

Municipality of West Elgin - Tri County Water System

Goto:

Month:

Year:

Date is Set to: **January-19**

Limit	Low	High	
Raw Water Chlorine Residual:	0.00	5.00	mg/L
Pre-Strainer Chlorine Residual:	0.00	5.00	mg/L
UV Inlet Chlorine Residual:	0.00	5.00	mg/L
Post Treatment Chlorine Residual:	1.00	5.00	mg/L
Treated Chlorine Residual:	1.00	2.50	mg/L
Distribution Chlorine Residual:	1.00	2.50	mg/L
Limit		High	
Limit		156.0	L/s
WTP Permit to Take Water		13500.0	m ³
Limit	Low	High	
System Pressure Limits:	50.0	1034.0	Kpa

Compliance Report

Low Lift Monthly Report

>>>

Membranes Monthly Report

>>>

UV System Monthly Report

>>>

Plant Quality Report

>>>

Raw Well/Treated Storage Report

>>>

High Lift Monthly Report

>>>

Operational Report

Low Lift Monthly Report

>>>

High Lift Monthly Report

>>>

Chemical Usage Monthly Report

>>>

Runtimes Report

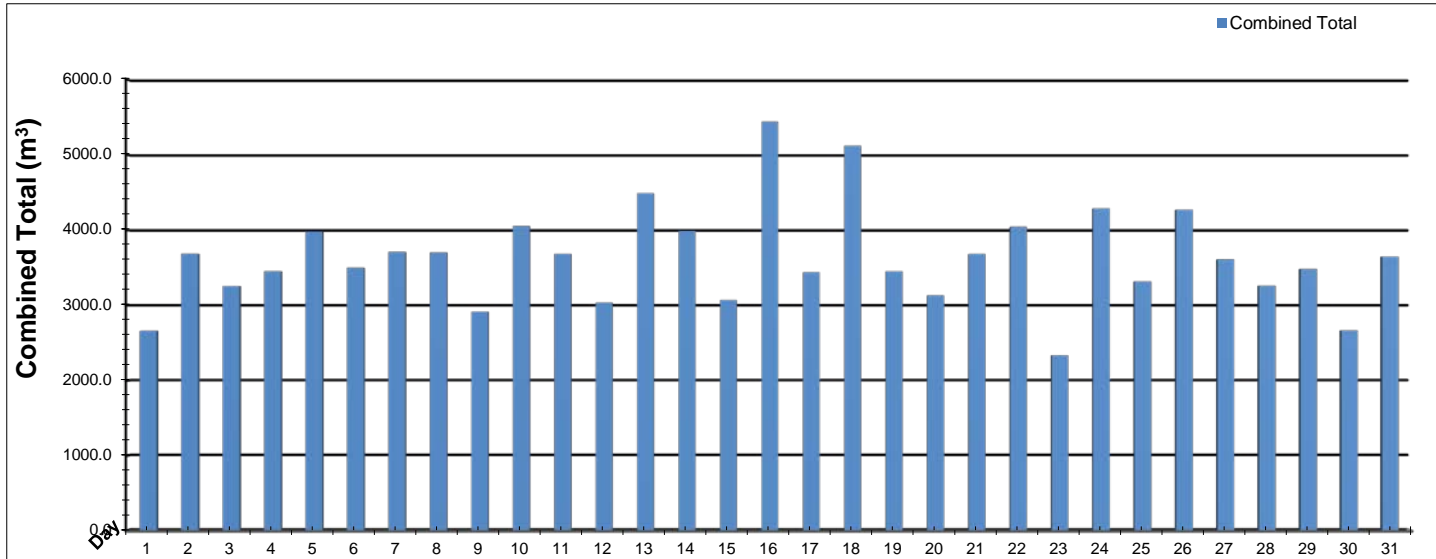
>>>

Plant Internal Flow Report

>>>

Low Lift Monthly Report

Month: **January-19**

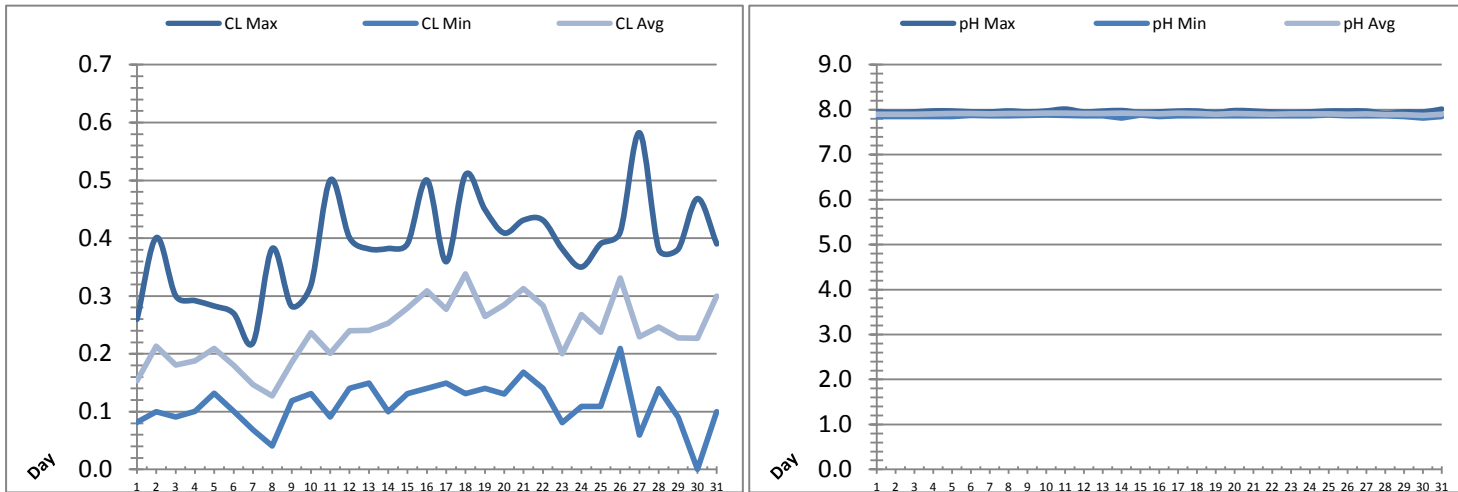


Date	Combined Total (m³)	West Train FIT-1017 (m³)	West Peak Flow FIT-1017 (L/s)	East Train FIT-1027 (m³)	East Peak Flow FIT-1027 (L/s)	Combined Peak Flow (L/s)
1	2660.3	2660.3	77.3	0.0	0.0	77.3
2	3684.5	3684.5	136.2	0.0	0.0	136.2
3	3254.4	3254.4	77.9	0.0	0.0	77.9
4	3452.1	3452.1	78.0	0.0	0.0	78.0
5	3980.2	3980.2	78.1	0.0	0.0	78.1
6	3498.9	3498.9	78.2	0.0	0.0	78.2
7	3710.3	3710.3	78.2	0.0	0.0	78.2
8	3702.7	3702.7	135.5	0.0	0.0	135.5
9	2915.4	2915.4	78.1	0.0	0.0	78.1
10	4054.0	4054.0	78.0	0.0	0.0	78.0
11	3682.8	3682.8	138.5	0.0	0.0	138.5
12	3035.1	3035.1	78.2	0.0	0.0	78.2
13	4488.5	4488.5	132.3	0.0	0.0	132.3
14	3989.2	3989.2	78.4	0.0	0.0	78.4
15	3071.1	3071.1	78.7	0.0	0.0	78.7
16	5439.6	5439.6	136.0	0.0	0.0	136.0
17	3437.3	3437.3	133.9	0.0	0.0	133.9
18	5121.3	5121.3	136.3	0.0	0.0	136.3
19	3451.5	3451.5	135.5	0.0	0.0	135.5
20	3130.9	3130.9	95.9	0.0	0.0	95.9
21	3681.8	3681.8	78.5	0.0	0.0	78.5
22	4043.6	4043.6	135.3	0.0	0.0	135.3
23	2334.5	2334.5	78.1	0.0	0.0	78.1
24	4288.1	4288.1	77.5	0.0	0.0	77.5
25	3317.1	3317.1	78.3	0.0	0.0	78.3
26	4270.4	4270.4	78.6	0.0	0.0	78.6
27	3610.1	3610.1	124.1	0.0	0.0	124.1
28	3259.7	3259.7	77.6	0.0	0.0	77.6
29	3482.9	3482.9	78.0	0.0	0.0	78.0
30	2665.0	2665.0	74.5	0.0	0.0	74.5
31	3647.3	3647.3	123.9	0.0	0.0	123.9
Total	112360.6	112360.6		0.0		
Average	3624.5	3624.5	98.2	0.0	0.0	98.2
Maximum	5439.6	5439.6	138.54	0.0	0.00	138.54
Date	16-Jan	16-Jan	11-Jan	4-Jan	1-Jan	11-Jan
Minimum	2334.5	2334.5	74.48	0.0	0.00	74.48
Date	23-Jan	23-Jan	30-Jan	1-Jan	1-Jan	30-Jan

Notes:

Low Lift Monthly Report

Month: January-19

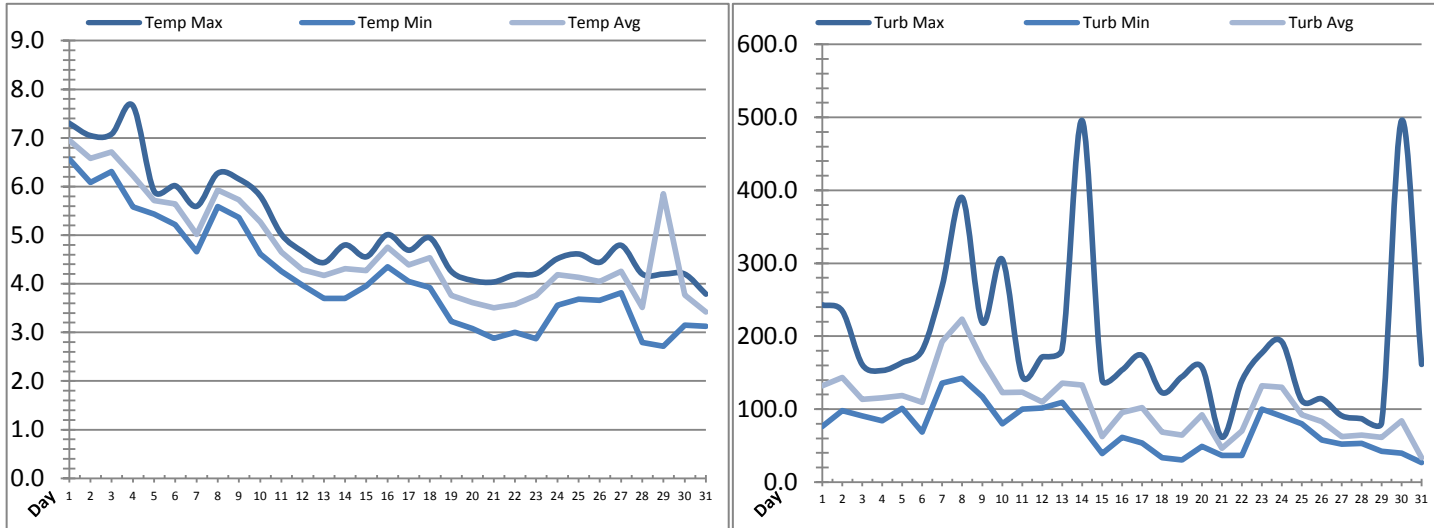


Date	Raw Water Chlorine Residual			Raw Water pH		
	AIT_1401_CL (mg/L)			AIT_1401_PH		
	Maximum	Minimum	Average	Maximum	Minimum	Average
1	0.26	0.08	0.15	7.95	7.85	7.90
2	0.40	0.10	0.21	7.94	7.85	7.90
3	0.30	0.09	0.18	7.95	7.85	7.90
4	0.29	0.10	0.19	7.97	7.85	7.91
5	0.28	0.13	0.21	7.97	7.85	7.91
6	0.27	0.10	0.18	7.95	7.87	7.91
7	0.22	0.07	0.15	7.95	7.87	7.90
8	0.38	0.04	0.13	7.97	7.87	7.91
9	0.28	0.12	0.19	7.95	7.87	7.92
10	0.32	0.13	0.24	7.97	7.88	7.92
11	0.50	0.09	0.20	8.01	7.87	7.93
12	0.40	0.14	0.24	7.95	7.87	7.91
13	0.38	0.15	0.24	7.97	7.87	7.92
14	0.38	0.10	0.25	7.98	7.81	7.93
15	0.39	0.13	0.28	7.94	7.88	7.91
16	0.50	0.14	0.31	7.95	7.85	7.91
17	0.36	0.15	0.28	7.97	7.87	7.92
18	0.51	0.13	0.34	7.97	7.87	7.91
19	0.45	0.14	0.26	7.94	7.87	7.90
20	0.41	0.13	0.28	7.98	7.87	7.91
21	0.43	0.17	0.31	7.97	7.86	7.91
22	0.43	0.14	0.28	7.95	7.87	7.90
23	0.38	0.08	0.20	7.94	7.87	7.90
24	0.35	0.11	0.27	7.95	7.87	7.91
25	0.39	0.11	0.24	7.97	7.88	7.91
26	0.41	0.21	0.33	7.97	7.87	7.90
27	0.58	0.06	0.23	7.97	7.87	7.90
28	0.38	0.14	0.25	7.92	7.87	7.89
29	0.38	0.09	0.23	7.95	7.85	7.89
30	0.47	0.00	0.23	7.95	7.82	7.88
31	0.39	0.10	0.30	8.01	7.84	7.89
Total						
Average	0.38	0.11	0.24	7.96	7.86	7.91
Maximum	0.58		0.34	8.01		7.93
Date	27-Jan		18-Jan	11-Jan		11-Jan
Minimum		0.00	0.13		7.81	7.88
Date		30-Jan	8-Jan		14-Jan	30-Jan

Notes:

Low Lift Monthly Report

Month: January-19

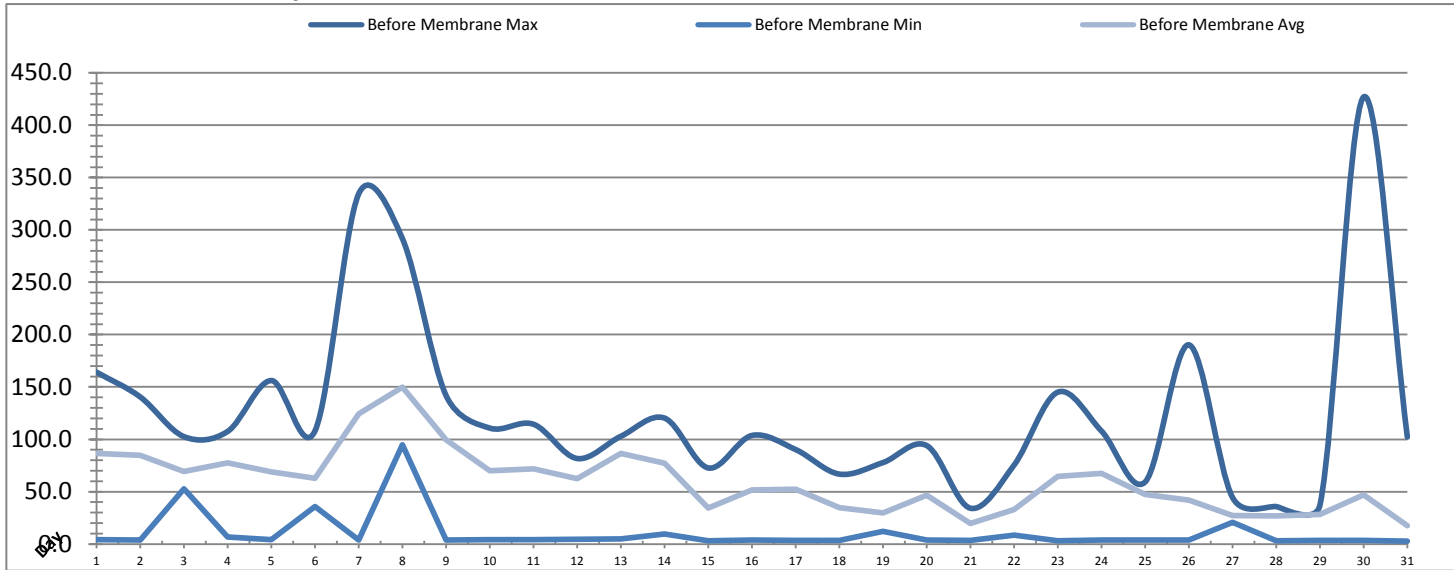


Date	Raw Water Temperature			Raw Water Turbidity		
	TIT_1403 (°C)			AIT_1404 (NTU)		
	Maximum	Minimum	Average	Maximum	Minimum	Average
1	7.3	6.6	6.9	242.93	76.25	131.86
2	7.0	6.1	6.6	234.35	97.91	143.42
3	7.1	6.3	6.7	160.75	90.95	113.44
4	7.7	5.6	6.2	152.95	84.01	115.62
5	5.9	5.4	5.7	163.86	101.04	118.75
6	6.0	5.2	5.6	180.93	68.55	109.07
7	5.6	4.7	5.0	269.20	135.83	192.39
8	6.3	5.6	5.9	389.98	142.09	223.16
9	6.2	5.4	5.7	218.94	117.29	167.38
10	5.8	4.6	5.3	305.55	80.10	122.69
11	5.0	4.3	4.7	145.25	100.16	123.15
12	4.7	4.0	4.3	171.52	101.69	110.03
13	4.4	3.7	4.2	182.31	109.43	135.42
14	4.8	3.7	4.3	495.82	75.38	133.20
15	4.6	4.0	4.3	140.47	39.00	62.39
16	5.0	4.4	4.8	153.67	61.45	95.61
17	4.7	4.0	4.4	173.78	53.66	102.30
18	4.9	3.9	4.5	122.68	33.58	68.66
19	4.3	3.2	3.8	144.29	30.43	64.58
20	4.1	3.1	3.6	157.46	48.95	92.40
21	4.0	2.9	3.5	61.46	36.60	46.21
22	4.2	3.0	3.6	138.88	36.60	69.90
23	4.2	2.9	3.8	176.91	100.09	131.88
24	4.5	3.6	4.2	192.41	90.11	129.86
25	4.6	3.7	4.1	111.81	80.06	92.37
26	4.4	3.7	4.0	114.13	57.58	82.73
27	4.8	3.8	4.3	90.96	52.15	62.51
28	4.2	2.8	3.5	86.90	52.80	64.59
29	4.2	2.7	5.8	81.59	42.02	61.37
30	4.2	3.1	3.8	495.81	39.70	83.90
31	3.8	3.1	3.4	161.28	26.46	33.23
Total						
Average	5.1	4.2	4.7	190.9	73.0	105.9
Maximum	7.7		6.9	495.8		223.2
Date	4-Jan		1-Jan	14-Jan		8-Jan
Minimum		2.7	3.4		26.5	33.2
Date		29-Jan	31-Jan		31-Jan	31-Jan

Notes:

Membranes Monthly Report

Month: January-19

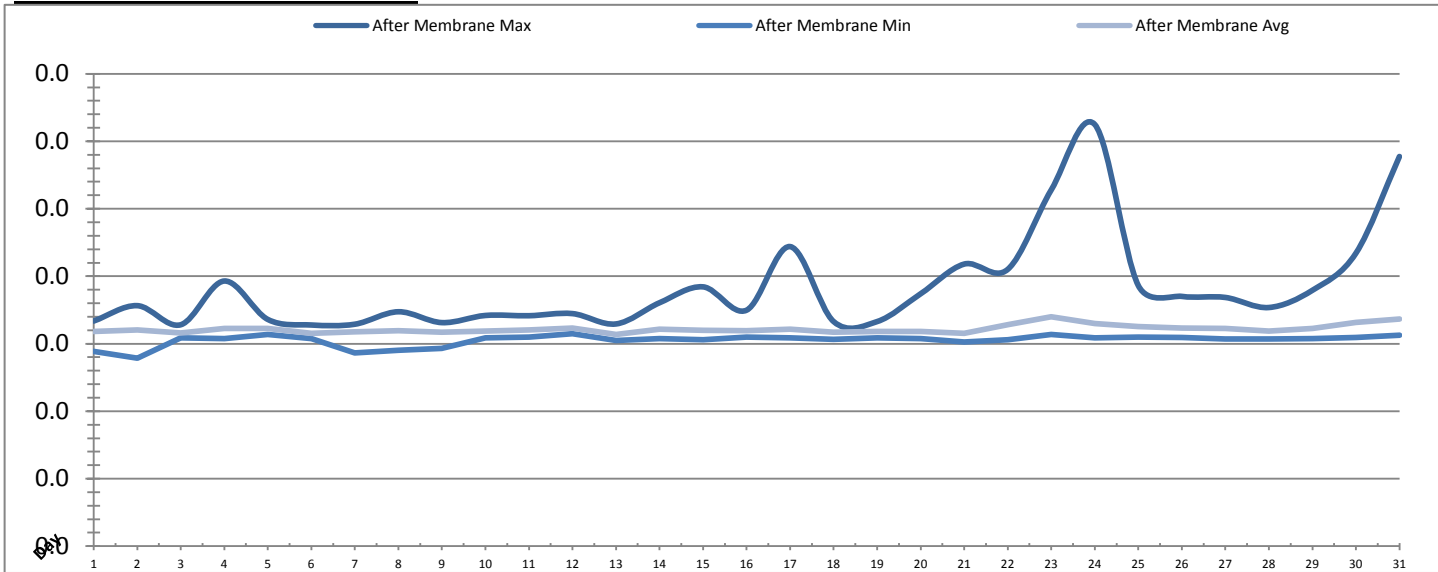


Date	Turbidity Before Membrane			Rack #1 Turbidity			Rack #2 Turbidity		
	PALL_FEED_AIT2006_Value NTU			RACK1_NTU_Value NTU			RACK2_NTU_Value NTU		
	Maximum	Minimum	Average	Maximum	Minimum	Average	Maximum	Minimum	Average
1	164.10	4.16	86.40	0.02	0.02	0.02	0.25	0.02	0.02
2	140.44	3.82	84.69	0.02	0.02	0.02	0.03	0.02	0.02
3	102.54	52.74	69.35	0.02	0.02	0.02	0.06	0.02	0.02
4	107.53	6.63	77.69	0.02	0.02	0.02	0.06	0.02	0.02
5	156.13	4.06	68.79	0.02	0.02	0.02	0.20	0.02	0.02
6	108.13	35.72	62.61	0.02	0.02	0.02	0.14	0.02	0.02
7	334.56	3.84	124.20	0.02	0.02	0.02	0.02	0.02	0.02
8	291.71	94.61	149.70	0.02	0.02	0.02	0.15	0.02	0.02
9	141.72	3.73	99.43	0.06	0.02	0.02	0.06	0.02	0.02
10	110.71	4.22	69.99	0.02	0.02	0.02	0.02	0.02	0.02
11	114.38	4.32	71.68	0.02	0.02	0.02	0.03	0.02	0.02
12	81.65	4.37	62.30	0.02	0.02	0.02	0.17	0.02	0.02
13	102.89	4.98	86.65	0.02	0.02	0.02	0.16	0.02	0.02
14	120.24	9.58	77.13	0.02	0.02	0.02	0.08	0.02	0.02
15	72.64	3.26	34.44	0.02	0.02	0.02	0.02	0.02	0.02
16	103.68	3.63	51.54	0.02	0.02	0.02	0.19	0.02	0.02
17	90.21	3.57	52.22	0.03	0.02	0.02	0.18	0.02	0.02
18	66.76	3.51	34.62	0.31	0.02	0.02	0.16	0.02	0.02
19	77.79	12.03	29.85	0.02	0.02	0.02	0.18	0.02	0.02
20	94.00	3.69	46.76	0.02	0.02	0.02	0.18	0.02	0.02
21	34.17	3.33	19.53	0.02	0.02	0.02	0.15	0.02	0.02
22	75.47	8.40	32.83	0.02	0.02	0.02	0.14	0.02	0.02
23	145.06	3.10	64.58	0.02	0.02	0.02	0.03	0.02	0.02
24	107.88	3.84	67.62	0.15	0.02	0.02	0.06	0.02	0.02
25	59.34	3.88	47.45	0.02	0.02	0.02	0.21	0.02	0.02
26	190.22	3.77	41.87	0.02	0.02	0.02	0.14	0.02	0.02
27	44.32	20.61	27.01	0.02	0.02	0.02	0.14	0.02	0.02
28	35.74	3.00	26.87	0.02	0.02	0.02	0.05	0.02	0.02
29	37.29	3.27	28.26	0.02	0.02	0.02	0.11	0.02	0.03
30	427.05	3.37	46.83	0.02	0.02	0.02	0.04	0.02	0.02
31	102.13	2.76	17.63	0.02	0.02	0.02	0.08	0.02	0.02
Total									
Average	123.9	10.5	60.0	0.03	0.02	0.02	0.11	0.02	0.02
Maximum	427.0		149.7	0.31		0.02	0.25		0.03
Date	30-Jan		8-Jan	18-Jan		18-Jan	1-Jan		29-Jan
Minimum		2.8	17.6		0.02	0.02		0.02	0.02
Date		31-Jan	31-Jan		1-Jan	3-Jan		1-Jan	7-Jan

Notes:

Membranes Monthly Report

Month: **January-19**

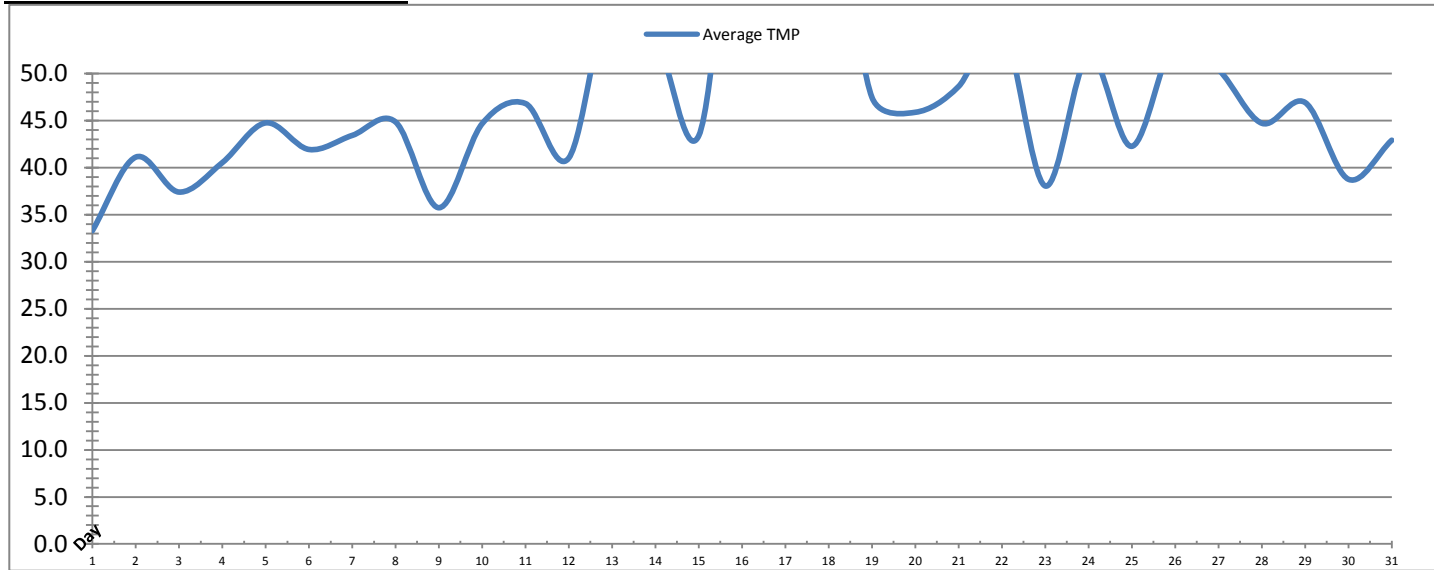


Date	Rack #3 Turbidity			Rack #4 Turbidity			Turbidity After Membranes		
	RACK3_NTU_Value NTU			RACK4_NTU_Value NTU			PALL_FILT_AIT5001_Value NTU		
	Maximum	Minimum	Average	Maximum	Minimum	Average	Maximum	Minimum	Average
1	0.02	0.02	0.02	0.03	0.03	0.03	0.02	0.01	0.02
2	0.03	0.02	0.02	0.03	0.03	0.03	0.02	0.01	0.02
3	0.02	0.02	0.02	0.03	0.03	0.03	0.02	0.02	0.02
4	0.02	0.02	0.02	0.03	0.03	0.03	0.02	0.02	0.02
5	0.02	0.02	0.02	0.03	0.03	0.03	0.02	0.02	0.02
6	0.02	0.02	0.02	0.03	0.03	0.03	0.02	0.02	0.02
7	0.02	0.02	0.02	0.03	0.03	0.03	0.02	0.01	0.02
8	0.02	0.02	0.02	0.03	0.03	0.03	0.02	0.01	0.02
9	0.06	0.02	0.02	0.03	0.03	0.03	0.02	0.01	0.02
10	0.02	0.02	0.02	0.03	0.03	0.03	0.02	0.02	0.02
11	0.02	0.02	0.02	0.03	0.03	0.03	0.02	0.02	0.02
12	0.02	0.02	0.02	0.03	0.03	0.03	0.02	0.02	0.02
13	0.02	0.02	0.02	0.03	0.03	0.03	0.02	0.02	0.02
14	0.02	0.02	0.02	0.03	0.03	0.03	0.02	0.02	0.02
15	0.02	0.02	0.02	0.03	0.03	0.03	0.02	0.02	0.02
16	0.02	0.02	0.02	0.03	0.03	0.03	0.02	0.02	0.02
17	0.04	0.02	0.02	0.03	0.03	0.03	0.02	0.02	0.02
18	0.02	0.02	0.02	0.03	0.03	0.03	0.02	0.02	0.02
19	0.02	0.02	0.02	0.03	0.03	0.03	0.02	0.02	0.02
20	0.02	0.02	0.02	0.03	0.03	0.03	0.02	0.02	0.02
21	0.02	0.02	0.02	0.06	0.03	0.03	0.02	0.02	0.02
22	0.02	0.02	0.02	0.04	0.03	0.03	0.02	0.02	0.02
23	0.04	0.02	0.02	0.08	0.03	0.03	0.03	0.02	0.02
24	0.03	0.02	0.02	0.09	0.03	0.03	0.03	0.02	0.02
25	0.03	0.02	0.02	0.04	0.03	0.03	0.02	0.02	0.02
26	0.02	0.02	0.02	0.06	0.03	0.03	0.02	0.02	0.02
27	0.02	0.02	0.02	0.03	0.03	0.03	0.02	0.02	0.02
28	0.02	0.02	0.02	0.03	0.03	0.03	0.02	0.02	0.02
29	0.02	0.02	0.02	0.03	0.03	0.03	0.02	0.02	0.02
30	0.02	0.02	0.02	0.03	0.03	0.03	0.02	0.02	0.02
31	0.16	0.02	0.02	0.03	0.03	0.03	0.03	0.02	0.02
Total									
Average	0.03	0.02	0.02	0.03	0.03	0.03	0.02	0.02	0.02
Maximum	0.16		0.02	0.09		0.03	0.03		0.02
Date	31-Jan		8-Jan	24-Jan		23-Jan	24-Jan		23-Jan
Minimum		0.02	0.02		0.03	0.03		0.01	0.02
Date		2-Jan	20-Jan		1-Jan	3-Jan		2-Jan	13-Jan

Notes:

Membranes Monthly Report

Month: **January-19**

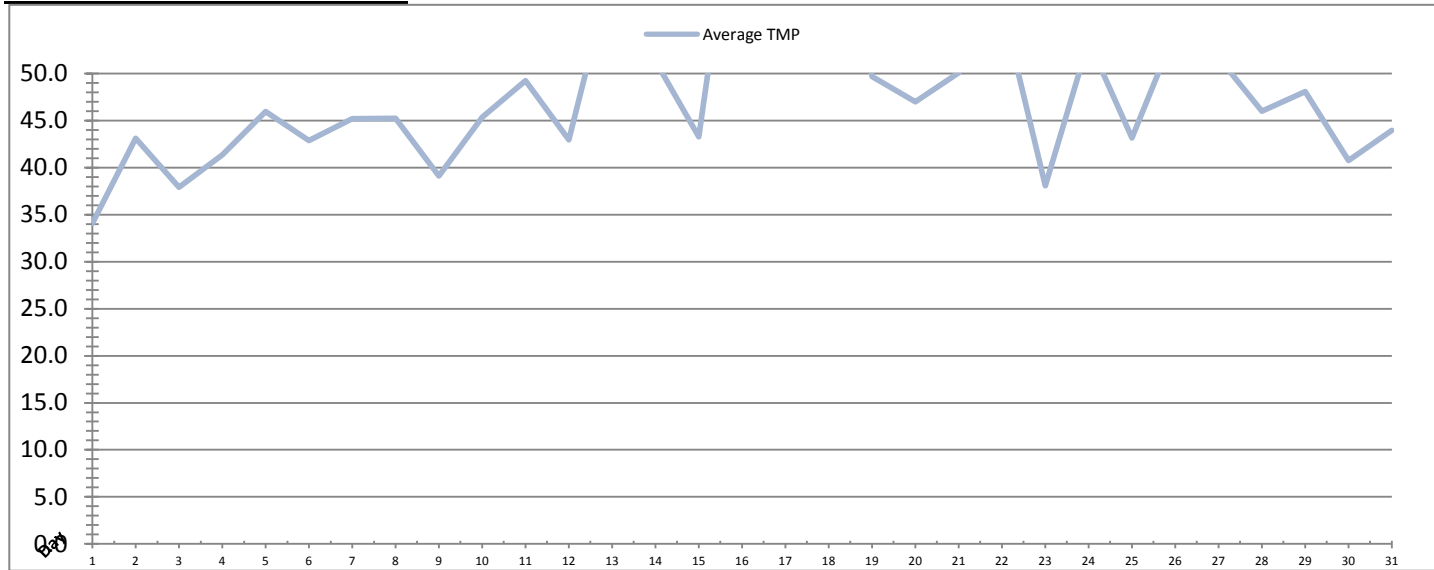


Date	Integrity Test Rack 1							
	Initial Pressure (kPa)	Final Pressure (kPa)	Test Duration (sec)	Change in Pressure (kPa)	UCL	Within UCL	Average TMP (kPa)	Max TMP (kPa)
1	198.9	197.6	300.0	1.3	2.0	✓ 2.0	33.3	99.3
2	198.9	197.8	300.0	1.2	2.0	✓ 2.0	41.1	190.0
3	199.5	198.3	300.0	1.2	2.0	✓ 2.0	37.4	100.9
4	199.0	197.7	300.0	1.3	2.0	✓ 2.0	40.5	198.1
5	198.8	197.4	300.0	1.4	2.0	✓ 2.0	44.8	109.0
6	198.9	197.6	300.0	1.3	2.0	✓ 2.0	41.9	109.6
7	199.4	197.9	300.0	1.5	2.0	✓ 2.0	43.4	110.6
8	199.2	197.8	300.0	1.4	2.0	✓ 2.0	44.8	174.3
9	198.6	197.4	300.0	1.2	2.0	✓ 2.0	35.7	199.8
10	198.6	197.3	300.0	1.3	2.0	✓ 2.0	44.7	173.2
11	198.9	197.7	300.0	1.2	2.0	✓ 2.0	46.8	197.4
12	199.5	198.1	300.0	1.4	2.0	✓ 2.0	41.0	120.5
13	199.2	197.9	300.0	1.3	2.0	✓ 2.0	59.2	190.5
14	198.7	197.6	300.0	1.2	2.0	✓ 2.0	54.2	202.5
15	199.4	198.1	300.0	1.3	2.0	✓ 2.0	43.4	179.1
16	198.9	197.6	300.0	1.3	2.0	✓ 2.0	73.6	209.4
17	198.8	197.6	300.0	1.2	2.0	✓ 2.0	54.0	207.9
18	199.1	197.9	300.0	1.3	2.0	✓ 2.0	69.5	240.0
19	199.5	198.1	300.0	1.4	2.0	✓ 2.0	47.4	201.1
20	199.5	198.2	300.0	1.3	2.0	✓ 2.0	45.9	182.7
21	199.1	197.7	300.0	1.4	2.0	✓ 2.0	48.6	164.8
22	198.9	197.7	300.0	1.1	2.0	✓ 2.0	55.1	208.5
23	199.2	198.0	300.0	1.1	2.0	✓ 2.0	38.0	169.0
24	199.2	198.1	300.0	1.1	2.0	✓ 2.0	51.9	197.4
25	198.9	197.7	300.0	1.2	2.0	✓ 2.0	42.3	140.1
26	199.4	198.1	300.0	1.3	2.0	✓ 2.0	53.5	123.6
27	199.2	197.9	300.0	1.3	2.0	✓ 2.0	50.4	155.3
28	199.3	198.1	300.0	1.2	2.0	✓ 2.0	44.7	211.8
29	199.2	198.0	300.0	1.2	2.0	✓ 2.0	46.9	123.9
30	199.0	197.8	300.0	1.2	2.0	✓ 2.0	38.8	99.1
31	199.4	198.2	300.0	1.2	2.0	✓ 2.0	42.9	188.6
Total								
Average	199.1	197.8	300.0	1.3	2.0	2.0	47.0	167.0
Maximum	199.5	198.3	300.0	1.5	2.0	2.0	73.6	240.0
Date	3-Jan	3-Jan	1-Jan	7-Jan	1-Jan	1-Jan	16-Jan	18-Jan
Minimum	198.6	197.3	300.0	1.1	2.0	2.0	33.3	99.1
Date	9-Jan	10-Jan	1-Jan	22-Jan	1-Jan	1-Jan	1-Jan	30-Jan

Notes:

Membranes Monthly Report

Month: **January-19**

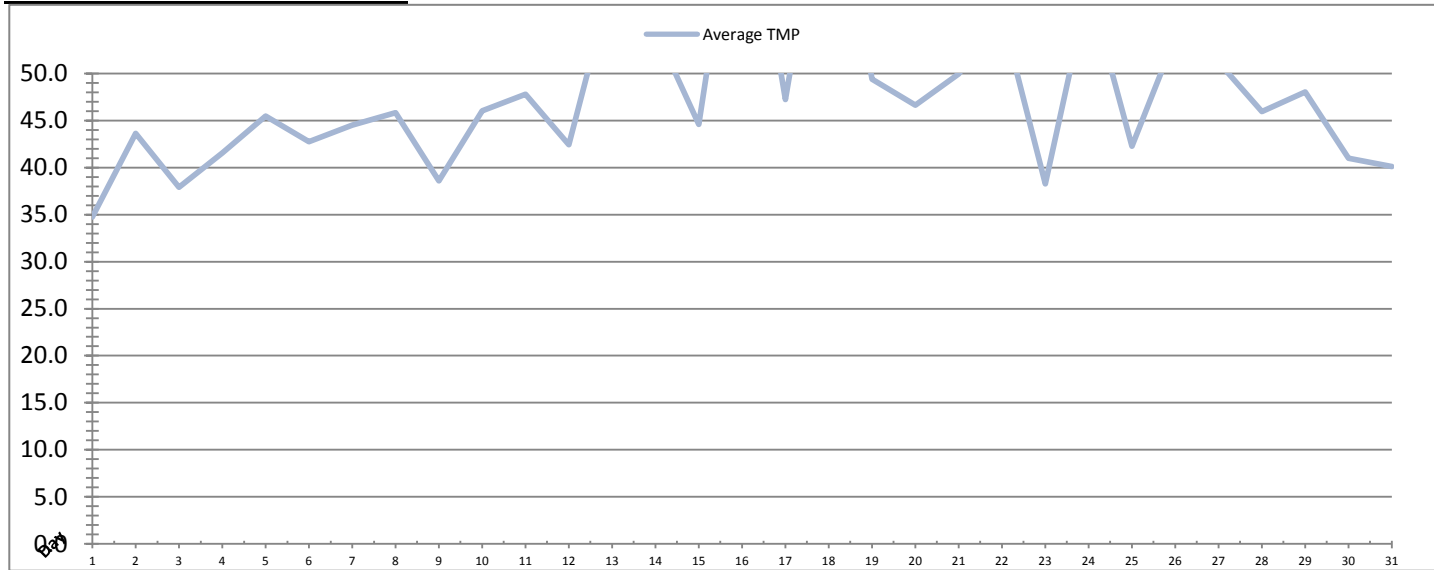


Integrity Test Rack 2									
Date	Initial Pressure (kPa)	Final Pressure (kPa)	Test Duration (sec)	Change in Pressure (kPa)	UCL	Within UCL	Average TMP (kPa)	Max TMP (kPa)	
1	208.1	206.9	300.0	1.2	2.0	✓ 2.0	34.1	101.0	
2	208.8	207.6	300.0	1.2	2.0	✓ 2.0	43.1	172.7	
3	208.1	207.0	300.0	1.1	2.0	✓ 2.0	37.9	101.8	
4	209.1	207.8	300.0	1.3	2.0	✓ 2.0	41.4	104.7	
5	208.2	206.9	300.0	1.3	2.0	✓ 2.0	46.0	110.0	
6	208.3	207.1	300.0	1.2	2.0	✓ 2.0	42.9	111.4	
7	208.6	207.2	300.0	1.3	2.0	✓ 2.0	45.2	112.4	
8	208.1	206.8	300.0	1.3	2.0	✓ 2.0	45.2	179.7	
9	208.9	207.7	300.0	1.2	2.0	✓ 2.0	39.1	113.3	
10	209.2	208.0	300.0	1.2	2.0	✓ 2.0	45.3	108.8	
11	208.9	207.7	300.0	1.2	2.0	✓ 2.0	49.2	198.7	
12	208.2	206.8	300.0	1.3	2.0	✓ 2.0	42.9	122.8	
13	208.0	206.7	300.0	1.3	2.0	✓ 2.0	61.2	192.2	
14	208.5	207.3	300.0	1.2	2.0	✓ 2.0	51.3	130.6	
15	209.2	208.0	300.0	1.2	2.0	✓ 2.0	43.3	123.8	
16	209.1	207.8	300.0	1.3	2.0	✓ 2.0	75.6	211.3	
17	208.7	207.5	300.0	1.2	2.0	✓ 2.0	54.7	211.9	
18	208.8	207.5	300.0	1.2	2.0	✓ 2.0	76.1	239.8	
19	207.6	206.3	300.0	1.3	2.0	✓ 2.0	49.7	207.5	
20	208.8	207.6	300.0	1.2	2.0	✓ 2.0	47.0	187.0	
21	208.1	206.9	300.0	1.3	2.0	✓ 2.0	50.1	132.4	
22	208.8	207.7	300.0	1.1	2.0	✓ 2.0	57.2	211.2	
23	208.1	207.0	300.0	1.1	2.0	✓ 2.0	38.1	131.9	
24	207.7	206.6	300.0	1.1	2.0	✓ 2.0	53.4	180.7	
25	208.6	207.7	300.0	0.9	2.0	✓ 2.0	43.1	113.7	
26	207.9	206.6	300.0	1.3	2.0	✓ 2.0	54.5	136.6	
27	208.2	207.0	300.0	1.2	2.0	✓ 2.0	51.7	156.8	
28	208.9	207.7	300.0	1.2	2.0	✓ 2.0	46.0	119.2	
29	208.4	207.3	300.0	1.1	2.0	✓ 2.0	48.1	125.5	
30	208.6	207.5	300.0	1.1	2.0	✓ 2.0	40.7	101.0	
31	208.4	207.3	300.0	1.1	2.0	✓ 2.0	43.9	195.0	
Total									
Average	208.5	207.3	300.0	1.2	2.0	2.0	48.3	149.8	
Maximum	209.2	208.0	300.0	1.3	2.0	2.0	76.1	239.8	
Date	10-Jan	10-Jan	1-Jan	7-Jan	1-Jan	1-Jan	18-Jan	18-Jan	
Minimum	207.6	206.3	300.0	0.9	2.0	2.0	34.1	101.0	
Date	19-Jan	19-Jan	1-Jan	25-Jan	1-Jan	1-Jan	1-Jan	30-Jan	

Notes:

Membranes Monthly Report

Month: **January-19**

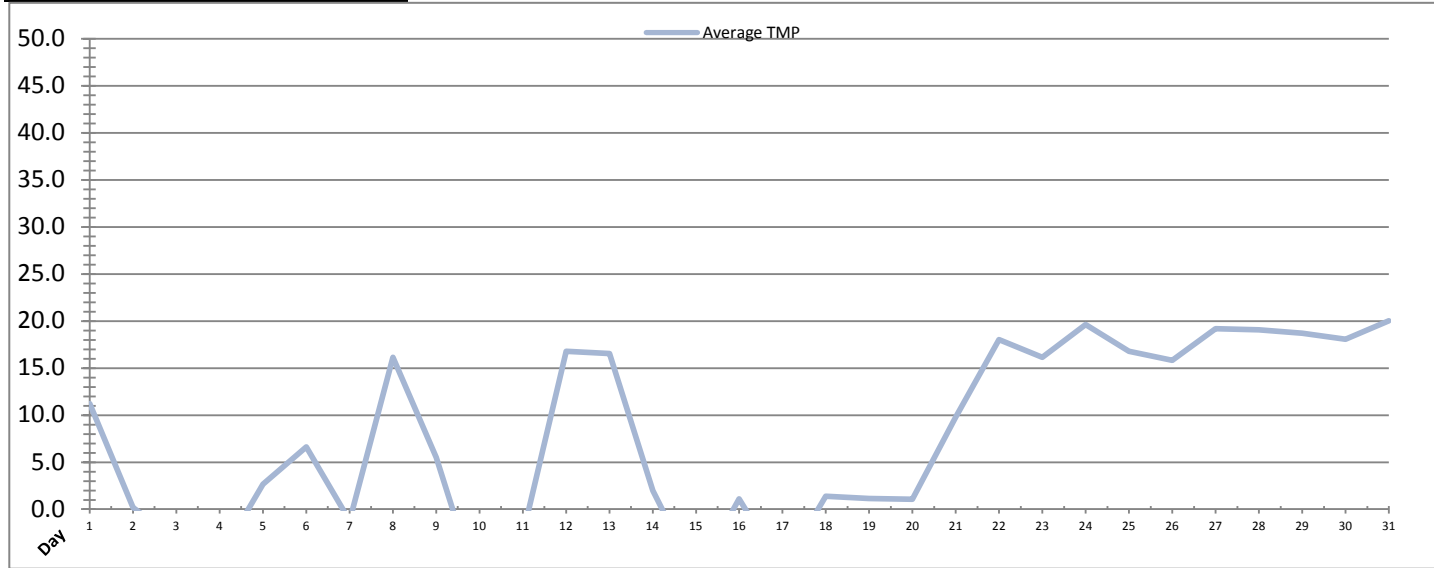


Integrity Test Rack 3									
Date	Initial Pressure (kPa)	Final Pressure (kPa)	Test Duration (sec)	Change in Pressure (kPa)	UCL	Within UCL	Average TMP (kPa)	Max TMP (kPa)	
1	180.5	179.3	300.0	1.2	2.0	✓ 2.0	34.7	100.0	
2	180.3	179.2	300.0	1.1	2.0	✓ 2.0	43.6	169.1	
3	180.5	179.3	300.0	1.2	2.0	✓ 2.0	37.9	142.6	
4	180.3	179.2	300.0	1.1	2.0	✓ 2.0	41.6	106.5	
5	181.9	180.6	300.0	1.3	2.0	✓ 2.0	45.5	104.5	
6	180.1	178.8	300.0	1.3	2.0	✓ 2.0	42.8	107.1	
7	179.7	178.4	300.0	1.3	2.0	✓ 2.0	44.5	165.2	
8	181.6	180.3	300.0	1.3	2.0	✓ 2.0	45.8	177.6	
9	180.2	179.0	300.0	1.1	2.0	✓ 2.0	38.6	168.7	
10	179.7	178.6	300.0	1.1	2.0	✓ 2.0	46.0	159.7	
11	179.7	178.6	300.0	1.1	2.0	✓ 2.0	47.8	184.3	
12	180.1	178.9	300.0	1.2	2.0	✓ 2.0	42.4	114.9	
13	179.8	178.6	300.0	1.1	2.0	✓ 2.0	60.1	185.6	
14	180.3	179.0	300.0	1.3	2.0	✓ 2.0	54.7	205.4	
15	180.2	179.1	300.0	1.1	2.0	✓ 2.0	44.6	218.4	
16	179.2	178.2	300.0	1.1	2.0	✓ 2.0	74.7	193.1	
17	182.1	181.0	300.0	1.2	2.0	✓ 2.0	47.2	163.3	
18	182.1	180.9	300.0	1.2	2.0	✓ 2.0	74.3	224.8	
19	181.6	180.3	300.0	1.3	2.0	✓ 2.0	49.4	206.1	
20	181.6	180.3	300.0	1.3	2.0	✓ 2.0	46.6	130.5	
21	181.9	180.7	300.0	1.2	2.0	✓ 2.0	50.0	156.0	
22	182.4	181.3	300.0	1.1	2.0	✓ 2.0	56.2	209.2	
23	181.8	180.8	300.0	1.1	2.0	✓ 2.0	38.3	193.2	
24	182.3	181.3	300.0	1.1	2.0	✓ 2.0	59.2	220.3	
25	181.7	180.5	300.0	1.1	2.0	✓ 2.0	42.3	109.1	
26	181.3	180.2	300.0	1.2	2.0	✓ 2.0	53.9	118.3	
27	182.6	181.3	300.0	1.3	2.0	✓ 2.0	51.2	155.7	
28	182.1	181.1	300.0	1.1	2.0	✓ 2.0	46.0	119.6	
29	181.8	180.6	300.0	1.1	2.0	✓ 2.0	48.0	178.6	
30	181.4	180.2	300.0	1.2	2.0	✓ 2.0	41.0	101.1	
31	181.6	180.5	300.0	1.2	2.0	✓ 2.0	40.1	113.9	
Total									
Average	181.1	179.9	300.0	1.2	2.0	2.0	48.0	158.1	
Maximum	182.6	181.3	300.0	1.3	2.0	2.0	74.7	224.8	
Date	27-Jan	27-Jan	1-Jan	19-Jan	1-Jan	1-Jan	16-Jan	18-Jan	
Minimum	179.2	178.2	300.0	1.1	2.0	2.0	34.7	100.0	
Date	16-Jan	16-Jan	1-Jan	16-Jan	1-Jan	1-Jan	1-Jan	1-Jan	

Notes:

Membranes Monthly Report

Month: **January-19**



Integrity Test Rack 4									
Date	Initial Pressure (kPa)	Final Pressure (kPa)	Test Duration (sec)	Change in Pressure (kPa)	UCL	Within UCL	Average TMP (kPa)	Max TMP (kPa)	
1	197.8	195.2	300.0	2.6	2.0	✓ 2.0	11.2	48.2	
2	198.0	196.6	300.0	1.3	2.0	✓ 2.0	0.2	41.0	
3	197.6	195.3	300.0	2.3	2.0	✓ 2.0	-3.3	45.7	
4	193.3	191.1	300.0	2.1	2.0	✓ 2.0	-5.2	115.8	
5	193.3	191.1	300.0	2.1	2.0	✓ 2.0	2.7	4.8	
6	193.3	191.1	300.0	2.1	2.0	✓ 2.0	6.6	8.3	
7	193.4	191.2	300.0	2.2	2.0	✓ 2.0	-1.2	30.8	
8	193.4	191.2	300.0	2.2	2.0	✓ 2.0	16.1	16.6	
9	193.2	191.9	300.0	1.3	2.0	✓ 2.0	5.5	42.0	
10	193.1	190.9	300.0	2.3	2.0	✓ 2.0	-9.0	42.0	
11	193.2	191.7	300.0	1.6	2.0	✓ 2.0	-2.7	20.6	
12	193.2	191.7	300.0	1.6	2.0	✓ 2.0	16.8	17.4	
13	193.2	191.7	300.0	1.6	2.0	✓ 2.0	16.5	17.1	
14	193.0	0.0	300.0	2.1	2.0	✓ 2.0	2.0	44.6	
15	181.5	179.4	300.0	2.1	2.0	✓ 2.0	-7.2	42.7	
16	181.5	179.4	300.0	2.1	2.0	✓ 2.0	1.1	3.2	
17	190.4	188.9	300.0	1.4	2.0	✓ 2.0	-6.4	48.4	
18	199.4	194.9	300.0	4.5	2.0	✓ 2.0	1.4	62.8	
19	199.4	194.9	300.0	4.5	2.0	✓ 2.0	1.1	19.0	
20	199.4	194.9	300.0	4.5	2.0	✓ 2.0	1.1	18.8	
21	200.3	198.7	300.0	1.6	2.0	✓ 2.0	9.8	62.3	
22	200.1	199.1	300.0	1.0	2.0	✓ 2.0	18.0	49.5	
23	200.0	198.7	300.0	1.3	2.0	✓ 2.0	16.2	49.2	
24	199.8	198.6	300.0	1.2	2.0	✓ 2.0	19.6	65.4	
25	200.1	198.9	300.0	1.3	2.0	✓ 2.0	16.8	47.4	
26	200.4	199.1	300.0	1.3	2.0	✓ 2.0	15.8	44.6	
27	200.3	199.1	300.0	1.3	2.0	✓ 2.0	19.2	57.4	
28	200.3	199.1	300.0	1.2	2.0	✓ 2.0	19.1	51.0	
29	200.5	199.2	300.0	1.3	2.0	✓ 2.0	18.7	50.1	
30	200.0	198.7	300.0	1.3	2.0	✓ 2.0	18.1	47.8	
31	200.2	199.2	300.0	1.0	2.0	✓ 2.0	20.0	49.7	
Total									
Average	195.9	187.8	300.0	1.9	2.0	2.0	7.7	40.8	
Maximum	200.5	199.2	300.0	4.5	2.0	2.0	20.0	115.8	
Date	29-Jan	29-Jan	1-Jan	18-Jan	1-Jan	1-Jan	31-Jan	4-Jan	
Minimum	181.5	0.0	300.0	1.0	2.0	2.0	-9.0	3.2	
Date	15-Jan	14-Jan	1-Jan	22-Jan	1-Jan	1-Jan	10-Jan	16-Jan	

Notes:

Membranes Monthly Report

Month: January-19

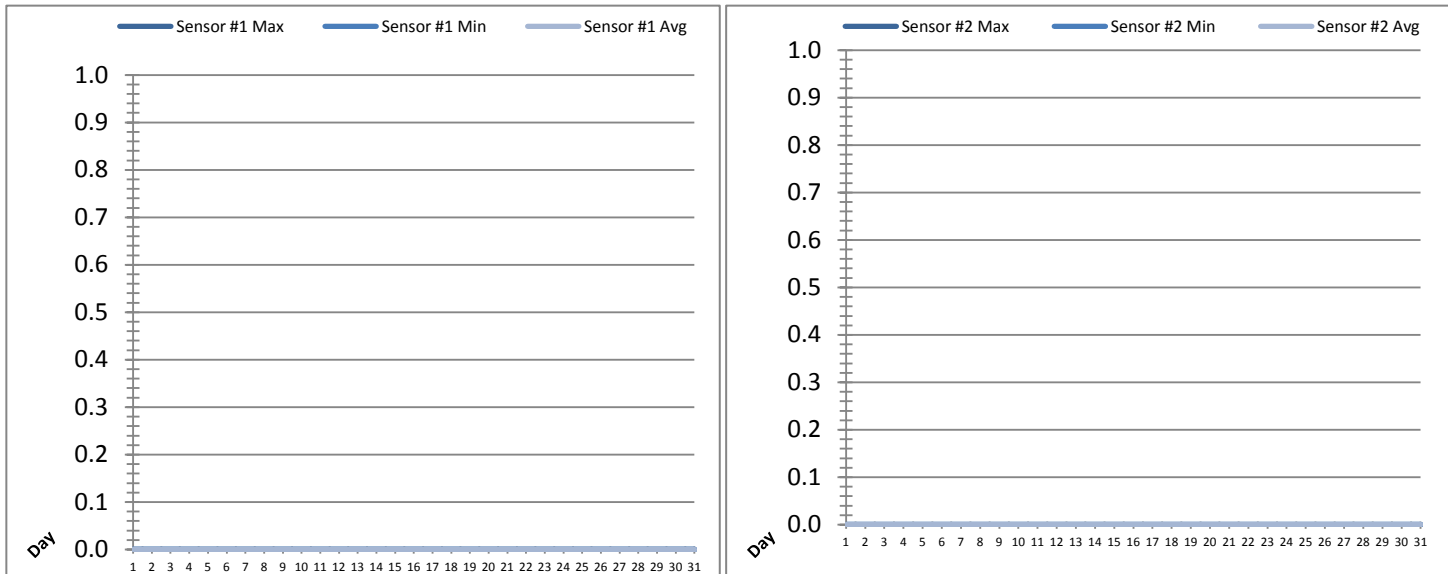
Date	Membranes Monthly Performance							
	Rack 1 >0.1 NTU (Minutes)	Rack 1 Forward Flow (Minutes)	Rack 2 >0.1 NTU (Minutes)	Rack 2 Forward Flow (Minutes)	Rack 3 >0.1 NTU (Minutes)	Rack 3 Forward Flow (Minutes)	Rack 4 >0.1 NTU (Minutes)	Rack 4 Forward Flow (Minutes)
1	0.0	620.4	2.3	628.0	0.0	618.1	0.0	123.2
2	0.0	785.1	0.0	786.4	0.0	769.4	0.0	110.6
3	0.0	745.0	0.0	752.2	0.0	735.2	0.0	45.5
4	0.0	790.5	0.0	796.3	0.0	783.3	0.0	0.0
5	0.0	896.4	1.4	905.5	0.0	888.3	0.0	0.0
6	0.0	785.1	0.5	797.3	0.0	777.6	0.0	0.0
7	0.0	849.4	0.0	853.6	0.0	844.5	0.0	0.0
8	0.0	766.2	1.3	763.1	0.0	756.3	0.0	0.0
9	0.0	613.4	0.0	665.6	0.0	637.2	0.0	0.0
10	0.0	907.1	0.0	901.3	0.0	899.5	0.0	0.0
11	0.0	702.5	0.0	710.2	0.0	693.5	0.0	0.0
12	0.0	685.3	1.4	693.3	0.0	677.2	0.0	0.0
13	0.0	983.6	1.4	997.5	0.0	972.3	0.0	0.0
14	0.0	894.1	0.0	847.4	0.0	879.4	0.0	0.0
15	0.0	670.6	0.0	661.0	0.0	666.5	0.0	0.0
16	0.0	1182.1	1.4	1197.4	0.0	1173.2	0.0	0.0
17	0.0	776.0	1.4	779.2	0.0	685.3	0.0	0.0
18	6.3	1014.1	1.4	1080.2	0.0	1052.4	0.0	0.0
19	0.0	731.0	1.4	745.0	0.0	730.2	0.0	0.0
20	0.0	705.0	1.4	716.3	0.0	697.4	0.0	0.0
21	0.0	836.5	1.4	845.0	0.0	834.3	0.0	204.1
22	0.0	878.2	1.4	894.4	0.0	871.0	0.0	266.2
23	0.0	541.0	0.0	536.2	0.0	534.3	0.0	129.0
24	2.3	874.5	0.0	912.2	0.0	979.2	0.0	445.5
25	0.0	752.0	1.4	765.5	0.0	725.5	0.0	152.5
26	0.0	972.1	1.4	982.1	0.0	964.1	0.0	48.1
27	0.0	782.0	1.4	791.5	0.0	777.5	0.0	449.1
28	0.0	746.2	0.0	750.3	0.0	739.0	0.0	342.5
29	0.0	798.2	1.4	805.3	0.0	796.4	0.0	511.3
30	0.0	940.4	0.0	942.2	0.0	951.3	0.0	540.5
31	0.0	1079.1	0.0	1079.2	5.4	1009.6	0.0	401.4
Total	8.6	25303.5	23.5	25580.7	5.4	25118.9	0.0	3769.2
Percent	0.03		0.09		0.02		0.00	
Maximum	6.3	1182.1	2.3	1197.4	5.4	1173.2	0.0	540.5
Date	18-Jan	16-Jan	1-Jan	16-Jan	31-Jan	16-Jan	1-Jan	30-Jan
Minimum	0.0	541.0	0.0	536.2	0.0	534.3	0.0	0.0
Date	1-Jan	23-Jan	2-Jan	23-Jan	1-Jan	23-Jan	1-Jan	4-Jan

Notes:

Met filter performance criteria of 99% readings for the month were less than 0.1NTU.

UV System Monthly Report

Month: January-19

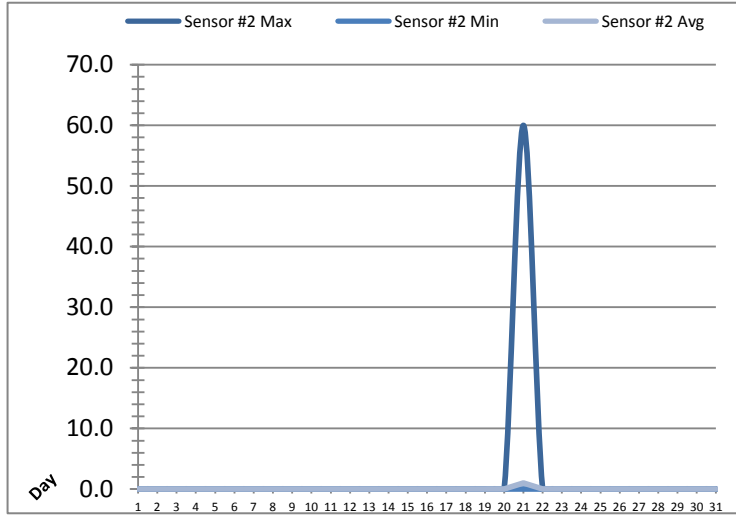
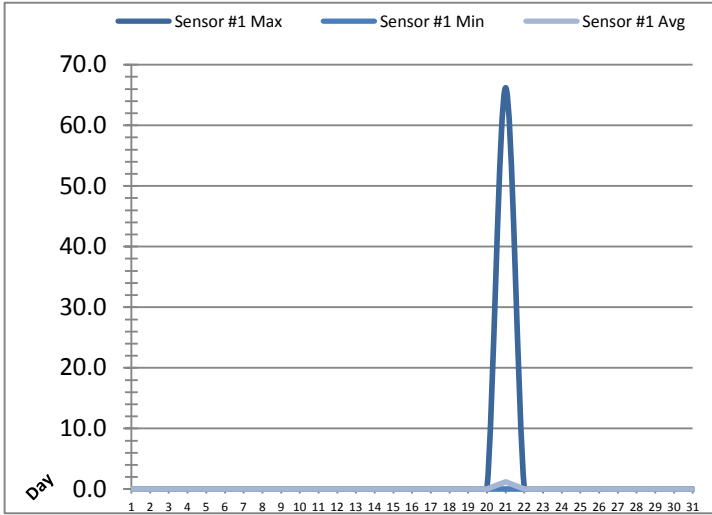


Date	UV Reactor 1					
	Intensity Sensor 1 (mW/cm ²)			Intensity Sensor 2 (mW/cm ²)		
	Maximum	Minimum	Average	Maximum	Minimum	Average
1	0.0	0.0	0.0	0.0	0.0	0.0
2	0.0	0.0	0.0	0.0	0.0	0.0
3	0.0	0.0	0.0	0.0	0.0	0.0
4	0.0	0.0	0.0	0.0	0.0	0.0
5	0.0	0.0	0.0	0.0	0.0	0.0
6	0.0	0.0	0.0	0.0	0.0	0.0
7	0.0	0.0	0.0	0.0	0.0	0.0
8	0.0	0.0	0.0	0.0	0.0	0.0
9	0.0	0.0	0.0	0.0	0.0	0.0
10	0.0	0.0	0.0	0.0	0.0	0.0
11	0.0	0.0	0.0	0.0	0.0	0.0
12	0.0	0.0	0.0	0.0	0.0	0.0
13	0.0	0.0	0.0	0.0	0.0	0.0
14	0.0	0.0	0.0	0.0	0.0	0.0
15	0.0	0.0	0.0	0.0	0.0	0.0
16	0.0	0.0	0.0	0.0	0.0	0.0
17	0.0	0.0	0.0	0.0	0.0	0.0
18	0.0	0.0	0.0	0.0	0.0	0.0
19	0.0	0.0	0.0	0.0	0.0	0.0
20	0.0	0.0	0.0	0.0	0.0	0.0
21	0.0	0.0	0.0	0.0	0.0	0.0
22	0.0	0.0	0.0	0.0	0.0	0.0
23	0.0	0.0	0.0	0.0	0.0	0.0
24	0.0	0.0	0.0	0.0	0.0	0.0
25	0.0	0.0	0.0	0.0	0.0	0.0
26	0.0	0.0	0.0	0.0	0.0	0.0
27	0.0	0.0	0.0	0.0	0.0	0.0
28	0.0	0.0	0.0	0.0	0.0	0.0
29	0.0	0.0	0.0	0.0	0.0	0.0
30	0.0	0.0	0.0	0.0	0.0	0.0
31	0.0	0.0	0.0	0.0	0.0	0.0
Total						
Average	0.0	0.0	0.0	0.0	0.0	0.0
Maximum	0.0		0.0	0.0		0.0
Date	1-Jan		1-Jan	1-Jan		1-Jan
Minimum		0.0	0.0		0.0	0.0
Date		1-Jan	1-Jan		1-Jan	1-Jan

Notes:

UV System Monthly Report

Month: **January-19**

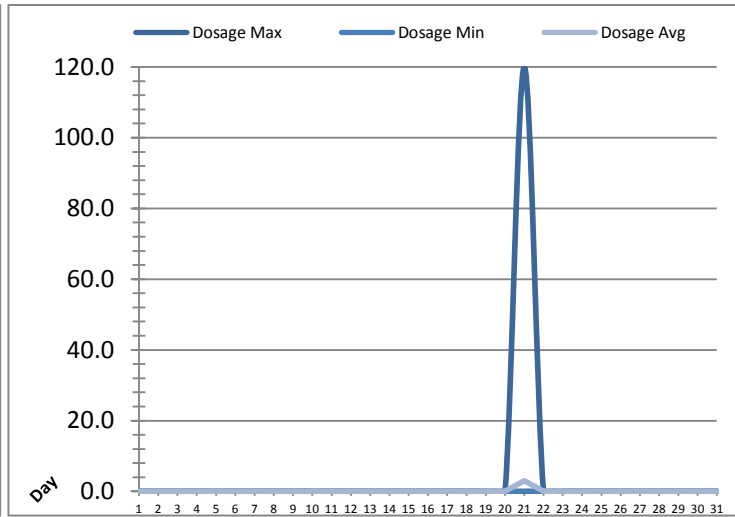
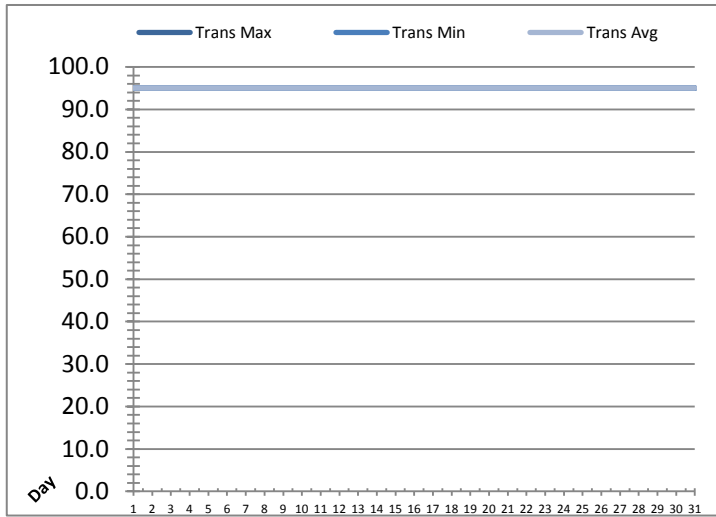


Date	UV Reactor 2					
	Intensity Sensor 1 (mW/cm ²)			Intensity Sensor 2 (mW/cm ²)		
	Maximum	Minimum	Average	Maximum	Minimum	Average
1	0.0	0.0	0.0	0.0	0.0	0.0
2	0.0	0.0	0.0	0.0	0.0	0.0
3	0.0	0.0	0.0	0.0	0.0	0.0
4	0.0	0.0	0.0	0.0	0.0	0.0
5	0.0	0.0	0.0	0.0	0.0	0.0
6	0.0	0.0	0.0	0.0	0.0	0.0
7	0.0	0.0	0.0	0.0	0.0	0.0
8	0.0	0.0	0.0	0.0	0.0	0.0
9	0.0	0.0	0.0	0.0	0.0	0.0
10	0.0	0.0	0.0	0.0	0.0	0.0
11	0.0	0.0	0.0	0.0	0.0	0.0
12	0.0	0.0	0.0	0.0	0.0	0.0
13	0.0	0.0	0.0	0.0	0.0	0.0
14	0.0	0.0	0.0	0.0	0.0	0.0
15	0.0	0.0	0.0	0.0	0.0	0.0
16	0.0	0.0	0.0	0.0	0.0	0.0
17	0.0	0.0	0.0	0.0	0.0	0.0
18	0.0	0.0	0.0	0.0	0.0	0.0
19	0.0	0.0	0.0	0.0	0.0	0.0
20	0.0	0.0	0.0	0.0	0.0	0.0
21	66.2	0.0	1.2	60.0	0.0	1.0
22	0.0	0.0	0.0	0.0	0.0	0.0
23	0.0	0.0	0.0	0.0	0.0	0.0
24	0.0	0.0	0.0	0.0	0.0	0.0
25	0.0	0.0	0.0	0.0	0.0	0.0
26	0.0	0.0	0.0	0.0	0.0	0.0
27	0.0	0.0	0.0	0.0	0.0	0.0
28	0.0	0.0	0.0	0.0	0.0	0.0
29	0.0	0.0	0.0	0.0	0.0	0.0
30	0.0	0.0	0.0	0.0	0.0	0.0
31	0.0	0.0	0.0	0.0	0.0	0.0
Total						
Average	2.1	0.0	0.0	1.9	0.0	0.0
Maximum	66.2		1.2	60.0		1.0
Date	21-Jan		21-Jan	21-Jan		21-Jan
Minimum		0.0	0.0		0.0	0.0
Date		1-Jan	1-Jan		1-Jan	1-Jan

Notes:

UV System Monthly Report

Month: January-19

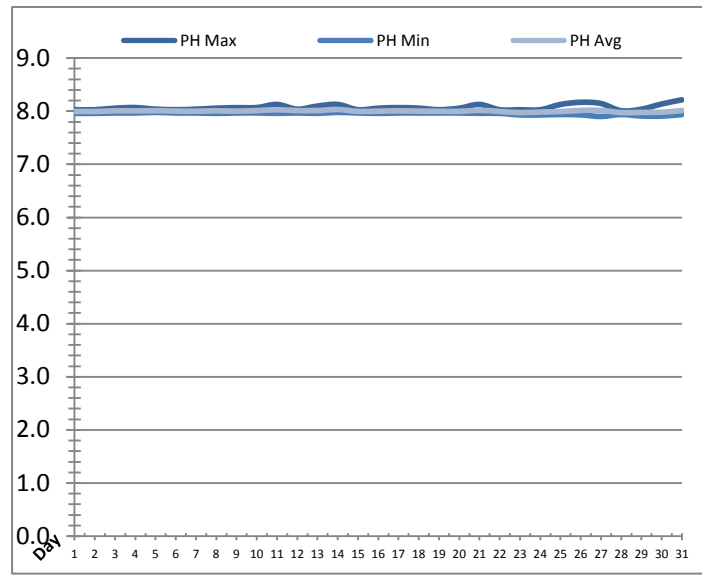
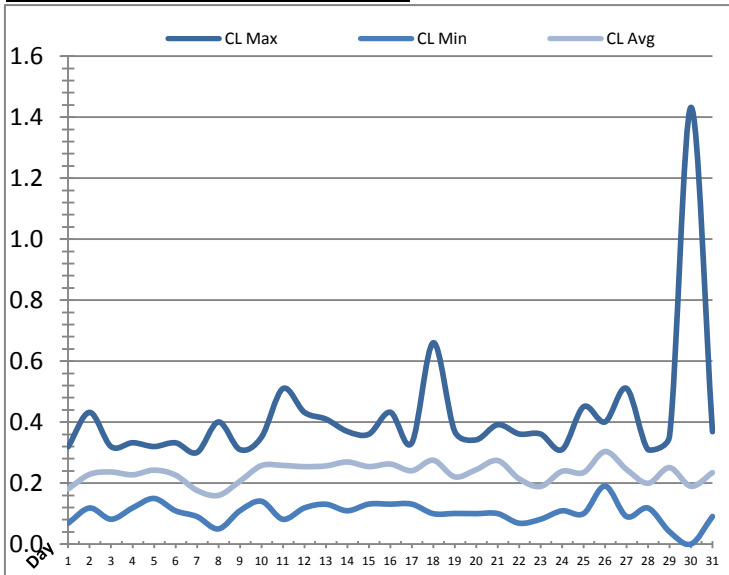


UV System							
Date	Transmittance (%)			Dosage (mJ/cm ²)			Inlet Flow (L/s)
	Maximum	Minimum	Average	Maximum	Minimum	Average	Maximum
1	95.00	95.00	95.00	0.0	0.0	0.0	100.2
2	95.00	95.00	95.00	0.0	0.0	0.0	133.7
3	95.00	95.00	95.00	0.0	0.0	0.0	95.3
4	95.00	95.00	95.00	0.0	0.0	0.0	93.5
5	95.00	95.00	95.00	0.0	0.0	0.0	84.3
6	95.00	95.00	95.00	0.0	0.0	0.0	84.1
7	95.00	95.00	95.00	0.0	0.0	0.0	85.0
8	95.00	95.00	95.00	0.0	0.0	0.0	141.7
9	95.00	95.00	95.00	0.0	0.0	0.0	84.7
10	95.00	95.00	95.00	0.0	0.0	0.0	86.6
11	95.00	95.00	95.00	0.0	0.0	0.0	149.1
12	95.00	95.00	95.00	0.0	0.0	0.0	85.6
13	95.00	95.00	95.00	0.0	0.0	0.0	132.3
14	95.00	95.00	95.00	0.0	0.0	0.0	85.7
15	95.00	95.00	95.00	0.0	0.0	0.0	129.1
16	95.00	95.00	95.00	0.0	0.0	0.0	136.3
17	95.00	95.00	95.00	0.0	0.0	0.0	133.6
18	95.00	95.00	95.00	0.0	0.0	0.0	140.7
19	95.00	95.00	95.00	0.0	0.0	0.0	141.5
20	95.00	95.00	95.00	0.0	0.0	0.0	95.4
21	95.00	95.00	95.00	120.0	0.0	3.0	96.0
22	95.00	95.00	95.00	0.0	0.0	0.0	140.8
23	95.00	95.00	95.00	0.0	0.0	0.0	101.5
24	95.00	95.00	95.00	0.0	0.0	0.0	110.8
25	95.00	95.00	95.00	0.0	0.0	0.0	100.6
26	95.00	95.00	95.00	0.0	0.0	0.0	92.7
27	95.00	95.00	95.00	0.0	0.0	0.0	133.9
28	95.00	95.00	95.00	0.0	0.0	0.0	101.3
29	95.00	95.00	95.00	0.0	0.0	0.0	100.4
30	95.00	95.00	95.00	0.0	0.0	0.0	91.8
31	95.00	95.00	95.00	0.0	0.0	0.0	148.8
Total							
Average	95.00	95.00	95.00	3.9	0.0	0.1	110.9
Maximum	95.00		95.00	120.0		3.0	149.1
Date	1-Jan		1-Jan	21-Jan		21-Jan	11-Jan
Minimum		95.00	95.00		0.0	0.0	
Date		1-Jan	1-Jan		1-Jan	1-Jan	

Notes:

Plant Quality Report

Month: **January-19**

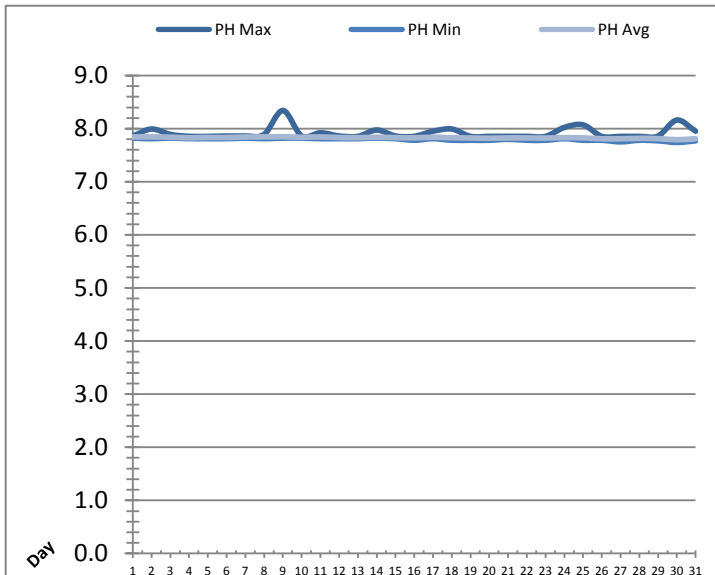
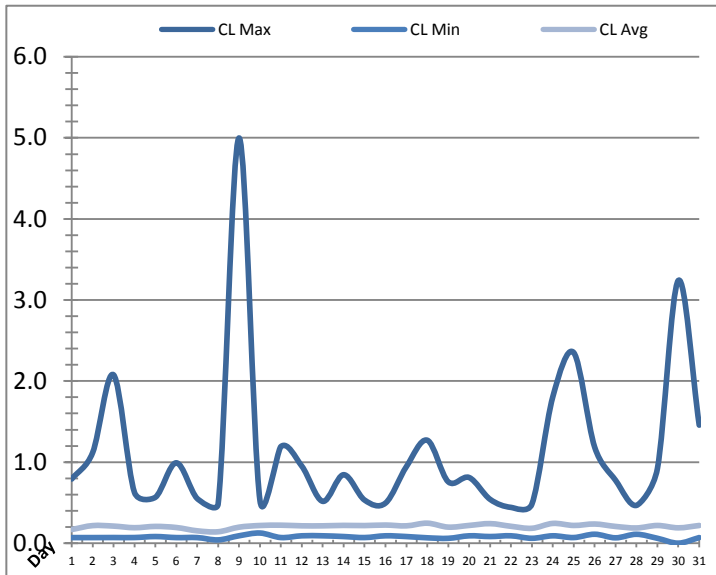


Date	Strainer Chlorine Residual			Strainer pH		
	AIT_2003_CL (ppm)			AIT_2003_PH		
	Maximum	Minimum	Average	Maximum	Minimum	Average
1	0.32	0.07	0.18	8.03	7.96	8.00
2	0.43	0.12	0.23	8.03	7.96	8.00
3	0.32	0.08	0.24	8.06	7.97	8.01
4	0.33	0.12	0.23	8.07	7.97	8.01
5	0.32	0.15	0.24	8.04	7.98	8.01
6	0.33	0.11	0.23	8.03	7.97	8.00
7	0.30	0.09	0.18	8.04	7.97	8.00
8	0.40	0.05	0.16	8.06	7.96	8.01
9	0.31	0.11	0.21	8.07	7.97	8.00
10	0.35	0.14	0.26	8.07	7.97	8.01
11	0.51	0.08	0.26	8.13	7.96	8.03
12	0.43	0.12	0.25	8.04	7.97	8.01
13	0.41	0.13	0.26	8.10	7.96	8.01
14	0.37	0.11	0.27	8.13	7.98	8.03
15	0.36	0.13	0.25	8.03	7.97	8.00
16	0.43	0.13	0.26	8.06	7.96	8.00
17	0.33	0.13	0.24	8.07	7.97	8.01
18	0.66	0.10	0.27	8.06	7.97	8.00
19	0.37	0.10	0.22	8.03	7.97	8.00
20	0.34	0.10	0.24	8.06	7.97	8.00
21	0.39	0.10	0.27	8.13	7.96	8.02
22	0.36	0.07	0.21	8.03	7.96	7.99
23	0.36	0.08	0.19	8.03	7.93	7.97
24	0.31	0.11	0.24	8.03	7.93	7.98
25	0.45	0.10	0.23	8.13	7.94	7.99
26	0.40	0.19	0.30	8.17	7.93	8.02
27	0.51	0.09	0.24	8.14	7.90	8.01
28	0.31	0.12	0.20	8.01	7.94	7.97
29	0.35	0.04	0.25	8.04	7.91	7.98
30	1.43	0.00	0.19	8.14	7.91	7.98
31	0.37	0.09	0.23	8.21	7.94	8.01
Total						
Average	0.42	0.10	0.23	8.07	7.95	8.00
Maximum	1.43		0.30	8.21		8.03
Date	30-Jan		26-Jan	31-Jan		14-Jan
Minimum		0.00	0.16		7.90	7.97
Date		30-Jan	8-Jan		27-Jan	23-Jan

Notes:

Plant Quality Report

Month: **January-19**

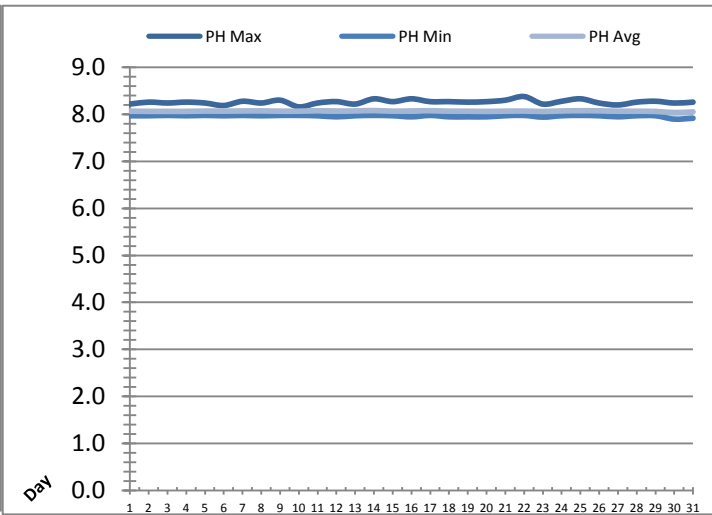
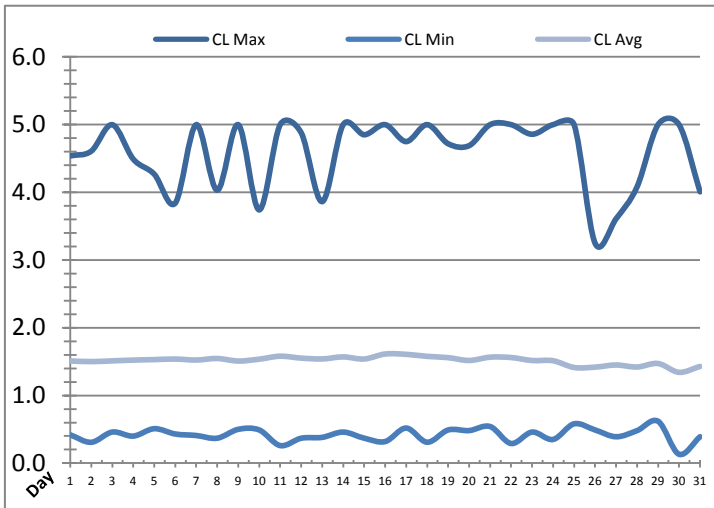


Date	Inlet UV Chlorine Residual			Inlet UV pH		
	AIT_5005_CL (ppm)			AIT_5005_PH		
	Maximum	Minimum	Average	Maximum	Minimum	Average
1	0.79	0.07	0.17	7.86	7.82	7.84
2	1.12	0.07	0.22	7.99	7.81	7.84
3	2.08	0.07	0.21	7.89	7.82	7.84
4	0.63	0.07	0.19	7.85	7.81	7.83
5	0.57	0.08	0.21	7.85	7.81	7.83
6	0.99	0.07	0.19	7.86	7.81	7.83
7	0.55	0.07	0.15	7.86	7.82	7.84
8	0.48	0.04	0.14	7.89	7.81	7.84
9	5.00	0.09	0.20	8.34	7.82	7.85
10	0.53	0.13	0.22	7.86	7.82	7.84
11	1.19	0.07	0.22	7.92	7.81	7.84
12	0.95	0.09	0.21	7.86	7.81	7.83
13	0.52	0.09	0.21	7.85	7.81	7.83
14	0.84	0.08	0.22	7.97	7.82	7.84
15	0.53	0.07	0.22	7.86	7.81	7.83
16	0.49	0.09	0.22	7.85	7.78	7.83
17	0.94	0.08	0.21	7.95	7.81	7.84
18	1.27	0.07	0.25	7.99	7.78	7.83
19	0.76	0.06	0.20	7.85	7.78	7.82
20	0.81	0.09	0.22	7.85	7.78	7.82
21	0.54	0.08	0.24	7.85	7.80	7.83
22	0.44	0.09	0.21	7.85	7.78	7.83
23	0.48	0.06	0.18	7.85	7.78	7.82
24	1.81	0.09	0.24	8.02	7.81	7.83
25	2.35	0.07	0.22	8.07	7.78	7.83
26	1.19	0.11	0.24	7.85	7.78	7.81
27	0.78	0.07	0.21	7.85	7.75	7.81
28	0.47	0.11	0.19	7.85	7.78	7.82
29	0.92	0.06	0.22	7.86	7.77	7.81
30	3.24	0.00	0.19	8.16	7.74	7.79
31	1.46	0.07	0.22	7.95	7.77	7.81
Total						
Average	1.12	0.08	0.21	7.92	7.80	7.83
Maximum	5.00		0.25	8.34		7.85
Date	9-Jan		18-Jan	9-Jan		9-Jan
Minimum		0.00	0.14		7.74	7.79
Date		30-Jan	8-Jan		30-Jan	30-Jan

Notes:

Plant Quality Report

Month: January-19

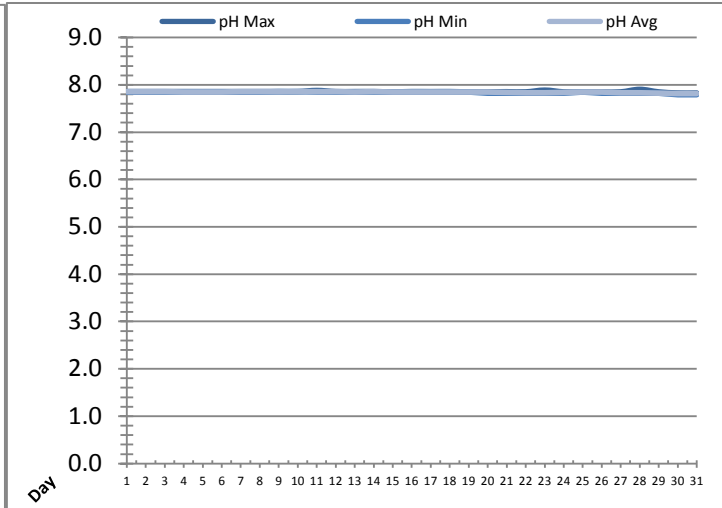
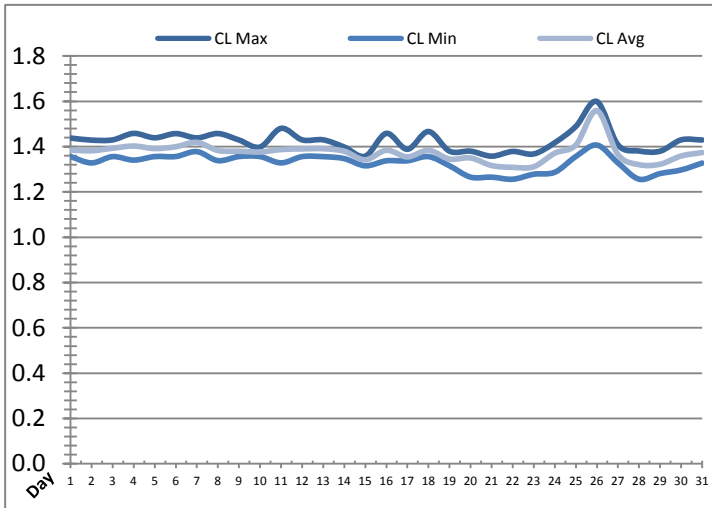


Date	Discharge UV Chlorine Residual			Discharge UV pH		
	AIT_5006_CL (ppm)			AIT_5006_PH		
	Maximum	Minimum	Average	Maximum	Minimum	Average
1	4.54	0.42	1.51	8.22	7.97	8.07
2	4.61	0.31	1.50	8.26	7.97	8.07
3	5.00	0.46	1.51	8.24	7.98	8.07
4	4.49	0.40	1.52	8.26	7.97	8.06
5	4.27	0.51	1.53	8.24	7.98	8.07
6	3.84	0.43	1.54	8.19	7.97	8.07
7	5.00	0.41	1.52	8.28	7.98	8.07
8	4.03	0.37	1.55	8.24	7.97	8.08
9	5.00	0.50	1.51	8.30	7.98	8.07
10	3.74	0.49	1.54	8.16	7.98	8.07
11	5.00	0.26	1.58	8.24	7.97	8.08
12	4.88	0.37	1.55	8.27	7.95	8.07
13	3.86	0.38	1.54	8.22	7.97	8.07
14	5.00	0.46	1.57	8.33	7.98	8.08
15	4.85	0.37	1.54	8.27	7.97	8.07
16	5.00	0.32	1.61	8.33	7.95	8.07
17	4.75	0.52	1.61	8.27	7.98	8.08
18	5.00	0.31	1.58	8.27	7.95	8.07
19	4.72	0.49	1.56	8.26	7.95	8.07
20	4.69	0.48	1.52	8.27	7.95	8.06
21	5.00	0.54	1.57	8.30	7.97	8.07
22	5.00	0.29	1.56	8.38	7.98	8.07
23	4.86	0.46	1.52	8.22	7.94	8.06
24	5.00	0.35	1.51	8.28	7.97	8.07
25	5.00	0.58	1.41	8.33	7.98	8.08
26	3.25	0.49	1.42	8.24	7.97	8.08
27	3.61	0.39	1.45	8.20	7.95	8.07
28	4.08	0.48	1.42	8.26	7.97	8.07
29	5.00	0.62	1.47	8.28	7.97	8.06
30	5.00	0.13	1.34	8.24	7.90	8.04
31	4.01	0.39	1.43	8.26	7.92	8.05
Total						
Average	4.58	0.42	1.52	8.26	7.96	8.07
Maximum	5.00		1.61	8.38		8.08
Date	14-Jan		16-Jan	22-Jan		14-Jan
Minimum		0.13	1.34		7.90	8.04
Date		30-Jan	30-Jan		30-Jan	30-Jan

Notes:

Plant Quality Report

Month: January-19

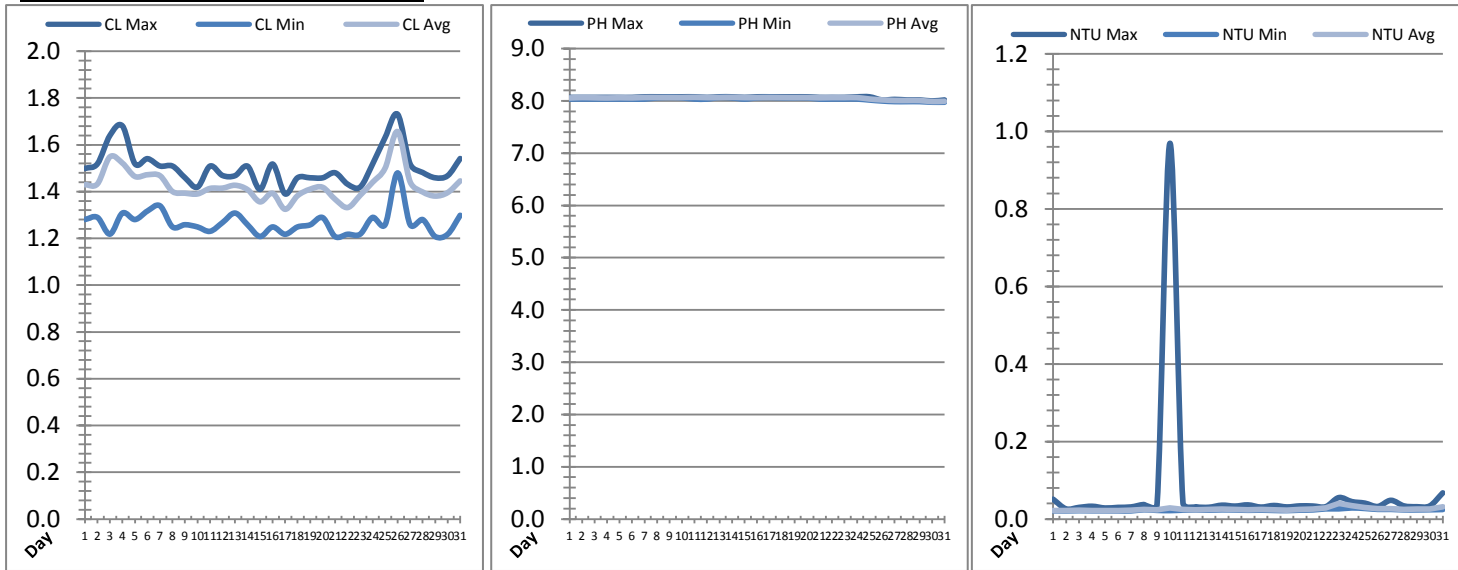


Date	Suction Header Chlorine Res.			Suction Header pH			Distribution CT Calc Total		
	AIT_7001_CL (ppm)			AIT_7001_PH (m)			REAL_CT_CALC_TOTAL (mg*ml/min)		
	Maximum	Minimum	Average	Maximum	Minimum	Average	Maximum	Minimum	Average
1	1.44	1.36	1.38	7.86	7.85	7.86	11575.62	0.00	559.30
2	1.43	1.33	1.38	7.86	7.85	7.85	10070.38	0.00	253.35
3	1.43	1.36	1.39	7.86	7.85	7.85	8702.25	0.00	215.74
4	1.46	1.34	1.40	7.86	7.85	7.85	9596.70	0.00	204.66
5	1.44	1.36	1.39	7.86	7.85	7.85	9420.30	0.00	205.89
6	1.46	1.36	1.40	7.86	7.85	7.85	9205.23	0.00	228.75
7	1.44	1.38	1.42	7.86	7.85	7.85	10080.97	0.00	222.79
8	1.46	1.34	1.38	7.86	7.85	7.85	8934.34	0.00	192.08
9	1.43	1.36	1.38	7.86	7.85	7.86	8522.89	0.00	200.59
10	1.40	1.36	1.38	7.86	7.85	7.85	8408.43	0.00	190.73
11	1.48	1.33	1.39	7.88	7.85	7.86	8495.61	0.00	186.24
12	1.43	1.36	1.39	7.86	7.85	7.86	8795.51	0.00	205.28
13	1.43	1.36	1.39	7.86	7.85	7.85	8390.61	0.00	246.25
14	1.40	1.35	1.38	7.86	7.85	7.85	8691.22	0.00	206.28
15	1.36	1.32	1.34	7.85	7.85	7.85	7829.86	0.00	183.16
16	1.46	1.34	1.38	7.86	7.85	7.85	8637.12	0.00	239.96
17	1.39	1.34	1.35	7.86	7.85	7.85	8765.36	0.00	170.78
18	1.47	1.36	1.38	7.86	7.85	7.85	9072.92	0.00	257.36
19	1.38	1.32	1.34	7.85	7.85	7.85	8855.59	0.00	178.06
20	1.38	1.27	1.35	7.85	7.82	7.85	8076.29	0.00	176.48
21	1.36	1.27	1.32	7.85	7.82	7.84	8080.16	0.00	205.20
22	1.38	1.26	1.31	7.85	7.82	7.83	8152.85	0.00	197.25
23	1.37	1.28	1.31	7.89	7.82	7.83	8313.15	0.00	169.54
24	1.42	1.29	1.37	7.85	7.82	7.84	8326.58	0.00	217.21
25	1.49	1.36	1.41	7.85	7.85	7.85	8243.88	0.00	247.60
26	1.60	1.41	1.56	7.85	7.83	7.85	10362.14	0.00	250.55
27	1.41	1.33	1.36	7.85	7.82	7.83	8929.03	0.00	260.54
28	1.38	1.26	1.32	7.90	7.82	7.83	8456.17	0.00	209.42
29	1.38	1.28	1.32	7.85	7.82	7.82	8518.47	0.00	206.73
30	1.43	1.30	1.36	7.83	7.79	7.82	8677.90	0.00	195.53
31	1.43	1.33	1.37	7.83	7.79	7.82	8493.85	0.00	286.15
Total									
Average	1.43	1.33	1.38	7.86	7.84	7.84			
Maximum	1.60		1.56	7.90		7.86			
Date	26-Jan		26-Jan	28-Jan		11-Jan			
Minimum		1.26	1.31		7.79	7.82			
Date		22-Jan	22-Jan		31-Jan	31-Jan			

Notes:

Plant Quality Report

Month: **January-19**

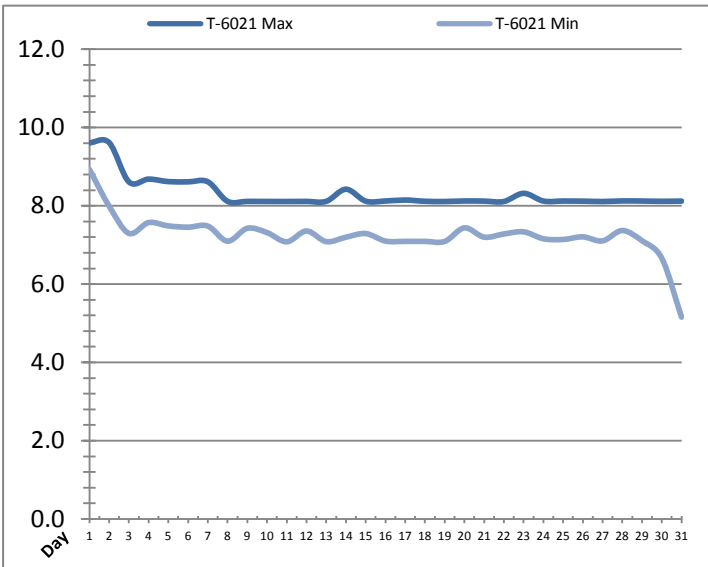
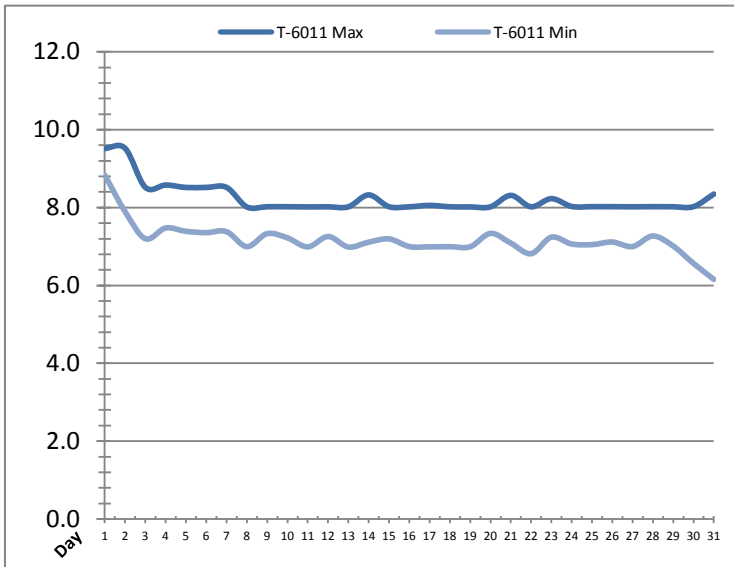


Date	Distribution Chlorine Header			Distribution pH			Distribution Turbidity		
	AIT_7004_CL (ppm)			AIT_7004_PH (mg/L)			AIT_7003 (mg/L)		
	Maximum	Minimum	Average	Maximum	Minimum	Average	Maximum	Minimum	Average
1	1.50	1.28	1.43	8.07	8.03	8.06	0.05	0.02	0.02
2	1.52	1.29	1.43	8.07	8.04	8.06	0.03	0.02	0.02
3	1.64	1.22	1.55	8.07	8.03	8.06	0.03	0.02	0.02
4	1.68	1.31	1.52	8.07	8.03	8.05	0.03	0.02	0.02
5	1.52	1.28	1.46	8.07	8.03	8.06	0.03	0.02	0.02
6	1.54	1.32	1.47	8.07	8.03	8.06	0.03	0.02	0.02
7	1.51	1.34	1.47	8.08	8.03	8.06	0.03	0.02	0.02
8	1.51	1.25	1.40	8.08	8.06	8.06	0.04	0.02	0.03
9	1.46	1.26	1.39	8.08	8.06	8.06	0.04	0.02	0.02
10	1.42	1.25	1.39	8.08	8.06	8.06	0.97	0.02	0.03
11	1.51	1.23	1.41	8.08	8.03	8.07	0.04	0.02	0.03
12	1.47	1.27	1.41	8.07	8.03	8.06	0.03	0.02	0.02
13	1.47	1.31	1.43	8.08	8.06	8.06	0.03	0.02	0.02
14	1.51	1.26	1.41	8.08	8.06	8.07	0.04	0.02	0.03
15	1.41	1.21	1.36	8.07	8.03	8.06	0.03	0.02	0.02
16	1.52	1.25	1.39	8.08	8.06	8.06	0.04	0.02	0.02
17	1.39	1.22	1.32	8.08	8.06	8.07	0.03	0.02	0.02
18	1.46	1.25	1.38	8.08	8.06	8.06	0.03	0.02	0.02
19	1.46	1.26	1.41	8.08	8.06	8.06	0.03	0.02	0.02
20	1.46	1.29	1.42	8.08	8.06	8.06	0.03	0.02	0.02
21	1.48	1.21	1.37	8.07	8.03	8.06	0.03	0.02	0.03
22	1.43	1.22	1.33	8.07	8.04	8.06	0.03	0.03	0.03
23	1.42	1.22	1.38	8.07	8.03	8.06	0.06	0.03	0.04
24	1.52	1.29	1.44	8.08	8.03	8.06	0.04	0.03	0.03
25	1.63	1.26	1.50	8.08	8.02	8.04	0.04	0.03	0.03
26	1.73	1.48	1.66	8.02	8.00	8.02	0.03	0.02	0.03
27	1.52	1.26	1.44	8.03	7.99	8.01	0.05	0.02	0.03
28	1.48	1.28	1.40	8.02	7.99	8.01	0.03	0.02	0.03
29	1.46	1.21	1.38	8.02	7.99	8.01	0.03	0.02	0.03
30	1.47	1.22	1.40	8.00	7.97	7.99	0.03	0.02	0.03
31	1.54	1.30	1.45	8.02	7.97	7.99	0.07	0.02	0.03
Total									
Average	1.50	1.27	1.43	8.06	8.03	8.05	0.1	0.0	0.0
Maximum	1.73		1.66	8.08		8.07	1.0		0.0
Date	26-Jan		26-Jan	8-Jan		14-Jan	10-Jan		23-Jan
Minimum		1.21	1.32		7.97	7.99		0.0	0.0
Date		21-Jan	17-Jan		31-Jan	30-Jan		2-Jan	6-Jan

Notes:

Raw Well/Treated Storage Report

Month: January-19

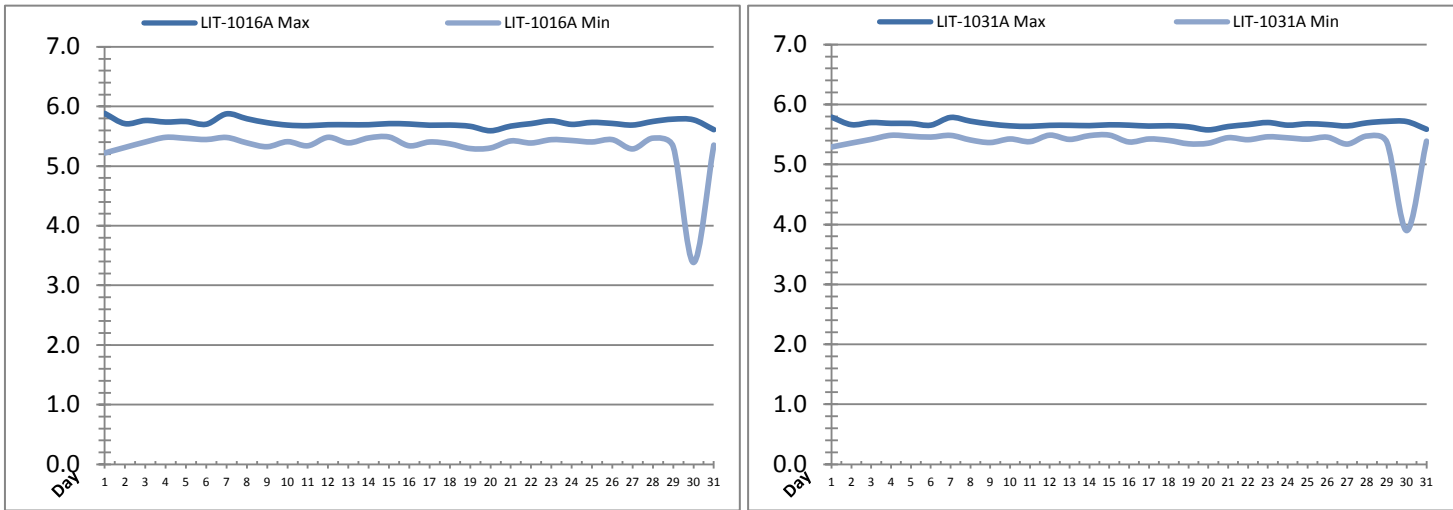


Date	Treated Water Storage Tank					
	T-6011 (m)			T-6021 (m)		
	Maximum	Minimum	Average	Maximum	Minimum	Average
1	9.5	8.8	9.2	9.6	8.9	9.3
2	9.5	7.9	8.8	9.6	8.0	8.9
3	8.5	7.2	8.0	8.6	7.3	8.1
4	8.6	7.5	8.2	8.7	7.6	8.3
5	8.5	7.4	8.1	8.6	7.5	8.2
6	8.5	7.4	8.2	8.6	7.5	8.3
7	8.5	7.4	8.0	8.6	7.5	8.1
8	8.0	7.0	7.6	8.1	7.1	7.7
9	8.0	7.3	7.8	8.1	7.4	7.9
10	8.0	7.2	7.7	8.1	7.3	7.8
11	8.0	7.0	7.6	8.1	7.1	7.7
12	8.0	7.3	7.7	8.1	7.4	7.8
13	8.0	7.0	7.6	8.1	7.1	7.7
14	8.3	7.1	7.7	8.4	7.2	7.8
15	8.0	7.2	7.8	8.1	7.3	7.9
16	8.0	7.0	7.6	8.1	7.1	7.7
17	8.1	7.0	7.7	8.1	7.1	7.8
18	8.0	7.0	7.5	8.1	7.1	7.6
19	8.0	7.0	7.7	8.1	7.1	7.8
20	8.0	7.3	7.8	8.1	7.4	7.9
21	8.3	7.1	7.6	8.1	7.2	7.7
22	8.0	6.8	7.6	8.1	7.3	7.7
23	8.2	7.2	7.9	8.3	7.3	8.0
24	8.0	7.1	7.6	8.1	7.2	7.7
25	8.0	7.0	7.6	8.1	7.1	7.7
26	8.0	7.1	7.7	8.1	7.2	7.8
27	8.0	7.0	7.6	8.1	7.1	7.7
28	8.0	7.3	7.7	8.1	7.4	7.8
29	8.0	7.0	7.6	8.1	7.1	7.7
30	8.0	6.6	7.5	8.1	6.7	7.6
31	8.3	6.2	7.6	8.1	5.2	7.7
Total						
Average	8.2	7.2	7.8	8.3	7.2	7.9
Maximum	9.5		9.2	9.6		9.3
Date	2-Jan		1-Jan	2-Jan		1-Jan
Minimum		6.2	7.5		5.2	7.6
Date		31-Jan	30-Jan		31-Jan	30-Jan

Notes:

Raw Well/Treated Storage Report

Month: January-19

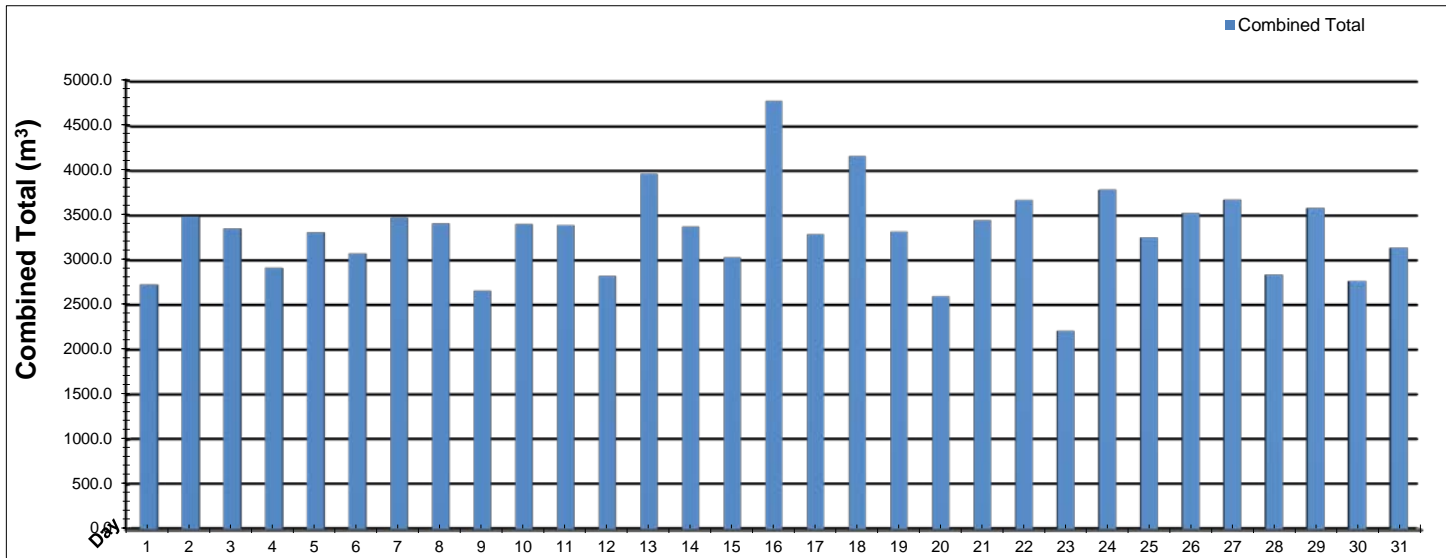


Date	Low Lift Intake Levels					
	Wet Well #1 (LIT-1016A) (m)			Wet Well #2 (LIT-1031A) (m)		
	Maximum	Minimum	Average	Maximum	Minimum	Average
1	5.9	5.2	5.6	5.8	5.3	5.5
2	5.7	5.3	5.6	5.7	5.4	5.5
3	5.8	5.4	5.6	5.7	5.4	5.6
4	5.7	5.5	5.6	5.7	5.5	5.6
5	5.7	5.5	5.6	5.7	5.5	5.6
6	5.7	5.4	5.6	5.7	5.5	5.5
7	5.9	5.5	5.6	5.8	5.5	5.6
8	5.8	5.4	5.6	5.7	5.4	5.6
9	5.7	5.3	5.5	5.7	5.4	5.5
10	5.7	5.4	5.5	5.6	5.4	5.5
11	5.7	5.3	5.6	5.6	5.4	5.5
12	5.7	5.5	5.6	5.7	5.5	5.6
13	5.7	5.4	5.5	5.7	5.4	5.5
14	5.7	5.5	5.6	5.6	5.5	5.5
15	5.7	5.5	5.6	5.7	5.5	5.6
16	5.7	5.3	5.5	5.7	5.4	5.5
17	5.7	5.4	5.6	5.6	5.4	5.5
18	5.7	5.4	5.5	5.6	5.4	5.5
19	5.7	5.3	5.5	5.6	5.3	5.5
20	5.6	5.3	5.5	5.6	5.4	5.5
21	5.7	5.4	5.5	5.6	5.4	5.5
22	5.7	5.4	5.6	5.7	5.4	5.5
23	5.8	5.4	5.6	5.7	5.5	5.6
24	5.7	5.4	5.5	5.7	5.4	5.5
25	5.7	5.4	5.5	5.7	5.4	5.5
26	5.7	5.4	5.5	5.7	5.5	5.5
27	5.7	5.3	5.5	5.6	5.3	5.5
28	5.7	5.5	5.6	5.7	5.5	5.6
29	5.8	5.3	5.5	5.7	5.4	5.5
30	5.8	3.4	5.1	5.7	3.9	5.2
31	5.6	5.4	5.5	5.6	5.4	5.5
Total						
Average	5.7	5.3	5.5	5.7	5.4	5.5
Maximum	5.9		5.6	5.8		5.6
Date	1-Jan		7-Jan	1-Jan		7-Jan
Minimum		3.4	5.1		3.9	5.2
Date		30-Jan	30-Jan		30-Jan	30-Jan

Notes:

High Lift Monthly Report

Month: January-19

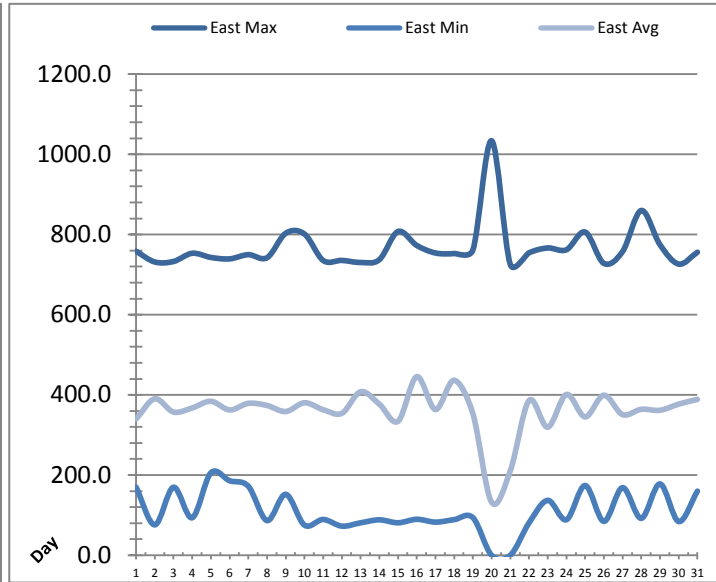
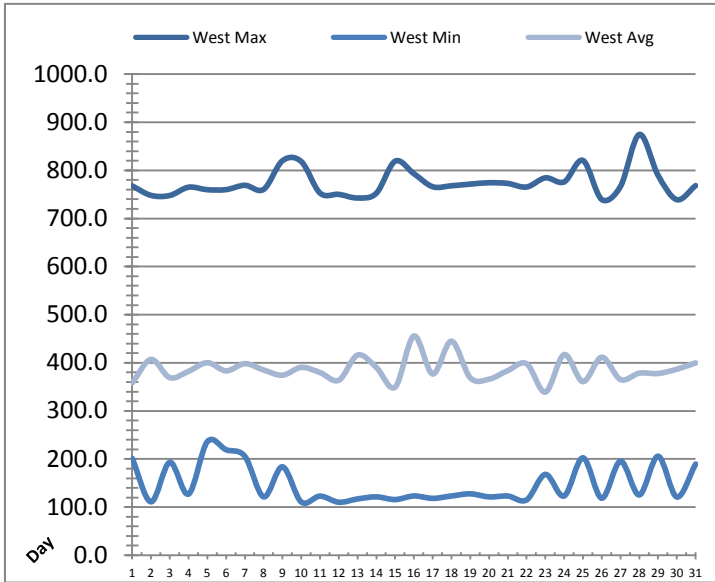


Date	Distribution Flow					
	FIT_7052 (East)		FIT_7062 (West)		Combined	
	(m³)	(L/s)	(m³)	(L/s)	(m³)	(L/s)
	Total	Peak	Total	Peak	Total	Peak
1	1182.9	65.3	1544.9	102.2	2727.9	105.1
2	966.7	51.5	2519.5	101.0	3486.2	101.0
3	1177.9	51.1	2174.2	98.5	3352.1	98.5
4	989.4	52.6	1924.1	99.2	2913.5	106.0
5	852.1	52.3	2457.5	96.4	3309.5	98.0
6	1213.9	53.0	1861.0	101.1	3074.8	106.1
7	1005.0	51.9	2468.7	102.1	3473.7	106.2
8	1178.0	52.6	2231.8	99.0	3409.8	106.2
9	857.6	51.5	1801.8	99.0	2659.4	99.0
10	744.9	51.6	2657.7	102.0	3402.6	102.0
11	1084.6	52.9	2305.2	98.1	3389.7	109.1
12	932.0	52.9	1890.5	97.4	2822.5	97.4
13	1342.5	51.5	2621.5	98.3	3964.0	98.3
14	1066.5	53.1	2308.4	91.4	3374.9	105.9
15	1071.2	52.2	1957.8	97.5	3029.0	107.2
16	1039.6	51.9	3733.9	100.3	4773.5	100.3
17	585.6	51.2	2703.0	100.9	3288.5	100.9
18	1167.4	51.7	2992.3	103.4	4159.7	103.4
19	1095.1	56.9	2223.9	98.6	3319.0	106.1
20	792.4	53.1	1806.6	98.6	2599.0	101.9
21	1048.4	51.9	2398.2	98.3	3446.6	98.4
22	1196.1	52.9	2473.3	98.9	3669.4	103.5
23	728.1	50.7	1484.2	100.4	2212.3	101.4
24	756.4	46.2	3028.4	100.0	3784.8	100.0
25	1100.8	51.1	2153.1	99.5	3253.9	99.5
26	825.3	121.1	2699.0	101.2	3524.3	121.1
27	1458.7	108.5	2214.3	89.0	3673.0	167.0
28	792.7	119.4	2046.2	100.6	2838.8	120.3
29	1093.2	117.6	2487.7	99.2	3580.9	160.1
30	413.1	78.7	2355.5	100.3	2768.6	167.5
31	816.8	55.1	2319.5	97.1	3136.3	125.5
Total	30574.8		71843.6		102418.3	
Average	986.3	61.7	2317.5	99.0	3303.8	110.4
Maximum	1458.7	121.1	3733.9	103.4	4773.5	167.5
Date	27-Jan	26-Jan	16-Jan	18-Jan	16-Jan	30-Jan
Minimum	413.1		1484.2		2212.3	
Date	30-Jan		23-Jan		23-Jan	

Notes:

Low Lift Monthly Report

Month: **January-19**

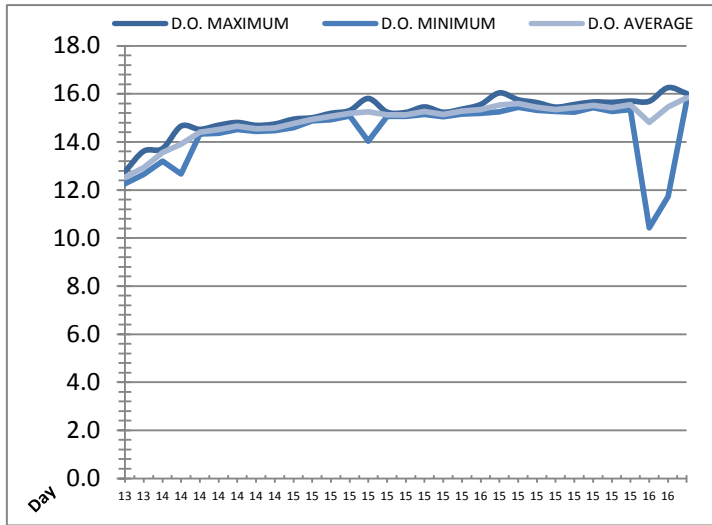
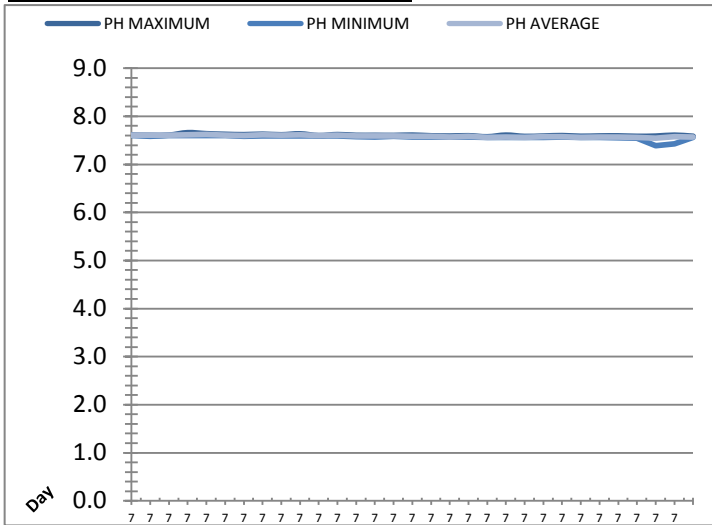


Date	West Train Header Pressure PIT_1018 (kPa)			East Train Header Pressure PIT_1028 (kPa)		
	Maximum	Minimum	Average	Maximum	Minimum	Average
1	767.7	201.4	358.1	758.3	170.0	339.8
2	748.0	111.1	407.1	731.5	75.8	390.3
3	747.8	193.3	369.2	732.8	169.7	357.2
4	765.0	127.2	382.4	753.2	93.6	367.4
5	759.8	236.2	400.3	742.8	205.8	384.0
6	760.0	219.3	383.3	739.3	185.9	362.5
7	769.0	205.6	398.3	749.8	172.1	379.0
8	760.5	121.4	385.1	742.2	86.5	373.6
9	820.0	183.9	374.3	803.2	152.0	358.5
10	818.4	110.7	390.5	801.2	75.1	380.4
11	752.8	122.9	379.8	735.2	89.3	363.1
12	750.2	110.2	363.8	735.4	72.7	354.1
13	742.6	117.1	416.1	730.3	81.0	408.0
14	752.6	121.4	390.3	737.2	88.4	376.9
15	819.2	115.8	349.5	807.6	81.0	334.1
16	793.1	123.2	455.8	772.8	89.7	445.5
17	766.0	118.3	376.8	753.9	82.7	363.4
18	768.0	123.2	445.0	752.7	88.8	436.6
19	771.5	127.7	368.8	761.3	93.9	353.1
20	774.3	121.4	366.0	1033.9	0.0	132.4
21	772.9	123.1	383.9	725.2	0.0	210.8
22	765.4	115.1	398.1	754.4	80.7	385.9
23	784.4	168.1	339.2	766.5	136.9	319.4
24	776.1	123.2	417.1	762.0	88.6	401.1
25	820.7	202.6	360.9	806.1	174.0	345.1
26	739.3	118.6	411.6	728.0	84.6	399.2
27	766.8	195.5	365.2	757.6	168.7	350.9
28	874.6	125.4	378.5	860.0	92.1	364.1
29	789.7	205.9	377.8	774.5	178.0	361.7
30	739.1	121.1	386.7	726.3	84.1	377.0
31	768.3	189.5	399.9	755.8	159.9	388.8
Total						
Average	774.3	148.4	386.4	767.4	109.7	360.1
Maximum	874.6		455.8	1033.9		445.5
Date	28-Jan		16-Jan	20-Jan		16-Jan
Minimum		110.2	339.2		0.0	132.4
Date		12-Jan	23-Jan		20-Jan	20-Jan

Notes:

Low Lift Monthly Report

Month: **January-19**

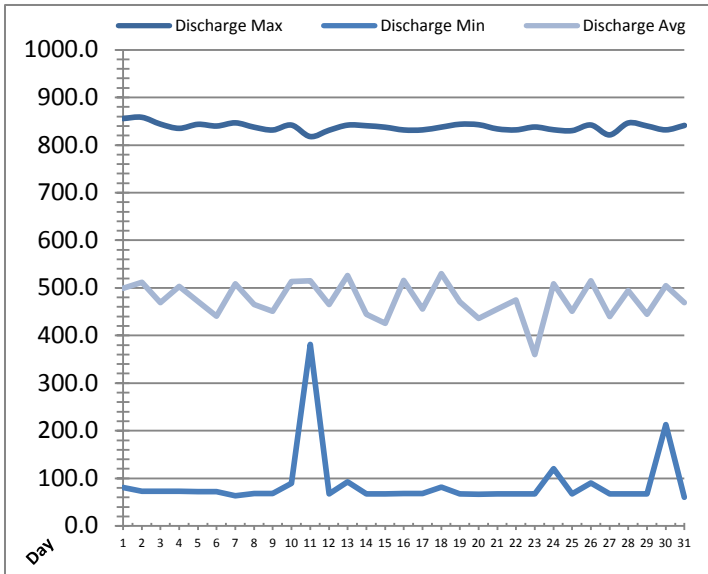
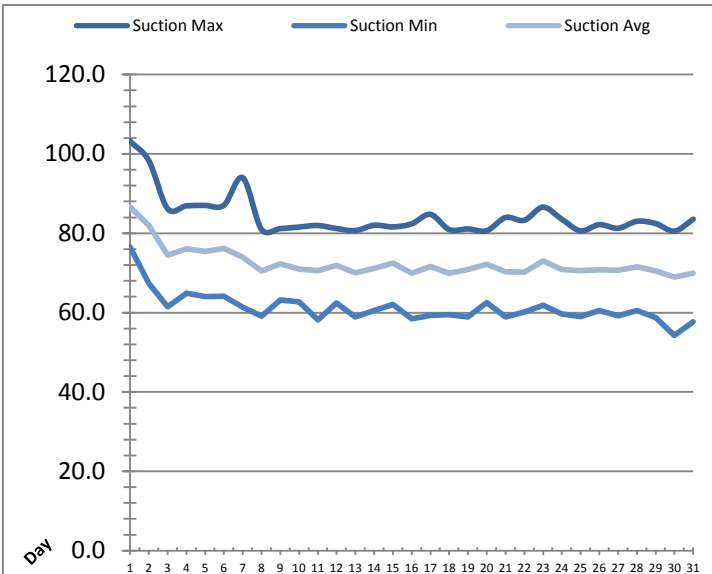


Date	Raw Water Sample Line					
	AIT_1402_PH (pH)			AIT_1402_DO (mg/L)		
	Maximum	Minimum	Average	Maximum	Minimum	Average
1	7.6	7.6	7.6	12.8	12.3	12.5
2	7.6	7.6	7.6	13.6	12.6	12.9
3	7.6	7.6	7.6	13.7	13.2	13.6
4	7.7	7.6	7.6	14.7	12.7	13.9
5	7.6	7.6	7.6	14.5	14.3	14.4
6	7.6	7.6	7.6	14.7	14.4	14.5
7	7.6	7.6	7.6	14.8	14.5	14.7
8	7.6	7.6	7.6	14.7	14.4	14.5
9	7.6	7.6	7.6	14.7	14.5	14.6
10	7.6	7.6	7.6	14.9	14.6	14.8
11	7.6	7.6	7.6	15.0	14.9	14.9
12	7.6	7.6	7.6	15.2	14.9	15.1
13	7.6	7.6	7.6	15.3	15.1	15.2
14	7.6	7.6	7.6	15.8	14.0	15.3
15	7.6	7.6	7.6	15.2	15.1	15.1
16	7.6	7.6	7.6	15.2	15.1	15.1
17	7.6	7.6	7.6	15.5	15.1	15.3
18	7.6	7.6	7.6	15.2	15.0	15.1
19	7.6	7.6	7.6	15.4	15.2	15.3
20	7.6	7.6	7.6	15.6	15.2	15.3
21	7.6	7.6	7.6	16.0	15.3	15.5
22	7.6	7.6	7.6	15.8	15.4	15.6
23	7.6	7.6	7.6	15.6	15.3	15.4
24	7.6	7.6	7.6	15.4	15.3	15.3
25	7.6	7.6	7.6	15.6	15.2	15.4
26	7.6	7.6	7.6	15.7	15.4	15.5
27	7.6	7.6	7.6	15.6	15.3	15.4
28	7.6	7.5	7.6	15.7	15.3	15.5
29	7.6	7.4	7.5	15.7	10.4	14.8
30	7.6	7.4	7.6	16.3	11.7	15.5
31	7.6	7.6	7.6	16.0	15.7	15.8
Total						
Average	7.6	7.6	7.6	15.2	14.4	14.9
Maximum	7.7		7.6	16.3		15.8
Date	4-Jan		5-Jan	30-Jan		31-Jan
Minimum		7.4	7.5		10.4	12.5
Date		29-Jan	29-Jan		29-Jan	1-Jan

Notes:

High Lift Monthly Report

Month: January-19

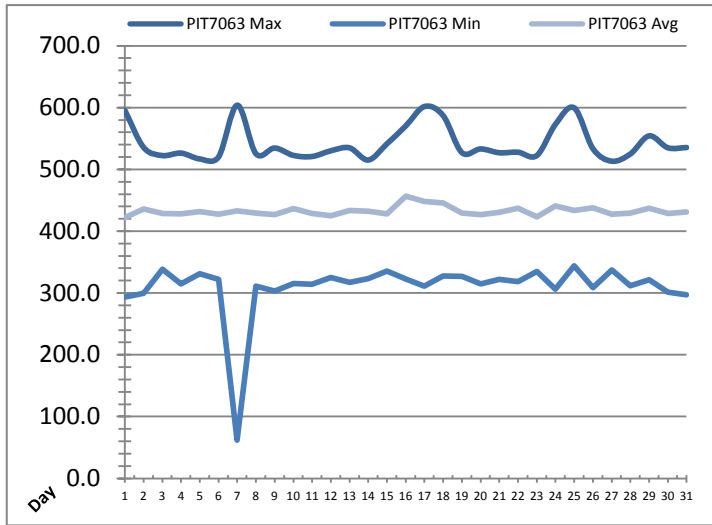
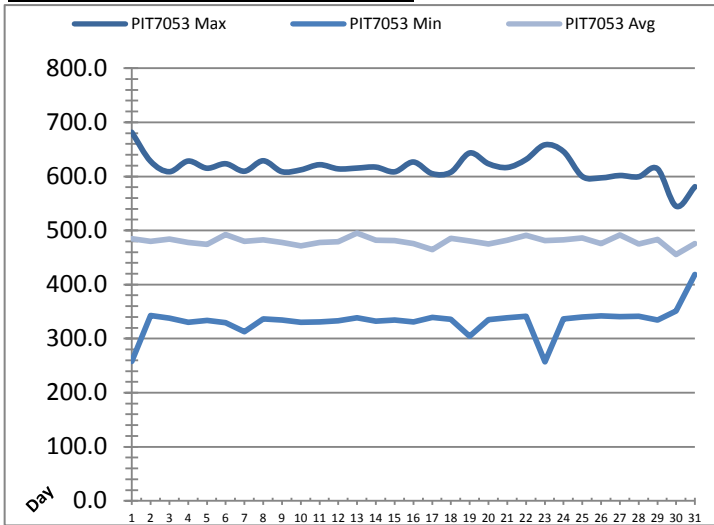


Date	Suction Header Pressure			Discharge Header Pressure		
	PIT_7002 (kPa)			PIT_7005 (kPa)		
	Maximum	Minimum	Average	Maximum	Minimum	Average
1	103.2	76.6	86.6	855.7	80.4	499.1
2	98.3	67.4	81.9	858.3	72.8	511.7
3	86.2	61.5	74.5	843.9	72.6	468.9
4	86.9	64.9	76.1	835.1	72.7	502.7
5	87.0	64.1	75.4	843.5	72.3	471.0
6	87.1	64.1	76.1	840.0	72.2	440.2
7	94.0	61.4	74.0	846.6	63.6	509.0
8	81.0	59.1	70.5	837.5	67.7	464.9
9	81.2	63.2	72.2	831.6	67.8	450.7
10	81.6	62.7	70.9	841.9	89.2	513.6
11	82.0	58.2	70.6	817.9	380.9	514.7
12	81.2	62.4	71.9	831.0	67.7	465.0
13	80.7	58.9	70.0	841.9	92.9	526.2
14	82.0	60.5	71.2	840.6	67.3	444.5
15	81.6	62.1	72.5	837.4	67.4	425.9
16	82.4	58.4	69.9	831.7	68.3	515.5
17	84.8	59.3	71.6	831.8	67.8	455.8
18	80.9	59.5	69.9	837.6	81.4	529.6
19	81.1	58.9	70.9	843.7	67.4	470.3
20	80.6	62.5	72.2	842.7	66.8	436.2
21	84.0	58.9	70.3	833.9	67.1	455.8
22	83.3	60.1	70.2	831.9	67.1	474.9
23	86.6	61.9	73.1	837.9	67.4	359.6
24	83.5	59.7	70.9	832.1	120.5	508.7
25	80.6	59.0	70.5	830.3	67.1	451.1
26	82.2	60.6	70.8	842.1	90.1	515.2
27	81.3	59.2	70.7	821.4	67.0	440.0
28	83.0	60.5	71.6	846.4	67.6	494.4
29	82.4	58.7	70.5	840.1	67.6	444.2
30	80.5	54.2	68.9	831.9	212.5	504.3
31	83.5	57.6	70.0	841.2	60.5	468.7
Total						
Average	84.3	61.2	72.5	838.1	87.5	475.2
Maximum	103.2		86.6	858.3		529.6
Date	1-Jan		1-Jan	2-Jan		18-Jan
Minimum		54.2	68.9		60.5	359.6
Date		30-Jan	30-Jan		31-Jan	23-Jan

Notes:

High Lift Monthly Report

Month: **January-19**

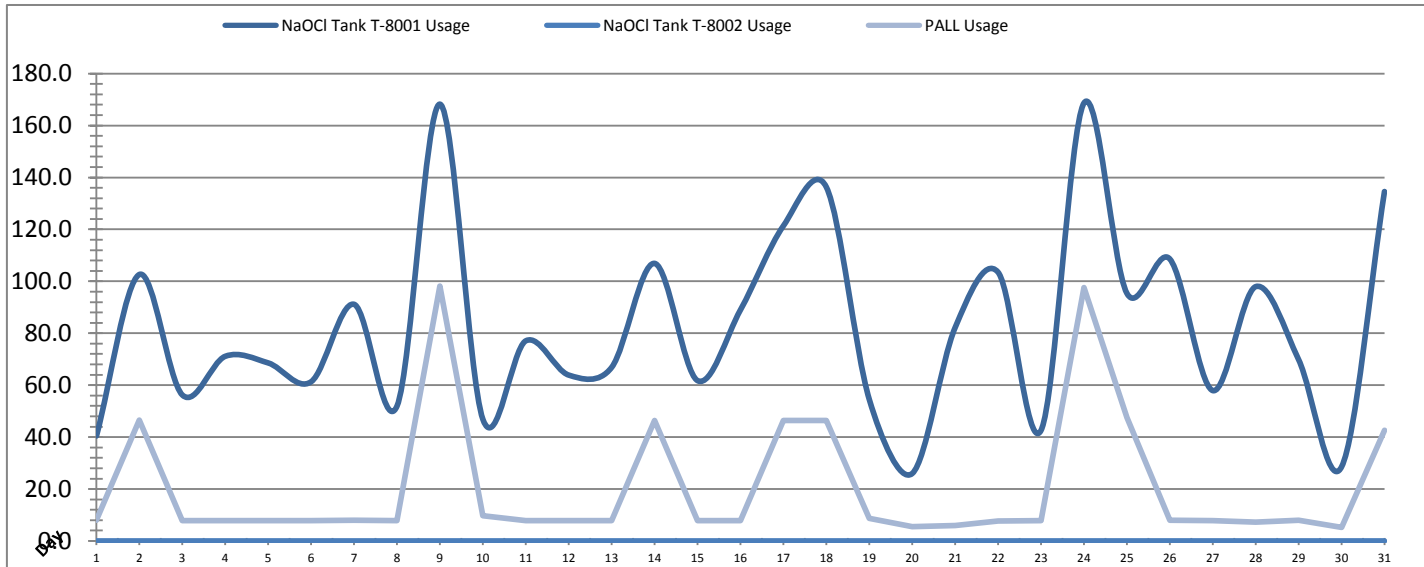


Date	Distribution Pressures					
	PIT_7053 (kPa)			PIT_7063 (kPa)		
	Maximum	Minimum	Average	Maximum	Minimum	Average
1	681.5	257.5	485.1	595.4	293.4	422.2
2	627.9	342.5	480.1	535.6	299.6	435.7
3	608.6	338.1	484.4	522.4	338.8	428.5
4	628.4	330.5	478.0	526.3	314.5	427.8
5	615.2	333.5	474.4	516.9	331.3	431.5
6	623.4	329.3	492.7	519.9	322.0	427.3
7	609.6	312.9	479.8	603.9	62.2	432.6
8	628.9	336.5	483.0	525.3	311.3	429.2
9	608.7	334.5	477.8	534.6	303.1	426.8
10	612.1	330.2	471.3	522.7	315.3	436.5
11	621.6	331.1	478.1	520.9	314.0	428.9
12	613.9	332.8	479.3	530.1	325.2	425.2
13	615.4	338.9	495.2	534.8	317.4	433.6
14	617.2	332.3	481.7	515.1	323.0	432.1
15	608.5	334.3	481.2	541.5	335.3	428.2
16	626.6	330.7	475.6	570.3	322.5	456.9
17	605.1	339.4	464.2	601.7	311.3	448.3
18	607.8	335.4	485.5	587.0	327.5	445.8
19	643.3	304.7	480.3	527.1	326.9	429.5
20	623.4	335.1	475.3	533.1	314.9	426.7
21	616.5	338.5	481.9	526.9	321.9	430.7
22	631.2	341.2	491.3	527.8	318.3	437.4
23	658.3	257.0	481.0	522.4	334.7	422.9
24	645.9	336.8	482.3	573.1	306.1	441.1
25	599.9	339.9	485.9	599.5	343.8	433.2
26	597.3	342.0	475.9	533.5	308.4	437.6
27	601.6	340.9	491.5	513.3	337.6	427.7
28	599.4	341.5	475.0	525.0	311.4	429.0
29	614.2	334.4	483.3	554.2	321.2	437.0
30	544.8	350.8	455.4	535.0	301.3	428.8
31	580.9	419.0	475.5	535.3	296.9	430.9
Total						
Average	616.7	332.3	480.1	542.3	310.0	432.6
Maximum	681.5		495.2	603.9		456.9
Date	1-Jan		13-Jan	7-Jan		16-Jan
Minimum		257.0	455.4		62.2	422.2
Date		23-Jan	30-Jan		7-Jan	1-Jan

Notes:

Chemical Usage Monthly Report

Month: January-19

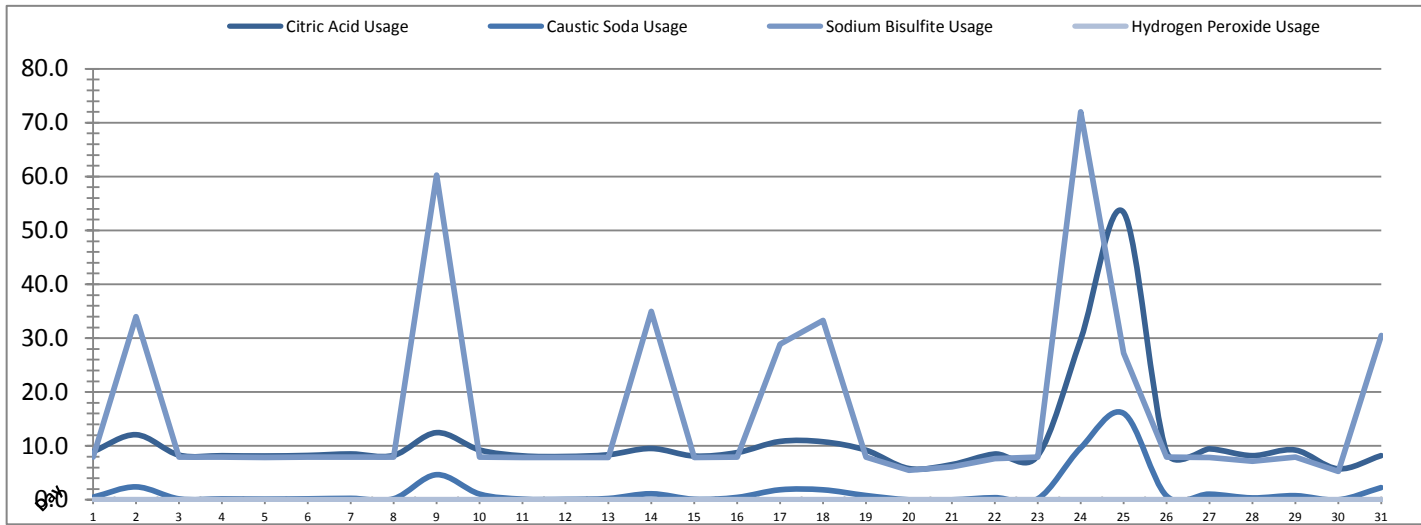


Date	PALL Usage	NaOCI Tank T-8001	NaOCI Tank T-8002
	PALL_HYPO_USAGE (L) Usage	LIT_8002 (Storage) (L) Usage	LIT_8004 (Day) (L) Usage
1	7.9	40.5	0.0
2	46.6	102.6	0.0
3	7.9	56.2	0.0
4	7.9	71.1	0.0
5	7.9	68.6	0.0
6	7.9	61.3	0.0
7	7.9	91.1	0.0
8	7.9	52.0	0.0
9	98.1	168.2	0.0
10	9.7	46.8	0.0
11	7.8	77.1	0.0
12	7.8	63.9	0.0
13	7.9	66.9	0.0
14	46.40	106.90	0.0
15	7.9	61.8	0.0
16	7.9	89.0	0.0
17	46.4	121.4	0.0
18	46.4	136.3	0.0
19	8.7	54.5	0.0
20	5.5	26.0	0.0
21	6.0	82.2	0.0
22	7.7	103.5	0.0
23	7.9	42.6	0.0
24	97.6	168.6	0.0
25	47.5	95.4	0.0
26	8.0	108.6	0.0
27	7.8	57.9	0.0
28	7.2	98.0	0.0
29	8.0	69.8	0.0
30	5.2	28.5	0.0
31	42.6	134.6	0.0
Total	647.6	2551.9	0.0
Average	20.9	82.3	0.0
Maximum	98.1	168.6	0.0
Date	9-Jan	24-Jan	1-Jan
Minimum	5.2	26.0	0.0
Date	30-Jan	20-Jan	1-Jan

Notes:	
Dosage (mg/L)=	Day Tank (L) x %conc. x 1000
	Membrane Flow (m3)
Chlorine Concentration:	12.0%

Chemical Usage Monthly Report

Month: January-19



Date	Citric Acid	Caustic Soda	Captor	Hydrogen Peroxide		Membrane Flow (m ³)
	TAGNAME (L) Usage	TAGNAME (L) Usage	TAGNAME (L) Usage	TAGNAME (L) Usage	(mg/L) Dose	
1	9.0	0.5	7.9	0.0	0.0	2632.402
2	12.1	2.4	34.0	0.0	0.0	3604.481
3	8.3	0.2	7.9	0.0	0.0	3131.300
4	8.2	0.2	7.9	0.0	0.0	3258.426
5	8.1	0.1	7.9	0.0	0.0	3758.438
6	8.2	0.2	7.9	0.0	0.0	3323.364
7	8.5	0.3	7.9	0.0	0.0	3424.559
8	8.3	0.2	7.9	0.0	0.0	3541.298
9	12.5	4.7	60.2	0.0	0.0	2754.020
10	9.3	1.1	7.9	0.0	0.0	3844.499
11	8.2	0.1	7.9	0.0	0.0	3573.957
12	8.0	0.1	7.9	0.0	0.0	2875.683
13	8.4	0.2	7.9	0.0	0.0	4306.012
14	9.5	1.1	34.9	0.0	0.0	3784.160
15	8.1	0.1	7.9	0.0	0.0	2894.822
16	8.8	0.4	7.9	0.0	0.0	5182.608
17	10.8	1.9	28.9	0.0	0.0	3256.077
18	10.8	1.9	33.3	0.0	0.0	4885.024
19	9.2	0.8	7.9	0.0	0.0	3325.128
20	5.8	0.0	5.5	0.0	0.0	2950.825
21	6.5	0.0	6.1	0.0	0.0	3608.526
22	8.5	0.4	7.6	0.0	0.0	4119.643
23	8.2	0.2	7.9	0.0	0.0	2313.979
24	29.7	9.6	72.0	0.0	0.0	4539.040
25	53.4	16.1	27.2	0.0	0.0	3297.106
26	8.9	0.7	8.0	0.0	0.0	4063.540
27	9.5	1.1	7.8	0.0	0.0	3791.862
28	8.2	0.4	7.2	0.0	0.0	3400.056
29	9.2	0.8	7.9	0.0	0.0	3614.912
30	5.8	0.0	5.3	0.0	0.0	2546.151
31	8.2	2.3	30.5	0.0	0.0	3677.460
Total	336.1	47.8	495.0	0.0		109279.4
Average	10.8	1.5	16.0	0.0	0.0	3525.1
Maximum	53.4	16.1	72.0	0.0	0.0	5182.6
Date	25-Jan	25-Jan	24-Jan	1-Jan	1-Jan	16-Jan
Minimum	5.8	0.0	5.3	0.0	0.0	2314.0
Date	30-Jan	20-Jan	30-Jan	1-Jan	1-Jan	23-Jan

Notes:	
Dosage (mg/L)=	Day Tank (L) x %conc. x 1000
	Membrane Flow (m3)
Peroxide Concentration:	50.0%

Runtimes Report

Month: January-19

Date	Daily Gen-Set Runtimes		Daily UV Runtimes		Daily PALL Runtimes				
	LLPS	WTP	UV #1	UV #2	Air Compressor #1	Air Compressor #2	CIP Neutralization	CIP Drain	CIP Recirc
	(Hrs)	(Hrs)	(Hrs)	(Hrs)	(Hrs)	(Hrs)	(Hrs)	(Hrs)	(Hrs)
1	0.0	0.0	0.0	0.0	1.1	23.3	0.0	0.0	0.0
2	0.0	0.0	0.0	0.0	23.3	1.1	0.2	0.0	0.1
3	0.0	0.0	0.0	0.0	1.1	23.3	0.0	0.0	0.0
4	0.0	0.0	0.0	0.0	23.3	1.1	0.0	0.0	0.0
5	0.0	0.0	0.0	0.0	1.1	23.3	0.0	0.0	0.0
6	0.0	0.0	0.0	0.0	23.3	1.1	0.0	0.0	0.0
7	0.0	0.0	0.0	0.0	11.0	13.2	0.0	0.0	0.0
8	0.0	0.0	0.0	0.0	1.1	23.4	0.0	0.0	0.0
9	0.0	0.0	0.0	0.0	11.3	13.1	0.3	0.0	0.4
10	0.0	0.0	0.0	0.0	0.0	24.4	0.0	0.0	0.0
11	0.0	0.0	0.0	0.0	0.0	24.4	0.0	0.0	0.0
12	0.0	0.0	0.0	0.0	0.0	24.4	0.0	0.0	0.0
13	0.0	0.0	0.0	0.0	0.0	24.4	0.0	0.0	0.0
14	0.0	0.0	0.0	0.0	0.0	24.4	0.1	0.1	0.1
15	0.0	0.0	0.0	0.0	0.0	23.9	0.0	0.0	0.0
16	0.0	0.0	0.0	0.0	0.0	24.4	0.0	0.0	0.0
17	0.0	0.0	0.0	0.0	13.2	11.2	0.2	0.0	0.2
18	0.0	0.0	0.0	0.0	1.1	23.3	0.1	0.0	0.1
19	0.0	0.0	0.0	0.0	23.3	1.0	0.0	0.0	0.0
20	0.0	0.0	0.0	0.0	1.1	23.3	0.0	0.0	0.0
21	0.0	0.0	0.0	0.6	23.3	1.1	0.0	0.0	0.0
22	0.0	1.4	0.0	0.0	1.1	23.3	0.0	0.0	0.0
23	0.0	0.0	0.0	0.0	23.3	1.1	0.0	0.0	0.0
24	0.0	0.0	0.0	0.0	12.1	12.3	0.4	0.0	0.4
25	0.0	0.0	0.0	0.0	24.4	0.0	0.1	0.0	0.1
26	0.0	0.0	0.0	0.0	24.4	0.0	0.0	0.0	0.0
27	0.0	0.0	0.0	0.0	24.4	0.0	0.0	0.0	0.0
28	0.0	0.0	0.0	0.0	24.4	0.0	0.0	0.0	0.0
29	1.4	0.0	0.0	0.0	24.4	0.0	0.0	0.0	0.0
30	0.0	0.0	0.0	0.0	21.8	2.5	0.0	0.0	0.0
31	0.0	0.0	0.0	0.0	24.4	0.0	0.1	0.0	0.2
Total	1.4	1.4	0.0	0.6	363.0	391.9	1.5	0.1	1.6

Notes:

Runtimes Report

Month: January-19

Daily

Date	PALL Runtimes						Process Drain	
	RFR Pump #1	RFR Pump #2	RF Pump #1	RF Pump #2	XR Pump #1	XR Pump #2	PDP9010 Pump	PDP9020 Pump
	(Hrs)	(Hrs)	(Hrs)	(Hrs)	(Hrs)	(Hrs)	(Hrs)	(Hrs)
1	2.1	2.1	0.5	0.4	4.3	6.7	0.0	4.9
2	1.8	1.9	0.5	0.6	5.7	8.1	0.0	4.8
3	0.8	0.8	0.6	0.6	6.6	6.6	0.0	4.7
4	0.0	0.0	0.4	0.5	7.3	6.5	0.0	4.7
5	0.0	0.0	0.7	0.6	6.5	9.4	0.0	4.6
6	0.0	0.0	0.5	0.5	8.7	5.3	0.0	4.5
7	0.0	0.0	0.6	0.5	7.0	7.1	0.0	5.2
8	0.0	0.0	0.7	0.7	6.0	7.0	0.0	4.3
9	0.0	0.0	0.4	0.4	6.0	5.8	0.0	4.8
10	0.0	0.0	0.6	0.6	11.1	5.1	0.0	4.8
11	0.0	0.0	0.6	0.5	4.1	8.5	0.0	4.4
12	0.0	0.0	0.5	0.5	5.9	6.4	0.0	4.4
13	0.0	0.0	0.7	0.6	6.5	10.9	0.0	4.4
14	0.0	0.0	0.5	0.7	9.9	6.0	0.0	4.8
15	0.0	0.0	0.4	0.5	5.9	6.1	0.0	5.0
16	0.0	0.0	0.9	0.8	10.1	10.7	0.0	4.4
17	0.0	0.0	0.5	0.5	7.3	6.4	1.2	3.6
18	0.0	0.0	0.7	0.8	10.4	8.4	2.3	2.6
19	0.0	0.0	0.5	0.5	5.4	7.6	2.0	2.2
20	0.0	0.0	0.4	0.5	5.8	6.8	2.1	2.1
21	2.5	2.5	0.8	0.6	8.7	6.1	2.8	2.8
22	4.4	4.3	0.8	0.7	6.9	8.6	2.2	2.2
23	2.2	2.2	0.5	0.4	5.1	4.6	2.2	2.2
24	7.5	7.7	0.9	0.9	8.7	8.6	2.2	2.5
25	2.7	2.6	0.5	0.5	5.9	7.5	2.2	2.4
26	0.8	0.8	0.6	0.7	9.4	7.7	2.3	2.3
27	5.3	5.3	0.6	0.6	6.2	7.5	2.3	2.3
28	6.0	5.9	0.7	0.7	5.3	7.9	2.1	2.4
29	4.8	4.8	0.6	0.6	9.8	4.3	2.4	2.3
30	3.9	3.9	0.5	0.6	5.4	9.1	2.0	2.6
31	6.8	6.9	0.8	0.8	10.4	8.2	2.3	2.4
Total	51.4	51.5	18.5	18.4	221.4	224.6	32.6	111.7

Notes:

Runtimes Report

Month: January-19

Daily

Date	Low Lift Pump Motor Runtimes				High Lift Pump Motor Runtimes			
	LLP1010 (Hrs)	LLP1020 (Hrs)	LLP1030 (Hrs)	LLP1040 (Hrs)	HLP7010 (Hrs)	HLP7020 (Hrs)	HLP7030 (Hrs)	HLP7040 (Hrs)
1	4.9	4.5	0.0	1.7	3.6	5.7	4.2	0.0
2	6.5	6.0	0.0	3.1	4.2	5.3	3.6	0.0
3	3.2	5.6	0.0	4.6	1.4	10.5	0.9	0.0
4	6.4	2.2	0.0	5.5	2.0	1.5	7.5	0.0
5	5.9	4.7	0.0	5.6	7.4	3.2	1.7	0.0
6	5.5	7.9	0.0	0.8	2.9	0.1	9.2	0.0
7	6.1	5.6	0.0	3.8	6.9	2.7	3.4	0.0
8	6.2	5.0	0.0	4.9	0.0	1.3	10.9	0.0
9	3.8	4.2	0.0	4.0	6.5	1.8	2.4	0.0
10	4.6	5.1	0.0	6.7	2.7	6.7	3.1	0.0
11	5.3	5.3	0.0	5.3	1.4	0.5	10.0	0.0
12	4.8	3.7	0.0	3.9	2.7	2.4	6.4	0.0
13	7.5	5.3	0.0	6.0	11.3	1.6	2.4	0.0
14	7.8	1.3	0.0	7.0	1.7	2.9	7.9	0.0
15	8.1	0.0	0.0	4.1	1.9	4.8	4.6	0.0
16	10.1	0.0	0.0	13.1	8.8	2.7	4.8	0.0
17	8.3	0.0	0.0	5.9	3.7	2.8	5.0	0.0
18	8.8	0.0	0.0	13.8	8.8	5.0	2.5	0.0
19	5.9	0.0	0.0	8.9	0.2	1.3	10.3	0.0
20	8.1	0.0	0.0	4.8	1.8	1.7	6.5	0.0
21	7.7	0.0	0.0	7.4	7.9	3.0	2.5	0.0
22	5.9	0.0	0.0	11.5	1.6	1.2	10.7	0.0
23	3.5	0.0	0.0	6.5	1.2	5.6	2.3	0.0
24	8.5	0.0	0.0	9.2	8.7	2.3	3.2	0.0
25	5.7	0.0	0.0	7.8	2.0	9.2	2.3	0.0
26	7.7	0.0	0.0	9.9	9.4	0.0	3.9	0.0
27	8.1	0.0	0.0	6.8	2.3	12.7	0.1	0.0
28	4.8	0.0	0.0	8.8	3.6	5.0	3.0	0.0
29	7.0	0.0	0.0	7.2	1.4	1.3	10.9	0.0
30	2.0	12.4	0.0	2.3	7.5	0.4	2.7	0.0
31	3.0	9.6	0.0	6.7	1.5	4.8	6.9	0.0
Total	191.7	88.4	0.0	197.6	127.0	110.1	155.8	0.0

Notes:

Plant Internal Flow Report

Month: January-19

Date	Settling Tank Level		Process Drain Tank		Settling Tank Flow		Potable Water Flow		Non-Potable Flow	
	T-9003 (m)		T-9001 (m)		FIT_9005 (m ³) (L/s)		FIT_7082 (m ³) (L/s)		FIT_7092 (m ³) (L/s)	
	Maximum	Minimum	Maximum	Minimum	Total	Peak	Total	Peak	Total	Peak
1	2.2	0.1	1.0	0.4	54.8	15.7	0.0	1.1	0.0	0.0
2	2.2	0.1	1.1	0.4	91.5	15.7	0.1	1.4	12.2	15.6
3	2.2	0.2	1.0	0.4	96.2	15.7	0.1	1.4	0.0	0.0
4	2.2	0.1	1.2	0.4	138.6	15.7	0.1	1.4	0.0	0.0
5	2.2	0.1	1.0	0.4	153.3	15.7	0.0	0.0	0.4	1.1
6	2.2	0.2	1.1	0.4	135.0	15.7	0.0	0.0	0.0	0.0
7	2.2	0.1	2.2	0.4	166.3	15.7	0.1	1.4	0.0	0.0
8	2.2	0.1	1.1	0.4	178.6	15.7	0.1	1.4	0.0	0.0
9	2.2	0.1	1.4	0.4	108.6	15.7	0.4	1.4	30.2	22.3
10	2.2	0.1	1.1	0.4	115.2	15.7	0.1	1.4	0.2	1.1
11	2.2	0.1	1.0	0.4	152.1	15.7	0.1	1.3	0.2	1.2
12	2.2	0.1	1.0	0.4	92.7	15.7	0.0	0.0	0.0	0.0
13	2.2	0.1	1.1	0.4	168.5	15.7	0.0	0.0	0.0	0.0
14	2.2	0.1	1.4	0.4	152.5	15.7	0.1	1.5	11.8	15.6
15	2.2	0.1	2.1	0.4	102.2	15.7	0.4	1.4	0.0	0.0
16	2.2	0.1	1.1	0.4	154.7	15.7	0.0	1.5	0.0	0.0
17	2.2	0.1	1.8	0.4	150.6	15.7	0.5	1.4	12.3	16.2
18	2.2	0.1	1.3	0.4	246.2	15.7	0.1	1.4	12.2	18.0
19	2.2	0.1	1.0	0.4	142.4	15.7	0.0	0.0	0.0	0.0
20	2.1	0.1	1.0	0.4	112.9	15.7	0.0	0.0	0.0	0.0
21	2.2	0.1	2.2	0.4	88.4	15.7	1.2	4.7	0.9	1.3
22	2.2	0.1	1.0	0.4	100.4	15.7	0.1	1.4	0.0	0.0
23	2.2	0.1	1.3	0.4	83.4	15.7	0.1	1.4	0.0	0.0
24	2.2	0.1	1.5	0.4	36.5	13.9	0.1	1.4	29.5	22.1
25	2.2	0.1	1.4	0.4	66.6	15.7	0.4	1.5	12.4	16.1
26	2.2	0.1	1.1	0.4	148.4	15.7	0.0	1.4	0.1	1.3
27	2.2	0.1	1.2	0.4	21.4	15.7	0.0	0.0	0.0	0.0
28	2.2	0.0	1.2	0.4	125.3	15.7	0.2	1.4	0.0	0.0
29	2.2	0.1	1.4	0.4	28.6	15.2	0.1	1.4	0.8	1.6
30	2.2	0.0	1.4	0.4	0.1	0.9	0.1	1.4	0.0	0.0
31	2.2	0.0	1.3	0.4	12.1	13.6	0.1	1.4	12.3	16.8
Total					3424.3		4.5		135.6	
Average	2.2	0.1	1.3	0.4	110.5	15.1	0.1	1.2	4.4	4.8
Maximum	2.2		2.2		246.2		1.2		30.2	
Date	31-Jan		7-Jan		18-Jan		21-Jan		9-Jan	
Minimum		0.0		0.4		0.9		0.0		0.0
Date		28-Jan		21-Jan		30-Jan		5-Jan		1-Jan

Notes: