

Municipality of West Elgin - Tri County Water System

Goto:

Month:

Year:

Date is Set to: **October-17**

| Limit | Low | High | |
|-----------------------------------|------|---------|----------------|
| Raw Water Chlorine Residual: | 0.00 | 5.00 | mg/L |
| Pre-Strainer Chlorine Residual: | 0.00 | 5.00 | mg/L |
| UV Inlet Chlorine Residual: | 0.00 | 5.00 | mg/L |
| Post Treatment Chlorine Residual: | 1.00 | 5.00 | mg/L |
| Treated Chlorine Residual: | 1.00 | 2.50 | mg/L |
| Distribution Chlorine Residual: | 1.00 | 2.50 | mg/L |
| Limit | | High | |
| WTP C of A | | 156.0 | L/s |
| WTP Permit to Take Water | | 13500.0 | m ³ |
| Limit | Low | High | |
| System Pressure Limits: | 50.0 | 1034.0 | Kpa |

Compliance Report

Low Lift Monthly Report

>>>

Membranes Monthly Report

>>>

UV System Monthly Report

>>>

Plant Quality Report

>>>

Raw Well/Treated Storage Report

>>>

High Lift Monthly Report

>>>

Operational Report

Low Lift Monthly Report

>>>

High Lift Monthly Report

>>>

Chemical Usage Monthly Report

>>>

Runtimes Report

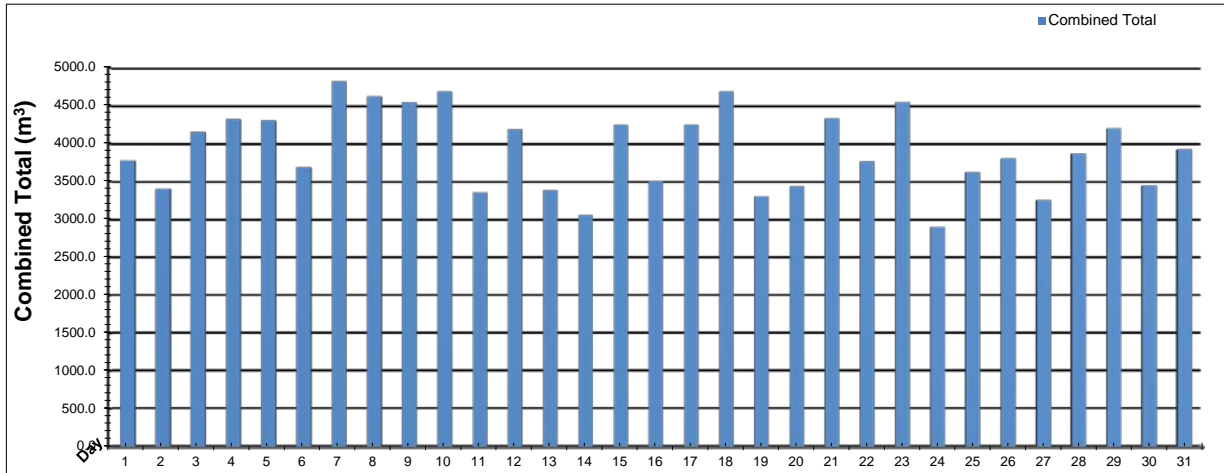
>>>

Plant Internal Flow Report

>>>

Low Lift Monthly Report

Month: October-17



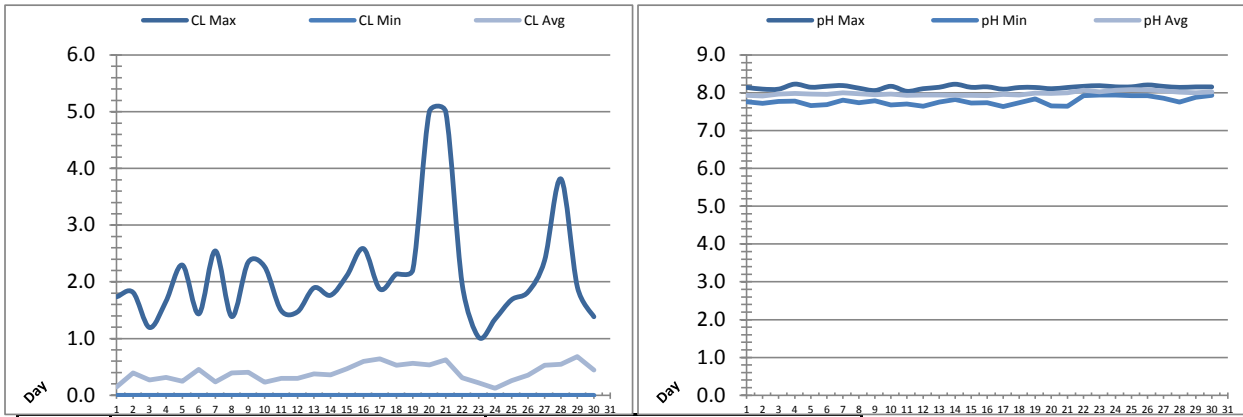
| Date | Combined Total (m³) | West Train (FIT-1017 (m³)) | West Peak Flow (FIT-1017 (L/s)) | East Train (FIT-1027 (m³)) | East Peak Flow (FIT-1027 (L/s)) | Combined Peak Flow (L/s) |
|----------------|---------------------|----------------------------|---------------------------------|----------------------------|---------------------------------|--------------------------|
| 1 | ✓ 3775.0 | 3775.0 | 199.3 | 0.0 | 0.0 | 199.3 |
| 2 | ✓ 3408.5 | 3408.5 | 155.9 | 0.0 | 0.0 | 155.9 |
| 3 | ✓ 4150.7 | 4150.7 | 191.6 | 0.0 | 0.0 | 191.6 |
| 4 | ✓ 4324.0 | 4324.0 | 193.1 | 0.0 | 0.0 | 193.1 |
| 5 | ✓ 4302.8 | 4302.8 | 168.4 | 0.0 | 0.0 | 168.4 |
| 6 | ✓ 3692.0 | 3692.0 | 199.6 | 0.0 | 0.0 | 199.6 |
| 7 | ✓ 4822.3 | 4822.3 | 199.7 | 0.0 | 0.0 | 199.7 |
| 8 | ✓ 4623.4 | 4623.4 | 131.1 | 0.0 | 0.0 | 131.1 |
| 9 | ✓ 4542.0 | 4542.0 | 199.6 | 0.0 | 0.0 | 199.6 |
| 10 | ✓ 4684.0 | 4684.0 | 158.2 | 0.0 | 0.0 | 158.2 |
| 11 | ✓ 3359.1 | 3359.1 | 161.7 | 0.0 | 0.0 | 161.7 |
| 12 | ✓ 4191.0 | 4191.0 | 190.6 | 0.0 | 0.0 | 190.6 |
| 13 | ✓ 3384.8 | 3384.8 | 198.5 | 0.0 | 0.0 | 198.5 |
| 14 | ✓ 3057.1 | 3057.1 | 190.5 | 0.0 | 0.0 | 190.5 |
| 15 | ✓ 4245.6 | 4245.6 | 123.7 | 0.0 | 0.0 | 123.7 |
| 16 | ✓ 3507.8 | 3507.8 | 199.3 | 0.0 | 0.0 | 199.3 |
| 17 | ✓ 4247.1 | 4247.1 | 190.1 | 0.0 | 0.0 | 190.1 |
| 18 | ✓ 4684.1 | 4684.1 | 177.3 | 0.0 | 0.0 | 177.3 |
| 19 | ✓ 3300.9 | 3300.9 | 143.2 | 0.0 | 0.0 | 143.2 |
| 20 | ✓ 3433.6 | 3433.6 | 133.8 | 0.0 | 0.0 | 133.8 |
| 21 | ✓ 4333.2 | 4333.2 | 136.3 | 0.0 | 0.0 | 136.3 |
| 22 | ✓ 3764.1 | 3764.1 | 136.1 | 0.0 | 0.0 | 136.1 |
| 23 | ✓ 4544.3 | 4544.3 | 136.7 | 0.0 | 0.0 | 136.7 |
| 24 | ✓ 2899.3 | 2899.3 | 134.6 | 0.0 | 0.0 | 134.6 |
| 25 | ✓ 3623.5 | 3623.5 | 136.2 | 0.0 | 0.0 | 136.2 |
| 26 | ✓ 3805.7 | 3805.7 | 135.3 | 0.0 | 0.0 | 135.3 |
| 27 | ✓ 3253.6 | 3253.6 | 133.3 | 0.0 | 0.0 | 133.3 |
| 28 | ✓ 3867.8 | 3867.8 | 132.6 | 0.0 | 0.0 | 132.6 |
| 29 | ✓ 4199.3 | 4199.3 | 132.5 | 0.0 | 0.0 | 132.5 |
| 30 | ✓ 3446.1 | 3446.1 | 132.3 | 0.0 | 0.0 | 132.3 |
| 31 | ✓ 3921.4 | 3921.4 | 132.6 | 0.0 | 0.0 | 132.6 |
| Total | 121394.1 | 121394.0 | | 0.1 | | |
| Average | 3915.9 | 3915.9 | 160.8 | 0.0 | 0.0 | 160.8 |
| Maximum | 4822.3 | 4822.3 | 199.74 | 0.0 | 0.00 | 199.74 |
| Date | 7-Oct | 7-Oct | 7-Oct | 5-Oct | 1-Oct | 7-Oct |
| Minimum | 2899.3 | 2899.3 | 123.69 | 0.0 | 0.00 | 123.69 |
| Date | 24-Oct | 24-Oct | 15-Oct | 31-Oct | 1-Oct | 15-Oct |

Notes:

PTTW Limit is 9,400L/min (equates to 156L/s), no PTTW exceedances since spikes in flows were all less than 1 minute in duration.

Low Lift Monthly Report

Month: October-17



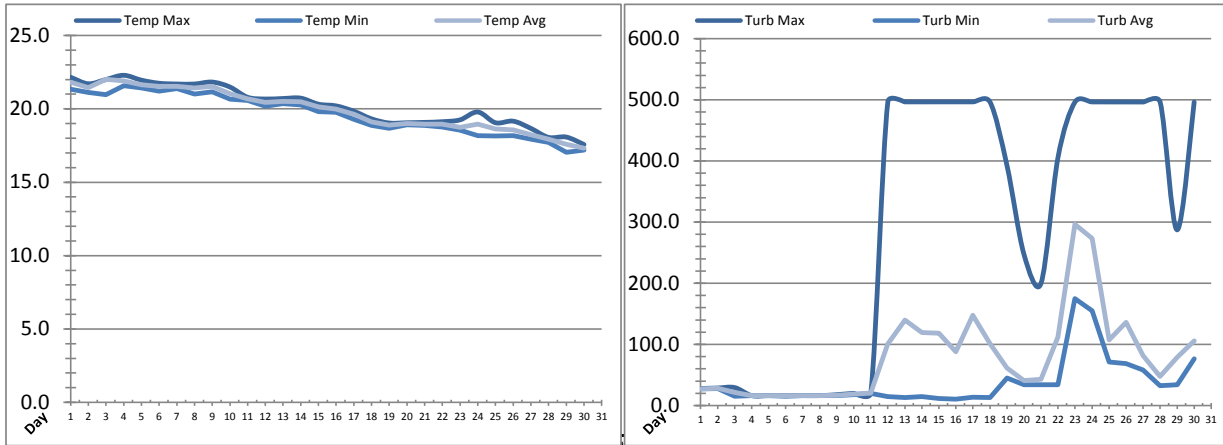
| Date | Raw Water Chlorine Residual | | | Raw Water pH | | |
|---------|-----------------------------|---------|---------|--------------|---------|---------|
| | AIT_1401_CL (mg/L) | | | AIT_1401_PH | | |
| | Maximum | Minimum | Average | Maximum | Minimum | Average |
| 1 | 1.74 | 0.00 | 0.24 | 8.14 | 7.76 | 7.89 |
| 2 | 1.74 | 0.00 | 0.14 | 8.14 | 7.76 | 7.94 |
| 3 | 1.81 | 0.00 | 0.39 | 8.10 | 7.72 | 7.91 |
| 4 | 1.19 | 0.00 | 0.27 | 8.10 | 7.77 | 7.97 |
| 5 | 1.65 | 0.00 | 0.32 | 8.23 | 7.78 | 7.98 |
| 6 | 2.30 | 0.00 | 0.25 | 8.15 | 7.66 | 7.97 |
| 7 | 1.44 | 0.00 | 0.45 | 8.17 | 7.69 | 7.96 |
| 8 | 2.55 | 0.00 | 0.24 | 8.19 | 7.81 | 8.00 |
| 9 | 1.39 | 0.00 | 0.39 | 8.12 | 7.74 | 7.97 |
| 10 | 2.35 | 0.00 | 0.41 | 8.06 | 7.79 | 7.95 |
| 11 | 2.26 | 0.00 | 0.23 | 8.17 | 7.68 | 7.97 |
| 12 | 1.49 | 0.00 | 0.30 | 8.04 | 7.71 | 7.94 |
| 13 | 1.47 | 0.00 | 0.30 | 8.11 | 7.64 | 7.94 |
| 14 | 1.90 | 0.00 | 0.37 | 8.15 | 7.76 | 7.94 |
| 15 | 1.76 | 0.00 | 0.36 | 8.23 | 7.82 | 7.94 |
| 16 | 2.11 | 0.00 | 0.47 | 8.15 | 7.73 | 7.94 |
| 17 | 2.59 | 0.00 | 0.59 | 8.16 | 7.74 | 7.92 |
| 18 | 1.87 | 0.00 | 0.64 | 8.10 | 7.64 | 7.96 |
| 19 | 2.14 | 0.00 | 0.53 | 8.14 | 7.74 | 7.94 |
| 20 | 2.21 | 0.00 | 0.56 | 8.14 | 7.84 | 7.99 |
| 21 | 5.00 | 0.00 | 0.53 | 8.11 | 7.66 | 7.99 |
| 22 | 5.00 | 0.00 | 0.63 | 8.14 | 7.65 | 8.00 |
| 23 | 1.95 | 0.00 | 0.31 | 8.17 | 7.93 | 8.07 |
| 24 | 1.02 | 0.00 | 0.22 | 8.19 | 7.94 | 8.03 |
| 25 | 1.34 | 0.00 | 0.12 | 8.16 | 7.94 | 8.07 |
| 26 | 1.68 | 0.00 | 0.26 | 8.16 | 7.93 | 8.09 |
| 27 | 1.82 | 0.00 | 0.35 | 8.21 | 7.92 | 8.07 |
| 28 | 2.37 | 0.00 | 0.53 | 8.17 | 7.86 | 8.05 |
| 29 | 3.81 | 0.00 | 0.54 | 8.14 | 7.76 | 8.02 |
| 30 | 1.90 | 0.00 | 0.68 | 8.16 | 7.89 | 8.00 |
| 31 | 1.38 | 0.00 | 0.45 | 8.16 | 7.94 | 8.02 |
| Total | | | | | | |
| Average | 2.10 | 0.00 | 0.39 | 8.15 | 7.78 | 7.98 |
| Maximum | 5.00 | | 0.68 | 8.23 | | 8.09 |
| Date | 21-Oct | | 30-Oct | 5-Oct | | 26-Oct |
| Minimum | | 0.00 | 0.12 | | 7.64 | 7.89 |
| Date | | 1-Oct | 25-Oct | | 18-Oct | 1-Oct |

Notes:

| |
|--|
| |
| |
| |

Low Lift Monthly Report

Month: October-17



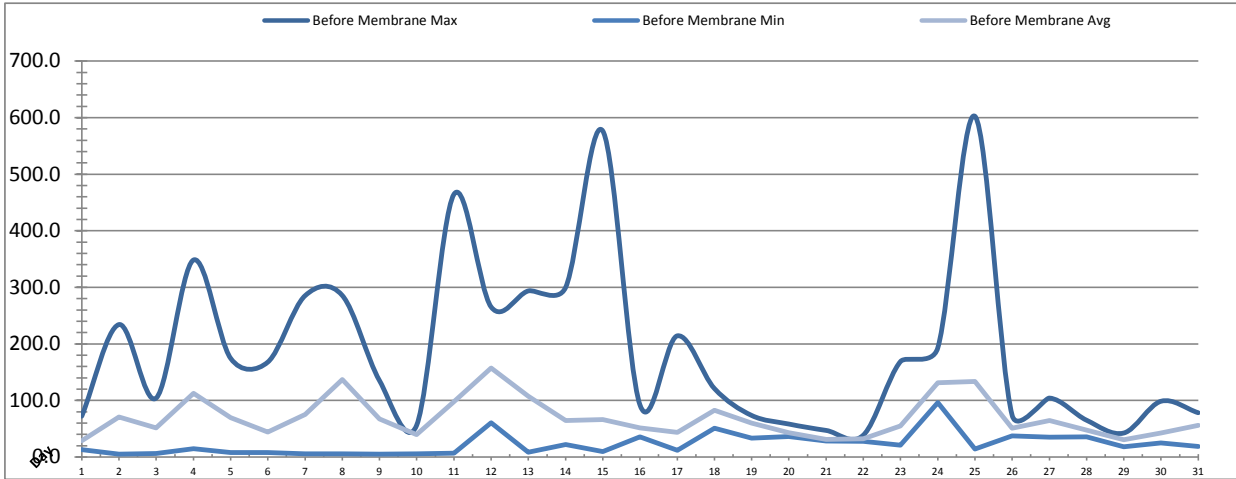
| Date | Raw water temperature | | | Raw water turbidity | | |
|---------|-----------------------|---------|---------|---------------------|---------|---------|
| | TIT_1403 (°C) | | | AIT_1404 (NTU) | | |
| | Maximum | Minimum | Average | Maximum | Minimum | Average |
| 1 | 22.5 | 21.9 | 22.1 | 27.09 | 25.43 | 26.47 |
| 2 | 22.2 | 21.3 | 21.8 | 27.86 | 26.97 | 27.26 |
| 3 | 21.7 | 21.1 | 21.5 | 28.66 | 27.74 | 28.28 |
| 4 | 22.0 | 21.0 | 22.0 | 29.36 | 15.36 | 21.33 |
| 5 | 22.3 | 21.6 | 21.9 | 16.25 | 16.12 | 16.17 |
| 6 | 22.0 | 21.4 | 21.7 | 16.20 | 16.13 | 16.15 |
| 7 | 21.7 | 21.2 | 21.5 | 16.23 | 15.35 | 16.11 |
| 8 | 21.7 | 21.4 | 21.5 | 16.23 | 16.12 | 16.15 |
| 9 | 21.7 | 21.0 | 21.4 | 16.22 | 16.11 | 16.15 |
| 10 | 21.8 | 21.2 | 21.5 | 17.73 | 16.12 | 16.93 |
| 11 | 21.5 | 20.7 | 21.0 | 19.96 | 17.67 | 18.74 |
| 12 | 20.8 | 20.6 | 20.7 | 20.78 | 19.91 | 20.38 |
| 13 | 20.7 | 20.2 | 20.4 | 496.55 | 14.53 | 100.62 |
| 14 | 20.7 | 20.4 | 20.5 | 496.61 | 12.98 | 139.62 |
| 15 | 20.7 | 20.3 | 20.5 | 496.57 | 14.53 | 119.58 |
| 16 | 20.3 | 19.8 | 20.1 | 496.62 | 11.48 | 118.12 |
| 17 | 20.2 | 19.8 | 20.0 | 496.61 | 10.64 | 87.96 |
| 18 | 19.8 | 19.3 | 19.6 | 496.62 | 13.72 | 147.63 |
| 19 | 19.3 | 18.9 | 19.1 | 496.57 | 12.97 | 100.98 |
| 20 | 19.0 | 18.7 | 18.9 | 392.71 | 44.76 | 61.29 |
| 21 | 19.1 | 18.9 | 19.0 | 247.11 | 33.95 | 40.83 |
| 22 | 19.1 | 18.9 | 19.0 | 199.78 | 33.93 | 42.95 |
| 23 | 19.1 | 18.8 | 19.0 | 405.94 | 33.93 | 111.97 |
| 24 | 19.3 | 18.6 | 18.7 | 496.51 | 174.94 | 296.37 |
| 25 | 19.8 | 18.2 | 19.0 | 496.52 | 154.76 | 273.54 |
| 26 | 19.1 | 18.2 | 18.6 | 496.46 | 71.11 | 107.08 |
| 27 | 19.2 | 18.2 | 18.6 | 496.43 | 68.72 | 135.90 |
| 28 | 18.7 | 17.9 | 18.2 | 496.37 | 57.87 | 81.54 |
| 29 | 18.1 | 17.7 | 17.9 | 496.33 | 32.27 | 47.58 |
| 30 | 18.1 | 17.0 | 17.6 | 287.28 | 33.82 | 79.01 |
| 31 | 17.6 | 17.2 | 17.3 | 496.34 | 76.41 | 105.50 |
| Total | | | | | | |
| Average | 20.3 | 19.7 | 20.0 | 281.8 | 36.7 | 78.7 |
| Maximum | 22.5 | | 22.1 | 496.6 | | 296.4 |
| Date | 1-Oct | | 1-Oct | 16-Oct | | 24-Oct |
| Minimum | | 17.0 | 17.3 | | 10.6 | 16.1 |
| Date | | 30-Oct | 31-Oct | | 17-Oct | 7-Oct |

Notes:

| |
|--|
| |
| |
| |
| |

Membranes Monthly Report

Month: October-17

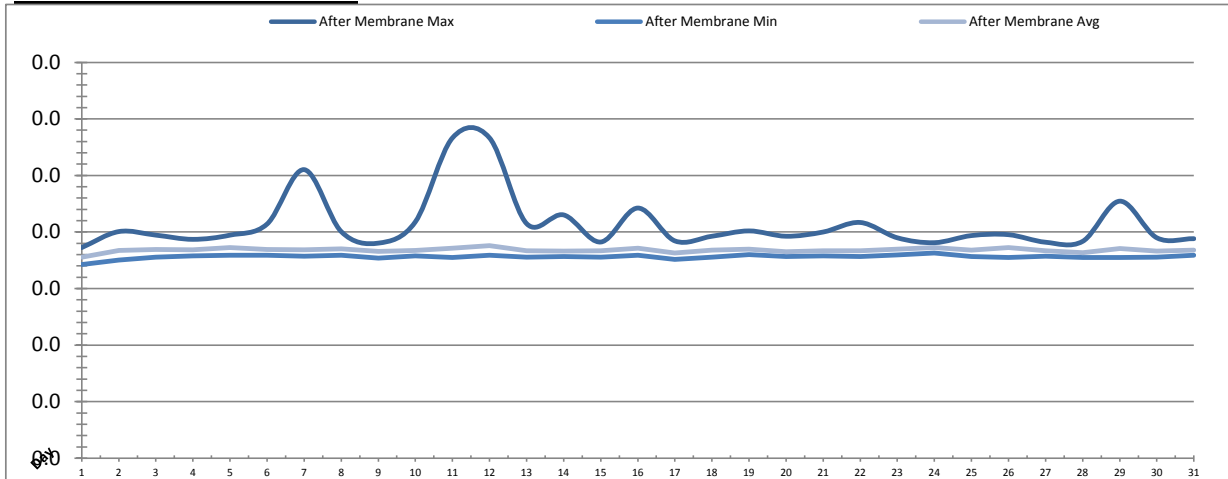


| Date | Turbidity Before Membrane | | | Rack #1 Turbidity | | | Rack #2 Turbidity | | |
|---------|--------------------------------|---------|---------|------------------------|---------|---------|------------------------|---------|---------|
| | PALL_FEED_AIT2006_Value NTU | | | RACK1_NTU_Value NTU | | | RACK2_NTU_Value NTU | | |
| | Maximum | Minimum | Average | Maximum | Minimum | Average | Maximum | Minimum | Average |
| 1 | 72.21 | 13.09 | 29.01 | 0.02 | 0.02 | 0.02 | 0.04 | 0.02 | 0.02 |
| 2 | 234.21 | 5.12 | 70.71 | 0.04 | 0.02 | 0.02 | 0.04 | 0.02 | 0.02 |
| 3 | 104.27 | 6.45 | 51.23 | 0.03 | 0.02 | 0.02 | 0.05 | 0.02 | 0.02 |
| 4 | 348.32 | 14.54 | 112.43 | 0.03 | 0.02 | 0.02 | 0.04 | 0.02 | 0.02 |
| 5 | 174.48 | 7.87 | 69.37 | 0.09 | 0.02 | 0.02 | 0.03 | 0.02 | 0.02 |
| 6 | 167.88 | 7.75 | 44.16 | 0.02 | 0.02 | 0.02 | 0.04 | 0.02 | 0.02 |
| 7 | 285.23 | 5.75 | 75.18 | 0.02 | 0.02 | 0.02 | 0.04 | 0.02 | 0.02 |
| 8 | 285.66 | 5.79 | 136.75 | 0.02 | 0.02 | 0.02 | 0.02 | 0.02 | 0.02 |
| 9 | 135.06 | 5.16 | 67.35 | 0.02 | 0.02 | 0.02 | 0.04 | 0.02 | 0.02 |
| 10 | 56.41 | 5.61 | 39.36 | 0.02 | 0.02 | 0.02 | 0.04 | 0.02 | 0.02 |
| 11 | 464.50 | 6.47 | 98.01 | 0.02 | 0.02 | 0.02 | 0.10 | 0.02 | 0.02 |
| 12 | 265.26 | 60.81 | 157.35 | 0.04 | 0.02 | 0.02 | 0.03 | 0.02 | 0.02 |
| 13 | 293.71 | 8.32 | 107.29 | 0.02 | 0.02 | 0.02 | 0.03 | 0.02 | 0.02 |
| 14 | 299.67 | 22.16 | 64.63 | 0.02 | 0.02 | 0.02 | 0.17 | 0.02 | 0.02 |
| 15 | 576.47 | 9.67 | 66.43 | 0.02 | 0.02 | 0.02 | 0.03 | 0.02 | 0.02 |
| 16 | 91.84 | 35.55 | 51.24 | 0.02 | 0.02 | 0.02 | 0.02 | 0.02 | 0.02 |
| 17 | 214.23 | 11.97 | 43.45 | 0.03 | 0.02 | 0.02 | 0.03 | 0.00 | 0.02 |
| 18 | 121.03 | 50.72 | 82.64 | 0.03 | 0.02 | 0.02 | 0.16 | 0.03 | 0.03 |
| 19 | 73.47 | 33.43 | 59.95 | 0.10 | 0.02 | 0.02 | 0.06 | 0.03 | 0.03 |
| 20 | 58.28 | 36.06 | 42.97 | 0.02 | 0.02 | 0.02 | 0.06 | 0.03 | 0.03 |
| 21 | 47.01 | 28.20 | 31.29 | 0.02 | 0.02 | 0.02 | 0.04 | 0.03 | 0.03 |
| 22 | 38.59 | 27.81 | 32.02 | 0.02 | 0.02 | 0.02 | 0.03 | 0.03 | 0.03 |
| 23 | 168.87 | 21.02 | 55.00 | 0.02 | 0.02 | 0.02 | 0.07 | 0.03 | 0.03 |
| 24 | 192.64 | 96.20 | 131.53 | 0.05 | 0.02 | 0.02 | 0.07 | 0.03 | 0.03 |
| 25 | 602.49 | 14.35 | 133.49 | 0.02 | 0.02 | 0.02 | 0.06 | 0.03 | 0.03 |
| 26 | 73.63 | 37.12 | 51.02 | 0.02 | 0.02 | 0.02 | 0.05 | 0.03 | 0.03 |
| 27 | 104.21 | 34.98 | 64.29 | 0.02 | 0.02 | 0.02 | 0.04 | 0.03 | 0.03 |
| 28 | 65.01 | 35.90 | 47.78 | 0.02 | 0.02 | 0.02 | 0.11 | 0.03 | 0.03 |
| 29 | 42.43 | 17.94 | 30.75 | 0.02 | 0.02 | 0.02 | 0.05 | 0.03 | 0.03 |
| 30 | 98.57 | 24.79 | 42.32 | 0.06 | 0.02 | 0.02 | 0.09 | 0.03 | 0.03 |
| 31 | 78.26 | 18.86 | 56.23 | 0.02 | 0.02 | 0.02 | 0.06 | 0.03 | 0.03 |
| Total | | | | | | | | | |
| Average | 188.2 | 22.9 | 69.2 | 0.03 | 0.02 | 0.02 | 0.06 | 0.02 | 0.02 |
| Maximum | 602.5 | | 157.4 | 0.10 | | 0.02 | 0.17 | | 0.03 |
| Date | 25-Oct | | 12-Oct | 19-Oct | | 5-Oct | 14-Oct | | 18-Oct |
| Minimum | | 5.1 | 29.0 | | 0.02 | 0.02 | | 0.00 | 0.02 |
| Date | | 2-Oct | 1-Oct | | 3-Oct | 29-Oct | | 17-Oct | 17-Oct |

Notes:

Membranes Monthly Report

Month: **October-17**

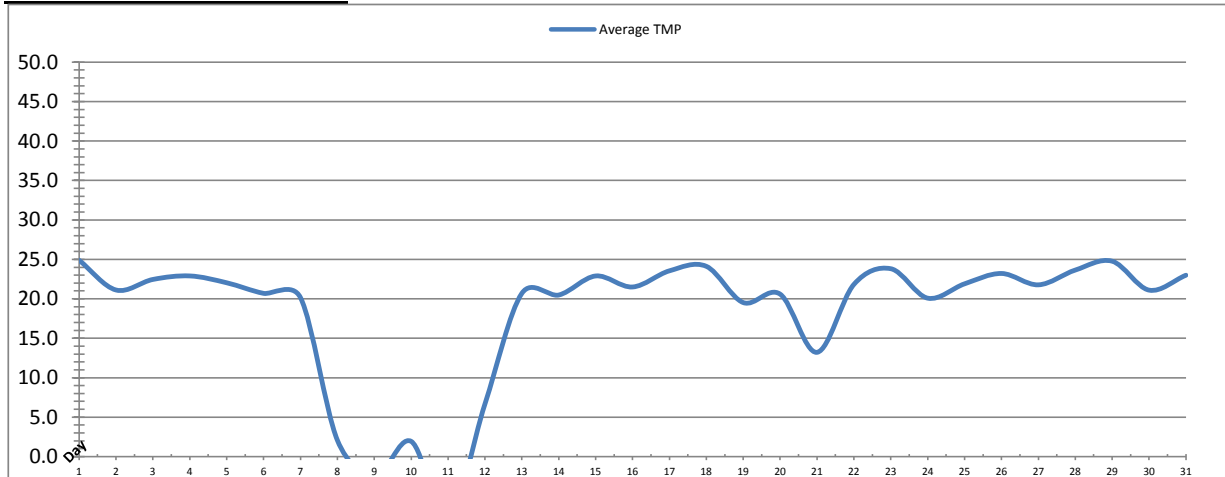


| Date | Rack #3 Turbidity | | | Rack #4 Turbidity | | | Turbidity After Membranes | | |
|----------------|------------------------|---------|---------|------------------------|---------|---------|--------------------------------|---------|---------|
| | RACK3_NTU_Value NTU | | | RACK4_NTU_Value NTU | | | PALL_FILT_AIT5001_Value NTU | | |
| | Maximum | Minimum | Average | Maximum | Minimum | Average | Maximum | Minimum | Average |
| 1 | 0.02 | 0.01 | 0.01 | 0.03 | 0.02 | 0.02 | 0.02 | 0.02 | 0.02 |
| 2 | 0.03 | 0.01 | 0.01 | 0.03 | 0.02 | 0.02 | 0.02 | 0.02 | 0.02 |
| 3 | 0.02 | 0.01 | 0.01 | 0.04 | 0.02 | 0.02 | 0.02 | 0.02 | 0.02 |
| 4 | 0.02 | 0.01 | 0.01 | 0.04 | 0.02 | 0.02 | 0.02 | 0.02 | 0.02 |
| 5 | 0.35 | 0.01 | 0.02 | 0.04 | 0.02 | 0.02 | 0.02 | 0.02 | 0.02 |
| 6 | 0.02 | 0.01 | 0.01 | 0.03 | 0.02 | 0.02 | 0.02 | 0.02 | 0.02 |
| 7 | 0.02 | 0.01 | 0.01 | 0.05 | 0.02 | 0.02 | 0.03 | 0.02 | 0.02 |
| 8 | 0.02 | 0.01 | 0.01 | 0.03 | 0.02 | 0.02 | 0.02 | 0.02 | 0.02 |
| 9 | 0.02 | 0.01 | 0.01 | 0.02 | 0.02 | 0.02 | 0.02 | 0.02 | 0.02 |
| 10 | 0.02 | 0.01 | 0.01 | 0.02 | 0.02 | 0.02 | 0.02 | 0.02 | 0.02 |
| 11 | 0.04 | 0.01 | 0.01 | 0.04 | 0.02 | 0.02 | 0.03 | 0.02 | 0.02 |
| 12 | 0.05 | 0.01 | 0.01 | 0.03 | 0.02 | 0.02 | 0.03 | 0.02 | 0.02 |
| 13 | 0.02 | 0.01 | 0.01 | 0.02 | 0.02 | 0.02 | 0.02 | 0.02 | 0.02 |
| 14 | 0.02 | 0.01 | 0.01 | 0.02 | 0.02 | 0.02 | 0.02 | 0.02 | 0.02 |
| 15 | 0.02 | 0.01 | 0.01 | 0.02 | 0.02 | 0.02 | 0.02 | 0.02 | 0.02 |
| 16 | 0.02 | 0.01 | 0.01 | 0.02 | 0.02 | 0.02 | 0.02 | 0.02 | 0.02 |
| 17 | 0.02 | 0.01 | 0.01 | 0.02 | 0.02 | 0.02 | 0.02 | 0.02 | 0.02 |
| 18 | 0.02 | 0.01 | 0.01 | 0.02 | 0.02 | 0.02 | 0.02 | 0.02 | 0.02 |
| 19 | 0.10 | 0.01 | 0.01 | 0.04 | 0.02 | 0.02 | 0.02 | 0.02 | 0.02 |
| 20 | 0.02 | 0.01 | 0.01 | 0.02 | 0.02 | 0.02 | 0.02 | 0.02 | 0.02 |
| 21 | 0.02 | 0.01 | 0.01 | 0.02 | 0.02 | 0.02 | 0.02 | 0.02 | 0.02 |
| 22 | 0.02 | 0.01 | 0.01 | 0.02 | 0.02 | 0.02 | 0.02 | 0.02 | 0.02 |
| 23 | 0.02 | 0.01 | 0.01 | 0.02 | 0.02 | 0.02 | 0.02 | 0.02 | 0.02 |
| 24 | 0.05 | 0.01 | 0.01 | 0.02 | 0.02 | 0.02 | 0.02 | 0.02 | 0.02 |
| 25 | 0.02 | 0.01 | 0.01 | 0.02 | 0.02 | 0.02 | 0.02 | 0.02 | 0.02 |
| 26 | 0.07 | 0.01 | 0.01 | 0.02 | 0.02 | 0.02 | 0.02 | 0.02 | 0.02 |
| 27 | 0.02 | 0.01 | 0.01 | 0.02 | 0.02 | 0.02 | 0.02 | 0.02 | 0.02 |
| 28 | 0.02 | 0.01 | 0.01 | 0.02 | 0.02 | 0.02 | 0.02 | 0.02 | 0.02 |
| 29 | 0.02 | 0.01 | 0.01 | 0.02 | 0.02 | 0.02 | 0.02 | 0.02 | 0.02 |
| 30 | 0.02 | 0.01 | 0.01 | 0.02 | 0.02 | 0.02 | 0.02 | 0.02 | 0.02 |
| 31 | 0.02 | 0.01 | 0.01 | 0.02 | 0.02 | 0.02 | 0.02 | 0.02 | 0.02 |
| Total | | | | | | | | | |
| Average | 0.03 | 0.01 | 0.01 | 0.03 | 0.02 | 0.02 | 0.02 | 0.02 | 0.02 |
| Maximum | 0.35 | | 0.02 | 0.05 | | 0.02 | 0.03 | | 0.02 |
| Date | 5-Oct | | 5-Oct | 7-Oct | | 3-Oct | 11-Oct | | 12-Oct |
| Minimum | | 0.01 | 0.01 | | 0.02 | 0.02 | | 0.02 | 0.02 |
| Date | | 1-Oct | 15-Oct | | 1-Oct | 11-Oct | | 1-Oct | 1-Oct |

Notes:

Membranes Monthly Report

Month: **October-17**

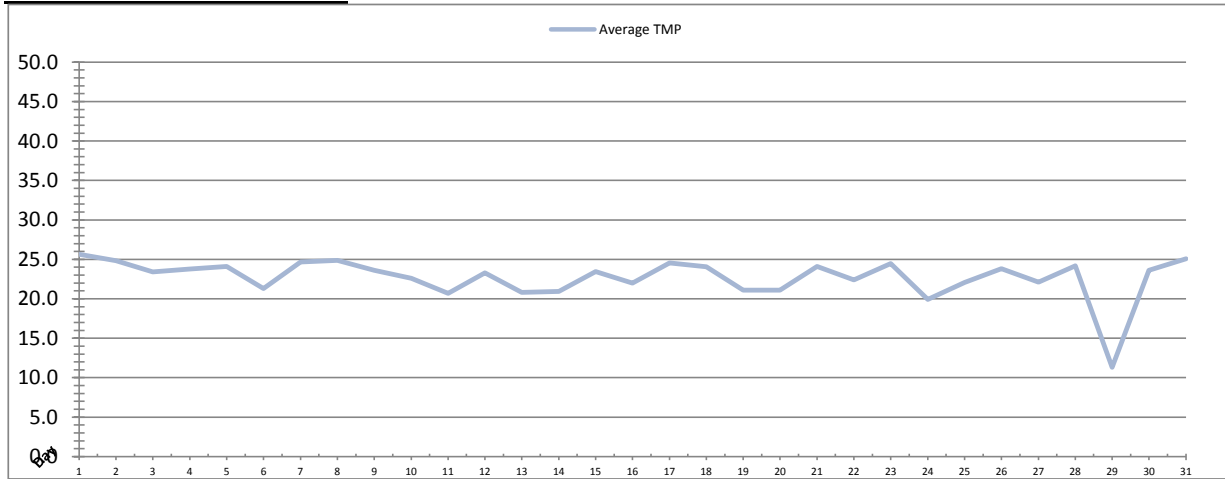


| Date | Integrity Test Rack 1 | | | | | | | |
|--------------|---------------------------|-------------------------|------------------------|-----------------------------|-------|------------|----------------------|------------------|
| | Initial Pressure (kPa) | Final Pressure (kPa) | Test Duration (sec) | Change in Pressure (kPa) | UCL | Within UCL | Average TMP (kPa) | Max TMP (kPa) |
| 1 | 198.7 | 197.7 | 300.0 | 1.0 | 2.0 | ✓ 2.0 | 24.9 | 57.2 |
| 2 | 198.7 | 197.6 | 300.0 | 1.2 | 2.0 | ✓ 2.0 | 21.1 | 74.7 |
| 3 | 199.0 | 197.9 | 300.0 | 1.1 | 2.0 | ✓ 2.0 | 22.5 | 71.8 |
| 4 | 198.4 | 197.3 | 300.0 | 1.1 | 2.0 | ✓ 2.0 | 22.9 | 65.8 |
| 5 | 198.6 | 197.5 | 300.0 | 1.1 | 2.0 | ✓ 2.0 | 22.0 | 79.6 |
| 6 | 198.9 | 197.8 | 300.0 | 1.2 | 2.0 | ✓ 2.0 | 20.7 | 58.5 |
| 7 | 198.3 | 193.7 | 300.0 | 4.6 | 2.0 | | 20.2 | 49.6 |
| 8 | 198.1 | 193.6 | 300.0 | 4.5 | 2.0 | | 2.1 | 114.9 |
| 9 | 198.1 | 193.6 | 300.0 | 4.5 | 2.0 | | -2.7 | 11.0 |
| 10 | 198.1 | 193.6 | 300.0 | 4.5 | 2.0 | | 1.9 | 9.9 |
| 11 | 198.1 | 193.6 | 300.0 | 4.5 | 2.0 | | -8.0 | -7.5 |
| 12 | 199.3 | 197.8 | 300.0 | 1.5 | 2.0 | ✓ 2.0 | 6.7 | 59.8 |
| 13 | 198.7 | 197.6 | 300.0 | 1.1 | 2.0 | ✓ 2.0 | 20.7 | 59.1 |
| 14 | 198.4 | 197.2 | 300.0 | 1.2 | 2.0 | ✓ 2.0 | 20.5 | 65.8 |
| 15 | 198.9 | 197.7 | 300.0 | 1.2 | 2.0 | ✓ 2.0 | 22.9 | 61.2 |
| 16 | 198.7 | 197.6 | 300.0 | 1.1 | 2.0 | ✓ 2.0 | 21.5 | 60.4 |
| 17 | 199.4 | 198.2 | 300.0 | 1.2 | 2.0 | ✓ 2.0 | 23.5 | 61.9 |
| 18 | 199.2 | 198.1 | 300.0 | 1.1 | 2.0 | ✓ 2.0 | 24.1 | 61.7 |
| 19 | 199.1 | 197.9 | 300.0 | 1.2 | 2.0 | ✓ 2.0 | 19.5 | 47.9 |
| 20 | 198.5 | 197.4 | 300.0 | 1.1 | 2.0 | ✓ 2.0 | 20.6 | 63.0 |
| 21 | 199.3 | 198.2 | 300.0 | 1.1 | 2.0 | ✓ 2.0 | 13.2 | 68.5 |
| 22 | 198.5 | 197.4 | 300.0 | 1.1 | 2.0 | ✓ 2.0 | 21.8 | 68.5 |
| 23 | 199.0 | 197.9 | 300.0 | 1.1 | 2.0 | ✓ 2.0 | 23.8 | 71.7 |
| 24 | 199.8 | 198.5 | 300.0 | 1.3 | 2.0 | ✓ 2.0 | 20.1 | 50.0 |
| 25 | 199.0 | 197.9 | 300.0 | 1.2 | 2.0 | ✓ 2.0 | 21.9 | 73.0 |
| 26 | 199.2 | 198.0 | 300.0 | 1.2 | 2.0 | ✓ 2.0 | 23.2 | 77.1 |
| 27 | 199.1 | 197.8 | 300.0 | 1.3 | 2.0 | ✓ 2.0 | 21.8 | 73.5 |
| 28 | 198.7 | 197.5 | 300.0 | 1.1 | 2.0 | ✓ 2.0 | 23.6 | 75.8 |
| 29 | 199.2 | 198.0 | 300.0 | 1.2 | 2.0 | ✓ 2.0 | 24.8 | 78.3 |
| 30 | 199.2 | 197.9 | 300.0 | 1.3 | 2.0 | ✓ 2.0 | 21.1 | 74.0 |
| 31 | 199.2 | 198.1 | 300.0 | 1.2 | 2.0 | ✓ 2.0 | 23.0 | 73.0 |
| Total | | | | | | | | |
| Average | 198.8 | 197.1 | 300.0 | 1.7 | 2.0 | 2.0 | 18.3 | 61.6 |
| Maximum | 199.8 | 198.5 | 300.0 | 4.6 | 2.0 | 2.0 | 24.9 | 114.9 |
| Date | 24-Oct | 24-Oct | 1-Oct | 7-Oct | 1-Oct | 1-Oct | 1-Oct | 8-Oct |
| Minimum | 198.1 | 193.6 | 300.0 | 1.0 | 2.0 | 2.0 | -8.0 | -7.5 |
| Date | 8-Oct | 8-Oct | 1-Oct | 1-Oct | 1-Oct | 1-Oct | 11-Oct | 11-Oct |

Notes:
 Rack 1 offline Oct 7-12 due to valve isolation issue, causing failure in IT.

Membranes Monthly Report

Month: **October-17**

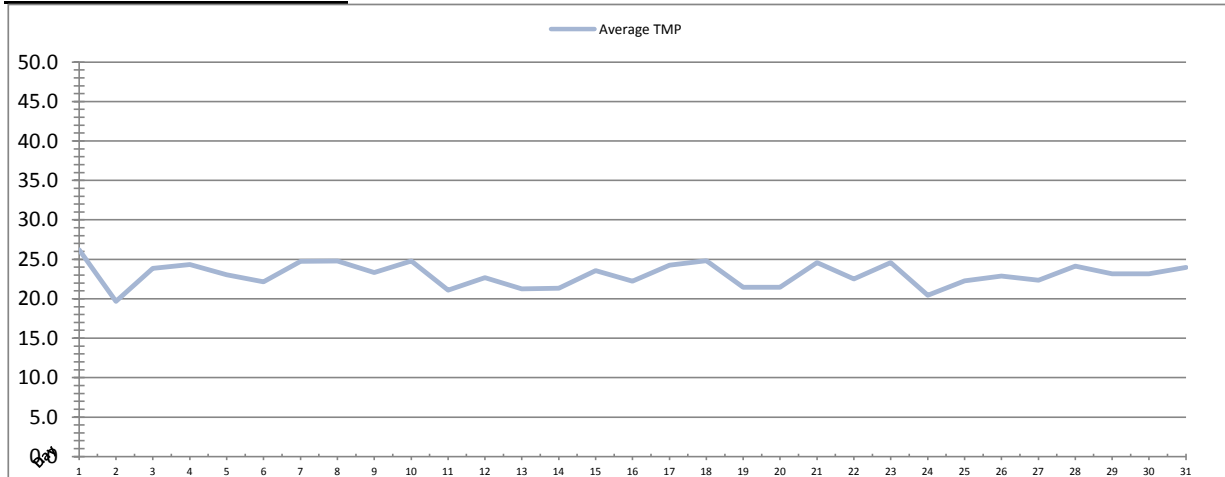


| Date | Integrity Test Rack 2 | | | | | | | |
|--------------|---------------------------|-------------------------|------------------------|-----------------------------|-------|------------|----------------------|------------------|
| | Initial Pressure (kPa) | Final Pressure (kPa) | Test Duration (sec) | Change in Pressure (kPa) | UCL | Within UCL | Average TMP (kPa) | Max TMP (kPa) |
| 1 | 208.8 | 207.7 | 300.0 | 1.1 | 2.0 | ✓ 2.0 | 25.6 | 65.4 |
| 2 | 208.8 | 207.7 | 300.0 | 1.1 | 2.0 | ✓ 2.0 | 24.8 | 101.2 |
| 3 | 208.4 | 207.4 | 300.0 | 1.0 | 2.0 | ✓ 2.0 | 23.4 | 75.7 |
| 4 | 208.6 | 207.6 | 300.0 | 1.0 | 2.0 | ✓ 2.0 | 23.8 | 67.3 |
| 5 | 208.8 | 207.7 | 300.0 | 1.1 | 2.0 | ✓ 2.0 | 24.1 | 63.1 |
| 6 | 208.5 | 207.4 | 300.0 | 1.1 | 2.0 | ✓ 2.0 | 21.3 | 70.8 |
| 7 | 208.3 | 207.5 | 300.0 | 0.8 | 2.0 | ✓ 2.0 | 24.7 | 72.5 |
| 8 | 208.6 | 207.6 | 300.0 | 1.0 | 2.0 | ✓ 2.0 | 24.9 | 131.0 |
| 9 | 208.6 | 207.5 | 300.0 | 1.1 | 2.0 | ✓ 2.0 | 23.6 | 71.3 |
| 10 | 208.9 | 207.7 | 300.0 | 1.2 | 2.0 | ✓ 2.0 | 22.6 | 70.8 |
| 11 | 208.9 | 207.9 | 300.0 | 1.1 | 2.0 | ✓ 2.0 | 20.7 | 61.2 |
| 12 | 208.9 | 207.7 | 300.0 | 1.2 | 2.0 | ✓ 2.0 | 23.3 | 62.4 |
| 13 | 208.8 | 207.6 | 300.0 | 1.1 | 2.0 | ✓ 2.0 | 20.8 | 60.8 |
| 14 | 208.7 | 207.6 | 300.0 | 1.1 | 2.0 | ✓ 2.0 | 20.9 | 62.7 |
| 15 | 208.5 | 207.5 | 300.0 | 1.1 | 2.0 | ✓ 2.0 | 23.5 | 63.0 |
| 16 | 207.6 | 206.5 | 300.0 | 1.1 | 2.0 | ✓ 2.0 | 22.0 | 62.2 |
| 17 | 207.6 | 206.5 | 300.0 | 1.1 | 2.0 | ✓ 2.0 | 24.6 | 64.1 |
| 18 | 209.1 | 207.8 | 300.0 | 1.2 | 2.0 | ✓ 2.0 | 24.1 | 60.1 |
| 19 | 208.7 | 207.6 | 300.0 | 1.1 | 2.0 | ✓ 2.0 | 21.1 | 60.3 |
| 20 | 208.6 | 207.5 | 300.0 | 1.1 | 2.0 | ✓ 2.0 | 21.1 | 69.2 |
| 21 | 208.7 | 207.5 | 300.0 | 1.2 | 2.0 | ✓ 2.0 | 24.1 | 72.0 |
| 22 | 208.5 | 207.4 | 300.0 | 1.2 | 2.0 | ✓ 2.0 | 22.4 | 71.5 |
| 23 | 208.8 | 207.7 | 300.0 | 1.1 | 2.0 | ✓ 2.0 | 24.5 | 74.7 |
| 24 | 208.8 | 207.7 | 300.0 | 1.1 | 2.0 | ✓ 2.0 | 19.9 | 71.1 |
| 25 | 208.0 | 206.8 | 300.0 | 1.1 | 2.0 | ✓ 2.0 | 22.1 | 74.9 |
| 26 | 208.3 | 207.1 | 300.0 | 1.2 | 2.0 | ✓ 2.0 | 23.8 | 80.3 |
| 27 | 208.9 | 207.7 | 300.0 | 1.2 | 2.0 | ✓ 2.0 | 22.1 | 77.9 |
| 28 | 208.7 | 207.1 | 300.0 | 1.6 | 2.0 | ✓ 2.0 | 24.2 | 78.3 |
| 29 | 208.7 | 207.5 | 300.0 | 1.3 | 2.0 | ✓ 2.0 | 11.3 | 79.2 |
| 30 | 209.1 | 207.9 | 300.0 | 1.2 | 2.0 | ✓ 2.0 | 23.6 | 81.4 |
| 31 | 209.1 | 207.9 | 300.0 | 1.2 | 2.0 | ✓ 2.0 | 25.1 | 75.4 |
| Total | | | | | | | | |
| Average | 208.6 | 207.5 | 300.0 | 1.1 | 2.0 | 2.0 | 22.7 | 72.6 |
| Maximum | 209.1 | 207.9 | 300.0 | 1.6 | 2.0 | 2.0 | 25.6 | 131.0 |
| Date | 30-Oct | 11-Oct | 1-Oct | 28-Oct | 1-Oct | 1-Oct | 1-Oct | 8-Oct |
| Minimum | 207.6 | 206.5 | 300.0 | 0.8 | 2.0 | 2.0 | 11.3 | 60.1 |
| Date | 16-Oct | 16-Oct | 1-Oct | 7-Oct | 1-Oct | 1-Oct | 29-Oct | 18-Oct |

Notes:

Membranes Monthly Report

Month: **October-17**

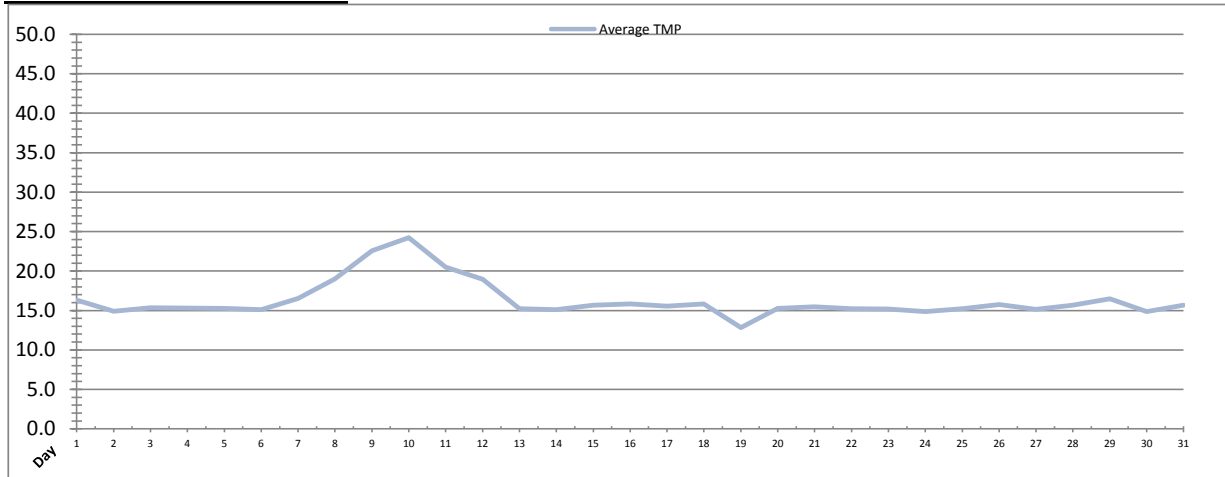


| Integrity Test Rack 3 | | | | | | | | | |
|-----------------------|---------------------------|-------------------------|------------------------|-----------------------------|-------|------------|----------------------|------------------|--|
| Date | Initial Pressure (kPa) | Final Pressure (kPa) | Test Duration (sec) | Change in Pressure (kPa) | UCL | Within UCL | Average TMP (kPa) | Max TMP (kPa) | |
| 1 | 190.4 | 189.2 | 300.0 | 1.2 | 2.0 | ✓ 2.0 | 26.2 | 61.6 | |
| 2 | 190.4 | 189.2 | 300.0 | 1.1 | 2.0 | ✓ 2.0 | 19.7 | 75.8 | |
| 3 | 190.2 | 189.1 | 300.0 | 1.1 | 2.0 | ✓ 2.0 | 23.8 | 66.8 | |
| 4 | 190.5 | 189.4 | 300.0 | 1.1 | 2.0 | ✓ 2.0 | 24.3 | 66.0 | |
| 5 | 190.1 | 188.9 | 300.0 | 1.2 | 2.0 | ✓ 2.0 | 23.1 | 58.1 | |
| 6 | 189.7 | 188.6 | 300.0 | 1.1 | 2.0 | ✓ 2.0 | 22.2 | 66.8 | |
| 7 | 190.0 | 188.9 | 300.0 | 1.1 | 2.0 | ✓ 2.0 | 24.7 | 52.9 | |
| 8 | 190.7 | 189.5 | 300.0 | 1.2 | 2.0 | ✓ 2.0 | 24.8 | 77.0 | |
| 9 | 190.5 | 189.3 | 300.0 | 1.2 | 2.0 | ✓ 2.0 | 23.3 | 67.6 | |
| 10 | 190.3 | 189.1 | 300.0 | 1.2 | 2.0 | ✓ 2.0 | 24.8 | 80.9 | |
| 11 | 190.7 | 189.4 | 300.0 | 1.3 | 2.0 | ✓ 2.0 | 21.1 | 61.0 | |
| 12 | 189.9 | 188.7 | 300.0 | 1.3 | 2.0 | ✓ 2.0 | 22.7 | 59.2 | |
| 13 | 190.3 | 189.1 | 300.0 | 1.2 | 2.0 | ✓ 2.0 | 21.2 | 57.1 | |
| 14 | 190.1 | 188.9 | 300.0 | 1.2 | 2.0 | ✓ 2.0 | 21.3 | 60.0 | |
| 15 | 189.6 | 188.5 | 300.0 | 1.2 | 2.0 | ✓ 2.0 | 23.6 | 59.7 | |
| 16 | 190.8 | 189.6 | 300.0 | 1.2 | 2.0 | ✓ 2.0 | 22.2 | 59.6 | |
| 17 | 190.2 | 189.0 | 300.0 | 1.2 | 2.0 | ✓ 2.0 | 24.3 | 61.7 | |
| 18 | 190.0 | 188.8 | 300.0 | 1.2 | 2.0 | ✓ 2.0 | 24.8 | 61.9 | |
| 19 | 190.3 | 189.1 | 300.0 | 1.1 | 2.0 | ✓ 2.0 | 21.5 | 70.2 | |
| 20 | 189.9 | 188.7 | 300.0 | 1.1 | 2.0 | ✓ 2.0 | 21.5 | 65.5 | |
| 21 | 190.0 | 188.8 | 300.0 | 1.2 | 2.0 | ✓ 2.0 | 24.6 | 69.1 | |
| 22 | 189.5 | 188.5 | 300.0 | 1.1 | 2.0 | ✓ 2.0 | 22.5 | 67.6 | |
| 23 | 190.1 | 188.8 | 300.0 | 1.3 | 2.0 | ✓ 2.0 | 24.6 | 113.9 | |
| 24 | 190.3 | 189.1 | 300.0 | 1.3 | 2.0 | ✓ 2.0 | 20.5 | 67.3 | |
| 25 | 189.3 | 188.2 | 300.0 | 1.1 | 2.0 | ✓ 2.0 | 22.3 | 69.3 | |
| 26 | 190.2 | 189.0 | 300.0 | 1.2 | 2.0 | ✓ 2.0 | 22.9 | 74.2 | |
| 27 | 190.6 | 189.3 | 300.0 | 1.3 | 2.0 | ✓ 2.0 | 22.3 | 73.5 | |
| 28 | 190.3 | 189.1 | 300.0 | 1.2 | 2.0 | ✓ 2.0 | 24.1 | 74.2 | |
| 29 | 190.6 | 189.3 | 300.0 | 1.3 | 2.0 | ✓ 2.0 | 23.2 | 76.8 | |
| 30 | 190.4 | 189.1 | 300.0 | 1.2 | 2.0 | ✓ 2.0 | 23.1 | 77.2 | |
| 31 | 190.6 | 189.4 | 300.0 | 1.2 | 2.0 | ✓ 2.0 | 24.0 | 72.7 | |
| Total | | | | | | | | | |
| Average | 190.2 | 189.0 | 300.0 | 1.2 | 2.0 | 2.0 | 23.1 | 68.6 | |
| Maximum | 190.8 | 189.6 | 300.0 | 1.3 | 2.0 | 2.0 | 26.2 | 113.9 | |
| Date | 16-Oct | 16-Oct | 1-Oct | 29-Oct | 1-Oct | 1-Oct | 1-Oct | 23-Oct | |
| Minimum | 189.3 | 188.2 | 300.0 | 1.1 | 2.0 | 2.0 | 19.7 | 52.9 | |
| Date | 25-Oct | 25-Oct | 1-Oct | 6-Oct | 1-Oct | 1-Oct | 2-Oct | 7-Oct | |

Notes:

Membranes Monthly Report

Month: **October-17**



| Integrity Test Rack 4 | | | | | | | | | |
|-----------------------|------------------------|----------------------|---------------------|--------------------------|-------|------------|-------------------|---------------|--|
| Date | Initial Pressure (kPa) | Final Pressure (kPa) | Test Duration (sec) | Change in Pressure (kPa) | UCL | Within UCL | Average TMP (kPa) | Max TMP (kPa) | |
| 1 | 197.5 | 196.5 | 300.0 | 1.0 | 2.0 | ✓ 2.0 | 16.3 | 23.5 | |
| 2 | 197.8 | 196.6 | 300.0 | 1.2 | 2.0 | ✓ 2.0 | 14.9 | 25.5 | |
| 3 | 197.8 | 196.8 | 300.0 | 1.1 | 2.0 | ✓ 2.0 | 15.3 | 25.7 | |
| 4 | 197.5 | 196.4 | 300.0 | 1.1 | 2.0 | ✓ 2.0 | 15.3 | 24.5 | |
| 5 | 197.6 | 196.5 | 300.0 | 1.1 | 2.0 | ✓ 2.0 | 15.2 | 27.6 | |
| 6 | 197.9 | 196.8 | 300.0 | 1.1 | 2.0 | ✓ 2.0 | 15.1 | 25.7 | |
| 7 | 197.9 | 196.8 | 300.0 | 1.1 | 2.0 | ✓ 2.0 | 16.5 | 25.8 | |
| 8 | 197.4 | 196.3 | 300.0 | 1.1 | 2.0 | ✓ 2.0 | 19.0 | 55.5 | |
| 9 | 197.3 | 196.2 | 300.0 | 1.1 | 2.0 | ✓ 2.0 | 22.6 | 71.0 | |
| 10 | 197.7 | 196.6 | 300.0 | 1.1 | 2.0 | ✓ 2.0 | 24.2 | 65.2 | |
| 11 | 197.1 | 196.0 | 300.0 | 1.1 | 2.0 | ✓ 2.0 | 20.5 | 58.1 | |
| 12 | 197.6 | 196.4 | 300.0 | 1.2 | 2.0 | ✓ 2.0 | 19.0 | 57.3 | |
| 13 | 197.9 | 196.8 | 300.0 | 1.1 | 2.0 | ✓ 2.0 | 15.2 | 33.1 | |
| 14 | 197.4 | 196.3 | 300.0 | 1.1 | 2.0 | ✓ 2.0 | 15.1 | 32.7 | |
| 15 | 197.7 | 196.6 | 300.0 | 1.1 | 2.0 | ✓ 2.0 | 15.7 | 32.0 | |
| 16 | 197.3 | 196.2 | 300.0 | 1.1 | 2.0 | ✓ 2.0 | 15.8 | 30.7 | |
| 17 | 197.3 | 196.0 | 300.0 | 1.4 | 2.0 | ✓ 2.0 | 15.5 | 28.2 | |
| 18 | 197.5 | 196.1 | 300.0 | 1.3 | 2.0 | ✓ 2.0 | 15.8 | 29.5 | |
| 19 | 197.6 | 196.5 | 300.0 | 1.1 | 2.0 | ✓ 2.0 | 12.8 | 27.3 | |
| 20 | 197.3 | 196.2 | 300.0 | 1.1 | 2.0 | ✓ 2.0 | 15.3 | 30.7 | |
| 21 | 198.1 | 196.9 | 300.0 | 1.1 | 2.0 | ✓ 2.0 | 15.5 | 30.5 | |
| 22 | 197.2 | 196.1 | 300.0 | 1.1 | 2.0 | ✓ 2.0 | 15.2 | 25.2 | |
| 23 | 197.3 | 196.1 | 300.0 | 1.2 | 2.0 | ✓ 2.0 | 15.2 | 27.4 | |
| 24 | 197.3 | 195.9 | 300.0 | 1.4 | 2.0 | ✓ 2.0 | 14.9 | 27.1 | |
| 25 | 197.8 | 196.3 | 300.0 | 1.5 | 2.0 | ✓ 2.0 | 15.2 | 56.0 | |
| 26 | 197.7 | 196.5 | 300.0 | 1.2 | 2.0 | ✓ 2.0 | 15.7 | 26.4 | |
| 27 | 197.4 | 196.3 | 300.0 | 1.2 | 2.0 | ✓ 2.0 | 15.1 | 25.3 | |
| 28 | 197.8 | 196.4 | 300.0 | 1.3 | 2.0 | ✓ 2.0 | 15.7 | 27.8 | |
| 29 | 197.7 | 196.3 | 300.0 | 1.4 | 2.0 | ✓ 2.0 | 16.5 | 40.2 | |
| 30 | 197.5 | 196.3 | 300.0 | 1.3 | 2.0 | ✓ 2.0 | 14.9 | 27.3 | |
| 31 | 197.7 | 196.3 | 300.0 | 1.4 | 2.0 | ✓ 2.0 | 15.7 | 26.7 | |
| Total | | | | | | | | | |
| Average | 197.6 | 196.4 | 300.0 | 1.2 | 2.0 | 2.0 | 16.3 | 34.5 | |
| Maximum | 198.1 | 196.9 | 300.0 | 1.5 | 2.0 | 2.0 | 24.2 | 71.0 | |
| Date | 21-Oct | 21-Oct | 1-Oct | 25-Oct | 1-Oct | 1-Oct | 10-Oct | 9-Oct | |
| Minimum | 197.1 | 195.9 | 300.0 | 1.0 | 2.0 | 2.0 | 12.8 | 23.5 | |
| Date | 11-Oct | 24-Oct | 1-Oct | 1-Oct | 1-Oct | 1-Oct | 19-Oct | 1-Oct | |

Notes:

Membranes Monthly Report

Month: October-17

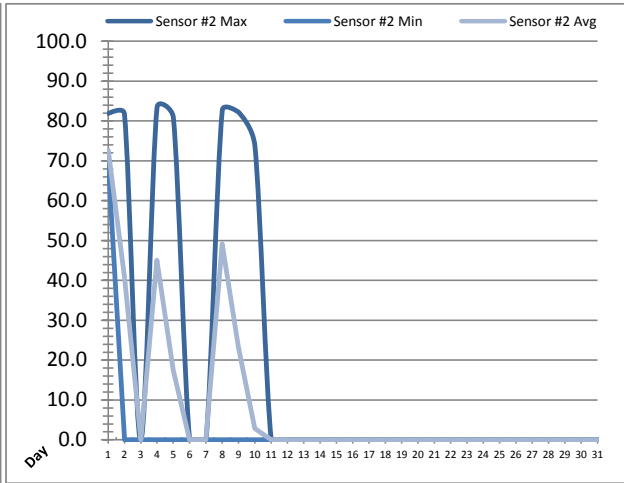
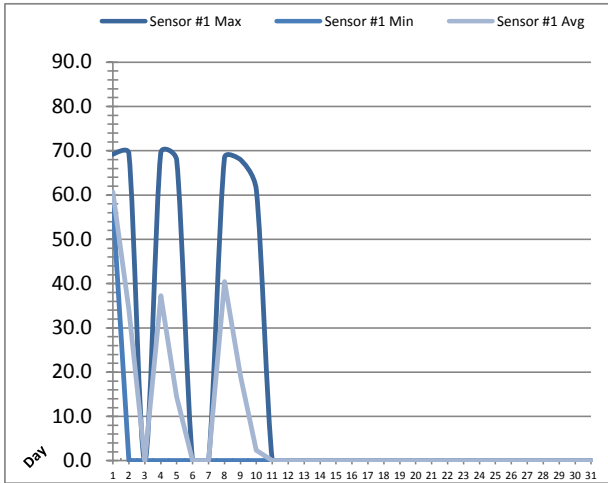
| Date | Membranes Monthly Performance | | | | | | | |
|---------|-------------------------------|-------------------------------|---------------------------|-------------------------------|---------------------------|-------------------------------|---------------------------|-------------------------------|
| | Rack 1 >0.1 NTU (Minutes) | Rack 1 Forward Flow (Minutes) | Rack 2 >0.1 NTU (Minutes) | Rack 2 Forward Flow (Minutes) | Rack 3 >0.1 NTU (Minutes) | Rack 3 Forward Flow (Minutes) | Rack 4 >0.1 NTU (Minutes) | Rack 4 Forward Flow (Minutes) |
| 1 | 0.0 | 805.1 | 0.0 | 847.4 | 0.0 | 847.4 | 0.0 | 811.5 |
| 2 | 0.0 | 750.4 | 0.0 | 830.3 | 0.0 | 805.2 | 0.0 | 608.3 |
| 3 | 0.0 | 939.6 | 0.0 | 955.2 | 0.0 | 947.6 | 0.0 | 608.2 |
| 4 | 0.0 | 946.2 | 0.0 | 960.2 | 0.0 | 950.3 | 0.0 | 664.2 |
| 5 | 0.0 | 864.5 | 0.0 | 933.2 | 2.3 | 878.4 | 0.0 | 618.1 |
| 6 | 0.0 | 931.4 | 0.0 | 896.3 | 0.0 | 939.0 | 0.0 | 545.3 |
| 7 | 0.0 | 1085.3 | 0.0 | 1127.1 | 0.0 | 1114.6 | 0.0 | 653.1 |
| 8 | 0.0 | 298.4 | 0.0 | 998.5 | 0.0 | 985.5 | 0.0 | 934.2 |
| 9 | 0.0 | 0.0 | 0.0 | 848.6 | 0.0 | 842.2 | 0.0 | 848.1 |
| 10 | 0.0 | 0.0 | 0.0 | 852.5 | 0.0 | 848.5 | 0.0 | 847.6 |
| 11 | 0.0 | 0.0 | 0.0 | 799.2 | 0.0 | 795.2 | 0.0 | 792.5 |
| 12 | 0.0 | 592.1 | 0.0 | 1030.4 | 0.0 | 951.3 | 0.0 | 798.2 |
| 13 | 0.0 | 925.1 | 0.0 | 928.2 | 0.0 | 926.4 | 0.0 | 532.4 |
| 14 | 0.0 | 641.2 | 0.5 | 651.1 | 0.0 | 647.5 | 0.0 | 441.5 |
| 15 | 0.0 | 1052.3 | 0.0 | 1057.0 | 0.0 | 1049.0 | 0.0 | 646.1 |
| 16 | 0.0 | 813.3 | 0.0 | 820.5 | 0.0 | 817.3 | 0.0 | 510.2 |
| 17 | 0.0 | 953.4 | 0.0 | 828.5 | 0.0 | 956.5 | 0.0 | 610.5 |
| 18 | 0.0 | 1185.2 | 0.5 | 1182.6 | 0.0 | 1185.3 | 0.0 | 678.2 |
| 19 | 0.5 | 736.4 | 0.0 | 814.2 | 0.5 | 800.1 | 0.0 | 436.3 |
| 20 | 0.0 | 771.5 | 0.0 | 786.3 | 0.0 | 776.4 | 0.0 | 485.1 |
| 21 | 0.0 | 776.3 | 0.0 | 796.6 | 0.0 | 789.4 | 0.0 | 611.2 |
| 22 | 0.0 | 826.4 | 0.0 | 838.1 | 0.0 | 829.0 | 0.0 | 536.6 |
| 23 | 0.0 | 897.1 | 0.0 | 915.1 | 0.0 | 898.4 | 0.0 | 640.5 |
| 24 | 0.0 | 688.3 | 0.0 | 690.1 | 0.0 | 688.3 | 0.0 | 417.2 |
| 25 | 0.0 | 807.6 | 0.0 | 814.3 | 0.0 | 807.6 | 0.0 | 393.0 |
| 26 | 0.0 | 801.6 | 0.0 | 817.0 | 0.0 | 786.1 | 0.0 | 548.3 |
| 27 | 0.0 | 746.6 | 0.0 | 757.5 | 0.0 | 742.2 | 0.0 | 475.1 |
| 28 | 0.0 | 874.3 | 0.5 | 889.1 | 0.0 | 874.3 | 0.0 | 563.2 |
| 29 | 0.0 | 921.1 | 0.0 | 746.2 | 0.0 | 912.5 | 0.0 | 634.2 |
| 30 | 0.0 | 759.3 | 0.0 | 773.5 | 0.0 | 766.0 | 0.0 | 247.5 |
| 31 | 0.0 | 864.4 | 0.0 | 895.1 | 0.0 | 872.5 | 0.0 | 346.4 |
| Total | 0.5 | 23254.2 | 1.5 | 27079.7 | 2.7 | 27029.7 | 0.0 | 18482.8 |
| Percent | 0.00 | | 0.01 | | 0.01 | | 0.00 | |
| Maximum | 0.5 | 1185.2 | 0.5 | 1182.6 | 2.3 | 1185.3 | 0.0 | 934.2 |
| Date | 19-Oct | 18-Oct | 28-Oct | 18-Oct | 5-Oct | 18-Oct | 1-Oct | 8-Oct |
| Minimum | 0.0 | 0.0 | 0.0 | 651.1 | 0.0 | 647.5 | 0.0 | 247.5 |
| Date | 1-Oct | 9-Oct | 1-Oct | 14-Oct | 1-Oct | 14-Oct | 1-Oct | 30-Oct |

Notes:

Met filter performance criteria of 99% of readings for the month were <0.1ntu.

UV System Monthly Report

Month: October-17

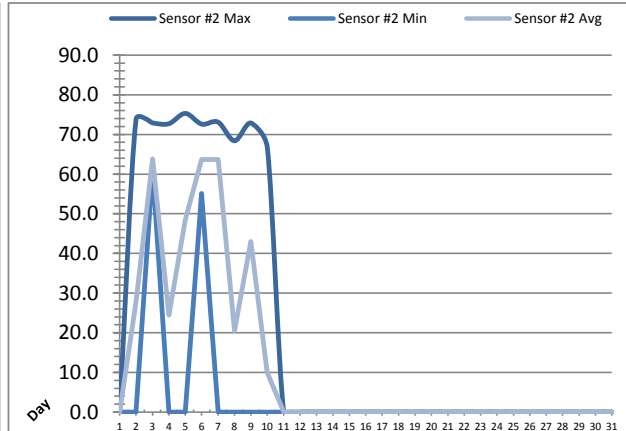
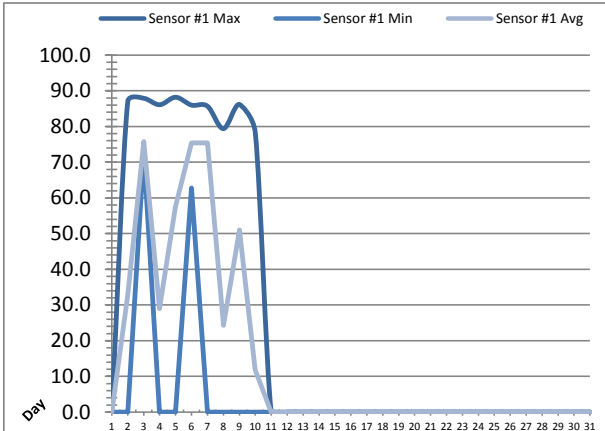


| Date | UV Reactor 1 | | | | | |
|---------|---|---------|---------|---|---------|---------|
| | Intensity Sensor 1 (mW/cm ²) | | | Intensity Sensor 2 (mW/cm ²) | | |
| | Maximum | Minimum | Average | Maximum | Minimum | Average |
| 1 | 69.2 | 57.9 | 60.7 | 81.9 | 69.6 | 72.7 |
| 2 | 69.4 | 0.0 | 34.1 | 81.8 | 0.0 | 40.7 |
| 3 | 0.0 | 0.0 | 0.0 | 0.0 | 0.0 | 0.0 |
| 4 | 69.5 | 0.0 | 37.3 | 83.4 | 0.0 | 45.1 |
| 5 | 67.9 | 0.0 | 14.5 | 80.9 | 0.0 | 17.6 |
| 6 | 0.0 | 0.0 | 0.0 | 0.0 | 0.0 | 0.0 |
| 7 | 0.0 | 0.0 | 0.0 | 0.0 | 0.0 | 0.0 |
| 8 | 68.4 | 0.0 | 40.5 | 82.7 | 0.0 | 49.2 |
| 9 | 68.0 | 0.0 | 19.1 | 82.2 | 0.0 | 23.2 |
| 10 | 61.1 | 0.0 | 2.4 | 73.7 | 0.0 | 2.9 |
| 11 | 0.0 | 0.0 | 0.0 | 0.0 | 0.0 | 0.0 |
| 12 | 0.0 | 0.0 | 0.0 | 0.0 | 0.0 | 0.0 |
| 13 | 0.0 | 0.0 | 0.0 | 0.0 | 0.0 | 0.0 |
| 14 | 0.0 | 0.0 | 0.0 | 0.0 | 0.0 | 0.0 |
| 15 | 0.0 | 0.0 | 0.0 | 0.0 | 0.0 | 0.0 |
| 16 | 0.0 | 0.0 | 0.0 | 0.0 | 0.0 | 0.0 |
| 17 | 0.0 | 0.0 | 0.0 | 0.0 | 0.0 | 0.0 |
| 18 | 0.0 | 0.0 | 0.0 | 0.0 | 0.0 | 0.0 |
| 19 | 0.0 | 0.0 | 0.0 | 0.0 | 0.0 | 0.0 |
| 20 | 0.0 | 0.0 | 0.0 | 0.0 | 0.0 | 0.0 |
| 21 | 0.0 | 0.0 | 0.0 | 0.0 | 0.0 | 0.0 |
| 22 | 0.0 | 0.0 | 0.0 | 0.0 | 0.0 | 0.0 |
| 23 | 0.0 | 0.0 | 0.0 | 0.0 | 0.0 | 0.0 |
| 24 | 0.0 | 0.0 | 0.0 | 0.0 | 0.0 | 0.0 |
| 25 | 0.0 | 0.0 | 0.0 | 0.0 | 0.0 | 0.0 |
| 26 | 0.0 | 0.0 | 0.0 | 0.0 | 0.0 | 0.0 |
| 27 | 0.0 | 0.0 | 0.0 | 0.0 | 0.0 | 0.0 |
| 28 | 0.0 | 0.0 | 0.0 | 0.0 | 0.0 | 0.0 |
| 29 | 0.0 | 0.0 | 0.0 | 0.0 | 0.0 | 0.0 |
| 30 | 0.0 | 0.0 | 0.0 | 0.0 | 0.0 | 0.0 |
| 31 | 0.0 | 0.0 | 0.0 | 0.0 | 0.0 | 0.0 |
| Total | | | | | | |
| Average | 15.3 | 1.9 | 6.7 | 18.3 | 2.2 | 8.1 |
| Maximum | 69.5 | | 60.7 | 83.4 | | 72.7 |
| Date | 4-Oct | | 1-Oct | 4-Oct | | 1-Oct |
| Minimum | | 0.0 | 0.0 | | 0.0 | 0.0 |
| Date | | 2-Oct | 3-Oct | | 2-Oct | 3-Oct |

Notes:
 AOP System shutdown on 10th.

UV System Monthly Report

Month: October-17

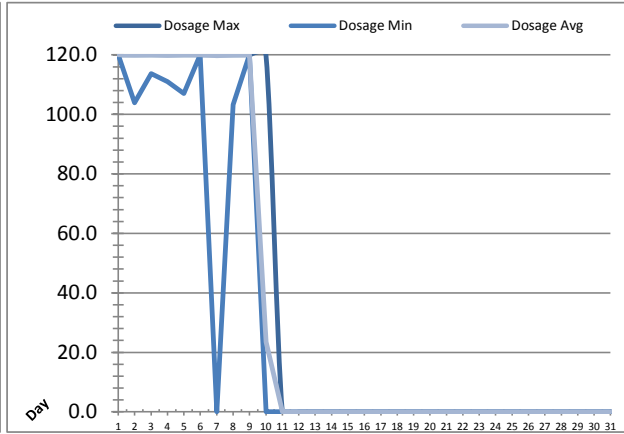
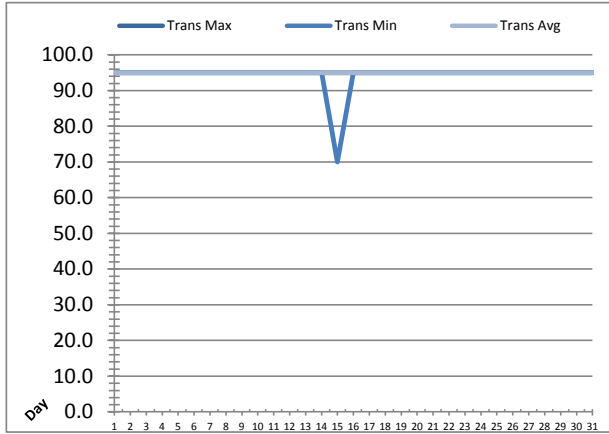


| UV Reactor 2 | | | | | | |
|--------------|---|---------|---------|---|---------|---------|
| Date | Intensity Sensor 1 (mW/cm ²) | | | Intensity Sensor 2 (mW/cm ²) | | |
| | Maximum | Minimum | Average | Maximum | Minimum | Average |
| 1 | 0.0 | 0.0 | 0.0 | 0.0 | 0.0 | 0.0 |
| 2 | 87.0 | 0.0 | 32.9 | 73.8 | 0.0 | 27.7 |
| 3 | 87.9 | 72.8 | 75.8 | 72.9 | 61.2 | 63.8 |
| 4 | 86.1 | 0.0 | 29.0 | 72.7 | 0.0 | 24.4 |
| 5 | 88.2 | 0.0 | 57.5 | 75.3 | 0.0 | 48.5 |
| 6 | 86.0 | 62.8 | 75.4 | 72.6 | 55.1 | 63.7 |
| 7 | 85.7 | 0.0 | 75.5 | 73.1 | 0.0 | 63.7 |
| 8 | 79.4 | 0.0 | 24.3 | 68.4 | 0.0 | 20.5 |
| 9 | 86.2 | 0.0 | 51.0 | 72.9 | 0.0 | 43.0 |
| 10 | 78.3 | 0.0 | 11.8 | 66.7 | 0.0 | 10.0 |
| 11 | 0.0 | 0.0 | 0.0 | 0.0 | 0.0 | 0.0 |
| 12 | 0.0 | 0.0 | 0.0 | 0.0 | 0.0 | 0.0 |
| 13 | 0.0 | 0.0 | 0.0 | 0.0 | 0.0 | 0.0 |
| 14 | 0.0 | 0.0 | 0.0 | 0.0 | 0.0 | 0.0 |
| 15 | 0.0 | 0.0 | 0.0 | 0.0 | 0.0 | 0.0 |
| 16 | 0.0 | 0.0 | 0.0 | 0.0 | 0.0 | 0.0 |
| 17 | 0.0 | 0.0 | 0.0 | 0.0 | 0.0 | 0.0 |
| 18 | 0.0 | 0.0 | 0.0 | 0.0 | 0.0 | 0.0 |
| 19 | 0.0 | 0.0 | 0.0 | 0.0 | 0.0 | 0.0 |
| 20 | 0.0 | 0.0 | 0.0 | 0.0 | 0.0 | 0.0 |
| 21 | 0.0 | 0.0 | 0.0 | 0.0 | 0.0 | 0.0 |
| 22 | 0.0 | 0.0 | 0.0 | 0.0 | 0.0 | 0.0 |
| 23 | 0.0 | 0.0 | 0.0 | 0.0 | 0.0 | 0.0 |
| 24 | 0.0 | 0.0 | 0.0 | 0.0 | 0.0 | 0.0 |
| 25 | 0.0 | 0.0 | 0.0 | 0.0 | 0.0 | 0.0 |
| 26 | 0.0 | 0.0 | 0.0 | 0.0 | 0.0 | 0.0 |
| 27 | 0.0 | 0.0 | 0.0 | 0.0 | 0.0 | 0.0 |
| 28 | 0.0 | 0.0 | 0.0 | 0.0 | 0.0 | 0.0 |
| 29 | 0.0 | 0.0 | 0.0 | 0.0 | 0.0 | 0.0 |
| 30 | 0.0 | 0.0 | 0.0 | 0.0 | 0.0 | 0.0 |
| 31 | 0.0 | 0.0 | 0.0 | 0.0 | 0.0 | 0.0 |
| Total | | | | | | |
| Average | 24.7 | 4.4 | 14.0 | 20.9 | 3.8 | 11.8 |
| Maximum | 88.2 | | 75.8 | 75.3 | | 63.8 |
| Date | 5-Oct | | 3-Oct | 5-Oct | | 3-Oct |
| Minimum | | 0.0 | 0.0 | | 0.0 | 0.0 |
| Date | | 1-Oct | 1-Oct | | 1-Oct | 1-Oct |

Notes:
 UV reactor was off.

UV System Monthly Report

Month: **October-17**

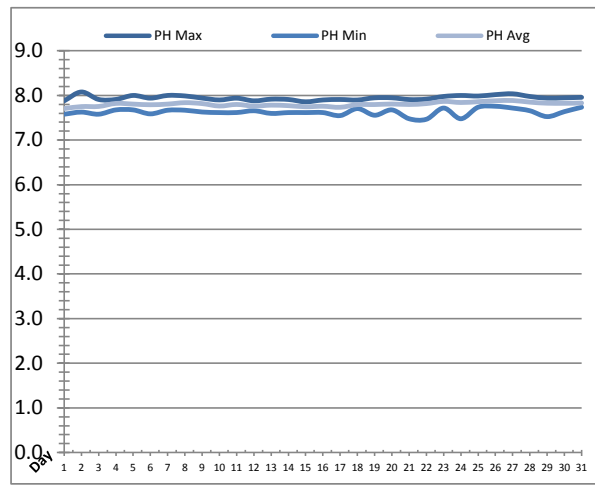
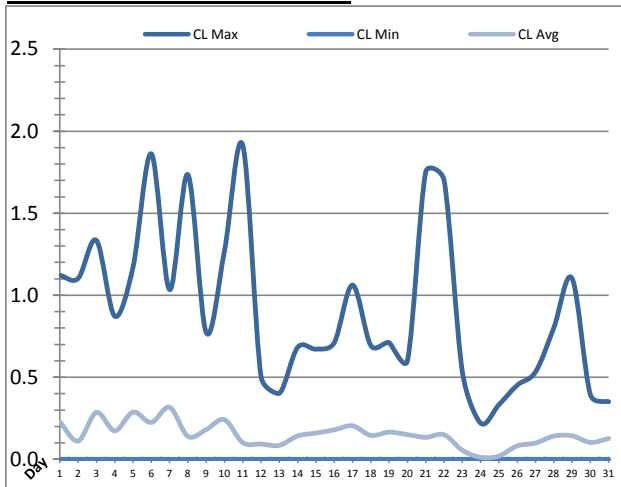


| UV System | | | | | | | |
|-----------|-------------------|---------|---------|------------------------------|---------|---------|------------------|
| Date | Transmittance (%) | | | Dosage (mJ/cm ²) | | | Inlet Flow (L/s) |
| | Maximum | Minimum | Average | Maximum | Minimum | Average | Maximum |
| 1 | 95.00 | 95.00 | 95.00 | 120.0 | 120.0 | 120.0 | 122.8 |
| 2 | 95.00 | 95.00 | 95.00 | 120.0 | 103.9 | 119.9 | 160.3 |
| 3 | 95.00 | 95.00 | 95.00 | 120.0 | 113.7 | 120.0 | 155.3 |
| 4 | 95.00 | 95.00 | 95.00 | 120.0 | 111.0 | 119.9 | 148.5 |
| 5 | 95.00 | 95.00 | 95.00 | 120.0 | 107.0 | 120.0 | 560.6 |
| 6 | 95.00 | 95.00 | 95.00 | 120.0 | 120.0 | 120.0 | 133.8 |
| 7 | 95.00 | 95.00 | 95.00 | 120.0 | 0.0 | 119.7 | 129.7 |
| 8 | 95.00 | 95.00 | 95.00 | 120.0 | 103.2 | 119.9 | 557.2 |
| 9 | 95.00 | 95.00 | 95.00 | 120.0 | 120.0 | 120.0 | 132.4 |
| 10 | 95.00 | 95.00 | 95.00 | 120.0 | 0.0 | 23.5 | 130.6 |
| 11 | 95.00 | 95.00 | 95.00 | 0.0 | 0.0 | 0.0 | 124.9 |
| 12 | 95.00 | 95.00 | 95.00 | 0.0 | 0.0 | 0.0 | 131.2 |
| 13 | 95.00 | 95.00 | 95.00 | 0.0 | 0.0 | 0.0 | 126.1 |
| 14 | 95.00 | 95.00 | 95.00 | 0.0 | 0.0 | 0.0 | 129.0 |
| 15 | 95.00 | 70.00 | 94.98 | 0.0 | 0.0 | 0.0 | 130.8 |
| 16 | 95.00 | 95.00 | 95.00 | 0.0 | 0.0 | 0.0 | 130.7 |
| 17 | 95.00 | 95.00 | 95.00 | 0.0 | 0.0 | 0.0 | 129.2 |
| 18 | 95.00 | 95.00 | 95.00 | 0.0 | 0.0 | 0.0 | 130.6 |
| 19 | 95.00 | 95.00 | 95.00 | 0.0 | 0.0 | 0.0 | 132.8 |
| 20 | 95.00 | 95.00 | 95.00 | 0.0 | 0.0 | 0.0 | 137.3 |
| 21 | 95.00 | 95.00 | 95.00 | 0.0 | 0.0 | 0.0 | 151.0 |
| 22 | 95.00 | 95.00 | 95.00 | 0.0 | 0.0 | 0.0 | 143.7 |
| 23 | 95.00 | 95.00 | 95.00 | 0.0 | 0.0 | 0.0 | 150.0 |
| 24 | 95.00 | 95.00 | 95.00 | 0.0 | 0.0 | 0.0 | 139.7 |
| 25 | 95.00 | 95.00 | 95.00 | 0.0 | 0.0 | 0.0 | 148.0 |
| 26 | 95.00 | 95.00 | 95.00 | 0.0 | 0.0 | 0.0 | 145.1 |
| 27 | 95.00 | 95.00 | 95.00 | 0.0 | 0.0 | 0.0 | 142.7 |
| 28 | 95.00 | 95.00 | 95.00 | 0.0 | 0.0 | 0.0 | 143.5 |
| 29 | 95.00 | 95.00 | 95.00 | 0.0 | 0.0 | 0.0 | 145.8 |
| 30 | 95.00 | 95.00 | 95.00 | 0.0 | 0.0 | 0.0 | 137.8 |
| 31 | 95.00 | 95.00 | 95.00 | 0.0 | 0.0 | 0.0 | 141.2 |
| Total | | | | | | | |
| Average | 95.00 | 94.19 | 95.00 | 38.7 | 29.0 | 35.6 | 165.2 |
| Maximum | 95.00 | | 95.00 | 120.0 | | 120.0 | 560.6 |
| Date | 1-Oct | | 1-Oct | 1-Oct | | 1-Oct | 5-Oct |
| Minimum | | 70.00 | 94.98 | | 0.0 | 0.0 | |
| Date | | 15-Oct | 15-Oct | | 7-Oct | 11-Oct | |

Notes:
 AOP System shutdown on 10th.

Plant Quality Report

Month: **October-17**

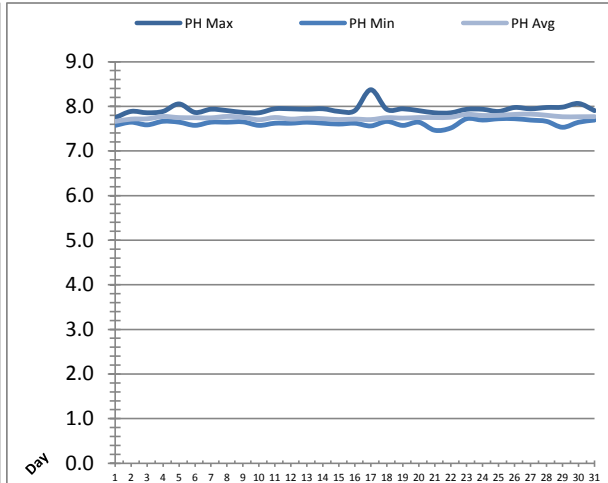
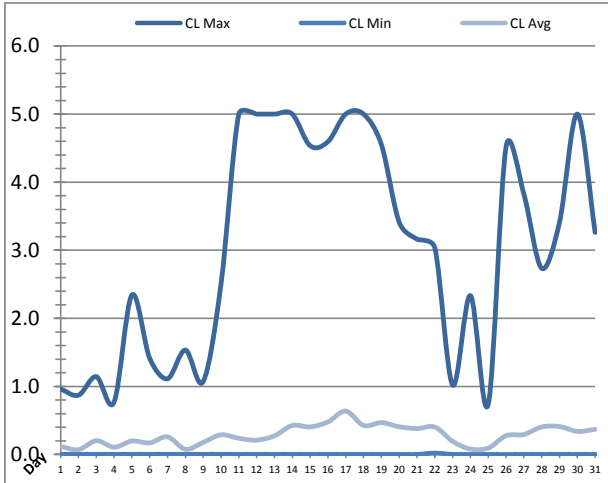


| Date | Strainer Chlorine Residual | | | Strainer pH | | |
|---------|----------------------------|---------|---------|-------------|---------|---------|
| | AIT_2003_CL (ppm) | | | AIT_2003_PH | | |
| | Maximum | Minimum | Average | Maximum | Minimum | Average |
| 1 | 1.12 | 0.00 | 0.23 | 7.88 | 7.58 | 7.71 |
| 2 | 1.10 | 0.00 | 0.11 | 8.08 | 7.63 | 7.75 |
| 3 | 1.33 | 0.00 | 0.29 | 7.91 | 7.58 | 7.75 |
| 4 | 0.87 | 0.00 | 0.17 | 7.91 | 7.68 | 7.82 |
| 5 | 1.17 | 0.00 | 0.29 | 8.00 | 7.68 | 7.81 |
| 6 | 1.86 | 0.00 | 0.22 | 7.94 | 7.59 | 7.79 |
| 7 | 1.03 | 0.00 | 0.32 | 8.00 | 7.67 | 7.81 |
| 8 | 1.73 | 0.00 | 0.14 | 7.99 | 7.67 | 7.84 |
| 9 | 0.77 | 0.00 | 0.18 | 7.94 | 7.63 | 7.82 |
| 10 | 1.27 | 0.00 | 0.24 | 7.90 | 7.62 | 7.76 |
| 11 | 1.91 | 0.00 | 0.10 | 7.94 | 7.62 | 7.80 |
| 12 | 0.50 | 0.00 | 0.09 | 7.88 | 7.66 | 7.76 |
| 13 | 0.40 | 0.00 | 0.09 | 7.92 | 7.60 | 7.78 |
| 14 | 0.68 | 0.00 | 0.14 | 7.91 | 7.62 | 7.77 |
| 15 | 0.67 | 0.00 | 0.16 | 7.86 | 7.62 | 7.75 |
| 16 | 0.71 | 0.00 | 0.18 | 7.90 | 7.62 | 7.76 |
| 17 | 1.06 | 0.00 | 0.20 | 7.91 | 7.55 | 7.73 |
| 18 | 0.69 | 0.00 | 0.15 | 7.90 | 7.71 | 7.79 |
| 19 | 0.71 | 0.00 | 0.17 | 7.95 | 7.56 | 7.80 |
| 20 | 0.60 | 0.00 | 0.15 | 7.95 | 7.68 | 7.81 |
| 21 | 1.75 | 0.00 | 0.13 | 7.91 | 7.48 | 7.80 |
| 22 | 1.70 | 0.00 | 0.15 | 7.92 | 7.47 | 7.82 |
| 23 | 0.53 | 0.00 | 0.05 | 7.98 | 7.72 | 7.87 |
| 24 | 0.22 | 0.00 | 0.01 | 8.00 | 7.48 | 7.84 |
| 25 | 0.33 | 0.00 | 0.02 | 7.99 | 7.74 | 7.86 |
| 26 | 0.45 | 0.00 | 0.08 | 8.02 | 7.76 | 7.88 |
| 27 | 0.53 | 0.00 | 0.10 | 8.04 | 7.72 | 7.89 |
| 28 | 0.80 | 0.00 | 0.14 | 7.98 | 7.66 | 7.85 |
| 29 | 1.10 | 0.00 | 0.14 | 7.94 | 7.53 | 7.83 |
| 30 | 0.39 | 0.00 | 0.10 | 7.95 | 7.64 | 7.82 |
| 31 | 0.35 | 0.00 | 0.13 | 7.96 | 7.74 | 7.83 |
| Total | | | | | | |
| Average | 0.92 | 0.00 | 0.15 | 7.95 | 7.63 | 7.80 |
| Maximum | 1.91 | | 0.32 | 8.08 | | 7.89 |
| Date | 11-Oct | | 7-Oct | 2-Oct | | 27-Oct |
| Minimum | | 0.00 | 0.01 | | 7.47 | 7.71 |
| Date | | 1-Oct | 24-Oct | | 22-Oct | 1-Oct |

Notes:

Plant Quality Report

Month: **October-17**

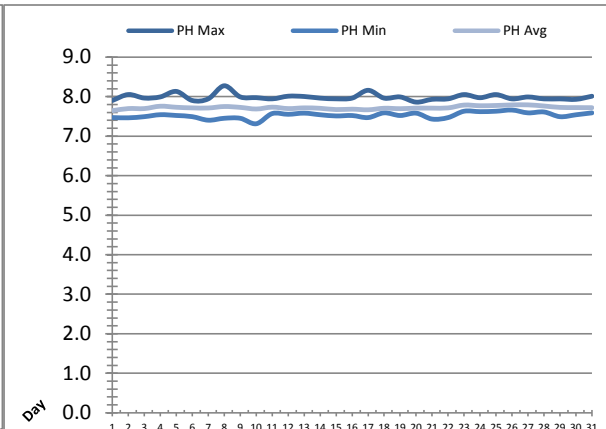
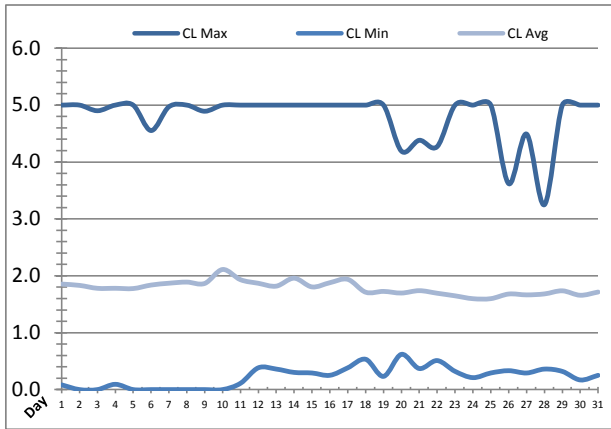


| Date | Inlet UV Chlorine Residual | | | Inlet UV pH | | |
|---------|----------------------------|---------|---------|-------------|---------|---------|
| | AIT_5005_CL (ppm) | | | AIT_5005_PH | | |
| | Maximum | Minimum | Average | Maximum | Minimum | Average |
| 1 | 0.96 | 0.00 | 0.12 | 7.74 | 7.57 | 7.66 |
| 2 | 0.87 | 0.00 | 0.07 | 7.89 | 7.64 | 7.71 |
| 3 | 1.14 | 0.00 | 0.20 | 7.86 | 7.58 | 7.72 |
| 4 | 0.77 | 0.00 | 0.11 | 7.89 | 7.66 | 7.77 |
| 5 | 2.34 | 0.00 | 0.20 | 8.05 | 7.65 | 7.75 |
| 6 | 1.41 | 0.00 | 0.17 | 7.86 | 7.57 | 7.74 |
| 7 | 1.11 | 0.00 | 0.26 | 7.94 | 7.65 | 7.74 |
| 8 | 1.53 | 0.00 | 0.08 | 7.90 | 7.64 | 7.77 |
| 9 | 1.07 | 0.00 | 0.18 | 7.86 | 7.65 | 7.75 |
| 10 | 2.50 | 0.00 | 0.29 | 7.86 | 7.57 | 7.70 |
| 11 | 5.00 | 0.00 | 0.24 | 7.94 | 7.62 | 7.75 |
| 12 | 5.00 | 0.00 | 0.21 | 7.94 | 7.62 | 7.71 |
| 13 | 5.00 | 0.00 | 0.28 | 7.93 | 7.64 | 7.74 |
| 14 | 5.00 | 0.00 | 0.43 | 7.95 | 7.62 | 7.72 |
| 15 | 4.54 | 0.00 | 0.41 | 7.89 | 7.60 | 7.70 |
| 16 | 4.59 | 0.00 | 0.48 | 7.90 | 7.62 | 7.71 |
| 17 | 5.00 | 0.00 | 0.64 | 8.37 | 7.56 | 7.70 |
| 18 | 5.00 | 0.00 | 0.43 | 7.93 | 7.66 | 7.75 |
| 19 | 4.55 | 0.00 | 0.47 | 7.95 | 7.57 | 7.74 |
| 20 | 3.41 | 0.00 | 0.41 | 7.90 | 7.64 | 7.75 |
| 21 | 3.16 | 0.00 | 0.38 | 7.86 | 7.46 | 7.75 |
| 22 | 3.04 | 0.02 | 0.40 | 7.86 | 7.51 | 7.76 |
| 23 | 1.02 | 0.00 | 0.19 | 7.93 | 7.72 | 7.82 |
| 24 | 2.33 | 0.00 | 0.08 | 7.93 | 7.69 | 7.80 |
| 25 | 0.74 | 0.00 | 0.10 | 7.89 | 7.72 | 7.80 |
| 26 | 4.52 | 0.00 | 0.28 | 7.97 | 7.72 | 7.82 |
| 27 | 3.82 | 0.00 | 0.29 | 7.94 | 7.69 | 7.83 |
| 28 | 2.73 | 0.00 | 0.41 | 7.97 | 7.66 | 7.80 |
| 29 | 3.41 | 0.00 | 0.41 | 7.98 | 7.53 | 7.77 |
| 30 | 5.00 | 0.00 | 0.34 | 8.06 | 7.64 | 7.77 |
| 31 | 3.26 | 0.00 | 0.37 | 7.90 | 7.69 | 7.77 |
| Total | | | | | | |
| Average | 3.03 | 0.00 | 0.29 | 7.93 | 7.63 | 7.75 |
| Maximum | 5.00 | | 0.64 | 8.37 | | 7.83 |
| Date | 11-Oct | | 17-Oct | 17-Oct | | 27-Oct |
| Minimum | | 0.00 | 0.07 | | 7.46 | 7.66 |
| Date | | 26-Oct | 2-Oct | | 21-Oct | 1-Oct |

Notes:

Plant Quality Report

Month: **October-17**

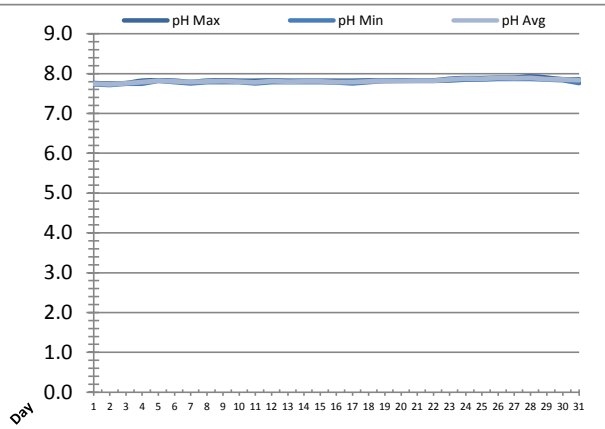
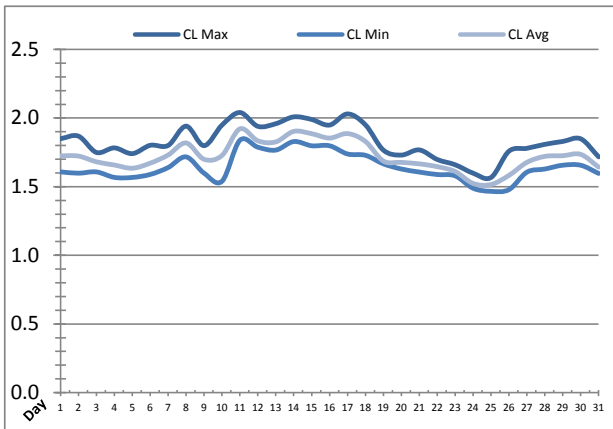


| Date | Discharge UV Chlorine Residual | | | Discharge UV pH | | |
|---------|--------------------------------|---------|---------|-----------------|---------|---------|
| | AIT_5006_CL (ppm) | | | AIT_5006_PH | | |
| | Maximum | Minimum | Average | Maximum | Minimum | Average |
| 1 | 5.00 | 0.08 | 1.85 | 7.90 | 7.47 | 7.65 |
| 2 | 5.00 | 0.00 | 1.83 | 8.05 | 7.46 | 7.70 |
| 3 | 4.90 | 0.00 | 1.78 | 7.96 | 7.49 | 7.70 |
| 4 | 5.00 | 0.09 | 1.78 | 7.99 | 7.54 | 7.76 |
| 5 | 5.00 | 0.00 | 1.78 | 8.13 | 7.52 | 7.73 |
| 6 | 4.55 | 0.00 | 1.84 | 7.90 | 7.49 | 7.72 |
| 7 | 4.97 | 0.00 | 1.87 | 7.94 | 7.40 | 7.71 |
| 8 | 5.00 | 0.00 | 1.89 | 8.28 | 7.45 | 7.75 |
| 9 | 4.89 | 0.00 | 1.87 | 7.99 | 7.45 | 7.73 |
| 10 | 5.00 | 0.00 | 2.11 | 7.97 | 7.31 | 7.69 |
| 11 | 5.00 | 0.11 | 1.93 | 7.94 | 7.57 | 7.73 |
| 12 | 5.00 | 0.38 | 1.87 | 8.01 | 7.55 | 7.70 |
| 13 | 5.00 | 0.36 | 1.82 | 8.00 | 7.58 | 7.72 |
| 14 | 5.00 | 0.30 | 1.96 | 7.96 | 7.54 | 7.70 |
| 15 | 5.00 | 0.29 | 1.80 | 7.94 | 7.51 | 7.67 |
| 16 | 5.00 | 0.25 | 1.88 | 7.96 | 7.52 | 7.68 |
| 17 | 5.00 | 0.38 | 1.94 | 8.16 | 7.47 | 7.67 |
| 18 | 5.00 | 0.53 | 1.71 | 7.96 | 7.59 | 7.71 |
| 19 | 5.00 | 0.23 | 1.73 | 7.99 | 7.52 | 7.70 |
| 20 | 4.19 | 0.62 | 1.70 | 7.86 | 7.58 | 7.71 |
| 21 | 4.38 | 0.37 | 1.74 | 7.93 | 7.43 | 7.71 |
| 22 | 4.27 | 0.51 | 1.69 | 7.94 | 7.47 | 7.72 |
| 23 | 5.00 | 0.32 | 1.65 | 8.05 | 7.63 | 7.79 |
| 24 | 5.00 | 0.21 | 1.60 | 7.97 | 7.62 | 7.77 |
| 25 | 5.00 | 0.29 | 1.60 | 8.05 | 7.63 | 7.78 |
| 26 | 3.62 | 0.33 | 1.68 | 7.94 | 7.66 | 7.79 |
| 27 | 4.49 | 0.29 | 1.66 | 7.99 | 7.59 | 7.79 |
| 28 | 3.25 | 0.36 | 1.68 | 7.94 | 7.61 | 7.76 |
| 29 | 5.00 | 0.32 | 1.74 | 7.94 | 7.49 | 7.73 |
| 30 | 5.00 | 0.17 | 1.66 | 7.93 | 7.54 | 7.72 |
| 31 | 5.00 | 0.25 | 1.71 | 8.01 | 7.59 | 7.72 |
| Total | | | | | | |
| Average | 4.79 | 0.23 | 1.79 | 7.99 | 7.53 | 7.72 |
| Maximum | 5.00 | | 2.11 | 8.28 | | 7.79 |
| Date | 1-Oct | | 10-Oct | 8-Oct | | 27-Oct |
| Minimum | | 0.00 | 1.60 | | 7.31 | 7.65 |
| Date | | 2-Oct | 24-Oct | | 10-Oct | 1-Oct |

Notes:

Plant Quality Report

Month: **October-17**

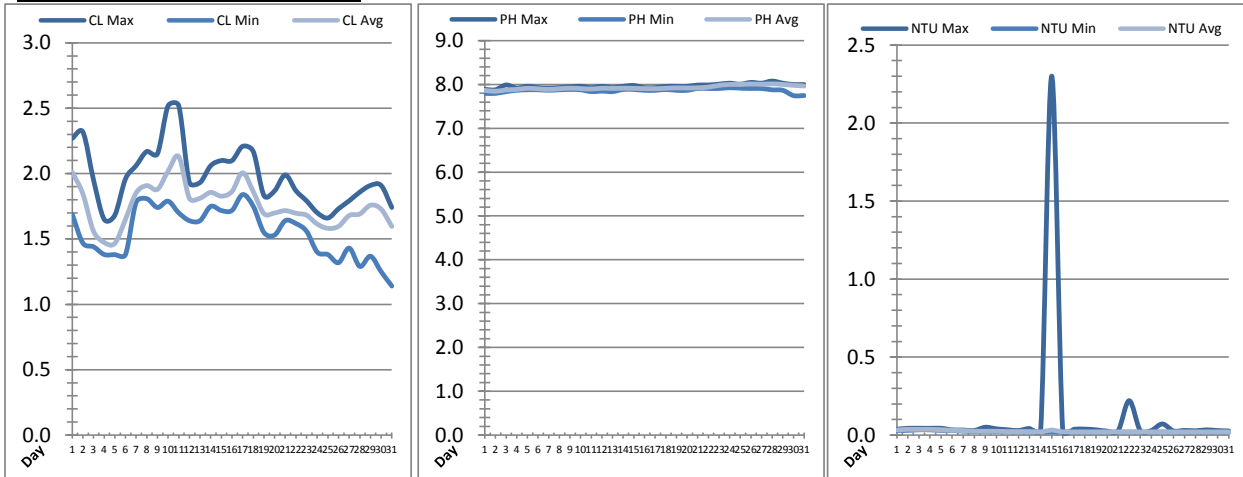


| Date | Suction Header Chlorine Res. | | | Suction Header pH | | | Distribution CT Calc Total | | |
|---------|------------------------------|---------|---------|-------------------|---------|---------|--------------------------------|---------|---------|
| | AIT_7001_CL (ppm) | | | AIT_7001_PH (m) | | | REAL_CT_CALC_TOTAL (mg*ml/min) | | |
| | Maximum | Minimum | Average | Maximum | Minimum | Average | Maximum | Minimum | Average |
| 1 | 1.85 | 1.61 | 1.72 | 7.76 | 7.74 | 7.75 | 1032.02 | 0.00 | 95.13 |
| 2 | 1.87 | 1.60 | 1.72 | 7.75 | 7.72 | 7.73 | 1159.86 | 0.00 | 62.45 |
| 3 | 1.75 | 1.61 | 1.68 | 7.76 | 7.75 | 7.75 | 3007.24 | 0.00 | 80.87 |
| 4 | 1.78 | 1.57 | 1.66 | 7.82 | 7.75 | 7.79 | 3202.12 | 0.00 | 88.64 |
| 5 | 1.74 | 1.57 | 1.63 | 7.83 | 7.82 | 7.82 | 5730.29 | 0.00 | 99.12 |
| 6 | 1.80 | 1.59 | 1.67 | 7.82 | 7.79 | 7.81 | 4132.02 | 0.00 | 89.71 |
| 7 | 1.80 | 1.64 | 1.73 | 7.79 | 7.76 | 7.79 | 5921.66 | 0.00 | 97.66 |
| 8 | 1.94 | 1.72 | 1.82 | 7.82 | 7.79 | 7.80 | 3674.39 | 0.00 | 98.95 |
| 9 | 1.80 | 1.60 | 1.70 | 7.83 | 7.79 | 7.82 | 1193.49 | 0.00 | 98.57 |
| 10 | 1.95 | 1.54 | 1.73 | 7.82 | 7.79 | 7.79 | 2784.38 | 0.00 | 102.92 |
| 11 | 2.04 | 1.84 | 1.92 | 7.82 | 7.76 | 7.78 | 1749.30 | 0.00 | 145.49 |
| 12 | 1.94 | 1.79 | 1.83 | 7.83 | 7.79 | 7.81 | 6630.57 | 0.00 | 174.89 |
| 13 | 1.96 | 1.77 | 1.83 | 7.82 | 7.79 | 7.80 | 6422.82 | 0.00 | 165.88 |
| 14 | 2.01 | 1.83 | 1.90 | 7.82 | 7.79 | 7.80 | 7757.40 | 0.00 | 403.95 |
| 15 | 1.99 | 1.80 | 1.89 | 7.82 | 7.79 | 7.80 | 6462.51 | 0.00 | 175.34 |
| 16 | 1.95 | 1.80 | 1.85 | 7.82 | 7.78 | 7.79 | 2260.13 | 0.00 | 98.24 |
| 17 | 2.03 | 1.74 | 1.89 | 7.82 | 7.76 | 7.79 | 2497.02 | 0.00 | 100.91 |
| 18 | 1.95 | 1.73 | 1.83 | 7.83 | 7.79 | 7.81 | 6883.49 | 0.00 | 334.59 |
| 19 | 1.77 | 1.67 | 1.69 | 7.82 | 7.82 | 7.82 | 1591.85 | 0.00 | 94.73 |
| 20 | 1.73 | 1.63 | 1.68 | 7.83 | 7.82 | 7.82 | 852.93 | 0.00 | 114.54 |
| 21 | 1.77 | 1.61 | 1.67 | 7.83 | 7.82 | 7.82 | 1636.73 | 0.00 | 125.01 |
| 22 | 1.70 | 1.59 | 1.65 | 7.83 | 7.82 | 7.82 | 5676.73 | 0.00 | 184.24 |
| 23 | 1.66 | 1.58 | 1.61 | 7.87 | 7.83 | 7.85 | 5600.23 | 0.00 | 148.43 |
| 24 | 1.60 | 1.49 | 1.52 | 7.89 | 7.86 | 7.87 | 1438.64 | 0.00 | 103.68 |
| 25 | 1.57 | 1.47 | 1.52 | 7.89 | 7.86 | 7.87 | 4684.24 | 0.00 | 167.40 |
| 26 | 1.76 | 1.48 | 1.58 | 7.90 | 7.87 | 7.89 | 2335.14 | 0.00 | 121.33 |
| 27 | 1.78 | 1.61 | 1.68 | 7.90 | 7.87 | 7.88 | 4338.46 | 0.00 | 178.90 |
| 28 | 1.81 | 1.63 | 1.72 | 7.93 | 7.87 | 7.90 | 5154.78 | 0.00 | 188.22 |
| 29 | 1.83 | 1.66 | 1.73 | 7.90 | 7.85 | 7.86 | 5577.42 | 0.00 | 176.01 |
| 30 | 1.85 | 1.66 | 1.74 | 7.86 | 7.84 | 7.85 | 850.47 | 0.00 | 178.12 |
| 31 | 1.72 | 1.60 | 1.64 | 7.86 | 7.76 | 7.84 | 5847.12 | 0.00 | 130.79 |
| Total | | | | | | | | | |
| Average | 1.83 | 1.64 | 1.72 | 7.83 | 7.80 | 7.82 | | | |
| Maximum | 2.04 | | 1.92 | 7.93 | | 7.90 | | | |
| Date | 11-Oct | | 11-Oct | 28-Oct | | 28-Oct | | | |
| Minimum | | 1.47 | 1.52 | | 7.72 | 7.73 | | | |
| Date | | 25-Oct | 25-Oct | | 2-Oct | 2-Oct | | | |

Notes:

Plant Quality Report

Month: **October-17**



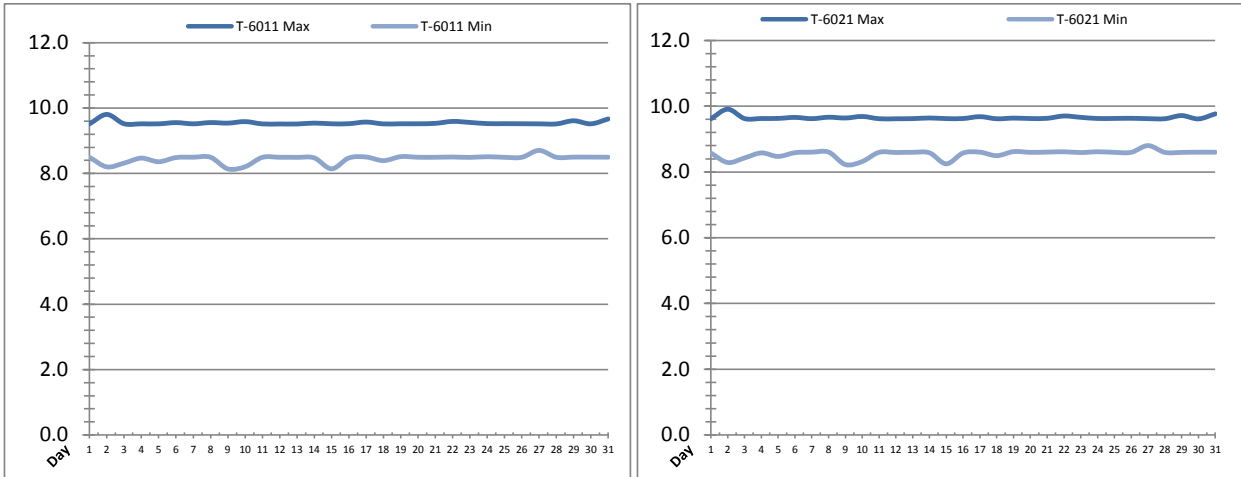
| Date | Distribution Chlorine Header | | | Distribution pH | | | Distribution Turbidity | | |
|---------|------------------------------|---------|---------|--------------------|---------|---------|------------------------|---------|---------|
| | AIT_7004_CL (ppm) | | | AIT_7004_PH (mg/L) | | | AIT_7003 (mg/L) | | |
| | Maximum | Minimum | Average | Maximum | Minimum | Average | Maximum | Minimum | Average |
| 1 | 2.27 | 1.69 | 2.01 | 7.89 | 7.80 | 7.86 | 0.04 | 0.03 | 0.03 |
| 2 | 2.32 | 1.47 | 1.85 | 7.88 | 7.80 | 7.84 | 0.04 | 0.03 | 0.04 |
| 3 | 1.95 | 1.44 | 1.56 | 7.99 | 7.84 | 7.87 | 0.04 | 0.03 | 0.04 |
| 4 | 1.65 | 1.38 | 1.47 | 7.92 | 7.87 | 7.89 | 0.04 | 0.03 | 0.04 |
| 5 | 1.68 | 1.38 | 1.47 | 7.96 | 7.88 | 7.91 | 0.04 | 0.03 | 0.03 |
| 6 | 1.96 | 1.38 | 1.65 | 7.93 | 7.88 | 7.90 | 0.03 | 0.03 | 0.03 |
| 7 | 2.06 | 1.78 | 1.85 | 7.92 | 7.87 | 7.89 | 0.03 | 0.03 | 0.03 |
| 8 | 2.17 | 1.81 | 1.91 | 7.93 | 7.88 | 7.90 | 0.03 | 0.02 | 0.02 |
| 9 | 2.15 | 1.74 | 1.88 | 7.95 | 7.89 | 7.92 | 0.05 | 0.02 | 0.02 |
| 10 | 2.52 | 1.79 | 2.02 | 7.96 | 7.88 | 7.91 | 0.04 | 0.02 | 0.02 |
| 11 | 2.52 | 1.70 | 2.13 | 7.93 | 7.84 | 7.90 | 0.03 | 0.02 | 0.02 |
| 12 | 1.93 | 1.64 | 1.81 | 7.96 | 7.85 | 7.91 | 0.03 | 0.02 | 0.02 |
| 13 | 1.93 | 1.64 | 1.81 | 7.93 | 7.84 | 7.91 | 0.04 | 0.02 | 0.02 |
| 14 | 2.06 | 1.75 | 1.86 | 7.96 | 7.89 | 7.91 | 0.03 | 0.02 | 0.02 |
| 15 | 2.10 | 1.72 | 1.83 | 7.98 | 7.89 | 7.91 | 2.30 | 0.02 | 0.03 |
| 16 | 2.10 | 1.72 | 1.86 | 7.93 | 7.87 | 7.91 | 0.02 | 0.02 | 0.02 |
| 17 | 2.21 | 1.84 | 2.01 | 7.93 | 7.87 | 7.90 | 0.04 | 0.02 | 0.02 |
| 18 | 2.17 | 1.75 | 1.86 | 7.96 | 7.89 | 7.91 | 0.04 | 0.02 | 0.02 |
| 19 | 1.83 | 1.55 | 1.69 | 7.96 | 7.87 | 7.92 | 0.03 | 0.02 | 0.02 |
| 20 | 1.87 | 1.53 | 1.70 | 7.96 | 7.87 | 7.92 | 0.03 | 0.02 | 0.02 |
| 21 | 1.99 | 1.64 | 1.72 | 7.99 | 7.91 | 7.92 | 0.03 | 0.02 | 0.02 |
| 22 | 1.87 | 1.62 | 1.70 | 7.99 | 7.91 | 7.94 | 0.22 | 0.02 | 0.02 |
| 23 | 1.79 | 1.56 | 1.68 | 8.01 | 7.91 | 7.98 | 0.03 | 0.02 | 0.02 |
| 24 | 1.70 | 1.40 | 1.61 | 8.03 | 7.93 | 8.00 | 0.03 | 0.02 | 0.02 |
| 25 | 1.66 | 1.38 | 1.58 | 8.01 | 7.92 | 8.00 | 0.07 | 0.02 | 0.02 |
| 26 | 1.73 | 1.32 | 1.60 | 8.05 | 7.91 | 8.01 | 0.03 | 0.02 | 0.02 |
| 27 | 1.79 | 1.43 | 1.68 | 8.03 | 7.91 | 8.00 | 0.03 | 0.02 | 0.02 |
| 28 | 1.86 | 1.29 | 1.69 | 8.08 | 7.88 | 8.01 | 0.03 | 0.02 | 0.02 |
| 29 | 1.91 | 1.37 | 1.76 | 8.03 | 7.87 | 8.00 | 0.03 | 0.02 | 0.02 |
| 30 | 1.91 | 1.25 | 1.73 | 8.00 | 7.75 | 7.98 | 0.03 | 0.02 | 0.02 |
| 31 | 1.74 | 1.14 | 1.60 | 8.00 | 7.75 | 7.96 | 0.03 | 0.02 | 0.02 |
| Total | | | | | | | | | |
| Average | 1.98 | 1.55 | 1.76 | 7.97 | 7.87 | 7.93 | 0.1 | 0.0 | 0.0 |
| Maximum | 2.52 | | 2.13 | 8.08 | | 8.01 | 2.3 | | 0.0 |
| Date | 10-Oct | | 11-Oct | 28-Oct | | 28-Oct | 15-Oct | | 4-Oct |
| Minimum | | 1.14 | 1.47 | | 7.75 | 7.84 | | 0.0 | 0.0 |
| Date | | 31-Oct | 5-Oct | | 30-Oct | 2-Oct | | 30-Oct | 30-Oct |

Notes:

October 16th the maximum distribution turbidity was 2.30 due to switching to combined mode.

Raw Well/Treated Storage Report

Month: October-17

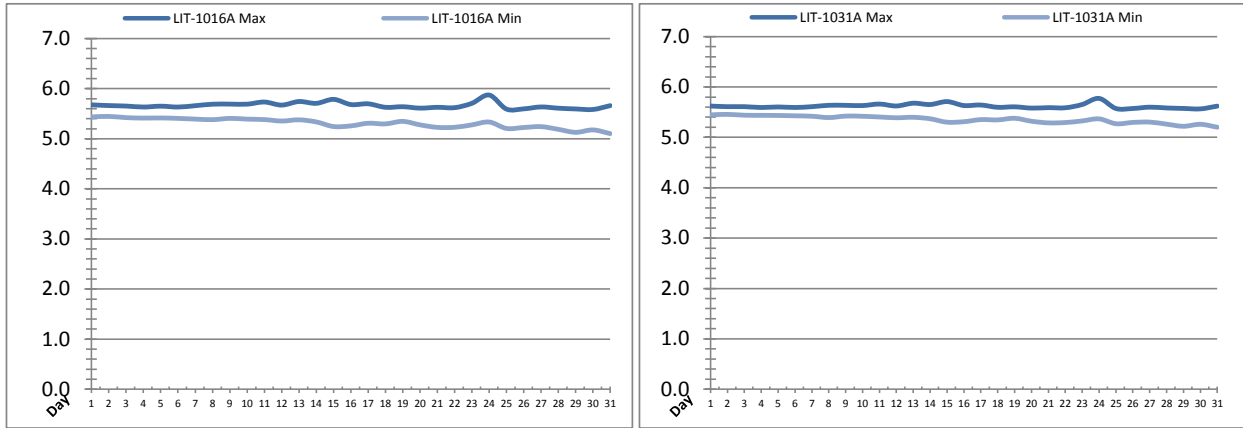


| Date | Treated Water Storage Tank | | | | | |
|---------|----------------------------|---------|---------|------------|---------|---------|
| | T-6011 (m) | | | T-6021 (m) | | |
| | Maximum | Minimum | Average | Maximum | Minimum | Average |
| 1 | 9.5 | 8.5 | 9.1 | 9.6 | 8.6 | 9.2 |
| 2 | 9.8 | 8.2 | 9.1 | 9.9 | 8.3 | 9.2 |
| 3 | 9.5 | 8.3 | 9.1 | 9.6 | 8.4 | 9.2 |
| 4 | 9.5 | 8.5 | 9.1 | 9.6 | 8.6 | 9.2 |
| 5 | 9.5 | 8.4 | 9.1 | 9.6 | 8.5 | 9.2 |
| 6 | 9.6 | 8.5 | 9.1 | 9.7 | 8.6 | 9.2 |
| 7 | 9.5 | 8.5 | 9.1 | 9.6 | 8.6 | 9.2 |
| 8 | 9.6 | 8.5 | 9.1 | 9.7 | 8.6 | 9.2 |
| 9 | 9.5 | 8.1 | 9.0 | 9.6 | 8.2 | 9.1 |
| 10 | 9.6 | 8.2 | 8.9 | 9.7 | 8.3 | 9.0 |
| 11 | 9.5 | 8.5 | 9.1 | 9.6 | 8.6 | 9.3 |
| 12 | 9.5 | 8.5 | 9.0 | 9.6 | 8.6 | 9.1 |
| 13 | 9.5 | 8.5 | 9.1 | 9.6 | 8.6 | 9.2 |
| 14 | 9.5 | 8.5 | 9.2 | 9.6 | 8.6 | 9.3 |
| 15 | 9.5 | 8.1 | 9.0 | 9.6 | 8.2 | 9.1 |
| 16 | 9.5 | 8.5 | 9.1 | 9.6 | 8.6 | 9.2 |
| 17 | 9.6 | 8.5 | 9.1 | 9.7 | 8.6 | 9.2 |
| 18 | 9.5 | 8.4 | 8.9 | 9.6 | 8.5 | 9.1 |
| 19 | 9.5 | 8.5 | 9.2 | 9.6 | 8.6 | 9.3 |
| 20 | 9.5 | 8.5 | 9.1 | 9.6 | 8.6 | 9.2 |
| 21 | 9.5 | 8.5 | 9.1 | 9.6 | 8.6 | 9.2 |
| 22 | 9.6 | 8.5 | 9.1 | 9.7 | 8.6 | 9.2 |
| 23 | 9.6 | 8.5 | 9.1 | 9.7 | 8.6 | 9.2 |
| 24 | 9.5 | 8.5 | 9.2 | 9.6 | 8.6 | 9.3 |
| 25 | 9.5 | 8.5 | 9.2 | 9.6 | 8.6 | 9.3 |
| 26 | 9.5 | 8.5 | 9.1 | 9.6 | 8.6 | 9.2 |
| 27 | 9.5 | 8.7 | 9.2 | 9.6 | 8.8 | 9.3 |
| 28 | 9.5 | 8.5 | 9.1 | 9.6 | 8.6 | 9.2 |
| 29 | 9.6 | 8.5 | 9.1 | 9.7 | 8.6 | 9.2 |
| 30 | 9.5 | 8.5 | 9.2 | 9.6 | 8.6 | 9.3 |
| 31 | 9.7 | 8.5 | 9.1 | 9.8 | 8.6 | 9.2 |
| Total | | | | | | |
| Average | 9.5 | 8.4 | 9.1 | 9.7 | 8.5 | 9.2 |
| Maximum | 9.8 | | 9.2 | 9.9 | | 9.3 |
| Date | 2-Oct | | 24-Oct | 2-Oct | | 24-Oct |
| Minimum | | 8.1 | 8.9 | | 8.2 | 9.0 |
| Date | | 9-Oct | 10-Oct | | 9-Oct | 10-Oct |

Notes:

Raw Well/Treated Storage Report

Month: October-17

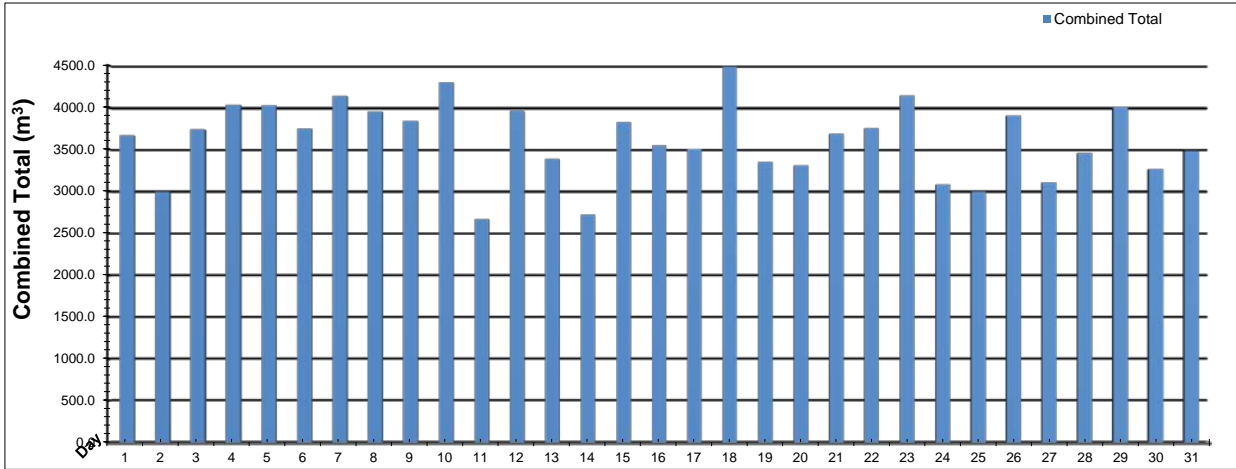


| Date | Low Lift Intake Levels | | | | | |
|---------|--------------------------------|---------|---------|--------------------------------|---------|---------|
| | Wet Well #1 (LIT-1016A) (m) | | | Wet Well #2 (LIT-1031A) (m) | | |
| | Maximum | Minimum | Average | Maximum | Minimum | Average |
| 1 | 5.7 | 5.4 | 5.6 | 5.6 | 5.4 | 5.5 |
| 2 | 5.7 | 5.4 | 5.6 | 5.6 | 5.5 | 5.5 |
| 3 | 5.7 | 5.4 | 5.6 | 5.6 | 5.4 | 5.5 |
| 4 | 5.6 | 5.4 | 5.5 | 5.6 | 5.4 | 5.5 |
| 5 | 5.7 | 5.4 | 5.5 | 5.6 | 5.4 | 5.5 |
| 6 | 5.6 | 5.4 | 5.5 | 5.6 | 5.4 | 5.5 |
| 7 | 5.7 | 5.4 | 5.6 | 5.6 | 5.4 | 5.5 |
| 8 | 5.7 | 5.4 | 5.5 | 5.6 | 5.4 | 5.5 |
| 9 | 5.7 | 5.4 | 5.6 | 5.6 | 5.4 | 5.5 |
| 10 | 5.7 | 5.4 | 5.6 | 5.6 | 5.4 | 5.5 |
| 11 | 5.7 | 5.4 | 5.6 | 5.7 | 5.4 | 5.5 |
| 12 | 5.7 | 5.4 | 5.6 | 5.6 | 5.4 | 5.5 |
| 13 | 5.7 | 5.4 | 5.6 | 5.7 | 5.4 | 5.5 |
| 14 | 5.7 | 5.3 | 5.6 | 5.7 | 5.4 | 5.5 |
| 15 | 5.8 | 5.2 | 5.5 | 5.7 | 5.3 | 5.5 |
| 16 | 5.7 | 5.3 | 5.5 | 5.6 | 5.3 | 5.5 |
| 17 | 5.7 | 5.3 | 5.5 | 5.6 | 5.4 | 5.5 |
| 18 | 5.6 | 5.3 | 5.5 | 5.6 | 5.3 | 5.5 |
| 19 | 5.6 | 5.3 | 5.5 | 5.6 | 5.4 | 5.5 |
| 20 | 5.6 | 5.3 | 5.5 | 5.6 | 5.3 | 5.5 |
| 21 | 5.6 | 5.2 | 5.5 | 5.6 | 5.3 | 5.5 |
| 22 | 5.6 | 5.2 | 5.5 | 5.6 | 5.3 | 5.5 |
| 23 | 5.7 | 5.3 | 5.5 | 5.7 | 5.3 | 5.5 |
| 24 | 5.9 | 5.3 | 5.6 | 5.8 | 5.4 | 5.5 |
| 25 | 5.6 | 5.2 | 5.5 | 5.6 | 5.3 | 5.5 |
| 26 | 5.6 | 5.2 | 5.5 | 5.6 | 5.3 | 5.5 |
| 27 | 5.6 | 5.2 | 5.5 | 5.6 | 5.3 | 5.5 |
| 28 | 5.6 | 5.2 | 5.4 | 5.6 | 5.3 | 5.4 |
| 29 | 5.6 | 5.1 | 5.4 | 5.6 | 5.2 | 5.4 |
| 30 | 5.6 | 5.2 | 5.4 | 5.6 | 5.3 | 5.4 |
| 31 | 5.7 | 5.1 | 5.4 | 5.6 | 5.2 | 5.4 |
| Total | | | | | | |
| Average | 5.7 | 5.3 | 5.5 | 5.6 | 5.4 | 5.5 |
| Maximum | 5.9 | | 5.6 | 5.8 | | 5.5 |
| Date | 24-Oct | | 11-Oct | 24-Oct | | 13-Oct |
| Minimum | | 5.1 | 5.4 | | 5.2 | 5.4 |
| Date | | 31-Oct | 30-Oct | | 31-Oct | 30-Oct |

Notes:

High Lift Monthly Report

Month: October-17



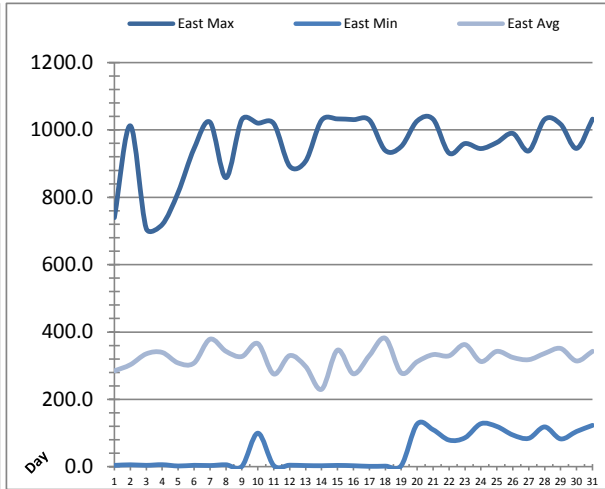
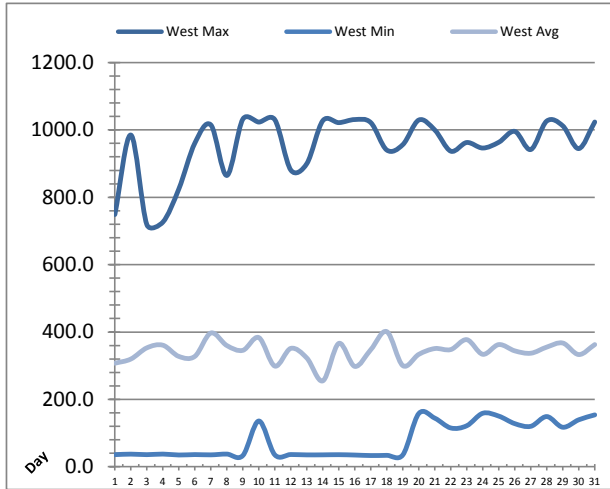
| Date | Distribution Flow | | | | | |
|----------------|-------------------|---------------|-----------------|---------------|-----------------|---------------|
| | FIT_7052 (East) | | FIT_7062 (West) | | Combined | |
| | (m³) | (L/s) | (m³) | (L/s) | (m³) | (L/s) |
| | Total | Peak | Total | Peak | Total | Peak |
| 1 | 3666.5 | 97.2 | 0.0 | 0.0 | 3666.5 | 97.2 |
| 2 | 2996.0 | 149.1 | 0.0 | 0.0 | 2996.0 | 149.1 |
| 3 | 3737.9 | 148.5 | 0.0 | 0.0 | 3737.9 | 148.5 |
| 4 | 4034.1 | 146.2 | 0.0 | 0.0 | 4034.1 | 146.2 |
| 5 | 4029.3 | 115.3 | 0.0 | 0.0 | 4029.3 | 115.3 |
| 6 | 3747.7 | 147.0 | 0.0 | 0.0 | 3747.7 | 147.0 |
| 7 | 4136.4 | 148.3 | 0.0 | 0.0 | 4136.5 | 148.3 |
| 8 | 3952.1 | 146.5 | 0.0 | 0.0 | 3952.1 | 146.5 |
| 9 | 3841.4 | 96.7 | 0.0 | 0.0 | 3841.4 | 96.7 |
| 10 | 4297.6 | 148.2 | 0.0 | 0.0 | 4297.6 | 148.2 |
| 11 | 2671.2 | 144.5 | 0.0 | 0.0 | 2671.2 | 144.5 |
| 12 | 3958.7 | 105.9 | 0.0 | 0.0 | 3958.7 | 105.9 |
| 13 | 1652.3 | 117.4 | 1734.7 | 83.1 | 3387.0 | 117.4 |
| 14 | 745.5 | 36.5 | 1979.1 | 93.9 | 2724.5 | 107.1 |
| 15 | 3508.7 | 151.1 | 314.6 | 131.7 | 3823.3 | 158.2 |
| 16 | 3549.9 | 100.2 | 0.0 | 0.0 | 3549.9 | 100.2 |
| 17 | 3507.8 | 156.1 | 0.0 | 0.0 | 3507.8 | 156.1 |
| 18 | 2880.9 | 146.7 | 1607.3 | 118.4 | 4488.2 | 152.9 |
| 19 | 432.2 | 19.4 | 2917.6 | 96.0 | 3349.7 | 102.1 |
| 20 | 904.7 | 45.3 | 2403.3 | 92.3 | 3308.0 | 104.5 |
| 21 | 1216.4 | 52.8 | 2469.8 | 89.1 | 3686.2 | 103.1 |
| 22 | 1068.0 | 36.8 | 2687.7 | 92.9 | 3755.7 | 100.6 |
| 23 | 911.2 | 54.2 | 3232.1 | 91.1 | 4143.4 | 100.9 |
| 24 | 832.0 | 53.2 | 2248.9 | 88.2 | 3080.9 | 103.7 |
| 25 | 1111.2 | 60.2 | 1885.2 | 97.1 | 2996.4 | 102.8 |
| 26 | 926.7 | 58.1 | 2979.0 | 91.6 | 3905.7 | 103.4 |
| 27 | 1123.1 | 45.0 | 1986.4 | 92.6 | 3109.5 | 101.0 |
| 28 | 1224.6 | 58.1 | 2234.3 | 91.2 | 3458.9 | 103.5 |
| 29 | 1098.9 | 58.6 | 2909.0 | 91.5 | 4007.9 | 103.9 |
| 30 | 1312.6 | 59.5 | 1951.5 | 85.0 | 3264.1 | 103.5 |
| 31 | 996.5 | 59.0 | 2485.9 | 92.8 | 3482.3 | 104.5 |
| Total | 74071.9 | | 38026.3 | | 112098.2 | |
| Average | 2389.4 | 95.5 | 1226.7 | 52.2 | 3616.1 | 120.1 |
| Maximum | 4297.6 | 156.1 | 3232.1 | 131.7 | 4488.2 | 158.2 |
| Date | 10-Oct | 17-Oct | 23-Oct | 15-Oct | 18-Oct | 15-Oct |
| Minimum | 432.2 | | 0.0 | | 2671.2 | |
| Date | 19-Oct | | 17-Oct | | 11-Oct | |

Notes:

From Oct 1 - 11, flow was on combined mode.

Low Lift Monthly Report

Month: **October-17**

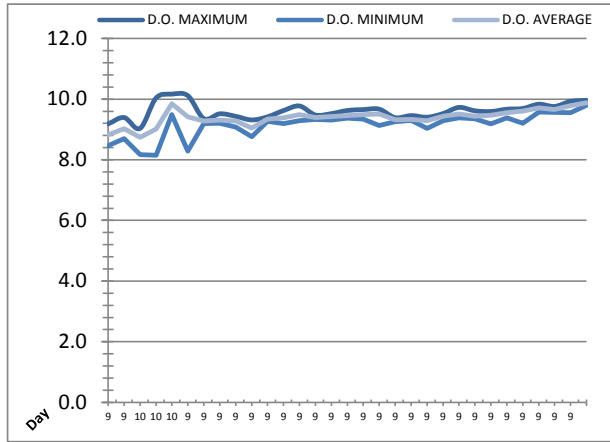
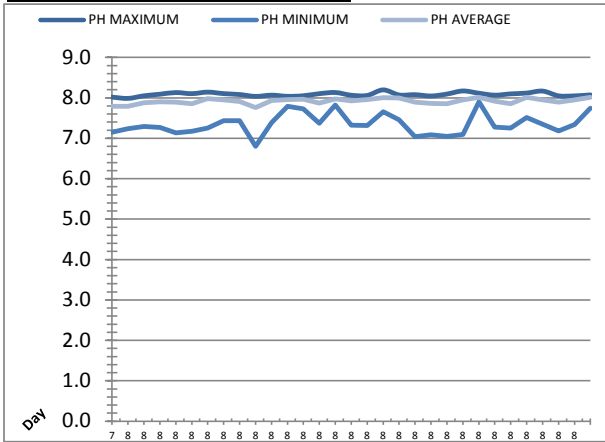


| Date | West Train Header Pressure PIT_1018 (kPa) | | | East Train Header Pressure PIT_1028 (kPa) | | |
|----------------|---|---------|---------|---|---------|---------|
| | Maximum | Minimum | Average | Maximum | Minimum | Average |
| 1 | 748.8 | 35.9 | 307.3 | 739.4 | 4.1 | 284.5 |
| 2 | 984.8 | 37.5 | 319.8 | 1012.2 | 5.8 | 302.9 |
| 3 | 718.7 | 35.9 | 353.1 | 707.3 | 4.3 | 335.2 |
| 4 | 726.2 | 37.6 | 360.8 | 718.8 | 6.1 | 339.4 |
| 5 | 824.8 | 34.9 | 327.5 | 814.1 | 2.3 | 308.1 |
| 6 | 960.9 | 36.1 | 327.7 | 944.7 | 4.3 | 308.1 |
| 7 | 1014.8 | 35.4 | 397.1 | 1022.8 | 3.6 | 378.7 |
| 8 | 864.7 | 37.6 | 359.8 | 858.1 | 5.9 | 342.8 |
| 9 | 1032.1 | 33.3 | 345.6 | 1030.7 | 1.0 | 327.4 |
| 10 | 1023.3 | 135.8 | 383.4 | 1020.1 | 99.7 | 365.8 |
| 11 | 1030.3 | 35.3 | 298.8 | 1018.8 | 3.5 | 275.4 |
| 12 | 880.7 | 36.3 | 351.5 | 892.1 | 4.6 | 330.0 |
| 13 | 899.9 | 35.2 | 322.8 | 907.2 | 3.5 | 297.6 |
| 14 | 1027.4 | 35.4 | 255.0 | 1028.6 | 3.0 | 229.9 |
| 15 | 1021.6 | 35.8 | 366.2 | 1032.7 | 4.0 | 346.2 |
| 16 | 1030.8 | 34.8 | 297.9 | 1030.5 | 3.0 | 275.9 |
| 17 | 1021.6 | 33.3 | 347.8 | 1029.2 | 1.3 | 330.1 |
| 18 | 940.2 | 33.9 | 401.1 | 938.9 | 1.9 | 381.4 |
| 19 | 956.3 | 35.1 | 300.2 | 950.9 | 3.3 | 278.5 |
| 20 | 1029.4 | 158.1 | 333.7 | 1026.7 | 126.9 | 311.9 |
| 21 | 999.8 | 144.2 | 350.9 | 1031.7 | 109.9 | 332.9 |
| 22 | 936.9 | 115.1 | 347.9 | 931.0 | 79.2 | 329.4 |
| 23 | 962.6 | 121.8 | 377.3 | 959.5 | 86.1 | 362.6 |
| 24 | 946.2 | 158.9 | 333.8 | 944.6 | 127.9 | 312.4 |
| 25 | 963.3 | 150.3 | 362.7 | 962.6 | 119.6 | 342.6 |
| 26 | 995.7 | 128.0 | 344.1 | 989.6 | 94.3 | 324.5 |
| 27 | 941.7 | 120.1 | 337.0 | 937.6 | 84.4 | 317.9 |
| 28 | 1026.4 | 149.0 | 355.3 | 1031.3 | 118.3 | 336.6 |
| 29 | 1012.1 | 117.3 | 367.3 | 1017.0 | 82.7 | 351.2 |
| 30 | 944.5 | 139.5 | 333.1 | 945.2 | 104.8 | 314.0 |
| 31 | 1023.5 | 154.0 | 362.7 | 1032.1 | 122.9 | 342.8 |
| Total | | | | | | |
| Average | 951.3 | 78.4 | 342.9 | 951.8 | 45.9 | 323.1 |
| Maximum | 1032.1 | | 401.1 | 1032.7 | | 381.4 |
| Date | 9-Oct | | 18-Oct | 15-Oct | | 18-Oct |
| Minimum | | 33.3 | 255.0 | | 1.0 | 229.9 |
| Date | | 9-Oct | 14-Oct | | 9-Oct | 14-Oct |

Notes:

Low Lift Monthly Report

Month: **October-17**

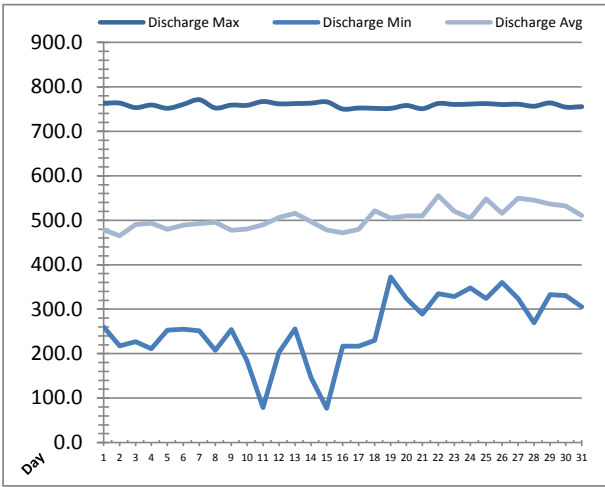
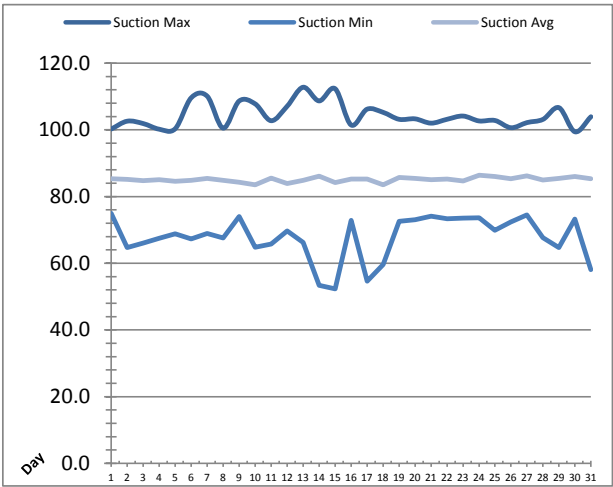


| Date | Raw Water Sample Line | | | | | |
|---------|-----------------------|---------|---------|--------------------|---------|---------|
| | AIT_1402_PH (pH) | | | AIT_1402_DO (mg/L) | | |
| | Maximum | Minimum | Average | Maximum | Minimum | Average |
| 1 | 8.0 | 7.1 | 7.8 | 9.2 | 8.5 | 8.8 |
| 2 | 8.0 | 7.2 | 7.8 | 9.4 | 8.7 | 9.0 |
| 3 | 8.1 | 7.3 | 7.9 | 9.0 | 8.2 | 8.7 |
| 4 | 8.1 | 7.3 | 7.9 | 10.0 | 8.2 | 9.0 |
| 5 | 8.1 | 7.1 | 7.9 | 10.2 | 9.5 | 9.8 |
| 6 | 8.1 | 7.2 | 7.9 | 10.1 | 8.3 | 9.4 |
| 7 | 8.1 | 7.3 | 8.0 | 9.4 | 9.2 | 9.3 |
| 8 | 8.1 | 7.4 | 7.9 | 9.5 | 9.2 | 9.3 |
| 9 | 8.1 | 7.4 | 7.9 | 9.4 | 9.1 | 9.3 |
| 10 | 8.0 | 6.8 | 7.8 | 9.3 | 8.8 | 9.0 |
| 11 | 8.1 | 7.4 | 7.9 | 9.4 | 9.3 | 9.3 |
| 12 | 8.0 | 7.8 | 8.0 | 9.6 | 9.2 | 9.4 |
| 13 | 8.1 | 7.7 | 8.0 | 9.8 | 9.3 | 9.5 |
| 14 | 8.1 | 7.4 | 7.9 | 9.5 | 9.3 | 9.4 |
| 15 | 8.1 | 7.8 | 8.0 | 9.5 | 9.3 | 9.4 |
| 16 | 8.1 | 7.3 | 7.9 | 9.6 | 9.4 | 9.5 |
| 17 | 8.1 | 7.3 | 8.0 | 9.7 | 9.3 | 9.5 |
| 18 | 8.2 | 7.7 | 8.0 | 9.7 | 9.1 | 9.5 |
| 19 | 8.1 | 7.5 | 8.0 | 9.4 | 9.3 | 9.3 |
| 20 | 8.1 | 7.0 | 7.9 | 9.5 | 9.3 | 9.3 |
| 21 | 8.0 | 7.1 | 7.9 | 9.4 | 9.0 | 9.3 |
| 22 | 8.1 | 7.0 | 7.9 | 9.5 | 9.3 | 9.4 |
| 23 | 8.2 | 7.1 | 7.9 | 9.7 | 9.4 | 9.5 |
| 24 | 8.1 | 7.9 | 8.0 | 9.6 | 9.4 | 9.4 |
| 25 | 8.1 | 7.3 | 7.9 | 9.6 | 9.2 | 9.5 |
| 26 | 8.1 | 7.3 | 7.9 | 9.7 | 9.4 | 9.6 |
| 27 | 8.1 | 7.5 | 8.0 | 9.7 | 9.2 | 9.6 |
| 28 | 8.2 | 7.3 | 7.9 | 9.8 | 9.6 | 9.7 |
| 29 | 8.0 | 7.2 | 7.9 | 9.8 | 9.6 | 9.7 |
| 30 | 8.0 | 7.3 | 7.9 | 9.9 | 9.6 | 9.8 |
| 31 | 8.1 | 7.7 | 8.0 | 10.0 | 9.8 | 9.9 |
| Total | | | | | | |
| Average | 8.1 | 7.3 | 7.9 | 9.6 | 9.1 | 9.4 |
| Maximum | 8.2 | | 8.0 | 10.2 | | 9.9 |
| Date | 18-Oct | | 27-Oct | 5-Oct | | 31-Oct |
| Minimum | | 6.8 | 7.8 | | 8.2 | 8.7 |
| Date | | 10-Oct | 10-Oct | | 4-Oct | 3-Oct |

Notes:

High Lift Monthly Report

Month: **October-17**

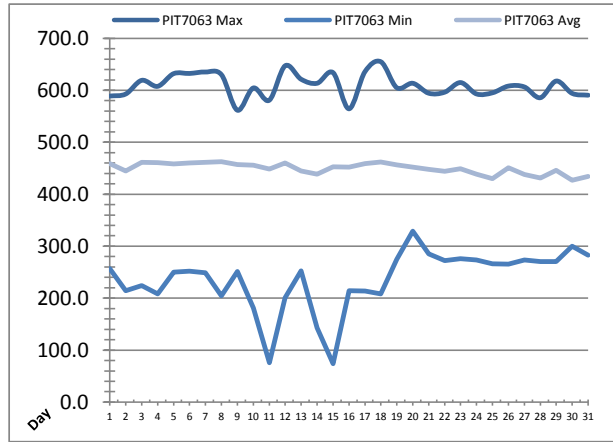
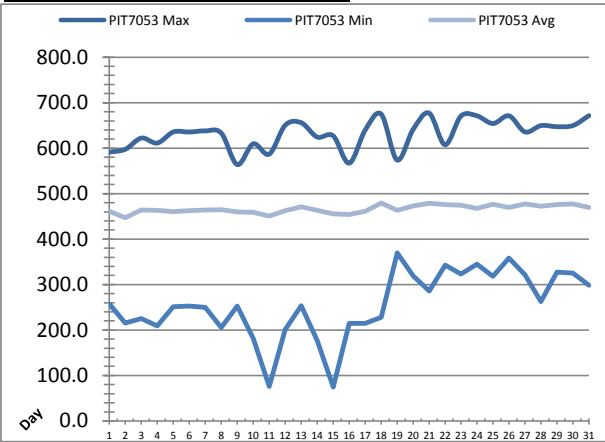


| Date | Suction Header Pressure | | | Discharge Header Pressure | | |
|---------|-------------------------|---------|---------|---------------------------|---------|---------|
| | PIT_7002 (kPa) | | | PIT_7005 (kPa) | | |
| | Maximum | Minimum | Average | Maximum | Minimum | Average |
| 1 | 100.3 | 75.0 | 85.3 | 763.3 | 260.0 | 478.6 |
| 2 | 102.6 | 64.7 | 85.2 | 763.6 | 217.3 | 465.4 |
| 3 | 101.9 | 66.0 | 84.8 | 753.4 | 227.2 | 490.8 |
| 4 | 100.2 | 67.5 | 85.1 | 759.3 | 211.1 | 493.6 |
| 5 | 100.3 | 68.9 | 84.6 | 751.8 | 253.1 | 479.8 |
| 6 | 109.6 | 67.3 | 84.8 | 760.7 | 254.7 | 489.0 |
| 7 | 110.1 | 68.9 | 85.5 | 771.2 | 251.6 | 492.3 |
| 8 | 100.5 | 67.6 | 84.9 | 752.6 | 207.8 | 495.3 |
| 9 | 108.7 | 74.0 | 84.3 | 759.0 | 254.5 | 477.8 |
| 10 | 107.8 | 64.8 | 83.5 | 758.6 | 183.9 | 480.6 |
| 11 | 102.8 | 65.8 | 85.6 | 767.1 | 78.5 | 489.7 |
| 12 | 107.1 | 69.7 | 83.9 | 761.8 | 203.5 | 506.6 |
| 13 | 112.8 | 66.2 | 84.9 | 762.5 | 255.6 | 515.9 |
| 14 | 108.7 | 53.4 | 86.1 | 763.4 | 146.3 | 497.3 |
| 15 | 112.4 | 52.3 | 84.2 | 766.3 | 76.9 | 478.2 |
| 16 | 101.5 | 72.9 | 85.2 | 750.2 | 217.1 | 471.8 |
| 17 | 106.2 | 54.7 | 85.2 | 752.5 | 216.9 | 479.4 |
| 18 | 105.3 | 59.7 | 83.5 | 751.8 | 229.8 | 521.8 |
| 19 | 103.2 | 72.6 | 85.7 | 751.6 | 372.7 | 505.0 |
| 20 | 103.3 | 73.1 | 85.4 | 758.1 | 323.8 | 510.0 |
| 21 | 102.0 | 74.1 | 85.0 | 751.0 | 288.5 | 509.7 |
| 22 | 103.2 | 73.4 | 85.3 | 762.7 | 335.2 | 555.2 |
| 23 | 104.2 | 73.5 | 84.7 | 760.5 | 328.2 | 519.7 |
| 24 | 102.7 | 73.6 | 86.4 | 761.3 | 348.0 | 504.5 |
| 25 | 102.8 | 69.9 | 86.0 | 762.5 | 324.1 | 548.3 |
| 26 | 100.7 | 72.4 | 85.4 | 760.2 | 359.9 | 515.8 |
| 27 | 102.2 | 74.5 | 86.2 | 761.0 | 324.4 | 549.3 |
| 28 | 103.2 | 67.7 | 84.9 | 756.5 | 269.6 | 545.2 |
| 29 | 106.7 | 64.7 | 85.4 | 763.9 | 332.8 | 536.8 |
| 30 | 99.4 | 73.2 | 86.0 | 754.4 | 330.3 | 531.9 |
| 31 | 103.9 | 58.1 | 85.3 | 755.5 | 305.1 | 510.4 |
| Total | | | | | | |
| Average | 104.4 | 67.7 | 85.1 | 759.0 | 257.7 | 504.7 |
| Maximum | 112.8 | | 86.4 | 771.2 | | 555.2 |
| Date | 13-Oct | | 24-Oct | 7-Oct | | 22-Oct |
| Minimum | | 52.3 | 83.5 | | 76.9 | 465.4 |
| Date | | 15-Oct | 10-Oct | | 15-Oct | 2-Oct |

Notes:

High Lift Monthly Report

Month: **October-17**

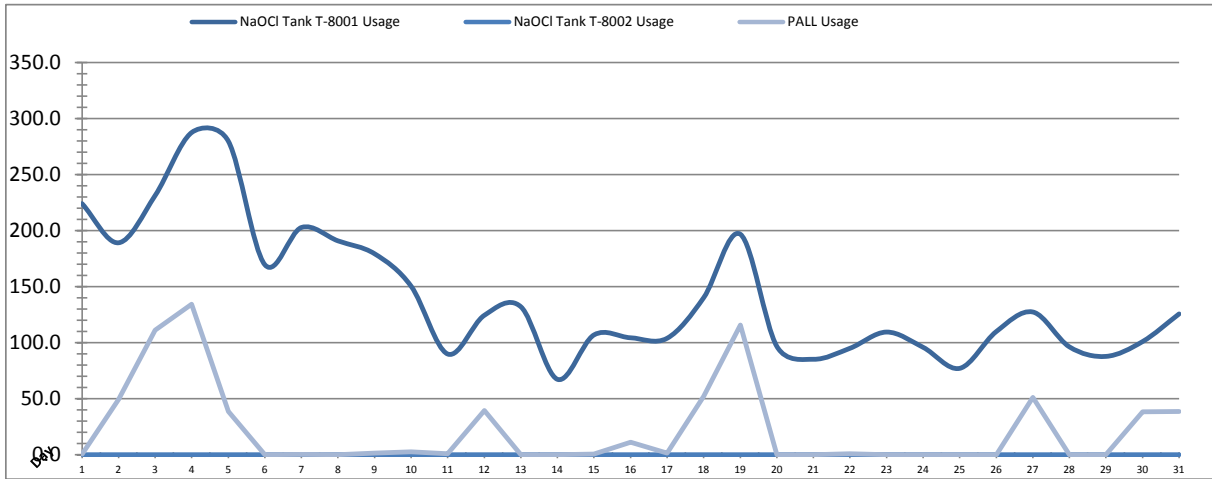


| Date | Distribution Pressures | | | | | |
|---------|------------------------|---------|---------|----------------|---------|---------|
| | PIT_7053 (kPa) | | | PIT_7063 (kPa) | | |
| | Maximum | Minimum | Average | Maximum | Minimum | Average |
| 1 | ✓ 591.3 | ✓ 257.9 | 461.3 | ✓ 588.9 | ✓ 256.9 | 459.0 |
| 2 | ✓ 597.5 | ✓ 215.1 | 447.1 | ✓ 592.9 | ✓ 214.2 | 444.9 |
| 3 | ✓ 622.2 | ✓ 225.1 | 463.9 | ✓ 619.1 | ✓ 224.1 | 461.5 |
| 4 | ✓ 611.2 | ✓ 208.9 | 463.4 | ✓ 607.6 | ✓ 208.0 | 460.9 |
| 5 | ✓ 635.6 | ✓ 251.1 | 460.5 | ✓ 632.0 | ✓ 250.1 | 458.0 |
| 6 | ✓ 635.5 | ✓ 252.7 | 462.5 | ✓ 632.4 | ✓ 251.7 | 460.1 |
| 7 | ✓ 638.0 | ✓ 249.6 | 463.9 | ✓ 635.2 | ✓ 248.6 | 461.3 |
| 8 | ✓ 633.2 | ✓ 205.6 | 464.9 | ✓ 630.0 | ✓ 204.7 | 462.4 |
| 9 | ✓ 563.8 | ✓ 252.5 | 459.4 | ✓ 561.6 | ✓ 251.6 | 457.0 |
| 10 | ✓ 609.6 | ✓ 181.8 | 458.7 | ✓ 604.5 | ✓ 181.0 | 456.0 |
| 11 | ✓ 586.8 | ✓ 76.2 | 450.7 | ✓ 580.8 | ✓ 75.6 | 448.7 |
| 12 | ✓ 650.4 | ✓ 201.3 | 462.3 | ✓ 647.2 | ✓ 200.6 | 459.8 |
| 13 | ✓ 656.0 | ✓ 253.6 | 470.9 | ✓ 621.2 | ✓ 252.7 | 444.5 |
| 14 | ✓ 624.4 | ✓ 177.0 | 463.3 | ✓ 613.5 | ✓ 142.6 | 438.7 |
| 15 | ✓ 627.2 | ✓ 74.5 | 455.8 | ✓ 634.0 | ✓ 73.9 | 452.7 |
| 16 | ✓ 567.0 | ✓ 215.0 | 454.3 | ✓ 564.3 | ✓ 214.1 | 452.0 |
| 17 | ✓ 639.5 | ✓ 214.9 | 461.5 | ✓ 635.7 | ✓ 214.0 | 459.1 |
| 18 | ✓ 674.9 | ✓ 227.8 | 479.2 | ✓ 654.9 | ✓ 208.4 | 462.3 |
| 19 | ✓ 573.8 | ✓ 369.8 | 463.3 | ✓ 604.9 | ✓ 274.5 | 456.5 |
| 20 | ✓ 641.0 | ✓ 319.1 | 473.0 | ✓ 613.5 | ✓ 328.8 | 452.3 |
| 21 | ✓ 677.2 | ✓ 285.9 | 479.0 | ✓ 594.3 | ✓ 285.3 | 447.5 |
| 22 | ✓ 607.5 | ✓ 343.0 | 475.9 | ✓ 596.3 | ✓ 272.0 | 444.1 |
| 23 | ✓ 670.8 | ✓ 323.0 | 474.4 | ✓ 614.8 | ✓ 276.1 | 449.1 |
| 24 | ✓ 671.0 | ✓ 344.7 | 467.7 | ✓ 592.9 | ✓ 273.4 | 438.9 |
| 25 | ✓ 654.1 | ✓ 318.0 | 476.5 | ✓ 595.2 | ✓ 266.4 | 429.8 |
| 26 | ✓ 671.1 | ✓ 358.0 | 469.3 | ✓ 608.1 | ✓ 265.3 | 450.6 |
| 27 | ✓ 635.6 | ✓ 321.4 | 477.4 | ✓ 606.4 | ✓ 273.4 | 438.2 |
| 28 | ✓ 649.6 | ✓ 262.8 | 472.4 | ✓ 585.7 | ✓ 270.5 | 431.4 |
| 29 | ✓ 647.2 | ✓ 327.3 | 475.6 | ✓ 617.8 | ✓ 270.3 | 445.8 |
| 30 | ✓ 649.7 | ✓ 325.4 | 477.2 | ✓ 594.0 | ✓ 300.0 | 427.1 |
| 31 | ✓ 671.6 | ✓ 298.8 | 469.4 | ✓ 590.5 | ✓ 282.5 | 434.2 |
| Total | | | | | | |
| Average | 631.7 | 256.1 | 466.3 | 608.7 | 235.9 | 449.8 |
| Maximum | 677.2 | | 479.2 | 654.9 | | 462.4 |
| Date | 21-Oct | | 18-Oct | 18-Oct | | 8-Oct |
| Minimum | | 74.5 | 447.1 | | 73.9 | 427.1 |
| Date | | 15-Oct | 2-Oct | | 15-Oct | 30-Oct |

Notes:

Chemical Usage Monthly Report

Month: **October-17**

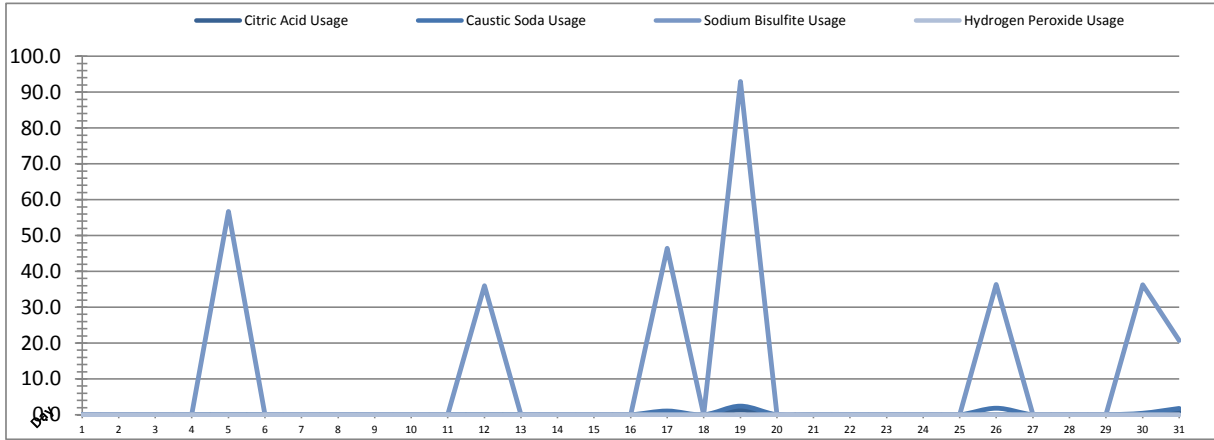


| Date | PALL Usage | NaOCI Tank T-8001 | NaOCI Tank T-8002 |
|---------|---------------------------|------------------------------|--------------------------|
| | PALL_HYPO_USAGE (L) Usage | LIT_8002 (Storage) (L) Usage | LIT_8004 (Day) (L) Usage |
| 1 | 0.5 | 224.0 | 0.0 |
| 2 | 49.5 | 189.1 | 0.0 |
| 3 | 111.2 | 231.3 | 0.0 |
| 4 | 134.1 | 287.5 | 0.0 |
| 5 | 38.7 | 279.8 | 0.0 |
| 6 | 0.1 | 169.5 | 0.0 |
| 7 | 0.2 | 202.7 | 0.0 |
| 8 | 0.1 | 190.8 | 0.0 |
| 9 | 1.4 | 179.3 | 0.0 |
| 10 | 2.6 | 150.3 | 0.0 |
| 11 | 0.9 | 89.9 | 0.0 |
| 12 | 39.3 | 124.4 | 0.0 |
| 13 | 0.0 | 132.0 | 0.0 |
| 14 | 0.03 | 67.29 | 0.0 |
| 15 | 0.5 | 106.9 | 0.0 |
| 16 | 11.1 | 104.3 | 0.0 |
| 17 | 1.4 | 103.9 | 0.0 |
| 18 | 52.2 | 140.1 | 0.0 |
| 19 | 115.6 | 196.8 | 0.0 |
| 20 | 0.0 | 96.7 | 0.0 |
| 21 | 0.0 | 85.2 | 0.0 |
| 22 | 0.9 | 95.0 | 0.0 |
| 23 | 0.1 | 109.5 | 0.0 |
| 24 | 0.0 | 95.8 | 0.0 |
| 25 | 0.0 | 77.1 | 0.0 |
| 26 | 0.1 | 109.9 | 0.0 |
| 27 | 51.1 | 127.3 | 0.0 |
| 28 | 0.0 | 96.2 | 0.0 |
| 29 | 0.0 | 87.7 | 0.0 |
| 30 | 38.4 | 100.9 | 0.0 |
| 31 | 38.5 | 125.6 | 0.0 |
| Total | 688.7 | 4376.7 | 1.1 |
| Average | 22.2 | 141.2 | 0.0 |
| Maximum | 134.1 | 287.5 | 0.0 |
| Date | 4-Oct | 4-Oct | 1-Oct |
| Minimum | 0.0 | 67.3 | 0.0 |
| Date | 21-Oct | 14-Oct | 1-Oct |

| | |
|--------|---|
| Notes: | |
| | Dosage (mg/L)= Day Tank (L) x %conc. x 1000 Membrane Flow (m3) |
| | Chlorine Concentration: 12.0% |

Chemical Usage Monthly Report

Month: **October-17**



| Date | Citric Acid | Caustic Soda | Captor | Hydrogen Peroxide | | Membrane Flow (m ³) |
|---------|-------------------|-------------------|-------------------|-------------------|---------------------|---------------------------------|
| | TAGNAME (L) Usage | TAGNAME (L) Usage | TAGNAME (L) Usage | TAGNAME (L) Usage | TAGNAME (mg/L) Dose | |
| 1 | 0.0 | 0.0 | 0.0 | 0.0 | 0.0 | 3534.776 |
| 2 | 0.0 | 0.0 | 0.0 | 0.0 | 0.0 | 3173.270 |
| 3 | 0.0 | 0.0 | 0.0 | 0.0 | 0.0 | 4002.650 |
| 4 | 0.0 | 0.0 | 0.0 | 0.0 | 0.0 | 4198.335 |
| 5 | 0.0 | 0.0 | 56.7 | 0.0 | 0.0 | 4237.605 |
| 6 | 0.0 | 0.0 | 0.0 | 0.0 | 0.0 | 3554.925 |
| 7 | 0.0 | 0.0 | 0.0 | 0.0 | 0.0 | 4363.649 |
| 8 | 0.0 | 0.0 | 0.0 | 0.0 | 0.0 | 4080.522 |
| 9 | 0.0 | 0.0 | 0.0 | 0.0 | 0.0 | 3802.079 |
| 10 | 0.0 | 0.0 | 0.0 | 0.0 | 0.0 | 4049.647 |
| 11 | 0.0 | 0.0 | 0.0 | 0.0 | 0.0 | 2798.295 |
| 12 | 0.0 | 0.0 | 36.0 | 0.0 | 0.0 | 3865.372 |
| 13 | 0.0 | 0.0 | 0.0 | 0.0 | 0.0 | 3218.361 |
| 14 | 0.0 | 0.0 | 0.0 | 0.0 | 0.0 | 3028.779 |
| 15 | 0.0 | 0.0 | 0.0 | 0.0 | 0.0 | 4055.183 |
| 16 | 0.0 | 0.0 | 0.0 | 0.0 | 0.0 | 3449.961 |
| 17 | 0.0 | 1.0 | 46.4 | 0.0 | 0.0 | 4153.281 |
| 18 | 0.0 | 0.0 | 0.0 | 0.0 | 0.0 | 4538.854 |
| 19 | 1.3 | 2.4 | 92.9 | 0.0 | 0.0 | 3144.940 |
| 20 | 0.0 | 0.0 | 0.0 | 0.0 | 0.0 | 3339.361 |
| 21 | 0.0 | 0.0 | 0.0 | 0.0 | 0.0 | 4314.223 |
| 22 | 0.0 | 0.0 | 0.0 | 0.0 | 0.0 | 3654.066 |
| 23 | 0.0 | 0.0 | 0.0 | 0.0 | 0.0 | 4473.695 |
| 24 | 0.0 | 0.0 | 0.0 | 0.0 | 0.0 | 2752.235 |
| 25 | 0.0 | 0.0 | 0.0 | 0.0 | 0.0 | 3356.967 |
| 26 | 0.0 | 1.8 | 36.4 | 0.0 | 0.0 | 3719.375 |
| 27 | 0.0 | 0.0 | 0.0 | 0.0 | 0.0 | 3103.620 |
| 28 | 0.0 | 0.0 | 0.0 | 0.0 | 0.0 | 3741.698 |
| 29 | 0.0 | 0.0 | 0.0 | 0.0 | 0.0 | 4076.403 |
| 30 | 0.0 | 0.4 | 36.3 | 0.0 | 0.0 | 3170.254 |
| 31 | 0.8 | 1.8 | 20.7 | 0.0 | 0.0 | 3621.722 |
| Total | 2.1 | 7.5 | 325.4 | 0.0 | 0.0 | 114574.1 |
| Average | 0.1 | 0.2 | 10.5 | 0.0 | 0.0 | 3695.9 |
| Maximum | 1.3 | 2.4 | 92.9 | 0.0 | 0.0 | 4538.9 |
| Date | 19-Oct | 19-Oct | 19-Oct | 1-Oct | 1-Oct | 18-Oct |
| Minimum | 0.0 | 0.0 | 0.0 | 0.0 | 0.0 | 2752.2 |
| Date | 1-Oct | 1-Oct | 1-Oct | 1-Oct | 1-Oct | 24-Oct |

Notes:

$$\text{Dosage (mg/L)} = \frac{\text{Day Tank (L)} \times \% \text{conc.} \times 1000}{\text{Membrane Flow (m}^3\text{)}}$$

Peroxide Concentration: **50.0%**

Runtimes Report

Month: October-17

| Date | Daily Gen-Set Runtimes | | Daily UV Runtimes | | Daily PALL Runtimes | | | | |
|--------------|---------------------------|-------|----------------------|-------|------------------------|-------------------|--------------------|-----------|------------|
| | LLPS | WTP | UV #1 | UV #2 | Air Compressor #1 | Air Compressor #2 | CIP Neutralization | CIP Drain | CIP Recirc |
| | (Hrs) | (Hrs) | (Hrs) | (Hrs) | (Hrs) | (Hrs) | (Hrs) | (Hrs) | (Hrs) |
| 1 | 0.0 | 0.0 | 14.6 | 0.0 | 24.4 | 0.0 | 0.0 | 0.0 | 0.0 |
| 2 | 0.0 | 0.0 | 8.1 | 6.4 | 6.8 | 17.3 | 0.0 | 0.0 | 0.0 |
| 3 | 0.0 | 0.0 | 0.0 | 16.9 | 16.5 | 7.8 | 0.0 | 0.0 | 0.0 |
| 4 | 0.0 | 0.0 | 10.5 | 6.6 | 0.0 | 23.9 | 0.0 | 0.0 | 0.0 |
| 5 | 0.0 | 0.0 | 4.2 | 12.6 | 18.2 | 6.1 | 0.2 | 0.2 | 0.3 |
| 6 | 0.0 | 0.0 | 0.0 | 16.8 | 8.9 | 15.0 | 0.1 | 0.0 | 0.0 |
| 7 | 0.0 | 0.0 | 0.0 | 20.0 | 11.6 | 12.7 | 0.0 | 0.0 | 0.0 |
| 8 | 0.0 | 0.0 | 12.1 | 5.7 | 24.4 | 0.0 | 0.0 | 0.0 | 0.0 |
| 9 | 0.0 | 0.0 | 4.9 | 10.9 | 13.4 | 10.7 | 0.0 | 0.0 | 0.0 |
| 10 | 0.0 | 0.0 | 0.7 | 2.4 | 0.0 | 23.9 | 0.0 | 0.0 | 0.0 |
| 11 | 0.0 | 0.0 | 0.0 | 0.0 | 24.4 | 0.0 | 0.0 | 0.0 | 0.0 |
| 12 | 0.0 | 0.0 | 0.0 | 0.0 | 0.0 | 23.9 | 0.2 | 0.1 | 0.1 |
| 13 | 0.0 | 0.0 | 0.0 | 0.0 | 24.4 | 0.0 | 0.0 | 0.0 | 0.0 |
| 14 | 0.0 | 0.0 | 0.0 | 0.0 | 0.0 | 23.9 | 0.0 | 0.0 | 0.0 |
| 15 | 0.0 | 0.0 | 0.0 | 0.0 | 24.4 | 0.0 | 0.0 | 0.0 | 0.0 |
| 16 | 0.0 | 0.0 | 0.0 | 0.0 | 24.1 | 0.4 | 0.0 | 0.0 | 0.0 |
| 17 | 0.0 | 0.0 | 0.0 | 0.0 | 15.2 | 8.9 | 0.2 | 0.2 | 0.3 |
| 18 | 0.0 | 0.0 | 0.0 | 0.0 | 10.0 | 14.1 | 0.0 | 0.0 | 0.0 |
| 19 | 0.0 | 0.0 | 0.0 | 0.0 | 13.5 | 10.8 | 0.6 | 0.3 | 0.4 |
| 20 | 0.0 | 0.0 | 0.0 | 0.0 | 24.4 | 0.0 | 0.0 | 0.0 | 0.0 |
| 21 | 0.0 | 0.0 | 0.0 | 0.0 | 0.0 | 23.9 | 0.0 | 0.0 | 0.0 |
| 22 | 0.0 | 0.0 | 0.0 | 0.0 | 24.4 | 0.0 | 0.0 | 0.0 | 0.0 |
| 23 | 0.0 | 0.0 | 0.0 | 0.0 | 6.2 | 16.9 | 0.0 | 0.0 | 0.0 |
| 24 | 0.0 | 1.1 | 0.0 | 0.0 | 22.3 | 2.0 | 0.0 | 0.0 | 0.0 |
| 25 | 0.0 | 0.0 | 0.0 | 0.0 | 23.9 | 0.5 | 0.0 | 0.0 | 0.0 |
| 26 | 1.3 | 0.0 | 0.0 | 0.0 | 0.0 | 23.9 | 0.2 | 0.1 | 0.2 |
| 27 | 0.0 | 0.0 | 0.0 | 0.0 | 24.4 | 0.0 | 0.0 | 0.0 | 0.1 |
| 28 | 0.0 | 0.0 | 0.0 | 0.0 | 0.0 | 23.9 | 0.0 | 0.0 | 0.0 |
| 29 | 0.0 | 0.0 | 0.0 | 0.0 | 24.4 | 0.0 | 0.0 | 0.0 | 0.0 |
| 30 | 0.0 | 0.0 | 0.0 | 0.0 | 0.0 | 23.9 | 0.2 | 0.1 | 0.1 |
| 31 | 0.0 | 0.0 | 0.0 | 0.0 | 24.4 | 0.0 | 0.2 | 0.2 | 0.1 |
| Total | 1.3 | 1.1 | 55.2 | 98.4 | 434.3 | 314.4 | 1.9 | 1.2 | 1.6 |

| |
|--------|
| Notes: |
| |
| |
| |

Runtimes Report

Month: October-17

Daily

| Date | PALL Runtimes | | | | | | Process Drain | |
|-------|----------------------|----------------------|---------------------|---------------------|---------------------|---------------------|-----------------------|-----------------------|
| | RFR Pump #1 (Hrs) | RFR Pump #2 (Hrs) | RF Pump #1 (Hrs) | RF Pump #2 (Hrs) | XR Pump #1 (Hrs) | XR Pump #2 (Hrs) | PDP9010 Pump (Hrs) | PDP9020 Pump (Hrs) |
| 1 | 0.9 | 0.9 | 0.2 | 0.1 | 14.0 | 0.0 | 1.9 | 2.5 |
| 2 | 3.6 | 3.5 | 0.5 | 0.6 | 12.6 | 0.0 | 1.9 | 2.6 |
| 3 | 5.2 | 5.3 | 0.9 | 0.9 | 15.4 | 0.0 | 1.8 | 2.4 |
| 4 | 5.5 | 5.3 | 0.8 | 0.8 | 15.6 | 0.0 | 1.8 | 2.3 |
| 5 | 5.3 | 5.3 | 0.8 | 0.8 | 16.2 | 0.0 | 1.8 | 2.5 |
| 6 | 4.5 | 4.8 | 0.8 | 0.9 | 16.5 | 0.0 | 1.9 | 2.3 |
| 7 | 4.0 | 3.8 | 0.7 | 0.7 | 19.3 | 0.0 | 6.2 | 10.8 |
| 8 | 0.2 | 0.2 | 0.7 | 0.6 | 17.2 | 0.0 | 7.9 | 7.4 |
| 9 | 0.0 | 0.0 | 0.6 | 0.5 | 14.2 | 0.0 | 3.4 | 4.1 |
| 10 | 0.0 | 0.0 | 0.6 | 0.7 | 15.0 | 0.0 | 2.2 | 3.1 |
| 11 | 0.0 | 0.0 | 0.5 | 0.4 | 14.0 | 0.0 | 1.9 | 2.1 |
| 12 | 3.1 | 3.2 | 0.8 | 0.8 | 17.5 | 0.0 | 1.8 | 2.2 |
| 13 | 4.6 | 4.2 | 0.8 | 0.8 | 16.1 | 0.0 | 2.2 | 2.5 |
| 14 | 3.6 | 4.0 | 0.6 | 0.7 | 11.5 | 0.0 | 1.9 | 2.4 |
| 15 | 5.5 | 5.6 | 0.8 | 0.9 | 18.1 | 0.0 | 2.2 | 2.8 |
| 16 | 4.7 | 4.1 | 0.7 | 0.6 | 14.2 | 0.0 | 1.7 | 2.1 |
| 17 | 5.0 | 5.4 | 1.1 | 1.2 | 16.4 | 0.0 | 1.9 | 2.4 |
| 18 | 6.0 | 5.7 | 1.0 | 1.0 | 20.4 | 0.0 | 1.8 | 2.2 |
| 19 | 3.7 | 3.8 | 0.7 | 0.5 | 13.7 | 0.0 | 1.8 | 2.3 |
| 20 | 4.1 | 4.2 | 0.6 | 0.8 | 13.5 | 0.0 | 1.7 | 2.2 |
| 21 | 5.4 | 5.0 | 0.9 | 0.8 | 13.6 | 0.0 | 1.9 | 2.5 |
| 22 | 4.2 | 5.0 | 0.8 | 0.7 | 14.5 | 0.0 | 1.8 | 2.3 |
| 23 | 5.7 | 5.2 | 1.0 | 0.9 | 15.0 | 0.0 | 2.0 | 2.5 |
| 24 | 3.5 | 3.7 | 0.5 | 0.7 | 10.7 | 0.0 | 1.8 | 2.4 |
| 25 | 3.4 | 3.3 | 0.6 | 0.7 | 7.5 | 5.2 | 2.1 | 2.4 |
| 26 | 4.7 | 4.8 | 0.8 | 0.8 | 0.0 | 13.7 | 1.8 | 2.4 |
| 27 | 4.2 | 3.9 | 0.5 | 0.6 | 0.0 | 12.5 | 2.0 | 2.4 |
| 28 | 4.9 | 4.7 | 0.8 | 0.8 | 0.0 | 15.0 | 1.8 | 2.3 |
| 29 | 4.3 | 4.4 | 0.9 | 1.1 | 0.0 | 15.5 | 2.1 | 2.3 |
| 30 | 2.0 | 2.3 | 0.7 | 0.5 | 0.0 | 12.6 | 1.8 | 2.3 |
| 31 | 2.9 | 2.9 | 0.7 | 0.8 | 0.0 | 13.7 | 1.9 | 2.3 |
| Total | 114.3 | 114.1 | 22.4 | 22.7 | 373.3 | 88.3 | 70.8 | 89.3 |

| |
|--------|
| Notes: |
| |
| |
| |

Runtimes Report

Month: October-17

Daily

| Date | Low Lift Pump Motor Runtimes | | | | High Lift Pump Motor Runtimes | | | |
|-------|------------------------------|------------------|------------------|------------------|-------------------------------|------------------|------------------|------------------|
| | LLP1010 (Hrs) | LLP1020 (Hrs) | LLP1030 (Hrs) | LLP1040 (Hrs) | HLP7010 (Hrs) | HLP7020 (Hrs) | HLP7030 (Hrs) | HLP7040 (Hrs) |
| 1 | 5.1 | 5.0 | 5.1 | 5.0 | 0.0 | 11.5 | 0.0 | 0.0 |
| 2 | 7.5 | 5.5 | 4.9 | 1.4 | 2.3 | 8.1 | 0.0 | 0.0 |
| 3 | 3.3 | 7.6 | 4.6 | 5.8 | 10.6 | 3.8 | 0.0 | 0.0 |
| 4 | 4.0 | 5.2 | 5.2 | 7.1 | 11.7 | 3.6 | 0.0 | 0.0 |
| 5 | 8.7 | 6.1 | 4.0 | 3.0 | 12.6 | 0.1 | 0.0 | 0.0 |
| 6 | 8.4 | 4.8 | 1.3 | 5.6 | 11.2 | 2.5 | 0.0 | 0.0 |
| 7 | 6.5 | 5.9 | 5.1 | 4.1 | 11.2 | 3.8 | 0.0 | 0.0 |
| 8 | 5.9 | 8.8 | 3.9 | 3.5 | 11.5 | 3.8 | 0.0 | 0.0 |
| 9 | 1.2 | 3.5 | 10.4 | 8.4 | 10.9 | 1.3 | 0.0 | 0.0 |
| 10 | 4.6 | 6.4 | 6.1 | 6.3 | 9.1 | 4.4 | 0.0 | 0.0 |
| 11 | 4.6 | 5.5 | 4.3 | 3.8 | 4.7 | 5.6 | 0.0 | 0.0 |
| 12 | 5.6 | 5.1 | 7.0 | 5.5 | 7.4 | 6.7 | 0.0 | 0.0 |
| 13 | 4.2 | 6.0 | 3.3 | 5.6 | 1.7 | 11.2 | 0.0 | 0.0 |
| 14 | 5.0 | 4.7 | 3.1 | 3.8 | 1.5 | 8.0 | 0.0 | 0.0 |
| 15 | 5.1 | 8.0 | 3.5 | 7.0 | 7.6 | 5.7 | 0.0 | 0.0 |
| 16 | 1.4 | 7.3 | 5.2 | 5.6 | 11.1 | 0.0 | 0.0 | 0.0 |
| 17 | 9.2 | 3.1 | 5.5 | 5.5 | 10.8 | 1.0 | 0.0 | 0.0 |
| 18 | 8.7 | 6.7 | 5.6 | 5.0 | 14.4 | 2.0 | 0.0 | 0.0 |
| 19 | 1.7 | 5.6 | 5.1 | 2.1 | 11.0 | 0.0 | 0.0 | 0.0 |
| 20 | 3.3 | 2.8 | 3.4 | 4.8 | 11.6 | 0.0 | 0.0 | 0.0 |
| 21 | 4.6 | 6.6 | 4.8 | 2.8 | 12.6 | 0.0 | 0.0 | 0.0 |
| 22 | 1.9 | 5.6 | 5.7 | 2.7 | 9.4 | 5.7 | 0.0 | 0.0 |
| 23 | 4.6 | 2.4 | 9.3 | 3.3 | 12.1 | 2.4 | 0.0 | 0.0 |
| 24 | 2.8 | 5.0 | 3.0 | 1.8 | 11.0 | 0.0 | 0.0 | 0.0 |
| 25 | 2.8 | 2.2 | 3.9 | 6.7 | 2.9 | 10.0 | 0.0 | 0.0 |
| 26 | 5.2 | 1.9 | 6.1 | 2.8 | 0.0 | 13.4 | 0.0 | 0.0 |
| 27 | 5.1 | 4.9 | 2.0 | 1.8 | 0.0 | 13.2 | 0.0 | 0.0 |
| 28 | 2.7 | 4.7 | 5.5 | 3.6 | 0.0 | 14.2 | 0.0 | 0.0 |
| 29 | 6.6 | 6.9 | 0.0 | 4.7 | 10.6 | 4.3 | 0.0 | 0.0 |
| 30 | 3.2 | 5.6 | 1.9 | 4.2 | 13.2 | 0.0 | 0.0 | 0.0 |
| 31 | 3.7 | 3.2 | 6.1 | 3.9 | 12.5 | 0.0 | 0.0 | 0.0 |
| Total | 147.2 | 162.6 | 144.9 | 137.2 | 257.2 | 146.3 | 0.0 | 0.0 |

Notes:

HLP #3 & 4 out of service.

Plant Internal Flow Report

Month: October-17

| Date | Settling Tank Level | | Process Drain Tank | | Settling Tank Flow | | Potable Water Flow | | Non-Potable Flow | |
|---------|---------------------|---------|--------------------|---------|-------------------------------------|--------|-------------------------------------|--------|-------------------------------------|-------|
| | T-9003 (m) | | T-9001 (m) | | FIT_9005 (m ³) (L/s) | | FIT_7082 (m ³) (L/s) | | FIT_7092 (m ³) (L/s) | |
| | Maximum | Minimum | Maximum | Minimum | Total | Peak | Total | Peak | Total | Peak |
| 1 | 2.2 | 0.1 | 0.8 | 0.4 | 54.0 | 15.7 | 7.1 | 5.2 | 0.0 | 0.0 |
| 2 | 2.2 | 0.3 | 1.0 | 0.4 | 156.7 | 15.7 | 20.1 | 7.2 | 0.2 | 2.7 |
| 3 | 2.2 | 0.1 | 0.8 | 0.4 | 246.0 | 15.7 | 6.4 | 4.9 | 0.0 | 0.0 |
| 4 | 2.2 | 0.1 | 0.8 | 0.4 | 251.3 | 15.7 | 9.1 | 5.8 | 5.6 | 23.3 |
| 5 | 2.2 | 0.1 | 1.3 | 0.4 | 200.8 | 15.7 | 10.0 | 7.0 | 24.4 | 18.4 |
| 6 | 2.2 | 0.2 | 1.3 | 0.4 | 208.5 | 15.7 | 11.8 | 5.0 | 0.1 | 1.0 |
| 7 | 2.2 | 0.1 | 1.8 | 0.4 | 382.7 | 15.7 | 28.8 | 7.1 | 0.0 | 0.0 |
| 8 | 2.2 | 0.1 | 2.1 | 0.4 | 416.4 | 15.7 | 14.6 | 6.9 | 0.0 | 0.0 |
| 9 | 2.2 | 0.1 | 2.1 | 0.4 | 482.9 | 15.7 | 30.3 | 6.8 | 0.2 | 1.0 |
| 10 | 2.2 | 0.1 | 1.9 | 0.4 | 456.1 | 15.7 | 10.1 | 5.3 | 0.4 | 1.1 |
| 11 | 2.2 | 0.1 | 1.5 | 0.4 | 322.7 | 15.7 | 0.0 | 1.4 | 0.0 | 0.0 |
| 12 | 2.2 | 0.3 | 1.0 | 0.4 | 261.6 | 15.7 | 0.0 | 1.3 | 12.6 | 17.1 |
| 13 | 2.2 | 0.1 | 2.0 | 0.4 | 197.2 | 15.7 | 0.1 | 1.4 | 0.2 | 1.2 |
| 14 | 2.2 | 0.2 | 0.8 | 0.4 | 178.1 | 15.7 | 0.0 | 0.0 | 0.0 | 0.0 |
| 15 | 2.2 | 0.1 | 2.1 | 0.4 | 173.4 | 15.7 | 0.0 | 1.1 | 0.0 | 0.0 |
| 16 | 2.2 | 0.3 | 0.8 | 0.4 | 78.9 | 15.7 | 0.2 | 1.3 | 0.3 | 1.2 |
| 17 | 2.2 | 0.1 | 2.0 | 0.4 | 134.3 | 15.7 | 0.0 | 1.3 | 13.1 | 22.7 |
| 18 | 2.2 | 0.1 | 0.8 | 0.4 | 164.7 | 15.7 | 0.1 | 1.4 | 5.6 | 23.5 |
| 19 | 2.2 | 0.1 | 1.0 | 0.4 | 177.2 | 15.7 | 0.1 | 1.4 | 37.6 | 17.4 |
| 20 | 2.2 | 0.1 | 0.8 | 0.4 | 126.2 | 15.7 | 0.1 | 1.2 | 0.0 | 0.0 |
| 21 | 2.2 | 0.2 | 1.8 | 0.4 | 161.5 | 15.7 | 0.0 | 0.0 | 0.0 | 0.0 |
| 22 | 2.2 | 0.1 | 0.8 | 0.4 | 178.5 | 15.7 | 0.0 | 1.1 | 0.0 | 0.0 |
| 23 | 2.2 | 0.1 | 2.0 | 0.4 | 201.1 | 15.7 | 0.1 | 1.3 | 0.0 | 0.0 |
| 24 | 2.2 | 0.2 | 1.0 | 0.4 | 73.5 | 15.7 | 0.2 | 1.4 | 0.2 | 0.7 |
| 25 | 2.2 | 0.3 | 1.9 | 0.4 | 140.5 | 15.7 | 0.1 | 1.4 | 0.0 | 0.0 |
| 26 | 2.2 | 0.1 | 1.0 | 0.4 | 102.8 | 15.7 | 0.1 | 1.4 | 13.9 | 22.4 |
| 27 | 2.2 | 0.1 | 2.0 | 0.4 | 111.2 | 15.7 | 0.1 | 1.4 | 5.6 | 22.5 |
| 28 | 2.2 | 0.1 | 0.8 | 0.4 | 56.5 | 15.7 | 0.0 | 0.0 | 0.0 | 0.0 |
| 29 | 2.2 | 0.1 | 1.2 | 0.4 | 124.8 | 15.7 | 0.0 | 0.5 | 0.0 | 0.0 |
| 30 | 2.2 | 0.3 | 0.8 | 0.4 | 132.8 | 15.7 | 0.1 | 1.3 | 12.3 | 17.2 |
| 31 | 2.2 | 0.1 | 1.0 | 0.4 | 142.0 | 15.7 | 0.2 | 1.3 | 11.9 | 16.9 |
| Total | | | | | 6094.8 | | 149.5 | | 144.3 | |
| Average | 2.2 | 0.1 | 1.3 | 0.4 | 196.6 | 15.7 | 4.8 | 2.7 | 4.7 | 6.8 |
| Maximum | 2.2 | | 2.1 | | 482.9 | | 30.3 | | 37.6 | |
| Date | 7-Oct | | 8-Oct | | 9-Oct | | 9-Oct | | 19-Oct | |
| Minimum | | 0.1 | | 0.4 | | 15.7 | | 0.0 | | 0.0 |
| Date | | 20-Oct | | 15-Oct | | 28-Oct | | 14-Oct | | 1-Oct |

| |
|--------|
| Notes: |
| |
| |
| |