

Municipality of West Elgin - Tri County Water System

Goto:

Month:

Year:

Date is Set to:

Limit	Low	High	
Raw Water Chlorine Residual:	0.00	5.00	mg/L
Pre-Strainer Chlorine Residual:	0.00	5.00	mg/L
UV Inlet Chlorine Residual:	0.00	5.00	mg/L
Post Treatment Chlorine Residual:	1.00	5.00	mg/L
Treated Chlorine Residual:	1.00	2.50	mg/L
Distribution Chlorine Residual:	1.00	2.50	mg/L

Limit	High	
Limit	156.0	L/s
WTP Permit to Take Water	13500.0	m <sup>3</sup>

Limit	Low	High	
System Pressure Limits:	50.0	1034.0	Kpa

Compliance Report

Low Lift Monthly Report

>>>

Membranes Monthly Report

>>>

UV System Monthly Report

>>>

Plant Quality Report

>>>

Raw Well/Treated Storage Report

>>>

High Lift Monthly Report

>>>

Operational Report

Low Lift Monthly Report

>>>

High Lift Monthly Report

>>>

Chemical Usage Monthly Report

>>>

Runtimes Report

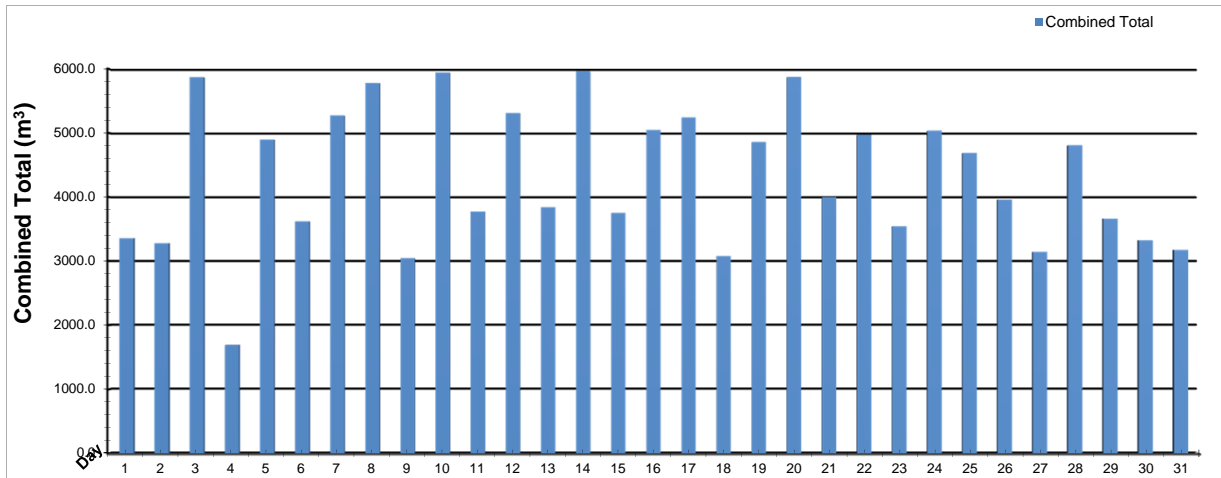
>>>

Plant Internal Flow Report

>>>

# Low Lift Monthly Report

Month: **October-18**

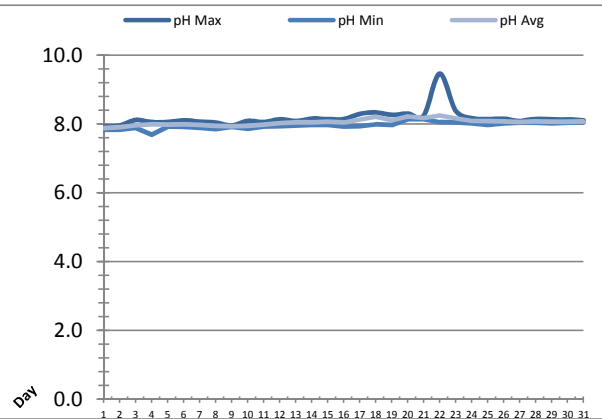
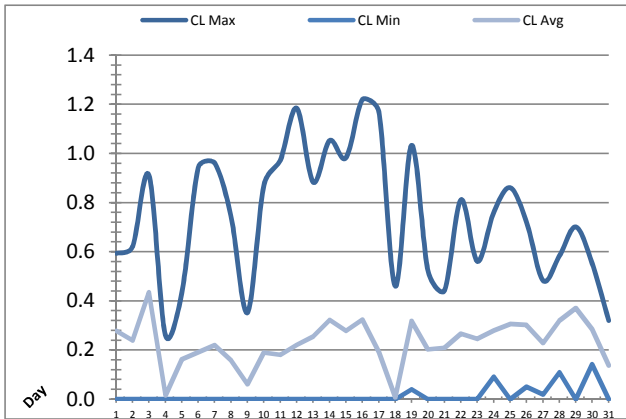


Date	Combined Total (m³)	West Train FIT-1017 (m³)	West Peak Flow FIT-1017 (L/s)	East Train FIT-1027 (m³)	East Peak Flow FIT-1027 (L/s)	Combined Peak Flow (L/s)
1	3355.2	0.0	0.0	3355.2	76.3	76.3
2	3278.6	0.0	0.0	3278.6	77.2	77.2
3	5871.1	0.0	0.0	5871.1	138.2	138.2
4	1686.6	956.5	75.7	730.1	71.3	75.7
5	4898.1	4898.1	136.1	0.0	0.0	136.1
6	3619.7	3619.7	137.2	0.0	0.0	137.2
7	5273.7	5273.7	137.0	0.0	0.0	137.0
8	5779.6	5779.6	137.6	0.0	0.0	137.6
9	3043.3	3043.3	76.0	0.0	0.0	76.0
10	5944.9	5944.9	138.9	0.0	0.0	138.9
11	3774.4	3774.4	78.4	0.0	0.0	78.4
12	5312.4	5312.4	137.3	0.0	0.0	137.3
13	3842.9	3842.9	77.6	0.0	0.0	77.6
14	5965.3	5965.3	136.9	0.0	0.0	136.9
15	3752.7	3752.7	132.9	0.0	0.0	132.9
16	5049.0	5049.0	137.7	0.0	0.0	137.7
17	5243.2	5243.2	138.8	0.0	0.0	138.8
18	3079.2	3079.2	137.7	0.0	0.0	137.7
19	4860.0	4860.0	138.4	0.0	0.0	138.4
20	5875.2	5875.2	137.0	0.0	0.0	137.0
21	3997.7	3997.7	136.9	0.0	0.0	136.9
22	4972.1	4972.1	138.0	0.0	0.0	138.0
23	3543.1	3543.1	83.2	0.0	0.0	83.2
24	5036.9	5036.9	138.0	0.0	0.0	138.0
25	4688.2	4688.2	136.9	0.0	0.0	136.9
26	3961.4	3961.4	138.6	0.0	0.0	138.6
27	3142.3	3142.3	77.8	0.0	0.0	77.8
28	4809.0	4809.0	136.7	0.0	0.0	136.7
29	3661.1	3661.1	77.3	0.0	0.0	77.3
30	3324.7	3324.7	77.9	0.0	0.0	77.9
31	3174.8	3174.8	78.1	0.0	0.0	78.1
<b>Total</b>	<b>133816.5</b>	<b>120581.3</b>		<b>13235.2</b>		
<b>Average</b>	<b>4316.7</b>	<b>3889.7</b>	<b>106.8</b>	<b>426.9</b>	<b>11.7</b>	<b>116.2</b>
<b>Maximum</b>	<b>5965.3</b>	<b>5965.3</b>	<b>138.92</b>	<b>5871.1</b>	<b>138.20</b>	<b>138.92</b>
<b>Date</b>	<b>14-Oct</b>	<b>14-Oct</b>	<b>10-Oct</b>	<b>3-Oct</b>	<b>3-Oct</b>	<b>10-Oct</b>
<b>Minimum</b>	<b>1686.6</b>	<b>0.0</b>	<b>0.00</b>	<b>0.0</b>	<b>0.00</b>	<b>75.66</b>
<b>Date</b>	<b>4-Oct</b>	<b>1-Oct</b>	<b>1-Oct</b>	<b>27-Oct</b>	<b>5-Oct</b>	<b>4-Oct</b>

Notes:


# Low Lift Monthly Report

Month: **October-18**



Date	Raw Water Chlorine Residual			Raw Water pH		
	AIT_1401_CL (mg/L)			AIT_1401_PH		
	Maximum	Minimum	Average	Maximum	Minimum	Average
1	0.59	0.00	0.28	7.92	7.84	7.87
2	0.62	0.00	0.24	7.96	7.83	7.91
3	0.91	0.00	0.44	8.12	7.89	7.96
4	0.26	0.00	0.02	8.06	7.69	7.99
5	0.43	0.00	0.16	8.06	7.92	7.98
6	0.94	0.00	0.19	8.11	7.92	7.99
7	0.96	0.00	0.22	8.07	7.89	7.97
8	0.74	0.00	0.16	8.04	7.85	7.95
9	0.35	0.00	0.06	7.96	7.92	7.94
10	0.87	0.00	0.19	8.09	7.86	7.94
11	0.97	0.00	0.18	8.06	7.92	7.98
12	1.18	0.00	0.22	8.14	7.94	8.03
13	0.88	0.00	0.26	8.09	7.95	8.05
14	1.05	0.00	0.32	8.16	7.97	8.05
15	0.98	0.00	0.28	8.14	7.97	8.07
16	1.22	0.00	0.32	8.14	7.92	8.04
17	1.17	0.00	0.19	8.29	7.94	8.13
18	0.46	0.00	0.01	8.34	7.99	8.21
19	1.03	0.04	0.32	8.27	7.97	8.11
20	0.52	0.00	0.20	8.31	8.14	8.22
21	0.44	0.00	0.21	8.24	8.13	8.17
22	0.81	0.00	0.27	9.47	8.05	8.25
23	0.56	0.00	0.25	8.39	8.04	8.17
24	0.76	0.09	0.28	8.17	8.02	8.09
25	0.86	0.00	0.31	8.14	7.97	8.08
26	0.72	0.05	0.30	8.15	8.02	8.07
27	0.48	0.02	0.23	8.09	8.04	8.06
28	0.58	0.11	0.32	8.15	8.04	8.08
29	0.70	0.00	0.37	8.14	8.02	8.07
30	0.55	0.14	0.29	8.14	8.04	8.07
31	0.32	0.00	0.14	8.11	8.04	8.08
Total						
Average	0.74	0.01	0.23	8.18	7.96	8.05
Maximum	1.22		0.44	9.47		8.25
Date	16-Oct		3-Oct	22-Oct		22-Oct
Minimum		0.00	0.01		7.69	7.87
Date		1-Oct	18-Oct		4-Oct	1-Oct

Notes:

---



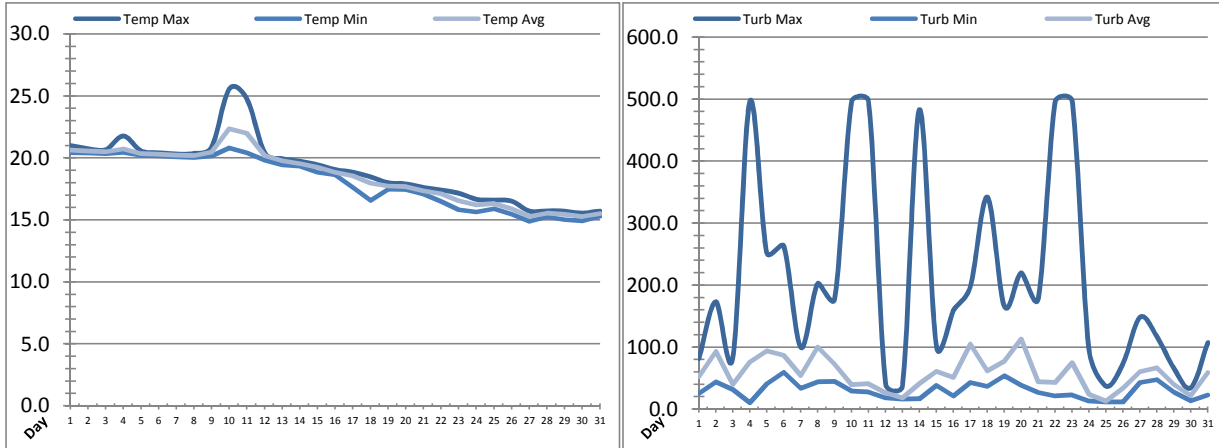
---



---

# Low Lift Monthly Report

Month: October-18



Date	Raw Water Temperature			Raw Water Turbidity		
	TIT_1403 (°C)			AIT_1404 (NTU)		
	Maximum	Minimum	Average	Maximum	Minimum	Average
1	21.0	20.4	20.6	81.89	25.27	52.66
2	20.8	20.4	20.5	173.33	43.88	93.16
3	20.7	20.3	20.5	83.49	31.52	39.87
4	21.8	20.5	20.7	496.35	10.57	76.05
5	20.6	20.2	20.3	252.37	40.76	94.31
6	20.4	20.2	20.3	263.22	59.42	87.10
7	20.3	20.1	20.2	99.68	33.82	54.20
8	20.4	20.0	20.2	202.83	43.86	100.51
9	20.9	20.2	20.5	177.97	44.71	72.63
10	25.6	20.8	22.4	496.45	29.22	39.12
11	24.8	20.4	22.0	496.35	27.68	40.75
12	20.4	19.8	20.2	40.84	18.33	26.25
13	19.9	19.4	19.8	37.70	15.96	18.30
14	19.7	19.3	19.5	483.05	16.70	41.34
15	19.5	18.8	19.3	100.42	38.42	61.09
16	19.1	18.6	18.9	159.33	21.36	51.19
17	18.9	17.6	18.6	198.07	43.08	104.70
18	18.5	16.6	18.0	342.15	36.85	61.80
19	18.0	17.5	17.7	166.31	53.92	77.27
20	17.9	17.5	17.7	219.88	38.40	113.31
21	17.6	17.1	17.4	178.68	26.78	44.16
22	17.4	16.5	17.1	496.20	21.36	42.87
23	17.2	15.8	16.6	496.28	22.91	74.86
24	16.7	15.6	16.2	93.44	12.84	23.89
25	16.6	15.9	16.3	36.90	11.27	12.89
26	16.5	15.5	15.9	74.11	11.27	33.49
27	15.7	14.9	15.3	148.44	43.05	60.36
28	15.7	15.3	15.5	116.71	47.71	66.64
29	15.7	15.0	15.4	65.58	27.59	39.62
30	15.6	14.9	15.3	34.59	13.59	21.75
31	15.7	15.3	15.5	107.46	22.93	59.03
Total						
Average	19.0	18.1	18.5	207.1	30.2	57.6
Maximum	25.6		22.4	496.5		113.3
Date	10-Oct		10-Oct	10-Oct		20-Oct
Minimum		14.9	15.3		10.6	12.9
Date		27-Oct	30-Oct		4-Oct	25-Oct

Notes:

---



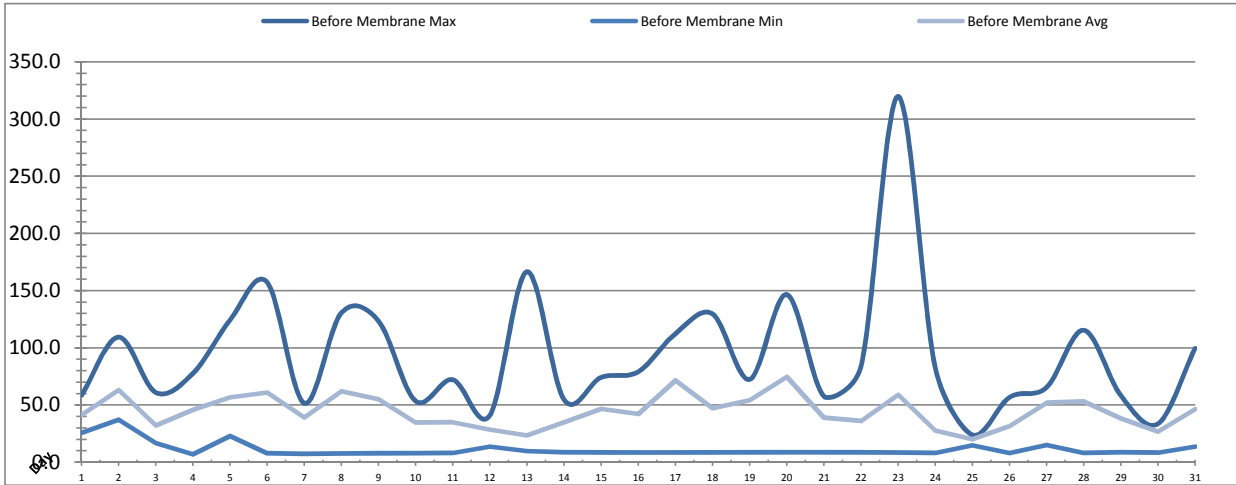
---



---

# Membranes Monthly Report

Month: **October-18**



Date	Turbidity Before Membrane			Rack #1 Turbidity			Rack #2 Turbidity		
	PALL_FEED_AIT2006_Value NTU			RACK1_NTU_Value NTU			RACK2_NTU_Value NTU		
	Maximum	Minimum	Average	Maximum	Minimum	Average	Maximum	Minimum	Average
1	58.53	25.63	41.28	0.02	0.02	0.02	0.02	0.02	0.02
2	109.43	37.35	63.30	0.02	0.02	0.02	0.04	0.02	0.02
3	61.08	16.76	32.18	0.02	0.02	0.02	0.25	0.02	0.02
4	77.57	7.04	46.00	0.02	0.02	0.02	0.21	0.02	0.02
5	124.29	22.94	56.89	0.02	0.02	0.02	0.03	0.02	0.02
6	157.50	7.89	61.05	0.02	0.02	0.02	0.24	0.02	0.02
7	51.66	7.36	39.15	0.02	0.02	0.02	0.22	0.02	0.02
8	130.53	7.63	62.01	0.02	0.02	0.02	0.09	0.02	0.02
9	123.54	7.87	55.13	0.03	0.02	0.02	0.14	0.02	0.02
10	53.60	7.99	34.61	0.02	0.02	0.02	0.26	0.02	0.02
11	72.27	8.18	34.89	0.03	0.02	0.02	0.08	0.02	0.02
12	41.00	13.68	28.53	0.02	0.02	0.02	0.06	0.02	0.02
13	166.61	9.67	23.42	0.02	0.02	0.02	0.21	0.02	0.02
14	54.86	8.69	35.02	0.02	0.02	0.02	0.30	0.02	0.02
15	74.25	8.52	46.66	0.02	0.02	0.02	0.19	0.02	0.02
16	79.18	8.52	42.16	0.02	0.02	0.02	0.04	0.02	0.02
17	112.43	8.61	71.70	0.02	0.02	0.02	0.20	0.02	0.02
18	129.71	8.79	47.24	0.03	0.02	0.02	0.03	0.02	0.02
19	72.45	8.38	54.39	0.02	0.02	0.02	0.06	0.02	0.02
20	146.65	8.75	74.68	0.03	0.02	0.02	0.21	0.02	0.02
21	57.69	8.56	39.00	0.02	0.02	0.02	0.17	0.02	0.02
22	83.85	8.73	36.23	0.08	0.02	0.02	0.03	0.02	0.02
23	319.83	8.38	59.01	0.02	0.02	0.02	0.03	0.02	0.02
24	82.87	8.20	27.81	0.02	0.02	0.02	0.17	0.02	0.02
25	23.94	14.76	20.24	0.02	0.02	0.02	0.04	0.02	0.02
26	56.80	8.12	31.73	0.02	0.02	0.02	0.02	0.02	0.02
27	65.48	15.13	52.04	0.02	0.02	0.02	0.20	0.02	0.02
28	115.49	8.18	53.26	0.02	0.02	0.02	0.12	0.02	0.02
29	58.33	8.57	38.29	0.07	0.02	0.02	0.07	0.02	0.02
30	33.76	8.54	26.80	0.02	0.02	0.02	0.24	0.02	0.02
31	99.56	13.72	46.36	0.02	0.02	0.02	0.17	0.02	0.02
Total									
Average	93.4	11.3	44.6	0.02	0.02	0.02	0.13	0.02	0.02
Maximum	319.8		74.7	0.08		0.02	0.30		0.02
Date	23-Oct		20-Oct	22-Oct		12-Oct	14-Oct		9-Oct
Minimum		7.0	20.2		0.02	0.02		0.02	0.02
Date		4-Oct	25-Oct		16-Oct	25-Oct		1-Oct	1-Oct

Notes:

---



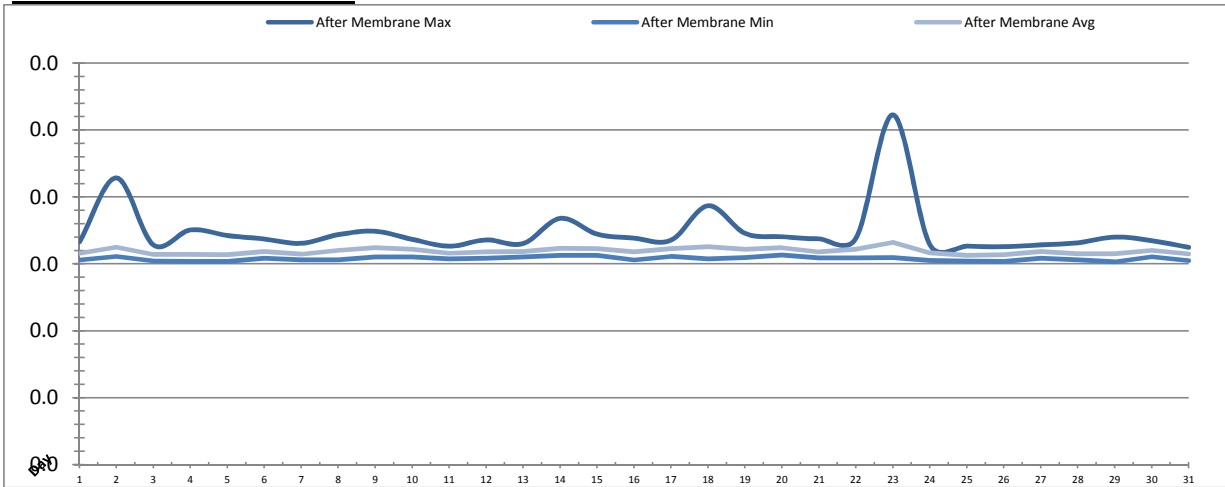
---



---

# Membranes Monthly Report

Month: **October-18**

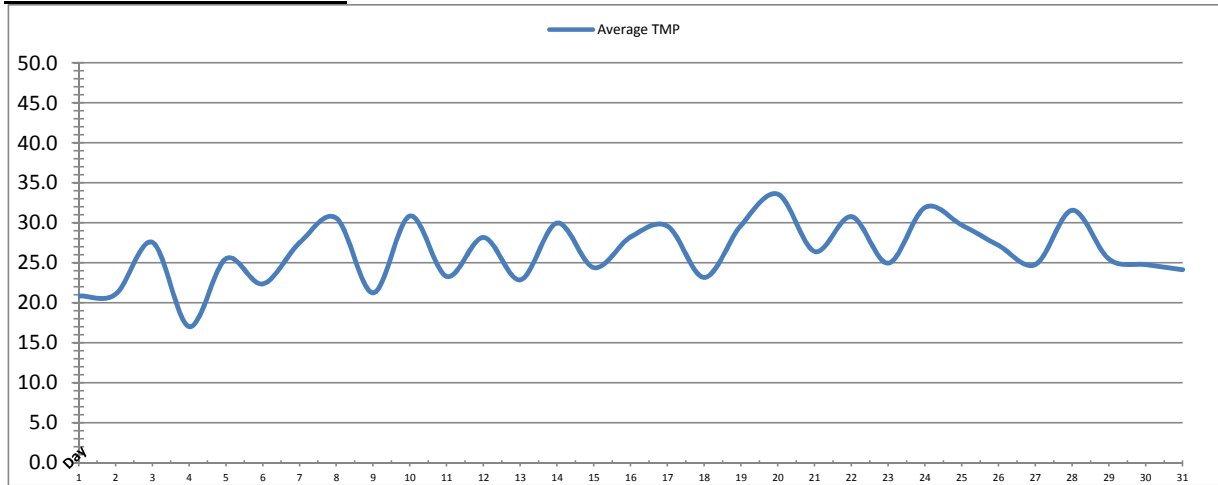


Date	Rack #3 Turbidity			Rack #4 Turbidity			Turbidity After Membranes		
	RACK3_NTU_Value			RACK4_NTU_Value			PALL_FILT_AIT5001_Value		
	Maximum	Minimum	Average	Maximum	Minimum	Average	Maximum	Minimum	Average
1	0.02	0.02	0.02	0.03	0.02	0.03	0.02	0.02	0.02
2	0.03	0.02	0.02	0.03	0.02	0.03	0.02	0.02	0.02
3	0.02	0.02	0.02	0.03	0.02	0.03	0.02	0.02	0.02
4	0.02	0.02	0.02	0.03	0.02	0.03	0.02	0.02	0.02
5	0.02	0.02	0.02	0.06	0.02	0.03	0.02	0.02	0.02
6	0.02	0.02	0.02	0.07	0.02	0.03	0.02	0.02	0.02
7	0.02	0.02	0.02	0.06	0.02	0.03	0.02	0.02	0.02
8	0.02	0.02	0.02	0.08	0.02	0.03	0.02	0.02	0.02
9	0.02	0.02	0.02	0.07	0.02	0.03	0.02	0.02	0.02
10	0.07	0.02	0.02	0.08	0.02	0.03	0.02	0.02	0.02
11	0.02	0.02	0.02	0.06	0.02	0.03	0.02	0.02	0.02
12	0.02	0.02	0.02	0.06	0.02	0.03	0.02	0.02	0.02
13	0.02	0.02	0.02	0.05	0.02	0.02	0.02	0.02	0.02
14	0.02	0.02	0.02	0.06	0.02	0.03	0.02	0.02	0.02
15	0.03	0.02	0.02	0.05	0.02	0.03	0.02	0.02	0.02
16	0.02	0.02	0.02	0.06	0.02	0.03	0.02	0.02	0.02
17	0.02	0.02	0.02	0.07	0.02	0.03	0.02	0.02	0.02
18	0.02	0.02	0.02	0.04	0.02	0.03	0.02	0.02	0.02
19	0.02	0.02	0.02	0.06	0.02	0.03	0.02	0.02	0.02
20	0.03	0.02	0.02	0.04	0.02	0.03	0.02	0.02	0.02
21	0.02	0.02	0.02	0.04	0.02	0.03	0.02	0.02	0.02
22	0.04	0.02	0.02	0.05	0.02	0.03	0.02	0.02	0.02
23	0.02	0.02	0.02	0.03	0.02	0.03	0.03	0.02	0.02
24	0.02	0.02	0.02	0.04	0.02	0.03	0.02	0.02	0.02
25	0.02	0.01	0.01	0.04	0.02	0.03	0.02	0.02	0.02
26	0.02	0.01	0.02	0.04	0.02	0.03	0.02	0.02	0.02
27	0.02	0.02	0.02	0.04	0.02	0.03	0.02	0.02	0.02
28	0.02	0.02	0.02	0.03	0.02	0.03	0.02	0.02	0.02
29	0.02	0.02	0.02	0.05	0.02	0.03	0.02	0.02	0.02
30	0.05	0.02	0.02	0.05	0.02	0.03	0.02	0.02	0.02
31	0.02	0.02	0.02	0.04	0.02	0.03	0.02	0.02	0.02
Total									
Average	0.02	0.02	0.02	0.05	0.02	0.03	0.02	0.02	0.02
Maximum	0.07		0.02	0.08		0.03	0.03		0.02
Date	10-Oct		15-Oct	10-Oct		6-Oct	23-Oct		23-Oct
Minimum		0.01	0.01		0.02	0.02		0.02	0.02
Date		25-Oct	25-Oct		1-Oct	13-Oct		29-Oct	25-Oct

Notes:

# Membranes Monthly Report

Month: **October-18**



Date	Integrity Test Rack 1							
	Initial Pressure (kPa)	Final Pressure (kPa)	Test Duration (sec)	Change in Pressure (kPa)	UCL	Within UCL	Average TMP (kPa)	Max TMP (kPa)
1	199.2	198.1	300.0	1.1	2.0	✓ 2.0	20.9	41.2
2	198.7	197.6	300.0	1.1	2.0	✓ 2.0	21.1	92.3
3	199.4	198.2	300.0	1.2	2.0	✓ 2.0	27.6	75.6
4	199.0	197.8	300.0	1.2	2.0	✓ 2.0	17.0	42.4
5	198.5	197.4	300.0	1.1	2.0	✓ 2.0	25.5	75.5
6	199.5	198.3	300.0	1.2	2.0	✓ 2.0	22.4	77.2
7	198.9	197.7	300.0	1.2	2.0	✓ 2.0	27.5	78.0
8	199.0	197.8	300.0	1.2	2.0	✓ 2.0	30.6	89.5
9	199.2	198.0	300.0	1.2	2.0	✓ 2.0	21.3	46.8
10	198.9	197.7	300.0	1.2	2.0	✓ 2.0	30.9	155.1
11	198.7	197.6	300.0	1.1	2.0	✓ 2.0	23.3	91.2
12	199.0	197.9	300.0	1.1	2.0	✓ 2.0	28.2	75.8
13	199.1	198.0	300.0	1.1	2.0	✓ 2.0	22.9	48.3
14	198.7	197.6	300.0	1.1	2.0	✓ 2.0	30.0	81.9
15	199.1	197.9	300.0	1.2	2.0	✓ 2.0	24.4	98.7
16	199.0	197.9	300.0	1.2	2.0	✓ 2.0	28.3	93.8
17	199.0	197.7	300.0	1.3	2.0	✓ 2.0	29.6	89.4
18	199.1	197.9	300.0	1.1	2.0	✓ 2.0	23.2	91.1
19	199.2	198.0	300.0	1.3	2.0	✓ 2.0	29.7	95.1
20	199.1	198.0	300.0	1.1	2.0	✓ 2.0	33.6	105.4
21	199.5	198.4	300.0	1.2	2.0	✓ 2.0	26.4	91.9
22	198.9	197.8	300.0	1.2	2.0	✓ 2.0	30.8	99.0
23	199.9	198.7	300.0	1.2	2.0	✓ 2.0	25.0	53.4
24	199.4	198.2	300.0	1.2	2.0	✓ 2.0	31.9	96.0
25	199.1	197.9	300.0	1.2	2.0	✓ 2.0	29.7	94.6
26	199.0	197.8	300.0	1.2	2.0	✓ 2.0	27.2	94.1
27	199.2	198.1	300.0	1.1	2.0	✓ 2.0	24.8	56.9
28	199.0	197.8	300.0	1.2	2.0	✓ 2.0	31.6	113.2
29	199.2	198.1	300.0	1.1	2.0	✓ 2.0	25.5	57.2
30	199.6	198.4	300.0	1.2	2.0	✓ 2.0	24.8	53.8
31	199.6	198.4	300.0	1.3	2.0	✓ 2.0	24.2	55.4
Total								
Average	199.1	198.0	300.0	1.2	2.0	2.0	26.4	81.0
Maximum	199.9	198.7	300.0	1.3	2.0	2.0	33.6	155.1
Date	23-Oct	23-Oct	1-Oct	17-Oct	1-Oct	1-Oct	20-Oct	10-Oct
Minimum	198.5	197.4	300.0	1.1	2.0	2.0	17.0	41.2
Date	5-Oct	5-Oct	1-Oct	5-Oct	1-Oct	1-Oct	4-Oct	1-Oct

Notes:

---



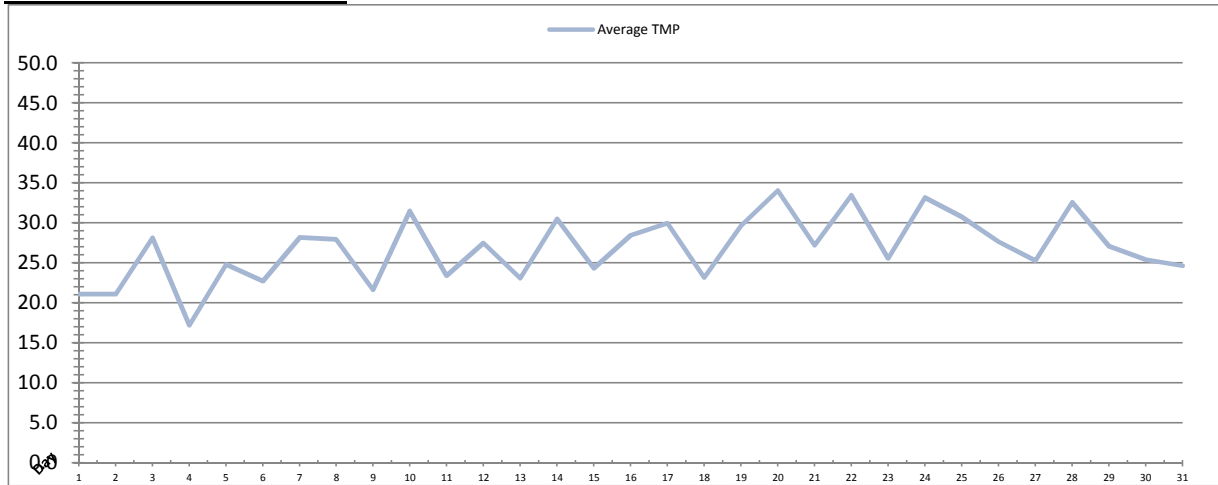
---



---

# Membranes Monthly Report

Month: **October-18**



Date	Integrity Test Rack 2							
	Initial Pressure (kPa)	Final Pressure (kPa)	Test Duration (sec)	Change in Pressure (kPa)	UCL	Within UCL	Average TMP (kPa)	Max TMP (kPa)
1	208.1	206.9	300.0	1.2	2.0	✓ 2.0	21.1	41.7
2	207.8	206.8	300.0	1.0	2.0	✓ 2.0	21.1	58.5
3	208.2	207.0	300.0	1.1	2.0	✓ 2.0	28.1	78.6
4	208.3	207.1	300.0	1.1	2.0	✓ 2.0	17.2	45.5
5	208.2	207.1	300.0	1.1	2.0	✓ 2.0	24.8	79.6
6	208.1	206.9	300.0	1.2	2.0	✓ 2.0	22.7	73.6
7	208.5	207.4	300.0	1.1	2.0	✓ 2.0	28.2	76.0
8	207.5	206.4	300.0	1.1	2.0	✓ 2.0	27.9	80.0
9	208.6	207.5	300.0	1.1	2.0	✓ 2.0	21.6	48.6
10	208.3	207.2	300.0	1.1	2.0	✓ 2.0	31.5	83.0
11	208.2	207.0	300.0	1.2	2.0	✓ 2.0	23.4	47.0
12	208.4	207.2	300.0	1.1	2.0	✓ 2.0	27.5	78.4
13	208.6	207.5	300.0	1.1	2.0	✓ 2.0	23.1	45.0
14	208.5	207.5	300.0	1.1	2.0	✓ 2.0	30.5	81.6
15	208.9	207.8	300.0	1.1	2.0	✓ 2.0	24.3	115.7
16	207.8	206.8	300.0	1.0	2.0	✓ 2.0	28.5	88.4
17	208.9	207.7	300.0	1.2	2.0	✓ 2.0	30.0	88.6
18	208.6	207.5	300.0	1.1	2.0	✓ 2.0	23.2	131.4
19	208.4	207.3	300.0	1.1	2.0	✓ 2.0	29.6	90.0
20	208.9	207.8	300.0	1.1	2.0	✓ 2.0	34.0	90.3
21	208.7	207.6	300.0	1.1	2.0	✓ 2.0	27.2	92.8
22	209.1	208.0	300.0	1.1	2.0	✓ 2.0	33.5	179.2
23	208.8	207.6	300.0	1.1	2.0	✓ 2.0	25.6	55.5
24	208.9	207.8	300.0	1.1	2.0	✓ 2.0	33.2	186.8
25	208.8	207.7	300.0	1.1	2.0	✓ 2.0	30.8	99.1
26	208.9	207.7	300.0	1.1	2.0	✓ 2.0	27.6	183.5
27	208.8	207.7	300.0	1.1	2.0	✓ 2.0	25.3	62.9
28	208.2	206.9	300.0	1.2	2.0	✓ 2.0	32.6	140.9
29	209.1	207.9	300.0	1.2	2.0	✓ 2.0	27.1	97.2
30	208.2	207.1	300.0	1.1	2.0	✓ 2.0	25.4	95.1
31	208.6	207.4	300.0	1.3	2.0	✓ 2.0	24.6	56.4
<b>Total</b>								
<b>Average</b>	208.5	207.4	300.0	1.1	2.0	2.0	26.8	89.4
<b>Maximum</b>	209.1	208.0	300.0	1.3	2.0	2.0	34.0	186.8
<b>Date</b>	22-Oct	22-Oct	1-Oct	31-Oct	1-Oct	1-Oct	20-Oct	24-Oct
<b>Minimum</b>	207.5	206.4	300.0	1.0	2.0	2.0	17.2	41.7
<b>Date</b>	8-Oct	8-Oct	1-Oct	2-Oct	1-Oct	1-Oct	4-Oct	1-Oct

Notes:

---



---

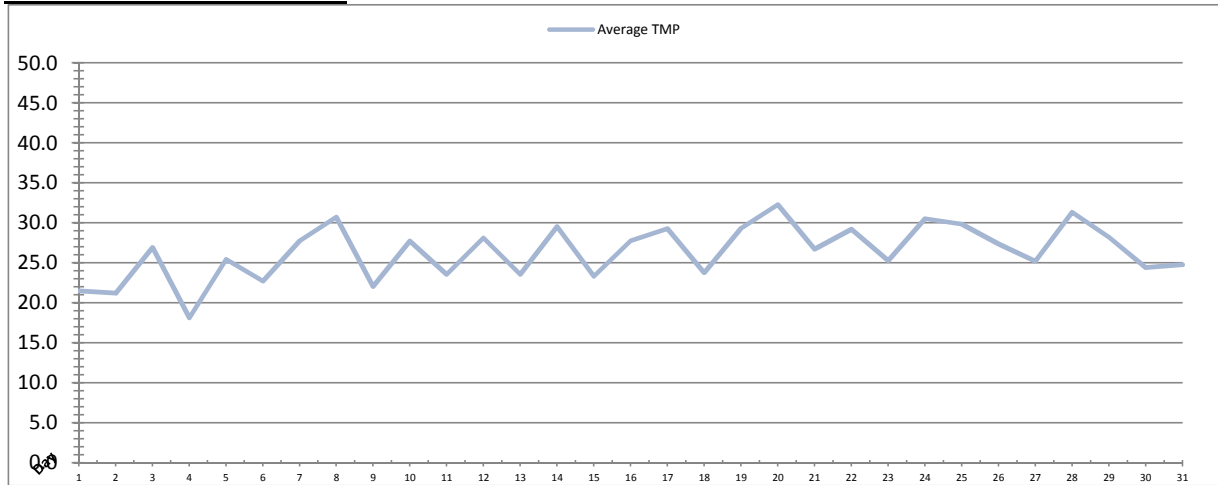


---



# Membranes Monthly Report

Month: **October-18**



Date	Integrity Test Rack 3							
	Initial Pressure (kPa)	Final Pressure (kPa)	Test Duration (sec)	Change in Pressure (kPa)	UCL	Within UCL	Average TMP (kPa)	Max TMP (kPa)
1	178.1	176.9	300.0	1.2	2.0	✓ 2.0	21.5	66.3
2	178.6	177.6	300.0	1.1	2.0	✓ 2.0	21.2	48.6
3	178.0	176.9	300.0	1.1	2.0	✓ 2.0	26.9	67.9
4	178.0	176.9	300.0	1.1	2.0	✓ 2.0	18.1	46.8
5	178.0	176.9	300.0	1.1	2.0	✓ 2.0	25.4	70.4
6	178.6	177.4	300.0	1.1	2.0	✓ 2.0	22.7	72.8
7	177.3	176.2	300.0	1.1	2.0	✓ 2.0	27.8	74.5
8	177.8	176.7	300.0	1.1	2.0	✓ 2.0	30.7	78.4
9	177.8	176.7	300.0	1.1	2.0	✓ 2.0	22.1	44.5
10	178.1	177.0	300.0	1.1	2.0	✓ 2.0	27.7	75.3
11	177.3	176.3	300.0	1.0	2.0	✓ 2.0	23.6	44.1
12	177.6	176.5	300.0	1.1	2.0	✓ 2.0	28.1	84.5
13	177.6	176.5	300.0	1.1	2.0	✓ 2.0	23.5	44.3
14	178.1	177.1	300.0	1.1	2.0	✓ 2.0	29.5	75.8
15	177.2	176.1	300.0	1.1	2.0	✓ 2.0	23.3	81.4
16	177.4	176.3	300.0	1.1	2.0	✓ 2.0	27.8	80.1
17	176.8	175.7	300.0	1.1	2.0	✓ 2.0	29.3	81.5
18	177.5	176.4	300.0	1.1	2.0	✓ 2.0	23.8	109.8
19	176.9	175.8	300.0	1.1	2.0	✓ 2.0	29.3	85.8
20	177.4	176.3	300.0	1.1	2.0	✓ 2.0	32.3	86.4
21	177.2	176.3	300.0	0.9	2.0	✓ 2.0	26.7	88.1
22	177.0	176.0	300.0	1.1	2.0	✓ 2.0	29.2	93.7
23	177.2	176.1	300.0	1.1	2.0	✓ 2.0	25.3	85.7
24	177.1	176.0	300.0	1.2	2.0	✓ 2.0	30.5	89.2
25	176.8	175.7	300.0	1.0	2.0	✓ 2.0	29.9	89.9
26	176.8	175.7	300.0	1.1	2.0	✓ 2.0	27.4	88.7
27	176.6	175.5	300.0	1.1	2.0	✓ 2.0	25.2	55.6
28	176.2	175.0	300.0	1.1	2.0	✓ 2.0	31.3	159.1
29	176.5	175.4	300.0	1.1	2.0	✓ 2.0	28.2	98.5
30	176.2	175.2	300.0	1.1	2.0	✓ 2.0	24.4	53.7
31	176.5	175.3	300.0	1.1	2.0	✓ 2.0	24.8	82.0
Total								
Average	177.4	176.3	300.0	1.1	2.0	2.0	26.4	77.5
Maximum	178.6	177.6	300.0	1.2	2.0	2.0	32.3	159.1
Date	2-Oct	2-Oct	1-Oct	1-Oct	1-Oct	1-Oct	20-Oct	28-Oct
Minimum	176.2	175.0	300.0	0.9	2.0	2.0	18.1	44.1
Date	28-Oct	28-Oct	1-Oct	21-Oct	1-Oct	1-Oct	4-Oct	11-Oct

Notes:

---



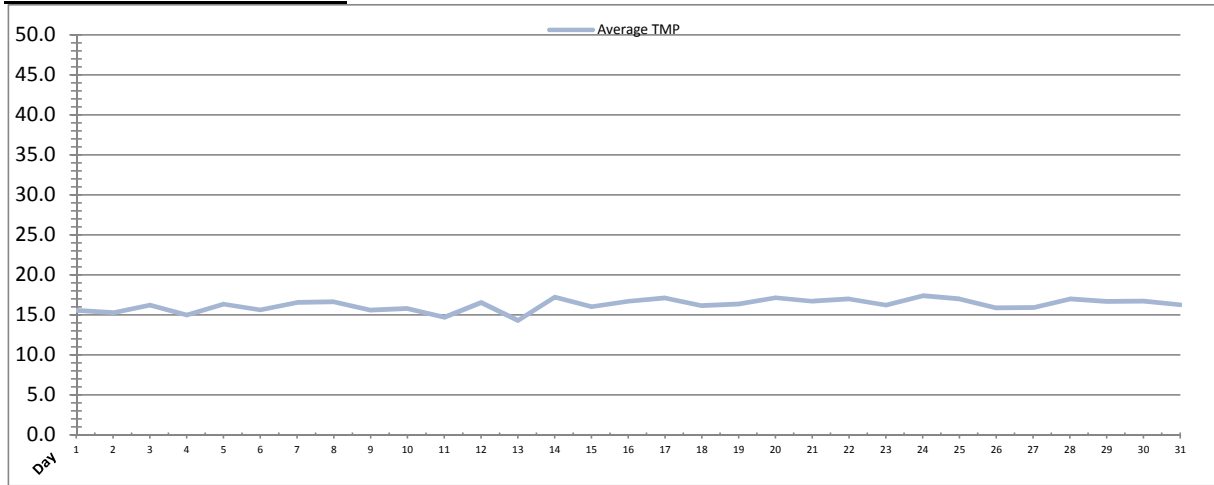
---



---

# Membranes Monthly Report

Month: **October-18**



Date	Integrity Test Rack 4							
	Initial Pressure (kPa)	Final Pressure (kPa)	Test Duration (sec)	Change in Pressure (kPa)	UCL	Within UCL	Average TMP (kPa)	Max TMP (kPa)
1	200.5	199.3	300.0	1.2	2.0	✓ 2.0	15.6	30.3
2	200.8	199.7	300.0	1.2	2.0	✓ 2.0	15.3	49.6
3	201.3	200.1	300.0	1.3	2.0	✓ 2.0	16.3	31.3
4	200.8	199.5	300.0	1.4	2.0	✓ 2.0	15.0	44.8
5	201.3	200.1	300.0	1.2	2.0	✓ 2.0	16.4	30.4
6	201.1	199.7	300.0	1.5	2.0	✓ 2.0	15.6	32.8
7	200.9	199.7	300.0	1.2	2.0	✓ 2.0	16.6	35.4
8	200.8	199.7	300.0	1.2	2.0	✓ 2.0	16.6	50.6
9	201.4	200.0	300.0	1.5	2.0	✓ 2.0	15.6	30.5
10	201.2	199.8	300.0	1.4	2.0	✓ 2.0	15.8	34.2
11	201.3	200.0	300.0	1.3	2.0	✓ 2.0	14.7	33.6
12	201.1	199.7	300.0	1.3	2.0	✓ 2.0	16.6	35.6
13	200.5	199.2	300.0	1.2	2.0	✓ 2.0	14.3	30.3
14	200.7	199.3	300.0	1.3	2.0	✓ 2.0	17.2	44.7
15	200.9	199.6	300.0	1.3	2.0	✓ 2.0	16.0	41.4
16	201.3	200.1	300.0	1.2	2.0	✓ 2.0	16.7	44.8
17	201.4	200.1	300.0	1.3	2.0	✓ 2.0	17.1	36.2
18	201.3	200.0	300.0	1.3	2.0	✓ 2.0	16.2	35.9
19	201.4	200.2	300.0	1.2	2.0	✓ 2.0	16.4	31.0
20	200.7	199.3	300.0	1.3	2.0	✓ 2.0	17.2	42.2
21	200.9	199.6	300.0	1.3	2.0	✓ 2.0	16.7	42.3
22	201.3	200.0	300.0	1.3	2.0	✓ 2.0	17.0	46.6
23	201.8	200.4	300.0	1.4	2.0	✓ 2.0	16.3	32.8
24	201.3	200.1	300.0	1.2	2.0	✓ 2.0	17.4	43.1
25	201.3	200.1	300.0	1.3	2.0	✓ 2.0	17.0	34.5
26	201.4	200.0	300.0	1.4	2.0	✓ 2.0	15.9	36.8
27	201.6	200.3	300.0	1.3	2.0	✓ 2.0	15.9	50.2
28	200.9	199.6	300.0	1.3	2.0	✓ 2.0	17.0	34.7
29	201.0	199.7	300.0	1.3	2.0	✓ 2.0	16.7	64.3
30	201.4	200.1	300.0	1.3	2.0	✓ 2.0	16.7	49.9
31	201.3	199.9	300.0	1.4	2.0	✓ 2.0	16.3	35.7
Total								
Average	201.1	199.8	300.0	1.3	2.0	2.0	16.3	39.2
Maximum	201.8	200.4	300.0	1.5	2.0	2.0	17.4	64.3
Date	23-Oct	23-Oct	1-Oct	6-Oct	1-Oct	1-Oct	24-Oct	29-Oct
Minimum	200.5	199.2	300.0	1.2	2.0	2.0	14.3	30.3
Date	13-Oct	13-Oct	1-Oct	2-Oct	1-Oct	1-Oct	13-Oct	1-Oct

Notes:

---



---



---

# Membranes Monthly Report

Month: October-18

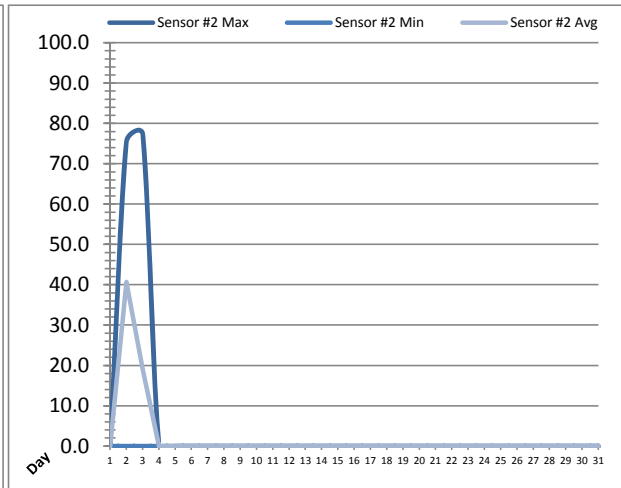
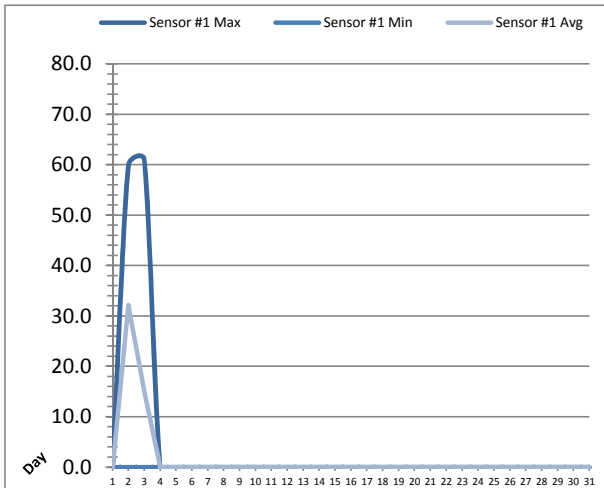
Date	Membranes Monthly Performance							
	Rack 1 >0.1 NTU (Minutes)	Rack 1 Forward Flow (Minutes)	Rack 2 >0.1 NTU (Minutes)	Rack 2 Forward Flow (Minutes)	Rack 3 >0.1 NTU (Minutes)	Rack 3 Forward Flow (Minutes)	Rack 4 >0.1 NTU (Minutes)	Rack 4 Forward Flow (Minutes)
1	0.0	764.1	0.0	770.5	0.0	764.1	0.0	363.0
2	0.0	751.6	0.0	752.5	0.0	729.6	0.0	390.6
3	0.0	1220.3	0.5	1235.5	0.0	1215.3	0.0	638.1
4	0.0	388.2	1.4	395.0	0.0	389.6	0.0	195.5
5	0.0	1064.2	0.0	1005.3	0.0	1066.5	0.0	567.2
6	0.0	751.5	2.3	759.2	0.0	748.4	0.0	429.3
7	0.0	995.0	1.4	1014.4	0.0	997.2	0.0	537.1
8	0.0	1160.1	0.0	1015.0	0.0	1162.4	0.0	582.2
9	0.0	701.5	1.4	713.1	0.0	699.2	0.0	332.0
10	0.0	1159.2	1.4	1179.4	0.0	1059.4	0.0	439.5
11	0.0	860.6	0.0	867.3	0.0	851.1	0.0	235.5
12	0.0	995.6	0.0	962.3	0.0	996.5	0.0	554.1
13	0.0	866.5	1.4	877.3	0.0	861.1	0.0	412.1
14	0.0	1155.5	2.3	1178.5	0.0	1149.2	0.0	624.3
15	0.0	834.2	1.4	833.3	0.0	751.5	0.0	405.3
16	0.0	987.4	0.0	997.2	0.0	982.4	0.0	516.6
17	0.0	1029.4	1.4	1050.0	0.0	1025.4	0.0	541.6
18	0.0	601.3	0.0	607.2	0.0	603.2	0.0	313.4
19	0.0	908.5	0.0	894.1	0.0	901.4	0.0	462.6
20	0.0	1153.3	1.4	1174.4	0.0	1148.4	0.0	648.3
21	0.0	860.0	0.5	878.5	0.0	862.3	0.0	428.4
22	0.0	956.1	0.0	1010.0	0.0	905.4	0.0	547.2
23	0.0	800.2	0.0	810.6	0.0	801.6	0.0	404.4
24	0.0	959.1	1.4	976.3	0.0	955.6	0.0	523.1
25	0.0	912.4	0.0	925.3	0.0	911.6	0.0	500.1
26	0.0	859.1	0.0	863.2	0.0	859.1	0.0	432.2
27	0.0	710.5	2.3	724.4	0.0	707.3	0.0	362.5
28	0.0	1022.5	1.4	1041.3	0.0	1016.2	0.0	510.2
29	0.0	760.0	0.0	803.2	0.0	835.6	0.0	381.2
30	0.0	748.3	2.3	763.1	0.0	699.3	0.0	370.3
31	0.0	722.5	0.5	727.4	0.0	720.2	0.0	357.1
<b>Total</b>	0.0	27658.7	24.4	27805.1	0.0	27376.0	0.0	14004.6
<b>Percent</b>	0.00		0.09		0.00		0.00	
<b>Maximum</b>	0.0	1220.3	2.3	1235.5	0.0	1215.3	0.0	648.3
<b>Date</b>	1-Oct	3-Oct	6-Oct	3-Oct	1-Oct	3-Oct	1-Oct	20-Oct
<b>Minimum</b>	0.0	388.2	0.0	395.0	0.0	389.6	0.0	195.5
<b>Date</b>	1-Oct	4-Oct	1-Oct	4-Oct	1-Oct	4-Oct	1-Oct	4-Oct

Notes:

Met filter performance criteria of greater than 99% of the readings below 0.1ntu for the month.

# UV System Monthly Report

Month: **October-18**



Date	UV Reactor 1					
	Intensity Sensor 1 (mW/cm <sup>2</sup> )			Intensity Sensor 2 (mW/cm <sup>2</sup> )		
	Maximum	Minimum	Average	Maximum	Minimum	Average
1	0.0	0.0	0.0	0.0	0.0	0.0
2	59.9	0.0	32.1	75.5	0.0	40.7
3	61.0	0.0	15.0	77.4	0.0	19.0
4	0.0	0.0	0.0	0.0	0.0	0.0
5	0.0	0.0	0.0	0.0	0.0	0.0
6	0.0	0.0	0.0	0.0	0.0	0.0
7	0.0	0.0	0.0	0.0	0.0	0.0
8	0.0	0.0	0.0	0.0	0.0	0.0
9	0.0	0.0	0.0	0.0	0.0	0.0
10	0.0	0.0	0.0	0.0	0.0	0.0
11	0.0	0.0	0.0	0.0	0.0	0.0
12	0.0	0.0	0.0	0.0	0.0	0.0
13	0.0	0.0	0.0	0.0	0.0	0.0
14	0.0	0.0	0.0	0.0	0.0	0.0
15	0.0	0.0	0.0	0.0	0.0	0.0
16	0.0	0.0	0.0	0.0	0.0	0.0
17	0.0	0.0	0.0	0.0	0.0	0.0
18	0.0	0.0	0.0	0.0	0.0	0.0
19	0.0	0.0	0.0	0.0	0.0	0.0
20	0.0	0.0	0.0	0.0	0.0	0.0
21	0.0	0.0	0.0	0.0	0.0	0.0
22	0.0	0.0	0.0	0.0	0.0	0.0
23	0.0	0.0	0.0	0.0	0.0	0.0
24	0.0	0.0	0.0	0.0	0.0	0.0
25	0.0	0.0	0.0	0.0	0.0	0.0
26	0.0	0.0	0.0	0.0	0.0	0.0
27	0.0	0.0	0.0	0.0	0.0	0.0
28	0.0	0.0	0.0	0.0	0.0	0.0
29	0.0	0.0	0.0	0.0	0.0	0.0
30	0.0	0.0	0.0	0.0	0.0	0.0
31	0.0	0.0	0.0	0.0	0.0	0.0
<b>Total</b>						
<b>Average</b>	3.9	0.0	1.5	4.9	0.0	1.9
<b>Maximum</b>	61.0		32.1	77.4		40.7
<b>Date</b>	3-Oct		2-Oct	3-Oct		2-Oct
<b>Minimum</b>		0.0	0.0		0.0	0.0
<b>Date</b>		1-Oct	1-Oct		1-Oct	1-Oct

Notes:

---



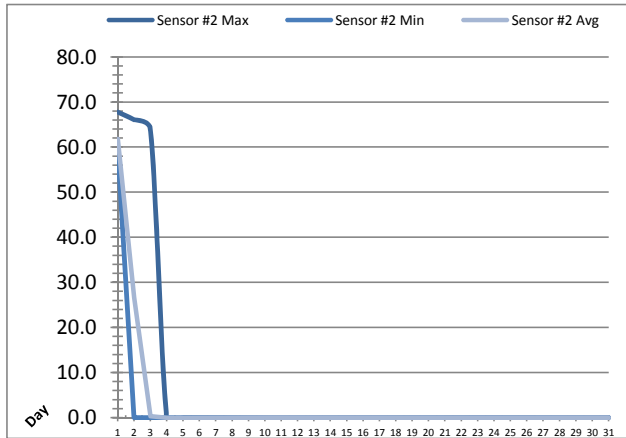
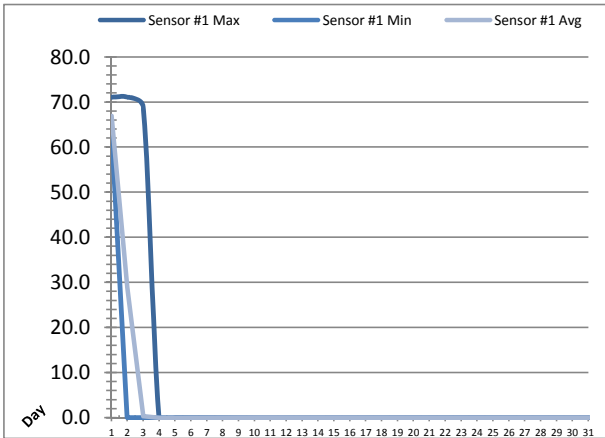
---



---

# UV System Monthly Report

Month: **October-18**



Date	UV Reactor 2					
	Intensity Sensor 1 (mW/cm <sup>2</sup> )			Intensity Sensor 2 (mW/cm <sup>2</sup> )		
	Maximum	Minimum	Average	Maximum	Minimum	Average
1	71.1	64.3	66.9	67.8	60.0	61.8
2	71.1	0.0	29.0	66.1	0.0	26.7
3	68.9	0.0	0.4	64.0	0.0	0.4
4	0.0	0.0	0.0	0.0	0.0	0.0
5	0.0	0.0	0.0	0.0	0.0	0.0
6	0.0	0.0	0.0	0.0	0.0	0.0
7	0.0	0.0	0.0	0.0	0.0	0.0
8	0.0	0.0	0.0	0.0	0.0	0.0
9	0.0	0.0	0.0	0.0	0.0	0.0
10	0.0	0.0	0.0	0.0	0.0	0.0
11	0.0	0.0	0.0	0.0	0.0	0.0
12	0.0	0.0	0.0	0.0	0.0	0.0
13	0.0	0.0	0.0	0.0	0.0	0.0
14	0.0	0.0	0.0	0.0	0.0	0.0
15	0.0	0.0	0.0	0.0	0.0	0.0
16	0.0	0.0	0.0	0.0	0.0	0.0
17	0.0	0.0	0.0	0.0	0.0	0.0
18	0.0	0.0	0.0	0.0	0.0	0.0
19	0.0	0.0	0.0	0.0	0.0	0.0
20	0.0	0.0	0.0	0.0	0.0	0.0
21	0.0	0.0	0.0	0.0	0.0	0.0
22	0.0	0.0	0.0	0.0	0.0	0.0
23	0.0	0.0	0.0	0.0	0.0	0.0
24	0.0	0.0	0.0	0.0	0.0	0.0
25	0.0	0.0	0.0	0.0	0.0	0.0
26	0.0	0.0	0.0	0.0	0.0	0.0
27	0.0	0.0	0.0	0.0	0.0	0.0
28	0.0	0.0	0.0	0.0	0.0	0.0
29	0.0	0.0	0.0	0.0	0.0	0.0
30	0.0	0.0	0.0	0.0	0.0	0.0
31	0.0	0.0	0.0	0.0	0.0	0.0
Total						
Average	6.8	2.1	3.1	6.4	1.9	2.9
Maximum	71.1		66.9	67.8		61.8
Date	1-Oct		1-Oct	1-Oct		1-Oct
Minimum		0.0	0.0		0.0	0.0
Date		2-Oct	4-Oct		2-Oct	4-Oct

Notes:

---



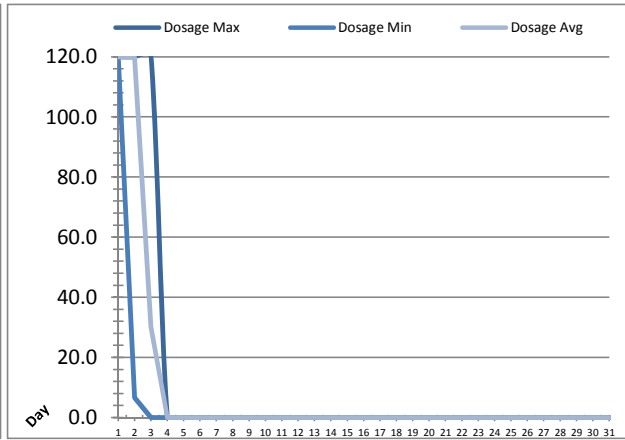
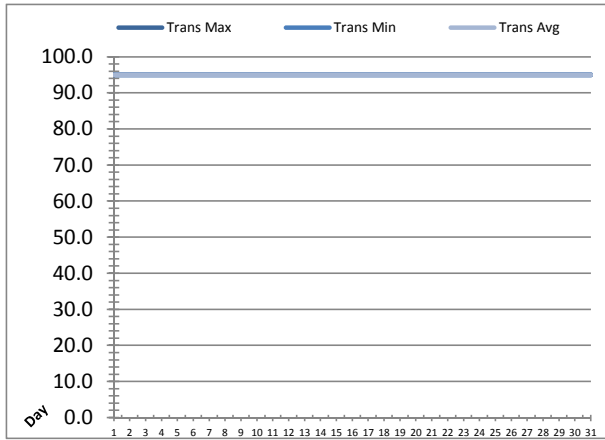
---



---

# UV System Monthly Report

Month: **October-18**



UV System							
Date	Transmittance (%)			Dosage (mJ/cm <sup>2</sup> )			Inlet Flow (L/s)
	Maximum	Minimum	Average	Maximum	Minimum	Average	Maximum
1	95.00	95.00	95.00	120.0	120.0	120.0	100.4
2	95.00	95.00	95.00	120.0	6.6	119.7	103.9
3	95.00	95.00	95.00	120.0	0.0	30.2	168.6
4	95.00	95.00	95.00	0.0	0.0	0.0	114.2
5	95.00	95.00	95.00	0.0	0.0	0.0	166.8
6	95.00	95.00	95.00	0.0	0.0	0.0	160.6
7	95.00	95.00	95.00	0.0	0.0	0.0	164.6
8	95.00	95.00	95.00	0.0	0.0	0.0	166.9
9	95.00	95.00	95.00	0.0	0.0	0.0	105.4
10	95.00	95.00	95.00	0.0	0.0	0.0	167.6
11	95.00	95.00	95.00	0.0	0.0	0.0	99.0
12	95.00	95.00	95.00	0.0	0.0	0.0	168.8
13	95.00	95.00	95.00	0.0	0.0	0.0	102.3
14	95.00	95.00	95.00	0.0	0.0	0.0	165.9
15	95.00	95.00	95.00	0.0	0.0	0.0	163.9
16	95.00	95.00	95.00	0.0	0.0	0.0	166.3
17	95.00	95.00	95.00	0.0	0.0	0.0	171.4
18	95.00	95.00	95.00	0.0	0.0	0.0	169.3
19	95.00	95.00	95.00	0.0	0.0	0.0	168.0
20	95.00	95.00	95.00	0.0	0.0	0.0	162.5
21	95.00	95.00	95.00	0.0	0.0	0.0	168.3
22	95.00	95.00	95.00	0.0	0.0	0.0	166.0
23	95.00	95.00	95.00	0.0	0.0	0.0	113.4
24	95.00	95.00	95.00	0.0	0.0	0.0	165.9
25	95.00	95.00	95.00	0.0	0.0	0.0	631.3
26	95.00	95.00	95.00	0.0	0.0	0.0	163.0
27	95.00	95.00	95.00	0.0	0.0	0.0	104.6
28	95.00	95.00	95.00	0.0	0.0	0.0	627.9
29	95.00	95.00	95.00	0.0	0.0	0.0	102.2
30	95.00	95.00	95.00	0.0	0.0	0.0	105.5
31	95.00	95.00	95.00	0.0	0.0	0.0	104.8
Total							
Average	95.00	95.00	95.00	11.6	4.1	8.7	174.5
Maximum	95.00		95.00	120.0		120.0	631.3
Date	1-Oct		1-Oct	1-Oct		1-Oct	25-Oct
Minimum		95.00	95.00		0.0	0.0	
Date		1-Oct	1-Oct		3-Oct	4-Oct	

Notes:

---



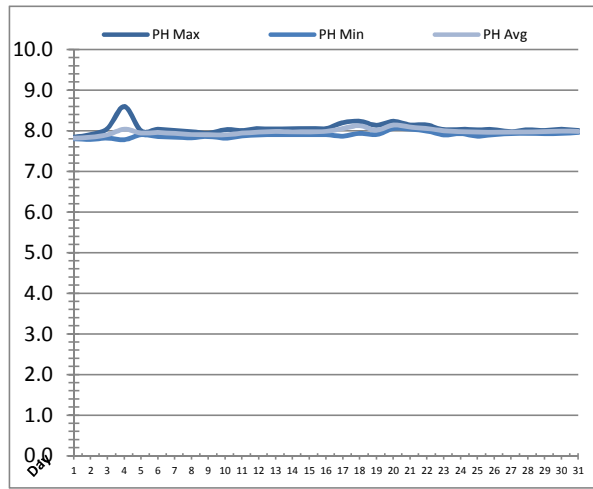
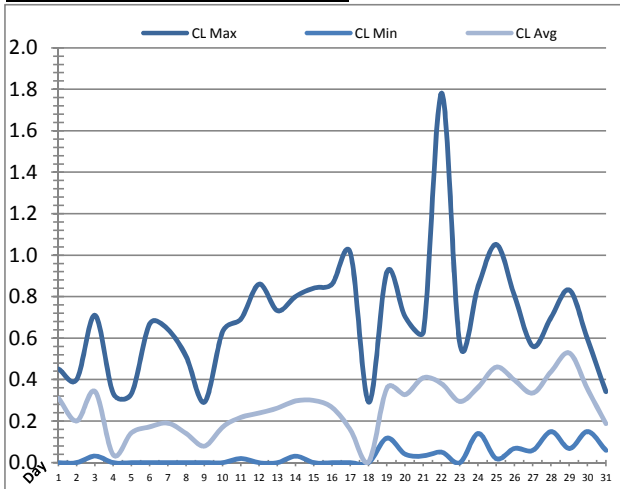
---



---

# Plant Quality Report

Month: **October-18**



Date	Strainer Chlorine Residual			Strainer pH		
	AIT_2003_CL (ppm)			AIT_2003_PH		
	Maximum	Minimum	Average	Maximum	Minimum	Average
1	0.45	0.00	0.31	7.84	7.80	7.82
2	0.40	0.00	0.20	7.91	7.79	7.84
3	0.71	0.03	0.34	8.06	7.82	7.90
4	0.33	0.00	0.04	8.60	7.78	8.04
5	0.33	0.00	0.14	8.00	7.90	7.95
6	0.67	0.00	0.17	8.04	7.86	7.96
7	0.64	0.00	0.19	8.01	7.84	7.94
8	0.51	0.00	0.14	7.98	7.83	7.91
9	0.29	0.00	0.08	7.94	7.86	7.91
10	0.63	0.00	0.17	8.03	7.82	7.90
11	0.69	0.02	0.22	8.01	7.87	7.94
12	0.86	0.00	0.24	8.06	7.90	7.97
13	0.73	0.00	0.26	8.04	7.91	7.98
14	0.80	0.03	0.30	8.06	7.91	7.97
15	0.84	0.00	0.30	8.06	7.91	7.98
16	0.86	0.00	0.27	8.06	7.91	7.99
17	1.01	0.00	0.16	8.20	7.87	8.06
18	0.29	0.00	0.00	8.23	7.94	8.13
19	0.92	0.12	0.36	8.14	7.91	8.02
20	0.70	0.04	0.33	8.23	8.06	8.14
21	0.63	0.03	0.41	8.15	8.04	8.09
22	1.78	0.05	0.38	8.15	8.00	8.06
23	0.57	0.00	0.30	8.03	7.90	8.00
24	0.85	0.14	0.36	8.04	7.93	7.98
25	1.05	0.02	0.46	8.03	7.87	7.97
26	0.80	0.07	0.40	8.03	7.91	7.97
27	0.56	0.06	0.34	7.98	7.94	7.96
28	0.70	0.15	0.44	8.03	7.94	7.98
29	0.83	0.07	0.53	8.01	7.93	7.98
30	0.59	0.15	0.35	8.04	7.94	7.99
31	0.34	0.06	0.19	8.01	7.96	7.99
Total						
Average	0.69	0.03	0.27	8.06	7.90	7.98
Maximum	1.78		0.53	8.60		8.14
Date	22-Oct		29-Oct	4-Oct		20-Oct
Minimum		0.00	0.00		7.78	7.82
Date		1-Oct	18-Oct		4-Oct	1-Oct

Notes:

---



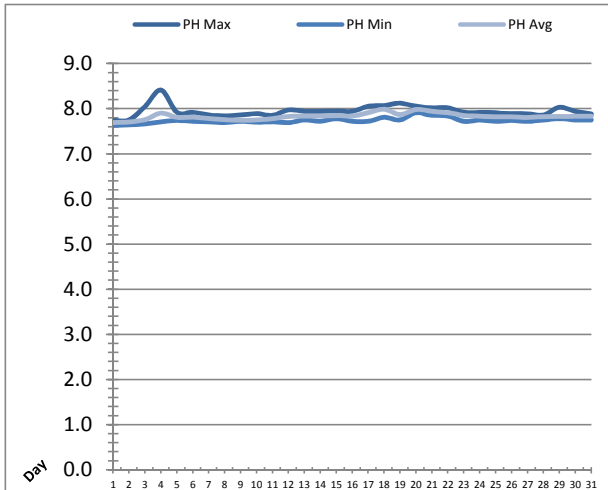
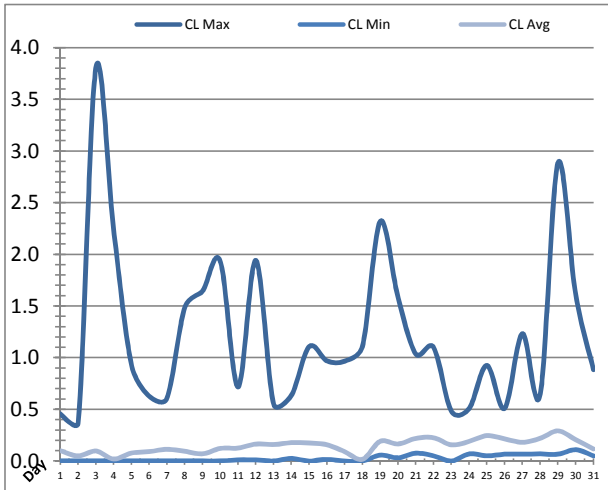
---



---

# Plant Quality Report

Month: **October-18**



Date	Inlet UV Chlorine Residual			Inlet UV pH		
	AIT_5005_CL (ppm)			AIT_5005_PH		
	Maximum	Minimum	Average	Maximum	Minimum	Average
1	0.46	0.00	0.10	7.74	7.63	7.69
2	0.37	0.00	0.05	7.75	7.64	7.71
3	3.81	0.00	0.10	8.05	7.67	7.76
4	2.24	0.00	0.02	8.41	7.71	7.90
5	0.93	0.00	0.08	7.92	7.74	7.81
6	0.63	0.00	0.09	7.92	7.72	7.82
7	0.61	0.00	0.11	7.86	7.71	7.78
8	1.49	0.00	0.10	7.84	7.69	7.76
9	1.65	0.00	0.07	7.86	7.72	7.74
10	1.93	0.00	0.12	7.89	7.70	7.75
11	0.72	0.01	0.13	7.86	7.71	7.78
12	1.94	0.01	0.17	7.98	7.69	7.83
13	0.55	0.00	0.16	7.95	7.75	7.84
14	0.64	0.03	0.18	7.95	7.72	7.84
15	1.11	0.00	0.18	7.95	7.78	7.85
16	0.97	0.02	0.16	7.94	7.72	7.84
17	0.97	0.00	0.09	8.05	7.72	7.91
18	1.11	0.00	0.02	8.07	7.81	7.99
19	2.32	0.06	0.19	8.12	7.75	7.87
20	1.59	0.03	0.17	8.05	7.91	7.99
21	1.04	0.08	0.22	8.02	7.85	7.95
22	1.10	0.05	0.23	8.02	7.84	7.91
23	0.48	0.00	0.16	7.92	7.72	7.85
24	0.51	0.07	0.19	7.92	7.75	7.84
25	0.93	0.05	0.25	7.91	7.72	7.82
26	0.51	0.07	0.22	7.89	7.74	7.82
27	1.23	0.07	0.18	7.89	7.72	7.81
28	0.64	0.07	0.22	7.86	7.75	7.83
29	2.89	0.07	0.29	8.03	7.78	7.83
30	1.61	0.11	0.21	7.94	7.75	7.84
31	0.89	0.05	0.12	7.88	7.75	7.84
Total						
Average	1.22	0.03	0.15	7.95	7.74	7.83
Maximum	3.81		0.29	8.41		7.99
Date	3-Oct		29-Oct	4-Oct		18-Oct
Minimum		0.00	0.02		7.63	7.69
Date		15-Oct	18-Oct		1-Oct	1-Oct

Notes:

---



---

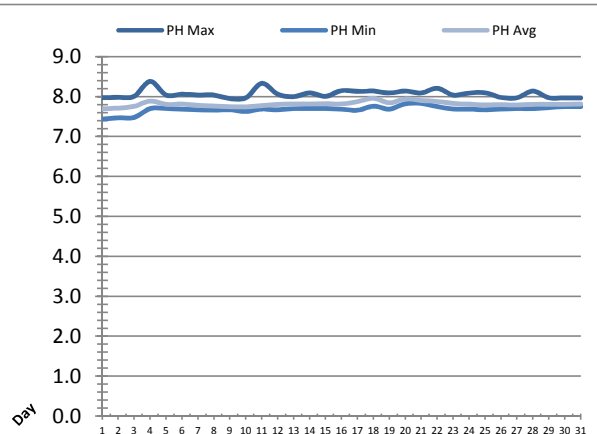
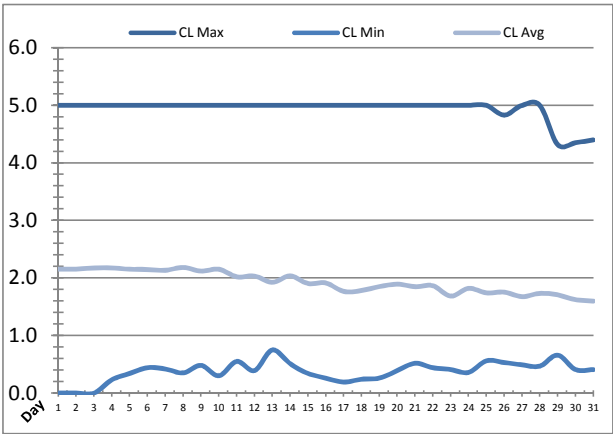


---



# Plant Quality Report

Month: **October-18**



Date	Discharge UV Chlorine Residual			Discharge UV pH		
	AIT_5006_CL (ppm)			AIT_5006_PH		
	Maximum	Minimum	Average	Maximum	Minimum	Average
1	5.00	0.00	2.15	7.97	7.44	7.70
2	5.00	0.00	2.16	7.98	7.47	7.72
3	5.00	0.00	2.18	8.01	7.48	7.76
4	5.00	0.23	2.18	8.38	7.70	7.89
5	5.00	0.34	2.15	8.04	7.70	7.81
6	5.00	0.44	2.15	8.06	7.69	7.82
7	5.00	0.42	2.13	8.04	7.67	7.79
8	5.00	0.35	2.18	8.04	7.66	7.76
9	5.00	0.48	2.12	7.95	7.67	7.75
10	5.00	0.30	2.15	7.97	7.63	7.75
11	5.00	0.55	2.02	8.33	7.69	7.77
12	5.00	0.39	2.03	8.06	7.67	7.81
13	5.00	0.75	1.93	8.00	7.70	7.82
14	5.00	0.51	2.04	8.09	7.70	7.82
15	5.00	0.34	1.91	8.01	7.70	7.83
16	5.00	0.26	1.91	8.15	7.69	7.82
17	5.00	0.19	1.77	8.13	7.66	7.88
18	5.00	0.24	1.78	8.14	7.76	7.96
19	5.00	0.26	1.85	8.09	7.69	7.85
20	5.00	0.39	1.89	8.14	7.82	7.94
21	5.00	0.52	1.85	8.09	7.83	7.91
22	5.00	0.44	1.87	8.21	7.75	7.88
23	5.00	0.41	1.69	8.04	7.69	7.83
24	5.00	0.36	1.82	8.09	7.69	7.81
25	5.00	0.56	1.74	8.10	7.67	7.80
26	4.83	0.53	1.76	7.98	7.69	7.80
27	5.00	0.49	1.68	7.97	7.70	7.79
28	5.00	0.47	1.73	8.14	7.70	7.81
29	4.32	0.66	1.71	7.97	7.73	7.81
30	4.35	0.41	1.62	7.97	7.75	7.81
31	4.40	0.41	1.60	7.97	7.75	7.82
Total						
Average	4.93	0.38	1.93	8.07	7.68	7.82
Maximum	5.00		2.18	8.38		7.96
Date	1-Oct		8-Oct	4-Oct		18-Oct
Minimum		0.00	1.60		7.44	7.70
Date		1-Oct	31-Oct		1-Oct	1-Oct

Notes:

---



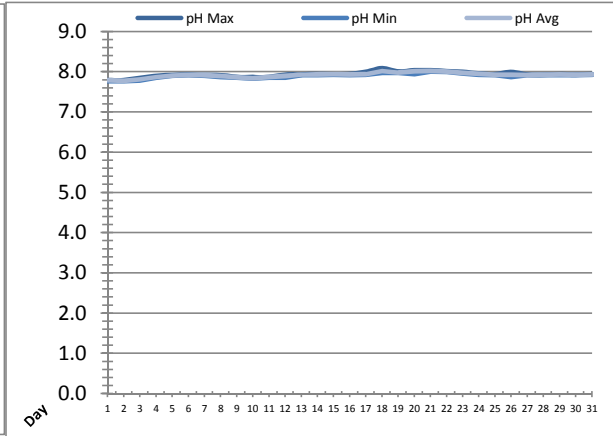
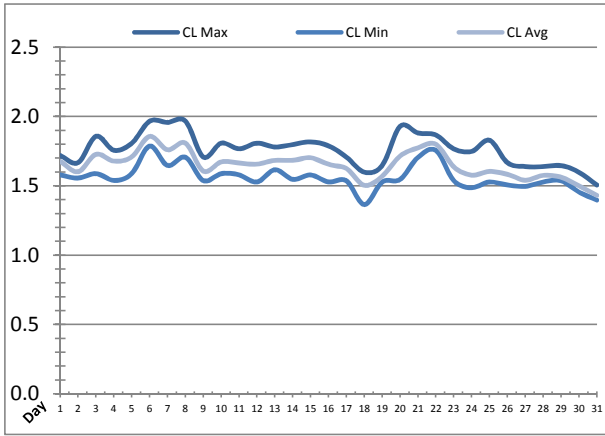
---



---

# Plant Quality Report

Month: **October-18**

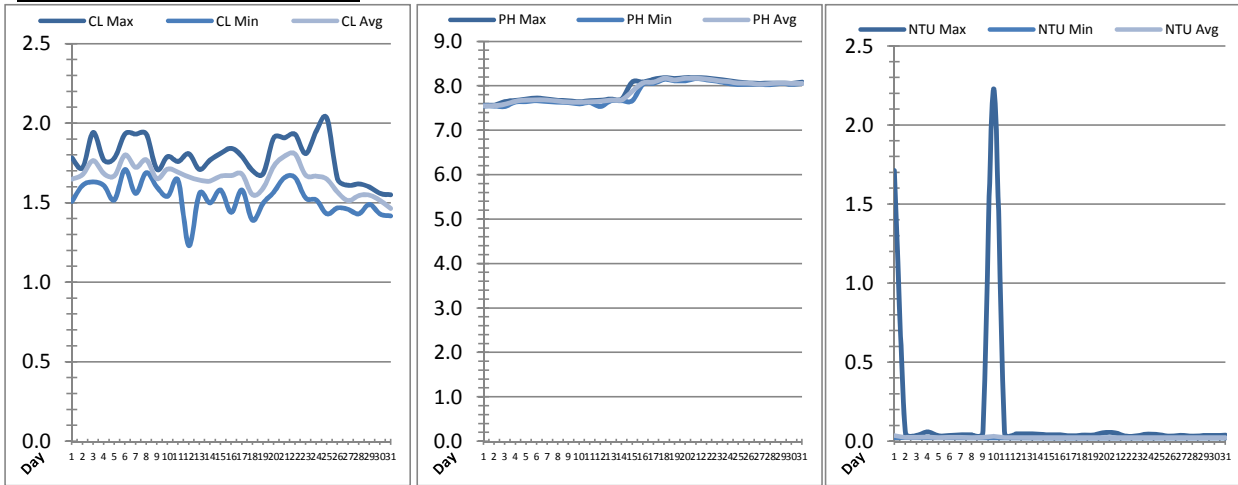


Date	Suction Header Chlorine Res.			Suction Header pH			Distribution CT Calc Total		
	AIT_7001_CL (ppm)			AIT_7001_PH (m)			REAL_CT_CALC_TOTAL (mg·ml/min)		
	Maximum	Minimum	Average	Maximum	Minimum	Average	Maximum	Minimum	Average
1	1.72	1.58	1.68	7.79	7.77	7.79	10227.93	0.00	249.18
2	1.67	1.56	1.60	7.79	7.77	7.77	6267.92	0.00	260.26
3	1.86	1.59	1.73	7.85	7.78	7.81	5164.91	0.00	391.19
4	1.76	1.54	1.68	7.90	7.85	7.87	6781.86	0.00	84.57
5	1.81	1.59	1.71	7.92	7.90	7.91	5783.16	0.00	229.99
6	1.97	1.79	1.86	7.93	7.91	7.92	6540.80	0.00	185.57
7	1.96	1.65	1.76	7.92	7.90	7.91	4222.98	0.00	265.23
8	1.97	1.71	1.81	7.92	7.87	7.89	10998.27	0.00	292.05
9	1.71	1.54	1.61	7.87	7.85	7.86	6356.37	0.00	152.71
10	1.81	1.59	1.67	7.87	7.83	7.84	12180.68	0.00	313.27
11	1.77	1.58	1.67	7.87	7.85	7.86	8942.04	0.00	264.88
12	1.81	1.53	1.66	7.93	7.86	7.89	10912.49	0.00	305.83
13	1.78	1.62	1.68	7.93	7.91	7.93	9875.59	0.00	313.63
14	1.80	1.55	1.68	7.94	7.92	7.93	9788.81	0.00	332.68
15	1.82	1.58	1.70	7.94	7.93	7.94	8229.36	0.00	266.91
16	1.79	1.53	1.66	7.94	7.92	7.93	10721.71	0.00	324.84
17	1.71	1.54	1.63	8.00	7.93	7.94	9277.99	0.00	255.79
18	1.60	1.37	1.50	8.09	7.97	8.02	10466.77	0.00	206.79
19	1.65	1.53	1.57	8.01	7.97	7.98	9714.03	0.00	320.74
20	1.93	1.55	1.72	8.04	7.94	8.01	7913.20	0.00	342.87
21	1.88	1.71	1.77	8.04	8.01	8.02	9166.83	0.00	300.23
22	1.87	1.76	1.80	8.02	8.00	8.00	10802.38	0.00	319.52
23	1.77	1.54	1.64	8.00	7.96	7.97	9955.74	0.00	285.11
24	1.75	1.49	1.58	7.96	7.93	7.95	7779.18	0.00	214.69
25	1.83	1.53	1.60	7.94	7.92	7.92	12478.79	0.00	253.73
26	1.67	1.51	1.58	8.00	7.87	7.93	9188.78	0.00	242.29
27	1.64	1.50	1.54	7.93	7.92	7.92	9865.79	0.00	249.00
28	1.64	1.53	1.58	7.93	7.92	7.93	8079.28	0.00	265.99
29	1.65	1.54	1.56	7.94	7.92	7.93	13565.83	0.00	309.99
30	1.60	1.46	1.50	7.93	7.92	7.93	8750.13	0.00	225.62
31	1.51	1.40	1.43	7.94	7.93	7.93	6992.51	0.00	202.78
Total									
Average	1.76	1.56	1.65	7.94	7.90	7.92			
Maximum	1.97		1.86	8.09		8.02			
Date	8-Oct		6-Oct	18-Oct		21-Oct			
Minimum		1.37	1.43		7.77	7.77			
Date		18-Oct	31-Oct		2-Oct	2-Oct			

Notes:

# Plant Quality Report

Month: **October-18**

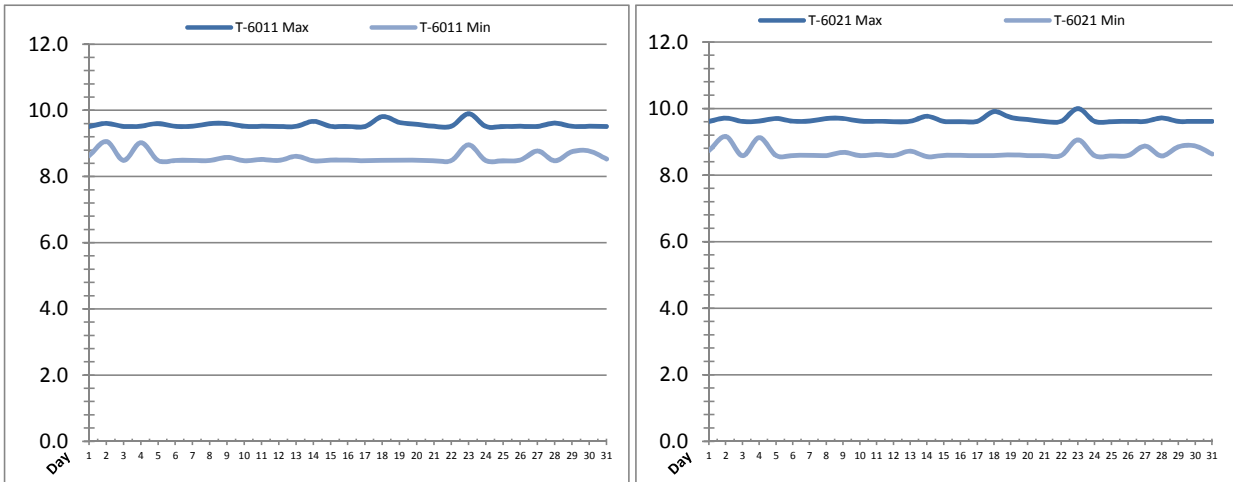


Date	Distribution Chlorine Header			Distribution pH			Distribution Turbidity		
	AIT_7004_CL (ppm)			AIT_7004_PH (mg/L)			AIT_7003 (mg/L)		
	Maximum	Minimum	Average	Maximum	Minimum	Average	Maximum	Minimum	Average
1	1.78	1.51	1.65	7.57	7.55	7.55	1.71	0.02	0.04
2	1.72	1.61	1.68	7.57	7.55	7.56	0.05	0.02	0.02
3	1.94	1.63	1.77	7.65	7.54	7.59	0.04	0.02	0.02
4	1.77	1.61	1.68	7.68	7.64	7.66	0.06	0.02	0.03
5	1.78	1.52	1.67	7.71	7.65	7.68	0.04	0.02	0.02
6	1.93	1.71	1.80	7.73	7.67	7.69	0.04	0.02	0.02
7	1.93	1.56	1.72	7.71	7.65	7.68	0.04	0.02	0.02
8	1.93	1.69	1.77	7.68	7.64	7.66	0.04	0.02	0.02
9	1.71	1.60	1.65	7.67	7.63	7.64	0.05	0.02	0.02
10	1.79	1.54	1.71	7.65	7.60	7.63	2.23	0.02	0.03
11	1.76	1.64	1.69	7.67	7.63	7.64	0.05	0.02	0.02
12	1.81	1.23	1.66	7.68	7.54	7.65	0.05	0.02	0.02
13	1.71	1.56	1.64	7.71	7.67	7.68	0.05	0.02	0.02
14	1.77	1.50	1.64	7.71	7.67	7.69	0.05	0.02	0.02
15	1.81	1.58	1.67	8.09	7.67	7.88	0.04	0.02	0.02
16	1.84	1.44	1.67	8.09	8.04	8.07	0.04	0.02	0.02
17	1.79	1.58	1.68	8.15	8.06	8.09	0.03	0.02	0.02
18	1.70	1.39	1.55	8.19	8.15	8.17	0.04	0.02	0.02
19	1.68	1.50	1.59	8.17	8.12	8.14	0.04	0.02	0.02
20	1.91	1.57	1.73	8.19	8.12	8.17	0.06	0.02	0.02
21	1.91	1.66	1.79	8.19	8.17	8.17	0.05	0.02	0.02
22	1.93	1.66	1.81	8.18	8.14	8.16	0.03	0.02	0.02
23	1.81	1.53	1.67	8.15	8.11	8.12	0.04	0.02	0.02
24	1.95	1.52	1.67	8.12	8.06	8.10	0.05	0.02	0.02
25	2.03	1.43	1.65	8.09	8.03	8.07	0.04	0.02	0.02
26	1.65	1.47	1.57	8.07	8.04	8.06	0.03	0.02	0.02
27	1.61	1.46	1.51	8.06	8.03	8.04	0.04	0.02	0.02
28	1.62	1.43	1.55	8.07	8.03	8.06	0.03	0.02	0.02
29	1.60	1.49	1.55	8.07	8.06	8.06	0.04	0.02	0.02
30	1.56	1.43	1.51	8.06	8.03	8.06	0.04	0.02	0.02
31	1.55	1.42	1.46	8.09	8.06	8.06	0.04	0.02	0.02
Total									
Average	1.78	1.53	1.66	7.91	7.85	7.89	0.2	0.0	0.0
Maximum	2.03		1.81	8.19		8.17	2.2		0.0
Date	25-Oct		22-Oct	20-Oct		21-Oct	10-Oct		1-Oct
Minimum		1.23	1.46		7.54	7.55		0.0	0.0
Date		12-Oct	31-Oct		12-Oct	1-Oct		23-Oct	31-Oct

Notes:

# Raw Well/Treated Storage Report

Month: **October-18**



Date	Treated Water Storage Tank					
	T-6011 (m)			T-6021 (m)		
	Maximum	Minimum	Average	Maximum	Minimum	Average
1	9.5	8.6	9.3	9.6	8.7	9.4
2	9.6	9.1	9.3	9.7	9.2	9.4
3	9.5	8.5	9.0	9.6	8.6	9.1
4	9.5	9.0	9.4	9.6	9.1	9.5
5	9.6	8.5	9.1	9.7	8.6	9.2
6	9.5	8.5	9.2	9.6	8.6	9.3
7	9.5	8.5	9.0	9.6	8.6	9.1
8	9.6	8.5	9.0	9.7	8.6	9.1
9	9.6	8.6	9.3	9.7	8.7	9.4
10	9.5	8.5	9.0	9.6	8.6	9.1
11	9.5	8.5	9.1	9.6	8.6	9.2
12	9.5	8.5	9.0	9.6	8.6	9.1
13	9.5	8.6	9.2	9.6	8.7	9.3
14	9.7	8.5	8.9	9.8	8.6	9.0
15	9.5	8.5	9.1	9.6	8.6	9.2
16	9.5	8.5	9.0	9.6	8.6	9.1
17	9.5	8.5	9.0	9.6	8.6	9.1
18	9.8	8.5	9.3	9.9	8.6	9.4
19	9.6	8.5	9.1	9.7	8.6	9.2
20	9.6	8.5	9.0	9.7	8.6	9.1
21	9.5	8.5	9.1	9.6	8.6	9.2
22	9.5	8.5	9.0	9.6	8.6	9.1
23	9.9	9.0	9.5	10.0	9.1	9.6
24	9.5	8.5	9.0	9.6	8.6	9.1
25	9.5	8.5	9.0	9.6	8.6	9.1
26	9.5	8.5	9.1	9.6	8.6	9.2
27	9.5	8.8	9.3	9.6	8.9	9.4
28	9.6	8.5	9.0	9.7	8.6	9.1
29	9.5	8.8	9.2	9.6	8.9	9.3
30	9.5	8.8	9.2	9.6	8.9	9.3
31	9.5	8.5	9.2	9.6	8.6	9.3
Total						
Average	9.6	8.6	9.1	9.7	8.7	9.2
Maximum	9.9		9.5	10.0		9.6
Date	23-Oct		23-Oct	23-Oct		23-Oct
Minimum		8.5	8.9		8.6	9.0
Date		28-Oct	14-Oct		14-Oct	14-Oct

Notes:

---



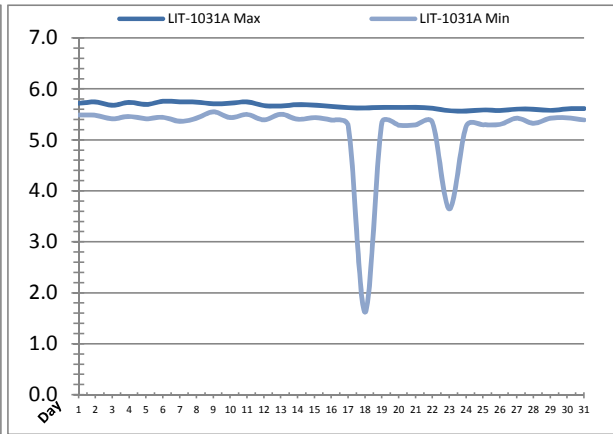
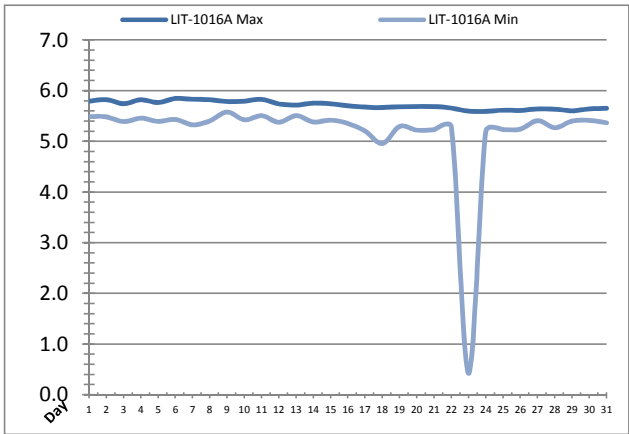
---



---

# Raw Well/Treated Storage Report

Month: **October-18**



Date	Low Lift Intake Levels					
	Wet Well #1 (LIT-1016A) (m)			Wet Well #2 (LIT-1031A) (m)		
	Maximum	Minimum	Average	Maximum	Minimum	Average
1	5.8	5.5	5.6	5.7	5.5	5.6
2	5.8	5.5	5.6	5.7	5.5	5.6
3	5.7	5.4	5.6	5.7	5.4	5.6
4	5.8	5.5	5.6	5.7	5.5	5.6
5	5.8	5.4	5.6	5.7	5.4	5.6
6	5.8	5.4	5.6	5.8	5.4	5.6
7	5.8	5.3	5.6	5.7	5.4	5.6
8	5.8	5.4	5.6	5.7	5.4	5.6
9	5.8	5.6	5.7	5.7	5.6	5.6
10	5.8	5.4	5.6	5.7	5.4	5.6
11	5.8	5.5	5.6	5.7	5.5	5.6
12	5.7	5.4	5.6	5.7	5.4	5.5
13	5.7	5.5	5.6	5.7	5.5	5.6
14	5.8	5.4	5.6	5.7	5.4	5.6
15	5.7	5.4	5.6	5.7	5.4	5.6
16	5.7	5.4	5.5	5.7	5.4	5.5
17	5.7	5.2	5.5	5.6	5.3	5.5
18	5.7	5.0	5.5	5.6	1.6	5.3
19	5.7	5.3	5.5	5.6	5.3	5.5
20	5.7	5.2	5.5	5.6	5.3	5.5
21	5.7	5.2	5.5	5.6	5.3	5.5
22	5.7	5.3	5.5	5.6	5.3	5.5
23	5.6	0.4	5.3	5.6	3.6	5.4
24	5.6	5.2	5.4	5.6	5.3	5.4
25	5.6	5.2	5.5	5.6	5.3	5.5
26	5.6	5.2	5.5	5.6	5.3	5.5
27	5.6	5.4	5.5	5.6	5.4	5.5
28	5.6	5.3	5.5	5.6	5.3	5.5
29	5.6	5.4	5.5	5.6	5.4	5.5
30	5.6	5.4	5.5	5.6	5.4	5.5
31	5.7	5.4	5.5	5.6	5.4	5.5
Total						
Average	5.7	5.2	5.5	5.7	5.2	5.5
Maximum	5.8		5.7	5.8		5.6
Date	6-Oct		9-Oct	6-Oct		9-Oct
Minimum		0.4	5.3		1.6	5.3
Date		23-Oct	23-Oct		18-Oct	18-Oct

Notes:

---



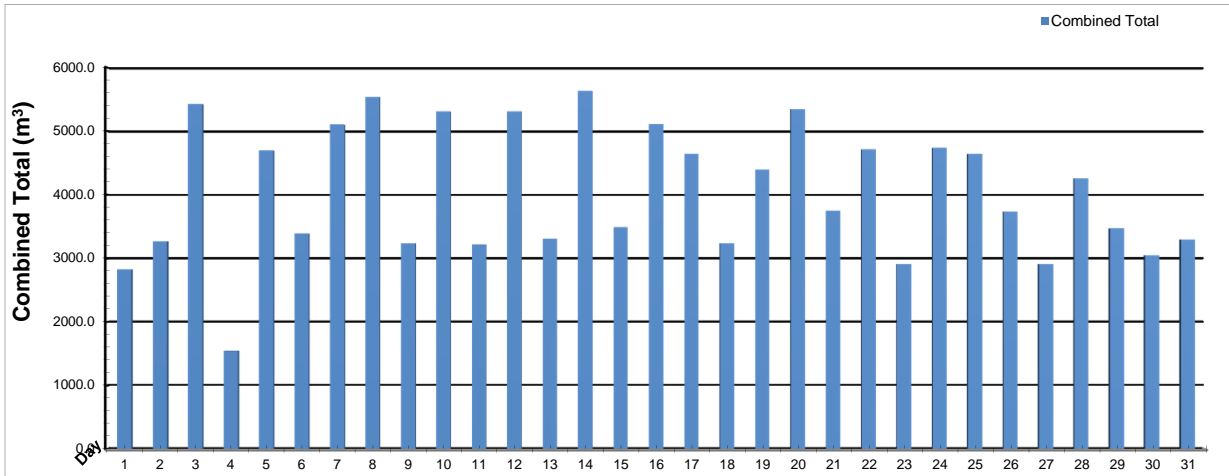
---



---

# High Lift Monthly Report

Month: **October-18**



Date	Distribution Flow					
	FIT_7052 (East)		FIT_7062 (West)		Combined	
	(m³) Total	(L/s) Peak	(m³) Total	(L/s) Peak	(m³) Total	(L/s) Peak
1	10.8	0.0	2814.7	99.2	2825.4	99.2
2	0.0	0.0	3266.3	73.1	3266.3	73.1
3	0.0	0.0	5423.8	135.9	5423.8	135.9
4	0.0	0.0	1540.8	104.3	1540.8	104.3
5	0.0	0.0	4692.0	107.5	4692.0	107.5
6	0.0	0.0	3385.6	105.6	3385.6	105.6
7	0.0	0.0	5102.2	105.3	5102.2	105.3
8	0.0	0.0	5533.4	105.9	5533.4	105.9
9	0.0	0.0	3233.8	106.9	3233.8	106.9
10	976.4	56.5	4331.2	105.6	5307.5	109.9
11	802.7	46.6	2415.8	94.4	3218.4	107.3
12	1084.5	55.8	4223.7	101.7	5308.2	103.5
13	906.5	46.7	2398.5	101.8	3305.0	101.8
14	1196.2	62.8	4430.8	93.5	5627.0	111.1
15	700.3	46.5	2791.7	93.8	3492.0	107.0
16	1271.8	57.7	3834.9	101.7	5106.8	102.4
17	880.1	63.4	3763.0	101.2	4643.2	109.9
18	746.6	56.2	2487.0	99.1	3233.6	101.6
19	1080.8	46.1	3313.6	110.5	4394.5	110.5
20	1101.3	62.8	4242.7	119.3	5344.0	166.1
21	980.9	46.3	2765.2	91.8	3746.1	110.3
22	680.9	63.3	4034.4	106.0	4715.3	109.2
23	879.8	46.3	2029.0	97.3	2908.8	98.0
24	442.2	66.2	4291.4	104.0	4733.6	110.0
25	1186.8	61.3	3453.5	98.5	4640.3	109.6
26	835.8	46.2	2900.0	101.8	3735.7	101.8
27	1095.6	54.6	1812.4	99.6	2908.1	109.2
28	1255.9	63.3	3000.7	101.6	4256.6	110.2
29	1215.0	61.6	2253.4	106.5	3468.4	108.2
30	1021.7	56.5	2028.8	100.6	3050.5	101.4
31	967.6	56.0	2327.2	100.3	3294.8	101.1
<b>Total</b>	<b>21320.2</b>		<b>104121.5</b>		<b>125441.7</b>	
<b>Average</b>	<b>687.7</b>	<b>39.4</b>	<b>3358.8</b>	<b>102.4</b>	<b>4046.5</b>	<b>107.9</b>
<b>Maximum</b>	<b>1271.8</b>	<b>66.2</b>	<b>5533.4</b>	<b>135.9</b>	<b>5627.0</b>	<b>166.1</b>
<b>Date</b>	<b>16-Oct</b>	<b>24-Oct</b>	<b>8-Oct</b>	<b>3-Oct</b>	<b>14-Oct</b>	<b>20-Oct</b>
<b>Minimum</b>	<b>0.0</b>		<b>1540.8</b>		<b>1540.8</b>	
<b>Date</b>	<b>6-Oct</b>		<b>4-Oct</b>		<b>4-Oct</b>	

Notes:

---



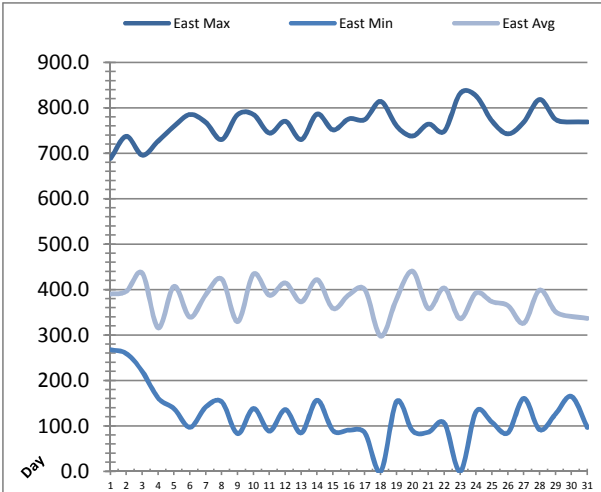
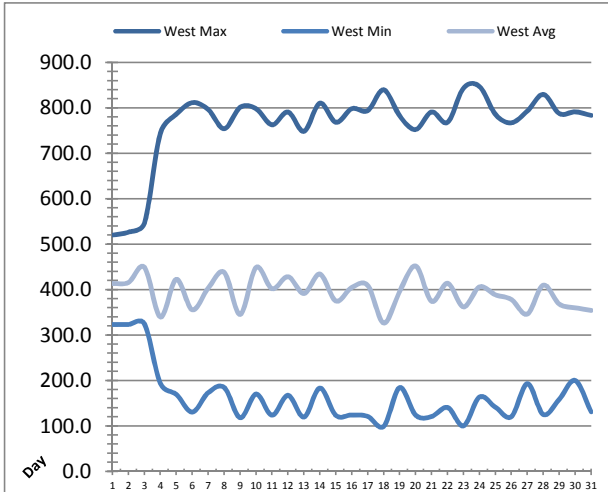
---



---

# Low Lift Monthly Report

Month: **October-18**



Date	West Train Header Pressure PIT_1018 (kPa)			East Train Header Pressure PIT_1028 (kPa)		
	Maximum	Minimum	Average	Maximum	Minimum	Average
1	520.2	323.6	413.3	688.7	268.0	390.2
2	526.6	323.4	415.9	737.5	259.5	396.3
3	546.6	324.8	449.2	696.0	220.1	436.3
4	744.5	193.7	339.9	727.1	161.4	316.0
5	786.1	169.5	422.8	759.6	137.9	407.3
6	811.6	130.6	355.7	785.6	97.0	339.5
7	796.6	173.3	403.6	767.9	142.0	389.5
8	754.1	184.6	438.2	730.4	153.1	423.3
9	801.4	118.1	345.4	785.5	83.2	329.6
10	798.2	170.2	449.0	785.4	138.5	434.5
11	762.8	123.8	402.1	744.6	88.6	387.6
12	791.1	167.4	428.5	770.6	136.0	414.9
13	748.5	119.6	391.5	730.4	84.8	373.2
14	810.5	183.5	434.4	786.6	156.7	422.0
15	768.3	123.4	375.0	751.6	89.7	358.7
16	798.4	124.2	404.9	775.9	90.7	388.6
17	794.2	121.0	409.1	774.3	84.7	400.2
18	840.0	99.3	326.5	814.3	0.0	297.6
19	782.3	184.5	396.4	760.5	153.9	380.2
20	752.5	123.8	452.1	738.0	89.5	440.7
21	791.2	120.7	374.3	764.5	86.4	358.5
22	768.3	140.7	414.1	748.7	106.2	403.6
23	843.6	100.3	362.0	832.0	0.0	336.1
24	847.3	163.8	406.2	826.2	131.8	392.9
25	785.8	141.2	388.7	771.1	108.0	373.5
26	767.4	120.5	378.3	743.0	84.8	365.1
27	793.3	193.1	346.3	768.8	160.6	326.3
28	829.8	125.2	410.0	818.6	91.7	399.0
29	787.7	158.8	368.3	774.8	126.6	351.4
30	791.4	200.1	360.0	769.2	165.0	341.0
31	783.5	131.3	354.4	769.1	96.7	337.0
Total						
Average	765.3	163.8	394.1	764.4	122.4	377.8
Maximum	847.3		452.1	832.0		440.7
Date	24-Oct		20-Oct	23-Oct		20-Oct
Minimum		99.3	326.5		0.0	297.6
Date		18-Oct	18-Oct		18-Oct	18-Oct

Notes:

---



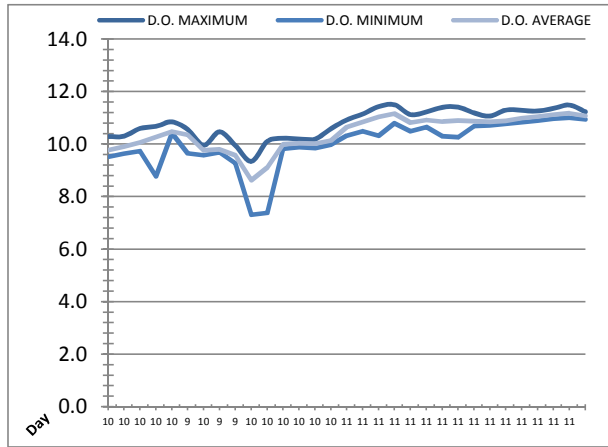
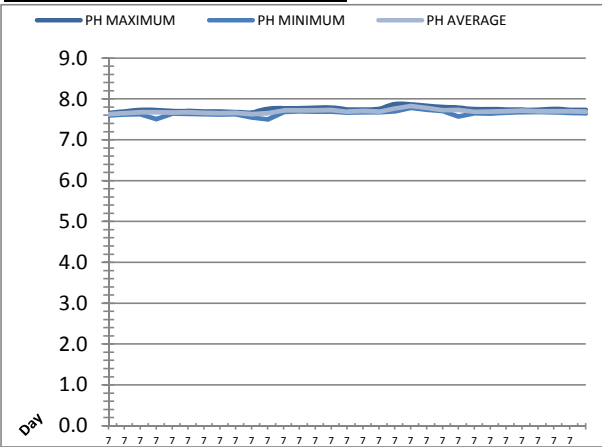
---



---

# Low Lift Monthly Report

Month: **October-18**



Date	Raw Water Sample Line					
	AIT_1402_PH (pH)			AIT_1402_DO (mg/L)		
	Maximum	Minimum	Average	Maximum	Minimum	Average
1	7.7	7.6	7.6	10.3	9.5	9.8
2	7.7	7.6	7.7	10.3	9.6	9.9
3	7.7	7.6	7.7	10.6	9.7	10.1
4	7.7	7.5	7.7	10.7	8.8	10.3
5	7.7	7.6	7.7	10.8	10.4	10.5
6	7.7	7.6	7.7	10.6	9.6	10.4
7	7.7	7.6	7.7	10.0	9.6	9.8
8	7.7	7.6	7.6	10.5	9.7	9.8
9	7.7	7.6	7.7	9.9	9.3	9.6
10	7.7	7.5	7.6	9.3	7.3	8.6
11	7.8	7.5	7.7	10.1	7.4	9.1
12	7.8	7.7	7.7	10.2	9.8	10.0
13	7.8	7.7	7.7	10.2	9.9	10.0
14	7.8	7.7	7.7	10.2	9.9	10.0
15	7.8	7.7	7.7	10.6	10.0	10.1
16	7.7	7.7	7.7	10.9	10.3	10.7
17	7.7	7.7	7.7	11.1	10.5	10.8
18	7.8	7.7	7.7	11.4	10.3	11.0
19	7.9	7.7	7.8	11.5	10.8	11.2
20	7.9	7.8	7.8	11.1	10.5	10.8
21	7.8	7.7	7.8	11.2	10.7	10.9
22	7.8	7.7	7.7	11.4	10.3	10.9
23	7.8	7.6	7.7	11.4	10.3	10.9
24	7.7	7.6	7.7	11.2	10.7	10.9
25	7.8	7.6	7.7	11.1	10.7	10.8
26	7.7	7.7	7.7	11.3	10.8	10.9
27	7.7	7.7	7.7	11.3	10.8	11.0
28	7.7	7.7	7.7	11.3	10.9	11.1
29	7.8	7.7	7.7	11.4	11.0	11.1
30	7.7	7.7	7.7	11.5	11.0	11.2
31	7.7	7.6	7.7	11.2	10.9	11.1
Total						
Average	7.7	7.6	7.7	10.8	10.0	10.4
Maximum	7.9		7.8	11.5		11.2
Date	19-Oct		20-Oct	19-Oct		30-Oct
Minimum		7.5	7.6		7.3	8.6
Date		11-Oct	1-Oct		10-Oct	10-Oct

Notes:

---



---

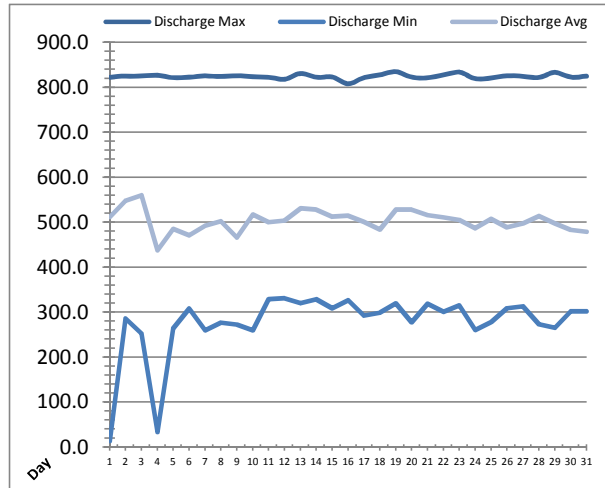
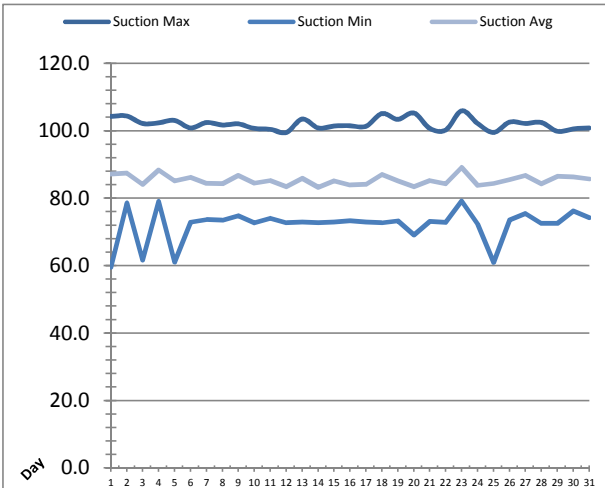


---



# High Lift Monthly Report

Month: October-18



Date	Suction Header Pressure			Discharge Header Pressure		
	PIT_7002 (kPa)			PIT_7005 (kPa)		
	Maximum	Minimum	Average	Maximum	Minimum	Average
1	104.3	59.5	87.1	822.4	13.5	511.7
2	104.4	78.6	87.5	825.2	286.1	547.6
3	102.2	61.6	84.1	825.0	252.4	560.2
4	102.4	79.1	88.3	826.8	33.5	437.3
5	103.1	61.0	85.1	821.4	264.0	485.0
6	100.9	72.9	86.2	822.5	308.0	471.2
7	102.5	73.7	84.3	825.4	259.4	492.6
8	101.7	73.4	84.3	824.2	276.9	502.1
9	102.1	74.8	86.8	826.0	272.1	465.9
10	100.7	72.7	84.4	823.5	259.8	517.3
11	100.5	74.0	85.3	822.4	328.5	500.1
12	99.5	72.7	83.4	818.0	330.8	503.5
13	103.5	72.9	85.9	830.8	320.2	530.3
14	100.9	72.8	83.3	822.5	328.9	527.8
15	101.4	72.9	85.1	823.1	308.9	512.4
16	101.5	73.3	84.0	808.0	326.3	514.3
17	101.4	73.0	84.1	821.7	292.6	500.9
18	105.1	72.7	87.1	827.7	298.6	483.8
19	103.4	73.3	85.2	834.6	319.1	528.1
20	105.3	69.1	83.5	822.5	277.1	527.9
21	100.7	73.1	85.3	821.2	318.4	516.0
22	100.3	72.8	84.3	827.4	300.8	510.8
23	105.9	79.2	89.1	833.9	315.3	504.8
24	102.2	72.3	83.8	819.2	260.4	486.7
25	99.5	60.9	84.4	821.0	278.2	507.3
26	102.6	73.6	85.6	825.6	308.7	488.8
27	102.2	75.5	86.7	824.4	312.8	497.1
28	102.5	72.5	84.3	821.9	273.2	513.7
29	99.9	72.5	86.4	833.2	265.1	497.5
30	100.6	76.3	86.3	822.7	301.3	483.2
31	100.8	74.2	85.7	824.9	301.3	479.0
Total						
Average	102.1	72.2	85.4	824.2	277.2	503.4
Maximum	105.9		89.1	834.6		560.2
Date	23-Oct		23-Oct	19-Oct		3-Oct
Minimum		59.5	83.3		13.5	437.3
Date		1-Oct	14-Oct		1-Oct	4-Oct

Notes:

---



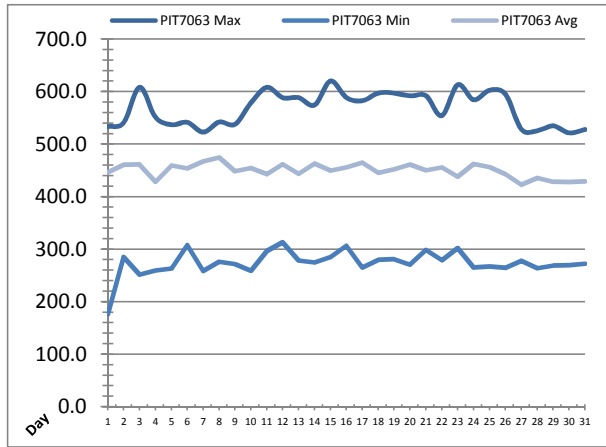
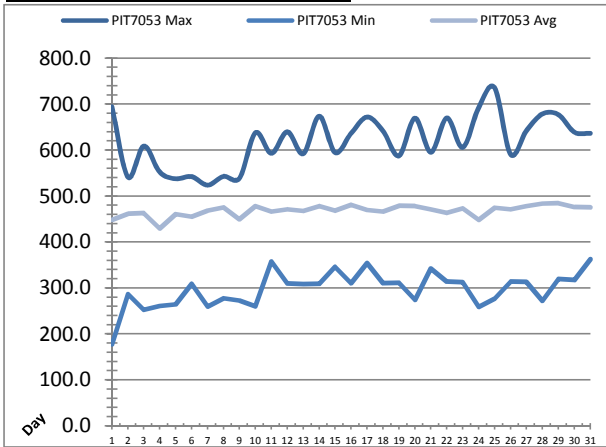
---



---

# High Lift Monthly Report

Month: **October-18**



Date	Distribution Pressures					
	PIT_7053 (kPa)			PIT_7063 (kPa)		
	Maximum	Minimum	Average	Maximum	Minimum	Average
1	694.3	177.1	448.1	533.3	176.0	446.4
2	541.6	286.5	461.6	541.0	285.3	460.5
3	609.0	252.5	462.5	608.4	251.6	461.4
4	552.2	260.8	429.5	551.2	259.6	428.1
5	537.9	264.2	460.8	537.0	263.1	459.7
6	542.4	308.7	455.3	541.5	307.6	454.2
7	523.9	259.6	468.5	522.9	258.6	467.4
8	543.0	277.4	475.5	542.2	276.3	474.5
9	539.0	272.6	449.4	538.0	271.5	448.3
10	637.9	260.3	478.0	578.8	259.2	454.2
11	593.1	357.4	466.7	608.2	296.5	442.8
12	639.9	309.8	471.5	588.4	313.2	462.0
13	592.2	308.0	468.0	588.6	278.6	443.6
14	673.9	309.2	477.9	574.5	275.0	462.9
15	594.7	345.9	468.7	620.3	285.4	449.4
16	636.7	310.4	481.1	588.8	306.6	456.0
17	672.1	354.0	470.1	582.7	264.8	464.6
18	641.4	310.3	466.5	597.2	280.0	445.3
19	587.5	310.8	478.8	597.1	281.0	451.9
20	669.6	273.9	477.9	591.9	270.3	461.0
21	595.5	342.7	471.4	592.2	298.6	450.2
22	670.1	314.1	463.7	554.3	279.1	455.9
23	606.2	312.7	473.1	613.1	302.1	437.9
24	692.9	258.5	448.2	584.5	265.2	462.3
25	735.5	276.9	474.8	602.7	266.6	456.5
26	591.0	314.2	470.9	595.1	264.2	443.2
27	642.8	313.4	478.4	528.4	277.7	423.1
28	679.0	271.9	483.8	525.5	263.9	435.8
29	677.2	319.4	484.1	535.0	268.6	428.2
30	639.0	317.4	476.1	521.5	269.1	427.6
31	636.7	362.3	475.3	528.1	272.1	429.2
Total						
Average	619.0	297.2	468.3	568.1	273.8	449.8
Maximum	735.5		484.1	620.3		474.5
Date	25-Oct		29-Oct	15-Oct		8-Oct
Minimum		177.1	429.5		176.0	423.1
Date		1-Oct	4-Oct		1-Oct	27-Oct

Notes:

---



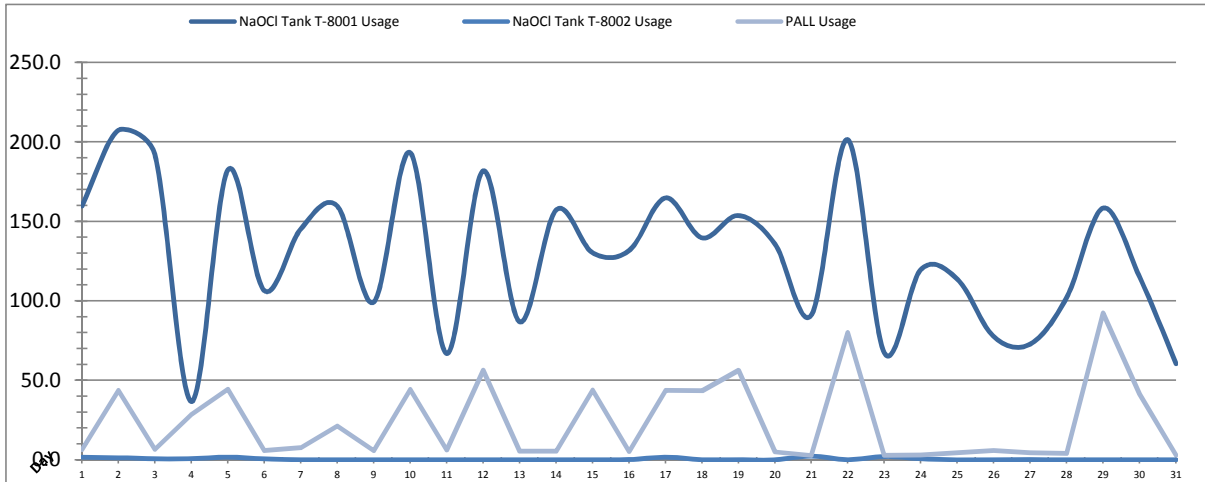
---



---

# Chemical Usage Monthly Report

Month: **October-18**

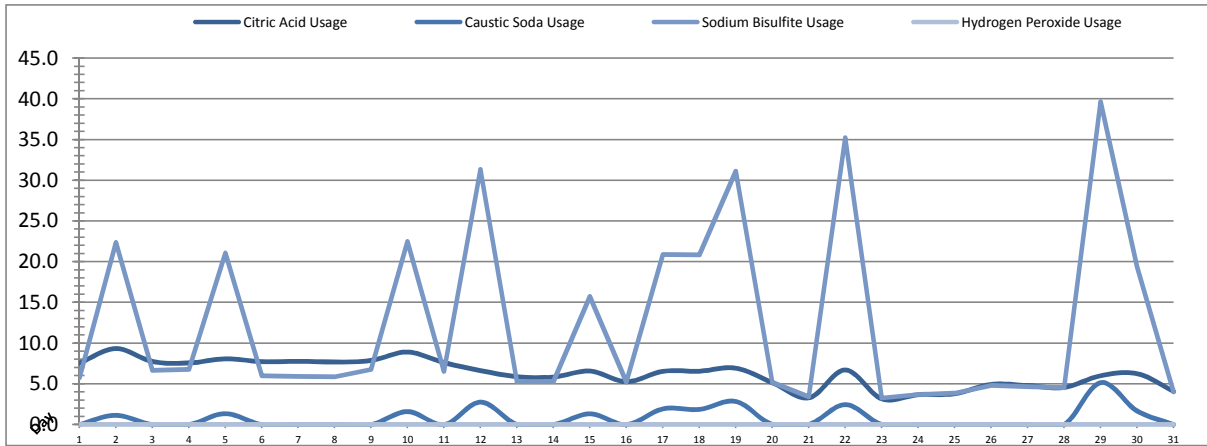


Date	PALL Usage	NaOCI Tank T-8001	NaOCI Tank T-8002
	PALL_HYPO_USAGE (L) Usage	LIT_8002 (Storage) (L) Usage	LIT_8004 (Day) (L) Usage
1	6.4	159.7	1.7
2	43.6	207.4	1.3
3	6.5	192.1	0.6
4	28.6	36.6	0.7
5	44.5	182.3	1.7
6	5.8	106.5	0.5
7	7.5	145.2	0.0
8	21.2	159.7	0.0
9	5.8	99.2	0.0
10	44.2	193.3	0.0
11	6.2	66.9	0.0
12	56.4	181.8	0.0
13	5.4	86.9	0.0
14	5.31	157.15	0.0
15	43.8	130.3	0.1
16	5.1	131.6	0.1
17	43.6	164.8	1.7
18	43.5	139.7	0.1
19	56.3	153.7	0.0
20	4.8	135.9	0.0
21	2.7	91.1	2.3
22	80.0	201.4	0.1
23	2.7	67.3	2.0
24	3.0	119.7	0.7
25	4.4	113.7	0.0
26	5.8	77.5	0.0
27	4.3	72.8	0.0
28	4.0	102.2	0.1
29	92.3	158.4	0.0
30	41.5	115.0	0.0
31	3.0	60.5	0.1
<b>Total</b>	<b>728.1</b>	<b>4010.5</b>	<b>14.0</b>
<b>Average</b>	<b>23.5</b>	<b>129.4</b>	<b>0.5</b>
<b>Maximum</b>	<b>92.3</b>	<b>207.4</b>	<b>2.3</b>
<b>Date</b>	<b>29-Oct</b>	<b>2-Oct</b>	<b>21-Oct</b>
<b>Minimum</b>	<b>2.7</b>	<b>36.6</b>	<b>0.0</b>
<b>Date</b>	<b>23-Oct</b>	<b>4-Oct</b>	<b>7-Oct</b>

<b>Notes:</b>	
Dosage (mg/L)=	Day Tank (L) x %conc. x 1000
	Membrane Flow (m3)
	Chlorine Concentration: <b>12.0%</b>

# Chemical Usage Monthly Report

Month: **October-18**



Date	Citric Acid	Caustic Soda	Captor	Hydrogen Peroxide		Membrane Flow (m <sup>3</sup> )
	TAGNAME (L) Usage	TAGNAME (L) Usage	TAGNAME (L) Usage	TAGNAME (L) Usage	TAGNAME (mg/L) Dose	
1	7.5	0.0	5.7	0.0	0.0	3448.233
2	9.3	1.1	22.4	0.0	0.0	3409.191
3	7.8	0.0	6.7	0.0	0.0	6174.027
4	7.6	0.0	6.8	0.0	0.0	1718.008
5	8.1	1.3	21.1	0.0	0.0	5128.357
6	7.7	0.0	6.0	0.0	0.0	3759.088
7	7.8	0.0	5.9	0.0	0.0	5623.210
8	7.7	0.0	5.8	0.0	0.0	6213.691
9	7.9	0.0	6.8	0.0	0.0	3179.715
10	8.9	1.6	22.5	0.0	0.0	6114.221
11	7.6	0.0	6.5	0.0	0.0	3783.572
12	6.6	2.8	31.3	0.0	0.0	5695.067
13	5.9	0.0	5.3	0.0	0.0	3995.600
14	5.8	0.0	5.3	0.0	0.0	6324.171
15	6.6	1.3	15.7	0.0	0.0	3914.379
16	5.3	0.0	5.2	0.0	0.0	5353.791
17	6.5	1.9	20.9	0.0	0.0	5532.742
18	6.6	1.9	20.8	0.0	0.0	3315.204
19	6.9	2.8	31.1	0.0	0.0	5105.288
20	5.2	0.0	5.2	0.0	0.0	6142.106
21	3.3	0.0	3.4	0.0	0.0	4139.037
22	6.7	2.5	35.2	0.0	0.0	5246.521
23	3.2	0.0	3.3	0.0	0.0	3632.784
24	3.7	0.0	3.7	0.0	0.0	5314.330
25	3.8	0.0	3.8	0.0	0.0	5022.076
26	4.9	0.0	4.8	0.0	0.0	4152.209
27	4.8	0.0	4.6	0.0	0.0	3279.458
28	4.6	0.0	4.5	0.0	0.0	5060.660
29	6.0	5.2	39.7	0.0	0.0	3882.307
30	6.3	1.7	19.4	0.0	0.0	3470.154
31	4.1	0.0	4.0	0.0	0.0	3321.392
<b>Total</b>	<b>194.5</b>	<b>24.1</b>	<b>383.3</b>	<b>0.0</b>		<b>140450.6</b>
<b>Average</b>	<b>6.3</b>	<b>0.8</b>	<b>12.4</b>	<b>0.0</b>	<b>0.0</b>	<b>4530.7</b>
<b>Maximum</b>	<b>9.3</b>	<b>5.2</b>	<b>39.7</b>	<b>0.0</b>	<b>0.0</b>	<b>6324.2</b>
<b>Date</b>	<b>2-Oct</b>	<b>29-Oct</b>	<b>29-Oct</b>	<b>1-Oct</b>	<b>1-Oct</b>	<b>14-Oct</b>
<b>Minimum</b>	<b>3.2</b>	<b>0.0</b>	<b>3.3</b>	<b>0.0</b>	<b>0.0</b>	<b>1718.0</b>
<b>Date</b>	<b>23-Oct</b>	<b>1-Oct</b>	<b>23-Oct</b>	<b>1-Oct</b>	<b>1-Oct</b>	<b>4-Oct</b>

<b>Notes:</b>	
Dosage (mg/L)=	Day Tank (L) x %conc. x 1000
	Membrane Flow (m3)
Peroxide Concentration:	<b>50.0%</b>

# Runtimes Report

Month: October-18

Date	Daily Gen-Set Runtimes		Daily UV Runtimes		Daily PALL Runtimes				
	LLPS	WTP	UV #1	UV #2	Air Compressor #1	Air Compressor #2	CIP Neutralization	CIP Drain	CIP Recirc
	(Hrs)	(Hrs)	(Hrs)	(Hrs)	(Hrs)	(Hrs)	(Hrs)	(Hrs)	(Hrs)
1	0.0	0.0	0.0	13.9	0.1	24.3	0.0	0.0	0.0
2	0.0	0.0	7.5	5.9	24.3	0.1	0.1	0.0	0.2
3	0.0	0.0	5.7	0.1	0.1	24.3	0.0	0.0	0.0
4	2.9	7.4	0.0	0.0	24.3	0.1	0.0	0.0	0.0
5	0.0	0.0	0.0	0.0	0.0	24.3	0.2	0.0	0.1
6	0.0	0.0	0.0	0.0	24.4	0.1	0.0	0.0	0.0
7	0.0	0.0	0.0	0.0	0.0	24.4	0.0	0.0	0.0
8	0.0	0.0	0.0	0.0	24.3	0.0	0.0	0.0	0.0
9	0.0	0.0	0.0	0.0	0.1	24.4	0.0	0.0	0.0
10	0.0	0.0	0.0	0.0	24.3	0.0	0.1	0.0	0.1
11	0.0	0.0	0.0	0.0	0.1	24.4	0.0	0.0	0.0
12	0.0	0.0	0.0	0.0	24.3	0.0	0.2	0.0	0.3
13	0.0	0.0	0.0	0.0	0.1	24.4	0.0	0.0	0.0
14	0.0	0.0	0.0	0.0	24.3	0.0	0.0	0.0	0.0
15	0.0	0.0	0.0	0.0	0.1	24.4	0.2	0.1	0.1
16	0.0	0.0	0.0	0.0	24.3	0.0	0.0	0.0	0.0
17	0.0	0.0	0.0	0.0	0.1	24.3	0.1	0.0	0.1
18	0.0	0.0	0.0	0.0	24.3	0.1	0.1	0.0	0.2
19	0.0	0.0	0.0	0.0	0.1	24.3	0.2	0.0	0.2
20	0.0	0.0	0.0	0.0	23.9	0.1	0.0	0.0	0.0
21	0.0	0.0	0.0	0.0	24.4	0.0	0.0	0.0	0.0
22	0.0	0.0	0.0	0.0	7.4	17.1	0.3	0.0	0.2
23	0.0	0.0	0.0	0.0	22.6	0.1	0.0	0.0	0.0
24	0.0	0.0	0.0	0.0	0.1	24.3	0.0	0.0	0.0
25	0.0	0.0	0.0	0.0	24.3	0.1	0.0	0.0	0.0
26	0.0	0.0	0.0	0.0	0.0	24.3	0.0	0.0	0.0
27	0.0	0.0	0.0	0.0	24.4	0.1	0.0	0.0	0.0
28	0.0	0.0	0.0	0.0	0.0	24.3	0.0	0.0	0.0
29	0.0	0.0	0.0	0.0	24.4	0.1	0.4	0.0	0.4
30	0.0	0.0	0.0	0.0	0.0	24.3	0.1	0.0	0.1
31	0.0	0.0	0.0	0.0	24.3	0.1	0.0	0.0	0.0
<b>Total</b>	2.9	7.4	13.2	19.9	395.1	358.4	2.0	0.1	2.0

Notes:

# Runtimes Report

Month: October-18

## Daily

Date	PALL Runtimes						Process Drain	
	RFR Pump #1 (Hrs)	RFR Pump #2 (Hrs)	RF Pump #1 (Hrs)	RF Pump #2 (Hrs)	XR Pump #1 (Hrs)	XR Pump #2 (Hrs)	PDP9010 Pump (Hrs)	PDP9020 Pump (Hrs)
1	6.0	5.9	0.8	0.7	7.3	5.8	0.0	7.4
2	6.4	6.5	0.7	0.7	6.5	6.4	0.0	7.8
3	10.8	10.7	1.3	1.1	10.2	10.8	0.0	8.0
4	3.2	3.3	0.3	0.3	2.7	4.2	0.0	7.0
5	9.2	9.2	1.1	1.1	9.5	8.2	0.0	8.6
6	6.8	6.7	0.8	0.6	6.8	6.0	0.0	8.0
7	9.1	9.1	1.0	1.2	7.3	10.4	0.0	7.7
8	9.8	9.8	1.2	1.2	11.4	9.0	0.0	7.9
9	5.6	5.6	0.7	0.6	6.0	6.6	0.0	7.3
10	7.3	7.2	1.3	1.1	11.0	9.2	0.0	11.0
11	4.0	4.0	0.7	0.7	7.9	7.3	0.0	13.1
12	9.4	9.4	1.0	1.1	7.5	10.0	0.0	13.9
13	6.9	7.0	0.8	0.8	8.1	7.2	0.0	14.0
14	10.7	10.8	1.3	1.3	10.7	9.4	0.0	14.5
15	6.8	6.7	0.7	0.8	7.5	7.1	0.0	14.6
16	8.9	8.8	1.1	1.1	7.9	9.3	0.0	15.1
17	9.0	9.0	1.0	1.0	10.5	7.5	0.0	15.1
18	5.3	5.4	0.6	0.7	3.5	7.2	0.0	14.9
19	7.7	7.8	1.0	0.9	7.9	7.8	0.0	15.4
20	10.9	10.8	1.2	1.2	9.8	9.5	0.0	15.8
21	7.0	7.0	0.8	0.9	7.6	7.0	0.0	15.4
22	9.1	9.0	1.0	0.9	8.2	8.7	0.0	15.7
23	6.7	6.6	0.8	0.8	6.8	6.6	0.0	15.6
24	8.9	8.9	1.0	1.1	8.2	7.7	0.0	15.7
25	8.3	8.4	1.0	1.0	7.7	8.3	0.0	16.1
26	7.4	7.3	0.9	0.8	7.2	7.7	0.0	15.9
27	6.0	6.0	0.6	0.8	6.5	6.0	0.0	16.0
28	8.7	8.7	1.1	0.9	9.3	8.5	0.0	16.1
29	6.5	6.5	0.7	0.8	5.9	8.9	0.0	16.3
30	6.2	6.0	0.8	0.6	7.8	5.4	0.0	16.3
31	6.0	5.9	0.6	0.7	6.5	6.3	0.0	16.5
Total	233.7	233.1	27.9	27.5	240.8	239.1	0.0	402.7

Notes:

# Runtimes Report

Month: October-18

## Daily

Date	Low Lift Pump Motor Runtimes				High Lift Pump Motor Runtimes			
	LLP1010 (Hrs)	LLP1020 (Hrs)	LLP1030 (Hrs)	LLP1040 (Hrs)	HLP7010 (Hrs)	HLP7020 (Hrs)	HLP7030 (Hrs)	HLP7040 (Hrs)
1	3.1	6.6	0.0	4.1	1.4	8.9	1.0	0.0
2	5.7	3.8	0.0	4.1	1.3	4.8	7.0	0.0
3	10.3	6.2	0.0	7.7	2.7	16.1	1.1	0.0
4	1.7	3.0	0.0	2.6	2.8	1.1	0.8	0.0
5	7.7	8.5	0.0	4.9	6.9	3.1	4.3	0.0
6	5.3	3.6	0.0	6.4	3.7	2.5	4.0	0.0
7	7.6	9.1	0.0	5.6	13.8	1.1	1.2	0.0
8	9.3	8.0	0.0	6.9	8.4	3.4	4.9	0.0
9	2.1	4.0	0.0	6.7	5.6	0.9	3.5	0.0
10	7.5	10.1	0.0	7.6	1.2	9.2	6.9	0.0
11	3.4	6.9	0.0	5.3	2.3	4.4	5.2	0.0
12	6.1	8.0	0.0	8.5	12.6	4.2	0.9	0.0
13	5.6	6.0	0.0	4.1	3.6	3.1	6.6	0.0
14	10.0	6.2	0.0	8.9	3.7	4.8	9.7	0.0
15	4.9	6.1	0.0	4.5	2.7	3.7	6.4	0.0
16	5.6	6.6	0.0	9.5	12.4	3.5	1.7	0.0
17	8.5	7.9	0.0	5.6	1.8	4.8	8.1	0.0
18	6.3	0.2	0.0	7.0	4.7	3.7	2.9	0.0
19	7.5	8.2	0.0	5.4	3.7	7.7	4.7	0.0
20	8.1	8.3	0.0	9.0	4.3	4.0	9.5	0.0
21	6.8	6.3	0.0	3.6	3.7	2.6	7.3	0.0
22	8.4	5.8	0.0	7.1	2.9	7.2	5.8	0.0
23	6.4	3.8	0.0	5.2	5.4	5.5	1.1	0.0
24	9.2	5.7	0.0	7.1	3.1	2.8	8.3	0.0
25	6.9	5.7	0.0	7.2	2.8	6.8	5.7	0.0
26	5.9	5.6	0.0	5.0	7.2	2.2	3.2	0.0
27	4.9	3.1	0.0	5.0	5.3	2.9	3.4	0.0
28	5.5	7.5	0.0	7.2	1.4	1.4	11.5	0.0
29	5.2	4.6	0.0	5.2	9.0	0.2	3.6	0.0
30	4.4	4.3	0.0	4.9	1.5	9.0	0.9	0.0
31	5.2	4.2	0.0	3.6	8.2	1.4	2.2	0.0
Total	195.1	183.9	0.0	185.5	150.1	137.1	143.4	0.0

Notes:

# Plant Internal Flow Report

Month: October-18

Date	Settling Tank Level		Process Drain Tank		Settling Tank Flow		Potable Water Flow		Non-Potable Flow	
	T-9003 (m)		T-9001 (m)		FIT_9005 (m <sup>3</sup> ) (L/s)		FIT_7082 (m <sup>3</sup> ) (L/s)		FIT_7092 (m <sup>3</sup> ) (L/s)	
	Maximum	Minimum	Maximum	Minimum	Total	Peak	Total	Peak	Total	Peak
1	2.2	0.1	1.0	0.4	93.3	15.7	7.5	4.7	0.0	0.0
2	2.2	0.1	1.4	0.4	181.9	15.7	18.4	6.4	12.3	17.5
3	2.2	0.1	1.2	0.4	215.1	15.7	9.5	6.6	0.0	0.0
4	2.2	0.1	1.5	0.4	70.4	15.7	0.1	1.4	0.0	0.0
5	2.2	0.1	1.1	0.4	181.6	15.7	0.4	1.4	12.3	18.6
6	2.2	0.1	0.9	0.4	186.0	15.7	0.0	0.0	0.0	0.0
7	2.2	0.1	1.0	0.4	178.7	15.7	0.0	0.0	0.0	0.0
8	2.2	0.1	1.0	0.4	249.7	15.7	0.0	1.1	0.0	0.0
9	2.2	0.1	1.0	0.4	174.5	15.7	0.1	1.4	0.0	0.0
10	2.2	0.1	1.6	0.4	372.7	15.7	0.3	1.6	12.3	15.9
11	2.2	0.1	1.1	0.4	271.2	15.7	0.0	1.4	0.0	0.0
12	2.2	0.1	1.1	0.4	131.2	15.7	0.0	1.4	17.4	23.0
13	2.2	0.1	1.1	0.4	93.8	15.7	0.0	0.0	0.0	0.0
14	2.2	0.1	1.1	0.4	170.1	15.7	0.0	0.0	0.0	0.0
15	2.2	0.1	1.6	0.4	154.1	15.7	0.1	1.3	12.3	17.3
16	2.2	0.1	1.1	0.4	140.9	15.7	0.2	1.4	0.0	0.0
17	2.2	0.1	1.0	0.4	147.0	15.7	0.0	1.3	12.2	15.8
18	2.2	0.1	1.4	0.4	80.3	15.7	0.0	1.4	12.2	16.0
19	2.2	0.1	1.1	0.4	173.9	15.7	0.1	1.4	17.5	23.3
20	2.2	0.1	2.2	0.4	200.8	15.7	0.0	0.5	0.0	0.0
21	2.2	0.1	1.1	0.4	95.1	15.7	0.0	1.1	0.0	0.0
22	2.2	0.1	1.4	0.4	163.2	15.7	0.4	1.3	24.4	17.0
23	2.2	0.1	1.3	0.4	106.6	15.7	0.1	1.5	0.0	1.0
24	2.2	0.1	0.9	0.4	132.9	15.7	0.7	1.4	0.0	0.0
25	2.2	0.1	1.0	0.4	94.6	15.7	0.2	1.4	0.0	0.0
26	2.2	0.1	1.3	0.4	120.9	15.7	0.1	1.4	0.0	0.0
27	2.2	0.1	1.0	0.4	75.5	15.7	0.0	0.0	0.0	0.0
28	2.2	0.1	1.0	0.4	120.4	15.7	0.0	0.0	0.0	0.0
29	2.2	0.1	1.4	0.4	118.4	15.7	0.1	1.1	29.4	22.8
30	2.2	0.1	1.6	0.4	126.5	15.7	0.3	1.4	12.2	17.0
31	2.2	0.1	1.1	0.4	147.5	15.7	0.7	1.4	0.0	0.0
<b>Total</b>					<b>4768.7</b>		<b>39.2</b>		<b>174.6</b>	
<b>Average</b>	2.2	0.1	1.2	0.4	153.8	15.7	1.3	1.5	5.6	6.6
<b>Maximum</b>	2.2		2.2		372.7		18.4		29.4	
<b>Date</b>	7-Oct		20-Oct		10-Oct		2-Oct		29-Oct	
<b>Minimum</b>		0.1		0.4		15.7		0.0		0.0
<b>Date</b>		29-Oct		8-Oct		24-Oct		6-Oct		1-Oct

Notes:
