

Municipality of West Elgin - Tri County Water System

Goto:

Month:

Year:

Date is Set to: **November-17**

Limit	Low	High	
Raw Water Chlorine Residual:	0.00	5.00	mg/L
Pre-Strainer Chlorine Residual:	0.00	5.00	mg/L
UV Inlet Chlorine Residual:	0.00	5.00	mg/L
Post Treatment Chlorine Residual:	1.00	5.00	mg/L
Treated Chlorine Residual:	1.00	2.50	mg/L
Distribution Chlorine Residual:	1.00	2.50	mg/L
Limit		High	
WTP C of A		156.0	L/s
WTP Permit to Take Water		13500.0	m ³
Limit	Low	High	
System Pressure Limits:	50.0	1034.0	Kpa

Compliance Report

Low Lift Monthly Report

>>>

Membranes Monthly Report

>>>

UV System Monthly Report

>>>

Plant Quality Report

>>>

Raw Well/Treated Storage Report

>>>

High Lift Monthly Report

>>>

Operational Report

Low Lift Monthly Report

>>>

High Lift Monthly Report

>>>

Chemical Usage Monthly Report

>>>

Runtimes Report

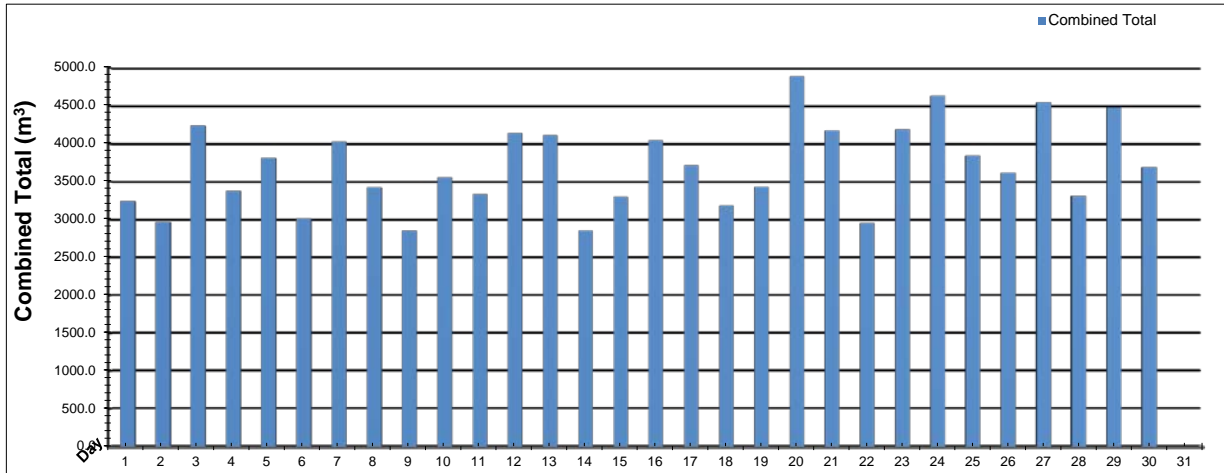
>>>

Plant Internal Flow Report

>>>

Low Lift Monthly Report

Month: **November-17**

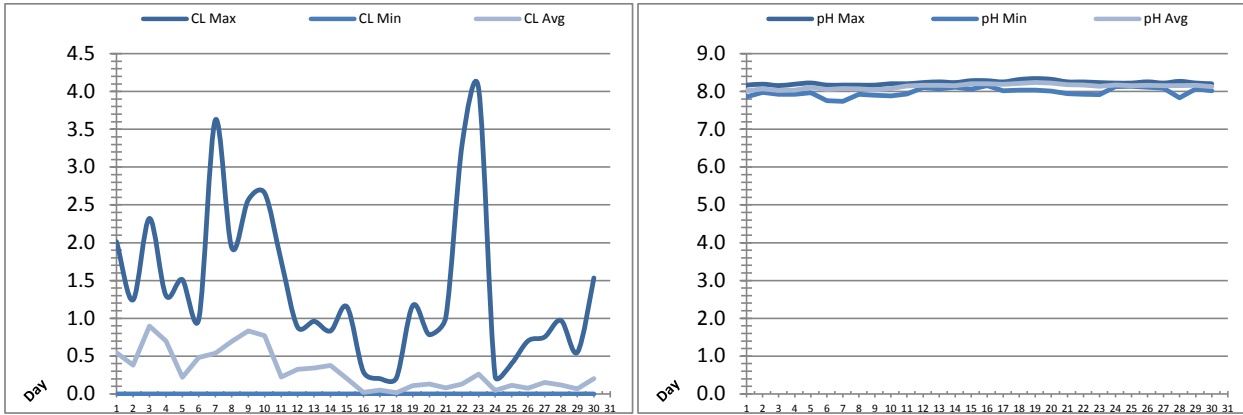


Date	Combined Total (m³)	West Train (FIT-1017 (m³))	West Peak Flow (FIT-1017 (L/s))	East Train (FIT-1027 (m³))	East Peak Flow (FIT-1027 (L/s))	Combined Peak Flow (L/s)
1	✓ 3239.0	3239.0	136.3	0.0	0.0	✓ 136.3
2	✓ 2965.6	2965.6	88.3	0.0	0.0	✓ 88.3
3	✓ 4238.4	4238.4	131.6	0.0	0.0	✓ 131.6
4	✓ 3377.4	3377.4	122.3	0.0	0.0	✓ 122.3
5	✓ 3811.8	3811.8	131.1	0.0	0.0	✓ 131.1
6	✓ 3016.0	3016.0	87.9	0.0	0.0	✓ 87.9
7	✓ 4028.1	4028.1	133.7	0.0	0.0	✓ 133.7
8	✓ 3423.5	3423.5	135.6	0.0	0.0	✓ 135.6
9	✓ 2852.9	2852.9	132.8	0.0	0.0	✓ 132.8
10	✓ 3556.9	3556.9	131.9	0.0	0.0	✓ 131.9
11	✓ 3335.1	3335.1	134.1	0.0	0.0	✓ 134.1
12	✓ 4138.6	4138.6	86.8	0.0	0.0	✓ 86.8
13	✓ 4109.0	4109.0	85.6	0.0	0.0	✓ 85.6
14	✓ 2855.0	2855.0	86.8	0.0	0.0	✓ 86.8
15	✓ 3295.2	3295.2	116.8	0.0	0.0	✓ 116.8
16	✓ 4047.0	4047.0	103.3	0.0	0.0	✓ 103.3
17	✓ 3715.2	3715.2	103.8	0.0	0.0	✓ 103.8
18	✓ 3181.2	3181.2	85.5	0.0	0.0	✓ 85.5
19	✓ 3430.2	3430.2	132.5	0.0	0.0	✓ 132.5
20	✓ 4883.6	4883.6	133.7	0.0	0.0	✓ 133.7
21	✓ 4177.3	4177.3	86.8	0.0	0.0	✓ 86.8
22	✓ 2950.2	2950.2	87.7	0.0	0.0	✓ 87.7
23	✓ 4189.6	3567.6	134.4	622.0	68.8	✓ 134.4
24	✓ 4631.2	483.8	76.7	4147.4	135.9	✓ 135.9
25	✓ 3844.2	0.0	0.0	3844.2	133.7	✓ 133.7
26	✓ 3616.8	0.0	0.0	3616.8	135.6	✓ 135.6
27	✓ 4541.5	0.0	0.0	4541.5	81.1	✓ 81.1
28	✓ 3312.7	1319.1	85.4	1993.7	79.7	✓ 85.4
29	✓ 4478.1	4478.1	119.6	0.0	0.0	✓ 119.6
30	✓ 3692.2	3692.2	86.6	0.0	0.0	✓ 86.6
Total	110933.5	92167.9		18765.6		
Average	3697.8	3072.3	99.3	625.5	21.2	112.9
Maximum	4883.6	4883.6	136.31	4541.5	135.94	136.31
Date	20-Nov	20-Nov	1-Nov	27-Nov	24-Nov	1-Nov
Minimum	2852.9	0.0	0.00	0.0	0.00	81.08
Date	9-Nov	25-Nov	25-Nov	11-Nov	1-Nov	27-Nov

Notes:

Low Lift Monthly Report

Month: **November-17**

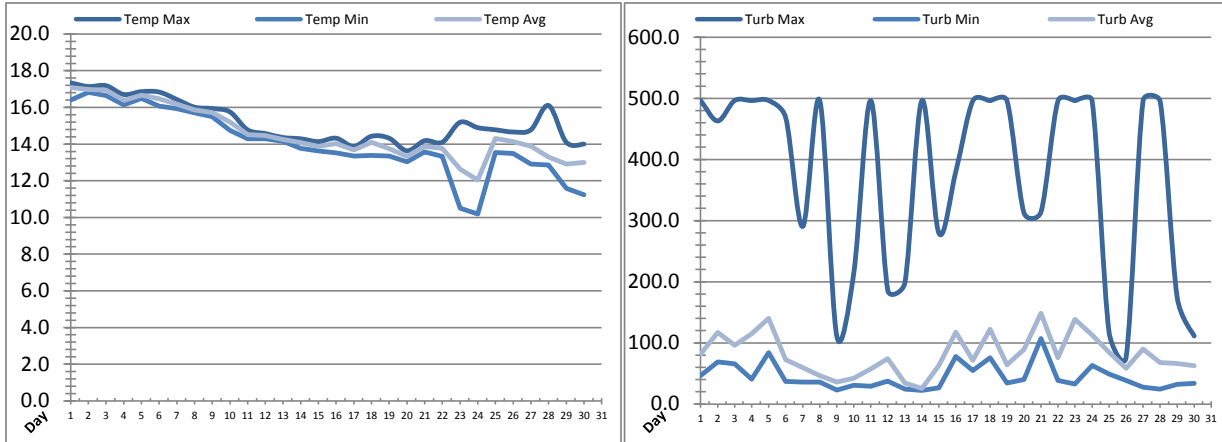


Date	Raw Water Chlorine Residual			Raw Water pH		
	AIT_1401_CL (mg/L)			AIT_1401_PH		
	Maximum	Minimum	Average	Maximum	Minimum	Average
1	2.01	0.00	0.55	8.17	7.85	8.02
2	1.24	0.00	0.38	8.19	7.97	8.07
3	2.32	0.00	0.90	8.16	7.92	8.03
4	1.30	0.00	0.70	8.19	7.92	8.04
5	1.51	0.00	0.22	8.23	7.97	8.11
6	0.99	0.00	0.48	8.17	7.75	8.05
7	3.62	0.00	0.54	8.17	7.74	8.08
8	1.93	0.00	0.69	8.17	7.92	8.07
9	2.56	0.00	0.83	8.17	7.90	8.04
10	2.66	0.00	0.77	8.21	7.88	8.07
11	1.76	0.00	0.23	8.20	7.93	8.14
12	0.88	0.00	0.33	8.24	8.10	8.17
13	0.96	0.00	0.34	8.25	8.07	8.16
14	0.83	0.00	0.38	8.24	8.12	8.16
15	1.15	0.00	0.20	8.29	8.07	8.20
16	0.29	0.00	0.02	8.29	8.15	8.20
17	0.20	0.00	0.05	8.25	8.02	8.19
18	0.21	0.00	0.02	8.32	8.03	8.21
19	1.17	0.00	0.11	8.34	8.03	8.24
20	0.78	0.00	0.13	8.32	8.01	8.22
21	1.01	0.00	0.08	8.25	7.94	8.18
22	3.31	0.00	0.13	8.25	7.92	8.18
23	4.03	0.00	0.26	8.24	7.92	8.14
24	0.23	0.00	0.05	8.22	8.13	8.17
25	0.40	0.00	0.11	8.22	8.13	8.15
26	0.70	0.00	0.08	8.25	8.11	8.16
27	0.75	0.00	0.15	8.22	8.09	8.16
28	0.97	0.00	0.12	8.27	7.84	8.16
29	0.55	0.00	0.07	8.22	8.07	8.16
30	1.53	0.00	0.20	8.20	8.02	8.13
Total						
Average	1.40	0.00	0.30	8.23	7.99	8.14
Maximum	4.03		0.90	8.34		8.24
Date	23-Nov		3-Nov	19-Nov		19-Nov
Minimum		0.00	0.02		7.74	8.02
Date		1-Nov	18-Nov		7-Nov	1-Nov

Notes:

Low Lift Monthly Report

Month: **November-17**

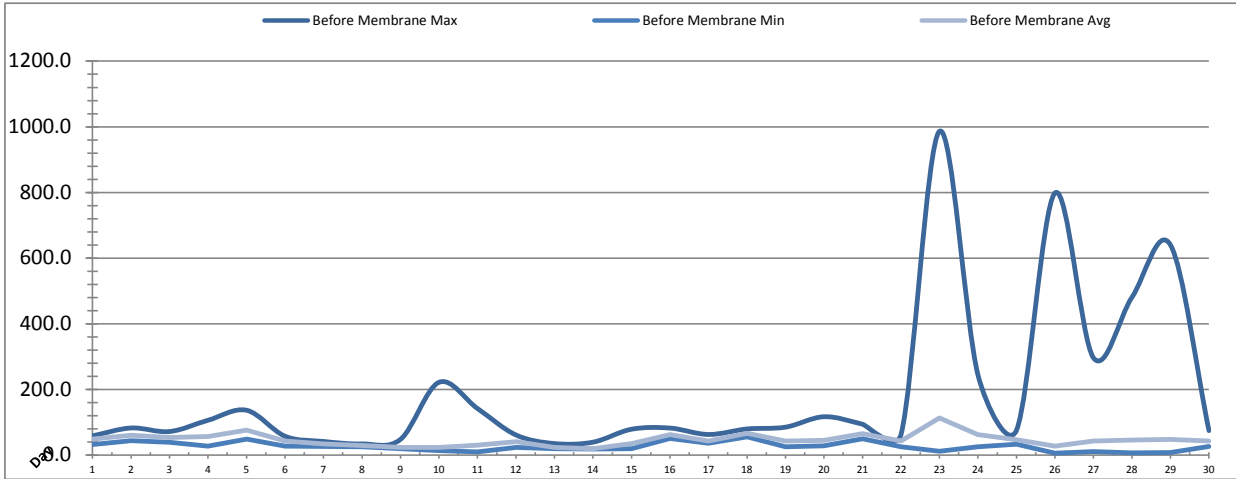


Date	Raw Water Temperature			Raw Water Turbidity		
	TIT_1403 (°C)			AIT_1404 (NTU)		
	Maximum	Minimum	Average	Maximum	Minimum	Average
1	17.3	16.4	17.1	496.31	46.20	81.48
2	17.1	16.8	17.0	463.03	68.68	116.99
3	17.2	16.6	16.9	496.34	65.61	95.92
4	16.7	16.1	16.4	496.28	40.76	114.75
5	16.9	16.5	16.7	496.35	84.20	139.99
6	16.8	16.1	16.5	468.44	36.89	72.62
7	16.4	15.9	16.2	290.34	36.12	59.63
8	16.0	15.7	15.9	496.28	36.12	46.56
9	15.9	15.5	15.7	111.30	22.90	36.00
10	15.8	14.7	15.2	214.38	30.63	42.28
11	14.8	14.3	14.5	496.17	29.05	57.17
12	14.6	14.3	14.5	185.62	37.60	74.12
13	14.4	14.2	14.3	198.02	24.43	34.27
14	14.3	13.8	14.1	496.26	22.16	25.70
15	14.1	13.6	13.9	279.43	26.74	63.18
16	14.3	13.5	14.0	380.85	77.89	117.84
17	13.9	13.3	13.7	496.16	54.62	71.78
18	14.4	13.4	14.1	496.18	75.54	122.58
19	14.3	13.3	13.8	496.16	34.53	64.36
20	13.6	13.0	13.3	312.62	39.91	89.09
21	14.2	13.6	13.9	314.18	107.32	148.70
22	14.1	13.3	13.8	496.14	38.31	75.89
23	15.2	10.5	12.6	496.17	32.92	138.69
24	14.9	10.2	12.0	496.19	63.11	112.98
25	14.8	13.5	14.3	117.41	49.21	84.41
26	14.7	13.5	14.1	76.36	38.34	58.43
27	14.8	12.9	13.9	496.28	27.51	89.81
28	16.1	12.9	13.3	495.45	24.41	68.08
29	14.1	11.6	12.9	174.82	32.19	66.42
30	14.0	11.2	13.0	111.26	33.72	62.66
Total						
Average	15.2	14.0	14.6	371.4	44.6	81.1
Maximum	17.3		17.1	496.4		148.7
Date	1-Nov		1-Nov	5-Nov		21-Nov
Minimum		10.2	12.0		22.2	25.7
Date		24-Nov	24-Nov		14-Nov	14-Nov

Notes:

Membranes Monthly Report

Month: November-17



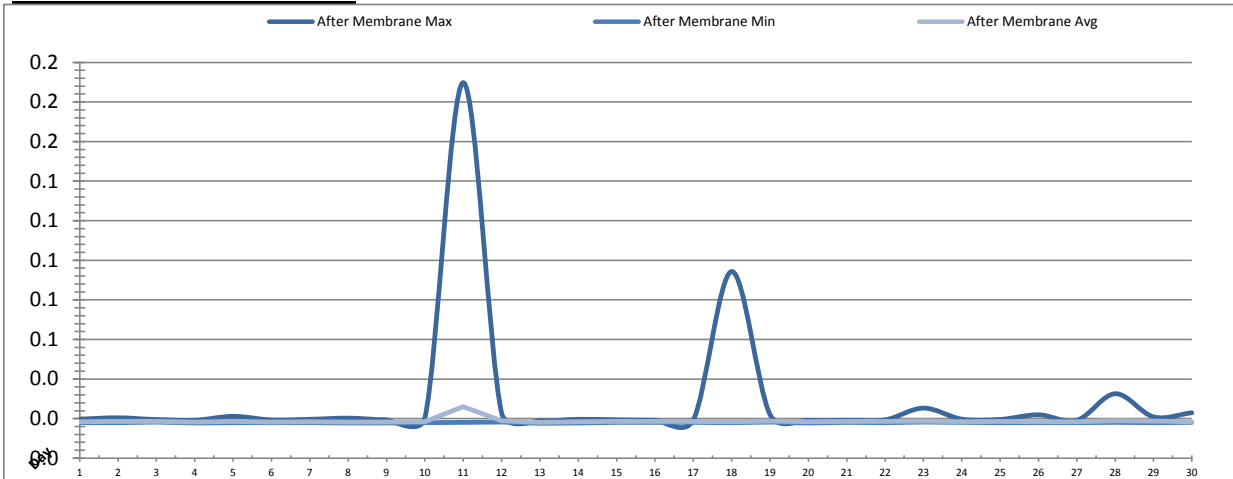
Date	Turbidity Before Membrane			Rack #1 Turbidity			Rack #2 Turbidity		
	PALL_FEED_AIT2006_Value NTU			RACK1_NTU_Value NTU			RACK2_NTU_Value NTU		
	Maximum	Minimum	Average	Maximum	Minimum	Average	Maximum	Minimum	Average
1	58.20	31.56	47.95	0.02	0.02	0.02	0.11	0.03	0.03
2	82.18	42.98	59.57	0.02	0.02	0.02	0.11	0.03	0.03
3	71.39	38.59	52.93	0.02	0.02	0.02	0.12	0.03	0.03
4	105.72	27.08	55.69	0.02	0.02	0.02	0.14	0.03	0.03
5	136.28	48.58	75.18	0.02	0.02	0.02	0.07	0.03	0.03
6	57.08	27.32	42.43	0.02	0.02	0.02	0.09	0.03	0.03
7	41.12	25.99	34.04	0.12	0.02	0.02	0.11	0.02	0.03
8	33.62	24.87	28.81	0.02	0.02	0.02	0.09	0.02	0.02
9	47.52	19.08	23.01	0.02	0.02	0.02	0.11	0.02	0.02
10	221.41	13.34	23.01	0.03	0.02	0.02	0.09	0.02	0.02
11	141.44	9.30	29.73	0.17	0.02	0.02	0.11	0.02	0.02
12	60.85	23.32	40.66	0.02	0.02	0.02	0.39	0.02	0.02
13	34.72	19.17	23.43	0.02	0.02	0.02	0.43	0.02	0.02
14	38.98	18.35	19.22	0.02	0.02	0.02	0.26	0.02	0.02
15	78.42	19.04	34.66	0.02	0.02	0.02	0.21	0.02	0.02
16	81.95	50.07	61.59	0.02	0.02	0.02	0.46	0.02	0.02
17	62.38	35.29	42.89	0.09	0.02	0.02	0.05	0.02	0.02
18	79.24	54.70	65.98	0.02	0.02	0.02	0.43	0.02	0.02
19	84.72	25.26	42.38	0.02	0.02	0.02	0.38	0.02	0.02
20	116.44	27.81	44.81	0.02	0.02	0.02	0.35	0.02	0.02
21	93.66	49.40	64.91	0.02	0.02	0.02	0.28	0.02	0.02
22	62.02	24.65	42.38	0.02	0.02	0.02	0.05	0.02	0.02
23	986.36	11.36	113.06	0.02	0.02	0.02	0.51	0.02	0.02
24	243.50	25.24	61.54	0.02	0.02	0.02	0.22	0.02	0.02
25	75.24	32.38	46.02	0.02	0.02	0.02	7.07	0.02	0.03
26	798.33	5.91	26.78	0.02	0.02	0.02	0.03	0.02	0.02
27	295.77	10.14	42.17	0.09	0.02	0.02	0.56	0.02	0.02
28	480.60	5.96	45.31	0.02	0.02	0.02	0.05	0.02	0.02
29	639.81	7.14	47.06	0.02	0.02	0.02	0.15	0.02	0.02
30	74.10	25.75	42.38	0.02	0.02	0.02	0.17	0.02	0.02
Total									
Average	179.4	26.0	46.0	0.0	0.0	0.0	0.4	0.0	0.0
Maximum	986.4		113.1	0.2		0.0	7.1		0.0
Date	23-Nov		23-Nov	11-Nov		7-Nov	25-Nov		25-Nov
Minimum		5.9	19.2		0.0	0.0		0.0	0.0
Date		26-Nov	14-Nov		8-Nov	15-Nov		14-Nov	26-Nov

Notes:

Rack 1: 7th >0.1ntu for 3min, 11th >0.1ntu due to maintenance.
 Rack 2: turbidity spikes post IT mostly all less than 2min duration.

Membranes Monthly Report

Month: November-17



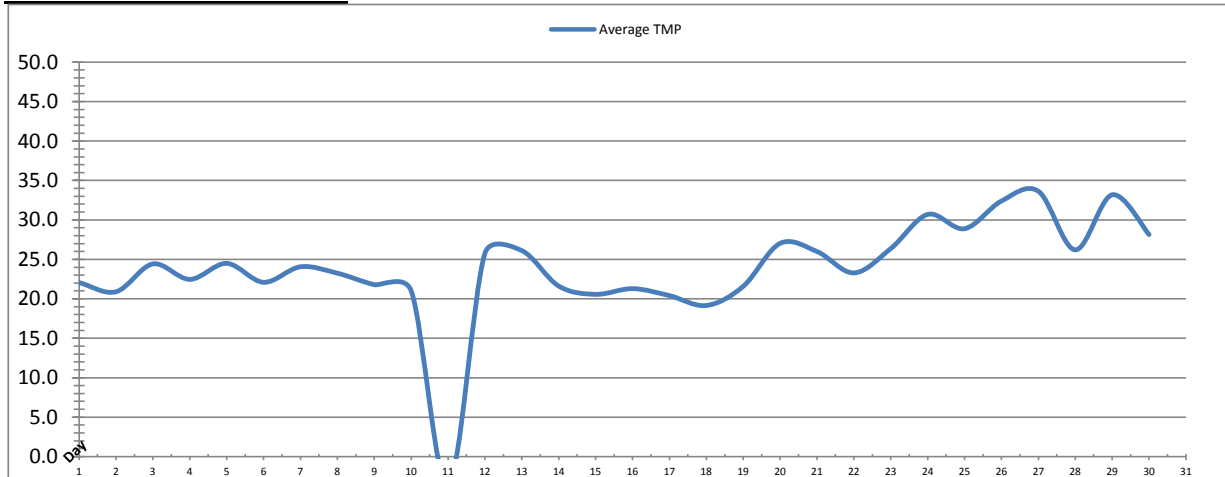
Date	Rack #3 Turbidity			Rack #4 Turbidity			Turbidity After Membranes		
	RACK3_NTU_Value NTU			RACK4_NTU_Value NTU			PALL_FILTER_AIT5001_Value NTU		
	Maximum	Minimum	Average	Maximum	Minimum	Average	Maximum	Minimum	Average
1	0.02	0.01	0.01	0.02	0.02	0.02	0.02	0.02	0.02
2	0.03	0.01	0.01	0.02	0.02	0.02	0.02	0.02	0.02
3	0.02	0.01	0.01	0.02	0.02	0.02	0.02	0.02	0.02
4	0.02	0.01	0.01	0.02	0.02	0.02	0.02	0.02	0.02
5	0.02	0.01	0.01	0.02	0.02	0.02	0.02	0.02	0.02
6	0.02	0.01	0.01	0.02	0.02	0.02	0.02	0.02	0.02
7	0.02	0.01	0.01	0.02	0.02	0.02	0.02	0.02	0.02
8	0.02	0.01	0.01	0.02	0.02	0.02	0.02	0.02	0.02
9	0.02	0.01	0.01	0.02	0.02	0.02	0.02	0.02	0.02
10	0.05	0.01	0.01	0.02	0.02	0.02	0.02	0.02	0.02
11	0.01	0.01	0.01	0.22	0.02	0.02	0.19	0.02	0.03
12	0.01	0.01	0.01	0.02	0.02	0.02	0.02	0.02	0.02
13	0.01	0.01	0.01	0.02	0.02	0.02	0.02	0.02	0.02
14	0.03	0.01	0.01	0.03	0.02	0.02	0.02	0.02	0.02
15	0.02	0.01	0.01	0.02	0.02	0.02	0.02	0.02	0.02
16	0.02	0.01	0.01	0.02	0.02	0.02	0.02	0.02	0.02
17	0.02	0.01	0.01	0.02	0.02	0.02	0.02	0.02	0.02
18	0.02	0.01	0.01	0.02	0.02	0.02	0.09	0.02	0.02
19	0.02	0.01	0.01	0.02	0.02	0.02	0.02	0.02	0.02
20	0.08	0.01	0.01	0.02	0.02	0.02	0.02	0.02	0.02
21	0.01	0.01	0.01	0.02	0.02	0.02	0.02	0.02	0.02
22	0.01	0.01	0.01	0.02	0.02	0.02	0.02	0.02	0.02
23	0.01	0.01	0.01	0.02	0.02	0.02	0.03	0.02	0.02
24	0.01	0.01	0.01	0.02	0.02	0.02	0.02	0.02	0.02
25	0.01	0.01	0.01	0.02	0.02	0.02	0.02	0.02	0.02
26	0.01	0.01	0.01	0.02	0.02	0.02	0.02	0.02	0.02
27	0.06	0.01	0.01	0.02	0.02	0.02	0.02	0.02	0.02
28	0.01	0.01	0.01	0.02	0.02	0.02	0.03	0.02	0.02
29	0.01	0.01	0.01	0.03	0.02	0.02	0.02	0.02	0.02
30	0.01	0.01	0.01	0.02	0.01	0.02	0.02	0.02	0.02
Total									
Average	0.0	0.0	0.0	0.0	0.0	0.0	0.0	0.0	0.0
Maximum	0.1		0.0	0.2		0.0	0.2		0.0
Date	20-Nov		14-Nov	11-Nov		11-Nov	11-Nov		11-Nov
Minimum		0.0	0.0		0.0	0.0		0.0	0.0
Date		11-Nov	12-Nov		30-Nov	13-Nov		13-Nov	13-Nov

Notes:

Rack 4: turbidity >0.1ntu for 6min

Membranes Monthly Report

Month: **November-17**

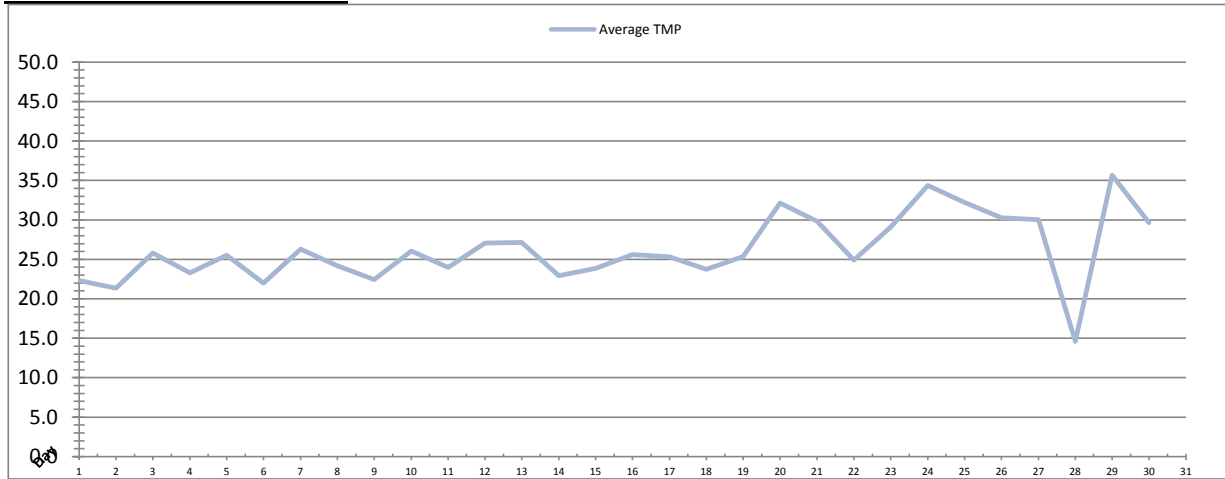


Date	Integrity Test Rack 1							
	Initial Pressure (kPa)	Final Pressure (kPa)	Test Duration (sec)	Change in Pressure (kPa)	UCL	Within UCL	Average TMP (kPa)	Max TMP (kPa)
1	199.3	198.1	300.0	1.2	2.0	✓ 2.0	22.1	74.1
2	199.4	198.2	300.0	1.2	2.0	✓ 2.0	20.9	45.0
3	199.2	197.9	300.0	1.3	2.0	✓ 2.0	24.4	75.7
4	199.3	198.1	300.0	1.2	2.0	✓ 2.0	22.5	67.2
5	199.2	198.1	300.0	1.2	2.0	✓ 2.0	24.5	80.4
6	198.9	197.8	300.0	1.1	2.0	✓ 2.0	22.1	47.5
7	198.9	197.6	300.0	1.2	2.0	✓ 2.0	24.1	79.1
8	199.4	198.1	300.0	1.2	2.0	✓ 2.0	23.2	81.0
9	199.5	198.1	300.0	1.3	2.0	✓ 2.0	21.8	81.8
10	180.4	179.6	300.0	0.8	2.0	✓ 2.0	21.0	81.5
11	198.9	197.4	300.0	1.5	2.0	✓ 2.0	-3.7	150.9
12	198.8	197.5	300.0	1.3	2.0	✓ 2.0	25.8	52.0
13	199.2	198.0	300.0	1.3	2.0	✓ 2.0	26.1	50.3
14	199.7	198.6	300.0	1.2	2.0	✓ 2.0	21.6	49.9
15	199.1	197.9	300.0	1.2	2.0	✓ 2.0	20.6	53.1
16	198.5	197.3	300.0	1.1	2.0	✓ 2.0	21.3	53.1
17	199.2	198.1	300.0	1.2	2.0	✓ 2.0	20.4	50.5
18	198.9	197.8	300.0	1.2	2.0	✓ 2.0	19.2	54.6
19	200.0	198.9	300.0	1.1	2.0	✓ 2.0	21.6	89.1
20	199.3	198.0	300.0	1.3	2.0	✓ 2.0	27.0	96.7
21	199.4	198.1	300.0	1.3	2.0	✓ 2.0	26.0	58.8
22	199.2	198.0	300.0	1.3	2.0	✓ 2.0	23.3	57.6
23	199.5	198.2	300.0	1.3	2.0	✓ 2.0	26.4	107.4
24	199.4	198.3	300.0	1.1	2.0	✓ 2.0	30.7	98.3
25	199.2	198.0	300.0	1.2	2.0	✓ 2.0	28.9	130.4
26	199.2	198.0	300.0	1.2	2.0	✓ 2.0	32.4	119.6
27	199.2	197.8	300.0	1.3	2.0	✓ 2.0	33.6	110.8
28	199.5	198.3	300.0	1.2	2.0	✓ 2.0	26.2	114.2
29	199.9	198.5	300.0	1.4	2.0	✓ 2.0	33.2	104.8
30	199.3	198.1	300.0	1.2	2.0	✓ 2.0	28.1	63.5
Total								
Average	198.6	197.4	300.0	1.2	2.0	2.0	23.8	79.3
Maximum	200.0	198.9	300.0	1.5	2.0	2.0	33.6	150.9
Date	19-Nov	19-Nov	1-Nov	11-Nov	1-Nov	1-Nov	27-Nov	11-Nov
Minimum	180.4	179.6	300.0	0.8	2.0	2.0	-3.7	45.0
Date	10-Nov	10-Nov	1-Nov	10-Nov	1-Nov	1-Nov	11-Nov	2-Nov

Notes:
 11: Leak on rack caused pressure issue. Maintenance completed and passed IT.

Membranes Monthly Report

Month: **November-17**

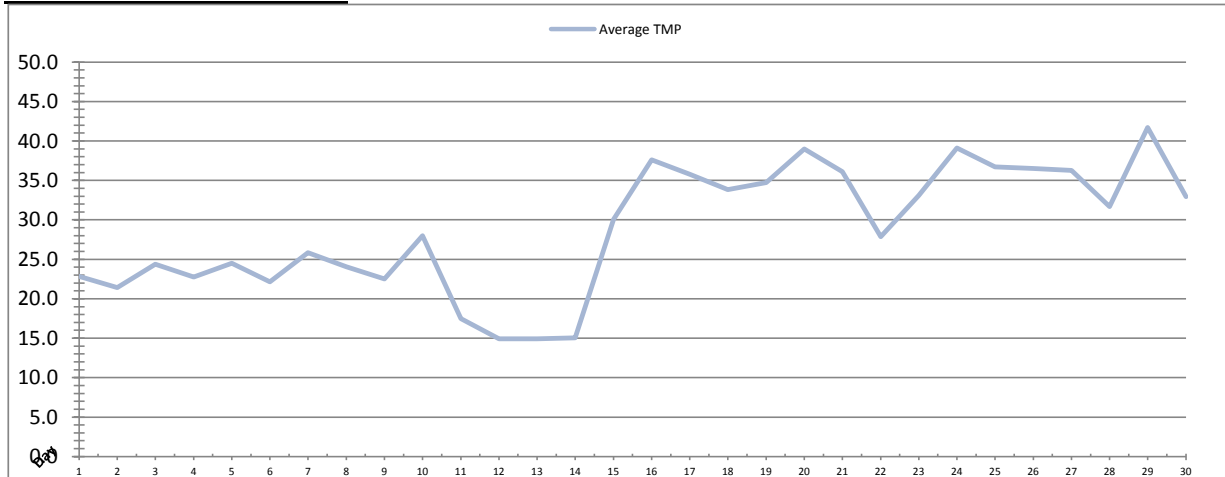


Date	Integrity Test Rack 2							
	Initial Pressure (kPa)	Final Pressure (kPa)	Test Duration (sec)	Change in Pressure (kPa)	UCL	Within UCL	Average TMP (kPa)	Max TMP (kPa)
1	208.8	207.7	300.0	1.1	2.0	✓ 2.0	22.3	77.0
2	209.1	207.8	300.0	1.3	2.0	✓ 2.0	21.3	49.0
3	208.9	207.8	300.0	1.1	2.0	✓ 2.0	25.8	77.0
4	209.1	207.9	300.0	1.2	2.0	✓ 2.0	23.3	53.9
5	208.6	207.4	300.0	1.2	2.0	✓ 2.0	25.5	80.1
6	208.3	207.1	300.0	1.2	2.0	✓ 2.0	22.0	47.3
7	209.1	208.0	300.0	1.1	2.0	✓ 2.0	26.3	82.3
8	208.2	207.0	300.0	1.2	2.0	✓ 2.0	24.2	86.8
9	208.7	207.6	300.0	1.1	2.0	✓ 2.0	22.4	85.9
10	208.2	207.1	300.0	1.1	2.0	✓ 2.0	26.0	105.4
11	209.3	208.0	300.0	1.3	2.0	✓ 2.0	24.0	115.9
12	208.5	207.3	300.0	1.2	2.0	✓ 2.0	27.0	54.3
13	208.2	207.0	300.0	1.2	2.0	✓ 2.0	27.1	74.8
14	208.7	207.5	300.0	1.2	2.0	✓ 2.0	22.9	51.2
15	208.5	207.3	300.0	1.3	2.0	✓ 2.0	23.9	55.2
16	208.5	207.5	300.0	1.1	2.0	✓ 2.0	25.6	54.1
17	207.8	206.7	300.0	1.1	2.0	✓ 2.0	25.3	58.9
18	209.1	208.0	300.0	1.2	2.0	✓ 2.0	23.7	54.3
19	208.0	206.9	300.0	1.2	2.0	✓ 2.0	25.4	93.7
20	207.9	206.7	300.0	1.2	2.0	✓ 2.0	32.1	106.3
21	208.4	207.2	300.0	1.2	2.0	✓ 2.0	29.8	63.6
22	209.3	208.2	300.0	1.1	2.0	✓ 2.0	24.9	60.0
23	208.3	206.9	300.0	1.3	2.0	✓ 2.0	29.1	209.4
24	208.1	206.9	300.0	1.2	2.0	✓ 2.0	34.4	122.4
25	208.3	207.1	300.0	1.2	2.0	✓ 2.0	32.2	133.9
26	188.8	183.2	300.0	5.5	2.0	✓ 2.0	30.3	128.9
27	208.0	206.7	300.0	1.3	2.0	✓ 2.0	30.0	144.0
28	209.1	207.8	300.0	1.3	2.0	✓ 2.0	14.6	69.0
29	208.2	206.9	300.0	1.3	2.0	✓ 2.0	35.6	106.0
30	209.1	207.9	300.0	1.2	2.0	✓ 2.0	29.6	65.7
Total								
Average	207.9	206.6	300.0	1.3	2.0	2.0	26.2	85.5
Maximum	209.3	208.2	300.0	5.5	2.0	2.0	35.6	209.4
Date	11-Nov	22-Nov	1-Nov	26-Nov	1-Nov	1-Nov	29-Nov	23-Nov
Minimum	188.8	183.2	300.0	1.1	2.0	2.0	14.6	47.3
Date	26-Nov	26-Nov	1-Nov	10-Nov	1-Nov	1-Nov	28-Nov	6-Nov

Notes:
 26: maintenance work performed on rack, passed IT after maintenance.

Membranes Monthly Report

Month: **November-17**

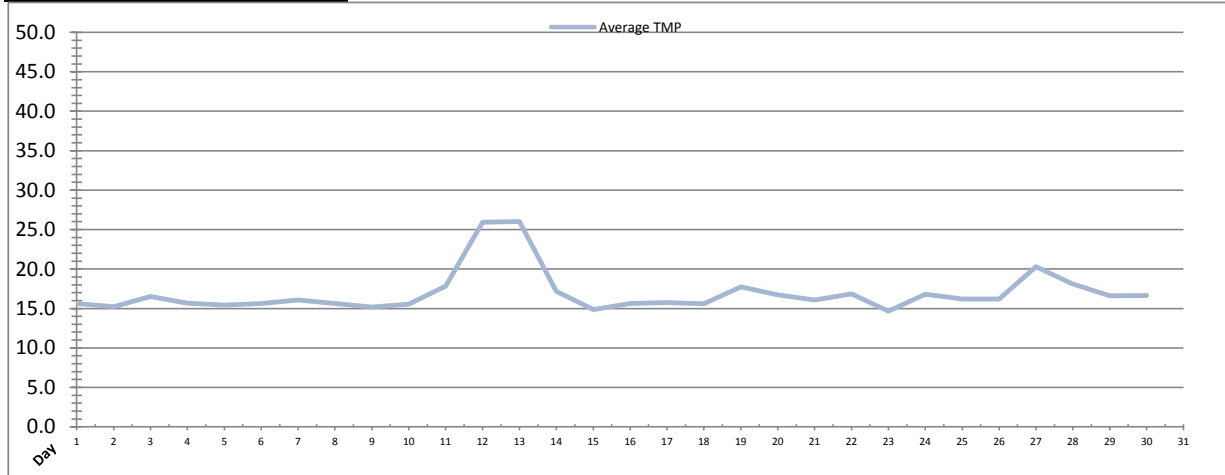


Date	Integrity Test Rack 3							
	Initial Pressure (kPa)	Final Pressure (kPa)	Test Duration (sec)	Change in Pressure (kPa)	UCL	Within UCL	Average TMP (kPa)	Max TMP (kPa)
1	190.9	189.6	300.0	1.3	2.0	✓ 2.0	22.8	74.9
2	189.6	188.4	300.0	1.3	2.0	✓ 2.0	21.4	46.7
3	190.2	188.9	300.0	1.3	2.0	✓ 2.0	24.4	75.5
4	189.8	188.6	300.0	1.2	2.0	✓ 2.0	22.8	66.3
5	190.7	189.4	300.0	1.3	2.0	✓ 2.0	24.5	78.2
6	190.3	189.1	300.0	1.2	2.0	✓ 2.0	22.1	44.2
7	190.8	189.5	300.0	1.3	2.0	✓ 2.0	25.8	85.6
8	190.5	189.2	300.0	1.3	2.0	✓ 2.0	24.1	81.4
9	190.5	189.3	300.0	1.2	2.0	✓ 2.0	22.5	82.3
10	189.9	188.7	300.0	1.2	2.0	✓ 2.0	28.0	86.5
11	190.5	189.3	300.0	1.3	2.0	✓ 2.0	17.5	79.8
12	190.5	189.3	300.0	1.3	2.0	✓ 2.0	14.9	15.2
13	190.5	189.3	300.0	1.3	2.0	✓ 2.0	14.9	15.2
14	190.4	189.1	300.0	1.3	2.0	✓ 2.0	15.1	45.8
15	190.6	189.3	300.0	1.3	2.0	✓ 2.0	30.1	86.4
16	190.4	189.1	300.0	1.3	2.0	✓ 2.0	37.6	79.4
17	190.1	188.9	300.0	1.2	2.0	✓ 2.0	35.8	81.8
18	190.1	188.9	300.0	1.2	2.0	✓ 2.0	33.9	71.5
19	191.6	190.3	300.0	1.3	2.0	✓ 2.0	34.7	183.5
20	190.4	189.0	300.0	1.3	2.0	✓ 2.0	39.0	101.6
21	190.6	189.3	300.0	1.3	2.0	✓ 2.0	36.1	77.3
22	190.0	188.8	300.0	1.2	2.0	✓ 2.0	27.9	80.7
23	190.1	188.8	300.0	1.3	2.0	✓ 2.0	33.1	210.3
24	191.3	190.2	300.0	1.1	2.0	✓ 2.0	39.1	117.9
25	191.7	190.6	300.0	1.1	2.0	✓ 2.0	36.7	168.0
26	191.7	190.6	300.0	1.1	2.0	✓ 2.0	36.5	126.3
27	190.5	189.1	300.0	1.4	2.0	✓ 2.0	36.3	133.6
28	189.8	188.5	300.0	1.3	2.0	✓ 2.0	31.7	125.8
29	190.4	189.1	300.0	1.3	2.0	✓ 2.0	41.7	120.1
30	190.7	189.3	300.0	1.3	2.0	✓ 2.0	32.9	69.2
Total								
Average	190.5	189.2	300.0	1.3	2.0	2.0	28.8	90.4
Maximum	191.7	190.6	300.0	1.4	2.0	2.0	41.7	210.3
Date	25-Nov	25-Nov	1-Nov	27-Nov	1-Nov	1-Nov	29-Nov	23-Nov
Minimum	189.6	188.4	300.0	1.1	2.0	2.0	14.9	15.2
Date	2-Nov	2-Nov	1-Nov	24-Nov	1-Nov	1-Nov	12-Nov	12-Nov

Notes:

Membranes Monthly Report

Month: **November-17**



Integrity Test Rack 4									
Date	Initial Pressure (kPa)	Final Pressure (kPa)	Test Duration (sec)	Change in Pressure (kPa)	UCL	Within UCL	Average TMP (kPa)	Max TMP (kPa)	
1	197.5	196.2	300.0	1.3	2.0	✓ 2.0	15.6	33.8	
2	197.8	196.5	300.0	1.3	2.0	✓ 2.0	15.2	27.8	
3	197.6	196.3	300.0	1.3	2.0	✓ 2.0	16.5	40.8	
4	197.6	196.3	300.0	1.2	2.0	✓ 2.0	15.7	34.3	
5	197.8	196.5	300.0	1.3	2.0	✓ 2.0	15.4	29.4	
6	197.4	196.1	300.0	1.3	2.0	✓ 2.0	15.6	27.0	
7	197.5	196.2	300.0	1.3	2.0	✓ 2.0	16.1	33.6	
8	197.2	196.0	300.0	1.3	2.0	✓ 2.0	15.6	32.6	
9	197.2	195.9	300.0	1.3	2.0	✓ 2.0	15.2	33.1	
10	197.3	196.1	300.0	1.2	2.0	✓ 2.0	15.6	28.8	
11	197.2	195.9	300.0	1.3	2.0	✓ 2.0	17.8	140.2	
12	197.6	196.3	300.0	1.2	2.0	✓ 2.0	25.9	49.1	
13	197.5	196.4	300.0	1.1	2.0	✓ 2.0	26.0	47.5	
14	197.7	196.3	300.0	1.4	2.0	✓ 2.0	17.2	48.8	
15	197.5	196.2	300.0	1.3	2.0	✓ 2.0	14.9	26.3	
16	197.8	196.5	300.0	1.3	2.0	✓ 2.0	15.6	30.6	
17	197.9	196.7	300.0	1.3	2.0	✓ 2.0	15.8	27.1	
18	198.0	196.7	300.0	1.3	2.0	✓ 2.0	15.6	32.3	
19	198.0	196.7	300.0	1.3	2.0	✓ 2.0	17.8	30.8	
20	198.1	196.7	300.0	1.3	2.0	✓ 2.0	16.7	31.9	
21	197.9	196.5	300.0	1.4	2.0	✓ 2.0	16.1	32.8	
22	197.5	196.1	300.0	1.4	2.0	✓ 2.0	16.8	33.6	
23	197.5	196.2	300.0	1.3	2.0	✓ 2.0	14.7	36.3	
24	197.4	196.2	300.0	1.3	2.0	✓ 2.0	16.8	32.6	
25	197.8	196.5	300.0	1.3	2.0	✓ 2.0	16.2	34.5	
26	198.0	196.6	300.0	1.3	2.0	✓ 2.0	16.2	33.2	
27	198.0	196.6	300.0	1.3	2.0	✓ 2.0	20.3	100.1	
28	198.0	196.6	300.0	1.3	2.0	✓ 2.0	18.1	53.6	
29	197.2	195.5	300.0	1.6	2.0	✓ 2.0	16.6	47.3	
30	197.5	196.3	300.0	1.3	2.0	✓ 2.0	16.6	34.6	
Total									
Average	197.6	196.3	300.0	1.3	2.0	2.0	16.9	40.8	
Maximum	198.1	196.7	300.0	1.6	2.0	2.0	26.0	140.2	
Date	20-Nov	20-Nov	1-Nov	29-Nov	1-Nov	1-Nov	13-Nov	11-Nov	
Minimum	197.2	195.5	300.0	1.1	2.0	2.0	14.7	26.3	
Date	9-Nov	29-Nov	1-Nov	13-Nov	1-Nov	1-Nov	23-Nov	15-Nov	

Notes:

Membranes Monthly Report

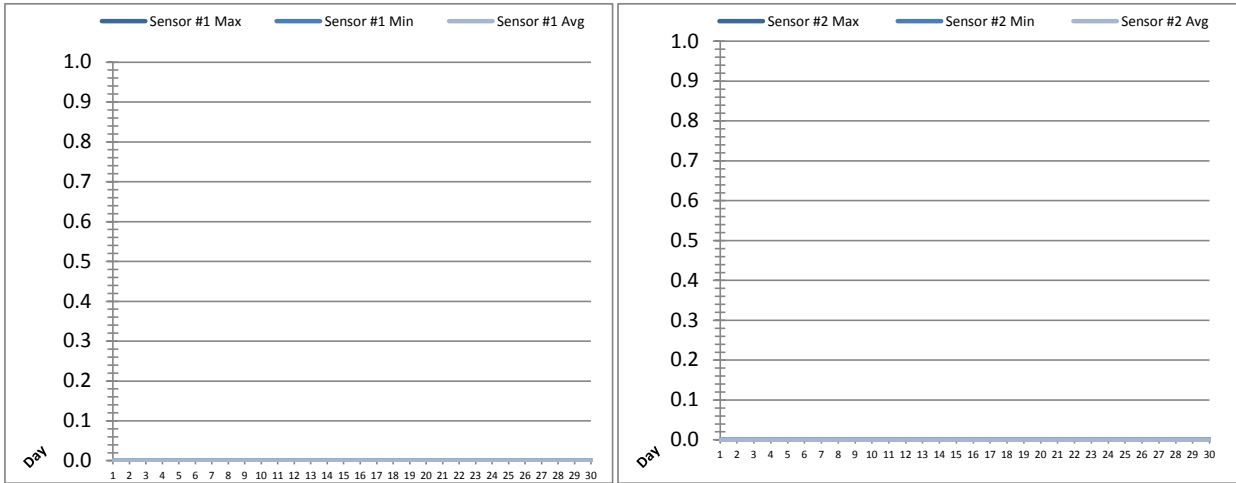
Month: November-17

Date	Membranes Monthly Performance							
	Rack 1 >0.1 NTU (Minutes)	Rack 1 Forward Flow (Minutes)	Rack 2 >0.1 NTU (Minutes)	Rack 2 Forward Flow (Minutes)	Rack 3 >0.1 NTU (Minutes)	Rack 3 Forward Flow (Minutes)	Rack 4 >0.1 NTU (Minutes)	Rack 4 Forward Flow (Minutes)
1	0.0	693.3	0.5	700.5	0.0	696.5	0.0	460.4
2	0.0	690.6	0.5	701.4	0.0	696.3	0.0	411.4
3	0.0	934.5	0.5	951.1	0.0	874.3	0.0	606.2
4	0.0	808.4	0.5	813.3	0.0	809.3	0.0	474.3
5	0.0	778.1	0.0	790.3	0.0	779.0	0.0	522.6
6	0.0	713.0	0.0	718.4	0.0	710.3	0.0	422.5
7	1.3	820.4	0.5	893.1	0.0	885.5	0.0	568.2
8	0.0	705.4	0.0	720.2	0.0	709.0	0.0	465.1
9	0.0	576.6	0.0	588.2	0.0	580.5	0.0	396.4
10	0.0	800.1	0.0	850.5	0.0	819.0	0.0	346.2
11	0.5	555.2	0.5	665.4	0.0	408.1	6.3	266.3
12	0.0	953.4	1.4	968.3	0.0	0.0	0.0	952.6
13	0.0	941.2	0.5	953.5	0.0	0.0	0.0	945.3
14	0.0	656.2	1.4	668.4	0.0	293.1	0.0	501.5
15	0.0	812.5	0.5	817.5	0.0	817.5	0.0	271.0
16	0.0	1028.2	0.5	1021.4	0.0	1032.2	0.0	475.5
17	0.0	923.0	0.0	924.4	0.0	934.3	0.0	315.6
18	0.0	810.3	0.5	812.6	0.0	809.4	0.0	306.2
19	0.0	772.2	0.5	780.4	0.0	780.4	0.0	116.4
20	0.0	1130.3	0.5	1150.6	0.0	1091.1	0.0	452.5
21	0.0	998.3	0.5	1003.3	0.0	996.2	0.0	489.1
22	0.0	689.2	0.0	698.2	0.0	693.2	0.0	405.0
23	0.0	859.5	0.5	868.5	0.0	849.1	0.0	548.1
24	0.0	1052.4	1.4	1064.0	0.0	1054.2	0.0	611.1
25	0.0	833.1	0.5	838.5	0.0	836.3	0.0	384.3
26	0.0	784.5	0.0	773.2	0.0	793.3	0.0	262.1
27	0.0	1059.5	0.5	997.4	0.0	1000.6	0.0	620.2
28	0.0	772.3	0.0	605.2	0.0	772.6	0.0	397.0
29	0.0	1013.1	0.5	1021.2	0.0	1013.3	0.0	764.1
30	0.0	877.0	0.5	882.5	0.0	875.3	0.0	518.4
Total	1.8	25041.7	12.9	25241.2	0.0	22610.1	6.3	14275.7
Percent	0.01		0.05		0.00		0.04	
Maximum	1.3	1130.3	1.4	1150.6	0.0	1091.1	6.3	952.6
Date	7-Nov	20-Nov	24-Nov	20-Nov	1-Nov	20-Nov	11-Nov	12-Nov
Minimum	0.0	555.2	0.0	588.2	0.0	0.0	0.0	116.4
Date	1-Nov	11-Nov	5-Nov	9-Nov	1-Nov	12-Nov	1-Nov	19-Nov

Notes:
 Met filter performance criteria of 99% readings <0.1ntu for the month.

UV System Monthly Report

Month: **November-17**

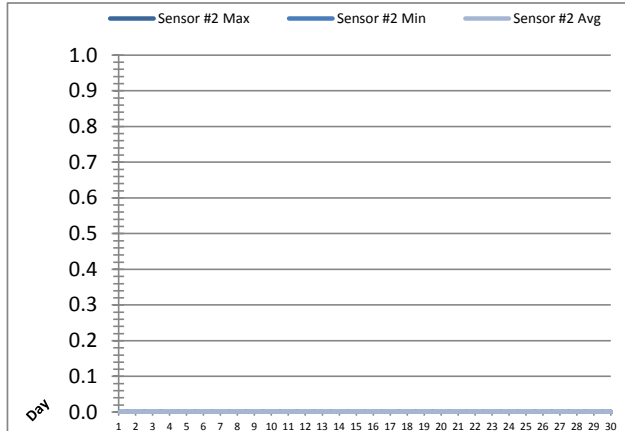
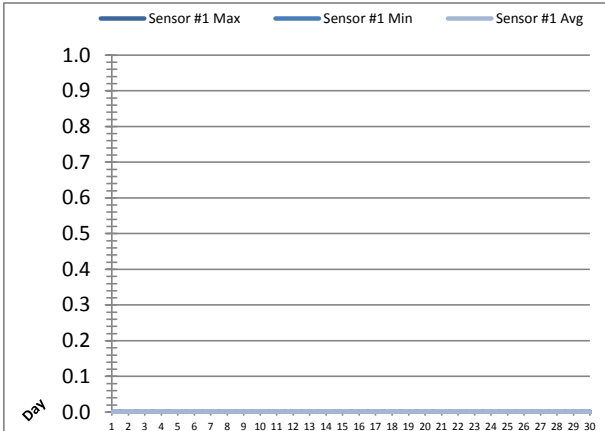


Date	UV Reactor 1					
	Intensity Sensor 1 (mW/cm ²)			Intensity Sensor 2 (mW/cm ²)		
	Maximum	Minimum	Average	Maximum	Minimum	Average
1	0.0	0.0	0.0	0.0	0.0	0.0
2	0.0	0.0	0.0	0.0	0.0	0.0
3	0.0	0.0	0.0	0.0	0.0	0.0
4	0.0	0.0	0.0	0.0	0.0	0.0
5	0.0	0.0	0.0	0.0	0.0	0.0
6	0.0	0.0	0.0	0.0	0.0	0.0
7	0.0	0.0	0.0	0.0	0.0	0.0
8	0.0	0.0	0.0	0.0	0.0	0.0
9	0.0	0.0	0.0	0.0	0.0	0.0
10	0.0	0.0	0.0	0.0	0.0	0.0
11	0.0	0.0	0.0	0.0	0.0	0.0
12	0.0	0.0	0.0	0.0	0.0	0.0
13	0.0	0.0	0.0	0.0	0.0	0.0
14	0.0	0.0	0.0	0.0	0.0	0.0
15	0.0	0.0	0.0	0.0	0.0	0.0
16	0.0	0.0	0.0	0.0	0.0	0.0
17	0.0	0.0	0.0	0.0	0.0	0.0
18	0.0	0.0	0.0	0.0	0.0	0.0
19	0.0	0.0	0.0	0.0	0.0	0.0
20	0.0	0.0	0.0	0.0	0.0	0.0
21	0.0	0.0	0.0	0.0	0.0	0.0
22	0.0	0.0	0.0	0.0	0.0	0.0
23	0.0	0.0	0.0	0.0	0.0	0.0
24	0.0	0.0	0.0	0.0	0.0	0.0
25	0.0	0.0	0.0	0.0	0.0	0.0
26	0.0	0.0	0.0	0.0	0.0	0.0
27	0.0	0.0	0.0	0.0	0.0	0.0
28	0.0	0.0	0.0	0.0	0.0	0.0
29	0.0	0.0	0.0	0.0	0.0	0.0
30	0.0	0.0	0.0	0.0	0.0	0.0
Total						
Average	0.0	0.0	0.0	0.0	0.0	0.0
Maximum	0.0		0.0	0.0		0.0
Date	1-Nov		1-Nov	1-Nov		1-Nov
Minimum		0.0			0.0	
Date		1-Nov	1-Nov		1-Nov	1-Nov

Notes:

UV System Monthly Report

Month: **November-17**

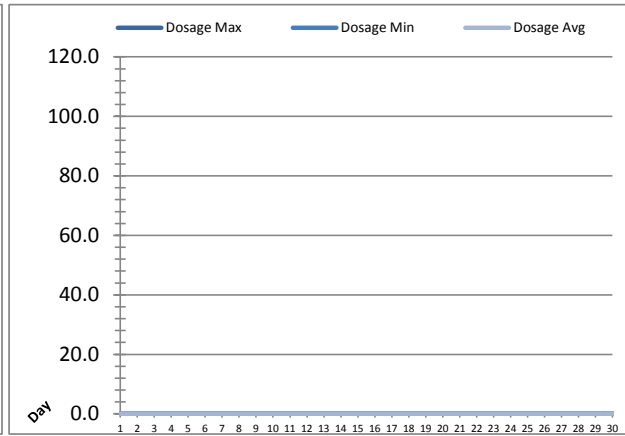
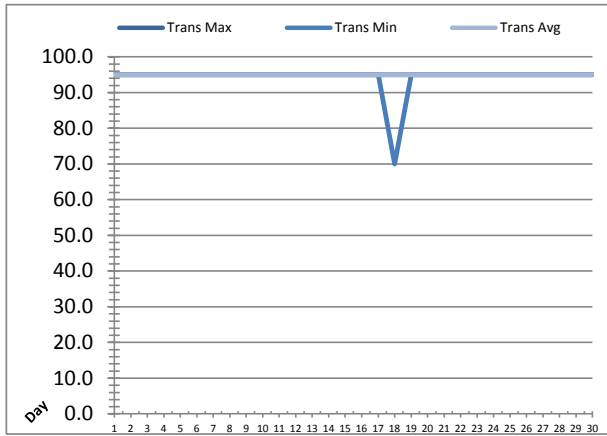


Date	UV Reactor 2					
	Intensity Sensor 1 (mW/cm ²)			Intensity Sensor 2 (mW/cm ²)		
	Maximum	Minimum	Average	Maximum	Minimum	Average
1	0.0	0.0	0.0	0.0	0.0	0.0
2	0.0	0.0	0.0	0.0	0.0	0.0
3	0.0	0.0	0.0	0.0	0.0	0.0
4	0.0	0.0	0.0	0.0	0.0	0.0
5	0.0	0.0	0.0	0.0	0.0	0.0
6	0.0	0.0	0.0	0.0	0.0	0.0
7	0.0	0.0	0.0	0.0	0.0	0.0
8	0.0	0.0	0.0	0.0	0.0	0.0
9	0.0	0.0	0.0	0.0	0.0	0.0
10	0.0	0.0	0.0	0.0	0.0	0.0
11	0.0	0.0	0.0	0.0	0.0	0.0
12	0.0	0.0	0.0	0.0	0.0	0.0
13	0.0	0.0	0.0	0.0	0.0	0.0
14	0.0	0.0	0.0	0.0	0.0	0.0
15	0.0	0.0	0.0	0.0	0.0	0.0
16	0.0	0.0	0.0	0.0	0.0	0.0
17	0.0	0.0	0.0	0.0	0.0	0.0
18	0.0	0.0	0.0	0.0	0.0	0.0
19	0.0	0.0	0.0	0.0	0.0	0.0
20	0.0	0.0	0.0	0.0	0.0	0.0
21	0.0	0.0	0.0	0.0	0.0	0.0
22	0.0	0.0	0.0	0.0	0.0	0.0
23	0.0	0.0	0.0	0.0	0.0	0.0
24	0.0	0.0	0.0	0.0	0.0	0.0
25	0.0	0.0	0.0	0.0	0.0	0.0
26	0.0	0.0	0.0	0.0	0.0	0.0
27	0.0	0.0	0.0	0.0	0.0	0.0
28	0.0	0.0	0.0	0.0	0.0	0.0
29	0.0	0.0	0.0	0.0	0.0	0.0
30	0.0	0.0	0.0	0.0	0.0	0.0
Total						
Average	0.0	0.0	0.0	0.0	0.0	0.0
Maximum	0.0		0.0	0.0		0.0
Date	1-Nov		1-Nov	1-Nov		1-Nov
Minimum		0.0	0.0		0.0	0.0
Date		1-Nov	1-Nov		1-Nov	1-Nov

Notes:

UV System Monthly Report

Month: **November-17**

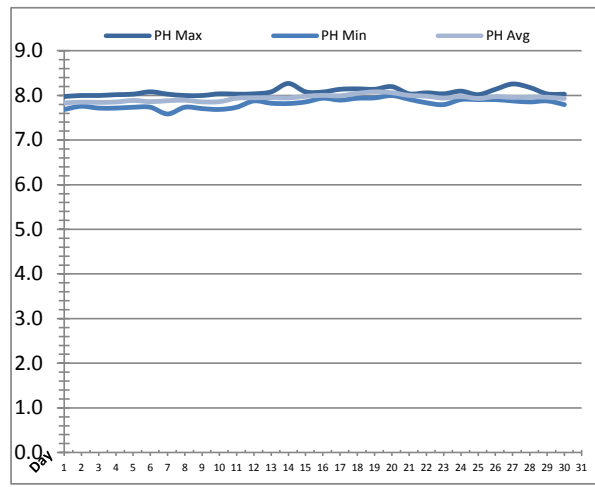
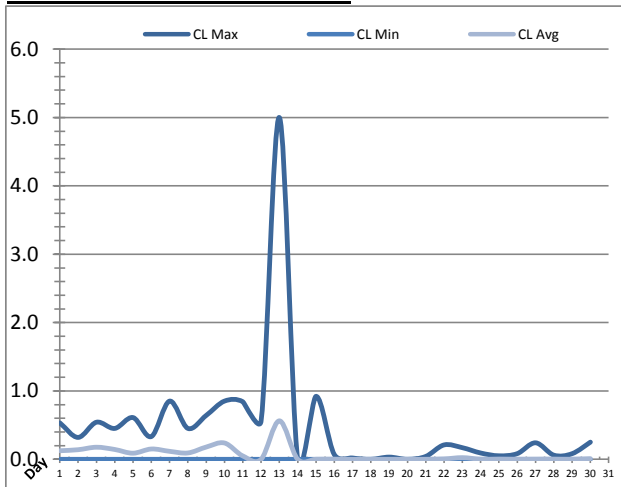


UV System							
Date	Transmittance (%)			Dosage (mJ/cm ²)			Inlet Flow (L/s)
	Maximum	Minimum	Average	Maximum	Minimum	Average	Maximum
1	95.00	95.00	95.00	0.0	0.0	0.0	148.3
2	95.00	95.00	95.00	0.0	0.0	0.0	81.8
3	95.00	95.00	95.00	0.0	0.0	0.0	144.0
4	95.00	95.00	95.00	0.0	0.0	0.0	107.3
5	95.00	95.00	95.00	0.0	0.0	0.0	144.2
6	95.00	95.00	95.00	0.0	0.0	0.0	102.7
7	95.00	95.00	95.00	0.0	0.0	0.0	141.4
8	95.00	95.00	95.00	0.0	0.0	0.0	148.0
9	95.00	95.00	95.00	0.0	0.0	0.0	145.1
10	95.00	95.00	95.00	0.0	0.0	0.0	102.3
11	95.00	95.00	95.00	0.0	0.0	0.0	137.1
12	95.00	95.00	95.00	0.0	0.0	0.0	83.6
13	95.00	95.00	95.00	0.0	0.0	0.0	74.9
14	95.00	95.00	95.00	0.0	0.0	0.0	84.9
15	95.00	95.00	95.00	0.0	0.0	0.0	85.8
16	95.00	95.00	95.00	0.0	0.0	0.0	86.1
17	95.00	95.00	95.00	0.0	0.0	0.0	91.2
18	95.00	70.00	94.98	0.0	0.0	0.0	88.8
19	95.00	95.00	95.00	0.0	0.0	0.0	143.9
20	95.00	95.00	95.00	0.0	0.0	0.0	623.0
21	95.00	95.00	95.00	0.0	0.0	0.0	89.7
22	95.00	95.00	95.00	0.0	0.0	0.0	96.5
23	95.00	95.00	95.00	0.0	0.0	0.0	145.4
24	95.00	95.00	95.00	0.0	0.0	0.0	143.6
25	95.00	95.00	95.00	0.0	0.0	0.0	140.6
26	95.00	95.00	95.00	0.0	0.0	0.0	141.1
27	95.00	95.00	95.00	0.0	0.0	0.0	92.1
28	95.00	95.00	95.00	0.0	0.0	0.0	89.2
29	95.00	95.00	95.00	0.0	0.0	0.0	123.4
30	95.00	95.00	95.00	0.0	0.0	0.0	84.4
Total							
Average	95.00	94.17	95.00	0.0	0.0	0.0	130.3
Maximum	95.00		95.00	0.0		0.0	623.0
Date	1-Nov		1-Nov	1-Nov		1-Nov	20-Nov
Minimum		70.00	94.98		0.0	0.0	
Date		18-Nov	18-Nov		1-Nov	1-Nov	

Notes:

Plant Quality Report

Month: **November-17**

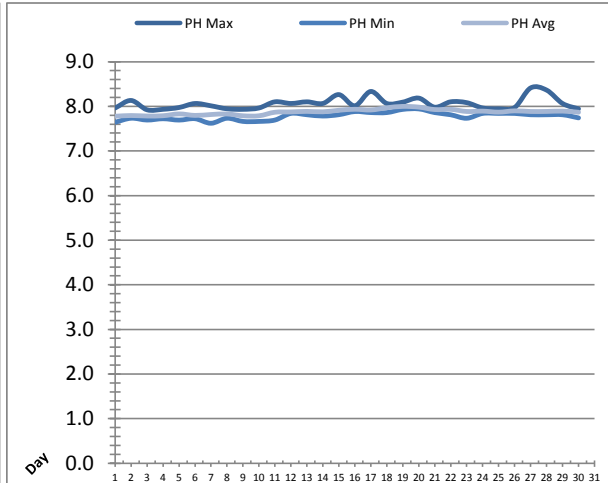
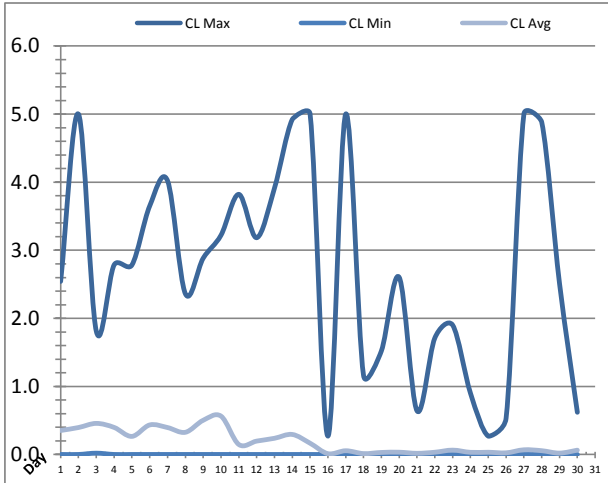


Date	Strainer Chlorine Residual			Strainer pH		
	AIT_2003_CL (ppm)			AIT_2003_PH		
	Maximum	Minimum	Average	Maximum	Minimum	Average
1	0.53	0.00	0.13	7.98	7.69	7.83
2	0.32	0.00	0.14	8.00	7.76	7.85
3	0.54	0.00	0.18	8.00	7.72	7.84
4	0.45	0.00	0.14	8.02	7.72	7.85
5	0.61	0.00	0.09	8.03	7.73	7.89
6	0.33	0.00	0.15	8.08	7.74	7.86
7	0.85	0.00	0.12	8.03	7.58	7.88
8	0.45	0.00	0.09	8.00	7.74	7.89
9	0.64	0.00	0.18	8.00	7.70	7.86
10	0.85	0.00	0.24	8.04	7.69	7.86
11	0.84	0.00	0.05	8.03	7.74	7.94
12	0.56	0.00	0.00	8.04	7.88	7.95
13	5.00	0.00	0.56	8.08	7.83	7.95
14	0.00	0.00	0.00	8.27	7.82	7.94
15	0.92	0.00	0.00	8.08	7.85	7.98
16	0.07	0.00	0.00	8.08	7.94	8.00
17	0.02	0.00	0.00	8.14	7.90	7.99
18	0.00	0.00	0.00	8.15	7.94	8.05
19	0.03	0.00	0.00	8.14	7.95	8.08
20	0.00	0.00	0.00	8.20	8.00	8.06
21	0.04	0.00	0.00	8.04	7.91	8.00
22	0.21	0.00	0.01	8.06	7.84	7.98
23	0.17	0.00	0.02	8.04	7.79	7.94
24	0.09	0.00	0.00	8.10	7.91	7.98
25	0.05	0.00	0.00	8.02	7.91	7.93
26	0.08	0.00	0.00	8.14	7.91	7.97
27	0.24	0.00	0.00	8.26	7.88	7.95
28	0.06	0.00	0.00	8.18	7.85	7.96
29	0.08	0.00	0.00	8.03	7.88	7.96
30	0.25	0.00	0.01	8.03	7.79	7.93
Total						
Average	0.48	0.00	0.07	8.07	7.82	7.94
Maximum	5.00		0.56	8.27		8.08
Date	13-Nov		13-Nov	14-Nov		19-Nov
Minimum		0.00	0.00		7.58	7.83
Date		1-Nov	14-Nov		7-Nov	1-Nov

Notes:

Plant Quality Report

Month: **November-17**

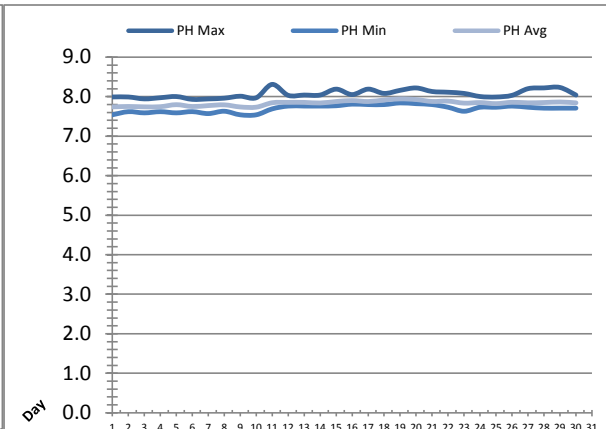
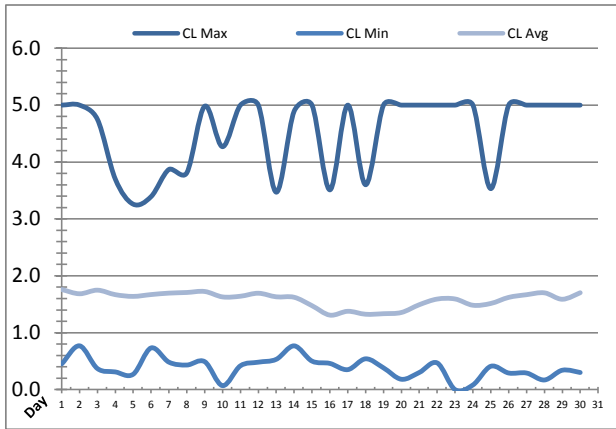


Date	Inlet UV Chlorine Residual			Inlet UV pH		
	AIT_5005_CL (ppm)			AIT_5005_PH		
	Maximum	Minimum	Average	Maximum	Minimum	Average
1	2.54	0.00	0.35	7.96	7.64	7.78
2	5.00	0.00	0.40	8.13	7.73	7.79
3	1.81	0.02	0.46	7.92	7.69	7.78
4	2.78	0.00	0.40	7.93	7.72	7.79
5	2.78	0.00	0.27	7.97	7.69	7.83
6	3.65	0.00	0.43	8.06	7.72	7.80
7	4.02	0.00	0.40	8.01	7.62	7.82
8	2.36	0.00	0.33	7.94	7.73	7.83
9	2.88	0.00	0.50	7.93	7.66	7.79
10	3.22	0.00	0.56	7.96	7.66	7.79
11	3.82	0.00	0.15	8.10	7.69	7.87
12	3.18	0.00	0.20	8.06	7.84	7.87
13	3.91	0.00	0.24	8.10	7.81	7.89
14	4.92	0.00	0.29	8.06	7.78	7.88
15	5.00	0.00	0.17	8.26	7.81	7.91
16	0.27	0.00	0.01	8.01	7.88	7.93
17	5.00	0.00	0.06	8.33	7.86	7.92
18	1.16	0.00	0.01	8.06	7.86	7.97
19	1.52	0.00	0.03	8.09	7.93	8.00
20	2.60	0.00	0.03	8.18	7.94	7.98
21	0.64	0.00	0.02	7.98	7.86	7.93
22	1.71	0.00	0.03	8.10	7.81	7.93
23	1.90	0.00	0.06	8.08	7.73	7.88
24	0.90	0.00	0.03	7.96	7.84	7.89
25	0.27	0.00	0.03	7.94	7.84	7.87
26	0.53	0.00	0.03	7.97	7.84	7.90
27	5.00	0.00	0.07	8.41	7.81	7.88
28	4.88	0.00	0.06	8.36	7.81	7.89
29	2.51	0.00	0.02	8.06	7.81	7.89
30	0.62	0.00	0.06	7.94	7.74	7.87
Total						
Average	2.71	0.00	0.19	8.07	7.78	7.87
Maximum	5.00		0.56	8.41		8.00
Date	2-Nov		10-Nov	27-Nov		19-Nov
Minimum		0.00	0.01		7.62	7.78
Date		16-Nov	16-Nov		7-Nov	1-Nov

Notes:

Plant Quality Report

Month: **November-17**

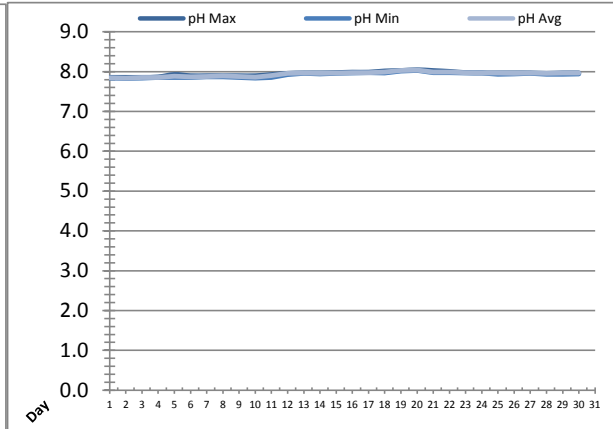
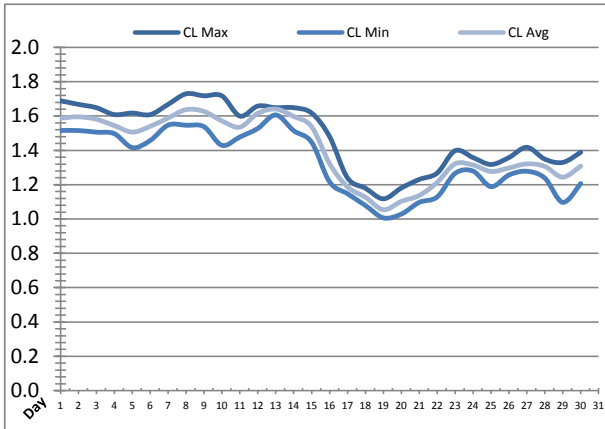


Date	Discharge UV Chlorine Residual			Discharge UV pH		
	AIT_5006_CL (ppm)			AIT_5006_PH		
	Maximum	Minimum	Average	Maximum	Minimum	Average
1	5.00	0.45	1.76	7.99	7.54	7.74
2	5.00	0.77	1.68	7.99	7.62	7.75
3	4.75	0.37	1.75	7.94	7.59	7.74
4	3.70	0.31	1.67	7.97	7.62	7.75
5	3.26	0.27	1.64	8.00	7.59	7.80
6	3.39	0.73	1.67	7.93	7.62	7.75
7	3.87	0.48	1.70	7.94	7.57	7.77
8	3.81	0.43	1.71	7.96	7.63	7.79
9	4.98	0.49	1.72	8.01	7.54	7.74
10	4.27	0.07	1.63	7.97	7.54	7.73
11	5.00	0.42	1.64	8.31	7.69	7.85
12	5.00	0.48	1.69	8.03	7.76	7.85
13	3.47	0.53	1.63	8.04	7.76	7.85
14	4.89	0.77	1.62	8.04	7.76	7.84
15	5.00	0.50	1.47	8.19	7.77	7.88
16	3.51	0.46	1.31	8.05	7.81	7.90
17	5.00	0.35	1.38	8.19	7.80	7.88
18	3.60	0.54	1.32	8.08	7.80	7.91
19	5.00	0.38	1.33	8.16	7.84	7.94
20	5.00	0.18	1.36	8.22	7.82	7.93
21	5.00	0.30	1.49	8.13	7.80	7.88
22	5.00	0.47	1.59	8.11	7.73	7.89
23	5.00	0.00	1.59	8.08	7.63	7.84
24	5.00	0.08	1.48	8.00	7.73	7.85
25	3.53	0.41	1.51	7.99	7.73	7.82
26	5.00	0.29	1.62	8.03	7.76	7.86
27	5.00	0.29	1.67	8.20	7.73	7.84
28	5.00	0.17	1.70	8.22	7.71	7.85
29	5.00	0.34	1.59	8.23	7.71	7.86
30	5.00	0.30	1.70	8.04	7.71	7.84
Total						
Average	4.53	0.39	1.59	8.07	7.70	7.83
Maximum	5.00		1.76	8.31		7.94
Date	1-Nov		1-Nov	11-Nov		19-Nov
Minimum		0.00	1.31		7.54	7.73
Date		23-Nov	16-Nov		10-Nov	10-Nov

Notes:

Plant Quality Report

Month: **November-17**

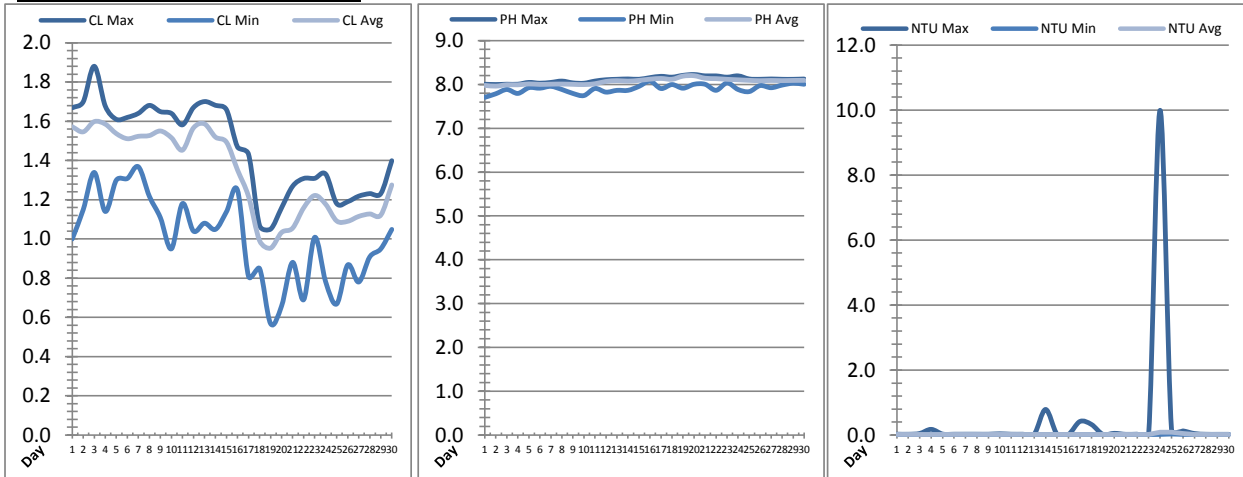


Date	Suction Header Chlorine Res.			Suction Header pH			Distribution CT Calc Total		
	AIT_7001_CL (ppm)			AIT_7001_PH (m)			REAL_CT_CALC_TOTAL (mg*ml/min)		
	Maximum	Minimum	Average	Maximum	Minimum	Average	Maximum	Minimum	Average
1	1.69	1.52	1.59	7.86	7.84	7.85	747.64	0.00	116.37
2	1.67	1.52	1.60	7.86	7.83	7.84	4887.87	0.00	176.27
3	1.65	1.51	1.58	7.86	7.84	7.85	798.28	0.00	154.45
4	1.61	1.50	1.54	7.87	7.85	7.85	5657.74	0.00	100.60
5	1.62	1.42	1.51	7.93	7.85	7.89	4507.87	0.00	185.20
6	1.61	1.46	1.54	7.90	7.85	7.87	1520.53	0.00	180.98
7	1.67	1.55	1.59	7.90	7.87	7.87	6090.16	0.00	168.73
8	1.73	1.55	1.64	7.90	7.87	7.89	767.64	0.00	136.45
9	1.72	1.54	1.63	7.90	7.85	7.87	3415.34	0.00	99.11
10	1.72	1.43	1.57	7.90	7.84	7.86	5617.82	0.00	179.13
11	1.60	1.48	1.54	7.93	7.85	7.90	5279.69	0.00	169.32
12	1.66	1.53	1.62	7.96	7.93	7.95	741.48	0.00	169.56
13	1.65	1.61	1.64	7.97	7.96	7.97	4974.57	0.00	142.24
14	1.65	1.51	1.60	7.97	7.94	7.96	4422.60	0.00	123.24
15	1.62	1.45	1.54	7.98	7.96	7.97	3459.47	0.00	120.20
16	1.48	1.22	1.32	7.99	7.97	7.97	905.93	0.00	129.20
17	1.24	1.15	1.19	7.99	7.97	7.98	688.10	0.00	68.78
18	1.18	1.08	1.13	8.02	7.97	7.99	2641.98	0.00	114.43
19	1.12	1.01	1.05	8.03	8.02	8.03	2143.25	0.00	104.72
20	1.18	1.03	1.10	8.05	8.03	8.04	1587.86	0.00	76.48
21	1.23	1.10	1.14	8.03	7.97	7.99	539.43	0.00	115.80
22	1.27	1.13	1.21	8.01	7.97	7.99	1832.90	0.00	85.38
23	1.40	1.27	1.32	7.98	7.97	7.97	3009.01	0.00	115.95
24	1.36	1.28	1.31	7.97	7.97	7.97	3798.96	0.00	111.73
25	1.32	1.19	1.28	7.97	7.94	7.97	438.68	0.00	102.14
26	1.36	1.26	1.30	7.97	7.94	7.95	974.80	0.00	122.12
27	1.42	1.28	1.32	7.97	7.96	7.96	529.49	0.00	185.94
28	1.35	1.24	1.31	7.96	7.94	7.96	622.73	0.00	121.99
29	1.33	1.10	1.24	7.97	7.94	7.96	479.17	0.00	165.38
30	1.39	1.21	1.31	7.97	7.94	7.97	3859.19	0.00	91.80
Total									
Average	1.48	1.34	1.41	7.95	7.92	7.94			
Maximum	1.73		1.64	8.05		8.04			
Date	8-Nov		13-Nov	20-Nov		20-Nov			
Minimum		1.01	1.05		7.83	7.84			
Date		19-Nov	19-Nov		2-Nov	2-Nov			

Notes:

Plant Quality Report

Month: **November-17**

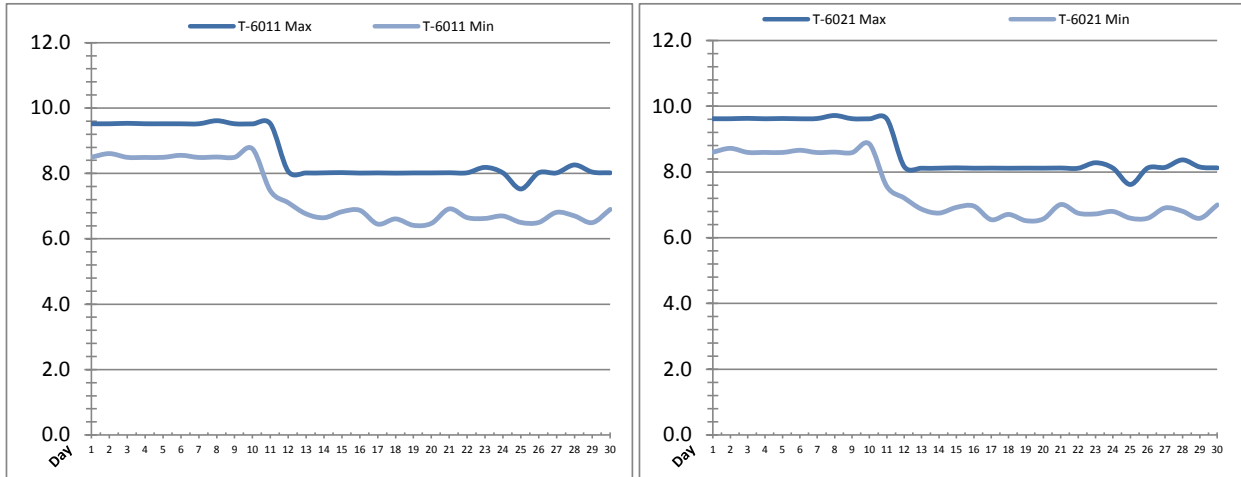


Date	Distribution Chlorine Header			Distribution pH			Distribution Turbidity		
	AIT_7004_CL (ppm)			AIT_7004_PH (mg/L)			AIT_7003 (mg/L)		
	Maximum	Minimum	Average	Maximum	Minimum	Average	Maximum	Minimum	Average
1	1.67	1.00	1.57	8.01	7.71	7.98	0.03	0.02	0.02
2	1.70	1.15	1.55	8.00	7.79	7.96	0.03	0.02	0.02
3	1.88	1.34	1.60	8.01	7.89	7.99	0.05	0.02	0.02
4	1.68	1.14	1.59	8.01	7.80	7.99	0.18	0.02	0.02
5	1.61	1.30	1.54	8.05	7.93	8.01	0.03	0.02	0.02
6	1.62	1.31	1.51	8.03	7.91	8.00	0.03	0.02	0.02
7	1.64	1.37	1.52	8.05	7.96	8.01	0.03	0.02	0.02
8	1.68	1.22	1.53	8.08	7.89	8.01	0.03	0.02	0.02
9	1.65	1.11	1.55	8.04	7.79	8.00	0.03	0.02	0.02
10	1.64	0.95	1.52	8.03	7.75	8.00	0.04	0.02	0.02
11	1.58	1.18	1.45	8.08	7.91	8.02	0.03	0.02	0.02
12	1.67	1.04	1.57	8.11	7.83	8.07	0.03	0.02	0.02
13	1.70	1.08	1.59	8.12	7.87	8.09	0.03	0.02	0.02
14	1.68	1.05	1.52	8.13	7.87	8.08	0.79	0.02	0.02
15	1.66	1.14	1.49	8.12	7.96	8.09	0.03	0.02	0.02
16	1.47	1.25	1.35	8.16	8.08	8.12	0.02	0.02	0.02
17	1.43	0.81	1.22	8.19	7.91	8.14	0.42	0.02	0.02
18	1.07	0.85	0.99	8.17	8.00	8.12	0.33	0.02	0.02
19	1.05	0.57	0.95	8.21	7.91	8.19	0.02	0.02	0.02
20	1.16	0.66	1.03	8.23	8.00	8.20	0.05	0.02	0.02
21	1.27	0.88	1.06	8.20	8.00	8.14	0.02	0.02	0.02
22	1.31	0.69	1.16	8.20	7.87	8.13	0.03	0.02	0.02
23	1.31	1.01	1.22	8.17	8.03	8.12	0.03	0.02	0.02
24	1.33	0.78	1.18	8.20	7.88	8.11	9.99	0.02	0.09
25	1.18	0.67	1.09	8.13	7.84	8.09	0.16	0.03	0.08
26	1.19	0.87	1.09	8.12	7.97	8.09	0.13	0.02	0.05
27	1.22	0.78	1.12	8.12	7.93	8.09	0.05	0.02	0.02
28	1.23	0.91	1.13	8.12	7.99	8.09	0.03	0.02	0.02
29	1.23	0.95	1.12	8.12	8.03	8.09	0.02	0.02	0.02
30	1.40	1.05	1.28	8.12	8.00	8.09	0.02	0.02	0.02
Total									
Average	1.46	1.00	1.34	8.11	7.91	8.07	0.4	0.0	0.0
Maximum	1.88		1.60	8.23		8.20	10.0		0.1
Date	3-Nov		3-Nov	20-Nov		20-Nov	24-Nov		24-Nov
Minimum		0.57	0.95		7.71	7.96		0.0	0.0
Date		19-Nov	19-Nov		1-Nov	2-Nov		21-Nov	16-Nov

Notes:
 24: Turbidity high due to maintenance on analyzer

Raw Well/Treated Storage Report

Month: **November-17**

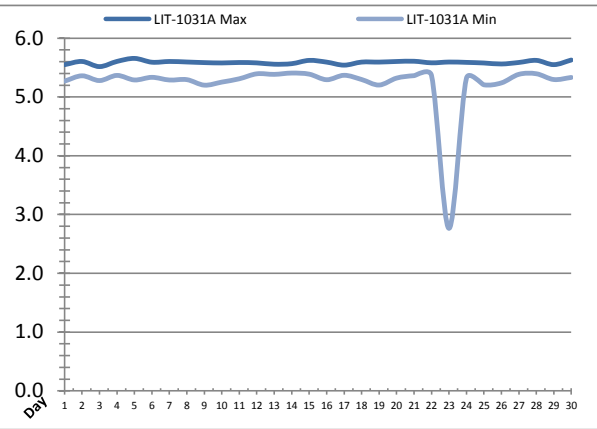
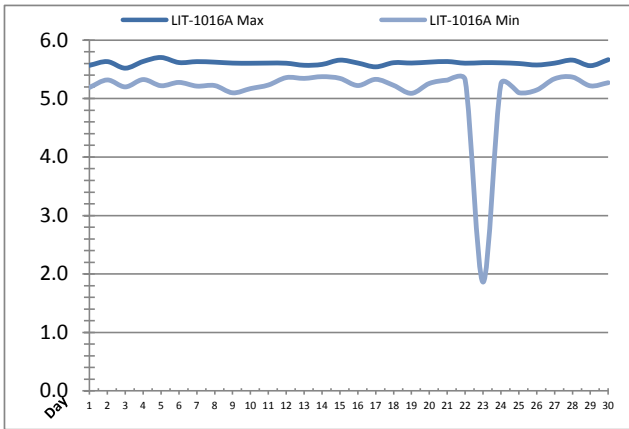


Date	Treated Water Storage Tank					
	T-6011 (m)			T-6021 (m)		
	Maximum	Minimum	Average	Maximum	Minimum	Average
1	9.5	8.5	9.2	9.6	8.6	9.3
2	9.5	8.6	9.3	9.6	8.7	9.4
3	9.5	8.5	9.1	9.6	8.6	9.2
4	9.5	8.5	9.1	9.6	8.6	9.2
5	9.5	8.5	9.2	9.6	8.6	9.3
6	9.5	8.6	9.2	9.6	8.7	9.3
7	9.5	8.5	9.2	9.6	8.6	9.3
8	9.6	8.5	9.1	9.7	8.6	9.2
9	9.5	8.5	9.2	9.6	8.6	9.3
10	9.5	8.8	9.3	9.6	8.9	9.4
11	9.5	7.5	8.8	9.6	7.6	8.9
12	8.1	7.1	7.7	8.2	7.2	7.8
13	8.0	6.8	7.6	8.1	6.9	7.7
14	8.0	6.6	7.6	8.1	6.7	7.7
15	8.0	6.8	7.6	8.1	6.9	7.8
16	8.0	6.9	7.6	8.1	7.0	7.7
17	8.0	6.5	7.3	8.1	6.5	7.4
18	8.0	6.6	7.5	8.1	6.7	7.6
19	8.0	6.4	7.6	8.1	6.5	7.7
20	8.0	6.5	7.3	8.1	6.6	7.4
21	8.0	6.9	7.6	8.1	7.0	7.7
22	8.0	6.6	7.6	8.1	6.7	7.7
23	8.2	6.6	7.6	8.3	6.7	7.7
24	8.0	6.7	7.3	8.1	6.8	7.4
25	7.5	6.5	7.2	7.6	6.6	7.3
26	8.0	6.5	7.5	8.1	6.6	7.6
27	8.0	6.8	7.6	8.1	6.9	7.7
28	8.3	6.7	7.7	8.4	6.8	7.8
29	8.0	6.5	7.5	8.2	6.6	7.6
30	8.0	6.9	7.6	8.1	7.0	7.7
Total						
Average	8.6	7.3	8.1	8.7	7.4	8.2
Maximum	9.6		9.3	9.7		9.4
Date	8-Nov		2-Nov	8-Nov		2-Nov
Minimum		6.4	7.2		6.5	7.3
Date		19-Nov	25-Nov		19-Nov	25-Nov

Notes:

Raw Well/Treated Storage Report

Month: November-17



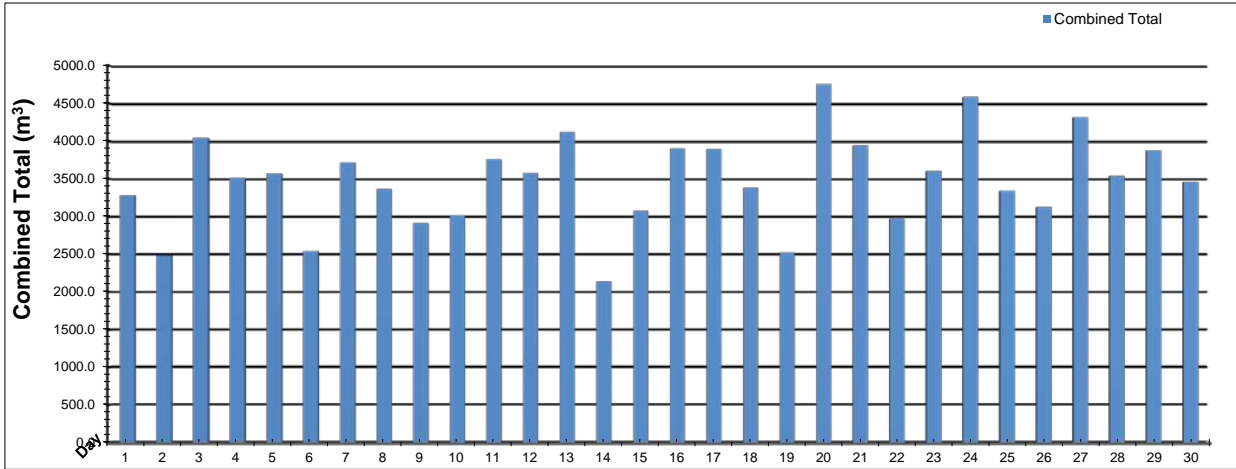
Date	Low Lift Intake Levels					
	Wet Well #1 (LIT-1016A) (m)			Wet Well #2 (LIT-1031A) (m)		
	Maximum	Minimum	Average	Maximum	Minimum	Average
1	5.6	5.2	5.4	5.5	5.3	5.4
2	5.6	5.3	5.5	5.6	5.4	5.5
3	5.5	5.2	5.4	5.5	5.3	5.4
4	5.6	5.3	5.5	5.6	5.4	5.5
5	5.7	5.2	5.5	5.7	5.3	5.5
6	5.6	5.3	5.5	5.6	5.3	5.5
7	5.6	5.2	5.5	5.6	5.3	5.5
8	5.6	5.2	5.5	5.6	5.3	5.5
9	5.6	5.1	5.5	5.6	5.2	5.5
10	5.6	5.2	5.4	5.6	5.3	5.4
11	5.6	5.2	5.5	5.6	5.3	5.5
12	5.6	5.4	5.4	5.6	5.4	5.5
13	5.6	5.3	5.4	5.6	5.4	5.5
14	5.6	5.4	5.5	5.6	5.4	5.5
15	5.7	5.3	5.5	5.6	5.4	5.5
16	5.6	5.2	5.4	5.6	5.3	5.4
17	5.5	5.3	5.4	5.5	5.4	5.5
18	5.6	5.2	5.4	5.6	5.3	5.5
19	5.6	5.1	5.4	5.6	5.2	5.4
20	5.6	5.3	5.5	5.6	5.3	5.5
21	5.6	5.3	5.5	5.6	5.4	5.5
22	5.6	5.3	5.4	5.6	5.4	5.5
23	5.6	1.9	5.4	5.6	2.8	5.4
24	5.6	5.3	5.5	5.6	5.3	5.5
25	5.6	5.1	5.4	5.6	5.2	5.5
26	5.6	5.1	5.4	5.6	5.2	5.4
27	5.6	5.3	5.4	5.6	5.4	5.5
28	5.7	5.4	5.5	5.6	5.4	5.5
29	5.6	5.2	5.4	5.5	5.3	5.4
30	5.7	5.3	5.5	5.6	5.3	5.5
Total						
Average	5.6	5.1	5.4	5.6	5.2	5.5
Maximum	5.7		5.5	5.7		5.5
Date	5-Nov		15-Nov	5-Nov		15-Nov
Minimum		1.9	5.4		2.8	5.4
Date		23-Nov	23-Nov		23-Nov	23-Nov

Notes:

23: low raw well due to back flush on intake.

High Lift Monthly Report

Month: November-17

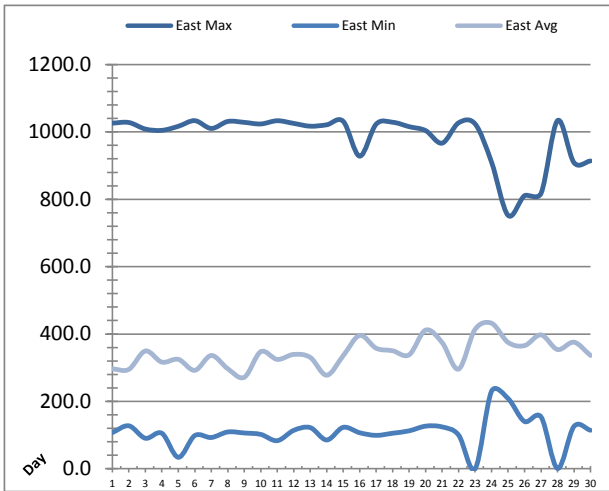
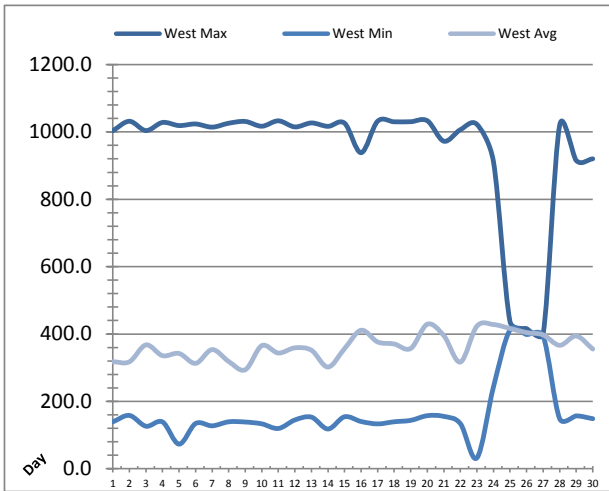


Date	Distribution Flow					
	FIT_7052 (East)		FIT_7062 (West)		Combined	
	(m³)	(L/s)	(m³)	(L/s)	(m³)	(L/s)
	Total	Peak	Total	Peak	Total	Peak
1	1055.0	58.8	2227.2	85.1	3282.2	104.4
2	1144.6	43.9	1339.8	94.0	2484.3	103.1
3	1235.3	58.2	2808.7	91.5	4044.0	103.6
4	486.3	19.6	3029.5	91.8	3515.8	98.9
5	1568.9	59.2	2000.1	85.6	3569.1	103.6
6	1235.0	58.1	1311.4	93.2	2546.4	99.7
7	934.5	36.6	2780.7	94.7	3715.2	100.8
8	890.3	59.5	2476.0	91.5	3366.3	100.5
9	1038.2	51.7	1872.7	91.8	2910.9	106.4
10	1115.8	58.7	1901.3	93.2	3017.1	99.9
11	1256.8	48.7	2504.7	93.9	3761.6	101.3
12	1355.9	52.2	2218.4	92.1	3574.2	101.3
13	1224.7	56.5	2898.3	87.4	4123.0	101.2
14	858.7	36.7	1276.9	106.1	2135.5	123.4
15	888.0	36.6	2188.4	96.9	3076.4	102.4
16	1437.8	54.5	2466.4	88.3	3904.2	101.5
17	1142.4	62.6	2753.0	113.7	3895.3	157.2
18	1431.0	51.9	1953.2	90.3	3384.2	106.4
19	1527.9	46.5	994.0	84.1	2521.9	107.2
20	1145.5	62.7	3613.4	120.7	4758.9	166.2
21	1365.2	61.3	2578.4	97.8	3943.5	111.6
22	1145.8	54.1	1830.4	94.0	2976.1	108.9
23	1158.2	54.8	2448.0	100.0	3606.2	107.4
24	1130.1	56.2	3456.4	96.0	4586.5	105.2
25	1219.5	53.7	2121.7	84.0	3341.2	100.0
26	1255.1	52.4	1873.2	94.0	3128.3	99.5
27	1704.7	56.8	2612.5	93.4	4317.2	99.7
28	1149.6	58.4	2392.5	90.9	3542.1	98.3
29	1881.7	56.0	1994.6	88.5	3876.3	99.1
30	869.8	51.4	2593.0	91.6	3462.8	100.5
Total	35852.1		68514.8		104366.9	
Average	1195.1	52.3	2283.8	93.9	3478.9	107.3
Maximum	1881.7	62.7	3613.4	120.7	4758.9	166.2
Date	29-Nov	20-Nov	20-Nov	20-Nov	20-Nov	20-Nov
Minimum	486.3		994.0		2135.5	
Date	4-Nov		19-Nov		14-Nov	

Notes:

Low Lift Monthly Report

Month: November-17

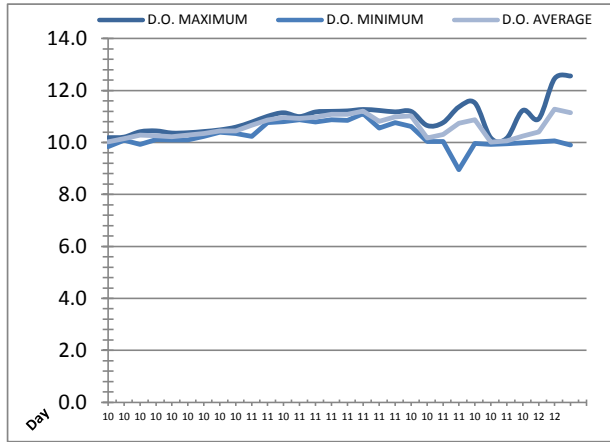
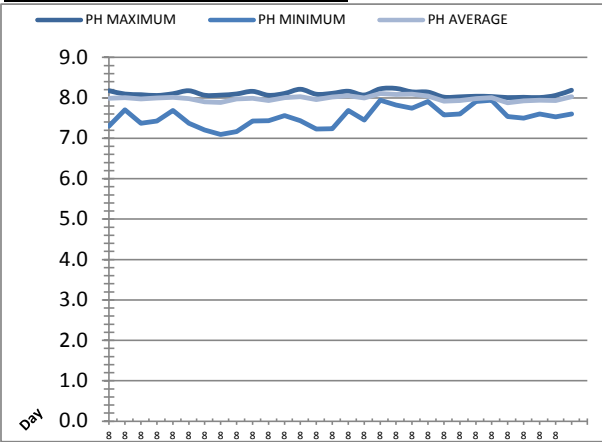


Date	West Train Header Pressure PIT_1018 (kPa)			East Train Header Pressure PIT_1028 (kPa)		
	Maximum	Minimum	Average	Maximum	Minimum	Average
1	1003.7	139.3	317.8	1026.0	107.4	296.5
2	1031.6	158.2	317.6	1027.9	127.4	295.1
3	1003.9	126.3	367.7	1008.5	90.6	349.7
4	1028.1	139.0	335.7	1004.6	105.4	316.6
5	1018.8	73.1	342.3	1016.7	34.0	324.7
6	1023.6	134.4	312.9	1033.4	98.6	292.2
7	1014.2	127.4	353.7	1010.3	92.8	336.3
8	1025.8	139.4	318.5	1031.0	109.2	296.8
9	1031.0	138.7	293.9	1028.3	106.1	271.6
10	1016.9	133.3	365.5	1023.6	102.0	347.6
11	1032.9	119.6	343.6	1033.2	83.4	324.6
12	1014.8	144.9	359.0	1025.3	114.0	339.4
13	1026.6	153.2	351.8	1017.0	122.2	330.6
14	1016.6	118.1	301.9	1021.1	85.5	277.6
15	1026.0	154.3	356.6	1031.5	122.9	335.7
16	938.2	140.2	411.2	928.0	106.9	395.9
17	1031.8	133.2	376.5	1023.1	99.2	357.8
18	1030.0	139.5	370.4	1028.6	105.5	350.3
19	1030.3	143.7	357.1	1015.5	112.6	338.3
20	1033.2	157.5	429.1	1003.9	126.5	411.7
21	972.4	155.4	395.0	966.6	124.1	374.6
22	1006.6	133.9	316.8	1027.1	100.0	295.9
23	1022.5	32.2	423.3	1023.7	0.0	413.9
24	911.5	243.1	428.2	909.8	230.4	432.0
25	436.5	412.0	416.5	752.2	208.5	375.1
26	416.1	398.5	404.2	810.7	140.2	365.6
27	399.9	394.4	397.5	817.7	153.9	397.5
28	1019.8	148.5	366.5	1033.7	0.9	353.9
29	915.2	156.9	394.2	908.6	125.8	375.7
30	920.1	148.6	355.4	913.8	114.2	336.3
Total						
Average	946.6	164.6	362.7	983.4	108.3	343.6
Maximum	1033.2		429.1	1033.7		432.0
Date	20-Nov		20-Nov	28-Nov		24-Nov
Minimum		32.2	293.9		0.0	271.6
Date		23-Nov	9-Nov		23-Nov	9-Nov

Notes:

Low Lift Monthly Report

Month: **November-17**

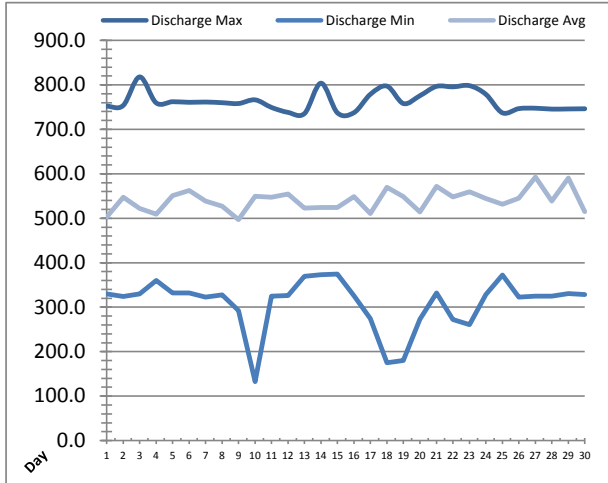
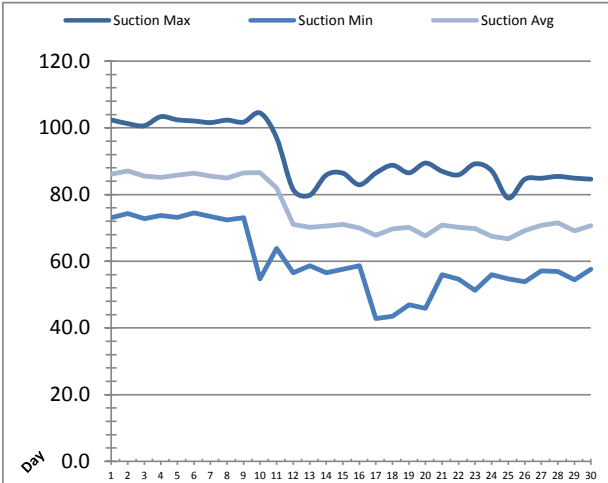


Date	Raw Water Sample Line					
	AIT_1402_PH (pH)			AIT_1402_DO (mg/L)		
	Maximum	Minimum	Average	Maximum	Minimum	Average
1	8.2	7.3	8.0	10.2	9.8	10.0
2	8.1	7.7	8.0	10.2	10.1	10.1
3	8.1	7.4	8.0	10.4	9.9	10.3
4	8.1	7.4	8.0	10.4	10.1	10.3
5	8.1	7.7	8.0	10.4	10.1	10.2
6	8.2	7.4	8.0	10.4	10.1	10.3
7	8.1	7.2	7.9	10.4	10.2	10.3
8	8.1	7.1	7.9	10.5	10.4	10.4
9	8.1	7.2	8.0	10.6	10.3	10.4
10	8.2	7.4	8.0	10.8	10.2	10.7
11	8.1	7.4	7.9	11.0	10.8	10.9
12	8.1	7.6	8.0	11.1	10.8	11.0
13	8.2	7.4	8.0	11.0	10.9	10.9
14	8.1	7.2	8.0	11.2	10.8	11.0
15	8.1	7.2	8.0	11.2	10.9	11.1
16	8.2	7.7	8.1	11.2	10.8	11.1
17	8.1	7.5	8.0	11.3	11.1	11.2
18	8.2	7.9	8.1	11.2	10.5	10.8
19	8.2	7.8	8.1	11.2	10.8	11.0
20	8.1	7.7	8.1	11.2	10.6	11.0
21	8.1	7.9	8.0	10.7	10.0	10.2
22	8.0	7.6	7.9	10.8	10.0	10.3
23	8.0	7.6	7.9	11.4	8.9	10.7
24	8.0	7.9	8.0	11.5	10.0	10.9
25	8.0	7.9	8.0	10.2	9.9	10.0
26	8.0	7.5	7.9	10.2	9.9	10.1
27	8.0	7.5	7.9	11.2	10.0	10.2
28	8.0	7.6	7.9	10.9	10.0	10.4
29	8.1	7.5	7.9	12.5	10.1	11.3
30	8.2	7.6	8.0	12.6	9.9	11.1
Total						
Average	8.1	7.5	8.0	10.9	10.3	10.6
Maximum	8.2		8.1	12.6		11.3
Date	19-Nov		18-Nov	30-Nov		29-Nov
Minimum		7.1	7.9		8.9	10.0
Date		8-Nov	26-Nov		23-Nov	25-Nov

Notes:

High Lift Monthly Report

Month: November-17

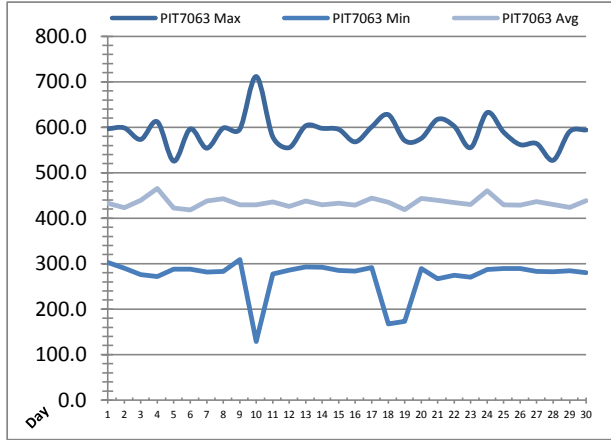
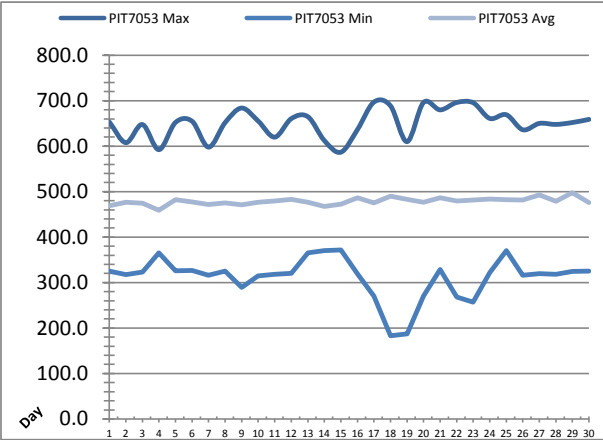


Date	Suction Header Pressure			Discharge Header Pressure		
	PIT_7002 (kPa)			PIT_7005 (kPa)		
	Maximum	Minimum	Average	Maximum	Minimum	Average
1	102.4	73.1	86.1	752.0	330.0	502.7
2	101.3	74.3	87.1	753.6	324.2	547.7
3	100.7	72.8	85.5	817.9	329.9	522.2
4	103.4	73.7	85.2	759.6	360.0	508.9
5	102.4	73.1	85.8	762.2	331.9	550.9
6	102.1	74.5	86.4	760.8	332.2	562.3
7	101.6	73.4	85.6	761.4	322.4	539.0
8	102.3	72.4	85.0	760.0	328.0	526.9
9	101.7	73.1	86.5	758.1	292.7	496.9
10	104.5	54.7	86.6	766.4	132.6	549.6
11	97.0	63.9	82.0	749.3	324.8	547.6
12	81.5	56.6	71.1	738.1	326.2	554.4
13	79.8	58.7	70.2	735.6	369.5	522.9
14	85.9	56.6	70.5	803.9	373.0	524.4
15	86.4	57.6	71.0	737.0	374.5	524.0
16	83.0	58.7	70.0	737.6	325.5	548.9
17	86.5	42.8	67.8	779.0	274.5	510.6
18	88.8	43.5	69.7	797.2	174.8	569.7
19	86.5	47.0	70.2	758.0	180.0	548.7
20	89.5	45.9	67.6	775.7	272.7	514.3
21	87.0	55.9	70.9	796.7	332.3	572.0
22	85.9	54.6	70.2	795.6	272.0	548.3
23	89.2	51.3	69.8	798.3	261.0	559.6
24	87.1	56.0	67.5	778.8	328.3	544.3
25	79.0	54.7	66.7	737.2	372.6	531.4
26	84.6	53.9	69.2	746.7	322.4	545.3
27	84.9	57.1	70.7	747.6	325.2	592.5
28	85.4	56.9	71.5	745.5	324.7	538.9
29	84.9	54.4	69.2	745.9	330.7	590.6
30	84.6	57.6	70.6	746.3	328.5	514.7
Total						
Average	91.3	60.0	75.5	763.4	309.2	540.3
Maximum	104.5		87.1	817.9		592.5
Date	10-Nov		2-Nov	3-Nov		27-Nov
Minimum		42.8	66.7		132.6	496.9
Date		17-Nov	25-Nov		10-Nov	9-Nov

Notes:

High Lift Monthly Report

Month: **November-17**

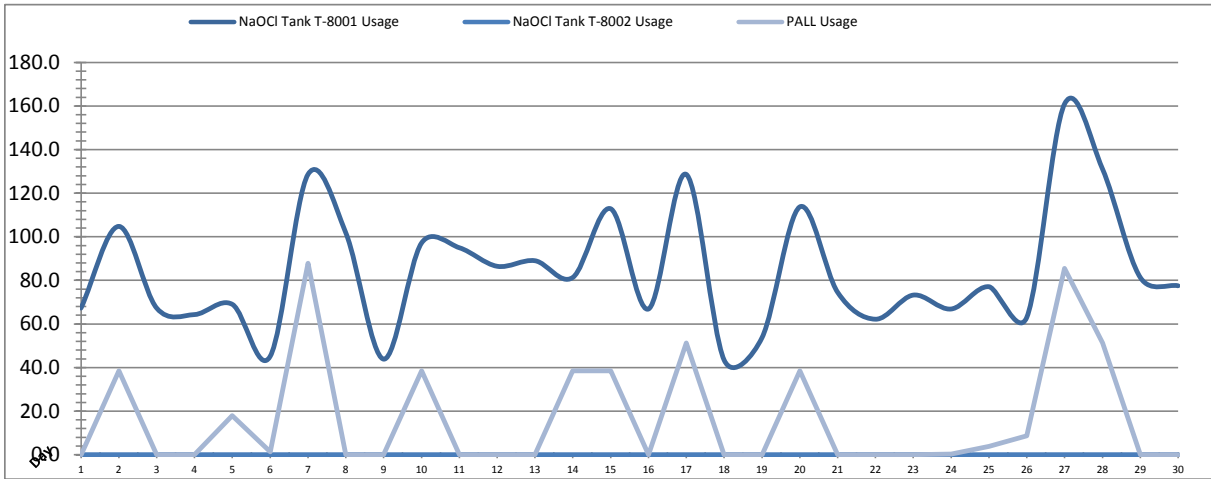


Date	Distribution Pressures					
	PIT_7053 (kPa)			PIT_7063 (kPa)		
	Maximum	Minimum	Average	Maximum	Minimum	Average
1	653.2	325.3	468.5	596.7	302.5	432.7
2	607.7	317.4	476.5	598.5	289.9	422.8
3	647.6	323.4	474.7	573.3	275.8	439.2
4	592.3	365.1	459.1	612.0	271.7	465.2
5	652.1	325.9	482.5	525.6	287.6	422.4
6	654.9	326.4	477.3	596.2	287.9	418.2
7	597.9	316.1	471.7	554.0	281.5	438.1
8	651.7	325.1	475.0	598.3	283.2	442.7
9	683.8	289.4	471.2	595.7	309.3	429.2
10	655.2	314.4	476.4	711.5	128.5	429.5
11	619.8	318.5	479.4	579.1	277.7	435.9
12	660.5	320.4	482.7	555.2	285.6	425.9
13	664.9	365.3	476.8	603.1	292.6	437.9
14	612.3	370.0	467.5	597.6	292.1	429.6
15	586.7	371.5	472.7	595.3	284.8	433.0
16	636.3	319.0	486.7	568.0	283.6	428.7
17	697.0	270.5	475.0	600.9	291.4	444.3
18	688.7	182.7	489.8	627.7	167.2	435.2
19	609.8	187.4	483.1	570.8	172.8	418.8
20	696.2	270.0	476.4	575.4	289.5	443.3
21	679.8	329.0	486.6	617.6	266.6	439.1
22	696.0	267.9	479.3	602.3	274.7	434.6
23	695.4	257.2	481.4	555.3	270.2	430.3
24	661.0	322.0	483.8	632.3	287.5	460.6
25	669.1	370.1	482.3	589.1	289.2	429.3
26	636.0	316.1	481.7	561.7	289.7	428.6
27	650.1	319.5	492.9	564.0	282.8	436.5
28	647.8	318.5	478.5	527.4	282.3	429.9
29	652.0	324.4	498.0	590.5	284.5	423.6
30	658.9	324.9	476.0	594.1	280.2	438.4
Total						
Average	650.5	311.8	478.8	589.0	272.1	434.1
Maximum	697.0		498.0	711.5		465.2
Date	17-Nov		29-Nov	10-Nov		4-Nov
Minimum		182.7	459.1		128.5	418.2
Date		18-Nov	4-Nov		10-Nov	6-Nov

Notes:

Chemical Usage Monthly Report

Month: **November-17**

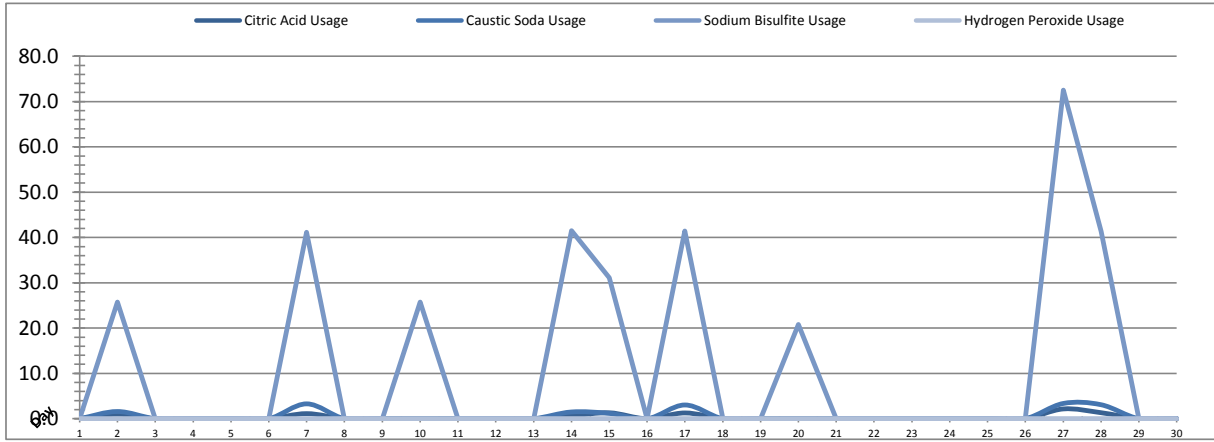


Date	PALL Usage	NaOCI Tank T-8001	NaOCI Tank T-8002
	PALL_HYPO_USAGE (L) Usage	LIT_8002 (Storage) (L) Usage	LIT_8004 (Day) (L) Usage
1	0.0	67.3	0.0
2	38.5	104.8	0.0
3	0.0	67.3	0.0
4	0.0	64.3	0.0
5	18.0	69.0	0.0
6	1.3	45.1	0.0
7	87.9	128.6	0.0
8	0.0	101.8	0.0
9	0.0	43.9	0.0
10	38.5	97.1	0.0
11	0.0	95.0	0.0
12	0.0	86.5	0.0
13	0.0	89.0	0.0
14	38.48	81.34	0.0
15	38.5	112.9	0.0
16	0.0	66.9	0.0
17	51.2	128.6	0.0
18	0.0	43.4	0.0
19	0.0	53.7	0.0
20	38.5	113.7	0.0
21	0.0	74.5	0.0
22	0.0	62.2	0.0
23	0.0	73.2	0.0
24	0.4	66.9	0.0
25	3.8	77.1	0.0
26	8.7	63.0	0.0
27	85.5	161.0	0.0
28	51.2	131.2	0.0
29	0.0	81.3	0.0
30	0.0	77.5	0.0
Total	500.6	2528.0	1.0
Average	16.7	84.3	0.0
Maximum	87.9	161.0	0.0
Date	7-Nov	27-Nov	1-Nov
Minimum	0.0	43.4	0.0
Date	1-Nov	18-Nov	1-Nov

Notes:	
Dosage (mg/L)=	Day Tank (L) x %conc. x 1000
	Membrane Flow (m3)
Chlorine Concentration:	12.0%

Chemical Usage Monthly Report

Month: **November-17**



Date	Citric Acid	Caustic Soda	Captor	Hydrogen Peroxide		Membrane Flow (m ³)
	TAGNAME (L) Usage	TAGNAME (L) Usage	TAGNAME (L) Usage	TAGNAME (L) Usage	(mg/L) Dose	
1	0.0	0.0	0.0	0.0	0.0	3170.062
2	1.0	1.6	25.7	0.0	0.0	2854.391
3	0.0	0.0	0.0	0.0	0.0	4084.299
4	0.0	0.0	0.0	0.0	0.0	3230.141
5	0.0	0.0	0.0	0.0	0.0	3701.650
6	0.0	0.0	0.0	0.0	0.0	2896.531
7	1.1	3.3	41.2	0.0	0.0	3905.872
8	0.0	0.0	0.0	0.0	0.0	3376.082
9	0.0	0.0	0.0	0.0	0.0	2803.106
10	0.0	0.0	25.8	0.0	0.0	3247.054
11	0.0	0.0	0.0	0.0	0.0	2922.399
12	0.0	0.0	0.0	0.0	0.0	3664.107
13	0.0	0.0	0.0	0.0	0.0	3629.284
14	0.6	1.5	41.5	0.0	0.0	2566.679
15	1.3	1.2	31.1	0.0	0.0	2984.925
16	0.0	0.0	0.0	0.0	0.0	3591.310
17	1.3	3.0	41.5	0.0	0.0	3383.089
18	0.0	0.0	0.0	0.0	0.0	2797.188
19	0.0	0.0	0.0	0.0	0.0	3032.005
20	0.0	0.0	20.8	0.0	0.0	4490.096
21	0.0	0.0	0.0	0.0	0.0	3801.813
22	0.0	0.0	0.0	0.0	0.0	2810.147
23	0.0	0.0	0.0	0.0	0.0	3857.588
24	0.0	0.0	0.0	0.0	0.0	4110.188
25	0.0	0.0	0.0	0.0	0.0	3522.032
26	0.0	0.0	0.0	0.0	0.0	3316.606
27	2.2	3.4	72.6	0.0	0.0	4337.167
28	1.3	3.1	41.4	0.0	0.0	3051.507
29	0.0	0.0	0.0	0.0	0.0	4112.022
30	0.0	0.0	0.0	0.0	0.0	3507.788
Total	8.8	17.0	341.4	0.0		102757.1
Average	0.3	0.6	11.4	0.0	0.0	3425.2
Maximum	2.2	3.4	72.6	0.0	0.0	4490.1
Date	27-Nov	27-Nov	27-Nov	1-Nov	1-Nov	20-Nov
Minimum	0.0	0.0	0.0	0.0	0.0	2566.7
Date	1-Nov	1-Nov	1-Nov	1-Nov	1-Nov	14-Nov

Notes:

$$\text{Dosage (mg/L)} = \frac{\text{Day Tank (L)} \times \% \text{conc.} \times 1000}{\text{Membrane Flow (m}^3\text{)}}$$

Peroxide Concentration: **50.0%**

Runtimes Report

Month: November-17

Date	Daily Gen-Set Runtimes		Daily UV Runtimes		Daily PALL Runtimes				
	LLPS	WTP	UV #1	UV #2	Air Compressor #1	Air Compressor #2	CIP Neutralization	CIP Drain	CIP Recirc
	(Hrs)	(Hrs)	(Hrs)	(Hrs)	(Hrs)	(Hrs)	(Hrs)	(Hrs)	(Hrs)
1	0.1	0.0	0.0	0.0	0.0	23.9	0.0	0.0	0.0
2	0.0	0.0	0.0	0.0	24.4	0.0	0.2	0.1	0.2
3	0.0	0.0	0.0	0.0	9.1	14.9	0.0	0.0	0.0
4	0.0	0.0	0.0	0.0	24.4	0.0	0.0	0.0	0.0
5	0.0	0.0	0.0	0.0	0.0	23.9	0.0	0.0	0.0
6	0.0	0.0	0.0	0.0	23.4	1.0	0.0	0.0	0.0
7	0.0	0.0	0.0	0.0	1.0	22.9	0.2	0.1	0.2
8	0.0	0.0	0.0	0.0	14.5	9.6	0.0	0.0	0.0
9	0.0	1.4	0.0	0.0	23.4	1.0	0.0	0.0	0.0
10	0.0	0.0	0.0	0.0	5.9	17.9	0.2	0.1	0.1
11	0.0	0.0	0.0	0.0	23.4	1.0	0.0	0.0	0.0
12	0.0	0.0	0.0	0.0	1.0	22.9	0.0	0.0	0.0
13	0.0	0.0	0.0	0.0	23.3	1.0	0.0	0.0	0.0
14	0.0	0.0	0.0	0.0	1.1	22.9	0.2	0.1	0.2
15	0.0	0.0	0.0	0.0	23.3	1.1	0.2	0.1	0.1
16	0.9	0.0	0.0	0.0	1.0	22.8	0.0	0.0	0.0
17	0.0	0.0	0.0	0.0	23.4	1.0	0.2	0.1	0.3
18	0.0	0.0	0.0	0.0	1.0	22.2	0.0	0.0	0.0
19	0.0	0.0	0.0	0.0	0.1	23.5	0.0	0.0	0.0
20	0.0	0.0	0.0	0.0	8.7	15.3	0.2	0.1	0.1
21	0.0	0.0	0.0	0.0	14.4	9.7	0.0	0.0	0.0
22	0.0	0.0	0.0	0.0	1.0	22.9	0.0	0.0	0.0
23	0.0	0.0	0.0	0.0	23.4	1.0	0.0	0.0	0.0
24	0.0	0.0	0.0	0.0	1.1	22.9	0.0	0.0	0.0
25	0.0	0.0	0.0	0.0	23.3	1.0	0.0	0.0	0.0
26	0.0	0.0	0.0	0.0	1.0	22.9	0.0	0.0	0.0
27	0.0	0.0	0.0	0.0	23.4	1.0	0.3	0.3	0.3
28	0.0	0.0	0.0	0.0	4.7	19.3	0.3	0.1	0.2
29	0.0	0.0	0.0	0.0	24.3	0.1	0.0	0.0	0.0
30	0.0	0.0	0.0	0.0	16.6	7.7	0.0	0.0	0.0
Total	1.0	1.4	0.0	0.0	365.3	357.4	2.0	1.1	1.7

Notes:

Runtimes Report

Month: November-17

Daily

Date	PALL Runtimes						Process Drain	
	RFR Pump #1 (Hrs)	RFR Pump #2 (Hrs)	RF Pump #1 (Hrs)	RF Pump #2 (Hrs)	XR Pump #1 (Hrs)	XR Pump #2 (Hrs)	PDP9010 Pump (Hrs)	PDP9020 Pump (Hrs)
1	4.0	3.9	0.6	0.5	0.0	11.7	1.8	2.3
2	3.5	3.4	0.5	0.6	0.0	11.7	1.8	2.3
3	4.7	5.0	0.8	0.9	0.0	15.9	2.0	2.5
4	4.2	4.0	0.7	0.6	0.0	12.9	1.8	2.2
5	4.6	4.3	0.7	0.8	0.0	12.3	1.8	2.3
6	3.5	3.7	0.5	0.7	0.0	12.5	1.8	2.2
7	4.8	4.9	0.7	0.8	0.0	15.3	1.8	2.3
8	4.1	4.0	0.7	0.7	0.0	12.5	1.8	2.3
9	3.5	3.3	0.6	0.6	0.0	10.1	1.8	2.2
10	2.9	3.0	0.4	0.5	0.0	8.4	2.0	2.7
11	0.3	0.4	0.4	0.5	0.0	9.5	2.1	3.1
12	0.0	0.0	0.7	0.6	0.0	16.7	1.6	2.1
13	0.0	0.0	0.5	0.7	0.0	16.3	1.7	2.0
14	1.0	1.1	0.5	0.4	0.0	10.1	1.7	2.2
15	2.2	2.4	0.4	0.3	0.0	6.3	1.7	2.1
16	2.7	3.0	0.4	0.4	0.0	5.1	1.7	2.0
17	3.0	2.4	0.4	0.4	0.0	7.0	1.6	2.2
18	2.5	2.8	0.3	0.4	0.0	2.7	1.7	2.0
19	1.1	0.9	0.4	0.4	0.0	5.4	1.8	2.2
20	3.7	4.0	0.8	0.9	0.0	10.6	1.7	2.4
21	4.3	4.2	0.8	0.7	0.0	10.8	1.7	2.2
22	3.6	3.3	0.4	0.6	0.0	9.8	1.7	2.0
23	4.6	4.9	0.7	0.8	0.1	12.1	1.8	2.2
24	5.4	5.2	0.8	0.8	0.0	12.8	2.0	2.4
25	3.2	3.5	0.7	0.6	0.0	10.3	1.7	2.1
26	2.3	2.2	0.7	0.6	0.0	11.9	1.6	2.3
27	5.0	4.8	0.8	0.8	0.0	16.5	1.9	2.2
28	3.1	3.1	0.5	0.5	0.0	10.2	2.2	2.7
29	3.4	3.5	0.6	0.5	0.0	12.8	1.6	2.1
30	4.5	4.4	0.7	0.8	0.0	12.7	1.8	2.1
Total	95.3	95.2	17.7	18.4	0.1	332.3	53.8	67.9

Notes:

Runtimes Report

Month: November-17

Daily

Date	Low Lift Pump Motor Runtimes				High Lift Pump Motor Runtimes			
	LLP1010 (Hrs)	LLP1020 (Hrs)	LLP1030 (Hrs)	LLP1040 (Hrs)	HLP7010 (Hrs)	HLP7020 (Hrs)	HLP7030 (Hrs)	HLP7040 (Hrs)
1	6.6	2.7	3.9	0.4	11.4	0.0	0.0	24.0
2	2.6	5.6	0.8	3.6	12.0	0.0	0.0	24.0
3	5.4	4.4	2.4	5.8	14.5	0.0	0.0	24.0
4	2.9	2.8	5.6	3.2	5.5	6.4	0.0	24.0
5	1.7	6.3	5.5	3.5	0.0	14.8	0.0	24.0
6	5.5	2.8	0.8	3.7	0.0	12.8	0.0	24.0
7	5.3	5.6	2.8	3.8	0.0	14.2	0.0	24.0
8	4.5	0.8	5.5	3.6	0.0	12.5	0.0	24.0
9	1.7	1.8	3.3	5.5	0.0	10.1	0.0	7.5
10	4.4	7.1	2.3	2.0	9.6	3.8	0.0	24.0
11	4.2	2.1	6.8	1.9	15.3	0.0	0.0	24.0
12	4.8	5.6	3.4	3.4	15.8	0.0	0.0	24.0
13	3.2	5.5	3.2	4.9	15.1	0.0	0.0	24.0
14	3.2	5.3	0.1	3.4	10.1	0.0	0.1	24.0
15	4.9	1.9	2.9	4.6	12.3	0.0	0.0	24.0
16	1.5	2.9	5.9	5.8	16.3	0.0	0.0	24.0
17	1.6	5.5	3.5	5.6	3.7	0.0	8.9	24.0
18	2.7	3.2	3.6	0.0	0.0	8.1	6.7	24.0
19	4.3	5.4	2.9	2.7	11.4	0.0	1.3	24.0
20	3.3	5.1	5.6	7.5	6.2	0.0	8.9	23.9
21	5.1	3.9	5.5	3.2	0.0	0.0	15.2	24.0
22	1.5	5.6	2.7	2.8	0.0	0.0	11.9	24.0
23	5.3	5.8	0.1	6.6	0.0	0.0	14.0	24.0
24	5.3	5.0	6.5	3.2	0.0	12.3	4.2	24.0
25	4.4	3.8	2.9	5.5	0.0	13.5	0.0	24.0
26	1.0	4.3	5.5	4.6	0.0	13.8	0.0	24.0
27	5.5	3.1	5.6	2.5	0.0	19.4	0.0	24.0
28	3.9	0.7	4.0	5.7	0.0	14.5	0.0	24.0
29	3.2	6.0	5.5	5.2	0.0	18.3	0.0	24.0
30	3.1	3.4	5.3	4.0	0.0	12.6	0.0	24.0
Total	112.6	124.0	114.4	118.2	159.2	187.1	71.2	703.4

Notes:

Plant Internal Flow Report

Month: November-17

Date	Settling Tank Level		Process Drain Tank		Settling Tank Flow		Potable Water Flow		Non-Potable Flow	
	T-9003 (m)		T-9001 (m)		FIT_9005 (m ³) (L/s)		FIT_7082 (m ³) (L/s)		FIT_7092 (m ³) (L/s)	
	Maximum	Minimum	Maximum	Minimum	Total	Peak	Total	Peak	Total	Peak
1	2.2	0.2	0.8	0.4	56.0	15.7	0.1	1.4	0.0	0.0
2	2.2	0.3	0.8	0.4	115.9	15.7	0.0	1.3	13.1	17.1
3	2.2	0.1	1.2	0.4	139.5	15.7	0.1	1.6	0.0	0.6
4	2.2	0.1	0.8	0.4	73.1	15.7	0.0	1.1	0.0	0.0
5	2.2	0.2	0.8	0.4	172.6	15.7	0.0	0.0	0.0	0.0
6	2.2	0.1	0.8	0.4	55.5	15.7	0.1	1.4	0.2	0.9
7	2.2	0.1	0.8	0.4	83.9	15.7	0.3	1.4	17.6	22.4
8	2.2	0.1	0.8	0.4	51.0	15.7	0.1	1.4	0.0	0.6
9	2.2	0.3	0.8	0.4	37.1	15.7	0.2	1.4	0.0	0.0
10	2.2	0.3	1.9	0.4	50.8	15.7	0.1	1.4	12.7	16.6
11	2.2	0.1	1.6	0.4	175.8	15.7	0.0	0.5	0.0	0.0
12	2.2	0.2	0.8	0.4	233.2	15.7	0.0	0.0	0.0	0.0
13	2.2	0.1	0.8	0.4	202.3	15.7	0.0	1.1	0.0	0.0
14	2.2	0.1	1.3	0.4	122.3	15.7	0.1	1.3	12.5	17.1
15	2.2	0.1	0.8	0.4	30.2	15.7	0.1	1.4	11.8	17.5
16	2.2	0.1	1.0	0.4	16.2	15.2	0.1	1.4	0.0	0.0
17	2.2	0.3	0.8	0.4	39.5	15.7	0.1	1.3	18.2	23.0
18	2.2	0.3	0.8	0.4	20.9	13.6	0.0	0.0	0.0	0.0
19	2.2	0.1	2.0	0.4	76.3	15.7	0.0	0.0	0.0	0.0
20	2.2	0.2	1.1	0.4	72.7	15.7	0.1	1.4	12.7	16.9
21	2.2	0.2	1.0	0.4	59.8	15.7	0.1	1.5	0.0	0.0
22	2.2	0.1	0.8	0.4	26.0	15.7	0.1	1.2	0.0	0.0
23	2.2	0.2	0.9	0.4	133.0	15.7	0.1	1.4	0.0	0.0
24	2.2	0.1	2.0	0.4	85.1	15.7	0.3	1.4	1.6	1.1
25	2.2	0.1	0.9	0.4	105.3	15.7	0.0	0.0	0.0	0.0
26	2.2	0.3	1.7	0.4	126.8	15.7	0.1	0.5	1.1	1.2
27	2.2	0.1	1.3	0.4	113.4	15.7	0.1	1.3	24.9	17.3
28	2.2	0.1	2.0	0.4	131.7	15.7	0.3	1.6	17.3	22.6
29	2.2	0.3	1.0	0.4	83.4	15.7	0.3	1.4	0.1	0.6
30	2.2	0.1	0.8	0.4	55.2	15.7	0.0	1.3	0.1	1.1
Total					2744.7		3.0		144.0	
Average	2.2	0.2	1.1	0.4	91.5	15.6	0.1	1.1	4.8	5.9
Maximum	2.2		2.0		233.2		0.3		24.9	
Date	2-Nov		19-Nov		12-Nov		7-Nov		27-Nov	
Minimum		0.1		0.4		13.6		0.0		0.0
Date		27-Nov		26-Nov		18-Nov		5-Nov		1-Nov

Notes: