

Municipality of West Elgin - Tri County Water System

Goto:

Month:

Year:

Date is Set to: **November-18**

Limit	Low	High	
Raw Water Chlorine Residual:	0.00	5.00	mg/L
Pre-Strainer Chlorine Residual:	0.00	5.00	mg/L
UV Inlet Chlorine Residual:	0.00	5.00	mg/L
Post Treatment Chlorine Residual:	1.00	5.00	mg/L
Treated Chlorine Residual:	1.00	2.50	mg/L
Distribution Chlorine Residual:	1.00	2.50	mg/L

Limit	High	
Limit	156.0	L/s
WTP Permit to Take Water	13500.0	m <sup>3</sup>

Limit	Low	High	
System Pressure Limits:	50.0	1034.0	Kpa

Compliance Report

Low Lift Monthly Report

Membranes Monthly Report

UV System Monthly Report

Plant Quality Report

Raw Well/Treated Storage Report

High Lift Monthly Report

Operational Report

Low Lift Monthly Report

High Lift Monthly Report

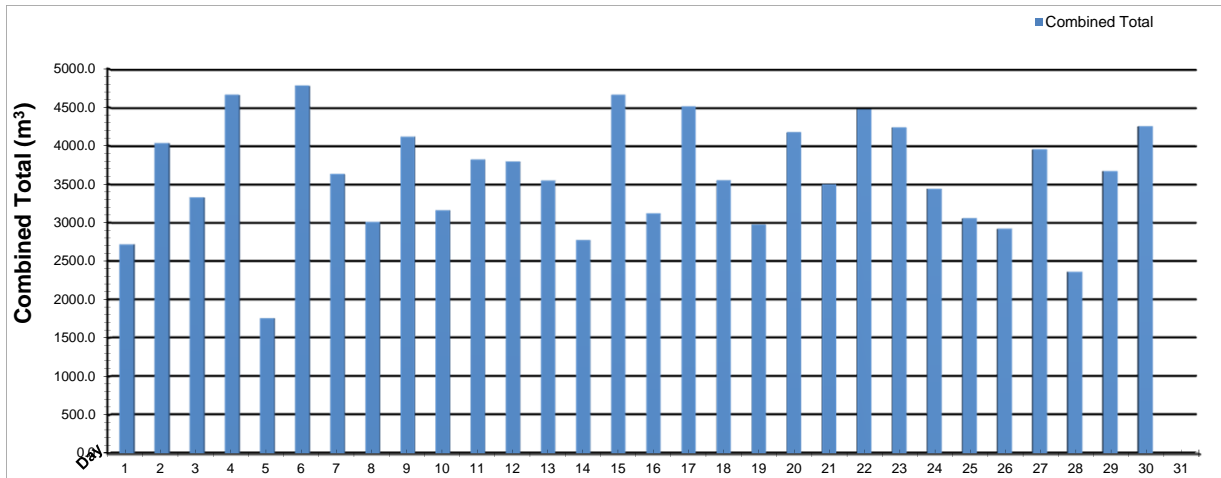
Chemical Usage Monthly Report

Runtimes Report

Plant Internal Flow Report

# Low Lift Monthly Report

Month: **November-18**

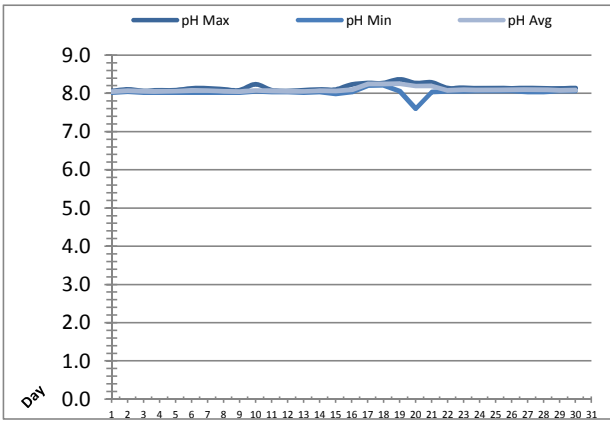
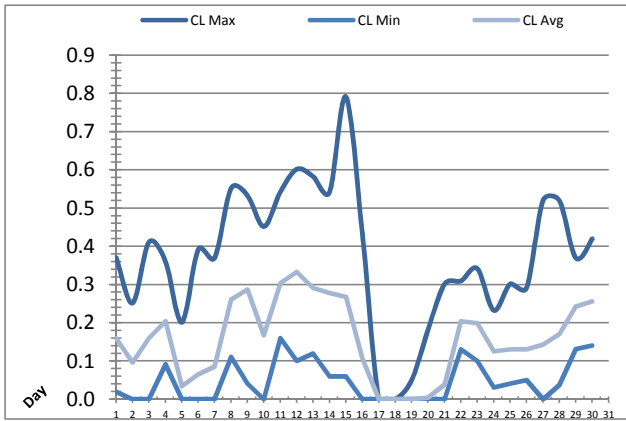


Date	Combined Total (m³)	West Train FIT-1017 (m³)	West Peak Flow FIT-1017 (L/s)	East Train FIT-1027 (m³)	East Peak Flow FIT-1027 (L/s)	Combined Peak Flow (L/s)
1	2717.0	2717.0	79.9	0.0	0.0	79.9
2	4036.3	4036.3	77.9	0.0	0.0	77.9
3	3329.9	3329.9	78.0	0.0	0.0	78.0
4	4665.4	4665.4	78.1	0.0	0.0	78.1
5	1755.5	1755.5	77.6	0.0	0.0	77.6
6	4784.9	4784.9	139.6	0.0	0.0	139.6
7	3634.2	3634.2	136.0	0.0	0.0	136.0
8	3009.0	3009.0	77.7	0.0	0.0	77.7
9	4118.7	4118.7	77.8	0.0	0.0	77.8
10	3160.7	3160.7	77.8	0.0	0.0	77.8
11	3823.3	3823.3	77.8	0.0	0.0	77.8
12	3796.8	3796.8	77.8	0.0	0.0	77.8
13	3549.3	3549.3	77.8	0.0	0.0	77.8
14	2774.4	2774.4	131.5	0.0	0.0	131.5
15	4664.7	4664.7	136.7	0.0	0.0	136.7
16	3121.1	3121.1	76.7	0.0	0.0	76.7
17	4515.3	4515.3	77.6	0.0	0.0	77.6
18	3550.9	3550.9	136.0	0.0	0.0	136.0
19	2975.4	2964.1	152.7	11.3	67.3	152.7
20	4177.7	4177.7	136.1	0.0	0.0	136.1
21	3501.3	3501.3	134.2	0.0	0.0	134.2
22	4475.5	4475.5	78.2	0.0	0.0	78.2
23	4240.2	4240.2	77.8	0.0	0.0	77.8
24	3439.8	3439.8	77.3	0.0	0.0	77.3
25	3058.3	3058.3	77.3	0.0	0.0	77.3
26	2921.2	2921.2	131.7	0.0	0.0	131.7
27	3955.3	3955.3	136.4	0.0	0.0	136.4
28	2360.8	2360.8	82.1	0.0	0.0	82.1
29	3672.6	3672.6	77.8	0.0	0.0	77.8
30	4256.1	4256.1	128.4	0.0	0.0	128.4
	0.0					
<b>Total</b>	<b>108041.5</b>	<b>108030.2</b>		<b>11.3</b>		
<b>Average</b>	<b>3601.4</b>	<b>3601.0</b>	<b>99.4</b>	<b>0.4</b>	<b>2.2</b>	<b>99.4</b>
<b>Maximum</b>	<b>4784.9</b>	<b>4784.9</b>	<b>152.72</b>	<b>11.3</b>	<b>67.31</b>	<b>152.72</b>
<b>Date</b>	<b>6-Nov</b>	<b>6-Nov</b>	<b>19-Nov</b>	<b>19-Nov</b>	<b>19-Nov</b>	<b>19-Nov</b>
<b>Minimum</b>	<b>1755.5</b>	<b>1755.5</b>	<b>76.70</b>	<b>0.0</b>	<b>0.00</b>	<b>76.70</b>
<b>Date</b>	<b>5-Nov</b>	<b>5-Nov</b>	<b>16-Nov</b>	<b>15-Nov</b>	<b>1-Nov</b>	<b>16-Nov</b>

Notes:

# Low Lift Monthly Report

Month: **November-18**



Date	Raw Water Chlorine Residual			Raw Water pH		
	AIT_1401_CL (mg/L)			AIT_1401_PH		
	Maximum	Minimum	Average	Maximum	Minimum	Average
1	0.37	0.02	0.16	8.07	8.02	8.05
2	0.25	0.00	0.10	8.11	8.04	8.07
3	0.41	0.00	0.16	8.07	8.02	8.05
4	0.36	0.09	0.20	8.09	8.02	8.05
5	0.20	0.00	0.03	8.09	8.02	8.05
6	0.39	0.00	0.07	8.14	8.02	8.08
7	0.37	0.00	0.09	8.14	8.02	8.07
8	0.55	0.11	0.26	8.10	8.02	8.05
9	0.53	0.04	0.29	8.09	8.02	8.04
10	0.45	0.00	0.17	8.24	8.05	8.07
11	0.54	0.16	0.30	8.09	8.04	8.06
12	0.60	0.10	0.33	8.07	8.04	8.06
13	0.58	0.12	0.29	8.09	8.02	8.05
14	0.54	0.06	0.28	8.11	8.04	8.07
15	0.79	0.06	0.27	8.10	7.99	8.06
16	0.43	0.00	0.11	8.24	8.04	8.09
17	0.00	0.00	0.00	8.27	8.20	8.24
18	0.00	0.00	0.00	8.27	8.21	8.25
19	0.05	0.00	0.00	8.37	8.06	8.25
20	0.18	0.00	0.00	8.27	7.60	8.19
21	0.30	0.00	0.04	8.29	8.04	8.20
22	0.31	0.13	0.20	8.14	8.05	8.08
23	0.34	0.10	0.20	8.15	8.05	8.09
24	0.23	0.03	0.13	8.13	8.06	8.09
25	0.30	0.04	0.13	8.14	8.06	8.09
26	0.29	0.05	0.13	8.13	8.06	8.09
27	0.52	0.00	0.14	8.14	8.04	8.11
28	0.52	0.04	0.17	8.13	8.04	8.09
29	0.37	0.13	0.24	8.13	8.06	8.08
30	0.42	0.14	0.26	8.14	8.06	8.09
Total						
Average	0.37	0.05	0.16	8.15	8.03	8.10
Maximum	0.79		0.33	8.37		8.25
Date	15-Nov		12-Nov	19-Nov		19-Nov
Minimum		0.00	0.00		7.60	8.04
Date		2-Nov	17-Nov		20-Nov	9-Nov

Notes:

---



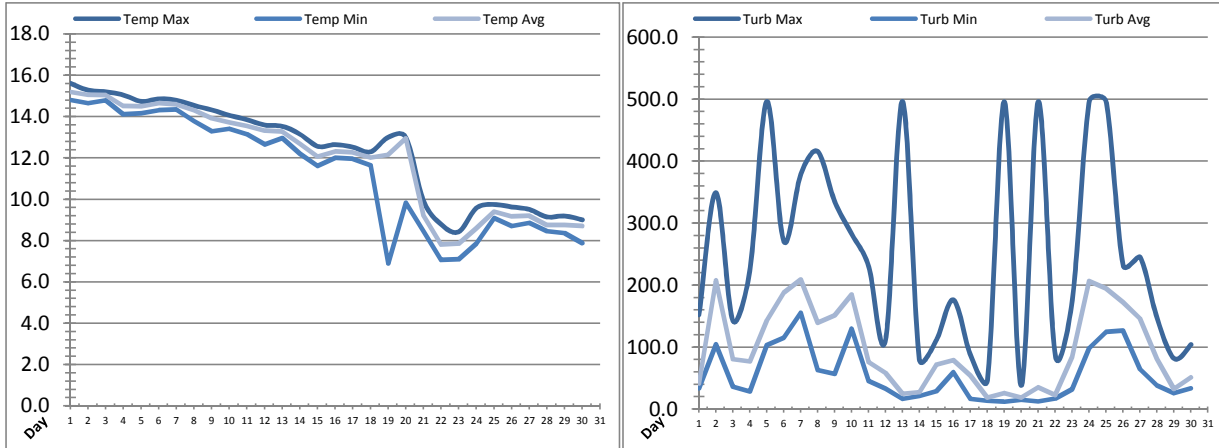
---



---

# Low Lift Monthly Report

Month: **November-18**



Date	Raw Water Temperature			Raw Water Turbidity		
	TIT_1403 (°C)			AIT_1404 (NTU)		
	Maximum	Minimum	Average	Maximum	Minimum	Average
1	15.6	14.8	15.2	152.34	33.80	41.30
2	15.3	14.7	15.1	349.14	104.26	207.40
3	15.2	14.8	15.0	143.04	36.10	80.68
4	15.1	14.1	14.5	223.68	28.34	76.87
5	14.7	14.2	14.5	496.19	103.47	142.88
6	14.9	14.3	14.6	270.98	115.10	187.90
7	14.8	14.3	14.6	378.54	155.44	209.41
8	14.5	13.8	14.3	415.73	63.18	139.60
9	14.3	13.3	13.9	335.22	56.92	151.48
10	14.1	13.4	13.7	282.60	129.85	184.94
11	13.9	13.1	13.5	230.63	45.38	76.06
12	13.6	12.7	13.3	112.04	32.98	58.56
13	13.5	13.0	13.3	496.14	16.67	24.87
14	13.2	12.2	12.7	80.21	21.32	27.60
15	12.6	11.6	12.1	111.95	29.03	72.07
16	12.7	12.0	12.3	176.31	59.29	79.11
17	12.5	12.0	12.3	87.96	16.63	54.40
18	12.3	11.7	12.0	46.91	13.50	18.87
19	13.0	6.9	12.2	495.81	11.84	25.76
20	13.0	9.8	13.0	38.34	15.08	18.79
21	9.9	8.5	9.2	496.08	12.48	35.01
22	8.8	7.1	7.8	87.14	17.32	22.65
23	8.4	7.1	7.8	174.70	32.05	84.49
24	9.6	7.8	8.6	496.13	97.97	206.49
25	9.8	9.1	9.4	496.13	124.35	194.80
26	9.6	8.7	9.2	232.15	126.62	172.30
27	9.5	8.9	9.2	245.30	64.68	146.40
28	9.2	8.5	8.8	146.82	38.30	81.38
29	9.2	8.4	8.8	81.74	25.89	32.65
30	9.0	7.9	8.7	104.20	33.68	51.38
Total						
Average	12.4	11.3	12.0	249.5	55.4	96.9
Maximum	15.6		15.2	496.2		209.4
Date	1-Nov		1-Nov	5-Nov		7-Nov
Minimum		6.9	7.8		11.8	18.8
Date		19-Nov	22-Nov		19-Nov	20-Nov

Notes:

---



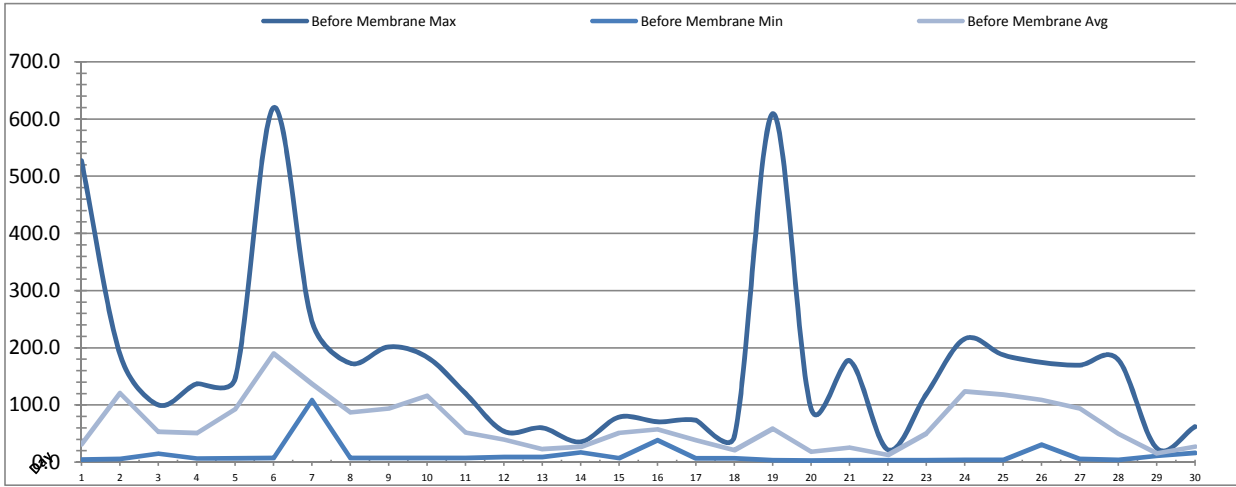
---



---

# Membranes Monthly Report

Month: **November-18**



Date	Turbidity Before Membrane			Rack #1 Turbidity			Rack #2 Turbidity		
	PALL_FEED_AIT2006_Value NTU			RACK1_NTU_Value NTU			RACK2_NTU_Value NTU		
	Maximum	Minimum	Average	Maximum	Minimum	Average	Maximum	Minimum	Average
1	527.55	4.55	31.37	0.02	0.02	0.02	0.20	0.02	0.02
2	189.12	5.57	120.78	0.02	0.02	0.02	0.02	0.02	0.02
3	100.38	15.15	52.93	0.02	0.02	0.02	0.18	0.02	0.02
4	137.28	6.61	50.84	0.02	0.02	0.02	0.19	0.02	0.02
5	146.45	6.75	92.69	0.02	0.02	0.02	0.18	0.02	0.02
6	619.88	7.40	190.30	0.02	0.02	0.02	0.16	0.02	0.02
7	246.50	108.41	137.36	0.02	0.02	0.02	0.21	0.02	0.02
8	173.22	7.46	87.49	0.02	0.02	0.02	0.02	0.02	0.02
9	201.92	7.18	94.29	0.02	0.02	0.02	0.02	0.02	0.02
10	183.92	7.53	116.35	0.02	0.02	0.02	0.19	0.02	0.02
11	120.42	7.30	51.93	0.02	0.02	0.02	0.19	0.02	0.02
12	54.25	8.87	39.87	0.02	0.02	0.02	0.16	0.02	0.02
13	60.24	8.81	22.95	0.02	0.02	0.02	0.09	0.02	0.02
14	35.78	17.25	26.69	0.02	0.02	0.02	0.08	0.02	0.02
15	79.12	7.57	51.30	0.02	0.02	0.02	0.17	0.02	0.02
16	71.01	38.69	57.90	0.02	0.02	0.02	0.06	0.02	0.02
17	73.61	7.00	38.66	0.02	0.02	0.02	0.18	0.02	0.02
18	45.20	6.98	21.33	0.02	0.02	0.02	0.18	0.02	0.02
19	609.40	3.31	58.80	0.02	0.02	0.02	0.17	0.02	0.02
20	93.90	3.04	18.24	0.03	0.02	0.02	0.17	0.02	0.02
21	177.68	3.12	25.58	0.02	0.02	0.02	0.23	0.02	0.02
22	21.88	3.33	12.95	0.02	0.02	0.02	0.21	0.02	0.02
23	119.03	3.27	50.31	0.02	0.02	0.02	0.07	0.02	0.02
24	215.86	4.08	123.49	0.02	0.02	0.02	0.20	0.02	0.02
25	187.75	3.79	117.99	0.02	0.02	0.02	0.17	0.02	0.02
26	174.79	30.66	109.32	0.04	0.02	0.02	0.18	0.02	0.02
27	170.04	5.61	94.09	0.02	0.02	0.02	0.02	0.02	0.02
28	179.31	4.04	49.56	0.02	0.02	0.02	0.17	0.02	0.02
29	24.81	11.13	15.78	0.02	0.02	0.02	0.16	0.02	0.02
30	62.26	16.17	27.72	0.02	0.02	0.02	0.08	0.02	0.02
Total									
Average	170.09	12.35	66.30	0.02	0.02	0.02	0.14	0.02	0.02
Maximum	619.88		190.30	0.04		0.02	0.23		0.02
Date	6-Nov		6-Nov	26-Nov		6-Nov	21-Nov		21-Nov
Minimum		3.0	13.0		0.0	0.0		0.0	0.0
Date		20-Nov	22-Nov		1-Nov	14-Nov		1-Nov	8-Nov

Notes:

---



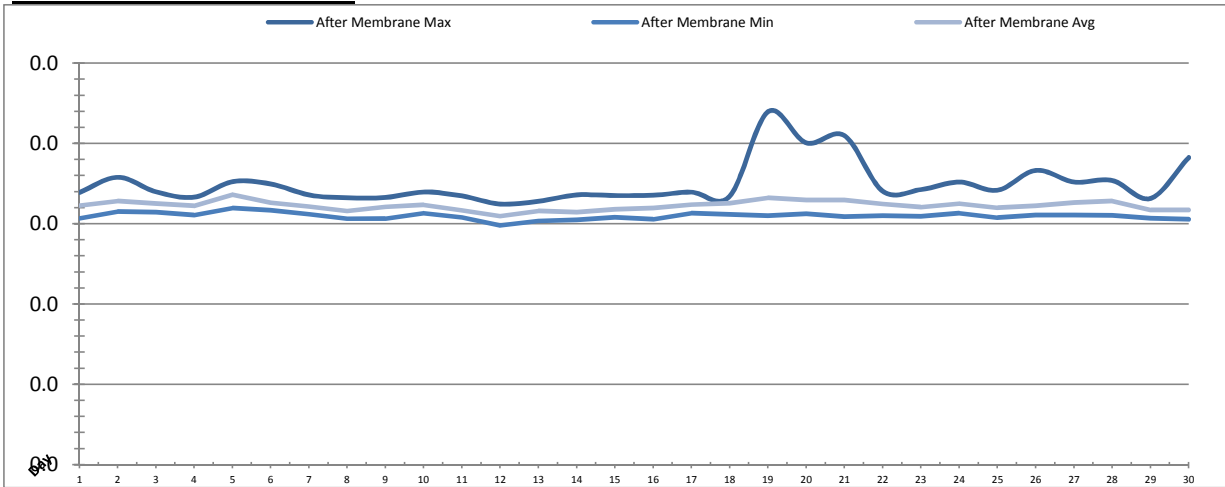
---



---

# Membranes Monthly Report

Month: **November-18**

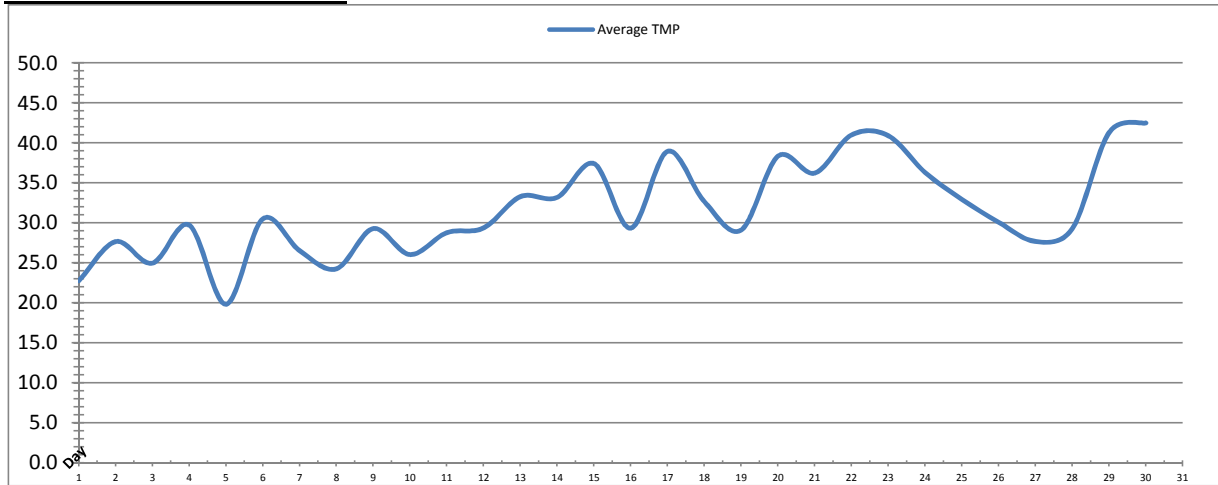


Date	Rack #3 Turbidity			Rack #4 Turbidity			Turbidity After Membranes		
	RACK3_NTU_Value			RACK4_NTU_Value			PALL_FILT_AIT5001_Value		
	Maximum	Minimum	Average	Maximum	Minimum	Average	Maximum	Minimum	Average
1	0.02	0.02	0.02	0.04	0.02	0.03	0.02	0.02	0.02
2	0.02	0.02	0.02	0.05	0.02	0.03	0.02	0.02	0.02
3	0.02	0.02	0.02	0.04	0.02	0.03	0.02	0.02	0.02
4	0.02	0.02	0.02	0.05	0.02	0.03	0.02	0.02	0.02
5	0.02	0.02	0.02	0.06	0.03	0.03	0.02	0.02	0.02
6	0.34	0.02	0.02	0.06	0.02	0.03	0.02	0.02	0.02
7	0.02	0.02	0.02	0.03	0.02	0.03	0.02	0.02	0.02
8	0.02	0.02	0.02	0.04	0.02	0.03	0.02	0.02	0.02
9	0.02	0.02	0.02	0.05	0.02	0.03	0.02	0.02	0.02
10	0.02	0.02	0.02	0.04	0.02	0.03	0.02	0.02	0.02
11	0.02	0.02	0.02	0.06	0.02	0.03	0.02	0.02	0.02
12	0.02	0.02	0.02	0.05	0.02	0.03	0.02	0.01	0.02
13	0.02	0.02	0.02	0.04	0.02	0.03	0.02	0.02	0.02
14	0.02	0.02	0.02	0.04	0.02	0.03	0.02	0.02	0.02
15	0.02	0.02	0.02	0.06	0.02	0.03	0.02	0.02	0.02
16	0.02	0.02	0.02	0.06	0.02	0.03	0.02	0.02	0.02
17	0.03	0.02	0.02	0.06	0.02	0.03	0.02	0.02	0.02
18	0.02	0.02	0.02	0.03	0.03	0.03	0.02	0.02	0.02
19	0.02	0.02	0.02	0.03	0.03	0.03	0.02	0.02	0.02
20	0.03	0.02	0.02	0.03	0.02	0.03	0.02	0.02	0.02
21	0.02	0.02	0.02	0.03	0.03	0.03	0.02	0.02	0.02
22	0.02	0.02	0.02	0.03	0.03	0.03	0.02	0.02	0.02
23	0.02	0.02	0.02	0.03	0.03	0.03	0.02	0.02	0.02
24	0.03	0.02	0.02	0.03	0.03	0.03	0.02	0.02	0.02
25	0.03	0.02	0.02	0.03	0.02	0.03	0.02	0.02	0.02
26	0.17	0.02	0.02	0.03	0.03	0.03	0.02	0.02	0.02
27	0.02	0.02	0.02	0.03	0.02	0.03	0.02	0.02	0.02
28	0.03	0.02	0.02	0.03	0.03	0.03	0.02	0.02	0.02
29	0.02	0.02	0.02	0.03	0.02	0.03	0.02	0.02	0.02
30	0.02	0.02	0.02	0.03	0.02	0.03	0.02	0.02	0.02
Total									
Average	0.04	0.02	0.02	0.04	0.02	0.03	0.02	0.02	0.02
Maximum	0.34		0.02	0.06		0.03	0.02		0.02
Date	6-Nov		26-Nov	17-Nov		22-Nov	19-Nov		5-Nov
Minimum		0.0			0.0			0.0	
Date		12-Nov	14-Nov		6-Nov	6-Nov		12-Nov	12-Nov

Notes:

# Membranes Monthly Report

Month: **November-18**



Date	Integrity Test Rack 1							
	Initial Pressure (kPa)	Final Pressure (kPa)	Test Duration (sec)	Change in Pressure (kPa)	UCL	Within UCL	Average TMP (kPa)	Max TMP (kPa)
1	199.1	197.9	300.0	1.2	2.0	✓ 2.0	22.8	56.5
2	199.3	198.1	300.0	1.2	2.0	✓ 2.0	27.7	57.1
3	198.9	197.7	300.0	1.2	2.0	✓ 2.0	25.0	54.2
4	199.2	197.9	300.0	1.3	2.0	✓ 2.0	29.7	57.4
5	199.2	197.9	300.0	1.2	2.0	✓ 2.0	19.8	72.7
6	199.7	198.4	300.0	1.3	2.0	✓ 2.0	30.5	105.4
7	199.4	198.1	300.0	1.3	2.0	✓ 2.0	26.5	98.1
8	199.4	198.1	300.0	1.3	2.0	✓ 2.0	24.3	108.2
9	199.2	197.9	300.0	1.3	2.0	✓ 2.0	29.3	59.8
10	199.4	198.1	300.0	1.3	2.0	✓ 2.0	26.0	60.6
11	199.4	198.1	300.0	1.3	2.0	✓ 2.0	28.8	64.6
12	199.5	198.3	300.0	1.3	2.0	✓ 2.0	29.4	63.9
13	199.2	198.0	300.0	1.2	2.0	✓ 2.0	33.3	143.5
14	199.0	197.8	300.0	1.3	2.0	✓ 2.0	33.2	229.4
15	199.2	198.1	300.0	1.2	2.0	✓ 2.0	37.4	125.8
16	199.0	197.9	300.0	1.1	2.0	✓ 2.0	29.3	75.5
17	199.2	197.9	300.0	1.3	2.0	✓ 2.0	39.0	175.6
18	199.0	197.8	300.0	1.2	2.0	✓ 2.0	32.7	135.1
19	199.0	197.9	300.0	1.1	2.0	✓ 2.0	29.1	130.9
20	199.1	197.9	300.0	1.3	2.0	✓ 2.0	38.3	152.9
21	199.4	198.3	300.0	1.1	2.0	✓ 2.0	36.2	250.9
22	199.4	198.1	300.0	1.3	2.0	✓ 2.0	41.0	87.1
23	199.3	198.0	300.0	1.3	2.0	✓ 2.0	40.9	159.4
24	199.1	197.9	300.0	1.2	2.0	✓ 2.0	36.3	152.1
25	199.0	197.9	300.0	1.2	2.0	✓ 2.0	32.9	129.7
26	199.1	197.9	300.0	1.2	2.0	✓ 2.0	30.1	141.6
27	199.4	197.9	300.0	1.5	2.0	✓ 2.0	27.7	149.6
28	199.0	197.9	300.0	1.1	2.0	✓ 2.0	29.3	140.3
29	199.2	197.9	300.0	1.3	2.0	✓ 2.0	41.3	180.7
30	199.5	198.1	300.0	1.4	2.0	✓ 2.0	42.5	187.6
Total								
Average	199.2	198.0	300.0	1.2	2.0	2.0	31.7	120.2
Maximum	199.7	198.4	300.0	1.5	2.0	2.0	42.5	250.9
Date	6-Nov	6-Nov	1-Nov	27-Nov	1-Nov	1-Nov	30-Nov	21-Nov
Minimum	198.9	197.7	300.0	1.1	2.0	2.0	19.8	54.2
Date	3-Nov	3-Nov	1-Nov	28-Nov	1-Nov	1-Nov	5-Nov	3-Nov

Notes:

---



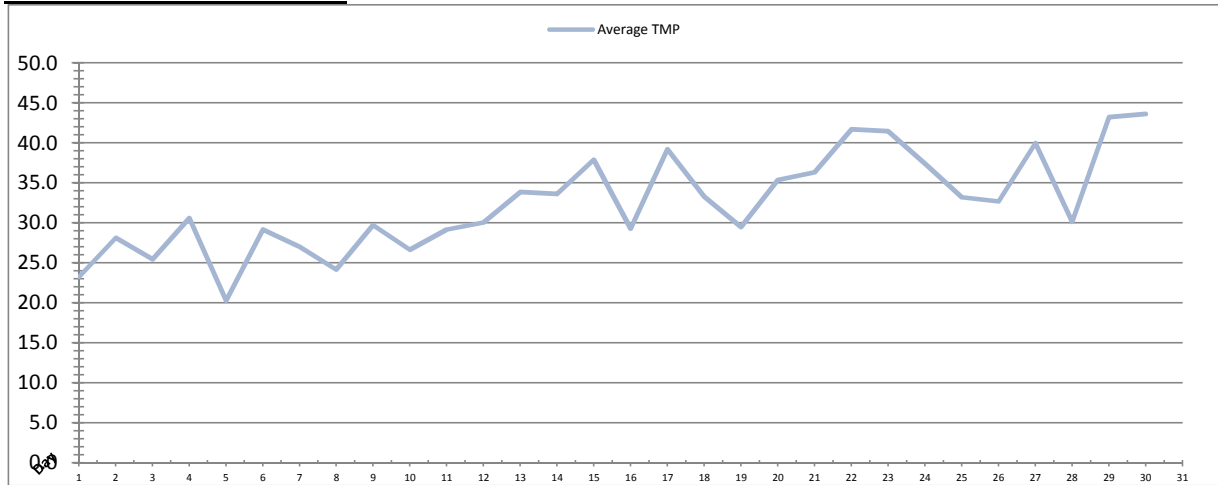
---



---

# Membranes Monthly Report

Month: **November-18**



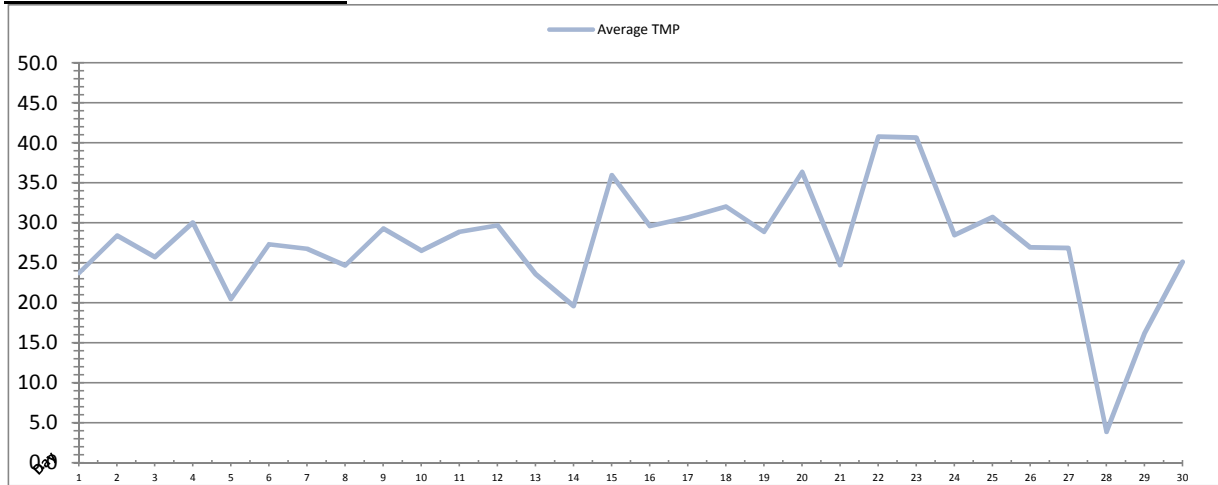
Date	Integrity Test Rack 2							
	Initial Pressure (kPa)	Final Pressure (kPa)	Test Duration (sec)	Change in Pressure (kPa)	UCL	Within UCL	Average TMP (kPa)	Max TMP (kPa)
1	208.5	207.4	300.0	1.1	2.0	✓ 2.0	23.3	61.4
2	208.2	207.0	300.0	1.2	2.0	✓ 2.0	28.1	58.2
3	209.0	207.8	300.0	1.2	2.0	✓ 2.0	25.4	55.6
4	208.5	207.4	300.0	1.2	2.0	✓ 2.0	30.6	67.6
5	207.8	206.6	300.0	1.2	2.0	✓ 2.0	20.3	63.3
6	208.8	207.6	300.0	1.2	2.0	✓ 2.0	29.2	106.9
7	208.8	207.7	300.0	1.1	2.0	✓ 2.0	27.0	98.6
8	209.1	207.9	300.0	1.3	2.0	✓ 2.0	24.2	68.9
9	208.6	207.4	300.0	1.2	2.0	✓ 2.0	29.7	61.2
10	208.6	207.3	300.0	1.3	2.0	✓ 2.0	26.7	62.1
11	207.7	206.5	300.0	1.2	2.0	✓ 2.0	29.2	63.3
12	209.3	208.2	300.0	1.1	2.0	✓ 2.0	30.1	64.9
13	208.1	207.0	300.0	1.1	2.0	✓ 2.0	33.9	128.2
14	209.1	207.9	300.0	1.2	2.0	✓ 2.0	33.6	137.7
15	209.3	208.1	300.0	1.2	2.0	✓ 2.0	37.9	129.7
16	209.3	208.2	300.0	1.1	2.0	✓ 2.0	29.3	76.2
17	208.2	207.1	300.0	1.1	2.0	✓ 2.0	39.2	153.3
18	208.9	207.8	300.0	1.1	2.0	✓ 2.0	33.3	143.8
19	208.5	207.5	300.0	1.1	2.0	✓ 2.0	29.5	135.1
20	209.3	208.0	300.0	1.2	2.0	✓ 2.0	35.4	132.7
21	208.8	207.7	300.0	1.1	2.0	✓ 2.0	36.3	197.0
22	209.2	208.0	300.0	1.2	2.0	✓ 2.0	41.7	87.9
23	208.5	207.2	300.0	1.3	2.0	✓ 2.0	41.4	91.6
24	209.0	207.8	300.0	1.2	2.0	✓ 2.0	37.4	161.0
25	208.1	207.0	300.0	1.1	2.0	✓ 2.0	33.2	137.1
26	209.1	207.8	300.0	1.2	2.0	✓ 2.0	32.7	140.8
27	209.2	207.9	300.0	1.3	2.0	✓ 2.0	40.0	157.4
28	208.8	207.6	300.0	1.2	2.0	✓ 2.0	30.1	154.6
29	208.1	206.9	300.0	1.2	2.0	✓ 2.0	43.2	162.1
30	208.8	207.5	300.0	1.3	2.0	✓ 2.0	43.6	179.8
Total								
Average	208.7	207.5	300.0	1.2	2.0	2.0	32.5	111.3
Maximum	209.3	208.2	300.0	1.3	2.0	2.0	43.6	197.0
Date	12-Nov	12-Nov	1-Nov	23-Nov	1-Nov	1-Nov	30-Nov	21-Nov
Minimum	207.7	206.5	300.0	1.1	2.0	2.0	20.3	55.6
Date	11-Nov	11-Nov	1-Nov	19-Nov	1-Nov	1-Nov	5-Nov	3-Nov

Notes:



# Membranes Monthly Report

Month: **November-18**

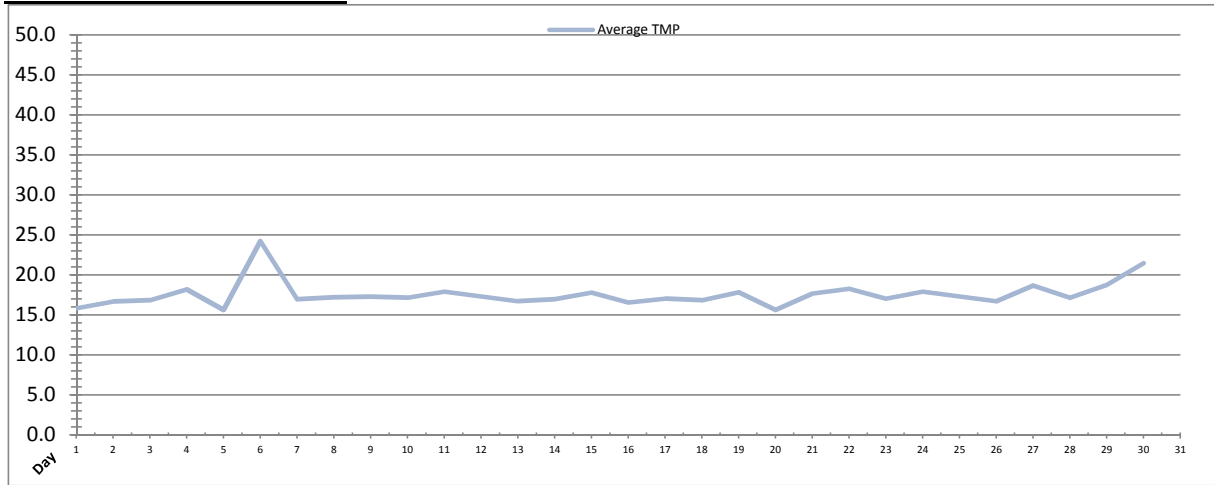


Date	Integrity Test Rack 3							
	Initial Pressure (kPa)	Final Pressure (kPa)	Test Duration (sec)	Change in Pressure (kPa)	UCL	Within UCL	Average TMP (kPa)	Max TMP (kPa)
1	176.2	175.2	300.0	1.0	2.0	✓ 2.0	23.7	56.1
2	176.6	175.4	300.0	1.1	2.0	✓ 2.0	28.4	95.6
3	175.5	174.4	300.0	1.1	2.0	✓ 2.0	25.7	54.2
4	175.9	174.8	300.0	1.1	2.0	✓ 2.0	30.0	56.9
5	176.5	175.3	300.0	1.2	2.0	✓ 2.0	20.5	57.4
6	176.7	175.4	300.0	1.2	2.0	✓ 2.0	27.3	160.1
7	175.9	174.7	300.0	1.1	2.0	✓ 2.0	26.8	88.6
8	176.6	175.3	300.0	1.3	2.0	✓ 2.0	24.7	55.1
9	175.2	174.1	300.0	1.1	2.0	✓ 2.0	29.3	106.1
10	175.7	174.6	300.0	1.2	2.0	✓ 2.0	26.5	59.6
11	176.5	175.2	300.0	1.2	2.0	✓ 2.0	28.9	61.7
12	175.9	174.7	300.0	1.1	2.0	✓ 2.0	29.7	62.0
13	175.7	174.6	300.0	1.1	2.0	✓ 2.0	23.6	61.4
14	175.6	174.5	300.0	1.1	2.0	✓ 2.0	19.6	97.2
15	175.0	173.9	300.0	1.1	2.0	✓ 2.0	36.0	109.7
16	175.9	174.8	300.0	1.1	2.0	✓ 2.0	29.6	112.8
17	175.3	174.2	300.0	1.1	2.0	✓ 2.0	30.7	68.9
18	175.0	173.9	300.0	1.1	2.0	✓ 2.0	32.0	120.9
19	175.1	174.1	300.0	1.1	2.0	✓ 2.0	28.9	116.5
20	175.6	174.4	300.0	1.2	2.0	✓ 2.0	36.4	141.4
21	189.1	187.5	300.0	1.6	2.0	✓ 2.0	24.7	117.0
22	175.8	174.6	300.0	1.2	2.0	✓ 2.0	40.8	86.5
23	175.5	174.2	300.0	1.3	2.0	✓ 2.0	40.6	88.0
24	175.9	174.6	300.0	1.2	2.0	✓ 2.0	28.5	87.3
25	175.5	175.4	300.0	0.1	2.0	✓ 2.0	30.7	83.9
26	175.1	174.0	300.0	1.1	2.0	✓ 2.0	26.9	116.1
27	175.2	175.0	300.0	0.1	2.0	✓ 2.0	26.9	134.3
28	175.6	173.6	300.0	2.0	2.0	✓ 2.0	3.9	81.1
29	175.3	175.2	300.0	0.0	2.0	✓ 2.0	16.2	80.9
30	175.3	174.2	300.0	1.1	2.0	✓ 2.0	25.1	82.8
Total								
Average	176.1	175.1	300.0	1.1	2.0	2.0	27.4	90.0
Maximum	189.1	187.5	300.0	2.0	2.0	2.0	40.8	160.1
Date	21-Nov	21-Nov	1-Nov	28-Nov	1-Nov	1-Nov	22-Nov	6-Nov
Minimum	175.0	173.6	300.0	0.0	2.0	2.0	3.9	54.2
Date	15-Nov	28-Nov	1-Nov	29-Nov	1-Nov	1-Nov	28-Nov	3-Nov

Notes:

# Membranes Monthly Report

Month: **November-18**



Date	Integrity Test Rack 4							
	Initial Pressure (kPa)	Final Pressure (kPa)	Test Duration (sec)	Change in Pressure (kPa)	UCL	Within UCL	Average TMP (kPa)	Max TMP (kPa)
1	201.0	199.7	300.0	1.3	2.0	✓ 2.0	15.8	47.8
2	201.0	199.7	300.0	1.3	2.0	✓ 2.0	16.7	39.7
3	201.4	200.1	300.0	1.3	2.0	✓ 2.0	16.8	37.9
4	201.1	199.7	300.0	1.3	2.0	✓ 2.0	18.2	48.0
5	201.6	200.2	300.0	1.4	2.0	✓ 2.0	15.7	53.2
6	201.7	200.2	300.0	1.5	2.0	✓ 2.0	24.2	65.8
7	201.2	199.8	300.0	1.4	2.0	✓ 2.0	17.0	53.1
8	201.9	200.5	300.0	1.5	2.0	✓ 2.0	17.2	41.6
9	201.6	200.2	300.0	1.4	2.0	✓ 2.0	17.3	53.4
10	201.8	200.2	300.0	1.6	2.0	✓ 2.0	17.2	45.7
11	202.0	200.3	300.0	1.6	2.0	✓ 2.0	17.9	37.5
12	201.6	200.0	300.0	1.6	2.0	✓ 2.0	17.3	41.2
13	201.3	200.0	300.0	1.3	2.0	✓ 2.0	16.7	41.6
14	200.9	199.3	300.0	1.6	2.0	✓ 2.0	17.0	57.0
15	201.2	199.7	300.0	1.5	2.0	✓ 2.0	17.8	54.5
16	201.1	199.7	300.0	1.4	2.0	✓ 2.0	16.5	38.7
17	201.2	199.8	300.0	1.4	2.0	✓ 2.0	17.0	54.3
18	201.6	200.2	300.0	1.4	2.0	✓ 2.0	16.9	38.3
19	201.6	200.2	300.0	1.4	2.0	✓ 2.0	17.8	58.5
20	200.9	199.3	300.0	1.6	2.0	✓ 2.0	15.6	47.0
21	200.9	199.3	300.0	1.6	2.0	✓ 2.0	17.7	37.3
22	200.9	199.3	300.0	1.6	2.0	✓ 2.0	18.3	18.8
23	201.2	200.0	300.0	1.3	2.0	✓ 2.0	17.1	42.3
24	201.5	199.9	300.0	1.6	2.0	✓ 2.0	17.9	70.7
25	201.2	199.5	300.0	1.7	2.0	✓ 2.0	17.3	47.8
26	201.0	199.5	300.0	1.6	2.0	✓ 2.0	16.7	43.8
27	200.7	199.2	300.0	1.5	2.0	✓ 2.0	18.7	98.3
28	200.9	199.5	300.0	1.4	2.0	✓ 2.0	17.2	45.1
29	201.1	199.5	300.0	1.6	2.0	✓ 2.0	18.8	48.1
30	200.7	198.9	300.0	1.8	2.0	✓ 2.0	21.5	120.5
Total								
Average	201.3	199.8	300.0	1.5	2.0	2.0	17.6	50.9
Maximum	202.0	200.5	300.0	1.8	2.0	2.0	24.2	120.5
Date	11-Nov	8-Nov	1-Nov	30-Nov	1-Nov	1-Nov	6-Nov	30-Nov
Minimum	200.7	198.9	300.0	1.3	2.0	2.0	15.6	18.8
Date	30-Nov	30-Nov	1-Nov	1-Nov	1-Nov	1-Nov	20-Nov	22-Nov

Notes:

---



---



---

# Membranes Monthly Report

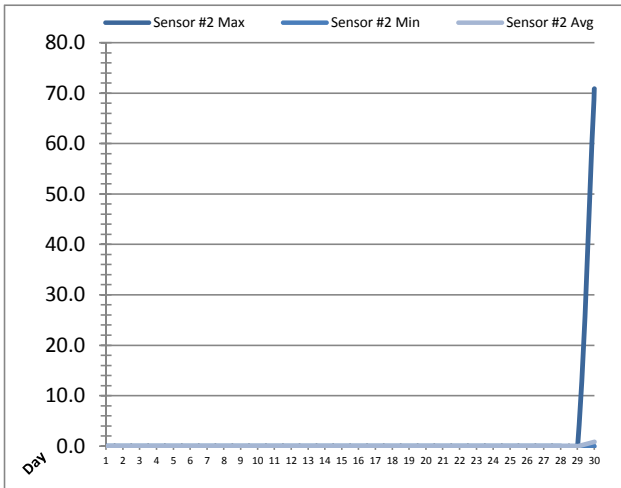
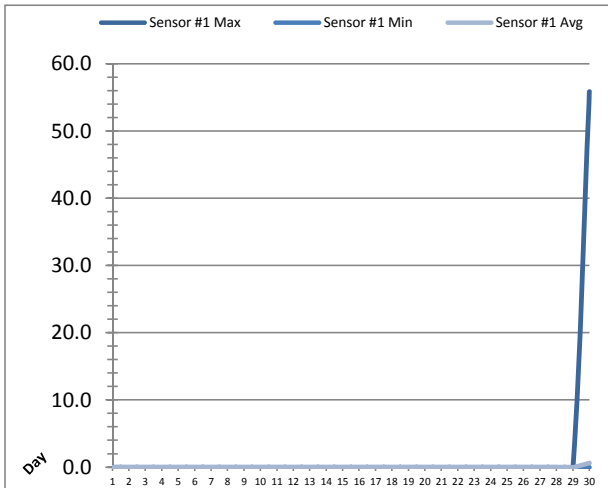
Month: November-18

Date	Membranes Monthly Performance							
	Rack 1 >0.1 NTU (Minutes)	Rack 1 Forward Flow (Minutes)	Rack 2 >0.1 NTU (Minutes)	Rack 2 Forward Flow (Minutes)	Rack 3 >0.1 NTU (Minutes)	Rack 3 Forward Flow (Minutes)	Rack 4 >0.1 NTU (Minutes)	Rack 4 Forward Flow (Minutes)
1	0.0	615.6	1.4	626.0	0.0	615.3	0.0	290.0
2	0.0	924.4	0.0	928.3	0.0	923.4	0.0	435.5
3	0.0	753.4	1.4	765.5	0.0	755.1	0.0	334.6
4	0.0	1059.2	1.4	1078.0	0.0	1053.4	0.0	523.0
5	0.0	400.1	1.4	406.4	0.0	400.6	0.0	190.2
6	0.0	1002.1	1.4	937.5	6.3	948.3	0.0	708.3
7	0.0	765.4	1.4	777.6	0.0	761.3	0.0	394.2
8	0.0	689.3	0.0	688.4	0.0	685.3	0.0	330.6
9	0.0	927.3	0.0	937.2	0.0	924.1	0.0	455.3
10	0.0	712.4	1.4	724.0	0.0	708.3	0.0	336.1
11	0.0	875.1	1.4	885.4	0.0	862.6	0.0	413.6
12	0.0	870.4	1.4	884.4	0.0	865.1	0.0	399.1
13	0.0	819.1	0.0	824.6	0.0	487.5	0.0	372.2
14	0.0	601.4	0.0	604.5	0.0	243.2	0.0	298.4
15	0.0	1027.0	1.4	1036.0	0.0	1015.4	0.0	501.2
16	0.0	720.3	0.0	716.3	0.0	712.3	0.0	352.3
17	0.0	1066.1	1.4	1075.1	0.0	983.5	0.0	280.5
18	0.0	746.4	1.4	758.1	0.0	737.5	0.0	312.3
19	0.0	654.5	1.4	659.0	0.0	649.0	0.0	240.0
20	0.0	915.5	1.4	850.3	0.0	906.5	0.0	270.5
21	0.0	754.5	1.4	759.1	0.0	688.5	0.0	54.4
22	0.0	1025.4	2.3	1040.2	0.0	1014.6	0.0	0.0
23	0.0	976.1	0.0	981.6	0.0	963.6	0.0	239.1
24	0.0	802.2	1.4	808.1	0.0	712.4	0.0	414.3
25	0.0	706.6	1.4	714.5	0.0	679.4	0.0	332.1
26	0.0	607.2	2.3	707.6	6.3	621.3	0.0	323.2
27	0.0	460.5	0.0	841.2	0.0	784.5	0.0	510.1
28	0.0	538.2	1.4	547.4	0.0	441.1	0.0	257.3
29	0.0	847.2	1.4	863.4	0.0	519.1	0.0	385.1
30	0.0	958.6	0.0	969.2	0.0	776.1	0.0	508.3
Total	0.0	23821.5	30.8	24395.0	12.6	22438.1	0.0	10461.5
Percent	0.0		0.1		0.1		0.0	
Maximum	0.0	1066.1	2.3	1078.0	6.3	1053.4	0.0	708.3
Date	1-Nov	17-Nov	26-Nov	4-Nov	26-Nov	4-Nov	1-Nov	6-Nov
Minimum	0.0	400.1	0.0	406.4	0.0	243.2	0.0	0.0
Date	1-Nov	5-Nov	2-Nov	5-Nov	1-Nov	14-Nov	1-Nov	22-Nov

Notes:  
 Met filter performance criteria of 99% readings for the month were below 0.1ntu.

# UV System Monthly Report

Month: **November-18**



Date	UV Reactor 1					
	Intensity Sensor 1 (mW/cm <sup>2</sup> )			Intensity Sensor 2 (mW/cm <sup>2</sup> )		
	Maximum	Minimum	Average	Maximum	Minimum	Average
1	0.0	0.0	0.0	0.0	0.0	0.0
2	0.0	0.0	0.0	0.0	0.0	0.0
3	0.0	0.0	0.0	0.0	0.0	0.0
4	0.0	0.0	0.0	0.0	0.0	0.0
5	0.0	0.0	0.0	0.0	0.0	0.0
6	0.0	0.0	0.0	0.0	0.0	0.0
7	0.0	0.0	0.0	0.0	0.0	0.0
8	0.0	0.0	0.0	0.0	0.0	0.0
9	0.0	0.0	0.0	0.0	0.0	0.0
10	0.0	0.0	0.0	0.0	0.0	0.0
11	0.0	0.0	0.0	0.0	0.0	0.0
12	0.0	0.0	0.0	0.0	0.0	0.0
13	0.0	0.0	0.0	0.0	0.0	0.0
14	0.0	0.0	0.0	0.0	0.0	0.0
15	0.0	0.0	0.0	0.0	0.0	0.0
16	0.0	0.0	0.0	0.0	0.0	0.0
17	0.0	0.0	0.0	0.0	0.0	0.0
18	0.0	0.0	0.0	0.0	0.0	0.0
19	0.0	0.0	0.0	0.0	0.0	0.0
20	0.0	0.0	0.0	0.0	0.0	0.0
21	0.0	0.0	0.0	0.0	0.0	0.0
22	0.0	0.0	0.0	0.0	0.0	0.0
23	0.0	0.0	0.0	0.0	0.0	0.0
24	0.0	0.0	0.0	0.0	0.0	0.0
25	0.0	0.0	0.0	0.0	0.0	0.0
26	0.0	0.0	0.0	0.0	0.0	0.0
27	0.0	0.0	0.0	0.0	0.0	0.0
28	0.0	0.0	0.0	0.0	0.0	0.0
29	0.0	0.0	0.0	0.0	0.0	0.0
30	55.9	0.0	0.6	70.9	0.0	0.9
Total						
Average	1.9	0.0	0.0	2.4	0.0	0.0
Maximum	55.9		0.6	70.9		0.9
Date	30-Nov		30-Nov	30-Nov		30-Nov
Minimum		0.0	0.0		0.0	0.0
Date		1-Nov	1-Nov		1-Nov	1-Nov

Notes:

---



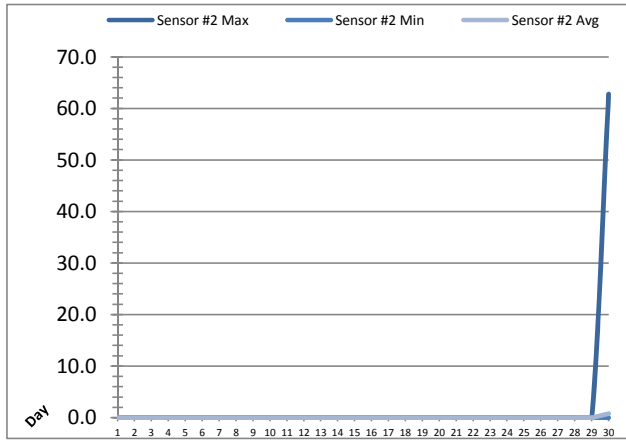
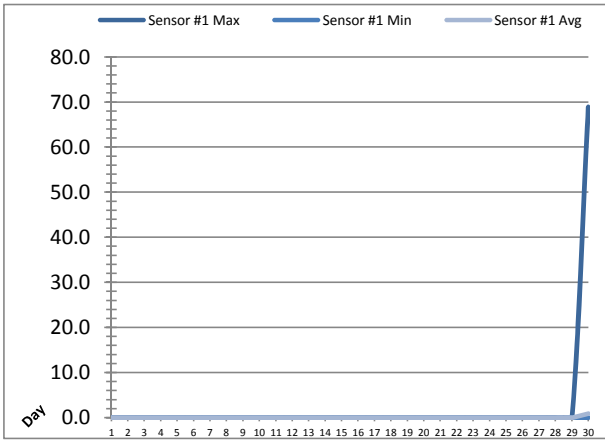
---



---

# UV System Monthly Report

Month: **November-18**

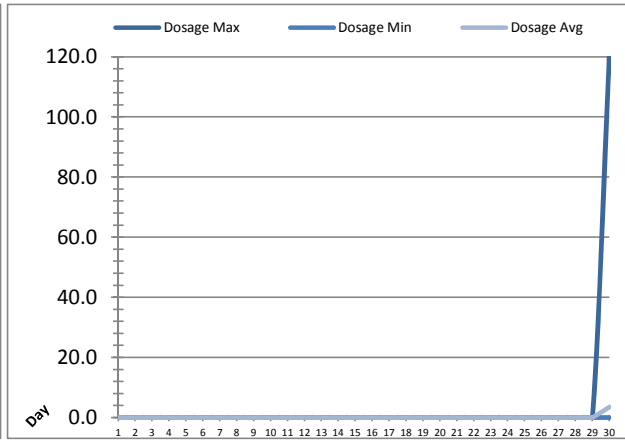
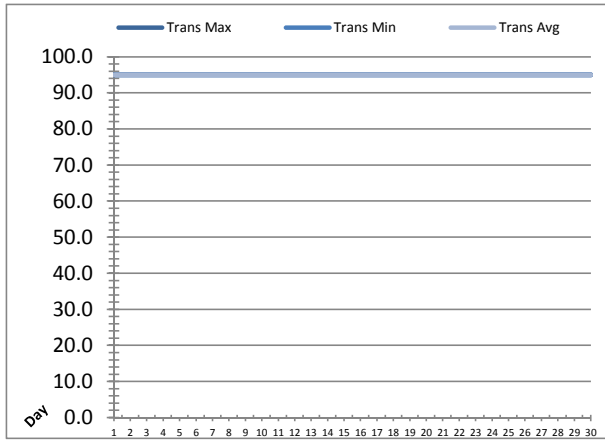


Date	UV Reactor 2					
	Intensity Sensor 1 (mW/cm <sup>2</sup> )			Intensity Sensor 2 (mW/cm <sup>2</sup> )		
	Maximum	Minimum	Average	Maximum	Minimum	Average
1	0.0	0.0	0.0	0.0	0.0	0.0
2	0.0	0.0	0.0	0.0	0.0	0.0
3	0.0	0.0	0.0	0.0	0.0	0.0
4	0.0	0.0	0.0	0.0	0.0	0.0
5	0.0	0.0	0.0	0.0	0.0	0.0
6	0.0	0.0	0.0	0.0	0.0	0.0
7	0.0	0.0	0.0	0.0	0.0	0.0
8	0.0	0.0	0.0	0.0	0.0	0.0
9	0.0	0.0	0.0	0.0	0.0	0.0
10	0.0	0.0	0.0	0.0	0.0	0.0
11	0.0	0.0	0.0	0.0	0.0	0.0
12	0.0	0.0	0.0	0.0	0.0	0.0
13	0.0	0.0	0.0	0.0	0.0	0.0
14	0.0	0.0	0.0	0.0	0.0	0.0
15	0.0	0.0	0.0	0.0	0.0	0.0
16	0.0	0.0	0.0	0.0	0.0	0.0
17	0.0	0.0	0.0	0.0	0.0	0.0
18	0.0	0.0	0.0	0.0	0.0	0.0
19	0.0	0.0	0.0	0.0	0.0	0.0
20	0.0	0.0	0.0	0.0	0.0	0.0
21	0.0	0.0	0.0	0.0	0.0	0.0
22	0.0	0.0	0.0	0.0	0.0	0.0
23	0.0	0.0	0.0	0.0	0.0	0.0
24	0.0	0.0	0.0	0.0	0.0	0.0
25	0.0	0.0	0.0	0.0	0.0	0.0
26	0.0	0.0	0.0	0.0	0.0	0.0
27	0.0	0.0	0.0	0.0	0.0	0.0
28	0.0	0.0	0.0	0.0	0.0	0.0
29	0.0	0.0	0.0	0.0	0.0	0.0
30	68.9	0.0	0.9	62.8	0.0	0.8
Total						
Average	2.3	0.0	0.0	2.1	0.0	0.0
Maximum	68.9		0.9	62.8		0.8
Date	30-Nov		30-Nov	30-Nov		30-Nov
Minimum		0.0	0.0		0.0	0.0
Date		1-Nov	1-Nov		1-Nov	1-Nov

Notes:


# UV System Monthly Report

Month: **November-18**



Date	UV System						
	Transmittance (%)			Dosage (mJ/cm <sup>2</sup> )			Inlet Flow (L/s)
	Maximum	Minimum	Average	Maximum	Minimum	Average	Maximum
1	95.00	95.00	95.00	0.0	0.0	0.0	104.2
2	95.00	95.00	95.00	0.0	0.0	0.0	100.0
3	95.00	95.00	95.00	0.0	0.0	0.0	101.0
4	95.00	95.00	95.00	0.0	0.0	0.0	101.9
5	95.00	95.00	95.00	0.0	0.0	0.0	104.0
6	95.00	95.00	95.00	0.0	0.0	0.0	628.1
7	95.00	95.00	95.00	0.0	0.0	0.0	162.3
8	95.00	95.00	95.00	0.0	0.0	0.0	99.4
9	95.00	95.00	95.00	0.0	0.0	0.0	105.4
10	95.00	95.00	95.00	0.0	0.0	0.0	98.8
11	95.00	95.00	95.00	0.0	0.0	0.0	107.1
12	95.00	95.00	95.00	0.0	0.0	0.0	101.8
13	95.00	95.00	95.00	0.0	0.0	0.0	98.3
14	95.00	95.00	95.00	0.0	0.0	0.0	151.5
15	95.00	95.00	95.00	0.0	0.0	0.0	159.5
16	95.00	95.00	95.00	0.0	0.0	0.0	100.4
17	95.00	95.00	95.00	0.0	0.0	0.0	96.0
18	95.00	95.00	95.00	0.0	0.0	0.0	158.3
19	95.00	95.00	95.00	0.0	0.0	0.0	148.4
20	95.00	95.00	95.00	0.0	0.0	0.0	155.7
21	95.00	95.00	95.00	0.0	0.0	0.0	142.8
22	95.00	95.00	95.00	0.0	0.0	0.0	87.3
23	95.00	95.00	95.00	0.0	0.0	0.0	97.5
24	95.00	95.00	95.00	0.0	0.0	0.0	98.3
25	95.00	95.00	95.00	0.0	0.0	0.0	99.6
26	95.00	95.00	95.00	0.0	0.0	0.0	165.7
27	95.00	95.00	95.00	0.0	0.0	0.0	164.2
28	95.00	95.00	95.00	0.0	0.0	0.0	101.5
29	95.00	95.00	95.00	0.0	0.0	0.0	110.3
30	95.00	95.00	95.00	120.0	0.0	3.5	137.7
Total							
Average	95.00	95.00	95.00	4.0	0.0	0.1	136.2
Maximum	95.00		95.00	120.0		3.5	628.1
Date	1-Nov		1-Nov	30-Nov		30-Nov	6-Nov
Minimum		95.00	95.00		0.0	0.0	
Date		1-Nov	1-Nov		1-Nov	1-Nov	

Notes:

---



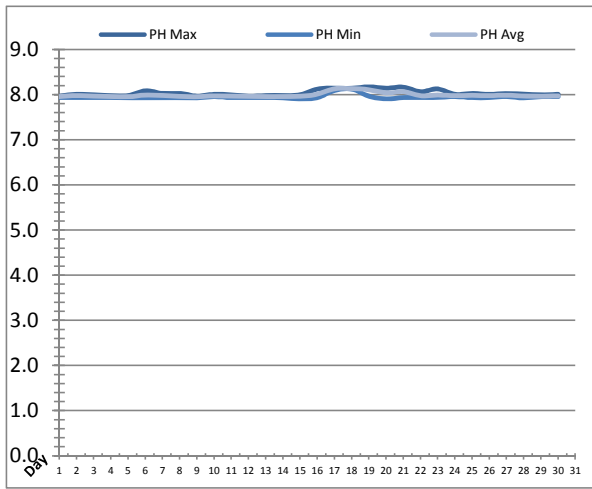
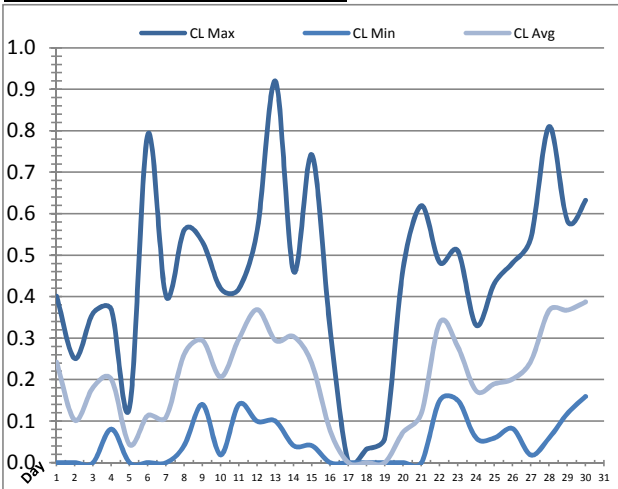
---



---

# Plant Quality Report

Month: **November-18**



Date	Strainer Chlorine Residual			Strainer pH		
	AIT_2003_CL (ppm)			AIT_2003_PH		
	Maximum	Minimum	Average	Maximum	Minimum	Average
1	0.40	0.00	0.24	7.97	7.94	7.96
2	0.25	0.00	0.10	8.01	7.94	7.98
3	0.36	0.00	0.18	8.00	7.94	7.97
4	0.37	0.08	0.20	7.98	7.94	7.96
5	0.13	0.00	0.04	7.98	7.93	7.96
6	0.79	0.00	0.11	8.09	7.94	7.99
7	0.40	0.00	0.11	8.03	7.94	7.98
8	0.56	0.04	0.26	8.03	7.93	7.96
9	0.53	0.14	0.29	7.97	7.93	7.95
10	0.42	0.02	0.21	8.01	7.96	7.98
11	0.42	0.14	0.30	8.00	7.94	7.97
12	0.56	0.10	0.37	7.97	7.94	7.97
13	0.92	0.10	0.29	7.98	7.94	7.96
14	0.46	0.04	0.30	7.98	7.93	7.96
15	0.74	0.04	0.24	8.00	7.91	7.96
16	0.32	0.00	0.08	8.13	7.94	8.01
17	0.00	0.00	0.00	8.15	8.10	8.13
18	0.03	0.00	0.00	8.15	8.13	8.14
19	0.06	0.00	0.00	8.17	7.97	8.11
20	0.47	0.00	0.07	8.15	7.91	8.04
21	0.62	0.00	0.12	8.17	7.94	8.07
22	0.48	0.15	0.34	8.07	7.94	7.98
23	0.51	0.15	0.28	8.13	7.94	7.99
24	0.33	0.06	0.17	8.01	7.96	7.98
25	0.43	0.06	0.19	8.03	7.94	7.98
26	0.48	0.08	0.20	8.01	7.94	7.98
27	0.54	0.02	0.24	8.03	7.96	7.99
28	0.81	0.06	0.37	8.01	7.93	7.97
29	0.58	0.12	0.37	8.00	7.96	7.97
30	0.63	0.16	0.39	8.01	7.96	7.97
Total						
Average	0.45	0.05	0.20	8.04	7.95	7.99
Maximum	0.92		0.39	8.17		8.14
Date	13-Nov		30-Nov	19-Nov		18-Nov
Minimum		0.00	0.00		7.91	7.95
Date		1-Nov	17-Nov		15-Nov	9-Nov

Notes:

---



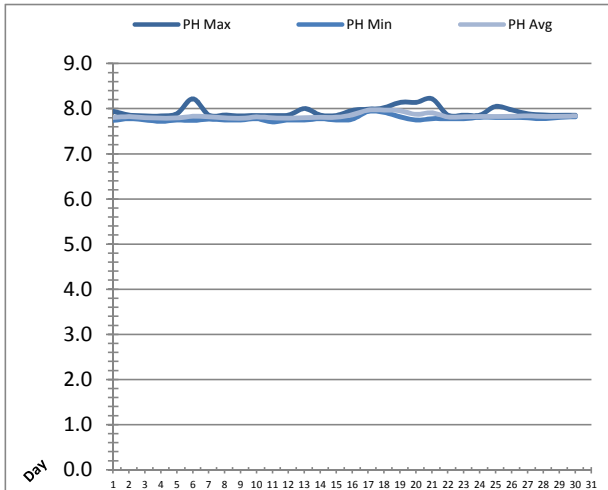
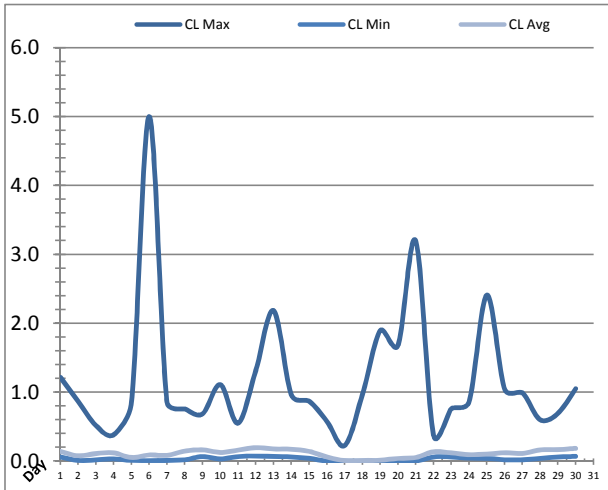
---



---

# Plant Quality Report

Month: **November-18**



Date	Inlet UV Chlorine Residual			Inlet UV pH		
	AIT_5005_CL (ppm)			AIT_5005_PH		
	Maximum	Minimum	Average	Maximum	Minimum	Average
1	1.22	0.06	0.14	7.94	7.74	7.81
2	0.87	0.01	0.08	7.86	7.78	7.83
3	0.52	0.02	0.11	7.84	7.75	7.80
4	0.38	0.03	0.12	7.84	7.72	7.80
5	0.85	0.01	0.05	7.89	7.75	7.80
6	5.00	0.01	0.09	8.22	7.74	7.83
7	0.86	0.01	0.08	7.86	7.77	7.82
8	0.76	0.02	0.15	7.86	7.75	7.80
9	0.69	0.07	0.16	7.84	7.75	7.79
10	1.11	0.03	0.13	7.85	7.78	7.82
11	0.55	0.07	0.16	7.85	7.71	7.80
12	1.32	0.08	0.20	7.86	7.75	7.79
13	2.19	0.07	0.18	8.00	7.75	7.80
14	0.96	0.06	0.17	7.86	7.78	7.81
15	0.87	0.04	0.14	7.85	7.75	7.81
16	0.58	0.00	0.06	7.96	7.77	7.87
17	0.23	0.00	0.01	7.99	7.94	7.97
18	0.97	0.00	0.01	8.02	7.92	7.97
19	1.89	0.00	0.01	8.14	7.82	7.96
20	1.68	0.00	0.04	8.14	7.75	7.88
21	3.19	0.00	0.05	8.22	7.78	7.91
22	0.38	0.06	0.14	7.86	7.78	7.82
23	0.76	0.06	0.12	7.86	7.78	7.83
24	0.86	0.04	0.09	7.86	7.81	7.83
25	2.41	0.04	0.10	8.05	7.81	7.83
26	1.04	0.02	0.12	7.97	7.81	7.84
27	0.99	0.02	0.11	7.89	7.80	7.85
28	0.60	0.04	0.16	7.86	7.78	7.83
29	0.69	0.06	0.17	7.86	7.81	7.83
30	1.05	0.07	0.18	7.86	7.82	7.84
Total						
Average	1.18	0.03	0.11	7.93	7.78	7.84
Maximum	5.00		0.20	8.22		7.97
Date	6-Nov		12-Nov	21-Nov		18-Nov
Minimum		0.00	0.01		7.71	7.79
Date		19-Nov	17-Nov		11-Nov	9-Nov

Notes:

---



---

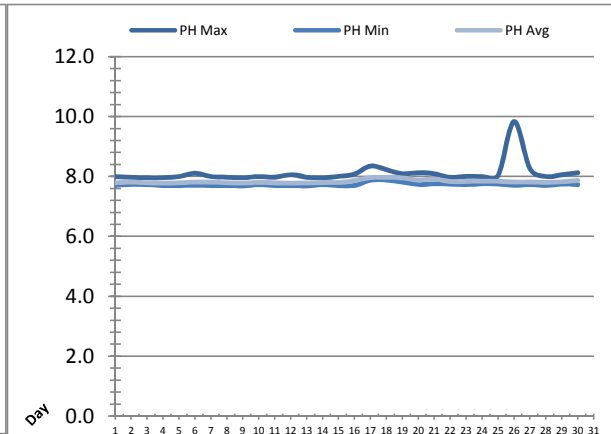
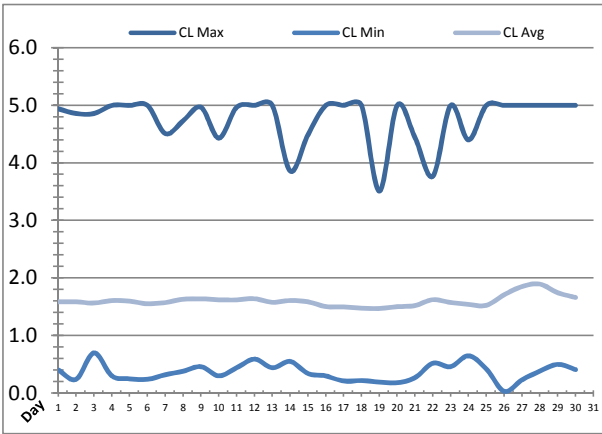


---



# Plant Quality Report

Month: **November-18**



Date	Discharge UV Chlorine Residual			Discharge UV pH		
	AIT_5006_CL (ppm)			AIT_5006_PH		
	Maximum	Minimum	Average	Maximum	Minimum	Average
1	4.94	0.40	1.59	8.00	7.71	7.79
2	4.86	0.24	1.59	7.98	7.74	7.82
3	4.86	0.70	1.57	7.96	7.73	7.79
4	5.00	0.30	1.61	7.96	7.70	7.79
5	5.00	0.25	1.60	8.00	7.70	7.79
6	5.00	0.24	1.55	8.11	7.71	7.82
7	4.51	0.32	1.57	8.00	7.70	7.81
8	4.73	0.38	1.63	7.98	7.70	7.79
9	4.97	0.46	1.64	7.96	7.69	7.78
10	4.43	0.30	1.62	8.00	7.73	7.81
11	4.97	0.44	1.62	7.98	7.70	7.79
12	5.00	0.59	1.64	8.06	7.70	7.79
13	5.00	0.44	1.58	7.98	7.69	7.79
14	3.86	0.55	1.61	7.96	7.73	7.80
15	4.49	0.34	1.59	8.00	7.70	7.81
16	5.00	0.30	1.50	8.08	7.70	7.87
17	5.00	0.21	1.50	8.35	7.88	7.97
18	5.00	0.22	1.48	8.23	7.88	7.97
19	3.51	0.19	1.47	8.09	7.82	7.96
20	5.00	0.18	1.50	8.13	7.73	7.89
21	4.44	0.27	1.52	8.09	7.76	7.92
22	3.77	0.52	1.62	7.97	7.75	7.83
23	5.00	0.46	1.57	8.01	7.73	7.84
24	4.40	0.65	1.54	8.00	7.76	7.85
25	5.00	0.42	1.53	8.04	7.75	7.85
26	5.00	0.03	1.71	9.84	7.71	7.82
27	5.00	0.23	1.85	8.26	7.73	7.82
28	5.00	0.38	1.90	8.00	7.70	7.81
29	5.00	0.50	1.74	8.06	7.75	7.83
30	5.00	0.41	1.66	8.13	7.73	7.87
<b>Total</b>						
<b>Average</b>	4.76	0.36	1.60	8.11	7.73	7.84
<b>Maximum</b>	5.00		1.90	9.84		7.97
<b>Date</b>	17-Nov		28-Nov	26-Nov		18-Nov
<b>Minimum</b>		0.03	1.47		7.69	7.78
<b>Date</b>		26-Nov	19-Nov		9-Nov	9-Nov

Notes:

---



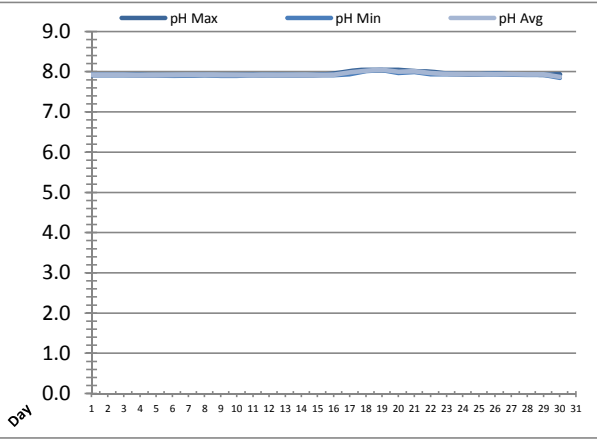
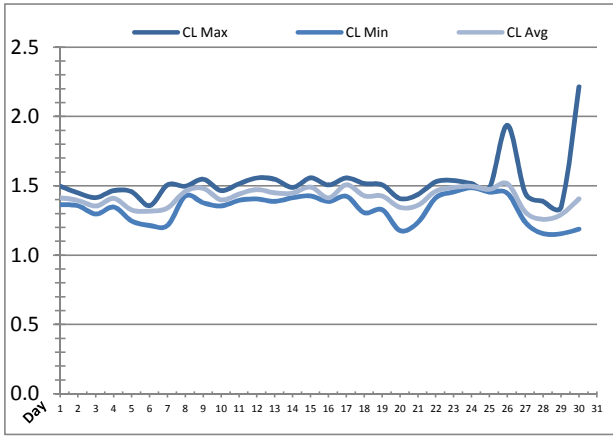
---



---

# Plant Quality Report

Month: **November-18**

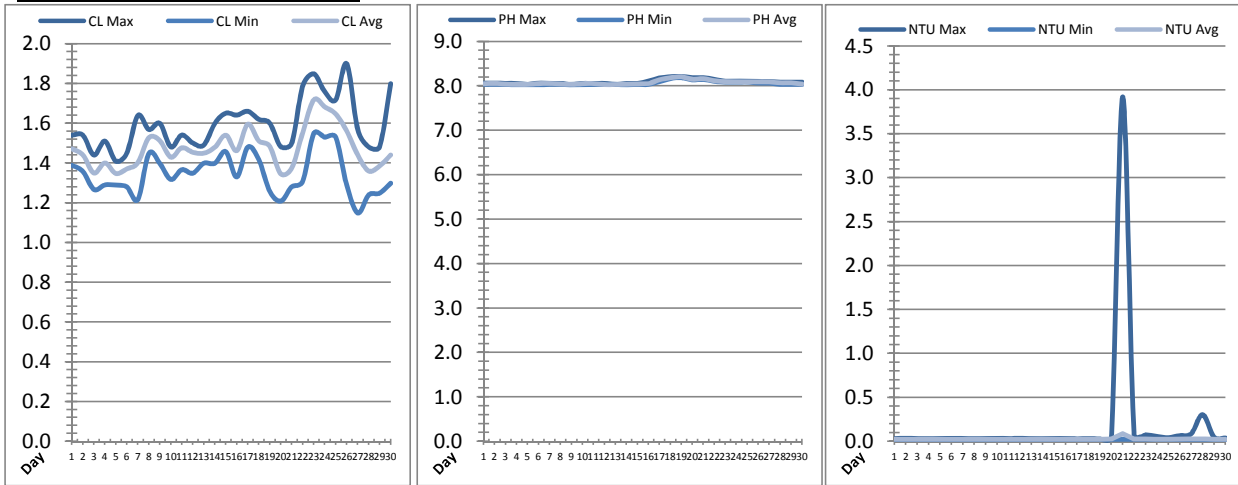


Date	Suction Header Chlorine Res.			Suction Header pH			Distribution CT Calc Total		
	AIT_7001_CL (ppm)			AIT_7001_PH (m)			REAL_CT_CALC_TOTAL (mg·ml/min)		
	Maximum	Minimum	Average	Maximum	Minimum	Average	Maximum	Minimum	Average
1	1.50	1.37	1.41	7.93	7.92	7.92	8657.09	0.00	195.12
2	1.45	1.36	1.40	7.93	7.92	7.93	8231.56	0.00	237.92
3	1.42	1.30	1.35	7.93	7.92	7.92	8242.05	0.00	231.82
4	1.47	1.35	1.41	7.92	7.91	7.91	8045.77	0.00	286.76
5	1.46	1.25	1.33	7.92	7.90	7.91	7994.16	0.00	192.03
6	1.36	1.22	1.32	7.93	7.90	7.92	7832.80	0.00	180.45
7	1.51	1.22	1.34	7.93	7.91	7.92	7597.58	0.00	220.93
8	1.50	1.43	1.46	7.93	7.91	7.92	9112.53	0.00	261.75
9	1.55	1.38	1.48	7.92	7.90	7.92	8579.62	0.00	219.47
10	1.47	1.36	1.40	7.93	7.90	7.92	8432.58	0.00	246.81
11	1.52	1.40	1.44	7.93	7.91	7.92	7026.03	0.00	246.95
12	1.56	1.41	1.47	7.92	7.91	7.91	8630.78	0.00	269.69
13	1.55	1.39	1.45	7.92	7.92	7.92	8361.12	0.00	229.97
14	1.49	1.42	1.45	7.92	7.91	7.92	8994.88	0.00	172.54
15	1.56	1.43	1.49	7.93	7.91	7.91	8225.44	0.00	279.95
16	1.51	1.39	1.41	7.96	7.91	7.92	8194.86	0.00	217.72
17	1.56	1.43	1.51	8.02	7.94	7.99	8932.58	0.00	261.21
18	1.52	1.31	1.43	8.05	8.02	8.03	10684.37	0.00	266.56
19	1.51	1.33	1.43	8.05	8.05	8.05	11025.58	0.00	182.58
20	1.41	1.18	1.35	8.05	7.97	8.01	3870.35	0.00	219.49
21	1.44	1.24	1.36	8.02	8.00	8.01	9625.51	0.00	258.46
22	1.53	1.42	1.46	8.00	7.94	7.97	8899.06	0.00	345.06
23	1.54	1.46	1.49	7.96	7.94	7.94	10357.11	0.00	326.12
24	1.52	1.49	1.50	7.94	7.94	7.94	8582.20	0.00	400.17
25	1.49	1.46	1.48	7.94	7.94	7.94	9316.38	0.00	308.29
26	1.94	1.45	1.52	7.96	7.94	7.94	8312.79	0.00	355.42
27	1.45	1.24	1.31	7.94	7.93	7.93	11145.47	0.00	544.69
28	1.39	1.16	1.26	7.94	7.93	7.93	9629.24	0.00	375.99
29	1.35	1.16	1.29	7.93	7.93	7.93	9834.68	0.00	388.00
30	2.22	1.19	1.41	7.94	7.85	7.88	12287.38	0.00	563.45
Total									
Average	1.52	1.34	1.41	7.95	7.93	7.94			
Maximum	2.22		1.52	8.05		8.05			
Date	30-Nov		26-Nov	18-Nov		19-Nov			
Minimum		1.16	1.26		7.85	7.88			
Date		29-Nov	28-Nov		30-Nov	30-Nov			

Notes:

# Plant Quality Report

Month: **November-18**

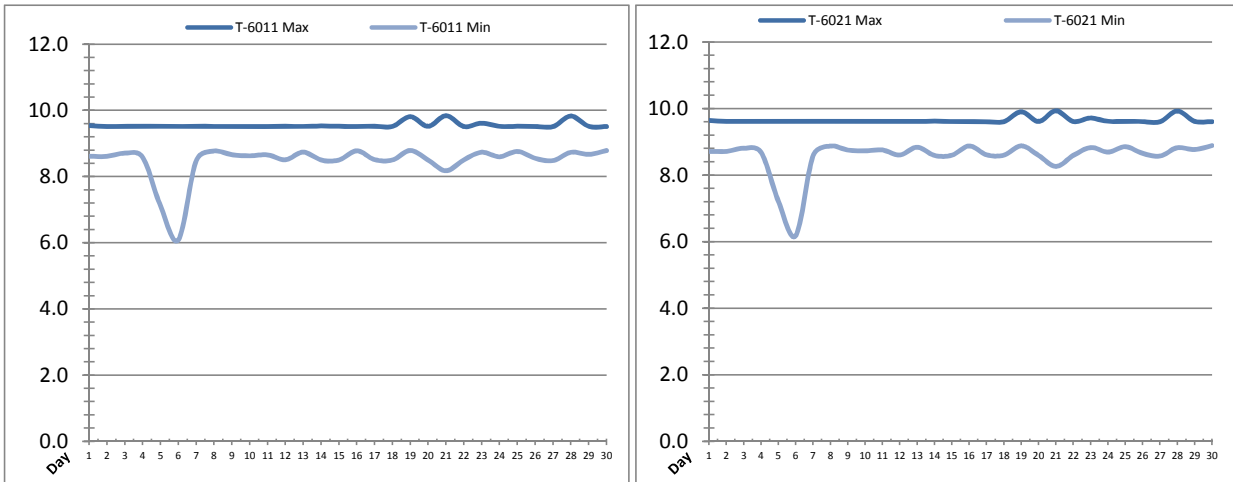


Date	Distribution Chlorine Header			Distribution pH			Distribution Turbidity		
	AIT_7004_CL (ppm)			AIT_7004_PH (mg/L)			AIT_7003 (mg/L)		
	Maximum	Minimum	Average	Maximum	Minimum	Average	Maximum	Minimum	Average
1	1.54	1.39	1.47	8.07	8.03	8.05	0.03	0.02	0.02
2	1.54	1.36	1.44	8.07	8.03	8.06	0.04	0.02	0.02
3	1.44	1.27	1.35	8.06	8.03	8.04	0.03	0.02	0.02
4	1.51	1.29	1.40	8.06	8.03	8.03	0.03	0.02	0.02
5	1.41	1.29	1.35	8.04	8.03	8.03	0.03	0.02	0.02
6	1.45	1.28	1.37	8.07	8.03	8.05	0.03	0.02	0.02
7	1.64	1.22	1.40	8.06	8.03	8.05	0.03	0.02	0.02
8	1.57	1.45	1.53	8.06	8.03	8.05	0.03	0.02	0.02
9	1.60	1.40	1.51	8.04	8.03	8.03	0.03	0.02	0.02
10	1.48	1.32	1.43	8.06	8.03	8.05	0.04	0.02	0.02
11	1.54	1.37	1.48	8.06	8.03	8.06	0.03	0.02	0.02
12	1.50	1.35	1.45	8.06	8.03	8.03	0.04	0.02	0.02
13	1.49	1.40	1.45	8.04	8.03	8.03	0.03	0.02	0.02
14	1.60	1.40	1.48	8.06	8.03	8.03	0.03	0.02	0.02
15	1.65	1.46	1.54	8.06	8.03	8.05	0.03	0.02	0.02
16	1.64	1.33	1.46	8.11	8.03	8.05	0.03	0.02	0.02
17	1.66	1.48	1.60	8.18	8.10	8.14	0.03	0.02	0.02
18	1.62	1.42	1.51	8.21	8.17	8.18	0.03	0.02	0.02
19	1.60	1.26	1.48	8.22	8.18	8.21	0.03	0.02	0.02
20	1.48	1.21	1.35	8.19	8.14	8.15	0.04	0.02	0.02
21	1.50	1.28	1.37	8.18	8.15	8.16	3.92	0.03	0.09
22	1.79	1.31	1.55	8.15	8.11	8.12	0.07	0.03	0.03
23	1.85	1.55	1.72	8.11	8.09	8.10	0.07	0.02	0.03
24	1.76	1.53	1.68	8.11	8.09	8.09	0.06	0.02	0.02
25	1.72	1.53	1.65	8.11	8.09	8.09	0.04	0.02	0.02
26	1.90	1.29	1.56	8.11	8.07	8.09	0.07	0.02	0.02
27	1.57	1.15	1.44	8.10	8.06	8.09	0.09	0.02	0.02
28	1.48	1.24	1.36	8.09	8.03	8.07	0.30	0.02	0.03
29	1.48	1.25	1.39	8.09	8.03	8.07	0.05	0.02	0.02
30	1.80	1.30	1.44	8.09	8.03	8.04	0.04	0.02	0.02
Total									
Average	1.59	1.34	1.47	8.09	8.06	8.08	0.2	0.0	0.0
Maximum	1.90		1.72	8.22		8.21	3.9		0.1
Date	26-Nov		23-Nov	19-Nov		19-Nov	21-Nov		21-Nov
Minimum		1.15	1.35		8.03	8.03		0.0	0.0
Date		27-Nov	20-Nov		5-Nov	4-Nov		11-Nov	11-Nov

Notes:

# Raw Well/Treated Storage Report

Month: **November-18**



Date	Treated Water Storage Tank					
	T-6011 (m)			T-6021 (m)		
	Maximum	Minimum	Average	Maximum	Minimum	Average
1	9.5	8.6	9.3	9.6	8.7	9.4
2	9.5	8.6	9.1	9.6	8.7	9.2
3	9.5	8.7	9.2	9.6	8.8	9.3
4	9.5	8.6	9.1	9.6	8.7	9.2
5	9.5	7.1	9.1	9.6	7.2	9.2
6	9.5	6.1	8.1	9.6	6.2	8.2
7	9.5	8.5	9.1	9.6	8.6	9.2
8	9.5	8.8	9.3	9.6	8.9	9.4
9	9.5	8.7	9.1	9.6	8.8	9.2
10	9.5	8.6	9.2	9.6	8.7	9.3
11	9.5	8.7	9.2	9.6	8.8	9.3
12	9.5	8.5	9.1	9.6	8.6	9.2
13	9.5	8.7	9.2	9.6	8.8	9.3
14	9.5	8.5	9.3	9.6	8.6	9.4
15	9.5	8.5	9.0	9.6	8.6	9.1
16	9.5	8.8	9.3	9.6	8.9	9.3
17	9.5	8.5	9.0	9.6	8.6	9.1
18	9.5	8.5	9.2	9.6	8.6	9.3
19	9.8	8.8	9.4	9.9	8.9	9.5
20	9.5	8.5	9.1	9.6	8.6	9.2
21	9.8	8.2	9.2	9.9	8.3	9.2
22	9.5	8.5	9.1	9.6	8.6	9.2
23	9.6	8.7	9.2	9.7	8.8	9.3
24	9.5	8.6	9.2	9.6	8.7	9.3
25	9.5	8.8	9.2	9.6	8.9	9.3
26	9.5	8.6	9.2	9.6	8.7	9.3
27	9.5	8.5	9.1	9.6	8.6	9.2
28	9.8	8.7	9.3	9.9	8.8	9.4
29	9.5	8.7	9.2	9.6	8.8	9.3
30	9.5	8.8	9.2	9.6	8.9	9.3
Total						
Average	9.6	8.5	9.1	9.7	8.6	9.2
Maximum	9.8		9.4	9.9		9.5
Date	21-Nov		19-Nov	21-Nov		19-Nov
Minimum		6.1	8.1		6.2	8.2
Date		6-Nov	6-Nov		6-Nov	6-Nov

Notes:

---



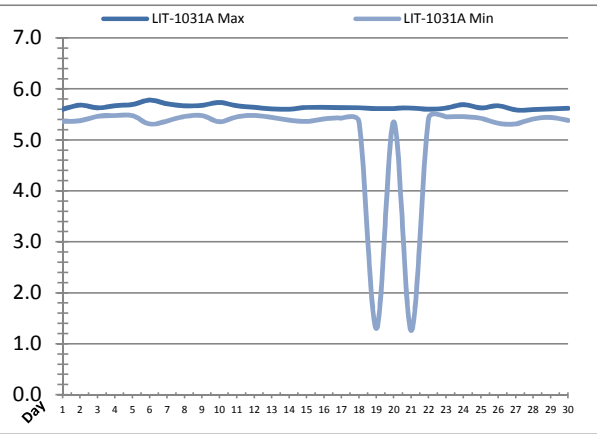
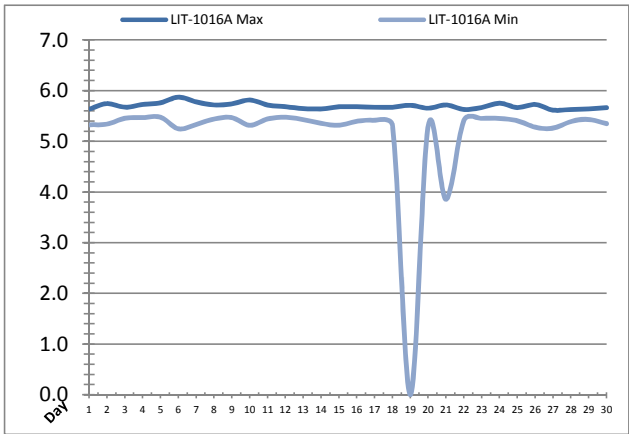
---



---

# Raw Well/Treated Storage Report

Month: **November-18**

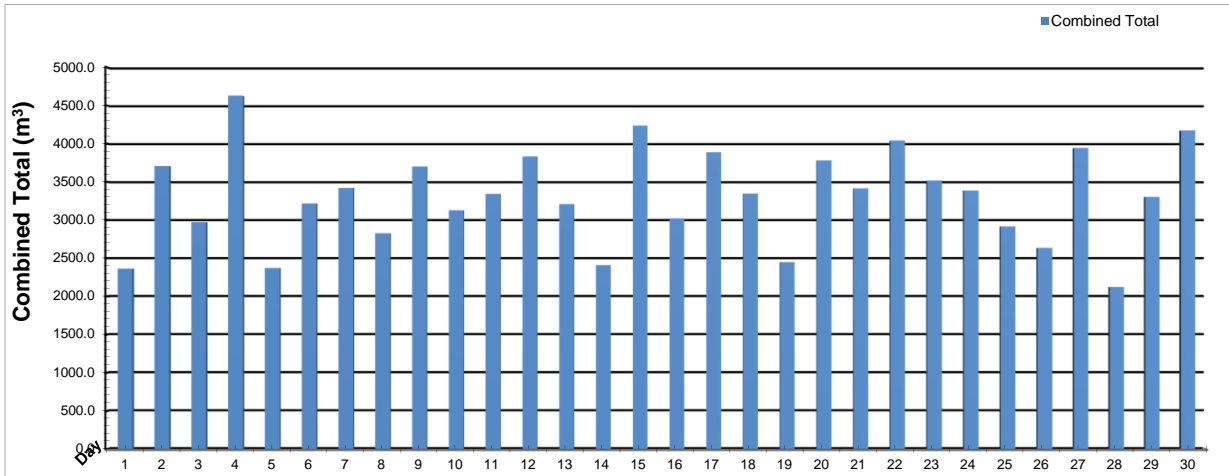


Date	Low Lift Intake Levels					
	Wet Well #1 (LIT-1016A) (m)			Wet Well #2 (LIT-1031A) (m)		
	Maximum	Minimum	Average	Maximum	Minimum	Average
1	5.6	5.3	5.5	5.6	5.4	5.5
2	5.7	5.3	5.5	5.7	5.4	5.5
3	5.7	5.5	5.6	5.6	5.5	5.5
4	5.7	5.5	5.6	5.7	5.5	5.6
5	5.8	5.5	5.6	5.7	5.5	5.6
6	5.9	5.2	5.6	5.8	5.3	5.5
7	5.8	5.3	5.6	5.7	5.4	5.6
8	5.7	5.4	5.6	5.7	5.5	5.5
9	5.7	5.5	5.6	5.7	5.5	5.6
10	5.8	5.3	5.6	5.7	5.4	5.5
11	5.7	5.4	5.6	5.7	5.5	5.5
12	5.7	5.5	5.5	5.6	5.5	5.5
13	5.6	5.4	5.5	5.6	5.4	5.5
14	5.6	5.4	5.5	5.6	5.4	5.5
15	5.7	5.3	5.5	5.6	5.4	5.5
16	5.7	5.4	5.5	5.6	5.4	5.5
17	5.7	5.4	5.5	5.6	5.4	5.5
18	5.7	5.3	5.5	5.6	5.4	5.5
19	5.7	0.0	4.3	5.6	1.3	4.9
20	5.7	5.3	5.5	5.6	5.4	5.5
21	5.7	3.9	5.5	5.6	1.3	4.3
22	5.6	5.4	5.5	5.6	5.4	5.5
23	5.7	5.5	5.5	5.6	5.5	5.5
24	5.8	5.5	5.6	5.7	5.5	5.5
25	5.7	5.4	5.5	5.6	5.4	5.5
26	5.7	5.3	5.5	5.7	5.3	5.5
27	5.6	5.3	5.4	5.6	5.3	5.5
28	5.6	5.4	5.5	5.6	5.4	5.5
29	5.6	5.4	5.5	5.6	5.4	5.5
30	5.7	5.4	5.5	5.6	5.4	5.5
<b>Total</b>						
<b>Average</b>	5.7	5.2	5.5	5.6	5.1	5.5
<b>Maximum</b>	5.9		5.6	5.8		5.6
<b>Date</b>	6-Nov		5-Nov	6-Nov		5-Nov
<b>Minimum</b>		0.0	4.3		1.3	4.3
<b>Date</b>		19-Nov	19-Nov		21-Nov	21-Nov

Notes:  
 Cleaning of raw well on 19 and 21st.

# High Lift Monthly Report

Month: **November-18**

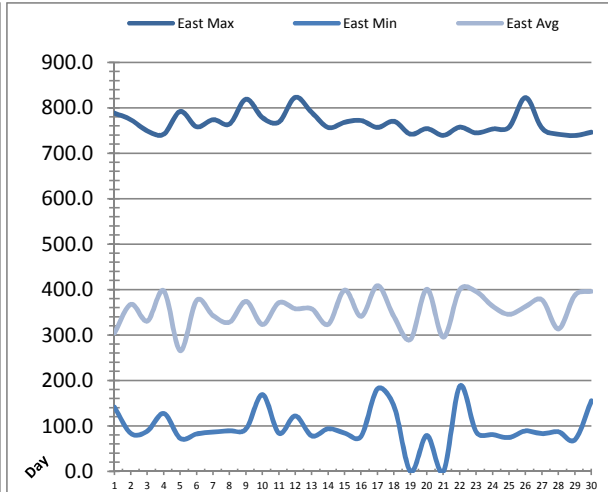
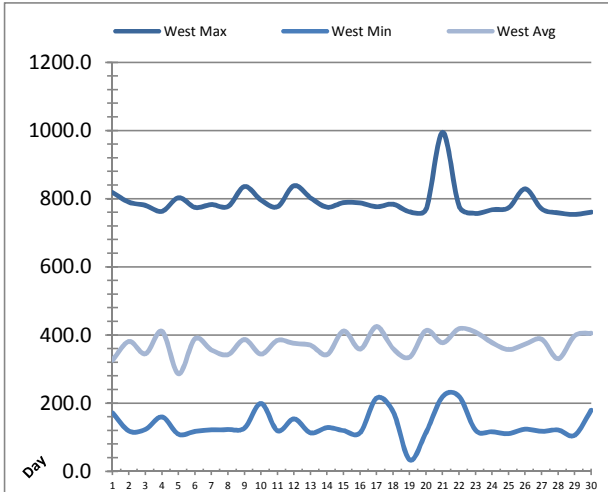


Date	Distribution Flow					
	FIT_7052 (East)		FIT_7062 (West)		Combined	
	(m³) Total	(L/s) Peak	(m³) Total	(L/s) Peak	(m³) Total	(L/s) Peak
1	1009.5	55.6	1353.2	99.7	2362.7	101.6
2	901.4	61.5	2804.4	99.7	3705.9	109.5
3	1209.4	56.4	1762.8	99.9	2972.2	108.6
4	1293.8	55.8	3334.1	99.3	4627.8	100.7
5	1064.4	54.3	1305.2	97.6	2369.6	100.4
6	824.5	55.3	2392.6	97.4	3217.1	98.5
7	1378.2	62.1	2042.6	97.4	3420.8	108.9
8	1042.5	46.8	1784.4	100.8	2826.9	101.0
9	667.6	55.3	3032.4	99.8	3700.0	101.7
10	1373.7	61.7	1753.8	90.5	3127.5	109.3
11	1041.0	62.4	2301.9	100.8	3342.9	109.2
12	1184.4	55.1	2648.4	100.1	3832.9	102.4
13	1005.3	56.1	2201.7	102.3	3207.0	103.8
14	796.0	55.5	1612.1	97.9	2408.0	99.4
15	1310.2	54.7	2926.8	99.8	4237.0	101.7
16	913.5	54.6	2107.0	99.3	3020.5	100.8
17	1100.2	61.8	2787.5	99.6	3887.8	108.6
18	1298.0	55.5	2047.7	99.5	3345.7	100.7
19	883.4	61.9	1565.3	100.0	2448.7	107.4
20	701.7	52.1	3079.6	101.2	3781.3	103.0
21	671.4	60.1	2743.3	104.8	3414.7	108.8
22	934.7	49.5	3105.8	101.3	4040.5	107.8
23	868.4	48.2	2648.7	102.4	3517.1	102.4
24	1271.8	53.4	2114.1	101.7	3385.9	109.4
25	889.9	40.5	2024.5	100.4	2914.4	100.4
26	1077.9	56.2	1555.0	103.5	2632.9	106.9
27	2366.1	106.4	1578.1	95.4	3944.2	106.4
28	1845.6	104.0	273.8	87.6	2119.3	105.4
29	1284.6	42.1	2017.5	93.4	3302.1	109.9
30	914.3	42.6	3258.3	103.2	4172.6	103.2
<b>Total</b>	<b>33123.1</b>	<b>57.9</b>	<b>66162.8</b>	<b>99.2</b>	<b>99285.9</b>	<b>104.6</b>
<b>Average</b>	<b>1104.1</b>	<b>57.9</b>	<b>2205.4</b>	<b>99.2</b>	<b>3309.5</b>	<b>104.6</b>
<b>Maximum</b>	<b>2366.1</b>	<b>106.4</b>	<b>3334.1</b>	<b>104.8</b>	<b>4627.8</b>	<b>109.9</b>
<b>Date</b>	<b>27-Nov</b>	<b>27-Nov</b>	<b>4-Nov</b>	<b>21-Nov</b>	<b>4-Nov</b>	<b>29-Nov</b>
<b>Minimum</b>	<b>667.6</b>		<b>273.8</b>		<b>2119.3</b>	
<b>Date</b>	<b>9-Nov</b>		<b>28-Nov</b>		<b>28-Nov</b>	

Notes:

# Low Lift Monthly Report

Month: **November-18**

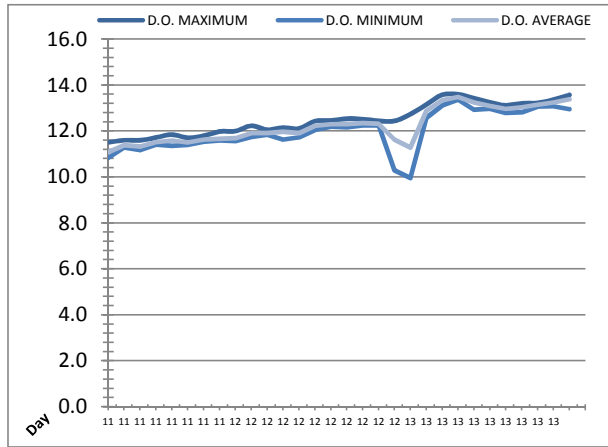
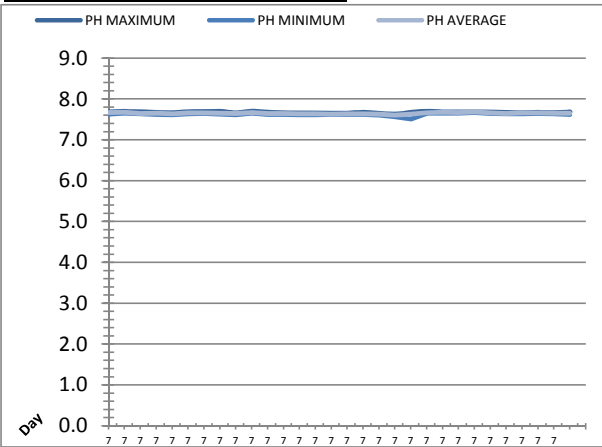


Date	West Train Header Pressure PIT_1018 (kPa)			East Train Header Pressure PIT_1028 (kPa)		
	Maximum	Minimum	Average	Maximum	Minimum	Average
1	818.5	171.8	326.5	788.6	141.4	304.7
2	790.1	118.5	381.4	774.0	83.6	367.7
3	780.6	123.6	345.2	749.2	88.9	330.8
4	763.3	159.9	411.0	742.2	127.6	397.4
5	803.3	109.1	286.5	792.2	72.7	265.7
6	774.8	117.6	389.5	758.5	82.4	376.6
7	783.1	121.9	356.4	774.3	86.8	342.8
8	777.6	123.0	342.8	764.8	89.4	328.6
9	836.0	127.4	387.0	819.3	93.6	374.4
10	796.2	199.5	344.2	778.6	169.0	323.3
11	776.8	119.1	384.6	768.9	84.1	371.4
12	838.5	154.2	375.5	823.4	122.1	358.0
13	802.8	113.0	370.3	789.9	78.1	357.6
14	775.3	128.3	342.7	756.9	94.0	323.8
15	788.9	119.7	411.9	768.4	84.4	399.0
16	787.7	113.5	359.0	772.3	77.2	341.2
17	776.7	215.3	425.2	757.2	182.0	408.8
18	784.1	175.7	360.4	770.6	143.7	340.3
19	761.8	34.0	335.2	742.3	0.0	290.7
20	769.8	114.9	413.3	754.3	79.1	401.0
21	995.2	219.4	377.8	739.7	0.0	295.5
22	778.2	220.1	418.8	757.6	187.7	400.2
23	757.3	120.3	408.2	744.9	86.6	395.8
24	767.9	116.1	377.7	753.8	81.0	363.5
25	773.8	111.2	357.4	757.7	74.6	345.6
26	829.0	123.8	373.3	822.8	89.2	362.8
27	770.6	117.7	388.0	755.1	82.9	377.6
28	758.6	121.5	330.7	742.2	87.3	313.6
29	754.5	106.1	398.3	739.4	69.5	387.6
30	760.9	179.5	405.6	746.7	155.3	396.2
Total						
Average	791.1	136.5	372.8	766.9	96.5	354.7
Maximum	995.2		425.2	823.4		408.8
Date	21-Nov		17-Nov	12-Nov		17-Nov
Minimum		34.0	286.5		0.0	265.7
Date		19-Nov	5-Nov		19-Nov	5-Nov

Notes:


# Low Lift Monthly Report

Month: **November-18**



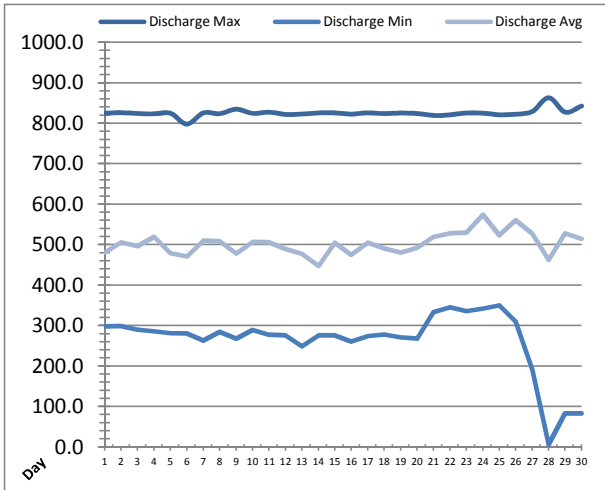
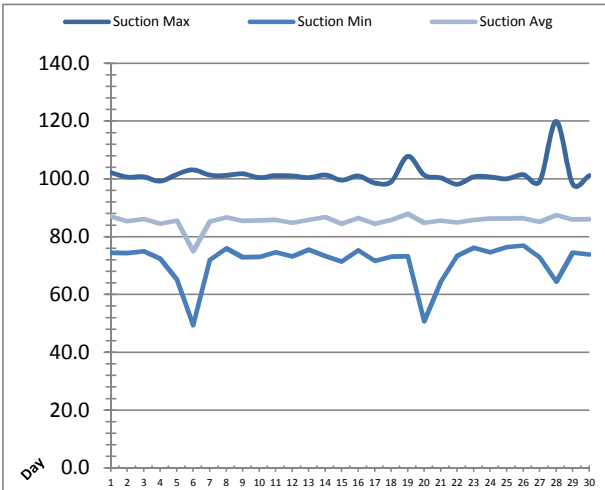
Date	Raw Water Sample Line					
	AIT_1402_PH (pH)			AIT_1402_DO (mg/L)		
	Maximum	Minimum	Average	Maximum	Minimum	Average
1	7.7	7.6	7.7	11.5	10.8	11.1
2	7.7	7.6	7.7	11.6	11.3	11.4
3	7.7	7.6	7.6	11.6	11.2	11.3
4	7.7	7.6	7.7	11.7	11.4	11.5
5	7.7	7.6	7.6	11.8	11.3	11.6
6	7.7	7.6	7.7	11.7	11.4	11.5
7	7.7	7.6	7.7	11.8	11.5	11.6
8	7.7	7.6	7.6	12.0	11.6	11.7
9	7.7	7.6	7.6	12.0	11.6	11.7
10	7.7	7.6	7.7	12.2	11.7	11.9
11	7.7	7.6	7.6	12.1	11.8	11.9
12	7.7	7.6	7.6	12.1	11.6	12.0
13	7.7	7.6	7.6	12.1	11.7	11.9
14	7.7	7.6	7.6	12.4	12.0	12.2
15	7.7	7.6	7.6	12.5	12.2	12.3
16	7.7	7.6	7.6	12.5	12.2	12.3
17	7.7	7.6	7.6	12.5	12.2	12.3
18	7.7	7.6	7.6	12.4	12.2	12.3
19	7.6	7.6	7.6	12.4	10.3	11.6
20	7.7	7.5	7.6	12.7	10.0	11.3
21	7.7	7.7	7.7	13.1	12.6	12.9
22	7.7	7.7	7.7	13.6	13.1	13.3
23	7.7	7.7	7.7	13.6	13.4	13.5
24	7.7	7.7	7.7	13.4	12.9	13.2
25	7.7	7.6	7.7	13.2	13.0	13.1
26	7.7	7.6	7.6	13.1	12.8	13.0
27	7.7	7.6	7.7	13.2	12.8	13.0
28	7.7	7.6	7.7	13.2	13.1	13.1
29	7.7	7.6	7.6	13.4	13.1	13.2
30	7.7	7.6	7.6	13.6	13.0	13.4
Total						
Average	7.7	7.6	7.6	12.5	12.0	12.2
Maximum	7.7		7.7	13.6		13.5
Date	10-Nov		24-Nov	23-Nov		23-Nov
Minimum		7.5	7.6		10.0	11.1
Date		20-Nov	19-Nov		20-Nov	1-Nov

Notes:



# High Lift Monthly Report

Month: **November-18**



Date	Suction Header Pressure			Discharge Header Pressure		
	PIT_7002 (kPa)			PIT_7005 (kPa)		
	Maximum	Minimum	Average	Maximum	Minimum	Average
1	102.2	74.4	87.1	825.0	297.5	480.5
2	100.7	74.4	85.4	826.3	298.7	506.2
3	100.7	74.9	86.2	824.3	290.1	496.7
4	99.2	72.5	84.5	823.6	285.6	519.5
5	101.6	65.3	85.6	824.9	281.1	479.1
6	103.2	49.4	75.0	798.0	280.4	470.6
7	101.4	72.0	85.3	825.7	262.7	509.9
8	101.3	76.0	86.7	823.8	284.2	508.4
9	101.8	72.8	85.5	835.1	268.0	478.5
10	100.5	72.9	85.6	824.6	288.8	506.8
11	101.2	74.7	85.8	827.6	277.3	505.6
12	101.1	73.2	84.8	821.9	275.4	489.2
13	100.5	75.5	85.9	823.0	248.6	477.5
14	101.4	73.3	86.8	825.7	275.5	446.9
15	99.6	71.5	84.5	825.8	275.4	505.1
16	101.0	75.3	86.5	822.8	260.9	474.8
17	98.6	71.7	84.5	826.0	273.8	505.0
18	99.1	73.1	85.8	824.2	278.4	491.0
19	107.9	73.2	87.9	825.5	271.1	480.3
20	101.3	50.8	84.8	824.3	268.1	492.1
21	100.4	64.5	85.6	819.1	333.5	518.9
22	98.2	73.4	84.9	820.8	344.9	528.1
23	100.8	76.2	85.8	825.7	335.6	529.7
24	100.7	74.6	86.3	825.2	341.8	574.0
25	100.1	76.4	86.3	821.2	349.7	523.5
26	101.5	77.0	86.4	822.7	310.0	560.2
27	99.2	72.9	85.1	829.0	191.5	527.0
28	119.9	64.5	87.5	863.2	6.3	462.2
29	98.2	74.5	85.9	827.5	82.5	528.3
30	101.2	73.9	86.0	842.7	82.7	514.3
Total						
Average	101.5	71.5	85.5	825.8	264.0	503.0
Maximum	119.9		87.9	863.2		574.0
Date	28-Nov		19-Nov	28-Nov		24-Nov
Minimum		49.4	75.0		6.3	446.9
Date		6-Nov	6-Nov		28-Nov	14-Nov

Notes:

---



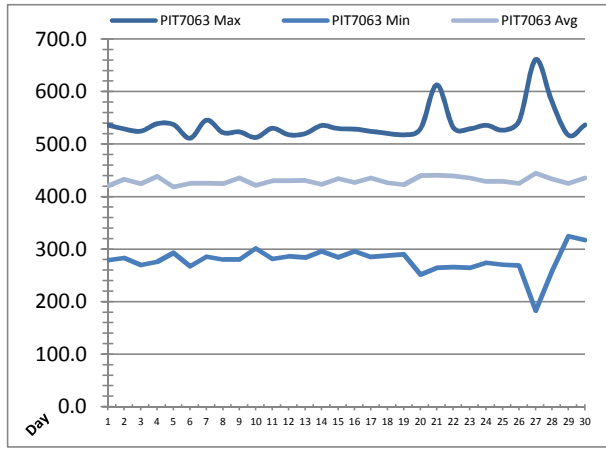
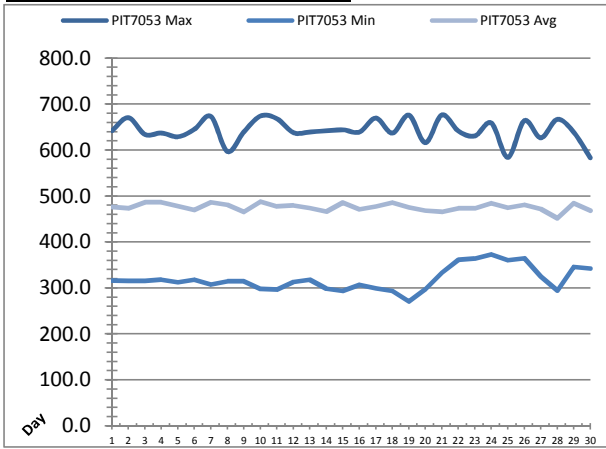
---



---

# High Lift Monthly Report

Month: **November-18**



Date	Distribution Pressures					
	PIT_7053 (kPa)			PIT_7063 (kPa)		
	Maximum	Minimum	Average	Maximum	Minimum	Average
1	642.3	316.1	476.2	536.5	279.4	420.4
2	670.7	315.0	473.0	528.9	283.6	433.4
3	634.2	314.9	486.7	524.7	269.7	424.9
4	637.3	317.7	486.3	539.0	275.8	438.9
5	629.2	312.4	477.9	537.3	292.9	418.9
6	645.4	317.8	469.6	511.3	267.5	425.1
7	673.3	307.5	486.6	545.8	285.5	425.5
8	597.0	314.7	480.7	522.0	280.0	424.7
9	639.8	314.7	465.9	523.4	280.4	435.9
10	674.3	297.9	487.8	512.9	301.5	421.8
11	668.6	296.5	477.5	530.3	281.7	430.1
12	638.1	313.0	479.7	517.9	286.5	430.4
13	639.6	317.7	474.1	520.3	283.9	430.5
14	642.1	298.8	466.1	535.7	296.1	423.7
15	644.4	293.9	485.9	529.5	284.7	434.2
16	639.4	307.0	471.5	528.8	296.0	427.4
17	669.7	299.3	477.6	524.5	285.3	435.8
18	637.0	293.5	486.0	520.7	287.4	426.4
19	676.2	270.4	475.4	518.0	290.1	422.6
20	616.3	296.9	468.2	529.2	251.4	439.6
21	676.7	333.4	465.5	613.0	264.4	440.8
22	641.6	361.0	473.1	531.6	265.4	439.5
23	631.0	363.9	473.5	529.1	264.2	435.4
24	659.1	372.8	484.4	536.2	274.1	429.0
25	584.3	360.7	474.6	526.6	270.7	428.9
26	664.1	364.4	481.1	544.5	268.4	425.4
27	626.8	324.8	472.2	661.2	182.8	444.8
28	667.1	294.5	452.0	580.0	258.2	433.7
29	638.6	346.1	484.7	517.0	324.6	425.1
30	583.3	342.1	468.5	536.8	317.2	435.7
Total						
Average	642.9	319.3	476.1	537.1	278.3	430.3
Maximum	676.7		487.8	661.2		444.8
Date	21-Nov		10-Nov	27-Nov		27-Nov
Minimum		270.4	452.0		182.8	418.9
Date		19-Nov	28-Nov		27-Nov	5-Nov

Notes:

---



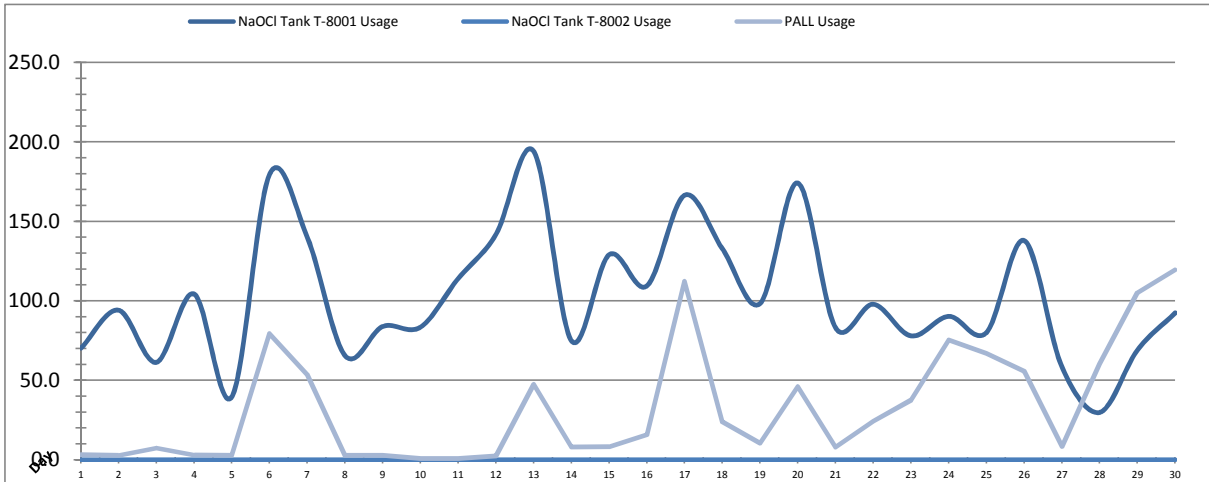
---



---

# Chemical Usage Monthly Report

Month: **November-18**

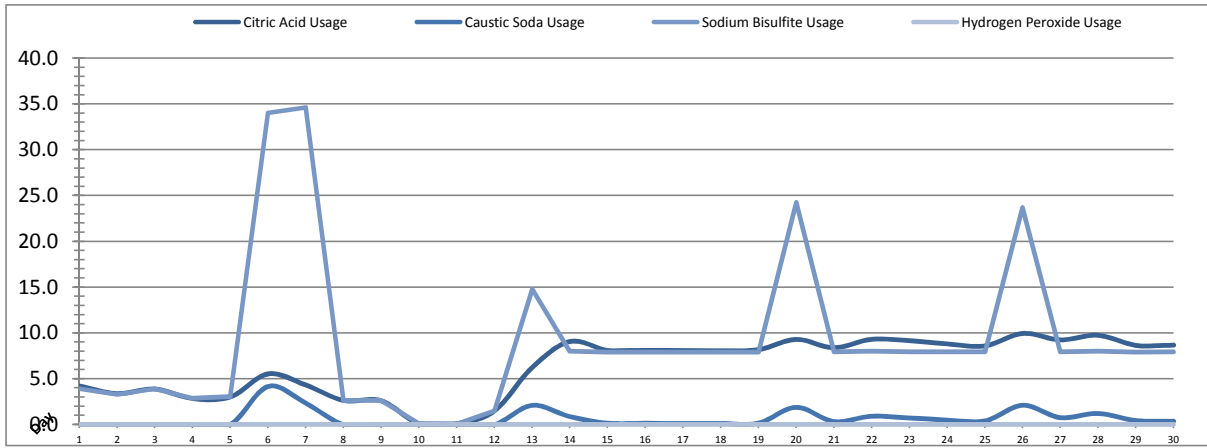


Date	PALL Usage	NaOCl Tank T-8001	NaOCl Tank T-8002
	PALL_HYPO_USAGE (L) Usage	LIT_8002 (Storage) (L) Usage	LIT_8004 (Day) (L) Usage
1	3.2	70.3	0.0
2	2.7	94.1	0.0
3	7.4	61.3	0.0
4	2.8	104.3	0.0
5	2.7	39.6	0.0
6	79.4	179.7	0.0
7	53.8	140.1	0.0
8	2.6	65.6	0.0
9	2.6	83.9	0.0
10	0.6	83.5	0.0
11	0.7	114.1	0.0
12	2.2	141.8	0.0
13	47.5	194.2	0.0
14	7.89	74.95	0.0
15	8.1	129.0	0.0
16	15.8	109.5	0.0
17	112.2	166.5	0.0
18	23.9	132.9	0.0
19	10.4	98.4	0.0
20	46.0	174.2	0.0
21	7.9	83.0	0.0
22	24.3	98.0	0.0
23	37.6	77.9	0.0
24	75.5	90.3	0.0
25	67.1	80.1	0.0
26	55.7	138.0	0.0
27	8.3	58.3	0.0
28	60.4	29.8	0.0
29	105.0	69.0	0.0
30	119.5	92.4	0.0
Total	993.7	3074.8	0.2
Average	33.1	102.5	0.0
Maximum	119.5	194.2	0.0
Date	30-Nov	13-Nov	2-Nov
Minimum	0.6	29.8	0.0
Date	10-Nov	28-Nov	1-Nov

Notes:	
Dosage (mg/L)=	Day Tank (L) x %conc. x 1000
	Membrane Flow (m3)
Chlorine Concentration:	12.0%

# Chemical Usage Monthly Report

Month: **November-18**



Date	Citric Acid	Caustic Soda	Captor	Hydrogen Peroxide		Membrane Flow (m <sup>3</sup> )
	TAGNAME (L) Usage	TAGNAME (L) Usage	TAGNAME (L) Usage	TAGNAME (L) Usage	TAGNAME (mg/L) Dose	
1	4.2	0.0	3.9	0.0	0.0	2828.638
2	3.4	0.0	3.3	0.0	0.0	4198.878
3	3.9	0.0	3.9	0.0	0.0	3455.849
4	2.9	0.0	2.9	0.0	0.0	4877.867
5	3.0	0.0	3.1	0.0	0.0	1797.631
6	5.5	4.2	34.0	0.0	0.0	5009.168
7	4.3	2.3	34.6	0.0	0.0	3798.283
8	2.6	0.0	2.6	0.0	0.0	3137.710
9	2.6	0.0	2.6	0.0	0.0	4276.595
10	0.1	0.0	0.1	0.0	0.0	3306.121
11	0.1	0.0	0.1	0.0	0.0	3952.978
12	1.5	0.0	1.5	0.0	0.0	3956.466
13	6.2	2.1	14.8	0.0	0.0	3643.344
14	9.1	0.9	8.0	0.0	0.0	2868.333
15	8.1	0.2	7.9	0.0	0.0	4855.623
16	8.1	0.1	7.9	0.0	0.0	3255.145
17	8.1	0.1	7.9	0.0	0.0	4576.908
18	8.1	0.1	7.9	0.0	0.0	3706.729
19	8.2	0.2	7.9	0.0	0.0	2939.701
20	9.3	1.9	24.2	0.0	0.0	4239.565
21	8.4	0.3	7.9	0.0	0.0	3360.687
22	9.3	0.9	8.0	0.0	0.0	4217.618
23	9.2	0.7	7.9	0.0	0.0	4173.522
24	8.8	0.5	7.9	0.0	0.0	3529.747
25	8.6	0.4	7.9	0.0	0.0	3198.666
26	10.0	2.1	23.7	0.0	0.0	2965.539
27	9.2	0.8	7.9	0.0	0.0	4077.480
28	9.8	1.2	8.0	0.0	0.0	2444.603
29	8.7	0.4	7.9	0.0	0.0	3784.295
30	8.7	0.4	7.9	0.0	0.0	4430.386
Total	189.8	19.8	274.2	0.0	#DIV/0!	110864.1
Average	6.3	0.7	9.1	0.0	0.0	3695.5
Maximum	10.0	4.2	34.6	0.0	0.0	5009.2
Date	26-Nov	6-Nov	7-Nov	1-Nov	1-Nov	6-Nov
Minimum	0.1	0.0	0.1	0.0	0.0	1797.6
Date	11-Nov	1-Nov	11-Nov	1-Nov	1-Nov	5-Nov

Notes:	
Dosage (mg/L)=	Day Tank (L) x %conc. x 1000
	Membrane Flow (m3)
Peroxide Concentration:	50.0%

# Runtimes Report

Month: November-18

Date	Daily Gen-Set Runtimes		Daily UV Runtimes		Daily PALL Runtimes				
	LLPS	WTP	UV #1	UV #2	Air Compressor #1	Air Compressor #2	CIP Neutralization	CIP Drain	CIP Recirc
	(Hrs)	(Hrs)	(Hrs)	(Hrs)	(Hrs)	(Hrs)	(Hrs)	(Hrs)	(Hrs)
1	0.0	0.0	0.0	0.0	0.1	24.3	0.0	0.0	0.0
2	0.0	0.0	0.0	0.0	24.3	0.1	0.0	0.0	0.0
3	0.0	0.0	0.0	0.0	0.1	24.3	0.0	0.0	0.0
4	0.0	0.0	0.0	0.0	24.3	0.1	0.0	0.0	0.0
5	0.0	0.0	0.0	0.0	1.1	23.3	0.0	0.0	0.0
6	0.0	0.0	0.0	0.0	23.3	1.1	0.3	0.1	0.3
7	0.0	0.0	0.0	0.0	1.1	23.3	0.2	0.0	0.2
8	0.0	0.0	0.0	0.0	23.3	1.1	0.0	0.0	0.0
9	0.0	0.0	0.0	0.0	1.1	23.3	0.0	0.0	0.0
10	0.0	0.0	0.0	0.0	23.3	1.1	0.0	0.0	0.0
11	0.0	0.0	0.0	0.0	1.1	23.3	0.0	0.0	0.0
12	0.0	0.0	0.0	0.0	23.3	1.1	0.0	0.0	0.0
13	0.0	0.0	0.0	0.0	1.1	23.3	0.1	0.0	0.1
14	0.0	0.0	0.0	0.0	23.3	1.1	0.0	0.0	0.0
15	0.0	0.0	0.0	0.0	1.1	23.3	0.0	0.0	0.0
16	0.0	0.0	0.0	0.0	23.3	1.1	0.0	0.0	0.0
17	0.0	0.0	0.0	0.0	1.1	23.3	0.0	0.0	0.0
18	0.0	0.0	0.0	0.0	23.3	1.1	0.0	0.0	0.0
19	0.0	0.0	0.0	0.0	1.1	23.3	0.0	0.0	0.0
20	0.0	0.0	0.0	0.0	23.3	1.1	0.2	0.0	0.2
21	0.0	0.0	0.0	0.0	1.1	23.3	0.0	0.0	0.0
22	0.0	0.0	0.0	0.0	23.3	1.1	0.0	0.0	0.0
23	0.0	0.0	0.0	0.0	1.1	23.3	0.0	0.0	0.0
24	0.0	0.0	0.0	0.0	23.3	1.1	0.0	0.0	0.0
25	0.0	0.0	0.0	0.0	1.1	23.3	0.0	0.0	0.0
26	0.0	0.0	0.0	0.0	23.3	1.1	0.1	0.0	0.1
27	0.0	1.6	0.0	0.0	1.1	23.2	0.0	0.0	0.0
28	0.0	0.0	0.0	0.0	23.3	1.1	0.0	0.0	0.0
29	0.0	0.0	0.0	0.0	1.1	23.3	0.0	0.0	0.0
30	1.1	0.0	0.3	0.4	5.9	18.5	0.0	0.0	0.0
<b>Total</b>	1.1	1.6	0.3	0.4	348.3	382.9	0.9	0.1	0.9

Notes:

---



---

# Runtimes Report

Month: **November-18**

## Daily

Date	PALL Runtimes						Process Drain	
	RFR Pump #1	RFR Pump #2	RF Pump #1	RF Pump #2	XR Pump #1	XR Pump #2	PDP9010 Pump	PDP9020 Pump
	(Hrs)	(Hrs)	(Hrs)	(Hrs)	(Hrs)	(Hrs)	(Hrs)	(Hrs)
1	4.9	4.8	0.6	0.6	5.1	5.9	0.0	16.8
2	7.4	7.5	0.9	0.8	7.9	8.3	0.0	17.0
3	5.7	5.7	0.6	0.6	7.9	5.4	0.0	17.2
4	8.9	8.7	1.1	1.1	8.4	9.9	0.0	17.7
5	3.0	3.1	0.5	0.3	2.8	4.1	0.0	17.0
6	5.0	5.0	0.9	1.0	8.5	8.0	0.0	17.3
7	6.4	6.5	0.8	0.8	6.9	6.4	0.0	18.0
8	5.6	5.6	0.6	0.6	5.6	6.7	0.0	17.8
9	7.6	7.7	0.9	0.8	8.0	7.8	0.0	18.3
10	5.7	5.7	0.7	0.7	6.0	6.5	0.0	18.2
11	7.0	7.1	0.7	0.8	8.3	6.9	0.0	18.2
12	6.8	6.9	0.8	0.8	7.7	7.4	0.0	18.4
13	6.3	6.2	0.7	0.7	6.9	7.3	0.0	18.2
14	5.1	5.1	0.6	0.6	6.8	3.9	0.0	18.6
15	8.4	8.6	1.0	1.0	7.8	9.7	0.0	19.1
16	5.9	5.8	0.7	0.7	5.5	6.9	0.0	19.0
17	4.7	4.9	0.9	0.7	9.6	8.5	0.0	19.5
18	5.3	5.1	0.6	0.8	6.3	6.8	0.0	19.3
19	4.1	4.1	0.6	0.6	5.4	5.8	0.0	19.1
20	4.7	4.7	0.8	0.8	7.4	8.3	0.0	15.9
21	0.9	0.9	0.6	0.5	7.0	5.7	0.0	7.8
22	0.0	0.0	0.6	0.6	9.4	8.6	0.0	7.6
23	4.0	4.0	0.8	0.7	8.4	8.7	0.0	7.9
24	6.3	6.2	0.7	0.7	6.2	7.4	0.0	8.2
25	5.5	5.7	0.6	0.7	6.1	6.4	0.0	7.9
26	5.3	5.4	0.7	0.5	6.0	5.5	0.0	8.2
27	5.3	5.3	0.8	0.8	8.0	6.4	0.0	7.5
28	4.4	4.4	0.4	0.4	3.6	6.0	0.0	4.8
29	6.5	6.6	0.7	0.8	8.6	6.1	0.0	4.9
30	7.4	7.3	0.8	0.9	8.0	9.0	0.0	5.1
Total	163.5	164.0	21.7	21.4	209.3	209.5	0.0	430.9

Notes:

# Runtimes Report

Month: November-18

## Daily

Date	Low Lift Pump Motor Runtimes				High Lift Pump Motor Runtimes			
	LLP1010 (Hrs)	LLP1020 (Hrs)	LLP1030 (Hrs)	LLP1040 (Hrs)	HLP7010 (Hrs)	HLP7020 (Hrs)	HLP7030 (Hrs)	HLP7040 (Hrs)
1	4.0	5.6	0.0	1.7	4.7	3.9	1.1	0.0
2	4.5	7.0	0.0	5.1	3.1	4.3	6.0	0.0
3	3.5	2.7	0.0	7.5	1.3	6.6	3.7	0.0
4	7.8	6.4	0.0	4.8	3.2	11.4	2.3	0.0
5	2.8	2.4	0.0	2.1	5.5	3.3	1.1	0.0
6	7.1	7.7	0.0	6.3	4.7	6.3	0.8	0.0
7	3.9	4.3	0.0	7.1	1.0	1.2	10.4	0.0
8	2.9	3.7	0.0	6.0	4.1	2.6	5.2	0.0
9	7.4	5.8	0.0	3.4	3.8	5.8	3.0	0.0
10	5.6	3.4	0.0	3.9	4.7	1.2	6.8	0.0
11	5.0	5.7	0.0	5.1	1.4	3.4	8.1	0.0
12	4.7	5.6	0.0	5.3	10.3	2.5	1.4	0.0
13	3.0	4.5	0.0	7.4	6.0	3.0	2.8	0.0
14	3.7	5.6	0.0	2.7	6.0	1.9	1.1	0.0
15	7.5	8.4	0.0	3.6	8.0	5.1	2.6	0.0
16	4.6	4.8	0.0	3.7	1.2	7.9	2.4	0.0
17	5.0	8.2	0.0	5.8	3.4	2.4	8.1	0.0
18	5.8	5.9	0.0	3.2	1.9	9.9	1.3	0.0
19	5.2	3.9	0.0	4.7	2.0	1.7	5.9	0.0
20	7.1	10.5	0.0	0.1	6.7	4.3	2.6	0.0
21	6.0	5.4	0.0	3.2	0.7	3.3	8.5	0.0
22	7.3	5.7	0.0	5.4	3.0	8.6	3.7	0.0
23	7.3	4.3	0.0	6.0	7.3	4.5	2.6	0.0
24	4.3	4.8	0.0	5.4	1.2	1.4	12.5	0.0
25	5.3	3.9	0.0	3.5	8.6	2.6	1.6	0.0
26	1.5	6.0	0.0	5.4	1.3	1.3	10.2	0.0
27	7.2	5.0	0.0	4.9	4.5	4.6	6.3	0.0
28	2.3	3.6	0.0	3.9	2.6	3.0	3.7	0.0
29	6.2	5.5	0.0	3.7	9.9	1.9	3.6	0.0
30	7.0	5.3	0.0	5.4	12.3	1.8	2.6	0.0
Total	155.5	161.6	0.0	136.3	134.4	121.8	132.0	0.0

Notes:

# Plant Internal Flow Report

Month: November-18

Date	Settling Tank Level		Process Drain Tank		Settling Tank Flow		Potable Water Flow		Non-Potable Flow	
	T-9003 (m)		T-9001 (m)		FIT_9005 (m <sup>3</sup> (L/s))		FIT_7082 (m <sup>3</sup> (L/s))		FIT_7092 (m <sup>3</sup> (L/s))	
	Maximum	Minimum	Maximum	Minimum	Total	Peak	Total	Peak	Total	Peak
1	2.2	0.1	0.9	0.4	66.4	15.7	0.1	1.4	0.0	0.0
2	2.2	0.1	1.1	0.4	102.7	15.7	0.1	1.4	0.0	0.0
3	2.2	0.1	1.0	0.4	76.8	15.7	0.0	0.0	0.0	0.0
4	2.2	0.1	1.1	0.4	165.1	15.7	0.0	0.0	0.0	0.0
5	2.2	0.1	0.9	0.4	108.1	15.7	0.0	1.3	0.0	0.0
6	2.2	0.1	1.6	0.4	283.0	15.7	0.1	1.4	24.4	18.7
7	2.2	0.1	0.9	0.4	93.7	15.7	0.1	1.3	17.7	23.5
8	2.2	0.3	1.9	0.4	68.8	15.7	0.1	1.2	0.6	1.2
9	2.2	0.1	1.2	0.4	93.6	15.7	0.1	1.3	0.0	0.0
10	2.2	0.2	1.1	0.4	43.3	15.7	0.0	0.5	0.0	0.0
11	2.2	0.1	1.0	0.4	62.5	15.7	0.0	0.0	0.0	0.0
12	2.2	0.1	1.1	0.4	82.7	15.7	0.0	1.1	0.0	0.0
13	2.2	0.1	1.1	0.4	69.2	15.7	0.1	1.4	12.3	17.0
14	2.2	0.1	1.9	0.4	37.6	15.7	0.3	1.7	0.0	0.0
15	2.2	0.1	1.5	0.4	80.6	15.7	0.3	1.8	0.0	0.0
16	2.2	0.1	1.1	0.4	58.6	15.7	0.3	1.6	0.0	0.0
17	2.2	0.1	1.4	0.4	165.4	15.7	0.0	1.1	0.0	0.0
18	2.2	0.1	1.0	0.4	94.8	15.7	0.0	0.0	0.0	0.0
19	2.2	0.1	1.1	0.4	107.2	15.7	0.1	1.4	0.0	0.0
20	2.2	0.1	1.3	0.4	150.0	15.7	0.1	1.4	11.8	16.4
21	2.2	0.1	1.4	0.4	119.2	15.7	0.2	1.4	0.0	0.0
22	2.2	0.1	1.0	0.4	157.9	15.7	0.0	1.4	0.0	0.0
23	2.2	0.1	1.1	0.4	119.6	15.7	0.1	1.4	0.0	0.0
24	2.2	0.1	1.2	0.4	48.9	15.2	0.0	0.5	0.0	0.0
25	2.2	0.1	1.1	0.4	39.6	15.7	0.0	0.0	0.0	0.0
26	2.2	0.1	1.7	0.4	51.1	15.7	0.1	1.3	12.5	19.2
27	2.2	0.1	1.6	0.4	50.4	15.7	0.1	1.4	0.0	0.0
28	2.2	0.1	1.3	0.4	15.8	15.7	1.6	18.0	2.8	40.0
29	2.2	0.1	1.2	0.4	25.7	15.1	0.1	1.6	0.0	0.0
30	2.2	0.1	1.4	0.4	63.6	15.7	3.9	5.7	0.2	1.2
Total					2701.9		7.8		82.3	
Average	2.2	0.1	1.2	0.4	90.1	15.7	0.3	1.8	2.7	4.6
Maximum	2.2		1.9		283.0		3.9		24.4	
Date	5-Nov		8-Nov		6-Nov		30-Nov		6-Nov	
Minimum		0.1		0.4		15.1		0.0		0.0
Date		18-Nov		27-Nov		29-Nov		3-Nov		1-Nov

Notes:
