

Municipality of West Elgin - Tri County Water System

Goto:

Month:

Year:

Date is Set to: December-17

Limit	Low	High	
Raw Water Chlorine Residual:	0.00	5.00	mg/L
Pre-Strainer Chlorine Residual:	0.00	5.00	mg/L
UV Inlet Chlorine Residual:	0.00	5.00	mg/L
Post Treatment Chlorine Residual:	1.00	5.00	mg/L
Treated Chlorine Residual:	1.00	2.50	mg/L
Distribution Chlorine Residual:	1.00	2.50	mg/L
Limit		High	
Limit		156.0	L/s
WTP Permit to Take Water		13500.0	m ³
Limit	Low	High	
System Pressure Limits:	50.0	1034.0	Kpa

Compliance Report

Low Lift Monthly Report

>>>

Membranes Monthly Report

>>>

UV System Monthly Report

>>>

Plant Quality Report

>>>

Raw Well/Treated Storage Report

>>>

High Lift Monthly Report

>>>

Operational Report

Low Lift Monthly Report

>>>

High Lift Monthly Report

>>>

Chemical Usage Monthly Report

>>>

Runtimes Report

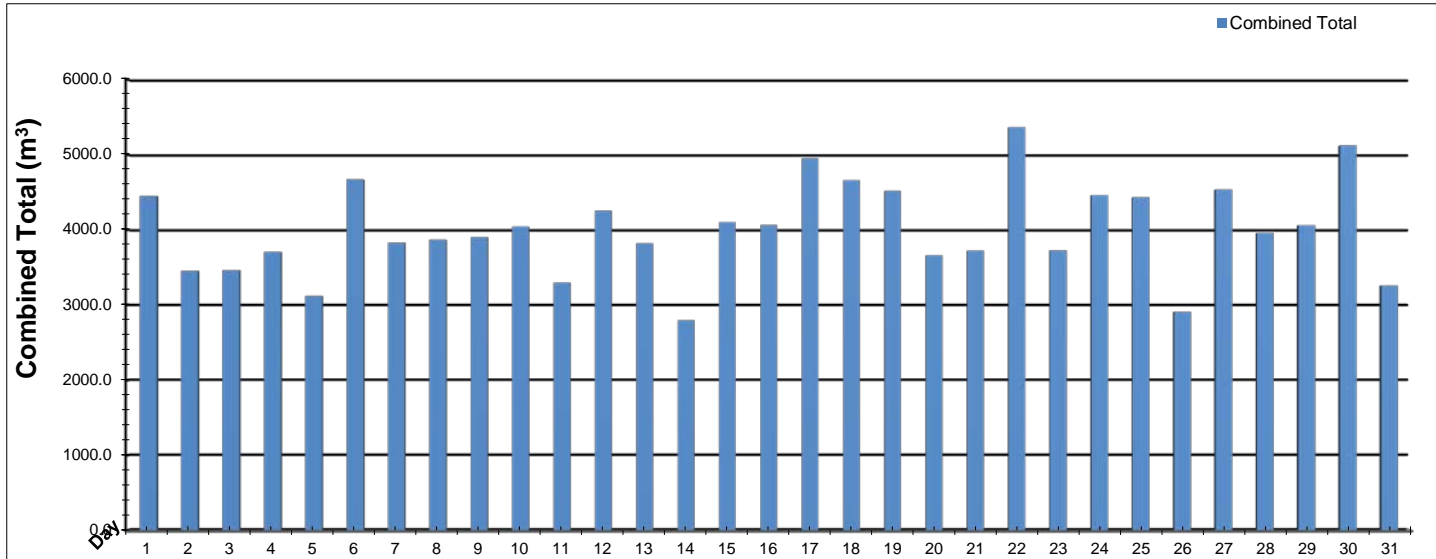
>>>

Plant Internal Flow Report

>>>

Low Lift Monthly Report

Month: December-17



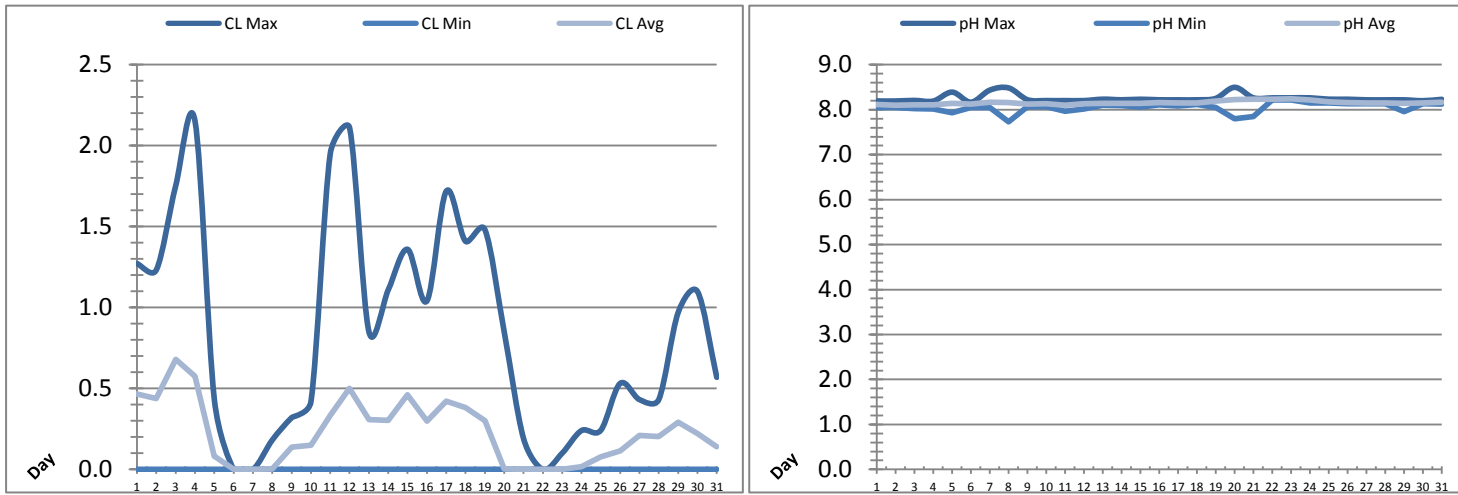
Date	Combined Total (m³)	West Train FIT-1017 (m³)	West Peak Flow FIT-1017 (L/s)	East Train FIT-1027 (m³)	East Peak Flow FIT-1027 (L/s)	Combined Peak Flow (L/s)
1	4450.9	4450.9	116.5	0.0	0.0	116.5
2	3454.3	3454.3	86.3	0.0	0.0	86.3
3	3463.5	3463.5	87.2	0.0	0.0	87.2
4	3706.8	3706.8	85.2	0.0	0.0	85.2
5	3120.4	2897.7	198.9	222.7	75.7	198.9
6	4670.4	4670.4	118.9	0.0	0.0	118.9
7	3830.9	3830.9	196.3	0.0	0.0	196.3
8	3869.4	3869.4	121.9	0.0	0.0	121.9
9	3903.0	3903.0	86.9	0.0	0.0	86.9
10	4045.4	4045.4	88.1	0.0	0.0	88.1
11	3297.5	3297.5	88.8	0.0	0.0	88.8
12	4255.5	4255.5	86.2	0.0	0.0	86.2
13	3821.0	3820.9	86.6	0.1	3.5	86.6
14	2795.3	2795.3	86.7	0.0	0.0	86.7
15	4104.6	4104.6	135.5	0.0	0.0	135.5
16	4065.3	4065.3	87.8	0.0	0.0	87.8
17	4954.0	4954.0	87.2	0.0	0.0	87.2
18	4660.4	4660.4	134.8	0.0	0.0	134.8
19	4518.5	4512.5	124.1	6.0	84.4	152.3
20	3663.0	1741.6	122.8	1921.4	136.4	136.4
21	3723.6	0.0	0.0	3723.6	136.6	136.6
22	5367.0	0.0	0.0	5367.0	138.5	138.5
23	3726.1	0.0	0.0	3726.1	75.4	75.4
24	4462.2	0.0	0.0	4462.2	75.1	75.1
25	4433.1	0.0	0.0	4433.1	137.1	137.1
26	2907.0	0.0	0.0	2907.0	135.2	135.2
27	4535.4	0.0	0.0	4535.4	75.8	75.8
28	3961.9	0.0	0.0	3961.9	75.4	75.4
29	4061.9	0.0	0.0	4061.9	137.3	137.3
30	5122.8	0.0	0.0	5122.8	137.5	137.5
31	3257.0	0.0	0.0	3257.0	75.0	75.0
Total	124208.1	76499.8		47708.3		
Average	4006.7	2467.7	71.8	1539.0	48.4	111.9
Maximum	5367.0	4954.0	198.94	5367.0	138.53	198.94
Date	22-Dec	17-Dec	5-Dec	22-Dec	22-Dec	5-Dec
Minimum	2795.3	0.0	0.00	0.0	0.00	75.02
Date	14-Dec	21-Dec	21-Dec	7-Dec	1-Dec	31-Dec

Notes:

5,7th: High peak flow on start up, less than 1min therefore no PTTW exceedance.

Low Lift Monthly Report

Month: December-17

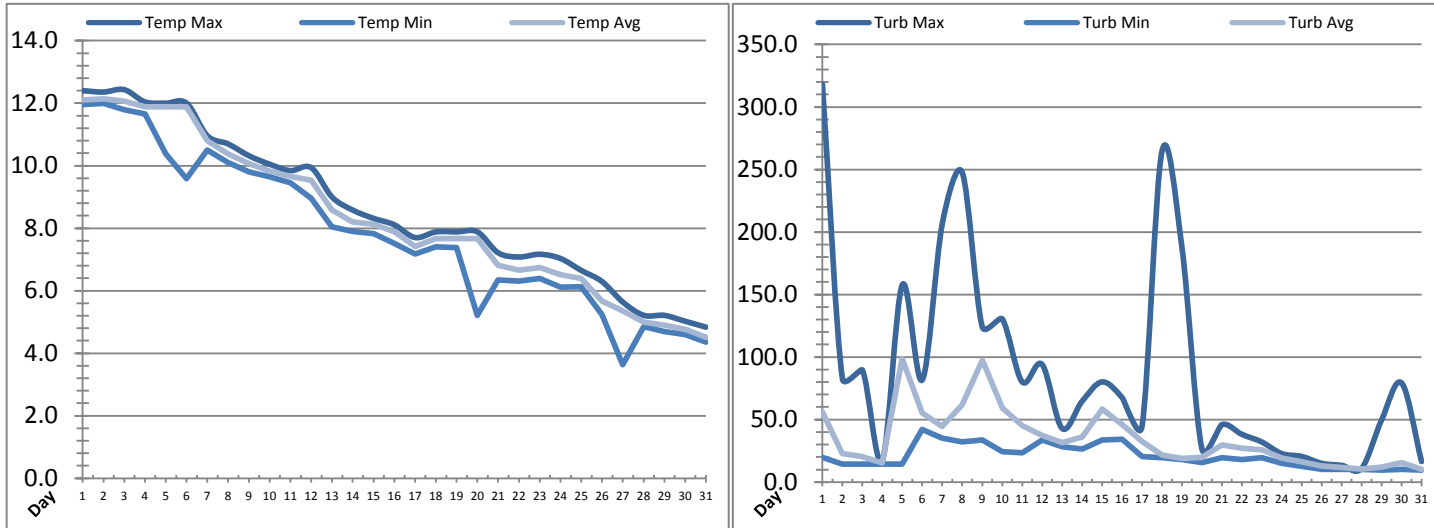


Date	Raw Water Chlorine Residual			Raw Water pH		
	AIT_1401_CL (mg/L)			AIT_1401_PH		
	Maximum	Minimum	Average	Maximum	Minimum	Average
1	1.27	0.00	0.47	8.19	8.05	8.11
2	1.23	0.00	0.44	8.19	8.05	8.10
3	1.75	0.00	0.68	8.21	8.02	8.11
4	2.15	0.00	0.58	8.19	8.02	8.11
5	0.43	0.00	0.08	8.39	7.93	8.14
6	0.00	0.00	0.00	8.17	8.05	8.12
7	0.00	0.00	0.00	8.44	8.05	8.16
8	0.18	0.00	0.00	8.48	7.73	8.16
9	0.32	0.00	0.14	8.22	8.07	8.13
10	0.42	0.00	0.15	8.20	8.06	8.14
11	1.95	0.00	0.33	8.20	7.96	8.10
12	2.11	0.00	0.50	8.20	8.01	8.13
13	0.85	0.00	0.31	8.23	8.10	8.14
14	1.11	0.00	0.30	8.22	8.09	8.14
15	1.36	0.00	0.46	8.23	8.06	8.14
16	1.04	0.00	0.30	8.22	8.11	8.16
17	1.72	0.00	0.42	8.22	8.09	8.15
18	1.41	0.00	0.38	8.22	8.11	8.15
19	1.48	0.00	0.30	8.25	8.05	8.19
20	0.85	0.00	0.00	8.50	7.80	8.22
21	0.19	0.00	0.00	8.26	7.85	8.24
22	0.00	0.00	0.00	8.26	8.22	8.24
23	0.10	0.00	0.00	8.26	8.22	8.24
24	0.24	0.00	0.02	8.26	8.15	8.22
25	0.24	0.00	0.08	8.23	8.15	8.17
26	0.53	0.00	0.12	8.23	8.13	8.15
27	0.43	0.00	0.21	8.22	8.13	8.15
28	0.43	0.00	0.20	8.22	8.13	8.15
29	0.97	0.00	0.29	8.22	7.96	8.14
30	1.10	0.00	0.22	8.20	8.13	8.15
31	0.57	0.00	0.14	8.23	8.13	8.17
Total						
Average	0.85	0.00	0.23	8.25	8.05	8.16
Maximum	2.15		0.68	8.50		8.24
Date	4-Dec		3-Dec	20-Dec		23-Dec
Minimum		0.00	0.00		7.73	8.10
Date		1-Dec	6-Dec		8-Dec	11-Dec

Notes:

Low Lift Monthly Report

Month: December-17

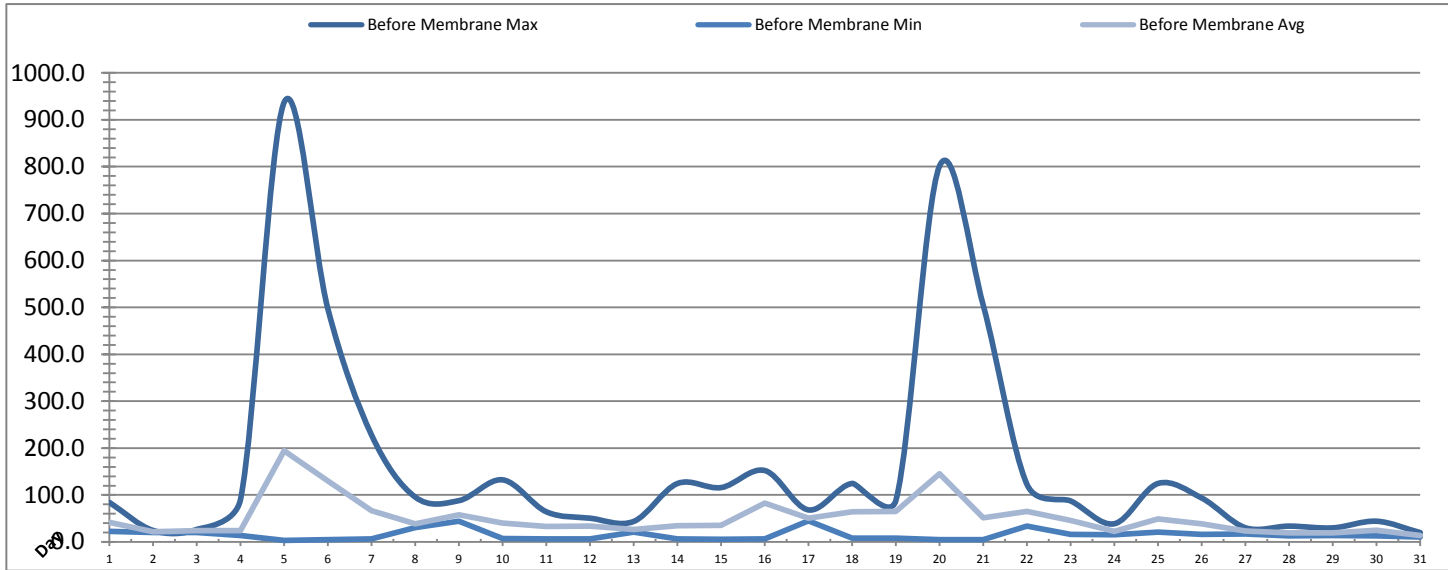


Date	Raw Water Temperature			Raw Water Turbidity		
	TIT_1403 (°C)			AIT_1404 (NTU)		
	Maximum	Minimum	Average	Maximum	Minimum	Average
1	12.4	12.0	12.1	318.11	19.79	56.37
2	12.4	12.0	12.1	82.62	14.32	22.70
3	12.4	11.8	12.1	89.60	14.32	20.52
4	12.0	11.7	11.9	17.47	14.30	15.18
5	12.0	10.4	11.9	157.76	14.30	98.63
6	12.0	9.6	11.9	81.73	42.22	55.25
7	11.0	10.5	10.8	206.51	35.23	44.37
8	10.7	10.1	10.4	247.58	32.10	61.55
9	10.3	9.8	10.1	124.31	33.67	97.44
10	10.0	9.7	9.8	130.53	24.33	59.24
11	9.8	9.4	9.7	80.15	23.54	45.13
12	9.9	9.0	9.5	94.05	33.69	37.21
13	9.0	8.0	8.6	42.91	28.17	31.48
14	8.6	7.9	8.2	64.56	26.55	36.01
15	8.3	7.8	8.1	80.09	33.58	58.19
16	8.1	7.5	7.9	67.69	34.37	46.07
17	7.7	7.2	7.4	44.40	20.35	32.52
18	7.9	7.4	7.7	264.47	19.63	21.72
19	7.9	7.4	7.7	187.77	17.90	18.90
20	7.9	5.2	7.7	26.63	15.60	19.77
21	7.2	6.3	6.8	45.96	19.58	29.82
22	7.1	6.3	6.7	38.18	18.06	27.09
23	7.2	6.4	6.7	32.05	19.63	25.87
24	7.0	6.1	6.5	22.73	14.92	19.28
25	6.6	6.1	6.4	20.48	12.64	16.24
26	6.3	5.2	5.7	14.97	10.26	12.96
27	5.6	3.6	5.4	13.32	10.20	11.76
28	5.2	4.8	5.0	11.01	10.15	10.33
29	5.2	4.7	4.9	49.76	9.44	11.84
30	5.0	4.6	4.8	79.23	10.23	15.72
31	4.8	4.4	4.5	16.42	9.43	10.07
Total						
Average	8.6	7.8	8.3	88.8	20.7	34.5
Maximum	12.4		12.1	318.1		98.6
Date	3-Dec		2-Dec	1-Dec		5-Dec
Minimum		3.6	4.5		9.4	10.1
Date		27-Dec	31-Dec		31-Dec	31-Dec

Notes:

Membranes Monthly Report

Month: December-17



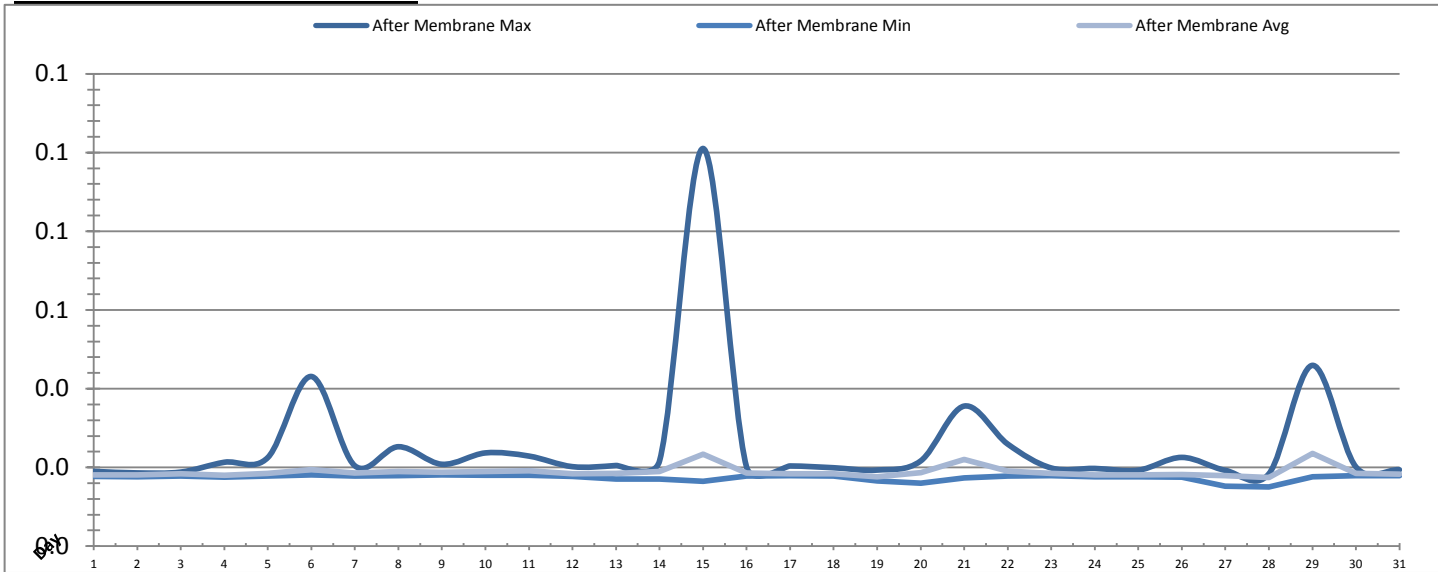
Date	Turbidity Before Membrane			Rack #1 Turbidity			Rack #2 Turbidity		
	PALL_FEED_AIT2006_Value NTU			RACK1_NTU_Value NTU			RACK2_NTU_Value NTU		
	Maximum	Minimum	Average	Maximum	Minimum	Average	Maximum	Minimum	Average
1	84.15	22.49	41.48	0.02	0.02	0.02	0.36	0.02	0.02
2	24.42	20.02	21.99	0.02	0.02	0.02	0.35	0.02	0.02
3	26.73	20.45	23.77	0.02	0.02	0.02	0.29	0.02	0.02
4	90.82	13.60	23.88	0.02	0.02	0.02	0.41	0.02	0.02
5	937.66	3.53	193.96	0.02	0.02	0.02	0.39	0.02	0.02
6	496.54	4.67	129.95	0.02	0.02	0.02	7.98	0.02	0.03
7	227.62	6.42	66.88	0.02	0.02	0.02	0.71	0.02	0.02
8	95.47	30.25	38.67	0.02	0.02	0.02	0.32	0.02	0.02
9	88.07	44.57	57.98	0.03	0.02	0.02	0.26	0.02	0.02
10	132.32	7.14	40.11	0.03	0.02	0.02	0.17	0.02	0.02
11	64.22	6.77	32.78	0.04	0.02	0.02	0.76	0.02	0.02
12	50.58	6.16	33.66	0.02	0.02	0.02	0.53	0.02	0.02
13	43.75	20.80	26.83	0.03	0.02	0.02	0.23	0.02	0.02
14	124.56	6.49	34.26	0.04	0.02	0.02	0.14	0.02	0.02
15	115.87	5.96	35.48	0.03	0.02	0.02	0.03	0.02	0.02
16	152.16	6.30	82.68	0.03	0.02	0.02	0.02	0.02	0.02
17	68.23	45.16	50.60	0.03	0.02	0.02	0.02	0.02	0.02
18	124.66	7.65	64.34	0.03	0.02	0.02	0.02	0.02	0.02
19	88.70	7.95	65.08	0.03	0.02	0.02	0.02	0.02	0.02
20	801.91	4.51	145.05	0.03	0.02	0.02	0.02	0.02	0.02
21	503.86	4.63	51.72	0.03	0.02	0.02	0.02	0.02	0.02
22	122.54	33.62	64.85	0.08	0.02	0.02	0.02	0.02	0.02
23	87.33	15.99	45.70	0.02	0.02	0.02	0.02	0.02	0.02
24	38.80	15.41	22.14	0.02	0.02	0.02	0.02	0.02	0.02
25	124.70	20.74	49.14	0.02	0.02	0.02	0.02	0.02	0.02
26	93.51	16.47	38.59	0.03	0.02	0.02	0.02	0.02	0.02
27	30.17	16.98	22.99	0.02	0.02	0.02	0.02	0.02	0.02
28	33.70	12.68	19.02	0.03	0.02	0.02	0.04	0.02	0.02
29	29.95	13.89	19.64	0.04	0.02	0.02	0.02	0.02	0.02
30	44.10	12.79	24.66	0.02	0.02	0.02	0.03	0.02	0.02
31	19.86	10.07	13.65	0.02	0.02	0.02	0.02	0.02	0.02
Total									
Average	160.2	15.0	51.0	0.0	0.0	0.0	0.4	0.0	0.0
Maximum	937.7		194.0	0.1		0.0	8.0		0.0
Date	5-Dec		5-Dec	22-Dec		22-Dec	6-Dec		6-Dec
Minimum		3.5	13.6		0.0	0.0		0.0	0.0
Date		5-Dec	31-Dec		1-Dec	28-Dec		1-Dec	10-Dec

Notes:

Rack 2: Spikes in turbidity occuring after IT for less than 1 min; rack offline from 15th onwards due to flow control valve issue

Membranes Monthly Report

Month: December-17



Date	Rack #3 Turbidity			Rack #4 Turbidity			Turbidity After Membranes		
	RACK3_NTU_Value NTU			RACK4_NTU_Value NTU			PALL_FILT_AIT5001_Value NTU		
	Maximum	Minimum	Average	Maximum	Minimum	Average	Maximum	Minimum	Average
1	0.01	0.01	0.01	0.02	0.02	0.02	0.02	0.02	0.02
2	0.01	0.01	0.01	0.02	0.02	0.02	0.02	0.02	0.02
3	0.01	0.01	0.01	0.02	0.02	0.02	0.02	0.02	0.02
4	0.03	0.01	0.01	0.02	0.02	0.02	0.02	0.02	0.02
5	0.02	0.02	0.02	0.03	0.02	0.02	0.02	0.02	0.02
6	0.03	0.02	0.02	0.06	0.02	0.03	0.04	0.02	0.02
7	0.13	0.02	0.02	0.03	0.02	0.02	0.02	0.02	0.02
8	0.02	0.02	0.02	0.11	0.02	0.03	0.03	0.02	0.02
9	0.03	0.02	0.02	0.08	0.02	0.03	0.02	0.02	0.02
10	0.05	0.02	0.02	0.06	0.02	0.03	0.02	0.02	0.02
11	0.03	0.02	0.02	0.42	0.02	0.03	0.02	0.02	0.02
12	0.06	0.02	0.02	0.07	0.03	0.03	0.02	0.02	0.02
13	0.05	0.02	0.02	0.13	0.03	0.03	0.02	0.02	0.02
14	0.05	0.02	0.02	0.07	0.03	0.03	0.02	0.02	0.02
15	0.04	0.02	0.02	0.06	0.03	0.03	0.10	0.02	0.02
16	0.03	0.02	0.02	0.04	0.03	0.03	0.02	0.02	0.02
17	0.04	0.02	0.02	0.04	0.03	0.03	0.02	0.02	0.02
18	0.03	0.02	0.02	0.04	0.03	0.03	0.02	0.02	0.02
19	0.05	0.02	0.02	0.04	0.03	0.03	0.02	0.02	0.02
20	0.16	0.02	0.02	0.10	0.03	0.03	0.02	0.02	0.02
21	0.04	0.02	0.02	0.11	0.03	0.03	0.04	0.02	0.02
22	0.05	0.02	0.02	0.07	0.03	0.03	0.03	0.02	0.02
23	0.02	0.02	0.02	0.04	0.03	0.03	0.02	0.02	0.02
24	0.03	0.02	0.02	0.04	0.03	0.03	0.02	0.02	0.02
25	0.05	0.02	0.02	0.04	0.03	0.03	0.02	0.02	0.02
26	0.03	0.02	0.02	0.05	0.03	0.03	0.02	0.02	0.02
27	0.09	0.02	0.02	0.04	0.03	0.03	0.02	0.02	0.02
28	0.02	0.02	0.02	0.05	0.03	0.03	0.02	0.02	0.02
29	0.03	0.02	0.02	0.06	0.03	0.03	0.05	0.02	0.02
30	0.02	0.02	0.02	0.03	0.03	0.03	0.02	0.02	0.02
31	0.02	0.02	0.02	0.04	0.03	0.03	0.02	0.02	0.02
Total									
Average	0.0	0.0	0.0	0.1	0.0	0.0	0.0	0.0	0.0
Maximum	0.2		0.0	0.4		0.0	0.1		0.0
Date	20-Dec		5-Dec	11-Dec		13-Dec	15-Dec		29-Dec
Minimum		0.0	0.0		0.0	0.0		0.0	0.0
Date		1-Dec	1-Dec		1-Dec	3-Dec		28-Dec	28-Dec

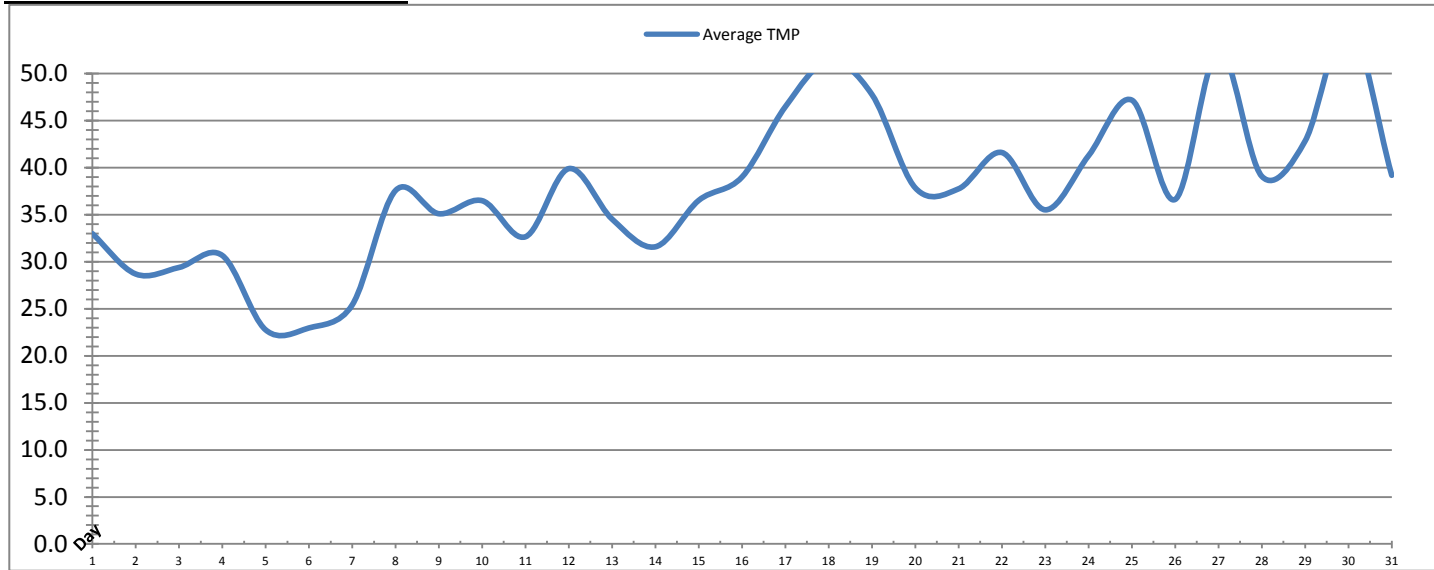
Notes:

Rack 3: 7th spike after EFM; 20th spike after IT

Rack 4: 8th spike after EFM, 11th spike after CIP, 13th and 20th spike after IT

Membranes Monthly Report

Month: December-17

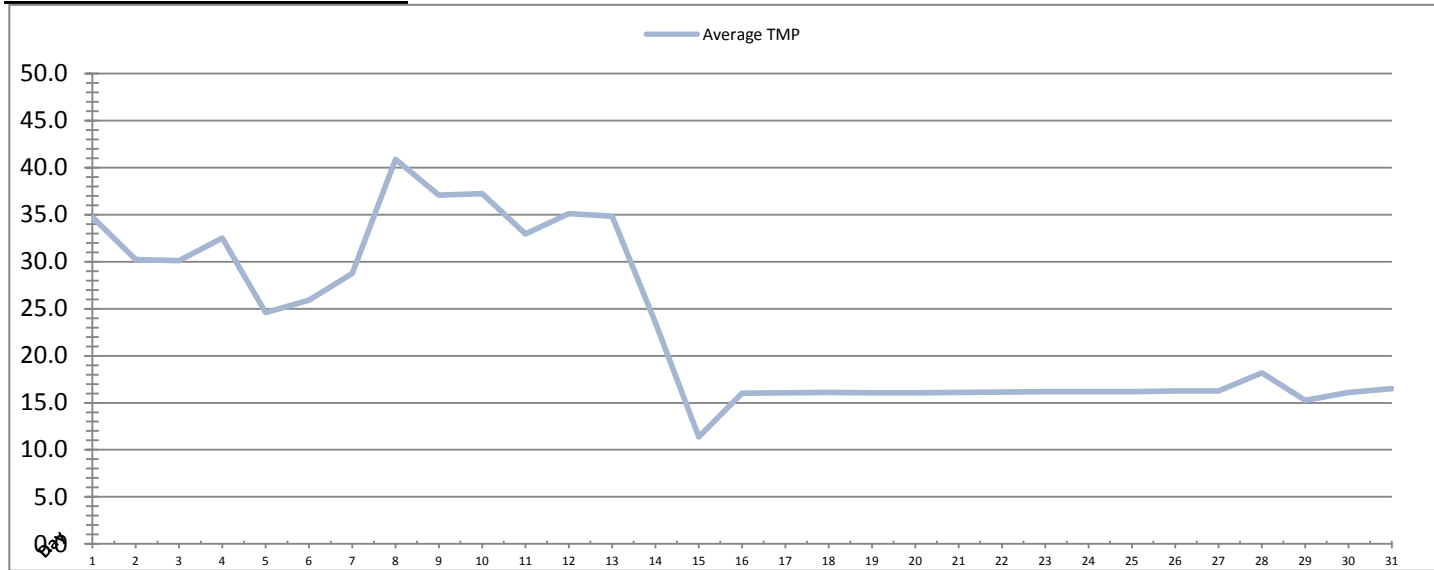


Date	Integrity Test Rack 1							
	Initial Pressure (kPa)	Final Pressure (kPa)	Test Duration (sec)	Change in Pressure (kPa)	UCL	Within UCL	Average TMP (kPa)	Max TMP (kPa)
1	199.6	198.3	300.0	1.3	2.0	✓ 2.0	33.0	65.9
2	199.3	198.1	300.0	1.2	2.0	✓ 2.0	28.7	64.8
3	199.0	198.0	300.0	1.1	2.0	✓ 2.0	29.4	64.6
4	199.2	198.0	300.0	1.3	2.0	✓ 2.0	30.7	114.8
5	199.2	198.0	300.0	1.2	2.0	✓ 2.0	22.8	113.7
6	199.6	198.3	300.0	1.3	2.0	✓ 2.0	23.0	124.1
7	199.4	198.1	300.0	1.3	2.0	✓ 2.0	25.4	154.8
8	199.5	198.2	300.0	1.3	2.0	✓ 2.0	37.6	141.2
9	199.8	198.4	300.0	1.4	2.0	✓ 2.0	35.1	100.4
10	200.0	198.6	300.0	1.3	2.0	✓ 2.0	36.5	111.9
11	199.6	198.2	300.0	1.3	2.0	✓ 2.0	32.7	138.4
12	200.0	198.7	300.0	1.3	2.0	✓ 2.0	39.9	144.8
13	200.1	198.7	300.0	1.4	2.0	✓ 2.0	34.5	79.5
14	199.9	198.5	300.0	1.4	2.0	✓ 2.0	31.6	152.1
15	200.1	198.6	300.0	1.5	2.0	✓ 2.0	36.5	152.6
16	200.1	198.7	300.0	1.4	2.0	✓ 2.0	39.0	96.0
17	200.1	198.7	300.0	1.5	2.0	✓ 2.0	46.5	98.1
18	200.3	198.9	300.0	1.3	2.0	✓ 2.0	51.3	178.3
19	199.7	198.2	300.0	1.4	2.0	✓ 2.0	47.8	166.9
20	199.8	198.5	300.0	1.3	2.0	✓ 2.0	37.8	168.1
21	200.0	198.6	300.0	1.5	2.0	✓ 2.0	37.7	161.1
22	199.7	198.2	300.0	1.4	2.0	✓ 2.0	41.6	142.1
23	199.4	198.1	300.0	1.3	2.0	✓ 2.0	35.5	76.9
24	199.6	198.4	300.0	1.2	2.0	✓ 2.0	41.3	99.3
25	199.5	198.3	300.0	1.3	2.0	✓ 2.0	47.2	184.9
26	199.3	198.1	300.0	1.2	2.0	✓ 2.0	36.6	166.7
27	199.4	198.1	300.0	1.3	2.0	✓ 2.0	52.5	188.1
28	198.9	197.6	300.0	1.2	2.0	✓ 2.0	39.1	97.7
29	199.4	198.1	300.0	1.3	2.0	✓ 2.0	42.8	177.6
30	199.3	198.0	300.0	1.3	2.0	✓ 2.0	55.4	175.8
31	199.3	198.1	300.0	1.3	2.0	✓ 2.0	39.2	102.2
Total								
Average	199.6	198.3	300.0	1.3	2.0	2.0	37.7	129.1
Maximum	200.3	198.9	300.0	1.5	2.0	2.0	55.4	188.1
Date	18-Dec	18-Dec	1-Dec	15-Dec	1-Dec	1-Dec	30-Dec	27-Dec
Minimum	198.9	197.6	300.0	1.1	2.0	2.0	22.8	64.6
Date	28-Dec	28-Dec	1-Dec	3-Dec	1-Dec	1-Dec	5-Dec	3-Dec

Notes:

Membranes Monthly Report

Month: December-17

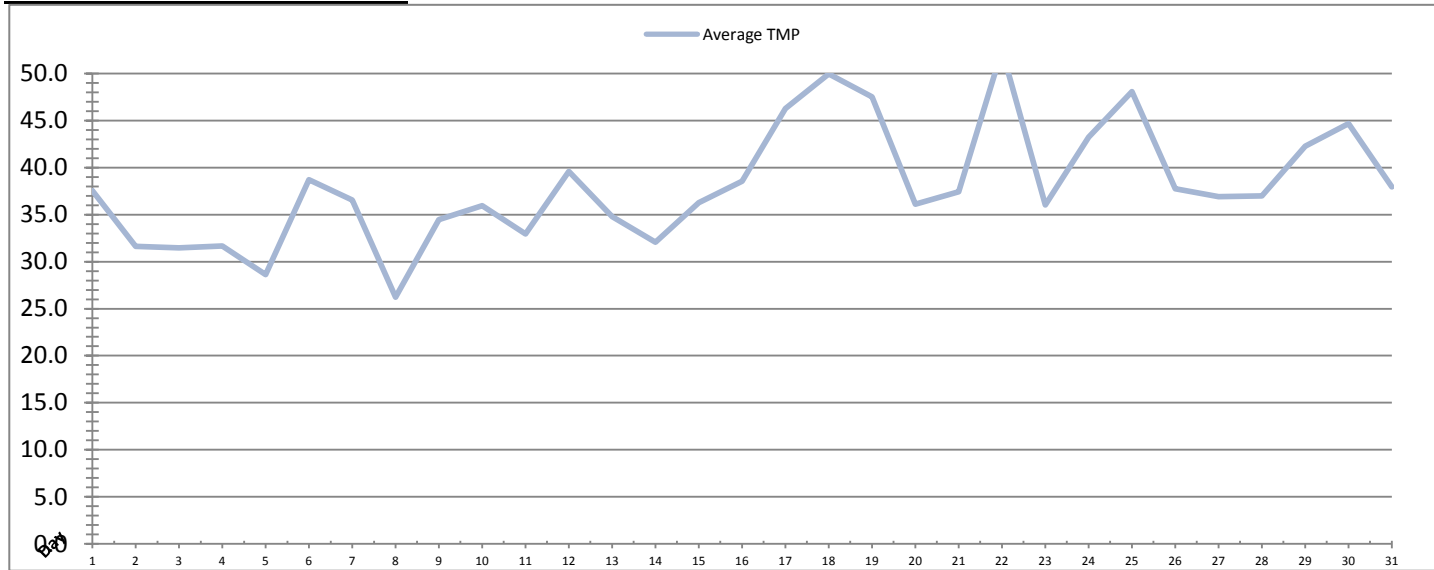


Date	Integrity Test Rack 2							
	Initial Pressure (kPa)	Final Pressure (kPa)	Test Duration (sec)	Change in Pressure (kPa)	UCL	Within UCL	Average TMP (kPa)	Max TMP (kPa)
1	208.0	206.8	300.0	1.2	2.0	✓ 2.0	34.7	68.0
2	208.0	206.9	300.0	1.1	2.0	✓ 2.0	30.2	67.8
3	208.6	207.5	300.0	1.1	2.0	✓ 2.0	30.1	66.3
4	208.0	206.7	300.0	1.2	2.0	✓ 2.0	32.5	123.0
5	208.0	206.7	300.0	1.2	2.0	✓ 2.0	24.6	114.1
6	208.2	206.8	300.0	1.3	2.0	✓ 2.0	25.9	115.9
7	208.2	206.9	300.0	1.3	2.0	✓ 2.0	28.7	115.3
8	208.0	206.7	300.0	1.3	2.0	✓ 2.0	40.9	155.7
9	208.3	207.1	300.0	1.3	2.0	✓ 2.0	37.1	83.1
10	208.5	207.2	300.0	1.3	2.0	✓ 2.0	37.2	134.5
11	213.3	212.1	300.0	1.2	2.0	✓ 2.0	32.9	132.1
12	208.1	206.8	300.0	1.3	2.0	✓ 2.0	35.1	88.2
13	208.4	207.0	300.0	1.3	2.0	✓ 2.0	34.8	71.4
14	208.7	207.3	300.0	1.4	2.0	✓ 2.0	23.5	109.0
15	208.6	207.0	300.0	1.6	2.0	✓ 2.0	11.4	54.9
16	208.6	207.0	300.0	1.6	2.0	✓ 2.0	16.0	16.1
17	208.6	207.0	300.0	1.6	2.0	✓ 2.0	16.1	16.1
18	208.6	207.0	300.0	1.6	2.0	✓ 2.0	16.1	16.2
19	208.6	207.0	300.0	1.6	2.0	✓ 2.0	16.1	16.1
20	208.6	207.0	300.0	1.6	2.0	✓ 2.0	16.1	16.2
21	208.6	207.0	300.0	1.6	2.0	✓ 2.0	16.1	16.3
22	208.6	207.0	300.0	1.6	2.0	✓ 2.0	16.1	16.3
23	208.6	207.0	300.0	1.6	2.0	✓ 2.0	16.2	16.3
24	208.6	207.0	300.0	1.6	2.0	✓ 2.0	16.2	16.3
25	208.6	207.0	300.0	1.6	2.0	✓ 2.0	16.2	16.3
26	208.6	207.0	300.0	1.6	2.0	✓ 2.0	16.2	16.3
27	208.6	207.0	300.0	1.6	2.0	✓ 2.0	16.2	16.3
28	208.6	207.0	300.0	1.6	2.0	✓ 2.0	18.2	57.9
29	208.6	207.0	300.0	1.6	2.0	✓ 2.0	15.3	15.4
30	208.6	207.0	300.0	1.6	2.0	✓ 2.0	16.1	48.1
31	208.6	207.0	300.0	1.6	2.0	✓ 2.0	16.5	16.6
Total								
Average	208.6	207.1	300.0	1.5	2.0	2.0	23.2	59.1
Maximum	213.3	212.1	300.0	1.6	2.0	2.0	40.9	155.7
Date	11-Dec	11-Dec	1-Dec	15-Dec	1-Dec	1-Dec	8-Dec	8-Dec
Minimum	208.0	206.7	300.0	1.1	2.0	2.0	11.4	15.4
Date	4-Dec	4-Dec	1-Dec	2-Dec	1-Dec	1-Dec	15-Dec	29-Dec

Notes:
 Rack 2 offline Dec 15th due to issues with flow control valve.

Membranes Monthly Report

Month: December-17

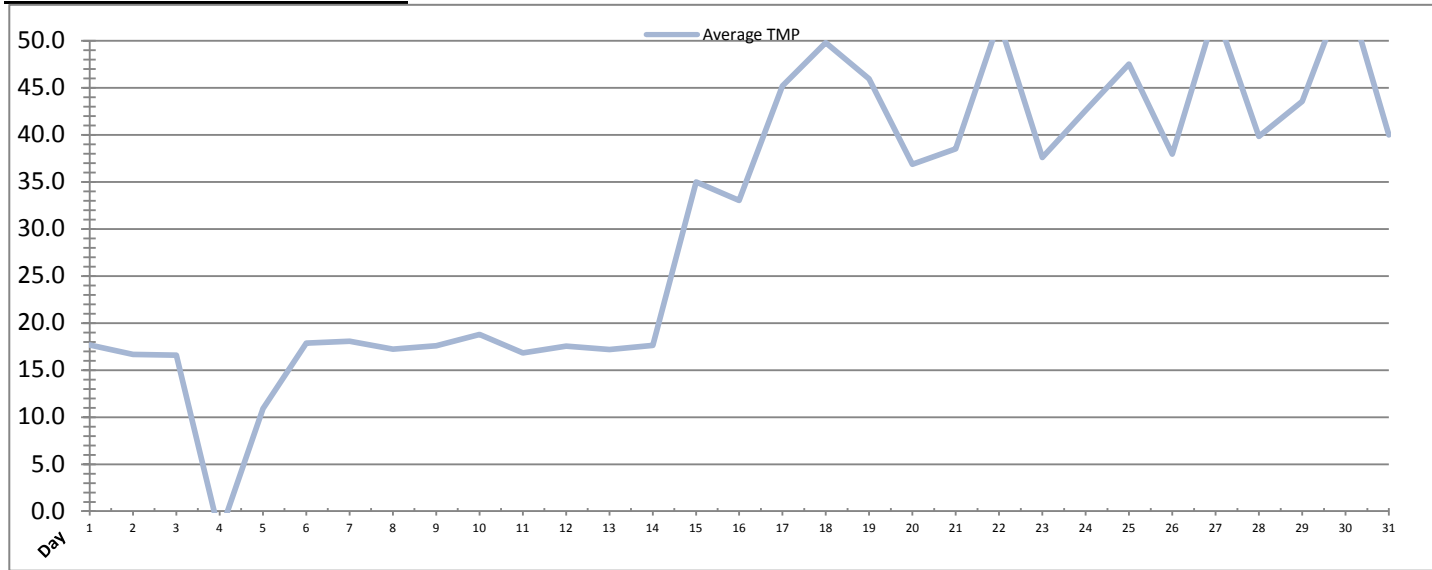


Integrity Test Rack 3									
Date	Initial Pressure (kPa)	Final Pressure (kPa)	Test Duration (sec)	Change in Pressure (kPa)	UCL	Within UCL	Average TMP (kPa)	Max TMP (kPa)	
1	190.7	189.3	300.0	1.3	2.0	✓ 2.0	37.6	82.5	
2	190.8	189.6	300.0	1.2	2.0	✓ 2.0	31.6	69.3	
3	190.7	189.4	300.0	1.3	2.0	✓ 2.0	31.4	66.1	
4	190.4	189.2	300.0	1.3	2.0	✓ 2.0	31.7	145.6	
5	193.7	192.5	300.0	1.2	2.0	✓ 2.0	28.6	113.3	
6	192.4	191.7	300.0	0.7	2.0	✓ 2.0	38.7	100.0	
7	192.9	191.7	300.0	1.2	2.0	✓ 2.0	36.6	164.6	
8	192.9	191.7	300.0	1.2	2.0	✓ 2.0	26.2	91.4	
9	193.3	192.0	300.0	1.3	2.0	✓ 2.0	34.4	98.3	
10	193.8	192.4	300.0	1.4	2.0	✓ 2.0	35.9	119.7	
11	193.5	192.2	300.0	1.3	2.0	✓ 2.0	33.0	131.1	
12	193.5	192.1	300.0	1.3	2.0	✓ 2.0	39.6	144.9	
13	193.6	192.2	300.0	1.4	2.0	✓ 2.0	34.8	79.9	
14	193.1	191.8	300.0	1.3	2.0	✓ 2.0	32.1	145.2	
15	194.1	192.5	300.0	1.5	2.0	✓ 2.0	36.3	151.8	
16	193.8	192.3	300.0	1.4	2.0	✓ 2.0	38.6	100.9	
17	193.6	192.2	300.0	1.4	2.0	✓ 2.0	46.3	98.6	
18	194.3	192.9	300.0	1.4	2.0	✓ 2.0	50.0	177.8	
19	193.6	192.1	300.0	1.4	2.0	✓ 2.0	47.5	166.4	
20	193.3	191.9	300.0	1.4	2.0	✓ 2.0	36.1	167.6	
21	194.1	192.7	300.0	1.4	2.0	✓ 2.0	37.4	161.6	
22	193.8	192.4	300.0	1.4	2.0	✓ 2.0	52.5	230.6	
23	194.6	193.4	300.0	1.1	2.0	✓ 2.0	36.0	92.9	
24	194.6	193.3	300.0	1.3	2.0	✓ 2.0	43.2	89.7	
25	193.9	192.5	300.0	1.3	2.0	✓ 2.0	48.1	188.3	
26	195.1	193.7	300.0	1.4	2.0	✓ 2.0	37.7	190.9	
27	193.6	192.3	300.0	1.3	2.0	✓ 2.0	36.9	114.4	
28	193.1	192.4	300.0	0.7	2.0	✓ 2.0	37.0	78.3	
29	194.0	192.7	300.0	1.3	2.0	✓ 2.0	42.3	156.9	
30	194.4	193.2	300.0	1.2	2.0	✓ 2.0	44.7	167.5	
31	193.0	192.3	300.0	0.7	2.0	✓ 2.0	37.9	94.1	
Total									
Average	193.3	192.0	300.0	1.3	2.0	2.0	38.1	128.4	
Maximum	195.1	193.7	300.0	1.5	2.0	2.0	52.5	230.6	
Date	26-Dec	26-Dec	1-Dec	15-Dec	1-Dec	1-Dec	22-Dec	22-Dec	
Minimum	190.4	189.2	300.0	0.7	2.0	2.0	26.2	66.1	
Date	4-Dec	4-Dec	1-Dec	28-Dec	1-Dec	1-Dec	8-Dec	3-Dec	

Notes:

Membranes Monthly Report

Month: December-17



Integrity Test Rack 4									
Date	Initial Pressure (kPa)	Final Pressure (kPa)	Test Duration (sec)	Change in Pressure (kPa)	UCL	Within UCL	Average TMP (kPa)	Max TMP (kPa)	
1	196.9	195.7	300.0	1.3	2.0	✓ 2.0	17.7	38.0	
2	197.6	196.4	300.0	1.2	2.0	✓ 2.0	16.7	33.7	
3	197.5	196.3	300.0	1.3	2.0	✓ 2.0	16.6	36.3	
4	197.3	196.0	300.0	1.3	2.0	✓ 2.0	-2.4	33.8	
5	201.4	200.2	300.0	1.2	2.0	✓ 2.0	10.9	32.5	
6	201.4	200.0	300.0	1.4	2.0	✓ 2.0	17.8	66.8	
7	201.6	200.3	300.0	1.3	2.0	✓ 2.0	18.1	48.9	
8	201.4	200.2	300.0	1.2	2.0	✓ 2.0	17.2	36.2	
9	201.6	200.3	300.0	1.3	2.0	✓ 2.0	17.6	40.5	
10	201.8	200.5	300.0	1.3	2.0	✓ 2.0	18.8	58.5	
11	201.7	200.4	300.0	1.3	2.0	✓ 2.0	16.8	115.8	
12	201.8	200.4	300.0	1.3	2.0	✓ 2.0	17.5	34.5	
13	202.1	200.6	300.0	1.4	2.0	✓ 2.0	17.2	33.0	
14	202.0	200.5	300.0	1.4	2.0	✓ 2.0	17.6	64.3	
15	202.6	200.9	300.0	1.7	2.0	✓ 2.0	35.0	116.7	
16	202.4	201.0	300.0	1.4	2.0	✓ 2.0	33.0	76.0	
17	202.4	201.0	300.0	1.5	2.0	✓ 2.0	45.2	85.3	
18	202.4	201.1	300.0	1.3	2.0	✓ 2.0	49.8	170.6	
19	202.4	200.8	300.0	1.6	2.0	✓ 2.0	46.0	109.7	
20	202.6	201.1	300.0	1.6	2.0	✓ 2.0	36.9	155.5	
21	202.8	201.4	300.0	1.4	2.0	✓ 2.0	38.5	153.7	
22	202.6	201.2	300.0	1.4	2.0	✓ 2.0	52.1	244.4	
23	202.3	201.1	300.0	1.2	2.0	✓ 2.0	37.6	91.4	
24	201.4	200.1	300.0	1.3	2.0	✓ 2.0	42.6	88.7	
25	202.1	201.0	300.0	1.1	2.0	✓ 2.0	47.5	185.3	
26	202.2	201.0	300.0	1.3	2.0	✓ 2.0	38.0	188.2	
27	201.7	200.5	300.0	1.2	2.0	✓ 2.0	53.1	188.3	
28	201.5	200.3	300.0	1.1	2.0	✓ 2.0	39.8	98.0	
29	201.5	200.2	300.0	1.3	2.0	✓ 2.0	43.6	177.5	
30	201.9	200.7	300.0	1.2	2.0	✓ 2.0	55.7	181.9	
31	201.9	200.6	300.0	1.2	2.0	✓ 2.0	40.0	103.1	
Total									
Average	201.4	200.1	300.0	1.3	2.0	2.0	30.7	99.6	
Maximum	202.8	201.4	300.0	1.7	2.0	2.0	55.7	244.4	
Date	21-Dec	21-Dec	1-Dec	15-Dec	1-Dec	1-Dec	30-Dec	22-Dec	
Minimum	196.9	195.7	300.0	1.1	2.0	2.0	-2.4	32.5	
Date	1-Dec	1-Dec	1-Dec	25-Dec	1-Dec	1-Dec	4-Dec	5-Dec	

Notes:

Membranes Monthly Report

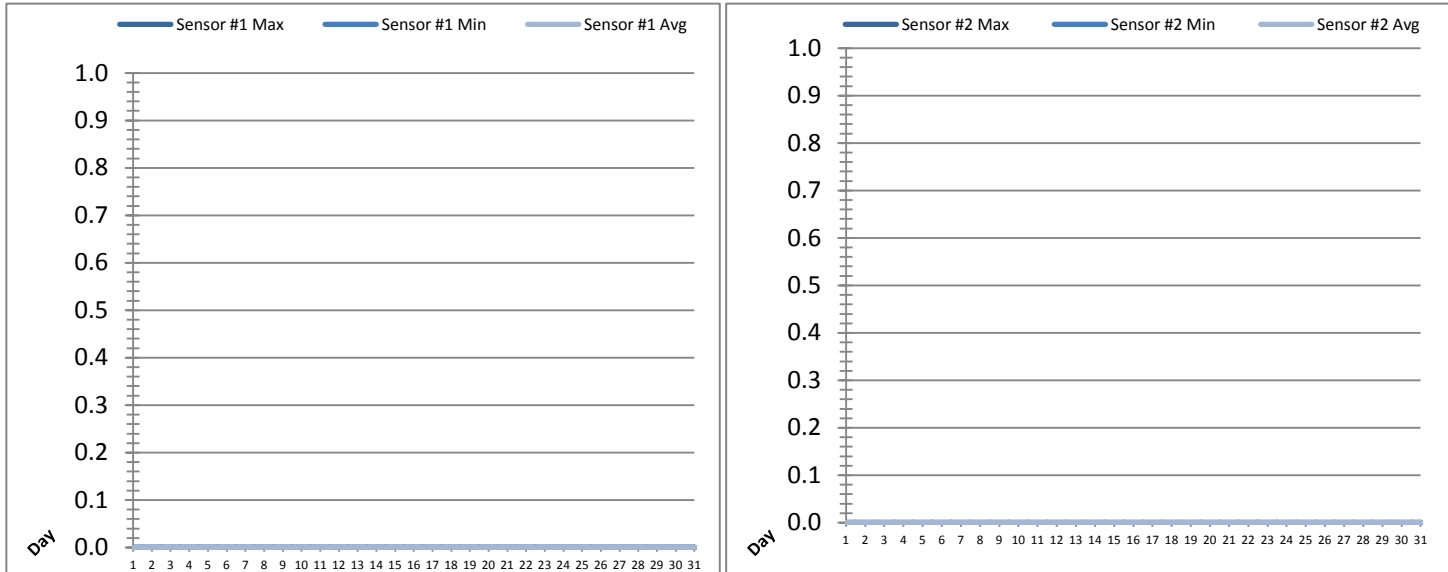
Month: December-17

Date	Membranes Monthly Performance							
	Rack 1 >0.1 NTU (Minutes)	Rack 1 Forward Flow (Minutes)	Rack 2 >0.1 NTU (Minutes)	Rack 2 Forward Flow (Minutes)	Rack 3 >0.1 NTU (Minutes)	Rack 3 Forward Flow (Minutes)	Rack 4 >0.1 NTU (Minutes)	Rack 4 Forward Flow (Minutes)
1	0.0	1055.3	0.5	1066.1	0.0	1064.2	0.0	617.5
2	0.0	813.1	0.5	825.3	0.0	816.2	0.0	466.1
3	0.0	810.4	0.5	823.0	0.0	820.3	0.0	486.3
4	0.0	878.2	0.5	891.3	0.0	751.5	0.0	419.3
5	0.0	731.3	0.5	717.3	0.0	707.4	0.0	420.3
6	0.0	1195.4	0.5	1122.1	0.0	1188.2	0.0	1000.3
7	0.0	1098.1	1.4	1102.1	1.4	1038.3	0.0	792.5
8	0.0	886.5	1.4	903.1	0.0	453.3	3.2	537.4
9	0.0	909.4	1.4	921.1	0.0	902.2	0.0	596.6
10	0.0	936.1	0.5	928.4	0.0	923.4	0.0	643.5
11	0.0	768.2	1.4	762.3	0.0	773.6	1.4	436.4
12	0.0	981.1	0.5	866.4	0.0	970.3	0.0	660.1
13	0.0	885.4	0.5	893.5	0.0	886.3	4.0	570.2
14	0.0	638.5	2.3	462.4	0.0	637.2	0.0	425.1
15	0.0	923.2	0.0	76.0	0.0	918.2	0.0	898.6
16	0.0	954.2	0.0	0.0	0.0	947.4	0.0	927.2
17	0.0	1146.4	0.0	0.0	0.0	1143.4	0.0	1124.5
18	0.0	866.1	0.0	0.0	0.0	859.1	0.0	859.5
19	0.0	1165.0	0.0	0.0	0.0	1164.1	0.0	1151.1
20	0.0	811.0	0.0	0.0	0.5	783.1	4.5	784.0
21	0.0	796.2	0.0	0.0	0.0	798.5	4.0	793.5
22	0.0	942.4	0.0	0.0	0.0	1146.6	0.0	1146.1
23	0.0	832.1	0.0	0.0	0.0	842.5	0.0	844.2
24	0.0	1013.5	0.0	0.0	0.0	1016.1	0.0	1017.5
25	0.0	951.3	0.0	0.0	0.0	948.3	0.0	949.1
26	0.0	651.4	0.0	0.0	0.0	650.5	0.0	649.6
27	0.0	1052.1	0.0	0.0	0.0	764.5	0.0	1053.1
28	0.0	909.2	0.0	225.1	0.0	888.0	0.0	909.2
29	0.0	855.2	0.0	0.0	0.0	846.2	0.0	855.2
30	0.0	1119.5	0.0	10.4	0.0	1090.4	0.0	1122.2
31	0.0	748.2	0.0	0.0	0.0	741.1	0.0	752.4
Total	0.0	28324.3	12.2	12596.0	1.9	27480.6	17.2	23908.2
Percent	0.00		0.10		0.01		0.07	
Maximum	0.0	1195.4	2.3	1122.1	1.4	1188.2	4.5	1151.1
Date	1-Dec	6-Dec	14-Dec	6-Dec	7-Dec	6-Dec	20-Dec	19-Dec
Minimum	0.0	638.5	0.0	0.0	0.0	453.3	0.0	419.3
Date	1-Dec	14-Dec	15-Dec	16-Dec	1-Dec	8-Dec	1-Dec	4-Dec

Notes:
 Met filter performance criteria of 99% of readings for the month were <0.1ntu.

UV System Monthly Report

Month: December-17



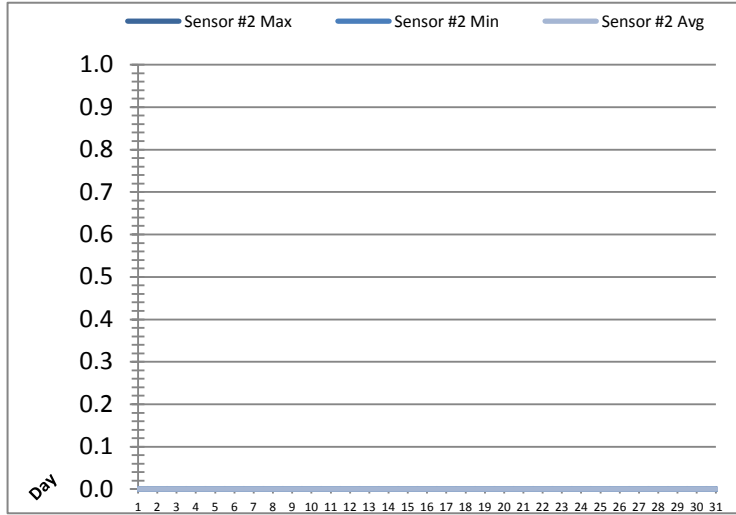
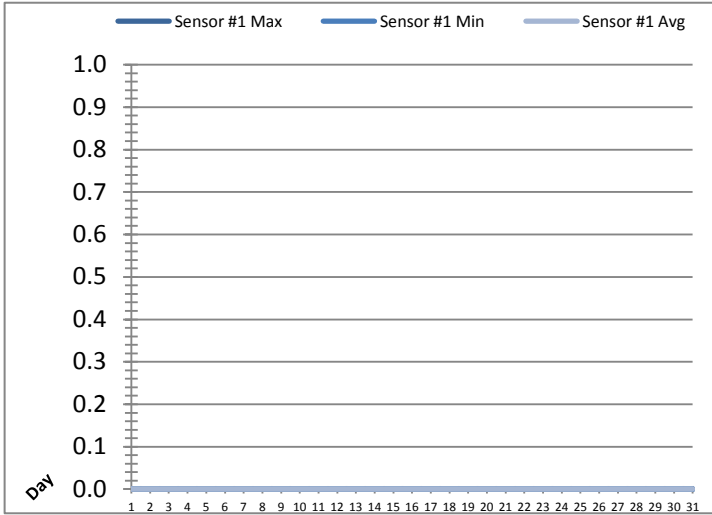
Date	UV Reactor 1					
	Intensity Sensor 1 (mW/cm ²)			Intensity Sensor 2 (mW/cm ²)		
	Maximum	Minimum	Average	Maximum	Minimum	Average
1	0.0	0.0	0.0	0.0	0.0	0.0
2	0.0	0.0	0.0	0.0	0.0	0.0
3	0.0	0.0	0.0	0.0	0.0	0.0
4	0.0	0.0	0.0	0.0	0.0	0.0
5	0.0	0.0	0.0	0.0	0.0	0.0
6	0.0	0.0	0.0	0.0	0.0	0.0
7	0.0	0.0	0.0	0.0	0.0	0.0
8	0.0	0.0	0.0	0.0	0.0	0.0
9	0.0	0.0	0.0	0.0	0.0	0.0
10	0.0	0.0	0.0	0.0	0.0	0.0
11	0.0	0.0	0.0	0.0	0.0	0.0
12	0.0	0.0	0.0	0.0	0.0	0.0
13	0.0	0.0	0.0	0.0	0.0	0.0
14	0.0	0.0	0.0	0.0	0.0	0.0
15	0.0	0.0	0.0	0.0	0.0	0.0
16	0.0	0.0	0.0	0.0	0.0	0.0
17	0.0	0.0	0.0	0.0	0.0	0.0
18	0.0	0.0	0.0	0.0	0.0	0.0
19	0.0	0.0	0.0	0.0	0.0	0.0
20	0.0	0.0	0.0	0.0	0.0	0.0
21	0.0	0.0	0.0	0.0	0.0	0.0
22	0.0	0.0	0.0	0.0	0.0	0.0
23	0.0	0.0	0.0	0.0	0.0	0.0
24	0.0	0.0	0.0	0.0	0.0	0.0
25	0.0	0.0	0.0	0.0	0.0	0.0
26	0.0	0.0	0.0	0.0	0.0	0.0
27	0.0	0.0	0.0	0.0	0.0	0.0
28	0.0	0.0	0.0	0.0	0.0	0.0
29	0.0	0.0	0.0	0.0	0.0	0.0
30	0.0	0.0	0.0	0.0	0.0	0.0
31	0.0	0.0	0.0	0.0	0.0	0.0
Total						
Average	0.0	0.0	0.0	0.0	0.0	0.0
Maximum	0.0		0.0	0.0		0.0
Date	1-Dec		1-Dec	1-Dec		1-Dec
Minimum		0.0	0.0		0.0	0.0
Date		1-Dec	1-Dec		1-Dec	1-Dec

Notes:

Values 0 as not currently in operation.

UV System Monthly Report

Month: December-17

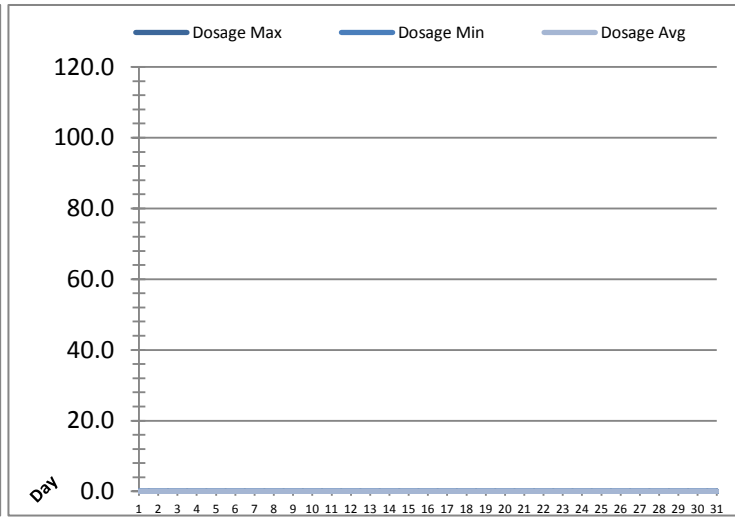
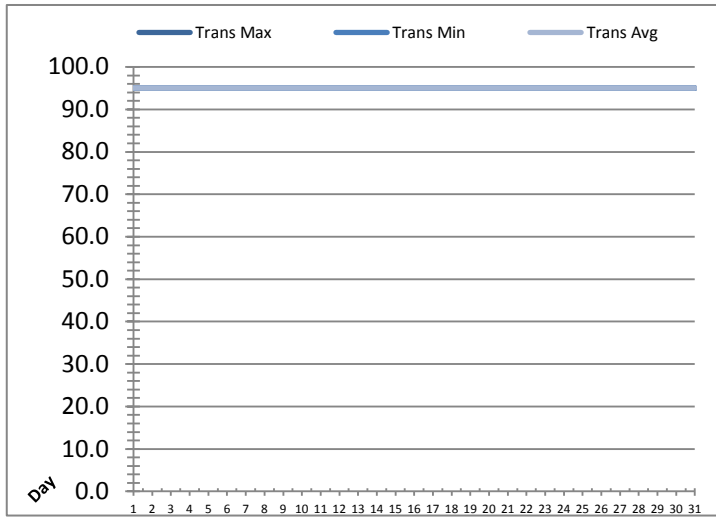


Date	UV Reactor 2					
	Intensity Sensor 1 (mW/cm ²)			Intensity Sensor 2 (mW/cm ²)		
	Maximum	Minimum	Average	Maximum	Minimum	Average
1	0.0	0.0	0.0	0.0	0.0	0.0
2	0.0	0.0	0.0	0.0	0.0	0.0
3	0.0	0.0	0.0	0.0	0.0	0.0
4	0.0	0.0	0.0	0.0	0.0	0.0
5	0.0	0.0	0.0	0.0	0.0	0.0
6	0.0	0.0	0.0	0.0	0.0	0.0
7	0.0	0.0	0.0	0.0	0.0	0.0
8	0.0	0.0	0.0	0.0	0.0	0.0
9	0.0	0.0	0.0	0.0	0.0	0.0
10	0.0	0.0	0.0	0.0	0.0	0.0
11	0.0	0.0	0.0	0.0	0.0	0.0
12	0.0	0.0	0.0	0.0	0.0	0.0
13	0.0	0.0	0.0	0.0	0.0	0.0
14	0.0	0.0	0.0	0.0	0.0	0.0
15	0.0	0.0	0.0	0.0	0.0	0.0
16	0.0	0.0	0.0	0.0	0.0	0.0
17	0.0	0.0	0.0	0.0	0.0	0.0
18	0.0	0.0	0.0	0.0	0.0	0.0
19	0.0	0.0	0.0	0.0	0.0	0.0
20	0.0	0.0	0.0	0.0	0.0	0.0
21	0.0	0.0	0.0	0.0	0.0	0.0
22	0.0	0.0	0.0	0.0	0.0	0.0
23	0.0	0.0	0.0	0.0	0.0	0.0
24	0.0	0.0	0.0	0.0	0.0	0.0
25	0.0	0.0	0.0	0.0	0.0	0.0
26	0.0	0.0	0.0	0.0	0.0	0.0
27	0.0	0.0	0.0	0.0	0.0	0.0
28	0.0	0.0	0.0	0.0	0.0	0.0
29	0.0	0.0	0.0	0.0	0.0	0.0
30	0.0	0.0	0.0	0.0	0.0	0.0
31	0.0	0.0	0.0	0.0	0.0	0.0
Total						
Average	0.0	0.0	0.0	0.0	0.0	0.0
Maximum	0.0		0.0	0.0		0.0
Date	1-Dec		1-Dec	1-Dec		1-Dec
Minimum		0.0	0.0		0.0	0.0
Date		1-Dec	1-Dec		1-Dec	1-Dec

Notes:
 Values 0 as not currently in operation.

UV System Monthly Report

Month: December-17

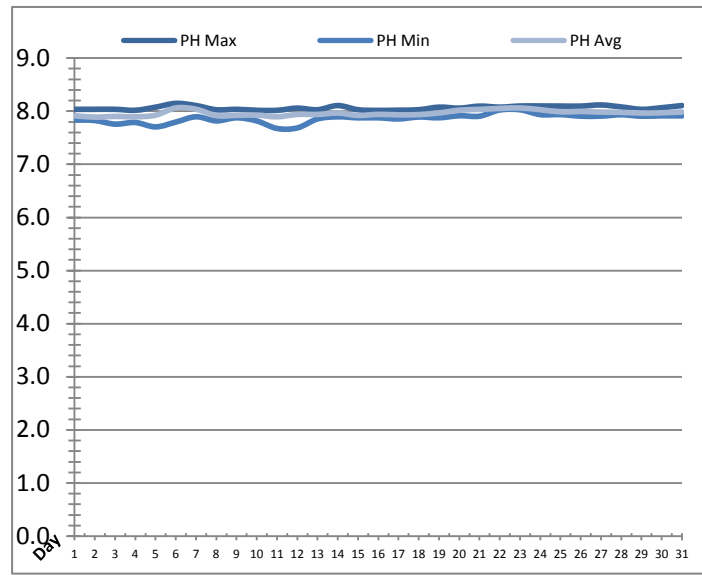
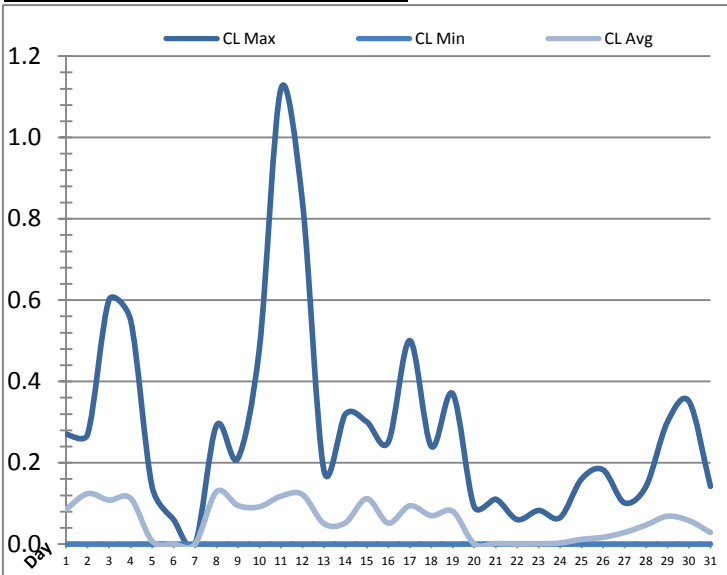


UV System							
Date	Transmittance (%)			Dosage (mJ/cm ²)			Inlet Flow (L/s)
	Maximum	Minimum	Average	Maximum	Minimum	Average	Maximum
1	95.00	95.00	95.00	0.0	0.0	0.0	85.5
2	95.00	95.00	95.00	0.0	0.0	0.0	85.7
3	95.00	95.00	95.00	0.0	0.0	0.0	85.7
4	95.00	95.00	95.00	0.0	0.0	0.0	88.7
5	95.00	95.00	95.00	0.0	0.0	0.0	133.8
6	95.00	95.00	95.00	0.0	0.0	0.0	99.2
7	95.00	95.00	95.00	0.0	0.0	0.0	146.8
8	95.00	95.00	95.00	0.0	0.0	0.0	95.3
9	95.00	95.00	95.00	0.0	0.0	0.0	90.2
10	95.00	95.00	95.00	0.0	0.0	0.0	92.4
11	95.00	95.00	95.00	0.0	0.0	0.0	94.1
12	95.00	95.00	95.00	0.0	0.0	0.0	96.3
13	95.00	95.00	95.00	0.0	0.0	0.0	92.2
14	95.00	95.00	95.00	0.0	0.0	0.0	94.6
15	95.00	95.00	95.00	0.0	0.0	0.0	620.2
16	95.00	95.00	95.00	0.0	0.0	0.0	90.1
17	95.00	95.00	95.00	0.0	0.0	0.0	90.9
18	95.00	95.00	95.00	0.0	0.0	0.0	160.4
19	95.00	95.00	95.00	0.0	0.0	0.0	90.9
20	95.00	95.00	95.00	0.0	0.0	0.0	156.8
21	95.00	95.00	95.00	0.0	0.0	0.0	157.0
22	95.00	95.00	95.00	0.0	0.0	0.0	615.7
23	95.00	95.00	95.00	0.0	0.0	0.0	90.9
24	95.00	95.00	95.00	0.0	0.0	0.0	91.9
25	95.00	95.00	95.00	0.0	0.0	0.0	152.1
26	95.00	95.00	95.00	0.0	0.0	0.0	87.8
27	95.00	95.00	95.00	0.0	0.0	0.0	88.9
28	95.00	95.00	95.00	0.0	0.0	0.0	101.5
29	95.00	95.00	95.00	0.0	0.0	0.0	162.6
30	95.00	95.00	95.00	0.0	0.0	0.0	152.1
31	95.00	95.00	95.00	0.0	0.0	0.0	89.1
Total							
Average	95.00	95.00	95.00	0.0	0.0	0.0	141.3
Maximum	95.00		95.00	0.0		0.0	620.2
Date	1-Dec		1-Dec	1-Dec		1-Dec	15-Dec
Minimum		95.00	95.00		0.0	0.0	
Date		1-Dec	1-Dec		1-Dec	1-Dec	

Notes:
 Values 0 as not currently in operation.

Plant Quality Report

Month: December-17

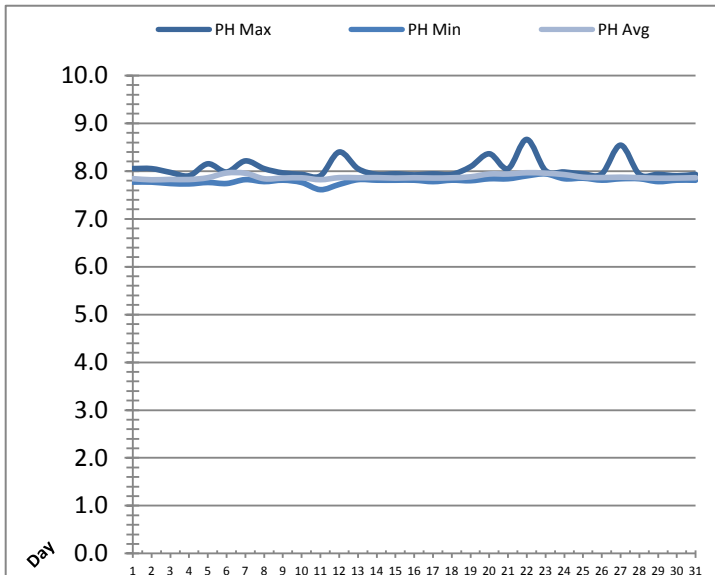
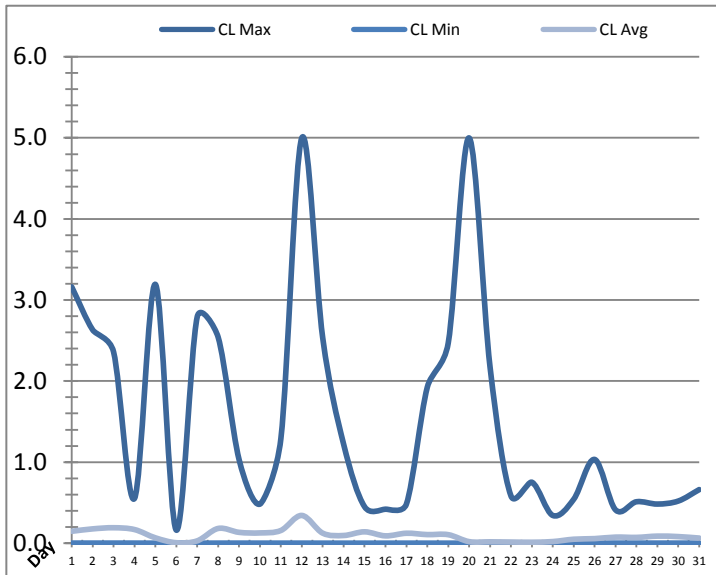


Date	Strainer Chlorine Residual			Strainer pH		
	AIT_2003_CL (ppm)			AIT_2003_PH		
	Maximum	Minimum	Average	Maximum	Minimum	Average
1	0.27	0.00	0.09	8.04	7.84	7.91
2	0.27	0.00	0.12	8.04	7.82	7.89
3	0.60	0.00	0.11	8.04	7.76	7.90
4	0.55	0.00	0.11	8.02	7.79	7.89
5	0.14	0.00	0.01	8.08	7.70	7.92
6	0.06	0.00	0.00	8.15	7.80	8.06
7	0.00	0.00	0.00	8.11	7.90	8.04
8	0.29	0.00	0.13	8.03	7.82	7.92
9	0.21	0.00	0.09	8.04	7.88	7.92
10	0.48	0.00	0.09	8.02	7.82	7.93
11	1.12	0.00	0.12	8.02	7.67	7.89
12	0.84	0.00	0.12	8.06	7.69	7.94
13	0.18	0.00	0.05	8.03	7.85	7.94
14	0.32	0.00	0.05	8.11	7.89	7.96
15	0.30	0.00	0.11	8.03	7.88	7.92
16	0.25	0.00	0.05	8.01	7.88	7.94
17	0.50	0.00	0.09	8.02	7.85	7.93
18	0.24	0.00	0.07	8.03	7.89	7.94
19	0.37	0.00	0.08	8.08	7.88	7.97
20	0.09	0.00	0.00	8.06	7.91	8.02
21	0.11	0.00	0.00	8.10	7.91	8.03
22	0.06	0.00	0.00	8.08	8.02	8.05
23	0.08	0.00	0.00	8.10	8.03	8.06
24	0.07	0.00	0.00	8.10	7.94	8.03
25	0.16	0.00	0.01	8.10	7.94	7.99
26	0.18	0.00	0.02	8.10	7.91	7.99
27	0.10	0.00	0.03	8.12	7.91	7.98
28	0.14	0.00	0.05	8.08	7.93	7.98
29	0.30	0.00	0.07	8.04	7.91	7.97
30	0.35	0.00	0.06	8.07	7.91	7.97
31	0.14	0.00	0.03	8.11	7.91	7.98
Total						
Average	0.28	0.00	0.06	8.06	7.86	7.96
Maximum	1.12		0.13	8.15		8.06
Date	11-Dec		8-Dec	6-Dec		6-Dec
Minimum		0.00	0.00		7.67	7.89
Date		1-Dec	7-Dec		11-Dec	2-Dec

Notes:

Plant Quality Report

Month: December-17

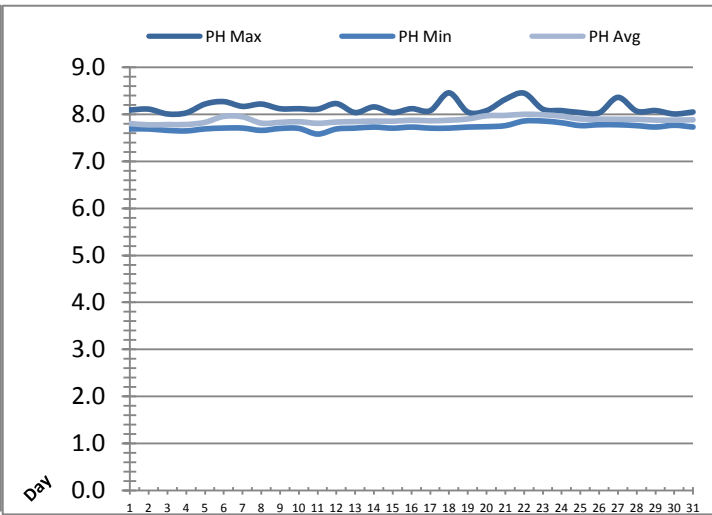
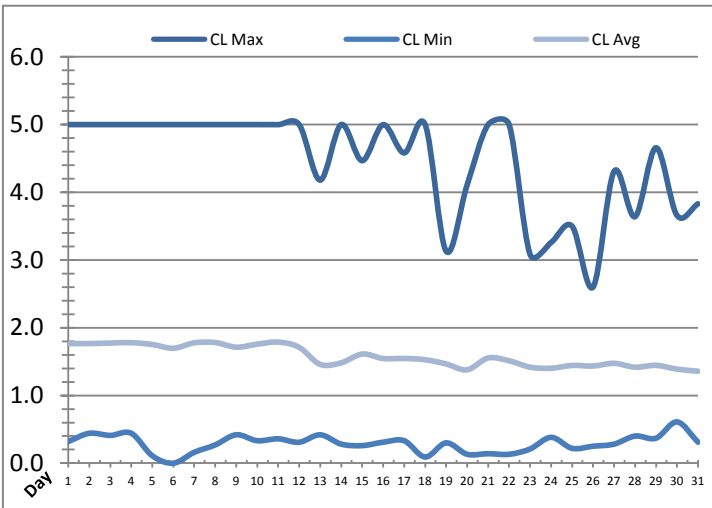


Date	Inlet UV Chlorine Residual			Inlet UV pH		
	AIT_5005_CL (ppm)			AIT_5005_PH		
	Maximum	Minimum	Average	Maximum	Minimum	Average
1	3.16	0.00	0.15	8.05	7.77	7.84
2	2.63	0.00	0.18	8.05	7.77	7.82
3	2.36	0.00	0.19	7.97	7.74	7.83
4	0.55	0.00	0.17	7.90	7.73	7.82
5	3.19	0.00	0.07	8.15	7.76	7.86
6	0.16	0.00	0.01	7.98	7.74	7.96
7	2.79	0.00	0.03	8.21	7.82	7.96
8	2.54	0.00	0.18	8.05	7.78	7.84
9	1.03	0.00	0.13	7.96	7.81	7.85
10	0.48	0.00	0.13	7.93	7.76	7.86
11	1.29	0.00	0.16	7.90	7.61	7.82
12	5.00	0.00	0.34	8.40	7.72	7.86
13	2.53	0.00	0.12	8.05	7.82	7.86
14	1.22	0.00	0.09	7.93	7.81	7.86
15	0.45	0.00	0.14	7.94	7.81	7.85
16	0.42	0.00	0.09	7.92	7.81	7.86
17	0.48	0.00	0.12	7.94	7.78	7.85
18	1.92	0.00	0.11	7.93	7.81	7.86
19	2.47	0.00	0.10	8.09	7.80	7.88
20	5.00	0.00	0.02	8.36	7.84	7.94
21	2.17	0.00	0.02	8.05	7.84	7.94
22	0.58	0.00	0.01	8.66	7.90	7.97
23	0.75	0.00	0.01	8.01	7.94	7.96
24	0.34	0.00	0.02	7.98	7.84	7.93
25	0.54	0.00	0.05	7.94	7.85	7.87
26	1.03	0.00	0.06	7.94	7.81	7.87
27	0.41	0.00	0.07	8.54	7.84	7.87
28	0.51	0.00	0.07	7.93	7.84	7.86
29	0.48	0.00	0.09	7.93	7.78	7.85
30	0.52	0.00	0.08	7.90	7.81	7.85
31	0.66	0.00	0.06	7.93	7.81	7.86
Total						
Average	1.54	0.00	0.10	8.05	7.80	7.88
Maximum	5.00		0.34	8.66		7.97
Date	12-Dec		12-Dec	22-Dec		22-Dec
Minimum		0.00	0.01		7.61	7.82
Date		5-Dec	6-Dec		11-Dec	2-Dec

Notes:

Plant Quality Report

Month: December-17

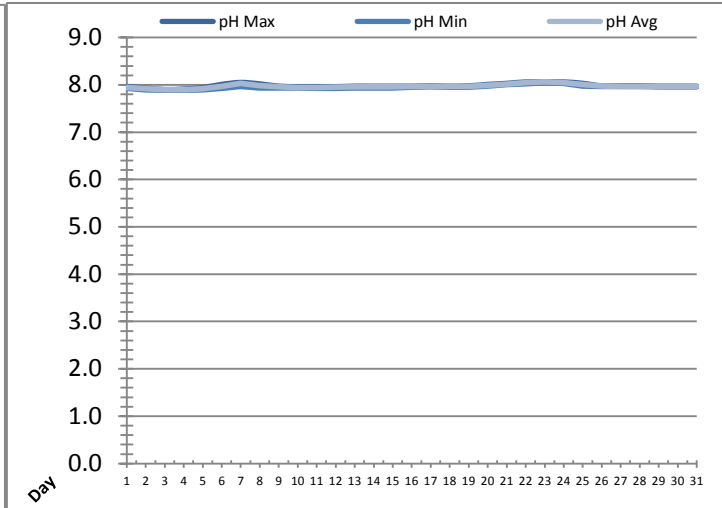
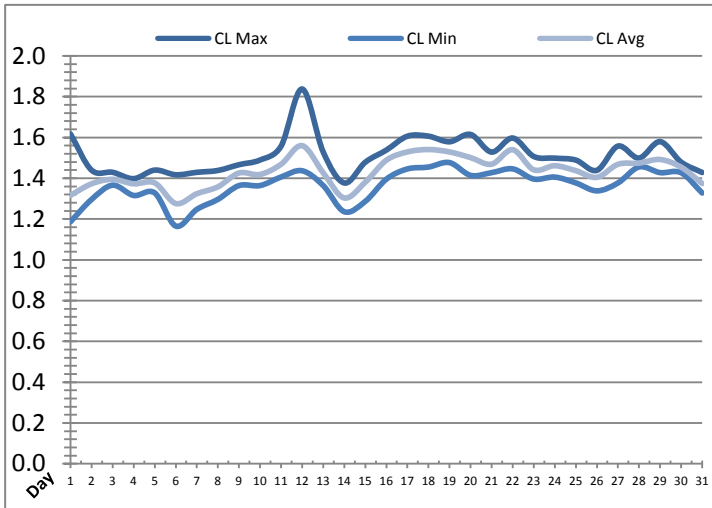


Date	Discharge UV Chlorine Residual			Discharge UV pH		
	AIT_5006_CL (ppm)			AIT_5006_PH		
	Maximum	Minimum	Average	Maximum	Minimum	Average
1	5.00	0.32	1.77	8.09	7.69	7.81
2	5.00	0.44	1.77	8.11	7.69	7.78
3	5.00	0.41	1.77	8.01	7.66	7.78
4	5.00	0.44	1.78	8.03	7.65	7.79
5	5.00	0.11	1.75	8.22	7.69	7.83
6	5.00	0.00	1.70	8.27	7.71	7.96
7	5.00	0.16	1.78	8.17	7.71	7.95
8	5.00	0.27	1.78	8.22	7.66	7.81
9	5.00	0.42	1.71	8.12	7.70	7.83
10	5.00	0.33	1.76	8.12	7.70	7.84
11	5.00	0.36	1.79	8.11	7.58	7.81
12	5.00	0.31	1.71	8.23	7.69	7.84
13	4.18	0.42	1.46	8.04	7.71	7.85
14	5.00	0.28	1.48	8.16	7.73	7.86
15	4.47	0.26	1.61	8.04	7.71	7.86
16	5.00	0.31	1.55	8.12	7.73	7.88
17	4.58	0.33	1.55	8.08	7.71	7.86
18	5.00	0.09	1.53	8.46	7.71	7.88
19	3.13	0.30	1.47	8.05	7.73	7.90
20	4.11	0.13	1.38	8.08	7.74	7.97
21	5.00	0.14	1.55	8.32	7.76	7.98
22	5.00	0.13	1.51	8.45	7.86	8.00
23	3.08	0.21	1.42	8.11	7.86	7.99
24	3.26	0.38	1.40	8.08	7.82	7.96
25	3.50	0.22	1.44	8.04	7.76	7.90
26	2.60	0.25	1.43	8.03	7.78	7.90
27	4.31	0.28	1.47	8.36	7.78	7.90
28	3.64	0.40	1.42	8.07	7.76	7.90
29	4.66	0.37	1.44	8.08	7.73	7.88
30	3.66	0.61	1.39	8.01	7.77	7.88
31	3.83	0.31	1.36	8.05	7.73	7.89
Total						
Average	4.45	0.29	1.58	8.14	7.73	7.88
Maximum	5.00		1.79	8.46		8.00
Date	1-Dec		11-Dec	18-Dec		22-Dec
Minimum		0.00	1.36		7.58	7.78
Date		6-Dec	31-Dec		11-Dec	2-Dec

Notes:

Plant Quality Report

Month: December-17

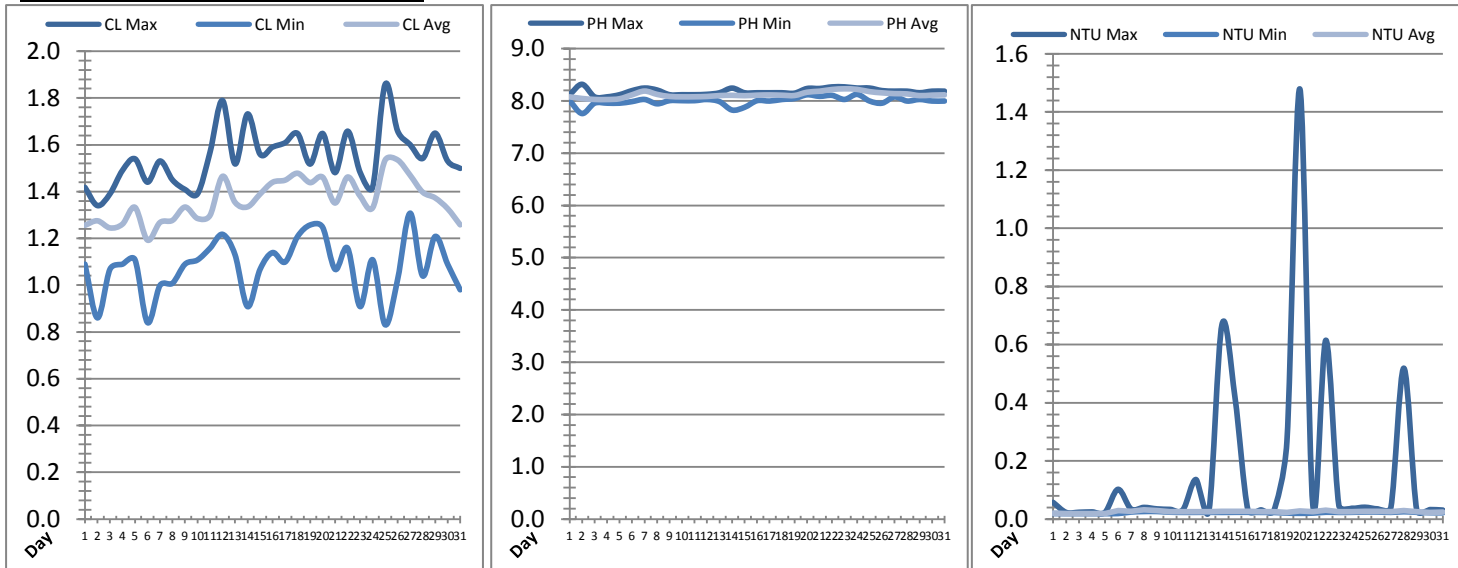


Date	Suction Header Chlorine Res.			Suction Header pH			Distribution CT Calc Total		
	AIT_7001_CL (ppm)			AIT_7001_PH (m)			REAL_CT_CALC_TOTAL (mg*ml/min)		
	Maximum	Minimum	Average	Maximum	Minimum	Average	Maximum	Minimum	Average
1	✓ 1.62	✓ 1.19	1.32	7.96	7.93	7.94	3471.51	0.00	117.64
2	✓ 1.44	✓ 1.30	1.37	7.93	7.90	7.92	532.10	0.00	125.29
3	✓ 1.43	✓ 1.37	1.40	7.90	7.88	7.90	2991.92	0.00	169.80
4	✓ 1.40	✓ 1.32	1.37	7.91	7.88	7.90	1593.54	0.00	128.02
5	✓ 1.44	✓ 1.33	1.38	7.94	7.90	7.92	1905.49	0.00	94.67
6	✓ 1.42	✓ 1.17	1.28	8.01	7.93	7.96	3307.68	0.00	115.12
7	✓ 1.43	✓ 1.25	1.32	8.05	7.96	8.03	3132.33	0.00	96.73
8	✓ 1.44	✓ 1.30	1.36	8.02	7.94	7.98	3103.92	0.00	135.49
9	✓ 1.47	✓ 1.36	1.43	7.97	7.94	7.96	3150.86	0.00	146.81
10	✓ 1.49	✓ 1.36	1.42	7.96	7.94	7.95	2790.97	0.00	147.50
11	✓ 1.56	✓ 1.41	1.47	7.96	7.93	7.94	4749.30	0.00	170.02
12	✓ 1.84	✓ 1.44	1.56	7.96	7.93	7.95	4120.60	0.00	162.81
13	✓ 1.53	✓ 1.36	1.43	7.97	7.94	7.96	2424.10	0.00	132.27
14	✓ 1.38	✓ 1.24	1.30	7.97	7.94	7.96	4359.78	0.00	120.10
15	✓ 1.48	✓ 1.29	1.38	7.97	7.94	7.96	2963.77	0.00	137.85
16	✓ 1.54	✓ 1.40	1.49	7.97	7.95	7.97	1337.16	0.00	162.82
17	✓ 1.61	✓ 1.45	1.53	7.98	7.96	7.97	1605.00	0.00	181.41
18	✓ 1.61	✓ 1.46	1.54	7.97	7.96	7.97	632.33	0.00	117.12
19	✓ 1.58	✓ 1.48	1.53	7.98	7.95	7.96	4298.73	0.00	97.29
20	✓ 1.62	✓ 1.41	1.50	8.01	7.97	7.99	3929.20	0.00	118.00
21	✓ 1.53	✓ 1.43	1.47	8.03	8.00	8.02	2873.71	0.00	201.09
22	✓ 1.60	✓ 1.45	1.54	8.06	8.03	8.05	2601.57	0.00	278.20
23	✓ 1.51	✓ 1.40	1.44	8.06	8.05	8.06	1928.66	0.00	243.59
24	✓ 1.50	✓ 1.41	1.46	8.06	8.03	8.05	8834.92	0.00	368.51
25	✓ 1.49	✓ 1.38	1.44	8.03	7.97	8.01	4495.44	0.00	209.14
26	✓ 1.44	✓ 1.34	1.40	7.98	7.97	7.97	1228.66	0.00	258.75
27	✓ 1.56	✓ 1.38	1.47	7.98	7.97	7.97	4469.27	0.00	300.54
28	✓ 1.50	✓ 1.46	1.47	7.98	7.97	7.97	5721.99	0.00	186.27
29	✓ 1.58	✓ 1.43	1.49	7.97	7.96	7.97	2090.54	0.00	145.14
30	✓ 1.48	✓ 1.43	1.45	7.97	7.96	7.97	7493.92	0.00	297.81
31	✓ 1.43	✓ 1.33	1.37	7.97	7.96	7.97	3598.07	0.00	179.73
Total									
Average	1.51	1.36	1.43	7.98	7.95	7.97	7.98	7.95	7.97
Maximum	1.84		1.56	8.06		8.06	8.06		8.06
Date	12-Dec		12-Dec	24-Dec		23-Dec	24-Dec		23-Dec
Minimum		1.17	1.28		7.88	7.90		7.88	7.90
Date		6-Dec	6-Dec		3-Dec	4-Dec		3-Dec	4-Dec

Notes:

Plant Quality Report

Month: December-17

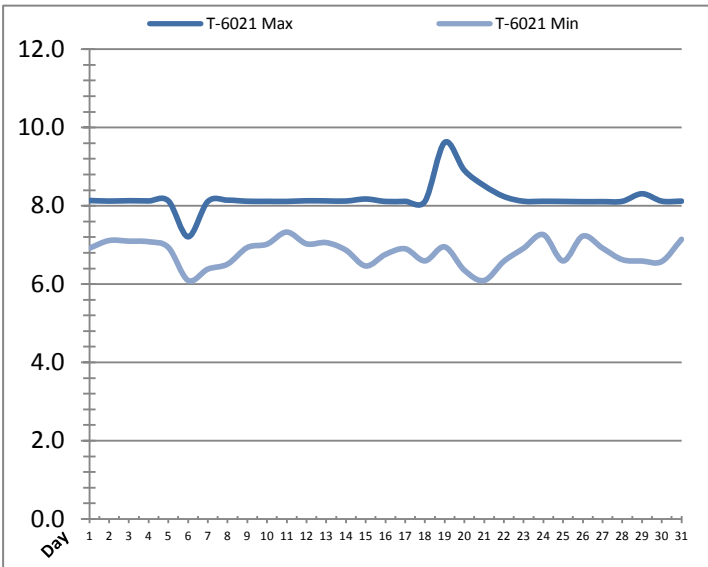
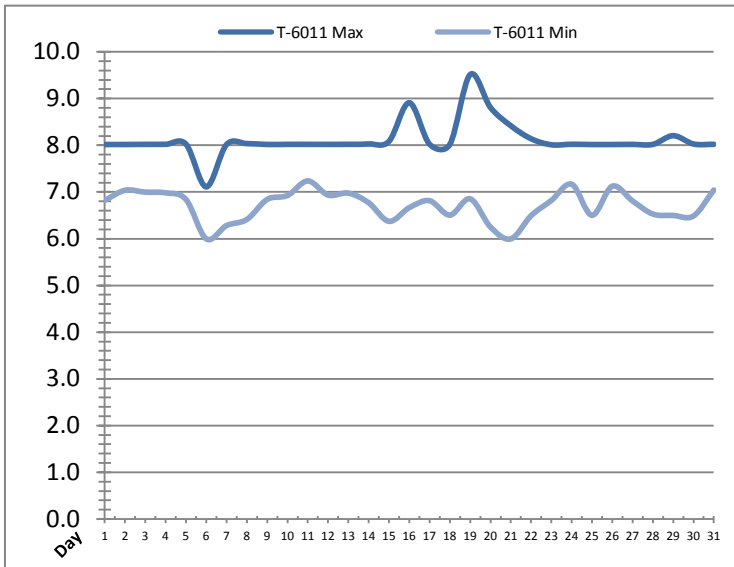


Date	Distribution Chlorine Header			Distribution pH			Distribution Turbidity		
	AIT_7004_CL (ppm)			AIT_7004_PH			AIT_7003 (ntu)		
	Maximum	Minimum	Average	Maximum	Minimum	Average	Maximum	Minimum	Average
1	1.42	1.09	1.26	8.12	8.00	8.08	0.06	0.02	0.02
2	1.34	0.86	1.27	8.32	7.76	8.05	0.02	0.02	0.02
3	1.39	1.07	1.24	8.08	7.96	8.03	0.02	0.02	0.02
4	1.49	1.09	1.26	8.08	7.96	8.03	0.02	0.02	0.02
5	1.54	1.11	1.33	8.12	7.96	8.04	0.02	0.02	0.02
6	1.44	0.84	1.19	8.20	7.99	8.12	0.10	0.02	0.03
7	1.53	1.00	1.27	8.24	8.03	8.19	0.03	0.02	0.03
8	1.45	1.01	1.28	8.21	7.94	8.12	0.04	0.03	0.03
9	1.41	1.09	1.33	8.12	8.00	8.08	0.03	0.03	0.03
10	1.39	1.11	1.29	8.12	8.00	8.08	0.03	0.02	0.03
11	1.57	1.16	1.30	8.12	8.00	8.08	0.03	0.02	0.03
12	1.79	1.22	1.47	8.13	8.03	8.08	0.14	0.02	0.03
13	1.52	1.13	1.35	8.15	7.99	8.10	0.03	0.02	0.03
14	1.73	0.91	1.33	8.24	7.82	8.11	0.67	0.02	0.03
15	1.56	1.07	1.39	8.15	7.88	8.10	0.42	0.02	0.03
16	1.59	1.14	1.44	8.15	8.00	8.11	0.03	0.02	0.03
17	1.61	1.10	1.45	8.15	8.00	8.11	0.03	0.02	0.03
18	1.65	1.21	1.48	8.15	8.03	8.11	0.03	0.02	0.03
19	1.52	1.26	1.44	8.15	8.05	8.10	0.27	0.02	0.02
20	1.65	1.25	1.46	8.24	8.12	8.17	1.48	0.02	0.03
21	1.48	1.07	1.35	8.24	8.09	8.18	0.05	0.02	0.03
22	1.66	1.16	1.46	8.27	8.11	8.22	0.62	0.02	0.03
23	1.48	0.91	1.38	8.27	8.03	8.23	0.05	0.02	0.02
24	1.42	1.11	1.33	8.25	8.12	8.22	0.04	0.02	0.03
25	1.86	0.83	1.53	8.24	8.00	8.18	0.04	0.02	0.03
26	1.66	1.02	1.54	8.20	7.96	8.15	0.03	0.02	0.03
27	1.60	1.31	1.47	8.19	8.08	8.14	0.04	0.02	0.03
28	1.54	1.04	1.40	8.19	8.00	8.13	0.52	0.03	0.03
29	1.65	1.21	1.37	8.16	8.03	8.10	0.03	0.02	0.03
30	1.53	1.09	1.33	8.18	8.00	8.11	0.03	0.02	0.02
31	1.50	0.98	1.26	8.19	8.00	8.12	0.03	0.02	0.02
Total									
Average	1.55	1.08	1.36	8.18	8.00	8.12	0.2	0.0	0.0
Maximum	1.86		1.54	8.32		8.23	1.5		0.0
Date	25-Dec		26-Dec	2-Dec		23-Dec	20-Dec		8-Dec
Minimum		0.83	1.19		7.76	8.03		0.0	0.0
Date		25-Dec	6-Dec		2-Dec	4-Dec		4-Dec	4-Dec

Notes:

Raw Well/Treated Storage Report

Month: December-17

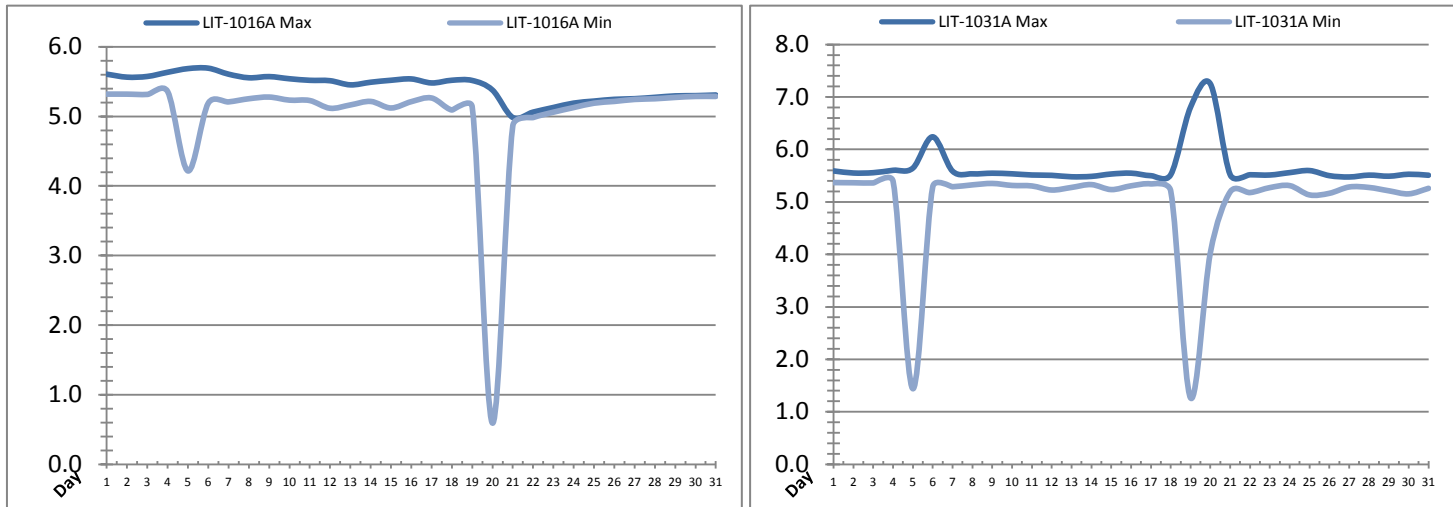


Date	Treated Water Storage Tank					
	T-6011 (m)			T-6021 (m)		
	Maximum	Minimum	Average	Maximum	Minimum	Average
1	8.0	6.8	7.5	8.1	6.9	7.6
2	8.0	7.0	7.7	8.1	7.1	7.8
3	8.0	7.0	7.7	8.1	7.1	7.8
4	8.0	7.0	7.6	8.1	7.1	7.7
5	8.0	6.8	7.6	8.1	6.9	7.7
6	7.1	6.0	6.4	7.2	6.1	6.5
7	8.0	6.3	7.1	8.1	6.4	7.2
8	8.0	6.4	7.4	8.1	6.5	7.5
9	8.0	6.8	7.5	8.1	6.9	7.6
10	8.0	6.9	7.6	8.1	7.0	7.6
11	8.0	7.2	7.7	8.1	7.3	7.8
12	8.0	6.9	7.6	8.1	7.0	7.7
13	8.0	7.0	7.6	8.1	7.1	7.6
14	8.0	6.8	7.6	8.1	6.9	7.7
15	8.1	6.4	7.5	8.2	6.5	7.6
16	8.9	6.7	7.5	8.1	6.8	7.6
17	8.0	6.8	7.4	8.1	6.9	7.5
18	8.0	6.5	7.4	8.1	6.6	7.5
19	9.5	6.9	8.1	9.6	7.0	8.2
20	8.8	6.3	7.7	8.9	6.4	7.8
21	8.4	6.0	7.4	8.5	6.1	7.5
22	8.1	6.5	7.2	8.2	6.6	7.3
23	8.0	6.8	7.5	8.1	6.9	7.6
24	8.0	7.2	7.6	8.1	7.3	7.7
25	8.0	6.5	7.4	8.1	6.6	7.5
26	8.0	7.1	7.7	8.1	7.2	7.8
27	8.0	6.8	7.5	8.1	6.9	7.6
28	8.0	6.5	7.4	8.1	6.6	7.5
29	8.2	6.5	7.5	8.3	6.6	7.6
30	8.0	6.5	7.4	8.1	6.6	7.5
31	8.0	7.0	7.7	8.1	7.1	7.8
Total						
Average	8.1	6.7	7.5	8.2	6.8	7.6
Maximum	9.5		8.1	9.6		8.2
Date	19-Dec		19-Dec	19-Dec		19-Dec
Minimum		6.0	6.4		6.1	6.5
Date		6-Dec	6-Dec		21-Dec	6-Dec

Notes:

Raw Well/Treated Storage Report

Month: December-17



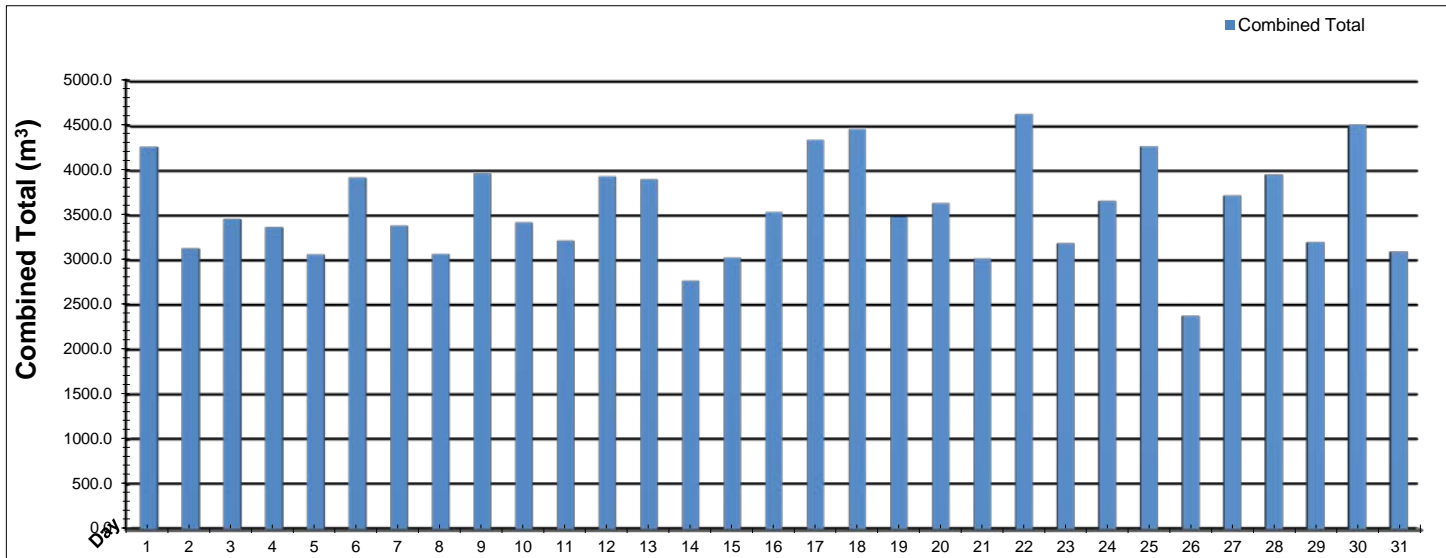
Date	Low Lift Intake Levels					
	Wet Well #1 (LIT-1016A) (m)			Wet Well #2 (LIT-1031A) (m)		
	Maximum	Minimum	Average	Maximum	Minimum	Average
1	5.6	5.3	5.4	5.6	5.4	5.4
2	5.6	5.3	5.5	5.6	5.4	5.5
3	5.6	5.3	5.4	5.6	5.4	5.5
4	5.6	5.4	5.5	5.6	5.4	5.5
5	5.7	4.2	5.5	5.6	1.4	4.5
6	5.7	5.2	5.4	6.2	5.3	5.5
7	5.6	5.2	5.4	5.6	5.3	5.4
8	5.6	5.3	5.4	5.5	5.3	5.4
9	5.6	5.3	5.4	5.5	5.4	5.4
10	5.5	5.2	5.4	5.5	5.3	5.4
11	5.5	5.2	5.4	5.5	5.3	5.4
12	5.5	5.1	5.3	5.5	5.2	5.3
13	5.5	5.2	5.3	5.5	5.3	5.4
14	5.5	5.2	5.4	5.5	5.3	5.4
15	5.5	5.1	5.3	5.5	5.2	5.4
16	5.5	5.2	5.4	5.5	5.3	5.4
17	5.5	5.3	5.3	5.5	5.3	5.4
18	5.5	5.1	5.3	5.5	5.2	5.4
19	5.5	5.1	5.3	6.8	1.3	3.9
20	5.4	0.6	3.7	7.2	4.0	6.1
21	5.0	4.9	4.9	5.5	5.2	5.4
22	5.1	5.0	5.0	5.5	5.2	5.4
23	5.1	5.1	5.1	5.5	5.3	5.4
24	5.2	5.1	5.2	5.6	5.3	5.4
25	5.2	5.2	5.2	5.6	5.1	5.4
26	5.2	5.2	5.2	5.5	5.2	5.4
27	5.3	5.2	5.2	5.5	5.3	5.3
28	5.3	5.3	5.3	5.5	5.3	5.4
29	5.3	5.3	5.3	5.5	5.2	5.4
30	5.3	5.3	5.3	5.5	5.2	5.3
31	5.3	5.3	5.3	5.5	5.3	5.4
Total						
Average	5.4	5.0	5.3	5.7	5.0	5.3
Maximum	5.7		5.5	7.2		6.1
Date	6-Dec		5-Dec	20-Dec		20-Dec
Minimum		0.6	3.7		1.3	3.9
Date		20-Dec	20-Dec		19-Dec	19-Dec

Notes:

19 and 20th: low/high levels due to cleaning of raw wells.

High Lift Monthly Report

Month: December-17

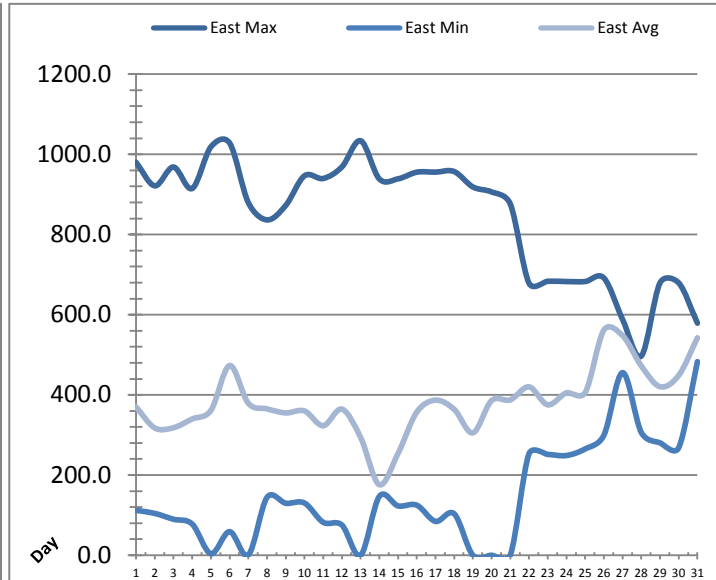
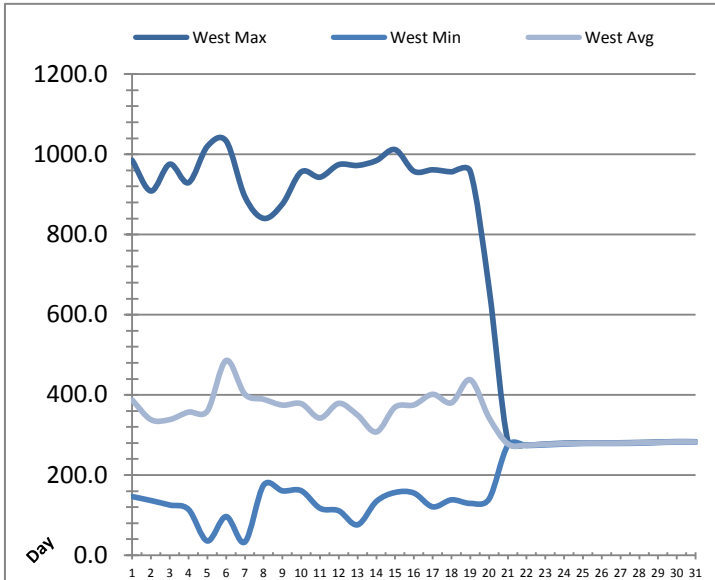


Date	Distribution Flow					
	FIT_7052 (East)		FIT_7062 (West)		Combined	
	(m³)	(L/s)	(m³)	(L/s)	(m³)	(L/s)
	Total	Peak	Total	Peak	Total	Peak
1	1345.6	50.1	2916.3	88.1	4261.9	99.4
2	1265.5	50.6	1863.4	86.2	3129.0	99.5
3	1533.4	54.0	1924.1	93.1	3457.5	99.1
4	1175.5	56.6	2189.6	92.0	3365.1	100.5
5	1052.3	51.5	2010.8	87.8	3063.1	100.0
6	1454.7	57.4	2465.3	92.7	3920.0	108.6
7	1272.3	46.7	2111.9	91.7	3384.2	106.0
8	1258.3	55.9	1810.7	123.6	3069.0	139.1
9	1373.4	50.5	2593.8	87.1	3967.2	101.8
10	1379.6	53.1	2039.7	86.3	3419.3	95.5
11	1258.5	55.5	1956.7	91.9	3215.2	97.4
12	1458.9	51.1	2474.3	87.1	3933.2	99.6
13	1224.9	51.6	2674.4	86.4	3899.3	100.3
14	1192.3	55.3	1577.9	90.4	2770.2	97.7
15	1562.6	56.2	1464.9	84.6	3027.6	100.6
16	1383.0	57.1	2150.6	95.5	3533.6	101.5
17	1648.4	57.4	2691.0	87.7	4339.4	100.9
18	1323.8	56.8	3137.7	87.7	4461.5	106.4
19	986.5	62.4	2493.0	93.5	3479.5	108.5
20	1229.1	61.4	2404.9	95.0	3634.0	108.6
21	1452.6	56.1	1565.3	78.7	3017.8	98.8
22	1423.8	55.7	3202.6	93.5	4626.4	99.8
23	1319.9	54.2	1867.5	87.6	3187.4	98.4
24	1595.8	55.2	2064.3	87.3	3660.1	95.9
25	1107.5	54.1	3161.3	88.2	4268.7	99.4
26	1219.2	55.0	1158.5	91.5	2377.7	97.7
27	1348.9	56.1	2370.9	86.8	3719.8	103.9
28	1130.4	62.0	2822.8	86.1	3953.2	109.7
29	1056.4	59.7	2143.3	93.5	3199.7	111.2
30	1637.2	61.0	2870.7	96.0	4507.9	109.2
31	919.3	43.1	2174.6	95.1	3093.9	108.8
Total	40589.9		70352.9		110942.8	
Average	1309.4	54.9	2269.4	90.7	3578.8	103.4
Maximum	1648.4	62.4	3202.6	123.6	4626.4	139.1
Date	17-Dec	19-Dec	22-Dec	8-Dec	22-Dec	8-Dec
Minimum	919.3		1158.5		2377.7	
Date	31-Dec		26-Dec		26-Dec	

Notes:

Low Lift Monthly Report

Month: December-17

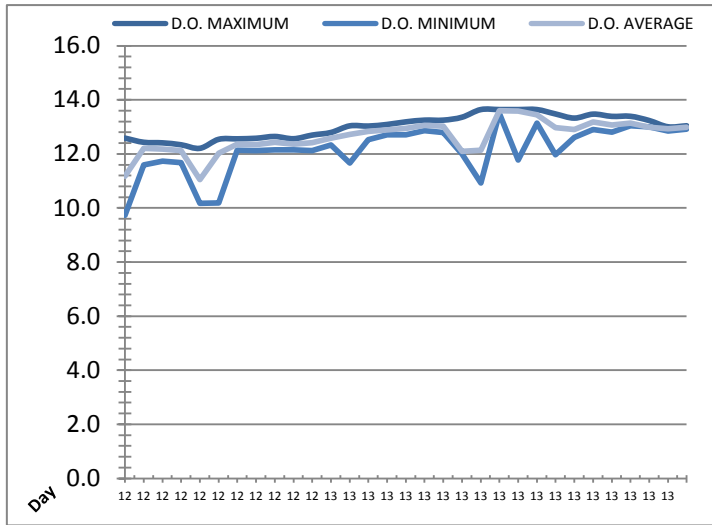
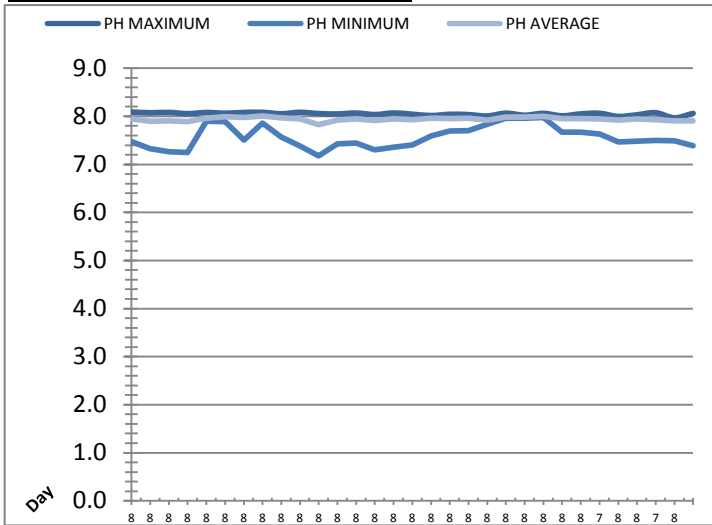


Date	West Train Header Pressure PIT_1018 (kPa)			East Train Header Pressure PIT_1028 (kPa)		
	Maximum	Minimum	Average	Maximum	Minimum	Average
1	985.0	146.4	387.2	980.1	112.0	369.7
2	908.5	136.5	338.2	921.4	104.5	317.5
3	975.5	125.3	338.5	968.4	89.8	318.1
4	929.4	114.3	357.2	914.8	77.8	340.0
5	1019.9	35.7	359.6	1018.7	3.9	361.4
6	1033.4	96.5	485.8	1028.2	59.0	473.1
7	894.4	33.2	401.6	879.5	0.8	379.0
8	840.3	175.2	389.0	836.4	144.6	365.1
9	876.2	160.7	374.5	872.6	129.8	355.1
10	956.3	161.0	378.1	946.5	130.3	359.9
11	943.0	117.2	342.2	939.8	82.3	323.0
12	974.4	111.0	379.0	968.6	75.4	364.6
13	972.3	76.0	349.5	1033.9	0.0	293.9
14	984.4	134.2	307.5	938.7	146.9	176.1
15	1011.8	156.7	369.6	938.9	123.2	253.9
16	957.7	155.2	375.0	955.5	124.9	356.9
17	961.4	120.9	401.5	955.6	84.5	386.8
18	956.3	138.3	380.3	957.0	103.5	364.0
19	957.5	129.4	437.8	918.6	0.0	305.2
20	666.5	140.3	343.0	906.3	0.0	385.9
21	285.4	273.9	277.8	876.1	0.6	387.6
22	275.5	273.7	274.5	678.6	253.2	420.1
23	277.4	275.4	276.8	683.5	251.6	375.2
24	279.5	277.3	278.2	682.7	248.9	405.1
25	280.1	278.9	279.6	682.8	265.2	405.7
26	280.1	279.0	279.6	691.6	299.3	561.6
27	280.5	279.1	279.8	588.3	455.5	547.8
28	281.3	279.7	280.5	497.0	306.3	472.3
29	282.4	281.2	281.8	679.5	280.4	420.6
30	283.5	282.2	282.7	679.3	268.3	448.8
31	283.2	282.2	282.5	579.0	483.0	542.5
Total						
Average	706.2	178.3	340.9	845.1	151.8	381.8
Maximum	1033.4		485.8	1033.9		561.6
Date	6-Dec		6-Dec	13-Dec		26-Dec
Minimum		33.2	274.5		0.0	176.1
Date		7-Dec	22-Dec		13-Dec	14-Dec

Notes:

Low Lift Monthly Report

Month: December-17

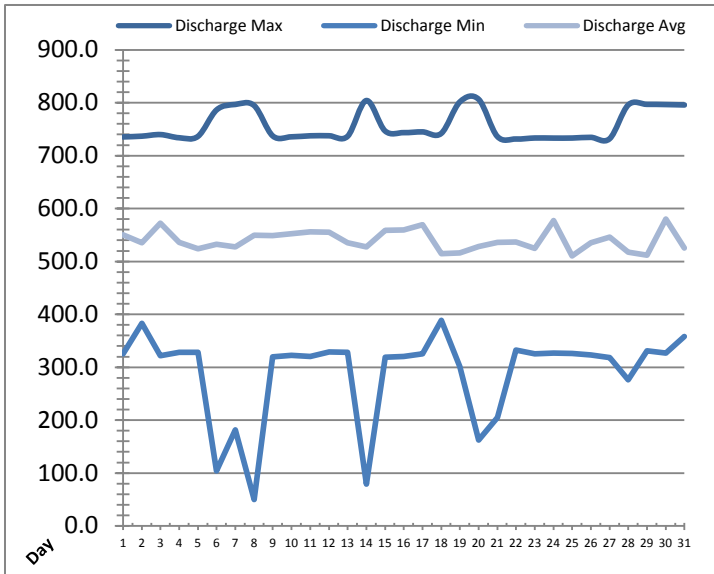
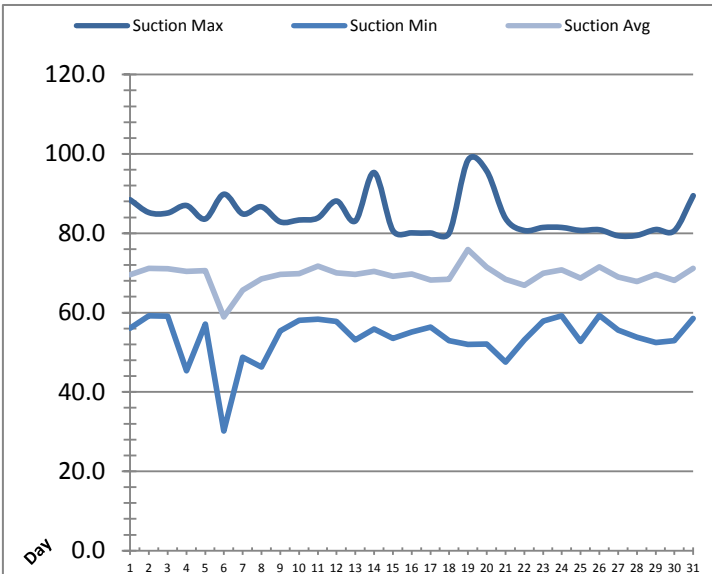


Date	Raw Water Sample Line					
	AIT_1402_PH (pH)			AIT_1402_DO (mg/L)		
	Maximum	Minimum	Average	Maximum	Minimum	Average
1	8.1	7.5	7.9	12.6	9.7	11.2
2	8.1	7.3	7.9	12.4	11.6	12.2
3	8.1	7.3	7.9	12.4	11.7	12.2
4	8.1	7.2	7.9	12.3	11.7	12.1
5	8.1	7.9	8.0	12.2	10.2	11.0
6	8.1	7.9	8.0	12.5	10.2	12.0
7	8.1	7.5	8.0	12.6	12.1	12.4
8	8.1	7.9	8.0	12.6	12.1	12.3
9	8.1	7.6	8.0	12.6	12.1	12.4
10	8.1	7.4	7.9	12.6	12.2	12.4
11	8.1	7.2	7.8	12.7	12.1	12.4
12	8.0	7.4	7.9	12.8	12.3	12.6
13	8.1	7.4	7.9	13.0	11.7	12.7
14	8.0	7.3	7.9	13.0	12.5	12.8
15	8.1	7.4	7.9	13.1	12.7	12.9
16	8.0	7.4	7.9	13.2	12.7	13.0
17	8.0	7.6	8.0	13.2	12.9	13.1
18	8.0	7.7	7.9	13.2	12.8	13.0
19	8.0	7.7	8.0	13.4	12.0	12.1
20	8.0	7.8	7.9	13.6	10.9	12.1
21	8.1	8.0	8.0	13.6	13.5	13.6
22	8.0	8.0	8.0	13.6	11.8	13.6
23	8.1	8.0	8.0	13.6	13.1	13.4
24	8.0	7.7	8.0	13.5	12.0	13.0
25	8.1	7.7	8.0	13.3	12.6	12.9
26	8.1	7.6	7.9	13.5	12.9	13.2
27	8.0	7.5	7.9	13.4	12.8	13.1
28	8.0	7.5	7.9	13.4	13.0	13.1
29	8.1	7.5	7.9	13.2	13.0	13.0
30	8.0	7.5	7.9	13.0	12.8	12.9
31	8.1	7.4	7.9	13.0	12.9	13.0
Total						
Average	8.1	7.6	7.9	13.0	12.2	12.6
Maximum	8.1		8.0	13.6		13.6
Date	1-Dec		8-Dec	20-Dec		21-Dec
Minimum		7.2	7.8		9.7	11.0
Date		11-Dec	11-Dec		1-Dec	5-Dec

Notes:

High Lift Monthly Report

Month: December-17

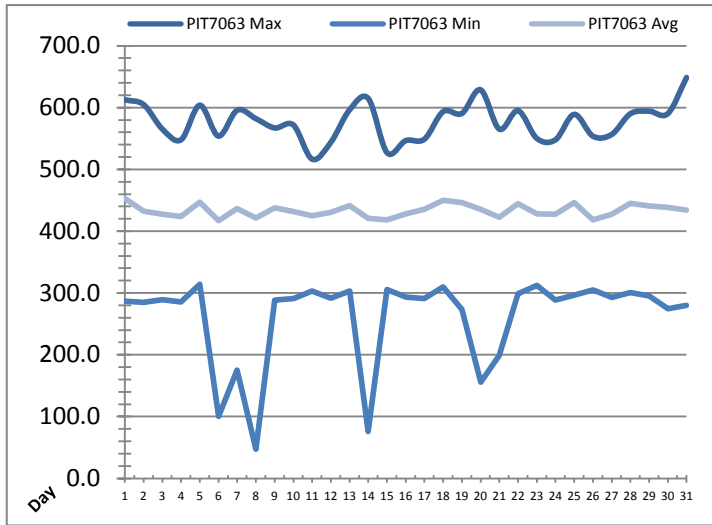
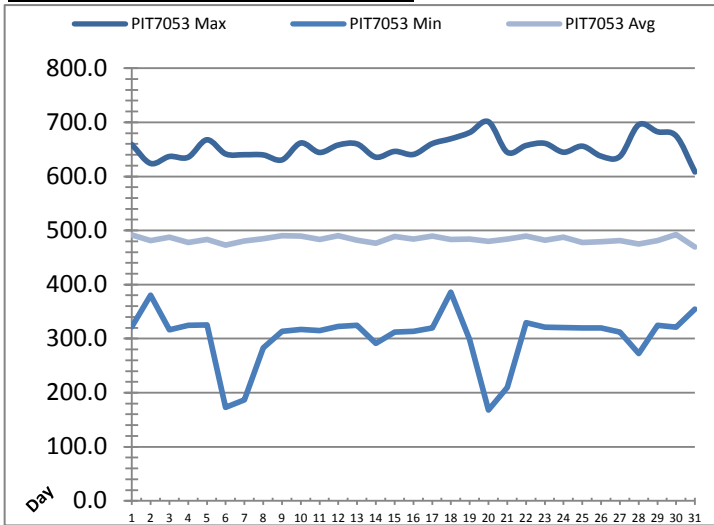


Date	Suction Header Pressure			Discharge Header Pressure		
	PIT_7002 (kPa)			PIT_7005 (kPa)		
	Maximum	Minimum	Average	Maximum	Minimum	Average
1	88.5	56.0	69.5	735.4	325.5	550.1
2	85.2	59.2	71.2	736.8	383.1	535.6
3	85.1	59.1	71.1	739.8	322.1	572.1
4	87.0	45.3	70.4	733.8	327.9	535.7
5	83.6	57.1	70.5	736.4	328.5	523.6
6	89.8	30.2	58.9	786.6	104.3	532.3
7	84.9	48.7	65.6	796.8	181.6	527.7
8	86.7	46.3	68.5	794.8	49.7	549.5
9	82.9	55.4	69.6	737.1	319.8	548.7
10	83.3	58.0	69.9	735.6	322.8	552.1
11	83.8	58.3	71.7	737.5	320.4	556.0
12	88.1	57.8	70.0	737.6	328.6	555.1
13	83.1	53.1	69.6	736.6	327.9	535.1
14	95.3	55.9	70.4	804.1	79.0	527.4
15	80.7	53.5	69.1	746.7	318.8	558.8
16	80.1	55.1	69.7	743.5	320.2	559.6
17	80.1	56.3	68.2	744.9	325.6	569.1
18	80.1	52.9	68.4	741.9	388.4	514.9
19	98.4	52.0	75.9	801.7	301.1	516.4
20	95.7	52.1	71.5	806.5	162.4	528.1
21	83.8	47.6	68.4	736.2	205.3	535.8
22	80.7	53.1	66.9	731.4	332.5	536.7
23	81.5	57.9	69.9	733.3	325.0	524.4
24	81.5	59.2	70.8	733.2	326.5	577.2
25	80.7	52.8	68.7	733.3	326.0	510.7
26	80.9	59.3	71.5	734.6	322.9	535.4
27	79.4	55.6	69.0	731.9	318.0	546.2
28	79.5	53.8	67.8	796.0	276.2	517.9
29	80.9	52.5	69.6	797.0	331.0	511.5
30	80.7	52.9	68.1	796.6	326.8	580.5
31	89.5	58.5	71.1	795.8	357.8	525.2
Total						
Average	84.6	53.7	69.4	756.6	289.9	540.3
Maximum	98.4		75.9	806.5		580.5
Date	19-Dec		19-Dec	20-Dec		30-Dec
Minimum		30.2	58.9		49.7	510.7
Date		6-Dec	6-Dec		8-Dec	25-Dec

Notes:

High Lift Monthly Report

Month: December-17



Date	Distribution Pressures					
	PIT_7053 (kPa)			PIT_7063 (kPa)		
	Maximum	Minimum	Average	Maximum	Minimum	Average
1	658.9	322.0	491.6	612.5	286.5	452.8
2	624.0	380.4	481.5	604.8	284.9	432.0
3	636.8	316.2	487.9	565.2	289.2	427.2
4	635.4	324.5	478.0	547.8	285.5	423.6
5	667.7	325.2	483.4	603.8	313.9	447.0
6	641.5	172.7	472.9	553.9	100.1	417.1
7	640.1	186.8	480.9	595.8	175.0	436.6
8	639.7	282.6	484.9	582.1	47.2	421.5
9	630.5	313.7	490.7	567.0	288.5	437.6
10	661.8	317.2	489.5	571.8	290.9	431.6
11	644.3	315.0	483.2	516.5	303.2	424.8
12	658.1	322.6	490.2	543.8	291.3	430.2
13	660.0	325.0	482.1	596.3	302.9	441.6
14	635.6	291.1	476.5	614.7	76.0	421.0
15	646.2	312.1	489.0	527.1	305.5	418.3
16	640.6	313.5	483.8	546.5	293.2	428.1
17	660.5	319.9	490.0	548.9	290.9	435.3
18	669.6	386.1	483.0	593.6	310.1	450.2
19	681.2	298.4	484.4	590.5	273.5	446.0
20	701.0	167.9	479.9	628.8	155.5	435.3
21	644.7	209.5	484.1	565.1	199.1	422.4
22	657.1	329.2	489.7	595.1	299.1	444.5
23	661.1	321.1	482.1	550.2	312.0	428.3
24	644.7	320.5	487.4	547.9	288.5	427.3
25	655.9	319.7	477.8	589.0	296.7	446.5
26	637.4	319.6	479.5	553.7	305.1	418.3
27	636.9	312.4	481.0	556.5	292.7	427.7
28	695.5	272.2	474.8	590.0	300.9	444.8
29	682.6	324.7	481.1	594.2	295.4	441.0
30	674.7	321.1	492.5	590.2	274.3	438.7
31	608.2	354.8	469.5	648.6	280.3	434.2
Total						
Average	652.7	303.1	483.3	577.2	261.5	433.3
Maximum	701.0		492.5	648.6		452.8
Date	20-Dec		30-Dec	31-Dec		1-Dec
Minimum		167.9	469.5		47.2	417.1
Date		20-Dec	31-Dec		8-Dec	6-Dec

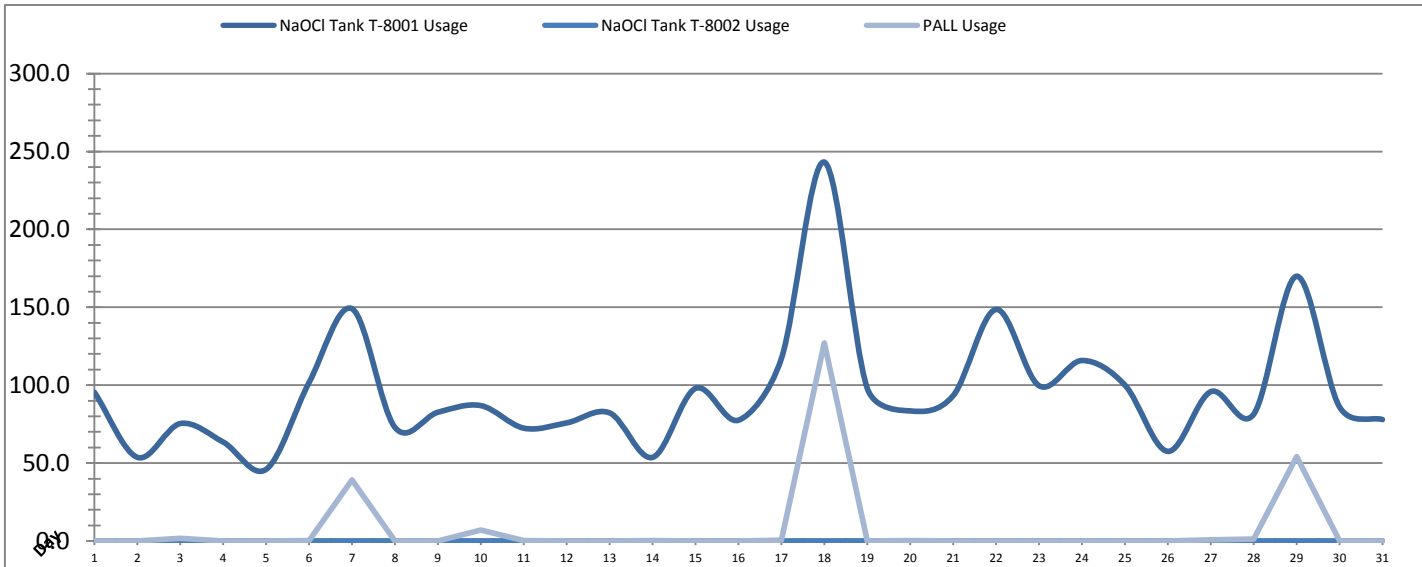
Notes:

8th: low pressure to due HLP shutting off due to low storage tank level, pressure drop <1min.

14th: low pressure for 10sec due to issue with flow control valve.

Chemical Usage Monthly Report

Month: December-17

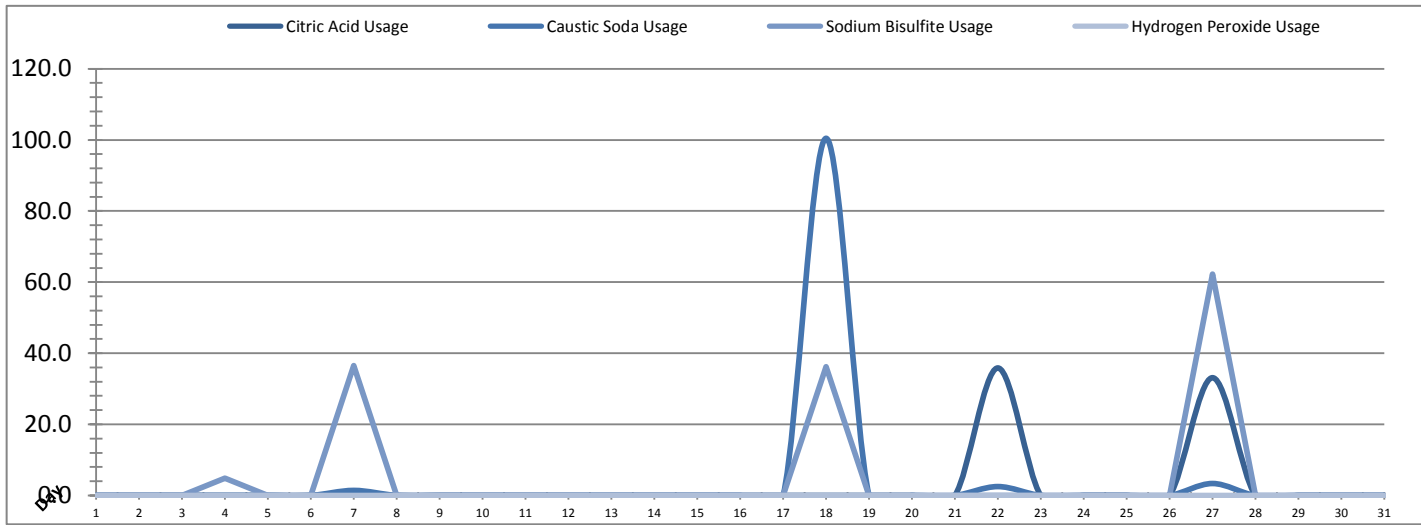


Date	PALL Usage	NaOCl Tank T-8001	NaOCl Tank T-8002
	PALL_HYPO_USAGE (L) Usage	LIT_8002 (Storage) (L) Usage	LIT_8004 (Day) (L) Usage
1	0.0	95.4	0.0
2	0.0	53.7	0.0
3	1.7	75.4	0.0
4	0.0	63.5	0.0
5	0.0	46.0	0.0
6	0.3	101.8	0.0
7	39.2	149.1	0.0
8	0.0	72.8	0.0
9	0.0	82.6	0.0
10	7.1	86.9	0.0
11	0.1	72.4	0.0
12	0.0	75.8	0.0
13	0.1	82.2	0.0
14	0.20	53.66	0.0
15	0.0	97.9	0.0
16	0.0	77.5	0.0
17	0.4	117.1	0.0
18	127.1	243.2	0.0
19	0.0	98.0	0.0
20	0.1	83.5	0.0
21	0.1	93.3	0.0
22	0.0	148.6	0.0
23	0.0	99.7	0.0
24	0.0	115.8	0.0
25	0.0	100.1	0.0
26	0.0	57.5	0.0
27	0.8	95.8	0.0
28	1.3	81.3	0.0
29	54.2	169.9	0.0
30	0.0	86.0	0.0
31	0.0	77.9	0.0
Total	232.9	2954.3	1.1
Average	7.5	95.3	0.0
Maximum	127.1	243.2	0.0
Date	18-Dec	18-Dec	1-Dec
Minimum	0.0	46.0	0.0
Date	2-Dec	5-Dec	1-Dec

Notes:	
Dosage (mg/L)=	Day Tank (L) x %conc. x 1000
	Membrane Flow (m3)
Chlorine Concentration:	12.0%

Chemical Usage Monthly Report

Month: December-17



Date	Citric Acid	Caustic Soda	Captor	Hydrogen Peroxide		Membrane Flow (m ³)
	TAGNAME (L) Usage	TAGNAME (L) Usage	TAGNAME (L) Usage	TAGNAME (L) Usage	TAGNAME (mg/L) Dose	
1	0.0	0.0	0.0	0.0	0.0	4259.674
2	0.0	0.0	0.0	0.0	0.0	3306.948
3	0.0	0.0	0.0	0.0	0.0	3323.999
4	0.0	0.0	4.9	0.0	0.0	3503.828
5	0.0	0.0	0.0	0.0	0.0	2810.736
6	0.0	0.0	0.0	0.0	0.0	3400.021
7	0.7	1.4	36.5	0.0	0.0	3231.474
8	0.0	0.0	0.0	0.0	0.0	3818.756
9	0.0	0.0	0.0	0.0	0.0	4020.450
10	0.0	0.0	0.0	0.0	0.0	4158.942
11	0.0	0.0	0.0	0.0	0.0	3353.181
12	0.0	0.0	0.0	0.0	0.0	4455.647
13	0.0	0.0	0.0	0.0	0.0	3940.271
14	0.0	0.0	0.0	0.0	0.0	2866.661
15	0.0	0.0	0.0	0.0	0.0	4459.551
16	0.0	0.0	0.0	0.0	0.0	4455.058
17	0.0	0.0	0.0	0.0	0.0	5490.293
18	0.0	100.5	36.2	0.0	0.0	5171.134
19	0.0	0.0	0.0	0.0	0.0	4954.220
20	0.0	0.0	0.0	0.0	0.0	3838.107
21	0.0	0.0	0.0	0.0	0.0	3995.401
22	35.9	2.5	0.0	0.0	0.0	6028.807
23	0.0	0.0	0.0	0.0	0.0	4131.066
24	0.0	0.0	0.0	0.0	0.0	4923.372
25	0.0	0.0	0.0	0.0	0.0	4922.183
26	0.0	0.0	0.0	0.0	0.0	3190.343
27	33.1	3.4	62.2	0.0	0.0	5006.039
28	0.0	0.0	0.0	0.0	0.0	4371.291
29	0.0	0.0	0.0	0.0	0.0	4494.899
30	0.0	0.0	0.0	0.0	0.0	5669.902
31	0.0	0.0	0.0	0.0	0.0	3597.331
Total	69.7	107.7	139.9	0.0		129149.6
Average	2.2	3.5	4.5	0.0	0.0	4166.1
Maximum	35.9	100.5	62.2	0.0	0.0	6028.8
Date	22-Dec	18-Dec	27-Dec	1-Dec	1-Dec	22-Dec
Minimum	0.0	0.0	0.0	0.0	0.0	2810.7
Date	1-Dec	1-Dec	1-Dec	1-Dec	1-Dec	5-Dec

Notes:	
Dosage (mg/L)=	Day Tank (L) x %conc. x 1000
	Membrane Flow (m3)
Peroxide Concentration:	50.0%

Runtimes Report

Month: December-17

Date	Daily Gen-Set Runtimes		Daily UV Runtimes		Daily PALL Runtimes				
	LLPS	WTP	UV #1	UV #2	Air Compressor #1	Air Compressor #2	CIP Neutralization	CIP Drain	CIP Recirc
	(Hrs)	(Hrs)	(Hrs)	(Hrs)	(Hrs)	(Hrs)	(Hrs)	(Hrs)	(Hrs)
1	0.0	0.0	0.0	0.0	23.4	1.0	0.0	0.0	0.0
2	0.0	0.0	0.0	0.0	1.0	22.9	0.0	0.0	0.0
3	0.0	0.0	0.0	0.0	23.4	1.0	0.0	0.0	0.0
4	0.0	0.0	0.0	0.0	1.0	22.9	0.0	0.1	0.0
5	0.0	0.0	0.0	0.0	23.8	0.6	0.0	0.0	0.0
6	0.0	0.0	0.0	0.0	24.3	0.1	0.0	0.0	0.0
7	0.0	0.0	0.0	0.0	24.3	0.1	0.2	0.1	0.1
8	0.0	0.0	0.0	0.0	15.1	9.1	0.0	0.0	0.0
9	0.0	0.0	0.0	0.0	23.3	1.0	0.0	0.0	0.0
10	0.0	0.0	0.0	0.0	1.1	22.9	0.0	0.0	0.0
11	0.0	0.0	0.0	0.0	23.3	1.0	0.2	0.1	0.8
12	0.0	0.0	0.0	0.0	1.1	22.9	0.0	0.1	0.5
13	0.0	0.0	0.0	0.0	23.3	1.0	0.0	0.0	0.0
14	0.0	0.0	0.0	0.0	1.1	22.9	0.0	0.0	0.0
15	0.0	0.0	0.0	0.0	0.0	23.9	0.0	0.0	0.0
16	0.0	0.0	0.0	0.0	23.4	1.0	0.0	0.0	0.0
17	0.0	0.0	0.0	0.0	1.0	23.1	0.0	0.0	0.0
18	0.0	0.0	0.0	0.0	0.0	24.4	0.2	0.0	0.2
19	0.0	0.0	0.0	0.0	0.0	24.3	0.0	0.0	0.0
20	0.0	0.0	0.0	0.0	9.4	15.0	0.0	0.0	0.0
21	0.0	0.0	0.0	0.0	1.0	23.4	0.0	0.0	0.0
22	0.0	0.0	0.0	0.0	23.4	1.0	0.2	0.1	0.8
23	0.0	0.0	0.0	0.0	1.0	23.4	0.0	0.0	0.0
24	0.0	0.0	0.0	0.0	23.4	1.0	0.0	0.0	0.0
25	0.0	0.0	0.0	0.0	1.0	23.3	0.0	0.0	0.0
26	0.0	0.0	0.0	0.0	23.4	1.1	0.0	0.0	0.0
27	0.0	0.0	0.0	0.0	1.0	23.3	0.2	0.2	0.8
28	1.1	1.1	0.0	0.0	23.3	1.0	0.0	0.0	0.0
29	0.0	0.0	0.0	0.0	24.4	0.1	0.0	0.0	0.1
30	0.0	0.0	0.0	0.0	24.3	0.1	0.0	0.0	0.0
31	0.0	0.0	0.0	0.0	24.3	0.1	0.0	0.0	0.0
Total	1.1	1.1	0.0	0.0	413.5	338.8	1.0	0.7	3.3

Notes:

Runtimes Report

Month: December-17

Daily

Date	PALL Runtimes						Process Drain	
	RFR Pump #1	RFR Pump #2	RF Pump #1	RF Pump #2	XR Pump #1	XR Pump #2	PDP9010 Pump	PDP9020 Pump
	(Hrs)	(Hrs)	(Hrs)	(Hrs)	(Hrs)	(Hrs)	(Hrs)	(Hrs)
1	5.4	5.4	0.9	0.8	0.0	16.4	1.7	2.2
2	4.0	4.1	0.6	0.8	0.0	13.2	1.7	2.2
3	4.3	4.2	0.6	0.6	0.0	13.7	1.8	2.1
4	3.7	3.7	0.8	0.9	0.0	13.4	1.9	2.4
5	3.6	3.7	0.6	0.6	0.0	7.6	1.9	2.5
6	1.4	1.2	0.8	0.8	0.1	5.8	2.2	2.6
7	2.5	2.8	0.7	0.7	0.0	7.6	1.9	2.4
8	4.8	4.6	0.7	0.6	0.0	12.8	1.7	2.3
9	4.9	5.4	0.9	0.8	0.0	15.1	1.8	2.2
10	5.3	5.1	0.8	0.8	0.0	16.1	1.8	2.6
11	3.8	3.6	0.6	0.7	0.0	13.3	1.8	2.3
12	5.4	6.0	0.9	0.8	0.0	17.2	1.8	2.5
13	5.3	4.5	0.8	0.8	0.0	15.5	1.8	2.3
14	3.1	3.5	0.6	0.5	0.0	11.3	2.2	2.4
15	0.3	0.2	0.7	0.7	0.0	15.8	1.8	2.1
16	0.0	0.0	0.8	0.7	0.0	16.3	1.7	2.2
17	0.0	0.0	0.7	0.8	0.0	20.0	1.7	2.1
18	0.0	0.0	0.8	0.8	0.0	14.8	1.8	2.3
19	0.0	0.0	0.7	0.8	0.0	19.9	1.7	2.3
20	0.0	0.0	0.6	0.7	0.0	13.2	2.0	2.5
21	0.0	0.0	0.6	0.5	0.0	12.5	2.0	2.6
22	0.0	0.0	1.0	1.0	0.0	20.0	2.2	2.7
23	0.0	0.0	0.6	0.6	0.0	14.8	2.0	2.6
24	0.0	0.0	0.8	0.7	0.0	18.0	2.1	2.7
25	0.0	0.0	0.8	0.7	0.0	16.4	2.1	2.6
26	0.0	0.0	0.5	0.5	0.0	11.5	2.0	2.6
27	0.0	0.0	0.8	0.8	0.0	18.5	2.2	2.6
28	3.2	3.3	0.6	0.6	0.0	16.0	2.1	2.7
29	0.0	0.0	0.7	0.8	0.0	15.1	2.1	2.6
30	0.2	0.1	0.9	0.9	0.0	19.7	2.1	2.7
31	0.0	0.0	0.5	0.5	0.0	13.1	2.1	2.6
Total	61.0	61.2	22.4	22.3	0.1	455.3	59.8	75.5

Notes:

Runtimes Report

Month: December-17

Daily

Date	Low Lift Pump Motor Runtimes				High Lift Pump Motor Runtimes			
	LLP1010 (Hrs)	LLP1020 (Hrs)	LLP1030 (Hrs)	LLP1040 (Hrs)	HLP7010 (Hrs)	HLP7020 (Hrs)	HLP7030 (Hrs)	HLP7040 (Hrs)
1	5.5	5.2	2.5	5.6	9.9	6.8	0.0	0.0
2	2.8	2.9	3.4	5.5	13.4	0.0	0.0	0.0
3	3.0	2.8	5.6	3.3	16.3	0.0	0.0	0.0
4	3.8	5.6	3.8	2.7	14.2	0.0	0.0	0.0
5	5.9	5.7	1.4	0.9	12.1	0.0	0.0	0.0
6	10.9	11.8	0.1	0.2	1.8	8.7	4.5	0.0
7	17.4	4.0	0.0	0.0	2.2	1.8	8.5	0.0
8	4.0	3.3	0.0	0.0	13.1	0.0	1.0	0.0
9	9.6	6.7	0.0	0.0	16.2	0.0	0.0	0.0
10	8.0	8.9	0.0	0.0	15.1	0.0	0.0	0.0
11	4.6	9.4	0.0	0.0	14.9	0.0	0.0	0.0
12	8.8	9.0	0.0	0.0	16.7	0.0	0.0	0.0
13	6.0	9.9	0.0	0.0	15.4	0.0	0.0	0.0
14	4.9	6.9	0.0	0.0	7.9	4.3	0.0	0.0
15	9.5	7.8	0.0	0.0	0.0	14.4	0.0	0.0
16	7.0	10.1	0.0	0.0	0.0	15.8	0.0	0.0
17	11.6	8.9	0.0	0.0	0.0	18.3	0.0	0.0
18	11.9	9.1	0.0	0.0	0.0	15.5	0.0	0.0
19	2.9	17.8	0.3	0.0	0.0	6.5	5.3	0.0
20	0.3	9.2	4.8	4.3	6.4	0.3	6.4	0.0
21	0.0	0.0	3.7	13.1	5.4	7.9	0.0	0.0
22	0.0	0.0	9.0	13.6	17.4	0.0	0.0	0.0
23	0.0	0.0	6.9	8.3	13.1	0.0	0.0	0.0
24	0.0	0.0	7.1	11.2	17.3	0.0	0.0	0.0
25	0.0	0.0	8.4	10.6	15.0	0.0	0.0	0.0
26	0.0	0.0	6.7	5.5	11.6	0.0	0.0	0.0
27	0.0	0.0	8.6	10.4	16.0	0.0	0.0	0.0
28	0.0	0.0	7.8	8.3	3.5	0.0	9.7	0.0
29	0.0	0.0	9.8	7.4	0.0	0.0	10.4	0.0
30	0.0	0.0	12.6	9.0	0.0	0.0	17.1	0.0
31	0.0	0.0	7.8	5.7	0.0	0.0	11.1	0.0
Total	138.4	155.0	110.3	125.6	274.9	100.3	74.0	0.0

Notes:
HLP 4 out of service

Plant Internal Flow Report

Month: December-17

Date	Settling Tank Level		Process Drain Tank		Settling Tank Flow		Potable Water Flow		Non-Potable Flow	
	T-9003 (m)		T-9001 (m)		FIT_9005 (m ³) (L/s)		FIT_7082 (m ³) (L/s)		FIT_7092 (m ³) (L/s)	
	Maximum	Minimum	Maximum	Minimum	Total	Peak	Total	Peak	Total	Peak
1	2.2	0.2	0.8	0.4	60.2	15.7	0.1	1.2	0.0	0.0
2	2.2	0.1	0.8	0.4	50.6	15.7	0.0	0.0	0.0	0.0
3	2.2	0.1	0.8	0.4	53.9	15.7	0.0	0.0	0.0	0.0
4	2.2	0.1	2.0	0.4	131.2	15.7	0.1	1.3	0.0	0.0
5	2.2	0.1	1.5	0.4	112.9	15.7	0.3	1.2	0.0	0.0
6	2.2	0.3	2.1	0.4	363.5	15.7	0.1	1.4	0.0	0.0
7	2.2	0.1	2.0	0.4	174.9	15.7	0.3	1.4	18.1	23.2
8	2.2	0.3	1.0	0.4	38.7	15.7	0.1	1.3	0.0	0.0
9	2.2	0.1	0.8	0.4	42.2	15.7	0.0	0.0	0.0	0.0
10	2.2	0.1	1.6	0.4	46.2	15.7	0.0	0.0	0.0	0.0
11	2.2	0.3	0.9	0.4	77.8	15.7	0.1	1.3	19.5	17.2
12	2.2	0.1	1.5	0.4	40.3	15.7	0.1	1.4	0.6	1.3
13	2.2	0.1	0.8	0.4	29.9	12.6	0.1	1.3	0.2	1.2
14	2.2	0.1	2.1	0.4	63.3	15.7	0.1	1.3	0.1	0.8
15	2.2	0.0	1.6	0.4	226.0	15.7	0.0	1.3	0.1	0.8
16	2.2	0.3	1.2	0.4	284.1	15.7	0.0	0.0	0.0	0.0
17	2.2	0.1	0.8	0.4	318.4	15.7	0.0	0.0	0.0	0.0
18	2.2	0.2	1.6	0.4	336.7	15.7	0.1	1.5	11.0	22.9
19	2.2	0.1	0.8	0.4	264.6	15.7	0.1	1.3	0.0	0.0
20	2.2	0.2	1.7	0.4	226.5	15.7	0.1	1.2	0.0	0.0
21	2.2	0.1	0.9	0.4	245.3	15.7	0.5	1.4	0.6	1.1
22	2.2	0.1	0.8	0.4	265.5	15.7	0.3	1.1	19.0	17.6
23	2.2	0.3	0.8	0.4	199.2	15.7	0.0	1.3	0.0	0.0
24	2.2	0.1	0.8	0.4	235.7	15.7	0.0	1.2	0.0	0.0
25	2.2	0.3	0.8	0.4	227.2	15.7	0.1	0.6	0.9	1.3
26	2.2	0.1	0.8	0.4	127.2	15.7	0.0	0.0	0.0	0.0
27	2.2	0.2	1.0	0.4	209.0	15.7	0.1	1.3	19.6	17.5
28	2.2	0.0	0.9	0.4	136.8	15.7	0.1	1.3	0.0	0.0
29	2.2	0.2	0.8	0.4	217.1	15.7	0.1	1.3	5.7	22.4
30	2.2	0.1	0.8	0.4	251.0	15.7	0.0	0.3	0.2	1.1
31	2.2	0.1	0.8	0.4	147.2	15.7	0.0	0.5	0.0	0.0
Total					5203.1		2.8		95.7	
Average	2.2	0.1	1.2	0.4	167.8	15.6	0.1	0.9	3.1	4.1
Maximum	2.2		2.1		363.5		0.5		19.6	
Date	1-Dec		6-Dec		6-Dec		21-Dec		27-Dec	
Minimum		0.0		0.4		12.6		0.0		0.0
Date		28-Dec		7-Dec		13-Dec		2-Dec		1-Dec

Notes: