

Municipality of West Elgin - Tri County Water System

Goto:

Month:

Year:

Date is Set to: **February-17**

Limit	Low	High	
Raw Water Chlorine Residual:	0.00	5.00	mg/L
Pre-Strainer Chlorine Residual:	0.00	5.00	mg/L
UV Inlet Chlorine Residual:	0.00	5.00	mg/L
Post Treatment Chlorine Residual:	1.00	5.00	mg/L
Treated Chlorine Residual:	1.00	2.50	mg/L
Distribution Chlorine Residual:	1.00	2.50	mg/L
Limit		High	
WTP C of A		156.0	L/s
WTP Permit to Take Water		13500.0	m ³
Limit	Low	High	
System Pressure Limits:	50.0	1034.0	Kpa

Compliance Report

Low Lift Monthly Report

>>>

Membranes Monthly Report

>>>

UV System Monthly Report

>>>

Plant Quality Report

>>>

Raw Well/Treated Storage Report

>>>

High Lift Monthly Report

>>>

Operational Report

Low Lift Monthly Report

>>>

High Lift Monthly Report

>>>

Chemical Usage Monthly Report

>>>

Runtimes Report

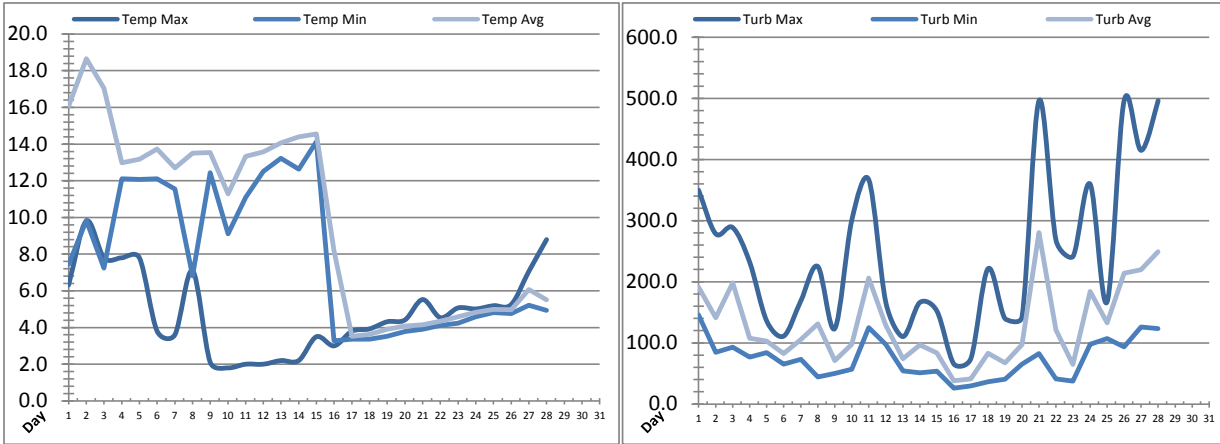
>>>

Plant Internal Flow Report

>>>

Low Lift Monthly Report

Month: February-17

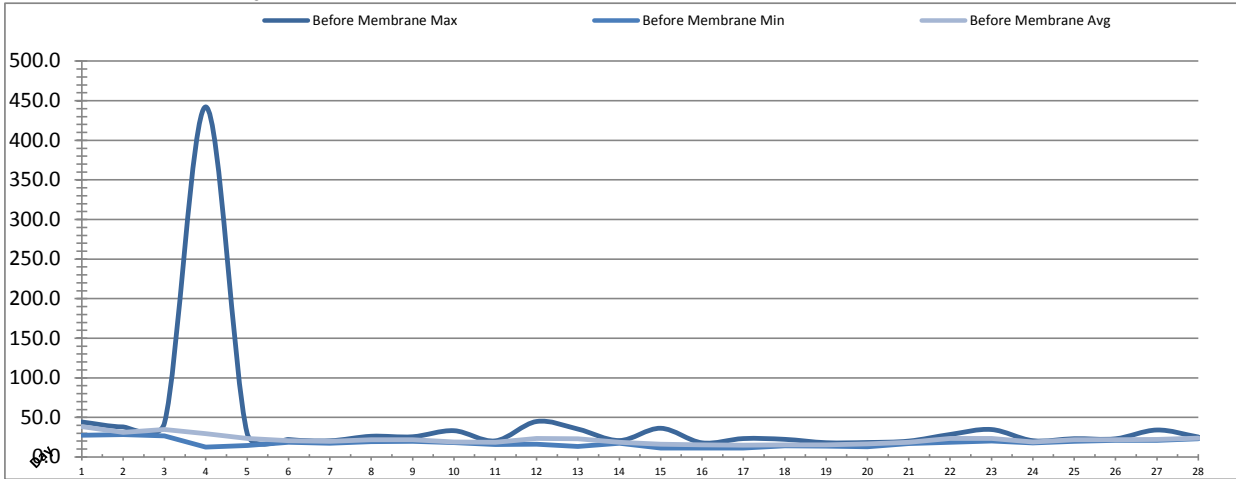


Date	Raw Water Temperature			Raw Water Turbidity		
	TIT_1403 (°C)			AIT_1404 (NTU)		
	Maximum	Minimum	Average	Maximum	Minimum	Average
1	6.3	7.4	16.1	349.67	146.03	191.31
2	9.8	9.8	18.7	278.57	84.84	141.25
3	7.8	7.2	17.1	288.64	93.23	197.99
4	7.8	12.1	13.0	232.05	77.00	107.90
5	7.8	12.1	13.2	135.87	83.98	102.71
6	3.8	12.1	13.7	111.09	65.37	82.56
7	3.6	11.6	12.7	168.43	73.09	105.75
8	7.1	6.8	13.5	225.07	44.45	131.26
9	2.1	12.4	13.5	123.48	49.86	71.17
10	1.8	9.1	11.3	300.80	56.78	97.84
11	2.0	11.1	13.3	366.65	124.98	205.97
12	2.0	12.5	13.6	166.11	97.87	129.10
13	2.2	13.2	14.1	110.31	54.50	74.40
14	2.2	12.6	14.4	166.17	51.36	96.90
15	3.5	14.1	14.5	152.19	53.72	83.47
16	3.0	3.3	8.2	65.42	25.84	37.97
17	3.8	3.4	3.5	74.67	29.73	41.14
18	3.9	3.4	3.6	221.24	36.70	83.11
19	4.3	3.5	3.9	139.81	40.68	67.21
20	4.4	3.8	4.1	142.18	65.43	97.00
21	5.5	3.9	4.1	496.15	82.47	280.39
22	4.5	4.1	4.3	267.76	41.40	121.17
23	5.1	4.2	4.6	241.45	37.55	64.86
24	5.0	4.6	4.8	359.88	97.97	183.96
25	5.2	4.8	5.0	166.98	107.28	132.76
26	5.3	4.8	5.0	496.15	93.30	213.81
27	7.1	5.2	6.1	414.86	125.85	219.55
28	8.8	4.9	5.5	496.13	123.54	248.83
Total						
Average	4.8	7.8	9.8	241.3	73.7	129.0
Maximum	9.8		18.7	496.1		280.4
Date	2-Feb		2-Feb	21-Feb		21-Feb
Minimum		3.3	3.5		25.8	38.0
Date		16-Feb	17-Feb		16-Feb	16-Feb

Notes:

Membranes Monthly Report

Month: February-17



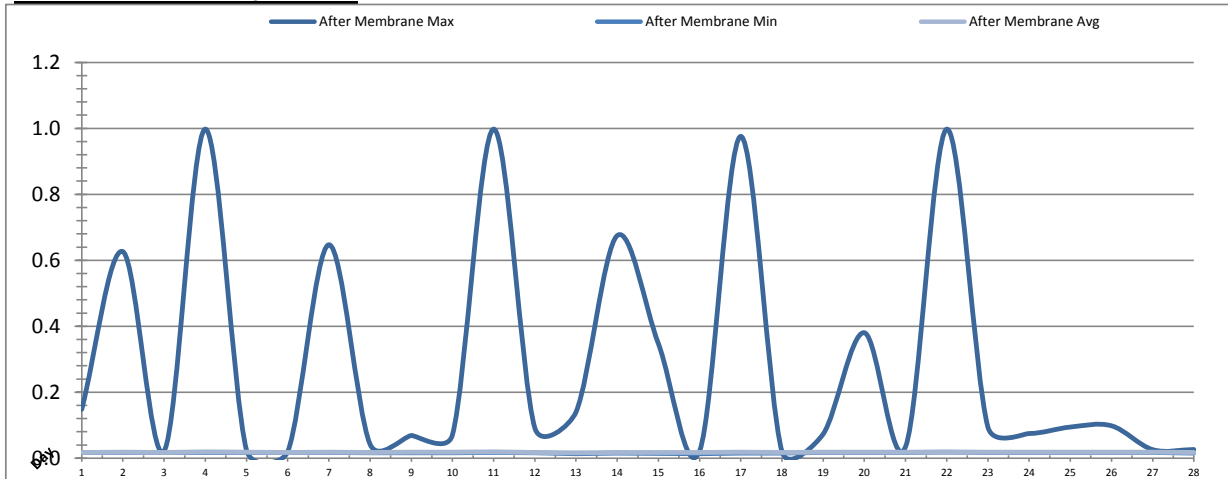
Date	Turbidity Before Membrane			Rack #1 Turbidity			Rack #2 Turbidity		
	PALL_FEED_AIT2006_Value NTU			RACK1_NTU_Value NTU			RACK2_NTU_Value NTU		
	Maximum	Minimum	Average	Maximum	Minimum	Average	Maximum	Minimum	Average
1	44.22	27.60	38.54	0.01	0.01	0.01	0.01	0.00	0.01
2	38.00	28.38	31.26	0.01	0.01	0.01	0.01	0.00	0.01
3	42.96	26.52	34.62	0.01	0.01	0.01	0.31	0.01	0.01
4	442.22	12.34	29.37	0.01	0.01	0.01	0.01	0.01	0.01
5	29.77	14.46	23.24	0.01	0.01	0.01	0.01	0.01	0.01
6	22.10	18.45	20.60	0.36	0.01	0.01	0.01	0.00	0.01
7	20.47	17.47	19.62	0.01	0.01	0.01	0.01	0.01	0.01
8	26.20	19.21	21.94	0.01	0.01	0.01	0.01	0.01	0.01
9	25.57	19.92	21.87	0.02	0.01	0.01	0.15	0.00	0.01
10	33.23	18.08	18.86	0.01	0.01	0.01	0.01	0.01	0.01
11	20.37	15.60	18.57	0.01	0.01	0.01	0.01	0.01	0.01
12	44.85	16.19	23.22	0.01	0.01	0.01	0.01	0.01	0.01
13	35.25	13.34	22.91	0.40	0.01	0.01	0.01	0.01	0.01
14	20.78	17.41	18.50	0.01	0.01	0.01	0.01	0.01	0.01
15	36.29	11.19	16.26	0.01	0.01	0.01	0.05	0.01	0.01
16	17.90	11.26	15.28	0.01	0.01	0.01	0.01	0.01	0.01
17	23.28	11.32	15.08	0.01	0.01	0.01	0.01	0.00	0.01
18	22.30	14.05	15.53	0.01	0.01	0.01	0.01	0.00	0.01
19	18.06	13.82	15.32	0.01	0.01	0.01	0.01	0.01	0.01
20	18.31	12.81	16.65	0.01	0.01	0.01	0.01	0.01	0.01
21	20.10	16.94	18.63	0.01	0.01	0.01	0.01	0.01	0.01
22	28.44	18.51	23.37	0.46	0.01	0.01	0.01	0.01	0.01
23	34.70	20.33	23.25	0.01	0.01	0.01	0.01	0.01	0.01
24	20.61	17.58	18.92	0.01	0.01	0.01	0.01	0.01	0.01
25	23.12	19.84	21.76	0.01	0.01	0.01	0.01	0.01	0.01
26	22.98	20.92	21.76	0.01	0.01	0.01	0.01	0.00	0.01
27	34.09	20.92	22.19	0.01	0.01	0.01	0.16	0.01	0.01
28	25.28	23.00	23.87	0.09	0.01	0.01	0.01	0.01	0.01
Total									
Average	42.6	17.8	21.8	0.1	0.0	0.0	0.0	0.0	0.0
Maximum	442.2		38.5	0.5		0.0	0.3		0.0
Date	4-Feb		1-Feb	22-Feb		6-Feb	3-Feb		3-Feb
Minimum		11.2	15.1		0.0	0.0		0.0	0.0
Date		15-Feb	17-Feb		1-Feb	3-Feb		1-Feb	17-Feb

Notes:

Rack 1: 6th >0.1ntu for 8min; 13th >0.1ntu for 6min post EFM; 22nd >0.1ntu 4min post EFM
 Rack 2: 3rd >0.1ntu for 9.5min post EFM; 9th >0.1ntu Post EFM; 27th >0.1ntu for 10min post EFM

Membranes Monthly Report

Month: February-17



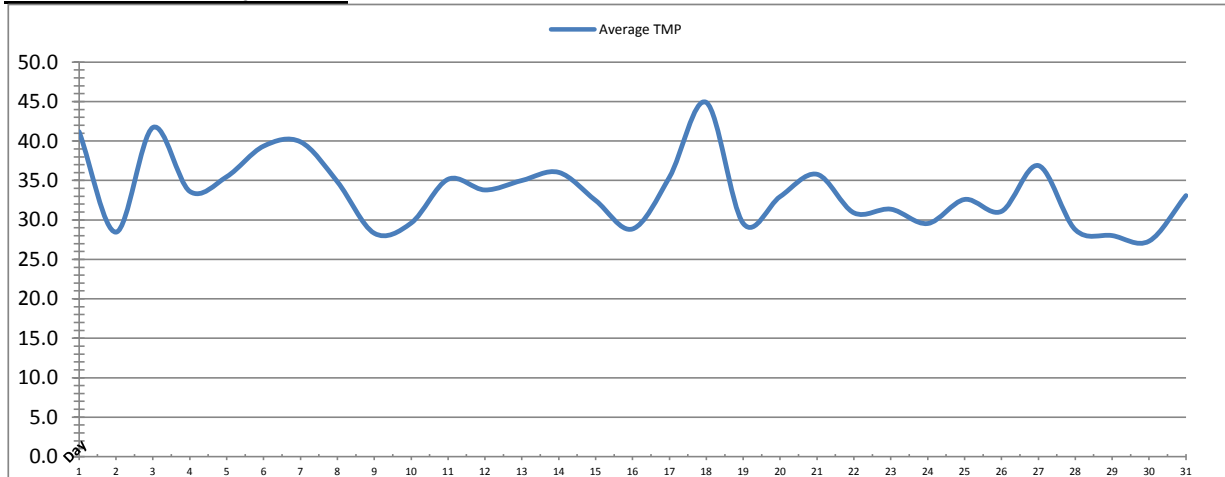
Date	Rack #3 Turbidity			Rack #4 Turbidity			Turbidity After Membranes		
	RACK3_NTU_Value			RACK4_NTU_Value			PALL_FILT_AIT5001_Value		
	Maximum	Minimum	Average	Maximum	Minimum	Average	Maximum	Minimum	Average
1				0.05	0.02	0.02	0.15	0.02	0.02
2				0.03	0.02	0.02	0.63	0.02	0.02
3				0.02	0.02	0.02	0.02	0.02	0.02
4				0.02	0.02	0.02	1.00	0.02	0.02
5				0.05	0.02	0.02	0.02	0.02	0.02
6				0.04	0.02	0.02	0.02	0.02	0.02
7				0.07	0.02	0.02	0.65	0.02	0.02
8				0.02	0.02	0.02	0.04	0.02	0.02
9				0.02	0.02	0.02	0.07	0.02	0.02
10				0.02	0.02	0.02	0.07	0.02	0.02
11				0.09	0.02	0.02	1.00	0.02	0.02
12				0.04	0.02	0.02	0.09	0.02	0.02
13				0.11	0.02	0.02	0.14	0.01	0.02
14				0.02	0.02	0.02	0.67	0.01	0.02
15				0.03	0.02	0.02	0.35	0.01	0.02
16				0.02	0.02	0.02	0.02	0.01	0.02
17				0.03	0.02	0.02	0.98	0.02	0.02
18				0.03	0.02	0.02	0.02	0.02	0.02
19				0.04	0.02	0.02	0.07	0.02	0.02
20				0.02	0.02	0.02	0.38	0.02	0.02
21				0.02	0.02	0.02	0.03	0.02	0.02
22				0.15	0.02	0.02	1.00	0.02	0.02
23				0.02	0.02	0.02	0.09	0.02	0.02
24				0.02	0.02	0.02	0.07	0.02	0.02
25				0.02	0.02	0.02	0.09	0.02	0.02
26				0.02	0.02	0.02	0.10	0.02	0.02
27				0.02	0.02	0.02	0.03	0.02	0.02
28				0.05	0.02	0.02	0.03	0.02	0.02
Total									
Average	#DIV/0!	#DIV/0!	#DIV/0!	0.0	0.0	0.0	0.3	0.0	0.0
Maximum	0.0		0.0	0.1		0.0	1.0		0.0
Date	#N/A		#N/A	22-Feb		11-Feb	11-Feb		4-Feb
Minimum		0.0	0.0		0.0	0.0		0.0	0.0
Date		#N/A	#N/A		3-Feb	23-Feb		13-Feb	13-Feb

Notes:

Rack 3: Offline due to turbidity meter failure; replacement on order
 Rack 4: 13th >0.1ntu for 3min due to post EFM; 22nd >0.1ntu for 4.5min post EFM
 Turbidity after membrane-spikes repairs necessary, waiting on parts.

Membranes Monthly Report

Month: February-17

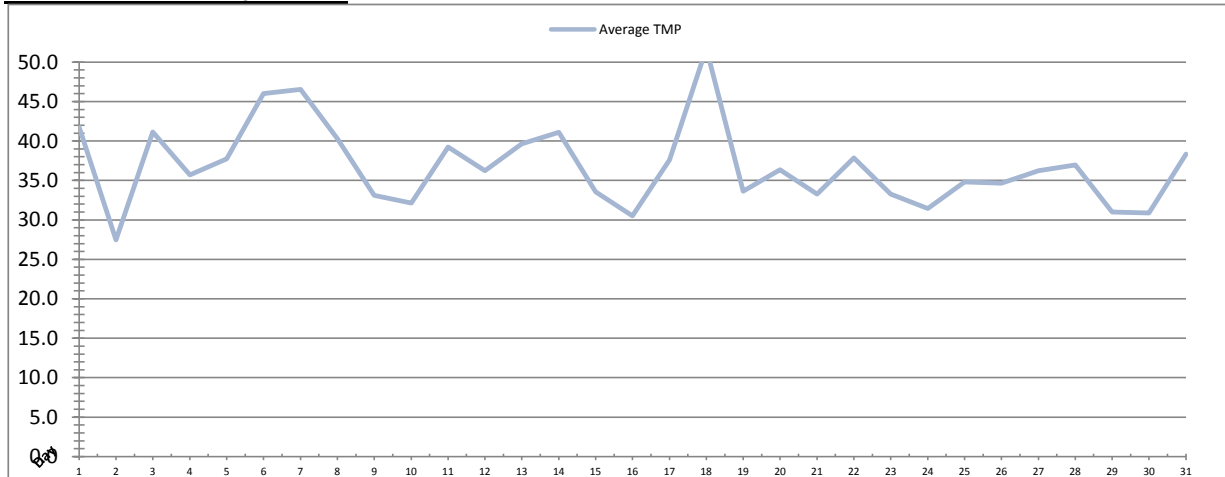


Integrity Test Rack 1									
Date	Initial Pressure (kPa)	Final Pressure (kPa)	Test Duration (sec)	Change in Pressure (kPa)	UCL	Within UCL	Average TMP (kPa)	Max TMP (kPa)	
1	195.1	194.0	300.0	1.1	2.0	✓ 2.0	41.2	151.2	
2	194.9	193.7	300.0	1.2	2.0	✓ 2.0	28.5	116.6	
3	194.8	194.1	300.0	0.7	2.0	✓ 2.0	41.7	163.8	
4	195.0	193.8	300.0	1.2	2.0	✓ 2.0	33.6	134.4	
5	195.2	193.9	300.0	1.3	2.0	✓ 2.0	35.5	160.5	
6	195.1	193.9	300.0	1.2	2.0	✓ 2.0	39.4	139.7	
7	195.1	193.8	300.0	1.3	2.0	✓ 2.0	39.9	162.1	
8	194.7	193.6	300.0	1.2	2.0	✓ 2.0	34.8	115.1	
9	194.9	193.7	300.0	1.3	2.0	✓ 2.0	28.3	111.9	
10	194.9	194.3	300.0	0.6	2.0	✓ 2.0	29.6	100.0	
11	194.9	194.1	300.0	0.7	2.0	✓ 2.0	35.2	150.7	
12	195.2	194.0	300.0	1.2	2.0	✓ 2.0	33.8	90.4	
13	194.9	193.7	300.0	1.2	2.0	✓ 2.0	35.0	149.5	
14	194.9	194.1	300.0	0.9	2.0	✓ 2.0	36.0	96.8	
15	194.9	194.4	300.0	0.5	2.0	✓ 2.0	32.5	103.1	
16	194.9	193.6	300.0	1.3	2.0	✓ 2.0	28.9	92.4	
17	195.0	193.9	300.0	1.1	2.0	✓ 2.0	35.4	133.2	
18	195.0	194.2	300.0	0.8	2.0	✓ 2.0	44.9	167.9	
19	194.6	193.3	300.0	1.2	2.0	✓ 2.0	29.6	99.8	
20	194.9	194.2	300.0	0.7	2.0	✓ 2.0	33.0	107.5	
21	194.9	193.6	300.0	1.3	2.0	✓ 2.0	35.8	95.2	
22	194.7	194.1	300.0	0.6	2.0	✓ 2.0	30.9	135.9	
23	195.1	193.9	300.0	1.2	2.0	✓ 2.0	31.4	69.2	
24	195.0	193.9	300.0	1.2	2.0	✓ 2.0	29.5	72.3	
25	194.9	193.6	300.0	1.2	2.0	✓ 2.0	32.6	129.2	
26	194.7	194.0	300.0	0.6	2.0	✓ 2.0	31.1	136.3	
27	194.9	193.6	300.0	1.3	2.0	✓ 2.0	36.9	127.5	
28	194.7	194.0	300.0	0.7	2.0	✓ 2.0	28.8	141.6	
	195.1	193.9	300.0	1.2	2.0	✓ 2.0	28.0	74.9	
	195.2	194.4	300.0	0.8	2.0	✓ 2.0	27.3	77.2	
	194.6	193.5	300.0	1.1	2.0	✓ 2.0	33.1	137.7	
Total									
Average	194.9	193.9	300.0	1.0	2.0	2.0	34.1	123.3	
Maximum	195.2	194.4	300.0	1.3	2.0	2.0	44.9	167.9	
Date	5-Feb	15-Feb	1-Feb	16-Feb	1-Feb	1-Feb	18-Feb	18-Feb	
Minimum	194.6	193.3	300.0	0.5	2.0	2.0	28.3	69.2	
Date	19-Feb	19-Feb	1-Feb	15-Feb	1-Feb	1-Feb	9-Feb	23-Feb	

Notes:

Membranes Monthly Report

Month: February-17

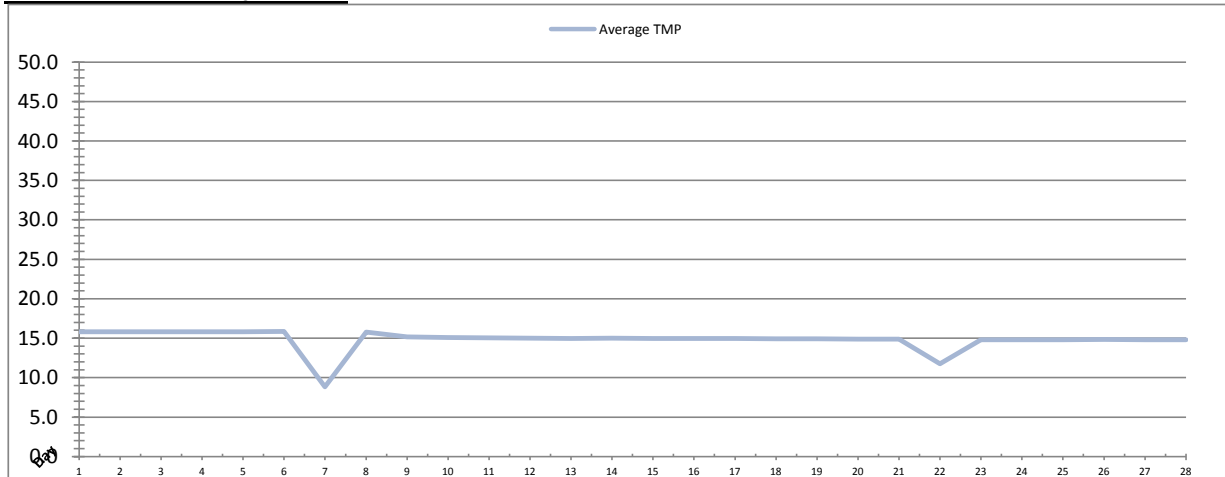


Date	Integrity Test Rack 2							
	Initial Pressure (kPa)	Final Pressure (kPa)	Test Duration (sec)	Change in Pressure (kPa)	UCL	Within UCL	Average TMP (kPa)	Max TMP (kPa)
1	200.7	200.0	300.0	0.8	2.0	✓ 2.0	41.8	160.2
2	201.6	200.8	300.0	0.9	2.0	✓ 2.0	27.5	164.8
3	201.6	200.6	300.0	1.0	2.0	✓ 2.0	41.2	148.7
4	201.7	200.6	300.0	1.1	2.0	✓ 2.0	35.7	118.9
5	201.6	200.5	300.0	1.1	2.0	✓ 2.0	37.7	111.7
6	201.6	200.6	300.0	1.1	2.0	✓ 2.0	46.0	182.6
7	201.6	200.5	300.0	1.1	2.0	✓ 2.0	46.5	186.9
8	201.6	200.5	300.0	1.1	2.0	✓ 2.0	40.3	142.4
9	201.6	200.5	300.0	1.1	2.0	✓ 2.0	33.1	115.8
10	201.7	200.5	300.0	1.2	2.0	✓ 2.0	32.1	127.1
11	201.3	200.3	300.0	1.0	2.0	✓ 2.0	39.2	124.5
12	201.5	200.4	300.0	1.1	2.0	✓ 2.0	36.2	118.6
13	201.4	200.3	300.0	1.1	2.0	✓ 2.0	39.6	152.0
14	201.4	200.3	300.0	1.1	2.0	✓ 2.0	41.1	124.9
15	201.6	200.5	300.0	1.1	2.0	✓ 2.0	33.6	129.8
16	201.6	200.5	300.0	1.1	2.0	✓ 2.0	30.5	126.2
17	201.8	200.7	300.0	1.1	2.0	✓ 2.0	37.6	130.2
18	201.8	200.7	300.0	1.1	2.0	✓ 2.0	51.7	165.7
19	201.6	200.7	300.0	0.9	2.0	✓ 2.0	33.6	135.2
20	201.5	200.5	300.0	1.0	2.0	✓ 2.0	36.3	100.5
21	201.5	200.4	300.0	1.1	2.0	✓ 2.0	33.3	140.8
22	201.7	200.7	300.0	1.1	2.0	✓ 2.0	37.8	139.0
23	201.6	200.5	300.0	1.1	2.0	✓ 2.0	33.3	108.8
24	201.6	200.5	300.0	1.1	2.0	✓ 2.0	31.4	123.5
25	200.8	200.0	300.0	0.9	2.0	✓ 2.0	34.8	91.3
26	201.6	200.5	300.0	1.1	2.0	✓ 2.0	34.7	137.0
27	201.0	200.0	300.0	1.0	2.0	✓ 2.0	36.2	149.4
28	201.3	200.3	300.0	1.0	2.0	✓ 2.0	37.0	142.5
	201.3	200.5	300.0	0.9	2.0	✓ 2.0	31.0	111.6
	201.4	200.5	300.0	0.9	2.0	✓ 2.0	30.9	85.6
	201.2	200.3	300.0	0.9	2.0	✓ 2.0	38.3	138.0
Total								
Average	201.5	200.5	300.0	1.0	2.0	2.0	37.1	135.7
Maximum	201.8	200.8	300.0	1.2	2.0	2.0	51.7	186.9
Date	17-Feb	2-Feb	1-Feb	10-Feb	1-Feb	1-Feb	18-Feb	7-Feb
Minimum	200.7	200.0	300.0	0.8	2.0	2.0	27.5	91.3
Date	1-Feb	1-Feb	1-Feb	1-Feb	1-Feb	1-Feb	2-Feb	25-Feb

Notes:

Membranes Monthly Report

Month: February-17



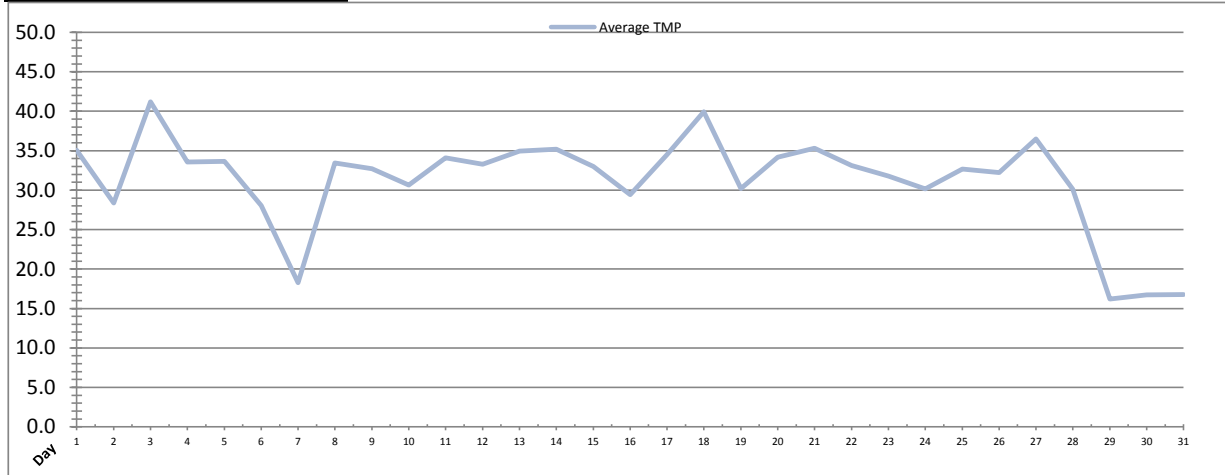
Integrity Test Rack 3								
Date	Initial Pressure (kPa)	Final Pressure (kPa)	Test Duration (sec)	Change in Pressure (kPa)	UCL	Within UCL	Average TMP (kPa)	Max TMP (kPa)
1					2.0	✓ 2.0	15.8	16.0
2					2.0	✓ 2.0	15.8	16.0
3					2.0	✓ 2.0	15.8	16.0
4					2.0	✓ 2.0	15.8	16.0
5					2.0	✓ 2.0	15.8	16.0
6					2.0	✓ 2.0	15.8	16.0
7					2.0	✓ 2.0	8.8	16.0
8					2.0	✓ 2.0	15.8	18.4
9					2.0	✓ 2.0	15.2	15.5
10					2.0	✓ 2.0	15.1	15.3
11					2.0	✓ 2.0	15.1	15.3
12					2.0	✓ 2.0	15.0	15.2
13					2.0	✓ 2.0	15.0	15.2
14					2.0	✓ 2.0	15.0	15.2
15					2.0	✓ 2.0	15.0	15.3
16					2.0	✓ 2.0	15.0	15.2
17					2.0	✓ 2.0	15.0	15.2
18					2.0	✓ 2.0	14.9	15.2
19					2.0	✓ 2.0	14.9	15.1
20					2.0	✓ 2.0	14.9	15.1
21					2.0	✓ 2.0	14.9	15.1
22					2.0	✓ 2.0	11.8	15.1
23					2.0	✓ 2.0	14.8	15.0
24					2.0	✓ 2.0	14.8	15.0
25					2.0	✓ 2.0	14.8	15.0
26					2.0	✓ 2.0	14.8	15.0
27					2.0	✓ 2.0	14.8	15.0
28					2.0	✓ 2.0	14.8	15.0
Total								
Average	#DIV/0!	#DIV/0!	#DIV/0!	#DIV/0!	2.0	2.0	14.8	15.5
Maximum	0.0	0.0	0.0	0.0	2.0	2.0	15.8	18.4
Date	#N/A	#N/A	#N/A	#N/A	1-Feb	1-Feb	6-Feb	8-Feb
Minimum	0.0	0.0	0.0	0.0	2.0	2.0	8.8	15.0
Date	#N/A	#N/A	#N/A	#N/A	1-Feb	1-Feb	7-Feb	28-Feb

Notes:

Rack 3 offline

Membranes Monthly Report

Month: February-17



Integrity Test Rack 4									
Date	Initial Pressure (kPa)	Final Pressure (kPa)	Test Duration (sec)	Change in Pressure (kPa)	UCL	Within UCL	Average TMP (kPa)	Max TMP (kPa)	
1	195.5	194.1	300.0	1.4	2.0	✓ 2.0	35.1	120.9	
2	195.3	194.3	300.0	1.0	2.0	✓ 2.0	28.4	112.2	
3	195.4	194.0	300.0	1.4	2.0	✓ 2.0	41.2	105.1	
4	195.3	194.3	300.0	1.0	2.0	✓ 2.0	33.6	111.3	
5	195.1	193.6	300.0	1.5	2.0	✓ 2.0	33.7	90.1	
6	195.8	194.0	300.0	1.8	2.0	✓ 2.0	28.1	133.2	
7	195.2	193.9	300.0	1.3	2.0	✓ 2.0	18.3	103.6	
8	195.3	193.9	300.0	1.4	2.0	✓ 2.0	33.5	100.5	
9	195.4	193.9	300.0	1.5	2.0	✓ 2.0	32.7	122.4	
10	195.2	194.2	300.0	1.0	2.0	✓ 2.0	30.7	99.3	
11	195.0	194.0	300.0	1.0	2.0	✓ 2.0	34.1	109.5	
12	195.5	194.4	300.0	1.1	2.0	✓ 2.0	33.3	96.9	
13	195.1	193.9	300.0	1.2	2.0	✓ 2.0	34.9	111.7	
14	195.4	194.3	300.0	1.1	2.0	✓ 2.0	35.2	85.4	
15	195.9	194.5	300.0	1.3	2.0	✓ 2.0	33.0	110.7	
16	195.1	193.7	300.0	1.4	2.0	✓ 2.0	29.4	90.2	
17	195.3	194.3	300.0	1.0	2.0	✓ 2.0	34.5	136.6	
18	195.5	194.0	300.0	1.4	2.0	✓ 2.0	39.9	157.3	
19	195.2	193.9	300.0	1.3	2.0	✓ 2.0	30.2	108.1	
20	195.5	194.4	300.0	1.1	2.0	✓ 2.0	34.2	87.7	
21	195.4	194.1	300.0	1.3	2.0	✓ 2.0	35.3	97.6	
22	195.0	193.7	300.0	1.3	2.0	✓ 2.0	33.1	103.6	
23	195.1	193.7	300.0	1.4	2.0	✓ 2.0	31.8	70.0	
24	195.5	194.3	300.0	1.2	2.0	✓ 2.0	30.1	92.5	
25	194.9	193.6	300.0	1.3	2.0	✓ 2.0	32.7	73.1	
26	195.2	193.8	300.0	1.4	2.0	✓ 2.0	32.2	80.9	
27	195.2	194.1	300.0	1.1	2.0	✓ 2.0	36.5	101.2	
28	195.1	193.9	300.0	1.2	2.0	✓ 2.0	30.1	125.7	
	195.2	194.0	300.0	1.2	2.0	✓ 2.0	16.2	32.4	
	195.0	193.7	300.0	1.3	2.0	✓ 2.0	16.7	34.5	
	195.4	194.2	300.0	1.1	2.0	✓ 2.0	16.8	31.9	
Total									
Average	195.3	194.0	300.0	1.3	2.0	2.0	32.7	104.9	
Maximum	195.9	194.5	300.0	1.8	2.0	2.0	41.2	157.3	
Date	15-Feb	15-Feb	1-Feb	6-Feb	1-Feb	1-Feb	3-Feb	18-Feb	
Minimum	194.9	193.6	300.0	1.0	2.0	2.0	18.3	70.0	
Date	25-Feb	25-Feb	1-Feb	2-Feb	1-Feb	1-Feb	7-Feb	23-Feb	

Notes:

Membranes Monthly Report

Month: February-17

Date	Membranes Monthly Performance							
	Rack 1 >0.1 NTU (Minutes)	Rack 1 Forward Flow (Minutes)	Rack 2 >0.1 NTU (Minutes)	Rack 2 Forward Flow (Minutes)	Rack 3 >0.1 NTU (Minutes)	Rack 3 Forward Flow (Minutes)	Rack 4 >0.1 NTU (Minutes)	Rack 4 Forward Flow (Minutes)
1	0.0	844.3	0.0	838.5	0.0	0.0	0.0	757.1
2	0.0	520.5	0.0	520.0	0.0	0.0	0.0	515.1
3	0.0	975.4	9.5	908.5	0.0	0.0	0.0	975.4
4	0.0	777.4	0.0	776.1	0.0	0.0	0.0	777.4
5	0.0	775.2	0.0	774.3	0.0	0.0	0.0	770.2
6	8.1	796.2	0.0	857.4	0.0	0.0	0.0	664.1
7	0.0	814.2	0.0	815.6	0.0	0.0	0.0	360.5
8	0.0	887.5	0.0	888.0	0.0	0.0	0.0	884.6
9	0.0	720.2	7.2	738.5	0.0	0.0	0.0	788.1
10	0.0	704.6	0.0	705.6	0.0	0.0	0.0	707.4
11	0.0	842.1	0.0	840.3	0.0	0.0	0.0	841.0
12	0.0	770.2	0.0	768.4	0.0	0.0	0.0	771.1
13	6.3	826.3	0.0	886.1	0.0	0.0	3.2	810.1
14	0.0	993.6	0.0	994.4	0.0	0.0	0.0	996.2
15	0.0	794.5	0.0	745.1	0.0	0.0	0.0	796.3
16	0.0	638.2	0.0	635.5	0.0	0.0	0.0	635.5
17	0.0	869.0	0.0	864.1	0.0	0.0	0.0	868.1
18	0.0	1003.4	0.0	998.6	0.0	0.0	0.0	1008.3
19	0.0	645.3	0.0	648.0	0.0	0.0	0.0	643.6
20	0.0	747.4	0.0	753.2	0.0	0.0	0.0	750.5
21	0.0	859.5	0.0	797.6	0.0	0.0	0.0	858.1
22	4.0	784.4	0.0	925.5	0.0	0.0	4.5	853.5
23	0.0	873.5	0.0	870.4	0.0	0.0	0.0	868.4
24	0.0	739.2	0.0	741.4	0.0	0.0	0.0	738.5
25	0.0	835.3	0.0	833.1	0.0	0.0	0.0	833.1
26	0.0	773.3	0.0	779.1	0.0	0.0	0.0	782.3
27	0.0	911.2	10.4	834.3	0.0	0.0	0.0	910.3
28	0.0	721.5	0.0	852.3	0.0	0.0	0.0	732.3
Total	18.5	22443.3	27.1	22589.7	0.0	0.0	7.7	21897.1
Percent	0.1		0.1		#DIV/0!		0.0	
Maximum	8.1	1003.4	10.4	998.6	0.0	0.0	4.5	1008.3
Date	6-Feb	18-Feb	27-Feb	18-Feb	1-Feb	1-Feb	22-Feb	18-Feb
Minimum	0.0	520.5	0.0	520.0	0.0	0.0	0.0	360.5
Date	1-Feb	2-Feb	1-Feb	2-Feb	1-Feb	1-Feb	1-Feb	7-Feb

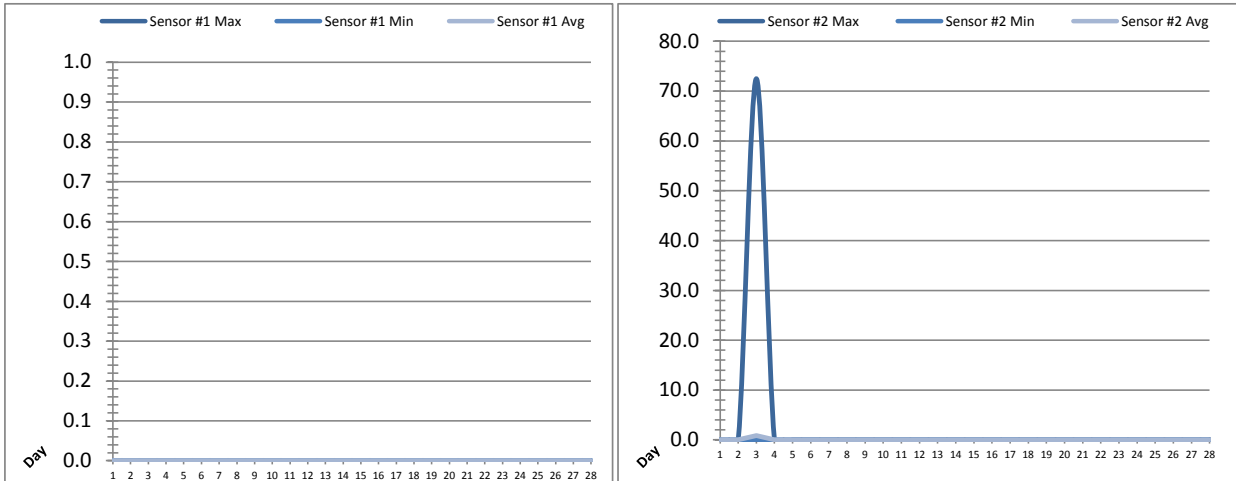
Notes:

Met filter performance criteria of 99% readings less than 0.1ntu for the month.

Note: Rack 3 offline.

UV System Monthly Report

Month: February-17

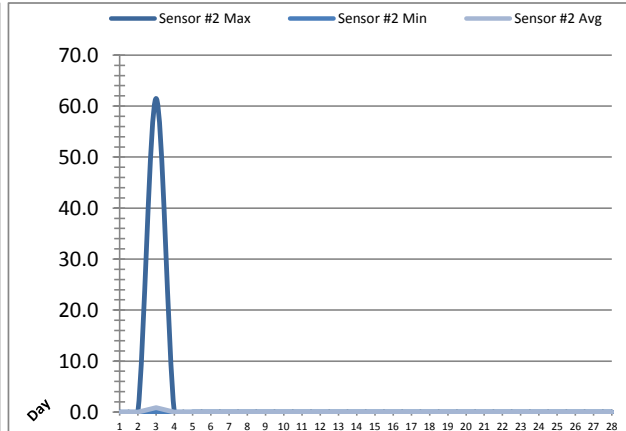
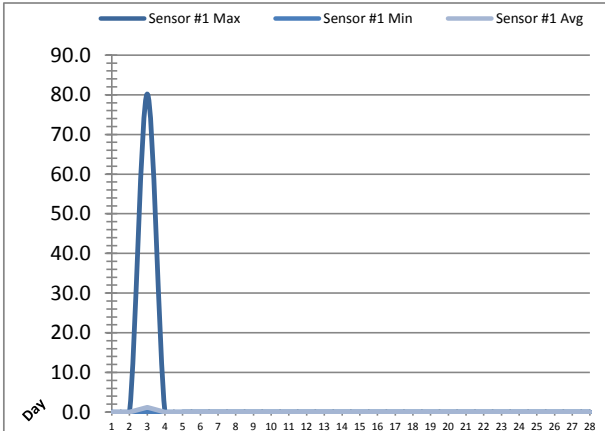


Date	UV Reactor 1					
	Intensity Sensor 1 (mW/cm ²)			Intensity Sensor 2 (mW/cm ²)		
	Maximum	Minimum	Average	Maximum	Minimum	Average
1	0.0	0.0	0.0	0.0	0.0	0.0
2	0.0	0.0	0.0	0.0	0.0	0.0
3	0.0	0.0	0.0	72.5	0.0	0.8
4	0.0	0.0	0.0	0.0	0.0	0.0
5	0.0	0.0	0.0	0.0	0.0	0.0
6	0.0	0.0	0.0	0.0	0.0	0.0
7	0.0	0.0	0.0	0.0	0.0	0.0
8	0.0	0.0	0.0	0.0	0.0	0.0
9	0.0	0.0	0.0	0.0	0.0	0.0
10	0.0	0.0	0.0	0.0	0.0	0.0
11	0.0	0.0	0.0	0.0	0.0	0.0
12	0.0	0.0	0.0	0.0	0.0	0.0
13	0.0	0.0	0.0	0.0	0.0	0.0
14	0.0	0.0	0.0	0.0	0.0	0.0
15	0.0	0.0	0.0	0.0	0.0	0.0
16	0.0	0.0	0.0	0.0	0.0	0.0
17	0.0	0.0	0.0	0.0	0.0	0.0
18	0.0	0.0	0.0	0.0	0.0	0.0
19	0.0	0.0	0.0	0.0	0.0	0.0
20	0.0	0.0	0.0	0.0	0.0	0.0
21	0.0	0.0	0.0	0.0	0.0	0.0
22	0.0	0.0	0.0	0.0	0.0	0.0
23	0.0	0.0	0.0	0.0	0.0	0.0
24	0.0	0.0	0.0	0.0	0.0	0.0
25	0.0	0.0	0.0	0.0	0.0	0.0
26	0.0	0.0	0.0	0.0	0.0	0.0
27	0.0	0.0	0.0	0.0	0.0	0.0
28	0.0	0.0	0.0	0.0	0.0	0.0
	0.0	0.0	0.0	0.0	0.0	0.0
	0.0	0.0	0.0	69.9	0.0	2.1
	0.0	0.0	0.0	0.0	0.0	0.0
Total						
Average	0.0	0.0	0.0	2.6	0.0	0.0
Maximum	0.0		0.0	72.5		0.8
Date	1-Feb		1-Feb	3-Feb		3-Feb
Minimum		0.0			0.0	
Date		1-Feb	1-Feb		1-Feb	1-Feb

Notes:

UV System Monthly Report

Month: February-17

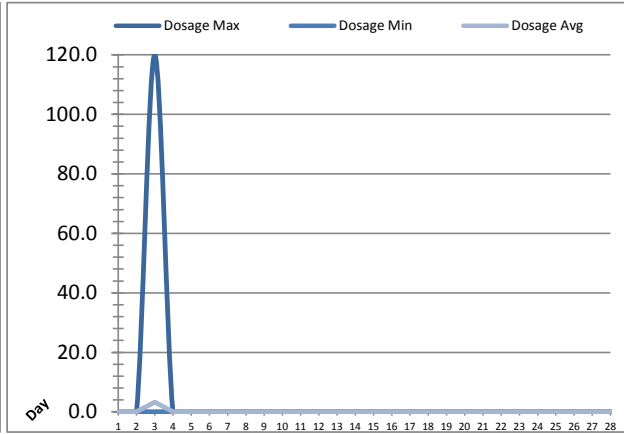
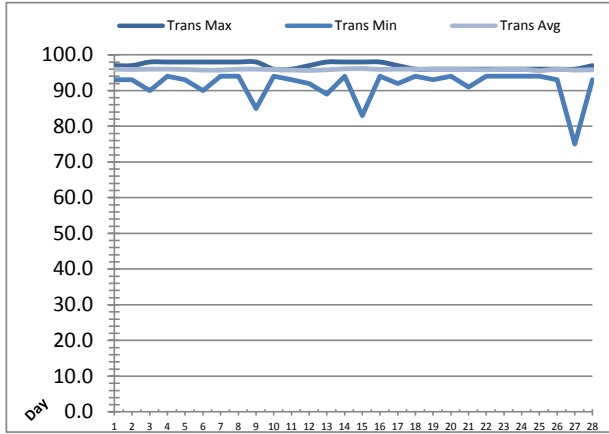


UV Reactor 2						
Date	Intensity Sensor 1 (mW/cm²)			Intensity Sensor 2 (mW/cm²)		
	Maximum	Minimum	Average	Maximum	Minimum	Average
1	0.0	0.0	0.0	0.0	0.0	0.0
2	0.0	0.0	0.0	0.0	0.0	0.0
3	80.2	0.0	1.2	61.5	0.0	0.9
4	0.0	0.0	0.0	0.0	0.0	0.0
5	0.0	0.0	0.0	0.0	0.0	0.0
6	0.0	0.0	0.0	0.0	0.0	0.0
7	0.0	0.0	0.0	0.0	0.0	0.0
8	0.0	0.0	0.0	0.0	0.0	0.0
9	0.0	0.0	0.0	0.0	0.0	0.0
10	0.0	0.0	0.0	0.0	0.0	0.0
11	0.0	0.0	0.0	0.0	0.0	0.0
12	0.0	0.0	0.0	0.0	0.0	0.0
13	0.0	0.0	0.0	0.0	0.0	0.0
14	0.0	0.0	0.0	0.0	0.0	0.0
15	0.0	0.0	0.0	0.0	0.0	0.0
16	0.0	0.0	0.0	0.0	0.0	0.0
17	0.0	0.0	0.0	0.0	0.0	0.0
18	0.0	0.0	0.0	0.0	0.0	0.0
19	0.0	0.0	0.0	0.0	0.0	0.0
20	0.0	0.0	0.0	0.0	0.0	0.0
21	0.0	0.0	0.0	0.0	0.0	0.0
22	0.0	0.0	0.0	0.0	0.0	0.0
23	0.0	0.0	0.0	0.0	0.0	0.0
24	0.0	0.0	0.0	0.0	0.0	0.0
25	0.0	0.0	0.0	0.0	0.0	0.0
26	0.0	0.0	0.0	0.0	0.0	0.0
27	0.0	0.0	0.0	0.0	0.0	0.0
28	0.0	0.0	0.0	0.0	0.0	0.0
	0.0	0.0	0.0	0.0	0.0	0.0
	78.7	0.0	4.0	60.3	0.0	2.6
	0.0	0.0	0.0	0.0	0.0	0.0
Total						
Average	2.9	0.0	0.0	2.2	0.0	0.0
Maximum	80.2		1.2	61.5		0.9
Date	3-Feb		3-Feb	3-Feb		3-Feb
Minimum		0.0	0.0		0.0	0.0
Date		1-Feb	1-Feb		1-Feb	1-Feb

Notes:

UV System Monthly Report

Month: February-17

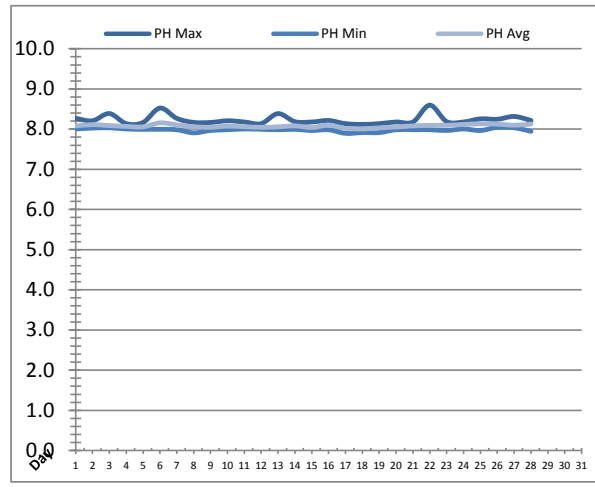
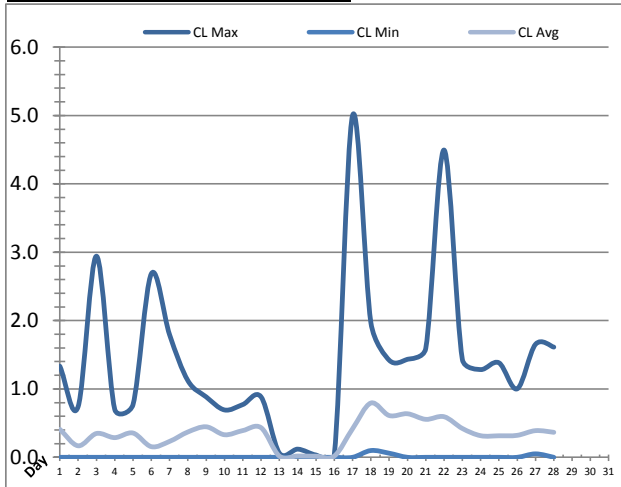


UV System							
Date	Transmittance (%)			Dosage (mJ/cm ²)			Inlet Flow (L/s)
	Maximum	Minimum	Average	Maximum	Minimum	Average	Maximum
1	97.00	93.00	95.97	0.0	0.0	0.0	92.8
2	97.00	93.00	95.86	0.0	0.0	0.0	87.3
3	98.00	90.00	95.99	120.0	0.0	3.3	91.3
4	98.00	94.00	95.99	0.0	0.0	0.0	83.7
5	98.00	93.00	95.92	0.0	0.0	0.0	90.0
6	98.00	90.00	95.69	0.0	0.0	0.0	83.7
7	98.00	94.00	95.76	0.0	0.0	0.0	87.6
8	98.00	94.00	96.00	0.0	0.0	0.0	86.9
9	98.00	85.00	95.96	0.0	0.0	0.0	95.5
10	96.00	94.00	95.92	0.0	0.0	0.0	87.9
11	96.00	93.00	95.69	0.0	0.0	0.0	84.1
12	97.00	92.00	95.65	0.0	0.0	0.0	89.2
13	98.00	89.00	95.80	0.0	0.0	0.0	82.1
14	98.00	94.00	96.07	0.0	0.0	0.0	87.0
15	98.00	83.00	96.20	0.0	0.0	0.0	91.8
16	98.00	94.00	95.91	0.0	0.0	0.0	81.5
17	97.00	92.00	95.98	0.0	0.0	0.0	99.5
18	96.00	94.00	95.99	0.0	0.0	0.0	129.6
19	96.00	93.00	95.97	0.0	0.0	0.0	86.5
20	96.00	94.00	95.98	0.0	0.0	0.0	89.0
21	96.00	91.00	95.89	0.0	0.0	0.0	89.5
22	96.00	94.00	95.86	0.0	0.0	0.0	79.1
23	96.00	94.00	95.99	0.0	0.0	0.0	76.3
24	96.00	94.00	95.98	0.0	0.0	0.0	76.1
25	96.00	94.00	95.56	0.0	0.0	0.0	76.2
26	96.00	93.00	95.98	0.0	0.0	0.0	74.1
27	96.00	75.00	95.70	0.0	0.0	0.0	73.9
28	97.00	93.00	95.79	0.0	0.0	0.0	74.2
	96.00	93.00	95.29	0.0	0.0	0.0	85.2
	96.00	93.00	95.69	120.0	0.0	12.3	86.2
	96.00	91.00	95.93	0.0	0.0	0.0	139.2
Total							
Average	96.96	91.64	95.90	4.3	0.0	0.1	88.3
Maximum	98.00		96.20	120.0		3.3	139.2
Date	3-Feb		15-Feb	3-Feb		3-Feb	
Minimum		75.00	95.56		0.0	0.0	
Date		27-Feb	25-Feb		1-Feb	1-Feb	

Notes:

Plant Quality Report

Month: February-17

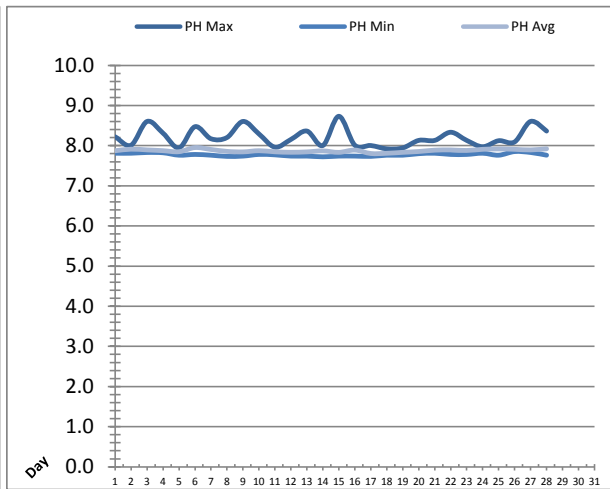
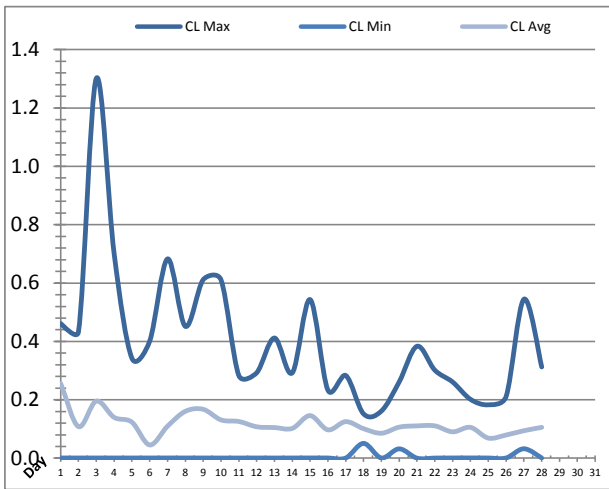


Date	Strainer Chlorine Residual			Strainer pH		
	AIT_2003_CL (ppm)			AIT_2003_PH		
	Maximum	Minimum	Average	Maximum	Minimum	Average
1	1.33	0.00	0.41	8.27	8.00	8.08
2	0.74	0.00	0.17	8.21	8.03	8.11
3	2.94	0.00	0.35	8.39	8.03	8.09
4	0.70	0.00	0.29	8.14	8.00	8.07
5	0.77	0.00	0.36	8.17	7.99	8.06
6	2.68	0.00	0.16	8.53	8.00	8.16
7	1.79	0.00	0.23	8.27	7.98	8.11
8	1.12	0.00	0.37	8.17	7.91	8.06
9	0.88	0.00	0.45	8.17	7.97	8.05
10	0.69	0.00	0.33	8.21	7.99	8.08
11	0.77	0.00	0.39	8.18	8.00	8.06
12	0.88	0.00	0.43	8.14	8.00	8.05
13	0.06	0.00	0.02	8.39	7.98	8.06
14	0.12	0.00	0.02	8.19	8.00	8.08
15	0.03	0.00	0.02	8.18	7.97	8.04
16	0.03	0.00	0.02	8.21	7.98	8.10
17	5.00	0.00	0.42	8.14	7.90	8.02
18	1.97	0.10	0.79	8.12	7.91	8.01
19	1.42	0.06	0.61	8.14	7.91	8.03
20	1.43	0.00	0.64	8.18	7.99	8.05
21	1.59	0.00	0.56	8.18	7.99	8.08
22	4.50	0.00	0.59	8.60	7.99	8.09
23	1.43	0.00	0.42	8.19	7.97	8.10
24	1.28	0.00	0.32	8.18	8.00	8.12
25	1.38	0.00	0.32	8.26	7.97	8.13
26	1.00	0.00	0.32	8.25	8.05	8.13
27	1.65	0.05	0.39	8.32	8.03	8.10
28	1.61	0.00	0.37	8.22	7.94	8.13
Total						
Average	1.42	0.01	0.35	8.23	7.98	8.08
Maximum	5.00		0.79	8.60		8.16
Date	17-Feb		18-Feb	22-Feb		6-Feb
Minimum		0.00	0.02		7.90	8.01
Date		1-Feb	15-Feb		17-Feb	18-Feb

Notes:

Plant Quality Report

Month: February-17

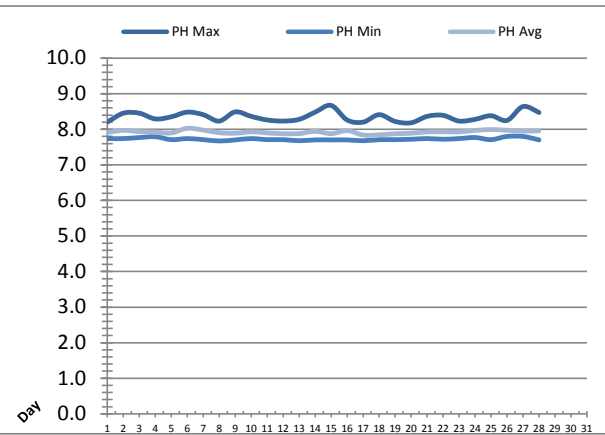
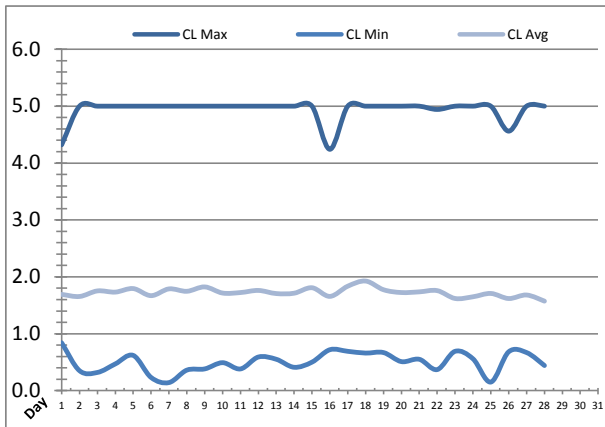


Date	Inlet UV Chlorine Residual			Inlet UV pH		
	AIT_5005_CL (ppm)			AIT_5005_PH		
	Maximum	Minimum	Average	Maximum	Minimum	Average
1	0.46	0.00	0.26	8.22	7.81	7.87
2	0.43	0.00	0.11	8.01	7.81	7.91
3	1.30	0.00	0.20	8.60	7.83	7.89
4	0.70	0.00	0.14	8.31	7.82	7.87
5	0.34	0.00	0.12	7.94	7.76	7.85
6	0.40	0.00	0.05	8.47	7.78	7.95
7	0.68	0.00	0.11	8.17	7.76	7.90
8	0.45	0.00	0.16	8.20	7.73	7.86
9	0.61	0.00	0.17	8.60	7.74	7.84
10	0.61	0.00	0.13	8.29	7.78	7.87
11	0.28	0.00	0.13	7.96	7.77	7.85
12	0.29	0.00	0.11	8.15	7.74	7.84
13	0.41	0.00	0.10	8.36	7.74	7.84
14	0.29	0.00	0.10	8.00	7.72	7.87
15	0.54	0.00	0.15	8.73	7.74	7.83
16	0.23	0.00	0.10	8.01	7.74	7.89
17	0.28	0.00	0.13	8.00	7.73	7.80
18	0.15	0.05	0.10	7.92	7.76	7.81
19	0.16	0.00	0.09	7.94	7.76	7.83
20	0.26	0.03	0.11	8.13	7.80	7.85
21	0.38	0.00	0.11	8.13	7.81	7.89
22	0.30	0.00	0.11	8.33	7.78	7.89
23	0.26	0.00	0.09	8.13	7.78	7.88
24	0.20	0.00	0.11	7.97	7.81	7.91
25	0.18	0.00	0.07	8.12	7.76	7.92
26	0.21	0.00	0.08	8.09	7.85	7.91
27	0.54	0.03	0.09	8.60	7.83	7.89
28	0.31	0.00	0.11	8.36	7.76	7.92
Total						
Average	0.40	0.00	0.12	8.21	7.78	7.87
Maximum	1.30		0.26	8.73		7.95
Date	3-Feb		1-Feb	15-Feb		6-Feb
Minimum		0.00	0.05		7.72	7.80
Date		21-Feb	6-Feb		14-Feb	17-Feb

Notes:

Plant Quality Report

Month: February-17

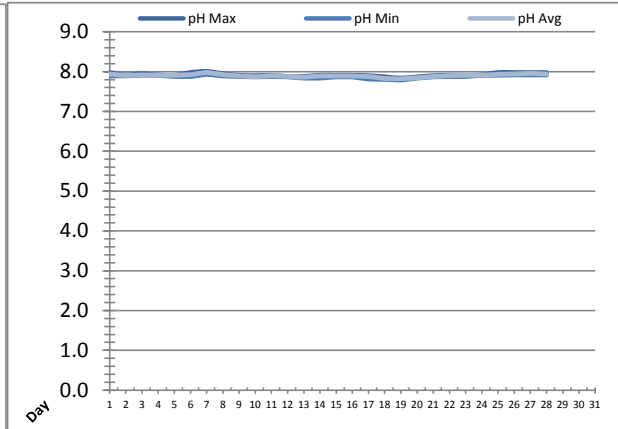
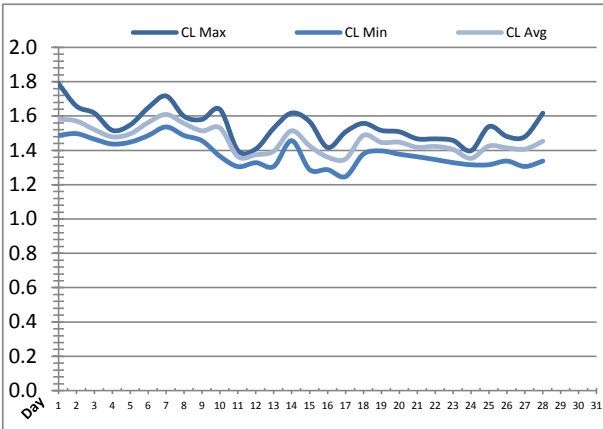


Date	Discharge UV Chlorine Residual			Discharge UV pH		
	AIT_5006_CL (ppm)			AIT_5006_PH		
	Maximum	Minimum	Average	Maximum	Minimum	Average
1	4.32	0.84	1.69	8.20	7.74	7.91
2	5.00	0.35	1.66	8.45	7.74	7.97
3	5.00	0.32	1.75	8.45	7.77	7.93
4	5.00	0.47	1.73	8.29	7.79	7.92
5	5.00	0.62	1.79	8.35	7.71	7.90
6	5.00	0.23	1.67	8.48	7.74	8.03
7	5.00	0.14	1.79	8.41	7.71	7.98
8	5.00	0.36	1.75	8.23	7.67	7.90
9	5.00	0.38	1.82	8.49	7.70	7.89
10	5.00	0.49	1.72	8.36	7.74	7.93
11	5.00	0.38	1.72	8.26	7.71	7.90
12	5.00	0.59	1.76	8.23	7.71	7.88
13	5.00	0.55	1.71	8.28	7.68	7.88
14	5.00	0.41	1.71	8.48	7.70	7.94
15	5.00	0.50	1.81	8.67	7.70	7.88
16	4.24	0.72	1.66	8.26	7.70	7.96
17	5.00	0.69	1.84	8.20	7.68	7.84
18	5.00	0.66	1.93	8.41	7.71	7.84
19	5.00	0.67	1.77	8.22	7.71	7.88
20	5.00	0.51	1.72	8.18	7.72	7.89
21	5.00	0.55	1.74	8.36	7.74	7.93
22	4.94	0.37	1.76	8.39	7.72	7.93
23	5.00	0.69	1.62	8.23	7.74	7.93
24	5.00	0.56	1.65	8.28	7.77	7.97
25	5.00	0.15	1.71	8.38	7.71	7.99
26	4.56	0.68	1.62	8.25	7.80	7.97
27	5.00	0.67	1.68	8.64	7.80	7.95
28	5.00	0.44	1.57	8.47	7.70	7.96
Total						
Average	4.93	0.50	1.73	8.36	7.73	7.92
Maximum	5.00		1.93	8.67		8.03
Date	2-Feb		18-Feb	15-Feb		6-Feb
Minimum		0.14	1.57		7.67	7.84
Date		7-Feb	28-Feb		8-Feb	17-Feb

Notes:

Plant Quality Report

Month: February-17

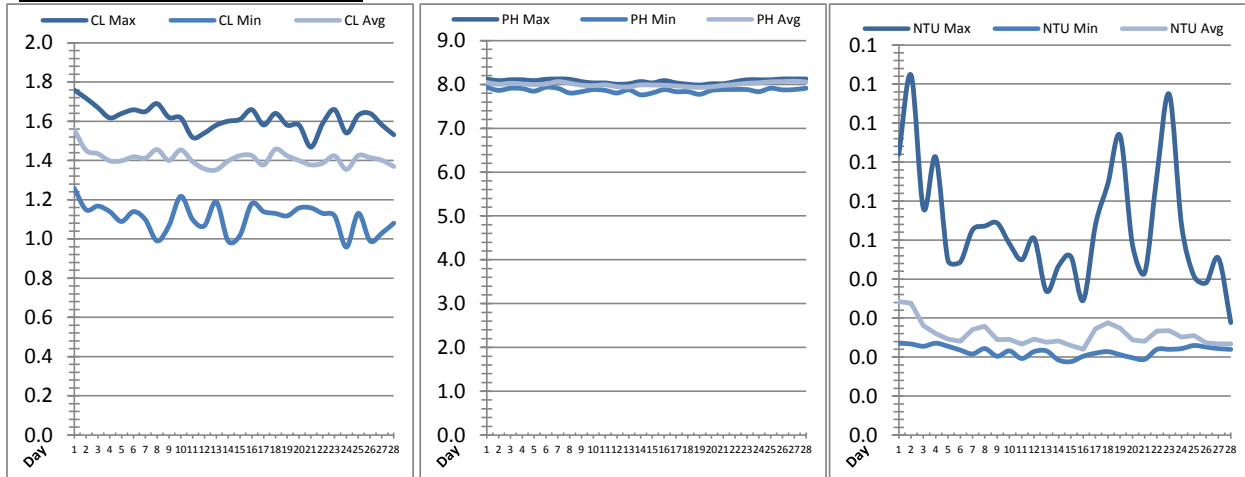


Date	Suction Header Chlorine Res.			Suction Header pH			Distribution CT Calc Total		
	AIT_7001_CL (ppm)			AIT_7001_PH (m)			REAL_CT_CALC_TOTAL (mg*ml/min)		
	Maximum	Minimum	Average	Maximum	Minimum	Average	Maximum	Minimum	Average
1	1.79	1.49	1.58	7.98	7.90	7.94	2658.29	0.00	262.35
2	1.66	1.50	1.57	7.92	7.90	7.90	9583.22	0.00	261.93
3	1.62	1.47	1.52	7.95	7.91	7.92	7855.39	0.00	329.08
4	1.52	1.44	1.48	7.92	7.91	7.91	8865.25	0.00	306.34
5	1.55	1.45	1.50	7.91	7.88	7.91	8565.61	0.00	276.55
6	1.65	1.49	1.56	7.98	7.88	7.93	3547.09	0.00	336.77
7	1.72	1.54	1.61	8.01	7.94	7.98	6779.34	0.00	362.67
8	1.60	1.49	1.56	7.95	7.90	7.93	3258.49	0.00	231.43
9	1.58	1.46	1.51	7.91	7.88	7.90	7192.33	0.00	453.42
10	1.64	1.37	1.53	7.90	7.87	7.87	1916.86	295.01	1239.82
11	1.40	1.31	1.36	7.91	7.88	7.90	2357.03	0.00	386.63
12	1.41	1.33	1.37	7.88	7.87	7.87	8619.68	0.00	203.06
13	1.53	1.31	1.40	7.88	7.84	7.86	6914.21	0.00	193.85
14	1.62	1.46	1.51	7.91	7.84	7.89	3001.11	0.00	478.28
15	1.57	1.29	1.43	7.91	7.87	7.89	2667.31	0.00	218.23
16	1.42	1.29	1.36	7.91	7.87	7.89	2273.14	0.00	337.28
17	1.51	1.25	1.35	7.90	7.82	7.87	2077.78	0.00	253.92
18	1.56	1.38	1.49	7.87	7.81	7.83	4769.26	0.00	345.53
19	1.52	1.40	1.45	7.84	7.79	7.82	1805.74	0.00	235.43
20	1.51	1.38	1.45	7.87	7.84	7.85	3537.53	0.00	184.50
21	1.47	1.36	1.42	7.90	7.87	7.88	2933.60	0.00	215.97
22	1.47	1.35	1.42	7.91	7.88	7.90	7834.42	0.00	211.72
23	1.46	1.33	1.41	7.91	7.88	7.91	1864.69	0.00	336.43
24	1.40	1.32	1.35	7.92	7.91	7.91	2191.99	0.00	205.77
25	1.54	1.32	1.43	7.98	7.91	7.93	8085.29	0.00	190.41
26	1.48	1.34	1.41	7.98	7.91	7.94	2137.32	0.00	336.57
27	1.48	1.31	1.41	7.98	7.91	7.96	1466.84	0.00	259.49
28	1.62	1.34	1.45	7.98	7.91	7.94	8859.69	0.00	125.00
Total									
Average	1.54	1.38	1.46	7.92	7.87	7.90			
Maximum	1.79		1.61	8.01		7.98			
Date	1-Feb		7-Feb	7-Feb		7-Feb			
Minimum		1.25	1.35		7.79	7.82			
Date		17-Feb	17-Feb		19-Feb	19-Feb			

Notes:

Plant Quality Report

Month: February-17

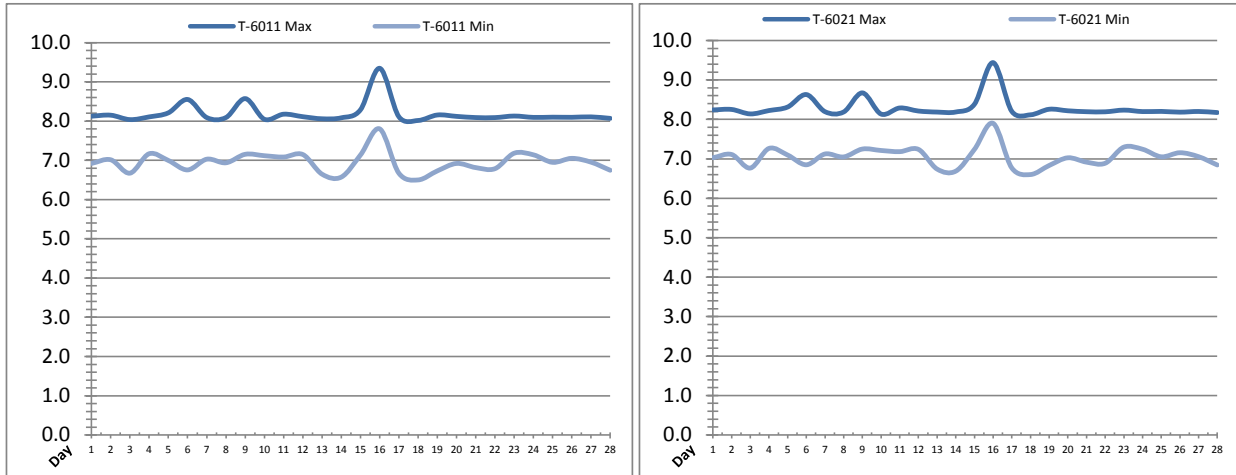


Date	Distribution Chlorine Header			Distribution pH			Distribution Turbidity		
	AIT_7004_CL (ppm)			AIT_7004_PH (mg/L)			AIT_7003 (mg/L)		
	Maximum	Minimum	Average	Maximum	Minimum	Average	Maximum	Minimum	Average
1	1.76	1.26	1.56	8.12	7.94	8.04	0.07	0.02	0.03
2	1.72	1.15	1.45	8.09	7.87	8.00	0.09	0.02	0.03
3	1.67	1.17	1.43	8.11	7.91	8.03	0.06	0.02	0.03
4	1.62	1.14	1.40	8.11	7.91	8.01	0.07	0.02	0.03
5	1.64	1.09	1.40	8.09	7.85	8.00	0.04	0.02	0.02
6	1.66	1.14	1.42	8.12	7.94	8.01	0.04	0.02	0.02
7	1.65	1.10	1.41	8.12	7.91	8.06	0.05	0.02	0.03
8	1.69	0.99	1.46	8.12	7.81	8.03	0.05	0.02	0.03
9	1.62	1.07	1.40	8.07	7.84	7.98	0.05	0.02	0.02
10	1.62	1.22	1.45	8.03	7.88	7.97	0.05	0.02	0.02
11	1.52	1.10	1.39	8.04	7.87	7.99	0.04	0.02	0.02
12	1.54	1.07	1.36	8.00	7.81	7.95	0.05	0.02	0.02
13	1.58	1.19	1.35	8.02	7.88	7.94	0.04	0.02	0.02
14	1.60	0.99	1.40	8.07	7.76	7.99	0.04	0.02	0.02
15	1.61	1.02	1.42	8.04	7.81	7.99	0.05	0.02	0.02
16	1.66	1.18	1.43	8.09	7.88	7.98	0.03	0.02	0.02
17	1.58	1.14	1.38	8.04	7.84	7.97	0.05	0.02	0.03
18	1.64	1.13	1.46	8.01	7.84	7.95	0.06	0.02	0.03
19	1.58	1.12	1.42	7.99	7.78	7.93	0.08	0.02	0.03
20	1.58	1.16	1.40	8.02	7.86	7.95	0.05	0.02	0.02
21	1.47	1.16	1.38	8.02	7.88	7.98	0.04	0.02	0.02
22	1.59	1.13	1.39	8.07	7.88	8.00	0.07	0.02	0.03
23	1.66	1.12	1.42	8.11	7.88	8.03	0.09	0.02	0.03
24	1.54	0.96	1.35	8.11	7.84	8.04	0.05	0.02	0.03
25	1.63	1.13	1.43	8.11	7.91	8.06	0.04	0.02	0.03
26	1.64	0.99	1.41	8.12	7.88	8.06	0.04	0.02	0.02
27	1.58	1.03	1.40	8.13	7.88	8.07	0.05	0.02	0.02
28	1.53	1.08	1.37	8.13	7.91	8.06	0.03	0.02	0.02
Total									
Average	1.61	1.11	1.41	8.07	7.87	8.00	0.1	0.0	0.0
Maximum	1.76		1.56	8.13		8.07	0.1		0.0
Date	1-Feb		1-Feb	27-Feb		27-Feb	2-Feb		1-Feb
Minimum		0.96	1.35		7.76	7.93		0.0	0.0
Date		24-Feb	13-Feb		14-Feb	19-Feb		15-Feb	16-Feb

Notes:

Raw Well/Treated Storage Report

Month: February-17

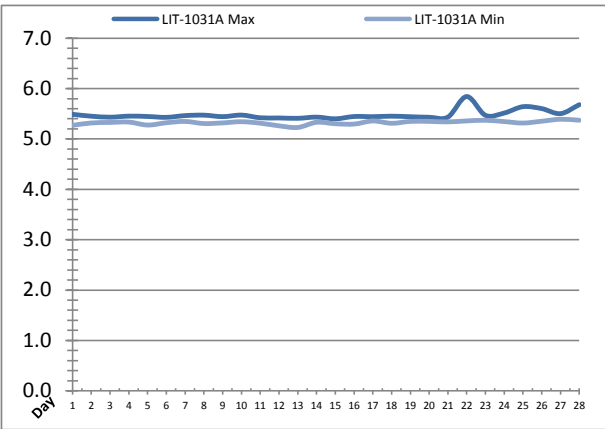
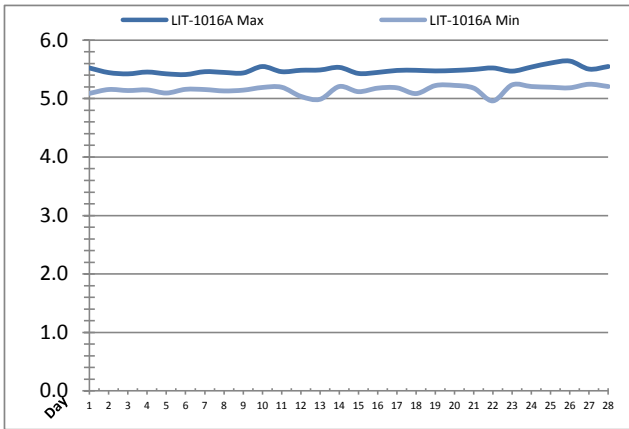


Date	Treated Water Storage Tank					
	T-6011 (m)			T-6021 (m)		
	Maximum	Minimum	Average	Maximum	Minimum	Average
1	8.1	6.9	7.6	8.2	7.0	7.7
2	8.2	7.0	7.8	8.3	7.1	7.9
3	8.0	6.7	7.5	8.1	6.8	7.6
4	8.1	7.2	7.7	8.2	7.3	7.8
5	8.2	7.0	7.7	8.3	7.1	7.8
6	8.6	6.8	7.6	8.6	6.8	7.7
7	8.1	7.0	7.6	8.2	7.1	7.7
8	8.1	6.9	7.7	8.2	7.0	7.8
9	8.6	7.2	7.7	8.7	7.2	7.8
10	8.0	7.1	7.7	8.1	7.2	7.8
11	8.2	7.1	7.7	8.3	7.2	7.8
12	8.1	7.1	7.7	8.2	7.2	7.8
13	8.1	6.6	7.5	8.2	6.7	7.6
14	8.1	6.6	7.4	8.2	6.7	7.5
15	8.3	7.1	7.9	8.4	7.2	8.0
16	9.3	7.8	8.7	9.4	7.9	8.8
17	8.1	6.7	7.5	8.2	6.8	7.6
18	8.0	6.5	7.2	8.1	6.6	7.4
19	8.2	6.7	7.6	8.3	6.8	7.7
20	8.1	6.9	7.7	8.2	7.0	7.8
21	8.1	6.8	7.5	8.2	6.9	7.6
22	8.1	6.8	7.5	8.2	6.9	7.6
23	8.1	7.2	7.7	8.2	7.3	7.8
24	8.1	7.1	7.7	8.2	7.2	7.8
25	8.1	6.9	7.6	8.2	7.1	7.8
26	8.1	7.1	7.7	8.2	7.2	7.8
27	8.1	7.0	7.5	8.2	7.1	7.6
28	8.1	6.7	7.6	8.2	6.8	7.7
Total						
Average	8.2	7.0	7.7	8.3	7.1	7.8
Maximum	9.3		8.7	9.4		8.8
Date	16-Feb		16-Feb	16-Feb		16-Feb
Minimum		6.5	7.2		6.6	7.4
Date		18-Feb	18-Feb		18-Feb	18-Feb

Notes:

Raw Well/Treated Storage Report

Month: February-17

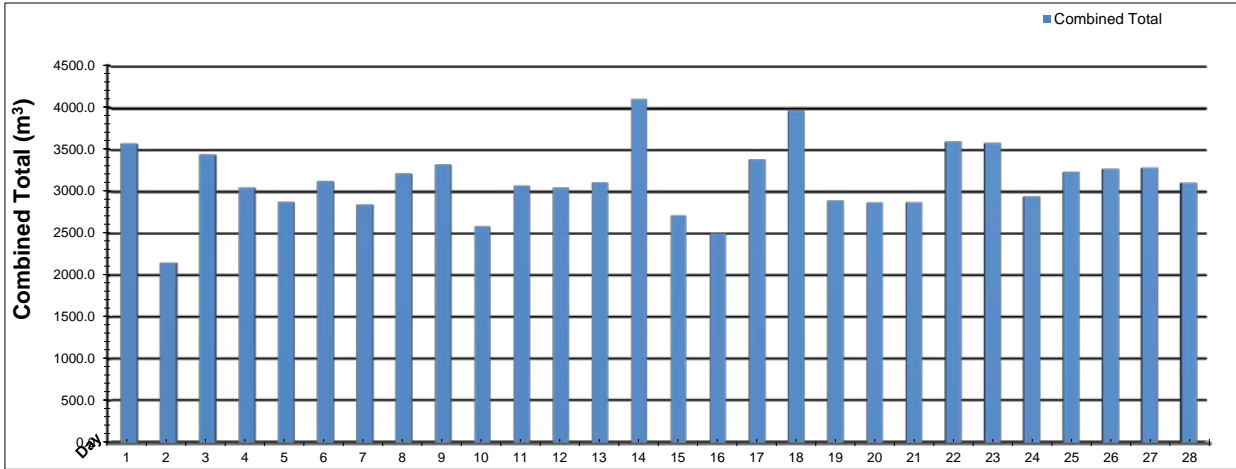


Date	Low Lift Intake Levels					
	Wet Well #1 (LIT-1016A) (m)			Wet Well #2 (LIT-1031A) (m)		
	Maximum	Minimum	Average	Maximum	Minimum	Average
1	5.5	5.1	5.3	5.5	5.3	5.4
2	5.4	5.2	5.3	5.5	5.3	5.4
3	5.4	5.1	5.3	5.4	5.3	5.4
4	5.5	5.1	5.3	5.5	5.3	5.4
5	5.4	5.1	5.3	5.4	5.3	5.4
6	5.4	5.2	5.3	5.4	5.3	5.4
7	5.5	5.2	5.3	5.5	5.3	5.4
8	5.4	5.1	5.3	5.5	5.3	5.4
9	5.4	5.1	5.3	5.4	5.3	5.4
10	5.5	5.2	5.3	5.5	5.3	5.4
11	5.5	5.2	5.3	5.4	5.3	5.4
12	5.5	5.0	5.3	5.4	5.3	5.4
13	5.5	5.0	5.3	5.4	5.2	5.3
14	5.5	5.2	5.3	5.4	5.3	5.4
15	5.4	5.1	5.3	5.4	5.3	5.4
16	5.4	5.2	5.3	5.4	5.3	5.4
17	5.5	5.2	5.3	5.4	5.4	5.4
18	5.5	5.1	5.3	5.5	5.3	5.4
19	5.5	5.2	5.3	5.4	5.3	5.4
20	5.5	5.2	5.3	5.4	5.3	5.4
21	5.5	5.2	5.3	5.4	5.3	5.4
22	5.5	5.0	5.3	5.8	5.4	5.4
23	5.5	5.2	5.3	5.5	5.4	5.4
24	5.5	5.2	5.4	5.5	5.3	5.4
25	5.6	5.2	5.4	5.6	5.3	5.4
26	5.6	5.2	5.4	5.6	5.4	5.4
27	5.5	5.2	5.4	5.5	5.4	5.4
28	5.5	5.2	5.4	5.7	5.4	5.4
Total						
Average	5.5	5.2	5.3	5.5	5.3	5.4
Maximum	5.6		5.4	5.8		5.4
Date	26-Feb		26-Feb	22-Feb		26-Feb
Minimum		5.0	5.3		5.2	5.3
Date		22-Feb	3-Feb		13-Feb	13-Feb

Notes:

High Lift Monthly Report

Month: February-17

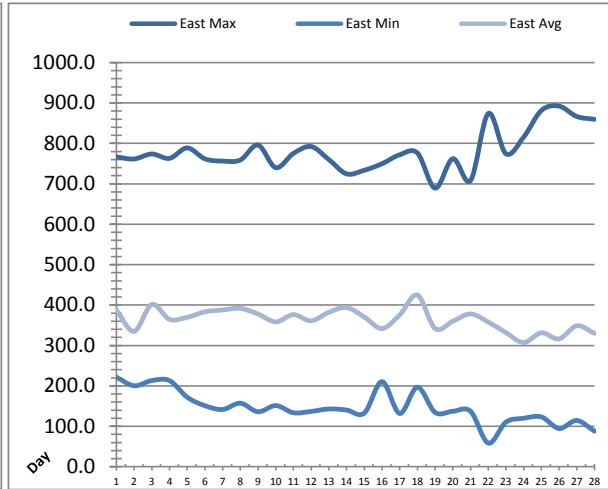
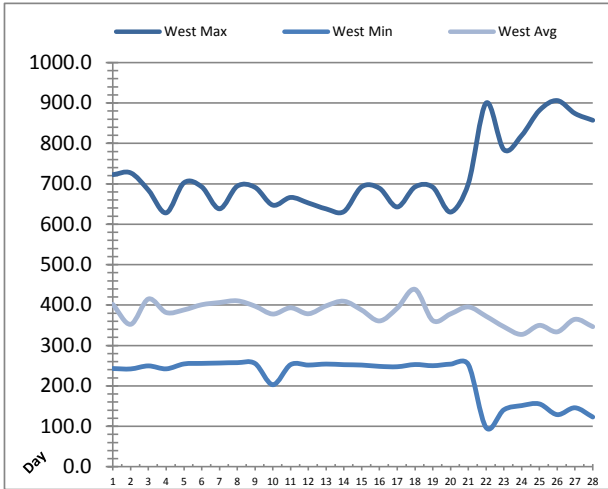


Date	Distribution Flow					
	FIT_7052 (East)		FIT_7062 (West)		Combined	
	(m³) Total	(L/s) Peak	(m³) Total	(L/s) Peak	(m³) Total	(L/s) Peak
1	574.2	41.1	2994.4	86.3	3568.6	124.3
2	727.3	39.0	1426.1	76.5	2153.5	105.2
3	552.2	41.7	2886.1	83.5	3438.3	121.6
4	697.8	34.7	2348.3	77.7	3046.1	82.8
5	430.6	40.4	2441.9	82.2	2872.5	87.5
6	800.6	40.4	2320.3	101.7	3120.9	137.1
7	790.6	34.2	2052.5	81.5	2843.1	81.5
8	461.1	34.4	2750.8	80.4	3211.9	84.5
9	862.3	34.2	2460.6	80.4	3322.9	82.3
10	1156.4	16.5	1423.8	78.7	2580.3	81.9
11	362.3	15.0	2707.9	81.4	3070.3	82.7
12	689.1	49.6	2354.5	81.0	3043.6	101.9
13	510.0	48.1	2598.5	107.3	3108.5	143.2
14	1282.7	42.9	2824.3	109.5	4107.0	144.4
15	700.0	45.2	2012.2	80.3	2712.2	81.9
16	678.6	46.6	1822.2	80.2	2500.8	102.3
17	670.3	29.1	2713.7	78.6	3384.1	86.7
18	1344.3	41.2	2618.6	80.8	3962.9	83.3
19	693.4	31.4	2198.5	74.4	2892.0	83.6
20	478.2	30.4	2387.5	78.0	2865.8	83.8
21	801.0	41.4	2070.2	78.7	2871.2	81.6
22	987.1	46.9	2608.5	99.8	3595.6	138.6
23	488.1	20.6	3087.9	79.9	3576.0	81.9
24	768.3	46.9	2174.7	79.4	2943.0	84.3
25	974.9	51.1	2258.6	97.0	3233.6	135.2
26	969.9	50.6	2298.2	78.9	3268.0	82.8
27	1134.1	67.1	2153.0	125.3	3287.1	132.0
28	411.0	56.5	2693.9	134.6	3104.9	134.6
Total	20996.3		66688.1		87684.4	
Average	749.9	39.9	2381.7	87.7	3131.6	101.9
Maximum	1344.3	67.1	3087.9	134.6	4107.0	144.4
Date	18-Feb	27-Feb	23-Feb	28-Feb	14-Feb	14-Feb
Minimum	362.3		1423.8		2153.5	
Date	11-Feb		10-Feb		2-Feb	

Notes:

Low Lift Monthly Report

Month: February-17

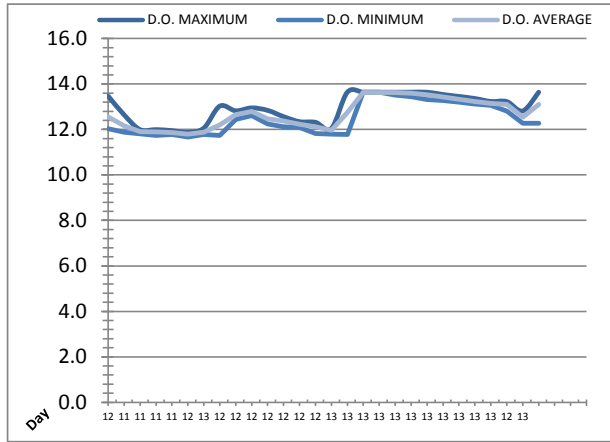
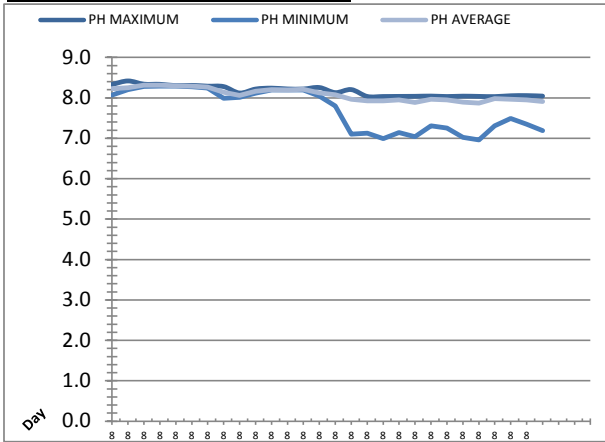


Date	West Train Header Pressure PIT_1018 (kPa)			East Train Header Pressure PIT_1028 (kPa)		
	Maximum	Minimum	Average	Maximum	Minimum	Average
	1	✓ 722.6	✓ 243.0	401.8	✓ 766.4	✓ 221.6
2	✓ 727.1	✓ 242.0	352.4	✓ 761.4	✓ 200.4	334.8
3	✓ 684.2	✓ 249.5	415.1	✓ 773.8	✓ 213.2	401.4
4	✓ 628.2	✓ 242.2	381.6	✓ 763.0	✓ 213.3	364.8
5	✓ 702.6	✓ 254.4	388.0	✓ 788.8	✓ 172.0	369.7
6	✓ 692.5	✓ 255.7	400.8	✓ 761.7	✓ 151.1	383.3
7	✓ 638.2	✓ 256.6	406.3	✓ 756.2	✓ 141.7	387.9
8	✓ 694.3	✓ 257.5	410.5	✓ 758.9	✓ 157.3	391.8
9	✓ 691.2	✓ 255.5	397.3	✓ 795.9	✓ 136.1	377.9
10	✓ 647.2	✓ 202.9	377.8	✓ 739.8	✓ 151.4	358.4
11	✓ 666.3	✓ 252.6	393.2	✓ 775.3	✓ 133.6	376.4
12	✓ 652.5	✓ 251.6	378.5	✓ 792.2	✓ 136.9	361.0
13	✓ 638.0	✓ 254.1	398.1	✓ 759.9	✓ 143.0	382.2
14	✓ 631.3	✓ 252.5	409.5	✓ 724.6	✓ 140.3	393.9
15	✓ 692.6	✓ 251.6	387.6	✓ 733.6	✓ 132.7	370.5
16	✓ 689.0	✓ 248.3	360.8	✓ 749.7	✓ 210.6	341.8
17	✓ 642.7	✓ 247.4	392.4	✓ 771.9	✓ 131.7	375.8
18	✓ 692.3	✓ 252.9	438.8	✓ 776.2	✓ 196.8	424.6
19	✓ 691.6	✓ 250.0	361.6	✓ 689.1	✓ 134.3	341.8
20	✓ 630.1	✓ 253.9	378.2	✓ 762.1	✓ 137.3	359.9
21	✓ 700.4	✓ 252.8	395.4	✓ 708.2	✓ 137.3	378.1
22	✓ 899.9	✓ 96.9	372.3	✓ 873.9	✓ 58.5	358.0
23	✓ 784.4	✓ 141.0	346.3	✓ 774.2	✓ 110.4	331.7
24	✓ 819.5	✓ 151.3	327.4	✓ 815.7	✓ 120.0	307.3
25	✓ 881.7	✓ 155.4	349.8	✓ 881.5	✓ 123.2	331.4
26	✓ 905.9	✓ 128.9	333.8	✓ 892.2	✓ 94.6	316.4
27	✓ 874.0	✓ 145.9	364.8	✓ 866.5	✓ 114.5	348.9
28	✓ 857.2	✓ 123.0	346.5	✓ 859.5	✓ 87.9	330.1
Total						
Average	720.6	220.3	381.0	781.2	146.5	363.8
Maximum	905.9		438.8	892.2		424.6
Date	26-Feb		18-Feb	26-Feb		18-Feb
Minimum		96.9	327.4		58.5	307.3
Date		22-Feb	24-Feb		22-Feb	24-Feb

Notes:

Low Lift Monthly Report

Month: February-17

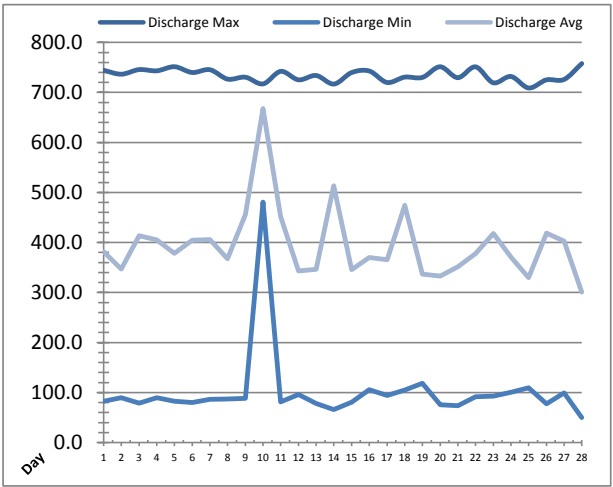
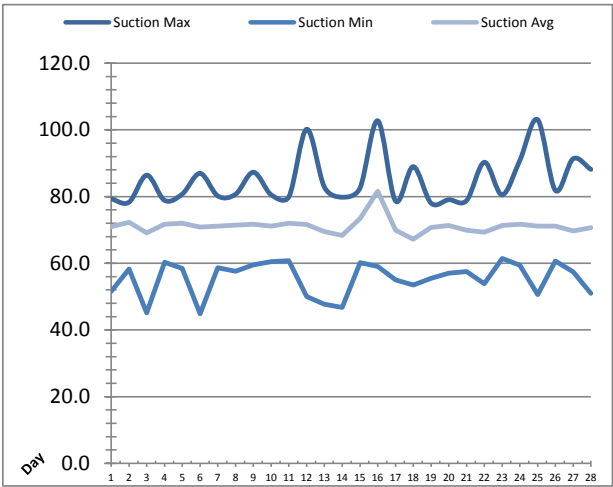


Date	Raw Water Sample Line					
	AIT_1402_PH (pH)			AIT_1402_DO (mg/L)		
	Maximum	Minimum	Average	Maximum	Minimum	Average
1	8.3	8.1	8.2	13.5	12.0	12.6
2	8.4	8.2	8.2	12.6	11.9	12.2
3	8.3	8.3	8.3	12.0	11.8	11.9
4	8.3	8.3	8.3	12.0	11.7	11.9
5	8.3	8.3	8.3	12.0	11.8	11.9
6	8.3	8.3	8.3	11.9	11.7	11.8
7	8.3	8.2	8.3	12.1	11.8	11.9
8	8.3	8.0	8.1	13.0	11.7	12.2
9	8.1	8.0	8.1	12.8	12.4	12.6
10	8.2	8.1	8.2	12.9	12.6	12.8
11	8.2	8.2	8.2	12.8	12.2	12.5
12	8.2	8.2	8.2	12.6	12.1	12.4
13	8.2	8.2	8.2	12.3	12.1	12.2
14	8.3	8.0	8.1	12.3	11.8	12.1
15	8.1	7.8	8.1	12.0	11.8	12.0
16	8.2	7.1	8.0	13.6	11.8	12.8
17	8.0	7.1	7.9	13.6	13.6	13.6
18	8.0	7.0	7.9	13.6	13.6	13.6
19	8.0	7.1	8.0	13.6	13.5	13.6
20	8.0	7.0	7.9	13.6	13.4	13.6
21	8.0	7.3	8.0	13.6	13.3	13.5
22	8.0	7.2	7.9	13.5	13.3	13.4
23	8.0	7.0	7.9	13.5	13.2	13.3
24	8.0	7.0	7.9	13.4	13.1	13.2
25	8.0	7.3	8.0	13.2	13.1	13.1
26	8.1	7.5	8.0	13.2	12.8	13.1
27	8.1	7.4	7.9	12.8	12.3	12.5
28	8.0	7.2	7.9	13.6	12.3	13.1
Total						
Average	8.2	7.7	8.1	12.9	12.5	12.7
Maximum	8.4		8.3	13.6		13.6
Date	2-Feb		4-Feb	16-Feb		17-Feb
Minimum		7.0	7.9		11.7	11.8
Date		24-Feb	24-Feb		6-Feb	6-Feb

Notes:

High Lift Monthly Report

Month: February-17

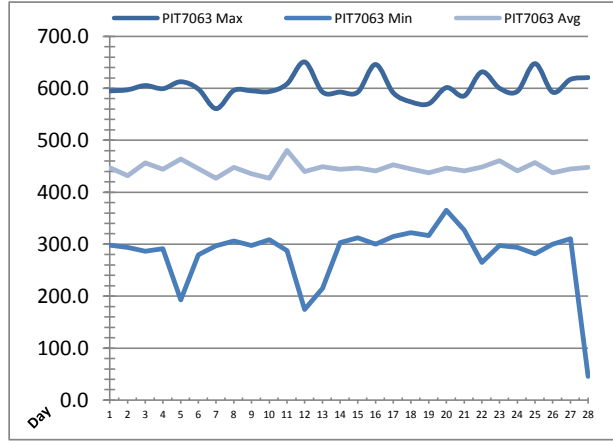
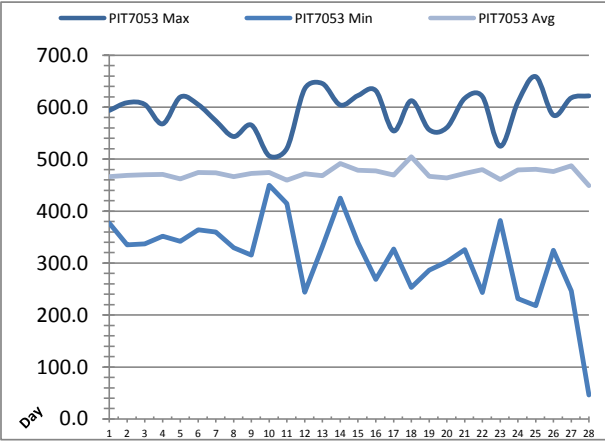


Date	Suction Header Pressure			Discharge Header Pressure		
	PIT_7002 (kPa)			PIT_7005 (kPa)		
	Maximum	Minimum	Average	Maximum	Minimum	Average
1	✓ 79.3	✓ 51.6	70.9	✓ 744.3	✓ 82.5	381.4
2	✓ 78.3	✓ 58.3	72.3	✓ 736.5	✓ 89.8	346.7
3	✓ 86.4	✗ 45.1	69.1	✓ 745.7	✓ 78.5	413.5
4	✓ 78.9	✓ 60.3	71.7	✓ 743.3	✓ 89.6	405.5
5	✓ 80.8	✓ 58.5	72.0	✓ 751.5	✓ 82.4	378.4
6	✓ 87.0	✗ 44.8	70.9	✓ 739.9	✓ 80.2	404.4
7	✓ 80.2	✓ 58.7	71.1	✓ 745.4	✓ 86.4	405.6
8	✓ 80.7	✓ 57.6	71.4	✓ 726.6	✓ 87.0	367.5
9	✓ 87.3	✓ 59.6	71.7	✓ 730.5	✓ 88.6	455.8
10	✓ 80.6	✓ 60.5	71.2	✓ 717.1	✓ 480.9	667.4
11	✓ 80.0	✓ 60.7	72.0	✓ 742.2	✓ 81.4	452.2
12	✓ 100.2	✓ 50.1	71.6	✓ 725.3	✓ 96.0	343.0
13	✓ 82.8	✗ 47.7	69.5	✓ 733.9	✓ 78.4	346.2
14	✓ 79.8	✗ 46.7	68.4	✓ 716.8	✓ 65.9	513.3
15	✓ 82.5	✓ 60.2	73.4	✓ 739.7	✓ 80.9	345.8
16	✓ 102.7	✓ 59.0	81.6	✓ 742.9	✓ 106.0	369.8
17	✓ 78.7	✓ 55.0	69.9	✓ 720.0	✓ 94.1	365.9
18	✓ 89.0	✓ 53.5	67.2	✓ 730.7	✓ 104.8	474.5
19	✓ 78.0	✓ 55.5	70.7	✓ 730.1	✓ 118.4	336.5
20	✓ 79.1	✓ 57.1	71.4	✓ 751.4	✓ 75.8	332.9
21	✓ 78.8	✓ 57.5	69.9	✓ 729.5	✓ 73.6	351.4
22	✓ 90.3	✓ 53.8	69.3	✓ 751.2	✓ 91.3	377.9
23	✓ 80.5	✓ 61.5	71.3	✓ 719.4	✓ 92.9	417.9
24	✓ 90.9	✓ 59.4	71.7	✓ 731.9	✓ 100.5	370.8
25	✓ 103.1	✓ 50.6	71.1	✓ 708.9	✓ 109.8	329.9
26	✓ 81.8	✓ 60.6	71.2	✓ 725.1	✓ 77.6	418.6
27	✓ 91.4	✓ 57.4	69.7	✓ 726.0	✓ 99.3	402.7
28	✓ 88.1	✓ 51.0	70.6	✓ 757.7	✗ 49.9	301.0
	✓ 94.2	✓ 52.8	71.9	✓ 726.2	✓ 69.4	365.1
	✓ 90.6	✓ 52.5	71.8	✓ 746.3	✓ 91.4	327.7
	✓ 84.1	✗ 46.8	70.7	✓ 748.2	✓ 67.5	451.9
Total						
Average	84.9	55.4	71.2	734.4	101.5	395.6
Maximum	103.1		81.6	757.7		667.4
Date	25-Feb		16-Feb	28-Feb		10-Feb
Minimum		44.8	67.2		49.9	301.0
Date		6-Feb	18-Feb		28-Feb	28-Feb

Notes:

High Lift Monthly Report

Month: February-17

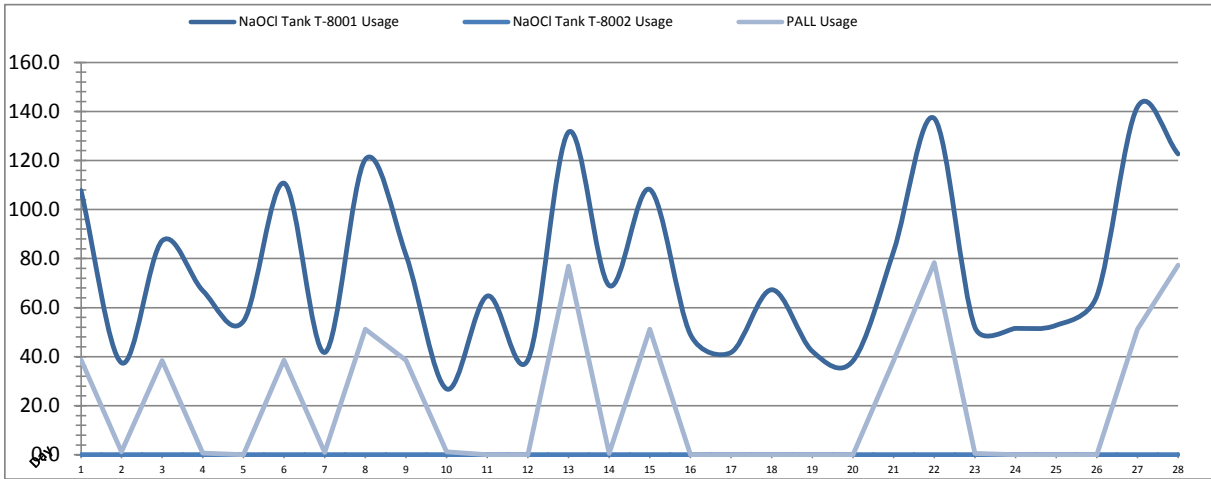


Date	Distribution Pressures					
	PIT_7053 (kPa)			PIT_7063 (kPa)		
	Maximum	Minimum	Average	Maximum	Minimum	Average
1	593.8	376.8	466.3	595.0	298.4	447.0
2	608.6	334.8	468.5	597.0	294.1	432.0
3	605.1	337.2	470.3	605.3	286.6	456.3
4	567.8	351.7	470.7	599.3	291.4	444.0
5	619.6	342.0	462.2	612.6	192.8	464.0
6	605.0	364.0	474.3	598.5	279.4	445.2
7	573.5	359.7	473.9	560.7	297.0	427.1
8	543.5	329.6	466.1	595.8	306.4	447.6
9	565.5	315.4	472.2	595.1	297.2	435.5
10	506.2	449.7	474.6	593.6	308.6	427.1
11	521.0	414.5	459.7	608.3	287.6	480.3
12	635.5	243.9	472.1	650.7	174.6	439.6
13	645.4	331.2	468.0	593.0	215.2	448.8
14	604.2	424.8	491.3	592.7	302.9	444.3
15	622.4	339.5	478.5	592.7	312.1	446.8
16	631.8	268.5	477.3	645.8	300.1	440.9
17	554.3	327.2	469.2	591.3	314.5	452.8
18	612.4	253.3	504.7	573.8	322.4	444.7
19	556.8	286.2	467.2	570.2	316.6	437.4
20	560.8	302.3	463.8	601.3	365.5	446.5
21	616.8	325.8	472.3	585.3	326.8	441.2
22	620.4	243.0	479.8	631.5	264.6	448.4
23	524.9	382.1	461.1	600.0	297.6	460.5
24	609.9	231.9	479.3	594.0	294.0	441.2
25	658.8	217.9	480.2	647.5	281.7	456.9
26	584.5	324.6	476.2	592.5	299.7	437.6
27	617.8	246.1	487.1	617.0	310.4	444.7
28	621.7	46.2	448.9	620.6	45.7	447.6
Total						
Average	592.4	313.2	472.7	602.2	281.6	445.9
Maximum	658.8		504.7	650.7		480.3
Date	25-Feb		18-Feb	12-Feb		11-Feb
Minimum		46.2	448.9		45.7	427.1
Date		28-Feb	28-Feb		28-Feb	10-Feb

Notes:
 28th: low pressure due to shutting off highlift pumps manually due to Wallacetown Tower in high level. Low pressure brief, 1min duration.

Chemical Usage Monthly Report

Month: February-17

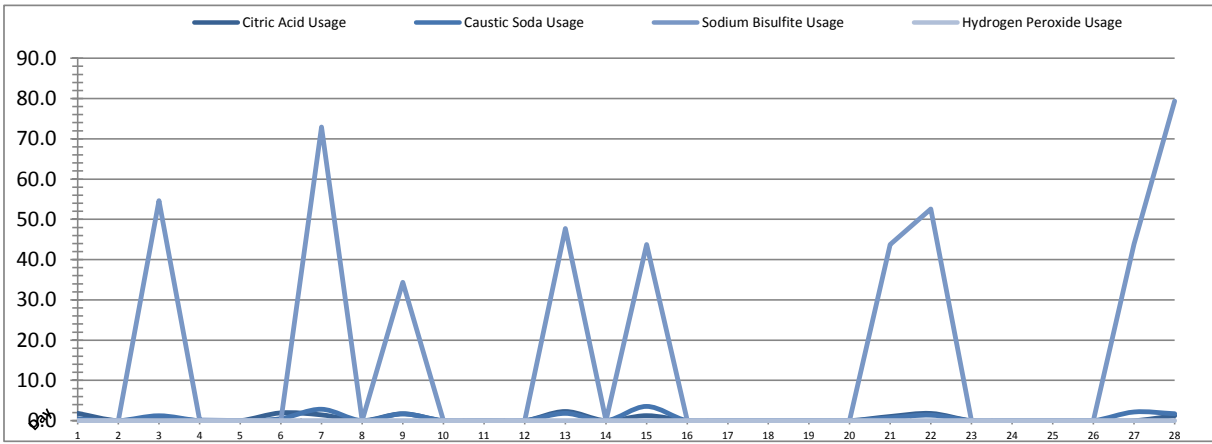


Date	PALL Usage	NaOCl Tank T-8001	NaOCl Tank T-8002
	PALL_HYPO_USAGE (L) Usage	LIT_8002 (Storage) (L) Usage	LIT_8004 (Day) (L) Usage
1	38.7	107.7	0.0
2	1.2	37.5	0.0
3	38.4	87.3	0.0
4	0.7	66.9	0.0
5	0.0	54.5	0.0
6	38.5	110.7	0.0
7	0.9	41.7	0.0
8	51.2	120.5	0.0
9	38.5	81.3	0.0
10	1.2	26.8	0.0
11	0.0	64.7	0.0
12	0.0	38.8	0.0
13	76.9	131.6	0.0
14	0.53	68.99	0.0
15	51.2	108.2	0.0
16	0.1	49.0	0.0
17	0.0	41.7	0.0
18	0.0	67.3	0.0
19	0.0	42.2	0.0
20	0.0	38.3	0.0
21	38.4	83.0	0.0
22	78.4	137.1	0.0
23	0.5	52.0	0.0
24	0.0	51.5	0.0
25	0.0	52.8	0.0
26	0.0	64.7	0.0
27	51.2	141.8	0.0
28	77.3	122.7	0.0
Total	583.9	2091.5	1.0
Average	20.9	74.7	0.0
Maximum	78.4	141.8	0.0
Date	22-Feb	27-Feb	1-Feb
Minimum	0.0	26.8	0.0
Date	5-Feb	10-Feb	1-Feb

Notes:	
Dosage (mg/L)=	Day Tank (L) x %conc. x 1000
	Membrane Flow (m3)
Chlorine Concentration:	12.0%

Chemical Usage Monthly Report

Month: February-17



Date	Citric Acid	Caustic Soda	Captor	Hydrogen Peroxide		Membrane Flow (m ³)
	TAGNAME (L) Usage	TAGNAME (L) Usage	TAGNAME (L) Usage	TAGNAME (L) Usage	(mg/L) Dose	
1	1.8	0.5	0.0	0.0	0.0	3388.539
2	0.0	0.0	0.0	0.0	0.0	2150.136
3	0.8	1.2	54.6	0.0	0.0	3918.753
4	0.0	0.0	0.2	0.0	0.0	3099.834
5	0.0	0.0	0.0	0.0	0.0	3062.847
6	1.9	0.5	0.0	0.0	0.0	3404.087
7	1.4	2.8	72.9	0.0	0.0	3137.818
8	0.0	0.0	0.0	0.0	0.0	3459.035
9	1.7	1.7	34.4	0.0	0.0	3082.125
10	0.0	0.0	0.0	0.0	0.0	2845.290
11	0.0	0.0	0.0	0.0	0.0	3332.467
12	0.0	0.0	0.0	0.0	0.0	3061.184
13	2.3	1.8	47.7	0.0	0.0	3585.898
14	0.0	0.0	0.0	0.0	0.0	3965.797
15	1.2	3.5	43.7	0.0	0.0	3170.799
16	0.0	0.0	0.0	0.0	0.0	2552.499
17	0.0	0.0	0.0	0.0	0.0	3409.071
18	0.0	0.0	0.0	0.0	0.0	4446.200
19	0.0	0.0	0.0	0.0	0.0	2538.269
20	0.0	0.0	0.0	0.0	0.0	2988.777
21	1.0	0.7	43.8	0.0	0.0	3425.221
22	1.8	1.4	52.6	0.0	0.0	3736.690
23	0.0	0.0	0.0	0.0	0.0	3557.124
24	0.0	0.0	0.0	0.0	0.0	3011.688
25	0.0	0.0	0.0	0.0	0.0	3369.691
26	0.0	0.0	0.0	0.0	0.0	3150.300
27	0.0	2.2	43.9	0.0	0.0	3670.167
28	1.2	1.7	79.4	0.0	0.0	3452.803
	0.0	0.0	0.0	0.0	0.0	2847.935
	0.5	2.7	17.7	0.0	0.0	2917.099
	0.0	0.0	0.0	0.0	0.0	3710.618
Total	15.8	20.7	490.8	0.0		101448.8
Average	0.5	0.6	16.9	0.0	0.0	3284.8
Maximum	2.3	3.5	79.4	0.0	0.0	4446.2
Date	13-Feb	15-Feb	28-Feb	1-Feb	1-Feb	18-Feb
Minimum	0.0	0.0	0.0	0.0	0.0	2150.1
Date	2-Feb	2-Feb	1-Feb	1-Feb	1-Feb	2-Feb

Notes:

$$\text{Dosage (mg/L)} = \frac{\text{Day Tank (L)} \times \% \text{conc.} \times 1000}{\text{Membrane Flow (m}^3\text{)}}$$

Peroxide Concentration: 50.0%

Runtimes Report

Month: February-17

Date	Daily Gen-Set Runtimes		Daily UV Runtimes		Daily PALL Runtimes				
	LLPS	WTP	UV #1	UV #2	Air Compressor #1	Air Compressor #2	CIP Neutralization	CIP Drain	CIP Recirc
	(Hrs)	(Hrs)	(Hrs)	(Hrs)	(Hrs)	(Hrs)	(Hrs)	(Hrs)	(Hrs)
1	0.0	0.0	0.0	0.0	24.4	0.0	0.2	0.1	0.5
2	0.0	0.0	0.0	0.0	24.4	0.0	0.0	0.0	0.0
3	0.0	0.0	0.0	0.6	24.4	0.0	0.2	0.1	0.5
4	0.0	0.0	0.0	0.0	24.4	0.0	0.0	0.0	0.0
5	0.0	0.0	0.0	0.0	24.4	0.0	0.0	0.0	0.0
6	0.0	0.0	0.0	0.0	24.4	0.0	0.1	0.1	0.5
7	0.0	0.0	0.0	0.0	24.4	0.0	0.2	0.2	0.6
8	0.0	0.0	0.0	0.0	24.4	0.0	0.2	0.0	0.0
9	0.0	0.0	0.0	0.0	24.4	0.0	0.2	0.1	0.5
10	0.0	0.0	0.0	0.0	24.4	0.0	0.0	0.0	0.0
11	0.0	0.0	0.0	0.0	24.4	0.0	0.0	0.0	0.0
12	0.0	0.0	0.0	0.0	24.4	0.0	0.0	0.0	0.0
13	0.0	0.0	0.0	0.0	24.4	0.0	0.4	0.2	1.0
14	0.0	0.0	0.0	0.0	24.3	0.0	0.0	0.0	0.0
15	1.2	1.1	0.0	0.0	24.4	0.0	0.2	0.1	0.6
16	0.0	0.0	0.0	0.0	24.4	0.0	0.0	0.0	0.0
17	0.0	0.0	0.0	0.0	24.4	0.0	0.0	0.0	0.0
18	0.0	0.0	0.0	0.0	24.4	0.0	0.0	0.0	0.0
19	0.0	0.0	0.0	0.0	24.4	0.0	0.0	0.0	0.0
20	0.0	0.0	0.0	0.0	24.4	0.0	0.0	0.0	0.0
21	0.0	0.0	0.0	0.0	24.4	0.0	0.2	0.1	0.5
22	0.0	0.0	0.0	0.0	24.4	0.0	0.3	0.3	1.0
23	0.0	0.0	0.0	0.0	24.4	0.0	0.0	0.0	0.0
24	0.0	0.0	0.0	0.0	24.4	0.0	0.0	0.0	0.0
25	0.0	0.0	0.0	0.0	24.4	0.0	0.0	0.0	0.0
26	0.0	0.0	0.0	0.0	24.4	0.0	0.0	0.0	0.0
27	0.0	0.0	0.0	0.0	24.4	0.0	0.2	0.1	0.6
28	0.0	0.0	0.0	0.0	24.4	0.0	0.3	0.2	1.1
Total	1.2	1.1	0.0	0.6	682.4	0.0	2.7	1.6	7.4

Notes:

Runtimes Report

Month: February-17

Daily

Date	PALL Runtimes						Process Drain	
	RFR Pump #1 (Hrs)	RFR Pump #2 (Hrs)	RF Pump #1 (Hrs)	RF Pump #2 (Hrs)	XR Pump #1 (Hrs)	XR Pump #2 (Hrs)	PDP9010 Pump (Hrs)	PDP9020 Pump (Hrs)
1	0.0	0.0	0.4	0.5	6.9	6.9	2.0	2.7
2	0.0	0.0	0.2	0.3	4.5	4.6	1.9	3.0
3	0.0	0.0	0.5	0.4	8.1	7.9	1.9	2.5
4	0.0	0.0	0.4	0.4	6.3	6.2	1.9	2.6
5	0.0	0.0	0.4	0.4	6.0	5.8	1.9	2.7
6	0.5	0.0	0.4	0.4	7.0	6.8	2.0	2.6
7	0.0	0.0	0.4	0.4	5.8	6.1	1.8	2.6
8	0.0	0.1	0.5	0.4	6.1	6.1	2.0	2.7
9	0.0	0.0	0.3	0.4	6.1	6.3	1.8	2.5
10	0.0	0.0	0.4	0.4	5.9	5.5	1.5	2.0
11	0.0	0.0	0.4	0.5	6.2	6.4	1.8	2.5
12	0.0	0.0	0.4	0.3	6.4	6.1	2.0	2.7
13	0.0	0.0	0.4	0.5	7.2	7.7	2.1	2.9
14	0.0	0.0	0.5	0.5	7.8	7.6	1.8	2.5
15	0.0	0.0	0.4	0.3	6.3	6.1	2.0	2.7
16	0.0	0.0	0.4	0.3	5.3	5.3	2.1	2.9
17	0.0	0.0	0.4	0.4	6.8	6.7	2.1	2.8
18	0.0	0.0	0.5	0.7	6.8	6.7	1.8	2.5
19	0.0	0.0	0.4	0.3	4.9	5.0	2.1	2.8
20	0.0	0.0	0.3	0.4	6.3	5.9	2.1	2.9
21	0.0	0.0	0.5	0.4	6.4	6.9	2.1	2.8
22	0.0	0.0	0.5	0.4	8.0	7.6	2.2	2.8
23	0.0	0.0	0.4	0.4	6.8	7.7	1.9	2.7
24	0.0	0.0	0.4	0.4	6.6	6.0	2.0	2.6
25	0.0	0.0	0.5	0.4	6.5	7.0	2.1	2.8
26	0.0	0.0	0.3	0.4	6.6	6.4	1.9	2.6
27	0.0	0.0	0.5	0.4	7.5	7.1	1.9	2.6
28	0.0	0.0	0.4	0.5	7.7	7.2	1.3	1.9
Total	0.5	0.1	11.5	11.5	182.1	180.9	54.1	73.9

Notes:
 RFR offline due to rack 3 offline.

Runtimes Report

Month: February-17

Daily

Date	Low Lift Pump Motor Runtimes				High Lift Pump Motor Runtimes			
	LLP1010 (Hrs)	LLP1020 (Hrs)	LLP1030 (Hrs)	LLP1040 (Hrs)	HLP7010 (Hrs)	HLP7020 (Hrs)	HLP7030 (Hrs)	HLP7040 (Hrs)
1	3.5	2.9	5.5	3.3	5.3	0.0	4.5	5.6
2	5.2	1.0	1.2	2.2	4.0	0.0	2.1	5.3
3	2.6	5.4	3.8	5.6	4.2	0.0	6.1	6.0
4	2.7	5.5	2.8	2.8	3.0	0.0	7.4	4.4
5	3.1	0.7	5.5	4.3	1.3	0.0	8.5	3.7
6	4.1	5.0	3.5	2.8	7.4	0.0	3.0	5.3
7	5.2	1.7	2.4	5.0	6.7	0.0	4.7	3.2
8	3.3	5.6	3.2	3.8	4.8	0.0	3.8	5.1
9	1.7	5.5	0.5	6.3	9.2	0.0	4.5	3.4
10	2.9	2.1	5.6	2.0	24.0	0.0	0.0	0.0
11	4.3	1.9	3.2	5.6	7.7	0.0	0.0	8.7
12	2.8	5.4	2.8	2.7	2.7	0.0	5.9	4.5
13	3.7	2.9	3.5	5.6	3.5	0.0	4.1	6.3
14	2.9	5.6	3.7	5.5	0.0	0.0	9.1	12.2
15	5.6	3.8	4.5	0.3	3.1	0.0	6.9	2.2
16	2.7	2.5	3.1	3.1	2.5	0.0	4.3	5.7
17	3.9	5.6	3.2	2.8	4.2	0.0	4.4	5.3
18	7.6	3.1	4.7	5.9	2.9	0.0	0.0	15.8
19	2.8	5.6	0.4	2.8	2.9	0.0	9.5	0.0
20	1.4	2.8	4.9	4.3	2.5	0.0	4.6	4.8
21	5.5	4.7	2.8	2.1	8.2	0.0	4.5	0.0
22	5.6	1.7	4.7	4.6	2.1	0.0	2.6	11.4
23	3.7	3.6	2.8	5.5	11.6	0.0	4.5	0.0
24	2.0	2.9	5.5	2.8	4.1	0.0	2.9	6.2
25	3.7	1.9	3.7	5.6	2.7	0.0	11.2	1.6
26	2.7	5.6	1.6	3.9	3.9	0.0	5.6	6.2
27	4.9	3.1	4.5	3.7	4.4	0.0	2.3	9.1
28	4.0	5.2	2.5	3.5	4.3	0.0	5.5	4.2
	3.0	2.6	2.4	3.8	2.7	0.0	8.5	2.5
	4.1	2.8	4.8	0.1	6.3	0.0	5.2	2.4
	2.9	4.4	2.8	6.2	4.4	0.0	10.1	4.3
Total	114.1	113.1	106.1	118.5	156.6	0.0	156.3	155.4

Notes:

Plant Internal Flow Report

Month: February-17

Date	Settling Tank Level		Process Drain Tank		Settling Tank Flow		Potable Water Flow		Non-Potable Flow	
	T-9003 (m)		T-9001 (m)		FIT_9005 (m ³) (L/s)		FIT_7082 (m ³) (L/s)		FIT_7092 (m ³) (L/s)	
	Maximum	Minimum	Maximum	Minimum	Total	Peak	Total	Peak	Total	Peak
1	2.2	0.1	1.5	0.4	135.0	15.7	0.1	1.6	11.0	16.2
2	2.2	0.1	1.6	0.4	66.9	15.7	0.1	1.4	0.0	0.0
3	2.2	0.3	0.8	0.4	108.3	15.7	0.1	1.4	10.7	17.8
4	2.2	0.1	0.9	0.4	92.5	15.7	0.0	0.3	1.1	1.5
5	2.2	0.1	0.8	0.4	125.3	15.7	0.0	0.0	0.0	0.0
6	2.2	0.1	1.1	0.4	103.7	15.7	0.1	1.3	11.1	16.1
7	2.2	0.1	1.4	0.4	137.1	15.7	0.0	1.3	11.0	16.0
8	2.2	0.1	0.8	0.4	138.3	15.7	0.1	1.4	5.6	23.8
9	2.2	0.1	0.8	0.4	95.2	15.7	0.3	1.5	11.5	16.0
10	2.2	0.1	0.8	0.4	88.7	15.7	0.1	1.3	0.3	1.3
11	2.2	0.1	0.8	0.4	152.3	15.7	0.0	0.0	0.0	0.0
12	2.2	0.2	0.8	0.4	105.3	15.7	0.0	0.0	0.0	0.0
13	2.2	0.2	1.2	0.4	108.2	15.7	0.1	1.3	22.1	16.9
14	2.2	0.1	0.8	0.4	164.4	15.7	0.1	1.4	0.0	0.0
15	2.2	0.1	0.8	0.4	117.3	15.7	0.1	1.3	16.3	22.9
16	2.2	0.1	0.8	0.4	90.0	15.7	0.3	1.3	0.0	0.0
17	2.2	0.1	0.8	0.4	135.5	15.7	0.2	1.6	0.7	1.2
18	2.2	0.1	0.8	0.4	263.6	15.7	0.0	0.0	0.0	0.0
19	2.2	0.1	0.8	0.4	129.2	15.7	0.0	0.0	0.0	0.0
20	2.2	0.1	0.8	0.4	108.8	15.7	0.1	1.0	1.1	1.1
21	2.2	0.1	0.8	0.4	138.3	15.7	0.0	1.4	10.6	10.8
22	2.2	0.1	1.1	0.4	165.3	15.7	0.0	1.3	22.6	14.5
23	2.2	0.1	0.8	0.4	191.6	15.7	0.1	1.4	0.2	0.7
24	2.2	0.1	0.8	0.4	137.2	15.7	0.1	1.4	0.1	0.9
25	2.2	0.1	0.8	0.4	147.2	15.7	0.0	0.0	0.0	0.0
26	2.2	0.1	0.8	0.4	87.0	15.7	0.0	0.0	0.0	0.0
27	2.2	0.1	0.8	0.4	120.4	15.7	0.0	1.4	16.3	23.3
28	2.2	0.2	1.2	0.4	160.8	15.7	0.1	1.4	22.2	14.3
	2.2	0.1	0.8	0.4	18.5	15.7	0.0	1.3	11.0	15.6
	2.2	0.1	0.8	0.4	32.6	15.7	9.2	5.6	0.0	0.0
	2.2	0.1	0.8	0.4	38.0	15.7	0.0	0.0	0.0	0.0
Total					3702.4		11.3		185.6	
Average	2.2	0.1	0.9	0.4	129.0	15.7	0.1	1.0	6.2	7.7
Maximum	2.2		1.6		263.6		0.3		22.6	
Date	18-Feb		2-Feb		18-Feb		16-Feb		22-Feb	
Minimum		0.1		0.4		15.7		0.0		0.0
Date		5-Feb		28-Feb		10-Feb		5-Feb		2-Feb

Notes:
