

Municipality of West Elgin - Tri County Water System

Goto:

Month:

Year:

Date is Set to: **March-18**

Limit	Low	High	
Raw Water Chlorine Residual:	0.00	5.00	mg/L
Pre-Strainer Chlorine Residual:	0.00	5.00	mg/L
UV Inlet Chlorine Residual:	0.00	5.00	mg/L
Post Treatment Chlorine Residual:	1.00	5.00	mg/L
Treated Chlorine Residual:	1.00	2.50	mg/L
Distribution Chlorine Residual:	1.00	2.50	mg/L
Limit		High	
Limit		156.0	L/s
WTP Permit to Take Water		13500.0	m <sup>3</sup>
Limit	Low	High	
System Pressure Limits:	50.0	1034.0	Kpa

Compliance Report

Low Lift Monthly Report

>>>

Membranes Monthly Report

>>>

UV System Monthly Report

>>>

Plant Quality Report

>>>

Raw Well/Treated Storage Report

>>>

High Lift Monthly Report

>>>

Operational Report

Low Lift Monthly Report

>>>

High Lift Monthly Report

>>>

Chemical Usage Monthly Report

>>>

Runtimes Report

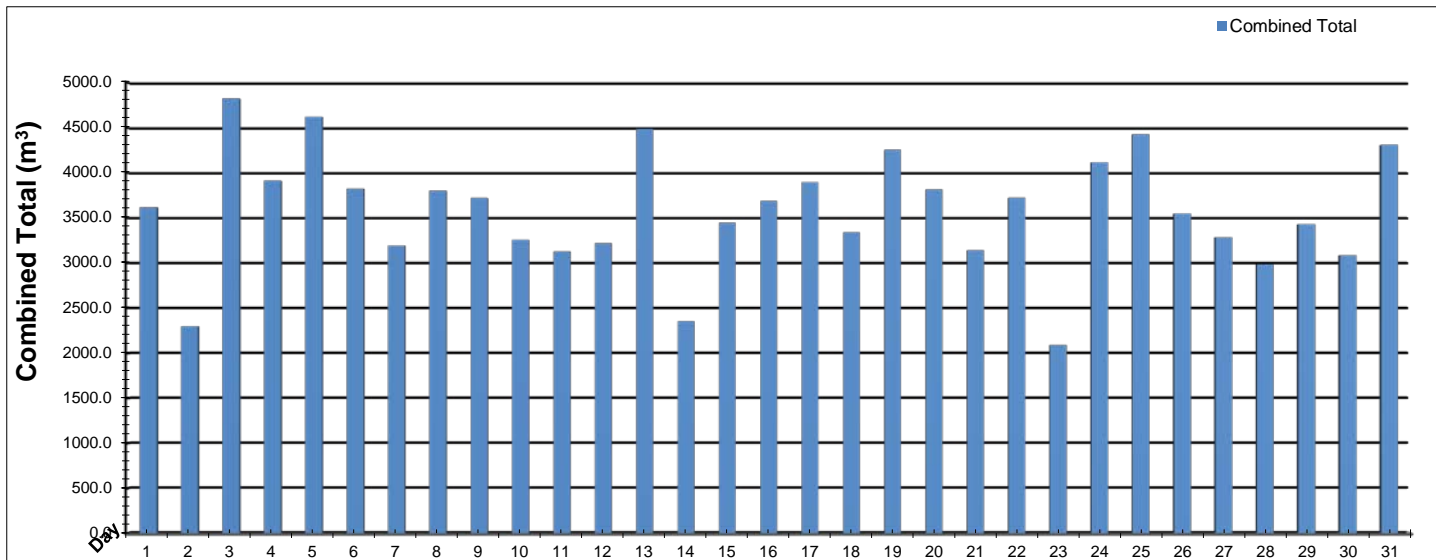
>>>

Plant Internal Flow Report

>>>

# Low Lift Monthly Report

Month: **March-18**



Date	Combined Total (m³)	West Train FIT-1017 (m³)	West Peak Flow FIT-1017 (L/s)	East Train FIT-1027 (m³)	East Peak Flow FIT-1027 (L/s)	Combined Peak Flow (L/s)
1	✓ 3617.8	0.0	0.0	3617.8	76.2	✓ 76.2
2	✓ 2298.3	0.0	0.0	2298.3	76.2	✓ 76.2
3	✓ 4824.2	0.0	0.0	4824.2	117.6	✓ 117.6
4	✓ 3912.7	0.0	0.0	3912.7	68.1	✓ 68.1
5	✓ 4620.4	0.0	0.0	4620.4	140.0	✓ 140.0
6	✓ 3824.4	0.0	0.0	3824.4	132.5	✓ 132.5
7	✓ 3193.7	0.0	0.0	3193.7	138.9	✓ 138.9
8	✓ 3802.0	0.0	0.0	3802.0	76.7	✓ 76.7
9	✓ 3720.6	0.0	0.0	3720.6	76.3	✓ 76.3
10	✓ 3257.5	0.0	0.0	3257.5	76.4	✓ 76.4
11	✓ 3128.5	0.0	0.0	3128.5	76.8	✓ 76.8
12	✓ 3218.4	0.0	0.0	3218.4	76.1	✓ 76.1
13	✓ 4486.3	0.0	0.0	4486.3	76.2	✓ 76.2
14	✓ 2352.2	0.0	0.0	2352.2	76.2	✓ 76.2
15	✓ 3447.3	0.0	0.0	3447.3	76.0	✓ 76.0
16	✓ 3689.2	0.0	0.0	3689.2	75.6	✓ 75.6
17	✓ 3896.5	0.0	0.0	3896.5	76.7	✓ 76.7
18	✓ 3339.4	0.0	0.0	3339.4	76.5	✓ 76.5
19	✓ 4256.1	0.0	0.0	4256.1	76.4	✓ 76.4
20	✓ 3814.7	0.0	0.0	3814.7	75.9	✓ 75.9
21	✓ 3140.2	0.0	0.0	3140.2	137.5	✓ 137.5
22	✓ 3723.3	0.0	0.0	3723.3	75.5	✓ 75.5
23	✓ 2089.8	0.0	0.0	2089.8	131.4	✓ 131.4
24	✓ 4116.9	0.0	0.0	4116.9	76.2	✓ 76.2
25	✓ 4427.7	0.0	0.0	4427.7	75.9	✓ 75.9
26	✓ 3548.9	0.0	0.0	3548.9	140.7	✓ 140.7
27	✓ 3285.1	2138.3	74.7	1146.7	76.1	✓ 76.1
28	✓ 2984.4	2984.4	75.3	0.0	0.0	✓ 75.3
29	✓ 3429.4	3429.4	75.3	0.0	0.0	✓ 75.3
30	✓ 3084.2	3084.2	75.3	0.0	0.0	✓ 75.3
31	✓ 4310.5	4310.5	75.6	0.0	0.0	✓ 75.6
<b>Total</b>	<b>110840.5</b>	<b>15946.8</b>		<b>94893.7</b>		
<b>Average</b>	<b>3575.5</b>	<b>514.4</b>	<b>12.1</b>	<b>3061.1</b>	<b>79.2</b>	<b>88.9</b>
<b>Maximum</b>	<b>4824.2</b>	<b>4310.5</b>	<b>75.57</b>	<b>4824.2</b>	<b>140.75</b>	<b>140.75</b>
<b>Date</b>	<b>3-Mar</b>	<b>31-Mar</b>	<b>31-Mar</b>	<b>3-Mar</b>	<b>26-Mar</b>	<b>26-Mar</b>
<b>Minimum</b>	<b>2089.8</b>	<b>0.0</b>	<b>0.00</b>	<b>0.0</b>	<b>0.00</b>	<b>68.08</b>
<b>Date</b>	<b>23-Mar</b>	<b>1-Mar</b>	<b>1-Mar</b>	<b>29-Mar</b>	<b>28-Mar</b>	<b>4-Mar</b>

Notes:

---



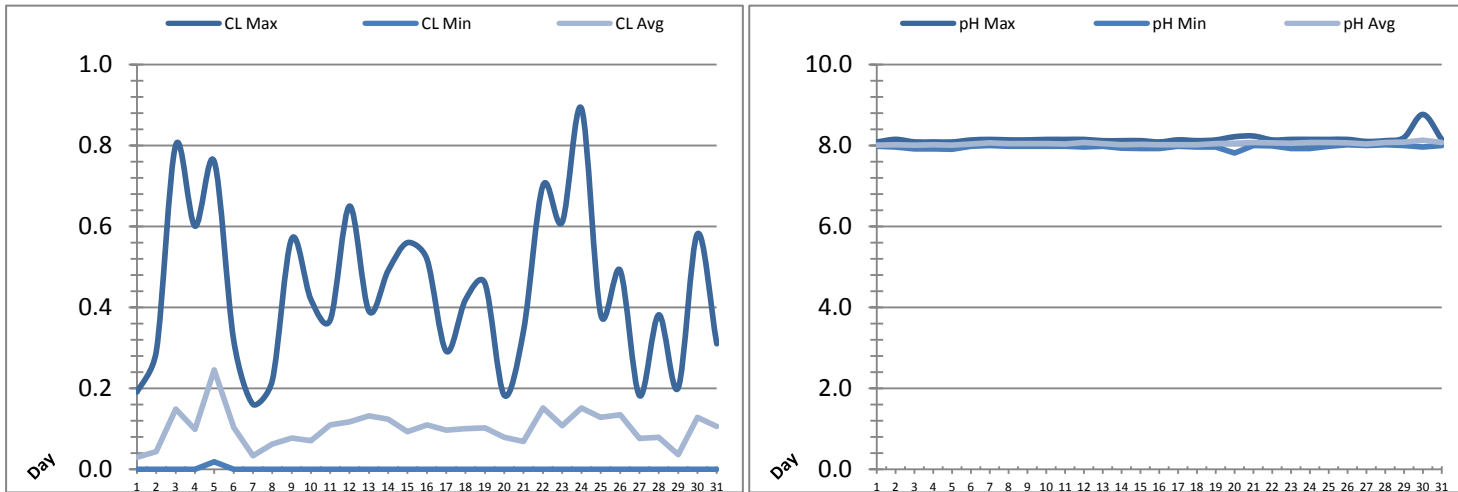
---



---

# Low Lift Monthly Report

Month: **March-18**

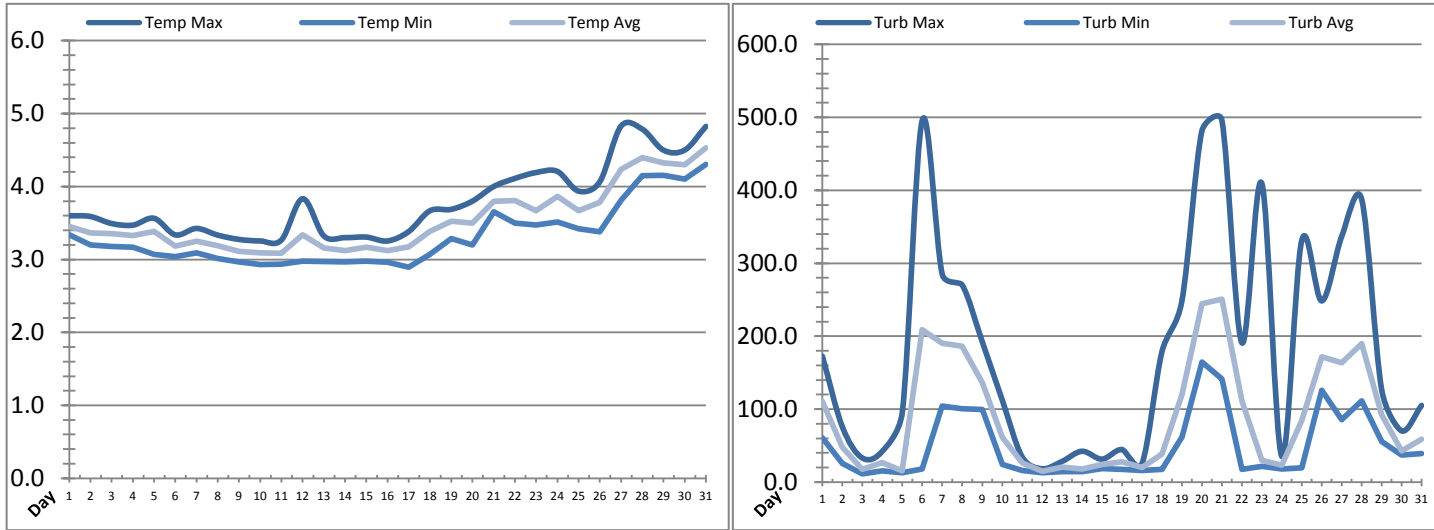


Date	Raw Water Chlorine Residual			Raw Water pH		
	AIT_1401_CL (mg/L)			AIT_1401_PH		
	Maximum	Minimum	Average	Maximum	Minimum	Average
1	0.19	0.00	0.03	8.09	7.98	8.02
2	0.29	0.00	0.04	8.16	7.96	8.02
3	0.80	0.00	0.15	8.09	7.92	8.01
4	0.60	0.00	0.10	8.09	7.92	8.02
5	0.76	0.02	0.25	8.09	7.91	8.01
6	0.32	0.00	0.10	8.14	7.99	8.04
7	0.16	0.00	0.03	8.15	8.00	8.07
8	0.22	0.00	0.06	8.14	7.99	8.05
9	0.57	0.00	0.08	8.14	7.98	8.05
10	0.42	0.00	0.07	8.15	7.98	8.05
11	0.37	0.00	0.11	8.15	7.98	8.04
12	0.65	0.00	0.12	8.15	7.96	8.08
13	0.39	0.00	0.13	8.12	7.99	8.05
14	0.49	0.00	0.12	8.12	7.93	8.02
15	0.56	0.00	0.09	8.12	7.93	8.03
16	0.52	0.00	0.11	8.09	7.93	8.02
17	0.29	0.00	0.10	8.14	7.98	8.03
18	0.42	0.00	0.10	8.12	7.96	8.02
19	0.46	0.00	0.10	8.14	7.96	8.05
20	0.18	0.00	0.08	8.22	7.82	8.06
21	0.34	0.00	0.07	8.24	8.00	8.08
22	0.70	0.00	0.15	8.14	7.99	8.07
23	0.61	0.00	0.11	8.15	7.93	8.06
24	0.89	0.00	0.15	8.16	7.93	8.08
25	0.38	0.00	0.13	8.15	7.99	8.08
26	0.49	0.00	0.14	8.15	8.02	8.07
27	0.18	0.00	0.08	8.10	8.00	8.04
28	0.38	0.00	0.08	8.12	8.02	8.08
29	0.20	0.00	0.04	8.20	8.00	8.08
30	0.58	0.00	0.13	8.77	7.97	8.14
31	0.31	0.00	0.11	8.15	8.00	8.08
<b>Total</b>						
<b>Average</b>	0.44	0.00	0.10	8.16	7.97	8.05
<b>Maximum</b>	0.89		0.25	8.77		8.14
<b>Date</b>	24-Mar		5-Mar	30-Mar		30-Mar
<b>Minimum</b>		0.00	0.03		7.82	8.01
<b>Date</b>		1-Mar	1-Mar		20-Mar	5-Mar

Notes:  
 On March 30th, pH spike was for a total of 2 minutes. Maximum was 8.40; minimum was 8.10. Possible cause - unknown.

# Low Lift Monthly Report

Month: **March-18**



Date	Raw Water Temperature			Raw Water Turbidity		
	TIT_1403 (°C)			AIT_1404 (NTU)		
	Maximum	Minimum	Average	Maximum	Minimum	Average
1	3.6	3.3	3.5	172.46	60.81	110.67
2	3.6	3.2	3.4	75.56	25.92	48.01
3	3.5	3.2	3.4	32.98	11.23	17.67
4	3.5	3.2	3.3	42.25	15.10	26.51
5	3.6	3.1	3.4	95.75	12.78	15.58
6	3.3	3.0	3.2	496.13	18.18	208.97
7	3.4	3.1	3.2	284.83	104.20	190.30
8	3.3	3.0	3.2	270.14	100.28	186.16
9	3.3	3.0	3.1	192.60	99.51	135.97
10	3.3	2.9	3.1	112.74	24.38	61.28
11	3.3	2.9	3.1	34.53	15.87	25.93
12	3.8	3.0	3.3	18.20	12.77	14.72
13	3.3	3.0	3.2	28.32	14.29	20.25
14	3.3	3.0	3.1	42.23	14.29	17.86
15	3.3	3.0	3.2	31.43	18.21	24.28
16	3.3	3.0	3.1	44.56	17.41	27.65
17	3.4	2.9	3.2	25.24	15.86	19.76
18	3.7	3.1	3.4	178.66	17.46	38.68
19	3.7	3.3	3.5	248.43	61.64	119.89
20	3.8	3.2	3.5	481.42	164.63	244.44
21	4.0	3.7	3.8	496.09	141.35	250.73
22	4.1	3.5	3.8	191.01	17.42	111.20
23	4.2	3.5	3.7	409.50	21.31	29.70
24	4.2	3.5	3.9	35.35	18.18	22.92
25	3.9	3.4	3.7	331.27	19.70	84.57
26	4.1	3.4	3.8	248.37	125.89	171.98
27	4.8	3.8	4.2	336.71	85.65	163.57
28	4.8	4.2	4.4	387.79	111.17	189.93
29	4.5	4.2	4.3	126.71	55.40	92.26
30	4.5	4.1	4.3	70.16	36.82	42.69
31	4.8	4.3	4.5	105.03	39.16	58.56
<b>Total</b>						
<b>Average</b>	3.8	3.3	3.5	182.1	48.3	89.4
<b>Maximum</b>	4.8		4.5	496.1		250.7
<b>Date</b>	27-Mar		31-Mar	6-Mar		21-Mar
<b>Minimum</b>		2.9	3.1		11.2	14.7
<b>Date</b>		17-Mar	11-Mar		3-Mar	12-Mar

Notes:

---



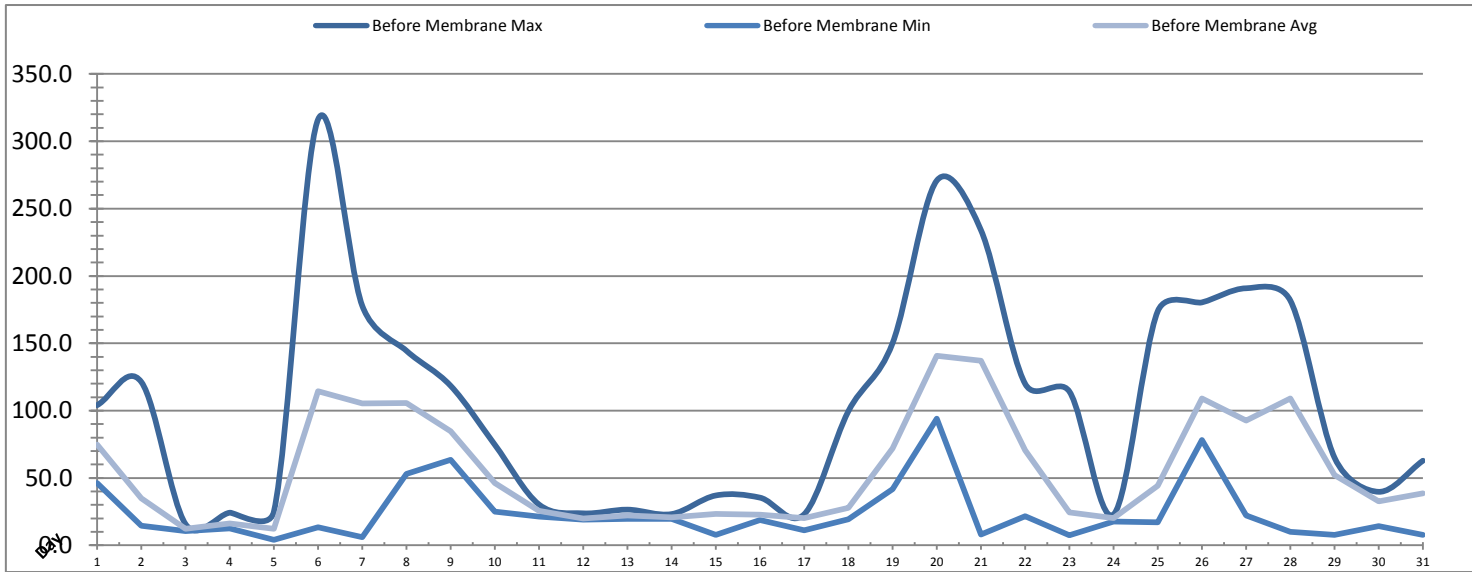
---



---

# Membranes Monthly Report

Month: **March-18**



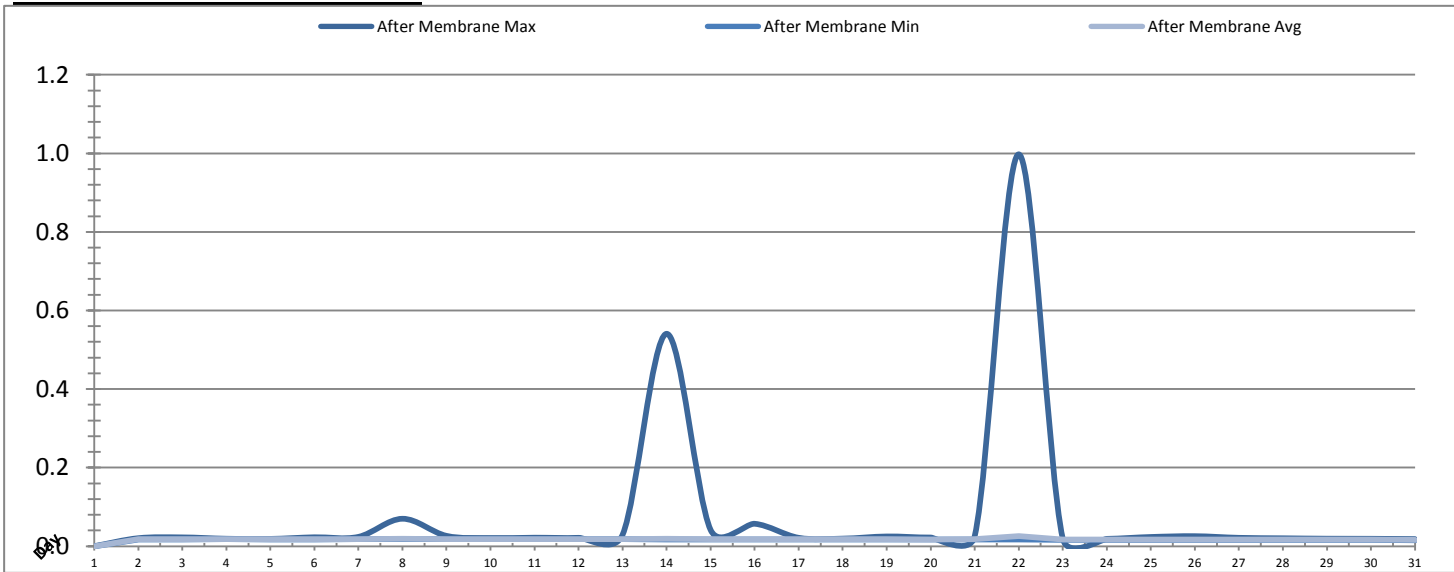
Date	Turbidity Before Membrane			Rack #1 Turbidity			Rack #2 Turbidity		
	PALL_FEED_AIT2006_Value NTU			RACK1_NTU_Value NTU			RACK2_NTU_Value NTU		
	Maximum	Minimum	Average	Maximum	Minimum	Average	Maximum	Minimum	Average
1	104.07	46.38	74.90	0.02	0.02	0.02	0.05	0.02	0.02
2	121.30	14.50	34.87	0.09	0.02	0.02	0.12	0.02	0.02
3	15.80	10.52	12.39	0.02	0.02	0.02	0.02	0.02	0.02
4	24.24	12.44	16.32	0.02	0.02	0.02	0.02	0.02	0.02
5	25.06	4.12	12.43	0.03	0.02	0.02	0.02	0.02	0.02
6	316.26	13.44	114.47	0.03	0.02	0.02	0.03	0.02	0.02
7	177.78	6.06	105.39	0.03	0.02	0.02	0.09	0.02	0.02
8	144.45	52.98	105.68	0.02	0.02	0.02	0.02	0.02	0.02
9	118.44	63.36	84.84	0.18	0.02	0.02	0.02	0.02	0.02
10	74.65	24.91	46.19	0.02	0.02	0.02	0.25	0.02	0.02
11	30.28	21.26	25.60	0.02	0.02	0.02	0.11	0.02	0.02
12	23.77	19.04	20.02	0.02	0.02	0.02	0.03	0.02	0.02
13	26.52	19.76	22.32	0.02	0.02	0.02	0.10	0.02	0.02
14	23.22	19.55	20.81	0.02	0.02	0.02	0.08	0.02	0.02
15	37.04	7.81	23.33	0.13	0.02	0.02	0.04	0.02	0.02
16	35.41	18.78	22.83	0.02	0.02	0.02	0.02	0.02	0.02
17	23.08	11.13	20.19	0.02	0.02	0.02	0.24	0.02	0.02
18	99.63	19.25	27.76	0.02	0.02	0.02	0.11	0.02	0.02
19	150.18	41.79	72.02	0.02	0.02	0.02	0.09	0.02	0.02
20	270.84	94.12	140.73	0.02	0.02	0.02	0.02	0.02	0.02
21	233.98	8.08	137.10	0.04	0.02	0.02	0.04	0.02	0.02
22	119.89	21.71	70.52	0.02	0.02	0.02	0.04	0.02	0.02
23	114.24	7.50	24.44	0.02	0.02	0.02	0.03	0.02	0.02
24	22.92	17.78	20.17	0.02	0.02	0.02	0.14	0.02	0.02
25	173.87	17.13	44.21	0.02	0.02	0.02	0.15	0.02	0.02
26	180.39	78.18	108.94	0.02	0.02	0.02	0.07	0.02	0.02
27	190.87	22.32	92.76	0.02	0.02	0.02	0.03	0.02	0.02
28	181.74	9.89	108.98	0.02	0.02	0.02	0.05	0.02	0.02
29	65.09	7.89	52.05	0.02	0.02	0.02	0.03	0.02	0.02
30	39.75	14.33	32.66	0.02	0.02	0.02	0.17	0.02	0.02
31	62.85	7.77	38.58	0.02	0.02	0.02	0.53	0.02	0.02
Total									
Average	104.1	23.7	55.9	0.0	0.0	0.0	0.1	0.0	0.0
Maximum	316.3		140.7	0.2		0.0	0.5		0.0
Date	6-Mar		20-Mar	9-Mar		2-Mar	31-Mar		31-Mar
Minimum		4.1	12.4		0.0	0.0		0.0	0.0
Date		5-Mar	3-Mar		1-Mar	3-Mar		1-Mar	16-Mar

**Notes:**

Spikes in turbidity on racks occurred after IT, possibly due to excess air trapped.

# Membranes Monthly Report

Month: **March-18**



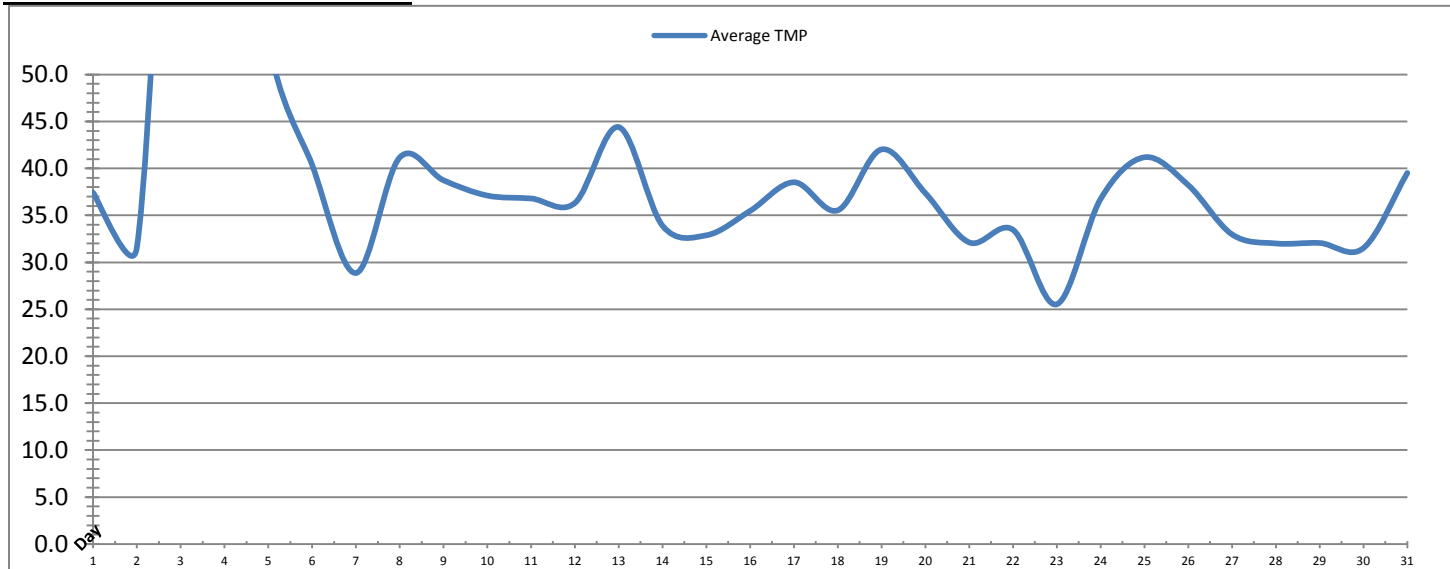
Date	Rack #3 Turbidity			Rack #4 Turbidity			Turbidity After Membranes		
	RACK3_NTU_Value NTU			RACK4_NTU_Value NTU			PALL_FILT_AIT5001_Value NTU		
	Maximum	Minimum	Average	Maximum	Minimum	Average	Maximum	Minimum	Average
1	0.02	0.02	0.02	0.04	0.03	0.03	0.02	0.02	0.02
2	0.02	0.02	0.02	0.06	0.03	0.03	0.02	0.02	0.02
3	0.02	0.02	0.02	0.03	0.03	0.03	0.02	0.02	0.02
4	0.02	0.02	0.02	0.03	0.03	0.03	0.02	0.02	0.02
5	0.02	0.02	0.02	0.04	0.03	0.03	0.02	0.02	0.02
6	0.02	0.02	0.02	0.07	0.03	0.03	0.02	0.02	0.02
7	0.02	0.02	0.02	0.19	0.03	0.03	0.07	0.02	0.02
8	0.02	0.02	0.02	0.05	0.03	0.03	0.03	0.02	0.02
9	0.02	0.02	0.02	0.06	0.03	0.03	0.02	0.02	0.02
10	0.02	0.02	0.02	0.04	0.03	0.03	0.02	0.02	0.02
11	0.02	0.02	0.02	0.05	0.03	0.03	0.02	0.02	0.02
12	0.02	0.02	0.02	0.04	0.03	0.03	0.03	0.02	0.02
13	0.02	0.02	0.02	0.04	0.03	0.03	0.54	0.02	0.02
14	0.02	0.02	0.02	0.04	0.03	0.03	0.04	0.02	0.02
15	0.02	0.02	0.02	0.04	0.03	0.03	0.06	0.02	0.02
16	0.02	0.02	0.02	0.04	0.03	0.03	0.02	0.02	0.02
17	0.02	0.02	0.02	0.03	0.03	0.03	0.02	0.02	0.02
18	0.02	0.02	0.02	0.03	0.03	0.03	0.02	0.02	0.02
19	0.05	0.02	0.02	0.03	0.03	0.03	0.02	0.02	0.02
20	0.02	0.02	0.02	0.08	0.03	0.03	0.03	0.02	0.02
21	0.05	0.02	0.02	0.09	0.03	0.03	1.00	0.02	0.03
22	0.02	0.02	0.02	0.03	0.03	0.03	0.02	0.02	0.02
23	0.02	0.02	0.02	0.04	0.03	0.03	0.02	0.02	0.02
24	0.02	0.02	0.02	0.05	0.03	0.03	0.02	0.02	0.02
25	0.02	0.02	0.02	0.05	0.03	0.03	0.03	0.02	0.02
26	0.99	0.02	0.02	0.04	0.03	0.03	0.02	0.02	0.02
27	0.02	0.02	0.02	0.04	0.03	0.03	0.02	0.02	0.02
28	0.02	0.02	0.02	0.06	0.03	0.03	0.02	0.02	0.02
29	0.02	0.02	0.02	0.04	0.03	0.03	0.02	0.02	0.02
30	0.02	0.02	0.02	0.04	0.03	0.03	0.02	0.01	0.02
31	0.02	0.02	0.02	0.04	0.03	0.03	0.02	0.02	0.02
Total									
Average	0.05	0.02	0.02	0.05	0.03	0.03	0.07	0.02	0.02
Maximum	0.99		0.02	0.19		0.03	1.00		0.03
Date	26-Mar		26-Mar	7-Mar		7-Mar	21-Mar		21-Mar
Minimum		0.02	0.02		0.03	0.03		0.01	0.02
Date		3-Mar	18-Mar		5-Mar	15-Mar		30-Mar	31-Mar

**Notes:**

21st: Turbidity after membrane spike due to maintenance.  
 26th: Rack 3 spike in turbidity after EFM, occurred for less than 2 min.

# Membranes Monthly Report

Month: **March-18**

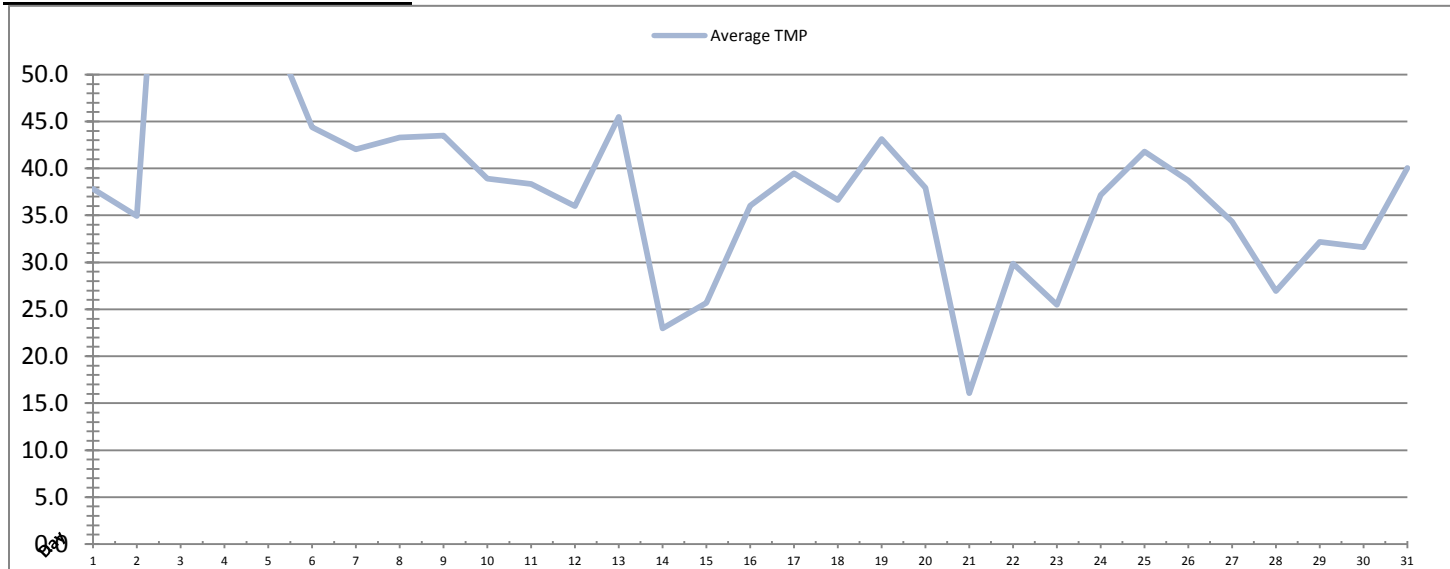


Date	Integrity Test Rack 1							
	Initial Pressure (kPa)	Final Pressure (kPa)	Test Duration (sec)	Change in Pressure (kPa)	UCL	Within UCL	Average TMP (kPa)	Max TMP (kPa)
1	199.9	198.5	300.0	1.4	2.0	✓ 2.0	37.4	149.7
2	199.1	197.8	300.0	1.3	2.0	✓ 2.0	31.6	105.1
3	199.1	197.8	300.0	1.3	2.0	✓ 2.0	100.6	207.6
4	199.7	198.3	300.0	1.3	2.0	✓ 2.0	108.0	210.8
5	199.7	198.3	300.0	1.3	2.0	✓ 2.0	54.2	246.0
6	199.9	198.6	300.0	1.3	2.0	✓ 2.0	40.4	170.1
7	199.9	198.6	300.0	1.3	2.0	✓ 2.0	28.9	121.6
8	199.9	198.4	300.0	1.4	2.0	✓ 2.0	41.2	100.7
9	199.2	197.8	300.0	1.4	2.0	✓ 2.0	38.7	135.8
10	199.5	198.1	300.0	1.4	2.0	✓ 2.0	37.1	94.4
11	199.5	198.1	300.0	1.3	2.0	✓ 2.0	36.8	95.8
12	199.9	198.6	300.0	1.3	2.0	✓ 2.0	36.3	98.9
13	200.0	198.6	300.0	1.5	2.0	✓ 2.0	44.4	115.5
14	199.7	198.3	300.0	1.4	2.0	✓ 2.0	33.9	180.3
15	200.0	198.5	300.0	1.5	2.0	✓ 2.0	32.9	175.7
16	199.6	198.2	300.0	1.4	2.0	✓ 2.0	35.5	109.5
17	199.7	198.4	300.0	1.3	2.0	✓ 2.0	38.5	86.3
18	199.7	198.3	300.0	1.4	2.0	✓ 2.0	35.5	128.7
19	199.1	197.7	300.0	1.4	2.0	✓ 2.0	42.0	173.2
20	199.7	198.3	300.0	1.5	2.0	✓ 2.0	37.4	93.7
21	199.6	198.2	300.0	1.4	2.0	✓ 2.0	32.1	213.7
22	199.6	198.3	300.0	1.3	2.0	✓ 2.0	33.5	88.2
23	199.5	198.3	300.0	1.3	2.0	✓ 2.0	25.5	127.8
24	199.8	198.4	300.0	1.4	2.0	✓ 2.0	36.8	79.4
25	199.7	198.4	300.0	1.3	2.0	✓ 2.0	41.2	84.9
26	199.4	198.1	300.0	1.3	2.0	✓ 2.0	38.2	230.2
27	199.4	198.1	300.0	1.3	2.0	✓ 2.0	33.0	131.0
28	199.6	198.4	300.0	1.2	2.0	✓ 2.0	32.0	154.0
29	199.3	198.0	300.0	1.3	2.0	✓ 2.0	32.1	78.4
30	199.7	198.4	300.0	1.3	2.0	✓ 2.0	31.5	122.1
31	199.0	197.7	300.0	1.3	2.0	✓ 2.0	39.5	83.4
<b>Total</b>								
Average	199.6	198.2	300.0	1.4	2.0	2.0	40.9	135.2
Maximum	200.0	198.6	300.0	1.5	2.0	2.0	108.0	246.0
Date	13-Mar	6-Mar	1-Mar	13-Mar	1-Mar	1-Mar	4-Mar	5-Mar
Minimum	199.0	197.7	300.0	1.2	2.0	2.0	25.5	78.4
Date	31-Mar	31-Mar	1-Mar	28-Mar	1-Mar	1-Mar	23-Mar	29-Mar

Notes:

# Membranes Monthly Report

Month: **March-18**



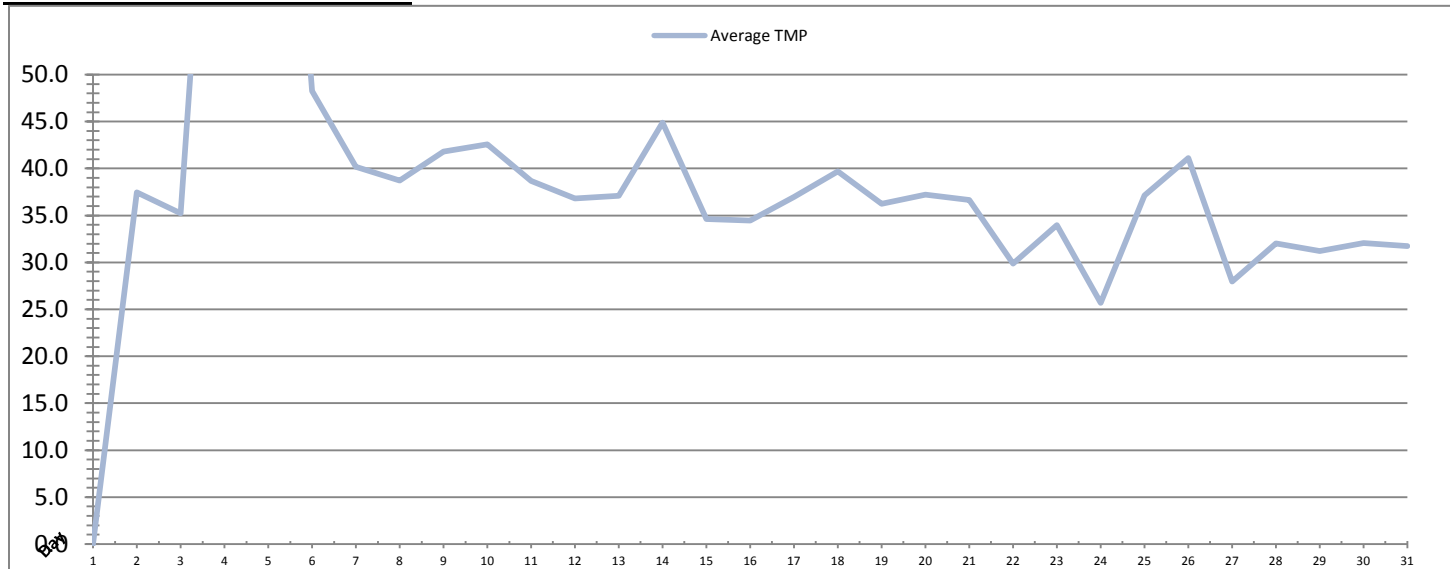
Date	Integrity Test Rack 2							
	Initial Pressure (kPa)	Final Pressure (kPa)	Test Duration (sec)	Change in Pressure (kPa)	UCL	Within UCL	Average TMP (kPa)	Max TMP (kPa)
1	208.3	206.9	300.0	1.3	2.0	✓ 2.0	37.8	91.0
2	208.1	206.8	300.0	1.3	2.0	✓ 2.0	35.0	110.2
3	208.1	206.8	300.0	1.3	2.0	✓ 2.0	102.0	211.5
4	208.0	206.7	300.0	1.3	2.0	✓ 2.0	109.1	185.3
5	208.0	206.7	300.0	1.3	2.0	✓ 2.0	55.7	249.8
6	208.2	207.0	300.0	1.2	2.0	✓ 2.0	44.4	249.5
7	208.3	206.9	300.0	1.4	2.0	✓ 2.0	42.0	213.9
8	208.2	206.9	300.0	1.3	2.0	✓ 2.0	43.3	106.2
9	208.2	206.9	300.0	1.3	2.0	✓ 2.0	43.5	101.2
10	208.3	206.9	300.0	1.3	2.0	✓ 2.0	38.9	155.4
11	208.0	206.7	300.0	1.3	2.0	✓ 2.0	38.3	98.8
12	208.3	206.9	300.0	1.4	2.0	✓ 2.0	36.0	117.0
13	208.2	206.8	300.0	1.4	2.0	✓ 2.0	45.5	90.2
14	208.2	206.8	300.0	1.4	2.0	✓ 2.0	23.0	116.6
15	208.3	206.6	300.0	1.7	2.0	✓ 2.0	25.7	76.7
16	208.2	206.9	300.0	1.3	2.0	✓ 2.0	36.0	114.3
17	208.1	206.8	300.0	1.3	2.0	✓ 2.0	39.5	86.9
18	208.2	206.9	300.0	1.3	2.0	✓ 2.0	36.6	88.6
19	208.0	206.6	300.0	1.3	2.0	✓ 2.0	43.1	170.7
20	208.4	207.0	300.0	1.4	2.0	✓ 2.0	38.0	95.9
21	208.0	206.7	300.0	1.3	2.0	✓ 2.0	16.1	91.2
22	208.3	206.9	300.0	1.5	2.0	✓ 2.0	29.9	76.6
23	208.1	206.8	300.0	1.3	2.0	✓ 2.0	25.5	122.1
24	208.1	206.8	300.0	1.3	2.0	✓ 2.0	37.2	77.3
25	208.2	206.8	300.0	1.4	2.0	✓ 2.0	41.8	115.8
26	208.1	206.7	300.0	1.3	2.0	✓ 2.0	38.7	176.2
27	208.0	206.7	300.0	1.3	2.0	✓ 2.0	34.3	171.1
28	208.0	206.7	300.0	1.3	2.0	✓ 2.0	27.0	84.8
29	207.8	206.6	300.0	1.2	2.0	✓ 2.0	32.2	78.5
30	208.2	207.0	300.0	1.2	2.0	✓ 2.0	31.6	83.3
31	207.8	206.6	300.0	1.3	2.0	✓ 2.0	40.1	84.2
<b>Total</b>								
Average	208.1	206.8	300.0	1.3	2.0	2.0	40.9	125.5
Maximum	208.4	207.0	300.0	1.7	2.0	2.0	109.1	249.8
Date	20-Mar	30-Mar	1-Mar	15-Mar	1-Mar	1-Mar	4-Mar	5-Mar
Minimum	207.8	206.6	300.0	1.2	2.0	2.0	16.1	76.6
Date	29-Mar	29-Mar	1-Mar	30-Mar	1-Mar	1-Mar	21-Mar	22-Mar

Notes:



# Membranes Monthly Report

Month: **March-18**



Integrity Test Rack 3									
Date	Initial Pressure (kPa)	Final Pressure (kPa)	Test Duration (sec)	Change in Pressure (kPa)	UCL	Within UCL	Average TMP (kPa)	Max TMP (kPa)	
1	193.4	192.1	300.0	1.3	2.0	✓ 2.0	37.4	86.3	
2	193.7	192.4	300.0	1.3	2.0	✓ 2.0	35.2	108.8	
3	193.7	192.4	300.0	1.3	2.0	✓ 2.0	101.7	209.5	
4	193.7	192.3	300.0	1.4	2.0	✓ 2.0	108.9	185.9	
5	193.7	192.3	300.0	1.4	2.0	✓ 2.0	48.3	249.5	
6	194.1	192.6	300.0	1.5	2.0	✓ 2.0	40.2	142.8	
7	193.8	192.4	300.0	1.3	2.0	✓ 2.0	38.7	138.9	
8	193.2	191.8	300.0	1.3	2.0	✓ 2.0	41.8	112.5	
9	193.7	192.3	300.0	1.4	2.0	✓ 2.0	42.6	137.0	
10	194.1	192.7	300.0	1.3	2.0	✓ 2.0	38.7	169.9	
11	192.8	192.1	300.0	0.6	2.0	✓ 2.0	36.8	141.8	
12	193.8	192.4	300.0	1.3	2.0	✓ 2.0	37.1	101.0	
13	193.7	192.4	300.0	1.3	2.0	✓ 2.0	44.9	92.2	
14	193.7	192.4	300.0	1.3	2.0	✓ 2.0	34.6	174.0	
15	193.9	192.5	300.0	1.5	2.0	✓ 2.0	34.4	97.8	
16	192.9	191.6	300.0	1.3	2.0	✓ 2.0	37.0	89.5	
17	194.1	192.9	300.0	1.3	2.0	✓ 2.0	39.7	87.5	
18	193.6	192.3	300.0	1.3	2.0	✓ 2.0	36.2	88.4	
19	192.1	191.4	300.0	0.7	2.0	✓ 2.0	37.2	162.6	
20	193.9	192.5	300.0	1.5	2.0	✓ 2.0	36.7	104.0	
21	193.6	192.2	300.0	1.3	2.0	✓ 2.0	29.9	127.4	
22	193.2	191.8	300.0	1.4	2.0	✓ 2.0	34.0	86.6	
23	193.4	192.1	300.0	1.3	2.0	✓ 2.0	25.7	127.3	
24	192.8	191.4	300.0	1.3	2.0	✓ 2.0	37.1	79.6	
25	193.6	192.1	300.0	1.5	2.0	✓ 2.0	41.1	85.4	
26	194.0	192.5	300.0	1.5	2.0	✓ 2.0	28.0	117.8	
27	194.1	192.9	300.0	1.2	2.0	✓ 2.0	32.0	85.5	
28	193.4	192.1	300.0	1.3	2.0	✓ 2.0	31.2	119.7	
29	193.2	192.0	300.0	1.3	2.0	✓ 2.0	32.1	77.4	
30	192.8	191.6	300.0	1.2	2.0	✓ 2.0	31.7	79.7	
31	193.0	191.7	300.0	1.3	2.0	✓ 2.0	39.6	82.6	
<b>Total</b>									
<b>Average</b>	193.5	192.2	300.0	1.3	2.0	2.0	41.0	120.9	
<b>Maximum</b>	194.1	192.9	300.0	1.5	2.0	2.0	108.9	249.5	
<b>Date</b>	17-Mar	17-Mar	1-Mar	26-Mar	1-Mar	1-Mar	4-Mar	5-Mar	
<b>Minimum</b>	192.1	191.4	300.0	0.6	2.0	2.0	25.7	77.4	
<b>Date</b>	19-Mar	19-Mar	1-Mar	11-Mar	1-Mar	1-Mar	23-Mar	29-Mar	

Notes:

---



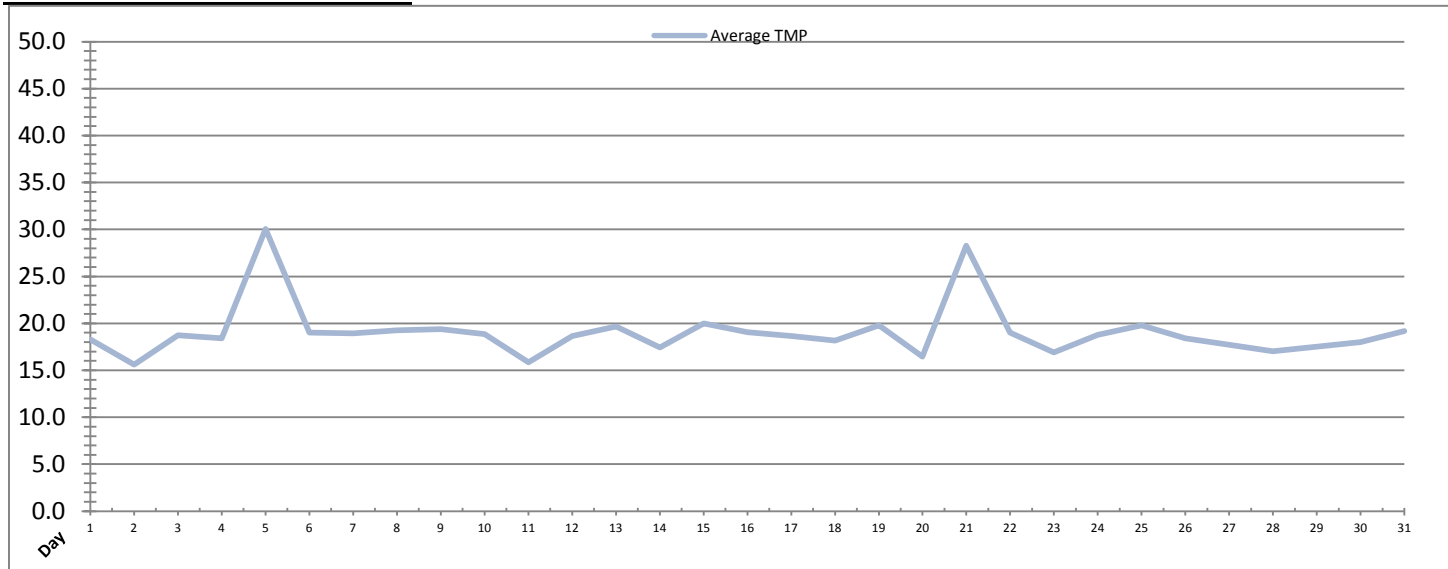
---



---

# Membranes Monthly Report

Month: **March-18**



Integrity Test Rack 4								
Date	Initial Pressure (kPa)	Final Pressure (kPa)	Test Duration (sec)	Change in Pressure (kPa)	UCL	Within UCL	Average TMP (kPa)	Max TMP (kPa)
1	200.8	199.3	300.0	1.4	2.0	✓ 2.0	18.3	46.9
2	201.0	199.7	300.0	1.3	2.0	✓ 2.0	15.6	42.4
3	201.0	199.7	300.0	1.3	2.0	✓ 2.0	18.7	29.8
4	200.7	199.7	300.0	1.1	2.0	✓ 2.0	18.4	34.7
5	200.7	199.7	300.0	1.1	2.0	✓ 2.0	30.1	126.5
6	201.3	200.0	300.0	1.3	2.0	✓ 2.0	19.0	49.1
7	201.1	199.7	300.0	1.3	2.0	✓ 2.0	18.9	136.0
8	200.8	199.3	300.0	1.4	2.0	✓ 2.0	19.3	51.0
9	201.2	199.9	300.0	1.3	2.0	✓ 2.0	19.4	49.5
10	201.2	199.9	300.0	1.3	2.0	✓ 2.0	18.8	45.5
11	201.0	199.5	300.0	1.5	2.0	✓ 2.0	15.8	48.4
12	201.1	199.7	300.0	1.3	2.0	✓ 2.0	18.6	63.1
13	201.0	199.6	300.0	1.4	2.0	✓ 2.0	19.6	41.9
14	200.8	199.2	300.0	1.6	2.0	✓ 2.0	17.4	52.5
15	200.8	199.5	300.0	1.4	2.0	✓ 2.0	20.0	79.6
16	201.3	199.8	300.0	1.5	2.0	✓ 2.0	19.0	48.0
17	201.0	199.5	300.0	1.5	2.0	✓ 2.0	18.7	45.3
18	201.0	199.7	300.0	1.3	2.0	✓ 2.0	18.2	44.3
19	201.4	200.1	300.0	1.3	2.0	✓ 2.0	19.8	55.8
20	201.0	199.7	300.0	1.3	2.0	✓ 2.0	16.5	36.3
21	201.2	199.7	300.0	1.6	2.0	✓ 2.0	28.3	175.5
22	201.1	199.5	300.0	1.6	2.0	✓ 2.0	19.0	64.9
23	201.2	199.6	300.0	1.6	2.0	✓ 2.0	16.9	74.0
24	201.0	199.6	300.0	1.4	2.0	✓ 2.0	18.8	39.6
25	201.1	199.5	300.0	1.6	2.0	✓ 2.0	19.8	61.1
26	201.0	199.5	300.0	1.5	2.0	✓ 2.0	18.4	79.0
27	200.9	199.5	300.0	1.5	2.0	✓ 2.0	17.7	51.3
28	200.9	199.5	300.0	1.4	2.0	✓ 2.0	17.0	39.7
29	201.2	199.7	300.0	1.4	2.0	✓ 2.0	17.5	50.8
30	200.8	199.4	300.0	1.5	2.0	✓ 2.0	18.0	51.3
31	201.0	199.5	300.0	1.5	2.0	✓ 2.0	19.2	41.8
<b>Total</b>								
Average	201.0	199.6	300.0	1.4	2.0	2.0	19.1	59.9
Maximum	201.4	200.1	300.0	1.6	2.0	2.0	30.1	175.5
Date	19-Mar	19-Mar	1-Mar	14-Mar	1-Mar	1-Mar	5-Mar	21-Mar
Minimum	200.7	199.2	300.0	1.1	2.0	2.0	15.6	29.8
Date	4-Mar	14-Mar	1-Mar	4-Mar	1-Mar	1-Mar	2-Mar	3-Mar

Notes:

---



---



---

# Membranes Monthly Report

Month: March-18

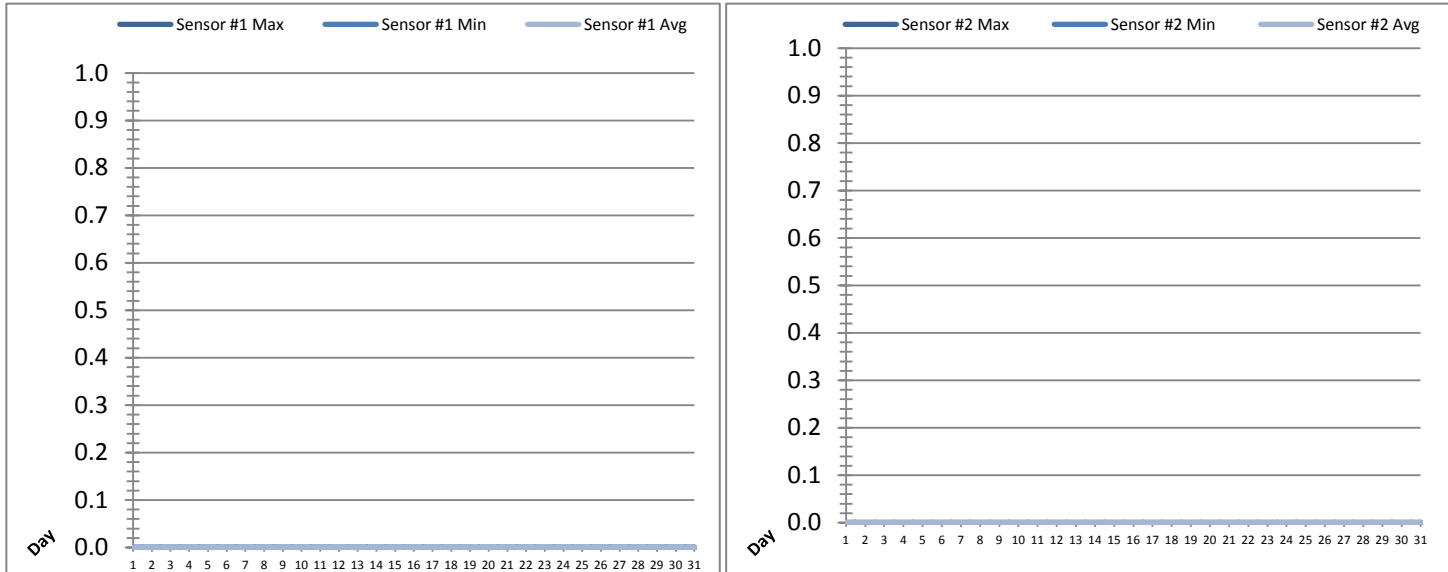
Date	Membranes Monthly Performance							
	Rack 1 >0.1 NTU (Minutes)	Rack 1 Forward Flow (Minutes)	Rack 2 >0.1 NTU (Minutes)	Rack 2 Forward Flow (Minutes)	Rack 3 >0.1 NTU (Minutes)	Rack 3 Forward Flow (Minutes)	Rack 4 >0.1 NTU (Minutes)	Rack 4 Forward Flow (Minutes)
1	0.0	814.2	0.0	820.5	0.0	806.5	0.0	475.4
2	0.0	491.6	1.3	543.2	0.0	541.0	0.0	529.6
3	0.0	1132.2	0.0	1132.2	0.0	1132.2	0.0	1132.2
4	0.0	1059.5	0.0	1059.5	0.0	1059.5	0.0	1059.5
5	0.0	914.3	0.0	933.2	0.0	895.5	0.0	697.3
6	0.0	837.5	0.0	877.5	0.0	862.2	0.0	511.1
7	0.0	429.5	0.0	710.4	0.0	682.6	2.3	437.1
8	0.0	840.2	0.0	858.1	0.0	837.5	0.0	535.0
9	0.5	776.1	0.0	845.3	0.0	831.4	0.0	534.2
10	0.0	732.2	1.4	758.3	0.0	742.0	0.0	437.4
11	0.0	704.1	0.5	726.6	0.0	704.0	0.0	441.2
12	0.0	724.5	0.0	730.4	0.0	724.1	0.0	438.2
13	0.0	1015.6	0.0	1033.3	0.0	1002.5	0.0	586.3
14	0.0	527.3	0.0	321.5	0.0	524.2	0.0	351.1
15	1.4	755.6	0.0	713.3	0.0	781.2	0.0	477.4
16	0.0	823.2	0.0	832.3	0.0	829.1	0.0	478.1
17	0.0	868.4	0.5	885.0	0.0	862.1	0.0	501.1
18	0.0	744.6	0.5	761.2	0.0	749.5	0.0	447.4
19	0.0	963.5	0.0	976.2	0.0	866.1	0.0	593.4
20	0.0	877.3	0.0	883.1	0.0	868.3	0.0	352.3
21	0.0	662.5	0.0	97.6	0.0	607.2	0.0	584.3
22	0.0	856.6	0.0	719.0	0.0	854.4	0.0	682.6
23	0.0	432.5	0.0	433.3	0.0	428.3	0.0	282.3
24	0.0	928.1	0.5	940.4	0.0	921.5	0.0	512.6
25	0.0	1008.3	0.5	1021.4	0.0	999.3	0.0	581.3
26	0.0	748.3	0.0	756.4	1.4	643.1	0.0	377.6
27	0.0	733.1	0.0	750.1	0.0	737.1	0.0	468.3
28	0.0	665.4	0.0	546.3	0.0	654.1	0.0	376.1
29	0.0	756.1	0.0	761.6	0.0	747.2	0.0	462.5
30	0.0	675.3	0.0	674.5	0.0	669.0	0.0	412.6
31	0.0	958.5	1.4	969.2	0.0	948.1	0.0	556.4
Total	1.9	24456.0	6.6	24070.8	1.4	24510.8	2.3	16311.9
Percent	0.01		0.03		0.01		0.01	
Maximum	1.4	1132.2	1.4	1132.2	1.4	1132.2	2.3	1132.2
Date	15-Mar	3-Mar	10-Mar	3-Mar	26-Mar	3-Mar	7-Mar	3-Mar
Minimum	0.0	429.5	0.0	97.6	0.0	428.3	0.0	282.3
Date	1-Mar	7-Mar	1-Mar	21-Mar	1-Mar	23-Mar	1-Mar	23-Mar

**Notes:**

Met filter performance criteria of 99% of readings being less than 0.1 ntu for the month.

# UV System Monthly Report

Month: **March-18**



Date	UV Reactor 1					
	Intensity Sensor 1 (mW/cm <sup>2</sup> )			Intensity Sensor 2 (mW/cm <sup>2</sup> )		
	Maximum	Minimum	Average	Maximum	Minimum	Average
1	0.0	0.0	0.0	0.0	0.0	0.0
2	0.0	0.0	0.0	0.0	0.0	0.0
3	0.0	0.0	0.0	0.0	0.0	0.0
4	0.0	0.0	0.0	0.0	0.0	0.0
5	0.0	0.0	0.0	0.0	0.0	0.0
6	0.0	0.0	0.0	0.0	0.0	0.0
7	0.0	0.0	0.0	0.0	0.0	0.0
8	0.0	0.0	0.0	0.0	0.0	0.0
9	0.0	0.0	0.0	0.0	0.0	0.0
10	0.0	0.0	0.0	0.0	0.0	0.0
11	0.0	0.0	0.0	0.0	0.0	0.0
12	0.0	0.0	0.0	0.0	0.0	0.0
13	0.0	0.0	0.0	0.0	0.0	0.0
14	0.0	0.0	0.0	0.0	0.0	0.0
15	0.0	0.0	0.0	0.0	0.0	0.0
16	0.0	0.0	0.0	0.0	0.0	0.0
17	0.0	0.0	0.0	0.0	0.0	0.0
18	0.0	0.0	0.0	0.0	0.0	0.0
19	0.0	0.0	0.0	0.0	0.0	0.0
20	0.0	0.0	0.0	0.0	0.0	0.0
21	0.0	0.0	0.0	0.0	0.0	0.0
22	0.0	0.0	0.0	0.0	0.0	0.0
23	0.0	0.0	0.0	0.0	0.0	0.0
24	0.0	0.0	0.0	0.0	0.0	0.0
25	0.0	0.0	0.0	0.0	0.0	0.0
26	0.0	0.0	0.0	0.0	0.0	0.0
27	0.0	0.0	0.0	0.0	0.0	0.0
28	0.0	0.0	0.0	0.0	0.0	0.0
29	0.0	0.0	0.0	0.0	0.0	0.0
30	0.0	0.0	0.0	0.0	0.0	0.0
31	0.0	0.0	0.0	0.0	0.0	0.0
Total						
Average	0.0	0.0	0.0	0.0	0.0	0.0
Maximum	0.0		0.0	0.0		0.0
Date	1-Mar		1-Mar	1-Mar		1-Mar
Minimum		0.0	0.0		0.0	0.0
Date		1-Mar	1-Mar		1-Mar	1-Mar

Notes:

---



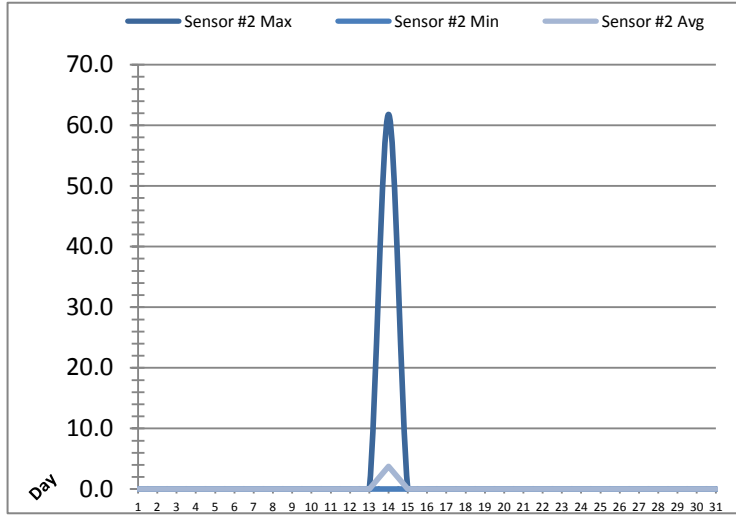
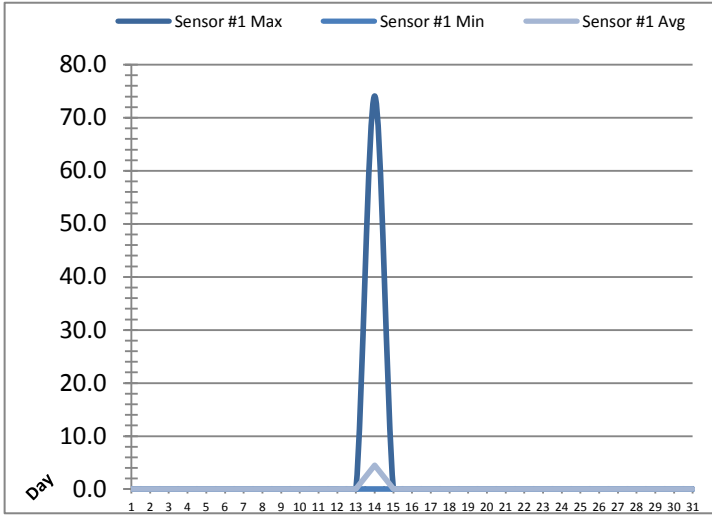
---



---

# UV System Monthly Report

Month: **March-18**



Date	UV Reactor 2					
	Intensity Sensor 1 (mW/cm²)			Intensity Sensor 2 (mW/cm²)		
	Maximum	Minimum	Average	Maximum	Minimum	Average
1	0.0	0.0	0.0	0.0	0.0	0.0
2	0.0	0.0	0.0	0.0	0.0	0.0
3	0.0	0.0	0.0	0.0	0.0	0.0
4	0.0	0.0	0.0	0.0	0.0	0.0
5	0.0	0.0	0.0	0.0	0.0	0.0
6	0.0	0.0	0.0	0.0	0.0	0.0
7	0.0	0.0	0.0	0.0	0.0	0.0
8	0.0	0.0	0.0	0.0	0.0	0.0
9	0.0	0.0	0.0	0.0	0.0	0.0
10	0.0	0.0	0.0	0.0	0.0	0.0
11	0.0	0.0	0.0	0.0	0.0	0.0
12	0.0	0.0	0.0	0.0	0.0	0.0
13	0.0	0.0	0.0	0.0	0.0	0.0
14	74.1	0.0	4.5	61.8	0.0	3.8
15	0.0	0.0	0.0	0.0	0.0	0.0
16	0.0	0.0	0.0	0.0	0.0	0.0
17	0.0	0.0	0.0	0.0	0.0	0.0
18	0.0	0.0	0.0	0.0	0.0	0.0
19	0.0	0.0	0.0	0.0	0.0	0.0
20	0.0	0.0	0.0	0.0	0.0	0.0
21	0.0	0.0	0.0	0.0	0.0	0.0
22	0.0	0.0	0.0	0.0	0.0	0.0
23	0.0	0.0	0.0	0.0	0.0	0.0
24	0.0	0.0	0.0	0.0	0.0	0.0
25	0.0	0.0	0.0	0.0	0.0	0.0
26	0.0	0.0	0.0	0.0	0.0	0.0
27	0.0	0.0	0.0	0.0	0.0	0.0
28	0.0	0.0	0.0	0.0	0.0	0.0
29	0.0	0.0	0.0	0.0	0.0	0.0
30	0.0	0.0	0.0	0.0	0.0	0.0
31	0.0	0.0	0.0	0.0	0.0	0.0
Total						
Average	2.4	0.0	0.1	2.0	0.0	0.1
Maximum	74.1		4.5	61.8		3.8
Date	14-Mar		14-Mar	14-Mar		14-Mar
Minimum		0.0	0.0		0.0	0.0
Date		1-Mar	1-Mar		1-Mar	1-Mar

Notes:

---



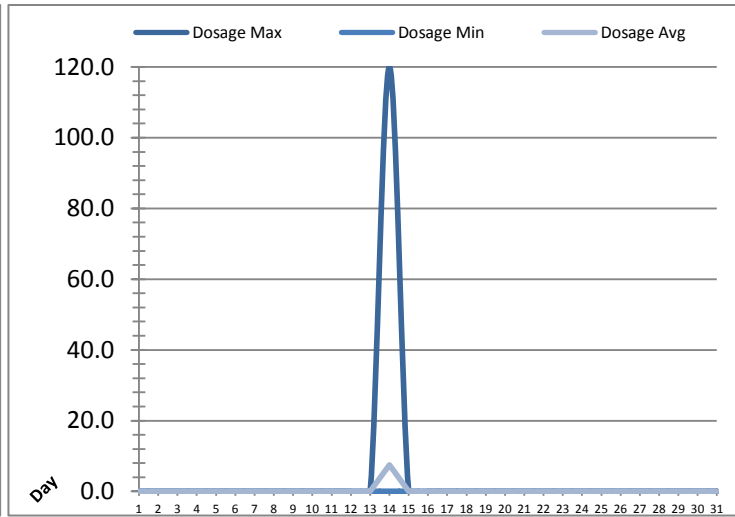
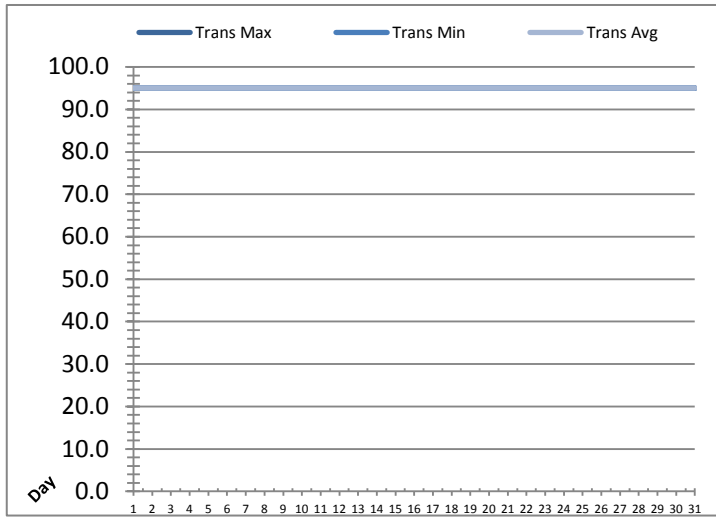
---



---

# UV System Monthly Report

Month: **March-18**

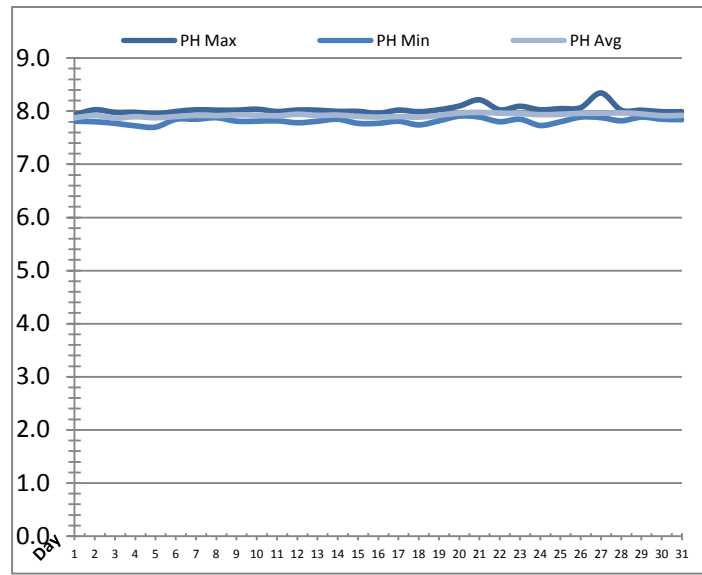
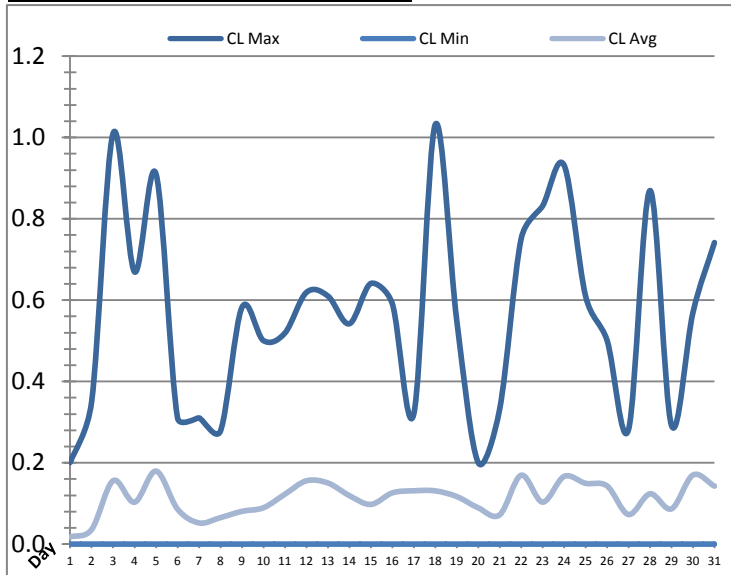


UV System							
Date	Transmittance (%)			Dosage (mJ/cm <sup>2</sup> )			Inlet Flow (L/s)
	Maximum	Minimum	Average	Maximum	Minimum	Average	Maximum
1	95.00	95.00	95.00	0.0	0.0	0.0	99.8
2	95.00	95.00	95.00	0.0	0.0	0.0	86.7
3	95.00	95.00	95.00	0.0	0.0	0.0	125.5
4	95.00	95.00	95.00	0.0	0.0	0.0	71.0
5	95.00	95.00	95.00	0.0	0.0	0.0	155.4
6	95.00	95.00	95.00	0.0	0.0	0.0	152.1
7	95.00	95.00	95.00	0.0	0.0	0.0	138.5
8	95.00	95.00	95.00	0.0	0.0	0.0	102.7
9	95.00	95.00	95.00	0.0	0.0	0.0	96.3
10	95.00	95.00	95.00	0.0	0.0	0.0	95.3
11	95.00	95.00	95.00	0.0	0.0	0.0	105.5
12	95.00	95.00	95.00	0.0	0.0	0.0	94.5
13	95.00	95.00	95.00	0.0	0.0	0.0	94.9
14	95.00	95.00	95.00	120.0	0.0	7.5	102.8
15	95.00	95.00	95.00	0.0	0.0	0.0	95.6
16	95.00	95.00	95.00	0.0	0.0	0.0	102.1
17	95.00	95.00	95.00	0.0	0.0	0.0	98.9
18	95.00	95.00	95.00	0.0	0.0	0.0	96.1
19	95.00	95.00	95.00	0.0	0.0	0.0	96.6
20	95.00	95.00	95.00	0.0	0.0	0.0	96.3
21	95.00	95.00	95.00	0.0	0.0	0.0	628.0
22	95.00	95.00	95.00	0.0	0.0	0.0	94.5
23	95.00	95.00	95.00	0.0	0.0	0.0	150.3
24	95.00	95.00	95.00	0.0	0.0	0.0	96.8
25	95.00	95.00	95.00	0.0	0.0	0.0	95.7
26	95.00	95.00	95.00	0.0	0.0	0.0	158.2
27	95.00	95.00	95.00	0.0	0.0	0.0	95.2
28	95.00	95.00	95.00	0.0	0.0	0.0	98.1
29	95.00	95.00	95.00	0.0	0.0	0.0	97.8
30	95.00	95.00	95.00	0.0	0.0	0.0	102.5
31	95.00	95.00	95.00	0.0	0.0	0.0	98.7
<b>Total</b>							
<b>Average</b>	95.00	95.00	95.00	3.9	0.0	0.2	123.3
<b>Maximum</b>	95.00		95.00	120.0		7.5	628.0
<b>Date</b>	1-Mar		1-Mar	14-Mar		14-Mar	21-Mar
<b>Minimum</b>		95.00	95.00		0.0	0.0	
<b>Date</b>		1-Mar	1-Mar		1-Mar	1-Mar	

Notes:

# Plant Quality Report

Month: **March-18**



Date	Strainer Chlorine Residual			Strainer pH		
	AIT_2003_CL (ppm)			AIT_2003_PH		
	Maximum	Minimum	Average	Maximum	Minimum	Average
1	0.20	0.00	0.02	7.93	7.81	7.88
2	0.35	0.00	0.04	8.03	7.80	7.92
3	1.01	0.00	0.16	7.98	7.77	7.87
4	0.67	0.00	0.10	7.98	7.72	7.90
5	0.91	0.00	0.18	7.95	7.70	7.88
6	0.31	0.00	0.09	7.99	7.85	7.90
7	0.31	0.00	0.05	8.03	7.85	7.92
8	0.28	0.00	0.07	8.02	7.88	7.91
9	0.58	0.00	0.08	8.02	7.81	7.93
10	0.50	0.00	0.09	8.04	7.81	7.93
11	0.52	0.00	0.12	7.99	7.82	7.91
12	0.62	0.00	0.16	8.02	7.78	7.94
13	0.61	0.00	0.15	8.02	7.81	7.92
14	0.54	0.00	0.12	8.00	7.85	7.93
15	0.64	0.00	0.10	8.00	7.77	7.90
16	0.59	0.00	0.13	7.96	7.77	7.89
17	0.32	0.00	0.13	8.02	7.81	7.90
18	1.03	0.00	0.13	7.99	7.74	7.89
19	0.55	0.00	0.12	8.03	7.82	7.92
20	0.20	0.00	0.09	8.10	7.91	7.96
21	0.33	0.00	0.07	8.21	7.89	7.98
22	0.75	0.00	0.17	8.03	7.80	7.96
23	0.83	0.00	0.10	8.09	7.85	7.95
24	0.93	0.00	0.17	8.03	7.73	7.93
25	0.61	0.00	0.15	8.05	7.80	7.94
26	0.50	0.00	0.14	8.07	7.89	7.96
27	0.28	0.00	0.07	8.34	7.88	7.96
28	0.87	0.00	0.12	8.02	7.82	7.97
29	0.29	0.00	0.09	8.02	7.89	7.95
30	0.57	0.00	0.17	7.99	7.85	7.91
31	0.74	0.00	0.14	7.99	7.84	7.92
<b>Total</b>						
<b>Average</b>	0.56	0.00	0.11	8.03	7.82	7.92
<b>Maximum</b>	1.03		0.18	8.34		7.98
<b>Date</b>	18-Mar		5-Mar	27-Mar		21-Mar
<b>Minimum</b>		0.00	0.02		7.70	7.87
<b>Date</b>		1-Mar	1-Mar		5-Mar	3-Mar

Notes:

---



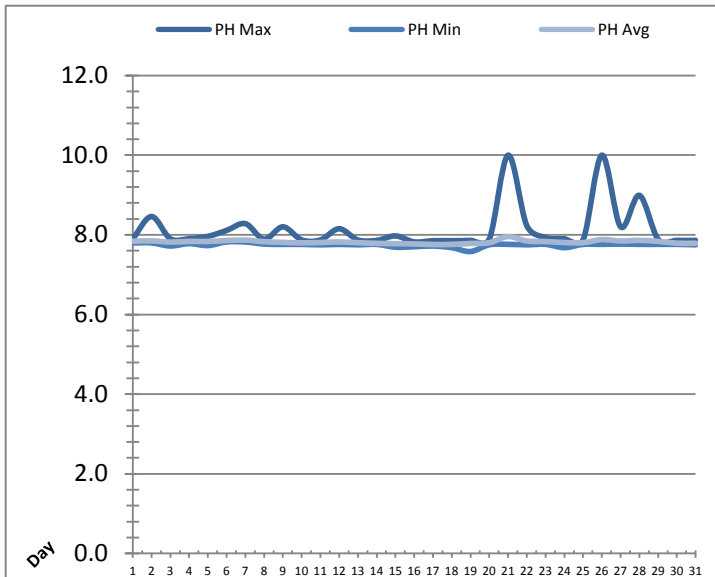
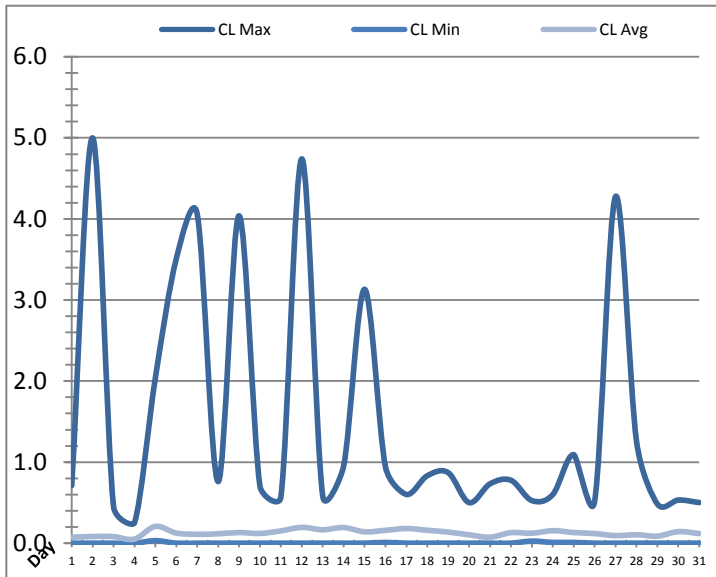
---



---

# Plant Quality Report

Month: March-18



Date	Inlet UV Chlorine Residual			Inlet UV pH		
	AIT_5005_CL (ppm)			AIT_5005_PH		
	Maximum	Minimum	Average	Maximum	Minimum	Average
1	0.71	0.00	0.07	7.90	7.80	7.84
2	5.00	0.00	0.08	8.46	7.80	7.85
3	0.45	0.00	0.08	7.90	7.72	7.82
4	0.25	0.00	0.05	7.90	7.78	7.84
5	2.04	0.03	0.21	7.96	7.73	7.83
6	3.51	0.00	0.12	8.11	7.82	7.86
7	4.06	0.00	0.11	8.28	7.82	7.87
8	0.76	0.00	0.12	7.89	7.77	7.83
9	4.04	0.00	0.13	8.20	7.76	7.81
10	0.70	0.00	0.12	7.87	7.76	7.80
11	0.57	0.00	0.15	7.87	7.75	7.81
12	4.74	0.00	0.19	8.15	7.76	7.82
13	0.58	0.00	0.16	7.87	7.75	7.80
14	0.95	0.00	0.19	7.86	7.76	7.79
15	3.13	0.00	0.14	7.97	7.69	7.78
16	0.94	0.01	0.16	7.82	7.70	7.77
17	0.60	0.00	0.18	7.85	7.72	7.76
18	0.83	0.00	0.16	7.85	7.68	7.76
19	0.87	0.00	0.14	7.86	7.58	7.78
20	0.50	0.00	0.10	7.89	7.75	7.80
21	0.73	0.00	0.07	10.00	7.76	7.96
22	0.78	0.00	0.13	8.23	7.75	7.85
23	0.53	0.03	0.12	7.93	7.76	7.83
24	0.60	0.01	0.15	7.90	7.68	7.81
25	1.09	0.01	0.13	7.87	7.76	7.80
26	0.52	0.00	0.12	10.00	7.76	7.88
27	4.28	0.00	0.09	8.20	7.77	7.85
28	1.26	0.00	0.10	8.99	7.76	7.86
29	0.48	0.00	0.09	7.89	7.76	7.84
30	0.53	0.00	0.14	7.86	7.76	7.79
31	0.50	0.00	0.12	7.86	7.75	7.79
Total						
Average	1.50	0.00	0.13	8.14	7.75	7.82
Maximum	5.00		0.21	10.00		7.96
Date	2-Mar		5-Mar	21-Mar		21-Mar
Minimum		0.00	0.05		7.58	7.76
Date		1-Mar	4-Mar		19-Mar	17-Mar

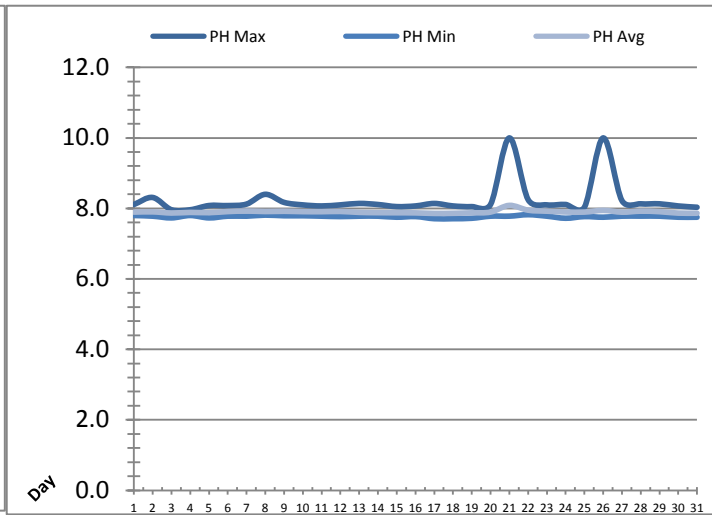
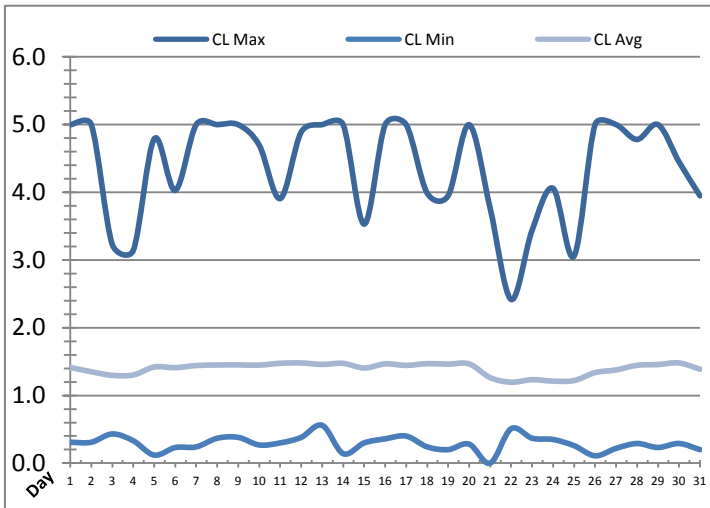
Notes:

21st and 26th spikes after EFM performed.



# Plant Quality Report

Month: March-18



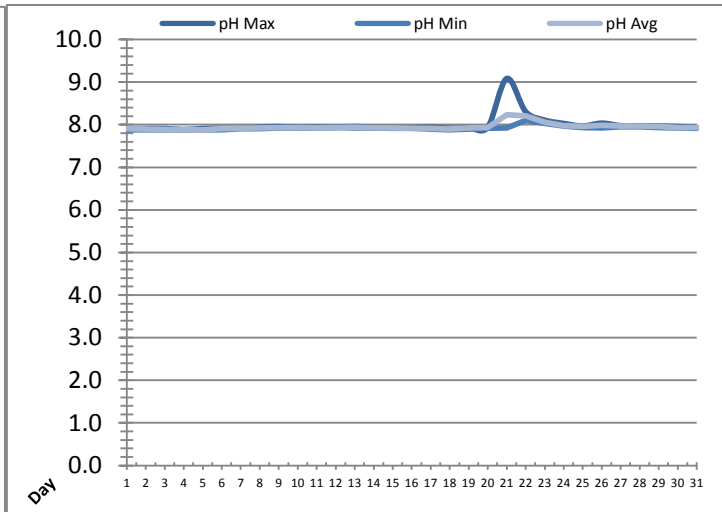
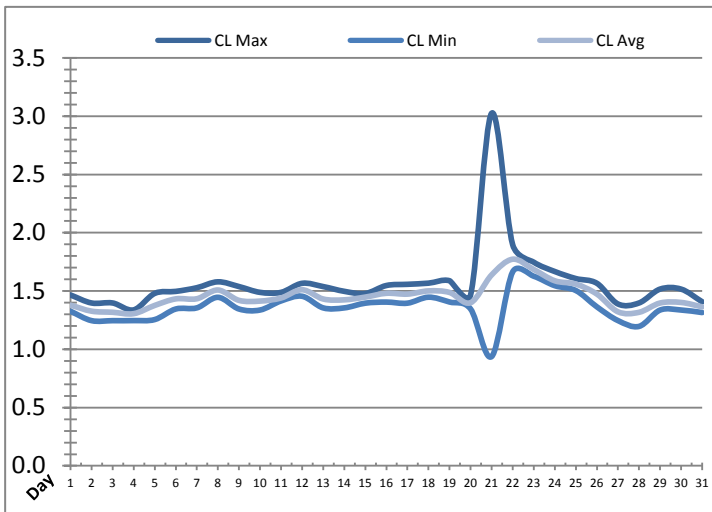
Date	Discharge UV Chlorine Residual			Discharge UV pH		
	AIT_5006_CL (ppm)			AIT_5006_PH		
	Maximum	Minimum	Average	Maximum	Minimum	Average
1	5.00	0.31	1.41	8.11	7.80	7.90
2	5.00	0.31	1.35	8.31	7.78	7.90
3	3.23	0.43	1.30	7.96	7.73	7.87
4	3.14	0.33	1.30	7.96	7.80	7.89
5	4.79	0.12	1.42	8.08	7.73	7.88
6	4.03	0.23	1.41	8.08	7.78	7.91
7	5.00	0.24	1.44	8.12	7.78	7.92
8	5.00	0.37	1.45	8.40	7.81	7.91
9	5.00	0.38	1.45	8.17	7.79	7.92
10	4.70	0.27	1.45	8.10	7.79	7.91
11	3.91	0.30	1.47	8.07	7.78	7.91
12	4.89	0.38	1.48	8.10	7.77	7.91
13	5.00	0.56	1.46	8.14	7.78	7.89
14	5.00	0.14	1.47	8.11	7.78	7.88
15	3.53	0.30	1.40	8.05	7.75	7.88
16	5.00	0.36	1.47	8.07	7.77	7.87
17	5.00	0.40	1.44	8.14	7.71	7.86
18	3.99	0.24	1.47	8.07	7.71	7.86
19	3.95	0.20	1.46	8.05	7.72	7.87
20	5.00	0.28	1.47	8.11	7.78	7.90
21	3.77	0.00	1.26	10.00	7.78	8.09
22	2.42	0.51	1.20	8.25	7.82	7.95
23	3.44	0.37	1.23	8.10	7.78	7.92
24	4.06	0.35	1.21	8.11	7.72	7.90
25	3.06	0.26	1.22	8.03	7.77	7.90
26	5.00	0.11	1.34	10.00	7.75	7.94
27	5.00	0.22	1.38	8.22	7.78	7.89
28	4.78	0.29	1.45	8.13	7.78	7.92
29	5.00	0.23	1.46	8.13	7.78	7.91
30	4.45	0.29	1.48	8.07	7.75	7.87
31	3.95	0.20	1.39	8.03	7.75	7.86
Total						
Average	4.36	0.29	1.39	8.23	7.77	7.90
Maximum	5.00		1.48	10.00		8.09
Date	26-Mar		30-Mar	21-Mar		21-Mar
Minimum		0.00	1.20		7.71	7.86
Date		21-Mar	22-Mar		18-Mar	17-Mar

**Notes:**

On 21st and 26th, max pH was 10 after EFM.

# Plant Quality Report

Month: **March-18**



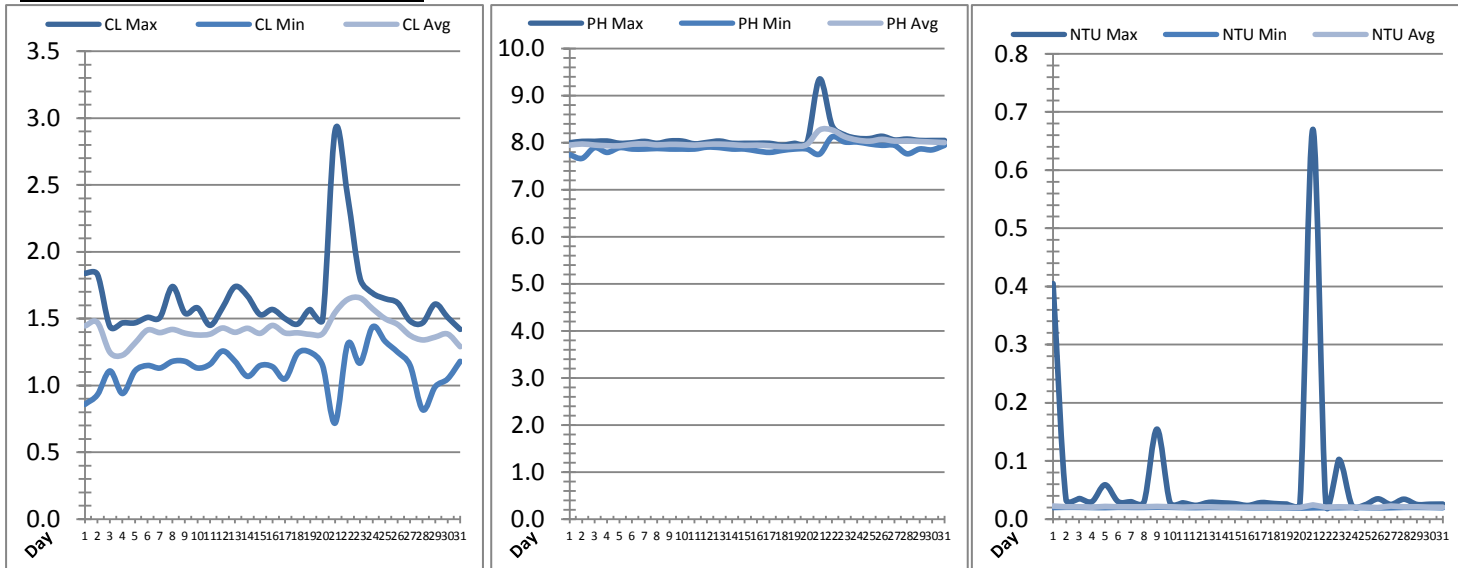
Date	Suction Header Chlorine Res.			Suction Header pH			Distribution CT Calc Total		
	AIT_7001_CL (ppm)			AIT_7001_PH (m)			REAL_CT_CALC_TOTAL (mg*ml/min)		
	Maximum	Minimum	Average	Maximum	Minimum	Average	Maximum	Minimum	Average
1	1.47	1.33	1.38	7.91	7.88	7.91	7070.52	0.00	290.01
2	1.40	1.25	1.33	7.91	7.88	7.90	7056.39	0.00	200.85
3	1.40	1.25	1.32	7.91	7.88	7.89	6046.98	0.00	365.43
4	1.34	1.25	1.31	7.89	7.88	7.88	7773.15	0.00	247.30
5	1.48	1.26	1.38	7.91	7.88	7.88	7729.79	0.00	274.67
6	1.50	1.35	1.43	7.92	7.88	7.90	7981.06	0.00	332.26
7	1.53	1.36	1.43	7.92	7.91	7.91	8785.48	0.00	259.60
8	1.58	1.45	1.51	7.94	7.91	7.92	8275.50	0.00	348.42
9	1.54	1.35	1.42	7.96	7.93	7.94	8619.01	0.00	280.71
10	1.49	1.34	1.41	7.94	7.93	7.94	8290.52	0.00	293.82
11	1.49	1.42	1.44	7.94	7.93	7.93	7855.92	0.00	263.61
12	1.57	1.46	1.51	7.94	7.94	7.94	8444.82	0.00	301.83
13	1.54	1.36	1.43	7.96	7.93	7.94	6808.22	0.00	290.76
14	1.50	1.36	1.42	7.93	7.93	7.92	8495.46	0.00	203.52
15	1.48	1.40	1.45	7.93	7.91	7.93	7992.98	0.00	322.41
16	1.55	1.41	1.48	7.93	7.91	7.92	8632.46	0.00	305.58
17	1.56	1.40	1.47	7.94	7.90	7.91	8531.28	0.00	262.45
18	1.57	1.45	1.50	7.92	7.88	7.90	7750.47	0.00	287.95
19	1.59	1.41	1.49	7.93	7.90	7.92	8228.30	0.00	299.83
20	1.47	1.35	1.40	7.94	7.91	7.93	7688.96	0.00	252.49
21	3.03	0.94	1.64	9.08	7.93	8.23	10675.65	0.00	192.11
22	1.90	1.66	1.77	8.30	8.11	8.21	10235.49	0.00	332.14
23	1.75	1.63	1.68	8.11	8.03	8.06	9595.21	0.00	318.90
24	1.67	1.55	1.59	8.03	7.97	7.98	8596.06	0.00	438.06
25	1.61	1.50	1.56	7.97	7.94	7.96	7370.77	0.00	344.94
26	1.57	1.36	1.47	8.04	7.93	7.99	9240.02	0.00	244.56
27	1.39	1.25	1.32	7.98	7.96	7.97	7262.08	0.00	197.37
28	1.40	1.20	1.32	7.98	7.96	7.97	7759.48	0.00	256.04
29	1.52	1.34	1.40	7.97	7.94	7.96	7872.01	0.00	301.79
30	1.52	1.34	1.40	7.96	7.93	7.93	8149.20	0.00	281.45
31	1.41	1.32	1.36	7.94	7.91	7.94	7948.34	0.00	334.53
Total									
Average	1.57	1.36	1.45	8.00	7.92	7.95	8.00	7.92	7.95
Maximum	3.03		1.77	9.08		8.23	9.08		8.23
Date	21-Mar		22-Mar	21-Mar		21-Mar	21-Mar		21-Mar
Minimum		0.94	1.31		7.88	7.88		7.88	7.88
Date		21-Mar	4-Mar		5-Mar	4-Mar		5-Mar	4-Mar

**Notes:**

On 21st, suction header pH spike, no flow.

# Plant Quality Report

Month: **March-18**



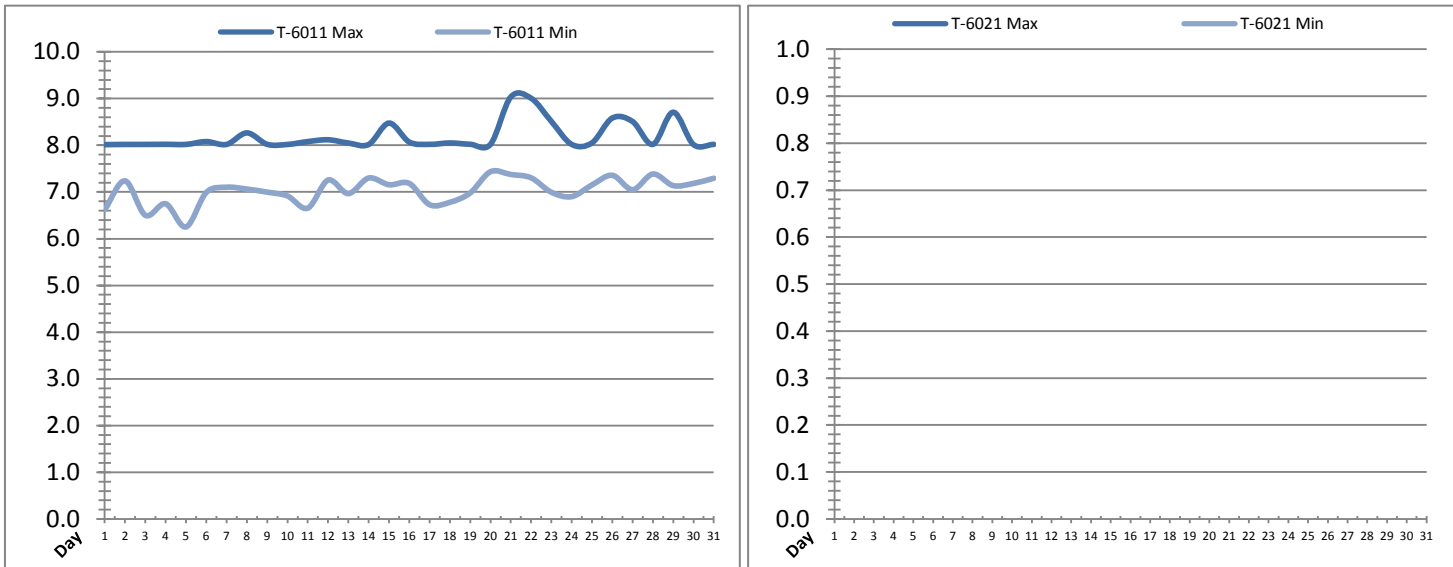
Date	Distribution Chlorine Header			Distribution pH			Distribution Turbidity		
	AIT_7004_CL (ppm)			AIT_7004_PH (mg/L)			AIT_7003 (mg/L)		
	Maximum	Minimum	Average	Maximum	Minimum	Average	Maximum	Minimum	Average
1	1.84	0.86	1.45	8.00	7.75	7.95	0.40	0.02	0.02
2	1.83	0.93	1.47	8.03	7.67	7.97	0.03	0.02	0.02
3	1.44	1.11	1.25	8.03	7.89	7.95	0.04	0.02	0.02
4	1.47	0.94	1.23	8.03	7.79	7.93	0.03	0.02	0.02
5	1.47	1.11	1.32	7.99	7.89	7.93	0.06	0.02	0.02
6	1.51	1.15	1.41	8.00	7.86	7.97	0.03	0.02	0.02
7	1.51	1.13	1.39	8.03	7.86	7.98	0.03	0.02	0.02
8	1.74	1.18	1.42	7.99	7.88	7.95	0.03	0.02	0.02
9	1.54	1.18	1.39	8.04	7.86	7.96	0.15	0.02	0.02
10	1.58	1.13	1.38	8.03	7.86	7.96	0.03	0.02	0.02
11	1.45	1.16	1.38	7.97	7.86	7.95	0.03	0.02	0.02
12	1.58	1.26	1.43	8.00	7.91	7.97	0.02	0.02	0.02
13	1.74	1.18	1.40	8.03	7.90	7.97	0.03	0.02	0.02
14	1.67	1.07	1.43	7.99	7.86	7.96	0.03	0.02	0.02
15	1.53	1.15	1.39	7.99	7.87	7.94	0.03	0.02	0.02
16	1.57	1.14	1.45	7.99	7.82	7.95	0.02	0.02	0.02
17	1.50	1.05	1.39	7.99	7.79	7.93	0.03	0.02	0.02
18	1.46	1.24	1.39	7.94	7.84	7.91	0.03	0.02	0.02
19	1.57	1.25	1.38	7.99	7.86	7.92	0.03	0.02	0.02
20	1.49	1.15	1.39	8.00	7.86	7.96	0.03	0.02	0.02
21	2.91	0.72	1.55	9.35	7.76	8.27	0.67	0.02	0.02
22	2.42	1.31	1.64	8.36	8.12	8.27	0.03	0.02	0.02
23	1.80	1.17	1.65	8.17	8.02	8.13	0.10	0.02	0.02
24	1.69	1.44	1.57	8.09	8.01	8.06	0.02	0.02	0.02
25	1.65	1.33	1.50	8.09	7.97	8.03	0.02	0.02	0.02
26	1.62	1.25	1.46	8.14	7.94	8.07	0.03	0.02	0.02
27	1.48	1.15	1.37	8.06	7.94	8.03	0.03	0.02	0.02
28	1.47	0.82	1.34	8.08	7.76	8.04	0.03	0.02	0.02
29	1.61	0.99	1.36	8.05	7.87	8.02	0.03	0.02	0.02
30	1.51	1.05	1.38	8.05	7.85	8.01	0.03	0.02	0.02
31	1.42	1.18	1.29	8.05	7.94	8.00	0.03	0.02	0.02
Total									
Average	1.65	1.12	1.41	8.08	7.87	8.00	0.1	0.0	0.0
Maximum	2.91		1.65	9.35		8.27	0.7		0.0
Date	21-Mar		23-Mar	21-Mar		22-Mar	21-Mar		21-Mar
Minimum		0.72	1.23		7.67	7.91		0.0	0.0
Date		21-Mar	4-Mar		2-Mar	18-Mar		20-Mar	19-Mar

**Notes:**

21st: spike in pH, no flow.

# Raw Well/Treated Storage Report

Month: **March-18**

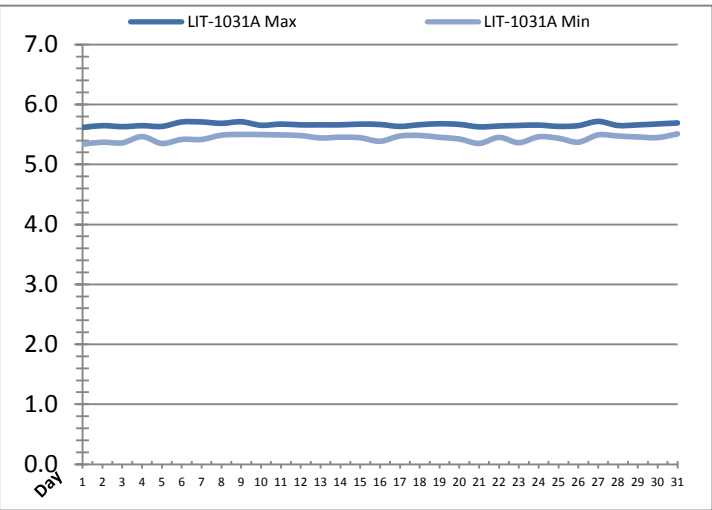
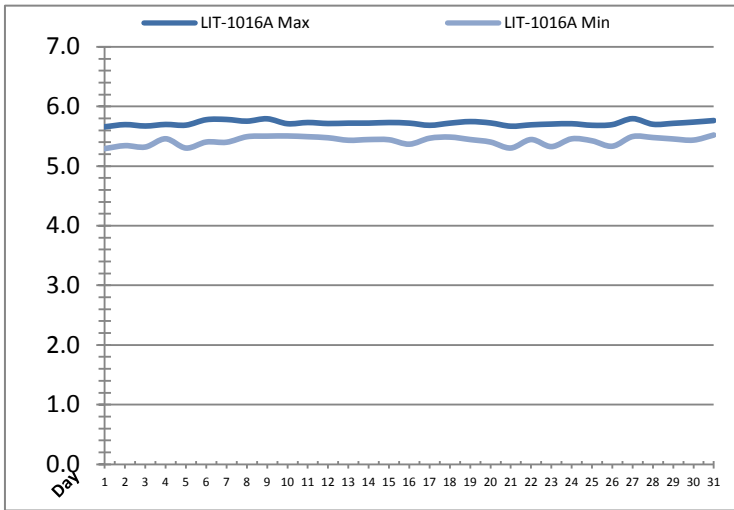


Date	Treated Water Storage Tank					
	T-6011 (m)			T-6021 (m)		
	Maximum	Minimum	Average	Maximum	Minimum	Average
1	8.0	6.6	7.5			
2	8.0	7.2	7.8			
3	8.0	6.5	7.4			
4	8.0	6.7	7.5			
5	8.0	6.3	7.2			
6	8.1	7.0	7.6			
7	8.0	7.1	7.7			
8	8.3	7.1	7.7			
9	8.0	7.0	7.7			
10	8.0	6.9	7.6			
11	8.1	6.7	7.6			
12	8.1	7.3	7.8			
13	8.0	7.0	7.5			
14	8.0	7.3	7.7			
15	8.5	7.2	7.8			
16	8.1	7.2	7.7			
17	8.0	6.7	7.4			
18	8.0	6.8	7.6			
19	8.0	7.0	7.6			
20	8.0	7.4	7.8			
21	9.0	7.4	8.2			
22	9.0	7.3	8.2			
23	8.5	7.0	7.8			
24	8.0	6.9	7.6			
25	8.1	7.2	7.6			
26	8.6	7.4	8.1			
27	8.5	7.0	7.7			
28	8.0	7.4	7.8			
29	8.7	7.1	7.9			
30	8.0	7.2	7.7			
31	8.0	7.3	7.7			
Total						
Average	8.2	7.0	7.7			
Maximum	9.0		8.2			
Date	21-Mar		22-Mar			
Minimum		6.3	7.2			
Date		5-Mar	5-Mar			

Notes:  
 T-6021 milltronics out of service.

# Raw Well/Treated Storage Report

Month: March-18



Date	Low Lift Intake Levels					
	Wet Well #1 (LIT-1016A) (m)			Wet Well #2 (LIT-1031A) (m)		
	Maximum	Minimum	Average	Maximum	Minimum	Average
1	5.7	5.3	5.5	5.6	5.3	5.5
2	5.7	5.3	5.5	5.6	5.4	5.5
3	5.7	5.3	5.5	5.6	5.4	5.5
4	5.7	5.5	5.6	5.6	5.5	5.5
5	5.7	5.3	5.5	5.6	5.3	5.5
6	5.8	5.4	5.6	5.7	5.4	5.6
7	5.8	5.4	5.6	5.7	5.4	5.6
8	5.8	5.5	5.6	5.7	5.5	5.6
9	5.8	5.5	5.6	5.7	5.5	5.6
10	5.7	5.5	5.6	5.7	5.5	5.6
11	5.7	5.5	5.6	5.7	5.5	5.6
12	5.7	5.5	5.6	5.7	5.5	5.6
13	5.7	5.4	5.5	5.7	5.4	5.5
14	5.7	5.4	5.6	5.7	5.5	5.5
15	5.7	5.4	5.6	5.7	5.4	5.6
16	5.7	5.4	5.5	5.7	5.4	5.5
17	5.7	5.5	5.6	5.6	5.5	5.5
18	5.7	5.5	5.6	5.7	5.5	5.6
19	5.7	5.4	5.6	5.7	5.5	5.5
20	5.7	5.4	5.5	5.7	5.4	5.5
21	5.7	5.3	5.5	5.6	5.4	5.5
22	5.7	5.4	5.5	5.6	5.5	5.5
23	5.7	5.3	5.6	5.7	5.4	5.5
24	5.7	5.5	5.5	5.7	5.5	5.5
25	5.7	5.4	5.5	5.6	5.4	5.5
26	5.7	5.3	5.6	5.6	5.4	5.5
27	5.8	5.5	5.6	5.7	5.5	5.6
28	5.7	5.5	5.6	5.6	5.5	5.6
29	5.7	5.5	5.6	5.7	5.5	5.6
30	5.7	5.4	5.6	5.7	5.4	5.6
31	5.8	5.5	5.6	5.7	5.5	5.6
Total						
Average	5.7	5.4	5.6	5.7	5.4	5.5
Maximum	5.8		5.6	5.7		5.6
Date	27-Mar		31-Mar	27-Mar		31-Mar
Minimum		5.3	5.5		5.3	5.5
Date		1-Mar	1-Mar		1-Mar	1-Mar

Notes:

---



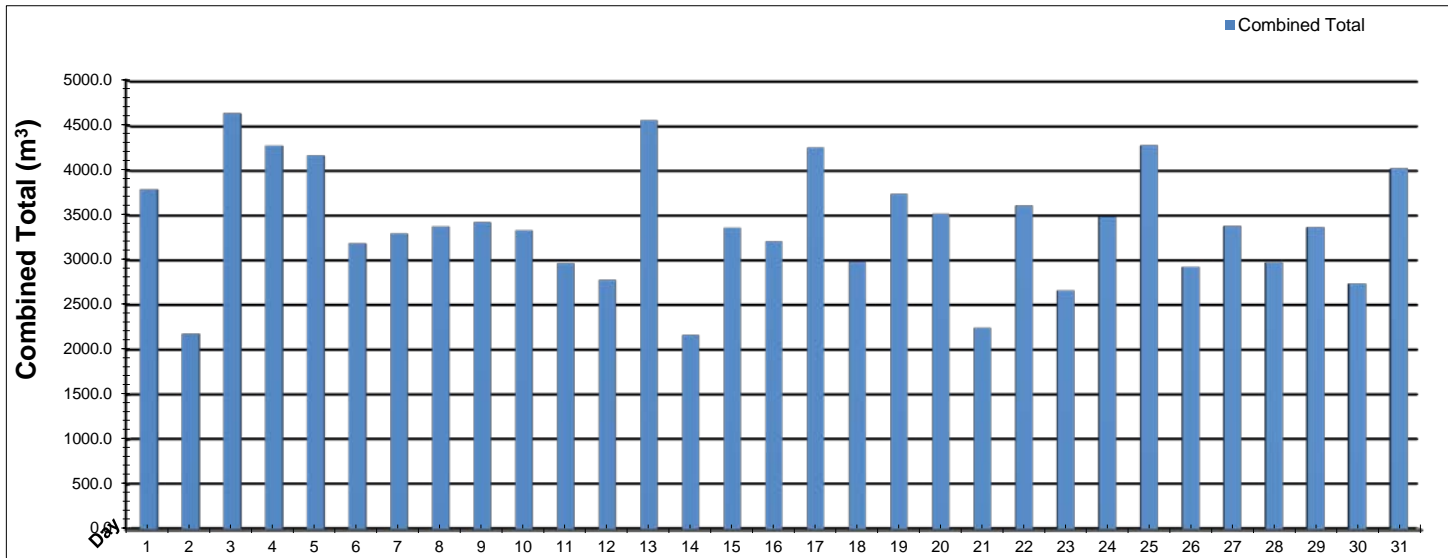
---



---

# High Lift Monthly Report

Month: **March-18**

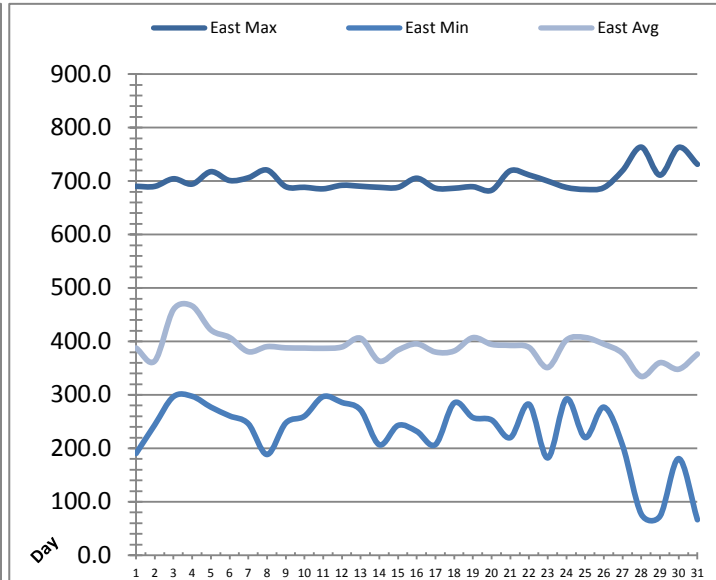
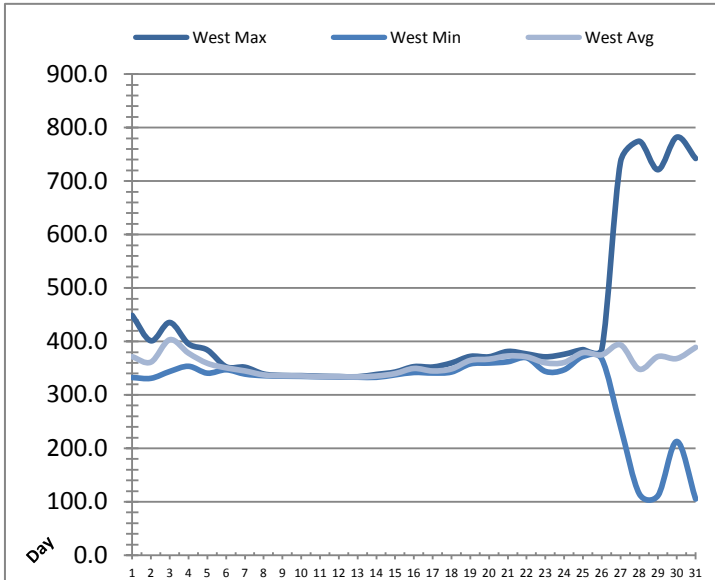


Date	Distribution Flow					
	FIT_7052 (East)		FIT_7062 (West)		Combined	
	(m³)	(L/s)	(m³)	(L/s)	(m³)	(L/s)
	Total	Peak	Total	Peak	Total	Peak
1	1601.9	59.9	2186.3	101.1	3788.2	108.6
2	1054.6	56.0	1123.6	97.5	2178.2	109.3
3	1499.7	36.8	3136.2	92.0	4635.9	108.3
4	994.8	54.9	3280.8	92.2	4275.6	100.5
5	1440.5	54.7	2726.9	79.4	4167.4	99.3
6	1697.5	55.5	1488.7	89.1	3186.2	99.6
7	1328.8	55.8	1969.7	90.2	3298.5	100.1
8	1432.9	55.9	1943.5	93.2	3376.4	100.3
9	1149.9	54.9	2272.4	111.2	3422.3	153.2
10	1469.6	55.0	1863.7	93.0	3333.2	99.1
11	1244.1	55.0	1723.1	91.3	2967.2	99.7
12	1080.3	56.1	1699.8	96.0	2780.1	97.1
13	1385.7	55.8	3173.4	99.3	4559.1	99.3
14	862.2	55.2	1302.0	96.9	2164.2	99.9
15	1553.0	55.6	1808.9	91.4	3362.0	103.0
16	1091.5	55.7	2116.0	95.4	3207.5	99.7
17	1449.0	55.4	2806.6	93.2	4255.6	99.7
18	1288.9	55.0	1693.6	93.1	2982.5	99.7
19	1203.8	55.2	2531.9	100.5	3735.7	103.6
20	1170.0	55.2	2347.7	99.1	3517.7	99.7
21	726.2	56.4	1520.9	93.1	2247.1	105.8
22	842.4	55.9	2766.3	92.9	3608.7	100.5
23	1230.6	55.4	1432.8	92.1	2663.4	98.9
24	1519.2	53.4	1961.6	92.4	3480.8	96.1
25	1291.5	55.1	2988.6	92.3	4280.1	100.7
26	1070.1	56.1	1856.1	93.4	2926.2	107.0
27	1160.4	55.5	2219.1	88.6	3379.5	100.4
28	1296.1	54.7	1678.8	92.0	2975.0	105.5
29	1446.2	54.7	1919.8	90.4	3366.0	99.7
30	1211.9	55.7	1527.4	91.4	2739.3	97.6
31	1494.0	56.4	2527.7	98.4	4021.8	100.4
<b>Total</b>	<b>39287.5</b>		<b>65593.8</b>		<b>104881.3</b>	
<b>Average</b>	<b>1267.3</b>	<b>54.9</b>	<b>2115.9</b>	<b>93.9</b>	<b>3383.3</b>	<b>103.0</b>
<b>Maximum</b>	<b>1697.5</b>	<b>59.9</b>	<b>3280.8</b>	<b>111.2</b>	<b>4635.9</b>	<b>153.2</b>
<b>Date</b>	<b>6-Mar</b>	<b>1-Mar</b>	<b>4-Mar</b>	<b>9-Mar</b>	<b>3-Mar</b>	<b>9-Mar</b>
<b>Minimum</b>	<b>726.2</b>		<b>1123.6</b>		<b>2164.2</b>	
<b>Date</b>	<b>21-Mar</b>		<b>2-Mar</b>		<b>14-Mar</b>	

Notes:

# Low Lift Monthly Report

Month: **March-18**



Date	West Train Header Pressure PIT_1018 (kPa)			East Train Header Pressure PIT_1028 (kPa)		
	Maximum	Minimum	Average	Maximum	Minimum	Average
1	448.8	332.6	371.4	690.1	190.5	387.7
2	401.2	331.0	361.4	690.1	244.0	363.4
3	435.5	343.8	403.3	704.3	296.7	459.8
4	395.5	353.5	378.1	694.4	297.4	466.3
5	384.0	340.6	359.1	717.6	277.1	421.5
6	352.7	347.0	350.6	701.0	260.7	407.4
7	351.9	338.9	344.8	706.2	246.0	380.8
8	339.1	335.9	337.4	720.6	188.5	390.3
9	336.3	335.0	335.9	689.5	247.4	388.0
10	336.1	334.7	335.5	688.3	260.3	387.6
11	334.9	333.9	334.2	685.5	296.8	387.1
12	334.4	333.4	334.0	692.1	285.9	389.6
13	333.9	333.1	333.7	690.3	271.7	406.0
14	338.3	332.9	335.2	688.3	206.7	363.1
15	342.8	337.5	339.9	688.2	242.9	383.9
16	352.9	341.9	349.4	705.3	231.8	395.4
17	352.2	340.9	344.8	686.7	207.0	380.2
18	359.7	342.8	348.5	686.6	284.9	382.2
19	372.1	357.9	364.6	689.4	257.6	407.1
20	371.3	359.5	366.8	682.8	253.1	394.5
21	381.3	362.0	372.8	719.4	220.1	392.5
22	376.7	369.4	371.2	711.4	282.5	388.8
23	371.2	343.9	360.0	700.0	182.1	351.2
24	376.1	347.0	360.7	688.1	292.4	402.6
25	384.7	371.9	379.0	684.3	220.3	407.4
26	384.7	367.3	375.0	687.8	277.1	395.0
27	735.7	240.4	393.7	719.7	205.5	377.7
28	774.6	114.9	348.0	763.5	76.9	334.5
29	721.2	111.9	371.8	711.1	73.1	360.3
30	782.2	212.9	368.0	763.0	180.8	348.1
31	742.2	105.2	388.9	731.3	66.5	376.5
Total						
Average	429.2	314.6	358.6	702.5	229.8	389.6
Maximum	782.2		403.3	763.5		466.3
Date	30-Mar		3-Mar	28-Mar		4-Mar
Minimum		105.2	333.7		66.5	334.5
Date		31-Mar	13-Mar		31-Mar	28-Mar

Notes:

---



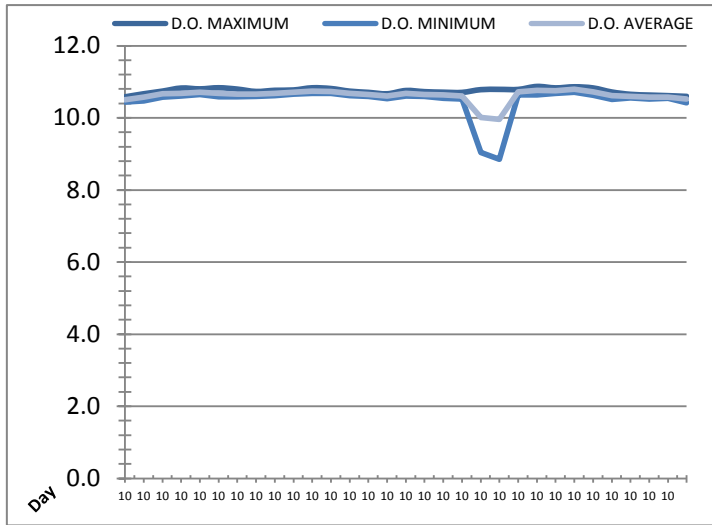
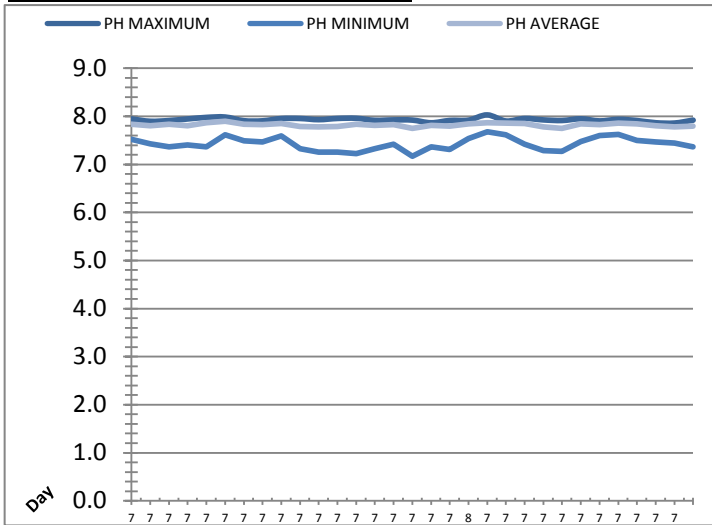
---



---

# Low Lift Monthly Report

Month: **March-18**



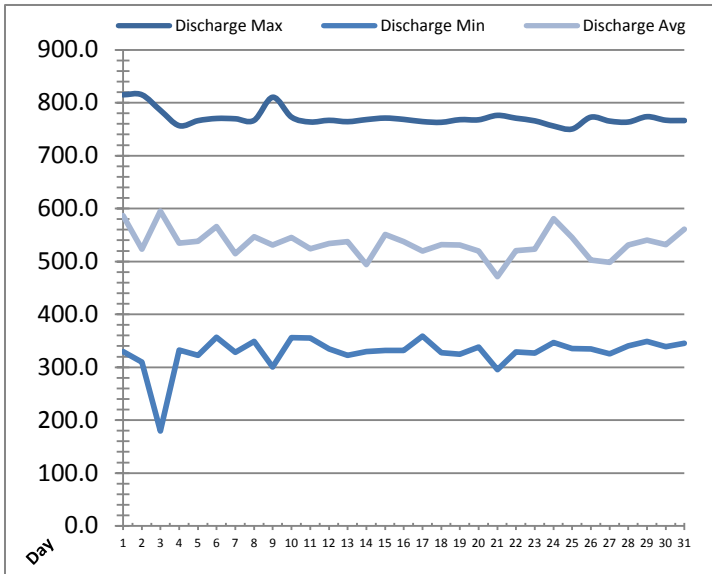
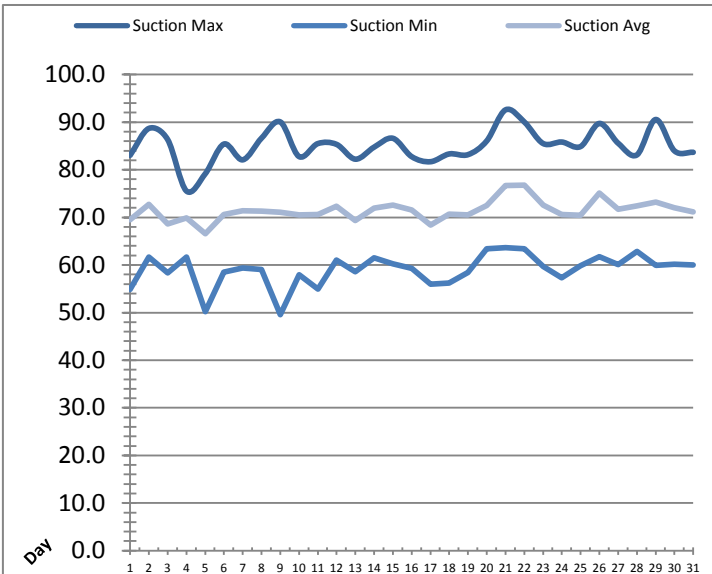
Date	Raw Water Sample Line					
	AIT_1402_PH (pH)			AIT_1402_DO (mg/L)		
	Maximum	Minimum	Average	Maximum	Minimum	Average
1	7.9	7.5	7.8	10.6	10.4	10.5
2	7.9	7.4	7.8	10.7	10.5	10.6
3	7.9	7.4	7.8	10.7	10.6	10.7
4	7.9	7.4	7.8	10.8	10.6	10.7
5	8.0	7.4	7.9	10.8	10.6	10.7
6	8.0	7.6	7.9	10.8	10.6	10.7
7	7.9	7.5	7.8	10.8	10.6	10.7
8	7.9	7.5	7.8	10.7	10.6	10.7
9	8.0	7.6	7.9	10.8	10.6	10.7
10	8.0	7.3	7.8	10.8	10.7	10.7
11	7.9	7.3	7.8	10.8	10.7	10.7
12	8.0	7.3	7.8	10.8	10.7	10.7
13	8.0	7.2	7.8	10.7	10.6	10.7
14	7.9	7.3	7.8	10.7	10.6	10.6
15	7.9	7.4	7.8	10.7	10.5	10.6
16	7.9	7.2	7.7	10.8	10.6	10.7
17	7.9	7.4	7.8	10.7	10.6	10.6
18	7.9	7.3	7.8	10.7	10.5	10.6
19	7.9	7.5	7.8	10.7	10.5	10.6
20	8.0	7.7	7.9	10.8	9.0	10.0
21	7.9	7.6	7.9	10.8	8.8	10.0
22	8.0	7.4	7.9	10.8	10.6	10.7
23	7.9	7.3	7.8	10.9	10.6	10.8
24	7.9	7.3	7.7	10.8	10.7	10.8
25	7.9	7.5	7.8	10.9	10.7	10.8
26	7.9	7.6	7.8	10.8	10.6	10.7
27	7.9	7.6	7.9	10.7	10.5	10.6
28	7.9	7.5	7.8	10.7	10.6	10.6
29	7.9	7.5	7.8	10.6	10.5	10.6
30	7.9	7.4	7.8	10.6	10.5	10.6
31	7.9	7.4	7.8	10.6	10.4	10.5
Total						
Average	7.9	7.4	7.8	10.7	10.5	10.6
Maximum	8.0		7.9	10.9		10.8
Date	20-Mar		6-Mar	23-Mar		25-Mar
Minimum		7.2	7.7		8.8	10.0
Date		16-Mar	16-Mar		21-Mar	21-Mar

Notes:



# High Lift Monthly Report

Month: **March-18**



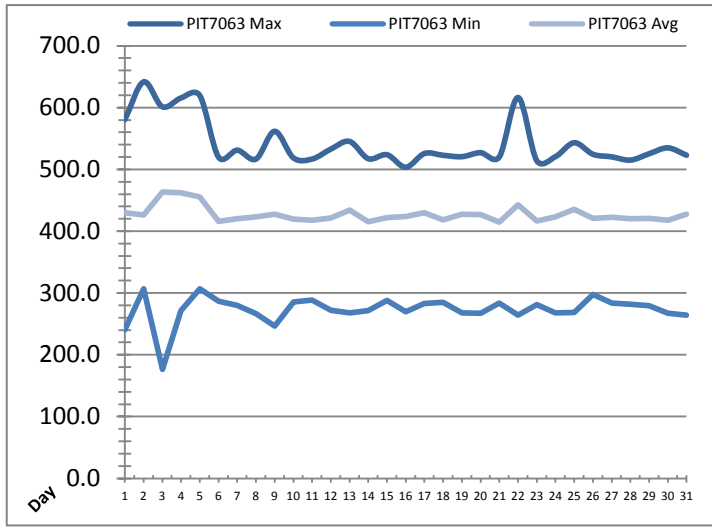
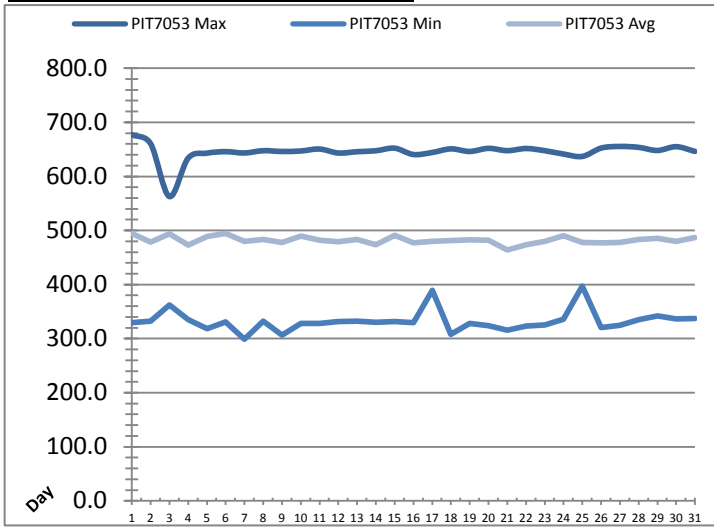
Date	Suction Header Pressure			Discharge Header Pressure		
	PIT_7002 (kPa)			PIT_7005 (kPa)		
	Maximum	Minimum	Average	Maximum	Minimum	Average
1	83.0	54.9	69.5	815.0	329.5	586.5
2	88.7	61.7	72.7	815.1	309.9	522.9
3	86.4	58.4	68.6	785.4	179.4	595.4
4	75.6	61.7	69.9	756.6	332.4	534.6
5	79.1	50.2	66.5	766.1	322.3	537.8
6	85.4	58.5	70.6	770.3	356.7	566.1
7	82.1	59.4	71.4	769.7	328.5	514.6
8	86.6	59.1	71.3	766.7	348.6	547.0
9	90.1	49.5	71.1	810.4	300.3	530.9
10	82.8	58.0	70.5	772.9	356.0	545.1
11	85.5	55.0	70.6	763.6	355.1	523.8
12	85.3	61.0	72.4	766.7	334.4	534.2
13	82.2	58.6	69.3	764.2	322.7	537.2
14	84.8	61.5	72.0	768.1	329.7	494.2
15	86.6	60.2	72.6	771.0	331.4	550.7
16	82.8	59.3	71.5	768.5	331.6	537.2
17	81.7	56.0	68.4	764.4	358.5	519.8
18	83.3	56.2	70.7	763.0	327.8	531.4
19	83.2	58.4	70.5	768.0	324.4	530.7
20	86.1	63.4	72.5	767.8	337.8	519.5
21	92.6	63.6	76.7	776.1	295.7	470.9
22	90.0	63.4	76.8	770.8	329.0	520.3
23	85.5	59.7	72.6	765.8	326.7	523.4
24	85.8	57.3	70.6	756.0	346.4	580.6
25	84.9	59.9	70.4	750.3	335.1	545.3
26	89.7	61.8	75.1	772.7	334.6	502.6
27	85.6	60.1	71.7	765.3	325.4	498.0
28	83.1	62.8	72.4	763.6	340.4	530.9
29	90.6	59.9	73.2	773.6	349.1	540.6
30	84.0	60.1	72.0	766.9	338.7	531.6
31	83.7	60.0	71.1	766.3	345.6	560.9
Total						
Average	85.1	59.0	71.5	771.6	328.5	534.3
Maximum	92.6		76.8	815.1		595.4
Date	21-Mar		22-Mar	2-Mar		3-Mar
Minimum		49.5	66.5		179.4	470.9
Date		9-Mar	5-Mar		3-Mar	21-Mar

Notes:

On 9th, header pressure minimum was 49.5 kPa as there was low level in the tank.

# High Lift Monthly Report

Month: **March-18**

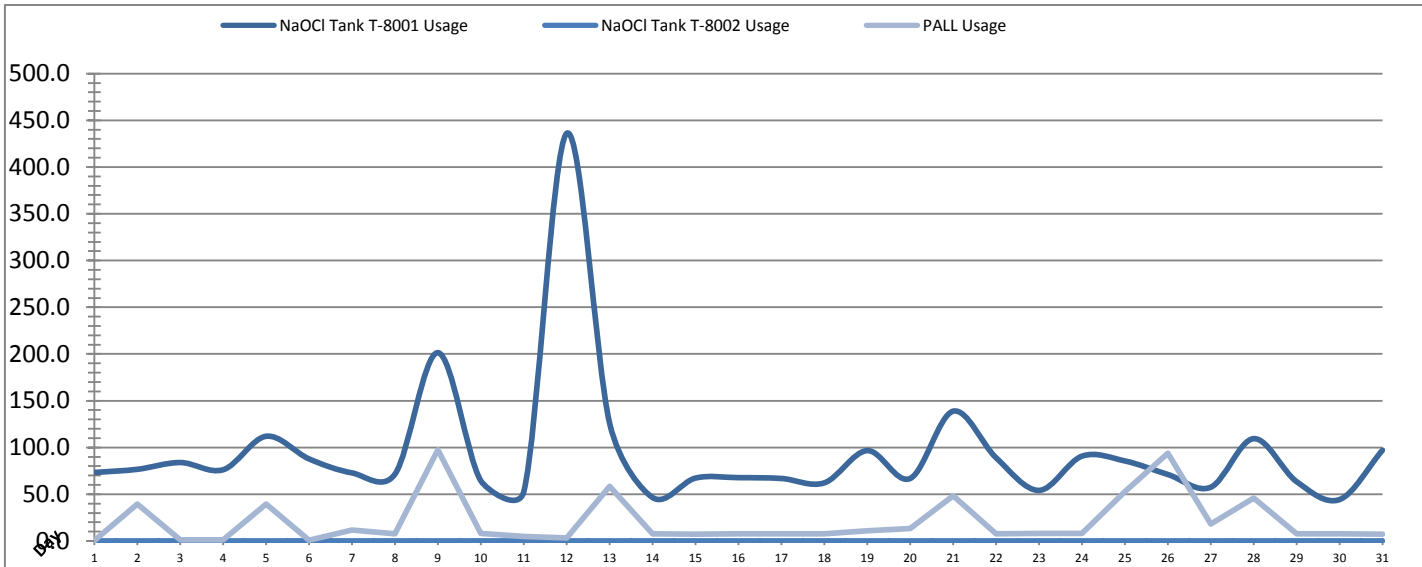


Date	Distribution Pressures					
	PIT_7053 (kPa)			PIT_7063 (kPa)		
	Maximum	Minimum	Average	Maximum	Minimum	Average
1	677.1	329.6	494.2	580.5	240.7	429.8
2	660.5	332.3	478.2	641.6	306.8	425.9
3	562.8	362.0	494.0	601.3	176.4	463.3
4	633.7	335.1	473.0	615.6	271.5	462.1
5	642.9	318.3	488.7	619.5	307.0	455.5
6	645.8	331.2	494.3	519.9	286.6	416.0
7	643.3	299.1	479.9	531.1	280.0	420.3
8	647.5	332.1	483.5	516.6	266.7	423.0
9	646.1	306.6	477.5	561.6	246.3	427.7
10	647.0	328.4	489.7	518.6	285.4	419.3
11	650.6	327.9	481.8	516.7	288.6	417.7
12	643.2	331.3	479.2	532.8	272.2	421.5
13	645.7	332.2	483.1	545.2	267.6	434.2
14	647.4	330.2	473.3	517.3	271.5	415.0
15	652.2	331.6	490.9	523.7	287.9	422.0
16	640.5	329.6	477.1	503.4	269.4	424.0
17	644.2	389.6	480.1	525.7	282.9	430.0
18	650.9	308.2	481.5	522.8	284.7	418.5
19	646.1	328.3	482.5	520.6	268.0	427.4
20	651.9	323.9	482.2	527.1	267.4	426.8
21	647.6	315.3	463.7	520.2	283.4	414.6
22	651.6	323.1	473.9	616.3	264.0	442.9
23	647.5	325.0	480.2	514.1	281.4	416.8
24	641.3	335.6	490.5	520.7	267.6	422.9
25	636.9	396.7	477.7	543.1	268.2	435.5
26	652.3	320.5	477.3	524.5	297.9	420.6
27	655.4	325.0	478.1	520.3	283.8	422.8
28	653.7	335.1	483.1	515.0	281.5	420.0
29	647.9	342.0	485.3	525.3	279.5	420.7
30	654.9	336.4	479.8	534.8	267.0	417.5
31	646.2	337.0	486.6	522.9	264.0	427.5
Total						
Average	645.6	332.2	482.0	541.9	273.1	427.1
Maximum	677.1		494.3	641.6		463.3
Date	1-Mar		6-Mar	2-Mar		3-Mar
Minimum		299.1	463.7		176.4	414.6
Date		7-Mar	21-Mar		3-Mar	21-Mar

Notes:

# Chemical Usage Monthly Report

Month: **March-18**

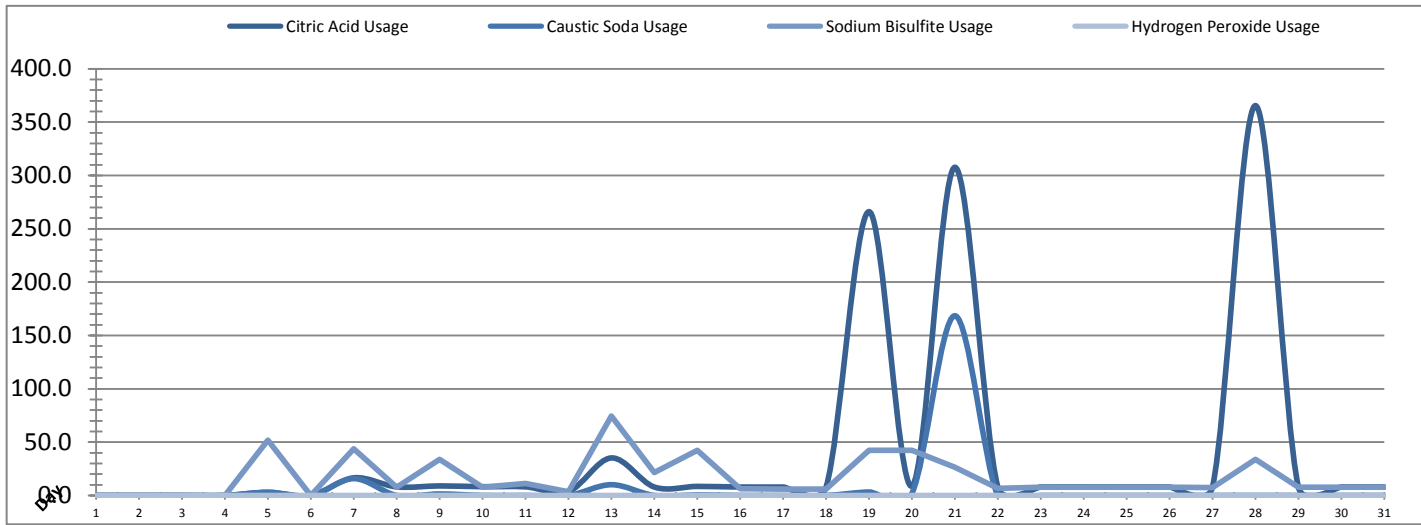


Date	PALL Usage	NaOCI Tank T-8001	NaOCI Tank T-8002
	PALL_HYPO_USAGE (L) Usage	LIT_8002 (Storage) (L) Usage	LIT_8004 (Day) (L) Usage
1	0.5	73.3	0.0
2	39.4	76.7	0.0
3	1.1	83.9	0.0
4	1.1	76.2	0.0
5	39.3	112.0	0.0
6	0.8	87.7	0.0
7	11.7	72.8	0.0
8	7.7	71.5	0.0
9	97.5	201.4	0.0
10	7.9	64.3	0.0
11	4.7	52.8	0.0
12	3.4	436.1	0.0
13	58.3	125.6	0.0
14	7.53	46.42	0.0
15	7.4	67.3	0.0
16	7.7	67.7	0.0
17	7.5	66.9	0.0
18	7.5	62.2	0.0
19	10.9	96.7	0.0
20	13.2	66.9	0.0
21	48.4	138.8	0.0
22	7.6	89.0	0.0
23	7.9	54.1	0.0
24	7.9	90.7	0.0
25	52.8	85.6	0.0
26	94.0	71.1	0.0
27	18.3	57.5	0.0
28	46.1	109.5	0.0
29	7.5	63.5	0.0
30	7.8	44.3	0.0
31	7.4	97.1	0.0
<b>Total</b>	<b>640.9</b>	<b>2909.6</b>	<b>1.1</b>
<b>Average</b>	<b>20.7</b>	<b>93.9</b>	<b>0.0</b>
<b>Maximum</b>	<b>97.5</b>	<b>436.1</b>	<b>0.0</b>
<b>Date</b>	<b>9-Mar</b>	<b>12-Mar</b>	<b>1-Mar</b>
<b>Minimum</b>	<b>0.5</b>	<b>44.3</b>	<b>0.0</b>
<b>Date</b>	<b>1-Mar</b>	<b>30-Mar</b>	<b>1-Mar</b>

<b>Notes:</b>	
Dosage (mg/L)=	Day Tank (L) x %conc. x 1000
	Membrane Flow (m3)
Chlorine Concentration:	12.0%

# Chemical Usage Monthly Report

Month: **March-18**



Date	Citric Acid	Caustic Soda	Captor	Hydrogen Peroxide		Membrane Flow (m <sup>3</sup> )
	TAGNAME (L) Usage	TAGNAME (L) Usage	TAGNAME (L) Usage	TAGNAME (L) Usage	(mg/L) Dose	
1	0.0	0.0	0.0	0.0	0.0	3791.525
2	0.0	0.0	0.0	0.0	0.0	2290.734
3	0.0	0.0	0.0	0.0	0.0	4843.516
4	0.0	0.0	0.0	0.0	0.0	3859.763
5	3.0	2.8	52.0	0.0	0.0	4745.579
6	0.0	0.0	0.0	0.0	0.0	3996.382
7	16.5	15.8	43.7	0.0	0.0	3288.286
8	8.1	0.0	7.8	0.0	0.0	4024.257
9	8.9	1.4	33.9	0.0	0.0	3936.282
10	8.2	0.0	7.9	0.0	0.0	3435.380
11	8.1	0.0	11.1	0.0	0.0	3296.133
12	3.8	0.0	3.6	0.0	0.0	3332.130
13	35.2	10.1	74.4	0.0	0.0	4689.684
14	7.9	0.0	21.6	0.0	0.0	2591.726
15	8.5	0.5	42.3	0.0	0.0	3601.647
16	7.9	0.0	6.2	0.0	0.0	3847.021
17	7.9	0.0	5.9	0.0	0.0	4093.882
18	7.9	0.0	5.9	0.0	0.0	3508.670
19	266.1	3.2	42.4	0.0	0.0	4444.473
20	8.8	2.1	42.4	0.0	0.0	3857.209
21	307.7	168.5	26.6	0.0	0.0	3403.751
22	7.9	0.0	6.6	0.0	0.0	3666.602
23	8.0	0.0	7.9	0.0	0.0	2198.523
24	8.0	0.0	7.9	0.0	0.0	4299.427
25	7.9	0.0	7.8	0.0	0.0	4611.241
26	7.9	0.0	7.8	0.0	0.0	3534.226
27	7.9	0.0	7.5	0.0	0.0	3450.611
28	365.5	0.0	34.0	0.0	0.0	3135.971
29	7.9	0.0	7.8	0.0	0.0	3584.396
30	7.9	0.0	7.9	0.0	0.0	3240.320
31	7.9	0.0	7.7	0.0	0.0	4500.594
Total	1151.4	204.4	530.3	0.0		115099.9
Average	37.1	6.6	17.1	0.0	0.0	3712.9
Maximum	365.5	168.5	74.4	0.0	0.0	4843.5
Date	28-Mar	21-Mar	13-Mar	1-Mar	1-Mar	3-Mar
Minimum	0.0	0.0	0.0	0.0	0.0	2198.5
Date	1-Mar	1-Mar	1-Mar	1-Mar	1-Mar	23-Mar

Notes:	
Dosage (mg/L)=	Day Tank (L) x %conc. x 1000
	Membrane Flow (m3)
Peroxide Concentration:	50.0%

# Runtimes Report

Month: March-18

Date	Daily Gen-Set Runtimes		Daily UV Runtimes		Daily PALL Runtimes				
	LLPS	WTP	UV #1	UV #2	Air Compressor #1	Air Compressor #2	CIP Neutralization	CIP Drain	CIP Recirc
	(Hrs)	(Hrs)	(Hrs)	(Hrs)	(Hrs)	(Hrs)	(Hrs)	(Hrs)	(Hrs)
1	0.0	0.0	0.0	0.0	1.0	23.4	0.0	0.0	0.0
2	0.0	0.0	0.0	0.0	23.4	1.0	0.0	0.1	0.2
3	0.0	0.0	0.0	0.0	1.0	23.4	0.0	0.0	0.0
4	0.0	0.0	0.0	0.0	23.4	1.0	0.0	0.0	0.0
5	0.0	0.0	0.0	0.0	1.0	23.4	0.3	0.1	0.1
6	0.0	0.0	0.0	0.0	23.4	1.0	0.0	0.0	0.0
7	0.0	0.0	0.0	0.0	1.0	23.4	0.2	0.1	0.2
8	0.0	0.0	0.0	0.0	23.6	0.8	0.0	0.0	0.0
9	0.0	0.0	0.0	0.0	1.0	23.4	0.2	0.1	0.1
10	0.0	0.0	0.0	0.0	23.4	1.0	0.0	0.0	0.0
11	0.0	0.0	0.0	0.0	1.0	23.3	0.0	0.0	0.0
12	0.0	0.0	0.0	0.0	23.6	0.8	0.2	0.1	0.1
13	0.0	0.0	0.0	0.0	0.0	24.4	0.0	0.0	0.2
14	0.0	0.0	0.0	0.6	24.4	0.0	0.3	0.2	0.8
15	0.0	0.0	0.0	0.0	0.0	24.4	0.2	0.1	0.7
16	0.0	0.0	0.0	0.0	24.4	0.0	0.0	0.0	0.0
17	0.0	0.0	0.0	0.0	0.0	24.4	0.0	0.0	0.0
18	0.0	0.0	0.0	0.0	24.4	0.0	0.0	0.0	0.0
19	0.0	0.0	0.0	0.0	0.0	24.4	0.5	0.3	0.9
20	0.0	0.0	0.0	0.0	24.4	0.0	0.3	0.2	0.8
21	0.0	0.0	0.0	0.0	0.0	24.4	0.2	0.1	0.4
22	0.0	0.0	0.0	0.0	24.4	0.0	0.0	0.0	0.0
23	1.1	1.2	0.0	0.0	1.0	23.3	0.0	0.0	0.0
24	0.0	0.0	0.0	0.0	24.4	0.0	0.0	0.0	0.0
25	0.0	0.0	0.0	0.0	0.1	24.4	0.0	0.0	0.0
26	0.0	0.0	0.0	0.0	24.3	0.0	0.0	0.1	0.1
27	0.0	0.0	0.0	0.0	0.1	24.4	0.0	0.0	0.0
28	0.0	0.0	0.0	0.0	24.3	0.0	0.2	0.2	0.2
29	0.0	0.0	0.0	0.0	0.1	24.4	0.0	0.0	0.0
30	0.0	0.0	0.0	0.0	24.3	0.0	0.0	0.0	0.0
31	0.0	0.0	0.0	0.0	0.1	24.4	0.0	0.0	0.0
<b>Total</b>	1.1	1.2	0.0	0.6	367.1	388.4	2.6	1.7	4.8

Notes:

# Runtimes Report

Month: March-18

## Daily

Date	PALL Runtimes						Process Drain	
	RFR Pump #1	RFR Pump #2	RF Pump #1	RF Pump #2	XR Pump #1	XR Pump #2	PDP9010 Pump	PDP9020 Pump
	(Hrs)	(Hrs)	(Hrs)	(Hrs)	(Hrs)	(Hrs)	(Hrs)	(Hrs)
1	4.3	4.1	0.8	0.7	7.8	6.7	2.1	2.6
2	0.3	0.2	0.0	0.1	9.2	0.0	1.9	2.5
3	0.0	0.0	0.0	0.0	18.7	0.0	1.9	2.5
4	0.0	0.0	0.0	0.0	17.4	0.0	2.0	2.5
5	2.9	3.1	0.9	0.7	1.1	14.4	2.4	3.2
6	4.4	4.6	0.8	0.8	0.0	14.7	2.2	2.9
7	3.4	3.1	0.6	0.7	0.0	12.2	2.5	3.3
8	4.6	4.9	0.9	0.9	5.0	10.1	2.0	2.7
9	4.8	4.7	0.8	0.8	7.3	7.6	2.1	2.8
10	3.8	3.8	0.7	0.8	5.9	7.3	2.1	2.6
11	3.9	3.9	0.7	0.7	6.3	6.3	2.1	2.7
12	3.7	4.0	0.7	0.7	4.2	8.7	2.4	2.9
13	6.6	3.5	0.9	0.9	5.1	12.9	2.2	2.7
14	1.7	4.6	0.6	0.5	6.2	3.4	1.9	2.6
15	3.3	3.3	0.7	0.6	7.6	6.3	2.1	3.1
16	4.0	4.3	0.7	0.9	3.3	11.4	2.1	2.7
17	4.4	4.4	0.8	0.8	0.0	15.4	2.0	2.7
18	4.0	3.7	0.7	0.7	0.0	13.2	2.1	2.6
19	4.9	5.2	1.0	1.0	8.7	8.1	1.4	3.6
20	3.1	3.2	0.8	0.7	15.0	0.0	1.5	3.5
21	0.4	0.5	0.5	0.6	11.5	0.0	1.5	7.2
22	1.8	1.5	0.5	0.4	12.5	2.3	1.8	4.7
23	2.4	2.5	0.4	0.5	3.2	4.7	2.3	2.9
24	4.5	4.5	0.8	0.8	6.3	10.2	2.0	2.6
25	5.0	5.2	0.9	0.9	9.6	7.9	2.2	2.5
26	3.4	3.3	0.7	0.8	6.3	6.1	2.8	4.4
27	4.1	4.1	0.6	0.7	7.1	5.9	0.0	3.7
28	3.1	3.4	0.6	0.6	6.0	5.9	1.5	3.4
29	4.2	3.9	0.7	0.7	6.5	6.9	2.2	2.6
30	3.8	3.4	0.6	0.6	5.5	6.7	2.0	2.6
31	4.8	5.0	0.9	0.9	8.0	9.0	2.1	2.6
<b>Total</b>	<b>105.2</b>	<b>105.5</b>	<b>20.3</b>	<b>20.5</b>	<b>210.8</b>	<b>223.9</b>	<b>61.4</b>	<b>95.9</b>

Notes:

# Runtimes Report

Month: March-18

## Daily

Date	Low Lift Pump Motor Runtimes				High Lift Pump Motor Runtimes			
	LLP1010 (Hrs)	LLP1020 (Hrs)	LLP1030 (Hrs)	LLP1040 (Hrs)	HLP7010 (Hrs)	HLP7020 (Hrs)	HLP7030 (Hrs)	HLP7040 (Hrs)
1	7.7	0.0	7.0	0.0	0.0	0.0	16.2	0.0
2	4.7	0.0	4.7	0.0	0.0	0.0	10.0	0.0
3	8.0	0.0	14.5	0.0	13.9	0.0	6.3	0.0
4	8.9	0.0	8.8	0.0	16.9	0.0	0.0	0.0
5	8.5	0.0	11.6	0.0	1.6	15.1	0.0	0.0
6	9.6	0.0	6.4	0.0	0.0	15.9	0.0	0.0
7	7.5	0.0	5.8	0.0	0.0	13.4	0.0	0.0
8	5.5	0.0	9.8	0.0	0.0	15.4	0.0	0.0
9	5.3	0.0	9.9	0.0	0.1	14.4	0.0	0.0
10	8.3	0.0	5.1	0.0	0.0	15.2	0.0	0.0
11	6.2	0.0	6.8	0.0	0.0	13.1	0.0	0.0
12	4.7	0.0	8.7	0.0	0.0	13.1	0.0	0.0
13	8.6	0.0	9.8	0.0	0.0	17.6	0.0	0.0
14	3.2	0.0	6.5	0.0	0.0	9.7	0.0	0.0
15	9.5	0.0	4.5	0.0	0.0	15.3	0.0	0.0
16	5.8	0.0	9.2	0.0	0.0	14.4	0.0	0.0
17	7.4	0.0	8.3	0.0	0.0	16.1	0.0	0.0
18	6.7	0.0	6.9	0.0	0.0	13.6	0.0	0.0
19	6.8	0.0	10.6	0.0	0.0	15.3	0.0	0.0
20	7.4	0.0	8.3	0.0	0.0	14.0	0.0	0.0
21	7.1	0.0	6.3	0.0	0.0	8.7	0.0	0.0
22	6.1	0.0	9.0	0.0	0.0	14.1	0.0	0.0
23	4.7	0.0	4.1	0.0	5.5	7.0	0.0	0.0
24	9.3	0.0	7.3	0.0	17.6	0.0	0.0	0.0
25	7.7	0.0	10.4	0.0	17.6	0.0	0.0	0.0
26	7.7	0.0	7.8	0.0	2.0	9.7	0.0	0.0
27	6.0	0.0	7.5	0.0	0.0	12.6	0.0	0.0
28	5.3	0.0	6.8	0.0	0.0	13.6	0.0	0.0
29	5.0	0.0	8.6	0.0	0.0	14.9	0.0	0.0
30	7.8	0.0	4.5	0.0	0.0	13.2	0.0	0.0
31	9.7	0.0	7.6	0.0	0.0	17.5	0.0	0.0
<b>Total</b>	<b>216.7</b>	<b>0.0</b>	<b>243.1</b>	<b>0.0</b>	<b>75.2</b>	<b>342.8</b>	<b>32.5</b>	<b>0.0</b>

**Notes:**

LLP1020 an 1040 set up for frazzil ice and therefore, do not run unless there is an issue.  
HLP7040 out of service.

# Plant Internal Flow Report

Month: March-18

Date	Settling Tank Level		Process Drain Tank		Settling Tank Flow		Potable Water Flow		Non-Potable Flow	
	T-9003 (m)		T-9001 (m)		FIT_9005 (m <sup>3</sup> ) (L/s)		FIT_7082 (m <sup>3</sup> ) (L/s)		FIT_7092 (m <sup>3</sup> ) (L/s)	
	Maximum	Minimum	Maximum	Minimum	Total	Peak	Total	Peak	Total	Peak
1	2.2	0.1	1.1	0.4	42.4	15.1	0.1	1.3	0.0	0.0
2	2.2	0.1	1.1	0.4	3.5	12.6	0.1	1.4	12.6	19.4
3	2.2	0.1	0.8	0.4	0.3	0.2	0.0	0.0	0.0	0.0
4	2.2	0.1	0.8	0.4	0.3	0.2	0.0	0.0	0.0	0.0
5	2.2	0.1	2.1	0.4	158.5	15.7	0.1	1.4	12.3	17.4
6	2.2	0.1	1.5	0.4	41.0	15.7	0.2	1.3	0.0	0.0
7	2.2	0.1	2.1	0.4	86.5	15.7	0.1	1.2	12.2	17.3
8	2.2	0.1	1.0	0.4	40.8	15.7	0.1	1.4	0.0	0.0
9	2.2	0.1	1.3	0.4	47.6	15.7	0.1	1.3	18.1	22.6
10	2.2	0.1	1.2	0.4	40.8	15.7	0.0	0.0	0.0	0.0
11	2.2	0.1	1.2	0.4	29.0	15.7	0.0	0.0	0.0	0.0
12	2.2	0.1	2.2	0.4	46.8	15.6	0.0	1.1	12.3	17.2
13	2.2	0.1	1.0	0.4	47.2	15.7	0.2	1.4	5.9	23.3
14	2.2	0.1	1.0	0.4	30.5	15.7	1.2	4.7	19.4	17.8
15	2.2	0.1	1.5	0.4	82.9	15.7	0.1	1.3	19.3	17.8
16	2.2	0.1	1.1	0.4	29.0	15.7	0.1	1.1	0.1	1.2
17	2.2	0.1	1.1	0.4	47.4	15.2	0.0	0.0	0.0	0.0
18	2.2	0.1	1.0	0.4	39.1	15.7	0.0	0.0	0.0	0.0
19	2.2	0.1	1.0	0.4	85.2	15.7	0.1	1.5	39.7	23.4
20	2.2	0.1	1.2	0.4	121.4	15.7	0.1	1.3	30.9	17.5
21	2.2	0.1	2.2	0.4	220.0	15.7	0.4	1.3	41.0	24.6
22	2.2	0.1	1.6	0.2	71.9	15.7	0.3	1.4	0.0	0.0
23	2.2	0.1	2.2	0.4	33.3	15.7	0.1	1.6	0.0	0.0
24	2.2	0.1	1.0	0.4	36.5	15.7	0.0	0.0	0.0	0.0
25	2.2	0.1	0.9	0.4	46.6	15.7	0.0	0.0	0.0	0.0
26	2.2	0.1	2.1	0.4	88.2	15.7	0.1	1.4	0.4	1.1
27	2.2	0.1	1.3	0.4	55.2	15.2	0.0	1.1	0.0	0.0
28	2.2	0.2	1.4	0.4	77.9	15.7	0.1	1.4	14.6	22.5
29	2.2	0.1	1.2	0.4	56.5	15.7	0.1	1.3	0.0	0.0
30	2.2	0.1	1.2	0.4	35.0	15.7	0.1	1.1	0.0	0.0
31	2.2	0.1	1.0	0.4	50.8	15.7	0.0	0.0	0.0	0.0
<b>Total</b>					1792.1		3.7		238.7	
<b>Average</b>	2.2	0.1	1.3	0.4	57.8	14.5	0.1	1.0	7.7	7.8
<b>Maximum</b>	2.2		2.2		220.0		1.2		41.0	
<b>Date</b>	29-Mar		21-Mar		21-Mar		14-Mar		21-Mar	
<b>Minimum</b>		0.1		0.2		0.2		0.0		0.0
<b>Date</b>		31-Mar		22-Mar		3-Mar		3-Mar		1-Mar

Notes: