

Municipality of West Elgin - Tri County Water System

Goto:

Month:

Year:

Date is Set to: **April-17**

Limit	Low	High	
Raw Water Chlorine Residual:	0.00	5.00	mg/L
Pre-Strainer Chlorine Residual:	0.00	5.00	mg/L
UV Inlet Chlorine Residual:	0.00	5.00	mg/L
Post Treatment Chlorine Residual:	1.00	5.00	mg/L
Treated Chlorine Residual:	1.00	2.50	mg/L
Distribution Chlorine Residual:	1.00	2.50	mg/L
Limit		High	
Limit		156.0	L/s
WTP Permit to Take Water		13500.0	m ³
Limit	Low	High	
System Pressure Limits:	50.0	1034.0	Kpa

Compliance Report

Low Lift Monthly Report

>>>

Membranes Monthly Report

>>>

UV System Monthly Report

>>>

Plant Quality Report

>>>

Raw Well/Treated Storage Report

>>>

High Lift Monthly Report

>>>

Operational Report

Low Lift Monthly Report

>>>

High Lift Monthly Report

>>>

Chemical Usage Monthly Report

>>>

Runtimes Report

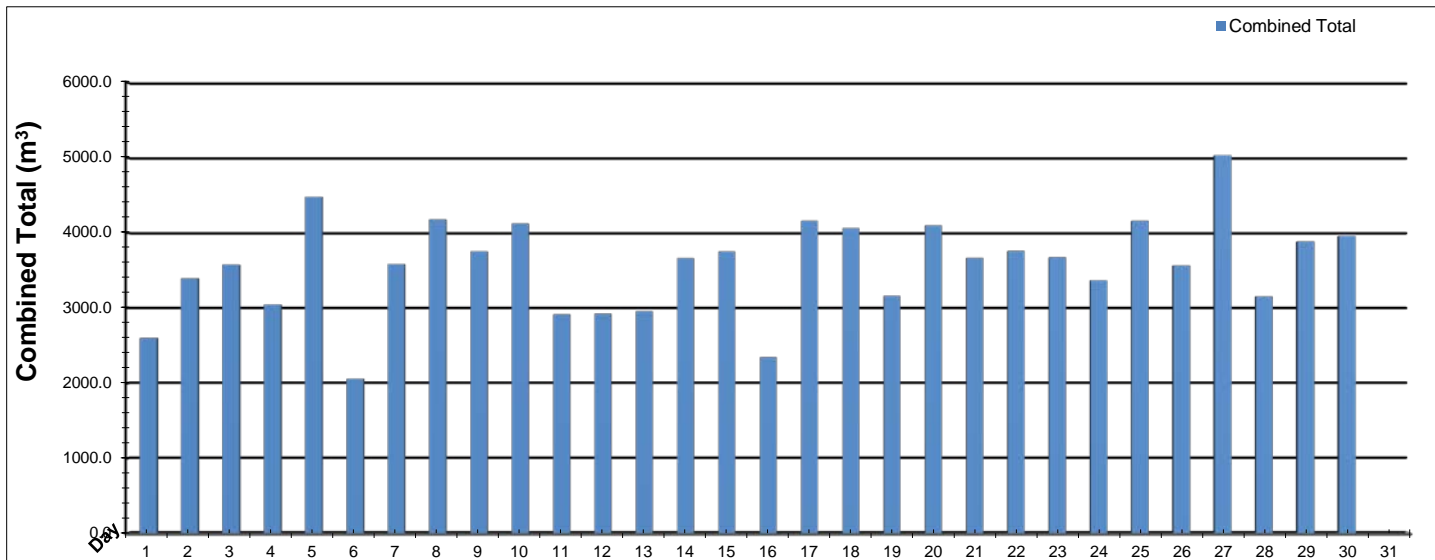
>>>

Plant Internal Flow Report

>>>

Low Lift Monthly Report

Month: April-17

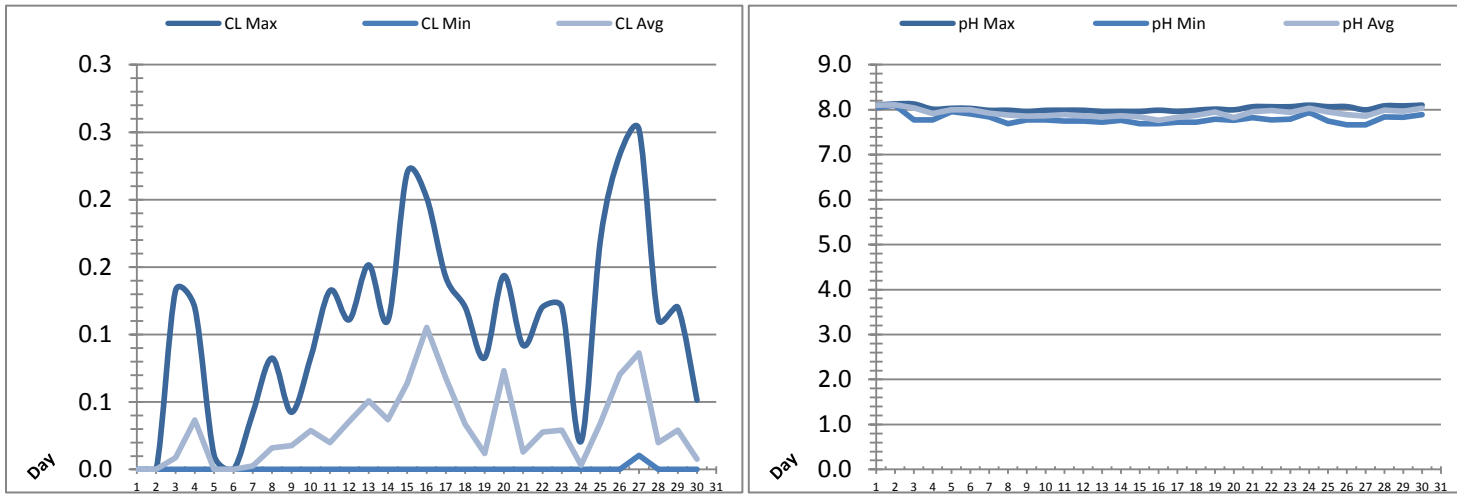


Date	Combined Total (m³)	West Train FIT-1017 (m³)	West Peak Flow FIT-1017 (L/s)	East Train FIT-1027 (m³)	East Peak Flow FIT-1027 (L/s)	Combined Peak Flow (L/s)
1	✓ 2599.4	0.0	0.0	2599.4	84.1	✓ 84.1
2	✓ 3393.7	0.0	0.0	3393.7	86.0	✓ 86.0
3	✓ 3577.6	0.0	0.0	3577.6	86.2	✓ 86.2
4	✓ 3047.8	0.0	0.0	3047.8	135.9	✓ 135.9
5	✓ 4479.3	0.0	0.0	4479.3	85.3	✓ 85.3
6	✓ 2057.3	0.0	0.0	2057.3	87.2	✓ 87.2
7	✓ 3585.6	0.0	0.0	3585.6	131.0	✓ 131.0
8	✓ 4177.3	0.0	0.0	4177.3	152.6	✓ 152.6
9	✓ 3755.1	0.0	0.0	3755.1	81.5	✓ 81.5
10	✓ 4124.9	0.0	0.0	4124.9	81.9	✓ 81.9
11	✓ 2915.2	0.0	0.0	2915.2	78.7	✓ 78.7
12	✓ 2926.5	0.0	0.0	2926.5	80.6	✓ 80.6
13	✓ 2956.6	0.0	0.0	2956.6	82.5	✓ 82.5
14	✓ 3663.9	0.0	0.0	3663.9	84.2	✓ 84.2
15	✓ 3752.5	0.0	0.0	3752.5	86.6	✓ 86.6
16	✓ 2346.9	0.0	0.0	2346.9	85.7	✓ 85.7
17	✓ 4161.0	0.0	0.0	4161.0	131.2	✓ 131.2
18	✓ 4063.2	0.0	0.0	4063.2	88.8	✓ 88.8
19	✓ 3162.2	0.0	0.0	3162.2	134.4	✓ 134.4
20	✓ 4098.3	0.0	0.0	4098.3	133.4	✓ 133.4
21	✓ 3669.5	0.0	0.0	3669.5	126.0	✓ 126.0
22	✓ 3758.9	0.0	0.0	3758.9	86.9	✓ 86.9
23	✓ 3674.3	0.0	0.0	3674.3	84.0	✓ 84.0
24	✓ 3366.7	0.0	0.0	3366.7	85.9	✓ 85.9
25	✓ 4160.2	0.0	0.0	4160.2	86.1	✓ 86.1
26	✓ 3567.1	0.0	0.0	3567.1	80.1	✓ 80.1
27	✓ 5033.9	0.0	0.0	5033.9	80.3	✓ 80.3
28	✓ 3153.0	0.0	0.0	3153.0	80.8	✓ 80.8
29	✓ 3886.0	0.0	0.0	3886.0	79.5	✓ 79.5
30	✓ 3961.5	0.0	0.0	3961.5	73.5	✓ 73.5
Total	107075.4	0.0		107075.4		
Average	3569.2	0.0	0.0	3569.2	95.4	95.4
Maximum	5033.9	0.0	0.00	5033.9	152.64	152.64
Date	27-Apr	26-Apr	1-Apr	27-Apr	8-Apr	8-Apr
Minimum	2057.3	0.0	0.00	2057.3	73.54	73.54
Date	6-Apr	1-Apr	1-Apr	6-Apr	30-Apr	30-Apr

Notes:

Low Lift Monthly Report

Month: April-17

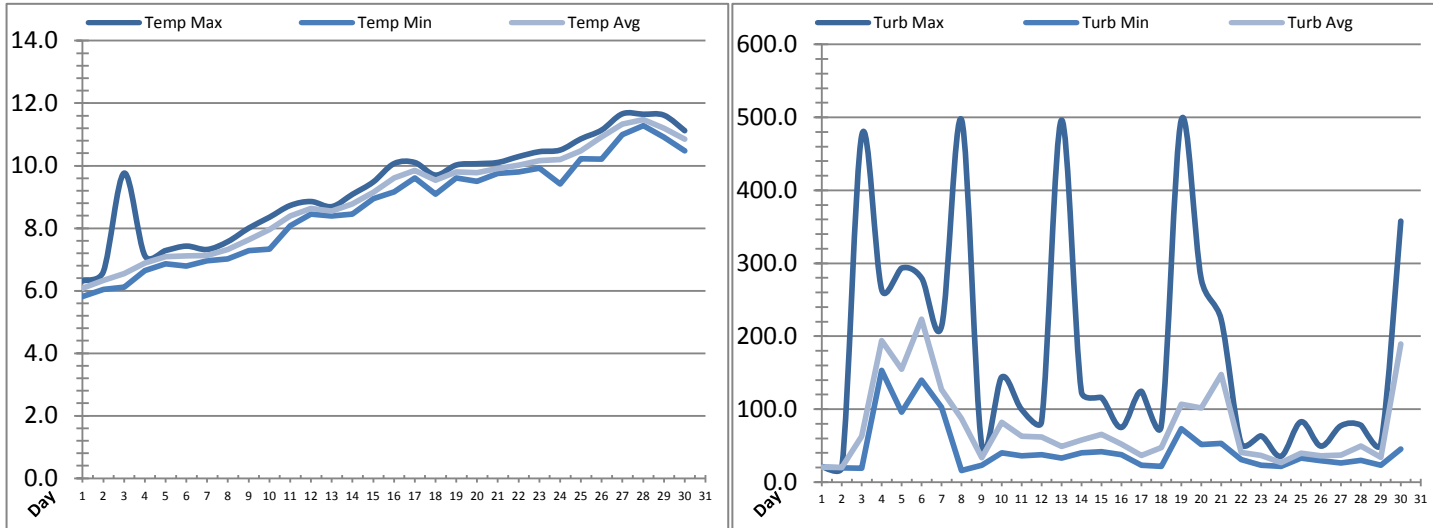


Date	Raw Water Chlorine Residual			Raw Water pH		
	AIT_1401_CL (mg/L)			AIT_1401_PH		
	Maximum	Minimum	Average	Maximum	Minimum	Average
1	0.00	0.00	0.00	8.10	8.06	8.10
2	0.00	0.00	0.00	8.13	8.10	8.10
3	0.13	0.00	0.01	8.13	7.77	8.04
4	0.12	0.00	0.04	8.01	7.77	7.92
5	0.01	0.00	0.00	8.03	7.96	8.00
6	0.00	0.00	0.00	8.03	7.90	8.00
7	0.04	0.00	0.00	7.99	7.84	7.92
8	0.08	0.00	0.02	7.99	7.69	7.88
9	0.04	0.00	0.02	7.96	7.77	7.85
10	0.08	0.00	0.03	7.99	7.77	7.87
11	0.13	0.00	0.02	7.99	7.75	7.89
12	0.11	0.00	0.04	7.99	7.75	7.86
13	0.15	0.00	0.05	7.96	7.72	7.84
14	0.11	0.00	0.04	7.96	7.76	7.87
15	0.22	0.00	0.06	7.96	7.69	7.84
16	0.20	0.00	0.11	7.99	7.69	7.77
17	0.14	0.00	0.07	7.96	7.72	7.83
18	0.12	0.00	0.03	7.99	7.72	7.88
19	0.08	0.00	0.01	8.01	7.79	7.94
20	0.14	0.00	0.07	8.00	7.76	7.83
21	0.09	0.00	0.01	8.07	7.83	7.95
22	0.12	0.00	0.03	8.07	7.77	7.98
23	0.12	0.00	0.03	8.07	7.79	7.94
24	0.02	0.00	0.00	8.10	7.94	8.03
25	0.17	0.00	0.03	8.07	7.75	7.95
26	0.23	0.00	0.07	8.07	7.66	7.89
27	0.25	0.01	0.09	8.00	7.66	7.86
28	0.11	0.00	0.02	8.09	7.84	7.99
29	0.12	0.00	0.03	8.09	7.83	7.97
30	0.05	0.00	0.01	8.10	7.89	8.03
Total						
Average	0.11	0.00	0.03	8.03	7.80	7.93
Maximum	0.25		0.11	8.13		8.10
Date	27-Apr		16-Apr	2-Apr		2-Apr
Minimum		0.00	0.00		7.66	7.77
Date		1-Apr	1-Apr		26-Apr	16-Apr

Notes:

Low Lift Monthly Report

Month: April-17

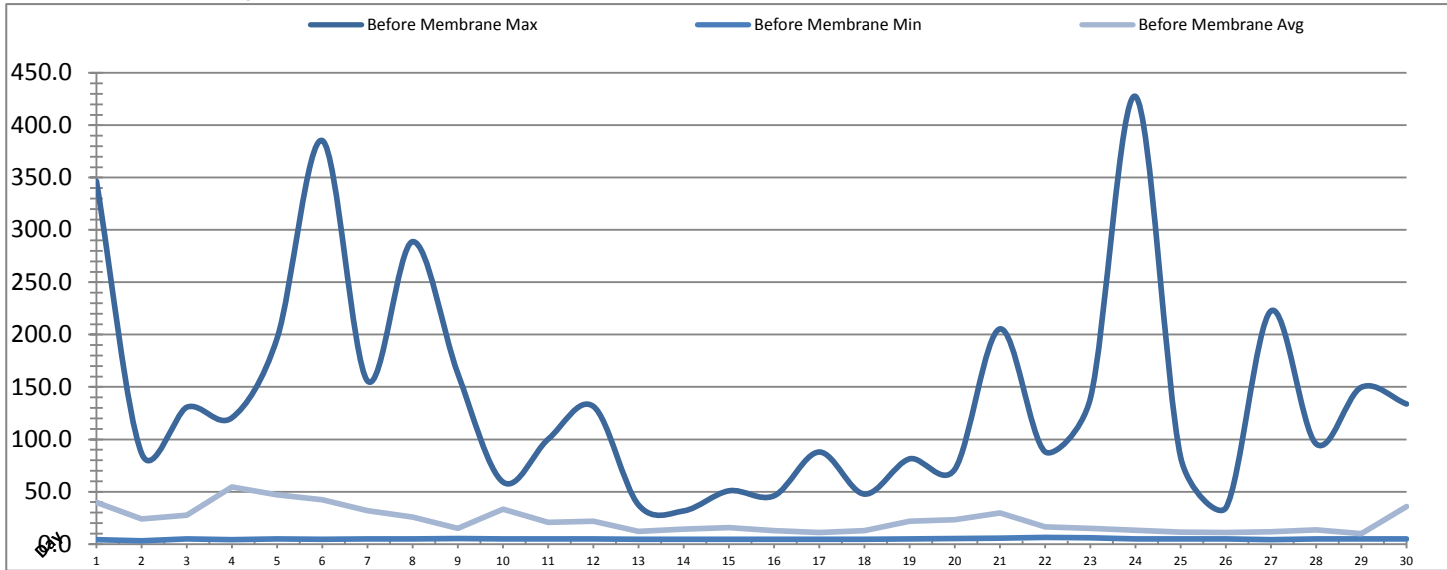


Date	Raw Water Temperature			Raw Water Turbidity		
	TIT_1403 (°C)			AIT_1404 (NTU)		
	Maximum	Minimum	Average	Maximum	Minimum	Average
1	6.3	5.8	6.1	21.36	20.48	20.57
2	6.6	6.0	6.3	20.64	19.72	20.13
3	9.8	6.1	6.6	476.00	18.95	62.76
4	7.1	6.6	6.9	263.20	153.04	194.05
5	7.3	6.9	7.1	293.45	95.75	154.83
6	7.4	6.8	7.1	279.42	139.84	223.50
7	7.3	7.0	7.1	214.31	102.67	126.93
8	7.6	7.0	7.3	496.28	15.86	87.01
9	8.0	7.3	7.6	52.38	22.86	33.41
10	8.4	7.3	8.0	143.84	39.92	81.94
11	8.7	8.1	8.4	99.65	36.12	63.07
12	8.9	8.5	8.6	82.65	37.66	61.87
13	8.7	8.4	8.5	496.23	32.98	48.77
14	9.1	8.5	8.8	123.69	40.00	57.51
15	9.5	8.9	9.2	115.93	41.49	65.44
16	10.1	9.2	9.6	74.91	37.64	51.88
17	10.1	9.6	9.9	124.50	22.94	36.41
18	9.7	9.1	9.5	77.20	21.36	47.38
19	10.0	9.6	9.8	496.27	73.29	106.71
20	10.1	9.5	9.8	278.75	51.54	101.75
21	10.1	9.8	9.9	222.96	53.13	147.74
22	10.3	9.8	10.0	53.21	30.70	40.50
23	10.4	9.9	10.2	63.30	22.92	36.40
24	10.5	9.4	10.2	35.42	21.37	26.55
25	10.9	10.2	10.5	82.67	33.03	39.43
26	11.1	10.2	10.9	49.30	29.13	36.18
27	11.7	11.0	11.3	77.24	26.04	36.82
28	11.6	11.3	11.5	78.01	29.93	49.43
29	11.6	10.9	11.2	52.43	22.93	33.71
30	11.1	10.5	10.9	357.76	45.41	189.14
Total						
Average	9.3	8.6	9.0	176.8	44.6	76.1
Maximum	11.7		11.5	496.3		223.5
Date	27-Apr		28-Apr	8-Apr		6-Apr
Minimum		5.8	6.1		15.9	20.1
Date		1-Apr	1-Apr		8-Apr	2-Apr

Notes:

Membranes Monthly Report

Month: April-17

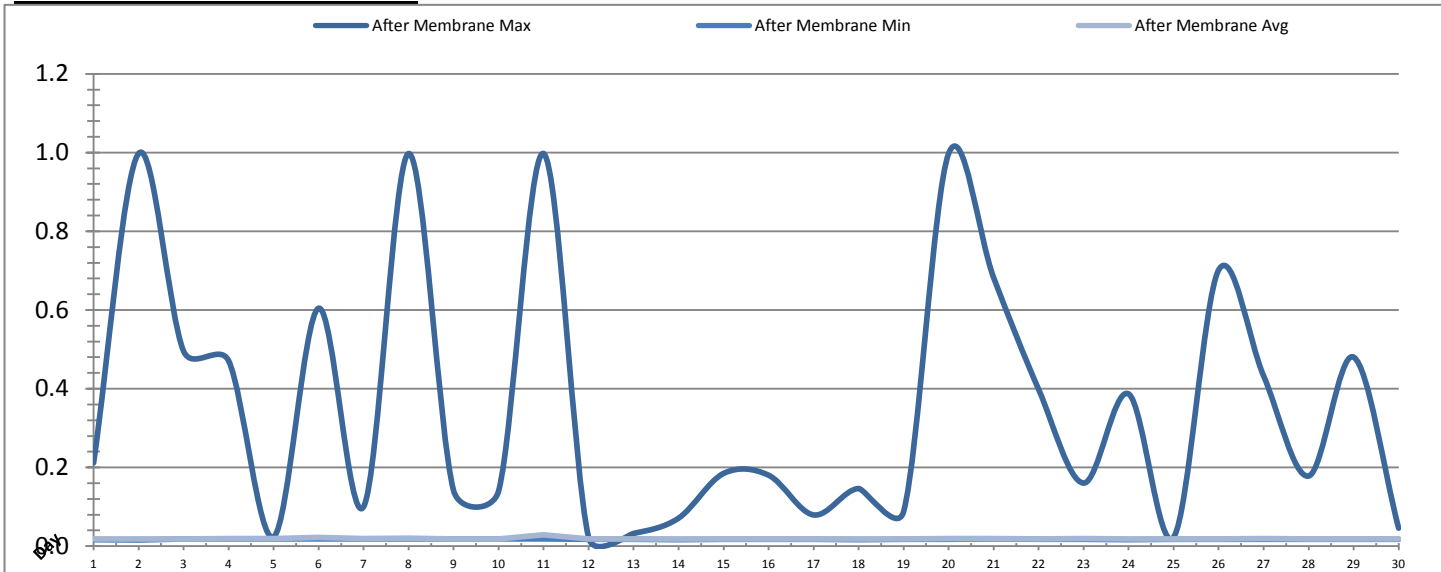


Date	Turbidity Before Membrane			Rack #1 Turbidity			Rack #2 Turbidity		
	PALL_FEED_AIT2006_Value NTU			RACK1_NTU_Value NTU			RACK2_NTU_Value NTU		
	Maximum	Minimum	Average	Maximum	Minimum	Average	Maximum	Minimum	Average
1	346.57	4.14	39.59	0.52	0.01	0.11	0.01	0.01	0.01
2	86.58	2.94	24.11	0.61	0.01	0.06	0.02	0.01	0.01
3	130.67	4.90	27.44	0.11	0.01	0.01	0.02	0.01	0.01
4	120.64	4.26	54.68	0.02	0.01	0.01	0.01	0.01	0.01
5	196.70	4.81	47.04	0.04	0.01	0.01	0.01	0.01	0.01
6	385.36	4.69	42.18	0.16	0.01	0.03	0.01	0.01	0.01
7	155.75	4.77	31.79	0.16	0.01	0.03	0.01	0.01	0.01
8	288.84	4.92	25.63	0.04	0.01	0.01	0.01	0.01	0.01
9	162.72	5.06	14.84	0.02	0.01	0.01	0.01	0.01	0.01
10	59.16	5.00	33.25	0.01	0.01	0.01	0.01	0.01	0.01
11	100.18	4.88	20.65	0.36	0.01	0.01	0.01	0.01	0.01
12	131.45	4.83	21.78	0.01	0.01	0.01	0.01	0.01	0.01
13	37.27	4.49	12.14	0.01	0.01	0.01	0.01	0.01	0.01
14	31.64	4.35	14.34	0.01	0.01	0.01	0.01	0.01	0.01
15	50.82	4.55	15.60	0.01	0.01	0.01	0.01	0.01	0.01
16	46.07	4.61	12.72	0.01	0.01	0.01	0.01	0.01	0.01
17	87.88	4.57	11.14	0.01	0.01	0.01	0.01	0.01	0.01
18	47.70	4.63	12.76	0.42	0.01	0.01	0.01	0.01	0.01
19	81.36	4.90	21.66	0.01	0.01	0.01	0.01	0.01	0.01
20	71.33	5.06	23.27	0.01	0.01	0.01	0.01	0.01	0.01
21	205.49	5.71	29.82	0.01	0.01	0.01	0.01	0.01	0.01
22	88.05	6.24	16.36	0.02	0.01	0.01	0.01	0.01	0.01
23	138.97	5.94	14.94	0.01	0.01	0.01	0.01	0.01	0.01
24	427.52	4.81	13.12	0.01	0.01	0.01	0.01	0.01	0.01
25	82.73	4.90	11.21	0.01	0.01	0.01	0.01	0.01	0.01
26	34.56	4.86	10.86	0.01	0.01	0.01	0.01	0.01	0.01
27	222.69	4.16	11.59	0.01	0.01	0.01	0.01	0.01	0.01
28	95.59	4.88	13.42	0.01	0.01	0.01	0.01	0.01	0.01
29	149.75	4.90	10.06	0.01	0.01	0.01	0.01	0.01	0.01
30	133.75	5.00	35.68	0.01	0.01	0.01	0.01	0.01	0.01
Total									
Average	139.9	4.8	22.5	0.1	0.0	0.0	0.0	0.0	0.0
Maximum	427.5		54.7	0.6		0.1	0.0		0.0
Date	24-Apr		4-Apr	2-Apr		1-Apr	2-Apr		3-Apr
Minimum		2.9	10.1		0.0	0.0		0.0	0.0
Date		2-Apr	29-Apr		14-Apr	30-Apr		1-Apr	1-Apr

Notes:

Membranes Monthly Report

Month: **April-17**

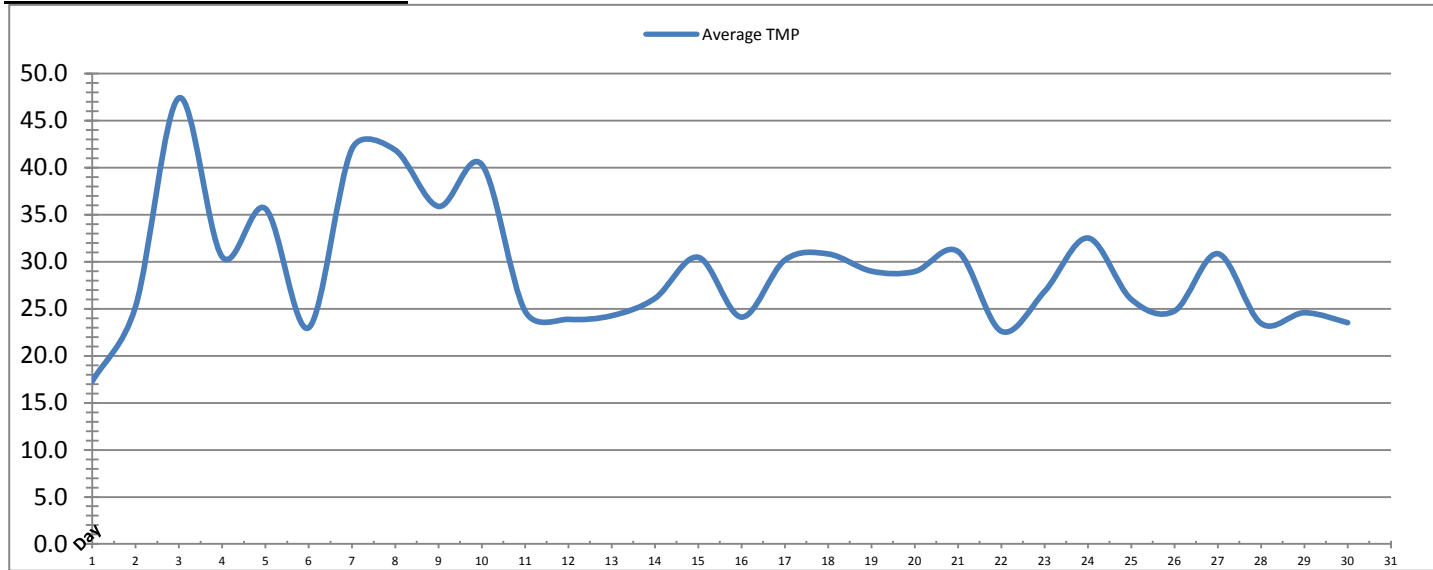


Date	Rack #3 Turbidity			Rack #4 Turbidity			Turbidity After Membranes		
	RACK3_NTU_Value NTU			RACK4_NTU_Value NTU			PALL_FILT_AIT5001_Value NTU		
	Maximum	Minimum	Average	Maximum	Minimum	Average	Maximum	Minimum	Average
1	0.03	0.03	0.03	0.24	0.02	0.04	0.21	0.02	0.02
2	0.03	0.03	0.03	0.24	0.02	0.02	1.00	0.02	0.02
3	0.03	0.03	0.03	0.36	0.02	0.02	0.50	0.02	0.02
4	0.38	0.01	0.02	0.40	0.02	0.02	0.47	0.02	0.02
5	0.15	0.01	0.01	0.26	0.02	0.02	0.02	0.02	0.02
6	0.52	0.01	0.03	1.14	0.02	0.04	0.60	0.02	0.02
7	0.19	0.01	0.02	0.06	0.02	0.02	0.10	0.02	0.02
8	0.02	0.01	0.01	0.03	0.02	0.02	1.00	0.02	0.02
9	0.12	0.01	0.02	0.04	0.02	0.02	0.14	0.02	0.02
10	0.11	0.01	0.02	0.05	0.02	0.02	0.14	0.02	0.02
11	0.14	0.01	0.01	0.67	0.02	0.02	1.00	0.02	0.03
12	0.01	0.01	0.01	0.08	0.02	0.02	0.02	0.02	0.02
13	0.02	0.01	0.01	0.03	0.02	0.02	0.03	0.02	0.02
14	0.01	0.01	0.01	0.04	0.02	0.02	0.07	0.02	0.02
15	0.02	0.01	0.01	0.03	0.02	0.02	0.18	0.02	0.02
16	0.02	0.01	0.01	0.03	0.02	0.02	0.18	0.02	0.02
17	0.02	0.01	0.01	0.05	0.02	0.02	0.08	0.02	0.02
18	0.01	0.01	0.01	0.06	0.02	0.02	0.15	0.02	0.02
19	0.08	0.01	0.01	0.06	0.02	0.02	0.09	0.02	0.02
20	0.02	0.01	0.01	0.11	0.02	0.02	1.00	0.02	0.02
21	0.02	0.01	0.01	0.08	0.02	0.02	0.68	0.02	0.02
22	0.01	0.01	0.01	0.12	0.02	0.02	0.40	0.02	0.02
23	0.03	0.01	0.01	0.12	0.02	0.02	0.16	0.02	0.02
24	0.02	0.01	0.01	0.09	0.02	0.02	0.39	0.02	0.02
25	0.03	0.01	0.01	0.13	0.02	0.02	0.02	0.02	0.02
26	0.02	0.01	0.01	0.06	0.02	0.02	0.70	0.02	0.02
27	0.03	0.01	0.01	0.21	0.02	0.02	0.43	0.02	0.02
28	0.02	0.01	0.01	0.13	0.02	0.02	0.18	0.02	0.02
29	0.03	0.01	0.01	0.12	0.02	0.02	0.48	0.02	0.02
30	0.02	0.01	0.01	0.12	0.02	0.02	0.05	0.02	0.02
Total									
Average	0.1	0.0	0.0	0.2	0.0	0.0	0.3	0.0	0.0
Maximum	0.5		0.0	1.1		0.0	1.0		0.0
Date	6-Apr		1-Apr	6-Apr		1-Apr	2-Apr		11-Apr
Minimum		0.0	0.0		0.0	0.0		0.0	0.0
Date		10-Apr	8-Apr		4-Apr	16-Apr		2-Apr	29-Apr

Notes:

Membranes Monthly Report

Month: **April-17**

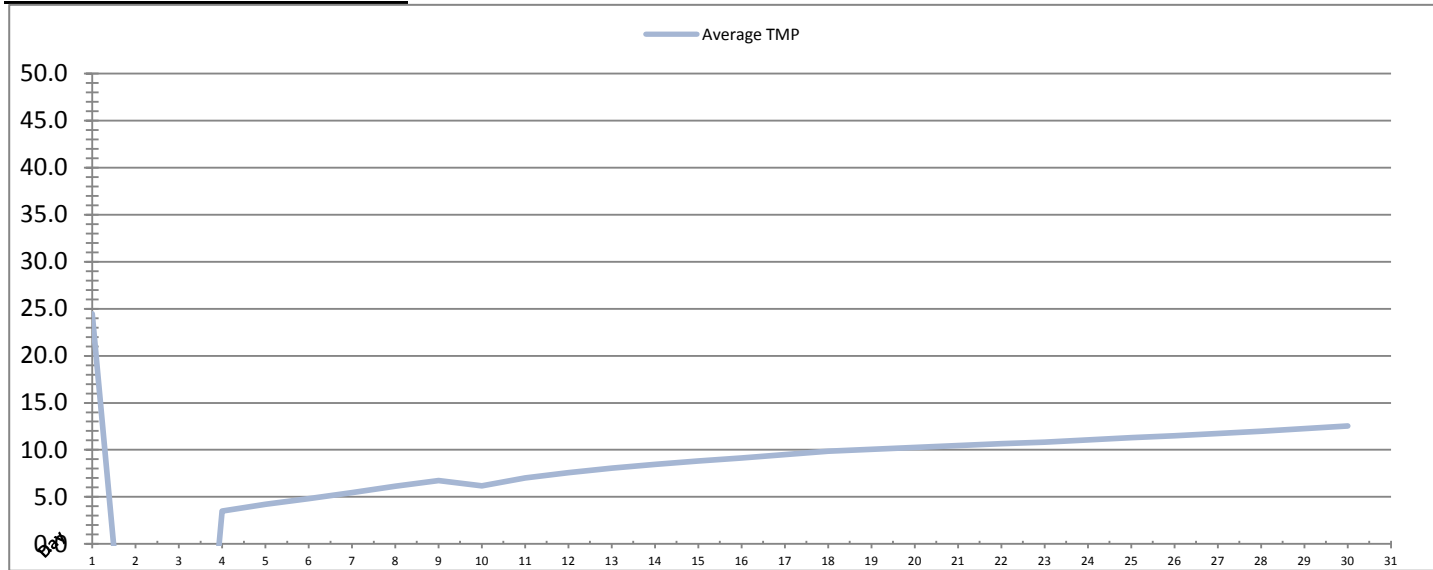


Integrity Test Rack 1									
Date	Initial Pressure (kPa)	Final Pressure (kPa)	Test Duration (sec)	Change in Pressure (kPa)	UCL	Within UCL	Average TMP (kPa)	Max TMP (kPa)	
1	195.3	194.0	300.0	1.3	2.0	✓ 2.0	17.3	202.6	
2	194.9	194.0	300.0	0.9	2.0	✓ 2.0	25.2	134.8	
3	195.0	194.1	300.0	0.9	2.0	✓ 2.0	47.4	152.8	
4	195.3	194.3	300.0	1.0	2.0	✓ 2.0	30.5	150.2	
5	195.1	194.1	300.0	0.9	2.0	✓ 2.0	35.6	79.0	
6	195.2	194.5	300.0	0.7	2.0	✓ 2.0	23.0	131.0	
7	195.2	193.8	300.0	1.4	2.0	✓ 2.0	42.0	181.2	
8	195.1	194.4	300.0	0.7	2.0	✓ 2.0	41.9	252.6	
9	195.2	194.1	300.0	1.2	2.0	✓ 2.0	35.9	96.4	
10	196.8	195.6	300.0	1.2	2.0	✓ 2.0	40.3	214.0	
11	197.4	196.1	300.0	1.3	2.0	✓ 2.0	24.7	80.4	
12	197.1	195.9	300.0	1.3	2.0	✓ 2.0	23.9	118.6	
13	196.6	195.4	300.0	1.3	2.0	✓ 2.0	24.3	124.8	
14	196.9	195.8	300.0	1.1	2.0	✓ 2.0	26.1	80.6	
15	197.0	195.8	300.0	1.2	2.0	✓ 2.0	30.5	126.9	
16	196.8	195.6	300.0	1.3	2.0	✓ 2.0	24.1	137.4	
17	196.9	195.7	300.0	1.2	2.0	✓ 2.0	30.2	135.1	
18	196.7	195.5	300.0	1.1	2.0	✓ 2.0	30.8	96.2	
19	196.7	195.4	300.0	1.3	2.0	✓ 2.0	29.0	104.2	
20	196.6	195.1	300.0	1.5	2.0	✓ 2.0	29.0	123.9	
21	197.4	196.0	300.0	1.4	2.0	✓ 2.0	31.1	215.9	
22	196.7	195.5	300.0	1.2	2.0	✓ 2.0	22.6	103.6	
23	196.6	195.5	300.0	1.1	2.0	✓ 2.0	26.8	120.5	
24	196.9	195.8	300.0	1.1	2.0	✓ 2.0	32.5	117.8	
25	196.8	195.6	300.0	1.2	2.0	✓ 2.0	26.0	90.0	
26	196.5	195.3	300.0	1.1	2.0	✓ 2.0	24.8	72.3	
27	196.0	194.9	300.0	1.1	2.0	✓ 2.0	30.9	152.6	
28	196.1	195.2	300.0	1.0	2.0	✓ 2.0	23.4	119.3	
29	196.3	195.2	300.0	1.1	2.0	✓ 2.0	24.6	93.0	
30	196.1	195.0	300.0	1.1	2.0	✓ 2.0	23.5	128.8	
Total									
Average	196.2	195.1	300.0	1.1	2.0	2.0	29.3	131.2	
Maximum	197.4	196.1	300.0	1.5	2.0	2.0	47.4	252.6	
Date	11-Apr	11-Apr	1-Apr	20-Apr	1-Apr	1-Apr	3-Apr	8-Apr	
Minimum	194.9	193.8	300.0	0.7	2.0	2.0	17.3	72.3	
Date	2-Apr	7-Apr	1-Apr	6-Apr	1-Apr	1-Apr	1-Apr	26-Apr	

Notes:

Membranes Monthly Report

Month: **April-17**

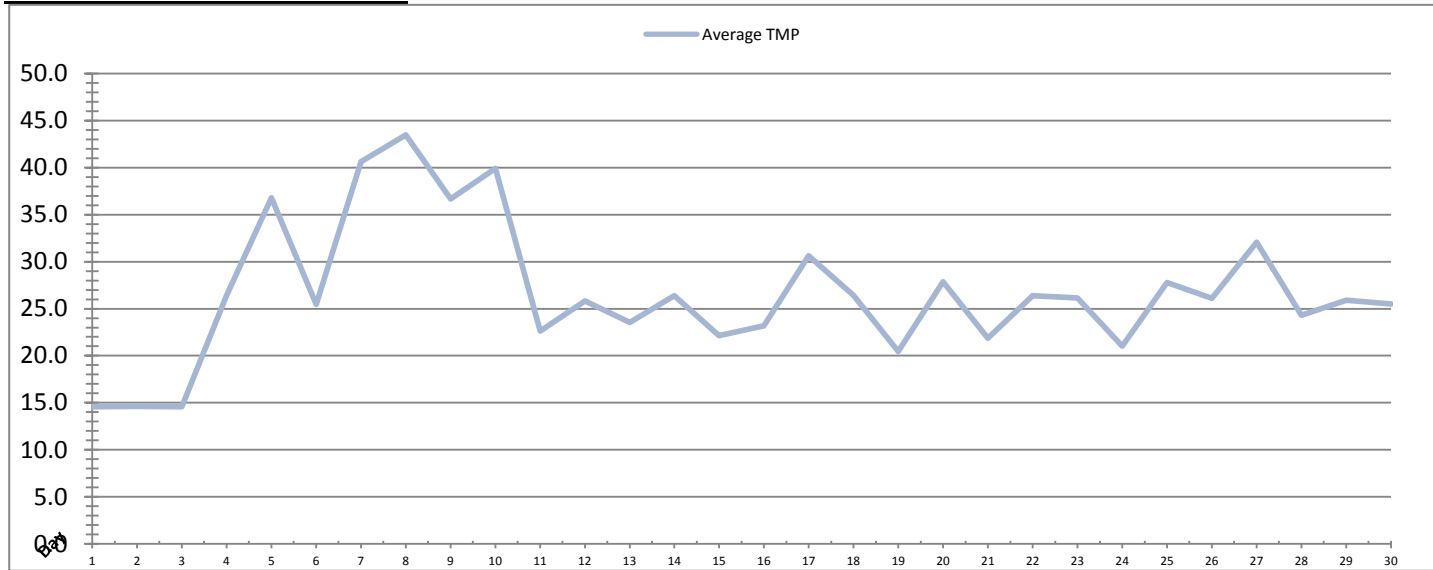


Integrity Test Rack 2									
Date	Initial Pressure (kPa)	Final Pressure (kPa)	Test Duration (sec)	Change in Pressure (kPa)	UCL	Within UCL	Average TMP (kPa)	Max TMP (kPa)	
1	201.9	200.5	300.0	1.3	2.0	✓ 2.0	24.4	212.5	
2	200.7	199.2	300.0	1.5	2.0	✓ 2.0	-25.2	165.4	
3	201.8	200.5	300.0	1.3	2.0	✓ 2.0	-47.1	71.2	
4	201.8	200.5	300.0	1.3	2.0	✓ 2.0	3.5	4.0	
5	201.8	200.5	300.0	1.3	2.0	✓ 2.0	4.2	4.7	
6	201.8	200.5	300.0	1.3	2.0	✓ 2.0	4.8	5.3	
7	201.8	200.5	300.0	1.3	2.0	✓ 2.0	5.5	5.9	
8	201.8	200.5	300.0	1.3	2.0	✓ 2.0	6.1	6.6	
9	201.8	200.5	300.0	1.3	2.0	✓ 2.0	6.7	7.1	
10	201.8	200.5	300.0	1.3	2.0	✓ 2.0	6.2	326.2	
11	201.8	200.5	300.0	1.3	2.0	✓ 2.0	7.0	7.4	
12	201.8	200.5	300.0	1.3	2.0	✓ 2.0	7.6	7.9	
13	201.8	200.5	300.0	1.3	2.0	✓ 2.0	8.1	8.4	
14	201.8	200.5	300.0	1.3	2.0	✓ 2.0	8.4	8.8	
15	201.8	200.5	300.0	1.3	2.0	✓ 2.0	8.8	9.1	
16	201.8	200.5	300.0	1.3	2.0	✓ 2.0	9.1	9.4	
17	201.8	200.5	300.0	1.3	2.0	✓ 2.0	9.5	9.8	
18	201.8	200.5	300.0	1.3	2.0	✓ 2.0	9.8	10.1	
19	201.8	200.5	300.0	1.3	2.0	✓ 2.0	10.1	10.4	
20	201.8	200.5	300.0	1.3	2.0	✓ 2.0	10.3	10.5	
21	201.8	200.5	300.0	1.3	2.0	✓ 2.0	10.5	10.7	
22	201.8	200.5	300.0	1.3	2.0	✓ 2.0	10.7	10.9	
23	201.8	200.5	300.0	1.3	2.0	✓ 2.0	10.8	11.1	
24	201.8	200.5	300.0	1.3	2.0	✓ 2.0	11.1	11.3	
25	201.8	200.5	300.0	1.3	2.0	✓ 2.0	11.3	11.5	
26	201.8	200.5	300.0	1.3	2.0	✓ 2.0	11.5	11.7	
27	201.8	200.5	300.0	1.3	2.0	✓ 2.0	11.7	12.0	
28	201.8	200.5	300.0	1.3	2.0	✓ 2.0	12.0	12.2	
29	201.8	200.5	300.0	1.3	2.0	✓ 2.0	12.2	12.5	
30	201.8	200.5	300.0	1.3	2.0	✓ 2.0	12.5	12.8	
Total									
Average	201.7	200.4	300.0	1.3	2.0	2.0	6.4	33.9	
Maximum	201.9	200.5	300.0	1.5	2.0	2.0	24.4	326.2	
Date	1-Apr	1-Apr	1-Apr	2-Apr	1-Apr	1-Apr	1-Apr	10-Apr	
Minimum	200.7	199.2	300.0	1.3	2.0	2.0	-47.1	4.0	
Date	2-Apr	2-Apr	1-Apr	1-Apr	1-Apr	1-Apr	3-Apr	4-Apr	

Notes:
Rack 2 Offline

Membranes Monthly Report

Month: **April-17**

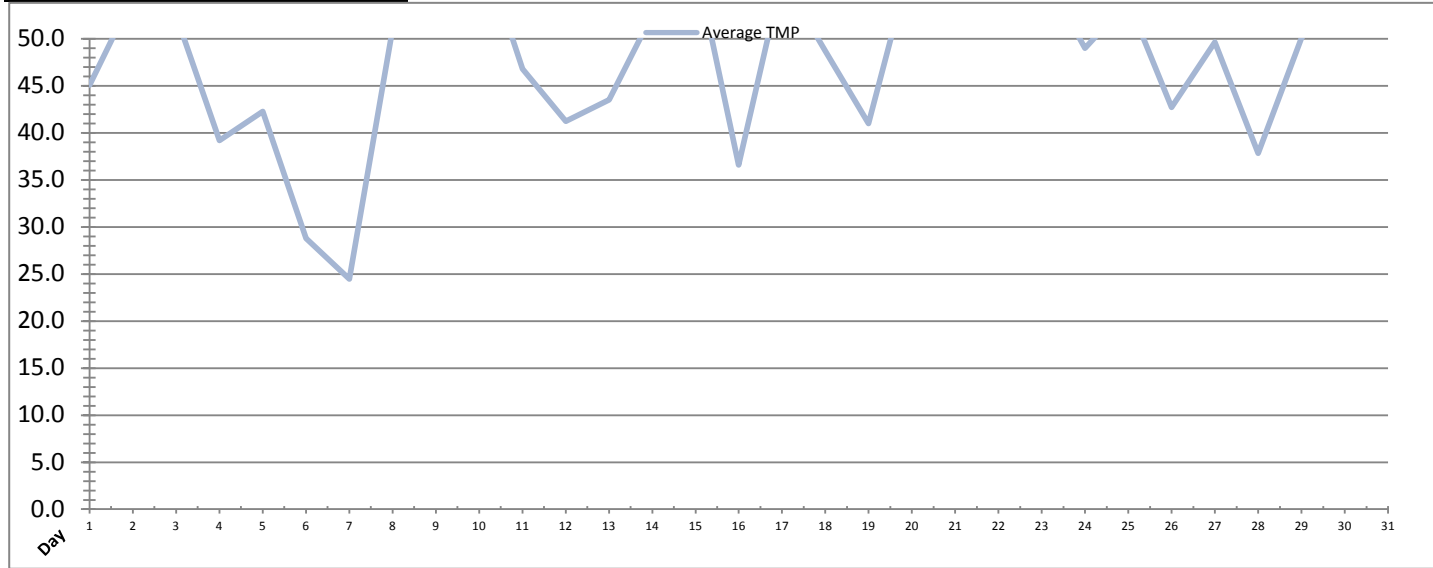


Date	Integrity Test Rack 3							
	Initial Pressure (kPa)	Final Pressure (kPa)	Test Duration (sec)	Change in Pressure (kPa)	UCL	Within UCL	Average TMP (kPa)	Max TMP (kPa)
1	191.8	190.7	300.0	1.2	2.0	✓ 2.0	14.6	15.2
2	191.8	190.7	300.0	1.2	2.0	✓ 2.0	14.6	15.3
3	191.8	190.7	300.0	1.2	2.0	✓ 2.0	14.6	15.1
4	192.1	190.8	300.0	1.3	2.0	✓ 2.0	26.4	122.2
5	191.2	189.6	300.0	1.6	2.0	✓ 2.0	36.8	106.4
6	191.3	189.8	300.0	1.6	2.0	✓ 2.0	25.5	190.2
7	191.0	189.5	300.0	1.5	2.0	✓ 2.0	40.6	192.2
8	189.9	189.1	300.0	0.8	2.0	✓ 2.0	43.5	223.8
9	192.4	191.1	300.0	1.3	2.0	✓ 2.0	36.6	127.1
10	192.0	190.6	300.0	1.4	2.0	✓ 2.0	39.9	213.8
11	191.5	190.0	300.0	1.4	2.0	✓ 2.0	22.6	83.1
12	191.5	190.0	300.0	1.4	2.0	✓ 2.0	25.8	95.1
13	191.1	189.9	300.0	1.2	2.0	✓ 2.0	23.5	70.5
14	191.7	190.5	300.0	1.3	2.0	✓ 2.0	26.4	76.4
15	191.8	190.4	300.0	1.4	2.0	✓ 2.0	22.1	83.8
16	191.8	190.4	300.0	1.4	2.0	✓ 2.0	23.2	79.6
17	191.3	189.9	300.0	1.4	2.0	✓ 2.0	30.6	121.7
18	191.5	189.9	300.0	1.6	2.0	✓ 2.0	26.4	105.2
19	190.8	189.1	300.0	1.6	2.0	✓ 2.0	20.5	73.5
20	190.9	189.5	300.0	1.4	2.0	✓ 2.0	27.9	117.8
21	192.0	190.7	300.0	1.3	2.0	✓ 2.0	21.9	99.0
22	192.0	190.7	300.0	1.3	2.0	✓ 2.0	26.4	83.3
23	191.4	189.8	300.0	1.6	2.0	✓ 2.0	26.1	125.7
24	191.1	189.6	300.0	1.5	2.0	✓ 2.0	21.0	100.0
25	191.6	190.3	300.0	1.3	2.0	✓ 2.0	27.8	130.1
26	191.7	190.5	300.0	1.2	2.0	✓ 2.0	26.1	75.7
27	192.0	190.9	300.0	1.2	2.0	✓ 2.0	32.1	157.0
28	191.7	190.5	300.0	1.3	2.0	✓ 2.0	24.3	118.2
29	191.4	190.2	300.0	1.2	2.0	✓ 2.0	25.9	95.6
30	191.7	190.4	300.0	1.3	2.0	✓ 2.0	25.5	132.5
Total								
Average	191.5	190.2	300.0	1.3	2.0	2.0	26.6	108.2
Maximum	192.4	191.1	300.0	1.6	2.0	2.0	43.5	223.8
Date	9-Apr	9-Apr	1-Apr	19-Apr	1-Apr	1-Apr	8-Apr	8-Apr
Minimum	189.9	189.1	300.0	0.8	2.0	2.0	14.6	15.1
Date	8-Apr	8-Apr	1-Apr	8-Apr	1-Apr	1-Apr	1-Apr	3-Apr

Notes:

Membranes Monthly Report

Month: **April-17**



Date	Integrity Test Rack 4							
	Initial Pressure (kPa)	Final Pressure (kPa)	Test Duration (sec)	Change in Pressure (kPa)	UCL	Within UCL	Average TMP (kPa)	Max TMP (kPa)
1	195.3	194.3	300.0	1.1	2.0	✓ 2.0	45.1	146.6
2	195.0	193.9	300.0	1.1	2.0	✓ 2.0	54.5	157.7
3	195.3	193.9	300.0	1.4	2.0	✓ 2.0	52.4	176.3
4	195.6	194.2	300.0	1.4	2.0	✓ 2.0	39.2	184.1
5	195.7	194.4	300.0	1.3	2.0	✓ 2.0	42.3	118.7
6	195.7	194.6	300.0	1.1	2.0	✓ 2.0	28.8	193.8
7	195.6	194.3	300.0	1.3	2.0	✓ 2.0	24.5	132.6
8	195.2	194.0	300.0	1.1	2.0	✓ 2.0	51.1	218.2
9	195.3	194.4	300.0	0.9	2.0	✓ 2.0	52.2	143.1
10	195.1	193.9	300.0	1.2	2.0	✓ 2.0	60.7	287.9
11	198.4	197.1	300.0	1.3	2.0	✓ 2.0	46.8	176.2
12	198.4	197.1	300.0	1.3	2.0	✓ 2.0	41.2	117.0
13	198.3	196.9	300.0	1.4	2.0	✓ 2.0	43.5	162.6
14	197.9	196.5	300.0	1.4	2.0	✓ 2.0	52.6	127.7
15	197.7	196.3	300.0	1.4	2.0	✓ 2.0	58.1	167.9
16	197.7	196.3	300.0	1.4	2.0	✓ 2.0	36.6	150.1
17	197.6	196.3	300.0	1.3	2.0	✓ 2.0	56.5	178.2
18	197.9	196.6	300.0	1.3	2.0	✓ 2.0	48.7	160.5
19	197.6	196.2	300.0	1.4	2.0	✓ 2.0	41.0	153.6
20	197.6	196.2	300.0	1.4	2.0	✓ 2.0	58.5	159.8
21	198.4	197.1	300.0	1.2	2.0	✓ 2.0	51.4	163.5
22	198.1	196.8	300.0	1.3	2.0	✓ 2.0	60.8	150.4
23	198.1	196.8	300.0	1.3	2.0	✓ 2.0	57.4	134.2
24	197.5	196.2	300.0	1.3	2.0	✓ 2.0	49.0	173.6
25	197.6	196.5	300.0	1.1	2.0	✓ 2.0	54.0	144.8
26	197.6	196.5	300.0	1.1	2.0	✓ 2.0	42.7	133.8
27	197.6	196.4	300.0	1.3	2.0	✓ 2.0	49.6	165.3
28	198.1	196.8	300.0	1.2	2.0	✓ 2.0	37.8	127.4
29	197.7	196.4	300.0	1.3	2.0	✓ 2.0	50.1	124.2
30	197.5	196.3	300.0	1.2	2.0	✓ 2.0	55.7	145.5
Total								
Average	197.0	195.8	300.0	1.3	2.0	2.0	48.1	159.2
Maximum	198.4	197.1	300.0	1.4	2.0	2.0	60.8	287.9
Date	11-Apr	21-Apr	1-Apr	16-Apr	1-Apr	1-Apr	22-Apr	10-Apr
Minimum	195.0	193.9	300.0	0.9	2.0	2.0	24.5	117.0
Date	2-Apr	10-Apr	1-Apr	9-Apr	1-Apr	1-Apr	7-Apr	12-Apr

Notes:

Membranes Monthly Report

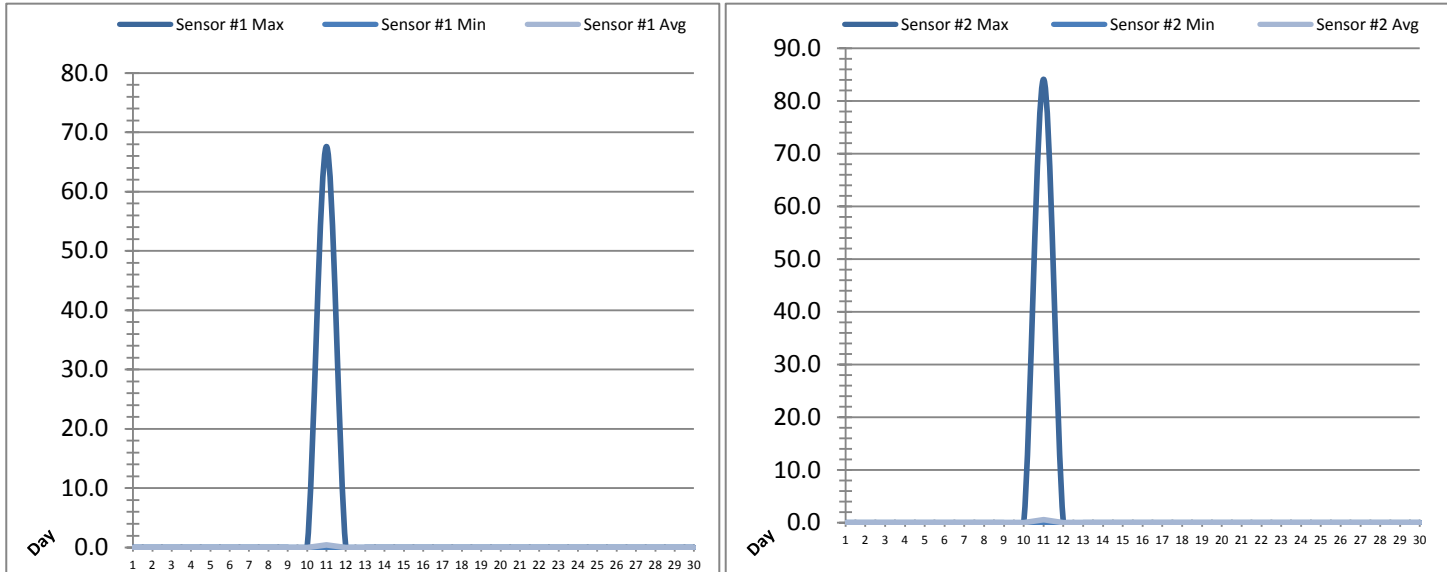
Month: April-17

Date	Membranes Monthly Performance							
	Rack 1 >0.1 NTU (Minutes)	Rack 1 Forward Flow (Minutes)	Rack 2 >0.1 NTU (Minutes)	Rack 2 Forward Flow (Minutes)	Rack 3 >0.1 NTU (Minutes)	Rack 3 Forward Flow (Minutes)	Rack 4 >0.1 NTU (Minutes)	Rack 4 Forward Flow (Minutes)
1	55.3	188.5	0.0	606.4	0.0	0.0	77.4	656.2
2	74.2	399.4	0.0	545.1	0.0	0.0	1.4	836.3
3	3.2	854.0	0.0	34.2	0.0	0.0	5.4	866.1
4	0.0	567.6	0.0	0.0	4.0	441.4	4.5	603.1
5	0.0	1053.5	0.0	0.0	1.4	1050.4	2.2	1060.2
6	29.2	476.5	0.0	0.0	25.1	485.0	30.1	475.3
7	46.3	732.4	0.0	0.0	0.5	691.5	0.0	235.2
8	0.0	652.2	0.0	0.0	0.0	661.6	0.0	737.1
9	0.0	926.1	0.0	0.0	4.0	925.3	0.0	922.1
10	0.0	989.5	0.0	0.0	2.3	966.6	0.0	981.3
11	7.2	741.5	0.0	0.0	4.6	699.3	4.0	711.4
12	0.0	725.3	0.0	0.0	0.0	737.5	0.0	618.4
13	0.0	726.2	0.0	0.0	0.0	693.3	0.0	729.3
14	0.0	911.6	0.0	0.0	0.0	912.4	0.0	917.3
15	0.0	934.2	0.0	0.0	0.0	715.1	0.0	935.1
16	0.0	571.3	0.0	0.0	0.0	509.2	0.0	574.4
17	0.0	921.3	0.0	0.0	0.0	926.3	0.0	928.5
18	5.4	910.1	0.0	0.0	0.0	662.5	0.0	992.4
19	0.0	768.0	0.0	0.0	0.0	457.6	0.0	780.2
20	0.0	940.6	0.0	0.0	0.0	888.4	0.5	947.3
21	0.0	906.4	0.0	0.0	0.0	567.5	0.0	910.4
22	0.0	956.2	0.0	0.0	0.0	922.1	1.4	961.2
23	0.0	919.5	0.0	0.0	0.0	913.6	1.4	924.3
24	0.0	817.4	0.0	0.0	0.0	510.5	0.0	829.6
25	0.0	1024.1	0.0	0.0	0.0	1036.3	2.3	1043.0
26	0.0	888.1	0.0	0.0	0.0	896.1	0.0	899.3
27	0.0	1224.1	0.0	0.0	0.0	1230.4	2.3	1237.1
28	0.0	764.4	0.0	0.0	0.0	765.3	1.4	769.5
29	0.0	968.3	0.0	0.0	0.0	974.2	2.3	977.4
30	0.0	1127.3	0.0	0.0	0.0	1136.3	0.5	1138.1
Total	220.8	24585.6	0.0	1185.8	41.9	21375.6	137.1	25196.9
Percent	0.9		0.0		0.2		0.5	
Maximum	74.2	1224.1	0.0	606.4	25.1	1230.4	77.4	1237.1
Date	2-Apr	27-Apr	1-Apr	1-Apr	6-Apr	27-Apr	1-Apr	27-Apr
Minimum	0.0	188.5	0.0	0.0	0.0	0.0	0.0	235.2
Date	4-Apr	1-Apr	1-Apr	4-Apr	1-Apr	1-Apr	7-Apr	7-Apr

Notes:
 Met filter performance criteria of 99% of the readings for April were below 0.1ntu.

UV System Monthly Report

Month: **April-17**

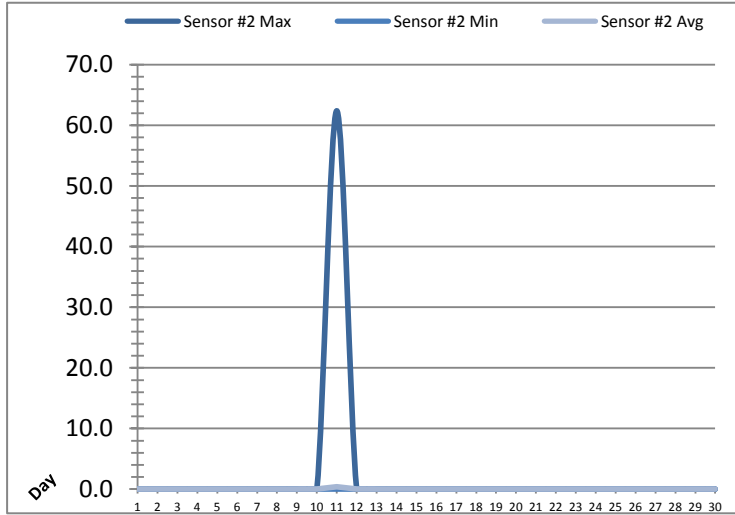
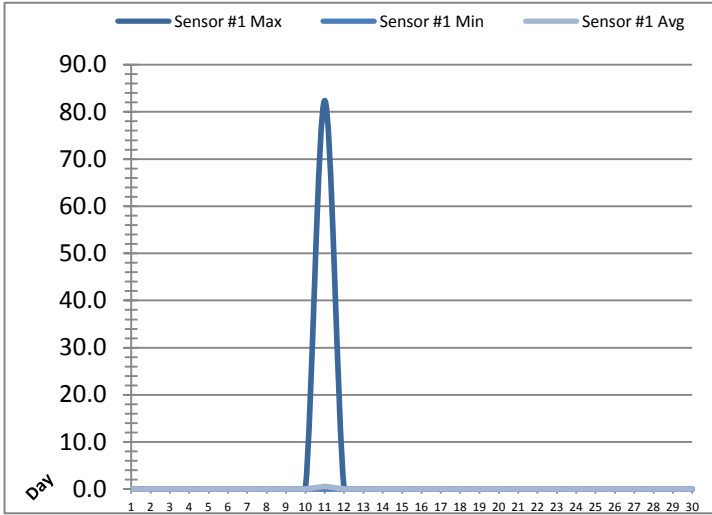


Date	UV Reactor 1					
	Intensity Sensor 1 (mW/cm ²)			Intensity Sensor 2 (mW/cm ²)		
	Maximum	Minimum	Average	Maximum	Minimum	Average
1	0.0	0.0	0.0	0.0	0.0	0.0
2	0.0	0.0	0.0	0.0	0.0	0.0
3	0.0	0.0	0.0	0.0	0.0	0.0
4	0.0	0.0	0.0	0.0	0.0	0.0
5	0.0	0.0	0.0	0.0	0.0	0.0
6	0.0	0.0	0.0	0.0	0.0	0.0
7	0.0	0.0	0.0	0.0	0.0	0.0
8	0.0	0.0	0.0	0.0	0.0	0.0
9	0.0	0.0	0.0	0.0	0.0	0.0
10	0.0	0.0	0.0	0.0	0.0	0.0
11	67.6	0.0	0.5	84.1	0.0	0.6
12	0.0	0.0	0.0	0.0	0.0	0.0
13	0.0	0.0	0.0	0.0	0.0	0.0
14	0.0	0.0	0.0	0.0	0.0	0.0
15	0.0	0.0	0.0	0.0	0.0	0.0
16	0.0	0.0	0.0	0.0	0.0	0.0
17	0.0	0.0	0.0	0.0	0.0	0.0
18	0.0	0.0	0.0	0.0	0.0	0.0
19	0.0	0.0	0.0	0.0	0.0	0.0
20	0.0	0.0	0.0	0.0	0.0	0.0
21	0.0	0.0	0.0	0.0	0.0	0.0
22	0.0	0.0	0.0	0.0	0.0	0.0
23	0.0	0.0	0.0	0.0	0.0	0.0
24	0.0	0.0	0.0	0.0	0.0	0.0
25	0.0	0.0	0.0	0.0	0.0	0.0
26	0.0	0.0	0.0	0.0	0.0	0.0
27	0.0	0.0	0.0	0.0	0.0	0.0
28	0.0	0.0	0.0	0.0	0.0	0.0
29	0.0	0.0	0.0	0.0	0.0	0.0
30	0.0	0.0	0.0	0.0	0.0	0.0
Total						
Average	2.3	0.0	0.0	2.8	0.0	0.0
Maximum	67.6		0.5	84.1		0.6
Date	11-Apr		11-Apr	11-Apr		11-Apr
Minimum		0.0	0.0		0.0	0.0
Date		1-Apr	1-Apr		1-Apr	1-Apr

Notes:

UV System Monthly Report

Month: **April-17**

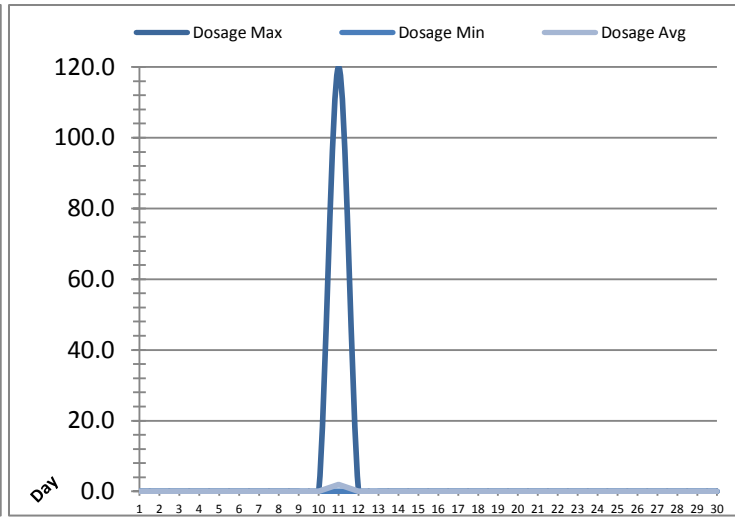


Date	UV Reactor 2					
	Intensity Sensor 1 (mW/cm²)			Intensity Sensor 2 (mW/cm²)		
	Maximum	Minimum	Average	Maximum	Minimum	Average
1	0.0	0.0	0.0	0.0	0.0	0.0
2	0.0	0.0	0.0	0.0	0.0	0.0
3	0.0	0.0	0.0	0.0	0.0	0.0
4	0.0	0.0	0.0	0.0	0.0	0.0
5	0.0	0.0	0.0	0.0	0.0	0.0
6	0.0	0.0	0.0	0.0	0.0	0.0
7	0.0	0.0	0.0	0.0	0.0	0.0
8	0.0	0.0	0.0	0.0	0.0	0.0
9	0.0	0.0	0.0	0.0	0.0	0.0
10	0.0	0.0	0.0	0.0	0.0	0.0
11	82.4	0.0	0.6	62.4	0.0	0.4
12	0.0	0.0	0.0	0.0	0.0	0.0
13	0.0	0.0	0.0	0.0	0.0	0.0
14	0.0	0.0	0.0	0.0	0.0	0.0
15	0.0	0.0	0.0	0.0	0.0	0.0
16	0.0	0.0	0.0	0.0	0.0	0.0
17	0.0	0.0	0.0	0.0	0.0	0.0
18	0.0	0.0	0.0	0.0	0.0	0.0
19	0.0	0.0	0.0	0.0	0.0	0.0
20	0.0	0.0	0.0	0.0	0.0	0.0
21	0.0	0.0	0.0	0.0	0.0	0.0
22	0.0	0.0	0.0	0.0	0.0	0.0
23	0.0	0.0	0.0	0.0	0.0	0.0
24	0.0	0.0	0.0	0.0	0.0	0.0
25	0.0	0.0	0.0	0.0	0.0	0.0
26	0.0	0.0	0.0	0.0	0.0	0.0
27	0.0	0.0	0.0	0.0	0.0	0.0
28	0.0	0.0	0.0	0.0	0.0	0.0
29	0.0	0.0	0.0	0.0	0.0	0.0
30	0.0	0.0	0.0	0.0	0.0	0.0
Total						
Average	2.7	0.0	0.0	2.1	0.0	0.0
Maximum	82.4		0.6	62.4		0.4
Date	11-Apr		11-Apr	11-Apr		11-Apr
Minimum		0.0	0.0		0.0	0.0
Date		1-Apr	1-Apr		1-Apr	1-Apr

Notes:

UV System Monthly Report

Month: April-17

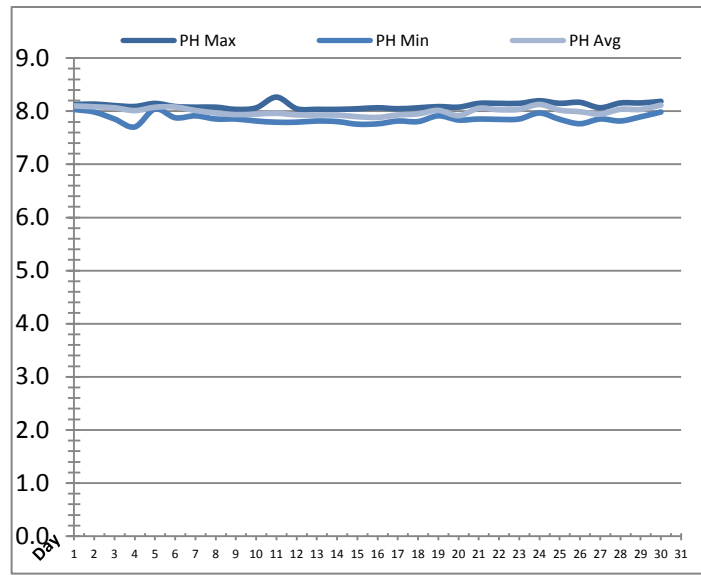
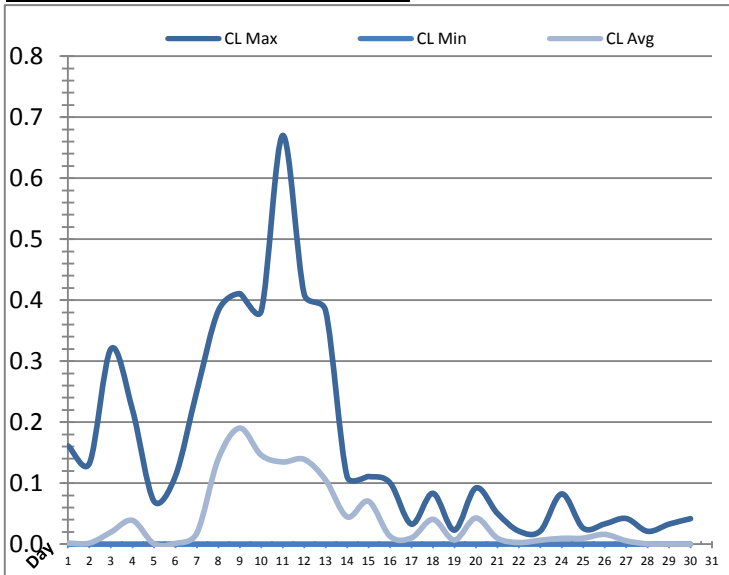


UV System							
Date	Transmittance (%)			Dosage (mJ/cm ²)			Inlet Flow (L/s)
	Maximum	Minimum	Average	Maximum	Minimum	Average	Maximum
1	97.00	94.00	94.88	0.0	0.0	0.0	78.2
2	97.00	92.00	95.08	0.0	0.0	0.0	81.0
3	97.00	93.00	95.03	0.0	0.0	0.0	79.1
4	96.00	91.00	94.45	0.0	0.0	0.0	130.6
5	96.00	93.00	94.73	0.0	0.0	0.0	86.7
6	96.00	92.00	94.30	0.0	0.0	0.0	101.0
7	96.00	93.00	94.50	0.0	0.0	0.0	121.0
8	97.00	92.00	94.44	0.0	0.0	0.0	137.6
9	97.00	93.00	95.01	0.0	0.0	0.0	93.4
10	97.00	93.00	94.93	0.0	0.0	0.0	80.0
11	97.00	76.00	95.01	120.0	0.0	2.0	75.3
12	97.00	94.00	95.13	0.0	0.0	0.0	73.9
13	97.00	94.00	95.21	0.0	0.0	0.0	78.0
14	97.00	94.00	95.18	0.0	0.0	0.0	77.5
15	96.00	94.00	95.00	0.0	0.0	0.0	73.7
16	96.00	94.00	94.99	0.0	0.0	0.0	73.3
17	96.00	94.00	95.60	0.0	0.0	0.0	128.5
18	97.00	94.00	95.64	0.0	0.0	0.0	74.6
19	97.00	92.00	95.27	0.0	0.0	0.0	73.0
20	97.00	95.00	95.41	0.0	0.0	0.0	128.3
21	96.00	94.00	95.04	0.0	0.0	0.0	125.7
22	96.00	94.00	95.40	0.0	0.0	0.0	75.7
23	96.00	94.00	95.56	0.0	0.0	0.0	78.5
24	97.00	95.00	95.35	0.0	0.0	0.0	74.8
25	97.00	94.00	95.68	0.0	0.0	0.0	82.2
26	96.00	94.00	95.86	0.0	0.0	0.0	83.9
27	97.00	94.00	95.87	0.0	0.0	0.0	85.3
28	96.00	95.00	95.56	0.0	0.0	0.0	81.1
29	97.00	94.00	95.82	0.0	0.0	0.0	76.4
30	97.00	94.00	95.66	0.0	0.0	0.0	68.4
Total							
Average	96.60	92.97	95.19	4.0	0.0	0.1	89.2
Maximum	97.00		95.87	120.0		2.0	137.6
Date	1-Apr		27-Apr	11-Apr		11-Apr	8-Apr
Minimum		76.00	94.30		0.0	0.0	
Date		11-Apr	6-Apr		1-Apr	1-Apr	

Notes:

Plant Quality Report

Month: April-17

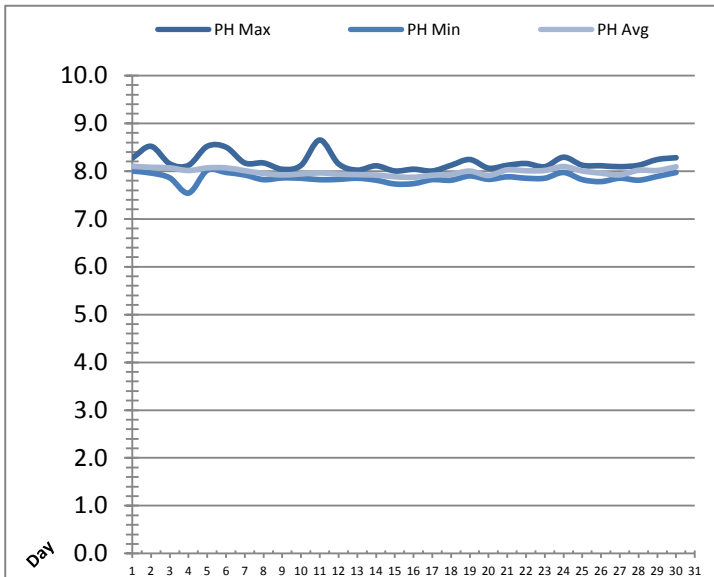
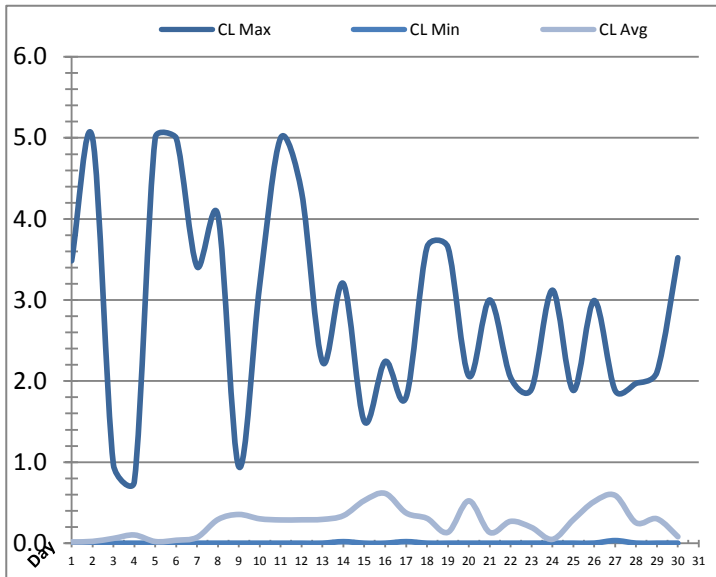


Date	Strainer Chlorine Residual			Strainer pH		
	AIT_2003_CL (ppm)			AIT_2003_PH		
	Maximum	Minimum	Average	Maximum	Minimum	Average
1	0.16	0.00	0.00	8.12	8.03	8.10
2	0.13	0.00	0.00	8.13	7.98	8.08
3	0.32	0.00	0.02	8.11	7.85	8.06
4	0.22	0.00	0.04	8.09	7.70	8.01
5	0.07	0.00	0.00	8.15	8.04	8.07
6	0.11	0.00	0.00	8.09	7.88	8.08
7	0.25	0.00	0.02	8.08	7.91	8.01
8	0.38	0.00	0.14	8.08	7.85	7.97
9	0.41	0.00	0.19	8.03	7.85	7.94
10	0.38	0.00	0.15	8.06	7.82	7.95
11	0.67	0.00	0.13	8.27	7.79	7.96
12	0.41	0.00	0.14	8.05	7.79	7.93
13	0.38	0.00	0.11	8.04	7.82	7.93
14	0.11	0.00	0.04	8.03	7.80	7.93
15	0.11	0.00	0.07	8.05	7.76	7.90
16	0.10	0.00	0.01	8.06	7.76	7.88
17	0.03	0.00	0.01	8.05	7.82	7.93
18	0.08	0.00	0.04	8.06	7.80	7.95
19	0.02	0.00	0.01	8.09	7.91	8.02
20	0.09	0.00	0.04	8.08	7.83	7.92
21	0.05	0.00	0.01	8.15	7.85	8.06
22	0.02	0.00	0.00	8.15	7.85	8.03
23	0.02	0.00	0.01	8.15	7.85	8.04
24	0.08	0.00	0.01	8.20	7.97	8.13
25	0.03	0.00	0.01	8.15	7.85	8.02
26	0.03	0.00	0.02	8.17	7.76	7.99
27	0.04	0.00	0.01	8.07	7.85	7.95
28	0.02	0.00	0.00	8.16	7.82	8.04
29	0.03	0.00	0.00	8.16	7.89	8.03
30	0.04	0.00	0.00	8.19	7.98	8.11
Total						
Average	0.16	0.00	0.04	8.11	7.86	8.00
Maximum	0.67		0.19	8.27		8.13
Date	11-Apr		9-Apr	11-Apr		24-Apr
Minimum		0.00	0.00		7.70	7.88
Date		1-Apr	30-Apr		4-Apr	16-Apr

Notes:

Plant Quality Report

Month: April-17

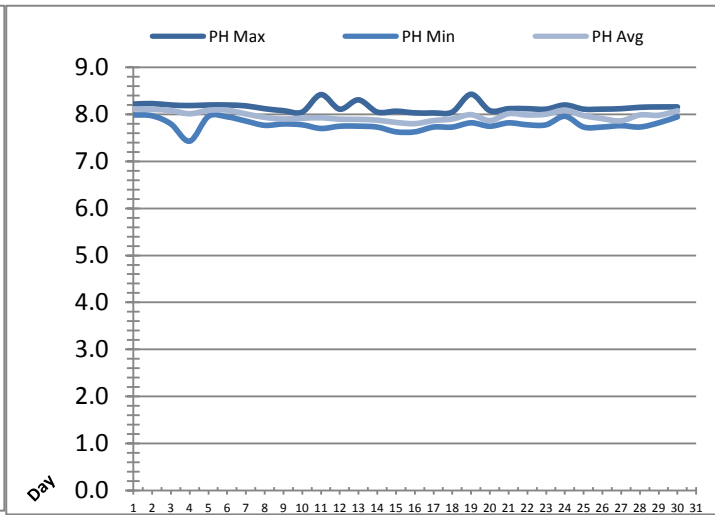
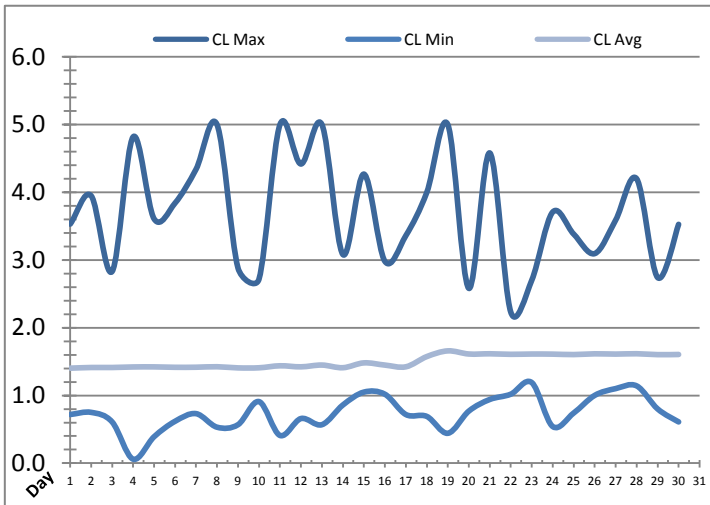


Date	Inlet UV Chlorine Residual			Inlet UV pH		
	AIT_5005_CL (ppm)			AIT_5005_PH		
	Maximum	Minimum	Average	Maximum	Minimum	Average
1	3.48	0.00	0.02	8.27	8.00	8.10
2	5.00	0.00	0.02	8.52	7.96	8.08
3	0.97	0.00	0.06	8.15	7.86	8.07
4	0.76	0.00	0.10	8.12	7.54	8.01
5	5.00	0.00	0.02	8.52	8.02	8.07
6	5.00	0.00	0.04	8.50	7.97	8.07
7	3.41	0.00	0.07	8.17	7.92	8.01
8	4.04	0.00	0.29	8.17	7.82	7.95
9	0.94	0.00	0.35	8.04	7.86	7.92
10	3.19	0.00	0.30	8.12	7.85	7.94
11	5.00	0.00	0.29	8.65	7.82	7.96
12	4.33	0.00	0.29	8.15	7.83	7.94
13	2.23	0.00	0.29	8.02	7.85	7.93
14	3.20	0.02	0.34	8.11	7.81	7.92
15	1.50	0.00	0.53	8.00	7.73	7.88
16	2.24	0.00	0.61	8.04	7.74	7.87
17	1.80	0.02	0.37	8.00	7.82	7.91
18	3.65	0.00	0.31	8.12	7.81	7.93
19	3.65	0.00	0.13	8.24	7.90	8.00
20	2.06	0.00	0.52	8.06	7.83	7.91
21	3.00	0.00	0.13	8.12	7.88	8.03
22	2.04	0.00	0.27	8.16	7.85	8.01
23	1.90	0.00	0.19	8.09	7.85	8.02
24	3.12	0.00	0.05	8.29	7.97	8.10
25	1.88	0.00	0.29	8.12	7.82	8.00
26	2.99	0.00	0.51	8.11	7.78	7.96
27	1.88	0.03	0.59	8.09	7.85	7.92
28	1.97	0.00	0.25	8.12	7.81	8.02
29	2.11	0.00	0.30	8.24	7.89	8.01
30	3.52	0.00	0.08	8.28	7.97	8.09
Total						
Average	2.86	0.00	0.25	8.19	7.85	7.99
Maximum	5.00		0.61	8.65		8.10
Date	2-Apr		16-Apr	11-Apr		1-Apr
Minimum		0.00	0.02		7.54	7.87
Date		3-Apr	1-Apr		4-Apr	16-Apr

Notes:

Plant Quality Report

Month: **April-17**

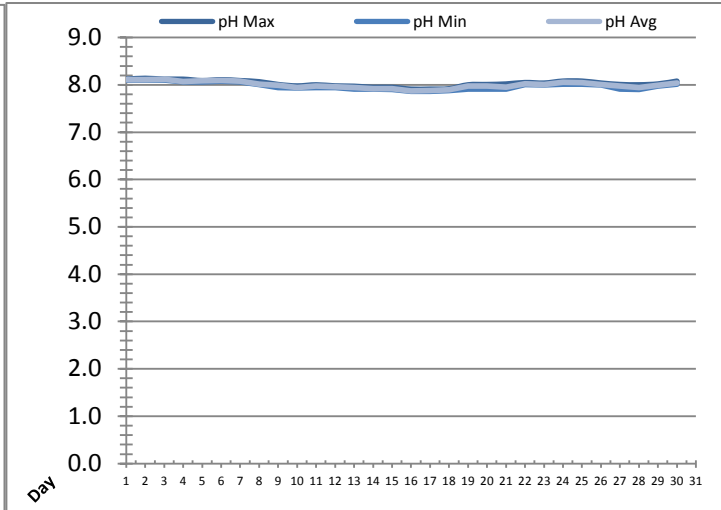
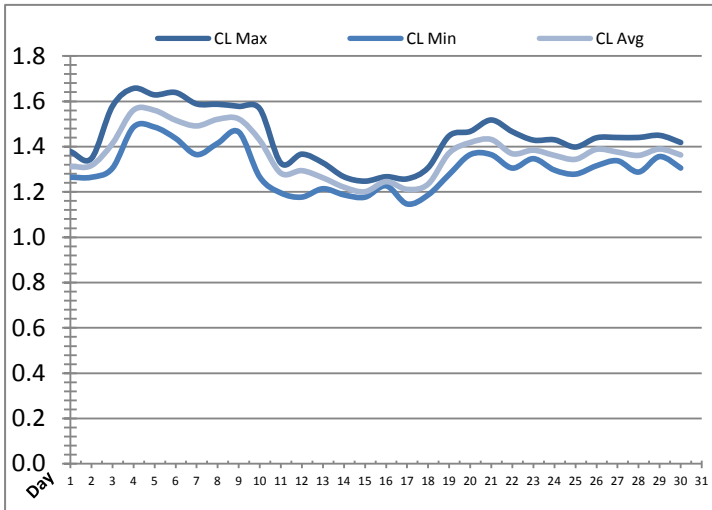


Date	Discharge UV Chlorine Residual			Discharge UV pH		
	AIT_5006_CL (ppm)			AIT_5006_PH		
	Maximum	Minimum	Average	Maximum	Minimum	Average
1	3.53	0.72	1.40	8.22	7.99	8.12
2	3.95	0.75	1.41	8.23	7.97	8.10
3	2.83	0.61	1.41	8.20	7.80	8.08
4	4.82	0.06	1.42	8.19	7.43	8.02
5	3.61	0.39	1.42	8.20	7.96	8.09
6	3.84	0.62	1.42	8.20	7.95	8.09
7	4.34	0.73	1.42	8.18	7.86	8.01
8	5.00	0.53	1.42	8.12	7.77	7.94
9	2.88	0.57	1.41	8.08	7.80	7.90
10	2.72	0.91	1.41	8.05	7.78	7.92
11	5.00	0.41	1.44	8.42	7.70	7.93
12	4.42	0.66	1.42	8.11	7.75	7.90
13	5.00	0.57	1.45	8.31	7.75	7.89
14	3.08	0.86	1.41	8.05	7.73	7.88
15	4.27	1.05	1.48	8.07	7.63	7.83
16	2.98	1.02	1.45	8.03	7.63	7.80
17	3.36	0.72	1.42	8.03	7.73	7.87
18	4.00	0.69	1.57	8.05	7.73	7.90
19	5.00	0.44	1.66	8.43	7.82	8.00
20	2.58	0.77	1.61	8.08	7.75	7.87
21	4.58	0.94	1.62	8.12	7.82	8.02
22	2.23	1.02	1.61	8.12	7.78	7.99
23	2.70	1.19	1.61	8.11	7.78	8.00
24	3.71	0.54	1.61	8.20	7.96	8.09
25	3.38	0.74	1.60	8.11	7.73	7.97
26	3.10	1.00	1.62	8.11	7.73	7.91
27	3.59	1.10	1.61	8.12	7.76	7.86
28	4.20	1.14	1.62	8.15	7.73	7.99
29	2.74	0.80	1.60	8.16	7.82	7.98
30	3.53	0.61	1.61	8.16	7.95	8.08
Total						
Average	3.70	0.74	1.51	8.15	7.79	7.97
Maximum	5.00		1.66	8.43		8.12
Date	11-Apr		19-Apr	19-Apr		1-Apr
Minimum		0.06	1.40		7.43	7.80
Date		4-Apr	1-Apr		4-Apr	16-Apr

Notes:

Plant Quality Report

Month: April-17

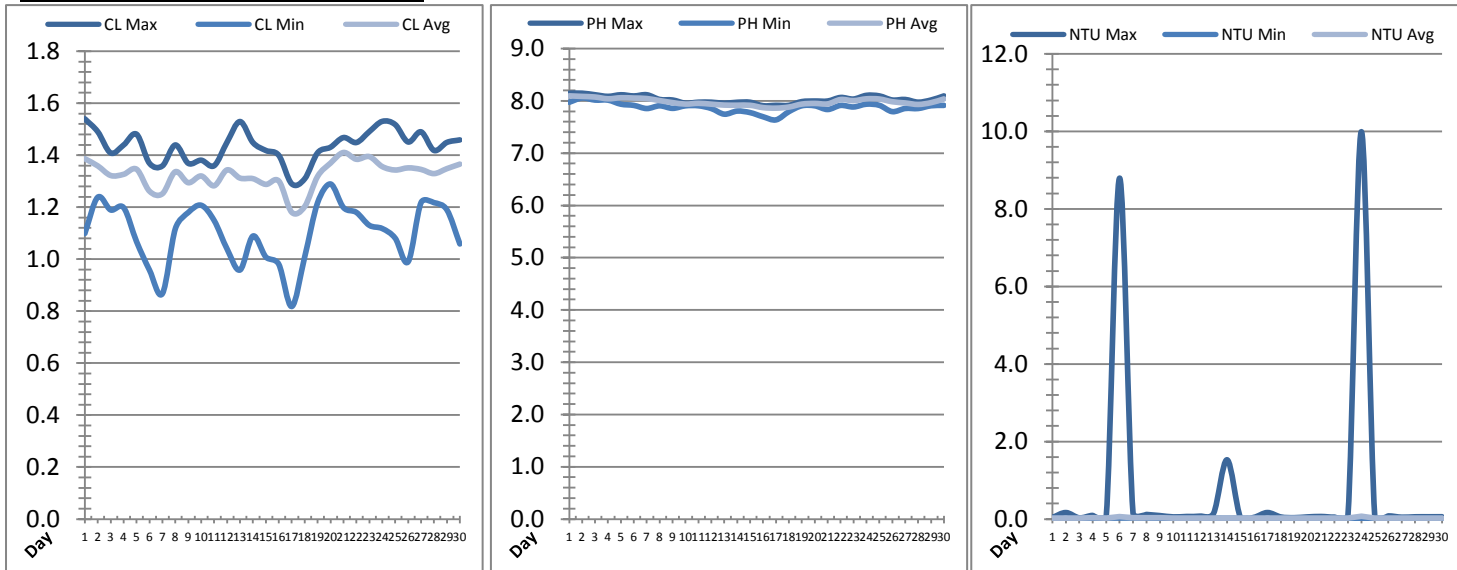


Date	Suction Header Chlorine Res.			Suction Header pH			Distribution CT Calc Total		
	AIT_7001_CL (ppm)			AIT_7001_PH (m)			REAL_CT_CALC_TOTAL (mg*ml/min)		
	Maximum	Minimum	Average	Maximum	Minimum	Average	Maximum	Minimum	Average
1	1.38	1.27	1.31	8.12	8.10	8.11	3610.42	0.00	211.10
2	1.35	1.26	1.32	8.14	8.10	8.11	7323.95	0.00	258.38
3	1.58	1.30	1.41	8.12	8.10	8.12	6840.84	0.00	189.81
4	1.66	1.49	1.56	8.12	8.06	8.07	6104.23	0.00	255.64
5	1.63	1.49	1.56	8.09	8.06	8.09	8410.88	0.00	390.10
6	1.64	1.44	1.52	8.11	8.08	8.09	8354.27	0.00	367.52
7	1.59	1.36	1.49	8.09	8.06	8.08	7163.21	0.00	319.40
8	1.59	1.41	1.52	8.06	8.00	8.01	8577.38	0.00	133.06
9	1.58	1.46	1.52	8.00	7.94	7.99	10294.75	0.00	269.55
10	1.57	1.27	1.43	7.97	7.94	7.95	4496.01	0.00	201.99
11	1.33	1.20	1.28	8.00	7.94	7.98	7193.00	0.00	162.86
12	1.37	1.18	1.29	7.98	7.94	7.96	3817.10	0.00	205.43
13	1.33	1.21	1.26	7.97	7.91	7.94	7306.86	0.00	462.07
14	1.27	1.19	1.22	7.95	7.91	7.92	1786.43	230.74	898.13
15	1.25	1.18	1.20	7.95	7.91	7.92	4990.94	229.79	929.73
16	1.27	1.23	1.25	7.91	7.86	7.87	9725.09	0.00	1521.26
17	1.26	1.15	1.21	7.91	7.87	7.88	8923.85	0.00	943.77
18	1.31	1.19	1.23	7.92	7.88	7.90	8338.40	0.00	444.17
19	1.45	1.28	1.37	8.00	7.91	7.97	2573.59	0.00	152.25
20	1.47	1.36	1.42	8.00	7.91	7.98	3779.08	0.00	259.99
21	1.52	1.36	1.43	8.02	7.91	7.95	5865.55	0.00	194.00
22	1.47	1.31	1.37	8.05	8.00	8.03	4759.80	0.00	327.54
23	1.43	1.35	1.38	8.04	8.00	8.01	9028.02	0.00	321.80
24	1.43	1.30	1.36	8.08	8.01	8.05	5846.56	0.00	271.41
25	1.40	1.28	1.34	8.08	8.02	8.05	7688.58	0.00	315.77
26	1.44	1.32	1.39	8.04	8.00	8.01	7414.76	0.00	317.59
27	1.44	1.34	1.38	8.01	7.91	7.98	6055.12	0.00	387.76
28	1.44	1.29	1.36	8.00	7.91	7.94	9000.85	0.00	277.27
29	1.45	1.36	1.39	8.02	7.97	7.99	7835.61	0.00	174.86
30	1.42	1.31	1.36	8.08	8.01	8.04	7846.83	0.00	262.53
Total									
Average	1.44	1.30	1.37	8.03	7.98	8.00	8.03	7.98	8.00
Maximum	1.66		1.56	8.14		8.12	8.14		8.12
Date	4-Apr		4-Apr	2-Apr		3-Apr	2-Apr		3-Apr
Minimum		1.15	1.20		7.86	7.87		7.86	7.87
Date		17-Apr	15-Apr		16-Apr	16-Apr		16-Apr	16-Apr

Notes:

Plant Quality Report

Month: April-17

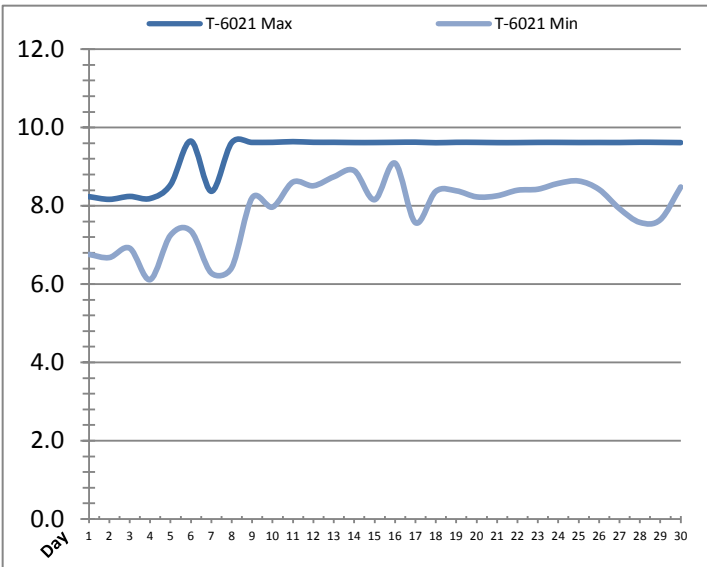
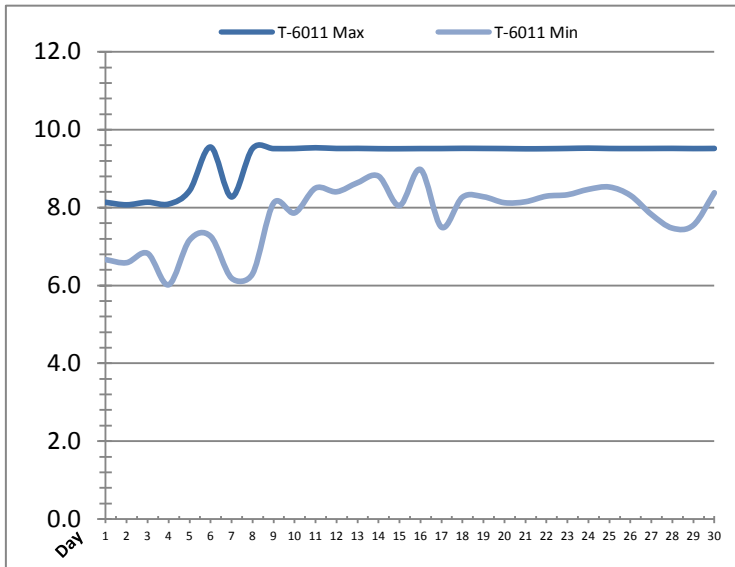


Date	Distribution Chlorine Header			Distribution pH			Distribution Turbidity		
	AIT_7004_CL (ppm)			AIT_7004_PH (mg/L)			AIT_7003 (mg/L)		
	Maximum	Minimum	Average	Maximum	Minimum	Average	Maximum	Minimum	Average
1	1.54	1.10	1.39	8.15	7.97	8.10	0.04	0.02	0.02
2	1.49	1.24	1.36	8.15	8.06	8.09	0.17	0.02	0.02
3	1.41	1.19	1.32	8.12	8.02	8.07	0.03	0.02	0.02
4	1.44	1.20	1.33	8.09	8.01	8.04	0.09	0.02	0.03
5	1.48	1.07	1.35	8.12	7.94	8.06	0.04	0.03	0.03
6	1.37	0.96	1.26	8.09	7.91	8.05	8.79	0.03	0.06
7	1.36	0.87	1.25	8.12	7.85	8.04	0.15	0.03	0.04
8	1.44	1.12	1.34	8.03	7.91	8.01	0.12	0.03	0.03
9	1.37	1.18	1.29	8.02	7.86	7.97	0.09	0.02	0.03
10	1.38	1.21	1.32	7.96	7.91	7.94	0.06	0.02	0.03
11	1.36	1.15	1.28	7.97	7.91	7.95	0.07	0.02	0.02
12	1.45	1.04	1.34	7.97	7.85	7.94	0.07	0.02	0.02
13	1.53	0.96	1.31	7.96	7.75	7.92	0.15	0.02	0.02
14	1.45	1.09	1.31	7.97	7.80	7.92	1.53	0.02	0.02
15	1.42	1.01	1.29	7.97	7.78	7.92	0.04	0.02	0.02
16	1.40	0.98	1.30	7.91	7.70	7.87	0.04	0.02	0.02
17	1.29	0.82	1.18	7.91	7.64	7.86	0.17	0.02	0.02
18	1.31	1.01	1.20	7.91	7.79	7.88	0.05	0.02	0.02
19	1.41	1.22	1.32	7.99	7.91	7.94	0.04	0.02	0.02
20	1.43	1.29	1.37	8.00	7.91	7.95	0.06	0.02	0.02
21	1.47	1.20	1.41	8.00	7.83	7.94	0.07	0.02	0.02
22	1.45	1.18	1.38	8.07	7.91	8.03	0.05	0.02	0.02
23	1.49	1.13	1.39	8.04	7.88	8.00	0.09	0.02	0.02
24	1.53	1.12	1.36	8.11	7.94	8.04	9.99	0.02	0.07
25	1.52	1.08	1.34	8.10	7.91	8.04	0.05	0.02	0.03
26	1.45	0.99	1.35	8.02	7.79	7.98	0.08	0.02	0.03
27	1.49	1.22	1.35	8.03	7.85	7.96	0.05	0.02	0.03
28	1.42	1.22	1.33	7.98	7.85	7.93	0.06	0.02	0.02
29	1.45	1.19	1.35	8.02	7.91	7.97	0.06	0.02	0.03
30	1.46	1.06	1.37	8.09	7.91	8.04	0.06	0.02	0.03
Total									
Average	1.43	1.10	1.32	8.03	7.88	7.98	0.7	0.0	0.0
Maximum	1.54		1.41	8.15		8.10	10.0		0.1
Date	1-Apr		21-Apr	2-Apr		1-Apr	24-Apr		24-Apr
Minimum		0.82	1.18		7.64	7.86		0.0	0.0
Date		17-Apr	17-Apr		17-Apr	17-Apr		18-Apr	19-Apr

Notes:

Raw Well/Treated Storage Report

Month: April-17

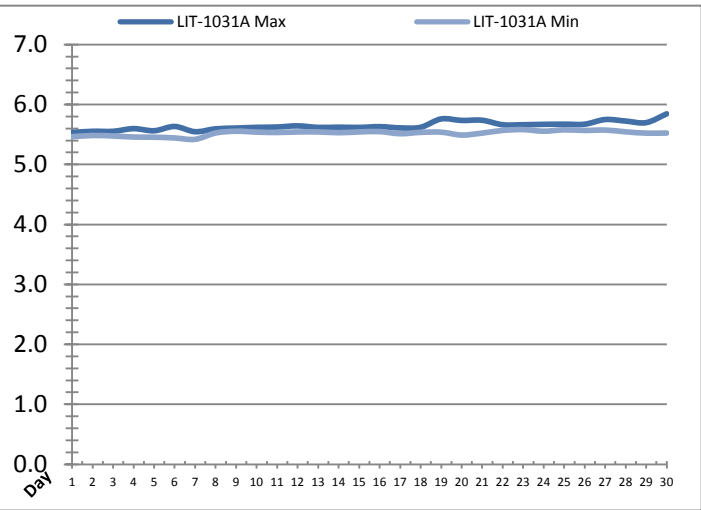
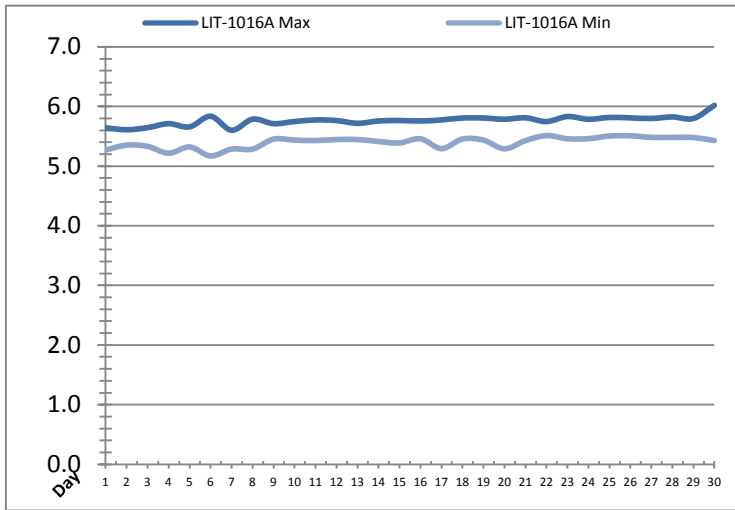


Date	Treated Water Storage Tank					
	T-6011 (m)			T-6021 (m)		
	Maximum	Minimum	Average	Maximum	Minimum	Average
1	8.1	6.7	7.6	8.2	6.8	7.7
2	8.1	6.6	7.5	8.2	6.7	7.6
3	8.1	6.8	7.5	8.2	6.9	7.6
4	8.1	6.0	7.4	8.2	6.1	7.5
5	8.4	7.2	7.6	8.5	7.2	7.7
6	9.6	7.3	8.7	9.7	7.4	8.8
7	8.3	6.2	7.5	8.4	6.3	7.6
8	9.5	6.3	7.9	9.6	6.4	8.0
9	9.5	8.1	8.9	9.6	8.2	9.0
10	9.5	7.9	8.7	9.6	8.0	8.8
11	9.5	8.5	9.1	9.6	8.6	9.2
12	9.5	8.4	9.1	9.6	8.5	9.3
13	9.5	8.6	9.2	9.6	8.7	9.3
14	9.5	8.8	9.2	9.6	8.9	9.3
15	9.5	8.1	8.9	9.6	8.2	9.0
16	9.5	9.0	9.3	9.6	9.1	9.4
17	9.5	7.5	8.9	9.6	7.6	9.0
18	9.5	8.3	8.9	9.6	8.4	9.0
19	9.5	8.3	9.1	9.6	8.4	9.2
20	9.5	8.1	9.0	9.6	8.2	9.1
21	9.5	8.1	9.0	9.6	8.3	9.1
22	9.5	8.3	9.0	9.6	8.4	9.1
23	9.5	8.3	9.1	9.6	8.4	9.2
24	9.5	8.5	9.1	9.6	8.6	9.2
25	9.5	8.5	9.1	9.6	8.6	9.2
26	9.5	8.3	9.1	9.6	8.4	9.2
27	9.5	7.8	8.8	9.6	7.9	8.9
28	9.5	7.5	9.0	9.6	7.6	9.1
29	9.5	7.5	8.7	9.6	7.6	8.8
30	9.5	8.4	8.9	9.6	8.5	9.0
Total						
Average	9.3	7.8	8.7	9.4	7.9	8.8
Maximum	9.6		9.3	9.7		9.4
Date	6-Apr		16-Apr	6-Apr		16-Apr
Minimum		6.0	7.4		6.1	7.5
Date		4-Apr	4-Apr		4-Apr	4-Apr

Notes:

Raw Well/Treated Storage Report

Month: April-17

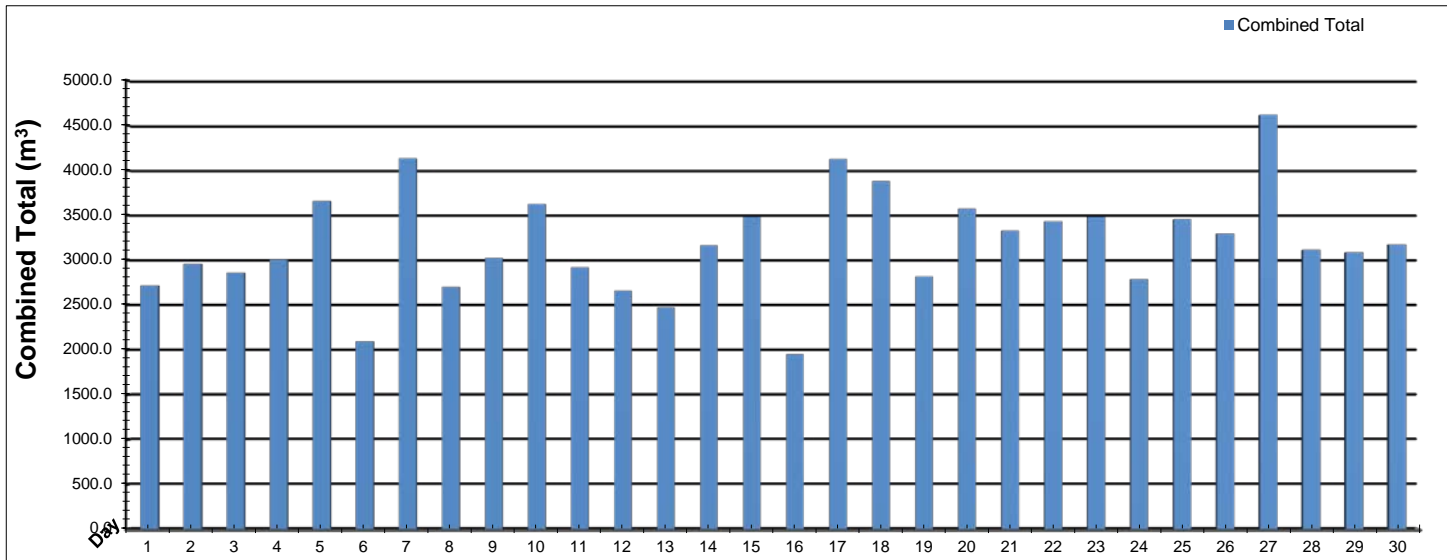


Date	Low Lift Intake Levels					
	Wet Well #1 (LIT-1016A) (m)			Wet Well #2 (LIT-1031A) (m)		
	Maximum	Minimum	Average	Maximum	Minimum	Average
1	5.6	5.3	5.5	5.5	5.5	5.5
2	5.6	5.4	5.5	5.6	5.5	5.5
3	5.6	5.3	5.5	5.6	5.5	5.5
4	5.7	5.2	5.5	5.6	5.5	5.5
5	5.7	5.3	5.5	5.6	5.5	5.5
6	5.8	5.2	5.5	5.6	5.4	5.5
7	5.6	5.3	5.4	5.5	5.4	5.5
8	5.8	5.3	5.5	5.6	5.5	5.6
9	5.7	5.5	5.6	5.6	5.6	5.6
10	5.7	5.4	5.6	5.6	5.5	5.6
11	5.8	5.4	5.6	5.6	5.5	5.6
12	5.8	5.4	5.6	5.6	5.5	5.6
13	5.7	5.4	5.6	5.6	5.5	5.6
14	5.8	5.4	5.6	5.6	5.5	5.6
15	5.8	5.4	5.6	5.6	5.5	5.6
16	5.8	5.5	5.6	5.6	5.5	5.6
17	5.8	5.3	5.6	5.6	5.5	5.6
18	5.8	5.5	5.6	5.6	5.5	5.6
19	5.8	5.4	5.6	5.8	5.5	5.6
20	5.8	5.3	5.6	5.7	5.5	5.6
21	5.8	5.4	5.6	5.7	5.5	5.6
22	5.7	5.5	5.6	5.7	5.6	5.6
23	5.8	5.5	5.6	5.7	5.6	5.6
24	5.8	5.5	5.6	5.7	5.6	5.6
25	5.8	5.5	5.6	5.7	5.6	5.6
26	5.8	5.5	5.6	5.7	5.6	5.6
27	5.8	5.5	5.6	5.7	5.6	5.6
28	5.8	5.5	5.6	5.7	5.5	5.6
29	5.8	5.5	5.6	5.7	5.5	5.6
30	6.0	5.4	5.6	5.8	5.5	5.6
Total						
Average	5.8	5.4	5.6	5.6	5.5	5.6
Maximum	6.0		5.6	5.8		5.6
Date	30-Apr		28-Apr	30-Apr		30-Apr
Minimum		5.2	5.4		5.4	5.5
Date		6-Apr	7-Apr		7-Apr	7-Apr

Notes:

High Lift Monthly Report

Month: **April-17**

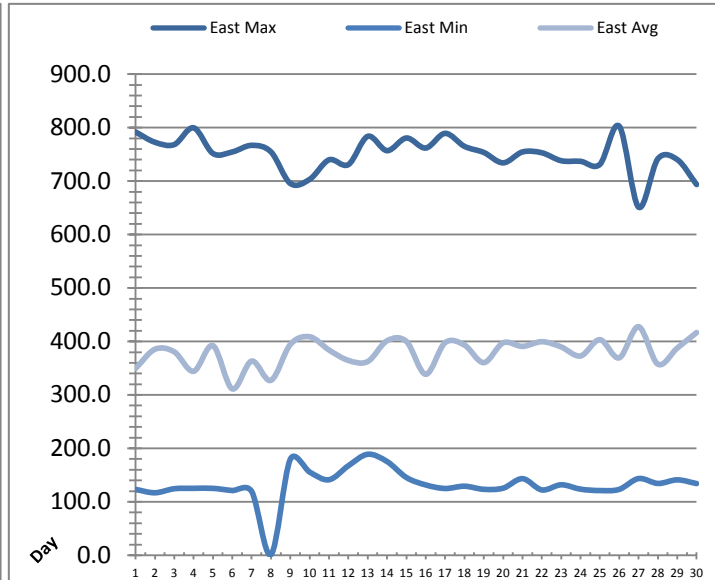
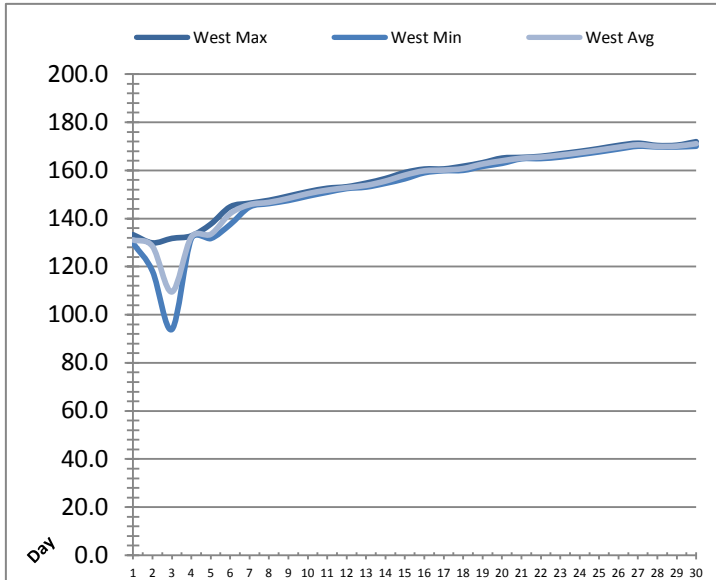


Date	Distribution Flow					
	FIT_7052 (East)		FIT_7062 (West)		Combined	
	(m³)	(L/s)	(m³)	(L/s)	(m³)	(L/s)
	Total	Peak	Total	Peak	Total	Peak
1	762.0	41.2	1955.1	77.6	2717.1	87.2
2	764.5	33.5	2196.4	77.1	2960.9	87.5
3	672.6	41.8	2188.0	82.5	2860.6	84.3
4	792.3	41.0	2214.0	83.3	3006.3	90.0
5	777.4	39.9	2882.2	80.7	3659.6	85.1
6	424.1	33.4	1671.5	78.5	2095.6	80.1
7	1059.3	44.2	3075.0	115.4	4134.3	156.1
8	796.7	47.6	1905.4	94.4	2702.0	104.4
9	1028.8	48.8	1995.7	96.4	3024.4	104.1
10	601.4	49.7	3024.7	95.5	3626.1	107.6
11	69.4	0.0	2850.8	97.5	2920.2	99.3
12	681.9	44.1	1976.6	97.5	2658.6	103.2
13	330.6	48.1	2143.8	95.7	2474.5	98.0
14	936.3	36.1	2227.8	88.2	3164.1	113.4
15	1044.2	41.1	2435.0	83.7	3479.2	103.3
16	1009.2	39.5	940.5	78.5	1949.6	100.0
17	927.7	37.9	3199.5	91.2	4127.2	114.8
18	878.9	48.4	3001.8	113.2	3880.7	156.6
19	781.9	48.8	2037.6	91.5	2819.5	109.0
20	882.5	49.9	2691.4	97.2	3573.9	104.9
21	849.6	52.8	2478.1	95.2	3327.7	105.2
22	1451.5	52.3	1982.0	94.5	3433.5	103.8
23	1348.4	54.0	2132.5	93.6	3480.9	103.9
24	1053.6	65.6	1735.7	101.9	2789.4	115.7
25	1187.4	53.4	2269.5	107.7	3457.0	108.6
26	1045.6	54.3	2250.1	125.3	3295.7	165.1
27	711.9	33.6	3907.3	97.7	4619.2	102.7
28	1169.0	60.9	1945.9	87.4	3114.9	105.6
29	935.8	41.0	2150.1	96.1	3085.9	104.0
30	1043.9	47.7	2131.4	96.8	3175.3	101.5
Total	26018.4		69595.6		95613.9	
Average	867.3	44.4	2319.9	93.7	3187.1	106.8
Maximum	1451.5	65.6	3907.3	125.3	4619.2	165.1
Date	22-Apr	24-Apr	27-Apr	26-Apr	27-Apr	26-Apr
Minimum	69.4		940.5		1949.6	
Date	11-Apr		16-Apr		16-Apr	

Notes:

Low Lift Monthly Report

Month: April-17

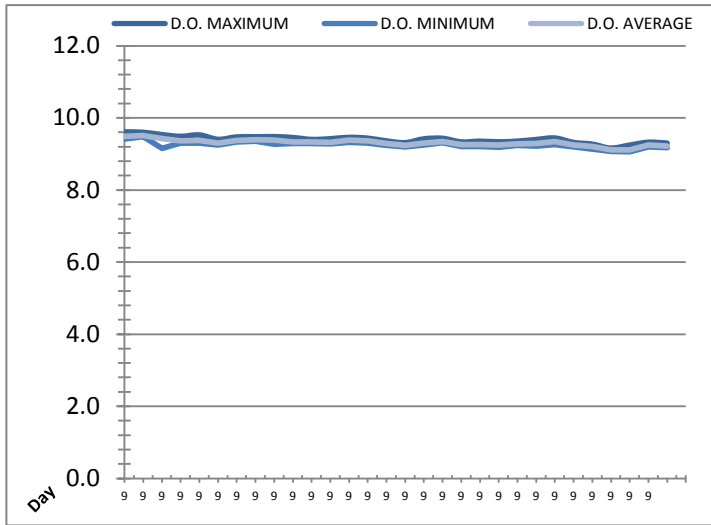
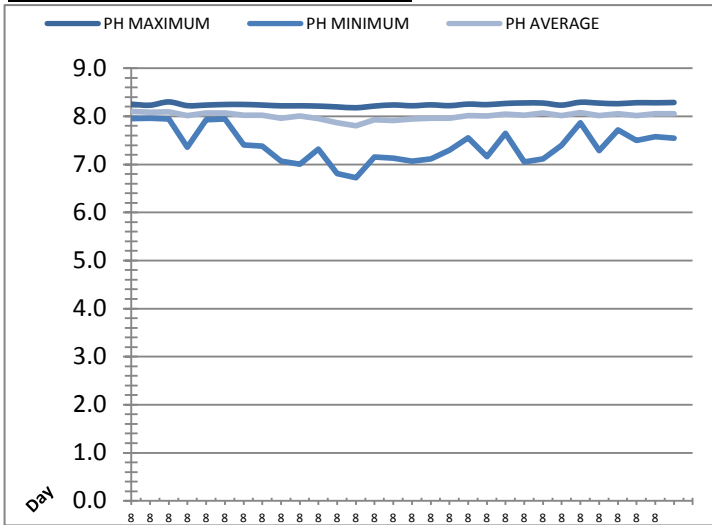


Date	West Train Header Pressure PIT_1018 (kPa)			East Train Header Pressure PIT_1028 (kPa)		
	Maximum	Minimum	Average	Maximum	Minimum	Average
1	✓ 133.3	✓ 129.7	131.1	✓ 791.9	✓ 123.2	349.5
2	✓ 129.9	✓ 118.1	128.4	✓ 772.7	✓ 116.9	385.4
3	✓ 131.7	✓ 93.9	109.5	✓ 768.3	✓ 124.5	380.6
4	✓ 132.8	✓ 131.7	132.3	✓ 799.7	✓ 125.2	344.2
5	✓ 137.7	✓ 131.7	133.4	✓ 751.7	✓ 125.2	392.1
6	✓ 144.9	✓ 137.5	142.0	✓ 754.5	✓ 121.2	311.3
7	✓ 146.3	✓ 144.8	145.7	✓ 766.9	✓ 119.5	363.3
8	✓ 147.6	✓ 146.2	146.7	✓ 754.6	✗ 1.4	327.3
9	✓ 149.3	✓ 147.5	148.4	✓ 695.6	✓ 179.7	394.3
10	✓ 151.1	✓ 149.3	150.3	✓ 703.3	✓ 155.6	408.8
11	✓ 152.6	✓ 150.9	151.8	✓ 739.8	✓ 141.3	384.0
12	✓ 153.2	✓ 152.5	152.8	✓ 730.8	✓ 167.5	364.5
13	✓ 154.7	✓ 153.1	153.8	✓ 783.7	✓ 189.0	362.4
14	✓ 156.6	✓ 154.6	155.6	✓ 756.9	✓ 175.4	401.3
15	✓ 159.1	✓ 156.5	158.0	✓ 780.6	✓ 145.5	400.0
16	✓ 160.5	✓ 159.0	159.8	✓ 761.9	✓ 131.6	338.6
17	✓ 160.6	✓ 159.9	160.1	✓ 789.3	✓ 125.0	397.8
18	✓ 161.7	✓ 160.0	160.8	✓ 765.0	✓ 129.2	393.2
19	✓ 163.2	✓ 161.7	162.6	✓ 753.6	✓ 123.4	360.4
20	✓ 165.1	✓ 162.9	164.0	✓ 734.1	✓ 125.6	397.4
21	✓ 165.4	✓ 164.8	165.1	✓ 754.5	✓ 143.3	390.8
22	✓ 165.8	✓ 164.9	165.5	✓ 752.9	✓ 122.3	399.6
23	✓ 166.9	✓ 165.5	166.3	✓ 738.1	✓ 131.9	389.7
24	✓ 167.9	✓ 166.6	167.3	✓ 737.0	✓ 123.7	372.9
25	✓ 169.1	✓ 167.7	168.4	✓ 731.3	✓ 121.1	403.4
26	✓ 170.4	✓ 168.9	169.6	✓ 802.7	✓ 123.3	369.4
27	✓ 171.3	✓ 170.0	170.6	✓ 651.2	✓ 143.5	427.6
28	✓ 170.4	✓ 169.7	170.0	✓ 741.8	✓ 134.4	357.4
29	✓ 170.5	✓ 169.7	170.1	✓ 740.2	✓ 141.1	387.7
30	✓ 171.9	✓ 170.0	171.1	✓ 693.5	✓ 134.2	416.7
Total						
Average	156.1	152.6	154.4	749.9	132.2	379.0
Maximum	171.9		171.1	802.7		427.6
Date	30-Apr		30-Apr	26-Apr		27-Apr
Minimum		93.9	109.5		1.4	311.3
Date		3-Apr	3-Apr		8-Apr	6-Apr

Notes:

Low Lift Monthly Report

Month: **April-17**

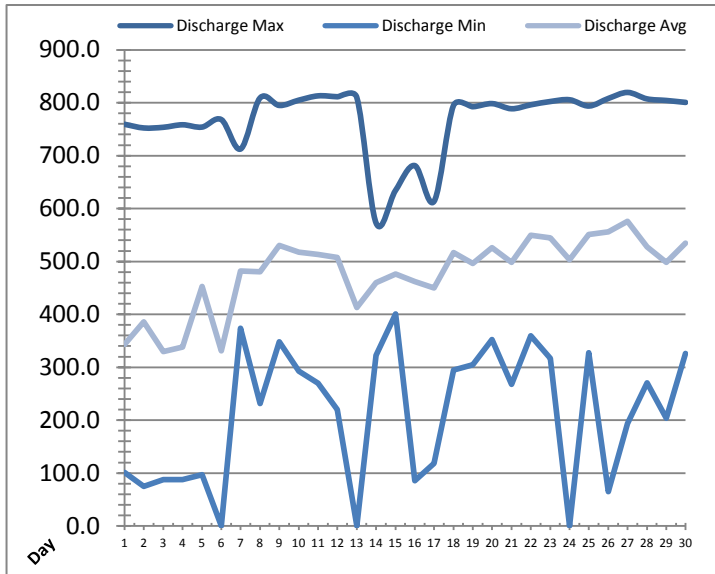
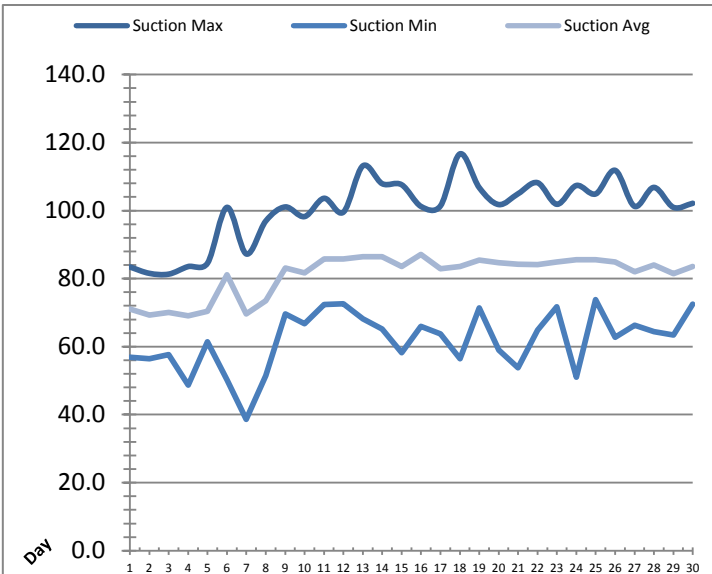


Date	Raw Water Sample Line					
	AIT_1402_PH (pH)			AIT_1402_DO (mg/L)		
	Maximum	Minimum	Average	Maximum	Minimum	Average
1	8.3	8.0	8.1	9.6	9.4	9.5
2	8.2	8.0	8.1	9.6	9.5	9.5
3	8.3	7.9	8.1	9.5	9.2	9.4
4	8.2	7.4	8.0	9.5	9.3	9.4
5	8.2	7.9	8.1	9.5	9.3	9.4
6	8.2	7.9	8.1	9.4	9.2	9.3
7	8.2	7.4	8.0	9.5	9.3	9.4
8	8.2	7.4	8.0	9.5	9.4	9.4
9	8.2	7.1	8.0	9.5	9.3	9.4
10	8.2	7.0	8.0	9.5	9.3	9.3
11	8.2	7.3	8.0	9.4	9.3	9.3
12	8.2	6.8	7.9	9.4	9.3	9.3
13	8.2	6.7	7.8	9.5	9.3	9.4
14	8.2	7.1	7.9	9.4	9.3	9.4
15	8.2	7.1	7.9	9.4	9.2	9.3
16	8.2	7.1	7.9	9.3	9.2	9.2
17	8.2	7.1	8.0	9.4	9.3	9.3
18	8.2	7.3	8.0	9.4	9.3	9.3
19	8.3	7.6	8.0	9.3	9.2	9.3
20	8.2	7.2	8.0	9.4	9.2	9.3
21	8.3	7.7	8.0	9.3	9.2	9.2
22	8.3	7.1	8.0	9.4	9.2	9.3
23	8.3	7.1	8.1	9.4	9.2	9.3
24	8.2	7.4	8.0	9.4	9.3	9.3
25	8.3	7.9	8.1	9.3	9.2	9.3
26	8.3	7.3	8.0	9.3	9.1	9.2
27	8.3	7.7	8.1	9.2	9.1	9.1
28	8.3	7.5	8.0	9.2	9.1	9.1
29	8.3	7.6	8.1	9.3	9.2	9.3
30	8.3	7.5	8.1	9.3	9.2	9.2
Total						
Average	8.2	7.4	8.0	9.4	9.2	9.3
Maximum	8.3		8.1	9.6		9.5
Date	3-Apr		1-Apr	1-Apr		2-Apr
Minimum		6.7	7.8		9.1	9.1
Date		13-Apr	13-Apr		28-Apr	27-Apr

Notes:

High Lift Monthly Report

Month: April-17

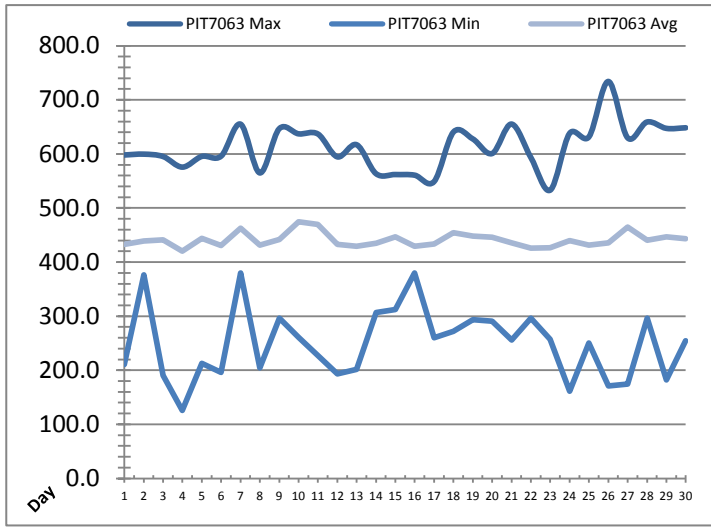
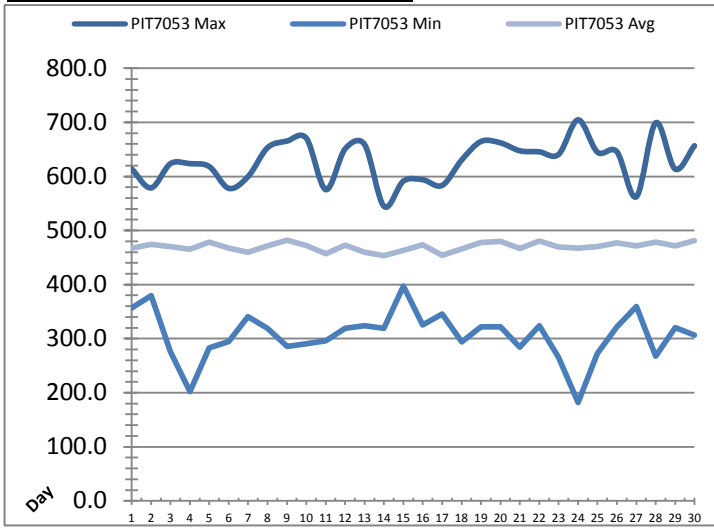


Date	Suction Header Pressure			Discharge Header Pressure		
	PIT_7002 (kPa)			PIT_7005 (kPa)		
	Maximum	Minimum	Average	Maximum	Minimum	Average
1	83.4	56.9	71.0	759.3	101.4	343.3
2	81.6	56.5	69.3	752.3	75.1	385.5
3	81.3	57.6	70.0	753.6	87.7	329.4
4	83.5	48.7	69.1	758.4	87.4	338.1
5	84.6	61.4	70.4	754.0	97.0	453.1
6	101.0	50.2	81.1	768.2	0.0	331.2
7	87.2	38.7	69.6	712.6	373.9	482.2
8	96.9	51.5	73.5	809.0	231.3	480.4
9	101.1	69.6	83.1	794.9	347.8	530.4
10	98.2	66.7	81.7	804.8	292.9	517.4
11	103.6	72.4	85.7	813.0	269.8	513.1
12	99.6	72.6	85.8	811.3	220.1	507.4
13	113.2	68.2	86.5	810.4	0.0	413.0
14	107.9	65.2	86.5	572.7	322.5	459.8
15	107.6	58.2	83.5	634.0	400.7	476.4
16	101.2	66.0	87.1	681.2	85.4	462.2
17	101.4	63.7	83.0	613.8	118.1	449.7
18	116.7	56.5	83.6	794.8	294.4	516.5
19	106.7	71.4	85.5	792.5	304.7	496.0
20	101.8	59.0	84.7	798.4	352.7	526.2
21	105.0	53.8	84.2	788.7	267.8	498.4
22	108.2	64.8	84.1	796.1	359.7	549.5
23	101.9	71.7	84.9	802.3	317.1	544.4
24	107.4	51.0	85.5	805.6	0.0	503.3
25	104.9	73.8	85.5	793.8	327.5	551.0
26	111.8	62.8	84.9	808.1	65.2	555.7
27	101.3	66.3	82.1	819.5	193.8	575.9
28	106.8	64.4	84.0	807.4	270.4	527.5
29	101.0	63.4	81.5	804.3	203.7	498.1
30	102.1	72.5	83.6	800.6	326.3	534.3
Total						
Average	100.3	61.9	81.0	767.2	213.1	478.3
Maximum	116.7		87.1	819.5		575.9
Date	18-Apr		16-Apr	27-Apr		27-Apr
Minimum		38.7	69.1		0.0	329.4
Date		7-Apr	4-Apr		6-Apr	3-Apr

Notes:

High Lift Monthly Report

Month: **April-17**

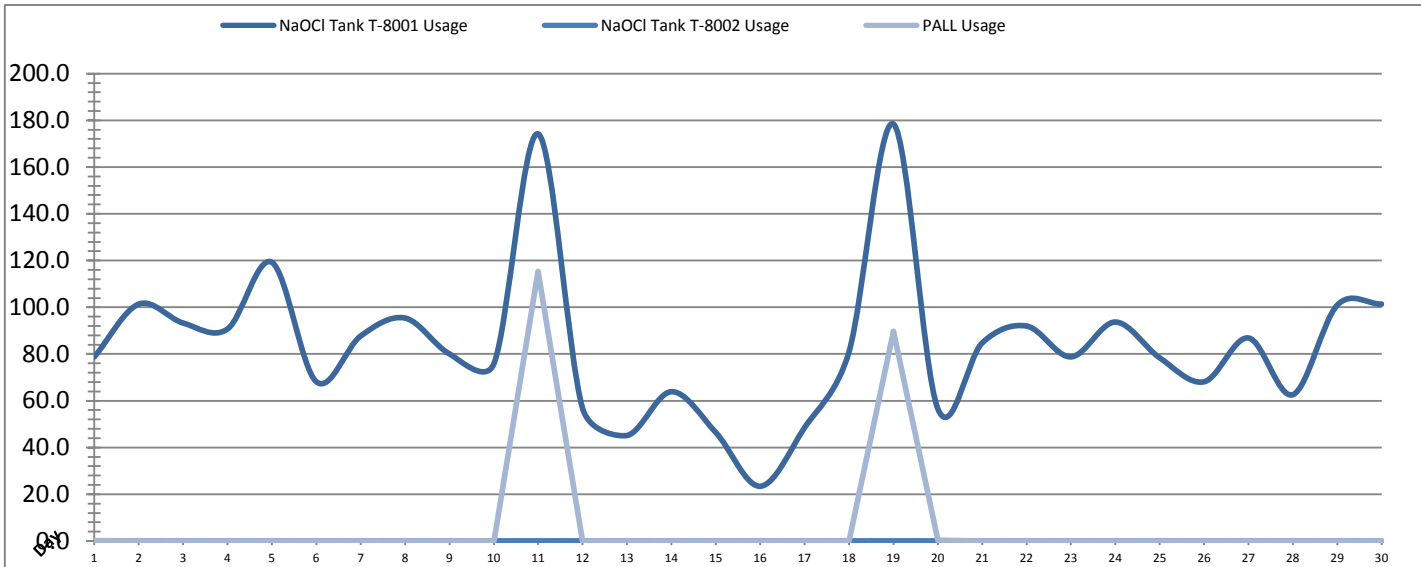


Date	Distribution Pressures					
	PIT_7053 (kPa)			PIT_7063 (kPa)		
	Maximum	Minimum	Average	Maximum	Minimum	Average
1	✓ 613.8	✓ 356.8	467.5	✓ 598.1	✓ 210.5	432.7
2	✓ 578.8	✓ 380.0	474.6	✓ 599.6	✓ 376.4	439.3
3	✓ 623.6	✓ 275.7	470.0	✓ 595.3	✓ 190.4	441.1
4	✓ 623.6	✓ 202.1	465.0	✓ 575.7	✓ 125.7	420.0
5	✓ 618.1	✓ 283.1	478.7	✓ 595.5	✓ 213.1	444.1
6	✓ 578.0	✓ 294.7	467.3	✓ 596.0	✓ 196.2	430.7
7	✓ 599.9	✓ 340.9	459.5	✓ 655.1	✓ 379.7	462.8
8	✓ 653.1	✓ 319.4	471.8	✓ 564.9	✓ 204.3	431.3
9	✓ 665.4	✓ 285.5	482.1	✓ 646.7	✓ 296.5	441.9
10	✓ 670.6	✓ 290.3	472.1	✓ 637.2	✓ 260.7	474.7
11	✓ 575.5	✓ 296.2	456.7	✓ 636.9	✓ 227.1	469.8
12	✓ 651.0	✓ 318.9	473.1	✓ 594.6	✓ 192.9	433.0
13	✓ 659.0	✓ 324.1	460.0	✓ 617.0	✓ 201.8	429.4
14	✓ 544.7	✓ 319.3	453.3	✓ 563.5	✓ 306.4	435.0
15	✓ 591.3	✓ 397.2	463.3	✓ 561.9	✓ 312.4	446.4
16	✓ 593.8	✓ 325.2	473.8	✓ 560.7	✓ 379.5	429.6
17	✓ 583.4	✓ 345.7	454.2	✓ 548.9	✓ 260.4	433.6
18	✓ 630.3	✓ 293.9	466.2	✓ 640.6	✓ 271.6	454.2
19	✓ 664.7	✓ 321.8	477.8	✓ 627.8	✓ 293.5	448.4
20	✓ 662.1	✓ 322.1	480.2	✓ 600.8	✓ 290.5	445.9
21	✓ 647.4	✓ 284.0	466.8	✓ 655.2	✓ 255.8	435.4
22	✓ 645.5	✓ 323.6	480.2	✓ 593.3	✓ 296.5	425.8
23	✓ 640.8	✓ 265.7	469.5	✓ 533.1	✓ 257.3	426.2
24	✓ 704.6	✓ 182.1	467.5	✓ 638.0	✓ 161.4	439.9
25	✓ 644.7	✓ 272.4	470.1	✓ 631.7	✓ 250.7	431.3
26	✓ 645.6	✓ 321.7	477.4	✓ 734.0	✓ 171.1	435.5
27	✓ 562.3	✓ 359.6	471.7	✓ 629.8	✓ 174.8	465.1
28	✓ 699.2	✓ 267.7	478.7	✓ 659.1	✓ 296.0	440.2
29	✓ 613.7	✓ 320.1	471.6	✓ 647.3	✓ 181.8	446.9
30	✓ 656.7	✓ 306.6	481.2	✓ 648.4	✓ 254.2	443.2
Total						
Average	628.0	306.5	470.1	612.9	249.6	441.1
Maximum	704.6		482.1	734.0		474.7
Date	24-Apr		9-Apr	26-Apr		10-Apr
Minimum		182.1	453.3		125.7	420.0
Date		24-Apr	14-Apr		4-Apr	4-Apr

Notes:

Chemical Usage Monthly Report

Month: **April-17**

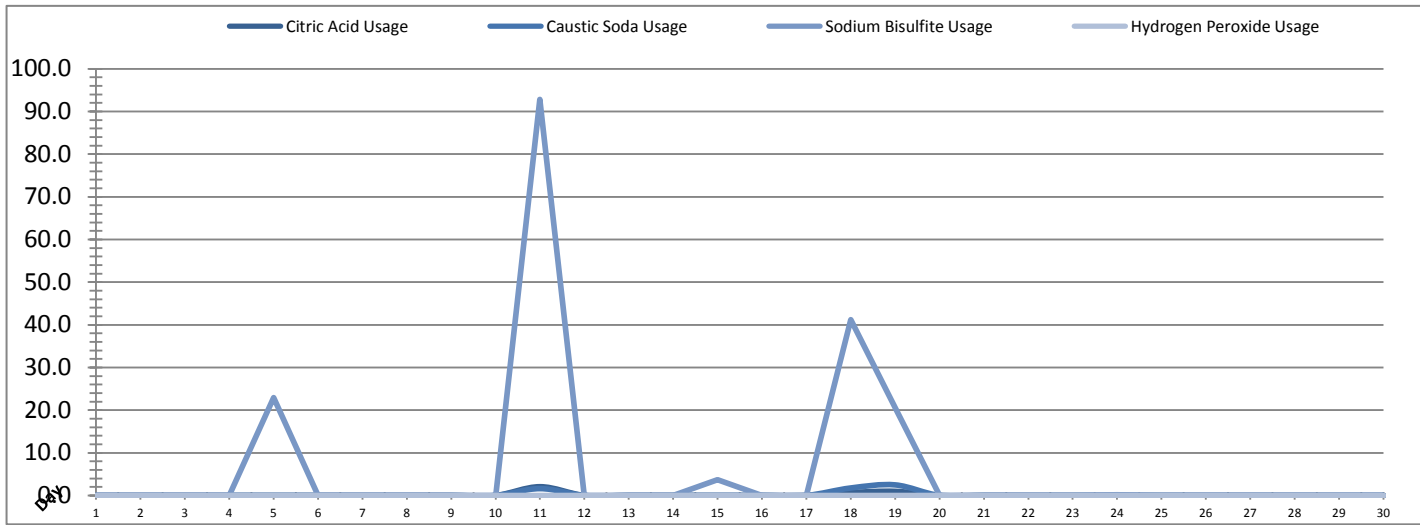


Date	PALL Usage	NaOCl Tank T-8001	NaOCl Tank T-8002
	PALL_HYPO_USAGE (L) Usage	LIT_8002 (Storage) (L) Usage	LIT_8004 (Day) (L) Usage
1	0.1	78.8	0.0
2	0.0	101.4	0.0
3	0.0	93.3	0.0
4	0.0	90.7	0.0
5	0.0	119.2	0.0
6	0.0	68.1	0.0
7	0.0	87.7	0.0
8	0.0	95.4	0.0
9	0.0	80.1	0.0
10	0.0	75.8	0.0
11	115.4	174.2	0.0
12	0.1	56.6	0.0
13	0.0	45.1	0.0
14	0.00	63.88	0.0
15	0.0	46.4	0.0
16	0.0	23.4	0.0
17	0.0	48.6	0.0
18	0.0	80.9	0.0
19	89.7	178.4	0.0
20	0.3	56.6	0.0
21	0.0	84.8	0.0
22	0.0	92.0	0.0
23	0.0	78.8	0.0
24	0.0	93.7	0.0
25	0.0	78.4	0.0
26	0.0	68.1	0.0
27	0.0	86.9	0.0
28	0.0	62.6	0.0
29	0.0	100.9	0.0
30	0.0	101.4	0.0
Total	205.5	2512.3	1.0
Average	6.9	83.7	0.0
Maximum	115.4	178.4	0.0
Date	11-Apr	19-Apr	1-Apr
Minimum	0.0	23.4	0.0
Date	2-Apr	16-Apr	1-Apr

Notes:	
Dosage (mg/L)=	Day Tank (L) x %conc. x 1000
	Membrane Flow (m3)
Chlorine Concentration:	12.0%

Chemical Usage Monthly Report

Month: **April-17**



Date	Citric Acid	Caustic Soda	Sodium Bisulfite	Hydrogen Peroxide		Membrane Flow (m ³)
	TAGNAME (L) Usage	TAGNAME (L) Usage	TAGNAME (L) Usage	TAGNAME (L) Usage	TAGNAME (mg/L) Dose	
1	0.0	0.0	0.0	0.0	0.0	2468.405
2	0.0	0.0	0.0	0.0	0.0	3231.619
3	0.0	0.0	0.0	0.0	0.0	3419.175
4	0.0	0.0	0.0	0.0	0.0	2864.228
5	0.0	0.0	22.9	0.0	0.0	4273.589
6	0.0	0.0	0.0	0.0	0.0	1930.421
7	0.0	0.0	0.0	0.0	0.0	3443.910
8	0.0	0.0	0.0	0.0	0.0	4006.775
9	0.0	0.0	0.0	0.0	0.0	3700.549
10	0.0	0.0	0.0	0.0	0.0	4060.979
11	2.1	1.6	92.8	0.0	0.0	2967.653
12	0.0	0.0	0.0	0.0	0.0	2845.632
13	0.0	0.0	0.0	0.0	0.0	2877.330
14	0.0	0.0	0.0	0.0	0.0	3606.165
15	0.0	0.0	3.7	0.0	0.0	3694.690
16	0.0	0.0	0.0	0.0	0.0	2298.722
17	0.0	0.0	0.0	0.0	0.0	4088.678
18	0.7	1.8	41.2	0.0	0.0	3993.709
19	1.0	2.5	20.5	0.0	0.0	3087.539
20	0.0	0.0	0.0	0.0	0.0	4027.430
21	0.0	0.0	0.0	0.0	0.0	3580.617
22	0.0	0.0	0.0	0.0	0.0	3702.970
23	0.0	0.0	0.0	0.0	0.0	3616.907
24	0.0	0.0	0.2	0.0	0.0	3257.154
25	0.0	0.0	0.0	0.0	0.0	4103.308
26	0.0	0.0	0.0	0.0	0.0	3523.748
27	0.0	0.0	0.0	0.0	0.0	4957.130
28	0.0	0.0	0.0	0.0	0.0	3067.537
29	0.0	0.0	0.0	0.0	0.0	3804.123
30	0.0	0.0	0.0	0.0	0.0	3869.815
Total	3.7	5.9	181.3	0.0		104370.5
Average	0.1	0.2	6.0	0.0	0.0	3479.0
Maximum	2.1	2.5	92.8	0.0	0.0	4957.1
Date	11-Apr	19-Apr	11-Apr	1-Apr	1-Apr	27-Apr
Minimum	0.0	0.0	0.0	0.0	0.0	1930.4
Date	1-Apr	1-Apr	1-Apr	1-Apr	1-Apr	6-Apr

Notes:	
Dosage (mg/L)=	Day Tank (L) x %conc. x 1000
	Membrane Flow (m3)
Peroxide Concentration:	50.0%

Runtimes Report

Month: April-17

Date	Daily Gen-Set Runtimes		Daily UV Runtimes		Daily PALL Runtimes				
	LLPS	WTP	UV #1	UV #2	Air Compressor #1	Air Compressor #2	CIP Neutralization	CIP Drain	CIP Recirc
	(Hrs)	(Hrs)	(Hrs)	(Hrs)	(Hrs)	(Hrs)	(Hrs)	(Hrs)	(Hrs)
1	0.0	0.0	0.0	0.0	24.4	0.0	0.0	0.0	0.0
2	0.0	0.0	0.0	0.0	24.4	0.0	0.0	0.0	0.0
3	0.0	0.0	0.0	0.0	24.4	0.0	0.0	0.0	0.0
4	0.0	0.0	0.0	0.0	24.4	0.0	0.0	0.0	0.0
5	0.0	0.0	0.0	0.0	24.4	0.0	0.0	0.0	0.0
6	0.0	0.0	0.0	0.0	24.4	0.0	0.0	0.0	0.0
7	0.0	0.0	0.0	0.0	24.4	0.0	0.0	0.0	0.0
8	0.0	0.0	0.0	0.0	24.4	0.0	0.0	0.0	0.0
9	0.0	0.0	0.0	0.0	24.4	0.0	0.0	0.0	0.0
10	0.0	0.0	0.0	0.0	24.4	0.0	0.1	0.0	0.0
11	0.0	0.0	0.1	0.0	24.4	0.0	0.5	0.4	1.4
12	0.0	0.0	0.0	0.0	24.4	0.0	0.0	0.0	0.0
13	0.0	0.0	0.0	0.0	24.4	0.0	0.0	0.0	0.0
14	0.0	0.0	0.0	0.0	24.4	0.0	0.0	0.0	0.0
15	0.0	0.0	0.0	0.0	24.4	0.0	0.0	0.0	0.0
16	0.0	0.0	0.0	0.0	24.4	0.0	0.0	0.0	0.0
17	0.0	0.0	0.0	0.0	24.3	0.0	0.0	0.0	0.0
18	0.0	0.0	0.0	0.0	24.4	0.0	0.3	0.1	0.6
19	0.0	0.0	0.0	0.0	24.4	0.0	0.2	0.1	0.7
20	0.0	0.0	0.0	0.0	24.4	0.0	0.0	0.0	0.0
21	0.0	0.0	0.0	0.0	24.4	0.0	0.0	0.0	0.0
22	0.0	0.0	0.0	0.0	24.4	0.0	0.0	0.0	0.0
23	0.0	0.0	0.0	0.0	24.4	0.0	0.0	0.0	0.0
24	0.0	0.0	0.0	0.0	24.4	0.0	0.0	0.0	0.0
25	0.0	0.0	0.0	0.0	24.4	0.0	0.0	0.0	0.0
26	0.0	0.0	0.0	0.0	24.3	0.0	0.0	0.0	0.0
27	0.0	0.0	0.0	0.0	24.4	0.0	0.0	0.0	0.0
28	0.0	0.0	0.0	0.0	24.4	0.0	0.0	0.0	0.0
29	0.0	0.0	0.0	0.0	24.4	0.0	0.0	0.0	0.0
30	0.0	0.0	0.0	0.0	24.4	0.0	0.0	0.0	0.0
Total	0.0	0.0	0.1	0.0	731.0	0.0	1.1	0.6	2.7

Notes:

Runtimes Report

Month: April-17

Daily

Date	PALL Runtimes						Process Drain	
	RFR Pump #1	RFR Pump #2	RF Pump #1	RF Pump #2	XR Pump #1	XR Pump #2	PDP9010 Pump	PDP9020 Pump
	(Hrs)	(Hrs)	(Hrs)	(Hrs)	(Hrs)	(Hrs)	(Hrs)	(Hrs)
1	0.0	0.0	0.2	0.1	2.2	2.3	2.0	2.8
2	0.0	0.0	0.4	0.4	4.3	3.7	1.9	2.8
3	0.0	0.0	0.4	0.4	7.2	7.4	2.0	2.9
4	0.0	0.0	0.3	0.5	4.9	5.1	2.2	2.8
5	0.0	0.0	0.6	0.5	8.9	8.4	1.9	2.6
6	0.0	0.0	0.2	0.3	3.5	4.2	2.1	2.8
7	0.0	0.0	0.7	0.8	6.5	6.4	2.0	2.5
8	0.0	0.0	0.8	0.7	6.5	5.9	1.7	2.3
9	0.0	0.0	0.6	0.7	6.1	6.5	1.6	2.3
10	0.0	0.0	0.8	0.8	6.6	7.0	1.7	2.4
11	0.0	0.0	0.5	0.5	3.5	3.4	1.7	2.4
12	0.0	0.0	0.3	0.3	4.0	3.5	1.8	2.2
13	0.0	0.1	0.5	0.5	3.7	4.3	1.8	2.5
14	0.0	0.0	0.5	0.5	4.4	5.1	1.8	2.5
15	0.0	0.0	0.7	0.6	5.2	4.4	1.8	2.4
16	0.0	0.0	0.3	0.4	3.4	3.4	1.7	2.3
17	0.0	0.0	0.7	0.7	5.5	4.5	1.8	2.4
18	0.0	0.0	0.7	0.7	6.6	7.7	1.7	2.4
19	0.0	0.0	0.6	0.5	5.7	5.7	1.7	2.4
20	0.0	0.0	0.6	0.7	4.7	4.7	1.7	2.3
21	0.0	0.0	0.9	0.9	4.3	6.3	1.8	2.4
22	0.0	0.0	0.5	0.5	5.3	2.4	1.8	2.2
23	0.0	0.0	0.6	0.5	4.0	5.1	1.6	2.2
24	0.0	0.0	0.7	0.7	5.3	5.3	1.8	2.7
25	0.0	0.0	0.6	0.6	4.4	7.3	1.7	2.2
26	0.0	0.0	0.6	0.6	7.7	3.8	1.6	2.3
27	0.0	0.0	0.9	1.0	8.0	9.2	1.7	2.3
28	0.0	0.0	0.5	0.5	5.6	4.2	1.8	2.3
29	0.0	0.0	0.7	0.6	5.2	5.6	1.6	2.2
30	0.0	0.0	0.8	0.6	5.0	5.3	1.7	2.2
Total	0.0	0.1	17.2	17.1	157.6	157.5	53.8	73.0

Notes:

Runtimes Report

Month: April-17

Daily

Date	Low Lift Pump Motor Runtimes				High Lift Pump Motor Runtimes			
	LLP1010 (Hrs)	LLP1020 (Hrs)	LLP1030 (Hrs)	LLP1040 (Hrs)	HLP7010 (Hrs)	HLP7020 (Hrs)	HLP7030 (Hrs)	HLP7040 (Hrs)
1	3.2	3.9	3.7	0.7	8.8	3.3	0.0	0.1
2	5.1	4.4	1.7	3.6	6.0	4.3	0.0	3.7
3	2.3	4.9	5.6	2.8	4.2	7.7	0.0	0.0
4	4.3	0.1	3.8	5.4	0.4	9.6	0.0	2.2
5	5.6	6.8	3.4	2.9	6.0	4.4	0.0	7.0
6	2.0	2.2	2.7	1.9	0.0	6.2	0.0	4.6
7	6.2	1.1	3.9	5.5	11.5	23.7	0.0	0.0
8	6.5	3.4	7.1	3.3	2.5	6.5	0.0	0.0
9	3.1	4.3	3.3	5.5	1.1	6.3	0.0	4.8
10	5.3	5.1	2.8	5.1	0.0	11.1	0.0	1.3
11	3.9	2.7	0.8	4.1	3.0	6.5	0.0	1.3
12	0.8	4.2	4.5	3.4	3.5	5.3	0.0	1.3
13	1.3	0.8	5.5	5.4	13.6	0.1	0.0	2.2
14	4.8	0.6	5.6	5.0	24.0	2.7	0.0	0.0
15	4.9	2.8	3.6	5.2	24.0	8.4	0.0	0.0
16	2.8	2.9	3.6	1.0	19.3	8.5	0.0	0.0
17	3.5	3.8	5.6	5.5	23.4	7.4	0.0	0.1
18	4.7	2.7	5.5	4.7	13.1	2.5	0.0	3.9
19	2.4	3.9	4.7	2.8	5.5	4.1	0.0	0.0
20	4.2	5.6	3.8	4.5	1.5	8.6	0.0	3.0
21	3.8	2.8	5.4	4.1	1.5	0.6	0.0	9.3
22	2.9	5.5	4.0	4.2	11.0	3.0	0.0	0.7
23	2.8	5.4	4.3	3.6	4.8	3.2	0.0	6.3
24	5.6	0.8	3.1	5.2	0.9	7.3	0.0	3.6
25	5.5	3.4	5.6	3.6	2.8	11.5	0.0	0.1
26	4.7	5.6	2.8	2.8	0.0	1.7	0.0	12.2
27	5.5	6.9	4.0	5.2	7.2	9.5	0.0	1.7
28	5.4	1.8	3.1	3.5	11.8	0.7	0.0	0.1
29	3.5	5.5	5.5	2.4	0.0	5.8	0.0	4.8
30	4.7	5.6	5.6	4.1	4.0	0.3	0.0	8.6
Total	121.3	109.5	124.6	117.0	215.4	180.8	0.0	82.9

Notes:

Plant Internal Flow Report

Month: April-17

Date	Settling Tank Level		Process Drain Tank		Settling Tank Flow		Potable Water Flow		Non-Potable Flow	
	T-9003 (m)		T-9001 (m)		FIT_9005 (m ³) (L/s)		FIT_7082 (m ³) (L/s)		FIT_7092 (m ³) (L/s)	
	Maximum	Minimum	Maximum	Minimum	Total	Peak	Total	Peak	Total	Peak
1	2.2	0.1	0.9	0.4	57.4	15.7	0.0	0.0	0.0	0.0
2	2.2	0.1	0.8	0.4	148.5	15.7	0.0	0.0	0.0	0.0
3	2.2	0.3	0.9	0.4	183.6	15.7	0.1	1.4	0.0	0.0
4	2.2	0.1	1.1	0.4	165.5	15.7	0.1	1.3	0.0	0.0
5	2.2	0.3	0.8	0.4	206.5	15.7	0.1	1.3	0.0	0.0
6	2.2	0.2	0.9	0.4	87.9	15.7	0.2	1.3	0.3	0.6
7	2.2	0.1	1.3	0.4	154.4	15.7	0.1	1.4	0.0	0.0
8	2.2	0.1	1.4	0.4	207.5	15.7	0.0	1.1	0.0	0.0
9	2.2	0.3	0.8	0.4	186.4	15.7	0.0	0.0	0.0	0.0
10	2.2	0.1	1.0	0.4	279.0	15.7	0.2	1.3	0.0	0.0
11	2.2	0.3	1.0	0.4	200.8	15.7	7.0	7.1	38.5	16.0
12	2.2	0.1	1.5	0.4	117.1	15.7	0.0	1.4	0.0	0.0
13	2.2	0.2	1.1	0.4	111.9	15.7	0.1	1.4	0.0	0.0
14	2.2	0.3	0.8	0.4	172.9	15.7	0.0	0.0	0.0	0.0
15	2.2	0.1	0.9	0.4	209.9	15.7	0.0	0.0	0.0	0.0
16	2.2	0.1	0.8	0.4	155.0	15.7	0.0	0.0	0.0	0.0
17	2.2	0.1	0.8	0.4	205.6	15.7	0.0	1.1	0.0	0.0
18	2.2	0.1	1.1	0.4	217.0	15.7	0.1	1.4	13.7	15.2
19	2.2	0.1	1.3	0.4	244.3	15.7	0.0	1.4	25.0	25.4
20	2.2	0.1	1.0	0.4	176.5	15.7	0.1	1.7	0.8	1.3
21	2.2	0.1	1.1	0.4	184.1	15.7	0.2	1.5	1.9	1.8
22	2.2	0.1	1.4	0.4	132.3	15.7	0.0	0.0	0.0	0.0
23	2.2	0.1	0.8	0.4	175.2	15.7	0.0	0.0	0.0	0.0
24	2.2	0.1	1.2	0.4	176.8	15.7	0.1	1.3	0.1	0.8
25	2.2	0.1	0.8	0.4	219.6	15.7	0.3	1.4	0.0	0.0
26	2.2	0.3	0.8	0.4	221.0	15.7	0.0	1.4	0.0	0.0
27	2.2	0.1	0.8	0.4	346.6	15.7	0.1	1.4	0.0	0.0
28	2.2	0.1	0.8	0.4	176.5	15.7	0.1	1.4	0.0	0.0
29	2.2	0.2	0.8	0.4	204.0	15.7	0.0	0.0	0.0	0.0
30	2.2	0.1	0.8	0.4	217.2	15.7	0.0	0.0	0.0	0.0
Total					5540.9		8.9		80.3	
Average	2.2	0.2	1.0	0.4	184.7	15.7	0.3	1.1	2.7	2.0
Maximum	2.2		1.5		346.6		7.0		38.5	
Date	16-Apr		12-Apr		27-Apr		11-Apr		11-Apr	
Minimum		0.1		0.4		15.7		0.0		0.0
Date		8-Apr		11-Apr		7-Apr		1-Apr		1-Apr

Notes: