

Municipality of West Elgin - Tri County Water System

Goto:

Month:

Year:

Date is Set to: **April-18**

Limit	Low	High	
Raw Water Chlorine Residual:	0.00	5.00	mg/L
Pre-Strainer Chlorine Residual:	0.00	5.00	mg/L
UV Inlet Chlorine Residual:	0.00	5.00	mg/L
Post Treatment Chlorine Residual:	1.00	5.00	mg/L
Treated Chlorine Residual:	1.00	2.50	mg/L
Distribution Chlorine Residual:	1.00	2.50	mg/L

Limit	High	
Limit	156.0	L/s
WTP Permit to Take Water	13500.0	m <sup>3</sup>

Limit	Low	High	
System Pressure Limits:	50.0	1034.0	Kpa

Compliance Report

Low Lift Monthly Report

Membranes Monthly Report

UV System Monthly Report

Plant Quality Report

Raw Well/Treated Storage Report

High Lift Monthly Report

Operational Report

Low Lift Monthly Report

High Lift Monthly Report

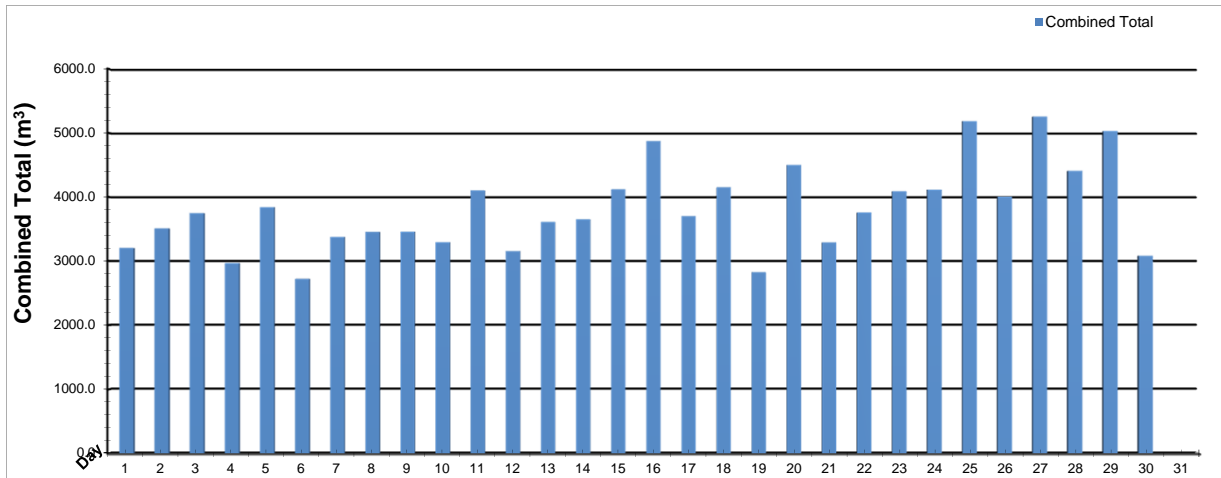
Chemical Usage Monthly Report

Runtimes Report

Plant Internal Flow Report

# Low Lift Monthly Report

Month: **April-18**

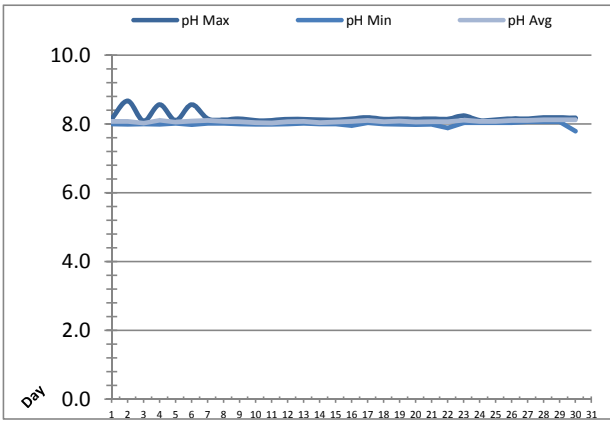
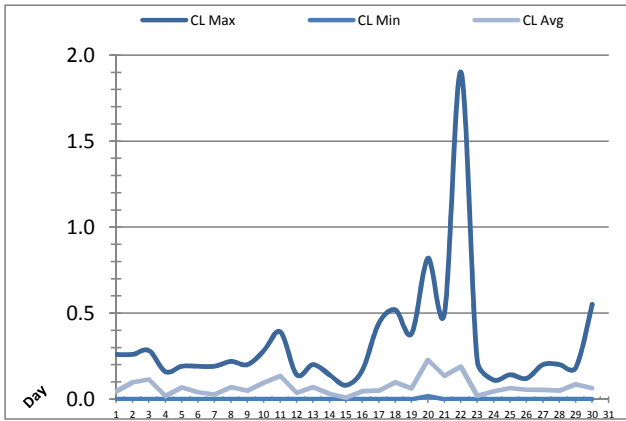


Date	Combined Total (m³)	West Train FIT-1017 (m³)	West Peak Flow FIT-1017 (L/s)	East Train FIT-1027 (m³)	East Peak Flow FIT-1027 (L/s)	Combined Peak Flow (L/s)
1	✓ 3203.8	3203.8	75.3	0.0	0.0	✓ 75.3
2	✓ 3509.4	3509.4	74.9	0.0	0.0	✓ 74.9
3	✓ 3749.6	3749.6	75.0	0.0	0.0	✓ 75.0
4	✓ 2969.4	2969.4	75.0	0.0	0.0	✓ 75.0
5	✓ 3842.0	3842.0	75.0	0.0	0.0	✓ 75.0
6	✓ 2721.0	2721.0	74.8	0.0	0.0	✓ 74.8
7	✓ 3377.3	3377.3	75.1	0.0	0.0	✓ 75.1
8	✓ 3456.3	3456.3	75.1	0.0	0.0	✓ 75.1
9	✓ 3458.6	3458.6	75.5	0.0	0.0	✓ 75.5
10	✓ 3294.7	3294.7	135.7	0.0	0.0	✓ 135.7
11	✓ 4103.0	4103.0	74.3	0.0	0.0	✓ 74.3
12	✓ 3155.5	3155.5	77.4	0.0	0.0	✓ 77.4
13	✓ 3612.4	3612.4	74.3	0.0	0.0	✓ 74.3
14	✓ 3653.4	3653.4	74.1	0.0	0.0	✓ 74.1
15	✓ 4120.4	4120.4	74.2	0.0	0.0	✓ 74.2
16	✓ 4874.8	4874.8	75.0	0.0	0.0	✓ 75.0
17	✓ 3699.9	3699.9	85.8	0.0	0.0	✓ 85.8
18	✓ 4152.8	4152.8	86.2	0.0	0.0	✓ 86.2
19	✓ 2825.6	2825.6	85.2	0.0	0.0	✓ 85.2
20	✓ 4500.9	4500.9	79.3	0.0	0.0	✓ 79.3
21	✓ 3290.0	3290.0	85.7	0.0	0.0	✓ 85.7
22	✓ 3758.3	3758.3	83.9	0.0	0.0	✓ 83.9
23	✓ 4092.2	4092.2	135.4	0.0	0.0	✓ 135.4
24	✓ 4115.0	4115.0	74.4	0.0	0.0	✓ 74.4
25	✓ 5185.7	5185.7	74.4	0.0	0.0	✓ 74.4
26	✓ 4004.2	4004.2	74.3	0.0	0.0	✓ 74.3
27	✓ 5257.4	5257.4	138.6	0.0	0.0	✓ 138.6
28	✓ 4409.1	4409.1	137.7	0.0	0.0	✓ 137.7
29	✓ 5031.0	5031.0	135.7	0.0	0.0	✓ 135.7
30	✓ 3082.3	1670.2	73.3	1412.1	74.9	✓ 74.9
31	✓ 0.0					
<b>Total</b>	114505.9	113093.8		1412.1		
<b>Average</b>	3816.9	3769.8	87.0	47.1	2.5	87.1
<b>Maximum</b>	5257.4	5257.4	138.64	1412.1	74.92	138.64
<b>Date</b>	27-Apr	27-Apr	27-Apr	30-Apr	30-Apr	27-Apr
<b>Minimum</b>	2721.0	1670.2	73.27	0.0	0.00	74.12
<b>Date</b>	6-Apr	30-Apr	30-Apr	15-Apr	1-Apr	14-Apr

Notes:


# Low Lift Monthly Report

Month: **April-18**



Date	Raw Water Chlorine Residual			Raw Water pH		
	AIT_1401_CL (mg/L)			AIT_1401_PH		
	Maximum	Minimum	Average	Maximum	Minimum	Average
1	0.26	0.00	0.05	8.15	8.00	8.08
2	0.26	0.00	0.10	8.67	7.99	8.07
3	0.28	0.00	0.11	8.09	8.00	8.03
4	0.16	0.00	0.02	8.57	7.99	8.11
5	0.19	0.00	0.07	8.11	8.02	8.06
6	0.19	0.00	0.04	8.57	7.98	8.08
7	0.19	0.00	0.03	8.15	8.02	8.10
8	0.22	0.00	0.07	8.12	8.02	8.07
9	0.20	0.00	0.05	8.15	8.00	8.06
10	0.28	0.00	0.10	8.11	7.99	8.04
11	0.39	0.00	0.13	8.10	7.99	8.03
12	0.14	0.00	0.04	8.14	8.00	8.06
13	0.20	0.00	0.07	8.14	8.02	8.07
14	0.14	0.00	0.03	8.12	8.00	8.04
15	0.08	0.00	0.01	8.12	8.00	8.05
16	0.17	0.00	0.05	8.15	7.95	8.08
17	0.44	0.00	0.05	8.19	8.03	8.10
18	0.52	0.00	0.10	8.14	8.00	8.07
19	0.38	0.00	0.06	8.15	7.99	8.08
20	0.82	0.02	0.23	8.14	7.98	8.06
21	0.50	0.00	0.14	8.16	7.99	8.07
22	1.90	0.00	0.19	8.14	7.89	8.06
23	0.22	0.00	0.02	8.24	8.03	8.11
24	0.11	0.00	0.05	8.11	8.03	8.08
25	0.14	0.00	0.07	8.13	8.03	8.08
26	0.12	0.00	0.05	8.16	8.03	8.10
27	0.20	0.00	0.05	8.16	8.07	8.10
28	0.20	0.00	0.05	8.19	8.07	8.12
29	0.18	0.00	0.09	8.19	8.07	8.12
30	0.55	0.00	0.07	8.18	7.79	8.12
Total						
Average	0.32	0.00	0.07	8.19	8.00	8.08
Maximum	1.90		0.23	8.67		8.12
Date	22-Apr		20-Apr	2-Apr		29-Apr
Minimum		0.00	0.01		7.79	8.03
Date		1-Apr	15-Apr		30-Apr	3-Apr

Notes:

---



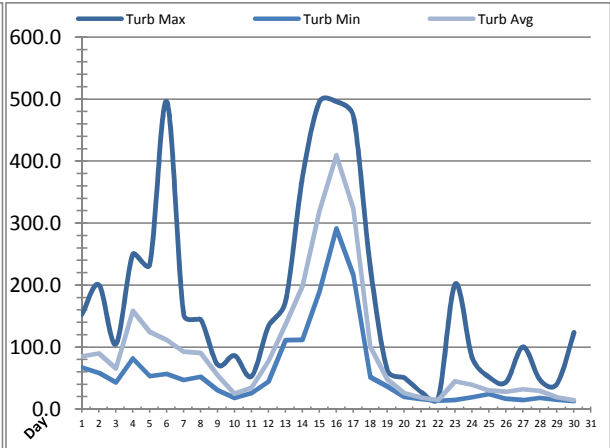
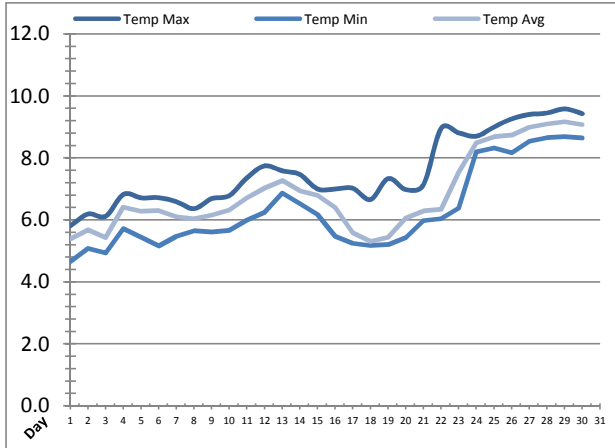
---



---

# Low Lift Monthly Report

Month: April-18



Date	Raw Water Temperature			Raw Water Turbidity		
	TIT_1403 (°C)			AIT_1404 (NTU)		
	Maximum	Minimum	Average	Maximum	Minimum	Average
1	5.8	4.7	5.4	153.08	67.05	85.13
2	6.2	5.1	5.7	200.44	58.54	89.94
3	6.1	4.9	5.4	105.00	42.99	65.61
4	6.8	5.7	6.4	249.99	81.77	158.84
5	6.7	5.4	6.3	233.73	53.11	124.66
6	6.7	5.2	6.3	496.15	56.98	111.79
7	6.6	5.5	6.1	152.29	46.90	92.64
8	6.4	5.7	6.0	144.52	52.31	90.24
9	6.7	5.6	6.2	71.72	30.62	54.50
10	6.8	5.7	6.3	86.44	18.20	24.82
11	7.4	6.0	6.7	53.12	25.94	34.86
12	7.7	6.2	7.0	134.51	44.55	77.69
13	7.6	6.9	7.3	174.01	111.24	136.64
14	7.5	6.5	6.9	374.51	111.87	198.50
15	7.0	6.2	6.8	496.07	189.30	319.91
16	7.0	5.5	6.4	496.18	291.02	409.60
17	7.0	5.2	5.6	473.00	216.64	323.05
18	6.7	5.2	5.3	228.28	51.52	100.94
19	7.3	5.2	5.4	63.18	36.81	48.36
20	7.0	5.4	6.1	50.75	19.75	26.03
21	7.1	6.0	6.3	27.55	15.91	18.78
22	9.0	6.0	6.3	17.49	13.54	14.80
23	8.8	6.4	7.5	201.95	14.33	45.15
24	8.7	8.2	8.5	83.42	19.02	39.54
25	9.0	8.3	8.7	51.60	24.44	29.86
26	9.3	8.2	8.7	43.93	16.70	28.01
27	9.4	8.5	9.0	100.43	14.35	32.19
28	9.4	8.7	9.1	47.00	18.23	29.49
29	9.6	8.7	9.2	40.76	15.15	19.46
30	9.4	8.6	9.1	123.74	12.88	14.43
Total						
Average	7.6	6.3	6.9	172.5	59.1	94.8
Maximum	9.6		9.2	496.2		409.6
Date	29-Apr		29-Apr	16-Apr		16-Apr
Minimum		4.7	5.3		12.9	14.4
Date		1-Apr	18-Apr		30-Apr	30-Apr

Notes:

---



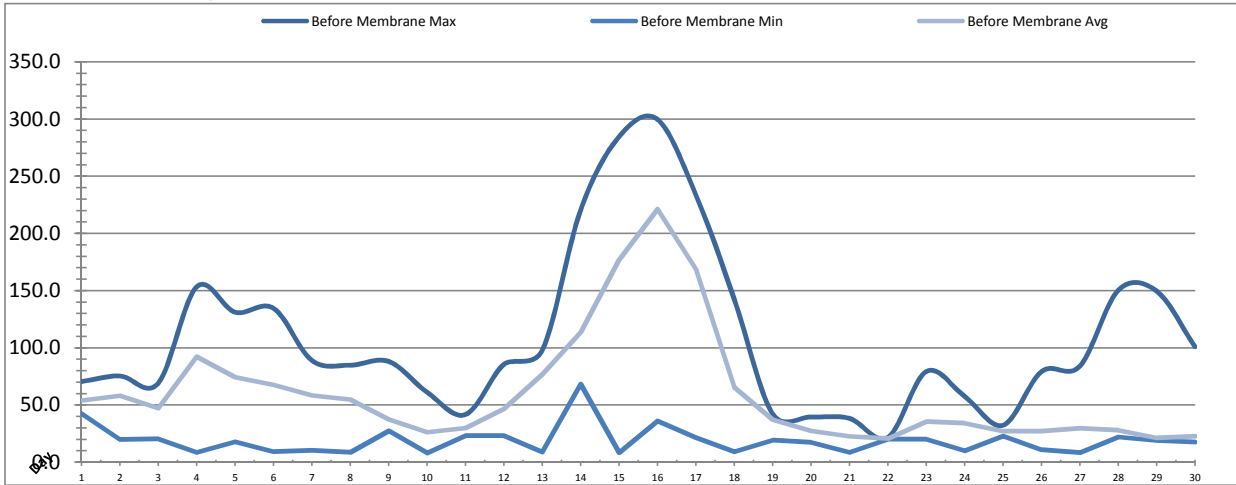
---



---

# Membranes Monthly Report

Month: April-18



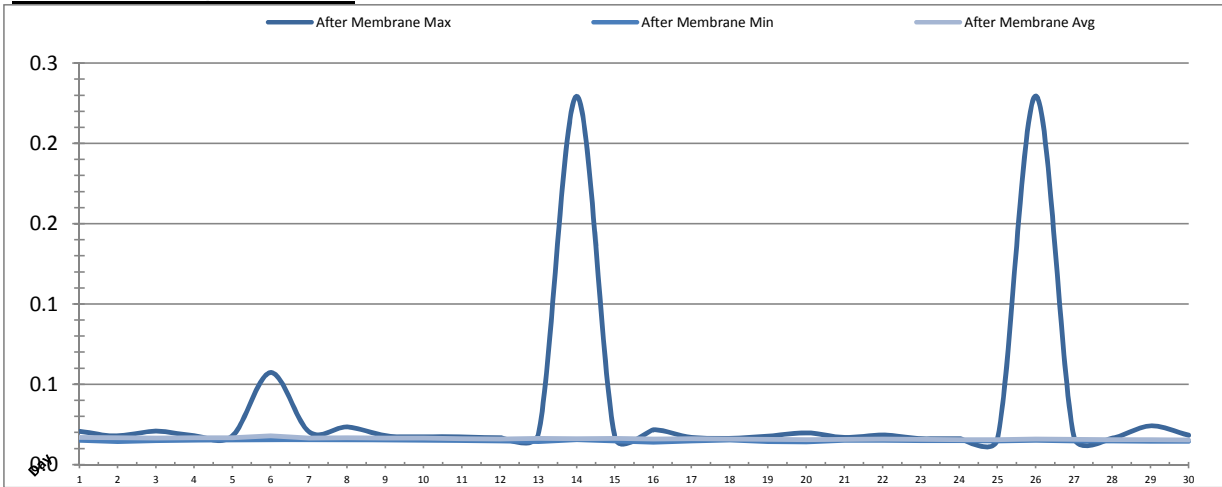
Date	Turbidity Before Membrane			Rack #1 Turbidity			Rack #2 Turbidity		
	PALL_FEED_AIT2006_Value NTU			RACK1_NTU_Value NTU			RACK2_NTU_Value NTU		
	Maximum	Minimum	Average	Maximum	Minimum	Average	Maximum	Minimum	Average
1	70.64	42.57	54.05	0.02	0.02	0.02	0.45	0.02	0.02
2	75.53	19.84	58.33	0.02	0.02	0.02	0.43	0.02	0.02
3	69.19	20.31	47.15	0.02	0.02	0.02	0.03	0.02	0.02
4	153.46	8.75	92.28	0.02	0.02	0.02	0.03	0.02	0.02
5	131.18	17.86	74.50	0.02	0.02	0.02	0.07	0.02	0.02
6	134.69	9.28	67.64	0.06	0.02	0.02	0.09	0.02	0.02
7	89.05	10.44	58.38	0.02	0.02	0.02	0.16	0.02	0.02
8	84.95	8.65	54.76	0.02	0.02	0.02	0.13	0.02	0.02
9	88.27	27.42	37.62	0.08	0.02	0.02	0.06	0.02	0.02
10	61.28	8.20	26.18	0.02	0.02	0.02	0.13	0.02	0.02
11	41.73	23.12	29.81	0.02	0.02	0.02	0.06	0.02	0.02
12	85.62	23.28	46.68	0.02	0.02	0.02	0.04	0.02	0.02
13	97.97	8.99	76.91	0.02	0.02	0.02	0.13	0.02	0.02
14	220.73	68.40	113.54	0.02	0.02	0.02	0.12	0.02	0.02
15	284.66	8.48	177.08	0.02	0.02	0.02	0.02	0.02	0.02
16	299.75	36.11	221.20	0.02	0.02	0.02	0.04	0.02	0.02
17	233.74	21.69	168.68	0.02	0.02	0.02	0.12	0.02	0.02
18	142.52	9.14	65.52	0.02	0.02	0.02	0.02	0.02	0.02
19	42.18	19.41	37.25	0.02	0.02	0.02	0.14	0.02	0.02
20	39.69	17.47	27.38	0.02	0.02	0.02	0.03	0.02	0.02
21	38.39	8.59	22.67	0.02	0.02	0.02	0.14	0.02	0.02
22	21.79	20.14	20.70	0.02	0.02	0.02	0.10	0.02	0.02
23	79.38	20.27	35.47	0.02	0.02	0.02	0.14	0.02	0.02
24	57.61	9.97	34.20	0.02	0.02	0.02	0.04	0.02	0.02
25	32.40	23.06	27.09	0.02	0.02	0.02	0.11	0.02	0.02
26	79.36	11.01	27.05	0.02	0.02	0.02	0.21	0.02	0.02
27	84.09	8.48	29.67	0.02	0.02	0.02	0.13	0.02	0.02
28	150.40	22.08	27.91	0.02	0.02	0.02	0.14	0.02	0.02
29	149.65	18.98	21.30	0.03	0.02	0.02	0.14	0.02	0.02
30	101.05	17.70	22.66	0.02	0.02	0.02	0.04	0.02	0.02
Total									
Average	108.0	19.0	60.1	0.0	0.0	0.0	0.1	0.0	0.0
Maximum	299.8		221.2	0.1		0.0	0.4		0.0
Date	16-Apr		16-Apr	9-Apr		6-Apr	1-Apr		2-Apr
Minimum		8.2	20.7		0.0	0.0		0.0	0.0
Date		10-Apr	22-Apr		30-Apr	25-Apr		1-Apr	4-Apr

**Notes:**

Rack 2 turbidity spikes after IT

# Membranes Monthly Report

Month: **April-18**



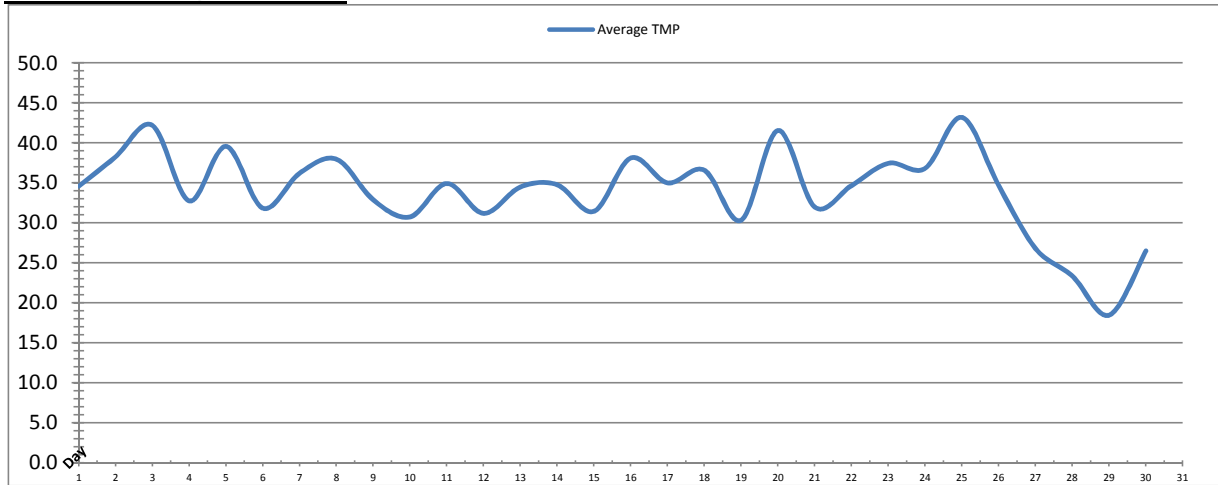
Date	Rack #3 Turbidity			Rack #4 Turbidity			Turbidity After Membranes		
	RACK3_NTU_Value			RACK4_NTU_Value			PALL_FILT_AIT5001_Value		
	Maximum	Minimum	Average	Maximum	Minimum	Average	Maximum	Minimum	Average
1	0.02	0.02	0.02	0.03	0.03	0.03	0.02	0.02	0.02
2	0.02	0.02	0.02	0.04	0.03	0.03	0.02	0.01	0.02
3	0.04	0.02	0.02	0.05	0.03	0.03	0.02	0.01	0.02
4	0.02	0.02	0.02	0.04	0.03	0.03	0.02	0.02	0.02
5	0.02	0.02	0.02	0.04	0.03	0.03	0.02	0.02	0.02
6	0.17	0.02	0.02	0.38	0.03	0.04	0.06	0.02	0.02
7	0.02	0.02	0.02	0.13	0.03	0.03	0.02	0.02	0.02
8	0.02	0.02	0.02	0.04	0.03	0.03	0.02	0.02	0.02
9	0.02	0.02	0.02	0.06	0.03	0.03	0.02	0.02	0.02
10	0.02	0.02	0.02	0.04	0.03	0.03	0.02	0.02	0.02
11	0.02	0.02	0.02	0.05	0.03	0.03	0.02	0.01	0.02
12	0.02	0.02	0.02	0.08	0.03	0.03	0.02	0.01	0.02
13	0.02	0.02	0.02	0.04	0.03	0.03	0.02	0.01	0.02
14	0.02	0.02	0.02	0.03	0.03	0.03	0.23	0.02	0.02
15	0.02	0.02	0.02	0.03	0.03	0.03	0.02	0.01	0.02
16	0.02	0.02	0.02	0.03	0.03	0.03	0.02	0.01	0.02
17	0.07	0.02	0.02	0.04	0.03	0.03	0.02	0.01	0.02
18	0.02	0.02	0.02	0.03	0.03	0.03	0.02	0.02	0.02
19	0.02	0.02	0.02	0.03	0.03	0.03	0.02	0.01	0.02
20	0.02	0.02	0.02	0.03	0.03	0.03	0.02	0.01	0.02
21	0.02	0.02	0.02	0.03	0.03	0.03	0.02	0.02	0.02
22	0.02	0.02	0.02	0.03	0.03	0.03	0.02	0.02	0.02
23	0.05	0.02	0.02	0.04	0.03	0.03	0.02	0.01	0.02
24	0.02	0.02	0.02	0.03	0.03	0.03	0.02	0.01	0.02
25	0.02	0.02	0.02	0.03	0.03	0.03	0.02	0.01	0.02
26	0.02	0.02	0.02	0.04	0.03	0.03	0.23	0.02	0.02
27	0.02	0.02	0.02	0.03	0.03	0.03	0.02	0.01	0.02
28	0.02	0.02	0.02	0.03	0.03	0.03	0.02	0.01	0.02
29	0.02	0.02	0.02	0.03	0.03	0.03	0.02	0.01	0.02
30	0.08	0.02	0.02	0.03	0.03	0.03	0.02	0.01	0.02
Total									
Average	0.0	0.0	0.0	0.1	0.0	0.0	0.0	0.0	0.0
Maximum	0.2		0.0	0.4		0.0	0.2		0.0
Date	6-Apr		25-Apr	6-Apr		6-Apr	26-Apr		6-Apr
Minimum		0.0	0.0		0.0	0.0		0.0	0.0
Date		1-Apr	22-Apr		6-Apr	30-Apr		16-Apr	30-Apr

**Notes:**

Rack 3 and 4 spikes after IT.

# Membranes Monthly Report

Month: **April-18**



Date	Integrity Test Rack 1							
	Initial Pressure (kPa)	Final Pressure (kPa)	Test Duration (sec)	Change in Pressure (kPa)	UCL	Within UCL	Average TMP (kPa)	Max TMP (kPa)
1	199.5	198.2	300.0	1.3	2.0	✓ 2.0	34.6	117.3
2	199.2	197.9	300.0	1.2	2.0	✓ 2.0	38.3	94.4
3	199.2	197.9	300.0	1.3	2.0	✓ 2.0	42.2	189.6
4	199.6	198.3	300.0	1.3	2.0	✓ 2.0	32.8	149.2
5	199.5	198.2	300.0	1.3	2.0	✓ 2.0	39.6	92.9
6	199.7	198.3	300.0	1.3	2.0	✓ 2.0	31.8	181.1
7	199.4	198.0	300.0	1.3	2.0	✓ 2.0	36.2	94.0
8	199.2	197.9	300.0	1.3	2.0	✓ 2.0	38.0	95.8
9	199.2	197.9	300.0	1.3	2.0	✓ 2.0	32.9	166.5
10	199.4	198.0	300.0	1.4	2.0	✓ 2.0	30.7	129.0
11	199.4	198.1	300.0	1.3	2.0	✓ 2.0	34.9	74.7
12	199.3	198.1	300.0	1.3	2.0	✓ 2.0	31.2	133.3
13	199.2	197.9	300.0	1.3	2.0	✓ 2.0	34.5	120.2
14	199.4	198.2	300.0	1.2	2.0	✓ 2.0	34.8	82.0
15	199.4	198.2	300.0	1.2	2.0	✓ 2.0	31.5	70.2
16	199.7	198.3	300.0	1.3	2.0	✓ 2.0	38.1	275.3
17	199.7	198.3	300.0	1.4	2.0	✓ 2.0	35.0	114.1
18	198.9	197.6	300.0	1.3	2.0	✓ 2.0	36.6	79.2
19	199.1	197.8	300.0	1.3	2.0	✓ 2.0	30.3	81.6
20	199.4	198.0	300.0	1.4	2.0	✓ 2.0	41.6	160.3
21	198.7	197.5	300.0	1.2	2.0	✓ 2.0	32.0	124.6
22	199.2	197.9	300.0	1.3	2.0	✓ 2.0	34.7	135.2
23	199.2	197.9	300.0	1.3	2.0	✓ 2.0	37.5	222.7
24	199.5	198.3	300.0	1.3	2.0	✓ 2.0	36.8	155.9
25	199.3	198.1	300.0	1.3	2.0	✓ 2.0	43.2	82.5
26	198.8	197.6	300.0	1.3	2.0	✓ 2.0	34.7	82.0
27	199.0	197.8	300.0	1.2	2.0	✓ 2.0	26.8	96.3
28	198.7	197.6	300.0	1.1	2.0	✓ 2.0	23.4	94.9
29	198.8	197.5	300.0	1.3	2.0	✓ 2.0	18.5	89.1
30	198.7	197.6	300.0	1.1	2.0	✓ 2.0	26.5	149.2
Total								
Average	199.2	198.0	300.0	1.3	2.0	2.0	34.0	124.4
Maximum	199.7	198.3	300.0	1.4	2.0	2.0	43.2	275.3
Date	17-Apr	6-Apr	1-Apr	10-Apr	1-Apr	1-Apr	25-Apr	16-Apr
Minimum	198.7	197.5	300.0	1.1	2.0	2.0	18.5	70.2
Date	21-Apr	21-Apr	1-Apr	28-Apr	1-Apr	1-Apr	29-Apr	15-Apr

Notes:

---



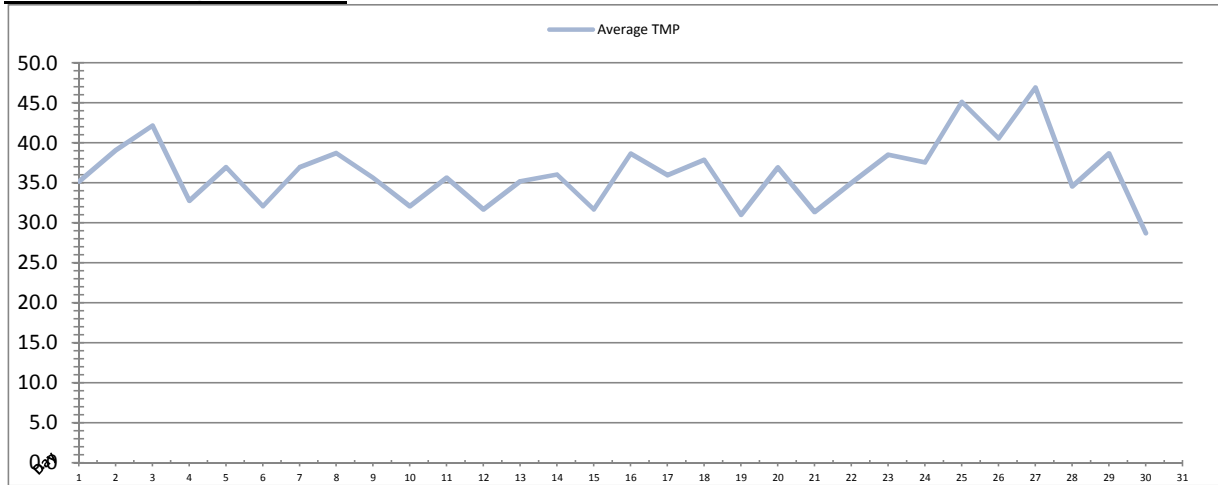
---



---

# Membranes Monthly Report

Month: **April-18**



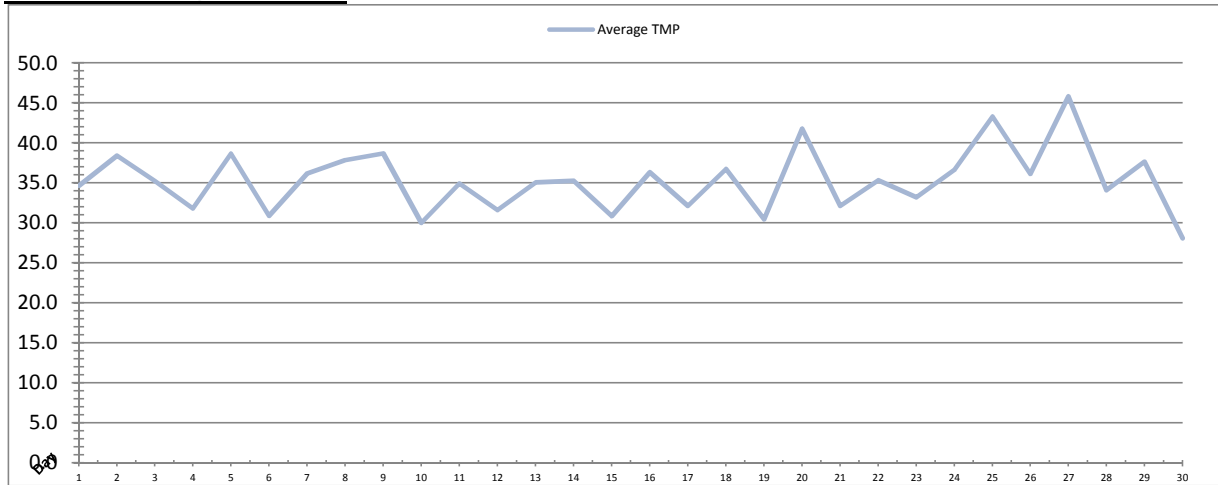
Date	Integrity Test Rack 2							
	Initial Pressure (kPa)	Final Pressure (kPa)	Test Duration (sec)	Change in Pressure (kPa)	UCL	Within UCL	Average TMP (kPa)	Max TMP (kPa)
1	208.1	206.9	300.0	1.2	2.0	✓ 2.0	35.2	90.2
2	207.9	206.8	300.0	1.1	2.0	✓ 2.0	39.1	96.2
3	207.9	206.7	300.0	1.2	2.0	✓ 2.0	42.2	183.1
4	208.1	206.8	300.0	1.3	2.0	✓ 2.0	32.8	94.3
5	207.9	206.7	300.0	1.2	2.0	✓ 2.0	37.0	94.0
6	208.0	206.7	300.0	1.3	2.0	✓ 2.0	32.1	92.9
7	207.8	206.5	300.0	1.3	2.0	✓ 2.0	37.0	94.9
8	208.1	206.9	300.0	1.2	2.0	✓ 2.0	38.7	97.8
9	207.9	206.6	300.0	1.3	2.0	✓ 2.0	35.6	133.4
10	207.8	206.5	300.0	1.3	2.0	✓ 2.0	32.1	246.7
11	207.8	206.6	300.0	1.3	2.0	✓ 2.0	35.6	76.1
12	207.8	206.6	300.0	1.2	2.0	✓ 2.0	31.7	78.4
13	207.8	206.6	300.0	1.2	2.0	✓ 2.0	35.2	79.3
14	207.8	206.6	300.0	1.2	2.0	✓ 2.0	36.0	128.2
15	207.8	206.6	300.0	1.2	2.0	✓ 2.0	31.7	77.2
16	208.1	206.8	300.0	1.3	2.0	✓ 2.0	38.6	288.3
17	207.9	206.7	300.0	1.2	2.0	✓ 2.0	36.0	170.7
18	207.6	206.5	300.0	1.1	2.0	✓ 2.0	37.9	81.0
19	207.9	206.7	300.0	1.2	2.0	✓ 2.0	31.0	126.9
20	207.9	206.7	300.0	1.2	2.0	✓ 2.0	36.9	129.1
21	207.9	206.9	300.0	1.0	2.0	✓ 2.0	31.4	72.7
22	207.8	206.6	300.0	1.3	2.0	✓ 2.0	35.0	76.1
23	208.0	206.9	300.0	1.1	2.0	✓ 2.0	38.5	252.3
24	207.9	206.7	300.0	1.1	2.0	✓ 2.0	37.6	82.5
25	208.2	207.0	300.0	1.2	2.0	✓ 2.0	45.1	126.6
26	208.1	206.9	300.0	1.1	2.0	✓ 2.0	40.6	155.1
27	208.2	207.0	300.0	1.1	2.0	✓ 2.0	46.9	276.5
28	208.3	207.2	300.0	1.2	2.0	✓ 2.0	34.6	97.2
29	208.3	207.2	300.0	1.1	2.0	✓ 2.0	38.7	139.7
30	207.8	206.8	300.0	1.1	2.0	✓ 2.0	28.7	81.3
Total								
Average	208.0	206.8	300.0	1.2	2.0	2.0	36.3	127.3
Maximum	208.3	207.2	300.0	1.3	2.0	2.0	46.9	288.3
Date	28-Apr	28-Apr	1-Apr	10-Apr	1-Apr	1-Apr	27-Apr	16-Apr
Minimum	207.6	206.5	300.0	1.0	2.0	2.0	28.7	72.7
Date	18-Apr	7-Apr	1-Apr	21-Apr	1-Apr	1-Apr	30-Apr	21-Apr

Notes:



# Membranes Monthly Report

Month: **April-18**



Date	Integrity Test Rack 3							
	Initial Pressure (kPa)	Final Pressure (kPa)	Test Duration (sec)	Change in Pressure (kPa)	UCL	Within UCL	Average TMP (kPa)	Max TMP (kPa)
1	193.0	191.8	300.0	1.2	2.0	✓ 2.0	34.6	86.3
2	193.2	192.0	300.0	1.3	2.0	✓ 2.0	38.4	89.7
3	192.8	191.5	300.0	1.3	2.0	✓ 2.0	35.3	147.7
4	193.4	192.1	300.0	1.3	2.0	✓ 2.0	31.8	78.1
5	193.1	191.8	300.0	1.3	2.0	✓ 2.0	38.6	126.6
6	192.3	191.7	300.0	0.7	2.0	✓ 2.0	30.9	86.4
7	192.8	191.6	300.0	1.2	2.0	✓ 2.0	36.2	83.5
8	192.6	191.2	300.0	1.5	2.0	✓ 2.0	37.8	89.5
9	192.5	191.2	300.0	1.3	2.0	✓ 2.0	38.7	176.4
10	193.4	192.0	300.0	1.4	2.0	✓ 2.0	30.0	108.7
11	193.2	192.0	300.0	1.2	2.0	✓ 2.0	34.9	118.3
12	193.2	192.0	300.0	1.3	2.0	✓ 2.0	31.6	72.3
13	192.8	191.6	300.0	1.2	2.0	✓ 2.0	35.1	77.0
14	193.4	192.2	300.0	1.2	2.0	✓ 2.0	35.2	79.1
15	193.4	192.2	300.0	1.2	2.0	✓ 2.0	30.9	75.3
16	193.4	192.0	300.0	1.4	2.0	✓ 2.0	36.3	236.9
17	192.6	191.3	300.0	1.3	2.0	✓ 2.0	32.1	76.6
18	193.2	192.0	300.0	1.3	2.0	✓ 2.0	36.7	123.8
19	193.4	192.1	300.0	1.3	2.0	✓ 2.0	30.4	75.8
20	192.8	191.5	300.0	1.3	2.0	✓ 2.0	41.8	153.4
21	193.3	192.1	300.0	1.1	2.0	✓ 2.0	32.1	78.8
22	193.6	192.3	300.0	1.3	2.0	✓ 2.0	35.3	78.7
23	192.5	191.8	300.0	0.7	2.0	✓ 2.0	33.2	149.5
24	193.2	192.0	300.0	1.2	2.0	✓ 2.0	36.6	73.2
25	192.3	191.6	300.0	0.7	2.0	✓ 2.0	43.3	77.4
26	192.7	191.5	300.0	1.2	2.0	✓ 2.0	36.1	137.5
27	194.1	193.0	300.0	1.2	2.0	✓ 2.0	45.8	215.7
28	193.8	192.5	300.0	1.3	2.0	✓ 2.0	34.1	107.4
29	192.1	191.3	300.0	0.8	2.0	✓ 2.0	37.6	132.8
30	193.1	191.9	300.0	1.2	2.0	✓ 2.0	28.1	129.2
Total								
Average	193.0	191.9	300.0	1.2	2.0	2.0	35.3	111.4
Maximum	194.1	193.0	300.0	1.5	2.0	2.0	45.8	236.9
Date	27-Apr	27-Apr	1-Apr	8-Apr	1-Apr	1-Apr	27-Apr	16-Apr
Minimum	192.1	191.2	300.0	0.7	2.0	2.0	28.1	72.3
Date	29-Apr	8-Apr	1-Apr	6-Apr	1-Apr	1-Apr	30-Apr	12-Apr

Notes:

---



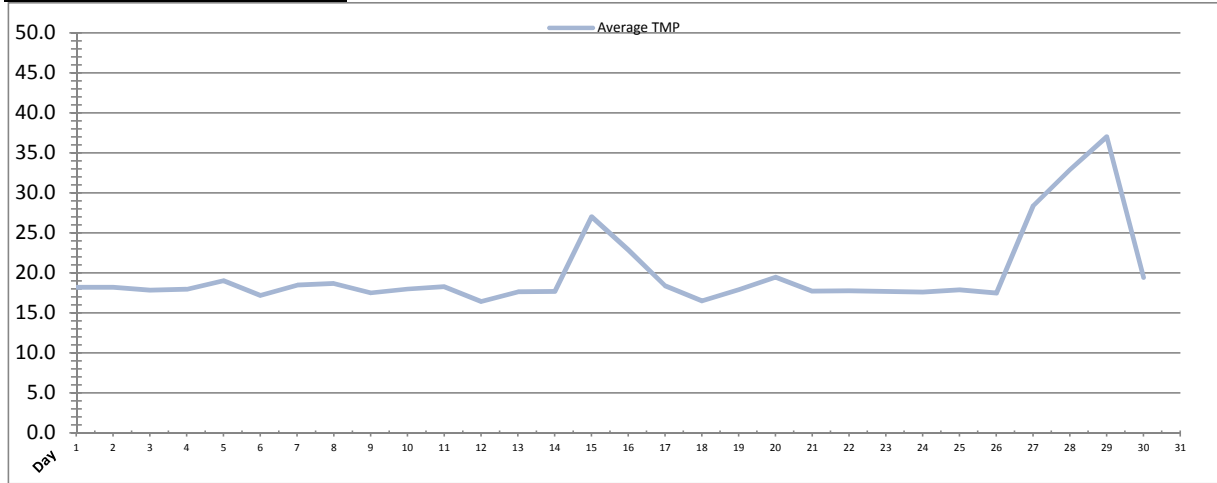
---



---

# Membranes Monthly Report

Month: **April-18**



Date	Integrity Test Rack 4							
	Initial Pressure (kPa)	Final Pressure (kPa)	Test Duration (sec)	Change in Pressure (kPa)	UCL	Within UCL	Average TMP (kPa)	Max TMP (kPa)
1	200.4	198.9	300.0	1.5	2.0	✓ 2.0	18.2	50.4
2	201.1	199.9	300.0	1.2	2.0	✓ 2.0	18.2	42.2
3	200.9	199.5	300.0	1.3	2.0	✓ 2.0	17.8	55.3
4	201.2	199.8	300.0	1.4	2.0	✓ 2.0	17.9	55.0
5	200.6	199.2	300.0	1.4	2.0	✓ 2.0	19.1	49.5
6	201.3	199.8	300.0	1.5	2.0	✓ 2.0	17.2	40.5
7	200.9	199.6	300.0	1.3	2.0	✓ 2.0	18.5	50.9
8	200.7	199.3	300.0	1.4	2.0	✓ 2.0	18.7	42.3
9	200.8	199.7	300.0	1.2	2.0	✓ 2.0	17.5	50.0
10	200.9	199.5	300.0	1.4	2.0	✓ 2.0	18.0	40.9
11	201.1	199.7	300.0	1.3	2.0	✓ 2.0	18.3	40.3
12	201.1	199.7	300.0	1.4	2.0	✓ 2.0	16.4	44.8
13	200.8	199.7	300.0	1.2	2.0	✓ 2.0	17.6	39.3
14	201.1	199.8	300.0	1.3	2.0	✓ 2.0	17.7	40.6
15	201.9	200.5	300.0	1.4	2.0	✓ 2.0	27.1	55.8
16	201.6	200.2	300.0	1.4	2.0	✓ 2.0	22.9	140.9
17	201.0	199.5	300.0	1.5	2.0	✓ 2.0	18.4	44.6
18	200.6	199.5	300.0	1.1	2.0	✓ 2.0	16.5	41.4
19	201.1	199.7	300.0	1.4	2.0	✓ 2.0	17.9	40.5
20	200.8	199.5	300.0	1.3	2.0	✓ 2.0	19.5	53.3
21	201.0	199.7	300.0	1.3	2.0	✓ 2.0	17.7	42.5
22	200.8	199.8	300.0	1.1	2.0	✓ 2.0	17.8	39.1
23	200.8	199.5	300.0	1.3	2.0	✓ 2.0	17.7	36.6
24	200.7	199.3	300.0	1.3	2.0	✓ 2.0	17.6	43.0
25	200.8	200.0	300.0	0.9	2.0	✓ 2.0	17.9	38.5
26	200.7	199.5	300.0	1.2	2.0	✓ 2.0	17.5	47.1
27	200.7	199.5	300.0	1.3	2.0	✓ 2.0	28.4	115.3
28	201.0	199.7	300.0	1.3	2.0	✓ 2.0	32.9	102.0
29	201.0	199.7	300.0	1.2	2.0	✓ 2.0	37.1	111.5
30	200.9	199.8	300.0	1.1	2.0	✓ 2.0	19.5	65.6
Total								
Average	200.9	199.7	300.0	1.3	2.0	2.0	19.9	55.3
Maximum	201.9	200.5	300.0	1.5	2.0	2.0	37.1	140.9
Date	15-Apr	15-Apr	1-Apr	17-Apr	1-Apr	1-Apr	29-Apr	16-Apr
Minimum	200.4	198.9	300.0	0.9	2.0	2.0	16.4	36.6
Date	1-Apr	1-Apr	1-Apr	25-Apr	1-Apr	1-Apr	12-Apr	23-Apr

Notes:

---



---



---

# Membranes Monthly Report

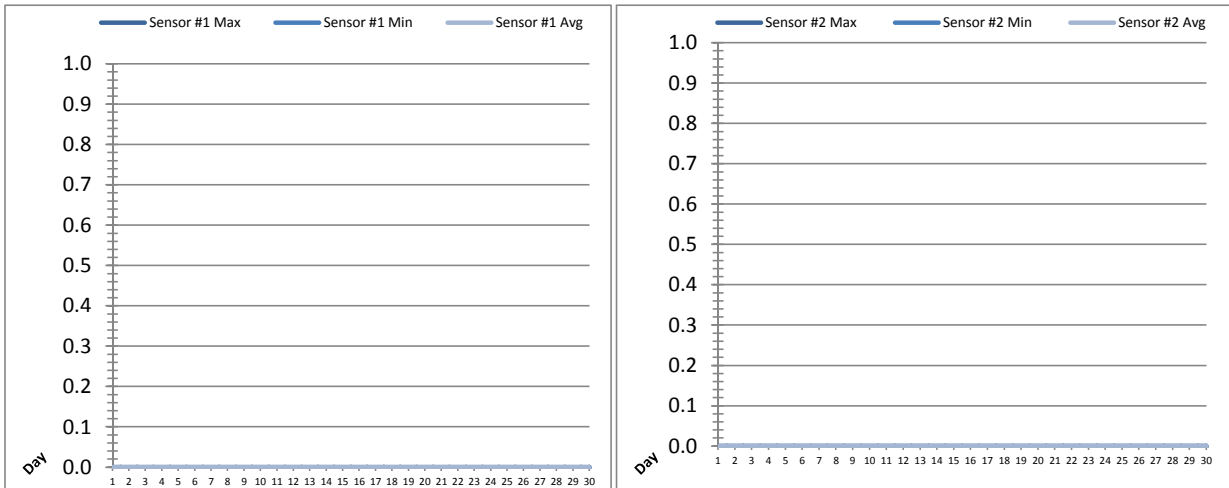
Month: April-18

Date	Membranes Monthly Performance							
	Rack 1 >0.1 NTU (Minutes)	Rack 1 Forward Flow (Minutes)	Rack 2 >0.1 NTU (Minutes)	Rack 2 Forward Flow (Minutes)	Rack 3 >0.1 NTU (Minutes)	Rack 3 Forward Flow (Minutes)	Rack 4 >0.1 NTU (Minutes)	Rack 4 Forward Flow (Minutes)
1	0.0	716.4	2.3	725.4	0.0	709.3	0.0	429.2
2	0.0	784.5	2.3	799.4	0.0	779.0	0.0	447.3
3	0.0	844.3	0.0	833.5	0.0	720.2	0.0	464.5
4	0.0	676.2	0.0	680.3	0.0	662.4	0.0	417.1
5	0.0	879.5	0.0	858.4	0.0	865.1	0.0	527.1
6	0.0	605.5	0.0	608.0	4.0	592.4	13.0	341.1
7	0.0	754.3	0.5	764.2	0.0	743.5	4.5	454.0
8	0.0	774.3	0.5	790.1	0.0	766.3	0.0	453.5
9	0.0	658.5	0.0	721.3	0.0	770.3	0.0	407.2
10	0.0	707.4	0.5	719.1	0.0	700.2	0.0	447.3
11	0.0	920.2	0.0	921.6	0.0	912.6	0.0	560.5
12	0.0	718.1	0.0	724.4	0.0	711.4	0.0	433.1
13	0.0	802.1	1.4	815.6	0.0	803.4	0.0	478.2
14	0.0	836.4	0.5	852.2	0.0	836.5	0.0	475.1
15	0.0	973.2	0.0	975.6	0.0	970.6	0.0	885.1
16	0.0	1084.6	0.0	1075.1	0.0	1030.1	0.0	766.4
17	0.0	836.3	0.5	853.3	0.0	773.4	0.0	489.5
18	0.0	941.4	0.0	953.5	0.0	935.6	0.0	573.0
19	0.0	628.3	0.5	634.2	0.0	621.1	0.0	379.3
20	0.0	1010.0	0.0	906.3	0.0	1005.6	0.0	571.3
21	0.0	733.4	0.5	738.5	0.0	731.1	0.0	403.1
22	0.0	831.0	0.0	849.5	0.0	835.1	0.0	481.5
23	0.0	842.2	0.5	865.3	0.0	780.3	0.0	554.3
24	0.0	916.4	0.0	934.3	0.0	911.1	0.0	522.1
25	0.0	1137.5	1.3	1174.5	0.0	1144.1	0.0	701.2
26	0.0	782.4	1.4	901.1	0.0	864.2	0.0	505.2
27	0.0	489.4	0.5	1040.1	0.0	1007.5	0.0	706.2
28	0.0	413.4	1.4	855.2	0.0	840.4	0.0	829.1
29	0.0	275.3	0.5	1094.1	0.0	1074.3	0.0	1063.1
30	0.0	539.2	0.0	689.4	0.0	641.2	0.0	446.1
Total	0.0	23111.5	14.9	25353.4	4.0	24738.1	17.6	16211.9
Percent	0.0		0.1		0.0		0.1	
Maximum	0.0	1137.5	2.3	1174.5	4.0	1144.1	13.0	1063.1
Date	1-Apr	25-Apr	2-Apr	25-Apr	6-Apr	25-Apr	6-Apr	29-Apr
Minimum	0.0	275.3	0.0	608.0	0.0	592.4	0.0	341.1
Date	1-Apr	29-Apr	3-Apr	6-Apr	1-Apr	6-Apr	1-Apr	6-Apr

Notes:  
 Met filter performance criteria of 99% of the readings were less than 0.1ntu.

# UV System Monthly Report

Month: **April-18**



Date	UV Reactor 1					
	Intensity Sensor 1 (mW/cm <sup>2</sup> )			Intensity Sensor 2 (mW/cm <sup>2</sup> )		
	Maximum	Minimum	Average	Maximum	Minimum	Average
1	0.0	0.0	0.0	0.0	0.0	0.0
2	0.0	0.0	0.0	0.0	0.0	0.0
3	0.0	0.0	0.0	0.0	0.0	0.0
4	0.0	0.0	0.0	0.0	0.0	0.0
5	0.0	0.0	0.0	0.0	0.0	0.0
6	0.0	0.0	0.0	0.0	0.0	0.0
7	0.0	0.0	0.0	0.0	0.0	0.0
8	0.0	0.0	0.0	0.0	0.0	0.0
9	0.0	0.0	0.0	0.0	0.0	0.0
10	0.0	0.0	0.0	0.0	0.0	0.0
11	0.0	0.0	0.0	0.0	0.0	0.0
12	0.0	0.0	0.0	0.0	0.0	0.0
13	0.0	0.0	0.0	0.0	0.0	0.0
14	0.0	0.0	0.0	0.0	0.0	0.0
15	0.0	0.0	0.0	0.0	0.0	0.0
16	0.0	0.0	0.0	0.0	0.0	0.0
17	0.0	0.0	0.0	0.0	0.0	0.0
18	0.0	0.0	0.0	0.0	0.0	0.0
19	0.0	0.0	0.0	0.0	0.0	0.0
20	0.0	0.0	0.0	0.0	0.0	0.0
21	0.0	0.0	0.0	0.0	0.0	0.0
22	0.0	0.0	0.0	0.0	0.0	0.0
23	0.0	0.0	0.0	0.0	0.0	0.0
24	0.0	0.0	0.0	0.0	0.0	0.0
25	0.0	0.0	0.0	0.0	0.0	0.0
26	0.0	0.0	0.0	0.0	0.0	0.0
27	0.0	0.0	0.0	0.0	0.0	0.0
28	0.0	0.0	0.0	0.0	0.0	0.0
29	0.0	0.0	0.0	0.0	0.0	0.0
30	0.0	0.0	0.0	0.0	0.0	0.0
Total						
Average	0.0	0.0	0.0	0.0	0.0	0.0
Maximum	0.0		0.0	0.0		0.0
Date	1-Apr		1-Apr	1-Apr		1-Apr
Minimum		0.0	0.0		0.0	0.0
Date		1-Apr	1-Apr		1-Apr	1-Apr

Notes:

---



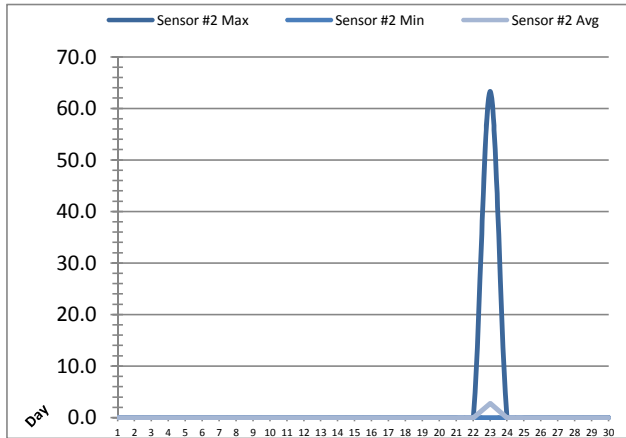
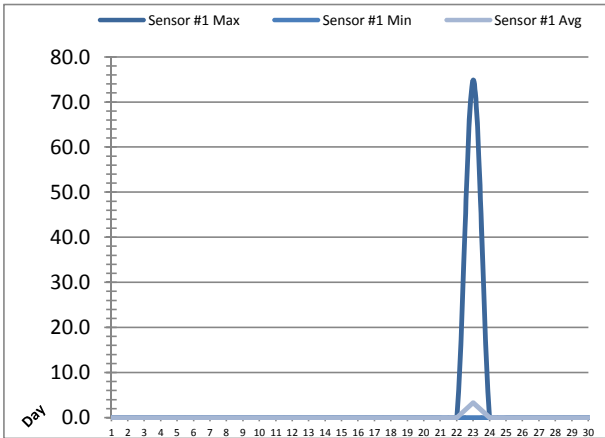
---



---

# UV System Monthly Report

Month: **April-18**



Date	UV Reactor 2					
	Intensity Sensor 1 (mW/cm <sup>2</sup> )			Intensity Sensor 2 (mW/cm <sup>2</sup> )		
	Maximum	Minimum	Average	Maximum	Minimum	Average
1	0.0	0.0	0.0	0.0	0.0	0.0
2	0.0	0.0	0.0	0.0	0.0	0.0
3	0.0	0.0	0.0	0.0	0.0	0.0
4	0.0	0.0	0.0	0.0	0.0	0.0
5	0.0	0.0	0.0	0.0	0.0	0.0
6	0.0	0.0	0.0	0.0	0.0	0.0
7	0.0	0.0	0.0	0.0	0.0	0.0
8	0.0	0.0	0.0	0.0	0.0	0.0
9	0.0	0.0	0.0	0.0	0.0	0.0
10	0.0	0.0	0.0	0.0	0.0	0.0
11	0.0	0.0	0.0	0.0	0.0	0.0
12	0.0	0.0	0.0	0.0	0.0	0.0
13	0.0	0.0	0.0	0.0	0.0	0.0
14	0.0	0.0	0.0	0.0	0.0	0.0
15	0.0	0.0	0.0	0.0	0.0	0.0
16	0.0	0.0	0.0	0.0	0.0	0.0
17	0.0	0.0	0.0	0.0	0.0	0.0
18	0.0	0.0	0.0	0.0	0.0	0.0
19	0.0	0.0	0.0	0.0	0.0	0.0
20	0.0	0.0	0.0	0.0	0.0	0.0
21	0.0	0.0	0.0	0.0	0.0	0.0
22	0.0	0.0	0.0	0.0	0.0	0.0
23	74.9	0.0	3.3	63.3	0.0	2.8
24	0.0	0.0	0.0	0.0	0.0	0.0
25	0.0	0.0	0.0	0.0	0.0	0.0
26	0.0	0.0	0.0	0.0	0.0	0.0
27	0.0	0.0	0.0	0.0	0.0	0.0
28	0.0	0.0	0.0	0.0	0.0	0.0
29	0.0	0.0	0.0	0.0	0.0	0.0
30	0.0	0.0	0.0	0.0	0.0	0.0
Total						
Average	2.5	0.0	0.1	2.1	0.0	0.1
Maximum	74.9		3.3	63.3		2.8
Date	23-Apr		23-Apr	23-Apr		23-Apr
Minimum		0.0	0.0		0.0	0.0
Date		1-Apr	1-Apr		1-Apr	1-Apr

Notes:

---



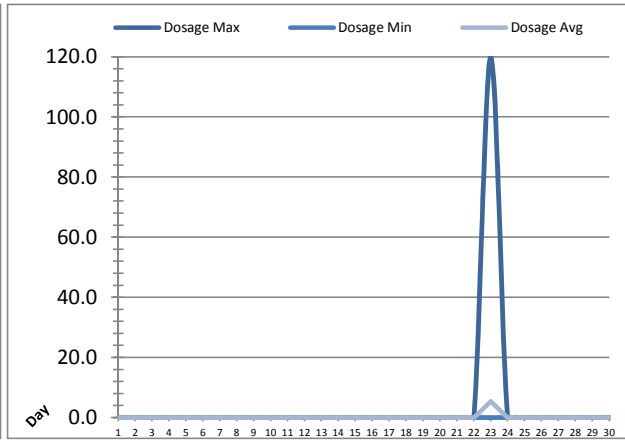
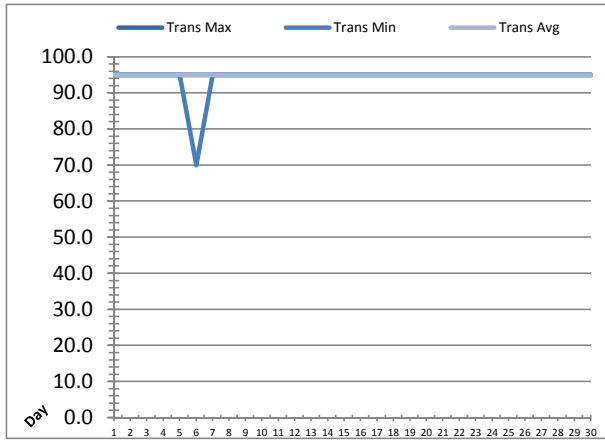
---



---

# UV System Monthly Report

Month: **April-18**



UV System							
Date	Transmittance (%)			Dosage (mJ/cm <sup>2</sup> )			Inlet Flow (L/s)
	Maximum	Minimum	Average	Maximum	Minimum	Average	Maximum
1	95.00	95.00	95.00	0.0	0.0	0.0	95.8
2	95.00	95.00	95.00	0.0	0.0	0.0	96.6
3	95.00	95.00	95.00	0.0	0.0	0.0	98.9
4	95.00	95.00	95.00	0.0	0.0	0.0	95.5
5	95.00	95.00	95.00	0.0	0.0	0.0	100.0
6	95.00	70.00	94.97	0.0	0.0	0.0	95.7
7	95.00	95.00	95.00	0.0	0.0	0.0	96.0
8	95.00	95.00	95.00	0.0	0.0	0.0	96.4
9	95.00	95.00	95.00	0.0	0.0	0.0	97.4
10	95.00	95.00	95.00	0.0	0.0	0.0	159.9
11	95.00	95.00	95.00	0.0	0.0	0.0	97.7
12	95.00	95.00	95.00	0.0	0.0	0.0	94.3
13	95.00	95.00	95.00	0.0	0.0	0.0	96.5
14	95.00	95.00	95.00	0.0	0.0	0.0	106.7
15	95.00	95.00	95.00	0.0	0.0	0.0	91.9
16	95.00	95.00	95.00	0.0	0.0	0.0	94.6
17	95.00	95.00	95.00	0.0	0.0	0.0	96.2
18	95.00	95.00	95.00	0.0	0.0	0.0	99.6
19	95.00	95.00	95.00	0.0	0.0	0.0	95.8
20	95.00	95.00	95.00	0.0	0.0	0.0	105.3
21	95.00	95.00	95.00	0.0	0.0	0.0	95.4
22	95.00	95.00	95.00	0.0	0.0	0.0	95.5
23	95.00	95.00	95.00	120.0	0.0	5.5	160.4
24	95.00	95.00	95.00	0.0	0.0	0.0	100.0
25	95.00	95.00	95.00	0.0	0.0	0.0	100.1
26	95.00	95.00	95.00	0.0	0.0	0.0	94.9
27	95.00	95.00	95.00	0.0	0.0	0.0	156.0
28	95.00	95.00	95.00	0.0	0.0	0.0	150.1
29	95.00	95.00	95.00	0.0	0.0	0.0	625.0
30	95.00	95.00	95.00	0.0	0.0	0.0	93.1
Total							
Average	95.00	94.17	95.00	4.0	0.0	0.2	122.7
Maximum	95.00		95.00	120.0		5.5	625.0
Date	1-Apr		1-Apr	23-Apr		23-Apr	29-Apr
Minimum		70.00	94.97		0.0	0.0	
Date		6-Apr	6-Apr		1-Apr	1-Apr	

Notes:

---



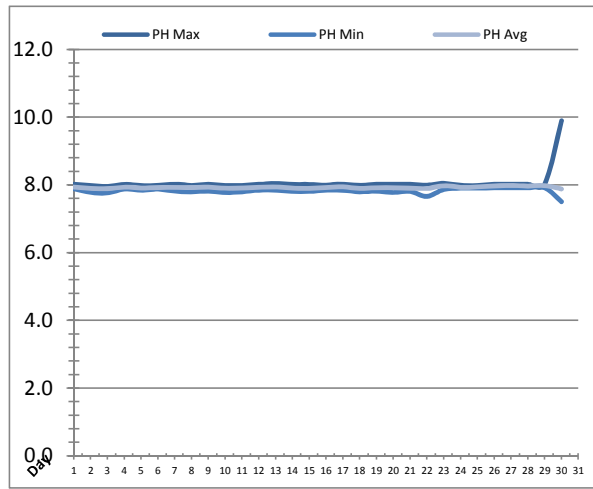
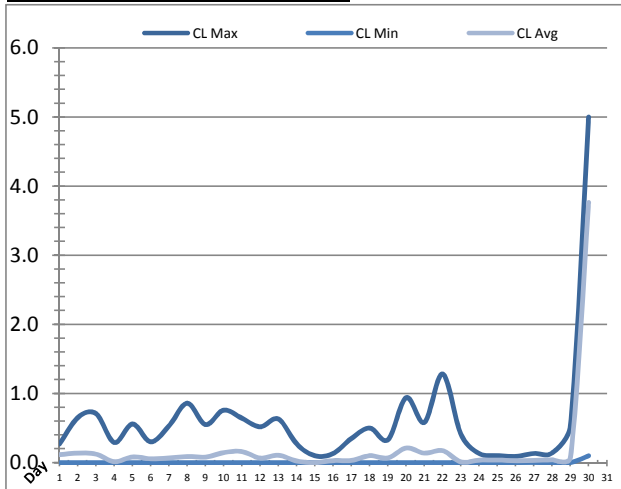
---



---

# Plant Quality Report

Month: April-18



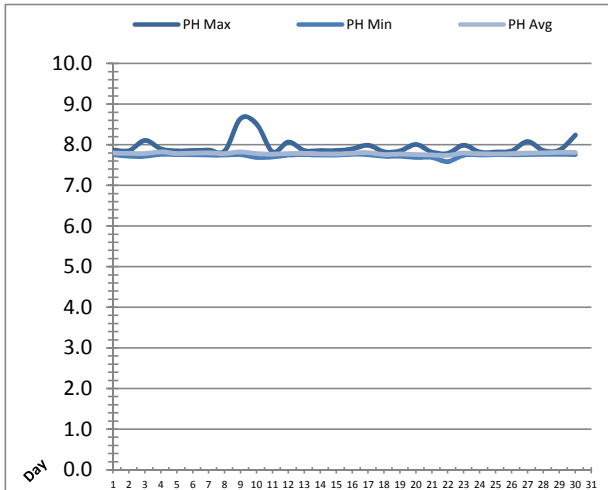
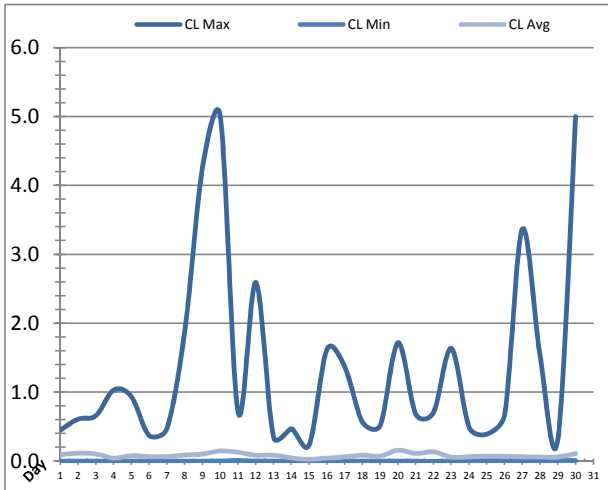
Date	Strainer Chlorine Residual			Strainer pH		
	AIT_2003_CL (ppm)			AIT_2003_PH		
	Maximum	Minimum	Average	Maximum	Minimum	Average
1	0.27	0.00	0.12	8.02	7.89	7.94
2	0.65	0.00	0.14	7.99	7.78	7.90
3	0.71	0.00	0.12	7.96	7.77	7.89
4	0.29	0.00	0.01	8.02	7.88	7.94
5	0.56	0.00	0.08	7.99	7.85	7.91
6	0.30	0.00	0.06	7.99	7.88	7.93
7	0.53	0.00	0.07	8.03	7.82	7.93
8	0.86	0.00	0.09	7.99	7.80	7.93
9	0.55	0.00	0.08	8.02	7.82	7.93
10	0.76	0.00	0.15	7.99	7.78	7.91
11	0.64	0.00	0.16	7.99	7.80	7.91
12	0.52	0.00	0.07	8.02	7.85	7.93
13	0.63	0.00	0.11	8.05	7.85	7.95
14	0.27	0.00	0.02	8.02	7.81	7.91
15	0.10	0.00	0.00	8.02	7.81	7.90
16	0.13	0.00	0.03	8.00	7.85	7.93
17	0.35	0.00	0.03	8.03	7.85	7.94
18	0.50	0.00	0.10	7.99	7.80	7.90
19	0.33	0.00	0.07	8.02	7.82	7.92
20	0.94	0.00	0.21	8.02	7.78	7.92
21	0.58	0.00	0.14	8.02	7.81	7.91
22	1.28	0.00	0.17	8.00	7.66	7.90
23	0.41	0.00	0.01	8.05	7.87	7.98
24	0.13	0.00	0.04	7.99	7.91	7.93
25	0.10	0.00	0.04	7.99	7.91	7.94
26	0.09	0.00	0.03	8.02	7.92	7.98
27	0.13	0.00	0.03	8.03	7.92	7.98
28	0.14	0.00	0.04	8.02	7.92	7.97
29	0.54	0.00	0.08	8.03	7.92	7.98
30	5.00	0.10	3.77	9.90	7.51	7.88
Total						
Average	0.61	0.00	0.20	8.07	7.83	7.93
Maximum	5.00		3.77	9.90		7.98
Date	30-Apr		30-Apr	30-Apr		27-Apr
Minimum		0.00	0.00		7.51	7.88
Date		1-Apr	15-Apr		30-Apr	30-Apr

Notes:

30

# Plant Quality Report

Month: April-18



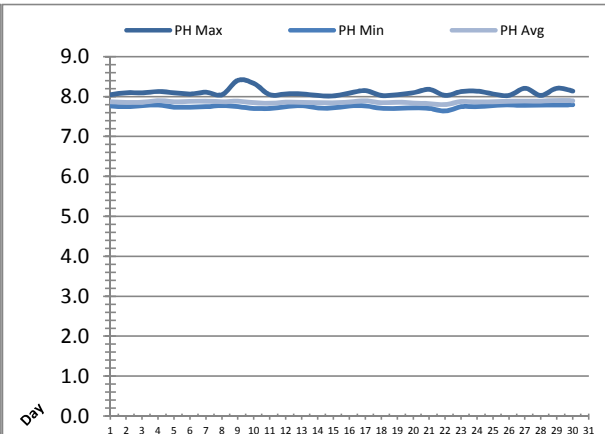
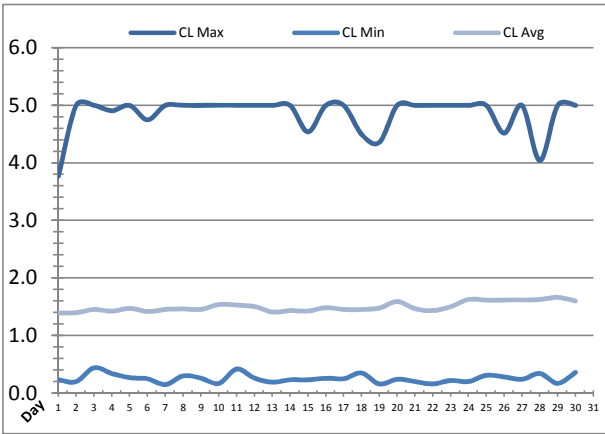
Date	Inlet UV Chlorine Residual			Inlet UV pH		
	AIT_5005_CL (ppm)			AIT_5005_PH		
	Maximum	Minimum	Average	Maximum	Minimum	Average
1	0.45	0.00	0.09	7.87	7.76	7.80
2	0.61	0.00	0.11	7.86	7.72	7.79
3	0.66	0.00	0.10	8.11	7.72	7.79
4	1.03	0.00	0.04	7.90	7.77	7.83
5	0.94	0.00	0.08	7.85	7.76	7.79
6	0.37	0.00	0.07	7.86	7.76	7.80
7	0.48	0.00	0.07	7.87	7.75	7.80
8	1.89	0.00	0.09	7.85	7.75	7.79
9	4.26	0.00	0.10	8.65	7.76	7.83
10	5.00	0.00	0.15	8.51	7.69	7.79
11	0.71	0.01	0.13	7.83	7.70	7.77
12	2.59	0.00	0.08	8.07	7.75	7.79
13	0.34	0.00	0.09	7.86	7.76	7.79
14	0.47	0.00	0.04	7.86	7.75	7.78
15	0.24	0.00	0.03	7.86	7.75	7.78
16	1.62	0.00	0.05	7.90	7.77	7.79
17	1.37	0.00	0.06	7.99	7.76	7.81
18	0.57	0.00	0.09	7.83	7.72	7.76
19	0.52	0.00	0.07	7.85	7.72	7.77
20	1.72	0.00	0.16	8.01	7.69	7.76
21	0.68	0.00	0.11	7.82	7.69	7.75
22	0.71	0.00	0.13	7.79	7.59	7.74
23	1.64	0.00	0.06	7.99	7.75	7.80
24	0.49	0.00	0.06	7.82	7.75	7.78
25	0.39	0.01	0.07	7.82	7.76	7.78
26	0.67	0.01	0.07	7.85	7.76	7.79
27	3.37	0.00	0.06	8.08	7.76	7.80
28	1.52	0.00	0.06	7.86	7.76	7.81
29	0.33	0.01	0.06	7.87	7.77	7.81
30	5.00	0.01	0.11	8.24	7.76	7.81
Total						
Average	1.35	0.00	0.08	7.95	7.74	7.79
Maximum	5.00		0.16	8.65		7.83
Date	10-Apr		20-Apr	9-Apr		9-Apr
Minimum		0.00	0.03		7.59	7.74
Date		6-Apr	15-Apr		22-Apr	22-Apr

Notes:  
 On 9th and 10th, inlet UV pH high at 8.65 and 8.51 after EFM



# Plant Quality Report

Month: **April-18**



Date	Discharge UV Chlorine Residual			Discharge UV pH		
	AIT_5006_CL (ppm)			AIT_5006_PH		
	Maximum	Minimum	Average	Maximum	Minimum	Average
1	3.77	0.23	1.39	8.05	7.77	7.88
2	5.00	0.20	1.40	8.10	7.75	7.86
3	5.00	0.44	1.45	8.10	7.78	7.86
4	4.91	0.34	1.42	8.13	7.79	7.90
5	5.00	0.27	1.47	8.10	7.74	7.87
6	4.75	0.25	1.42	8.07	7.74	7.88
7	5.00	0.15	1.45	8.11	7.75	7.89
8	5.00	0.30	1.46	8.05	7.78	7.87
9	5.00	0.26	1.45	8.41	7.75	7.89
10	5.00	0.17	1.54	8.33	7.71	7.85
11	5.00	0.42	1.53	8.05	7.71	7.84
12	5.00	0.26	1.51	8.07	7.75	7.86
13	5.00	0.19	1.41	8.07	7.78	7.86
14	5.00	0.23	1.43	8.03	7.72	7.85
15	4.54	0.23	1.43	8.02	7.72	7.85
16	5.00	0.26	1.48	8.09	7.77	7.87
17	5.00	0.25	1.45	8.15	7.77	7.90
18	4.50	0.35	1.45	8.03	7.71	7.85
19	4.36	0.16	1.48	8.05	7.71	7.86
20	5.00	0.24	1.59	8.10	7.72	7.84
21	5.00	0.20	1.47	8.18	7.71	7.83
22	5.00	0.16	1.43	8.03	7.64	7.80
23	5.00	0.22	1.50	8.13	7.75	7.88
24	5.00	0.20	1.63	8.14	7.75	7.87
25	5.00	0.31	1.62	8.07	7.78	7.87
26	4.52	0.28	1.62	8.03	7.79	7.89
27	5.00	0.24	1.62	8.21	7.78	7.89
28	4.04	0.34	1.63	8.03	7.79	7.89
29	5.00	0.17	1.66	8.21	7.79	7.91
30	5.00	0.36	1.60	8.14	7.80	7.90
Total						
Average	4.85	0.26	1.50	8.11	7.75	7.87
Maximum	5.00		1.66	8.41		7.91
Date	3-Apr		29-Apr	9-Apr		29-Apr
Minimum		0.15	1.39		7.64	7.80
Date		7-Apr	1-Apr		22-Apr	22-Apr

Notes:

---



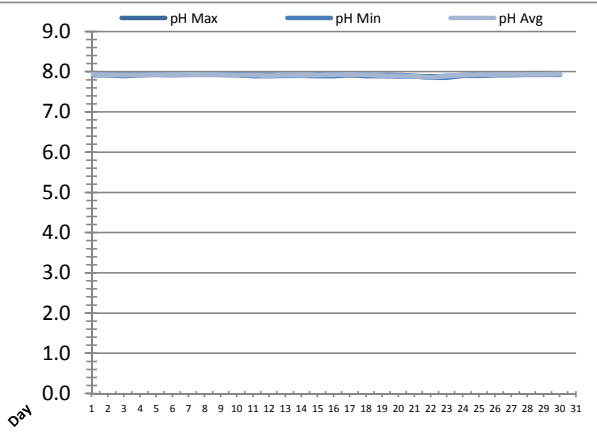
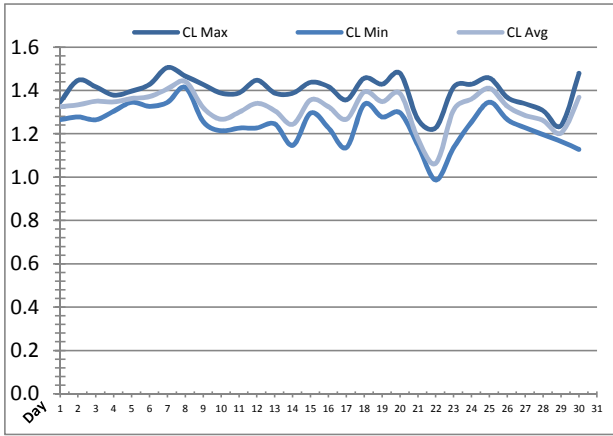
---



---

# Plant Quality Report

Month: **April-18**

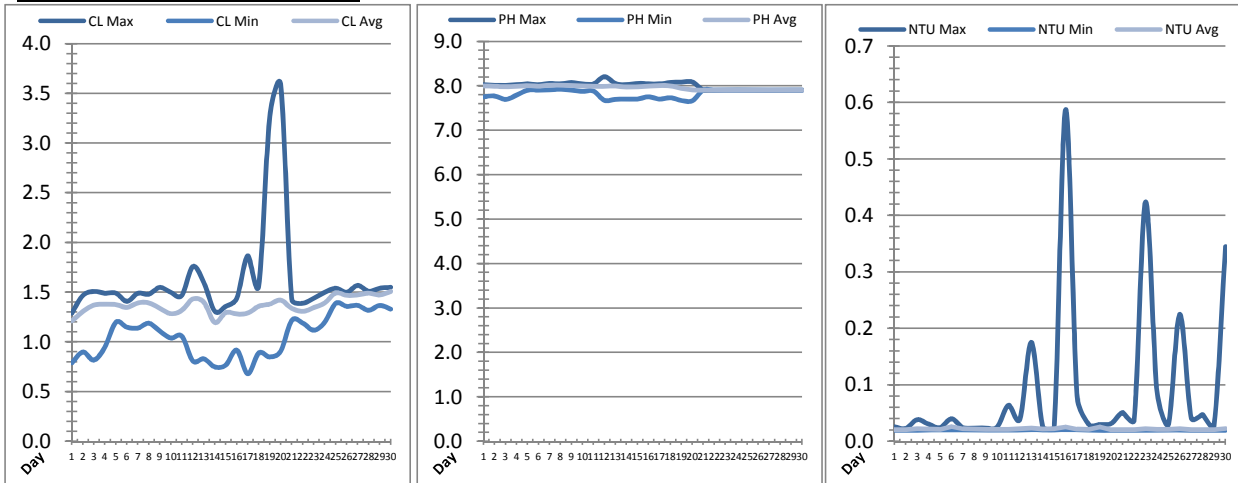


Date	Suction Header Chlorine Res.			Suction Header pH			Distribution CT Calc Total		
	AIT_7001_CL (ppm)			AIT_7001_PH (m)			REAL_CT_CALC_TOTAL (mg·ml/min)		
	Maximum	Minimum	Average	Maximum	Minimum	Average	Maximum	Minimum	Average
1	1.35	1.27	1.33	7.93	7.91	7.93	5841.92	0.00	193.31
2	1.45	1.28	1.33	7.93	7.91	7.92	7366.58	0.00	251.33
3	1.42	1.27	1.35	7.93	7.90	7.91	8563.09	0.00	299.25
4	1.38	1.31	1.35	7.93	7.91	7.93	7297.01	0.00	241.57
5	1.40	1.35	1.36	7.94	7.93	7.93	8702.42	0.00	259.77
6	1.43	1.33	1.37	7.93	7.91	7.93	8217.41	0.00	269.82
7	1.51	1.35	1.41	7.94	7.93	7.93	8221.15	0.00	318.57
8	1.47	1.41	1.44	7.93	7.93	7.93	8132.20	0.00	307.58
9	1.43	1.26	1.32	7.94	7.93	7.93	7041.66	0.00	206.27
10	1.39	1.22	1.27	7.93	7.91	7.92	7218.25	0.00	232.65
11	1.39	1.23	1.30	7.93	7.90	7.91	6769.20	0.00	380.57
12	1.45	1.23	1.34	7.92	7.90	7.90	7438.49	0.00	282.60
13	1.39	1.25	1.31	7.93	7.90	7.91	5012.16	0.00	227.14
14	1.39	1.15	1.24	7.92	7.90	7.91	5265.65	0.00	241.24
15	1.44	1.30	1.36	7.93	7.90	7.91	6935.48	0.00	316.84
16	1.42	1.23	1.33	7.93	7.90	7.92	7212.14	0.00	353.47
17	1.36	1.14	1.27	7.93	7.91	7.93	7723.82	0.00	327.02
18	1.46	1.34	1.39	7.93	7.90	7.92	8127.92	0.00	372.96
19	1.43	1.28	1.35	7.92	7.90	7.90	7994.71	0.00	194.27
20	1.48	1.30	1.39	7.92	7.88	7.90	7208.68	0.00	294.85
21	1.27	1.15	1.18	7.90	7.88	7.88	5397.48	0.00	213.24
22	1.23	0.99	1.07	7.89	7.85	7.86	6491.74	0.00	215.97
23	1.42	1.14	1.31	7.90	7.85	7.89	7884.77	0.00	300.43
24	1.43	1.26	1.36	7.92	7.90	7.91	7023.62	0.00	217.22
25	1.46	1.35	1.41	7.93	7.90	7.93	7979.73	0.00	354.62
26	1.37	1.27	1.33	7.93	7.91	7.93	7988.93	0.00	193.73
27	1.34	1.23	1.29	7.93	7.91	7.93	7666.36	0.00	289.59
28	1.31	1.20	1.26	7.94	7.93	7.93	735.81	0.00	144.27
29	1.24	1.17	1.20	7.94	7.93	7.94	7966.62	0.00	275.91
30	1.48	1.13	1.37	7.94	7.93	7.94	7800.20	0.00	325.42
Total									
Average	1.40	1.24	1.32	7.92	7.90	7.92			
Maximum	1.51		1.44	7.94		7.94			
Date	7-Apr		8-Apr	28-Apr		30-Apr			
Minimum		0.99	1.07		7.85	7.86			
Date		22-Apr	22-Apr		22-Apr	22-Apr			

Notes:

# Plant Quality Report

Month: **April-18**



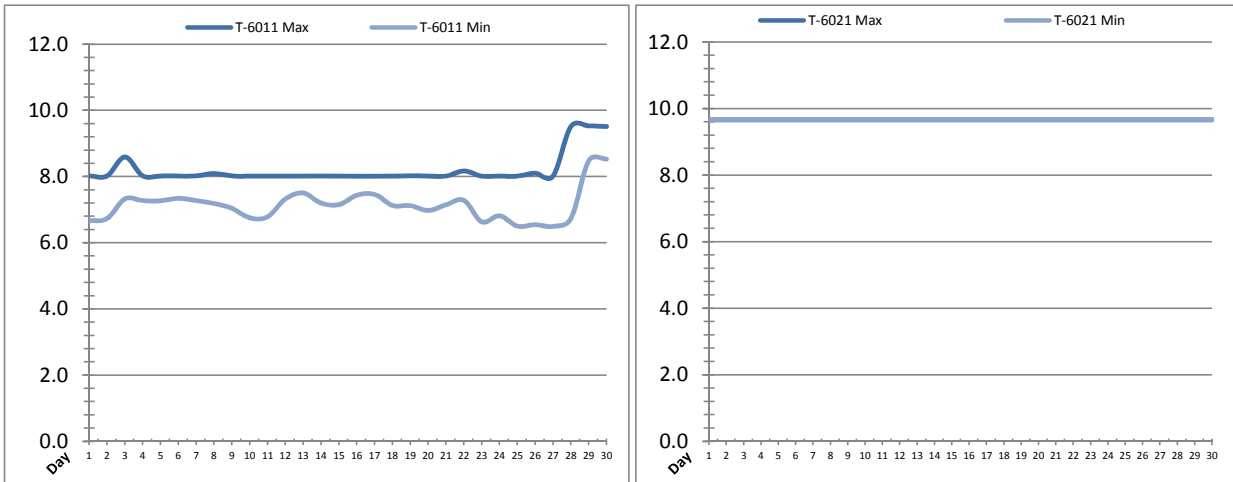
Date	Distribution Chlorine Header			Distribution pH			Distribution Turbidity		
	AIT_7004_CL (ppm)			AIT_7004_PH (mg/L)			AIT_7003 (mg/L)		
	Maximum	Minimum	Average	Maximum	Minimum	Average	Maximum	Minimum	Average
1	1.29	0.79	1.21	8.03	7.76	8.00	0.03	0.02	0.02
2	1.47	0.90	1.31	8.02	7.78	7.99	0.02	0.02	0.02
3	1.51	0.82	1.37	8.02	7.70	7.98	0.04	0.02	0.02
4	1.49	0.95	1.38	8.03	7.79	8.00	0.03	0.02	0.02
5	1.49	1.20	1.38	8.05	7.91	8.01	0.02	0.02	0.02
6	1.41	1.15	1.35	8.03	7.91	7.99	0.04	0.02	0.03
7	1.49	1.14	1.39	8.06	7.91	8.01	0.02	0.02	0.02
8	1.48	1.19	1.39	8.05	7.93	8.01	0.02	0.02	0.02
9	1.55	1.11	1.34	8.08	7.91	8.01	0.02	0.02	0.02
10	1.50	1.04	1.28	8.05	7.88	8.00	0.03	0.02	0.02
11	1.47	1.06	1.32	8.05	7.88	7.99	0.06	0.02	0.02
12	1.76	0.81	1.43	8.21	7.67	7.99	0.04	0.02	0.02
13	1.60	0.83	1.40	8.06	7.70	8.00	0.18	0.02	0.02
14	1.31	0.75	1.20	8.03	7.70	7.97	0.02	0.02	0.02
15	1.36	0.77	1.30	8.06	7.70	7.98	0.03	0.02	0.02
16	1.44	0.92	1.28	8.05	7.76	7.99	0.59	0.02	0.03
17	1.87	0.68	1.29	8.05	7.70	8.01	0.08	0.02	0.02
18	1.57	0.89	1.36	8.08	7.73	8.00	0.03	0.02	0.02
19	3.27	0.85	1.38	8.09	7.67	7.94	0.03	0.02	0.03
20	3.58	0.91	1.42	8.09	7.67	7.91	0.03	0.02	0.02
21	1.43	1.22	1.34	7.91	7.91	7.91	0.05	0.02	0.02
22	1.39	1.19	1.31	7.91	7.91	7.91	0.04	0.02	0.02
23	1.44	1.12	1.34	7.91	7.91	7.91	0.42	0.02	0.02
24	1.50	1.20	1.39	7.91	7.91	7.91	0.09	0.02	0.02
25	1.54	1.39	1.49	7.91	7.91	7.91	0.03	0.02	0.02
26	1.50	1.36	1.47	7.91	7.91	7.91	0.22	0.02	0.02
27	1.57	1.37	1.47	7.91	7.91	7.91	0.04	0.02	0.02
28	1.51	1.32	1.49	7.91	7.91	7.91	0.05	0.02	0.02
29	1.54	1.37	1.47	7.91	7.91	7.91	0.03	0.02	0.02
30	1.55	1.33	1.51	7.91	7.91	7.91	0.34	0.02	0.02
Total									
Average	1.63	1.05	1.37	8.01	7.82	7.96	0.1	0.0	0.0
Maximum	3.58		1.51	8.21		8.01	0.6		0.0
Date	20-Apr		30-Apr	12-Apr		7-Apr	16-Apr		6-Apr
Minimum		0.68	1.20		7.67	7.91		0.0	0.0
Date		17-Apr	14-Apr		20-Apr	22-Apr		1-Apr	1-Apr

**Notes:**

21st: pH probe causing issues with chlorine readings; put pH reading in manual until replacement

# Raw Well/Treated Storage Report

Month: **April-18**

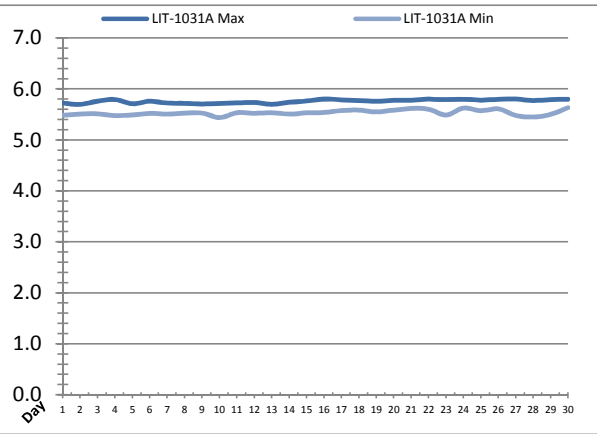
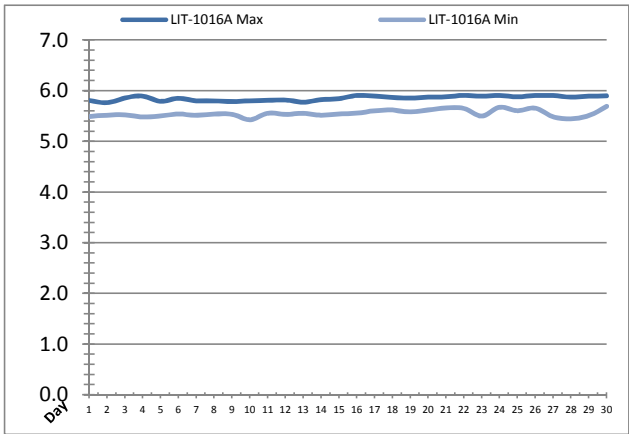


Date	Treated Water Storage Tank					
	T-6011 (m)			T-6021 (m)		
	Maximum	Minimum	Average	Maximum	Minimum	Average
1	8.0	6.7	7.5	9.7	9.7	9.7
2	8.0	6.7	7.7	9.7	9.7	9.7
3	8.6	7.3	7.9	9.7	9.7	9.7
4	8.0	7.3	7.7	9.7	9.7	9.7
5	8.0	7.3	7.8	9.7	9.7	9.7
6	8.0	7.3	7.8	9.7	9.7	9.7
7	8.0	7.3	7.7	9.7	9.7	9.7
8	8.1	7.2	7.7	9.7	9.7	9.7
9	8.0	7.0	7.7	9.7	9.7	9.7
10	8.0	6.8	7.7	9.7	9.7	9.7
11	8.0	6.8	7.7	9.7	9.7	9.7
12	8.0	7.3	7.8	9.7	9.7	9.7
13	8.0	7.5	7.8	9.7	9.7	9.7
14	8.0	7.2	7.7	9.7	9.7	9.7
15	8.0	7.2	7.6	9.7	9.7	9.7
16	8.0	7.4	7.7	9.7	9.7	9.7
17	8.0	7.5	7.8	9.7	9.7	9.7
18	8.0	7.1	7.6	9.7	9.7	9.7
19	8.0	7.1	7.7	9.7	9.7	9.7
20	8.0	7.0	7.5	9.7	9.7	9.7
21	8.0	7.2	7.6	9.7	9.7	9.7
22	8.2	7.3	7.7	9.7	9.7	9.7
23	8.0	6.6	7.6	9.7	9.7	9.7
24	8.0	6.8	7.5	9.7	9.7	9.7
25	8.0	6.5	7.3	9.7	9.7	9.7
26	8.1	6.5	7.5	9.7	9.7	9.7
27	8.0	6.5	7.3	9.7	9.7	9.7
28	9.5	6.7	7.9	9.7	9.7	9.7
29	9.5	8.5	9.0	9.7	9.7	9.7
30	9.5	8.5	9.2	9.7	9.7	9.7
Total						
Average	8.2	7.1	7.8	9.7	9.7	9.7
Maximum	9.5		9.2	9.7		9.7
Date	29-Apr		30-Apr	2-Apr		3-Apr
Minimum		6.5	7.3		9.7	9.7
Date		27-Apr	25-Apr		2-Apr	2-Apr

Notes:  
 T-6021 requires replacement, false readings, using T-6021 for readings.

# Raw Well/Treated Storage Report

Month: **April-18**



Date	Low Lift Intake Levels					
	Wet Well #1 (LIT-1016A) (m)			Wet Well #2 (LIT-1031A) (m)		
	Maximum	Minimum	Average	Maximum	Minimum	Average
1	5.8	5.5	5.6	5.7	5.5	5.6
2	5.8	5.5	5.6	5.7	5.5	5.6
3	5.9	5.5	5.6	5.8	5.5	5.6
4	5.9	5.5	5.7	5.8	5.5	5.6
5	5.8	5.5	5.6	5.7	5.5	5.6
6	5.9	5.5	5.7	5.8	5.5	5.6
7	5.8	5.5	5.6	5.7	5.5	5.6
8	5.8	5.5	5.6	5.7	5.5	5.6
9	5.8	5.5	5.6	5.7	5.5	5.6
10	5.8	5.4	5.7	5.7	5.4	5.6
11	5.8	5.6	5.7	5.7	5.5	5.6
12	5.8	5.5	5.7	5.7	5.5	5.6
13	5.8	5.6	5.6	5.7	5.5	5.6
14	5.8	5.5	5.7	5.7	5.5	5.6
15	5.8	5.5	5.7	5.8	5.5	5.6
16	5.9	5.6	5.7	5.8	5.5	5.7
17	5.9	5.6	5.7	5.8	5.6	5.7
18	5.9	5.6	5.7	5.8	5.6	5.7
19	5.9	5.6	5.7	5.8	5.6	5.6
20	5.9	5.6	5.7	5.8	5.6	5.7
21	5.9	5.7	5.7	5.8	5.6	5.7
22	5.9	5.7	5.7	5.8	5.6	5.7
23	5.9	5.5	5.7	5.8	5.5	5.7
24	5.9	5.7	5.7	5.8	5.6	5.7
25	5.9	5.6	5.7	5.8	5.6	5.7
26	5.9	5.7	5.8	5.8	5.6	5.7
27	5.9	5.5	5.7	5.8	5.5	5.7
28	5.9	5.4	5.7	5.8	5.5	5.6
29	5.9	5.5	5.7	5.8	5.5	5.7
30	5.9	5.7	5.8	5.8	5.6	5.7
<b>Total</b>						
<b>Average</b>	5.9	5.6	5.7	5.8	5.5	5.6
<b>Maximum</b>	5.9		5.8	5.8		5.7
<b>Date</b>	22-Apr		30-Apr	16-Apr		30-Apr
<b>Minimum</b>		5.4	5.6		5.4	5.6
<b>Date</b>		10-Apr	1-Apr		10-Apr	1-Apr

Notes:

---



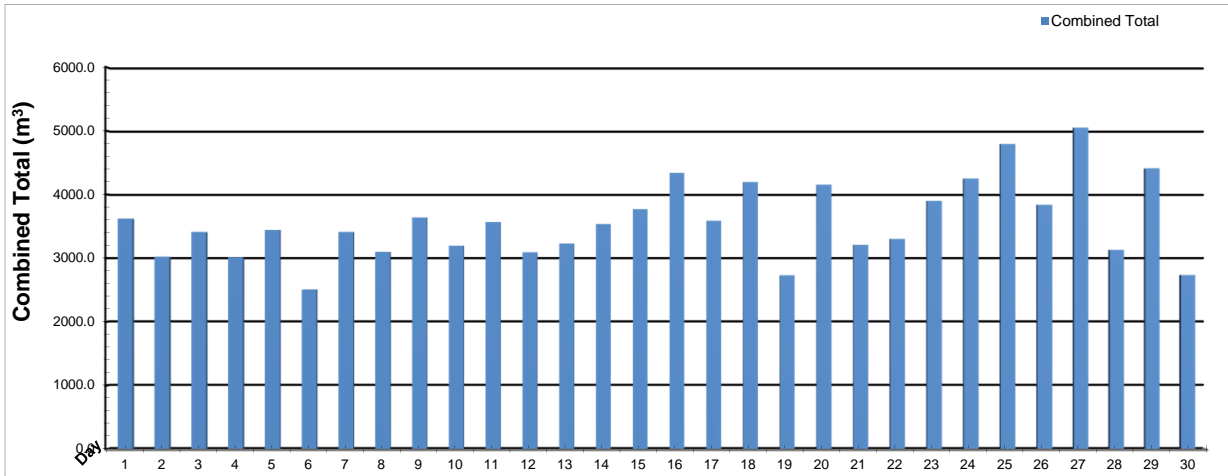
---



---

# High Lift Monthly Report

Month: April-18

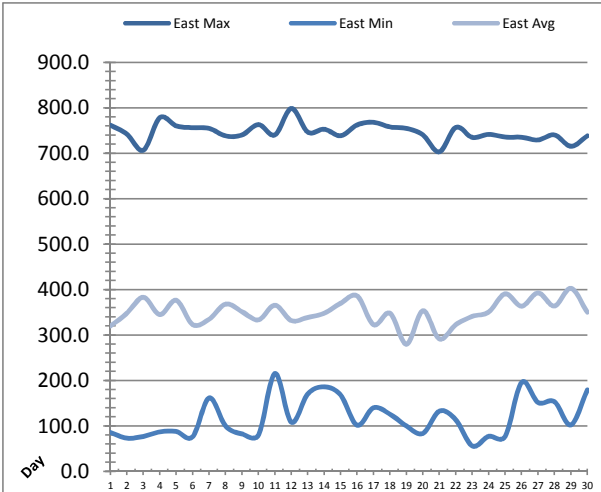
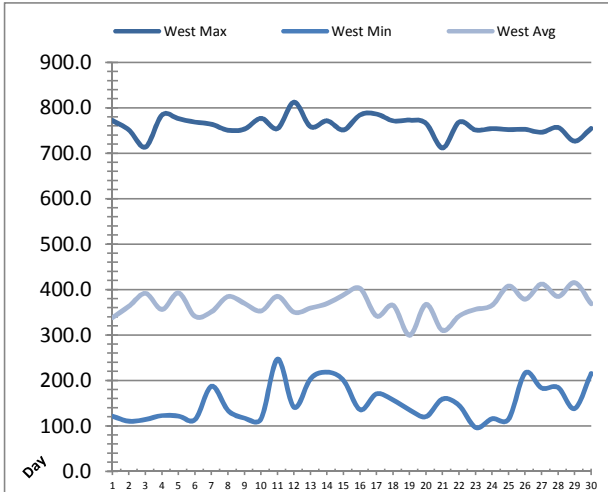


Date	Distribution Flow					
	FIT_7052 (East)		FIT_7062 (West)		Combined	
	(m³) Total	(L/s) Peak	(m³) Total	(L/s) Peak	(m³) Total	(L/s) Peak
1	1247.9	54.7	2372.4	90.8	3620.3	100.9
2	1236.4	54.3	1785.3	91.5	3021.7	100.0
3	1170.7	55.5	2240.0	93.7	3410.7	99.7
4	967.4	54.5	2043.9	92.6	3011.3	99.5
5	1211.5	55.1	2231.2	92.4	3442.7	102.5
6	1210.0	54.4	1294.9	92.4	2504.9	98.3
7	1311.6	54.7	2099.4	93.0	3411.0	99.0
8	1253.0	55.0	1844.4	95.1	3097.4	97.3
9	1118.8	55.3	2521.0	99.4	3639.8	100.1
10	1181.2	55.0	2013.9	92.5	3195.1	102.0
11	1698.0	67.5	1868.2	91.9	3566.2	99.5
12	191.9	51.0	2901.4	87.5	3093.4	88.9
13	121.6	36.3	3108.9	95.9	3230.5	96.9
14	192.4	27.7	3342.3	91.5	3534.7	97.2
15	215.8	32.8	3552.3	85.6	3768.1	92.3
16	51.7	30.0	4288.2	76.9	4339.9	92.0
17	4.9	24.1	3583.0	92.0	3588.0	92.0
18	1027.4	39.6	3170.2	101.2	4197.6	108.8
19	413.6	39.6	2317.8	106.4	2731.3	106.4
20	1100.1	40.8	3055.3	99.3	4155.4	99.9
21	1262.3	40.5	1947.9	88.2	3210.2	98.3
22	1031.0	39.9	2271.2	93.8	3302.2	100.4
23	1481.3	40.8	2418.9	90.6	3900.1	102.9
24	776.7	40.3	3473.9	94.2	4250.6	97.1
25	1030.0	39.8	3765.4	91.9	4795.4	93.2
26	241.5	36.9	3598.7	101.1	3840.1	102.8
27	340.9	36.4	4710.6	107.4	5051.5	114.9
28	241.3	44.7	2889.7	98.6	3131.1	105.7
29	1007.1	44.8	3405.0	103.5	4412.1	110.0
30	1164.6	59.8	1570.2	99.7	2734.8	109.9
<b>Total</b>	<b>25502.5</b>		<b>81685.4</b>		<b>107187.9</b>	
<b>Average</b>	<b>850.1</b>	<b>45.4</b>	<b>2722.8</b>	<b>94.3</b>	<b>3572.9</b>	<b>100.3</b>
<b>Maximum</b>	<b>1698.0</b>	<b>67.5</b>	<b>4710.6</b>	<b>107.4</b>	<b>5051.5</b>	<b>114.9</b>
<b>Date</b>	<b>11-Apr</b>	<b>11-Apr</b>	<b>27-Apr</b>	<b>27-Apr</b>	<b>27-Apr</b>	<b>27-Apr</b>
<b>Minimum</b>	<b>4.9</b>		<b>1294.9</b>		<b>2504.9</b>	
<b>Date</b>	<b>17-Apr</b>		<b>6-Apr</b>		<b>6-Apr</b>	

Notes:

# Low Lift Monthly Report

Month: **April-18**

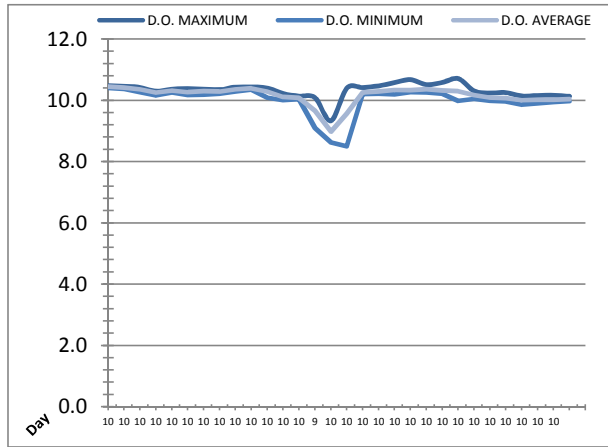
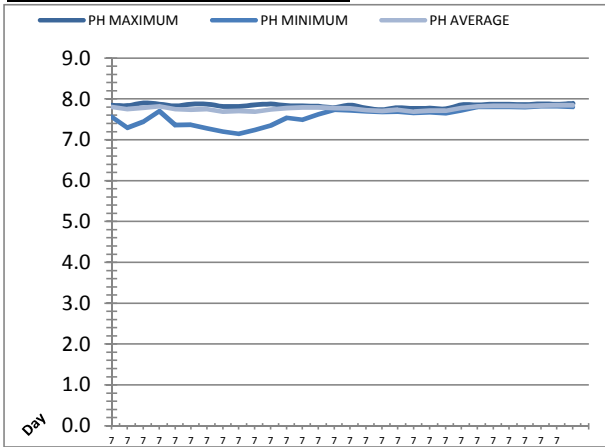


Date	West Train Header Pressure PIT_1018 (kPa)			East Train Header Pressure PIT_1028 (kPa)		
	Maximum	Minimum	Average	Maximum	Minimum	Average
	1	✓ 772.3	✓ 121.5	338.4	✓ 762.1	✓ 85.6
2	✓ 751.3	✓ 110.4	363.6	✓ 742.3	✓ 73.2	348.3
3	✓ 713.9	✓ 114.3	391.9	✓ 706.9	✓ 77.1	383.4
4	✓ 784.5	✓ 122.9	356.4	✓ 778.7	✓ 87.0	345.1
5	✓ 776.3	✓ 121.8	392.8	✓ 760.6	✓ 87.8	376.6
6	✓ 768.8	✓ 114.2	341.3	✓ 756.6	✓ 76.5	323.1
7	✓ 764.0	✓ 187.5	351.3	✓ 755.1	✓ 161.8	335.0
8	✓ 751.0	✓ 134.0	384.8	✓ 738.4	✓ 99.8	368.3
9	✓ 753.6	✓ 117.4	369.7	✓ 740.6	✓ 82.4	351.5
10	✓ 777.1	✓ 115.6	353.2	✓ 763.4	✓ 80.1	333.5
11	✓ 754.7	✓ 247.1	385.3	✓ 740.6	✓ 215.4	365.9
12	✓ 812.6	✓ 141.1	350.3	✓ 799.0	✓ 108.3	331.9
13	✓ 758.6	✓ 204.0	359.5	✓ 746.8	✓ 170.7	338.9
14	✓ 771.7	✓ 218.5	369.3	✓ 753.1	✓ 186.0	348.2
15	✓ 751.5	✓ 200.2	388.4	✓ 738.9	✓ 167.8	370.1
16	✓ 784.8	✓ 135.9	402.6	✓ 762.6	✓ 101.7	386.2
17	✓ 786.6	✓ 170.7	341.8	✓ 768.4	✓ 140.1	322.8
18	✓ 771.5	✓ 157.2	365.5	✓ 758.1	✓ 125.7	348.2
19	✓ 773.1	✓ 135.4	299.6	✓ 755.0	✓ 99.8	279.8
20	✓ 766.1	✓ 120.7	367.7	✓ 740.6	✓ 83.6	353.7
21	✓ 711.9	✓ 159.4	310.1	✓ 703.3	✓ 132.6	291.6
22	✓ 768.9	✓ 145.2	342.1	✓ 757.1	✓ 113.5	323.0
23	✓ 751.4	✓ 96.6	356.6	✓ 735.3	✓ 55.9	341.2
24	✓ 754.3	✓ 116.0	365.4	✓ 741.7	✓ 77.3	350.8
25	✓ 752.5	✓ 115.1	408.0	✓ 735.9	✓ 76.9	391.0
26	✓ 752.7	✓ 216.6	379.0	✓ 735.4	✓ 195.9	363.7
27	✓ 746.3	✓ 183.4	412.4	✓ 729.4	✓ 151.6	392.9
28	✓ 756.9	✓ 184.7	385.0	✓ 740.7	✓ 153.3	364.0
29	✓ 726.9	✓ 138.3	415.5	✓ 715.5	✓ 102.2	403.1
30	✓ 754.9	✓ 215.5	368.8	✓ 738.5	✓ 179.5	350.5
Total						
Average	760.7	152.0	367.2	746.7	118.3	350.1
Maximum	812.6		415.5	799.0		403.1
Date	12-Apr		29-Apr	12-Apr		29-Apr
Minimum		96.6	299.6		55.9	279.8
Date		23-Apr	19-Apr		23-Apr	19-Apr

Notes:


# Low Lift Monthly Report

Month: **April-18**



Date	Raw Water Sample Line					
	AIT_1402_PH (pH)			AIT_1402_DO (mg/L)		
	Maximum	Minimum	Average	Maximum	Minimum	Average
1	7.8	7.6	7.8	10.5	10.4	10.4
2	7.8	7.3	7.7	10.5	10.4	10.4
3	7.9	7.4	7.8	10.4	10.3	10.4
4	7.9	7.7	7.8	10.3	10.2	10.3
5	7.8	7.4	7.7	10.4	10.3	10.3
6	7.9	7.4	7.7	10.4	10.2	10.3
7	7.9	7.3	7.8	10.4	10.2	10.3
8	7.8	7.2	7.7	10.3	10.2	10.3
9	7.8	7.1	7.7	10.4	10.3	10.4
10	7.9	7.2	7.7	10.4	10.4	10.4
11	7.9	7.4	7.7	10.4	10.1	10.3
12	7.8	7.5	7.8	10.2	10.0	10.1
13	7.8	7.5	7.8	10.1	10.0	10.1
14	7.8	7.6	7.8	10.1	9.1	9.7
15	7.8	7.7	7.8	9.3	8.6	9.0
16	7.9	7.7	7.8	10.4	8.5	9.6
17	7.8	7.7	7.7	10.4	10.2	10.3
18	7.7	7.7	7.7	10.5	10.2	10.3
19	7.8	7.7	7.7	10.6	10.2	10.3
20	7.8	7.7	7.7	10.7	10.3	10.3
21	7.8	7.7	7.7	10.5	10.3	10.4
22	7.8	7.7	7.7	10.6	10.2	10.3
23	7.9	7.7	7.8	10.7	10.0	10.3
24	7.9	7.8	7.8	10.3	10.0	10.2
25	7.9	7.8	7.8	10.2	10.0	10.1
26	7.9	7.8	7.8	10.3	10.0	10.1
27	7.9	7.8	7.8	10.1	9.9	10.0
28	7.9	7.8	7.8	10.2	9.9	10.0
29	7.9	7.8	7.8	10.2	9.9	10.0
30	7.9	7.8	7.8	10.1	10.0	10.0
Total						
Average	7.8	7.6	7.8	10.3	10.0	10.2
Maximum	7.9		7.8	10.7		10.4
Date	3-Apr		30-Apr	23-Apr		1-Apr
Minimum		7.1	7.7		8.5	9.0
Date		9-Apr	20-Apr		16-Apr	15-Apr

Notes:

---



---

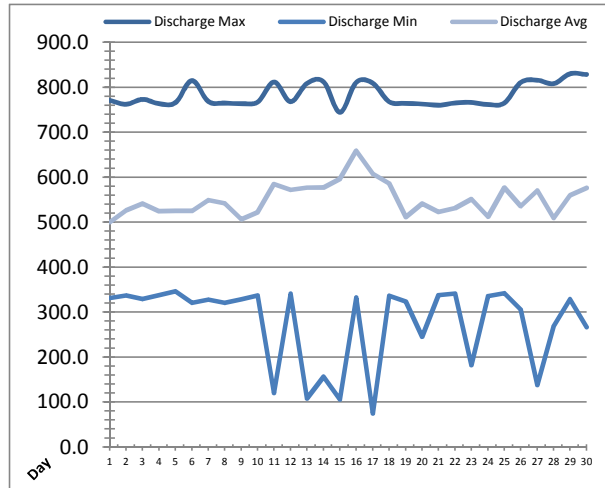
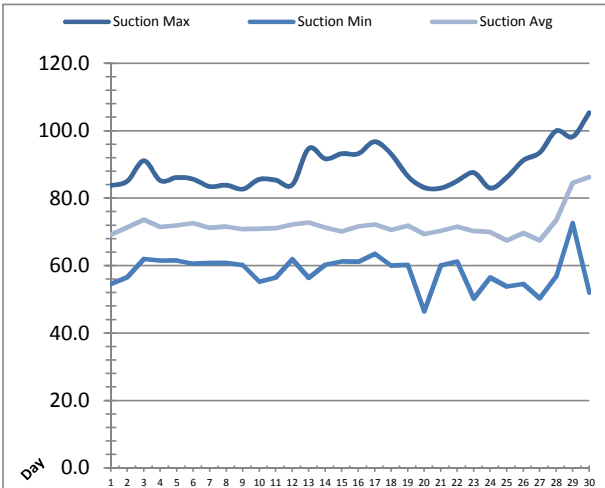


---



# High Lift Monthly Report

Month: April-18



Date	Suction Header Pressure			Discharge Header Pressure		
	PIT_7002 (kPa)			PIT_7005 (kPa)		
	Maximum	Minimum	Average	Maximum	Minimum	Average
1	✓ 83.8	✓ 54.6	69.2	✓ 770.9	✓ 331.2	500.2
2	✓ 85.1	✓ 56.6	71.4	✓ 762.4	✓ 337.3	526.6
3	✓ 91.1	✓ 62.0	73.7	✓ 773.3	✓ 329.3	541.6
4	✓ 85.2	✓ 61.5	71.4	✓ 763.6	✓ 337.6	524.3
5	✓ 86.2	✓ 61.5	71.9	✓ 765.8	✓ 346.0	525.1
6	✓ 85.6	✓ 60.5	72.6	✓ 815.1	✓ 320.6	525.1
7	✓ 83.5	✓ 60.8	71.2	✓ 768.5	✓ 327.9	549.2
8	✓ 83.9	✓ 60.8	71.6	✓ 764.9	✓ 320.9	542.2
9	✓ 82.7	✓ 60.2	70.9	✓ 763.9	✓ 328.4	506.4
10	✓ 85.6	✓ 55.2	70.9	✓ 767.4	✓ 337.4	522.4
11	✓ 85.4	✓ 56.5	71.1	✓ 811.9	✓ 120.1	584.8
12	✓ 84.0	✓ 61.9	72.2	✓ 768.1	✓ 340.8	571.7
13	✓ 94.8	✓ 56.4	72.8	✓ 809.0	✓ 108.2	576.8
14	✓ 91.7	✓ 60.3	71.3	✓ 812.6	✓ 156.2	577.0
15	✓ 93.2	✓ 61.2	70.2	✓ 744.4	✓ 105.5	596.0
16	✓ 93.2	✓ 61.1	71.7	✓ 811.4	✓ 332.2	658.5
17	✓ 96.8	✓ 63.5	72.3	✓ 809.1	✓ 74.2	607.8
18	✓ 93.0	✓ 60.0	70.6	✓ 767.9	✓ 336.7	586.5
19	✓ 86.6	✓ 60.2	71.9	✓ 764.4	✓ 323.6	511.5
20	✓ 83.2	✗ 46.4	69.4	✓ 763.1	✓ 245.3	541.5
21	✓ 83.0	✓ 60.1	70.3	✓ 760.2	✓ 337.6	522.6
22	✓ 85.2	✓ 61.3	71.6	✓ 765.2	✓ 341.6	531.0
23	✓ 87.6	✓ 50.2	70.2	✓ 766.3	✓ 182.1	551.3
24	✓ 83.0	✓ 56.5	69.9	✓ 761.8	✓ 335.4	512.0
25	✓ 86.2	✓ 53.8	67.5	✓ 765.1	✓ 342.3	576.9
26	✓ 91.2	✓ 54.6	69.7	✓ 811.0	✓ 306.1	535.4
27	✓ 93.6	✓ 50.3	67.5	✓ 815.9	✓ 137.8	570.4
28	✓ 100.0	✓ 56.9	73.6	✓ 808.2	✓ 268.6	509.1
29	✓ 98.3	✓ 72.6	84.6	✓ 830.2	✓ 328.9	559.6
30	✓ 105.4	✓ 52.0	86.3	✓ 828.5	✓ 266.7	576.0
Total						
Average	88.9	58.3	72.0	783.0	276.9	550.7
Maximum	105.4		86.3	830.2		658.5
Date	30-Apr		30-Apr	29-Apr		16-Apr
Minimum		46.4	67.5		74.2	500.2
Date		20-Apr	25-Apr		17-Apr	1-Apr

Notes:

---



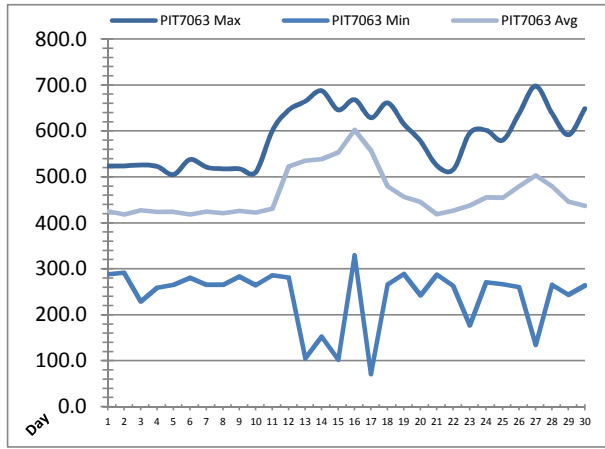
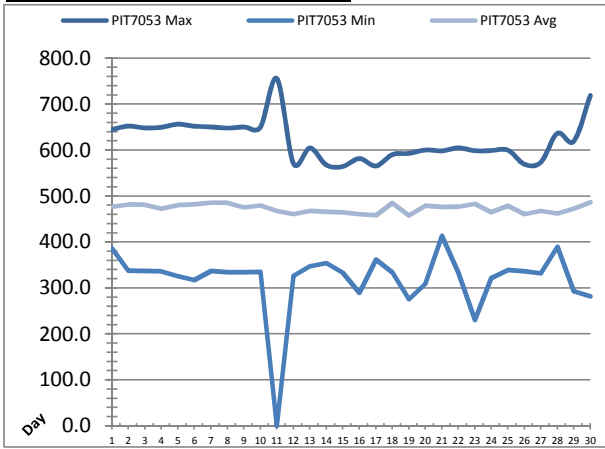
---



---

# High Lift Monthly Report

Month: **April-18**

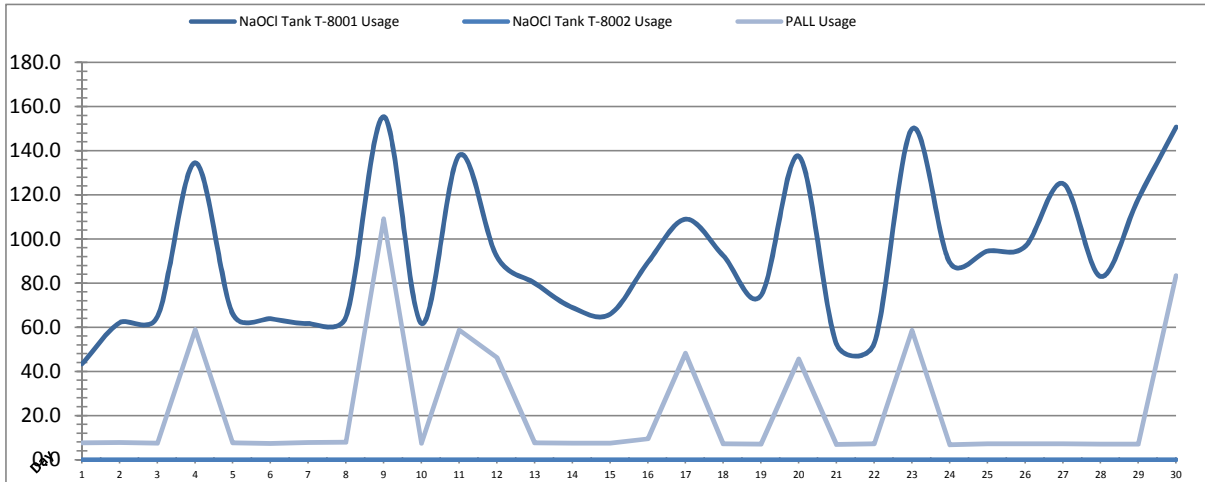


Date	Distribution Pressures					
	PIT_7053 (kPa)			PIT_7063 (kPa)		
	Maximum	Minimum	Average	Maximum	Minimum	Average
1	✓ 645.0	✓ 386.2	476.9	✓ 524.0	✓ 288.2	425.7
2	✓ 652.4	✓ 337.8	481.9	✓ 524.0	✓ 291.5	418.7
3	✓ 648.4	✓ 336.8	480.9	✓ 526.2	✓ 229.1	427.4
4	✓ 649.7	✓ 336.1	472.9	✓ 522.9	✓ 258.7	424.3
5	✓ 656.6	✓ 326.0	480.5	✓ 505.4	✓ 265.2	424.2
6	✓ 651.8	✓ 317.1	481.9	✓ 538.0	✓ 280.8	418.8
7	✓ 650.6	✓ 337.1	486.1	✓ 521.3	✓ 265.1	424.9
8	✓ 648.0	✓ 333.8	484.9	✓ 517.8	✓ 265.1	420.9
9	✓ 650.5	✓ 334.0	475.3	✓ 517.9	✓ 283.7	426.2
10	✓ 650.0	✓ 334.7	479.6	✓ 511.0	✓ 264.7	422.8
11	✓ 755.7	✗ 0.0	467.8	✓ 600.9	✓ 286.2	430.8
12	✓ 571.2	✓ 326.2	460.7	✓ 645.6	✓ 281.2	523.2
13	✓ 604.9	✓ 347.0	467.7	✓ 664.9	✓ 105.2	535.7
14	✓ 567.7	✓ 354.5	465.4	✓ 687.7	✓ 152.8	538.6
15	✓ 564.5	✓ 333.2	464.0	✓ 646.1	✓ 102.4	553.5
16	✓ 581.8	✓ 289.7	460.9	✓ 668.2	✓ 329.1	602.1
17	✓ 565.6	✓ 361.5	458.0	✓ 629.0	✓ 70.9	557.9
18	✓ 590.4	✓ 333.7	484.8	✓ 661.3	✓ 266.0	479.7
19	✓ 593.0	✓ 275.6	458.2	✓ 614.9	✓ 289.0	456.9
20	✓ 600.5	✓ 309.2	478.6	✓ 578.3	✓ 242.3	445.5
21	✓ 598.5	✓ 413.1	476.2	✓ 524.7	✓ 287.9	419.4
22	✓ 605.0	✓ 333.8	476.6	✓ 516.5	✓ 263.1	427.2
23	✓ 598.7	✓ 230.1	482.8	✓ 595.6	✓ 176.6	438.1
24	✓ 599.0	✓ 321.7	464.7	✓ 601.7	✓ 270.6	455.7
25	✓ 600.2	✓ 338.8	479.2	✓ 580.2	✓ 266.4	455.0
26	✓ 569.5	✓ 336.1	460.9	✓ 638.6	✓ 260.7	479.8
27	✓ 573.7	✓ 332.1	467.9	✓ 697.9	✓ 134.7	503.7
28	✓ 636.6	✓ 389.9	462.0	✓ 638.3	✓ 265.5	479.8
29	✓ 619.4	✓ 293.1	472.4	✓ 592.0	✓ 243.7	446.3
30	✓ 719.0	✓ 281.7	486.7	✓ 648.8	✓ 263.6	437.5
Total						
Average	620.6	319.4	473.2	588.0	241.7	463.3
Maximum	755.7		486.7	697.9		602.1
Date	11-Apr		30-Apr	27-Apr		16-Apr
Minimum		0.0	458.0		70.9	418.7
Date		11-Apr	17-Apr		17-Apr	2-Apr

Notes:  
 11th: minimum pressure on PIT-7053 shows 0.00 due to isolation for watermain break in Wallacetown

# Chemical Usage Monthly Report

Month: **April-18**

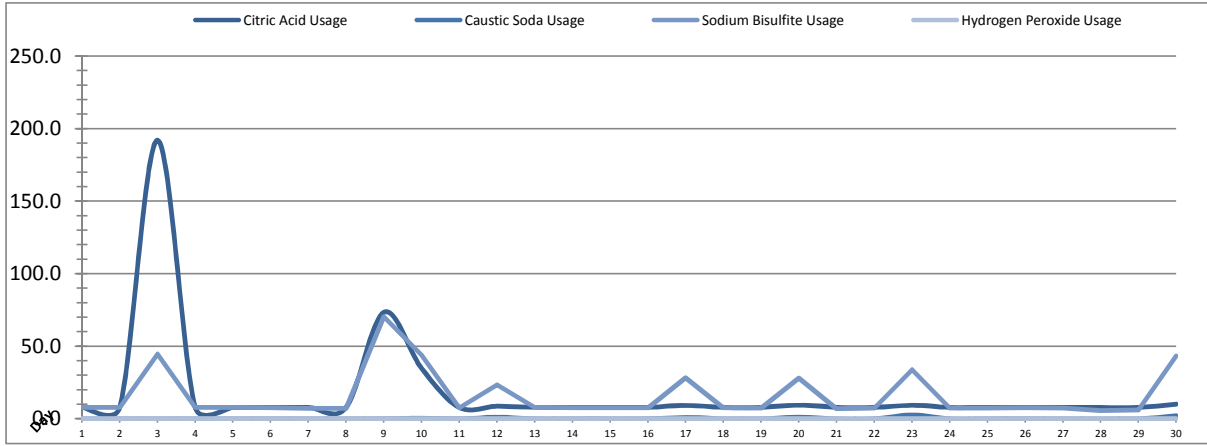


Date	PALL Usage	NaOCl Tank T-8001	NaOCl Tank T-8002
	PALL_HYPO_USAGE (L) Usage	LIT_8002 (Storage) (L) Usage	LIT_8004 (Day) (L) Usage
1	7.6	43.4	0.0
2	7.8	62.2	0.0
3	7.5	64.7	0.0
4	58.9	134.6	0.0
5	7.6	66.0	0.0
6	7.3	63.9	0.0
7	7.7	61.8	0.0
8	7.8	64.7	0.0
9	109.1	155.4	0.0
10	7.5	61.8	0.0
11	58.8	138.0	0.0
12	46.3	92.0	0.0
13	7.7	80.1	0.0
14	7.45	68.99	0.0
15	7.4	66.0	0.0
16	9.5	89.4	0.0
17	48.2	109.0	0.0
18	7.1	92.4	0.0
19	7.1	74.5	0.0
20	45.6	137.6	0.0
21	6.8	52.4	0.0
22	7.1	52.8	0.0
23	58.7	149.9	0.0
24	6.8	89.4	0.0
25	7.2	94.5	0.0
26	7.2	96.7	0.0
27	7.2	125.2	0.0
28	7.0	83.0	0.0
29	7.0	118.4	0.0
30	83.4	150.8	0.0
Total	672.6	2739.7	1.0
Average	22.4	91.3	0.0
Maximum	109.1	155.4	0.0
Date	9-Apr	9-Apr	1-Apr
Minimum	6.8	43.4	0.0
Date	24-Apr	1-Apr	1-Apr

Notes:	
Dosage (mg/L)=	Day Tank (L) x %conc. x 1000
	Membrane Flow (m3)
Chlorine Concentration:	12.0%

# Chemical Usage Monthly Report

Month: **April-18**



Date	Citric Acid	Caustic Soda	Captor	Hydrogen Peroxide		Membrane Flow (m <sup>3</sup> )
	TAGNAME (L) Usage	TAGNAME (L) Usage	TAGNAME (L) Usage	TAGNAME (L) Usage	TAGNAME (mg/L) Dose	
1	7.9	0.0	7.8	0.0	0.0	3366.070
2	7.9	0.0	7.8	0.0	0.0	3668.500
3	192.0	0.0	44.6	0.0	0.0	3876.238
4	7.9	0.0	7.8	0.0	0.0	3123.500
5	8.0	0.0	7.8	0.0	0.0	4033.968
6	7.9	0.0	7.6	0.0	0.0	2814.072
7	7.9	0.0	7.2	0.0	0.0	3547.774
8	7.9	0.0	7.2	0.0	0.0	3615.848
9	73.5	0.0	70.5	0.0	0.0	3650.076
10	34.8	0.5	44.0	0.0	0.0	3479.975
11	7.9	0.0	7.6	0.0	0.0	4317.197
12	8.7	1.1	23.5	0.0	0.0	3310.204
13	7.9	0.0	7.7	0.0	0.0	3794.463
14	7.9	0.0	7.6	0.0	0.0	3830.532
15	7.9	0.0	7.6	0.0	0.0	3894.460
16	7.9	0.0	7.5	0.0	0.0	4837.506
17	9.3	1.0	28.3	0.0	0.0	3882.186
18	7.9	0.0	7.5	0.0	0.0	4359.123
19	7.9	0.0	7.3	0.0	0.0	2973.503
20	9.5	1.2	28.2	0.0	0.0	4741.362
21	7.9	0.0	7.0	0.0	0.0	3414.706
22	7.9	0.0	7.3	0.0	0.0	3897.039
23	9.4	2.7	33.8	0.0	0.0	4317.437
24	7.9	0.0	7.3	0.0	0.0	4322.038
25	7.9	0.0	7.5	0.0	0.0	5470.621
26	7.9	0.0	7.5	0.0	0.0	4182.047
27	7.9	0.0	7.5	0.0	0.0	5390.709
28	7.9	0.0	5.6	0.0	0.0	4366.391
29	7.9	0.0	5.9	0.0	0.0	4962.626
30	10.2	2.2	43.3	0.0	0.0	3149.513
<b>Total</b>	<b>521.6</b>	<b>8.6</b>	<b>477.9</b>	<b>0.0</b>	<b>0.0</b>	<b>118589.7</b>
<b>Average</b>	<b>17.4</b>	<b>0.3</b>	<b>15.9</b>	<b>0.0</b>	<b>0.0</b>	<b>3953.0</b>
<b>Maximum</b>	<b>192.0</b>	<b>2.7</b>	<b>70.5</b>	<b>0.0</b>	<b>0.0</b>	<b>5470.6</b>
<b>Date</b>	<b>3-Apr</b>	<b>23-Apr</b>	<b>9-Apr</b>	<b>1-Apr</b>	<b>1-Apr</b>	<b>25-Apr</b>
<b>Minimum</b>	<b>7.9</b>	<b>0.0</b>	<b>5.6</b>	<b>0.0</b>	<b>0.0</b>	<b>2814.1</b>
<b>Date</b>	<b>28-Apr</b>	<b>1-Apr</b>	<b>28-Apr</b>	<b>1-Apr</b>	<b>1-Apr</b>	<b>6-Apr</b>

Notes:	
Dosage (mg/L)=	Day Tank (L) x %conc. x 1000
	Membrane Flow (m3)
Peroxide Concentration:	50.0%

# Runtimes Report

Month: April-18

Date	Daily Gen-Set Runtimes		Daily UV Runtimes		Daily PALL Runtimes				
	LLPS	WTP	UV #1	UV #2	Air Compressor #1	Air Compressor #2	CIP Neutralization	CIP Drain	CIP Recirc
	(Hrs)	(Hrs)	(Hrs)	(Hrs)	(Hrs)	(Hrs)	(Hrs)	(Hrs)	(Hrs)
1	0.0	0.0	0.0	0.0	24.3	0.0	0.0	0.0	0.0
2	0.0	0.0	0.0	0.0	0.1	24.4	0.0	0.0	0.0
3	0.0	0.0	0.0	0.0	24.3	0.0	0.2	0.1	0.3
4	0.0	0.0	0.0	0.0	11.6	12.9	0.0	0.0	0.0
5	0.0	0.0	0.0	0.0	24.3	0.0	0.0	0.0	0.0
6	0.0	3.1	0.0	0.0	23.7	0.6	0.0	0.0	0.0
7	0.0	0.0	0.0	0.0	24.3	0.1	0.0	0.0	0.0
8	0.0	0.0	0.0	0.0	24.3	0.1	0.0	0.0	0.0
9	0.0	0.0	0.0	0.0	11.2	13.2	0.6	0.3	0.4
10	0.0	0.0	0.0	0.0	24.4	0.0	0.2	0.1	0.2
11	0.0	0.0	0.0	0.0	0.0	24.4	0.0	0.0	0.1
12	0.0	0.0	0.0	0.0	24.4	0.0	0.2	0.1	0.1
13	0.0	0.0	0.0	0.0	0.0	24.4	0.0	0.0	0.0
14	0.0	0.0	0.0	0.0	24.4	0.0	0.0	0.0	0.0
15	0.0	0.0	0.0	0.0	15.7	7.7	0.0	0.0	0.0
16	0.0	0.0	0.0	0.0	24.3	0.0	0.0	0.0	0.0
17	1.2	0.0	0.0	0.0	8.1	16.4	0.2	0.1	0.2
18	0.0	0.0	0.0	0.0	24.4	0.0	0.0	0.0	0.0
19	0.0	0.0	0.0	0.0	0.0	24.4	0.0	0.0	0.0
20	0.0	0.0	0.0	0.0	24.4	0.0	0.1	0.2	0.1
21	0.0	0.0	0.0	0.0	0.0	24.4	0.0	0.0	0.0
22	0.0	0.0	0.0	0.0	24.4	0.0	0.0	0.0	0.0
23	0.0	0.0	0.0	0.6	14.3	10.0	0.3	0.0	0.2
24	0.0	0.0	0.0	0.0	0.0	24.4	0.0	0.0	0.0
25	0.0	0.0	0.0	0.0	24.4	0.0	0.0	0.0	0.0
26	0.0	0.0	0.0	0.0	24.4	0.1	0.0	0.0	0.0
27	0.0	0.0	0.0	0.0	24.2	0.1	0.0	0.0	0.0
28	0.0	0.0	0.0	0.0	24.4	0.1	0.0	0.0	0.0
29	0.0	0.0	0.0	0.0	24.3	0.0	0.0	0.0	0.0
30	0.0	0.0	0.0	0.0	8.5	15.8	0.3	0.3	0.3
Total	1.2	3.1	0.0	0.6	506.7	223.3	2.1	1.2	1.9

Notes:

---



---

# Runtimes Report

Month: April-18

## Daily

Date	PALL Runtimes						Process Drain	
	RFR Pump #1	RFR Pump #2	RF Pump #1	RF Pump #2	XR Pump #1	XR Pump #2	PDP9010 Pump	PDP9020 Pump
	(Hrs)	(Hrs)	(Hrs)	(Hrs)	(Hrs)	(Hrs)	(Hrs)	(Hrs)
1	3.7	3.8	0.6	0.7	7.7	5.0	2.0	2.7
2	3.8	3.9	0.7	0.7	5.9	8.1	2.1	2.5
3	4.1	4.1	0.8	0.8	7.5	7.6	2.3	3.0
4	3.5	3.8	0.5	0.7	6.2	5.7	2.3	2.9
5	4.6	4.6	0.9	0.8	9.9	5.7	2.2	3.2
6	3.0	3.0	0.5	0.6	3.0	7.9	2.4	3.3
7	3.9	4.0	0.7	0.7	9.4	4.0	2.3	2.8
8	4.2	3.9	0.7	0.7	4.0	9.8	2.2	3.0
9	3.6	3.6	0.7	0.6	9.8	3.9	2.5	3.1
10	3.6	4.1	0.7	0.8	4.9	7.8	2.1	2.9
11	5.1	4.8	0.9	0.8	6.6	9.8	2.5	2.9
12	3.9	3.6	0.7	0.7	6.3	6.6	2.1	2.8
13	4.0	4.3	0.7	0.8	8.4	5.9	2.2	2.7
14	4.1	4.1	0.7	0.9	6.9	7.9	2.0	2.8
15	0.9	0.9	0.7	0.7	7.7	7.5	2.4	2.8
16	3.7	3.7	0.9	1.1	8.5	10.5	2.3	3.1
17	4.7	4.6	0.8	0.7	8.9	5.9	2.0	2.6
18	5.1	5.2	0.8	0.9	6.5	10.3	2.4	2.8
19	3.2	3.4	0.7	0.6	6.3	5.1	2.0	2.5
20	5.1	4.9	1.0	0.9	9.3	8.6	2.2	2.6
21	3.5	3.5	0.6	0.6	8.0	5.0	2.1	2.5
22	4.1	4.3	0.7	0.8	6.4	8.6	2.0	2.5
23	4.9	5.1	0.9	0.8	6.9	8.0	2.0	2.7
24	4.9	4.3	0.9	0.8	9.8	6.7	2.3	2.5
25	6.0	6.2	1.2	1.2	9.6	10.8	2.1	2.5
26	4.4	4.4	0.9	0.8	10.0	5.6	2.0	2.6
27	2.4	2.2	0.9	1.0	8.4	9.7	2.3	3.0
28	0.0	0.0	0.7	0.7	5.5	9.4	2.0	2.5
29	0.0	0.0	0.9	0.9	10.6	8.5	2.5	2.7
30	2.4	2.8	0.6	0.6	6.1	6.3	2.3	2.8
Total	110.0	110.7	23.0	23.4	224.1	221.3	66.1	83.3

Notes:

# Runtimes Report

Month: April-18

## Daily

Date	Low Lift Pump Motor Runtimes				High Lift Pump Motor Runtimes			
	LLP1010 (Hrs)	LLP1020 (Hrs)	LLP1030 (Hrs)	LLP1040 (Hrs)	HLP7010 (Hrs)	HLP7020 (Hrs)	HLP7030 (Hrs)	HLP7040 (Hrs)
1	5.6	0.0	7.3	0.0	0.0	13.6	0.0	0.0
2	8.1	0.0	6.1	0.0	0.0	13.4	0.0	0.0
3	6.8	0.0	8.4	0.0	0.0	15.0	0.0	0.0
4	5.6	0.0	6.7	0.0	0.0	13.1	0.0	0.0
5	6.7	0.0	9.2	0.0	0.0	14.2	0.0	0.0
6	4.3	0.0	6.8	0.0	0.0	12.0	0.1	0.0
7	5.5	0.0	8.1	0.0	0.0	15.5	0.0	0.0
8	5.0	0.0	9.1	0.0	0.0	14.4	0.0	0.0
9	7.1	0.0	6.7	0.0	0.0	13.7	0.0	0.0
10	6.4	2.6	4.9	0.0	0.0	13.6	0.0	0.0
11	0.0	7.3	6.5	2.7	0.0	17.9	0.0	0.0
12	0.0	3.1	4.3	5.6	2.9	12.6	0.0	0.0
13	0.0	5.6	5.6	3.4	2.3	0.0	11.9	0.0
14	0.0	5.4	4.1	5.6	10.5	0.0	5.6	0.0
15	0.0	5.6	4.5	7.0	18.3	0.0	0.0	0.0
16	0.0	6.3	7.8	5.5	6.9	0.0	13.5	0.0
17	0.0	5.5	7.7	1.8	18.5	0.1	0.1	0.0
18	0.0	4.3	5.3	7.5	5.7	13.5	0.0	0.0
19	0.0	1.4	3.7	6.3	0.0	11.7	0.0	0.0
20	0.0	8.4	4.9	5.0	0.0	16.8	0.0	0.0
21	0.0	5.5	2.7	4.9	0.0	13.9	0.0	0.0
22	0.0	3.5	6.4	5.4	1.0	13.4	0.0	0.0
23	0.0	6.3	8.1	2.7	0.0	13.6	0.0	0.0
24	0.0	5.5	4.8	6.2	0.0	15.4	0.0	0.0
25	0.0	4.8	8.3	7.7	0.0	20.2	0.0	0.0
26	0.0	3.9	5.7	6.5	0.0	4.5	9.5	0.0
27	0.0	9.1	7.3	5.5	13.7	0.5	5.3	0.0
28	0.0	7.3	5.5	5.6	0.0	0.0	5.1	0.0
29	0.0	9.5	5.2	6.1	0.0	0.0	15.8	0.0
30	0.0	5.4	1.7	5.5	0.0	0.0	13.0	0.0
Total	61.1	116.3	183.4	106.5	79.8	292.5	79.9	0.0

Notes:

Lowlift pump 1010 out of service.  
 Highlift pump 7040 out of service.

# Plant Internal Flow Report

Month: April-18

Date	Settling Tank Level		Process Drain Tank		Settling Tank Flow		Potable Water Flow		Non-Potable Flow	
	T-9003 (m)		T-9001 (m)		FIT_9005 (m <sup>3</sup> (L/s))		FIT_7082 (m <sup>3</sup> (L/s))		FIT_7092 (m <sup>3</sup> (L/s))	
	Maximum	Minimum	Maximum	Minimum	Total	Peak	Total	Peak	Total	Peak
1	2.2	0.1	1.0	0.4	29.5	15.7	0.0	0.0	0.0	0.0
2	2.2	0.1	1.0	0.4	36.1	15.7	0.1	1.1	0.0	0.0
3	2.2	0.1	1.6	0.4	83.1	15.7	0.1	1.3	13.3	23.7
4	2.2	0.1	1.2	0.4	37.7	15.7	0.0	1.3	5.6	22.8
5	2.2	0.1	1.3	0.4	36.9	15.7	0.1	1.3	0.0	0.0
6	2.2	0.1	2.2	0.4	47.6	15.7	0.2	1.3	0.3	1.2
7	2.2	0.1	1.0	0.4	32.7	15.7	0.0	0.0	0.0	0.0
8	2.2	0.1	1.1	0.4	33.5	15.7	0.0	0.0	0.0	0.0
9	2.2	0.1	1.3	0.4	64.5	15.7	0.8	1.3	36.3	17.6
10	2.2	0.1	1.0	0.4	44.0	15.7	0.5	1.5	12.5	17.3
11	2.2	0.1	1.2	0.4	58.6	15.7	0.1	1.3	8.3	22.8
12	2.2	0.1	1.1	0.4	90.3	15.7	0.1	1.3	12.1	17.3
13	2.2	0.1	1.0	0.4	63.9	15.7	0.1	1.4	0.0	0.0
14	2.2	0.1	1.1	0.4	47.3	15.7	0.0	0.0	0.0	0.0
15	2.2	0.1	2.2	0.4	239.6	15.7	0.0	0.0	0.0	0.0
16	2.2	0.1	2.2	0.4	188.8	15.7	0.1	1.4	0.0	0.0
17	2.2	0.1	1.3	0.4	45.6	15.7	0.1	1.5	12.2	19.7
18	2.2	0.1	1.0	0.4	47.5	15.7	0.2	1.4	0.0	0.0
19	2.2	0.1	1.0	0.4	30.3	15.7	0.1	1.4	0.1	0.7
20	2.2	0.1	1.3	0.4	84.3	15.7	0.3	1.5	11.8	17.7
21	2.2	0.1	1.0	0.4	47.8	15.7	0.0	0.0	0.0	0.0
22	2.2	0.1	1.0	0.4	67.8	15.7	0.0	0.0	0.0	0.0
23	2.2	0.1	1.0	0.4	126.3	15.7	2.6	4.9	18.8	22.7
24	2.2	0.1	1.0	0.4	99.0	15.7	0.3	1.4	1.2	1.4
25	2.2	0.2	1.0	0.4	99.7	15.7	0.1	1.5	0.0	0.0
26	2.2	0.1	1.2	0.4	70.8	15.7	0.0	1.4	0.0	0.0
27	2.2	0.1	1.3	0.4	301.8	15.7	0.1	1.5	0.0	0.0
28	2.2	0.1	1.1	0.4	260.3	15.7	0.0	0.0	0.0	0.0
29	2.2	0.1	1.2	0.4	339.0	15.7	0.1	0.3	0.9	1.4
30	2.2	0.1	1.5	0.4	146.2	15.7	0.3	1.5	24.2	17.6
Total					2900.5		6.5		157.7	
Average	2.2	0.1	1.3	0.4	96.7	15.7	0.2	1.1	5.3	6.8
Maximum	2.2		2.2		339.0		2.6		36.3	
Date	9-Apr		6-Apr		29-Apr		23-Apr		9-Apr	
Minimum		0.1		0.4		15.7		0.0		0.0
Date		11-Apr		16-Apr		7-Apr		1-Apr		1-Apr

Notes: