

Municipality of West Elgin - Tri County Water System

Goto:

Month:

Year:

Date is Set to: **May-18**

Limit	Low	High	
Raw Water Chlorine Residual:	0.00	5.00	mg/L
Pre-Strainer Chlorine Residual:	0.00	5.00	mg/L
UV Inlet Chlorine Residual:	0.00	5.00	mg/L
Post Treatment Chlorine Residual:	1.00	5.00	mg/L
Treated Chlorine Residual:	1.00	2.50	mg/L
Distribution Chlorine Residual:	1.00	2.50	mg/L
Limit		High	
Limit		156.0	L/s
WTP Permit to Take Water		13500.0	m <sup>3</sup>
Limit	Low	High	
System Pressure Limits:	50.0	1034.0	Kpa

Compliance Report

Low Lift Monthly Report

>>>

Membranes Monthly Report

>>>

UV System Monthly Report

>>>

Plant Quality Report

>>>

Raw Well/Treated Storage Report

>>>

High Lift Monthly Report

>>>

Operational Report

Low Lift Monthly Report

>>>

High Lift Monthly Report

>>>

Chemical Usage Monthly Report

>>>

Runtimes Report

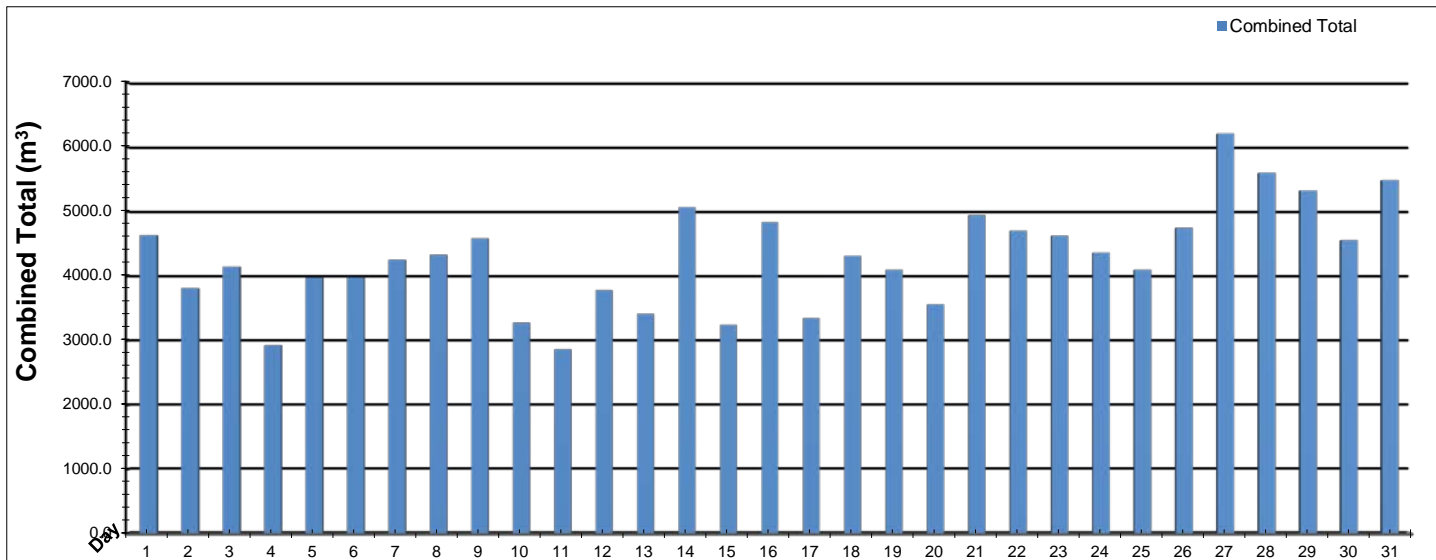
>>>

Plant Internal Flow Report

>>>

# Low Lift Monthly Report

Month: **May-18**

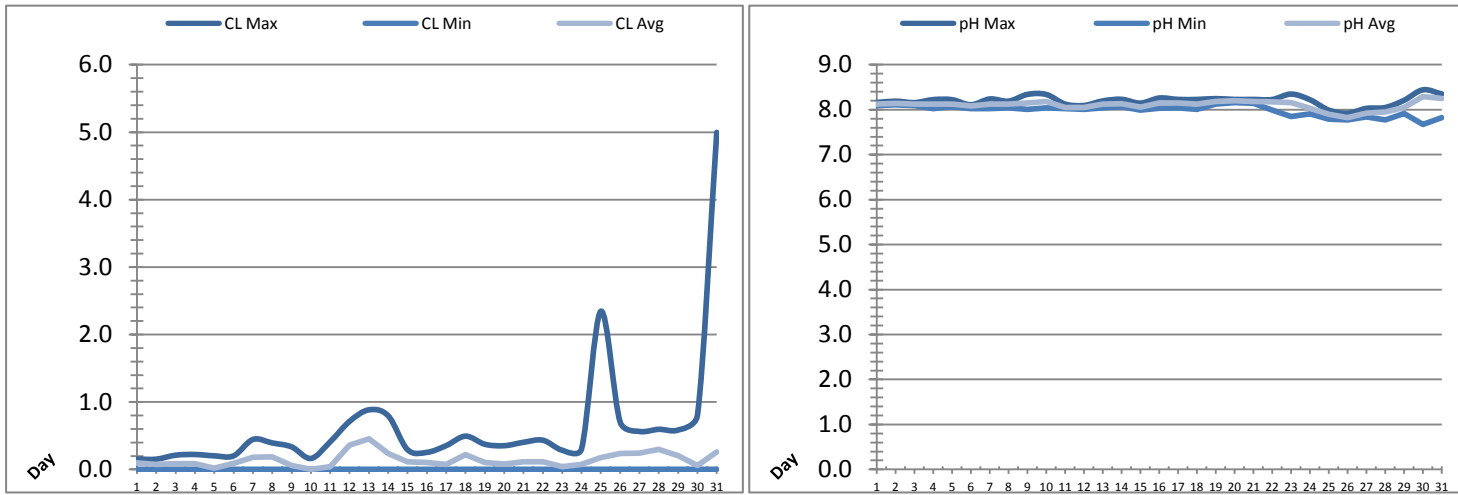


Date	Combined Total (m³)	West Train FIT-1017 (m³)	West Peak Flow FIT-1017 (L/s)	East Train FIT-1027 (m³)	East Peak Flow FIT-1027 (L/s)	Combined Peak Flow (L/s)
1	✓ 4635.5	0.0	0.0	4635.5	74.8	✓ 74.8
2	✓ 3812.0	0.0	0.0	3812.0	75.3	✓ 75.3
3	✓ 4146.3	0.0	0.0	4146.3	76.2	✓ 76.2
4	✓ 2926.2	0.0	0.0	2926.2	138.3	✓ 138.3
5	✓ 3975.3	0.0	0.0	3975.3	139.2	✓ 139.2
6	✓ 3977.8	0.0	0.0	3977.8	75.1	✓ 75.1
7	✓ 4251.9	0.0	0.0	4251.9	138.2	✓ 138.2
8	✓ 4331.9	0.0	0.0	4331.9	138.9	✓ 138.9
9	✓ 4585.0	0.0	0.0	4585.0	139.3	✓ 139.3
10	✓ 3277.6	0.0	0.0	3277.6	138.8	✓ 138.8
11	✓ 2864.4	0.0	0.0	2864.4	75.4	✓ 75.4
12	✓ 3781.6	0.0	0.0	3781.6	75.1	✓ 75.1
13	✓ 3415.9	0.0	0.0	3415.9	75.1	✓ 75.1
14	✓ 5068.1	0.0	0.0	5068.1	139.3	✓ 139.3
15	✓ 3244.1	0.0	0.0	3244.1	75.7	✓ 75.7
16	✓ 4836.2	0.0	0.0	4836.2	138.9	✓ 138.9
17	✓ 3347.3	0.0	0.0	3347.3	139.2	✓ 139.2
18	✓ 4313.1	0.0	0.0	4313.1	75.7	✓ 75.7
19	✓ 4097.7	0.0	0.0	4097.7	139.0	✓ 139.0
20	✓ 3562.3	0.0	0.0	3562.3	74.9	✓ 74.9
21	✓ 4947.4	0.0	0.0	4947.4	139.5	✓ 139.5
22	✓ 4704.2	0.0	0.0	4704.2	137.7	✓ 137.7
23	✓ 4626.4	0.0	0.0	4626.4	139.6	✓ 139.6
24	✓ 4362.7	0.0	0.0	4362.7	141.1	✓ 141.1
25	✓ 4097.1	0.0	0.0	4097.1	138.3	✓ 138.3
26	✓ 4748.6	0.0	0.0	4748.6	138.5	✓ 138.5
27	✓ 6210.7	0.0	0.0	6210.7	139.2	✓ 139.2
28	✓ 5600.7	3932.8	136.5	1667.8	75.1	✓ 136.5
29	✓ 5327.1	5327.1	138.2	0.0	0.0	✓ 138.2
30	✓ 4556.8	4556.8	135.7	0.0	0.0	✓ 135.7
31	✓ 5488.0	5488.0	136.6	0.0	0.0	✓ 136.6
<b>Total</b>	<b>133119.9</b>	<b>19304.7</b>		<b>113815.2</b>		
<b>Average</b>	<b>4294.2</b>	<b>622.7</b>	<b>17.6</b>	<b>3671.5</b>	<b>103.0</b>	<b>118.2</b>
<b>Maximum</b>	<b>6210.7</b>	<b>5488.0</b>	<b>138.23</b>	<b>6210.7</b>	<b>141.11</b>	<b>141.11</b>
<b>Date</b>	<b>27-May</b>	<b>31-May</b>	<b>29-May</b>	<b>27-May</b>	<b>24-May</b>	<b>24-May</b>
<b>Minimum</b>	<b>2864.4</b>	<b>0.0</b>	<b>0.00</b>	<b>0.0</b>	<b>0.00</b>	<b>74.79</b>
<b>Date</b>	<b>11-May</b>	<b>3-May</b>	<b>1-May</b>	<b>30-May</b>	<b>29-May</b>	<b>1-May</b>

Notes:

# Low Lift Monthly Report

Month: May-18



Date	Raw Water Chlorine Residual			Raw Water pH		
	AIT_1401_CL (mg/L)			AIT_1401_PH		
	Maximum	Minimum	Average	Maximum	Minimum	Average
1	0.15	0.00	0.10	8.16	8.09	8.12
2	0.15	0.00	0.08	8.19	8.10	8.14
3	0.21	0.00	0.09	8.16	8.09	8.12
4	0.22	0.00	0.08	8.22	8.02	8.12
5	0.20	0.00	0.02	8.22	8.07	8.12
6	0.20	0.00	0.09	8.11	8.02	8.08
7	0.45	0.00	0.18	8.24	8.02	8.12
8	0.39	0.00	0.18	8.19	8.04	8.13
9	0.33	0.00	0.06	8.34	8.01	8.15
10	0.16	0.00	0.00	8.34	8.04	8.18
11	0.41	0.00	0.04	8.12	8.02	8.05
12	0.71	0.00	0.36	8.09	8.01	8.05
13	0.88	0.00	0.45	8.20	8.04	8.13
14	0.79	0.00	0.23	8.23	8.07	8.13
15	0.29	0.00	0.11	8.15	7.99	8.06
16	0.25	0.00	0.10	8.26	8.04	8.15
17	0.35	0.00	0.08	8.23	8.04	8.15
18	0.49	0.00	0.22	8.23	8.01	8.12
19	0.37	0.00	0.10	8.25	8.12	8.19
20	0.35	0.00	0.08	8.23	8.16	8.20
21	0.40	0.00	0.11	8.23	8.14	8.19
22	0.43	0.00	0.11	8.23	7.99	8.18
23	0.29	0.00	0.04	8.35	7.85	8.16
24	0.30	0.00	0.07	8.22	7.91	8.03
25	2.34	0.00	0.17	7.99	7.79	7.90
26	0.70	0.00	0.24	7.92	7.77	7.82
27	0.56	0.00	0.24	8.03	7.84	7.93
28	0.59	0.00	0.30	8.05	7.78	7.95
29	0.58	0.00	0.20	8.21	7.92	8.05
30	0.80	0.00	0.06	8.44	7.67	8.29
31	5.00	0.00	0.26	8.35	7.82	8.25
Total						
Average	0.63	0.00	0.14	8.20	7.98	8.11
Maximum	5.00		0.45	8.44		8.29
Date	31-May		13-May	30-May		30-May
Minimum		0.00	0.00		7.67	7.82
Date		1-May	10-May		30-May	26-May

Notes:

---



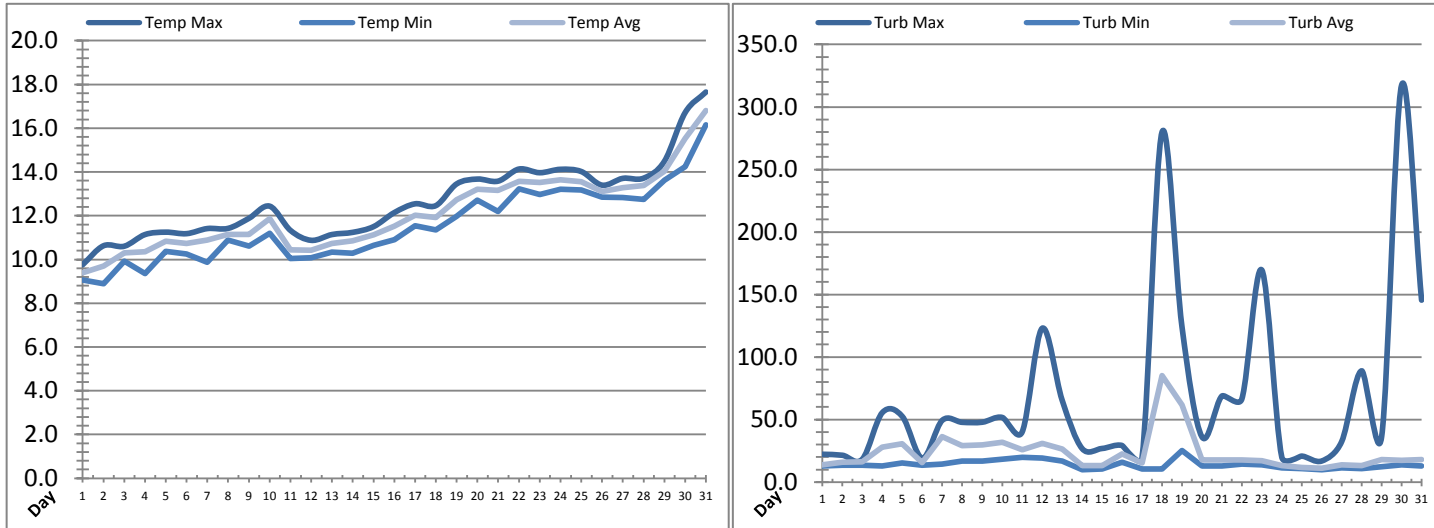
---



---

# Low Lift Monthly Report

Month: May-18

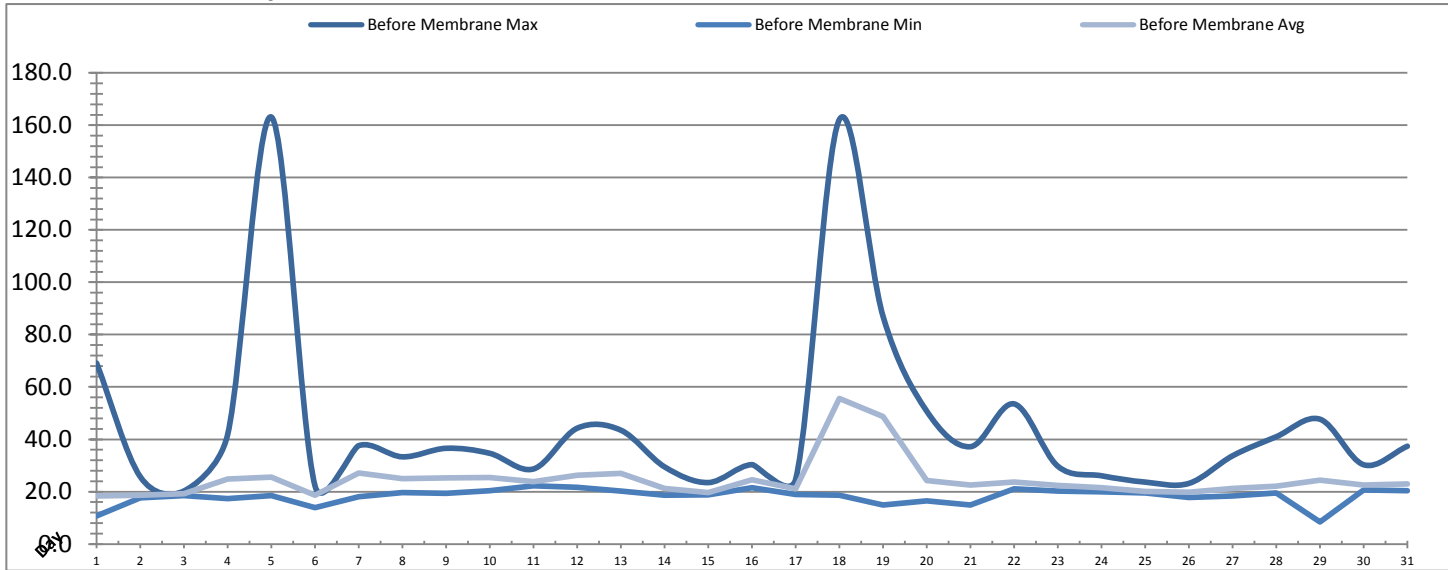


Date	Raw Water Temperature			Raw Water Turbidity		
	TIT_1403 (°C)			AIT_1404 (NTU)		
	Maximum	Minimum	Average	Maximum	Minimum	Average
1	9.8	9.1	9.4	22.23	12.84	13.88
2	10.6	8.9	9.7	21.44	13.59	15.76
3	10.6	9.9	10.3	18.32	13.60	16.13
4	11.1	9.4	10.4	55.59	12.85	27.82
5	11.2	10.4	10.8	52.47	15.22	30.70
6	11.2	10.3	10.7	19.11	13.62	15.68
7	11.4	9.9	10.9	49.38	14.41	36.37
8	11.4	10.9	11.2	47.79	16.76	29.01
9	11.9	10.6	11.1	47.85	16.73	29.78
10	12.4	11.2	11.9	51.70	18.35	31.81
11	11.3	10.0	10.4	40.03	19.82	25.79
12	10.9	10.1	10.4	122.94	19.06	31.01
13	11.1	10.3	10.7	65.61	16.77	26.27
14	11.2	10.3	10.8	26.85	9.79	13.21
15	11.5	10.6	11.1	26.86	10.53	13.31
16	12.1	10.9	11.5	29.28	16.01	22.54
17	12.5	11.5	12.0	19.18	10.60	15.17
18	12.5	11.4	11.9	279.68	10.58	85.05
19	13.5	12.0	12.7	124.55	25.34	61.77
20	13.7	12.7	13.2	36.23	12.92	17.79
21	13.6	12.2	13.2	68.77	12.91	17.66
22	14.1	13.2	13.6	66.42	14.45	17.70
23	14.0	13.0	13.5	169.59	13.65	17.01
24	14.1	13.2	13.6	20.01	11.43	13.30
25	14.0	13.2	13.6	20.78	10.62	11.56
26	13.4	12.9	13.1	16.84	9.86	10.97
27	13.7	12.8	13.3	32.39	11.38	13.80
28	13.7	12.7	13.4	88.97	10.63	13.28
29	14.5	13.6	14.0	36.29	12.20	17.90
30	16.7	14.2	15.5	317.44	13.65	17.30
31	17.7	16.1	16.8	145.50	12.99	18.09
<b>Total</b>						
<b>Average</b>	12.6	11.5	12.1	69.0	14.0	23.5
<b>Maximum</b>	17.7		16.8	317.4		85.0
<b>Date</b>	31-May		31-May	30-May		18-May
<b>Minimum</b>		8.9	9.4		9.8	11.0
<b>Date</b>		2-May	1-May		14-May	26-May

Notes:

# Membranes Monthly Report

Month: **May-18**



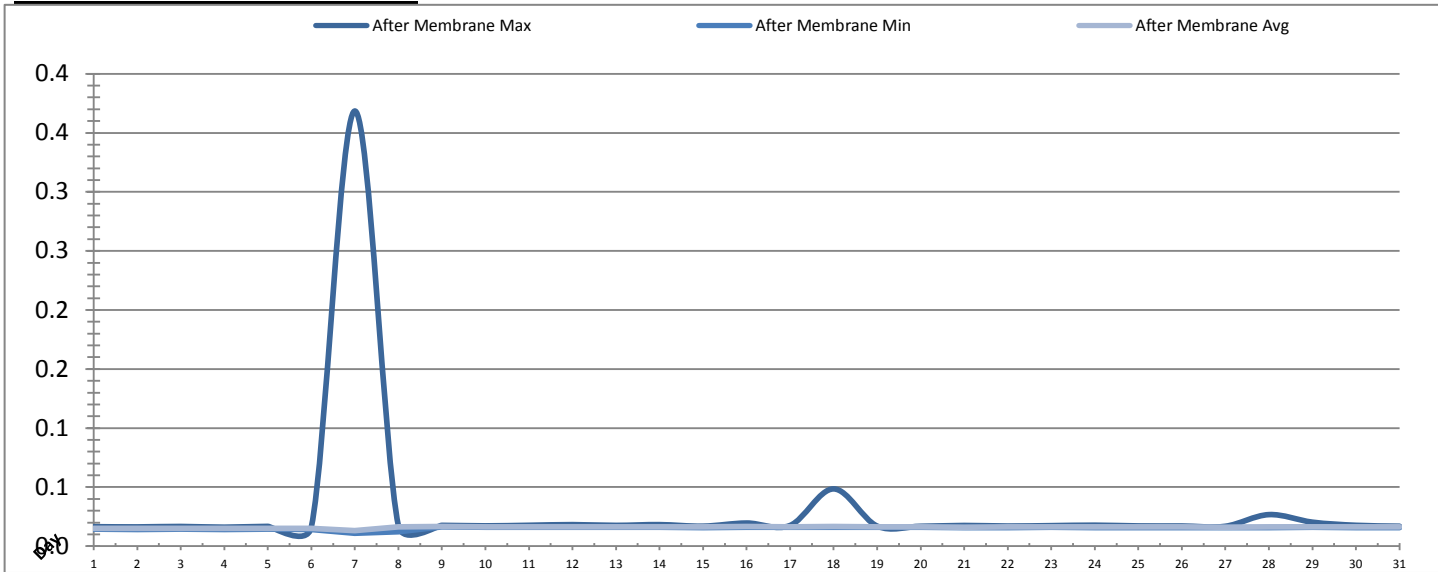
Date	Turbidity Before Membrane			Rack #1 Turbidity			Rack #2 Turbidity		
	PALL_FEED_AIT2006_Value NTU			RACK1_NTU_Value NTU			RACK2_NTU_Value NTU		
	Maximum	Minimum	Average	Maximum	Minimum	Average	Maximum	Minimum	Average
1	69.13	10.73	18.31	0.02	0.02	0.02	0.09	0.02	0.02
2	25.69	17.58	18.58	0.34	0.02	0.02	0.21	0.02	0.03
3	20.25	18.47	19.19	0.02	0.02	0.02	0.03	0.02	0.02
4	41.83	17.39	24.77	0.02	0.02	0.02	0.06	0.02	0.02
5	163.13	18.55	25.48	0.02	0.02	0.02	0.05	0.02	0.02
6	22.16	13.91	18.63	0.02	0.02	0.02	0.21	0.02	0.02
7	37.59	18.06	27.17	0.02	0.02	0.02	0.17	0.02	0.02
8	33.31	19.68	24.91	0.04	0.02	0.02	0.05	0.02	0.02
9	36.57	19.31	25.28	0.02	0.02	0.02	0.14	0.02	0.02
10	34.64	20.35	25.47	0.02	0.02	0.02	0.35	0.02	0.02
11	28.67	22.26	23.86	0.02	0.02	0.02	0.24	0.02	0.02
12	44.24	21.67	26.27	0.02	0.02	0.02	0.24	0.02	0.02
13	43.48	20.18	26.96	0.02	0.02	0.02	0.19	0.02	0.02
14	29.46	18.59	21.21	0.02	0.02	0.02	0.04	0.02	0.02
15	23.47	18.84	19.71	0.02	0.02	0.02	0.12	0.02	0.02
16	30.32	21.53	24.53	0.02	0.02	0.02	0.12	0.02	0.02
17	24.73	18.96	21.10	0.02	0.02	0.02	0.02	0.02	0.02
18	162.15	18.62	55.60	0.19	0.02	0.02	0.04	0.02	0.02
19	86.97	14.93	48.65	0.02	0.02	0.02	0.16	0.02	0.02
20	50.76	16.50	24.23	0.02	0.02	0.02	0.20	0.02	0.02
21	37.18	14.90	22.47	0.02	0.02	0.02	0.20	0.02	0.02
22	53.53	21.14	23.74	0.04	0.02	0.02	0.22	0.02	0.02
23	29.72	20.21	22.45	0.02	0.02	0.02	0.02	0.02	0.02
24	26.06	19.90	21.49	0.03	0.02	0.02	0.17	0.02	0.02
25	23.65	19.45	20.09	0.21	0.02	0.02	0.26	0.02	0.02
26	23.16	17.72	19.73	0.24	0.02	0.03	0.23	0.02	0.02
27	33.70	18.29	21.30	0.12	0.02	0.04	0.18	0.02	0.02
28	40.98	19.51	22.05	0.06	0.02	0.03	0.07	0.02	0.02
29	47.68	8.44	24.33	0.03	0.02	0.02	0.24	0.02	0.02
30	30.28	20.69	22.55	0.02	0.02	0.02	0.05	0.02	0.02
31	37.35	20.35	22.97	0.02	0.02	0.02	0.03	0.02	0.02
<b>Total</b>									
<b>Average</b>	44.9	18.3	24.6	0.05	0.02	0.02	0.14	0.02	0.02
<b>Maximum</b>	163.1		55.6	0.34		0.04	0.35		0.03
<b>Date</b>	5-May		18-May	2-May		27-May	10-May		2-May
<b>Minimum</b>		8.4	18.3		0.02	0.02		0.02	0.02
<b>Date</b>		29-May	1-May		8-May	1-May		10-May	14-May

**Notes:**

On 2nd, rack # 1 max ntu was 0.34 after EFM for 6 mins; rack # 2 maximum values high for the month after IT test; on 18th, rack # 1 ntu max 0.19 after EFM; on 25th, 26th, 27th rack # 1 ntu spikes for 2 min

# Membranes Monthly Report

Month: **May-18**

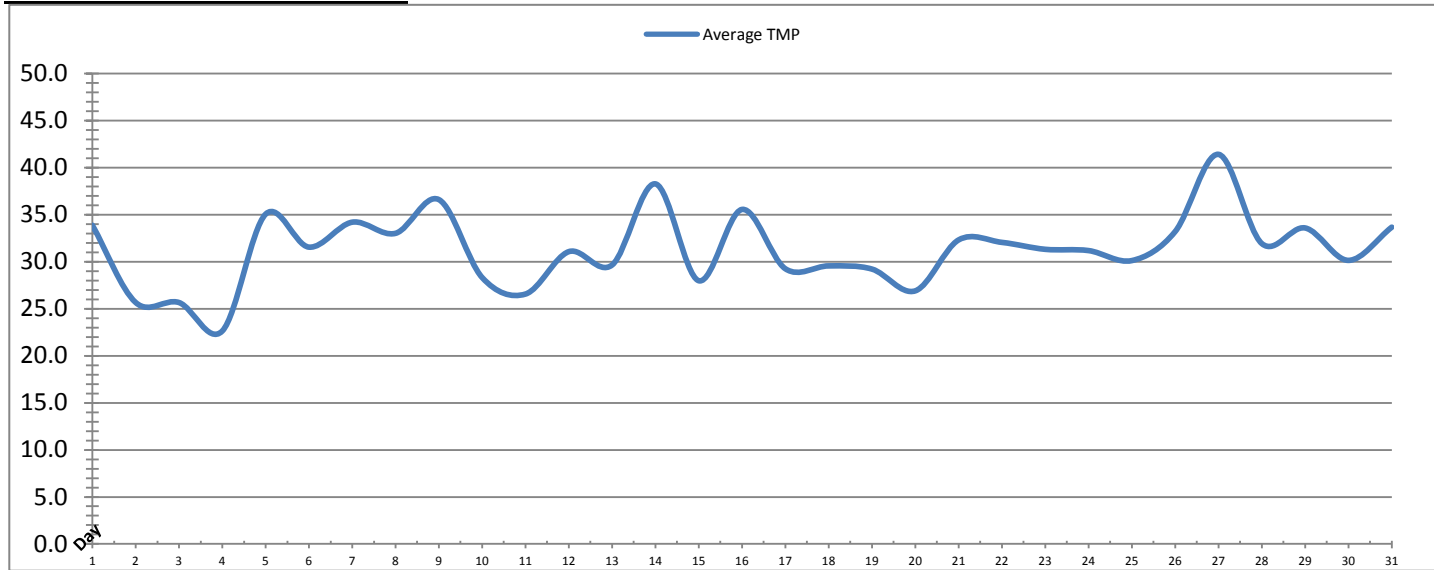


Date	Rack #3 Turbidity			Rack #4 Turbidity			Turbidity After Membranes		
	RACK3_NTU_Value NTU			RACK4_NTU_Value NTU			PALL_FILT_AIT5001_Value NTU		
	Maximum	Minimum	Average	Maximum	Minimum	Average	Maximum	Minimum	Average
1	0.02	0.02	0.02	0.14	0.03	0.03	0.02	0.01	0.02
2	0.02	0.02	0.02	0.03	0.03	0.03	0.02	0.01	0.01
3	0.02	0.02	0.02	0.03	0.03	0.03	0.02	0.01	0.02
4	0.02	0.02	0.02	0.03	0.03	0.03	0.02	0.01	0.01
5	0.02	0.02	0.02	0.03	0.03	0.03	0.02	0.01	0.02
6	0.02	0.02	0.02	0.03	0.03	0.03	0.02	0.01	0.01
7	0.02	0.02	0.02	0.03	0.03	0.03	0.37	0.01	0.01
8	0.02	0.02	0.02	0.03	0.03	0.03	0.02	0.01	0.02
9	0.02	0.02	0.02	0.03	0.03	0.03	0.02	0.02	0.02
10	0.02	0.02	0.02	0.03	0.03	0.03	0.02	0.02	0.02
11	0.02	0.02	0.02	0.03	0.03	0.03	0.02	0.02	0.02
12	0.02	0.02	0.02	0.04	0.03	0.03	0.02	0.02	0.02
13	0.02	0.02	0.02	0.04	0.03	0.03	0.02	0.02	0.02
14	0.03	0.02	0.02	0.04	0.03	0.03	0.02	0.02	0.02
15	0.02	0.02	0.02	0.03	0.03	0.03	0.02	0.02	0.02
16	0.02	0.02	0.02	0.03	0.03	0.03	0.02	0.02	0.02
17	0.02	0.02	0.02	0.03	0.03	0.03	0.02	0.02	0.02
18	0.02	0.02	0.02	0.03	0.03	0.03	0.05	0.02	0.02
19	0.02	0.02	0.02	0.03	0.03	0.03	0.02	0.02	0.02
20	0.02	0.02	0.02	0.03	0.03	0.03	0.02	0.02	0.02
21	0.02	0.02	0.02	0.03	0.03	0.03	0.02	0.02	0.02
22	0.04	0.02	0.02	0.03	0.03	0.03	0.02	0.02	0.02
23	0.02	0.02	0.02	0.03	0.03	0.03	0.02	0.02	0.02
24	0.02	0.02	0.02	0.09	0.02	0.03	0.02	0.02	0.02
25	0.02	0.02	0.02	0.03	0.03	0.03	0.02	0.02	0.02
26	0.02	0.02	0.02	0.03	0.03	0.03	0.02	0.02	0.02
27	0.02	0.02	0.02	0.03	0.03	0.03	0.02	0.02	0.02
28	0.08	0.02	0.02	0.04	0.03	0.03	0.03	0.02	0.02
29	0.02	0.02	0.02	0.03	0.03	0.03	0.02	0.02	0.02
30	0.02	0.02	0.02	0.03	0.03	0.03	0.02	0.02	0.02
31	0.02	0.02	0.02	0.03	0.03	0.03	0.02	0.02	0.02
<b>Total</b>									
<b>Average</b>	0.02	0.02	0.02	0.04	0.03	0.03	0.03	0.02	0.02
<b>Maximum</b>	0.08		0.02	0.14		0.03	0.37		0.02
<b>Date</b>	28-May		28-May	1-May		1-May	7-May		9-May
<b>Minimum</b>		0.02			0.02			0.01	
<b>Date</b>		1-May		1-May	24-May		31-May	7-May	7-May

Notes:  
 On 1st, rack # 4 ntu max was 0.14 after EFM; on 7th, max turbidity after membranes was 0.37 for 1 min after EFM on rack # 3

# Membranes Monthly Report

Month: **May-18**



Date	Integrity Test Rack 1							
	Initial Pressure (kPa)	Final Pressure (kPa)	Test Duration (sec)	Change in Pressure (kPa)	UCL	Within UCL	Average TMP (kPa)	Max TMP (kPa)
1	199.4	198.2	300.0	1.2	2.0	✓ 2.0	33.9	139.1
2	199.5	198.4	300.0	1.2	2.0	✓ 2.0	25.7	114.9
3	198.8	197.6	300.0	1.2	2.0	✓ 2.0	25.7	100.4
4	199.0	197.8	300.0	1.3	2.0	✓ 2.0	22.6	107.2
5	199.2	198.1	300.0	1.1	2.0	✓ 2.0	35.1	128.5
6	199.0	197.8	300.0	1.3	2.0	✓ 2.0	31.5	68.0
7	198.6	197.4	300.0	1.2	2.0	✓ 2.0	34.2	120.3
8	198.7	197.6	300.0	1.1	2.0	✓ 2.0	33.0	118.9
9	198.3	197.2	300.0	1.1	2.0	✓ 2.0	36.6	150.2
10	198.7	197.6	300.0	1.1	2.0	✓ 2.0	28.3	120.0
11	198.5	197.3	300.0	1.2	2.0	✓ 2.0	26.6	67.5
12	198.7	197.5	300.0	1.1	2.0	✓ 2.0	31.1	68.3
13	198.7	197.6	300.0	1.1	2.0	✓ 2.0	29.7	73.2
14	199.0	197.9	300.0	1.1	2.0	✓ 2.0	38.3	129.4
15	199.2	198.0	300.0	1.2	2.0	✓ 2.0	28.0	122.8
16	198.9	197.7	300.0	1.1	2.0	✓ 2.0	35.6	119.3
17	198.4	197.3	300.0	1.2	2.0	✓ 2.0	29.2	128.1
18	199.0	197.9	300.0	1.1	2.0	✓ 2.0	29.6	125.5
19	198.4	197.3	300.0	1.1	2.0	✓ 2.0	29.2	104.7
20	198.6	197.5	300.0	1.1	2.0	✓ 2.0	26.9	58.0
21	199.2	198.1	300.0	1.1	2.0	✓ 2.0	32.3	104.6
22	198.3	197.2	300.0	1.1	2.0	✓ 2.0	32.1	93.2
23	198.4	197.2	300.0	1.2	2.0	✓ 2.0	31.3	105.8
24	198.9	197.7	300.0	1.1	2.0	✓ 2.0	31.2	104.8
25	198.2	197.1	300.0	1.1	2.0	✓ 2.0	30.1	106.9
26	198.7	197.6	300.0	1.1	2.0	✓ 2.0	33.2	107.2
27	198.5	197.4	300.0	1.1	2.0	✓ 2.0	41.4	113.2
28	199.2	197.9	300.0	1.3	2.0	✓ 2.0	31.9	100.1
29	199.0	197.8	300.0	1.2	2.0	✓ 2.0	33.6	103.0
30	198.1	197.1	300.0	1.0	2.0	✓ 2.0	30.1	95.1
31	198.6	197.5	300.0	1.1	2.0	✓ 2.0	33.7	97.1
<b>Total</b>								
Average	198.8	197.6	300.0	1.1	2.0	2.0	31.3	106.3
Maximum	199.5	198.4	300.0	1.3	2.0	2.0	41.4	150.2
Date	2-May	2-May	1-May	28-May	1-May	1-May	27-May	9-May
Minimum	198.1	197.1	300.0	1.0	2.0	2.0	22.6	58.0
Date	30-May	25-May	1-May	30-May	1-May	1-May	4-May	20-May

Notes:

---



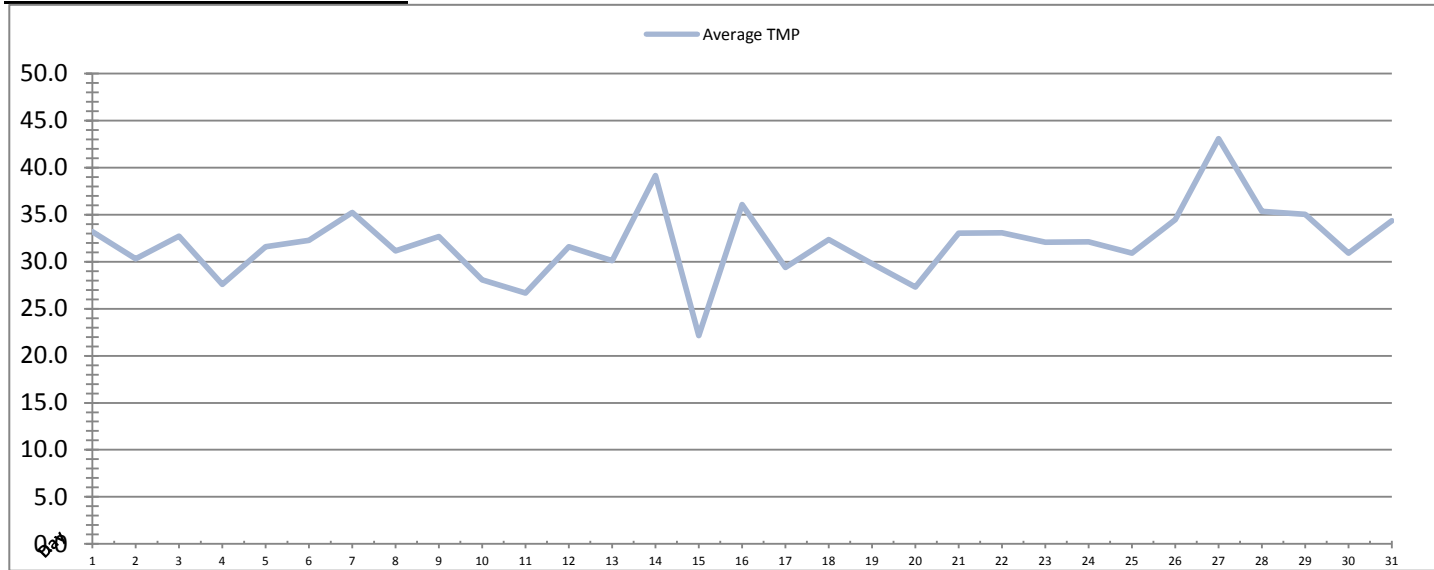
---



---

# Membranes Monthly Report

Month: **May-18**



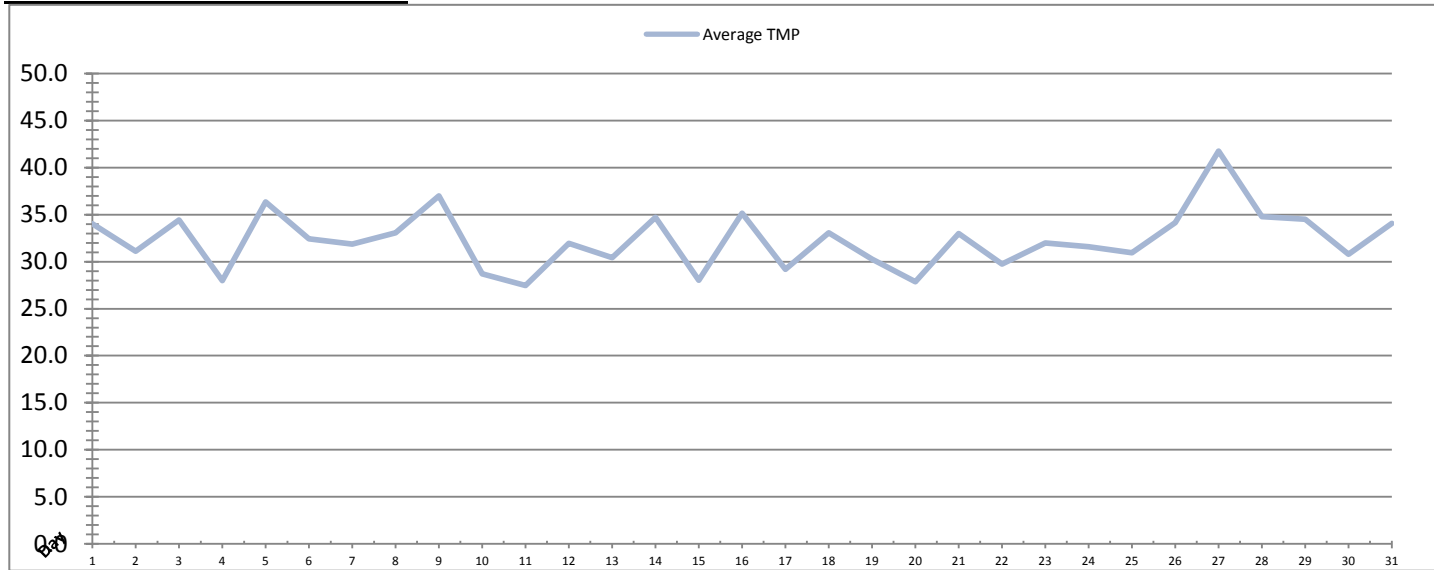
Date	Integrity Test Rack 2							
	Initial Pressure (kPa)	Final Pressure (kPa)	Test Duration (sec)	Change in Pressure (kPa)	UCL	Within UCL	Average TMP (kPa)	Max TMP (kPa)
1	208.0	206.9	300.0	1.1	2.0	✓ 2.0	33.2	86.6
2	208.1	206.9	300.0	1.2	2.0	✓ 2.0	30.3	103.4
3	207.7	206.6	300.0	1.1	2.0	✓ 2.0	32.7	113.8
4	208.3	207.1	300.0	1.2	2.0	✓ 2.0	27.6	174.2
5	208.0	206.8	300.0	1.2	2.0	✓ 2.0	31.6	124.0
6	207.9	206.8	300.0	1.1	2.0	✓ 2.0	32.2	67.6
7	207.9	206.8	300.0	1.1	2.0	✓ 2.0	35.2	137.3
8	207.8	206.7	300.0	1.1	2.0	✓ 2.0	31.1	121.9
9	208.0	206.9	300.0	1.1	2.0	✓ 2.0	32.6	118.4
10	207.8	206.8	300.0	1.0	2.0	✓ 2.0	28.1	113.8
11	207.8	206.7	300.0	1.1	2.0	✓ 2.0	26.7	63.9
12	207.6	206.5	300.0	1.1	2.0	✓ 2.0	31.6	69.3
13	207.7	206.7	300.0	1.0	2.0	✓ 2.0	30.1	67.1
14	207.9	206.7	300.0	1.1	2.0	✓ 2.0	39.2	159.1
15	207.9	206.8	300.0	1.1	2.0	✓ 2.0	22.2	93.3
16	207.9	206.9	300.0	1.1	2.0	✓ 2.0	36.1	121.6
17	207.9	206.7	300.0	1.1	2.0	✓ 2.0	29.4	122.1
18	207.6	206.5	300.0	1.1	2.0	✓ 2.0	32.3	146.4
19	207.6	206.6	300.0	1.0	2.0	✓ 2.0	29.8	105.0
20	208.5	207.4	300.0	1.1	2.0	✓ 2.0	27.3	75.9
21	207.7	206.7	300.0	1.1	2.0	✓ 2.0	33.0	103.4
22	207.9	206.8	300.0	1.1	2.0	✓ 2.0	33.1	112.9
23	208.0	206.9	300.0	1.1	2.0	✓ 2.0	32.1	110.4
24	207.7	206.6	300.0	1.1	2.0	✓ 2.0	32.1	107.2
25	208.1	207.1	300.0	1.0	2.0	✓ 2.0	30.9	111.2
26	207.8	206.8	300.0	1.1	2.0	✓ 2.0	34.5	111.4
27	207.7	206.6	300.0	1.1	2.0	✓ 2.0	43.1	115.8
28	208.0	206.9	300.0	1.2	2.0	✓ 2.0	35.4	125.8
29	207.5	206.4	300.0	1.1	2.0	✓ 2.0	35.0	106.0
30	207.8	206.9	300.0	0.9	2.0	✓ 2.0	30.9	96.8
31	207.5	206.6	300.0	0.9	2.0	✓ 2.0	34.4	98.9
<b>Total</b>								
Average	207.9	206.8	300.0	1.1	2.0	2.0	32.1	109.2
Maximum	208.5	207.4	300.0	1.2	2.0	2.0	43.1	174.2
Date	20-May	20-May	1-May	2-May	1-May	1-May	27-May	4-May
Minimum	207.5	206.4	300.0	0.9	2.0	2.0	22.2	63.9
Date	29-May	29-May	1-May	30-May	1-May	1-May	15-May	11-May

Notes:



# Membranes Monthly Report

Month: **May-18**



Date	Integrity Test Rack 3							
	Initial Pressure (kPa)	Final Pressure (kPa)	Test Duration (sec)	Change in Pressure (kPa)	UCL	Within UCL	Average TMP (kPa)	Max TMP (kPa)
1	192.7	191.4	300.0	1.3	2.0	✓ 2.0	34.0	67.3
2	193.6	192.3	300.0	1.3	2.0	✓ 2.0	31.1	122.9
3	193.6	192.4	300.0	1.3	2.0	✓ 2.0	34.4	125.8
4	193.1	191.8	300.0	1.2	2.0	✓ 2.0	28.0	122.7
5	193.1	192.0	300.0	1.1	2.0	✓ 2.0	36.3	198.9
6	193.3	192.1	300.0	1.2	2.0	✓ 2.0	32.4	68.9
7	192.5	191.3	300.0	1.2	2.0	✓ 2.0	31.9	120.5
8	193.5	192.3	300.0	1.1	2.0	✓ 2.0	33.1	103.4
9	193.4	192.3	300.0	1.1	2.0	✓ 2.0	37.0	134.8
10	193.3	192.1	300.0	1.1	2.0	✓ 2.0	28.7	114.9
11	193.0	191.8	300.0	1.2	2.0	✓ 2.0	27.5	66.5
12	193.1	191.8	300.0	1.3	2.0	✓ 2.0	31.9	68.1
13	192.7	191.5	300.0	1.2	2.0	✓ 2.0	30.4	68.5
14	192.9	191.7	300.0	1.2	2.0	✓ 2.0	34.7	118.0
15	193.0	191.8	300.0	1.2	2.0	✓ 2.0	28.0	100.2
16	192.5	191.3	300.0	1.2	2.0	✓ 2.0	35.2	106.3
17	192.8	191.7	300.0	1.1	2.0	✓ 2.0	29.2	114.0
18	192.9	191.7	300.0	1.2	2.0	✓ 2.0	33.1	122.0
19	193.3	192.2	300.0	1.2	2.0	✓ 2.0	30.3	104.7
20	192.7	191.5	300.0	1.2	2.0	✓ 2.0	27.9	67.3
21	193.4	192.3	300.0	1.1	2.0	✓ 2.0	33.0	103.4
22	192.2	191.7	300.0	0.5	2.0	✓ 2.0	29.7	69.2
23	192.5	191.4	300.0	1.1	2.0	✓ 2.0	32.0	97.8
24	192.5	191.3	300.0	1.2	2.0	✓ 2.0	31.6	101.5
25	192.1	191.0	300.0	1.1	2.0	✓ 2.0	31.0	106.4
26	192.5	191.2	300.0	1.2	2.0	✓ 2.0	34.2	106.0
27	191.5	190.3	300.0	1.1	2.0	✓ 2.0	41.8	111.0
28	192.3	191.1	300.0	1.2	2.0	✓ 2.0	34.8	123.8
29	192.4	191.3	300.0	1.1	2.0	✓ 2.0	34.5	98.7
30	191.5	190.5	300.0	1.0	2.0	✓ 2.0	30.8	90.0
31	191.4	189.9	300.0	1.4	2.0	✓ 2.0	34.0	95.1
<b>Total</b>								
Average	192.7	191.6	300.0	1.2	2.0	2.0	32.3	103.8
Maximum	193.6	192.4	300.0	1.4	2.0	2.0	41.8	198.9
Date	3-May	3-May	1-May	31-May	1-May	1-May	27-May	5-May
Minimum	191.4	189.9	300.0	0.5	2.0	2.0	27.5	66.5
Date	31-May	31-May	1-May	22-May	1-May	1-May	11-May	11-May

Notes:

---



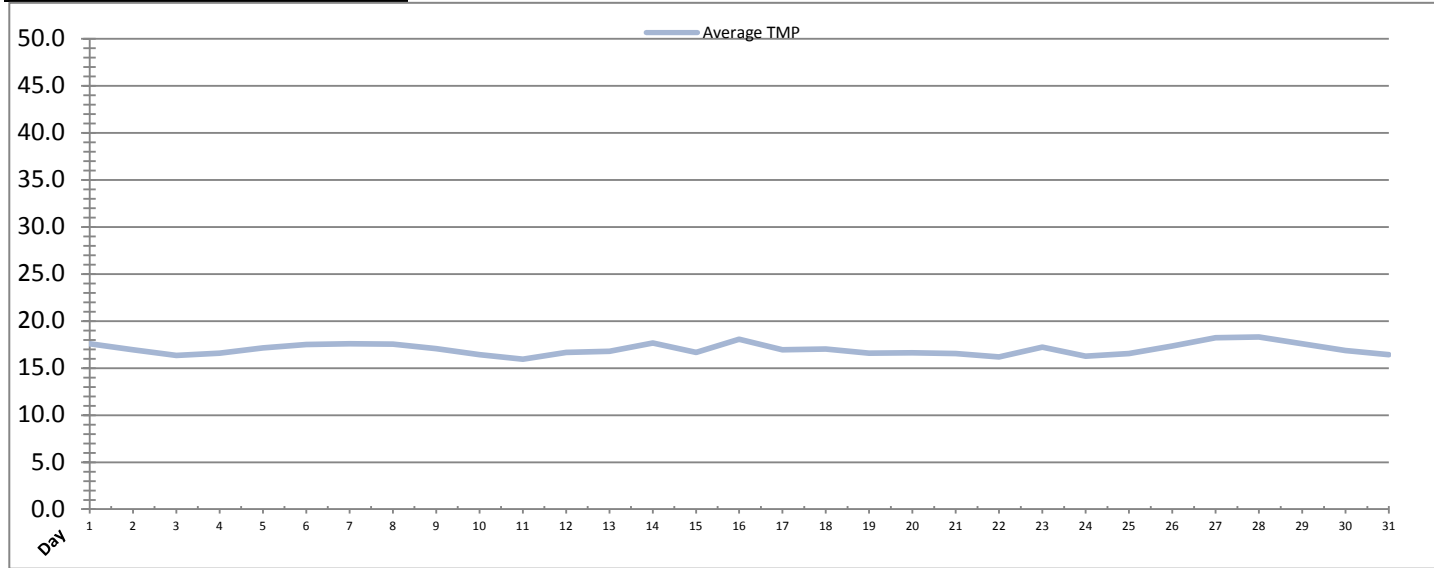
---



---

# Membranes Monthly Report

Month: **May-18**



Integrity Test Rack 4								
Date	Initial Pressure (kPa)	Final Pressure (kPa)	Test Duration (sec)	Change in Pressure (kPa)	UCL	Within UCL	Average TMP (kPa)	Max TMP (kPa)
1	200.9	199.6	300.0	1.3	2.0	✓ 2.0	17.6	56.6
2	200.7	199.5	300.0	1.2	2.0	✓ 2.0	16.9	44.5
3	200.7	199.5	300.0	1.2	2.0	✓ 2.0	16.4	38.5
4	200.6	199.4	300.0	1.2	2.0	✓ 2.0	16.6	53.3
5	200.4	199.2	300.0	1.2	2.0	✓ 2.0	17.1	68.6
6	200.2	198.9	300.0	1.3	2.0	✓ 2.0	17.5	34.4
7	200.8	199.7	300.0	1.2	2.0	✓ 2.0	17.6	38.5
8	200.7	199.4	300.0	1.3	2.0	✓ 2.0	17.6	38.2
9	200.5	199.3	300.0	1.2	2.0	✓ 2.0	17.1	56.7
10	200.2	198.8	300.0	1.4	2.0	✓ 2.0	16.4	38.3
11	200.5	199.3	300.0	1.2	2.0	✓ 2.0	15.9	55.9
12	200.5	199.2	300.0	1.3	2.0	✓ 2.0	16.7	36.7
13	200.5	199.1	300.0	1.3	2.0	✓ 2.0	16.8	37.9
14	200.1	198.9	300.0	1.2	2.0	✓ 2.0	17.7	51.9
15	200.4	199.0	300.0	1.4	2.0	✓ 2.0	16.7	48.0
16	200.3	198.8	300.0	1.5	2.0	✓ 2.0	18.1	45.3
17	200.5	199.1	300.0	1.4	2.0	✓ 2.0	16.9	51.9
18	200.4	199.1	300.0	1.3	2.0	✓ 2.0	17.0	43.0
19	200.5	199.4	300.0	1.1	2.0	✓ 2.0	16.6	46.0
20	200.2	199.1	300.0	1.1	2.0	✓ 2.0	16.6	51.0
21	200.2	198.9	300.0	1.2	2.0	✓ 2.0	16.5	57.0
22	200.5	199.4	300.0	1.2	2.0	✓ 2.0	16.2	48.8
23	200.5	199.3	300.0	1.3	2.0	✓ 2.0	17.2	48.7
24	200.4	199.2	300.0	1.1	2.0	✓ 2.0	16.3	39.5
25	200.7	199.6	300.0	1.1	2.0	✓ 2.0	16.5	40.2
26	200.7	199.5	300.0	1.2	2.0	✓ 2.0	17.3	49.4
27	200.5	199.3	300.0	1.2	2.0	✓ 2.0	18.2	41.3
28	200.5	199.3	300.0	1.2	2.0	✓ 2.0	18.3	75.5
29	200.7	199.6	300.0	1.1	2.0	✓ 2.0	17.6	39.8
30	200.5	199.2	300.0	1.3	2.0	✓ 2.0	16.9	48.9
31	200.9	199.9	300.0	1.0	2.0	✓ 2.0	16.4	39.3
<b>Total</b>								
Average	200.5	199.3	300.0	1.2	2.0	2.0	17.0	47.2
Maximum	200.9	199.9	300.0	1.5	2.0	2.0	18.3	75.5
Date	31-May	31-May	1-May	16-May	1-May	1-May	28-May	28-May
Minimum	200.1	198.8	300.0	1.0	2.0	2.0	15.9	34.4
Date	14-May	10-May	1-May	31-May	1-May	1-May	11-May	6-May

Notes:

---



---



---

# Membranes Monthly Report

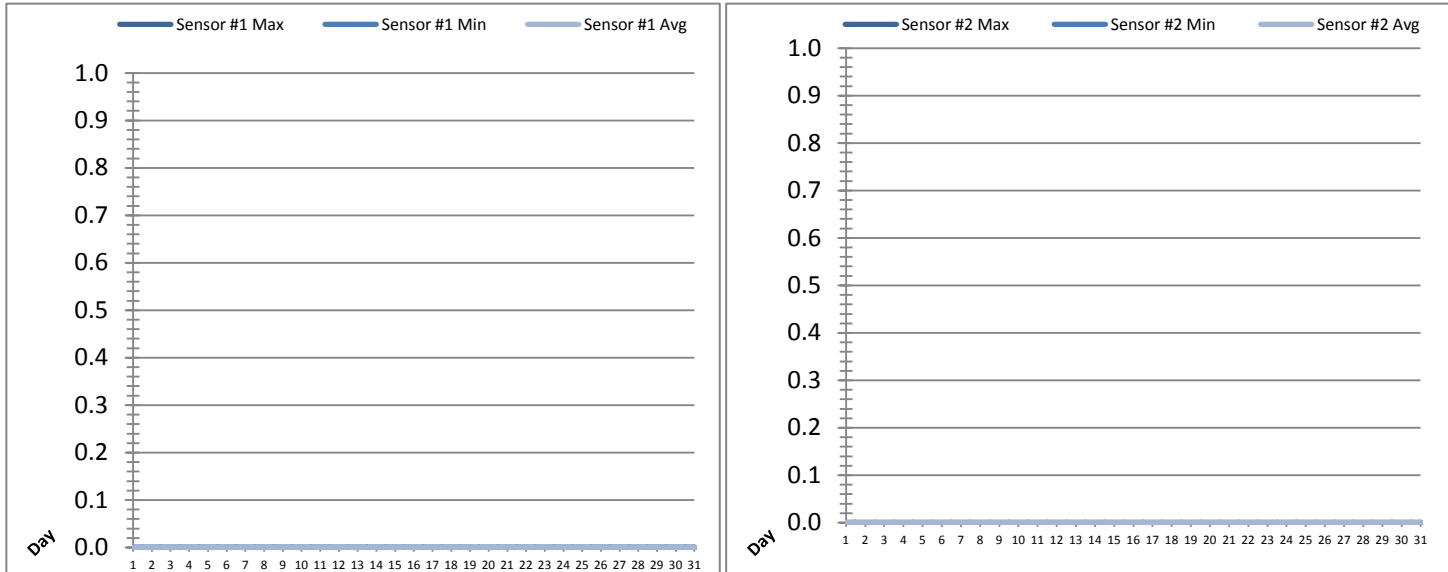
Month: May-18

Date	Membranes Monthly Performance							
	Rack 1 >0.1 NTU (Minutes)	Rack 1 Forward Flow (Minutes)	Rack 2 >0.1 NTU (Minutes)	Rack 2 Forward Flow (Minutes)	Rack 3 >0.1 NTU (Minutes)	Rack 3 Forward Flow (Minutes)	Rack 4 >0.1 NTU (Minutes)	Rack 4 Forward Flow (Minutes)
1	0.0	1037.5	0.0	1032.5	0.0	1031.2	3.2	644.5
2	6.3	719.4	1.4	851.1	0.0	856.0	0.0	483.4
3	0.0	655.1	0.0	867.2	0.0	916.1	0.0	423.1
4	0.0	473.5	0.0	616.0	0.0	610.3	0.0	318.1
5	0.0	585.6	0.0	566.2	0.0	589.1	0.0	378.1
6	0.0	883.0	1.4	902.3	0.0	882.1	0.0	465.0
7	0.0	840.4	1.3	853.5	0.0	784.2	0.0	466.6
8	0.0	936.1	0.0	924.4	0.0	927.2	0.0	503.3
9	0.0	799.1	1.4	754.2	0.0	803.1	0.0	446.3
10	0.0	665.3	2.3	667.0	0.0	660.4	0.0	343.4
11	0.0	640.3	1.4	648.5	0.0	643.0	0.0	431.4
12	0.0	835.5	2.2	850.3	0.0	837.2	0.0	399.0
13	0.0	764.1	1.4	773.6	0.0	760.6	0.0	358.2
14	0.0	1029.0	0.0	1039.0	0.0	932.0	0.0	531.0
15	0.0	720.4	1.4	643.1	0.0	716.4	0.0	403.2
16	0.0	1016.1	1.4	1032.3	0.0	1012.1	0.0	481.2
17	0.0	691.0	0.0	690.1	0.0	681.1	0.0	288.2
18	1.4	855.0	0.0	953.5	0.0	961.1	0.0	313.2
19	0.0	849.1	1.4	868.0	0.0	850.5	0.0	309.2
20	0.0	784.1	1.4	799.3	0.0	781.4	0.0	288.1
21	0.0	1027.5	1.4	1047.3	0.0	1025.3	0.0	261.6
22	0.0	1040.6	1.4	1059.5	0.0	961.5	0.0	233.3
23	0.0	915.3	0.0	928.3	0.0	914.4	0.0	350.4
24	0.0	840.2	1.4	861.4	0.0	840.2	0.0	319.2
25	4.5	834.4	2.3	854.1	0.0	836.2	0.0	335.2
26	2.3	1013.2	1.4	1032.5	0.0	1015.4	0.0	406.2
27	4.5	1134.4	1.3	1160.1	0.0	1134.1	0.0	492.5
28	0.0	1103.0	0.0	1115.2	0.0	1096.3	0.0	443.6
29	0.0	1023.1	1.4	1047.4	0.0	1024.4	0.0	408.6
30	0.0	924.3	0.0	931.1	0.0	921.2	0.0	398.2
31	0.0	1101.1	0.0	1119.1	0.0	1103.3	0.0	463.6
Total	19.0	26736.8	28.8	27488.2	0.0	27107.6	3.2	12386.8
Percent	0.07		0.10		0.00		0.03	
Maximum	6.3	1134.4	2.3	1160.1	0.0	1134.1	3.2	644.5
Date	2-May	27-May	25-May	27-May	1-May	27-May	1-May	1-May
Minimum	0.0	473.5	0.0	566.2	0.0	589.1	0.0	233.3
Date	1-May	4-May	1-May	5-May	1-May	5-May	2-May	22-May

Notes:
Monthly filter performance criteria met

# UV System Monthly Report

Month: **May-18**



Date	UV Reactor 1					
	Intensity Sensor 1 (mW/cm <sup>2</sup> )			Intensity Sensor 2 (mW/cm <sup>2</sup> )		
	Maximum	Minimum	Average	Maximum	Minimum	Average
1	0.0	0.0	0.0	0.0	0.0	0.0
2	0.0	0.0	0.0	0.0	0.0	0.0
3	0.0	0.0	0.0	0.0	0.0	0.0
4	0.0	0.0	0.0	0.0	0.0	0.0
5	0.0	0.0	0.0	0.0	0.0	0.0
6	0.0	0.0	0.0	0.0	0.0	0.0
7	0.0	0.0	0.0	0.0	0.0	0.0
8	0.0	0.0	0.0	0.0	0.0	0.0
9	0.0	0.0	0.0	0.0	0.0	0.0
10	0.0	0.0	0.0	0.0	0.0	0.0
11	0.0	0.0	0.0	0.0	0.0	0.0
12	0.0	0.0	0.0	0.0	0.0	0.0
13	0.0	0.0	0.0	0.0	0.0	0.0
14	0.0	0.0	0.0	0.0	0.0	0.0
15	0.0	0.0	0.0	0.0	0.0	0.0
16	0.0	0.0	0.0	0.0	0.0	0.0
17	0.0	0.0	0.0	0.0	0.0	0.0
18	0.0	0.0	0.0	0.0	0.0	0.0
19	0.0	0.0	0.0	0.0	0.0	0.0
20	0.0	0.0	0.0	0.0	0.0	0.0
21	0.0	0.0	0.0	0.0	0.0	0.0
22	0.0	0.0	0.0	0.0	0.0	0.0
23	0.0	0.0	0.0	0.0	0.0	0.0
24	0.0	0.0	0.0	0.0	0.0	0.0
25	0.0	0.0	0.0	0.0	0.0	0.0
26	0.0	0.0	0.0	0.0	0.0	0.0
27	0.0	0.0	0.0	0.0	0.0	0.0
28	0.0	0.0	0.0	0.0	0.0	0.0
29	0.0	0.0	0.0	0.0	0.0	0.0
30	0.0	0.0	0.0	0.0	0.0	0.0
31	0.0	0.0	0.0	0.0	0.0	0.0
Total						
Average	0.0	0.0	0.0	0.0	0.0	0.0
Maximum	0.0		0.0	0.0		0.0
Date	1-May		1-May	1-May		1-May
Minimum		0.0	0.0		0.0	0.0
Date		1-May	1-May		1-May	1-May

Notes:

---



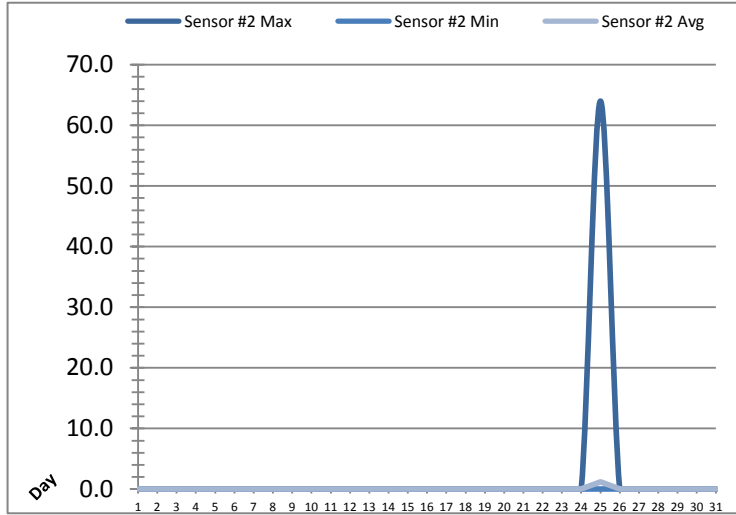
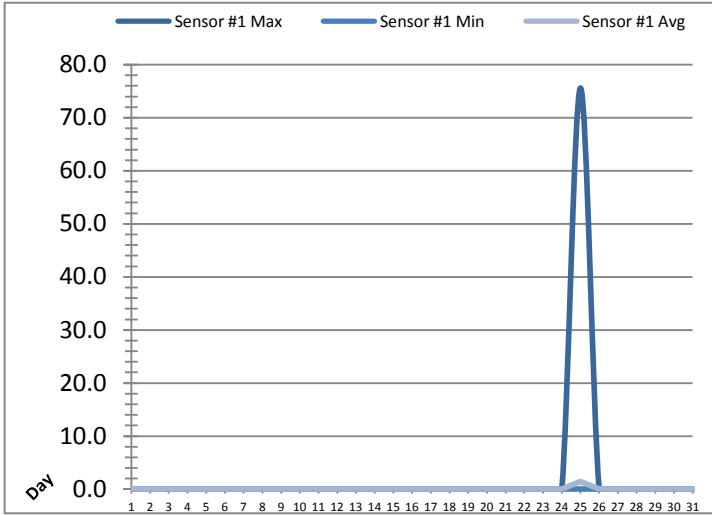
---



---

# UV System Monthly Report

Month: **May-18**



Date	UV Reactor 2					
	Intensity Sensor 1 (mW/cm²)			Intensity Sensor 2 (mW/cm²)		
	Maximum	Minimum	Average	Maximum	Minimum	Average
1	0.0	0.0	0.0	0.0	0.0	0.0
2	0.0	0.0	0.0	0.0	0.0	0.0
3	0.0	0.0	0.0	0.0	0.0	0.0
4	0.0	0.0	0.0	0.0	0.0	0.0
5	0.0	0.0	0.0	0.0	0.0	0.0
6	0.0	0.0	0.0	0.0	0.0	0.0
7	0.0	0.0	0.0	0.0	0.0	0.0
8	0.0	0.0	0.0	0.0	0.0	0.0
9	0.0	0.0	0.0	0.0	0.0	0.0
10	0.0	0.0	0.0	0.0	0.0	0.0
11	0.0	0.0	0.0	0.0	0.0	0.0
12	0.0	0.0	0.0	0.0	0.0	0.0
13	0.0	0.0	0.0	0.0	0.0	0.0
14	0.0	0.0	0.0	0.0	0.0	0.0
15	0.0	0.0	0.0	0.0	0.0	0.0
16	0.0	0.0	0.0	0.0	0.0	0.0
17	0.0	0.0	0.0	0.0	0.0	0.0
18	0.0	0.0	0.0	0.0	0.0	0.0
19	0.0	0.0	0.0	0.0	0.0	0.0
20	0.0	0.0	0.0	0.0	0.0	0.0
21	0.0	0.0	0.0	0.0	0.0	0.0
22	0.0	0.0	0.0	0.0	0.0	0.0
23	0.0	0.0	0.0	0.0	0.0	0.0
24	0.0	0.0	0.0	0.0	0.0	0.0
25	75.6	0.0	1.5	64.0	0.0	1.2
26	0.0	0.0	0.0	0.0	0.0	0.0
27	0.0	0.0	0.0	0.0	0.0	0.0
28	0.0	0.0	0.0	0.0	0.0	0.0
29	0.0	0.0	0.0	0.0	0.0	0.0
30	0.0	0.0	0.0	0.0	0.0	0.0
31	0.0	0.0	0.0	0.0	0.0	0.0
Total						
Average	2.4	0.0	0.0	2.1	0.0	0.0
Maximum	75.6		1.5	64.0		1.2
Date	25-May		25-May	25-May		25-May
Minimum		0.0	0.0		0.0	0.0
Date		1-May	1-May		1-May	1-May

Notes:

---



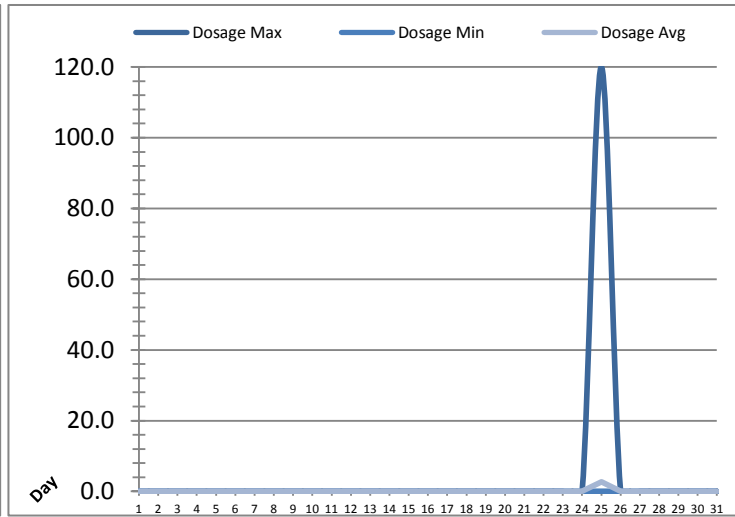
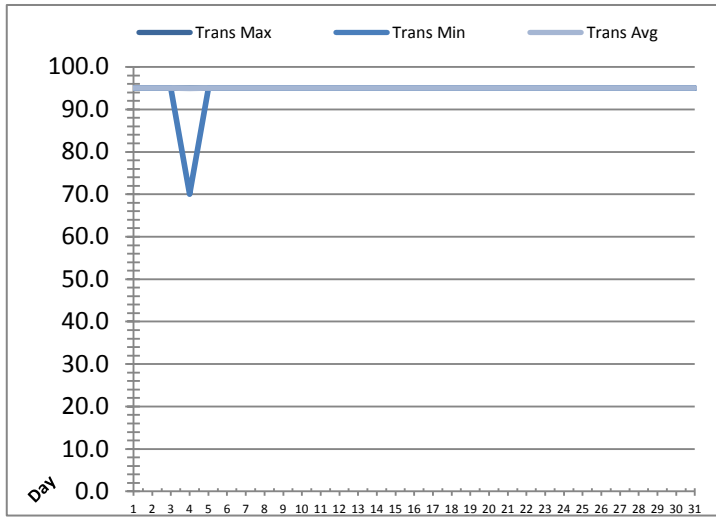
---



---

# UV System Monthly Report

Month: May-18

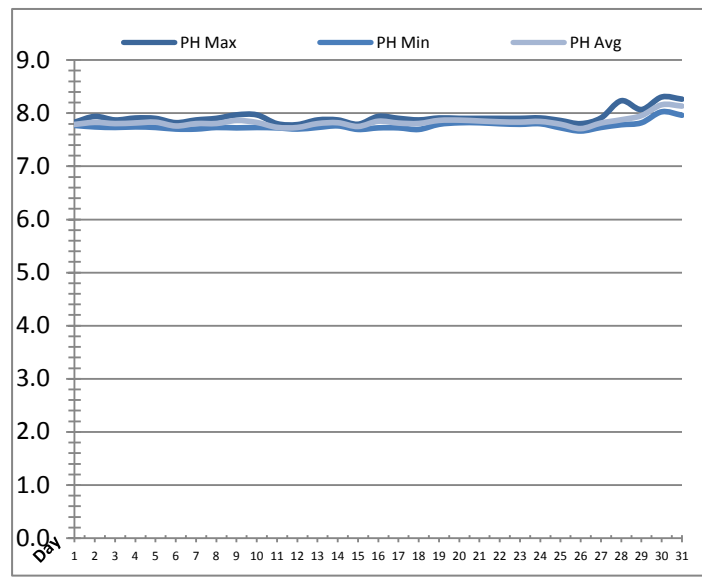
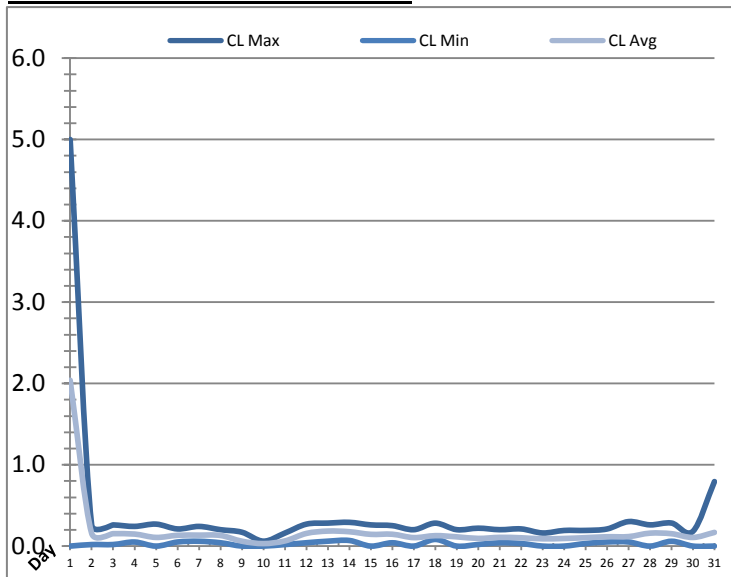


UV System							
Date	Transmittance (%)			Dosage (mJ/cm <sup>2</sup> )			Inlet Flow (L/s)
	Maximum	Minimum	Average	Maximum	Minimum	Average	Maximum
1	95.00	95.00	95.00	0.0	0.0	0.0	103.0
2	95.00	95.00	95.00	0.0	0.0	0.0	97.3
3	95.00	95.00	95.00	0.0	0.0	0.0	107.6
4	95.00	70.00	94.97	0.0	0.0	0.0	167.2
5	95.00	95.00	95.00	0.0	0.0	0.0	167.5
6	95.00	95.00	95.00	0.0	0.0	0.0	99.1
7	95.00	95.00	95.00	0.0	0.0	0.0	162.8
8	95.00	95.00	95.00	0.0	0.0	0.0	163.1
9	95.00	95.00	95.00	0.0	0.0	0.0	167.8
10	95.00	95.00	95.00	0.0	0.0	0.0	168.5
11	95.00	95.00	95.00	0.0	0.0	0.0	156.9
12	95.00	95.00	95.00	0.0	0.0	0.0	104.2
13	95.00	95.00	95.00	0.0	0.0	0.0	102.8
14	95.00	95.00	95.00	0.0	0.0	0.0	161.5
15	95.00	95.00	95.00	0.0	0.0	0.0	104.4
16	95.00	95.00	95.00	0.0	0.0	0.0	172.7
17	95.00	95.00	95.00	0.0	0.0	0.0	166.7
18	95.00	95.00	95.00	0.0	0.0	0.0	109.7
19	95.00	95.00	95.00	0.0	0.0	0.0	169.3
20	95.00	95.00	95.00	0.0	0.0	0.0	105.1
21	95.00	95.00	95.00	0.0	0.0	0.0	148.0
22	95.00	95.00	95.00	0.0	0.0	0.0	147.4
23	95.00	95.00	95.00	0.0	0.0	0.0	172.9
24	95.00	95.00	95.00	0.0	0.0	0.0	171.3
25	95.00	95.00	95.00	120.0	0.0	2.7	170.5
26	95.00	95.00	95.00	0.0	0.0	0.0	171.4
27	95.00	95.00	95.00	0.0	0.0	0.0	171.4
28	95.00	95.00	95.00	0.0	0.0	0.0	172.4
29	95.00	95.00	95.00	0.0	0.0	0.0	169.6
30	95.00	95.00	95.00	0.0	0.0	0.0	175.3
31	95.00	95.00	95.00	0.0	0.0	0.0	176.3
Total							
Average	95.00	94.19	95.00	3.9	0.0	0.1	148.5
Maximum	95.00		95.00	120.0		2.7	176.3
Date	1-May		1-May	25-May		25-May	31-May
Minimum		70.00	94.97		0.0	0.0	
Date		4-May	4-May		1-May	1-May	

Notes:

# Plant Quality Report

Month: **May-18**



Date	Strainer Chlorine Residual			Strainer pH		
	AIT_2003_CL (ppm)			AIT_2003_PH		
	Maximum	Minimum	Average	Maximum	Minimum	Average
1	5.00	0.00	2.04	7.83	7.77	7.79
2	0.26	0.02	0.16	7.94	7.74	7.83
3	0.26	0.02	0.15	7.87	7.73	7.80
4	0.24	0.05	0.15	7.91	7.74	7.82
5	0.27	0.00	0.11	7.90	7.73	7.83
6	0.21	0.05	0.13	7.82	7.70	7.76
7	0.24	0.06	0.13	7.87	7.70	7.80
8	0.20	0.04	0.13	7.90	7.73	7.81
9	0.17	0.00	0.06	7.97	7.72	7.86
10	0.06	0.00	0.03	7.97	7.73	7.83
11	0.16	0.02	0.06	7.80	7.72	7.73
12	0.27	0.04	0.16	7.78	7.70	7.73
13	0.28	0.06	0.18	7.87	7.73	7.80
14	0.29	0.07	0.18	7.87	7.76	7.82
15	0.26	0.00	0.14	7.79	7.69	7.75
16	0.25	0.04	0.15	7.94	7.72	7.85
17	0.20	0.00	0.10	7.90	7.72	7.81
18	0.28	0.08	0.13	7.87	7.69	7.81
19	0.20	0.00	0.11	7.91	7.79	7.86
20	0.22	0.02	0.09	7.90	7.82	7.87
21	0.20	0.04	0.11	7.90	7.82	7.85
22	0.21	0.03	0.10	7.90	7.80	7.84
23	0.16	0.00	0.09	7.90	7.79	7.83
24	0.19	0.00	0.09	7.91	7.80	7.84
25	0.19	0.03	0.10	7.86	7.72	7.79
26	0.21	0.05	0.11	7.80	7.66	7.71
27	0.30	0.05	0.12	7.91	7.73	7.81
28	0.26	0.00	0.16	8.23	7.78	7.88
29	0.28	0.06	0.15	8.07	7.82	7.95
30	0.18	0.00	0.11	8.30	8.03	8.16
31	0.79	0.00	0.17	8.26	7.96	8.13
Total						
Average	0.40	0.03	0.18	7.93	7.76	7.84
Maximum	5.00		2.04	8.30		8.16
Date	1-May		1-May	30-May		30-May
Minimum		0.00	0.03		7.66	7.71
Date		1-May	10-May		26-May	26-May

Notes:

---



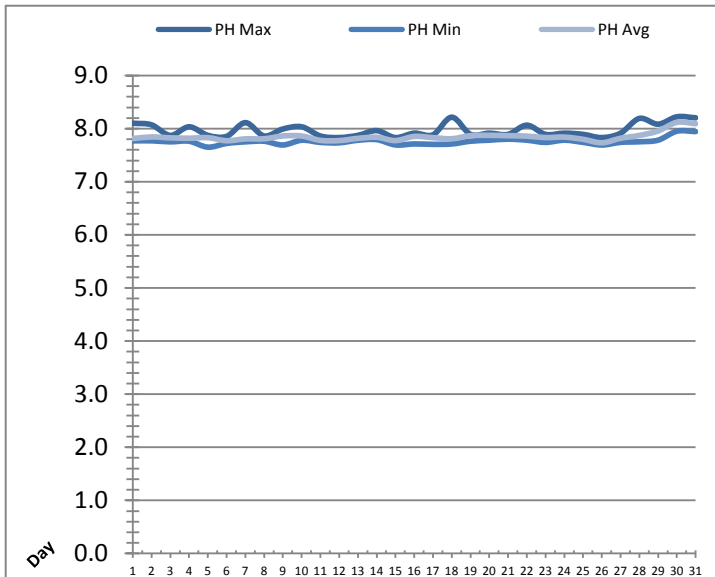
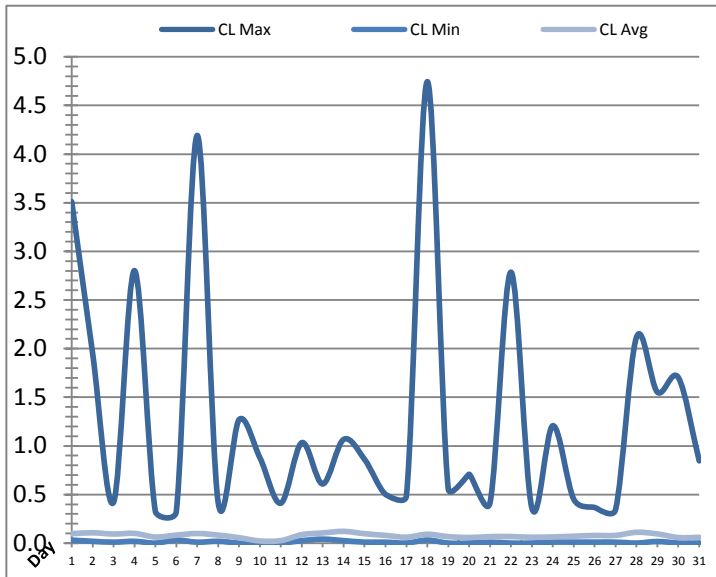
---



---

# Plant Quality Report

Month: **May-18**



Date	Inlet UV Chlorine Residual			Inlet UV pH		
	AIT_5005_CL (ppm)			AIT_5005_PH		
	Maximum	Minimum	Average	Maximum	Minimum	Average
1	3.51	0.03	0.10	8.10	7.77	7.81
2	1.95	0.02	0.11	8.07	7.77	7.84
3	0.42	0.01	0.09	7.87	7.75	7.83
4	2.80	0.02	0.10	8.03	7.76	7.82
5	0.33	0.00	0.06	7.87	7.65	7.83
6	0.33	0.03	0.08	7.85	7.72	7.77
7	4.19	0.01	0.10	8.11	7.75	7.81
8	0.42	0.02	0.08	7.86	7.76	7.81
9	1.27	0.00	0.06	7.99	7.69	7.86
10	0.88	0.00	0.02	8.03	7.78	7.86
11	0.41	0.00	0.03	7.86	7.74	7.78
12	1.03	0.03	0.09	7.83	7.73	7.78
13	0.61	0.04	0.11	7.87	7.78	7.82
14	1.07	0.03	0.12	7.96	7.79	7.84
15	0.86	0.01	0.10	7.83	7.69	7.78
16	0.50	0.01	0.08	7.92	7.71	7.85
17	0.49	0.00	0.06	7.88	7.70	7.83
18	4.75	0.03	0.09	8.22	7.71	7.81
19	0.56	0.00	0.07	7.89	7.76	7.87
20	0.71	0.00	0.06	7.91	7.78	7.87
21	0.42	0.01	0.07	7.89	7.80	7.87
22	2.79	0.00	0.07	8.06	7.78	7.86
23	0.36	0.00	0.06	7.89	7.74	7.83
24	1.21	0.01	0.06	7.92	7.78	7.84
25	0.45	0.01	0.07	7.89	7.74	7.80
26	0.37	0.01	0.08	7.83	7.69	7.73
27	0.35	0.01	0.08	7.92	7.74	7.82
28	2.12	0.00	0.11	8.19	7.75	7.87
29	1.55	0.02	0.10	8.08	7.78	7.96
30	1.70	0.00	0.06	8.22	7.95	8.12
31	0.85	0.00	0.06	8.20	7.94	8.09
Total						
Average	1.27	0.01	0.08	7.97	7.76	7.85
Maximum	4.75		0.12	8.22		8.12
Date	18-May		14-May	30-May		30-May
Minimum		0.00	0.02		7.65	7.73
Date		11-May	10-May		5-May	26-May

Notes:

---



---

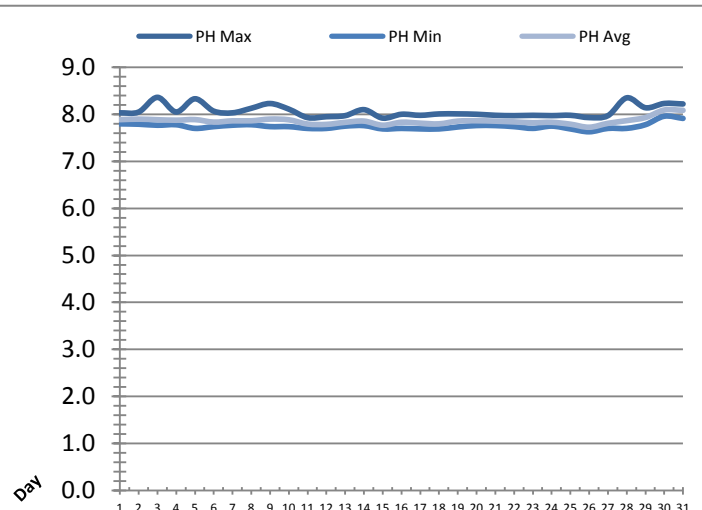
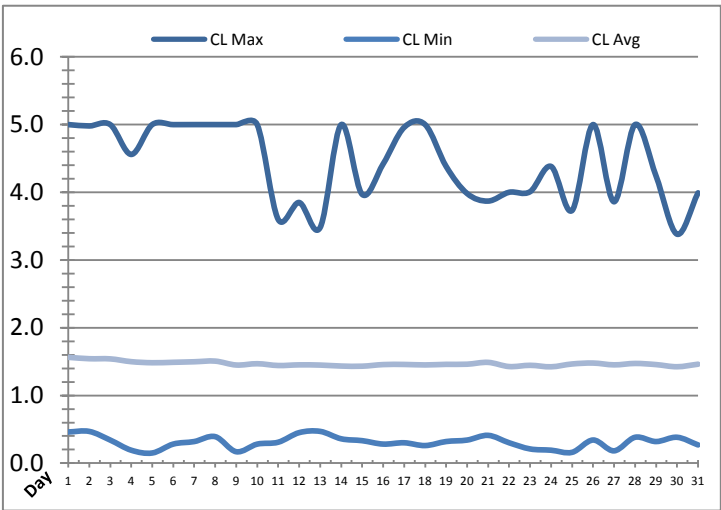


---



# Plant Quality Report

Month: **May-18**



Date	Discharge UV Chlorine Residual			Discharge UV pH		
	AIT_5006_CL (ppm)			AIT_5006_PH		
	Maximum	Minimum	Average	Maximum	Minimum	Average
1	5.00	0.46	1.56	8.03	7.80	7.89
2	4.98	0.47	1.54	8.05	7.79	7.90
3	5.00	0.34	1.54	8.36	7.77	7.89
4	4.56	0.19	1.50	8.05	7.78	7.88
5	5.00	0.15	1.48	8.33	7.70	7.89
6	5.00	0.28	1.49	8.07	7.74	7.84
7	5.00	0.32	1.50	8.03	7.77	7.86
8	5.00	0.39	1.51	8.13	7.78	7.86
9	5.00	0.17	1.45	8.23	7.74	7.90
10	5.00	0.28	1.47	8.11	7.74	7.89
11	3.60	0.31	1.44	7.93	7.70	7.80
12	3.85	0.45	1.45	7.95	7.70	7.79
13	3.48	0.47	1.45	7.97	7.75	7.83
14	5.00	0.36	1.43	8.10	7.76	7.86
15	3.97	0.33	1.43	7.92	7.69	7.77
16	4.42	0.28	1.46	8.00	7.70	7.83
17	4.96	0.30	1.46	7.98	7.69	7.81
18	5.00	0.26	1.45	8.01	7.69	7.80
19	4.38	0.32	1.46	8.01	7.73	7.86
20	3.98	0.34	1.46	8.00	7.76	7.87
21	3.87	0.41	1.49	7.98	7.76	7.86
22	4.00	0.30	1.43	7.97	7.74	7.84
23	4.01	0.21	1.44	7.98	7.70	7.82
24	4.38	0.19	1.42	7.97	7.75	7.83
25	3.73	0.16	1.46	7.98	7.69	7.79
26	5.00	0.34	1.48	7.93	7.63	7.73
27	3.86	0.18	1.45	7.97	7.70	7.81
28	5.00	0.38	1.47	8.35	7.70	7.87
29	4.24	0.32	1.46	8.14	7.78	7.93
30	3.38	0.38	1.42	8.23	7.96	8.09
31	3.99	0.27	1.46	8.22	7.91	8.09
Total						
Average	4.44	0.31	1.47	8.07	7.75	7.86
Maximum	5.00		1.56	8.36		8.09
Date	1-May		1-May	3-May		30-May
Minimum		0.15	1.42		7.63	7.73
Date		5-May	24-May		26-May	26-May

Notes:

---



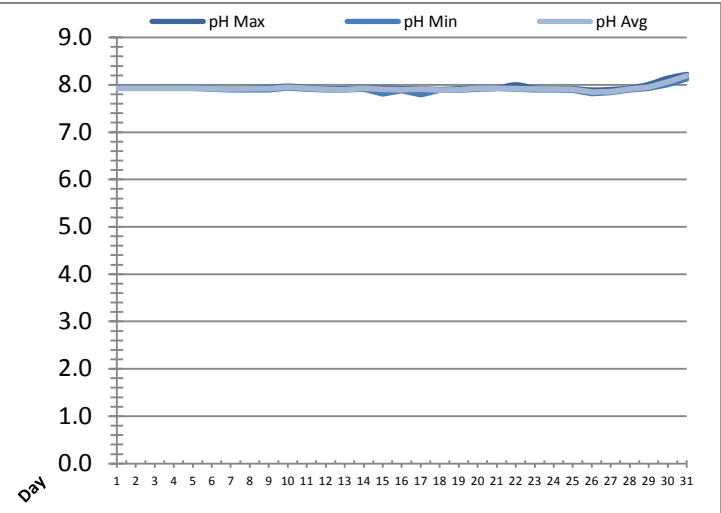
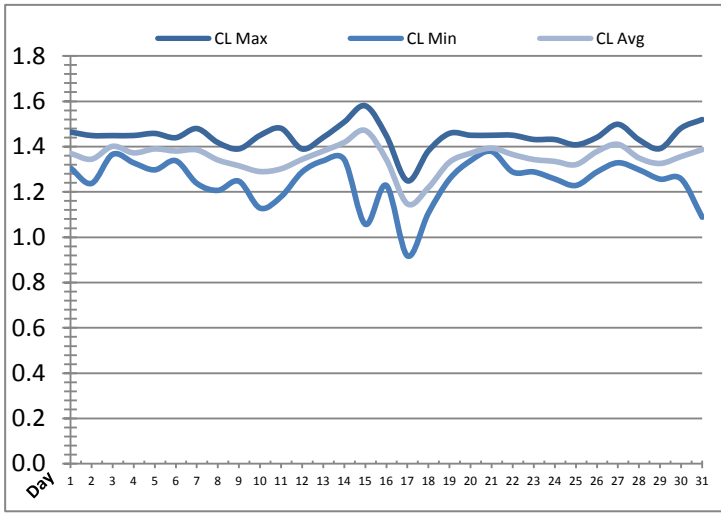
---



---

# Plant Quality Report

Month: **May-18**

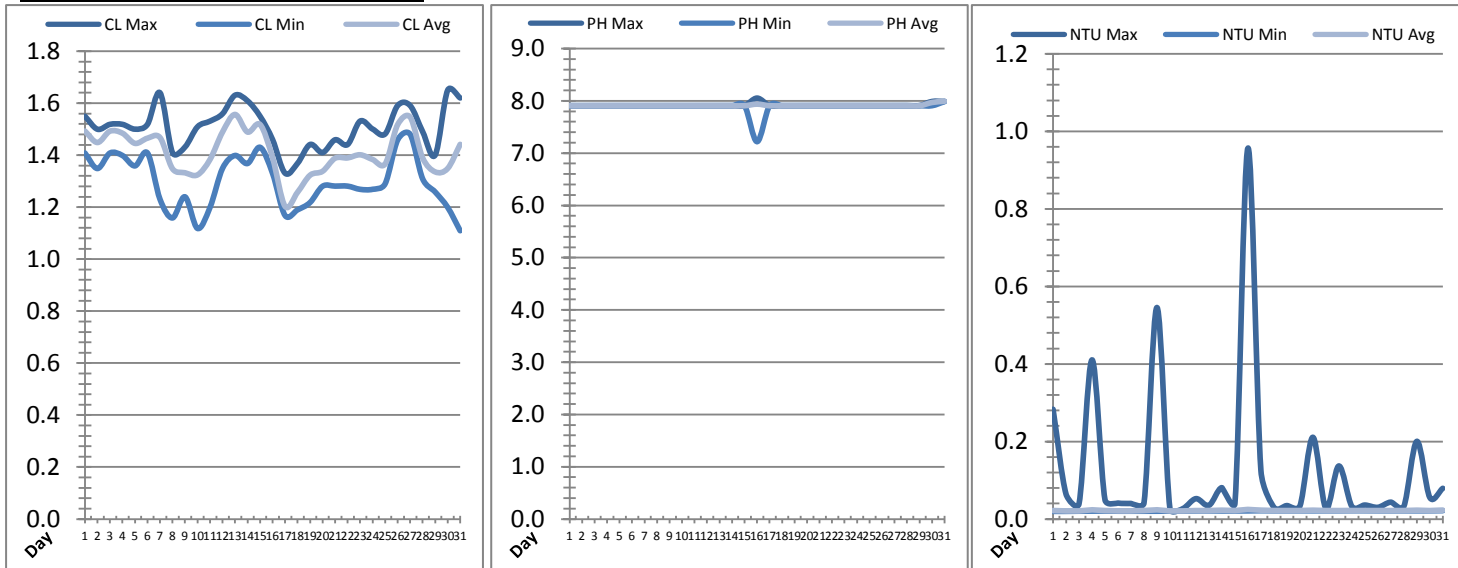


Date	Suction Header Chlorine Res.			Suction Header pH			Distribution CT Calc Total		
	AIT_7001_CL (ppm)			AIT_7001_PH (m)			REAL_CT_CALC_TOTAL (mg*ml/min)		
	Maximum	Minimum	Average	Maximum	Minimum	Average	Maximum	Minimum	Average
1	1.46	1.31	1.37	7.94	7.93	7.93	8551.20	0.00	241.06
2	1.45	1.24	1.34	7.94	7.93	7.93	9374.64	0.00	236.86
3	1.45	1.37	1.40	7.94	7.93	7.93	9303.47	0.00	269.15
4	1.45	1.33	1.37	7.94	7.93	7.93	9899.31	0.00	186.97
5	1.46	1.30	1.39	7.94	7.93	7.93	5422.99	0.00	171.45
6	1.44	1.34	1.38	7.93	7.91	7.92	7068.93	0.00	154.07
7	1.48	1.24	1.39	7.92	7.90	7.91	7947.14	0.00	177.60
8	1.42	1.21	1.34	7.93	7.90	7.92	9676.74	0.00	218.81
9	1.39	1.25	1.32	7.94	7.90	7.92	8565.93	0.00	125.25
10	1.45	1.13	1.29	7.97	7.94	7.95	5141.55	0.00	159.88
11	1.48	1.18	1.30	7.94	7.91	7.93	9429.77	0.00	125.67
12	1.39	1.29	1.34	7.92	7.90	7.91	9085.21	0.00	231.58
13	1.44	1.34	1.38	7.92	7.90	7.90	9115.55	0.00	300.90
14	1.51	1.34	1.42	7.93	7.92	7.93	10309.15	0.00	337.83
15	1.58	1.06	1.47	7.93	7.81	7.90	9676.31	0.00	284.53
16	1.45	1.23	1.34	7.92	7.88	7.89	7278.86	0.00	312.18
17	1.25	0.92	1.15	7.92	7.80	7.91	7964.50	0.00	219.64
18	1.38	1.11	1.22	7.90	7.88	7.89	7258.74	0.00	213.64
19	1.46	1.26	1.33	7.92	7.89	7.90	9404.29	0.00	274.52
20	1.45	1.34	1.37	7.93	7.92	7.93	8748.45	0.00	244.76
21	1.45	1.38	1.39	7.93	7.93	7.93	7919.88	0.00	346.69
22	1.45	1.29	1.37	8.00	7.92	7.92	9269.22	0.00	254.14
23	1.43	1.29	1.34	7.93	7.90	7.91	8872.14	0.00	291.65
24	1.43	1.26	1.33	7.92	7.90	7.91	9207.72	0.00	290.35
25	1.41	1.23	1.32	7.92	7.89	7.90	8643.82	0.00	272.09
26	1.44	1.29	1.38	7.89	7.82	7.85	8837.68	0.00	300.36
27	1.50	1.33	1.41	7.90	7.84	7.86	9597.57	0.00	312.98
28	1.43	1.30	1.35	7.93	7.90	7.91	8880.33	0.00	310.45
29	1.39	1.26	1.33	8.01	7.93	7.95	8402.63	0.00	306.65
30	1.48	1.26	1.36	8.14	8.00	8.06	8666.47	0.00	334.09
31	1.52	1.09	1.39	8.22	8.13	8.19	9213.07	0.00	310.92
Total									
Average	1.44	1.25	1.35	7.95	7.91	7.93			
Maximum	1.58		1.47	8.22		8.19			
Date	15-May		15-May	31-May		31-May			
Minimum		0.92	1.15		7.80	7.85			
Date		17-May	17-May		17-May	26-May			

Notes:

# Plant Quality Report

Month: **May-18**

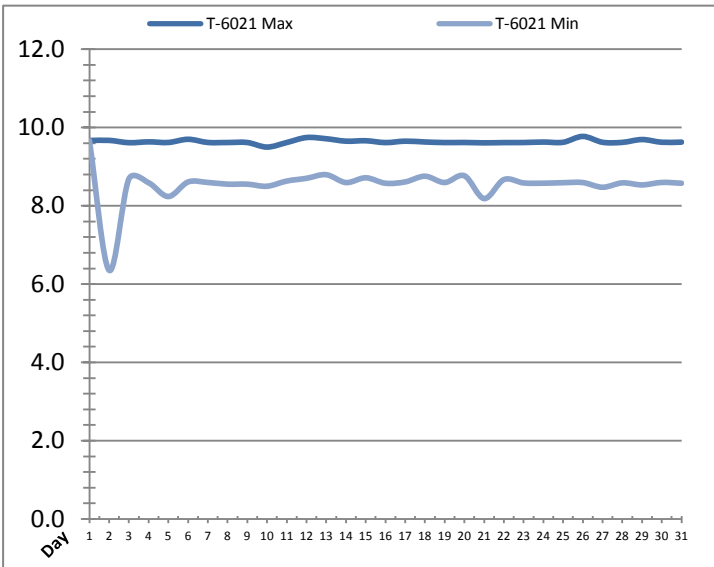
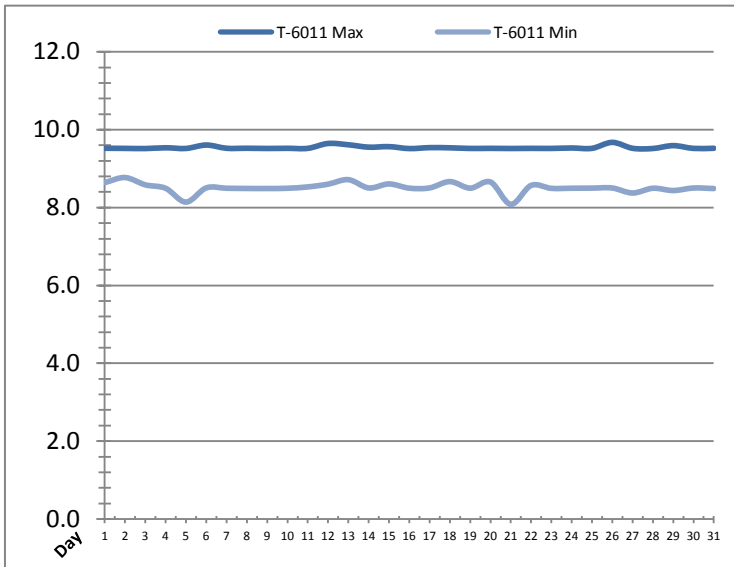


Date	Distribution Chlorine Header			Distribution pH			Distribution Turbidity		
	AIT_7004_CL (ppm)			AIT_7004_PH (mg/L)			AIT_7003 (mg/L)		
	Maximum	Minimum	Average	Maximum	Minimum	Average	Maximum	Minimum	Average
1	✓ 1.55	✓ 1.41	1.49	7.91	7.91	7.91	0.28	0.02	0.02
2	✓ 1.50	✓ 1.35	1.45	7.91	7.91	7.91	0.06	0.02	0.02
3	✓ 1.52	✓ 1.41	1.49	7.91	7.91	7.91	0.04	0.02	0.02
4	✓ 1.52	✓ 1.40	1.48	7.91	7.91	7.91	0.41	0.02	0.02
5	✓ 1.50	✓ 1.36	1.45	7.91	7.91	7.91	0.05	0.02	0.02
6	✓ 1.52	✓ 1.41	1.47	7.91	7.91	7.91	0.04	0.02	0.02
7	✓ 1.64	✓ 1.23	1.47	7.91	7.91	7.91	0.04	0.02	0.02
8	✓ 1.41	✓ 1.16	1.35	7.91	7.91	7.91	0.04	0.02	0.02
9	✓ 1.43	✓ 1.24	1.33	7.91	7.91	7.91	0.55	0.02	0.02
10	✓ 1.51	✓ 1.12	1.32	7.91	7.91	7.91	0.03	0.02	0.02
11	✓ 1.53	✓ 1.20	1.38	7.91	7.91	7.91	0.03	0.02	0.02
12	✓ 1.56	✓ 1.35	1.49	7.91	7.91	7.91	0.05	0.02	0.02
13	✓ 1.63	✓ 1.40	1.56	7.91	7.91	7.91	0.04	0.02	0.02
14	✓ 1.61	✓ 1.37	1.49	7.91	7.91	7.91	0.08	0.02	0.02
15	✓ 1.55	✓ 1.43	1.52	7.91	7.91	7.91	0.04	0.02	0.02
16	✓ 1.46	✓ 1.33	1.39	8.05	7.22	7.94	0.96	0.02	0.02
17	✓ 1.33	✓ 1.17	1.20	7.91	7.91	7.91	0.12	0.02	0.02
18	✓ 1.37	✓ 1.19	1.26	7.91	7.91	7.91	0.03	0.02	0.02
19	✓ 1.44	✓ 1.22	1.32	7.91	7.91	7.91	0.03	0.02	0.02
20	✓ 1.41	✓ 1.28	1.34	7.91	7.91	7.91	0.03	0.02	0.02
21	✓ 1.46	✓ 1.28	1.39	7.91	7.91	7.91	0.21	0.02	0.02
22	✓ 1.44	✓ 1.28	1.39	7.91	7.91	7.91	0.03	0.02	0.02
23	✓ 1.53	✓ 1.27	1.40	7.91	7.91	7.91	0.14	0.02	0.02
24	✓ 1.50	✓ 1.27	1.38	7.91	7.91	7.91	0.03	0.02	0.02
25	✓ 1.48	✓ 1.29	1.37	7.91	7.91	7.91	0.04	0.02	0.02
26	✓ 1.59	✓ 1.46	1.52	7.91	7.91	7.91	0.03	0.02	0.02
27	✓ 1.59	✓ 1.48	1.55	7.91	7.91	7.91	0.04	0.02	0.02
28	✓ 1.49	✓ 1.31	1.39	7.91	7.91	7.91	0.03	0.02	0.02
29	✓ 1.40	✓ 1.26	1.34	7.91	7.91	7.91	0.20	0.02	0.02
30	✓ 1.65	✓ 1.20	1.35	7.99	7.91	7.97	0.06	0.02	0.02
31	✓ 1.62	✓ 1.11	1.44	7.99	7.99	7.99	0.08	0.02	0.02
Total									
Average	1.51	1.30	1.41	7.92	7.89	7.91	0.1	0.0	0.0
Maximum	1.65		1.56	8.05		7.99	1.0		0.0
Date	30-May		13-May	16-May		31-May	16-May		16-May
Minimum		1.11	1.20		7.22	7.91		0.0	0.0
Date		31-May	17-May		16-May	2-May		1-May	2-May

Notes:

# Raw Well/Treated Storage Report

Month: May-18



Date	Treated Water Storage Tank					
	T-6011 (m)			T-6021 (m)		
	Maximum	Minimum	Average	Maximum	Minimum	Average
1	9.5	8.6	9.1	9.7	9.7	9.7
2	9.5	8.8	9.2	9.7	6.4	9.4
3	9.5	8.6	9.1	9.6	8.7	9.2
4	9.5	8.5	9.3	9.6	8.6	9.4
5	9.5	8.1	9.0	9.6	8.2	9.1
6	9.6	8.5	9.1	9.7	8.6	9.2
7	9.5	8.5	9.1	9.6	8.6	9.2
8	9.5	8.5	9.2	9.6	8.6	9.2
9	9.5	8.5	9.1	9.6	8.6	9.2
10	9.5	8.5	9.2	9.5	8.5	9.2
11	9.5	8.5	9.2	9.6	8.6	9.3
12	9.6	8.6	9.2	9.7	8.7	9.3
13	9.6	8.7	9.2	9.7	8.8	9.3
14	9.6	8.5	9.0	9.7	8.6	9.1
15	9.6	8.6	9.2	9.7	8.7	9.3
16	9.5	8.5	9.1	9.6	8.6	9.2
17	9.5	8.5	9.3	9.7	8.6	9.4
18	9.5	8.7	9.1	9.6	8.8	9.2
19	9.5	8.5	9.1	9.6	8.6	9.2
20	9.5	8.7	9.2	9.6	8.8	9.3
21	9.5	8.1	8.9	9.6	8.2	9.0
22	9.5	8.6	9.1	9.6	8.7	9.2
23	9.5	8.5	9.1	9.6	8.6	9.2
24	9.5	8.5	9.1	9.6	8.6	9.2
25	9.5	8.5	9.2	9.6	8.6	9.3
26	9.7	8.5	9.1	9.8	8.6	9.2
27	9.5	8.4	9.0	9.6	8.5	9.0
28	9.5	8.5	9.0	9.6	8.6	9.1
29	9.6	8.4	9.0	9.7	8.5	9.1
30	9.5	8.5	9.1	9.6	8.6	9.2
31	9.5	8.5	9.0	9.6	8.6	9.1
Total						
Average	9.5	8.5	9.1	9.6	8.5	9.2
Maximum	9.7		9.3	9.8		9.7
Date	26-May		4-May	26-May		1-May
Minimum		8.1	8.9		6.4	9.0
Date		21-May	21-May		2-May	21-May

Notes:

---



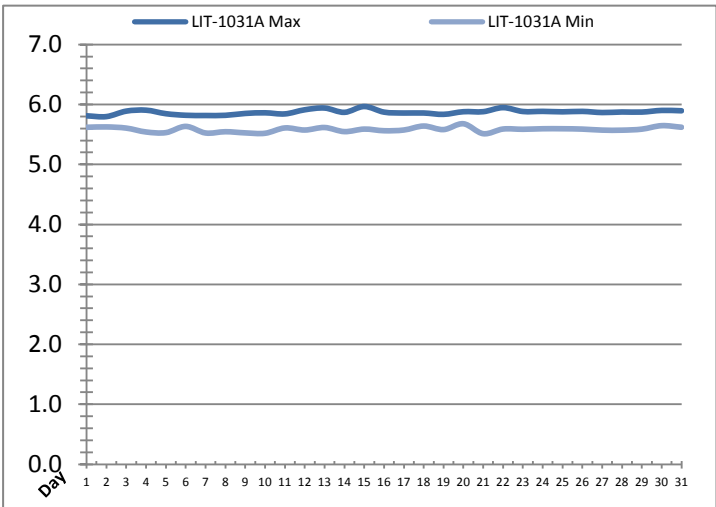
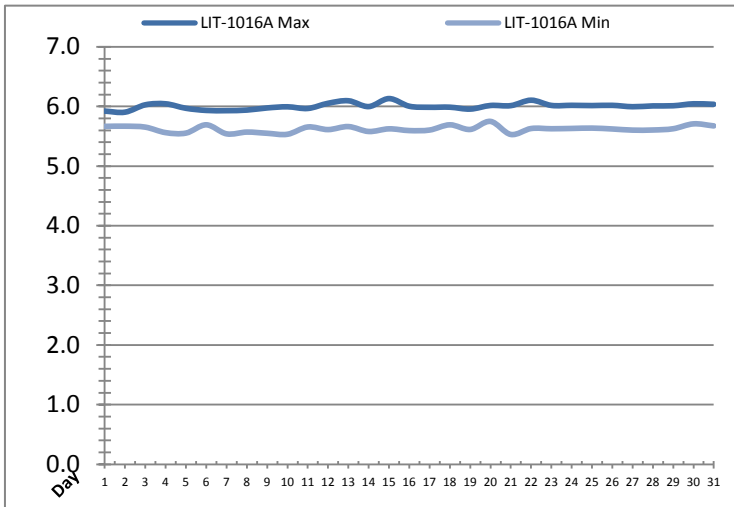
---



---

# Raw Well/Treated Storage Report

Month: May-18



Date	Low Lift Intake Levels					
	Wet Well #1 (LIT-1016A) (m)			Wet Well #2 (LIT-1031A) (m)		
	Maximum	Minimum	Average	Maximum	Minimum	Average
1	5.9	5.7	5.8	5.8	5.6	5.7
2	5.9	5.7	5.8	5.8	5.6	5.7
3	6.0	5.7	5.8	5.9	5.6	5.7
4	6.0	5.6	5.8	5.9	5.5	5.7
5	6.0	5.6	5.8	5.8	5.5	5.7
6	5.9	5.7	5.8	5.8	5.6	5.7
7	5.9	5.5	5.8	5.8	5.5	5.7
8	5.9	5.6	5.8	5.8	5.5	5.7
9	6.0	5.6	5.8	5.9	5.5	5.7
10	6.0	5.5	5.8	5.9	5.5	5.7
11	6.0	5.7	5.8	5.8	5.6	5.7
12	6.1	5.6	5.8	5.9	5.6	5.7
13	6.1	5.7	5.8	5.9	5.6	5.7
14	6.0	5.6	5.8	5.9	5.5	5.7
15	6.1	5.6	5.9	6.0	5.6	5.8
16	6.0	5.6	5.8	5.9	5.6	5.7
17	6.0	5.6	5.9	5.9	5.6	5.8
18	6.0	5.7	5.8	5.9	5.6	5.7
19	6.0	5.6	5.8	5.8	5.6	5.8
20	6.0	5.7	5.9	5.9	5.7	5.8
21	6.0	5.5	5.8	5.9	5.5	5.7
22	6.1	5.6	5.9	5.9	5.6	5.8
23	6.0	5.6	5.9	5.9	5.6	5.8
24	6.0	5.6	5.9	5.9	5.6	5.8
25	6.0	5.6	5.9	5.9	5.6	5.8
26	6.0	5.6	5.9	5.9	5.6	5.8
27	6.0	5.6	5.8	5.9	5.6	5.7
28	6.0	5.6	5.8	5.9	5.6	5.7
29	6.0	5.6	5.8	5.9	5.6	5.7
30	6.0	5.7	5.9	5.9	5.6	5.8
31	6.0	5.7	5.9	5.9	5.6	5.8
Total						
Average	6.0	5.6	5.8	5.9	5.6	5.7
Maximum	6.1		5.9	6.0		5.8
Date	15-May		31-May	15-May		31-May
Minimum		5.5	5.8		5.5	5.7
Date		21-May	5-May		21-May	5-May

Notes:

---



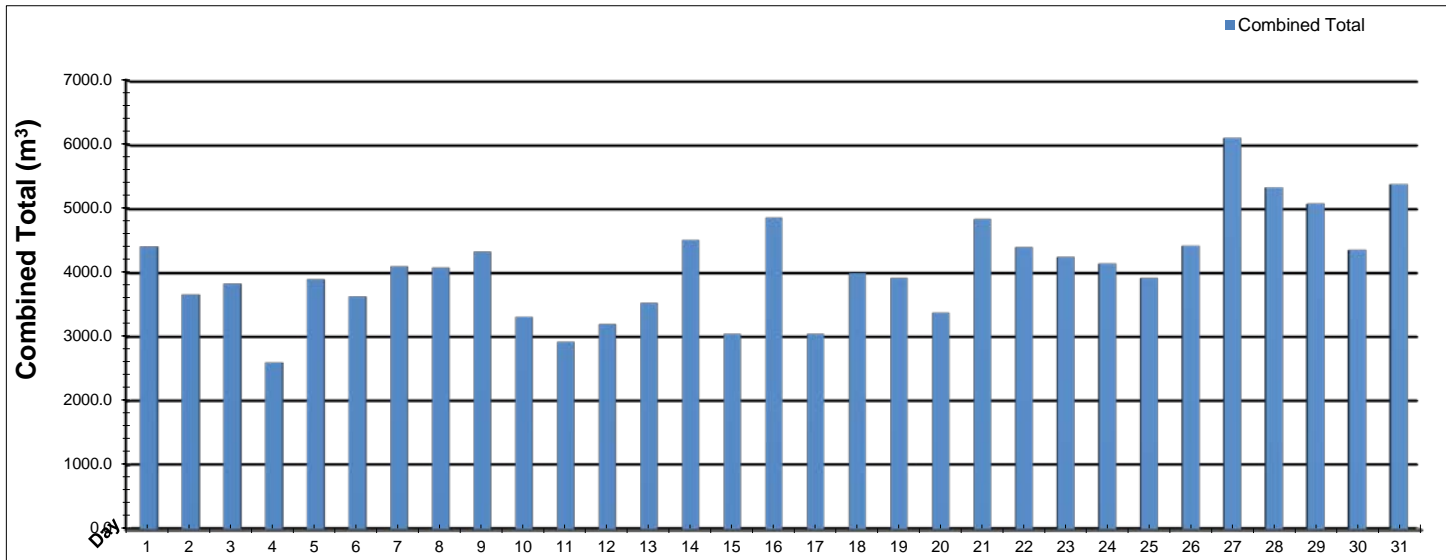
---



---

# High Lift Monthly Report

Month: **May-18**



Date	Distribution Flow					
	FIT_7052 (East)		FIT_7062 (West)		Combined	
	(m³) Total	(L/s) Peak	(m³) Total	(L/s) Peak	(m³) Total	(L/s) Peak
1	1398.5	62.0	3014.5	102.4	4413.1	113.0
2	1339.7	61.8	2323.9	102.9	3663.6	111.0
3	1272.2	58.1	2562.0	95.1	3834.2	100.7
4	418.8	56.9	2183.4	127.3	2602.2	131.0
5	1184.1	64.5	2716.2	139.5	3900.3	187.6
6	464.6	39.1	3168.0	98.7	3632.5	105.3
7	1437.8	60.3	2666.9	96.6	4104.7	109.3
8	1415.2	64.1	2666.5	81.6	4081.7	106.6
9	1510.4	62.8	2821.2	89.2	4331.6	142.2
10	1454.1	63.2	1862.6	71.7	3316.7	105.9
11	1208.3	63.6	1718.1	77.9	2926.4	107.9
12	1127.2	58.6	2073.2	82.0	3200.4	106.1
13	1411.1	58.0	2121.7	74.9	3532.8	99.0
14	1513.7	58.4	3003.3	80.9	4517.0	101.5
15	1376.7	59.1	1671.3	72.5	3048.0	98.3
16	1189.6	58.8	3671.9	86.1	4861.4	103.6
17	1413.6	57.5	1635.0	94.5	3048.6	102.9
18	1076.9	59.6	2921.3	100.2	3998.2	105.7
19	1838.2	58.1	2087.4	91.1	3925.6	103.4
20	1175.2	58.5	2204.3	99.2	3379.5	100.5
21	2023.9	59.1	2816.7	117.7	4840.6	152.7
22	1219.4	58.4	3184.6	99.5	4403.9	102.0
23	1866.6	59.2	2382.3	94.4	4248.9	102.9
24	1707.6	59.1	2440.8	101.5	4148.4	103.1
25	1589.7	58.9	2331.2	96.2	3920.9	103.3
26	1496.8	58.9	2930.1	96.4	4426.9	103.3
27	2078.7	64.2	4028.1	118.7	6106.9	163.7
28	1863.3	58.7	3473.2	118.9	5336.5	162.5
29	1831.1	62.8	3248.8	122.4	5080.0	168.6
30	1749.8	58.7	2610.2	97.5	4360.0	102.0
31	1766.3	59.4	3619.8	95.2	5386.0	102.5
<b>Total</b>	<b>44419.4</b>		<b>82158.2</b>		<b>126577.6</b>	
<b>Average</b>	<b>1432.9</b>	<b>59.4</b>	<b>2650.3</b>	<b>97.5</b>	<b>4083.1</b>	<b>116.4</b>
<b>Maximum</b>	<b>2078.7</b>	<b>64.5</b>	<b>4028.1</b>	<b>139.5</b>	<b>6106.9</b>	<b>187.6</b>
<b>Date</b>	<b>27-May</b>	<b>5-May</b>	<b>27-May</b>	<b>5-May</b>	<b>27-May</b>	<b>5-May</b>
<b>Minimum</b>	<b>418.8</b>		<b>1635.0</b>		<b>2602.2</b>	
<b>Date</b>	<b>4-May</b>		<b>17-May</b>		<b>4-May</b>	

Notes:

---



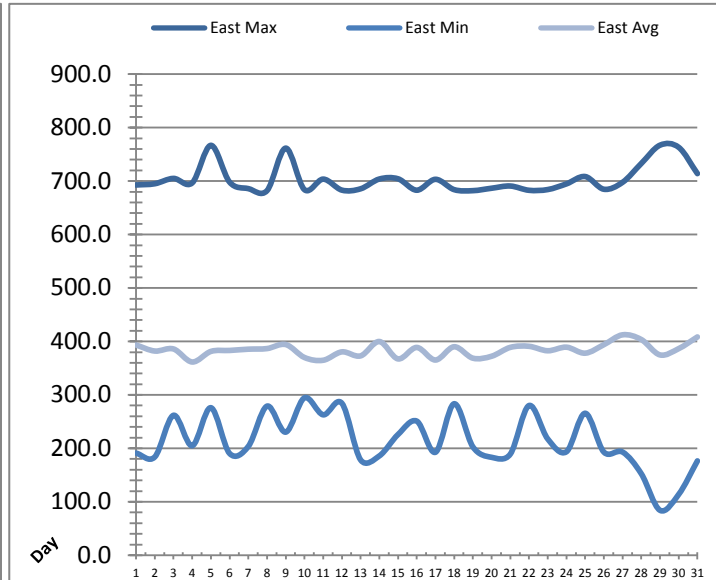
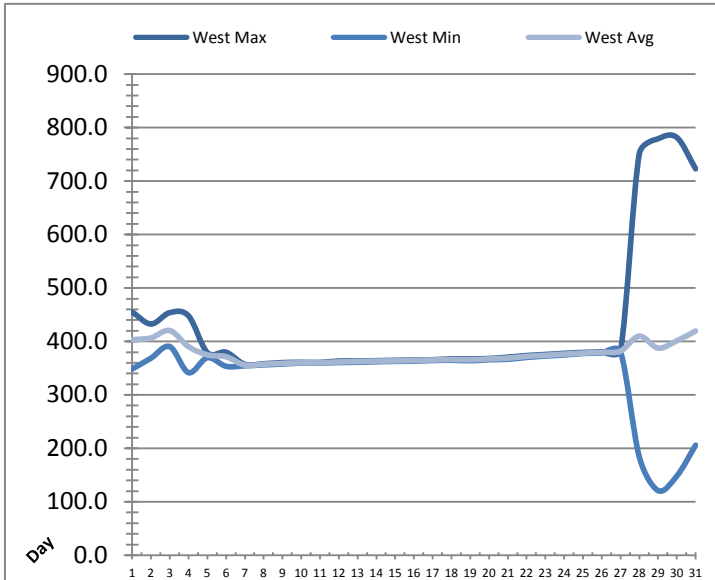
---



---

# Low Lift Monthly Report

Month: **May-18**



Date	West Train Header Pressure PIT_1018 (kPa)			East Train Header Pressure PIT_1028 (kPa)		
	Maximum	Minimum	Average	Maximum	Minimum	Average
1	✓ 455.1	✓ 348.4	403.2	✓ 692.7	✓ 191.1	393.4
2	✓ 432.6	✓ 368.7	406.6	✓ 695.0	✓ 183.9	382.0
3	✓ 453.9	✓ 390.3	420.4	✓ 705.0	✓ 261.8	385.9
4	✓ 447.8	✓ 341.5	390.3	✓ 696.5	✓ 204.9	361.6
5	✓ 379.1	✓ 369.6	374.9	✓ 766.8	✓ 276.0	381.4
6	✓ 379.8	✓ 353.5	371.4	✓ 697.9	✓ 190.4	383.1
7	✓ 356.9	✓ 354.4	355.6	✓ 685.8	✓ 203.7	385.5
8	✓ 358.3	✓ 356.1	357.3	✓ 682.1	✓ 279.0	386.6
9	✓ 360.4	✓ 357.8	359.1	✓ 761.6	✓ 230.4	394.2
10	✓ 361.0	✓ 359.6	360.0	✓ 683.8	✓ 294.6	369.9
11	✓ 360.8	✓ 359.6	360.1	✓ 703.6	✓ 262.8	364.8
12	✓ 363.4	✓ 360.5	361.7	✓ 683.0	✓ 284.3	380.5
13	✓ 363.4	✓ 361.1	362.4	✓ 685.5	✓ 178.4	373.0
14	✓ 364.0	✓ 362.0	363.3	✓ 703.8	✓ 185.8	399.8
15	✓ 364.7	✓ 362.8	363.7	✓ 704.2	✓ 226.0	367.3
16	✓ 365.3	✓ 363.1	364.5	✓ 682.9	✓ 251.0	388.7
17	✓ 365.8	✓ 364.3	365.3	✓ 703.3	✓ 192.7	365.2
18	✓ 367.5	✓ 364.9	366.2	✓ 683.9	✓ 283.4	390.0
19	✓ 367.2	✓ 363.9	365.8	✓ 682.1	✓ 202.8	368.7
20	✓ 368.1	✓ 365.7	367.2	✓ 686.6	✓ 183.2	372.3
21	✓ 370.5	✓ 366.7	368.8	✓ 690.7	✓ 189.3	388.9
22	✓ 373.6	✓ 370.1	372.0	✓ 682.7	✓ 280.1	390.9
23	✓ 375.6	✓ 372.6	374.1	✓ 684.1	✓ 217.6	382.6
24	✓ 377.7	✓ 374.7	376.2	✓ 694.7	✓ 193.6	389.2
25	✓ 379.4	✓ 377.5	378.1	✓ 708.4	✓ 265.6	378.1
26	✓ 380.6	✓ 378.4	379.6	✓ 684.7	✓ 193.0	394.0
27	✓ 383.8	✓ 380.1	381.9	✓ 697.7	✓ 193.1	412.4
28	✓ 751.1	✓ 184.0	410.0	✓ 732.9	✓ 152.5	403.6
29	✓ 779.1	✓ 121.0	387.6	✓ 767.1	✓ 84.1	374.8
30	✓ 781.5	✓ 148.3	401.2	✓ 763.1	✓ 114.0	386.6
31	✓ 722.8	✓ 205.9	419.6	✓ 713.9	✓ 176.6	408.4
Total						
Average	429.4	338.9	377.0	703.4	213.7	384.0
Maximum	781.5		420.4	767.1		412.4
Date	30-May		3-May	29-May		27-May
Minimum		121.0	355.6		84.1	361.6
Date		29-May	7-May		29-May	4-May

Notes:

---



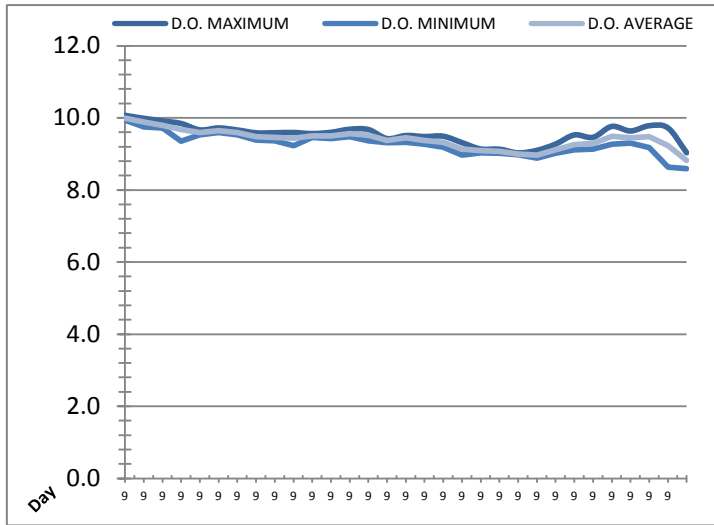
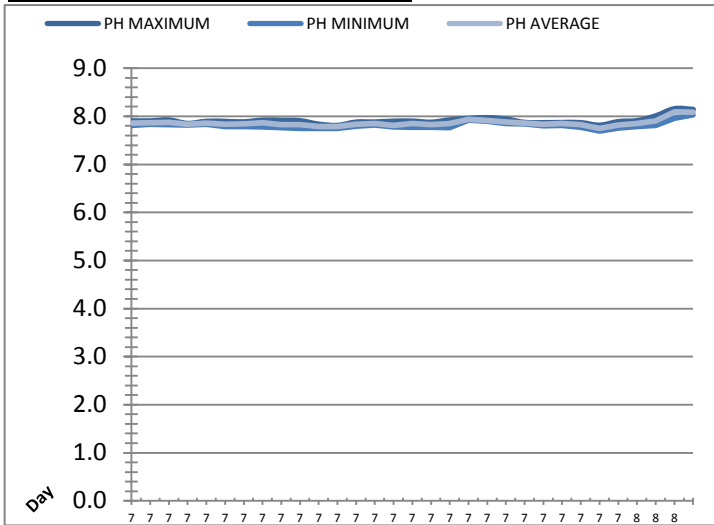
---



---

# Low Lift Monthly Report

Month: **May-18**



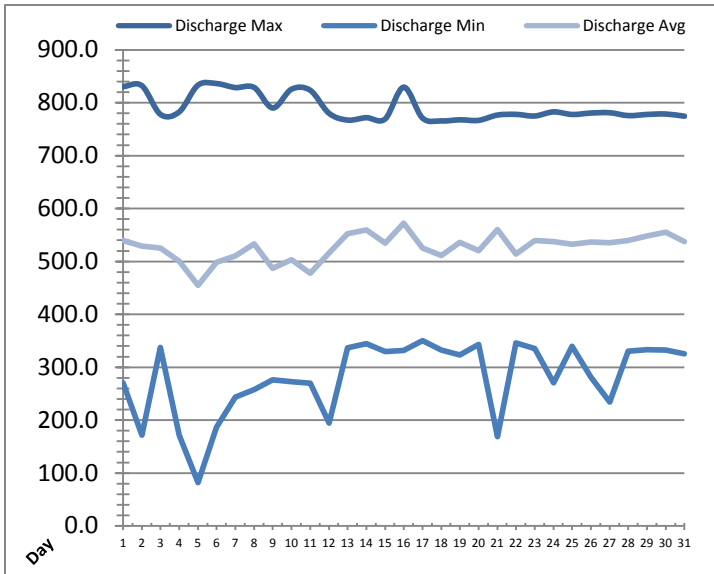
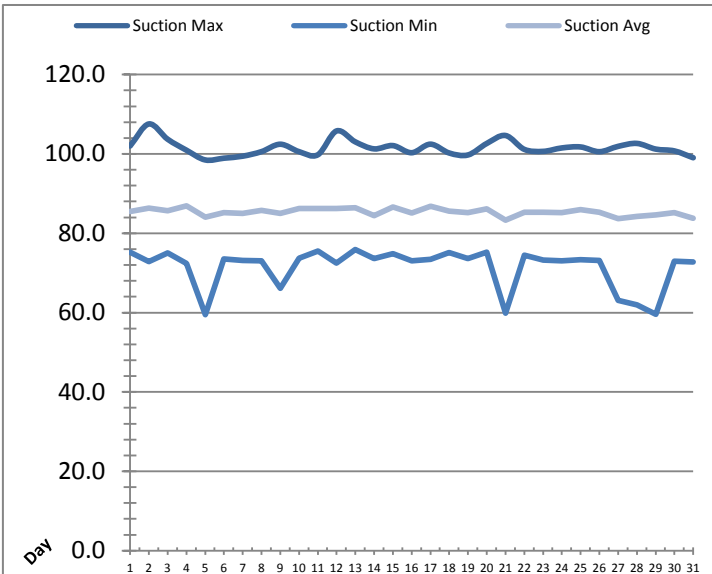
Date	Raw Water Sample Line					
	AIT_1402_PH (pH)			AIT_1402_DO (mg/L)		
	Maximum	Minimum	Average	Maximum	Minimum	Average
1	7.9	7.8	7.9	10.1	9.9	10.0
2	7.9	7.8	7.9	10.0	9.7	9.9
3	7.9	7.8	7.9	9.9	9.7	9.8
4	7.8	7.8	7.8	9.8	9.4	9.7
5	7.9	7.8	7.9	9.7	9.5	9.6
6	7.9	7.8	7.8	9.7	9.6	9.6
7	7.9	7.8	7.8	9.7	9.5	9.6
8	7.9	7.8	7.9	9.6	9.4	9.5
9	7.9	7.8	7.8	9.6	9.4	9.5
10	7.9	7.8	7.8	9.6	9.2	9.4
11	7.8	7.7	7.8	9.6	9.5	9.5
12	7.8	7.8	7.8	9.6	9.4	9.5
13	7.9	7.8	7.8	9.7	9.5	9.6
14	7.9	7.8	7.8	9.7	9.4	9.5
15	7.9	7.8	7.8	9.4	9.3	9.4
16	7.9	7.8	7.8	9.5	9.3	9.4
17	7.9	7.8	7.8	9.5	9.3	9.4
18	7.9	7.8	7.8	9.5	9.2	9.3
19	8.0	7.9	7.9	9.3	9.0	9.1
20	8.0	7.9	7.9	9.1	9.0	9.1
21	7.9	7.9	7.9	9.1	9.0	9.1
22	7.9	7.8	7.9	9.0	9.0	9.0
23	7.9	7.8	7.8	9.1	8.9	9.0
24	7.9	7.8	7.8	9.3	9.0	9.1
25	7.9	7.8	7.8	9.5	9.1	9.3
26	7.8	7.7	7.7	9.5	9.1	9.3
27	7.9	7.8	7.8	9.8	9.3	9.5
28	7.9	7.8	7.9	9.6	9.3	9.4
29	8.0	7.8	7.9	9.8	9.2	9.5
30	8.2	8.0	8.1	9.7	8.6	9.2
31	8.1	8.0	8.1	9.0	8.6	8.8
Total						
Average	7.9	7.8	7.9	9.5	9.3	9.4
Maximum	8.2		8.1	10.1		10.0
Date	30-May		30-May	1-May		1-May
Minimum		7.7	7.7		8.6	8.8
Date		26-May	26-May		31-May	31-May

Notes:



# High Lift Monthly Report

Month: **May-18**

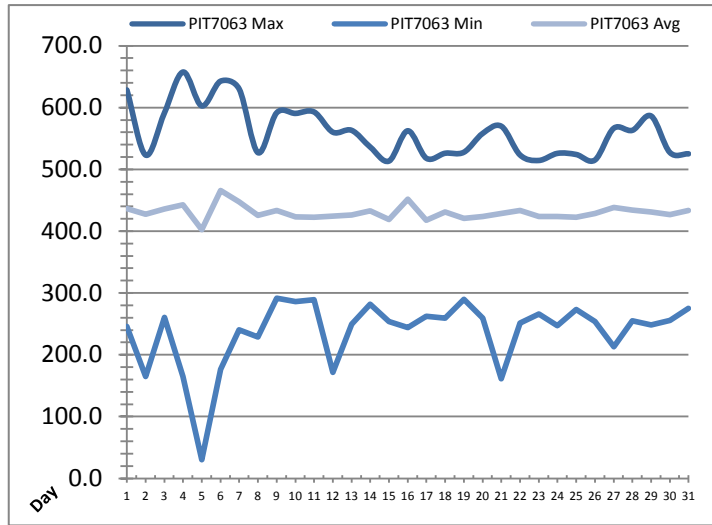
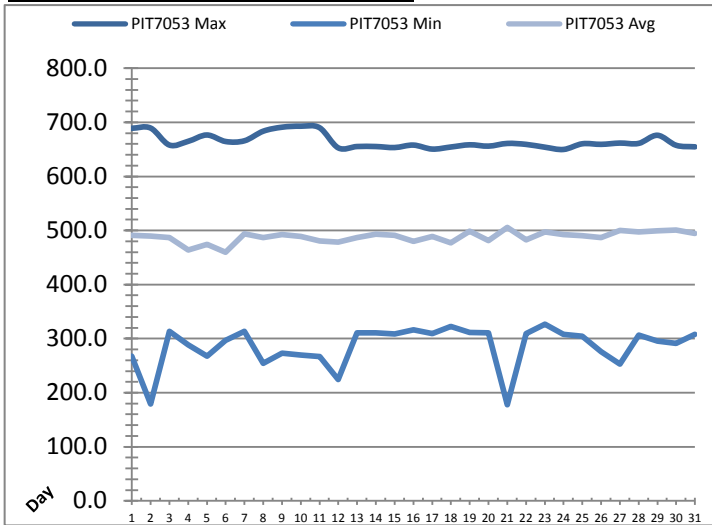


Date	Suction Header Pressure			Discharge Header Pressure		
	PIT_7002 (kPa)			PIT_7005 (kPa)		
	Maximum	Minimum	Average	Maximum	Minimum	Average
1	102.0	75.2	85.5	830.5	270.7	539.8
2	107.5	72.8	86.4	832.3	171.4	528.9
3	103.7	75.0	85.6	777.8	337.1	525.2
4	100.9	72.4	86.9	782.7	171.5	500.4
5	98.5	59.5	84.1	833.2	81.6	454.8
6	98.9	73.5	85.2	836.2	186.4	498.2
7	99.4	73.1	85.0	828.7	243.7	510.1
8	100.6	73.0	85.7	828.9	257.6	533.2
9	102.4	66.1	85.0	790.0	276.5	486.7
10	100.6	73.7	86.2	825.6	272.6	503.1
11	99.8	75.5	86.3	823.6	270.2	478.0
12	105.8	72.5	86.2	780.2	194.4	516.3
13	103.0	75.9	86.4	767.2	336.9	552.7
14	101.3	73.6	84.4	771.8	344.9	559.5
15	102.1	74.8	86.6	769.2	329.7	534.5
16	100.3	73.1	85.1	829.4	331.4	572.5
17	102.5	73.4	86.8	771.1	350.1	525.3
18	100.2	75.1	85.6	765.6	332.5	511.1
19	99.7	73.6	85.2	767.7	323.5	535.7
20	102.6	75.2	86.2	766.7	343.1	520.3
21	104.6	59.9	83.3	776.7	169.0	560.1
22	101.1	74.5	85.3	778.0	346.1	513.7
23	100.6	73.2	85.2	774.9	335.6	539.7
24	101.5	73.0	85.2	782.7	270.5	537.7
25	101.8	73.4	86.0	777.8	339.7	532.2
26	100.6	73.2	85.3	780.5	281.3	536.5
27	101.9	63.0	83.7	781.1	234.1	535.1
28	102.6	61.9	84.3	775.7	330.6	539.5
29	101.2	59.6	84.7	777.8	333.1	547.9
30	100.7	73.0	85.2	778.7	332.4	555.3
31	99.0	72.7	83.7	774.6	325.3	537.2
Total						
Average	101.5	71.4	85.4	791.5	281.4	526.5
Maximum	107.5		86.9	836.2		572.5
Date	2-May		4-May	6-May		16-May
Minimum		59.5	83.3		81.6	454.8
Date		5-May	21-May		5-May	5-May

Notes:

# High Lift Monthly Report

Month: **May-18**

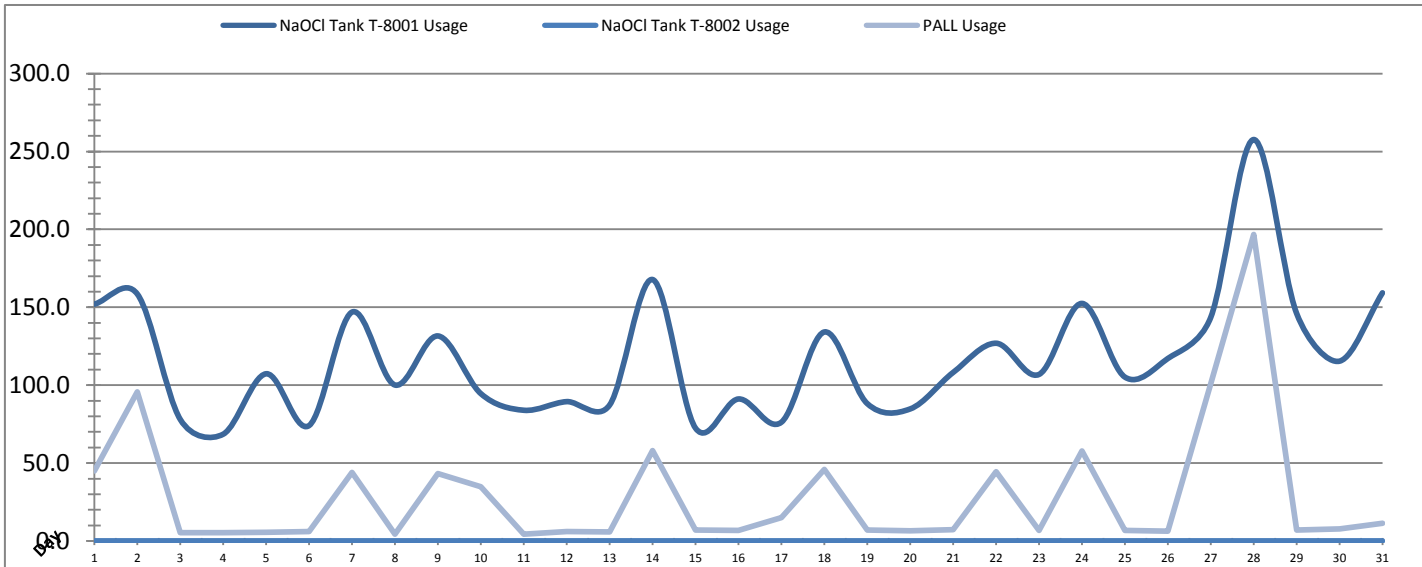


Date	Distribution Pressures					
	PIT_7053 (kPa)			PIT_7063 (kPa)		
	Maximum	Minimum	Average	Maximum	Minimum	Average
1	✓ 689.0	✓ 267.7	491.4	✓ 628.4	✓ 246.1	436.8
2	✓ 689.4	✓ 179.1	489.9	✓ 523.2	✓ 164.8	427.4
3	✓ 658.0	✓ 313.4	487.1	✓ 591.0	✓ 260.7	435.7
4	✓ 664.9	✓ 288.2	464.2	✓ 657.5	✓ 164.8	442.9
5	✓ 676.6	✓ 267.6	474.6	✓ 602.7	✗ 29.9	402.6
6	✓ 664.5	✓ 296.9	459.5	✓ 642.7	✓ 176.4	465.5
7	✓ 665.9	✓ 313.5	493.8	✓ 629.9	✓ 240.6	447.7
8	✓ 683.6	✓ 254.6	486.6	✓ 527.0	✓ 228.6	425.5
9	✓ 691.0	✓ 273.4	492.2	✓ 591.6	✓ 291.5	433.7
10	✓ 692.8	✓ 269.6	488.8	✓ 590.6	✓ 286.0	422.9
11	✓ 690.0	✓ 267.1	480.6	✓ 592.9	✓ 289.4	422.3
12	✓ 652.7	✓ 224.5	478.6	✓ 560.2	✓ 171.7	424.4
13	✓ 655.2	✓ 310.8	486.6	✓ 563.2	✓ 249.6	425.9
14	✓ 655.2	✓ 310.6	492.9	✓ 536.1	✓ 281.5	432.6
15	✓ 653.4	✓ 308.9	491.0	✓ 513.5	✓ 254.0	419.1
16	✓ 657.9	✓ 316.2	479.7	✓ 562.4	✓ 244.2	452.1
17	✓ 650.5	✓ 309.6	488.7	✓ 517.9	✓ 262.6	417.9
18	✓ 654.4	✓ 322.8	477.3	✓ 526.1	✓ 259.3	431.0
19	✓ 658.4	✓ 311.4	498.7	✓ 527.8	✓ 289.5	421.0
20	✓ 656.0	✓ 310.8	481.5	✓ 558.1	✓ 259.4	424.0
21	✓ 660.9	✓ 178.0	505.4	✓ 569.8	✓ 161.2	428.9
22	✓ 659.2	✓ 309.6	482.8	✓ 523.3	✓ 251.6	433.8
23	✓ 654.0	✓ 326.4	497.5	✓ 514.4	✓ 265.8	423.8
24	✓ 649.8	✓ 308.1	492.4	✓ 525.9	✓ 247.0	424.0
25	✓ 660.3	✓ 304.1	490.0	✓ 524.1	✓ 273.4	422.5
26	✓ 659.3	✓ 275.7	487.2	✓ 515.2	✓ 253.7	428.6
27	✓ 661.6	✓ 252.9	500.0	✓ 566.5	✓ 213.0	438.6
28	✓ 661.0	✓ 306.3	497.0	✓ 563.2	✓ 255.2	434.0
29	✓ 676.0	✓ 295.1	499.4	✓ 586.4	✓ 248.5	431.3
30	✓ 657.5	✓ 291.0	500.6	✓ 527.4	✓ 255.5	426.9
31	✓ 654.7	✓ 307.7	494.2	✓ 525.2	✓ 274.8	433.4
Total						
Average	665.0	286.2	488.1	560.8	237.1	430.2
Maximum	692.8		505.4	657.5		465.5
Date	10-May		21-May	4-May		6-May
Minimum		178.0	459.5		29.9	402.6
Date		21-May	6-May		5-May	5-May

Notes:  
 On 5th, PIT-7063 minimum due to a power flicker

# Chemical Usage Monthly Report

Month: **May-18**

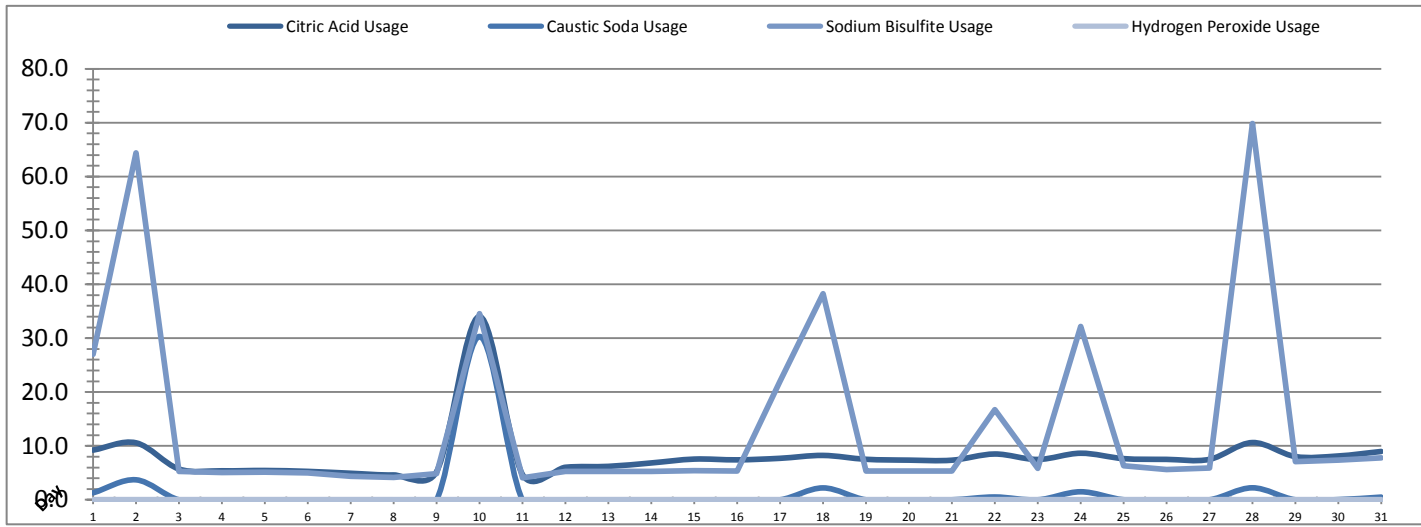


Date	PALL Usage	NaOCI Tank T-8001	NaOCI Tank T-8002
	PALL_HYPO_USAGE (L) Usage	LIT_8002 (Storage) (L) Usage	LIT_8004 (Day) (L) Usage
1	44.9	152.0	0.0
2	95.7	158.4	0.0
3	5.3	77.9	0.0
4	5.3	68.6	0.0
5	5.5	107.3	0.0
6	6.1	74.1	0.0
7	43.9	146.9	0.0
8	4.3	100.1	0.0
9	43.3	131.6	0.0
10	34.8	94.5	0.0
11	4.3	83.9	0.0
12	6.0	89.4	0.0
13	5.9	87.3	0.0
14	58.04	167.80	0.0
15	7.1	72.4	0.0
16	6.7	91.1	0.0
17	15.0	76.2	0.0
18	45.9	134.2	0.0
19	7.0	88.2	0.0
20	6.6	84.8	0.0
21	7.1	108.2	0.0
22	44.5	126.9	0.0
23	6.7	106.9	0.0
24	57.7	152.5	0.0
25	6.8	105.2	0.0
26	6.3	117.1	0.0
27	101.1	143.5	0.0
28	196.7	257.7	0.0
29	7.1	146.1	0.0
30	7.6	115.4	0.0
31	11.4	159.3	0.0
Total	904.8	3625.5	1.1
Average	29.2	117.0	0.0
Maximum	196.7	257.7	0.0
Date	28-May	28-May	1-May
Minimum	4.3	68.6	0.0
Date	11-May	4-May	1-May

Notes:	
Dosage (mg/L)=	Day Tank (L) x %conc. x 1000
	Membrane Flow (m3)
Chlorine Concentration:	12.0%

# Chemical Usage Monthly Report

Month: **May-18**



Date	Citric Acid	Caustic Soda	Captor	Hydrogen Peroxide		Membrane Flow (m <sup>3</sup> )
	TAGNAME (L) Usage	TAGNAME (L) Usage	TAGNAME (L) Usage	TAGNAME (L) Usage	(mg/L) Dose	
1	9.2	1.3	27.0	0.0		4780.773
2	10.6	3.7	64.4	0.0		3961.450
3	5.7	0.0	5.2	0.0		4319.221
4	5.4	0.0	5.1	0.0		3028.046
5	5.4	0.0	5.1	0.0		4389.291
6	5.3	0.0	5.0	0.0		4158.198
7	4.9	0.0	4.4	0.0		4501.175
8	4.6	0.0	4.1	0.0		4592.900
9	5.2	0.0	4.9	0.0		4929.619
10	34.0	30.3	34.5	0.0		3457.836
11	4.7	0.0	4.1	0.0		2916.189
12	6.0	0.0	5.3	0.0		3955.146
13	6.2	0.0	5.3	0.0		3570.032
14	6.8	0.0	5.3	0.0		5351.776
15	7.6	0.0	5.4	0.0		3415.287
16	7.4	0.0	5.3	0.0		5113.987
17	7.7	0.0	22.1	0.0		3538.479
18	8.2	2.2	38.3	0.0		4458.386
19	7.5	0.0	5.4	0.0		4322.245
20	7.4	0.0	5.3	0.0		3693.994
21	7.4	0.0	5.4	0.0		5017.257
22	8.5	0.5	16.7	0.0		4741.469
23	7.5	0.0	5.8	0.0		4901.059
24	8.6	1.5	32.2	0.0		4589.543
25	7.6	0.0	6.3	0.0		4332.414
26	7.5	0.0	5.6	0.0		4991.674
27	7.5	0.0	5.9	0.0		6636.929
28	10.6	2.2	69.9	0.0		5923.760
29	8.0	0.0	7.1	0.0		5695.442
30	8.1	0.0	7.4	0.0		4842.210
31	9.0	0.5	7.8	0.0		5833.739
Total	250.4	42.3	431.4	0.0		139959.5
Average	8.1	1.4	13.9	0.0	#DIV/0!	4514.8
Maximum	34.0	30.3	69.9	0.0	0.0	6636.9
Date	10-May	10-May	28-May	1-May	#N/A	27-May
Minimum	4.6	0.0	4.1	0.0	0.0	2916.2
Date	8-May	3-May	11-May	1-May	#N/A	11-May

Notes:	
Dosage (mg/L)=	Day Tank (L) x %conc. x 1000
	Membrane Flow (m3)
Peroxide Concentration:	50.0%

# Runtimes Report

Month: May-18

Date	Daily Gen-Set Runtimes		Daily UV Runtimes		Daily PALL Runtimes				
	LLPS	WTP	UV #1	UV #2	Air Compressor #1	Air Compressor #2	CIP Neutralization	CIP Drain	CIP Recirc
	(Hrs)	(Hrs)	(Hrs)	(Hrs)	(Hrs)	(Hrs)	(Hrs)	(Hrs)	(Hrs)
1	0.0	0.0	0.0	0.0	24.4	0.0	0.2	0.1	0.1
2	2.4	2.4	0.0	0.0	9.2	15.1	0.4	0.2	0.4
3	0.0	0.0	0.0	0.0	24.3	0.0	0.0	0.0	0.0
4	0.0	3.0	0.0	0.0	16.0	8.3	0.0	0.0	0.0
5	0.0	0.0	0.0	0.0	24.3	0.1	0.0	0.0	0.0
6	0.0	0.0	0.0	0.0	24.3	0.1	0.0	0.0	0.0
7	0.0	0.0	0.0	0.0	15.2	9.2	0.0	0.1	0.1
8	0.0	0.0	0.0	0.0	8.9	15.3	0.1	0.0	0.0
9	0.0	0.0	0.0	0.0	24.4	0.0	0.0	0.1	0.2
10	0.0	0.0	0.0	0.0	0.0	24.4	0.2	0.0	0.0
11	0.0	0.0	0.0	0.0	24.4	0.0	0.0	0.0	0.0
12	0.0	0.0	0.0	0.0	0.0	24.4	0.0	0.0	0.0
13	0.0	0.0	0.0	0.0	24.4	0.0	0.0	0.0	0.0
14	0.0	0.0	0.0	0.0	7.3	17.1	0.2	0.1	0.2
15	0.0	0.0	0.0	0.0	24.4	0.0	0.0	0.0	0.0
16	0.0	0.0	0.0	0.0	0.0	24.4	0.0	0.0	0.0
17	0.0	0.0	0.0	0.0	24.4	0.0	0.0	0.0	0.0
18	0.0	0.0	0.0	0.0	0.0	24.3	0.3	0.2	0.3
19	0.0	0.0	0.0	0.0	24.4	0.1	0.0	0.0	0.0
20	0.0	0.0	0.0	0.0	0.0	24.3	0.0	0.0	0.0
21	0.0	0.0	0.0	0.0	1.0	22.2	0.0	0.0	0.0
22	0.0	0.0	0.0	0.0	16.1	8.2	0.2	0.1	0.1
23	0.0	0.0	0.0	0.0	24.3	0.0	0.0	0.0	0.0
24	0.0	0.0	0.0	0.0	14.1	10.3	0.2	0.2	0.3
25	0.0	0.0	0.0	0.4	24.4	0.0	0.0	0.0	0.0
26	0.0	0.0	0.0	0.0	24.3	0.1	0.0	0.0	0.0
27	0.0	0.0	0.0	0.0	24.4	0.0	0.0	0.0	0.0
28	0.0	0.0	0.0	0.0	24.4	0.0	0.5	0.3	0.3
29	0.0	0.0	0.0	0.0	24.4	0.0	0.0	0.0	0.0
30	0.0	0.0	0.0	0.0	23.1	1.3	0.0	0.0	0.0
31	0.0	0.0	0.0	0.0	24.4	0.0	0.0	0.0	0.0
<b>Total</b>	2.4	5.4	0.0	0.4	525.0	229.2	2.3	1.4	2.0

Notes:

# Runtimes Report

Month: May-18

## Daily

Date	PALL Runtimes						Process Drain	
	RFR Pump #1	RFR Pump #2	RF Pump #1	RF Pump #2	XR Pump #1	XR Pump #2	PDP9010 Pump	PDP9020 Pump
	(Hrs)	(Hrs)	(Hrs)	(Hrs)	(Hrs)	(Hrs)	(Hrs)	(Hrs)
1	5.8	5.6	1.0	0.9	7.9	10.6	2.3	3.0
2	4.2	4.3	0.7	0.8	8.0	7.1	2.4	3.0
3	6.1	6.3	0.9	0.7	8.3	7.9	2.5	3.3
4	4.6	3.9	0.6	0.5	4.9	6.2	2.5	2.7
5	6.8	0.0	0.7	0.8	7.4	3.3	2.5	3.4
6	8.1	0.0	0.9	0.8	5.8	10.0	2.2	2.7
7	6.8	4.8	0.8	1.0	10.2	4.8	2.4	2.9
8	6.9	8.7	1.1	0.9	6.1	10.6	2.4	3.1
9	5.9	7.7	0.8	1.0	7.6	6.8	2.2	3.0
10	4.7	6.1	0.8	0.6	6.9	5.0	2.3	2.9
11	2.7	3.2	0.3	0.4	5.2	6.2	2.1	2.9
12	6.0	6.8	0.8	0.8	6.3	8.6	2.2	2.9
13	5.3	6.2	0.8	0.6	8.4	5.2	2.3	3.0
14	7.7	9.1	0.9	1.1	6.6	11.7	2.2	3.2
15	4.5	5.6	0.6	0.6	7.9	5.0	2.6	2.8
16	6.0	7.0	1.0	0.9	10.0	8.1	2.2	3.1
17	4.2	5.0	0.6	0.7	3.6	8.7	2.2	2.8
18	4.7	5.6	0.9	0.8	11.5	5.4	2.1	3.1
19	5.2	5.5	0.8	0.9	6.0	9.2	2.2	2.9
20	4.5	5.2	0.7	0.7	6.3	7.8	2.1	2.9
21	4.0	4.8	1.0	0.9	7.1	11.3	2.4	3.2
22	3.9	4.2	0.9	0.9	9.7	8.7	2.3	3.0
23	5.8	6.2	0.8	1.0	8.4	8.1	2.1	3.1
24	5.0	5.7	1.0	0.8	8.4	6.6	2.4	2.9
25	5.2	6.0	0.9	0.9	10.9	4.2	2.3	2.7
26	5.9	7.2	1.0	1.0	8.0	10.1	2.3	2.8
27	8.1	8.1	1.3	1.1	8.2	12.1	2.3	3.1
28	6.5	6.9	1.2	1.1	11.4	9.4	2.5	3.5
29	7.0	6.9	1.1	1.1	10.5	7.9	2.3	2.9
30	6.4	6.7	0.9	1.0	7.4	9.2	2.3	2.9
31	7.4	7.1	1.2	1.0	11.0	8.6	2.5	3.0
Total	175.2	175.7	27.0	26.3	244.9	243.4	71.6	92.7

Notes:


# Runtimes Report

Month: May-18

## Daily

Date	Low Lift Pump Motor Runtimes				High Lift Pump Motor Runtimes			
	LLP1010 (Hrs)	LLP1020 (Hrs)	LLP1030 (Hrs)	LLP1040 (Hrs)	HLP7010 (Hrs)	HLP7020 (Hrs)	HLP7030 (Hrs)	HLP7040 (Hrs)
1	0.0	7.0	3.3	8.4	0.0	0.0	14.8	0.0
2	0.0	5.1	6.8	3.4	1.8	3.5	8.0	0.0
3	0.0	4.6	5.6	6.7	0.0	14.4	0.0	0.0
4	0.0	3.1	3.3	5.5	2.8	9.6	0.0	0.0
5	0.0	6.7	6.2	4.8	0.0	2.8	9.3	0.0
6	0.0	5.1	7.0	3.8	0.0	0.0	11.1	0.0
7	0.0	5.8	6.4	5.3	0.0	0.0	12.8	0.0
8	0.0	8.2	3.7	5.5	0.0	0.0	13.7	0.0
9	0.0	5.4	6.0	8.0	0.0	2.1	11.5	0.0
10	0.0	5.1	3.4	4.9	0.0	0.0	10.9	0.0
11	0.0	2.0	5.2	4.3	0.0	0.0	9.1	0.0
12	0.0	3.1	8.0	4.0	12.6	0.0	0.1	0.0
13	0.0	4.2	3.3	6.2	15.1	0.0	0.0	0.0
14	0.0	8.2	5.1	7.5	17.9	0.0	0.0	0.0
15	0.0	4.4	5.5	3.1	13.2	0.0	0.0	0.0
16	0.0	5.5	7.0	7.0	18.6	0.0	1.6	0.0
17	0.0	4.6	6.6	2.5	12.7	0.0	0.0	0.0
18	0.0	7.6	5.1	4.7	14.2	0.0	0.0	0.0
19	0.0	5.5	5.3	5.5	15.3	0.0	0.0	0.0
20	0.0	5.1	3.6	5.7	13.1	0.0	0.0	0.0
21	0.0	6.6	5.0	8.3	0.7	17.9	0.0	0.0
22	0.0	7.1	6.6	5.0	0.0	15.3	0.0	0.0
23	0.0	5.0	7.1	6.7	0.0	16.3	0.0	0.0
24	0.0	6.5	5.1	6.3	0.0	15.9	0.0	0.0
25	0.0	4.9	3.7	7.9	0.0	15.1	0.0	0.0
26	0.0	6.7	7.3	5.2	0.0	16.5	0.0	0.0
27	0.0	9.6	9.1	7.0	1.1	19.1	0.0	0.0
28	0.0	6.4	8.3	7.9	0.1	18.8	0.0	0.0
29	0.0	8.7	6.8	6.5	0.0	18.1	0.8	0.0
30	0.0	6.7	5.7	7.1	0.0	17.4	0.0	0.0
31	0.0	5.6	9.2	8.0	0.0	18.8	0.0	0.0
Total	0.0	180.1	180.3	182.7	139.2	221.5	103.7	0.0

Notes:

Lowlift pump 1 out of service  
 Highlift pump 4 out of service

# Plant Internal Flow Report

Month: May-18

Date	Settling Tank Level		Process Drain Tank		Settling Tank Flow		Potable Water Flow		Non-Potable Flow	
	T-9003 (m)		T-9001 (m)		FIT_9005 (m <sup>3</sup> ) (L/s)		FIT_7082 (m <sup>3</sup> ) (L/s)		FIT_7092 (m <sup>3</sup> ) (L/s)	
	Maximum	Minimum	Maximum	Minimum	Total	Peak	Total	Peak	Total	Peak
1	2.2	0.1	1.0	0.4	186.8	15.7	0.2	1.4	12.3	16.8
2	2.2	0.1	1.3	0.4	188.2	15.7	0.1	1.4	31.7	22.7
3	2.2	0.1	1.4	0.4	221.9	15.7	0.1	1.3	0.3	1.3
4	2.2	0.1	1.7	0.4	131.5	15.7	0.2	1.6	0.0	0.0
5	2.2	0.1	1.2	0.4	161.8	15.7	0.0	1.1	0.0	0.0
6	2.2	0.1	1.1	0.4	172.0	15.7	0.0	0.0	0.0	0.0
7	2.2	0.1	1.0	0.4	142.5	15.7	0.1	1.4	12.2	17.1
8	2.2	0.1	1.2	0.4	168.8	15.7	0.1	1.3	0.0	0.0
9	2.2	0.1	1.1	0.4	170.5	15.7	0.1	1.4	11.9	18.6
10	2.2	0.1	1.2	0.4	179.6	15.7	0.7	1.7	0.0	0.0
11	2.2	0.1	1.1	0.4	44.1	15.7	0.0	1.3	0.0	0.0
12	2.2	0.2	1.0	0.4	114.5	15.7	0.0	0.0	0.0	0.0
13	2.2	0.1	1.1	0.4	118.3	15.7	0.0	0.0	0.0	0.0
14	2.2	0.1	1.3	0.4	174.8	15.7	0.0	1.3	18.0	22.6
15	2.2	0.1	1.4	0.4	182.8	15.7	0.2	1.3	0.1	1.1
16	2.2	0.1	1.3	0.4	183.1	15.7	0.2	1.5	0.5	1.2
17	2.2	0.1	1.1	0.4	172.7	15.7	0.1	1.4	0.5	0.9
18	2.2	0.1	1.3	0.4	205.9	15.7	0.0	1.2	18.1	17.6
19	2.2	0.1	1.1	0.4	159.8	15.7	0.0	0.5	0.0	0.0
20	2.2	0.1	1.0	0.4	140.9	15.7	0.0	0.0	0.0	0.0
21	2.2	0.1	2.1	0.4	267.6	15.7	0.0	1.1	0.0	0.0
22	2.2	0.1	1.5	0.4	281.9	15.7	0.3	1.3	12.5	17.4
23	2.2	0.1	1.1	0.4	205.3	15.7	0.0	1.3	0.0	0.0
24	2.2	0.1	1.0	0.4	232.5	15.7	0.1	1.4	17.9	22.2
25	2.2	0.1	1.1	0.4	228.7	15.7	3.6	4.7	0.4	1.2
26	2.2	0.1	1.1	0.4	216.8	15.7	0.0	0.0	0.0	0.0
27	2.2	0.1	1.1	0.4	288.1	15.7	0.0	0.0	0.0	0.0
28	2.2	0.1	1.8	0.4	359.4	15.7	0.1	1.6	36.4	17.7
29	2.2	0.1	1.1	0.4	315.5	15.7	0.1	1.4	0.0	0.0
30	2.2	0.1	1.1	0.4	288.8	15.7	0.0	1.2	0.4	1.0
31	2.2	0.1	1.1	0.4	322.4	15.7	0.3	1.1	0.0	0.0
<b>Total</b>					<b>6227.6</b>		<b>6.8</b>		<b>173.2</b>	
<b>Average</b>	2.2	0.1	1.2	0.4	200.9	15.7	0.2	1.2	5.6	5.8
<b>Maximum</b>	2.2		2.1		359.4		3.6		36.4	
<b>Date</b>	28-May		21-May		28-May		25-May		28-May	
<b>Minimum</b>		0.1		0.4		15.7		0.0		0.0
<b>Date</b>		20-May		23-May		11-May		6-May		4-May

Notes: