

Municipality of West Elgin - Tri County Water System

Goto:

Month:

Year:

Date is Set to: **June-17**

Limit	Low	High	
Raw Water Chlorine Residual:	0.00	5.00	mg/L
Pre-Strainer Chlorine Residual:	0.00	5.00	mg/L
UV Inlet Chlorine Residual:	0.00	5.00	mg/L
Post Treatment Chlorine Residual:	1.00	5.00	mg/L
Treated Chlorine Residual:	1.00	2.50	mg/L
Distribution Chlorine Residual:	1.00	2.50	mg/L
Limit		High	
Limit		156.0	L/s
WTP Permit to Take Water		13500.0	m ³
Limit	Low	High	
System Pressure Limits:	50.0	1034.0	Kpa

Compliance Report

Low Lift Monthly Report

>>>

Membranes Monthly Report

>>>

UV System Monthly Report

>>>

Plant Quality Report

>>>

Raw Well/Treated Storage Report

>>>

High Lift Monthly Report

>>>

Operational Report

Low Lift Monthly Report

>>>

High Lift Monthly Report

>>>

Chemical Usage Monthly Report

>>>

Runtimes Report

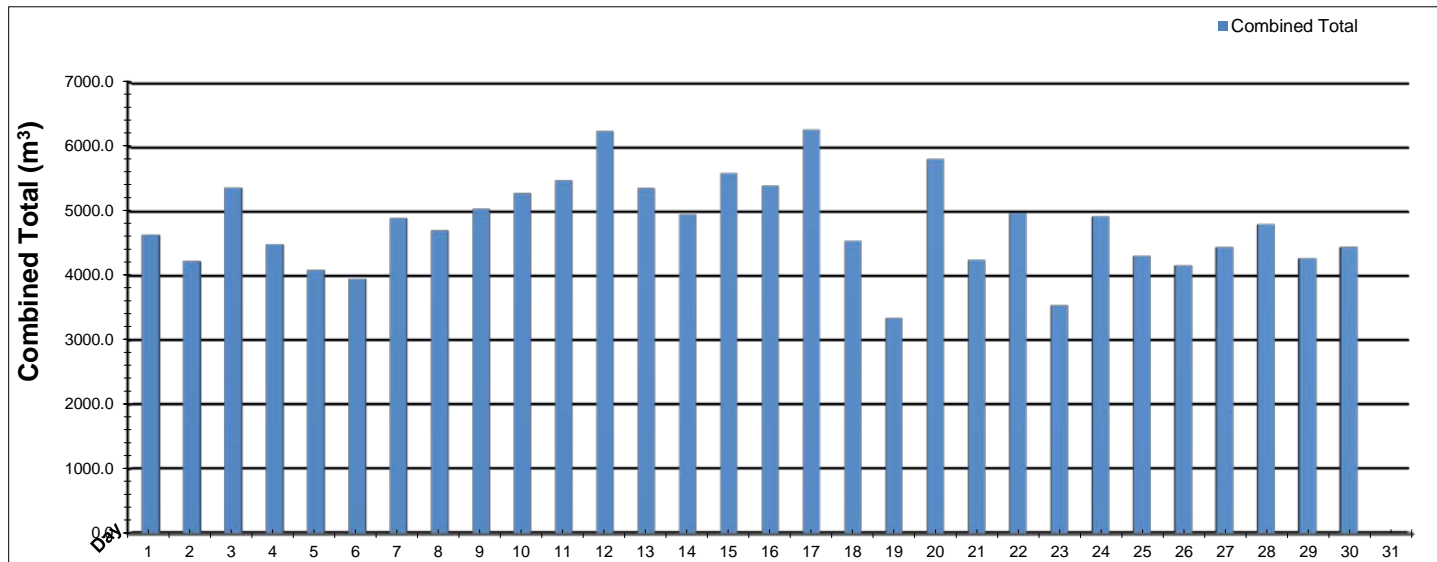
>>>

Plant Internal Flow Report

>>>

Low Lift Monthly Report

Month: June-17



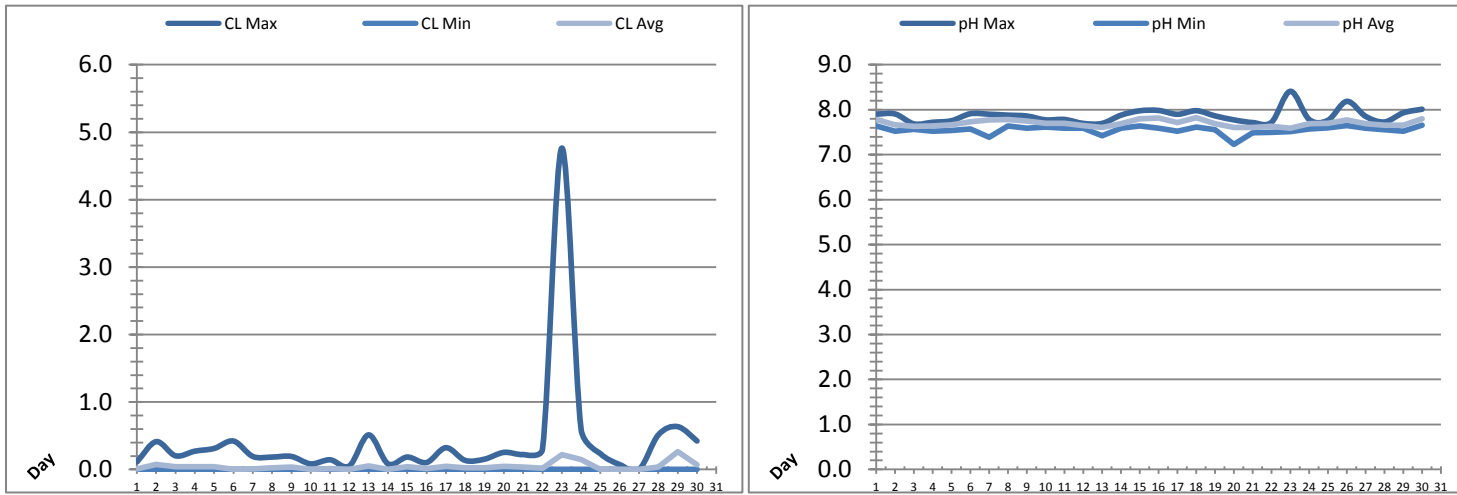
Date	Combined Total (m³)	West Train FIT-1017 (m³)	West Peak Flow FIT-1017 (L/s)	East Train FIT-1027 (m³)	East Peak Flow FIT-1027 (L/s)	Combined Peak Flow (L/s)
1	✓ 4636.1	715.8	199.2	3920.3	106.8	✗ 199.2
2	✓ 4226.7	0.0	0.0	4226.7	174.5	✗ 174.5
3	✓ 5366.6	0.0	0.0	5366.6	75.4	✓ 75.4
4	✓ 4490.2	0.0	0.0	4490.2	79.7	✓ 79.7
5	✓ 4089.7	0.0	0.0	4089.7	199.5	✗ 199.5
6	✓ 3953.5	0.0	0.0	3953.5	145.0	✓ 145.0
7	✓ 4895.1	0.0	0.0	4895.1	115.2	✓ 115.2
8	✓ 4704.5	0.0	0.0	4704.5	77.4	✓ 77.4
9	✓ 5040.6	0.0	0.0	5040.6	76.8	✓ 76.8
10	✓ 5283.4	0.0	0.0	5283.4	114.1	✓ 114.1
11	✓ 5482.0	0.0	0.0	5482.0	116.2	✓ 116.2
12	✓ 6245.5	0.0	0.0	6245.5	117.6	✓ 117.6
13	✓ 5359.3	0.0	0.0	5359.3	133.5	✓ 133.5
14	✓ 4956.3	0.0	0.0	4956.3	117.1	✓ 117.1
15	✓ 5593.6	0.0	0.0	5593.6	128.0	✓ 128.0
16	✓ 5398.5	0.0	0.0	5398.5	124.7	✓ 124.7
17	✓ 6270.0	0.0	0.0	6270.0	195.4	✗ 195.4
18	✓ 4542.2	0.0	0.0	4542.2	127.2	✓ 127.2
19	✓ 3342.7	0.0	0.0	3342.7	104.9	✓ 104.9
20	✓ 5813.9	0.0	0.0	5813.9	195.2	✗ 195.2
21	✓ 4245.2	0.0	0.0	4245.2	190.1	✗ 190.1
22	✓ 4970.7	0.0	0.0	4970.7	80.9	✓ 80.9
23	✓ 3543.9	0.0	0.0	3543.9	82.2	✓ 82.2
24	✓ 4920.6	0.0	0.0	4920.6	76.3	✓ 76.3
25	✓ 4312.1	0.0	0.0	4312.1	81.9	✓ 81.9
26	✓ 4160.5	1997.0	88.4	2163.5	79.6	✓ 88.4
27	✓ 4444.6	4444.6	116.8	0.0	0.0	✓ 116.8
28	✓ 4800.8	4800.8	120.3	0.0	0.0	✓ 120.3
29	✓ 4274.3	4274.3	194.9	0.0	0.0	✗ 194.9
30	✓ 4445.0	4445.0	148.4	0.0	0.0	✓ 148.4
Total	143808.1	20677.5		123130.6		
Average	4793.6	689.3	28.9	4104.4	103.8	126.6
Maximum	6270.0	4800.8	199.18	6270.0	199.49	199.49
Date	17-Jun	28-Jun	1-Jun	17-Jun	5-Jun	5-Jun
Minimum	3342.7	0.0	0.00	0.0	0.00	75.38
Date	19-Jun	5-Jun	2-Jun	27-Jun	27-Jun	3-Jun

Notes:

1, 2, 5, 17, 20, 21, 29: Peak flows exceeded 156L/s however, spike was less than a minute therefore no PTTW exceedances.

Low Lift Monthly Report

Month: June-17

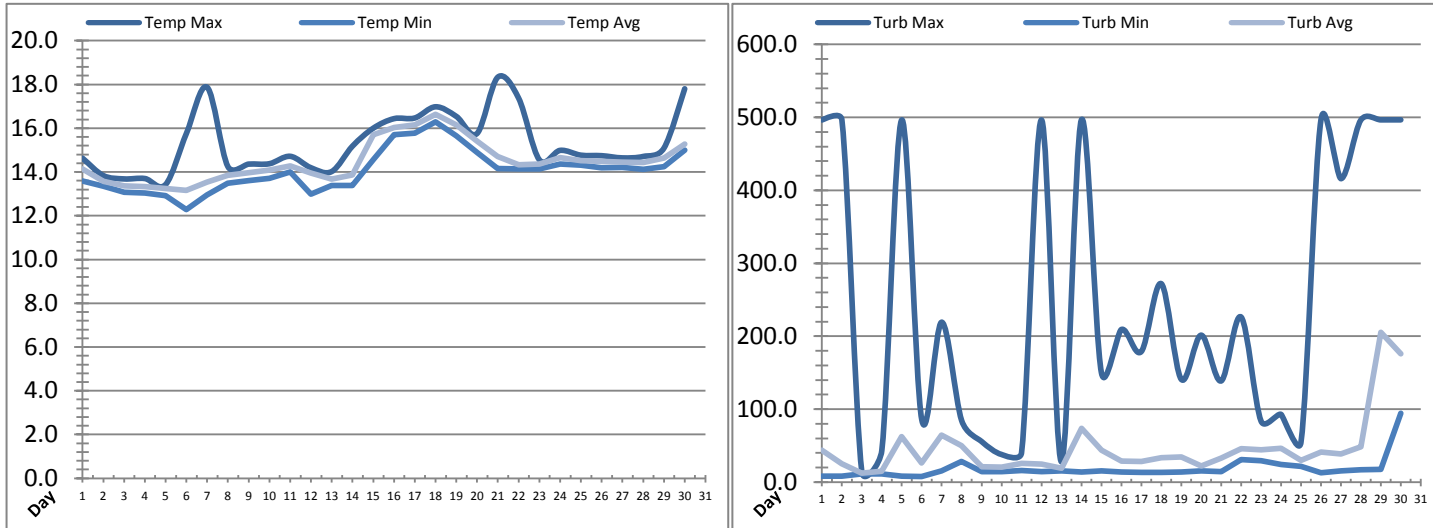


Date	Raw Water Chlorine Residual			Raw Water pH		
	AIT_1401_CL (mg/L)			AIT_1401_PH		
	Maximum	Minimum	Average	Maximum	Minimum	Average
1	0.11	0.00	0.01	7.90	7.64	7.78
2	0.41	0.00	0.07	7.90	7.53	7.66
3	0.20	0.00	0.04	7.68	7.57	7.63
4	0.27	0.00	0.04	7.72	7.52	7.64
5	0.31	0.00	0.04	7.76	7.54	7.66
6	0.42	0.00	0.00	7.91	7.57	7.73
7	0.19	0.00	0.01	7.90	7.39	7.77
8	0.18	0.00	0.03	7.88	7.64	7.78
9	0.19	0.00	0.04	7.86	7.59	7.75
10	0.08	0.00	0.00	7.77	7.61	7.70
11	0.14	0.00	0.01	7.78	7.59	7.69
12	0.05	0.00	0.00	7.69	7.59	7.65
13	0.51	0.00	0.05	7.70	7.42	7.61
14	0.08	0.00	0.00	7.88	7.59	7.69
15	0.18	0.00	0.04	7.98	7.64	7.80
16	0.10	0.00	0.01	7.98	7.59	7.81
17	0.32	0.00	0.04	7.90	7.52	7.72
18	0.13	0.00	0.02	7.98	7.61	7.83
19	0.15	0.00	0.02	7.86	7.56	7.69
20	0.25	0.00	0.05	7.77	7.23	7.61
21	0.22	0.00	0.04	7.71	7.48	7.60
22	0.30	0.00	0.02	7.72	7.50	7.63
23	4.76	0.00	0.22	8.41	7.51	7.59
24	0.59	0.00	0.15	7.78	7.57	7.69
25	0.23	0.00	0.00	7.76	7.59	7.70
26	0.07	0.00	0.00	8.19	7.65	7.78
27	0.00	0.00	0.00	7.85	7.59	7.69
28	0.51	0.00	0.04	7.73	7.55	7.65
29	0.63	0.00	0.26	7.93	7.52	7.65
30	0.42	0.00	0.07	8.01	7.66	7.79
Total						
Average	0.40	0.00	0.04	7.86	7.55	7.70
Maximum	4.76		0.26	8.41		7.83
Date	23-Jun		29-Jun	23-Jun		18-Jun
Minimum		0.00	0.00		7.23	7.59
Date		1-Jun	27-Jun		20-Jun	23-Jun

Notes:

Low Lift Monthly Report

Month: June-17

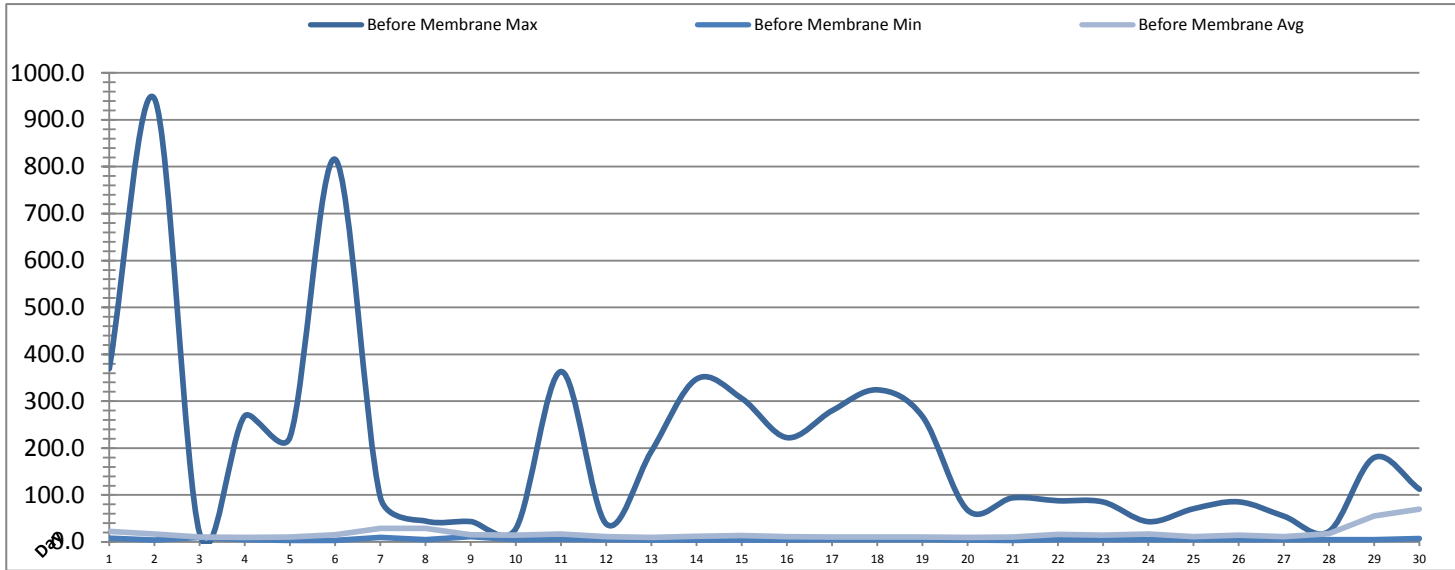


Date	Raw Water Temperature			Raw Water Turbidity		
	TIT_1403 (°C)			AIT_1404 (NTU)		
	Maximum	Minimum	Average	Maximum	Minimum	Average
1	14.6	13.6	14.1	496.55	8.28	43.93
2	13.8	13.3	13.6	496.58	8.35	25.13
3	13.7	13.1	13.4	13.78	11.36	12.48
4	13.7	13.0	13.3	43.19	11.37	14.91
5	13.4	12.9	13.2	496.54	8.32	62.14
6	15.8	12.3	13.2	85.83	7.53	26.29
7	17.9	12.9	13.5	219.27	15.23	64.53
8	14.2	13.5	13.8	84.33	28.51	50.10
9	14.4	13.6	14.0	55.63	14.49	21.28
10	14.4	13.7	14.1	37.82	14.47	20.43
11	14.7	14.0	14.3	40.20	16.08	25.52
12	14.2	13.0	14.0	496.55	14.50	24.72
13	14.0	13.4	13.7	27.75	15.27	19.06
14	15.2	13.4	13.9	496.63	13.76	73.70
15	16.0	14.6	15.7	150.20	15.34	43.62
16	16.4	15.7	16.0	209.18	13.78	28.58
17	16.5	15.8	16.1	178.93	13.07	28.13
18	17.0	16.3	16.6	272.01	13.06	33.24
19	16.5	15.7	16.1	140.95	13.82	34.67
20	15.8	14.9	15.4	201.43	15.30	21.89
21	18.3	14.2	14.7	138.64	14.50	32.78
22	17.4	14.1	14.3	226.27	30.82	45.96
23	14.6	14.1	14.4	83.58	29.27	44.26
24	15.0	14.4	14.7	92.84	23.88	46.46
25	14.8	14.3	14.5	54.84	21.48	29.77
26	14.7	14.2	14.5	496.59	13.01	41.04
27	14.6	14.2	14.4	415.99	15.33	38.35
28	14.7	14.1	14.4	496.50	16.81	48.46
29	15.1	14.2	14.6	496.63	17.62	205.13
30	17.8	15.0	15.3	496.64	94.35	175.87
Total						
Average	15.3	14.1	14.5	241.4	18.3	46.1
Maximum	18.3		16.6	496.6		205.1
Date	21-Jun		18-Jun	30-Jun		29-Jun
Minimum		12.3	13.2		7.5	12.5
Date		6-Jun	6-Jun		6-Jun	3-Jun

Notes:

Membranes Monthly Report

Month: June-17



Date	Turbidity Before Membrane			Rack #1 Turbidity			Rack #2 Turbidity		
	PALL_FEED_AIT2006_Value NTU			RACK1_NTU_Value NTU			RACK2_NTU_Value NTU		
	Maximum	Minimum	Average	Maximum	Minimum	Average	Maximum	Minimum	Average
1	369.50	8.12	22.40	0.01	0.01	0.01			
2	944.83	4.37	16.63	0.01	0.01	0.01			
3	17.76	9.91	10.42	0.01	0.01	0.01			
4	268.94	4.92	9.89	0.01	0.01	0.01			
5	223.63	3.43	10.58	0.03	0.01	0.01			
6	815.69	3.59	15.61	0.05	0.01	0.01			
7	94.90	9.83	29.19	0.02	0.01	0.01			
8	44.59	4.75	28.53	0.71	0.01	0.01			
9	43.42	11.26	14.97	0.01	0.01	0.01			
10	28.42	4.94	14.65	0.03	0.01	0.01			
11	363.31	5.26	16.82	0.01	0.01	0.01			
12	38.33	4.83	11.48	0.02	0.01	0.01			
13	193.48	4.35	9.46	0.06	0.01	0.01			
14	347.43	4.35	12.22	0.02	0.01	0.01			
15	305.96	3.98	13.86	0.14	0.01	0.01			
16	222.36	4.24	11.11	0.01	0.01	0.01			
17	279.97	4.55	10.69	0.01	0.01	0.01			
18	324.31	4.81	10.57	0.01	0.01	0.01			
19	267.44	4.45	10.80	0.01	0.01	0.01			
20	67.64	4.39	9.47	0.01	0.01	0.01			
21	94.08	3.12	10.39	0.07	0.01	0.01			
22	87.76	4.61	16.09	0.12	0.01	0.02			
23	85.17	4.98	14.33	0.12	0.01	0.04			
24	43.26	4.96	16.73	0.05	0.01	0.01			
25	70.80	4.86	11.20	0.04	0.01	0.01			
26	85.44	5.02	14.56	0.03	0.01	0.01			
27	54.88	4.51	11.32	0.02	0.01	0.01			
28	22.55	4.92	17.43	0.02	0.01	0.01			
29	179.88	4.49	55.50	0.02	0.01	0.01			
30	112.35	7.50	69.61	0.02	0.01	0.01			
Total									
Average	203.3	5.3	17.6	0.1	0.0	0.0			
Maximum	944.8		69.6	0.7		0.0			
Date	2-Jun		30-Jun	8-Jun		23-Jun			
Minimum		3.1	9.5		0.0	0.0			
Date		21-Jun	13-Jun		30-Jun	30-Jun			

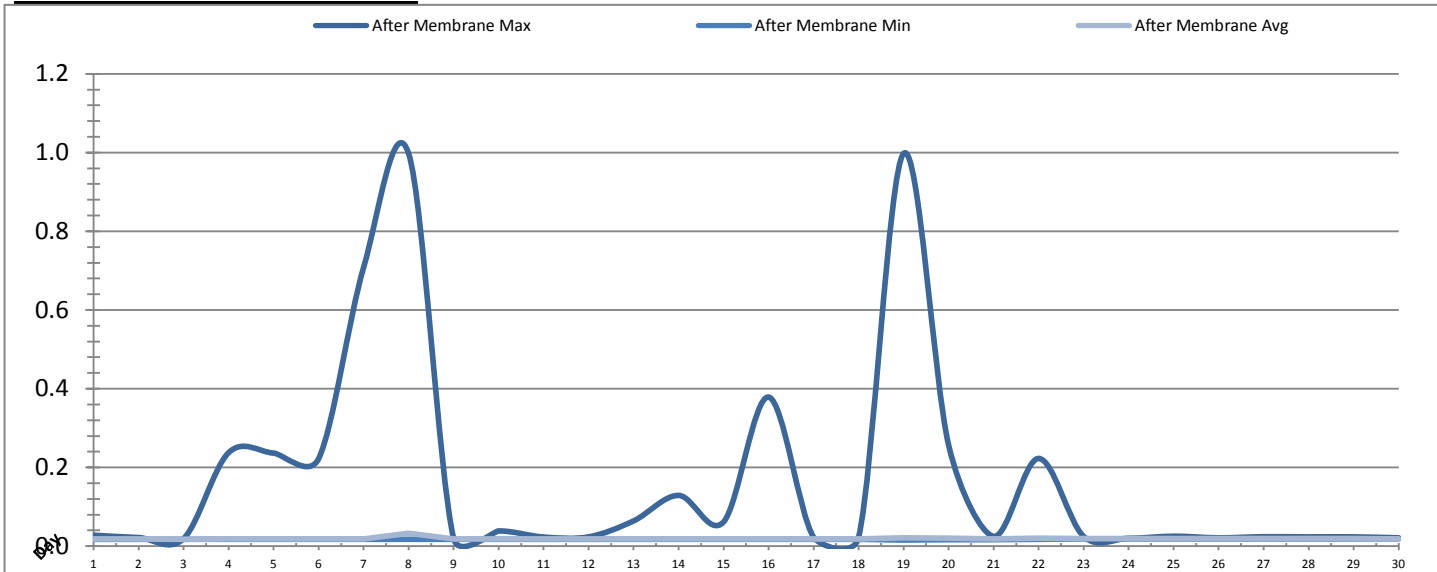
Notes:

Rack 1: 8th turbidity >0.1ntu post CIP, 15th, 22nd, 23rd turbidity >0.1ntu due to air bubbles.

Rack 2: Offline.

Membranes Monthly Report

Month: June-17



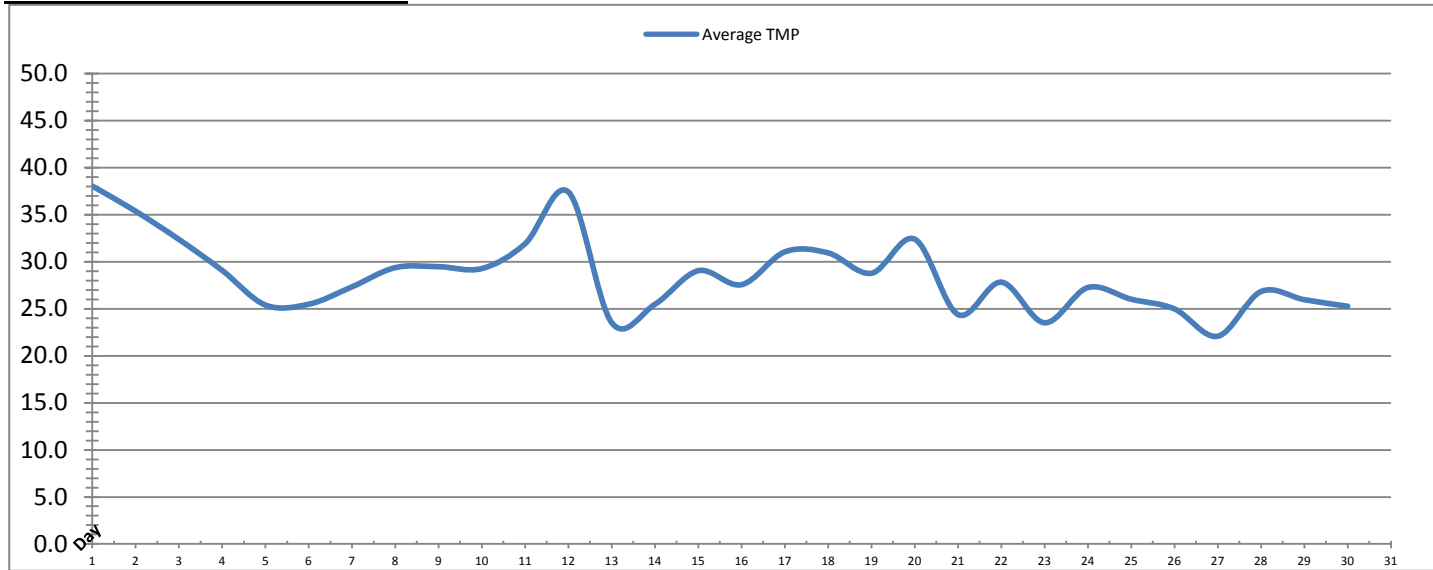
Date	Rack #3 Turbidity			Rack #4 Turbidity			Turbidity After Membranes		
	RACK3_NTU_Value NTU			RACK4_NTU_Value NTU			PALL_FILT_AIT5001_Value NTU		
	Maximum	Minimum	Average	Maximum	Minimum	Average	Maximum	Minimum	Average
1	0.02	0.01	0.01	0.02	0.02	0.02	0.03	0.02	0.02
2	0.02	0.01	0.01	0.03	0.02	0.02	0.02	0.02	0.02
3	0.01	0.01	0.01	0.02	0.02	0.02	0.02	0.02	0.02
4	0.02	0.01	0.01	0.04	0.02	0.02	0.24	0.02	0.02
5	0.02	0.01	0.01	0.03	0.02	0.02	0.24	0.02	0.02
6	0.13	0.01	0.02	0.08	0.02	0.03	0.22	0.02	0.02
7	0.02	0.01	0.01	0.11	0.02	0.03	0.71	0.02	0.02
8	0.03	0.01	0.01	0.36	0.02	0.02	1.00	0.02	0.03
9	0.01	0.01	0.01	0.03	0.02	0.02	0.02	0.02	0.02
10	0.01	0.01	0.01	0.03	0.02	0.02	0.04	0.02	0.02
11	0.02	0.01	0.01	0.02	0.02	0.02	0.02	0.02	0.02
12	0.06	0.01	0.01	0.02	0.02	0.02	0.02	0.02	0.02
13	0.02	0.01	0.01	0.02	0.02	0.02	0.06	0.02	0.02
14	0.02	0.01	0.01	0.02	0.02	0.02	0.13	0.02	0.02
15	0.24	0.01	0.01	0.05	0.02	0.02	0.06	0.02	0.02
16	0.04	0.01	0.01	0.02	0.02	0.02	0.38	0.02	0.02
17	0.02	0.01	0.01	0.03	0.02	0.02	0.02	0.02	0.02
18	0.02	0.01	0.01	0.02	0.02	0.02	0.02	0.02	0.02
19	0.02	0.01	0.01	0.03	0.02	0.02	1.00	0.02	0.02
20	0.02	0.01	0.01	0.04	0.02	0.02	0.26	0.02	0.02
21	0.05	0.01	0.02	0.08	0.02	0.02	0.02	0.02	0.02
22	0.03	0.01	0.01	0.17	0.02	0.03	0.22	0.02	0.02
23	0.02	0.01	0.01	0.03	0.02	0.02	0.02	0.02	0.02
24	0.03	0.01	0.01	0.03	0.02	0.02	0.02	0.02	0.02
25	0.02	0.01	0.01	0.02	0.02	0.02	0.03	0.02	0.02
26	0.03	0.01	0.01	0.02	0.02	0.02	0.02	0.02	0.02
27	0.02	0.01	0.01	0.02	0.02	0.02	0.02	0.02	0.02
28	0.02	0.01	0.01	0.03	0.02	0.02	0.02	0.02	0.02
29	0.02	0.01	0.01	0.03	0.02	0.02	0.02	0.02	0.02
30	0.02	0.01	0.01	0.03	0.02	0.02	0.02	0.02	0.02
Total									
Average	0.0	0.0	0.0	0.0	0.0	0.0	0.2	0.0	0.0
Maximum	0.2		0.0	0.4		0.0	1.0		0.0
Date	15-Jun		6-Jun	8-Jun		6-Jun	19-Jun		8-Jun
Minimum		0.0	0.0		0.0	0.0		0.0	0.0
Date		9-Jun	1-Jun		1-Jun	30-Jun		19-Jun	3-Jun

Notes:

Rack 3: th, 15th >0.1ntu post EFM
 Rack 4: 8th >0.1ntu post CIP; 22nd >0.1ntu due to air bubbles

Membranes Monthly Report

Month: **June-17**

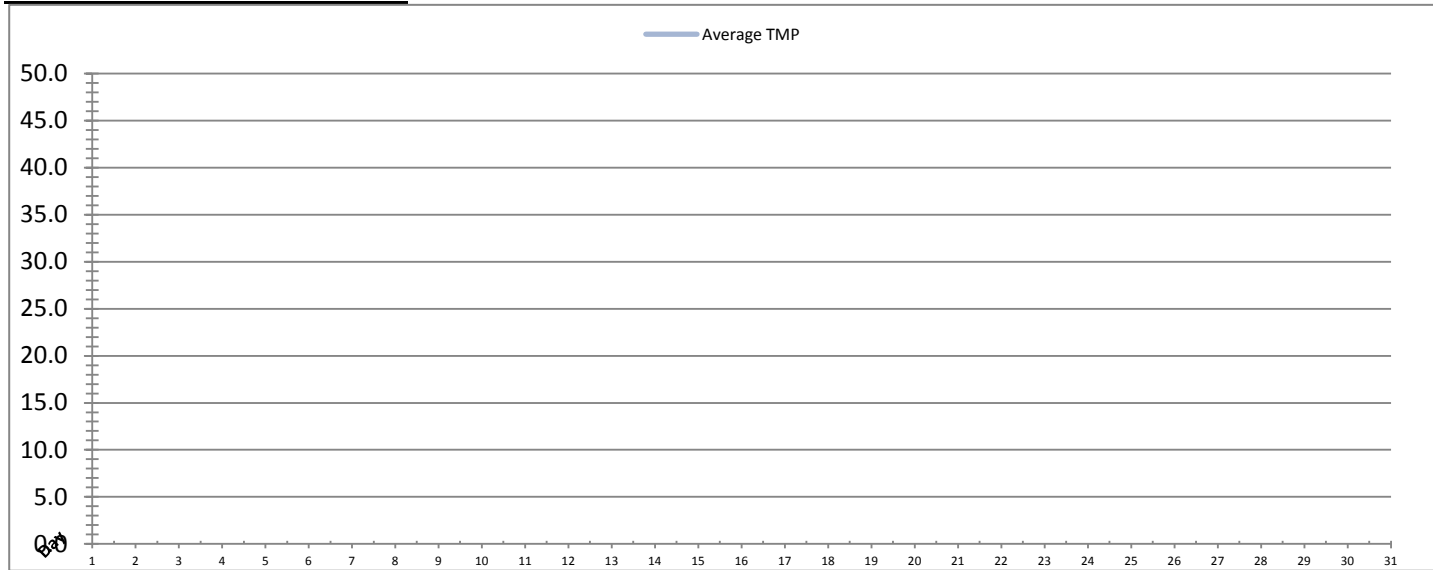


Date	Integrity Test Rack 1							
	Initial Pressure (kPa)	Final Pressure (kPa)	Test Duration (sec)	Change in Pressure (kPa)	UCL	Within UCL	Average TMP (kPa)	Max TMP (kPa)
1	195.9	194.9	300.0	1.0	2.0	✓ 2.0	38.0	151.5
2	195.5	194.7	300.0	0.8	2.0	✓ 2.0	35.4	158.9
3	195.8	194.9	300.0	0.8	2.0	✓ 2.0	32.4	73.1
4	195.9	195.0	300.0	0.9	2.0	✓ 2.0	29.1	94.5
5	195.4	194.6	300.0	0.8	2.0	✓ 2.0	25.4	60.3
6	195.6	194.7	300.0	0.9	2.0	✓ 2.0	25.5	159.4
7	195.5	194.7	300.0	0.8	2.0	✓ 2.0	27.3	95.4
8	195.6	194.7	300.0	0.8	2.0	✓ 2.0	29.4	96.3
9	195.9	194.9	300.0	1.0	2.0	✓ 2.0	29.5	77.6
10	195.5	194.6	300.0	0.9	2.0	✓ 2.0	29.3	79.4
11	195.4	194.6	300.0	0.8	2.0	✓ 2.0	31.9	96.7
12	195.4	194.6	300.0	0.8	2.0	✓ 2.0	37.4	104.6
13	195.7	194.7	300.0	1.0	2.0	✓ 2.0	23.5	90.8
14	195.7	194.7	300.0	0.9	2.0	✓ 2.0	25.5	123.1
15	195.5	194.7	300.0	0.8	2.0	✓ 2.0	29.0	88.6
16	195.4	194.5	300.0	0.8	2.0	✓ 2.0	27.6	120.7
17	195.7	194.7	300.0	1.0	2.0	✓ 2.0	31.1	90.0
18	196.0	195.1	300.0	0.9	2.0	✓ 2.0	30.9	161.2
19	195.7	194.7	300.0	0.9	2.0	✓ 2.0	28.8	125.4
20	195.6	194.7	300.0	0.9	2.0	✓ 2.0	32.4	88.1
21	195.8	194.9	300.0	0.8	2.0	✓ 2.0	24.4	117.3
22	195.8	194.9	300.0	0.9	2.0	✓ 2.0	27.8	85.1
23	196.0	195.0	300.0	1.0	2.0	✓ 2.0	23.5	64.1
24	196.0	195.0	300.0	1.0	2.0	✓ 2.0	27.3	60.5
25	196.0	194.9	300.0	1.1	2.0	✓ 2.0	26.0	100.9
26	194.9	193.9	300.0	1.0	2.0	✓ 2.0	25.0	82.4
27	196.4	195.2	300.0	1.1	2.0	✓ 2.0	22.1	68.0
28	195.7	194.6	300.0	1.2	2.0	✓ 2.0	26.8	68.7
29	195.7	194.6	300.0	1.2	2.0	✓ 2.0	26.0	70.6
30	196.4	195.2	300.0	1.2	2.0	✓ 2.0	25.3	75.6
Total								
Average	195.7	194.8	300.0	0.9	2.0	2.0	28.4	97.6
Maximum	196.4	195.2	300.0	1.2	2.0	2.0	38.0	161.2
Date	27-Jun	27-Jun	1-Jun	28-Jun	1-Jun	1-Jun	1-Jun	18-Jun
Minimum	194.9	193.9	300.0	0.8	2.0	2.0	22.1	60.3
Date	26-Jun	26-Jun	1-Jun	15-Jun	1-Jun	1-Jun	27-Jun	5-Jun

Notes:

Membranes Monthly Report

Month: June-17

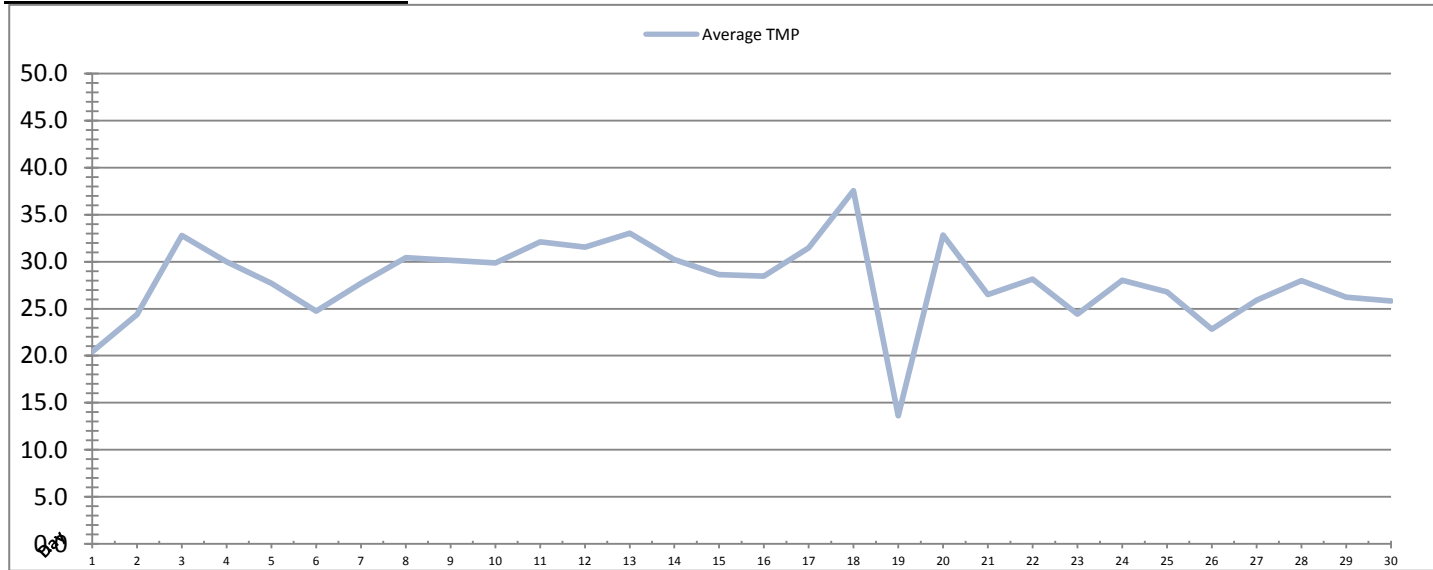


Date	Integrity Test Rack 2							
	Initial Pressure (kPa)	Final Pressure (kPa)	Test Duration (sec)	Change in Pressure (kPa)	UCL	Within UCL	Average TMP (kPa)	Max TMP (kPa)
1								
2								
3								
4								
5								
6								
7								
8								
9								
10								
11								
12								
13								
14								
15								
16								
17								
18								
19								
20								
21								
22								
23								
24								
25								
26								
27								
28								
29								
30								
Total								
Average								
Maximum								
Date								
Minimum								
Date								

Notes:
 Rack 2 offline

Membranes Monthly Report

Month: **June-17**

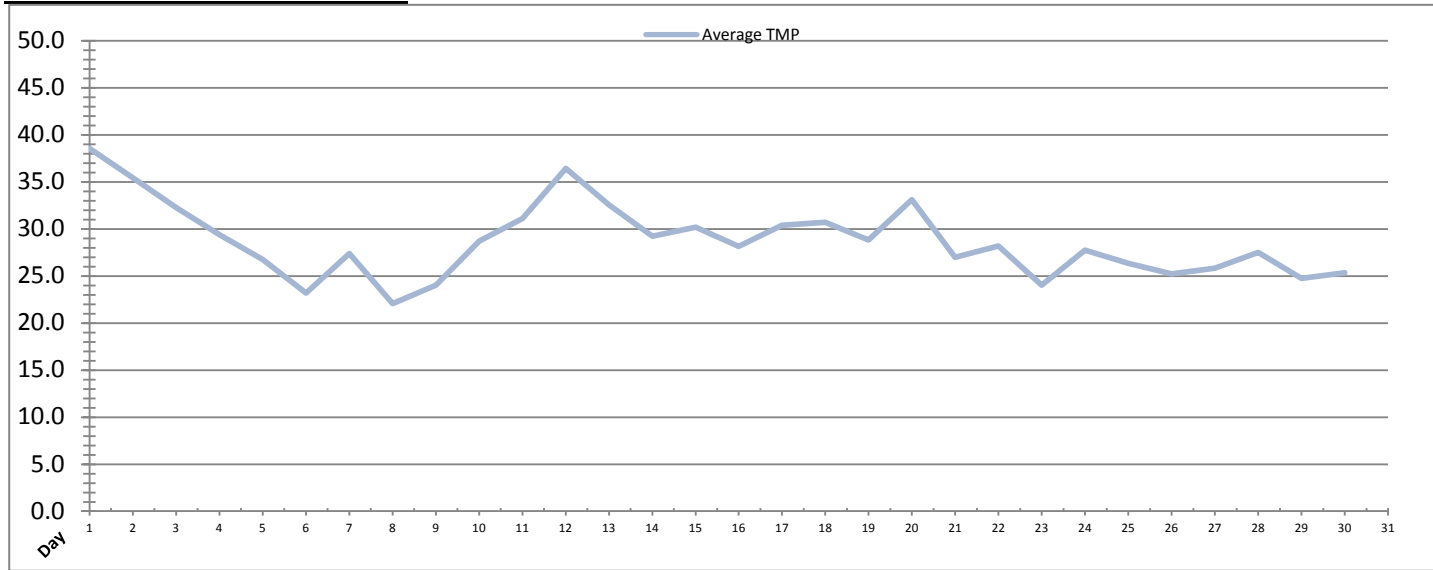


Date	Integrity Test Rack 3							
	Initial Pressure (kPa)	Final Pressure (kPa)	Test Duration (sec)	Change in Pressure (kPa)	UCL	Within UCL	Average TMP (kPa)	Max TMP (kPa)
1	190.9	189.6	300.0	1.3	2.0	✓ 2.0	20.4	70.2
2	192.4	191.3	300.0	1.1	2.0	✓ 2.0	24.4	167.5
3	190.9	189.8	300.0	1.2	2.0	✓ 2.0	32.8	69.2
4	191.7	190.5	300.0	1.2	2.0	✓ 2.0	30.0	69.0
5	191.5	190.3	300.0	1.2	2.0	✓ 2.0	27.7	175.7
6	191.4	190.3	300.0	1.1	2.0	✓ 2.0	24.7	167.7
7	191.2	190.2	300.0	1.0	2.0	✓ 2.0	27.7	93.0
8	190.9	189.7	300.0	1.2	2.0	✓ 2.0	30.4	86.3
9	189.8	188.6	300.0	1.2	2.0	✓ 2.0	30.2	77.8
10	190.7	189.4	300.0	1.3	2.0	✓ 2.0	29.9	72.3
11	190.0	188.8	300.0	1.2	2.0	✓ 2.0	32.1	100.1
12	190.1	189.0	300.0	1.1	2.0	✓ 2.0	31.5	83.1
13	191.4	190.2	300.0	1.2	2.0	✓ 2.0	33.0	110.6
14	190.9	189.7	300.0	1.3	2.0	✓ 2.0	30.2	129.4
15	189.4	189.1	300.0	0.3	2.0	✓ 2.0	28.6	95.1
16	191.4	190.2	300.0	1.2	2.0	✓ 2.0	28.5	122.1
17	191.3	190.0	300.0	1.3	2.0	✓ 2.0	31.4	91.8
18	191.3	190.0	300.0	1.3	2.0	✓ 2.0	37.5	72.2
19	191.1	190.0	300.0	1.1	2.0	✓ 2.0	13.6	113.6
20	191.5	190.4	300.0	1.1	2.0	✓ 2.0	32.8	85.4
21	191.1	190.0	300.0	1.1	2.0	✓ 2.0	26.5	119.9
22	191.9	190.8	300.0	1.1	2.0	✓ 2.0	28.1	81.9
23	191.2	189.9	300.0	1.3	2.0	✓ 2.0	24.4	64.4
24	191.2	190.0	300.0	1.2	2.0	✓ 2.0	28.0	73.7
25	191.0	189.6	300.0	1.3	2.0	✓ 2.0	26.8	65.1
26	190.7	189.4	300.0	1.3	2.0	✓ 2.0	22.8	55.9
27	190.9	189.6	300.0	1.4	2.0	✓ 2.0	25.9	72.0
28	190.7	189.3	300.0	1.4	2.0	✓ 2.0	28.0	71.4
29	192.2	190.7	300.0	1.5	2.0	✓ 2.0	26.2	68.8
30	191.2	189.8	300.0	1.4	2.0	✓ 2.0	25.8	70.1
Total								
Average	191.1	189.9	300.0	1.2	2.0	2.0	28.0	93.2
Maximum	192.4	191.3	300.0	1.5	2.0	2.0	37.5	175.7
Date	2-Jun	2-Jun	1-Jun	29-Jun	1-Jun	1-Jun	18-Jun	5-Jun
Minimum	189.4	188.6	300.0	0.3	2.0	2.0	13.6	55.9
Date	15-Jun	9-Jun	1-Jun	15-Jun	1-Jun	1-Jun	19-Jun	26-Jun

Notes:

Membranes Monthly Report

Month: **June-17**



Integrity Test Rack 4								
Date	Initial Pressure (kPa)	Final Pressure (kPa)	Test Duration (sec)	Change in Pressure (kPa)	UCL	Within UCL	Average TMP (kPa)	Max TMP (kPa)
1	196.9	195.8	300.0	1.1	2.0	✓ 2.0	38.5	163.1
2	197.3	196.3	300.0	1.1	2.0	✓ 2.0	35.4	176.3
3	197.5	196.4	300.0	1.1	2.0	✓ 2.0	32.3	71.8
4	196.8	195.8	300.0	1.0	2.0	✓ 2.0	29.4	95.1
5	197.0	195.9	300.0	1.1	2.0	✓ 2.0	26.7	132.5
6	197.3	196.3	300.0	1.0	2.0	✓ 2.0	23.2	87.8
7	197.3	196.2	300.0	1.1	2.0	✓ 2.0	27.4	91.0
8	197.4	196.4	300.0	1.0	2.0	✓ 2.0	22.1	65.5
9	197.5	196.3	300.0	1.1	2.0	✓ 2.0	24.0	58.1
10	196.8	195.6	300.0	1.1	2.0	✓ 2.0	28.7	71.7
11	196.9	195.7	300.0	1.2	2.0	✓ 2.0	31.1	86.5
12	197.4	196.3	300.0	1.1	2.0	✓ 2.0	36.4	85.3
13	197.4	196.3	300.0	1.1	2.0	✓ 2.0	32.5	141.8
14	197.1	195.9	300.0	1.1	2.0	✓ 2.0	29.2	137.4
15	196.7	195.7	300.0	1.0	2.0	✓ 2.0	30.2	90.3
16	196.8	195.8	300.0	0.9	2.0	✓ 2.0	28.2	132.4
17	196.7	195.7	300.0	1.0	2.0	✓ 2.0	30.4	84.2
18	196.5	195.5	300.0	0.9	2.0	✓ 2.0	30.7	163.1
19	197.6	196.5	300.0	1.1	2.0	✓ 2.0	28.8	150.3
20	196.5	195.5	300.0	1.0	2.0	✓ 2.0	33.1	89.8
21	197.2	196.1	300.0	1.1	2.0	✓ 2.0	27.0	118.1
22	196.5	195.4	300.0	1.1	2.0	✓ 2.0	28.2	84.8
23	197.1	195.9	300.0	1.2	2.0	✓ 2.0	24.0	62.2
24	196.6	195.5	300.0	1.1	2.0	✓ 2.0	27.7	71.4
25	197.4	196.2	300.0	1.2	2.0	✓ 2.0	26.4	61.5
26	195.3	193.9	300.0	1.4	2.0	✓ 2.0	25.2	77.8
27	197.5	196.1	300.0	1.3	2.0	✓ 2.0	25.8	70.5
28	197.2	195.8	300.0	1.4	2.0	✓ 2.0	27.5	70.1
29	196.9	195.6	300.0	1.3	2.0	✓ 2.0	24.8	69.6
30	197.0	195.7	300.0	1.3	2.0	✓ 2.0	25.4	67.6
Total								
Average	197.0	195.9	300.0	1.1	2.0	2.0	28.7	97.6
Maximum	197.6	196.5	300.0	1.4	2.0	2.0	38.5	176.3
Date	19-Jun	19-Jun	1-Jun	26-Jun	1-Jun	1-Jun	1-Jun	2-Jun
Minimum	195.3	193.9	300.0	0.9	2.0	2.0	22.1	58.1
Date	26-Jun	26-Jun	1-Jun	16-Jun	1-Jun	1-Jun	8-Jun	9-Jun

Notes:

Membranes Monthly Report

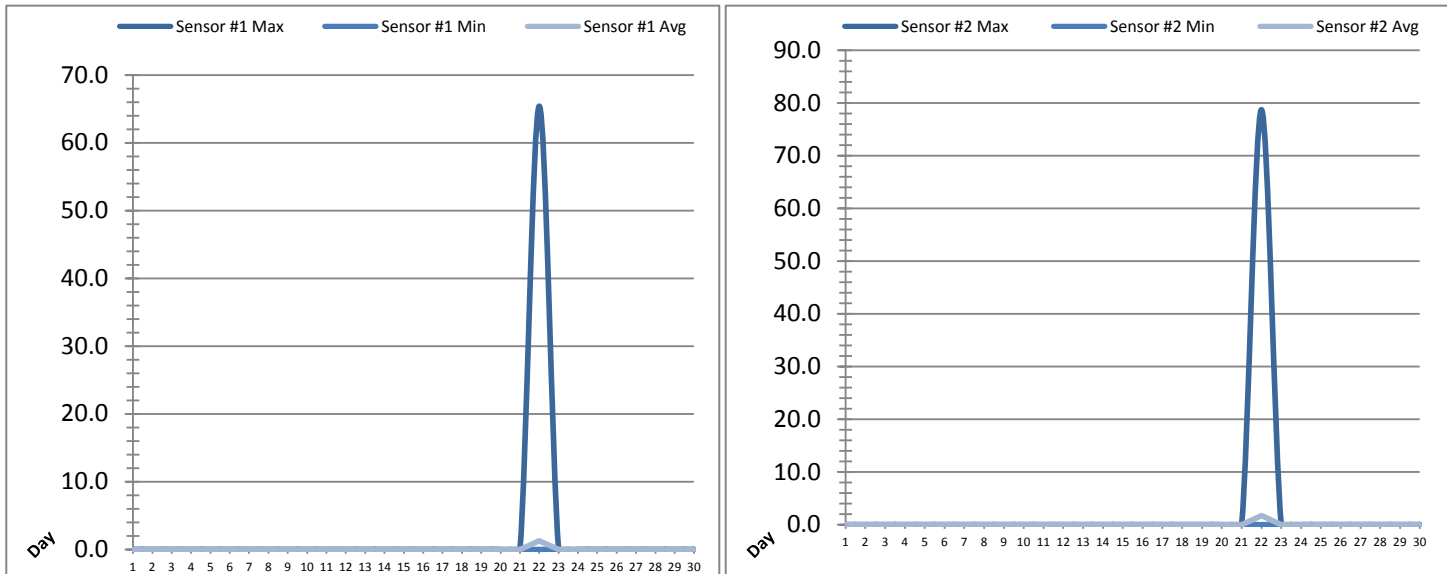
Month: June-17

Date	Membranes Monthly Performance							
	Rack 1 >0.1 NTU (Minutes)	Rack 1 Forward Flow (Minutes)	Rack 2 >0.1 NTU (Minutes)	Rack 2 Forward Flow (Minutes)	Rack 3 >0.1 NTU (Minutes)	Rack 3 Forward Flow (Minutes)	Rack 4 >0.1 NTU (Minutes)	Rack 4 Forward Flow (Minutes)
1	0.0	1038.3	0.0	0.0	0.0	638.4	0.0	1039.3
2	0.0	1063.6	0.0	0.0	0.0	641.2	0.0	1063.1
3	0.0	1314.1	0.0	0.0	0.0	1315.5	0.0	1314.2
4	0.0	1118.3	0.0	0.0	0.0	1118.3	0.0	1123.1
5	0.0	1080.1	0.0	0.0	0.0	1140.3	0.0	1136.4
6	0.0	1043.4	0.0	0.0	3.2	1048.3	0.0	997.0
7	0.0	1254.3	0.0	0.0	0.0	1253.1	4.6	1256.2
8	4.5	1144.4	0.0	0.0	0.0	1165.0	7.2	822.2
9	0.0	1300.3	0.0	0.0	0.0	1305.1	0.0	1003.2
10	0.0	1232.3	0.0	0.0	0.0	1231.0	0.0	1234.2
11	0.0	1268.3	0.0	0.0	0.0	1266.1	0.0	1267.5
12	0.0	1297.0	0.0	0.0	0.0	965.5	0.0	1301.1
13	0.0	818.6	0.0	0.0	0.0	1191.1	0.0	1196.5
14	0.0	1109.4	0.0	0.0	0.0	1122.4	0.0	1130.5
15	3.2	1138.1	0.0	0.0	4.0	1133.1	0.0	1209.1
16	0.0	1093.3	0.0	0.0	0.0	1099.5	0.0	1101.3
17	0.0	1189.1	0.0	0.0	0.0	1190.1	0.0	1194.4
18	0.0	1096.3	0.0	0.0	0.0	463.1	0.0	1100.1
19	0.0	701.5	0.0	0.0	0.0	441.4	0.0	705.5
20	0.0	982.4	0.0	0.0	0.0	985.1	0.0	987.0
21	0.0	1055.4	0.0	0.0	0.0	1046.4	0.0	1109.5
22	4.5	1226.2	0.0	0.0	0.0	1230.2	17.1	1233.1
23	3.2	828.3	0.0	0.0	0.0	830.0	0.0	834.0
24	0.0	1248.2	0.0	0.0	0.0	1249.0	0.0	1250.4
25	0.0	1047.4	0.0	0.0	0.0	1046.5	0.0	1050.1
26	0.0	1066.2	0.0	0.0	0.0	1030.2	0.0	1070.3
27	0.0	1046.5	0.0	0.0	0.0	1209.1	0.0	1213.6
28	0.0	1187.5	0.0	0.0	0.0	1191.1	0.0	1195.2
29	0.0	1125.6	0.0	0.0	0.0	1129.1	0.0	1026.6
30	0.0	1280.4	0.0	0.0	0.0	1288.1	0.0	1290.6
Total	15.4	33394.8	0.0	0.0	7.2	31963.4	28.9	33455.3
Percent	0.05		0.00		0.02		0.09	
Maximum	4.5	1314.1	0.0	0.0	4.0	1315.5	17.1	1314.2
Date	8-Jun	3-Jun	1-Jun	1-Jun	15-Jun	3-Jun	22-Jun	3-Jun
Minimum	0.0	701.5	0.0	0.0	0.0	441.4	0.0	705.5
Date	1-Jun	19-Jun	1-Jun	1-Jun	1-Jun	19-Jun	1-Jun	19-Jun

Notes:
 Met filter performance criteria of 99% of the readings were below 0.1ntu for the month.

UV System Monthly Report

Month: **June-17**

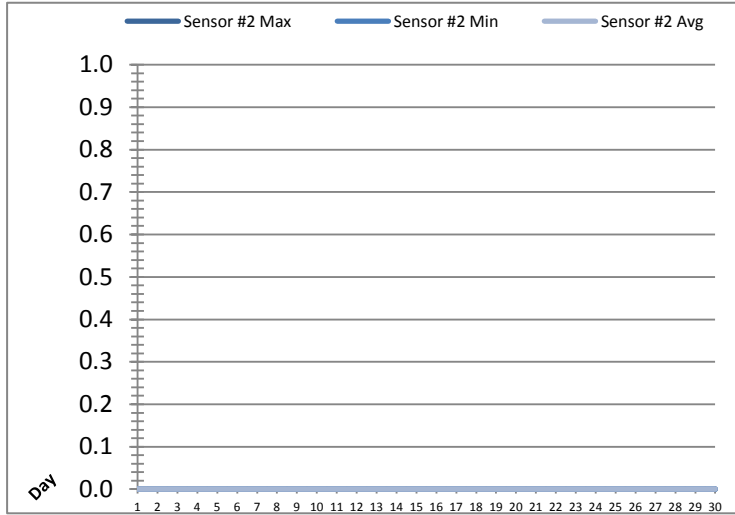
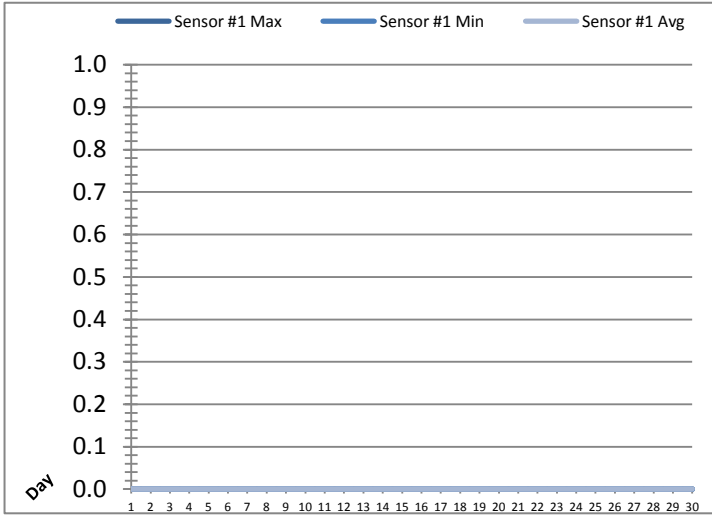


Date	UV Reactor 1					
	Intensity Sensor 1 (mW/cm ²)			Intensity Sensor 2 (mW/cm ²)		
	Maximum	Minimum	Average	Maximum	Minimum	Average
1	0.0	0.0	0.0	0.0	0.0	0.0
2	0.0	0.0	0.0	0.0	0.0	0.0
3	0.0	0.0	0.0	0.0	0.0	0.0
4	0.0	0.0	0.0	0.0	0.0	0.0
5	0.0	0.0	0.0	0.0	0.0	0.0
6	0.0	0.0	0.0	0.0	0.0	0.0
7	0.0	0.0	0.0	0.0	0.0	0.0
8	0.0	0.0	0.0	0.0	0.0	0.0
9	0.0	0.0	0.0	0.0	0.0	0.0
10	0.0	0.0	0.0	0.0	0.0	0.0
11	0.0	0.0	0.0	0.0	0.0	0.0
12	0.0	0.0	0.0	0.0	0.0	0.0
13	0.0	0.0	0.0	0.0	0.0	0.0
14	0.0	0.0	0.0	0.0	0.0	0.0
15	0.0	0.0	0.0	0.0	0.0	0.0
16	0.0	0.0	0.0	0.0	0.0	0.0
17	0.0	0.0	0.0	0.0	0.0	0.0
18	0.0	0.0	0.0	0.0	0.0	0.0
19	0.0	0.0	0.0	0.0	0.0	0.0
20	0.0	0.0	0.0	0.0	0.0	0.0
21	0.0	0.0	0.0	0.0	0.0	0.0
22	65.4	0.0	1.3	78.7	0.0	1.7
23	0.0	0.0	0.0	0.0	0.0	0.0
24	0.0	0.0	0.0	0.0	0.0	0.0
25	0.0	0.0	0.0	0.0	0.0	0.0
26	0.0	0.0	0.0	0.0	0.0	0.0
27	0.0	0.0	0.0	0.0	0.0	0.0
28	0.0	0.0	0.0	0.0	0.0	0.0
29	0.0	0.0	0.0	0.0	0.0	0.0
30	0.0	0.0	0.0	0.0	0.0	0.0
Total						
Average	2.2	0.0	0.0	2.6	0.0	0.1
Maximum	65.4		1.3	78.7		1.7
Date	22-Jun		22-Jun	22-Jun		22-Jun
Minimum		0.0	0.0		0.0	0.0
Date		1-Jun	1-Jun		1-Jun	1-Jun

Notes:

UV System Monthly Report

Month: June-17

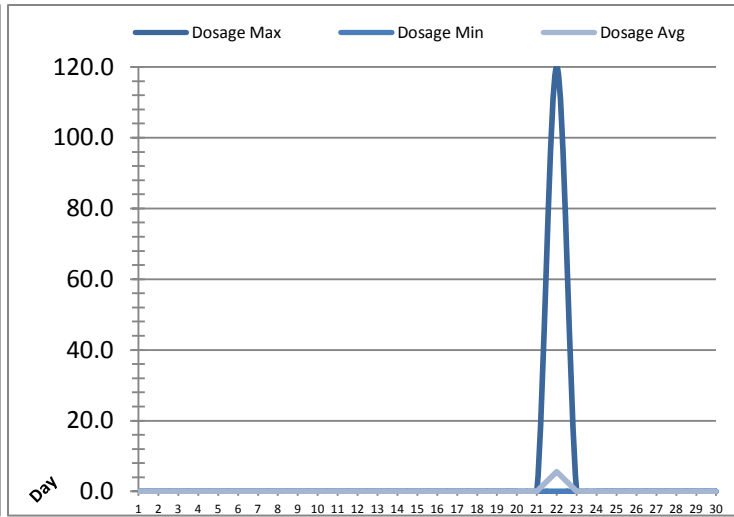
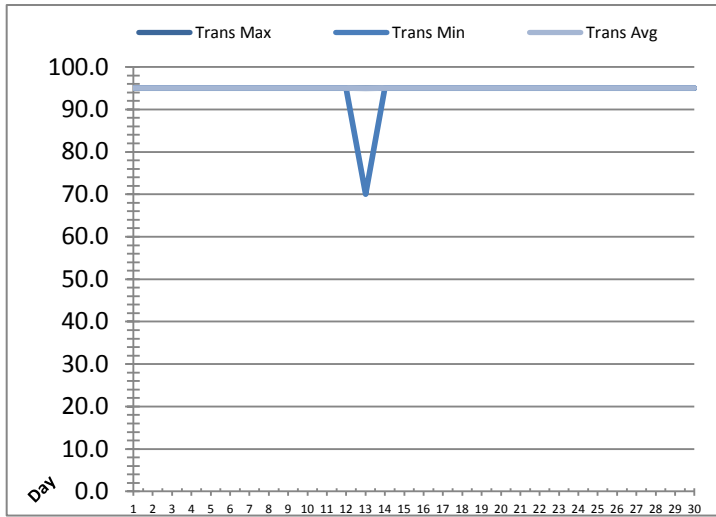


Date	UV Reactor 2					
	Intensity Sensor 1 (mW/cm ²)			Intensity Sensor 2 (mW/cm ²)		
	Maximum	Minimum	Average	Maximum	Minimum	Average
1	0.0	0.0	0.0	0.0	0.0	0.0
2	0.0	0.0	0.0	0.0	0.0	0.0
3	0.0	0.0	0.0	0.0	0.0	0.0
4	0.0	0.0	0.0	0.0	0.0	0.0
5	0.0	0.0	0.0	0.0	0.0	0.0
6	0.0	0.0	0.0	0.0	0.0	0.0
7	0.0	0.0	0.0	0.0	0.0	0.0
8	0.0	0.0	0.0	0.0	0.0	0.0
9	0.0	0.0	0.0	0.0	0.0	0.0
10	0.0	0.0	0.0	0.0	0.0	0.0
11	0.0	0.0	0.0	0.0	0.0	0.0
12	0.0	0.0	0.0	0.0	0.0	0.0
13	0.0	0.0	0.0	0.0	0.0	0.0
14	0.0	0.0	0.0	0.0	0.0	0.0
15	0.0	0.0	0.0	0.0	0.0	0.0
16	0.0	0.0	0.0	0.0	0.0	0.0
17	0.0	0.0	0.0	0.0	0.0	0.0
18	0.0	0.0	0.0	0.0	0.0	0.0
19	0.0	0.0	0.0	0.0	0.0	0.0
20	0.0	0.0	0.0	0.0	0.0	0.0
21	0.0	0.0	0.0	0.0	0.0	0.0
22	0.0	0.0	0.0	0.0	0.0	0.0
23	0.0	0.0	0.0	0.0	0.0	0.0
24	0.0	0.0	0.0	0.0	0.0	0.0
25	0.0	0.0	0.0	0.0	0.0	0.0
26	0.0	0.0	0.0	0.0	0.0	0.0
27	0.0	0.0	0.0	0.0	0.0	0.0
28	0.0	0.0	0.0	0.0	0.0	0.0
29	0.0	0.0	0.0	0.0	0.0	0.0
30	0.0	0.0	0.0	0.0	0.0	0.0
Total						
Average	0.0	0.0	0.0	0.0	0.0	0.0
Maximum	0.0		0.0	0.0		0.0
Date	1-Jun		1-Jun	1-Jun		1-Jun
Minimum		0.0	0.0		0.0	0.0
Date		1-Jun	1-Jun		1-Jun	1-Jun

Notes:
 Out of service.

UV System Monthly Report

Month: June-17

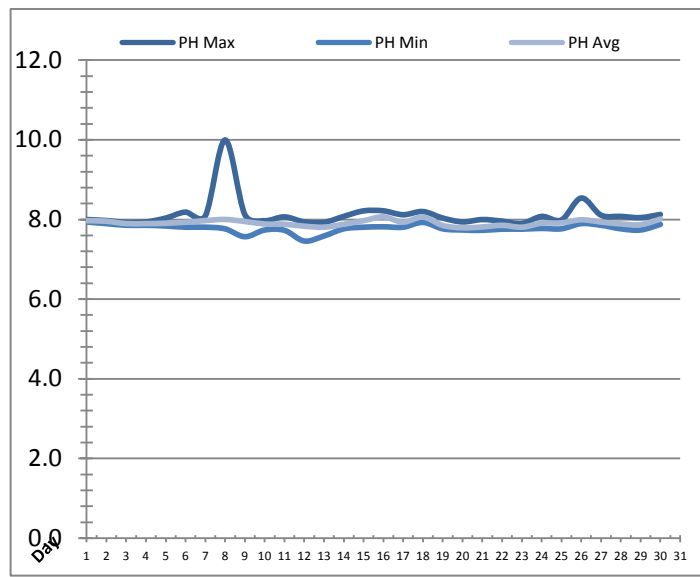
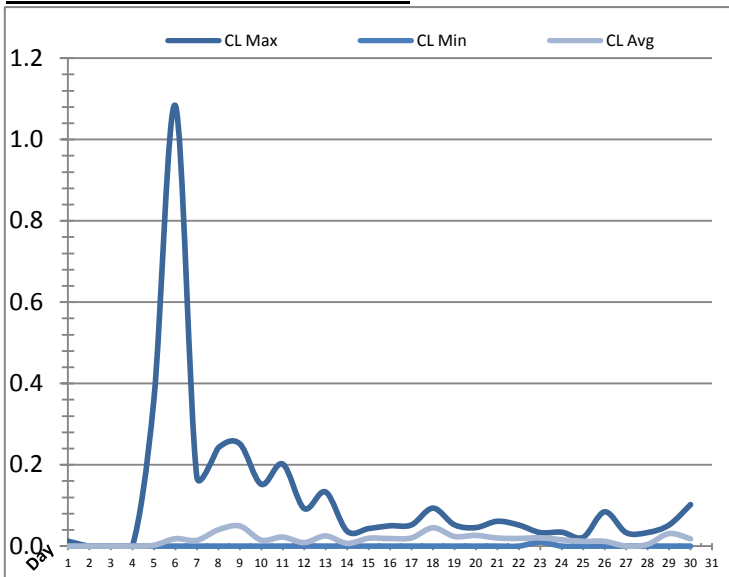


UV System							
Date	Transmittance (%)			Dosage (mJ/cm ²)			Inlet Flow (L/s)
	Maximum	Minimum	Average	Maximum	Minimum	Average	Maximum
1	95.00	95.00	95.00	0.0	0.0	0.0	122.9
2	95.00	95.00	95.00	0.0	0.0	0.0	123.3
3	95.00	95.00	95.00	0.0	0.0	0.0	125.9
4	95.00	95.00	95.00	0.0	0.0	0.0	100.1
5	95.00	95.00	95.00	0.0	0.0	0.0	109.8
6	95.00	95.00	95.00	0.0	0.0	0.0	133.9
7	95.00	95.00	95.00	0.0	0.0	0.0	157.8
8	95.00	95.00	95.00	0.0	0.0	0.0	116.7
9	95.00	95.00	95.00	0.0	0.0	0.0	104.6
10	95.00	95.00	95.00	0.0	0.0	0.0	113.7
11	95.00	95.00	95.00	0.0	0.0	0.0	135.9
12	95.00	95.00	95.00	0.0	0.0	0.0	125.3
13	95.00	70.00	94.97	0.0	0.0	0.0	132.5
14	95.00	95.00	95.00	0.0	0.0	0.0	163.2
15	95.00	95.00	95.00	0.0	0.0	0.0	144.3
16	95.00	95.00	95.00	0.0	0.0	0.0	151.7
17	95.00	95.00	95.00	0.0	0.0	0.0	158.6
18	95.00	95.00	95.00	0.0	0.0	0.0	145.6
19	95.00	95.00	95.00	0.0	0.0	0.0	132.9
20	95.00	95.00	95.00	0.0	0.0	0.0	154.6
21	95.00	95.00	95.00	0.0	0.0	0.0	138.7
22	95.00	95.00	95.00	120.0	0.0	5.6	133.0
23	95.00	95.00	95.00	0.0	0.0	0.0	123.7
24	95.00	95.00	95.00	0.0	0.0	0.0	106.9
25	95.00	95.00	95.00	0.0	0.0	0.0	99.3
26	95.00	95.00	95.00	0.0	0.0	0.0	86.0
27	95.00	95.00	95.00	0.0	0.0	0.0	117.7
28	95.00	95.00	95.00	0.0	0.0	0.0	117.3
29	95.00	95.00	95.00	0.0	0.0	0.0	112.4
30	95.00	95.00	95.00	0.0	0.0	0.0	120.7
Total							
Average	95.00	94.17	95.00	4.0	0.0	0.2	127.0
Maximum	95.00		95.00	120.0		5.6	163.2
Date	1-Jun		1-Jun	22-Jun		22-Jun	14-Jun
Minimum		70.00	94.97		0.0	0.0	
Date		13-Jun	13-Jun		1-Jun	1-Jun	

Notes:

Plant Quality Report

Month: June-17

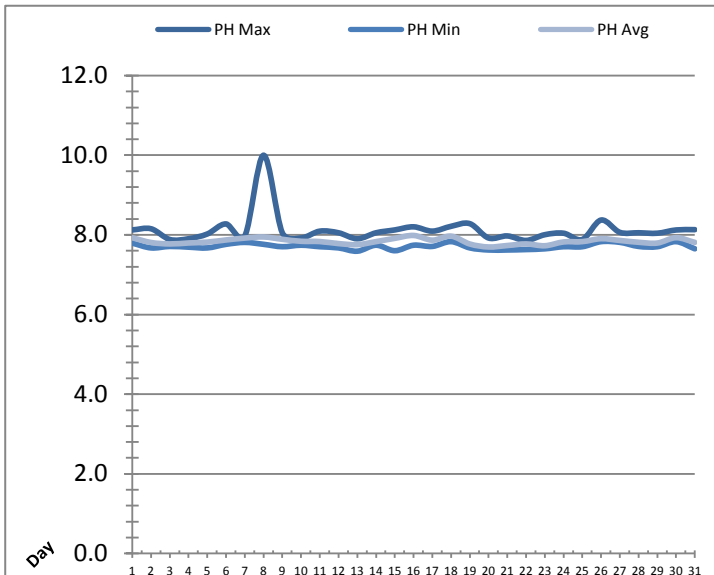
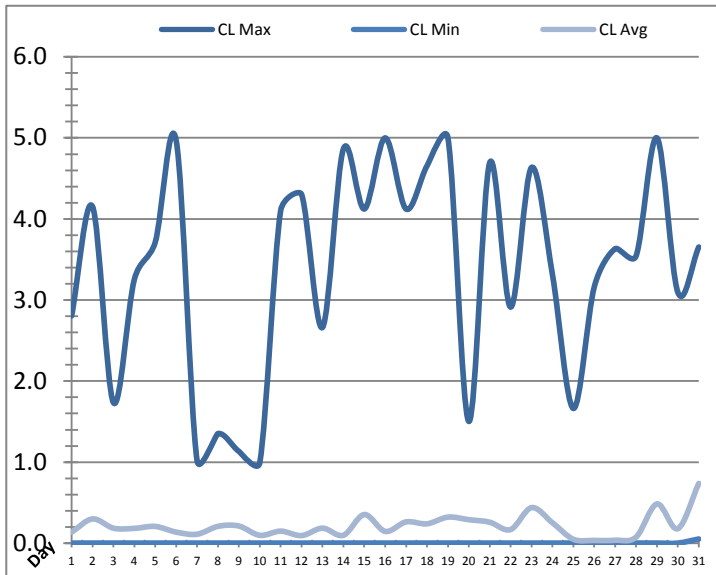


Date	Strainer Chlorine Residual			Strainer pH		
	AIT_2003_CL (ppm)			AIT_2003_PH		
	Maximum	Minimum	Average	Maximum	Minimum	Average
1	0.01	0.00	0.00	8.00	7.94	7.97
2	0.00	0.00	0.00	7.97	7.90	7.96
3	0.00	0.00	0.00	7.93	7.85	7.90
4	0.00	0.00	0.00	7.94	7.85	7.90
5	0.36	0.00	0.00	8.04	7.84	7.91
6	1.08	0.00	0.02	8.18	7.81	7.93
7	0.17	0.00	0.01	8.09	7.81	7.97
8	0.24	0.00	0.04	10.00	7.76	8.00
9	0.25	0.00	0.05	8.12	7.57	7.95
10	0.15	0.00	0.01	7.97	7.74	7.89
11	0.20	0.00	0.02	8.06	7.73	7.88
12	0.09	0.00	0.01	7.94	7.46	7.83
13	0.13	0.00	0.03	7.93	7.59	7.81
14	0.04	0.00	0.01	8.08	7.76	7.88
15	0.04	0.00	0.02	8.22	7.81	7.97
16	0.05	0.00	0.02	8.22	7.82	8.07
17	0.05	0.00	0.02	8.12	7.81	7.93
18	0.09	0.00	0.05	8.20	7.93	8.06
19	0.05	0.00	0.02	8.04	7.76	7.85
20	0.05	0.00	0.03	7.94	7.74	7.79
21	0.06	0.00	0.02	8.00	7.73	7.81
22	0.05	0.00	0.02	7.96	7.76	7.85
23	0.03	0.01	0.02	7.90	7.76	7.81
24	0.03	0.00	0.02	8.08	7.78	7.91
25	0.02	0.00	0.01	7.99	7.77	7.91
26	0.08	0.00	0.01	8.54	7.90	7.99
27	0.03	0.00	0.00	8.11	7.85	7.94
28	0.03	0.00	0.00	8.08	7.77	7.89
29	0.05	0.00	0.03	8.05	7.74	7.87
30	0.10	0.00	0.02	8.13	7.88	8.01
Total						
Average	0.12	0.00	0.02	8.13	7.78	7.91
Maximum	1.08		0.05	10.00		8.07
Date	6-Jun		9-Jun	8-Jun		16-Jun
Minimum		0.00	0.00		7.46	7.79
Date		1-Jun	1-Jun		12-Jun	20-Jun

Notes:

Plant Quality Report

Month: June-17

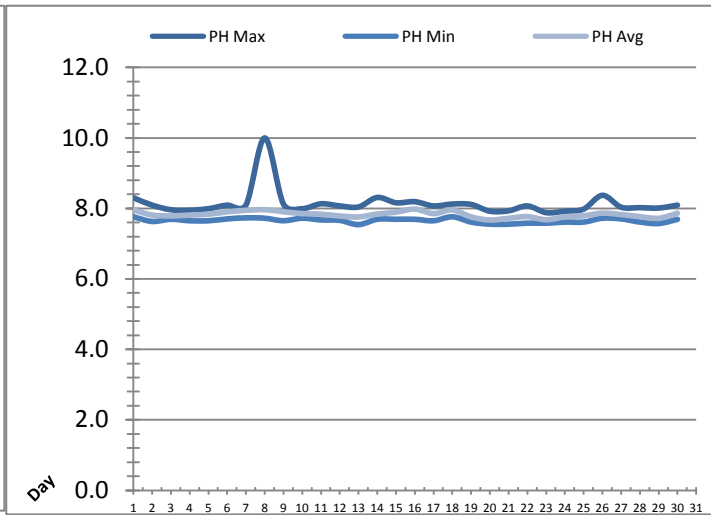
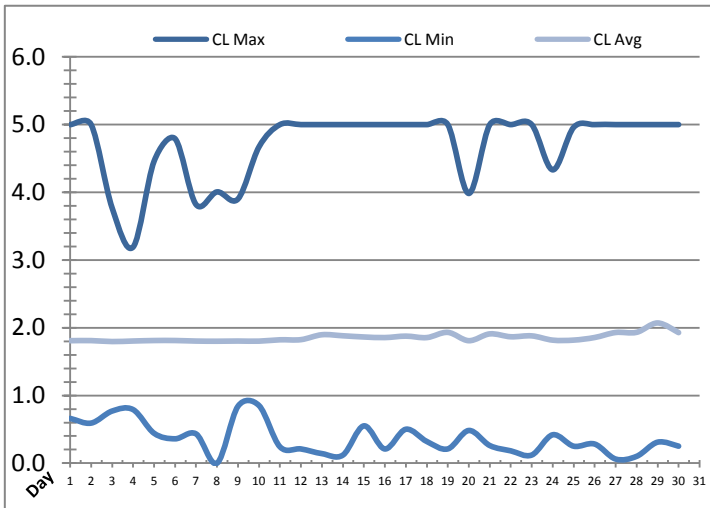


Date	Inlet UV Chlorine Residual			Inlet UV pH		
	AIT_5005_CL (ppm)			AIT_5005_PH		
	Maximum	Minimum	Average	Maximum	Minimum	Average
1	✓ 2.80	✓ 0.00	0.13	8.12	7.79	7.93
2	✓ 4.15	✓ 0.00	0.30	8.15	7.67	7.81
3	✓ 1.73	✓ 0.00	0.19	7.88	7.71	7.77
4	✓ 3.25	✓ 0.00	0.18	7.90	7.69	7.80
5	✓ 3.71	✓ 0.00	0.21	8.02	7.67	7.82
6	✓ 4.97	✓ 0.00	0.14	8.27	7.76	7.87
7	✓ 1.02	✓ 0.00	0.11	7.97	7.81	7.92
8	✓ 1.35	✓ 0.00	0.21	10.00	7.76	7.95
9	✓ 1.13	✓ 0.00	0.21	8.05	7.70	7.89
10	✓ 0.99	✓ 0.00	0.10	7.92	7.74	7.84
11	✓ 4.10	✓ 0.00	0.15	8.09	7.70	7.83
12	✓ 4.30	✓ 0.00	0.09	8.05	7.67	7.78
13	✓ 2.66	✓ 0.00	0.19	7.90	7.59	7.75
14	✓ 4.86	✓ 0.00	0.10	8.05	7.74	7.83
15	✓ 4.12	✓ 0.00	0.35	8.12	7.60	7.91
16	✓ 5.00	✓ 0.00	0.15	8.20	7.74	7.99
17	✓ 4.12	✓ 0.00	0.26	8.09	7.71	7.87
18	✓ 4.65	✓ 0.00	0.24	8.22	7.83	7.97
19	✓ 5.00	✓ 0.00	0.32	8.28	7.67	7.77
20	✓ 1.50	✓ 0.00	0.29	7.92	7.62	7.70
21	✓ 4.69	✓ 0.00	0.26	7.97	7.62	7.73
22	✓ 2.91	✓ 0.00	0.17	7.86	7.63	7.77
23	✓ 4.64	✓ 0.00	0.44	8.00	7.65	7.73
24	✓ 3.31	✓ 0.00	0.25	8.04	7.70	7.82
25	✓ 1.66	✓ 0.00	0.05	7.88	7.70	7.83
26	✓ 3.16	✓ 0.00	0.03	8.37	7.83	7.90
27	✓ 3.63	✓ 0.00	0.04	8.06	7.81	7.86
28	✓ 3.54	✓ 0.00	0.07	8.05	7.71	7.81
29	✓ 5.00	✓ 0.00	0.48	8.04	7.70	7.80
30	✓ 3.09	✓ 0.00	0.18	8.12	7.83	7.93
	✓ 3.65	✓ 0.05	0.74	8.13	7.65	7.81
Total						
Average	3.37	0.00	0.20	8.12	7.71	7.84
Maximum	5.00		0.48	10.00		7.99
Date	16-Jun		29-Jun	8-Jun		16-Jun
Minimum		0.00	0.03		7.59	7.70
Date		1-Jun	26-Jun		13-Jun	20-Jun

Notes:

Plant Quality Report

Month: June-17

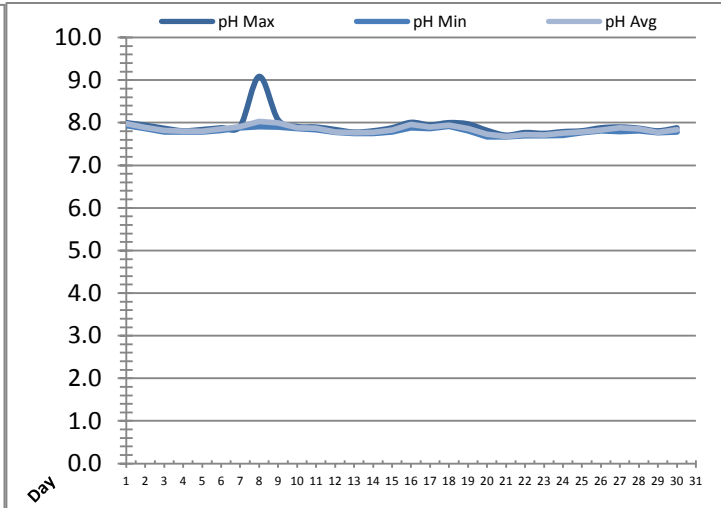
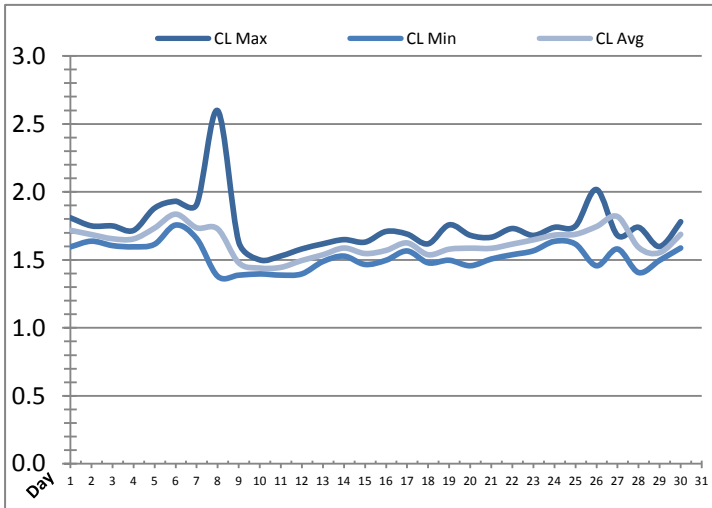


Date	Discharge UV Chlorine Residual			Discharge UV pH		
	AIT_5006_CL (ppm)			AIT_5006_PH		
	Maximum	Minimum	Average	Maximum	Minimum	Average
1	5.00	0.66	1.81	8.30	7.76	7.95
2	5.00	0.59	1.81	8.09	7.63	7.81
3	3.77	0.77	1.80	7.96	7.69	7.79
4	3.19	0.79	1.80	7.95	7.65	7.81
5	4.46	0.44	1.81	7.99	7.65	7.83
6	4.79	0.36	1.81	8.09	7.70	7.90
7	3.82	0.43	1.80	8.09	7.73	7.95
8	4.01	0.00	1.80	10.00	7.72	7.96
9	3.90	0.84	1.80	8.12	7.65	7.91
10	4.67	0.85	1.80	7.99	7.72	7.85
11	5.00	0.24	1.82	8.13	7.67	7.84
12	5.00	0.21	1.82	8.07	7.66	7.79
13	5.00	0.14	1.90	8.04	7.54	7.76
14	5.00	0.12	1.88	8.31	7.69	7.84
15	5.00	0.55	1.86	8.16	7.69	7.89
16	5.00	0.21	1.86	8.19	7.69	7.98
17	5.00	0.50	1.88	8.07	7.65	7.85
18	5.00	0.32	1.85	8.12	7.76	7.96
19	5.00	0.21	1.93	8.11	7.61	7.76
20	3.98	0.48	1.81	7.92	7.55	7.67
21	5.00	0.26	1.91	7.93	7.55	7.72
22	5.00	0.18	1.87	8.07	7.58	7.77
23	5.00	0.12	1.88	7.88	7.58	7.68
24	4.33	0.42	1.82	7.92	7.61	7.76
25	4.96	0.25	1.82	7.98	7.61	7.79
26	5.00	0.28	1.86	8.37	7.72	7.87
27	5.00	0.06	1.93	8.03	7.70	7.83
28	5.00	0.10	1.93	8.02	7.61	7.77
29	5.00	0.31	2.07	8.01	7.57	7.72
30	5.00	0.25	1.93	8.09	7.69	7.86
Total						
Average	4.70	0.37	1.86	8.14	7.66	7.83
Maximum	5.00		2.07	10.00		7.98
Date	1-Jun		29-Jun	8-Jun		16-Jun
Minimum		0.00	1.80		7.54	7.67
Date		8-Jun	3-Jun		13-Jun	20-Jun

Notes:

Plant Quality Report

Month: June-17

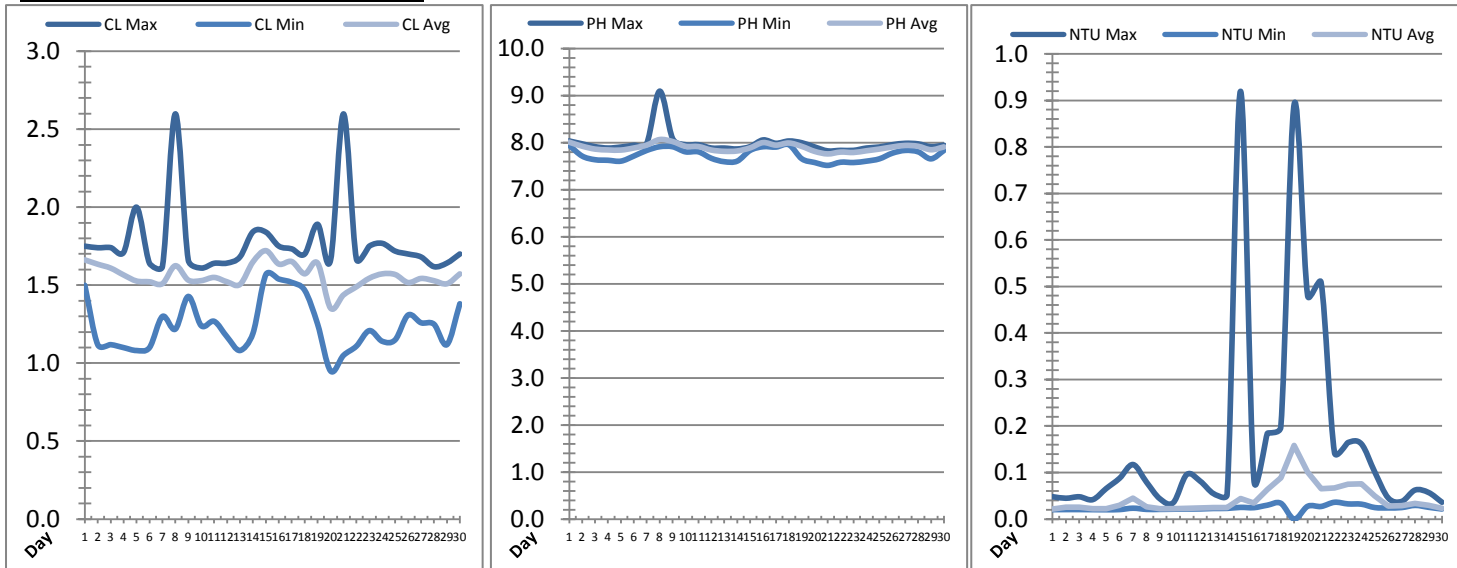


Date	Suction Header Chlorine Res.			Suction Header pH			Distribution CT Calc Total		
	AIT_7001_CL (ppm)			AIT_7001_PH (m)			REAL_CT_CALC_TOTAL (mg*ml/min)		
	Maximum	Minimum	Average	Maximum	Minimum	Average	Maximum	Minimum	Average
1	1.81	1.60	1.72	8.00	7.94	7.98	3692.04	0.00	253.93
2	1.75	1.64	1.69	7.94	7.87	7.89	3301.74	0.00	174.65
3	1.75	1.61	1.66	7.87	7.79	7.81	10050.00	0.00	389.82
4	1.72	1.60	1.65	7.81	7.79	7.80	10211.89	0.00	332.41
5	1.88	1.62	1.73	7.84	7.79	7.80	11010.70	0.00	208.63
6	1.93	1.76	1.84	7.88	7.82	7.86	10668.45	0.00	193.91
7	1.91	1.66	1.74	7.92	7.88	7.91	7300.10	0.00	500.86
8	2.60	1.38	1.73	9.08	7.91	8.03	10240.06	0.00	242.33
9	1.63	1.39	1.48	8.07	7.90	7.99	4169.08	0.00	382.65
10	1.50	1.40	1.44	7.91	7.87	7.88	3324.08	0.00	236.64
11	1.53	1.39	1.45	7.90	7.84	7.87	3185.02	0.00	230.52
12	1.58	1.40	1.50	7.84	7.78	7.79	8416.18	0.00	318.28
13	1.62	1.49	1.54	7.78	7.75	7.77	3489.96	0.00	213.28
14	1.65	1.53	1.59	7.81	7.75	7.77	2408.26	0.00	190.54
15	1.63	1.47	1.55	7.88	7.79	7.83	5060.94	0.00	263.69
16	1.71	1.50	1.57	8.01	7.88	7.96	5428.06	0.00	189.31
17	1.69	1.57	1.62	7.95	7.87	7.90	12026.54	0.00	212.08
18	1.62	1.48	1.54	8.00	7.91	7.94	7256.16	0.00	151.31
19	1.76	1.50	1.58	7.97	7.81	7.86	7940.16	0.00	161.02
20	1.68	1.46	1.59	7.82	7.67	7.73	7204.66	0.00	182.18
21	1.67	1.51	1.59	7.71	7.67	7.68	8350.80	0.00	197.96
22	1.73	1.54	1.62	7.77	7.70	7.72	9484.37	0.00	339.88
23	1.68	1.57	1.65	7.75	7.70	7.72	6562.31	0.00	144.48
24	1.74	1.64	1.68	7.79	7.70	7.76	11882.67	0.00	326.37
25	1.75	1.62	1.69	7.81	7.76	7.78	9128.86	0.00	222.54
26	2.02	1.46	1.75	7.88	7.81	7.82	11790.35	0.00	206.52
27	1.68	1.58	1.82	7.90	7.79	7.88	11228.72	0.00	247.98
28	1.74	1.41	1.59	7.87	7.81	7.85	1609.56	0.00	234.99
29	1.60	1.50	1.55	7.81	7.77	7.77	8730.92	0.00	215.45
30	1.78	1.59	1.69	7.88	7.79	7.83	11289.43	0.00	214.30
Total									
Average	1.74	1.53	1.63	7.91	7.80	7.84	7.91	7.80	7.84
Maximum	2.60		1.84	9.08		8.03	9.08		8.03
Date	8-Jun		6-Jun	8-Jun		8-Jun	8-Jun		8-Jun
Minimum		1.38	1.44		7.67	7.68		7.67	7.68
Date		8-Jun	10-Jun		21-Jun	21-Jun		21-Jun	21-Jun

Notes:

Plant Quality Report

Month: June-17

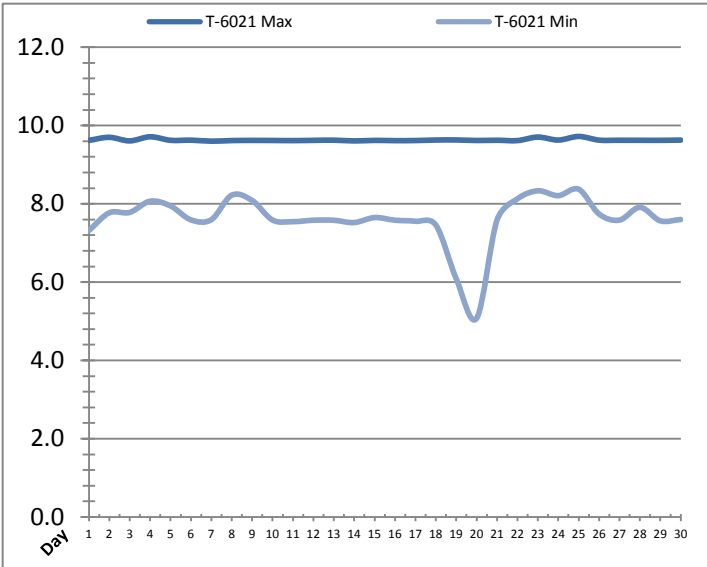
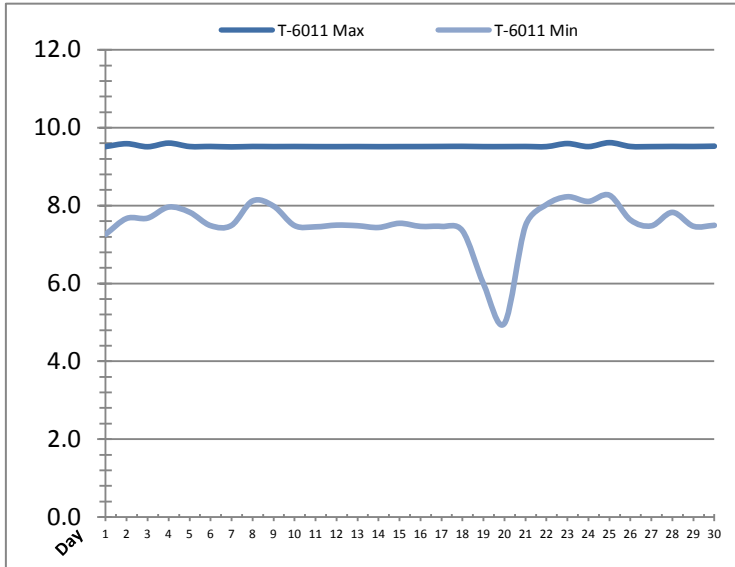


Date	Distribution Chlorine Header			Distribution pH			Distribution Turbidity		
	AIT_7004_CL (ppm)			AIT_7004_PH (mg/L)			AIT_7003 (mg/L)		
	Maximum	Minimum	Average	Maximum	Minimum	Average	Maximum	Minimum	Average
1	1.75	1.50	1.66	8.04	7.94	8.01	0.05	0.02	0.02
2	1.74	1.12	1.63	7.98	7.72	7.93	0.04	0.02	0.03
3	1.74	1.12	1.61	7.92	7.64	7.86	0.05	0.02	0.03
4	1.71	1.10	1.57	7.89	7.63	7.85	0.04	0.02	0.02
5	2.00	1.08	1.53	7.91	7.61	7.84	0.07	0.02	0.02
6	1.64	1.10	1.52	7.94	7.72	7.89	0.09	0.02	0.03
7	1.62	1.30	1.51	7.99	7.84	7.95	0.12	0.02	0.04
8	2.60	1.22	1.62	9.10	7.91	8.07	0.08	0.02	0.03
9	1.66	1.43	1.53	8.09	7.91	8.02	0.04	0.02	0.02
10	1.61	1.24	1.53	7.96	7.81	7.92	0.04	0.02	0.02
11	1.64	1.27	1.55	7.96	7.81	7.92	0.10	0.02	0.02
12	1.64	1.17	1.52	7.89	7.67	7.84	0.08	0.02	0.02
13	1.68	1.08	1.50	7.89	7.60	7.82	0.05	0.02	0.02
14	1.84	1.19	1.65	7.87	7.61	7.82	0.05	0.02	0.03
15	1.84	1.57	1.72	7.92	7.84	7.89	0.92	0.03	0.04
16	1.75	1.54	1.64	8.06	7.91	8.00	0.08	0.02	0.03
17	1.73	1.52	1.65	7.99	7.91	7.95	0.18	0.03	0.06
18	1.70	1.47	1.57	8.04	7.96	7.99	0.20	0.03	0.09
19	1.89	1.25	1.64	8.00	7.66	7.92	0.89	0.00	0.16
20	1.66	0.95	1.35	7.91	7.58	7.81	0.48	0.03	0.10
21	2.60	1.05	1.44	7.83	7.52	7.76	0.51	0.03	0.06
22	1.67	1.11	1.49	7.84	7.58	7.80	0.14	0.04	0.07
23	1.75	1.21	1.54	7.84	7.58	7.79	0.16	0.03	0.07
24	1.77	1.14	1.57	7.89	7.61	7.83	0.16	0.03	0.08
25	1.72	1.15	1.57	7.91	7.66	7.86	0.10	0.02	0.05
26	1.70	1.31	1.52	7.96	7.78	7.91	0.05	0.02	0.03
27	1.68	1.26	1.54	7.99	7.84	7.94	0.04	0.02	0.03
28	1.62	1.25	1.53	7.98	7.81	7.92	0.06	0.03	0.03
29	1.64	1.12	1.51	7.92	7.66	7.85	0.06	0.03	0.03
30	1.70	1.38	1.57	7.95	7.84	7.91	0.04	0.02	0.02
Total									
Average	1.78	1.24	1.56	7.98	7.74	7.90	0.2	0.0	0.0
Maximum	2.60		1.72	9.10		8.07	0.9		0.2
Date	8-Jun		15-Jun	8-Jun		8-Jun	15-Jun		19-Jun
Minimum		0.95	1.35		7.52	7.76		0.0	0.0
Date		20-Jun	20-Jun		21-Jun	21-Jun		19-Jun	1-Jun

Notes:

Raw Well/Treated Storage Report

Month: June-17

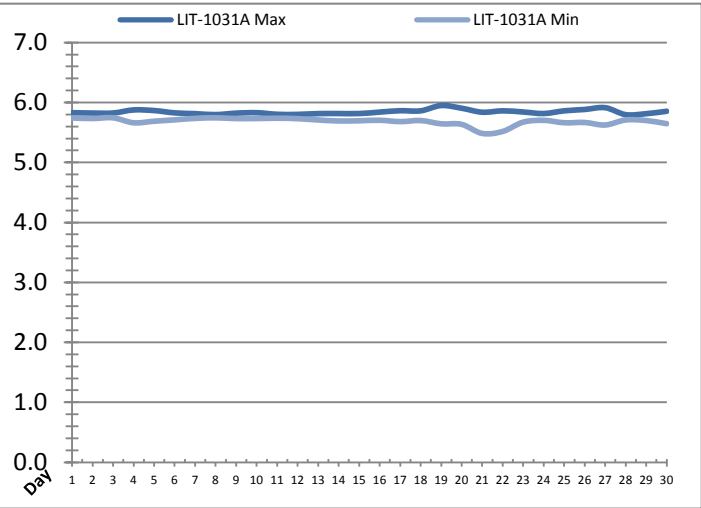
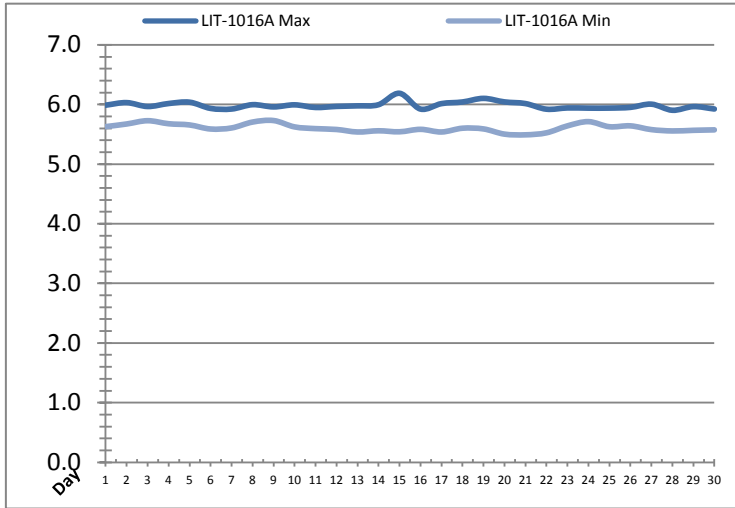


Date	Treated Water Storage Tank					
	T-6011 (m)			T-6021 (m)		
	Maximum	Minimum	Average	Maximum	Minimum	Average
1	9.5	7.3	8.3	9.6	7.3	8.4
2	9.6	7.7	8.8	9.7	7.8	8.9
3	9.5	7.7	8.4	9.6	7.8	8.5
4	9.6	8.0	8.8	9.7	8.1	8.9
5	9.5	7.8	8.9	9.6	7.9	9.0
6	9.5	7.5	8.5	9.6	7.6	8.6
7	9.5	7.5	8.6	9.6	7.6	8.7
8	9.5	8.1	8.9	9.6	8.2	9.0
9	9.5	8.0	8.7	9.6	8.1	8.8
10	9.5	7.5	8.7	9.6	7.6	8.8
11	9.5	7.5	8.2	9.6	7.5	8.3
12	9.5	7.5	8.5	9.6	7.6	8.6
13	9.5	7.5	8.6	9.6	7.6	8.7
14	9.5	7.4	8.4	9.6	7.5	8.5
15	9.5	7.5	8.6	9.6	7.6	8.7
16	9.5	7.5	8.3	9.6	7.6	8.4
17	9.5	7.5	8.2	9.6	7.6	8.3
18	9.5	7.4	8.4	9.6	7.5	8.5
19	9.5	6.0	7.9	9.6	6.1	8.0
20	9.5	5.0	7.0	9.6	5.1	7.1
21	9.5	7.5	8.6	9.6	7.6	8.7
22	9.5	8.0	8.7	9.6	8.1	8.8
23	9.6	8.2	9.1	9.7	8.3	9.2
24	9.5	8.1	8.8	9.6	8.2	9.0
25	9.6	8.3	9.0	9.7	8.4	9.1
26	9.5	7.6	8.7	9.6	7.7	8.8
27	9.5	7.5	8.5	9.6	7.6	8.6
28	9.5	7.8	8.7	9.6	7.9	8.8
29	9.5	7.5	8.6	9.6	7.6	8.7
30	9.5	7.5	8.6	9.6	7.6	8.7
Total						
Average	9.5	7.5	8.5	9.6	7.6	8.6
Maximum	9.6		9.1	9.7		9.2
Date	25-Jun		23-Jun	25-Jun		23-Jun
Minimum		5.0	7.0		5.1	7.1
Date		20-Jun	20-Jun		20-Jun	20-Jun

Notes:

Raw Well/Treated Storage Report

Month: June-17

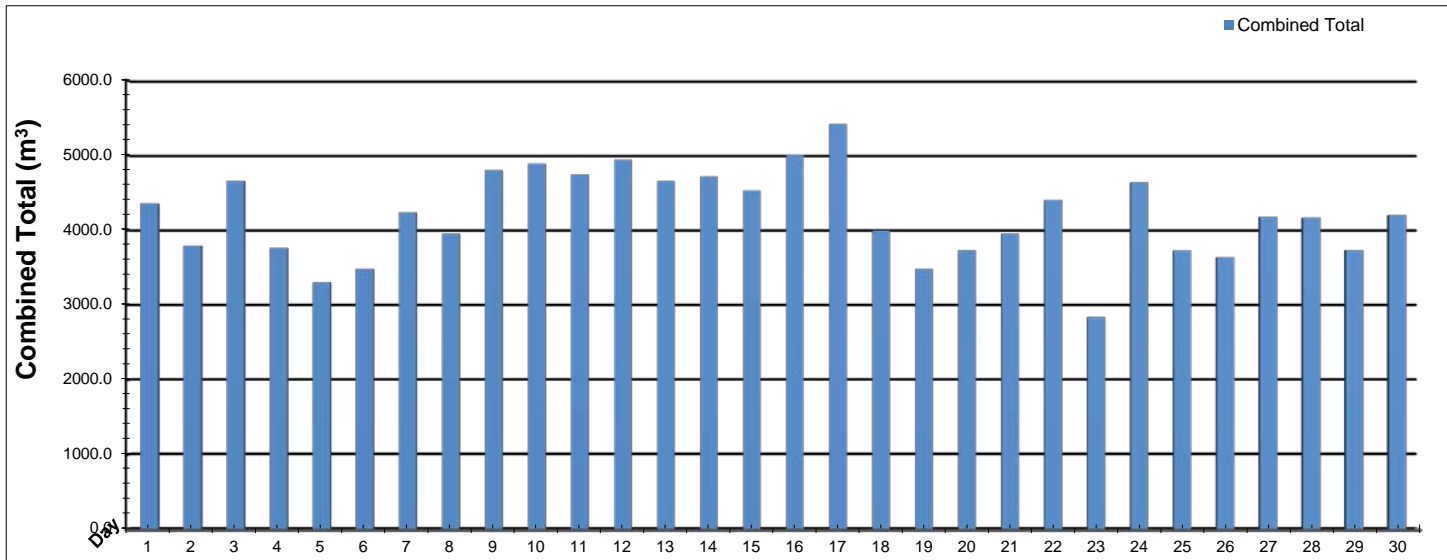


Date	Low Lift Intake Levels					
	Wet Well #1 (LIT-1016A) (m)			Wet Well #2 (LIT-1031A) (m)		
	Maximum	Minimum	Average	Maximum	Minimum	Average
1	6.0	5.6	5.8	5.8	5.7	5.8
2	6.0	5.7	5.8	5.8	5.7	5.8
3	6.0	5.7	5.8	5.8	5.7	5.8
4	6.0	5.7	5.8	5.9	5.7	5.8
5	6.0	5.7	5.8	5.9	5.7	5.8
6	5.9	5.6	5.8	5.8	5.7	5.8
7	5.9	5.6	5.8	5.8	5.7	5.8
8	6.0	5.7	5.8	5.8	5.7	5.8
9	6.0	5.7	5.8	5.8	5.7	5.8
10	6.0	5.6	5.8	5.8	5.7	5.8
11	6.0	5.6	5.8	5.8	5.7	5.8
12	6.0	5.6	5.7	5.8	5.7	5.8
13	6.0	5.5	5.7	5.8	5.7	5.8
14	6.0	5.6	5.8	5.8	5.7	5.8
15	6.2	5.5	5.8	5.8	5.7	5.8
16	5.9	5.6	5.8	5.8	5.7	5.8
17	6.0	5.5	5.7	5.9	5.7	5.8
18	6.0	5.6	5.8	5.9	5.7	5.8
19	6.1	5.6	5.8	5.9	5.6	5.8
20	6.0	5.5	5.7	5.9	5.6	5.8
21	6.0	5.5	5.8	5.8	5.5	5.7
22	5.9	5.5	5.8	5.9	5.5	5.7
23	5.9	5.6	5.8	5.8	5.7	5.8
24	5.9	5.7	5.8	5.8	5.7	5.8
25	5.9	5.6	5.8	5.9	5.7	5.8
26	6.0	5.6	5.8	5.9	5.7	5.8
27	6.0	5.6	5.8	5.9	5.6	5.7
28	5.9	5.6	5.8	5.8	5.7	5.7
29	6.0	5.6	5.8	5.8	5.7	5.8
30	5.9	5.6	5.8	5.9	5.6	5.8
Total						
Average	6.0	5.6	5.8	5.8	5.7	5.8
Maximum	6.2		5.8	5.9		5.8
Date	15-Jun		4-Jun	19-Jun		4-Jun
Minimum		5.5	5.7		5.5	5.7
Date		21-Jun	20-Jun		21-Jun	21-Jun

Notes:

High Lift Monthly Report

Month: June-17

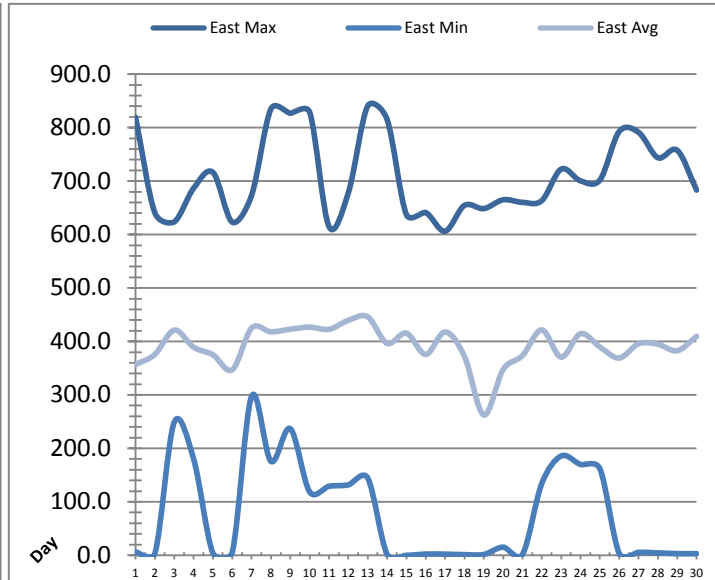
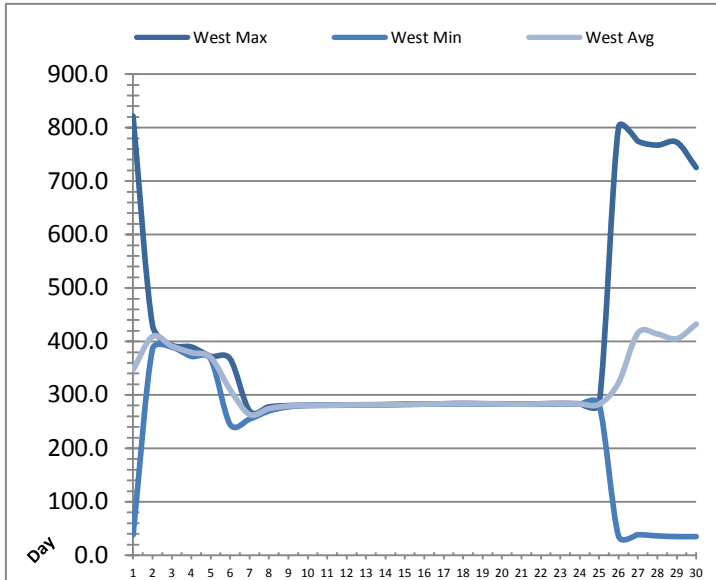


Date	Distribution Flow					
	FIT_7052 (East)		FIT_7062 (West)		Combined	
	(m³)	(L/s)	(m³)	(L/s)	(m³)	(L/s)
	Total	Peak	Total	Peak	Total	Peak
1	920.3	48.7	3434.8	103.4	4355.2	133.3
2	998.7	49.5	2794.6	111.9	3793.3	156.2
3	1312.7	47.5	3345.4	113.5	4658.1	156.4
4	916.9	41.2	2846.0	97.2	3762.9	102.2
5	682.1	44.8	2621.9	97.4	3304.0	105.8
6	726.8	47.6	2754.7	111.4	3481.5	151.7
7	1241.6	44.3	2996.5	97.0	4238.2	104.0
8	504.9	40.7	3449.2	117.7	3954.2	143.0
9	1254.8	42.8	3545.1	98.4	4799.9	106.3
10	1060.8	37.5	3830.0	98.9	4890.8	105.3
11	871.4	48.6	3871.1	97.3	4742.5	106.7
12	1274.5	47.7	3669.4	98.2	4943.9	108.1
13	635.7	31.3	4022.8	99.7	4658.4	106.0
14	1036.6	47.6	3681.1	115.8	4717.7	144.7
15	1223.8	54.6	3307.5	97.2	4531.3	106.5
16	1650.7	56.1	3354.3	85.7	5004.9	104.4
17	1781.7	54.8	3639.4	83.9	5421.1	104.8
18	1219.6	63.3	2778.7	85.1	3998.3	107.2
19	858.5	59.8	2622.3	90.0	3480.8	102.4
20	1040.6	47.0	2691.2	129.1	3731.8	163.1
21	512.9	20.5	3443.1	92.2	3956.0	100.5
22	1263.0	42.6	3140.4	94.2	4403.4	104.4
23	612.0	38.0	2228.9	93.1	2841.0	100.7
24	1084.6	38.8	3554.3	94.1	4638.9	103.0
25	825.0	40.6	2903.4	93.5	3728.3	101.2
26	631.5	36.4	3006.2	93.0	3637.7	101.5
27	861.2	50.6	3317.0	92.6	4178.2	102.5
28	586.2	33.4	3580.2	92.9	4166.4	100.6
29	958.2	49.9	2773.4	93.0	3731.6	102.7
30	850.9	49.8	3350.5	91.9	4201.4	105.3
Total	29398.5		96553.4		125951.8	
Average	979.9	45.2	3218.4	98.6	4198.4	114.7
Maximum	1781.7	63.3	4022.8	129.1	5421.1	163.1
Date	17-Jun	18-Jun	13-Jun	20-Jun	17-Jun	20-Jun
Minimum	504.9		2228.9		2841.0	
Date	8-Jun		23-Jun		23-Jun	

Notes:

Low Lift Monthly Report

Month: June-17

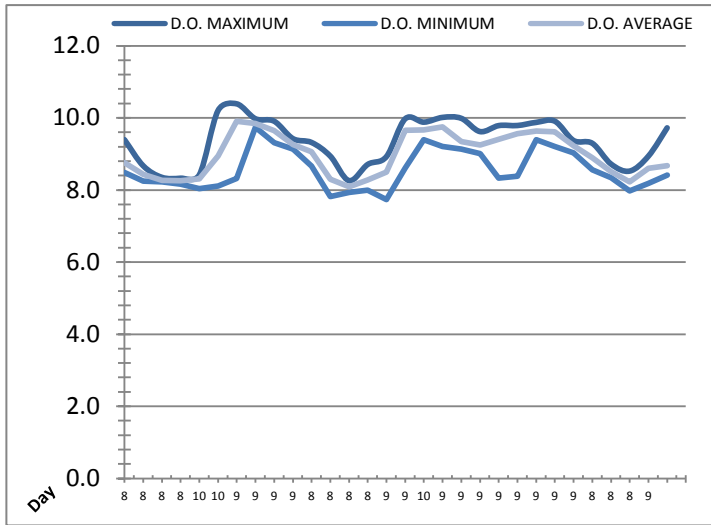
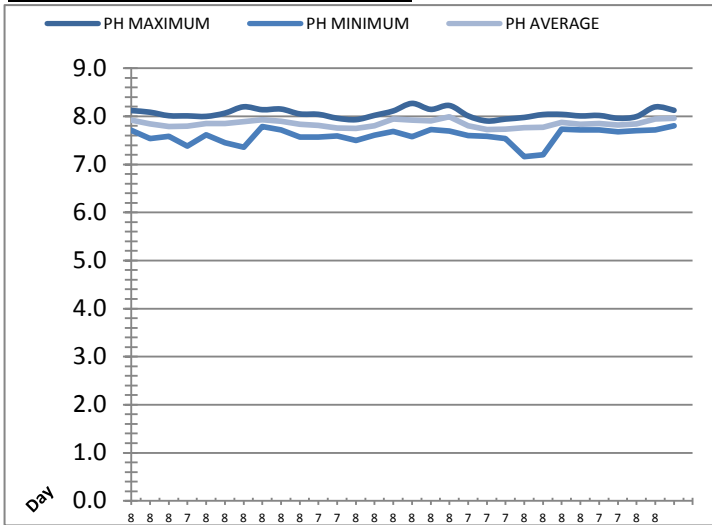


Date	West Train Header Pressure PIT_1018 (kPa)			East Train Header Pressure PIT_1028 (kPa)		
	Maximum	Minimum	Average	Maximum	Minimum	Average
1	821.6	38.0	347.2	819.3	6.3	356.9
2	430.4	385.9	409.3	640.5	3.2	375.8
3	393.2	389.3	391.3	623.7	248.9	421.2
4	389.7	372.0	379.3	686.5	180.4	389.2
5	372.2	366.9	369.7	716.3	3.7	375.0
6	367.3	244.6	309.8	623.1	5.7	347.0
7	270.0	254.8	263.5	673.6	297.5	425.1
8	277.8	270.0	274.3	835.1	175.7	418.0
9	280.1	277.7	279.2	826.9	236.8	422.9
10	280.8	280.0	280.2	828.7	118.5	426.7
11	281.0	280.5	280.5	614.8	129.1	422.7
12	281.4	280.7	281.3	678.3	131.8	439.4
13	281.7	281.2	281.5	840.6	144.5	446.0
14	282.0	281.2	281.6	815.5	2.1	396.4
15	282.9	282.0	282.1	637.2	0.0	415.6
16	283.0	282.6	282.7	641.0	2.3	375.7
17	283.5	282.8	283.3	606.2	2.2	417.6
18	284.1	283.5	283.9	654.5	1.2	371.9
19	283.6	283.1	283.5	648.5	1.5	262.4
20	283.4	282.8	283.0	665.0	15.2	347.4
21	283.0	282.6	282.7	660.2	1.8	373.5
22	283.5	282.6	283.3	663.5	134.7	421.6
23	284.1	283.4	283.8	722.4	185.8	370.6
24	283.6	282.6	283.0	700.4	169.9	414.5
25	283.0	282.5	282.5	701.9	162.0	389.7
26	800.5	35.8	322.7	792.9	3.5	368.9
27	774.5	38.5	415.9	791.1	5.5	395.7
28	767.2	36.3	413.9	743.7	4.5	394.7
29	772.6	34.9	405.2	757.5	3.1	382.7
30	725.3	35.0	432.5	683.1	3.0	409.6
Total						
Average	398.9	243.1	317.8	709.7	79.3	392.5
Maximum	821.6		432.5	840.6		446.0
Date	1-Jun		30-Jun	13-Jun		13-Jun
Minimum		34.9	263.5		0.0	262.4
Date		29-Jun	7-Jun		15-Jun	19-Jun

Notes:

Low Lift Monthly Report

Month: **June-17**

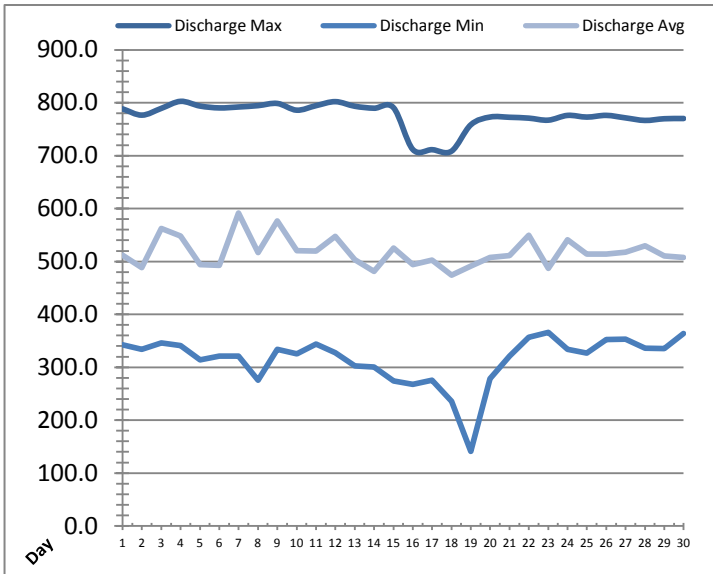


Date	Raw Water Sample Line					
	AIT_1402_PH (pH)			AIT_1402_DO (mg/L)		
	Maximum	Minimum	Average	Maximum	Minimum	Average
1	8.1	7.7	7.9	9.4	8.5	8.8
2	8.1	7.5	7.8	8.7	8.2	8.4
3	8.0	7.6	7.8	8.4	8.2	8.3
4	8.0	7.4	7.8	8.3	8.2	8.3
5	8.0	7.6	7.9	8.4	8.0	8.3
6	8.1	7.4	7.8	10.2	8.1	9.0
7	8.2	7.4	7.9	10.4	8.3	9.9
8	8.1	7.8	7.9	10.0	9.7	9.8
9	8.2	7.7	7.9	9.9	9.3	9.6
10	8.1	7.6	7.8	9.4	9.1	9.3
11	8.0	7.6	7.8	9.3	8.7	9.1
12	8.0	7.6	7.8	8.9	7.8	8.3
13	7.9	7.5	7.8	8.3	7.9	8.1
14	8.0	7.6	7.8	8.7	8.0	8.3
15	8.1	7.7	7.9	8.9	7.7	8.5
16	8.3	7.6	7.9	10.0	8.6	9.7
17	8.1	7.7	7.9	9.9	9.4	9.7
18	8.2	7.7	8.0	10.0	9.2	9.8
19	8.0	7.6	7.8	10.0	9.1	9.3
20	7.9	7.6	7.7	9.6	9.0	9.3
21	7.9	7.5	7.7	9.8	8.3	9.4
22	8.0	7.2	7.8	9.8	8.4	9.6
23	8.0	7.2	7.8	9.9	9.4	9.6
24	8.0	7.7	7.9	9.9	9.2	9.6
25	8.0	7.7	7.8	9.4	9.0	9.2
26	8.0	7.7	7.8	9.3	8.6	8.9
27	8.0	7.7	7.8	8.7	8.3	8.5
28	8.0	7.7	7.8	8.5	8.0	8.2
29	8.2	7.7	7.9	8.9	8.2	8.6
30	8.1	7.8	8.0	9.7	8.4	8.7
Total						
Average	8.1	7.6	7.8	9.4	8.6	9.0
Maximum	8.3		8.0	10.4		9.9
Date	16-Jun		18-Jun	7-Jun		7-Jun
Minimum		7.2	7.7		7.7	8.1
Date		22-Jun	20-Jun		15-Jun	13-Jun

Notes:

High Lift Monthly Report

Month: **June-17**

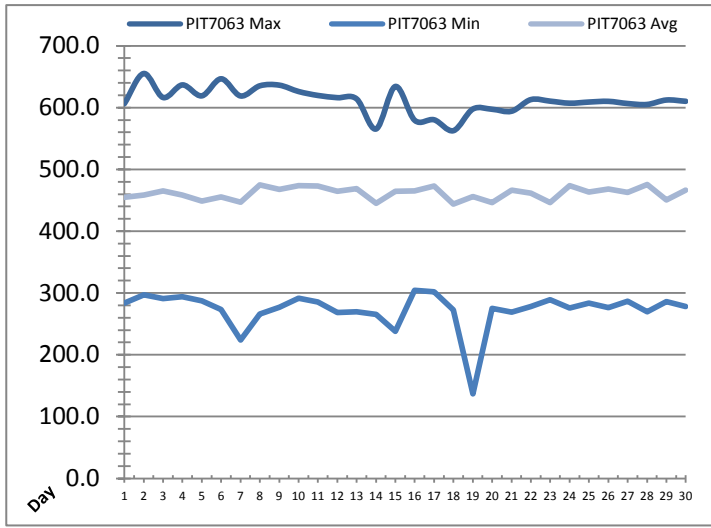
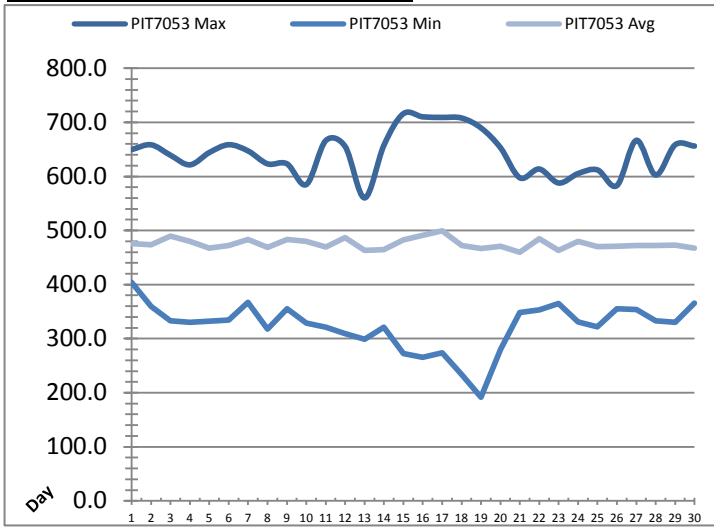


Date	Suction Header Pressure			Discharge Header Pressure		
	PIT_7002 (kPa)			PIT_7005 (kPa)		
	Maximum	Minimum	Average	Maximum	Minimum	Average
1	97.9	49.6	77.6	788.5	342.5	512.1
2	105.5	59.3	82.2	776.6	334.0	488.3
3	104.0	63.8	78.6	789.4	346.3	562.0
4	103.2	68.2	82.6	802.7	341.3	547.9
5	102.2	66.8	83.3	793.8	313.8	494.0
6	99.4	61.4	79.0	790.2	321.4	492.8
7	102.2	63.3	80.4	792.0	321.2	591.6
8	103.9	70.0	82.9	794.5	275.4	516.8
9	102.3	67.9	81.4	798.7	333.9	576.8
10	104.7	63.2	81.1	786.0	325.2	520.5
11	98.3	62.5	76.4	794.5	343.9	519.6
12	102.1	63.4	79.1	802.1	327.3	547.6
13	99.4	63.0	80.8	793.4	302.8	503.6
14	104.0	62.4	78.5	789.7	300.3	481.3
15	102.2	63.7	80.5	790.9	274.2	525.5
16	101.9	59.0	77.6	711.7	267.4	493.8
17	99.7	62.6	76.2	711.3	275.5	502.5
18	100.1	56.6	78.6	708.4	235.4	474.4
19	113.2	54.4	73.5	758.4	141.1	491.4
20	99.8	31.4	64.6	773.0	278.7	507.7
21	99.5	63.3	80.5	772.5	321.1	510.8
22	101.0	68.9	81.4	770.9	356.5	549.9
23	104.0	72.1	85.0	767.1	365.7	486.7
24	106.7	69.7	82.8	776.1	334.2	541.1
25	105.0	71.6	84.1	772.9	326.8	513.6
26	103.4	66.5	81.1	776.1	352.5	513.8
27	102.5	65.1	79.3	771.4	353.3	517.6
28	96.6	67.3	81.1	766.6	335.8	529.5
29	100.7	63.4	80.5	769.8	335.0	510.2
30	97.9	65.6	80.5	770.2	363.8	507.7
Total						
Average	102.1	62.9	79.7	775.3	314.9	517.7
Maximum	113.2		85.0	802.7		591.6
Date	19-Jun		23-Jun	4-Jun		7-Jun
Minimum		31.4	64.6		141.1	474.4
Date		20-Jun	20-Jun		19-Jun	18-Jun

Notes:

High Lift Monthly Report

Month: June-17

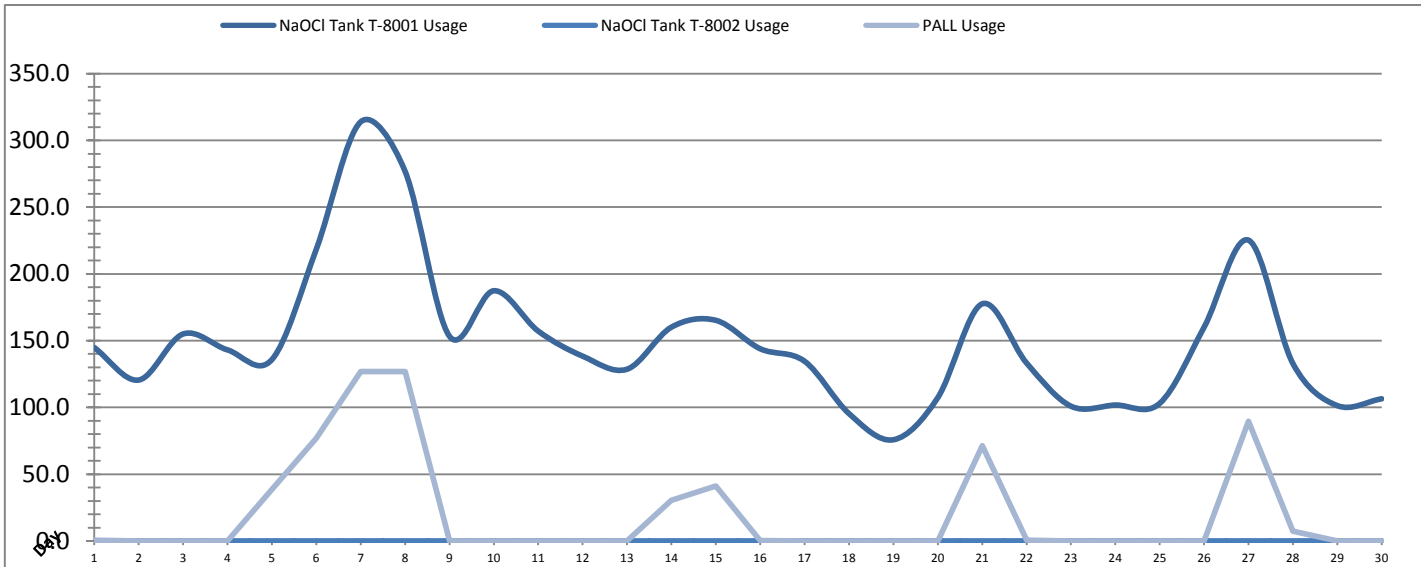


Date	Distribution Pressures					
	PIT_7053 (kPa)			PIT_7063 (kPa)		
	Maximum	Minimum	Average	Maximum	Minimum	Average
1	✓ 649.7	✓ 404.0	475.6	✓ 606.4	✓ 283.4	455.1
2	✓ 658.5	✓ 359.7	473.3	✓ 655.1	✓ 297.0	458.5
3	✓ 639.2	✓ 332.8	489.8	✓ 616.3	✓ 291.0	465.4
4	✓ 621.4	✓ 330.3	479.6	✓ 636.7	✓ 294.0	458.3
5	✓ 644.2	✓ 332.4	467.1	✓ 619.0	✓ 287.2	448.6
6	✓ 658.6	✓ 334.5	472.1	✓ 646.6	✓ 273.3	455.6
7	✓ 647.0	✓ 367.2	483.5	✓ 618.9	✓ 223.8	447.0
8	✓ 623.2	✓ 317.6	468.9	✓ 635.3	✓ 266.2	475.1
9	✓ 623.3	✓ 355.3	483.6	✓ 636.3	✓ 276.8	467.5
10	✓ 585.0	✓ 328.8	479.6	✓ 626.0	✓ 291.3	473.5
11	✓ 666.2	✓ 321.0	469.3	✓ 619.6	✓ 285.2	473.1
12	✓ 655.3	✓ 309.5	486.8	✓ 616.1	✓ 268.1	464.8
13	✓ 560.3	✓ 298.6	463.4	✓ 614.0	✓ 269.6	469.0
14	✓ 657.9	✓ 321.2	464.8	✓ 565.4	✓ 265.2	445.3
15	✓ 716.0	✓ 272.3	482.5	✓ 634.2	✓ 238.1	464.7
16	✓ 710.1	✓ 265.4	490.9	✓ 579.4	✓ 304.3	464.9
17	✓ 709.1	✓ 273.6	499.6	✓ 580.3	✓ 302.0	473.1
18	✓ 708.0	✓ 233.1	472.4	✓ 562.7	✓ 272.8	443.7
19	✓ 689.7	✓ 191.9	466.8	✓ 597.6	✓ 136.8	455.8
20	✓ 653.2	✓ 280.0	470.5	✓ 597.3	✓ 275.2	446.5
21	✓ 597.4	✓ 348.2	459.8	✓ 594.1	✓ 268.8	466.2
22	✓ 613.6	✓ 352.9	484.5	✓ 613.0	✓ 278.4	461.5
23	✓ 587.8	✓ 365.3	462.9	✓ 610.4	✓ 289.4	446.4
24	✓ 605.3	✓ 330.6	479.7	✓ 607.1	✓ 275.6	473.4
25	✓ 612.0	✓ 321.7	470.1	✓ 609.0	✓ 283.9	463.6
26	✓ 583.0	✓ 355.5	470.7	✓ 610.1	✓ 276.3	468.2
27	✓ 666.7	✓ 354.1	472.5	✓ 606.6	✓ 286.9	462.6
28	✓ 602.6	✓ 332.8	472.6	✓ 605.1	✓ 269.5	475.3
29	✓ 658.4	✓ 330.1	473.1	✓ 612.3	✓ 286.4	450.5
30	✓ 656.2	✓ 366.0	467.6	✓ 610.2	✓ 278.2	466.6
Total						
Average	642.0	322.9	475.1	611.4	273.2	461.3
Maximum	716.0		499.6	655.1		475.3
Date	15-Jun		17-Jun	2-Jun		28-Jun
Minimum		191.9	459.8		136.8	443.7
Date		19-Jun	21-Jun		19-Jun	18-Jun

Notes:

Chemical Usage Monthly Report

Month: June-17

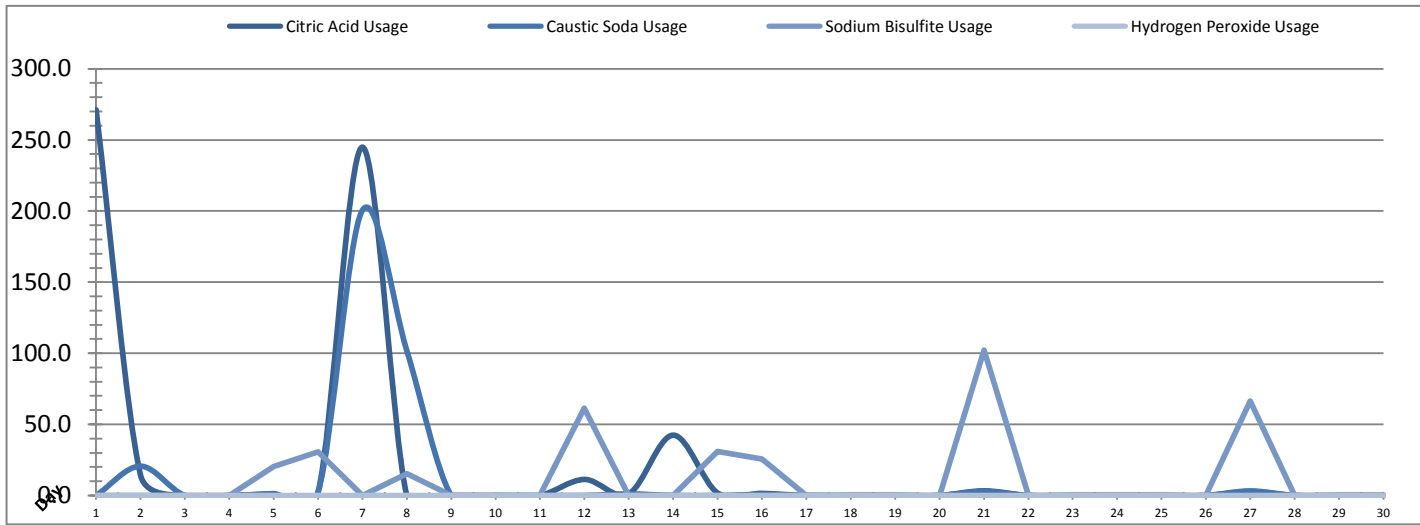


Date	PALL Usage	NaOCI Tank T-8001	NaOCI Tank T-8002
	PALL_HYPO_USAGE (L) Usage	LIT_8002 (Storage) (L) Usage	LIT_8004 (Day) (L) Usage
1	0.5	144.8	0.0
2	0.0	120.5	0.0
3	0.0	155.0	0.0
4	0.0	143.1	0.0
5	38.5	135.9	0.0
6	77.0	218.5	0.0
7	126.9	313.9	0.0
8	127.0	276.8	0.0
9	0.1	153.3	0.0
10	0.0	187.4	0.0
11	0.0	157.2	0.0
12	0.0	138.4	0.0
13	0.0	128.6	0.0
14	30.41	160.13	0.0
15	41.3	165.2	0.0
16	0.2	143.9	0.0
17	0.0	134.6	0.0
18	0.0	95.4	0.0
19	0.0	75.8	0.0
20	0.0	107.3	0.0
21	71.3	177.6	0.0
22	0.7	133.3	0.0
23	0.0	100.9	0.0
24	0.0	101.8	0.0
25	0.0	103.1	0.0
26	0.0	160.1	0.0
27	89.6	225.3	0.0
28	7.3	132.9	0.0
29	0.0	101.4	0.0
30	0.0	106.5	0.0
Total	610.7	4498.6	1.0
Average	20.4	150.0	0.0
Maximum	127.0	313.9	0.0
Date	8-Jun	7-Jun	1-Jun
Minimum	0.0	75.8	0.0
Date	2-Jun	19-Jun	1-Jun

Notes:	
Dosage (mg/L)=	Day Tank (L) x %conc. x 1000
	Membrane Flow (m3)
Chlorine Concentration:	12.0%

Chemical Usage Monthly Report

Month: **June-17**



Date	Citric Acid	Caustic Soda	Captor	Hydrogen Peroxide		Membrane Flow (m ³)
	TAGNAME (L) Usage	TAGNAME (L) Usage	TAGNAME (L) Usage	TAGNAME (L) Usage	(mg/L) Dose	
1	271.2	0.0	0.0	0.0	0.0	4593.674
2	14.4	20.6	0.0	0.0	0.0	4123.045
3	0.0	0.0	0.0	0.0	0.0	5354.712
4	0.0	0.0	0.0	0.0	0.0	4428.482
5	1.2	1.3	20.4	0.0	0.0	3943.881
6	2.2	2.4	30.7	0.0	0.0	3814.682
7	244.9	200.6	0.0	0.0	0.0	4841.368
8	0.0	101.8	15.3	0.0	0.0	4601.919
9	0.0	0.0	0.0	0.0	0.0	4997.005
10	0.0	0.0	0.0	0.0	0.0	5217.544
11	0.0	0.0	0.0	0.0	0.0	5382.944
12	11.3	0.0	61.5	0.0	0.0	6161.823
13	1.2	1.1	0.0	0.0	0.0	5194.076
14	42.4	0.0	0.0	0.0	0.0	4795.110
15	1.8	0.0	30.9	0.0	0.0	5518.740
16	1.5	0.7	25.6	0.0	0.0	5260.394
17	0.0	0.0	0.0	0.0	0.0	6106.065
18	0.0	0.0	0.0	0.0	0.0	4398.631
19	0.0	0.0	0.0	0.0	0.0	3207.731
20	0.0	0.0	0.0	0.0	0.0	5713.225
21	3.3	2.8	102.2	0.0	0.0	4099.152
22	0.0	0.0	0.0	0.0	0.0	4877.342
23	0.0	0.0	0.0	0.0	0.0	3489.572
24	0.0	0.0	0.0	0.0	0.0	4875.190
25	0.0	0.0	0.0	0.0	0.0	4278.163
26	0.0	0.0	0.0	0.0	0.0	4046.516
27	2.7	3.2	66.5	0.0	0.0	4265.239
28	0.0	0.0	0.0	0.0	0.0	4580.956
29	0.0	0.0	0.0	0.0	0.0	4061.870
30	0.0	0.0	0.0	0.0	0.0	4259.591
Total	598.0	334.5	353.1	0.0		140488.6
Average	19.9	11.2	11.8	0.0	0.0	4683.0
Maximum	271.2	200.6	102.2	0.0	0.0	6161.8
Date	1-Jun	7-Jun	21-Jun	1-Jun	1-Jun	12-Jun
Minimum	0.0	0.0	0.0	0.0	0.0	3207.7
Date	3-Jun	1-Jun	1-Jun	1-Jun	1-Jun	19-Jun

Notes:	
Dosage (mg/L)=	Day Tank (L) x %conc. x 1000
	Membrane Flow (m3)
Peroxide Concentration:	50.0%

Runtimes Report

Month: June-17

Date	Daily Gen-Set Runtimes		Daily UV Runtimes		Daily PALL Runtimes				
	LLPS	WTP	UV #1	UV #2	Air Compressor #1	Air Compressor #2	CIP Neutralization	CIP Drain	CIP Recirc
	(Hrs)	(Hrs)	(Hrs)	(Hrs)	(Hrs)	(Hrs)	(Hrs)	(Hrs)	(Hrs)
1	0.0	0.0	0.0	0.0	24.4	0.0	0.0	0.0	0.2
2	0.0	0.0	0.0	0.0	24.4	0.0	0.2	0.0	0.0
3	0.0	0.0	0.0	0.0	24.4	0.0	0.0	0.0	0.0
4	0.0	0.0	0.0	0.0	24.4	0.0	0.0	0.0	0.0
5	0.0	0.0	0.0	0.0	24.4	0.0	0.1	0.1	0.5
6	0.0	0.0	0.0	0.0	24.4	0.0	0.4	0.2	1.0
7	0.0	0.0	0.0	0.0	24.4	0.0	0.0	0.0	0.3
8	0.0	0.0	0.0	0.0	24.4	0.0	0.2	0.1	2.6
9	0.0	0.0	0.0	0.0	24.4	0.0	0.3	0.2	3.0
10	0.0	0.0	0.0	0.0	24.4	0.0	0.0	0.0	0.0
11	0.0	0.0	0.0	0.0	24.3	0.0	0.0	0.0	0.0
12	0.0	0.0	0.0	0.0	12.3	12.0	0.2	0.1	3.0
13	0.0	0.2	0.0	0.0	24.2	0.1	0.0	0.2	3.0
14	0.0	0.0	0.0	0.0	24.4	0.0	0.0	0.0	0.1
15	0.0	0.0	0.0	0.0	24.3	0.1	0.0	0.2	1.0
16	0.0	0.0	0.0	0.0	24.3	0.1	0.2	0.0	0.0
17	0.0	0.0	0.0	0.0	0.0	23.9	0.0	0.0	0.0
18	0.0	0.0	0.0	0.0	24.4	0.0	0.0	0.0	0.0
19	0.0	0.0	0.0	0.0	0.0	23.9	0.0	0.0	0.0
20	0.0	0.0	0.0	0.0	24.4	0.0	0.0	0.0	0.0
21	0.7	0.6	0.0	0.0	10.0	14.0	0.7	0.4	1.7
22	0.0	0.0	1.8	0.0	24.4	0.0	0.0	0.0	0.0
23	0.0	0.0	0.0	0.0	24.3	0.1	0.0	0.0	0.0
24	0.0	0.0	0.0	0.0	24.3	0.1	0.0	0.0	0.0
25	0.0	0.0	0.0	0.0	24.4	0.1	0.0	0.0	0.0
26	0.0	0.0	0.0	0.0	23.7	0.0	0.1	0.2	1.0
27	0.0	0.0	0.0	0.0	24.3	0.1	0.5	0.2	0.7
28	0.0	0.0	0.0	0.0	0.1	23.8	0.0	0.0	0.0
29	0.0	0.0	0.0	0.0	24.3	0.1	0.0	0.0	0.0
30	0.0	0.0	0.0	0.0	0.1	23.8	0.0	0.0	0.0
Total	0.7	0.8	1.8	0.0	605.8	122.2	2.9	1.9	18.1

Notes:

Runtimes Report

Month: June-17

Daily

Date	PALL Runtimes						Process Drain	
	RFR Pump #1	RFR Pump #2	RF Pump #1	RF Pump #2	XR Pump #1	XR Pump #2	PDP9010 Pump	PDP9020 Pump
	(Hrs)	(Hrs)	(Hrs)	(Hrs)	(Hrs)	(Hrs)	(Hrs)	(Hrs)
1	0.0	0.0	1.1	1.1	17.8	0.0	1.7	2.2
2	0.0	0.0	0.8	0.9	18.5	0.0	1.7	2.2
3	0.0	0.0	1.0	1.0	22.7	0.0	1.7	2.2
4	0.0	0.0	0.8	0.9	19.3	0.0	1.7	2.1
5	0.0	0.0	1.0	0.9	19.3	0.0	1.7	2.3
6	0.0	0.0	0.8	0.8	17.4	0.0	1.9	2.4
7	0.0	0.0	1.0	1.1	20.6	0.0	2.1	2.7
8	0.0	0.0	1.0	0.8	19.9	0.0	2.2	3.0
9	0.0	0.0	1.0	1.1	22.3	0.0	2.1	2.6
10	0.0	0.0	0.9	1.0	20.7	0.0	2.2	2.9
11	0.0	0.0	1.2	1.2	20.7	0.0	1.9	2.4
12	0.0	0.0	1.2	1.2	21.0	0.0	1.9	2.6
13	0.0	0.0	1.2	1.0	18.5	0.0	2.4	2.8
14	0.0	0.0	1.0	1.0	17.9	0.0	2.1	2.5
15	0.0	0.0	1.1	1.1	20.1	0.0	2.2	3.0
16	0.0	0.0	1.1	1.1	18.2	0.0	2.9	3.9
17	0.0	0.0	1.1	1.3	18.9	0.0	2.9	3.9
18	0.0	0.0	1.0	0.8	18.1	0.0	2.8	3.7
19	0.0	0.0	0.6	0.7	10.5	0.0	2.2	2.8
20	0.0	0.0	1.1	1.1	15.6	0.0	1.6	2.1
21	0.0	0.0	0.8	0.9	18.1	0.0	1.9	2.4
22	0.0	0.0	1.0	1.0	19.2	0.0	1.9	2.3
23	0.0	0.0	0.7	0.6	13.8	0.0	1.9	2.4
24	0.0	0.0	1.0	0.9	20.6	0.0	1.8	2.3
25	0.0	0.0	0.9	0.9	17.6	0.0	1.9	2.3
26	0.0	0.1	0.6	0.8	18.5	0.0	1.9	2.6
27	0.0	0.0	0.7	0.6	19.1	0.0	1.9	2.4
28	0.0	0.0	0.7	0.7	17.8	0.0	1.9	2.4
29	0.0	0.0	0.5	0.7	16.8	0.0	1.9	2.5
30	0.0	0.0	0.7	0.6	20.3	0.0	1.8	2.3
Total	0.0	0.1	27.6	27.8	560.5	0.0	60.8	78.2

Notes:

Runtimes Report

Month: June-17

Daily

Date	Low Lift Pump Motor Runtimes				High Lift Pump Motor Runtimes			
	LLP1010 (Hrs)	LLP1020 (Hrs)	LLP1030 (Hrs)	LLP1040 (Hrs)	HLP7010 (Hrs)	HLP7020 (Hrs)	HLP7030 (Hrs)	HLP7040 (Hrs)
1	8.7	7.8	6.2	5.1	10.6	0.0	0.0	4.0
2	3.0	3.0	7.3	8.2	1.0	10.5	0.0	0.3
3	5.5	5.5	6.6	5.5	13.6	1.8	0.0	2.6
4	4.2	5.6	4.5	5.6	2.9	2.6	0.0	9.1
5	3.4	5.5	5.6	5.5	2.7	2.5	0.0	5.7
6	5.5	6.0	4.4	5.6	3.1	3.5	0.0	4.8
7	5.6	5.6	8.8	4.5	3.3	0.4	0.0	14.5
8	5.6	6.0	4.1	5.2	5.0	5.6	0.0	2.9
9	5.5	5.5	4.2	7.6	1.4	14.4	0.0	2.9
10	8.4	6.5	5.9	3.0	2.7	0.8	0.0	12.3
11	5.7	9.4	5.9	10.7	12.7	2.9	0.0	0.3
12	4.9	8.8	9.9	11.5	2.1	12.8	0.0	2.8
13	8.5	5.8	6.8	8.8	9.0	1.3	0.0	4.4
14	9.2	4.1	4.3	6.3	3.0	0.0	0.0	11.2
15	5.1	8.3	7.4	8.0	1.0	0.0	0.0	14.4
16	8.3	8.6	5.0	7.1	0.0	0.0	0.0	14.8
17	5.5	8.7	11.7	8.3	0.0	0.0	0.0	16.1
18	5.6	8.1	4.3	8.9	11.3	0.0	0.0	0.5
19	5.5	6.8	3.0	5.5	5.6	3.7	0.0	1.9
20	10.9	7.8	5.8	8.4	2.8	5.4	0.0	5.2
21	5.6	7.4	5.6	4.3	3.4	2.6	0.0	6.7
22	6.9	9.2	5.9	0.0	3.2	0.5	0.0	12.4
23	5.8	4.5	4.4	0.0	6.1	2.9	0.0	0.0
24	8.1	6.2	7.8	0.0	5.2	8.0	0.0	3.0
25	7.8	5.8	4.9	0.0	3.0	6.2	0.0	3.2
26	5.7	8.2	5.7	0.0	2.0	7.2	0.0	2.8
27	6.9	8.2	8.2	0.0	0.0	11.0	0.0	2.6
28	11.1	6.0	8.5	0.0	4.7	3.2	0.0	6.1
29	5.6	9.8	5.1	2.9	8.3	1.1	0.0	3.2
30	7.4	6.1	7.0	5.5	8.2	1.9	0.0	3.4
Total	195.5	204.8	184.8	152.0	137.9	112.8	0.0	174.1

Notes:

Plant Internal Flow Report

Month: June-17

Date	Settling Tank Level		Process Drain Tank		Settling Tank Flow		Potable Water Flow		Non-Potable Flow	
	T-9003 (m)		T-9001 (m)		FIT_9005 (m ³) (L/s)		FIT_7082 (m ³) (L/s)		FIT_7092 (m ³) (L/s)	
	Maximum	Minimum	Maximum	Minimum	Total	Peak	Total	Peak	Total	Peak
1	2.2	0.1	0.8	0.4	373.1	15.7	0.1	1.4	14.8	23.6
2	2.2	0.1	0.9	0.4	304.9	15.7	0.1	1.4	0.0	0.0
3	2.2	0.1	0.8	0.4	408.9	15.7	0.0	0.0	0.0	0.0
4	2.2	0.3	0.8	0.4	374.5	15.7	0.0	1.1	0.0	0.0
5	2.2	0.1	0.8	0.4	371.9	15.7	0.2	1.3	12.8	15.6
6	2.2	0.1	1.1	0.4	367.6	15.7	0.1	1.7	25.2	15.1
7	2.2	0.1	0.8	0.4	368.9	15.7	0.1	1.4	14.2	25.8
8	2.2	0.3	1.4	0.4	371.7	15.7	0.1	1.4	3.1	22.7
9	2.2	0.3	1.0	0.4	458.1	15.7	0.2	1.4	19.5	17.5
10	2.2	0.1	1.9	0.4	456.9	15.7	0.0	0.0	0.0	0.0
11	2.2	0.1	0.8	0.4	458.5	15.7	0.0	0.0	0.0	0.0
12	2.2	0.1	0.8	0.4	531.7	15.7	0.3	1.3	19.5	21.7
13	2.2	0.2	2.0	0.4	509.9	15.7	0.1	1.3	18.9	18.9
14	2.2	0.1	1.6	0.4	451.2	15.7	0.1	1.4	10.4	24.6
15	2.2	0.1	1.0	0.4	443.6	15.7	0.1	1.4	25.5	15.6
16	2.2	0.1	0.8	0.4	533.5	15.7	0.1	1.4	0.0	0.0
17	2.2	0.3	0.8	0.4	549.6	15.7	0.1	1.1	0.4	1.1
18	2.2	0.1	0.8	0.4	407.9	15.7	0.0	0.0	0.0	0.0
19	2.2	0.1	0.8	0.4	291.2	15.7	0.1	1.4	0.0	0.0
20	2.2	0.1	0.8	0.4	409.4	15.7	0.1	1.4	0.0	0.8
21	2.2	0.3	1.4	0.4	376.7	15.7	0.1	1.7	47.1	22.9
22	2.2	0.1	0.8	0.4	464.2	15.7	1.9	5.2	1.1	1.9
23	2.2	0.1	0.8	0.4	285.6	15.7	0.3	1.4	0.1	0.9
24	2.2	0.3	0.8	0.4	452.5	15.7	0.0	0.0	0.0	0.0
25	2.2	0.1	0.8	0.4	356.3	15.7	0.0	0.0	0.0	0.0
26	2.2	0.1	1.4	0.4	331.0	15.7	0.0	1.4	25.5	17.8
27	2.2	0.1	1.0	0.4	370.5	15.7	0.1	1.4	22.2	22.9
28	2.2	0.3	0.8	0.4	400.9	15.7	0.1	1.4	0.3	1.0
29	2.2	0.1	1.1	0.4	413.1	15.7	0.1	1.4	0.0	0.0
30	2.2	0.1	0.8	0.4	478.6	15.7	0.1	1.3	0.0	0.0
Total					12372.6		4.6		260.8	
Average	2.2	0.2	1.0	0.4	412.4	15.7	0.2	1.2	8.7	9.0
Maximum	2.2		2.0		549.6		1.9		47.1	
Date	10-Jun		13-Jun		17-Jun		22-Jun		21-Jun	
Minimum		0.1		0.4		15.7		0.0		0.0
Date		12-Jun		21-Jun		1-Jun		3-Jun		2-Jun

Notes: