

Municipality of West Elgin - Tri County Water System

Goto:

Month:

Year:

Date is Set to: **June-18**

Limit	Low	High	
Raw Water Chlorine Residual:	0.00	5.00	mg/L
Pre-Strainer Chlorine Residual:	0.00	5.00	mg/L
UV Inlet Chlorine Residual:	0.00	5.00	mg/L
Post Treatment Chlorine Residual:	1.00	5.00	mg/L
Treated Chlorine Residual:	1.00	2.50	mg/L
Distribution Chlorine Residual:	1.00	2.50	mg/L
Limit		High	
Limit		156.0	L/s
WTP Permit to Take Water		13500.0	m ³
Limit	Low	High	
System Pressure Limits:	50.0	1034.0	Kpa

Compliance Report

Low Lift Monthly Report

>>>

Membranes Monthly Report

>>>

UV System Monthly Report

>>>

Plant Quality Report

>>>

Raw Well/Treated Storage Report

>>>

High Lift Monthly Report

>>>

Operational Report

Low Lift Monthly Report

>>>

High Lift Monthly Report

>>>

Chemical Usage Monthly Report

>>>

Runtimes Report

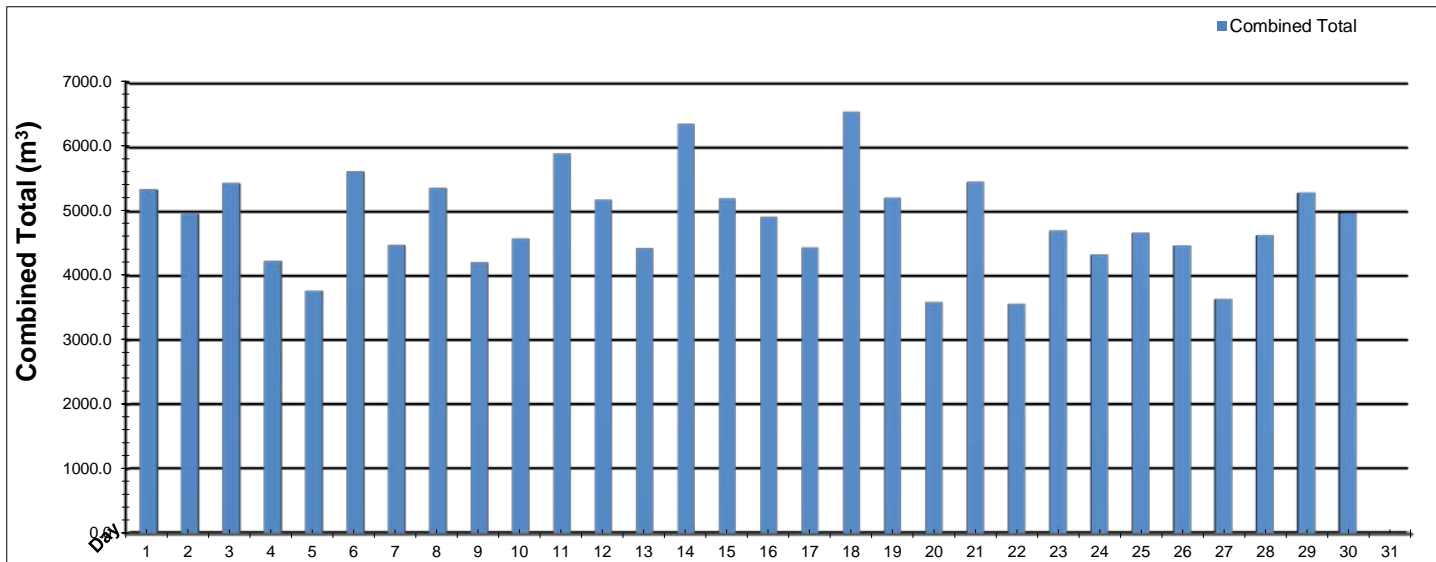
>>>

Plant Internal Flow Report

>>>

Low Lift Monthly Report

Month: June-18

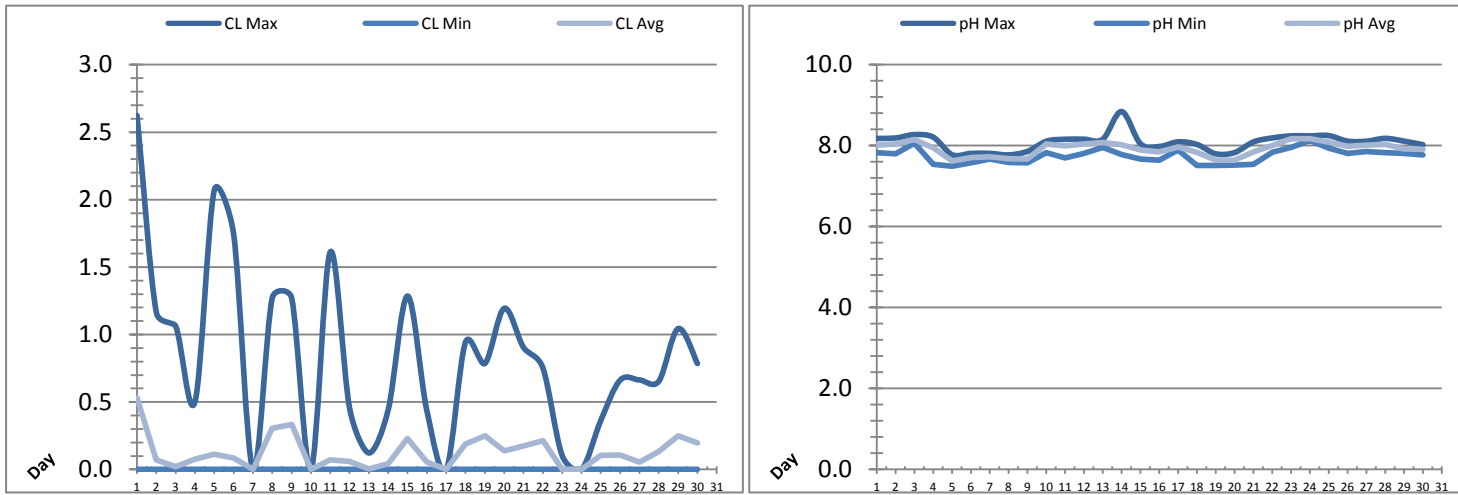


Date	Combined Total (m³)	West Train FIT-1017 (m³)	West Peak Flow FIT-1017 (L/s)	East Train FIT-1027 (m³)	East Peak Flow FIT-1027 (L/s)	Combined Peak Flow (L/s)
1	5341.3	5341.3	135.7	0.0	0.0	135.7
2	4965.6	4965.6	136.3	0.0	0.0	136.3
3	5437.9	5437.9	135.2	0.0	0.0	135.2
4	4230.7	4230.7	135.3	0.0	0.0	135.3
5	3767.3	3767.3	134.5	0.0	0.0	134.5
6	5619.8	5619.8	135.3	0.0	0.0	135.3
7	4476.4	4476.4	135.5	0.0	0.0	135.5
8	5362.5	5362.5	135.4	0.0	0.0	135.4
9	4207.7	4207.7	73.8	0.0	0.0	73.8
10	4577.7	4577.7	73.6	0.0	0.0	73.6
11	5902.2	5902.2	136.5	0.0	0.0	136.5
12	5180.3	5180.3	135.2	0.0	0.0	135.2
13	4425.5	4425.5	135.3	0.0	0.0	135.3
14	6357.2	6357.2	136.7	0.0	0.0	136.7
15	5199.6	5199.6	136.2	0.0	0.0	136.2
16	4917.0	4917.0	135.8	0.0	0.0	135.8
17	4438.7	4438.7	130.3	0.0	0.0	130.3
18	6545.8	6545.8	136.0	0.0	0.0	136.0
19	5209.4	5209.4	134.3	0.0	0.0	134.3
20	3589.0	3588.9	73.3	0.0	0.0	73.3
21	5457.5	5457.5	135.6	0.0	0.0	135.6
22	3562.3	3562.3	73.9	0.0	0.0	73.9
23	4702.7	4702.7	134.9	0.0	0.0	134.9
24	4326.7	4326.7	132.1	0.0	0.0	132.1
25	4664.0	4664.0	74.0	0.0	0.0	74.0
26	4470.0	4470.0	73.8	0.0	0.0	73.8
27	3638.6	3638.6	73.9	0.0	0.0	73.9
28	4631.9	4631.9	136.0	0.0	0.0	136.0
29	5289.3	5289.3	137.0	0.0	0.0	137.0
30	4976.9	4976.9	135.0	0.0	0.0	135.0
	0.0					
Total	145471.5	145471.4		0.1		
Average	4849.1	4849.0	120.9	0.0	0.0	120.9
Maximum	6545.8	6545.8	136.97	0.0	0.00	136.97
Date	18-Jun	18-Jun	29-Jun	18-Jun	1-Jun	29-Jun
Minimum	3562.3	3562.3	73.30	0.0	0.00	73.30
Date	22-Jun	22-Jun	20-Jun	4-Jun	1-Jun	20-Jun

Notes:

Low Lift Monthly Report

Month: June-18

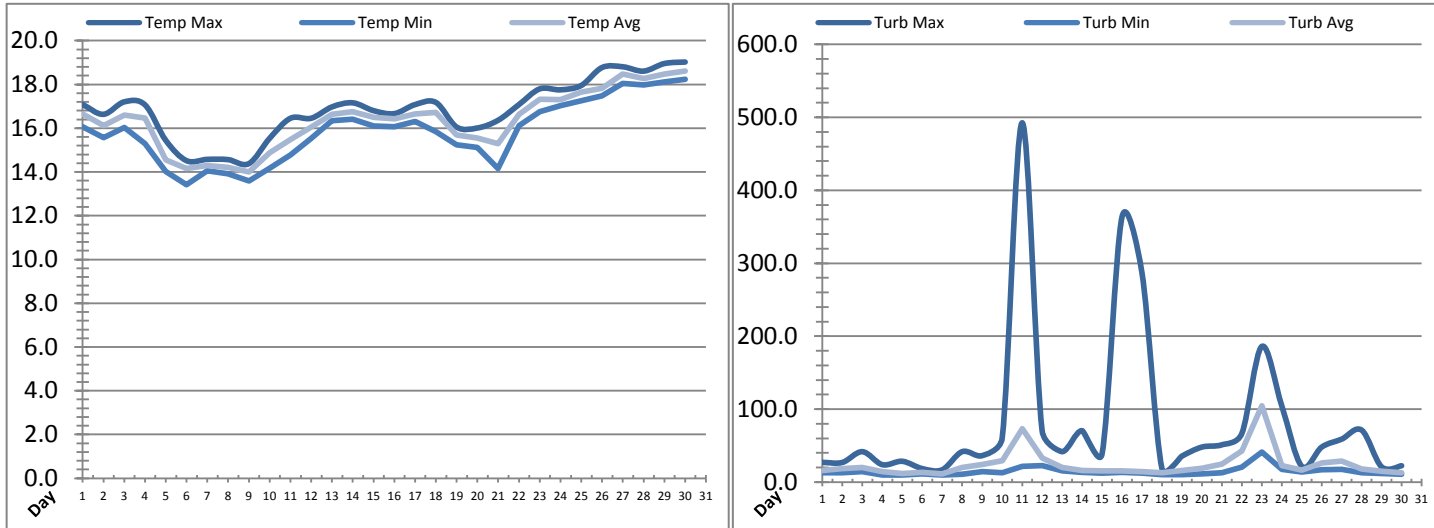


Date	Raw Water Chlorine Residual			Raw Water pH		
	AIT_1401_CL (mg/L)			AIT_1401_PH		
	Maximum	Minimum	Average	Maximum	Minimum	Average
1	2.62	0.00	0.53	8.18	7.83	8.01
2	1.16	0.00	0.07	8.19	7.79	8.04
3	1.06	0.00	0.02	8.27	8.06	8.15
4	0.50	0.00	0.08	8.21	7.54	7.95
5	2.07	0.00	0.11	7.78	7.49	7.62
6	1.74	0.00	0.08	7.81	7.58	7.71
7	0.00	0.00	0.00	7.81	7.67	7.72
8	1.27	0.00	0.31	7.77	7.59	7.68
9	1.27	0.00	0.33	7.86	7.58	7.67
10	0.00	0.00	0.00	8.11	7.83	8.04
11	1.61	0.00	0.07	8.16	7.69	8.00
12	0.45	0.00	0.06	8.16	7.81	8.04
13	0.12	0.00	0.00	8.16	7.96	8.08
14	0.44	0.00	0.04	8.84	7.78	8.02
15	1.29	0.00	0.23	8.05	7.67	7.89
16	0.43	0.00	0.05	7.98	7.65	7.84
17	0.00	0.00	0.00	8.09	7.89	7.97
18	0.94	0.00	0.19	8.03	7.51	7.84
19	0.79	0.00	0.25	7.80	7.51	7.64
20	1.19	0.00	0.14	7.83	7.52	7.64
21	0.90	0.00	0.18	8.09	7.54	7.85
22	0.75	0.00	0.21	8.19	7.84	8.01
23	0.10	0.00	0.00	8.24	7.96	8.17
24	0.00	0.00	0.00	8.24	8.12	8.17
25	0.36	0.00	0.10	8.25	7.94	8.09
26	0.66	0.00	0.11	8.11	7.81	7.99
27	0.66	0.00	0.05	8.11	7.86	8.01
28	0.65	0.00	0.13	8.18	7.83	8.03
29	1.04	0.00	0.25	8.11	7.81	7.92
30	0.78	0.00	0.20	8.02	7.77	7.91
Total						
Average	0.83	0.00	0.13	8.09	7.75	7.92
Maximum	2.62		0.53	8.84		8.17
Date	1-Jun		1-Jun	14-Jun		24-Jun
Minimum		0.00	0.00		7.49	7.62
Date		1-Jun	7-Jun		5-Jun	5-Jun

Notes:

Low Lift Monthly Report

Month: June-18

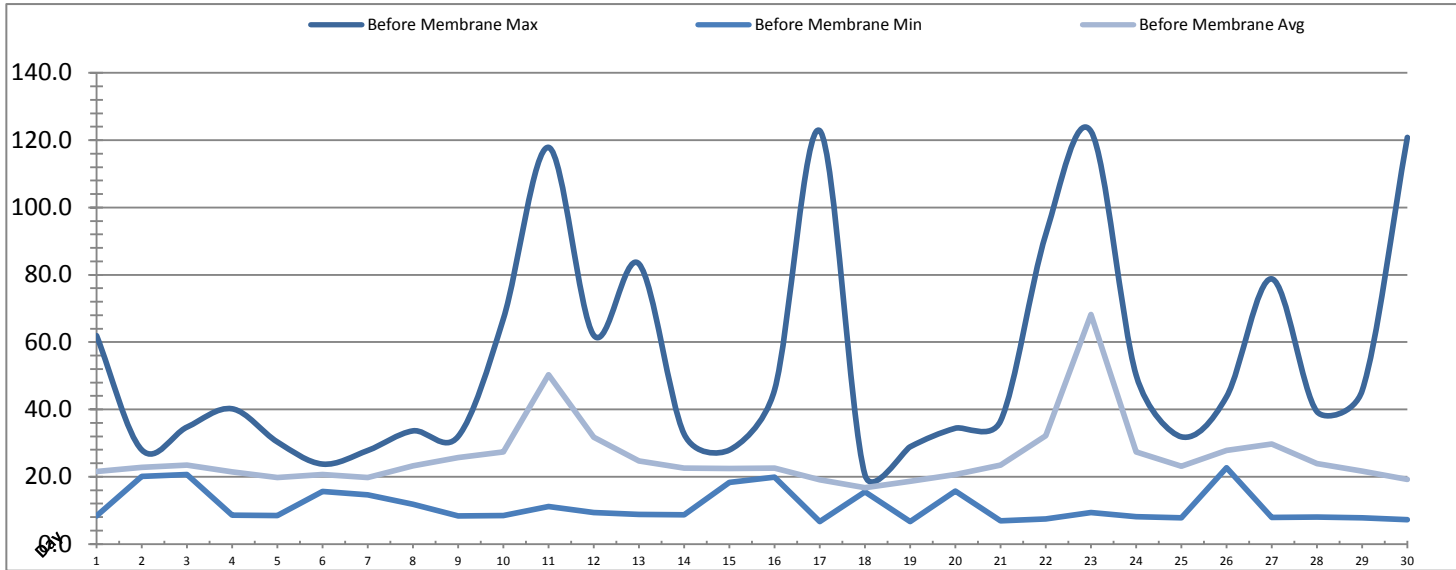


Date	Raw Water Temperature			Raw Water Turbidity		
	TIT_1403 (°C)			AIT_1404 (NTU)		
	Maximum	Minimum	Average	Maximum	Minimum	Average
1	17.1	16.1	16.6	26.97	12.95	15.81
2	16.6	15.6	16.1	26.93	12.91	18.28
3	17.2	16.0	16.6	41.65	14.44	19.82
4	17.1	15.3	16.5	23.82	9.80	14.12
5	15.4	14.0	14.6	28.47	9.80	11.65
6	14.5	13.4	14.2	18.41	11.36	13.19
7	14.6	14.0	14.3	16.87	9.85	11.32
8	14.6	13.9	14.2	41.72	10.62	20.06
9	14.4	13.6	14.0	36.27	14.49	24.33
10	15.5	14.2	14.9	60.27	12.94	29.47
11	16.5	14.8	15.5	492.55	21.50	73.13
12	16.5	15.5	16.1	70.41	22.36	32.73
13	17.0	16.3	16.6	41.70	15.34	19.86
14	17.2	16.4	16.8	70.45	13.08	15.85
15	16.8	16.1	16.5	38.60	12.23	15.50
16	16.7	16.1	16.4	363.40	13.03	15.42
17	17.1	16.3	16.7	286.72	12.31	14.25
18	17.2	15.9	16.7	18.51	9.97	12.80
19	16.1	15.2	15.7	35.58	9.94	16.05
20	16.0	15.1	15.5	47.95	11.46	19.05
21	16.4	14.2	15.3	51.08	12.99	24.75
22	17.1	16.1	16.6	66.56	20.75	42.54
23	17.8	16.8	17.3	185.95	40.93	104.79
24	17.8	17.0	17.3	104.53	17.66	22.82
25	18.0	17.2	17.6	21.63	13.74	16.53
26	18.8	17.5	17.8	47.96	16.86	26.36
27	18.8	18.0	18.5	58.83	17.65	28.76
28	18.6	18.0	18.3	71.23	12.98	18.05
29	19.0	18.1	18.5	20.79	11.48	14.69
30	19.0	18.2	18.6	22.35	10.67	12.55
Total						
Average	16.8	15.8	16.3	81.3	14.5	24.2
Maximum	19.0		18.6	492.6		104.8
Date	30-Jun		30-Jun	11-Jun		23-Jun
Minimum		13.4	14.0		9.8	11.3
Date		6-Jun	9-Jun		4-Jun	7-Jun

Notes:

Membranes Monthly Report

Month: June-18



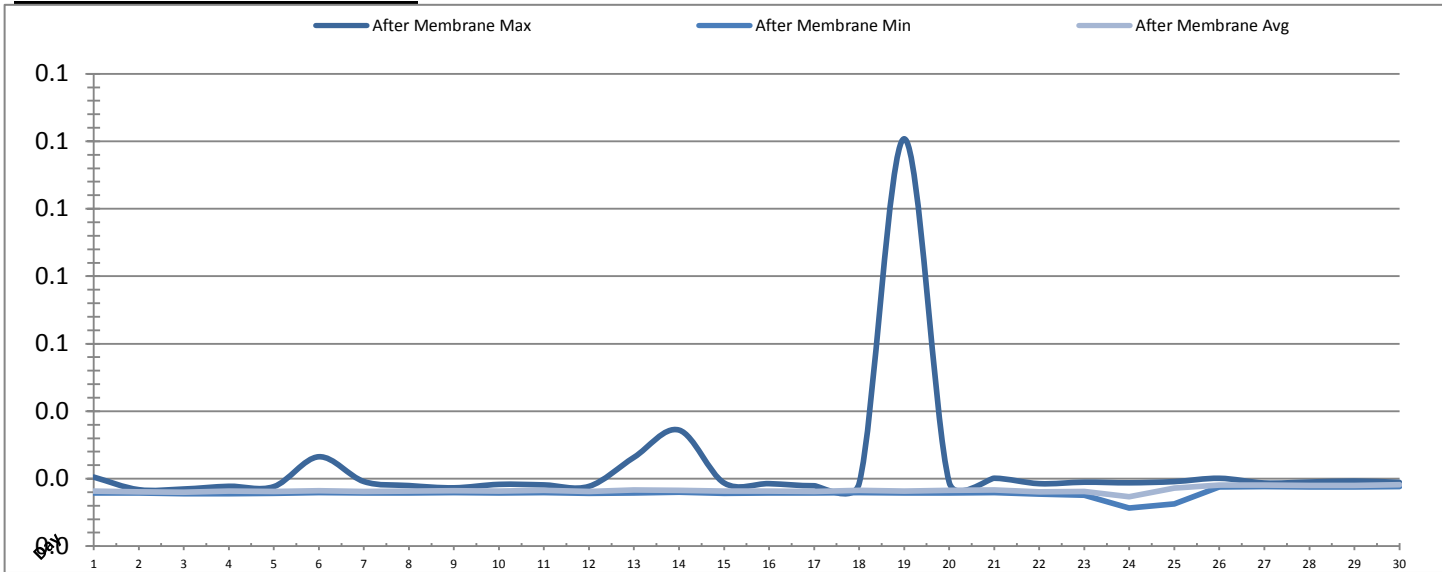
Date	Turbidity Before Membrane			Rack #1 Turbidity			Rack #2 Turbidity		
	PALL_FEED_AIT2006_Value NTU			RACK1_NTU_Value NTU			RACK2_NTU_Value NTU		
	Maximum	Minimum	Average	Maximum	Minimum	Average	Maximum	Minimum	Average
1	61.91	8.32	21.57	0.02	0.02	0.02	0.14	0.02	0.02
2	27.97	20.08	22.76	0.02	0.02	0.02	0.26	0.02	0.02
3	34.74	20.65	23.45	0.02	0.02	0.02	0.24	0.02	0.02
4	40.18	8.59	21.40	0.02	0.02	0.02	0.28	0.02	0.02
5	30.32	8.42	19.76	0.02	0.02	0.02	0.09	0.02	0.02
6	23.75	15.62	20.60	0.02	0.02	0.02	0.10	0.02	0.02
7	27.79	14.58	19.79	0.04	0.02	0.02	0.13	0.02	0.02
8	33.62	11.83	23.28	0.02	0.02	0.02	0.02	0.02	0.02
9	31.97	8.32	25.68	0.02	0.02	0.02	0.36	0.02	0.02
10	66.91	8.44	27.41	0.02	0.02	0.02	0.28	0.02	0.02
11	117.87	11.11	50.29	0.02	0.02	0.02	0.03	0.02	0.02
12	62.01	9.34	31.76	0.02	0.02	0.02	0.03	0.02	0.02
13	83.24	8.75	24.65	0.02	0.02	0.02	0.14	0.02	0.02
14	32.64	8.65	22.53	0.07	0.02	0.02	0.02	0.02	0.02
15	27.93	18.25	22.46	0.02	0.02	0.02	0.24	0.02	0.02
16	45.79	19.92	22.51	0.02	0.02	0.02	0.20	0.02	0.02
17	122.82	6.63	19.06	0.02	0.02	0.02	0.03	0.02	0.02
18	20.55	15.52	16.76	0.03	0.02	0.02	0.02	0.02	0.02
19	28.89	6.61	18.58	0.02	0.02	0.02	0.02	0.02	0.02
20	34.41	15.72	20.70	0.02	0.02	0.02	0.25	0.02	0.02
21	36.57	6.89	23.42	0.02	0.02	0.02	0.05	0.02	0.02
22	92.02	7.46	32.14	0.02	0.02	0.02	0.02	0.02	0.02
23	122.64	9.30	68.22	0.02	0.02	0.02	0.25	0.02	0.02
24	50.15	8.10	27.41	0.03	0.02	0.02	0.21	0.02	0.02
25	31.85	7.83	23.10	0.03	0.02	0.02	0.02	0.02	0.02
26	43.79	22.61	27.82	0.24	0.02	0.02	0.03	0.02	0.02
27	78.79	7.85	29.77	0.02	0.02	0.02	0.02	0.02	0.02
28	39.33	7.99	23.94	0.02	0.02	0.02	0.02	0.02	0.02
29	45.58	7.73	21.70	0.02	0.02	0.02	0.15	0.02	0.02
30	120.83	7.20	19.18	0.02	0.02	0.02	0.13	0.02	0.02
Total									
Average	53.9	11.3	25.7	0.0	0.0	0.0	0.1	0.0	0.0
Maximum	122.8		68.2	0.2		0.0	0.4		0.0
Date	17-Jun		23-Jun	26-Jun		24-Jun	9-Jun		20-Jun
Minimum		6.6	16.8		0.0	0.0		0.0	0.0
Date		19-Jun	18-Jun		28-Jun	29-Jun		14-Jun	25-Jun

Notes:

Rack 1: 26th turbidity spike after EFM
 Rack 2: Turbidity spikes throughout month after IT

Membranes Monthly Report

Month: June-18

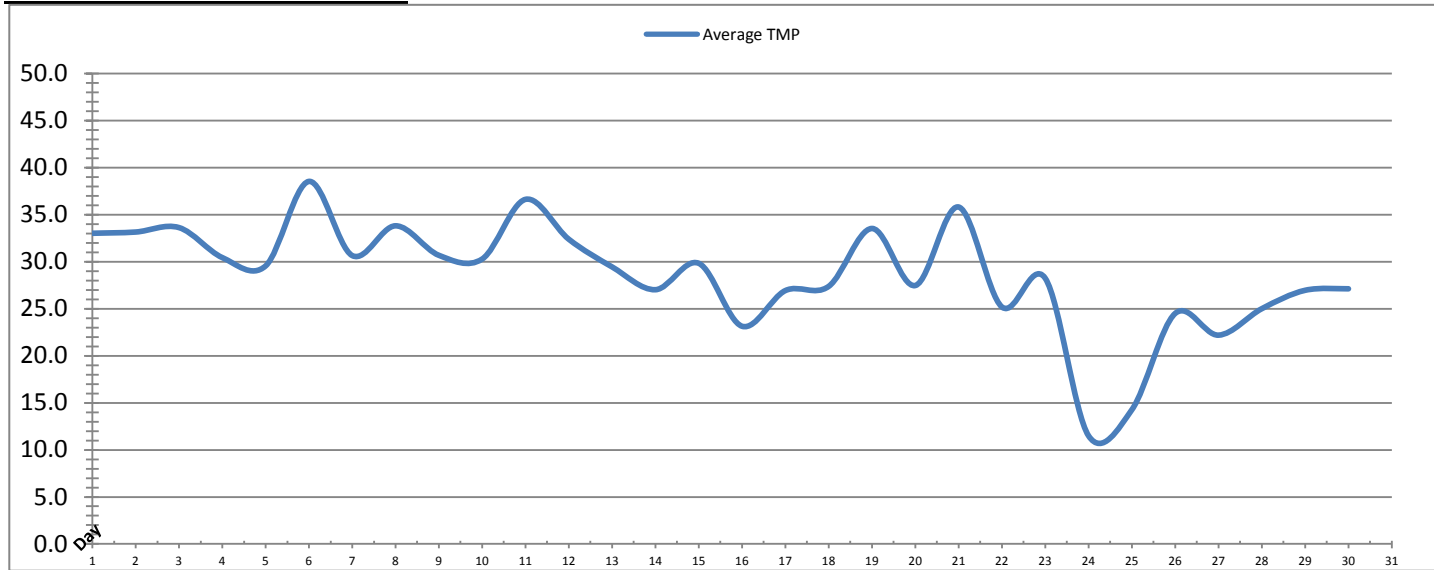


Date	Rack #3 Turbidity			Rack #4 Turbidity			Turbidity After Membranes		
	RACK3_NTU_Value NTU			RACK4_NTU_Value NTU			PALL_FILT_AIT5001_Value NTU		
	Maximum	Minimum	Average	Maximum	Minimum	Average	Maximum	Minimum	Average
1	0.08	0.02	0.02	0.03	0.03	0.03	0.02	0.02	0.02
2	0.02	0.02	0.02	0.03	0.03	0.03	0.02	0.02	0.02
3	0.02	0.02	0.02	0.03	0.03	0.03	0.02	0.02	0.02
4	0.02	0.02	0.02	0.04	0.03	0.03	0.02	0.02	0.02
5	0.02	0.02	0.02	0.03	0.03	0.03	0.02	0.02	0.02
6	0.04	0.02	0.02	0.03	0.03	0.03	0.03	0.02	0.02
7	0.02	0.02	0.02	0.03	0.03	0.03	0.02	0.02	0.02
8	0.02	0.02	0.02	0.03	0.03	0.03	0.02	0.02	0.02
9	0.02	0.02	0.02	0.03	0.03	0.03	0.02	0.02	0.02
10	0.02	0.02	0.02	0.04	0.03	0.03	0.02	0.02	0.02
11	0.12	0.02	0.02	0.04	0.03	0.03	0.02	0.02	0.02
12	0.02	0.02	0.02	0.04	0.03	0.03	0.02	0.02	0.02
13	0.02	0.02	0.02	0.04	0.03	0.03	0.03	0.02	0.02
14	0.02	0.02	0.02	0.04	0.03	0.03	0.03	0.02	0.02
15	0.02	0.02	0.02	0.03	0.03	0.03	0.02	0.02	0.02
16	0.02	0.02	0.02	0.10	0.03	0.03	0.02	0.02	0.02
17	0.02	0.02	0.02	0.04	0.03	0.03	0.02	0.02	0.02
18	0.02	0.02	0.02	0.03	0.03	0.03	0.02	0.02	0.02
19	0.02	0.02	0.02	0.06	0.03	0.03	0.12	0.02	0.02
20	0.02	0.02	0.02	0.04	0.03	0.03	0.02	0.02	0.02
21	0.02	0.02	0.02	0.07	0.01	0.03	0.02	0.02	0.02
22	0.02	0.02	0.02	0.04	0.03	0.03	0.02	0.02	0.02
23	0.02	0.02	0.02	0.03	0.03	0.03	0.02	0.02	0.02
24	0.02	0.02	0.02	0.10	0.02	0.03	0.02	0.01	0.01
25	0.30	0.02	0.02	0.03	0.03	0.03	0.02	0.01	0.02
26	0.02	0.02	0.02	0.03	0.03	0.03	0.02	0.02	0.02
27	0.02	0.02	0.02	0.03	0.03	0.03	0.02	0.02	0.02
28	0.04	0.02	0.02	0.03	0.02	0.03	0.02	0.02	0.02
29	0.02	0.02	0.02	0.03	0.02	0.03	0.02	0.02	0.02
30	0.02	0.02	0.02	0.03	0.02	0.03	0.02	0.02	0.02
Total									
Average	0.0	0.0	0.0	0.0	0.0	0.0	0.0	0.0	0.0
Maximum	0.3		0.0	0.1		0.0	0.1		0.0
Date	25-Jun		25-Jun	16-Jun		16-Jun	19-Jun		30-Jun
Minimum		0.0	0.0		0.0	0.0		0.0	0.0
Date		5-Jun	5-Jun		21-Jun	30-Jun		24-Jun	24-Jun

Notes:
 Rack 3: Turbidity spike on 24th after CIP
 Rack 4: Turbidity spike on 19th after CIP

Membranes Monthly Report

Month: **June-18**

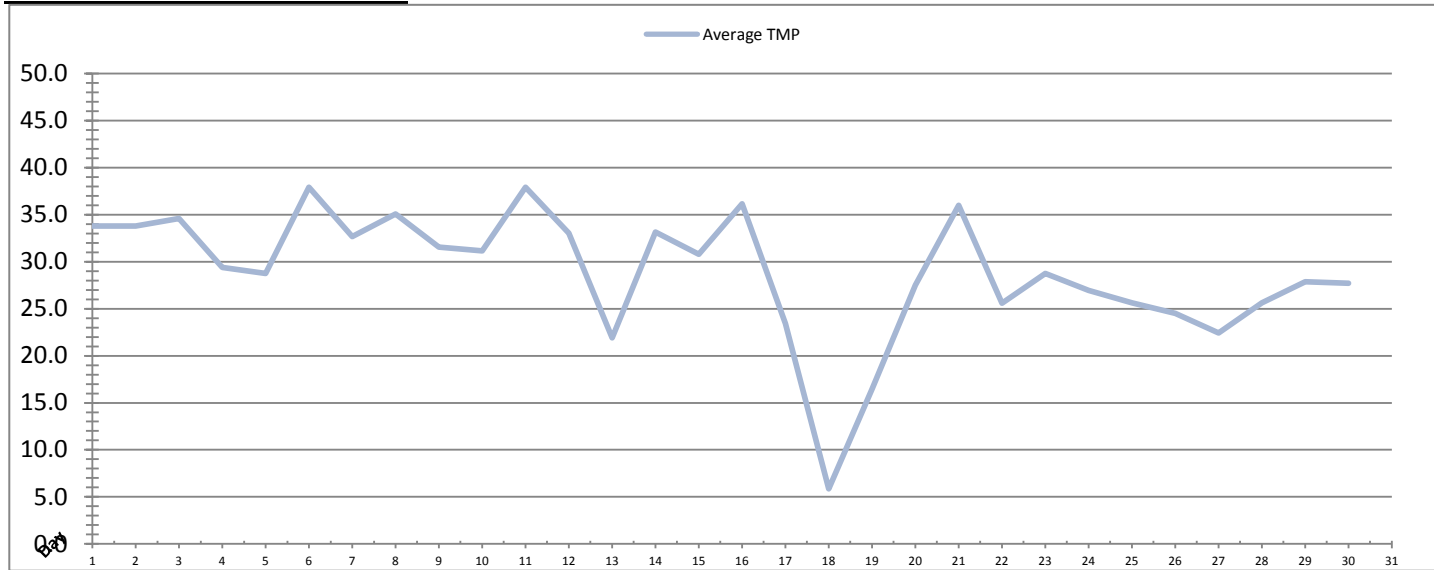


Integrity Test Rack 1								
Date	Initial Pressure (kPa)	Final Pressure (kPa)	Test Duration (sec)	Change in Pressure (kPa)	UCL	Within UCL	Average TMP (kPa)	Max TMP (kPa)
1	198.7	197.6	300.0	1.1	2.0	✓ 2.0	33.0	146.8
2	198.3	197.2	300.0	1.1	2.0	✓ 2.0	33.2	177.4
3	198.3	197.2	300.0	1.1	2.0	✓ 2.0	33.6	96.9
4	198.1	196.9	300.0	1.2	2.0	✓ 2.0	30.4	113.7
5	198.8	197.5	300.0	1.3	2.0	✓ 2.0	29.6	122.0
6	198.9	197.6	300.0	1.3	2.0	✓ 2.0	38.5	198.1
7	198.9	197.8	300.0	1.1	2.0	✓ 2.0	30.6	107.6
8	198.6	197.3	300.0	1.2	2.0	✓ 2.0	33.8	99.4
9	198.9	197.8	300.0	1.1	2.0	✓ 2.0	30.7	59.5
10	198.3	197.2	300.0	1.1	2.0	✓ 2.0	30.3	56.7
11	198.7	197.6	300.0	1.1	2.0	✓ 2.0	36.6	188.2
12	198.2	197.2	300.0	1.1	2.0	✓ 2.0	32.4	105.9
13	198.3	197.2	300.0	1.1	2.0	✓ 2.0	29.4	143.2
14	198.5	197.3	300.0	1.1	2.0	✓ 2.0	27.0	122.0
15	198.3	197.0	300.0	1.3	2.0	✓ 2.0	29.8	88.7
16	198.2	197.0	300.0	1.2	2.0	✓ 2.0	23.1	114.2
17	198.6	197.2	300.0	1.4	2.0	✓ 2.0	26.9	114.3
18	198.8	197.1	300.0	1.7	2.0	✓ 2.0	27.4	178.9
19	199.0	197.8	300.0	1.3	2.0	✓ 2.0	33.5	104.3
20	198.7	197.4	300.0	1.3	2.0	✓ 2.0	27.5	56.7
21	198.6	197.3	300.0	1.3	2.0	✓ 2.0	35.8	129.3
22	198.1	197.0	300.0	1.1	2.0	✓ 2.0	25.2	91.3
23	198.4	196.6	300.0	1.8	2.0	✓ 2.0	28.2	83.1
24	197.6	193.8	300.0	3.8	2.0	✓ 2.0	11.5	54.5
25	198.2	197.1	300.0	1.1	2.0	✓ 2.0	14.3	46.4
26	197.9	196.8	300.0	1.1	2.0	✓ 2.0	24.5	78.8
27	198.1	197.1	300.0	1.1	2.0	✓ 2.0	22.2	73.5
28	198.0	196.8	300.0	1.1	2.0	✓ 2.0	25.0	72.7
29	198.0	196.9	300.0	1.1	2.0	✓ 2.0	27.0	75.0
30	198.1	196.9	300.0	1.2	2.0	✓ 2.0	27.1	96.9
Total								
Average	198.4	197.1	300.0	1.3	2.0	2.0	28.6	106.5
Maximum	199.0	197.8	300.0	3.8	2.0	2.0	38.5	198.1
Date	19-Jun	7-Jun	1-Jun	24-Jun	1-Jun	1-Jun	6-Jun	6-Jun
Minimum	197.6	193.8	300.0	1.1	2.0	2.0	11.5	46.4
Date	24-Jun	24-Jun	1-Jun	1-Jun	1-Jun	1-Jun	24-Jun	25-Jun

Notes:
 IT failed on 24th due leak on connection at top of rack

Membranes Monthly Report

Month: **June-18**

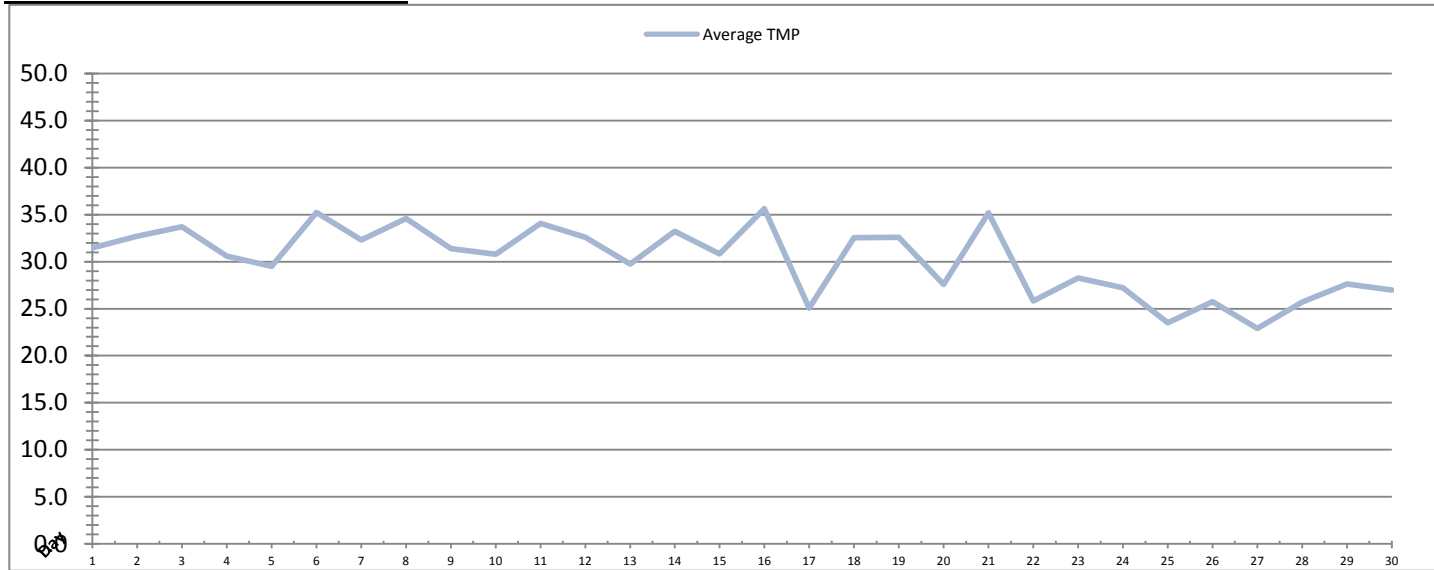


Date	Integrity Test Rack 2							
	Initial Pressure (kPa)	Final Pressure (kPa)	Test Duration (sec)	Change in Pressure (kPa)	UCL	Within UCL	Average TMP (kPa)	Max TMP (kPa)
1	207.5	206.5	300.0	1.0	2.0	✓ 2.0	33.8	100.7
2	207.9	206.8	300.0	1.1	2.0	✓ 2.0	33.8	110.5
3	207.9	206.9	300.0	1.0	2.0	✓ 2.0	34.6	99.3
4	207.7	206.6	300.0	1.1	2.0	✓ 2.0	29.4	100.6
5	207.7	206.6	300.0	1.1	2.0	✓ 2.0	28.8	102.7
6	208.0	206.9	300.0	1.1	2.0	✓ 2.0	37.9	107.9
7	207.4	206.3	300.0	1.1	2.0	✓ 2.0	32.7	107.6
8	208.2	207.1	300.0	1.1	2.0	✓ 2.0	35.1	104.1
9	207.8	206.8	300.0	1.1	2.0	✓ 2.0	31.5	61.2
10	207.8	206.7	300.0	1.1	2.0	✓ 2.0	31.1	59.0
11	207.8	206.8	300.0	1.1	2.0	✓ 2.0	37.9	207.5
12	207.5	206.4	300.0	1.1	2.0	✓ 2.0	33.0	97.8
13	208.0	207.1	300.0	1.0	2.0	✓ 2.0	21.9	56.9
14	208.3	207.2	300.0	1.1	2.0	✓ 2.0	33.1	117.0
15	207.9	206.9	300.0	1.0	2.0	✓ 2.0	30.8	91.0
16	207.8	206.7	300.0	1.2	2.0	✓ 2.0	36.1	142.3
17	207.8	206.6	300.0	1.2	2.0	✓ 2.0	23.4	115.7
18	206.7	0.0	300.0	4.8	2.0	✓ 2.0	5.9	103.1
19	207.8	205.9	300.0	1.9	2.0	✓ 2.0	16.5	101.6
20	207.8	206.5	300.0	1.3	2.0	✓ 2.0	27.5	57.4
21	207.7	206.5	300.0	1.2	2.0	✓ 2.0	36.0	107.4
22	207.8	206.7	300.0	1.1	2.0	✓ 2.0	25.6	54.3
23	207.7	206.6	300.0	1.1	2.0	✓ 2.0	28.7	88.1
24	208.0	206.8	300.0	1.1	2.0	✓ 2.0	27.0	154.3
25	207.8	206.8	300.0	1.1	2.0	✓ 2.0	25.6	49.9
26	207.3	206.2	300.0	1.1	2.0	✓ 2.0	24.5	48.8
27	207.8	206.7	300.0	1.1	2.0	✓ 2.0	22.4	44.0
28	207.7	206.7	300.0	1.0	2.0	✓ 2.0	25.6	75.6
29	208.0	207.0	300.0	1.0	2.0	✓ 2.0	27.9	76.9
30	207.8	206.7	300.0	1.1	2.0	✓ 2.0	27.7	80.1
Total								
Average	207.8	199.8	300.0	1.2	2.0	2.0	28.9	94.1
Maximum	208.3	207.2	300.0	4.8	2.0	2.0	37.9	207.5
Date	14-Jun	14-Jun	1-Jun	18-Jun	1-Jun	1-Jun	6-Jun	11-Jun
Minimum	206.7	0.0	300.0	1.0	2.0	2.0	5.9	44.0
Date	18-Jun	18-Jun	1-Jun	1-Jun	1-Jun	1-Jun	18-Jun	27-Jun

Notes:
 IT failed on 18th due to loose connection on rack.

Membranes Monthly Report

Month: **June-18**

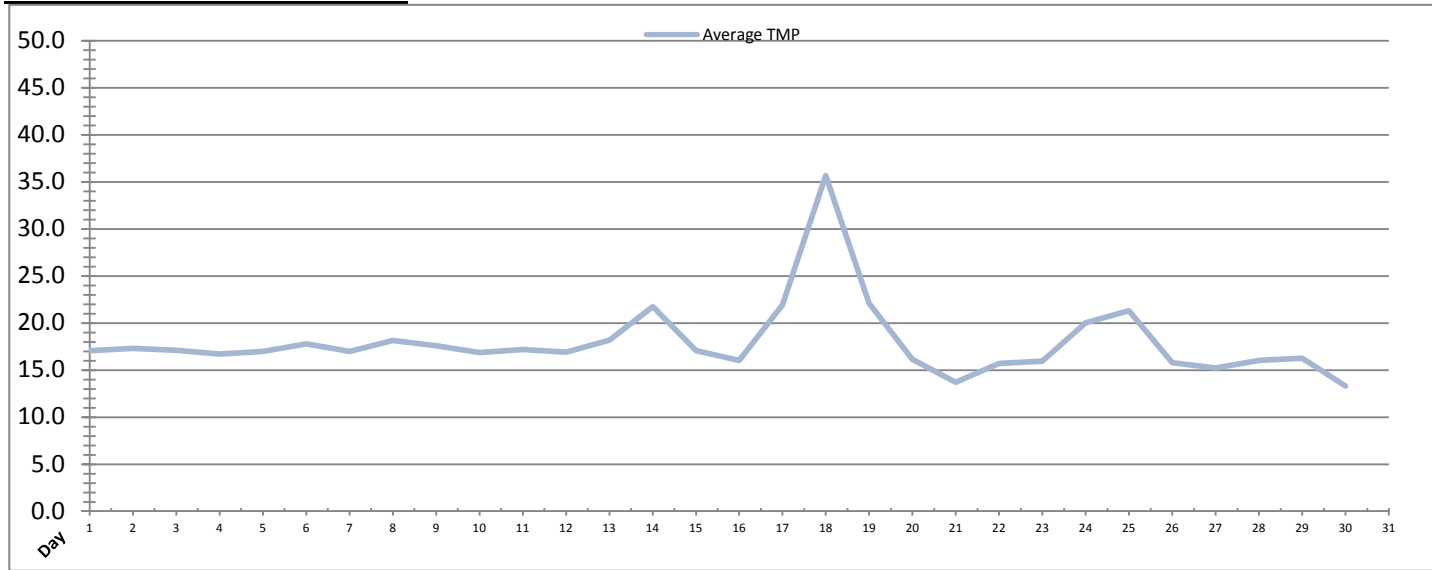


Date	Integrity Test Rack 3							
	Initial Pressure (kPa)	Final Pressure (kPa)	Test Duration (sec)	Change in Pressure (kPa)	UCL	Within UCL	Average TMP (kPa)	Max TMP (kPa)
1	191.6	190.5	300.0	1.1	2.0	✓ 2.0	31.5	153.0
2	190.5	189.3	300.0	1.2	2.0	✓ 2.0	32.7	94.6
3	191.9	190.8	300.0	1.1	2.0	✓ 2.0	33.7	93.0
4	189.9	188.8	300.0	1.1	2.0	✓ 2.0	30.6	112.0
5	190.5	189.3	300.0	1.2	2.0	✓ 2.0	29.5	113.3
6	190.8	189.6	300.0	1.1	2.0	✓ 2.0	35.2	114.3
7	190.6	189.4	300.0	1.2	2.0	✓ 2.0	32.3	98.1
8	190.1	189.0	300.0	1.2	2.0	✓ 2.0	34.6	97.7
9	190.5	189.3	300.0	1.2	2.0	✓ 2.0	31.4	59.8
10	190.8	189.7	300.0	1.1	2.0	✓ 2.0	30.8	57.4
11	190.3	189.1	300.0	1.1	2.0	✓ 2.0	34.1	93.0
12	189.5	188.4	300.0	1.1	2.0	✓ 2.0	32.6	86.9
13	190.4	189.2	300.0	1.1	2.0	✓ 2.0	29.7	229.2
14	189.3	188.2	300.0	1.1	2.0	✓ 2.0	33.2	162.3
15	190.0	188.8	300.0	1.2	2.0	✓ 2.0	30.8	121.2
16	189.6	188.5	300.0	1.2	2.0	✓ 2.0	35.6	224.7
17	188.5	187.3	300.0	1.2	2.0	✓ 2.0	25.0	102.7
18	189.3	188.3	300.0	1.0	2.0	✓ 2.0	32.5	141.6
19	188.8	187.6	300.0	1.2	2.0	✓ 2.0	32.6	103.2
20	189.2	188.0	300.0	1.2	2.0	✓ 2.0	27.6	57.6
21	188.0	186.8	300.0	1.2	2.0	✓ 2.0	35.2	103.0
22	189.0	187.9	300.0	1.1	2.0	✓ 2.0	25.8	52.6
23	188.8	187.7	300.0	1.1	2.0	✓ 2.0	28.3	82.7
24	188.7	187.5	300.0	1.1	2.0	✓ 2.0	27.2	148.2
25	188.7	187.5	300.0	1.1	2.0	✓ 2.0	23.5	89.4
26	188.0	186.9	300.0	1.1	2.0	✓ 2.0	25.8	78.7
27	188.0	186.9	300.0	1.1	2.0	✓ 2.0	22.9	42.3
28	188.1	187.0	300.0	1.1	2.0	✓ 2.0	25.7	71.4
29	187.7	186.5	300.0	1.1	2.0	✓ 2.0	27.6	71.7
30	187.0	185.9	300.0	1.1	2.0	✓ 2.0	27.0	74.8
Total								
Average	189.5	188.3	300.0	1.1	2.0	2.0	30.2	104.3
Maximum	191.9	190.8	300.0	1.2	2.0	2.0	35.6	229.2
Date	3-Jun	3-Jun	1-Jun	5-Jun	1-Jun	1-Jun	16-Jun	13-Jun
Minimum	187.0	185.9	300.0	1.0	2.0	2.0	22.9	42.3
Date	30-Jun	30-Jun	1-Jun	18-Jun	1-Jun	1-Jun	27-Jun	27-Jun

Notes:

Membranes Monthly Report

Month: **June-18**



Integrity Test Rack 4									
Date	Initial Pressure (kPa)	Final Pressure (kPa)	Test Duration (sec)	Change in Pressure (kPa)	UCL	Within UCL	Average TMP (kPa)	Max TMP (kPa)	
1	200.7	199.5	300.0	1.3	2.0	✓ 2.0	17.1	37.7	
2	201.1	199.8	300.0	1.3	2.0	✓ 2.0	17.3	41.5	
3	200.5	199.3	300.0	1.2	2.0	✓ 2.0	17.1	42.6	
4	200.5	199.3	300.0	1.3	2.0	✓ 2.0	16.7	38.5	
5	200.5	199.3	300.0	1.3	2.0	✓ 2.0	17.0	41.0	
6	201.1	199.9	300.0	1.2	2.0	✓ 2.0	17.8	46.1	
7	200.4	199.3	300.0	1.1	2.0	✓ 2.0	17.0	49.4	
8	201.4	200.2	300.0	1.2	2.0	✓ 2.0	18.1	43.3	
9	200.5	199.1	300.0	1.3	2.0	✓ 2.0	17.6	51.5	
10	201.0	199.6	300.0	1.4	2.0	✓ 2.0	16.9	48.8	
11	200.8	199.6	300.0	1.2	2.0	✓ 2.0	17.2	48.0	
12	201.0	199.8	300.0	1.2	2.0	✓ 2.0	16.9	47.2	
13	200.5	199.3	300.0	1.2	2.0	✓ 2.0	18.2	78.7	
14	200.7	199.5	300.0	1.3	2.0	✓ 2.0	21.7	131.6	
15	200.3	199.2	300.0	1.2	2.0	✓ 2.0	17.1	37.8	
16	200.7	199.2	300.0	1.5	2.0	✓ 2.0	16.0	39.3	
17	200.1	198.6	300.0	1.5	2.0	✓ 2.0	21.9	115.5	
18	200.8	199.3	300.0	1.5	2.0	✓ 2.0	35.7	147.7	
19	201.1	199.6	300.0	1.5	2.0	✓ 2.0	22.1	51.2	
20	200.5	199.3	300.0	1.3	2.0	✓ 2.0	16.2	44.0	
21	200.1	198.8	300.0	1.3	2.0	✓ 2.0	13.7	36.6	
22	200.3	198.9	300.0	1.4	2.0	✓ 2.0	15.7	39.8	
23	200.7	199.5	300.0	1.2	2.0	✓ 2.0	15.9	37.4	
24	200.5	198.7	300.0	1.8	2.0	✓ 2.0	20.0	124.1	
25	200.4	198.7	300.0	1.6	2.0	✓ 2.0	21.3	48.0	
26	200.5	199.3	300.0	1.2	2.0	✓ 2.0	15.8	41.7	
27	200.6	199.0	300.0	1.6	2.0	✓ 2.0	15.2	34.7	
28	200.8	199.2	300.0	1.6	2.0	✓ 2.0	16.0	42.6	
29	200.7	199.3	300.0	1.3	2.0	✓ 2.0	16.3	42.8	
30	200.5	199.1	300.0	1.3	2.0	✓ 2.0	13.3	42.1	
Total									
Average	200.6	199.3	300.0	1.3	2.0	2.0	18.0	55.7	
Maximum	201.4	200.2	300.0	1.8	2.0	2.0	35.7	147.7	
Date	8-Jun	8-Jun	1-Jun	24-Jun	1-Jun	1-Jun	18-Jun	18-Jun	
Minimum	200.1	198.6	300.0	1.1	2.0	2.0	13.3	34.7	
Date	17-Jun	17-Jun	1-Jun	7-Jun	1-Jun	1-Jun	30-Jun	27-Jun	

Notes:

Membranes Monthly Report

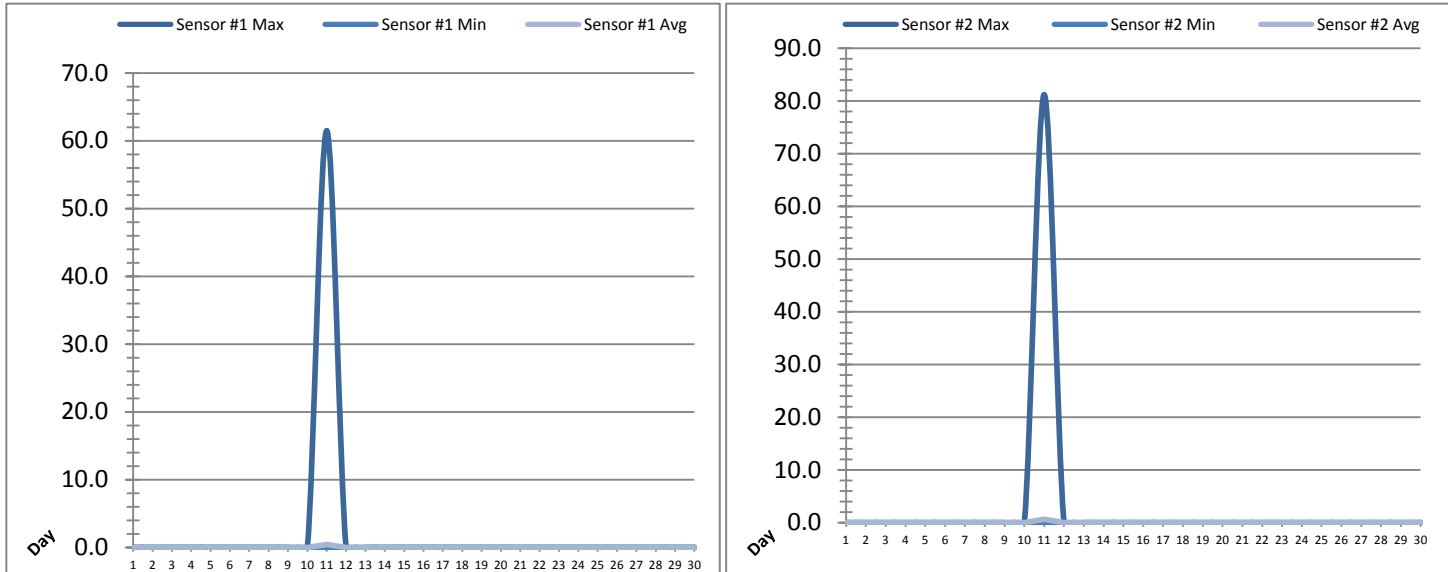
Month: June-18

Date	Membranes Monthly Performance							
	Rack 1 >0.1 NTU (Minutes)	Rack 1 Forward Flow (Minutes)	Rack 2 >0.1 NTU (Minutes)	Rack 2 Forward Flow (Minutes)	Rack 3 >0.1 NTU (Minutes)	Rack 3 Forward Flow (Minutes)	Rack 4 >0.1 NTU (Minutes)	Rack 4 Forward Flow (Minutes)
1	0.0	1103.1	0.5	1116.5	0.0	1084.1	0.0	458.4
2	0.0	942.1	2.3	960.5	0.0	936.3	0.0	397.3
3	0.0	1209.0	2.2	1227.5	0.0	1203.2	0.0	473.2
4	0.0	842.1	1.4	844.3	0.0	838.4	0.0	358.5
5	0.0	815.0	0.0	811.0	0.0	804.3	0.0	314.0
6	0.0	1214.5	0.0	1224.2	0.0	1153.3	0.0	552.4
7	0.0	923.4	0.5	947.5	0.0	943.6	0.0	586.5
8	0.0	1186.6	0.0	1204.0	0.0	1184.3	0.0	459.2
9	0.0	952.5	2.3	971.4	0.0	953.4	0.0	406.5
10	0.0	1050.5	2.3	1069.3	0.0	1050.4	0.0	363.6
11	0.0	1147.0	0.0	1165.4	2.3	1082.3	0.0	444.5
12	0.0	1145.2	0.0	1154.1	0.0	1132.2	0.0	426.4
13	0.0	962.5	0.5	681.6	0.0	962.0	0.0	479.6
14	0.0	913.3	0.0	1247.2	0.0	1236.4	0.0	657.6
15	0.0	1055.4	1.4	1074.3	0.0	1058.5	0.0	413.6
16	0.0	539.1	2.3	949.5	0.0	951.3	3.2	272.1
17	0.0	1067.6	0.0	921.0	0.0	1108.0	0.0	1091.3
18	0.0	1219.3	0.0	454.2	0.0	1354.2	0.0	1314.5
19	0.0	1156.3	0.0	748.4	0.0	1155.1	0.0	703.2
20	0.0	851.6	1.4	864.1	0.0	848.5	0.0	288.1
21	0.0	971.0	0.0	982.2	0.0	972.3	0.0	305.2
22	0.0	821.4	0.0	828.1	0.0	822.3	0.0	341.1
23	0.0	1010.5	1.4	1029.4	0.0	1010.5	0.0	425.2
24	0.0	449.2	1.3	978.1	0.0	965.6	0.5	627.3
25	0.0	719.2	0.0	1077.3	8.1	842.3	0.0	764.0
26	0.5	987.2	0.0	981.4	0.0	1037.1	0.0	406.3
27	0.0	829.0	0.0	835.4	0.0	828.1	0.0	297.0
28	0.0	974.1	0.0	995.2	0.0	977.3	0.0	398.5
29	0.0	1083.3	0.5	1105.3	0.0	1084.6	0.0	458.4
30	0.0	914.4	0.5	935.5	0.0	913.5	0.0	403.0
Total	0.5	29055.2	20.6	29384.0	10.4	30493.4	3.6	14886.6
Percent	0.0		0.1		0.0		0.0	
Maximum	0.5	1219.3	2.3	1247.2	8.1	1354.2	3.2	1314.5
Date	26-Jun	18-Jun	16-Jun	14-Jun	25-Jun	18-Jun	16-Jun	18-Jun
Minimum	0.0	449.2	0.0	454.2	0.0	804.3	0.0	272.1
Date	1-Jun	24-Jun	5-Jun	18-Jun	1-Jun	5-Jun	1-Jun	16-Jun

Notes:
 Met filter performance criteria of 99% of the readings were less than 0.1ntu.

UV System Monthly Report

Month: **June-18**

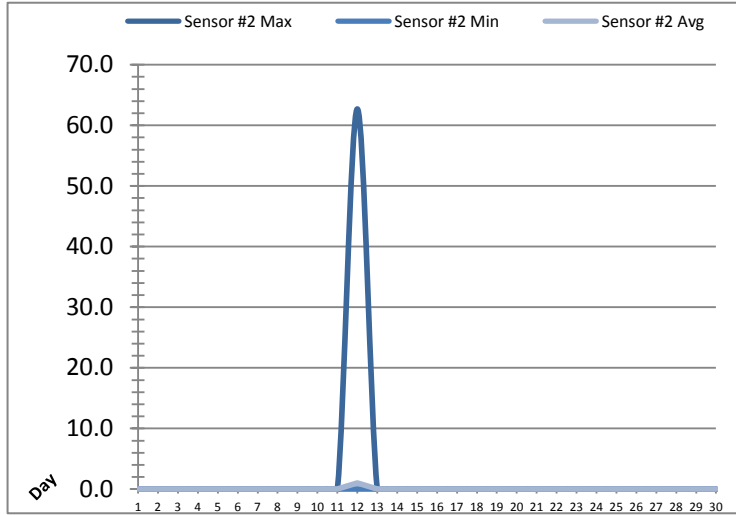
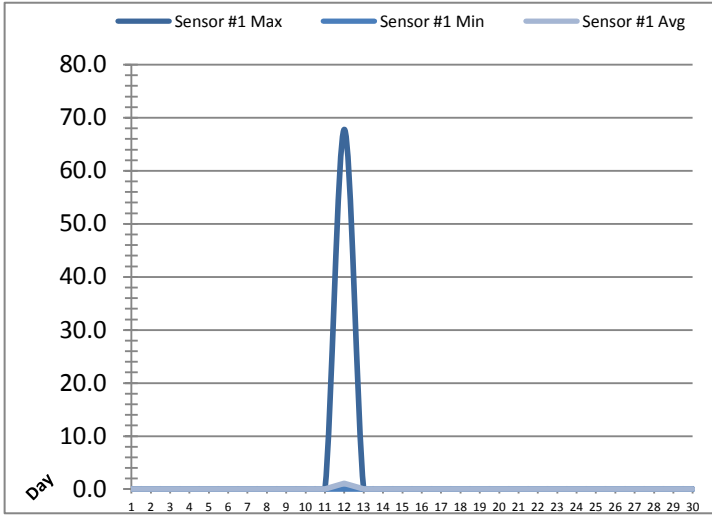


Date	UV Reactor 1					
	Intensity Sensor 1 (mW/cm ²)			Intensity Sensor 2 (mW/cm ²)		
	Maximum	Minimum	Average	Maximum	Minimum	Average
1	0.0	0.0	0.0	0.0	0.0	0.0
2	0.0	0.0	0.0	0.0	0.0	0.0
3	0.0	0.0	0.0	0.0	0.0	0.0
4	0.0	0.0	0.0	0.0	0.0	0.0
5	0.0	0.0	0.0	0.0	0.0	0.0
6	0.0	0.0	0.0	0.0	0.0	0.0
7	0.0	0.0	0.0	0.0	0.0	0.0
8	0.0	0.0	0.0	0.0	0.0	0.0
9	0.0	0.0	0.0	0.0	0.0	0.0
10	0.0	0.0	0.0	0.0	0.0	0.0
11	61.5	0.0	0.5	81.2	0.0	0.6
12	0.0	0.0	0.0	0.0	0.0	0.0
13	0.0	0.0	0.0	0.0	0.0	0.0
14	0.0	0.0	0.0	0.0	0.0	0.0
15	0.0	0.0	0.0	0.0	0.0	0.0
16	0.0	0.0	0.0	0.0	0.0	0.0
17	0.0	0.0	0.0	0.0	0.0	0.0
18	0.0	0.0	0.0	0.0	0.0	0.0
19	0.0	0.0	0.0	0.0	0.0	0.0
20	0.0	0.0	0.0	0.0	0.0	0.0
21	0.0	0.0	0.0	0.0	0.0	0.0
22	0.0	0.0	0.0	0.0	0.0	0.0
23	0.0	0.0	0.0	0.0	0.0	0.0
24	0.0	0.0	0.0	0.0	0.0	0.0
25	0.0	0.0	0.0	0.0	0.0	0.0
26	0.0	0.0	0.0	0.0	0.0	0.0
27	0.0	0.0	0.0	0.0	0.0	0.0
28	0.0	0.0	0.0	0.0	0.0	0.0
29	0.0	0.0	0.0	0.0	0.0	0.0
30	0.0	0.0	0.0	0.0	0.0	0.0
Total						
Average	2.1	0.0	0.0	2.7	0.0	0.0
Maximum	61.5		0.5	81.2		0.6
Date	11-Jun		11-Jun	11-Jun		11-Jun
Minimum		0.0	0.0		0.0	0.0
Date		1-Jun	1-Jun		1-Jun	1-Jun

Notes:

UV System Monthly Report

Month: June-18

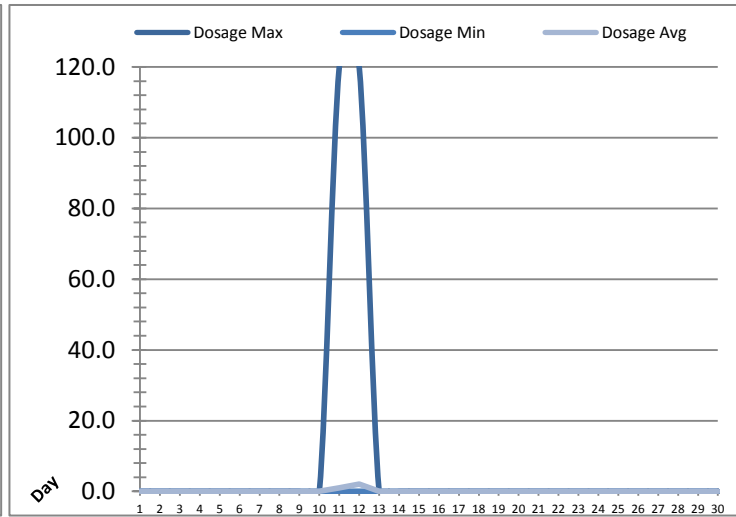
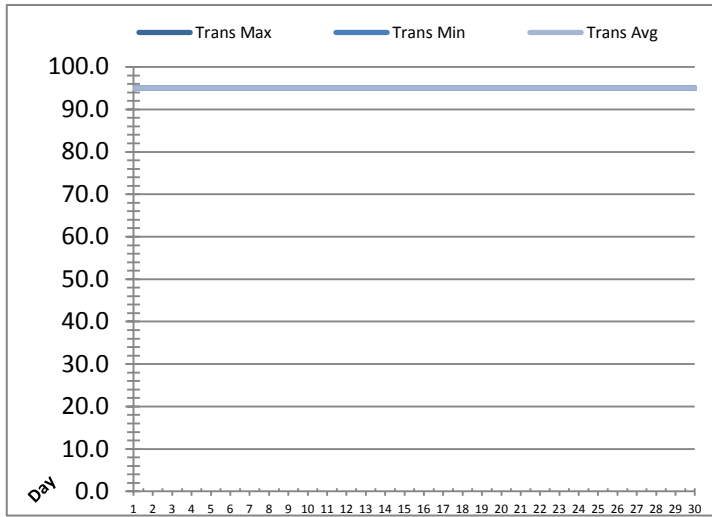


Date	UV Reactor 2					
	Intensity Sensor 1 (mW/cm²)			Intensity Sensor 2 (mW/cm²)		
	Maximum	Minimum	Average	Maximum	Minimum	Average
1	0.0	0.0	0.0	0.0	0.0	0.0
2	0.0	0.0	0.0	0.0	0.0	0.0
3	0.0	0.0	0.0	0.0	0.0	0.0
4	0.0	0.0	0.0	0.0	0.0	0.0
5	0.0	0.0	0.0	0.0	0.0	0.0
6	0.0	0.0	0.0	0.0	0.0	0.0
7	0.0	0.0	0.0	0.0	0.0	0.0
8	0.0	0.0	0.0	0.0	0.0	0.0
9	0.0	0.0	0.0	0.0	0.0	0.0
10	0.0	0.0	0.0	0.0	0.0	0.0
11	0.0	0.0	0.0	0.0	0.0	0.0
12	67.8	0.0	1.1	62.7	0.0	1.0
13	0.0	0.0	0.0	0.0	0.0	0.0
14	0.0	0.0	0.0	0.0	0.0	0.0
15	0.0	0.0	0.0	0.0	0.0	0.0
16	0.0	0.0	0.0	0.0	0.0	0.0
17	0.0	0.0	0.0	0.0	0.0	0.0
18	0.0	0.0	0.0	0.0	0.0	0.0
19	0.0	0.0	0.0	0.0	0.0	0.0
20	0.0	0.0	0.0	0.0	0.0	0.0
21	0.0	0.0	0.0	0.0	0.0	0.0
22	0.0	0.0	0.0	0.0	0.0	0.0
23	0.0	0.0	0.0	0.0	0.0	0.0
24	0.0	0.0	0.0	0.0	0.0	0.0
25	0.0	0.0	0.0	0.0	0.0	0.0
26	0.0	0.0	0.0	0.0	0.0	0.0
27	0.0	0.0	0.0	0.0	0.0	0.0
28	0.0	0.0	0.0	0.0	0.0	0.0
29	0.0	0.0	0.0	0.0	0.0	0.0
30	0.0	0.0	0.0	0.0	0.0	0.0
Total						
Average	2.3	0.0	0.0	2.1	0.0	0.0
Maximum	67.8		1.1	62.7		1.0
Date	12-Jun		12-Jun	12-Jun		12-Jun
Minimum		0.0	0.0		0.0	0.0
Date		1-Jun	1-Jun		1-Jun	1-Jun

Notes:

UV System Monthly Report

Month: June-18

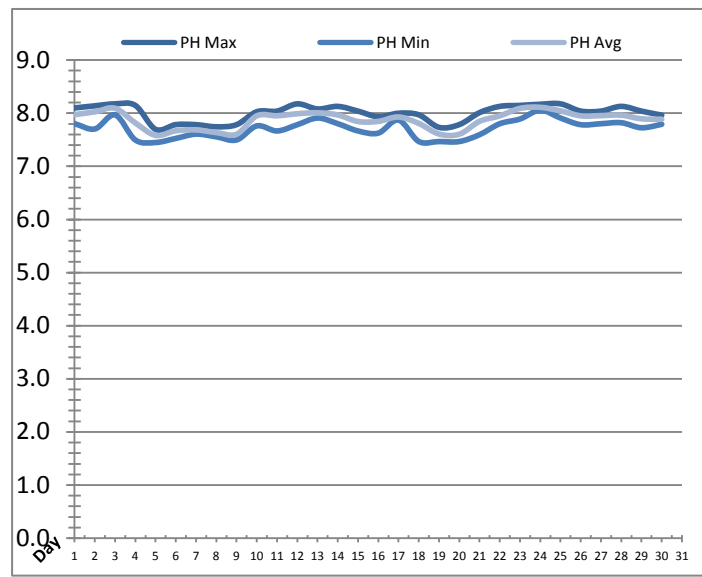
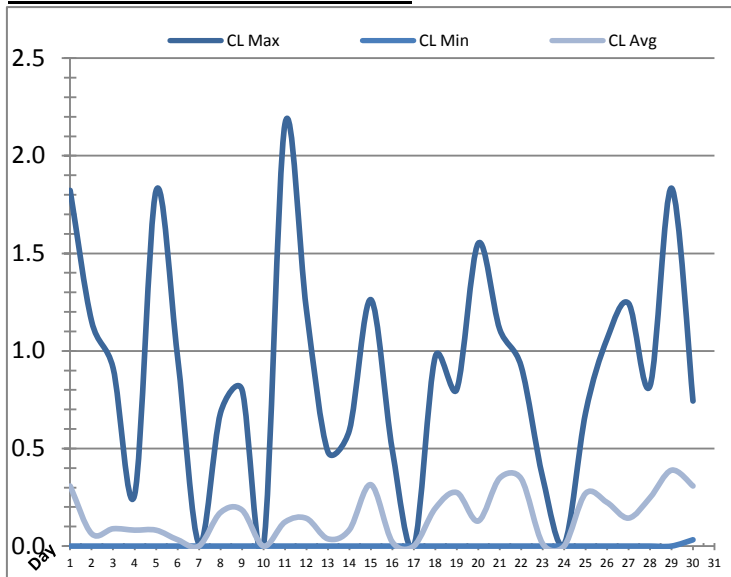


UV System							
Date	Transmittance (%)			Dosage (mJ/cm ²)			Inlet Flow (L/s)
	Maximum	Minimum	Average	Maximum	Minimum	Average	Maximum
1	95.00	95.00	95.00	0.0	0.0	0.0	172.5
2	95.00	95.00	95.00	0.0	0.0	0.0	167.9
3	95.00	95.00	95.00	0.0	0.0	0.0	158.6
4	95.00	95.00	95.00	0.0	0.0	0.0	173.8
5	95.00	95.00	95.00	0.0	0.0	0.0	167.1
6	95.00	95.00	95.00	0.0	0.0	0.0	171.9
7	95.00	95.00	95.00	0.0	0.0	0.0	172.1
8	95.00	95.00	95.00	0.0	0.0	0.0	175.8
9	95.00	95.00	95.00	0.0	0.0	0.0	104.7
10	95.00	95.00	95.00	0.0	0.0	0.0	104.6
11	95.00	95.00	95.00	120.0	0.0	1.0	167.3
12	95.00	95.00	95.00	120.0	0.0	2.0	170.2
13	95.00	95.00	95.00	0.0	0.0	0.0	631.7
14	95.00	95.00	95.00	0.0	0.0	0.0	171.7
15	95.00	95.00	95.00	0.0	0.0	0.0	168.9
16	95.00	95.00	95.00	0.0	0.0	0.0	564.7
17	95.00	95.00	95.00	0.0	0.0	0.0	85.3
18	95.00	95.00	95.00	0.0	0.0	0.0	560.5
19	95.00	95.00	95.00	0.0	0.0	0.0	167.4
20	95.00	95.00	95.00	0.0	0.0	0.0	104.2
21	95.00	95.00	95.00	0.0	0.0	0.0	168.8
22	95.00	95.00	95.00	0.0	0.0	0.0	103.1
23	95.00	95.00	95.00	0.0	0.0	0.0	171.4
24	95.00	95.00	95.00	0.0	0.0	0.0	621.8
25	95.00	95.00	95.00	0.0	0.0	0.0	102.6
26	95.00	95.00	95.00	0.0	0.0	0.0	112.6
27	95.00	95.00	95.00	0.0	0.0	0.0	103.1
28	95.00	95.00	95.00	0.0	0.0	0.0	167.9
29	95.00	95.00	95.00	0.0	0.0	0.0	172.5
30	95.00	95.00	95.00	0.0	0.0	0.0	170.9
Total							
Average	95.00	95.00	95.00	8.0	0.0	0.1	208.5
Maximum	95.00		95.00	120.0		2.0	631.7
Date	1-Jun		1-Jun	11-Jun		12-Jun	13-Jun
Minimum		95.00	95.00		0.0	0.0	
Date		1-Jun	1-Jun		1-Jun	1-Jun	

Notes:

Plant Quality Report

Month: June-18

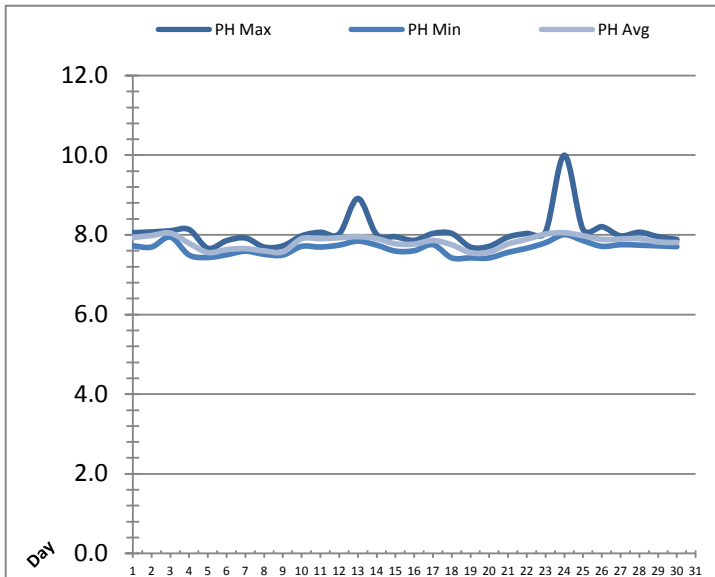
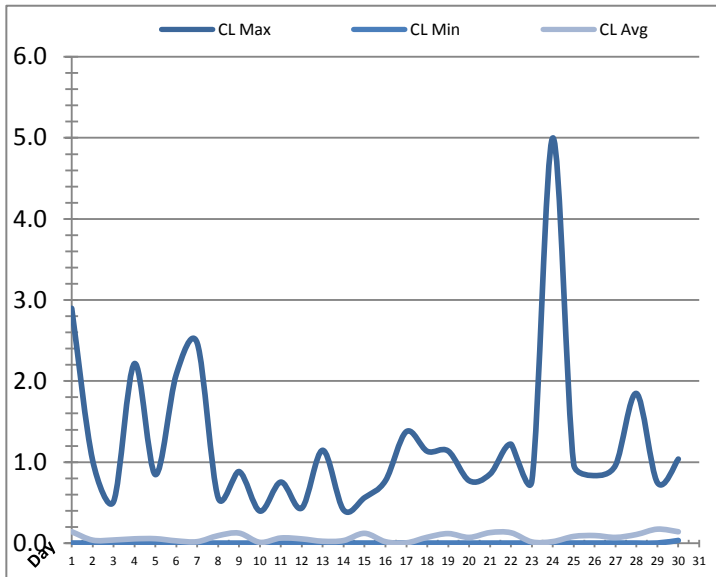


Date	Strainer Chlorine Residual			Strainer pH		
	AIT_2003_CL (ppm)			AIT_2003_PH		
	Maximum	Minimum	Average	Maximum	Minimum	Average
1	1.82	0.00	0.31	8.10	7.80	7.97
2	1.15	0.00	0.06	8.14	7.70	8.03
3	0.91	0.00	0.09	8.18	7.97	8.09
4	0.26	0.00	0.08	8.15	7.50	7.82
5	1.82	0.00	0.08	7.70	7.45	7.58
6	0.97	0.00	0.03	7.78	7.53	7.67
7	0.01	0.00	0.00	7.78	7.61	7.69
8	0.68	0.00	0.17	7.74	7.56	7.64
9	0.80	0.00	0.19	7.78	7.50	7.60
10	0.00	0.00	0.00	8.03	7.76	7.95
11	2.16	0.00	0.12	8.04	7.67	7.95
12	1.21	0.00	0.14	8.18	7.78	7.99
13	0.48	0.00	0.04	8.08	7.91	8.01
14	0.59	0.00	0.08	8.13	7.80	7.97
15	1.26	0.00	0.31	8.04	7.67	7.84
16	0.49	0.00	0.02	7.93	7.63	7.85
17	0.00	0.00	0.00	8.00	7.87	7.93
18	0.97	0.00	0.19	7.97	7.47	7.81
19	0.80	0.00	0.27	7.73	7.47	7.61
20	1.55	0.00	0.13	7.79	7.47	7.60
21	1.11	0.00	0.35	8.01	7.60	7.85
22	0.92	0.00	0.35	8.13	7.80	7.95
23	0.35	0.00	0.01	8.15	7.89	8.09
24	0.01	0.00	0.00	8.17	8.06	8.11
25	0.68	0.00	0.27	8.18	7.91	8.04
26	1.06	0.00	0.22	8.04	7.78	7.95
27	1.24	0.00	0.14	8.04	7.80	7.95
28	0.82	0.00	0.25	8.13	7.82	7.96
29	1.83	0.00	0.39	8.04	7.73	7.89
30	0.74	0.03	0.31	7.96	7.79	7.89
Total						
Average	0.89	0.00	0.15	8.00	7.71	7.88
Maximum	2.16		0.39	8.18		8.11
Date	11-Jun		29-Jun	25-Jun		24-Jun
Minimum		0.00	0.00		7.45	7.58
Date		1-Jun	10-Jun		5-Jun	5-Jun

Notes:

Plant Quality Report

Month: June-18

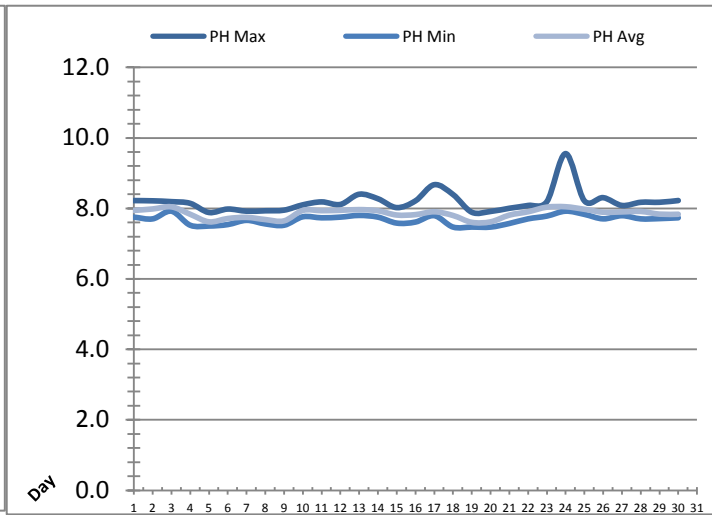
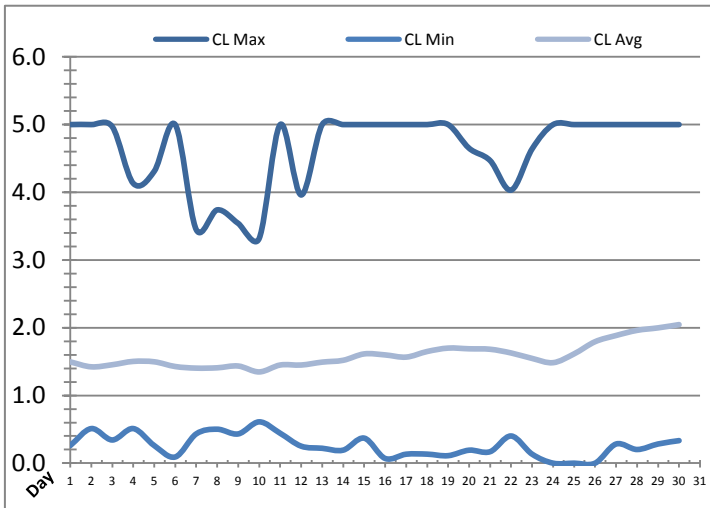


Date	Inlet UV Chlorine Residual			Inlet UV pH		
	AIT_5005_CL (ppm)			AIT_5005_PH		
	Maximum	Minimum	Average	Maximum	Minimum	Average
1	2.90	0.00	0.14	8.05	7.72	7.94
2	1.02	0.00	0.04	8.07	7.69	7.98
3	0.51	0.00	0.04	8.10	7.95	8.04
4	2.22	0.00	0.05	8.13	7.49	7.79
5	0.85	0.00	0.06	7.66	7.43	7.56
6	2.08	0.00	0.03	7.85	7.50	7.63
7	2.47	0.00	0.02	7.92	7.59	7.65
8	0.56	0.00	0.09	7.69	7.51	7.60
9	0.88	0.00	0.12	7.72	7.49	7.57
10	0.40	0.00	0.01	7.97	7.71	7.90
11	0.75	0.00	0.06	8.06	7.69	7.91
12	0.43	0.00	0.05	8.02	7.74	7.93
13	1.15	0.00	0.02	8.91	7.84	7.96
14	0.41	0.00	0.03	8.01	7.74	7.90
15	0.56	0.00	0.12	7.95	7.59	7.78
16	0.77	0.00	0.02	7.86	7.60	7.77
17	1.38	0.00	0.00	8.03	7.75	7.86
18	1.13	0.00	0.07	8.04	7.42	7.75
19	1.14	0.00	0.12	7.69	7.42	7.55
20	0.77	0.00	0.07	7.71	7.42	7.57
21	0.85	0.00	0.13	7.95	7.56	7.77
22	1.22	0.00	0.13	8.04	7.66	7.89
23	0.77	0.00	0.02	8.07	7.80	8.02
24	5.00	0.00	0.02	10.00	8.01	8.05
25	0.97	0.00	0.08	8.13	7.85	7.98
26	0.83	0.00	0.09	8.21	7.71	7.89
27	0.96	0.00	0.07	7.98	7.75	7.90
28	1.85	0.00	0.11	8.07	7.74	7.91
29	0.75	0.00	0.17	7.95	7.72	7.82
30	1.04	0.03	0.14	7.89	7.70	7.81
Total						
Average	1.22	0.00	0.07	8.06	7.66	7.82
Maximum	5.00		0.17	10.00		8.05
Date	24-Jun		29-Jun	24-Jun		24-Jun
Minimum		0.00	0.00		7.42	7.55
Date		6-Jun	17-Jun		20-Jun	19-Jun

Notes:

Plant Quality Report

Month: **June-18**

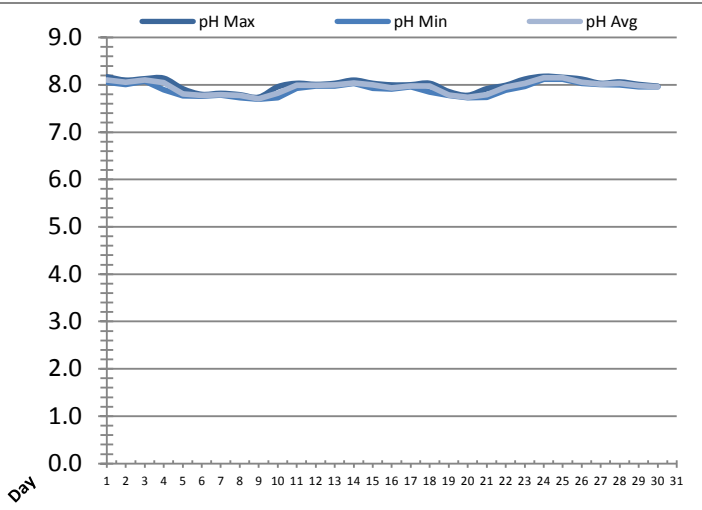
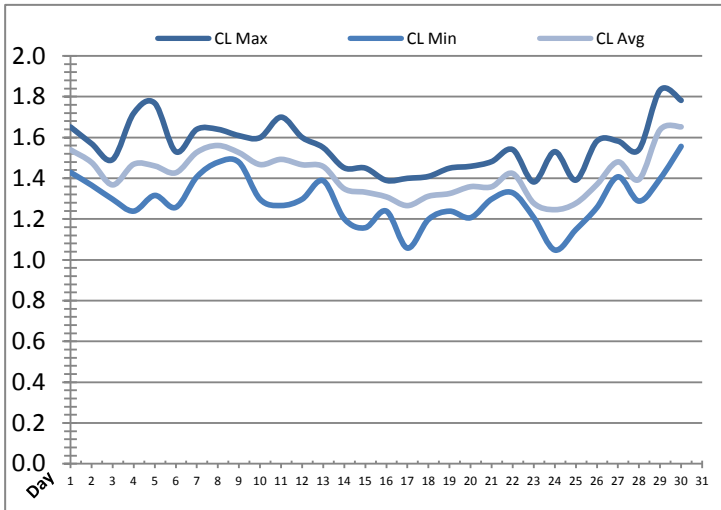


Date	Discharge UV Chlorine Residual			Discharge UV pH		
	AIT_5006_CL (ppm)			AIT_5006_PH		
	Maximum	Minimum	Average	Maximum	Minimum	Average
1	5.00	0.26	1.50	8.22	7.75	7.94
2	5.00	0.51	1.42	8.21	7.70	7.98
3	4.97	0.34	1.45	8.19	7.92	8.04
4	4.13	0.51	1.50	8.14	7.52	7.83
5	4.31	0.26	1.50	7.88	7.50	7.62
6	5.00	0.09	1.43	7.98	7.54	7.71
7	3.45	0.43	1.40	7.92	7.66	7.75
8	3.74	0.50	1.41	7.93	7.56	7.68
9	3.54	0.43	1.43	7.95	7.52	7.65
10	3.32	0.61	1.35	8.10	7.76	7.94
11	5.00	0.44	1.45	8.18	7.73	7.94
12	3.96	0.25	1.45	8.11	7.75	7.95
13	5.00	0.22	1.49	8.40	7.80	7.97
14	5.00	0.19	1.52	8.27	7.75	7.93
15	5.00	0.37	1.61	8.02	7.58	7.81
16	5.00	0.07	1.60	8.21	7.61	7.82
17	5.00	0.13	1.57	8.67	7.79	7.90
18	5.00	0.13	1.65	8.39	7.47	7.80
19	5.00	0.11	1.70	7.89	7.47	7.60
20	4.65	0.19	1.69	7.91	7.47	7.62
21	4.47	0.17	1.68	8.00	7.57	7.81
22	4.03	0.40	1.63	8.08	7.70	7.90
23	4.64	0.13	1.55	8.19	7.78	8.04
24	5.00	0.00	1.48	9.55	7.92	8.05
25	5.00	0.00	1.61	8.21	7.83	7.98
26	5.00	0.00	1.79	8.30	7.70	7.89
27	5.00	0.28	1.89	8.08	7.79	7.90
28	5.00	0.20	1.96	8.17	7.70	7.91
29	5.00	0.28	2.00	8.17	7.71	7.84
30	5.00	0.33	2.05	8.22	7.73	7.83
Total						
Average	4.64	0.26	1.59	8.19	7.68	7.85
Maximum	5.00		2.05	9.55		8.05
Date	1-Jun		30-Jun	24-Jun		24-Jun
Minimum		0.00	1.35		7.47	7.60
Date		24-Jun	10-Jun		20-Jun	19-Jun

Notes:

Plant Quality Report

Month: **June-18**

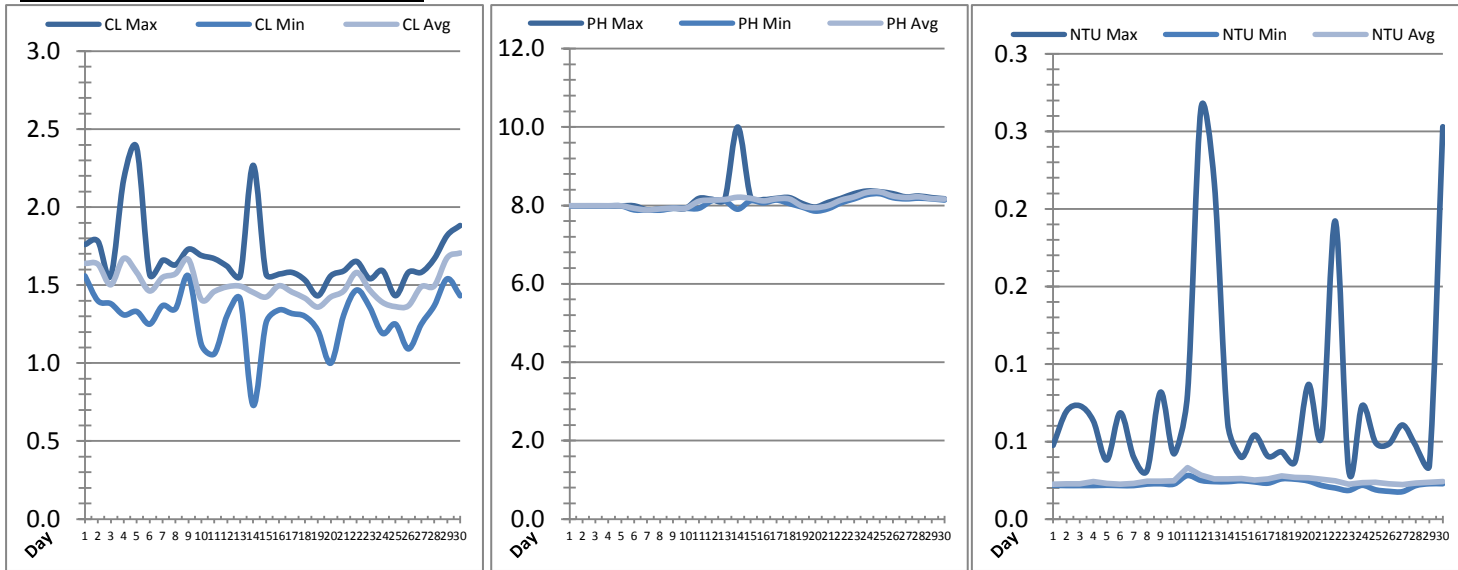


Date	Suction Header Chlorine Res.			Suction Header pH			Distribution CT Calc Total		
	AIT_7001_CL (ppm)			AIT_7001_PH (m)			REAL_CT_CALC_TOTAL (mg*ml/min)		
	Maximum	Minimum	Average	Maximum	Minimum	Average	Maximum	Minimum	Average
1	1.65	1.43	1.54	8.17	8.06	8.10	10151.17	0.00	379.04
2	1.57	1.37	1.48	8.10	8.01	8.05	3523.42	0.00	291.97
3	1.49	1.30	1.37	8.13	8.08	8.10	8624.49	0.00	325.61
4	1.72	1.24	1.47	8.14	7.90	8.05	10766.59	0.00	282.33
5	1.77	1.32	1.46	7.92	7.77	7.81	10876.34	0.00	249.46
6	1.53	1.26	1.43	7.80	7.76	7.78	10076.74	0.00	345.13
7	1.64	1.41	1.53	7.82	7.79	7.79	9372.41	0.00	307.51
8	1.64	1.48	1.56	7.79	7.73	7.78	10190.75	0.00	290.61
9	1.61	1.48	1.53	7.74	7.70	7.70	9803.46	0.00	342.21
10	1.60	1.30	1.47	7.96	7.73	7.82	9600.46	0.00	369.61
11	1.70	1.27	1.49	8.03	7.93	7.99	8553.42	0.00	337.61
12	1.60	1.30	1.47	8.01	7.98	7.99	9544.77	0.00	335.87
13	1.55	1.39	1.46	8.03	7.98	8.00	10314.34	0.00	316.11
14	1.45	1.20	1.35	8.10	8.03	8.04	3251.75	0.00	320.50
15	1.45	1.16	1.33	8.03	7.93	8.00	9531.77	0.00	282.99
16	1.39	1.24	1.31	8.00	7.92	7.93	2213.79	0.00	243.12
17	1.40	1.06	1.27	8.00	7.96	7.97	7557.50	0.00	284.34
18	1.41	1.20	1.31	8.03	7.85	7.97	8524.46	0.00	308.80
19	1.45	1.24	1.33	7.86	7.78	7.79	9224.00	0.00	303.17
20	1.46	1.21	1.36	7.78	7.73	7.74	9008.85	0.00	249.38
21	1.48	1.30	1.36	7.92	7.74	7.79	3045.88	0.00	276.36
22	1.54	1.33	1.42	7.99	7.89	7.95	9686.72	0.00	283.87
23	1.38	1.21	1.28	8.12	7.97	8.03	8997.61	0.00	318.43
24	1.53	1.05	1.25	8.18	8.12	8.15	8354.91	0.00	239.41
25	1.39	1.15	1.28	8.16	8.12	8.15	7874.86	0.00	231.31
26	1.58	1.26	1.37	8.12	8.03	8.06	8569.76	0.00	303.04
27	1.58	1.41	1.48	8.03	8.01	8.01	9839.54	0.00	301.62
28	1.54	1.29	1.39	8.06	8.00	8.03	9226.85	0.00	267.12
29	1.83	1.40	1.64	8.01	7.96	7.98	8952.21	0.00	366.88
30	1.78	1.56	1.65	7.97	7.96	7.96	11987.69	0.00	298.64
Total									
Average	1.56	1.29	1.42	8.00	7.91	7.95			
Maximum	1.83		1.65	8.18		8.15			
Date	29-Jun		30-Jun	24-Jun		25-Jun			
Minimum		1.05	1.25		7.70	7.70			
Date		24-Jun	24-Jun		9-Jun	9-Jun			

Notes:

Plant Quality Report

Month: June-18

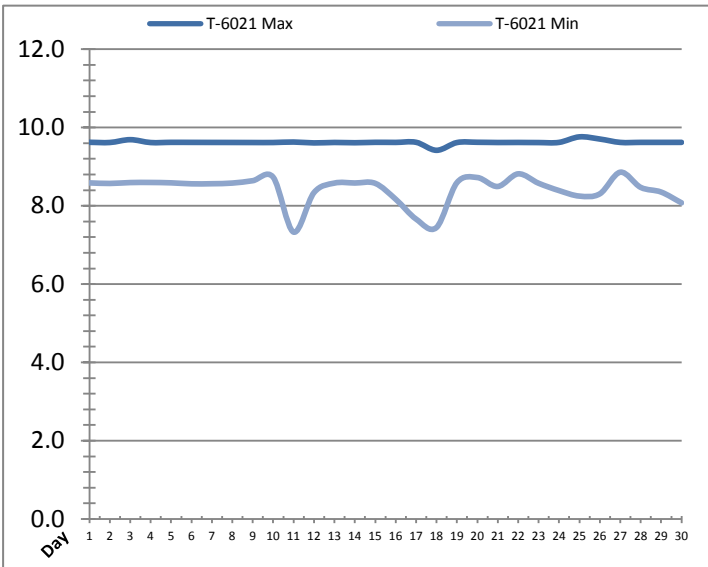
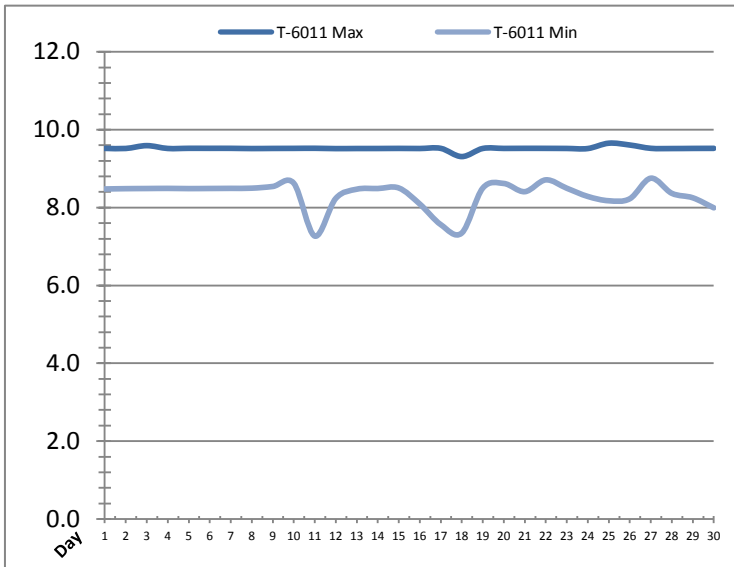


Date	Distribution Chlorine Header			Distribution pH			Distribution Turbidity		
	AIT_7004_CL (ppm)			AIT_7004_PH (mg/L)			AIT_7003 (mg/L)		
	Maximum	Minimum	Average	Maximum	Minimum	Average	Maximum	Minimum	Average
1	1.76	1.56	1.64	7.99	7.99	7.99	0.05	0.02	0.02
2	1.78	1.40	1.63	7.99	7.99	7.99	0.07	0.02	0.02
3	1.56	1.38	1.50	7.99	7.99	7.99	0.07	0.02	0.02
4	2.18	1.31	1.67	7.99	7.99	7.99	0.06	0.02	0.02
5	2.38	1.33	1.58	7.99	7.99	7.99	0.04	0.02	0.02
6	1.57	1.25	1.46	7.99	7.88	7.93	0.07	0.02	0.02
7	1.66	1.37	1.55	7.89	7.88	7.88	0.04	0.02	0.02
8	1.63	1.35	1.57	7.91	7.88	7.91	0.03	0.02	0.02
9	1.73	1.56	1.66	7.93	7.93	7.93	0.08	0.02	0.02
10	1.69	1.12	1.41	7.93	7.93	7.93	0.04	0.02	0.02
11	1.67	1.06	1.46	8.18	7.93	8.11	0.08	0.03	0.03
12	1.62	1.31	1.49	8.16	8.12	8.13	0.26	0.02	0.03
13	1.56	1.41	1.49	8.16	8.12	8.15	0.22	0.02	0.03
14	2.27	0.73	1.45	10.00	7.90	8.21	0.06	0.02	0.03
15	1.57	1.26	1.42	8.22	8.12	8.18	0.04	0.02	0.03
16	1.57	1.34	1.50	8.15	8.07	8.12	0.05	0.02	0.03
17	1.58	1.32	1.46	8.18	8.14	8.17	0.04	0.02	0.03
18	1.53	1.30	1.42	8.20	8.05	8.16	0.04	0.03	0.03
19	1.43	1.21	1.36	8.05	7.96	7.98	0.04	0.03	0.03
20	1.56	1.00	1.42	7.96	7.86	7.94	0.09	0.02	0.03
21	1.59	1.31	1.46	8.08	7.92	7.99	0.05	0.02	0.03
22	1.65	1.47	1.58	8.18	8.07	8.13	0.19	0.02	0.02
23	1.54	1.36	1.47	8.30	8.17	8.22	0.03	0.02	0.02
24	1.59	1.19	1.39	8.37	8.28	8.33	0.07	0.02	0.02
25	1.43	1.25	1.36	8.35	8.30	8.34	0.05	0.02	0.02
26	1.58	1.09	1.37	8.30	8.20	8.24	0.05	0.02	0.02
27	1.58	1.25	1.49	8.22	8.17	8.20	0.06	0.02	0.02
28	1.67	1.37	1.50	8.24	8.19	8.22	0.05	0.02	0.02
29	1.82	1.54	1.68	8.20	8.17	8.18	0.03	0.02	0.02
30	1.88	1.43	1.71	8.17	8.14	8.16	0.25	0.02	0.02
Total									
Average	1.69	1.29	1.51	8.17	8.04	8.09	0.1	0.0	0.0
Maximum	2.38		1.71	10.00		8.34	0.3		0.0
Date	5-Jun		30-Jun	14-Jun		25-Jun	12-Jun		11-Jun
Minimum		0.73	1.36		7.86	7.88		0.0	0.0
Date		14-Jun	19-Jun		20-Jun	7-Jun		27-Jun	27-Jun

Notes:

Raw Well/Treated Storage Report

Month: June-18

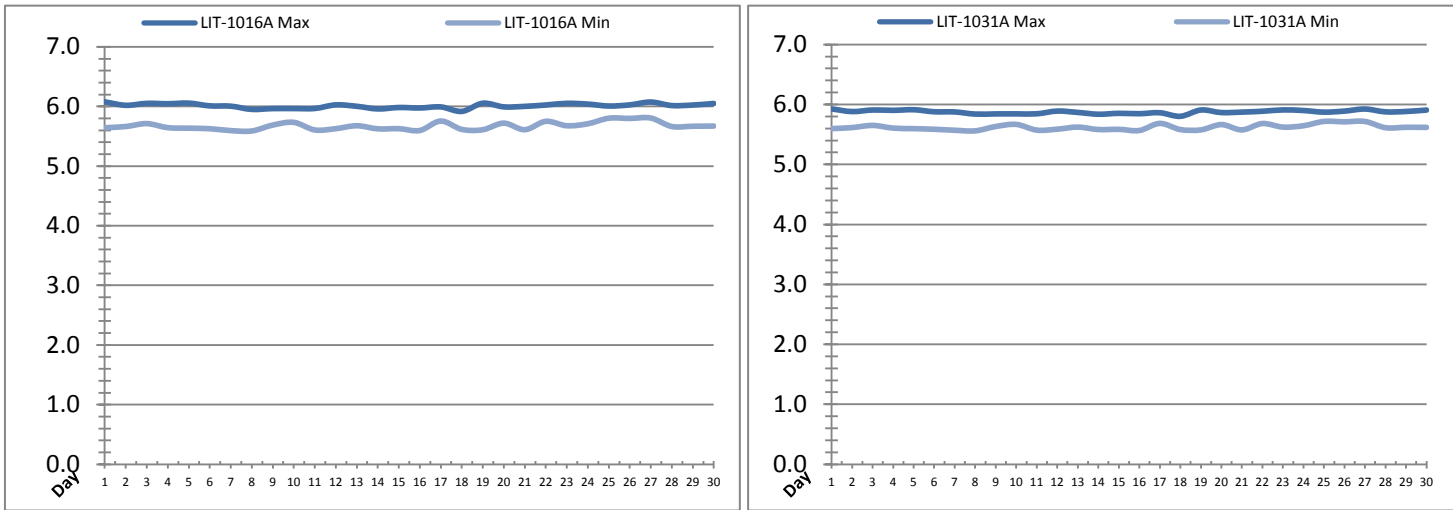


Date	Treated Water Storage Tank					
	T-6011 (m)			T-6021 (m)		
	Maximum	Minimum	Average	Maximum	Minimum	Average
1	9.5	8.5	9.0	9.6	8.6	9.1
2	9.5	8.5	9.0	9.6	8.6	9.1
3	9.6	8.5	9.0	9.7	8.6	9.1
4	9.5	8.5	9.1	9.6	8.6	9.2
5	9.5	8.5	9.1	9.6	8.6	9.2
6	9.5	8.5	9.0	9.6	8.6	9.1
7	9.5	8.5	9.1	9.6	8.6	9.2
8	9.5	8.5	8.9	9.6	8.6	9.0
9	9.5	8.5	9.1	9.6	8.6	9.2
10	9.5	8.6	9.1	9.6	8.7	9.2
11	9.5	7.3	8.7	9.6	7.3	8.8
12	9.5	8.2	8.9	9.6	8.3	9.0
13	9.5	8.5	9.0	9.6	8.6	9.1
14	9.5	8.5	8.9	9.6	8.6	9.0
15	9.5	8.5	9.1	9.6	8.6	9.1
16	9.5	8.1	9.0	9.6	8.2	9.1
17	9.5	7.6	8.7	9.6	7.7	8.8
18	9.3	7.3	8.4	9.4	7.4	8.5
19	9.5	8.5	9.0	9.6	8.6	9.1
20	9.5	8.6	9.1	9.6	8.7	9.2
21	9.5	8.4	9.0	9.6	8.5	9.1
22	9.5	8.7	9.2	9.6	8.8	9.3
23	9.5	8.5	9.0	9.6	8.6	9.1
24	9.5	8.3	9.0	9.6	8.4	9.1
25	9.7	8.2	9.0	9.8	8.2	9.1
26	9.6	8.2	8.9	9.7	8.3	9.0
27	9.5	8.8	9.2	9.6	8.9	9.3
28	9.5	8.4	9.0	9.6	8.5	9.1
29	9.5	8.3	8.9	9.6	8.4	9.0
30	9.5	8.0	8.9	9.6	8.1	9.0
Total						
Average	9.5	8.3	9.0	9.6	8.4	9.1
Maximum	9.7		9.2	9.8		9.3
Date	25-Jun		22-Jun	25-Jun		22-Jun
Minimum		7.3	8.4		7.3	8.5
Date		11-Jun	18-Jun		11-Jun	18-Jun

Notes:

Raw Well/Treated Storage Report

Month: June-18

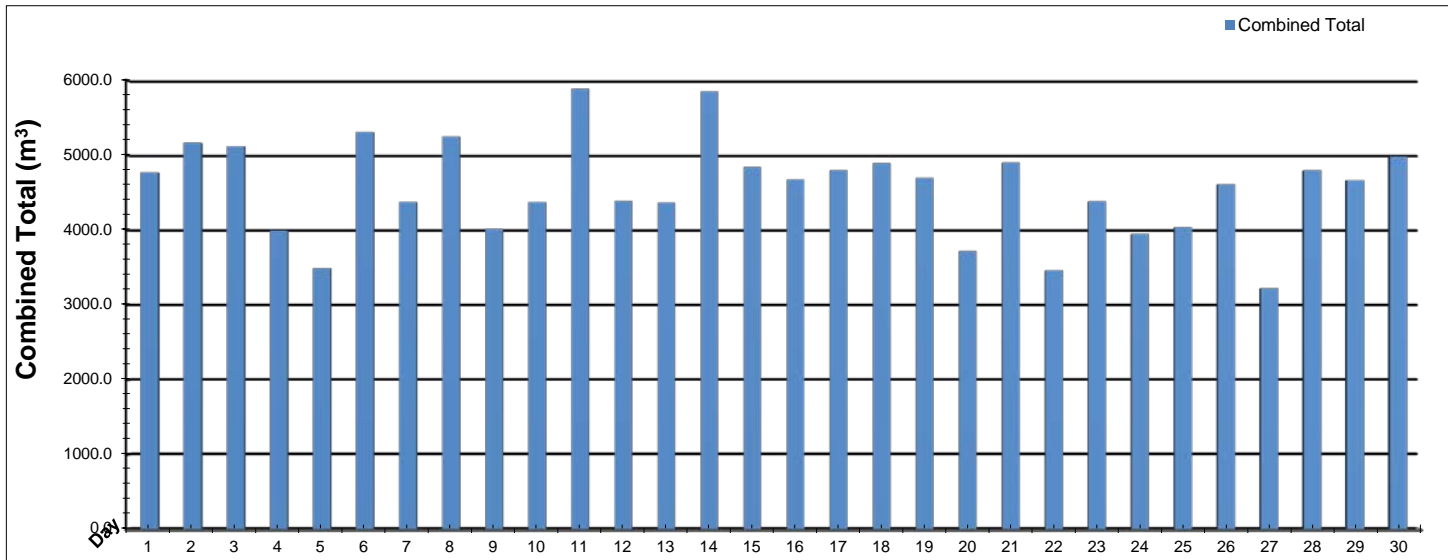


Date	Low Lift Intake Levels					
	Wet Well #1 (LIT-1016A) (m)			Wet Well #2 (LIT-1031A) (m)		
	Maximum	Minimum	Average	Maximum	Minimum	Average
1	6.1	5.6	5.9	5.9	5.6	5.8
2	6.0	5.7	5.9	5.9	5.6	5.8
3	6.1	5.7	5.9	5.9	5.7	5.8
4	6.0	5.6	5.9	5.9	5.6	5.8
5	6.1	5.6	5.8	5.9	5.6	5.8
6	6.0	5.6	5.8	5.9	5.6	5.7
7	6.0	5.6	5.8	5.9	5.6	5.7
8	6.0	5.6	5.8	5.8	5.6	5.7
9	6.0	5.7	5.8	5.8	5.6	5.7
10	6.0	5.7	5.8	5.8	5.7	5.7
11	6.0	5.6	5.8	5.8	5.6	5.7
12	6.0	5.6	5.8	5.9	5.6	5.7
13	6.0	5.7	5.9	5.9	5.6	5.8
14	6.0	5.6	5.8	5.8	5.6	5.7
15	6.0	5.6	5.8	5.9	5.6	5.7
16	6.0	5.6	5.8	5.8	5.6	5.7
17	6.0	5.8	5.8	5.9	5.7	5.7
18	5.9	5.6	5.8	5.8	5.6	5.7
19	6.1	5.6	5.8	5.9	5.6	5.7
20	6.0	5.7	5.8	5.9	5.7	5.8
21	6.0	5.6	5.8	5.9	5.6	5.7
22	6.0	5.8	5.9	5.9	5.7	5.8
23	6.1	5.7	5.9	5.9	5.6	5.8
24	6.0	5.7	5.9	5.9	5.6	5.8
25	6.0	5.8	5.9	5.9	5.7	5.8
26	6.0	5.8	5.9	5.9	5.7	5.8
27	6.1	5.8	5.9	5.9	5.7	5.8
28	6.0	5.7	5.9	5.9	5.6	5.8
29	6.0	5.7	5.9	5.9	5.6	5.8
30	6.1	5.7	5.9	5.9	5.6	5.8
Total						
Average	6.0	5.7	5.8	5.9	5.6	5.8
Maximum	6.1		5.9	5.9		5.8
Date	1-Jun		27-Jun	1-Jun		27-Jun
Minimum		5.6	5.8		5.6	5.7
Date		8-Jun	14-Jun		8-Jun	14-Jun

Notes:

High Lift Monthly Report

Month: June-18

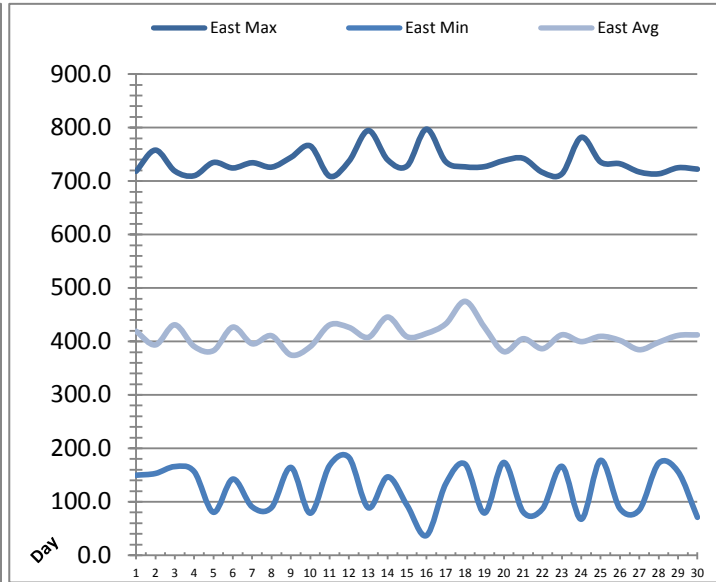
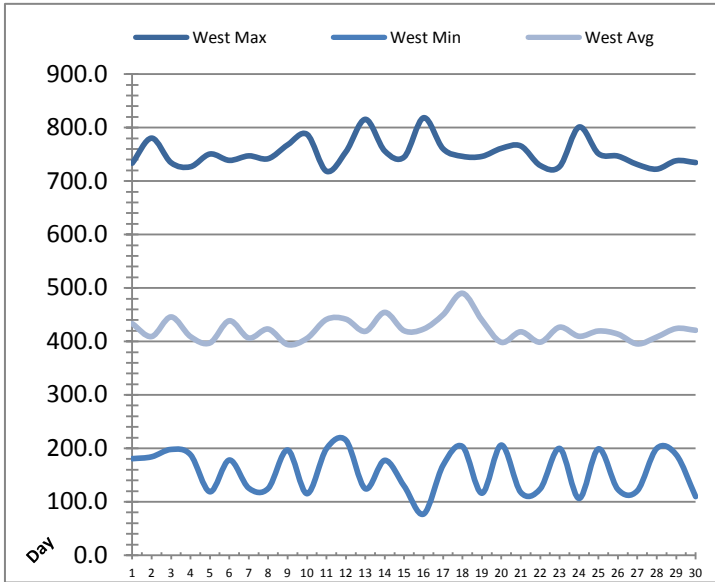


Date	Distribution Flow					
	FIT_7052 (East)		FIT_7062 (West)		Combined	
	(m³)	(L/s)	(m³)	(L/s)	(m³)	(L/s)
	Total	Peak	Total	Peak	Total	Peak
1	1962.4	59.3	2809.4	95.4	4771.8	106.4
2	1672.6	59.3	3495.9	96.4	5168.5	103.6
3	1725.5	59.7	3397.2	95.4	5122.7	101.9
4	1648.6	58.7	2349.9	91.1	3998.5	102.4
5	1356.4	58.8	2136.3	91.8	3492.7	105.2
6	1694.1	58.6	3617.5	96.0	5311.5	103.4
7	1483.0	58.9	2894.7	97.6	4377.7	102.7
8	1514.2	58.9	3737.9	96.4	5252.1	103.6
9	1518.8	59.7	2500.0	95.9	4018.8	103.5
10	1827.6	59.4	2549.4	94.4	4377.0	100.0
11	1862.5	59.6	4028.8	117.3	5891.3	158.2
12	1704.1	60.4	2684.9	106.0	4389.1	153.6
13	1681.3	57.9	2687.7	98.7	4369.0	107.1
14	1865.7	59.0	3986.7	95.7	5852.4	109.2
15	1821.9	58.9	3022.9	91.2	4844.9	106.4
16	1598.5	59.0	3079.2	95.9	4677.6	104.8
17	2005.3	58.9	2795.2	96.6	4800.5	104.6
18	1751.4	58.3	3146.9	95.2	4898.2	104.1
19	1668.5	58.3	3034.0	100.2	4702.5	104.9
20	1187.1	57.9	2536.7	96.0	3723.7	106.6
21	1837.1	59.2	3065.6	92.5	4902.7	110.1
22	1339.0	58.0	2123.3	98.8	3462.4	102.2
23	1968.1	58.6	2419.7	95.0	4387.8	101.9
24	1316.4	57.6	2634.1	95.4	3950.5	102.6
25	1388.2	59.7	2649.9	94.8	4038.1	104.7
26	1893.1	59.1	2719.8	94.7	4612.9	106.2
27	1278.7	59.1	1944.5	94.6	3223.2	99.5
28	1550.2	59.1	3250.3	109.3	4800.5	109.3
29	1959.8	59.2	2708.4	92.1	4668.2	103.0
30	1563.5	60.0	3422.5	93.2	4986.0	111.4
Total	49643.7		87429.2		137072.9	
Average	1654.8	59.0	2914.3	96.8	4569.1	108.1
Maximum	2005.3	60.4	4028.8	117.3	5891.3	158.2
Date	17-Jun	12-Jun	11-Jun	11-Jun	11-Jun	11-Jun
Minimum	1187.1		1944.5		3223.2	
Date	20-Jun		27-Jun		27-Jun	

Notes:

Low Lift Monthly Report

Month: June-18

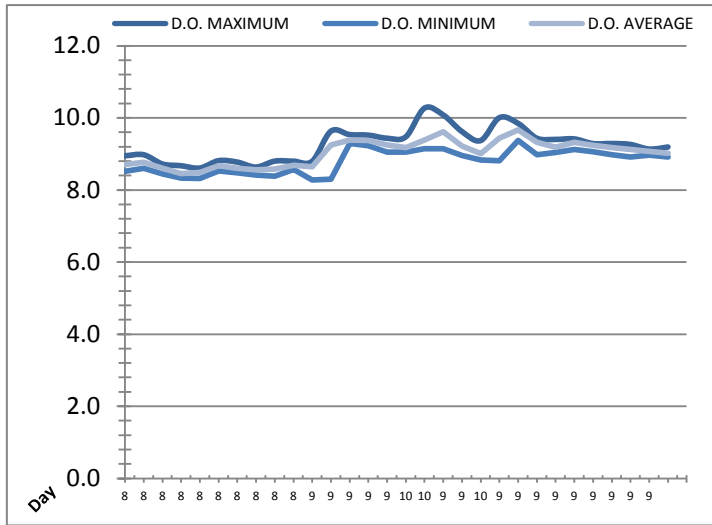
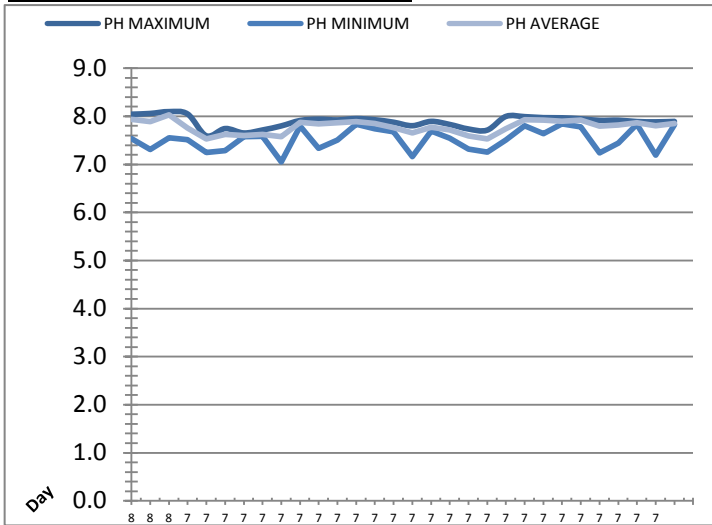


Date	West Train Header Pressure PIT_1018 (kPa)			East Train Header Pressure PIT_1028 (kPa)		
	Maximum	Minimum	Average	Maximum	Minimum	Average
1	733.4	180.7	433.3	718.3	149.8	419.1
2	780.3	184.2	409.2	757.9	153.0	393.6
3	734.4	198.0	445.8	718.8	165.9	431.0
4	726.8	188.1	409.1	710.0	156.6	390.7
5	750.6	118.8	397.2	734.8	80.4	382.9
6	738.7	178.2	438.6	724.5	142.5	426.8
7	747.1	125.5	406.4	734.3	90.5	395.7
8	741.9	125.0	423.1	726.1	89.4	410.6
9	767.8	196.9	394.1	744.3	164.3	374.6
10	787.4	115.2	405.9	765.7	78.7	390.2
11	718.3	199.4	441.2	709.0	168.2	430.9
12	754.8	215.2	441.6	737.2	183.0	426.3
13	815.5	124.4	418.9	794.5	88.8	407.6
14	756.1	177.6	454.4	739.5	146.7	445.6
15	745.1	129.3	420.0	728.2	93.4	408.8
16	818.4	77.1	423.2	797.1	36.9	415.0
17	760.4	168.4	449.9	736.0	133.8	432.9
18	746.2	203.4	490.1	726.6	170.5	475.0
19	746.1	116.1	439.9	727.0	79.0	426.6
20	761.2	206.2	398.4	738.3	173.6	380.9
21	765.7	117.6	418.0	742.5	80.9	405.1
22	729.1	124.1	398.7	716.2	87.0	386.5
23	727.2	199.8	426.7	713.4	166.4	412.4
24	801.1	106.3	409.7	781.8	67.4	399.7
25	751.2	199.1	419.5	735.6	177.6	409.5
26	746.7	123.1	413.7	732.4	87.0	401.8
27	731.0	120.7	395.4	717.0	84.7	384.5
28	722.3	199.9	408.3	713.6	172.3	398.5
29	738.0	188.1	424.2	725.0	156.3	411.2
30	734.6	109.7	420.8	722.3	71.0	412.2
Total						
Average	752.6	157.2	422.5	735.6	123.2	409.5
Maximum	818.4		490.1	797.1		475.0
Date	16-Jun		18-Jun	16-Jun		18-Jun
Minimum		77.1	394.1		36.9	374.6
Date		16-Jun	9-Jun		16-Jun	9-Jun

Notes:

Low Lift Monthly Report

Month: June-18

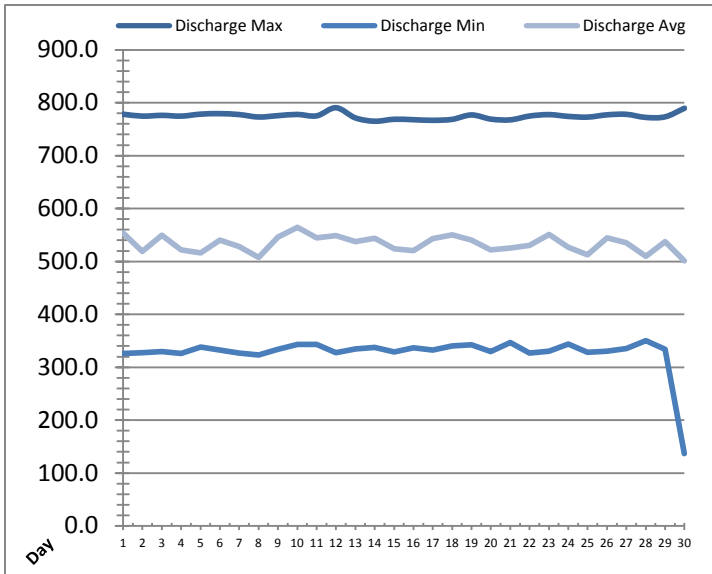
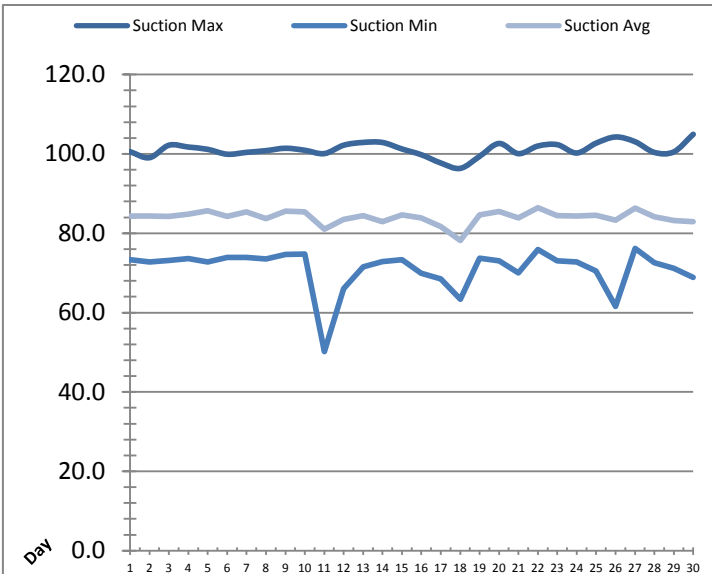


Date	Raw Water Sample Line					
	AIT_1402_PH (pH)			AIT_1402_DO (mg/L)		
	Maximum	Minimum	Average	Maximum	Minimum	Average
1	8.0	7.5	7.9	8.9	8.5	8.7
2	8.1	7.3	7.9	9.0	8.6	8.8
3	8.1	7.6	8.0	8.7	8.4	8.6
4	8.0	7.5	7.8	8.7	8.3	8.5
5	7.6	7.2	7.5	8.6	8.3	8.5
6	7.7	7.3	7.6	8.8	8.5	8.7
7	7.7	7.6	7.6	8.8	8.5	8.6
8	7.7	7.6	7.6	8.6	8.4	8.6
9	7.8	7.1	7.6	8.8	8.4	8.6
10	7.9	7.8	7.9	8.8	8.6	8.7
11	7.9	7.3	7.8	8.8	8.3	8.6
12	7.9	7.5	7.9	9.6	8.3	9.2
13	8.0	7.8	7.9	9.5	9.3	9.4
14	7.9	7.7	7.8	9.5	9.2	9.4
15	7.9	7.7	7.8	9.4	9.1	9.2
16	7.8	7.2	7.7	9.5	9.1	9.2
17	7.9	7.7	7.8	10.3	9.1	9.4
18	7.8	7.5	7.7	10.1	9.1	9.6
19	7.7	7.3	7.6	9.6	9.0	9.2
20	7.7	7.3	7.5	9.4	8.8	9.0
21	8.0	7.5	7.7	10.0	8.8	9.4
22	8.0	7.8	7.9	9.8	9.4	9.7
23	8.0	7.6	7.9	9.4	9.0	9.3
24	8.0	7.8	7.9	9.4	9.0	9.2
25	7.9	7.8	7.9	9.4	9.1	9.3
26	7.9	7.2	7.8	9.3	9.1	9.2
27	7.9	7.4	7.8	9.3	9.0	9.2
28	7.9	7.8	7.9	9.3	8.9	9.1
29	7.9	7.2	7.8	9.1	9.0	9.1
30	7.9	7.8	7.9	9.2	8.9	9.0
Total						
Average	7.9	7.5	7.8	9.3	8.8	9.0
Maximum	8.1		8.0	10.3		9.7
Date	3-Jun		3-Jun	17-Jun		22-Jun
Minimum		7.1	7.5		8.3	8.5
Date		9-Jun	5-Jun		11-Jun	4-Jun

Notes:

High Lift Monthly Report

Month: June-18

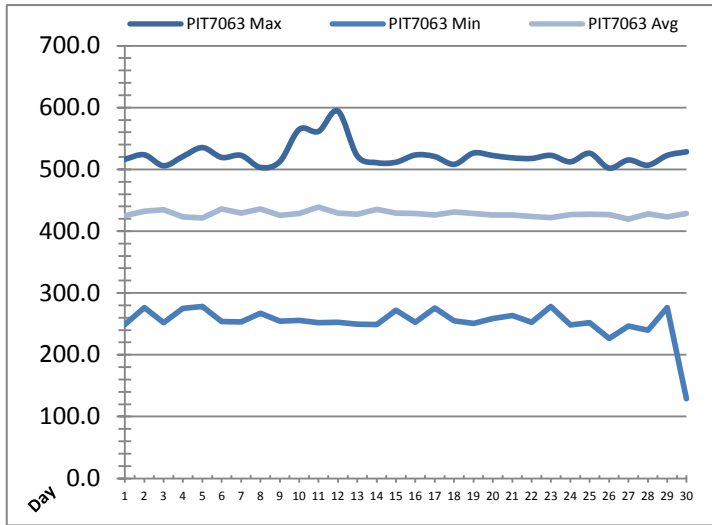
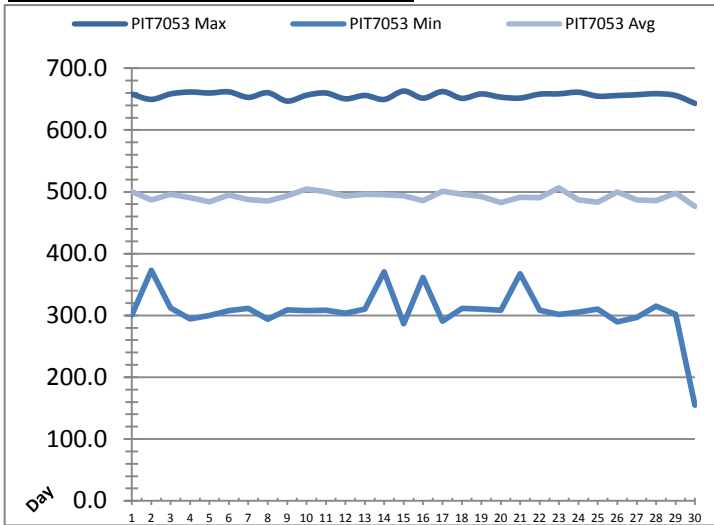


Date	Suction Header Pressure			Discharge Header Pressure		
	PIT_7002 (kPa)			PIT_7005 (kPa)		
	Maximum	Minimum	Average	Maximum	Minimum	Average
1	100.6	73.4	84.3	778.3	326.0	553.6
2	99.0	72.8	84.3	774.7	327.3	519.1
3	102.2	73.1	84.3	776.1	329.4	549.7
4	101.7	73.6	84.8	774.7	326.3	521.7
5	101.1	72.8	85.7	778.4	338.2	516.2
6	99.9	73.9	84.2	779.4	332.4	540.2
7	100.4	73.9	85.4	777.6	326.8	528.1
8	100.8	73.5	83.7	773.0	323.1	507.5
9	101.4	74.7	85.6	775.6	333.8	545.7
10	100.9	74.8	85.4	777.9	342.9	564.2
11	100.1	50.2	81.1	775.2	343.2	544.3
12	102.2	66.0	83.4	790.5	327.6	548.7
13	102.9	71.5	84.5	771.3	334.5	537.3
14	102.9	72.8	82.9	765.1	337.7	544.0
15	101.2	73.4	84.7	768.8	329.1	524.2
16	99.8	69.9	83.9	767.9	336.8	520.1
17	97.7	68.5	81.7	766.7	332.4	542.9
18	96.4	63.4	78.2	768.6	340.5	550.6
19	99.4	73.7	84.6	776.9	342.7	540.3
20	102.6	73.0	85.5	769.0	329.8	521.6
21	100.1	70.0	83.8	767.6	346.9	525.5
22	102.0	75.9	86.4	774.9	326.5	530.1
23	102.3	73.1	84.4	777.5	330.1	550.8
24	100.2	72.8	84.4	774.2	343.9	526.7
25	102.7	70.5	84.5	772.8	328.3	512.2
26	104.3	61.5	83.3	777.2	330.7	544.4
27	103.1	76.1	86.4	778.1	335.6	535.0
28	100.4	72.6	84.1	772.2	350.2	509.5
29	100.5	71.2	83.2	773.4	334.1	537.5
30	104.9	68.9	82.9	789.6	136.9	501.2
Total						
Average	101.1	71.0	84.1	774.8	327.5	533.1
Maximum	104.9		86.4	790.5		564.2
Date	30-Jun		22-Jun	12-Jun		10-Jun
Minimum		50.2	78.2		136.9	501.2
Date		11-Jun	18-Jun		30-Jun	30-Jun

Notes:

High Lift Monthly Report

Month: **June-18**

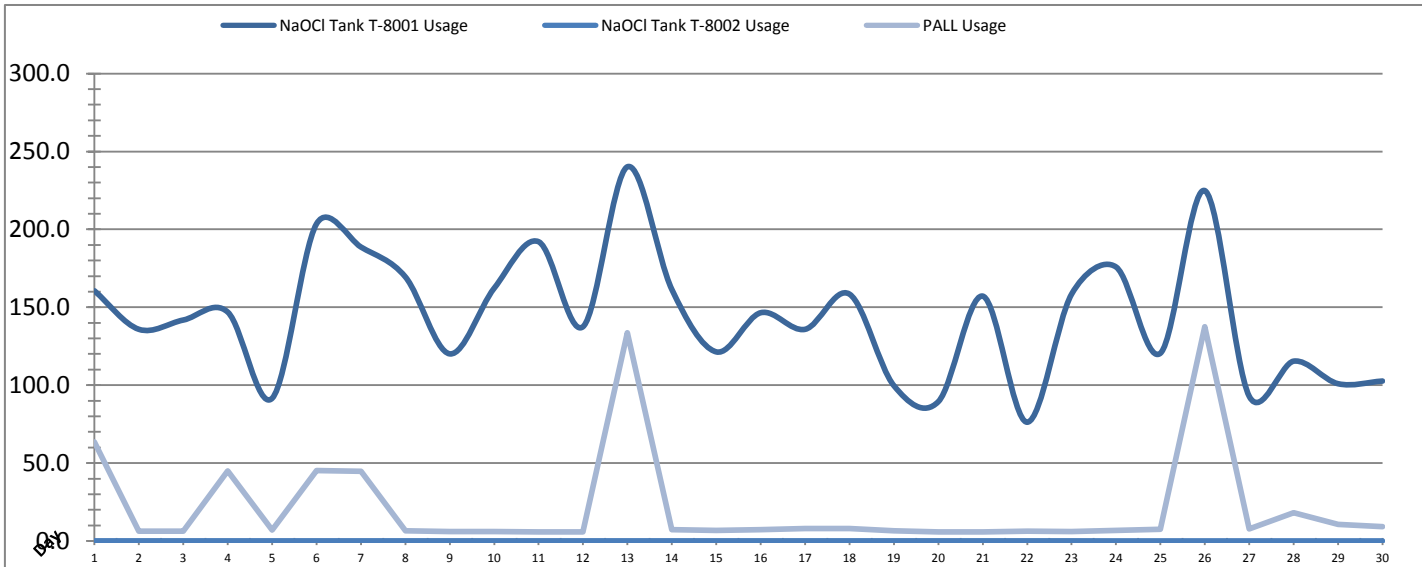


Date	Distribution Pressures					
	PIT_7053 (kPa)			PIT_7063 (kPa)		
	Maximum	Minimum	Average	Maximum	Minimum	Average
1	658.1	300.7	500.4	516.5	249.1	425.3
2	649.6	373.2	486.9	523.6	276.1	432.1
3	658.5	312.0	495.8	505.9	252.2	434.7
4	661.5	294.4	490.6	521.0	275.0	422.9
5	659.9	299.7	483.7	535.2	278.0	421.2
6	661.8	307.8	495.1	519.3	254.0	435.8
7	652.9	311.4	487.6	522.7	253.2	429.5
8	660.4	293.7	485.4	503.2	266.9	435.7
9	646.9	309.1	493.3	512.6	254.5	425.8
10	656.4	307.9	504.3	564.7	255.8	428.3
11	659.9	308.3	500.0	561.4	252.2	439.3
12	650.5	303.7	492.8	594.3	252.8	429.0
13	656.0	310.2	496.2	521.8	249.6	427.3
14	649.5	370.6	495.4	510.8	248.6	435.4
15	663.1	286.6	493.4	511.6	272.1	429.3
16	651.6	361.6	485.4	523.3	252.7	428.6
17	662.3	290.5	501.0	520.8	275.9	426.4
18	651.3	311.6	495.9	508.2	254.7	431.4
19	658.5	310.2	492.6	526.5	250.6	428.7
20	653.3	308.5	482.4	522.4	258.5	425.9
21	651.8	367.8	491.1	518.7	263.5	426.0
22	658.1	308.2	490.7	517.7	252.7	424.0
23	658.6	301.8	506.2	522.7	277.9	422.0
24	661.2	305.3	487.0	512.2	248.4	426.8
25	654.8	310.5	483.4	526.1	252.1	427.2
26	655.9	289.6	499.7	502.1	226.4	426.7
27	657.1	297.0	487.0	515.2	246.8	419.7
28	658.9	315.0	485.9	506.7	239.7	428.2
29	655.9	301.8	497.9	522.6	276.2	423.0
30	643.1	154.8	476.5	528.4	129.0	428.8
Total						
Average	655.9	307.4	492.1	523.3	253.2	428.2
Maximum	663.1		506.2	594.3		439.3
Date	15-Jun		23-Jun	12-Jun		11-Jun
Minimum		154.8	476.5		129.0	419.7
Date		30-Jun	30-Jun		30-Jun	27-Jun

Notes:
 30th lower pressure due to power failure, SCADA min was 182kPa

Chemical Usage Monthly Report

Month: **June-18**

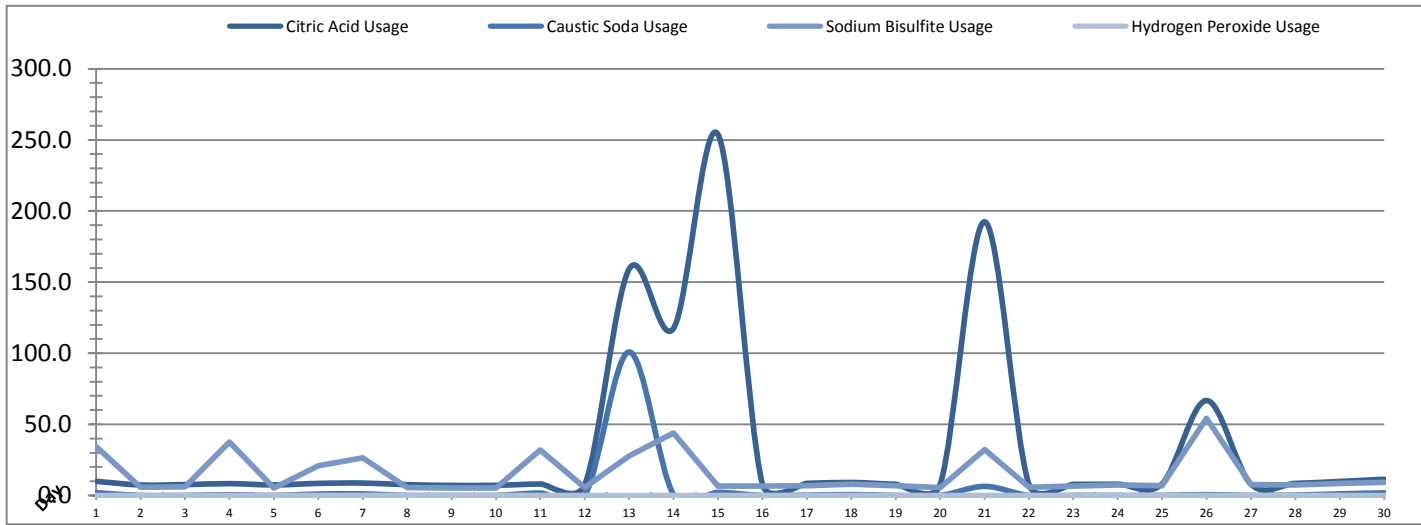


Date	PALL Usage	NaOCl Tank T-8001	NaOCl Tank T-8002
	PALL_HYPO_USAGE (L) Usage	LIT_8002 (Storage) (L) Usage	LIT_8004 (Day) (L) Usage
1	63.6	160.6	0.0
2	6.2	135.9	0.0
3	6.2	141.8	0.0
4	45.0	146.9	0.0
5	6.9	91.6	0.0
6	45.2	203.6	0.0
7	44.8	188.7	0.0
8	6.6	169.5	0.0
9	6.0	120.1	0.0
10	6.0	162.3	0.0
11	5.9	192.1	0.0
12	5.9	137.6	0.0
13	133.6	240.2	0.0
14	7.29	161.41	0.0
15	6.7	121.4	0.0
16	7.2	146.5	0.0
17	8.0	135.9	0.0
18	8.0	158.4	0.0
19	6.4	99.7	0.0
20	5.8	89.4	0.0
21	5.9	157.1	0.0
22	6.2	76.2	0.0
23	6.1	158.4	0.0
24	6.7	175.9	0.0
25	7.5	120.5	0.0
26	137.4	224.9	0.0
27	7.6	92.8	0.0
28	18.2	115.4	0.0
29	10.5	100.9	0.0
30	9.2	102.6	0.0
Total	646.7	4328.2	0.8
Average	21.6	144.3	0.0
Maximum	137.4	240.2	0.0
Date	26-Jun	13-Jun	1-Jun
Minimum	5.8	76.2	0.0
Date	20-Jun	22-Jun	24-Jun

Notes:	
Dosage (mg/L)=	Day Tank (L) x %conc. x 1000
	Membrane Flow (m3)
Chlorine Concentration:	12.0%

Chemical Usage Monthly Report

Month: June-18



Date	Citric Acid	Caustic Soda	Captor	Hydrogen Peroxide		Membrane Flow (m ³)
	TAGNAME (L) Usage	TAGNAME (L) Usage	TAGNAME (L) Usage	TAGNAME (L) Usage	(mg/L) Dose	
1	9.9	2.0	34.3	0.0	0.0	5668.271
2	7.4	0.0	5.8	0.0	0.0	5336.647
3	7.6	0.0	6.0	0.0	0.0	5709.468
4	8.3	0.5	37.6	0.0	0.0	4493.878
5	7.4	0.0	5.4	0.0	0.0	3896.996
6	8.5	1.0	21.0	0.0	0.0	5858.120
7	8.7	1.1	26.4	0.0	0.0	4682.027
8	7.6	0.0	5.6	0.0	0.0	5632.882
9	7.1	0.0	5.3	0.0	0.0	4403.446
10	7.1	0.0	5.3	0.0	0.0	4776.771
11	8.1	1.7	32.0	0.0	0.0	6311.565
12	7.6	0.0	5.6	0.0	0.0	5452.344
13	159.2	100.9	27.9	0.0	0.0	4822.075
14	117.6	0.6	44.0	0.0	0.0	6672.215
15	253.8	2.2	6.5	0.0	0.0	5516.601
16	7.9	0.0	6.7	0.0	0.0	5036.914
17	8.5	0.2	6.9	0.0	0.0	4141.060
18	9.1	0.6	8.0	0.0	0.0	6679.611
19	7.9	0.0	6.8	0.0	0.0	5465.026
20	7.6	0.0	5.7	0.0	0.0	3687.769
21	192.4	6.4	32.2	0.0	0.0	5614.047
22	7.8	0.0	5.8	0.0	0.0	3701.269
23	7.8	0.0	6.5	0.0	0.0	4903.763
24	7.9	0.0	7.3	0.0	0.0	4533.245
25	8.2	0.0	6.9	0.0	0.0	4621.297
26	66.8	0.5	54.3	0.0	0.0	4696.192
27	7.9	0.0	7.8	0.0	0.0	3805.278
28	8.5	0.3	7.4	0.0	0.0	4909.313
29	9.9	1.1	8.6	0.0	0.0	5643.023
30	11.4	1.8	9.4	0.0	0.0	5283.307
					#DIV/0!	
Total	995.5	120.9	448.8	0.0		151954.4
Average	33.2	4.0	15.0	0.0	0.0	5065.1
Maximum	253.8	100.9	54.3	0.0	0.0	6679.6
Date	15-Jun	13-Jun	26-Jun	1-Jun	1-Jun	18-Jun
Minimum	7.1	0.0	5.3	0.0	0.0	3687.8
Date	9-Jun	2-Jun	10-Jun	1-Jun	1-Jun	20-Jun

Notes:	
Dosage (mg/L)=	Day Tank (L) x %conc. x 1000
	Membrane Flow (m3)
Peroxide Concentration:	50.0%

Runtimes Report

Month: June-18

Date	Daily Gen-Set Runtimes		Daily UV Runtimes		Daily PALL Runtimes				
	LLPS	WTP	UV #1	UV #2	Air Compressor #1	Air Compressor #2	CIP Neutralization	CIP Drain	CIP Recirc
	(Hrs)	(Hrs)	(Hrs)	(Hrs)	(Hrs)	(Hrs)	(Hrs)	(Hrs)	(Hrs)
1	0.0	0.0	0.0	0.0	24.4	0.0	0.2	0.1	0.3
2	0.0	0.0	0.0	0.0	24.3	0.1	0.0	0.0	0.0
3	0.0	0.0	0.0	0.0	24.3	0.1	0.0	0.0	0.0
4	0.0	0.0	0.0	0.0	24.4	0.0	0.2	0.2	0.2
5	0.0	0.0	0.0	0.0	24.4	0.0	0.0	0.0	0.0
6	0.0	0.0	0.0	0.0	24.3	0.1	0.2	0.1	0.1
7	0.0	0.0	0.0	0.0	24.4	0.0	0.2	0.1	0.1
8	0.0	0.0	0.0	0.0	24.4	0.1	0.0	0.0	0.0
9	0.0	0.0	0.0	0.0	24.3	0.0	0.0	0.0	0.0
10	0.0	0.0	0.0	0.0	24.3	0.1	0.0	0.0	0.0
11	0.0	0.0	0.2	0.0	24.4	0.1	0.2	0.1	0.3
12	0.0	0.0	0.0	0.3	24.3	0.0	0.0	0.0	0.0
13	0.0	0.0	0.0	0.0	24.0	0.1	0.4	0.2	0.8
14	0.0	0.0	0.0	0.0	24.4	0.0	0.4	0.1	0.9
15	0.0	0.0	0.0	0.0	24.3	0.1	0.0	0.0	0.0
16	0.0	0.0	0.0	0.0	24.3	0.1	0.0	0.0	0.0
17	0.0	0.0	0.0	0.0	24.4	0.0	0.0	0.0	0.0
18	0.0	0.0	0.0	0.0	24.3	0.1	0.0	0.0	0.0
19	0.0	0.0	0.0	0.0	24.3	0.1	0.0	0.0	0.0
20	0.0	0.0	0.0	0.0	24.3	0.1	0.0	0.0	0.0
21	1.0	0.0	0.0	0.0	24.3	0.1	0.4	0.1	0.8
22	0.0	0.0	0.0	0.0	24.3	0.1	0.0	0.0	0.0
23	0.0	0.0	0.0	0.0	24.3	0.1	0.0	0.0	0.0
24	0.0	0.0	0.0	0.0	24.4	0.0	0.0	0.0	0.0
25	0.0	0.0	0.0	0.0	24.3	0.1	0.0	0.0	0.9
26	0.0	2.1	0.0	0.0	24.3	0.1	0.5	0.0	0.4
27	0.0	0.0	0.0	0.0	24.4	0.1	0.0	0.0	0.0
28	0.0	0.0	0.0	0.0	24.3	0.0	0.0	0.0	0.0
29	0.0	0.0	0.0	0.0	11.2	13.2	0.0	0.0	0.0
30	0.0	5.2	0.0	0.0	23.5	0.1	0.0	0.0	0.0
Total	1.0	7.3	0.2	0.3	715.0	15.1	2.7	1.0	4.8

Notes:
Compressor 2 out of service for repairs

Runtimes Report

Month: June-18

Daily

Date	PALL Runtimes						Process Drain	
	RFR Pump #1	RFR Pump #2	RF Pump #1	RF Pump #2	XR Pump #1	XR Pump #2	PDP9010 Pump	PDP9020 Pump
	(Hrs)	(Hrs)	(Hrs)	(Hrs)	(Hrs)	(Hrs)	(Hrs)	(Hrs)
1	7.3	7.3	1.2	1.1	8.2	11.1	2.4	3.1
2	6.6	6.7	1.0	1.0	7.1	9.7	2.2	3.0
3	7.5	7.7	1.2	1.0	9.7	11.6	2.3	3.1
4	5.8	5.3	0.8	1.0	10.5	4.4	2.2	3.0
5	5.0	5.1	0.8	0.7	6.5	8.0	2.4	2.8
6	6.6	6.3	1.0	0.9	10.2	10.9	2.2	3.2
7	4.6	4.6	0.8	0.7	8.6	8.0	2.3	3.0
8	7.2	7.8	1.0	1.2	9.2	11.7	2.4	2.9
9	6.3	5.9	0.9	0.9	8.5	8.5	2.3	2.8
10	6.1	6.3	1.0	1.1	10.3	8.3	2.3	2.8
11	7.5	7.6	1.3	1.2	11.0	9.2	2.5	3.1
12	7.1	7.1	1.2	1.1	8.3	11.9	2.2	3.4
13	5.4	5.1	0.9	1.0	9.2	7.8	2.6	2.9
14	5.8	6.4	1.2	1.2	10.6	10.2	2.3	3.3
15	7.2	6.9	1.0	1.1	9.5	9.2	2.5	2.8
16	3.5	4.0	0.8	0.9	8.4	8.1	2.6	3.0
17	0.0	0.0	0.5	0.4	5.9	5.9	2.3	3.2
18	0.2	0.1	0.8	0.9	7.8	8.3	2.1	3.1
19	4.6	4.2	1.1	1.0	9.5	9.5	2.2	2.6
20	5.0	4.8	0.7	0.8	7.2	7.1	2.3	2.7
21	5.1	5.0	1.0	1.1	8.9	7.8	2.4	2.9
22	5.3	5.3	0.8	0.8	6.6	7.8	2.3	3.0
23	6.6	6.8	1.0	0.9	7.7	9.8	2.3	3.0
24	2.6	2.5	0.8	0.8	10.8	6.2	2.6	3.1
25	3.4	3.1	0.8	0.9	7.1	11.3	2.6	2.8
26	5.8	5.9	0.8	0.9	8.8	9.4	2.3	3.1
27	5.0	5.2	0.8	0.8	8.5	6.3	2.1	3.0
28	6.6	6.5	0.9	1.0	9.3	8.2	2.1	3.0
29	7.4	7.4	1.2	1.2	10.4	9.1	2.3	2.9
30	6.6	6.6	1.0	1.1	6.8	9.1	2.4	3.3
Total	163.1	162.9	28.3	28.7	260.1	263.4	70.0	89.9

Notes:

Runtimes Report

Month: June-18

Daily

Date	Low Lift Pump Motor Runtimes				High Lift Pump Motor Runtimes			
	LLP1010 (Hrs)	LLP1020 (Hrs)	LLP1030 (Hrs)	LLP1040 (Hrs)	HLP7010 (Hrs)	HLP7020 (Hrs)	HLP7030 (Hrs)	HLP7040 (Hrs)
1	0.0	9.4	5.3	7.8	0.0	18.3	0.0	0.0
2	0.0	7.2	6.5	7.7	0.0	17.4	0.0	0.0
3	0.0	9.1	7.8	5.9	0.0	18.9	0.0	0.0
4	0.0	5.2	5.3	7.3	0.0	14.7	0.0	0.0
5	0.0	5.7	7.6	2.8	0.0	13.3	0.0	0.0
6	0.0	7.4	6.9	9.4	0.0	18.9	0.0	0.0
7	0.0	6.3	5.5	7.0	0.0	15.9	0.0	0.0
8	0.0	7.0	6.6	8.5	0.0	17.1	0.0	0.0
9	0.0	8.2	5.7	3.5	0.0	16.0	0.0	0.0
10	0.0	5.1	7.7	6.0	0.0	17.7	0.0	0.0
11	0.0	7.8	10.9	6.5	1.0	19.9	0.0	0.0
12	0.0	9.5	5.7	6.7	11.1	5.5	0.3	0.0
13	0.0	4.5	5.8	8.5	16.4	0.0	0.0	0.0
14	0.0	7.1	9.6	11.0	20.3	0.0	0.0	0.0
15	0.0	5.1	6.3	10.5	16.9	0.0	0.0	0.0
16	0.0	8.1	6.8	7.2	16.2	0.0	0.0	0.0
17	0.0	5.3	8.1	6.1	17.9	0.0	0.0	0.0
18	0.0	8.9	11.8	8.4	18.6	0.0	0.0	0.0
19	0.0	8.4	6.5	7.7	17.4	0.0	0.0	0.0
20	0.0	5.4	5.6	4.3	14.2	0.0	0.0	0.0
21	0.0	9.4	9.6	5.2	17.1	0.0	0.0	0.0
22	0.0	3.3	4.9	6.7	8.0	5.9	0.0	0.0
23	0.0	7.1	8.5	4.2	0.0	17.2	0.0	0.0
24	0.0	8.1	4.8	5.6	0.0	14.9	0.0	0.0
25	0.0	6.7	5.5	6.9	0.0	14.5	0.0	0.0
26	0.0	6.5	6.3	5.6	0.0	17.5	0.0	0.0
27	0.0	4.2	5.9	5.0	0.0	13.5	0.0	0.0
28	0.0	5.6	6.6	7.0	0.0	16.4	0.0	0.0
29	0.0	7.8	7.5	6.8	0.0	17.3	0.0	0.0
30	0.0	7.4	7.4	6.8	6.5	9.7	0.0	0.0
Total	0.0	206.8	208.9	202.6	181.6	320.4	0.3	0.0

Notes:

Plant Internal Flow Report

Month: June-18

Date	Settling Tank Level		Process Drain Tank		Settling Tank Flow		Potable Water Flow		Non-Potable Flow	
	T-9003 (m)		T-9001 (m)		FIT_9005 (m ³) (L/s)		FIT_7082 (m ³) (L/s)		FIT_7092 (m ³) (L/s)	
	Maximum	Minimum	Maximum	Minimum	Total	Peak	Total	Peak	Total	Peak
1	2.2	0.2	1.4	0.4	352.6	15.7	0.1	1.3	19.2	22.9
2	2.2	0.1	1.0	0.4	201.0	15.7	0.0	0.0	0.0	0.0
3	2.2	0.1	1.1	0.4	248.5	15.7	0.0	1.3	0.0	0.0
4	2.2	0.2	1.1	0.4	207.5	15.7	0.1	1.4	11.9	17.2
5	2.2	0.1	1.1	0.4	139.8	15.7	0.2	1.3	0.0	0.0
6	2.2	0.1	1.1	0.4	188.2	15.7	0.1	1.2	12.2	16.9
7	2.2	0.1	1.2	0.4	185.2	15.7	0.0	1.1	12.3	16.9
8	2.2	0.1	1.1	0.4	249.6	15.7	0.1	1.4	0.1	1.0
9	2.2	0.1	1.1	0.4	190.5	15.7	0.0	0.0	0.0	0.0
10	2.2	0.2	1.0	0.4	206.3	15.7	0.0	1.2	0.0	0.0
11	2.2	0.1	1.1	0.4	293.2	15.7	2.8	5.6	16.0	23.4
12	2.2	0.2	1.7	0.4	252.8	15.7	2.7	4.8	0.7	1.4
13	2.2	0.2	1.3	0.4	338.8	15.7	0.2	1.4	35.3	22.8
14	2.2	0.3	1.3	0.4	400.8	15.7	0.1	1.4	32.0	22.8
15	2.2	0.1	1.0	0.4	251.6	15.7	0.1	1.4	7.2	22.9
16	2.2	0.1	2.0	0.4	343.9	15.7	0.0	0.0	0.0	0.0
17	2.2	0.1	2.0	0.4	324.9	15.7	0.0	0.0	0.0	0.0
18	2.2	0.3	1.8	0.4	579.4	15.7	0.2	1.4	0.0	0.0
19	2.2	0.2	1.3	0.4	424.9	15.7	0.1	1.4	0.0	0.0
20	2.2	0.3	1.0	0.4	192.7	15.7	0.1	1.4	0.0	0.0
21	2.2	0.3	1.2	0.4	339.8	15.7	0.1	1.4	30.0	16.1
22	2.2	0.3	1.1	0.4	183.0	15.7	0.1	1.4	0.0	0.0
23	2.2	0.2	1.0	0.4	238.2	15.7	0.0	0.0	0.0	0.0
24	2.2	0.3	1.9	0.4	376.5	15.7	0.0	1.4	0.0	0.0
25	2.2	0.3	1.2	0.4	374.6	15.7	0.1	1.4	14.1	22.2
26	2.2	0.3	1.1	0.4	243.9	15.7	0.6	1.4	30.9	22.7
27	2.2	0.1	1.1	0.4	244.9	15.7	0.1	1.4	0.2	0.8
28	2.2	0.1	1.1	0.4	297.7	15.7	0.0	1.4	0.0	0.0
29	2.2	0.1	1.0	0.4	356.0	15.7	0.7	1.1	0.5	1.5
30	2.2	0.1	2.2	0.4	410.2	15.7	0.0	1.1	0.0	0.0
Total					8637.1		8.3		222.8	
Average	2.2	0.2	1.3	0.4	287.9	15.7	0.3	1.4	7.4	7.7
Maximum	2.2		2.2		579.4		2.8		35.3	
Date	29-Jun		30-Jun		18-Jun		11-Jun		13-Jun	
Minimum		0.1		0.4		15.7		0.0		0.0
Date		5-Jun		18-Jun		1-Jun		2-Jun		2-Jun

Notes: