

Municipality of West Elgin - Tri County Water System

Goto:

Month:

Year:

Date is Set to: **July-17**

Limit	Low	High	
Raw Water Chlorine Residual:	0.00	5.00	mg/L
Pre-Strainer Chlorine Residual:	0.00	5.00	mg/L
UV Inlet Chlorine Residual:	0.00	5.00	mg/L
Post Treatment Chlorine Residual:	1.00	5.00	mg/L
Treated Chlorine Residual:	1.00	2.50	mg/L
Distribution Chlorine Residual:	1.00	2.50	mg/L
Limit		High	
WTP C of A		156.0	L/s
WTP Permit to Take Water		13500.0	m ³
Limit	Low	High	
System Pressure Limits:	50.0	1034.0	Kpa

Compliance Report

Low Lift Monthly Report

>>>

Membranes Monthly Report

>>>

UV System Monthly Report

>>>

Plant Quality Report

>>>

Raw Well/Treated Storage Report

>>>

High Lift Monthly Report

>>>

Operational Report

Low Lift Monthly Report

>>>

High Lift Monthly Report

>>>

Chemical Usage Monthly Report

>>>

Runtimes Report

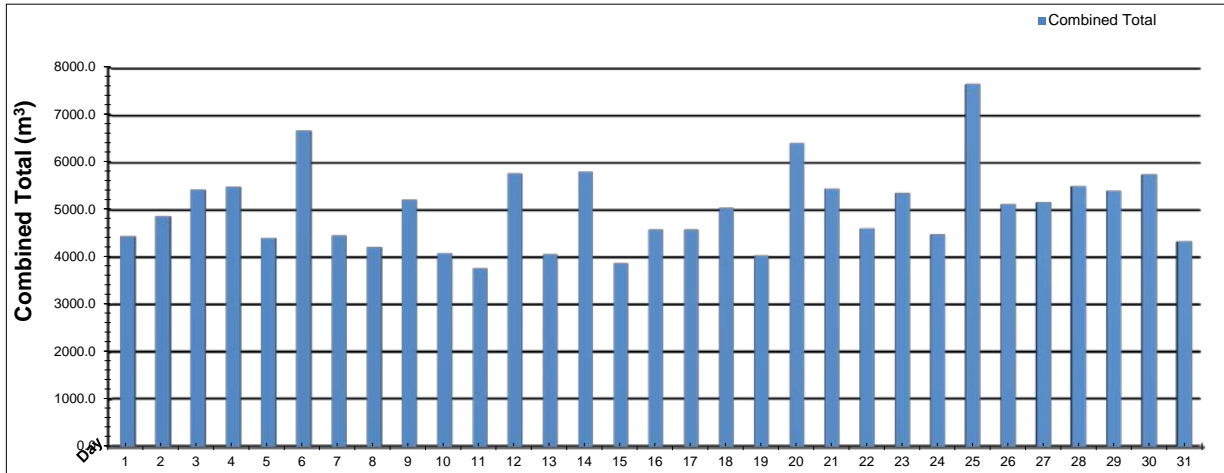
>>>

Plant Internal Flow Report

>>>

Low Lift Monthly Report

Month: July-17



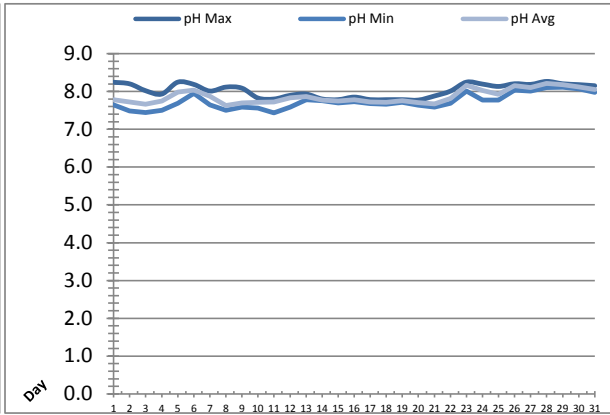
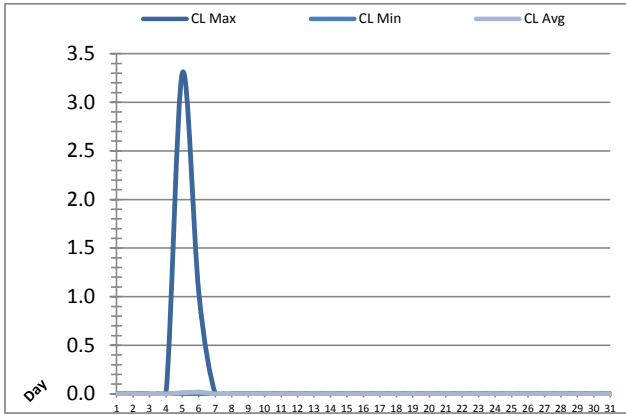
Date	Combined Total (m³)	West Train (FIT-1017 (m³))	West Peak Flow (FIT-1017 (L/s))	East Train (FIT-1027 (m³))	East Peak Flow (FIT-1027 (L/s))	Combined Peak Flow (L/s)
1	✓ 4446.6	4446.6	199.4	0.0	0.0	✗ 199.4
2	✓ 4869.2	4869.2	198.3	0.0	0.0	✗ 198.3
3	✓ 5422.3	5422.3	195.1	0.0	0.0	✗ 195.1
4	✓ 5486.8	5486.8	166.5	0.0	0.0	✗ 166.5
5	✓ 4407.6	4407.5	197.3	0.0	0.0	✗ 197.3
6	✓ 6674.6	6674.6	172.7	0.0	0.0	✗ 172.7
7	✓ 4466.7	4466.7	115.0	0.0	0.0	✓ 115.0
8	✓ 4222.1	4222.1	120.5	0.0	0.0	✓ 120.5
9	✓ 5219.8	5219.8	119.2	0.0	0.0	✓ 119.2
10	✓ 4087.5	4087.5	194.7	0.0	0.0	✗ 194.7
11	✓ 3772.5	3772.5	160.1	0.0	0.0	✗ 160.1
12	✓ 5768.7	5768.7	122.7	0.0	0.0	✓ 122.7
13	✓ 4067.4	4067.3	120.5	0.0	0.0	✓ 120.5
14	✓ 5801.8	5801.8	123.1	0.0	0.0	✓ 123.1
15	✓ 3871.5	3871.5	127.1	0.0	0.0	✓ 127.1
16	✓ 4590.0	4590.0	127.0	0.0	0.0	✓ 127.0
17	✓ 4587.9	4587.9	124.3	0.0	0.0	✓ 124.3
18	✓ 5049.0	5049.0	126.1	0.0	0.0	✓ 126.1
19	✓ 4036.2	4036.2	123.4	0.0	0.0	✓ 123.4
20	✓ 6409.7	6409.7	121.7	0.0	0.0	✓ 121.7
21	✓ 5454.2	5454.2	121.4	0.0	0.0	✓ 121.4
22	✓ 4614.0	4614.0	121.7	0.0	0.0	✓ 121.7
23	✓ 5355.6	5355.6	125.8	0.0	0.0	✓ 125.8
24	✓ 4482.5	4482.5	133.0	0.0	0.0	✓ 133.0
25	✓ 7651.3	7651.3	136.6	0.0	0.0	✓ 136.6
26	✓ 5116.6	5116.6	131.2	0.0	0.0	✓ 131.2
27	✓ 5162.2	5162.1	132.1	0.0	0.0	✓ 132.1
28	✓ 5496.2	5496.2	135.9	0.0	0.0	✓ 135.9
29	✓ 5408.1	5408.1	131.2	0.0	0.0	✓ 131.2
30	✓ 5747.3	5747.3	135.8	0.0	0.0	✓ 135.8
31	✓ 4331.2	4331.2	135.9	0.0	0.0	✓ 135.9
Total	156077.0	156076.9		0.2		
Average	5034.7	5034.7	141.8	0.0	0.0	141.8
Maximum	7651.3	7651.3	199.45	0.0	0.00	199.45
Date	25-Jul	25-Jul	1-Jul	31-Jul	1-Jul	1-Jul
Minimum	3772.5	3772.5	114.96	0.0	0.00	114.96
Date	11-Jul	11-Jul	7-Jul	1-Jul	1-Jul	7-Jul

Notes:

All peak flow readings were less than a minute therefore no PTTW exceedances.

Low Lift Monthly Report

Month: July-17

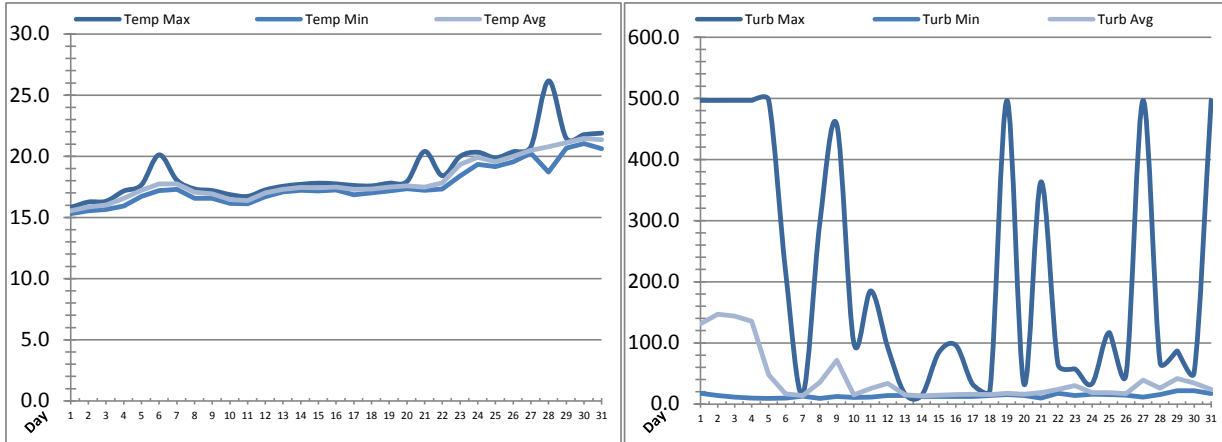


Date	Raw Water Chlorine Residual			Raw Water pH		
	AIT_1401_CL (mg/L)			AIT_1401_PH		
	Maximum	Minimum	Average	Maximum	Minimum	Average
1	0.00	0.00	0.00	8.24	7.65	7.78
2	0.00	0.00	0.00	8.20	7.48	7.72
3	0.00	0.00	0.00	8.02	7.44	7.67
4	0.00	0.00	0.00	7.93	7.50	7.75
5	3.30	0.00	0.01	8.25	7.69	7.99
6	1.04	0.00	0.02	8.19	7.95	8.04
7	0.00	0.00	0.00	8.01	7.65	7.88
8	0.00	0.00	0.00	8.12	7.50	7.63
9	0.00	0.00	0.00	8.09	7.59	7.69
10	0.00	0.00	0.00	7.83	7.56	7.72
11	0.00	0.00	0.00	7.80	7.43	7.72
12	0.00	0.00	0.00	7.90	7.59	7.83
13	0.00	0.00	0.00	7.93	7.78	7.87
14	0.00	0.00	0.00	7.80	7.75	7.78
15	0.00	0.00	0.00	7.78	7.69	7.75
16	0.00	0.00	0.00	7.85	7.73	7.78
17	0.00	0.00	0.00	7.78	7.68	7.72
18	0.00	0.00	0.00	7.78	7.66	7.71
19	0.00	0.00	0.00	7.78	7.71	7.75
20	0.00	0.00	0.00	7.77	7.64	7.71
21	0.00	0.00	0.00	7.88	7.59	7.67
22	0.00	0.00	0.00	8.01	7.69	7.81
23	0.00	0.00	0.00	8.25	8.01	8.16
24	0.00	0.00	0.00	8.20	7.77	8.03
25	0.00	0.00	0.00	8.13	7.77	7.92
26	0.00	0.00	0.00	8.21	8.03	8.15
27	0.00	0.00	0.00	8.19	8.01	8.11
28	0.00	0.00	0.00	8.27	8.11	8.21
29	0.00	0.00	0.00	8.20	8.11	8.18
30	0.00	0.00	0.00	8.18	8.07	8.12
31	0.00	0.00	0.00	8.15	7.98	8.05
Total						
Average	0.14	0.00	0.00	8.02	7.74	7.87
Maximum	3.30		0.02	8.27		8.21
Date	5-Jul		6-Jul	28-Jul		28-Jul
Minimum		0.00	0.00		7.43	7.63
Date		1-Jul	1-Jul		11-Jul	8-Jul

Notes:

Low Lift Monthly Report

Month: July-17

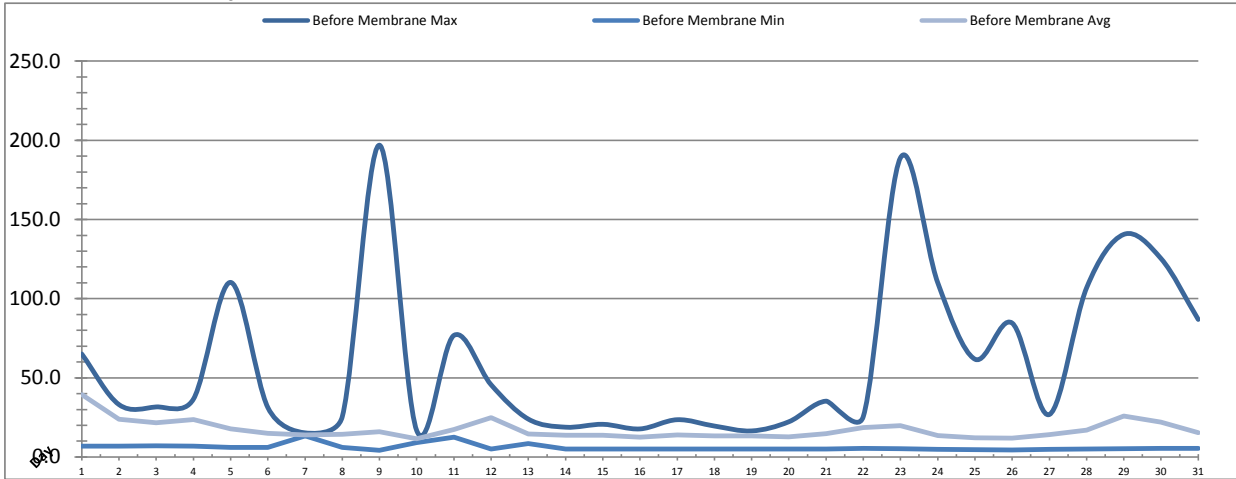


Date	Raw Water Temperature			Raw Water Turbidity		
	TIT_1403 (°C)			AIT_1404 (NTU)		
	Maximum	Minimum	Average	Maximum	Minimum	Average
1	15.8	15.3	15.6	496.63	17.65	131.12
2	16.3	15.6	15.9	496.61	13.76	147.08
3	16.3	15.6	16.0	496.68	11.52	143.75
4	17.2	15.9	16.6	496.67	10.01	135.16
5	17.7	16.7	17.2	496.69	9.20	48.05
6	20.1	17.2	17.8	214.69	10.01	16.52
7	18.1	17.3	17.7	16.19	13.04	14.21
8	17.3	16.6	17.1	295.32	9.16	35.61
9	17.2	16.6	16.9	457.11	12.25	71.71
10	16.9	16.1	16.5	100.59	10.69	14.87
11	16.7	16.1	16.4	185.11	11.46	25.24
12	17.3	16.7	17.0	92.12	13.75	33.88
13	17.6	17.1	17.3	16.92	13.74	14.94
14	17.7	17.2	17.4	14.66	12.28	13.58
15	17.8	17.2	17.4	84.44	12.23	14.59
16	17.7	17.3	17.5	96.02	12.24	15.77
17	17.6	16.8	17.3	31.73	12.25	16.27
18	17.6	17.0	17.3	22.37	13.77	15.69
19	17.8	17.2	17.5	496.57	15.34	17.37
20	17.9	17.3	17.6	32.48	13.81	16.11
21	20.4	17.2	17.5	363.40	9.94	18.65
22	18.4	17.3	17.8	65.00	17.66	23.78
23	20.0	18.4	19.3	57.31	13.76	30.15
24	20.3	19.3	19.9	33.26	16.14	18.53
25	19.9	19.2	19.6	116.95	15.34	18.48
26	20.4	19.5	20.0	48.77	14.62	17.32
27	20.8	20.3	20.5	496.70	11.52	38.88
28	26.2	18.7	20.8	67.41	15.39	26.24
29	21.5	20.7	21.1	86.84	21.59	41.91
30	21.8	21.1	21.4	51.87	21.68	34.20
31	21.9	20.6	21.4	496.70	17.00	23.64
Total						
Average	18.7	17.6	18.0	210.4	13.6	39.8
Maximum	26.2		21.4	496.7		147.1
Date	28-Jul		30-Jul	27-Jul		2-Jul
Minimum		15.3	15.6		9.2	13.6
Date		1-Jul	1-Jul		8-Jul	14-Jul

Notes:

Membranes Monthly Report

Month: July-17



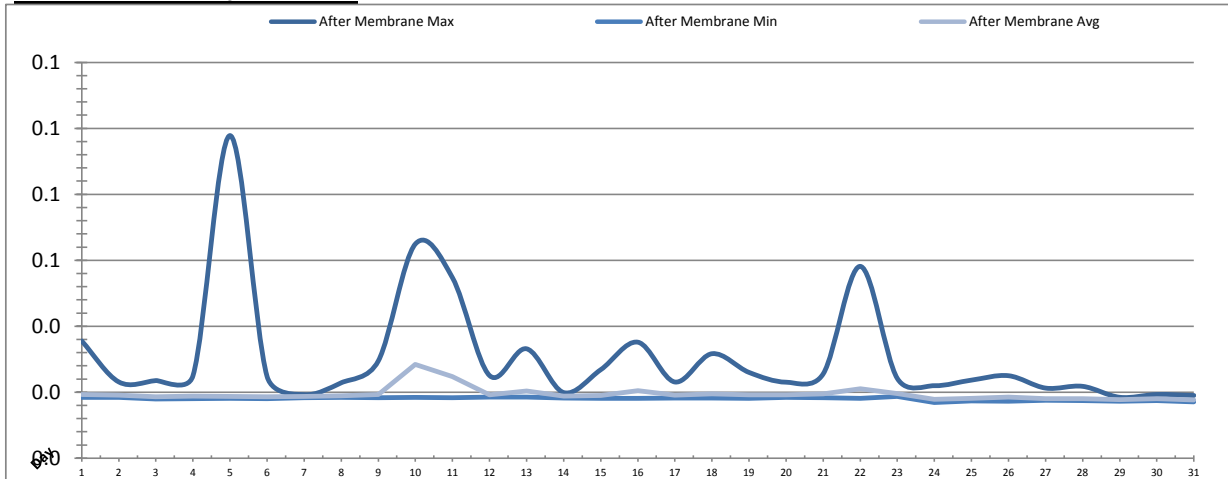
Date	Turbidity Before Membrane			Rack #1 Turbidity			Rack #2 Turbidity		
	PALL_FEED_AIT2006_Value NTU			RACK1_NTU_Value NTU			RACK2_NTU_Value NTU		
	Maximum	Minimum	Average	Maximum	Minimum	Average	Maximum	Minimum	Average
1	65.05	6.95	39.50	0.02	0.01	0.01	0.01	0.01	0.01
2	33.09	6.93	23.91	0.01	0.01	0.01	0.01	0.01	0.01
3	31.62	7.12	21.67	0.02	0.01	0.01	0.01	0.01	0.01
4	36.55	6.81	23.63	0.02	0.01	0.01	0.01	0.01	0.01
5	110.27	6.10	17.73	0.02	0.01	0.01	0.01	0.01	0.01
6	31.23	6.10	14.97	0.01	0.01	0.01	0.01	0.01	0.01
7	15.25	13.27	13.89	0.01	0.01	0.01	0.01	0.01	0.01
8	25.46	6.02	14.27	0.01	0.01	0.01	0.01	0.01	0.01
9	196.94	4.18	15.99	0.02	0.01	0.01	0.01	0.01	0.01
10	16.68	9.18	11.57	0.04	0.01	0.01	0.01	0.01	0.01
11	76.81	12.60	17.42	0.10	0.01	0.01	0.01	0.01	0.01
12	45.58	5.02	24.82	0.02	0.01	0.01	0.01	0.01	0.01
13	23.92	8.57	14.58	0.03	0.01	0.01	0.01	0.01	0.01
14	18.82	5.12	13.74	0.02	0.01	0.01	0.01	0.01	0.01
15	20.65	5.10	13.81	0.01	0.01	0.01	0.01	0.01	0.01
16	17.74	5.00	12.56	0.01	0.01	0.01	0.01	0.01	0.01
17	23.55	4.94	13.92	0.01	0.01	0.01	0.01	0.01	0.01
18	19.55	5.12	13.24	0.01	0.01	0.01	0.01	0.01	0.01
19	16.47	5.10	13.39	0.01	0.01	0.01	0.01	0.01	0.01
20	22.26	5.10	12.72	0.01	0.01	0.01	0.01	0.01	0.01
21	35.27	5.14	14.68	0.02	0.01	0.01	0.01	0.01	0.01
22	25.55	5.51	18.66	0.02	0.01	0.01	0.01	0.01	0.01
23	189.04	5.28	19.86	0.01	0.01	0.01	0.01	0.01	0.01
24	110.10	4.83	13.43	0.01	0.01	0.01	0.01	0.01	0.01
25	61.77	4.67	12.06	0.02	0.01	0.01	0.01	0.01	0.01
26	84.58	4.51	11.83	0.01	0.01	0.01	0.01	0.01	0.01
27	26.83	4.90	14.08	0.02	0.01	0.01	0.01	0.01	0.01
28	106.82	4.94	16.98	0.09	0.01	0.01	0.01	0.01	0.01
29	140.58	5.33	25.80	0.03	0.01	0.01	0.01	0.01	0.01
30	125.33	5.38	22.02	0.03	0.01	0.01	0.01	0.01	0.01
31	86.88	5.36	15.44	0.06	0.01	0.01	0.01	0.01	0.01
Total									
Average	59.4	6.1	17.2	0.02	0.01	0.01	0.01	0.01	0.01
Maximum	196.9		39.5	0.10		0.01	0.01		0.01
Date	9-Jul		1-Jul	11-Jul		13-Jul	1-Jul		1-Jul
Minimum		4.2	11.6		0.01	0.01		0.01	0.01
Date		9-Jul	10-Jul		2-Jul	7-Jul		1-Jul	1-Jul

Notes:

Rack 2 offline.

Membranes Monthly Report

Month: July-17



Date	Rack #3 Turbidity			Rack #4 Turbidity			Turbidity After Membranes		
	RACK3_NTU_Value			RACK4_NTU_Value			PALL_FILT_AIT5001_Value		
	Maximum	Minimum	Average	Maximum	Minimum	Average	Maximum	Minimum	Average
1	0.02	0.01	0.01	0.02	0.02	0.02	0.04	0.02	0.02
2	0.02	0.01	0.01	0.03	0.02	0.02	0.02	0.02	0.02
3	0.02	0.01	0.01	0.02	0.02	0.02	0.02	0.02	0.02
4	0.02	0.01	0.01	0.03	0.02	0.02	0.02	0.02	0.02
5	0.02	0.01	0.01	0.02	0.02	0.02	0.10	0.02	0.02
6	0.02	0.01	0.01	0.02	0.02	0.02	0.02	0.02	0.02
7	0.02	0.01	0.01	0.02	0.02	0.02	0.02	0.02	0.02
8	0.02	0.01	0.01	0.03	0.02	0.02	0.02	0.02	0.02
9	0.02	0.01	0.01	0.03	0.02	0.02	0.03	0.02	0.02
10	0.05	0.01	0.01	0.05	0.02	0.02	0.06	0.02	0.03
11	0.03	0.01	0.01	0.03	0.02	0.02	0.05	0.02	0.02
12	0.03	0.01	0.01	0.03	0.02	0.02	0.03	0.02	0.02
13	0.02	0.01	0.01	0.03	0.02	0.02	0.03	0.02	0.02
14	0.02	0.01	0.01	0.03	0.02	0.02	0.02	0.02	0.02
15	0.02	0.01	0.01	0.03	0.02	0.02	0.03	0.02	0.02
16	0.02	0.01	0.01	0.03	0.02	0.02	0.04	0.02	0.02
17	0.02	0.01	0.01	0.03	0.02	0.02	0.02	0.02	0.02
18	0.02	0.01	0.01	0.03	0.02	0.02	0.03	0.02	0.02
19	0.02	0.01	0.01	0.03	0.02	0.02	0.03	0.02	0.02
20	0.13	0.01	0.01	0.11	0.02	0.02	0.02	0.02	0.02
21	0.04	0.01	0.01	0.03	0.02	0.02	0.03	0.02	0.02
22	0.03	0.01	0.01	0.03	0.02	0.02	0.06	0.02	0.02
23	0.02	0.01	0.01	0.03	0.02	0.02	0.02	0.02	0.02
24	0.02	0.01	0.01	0.02	0.02	0.02	0.02	0.02	0.02
25	0.02	0.01	0.01	0.02	0.02	0.02	0.02	0.02	0.02
26	0.02	0.01	0.01	0.02	0.02	0.02	0.03	0.02	0.02
27	0.08	0.01	0.01	0.03	0.02	0.02	0.02	0.02	0.02
28	0.02	0.01	0.01	0.03	0.02	0.02	0.02	0.02	0.02
29	0.03	0.01	0.01	0.02	0.02	0.02	0.02	0.02	0.02
30	0.03	0.01	0.01	0.02	0.02	0.02	0.02	0.02	0.02
31	0.02	0.01	0.01	0.02	0.02	0.02	0.02	0.02	0.02
Total									
Average	0.03	0.01	0.01	0.03	0.02	0.02	0.03	0.02	0.02
Maximum	0.13		0.01	0.11		0.02	0.10		0.03
Date	20-Jul		20-Jul	20-Jul		20-Jul	5-Jul		10-Jul
Minimum		0.01	0.01		0.02	0.02		0.02	0.02
Date		31-Jul	6-Jul		13-Jul	30-Jul		24-Jul	31-Jul

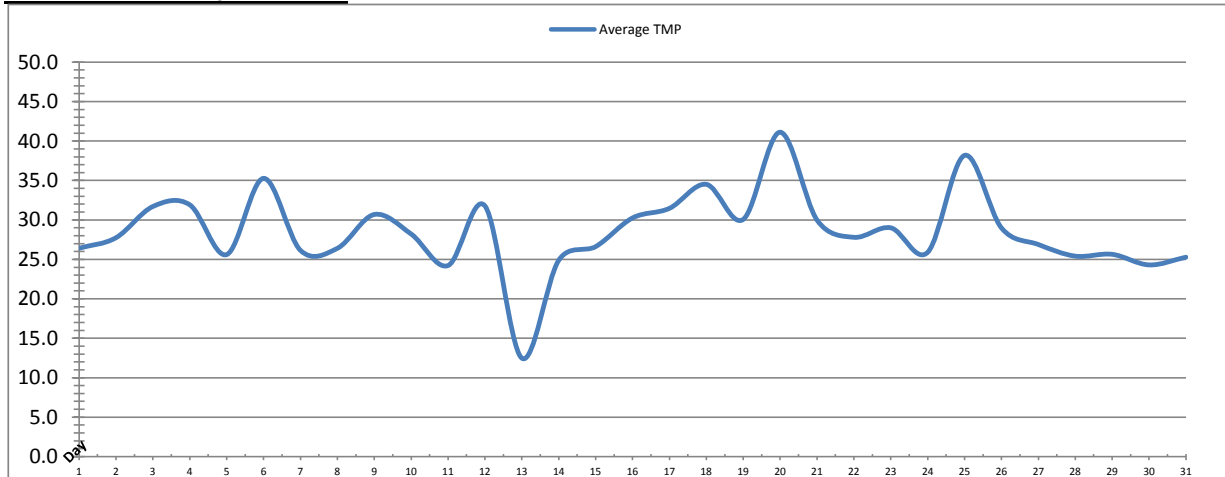
Notes:

Rack 3: July 20th turbidity >0.1ntu for 4 min after an EFM

Rack 4: July 20th turbidity >0.1ntu for 1.4min after an EFM

Membranes Monthly Report

Month: July-17

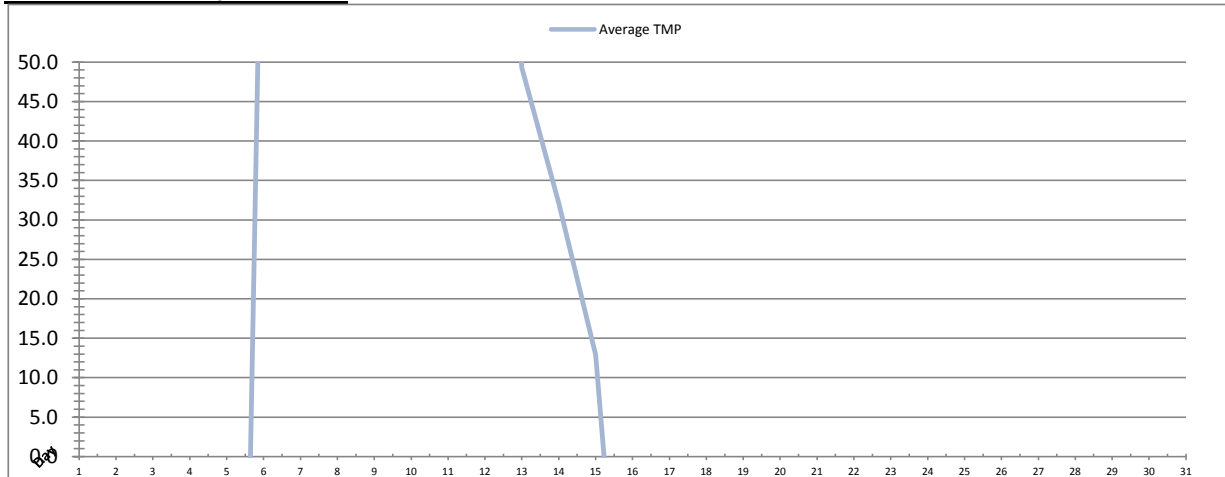


Date	Integrity Test Rack 1							
	Initial Pressure (kPa)	Final Pressure (kPa)	Test Duration (sec)	Change in Pressure (kPa)	UCL	Within UCL	Average TMP (kPa)	Max TMP (kPa)
1	195.8	194.8	300.0	1.0	2.0	✓ 2.0	26.4	71.8
2	196.0	194.9	300.0	1.1	2.0	✓ 2.0	27.7	71.4
3	195.8	194.9	300.0	0.9	2.0	✓ 2.0	31.7	77.0
4	195.8	194.9	300.0	1.0	2.0	✓ 2.0	31.9	81.5
5	194.9	193.9	300.0	1.0	2.0	✓ 2.0	25.6	70.5
6	196.0	194.8	300.0	1.1	2.0	✓ 2.0	35.3	116.6
7	196.4	195.2	300.0	1.2	2.0	✓ 2.0	26.1	69.2
8	195.6	194.7	300.0	1.0	2.0	✓ 2.0	26.4	77.9
9	195.9	194.9	300.0	1.0	2.0	✓ 2.0	30.7	78.3
10	196.0	194.8	300.0	1.1	2.0	✓ 2.0	28.2	90.7
11	196.1	195.0	300.0	1.1	2.0	✓ 2.0	24.2	96.6
12	196.0	195.1	300.0	0.9	2.0	✓ 2.0	31.8	73.4
13	196.0	195.1	300.0	0.9	2.0	✓ 2.0	12.5	55.5
14	195.9	194.9	300.0	1.0	2.0	✓ 2.0	24.9	74.6
15	195.6	194.7	300.0	0.9	2.0	✓ 2.0	26.6	81.5
16	195.5	194.7	300.0	0.7	2.0	✓ 2.0	30.3	82.4
17	195.8	194.7	300.0	1.1	2.0	✓ 2.0	31.5	86.3
18	195.8	194.7	300.0	1.1	2.0	✓ 2.0	34.5	88.5
19	196.2	194.9	300.0	1.3	2.0	✓ 2.0	30.1	93.5
20	195.8	194.8	300.0	1.0	2.0	✓ 2.0	41.1	88.3
21	195.9	194.8	300.0	1.1	2.0	✓ 2.0	30.0	81.2
22	196.1	195.0	300.0	1.1	2.0	✓ 2.0	27.8	74.9
23	196.0	195.2	300.0	0.8	2.0	✓ 2.0	29.0	77.8
24	196.0	195.1	300.0	0.9	2.0	✓ 2.0	25.9	78.9
25	195.6	194.4	300.0	1.2	2.0	✓ 2.0	38.2	129.9
26	195.8	194.8	300.0	1.0	2.0	✓ 2.0	29.0	76.7
27	195.9	195.1	300.0	0.8	2.0	✓ 2.0	26.9	77.5
28	195.9	194.9	300.0	0.9	2.0	✓ 2.0	25.4	69.3
29	195.7	194.7	300.0	1.0	2.0	✓ 2.0	25.6	66.7
30	196.3	195.3	300.0	0.9	2.0	✓ 2.0	24.3	72.2
31	196.3	195.3	300.0	0.9	2.0	✓ 2.0	25.3	71.0
Total								
Average	195.9	194.9	300.0	1.0	2.0	2.0	28.5	80.7
Maximum	196.4	195.3	300.0	1.3	2.0	2.0	41.1	129.9
Date	7-Jul	30-Jul	1-Jul	19-Jul	1-Jul	1-Jul	20-Jul	25-Jul
Minimum	194.9	193.9	300.0	0.7	2.0	2.0	12.5	55.5
Date	5-Jul	5-Jul	1-Jul	16-Jul	1-Jul	1-Jul	13-Jul	13-Jul

Notes:

Membranes Monthly Report

Month: **July-17**

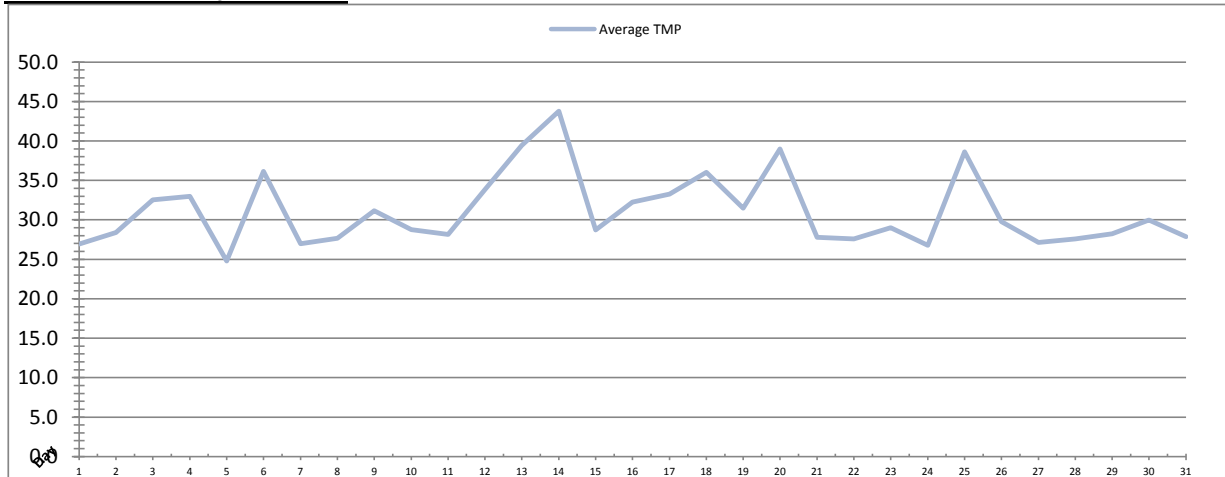


Date	Integrity Test Rack 2							
	Initial Pressure (kPa)	Final Pressure (kPa)	Test Duration (sec)	Change in Pressure (kPa)	UCL	Within UCL	Average TMP (kPa)	Max TMP (kPa)
1	200.9	199.9	300.0	1.0	2.0	✓ 2.0	-227.9	313.6
2	200.9	199.9	300.0	1.0	2.0	✓ 2.0	-229.9	313.6
3	200.9	199.9	300.0	1.0	2.0	✓ 2.0	-235.2	313.6
4	200.9	199.9	300.0	1.0	2.0	✓ 2.0	-239.7	313.6
5	200.9	199.9	300.0	1.0	2.0	✓ 2.0	-161.4	313.6
6	200.9	199.9	300.0	1.0	2.0	✓ 2.0	88.4	292.1
7	200.9	199.9	300.0	1.0	2.0	✓ 2.0	211.7	289.8
8	200.9	199.9	300.0	1.0	2.0	✓ 2.0	208.3	313.6
9	200.9	199.9	300.0	1.0	2.0	✓ 2.0	195.8	313.6
10	200.9	199.9	300.0	1.0	2.0	✓ 2.0	205.3	313.6
11	200.9	199.9	300.0	1.0	2.0	✓ 2.0	202.3	311.3
12	200.9	199.9	300.0	1.0	2.0	✓ 2.0	145.2	313.6
13	200.9	199.9	300.0	1.0	2.0	✓ 2.0	49.3	309.0
14	200.9	199.9	300.0	1.0	2.0	✓ 2.0	32.1	289.8
15	200.9	199.9	300.0	1.0	2.0	✓ 2.0	12.9	313.6
16	200.9	199.9	300.0	1.0	2.0	✓ 2.0	-43.6	313.6
17	200.9	199.9	300.0	1.0	2.0	✓ 2.0	-73.3	306.7
18	200.9	199.9	300.0	1.0	2.0	✓ 2.0	-68.8	274.4
19	200.9	199.9	300.0	1.0	2.0	✓ 2.0	-154.7	313.6
20	200.9	199.9	300.0	1.0	2.0	✓ 2.0	-201.4	313.6
21	200.9	199.9	300.0	1.0	2.0	✓ 2.0	-181.5	306.7
22	200.9	199.9	300.0	1.0	2.0	✓ 2.0	-197.4	306.7
23	200.9	199.9	300.0	1.0	2.0	✓ 2.0	-228.1	309.0
24	200.9	199.9	300.0	1.0	2.0	✓ 2.0	-248.8	311.3
25	200.9	199.9	300.0	1.0	2.0	✓ 2.0	-235.6	309.0
26	200.9	199.9	300.0	1.0	2.0	✓ 2.0	-219.9	311.3
27	200.9	199.9	300.0	1.0	2.0	✓ 2.0	-181.7	311.3
28	200.9	199.9	300.0	1.0	2.0	✓ 2.0	-149.6	313.6
29	200.9	199.9	300.0	1.0	2.0	✓ 2.0	-122.7	289.8
30	200.9	199.9	300.0	1.0	2.0	✓ 2.0	-93.0	313.6
31	200.9	199.9	300.0	1.0	2.0	✓ 2.0	-19.3	319.8
Total								
Average	200.9	199.9	300.0	1.0	2.0	2.0	-69.7	308.2
Maximum	200.9	199.9	300.0	1.0	2.0	2.0	211.7	319.8
Date	1-Jul	1-Jul	1-Jul	1-Jul	1-Jul	1-Jul	7-Jul	31-Jul
Minimum	200.9	199.9	300.0	1.0	2.0	2.0	-248.8	274.4
Date	1-Jul	1-Jul	1-Jul	1-Jul	1-Jul	1-Jul	24-Jul	18-Jul

Notes:
 Rack 2 offline

Membranes Monthly Report

Month: July-17

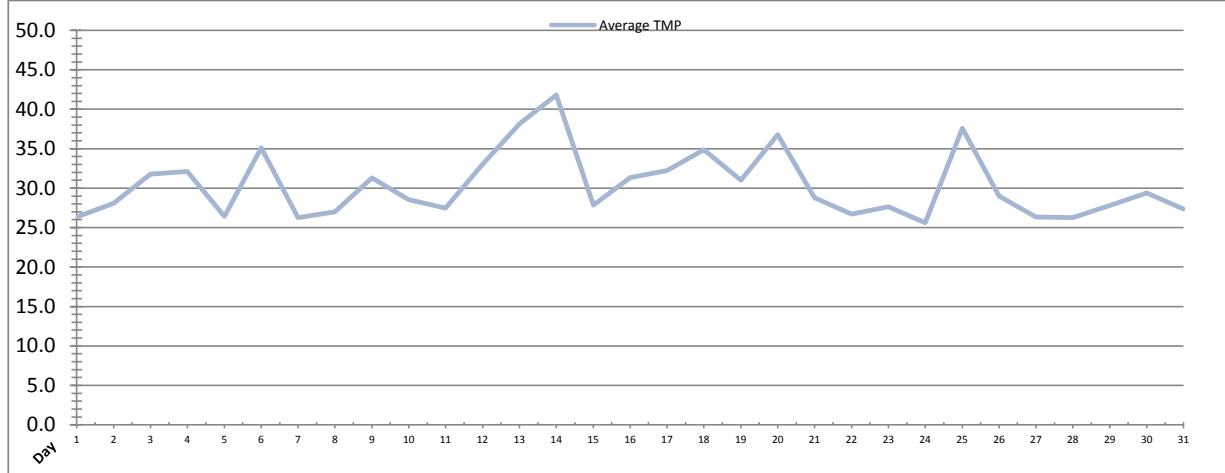


Integrity Test Rack 3									
Date	Initial Pressure (kPa)	Final Pressure (kPa)	Test Duration (sec)	Change in Pressure (kPa)	UCL	Within UCL	Average TMP (kPa)	Max TMP (kPa)	
1	191.3	190.0	300.0	1.3	2.0	✓ 2.0	26.9	71.2	
2	190.1	188.8	300.0	1.3	2.0	✓ 2.0	28.4	70.5	
3	190.4	189.0	300.0	1.4	2.0	✓ 2.0	32.5	77.2	
4	190.4	189.1	300.0	1.3	2.0	✓ 2.0	33.0	81.8	
5	190.6	189.5	300.0	1.1	2.0	✓ 2.0	24.8	73.2	
6	191.0	189.6	300.0	1.4	2.0	✓ 2.0	36.1	75.8	
7	191.0	189.6	300.0	1.4	2.0	✓ 2.0	27.0	69.5	
8	189.9	188.6	300.0	1.3	2.0	✓ 2.0	27.7	77.7	
9	190.7	189.3	300.0	1.4	2.0	✓ 2.0	31.2	77.9	
10	190.6	189.3	300.0	1.3	2.0	✓ 2.0	28.8	87.1	
11	190.7	189.4	300.0	1.3	2.0	✓ 2.0	28.2	88.4	
12	191.1	189.9	300.0	1.2	2.0	✓ 2.0	33.8	83.0	
13	190.8	189.7	300.0	1.1	2.0	✓ 2.0	39.5	154.2	
14	190.2	189.1	300.0	1.1	2.0	✓ 2.0	43.8	158.6	
15	191.4	190.2	300.0	1.2	2.0	✓ 2.0	28.7	94.7	
16	191.2	189.8	300.0	1.4	2.0	✓ 2.0	32.3	92.9	
17	190.4	189.1	300.0	1.3	2.0	✓ 2.0	33.3	90.9	
18	190.2	189.0	300.0	1.3	2.0	✓ 2.0	36.0	98.5	
19	190.3	189.0	300.0	1.3	2.0	✓ 2.0	31.5	97.2	
20	191.5	190.1	300.0	1.4	2.0	✓ 2.0	39.0	125.1	
21	190.5	189.3	300.0	1.2	2.0	✓ 2.0	27.8	74.3	
22	190.4	189.0	300.0	1.3	2.0	✓ 2.0	27.6	71.1	
23	191.2	190.0	300.0	1.2	2.0	✓ 2.0	29.0	70.5	
24	191.8	190.7	300.0	1.1	2.0	✓ 2.0	26.8	77.8	
25	191.1	189.8	300.0	1.3	2.0	✓ 2.0	38.6	82.5	
26	191.0	189.8	300.0	1.2	2.0	✓ 2.0	29.8	76.3	
27	191.4	190.2	300.0	1.2	2.0	✓ 2.0	27.1	73.9	
28	190.2	188.9	300.0	1.3	2.0	✓ 2.0	27.6	69.9	
29	190.6	189.3	300.0	1.3	2.0	✓ 2.0	28.2	122.7	
30	190.7	189.5	300.0	1.2	2.0	✓ 2.0	30.0	133.8	
31	190.7	189.5	300.0	1.2	2.0	✓ 2.0	27.9	73.5	
Total									
Average	190.8	189.5	300.0	1.3	2.0	2.0	31.1	89.4	
Maximum	191.8	190.7	300.0	1.4	2.0	2.0	43.8	158.6	
Date	24-Jul	24-Jul	1-Jul	3-Jul	1-Jul	1-Jul	14-Jul	14-Jul	
Minimum	189.9	188.6	300.0	1.1	2.0	2.0	24.8	69.5	
Date	8-Jul	8-Jul	1-Jul	5-Jul	1-Jul	1-Jul	5-Jul	7-Jul	

Notes:

Membranes Monthly Report

Month: July-17



Integrity Test Rack 4									
Date	Initial Pressure (kPa)	Final Pressure (kPa)	Test Duration (sec)	Change in Pressure (kPa)	UCL	Within UCL	Average TMP (kPa)	Max TMP (kPa)	
1	196.7	195.7	300.0	1.1	2.0	✓ 2.0	26.3	70.8	
2	196.6	195.5	300.0	1.2	2.0	✓ 2.0	28.1	117.3	
3	196.8	195.5	300.0	1.3	2.0	✓ 2.0	31.8	76.9	
4	197.1	195.8	300.0	1.3	2.0	✓ 2.0	32.1	134.3	
5	195.3	193.9	300.0	1.4	2.0	✓ 2.0	26.4	70.1	
6	197.9	196.6	300.0	1.3	2.0	✓ 2.0	35.1	122.7	
7	197.7	196.4	300.0	1.3	2.0	✓ 2.0	26.3	67.8	
8	196.7	195.5	300.0	1.3	2.0	✓ 2.0	27.0	76.5	
9	197.1	195.9	300.0	1.3	2.0	✓ 2.0	31.3	99.7	
10	196.9	195.6	300.0	1.3	2.0	✓ 2.0	28.5	136.3	
11	197.7	196.4	300.0	1.3	2.0	✓ 2.0	27.5	130.6	
12	197.1	195.8	300.0	1.3	2.0	✓ 2.0	33.0	142.7	
13	197.2	196.1	300.0	1.1	2.0	✓ 2.0	38.2	149.3	
14	197.3	196.1	300.0	1.2	2.0	✓ 2.0	41.8	162.2	
15	197.7	196.4	300.0	1.3	2.0	✓ 2.0	27.8	90.5	
16	197.3	196.1	300.0	1.2	2.0	✓ 2.0	31.3	89.4	
17	196.8	195.5	300.0	1.3	2.0	✓ 2.0	32.2	88.0	
18	197.5	196.3	300.0	1.3	2.0	✓ 2.0	34.9	94.8	
19	197.4	196.0	300.0	1.4	2.0	✓ 2.0	31.0	94.6	
20	197.3	196.2	300.0	1.2	2.0	✓ 2.0	36.8	159.9	
21	197.2	196.0	300.0	1.2	2.0	✓ 2.0	28.8	74.8	
22	197.3	196.0	300.0	1.3	2.0	✓ 2.0	26.7	70.6	
23	197.0	195.8	300.0	1.1	2.0	✓ 2.0	27.6	73.5	
24	197.4	196.3	300.0	1.1	2.0	✓ 2.0	25.6	75.3	
25	197.6	196.3	300.0	1.3	2.0	✓ 2.0	37.6	81.8	
26	197.4	196.3	300.0	1.1	2.0	✓ 2.0	29.0	72.9	
27	197.6	196.5	300.0	1.1	2.0	✓ 2.0	26.3	69.3	
28	197.2	196.1	300.0	1.1	2.0	✓ 2.0	26.3	72.2	
29	197.4	196.3	300.0	1.1	2.0	✓ 2.0	27.8	102.8	
30	197.1	196.0	300.0	1.1	2.0	✓ 2.0	29.4	122.3	
31	197.1	196.0	300.0	1.1	2.0	✓ 2.0	27.3	103.1	
Total									
Average	197.2	196.0	300.0	1.2	2.0	2.0	30.3	99.8	
Maximum	197.9	196.6	300.0	1.4	2.0	2.0	41.8	162.2	
Date	6-Jul	6-Jul	1-Jul	5-Jul	1-Jul	1-Jul	14-Jul	14-Jul	
Minimum	195.3	193.9	300.0	1.1	2.0	2.0	25.6	67.8	
Date	5-Jul	5-Jul	1-Jul	1-Jul	1-Jul	1-Jul	24-Jul	7-Jul	

Notes:

Membranes Monthly Report

Month: July-17

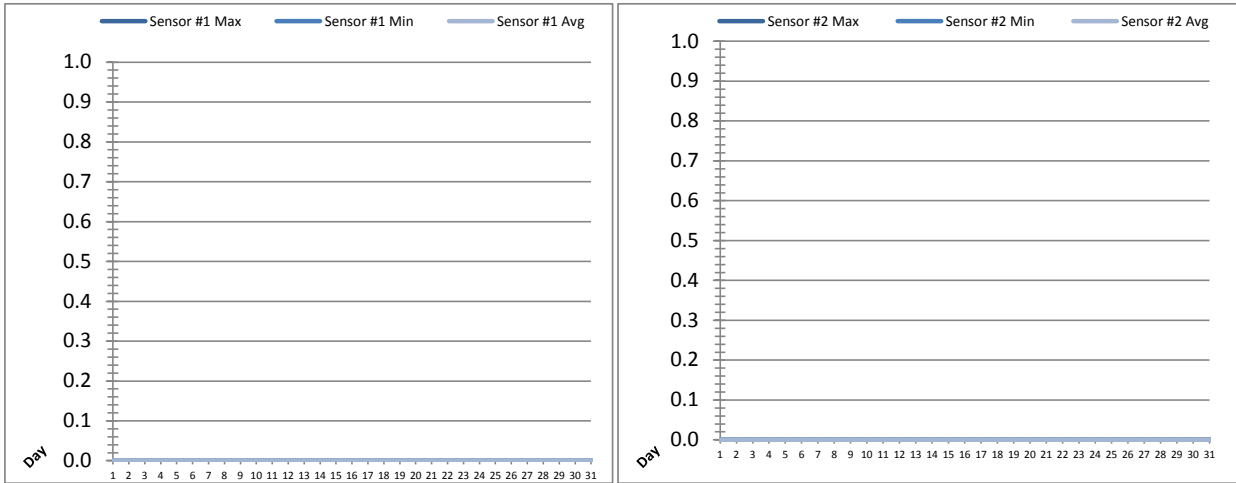
Date	Membranes Monthly Performance							
	Rack 1 >0.1 NTU (Minutes)	Rack 1 Forward Flow (Minutes)	Rack 2 >0.1 NTU (Minutes)	Rack 2 Forward Flow (Minutes)	Rack 3 >0.1 NTU (Minutes)	Rack 3 Forward Flow (Minutes)	Rack 4 >0.1 NTU (Minutes)	Rack 4 Forward Flow (Minutes)
1	0.0	966.0	0.0	0.0	0.0	970.5	0.0	971.0
2	0.0	1214.5	0.0	0.0	0.0	1219.4	0.0	1223.5
3	0.0	1022.2	0.0	0.0	0.0	1028.5	0.0	1031.1
4	0.0	1085.1	0.0	0.0	0.0	1094.1	0.0	1092.3
5	0.0	1089.1	0.0	0.0	0.0	1128.3	0.0	1153.4
6	0.0	1150.2	0.0	0.0	0.0	1162.3	0.0	1160.1
7	0.0	1355.2	0.0	0.0	0.0	1363.1	0.0	1365.3
8	0.0	1142.5	0.0	0.0	0.0	1149.3	0.0	1151.0
9	0.0	1222.0	0.0	0.0	0.0	1293.1	0.0	1302.0
10	0.0	790.5	0.0	0.0	0.0	798.0	0.0	796.3
11	0.0	650.2	0.0	0.0	0.0	723.1	0.0	722.1
12	0.0	1061.1	0.0	0.0	0.0	1069.4	0.0	1075.1
13	0.0	60.2	0.0	0.0	0.0	734.2	0.0	735.1
14	0.0	600.5	0.0	0.0	0.0	1014.1	0.0	1012.4
15	0.0	733.0	0.0	0.0	0.0	740.2	0.0	742.5
16	0.0	786.1	0.0	0.0	0.0	795.2	0.0	798.3
17	0.0	806.5	0.0	0.0	0.0	806.1	0.0	806.0
18	0.0	913.5	0.0	0.0	0.0	917.1	0.0	914.4
19	0.0	791.4	0.0	0.0	0.0	789.1	0.0	791.4
20	0.0	1080.3	0.0	0.0	4.0	1023.2	1.4	989.6
21	0.0	948.5	0.0	0.0	0.0	930.0	0.0	950.2
22	0.0	838.0	0.0	0.0	0.0	830.1	0.0	829.1
23	0.0	942.2	0.0	0.0	0.0	944.3	0.0	940.5
24	0.0	823.3	0.0	0.0	0.0	821.1	0.0	826.4
25	0.0	1133.3	0.0	0.0	0.0	1136.5	0.0	1142.3
26	0.0	792.5	0.0	0.0	0.0	791.5	0.0	791.1
27	0.0	878.4	0.0	0.0	0.0	865.5	0.0	846.1
28	0.0	876.4	0.0	0.0	0.0	936.1	0.0	938.4
29	0.0	885.5	0.0	0.0	0.0	944.4	0.0	945.2
30	0.0	888.3	0.0	0.0	0.0	956.3	0.0	957.2
31	0.0	703.3	0.0	0.0	0.0	758.1	0.0	768.0
Total	0.0	28230.1	0.0	0.0	4.0	29732.3	1.4	29767.6
Percent	0.000		#DIV/0!		0.014		0.005	
Maximum	0.0	1355.2	0.0	0.0	4.0	1363.1	1.4	1365.3
Date	1-Jul	7-Jul	1-Jul	1-Jul	20-Jul	7-Jul	20-Jul	7-Jul
Minimum	0.0	60.2	0.0	0.0	0.0	723.1	0.0	722.1
Date	1-Jul	13-Jul	1-Jul	1-Jul	1-Jul	11-Jul	1-Jul	11-Jul

Notes:

Met filter performance criteria of 99% of the readings less than 0.1ntu for the month.

UV System Monthly Report

Month: July-17

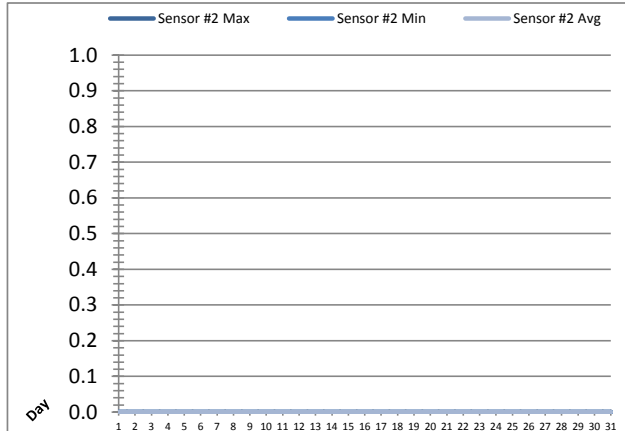
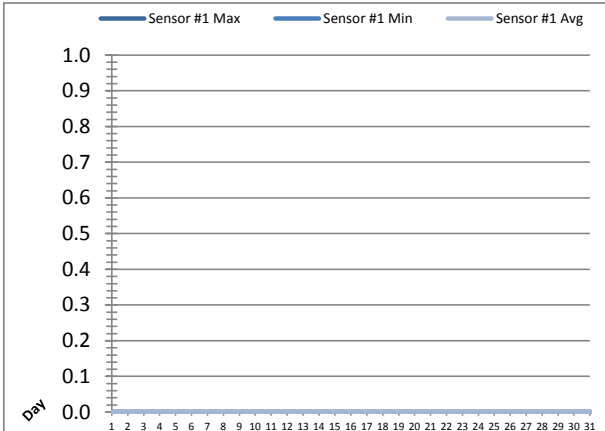


Date	UV Reactor 1					
	Intensity Sensor 1 (mW/cm ²)			Intensity Sensor 2 (mW/cm ²)		
	Maximum	Minimum	Average	Maximum	Minimum	Average
1	0.0	0.0	0.0	0.0	0.0	0.0
2	0.0	0.0	0.0	0.0	0.0	0.0
3	0.0	0.0	0.0	0.0	0.0	0.0
4	0.0	0.0	0.0	0.0	0.0	0.0
5	0.0	0.0	0.0	0.0	0.0	0.0
6	0.0	0.0	0.0	0.0	0.0	0.0
7	0.0	0.0	0.0	0.0	0.0	0.0
8	0.0	0.0	0.0	0.0	0.0	0.0
9	0.0	0.0	0.0	0.0	0.0	0.0
10	0.0	0.0	0.0	0.0	0.0	0.0
11	0.0	0.0	0.0	0.0	0.0	0.0
12	0.0	0.0	0.0	0.0	0.0	0.0
13	0.0	0.0	0.0	0.0	0.0	0.0
14	0.0	0.0	0.0	0.0	0.0	0.0
15	0.0	0.0	0.0	0.0	0.0	0.0
16	0.0	0.0	0.0	0.0	0.0	0.0
17	0.0	0.0	0.0	0.0	0.0	0.0
18	0.0	0.0	0.0	0.0	0.0	0.0
19	0.0	0.0	0.0	0.0	0.0	0.0
20	0.0	0.0	0.0	0.0	0.0	0.0
21	0.0	0.0	0.0	0.0	0.0	0.0
22	0.0	0.0	0.0	0.0	0.0	0.0
23	0.0	0.0	0.0	0.0	0.0	0.0
24	0.0	0.0	0.0	0.0	0.0	0.0
25	0.0	0.0	0.0	0.0	0.0	0.0
26	0.0	0.0	0.0	0.0	0.0	0.0
27	0.0	0.0	0.0	0.0	0.0	0.0
28	0.0	0.0	0.0	0.0	0.0	0.0
29	0.0	0.0	0.0	0.0	0.0	0.0
30	0.0	0.0	0.0	0.0	0.0	0.0
31	0.0	0.0	0.0	0.0	0.0	0.0
Total						
Average	0.0	0.0	0.0	0.0	0.0	0.0
Maximum	0.0		0.0	0.0		0.0
Date	1-Jul		1-Jul	1-Jul		1-Jul
Minimum		0.0	0.0		0.0	0.0
Date		1-Jul	1-Jul		1-Jul	1-Jul

Notes:

UV System Monthly Report

Month: July-17

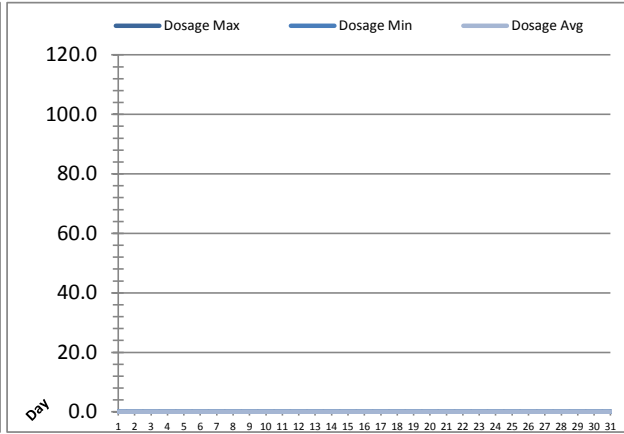
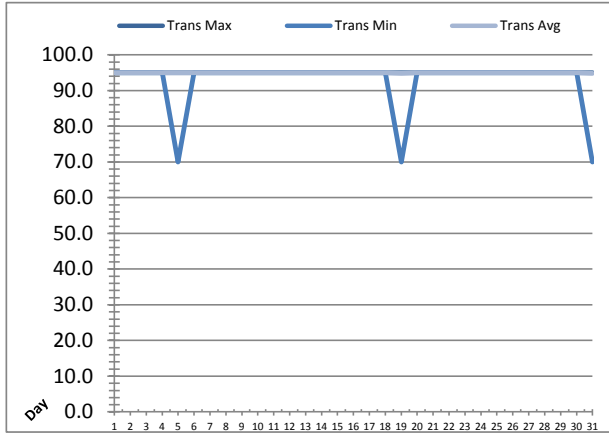


UV Reactor 2						
Date	Intensity Sensor 1 (mW/cm ²)			Intensity Sensor 2 (mW/cm ²)		
	Maximum	Minimum	Average	Maximum	Minimum	Average
1	0.0	0.0	0.0	0.0	0.0	0.0
2	0.0	0.0	0.0	0.0	0.0	0.0
3	0.0	0.0	0.0	0.0	0.0	0.0
4	0.0	0.0	0.0	0.0	0.0	0.0
5	0.0	0.0	0.0	0.0	0.0	0.0
6	0.0	0.0	0.0	0.0	0.0	0.0
7	0.0	0.0	0.0	0.0	0.0	0.0
8	0.0	0.0	0.0	0.0	0.0	0.0
9	0.0	0.0	0.0	0.0	0.0	0.0
10	0.0	0.0	0.0	0.0	0.0	0.0
11	0.0	0.0	0.0	0.0	0.0	0.0
12	0.0	0.0	0.0	0.0	0.0	0.0
13	0.0	0.0	0.0	0.0	0.0	0.0
14	0.0	0.0	0.0	0.0	0.0	0.0
15	0.0	0.0	0.0	0.0	0.0	0.0
16	0.0	0.0	0.0	0.0	0.0	0.0
17	0.0	0.0	0.0	0.0	0.0	0.0
18	0.0	0.0	0.0	0.0	0.0	0.0
19	0.0	0.0	0.0	0.0	0.0	0.0
20	0.0	0.0	0.0	0.0	0.0	0.0
21	0.0	0.0	0.0	0.0	0.0	0.0
22	0.0	0.0	0.0	0.0	0.0	0.0
23	0.0	0.0	0.0	0.0	0.0	0.0
24	0.0	0.0	0.0	0.0	0.0	0.0
25	0.0	0.0	0.0	0.0	0.0	0.0
26	0.0	0.0	0.0	0.0	0.0	0.0
27	0.0	0.0	0.0	0.0	0.0	0.0
28	0.0	0.0	0.0	0.0	0.0	0.0
29	0.0	0.0	0.0	0.0	0.0	0.0
30	0.0	0.0	0.0	0.0	0.0	0.0
31	0.0	0.0	0.0	0.0	0.0	0.0
Total						
Average	0.0	0.0	0.0	0.0	0.0	0.0
Maximum	0.0		0.0	0.0		0.0
Date	1-Jul		1-Jul	1-Jul		1-Jul
Minimum		0.0	0.0		0.0	0.0
Date		1-Jul	1-Jul		1-Jul	1-Jul

Notes:

UV System Monthly Report

Month: July-17

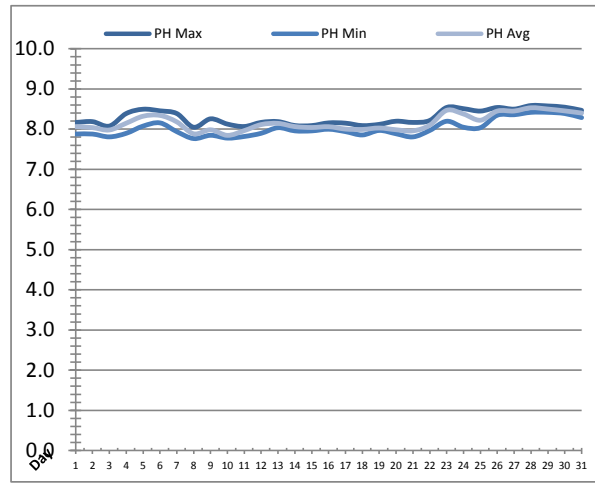
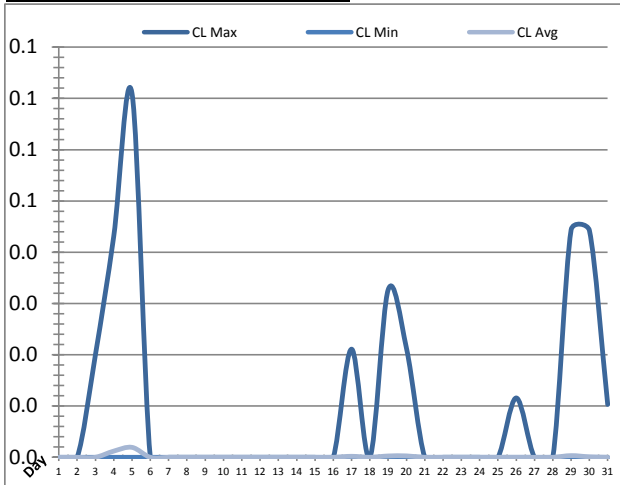


UV System							
Date	Transmittance (%)			Dosage (mJ/cm ²)			Inlet Flow (L/s)
	Maximum	Minimum	Average	Maximum	Minimum	Average	Maximum
1	95.00	95.00	95.00	0.0	0.0	0.0	123.4
2	95.00	95.00	95.00	0.0	0.0	0.0	117.7
3	95.00	95.00	95.00	0.0	0.0	0.0	120.8
4	95.00	95.00	95.00	0.0	0.0	0.0	118.9
5	95.00	70.00	94.98	0.0	0.0	0.0	119.2
6	95.00	95.00	95.00	0.0	0.0	0.0	119.9
7	95.00	95.00	95.00	0.0	0.0	0.0	110.1
8	95.00	95.00	95.00	0.0	0.0	0.0	119.0
9	95.00	95.00	95.00	0.0	0.0	0.0	118.8
10	95.00	95.00	95.00	0.0	0.0	0.0	129.4
11	95.00	95.00	95.00	0.0	0.0	0.0	127.4
12	95.00	95.00	95.00	0.0	0.0	0.0	126.4
13	95.00	95.00	95.00	0.0	0.0	0.0	121.6
14	95.00	95.00	95.00	0.0	0.0	0.0	118.0
15	95.00	95.00	95.00	0.0	0.0	0.0	123.0
16	95.00	95.00	95.00	0.0	0.0	0.0	120.8
17	95.00	95.00	95.00	0.0	0.0	0.0	118.8
18	95.00	95.00	95.00	0.0	0.0	0.0	122.5
19	95.00	70.00	94.85	0.0	0.0	0.0	121.0
20	95.00	95.00	95.00	0.0	0.0	0.0	114.9
21	95.00	95.00	95.00	0.0	0.0	0.0	117.7
22	95.00	95.00	95.00	0.0	0.0	0.0	118.9
23	95.00	95.00	95.00	0.0	0.0	0.0	123.0
24	95.00	95.00	95.00	0.0	0.0	0.0	128.6
25	95.00	95.00	95.00	0.0	0.0	0.0	134.8
26	95.00	95.00	95.00	0.0	0.0	0.0	126.2
27	95.00	95.00	95.00	0.0	0.0	0.0	129.5
28	95.00	95.00	95.00	0.0	0.0	0.0	133.2
29	95.00	95.00	95.00	0.0	0.0	0.0	128.4
30	95.00	95.00	95.00	0.0	0.0	0.0	132.8
31	95.00	70.00	94.87	0.0	0.0	0.0	133.0
Total							
Average	95.00	92.58	94.99	0.0	0.0	0.0	123.2
Maximum	95.00		95.00	0.0		0.0	134.8
Date	1-Jul		1-Jul	1-Jul		1-Jul	25-Jul
Minimum		70.00	94.85		0.0	0.0	
Date		5-Jul	19-Jul		1-Jul	1-Jul	

Notes:

Plant Quality Report

Month: July-17

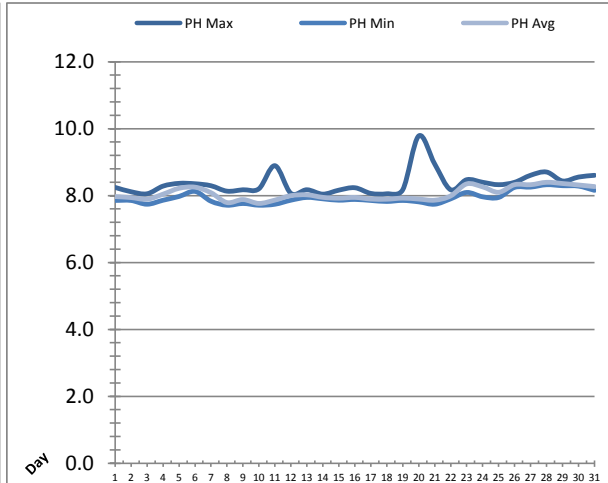
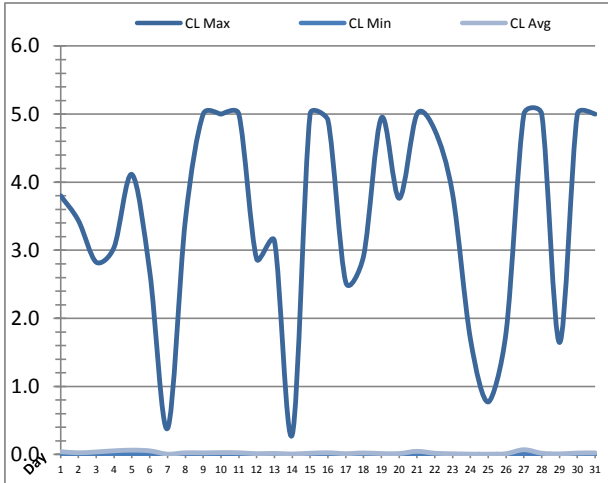


Date	Strainer Chlorine Residual			Strainer pH		
	AIT_2003_CL (ppm)			AIT_2003_PH		
	Maximum	Minimum	Average	Maximum	Minimum	Average
1	0.00	0.00	0.00	8.17	7.88	8.06
2	0.00	0.00	0.00	8.19	7.88	8.04
3	0.02	0.00	0.00	8.08	7.81	7.98
4	0.04	0.00	0.00	8.39	7.90	8.15
5	0.07	0.00	0.00	8.50	8.08	8.32
6	0.00	0.00	0.00	8.46	8.16	8.34
7	0.00	0.00	0.00	8.39	7.94	8.18
8	0.00	0.00	0.00	8.05	7.76	7.88
9	0.00	0.00	0.00	8.26	7.85	7.98
10	0.00	0.00	0.00	8.13	7.78	7.85
11	0.00	0.00	0.00	8.07	7.82	7.96
12	0.00	0.00	0.00	8.17	7.90	8.11
13	0.00	0.00	0.00	8.19	8.04	8.14
14	0.00	0.00	0.00	8.09	7.96	8.06
15	0.00	0.00	0.00	8.09	7.96	8.04
16	0.00	0.00	0.00	8.16	8.00	8.06
17	0.02	0.00	0.00	8.15	7.94	8.00
18	0.00	0.00	0.00	8.09	7.86	7.99
19	0.03	0.00	0.00	8.12	7.97	8.03
20	0.02	0.00	0.00	8.20	7.88	7.98
21	0.00	0.00	0.00	8.17	7.81	7.96
22	0.00	0.00	0.00	8.22	7.97	8.10
23	0.00	0.00	0.00	8.54	8.20	8.47
24	0.00	0.00	0.00	8.51	8.05	8.38
25	0.00	0.00	0.00	8.45	8.04	8.22
26	0.01	0.00	0.00	8.54	8.35	8.45
27	0.00	0.00	0.00	8.50	8.36	8.45
28	0.00	0.00	0.00	8.59	8.42	8.53
29	0.04	0.00	0.00	8.58	8.42	8.50
30	0.04	0.00	0.00	8.55	8.39	8.45
31	0.01	0.00	0.00	8.47	8.29	8.40
Total						
Average	0.01	0.00	0.00	8.29	8.02	8.16
Maximum	0.07		0.00	8.59		8.53
Date	5-Jul		5-Jul	28-Jul		28-Jul
Minimum		0.00	0.00		7.76	7.85
Date		1-Jul	1-Jul		8-Jul	10-Jul

Notes:

Plant Quality Report

Month: July-17

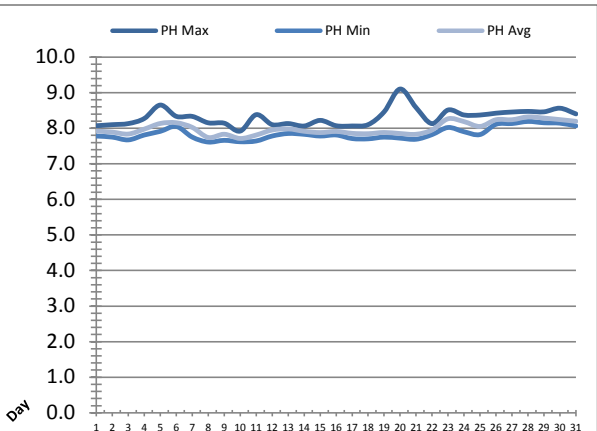
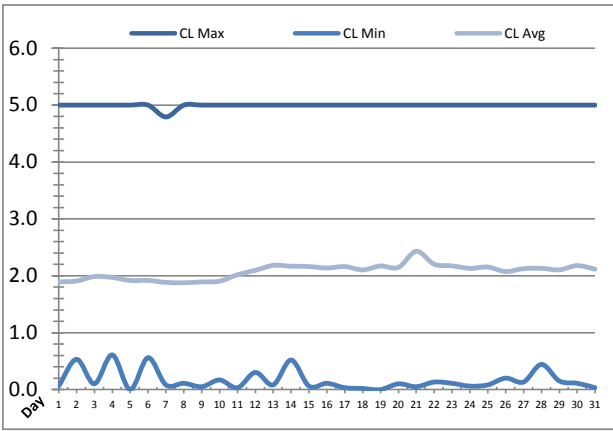


Date	Inlet UV Chlorine Residual			Inlet UV pH		
	AIT_5005_CL (ppm)			AIT_5005_PH		
	Maximum	Minimum	Average	Maximum	Minimum	Average
1	3.80	0.00	0.04	8.24	7.85	7.97
2	3.43	0.00	0.03	8.11	7.85	7.94
3	2.82	0.00	0.04	8.05	7.74	7.89
4	3.04	0.00	0.05	8.28	7.86	8.04
5	4.11	0.00	0.06	8.37	7.97	8.22
6	2.68	0.00	0.05	8.35	8.12	8.25
7	0.38	0.00	0.01	8.29	7.83	8.09
8	3.44	0.00	0.03	8.13	7.71	7.79
9	5.00	0.00	0.02	8.17	7.76	7.88
10	5.00	0.00	0.03	8.20	7.71	7.76
11	5.00	0.00	0.03	8.89	7.74	7.86
12	2.87	0.00	0.01	8.06	7.86	8.00
13	3.14	0.00	0.02	8.17	7.94	8.02
14	0.29	0.00	0.01	8.04	7.90	7.95
15	5.00	0.00	0.02	8.16	7.86	7.92
16	4.91	0.00	0.03	8.23	7.88	7.95
17	2.53	0.00	0.01	8.06	7.85	7.90
18	2.91	0.00	0.02	8.05	7.82	7.89
19	4.95	0.00	0.01	8.17	7.85	7.92
20	3.76	0.00	0.01	9.78	7.81	7.90
21	5.00	0.00	0.05	8.94	7.74	7.86
22	4.76	0.00	0.02	8.17	7.90	7.99
23	3.82	0.00	0.01	8.47	8.09	8.35
24	1.69	0.00	0.01	8.40	7.96	8.26
25	0.77	0.00	0.01	8.32	7.94	8.10
26	1.80	0.00	0.01	8.40	8.24	8.33
27	5.00	0.00	0.07	8.61	8.25	8.32
28	5.00	0.00	0.02	8.70	8.32	8.40
29	1.64	0.00	0.01	8.44	8.29	8.36
30	5.00	0.00	0.02	8.55	8.28	8.32
31	5.00	0.00	0.02	8.61	8.16	8.27
Total						
Average	3.50	0.00	0.03	8.37	7.94	8.05
Maximum	5.00		0.07	9.78		8.40
Date	9-Jul		27-Jul	20-Jul		28-Jul
Minimum		0.00	0.01		7.71	7.76
Date		23-Jul	25-Jul		8-Jul	10-Jul

Notes:

Plant Quality Report

Month: **July-17**

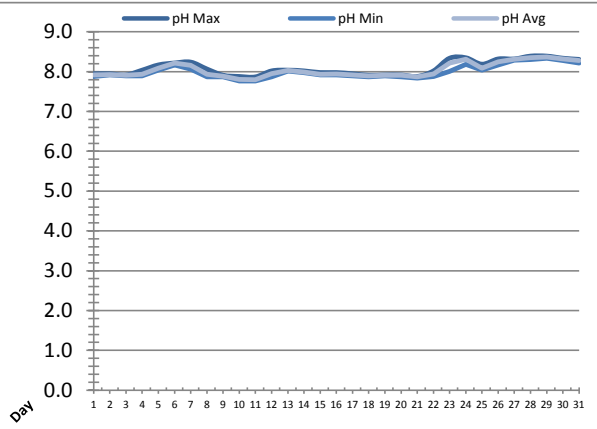
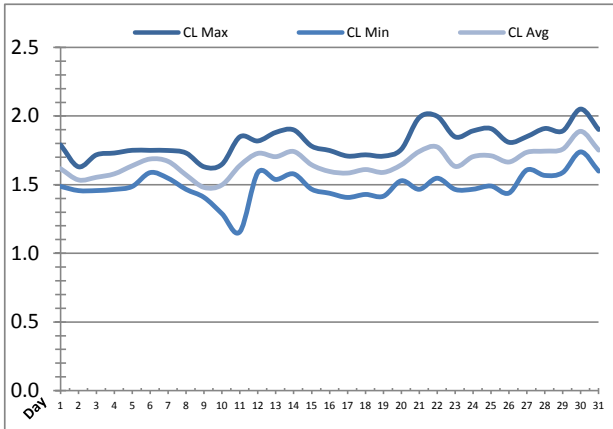


Date	Discharge UV Chlorine Residual			Discharge UV pH		
	AIT_5006_CL (ppm)			AIT_5006_PH		
	Maximum	Minimum	Average	Maximum	Minimum	Average
1	5.00	0.06	1.89	8.07	7.78	7.92
2	5.00	0.53	1.91	8.10	7.75	7.89
3	5.00	0.10	1.99	8.13	7.67	7.84
4	5.00	0.61	1.97	8.27	7.81	7.98
5	5.00	0.00	1.92	8.65	7.91	8.13
6	5.00	0.56	1.92	8.33	8.05	8.16
7	4.79	0.08	1.88	8.33	7.75	8.02
8	5.00	0.11	1.88	8.15	7.61	7.74
9	5.00	0.05	1.89	8.14	7.66	7.83
10	5.00	0.17	1.90	7.92	7.62	7.71
11	5.00	0.03	2.02	8.38	7.64	7.81
12	5.00	0.30	2.10	8.10	7.78	7.95
13	5.00	0.08	2.18	8.13	7.85	7.98
14	5.00	0.52	2.17	8.06	7.83	7.92
15	5.00	0.06	2.16	8.22	7.78	7.88
16	5.00	0.11	2.14	8.07	7.81	7.91
17	5.00	0.03	2.16	8.06	7.71	7.86
18	5.00	0.02	2.10	8.10	7.70	7.85
19	5.00	0.00	2.17	8.46	7.75	7.88
20	5.00	0.10	2.15	9.10	7.72	7.85
21	5.00	0.05	2.43	8.58	7.69	7.83
22	5.00	0.13	2.20	8.13	7.82	7.95
23	5.00	0.11	2.18	8.51	8.02	8.27
24	5.00	0.06	2.13	8.37	7.90	8.19
25	5.00	0.08	2.15	8.37	7.82	8.05
26	5.00	0.20	2.08	8.42	8.11	8.24
27	5.00	0.13	2.13	8.46	8.13	8.24
28	5.00	0.44	2.13	8.47	8.19	8.32
29	5.00	0.15	2.10	8.46	8.15	8.29
30	5.00	0.11	2.18	8.56	8.14	8.24
31	5.00	0.03	2.12	8.40	8.07	8.20
Total						
Average	4.99	0.16	2.08	8.31	7.85	8.00
Maximum	5.00		2.43	9.10		8.32
Date	1-Jul		21-Jul	20-Jul		28-Jul
Minimum		0.00	1.88		7.61	7.71
Date		5-Jul	8-Jul		8-Jul	10-Jul

Notes:

Plant Quality Report

Month: **July-17**

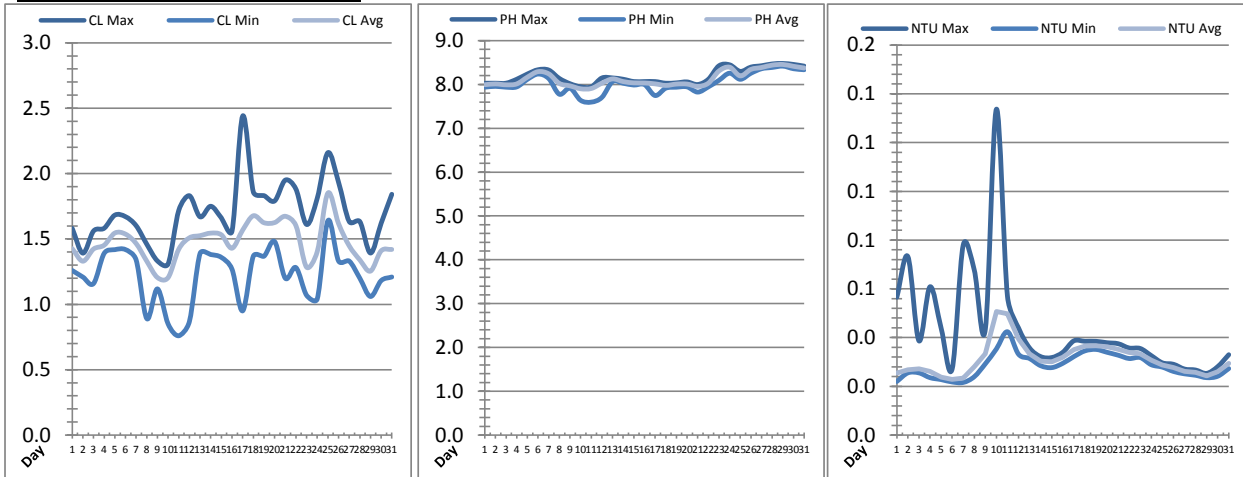


Date	Suction Header Chlorine Res.			Suction Header pH			Distribution CT Calc Total		
	AIT_7001_CL (ppm)			AIT_7001_PH (m)			REAL_CT_CALC_TOTAL (mg*ml/min)		
	Maximum	Minimum	Average	Maximum	Minimum	Average	Maximum	Minimum	Average
1	1.79	1.49	1.62	7.95	7.88	7.92	12159.77	0.00	255.58
2	1.63	1.46	1.53	7.95	7.91	7.92	9611.29	0.00	242.04
3	1.72	1.46	1.55	7.92	7.90	7.91	10113.13	0.00	254.25
4	1.73	1.47	1.58	8.04	7.90	7.93	9786.59	0.00	206.09
5	1.75	1.49	1.64	8.17	8.04	8.08	9303.63	0.00	177.42
6	1.75	1.59	1.69	8.22	8.17	8.21	9683.93	0.00	342.28
7	1.75	1.55	1.67	8.24	8.07	8.16	11251.91	0.00	228.64
8	1.73	1.47	1.57	8.07	7.87	7.93	7247.08	0.00	218.29
9	1.63	1.41	1.48	7.91	7.87	7.88	9606.40	0.00	215.96
10	1.65	1.29	1.50	7.88	7.77	7.80	8142.72	0.00	180.26
11	1.85	1.16	1.64	7.87	7.77	7.80	557.71	0.00	130.94
12	1.82	1.59	1.73	8.02	7.87	7.95	6378.71	0.00	197.09
13	1.88	1.54	1.70	8.04	8.02	8.03	5209.02	0.00	108.61
14	1.90	1.58	1.74	8.02	7.97	7.99	4394.31	0.00	150.34
15	1.78	1.47	1.64	7.98	7.92	7.94	5393.25	0.00	142.87
16	1.75	1.44	1.60	7.98	7.91	7.94	5228.59	0.00	119.66
17	1.71	1.41	1.58	7.95	7.90	7.91	782.99	0.00	115.00
18	1.72	1.43	1.61	7.91	7.87	7.89	3524.72	0.00	108.47
19	1.71	1.42	1.59	7.92	7.90	7.91	5695.89	0.00	121.06
20	1.76	1.53	1.64	7.92	7.87	7.91	4094.85	0.00	142.05
21	1.99	1.47	1.74	7.88	7.84	7.86	5611.14	0.00	185.12
22	2.00	1.55	1.77	8.02	7.88	7.94	5302.37	0.00	148.80
23	1.85	1.47	1.63	8.34	8.00	8.21	5007.91	0.00	151.50
24	1.89	1.47	1.70	8.35	8.19	8.31	5357.72	0.00	141.81
25	1.91	1.49	1.71	8.19	8.04	8.09	5195.73	0.00	124.28
26	1.81	1.44	1.67	8.32	8.17	8.25	5698.70	0.00	106.10
27	1.85	1.61	1.74	8.32	8.29	8.31	4820.73	0.00	168.89
28	1.91	1.57	1.74	8.39	8.31	8.35	5497.07	0.00	147.13
29	1.89	1.59	1.76	8.39	8.34	8.37	3335.86	0.00	178.33
30	2.05	1.74	1.89	8.34	8.28	8.32	1233.17	0.00	174.40
31	1.90	1.60	1.75	8.31	8.22	8.28	5488.44	0.00	144.51
Total									
Average	1.81	1.49	1.66	8.09	8.00	8.04			
Maximum	2.05		1.89	8.39		8.37			
Date	30-Jul		30-Jul	28-Jul		29-Jul			
Minimum		1.16	1.48		7.77	7.80			
Date		11-Jul	9-Jul		10-Jul	11-Jul			

Notes:

Plant Quality Report

Month: July-17

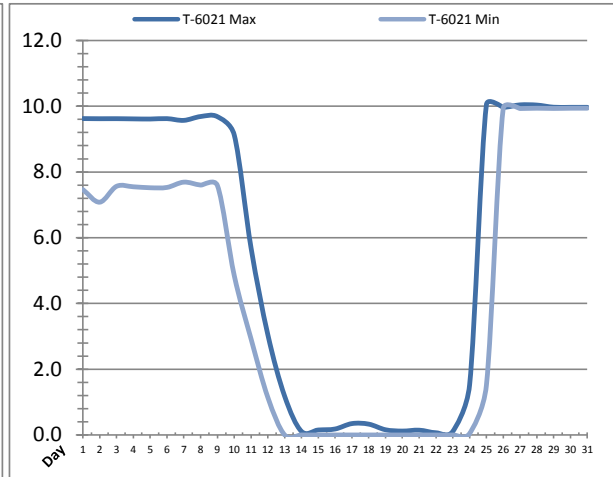
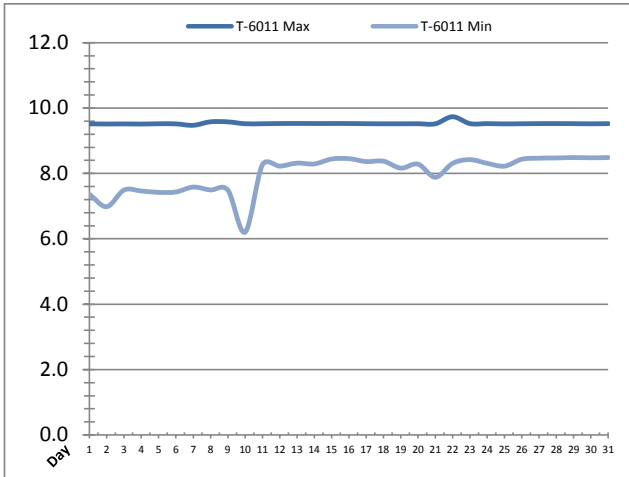


Date	Distribution Chlorine Header			Distribution pH			Distribution Turbidity		
	AIT_7004_CL (ppm)			AIT_7004_PH (mg/L)			AIT_7003 (mg/L)		
	Maximum	Minimum	Average	Maximum	Minimum	Average	Maximum	Minimum	Average
1	1.58	1.26	1.43	8.03	7.94	7.99	0.06	0.02	0.03
2	1.39	1.21	1.33	8.03	7.96	8.01	0.07	0.03	0.03
3	1.56	1.16	1.42	8.03	7.94	7.99	0.04	0.03	0.03
4	1.58	1.39	1.45	8.12	7.94	8.01	0.06	0.02	0.03
5	1.68	1.42	1.55	8.24	8.12	8.17	0.04	0.02	0.02
6	1.67	1.42	1.54	8.34	8.24	8.29	0.03	0.02	0.02
7	1.60	1.34	1.47	8.33	8.14	8.24	0.08	0.02	0.02
8	1.46	0.89	1.33	8.14	7.78	8.02	0.07	0.02	0.03
9	1.33	1.12	1.20	8.02	7.91	7.97	0.04	0.03	0.03
10	1.31	0.85	1.20	7.95	7.64	7.90	0.13	0.04	0.05
11	1.72	0.76	1.42	7.95	7.60	7.91	0.06	0.04	0.05
12	1.83	0.87	1.51	8.15	7.71	8.03	0.04	0.03	0.04
13	1.67	1.39	1.53	8.15	8.07	8.13	0.04	0.03	0.03
14	1.75	1.38	1.54	8.12	8.03	8.07	0.03	0.03	0.03
15	1.66	1.36	1.53	8.07	7.99	8.04	0.03	0.03	0.03
16	1.56	1.27	1.43	8.07	8.00	8.03	0.03	0.03	0.03
17	2.44	0.95	1.57	8.07	7.75	8.01	0.04	0.03	0.04
18	1.86	1.37	1.68	8.03	7.91	7.98	0.04	0.03	0.04
19	1.83	1.37	1.62	8.04	7.94	8.01	0.04	0.04	0.04
20	1.79	1.48	1.63	8.06	7.94	8.01	0.04	0.03	0.04
21	1.95	1.20	1.67	8.00	7.83	7.96	0.04	0.03	0.04
22	1.88	1.28	1.60	8.12	7.95	8.03	0.04	0.03	0.03
23	1.61	1.07	1.28	8.43	8.09	8.31	0.04	0.03	0.03
24	1.81	1.04	1.40	8.45	8.26	8.39	0.03	0.03	0.03
25	2.16	1.64	1.85	8.30	8.12	8.20	0.03	0.03	0.03
26	1.93	1.33	1.62	8.40	8.26	8.34	0.03	0.03	0.03
27	1.63	1.33	1.45	8.43	8.36	8.39	0.03	0.03	0.03
28	1.63	1.20	1.34	8.47	8.39	8.44	0.03	0.02	0.03
29	1.39	1.06	1.25	8.48	8.42	8.46	0.03	0.02	0.02
30	1.62	1.18	1.41	8.46	8.36	8.41	0.03	0.02	0.03
31	1.84	1.21	1.42	8.42	8.34	8.38	0.03	0.03	0.03
Total									
Average	1.70	1.22	1.47	8.19	8.03	8.13	0.0	0.0	0.0
Maximum	2.44		1.85	8.48		8.46	0.1		0.1
Date	17-Jul		25-Jul	29-Jul		29-Jul	10-Jul		10-Jul
Minimum		0.76	1.20		7.60	7.90		0.0	0.0
Date		11-Jul	10-Jul		11-Jul	10-Jul		7-Jul	6-Jul

Notes:

Raw Well/Treated Storage Report

Month: July-17

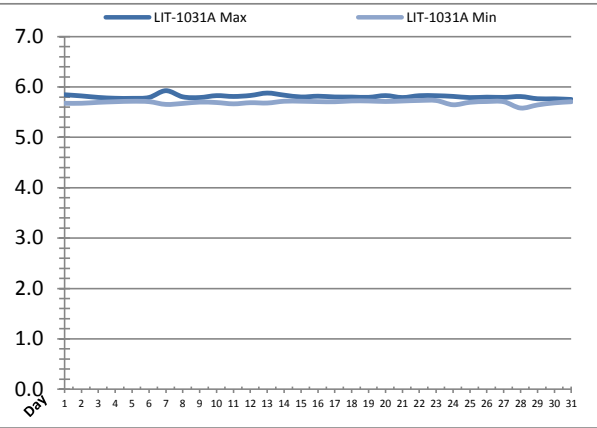
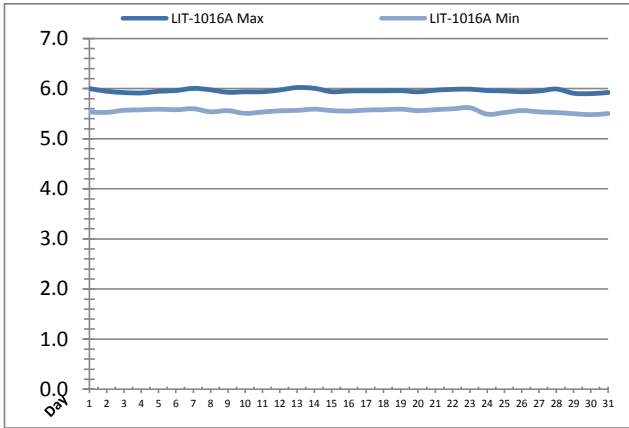


Date	Treated Water Storage Tank					
	T-6011 (m)			T-6021 (m)		
	Maximum	Minimum	Average	Maximum	Minimum	Average
1	9.5	7.4	8.7	9.6	7.5	8.8
2	9.5	7.0	8.4	9.6	7.1	8.5
3	9.5	7.5	8.6	9.6	7.6	8.7
4	9.5	7.5	8.3	9.6	7.5	8.4
5	9.5	7.4	8.6	9.6	7.5	8.7
6	9.5	7.4	8.4	9.6	7.5	8.5
7	9.5	7.6	8.5	9.6	7.7	8.6
8	9.6	7.5	8.5	9.7	7.6	8.6
9	9.6	7.5	8.5	9.7	7.6	8.6
10	9.5	6.2	8.4	9.1	4.8	6.7
11	9.5	8.3	8.9	5.7	2.9	4.2
12	9.5	8.2	8.9	3.0	1.1	2.0
13	9.5	8.3	9.0	1.2	0.0	0.7
14	9.5	8.3	8.9	0.1	0.0	0.0
15	9.5	8.4	9.1	0.2	0.0	0.0
16	9.5	8.5	9.1	0.2	0.0	0.0
17	9.5	8.4	9.0	0.3	0.0	0.1
18	9.5	8.4	8.9	0.3	0.0	0.1
19	9.5	8.2	9.0	0.2	0.0	0.0
20	9.5	8.3	8.8	0.1	0.0	0.0
21	9.5	7.9	8.9	0.1	0.0	0.0
22	9.7	8.3	9.0	0.1	0.0	0.0
23	9.5	8.4	9.0	0.1	0.0	0.0
24	9.5	8.3	9.1	1.5	0.0	0.7
25	9.5	8.2	8.8	10.0	1.5	5.5
26	9.5	8.4	9.0	10.0	9.9	9.9
27	9.5	8.5	9.0	10.0	9.9	10.0
28	9.5	8.5	9.0	10.0	9.9	10.0
29	9.5	8.5	9.0	10.0	9.9	10.0
30	9.5	8.5	9.0	10.0	9.9	10.0
31	9.5	8.5	9.1	10.0	9.9	10.0
Total						
Average	9.5	8.0	8.8	5.8	4.4	5.1
Maximum	9.7		9.1	10.0		10.0
Date	22-Jul		15-Jul	25-Jul		31-Jul
Minimum		6.2	8.3		0.0	0.0
Date		10-Jul	4-Jul		13-Jul	14-Jul

Notes:
 Storage Tank T-6021 taken out of service for leak repair.

Raw Well/Treated Storage Report

Month: July-17

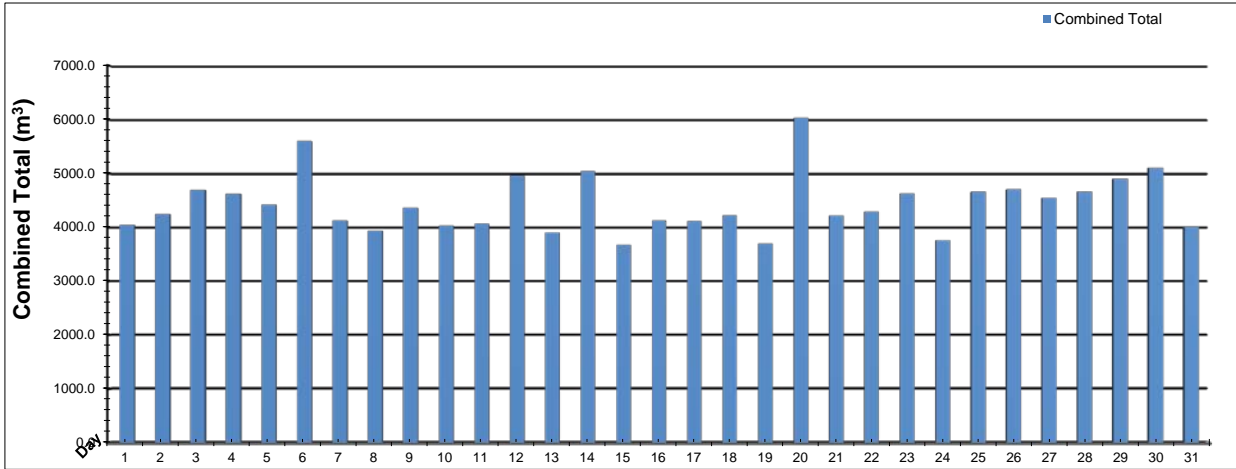


Date	Low Lift Intake Levels					
	Wet Well #1 (LIT-1016A) (m)			Wet Well #2 (LIT-1031A) (m)		
	Maximum	Minimum	Average	Maximum	Minimum	Average
1	6.0	5.5	5.8	5.8	5.7	5.8
2	5.9	5.5	5.8	5.8	5.7	5.8
3	5.9	5.6	5.7	5.8	5.7	5.7
4	5.9	5.6	5.7	5.8	5.7	5.7
5	5.9	5.6	5.8	5.8	5.7	5.7
6	6.0	5.6	5.7	5.8	5.7	5.7
7	6.0	5.6	5.8	5.9	5.7	5.8
8	6.0	5.5	5.8	5.8	5.7	5.7
9	5.9	5.6	5.7	5.8	5.7	5.7
10	5.9	5.5	5.7	5.8	5.7	5.7
11	5.9	5.5	5.8	5.8	5.7	5.7
12	6.0	5.6	5.7	5.8	5.7	5.8
13	6.0	5.6	5.8	5.9	5.7	5.8
14	6.0	5.6	5.8	5.8	5.7	5.8
15	5.9	5.6	5.8	5.8	5.7	5.8
16	6.0	5.6	5.8	5.8	5.7	5.8
17	6.0	5.6	5.8	5.8	5.7	5.8
18	6.0	5.6	5.7	5.8	5.7	5.8
19	6.0	5.6	5.8	5.8	5.7	5.8
20	5.9	5.6	5.7	5.8	5.7	5.8
21	6.0	5.6	5.7	5.8	5.7	5.8
22	6.0	5.6	5.8	5.8	5.7	5.8
23	6.0	5.6	5.8	5.8	5.7	5.8
24	6.0	5.5	5.8	5.8	5.6	5.7
25	6.0	5.5	5.7	5.8	5.7	5.8
26	5.9	5.6	5.7	5.8	5.7	5.8
27	6.0	5.5	5.7	5.8	5.7	5.8
28	6.0	5.5	5.7	5.8	5.6	5.7
29	5.9	5.5	5.7	5.8	5.6	5.7
30	5.9	5.5	5.7	5.8	5.7	5.7
31	5.9	5.5	5.7	5.8	5.7	5.7
Total						
Average	6.0	5.6	5.7	5.8	5.7	5.8
Maximum	6.0		5.8	5.9		5.8
Date	13-Jul		7-Jul	7-Jul		23-Jul
Minimum		5.5	5.7		5.6	5.7
Date		30-Jul	25-Jul		28-Jul	29-Jul

Notes:

High Lift Monthly Report

Month: July-17

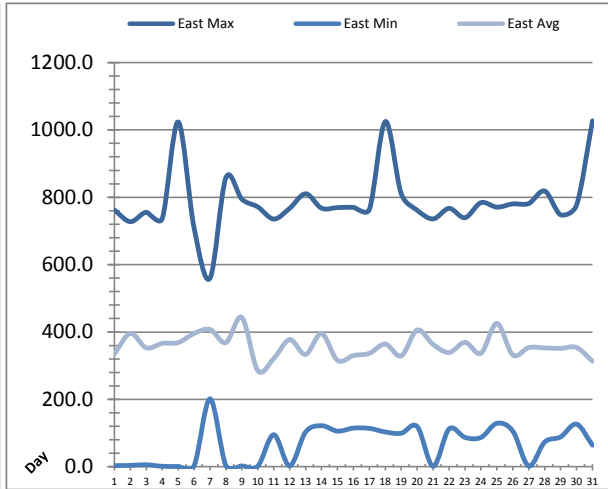
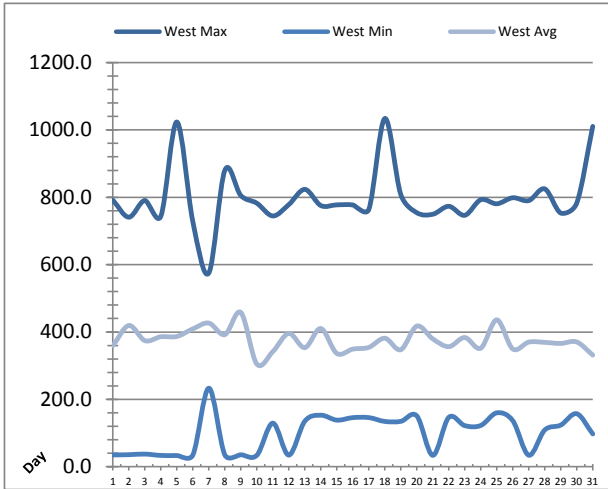


Date	Distribution Flow					
	FIT_7052 (East)		FIT_7062 (West)		Combined	
	(m³) Total	(L/s) Peak	(m³) Total	(L/s) Peak	(m³) Total	(L/s) Peak
1	1157.6	37.5	2888.2	93.5	4045.8	103.3
2	1081.3	50.3	3166.3	90.5	4247.6	106.9
3	1051.6	49.8	3641.9	91.1	4693.5	103.3
4	1082.8	33.3	3538.7	92.0	4621.6	104.7
5	921.7	50.0	3504.5	129.8	4426.2	171.6
6	1819.1	54.6	3784.4	92.1	5603.5	103.2
7	911.7	51.3	3213.4	98.7	4125.2	104.5
8	912.2	46.3	3024.4	96.2	3936.6	102.7
9	902.9	33.5	3464.2	93.3	4367.2	106.5
10	1064.7	41.4	2970.0	91.0	4034.7	106.0
11	1120.6	55.9	2943.6	97.3	4064.2	106.0
12	836.7	34.7	4130.2	123.4	4966.9	138.3
13	891.4	51.5	3018.0	96.5	3909.4	102.9
14	892.3	51.7	4154.4	95.4	5046.7	103.0
15	1074.0	39.1	2601.9	91.8	3675.9	104.1
16	1277.0	41.2	2853.3	91.0	4130.3	104.7
17	969.6	51.2	3149.7	96.4	4119.3	105.9
18	629.6	51.2	3599.7	95.2	4229.3	102.1
19	892.0	37.5	2812.9	97.9	3704.9	110.3
20	1404.7	37.3	4626.8	95.6	6031.5	111.0
21	1286.3	50.4	2936.7	93.5	4223.0	105.3
22	1213.7	39.7	3081.4	90.8	4295.0	108.6
23	1187.1	52.0	3447.5	93.5	4634.6	103.8
24	849.7	33.7	2917.2	104.4	3767.0	109.9
25	953.9	35.3	3707.3	92.9	4661.2	103.8
26	934.3	49.7	3776.1	98.6	4710.4	141.8
27	1168.5	40.6	3377.4	92.0	4546.0	103.4
28	1334.3	52.5	3331.7	93.7	4666.0	105.6
29	1378.2	52.2	3527.9	99.4	4906.2	105.2
30	1321.5	52.3	3790.7	98.7	5112.2	104.5
31	843.8	33.7	3165.5	97.8	4009.4	109.8
Total	33365.1		104146.1		137511.2	
Average	1076.3	44.9	3359.6	96.9	4435.8	109.8
Maximum	1819.1	55.9	4626.8	129.8	6031.5	171.6
Date	6-Jul	11-Jul	20-Jul	5-Jul	20-Jul	5-Jul
Minimum	629.6		2601.9		3675.9	
Date	18-Jul		15-Jul		15-Jul	

Notes:

Low Lift Monthly Report

Month: July-17

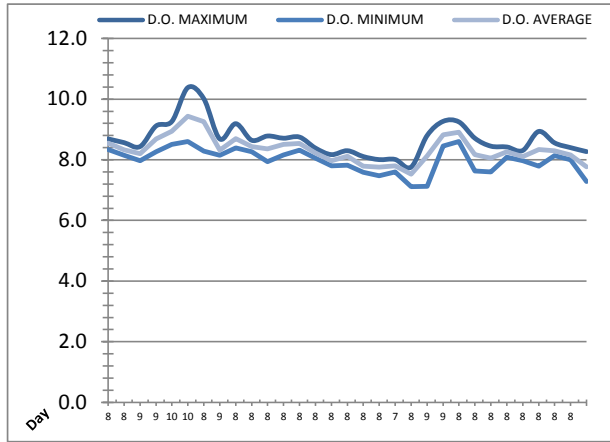
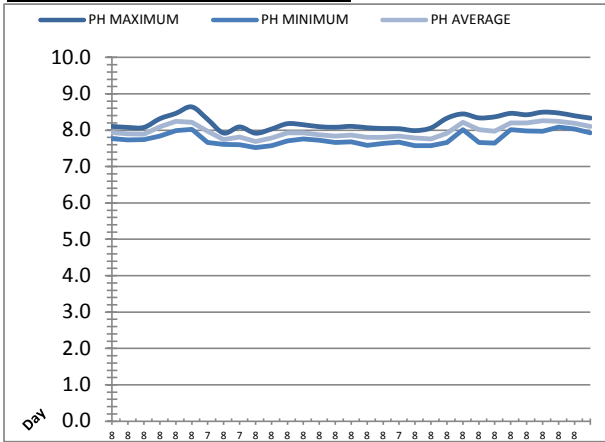


Date	West Train Header Pressure PIT_1018 (kPa)			East Train Header Pressure PIT_1028 (kPa)		
	Maximum	Minimum	Average	Maximum	Minimum	Average
1	791.5	35.1	359.3	762.2	3.3	335.0
2	740.8	35.8	419.4	727.5	4.0	395.9
3	790.5	37.6	374.4	755.5	5.9	353.0
4	743.9	33.6	386.0	736.5	1.5	366.2
5	1023.5	33.4	386.8	1023.6	1.0	368.6
6	727.5	34.9	409.3	709.1	3.1	395.4
7	575.5	233.3	426.5	559.9	201.7	407.6
8	880.0	35.1	392.2	858.3	3.2	368.4
9	805.1	35.6	458.0	794.3	2.6	443.4
10	782.4	34.0	304.8	771.4	2.1	285.4
11	744.6	129.5	341.8	735.4	95.2	321.3
12	778.4	34.5	395.9	767.3	2.5	377.5
13	823.5	135.3	353.5	810.5	103.1	333.4
14	775.5	153.0	410.4	767.6	121.9	395.4
15	777.5	138.4	336.4	769.3	105.8	315.6
16	777.2	145.9	349.3	770.0	114.7	330.1
17	763.8	145.9	354.4	764.0	113.9	336.7
18	1033.9	134.6	381.6	1024.8	103.2	364.3
19	808.0	134.8	347.4	810.4	99.5	329.1
20	754.2	151.0	417.6	761.5	119.5	405.9
21	749.6	33.9	379.6	735.8	1.6	363.1
22	773.3	146.7	356.5	767.1	112.4	339.0
23	746.5	122.1	383.7	739.3	87.1	369.4
24	792.8	122.6	352.0	784.0	86.9	336.9
25	780.7	160.0	436.1	770.7	129.0	425.6
26	798.6	136.7	349.6	780.4	105.7	331.6
27	790.2	34.2	370.1	781.6	2.1	353.9
28	824.9	109.2	369.2	818.6	73.3	352.8
29	753.2	123.7	366.1	747.9	88.6	351.4
30	782.9	157.4	370.3	777.0	126.5	354.1
31	1010.5	97.4	331.5	1027.0	63.9	313.1
Total						
Average	796.8	99.8	376.4	787.4	67.3	358.7
Maximum	1033.9		458.0	1027.0		443.4
Date	18-Jul		9-Jul	31-Jul		9-Jul
Minimum		33.4	304.8		1.0	285.4
Date		5-Jul	10-Jul		5-Jul	10-Jul

Notes:

Low Lift Monthly Report

Month: **July-17**

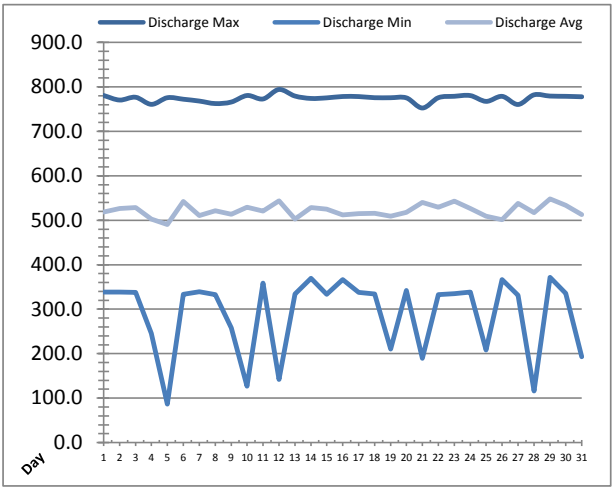
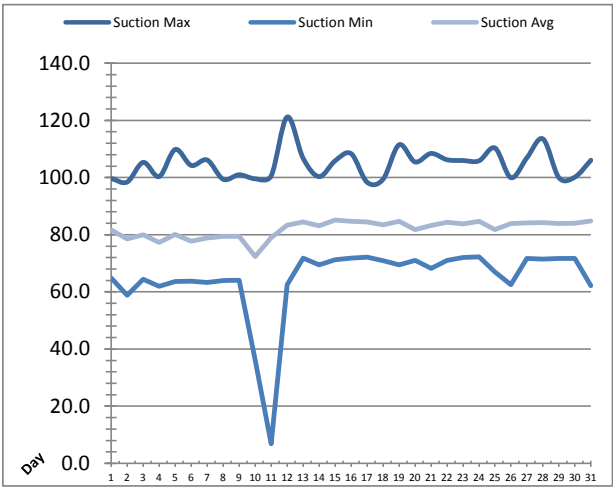


Raw Water Sample Line						
Date	AIT_1402_PH (pH)			AIT_1402_DO (mg/L)		
	Maximum	Minimum	Average	Maximum	Minimum	Average
1	8.1	7.8	7.9	8.7	8.3	8.6
2	8.1	7.7	7.9	8.6	8.2	8.3
3	8.1	7.7	7.9	8.4	8.0	8.2
4	8.3	7.8	8.1	9.1	8.3	8.7
5	8.5	8.0	8.2	9.3	8.5	8.9
6	8.6	8.0	8.2	10.4	8.6	9.4
7	8.3	7.7	8.0	10.0	8.3	9.3
8	7.9	7.6	7.7	8.7	8.1	8.3
9	8.1	7.6	7.8	9.2	8.4	8.7
10	7.9	7.5	7.7	8.6	8.3	8.4
11	8.0	7.6	7.8	8.8	7.9	8.4
12	8.2	7.7	7.9	8.7	8.2	8.5
13	8.1	7.8	7.9	8.7	8.3	8.5
14	8.1	7.7	7.9	8.4	8.1	8.2
15	8.1	7.7	7.8	8.2	7.8	8.0
16	8.1	7.7	7.9	8.3	7.8	8.1
17	8.1	7.6	7.8	8.1	7.6	7.8
18	8.0	7.6	7.8	8.0	7.5	7.8
19	8.0	7.7	7.8	8.0	7.6	7.8
20	8.0	7.6	7.8	7.8	7.1	7.5
21	8.1	7.6	7.8	8.8	7.1	8.1
22	8.3	7.7	7.9	9.3	8.5	8.8
23	8.4	8.0	8.2	9.2	8.6	8.9
24	8.3	7.7	8.0	8.7	7.6	8.2
25	8.4	7.6	8.0	8.5	7.6	8.1
26	8.5	8.0	8.2	8.4	8.1	8.3
27	8.4	8.0	8.2	8.3	8.0	8.1
28	8.5	8.0	8.3	8.9	7.8	8.3
29	8.5	8.1	8.2	8.6	8.1	8.3
30	8.4	8.0	8.2	8.4	8.0	8.2
31	8.3	7.9	8.1	8.3	7.3	7.8
Total						
Average	8.2	7.8	8.0	8.7	8.0	8.3
Maximum	8.6		8.3	10.4		9.4
Date	6-Jul		28-Jul	6-Jul		6-Jul
Minimum		7.5	7.7		7.1	7.5
Date		10-Jul	10-Jul		20-Jul	20-Jul

Notes:

High Lift Monthly Report

Month: July-17

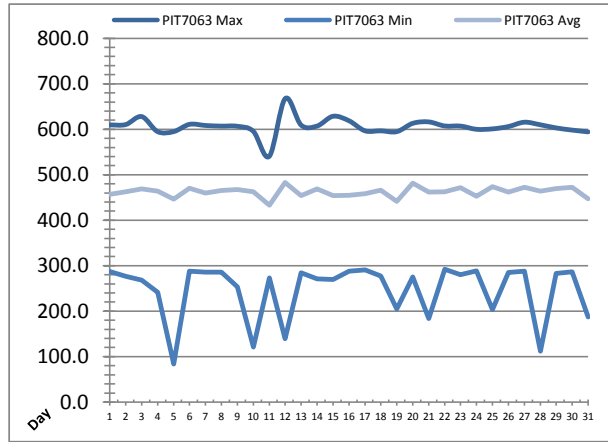
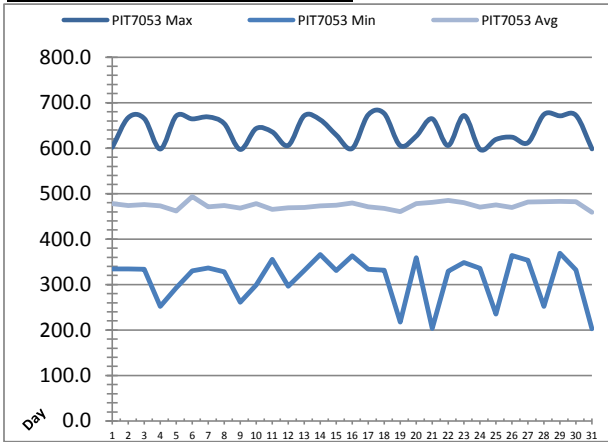


Date	Suction Header Pressure			Discharge Header Pressure		
	PIT_7002 (kPa)			PIT_7005 (kPa)		
	Maximum	Minimum	Average	Maximum	Minimum	Average
1	99.6	64.8	81.6	780.6	338.6	518.2
2	98.5	58.8	78.5	770.4	338.6	526.3
3	105.3	64.4	79.9	776.7	338.0	528.4
4	100.3	62.0	77.3	760.7	245.6	502.8
5	109.8	63.6	80.1	775.7	86.7	490.7
6	104.2	63.7	77.8	772.3	333.7	542.2
7	106.1	63.3	78.9	768.1	339.2	510.5
8	99.4	64.0	79.4	762.5	333.0	521.4
9	101.0	64.1	79.4	765.9	257.6	513.6
10	99.6	36.2	72.4	780.6	126.7	529.2
11	100.6	6.8	78.9	772.9	358.8	520.8
12	121.2	62.5	83.4	794.2	142.1	544.0
13	106.8	71.8	84.4	779.4	334.3	502.8
14	100.3	69.5	83.2	774.0	369.1	528.9
15	105.8	71.3	85.1	775.3	333.7	525.1
16	108.4	71.8	84.7	778.4	366.6	512.0
17	98.4	72.1	84.4	778.2	337.7	514.8
18	99.4	70.9	83.4	775.7	333.9	515.5
19	111.5	69.5	84.7	775.6	210.1	509.4
20	105.4	71.0	81.8	775.2	342.2	518.0
21	108.4	68.2	83.2	752.5	189.3	540.5
22	106.2	71.0	84.4	775.7	332.7	529.6
23	106.0	72.1	83.8	778.9	335.0	542.9
24	105.8	72.2	84.6	780.5	338.6	526.8
25	110.3	66.9	81.8	767.4	208.1	509.3
26	99.9	62.5	83.9	778.7	366.7	501.1
27	106.9	71.7	84.1	760.5	331.3	538.2
28	113.5	71.5	84.3	782.1	116.2	516.8
29	99.9	71.7	83.9	779.4	371.9	548.2
30	100.2	71.6	84.0	778.8	335.8	533.5
31	106.1	62.2	84.8	777.8	192.9	512.9
Total						
Average	104.7	64.6	82.0	774.4	289.8	521.8
Maximum	121.2		85.1	794.2		548.2
Date	12-Jul		15-Jul	12-Jul		29-Jul
Minimum		6.8	72.4		86.7	490.7
Date		11-Jul	10-Jul		5-Jul	5-Jul

Notes:
 July 10 and 11th: during maintenance on South storage tank, pressure restored.

High Lift Monthly Report

Month: July-17

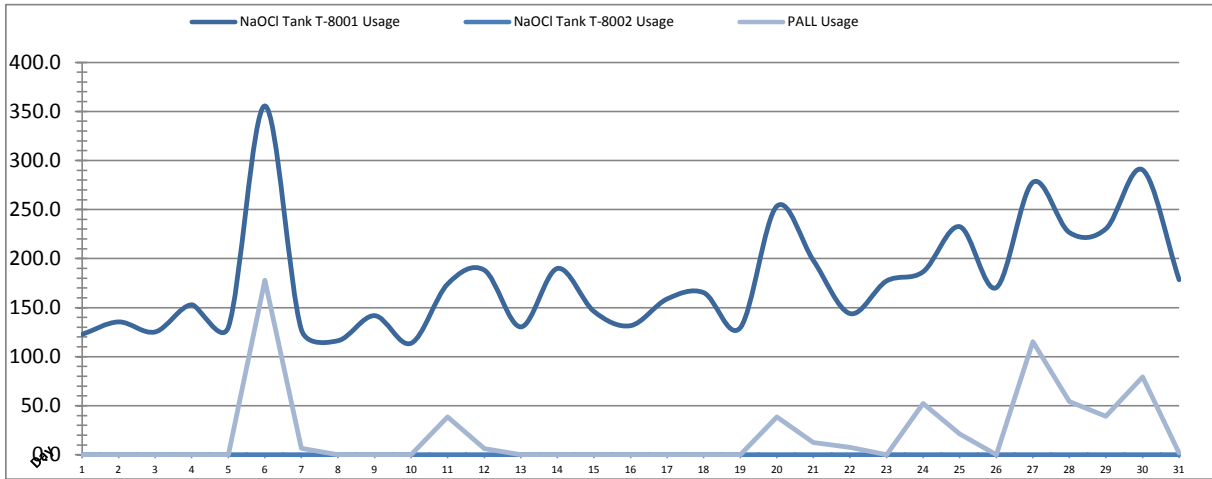


Date	Distribution Pressures					
	PIT_7053 (kPa)			PIT_7063 (kPa)		
	Maximum	Minimum	Average	Maximum	Minimum	Average
1	601.9	334.2	477.8	609.5	286.9	456.7
2	667.2	334.1	473.7	610.4	276.8	462.7
3	665.0	333.9	475.8	627.9	268.1	468.9
4	598.1	252.3	473.1	594.7	241.2	463.9
5	670.9	292.9	461.6	594.8	83.6	446.3
6	664.3	330.2	493.2	610.8	288.0	470.0
7	668.6	336.5	470.9	608.3	285.7	460.0
8	654.0	327.8	474.0	606.9	285.9	465.5
9	597.1	260.8	468.4	606.5	253.6	467.5
10	643.2	299.3	478.1	595.5	121.2	462.8
11	635.7	355.4	465.0	540.4	273.4	432.9
12	605.9	296.5	469.1	667.5	139.1	482.7
13	671.3	330.9	469.7	609.1	284.5	454.4
14	662.5	366.1	473.3	607.1	271.0	468.6
15	629.0	330.9	474.8	628.6	269.8	453.9
16	599.3	363.1	479.6	618.7	287.8	454.9
17	673.1	333.7	471.2	596.6	290.8	458.4
18	676.4	331.4	467.3	596.6	277.1	466.3
19	605.7	217.5	460.6	594.7	205.1	441.3
20	626.2	358.7	478.2	613.0	275.4	481.5
21	664.7	203.7	480.7	616.2	183.4	461.6
22	605.8	329.3	484.7	607.2	291.9	462.6
23	671.7	348.1	479.9	606.9	279.8	471.4
24	597.2	335.9	470.6	599.9	288.3	452.4
25	619.2	234.9	475.0	600.8	203.8	474.1
26	624.1	363.6	469.3	606.0	285.2	461.6
27	612.1	353.1	481.3	615.5	287.8	472.2
28	674.2	252.3	482.3	609.8	111.7	463.9
29	671.0	369.1	483.2	602.9	282.8	469.7
30	672.0	332.4	481.9	598.2	286.2	472.1
31	598.3	203.0	458.7	594.2	187.6	447.4
Total						
Average	639.5	313.3	474.3	606.3	246.9	462.2
Maximum	676.4		493.2	667.5		482.7
Date	18-Jul		6-Jul	12-Jul		12-Jul
Minimum		203.0	458.7		83.6	432.9
Date		31-Jul	31-Jul		5-Jul	11-Jul

Notes:
 5th, 10th and 28th: lower pressures due to maintenance. All occurred for less than minute.

Chemical Usage Monthly Report

Month: July-17

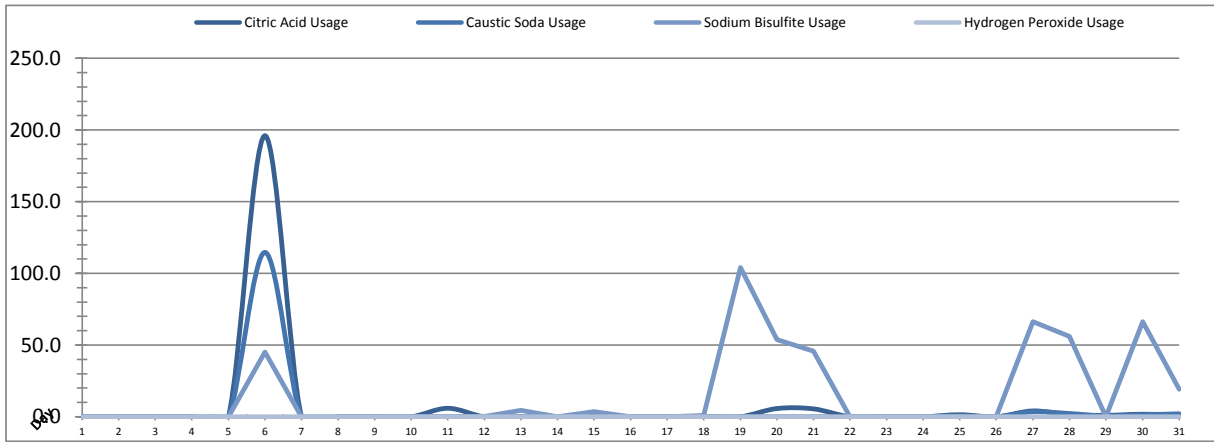


Date	PALL Usage	NaOCl Tank T-8001	NaOCl Tank T-8002
	PALL_HYO_USAGE (L) Usage	LIT_8002 (Storage) (L) Usage	LIT_8004 (Day) (L) Usage
1	0.0	122.7	0.0
2	0.0	135.4	0.0
3	0.0	125.2	0.0
4	0.0	152.9	0.0
5	0.0	129.9	0.0
6	178.1	355.6	0.0
7	6.6	127.3	0.0
8	0.0	116.3	0.0
9	0.0	141.8	0.0
10	0.0	113.7	0.0
11	38.5	174.2	0.0
12	6.2	188.2	0.0
13	0.0	130.3	0.0
14	0.0	189.94	0.0
15	0.0	146.1	0.0
16	0.0	131.6	0.0
17	0.0	158.9	0.0
18	0.0	165.2	0.0
19	0.0	129.5	0.0
20	38.5	253.4	0.0
21	12.6	198.0	0.0
22	7.4	143.9	0.0
23	0.0	177.2	0.0
24	52.1	186.5	0.0
25	21.1	232.5	0.0
26	0.0	170.4	0.0
27	115.4	277.7	0.0
28	54.1	226.6	0.0
29	39.3	230.4	0.0
30	79.4	290.4	0.0
31	1.8	178.4	0.0
Total	651.1	5500.2	1.1
Average	21.0	177.4	0.0
Maximum	178.1	355.6	0.0
Date	6-Jul	6-Jul	1-Jul
Minimum	0.0	113.7	0.0
Date	1-Jul	10-Jul	1-Jul

Notes:	
Dosage (mg/L)=	Day Tank (L) x %conc. x 1000
	Membrane Flow (m3)
Chlorine Concentration:	12.0%

Chemical Usage Monthly Report

Month: July-17



Date	Citric Acid	Caustic Soda	Captor	Hydrogen Peroxide		Membrane Flow (m ³)
	TAGNAME (L) Usage	TAGNAME (L) Usage	TAGNAME (L) Usage	TAGNAME (L) Usage	TAGNAME (mg/L) Dose	
1	0.0	0.0	0.0	0.0	0.0	4265.981
2	0.0	0.0	0.0	0.0	0.0	4696.732
3	0.0	0.0	0.0	0.0	0.0	5235.229
4	0.0	0.0	0.0	0.0	0.0	5300.936
5	0.0	0.0	0.0	0.0	0.0	4187.968
6	196.0	114.7	45.1	0.0	0.0	6442.843
7	0.0	0.0	0.0	0.0	0.0	4311.307
8	0.0	0.0	0.0	0.0	0.0	4067.025
9	0.0	0.0	0.0	0.0	0.0	5009.169
10	0.0	0.0	0.0	0.0	0.0	3932.292
11	5.9	0.0	0.0	0.0	0.0	3638.364
12	0.0	0.0	0.2	0.0	0.0	5553.887
13	0.0	0.0	4.5	0.0	0.0	3891.731
14	0.0	0.0	0.0	0.0	0.0	5575.907
15	0.0	0.0	3.5	0.0	0.0	3732.460
16	0.0	0.0	0.0	0.0	0.0	4423.983
17	0.0	0.0	0.0	0.0	0.0	4406.771
18	0.0	0.0	0.9	0.0	0.0	4853.653
19	0.0	0.0	103.9	0.0	0.0	3884.415
20	5.7	0.0	53.8	0.0	0.0	6216.231
21	5.5	0.0	45.8	0.0	0.0	4992.949
22	0.0	0.0	0.0	0.0	0.0	4390.074
23	0.0	0.0	0.0	0.0	0.0	5097.075
24	0.0	0.0	0.0	0.0	0.0	4265.491
25	1.4	0.7	0.0	0.0	0.0	7302.097
26	0.0	0.0	0.0	0.0	0.0	4867.320
27	4.1	3.5	66.2	0.0	0.0	4924.869
28	1.4	2.3	56.0	0.0	0.0	5225.140
29	1.0	0.5	0.0	0.0	0.0	5168.942
30	1.8	1.4	66.2	0.0	0.0	5507.238
31	1.3	2.1	19.3	0.0	0.0	4084.006
Total	224.2	125.1	465.4	0.0		149452.1
Average	7.2	4.0	15.0	0.0	0.0	4821.0
Maximum	196.0	114.7	103.9	0.0	0.0	7302.1
Date	6-Jul	6-Jul	19-Jul	1-Jul	1-Jul	25-Jul
Minimum	0.0	0.0	0.0	0.0	0.0	3638.4
Date	1-Jul	1-Jul	1-Jul	1-Jul	1-Jul	11-Jul

Notes:

$$\text{Dosage (mg/L)} = \frac{\text{Day Tank (L)} \times \% \text{conc.} \times 1000}{\text{Membrane Flow (m}^3\text{)}}$$

Peroxide Concentration: 50.0%

Runtimes Report

Month: July-17

Date	Daily Gen-Set Runtimes		Daily UV Runtimes		Daily PALL Runtimes				
	LLPS	WTP	UV #1	UV #2	Air Compressor #1	Air Compressor #2	CIP Neutralization	CIP Drain	CIP Recirc
	(Hrs)	(Hrs)	(Hrs)	(Hrs)	(Hrs)	(Hrs)	(Hrs)	(Hrs)	(Hrs)
1	0.0	0.0	0.0	0.0	24.3	0.1	0.0	0.0	0.0
2	0.0	0.0	0.0	0.0	0.1	23.8	0.0	0.0	0.0
3	0.0	0.0	0.0	0.0	24.3	0.1	0.0	0.0	0.0
4	0.0	0.0	0.0	0.0	0.1	23.8	0.0	0.0	0.0
5	0.0	0.2	0.0	0.0	24.2	0.1	0.0	0.0	0.0
6	0.0	0.0	0.0	0.0	24.4	0.0	0.2	0.0	0.2
7	0.0	0.0	0.0	0.0	0.0	23.9	0.0	0.0	0.0
8	0.0	0.0	0.0	0.0	24.3	0.0	0.0	0.0	0.0
9	0.0	0.0	0.0	0.0	0.1	23.9	0.0	0.0	0.0
10	0.2	0.2	0.0	0.0	24.3	0.0	0.0	0.0	0.0
11	0.0	0.0	0.0	0.0	0.1	23.9	0.2	0.1	0.5
12	0.0	0.0	0.0	0.0	23.0	1.4	0.0	0.0	0.0
13	0.0	0.0	0.0	0.0	0.0	23.8	0.0	0.0	0.0
14	0.0	0.0	0.0	0.0	24.4	0.1	0.0	0.0	0.0
15	0.0	0.0	0.0	0.0	0.0	23.8	0.0	0.0	0.0
16	0.0	0.0	0.0	0.0	24.4	0.1	0.0	0.0	0.0
17	0.0	0.0	0.0	0.0	0.0	23.8	0.0	0.0	0.0
18	0.0	0.0	0.0	0.0	24.3	0.1	0.0	0.0	0.0
19	0.0	2.6	0.0	0.0	6.9	17.1	0.0	0.0	0.0
20	0.0	0.0	0.0	0.0	24.2	0.1	0.3	0.2	1.0
21	0.0	0.0	0.0	0.0	24.3	0.1	0.3	0.1	0.6
22	0.0	0.0	0.0	0.0	24.4	0.0	0.0	0.0	0.0
23	0.0	0.0	0.0	0.0	24.4	0.1	0.0	0.0	0.0
24	0.0	0.0	0.0	0.0	24.3	0.1	0.0	0.0	0.0
25	0.0	0.0	0.0	0.0	24.3	0.1	0.0	0.1	0.0
26	0.0	0.0	0.0	0.0	24.2	0.1	0.0	0.0	0.0
27	0.0	0.0	0.0	0.0	24.3	0.1	0.6	0.4	1.5
28	0.0	0.0	0.0	0.0	0.1	23.9	0.3	0.1	0.7
29	0.0	0.0	0.0	0.0	24.3	0.0	0.2	0.2	0.5
30	0.0	0.0	0.0	0.0	0.1	23.9	0.4	0.2	1.0
31	0.0	0.2	0.0	0.0	23.5	0.0	0.2	0.1	0.5
Total	0.2	3.2	0.0	0.0	491.1	258.4	2.7	1.5	6.5

Notes:

Runtimes Report

Month: July-17

Daily

Date	PALL Runtimes						Process Drain	
	RFR Pump #1 (Hrs)	RFR Pump #2 (Hrs)	RF Pump #1 (Hrs)	RF Pump #2 (Hrs)	XR Pump #1 (Hrs)	XR Pump #2 (Hrs)	PDP9010 Pump (Hrs)	PDP9020 Pump (Hrs)
1	0.0	0.0	0.6	0.6	15.3	0.0	1.9	2.5
2	0.0	0.0	0.7	0.7	19.0	0.0	1.9	2.3
3	0.0	0.0	0.8	0.6	17.5	0.0	1.9	2.4
4	0.0	0.0	0.7	0.7	19.0	0.0	1.8	2.4
5	0.0	0.0	0.7	0.6	19.8	0.1	2.0	2.5
6	0.0	0.0	0.8	0.9	20.1	0.0	1.9	2.5
7	0.0	0.0	0.7	0.7	23.7	0.0	1.9	2.3
8	0.0	0.0	0.7	0.6	20.0	0.0	1.8	2.4
9	0.0	0.0	0.7	0.7	17.8	0.0	1.9	2.4
10	0.0	0.0	0.6	0.5	13.6	0.0	1.8	2.2
11	0.0	0.0	0.4	0.4	11.2	0.0	1.7	2.2
12	0.0	0.0	0.8	0.7	18.6	0.0	1.9	2.3
13	0.0	0.0	0.4	0.5	13.2	0.0	1.8	2.3
14	0.0	0.0	0.7	0.8	17.9	0.0	1.9	2.3
15	0.0	0.0	0.5	0.4	12.8	0.0	1.8	2.3
16	0.0	0.0	0.5	0.6	13.9	0.0	1.8	2.3
17	0.0	0.0	0.5	0.6	14.2	0.0	1.8	2.3
18	0.0	0.0	0.6	0.5	15.8	0.0	1.8	2.3
19	0.0	0.0	0.5	0.4	13.8	0.0	1.8	2.3
20	0.0	0.0	0.6	0.8	18.5	0.0	1.9	2.5
21	0.0	0.0	1.5	1.5	16.9	0.0	1.8	2.3
22	0.0	0.0	0.6	0.6	14.4	0.0	1.8	2.3
23	0.0	0.0	0.8	0.7	16.4	0.0	1.8	2.2
24	0.0	0.0	0.6	0.6	14.6	0.0	1.8	2.2
25	0.0	0.0	1.2	1.1	19.5	0.0	1.8	2.3
26	0.0	0.0	0.7	0.7	14.1	0.0	1.7	2.3
27	0.0	0.0	0.7	0.7	13.2	0.0	1.9	2.2
28	0.0	0.0	0.9	0.7	16.7	0.0	1.9	2.3
29	0.0	0.0	0.7	0.9	16.8	0.0	1.8	2.4
30	0.0	0.0	0.8	0.7	17.0	0.0	1.8	2.3
31	0.0	0.0	0.5	0.6	13.1	0.0	1.9	2.4
Total	0.0	0.0	21.5	21.1	509.4	0.1	57.1	72.2

Notes:
RFR offline due to Rack 2 being offline.

Runtimes Report

Month: July-17

Daily

Date	Low Lift Pump Motor Runtimes				High Lift Pump Motor Runtimes			
	LLP1010 (Hrs)	LLP1020 (Hrs)	LLP1030 (Hrs)	LLP1040 (Hrs)	HLP7010 (Hrs)	HLP7020 (Hrs)	HLP7030 (Hrs)	HLP7040 (Hrs)
1	9.1	3.7	6.0	5.9	1.4	3.2	0.0	8.9
2	8.4	6.5	5.8	6.5	3.2	9.7	0.0	1.8
3	10.4	4.8	6.5	7.4	2.5	1.5	0.0	11.5
4	8.8	6.9	5.6	8.7	9.3	5.0	0.0	0.0
5	5.4	5.8	4.2	8.7	4.3	5.7	0.0	3.7
6	8.3	8.3	9.4	9.2	0.0	0.0	0.0	18.8
7	5.5	6.9	6.9	5.5	3.6	2.5	0.0	7.2
8	3.1	6.6	6.3	8.2	4.1	8.2	0.0	1.3
9	8.7	8.1	7.1	8.3	8.2	4.0	0.0	1.7
10	2.8	6.6	7.4	5.4	1.2	5.4	0.0	7.8
11	5.6	4.9	4.7	4.8	11.7	1.6	0.0	0.9
12	6.4	8.8	6.4	6.1	8.0	5.1	0.0	4.7
13	3.2	5.5	6.9	6.4	0.0	3.0	0.0	9.4
14	6.5	9.0	6.1	7.9	9.3	3.6	0.0	3.4
15	4.6	3.3	4.1	7.0	0.9	2.7	0.0	9.5
16	8.1	5.9	5.0	3.0	1.1	4.1	0.0	8.3
17	4.4	5.8	6.8	7.1	3.9	3.2	0.0	6.4
18	4.8	5.8	8.4	8.4	2.8	3.4	0.0	7.2
19	2.6	5.6	5.6	7.3	4.3	4.2	0.0	4.1
20	9.4	10.8	4.6	9.1	4.8	7.7	0.0	5.9
21	6.8	8.0	7.8	6.7	15.6	0.0	0.0	0.0
22	6.3	9.3	4.7	2.7	1.6	7.5	0.0	5.4
23	5.9	6.3	8.0	6.6	1.6	4.0	0.0	10.4
24	8.4	1.2	2.9	8.8	8.2	4.3	0.0	0.8
25	12.7	0.0	11.9	12.6	11.1	0.0	0.0	3.4
26	7.4	0.0	9.0	9.1	6.4	4.4	0.0	3.4
27	6.7	0.0	9.5	8.7	12.6	3.2	0.0	0.0
28	9.1	0.0	5.4	10.6	0.4	4.1	0.0	10.5
29	7.7	0.0	9.0	9.4	3.0	4.3	0.0	9.7
30	9.4	0.0	8.6	8.1	3.1	4.4	0.0	9.3
31	7.3	0.0	4.2	7.8	3.5	5.1	0.0	0.0
Total	213.7	154.4	204.8	231.9	151.7	125.1	0.0	175.4

Notes:

Plant Internal Flow Report

Month: July-17

Date	Settling Tank Level		Process Drain Tank		Settling Tank Flow		Potable Water Flow		Non-Potable Flow	
	T-9003 (m)		T-9001 (m)		FIT_9005 (m ³) (L/s)		FIT_7082 (m ³) (L/s)		FIT_7092 (m ³) (L/s)	
	Maximum	Minimum	Maximum	Minimum	Total	Peak	Total	Peak	Total	Peak
1	2.2	0.1	0.8	0.4	434.0	15.7	0.0	0.0	0.0	0.0
2	2.2	0.1	0.8	0.4	473.0	15.7	0.0	1.1	0.0	0.0
3	2.2	0.1	0.8	0.4	455.3	15.7	0.0	0.5	0.0	0.0
4	2.2	0.1	0.8	0.4	411.6	15.7	0.0	1.3	0.1	1.0
5	2.2	0.1	1.4	0.4	435.6	15.7	0.1	1.3	0.3	1.4
6	2.2	0.1	0.9	0.4	496.6	15.7	0.0	1.4	13.4	22.8
7	2.2	0.2	0.8	0.4	509.1	15.7	0.2	1.4	0.3	0.7
8	2.2	0.1	0.8	0.4	441.0	15.7	0.0	0.0	0.0	0.0
9	2.2	0.1	1.2	0.4	421.0	15.7	0.0	1.1	0.0	0.0
10	2.2	0.2	0.8	0.4	346.9	15.7	0.1	1.4	0.0	0.0
11	2.2	0.1	0.8	0.4	312.3	15.7	0.1	1.4	13.3	15.2
12	2.2	0.1	0.8	0.4	478.2	15.7	0.1	1.4	0.3	1.1
13	2.2	0.2	0.8	0.4	375.1	15.7	0.1	1.4	0.0	0.0
14	2.2	0.3	1.0	0.4	504.5	15.7	0.1	1.4	0.0	1.0
15	2.2	0.1	0.8	0.4	332.5	15.7	0.1	0.3	0.5	1.1
16	2.2	0.2	0.8	0.4	372.1	15.7	0.0	0.0	0.2	1.1
17	2.2	0.1	0.8	0.4	363.3	15.7	0.0	1.3	0.2	0.9
18	2.2	0.1	0.8	0.4	359.9	15.7	0.1	1.3	0.0	0.7
19	2.2	0.1	0.8	0.4	385.4	15.7	0.1	1.3	0.2	1.0
20	2.2	0.1	1.1	0.4	509.0	15.7	0.1	1.1	26.8	16.4
21	2.2	0.2	0.8	0.4	303.0	15.7	0.3	1.4	15.0	23.4
22	2.2	0.2	0.8	0.4	439.5	15.7	0.0	1.3	0.0	0.0
23	2.2	0.3	0.8	0.4	511.4	15.7	0.0	1.1	0.0	0.0
24	2.2	0.3	0.8	0.4	340.4	15.7	0.2	1.4	3.1	23.0
25	2.2	0.1	0.9	0.0	665.4	15.7	0.1	1.4	0.0	0.0
26	2.2	0.1	0.8	0.4	483.4	15.7	0.0	1.5	0.0	0.0
27	2.2	0.1	1.0	0.4	533.7	15.7	0.1	1.4	37.9	17.1
28	2.2	0.1	0.9	0.4	515.3	15.7	0.1	1.4	21.9	22.5
29	2.2	0.2	0.8	0.4	450.7	15.7	0.0	0.3	13.3	18.2
30	2.2	0.3	0.8	0.4	504.6	15.7	0.0	0.0	25.5	17.1
31	2.2	0.1	1.6	0.4	429.4	15.7	0.0	1.4	12.8	16.4
Total					13593.2		2.3		185.1	
Average	2.2	0.1	0.9	0.4	438.5	15.7	0.1	1.1	6.0	6.5
Maximum	2.2		1.6		665.4		0.3		37.9	
Date	11-Jul		31-Jul		25-Jul		21-Jul		27-Jul	
Minimum		0.1		0.0		15.7		0.0		0.0
Date		2-Jul		25-Jul		1-Jul		1-Jul		1-Jul

Notes: