

Municipality of West Elgin - Tri County Water System

Goto:

Month:

Year:

Date is Set to: **September-18**

Limit	Low	High	
Raw Water Chlorine Residual:	0.00	5.00	mg/L
Pre-Strainer Chlorine Residual:	0.00	5.00	mg/L
UV Inlet Chlorine Residual:	0.00	5.00	mg/L
Post Treatment Chlorine Residual:	1.00	5.00	mg/L
Treated Chlorine Residual:	1.00	2.50	mg/L
Distribution Chlorine Residual:	1.00	2.50	mg/L
Limit		High	
Limit		156.0	L/s
WTP Permit to Take Water		13500.0	m ³
Limit	Low	High	
System Pressure Limits:	50.0	1034.0	Kpa

Compliance Report

Low Lift Monthly Report

>>>

Membranes Monthly Report

>>>

UV System Monthly Report

>>>

Plant Quality Report

>>>

Raw Well/Treated Storage Report

>>>

High Lift Monthly Report

>>>

Operational Report

Low Lift Monthly Report

>>>

High Lift Monthly Report

>>>

Chemical Usage Monthly Report

>>>

Runtimes Report

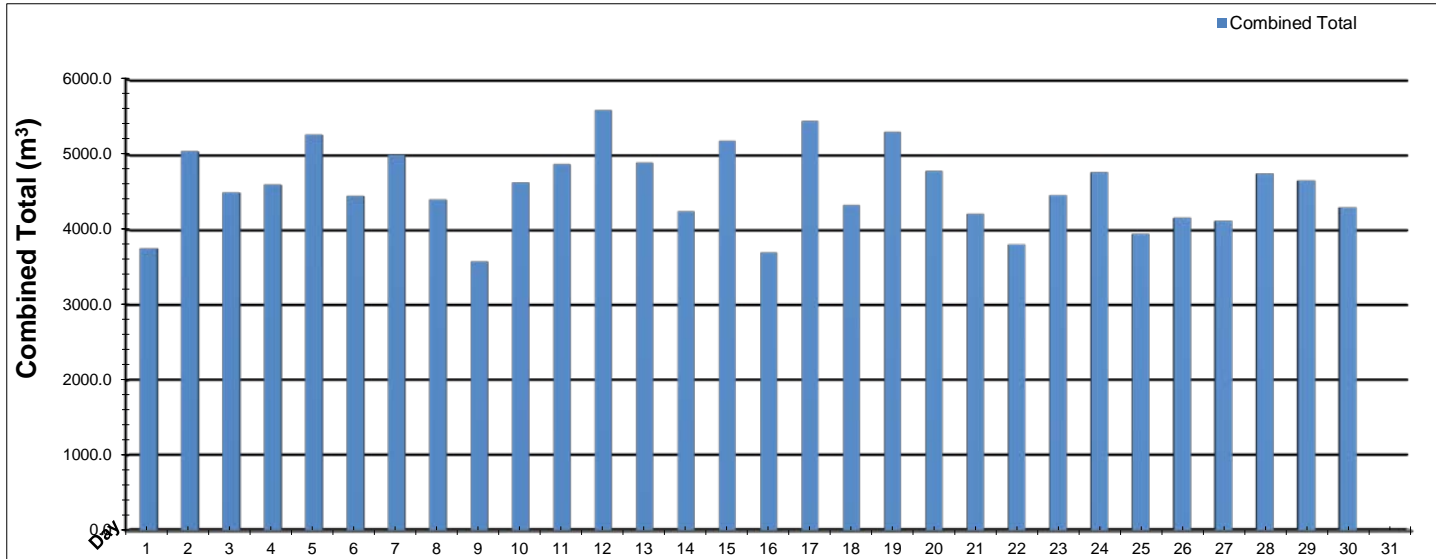
>>>

Plant Internal Flow Report

>>>

Low Lift Monthly Report

Month: September-18

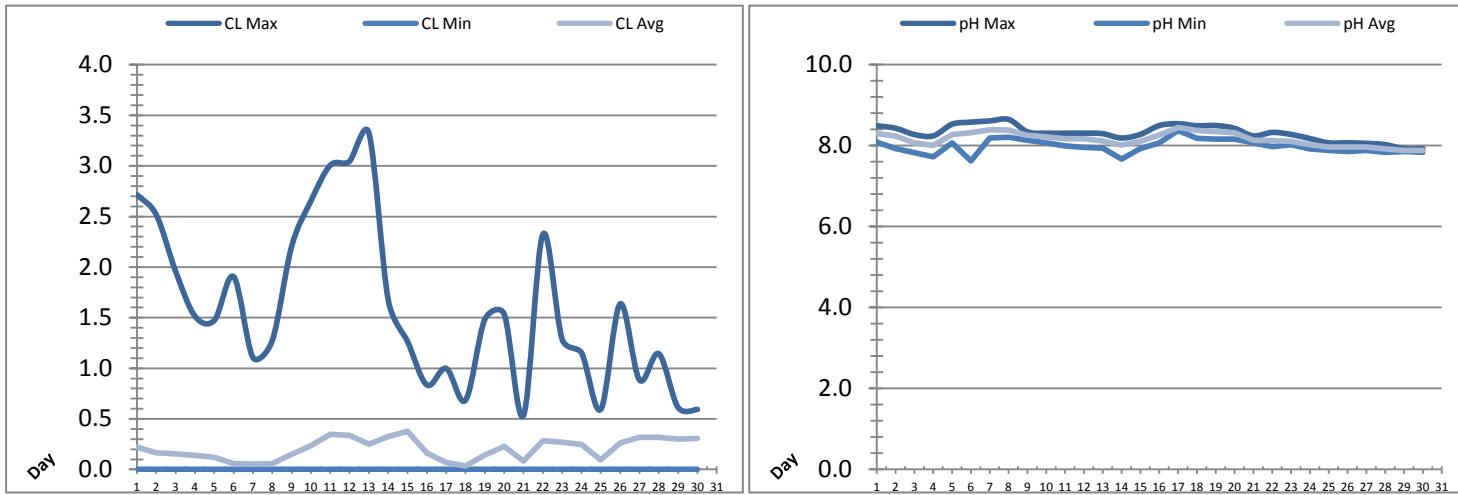


Date	Combined Total (m³)	West Train FIT-1017 (m³)	West Peak Flow FIT-1017 (L/s)	East Train FIT-1027 (m³)	East Peak Flow FIT-1027 (L/s)	Combined Peak Flow (L/s)
1	✓ 3754.5	3754.5	135.0	0.0	0.0	✓ 135.0
2	✓ 5046.2	5046.2	135.3	0.0	0.0	✓ 135.3
3	✓ 4497.9	4497.9	134.7	0.0	0.0	✓ 134.7
4	✓ 4601.9	4601.9	136.8	0.0	0.0	✓ 136.8
5	✓ 5266.2	5266.2	135.6	0.0	0.0	✓ 135.6
6	✓ 4452.0	1539.3	72.5	2912.7	73.5	✓ 73.5
7	✓ 4994.3	0.0	0.0	4994.3	136.6	✓ 136.6
8	✓ 4404.5	0.0	0.0	4404.5	127.3	✓ 127.3
9	✓ 3579.7	0.0	0.0	3579.7	72.0	✓ 72.0
10	✓ 4631.0	0.0	0.0	4631.0	137.6	✓ 137.6
11	✓ 4873.6	0.0	0.0	4873.6	137.8	✓ 137.8
12	✓ 5594.8	0.0	0.0	5594.8	138.9	✓ 138.9
13	✓ 4893.3	0.0	0.0	4893.3	137.8	✓ 137.8
14	✓ 4248.1	0.0	0.0	4248.1	138.7	✓ 138.7
15	✓ 5184.9	0.0	0.0	5184.9	138.0	✓ 138.0
16	✓ 3698.2	0.0	0.0	3698.2	73.2	✓ 73.2
17	✓ 5448.0	0.0	0.0	5448.0	136.9	✓ 136.9
18	✓ 4329.4	0.0	0.0	4329.4	113.6	✓ 113.6
19	✓ 5305.4	0.0	0.0	5305.4	139.3	✓ 139.3
20	✓ 4783.0	0.0	0.0	4783.0	77.8	✓ 77.8
21	✓ 4214.2	0.0	0.0	4214.2	76.7	✓ 76.7
22	✓ 3806.1	0.0	0.0	3806.1	138.2	✓ 138.2
23	✓ 4462.8	0.0	0.0	4462.8	135.0	✓ 135.0
24	✓ 4767.2	0.0	0.0	4767.2	78.1	✓ 78.1
25	✓ 3946.1	0.0	0.0	3946.1	136.4	✓ 136.4
26	✓ 4160.4	0.0	0.0	4160.4	138.2	✓ 138.2
27	✓ 4118.9	0.0	0.0	4118.9	139.9	✓ 139.9
28	✓ 4749.9	0.0	0.0	4749.9	134.6	✓ 134.6
29	✓ 4658.1	0.0	0.0	4658.1	78.2	✓ 78.2
30	✓ 4300.0	0.0	0.0	4300.0	77.7	✓ 77.7
31	✓ 0.0					
Total	136770.6	24706.0		112064.6		
Average	4559.0	823.5	25.0	3735.5	97.1	119.7
Maximum	5594.8	5266.2	136.75	5594.8	139.87	139.87
Date	12-Sep	5-Sep	4-Sep	12-Sep	27-Sep	27-Sep
Minimum	3579.7	0.0	0.00	0.0	0.00	71.98
Date	9-Sep	10-Sep	7-Sep	2-Sep	1-Sep	9-Sep

Notes:

Low Lift Monthly Report

Month: September-18

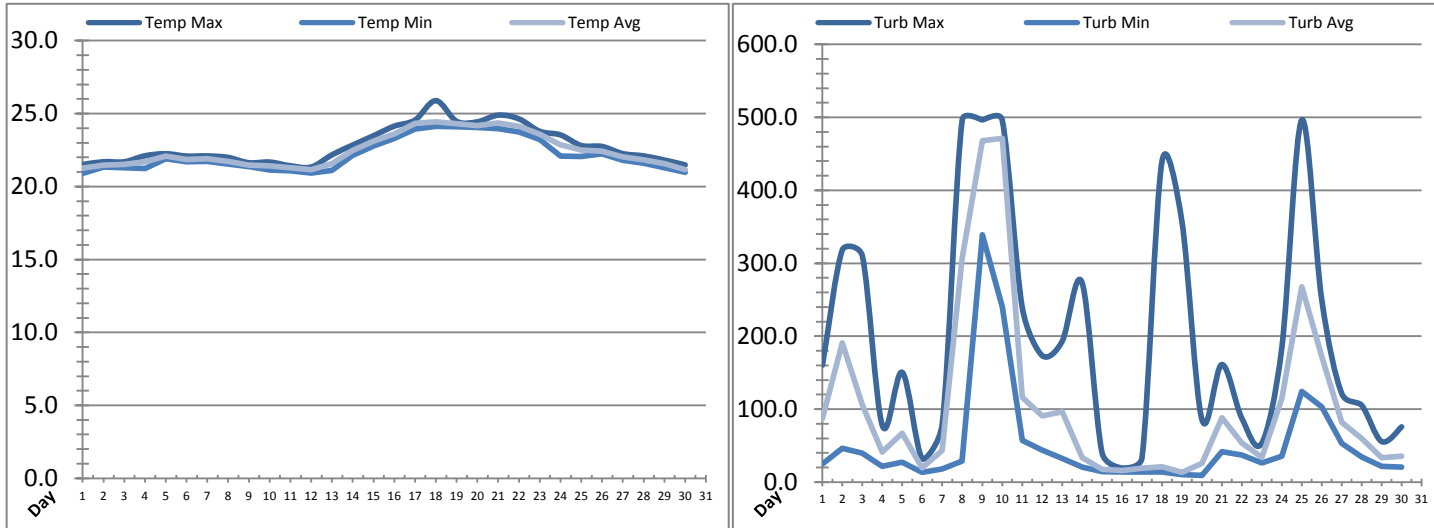


Date	Raw Water Chlorine Residual			Raw Water pH		
	AIT_1401_CL (mg/L)			AIT_1401_PH		
	Maximum	Minimum	Average	Maximum	Minimum	Average
1	2.72	0.00	0.22	8.49	8.09	8.30
2	2.52	0.00	0.16	8.43	7.93	8.24
3	1.96	0.00	0.16	8.28	7.83	8.07
4	1.51	0.00	0.14	8.24	7.73	8.01
5	1.47	0.00	0.12	8.53	8.07	8.28
6	1.91	0.00	0.06	8.58	7.62	8.32
7	1.11	0.00	0.05	8.61	8.19	8.39
8	1.28	0.00	0.06	8.65	8.21	8.38
9	2.20	0.00	0.15	8.34	8.14	8.26
10	2.65	0.00	0.24	8.31	8.07	8.22
11	3.01	0.00	0.35	8.31	7.99	8.18
12	3.05	0.00	0.34	8.31	7.96	8.17
13	3.32	0.00	0.25	8.30	7.94	8.12
14	1.67	0.00	0.32	8.19	7.67	8.01
15	1.26	0.00	0.38	8.28	7.93	8.11
16	0.83	0.00	0.16	8.50	8.07	8.26
17	1.00	0.00	0.07	8.54	8.38	8.45
18	0.68	0.00	0.04	8.49	8.18	8.38
19	1.48	0.00	0.14	8.50	8.16	8.35
20	1.53	0.00	0.23	8.43	8.16	8.32
21	0.53	0.00	0.08	8.24	8.07	8.13
22	2.32	0.00	0.28	8.33	7.98	8.12
23	1.29	0.00	0.27	8.28	8.02	8.10
24	1.15	0.00	0.25	8.18	7.92	8.02
25	0.59	0.00	0.09	8.07	7.89	7.97
26	1.64	0.00	0.26	8.07	7.86	7.96
27	0.88	0.00	0.32	8.06	7.89	7.97
28	1.14	0.00	0.32	8.03	7.84	7.92
29	0.61	0.00	0.30	7.93	7.85	7.88
30	0.59	0.00	0.31	7.93	7.84	7.88
Total						
Average	1.60	0.00	0.20	8.31	7.98	8.16
Maximum	3.32		0.38	8.65		8.45
Date	13-Sep		15-Sep	8-Sep		17-Sep
Minimum		0.00	0.04		7.62	7.88
Date		1-Sep	18-Sep		6-Sep	30-Sep

Notes:

Low Lift Monthly Report

Month: September-18

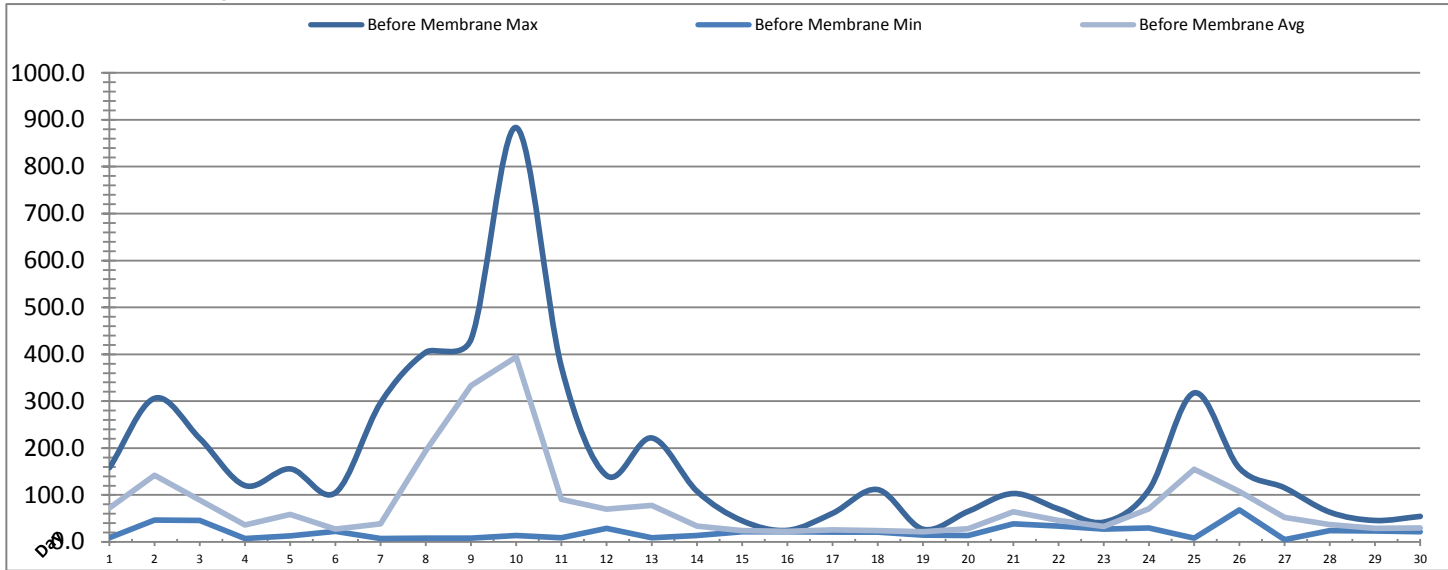


Date	Raw Water Temperature			Raw Water Turbidity		
	TIT_1403 (°C)			AIT_1404 (NTU)		
	Maximum	Minimum	Average	Maximum	Minimum	Average
1	21.5	20.9	21.3	160.36	24.66	86.71
2	21.7	21.3	21.5	318.54	46.37	190.82
3	21.7	21.3	21.5	309.97	39.42	106.44
4	22.1	21.2	21.7	77.46	21.59	40.92
5	22.2	21.9	22.1	150.35	27.05	66.87
6	22.1	21.7	21.9	31.71	13.06	19.61
7	22.1	21.7	21.9	79.82	17.69	43.38
8	22.0	21.5	21.7	496.59	28.56	305.86
9	21.6	21.4	21.5	496.51	339.21	468.33
10	21.7	21.1	21.4	496.49	240.07	471.36
11	21.4	21.1	21.3	240.08	57.13	116.22
12	21.3	20.9	21.1	173.45	43.94	90.67
13	22.2	21.1	21.6	192.79	32.34	96.41
14	22.8	22.1	22.5	273.43	20.75	33.30
15	23.5	22.8	23.1	40.19	14.51	17.27
16	24.1	23.3	23.6	19.24	13.76	16.00
17	24.6	23.9	24.3	33.28	13.75	19.12
18	25.9	24.1	24.4	439.28	13.72	21.23
19	24.5	24.1	24.3	357.18	9.99	13.49
20	24.4	24.0	24.2	85.91	9.12	25.56
21	24.9	24.0	24.4	161.17	41.68	88.00
22	24.6	23.7	24.1	87.48	37.03	53.41
23	23.8	23.2	23.6	53.30	26.13	34.03
24	23.5	22.1	22.9	183.51	35.46	114.23
25	22.8	22.1	22.5	496.45	124.52	267.68
26	22.7	22.2	22.4	250.17	102.85	172.11
27	22.3	21.8	22.0	121.49	53.23	82.14
28	22.1	21.6	21.8	105.23	34.64	59.81
29	21.8	21.3	21.6	55.59	21.46	33.51
30	21.5	21.0	21.2	75.70	20.64	35.71
Total						
Average	22.8	22.2	22.4	202.1	50.8	106.3
Maximum	25.9		24.4	496.6		471.4
Date	18-Sep		18-Sep	8-Sep		10-Sep
Minimum		20.9	21.1		9.1	13.5
Date		1-Sep	12-Sep		20-Sep	19-Sep

Notes:

Membranes Monthly Report

Month: September-18

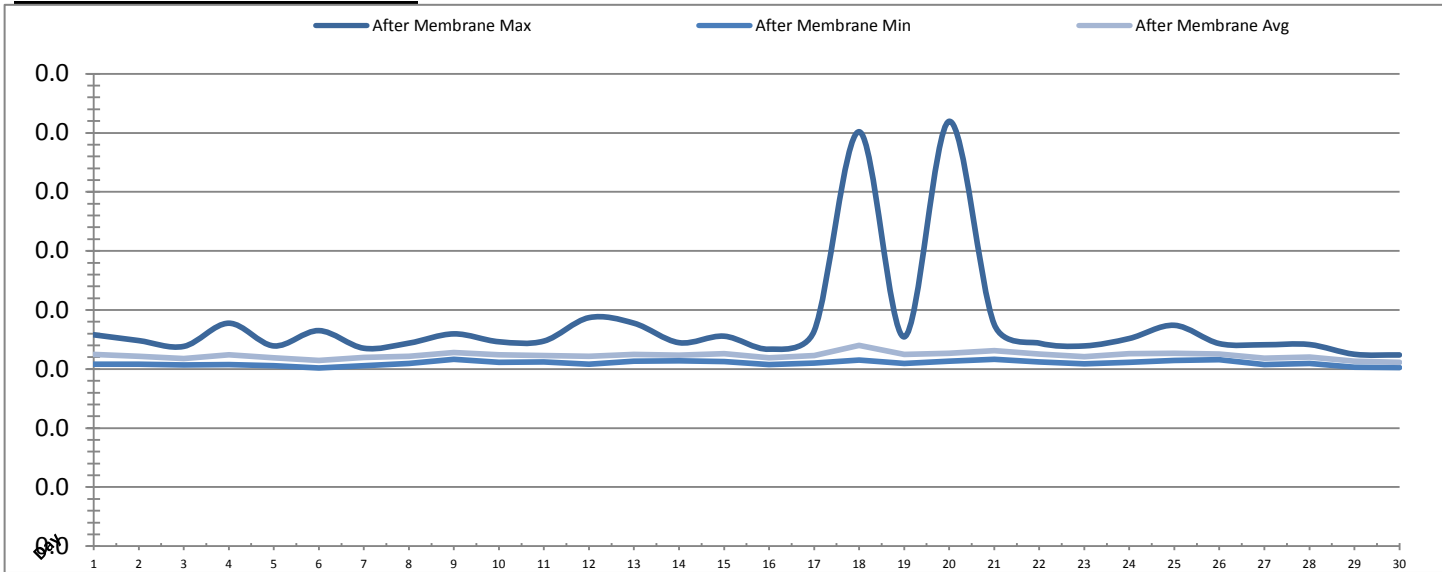


Date	Turbidity Before Membrane			Rack #1 Turbidity			Rack #2 Turbidity		
	PALL_FEED_AIT2006_Value NTU			RACK1_NTU_Value NTU			RACK2_NTU_Value NTU		
	Maximum	Minimum	Average	Maximum	Minimum	Average	Maximum	Minimum	Average
1	158.23	8.87	72.35	0.02	0.02	0.02	0.16	0.02	0.02
2	306.29	46.75	142.05	0.02	0.02	0.02	0.28	0.02	0.02
3	220.37	45.61	88.86	0.02	0.02	0.02	0.23	0.02	0.02
4	120.19	7.42	36.14	0.04	0.02	0.02	0.16	0.02	0.02
5	155.73	12.89	58.90	0.02	0.02	0.02	0.03	0.02	0.02
6	104.91	22.81	27.12	0.16	0.02	0.02	0.07	0.02	0.02
7	296.83	7.61	38.28	0.02	0.02	0.02	0.19	0.02	0.02
8	404.42	7.91	194.07	0.02	0.02	0.02	0.14	0.02	0.02
9	432.07	8.14	333.41	0.02	0.02	0.02	0.15	0.02	0.02
10	883.39	13.89	394.14	0.02	0.02	0.02	0.03	0.02	0.02
11	372.66	8.48	90.83	0.02	0.02	0.02	0.08	0.02	0.02
12	141.46	29.01	70.11	0.02	0.02	0.02	0.02	0.02	0.02
13	221.65	8.50	77.65	0.02	0.02	0.02	0.02	0.02	0.02
14	107.90	13.50	33.65	0.05	0.02	0.02	0.04	0.02	0.02
15	45.07	21.39	24.51	0.02	0.02	0.02	0.17	0.02	0.02
16	24.69	21.61	22.50	0.02	0.02	0.02	0.18	0.02	0.02
17	61.12	21.14	25.70	0.02	0.02	0.02	0.02	0.02	0.02
18	111.47	20.80	24.48	0.02	0.02	0.02	0.04	0.02	0.02
19	27.07	14.64	21.64	0.02	0.02	0.02	0.19	0.02	0.02
20	65.20	13.44	28.06	0.02	0.02	0.02	0.22	0.02	0.02
21	103.19	38.27	64.26	0.02	0.02	0.02	0.02	0.02	0.02
22	70.25	33.72	45.52	0.02	0.02	0.02	0.12	0.02	0.02
23	42.20	27.71	32.67	0.02	0.02	0.02	0.12	0.02	0.02
24	111.39	29.66	70.46	0.05	0.02	0.02	0.06	0.02	0.02
25	317.77	7.91	154.84	0.02	0.02	0.02	0.32	0.02	0.02
26	157.21	68.03	107.99	0.02	0.02	0.02	0.02	0.02	0.02
27	115.28	4.85	52.35	0.04	0.02	0.02	0.08	0.02	0.02
28	63.42	24.16	37.31	0.02	0.02	0.02	0.04	0.02	0.02
29	45.71	23.14	28.68	0.02	0.02	0.02	0.21	0.02	0.02
30	54.41	21.96	29.84	0.02	0.02	0.02	0.02	0.02	0.02
Total									
Average	178.1	21.1	80.9	0.0	0.0	0.0	0.1	0.0	0.0
Maximum	883.4		394.1	0.2		0.0	0.3		0.0
Date	10-Sep		10-Sep	6-Sep		6-Sep	25-Sep		20-Sep
Minimum		4.8	21.6		0.0	0.0		0.0	0.0
Date		27-Sep	19-Sep		4-Sep	15-Sep		1-Sep	30-Sep

Notes:

Membranes Monthly Report

Month: September-18

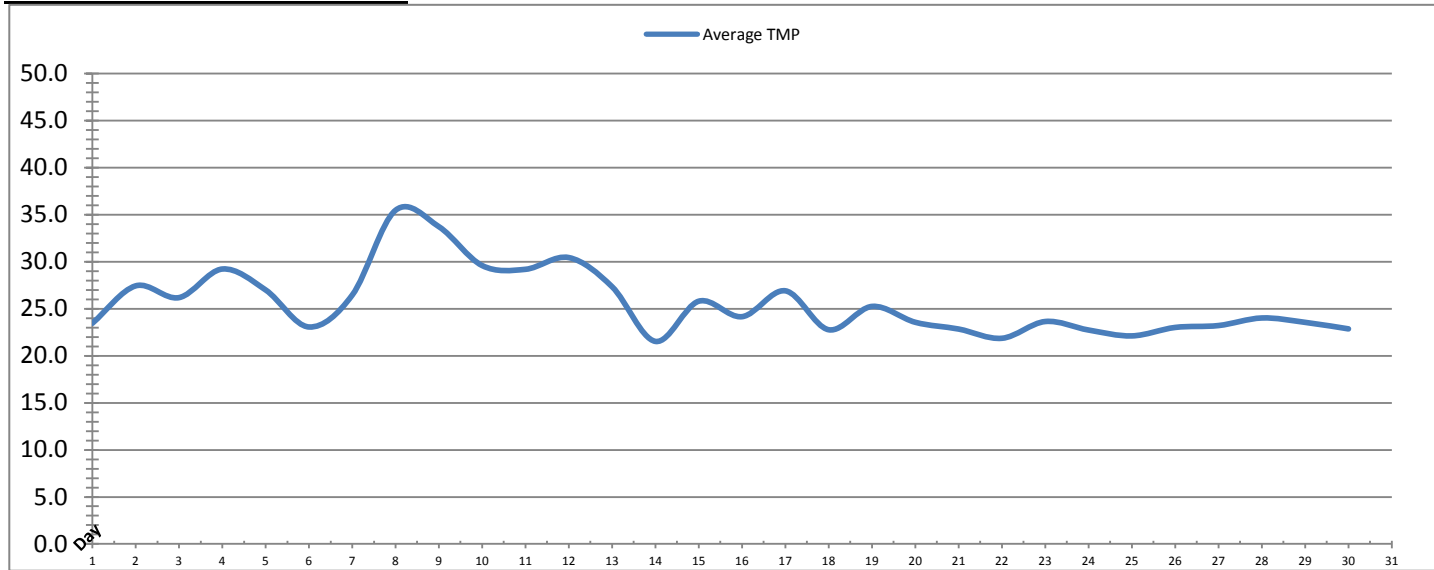


Date	Rack #3 Turbidity			Rack #4 Turbidity			Turbidity After Membranes		
	RACK3_NTU_Value NTU			RACK4_NTU_Value NTU			PALL_FILT_AIT5001_Value NTU		
	Maximum	Minimum	Average	Maximum	Minimum	Average	Maximum	Minimum	Average
1	0.03	0.02	0.02	0.06	0.02	0.03	0.02	0.02	0.02
2	0.02	0.02	0.02	0.03	0.02	0.03	0.02	0.02	0.02
3	0.02	0.02	0.02	0.03	0.02	0.03	0.02	0.02	0.02
4	0.36	0.02	0.02	0.03	0.02	0.03	0.02	0.02	0.02
5	0.02	0.02	0.02	0.03	0.02	0.03	0.02	0.02	0.02
6	0.02	0.02	0.02	0.03	0.02	0.02	0.02	0.02	0.02
7	0.02	0.02	0.02	0.03	0.02	0.02	0.02	0.02	0.02
8	0.02	0.02	0.02	0.03	0.02	0.02	0.02	0.02	0.02
9	0.02	0.02	0.02	0.03	0.02	0.02	0.02	0.02	0.02
10	0.02	0.02	0.02	0.03	0.02	0.03	0.02	0.02	0.02
11	0.02	0.02	0.02	0.03	0.02	0.03	0.02	0.02	0.02
12	0.02	0.02	0.02	0.03	0.02	0.03	0.02	0.02	0.02
13	0.02	0.02	0.02	0.03	0.02	0.03	0.02	0.02	0.02
14	0.02	0.02	0.02	0.03	0.02	0.02	0.02	0.02	0.02
15	0.02	0.02	0.02	0.03	0.02	0.02	0.02	0.02	0.02
16	0.02	0.02	0.02	0.03	0.02	0.02	0.02	0.02	0.02
17	0.03	0.02	0.02	0.03	0.02	0.02	0.02	0.02	0.02
18	0.02	0.02	0.02	0.09	0.02	0.03	0.04	0.02	0.02
19	0.02	0.02	0.02	0.03	0.02	0.03	0.02	0.02	0.02
20	0.02	0.02	0.02	0.03	0.02	0.02	0.04	0.02	0.02
21	0.02	0.02	0.02	0.03	0.02	0.03	0.02	0.02	0.02
22	0.02	0.02	0.02	0.03	0.02	0.03	0.02	0.02	0.02
23	0.02	0.02	0.02	0.03	0.02	0.02	0.02	0.02	0.02
24	0.02	0.02	0.02	0.04	0.02	0.03	0.02	0.02	0.02
25	0.22	0.02	0.02	0.08	0.02	0.03	0.02	0.02	0.02
26	0.02	0.02	0.02	0.03	0.02	0.03	0.02	0.02	0.02
27	0.02	0.02	0.02	0.03	0.02	0.03	0.02	0.02	0.02
28	0.02	0.02	0.02	0.03	0.02	0.03	0.02	0.02	0.02
29	0.02	0.02	0.02	0.03	0.02	0.02	0.02	0.02	0.02
30	0.02	0.02	0.02	0.03	0.02	0.02	0.02	0.02	0.02
Total									
Average	0.0	0.0	0.0	0.0	0.0	0.0	0.0	0.0	0.0
Maximum	0.4		0.0	0.1		0.0	0.0		0.0
Date	4-Sep		4-Sep	18-Sep		18-Sep	20-Sep		18-Sep
Minimum		0.0	0.0		0.0	0.0		0.0	0.0
Date		1-Sep	15-Sep		7-Sep	8-Sep		6-Sep	30-Sep

Notes:

Membranes Monthly Report

Month: September-18

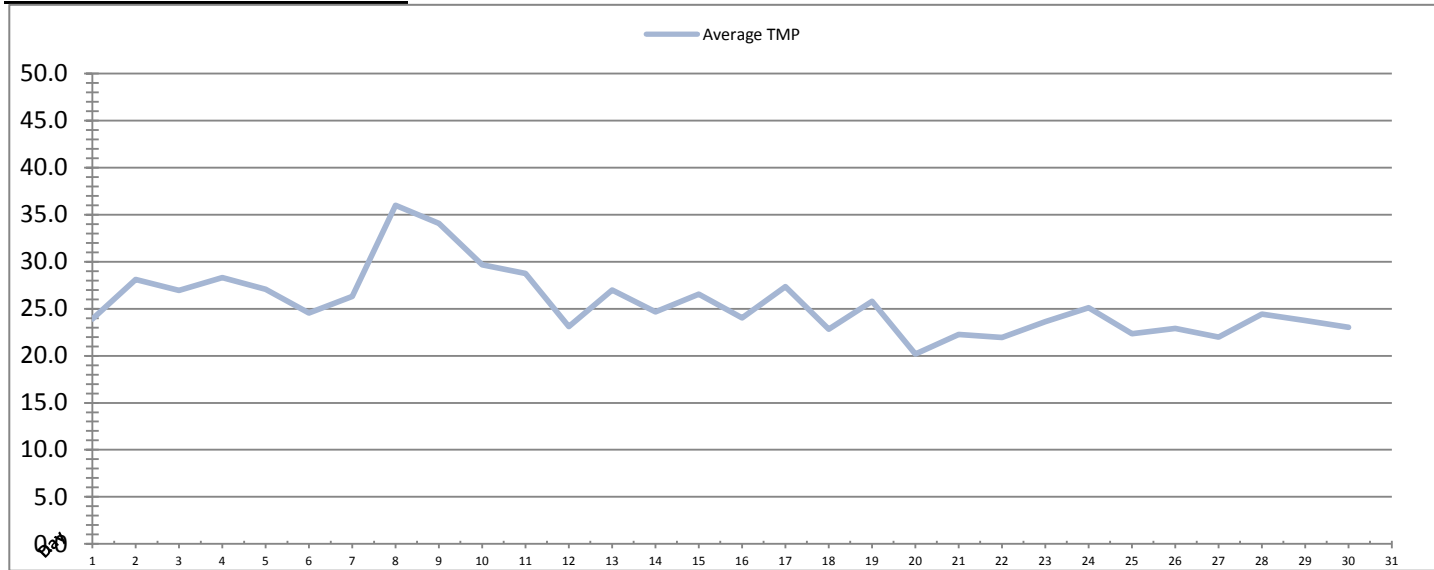


Date	Integrity Test Rack 1							
	Initial Pressure (kPa)	Final Pressure (kPa)	Test Duration (sec)	Change in Pressure (kPa)	UCL	Within UCL	Average TMP (kPa)	Max TMP (kPa)
1	198.1	197.1	300.0	1.1	2.0	✓ 2.0	23.5	75.0
2	198.2	197.1	300.0	1.1	2.0	✓ 2.0	27.4	77.0
3	198.2	197.2	300.0	1.1	2.0	✓ 2.0	26.2	81.2
4	198.1	197.0	300.0	1.1	2.0	✓ 2.0	29.2	136.6
5	198.5	197.4	300.0	1.1	2.0	✓ 2.0	27.0	78.9
6	198.5	197.3	300.0	1.2	2.0	✓ 2.0	23.1	58.1
7	198.3	197.2	300.0	1.1	2.0	✓ 2.0	26.5	74.1
8	198.4	197.4	300.0	1.1	2.0	✓ 2.0	35.5	92.7
9	198.5	197.4	300.0	1.1	2.0	✓ 2.0	33.7	74.1
10	198.4	197.3	300.0	1.0	2.0	✓ 2.0	29.6	91.4
11	198.5	197.4	300.0	1.1	2.0	✓ 2.0	29.2	95.5
12	198.3	197.2	300.0	1.1	2.0	✓ 2.0	30.4	148.9
13	198.4	197.3	300.0	1.0	2.0	✓ 2.0	27.3	83.5
14	198.1	197.2	300.0	1.0	2.0	✓ 2.0	21.5	120.7
15	198.2	197.3	300.0	0.9	2.0	✓ 2.0	25.8	67.9
16	198.2	197.3	300.0	0.9	2.0	✓ 2.0	24.2	48.0
17	197.9	197.0	300.0	0.9	2.0	✓ 2.0	26.9	71.5
18	197.9	196.8	300.0	1.0	2.0	✓ 2.0	22.8	83.6
19	198.4	197.4	300.0	1.0	2.0	✓ 2.0	25.2	69.9
20	198.2	197.2	300.0	1.0	2.0	✓ 2.0	23.6	60.7
21	198.0	197.1	300.0	0.9	2.0	✓ 2.0	22.8	78.8
22	198.2	197.2	300.0	1.1	2.0	✓ 2.0	21.9	70.7
23	198.4	197.3	300.0	1.0	2.0	✓ 2.0	23.6	69.1
24	198.1	197.0	300.0	1.1	2.0	✓ 2.0	22.7	74.9
25	198.8	197.8	300.0	1.0	2.0	✓ 2.0	22.1	69.0
26	198.7	197.6	300.0	1.1	2.0	✓ 2.0	23.0	85.0
27	198.5	197.4	300.0	1.1	2.0	✓ 2.0	23.2	80.1
28	199.0	197.9	300.0	1.1	2.0	✓ 2.0	24.0	67.1
29	198.9	197.8	300.0	1.1	2.0	✓ 2.0	23.6	43.6
30	198.8	197.6	300.0	1.2	2.0	✓ 2.0	22.9	78.9
Total								
Average	198.4	197.3	300.0	1.0	2.0	2.0	25.6	80.2
Maximum	199.0	197.9	300.0	1.2	2.0	2.0	35.5	148.9
Date	28-Sep	28-Sep	1-Sep	6-Sep	1-Sep	1-Sep	8-Sep	12-Sep
Minimum	197.9	196.8	300.0	0.9	2.0	2.0	21.5	43.6
Date	18-Sep	18-Sep	1-Sep	21-Sep	1-Sep	1-Sep	14-Sep	29-Sep

Notes:

Membranes Monthly Report

Month: September-18

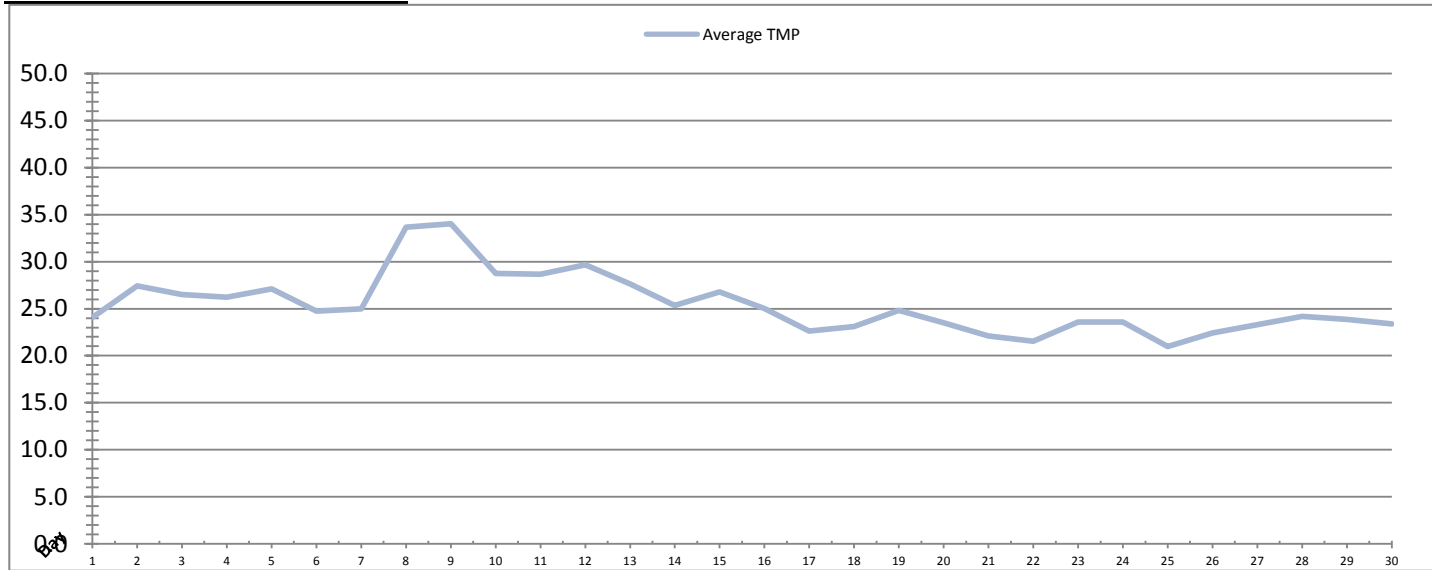


Date	Integrity Test Rack 2							
	Initial Pressure (kPa)	Final Pressure (kPa)	Test Duration (sec)	Change in Pressure (kPa)	UCL	Within UCL	Average TMP (kPa)	Max TMP (kPa)
1	207.8	206.6	300.0	1.2	2.0	✓ 2.0	23.9	77.1
2	207.8	206.6	300.0	1.3	2.0	✓ 2.0	28.1	79.8
3	207.9	206.8	300.0	1.1	2.0	✓ 2.0	26.9	80.7
4	207.6	206.5	300.0	1.1	2.0	✓ 2.0	28.3	191.5
5	207.6	206.6	300.0	1.0	2.0	✓ 2.0	27.1	73.9
6	207.8	206.8	300.0	1.1	2.0	✓ 2.0	24.5	70.6
7	207.6	206.5	300.0	1.1	2.0	✓ 2.0	26.3	73.3
8	208.0	207.0	300.0	1.0	2.0	✓ 2.0	36.0	109.8
9	208.0	206.9	300.0	1.1	2.0	✓ 2.0	34.1	78.0
10	208.2	207.1	300.0	1.1	2.0	✓ 2.0	29.7	89.3
11	207.5	206.4	300.0	1.1	2.0	✓ 2.0	28.7	84.2
12	208.3	207.2	300.0	1.1	2.0	✓ 2.0	23.1	76.1
13	208.1	207.0	300.0	1.1	2.0	✓ 2.0	27.0	76.1
14	207.7	206.7	300.0	1.1	2.0	✓ 2.0	24.6	78.8
15	207.9	206.9	300.0	1.0	2.0	✓ 2.0	26.5	74.3
16	207.5	206.6	300.0	0.9	2.0	✓ 2.0	24.0	44.7
17	207.8	206.9	300.0	1.0	2.0	✓ 2.0	27.3	73.2
18	207.8	206.8	300.0	1.0	2.0	✓ 2.0	22.8	48.2
19	207.9	206.9	300.0	1.0	2.0	✓ 2.0	25.8	139.5
20	207.9	206.9	300.0	0.9	2.0	✓ 2.0	20.2	65.8
21	207.8	206.8	300.0	1.0	2.0	✓ 2.0	22.2	40.8
22	208.1	207.0	300.0	1.1	2.0	✓ 2.0	21.9	68.4
23	208.0	206.9	300.0	1.1	2.0	✓ 2.0	23.6	69.0
24	208.3	207.2	300.0	1.1	2.0	✓ 2.0	25.1	65.3
25	208.6	207.5	300.0	1.1	2.0	✓ 2.0	22.3	68.5
26	208.5	207.3	300.0	1.2	2.0	✓ 2.0	22.9	77.9
27	208.3	207.2	300.0	1.1	2.0	✓ 2.0	22.0	70.0
28	208.0	206.9	300.0	1.1	2.0	✓ 2.0	24.4	64.4
29	208.4	207.2	300.0	1.1	2.0	✓ 2.0	23.8	43.6
30	208.1	207.0	300.0	1.1	2.0	✓ 2.0	23.0	46.3
Total								
Average	208.0	206.9	300.0	1.1	2.0	2.0	25.5	76.6
Maximum	208.6	207.5	300.0	1.3	2.0	2.0	36.0	191.5
Date	25-Sep	25-Sep	1-Sep	2-Sep	1-Sep	1-Sep	8-Sep	4-Sep
Minimum	207.5	206.4	300.0	0.9	2.0	2.0	20.2	40.8
Date	11-Sep	11-Sep	1-Sep	16-Sep	1-Sep	1-Sep	20-Sep	21-Sep

Notes:

Membranes Monthly Report

Month: September-18

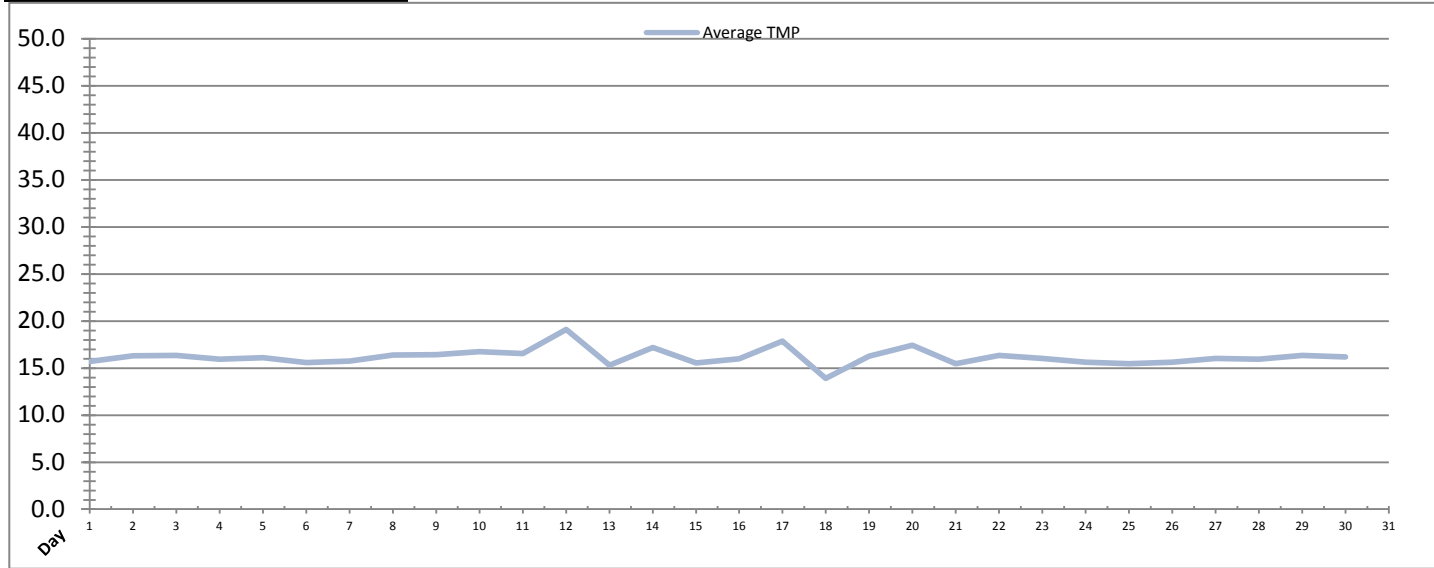


Date	Integrity Test Rack 3							
	Initial Pressure (kPa)	Final Pressure (kPa)	Test Duration (sec)	Change in Pressure (kPa)	UCL	Within UCL	Average TMP (kPa)	Max TMP (kPa)
1	181.2	180.1	300.0	1.1	2.0	✓ 2.0	24.0	72.7
2	180.3	179.2	300.0	1.1	2.0	✓ 2.0	27.4	75.4
3	180.5	179.3	300.0	1.1	2.0	✓ 2.0	26.5	79.3
4	180.0	178.9	300.0	1.1	2.0	✓ 2.0	26.2	79.5
5	180.8	179.8	300.0	1.0	2.0	✓ 2.0	27.1	74.9
6	180.5	179.4	300.0	1.1	2.0	✓ 2.0	24.7	75.8
7	180.0	178.9	300.0	1.1	2.0	✓ 2.0	25.0	69.8
8	180.6	179.6	300.0	1.1	2.0	✓ 2.0	33.7	90.4
9	179.6	178.6	300.0	1.0	2.0	✓ 2.0	34.0	75.6
10	180.8	179.8	300.0	1.1	2.0	✓ 2.0	28.8	100.2
11	180.0	179.0	300.0	1.0	2.0	✓ 2.0	28.7	86.5
12	179.8	178.7	300.0	1.1	2.0	✓ 2.0	29.7	145.9
13	179.4	178.4	300.0	1.0	2.0	✓ 2.0	27.6	91.0
14	179.8	178.9	300.0	1.0	2.0	✓ 2.0	25.3	86.0
15	179.2	178.3	300.0	0.9	2.0	✓ 2.0	26.8	71.1
16	180.3	179.4	300.0	0.9	2.0	✓ 2.0	25.0	48.6
17	180.2	179.2	300.0	1.0	2.0	✓ 2.0	22.6	119.5
18	179.5	178.6	300.0	0.9	2.0	✓ 2.0	23.1	47.0
19	179.4	178.5	300.0	0.9	2.0	✓ 2.0	24.8	66.4
20	179.1	178.2	300.0	0.9	2.0	✓ 2.0	23.5	41.3
21	178.8	177.9	300.0	0.9	2.0	✓ 2.0	22.1	42.6
22	179.0	178.1	300.0	1.0	2.0	✓ 2.0	21.5	65.7
23	179.4	178.5	300.0	0.9	2.0	✓ 2.0	23.6	66.0
24	179.0	178.0	300.0	1.0	2.0	✓ 2.0	23.6	74.6
25	178.9	177.8	300.0	1.1	2.0	✓ 2.0	21.0	64.0
26	179.0	178.0	300.0	1.0	2.0	✓ 2.0	22.4	64.7
27	178.0	176.8	300.0	1.2	2.0	✓ 2.0	23.3	75.0
28	178.6	177.5	300.0	1.1	2.0	✓ 2.0	24.2	82.4
29	178.3	177.2	300.0	1.1	2.0	✓ 2.0	23.8	40.5
30	178.0	176.9	300.0	1.1	2.0	✓ 2.0	23.4	88.4
Total								
Average	179.6	178.6	300.0	1.0	2.0	2.0	25.5	75.4
Maximum	181.2	180.1	300.0	1.2	2.0	2.0	34.0	145.9
Date	1-Sep	1-Sep	1-Sep	27-Sep	1-Sep	1-Sep	9-Sep	12-Sep
Minimum	178.0	176.8	300.0	0.9	2.0	2.0	21.0	40.5
Date	27-Sep	27-Sep	1-Sep	19-Sep	1-Sep	1-Sep	25-Sep	29-Sep

Notes:

Membranes Monthly Report

Month: September-18



Date	Integrity Test Rack 4							
	Initial Pressure (kPa)	Final Pressure (kPa)	Test Duration (sec)	Change in Pressure (kPa)	UCL	Within UCL	Average TMP (kPa)	Max TMP (kPa)
1	200.3	199.1	300.0	1.2	2.0	✓ 2.0	15.7	45.0
2	200.6	199.5	300.0	1.1	2.0	✓ 2.0	16.3	43.2
3	201.0	199.8	300.0	1.2	2.0	✓ 2.0	16.3	40.0
4	200.8	199.7	300.0	1.2	2.0	✓ 2.0	15.9	43.8
5	201.2	200.0	300.0	1.3	2.0	✓ 2.0	16.1	43.0
6	200.8	199.7	300.0	1.1	2.0	✓ 2.0	15.6	33.7
7	200.7	199.3	300.0	1.4	2.0	✓ 2.0	15.8	44.0
8	200.7	199.3	300.0	1.4	2.0	✓ 2.0	16.4	20.6
9	200.7	199.3	300.0	1.4	2.0	✓ 2.0	16.4	21.7
10	201.4	199.7	300.0	1.7	2.0	✓ 2.0	16.7	81.6
11	200.9	199.4	300.0	1.5	2.0	✓ 2.0	16.5	43.3
12	200.7	199.4	300.0	1.3	2.0	✓ 2.0	19.1	129.3
13	200.1	198.7	300.0	1.4	2.0	✓ 2.0	15.3	43.1
14	200.5	199.2	300.0	1.3	2.0	✓ 2.0	17.2	66.7
15	201.1	199.9	300.0	1.1	2.0	✓ 2.0	15.6	37.0
16	201.1	199.9	300.0	1.1	2.0	✓ 2.0	16.0	18.9
17	200.8	199.6	300.0	1.3	2.0	✓ 2.0	17.9	58.0
18	200.2	199.1	300.0	1.1	2.0	✓ 2.0	13.9	118.2
19	200.5	199.4	300.0	1.1	2.0	✓ 2.0	16.3	35.6
20	200.3	199.0	300.0	1.3	2.0	✓ 2.0	17.4	40.1
21	200.8	199.5	300.0	1.2	2.0	✓ 2.0	15.5	40.9
22	200.3	199.0	300.0	1.3	2.0	✓ 2.0	16.3	41.8
23	200.5	199.2	300.0	1.3	2.0	✓ 2.0	16.0	40.2
24	200.3	198.9	300.0	1.4	2.0	✓ 2.0	15.6	32.7
25	201.2	199.8	300.0	1.4	2.0	✓ 2.0	15.5	26.7
26	200.8	199.7	300.0	1.1	2.0	✓ 2.0	15.6	32.3
27	200.5	199.3	300.0	1.3	2.0	✓ 2.0	16.0	31.9
28	200.8	199.4	300.0	1.4	2.0	✓ 2.0	16.0	29.9
29	201.1	200.0	300.0	1.2	2.0	✓ 2.0	16.3	42.1
30	200.9	199.6	300.0	1.3	2.0	✓ 2.0	16.2	32.1
Total								
Average	200.7	199.4	300.0	1.3	2.0	2.0	16.2	45.3
Maximum	201.4	200.0	300.0	1.7	2.0	2.0	19.1	129.3
Date	10-Sep	5-Sep	1-Sep	10-Sep	1-Sep	1-Sep	12-Sep	12-Sep
Minimum	200.1	198.7	300.0	1.1	2.0	2.0	13.9	18.9
Date	13-Sep	13-Sep	1-Sep	19-Sep	1-Sep	1-Sep	18-Sep	16-Sep

Notes:

Membranes Monthly Report

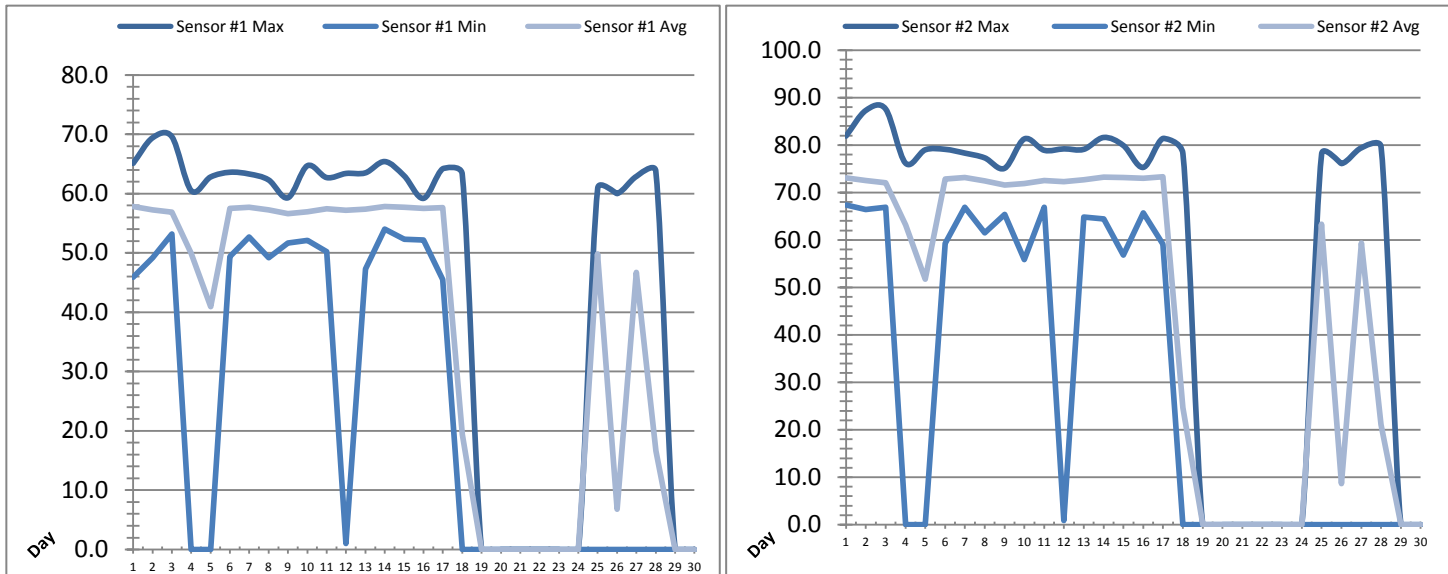
Month: September-18

Date	Membranes Monthly Performance							
	Rack 1 >0.1 NTU (Minutes)	Rack 1 Forward Flow (Minutes)	Rack 2 >0.1 NTU (Minutes)	Rack 2 Forward Flow (Minutes)	Rack 3 >0.1 NTU (Minutes)	Rack 3 Forward Flow (Minutes)	Rack 4 >0.1 NTU (Minutes)	Rack 4 Forward Flow (Minutes)
1	0.0	811.2	1.4	822.5	0.0	807.3	0.0	264.3
2	0.0	1022.3	2.2	1044.3	0.0	1023.2	0.0	338.0
3	0.0	1012.3	2.3	1026.2	0.0	1011.4	0.0	292.1
4	0.0	1227.0	1.4	1172.2	10.4	1156.4	0.0	587.5
5	0.0	1101.2	0.0	1106.2	0.0	1095.4	0.0	327.2
6	1.4	964.2	0.0	1048.3	0.0	1041.5	0.0	542.5
7	0.0	1062.2	0.5	1064.5	0.0	1063.5	0.0	504.5
8	0.0	1038.6	1.4	1040.3	0.0	1036.3	0.0	1058.3
9	0.0	881.0	1.3	887.3	0.0	885.5	0.0	905.3
10	0.0	1004.2	0.0	1010.5	0.0	1002.4	0.0	467.6
11	0.0	1036.1	0.0	1038.4	0.0	1029.3	0.0	457.5
12	0.0	1134.6	0.0	836.5	0.0	1138.4	0.0	402.2
13	0.0	1006.4	0.0	1004.3	0.0	1004.2	0.0	213.0
14	0.0	686.1	0.0	877.1	0.0	870.4	0.0	355.5
15	0.0	1138.6	1.4	1162.3	0.0	1140.3	0.0	543.6
16	0.0	870.5	1.4	873.1	0.0	874.0	0.0	894.2
17	0.0	1178.5	0.0	1194.2	0.0	858.5	0.0	776.3
18	0.0	988.0	0.0	996.1	0.0	983.6	0.0	188.2
19	0.0	1166.3	1.4	1183.5	0.0	1164.1	0.0	339.5
20	0.0	1093.6	2.3	841.5	0.0	1092.3	0.0	526.2
21	0.0	997.6	0.0	997.6	0.0	998.5	0.0	411.2
22	0.0	821.5	0.5	829.6	0.0	821.0	0.0	346.6
23	0.0	926.6	0.5	942.3	0.0	930.1	0.0	352.0
24	0.0	1000.5	0.0	1160.0	0.0	1157.4	0.0	383.4
25	0.0	879.4	2.3	895.1	3.2	852.6	0.0	510.0
26	0.0	876.5	0.0	884.1	0.0	881.5	0.0	498.5
27	0.0	896.3	0.0	830.1	0.0	895.3	0.0	439.1
28	0.0	1064.3	0.0	1074.2	0.0	1062.1	0.0	520.4
29	0.0	1054.5	2.2	1071.2	0.0	1052.3	0.0	538.5
30	0.0	977.3	0.0	979.1	0.0	979.0	0.0	466.2
Total	1.4	29917.4	22.4	29892.8	13.5	29907.8	0.0	14449.7
Percent	0.0		0.1		0.0		0.0	
Maximum	1.4	1227.0	2.3	1194.2	10.4	1164.1	0.0	1058.3
Date	6-Sep	4-Sep	3-Sep	17-Sep	4-Sep	19-Sep	1-Sep	8-Sep
Minimum	0.0	686.1	0.0	822.5	0.0	807.3	0.0	188.2
Date	1-Sep	14-Sep	5-Sep	1-Sep	1-Sep	1-Sep	1-Sep	18-Sep

Notes:
 Met filter performance criteria of >99% of the readings for turbidity <0.1ntu.

UV System Monthly Report

Month: **September-18**

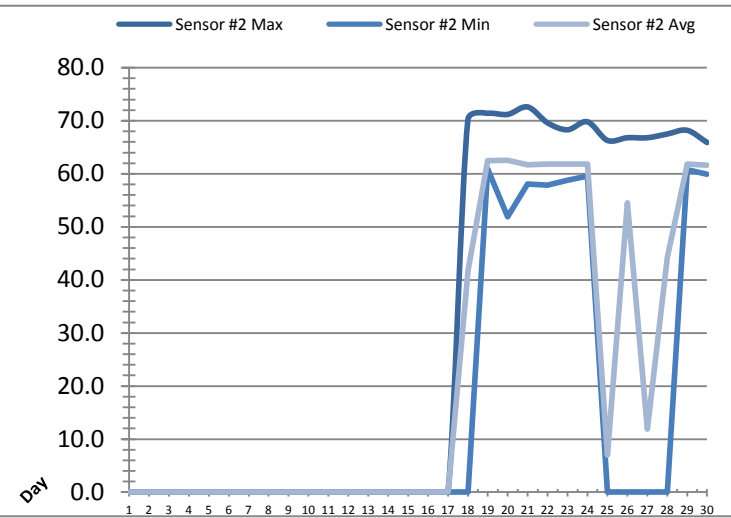
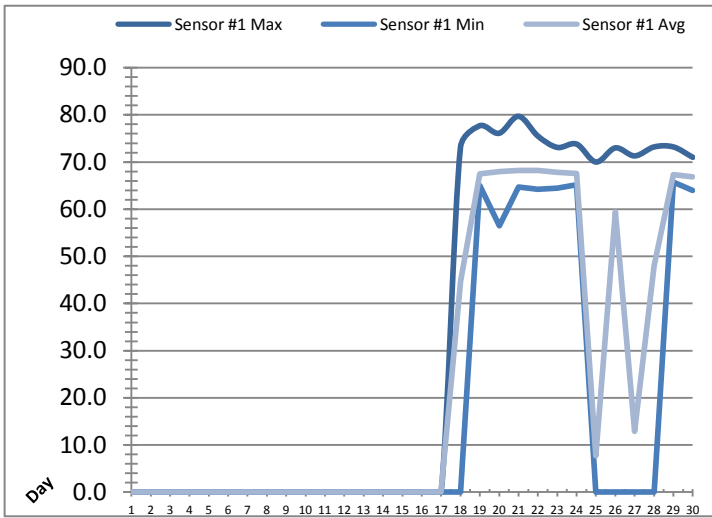


Date	UV Reactor 1					
	Intensity Sensor 1 (mW/cm ²)			Intensity Sensor 2 (mW/cm ²)		
	Maximum	Minimum	Average	Maximum	Minimum	Average
1	65.1	45.9	57.8	81.9	67.4	73.1
2	69.4	49.2	57.3	87.3	66.4	72.6
3	69.6	53.2	56.9	87.6	66.9	72.0
4	60.5	0.0	50.0	76.2	0.0	63.2
5	62.8	0.0	40.9	79.0	0.0	51.8
6	63.6	49.4	57.5	79.1	59.3	72.8
7	63.3	52.7	57.7	78.3	66.9	73.1
8	62.3	49.2	57.2	77.3	61.5	72.4
9	59.3	51.7	56.6	75.1	65.4	71.6
10	64.7	52.1	56.9	81.3	55.9	71.9
11	62.7	50.2	57.5	78.9	66.9	72.6
12	63.4	1.0	57.2	79.2	0.9	72.3
13	63.5	47.3	57.4	79.1	64.8	72.7
14	65.4	54.0	57.9	81.6	64.4	73.3
15	63.0	52.3	57.7	79.9	56.8	73.2
16	59.2	52.2	57.5	75.3	65.7	73.0
17	64.2	45.5	57.6	81.4	59.1	73.3
18	63.3	0.0	19.4	78.2	0.0	24.7
19	0.0	0.0	0.0	0.0	0.0	0.0
20	0.0	0.0	0.0	0.0	0.0	0.0
21	0.0	0.0	0.0	0.0	0.0	0.0
22	0.0	0.0	0.0	0.0	0.0	0.0
23	0.0	0.0	0.0	0.0	0.0	0.0
24	0.0	0.0	0.0	0.0	0.0	0.0
25	60.9	0.0	49.8	78.1	0.0	63.3
26	60.0	0.0	6.8	76.1	0.0	8.6
27	62.9	0.0	46.7	79.4	0.0	59.4
28	63.8	0.0	16.6	79.6	0.0	21.1
29	0.0	0.0	0.0	0.0	0.0	0.0
30	0.0	0.0	0.0	0.0	0.0	0.0
Total						
Average	46.4	23.5	36.4	58.3	29.6	46.1
Maximum	69.6		57.9	87.6		73.3
Date	3-Sep		14-Sep	3-Sep		17-Sep
Minimum		0.0	0.0		0.0	0.0
Date		4-Sep	19-Sep		4-Sep	19-Sep

Notes:

UV System Monthly Report

Month: **September-18**

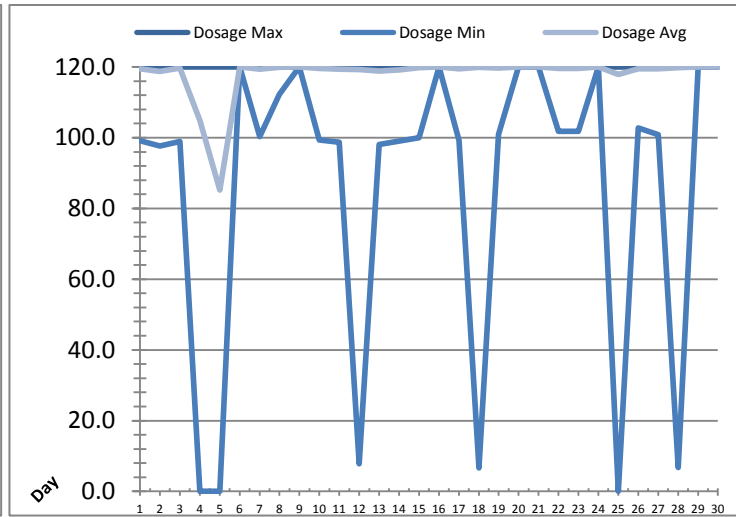
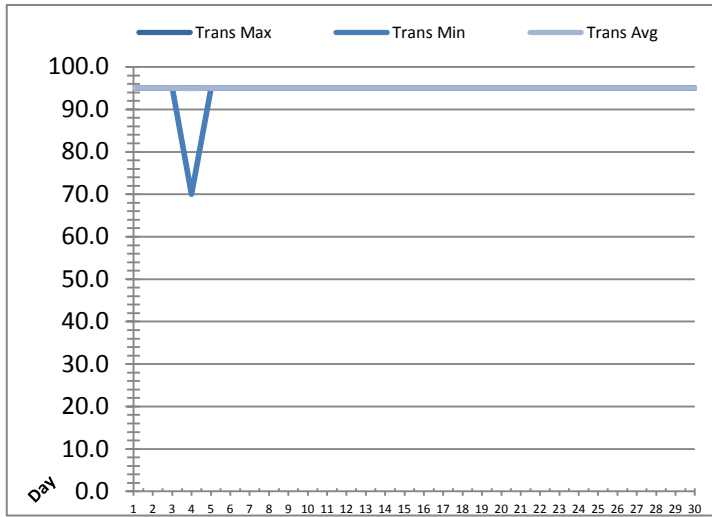


Date	UV Reactor 2					
	Intensity Sensor 1 (mW/cm ²)			Intensity Sensor 2 (mW/cm ²)		
	Maximum	Minimum	Average	Maximum	Minimum	Average
1	0.0	0.0	0.0	0.0	0.0	0.0
2	0.0	0.0	0.0	0.0	0.0	0.0
3	0.0	0.0	0.0	0.0	0.0	0.0
4	0.0	0.0	0.0	0.0	0.0	0.0
5	0.0	0.0	0.0	0.0	0.0	0.0
6	0.0	0.0	0.0	0.0	0.0	0.0
7	0.0	0.0	0.0	0.0	0.0	0.0
8	0.0	0.0	0.0	0.0	0.0	0.0
9	0.0	0.0	0.0	0.0	0.0	0.0
10	0.0	0.0	0.0	0.0	0.0	0.0
11	0.0	0.0	0.0	0.0	0.0	0.0
12	0.0	0.0	0.0	0.0	0.0	0.0
13	0.0	0.0	0.0	0.0	0.0	0.0
14	0.0	0.0	0.0	0.0	0.0	0.0
15	0.0	0.0	0.0	0.0	0.0	0.0
16	0.0	0.0	0.0	0.0	0.0	0.0
17	0.0	0.0	0.0	0.0	0.0	0.0
18	73.1	0.0	44.6	70.2	0.0	41.9
19	77.7	65.0	67.5	71.4	60.9	62.5
20	76.1	56.5	68.0	71.2	51.9	62.5
21	79.7	64.7	68.2	72.6	58.1	61.7
22	75.5	64.2	68.2	69.6	57.9	61.9
23	73.1	64.5	67.8	68.3	58.8	61.8
24	73.8	65.2	67.6	69.8	59.6	61.8
25	70.0	0.0	7.7	66.3	0.0	7.0
26	73.0	0.0	59.4	66.8	0.0	54.5
27	71.3	0.0	12.9	66.8	0.0	11.9
28	73.2	0.0	48.1	67.5	0.0	44.2
29	73.2	65.7	67.3	68.2	60.8	61.8
30	71.0	64.0	66.9	65.9	59.9	61.6
Total						
Average	32.0	17.0	23.8	29.8	15.6	21.8
Maximum	79.7		68.2	72.6		62.5
Date	21-Sep		22-Sep	21-Sep		20-Sep
Minimum		0.0	0.0		0.0	0.0
Date		1-Sep	1-Sep		1-Sep	1-Sep

Notes:

UV System Monthly Report

Month: September-18



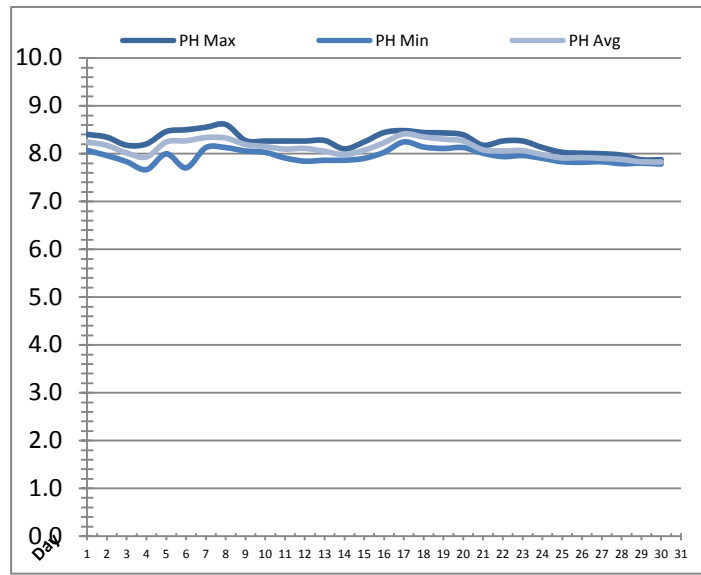
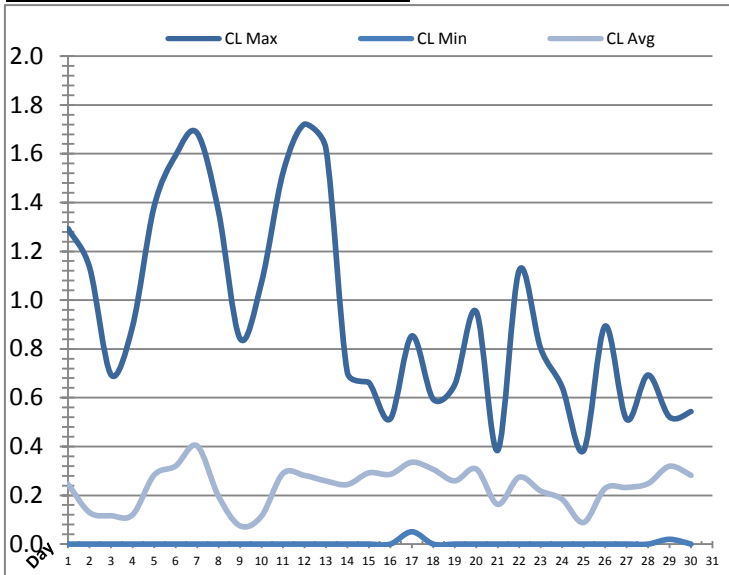
UV System

Date	Transmittance (%)			Dosage (mJ/cm ²)			Inlet Flow (L/s)
	Maximum	Minimum	Average	Maximum	Minimum	Average	Maximum
1	95.00	95.00	95.00	120.0	99.1	119.4	175.1
2	95.00	95.00	95.00	120.0	97.7	118.8	177.9
3	95.00	95.00	95.00	120.0	98.9	119.6	166.4
4	95.00	70.00	94.98	120.0	0.0	104.9	642.0
5	95.00	95.00	95.00	120.0	0.0	85.2	179.2
6	95.00	95.00	95.00	120.0	120.0	120.0	110.0
7	95.00	95.00	95.00	120.0	100.3	119.4	172.6
8	95.00	95.00	95.00	120.0	112.2	119.9	139.6
9	95.00	95.00	95.00	120.0	120.0	120.0	77.3
10	95.00	95.00	95.00	120.0	99.4	119.6	164.8
11	95.00	95.00	95.00	120.0	98.7	119.4	173.2
12	95.00	95.00	95.00	120.0	7.8	119.2	591.2
13	95.00	95.00	95.00	120.0	98.1	118.9	181.1
14	95.00	95.00	95.00	120.0	99.0	119.2	177.7
15	95.00	95.00	95.00	120.0	100.0	119.8	182.4
16	95.00	95.00	95.00	120.0	120.0	120.0	86.1
17	95.00	95.00	95.00	120.0	99.2	119.5	169.7
18	95.00	95.00	95.00	120.0	6.6	119.9	116.6
19	95.00	95.00	95.00	120.0	100.9	119.7	173.1
20	95.00	95.00	95.00	120.0	120.0	120.0	112.0
21	95.00	95.00	95.00	120.0	120.0	120.0	108.9
22	95.00	95.00	95.00	120.0	101.8	119.5	173.0
23	95.00	95.00	95.00	120.0	101.8	119.6	165.7
24	95.00	95.00	95.00	120.0	120.0	120.0	108.0
25	95.00	95.00	95.00	120.0	0.0	117.8	155.9
26	95.00	95.00	95.00	120.0	102.8	119.5	160.4
27	95.00	95.00	95.00	120.0	100.8	119.5	161.9
28	95.00	95.00	95.00	120.0	6.7	119.8	152.8
29	95.00	95.00	95.00	120.0	120.0	120.0	102.6
30	95.00	95.00	95.00	120.0	120.0	120.0	105.8
Total							
Average	95.00	94.17	95.00	120.0	86.4	117.9	178.8
Maximum	95.00		95.00	120.0		120.0	642.0
Date	1-Sep		1-Sep	1-Sep		6-Sep	4-Sep
Minimum		70.00	94.98		0.0	85.2	
Date		4-Sep	4-Sep		4-Sep	5-Sep	

Notes:

Plant Quality Report

Month: September-18

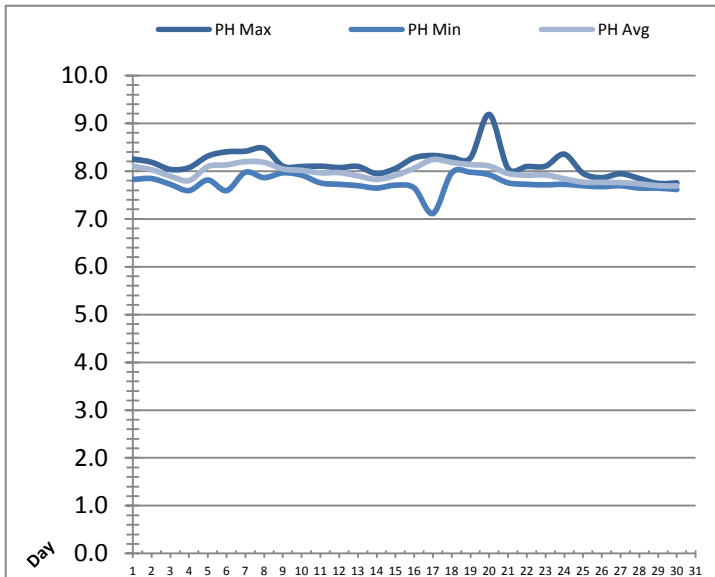
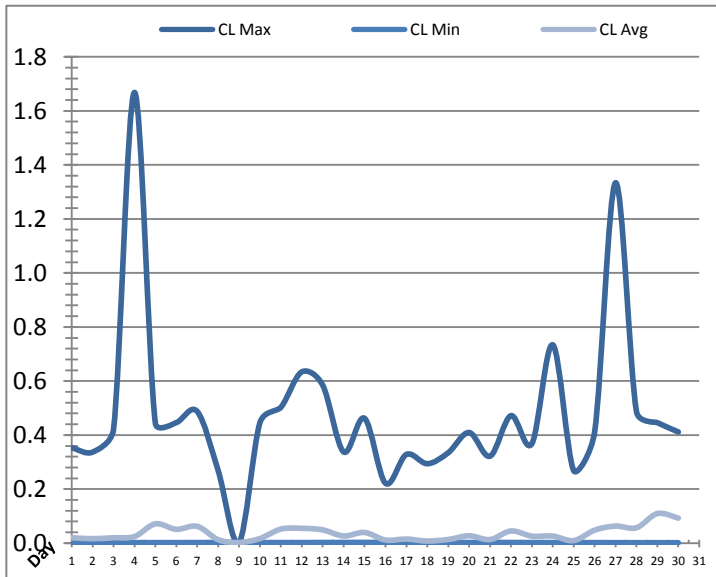


Date	Strainer Chlorine Residual			Strainer pH		
	AIT_2003_CL (ppm)			AIT_2003_PH		
	Maximum	Minimum	Average	Maximum	Minimum	Average
1	1.29	0.00	0.24	8.40	8.07	8.25
2	1.13	0.00	0.13	8.34	7.96	8.17
3	0.69	0.00	0.12	8.18	7.83	8.01
4	0.89	0.00	0.12	8.20	7.67	7.93
5	1.38	0.00	0.28	8.46	8.00	8.25
6	1.59	0.00	0.32	8.50	7.70	8.27
7	1.69	0.00	0.40	8.55	8.13	8.34
8	1.36	0.00	0.20	8.61	8.13	8.33
9	0.84	0.00	0.07	8.28	8.06	8.19
10	1.07	0.00	0.11	8.26	8.03	8.15
11	1.52	0.00	0.29	8.27	7.91	8.10
12	1.72	0.00	0.28	8.26	7.84	8.11
13	1.62	0.00	0.26	8.28	7.86	8.05
14	0.70	0.00	0.24	8.10	7.86	7.98
15	0.66	0.00	0.29	8.25	7.90	8.07
16	0.51	0.00	0.29	8.44	8.03	8.23
17	0.85	0.05	0.34	8.48	8.25	8.41
18	0.59	0.00	0.31	8.44	8.14	8.35
19	0.65	0.00	0.26	8.43	8.11	8.30
20	0.95	0.00	0.31	8.39	8.13	8.27
21	0.38	0.00	0.16	8.18	8.01	8.08
22	1.12	0.00	0.27	8.27	7.94	8.06
23	0.80	0.00	0.22	8.27	7.96	8.06
24	0.64	0.00	0.18	8.13	7.90	7.98
25	0.38	0.00	0.09	8.03	7.83	7.91
26	0.89	0.00	0.23	8.01	7.82	7.92
27	0.51	0.00	0.23	8.00	7.83	7.90
28	0.69	0.00	0.25	7.97	7.79	7.88
29	0.52	0.02	0.32	7.87	7.80	7.83
30	0.54	0.00	0.28	7.87	7.78	7.83
Total						
Average	0.94	0.00	0.24	8.26	7.94	8.11
Maximum	1.72		0.40	8.61		8.41
Date	12-Sep		7-Sep	8-Sep		17-Sep
Minimum		0.00	0.07		7.67	7.83
Date		1-Sep	9-Sep		4-Sep	30-Sep

Notes:

Plant Quality Report

Month: **September-18**

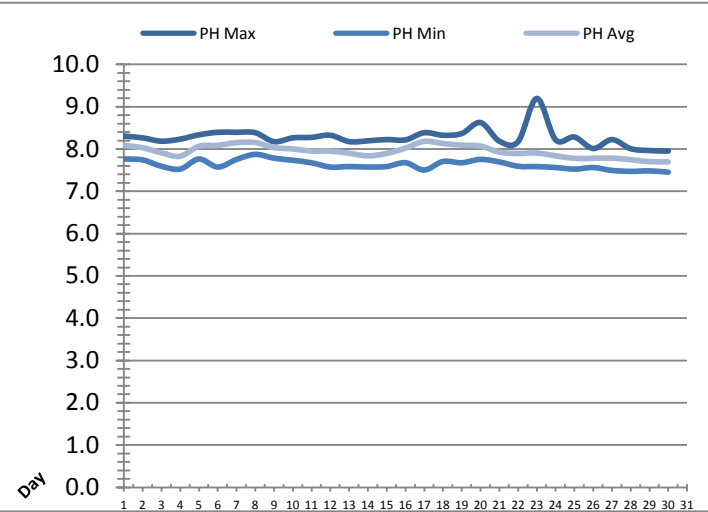
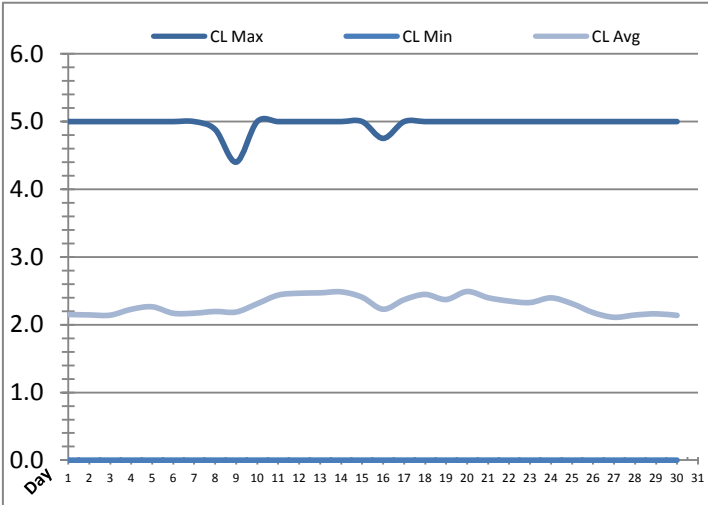


Date	Inlet UV Chlorine Residual			Inlet UV pH		
	AIT_5005_CL (ppm)			AIT_5005_PH		
	Maximum	Minimum	Average	Maximum	Minimum	Average
1	0.35	0.00	0.02	8.25	7.83	8.10
2	0.34	0.00	0.02	8.19	7.84	8.03
3	0.42	0.00	0.02	8.04	7.72	7.90
4	1.67	0.00	0.02	8.07	7.59	7.80
5	0.44	0.00	0.07	8.31	7.81	8.10
6	0.45	0.00	0.05	8.40	7.59	8.13
7	0.49	0.00	0.06	8.42	7.98	8.20
8	0.27	0.00	0.01	8.48	7.86	8.18
9	0.00	0.00	0.00	8.10	7.96	8.04
10	0.45	0.00	0.02	8.10	7.92	8.02
11	0.50	0.00	0.05	8.10	7.75	7.96
12	0.63	0.00	0.05	8.07	7.72	7.97
13	0.58	0.00	0.05	8.10	7.70	7.90
14	0.34	0.00	0.03	7.95	7.65	7.83
15	0.46	0.00	0.04	8.06	7.71	7.91
16	0.22	0.00	0.01	8.28	7.65	8.06
17	0.33	0.00	0.02	8.33	7.11	8.24
18	0.29	0.00	0.01	8.29	7.96	8.18
19	0.33	0.00	0.01	8.28	7.98	8.14
20	0.41	0.00	0.03	9.19	7.92	8.11
21	0.32	0.00	0.01	8.06	7.76	7.95
22	0.47	0.00	0.05	8.10	7.72	7.91
23	0.37	0.00	0.03	8.10	7.71	7.92
24	0.73	0.00	0.03	8.35	7.72	7.84
25	0.27	0.00	0.01	7.95	7.69	7.77
26	0.41	0.00	0.05	7.86	7.67	7.77
27	1.33	0.00	0.06	7.95	7.69	7.76
28	0.49	0.00	0.06	7.84	7.65	7.73
29	0.45	0.00	0.11	7.74	7.64	7.70
30	0.41	0.00	0.09	7.75	7.61	7.69
Total						
Average	0.47	0.00	0.04	8.16	7.74	7.96
Maximum	1.67		0.11	9.19		8.24
Date	4-Sep		29-Sep	20-Sep		17-Sep
Minimum		0.00	0.00		7.11	7.69
Date		30-Sep	9-Sep		17-Sep	30-Sep

Notes:

Plant Quality Report

Month: September-18

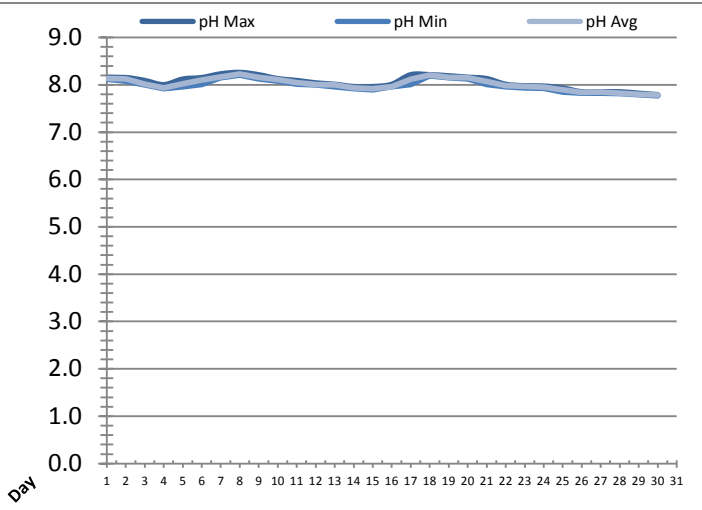
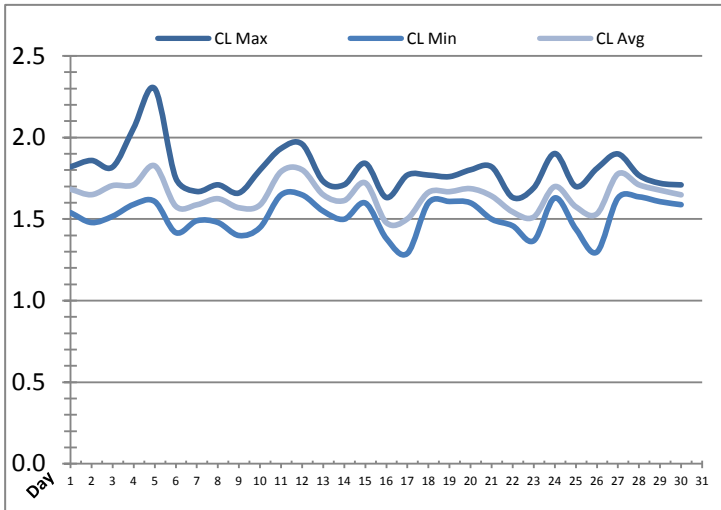


Date	Discharge UV Chlorine Residual			Discharge UV pH		
	AIT_5006_CL (ppm)			AIT_5006_PH		
	Maximum	Minimum	Average	Maximum	Minimum	Average
1	5.00	0.00	2.15	8.31	7.76	8.08
2	5.00	0.00	2.15	8.26	7.74	8.03
3	5.00	0.00	2.14	8.18	7.59	7.91
4	5.00	0.00	2.23	8.23	7.52	7.83
5	5.00	0.00	2.26	8.34	7.76	8.07
6	5.00	0.00	2.17	8.39	7.57	8.09
7	5.00	0.00	2.17	8.40	7.75	8.15
8	4.88	0.00	2.20	8.39	7.87	8.15
9	4.40	0.00	2.19	8.17	7.78	8.04
10	5.00	0.00	2.31	8.26	7.73	8.00
11	5.00	0.00	2.44	8.28	7.67	7.95
12	5.00	0.00	2.47	8.32	7.57	7.95
13	5.00	0.00	2.47	8.17	7.59	7.90
14	5.00	0.00	2.49	8.19	7.57	7.84
15	5.00	0.00	2.41	8.22	7.59	7.90
16	4.75	0.00	2.23	8.22	7.68	8.02
17	5.00	0.00	2.37	8.39	7.50	8.18
18	5.00	0.00	2.45	8.33	7.71	8.13
19	5.00	0.00	2.37	8.37	7.68	8.09
20	5.00	0.00	2.49	8.63	7.75	8.07
21	5.00	0.00	2.40	8.19	7.69	7.93
22	5.00	0.00	2.35	8.17	7.59	7.89
23	5.00	0.00	2.33	9.20	7.58	7.91
24	5.00	0.00	2.40	8.22	7.56	7.84
25	5.00	0.00	2.31	8.28	7.52	7.78
26	5.00	0.00	2.18	8.01	7.56	7.78
27	5.00	0.00	2.11	8.22	7.49	7.78
28	5.00	0.00	2.14	8.01	7.47	7.75
29	5.00	0.00	2.16	7.96	7.48	7.70
30	5.00	0.00	2.14	7.95	7.45	7.70
Total						
Average	4.97	0.00	2.29	8.28	7.63	7.95
Maximum	5.00		2.49	9.20		8.18
Date	1-Sep		20-Sep	23-Sep		17-Sep
Minimum		0.00	2.11		7.45	7.70
Date		1-Sep	27-Sep		30-Sep	30-Sep

Notes:

Plant Quality Report

Month: September-18

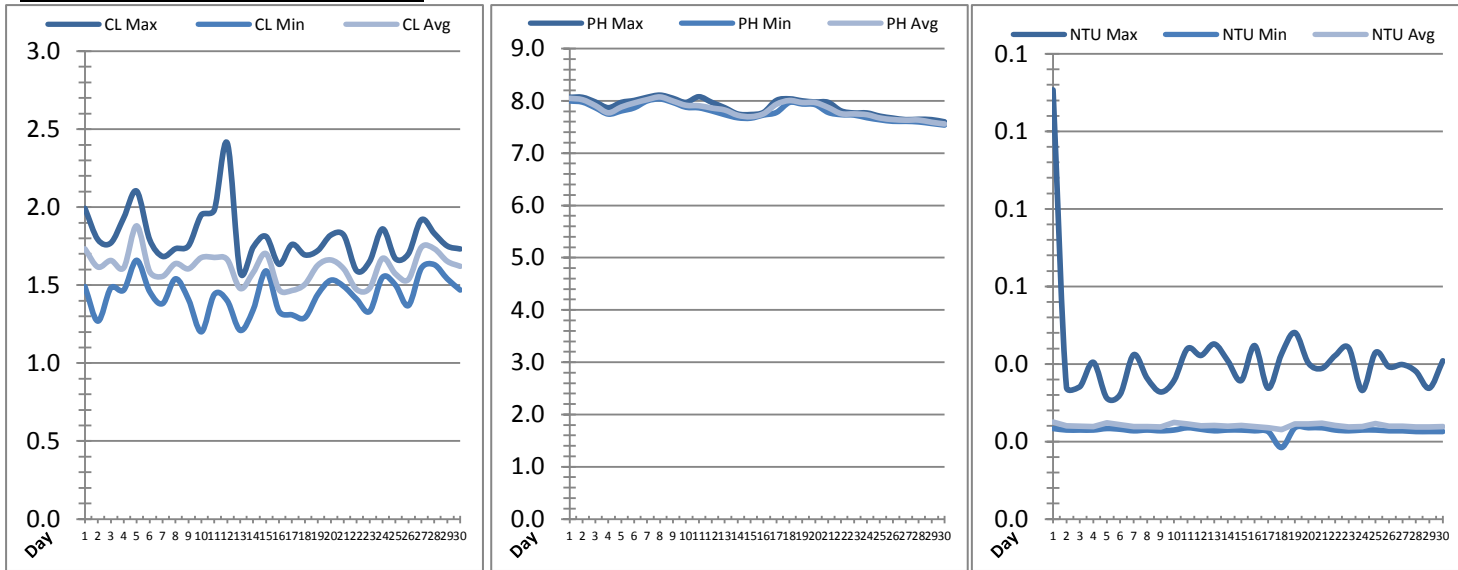


Date	Suction Header Chlorine Res.			Suction Header pH			Distribution CT Calc Total		
	AIT_7001_CL (ppm)			AIT_7001_PH (m)			REAL_CT_CALC_TOTAL (mg*ml/min)		
	Maximum	Minimum	Average	Maximum	Minimum	Average	Maximum	Minimum	Average
1	1.82	1.54	1.68	8.15	8.12	8.13	11594.48	0.00	293.61
2	1.86	1.48	1.65	8.15	8.08	8.13	8414.00	0.00	347.09
3	1.82	1.52	1.71	8.09	8.00	8.02	10199.96	0.00	338.08
4	2.06	1.59	1.71	8.00	7.92	7.94	10687.91	0.00	382.41
5	2.30	1.61	1.83	8.12	7.96	8.02	12067.11	0.00	355.29
6	1.75	1.42	1.58	8.15	8.01	8.10	10152.54	0.00	303.65
7	1.67	1.49	1.59	8.23	8.15	8.16	8378.38	0.00	322.79
8	1.71	1.48	1.62	8.26	8.21	8.23	10175.71	0.00	312.98
9	1.66	1.40	1.57	8.21	8.13	8.16	8732.06	0.00	251.95
10	1.80	1.45	1.59	8.13	8.08	8.11	10319.05	0.00	313.14
11	1.93	1.65	1.79	8.09	8.02	8.04	11668.80	0.00	349.99
12	1.96	1.65	1.80	8.04	8.00	8.00	9993.20	0.00	375.56
13	1.73	1.55	1.65	8.01	7.96	8.00	10473.21	0.00	320.56
14	1.71	1.50	1.61	7.96	7.92	7.94	10417.33	0.00	305.89
15	1.84	1.60	1.72	7.96	7.90	7.92	10369.96	0.00	321.79
16	1.63	1.38	1.48	8.01	7.96	7.96	10152.65	0.00	326.00
17	1.77	1.29	1.50	8.21	8.01	8.12	7619.55	0.00	354.76
18	1.77	1.60	1.66	8.21	8.19	8.21	9096.81	0.00	286.07
19	1.76	1.61	1.67	8.19	8.15	8.16	8645.03	0.00	353.42
20	1.80	1.60	1.69	8.16	8.13	8.15	8377.21	0.00	325.43
21	1.82	1.50	1.64	8.13	8.01	8.07	10727.52	0.00	290.25
22	1.63	1.46	1.54	8.01	7.96	7.98	3006.86	0.00	168.34
23	1.69	1.37	1.51	7.98	7.94	7.97	8008.59	0.00	271.07
24	1.90	1.63	1.70	7.97	7.93	7.95	8745.06	0.00	345.96
25	1.70	1.44	1.58	7.93	7.85	7.90	9658.14	0.00	215.52
26	1.81	1.30	1.53	7.85	7.83	7.84	7192.64	0.00	236.45
27	1.90	1.63	1.78	7.85	7.83	7.84	12889.98	0.00	281.07
28	1.77	1.64	1.71	7.85	7.82	7.82	9912.24	0.00	334.12
29	1.72	1.61	1.68	7.82	7.79	7.80	3554.49	0.00	361.02
30	1.71	1.59	1.65	7.79	7.77	7.78	1385.03	0.00	334.30
Total									
Average	1.80	1.52	1.65	8.05	7.99	8.02	8.05	7.99	8.02
Maximum	2.30		1.83	8.26		8.23	8.26		8.23
Date	5-Sep		5-Sep	8-Sep		8-Sep	8-Sep		8-Sep
Minimum		1.29	1.48		7.77	7.78		7.77	7.78
Date		17-Sep	16-Sep		30-Sep	30-Sep		30-Sep	30-Sep

Notes:

Plant Quality Report

Month: **September-18**

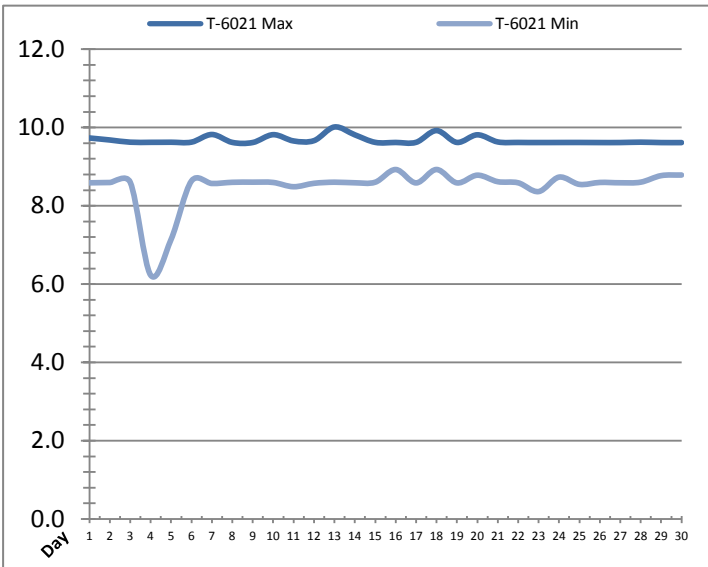
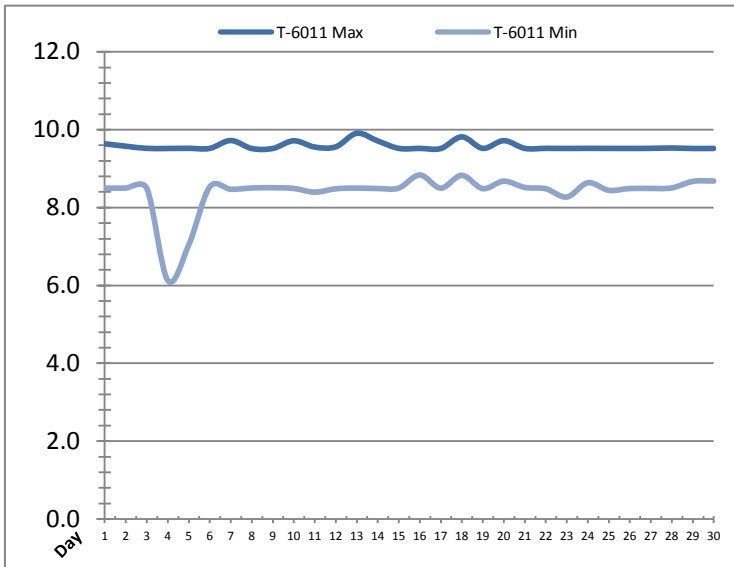


Date	Distribution Chlorine Header			Distribution pH			Distribution Turbidity		
	AIT_7004_CL (ppm)			AIT_7004_PH (mg/L)			AIT_7003 (mg/L)		
	Maximum	Minimum	Average	Maximum	Minimum	Average	Maximum	Minimum	Average
1	1.99	1.49	1.73	8.07	8.00	8.05	0.11	0.02	0.03
2	1.79	1.27	1.62	8.07	7.98	8.02	0.03	0.02	0.02
3	1.77	1.48	1.66	7.98	7.87	7.91	0.03	0.02	0.02
4	1.93	1.47	1.61	7.87	7.75	7.77	0.04	0.02	0.02
5	2.10	1.66	1.88	7.97	7.81	7.88	0.03	0.02	0.02
6	1.79	1.46	1.59	8.01	7.87	7.96	0.03	0.02	0.02
7	1.68	1.38	1.56	8.07	8.00	8.02	0.04	0.02	0.02
8	1.73	1.54	1.64	8.11	8.04	8.07	0.04	0.02	0.02
9	1.75	1.41	1.60	8.05	7.97	8.00	0.03	0.02	0.02
10	1.95	1.20	1.68	7.97	7.88	7.92	0.04	0.02	0.02
11	1.98	1.44	1.68	8.08	7.87	7.91	0.04	0.02	0.02
12	2.41	1.40	1.66	7.97	7.81	7.86	0.04	0.02	0.02
13	1.58	1.21	1.48	7.87	7.74	7.82	0.05	0.02	0.02
14	1.74	1.34	1.58	7.75	7.68	7.72	0.04	0.02	0.02
15	1.81	1.59	1.70	7.74	7.67	7.70	0.04	0.02	0.02
16	1.63	1.33	1.47	7.78	7.73	7.75	0.04	0.02	0.02
17	1.76	1.31	1.47	8.01	7.78	7.93	0.03	0.02	0.02
18	1.69	1.29	1.51	8.04	7.97	8.01	0.04	0.02	0.02
19	1.72	1.44	1.63	8.00	7.94	7.97	0.05	0.02	0.02
20	1.82	1.53	1.66	7.98	7.93	7.97	0.04	0.02	0.02
21	1.82	1.49	1.60	7.97	7.78	7.87	0.04	0.02	0.02
22	1.59	1.41	1.47	7.81	7.74	7.76	0.04	0.02	0.02
23	1.65	1.33	1.48	7.77	7.73	7.75	0.04	0.02	0.02
24	1.86	1.55	1.67	7.77	7.68	7.74	0.03	0.02	0.02
25	1.67	1.50	1.57	7.71	7.64	7.67	0.04	0.02	0.02
26	1.70	1.37	1.54	7.67	7.61	7.64	0.04	0.02	0.02
27	1.92	1.61	1.74	7.64	7.61	7.63	0.04	0.02	0.02
28	1.83	1.63	1.73	7.65	7.60	7.63	0.04	0.02	0.02
29	1.75	1.54	1.65	7.64	7.57	7.59	0.03	0.02	0.02
30	1.73	1.47	1.62	7.60	7.54	7.56	0.04	0.02	0.02
Total									
Average	1.81	1.44	1.62	7.89	7.79	7.84	0.0	0.0	0.0
Maximum	2.41		1.88	8.11		8.07	0.1		0.0
Date	12-Sep		5-Sep	8-Sep		8-Sep	1-Sep		1-Sep
Minimum		1.20	1.47		7.54	7.56		0.0	0.0
Date		10-Sep	17-Sep		30-Sep	30-Sep		18-Sep	18-Sep

Notes:

Raw Well/Treated Storage Report

Month: September-18

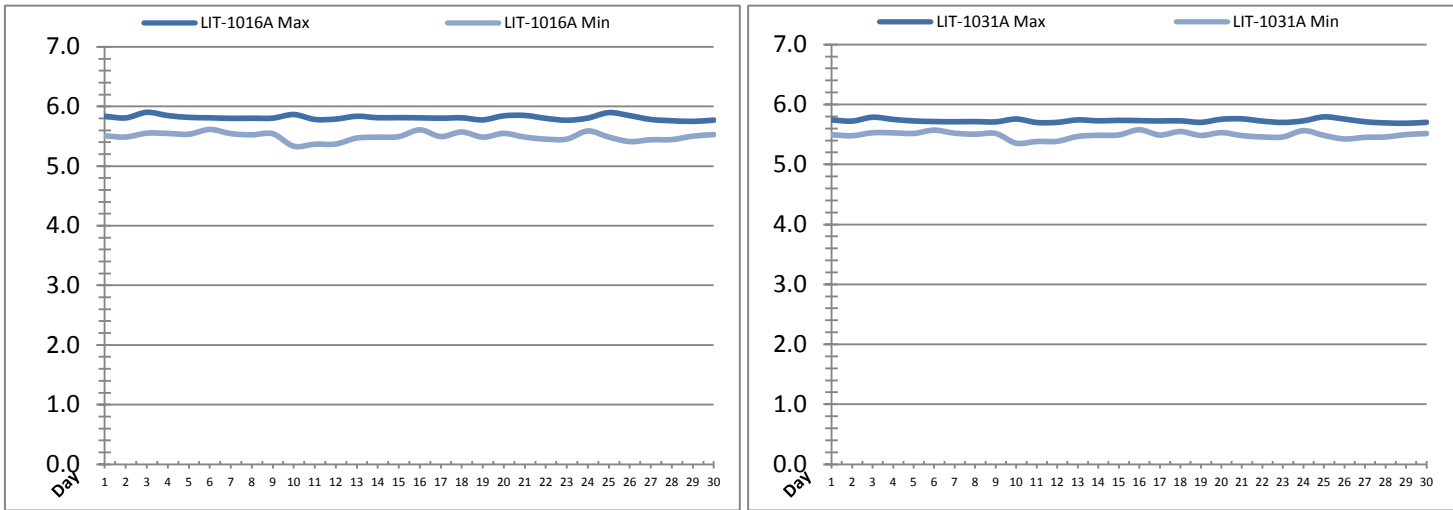


Date	Treated Water Storage Tank					
	T-6011 (m)			T-6021 (m)		
	Maximum	Minimum	Average	Maximum	Minimum	Average
1	9.6	8.5	9.2	9.7	8.6	9.3
2	9.6	8.5	9.0	9.7	8.6	9.1
3	9.5	8.5	9.1	9.6	8.6	9.2
4	9.5	6.1	8.4	9.6	6.2	8.5
5	9.5	7.0	9.0	9.6	7.1	9.1
6	9.5	8.5	9.1	9.6	8.6	9.2
7	9.7	8.5	9.2	9.8	8.6	9.3
8	9.5	8.5	9.1	9.6	8.6	9.2
9	9.5	8.5	9.1	9.6	8.6	9.2
10	9.7	8.5	9.0	9.8	8.6	9.1
11	9.6	8.4	9.0	9.7	8.5	9.1
12	9.6	8.5	9.0	9.7	8.6	9.1
13	9.9	8.5	9.2	10.0	8.6	9.3
14	9.7	8.5	9.2	9.8	8.6	9.3
15	9.5	8.5	9.0	9.6	8.6	9.1
16	9.5	8.8	9.3	9.6	8.9	9.4
17	9.5	8.5	9.0	9.6	8.6	9.1
18	9.8	8.8	9.3	9.9	8.9	9.4
19	9.5	8.5	9.1	9.6	8.6	9.2
20	9.7	8.7	9.2	9.8	8.8	9.3
21	9.5	8.5	9.1	9.6	8.6	9.2
22	9.5	8.5	9.2	9.6	8.6	9.3
23	9.5	8.3	9.1	9.6	8.4	9.2
24	9.5	8.6	9.1	9.6	8.7	9.2
25	9.5	8.4	9.1	9.6	8.5	9.2
26	9.5	8.5	9.1	9.6	8.6	9.2
27	9.5	8.5	9.1	9.6	8.6	9.2
28	9.5	8.5	9.1	9.6	8.6	9.2
29	9.5	8.7	9.1	9.6	8.8	9.2
30	9.5	8.7	9.1	9.6	8.8	9.2
Total						
Average	9.6	8.4	9.1	9.7	8.5	9.2
Maximum	9.9		9.3	10.0		9.4
Date	13-Sep		18-Sep	13-Sep		18-Sep
Minimum		6.1	8.4		6.2	8.5
Date		4-Sep	4-Sep		4-Sep	4-Sep

Notes:

Raw Well/Treated Storage Report

Month: September-18

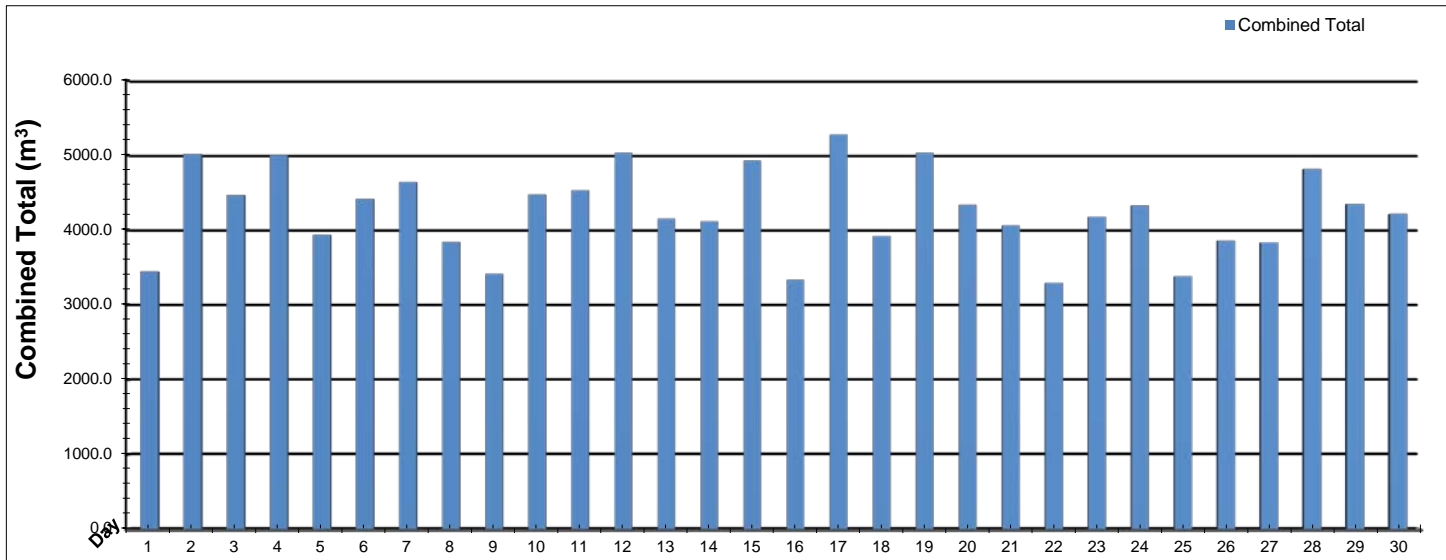


Date	Low Lift Intake Levels					
	Wet Well #1 (LIT-1016A) (m)			Wet Well #2 (LIT-1031A) (m)		
	Maximum	Minimum	Average	Maximum	Minimum	Average
1	5.8	5.5	5.7	5.7	5.5	5.6
2	5.8	5.5	5.7	5.7	5.5	5.6
3	5.9	5.6	5.7	5.8	5.5	5.6
4	5.8	5.5	5.7	5.8	5.5	5.6
5	5.8	5.5	5.7	5.7	5.5	5.6
6	5.8	5.6	5.7	5.7	5.6	5.6
7	5.8	5.5	5.7	5.7	5.5	5.6
8	5.8	5.5	5.7	5.7	5.5	5.6
9	5.8	5.5	5.7	5.7	5.5	5.6
10	5.9	5.3	5.7	5.8	5.4	5.6
11	5.8	5.4	5.6	5.7	5.4	5.6
12	5.8	5.4	5.6	5.7	5.4	5.6
13	5.8	5.5	5.7	5.7	5.5	5.6
14	5.8	5.5	5.7	5.7	5.5	5.6
15	5.8	5.5	5.7	5.7	5.5	5.6
16	5.8	5.6	5.7	5.7	5.6	5.6
17	5.8	5.5	5.7	5.7	5.5	5.6
18	5.8	5.6	5.7	5.7	5.5	5.6
19	5.8	5.5	5.6	5.7	5.5	5.6
20	5.8	5.5	5.7	5.8	5.5	5.6
21	5.8	5.5	5.7	5.8	5.5	5.6
22	5.8	5.5	5.6	5.7	5.5	5.6
23	5.8	5.5	5.6	5.7	5.5	5.6
24	5.8	5.6	5.7	5.7	5.6	5.6
25	5.9	5.5	5.7	5.8	5.5	5.6
26	5.8	5.4	5.6	5.8	5.4	5.6
27	5.8	5.4	5.6	5.7	5.5	5.6
28	5.8	5.4	5.6	5.7	5.5	5.6
29	5.8	5.5	5.6	5.7	5.5	5.6
30	5.8	5.5	5.6	5.7	5.5	5.6
Total						
Average	5.8	5.5	5.7	5.7	5.5	5.6
Maximum	5.9		5.7	5.8		5.6
Date	3-Sep		3-Sep	25-Sep		3-Sep
Minimum		5.3	5.6		5.4	5.6
Date		10-Sep	29-Sep		10-Sep	29-Sep

Notes:

High Lift Monthly Report

Month: September-18

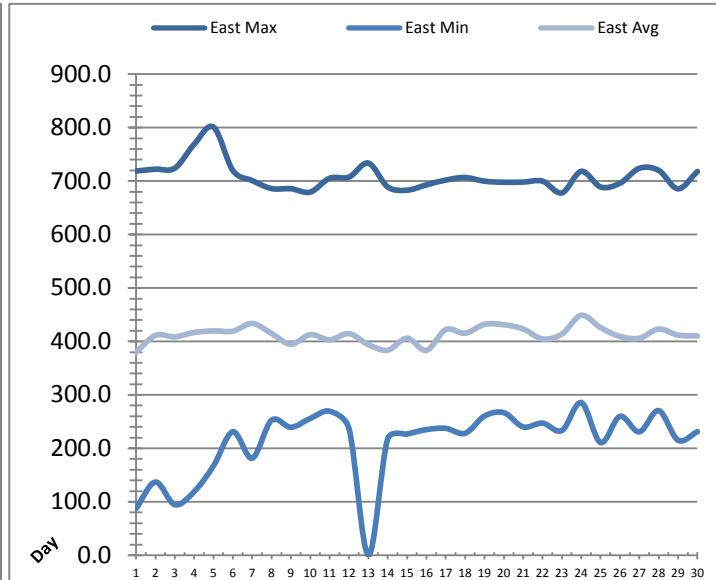
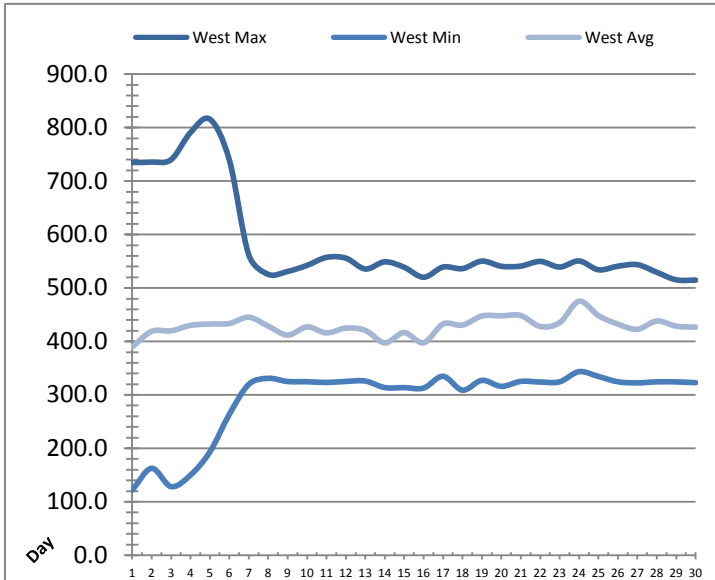


Date	Distribution Flow					
	FIT_7052 (East)		FIT_7062 (West)		Combined	
	(m³)	(L/s)	(m³)	(L/s)	(m³)	(L/s)
	Total	Peak	Total	Peak	Total	Peak
1	1491.8	59.8	1954.5	101.5	3446.3	107.8
2	1858.8	63.2	3158.6	99.5	5017.4	111.4
3	1633.4	62.3	2835.7	103.7	4469.1	111.7
4	1654.7	57.5	3349.3	100.4	5004.0	109.0
5	1055.0	58.1	2883.8	103.7	3938.8	106.4
6	949.6	63.1	3468.9	102.0	4418.5	110.7
7	1241.2	58.1	3402.9	102.9	4644.1	109.9
8	1096.5	57.3	2747.6	103.3	3844.0	103.3
9	1188.3	63.4	2229.5	101.4	3417.8	110.8
10	1007.4	57.8	3468.8	100.8	4476.2	103.2
11	1169.4	63.5	3363.5	120.1	4532.9	166.2
12	1159.9	57.3	3875.0	109.8	5034.8	114.7
13	1189.8	61.6	2965.9	102.9	4155.7	105.8
14	1585.0	63.7	2534.9	95.4	4119.9	115.0
15	1339.1	57.8	3591.3	101.9	4930.4	104.9
16	1666.0	65.7	1669.9	102.1	3335.9	108.7
17	1695.7	57.4	3582.4	104.7	5278.1	105.5
18	1100.2	60.4	2822.0	111.4	3922.2	156.3
19	1672.3	64.1	3362.1	103.7	5034.4	111.2
20	1285.6	64.1	3056.2	101.3	4341.8	113.1
21	1283.9	64.3	2778.6	102.0	4062.5	108.9
22	996.4	63.7	2300.7	102.4	3297.2	112.4
23	1558.0	65.1	2621.3	93.2	4179.3	112.0
24	1521.8	69.1	2809.1	96.6	4330.9	115.1
25	1242.5	62.4	2141.0	100.5	3383.5	108.2
26	1470.5	60.6	2390.5	93.3	3860.9	100.7
27	1598.5	62.5	2238.3	101.7	3836.8	104.0
28	506.2	63.0	4312.9	101.4	4819.1	104.0
29	0.0	0.0	4349.8	73.3	4349.8	73.3
30	0.0	0.0	4217.6	73.4	4217.6	73.4
Total	37217.4		90482.6		127700.0	
Average	1240.6	57.6	3016.1	100.3	4256.7	109.9
Maximum	1858.8	69.1	4349.8	120.1	5278.1	166.2
Date	2-Sep	24-Sep	29-Sep	11-Sep	17-Sep	11-Sep
Minimum	0.0		1669.9		3297.2	
Date	30-Sep		16-Sep		22-Sep	

Notes:

Low Lift Monthly Report

Month: **September-18**

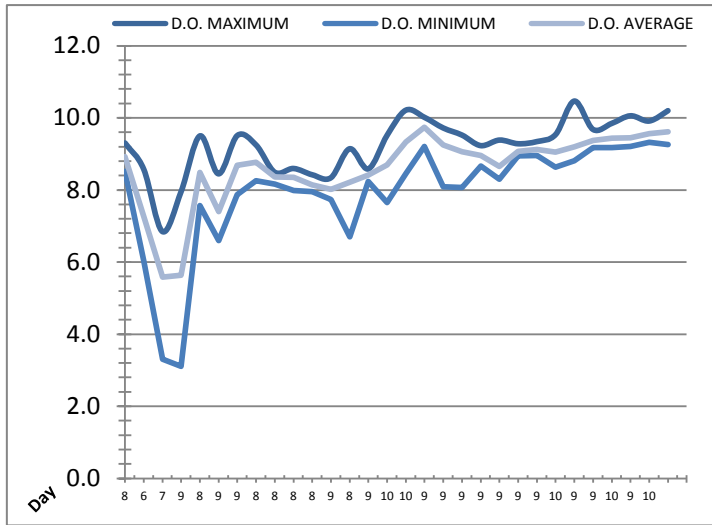
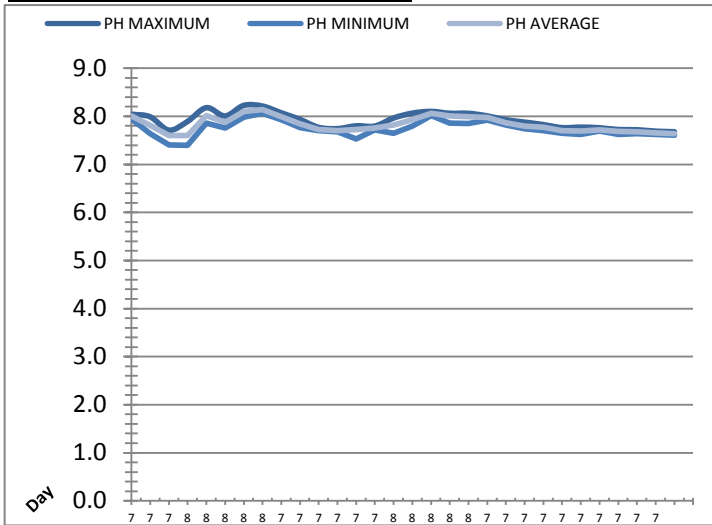


Date	West Train Header Pressure PIT_1018 (kPa)			East Train Header Pressure PIT_1028 (kPa)		
	Maximum	Minimum	Average	Maximum	Minimum	Average
1	734.9	121.9	389.6	718.8	87.4	379.9
2	735.5	162.7	418.9	722.3	136.9	411.4
3	740.0	128.4	419.9	724.1	94.6	408.7
4	790.7	150.0	430.0	768.8	119.0	416.7
5	815.7	193.5	432.6	800.9	167.2	419.8
6	739.3	263.7	433.6	719.9	231.0	419.1
7	561.8	319.7	445.3	700.9	181.6	433.6
8	525.5	331.0	428.7	685.9	252.6	414.9
9	530.9	325.1	411.9	685.7	239.4	394.7
10	542.3	324.6	427.2	679.4	256.0	412.9
11	557.2	323.3	416.0	705.3	269.5	403.0
12	555.7	325.2	424.9	707.4	237.1	414.6
13	535.5	325.8	420.7	733.6	0.2	394.0
14	548.9	313.7	397.4	689.0	217.7	383.7
15	538.7	313.6	416.5	682.9	226.7	406.1
16	520.1	312.9	397.5	692.9	235.1	383.2
17	539.1	334.8	432.7	701.9	237.4	422.3
18	536.2	308.8	430.6	706.6	228.2	415.4
19	550.3	327.2	447.6	699.8	260.4	432.0
20	540.6	316.0	447.9	697.7	266.7	431.2
21	540.9	325.2	448.5	698.1	240.1	423.3
22	549.7	324.1	427.9	699.8	247.2	404.7
23	539.1	324.5	435.1	677.8	233.4	413.8
24	550.5	343.4	475.2	718.3	285.6	448.8
25	534.0	334.5	448.3	688.9	210.8	425.8
26	540.7	324.5	432.3	696.0	259.8	409.3
27	543.6	322.5	422.7	724.0	230.8	406.1
28	529.3	324.4	438.2	719.9	270.6	423.2
29	515.2	324.3	428.5	685.4	215.1	411.9
30	514.7	322.8	426.8	717.9	231.2	410.2
Total						
Average	583.2	293.1	428.4	708.3	212.3	412.5
Maximum	815.7		475.2	800.9		448.8
Date	5-Sep		24-Sep	5-Sep		24-Sep
Minimum		121.9	389.6		0.2	379.9
Date		1-Sep	1-Sep		13-Sep	1-Sep

Notes:

Low Lift Monthly Report

Month: **September-18**

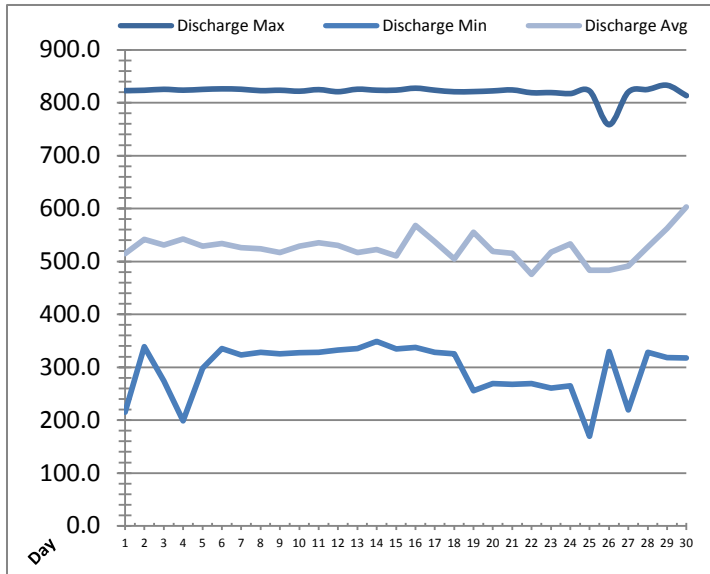
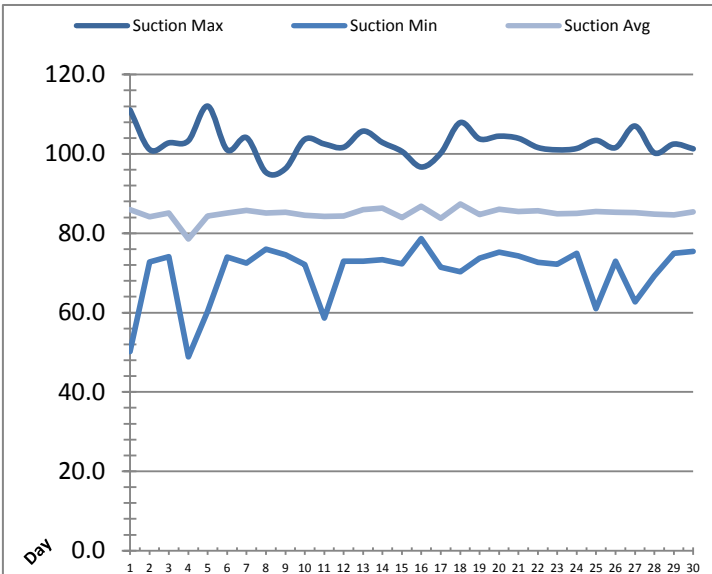


Date	Raw Water Sample Line					
	AIT_1402_PH (pH)			AIT_1402_DO (mg/L)		
	Maximum	Minimum	Average	Maximum	Minimum	Average
1	8.0	7.9	8.0	9.3	8.5	8.9
2	8.0	7.6	7.8	8.6	6.0	7.3
3	7.7	7.4	7.6	6.8	3.3	5.6
4	7.9	7.4	7.6	8.0	3.1	5.6
5	8.2	7.9	8.0	9.5	7.6	8.5
6	8.0	7.8	7.9	8.4	6.6	7.4
7	8.2	8.0	8.1	9.5	7.9	8.7
8	8.2	8.1	8.1	9.2	8.3	8.8
9	8.1	7.9	8.0	8.5	8.2	8.4
10	7.9	7.8	7.8	8.6	8.0	8.4
11	7.8	7.7	7.7	8.4	8.0	8.1
12	7.7	7.7	7.7	8.3	7.7	8.0
13	7.8	7.5	7.7	9.1	6.7	8.2
14	7.8	7.7	7.8	8.6	8.2	8.4
15	8.0	7.6	7.8	9.5	7.6	8.7
16	8.1	7.8	7.9	10.2	8.5	9.3
17	8.1	8.0	8.1	10.0	9.2	9.7
18	8.1	7.9	8.0	9.7	8.1	9.2
19	8.1	7.8	8.0	9.5	8.1	9.1
20	8.0	7.9	8.0	9.2	8.7	9.0
21	7.9	7.8	7.9	9.4	8.3	8.7
22	7.9	7.7	7.8	9.3	8.9	9.1
23	7.8	7.7	7.8	9.3	9.0	9.1
24	7.8	7.6	7.7	9.5	8.6	9.0
25	7.8	7.6	7.7	10.5	8.8	9.2
26	7.8	7.7	7.7	9.7	9.2	9.4
27	7.7	7.6	7.7	9.8	9.2	9.4
28	7.7	7.6	7.7	10.1	9.2	9.5
29	7.7	7.6	7.7	9.9	9.3	9.6
30	7.7	7.6	7.6	10.2	9.3	9.6
Total						
Average	7.9	7.7	7.8	9.2	7.9	8.6
Maximum	8.2		8.1	10.5		9.7
Date	7-Sep		8-Sep	25-Sep		17-Sep
Minimum		7.4	7.6		3.1	5.6
Date		4-Sep	3-Sep		4-Sep	3-Sep

Notes:

High Lift Monthly Report

Month: September-18

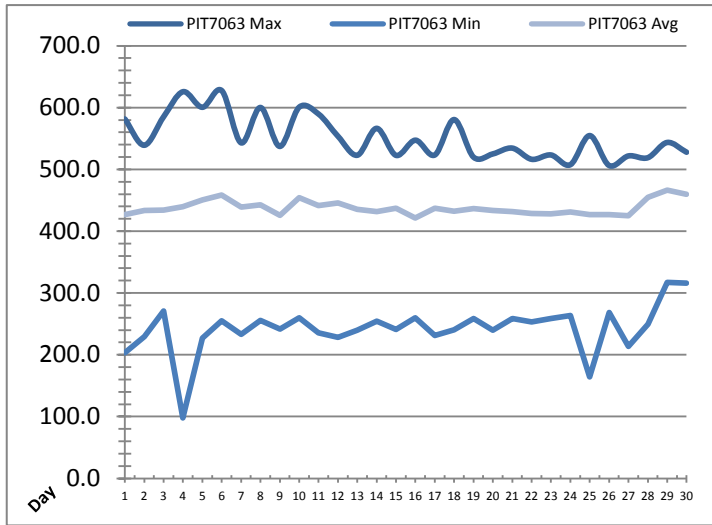
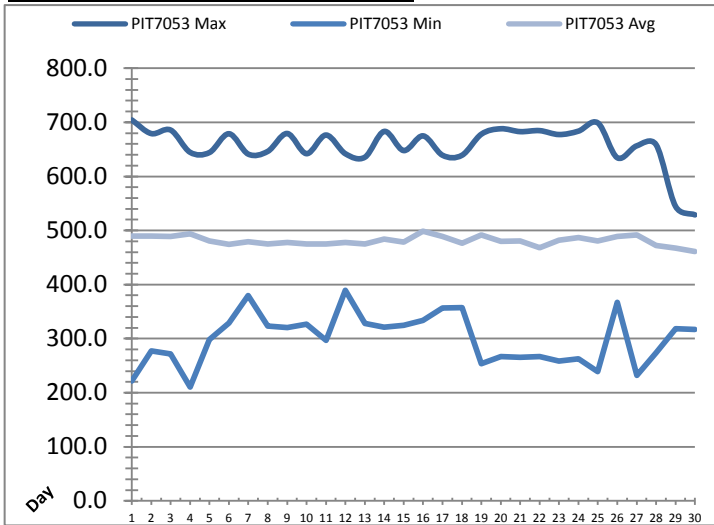


Date	Suction Header Pressure			Discharge Header Pressure		
	PIT_7002 (kPa)			PIT_7005 (kPa)		
	Maximum	Minimum	Average	Maximum	Minimum	Average
1	111.1	50.2	86.0	822.9	214.7	514.9
2	101.1	72.8	84.2	823.6	338.7	541.6
3	102.8	74.1	85.1	825.4	274.2	530.8
4	103.3	48.8	78.6	823.8	198.7	542.6
5	112.0	60.3	84.3	825.2	298.4	528.7
6	101.0	74.0	85.1	826.2	335.2	533.6
7	104.1	72.5	85.8	825.5	323.4	526.0
8	95.3	76.0	85.1	822.8	328.4	524.0
9	96.3	74.6	85.3	823.6	325.4	516.5
10	103.7	72.1	84.5	821.8	327.7	528.7
11	102.5	58.7	84.3	824.8	328.0	535.1
12	101.7	72.9	84.3	820.8	332.6	530.4
13	105.7	72.9	86.0	825.6	335.5	517.1
14	102.9	73.4	86.3	823.7	349.2	522.7
15	100.6	72.3	84.0	823.8	334.9	510.4
16	96.7	78.6	86.8	827.5	337.2	568.4
17	100.2	71.5	83.7	823.7	328.2	537.8
18	107.9	70.3	87.4	820.8	325.3	504.7
19	103.8	73.7	84.7	821.1	255.6	555.0
20	104.5	75.2	86.0	822.4	268.9	519.0
21	103.9	74.3	85.5	824.2	267.5	515.1
22	101.6	72.7	85.7	818.9	269.2	475.5
23	101.0	72.2	84.9	819.2	260.4	517.6
24	101.4	75.0	85.0	817.3	264.7	533.1
25	103.4	61.0	85.5	822.0	169.8	483.5
26	101.6	72.9	85.3	758.5	329.5	483.5
27	107.0	62.7	85.2	820.2	219.5	490.8
28	100.3	69.2	84.8	825.1	328.4	527.5
29	102.5	75.0	84.7	833.0	318.5	562.3
30	101.3	75.4	85.4	813.3	317.2	602.8
Total						
Average	102.7	70.2	85.0	820.9	296.8	526.0
Maximum	112.0		87.4	833.0		602.8
Date	5-Sep		18-Sep	29-Sep		30-Sep
Minimum		48.8	78.6		169.8	475.5
Date		4-Sep	4-Sep		25-Sep	22-Sep

Notes:

High Lift Monthly Report

Month: **September-18**

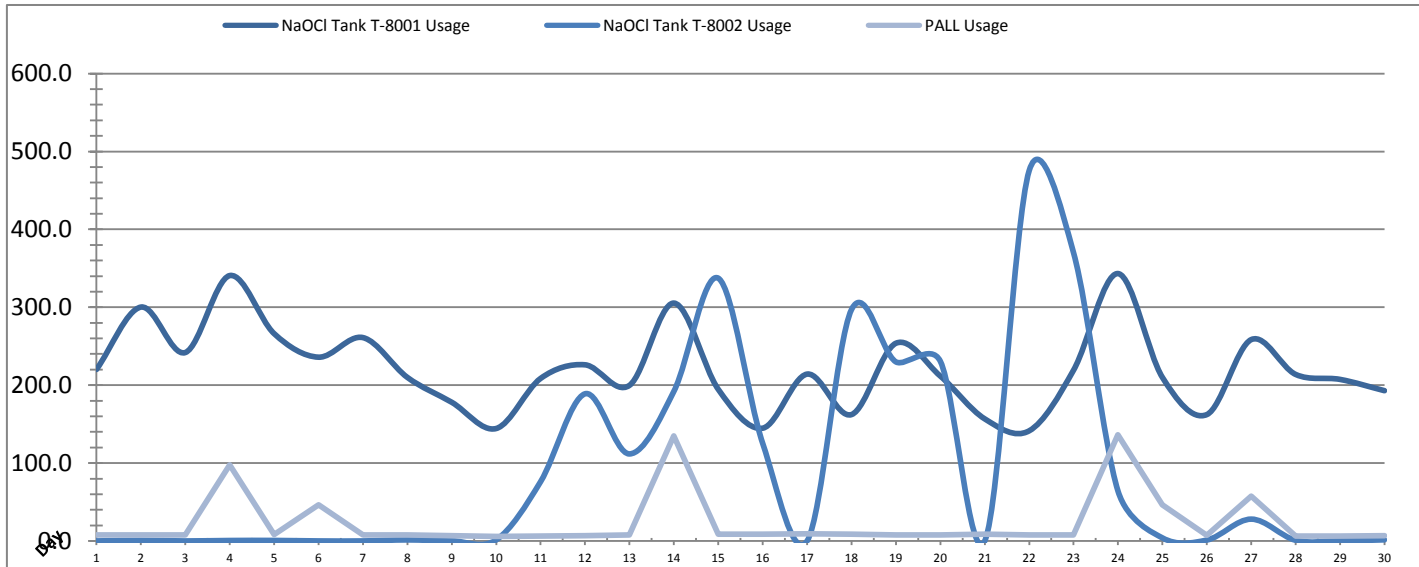


Date	Distribution Pressures					
	PIT_7053 (kPa)			PIT_7063 (kPa)		
	Maximum	Minimum	Average	Maximum	Minimum	Average
1	704.3	221.9	489.6	581.5	203.2	426.6
2	679.2	277.0	489.5	539.1	229.5	433.7
3	685.7	272.0	489.0	585.2	270.9	433.8
4	644.6	210.2	494.0	625.7	97.9	439.9
5	644.2	297.8	480.6	600.5	226.8	450.8
6	678.9	329.1	474.4	627.5	254.9	458.7
7	641.1	379.8	479.4	543.0	232.9	439.1
8	646.3	323.1	474.8	600.1	255.7	442.8
9	679.3	320.4	477.6	537.2	241.6	425.5
10	642.0	326.6	475.0	600.7	259.6	454.0
11	676.5	297.0	475.3	589.5	235.6	441.6
12	641.8	389.2	477.7	553.7	228.1	445.6
13	635.4	327.8	474.9	522.9	239.5	435.6
14	683.2	321.0	484.4	566.4	254.7	431.6
15	647.8	324.8	478.3	522.7	241.2	437.1
16	675.0	333.4	498.4	547.2	259.6	421.1
17	639.1	356.7	489.0	523.3	231.5	436.9
18	639.0	357.7	476.2	580.6	240.2	432.4
19	678.1	253.4	491.5	519.8	258.9	436.5
20	688.1	267.0	480.2	525.1	240.0	433.3
21	682.8	265.4	480.3	534.4	258.9	431.7
22	684.6	266.6	468.1	516.3	253.4	428.5
23	677.4	258.3	482.1	523.3	258.8	428.3
24	683.7	262.6	487.1	507.5	263.4	431.1
25	698.9	238.9	480.8	554.7	163.9	427.1
26	634.5	367.4	488.9	506.3	268.5	427.0
27	656.5	231.8	491.5	521.8	213.4	425.3
28	658.5	273.6	472.5	518.9	249.7	454.6
29	544.6	318.5	467.4	543.5	317.3	466.2
30	528.8	317.2	460.9	527.8	316.1	459.7
Total						
Average	656.7	299.5	481.0	551.5	242.2	437.9
Maximum	704.3		498.4	627.5		466.2
Date	1-Sep		16-Sep	6-Sep		29-Sep
Minimum		210.2	460.9		97.9	421.1
Date		4-Sep	30-Sep		4-Sep	16-Sep

Notes:

Chemical Usage Monthly Report

Month: September-18

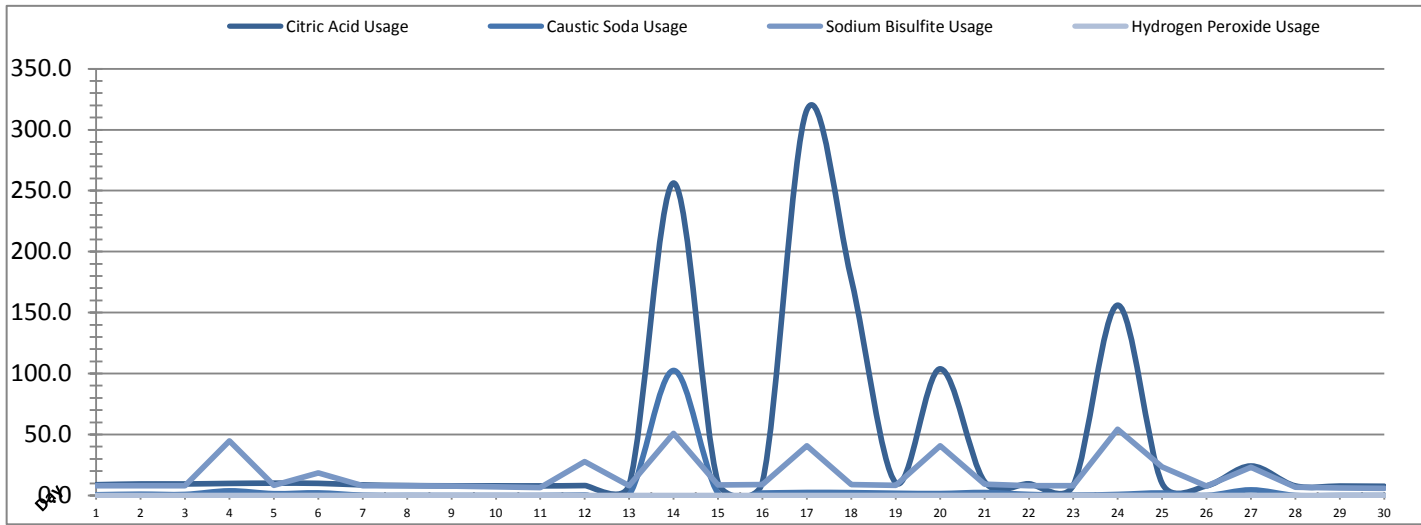


Date	PALL Usage	NaOCl Tank T-8001	NaOCl Tank T-8002
	PALL_HYPO_USAGE (L) Usage	LIT_8002 (Storage) (L) Usage	LIT_8004 (Day) (L) Usage
1	7.9	220.2	0.0
2	7.9	300.2	0.7
3	7.9	241.9	0.0
4	97.5	340.7	0.6
5	8.0	266.2	0.7
6	46.3	235.9	0.0
7	7.9	261.1	0.0
8	7.8	210.0	1.3
9	6.9	178.0	0.1
10	5.8	144.4	1.4
11	6.1	208.7	76.2
12	6.9	226.1	188.9
13	7.9	199.7	111.7
14	135.02	305.36	192.0
15	8.8	194.6	337.3
16	8.6	144.8	125.3
17	9.3	214.2	0.0
18	8.5	162.3	297.1
19	8.0	253.8	229.9
20	8.0	211.7	230.7
21	8.6	156.7	0.0
22	7.9	141.4	475.4
23	7.9	219.3	369.8
24	136.2	343.3	64.0
25	46.4	210.0	3.9
26	7.4	162.3	1.2
27	57.5	258.5	28.0
28	6.4	213.8	0.9
29	6.3	207.4	0.2
30	6.6	192.9	1.5
Total	702.3	6625.4	2739.0
Average	23.4	220.8	91.3
Maximum	136.2	343.3	475.4
Date	24-Sep	24-Sep	22-Sep
Minimum	5.8	141.4	0.0
Date	10-Sep	22-Sep	3-Sep

Notes:	
Dosage (mg/L)=	Day Tank (L) x %conc. x 1000
	Membrane Flow (m3)
Chlorine Concentration:	12.0%

Chemical Usage Monthly Report

Month: September-18



Date	Citric Acid	Caustic Soda	Sodium Bisulfite	Hydrogen Peroxide		Membrane Flow (m ³)
	TAGNAME (L) Usage	TAGNAME (L) Usage	TAGNAME (L) Usage	TAGNAME (L) Usage	(mg/L) Dose	
1	8.8	0.6	7.9	0.0	0.0	3926.488
2	9.4	1.0	8.0	0.0	0.0	5281.364
3	9.4	0.8	7.9	0.0	0.0	4620.657
4	9.9	3.8	44.7	0.0	0.0	4822.821
5	10.1	1.5	8.3	0.0	0.0	5480.337
6	9.9	2.1	18.5	0.0	0.0	4446.854
7	8.7	0.2	7.9	0.0	0.0	4982.627
8	8.1	0.0	7.9	0.0	0.0	4261.629
9	7.9	0.0	7.7	0.0	0.0	3475.120
10	7.9	0.0	7.0	0.0	0.0	4662.093
11	7.9	0.0	6.6	0.0	0.0	4971.370
12	8.1	0.3	27.8	0.0	0.0	5587.979
13	8.9	0.6	7.9	0.0	0.0	4979.594
14	256.3	102.5	51.0	0.0	0.0	4366.678
15	10.7	1.9	8.5	0.0	0.0	5314.600
16	10.9	2.0	8.9	0.0	0.0	3633.939
17	316.2	2.5	40.7	0.0	0.0	5441.053
18	177.6	2.3	9.0	0.0	0.0	4345.404
19	10.5	1.8	8.3	0.0	0.0	5486.063
20	103.9	1.6	40.7	0.0	0.0	4929.098
21	11.4	2.4	9.2	0.0	0.0	4216.085
22	9.6	0.9	8.0	0.0	0.0	3839.439
23	8.5	0.2	7.9	0.0	0.0	4543.946
24	156.1	0.8	54.2	0.0	0.0	4628.120
25	9.9	2.0	23.6	0.0	0.0	3842.886
26	7.9	0.0	7.7	0.0	0.0	4249.997
27	24.2	4.6	23.0	0.0	0.0	4307.151
28	7.8	0.0	6.8	0.0	0.0	4901.445
29	7.7	0.0	6.1	0.0	0.0	4826.532
30	7.6	0.0	5.9	0.0	0.0	4462.618
					#DIV/0!	
Total	1251.6	136.4	487.7	0.0		138834.0
Average	41.7	4.5	16.3	0.0	0.0	4627.8
Maximum	316.2	102.5	54.2	0.0	0.0	5588.0
Date	17-Sep	14-Sep	24-Sep	1-Sep	1-Sep	12-Sep
Minimum	7.6	0.0	5.9	0.0	0.0	3475.1
Date	30-Sep	9-Sep	30-Sep	1-Sep	1-Sep	9-Sep

Notes:
$\text{Dosage (mg/L)} = \frac{\text{Day Tank (L)} \times \% \text{conc.} \times 1000}{\text{Membrane Flow (m}^3\text{)}}$
Peroxide Concentration: 50.0%

Runtimes Report

Month: September-18

Date	Daily Gen-Set Runtimes		Daily UV Runtimes		Daily PALL Runtimes				
	LLPS	WTP	UV #1	UV #2	Air Compressor #1	Air Compressor #2	CIP Neutralization	CIP Drain	CIP Recirc
	(Hrs)	(Hrs)	(Hrs)	(Hrs)	(Hrs)	(Hrs)	(Hrs)	(Hrs)	(Hrs)
1	0.0	0.0	14.7	0.0	0.0	24.3	0.0	0.0	0.0
2	0.0	0.0	18.5	0.0	24.4	0.1	0.0	0.0	0.0
3	0.0	0.0	18.2	0.0	0.0	24.4	0.0	0.0	0.0
4	0.0	0.1	14.9	0.0	17.4	7.0	0.4	0.0	0.4
5	0.0	0.0	14.1	0.0	9.0	15.3	0.0	0.0	0.0
6	0.0	0.0	18.6	0.0	24.3	0.1	0.1	0.0	0.2
7	0.0	0.0	19.1	0.0	0.1	24.1	0.0	0.0	0.0
8	0.0	0.0	17.8	0.0	24.3	0.0	0.0	0.0	0.0
9	0.0	0.0	15.2	0.0	0.1	24.4	0.0	0.0	0.0
10	0.0	0.0	18.2	0.0	16.1	7.9	0.0	0.0	0.0
11	0.0	0.0	18.5	0.0	0.0	24.3	0.0	0.0	0.0
12	0.0	0.0	20.3	0.0	24.4	0.1	0.2	0.0	0.2
13	0.0	0.0	18.1	0.0	0.0	24.3	0.0	0.0	0.0
14	0.0	0.0	15.8	0.0	24.4	0.1	0.4	0.0	0.8
15	0.0	0.0	20.4	0.0	0.0	24.3	0.0	0.0	0.0
16	0.0	0.0	15.1	0.0	24.4	0.1	0.0	0.0	0.0
17	0.0	0.0	21.0	0.0	0.0	24.3	0.2	0.0	0.5
18	0.0	0.0	6.0	11.9	24.4	0.1	0.3	0.0	0.5
19	0.0	0.0	0.0	21.0	0.0	24.3	0.0	0.0	0.0
20	0.0	0.0	0.0	19.6	24.4	0.1	0.2	0.1	0.6
21	0.0	0.0	0.0	18.0	0.0	24.3	0.0	0.0	0.0
22	0.0	0.0	0.0	14.9	24.4	0.1	0.0	0.0	0.0
23	0.0	0.0	0.0	16.8	0.0	24.3	0.0	0.0	0.0
24	0.0	0.0	0.0	20.5	24.4	0.1	0.5	0.0	0.5
25	0.0	0.0	13.8	1.8	0.9	22.1	0.1	0.0	0.1
26	0.0	1.6	1.9	13.9	24.3	0.0	0.0	0.0	0.0
27	1.6	0.0	13.0	3.2	0.1	24.4	0.2	0.1	0.2
28	0.0	0.0	5.6	13.5	24.3	0.0	0.0	0.0	0.0
29	0.0	0.0	0.0	19.0	0.1	24.3	0.0	0.0	0.0
30	0.0	0.0	0.0	17.6	24.3	0.1	0.0	0.0	0.0
Total	1.6	1.7	339.1	191.9	360.2	369.1	2.6	0.2	4.0

Notes:

Runtimes Report

Month: September-18

Daily

Date	PALL Runtimes						Process Drain	
	RFR Pump #1	RFR Pump #2	RF Pump #1	RF Pump #2	XR Pump #1	XR Pump #2	PDP9010 Pump	PDP9020 Pump
	(Hrs)	(Hrs)	(Hrs)	(Hrs)	(Hrs)	(Hrs)	(Hrs)	(Hrs)
1	4.3	4.5	0.8	0.8	7.8	6.6	3.5	4.7
2	5.8	5.4	1.1	1.1	7.5	9.8	3.8	5.0
3	5.0	4.9	0.9	0.8	8.9	7.8	3.7	4.9
4	3.6	3.9	0.8	0.8	10.1	10.4	3.7	5.3
5	5.8	5.5	1.0	1.1	9.6	9.2	3.9	5.1
6	4.0	3.9	0.8	0.9	8.5	9.0	3.9	5.3
7	4.8	4.8	0.8	0.9	6.5	9.8	4.4	5.8
8	0.0	0.0	0.1	0.0	10.0	5.9	3.6	5.0
9	0.0	0.0	0.1	0.1	6.6	7.8	3.7	4.8
10	5.4	5.6	0.8	0.9	8.8	7.3	4.8	7.5
11	4.5	4.6	0.9	0.9	8.9	8.6	3.9	5.7
12	2.5	2.5	1.1	1.1	8.5	10.4	4.1	5.6
13	4.0	3.9	0.8	1.0	8.9	8.5	4.0	5.3
14	3.2	3.2	1.0	0.7	8.8	6.7	4.2	5.5
15	4.0	4.0	0.8	0.9	8.6	11.6	4.1	5.6
16	0.0	0.0	0.0	0.1	8.8	6.0	4.2	5.6
17	3.1	3.0	0.8	0.8	8.1	12.3	4.4	6.3
18	3.4	3.5	0.9	0.8	9.8	7.3	4.3	5.9
19	6.0	6.1	1.1	1.1	10.0	9.6	4.4	5.9
20	4.7	4.7	0.9	0.9	9.1	9.2	4.5	6.3
21	6.7	6.6	0.8	0.9	7.8	7.7	5.0	6.7
22	5.7	5.8	0.8	0.7	6.4	6.3	5.0	7.2
23	5.9	5.9	0.8	0.8	7.7	7.8	4.8	6.9
24	6.5	6.5	1.0	0.9	8.0	8.0	3.1	11.2
25	7.9	7.8	0.9	0.8	6.2	6.2	0.4	15.5
26	8.0	7.9	0.8	0.9	6.9	7.0	0.0	13.6
27	7.3	7.1	0.8	0.8	7.4	7.6	0.0	12.7
28	8.6	8.5	1.0	1.1	9.0	8.8	0.0	10.9
29	8.8	8.8	1.0	1.0	9.3	8.8	0.0	7.4
30	7.9	7.9	0.9	0.8	7.4	9.5	0.0	7.5
Total	146.8	146.2	24.3	24.4	248.9	250.5	99.4	210.6

Notes:

Runtimes Report

Month: September-18

Daily

Date	Low Lift Pump Motor Runtimes				High Lift Pump Motor Runtimes			
	LLP1010 (Hrs)	LLP1020 (Hrs)	LLP1030 (Hrs)	LLP1040 (Hrs)	HLP7010 (Hrs)	HLP7020 (Hrs)	HLP7030 (Hrs)	HLP7040 (Hrs)
1	0.0	7.5	0.0	8.2	6.1	5.8	1.2	0.0
2	0.0	11.0	0.0	10.8	8.7	1.5	7.2	0.0
3	0.0	11.7	0.0	7.6	5.6	4.3	6.1	0.0
4	0.0	10.5	0.0	9.8	5.9	11.6	1.2	0.0
5	0.0	9.9	0.0	12.4	6.6	5.5	2.7	0.0
6	0.0	10.1	0.0	8.6	2.7	6.7	6.4	0.0
7	0.0	12.2	0.0	10.6	5.7	6.6	4.0	0.0
8	0.0	7.9	0.0	11.4	7.7	3.0	3.8	0.0
9	0.0	7.6	0.0	7.6	1.4	1.4	9.6	0.0
10	0.0	8.6	0.0	11.7	2.8	9.1	4.2	0.0
11	0.0	11.0	0.0	9.7	3.1	5.7	7.4	0.0
12	0.0	9.7	0.0	14.7	5.8	7.8	4.0	0.0
13	0.0	10.6	0.0	10.8	3.7	8.7	2.6	0.0
14	0.0	7.2	0.0	10.4	3.2	5.9	5.7	0.0
15	0.0	10.6	0.0	10.5	3.0	10.6	2.8	0.0
16	0.0	8.6	0.0	6.5	3.7	1.8	9.0	0.0
17	0.0	11.1	0.0	11.7	1.6	14.4	2.9	0.0
18	4.9	5.5	0.0	7.3	7.7	3.0	3.1	0.0
19	7.3	6.8	0.0	8.0	1.7	1.4	14.2	0.0
20	7.7	6.0	0.0	5.9	3.2	7.9	4.3	0.0
21	4.4	8.3	0.0	5.2	4.5	3.1	6.6	0.0
22	5.3	6.1	0.0	5.3	0.6	0.0	9.6	0.0
23	5.0	8.1	0.0	6.1	2.7	1.7	10.2	0.0
24	8.3	6.2	0.0	6.0	4.1	3.3	8.3	0.0
25	6.3	5.3	0.0	5.8	7.7	1.4	2.5	0.0
26	5.6	7.1	0.0	5.3	10.8	2.7	0.0	0.0
27	5.0	8.8	0.0	3.7	1.8	10.4	1.2	0.0
28	5.6	6.6	0.0	7.6	2.7	13.1	1.5	0.0
29	7.2	7.3	0.0	4.4	14.2	1.8	1.4	0.0
30	5.6	5.3	0.0	6.7	0.0	1.7	15.0	0.0
Total	78.2	253.2	0.0	250.2	139.0	161.9	158.7	0.0

Notes:

Plant Internal Flow Report

Month: September-18

Date	Settling Tank Level		Process Drain Tank		Settling Tank Flow		Potable Water Flow		Non-Potable Flow	
	T-9003 (m)		T-9001 (m)		FIT_9005 (m ³) (L/s)		FIT_7082 (m ³) (L/s)		FIT_7092 (m ³) (L/s)	
	Maximum	Minimum	Maximum	Minimum	Total	Peak	Total	Peak	Total	Peak
1	2.2	0.3	1.0	0.4	247.9	15.7	10.0	5.2	0.0	0.0
2	2.2	0.3	1.0	0.4	330.9	15.7	8.9	5.3	0.0	0.0
3	2.2	0.3	0.9	0.4	320.3	15.7	10.3	5.1	0.0	0.0
4	2.2	0.1	1.6	0.4	283.4	15.7	7.5	5.3	29.7	22.6
5	2.2	0.1	1.1	0.4	367.3	15.7	5.6	5.2	0.0	0.0
6	2.2	0.1	1.4	0.4	267.5	15.7	9.2	5.3	12.2	17.8
7	2.2	0.1	2.1	0.4	291.6	15.7	12.9	5.2	0.0	0.0
8	2.2	0.1	1.0	0.4	89.9	12.7	8.9	5.3	0.0	0.0
9	2.2	0.2	0.9	0.4	60.2	15.7	11.2	5.3	0.0	0.0
10	2.2	0.1	2.2	0.4	258.9	15.7	13.5	5.3	0.0	0.0
11	2.2	0.3	1.1	0.4	207.2	15.7	13.1	5.4	0.0	0.0
12	2.2	0.1	1.6	0.4	417.7	15.7	8.0	5.1	17.6	17.1
13	2.2	0.1	1.1	0.4	335.2	15.7	13.0	5.2	0.0	0.0
14	2.2	0.1	1.1	0.4	299.3	15.7	10.4	5.2	34.5	23.9
15	2.2	0.2	1.0	0.4	244.3	15.7	10.5	5.1	0.0	0.0
16	2.2	0.3	0.9	0.4	162.5	15.7	11.9	5.2	0.0	0.0
17	2.2	0.2	1.1	0.4	351.8	15.7	12.8	5.2	19.5	16.4
18	2.2	0.3	1.2	0.4	325.9	15.7	12.5	5.4	19.6	16.6
19	2.2	0.1	1.0	0.4	275.7	15.7	9.8	4.8	0.0	1.0
20	2.2	0.1	1.2	0.4	334.3	15.7	13.1	4.8	19.8	17.0
21	2.2	0.1	1.3	0.4	304.4	15.7	13.0	4.8	0.4	1.0
22	2.2	0.1	1.3	0.4	187.0	15.7	12.4	4.8	0.0	0.0
23	2.2	0.1	1.1	0.4	221.3	15.7	11.8	4.7	0.0	0.0
24	2.2	0.1	2.1	0.4	352.3	15.7	6.8	4.7	42.3	22.8
25	2.2	0.1	2.2	0.4	341.8	15.7	16.1	5.4	12.4	15.8
26	2.2	0.1	1.3	0.4	251.1	15.7	6.2	5.2	0.2	0.9
27	2.2	0.1	1.2	0.4	219.5	15.7	9.6	4.9	17.6	22.9
28	2.2	0.1	1.1	0.4	215.0	15.7	11.6	5.7	0.2	1.1
29	2.2	0.1	1.0	0.4	137.7	15.7	6.6	4.8	0.0	0.0
30	2.2	0.1	1.1	0.4	132.5	15.7	6.3	4.7	0.0	0.0
Total					7834.5		313.3		226.0	
Average	2.2	0.2	1.3	0.4	261.1	15.6	10.4	5.1	7.5	6.6
Maximum	2.2		2.2		417.7		16.1		42.3	
Date	5-Sep		10-Sep		12-Sep		25-Sep		24-Sep	
Minimum		0.1		0.4		12.7		4.7		0.0
Date		28-Sep		24-Sep		8-Sep		30-Sep		1-Sep

Notes: