

Municipality of West Elgin - Tri County Water System

Goto:

Month:

Year:

Date is Set to: **May-17**

Limit	Low	High	
Raw Water Chlorine Residual:	0.00	5.00	mg/L
Pre-Strainer Chlorine Residual:	0.00	5.00	mg/L
UV Inlet Chlorine Residual:	0.00	5.00	mg/L
Post Treatment Chlorine Residual:	1.00	5.00	mg/L
Treated Chlorine Residual:	1.00	2.50	mg/L
Distribution Chlorine Residual:	1.00	2.50	mg/L
Limit		High	
Limit		156.0	L/s
WTP Permit to Take Water		13500.0	m ³
Limit	Low	High	
System Pressure Limits:	50.0	1034.0	Kpa

Compliance Report

Low Lift Monthly Report

>>>

Membranes Monthly Report

>>>

UV System Monthly Report

>>>

Plant Quality Report

>>>

Raw Well/Treated Storage Report

>>>

High Lift Monthly Report

>>>

Operational Report

Low Lift Monthly Report

>>>

High Lift Monthly Report

>>>

Chemical Usage Monthly Report

>>>

Runtimes Report

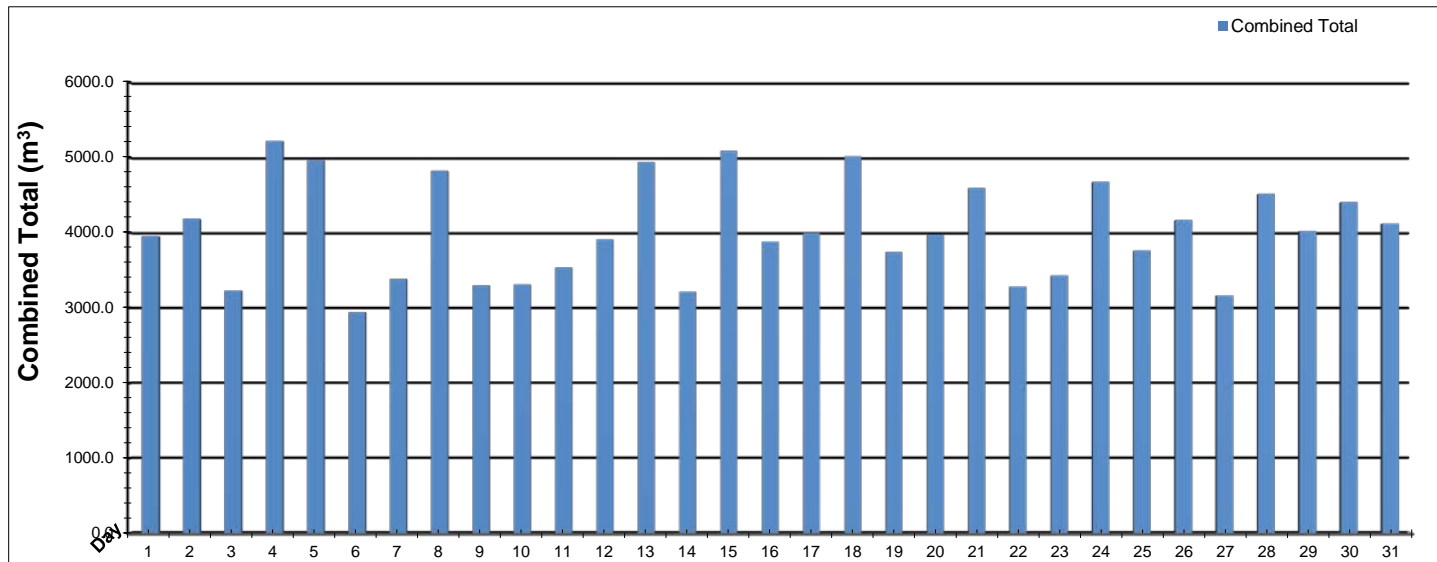
>>>

Plant Internal Flow Report

>>>

Low Lift Monthly Report

Month: **May-17**



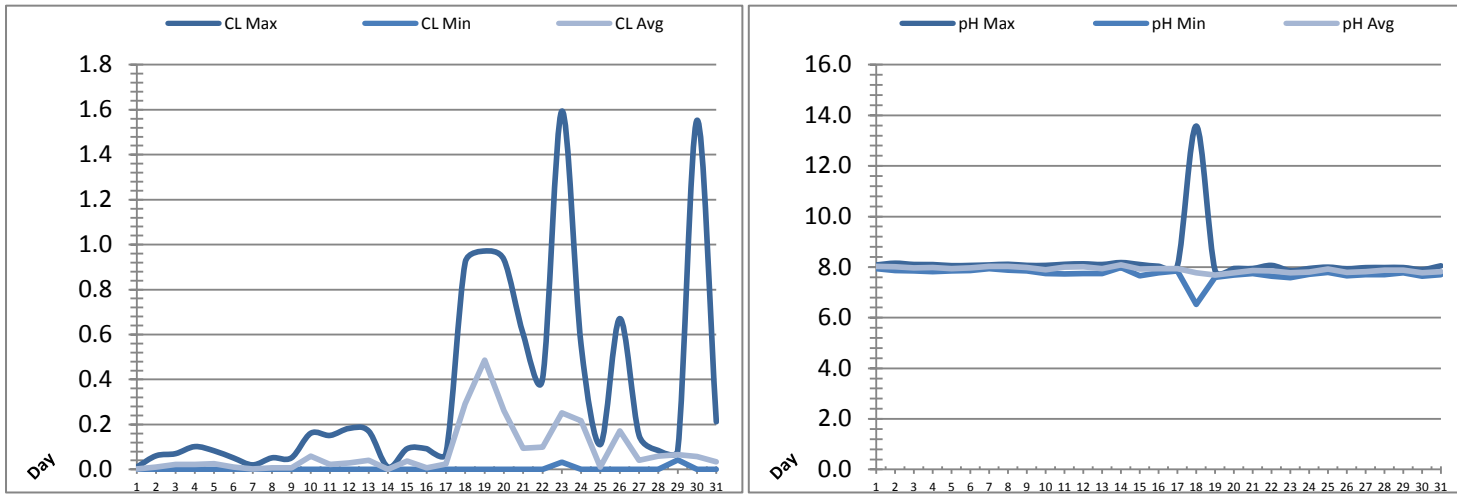
Date	Combined Total (m³)	West Train FIT-1017 (m³)	West Peak Flow FIT-1017 (L/s)	East Train FIT-1027 (m³)	East Peak Flow FIT-1027 (L/s)	Combined Peak Flow (L/s)
1	✓ 3955.5	0.0	0.0	3955.5	77.1	✓ 77.1
2	✓ 4184.8	2736.0	200.0	1448.8	199.0	✗ 200.0
3	✓ 3230.4	3230.4	119.3	0.0	0.0	✓ 119.3
4	✓ 5222.7	5222.7	83.4	0.0	0.0	✓ 83.4
5	✓ 4964.1	4964.1	132.0	0.0	0.0	✓ 132.0
6	✓ 2945.3	2945.3	199.5	0.0	0.0	✗ 199.5
7	✓ 3385.6	3385.6	87.7	0.0	0.0	✓ 87.7
8	✓ 4824.8	4824.8	84.5	0.0	0.0	✓ 84.5
9	✓ 3301.5	3301.5	87.8	0.0	0.0	✓ 87.8
10	✓ 3313.2	3313.2	88.1	0.0	0.0	✓ 88.1
11	✓ 3538.1	3538.1	85.1	0.0	0.0	✓ 85.1
12	✓ 3912.0	3912.0	53.5	0.0	0.0	✓ 53.5
13	✓ 4942.0	4942.0	194.4	0.0	0.0	✓ 128.9
14	✓ 3218.6	3218.6	191.3	0.0	0.0	✓ 128.2
15	✓ 5088.6	5088.6	198.9	0.0	0.0	✗ 198.9
16	✓ 3883.4	3883.4	164.7	0.0	0.0	✓ 117.6
17	✓ 4002.4	4002.4	87.3	0.0	0.0	✓ 87.3
18	✓ 5018.3	5018.3	187.1	0.0	0.0	✓ 153.8
19	✓ 3745.7	3745.7	88.2	0.0	0.0	✓ 88.2
20	✓ 3970.7	3970.7	87.8	0.0	0.0	✓ 87.8
21	✓ 4595.3	4595.3	176.6	0.0	0.0	✓ 120.6
22	✓ 3287.3	3287.3	197.7	0.0	0.0	✓ 120.1
23	✓ 3432.6	3432.6	85.2	0.0	0.0	✓ 85.2
24	✓ 4678.6	4678.6	185.5	0.0	0.0	✓ 126.9
25	✓ 3764.7	3764.7	199.7	0.0	0.0	✗ 199.7
26	✓ 4168.2	4168.2	125.5	0.0	0.0	✓ 125.5
27	✓ 3167.2	3167.2	113.2	0.0	0.0	✓ 113.2
28	✓ 4517.9	4517.9	191.9	0.0	0.0	✓ 89.5
29	✓ 4022.3	4022.3	85.5	0.0	0.0	✓ 85.5
30	✓ 4407.0	4407.0	121.2	0.0	0.0	✓ 121.2
31	✓ 4123.6	4123.6	197.5	0.0	0.0	✗ 197.5
Total	124812.4	119408.0		5404.4		
Average	4026.2	3851.9	132.2	174.3	8.9	118.5
Maximum	5222.7	5222.7	199.98	3955.5	199.04	199.98
Date	4-May	4-May	2-May	1-May	2-May	2-May
Minimum	2945.3	0.0	0.00	0.0	0.00	53.48
Date	6-May	1-May	1-May	4-May	3-May	12-May

Notes:

2, 6, 15, 25, 31: Peak flow above 156L/s but for less than 1 min. Therefore, no PTTW exceedance occurred.

Low Lift Monthly Report

Month: May-17

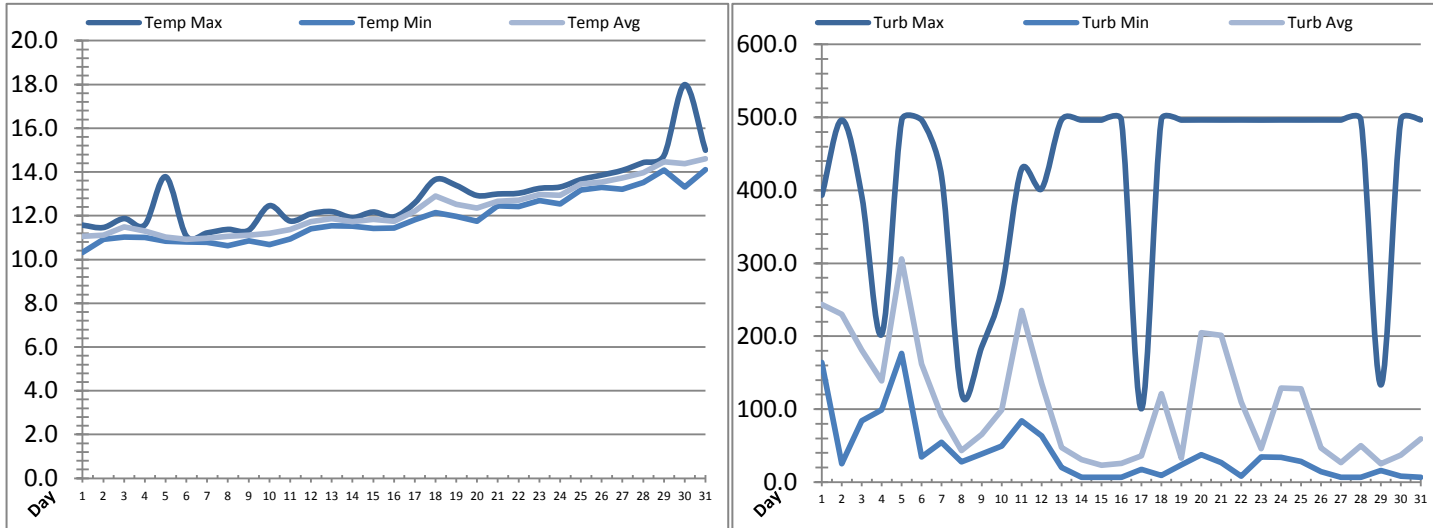


Date	Raw Water Chlorine Residual			Raw Water pH		
	AIT_1401_CL (mg/L)			AIT_1401_PH		
	Maximum	Minimum	Average	Maximum	Minimum	Average
1	0.01	0.00	0.00	8.08	7.94	8.02
2	0.06	0.00	0.01	8.15	7.86	8.02
3	0.07	0.00	0.02	8.10	7.84	7.96
4	0.10	0.00	0.02	8.10	7.83	7.98
5	0.08	0.00	0.03	8.06	7.84	7.93
6	0.05	0.00	0.01	8.07	7.87	7.97
7	0.02	0.00	0.00	8.09	7.94	8.03
8	0.05	0.00	0.01	8.11	7.87	8.03
9	0.05	0.00	0.01	8.07	7.84	7.99
10	0.16	0.00	0.06	8.07	7.75	7.89
11	0.15	0.00	0.02	8.11	7.73	7.99
12	0.18	0.00	0.03	8.13	7.75	8.02
13	0.17	0.00	0.04	8.10	7.75	7.94
14	0.01	0.00	0.00	8.18	7.98	8.08
15	0.09	0.00	0.04	8.10	7.65	7.92
16	0.09	0.00	0.01	8.03	7.77	7.94
17	0.07	0.00	0.02	8.06	7.85	7.93
18	0.92	0.00	0.29	13.58	6.53	7.78
19	0.97	0.00	0.49	7.87	7.59	7.68
20	0.93	0.00	0.26	7.94	7.68	7.78
21	0.60	0.00	0.09	7.94	7.75	7.86
22	0.40	0.00	0.10	8.07	7.64	7.85
23	1.59	0.03	0.25	7.86	7.59	7.77
24	0.55	0.00	0.22	7.95	7.71	7.81
25	0.11	0.00	0.01	8.00	7.79	7.92
26	0.67	0.00	0.17	7.94	7.66	7.78
27	0.15	0.00	0.04	7.98	7.70	7.82
28	0.08	0.00	0.06	7.98	7.70	7.88
29	0.08	0.04	0.07	7.98	7.78	7.87
30	1.55	0.00	0.06	7.90	7.64	7.77
31	0.21	0.00	0.03	8.05	7.70	7.83
Total						
Average	0.33	0.00	0.08	8.21	7.73	7.90
Maximum	1.59		0.49	13.58		8.08
Date	23-May		19-May	18-May		14-May
Minimum		0.00	0.00		6.53	7.68
Date		1-May	14-May		18-May	19-May

Notes:

Low Lift Monthly Report

Month: May-17

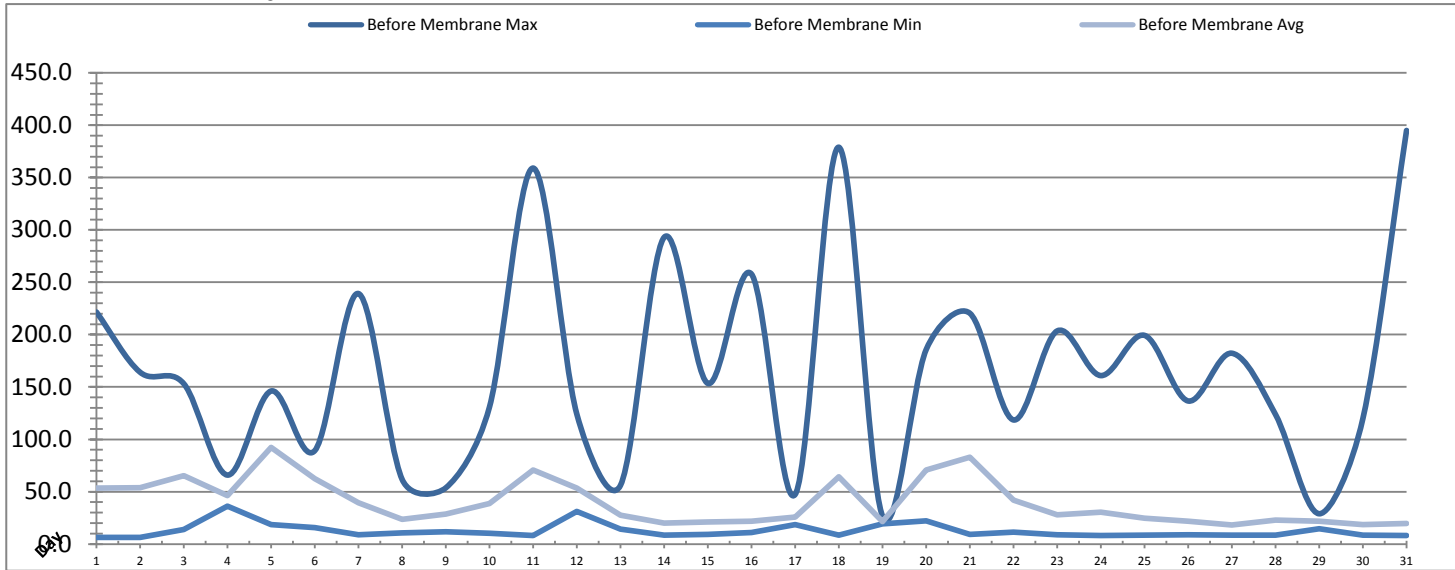


Date	Raw Water Temperature			Raw Water Turbidity		
	TIT_1403 (°C)			AIT_1404 (NTU)		
	Maximum	Minimum	Average	Maximum	Minimum	Average
1	11.6	10.3	11.1	393.37	164.00	243.45
2	11.5	10.9	11.1	496.39	25.25	230.01
3	11.9	11.0	11.5	391.81	84.20	180.92
4	11.6	11.0	11.3	202.76	98.84	138.58
5	13.8	10.8	11.0	496.39	176.40	306.19
6	11.1	10.8	10.9	496.29	34.58	162.02
7	11.2	10.8	11.0	418.16	54.74	90.61
8	11.4	10.6	11.1	121.40	27.59	43.00
9	11.3	10.8	11.1	184.95	38.41	65.58
10	12.5	10.7	11.2	264.03	49.30	99.16
11	11.8	10.9	11.4	429.06	84.18	235.14
12	12.1	11.4	11.7	401.93	63.22	135.05
13	12.2	11.5	11.9	496.42	19.84	47.52
14	11.9	11.5	11.7	496.40	6.63	31.06
15	12.2	11.4	11.8	496.33	6.68	23.20
16	12.0	11.4	11.7	496.38	6.63	25.85
17	12.6	11.8	12.2	100.42	17.53	35.79
18	13.7	12.1	12.9	496.56	9.02	120.95
19	13.4	12.0	12.5	496.37	23.75	32.90
20	12.9	11.8	12.4	496.50	37.69	204.60
21	13.0	12.4	12.7	496.41	26.83	201.23
22	13.0	12.4	12.7	496.46	8.23	109.77
23	13.3	12.7	13.0	496.35	34.66	45.61
24	13.3	12.5	12.9	496.47	33.84	129.03
25	13.7	13.2	13.5	496.43	28.40	127.78
26	13.9	13.3	13.5	496.46	14.43	47.03
27	14.1	13.2	13.7	496.41	6.67	26.71
28	14.4	13.5	14.0	496.47	6.70	49.76
29	14.7	14.1	14.5	133.16	16.03	25.07
30	18.0	13.3	14.4	496.51	8.31	36.79
31	15.0	14.1	14.6	496.52	6.71	59.33
Total						
Average	12.9	11.9	12.3	418.4	39.3	106.8
Maximum	18.0		14.6	496.6		306.2
Date	30-May		31-May	18-May		5-May
Minimum		10.3	10.9		6.6	23.2
Date		1-May	6-May		14-May	15-May

Notes:

Membranes Monthly Report

Month: **May-17**



Date	Turbidity Before Membrane			Rack #1 Turbidity			Rack #2 Turbidity		
	PALL_FEED_AIT2006_Value NTU			RACK1_NTU_Value NTU			RACK2_NTU_Value NTU		
	Maximum	Minimum	Average	Maximum	Minimum	Average	Maximum	Minimum	Average
1	221.55	6.30	53.29	0.01	0.01	0.01	0.01	0.01	0.01
2	164.08	6.45	53.82	0.01	0.01	0.01	0.01	0.01	0.01
3	153.12	14.01	65.35	0.04	0.01	0.01	0.01	0.01	0.01
4	65.85	36.00	46.15	0.01	0.01	0.01	0.01	0.01	0.01
5	146.16	18.43	92.36	0.01	0.01	0.01	0.01	0.01	0.01
6	89.21	15.60	62.49	0.02	0.01	0.01	0.01	0.01	0.01
7	239.22	8.85	39.53	0.01	0.01	0.01	0.01	0.01	0.01
8	61.69	10.52	23.43	0.01	0.01	0.01	0.01	0.01	0.01
9	53.66	11.73	28.51	0.12	0.01	0.01	0.01	0.01	0.01
10	130.86	10.16	38.81	0.01	0.01	0.01	0.01	0.01	0.01
11	359.09	8.14	70.73	0.01	0.01	0.01	0.01	0.01	0.01
12	124.05	31.10	53.27	0.01	0.01	0.01	0.01	0.01	0.01
13	56.10	14.33	27.66	0.01	0.01	0.01	0.01	0.01	0.01
14	293.00	8.57	19.89	0.01	0.01	0.01	0.01	0.01	0.01
15	153.42	9.05	20.95	0.01	0.01	0.01	0.01	0.01	0.01
16	257.81	11.07	21.69	0.11	0.01	0.01	0.01	0.01	0.01
17	47.38	18.45	25.69	0.01	0.01	0.01	0.01	0.01	0.01
18	379.02	8.52	64.15	0.02	0.01	0.01	0.01	0.01	0.01
19	26.73	19.14	21.37	0.01	0.01	0.01	0.01	0.01	0.01
20	185.75	22.02	70.63	0.01	0.01	0.01	0.01	0.01	0.01
21	220.43	9.16	83.09	0.01	0.01	0.01	0.01	0.01	0.01
22	118.52	11.40	42.10	0.01	0.01	0.01	0.01	0.01	0.01
23	203.57	8.81	27.72	0.01	0.01	0.01	0.01	0.01	0.01
24	160.88	8.10	30.32	0.01	0.01	0.01	0.01	0.01	0.01
25	199.29	8.50	24.67	0.01	0.01	0.01	0.01	0.01	0.01
26	136.62	8.69	21.63	0.01	0.01	0.01	0.01	0.01	0.01
27	182.23	8.34	18.07	0.01	0.01	0.01	0.01	0.01	0.01
28	123.68	8.48	22.85	0.01	0.01	0.01	0.01	0.01	0.01
29	28.91	14.62	21.68	0.01	0.01	0.01	0.01	0.01	0.01
30	119.83	8.44	18.69	0.26	0.01	0.01	0.01	0.01	0.01
31	395.03	8.16	19.61	0.01	0.01	0.01	0.01	0.01	0.01
Total									
Average	164.4	12.6	39.7	0.03	0.01	0.01	0.01	0.01	0.01
Maximum	395.0		92.4	0.26		0.01	0.01		0.01
Date	31-May		5-May	30-May		30-May	1-May		1-May
Minimum		6.3	18.1		0.01	0.01		0.01	0.01
Date		1-May	27-May		3-May	14-May		1-May	1-May

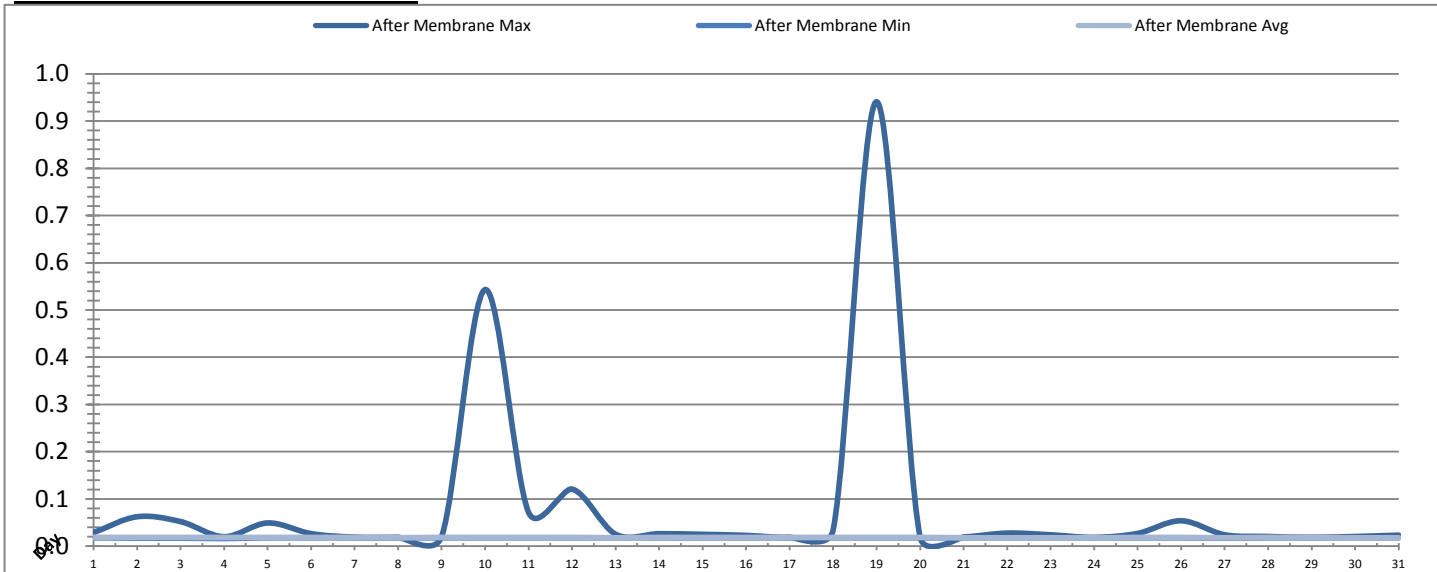
Notes:

Rack 1: 9, 16, 30th >0.1ntu after EFM

Rack 2 out of service.

Membranes Monthly Report

Month: **May-17**



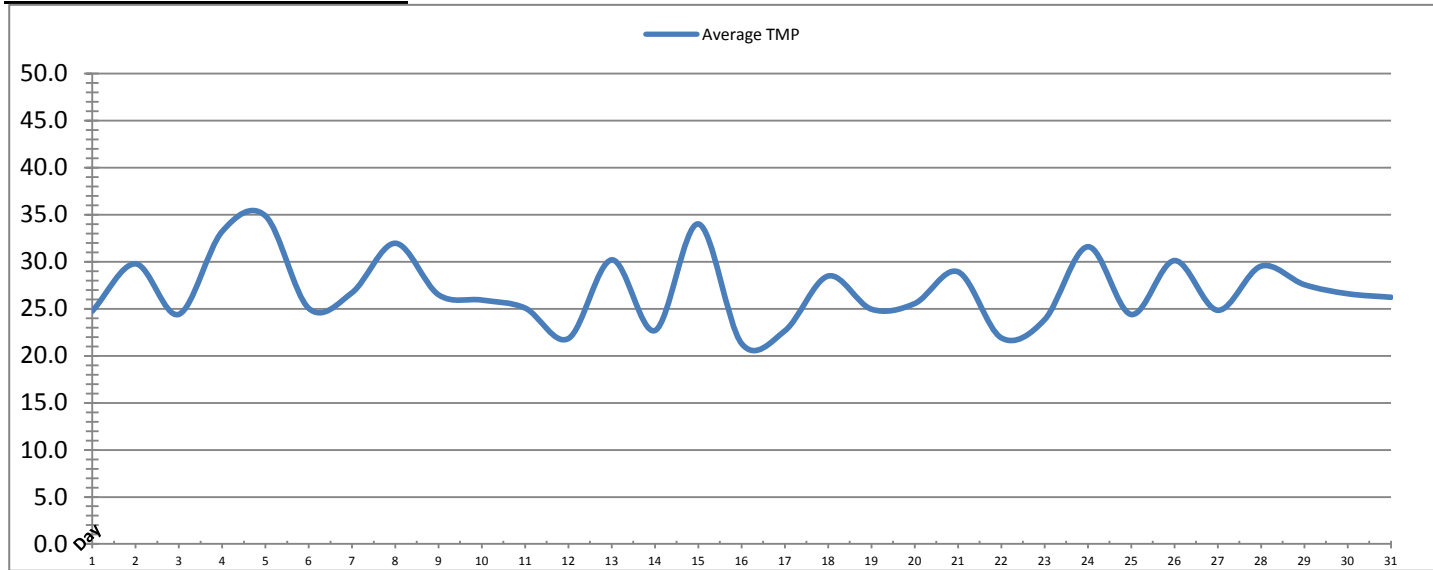
Date	Rack #3 Turbidity			Rack #4 Turbidity			Turbidity After Membranes		
	RACK3_NTU_Value NTU			RACK4_NTU_Value NTU			PALL_FILT_AIT5001_Value NTU		
	Maximum	Minimum	Average	Maximum	Minimum	Average	Maximum	Minimum	Average
1	0.02	0.01	0.01	0.08	0.02	0.03	0.03	0.02	0.02
2	0.02	0.01	0.01	0.08	0.02	0.03	0.06	0.02	0.02
3	0.03	0.01	0.01	0.06	0.02	0.02	0.05	0.02	0.02
4	0.02	0.01	0.01	0.06	0.02	0.02	0.02	0.02	0.02
5	0.01	0.01	0.01	0.04	0.02	0.02	0.05	0.02	0.02
6	0.02	0.01	0.01	0.04	0.02	0.02	0.03	0.02	0.02
7	0.01	0.01	0.01	0.04	0.02	0.02	0.02	0.02	0.02
8	0.01	0.01	0.01	0.04	0.02	0.02	0.02	0.02	0.02
9	0.03	0.01	0.01	0.04	0.02	0.02	0.02	0.02	0.02
10	0.01	0.01	0.01	0.03	0.02	0.02	0.54	0.02	0.02
11	0.01	0.01	0.01	0.04	0.02	0.02	0.07	0.02	0.02
12	0.01	0.01	0.01	0.02	0.02	0.02	0.12	0.02	0.02
13	0.01	0.01	0.01	0.03	0.02	0.02	0.03	0.02	0.02
14	0.01	0.01	0.01	0.02	0.02	0.02	0.03	0.02	0.02
15	0.07	0.01	0.01	0.02	0.02	0.02	0.03	0.02	0.02
16	0.01	0.01	0.01	0.04	0.02	0.02	0.02	0.02	0.02
17	0.01	0.01	0.01	0.02	0.02	0.02	0.02	0.02	0.02
18	0.01	0.01	0.01	0.03	0.02	0.02	0.03	0.02	0.02
19	0.01	0.01	0.01	0.03	0.02	0.02	0.94	0.02	0.02
20	0.01	0.01	0.01	0.02	0.02	0.02	0.02	0.02	0.02
21	0.01	0.01	0.01	0.02	0.02	0.02	0.02	0.02	0.02
22	0.02	0.01	0.01	0.03	0.02	0.02	0.03	0.02	0.02
23	0.01	0.01	0.01	0.03	0.02	0.02	0.02	0.02	0.02
24	0.01	0.01	0.01	0.02	0.02	0.02	0.02	0.02	0.02
25	0.02	0.01	0.01	0.02	0.02	0.02	0.03	0.02	0.02
26	0.02	0.01	0.01	0.02	0.02	0.02	0.05	0.02	0.02
27	0.02	0.01	0.01	0.02	0.02	0.02	0.02	0.02	0.02
28	0.01	0.01	0.01	0.02	0.02	0.02	0.02	0.02	0.02
29	0.01	0.01	0.01	0.02	0.02	0.02	0.02	0.02	0.02
30	0.04	0.01	0.01	0.12	0.02	0.02	0.02	0.02	0.02
31	0.01	0.01	0.01	0.02	0.02	0.02	0.02	0.02	0.02
Total									
Average	0.02	0.01	0.01	0.04	0.02	0.02	0.08	0.02	0.02
Maximum	0.07		0.01	0.12		0.03	0.94		0.02
Date	15-May		30-May	30-May		2-May	19-May		2-May
Minimum		0.01	0.01		0.02			0.02	0.02
Date		7-May	11-May		13-May	29-May		4-May	27-May

Notes:

Rack 4: on 30th >0.1ntu after an EFM

Membranes Monthly Report

Month: **May-17**

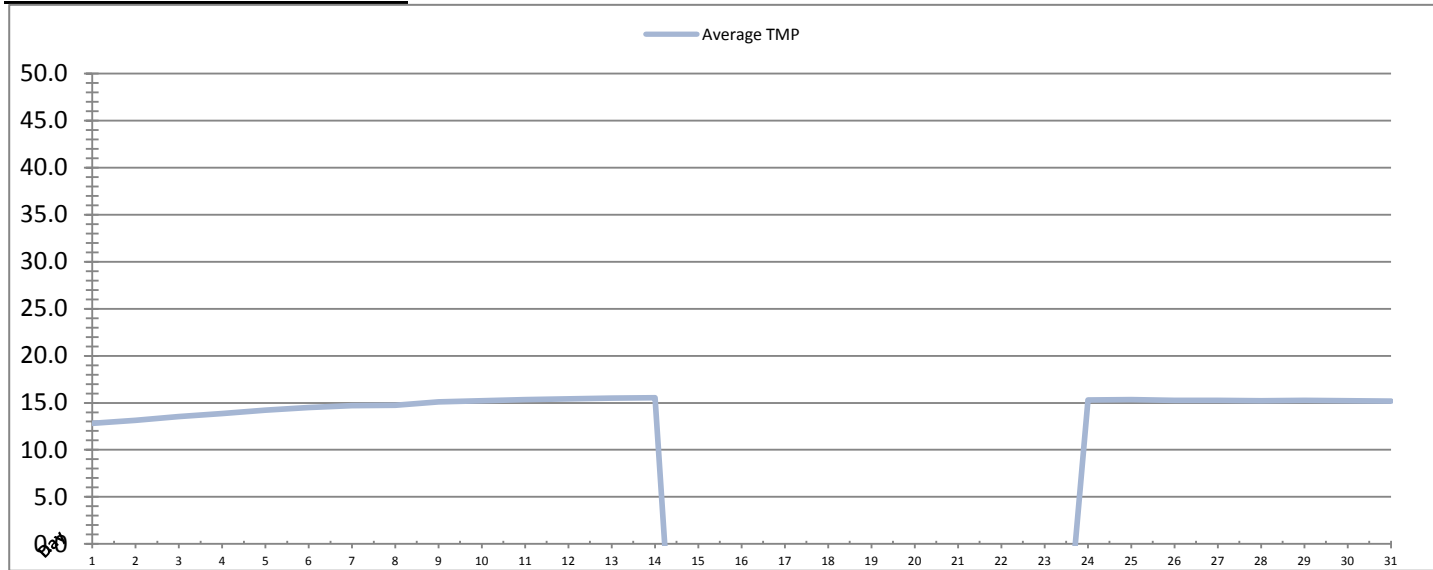


Date	Integrity Test Rack 1							
	Initial Pressure (kPa)	Final Pressure (kPa)	Test Duration (sec)	Change in Pressure (kPa)	UCL	Within UCL	Average TMP (kPa)	Max TMP (kPa)
1	196.4	195.4	300.0	1.0	2.0	✓ 2.0	24.7	136.8
2	196.1	195.0	300.0	1.1	2.0	✓ 2.0	29.8	125.7
3	196.0	195.0	300.0	1.0	2.0	✓ 2.0	24.4	90.9
4	196.7	195.5	300.0	1.2	2.0	✓ 2.0	33.2	69.7
5	196.7	195.4	300.0	1.3	2.0	✓ 2.0	34.9	121.3
6	196.8	195.7	300.0	1.1	2.0	✓ 2.0	25.0	65.0
7	196.3	195.1	300.0	1.2	2.0	✓ 2.0	26.7	67.6
8	196.3	195.1	300.0	1.2	2.0	✓ 2.0	32.0	68.2
9	196.2	195.2	300.0	1.0	2.0	✓ 2.0	26.5	97.0
10	195.9	194.9	300.0	1.0	2.0	✓ 2.0	25.9	63.6
11	196.0	194.9	300.0	1.1	2.0	✓ 2.0	25.1	102.0
12	195.6	194.6	300.0	1.1	2.0	✓ 2.0	21.8	50.5
13	195.8	194.9	300.0	0.9	2.0	✓ 2.0	30.2	106.7
14	195.8	194.9	300.0	0.9	2.0	✓ 2.0	22.7	63.6
15	195.6	194.7	300.0	0.9	2.0	✓ 2.0	34.0	104.6
16	196.0	194.9	300.0	1.2	2.0	✓ 2.0	21.3	66.0
17	195.8	194.7	300.0	1.1	2.0	✓ 2.0	22.7	57.5
18	196.1	195.1	300.0	1.0	2.0	✓ 2.0	28.5	87.4
19	195.8	194.9	300.0	1.0	2.0	✓ 2.0	25.0	64.0
20	195.7	194.7	300.0	1.0	2.0	✓ 2.0	25.6	66.8
21	195.5	194.6	300.0	0.9	2.0	✓ 2.0	28.9	104.8
22	195.9	194.9	300.0	1.0	2.0	✓ 2.0	21.9	66.1
23	195.6	194.8	300.0	0.8	2.0	✓ 2.0	23.8	66.2
24	195.9	194.9	300.0	1.0	2.0	✓ 2.0	31.6	113.5
25	195.7	194.9	300.0	0.8	2.0	✓ 2.0	24.4	49.6
26	195.5	194.5	300.0	1.0	2.0	✓ 2.0	30.1	92.6
27	196.1	195.0	300.0	1.1	2.0	✓ 2.0	24.8	51.2
28	195.6	194.6	300.0	1.0	2.0	✓ 2.0	29.5	57.6
29	195.7	194.7	300.0	1.0	2.0	✓ 2.0	27.6	48.5
30	195.7	194.7	300.0	0.9	2.0	✓ 2.0	26.6	128.8
31	196.0	194.9	300.0	1.1	2.0	✓ 2.0	26.2	85.3
Total								
Average	196.0	194.9	300.0	1.0	2.0	2.0	26.9	81.9
Maximum	196.8	195.7	300.0	1.3	2.0	2.0	34.9	136.8
Date	6-May	6-May	1-May	5-May	1-May	1-May	5-May	1-May
Minimum	195.5	194.5	300.0	0.8	2.0	2.0	21.3	48.5
Date	21-May	26-May	1-May	23-May	1-May	1-May	16-May	29-May

Notes:

Membranes Monthly Report

Month: **May-17**

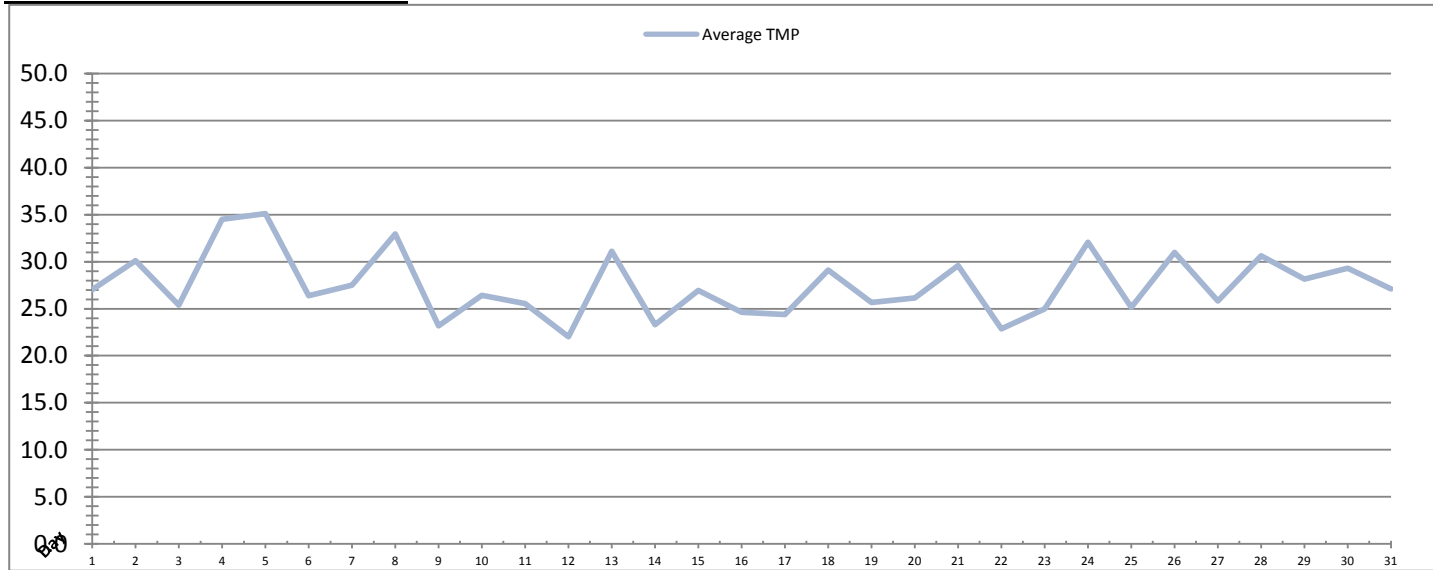


Date	Integrity Test Rack 2							
	Initial Pressure (kPa)	Final Pressure (kPa)	Test Duration (sec)	Change in Pressure (kPa)	UCL	Within UCL	Average TMP (kPa)	Max TMP (kPa)
1	201.8	200.5	300.0	1.3	2.0	✓ 2.0	12.8	13.1
2	201.8	200.5	300.0	1.3	2.0	✓ 2.0	13.2	13.4
3	201.8	200.5	300.0	1.3	2.0	✓ 2.0	13.5	13.8
4	201.8	200.5	300.0	1.3	2.0	✓ 2.0	13.8	14.2
5	201.8	200.5	300.0	1.3	2.0	✓ 2.0	14.2	14.5
6	201.8	200.5	300.0	1.3	2.0	✓ 2.0	14.5	14.7
7	201.8	200.5	300.0	1.3	2.0	✓ 2.0	14.7	14.9
8	201.8	200.5	300.0	1.3	2.0	✓ 2.0	14.8	15.2
9	201.8	200.5	300.0	1.3	2.0	✓ 2.0	15.1	15.3
10	201.8	200.5	300.0	1.3	2.0	✓ 2.0	15.2	15.4
11	201.8	200.5	300.0	1.3	2.0	✓ 2.0	15.3	15.5
12	201.8	200.5	300.0	1.3	2.0	✓ 2.0	15.4	15.7
13	201.8	200.5	300.0	1.3	2.0	✓ 2.0	15.5	15.7
14	201.8	200.5	300.0	1.3	2.0	✓ 2.0	15.5	15.7
15	201.8	200.5	300.0	1.3	2.0	✓ 2.0	-54.3	93.4
16	201.8	200.5	300.0	1.3	2.0	✓ 2.0	-126.0	-126.1
17	201.8	200.5	300.0	1.3	2.0	✓ 2.0	-126.0	-126.1
18	201.8	200.5	300.0	1.3	2.0	✓ 2.0	-126.0	-126.1
19	201.8	200.5	300.0	1.3	2.0	✓ 2.0	-126.0	-126.1
20	201.8	200.5	300.0	1.3	2.0	✓ 2.0	-126.0	-126.1
21	201.8	200.5	300.0	1.3	2.0	✓ 2.0	-126.0	-126.1
22	201.8	200.5	300.0	1.3	2.0	✓ 2.0	-126.0	-126.1
23	201.8	200.5	300.0	1.3	2.0	✓ 2.0	-36.9	74.3
24	201.8	200.5	300.0	1.3	2.0	✓ 2.0	15.3	15.4
25	201.8	200.5	300.0	1.3	2.0	✓ 2.0	15.3	15.4
26	201.8	200.5	300.0	1.3	2.0	✓ 2.0	15.3	15.4
27	201.8	200.5	300.0	1.3	2.0	✓ 2.0	15.3	15.4
28	201.8	200.5	300.0	1.3	2.0	✓ 2.0	15.2	15.4
29	201.8	200.5	300.0	1.3	2.0	✓ 2.0	15.2	15.4
30	201.8	200.5	300.0	1.3	2.0	✓ 2.0	15.2	15.4
31	201.8	200.5	300.0	1.3	2.0	✓ 2.0	15.2	15.3
Total								
Average	201.8	200.5	300.0	1.3	2.0	2.0	-20.9	-12.4
Maximum	201.8	200.5	300.0	1.3	2.0	2.0	15.5	93.4
Date	1-May	1-May	1-May	1-May	1-May	1-May	14-May	15-May
Minimum	201.8	200.5	300.0	1.3	2.0	2.0	-126.0	-126.1
Date	1-May	1-May	1-May	1-May	1-May	1-May	16-May	16-May

Notes:
 Rack 2 offline

Membranes Monthly Report

Month: **May-17**

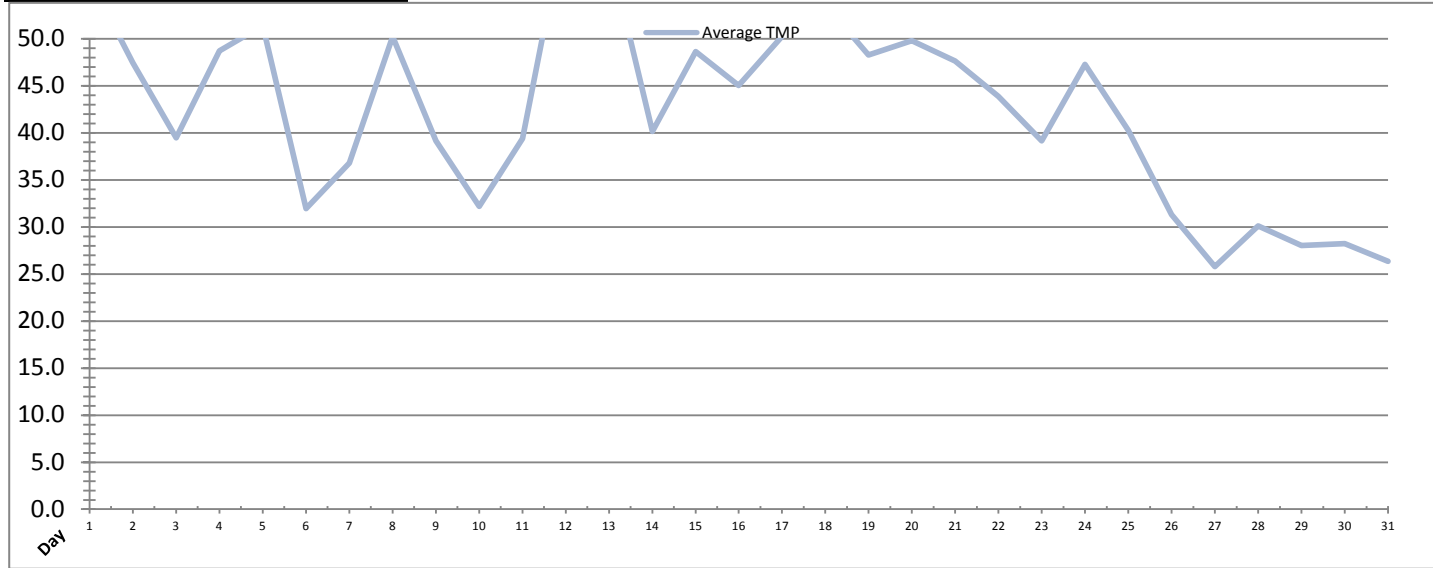


Date	Integrity Test Rack 3							
	Initial Pressure (kPa)	Final Pressure (kPa)	Test Duration (sec)	Change in Pressure (kPa)	UCL	Within UCL	Average TMP (kPa)	Max TMP (kPa)
1	191.8	190.7	300.0	1.1	2.0	✓ 2.0	27.0	138.8
2	191.4	189.9	300.0	1.5	2.0	✓ 2.0	30.1	202.2
3	192.0	190.9	300.0	1.2	2.0	✓ 2.0	25.4	90.6
4	190.9	189.4	300.0	1.5	2.0	✓ 2.0	34.5	73.5
5	191.2	189.9	300.0	1.3	2.0	✓ 2.0	35.1	120.0
6	190.4	189.0	300.0	1.4	2.0	✓ 2.0	26.4	81.0
7	191.2	189.8	300.0	1.4	2.0	✓ 2.0	27.5	70.8
8	191.5	190.1	300.0	1.4	2.0	✓ 2.0	32.9	75.6
9	190.9	189.7	300.0	1.2	2.0	✓ 2.0	23.2	63.0
10	190.9	189.6	300.0	1.3	2.0	✓ 2.0	26.4	64.2
11	192.4	191.2	300.0	1.2	2.0	✓ 2.0	25.5	96.8
12	191.4	190.0	300.0	1.4	2.0	✓ 2.0	22.0	58.7
13	191.3	190.0	300.0	1.3	2.0	✓ 2.0	31.1	106.8
14	191.1	189.9	300.0	1.2	2.0	✓ 2.0	23.3	67.7
15	191.2	189.9	300.0	1.2	2.0	✓ 2.0	26.9	68.3
16	191.2	190.1	300.0	1.1	2.0	✓ 2.0	24.6	90.7
17	191.6	190.4	300.0	1.2	2.0	✓ 2.0	24.4	76.9
18	190.9	189.5	300.0	1.4	2.0	✓ 2.0	29.1	71.1
19	191.0	189.9	300.0	1.1	2.0	✓ 2.0	25.7	68.1
20	191.4	190.1	300.0	1.2	2.0	✓ 2.0	26.1	72.2
21	191.2	189.9	300.0	1.4	2.0	✓ 2.0	29.6	108.3
22	191.2	189.9	300.0	1.3	2.0	✓ 2.0	22.9	64.7
23	191.0	189.9	300.0	1.1	2.0	✓ 2.0	25.0	65.4
24	191.1	189.8	300.0	1.3	2.0	✓ 2.0	32.1	104.9
25	191.4	190.1	300.0	1.2	2.0	✓ 2.0	25.2	50.5
26	191.0	189.9	300.0	1.1	2.0	✓ 2.0	31.0	90.9
27	190.8	189.5	300.0	1.3	2.0	✓ 2.0	25.8	51.3
28	191.2	189.8	300.0	1.4	2.0	✓ 2.0	30.6	52.9
29	190.9	189.6	300.0	1.3	2.0	✓ 2.0	28.2	48.5
30	190.6	189.4	300.0	1.2	2.0	✓ 2.0	29.3	140.7
31	191.5	190.2	300.0	1.2	2.0	✓ 2.0	27.1	76.4
Total								
Average	191.2	189.9	300.0	1.3	2.0	2.0	27.5	84.2
Maximum	192.4	191.2	300.0	1.5	2.0	2.0	35.1	202.2
Date	11-May	11-May	1-May	2-May	1-May	1-May	5-May	2-May
Minimum	190.4	189.0	300.0	1.1	2.0	2.0	22.0	48.5
Date	6-May	6-May	1-May	16-May	1-May	1-May	12-May	29-May

Notes:

Membranes Monthly Report

Month: **May-17**



Date	Integrity Test Rack 4							
	Initial Pressure (kPa)	Final Pressure (kPa)	Test Duration (sec)	Change in Pressure (kPa)	UCL	Within UCL	Average TMP (kPa)	Max TMP (kPa)
1	197.9	196.7	300.0	1.2	2.0	✓ 2.0	56.4	145.1
2	197.8	196.5	300.0	1.3	2.0	✓ 2.0	47.5	199.0
3	197.6	196.4	300.0	1.1	2.0	✓ 2.0	39.5	141.3
4	197.4	196.2	300.0	1.3	2.0	✓ 2.0	48.7	121.4
5	197.3	196.0	300.0	1.3	2.0	✓ 2.0	51.4	150.6
6	197.3	196.0	300.0	1.3	2.0	✓ 2.0	31.9	117.6
7	197.2	195.9	300.0	1.3	2.0	✓ 2.0	36.8	121.8
8	197.6	196.2	300.0	1.4	2.0	✓ 2.0	50.2	117.7
9	197.7	196.5	300.0	1.2	2.0	✓ 2.0	39.1	152.0
10	197.4	196.3	300.0	1.1	2.0	✓ 2.0	32.2	117.5
11	197.4	196.3	300.0	1.1	2.0	✓ 2.0	39.4	159.4
12	198.0	196.7	300.0	1.3	2.0	✓ 2.0	62.7	96.9
13	198.0	196.8	300.0	1.2	2.0	✓ 2.0	59.3	131.6
14	198.0	196.7	300.0	1.3	2.0	✓ 2.0	40.2	114.7
15	198.1	196.9	300.0	1.2	2.0	✓ 2.0	48.6	127.7
16	197.6	196.5	300.0	1.1	2.0	✓ 2.0	45.1	121.0
17	197.4	196.3	300.0	1.1	2.0	✓ 2.0	50.2	155.8
18	197.5	196.3	300.0	1.1	2.0	✓ 2.0	53.6	119.7
19	197.4	196.2	300.0	1.2	2.0	✓ 2.0	48.3	126.6
20	198.2	197.0	300.0	1.2	2.0	✓ 2.0	49.8	127.5
21	198.0	196.8	300.0	1.2	2.0	✓ 2.0	47.7	145.7
22	197.6	196.5	300.0	1.1	2.0	✓ 2.0	43.9	118.5
23	198.1	197.0	300.0	1.1	2.0	✓ 2.0	39.1	113.2
24	197.9	196.8	300.0	1.2	2.0	✓ 2.0	47.3	162.9
25	197.1	195.9	300.0	1.1	2.0	✓ 2.0	40.3	93.7
26	197.2	196.0	300.0	1.3	2.0	✓ 2.0	31.3	107.4
27	196.8	195.8	300.0	0.9	2.0	✓ 2.0	25.8	51.9
28	197.2	196.0	300.0	1.3	2.0	✓ 2.0	30.1	57.4
29	197.0	195.8	300.0	1.2	2.0	✓ 2.0	28.0	67.2
30	196.9	195.7	300.0	1.1	2.0	✓ 2.0	28.2	124.2
31	196.6	195.4	300.0	1.2	2.0	✓ 2.0	26.3	76.9
Total								
Average	197.5	196.3	300.0	1.2	2.0	2.0	42.5	122.1
Maximum	198.2	197.0	300.0	1.4	2.0	2.0	62.7	199.0
Date	20-May	23-May	1-May	8-May	1-May	1-May	12-May	2-May
Minimum	196.6	195.4	300.0	0.9	2.0	2.0	25.8	51.9
Date	31-May	31-May	1-May	27-May	1-May	1-May	27-May	27-May

Notes:

Membranes Monthly Report

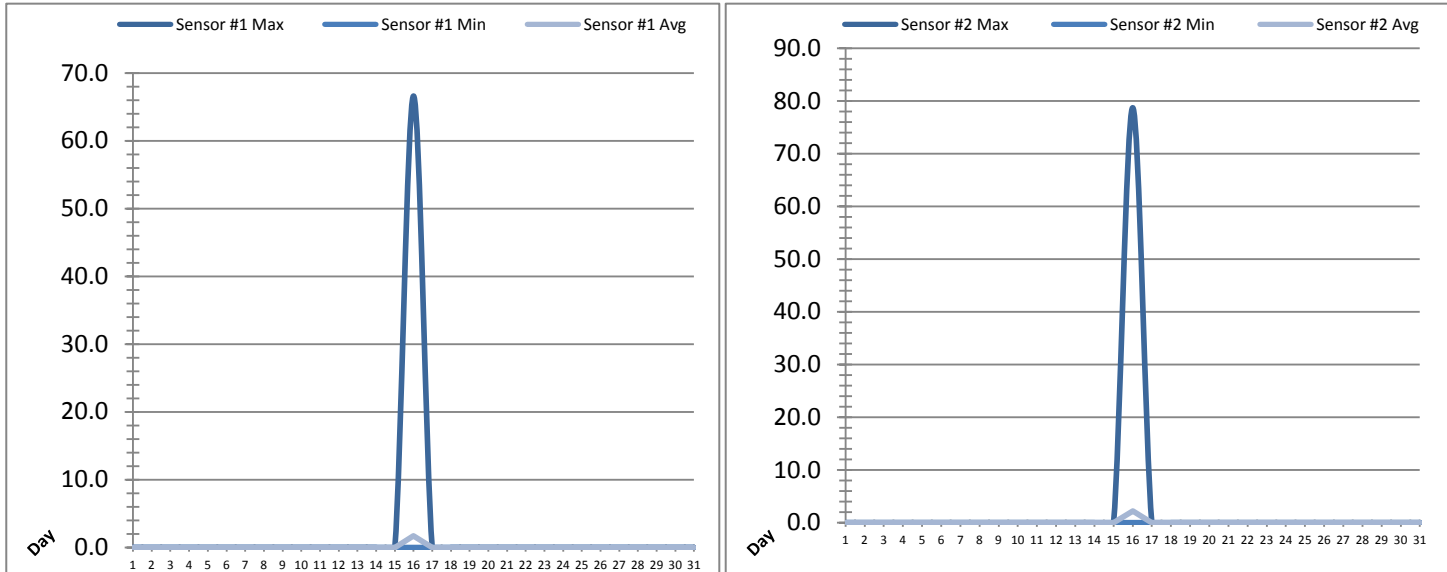
Month: May-17

Date	Membranes Monthly Performance							
	Rack 1 >0.1 NTU (Minutes)	Rack 1 Forward Flow (Minutes)	Rack 2 >0.1 NTU (Minutes)	Rack 2 Forward Flow (Minutes)	Rack 3 >0.1 NTU (Minutes)	Rack 3 Forward Flow (Minutes)	Rack 4 >0.1 NTU (Minutes)	Rack 4 Forward Flow (Minutes)
1	0.0	1134.1	0.0	0.0	0.0	1141.3	0.0	1143.0
2	0.0	919.4	0.0	0.0	0.0	923.5	0.0	922.0
3	0.0	785.5	0.0	0.0	0.0	790.0	0.0	793.2
4	0.0	1242.3	0.0	0.0	0.0	1249.5	0.0	1257.1
5	0.0	945.2	0.0	0.0	0.0	946.5	0.0	952.4
6	0.0	705.3	0.0	0.0	0.0	712.0	0.0	713.5
7	0.0	834.0	0.0	0.0	0.0	835.0	0.0	837.2
8	0.0	1179.1	0.0	0.0	0.0	1184.1	0.0	1182.4
9	2.2	818.4	0.0	0.0	0.0	689.4	0.0	833.3
10	0.0	798.4	0.0	0.0	0.0	798.4	0.0	801.6
11	0.0	1066.2	0.0	0.0	0.0	1070.3	0.0	892.4
12	0.0	1402.2	0.0	0.0	0.0	1406.3	0.0	1408.1
13	0.0	1238.3	0.0	0.0	0.0	1239.2	0.0	1246.3
14	0.0	810.3	0.0	0.0	0.0	812.6	0.0	812.6
15	0.0	1238.3	0.0	0.0	0.0	1033.4	0.0	1239.1
16	3.2	884.3	0.0	0.0	0.0	966.1	0.0	971.1
17	0.0	1120.1	0.0	0.0	0.0	1151.2	0.0	1152.5
18	0.0	1249.5	0.0	0.0	0.0	1254.4	0.0	1255.3
19	0.0	902.4	0.0	0.0	0.0	905.1	0.0	908.2
20	0.0	966.6	0.0	0.0	0.0	972.5	0.0	977.3
21	0.0	908.6	0.0	0.0	0.0	915.3	0.0	911.3
22	0.0	825.0	0.0	0.0	0.0	829.6	0.0	838.1
23	0.0	890.5	0.0	0.0	0.0	899.4	0.0	900.3
24	0.0	842.2	0.0	0.0	0.0	848.0	0.0	848.5
25	0.0	1132.4	0.0	0.0	0.0	1135.2	0.0	1135.0
26	0.0	865.0	0.0	0.0	0.0	864.5	0.0	870.5
27	0.0	834.1	0.0	0.0	0.0	836.3	0.0	836.3
28	0.0	1174.4	0.0	0.0	0.0	1179.4	0.0	1176.3
29	0.0	1108.4	0.0	0.0	0.0	1109.2	0.0	1110.6
30	10.4	1057.4	0.0	0.0	0.0	1064.6	1.3	1069.5
31	0.0	950.4	0.0	0.0	0.0	953.6	0.0	954.5
Total	15.8	30828.3	0.0	0.0	0.0	30715.8	1.3	30949.3
Percent	0.051		#DIV/0!		0.000		0.004	
Maximum	10.4	1402.2	0.0	0.0	0.0	1406.3	1.3	1408.1
Date	30-May	12-May	1-May	1-May	1-May	12-May	30-May	12-May
Minimum	0.0	705.3	0.0	0.0	0.0	689.4	0.0	713.5
Date	1-May	6-May	1-May	1-May	1-May	9-May	1-May	6-May

Notes:
 Met filter performance criteria of 99% of readings <0.1ntu for the month.
 Rack 2 offline.

UV System Monthly Report

Month: May-17

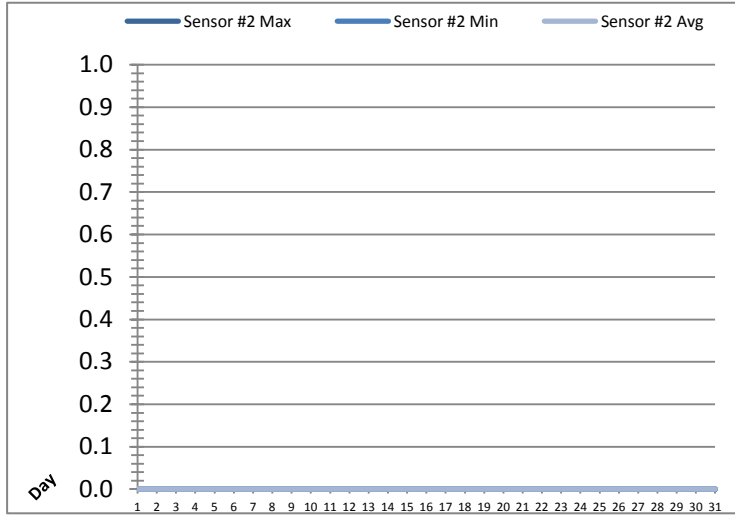
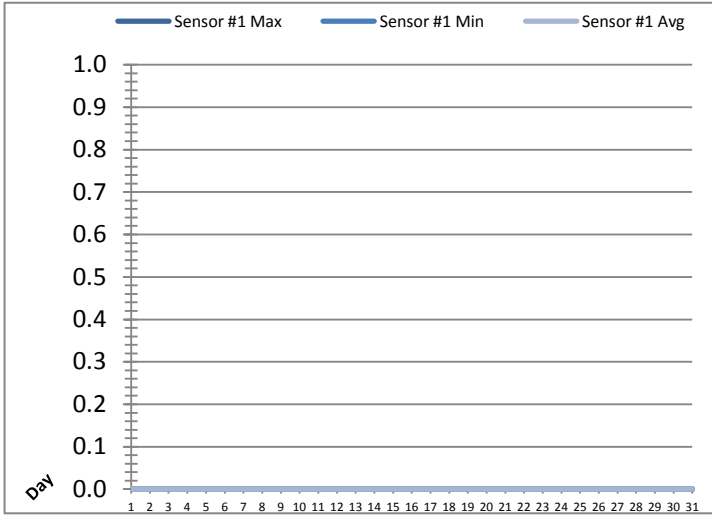


Date	UV Reactor 1					
	Intensity Sensor 1 (mW/cm ²)			Intensity Sensor 2 (mW/cm ²)		
	Maximum	Minimum	Average	Maximum	Minimum	Average
1	0.0	0.0	0.0	0.0	0.0	0.0
2	0.0	0.0	0.0	0.0	0.0	0.0
3	0.0	0.0	0.0	0.0	0.0	0.0
4	0.0	0.0	0.0	0.0	0.0	0.0
5	0.0	0.0	0.0	0.0	0.0	0.0
6	0.0	0.0	0.0	0.0	0.0	0.0
7	0.0	0.0	0.0	0.0	0.0	0.0
8	0.0	0.0	0.0	0.0	0.0	0.0
9	0.0	0.0	0.0	0.0	0.0	0.0
10	0.0	0.0	0.0	0.0	0.0	0.0
11	0.0	0.0	0.0	0.0	0.0	0.0
12	0.0	0.0	0.0	0.0	0.0	0.0
13	0.0	0.0	0.0	0.0	0.0	0.0
14	0.0	0.0	0.0	0.0	0.0	0.0
15	0.0	0.0	0.0	0.0	0.0	0.0
16	66.6	0.0	1.7	78.7	0.0	2.2
17	0.0	0.0	0.0	0.0	0.0	0.0
18	0.0	0.0	0.0	0.0	0.0	0.0
19	0.0	0.0	0.0	0.0	0.0	0.0
20	0.0	0.0	0.0	0.0	0.0	0.0
21	0.0	0.0	0.0	0.0	0.0	0.0
22	0.0	0.0	0.0	0.0	0.0	0.0
23	0.0	0.0	0.0	0.0	0.0	0.0
24	0.0	0.0	0.0	0.0	0.0	0.0
25	0.0	0.0	0.0	0.0	0.0	0.0
26	0.0	0.0	0.0	0.0	0.0	0.0
27	0.0	0.0	0.0	0.0	0.0	0.0
28	0.0	0.0	0.0	0.0	0.0	0.0
29	0.0	0.0	0.0	0.0	0.0	0.0
30	0.0	0.0	0.0	0.0	0.0	0.0
31	0.0	0.0	0.0	0.0	0.0	0.0
Total						
Average	2.1	0.0	0.1	2.5	0.0	0.1
Maximum	66.6		1.7	78.7		2.2
Date	16-May		16-May	16-May		16-May
Minimum		0.0	0.0		0.0	0.0
Date		1-May	1-May		1-May	1-May

Notes:

UV System Monthly Report

Month: May-17

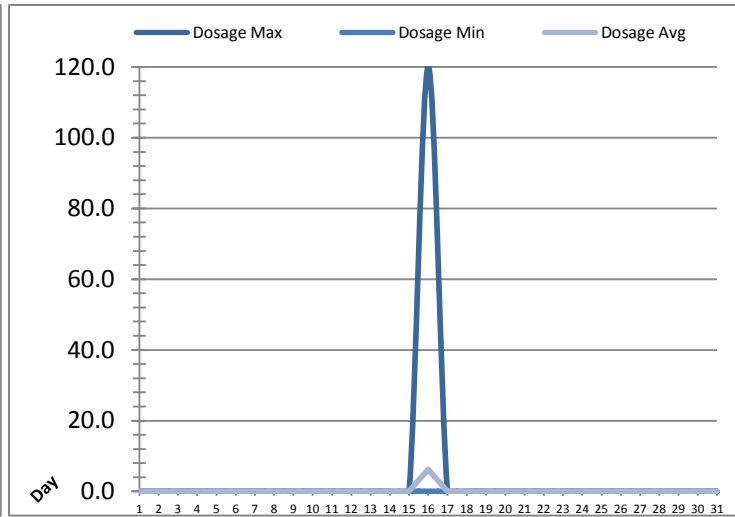


Date	UV Reactor 2					
	Intensity Sensor 1 (mW/cm ²)			Intensity Sensor 2 (mW/cm ²)		
	Maximum	Minimum	Average	Maximum	Minimum	Average
1	0.0	0.0	0.0	0.0	0.0	0.0
2	0.0	0.0	0.0	0.0	0.0	0.0
3	0.0	0.0	0.0	0.0	0.0	0.0
4	0.0	0.0	0.0	0.0	0.0	0.0
5	0.0	0.0	0.0	0.0	0.0	0.0
6	0.0	0.0	0.0	0.0	0.0	0.0
7	0.0	0.0	0.0	0.0	0.0	0.0
8	0.0	0.0	0.0	0.0	0.0	0.0
9	0.0	0.0	0.0	0.0	0.0	0.0
10	0.0	0.0	0.0	0.0	0.0	0.0
11	0.0	0.0	0.0	0.0	0.0	0.0
12	0.0	0.0	0.0	0.0	0.0	0.0
13	0.0	0.0	0.0	0.0	0.0	0.0
14	0.0	0.0	0.0	0.0	0.0	0.0
15	0.0	0.0	0.0	0.0	0.0	0.0
16	0.0	0.0	0.0	0.0	0.0	0.0
17	0.0	0.0	0.0	0.0	0.0	0.0
18	0.0	0.0	0.0	0.0	0.0	0.0
19	0.0	0.0	0.0	0.0	0.0	0.0
20	0.0	0.0	0.0	0.0	0.0	0.0
21	0.0	0.0	0.0	0.0	0.0	0.0
22	0.0	0.0	0.0	0.0	0.0	0.0
23	0.0	0.0	0.0	0.0	0.0	0.0
24	0.0	0.0	0.0	0.0	0.0	0.0
25	0.0	0.0	0.0	0.0	0.0	0.0
26	0.0	0.0	0.0	0.0	0.0	0.0
27	0.0	0.0	0.0	0.0	0.0	0.0
28	0.0	0.0	0.0	0.0	0.0	0.0
29	0.0	0.0	0.0	0.0	0.0	0.0
30	0.0	0.0	0.0	0.0	0.0	0.0
31	0.0	0.0	0.0	0.0	0.0	0.0
Total						
Average	0.0	0.0	0.0	0.0	0.0	0.0
Maximum	0.0		0.0	0.0		0.0
Date	1-May		1-May	1-May		1-May
Minimum		0.0	0.0		0.0	0.0
Date		1-May	1-May		1-May	1-May

Notes:

UV System Monthly Report

Month: May-17

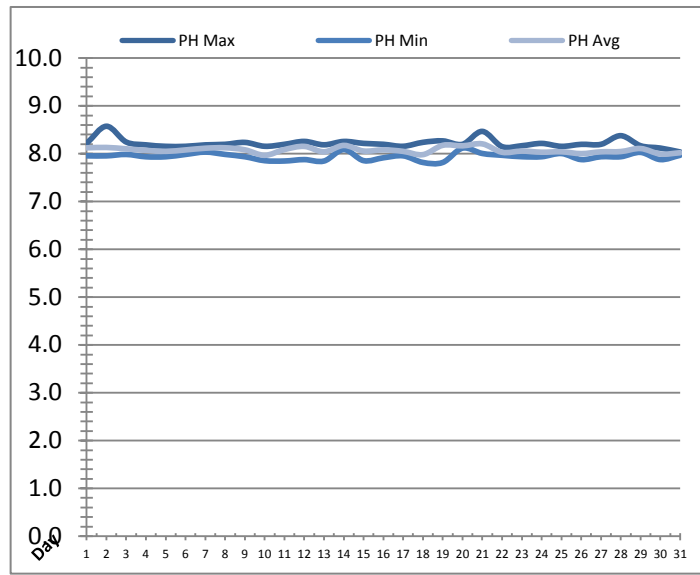
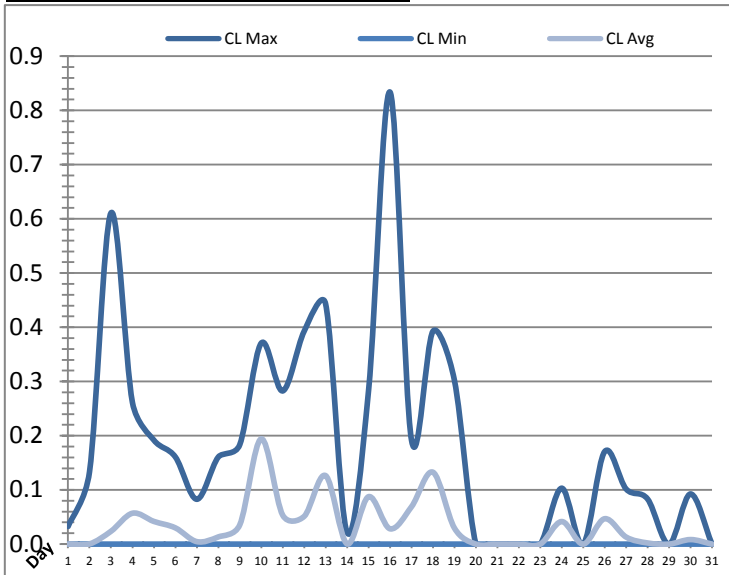


UV System							
Date	Transmittance (%)			Dosage (mJ/cm ²)			Inlet Flow (L/s)
	Maximum	Minimum	Average	Maximum	Minimum	Average	Maximum
1	96.00	93.00	95.55	0.0	0.0	0.0	85.3
2	97.00	95.00	95.61	0.0	0.0	0.0	133.6
3	96.00	93.00	95.71	0.0	0.0	0.0	117.7
4	97.00	93.00	95.68	0.0	0.0	0.0	71.8
5	96.00	94.00	95.45	0.0	0.0	0.0	129.5
6	96.00	94.00	95.17	0.0	0.0	0.0	75.1
7	96.00	93.00	94.76	0.0	0.0	0.0	73.4
8	96.00	93.00	95.38	0.0	0.0	0.0	71.7
9	96.00	91.00	95.08	0.0	0.0	0.0	71.3
10	96.00	93.00	95.03	0.0	0.0	0.0	95.1
11	96.00	86.00	94.76	0.0	0.0	0.0	71.0
12	96.00	94.00	94.85	0.0	0.0	0.0	52.3
13	96.00	94.00	95.16	0.0	0.0	0.0	131.3
14	97.00	94.00	95.45	0.0	0.0	0.0	125.4
15	97.00	94.00	95.67	0.0	0.0	0.0	75.3
16	96.00	70.00	95.57	120.0	0.0	6.3	104.9
17	96.00	95.00	95.77	0.0	0.0	0.0	69.4
18	96.00	95.00	95.66	0.0	0.0	0.0	111.6
19	97.00	94.00	95.94	0.0	0.0	0.0	101.2
20	96.00	94.00	95.73	0.0	0.0	0.0	71.7
21	96.00	95.00	95.65	0.0	0.0	0.0	130.2
22	96.00	95.00	95.84	0.0	0.0	0.0	143.0
23	97.00	95.00	95.93	0.0	0.0	0.0	145.1
24	97.00	94.00	95.77	0.0	0.0	0.0	131.1
25	97.00	70.00	95.30	0.0	0.0	0.0	117.0
26	96.00	86.00	95.84	0.0	0.0	0.0	121.5
27	96.00	70.00	95.24	0.0	0.0	0.0	115.1
28	95.00	95.00	95.00	0.0	0.0	0.0	116.4
29	95.00	95.00	95.00	0.0	0.0	0.0	62.9
30	95.00	95.00	95.00	0.0	0.0	0.0	103.9
31	95.00	95.00	95.00	0.0	0.0	0.0	117.1
Total							
Average	96.13	91.19	95.41	3.9	0.0	0.2	101.4
Maximum	97.00		95.94	120.0		6.3	145.1
Date	2-May		19-May	16-May		16-May	23-May
Minimum		70.00	94.76		0.0	0.0	
Date		16-May	11-May		1-May	1-May	

Notes:

Plant Quality Report

Month: **May-17**

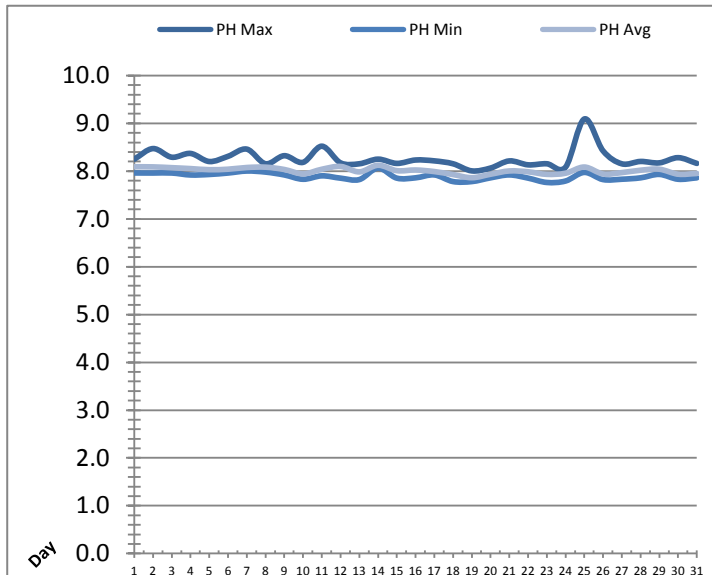
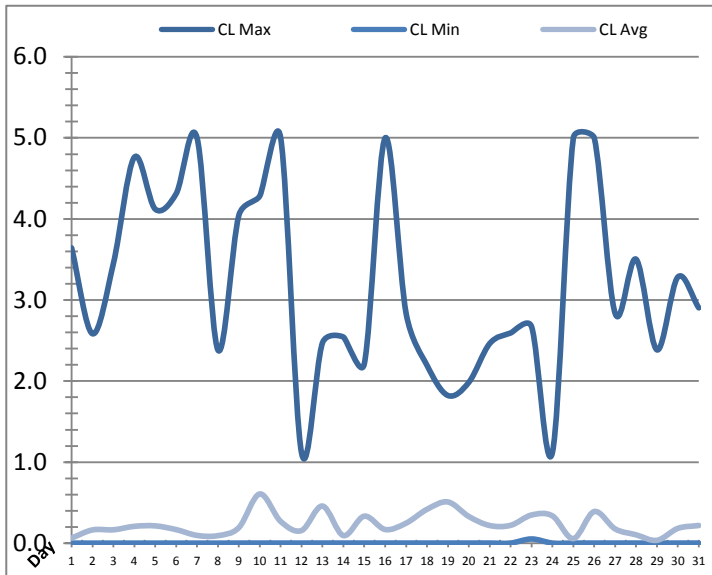


Date	Strainer Chlorine Residual			Strainer pH		
	AIT_2003_CL (ppm)			AIT_2003_PH		
	Maximum	Minimum	Average	Maximum	Minimum	Average
1	0.03	0.00	0.00	8.21	7.96	8.12
2	0.13	0.00	0.00	8.57	7.95	8.13
3	0.61	0.00	0.02	8.24	7.98	8.10
4	0.26	0.00	0.06	8.19	7.94	8.07
5	0.19	0.00	0.04	8.15	7.94	8.05
6	0.16	0.00	0.03	8.15	7.98	8.08
7	0.08	0.00	0.00	8.19	8.03	8.12
8	0.16	0.00	0.01	8.20	7.99	8.12
9	0.18	0.00	0.04	8.24	7.94	8.08
10	0.37	0.00	0.19	8.16	7.85	7.97
11	0.28	0.00	0.05	8.20	7.85	8.09
12	0.39	0.00	0.05	8.26	7.88	8.15
13	0.44	0.00	0.13	8.19	7.85	8.04
14	0.02	0.00	0.00	8.26	8.09	8.17
15	0.28	0.00	0.09	8.22	7.85	8.06
16	0.83	0.00	0.03	8.20	7.91	8.08
17	0.19	0.00	0.07	8.16	7.96	8.05
18	0.39	0.00	0.13	8.24	7.82	7.98
19	0.30	0.00	0.03	8.27	7.82	8.18
20	0.00	0.00	0.00	8.20	8.12	8.17
21	0.00	0.00	0.00	8.47	8.00	8.21
22	0.00	0.00	0.00	8.15	7.97	8.03
23	0.00	0.00	0.00	8.17	7.94	8.05
24	0.10	0.00	0.04	8.22	7.94	8.03
25	0.00	0.00	0.00	8.15	8.00	8.04
26	0.17	0.00	0.05	8.20	7.88	8.00
27	0.10	0.00	0.01	8.20	7.94	8.04
28	0.08	0.00	0.00	8.38	7.94	8.05
29	0.00	0.00	0.00	8.17	8.03	8.11
30	0.09	0.00	0.01	8.12	7.88	7.99
31	0.00	0.00	0.00	8.04	7.97	8.02
Total						
Average	0.19	0.00	0.04	8.22	7.94	8.08
Maximum	0.83		0.19	8.57		8.21
Date	16-May		10-May	2-May		21-May
Minimum		0.00	0.00		7.82	7.97
Date		1-May	20-May		18-May	10-May

Notes:

Plant Quality Report

Month: **May-17**

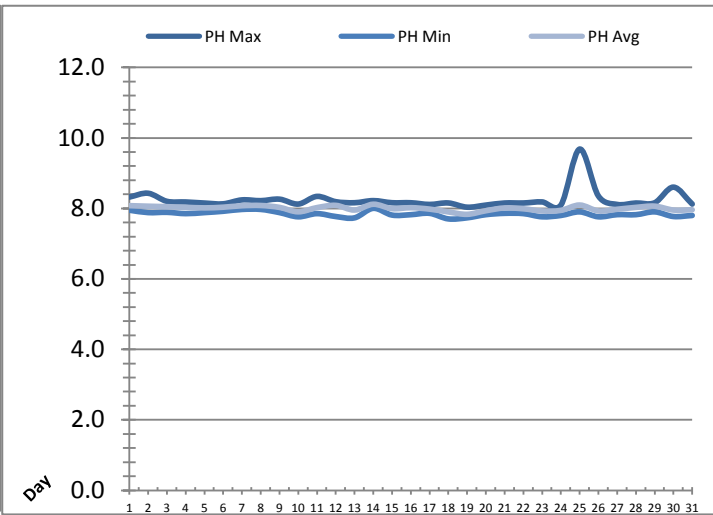
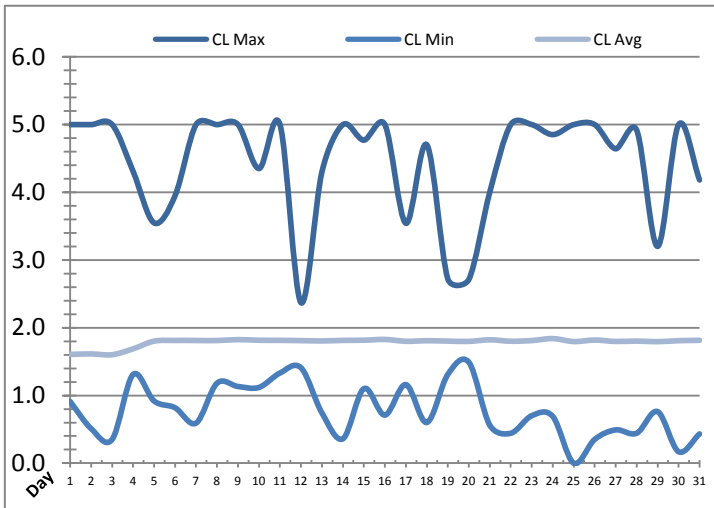


Date	Inlet UV Chlorine Residual			Inlet UV pH		
	AIT_5005_CL (ppm)			AIT_5005_PH		
	Maximum	Minimum	Average	Maximum	Minimum	Average
1	✓ 3.64	✓ 0.00	0.06	8.25	7.96	8.09
2	✓ 2.58	✓ 0.00	0.16	8.47	7.96	8.09
3	✓ 3.45	✓ 0.00	0.17	8.29	7.96	8.07
4	✓ 4.76	✓ 0.00	0.21	8.37	7.92	8.05
5	✓ 4.12	✓ 0.00	0.21	8.20	7.93	8.03
6	✓ 4.31	✓ 0.00	0.17	8.31	7.96	8.04
7	✓ 5.00	✓ 0.00	0.10	8.46	8.00	8.08
8	✓ 2.38	✓ 0.00	0.09	8.15	7.98	8.08
9	✓ 4.04	✓ 0.00	0.19	8.32	7.92	8.03
10	✓ 4.28	✓ 0.00	0.61	8.18	7.83	7.94
11	✓ 5.00	✓ 0.00	0.27	8.52	7.90	8.04
12	✓ 1.11	✓ 0.00	0.16	8.17	7.85	8.10
13	✓ 2.47	✓ 0.00	0.46	8.15	7.82	7.98
14	✓ 2.54	✓ 0.00	0.09	8.25	8.06	8.12
15	✓ 2.21	✓ 0.00	0.33	8.16	7.85	8.01
16	✓ 5.00	✓ 0.00	0.17	8.23	7.86	8.02
17	✓ 2.83	✓ 0.00	0.25	8.21	7.92	7.99
18	✓ 2.19	✓ 0.00	0.42	8.15	7.78	7.93
19	✓ 1.82	✓ 0.00	0.51	8.01	7.78	7.86
20	✓ 1.98	✓ 0.00	0.33	8.06	7.86	7.94
21	✓ 2.46	✓ 0.00	0.22	8.21	7.92	8.00
22	✓ 2.59	✓ 0.00	0.22	8.13	7.85	7.99
23	✓ 2.67	✓ 0.05	0.35	8.15	7.76	7.93
24	✓ 1.12	✓ 0.00	0.34	8.08	7.79	7.96
25	✓ 5.00	✓ 0.00	0.06	9.09	7.97	8.09
26	✓ 5.00	✓ 0.00	0.39	8.42	7.82	7.94
27	✓ 2.83	✓ 0.00	0.18	8.15	7.83	7.97
28	✓ 3.50	✓ 0.00	0.10	8.20	7.86	8.02
29	✓ 2.38	✓ 0.00	0.04	8.17	7.93	8.04
30	✓ 3.28	✓ 0.00	0.18	8.28	7.83	7.94
31	✓ 2.90	✓ 0.00	0.22	8.16	7.86	7.95
Total						
Average	3.21	0.00	0.23	8.26	7.89	8.01
Maximum	5.00		0.61	9.09		8.12
Date	7-May		10-May	25-May		14-May
Minimum		0.00	0.04		7.76	7.86
Date		8-May	29-May		23-May	19-May

Notes:

Plant Quality Report

Month: **May-17**

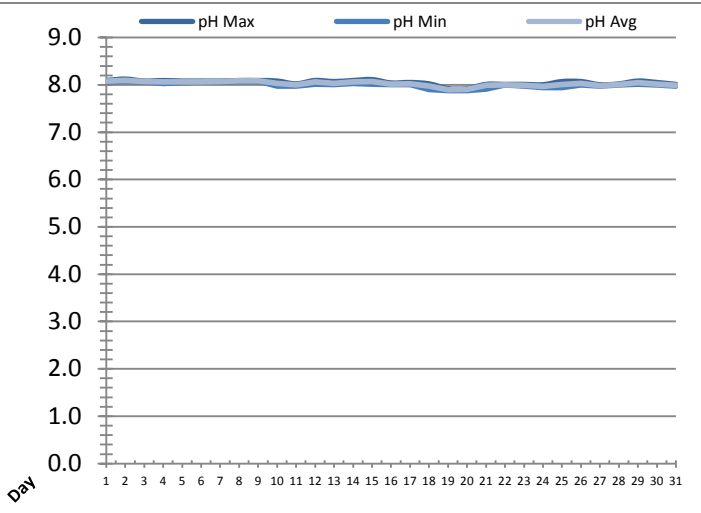
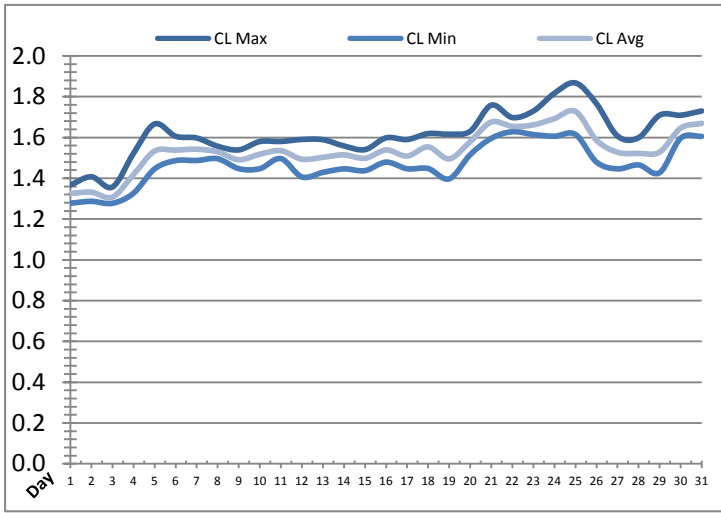


Date	Discharge UV Chlorine Residual			Discharge UV pH		
	AIT_5006_CL (ppm)			AIT_5006_PH		
	Maximum	Minimum	Average	Maximum	Minimum	Average
1	5.00	0.91	1.61	8.32	7.95	8.08
2	5.00	0.51	1.61	8.43	7.88	8.06
3	5.00	0.35	1.60	8.20	7.89	8.05
4	4.31	1.31	1.69	8.18	7.85	8.03
5	3.55	0.92	1.80	8.15	7.88	8.02
6	3.95	0.82	1.81	8.13	7.92	8.03
7	5.00	0.59	1.81	8.24	7.97	8.08
8	5.00	1.18	1.81	8.22	7.97	8.08
9	5.00	1.13	1.82	8.26	7.88	8.03
10	4.35	1.12	1.82	8.12	7.76	7.90
11	5.00	1.33	1.81	8.34	7.85	8.02
12	2.37	1.41	1.81	8.19	7.77	8.09
13	4.30	0.74	1.81	8.16	7.73	7.95
14	5.00	0.36	1.81	8.22	8.00	8.12
15	4.77	1.10	1.82	8.16	7.81	7.99
16	5.00	0.71	1.83	8.16	7.82	8.02
17	3.54	1.16	1.80	8.11	7.86	7.98
18	4.70	0.60	1.81	8.15	7.70	7.90
19	2.72	1.31	1.80	8.03	7.73	7.83
20	2.71	1.49	1.80	8.09	7.82	7.93
21	4.00	0.56	1.82	8.15	7.86	8.01
22	5.00	0.44	1.80	8.15	7.85	7.99
23	5.00	0.70	1.81	8.18	7.76	7.93
24	4.85	0.69	1.84	8.09	7.80	7.95
25	5.00	0.00	1.80	9.68	7.90	8.10
26	5.00	0.35	1.82	8.35	7.76	7.93
27	4.64	0.49	1.80	8.11	7.82	7.98
28	4.92	0.44	1.80	8.15	7.82	8.03
29	3.20	0.76	1.79	8.16	7.90	8.06
30	5.00	0.17	1.81	8.60	7.77	7.95
31	4.18	0.43	1.81	8.12	7.80	7.96
Total						
Average	4.42	0.78	1.79	8.25	7.84	8.00
Maximum	5.00		1.84	9.68		8.12
Date	1-May		24-May	25-May		14-May
Minimum		0.00	1.60		7.70	7.83
Date		25-May	3-May		18-May	19-May

Notes:

Plant Quality Report

Month: **May-17**

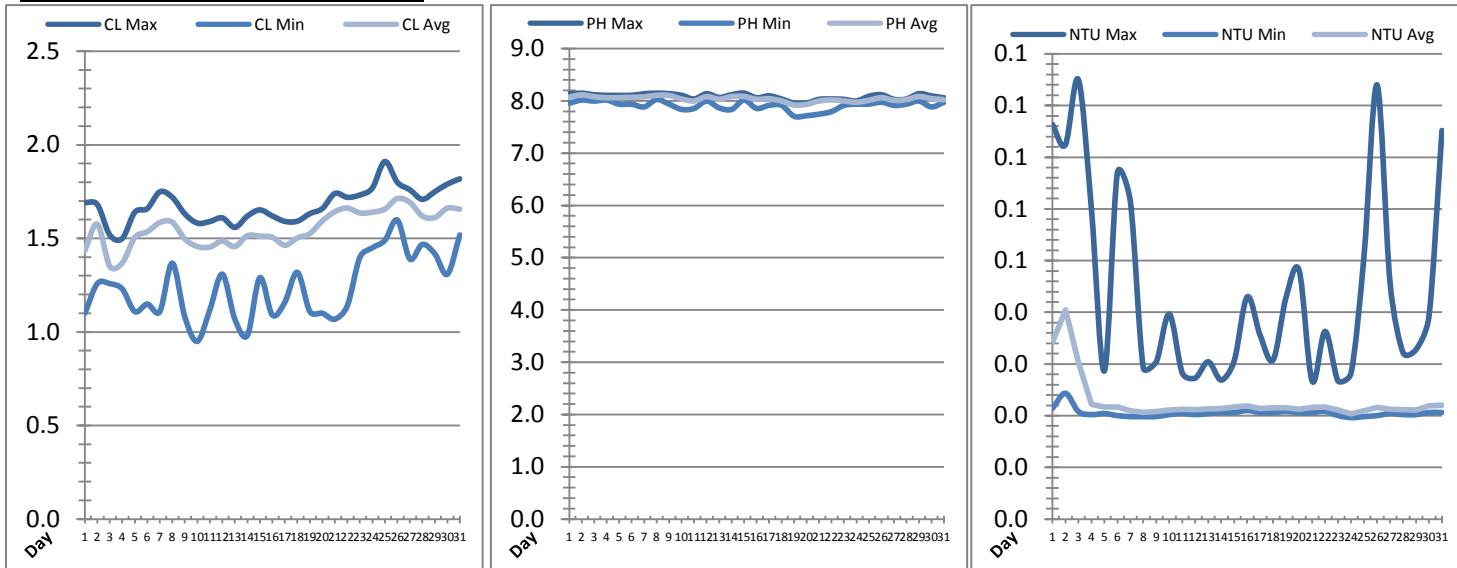


Date	Suction Header Chlorine Res.			Suction Header pH			Distribution CT Calc Total		
	AIT_7001_CL (ppm)			AIT_7001_PH (m)			REAL_CT_CALC_TOTAL (mg*ml/min)		
	Maximum	Minimum	Average	Maximum	Minimum	Average	Maximum	Minimum	Average
1	✓ 1.37	✓ 1.28	1.33	8.09	8.06	8.08	3617.25	0.00	312.20
2	✓ 1.41	✓ 1.29	1.33	8.12	8.07	8.10	2503.67	0.00	190.34
3	✓ 1.36	✓ 1.28	1.31	8.08	8.06	8.07	2747.96	0.00	154.90
4	✓ 1.52	✓ 1.33	1.42	8.09	8.03	8.06	2527.28	0.00	332.74
5	✓ 1.67	✓ 1.45	1.53	8.08	8.04	8.06	2616.85	0.00	264.88
6	✓ 1.61	✓ 1.49	1.54	8.08	8.06	8.06	1645.45	0.00	352.64
7	✓ 1.60	✓ 1.49	1.54	8.08	8.06	8.07	7768.18	0.00	181.00
8	✓ 1.56	✓ 1.50	1.53	8.09	8.07	8.09	3014.05	0.00	277.74
9	✓ 1.54	✓ 1.45	1.49	8.09	8.08	8.09	3186.12	0.00	302.65
10	✓ 1.58	✓ 1.45	1.52	8.08	7.97	8.03	6451.91	0.00	311.53
11	✓ 1.58	✓ 1.50	1.54	8.02	7.97	8.00	11228.69	0.00	409.15
12	✓ 1.59	✓ 1.41	1.49	8.09	8.02	8.07	10833.09	0.00	334.38
13	✓ 1.59	✓ 1.43	1.50	8.07	8.00	8.03	9165.69	0.00	265.67
14	✓ 1.56	✓ 1.45	1.52	8.09	8.03	8.06	7368.67	0.00	238.66
15	✓ 1.54	✓ 1.44	1.50	8.11	8.02	8.07	3071.37	0.00	327.05
16	✓ 1.60	✓ 1.48	1.54	8.04	8.00	8.02	5978.62	0.00	265.27
17	✓ 1.59	✓ 1.45	1.51	8.05	8.00	8.03	2625.93	0.00	315.41
18	✓ 1.62	✓ 1.45	1.55	8.02	7.91	7.98	3836.17	0.00	336.81
19	✓ 1.62	✓ 1.40	1.50	7.92	7.88	7.89	9132.48	0.00	254.49
20	✓ 1.63	✓ 1.52	1.58	7.92	7.88	7.91	3737.35	0.00	263.98
21	✓ 1.76	✓ 1.60	1.68	8.01	7.92	7.99	4152.98	0.00	228.53
22	✓ 1.70	✓ 1.63	1.66	8.01	8.00	8.00	4801.76	0.00	259.89
23	✓ 1.73	✓ 1.61	1.66	8.01	7.97	7.99	5482.17	0.00	511.88
24	✓ 1.82	✓ 1.61	1.69	8.00	7.94	7.97	6049.34	0.00	146.12
25	✓ 1.87	✓ 1.62	1.73	8.07	7.94	8.01	6274.75	0.00	269.26
26	✓ 1.77	✓ 1.48	1.59	8.07	8.00	8.03	3967.52	0.00	214.83
27	✓ 1.61	✓ 1.45	1.53	8.00	7.97	7.99	4138.52	0.00	158.16
28	✓ 1.60	✓ 1.47	1.52	8.02	8.00	8.00	9431.08	0.00	410.43
29	✓ 1.71	✓ 1.43	1.53	8.08	8.02	8.05	14902.71	0.00	154.42
30	✓ 1.71	✓ 1.60	1.65	8.05	8.00	8.02	12488.49	0.00	252.74
31	✓ 1.73	✓ 1.61	1.67	8.01	7.97	7.99	9712.90	0.00	169.80
Total									
Average	1.62	1.47	1.54	8.05	8.00	8.03			
Maximum	1.87		1.73	8.12		8.10			
Date	25-May		25-May	2-May		2-May			
Minimum		1.28	1.31		7.88	7.89			
Date		3-May	3-May		19-May	19-May			

Notes:

Plant Quality Report

Month: **May-17**

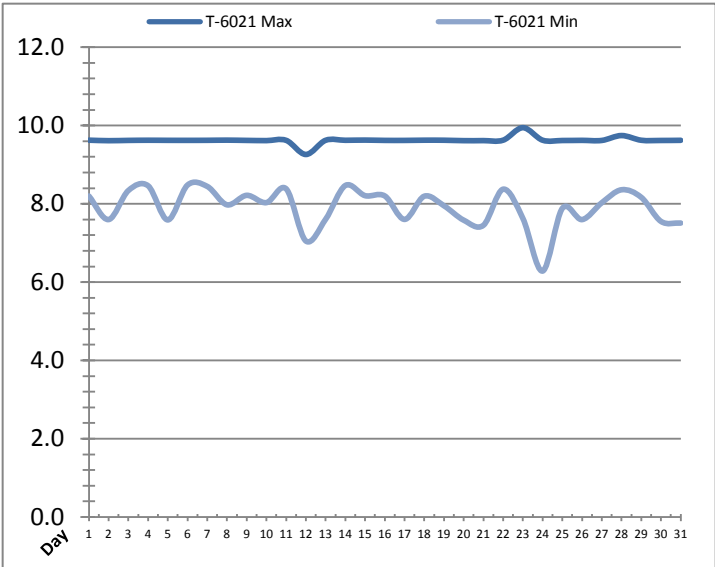
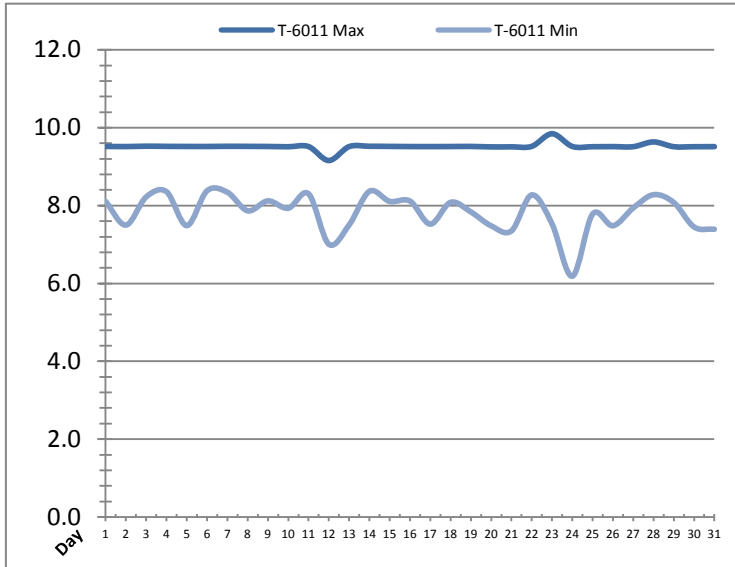


Date	Distribution Chlorine Header			Distribution pH			Distribution Turbidity		
	AIT_7004_CL (ppm)			AIT_7004_PH (mg/L)			AIT_7003 (mg/L)		
	Maximum	Minimum	Average	Maximum	Minimum	Average	Maximum	Minimum	Average
1	1.69	1.10	1.43	8.14	7.96	8.07	0.08	0.02	0.03
2	1.68	1.26	1.58	8.15	8.02	8.11	0.07	0.02	0.04
3	1.52	1.26	1.35	8.12	8.00	8.08	0.08	0.02	0.03
4	1.50	1.23	1.37	8.11	8.02	8.06	0.06	0.02	0.02
5	1.64	1.11	1.50	8.11	7.94	8.06	0.03	0.02	0.02
6	1.66	1.15	1.54	8.11	7.94	8.07	0.07	0.02	0.02
7	1.75	1.11	1.58	8.14	7.88	8.08	0.06	0.02	0.02
8	1.72	1.37	1.59	8.15	8.03	8.11	0.03	0.02	0.02
9	1.63	1.08	1.50	8.14	7.94	8.10	0.03	0.02	0.02
10	1.58	0.95	1.46	8.11	7.84	8.03	0.04	0.02	0.02
11	1.59	1.12	1.45	8.04	7.86	8.00	0.03	0.02	0.02
12	1.61	1.31	1.49	8.14	8.00	8.08	0.03	0.02	0.02
13	1.56	1.07	1.46	8.07	7.87	8.03	0.03	0.02	0.02
14	1.62	0.98	1.51	8.12	7.84	8.08	0.03	0.02	0.02
15	1.65	1.29	1.51	8.15	8.02	8.08	0.03	0.02	0.02
16	1.62	1.09	1.51	8.06	7.86	8.03	0.04	0.02	0.02
17	1.59	1.16	1.46	8.10	7.91	8.04	0.04	0.02	0.02
18	1.59	1.32	1.50	8.04	7.91	8.00	0.03	0.02	0.02
19	1.63	1.11	1.53	7.96	7.71	7.92	0.04	0.02	0.02
20	1.66	1.10	1.59	7.96	7.72	7.93	0.05	0.02	0.02
21	1.74	1.07	1.64	8.03	7.75	8.00	0.03	0.02	0.02
22	1.72	1.14	1.66	8.04	7.79	8.02	0.04	0.02	0.02
23	1.73	1.40	1.64	8.03	7.91	8.00	0.03	0.02	0.02
24	1.77	1.45	1.64	8.00	7.94	7.97	0.03	0.02	0.02
25	1.91	1.49	1.66	8.09	7.94	8.01	0.05	0.02	0.02
26	1.80	1.60	1.71	8.12	7.97	8.06	0.08	0.02	0.02
27	1.76	1.39	1.69	8.03	7.91	8.01	0.05	0.02	0.02
28	1.71	1.47	1.62	8.04	7.94	8.02	0.03	0.02	0.02
29	1.75	1.42	1.61	8.14	8.00	8.08	0.03	0.02	0.02
30	1.79	1.31	1.66	8.09	7.88	8.04	0.04	0.02	0.02
31	1.82	1.52	1.66	8.06	7.97	8.02	0.08	0.02	0.02
Total									
Average	1.68	1.24	1.55	8.08	7.91	8.04	0.0	0.0	0.0
Maximum	1.91		1.71	8.15		8.11	0.1		0.0
Date	25-May		26-May	15-May		2-May	3-May		2-May
Minimum		0.95	1.35		7.71	7.92		0.0	0.0
Date		10-May	3-May		19-May	19-May		24-May	24-May

Notes:

Raw Well/Treated Storage Report

Month: May-17

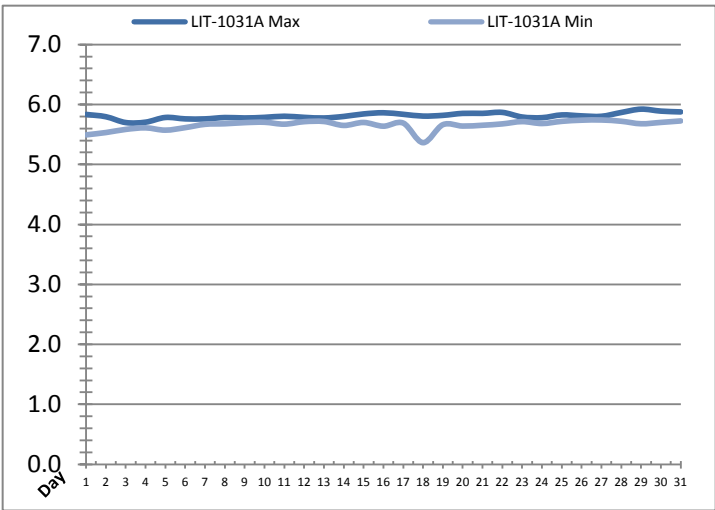
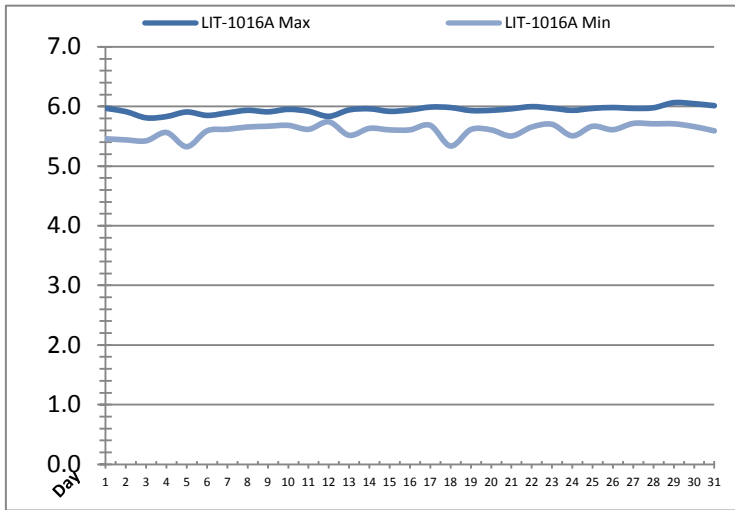


Date	Treated Water Storage Tank					
	T-6011 (m)			T-6021 (m)		
	Maximum	Minimum	Average	Maximum	Minimum	Average
1	9.5	8.1	8.7	9.6	8.2	8.8
2	9.5	7.5	8.8	9.6	7.6	8.9
3	9.5	8.2	9.0	9.6	8.3	9.1
4	9.5	8.4	8.9	9.6	8.5	9.0
5	9.5	7.5	8.7	9.6	7.6	8.8
6	9.5	8.4	9.1	9.6	8.5	9.2
7	9.5	8.3	9.1	9.6	8.4	9.2
8	9.5	7.9	8.8	9.6	8.0	8.9
9	9.5	8.1	9.0	9.6	8.2	9.1
10	9.5	7.9	9.0	9.6	8.0	9.1
11	9.5	8.3	9.0	9.6	8.4	9.1
12	9.2	7.0	8.0	9.3	7.1	8.1
13	9.5	7.5	8.5	9.6	7.6	8.6
14	9.5	8.4	9.1	9.6	8.5	9.2
15	9.5	8.1	8.7	9.6	8.2	8.8
16	9.5	8.1	8.9	9.6	8.2	9.0
17	9.5	7.5	8.5	9.6	7.6	8.6
18	9.5	8.1	8.8	9.6	8.2	8.9
19	9.5	7.8	8.8	9.6	7.9	8.9
20	9.5	7.5	8.7	9.6	7.6	8.8
21	9.5	7.3	8.8	9.6	7.5	8.9
22	9.5	8.3	9.0	9.6	8.4	9.1
23	9.8	7.5	9.0	9.9	7.6	9.1
24	9.5	6.2	8.2	9.6	6.3	8.3
25	9.5	7.8	8.7	9.6	7.9	8.8
26	9.5	7.5	8.7	9.6	7.6	8.8
27	9.5	7.9	9.0	9.6	8.0	9.1
28	9.6	8.3	8.9	9.7	8.4	9.0
29	9.5	8.1	8.9	9.6	8.2	9.0
30	9.5	7.5	8.6	9.6	7.6	8.7
31	9.5	7.4	8.7	9.6	7.5	8.8
Total						
Average	9.5	7.8	8.8	9.6	7.9	8.9
Maximum	9.8		9.1	9.9		9.2
Date	23-May		6-May	23-May		6-May
Minimum		6.2	8.0		6.3	8.1
Date		24-May	12-May		24-May	12-May

Notes:

Raw Well/Treated Storage Report

Month: May-17

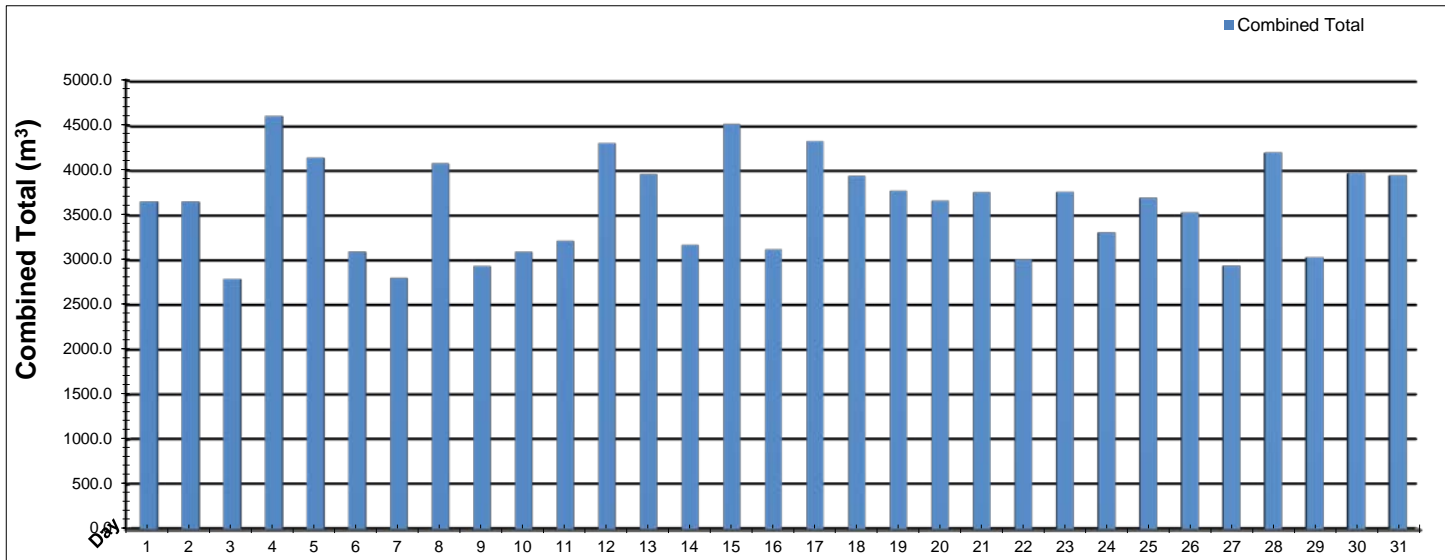


Date	Low Lift Intake Levels					
	Wet Well #1 (LIT-1016A) (m)			Wet Well #2 (LIT-1031A) (m)		
	Maximum	Minimum	Average	Maximum	Minimum	Average
1	6.0	5.5	5.7	5.8	5.5	5.7
2	5.9	5.4	5.7	5.8	5.5	5.7
3	5.8	5.4	5.7	5.7	5.6	5.7
4	5.8	5.6	5.6	5.7	5.6	5.7
5	5.9	5.3	5.6	5.8	5.6	5.7
6	5.9	5.6	5.7	5.8	5.6	5.7
7	5.9	5.6	5.7	5.8	5.7	5.7
8	5.9	5.7	5.7	5.8	5.7	5.7
9	5.9	5.7	5.8	5.8	5.7	5.7
10	6.0	5.7	5.8	5.8	5.7	5.7
11	5.9	5.6	5.8	5.8	5.7	5.7
12	5.8	5.7	5.8	5.8	5.7	5.7
13	5.9	5.5	5.8	5.8	5.7	5.8
14	6.0	5.6	5.8	5.8	5.7	5.7
15	5.9	5.6	5.7	5.8	5.7	5.7
16	5.9	5.6	5.8	5.9	5.6	5.8
17	6.0	5.7	5.8	5.8	5.7	5.8
18	6.0	5.3	5.8	5.8	5.4	5.7
19	5.9	5.6	5.7	5.8	5.7	5.7
20	5.9	5.6	5.8	5.9	5.6	5.7
21	6.0	5.5	5.7	5.9	5.7	5.8
22	6.0	5.7	5.8	5.9	5.7	5.8
23	6.0	5.7	5.8	5.8	5.7	5.7
24	5.9	5.5	5.7	5.8	5.7	5.7
25	6.0	5.7	5.8	5.8	5.7	5.8
26	6.0	5.6	5.8	5.8	5.7	5.8
27	6.0	5.7	5.8	5.8	5.7	5.8
28	6.0	5.7	5.8	5.9	5.7	5.8
29	6.1	5.7	5.8	5.9	5.7	5.8
30	6.0	5.7	5.8	5.9	5.7	5.8
31	6.0	5.6	5.8	5.9	5.7	5.8
Total						
Average	5.9	5.6	5.8	5.8	5.7	5.7
Maximum	6.1		5.8	5.9		5.8
Date	29-May		29-May	29-May		30-May
Minimum		5.3	5.6		5.4	5.7
Date		5-May	5-May		18-May	3-May

Notes:

High Lift Monthly Report

Month: **May-17**

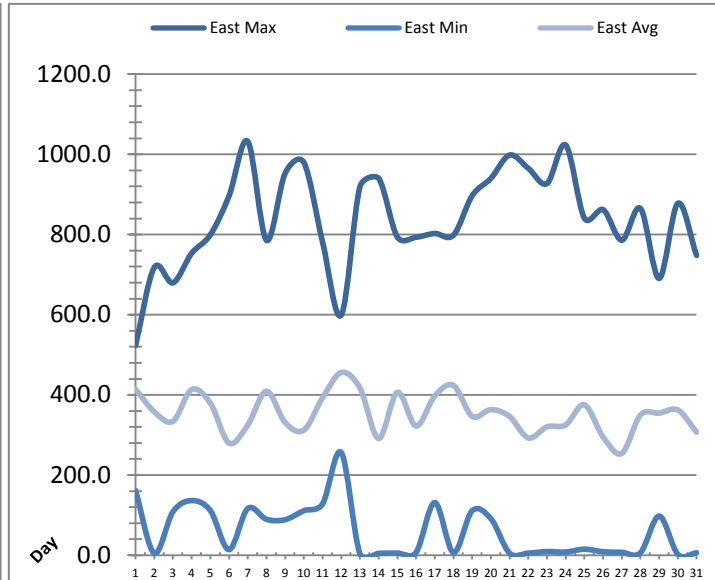
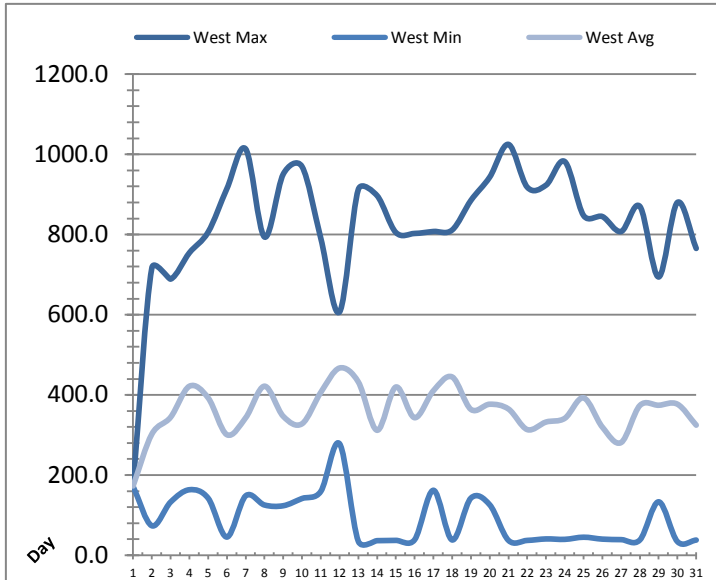


Date	Distribution Flow					
	FIT_7052 (East)		FIT_7062 (West)		Combined	
	(m³)	(L/s)	(m³)	(L/s)	(m³)	(L/s)
	Total	Peak	Total	Peak	Total	Peak
1	1033.8	42.2	2619.9	96.8	3653.7	106.7
2	775.1	50.0	2875.9	98.3	3651.0	102.4
3	62.1	0.0	2728.5	96.7	2790.6	98.3
4	470.1	33.3	4134.9	129.8	4605.0	132.9
5	93.6	3.4	4047.7	98.3	4141.3	100.7
6	740.6	49.3	2353.0	94.1	3093.6	104.0
7	613.1	40.4	2187.9	96.7	2801.1	103.1
8	722.2	47.2	3355.0	97.8	4077.2	104.4
9	1035.7	51.9	1898.2	100.1	2933.9	103.6
10	1121.4	34.6	1970.9	96.5	3092.2	102.8
11	962.0	34.5	2251.6	104.0	3213.6	104.0
12	872.0	49.5	3431.7	96.9	4303.7	104.4
13	1214.3	52.9	2746.2	96.2	3960.5	106.2
14	931.7	40.4	2237.9	96.5	3169.6	103.1
15	1007.3	50.6	3509.4	96.8	4516.7	101.8
16	744.5	46.0	2375.6	99.7	3120.1	102.0
17	1034.2	49.2	3291.3	97.6	4325.5	102.0
18	887.8	50.2	3049.2	97.3	3937.0	103.2
19	996.1	49.6	2774.8	95.5	3770.9	137.3
20	1042.8	52.1	2619.7	96.4	3662.5	138.2
21	1029.4	52.3	2727.3	113.1	3756.8	156.8
22	785.9	49.4	2224.6	112.3	3010.5	157.0
23	899.8	42.8	2861.2	97.0	3761.0	105.3
24	867.9	46.5	2441.7	84.7	3309.6	128.8
25	828.7	49.9	2866.1	108.8	3694.8	152.1
26	705.8	49.6	2824.8	96.5	3530.6	133.2
27	585.5	49.3	2351.7	95.6	2937.2	98.4
28	1393.2	39.5	2806.0	97.4	4199.2	105.2
29	463.5	36.5	2569.9	97.9	3033.4	101.9
30	981.7	46.1	2988.9	92.4	3970.6	130.3
31	845.1	48.3	3099.8	110.1	3944.9	152.3
Total	25746.8		86221.3		111968.2	
Average	830.5	43.1	2781.3	99.6	3611.9	115.6
Maximum	1393.2	52.9	4134.9	129.8	4605.0	157.0
Date	28-May	13-May	4-May	4-May	4-May	22-May
Minimum	62.1		1898.2		2790.6	
Date	3-May		9-May		3-May	

Notes:

Low Lift Monthly Report

Month: **May-17**

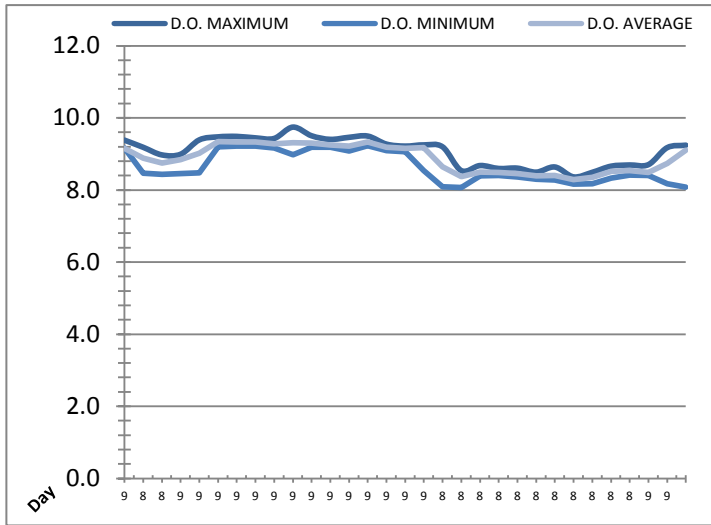
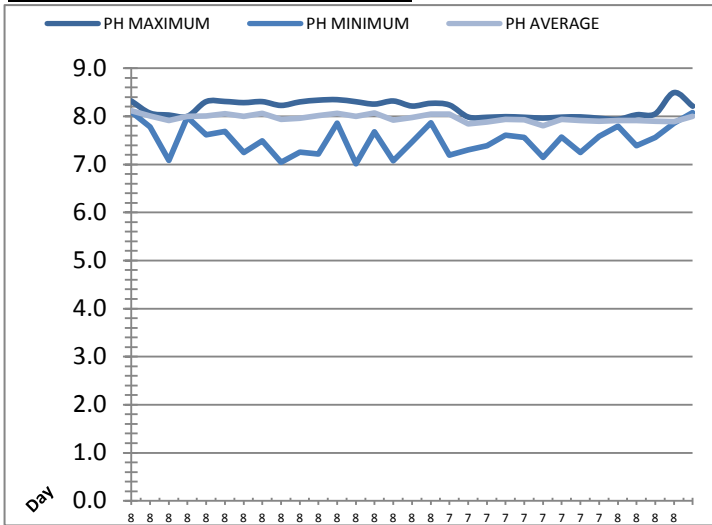


Date	West Train Header Pressure PIT_1018 (kPa)			East Train Header Pressure PIT_1028 (kPa)		
	Maximum	Minimum	Average	Maximum	Minimum	Average
1	173.8	171.9	172.9	523.3	161.5	414.2
2	716.6	73.7	302.2	717.8	5.0	358.0
3	688.8	132.8	344.4	679.6	108.7	334.2
4	754.4	163.5	421.6	753.2	136.5	413.5
5	806.2	142.4	392.6	799.4	111.5	379.4
6	914.6	45.5	300.7	896.6	14.0	279.8
7	1013.3	148.3	343.1	1032.4	116.7	325.0
8	793.9	125.4	421.7	785.8	89.7	409.1
9	950.7	123.6	346.6	953.0	88.8	331.0
10	969.6	141.6	328.0	979.7	111.3	312.2
11	790.7	159.2	406.3	781.3	128.3	393.0
12	607.0	278.2	467.1	599.2	256.1	455.9
13	912.5	34.9	432.3	919.4	3.2	417.2
14	897.0	36.5	311.8	940.2	4.9	291.2
15	805.1	37.2	419.7	793.7	5.6	406.6
16	802.7	38.8	343.2	793.3	7.1	322.5
17	807.6	162.2	410.5	802.6	131.4	397.4
18	811.4	38.2	444.8	798.6	6.6	423.7
19	885.3	142.8	363.8	896.9	111.3	346.6
20	943.2	125.9	376.8	940.1	91.3	363.4
21	1024.8	37.1	364.8	998.2	5.3	346.3
22	918.0	37.1	313.5	965.2	5.4	292.6
23	923.2	40.8	332.4	927.2	9.2	320.3
24	981.9	39.7	341.7	1023.2	8.1	325.2
25	847.3	45.1	392.7	840.8	15.2	375.3
26	844.9	40.3	319.7	862.2	8.8	295.1
27	807.6	39.0	281.2	785.9	7.4	254.1
28	870.0	38.3	373.7	865.1	6.5	350.0
29	694.1	133.4	374.2	690.5	97.8	354.6
30	880.2	34.1	376.8	878.0	2.1	362.3
31	765.4	37.9	324.6	747.8	6.2	307.0
Total						
Average	825.9	91.8	359.5	837.7	60.0	353.4
Maximum	1024.8		467.1	1032.4		455.9
Date	21-May		12-May	7-May		12-May
Minimum		34.1	172.9		2.1	254.1
Date		30-May	1-May		30-May	27-May

Notes:

Low Lift Monthly Report

Month: **May-17**

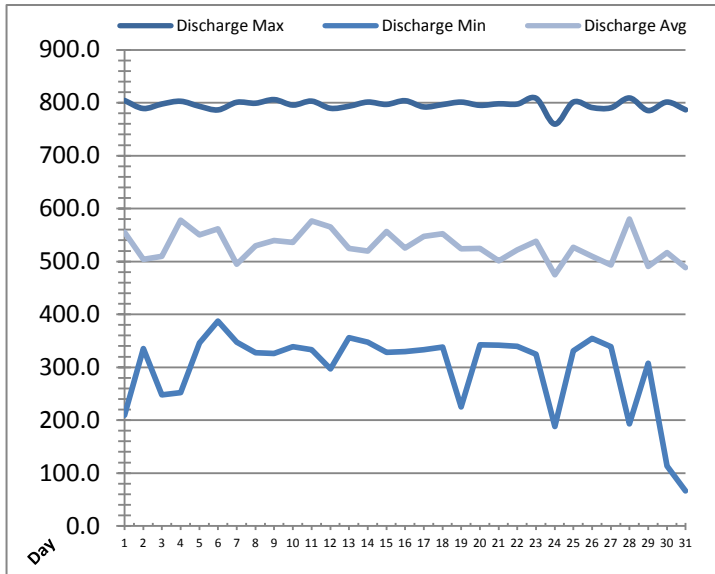
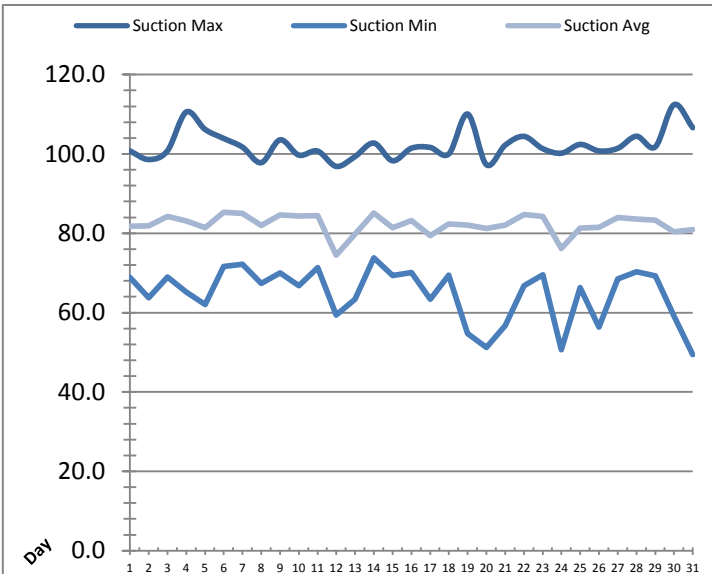


Date	Raw Water Sample Line					
	AIT_1402_PH (pH)			AIT_1402_DO (mg/L)		
	Maximum	Minimum	Average	Maximum	Minimum	Average
1	8.3	8.1	8.1	9.4	9.2	9.2
2	8.1	7.8	8.0	9.2	8.5	8.9
3	8.0	7.1	7.9	9.0	8.4	8.8
4	8.0	8.0	8.0	9.0	8.5	8.8
5	8.3	7.6	8.0	9.4	8.5	9.0
6	8.3	7.7	8.1	9.5	9.2	9.3
7	8.3	7.2	8.0	9.5	9.2	9.3
8	8.3	7.5	8.1	9.4	9.2	9.3
9	8.2	7.0	7.9	9.4	9.2	9.3
10	8.3	7.3	8.0	9.7	9.0	9.3
11	8.3	7.2	8.0	9.5	9.2	9.3
12	8.3	7.9	8.1	9.4	9.2	9.2
13	8.3	7.0	8.0	9.5	9.1	9.2
14	8.3	7.7	8.1	9.5	9.2	9.3
15	8.3	7.1	7.9	9.3	9.1	9.2
16	8.2	7.5	8.0	9.2	9.1	9.2
17	8.3	7.9	8.0	9.3	8.5	9.2
18	8.2	7.2	8.0	9.2	8.1	8.6
19	8.0	7.3	7.8	8.5	8.1	8.4
20	8.0	7.4	7.9	8.7	8.4	8.5
21	8.0	7.6	7.9	8.6	8.4	8.5
22	8.0	7.6	7.9	8.6	8.4	8.5
23	8.0	7.1	7.8	8.5	8.3	8.4
24	8.0	7.6	7.9	8.6	8.3	8.4
25	8.0	7.2	7.9	8.4	8.2	8.3
26	8.0	7.6	7.9	8.5	8.2	8.4
27	7.9	7.8	7.9	8.7	8.3	8.5
28	8.0	7.4	7.9	8.7	8.4	8.5
29	8.1	7.6	7.9	8.7	8.4	8.5
30	8.5	7.9	7.9	9.2	8.2	8.7
31	8.2	8.1	8.0	9.2	8.1	9.1
Total						
Average	8.2	7.5	8.0	9.1	8.6	8.9
Maximum	8.5		8.1	9.7		9.3
Date	30-May		1-May	10-May		6-May
Minimum		7.0	7.8		8.1	8.3
Date		13-May	23-May		19-May	25-May

Notes:

High Lift Monthly Report

Month: **May-17**

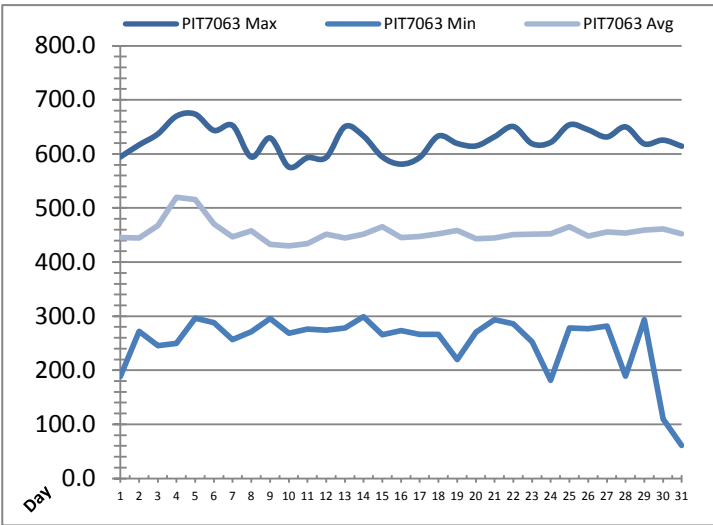
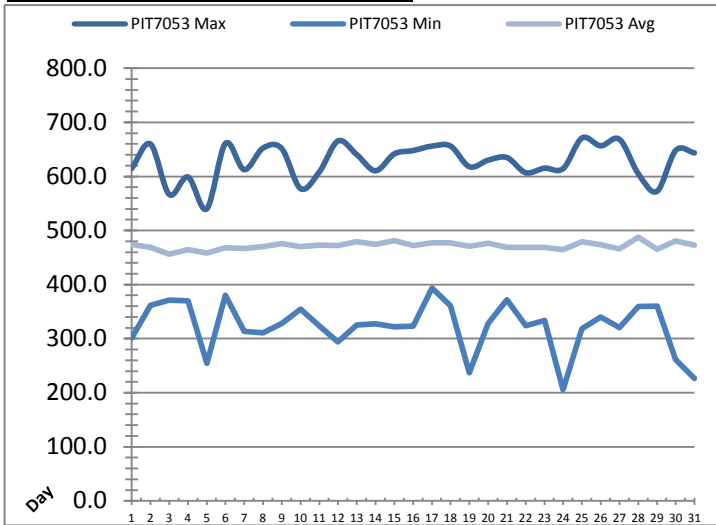


Date	Suction Header Pressure			Discharge Header Pressure		
	PIT_7002 (kPa)			PIT_7005 (kPa)		
	Maximum	Minimum	Average	Maximum	Minimum	Average
1	100.7	68.9	81.8	804.2	209.6	555.6
2	98.6	63.7	81.9	789.2	335.3	504.1
3	100.8	69.0	84.3	797.7	247.7	509.9
4	110.6	65.1	83.1	802.8	252.2	577.8
5	106.2	62.1	81.4	793.3	346.1	550.1
6	103.9	71.6	85.3	786.5	387.2	561.6
7	101.7	72.2	85.0	800.9	347.5	494.9
8	97.8	67.4	82.0	799.1	327.5	529.5
9	103.6	70.0	84.6	805.9	325.8	539.4
10	99.7	66.8	84.3	795.7	339.2	536.2
11	100.7	71.4	84.4	803.0	333.3	576.5
12	96.9	59.4	74.5	789.6	296.9	564.9
13	99.3	63.4	79.8	793.5	355.7	524.5
14	102.7	73.8	85.1	801.3	347.4	519.9
15	98.3	69.4	81.4	796.9	328.5	556.4
16	101.4	70.1	83.2	803.8	329.5	525.2
17	101.6	63.4	79.4	792.1	333.0	547.7
18	100.0	69.5	82.3	796.6	338.3	552.2
19	110.0	54.8	82.1	801.2	225.0	523.9
20	97.3	51.2	81.2	795.2	342.3	524.8
21	102.2	56.7	82.1	798.1	341.4	500.9
22	104.4	66.8	84.8	797.6	339.9	521.8
23	101.3	69.6	84.2	808.5	324.6	538.4
24	100.2	50.7	76.2	759.7	187.7	475.1
25	102.4	66.4	81.3	801.3	331.3	526.5
26	100.7	56.4	81.5	790.9	354.8	509.8
27	101.4	68.5	83.9	790.4	338.9	493.4
28	104.5	70.3	83.5	809.0	193.2	580.1
29	101.8	69.3	83.3	785.2	307.8	490.8
30	112.4	59.2	80.3	801.3	113.0	517.1
31	106.6	49.5	80.9	786.7	66.2	488.1
Total						
Average	102.3	64.7	82.2	796.0	298.3	529.6
Maximum	112.4		85.3	809.0		580.1
Date	30-May		6-May	28-May		28-May
Minimum		49.5	74.5		66.2	475.1
Date		31-May	12-May		31-May	24-May

Notes:

High Lift Monthly Report

Month: **May-17**



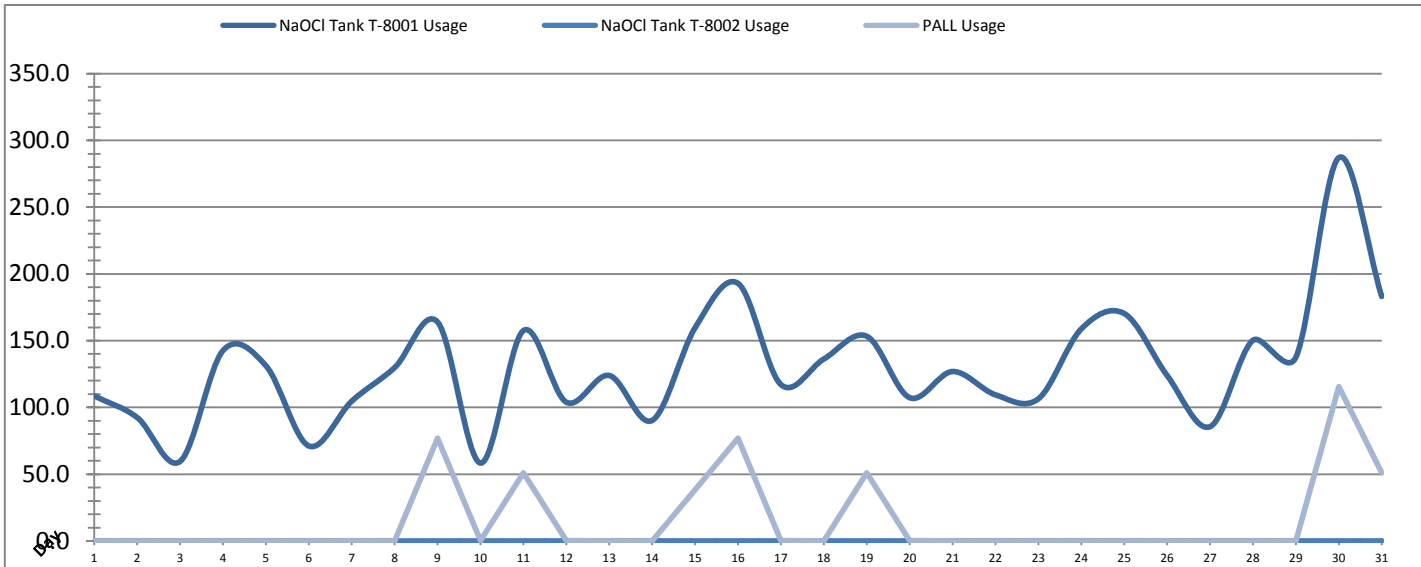
Date	Distribution Pressures					
	PIT_7053 (kPa)			PIT_7063 (kPa)		
	Maximum	Minimum	Average	Maximum	Minimum	Average
1	✓ 614.8	✓ 301.0	474.6	✓ 594.5	✓ 188.6	445.4
2	✓ 659.9	✓ 361.7	468.4	✓ 616.7	✓ 272.1	444.4
3	✓ 566.7	✓ 371.6	456.1	✓ 636.9	✓ 245.4	467.7
4	✓ 598.9	✓ 369.7	464.6	✓ 670.0	✓ 250.0	519.7
5	✓ 540.0	✓ 254.5	458.2	✓ 673.5	✓ 296.1	515.8
6	✓ 661.0	✓ 380.4	468.1	✓ 643.5	✓ 287.6	470.6
7	✓ 612.4	✓ 313.3	466.8	✓ 652.5	✓ 256.8	446.7
8	✓ 652.5	✓ 310.8	470.4	✓ 594.3	✓ 271.3	458.0
9	✓ 651.5	✓ 327.8	475.7	✓ 629.6	✓ 295.9	432.5
10	✓ 577.4	✓ 354.2	469.9	✓ 575.8	✓ 268.2	429.8
11	✓ 608.1	✓ 323.1	473.2	✓ 593.1	✓ 276.0	433.9
12	✓ 665.6	✓ 294.0	472.3	✓ 593.6	✓ 273.8	451.8
13	✓ 640.2	✓ 325.6	479.1	✓ 650.6	✓ 278.3	444.5
14	✓ 610.4	✓ 327.3	474.6	✓ 632.8	✓ 299.2	451.8
15	✓ 641.6	✓ 321.5	481.3	✓ 594.5	✓ 265.9	465.4
16	✓ 647.8	✓ 323.3	471.9	✓ 581.2	✓ 273.5	445.3
17	✓ 656.0	✓ 393.8	476.8	✓ 593.7	✓ 266.6	447.4
18	✓ 656.0	✓ 360.7	476.9	✓ 633.3	✓ 266.1	452.3
19	✓ 617.9	✓ 237.1	470.8	✓ 619.4	✓ 219.6	458.7
20	✓ 630.0	✓ 327.9	476.4	✓ 614.8	✓ 270.8	442.9
21	✓ 634.9	✓ 371.7	468.6	✓ 631.9	✓ 293.4	444.6
22	✓ 606.9	✓ 323.7	468.5	✓ 650.7	✓ 286.0	451.2
23	✓ 615.2	✓ 333.8	468.8	✓ 619.0	✓ 252.7	451.3
24	✓ 614.5	✓ 205.7	464.5	✓ 621.5	✓ 181.5	452.5
25	✓ 671.0	✓ 318.4	479.1	✓ 653.9	✓ 277.9	465.5
26	✓ 656.6	✓ 340.3	473.5	✓ 644.7	✓ 277.0	448.4
27	✓ 668.6	✓ 320.4	466.0	✓ 631.4	✓ 281.8	456.0
28	✓ 605.2	✓ 359.2	487.5	✓ 650.0	✓ 189.3	453.6
29	✓ 572.4	✓ 360.0	465.6	✓ 618.7	✓ 293.2	459.4
30	✓ 648.2	✓ 261.0	480.8	✓ 625.6	✓ 110.0	461.0
31	✓ 643.5	✓ 226.6	473.0	✓ 614.4	✓ 61.3	452.3
Total						
Average	627.3	322.6	471.7	624.4	252.5	455.5
Maximum	671.0		487.5	673.5		519.7
Date	25-May		28-May	5-May		4-May
Minimum		205.7	456.1		61.3	429.8
Date		24-May	3-May		31-May	10-May

Notes:

- 30: lower pressure for less than a minute due to high usage, highlift pump initiated.
- 31: Lower pressure (<1min) due to high usage, highlift pump initiated.

Chemical Usage Monthly Report

Month: May-17

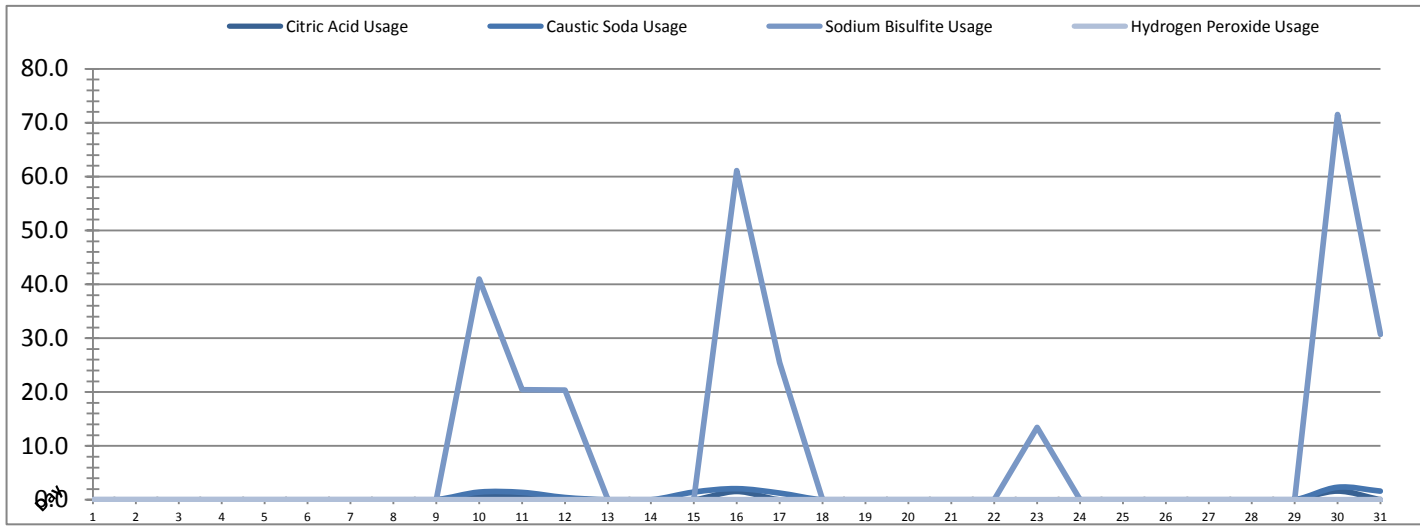


Date	PALL Usage	NaOCl Tank T-8001	NaOCl Tank T-8002
	PALL_HYPO_USAGE (L) Usage	LIT_8002 (Storage) (L) Usage	LIT_8004 (Day) (L) Usage
1	0.0	108.6	0.0
2	0.0	92.4	0.0
3	0.0	59.6	0.0
4	0.0	142.7	0.0
5	0.0	131.2	0.0
6	0.0	71.1	0.0
7	0.0	104.8	0.0
8	0.0	129.9	0.0
9	76.9	164.0	0.0
10	0.4	58.3	0.0
11	51.1	157.6	0.0
12	0.2	103.9	0.0
13	0.0	123.9	0.0
14	0.00	90.29	0.0
15	38.5	159.7	0.0
16	76.9	192.9	0.0
17	0.2	117.1	0.0
18	0.0	136.3	0.0
19	51.1	153.3	0.0
20	0.3	107.3	0.0
21	0.0	126.9	0.0
22	0.0	109.5	0.0
23	0.0	106.5	0.0
24	0.0	158.9	0.0
25	0.0	170.4	0.0
26	0.0	123.9	0.0
27	0.0	85.6	0.0
28	0.0	150.3	0.0
29	0.0	137.6	0.0
30	115.5	287.0	0.0
31	51.2	183.1	0.0
Total	462.2	4044.6	1.1
Average	14.9	130.5	0.0
Maximum	115.5	287.0	0.0
Date	30-May	30-May	1-May
Minimum	0.0	58.3	0.0
Date	1-May	10-May	1-May

Notes:	
Dosage (mg/L)=	Day Tank (L) x %conc. x 1000
	Membrane Flow (m3)
Chlorine Concentration:	12.0%

Chemical Usage Monthly Report

Month: **May-17**



Date	Citric Acid	Caustic Soda	Captor	Hydrogen Peroxide		Membrane Flow (m ³)
	TAGNAME (L) Usage	TAGNAME (L) Usage	TAGNAME (L) Usage	TAGNAME (L) Usage	(mg/L) Dose	
1	0.0	0.0	0.0	0.0	0.0	3837.624
2	0.0	0.0	0.0	0.0	0.0	3995.682
3	0.0	0.0	0.0	0.0	0.0	3199.676
4	0.0	0.0	0.0	0.0	0.0	5218.490
5	0.0	0.0	0.0	0.0	0.0	4934.760
6	0.0	0.0	0.0	0.0	0.0	2943.475
7	0.0	0.0	0.0	0.0	0.0	3372.325
8	0.0	0.0	0.0	0.0	0.0	4813.138
9	0.0	0.0	0.0	0.0	0.0	3264.544
10	0.5	1.4	41.0	0.0	0.0	3317.104
11	0.7	1.4	20.5	0.0	0.0	3494.320
12	0.0	0.4	20.4	0.0	0.0	3883.381
13	0.0	0.0	0.0	0.0	0.0	4931.802
14	0.0	0.0	0.0	0.0	0.0	3198.009
15	0.0	1.4	0.0	0.0	0.0	5081.292
16	1.6	2.1	61.1	0.0	0.0	3881.726
17	0.0	1.3	25.5	0.0	0.0	3983.910
18	0.0	0.0	0.0	0.0	0.0	5001.015
19	0.0	0.0	0.0	0.0	0.0	3736.834
20	0.0	0.0	0.0	0.0	0.0	3959.614
21	0.0	0.0	0.0	0.0	0.0	4543.023
22	0.0	0.0	0.0	0.0	0.0	3284.359
23	0.0	0.0	13.5	0.0	0.0	3424.871
24	0.0	0.0	0.0	0.0	0.0	4599.629
25	0.0	0.0	0.0	0.0	0.0	3740.925
26	0.0	0.0	0.0	0.0	0.0	4159.128
27	0.0	0.0	0.0	0.0	0.0	3176.495
28	0.0	0.0	0.0	0.0	0.0	4529.421
29	0.0	0.0	0.0	0.0	0.0	4012.828
30	1.6	2.3	71.6	0.0	0.0	4387.323
31	0.0	1.6	30.7	0.0	0.0	4103.576
Total	4.5	12.0	284.1	0.0	0.0	124010.3
Average	0.1	0.4	9.2	0.0	0.0	4000.3
Maximum	1.6	2.3	71.6	0.0	0.0	5218.5
Date	30-May	30-May	30-May	1-May	1-May	4-May
Minimum	0.0	0.0	0.0	0.0	0.0	2943.5
Date	1-May	1-May	1-May	1-May	1-May	6-May

Notes:

$$\text{Dosage (mg/L)} = \frac{\text{Day Tank (L)} \times \% \text{conc.} \times 1000}{\text{Membrane Flow (m}^3\text{)}}$$

Peroxide Concentration: **50.0%**

Runtimes Report

Month: May-17

Date	Daily Gen-Set Runtimes		Daily UV Runtimes		Daily PALL Runtimes				
	LLPS	WTP	UV #1	UV #2	Air Compressor #1	Air Compressor #2	CIP Neutralization	CIP Drain	CIP Recirc
	(Hrs)	(Hrs)	(Hrs)	(Hrs)	(Hrs)	(Hrs)	(Hrs)	(Hrs)	(Hrs)
1	0.5	1.0	0.0	0.0	24.4	0.0	0.0	0.0	0.0
2	0.0	0.0	0.0	0.0	24.4	0.0	0.0	0.0	0.0
3	0.0	0.0	0.0	0.0	24.4	0.0	0.0	0.0	0.0
4	0.0	0.0	0.0	0.0	24.4	0.0	0.0	0.0	0.0
5	0.0	0.0	0.0	0.0	24.4	0.0	0.0	0.0	0.0
6	0.0	0.0	0.0	0.0	24.4	0.0	0.0	0.0	0.0
7	0.0	0.0	0.0	0.0	24.4	0.0	0.0	0.0	0.0
8	0.0	0.0	0.0	0.0	24.4	0.0	0.0	0.0	0.0
9	0.0	0.0	0.0	0.0	24.4	0.0	0.2	0.2	1.0
10	0.0	0.0	0.0	0.0	24.4	0.0	0.2	0.0	0.0
11	0.0	0.0	0.0	0.0	24.4	0.0	0.2	0.1	0.7
12	0.0	0.0	0.0	0.0	24.4	0.0	0.1	0.0	0.0
13	0.0	0.0	0.0	0.0	24.4	0.0	0.0	0.0	0.0
14	0.0	0.0	0.0	0.0	24.4	0.0	0.0	0.0	0.0
15	0.0	0.0	0.0	0.0	24.4	0.0	0.2	0.1	0.5
16	0.0	0.0	1.3	0.0	24.4	0.0	0.4	0.3	1.3
17	0.0	0.0	0.0	0.0	24.4	0.0	0.1	0.0	0.0
18	0.0	0.0	0.0	0.0	24.3	0.0	0.0	0.0	0.0
19	0.0	0.0	0.0	0.0	24.4	0.0	0.0	0.0	0.0
20	0.0	0.0	0.0	0.0	24.4	0.0	0.0	0.0	0.0
21	0.0	0.0	0.0	0.0	24.4	0.0	0.0	0.0	0.0
22	0.0	0.0	0.0	0.0	24.4	0.0	0.0	0.0	0.0
23	0.0	0.0	0.0	0.0	24.4	0.0	0.0	0.0	0.0
24	0.0	0.0	0.0	0.0	24.4	0.0	0.0	0.0	0.0
25	0.0	0.0	0.0	0.0	24.4	0.0	0.0	0.0	0.0
26	0.0	0.0	0.0	0.0	24.4	0.0	0.0	0.0	0.0
27	0.0	0.0	0.0	0.0	24.4	0.0	0.0	0.0	0.0
28	0.0	0.0	0.0	0.0	24.4	0.0	0.0	0.0	0.0
29	0.0	0.0	0.0	0.0	24.4	0.0	0.0	0.0	0.0
30	0.8	0.0	0.0	0.0	24.4	0.0	0.6	0.4	1.5
31	0.0	1.2	0.0	0.0	24.4	0.0	0.1	0.0	0.2
Total	1.3	2.2	1.3	0.0	755.5	0.0	2.1	1.1	5.2

Notes:

Runtimes Report

Month: May-17

Daily

Date	PALL Runtimes						Process Drain	
	RFR Pump #1	RFR Pump #2	RF Pump #1	RF Pump #2	XR Pump #1	XR Pump #2	PDP9010 Pump	PDP9020 Pump
	(Hrs)	(Hrs)	(Hrs)	(Hrs)	(Hrs)	(Hrs)	(Hrs)	(Hrs)
1	0.0	0.0	0.6	0.7	5.2	5.7	1.6	2.2
2	0.0	0.0	0.8	0.8	5.9	5.8	1.7	2.3
3	0.0	0.0	0.6	0.5	6.0	4.1	1.7	2.3
4	0.0	0.0	0.8	1.0	8.5	9.9	1.6	2.2
5	0.0	0.0	1.1	0.8	6.1	6.4	1.8	2.4
6	0.0	0.0	0.5	0.6	6.0	5.0	1.7	2.3
7	0.0	0.0	0.6	0.6	7.2	4.7	1.7	2.2
8	0.0	0.0	0.8	0.8	6.3	9.6	1.7	2.4
9	0.0	0.0	0.5	0.6	4.9	6.6	1.8	2.4
10	0.0	0.0	0.6	0.6	6.7	6.0	1.7	2.3
11	0.0	0.0	0.6	0.5	6.1	4.6	1.7	2.3
12	0.0	0.0	0.3	0.3	1.0	5.2	1.6	2.3
13	0.0	0.0	0.7	0.7	8.3	4.2	1.8	2.4
14	0.0	0.0	0.4	0.4	4.0	4.4	1.7	2.3
15	0.0	0.0	0.8	0.8	9.3	8.4	1.7	2.5
16	0.0	0.0	0.5	0.5	4.5	5.7	1.8	2.3
17	0.0	0.0	0.5	0.4	4.7	5.2	1.8	2.4
18	0.0	0.0	0.9	0.8	7.4	6.7	1.7	2.3
19	0.0	0.0	0.5	0.6	5.1	4.7	1.7	2.1
20	0.0	0.0	0.6	0.6	5.6	4.8	1.6	2.1
21	0.0	0.0	0.9	0.7	6.3	4.4	1.7	2.1
22	0.0	0.0	0.5	0.5	8.4	0.0	1.7	2.2
23	0.0	0.0	0.6	0.7	11.6	0.0	1.7	2.1
24	0.0	0.0	0.8	0.7	11.0	0.0	1.7	2.3
25	0.0	0.0	0.6	0.6	13.2	0.0	1.7	2.1
26	0.0	0.0	0.8	0.8	14.8	0.0	1.7	2.2
27	0.0	0.0	0.7	0.6	14.5	0.0	1.7	2.2
28	0.0	0.0	0.9	0.9	20.5	0.0	1.8	2.2
29	0.0	0.0	0.7	0.9	19.3	0.0	1.7	2.2
30	0.0	0.0	0.9	0.9	19.9	0.0	1.8	2.3
31	0.0	0.0	0.8	0.8	16.4	0.0	1.7	2.2
Total	0.0	0.0	20.9	20.7	274.3	121.6	53.1	70.1

Notes:

Runtimes Report

Month: May-17

Daily

Date	Low Lift Pump Motor Runtimes				High Lift Pump Motor Runtimes			
	LLP1010 (Hrs)	LLP1020 (Hrs)	LLP1030 (Hrs)	LLP1040 (Hrs)	HLP7010 (Hrs)	HLP7020 (Hrs)	HLP7030 (Hrs)	HLP7040 (Hrs)
1	2.8	5.1	5.6	6.4	3.2	10.9	0.0	0.0
2	5.0	2.9	5.3	5.6	2.9	0.0	0.0	9.7
3	1.8	4.1	2.8	5.5	0.0	7.6	0.0	2.7
4	5.6	5.5	5.3	5.6	4.3	13.6	0.0	0.5
5	7.9	6.1	4.0	4.1	0.0	15.3	0.0	0.0
6	2.8	2.1	2.7	5.0	7.3	7.0	0.0	0.0
7	3.8	4.5	5.6	0.9	0.0	7.4	0.0	2.3
8	4.4	5.5	3.8	7.0	0.0	9.9	0.0	4.7
9	2.8	4.1	5.1	2.8	0.0	8.9	0.0	3.6
10	4.2	2.7	2.8	4.5	0.0	10.0	0.0	2.8
11	5.5	4.8	3.7	4.7	0.0	11.5	0.0	3.6
12	5.6	5.6	5.5	7.3	0.0	8.3	0.0	8.9
13	5.5	5.5	9.3	3.8	0.0	11.0	0.0	3.1
14	4.7	2.7	4.1	2.8	0.0	8.3	0.0	3.6
15	5.2	5.5	5.6	5.5	0.0	5.8	0.0	11.0
16	4.0	4.8	4.1	3.9	0.0	4.3	0.0	7.9
17	5.6	5.6	3.3	5.6	0.0	13.3	0.0	3.0
18	4.7	5.5	6.6	7.8	0.0	12.6	0.0	2.8
19	5.5	4.1	2.9	3.4	0.0	9.0	0.0	4.6
20	4.0	4.3	5.6	3.3	0.0	9.4	0.0	4.1
21	4.4	3.7	5.7	8.3	0.0	0.1	0.0	12.5
22	5.3	3.0	3.4	2.7	0.0	7.9	0.0	3.8
23	2.6	5.3	4.1	3.9	0.0	3.8	0.0	10.9
24	5.6	7.9	4.3	5.6	1.4	0.0	0.0	8.8
25	4.4	0.7	6.4	8.3	1.6	3.2	0.0	8.5
26	6.1	8.2	1.7	5.1	0.0	8.1	0.0	4.0
27	5.6	5.6	0.0	3.7	3.6	6.4	0.0	0.0
28	7.0	5.4	0.0	8.3	0.0	15.0	0.0	2.4
29	5.5	5.6	3.1	5.6	2.8	0.5	0.0	6.6
30	7.0	8.1	8.3	1.3	0.0	0.8	0.0	12.8
31	5.5	3.1	5.8	7.3	1.3	10.3	0.0	1.0
Total	150.4	147.6	136.5	155.6	28.4	240.2	0.0	150.2

Notes:

Plant Internal Flow Report

Month: May-17

Date	Settling Tank Level		Process Drain Tank		Settling Tank Flow		Potable Water Flow		Non-Potable Flow	
	T-9003 (m)		T-9001 (m)		FIT_9005 (m ³) (L/s)		FIT_7082 (m ³) (L/s)		FIT_7092 (m ³) (L/s)	
	Maximum	Minimum	Maximum	Minimum	Total	Peak	Total	Peak	Total	Peak
1	2.2	0.1	0.8	0.4	203.8	15.7	0.0	1.4	0.0	0.0
2	2.2	0.1	0.8	0.4	226.7	15.7	0.1	1.4	0.0	0.0
3	2.2	0.1	0.8	0.4	174.1	15.7	0.1	1.4	0.0	0.0
4	2.2	0.2	0.8	0.4	277.6	15.7	0.2	1.4	0.0	0.0
5	2.2	0.1	0.8	0.4	272.0	15.7	0.3	1.4	0.0	0.0
6	2.2	0.3	0.8	0.4	136.2	15.7	0.0	0.5	0.0	0.0
7	2.2	0.1	0.8	0.4	173.8	15.7	0.0	1.1	0.0	0.0
8	2.2	0.3	0.8	0.4	235.8	15.7	0.1	1.4	0.0	0.0
9	2.2	0.1	1.1	0.4	190.6	15.7	0.0	1.3	25.6	15.9
10	2.2	0.2	0.8	0.4	224.7	15.7	0.1	1.4	0.0	0.0
11	2.2	0.1	0.8	0.4	183.8	15.7	0.1	1.4	22.4	23.7
12	2.2	0.2	0.8	0.4	84.0	15.7	0.3	1.7	0.0	0.6
13	2.2	0.1	0.8	0.4	252.4	15.7	0.1	0.3	0.9	1.4
14	2.2	0.1	0.8	0.4	147.6	15.7	0.0	0.0	0.0	0.0
15	2.2	0.1	0.9	0.4	310.4	15.7	0.1	1.5	14.9	22.7
16	2.2	0.1	0.9	0.4	189.4	15.7	1.6	5.4	32.7	24.8
17	2.2	0.3	1.0	0.4	226.4	15.7	0.1	1.4	0.0	0.0
18	2.2	0.1	1.0	0.4	348.5	15.7	0.1	1.4	0.0	0.0
19	2.2	0.1	0.8	0.4	195.8	15.7	0.0	1.3	5.8	22.4
20	2.2	0.1	0.8	0.4	203.8	15.7	0.0	0.0	0.0	0.0
21	2.2	0.1	0.8	0.4	327.5	15.7	0.0	1.3	0.0	0.0
22	2.2	0.1	0.8	0.4	166.3	15.7	0.0	0.5	0.0	0.0
23	2.2	0.1	0.8	0.4	239.7	15.7	0.2	1.4	0.0	0.8
24	2.2	0.2	1.6	0.4	337.9	15.7	0.1	1.4	0.0	0.0
25	2.2	0.2	0.8	0.4	207.7	15.7	0.1	1.7	0.0	0.0
26	2.2	0.1	0.8	0.4	334.4	15.7	0.2	1.4	0.1	0.7
27	2.2	0.1	0.8	0.4	276.5	15.7	0.0	0.0	0.0	0.0
28	2.2	0.3	0.8	0.4	382.9	15.7	0.0	0.0	0.0	0.0
29	2.2	0.1	0.8	0.4	401.2	15.7	0.3	1.6	0.0	0.0
30	2.2	0.1	1.1	0.4	358.8	15.7	0.1	1.4	38.9	17.1
31	2.2	0.1	0.8	0.4	315.6	15.7	0.1	1.3	9.1	23.3
Total					7605.9		4.2		150.5	
Average	2.2	0.1	0.9	0.4	245.4	15.7	0.1	1.3	4.9	4.9
Maximum	2.2		1.6		401.2		1.6		38.9	
Date	18-May		24-May		29-May		16-May		30-May	
Minimum		0.1		0.4		15.7		0.0		0.0
Date		27-May		31-May		5-May		14-May		1-May

Notes: