

Municipality of West Elgin - Tri County Water System

Goto:

Month:

Year:

Date is Set to: **March-17**

Limit	Low	High	
Raw Water Chlorine Residual:	0.00	5.00	mg/L
Pre-Strainer Chlorine Residual:	0.00	5.00	mg/L
UV Inlet Chlorine Residual:	0.00	5.00	mg/L
Post Treatment Chlorine Residual:	1.00	5.00	mg/L
Treated Chlorine Residual:	1.00	2.50	mg/L
Distribution Chlorine Residual:	1.00	2.50	mg/L
Limit		High	
WTP C of A		156.0	L/s
WTP Permit to Take Water		13500.0	m ³
Limit	Low	High	
System Pressure Limits:	50.0	1034.0	Kpa

Compliance Report

Low Lift Monthly Report

>>>

Membranes Monthly Report

>>>

UV System Monthly Report

>>>

Plant Quality Report

>>>

Raw Well/Treated Storage Report

>>>

High Lift Monthly Report

>>>

Operational Report

Low Lift Monthly Report

>>>

High Lift Monthly Report

>>>

Chemical Usage Monthly Report

>>>

Runtimes Report

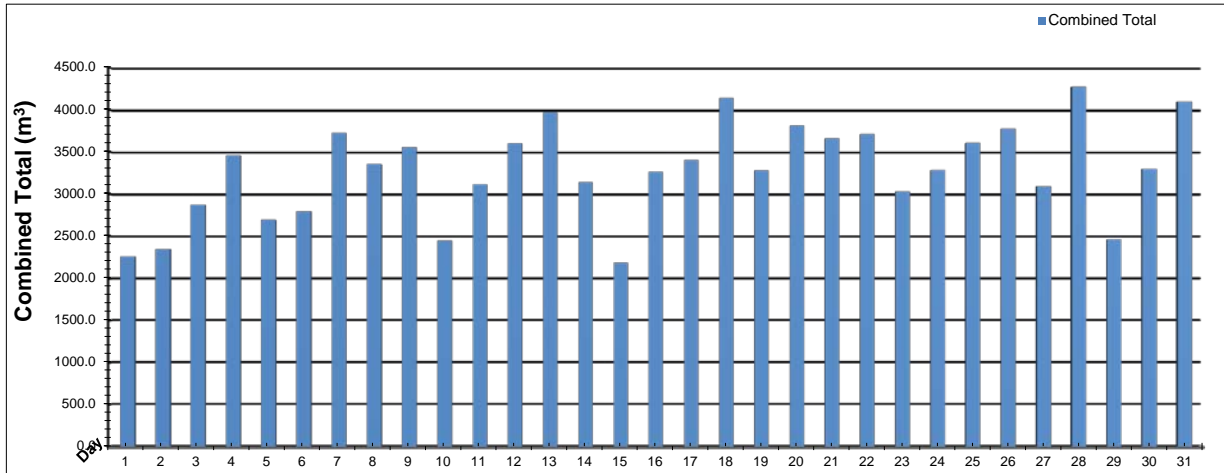
>>>

Plant Internal Flow Report

>>>

Low Lift Monthly Report

Month: March-17

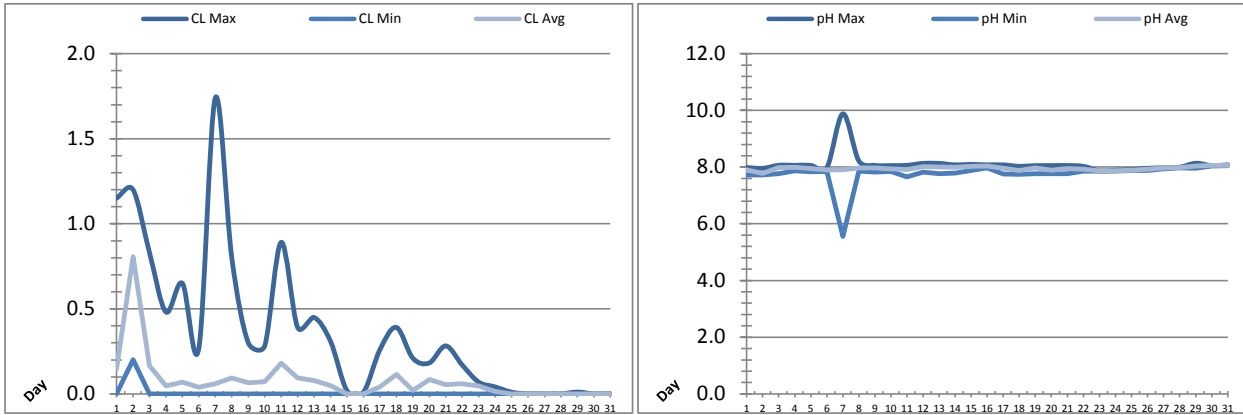


Date	Combined Total (m³)	West Train FIT-1017 (m³)	West Peak Flow FIT-1017 (L/s)	East Train FIT-1027 (m³)	East Peak Flow FIT-1027 (L/s)	Combined Peak Flow (L/s)
1	✓ 2260.1	2260.1	86.7	0.0	0.0	✓ 86.7
2	✓ 2347.5	2347.5	88.6	0.0	0.0	✓ 88.6
3	✓ 2873.8	2873.8	87.5	0.0	0.0	✓ 87.5
4	✓ 3463.1	3463.1	86.6	0.0	0.0	✓ 86.6
5	✓ 2694.7	2694.7	88.6	0.0	0.0	✓ 88.6
6	✓ 2794.4	2794.4	87.4	0.0	0.0	✓ 87.4
7	✓ 3728.2	3728.2	135.3	0.0	0.0	✓ 135.3
8	✓ 3353.5	3353.5	129.4	0.0	0.0	✓ 129.4
9	✓ 3557.7	3557.7	87.2	0.0	0.0	✓ 87.2
10	✓ 2450.5	2450.5	87.4	0.0	0.0	✓ 87.4
11	✓ 3119.3	3119.3	87.1	0.0	0.0	✓ 87.1
12	✓ 3602.3	3602.3	133.0	0.0	0.0	✓ 133.0
13	✓ 3971.6	3971.6	134.6	0.0	0.0	✓ 134.6
14	✓ 3144.3	3144.3	128.9	0.0	0.0	✓ 128.9
15	✓ 2186.5	2186.5	86.8	0.0	0.0	✓ 86.8
16	✓ 3262.9	3262.9	135.8	0.0	0.0	✓ 135.8
17	✓ 3404.7	3404.7	134.2	0.0	0.0	✓ 134.2
18	✓ 4146.4	4146.4	88.2	0.0	0.0	✓ 88.2
19	✓ 3283.9	3283.9	88.0	0.0	0.0	✓ 88.0
20	✓ 3816.3	3816.3	127.0	0.0	0.0	✓ 127.0
21	✓ 3659.8	3659.8	88.2	0.0	0.0	✓ 88.2
22	✓ 3715.5	1834.5	129.7	1881.0	85.3	✓ 129.7
23	✓ 3033.2	0.0	0.0	3033.2	131.6	✓ 131.6
24	✓ 3288.0	0.0	0.0	3288.0	82.2	✓ 82.2
25	✓ 3608.0	0.0	0.0	3608.0	80.6	✓ 80.6
26	✓ 3777.8	0.0	0.0	3777.8	79.6	✓ 79.6
27	✓ 3091.4	0.0	0.0	3091.4	82.3	✓ 82.3
28	✓ 4272.5	0.0	0.0	4272.5	131.8	✓ 131.8
29	✓ 2467.0	0.0	0.0	2467.0	154.4	✓ 154.4
30	✓ 3300.0	0.0	0.0	3300.0	119.2	✓ 119.2
31	✓ 4095.5	0.0	0.0	4095.5	133.9	✓ 133.9
Total	101770.7	68956.2		32814.5		
Average	3282.9	2224.4	75.0	1058.5	34.9	107.2
Maximum	4272.5	4146.4	135.82	4272.5	154.45	154.45
Date	28-Mar	18-Mar	16-Mar	28-Mar	29-Mar	29-Mar
Minimum	2186.5	0.0	0.00	0.0	0.00	79.58
Date	15-Mar	23-Mar	23-Mar	4-Mar	1-Mar	26-Mar

Notes:

Low Lift Monthly Report

Month: **March-17**

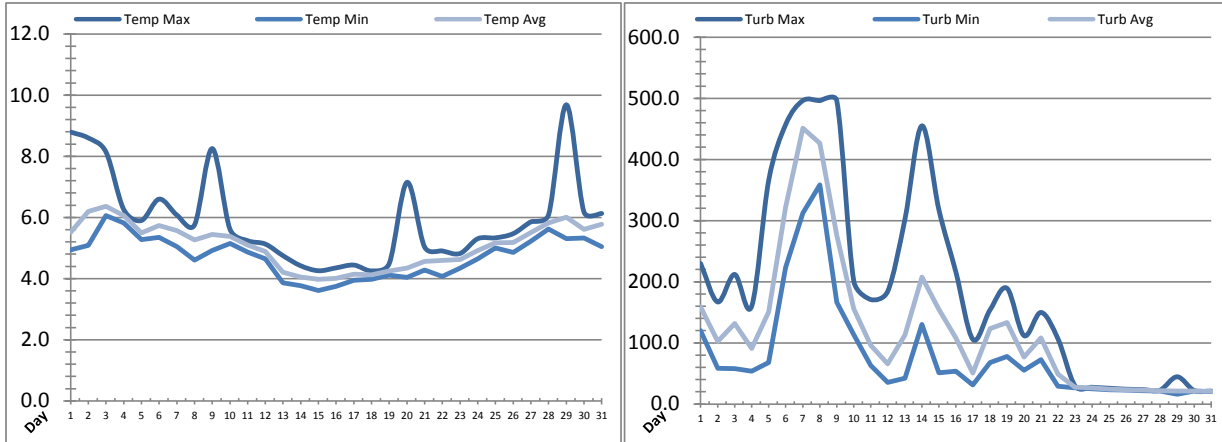


Date	Raw Water Chlorine Residual			Raw Water pH		
	AIT_1401_CL (mg/L)			AIT_1401_PH		
	Maximum	Minimum	Average	Maximum	Minimum	Average
1	1.15	0.00	0.14	7.98	7.73	7.90
2	1.20	0.20	0.81	7.96	7.73	7.78
3	0.83	0.00	0.16	8.06	7.77	7.98
4	0.48	0.00	0.05	8.06	7.87	7.99
5	0.65	0.00	0.07	8.06	7.83	7.95
6	0.27	0.00	0.04	7.97	7.84	7.90
7	1.74	0.00	0.06	9.88	5.55	7.90
8	0.80	0.00	0.09	8.22	7.86	7.97
9	0.30	0.00	0.07	8.06	7.82	7.97
10	0.28	0.00	0.07	8.05	7.84	7.93
11	0.89	0.00	0.18	8.06	7.65	7.91
12	0.39	0.00	0.09	8.13	7.82	8.02
13	0.45	0.00	0.08	8.13	7.77	8.00
14	0.31	0.00	0.05	8.08	7.79	7.99
15	0.02	0.00	0.00	8.10	7.88	8.03
16	0.01	0.00	0.00	8.08	7.97	8.03
17	0.26	0.00	0.04	8.08	7.76	7.96
18	0.39	0.00	0.11	8.03	7.74	7.88
19	0.21	0.00	0.02	8.05	7.77	7.97
20	0.18	0.00	0.08	8.05	7.77	7.89
21	0.28	0.00	0.05	8.06	7.77	7.95
22	0.17	0.00	0.06	8.03	7.86	7.92
23	0.07	0.00	0.05	7.87	7.86	7.87
24	0.04	0.00	0.02	7.89	7.86	7.87
25	0.01	0.00	0.00	7.91	7.88	7.89
26	0.00	0.00	0.00	7.96	7.88	7.92
27	0.00	0.00	0.00	7.98	7.94	7.97
28	0.00	0.00	0.00	8.00	7.97	7.99
29	0.01	0.00	0.00	8.14	7.96	8.03
30	0.00	0.00	0.00	8.06	8.04	8.06
31	0.00	0.00	0.00	8.08	8.05	8.06
Total						
Average	0.37	0.01	0.08	8.10	7.77	7.95
Maximum	1.74		0.81	9.88		8.06
Date	7-Mar		2-Mar	7-Mar		31-Mar
Minimum		0.00	0.00		5.55	7.78
Date		1-Mar	26-Mar		7-Mar	2-Mar

Notes:

Low Lift Monthly Report

Month: March-17

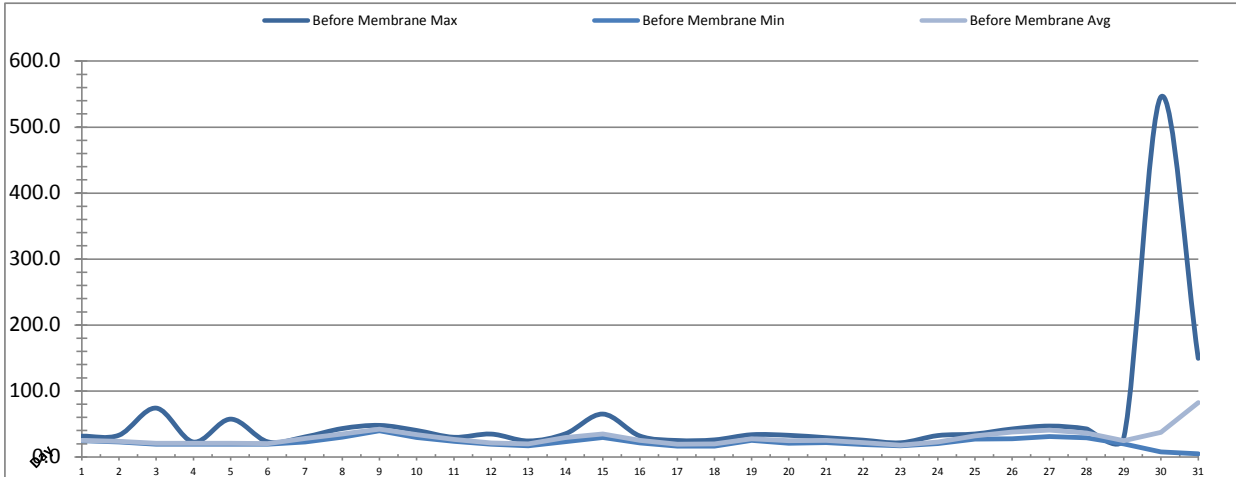


Date	Raw Water Temperature			Raw Water Turbidity		
	TIT_1403 (°C)			AIT_1404 (NTU)		
	Maximum	Minimum	Average	Maximum	Minimum	Average
1	8.8	4.9	5.5	229.83	120.45	159.09
2	8.6	5.1	6.2	166.98	58.45	102.60
3	8.1	6.1	6.4	211.98	57.68	131.98
4	6.3	5.8	6.1	159.98	53.76	90.86
5	5.9	5.3	5.5	365.93	67.66	150.79
6	6.6	5.3	5.7	457.35	223.55	321.94
7	6.1	5.0	5.6	496.15	312.55	451.27
8	5.8	4.6	5.3	496.16	358.29	426.28
9	8.3	4.9	5.4	496.13	166.19	275.87
10	5.6	5.1	5.4	201.11	113.47	155.77
11	5.2	4.9	5.1	170.83	63.07	96.28
12	5.1	4.6	4.9	184.75	35.20	65.54
13	4.7	3.9	4.2	301.44	42.10	113.14
14	4.4	3.8	4.1	455.00	130.41	207.73
15	4.3	3.6	4.0	317.86	51.36	154.58
16	4.4	3.7	4.0	215.73	53.71	108.24
17	4.4	3.9	4.1	105.68	31.26	50.61
18	4.3	4.0	4.1	153.72	67.69	123.21
19	4.5	4.1	4.3	189.40	77.78	133.30
20	7.1	4.0	4.3	111.91	55.31	76.79
21	5.0	4.3	4.6	149.85	72.36	108.20
22	4.9	4.1	4.6	106.49	28.96	49.20
23	4.8	4.3	4.6	29.78	26.63	27.79
24	5.3	4.6	4.9	27.51	25.13	26.48
25	5.3	5.0	5.2	25.92	23.52	24.37
26	5.5	4.9	5.2	24.32	22.79	23.30
27	5.9	5.2	5.5	23.60	22.06	22.78
28	6.1	5.6	5.8	22.85	21.28	22.06
29	9.7	5.3	6.0	44.59	15.91	21.50
30	6.2	5.3	5.6	22.10	21.15	21.21
31	6.1	5.0	5.8	21.31	20.45	21.01
Total						
Average	5.9	4.7	5.1	193.1	78.7	121.4
Maximum	9.7		6.4	496.2		451.3
Date	29-Mar		3-Mar	8-Mar		7-Mar
Minimum		3.6	4.0		15.9	21.0
Date		15-Mar	15-Mar		29-Mar	31-Mar

Notes:

Membranes Monthly Report

Month: March-17



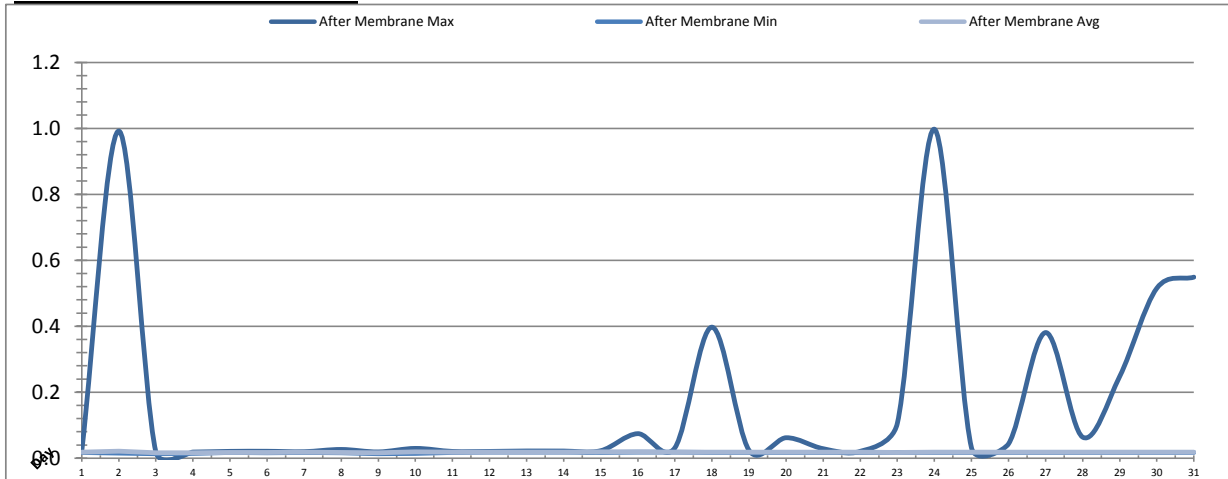
Date	Turbidity Before Membrane			Rack #1 Turbidity			Rack #2 Turbidity		
	PALL_FEED_AIT2006_Value NTU			RACK1_NTU_Value NTU			RACK2_NTU_Value NTU		
	Maximum	Minimum	Average	Maximum	Minimum	Average	Maximum	Minimum	Average
1	31.60	24.65	25.29	0.01	0.01	0.01	0.01	0.01	0.01
2	33.05	22.65	23.75	0.01	0.01	0.01	0.01	0.00	0.01
3	74.10	19.17	20.93	0.01	0.01	0.01	0.01	0.00	0.01
4	22.69	19.27	21.07	0.01	0.01	0.01	0.01	0.00	0.01
5	57.41	19.21	20.77	0.01	0.01	0.01	0.01	0.00	0.01
6	22.92	19.14	20.16	0.01	0.01	0.01	0.15	0.01	0.01
7	30.42	22.79	28.02	0.01	0.01	0.01	0.01	0.01	0.01
8	43.14	29.99	35.06	0.01	0.01	0.01	0.01	0.01	0.01
9	47.91	39.63	42.25	0.01	0.01	0.01	0.02	0.01	0.01
10	40.20	29.44	33.84	0.01	0.01	0.01	0.01	0.01	0.01
11	29.89	23.89	26.77	0.01	0.01	0.01	0.01	0.01	0.01
12	34.76	19.37	21.51	0.01	0.01	0.01	0.01	0.01	0.01
13	24.32	16.76	19.73	0.03	0.01	0.01	0.01	0.01	0.01
14	35.23	23.38	29.72	0.02	0.00	0.01	0.02	0.00	0.01
15	65.09	29.56	35.05	0.01	0.01	0.01	0.46	0.01	0.02
16	31.72	21.41	25.03	0.19	0.01	0.01	0.01	0.01	0.01
17	25.02	16.29	19.28	0.02	0.01	0.01	0.02	0.01	0.01
18	25.95	16.70	19.99	0.01	0.01	0.01	0.01	0.01	0.01
19	33.76	25.06	27.70	0.02	0.01	0.01	0.01	0.01	0.01
20	32.88	20.61	24.76	0.05	0.01	0.01	0.01	0.01	0.01
21	29.28	21.63	25.08	0.14	0.01	0.01	0.01	0.01	0.01
22	25.51	18.74	21.75	0.01	0.01	0.01	0.10	0.01	0.01
23	21.59	16.98	18.10	0.01	0.01	0.01	0.01	0.01	0.01
24	32.48	20.16	22.86	0.01	0.01	0.01	0.01	0.01	0.01
25	34.91	27.30	32.00	0.01	0.01	0.01	0.02	0.01	0.01
26	42.49	27.52	37.68	0.01	0.01	0.01	0.01	0.01	0.01
27	46.91	31.21	40.84	0.01	0.01	0.01	0.02	0.01	0.01
28	42.55	29.24	36.18	0.03	0.01	0.01	0.01	0.01	0.01
29	29.40	20.10	24.59	0.01	0.01	0.01	0.01	0.01	0.01
30	545.96	7.79	37.19	0.28	0.01	0.02	0.16	0.01	0.01
31	149.49	4.67	82.24	0.28	0.01	0.03	0.03	0.01	0.01
Total									
Average	56.2	22.1	29.0	0.04	0.01	0.01	0.04	0.01	0.01
Maximum	546.0		82.2	0.28		0.03	0.46		0.02
Date	30-Mar		31-Mar	30-Mar		31-Mar	15-Mar		15-Mar
Minimum		4.7	18.1		0.003	0.009		0.004	0.006
Date		31-Mar	23-Mar		14-Mar	4-Mar		14-Mar	5-Mar

Notes:

Rack 1&2: Turbidity spikes >0.1ntu due to CIP and EFMs

Membranes Monthly Report

Month: **March-17**



Date	Rack #3 Turbidity			Rack #4 Turbidity			Turbidity After Membranes		
	RACK3_NTU_Value			RACK4_NTU_Value			PALL_FILT_AIT5001_Value		
	Maximum	Minimum	Average	Maximum	Minimum	Average	Maximum	Minimum	Average
1	0.03	0.03	0.03	0.02	0.02	0.02	0.02	0.02	0.02
2	0.03	0.03	0.03	0.02	0.02	0.02	0.99	0.02	0.02
3	0.03	0.03	0.03	0.02	0.02	0.02	0.02	0.01	0.02
4	0.03	0.03	0.03	0.02	0.02	0.02	0.02	0.01	0.02
5	0.03	0.03	0.03	0.02	0.02	0.02	0.02	0.02	0.02
6	0.03	0.03	0.03	0.08	0.02	0.02	0.02	0.02	0.02
7	0.03	0.03	0.03	0.02	0.02	0.02	0.02	0.02	0.02
8	0.03	0.03	0.03	0.02	0.02	0.02	0.03	0.02	0.02
9	0.03	0.03	0.03	0.02	0.02	0.02	0.02	0.01	0.02
10	0.03	0.03	0.03	0.02	0.02	0.02	0.03	0.01	0.02
11	0.03	0.03	0.03	0.02	0.02	0.02	0.02	0.02	0.02
12	0.03	0.03	0.03	0.03	0.02	0.02	0.02	0.02	0.02
13	0.03	0.03	0.03	0.03	0.02	0.02	0.02	0.02	0.02
14	0.03	0.03	0.03	0.11	0.01	0.02	0.02	0.02	0.02
15	0.03	0.03	0.03	0.03	0.02	0.02	0.02	0.02	0.02
16	0.03	0.03	0.03	0.03	0.02	0.02	0.07	0.02	0.02
17	0.03	0.03	0.03	0.18	0.02	0.02	0.03	0.02	0.02
18	0.03	0.03	0.03	0.04	0.02	0.02	0.40	0.02	0.02
19	0.03	0.03	0.03	0.03	0.02	0.02	0.02	0.02	0.02
20	0.03	0.03	0.03	0.38	0.02	0.02	0.06	0.02	0.02
21	0.03	0.03	0.03	0.03	0.02	0.02	0.03	0.02	0.02
22	0.03	0.03	0.03	0.03	0.02	0.02	0.02	0.02	0.02
23	0.03	0.03	0.03	0.03	0.02	0.02	0.11	0.02	0.02
24	0.03	0.03	0.03	0.06	0.02	0.02	1.00	0.02	0.02
25	0.03	0.03	0.03	0.03	0.02	0.02	0.03	0.02	0.02
26	0.03	0.03	0.03	0.03	0.02	0.02	0.04	0.02	0.02
27	0.03	0.03	0.03	0.04	0.02	0.02	0.38	0.02	0.02
28	0.03	0.03	0.03	0.03	0.02	0.02	0.06	0.02	0.02
29	0.03	0.03	0.03	0.04	0.02	0.02	0.25	0.02	0.02
30	0.03	0.03	0.03	0.03	0.02	0.02	0.52	0.02	0.02
31	0.03	0.03	0.03	0.40	0.02	0.02	0.55	0.02	0.02
Total									
Average	0.0	0.0	0.0	0.1	0.0	0.0	0.2	0.0	0.0
Maximum	0.0		0.0	0.4		0.0	1.0		0.0
Date	1-Mar		1-Mar	31-Mar		17-Mar	24-Mar		2-Mar
Minimum		0.0	0.0		0.0	0.0		0.0	0.0
Date		1-Mar	1-Mar		14-Mar	1-Mar		3-Mar	9-Mar

Notes:

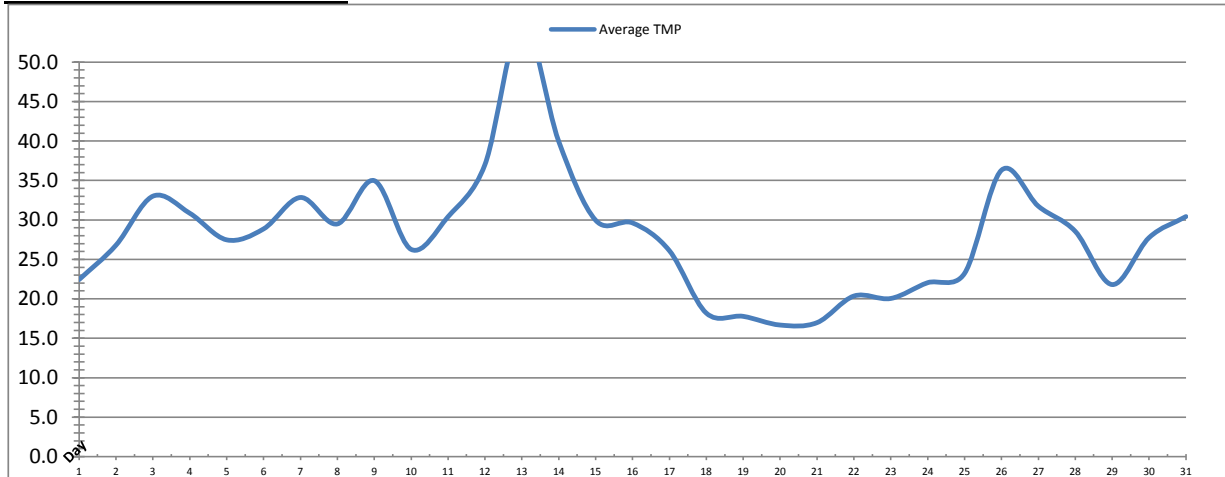
Rack 3: offline

Rack 4: turbidity spikes post EFM and CIP, met filter performance criteria

Turbidity after membranes: calibration caused spike and air bubbles.

Membranes Monthly Report

Month: **March-17**

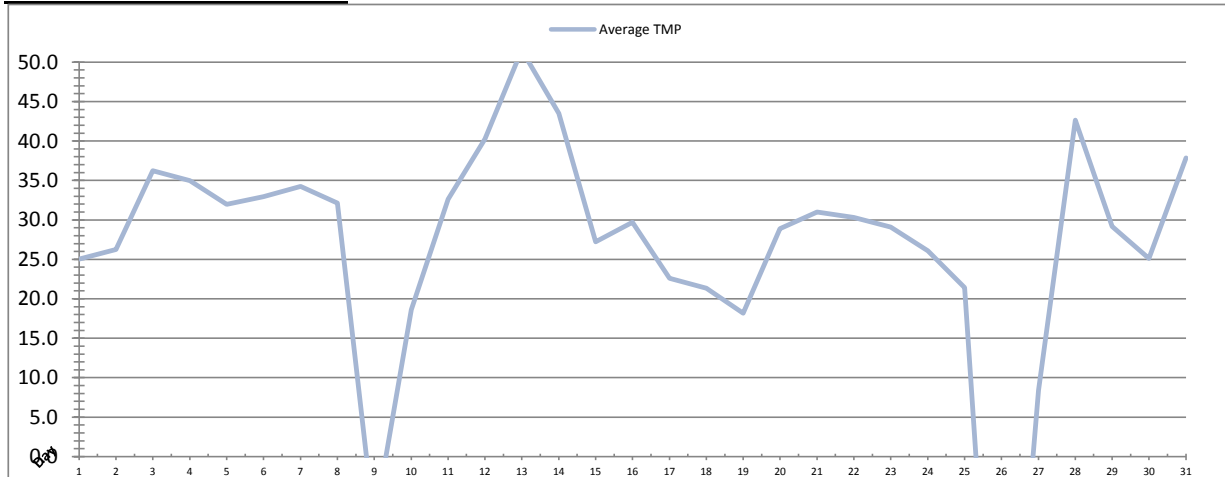


Date	Integrity Test Rack 1							
	Initial Pressure (kPa)	Final Pressure (kPa)	Test Duration (sec)	Change in Pressure (kPa)	UCL	Within UCL	Average TMP (kPa)	Max TMP (kPa)
1	195.5	194.9	300.0	0.6	2.0	✓ 2.0	22.4	104.8
2	195.5	194.9	300.0	0.6	2.0	✓ 2.0	26.8	69.7
3	195.1	194.3	300.0	0.8	2.0	✓ 2.0	33.0	134.3
4	194.9	193.6	300.0	1.3	2.0	✓ 2.0	30.8	83.5
5	195.4	194.1	300.0	1.3	2.0	✓ 2.0	27.5	121.8
6	194.3	193.1	300.0	1.3	2.0	✓ 2.0	28.9	110.6
7	195.0	193.7	300.0	1.3	2.0	✓ 2.0	32.8	123.9
8	194.9	193.6	300.0	1.3	2.0	✓ 2.0	29.5	122.5
9	195.2	194.1	300.0	1.1	2.0	✓ 2.0	35.0	135.8
10	195.2	194.3	300.0	0.8	2.0	✓ 2.0	26.3	133.0
11	195.4	194.2	300.0	1.1	2.0	✓ 2.0	30.4	127.7
12	195.4	194.3	300.0	1.1	2.0	✓ 2.0	37.0	145.1
13	195.3	194.2	300.0	1.1	2.0	✓ 2.0	55.2	258.0
14	195.5	194.7	300.0	0.8	2.0	✓ 2.0	39.9	197.7
15	194.9	193.9	300.0	1.0	2.0	✓ 2.0	30.0	190.5
16	195.3	194.3	300.0	1.0	2.0	✓ 2.0	29.6	144.5
17	195.6	194.6	300.0	1.0	2.0	✓ 2.0	26.1	99.6
18	195.8	194.7	300.0	1.2	2.0	✓ 2.0	18.2	104.7
19	195.8	194.7	300.0	1.2	2.0	✓ 2.0	17.8	101.3
20	195.5	194.5	300.0	1.1	2.0	✓ 2.0	16.7	104.9
21	195.2	194.1	300.0	1.1	2.0	✓ 2.0	17.0	59.8
22	195.7	194.6	300.0	1.1	2.0	✓ 2.0	20.4	110.5
23	195.5	194.6	300.0	0.9	2.0	✓ 2.0	20.0	121.1
24	195.5	194.5	300.0	1.0	2.0	✓ 2.0	22.0	171.0
25	195.4	194.2	300.0	1.2	2.0	✓ 2.0	23.2	186.6
26	195.3	194.4	300.0	0.9	2.0	✓ 2.0	36.3	127.8
27	195.5	194.4	300.0	1.1	2.0	✓ 2.0	31.7	129.3
28	195.6	194.5	300.0	1.1	2.0	✓ 2.0	28.6	138.6
29	195.2	194.3	300.0	0.9	2.0	✓ 2.0	21.8	143.1
30	196.3	195.1	300.0	1.1	2.0	✓ 2.0	27.8	144.4
31	196.0	194.7	300.0	1.3	2.0	✓ 2.0	30.4	149.6
Total								
Average	195.4	194.3	300.0	1.1	2.0	2.0	28.2	132.1
Maximum	196.3	195.1	300.0	1.3	2.0	2.0	55.2	258.0
Date	30-Mar	30-Mar	1-Mar	4-Mar	1-Mar	1-Mar	13-Mar	13-Mar
Minimum	194.3	193.1	300.0	0.6	2.0	2.0	16.7	59.8
Date	6-Mar	6-Mar	1-Mar	1-Mar	1-Mar	1-Mar	20-Mar	21-Mar

Notes:

Membranes Monthly Report

Month: **March-17**

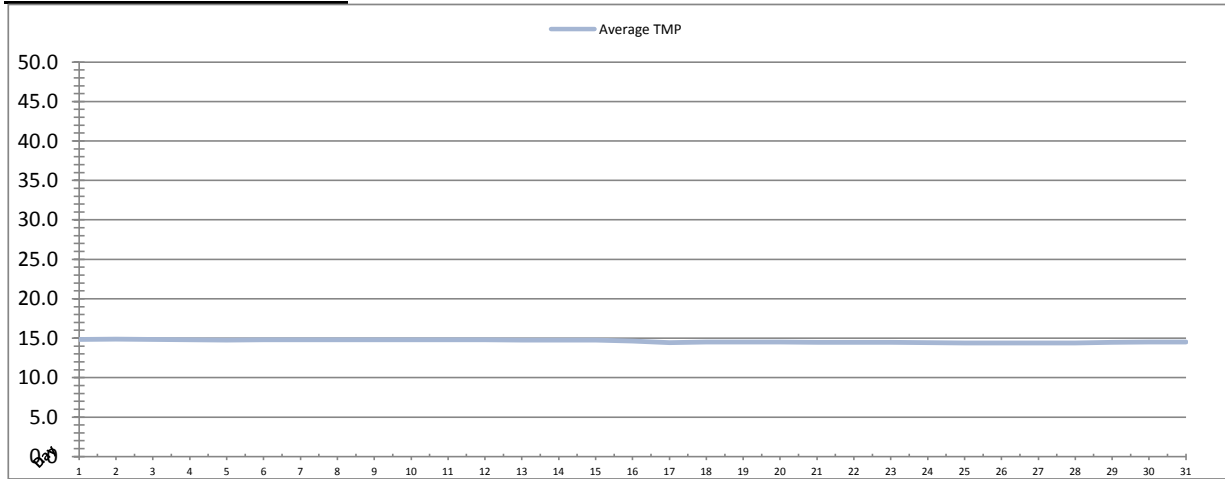


Date	Integrity Test Rack 2								
	Initial Pressure (kPa)	Final Pressure (kPa)	Test Duration (sec)	Change in Pressure (kPa)	UCL	Within UCL	Average TMP (kPa)	Max TMP (kPa)	
1	201.6	200.6	300.0	1.0	2.0	✓ 2.0	25.0	121.8	
2	201.4	200.4	300.0	1.1	2.0	✓ 2.0	26.2	103.8	
3	201.6	200.5	300.0	1.1	2.0	✓ 2.0	36.2	141.0	
4	201.3	200.2	300.0	1.1	2.0	✓ 2.0	35.0	103.9	
5	201.5	200.5	300.0	1.0	2.0	✓ 2.0	32.0	104.6	
6	201.6	200.5	300.0	1.1	2.0	✓ 2.0	33.0	125.3	
7	201.6	200.5	300.0	1.1	2.0	✓ 2.0	34.3	121.9	
8	201.6	200.6	300.0	1.0	2.0	✓ 2.0	32.1	114.8	
9	200.7	199.7	300.0	1.0	2.0	✓ 2.0	-8.6	74.3	
10	200.9	200.6	300.0	0.3	2.0	✓ 2.0	18.6	76.7	
11	201.5	200.3	300.0	1.2	2.0	✓ 2.0	32.6	122.6	
12	200.6	199.6	300.0	1.0	2.0	✓ 2.0	40.2	147.4	
13	201.0	199.9	300.0	1.1	2.0	✓ 2.0	51.5	184.3	
14	201.9	200.6	300.0	1.3	2.0	✓ 2.0	43.5	230.6	
15	200.9	199.9	300.0	1.0	2.0	✓ 2.0	27.2	182.5	
16	201.7	200.4	300.0	1.3	2.0	✓ 2.0	29.7	126.1	
17	201.0	200.7	300.0	0.3	2.0	✓ 2.0	22.6	110.6	
18	200.7	199.4	300.0	1.3	2.0	✓ 2.0	21.4	63.5	
19	201.2	199.9	300.0	1.3	2.0	✓ 2.0	18.2	63.6	
20	201.4	200.6	300.0	0.8	2.0	✓ 2.0	28.9	131.2	
21	200.8	199.7	300.0	1.1	2.0	✓ 2.0	31.0	75.1	
22	201.9	200.7	300.0	1.2	2.0	✓ 2.0	30.3	133.5	
23	200.9	199.9	300.0	1.1	2.0	✓ 2.0	29.1	131.9	
24	201.3	200.0	300.0	1.2	2.0	✓ 2.0	26.1	174.6	
25	201.1	201.0	300.0	0.2	2.0	✓ 2.0	21.4	89.5	
26	201.3	199.9	300.0	1.3	2.0	✓ 2.0	-48.1	89.0	
27	201.1	200.0	300.0	1.2	2.0	✓ 2.0	8.4	94.8	
28	201.2	200.3	300.0	0.9	2.0	✓ 2.0	42.6	189.4	
29	201.2	200.0	300.0	1.2	2.0	✓ 2.0	29.2	144.3	
30	201.9	201.8	300.0	0.2	2.0	✓ 2.0	25.1	139.4	
31	202.1	201.9	300.0	0.2	2.0	✓ 2.0	37.9	134.9	
Total									
Average	201.3	200.3	300.0	1.0	2.0	2.0	26.2	124.1	
Maximum	202.1	201.9	300.0	1.3	2.0	2.0	51.5	230.6	
Date	31-Mar	31-Mar	1-Mar	26-Mar	1-Mar	1-Mar	13-Mar	14-Mar	
Minimum	200.6	199.4	300.0	0.2	2.0	2.0	-48.1	63.5	
Date	12-Mar	18-Mar	1-Mar	25-Mar	1-Mar	1-Mar	26-Mar	18-Mar	

Notes:

Membranes Monthly Report

Month: **March-17**

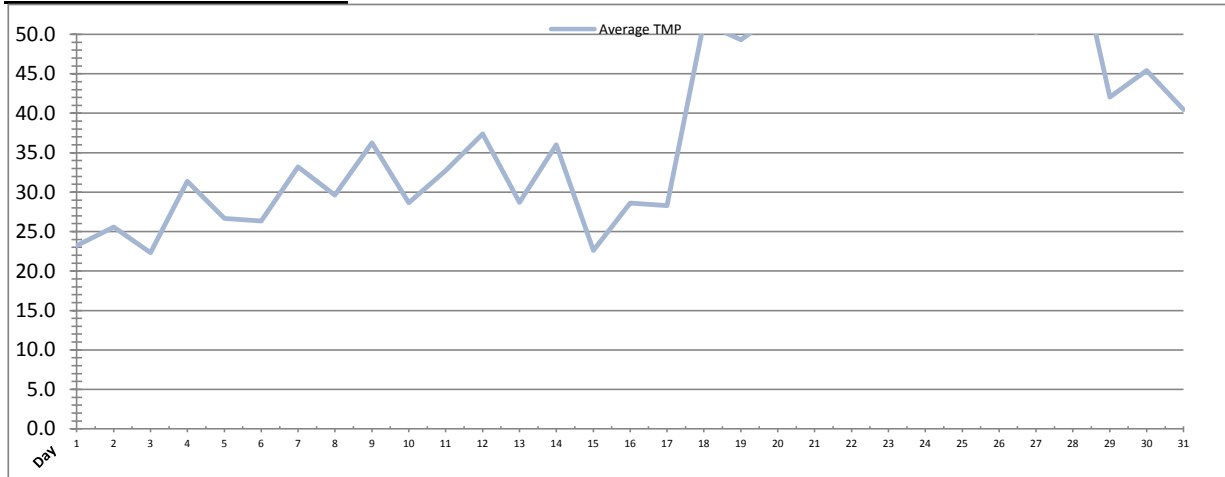


Integrity Test Rack 3									
Date	Initial Pressure (kPa)	Final Pressure (kPa)	Test Duration (sec)	Change in Pressure (kPa)	UCL	Within UCL	Average TMP (kPa)	Max TMP (kPa)	
1	191.8	190.7	300.0	1.2	2.0	✓ 2.0	14.9	15.0	
2	191.8	190.7	300.0	1.2	2.0	✓ 2.0	14.9	15.0	
3	191.8	190.7	300.0	1.2	2.0	✓ 2.0	14.9	15.0	
4	191.8	190.7	300.0	1.2	2.0	✓ 2.0	14.8	15.0	
5	191.8	190.7	300.0	1.2	2.0	✓ 2.0	14.8	14.9	
6	191.8	190.7	300.0	1.2	2.0	✓ 2.0	14.8	15.0	
7	191.8	190.7	300.0	1.2	2.0	✓ 2.0	14.8	15.0	
8	191.8	190.7	300.0	1.2	2.0	✓ 2.0	14.8	15.0	
9	191.8	190.7	300.0	1.2	2.0	✓ 2.0	14.8	15.3	
10	191.8	190.7	300.0	1.2	2.0	✓ 2.0	14.8	15.0	
11	191.8	190.7	300.0	1.2	2.0	✓ 2.0	14.8	15.0	
12	191.8	190.7	300.0	1.2	2.0	✓ 2.0	14.8	15.0	
13	191.8	190.7	300.0	1.2	2.0	✓ 2.0	14.8	15.0	
14	191.8	190.7	300.0	1.2	2.0	✓ 2.0	14.8	15.3	
15	191.8	190.7	300.0	1.2	2.0	✓ 2.0	14.8	15.0	
16	191.8	190.7	300.0	1.2	2.0	✓ 2.0	14.7	15.3	
17	191.8	190.7	300.0	1.2	2.0	✓ 2.0	14.4	15.0	
18	191.8	190.7	300.0	1.2	2.0	✓ 2.0	14.5	15.1	
19	191.8	190.7	300.0	1.2	2.0	✓ 2.0	14.5	15.0	
20	191.8	190.7	300.0	1.2	2.0	✓ 2.0	14.5	15.0	
21	191.8	190.7	300.0	1.2	2.0	✓ 2.0	14.5	14.9	
22	191.8	190.7	300.0	1.2	2.0	✓ 2.0	14.5	14.7	
23	191.8	190.7	300.0	1.2	2.0	✓ 2.0	14.5	14.7	
24	191.8	190.7	300.0	1.2	2.0	✓ 2.0	14.4	14.6	
25	191.8	190.7	300.0	1.2	2.0	✓ 2.0	14.4	14.6	
26	191.8	190.7	300.0	1.2	2.0	✓ 2.0	14.4	14.6	
27	191.8	190.7	300.0	1.2	2.0	✓ 2.0	14.4	14.6	
28	191.8	190.7	300.0	1.2	2.0	✓ 2.0	14.4	14.6	
29	191.8	190.7	300.0	1.2	2.0	✓ 2.0	14.5	15.1	
30	191.8	190.7	300.0	1.2	2.0	✓ 2.0	14.5	15.1	
31	191.8	190.7	300.0	1.2	2.0	✓ 2.0	14.5	15.0	
Total									
Average	191.8	190.7	300.0	1.2	2.0	2.0	14.6	14.9	
Maximum	191.8	190.7	300.0	1.2	2.0	2.0	14.9	15.3	
Date	1-Mar	1-Mar	1-Mar	1-Mar	1-Mar	1-Mar	2-Mar	9-Mar	
Minimum	191.8	190.7	300.0	1.2	2.0	2.0	14.4	14.6	
Date	1-Mar	1-Mar	1-Mar	1-Mar	1-Mar	1-Mar	28-Mar	25-Mar	

Notes:
 Rack 3 Offline

Membranes Monthly Report

Month: **March-17**



Integrity Test Rack 4									
Date	Initial Pressure (kPa)	Final Pressure (kPa)	Test Duration (sec)	Change in Pressure (kPa)	UCL	Within UCL	Average TMP (kPa)	Max TMP (kPa)	
1	195.4	194.2	300.0	1.1	2.0	✓ 2.0	23.2	66.9	
2	195.5	194.1	300.0	1.3	2.0	✓ 2.0	25.6	67.1	
3	195.1	193.9	300.0	1.3	2.0	✓ 2.0	22.3	96.6	
4	195.3	194.1	300.0	1.2	2.0	✓ 2.0	31.4	112.2	
5	195.7	194.6	300.0	1.1	2.0	✓ 2.0	26.7	73.7	
6	195.3	194.1	300.0	1.2	2.0	✓ 2.0	26.3	107.3	
7	195.1	193.9	300.0	1.2	2.0	✓ 2.0	33.2	119.4	
8	195.2	193.9	300.0	1.2	2.0	✓ 2.0	29.6	118.2	
9	195.4	194.4	300.0	1.1	2.0	✓ 2.0	36.2	117.3	
10	195.3	194.0	300.0	1.3	2.0	✓ 2.0	28.7	120.5	
11	194.9	193.6	300.0	1.3	2.0	✓ 2.0	32.7	79.8	
12	194.9	193.7	300.0	1.2	2.0	✓ 2.0	37.4	141.1	
13	195.5	193.9	300.0	1.5	2.0	✓ 2.0	28.7	246.6	
14	194.8	192.9	300.0	1.9	2.0	✓ 2.0	36.0	167.6	
15	195.3	193.9	300.0	1.4	2.0	✓ 2.0	22.6	100.1	
16	195.2	193.9	300.0	1.3	2.0	✓ 2.0	28.6	140.1	
17	195.6	194.1	300.0	1.5	2.0	✓ 2.0	28.3	128.8	
18	195.4	193.9	300.0	1.5	2.0	✓ 2.0	51.5	106.3	
19	195.5	194.0	300.0	1.5	2.0	✓ 2.0	49.3	137.2	
20	195.6	194.2	300.0	1.4	2.0	✓ 2.0	52.7	153.7	
21	195.3	194.1	300.0	1.1	2.0	✓ 2.0	58.2	135.4	
22	195.7	194.2	300.0	1.5	2.0	✓ 2.0	59.4	164.6	
23	195.1	193.7	300.0	1.4	2.0	✓ 2.0	52.7	166.0	
24	195.1	193.6	300.0	1.5	2.0	✓ 2.0	58.0	199.8	
25	195.8	194.6	300.0	1.3	2.0	✓ 2.0	62.4	151.8	
26	195.7	194.4	300.0	1.3	2.0	✓ 2.0	60.4	177.1	
27	195.5	194.1	300.0	1.4	2.0	✓ 2.0	50.2	165.6	
28	195.4	194.1	300.0	1.3	2.0	✓ 2.0	63.1	209.6	
29	195.4	193.9	300.0	1.5	2.0	✓ 2.0	42.0	229.4	
30	195.4	194.1	300.0	1.2	2.0	✓ 2.0	45.4	215.7	
31	195.7	194.3	300.0	1.3	2.0	✓ 2.0	40.5	229.0	
Total									
Average	195.4	194.0	300.0	1.3	2.0	2.0	40.1	143.4	
Maximum	195.8	194.6	300.0	1.9	2.0	2.0	63.1	246.6	
Date	25-Mar	5-Mar	1-Mar	14-Mar	1-Mar	1-Mar	28-Mar	13-Mar	
Minimum	194.8	192.9	300.0	1.1	2.0	2.0	22.3	66.9	
Date	14-Mar	14-Mar	1-Mar	9-Mar	1-Mar	1-Mar	3-Mar	1-Mar	

Notes:

Membranes Monthly Report

Month: March-17

Date	Membranes Monthly Performance							
	Rack 1 >0.1 NTU (Minutes)	Rack 1 Forward Flow (Minutes)	Rack 2 >0.1 NTU (Minutes)	Rack 2 Forward Flow (Minutes)	Rack 3 >0.1 NTU (Minutes)	Rack 3 Forward Flow (Minutes)	Rack 4 >0.1 NTU (Minutes)	Rack 4 Forward Flow (Minutes)
1	0.0	522.5	0.0	527.4	0.0	0.0	0.0	527.6
2	0.0	558.4	0.0	541.4	0.0	0.0	0.0	530.3
3	0.0	683.1	0.0	685.4	0.0	0.0	0.0	326.3
4	0.0	827.4	0.0	826.6	0.0	0.0	0.0	826.1
5	0.0	645.3	0.0	642.2	0.0	0.0	0.0	641.3
6	0.0	676.4	3.2	669.1	0.0	0.0	0.0	634.1
7	0.0	818.4	0.0	817.0	0.0	0.0	0.0	819.3
8	0.0	773.0	0.0	785.2	0.0	0.0	0.0	762.2
9	0.0	843.6	0.0	578.0	0.0	0.0	0.0	846.4
10	0.0	563.0	0.0	514.1	0.0	0.0	0.0	565.4
11	0.0	735.2	0.0	736.1	0.0	0.0	0.0	737.0
12	0.0	760.2	0.0	760.2	0.0	0.0	0.0	761.3
13	0.0	858.3	0.0	841.1	0.0	0.0	0.0	383.3
14	0.0	687.1	0.0	696.1	0.0	0.0	1.4	596.3
15	0.0	513.2	12.1	439.6	0.0	0.0	0.0	403.2
16	2.3	547.5	0.0	555.0	0.0	0.0	0.0	556.4
17	0.0	733.4	0.0	687.6	0.0	0.0	4.0	609.4
18	0.0	1074.4	0.0	1025.4	0.0	0.0	0.0	1070.3
19	0.0	839.4	0.0	790.5	0.0	0.0	0.0	838.1
20	0.0	847.0	0.0	871.2	0.0	0.0	1.4	846.1
21	13.0	821.4	0.0	933.3	0.0	0.0	0.0	937.3
22	0.0	863.2	0.5	853.3	0.0	0.0	0.0	871.3
23	0.0	679.6	0.0	683.1	0.0	0.0	0.0	687.2
24	0.0	822.4	0.0	773.4	0.0	0.0	0.0	829.1
25	0.0	987.3	0.0	840.4	0.0	0.0	0.0	993.2
26	0.0	929.5	0.0	395.0	0.0	0.0	0.0	939.4
27	0.0	761.2	0.0	454.0	0.0	0.0	0.0	772.5
28	0.0	983.1	0.0	999.3	0.0	0.0	0.0	1006.5
29	0.0	525.5	0.0	531.4	0.0	0.0	0.0	540.3
30	6.3	767.0	9.5	688.4	0.0	0.0	0.0	742.4
31	62.0	780.1	0.0	809.3	0.0	0.0	4.5	725.3
Total	83.7	23427.0	25.3	21950.2	0.0	0.0	11.3	22325.0
Percent	0.4		0.1		#DIV/0!		0.1	
Maximum	62.0	1074.4	12.1	1025.4	0.0	0.0	4.5	1070.3
Date	31-Mar	18-Mar	15-Mar	18-Mar	1-Mar	1-Mar	31-Mar	18-Mar
Minimum	0.0	513.2	0.0	395.0	0.0	0.0	0.0	326.3
Date	1-Mar	15-Mar	1-Mar	26-Mar	1-Mar	1-Mar	1-Mar	3-Mar

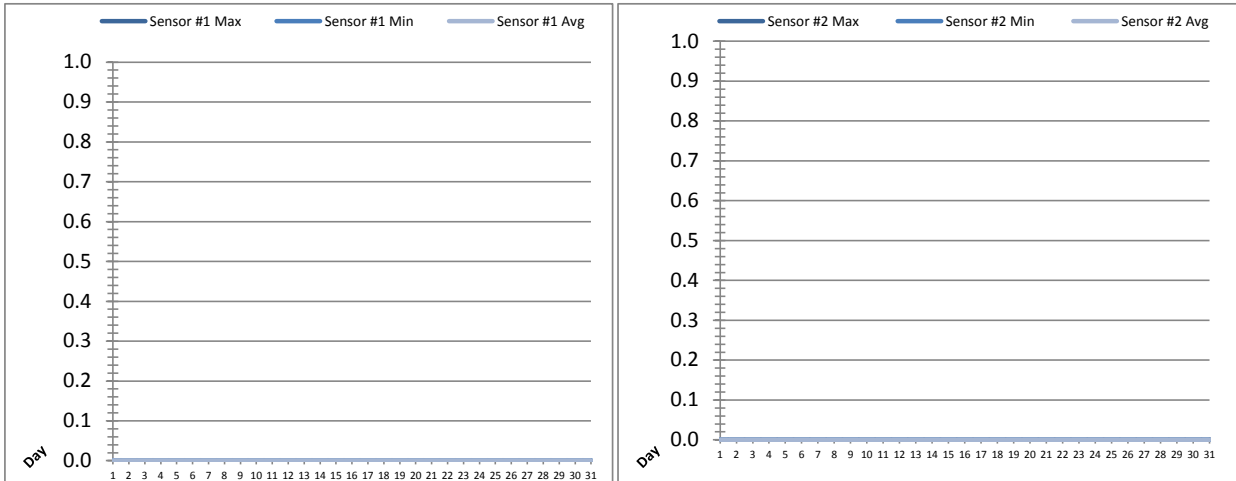
Notes:

Met filter performance criteria of 99% of readings below 0.1ntu for the month.

Rack 3 offline.

UV System Monthly Report

Month: **March-17**

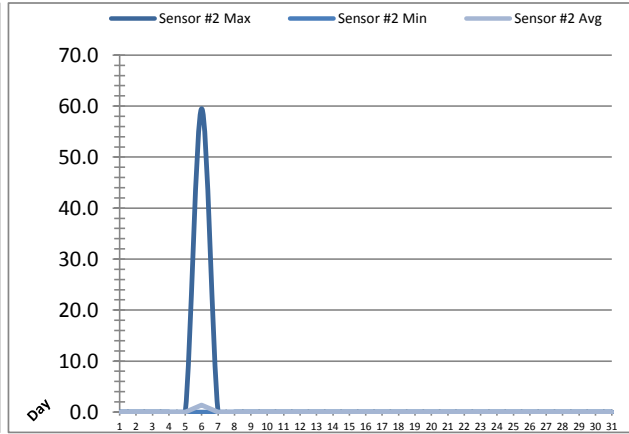
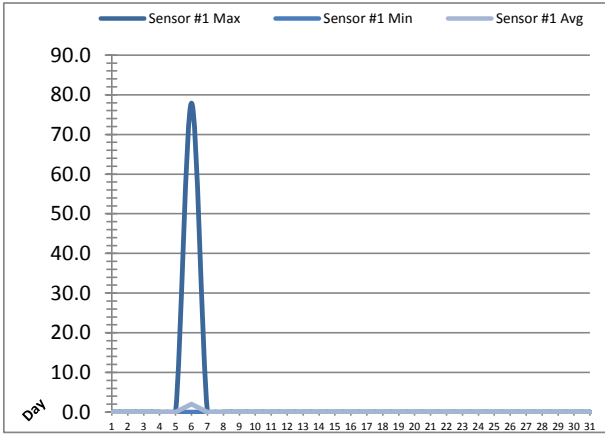


Date	UV Reactor 1					
	Intensity Sensor 1 (mW/cm ²)			Intensity Sensor 2 (mW/cm ²)		
	Maximum	Minimum	Average	Maximum	Minimum	Average
1	0.0	0.0	0.0	0.0	0.0	0.0
2	0.0	0.0	0.0	0.0	0.0	0.0
3	0.0	0.0	0.0	0.0	0.0	0.0
4	0.0	0.0	0.0	0.0	0.0	0.0
5	0.0	0.0	0.0	0.0	0.0	0.0
6	0.0	0.0	0.0	0.0	0.0	0.0
7	0.0	0.0	0.0	0.0	0.0	0.0
8	0.0	0.0	0.0	0.0	0.0	0.0
9	0.0	0.0	0.0	0.0	0.0	0.0
10	0.0	0.0	0.0	0.0	0.0	0.0
11	0.0	0.0	0.0	0.0	0.0	0.0
12	0.0	0.0	0.0	0.0	0.0	0.0
13	0.0	0.0	0.0	0.0	0.0	0.0
14	0.0	0.0	0.0	0.0	0.0	0.0
15	0.0	0.0	0.0	0.0	0.0	0.0
16	0.0	0.0	0.0	0.0	0.0	0.0
17	0.0	0.0	0.0	0.0	0.0	0.0
18	0.0	0.0	0.0	0.0	0.0	0.0
19	0.0	0.0	0.0	0.0	0.0	0.0
20	0.0	0.0	0.0	0.0	0.0	0.0
21	0.0	0.0	0.0	0.0	0.0	0.0
22	0.0	0.0	0.0	0.0	0.0	0.0
23	0.0	0.0	0.0	0.0	0.0	0.0
24	0.0	0.0	0.0	0.0	0.0	0.0
25	0.0	0.0	0.0	0.0	0.0	0.0
26	0.0	0.0	0.0	0.0	0.0	0.0
27	0.0	0.0	0.0	0.0	0.0	0.0
28	0.0	0.0	0.0	0.0	0.0	0.0
29	0.0	0.0	0.0	0.0	0.0	0.0
30	0.0	0.0	0.0	0.0	0.0	0.0
31	0.0	0.0	0.0	0.0	0.0	0.0
Total						
Average	0.0	0.0	0.0	0.0	0.0	0.0
Maximum	0.0		0.0	0.0		0.0
Date	1-Mar		1-Mar	1-Mar		1-Mar
Minimum		0.0	0.0		0.0	0.0
Date		1-Mar	1-Mar		1-Mar	1-Mar

Notes:

UV System Monthly Report

Month: **March-17**

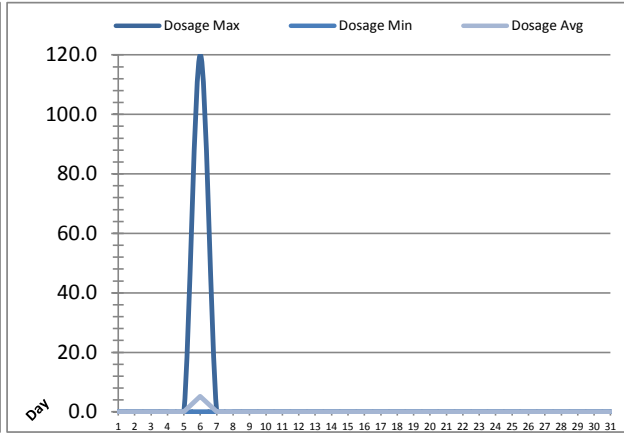
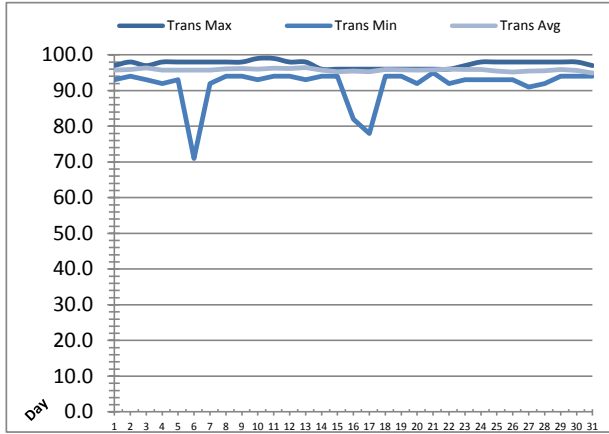


UV Reactor 2						
Date	Intensity Sensor 1 (mW/cm²)			Intensity Sensor 2 (mW/cm²)		
	Maximum	Minimum	Average	Maximum	Minimum	Average
1	0.0	0.0	0.0	0.0	0.0	0.0
2	0.0	0.0	0.0	0.0	0.0	0.0
3	0.0	0.0	0.0	0.0	0.0	0.0
4	0.0	0.0	0.0	0.0	0.0	0.0
5	0.0	0.0	0.0	0.0	0.0	0.0
6	77.9	0.0	2.0	59.5	0.0	1.4
7	0.0	0.0	0.0	0.0	0.0	0.0
8	0.0	0.0	0.0	0.0	0.0	0.0
9	0.0	0.0	0.0	0.0	0.0	0.0
10	0.0	0.0	0.0	0.0	0.0	0.0
11	0.0	0.0	0.0	0.0	0.0	0.0
12	0.0	0.0	0.0	0.0	0.0	0.0
13	0.0	0.0	0.0	0.0	0.0	0.0
14	0.0	0.0	0.0	0.0	0.0	0.0
15	0.0	0.0	0.0	0.0	0.0	0.0
16	0.0	0.0	0.0	0.0	0.0	0.0
17	0.0	0.0	0.0	0.0	0.0	0.0
18	0.0	0.0	0.0	0.0	0.0	0.0
19	0.0	0.0	0.0	0.0	0.0	0.0
20	0.0	0.0	0.0	0.0	0.0	0.0
21	0.0	0.0	0.0	0.0	0.0	0.0
22	0.0	0.0	0.0	0.0	0.0	0.0
23	0.0	0.0	0.0	0.0	0.0	0.0
24	0.0	0.0	0.0	0.0	0.0	0.0
25	0.0	0.0	0.0	0.0	0.0	0.0
26	0.0	0.0	0.0	0.0	0.0	0.0
27	0.0	0.0	0.0	0.0	0.0	0.0
28	0.0	0.0	0.0	0.0	0.0	0.0
29	0.0	0.0	0.0	0.0	0.0	0.0
30	0.0	0.0	0.0	0.0	0.0	0.0
31	0.0	0.0	0.0	0.0	0.0	0.0
Total						
Average	2.5	0.0	0.1	1.9	0.0	0.0
Maximum	77.9		2.0	59.5		1.4
Date	6-Mar		6-Mar	6-Mar		6-Mar
Minimum		0.0	0.0		0.0	0.0
Date		1-Mar	1-Mar		1-Mar	1-Mar

Notes:

UV System Monthly Report

Month: **March-17**

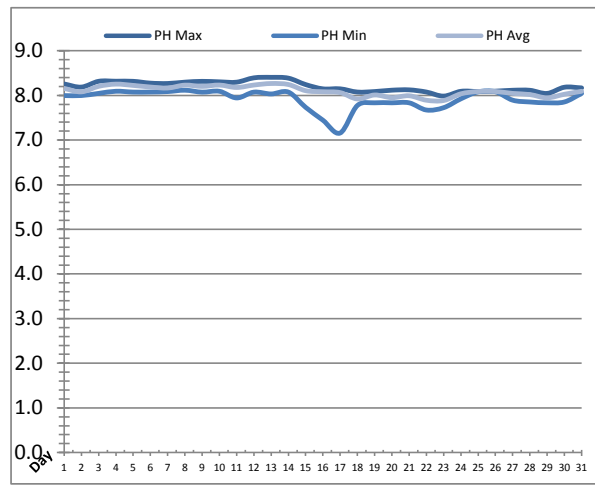
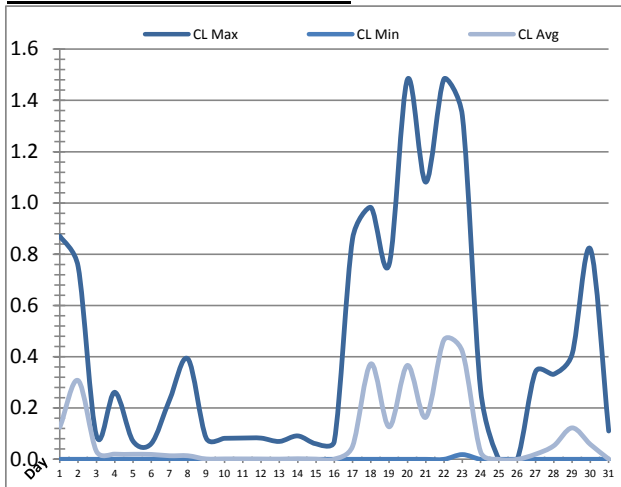


UV System							
Date	Transmittance (%)			Dosage (mJ/cm ²)			Inlet Flow (L/s)
	Maximum	Minimum	Average	Maximum	Minimum	Average	Maximum
1	97.00	93.00	95.70	0.0	0.0	0.0	84.0
2	98.00	94.00	95.94	0.0	0.0	0.0	73.8
3	97.00	93.00	96.35	0.0	0.0	0.0	74.4
4	98.00	92.00	95.74	0.0	0.0	0.0	76.0
5	98.00	93.00	95.75	0.0	0.0	0.0	75.5
6	98.00	71.00	95.75	120.0	0.0	5.2	80.2
7	98.00	92.00	95.73	0.0	0.0	0.0	132.7
8	98.00	94.00	96.06	0.0	0.0	0.0	126.4
9	98.00	94.00	96.17	0.0	0.0	0.0	75.6
10	99.00	93.00	96.00	0.0	0.0	0.0	90.1
11	99.00	94.00	96.24	0.0	0.0	0.0	74.9
12	98.00	94.00	96.15	0.0	0.0	0.0	128.1
13	98.00	93.00	96.43	0.0	0.0	0.0	127.4
14	96.00	94.00	95.76	0.0	0.0	0.0	123.0
15	96.00	94.00	95.27	0.0	0.0	0.0	79.2
16	96.00	82.00	95.47	0.0	0.0	0.0	133.5
17	96.00	78.00	95.27	0.0	0.0	0.0	132.2
18	96.00	94.00	95.94	0.0	0.0	0.0	65.6
19	96.00	94.00	95.78	0.0	0.0	0.0	70.0
20	96.00	92.00	95.73	0.0	0.0	0.0	127.8
21	96.00	95.00	95.81	0.0	0.0	0.0	71.0
22	96.00	92.00	95.97	0.0	0.0	0.0	125.5
23	97.00	93.00	95.94	0.0	0.0	0.0	132.4
24	98.00	93.00	95.91	0.0	0.0	0.0	74.2
25	98.00	93.00	95.48	0.0	0.0	0.0	79.9
26	98.00	93.00	95.23	0.0	0.0	0.0	75.7
27	98.00	91.00	95.42	0.0	0.0	0.0	72.9
28	98.00	92.00	95.51	0.0	0.0	0.0	125.3
29	98.00	94.00	95.88	0.0	0.0	0.0	127.9
30	98.00	94.00	95.62	0.0	0.0	0.0	126.7
31	97.00	94.00	94.91	0.0	0.0	0.0	132.8
Total							
Average	97.35	91.68	95.77	3.9	0.0	0.2	99.8
Maximum	99.00		96.43	120.0		5.2	133.5
Date	10-Mar		13-Mar	6-Mar		6-Mar	16-Mar
Minimum		71.00	94.91		0.0	0.0	
Date		6-Mar	31-Mar		1-Mar	1-Mar	

Notes:

Plant Quality Report

Month: **March-17**

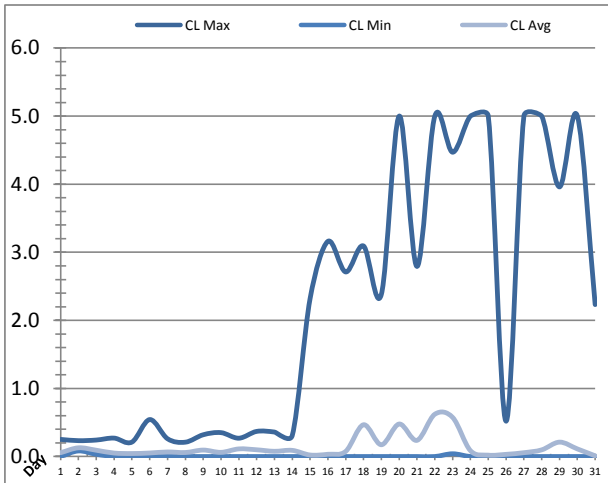


Date	Strainer Chlorine Residual			Strainer pH		
	AIT_2003_CL (ppm)			AIT_2003_PH		
	Maximum	Minimum	Average	Maximum	Minimum	Average
1	0.87	0.00	0.13	8.26	8.00	8.16
2	0.75	0.00	0.31	8.19	8.00	8.08
3	0.09	0.00	0.03	8.32	8.05	8.20
4	0.26	0.00	0.02	8.32	8.09	8.25
5	0.07	0.00	0.02	8.32	8.08	8.22
6	0.06	0.00	0.02	8.28	8.08	8.19
7	0.23	0.00	0.01	8.27	8.09	8.17
8	0.39	0.00	0.01	8.30	8.12	8.23
9	0.08	0.00	0.00	8.32	8.07	8.20
10	0.08	0.00	0.00	8.30	8.09	8.23
11	0.08	0.00	0.00	8.30	7.94	8.18
12	0.08	0.00	0.00	8.39	8.07	8.23
13	0.07	0.00	0.00	8.41	8.03	8.27
14	0.09	0.00	0.00	8.39	8.07	8.24
15	0.06	0.00	0.00	8.24	7.73	8.11
16	0.07	0.00	0.00	8.15	7.45	8.08
17	0.86	0.00	0.05	8.15	7.16	8.06
18	0.98	0.00	0.37	8.08	7.77	7.92
19	0.76	0.00	0.13	8.09	7.83	8.01
20	1.48	0.00	0.37	8.12	7.83	7.95
21	1.08	0.00	0.16	8.12	7.83	7.99
22	1.48	0.00	0.47	8.08	7.67	7.89
23	1.34	0.02	0.42	7.99	7.73	7.89
24	0.27	0.00	0.03	8.09	7.92	8.04
25	0.00	0.00	0.00	8.09	8.08	8.09
26	0.00	0.00	0.00	8.10	8.08	8.09
27	0.34	0.00	0.02	8.12	7.89	8.05
28	0.33	0.00	0.05	8.12	7.85	8.02
29	0.41	0.00	0.12	8.05	7.84	7.95
30	0.82	0.00	0.06	8.18	7.85	8.03
31	0.11	0.00	0.00	8.17	8.04	8.09
Total						
Average	0.44	0.00	0.09	8.20	7.91	8.10
Maximum	1.48		0.47	8.41		8.27
Date	22-Mar		22-Mar	13-Mar		13-Mar
Minimum		0.00	0.00		7.16	7.89
Date		1-Mar	25-Mar		17-Mar	23-Mar

Notes:

Plant Quality Report

Month: **March-17**

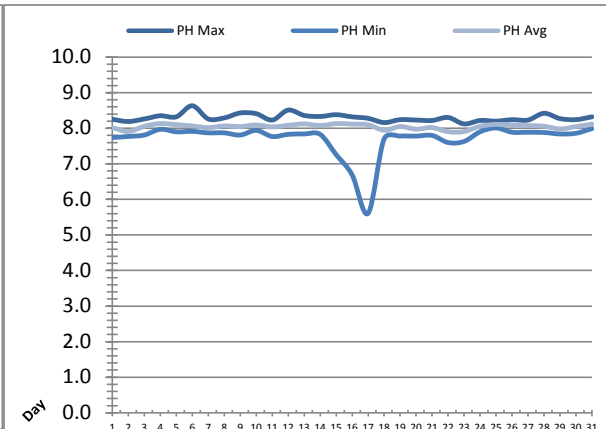
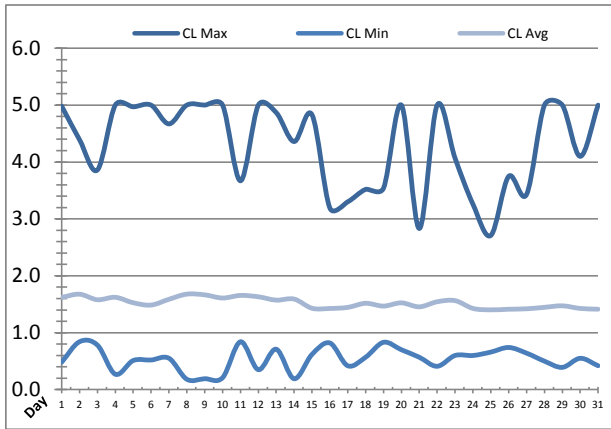


Date	Inlet UV Chlorine Residual			Inlet UV pH		
	AIT_5005_CL (ppm)			AIT_5005_PH		
	Maximum	Minimum	Average	Maximum	Minimum	Average
1	0.25	0.00	0.06	8.11	7.81	7.94
2	0.23	0.08	0.13	7.97	7.78	7.87
3	0.24	0.03	0.09	8.18	7.83	7.98
4	0.27	0.00	0.05	8.15	7.94	8.03
5	0.21	0.00	0.04	8.29	7.91	8.01
6	0.54	0.00	0.05	8.77	7.92	7.98
7	0.26	0.00	0.07	8.22	7.88	7.95
8	0.21	0.00	0.06	8.20	7.91	8.00
9	0.32	0.00	0.09	8.32	7.86	7.98
10	0.35	0.00	0.06	8.29	7.91	8.01
11	0.27	0.00	0.11	8.15	7.78	7.97
12	0.37	0.00	0.10	8.32	7.91	8.03
13	0.36	0.00	0.08	8.41	7.91	8.07
14	0.31	0.00	0.09	8.22	7.88	8.03
15	2.32	0.00	0.02	8.31	7.17	8.10
16	3.16	0.00	0.03	8.32	6.41	8.09
17	2.71	0.00	0.08	8.21	5.00	8.07
18	3.09	0.00	0.47	8.24	7.82	7.94
19	2.38	0.00	0.17	8.23	7.85	8.02
20	5.00	0.00	0.48	8.25	7.86	7.97
21	2.79	0.00	0.24	8.23	7.86	8.00
22	5.00	0.00	0.62	8.44	7.71	7.91
23	4.47	0.04	0.57	8.20	7.74	7.91
24	5.00	0.00	0.09	8.36	7.94	8.03
25	5.00	0.00	0.02	8.52	8.05	8.09
26	0.52	0.00	0.03	8.15	7.94	8.08
27	5.00	0.00	0.06	8.55	7.93	8.08
28	5.00	0.00	0.10	8.44	7.92	8.05
29	3.96	0.00	0.21	8.28	7.90	7.98
30	5.00	0.00	0.11	8.36	7.92	8.05
31	2.23	0.00	0.01	8.28	8.05	8.10
Total						
Average	2.16	0.01	0.14	8.29	7.72	8.01
Maximum	5.00		0.62	8.77		8.10
Date	20-Mar		22-Mar	6-Mar		31-Mar
Minimum		0.00	0.01		5.00	7.87
Date		9-Mar	31-Mar		17-Mar	2-Mar

Notes:

Plant Quality Report

Month: **March-17**

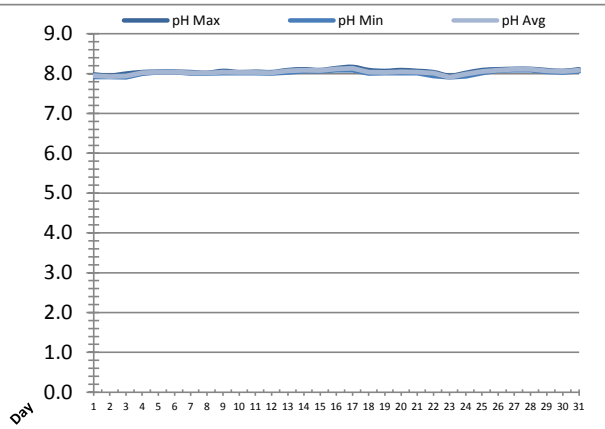
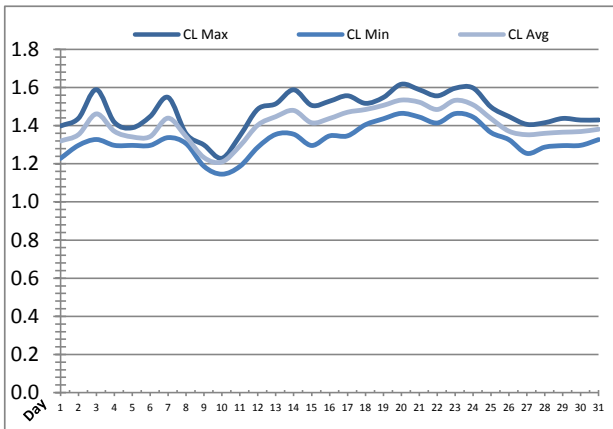


Date	Discharge UV Chlorine Residual			Discharge UV pH		
	AIT_5006_CL (ppm)			AIT_5006_PH		
	Maximum	Minimum	Average	Maximum	Minimum	Average
1	4.98	0.48	1.62	8.25	7.74	8.02
2	4.39	0.84	1.68	8.19	7.77	7.91
3	3.86	0.78	1.58	8.26	7.81	8.06
4	5.00	0.27	1.62	8.35	7.97	8.13
5	4.97	0.51	1.53	8.32	7.90	8.10
6	5.00	0.52	1.49	8.63	7.91	8.07
7	4.67	0.55	1.59	8.26	7.87	8.02
8	5.00	0.18	1.68	8.29	7.87	8.06
9	5.00	0.19	1.67	8.43	7.81	8.05
10	5.00	0.21	1.61	8.41	7.94	8.09
11	3.67	0.84	1.66	8.23	7.77	8.04
12	5.00	0.35	1.63	8.51	7.83	8.08
13	4.87	0.71	1.57	8.36	7.84	8.12
14	4.36	0.19	1.59	8.33	7.83	8.08
15	4.83	0.62	1.43	8.38	7.26	8.13
16	3.19	0.82	1.43	8.32	6.69	8.12
17	3.30	0.42	1.44	8.28	5.61	8.10
18	3.52	0.57	1.52	8.16	7.70	7.95
19	3.54	0.83	1.47	8.24	7.78	8.05
20	5.00	0.70	1.52	8.23	7.78	7.97
21	2.83	0.57	1.45	8.22	7.80	8.02
22	5.00	0.41	1.54	8.30	7.60	7.90
23	4.07	0.60	1.56	8.12	7.63	7.91
24	3.26	0.60	1.43	8.22	7.90	8.06
25	2.71	0.66	1.40	8.20	8.01	8.11
26	3.75	0.74	1.41	8.24	7.89	8.09
27	3.43	0.64	1.42	8.23	7.89	8.08
28	5.00	0.50	1.45	8.42	7.88	8.06
29	5.00	0.39	1.47	8.27	7.84	7.98
30	4.10	0.55	1.43	8.24	7.86	8.05
31	5.00	0.42	1.41	8.32	7.99	8.12
Total						
Average	4.30	0.54	1.53	8.30	7.71	8.05
Maximum	5.00		1.68	8.63		8.13
Date	4-Mar		8-Mar	6-Mar		4-Mar
Minimum		0.18	1.40		5.61	7.90
Date		8-Mar	25-Mar		17-Mar	22-Mar

Notes:

Plant Quality Report

Month: **March-17**

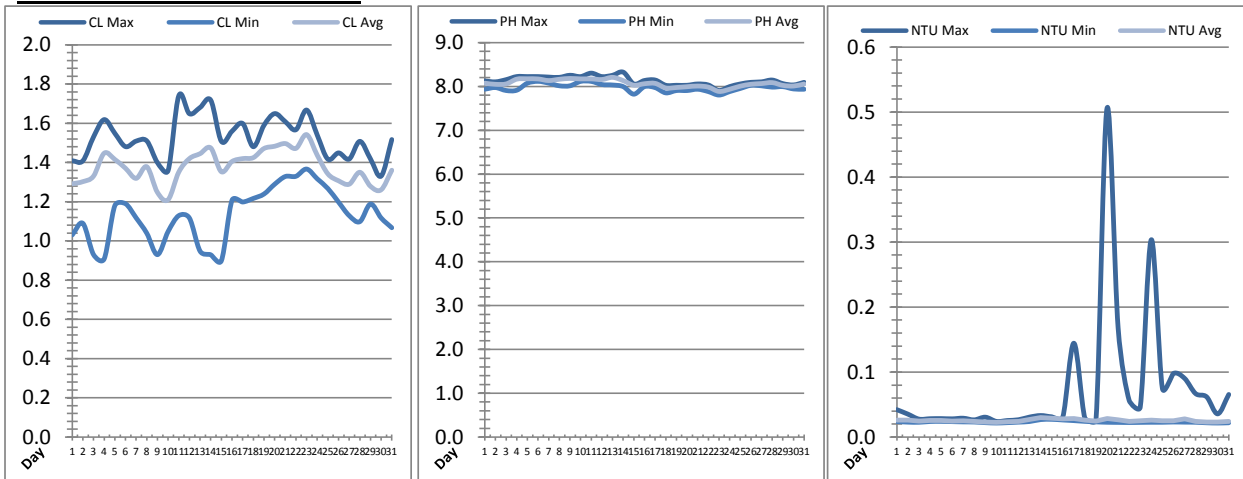


Date	Suction Header Chlorine Res.			Suction Header pH			Distribution CT Calc Total		
	AIT_7001_CL (ppm)			AIT_7001_PH (m)			REAL_CT_CALC_TOTAL (mg*ml/min)		
	Maximum	Minimum	Average	Maximum	Minimum	Average	Maximum	Minimum	Average
1	1.40	1.23	1.32	7.98	7.91	7.95	6862.69	0.00	63.05
2	1.44	1.30	1.35	7.95	7.91	7.93	2670.35	0.00	48.50
3	1.59	1.33	1.46	8.00	7.91	7.95	3787.81	0.00	74.77
4	1.42	1.30	1.37	8.04	8.00	8.02	1383.33	0.00	70.97
5	1.39	1.30	1.34	8.05	8.03	8.04	2765.12	0.00	62.91
6	1.45	1.30	1.34	8.05	8.03	8.04	1140.30	0.00	58.01
7	1.55	1.34	1.44	8.04	8.00	8.02	2224.88	0.00	78.36
8	1.36	1.31	1.34	8.02	8.00	8.02	1523.19	0.00	68.37
9	1.30	1.19	1.23	8.07	8.01	8.03	1208.22	0.00	92.70
10	1.23	1.15	1.21	8.04	8.01	8.03	4190.03	0.00	77.94
11	1.35	1.19	1.29	8.04	8.01	8.03	1409.15	0.00	58.21
12	1.49	1.29	1.40	8.03	8.00	8.02	1755.43	0.00	104.50
13	1.51	1.35	1.45	8.09	8.03	8.07	4118.84	0.00	82.36
14	1.59	1.36	1.48	8.11	8.06	8.08	4684.42	0.00	93.62
15	1.51	1.30	1.42	8.09	8.06	8.08	3382.66	0.00	65.44
16	1.53	1.35	1.44	8.14	8.09	8.12	1317.17	0.00	79.42
17	1.56	1.35	1.47	8.17	8.09	8.13	8388.59	0.00	89.52
18	1.52	1.41	1.48	8.09	8.00	8.03	3607.77	0.00	97.78
19	1.55	1.44	1.51	8.06	8.01	8.03	1197.40	0.00	86.06
20	1.62	1.46	1.53	8.09	8.01	8.04	9660.64	0.00	169.67
21	1.59	1.45	1.52	8.07	8.01	8.04	7362.59	0.00	237.60
22	1.56	1.41	1.48	8.04	7.94	8.01	8809.77	0.00	218.32
23	1.60	1.46	1.53	7.94	7.91	7.91	7980.29	0.00	160.75
24	1.60	1.45	1.51	8.02	7.94	7.99	8441.67	0.00	184.90
25	1.50	1.36	1.44	8.09	8.01	8.05	8737.64	0.00	230.73
26	1.45	1.33	1.37	8.11	8.07	8.09	7649.75	0.00	311.77
27	1.41	1.25	1.35	8.12	8.09	8.11	8134.80	0.00	147.32
28	1.42	1.29	1.36	8.12	8.09	8.11	7396.45	0.00	238.01
29	1.44	1.30	1.37	8.09	8.04	8.07	9829.06	0.00	216.58
30	1.43	1.30	1.37	8.07	8.03	8.06	7255.91	0.00	251.92
31	1.43	1.33	1.38	8.11	8.06	8.09	8323.38	0.00	240.39
Total									
Average	1.48	1.33	1.41	8.06	8.01	8.04			
Maximum	1.62		1.53	8.17		8.13			
Date	20-Mar		20-Mar	17-Mar		17-Mar			
Minimum		1.15	1.21		7.91	7.91			
Date		10-Mar	10-Mar		23-Mar	23-Mar			

Notes:

Plant Quality Report

Month: **March-17**



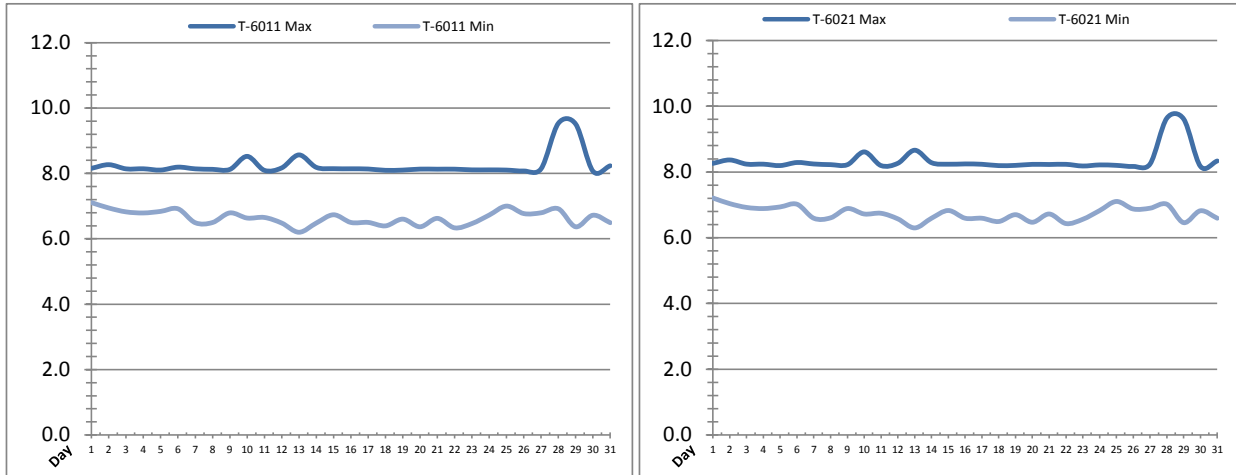
Date	Distribution Chlorine Header			Distribution pH			Distribution Turbidity		
	AIT_7004_CL (ppm)			AIT_7004_PH (mg/L)			AIT_7003 (mg/L)		
	Maximum	Minimum	Average	Maximum	Minimum	Average	Maximum	Minimum	Average
1	1.41	1.03	1.29	8.13	7.94	8.07	0.04	0.02	0.03
2	1.41	1.09	1.30	8.11	7.97	8.05	0.04	0.02	0.03
3	1.53	0.93	1.33	8.16	7.91	8.06	0.03	0.02	0.02
4	1.62	0.91	1.45	8.23	7.91	8.17	0.03	0.02	0.03
5	1.55	1.18	1.42	8.23	8.08	8.18	0.03	0.02	0.03
6	1.48	1.19	1.37	8.23	8.12	8.17	0.03	0.02	0.02
7	1.51	1.12	1.32	8.21	8.08	8.13	0.03	0.02	0.02
8	1.51	1.04	1.38	8.21	8.02	8.16	0.03	0.02	0.02
9	1.40	0.93	1.25	8.26	8.01	8.18	0.03	0.02	0.02
10	1.36	1.05	1.21	8.23	8.12	8.17	0.02	0.02	0.02
11	1.74	1.13	1.35	8.30	8.12	8.17	0.03	0.02	0.02
12	1.65	1.12	1.42	8.23	8.04	8.16	0.03	0.02	0.02
13	1.68	0.95	1.44	8.25	8.03	8.21	0.03	0.02	0.03
14	1.72	0.93	1.47	8.33	8.00	8.13	0.03	0.03	0.03
15	1.51	0.90	1.35	8.06	7.82	8.03	0.03	0.03	0.03
16	1.56	1.21	1.41	8.14	8.00	8.06	0.03	0.03	0.03
17	1.60	1.20	1.42	8.15	7.97	8.07	0.14	0.03	0.03
18	1.48	1.22	1.42	8.03	7.85	7.97	0.03	0.02	0.03
19	1.59	1.24	1.47	8.03	7.91	7.98	0.03	0.02	0.02
20	1.65	1.29	1.48	8.03	7.91	7.99	0.51	0.02	0.03
21	1.61	1.33	1.50	8.06	7.94	8.01	0.17	0.02	0.03
22	1.57	1.33	1.47	8.03	7.88	7.98	0.06	0.02	0.02
23	1.67	1.37	1.54	7.91	7.80	7.89	0.05	0.02	0.03
24	1.54	1.32	1.44	8.00	7.88	7.94	0.30	0.02	0.03
25	1.42	1.27	1.34	8.06	7.95	8.01	0.07	0.02	0.03
26	1.45	1.20	1.31	8.09	8.03	8.05	0.10	0.02	0.03
27	1.42	1.13	1.29	8.11	8.01	8.07	0.09	0.02	0.03
28	1.51	1.10	1.35	8.15	7.98	8.09	0.07	0.02	0.02
29	1.42	1.19	1.28	8.06	8.00	8.02	0.06	0.02	0.02
30	1.33	1.12	1.26	8.03	7.94	8.01	0.04	0.02	0.02
31	1.52	1.07	1.36	8.09	7.94	8.06	0.07	0.02	0.02
Total									
Average	1.53	1.13	1.38	8.13	7.97	8.07	0.1	0.0	0.0
Maximum	1.74		1.54	8.33		8.21	0.5		0.0
Date	11-Mar		23-Mar	14-Mar		13-Mar	20-Mar		14-Mar
Minimum		0.90	1.21		7.80	7.89		0.0	0.0
Date		15-Mar	10-Mar		23-Mar	23-Mar		10-Mar	10-Mar

Notes:

- 17: turbidity spike due to testing of HLP#3
- 20: returned to split mode.
- 21: Testing on HLP#2

Raw Well/Treated Storage Report

Month: March-17

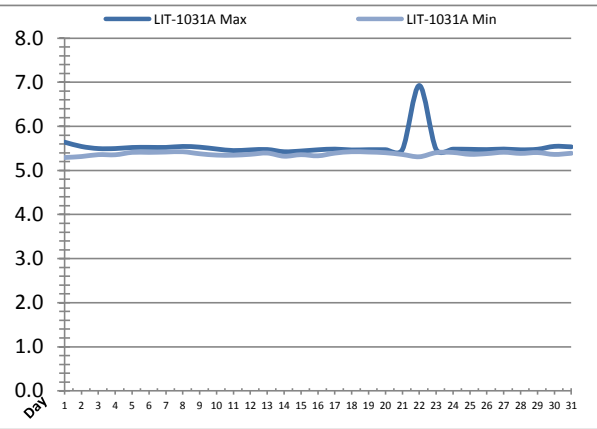
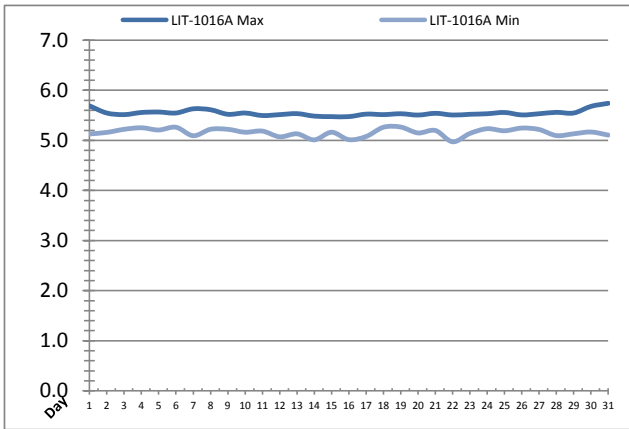


Date	Treated Water Storage Tank					
	T-6011 (m)			T-6021 (m)		
	Maximum	Minimum	Average	Maximum	Minimum	Average
1	8.2	7.1	7.8	8.3	7.2	7.9
2	8.3	6.9	7.8	8.4	7.0	7.9
3	8.1	6.8	7.7	8.2	6.9	7.8
4	8.1	6.8	7.7	8.2	6.9	7.8
5	8.1	6.8	7.7	8.2	6.9	7.8
6	8.2	6.9	7.8	8.3	7.0	7.9
7	8.1	6.5	7.6	8.2	6.6	7.7
8	8.1	6.5	7.5	8.2	6.6	7.6
9	8.1	6.8	7.6	8.2	6.9	7.7
10	8.5	6.6	7.8	8.6	6.7	7.9
11	8.1	6.7	7.7	8.2	6.7	7.8
12	8.2	6.5	7.6	8.3	6.6	7.7
13	8.6	6.2	7.5	8.7	6.3	7.6
14	8.2	6.5	7.6	8.3	6.6	7.7
15	8.1	6.7	7.7	8.2	6.8	7.8
16	8.1	6.5	7.6	8.2	6.6	7.7
17	8.1	6.5	7.6	8.2	6.6	7.7
18	8.1	6.4	7.3	8.2	6.5	7.4
19	8.1	6.6	7.5	8.2	6.7	7.6
20	8.1	6.4	7.5	8.2	6.5	7.6
21	8.1	6.6	7.4	8.2	6.7	7.5
22	8.1	6.3	7.5	8.2	6.4	7.6
23	8.1	6.5	7.6	8.2	6.6	7.7
24	8.1	6.7	7.7	8.2	6.8	7.8
25	8.1	7.0	7.7	8.2	7.1	7.8
26	8.1	6.8	7.6	8.2	6.9	7.7
27	8.1	6.8	7.7	8.2	6.9	7.8
28	9.5	6.9	8.0	9.6	7.0	8.1
29	9.5	6.4	8.5	9.6	6.5	8.6
30	8.1	6.7	7.6	8.2	6.8	7.7
31	8.2	6.5	7.5	8.3	6.6	7.6
Total						
Average	8.3	6.6	7.7	8.4	6.7	7.8
Maximum	9.5		8.5	9.6		8.6
Date	28-Mar		29-Mar	28-Mar		29-Mar
Minimum		6.2	7.3		6.3	7.4
Date		13-Mar	18-Mar		13-Mar	18-Mar

Notes:

Raw Well/Treated Storage Report

Month: March-17

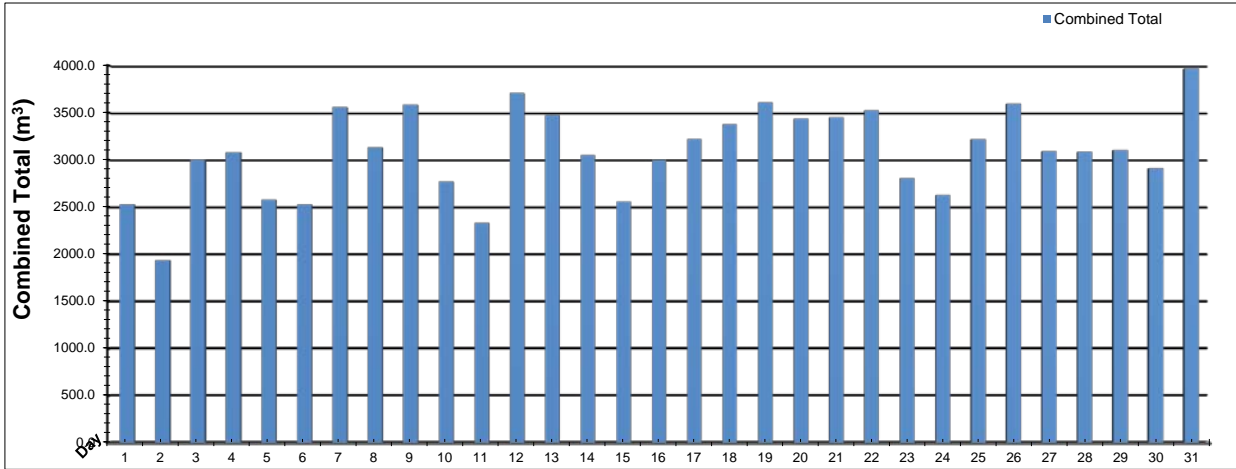


Date	Low Lift Intake Levels					
	Wet Well #1 (LIT-1016A) (m)			Wet Well #2 (LIT-1031A) (m)		
	Maximum	Minimum	Average	Maximum	Minimum	Average
1	5.7	5.1	5.4	5.6	5.3	5.4
2	5.5	5.2	5.4	5.5	5.3	5.4
3	5.5	5.2	5.4	5.5	5.4	5.4
4	5.6	5.3	5.4	5.5	5.4	5.4
5	5.6	5.2	5.4	5.5	5.4	5.5
6	5.5	5.3	5.4	5.5	5.4	5.5
7	5.6	5.1	5.4	5.5	5.4	5.5
8	5.6	5.2	5.4	5.5	5.4	5.5
9	5.5	5.2	5.4	5.5	5.4	5.4
10	5.5	5.2	5.3	5.5	5.3	5.4
11	5.5	5.2	5.3	5.5	5.3	5.4
12	5.5	5.1	5.3	5.5	5.4	5.4
13	5.5	5.1	5.3	5.5	5.4	5.4
14	5.5	5.0	5.3	5.4	5.3	5.4
15	5.5	5.2	5.3	5.4	5.4	5.4
16	5.5	5.0	5.3	5.5	5.3	5.4
17	5.5	5.1	5.4	5.5	5.4	5.4
18	5.5	5.3	5.4	5.5	5.4	5.4
19	5.5	5.3	5.4	5.5	5.4	5.4
20	5.5	5.1	5.4	5.5	5.4	5.4
21	5.5	5.2	5.4	5.5	5.4	5.4
22	5.5	5.0	5.3	6.9	5.3	5.5
23	5.5	5.1	5.4	5.5	5.4	5.4
24	5.5	5.2	5.4	5.5	5.4	5.4
25	5.6	5.2	5.4	5.5	5.4	5.4
26	5.5	5.2	5.4	5.5	5.4	5.4
27	5.5	5.2	5.4	5.5	5.4	5.4
28	5.6	5.1	5.4	5.5	5.4	5.4
29	5.5	5.1	5.4	5.5	5.4	5.4
30	5.7	5.2	5.4	5.5	5.4	5.4
31	5.7	5.1	5.4	5.5	5.4	5.5
Total						
Average	5.5	5.2	5.4	5.5	5.4	5.4
Maximum	5.7		5.4	6.9		5.5
Date	31-Mar		8-Mar	22-Mar		22-Mar
Minimum		5.0	5.3		5.3	5.4
Date		22-Mar	14-Mar		1-Mar	14-Mar

Notes:

High Lift Monthly Report

Month: March-17



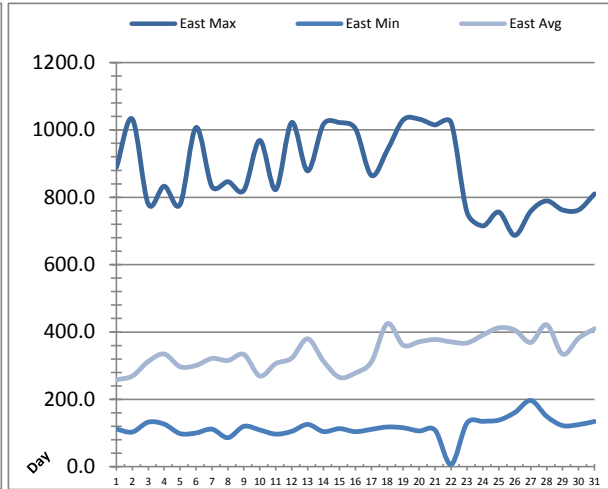
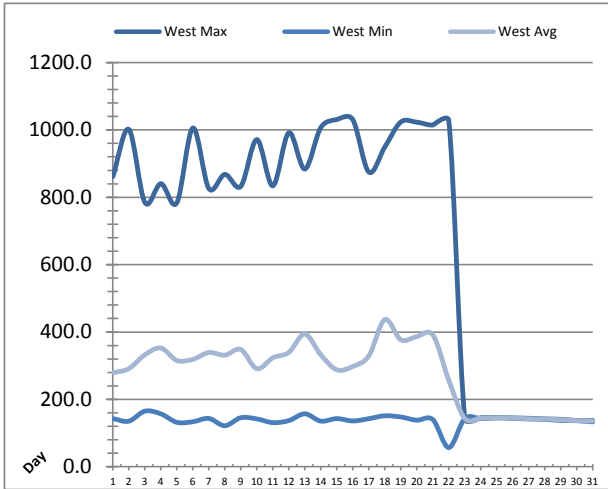
Date	Distribution Flow					
	FIT_7052 (East)		FIT_7062 (West)		Combined	
	(m³) Total	(L/s) Peak	(m³) Total	(L/s) Peak	(m³) Total	(L/s) Peak
1	0.0	0.0	2533.1	135.4	2533.1	135.4
2	0.0	0.0	1937.3	134.0	1937.3	134.0
3	0.0	0.0	3004.2	135.8	3004.2	135.8
4	0.0	0.0	3083.1	135.3	3083.1	135.3
5	0.0	0.0	2581.3	134.9	2581.3	134.9
6	0.0	0.0	2533.5	134.8	2533.5	134.8
7	0.0	0.0	3559.1	135.6	3559.1	135.6
8	0.0	0.0	3133.0	134.0	3133.0	134.0
9	0.0	0.0	3586.8	133.0	3586.8	133.0
10	0.0	0.0	2772.9	135.8	2772.9	135.8
11	0.0	0.0	2333.3	129.7	2333.3	129.7
12	0.0	0.0	3708.9	133.0	3708.9	133.0
13	0.0	0.0	3476.0	153.1	3476.0	153.1
14	0.0	0.0	3051.0	134.5	3051.0	134.5
15	0.0	0.0	2558.3	138.1	2558.3	138.1
16	0.0	0.0	3001.7	135.8	3001.7	135.8
17	0.0	0.0	3223.9	132.7	3223.9	132.7
18	0.0	0.0	3381.8	132.9	3381.8	132.9
19	0.0	0.0	3611.9	135.7	3611.9	135.7
20	557.4	42.7	2880.3	134.2	3437.7	134.3
21	676.7	42.2	2776.5	91.5	3453.2	91.5
22	791.0	40.1	2738.1	109.5	3529.1	140.8
23	892.1	41.1	1919.0	103.9	2811.1	138.9
24	544.7	46.3	2083.7	100.1	2628.3	138.5
25	653.8	40.1	2567.1	77.5	3220.9	87.8
26	1190.9	41.4	2405.8	82.9	3596.6	84.7
27	721.3	40.5	2371.3	77.8	3092.5	87.8
28	295.3	20.2	2790.9	77.6	3086.2	86.0
29	647.8	40.3	2459.4	83.5	3107.2	88.4
30	693.9	34.3	2218.7	82.3	2912.6	88.6
31	1057.6	42.5	2913.7	77.6	3971.3	89.3
Total	8722.5		87195.4		95917.9	
Average	281.4	15.2	2812.8	118.5	3094.1	123.6
Maximum	1190.9	46.3	3708.9	153.1	3971.3	153.1
Date	26-Mar	24-Mar	12-Mar	13-Mar	31-Mar	13-Mar
Minimum	0.0		1919.0		1937.3	
Date	13-Mar		23-Mar		2-Mar	

Notes:

System operated in combined mode until 19th for repairs to flow control valve. Returned to split mode after the 19th.

Low Lift Monthly Report

Month: **March-17**

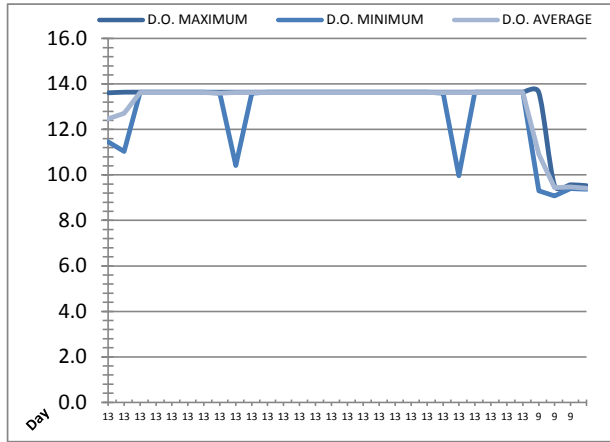
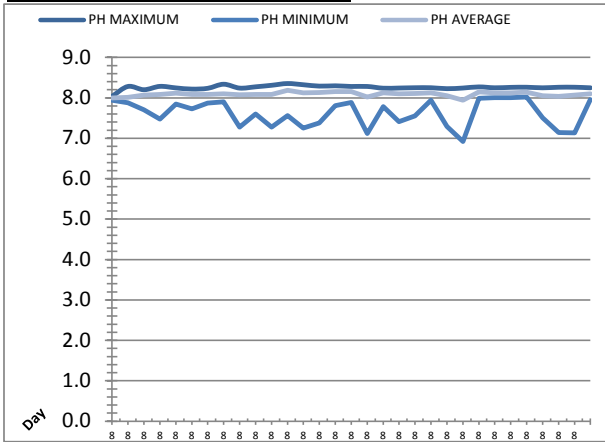


Date	West Train Header Pressure PIT_1018 (kPa)			East Train Header Pressure PIT_1028 (kPa)		
	Maximum	Minimum	Average	Maximum	Minimum	Average
1	861.5	142.9	279.0	888.1	111.8	258.3
2	1001.5	135.3	291.2	1032.2	103.1	269.3
3	784.7	165.1	332.6	780.0	132.4	312.6
4	840.3	157.1	352.4	832.8	126.5	334.6
5	783.6	131.8	315.5	778.9	98.4	296.9
6	1005.7	133.7	318.9	1007.1	100.3	300.7
7	826.0	143.4	339.2	831.4	111.5	321.6
8	868.0	121.8	331.3	846.3	86.3	315.3
9	832.5	145.6	348.0	820.6	120.0	333.4
10	971.3	142.0	291.1	968.8	109.2	269.3
11	833.9	131.0	323.5	822.7	96.9	306.2
12	991.6	137.0	339.4	1022.0	105.0	322.3
13	883.8	157.1	394.0	878.4	125.6	379.8
14	1007.0	135.5	332.2	1017.4	104.4	313.1
15	1030.9	143.0	287.7	1021.8	113.1	265.4
16	1030.4	136.0	297.6	1003.6	104.2	278.5
17	874.8	142.6	329.2	864.9	111.1	311.2
18	949.1	151.3	436.9	940.1	118.0	424.8
19	1023.4	147.7	377.1	1029.8	115.7	360.7
20	1022.8	138.2	386.3	1032.0	106.3	371.0
21	1014.3	140.1	391.8	1014.8	108.4	377.8
22	1027.1	56.9	256.5	1022.2	6.7	370.7
23	143.7	142.9	143.2	755.6	129.9	367.4
24	146.2	143.2	144.7	715.0	134.8	391.1
25	146.4	144.8	145.6	756.1	138.6	412.4
26	145.1	143.8	144.8	686.8	161.0	405.7
27	143.9	141.7	142.6	758.6	196.8	369.0
28	142.0	140.7	141.6	789.2	149.6	421.7
29	140.8	137.3	139.6	762.3	122.3	334.1
30	137.4	136.7	137.0	762.4	125.1	381.6
31	137.4	133.2	136.0	810.1	134.6	409.8
Total						
Average	701.5	138.7	278.3	879.1	116.4	341.5
Maximum	1030.9		436.9	1032.2		424.8
Date	15-Mar		18-Mar	2-Mar		18-Mar
Minimum		56.9	136.0		6.7	258.3
Date		22-Mar	31-Mar		22-Mar	1-Mar

Notes:

Low Lift Monthly Report

Month: **March-17**

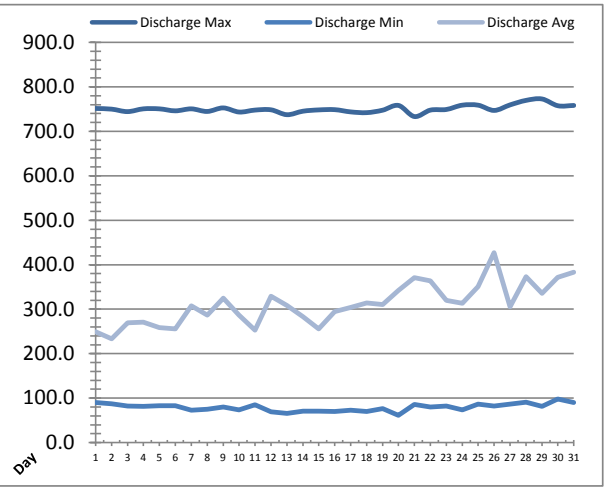
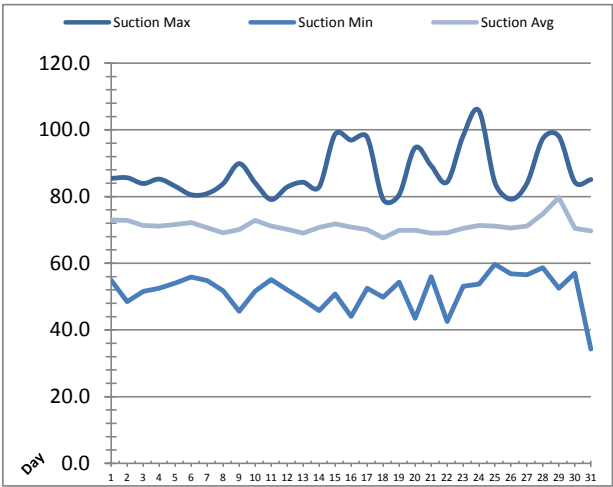


Date	Raw Water Sample Line					
	AIT_1402_PH (pH)			AIT_1402_DO (mg/L)		
	Maximum	Minimum	Average	Maximum	Minimum	Average
1	8.0	7.9	8.0	13.6	11.5	12.5
2	8.3	7.9	8.0	13.6	11.0	12.7
3	8.2	7.7	8.1	13.6	13.6	13.6
4	8.3	7.5	8.1	13.6	13.6	13.6
5	8.2	7.8	8.1	13.6	13.6	13.6
6	8.2	7.7	8.1	13.6	13.6	13.6
7	8.2	7.9	8.1	13.6	13.6	13.6
8	8.3	7.9	8.1	13.6	13.6	13.6
9	8.2	7.3	8.1	13.6	10.4	13.6
10	8.3	7.6	8.1	13.6	13.6	13.6
11	8.3	7.3	8.1	13.6	13.6	13.6
12	8.4	7.6	8.2	13.6	13.6	13.6
13	8.3	7.3	8.1	13.6	13.6	13.6
14	8.3	7.4	8.1	13.6	13.6	13.6
15	8.3	7.8	8.2	13.6	13.6	13.6
16	8.3	7.9	8.2	13.6	13.6	13.6
17	8.3	7.1	8.0	13.6	13.6	13.6
18	8.2	7.8	8.1	13.6	13.6	13.6
19	8.2	7.4	8.1	13.6	13.6	13.6
20	8.3	7.6	8.1	13.6	13.6	13.6
21	8.3	7.9	8.1	13.6	13.6	13.6
22	8.2	7.3	8.1	13.6	13.6	13.6
23	8.2	6.9	7.9	13.6	10.0	13.6
24	8.3	8.0	8.1	13.6	13.6	13.6
25	8.2	8.0	8.1	13.6	13.6	13.6
26	8.3	8.0	8.1	13.6	13.6	13.6
27	8.3	8.0	8.1	13.6	13.6	13.6
28	8.2	7.5	8.1	13.6	9.3	10.9
29	8.3	7.1	8.0	9.5	9.1	9.4
30	8.3	7.1	8.1	9.6	9.4	9.5
31	8.2	8.0	8.1	9.5	9.4	9.4
Total						
Average	8.3	7.6	8.1	13.2	12.7	13.1
Maximum	8.4		8.2	13.6		13.6
Date	12-Mar		12-Mar	2-Mar		3-Mar
Minimum		6.9	7.9		9.1	9.4
Date		23-Mar	23-Mar		29-Mar	31-Mar

Notes:

High Lift Monthly Report

Month: **March-17**

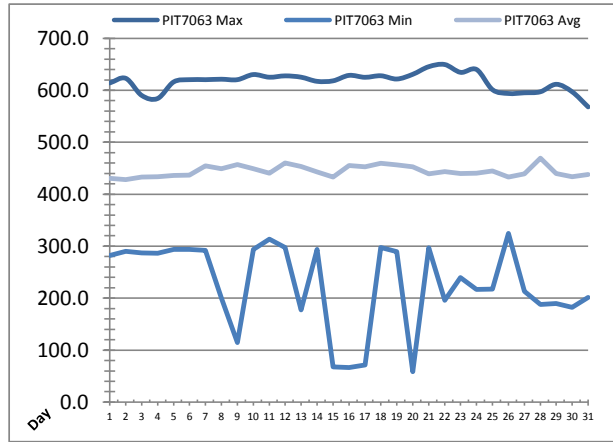
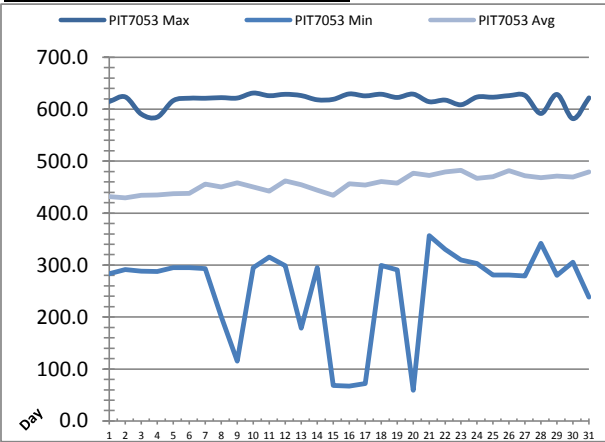


Date	Suction Header Pressure			Discharge Header Pressure		
	PIT_7002 (kPa)			PIT_7005 (kPa)		
	Maximum	Minimum	Average	Maximum	Minimum	Average
1	85.5	55.0	73.0	751.5	90.4	249.6
2	85.6	48.5	72.9	750.0	87.1	233.6
3	83.9	51.5	71.3	744.4	81.9	269.4
4	85.2	52.6	71.2	750.7	81.6	271.0
5	83.1	54.0	71.6	750.6	83.1	258.2
6	80.6	55.9	72.2	746.1	83.0	255.7
7	80.9	54.8	70.7	750.6	72.8	307.2
8	83.9	51.8	69.2	744.8	74.9	286.9
9	89.9	45.6	70.1	752.7	79.8	325.2
10	84.1	51.6	72.8	743.5	73.7	286.6
11	79.1	55.1	71.1	747.9	84.9	252.9
12	82.9	52.0	70.2	748.5	69.4	329.1
13	84.3	49.1	69.0	737.5	65.5	308.3
14	82.9	45.8	70.8	745.3	70.7	283.1
15	98.7	50.8	71.9	748.3	70.7	255.9
16	96.9	44.1	70.9	748.8	69.6	294.3
17	97.8	52.6	70.1	743.8	72.6	304.1
18	79.2	49.8	67.6	742.1	69.9	313.7
19	80.5	54.4	69.9	747.5	76.1	310.5
20	94.6	43.5	69.9	758.3	61.6	341.9
21	89.3	56.0	69.0	733.3	85.9	371.0
22	84.4	42.5	69.1	747.8	80.1	363.7
23	98.1	53.1	70.4	749.2	81.8	319.9
24	105.7	53.8	71.3	758.9	73.3	313.3
25	84.1	59.8	71.2	758.8	86.4	350.7
26	79.2	56.8	70.6	747.1	81.9	427.3
27	84.0	56.6	71.1	759.5	86.2	305.2
28	97.4	58.7	74.8	769.6	91.1	373.2
29	98.0	52.5	79.7	772.9	81.2	335.4
30	84.3	57.0	70.5	757.6	98.2	371.6
31	85.1	34.3	69.8	758.2	90.2	383.0
Total						
Average	87.4	51.6	71.1	750.5	79.2	311.3
Maximum	105.7		79.7	772.9		427.3
Date	24-Mar		29-Mar	29-Mar		26-Mar
Minimum		34.3	67.6		61.6	233.6
Date		31-Mar	18-Mar		20-Mar	2-Mar

Notes:

High Lift Monthly Report

Month: **March-17**

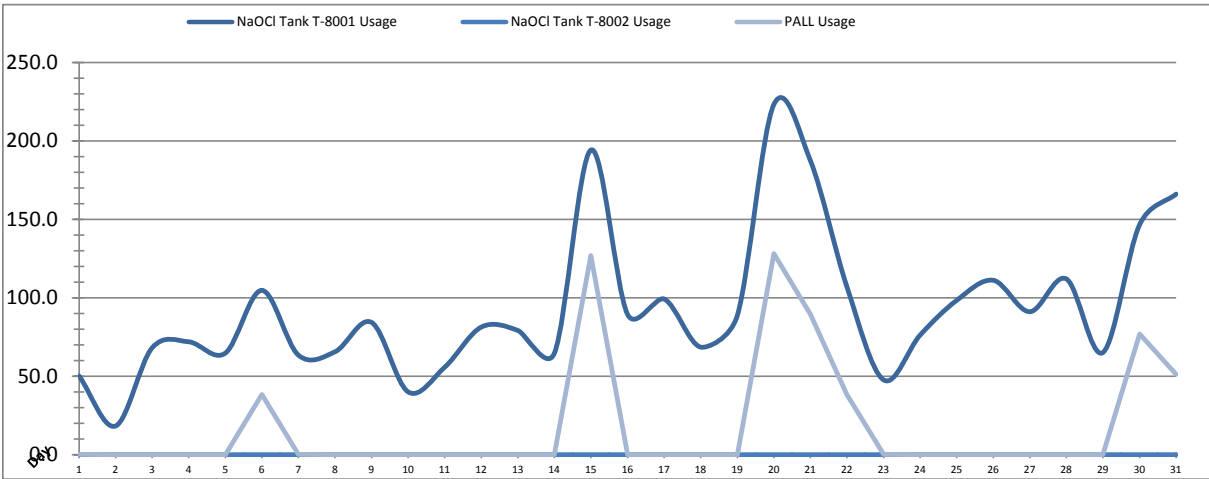


Date	Distribution Pressures					
	PIT_7053 (kPa)			PIT_7063 (kPa)		
	Maximum	Minimum	Average	Maximum	Minimum	Average
1	614.8	283.2	431.7	614.1	282.0	430.5
2	623.5	291.3	429.4	623.0	290.1	428.3
3	590.5	288.3	434.2	590.1	287.1	433.0
4	584.7	287.7	435.0	584.2	286.5	433.8
5	616.5	294.9	437.4	616.0	293.8	436.2
6	621.1	294.9	437.7	620.4	293.6	436.6
7	621.0	293.2	455.5	620.4	292.0	454.4
8	622.2	201.0	450.5	621.3	200.1	449.3
9	621.4	115.4	458.4	620.4	114.3	457.0
10	631.0	295.3	450.3	630.3	293.8	448.8
11	625.9	315.2	442.2	625.1	313.7	440.7
12	628.6	298.8	461.8	627.7	297.3	460.4
13	626.2	178.7	454.8	625.2	177.6	453.4
14	618.1	295.1	444.2	617.2	293.7	442.7
15	618.9	68.5	434.2	618.2	67.5	432.8
16	629.3	67.3	456.7	628.7	66.3	455.4
17	625.6	72.2	453.8	625.0	71.3	452.5
18	628.7	299.2	460.8	627.9	297.8	459.5
19	622.6	290.6	457.5	621.7	289.2	456.2
20	629.0	59.4	476.7	630.7	58.5	452.8
21	614.4	356.5	472.3	645.4	296.8	439.3
22	617.5	330.2	479.3	649.6	195.8	443.8
23	608.5	309.6	482.5	634.5	239.7	439.9
24	623.4	302.9	466.8	640.0	216.7	440.4
25	623.0	281.0	469.9	601.1	217.4	444.5
26	626.0	280.7	481.9	593.8	324.8	433.1
27	626.4	278.8	471.9	595.2	213.0	439.1
28	591.7	341.7	468.2	597.1	188.0	469.1
29	628.3	280.0	471.0	611.5	189.7	439.9
30	581.7	305.2	469.2	597.0	182.1	433.7
31	621.8	238.5	479.1	568.0	201.2	437.7
Total						
Average	618.1	254.7	457.3	616.8	226.8	444.4
Maximum	631.0		482.5	649.6		469.1
Date	10-Mar		23-Mar	22-Mar		28-Mar
Minimum		59.4	429.4		58.5	428.3
Date		20-Mar	2-Mar		20-Mar	2-Mar

Notes:

Chemical Usage Monthly Report

Month: **March-17**

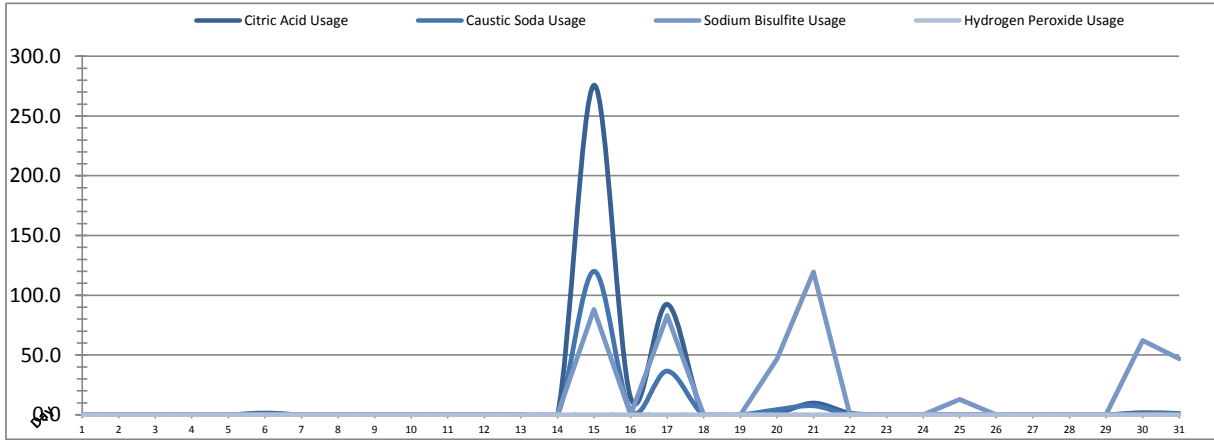


Date	PALL Usage	NaOCI Tank T-8001	NaOCI Tank T-8002
	PALL_HYPO_USAGE (L) Usage	LIT_8002 (Storage) (L) Usage	LIT_8004 (Day) (L) Usage
1	0.2	50.3	0.0
2	0.0	18.3	0.0
3	0.0	68.1	0.0
4	0.0	72.0	0.0
5	0.0	64.7	0.0
6	38.5	104.8	0.0
7	0.2	63.5	0.0
8	0.0	65.6	0.0
9	0.0	84.3	0.0
10	0.0	40.0	0.0
11	0.0	55.8	0.0
12	0.0	81.3	0.0
13	0.0	79.2	0.0
14	0.00	64.73	0.0
15	127.0	194.2	0.0
16	0.1	89.4	0.0
17	0.0	99.2	0.0
18	0.0	68.6	0.0
19	0.0	88.6	0.0
20	128.0	223.2	0.0
21	89.6	187.4	0.0
22	38.4	106.9	0.0
23	0.2	47.7	0.0
24	0.0	76.2	0.0
25	0.0	98.4	0.0
26	0.0	111.2	0.0
27	0.0	91.1	0.0
28	0.0	112.0	0.0
29	0.0	65.2	0.0
30	76.9	146.5	0.0
31	51.2	166.1	0.0
Total	550.3	2884.5	1.1
Average	17.8	93.0	0.0
Maximum	128.0	223.2	0.0
Date	20-Mar	20-Mar	1-Mar
Minimum	0.0	18.3	0.0
Date	2-Mar	2-Mar	1-Mar

Notes:	
Dosage (mg/L)=	Day Tank (L) x %conc. x 1000
	Membrane Flow (m3)
Chlorine Concentration:	12.0%

Chemical Usage Monthly Report

Month: **March-17**



Date	Citric Acid	Caustic Soda	Captor	Hydrogen Peroxide		Membrane Flow (m ³)
	TAGNAME (L) Usage	TAGNAME (L) Usage	TAGNAME (L) Usage	TAGNAME (L) Usage	(mg/L) Dose	
1	0.0	0.0	0.0	0.0	0.0	2167.704
2	0.0	0.0	0.0	0.0	0.0	2227.569
3	0.0	0.0	0.0	0.0	0.0	2774.831
4	0.0	0.0	0.0	0.0	0.0	3304.270
5	0.0	0.0	0.0	0.0	0.0	2543.514
6	1.4	0.9	0.0	0.0	0.0	2654.668
7	0.0	0.0	0.0	0.0	0.0	3589.341
8	0.0	0.0	0.0	0.0	0.0	3195.798
9	0.0	0.0	0.0	0.0	0.0	3409.321
10	0.0	0.0	0.0	0.0	0.0	2347.165
11	0.0	0.0	0.0	0.0	0.0	2994.621
12	0.0	0.0	0.0	0.0	0.0	3463.466
13	0.0	0.0	0.0	0.0	0.0	3761.150
14	0.0	0.0	0.0	0.0	0.0	2979.469
15	275.8	120.1	88.0	0.0	0.0	2076.497
16	14.2	3.4	0.0	0.0	0.0	3131.792
17	92.5	36.5	83.0	0.0	0.0	3274.986
18	0.0	0.0	0.0	0.0	0.0	3821.556
19	0.0	0.0	0.0	0.0	0.0	3071.584
20	1.3	4.3	46.7	0.0	0.0	3652.278
21	9.8	7.5	119.4	0.0	0.0	3519.665
22	1.4	0.0	0.0	0.0	0.0	3534.711
23	0.0	0.0	0.0	0.0	0.0	2840.825
24	0.0	0.0	0.0	0.0	0.0	3033.822
25	0.0	0.0	13.0	0.0	0.0	3431.982
26	0.0	0.0	0.0	0.0	0.0	3609.361
27	0.0	0.0	0.0	0.0	0.0	2973.458
28	0.0	0.0	0.0	0.0	0.0	4100.583
29	0.0	0.0	0.0	0.0	0.0	2295.953
30	1.7	1.2	62.3	0.0	0.0	3130.003
31	1.1	0.9	46.8	0.0	0.0	3839.672
Total	399.1	174.7	459.2	0.0	0.0	96751.6
Average	12.9	5.6	14.8	0.0	0.0	3121.0
Maximum	275.8	120.1	119.4	0.0	0.0	4100.6
Date	15-Mar	15-Mar	21-Mar	1-Mar	1-Mar	28-Mar
Minimum	0.0	0.0	0.0	0.0	0.0	2076.5
Date	1-Mar	1-Mar	1-Mar	1-Mar	1-Mar	15-Mar

Notes:

$$\text{Dosage (mg/L)} = \frac{\text{Day Tank (L)} \times \% \text{conc.} \times 1000}{\text{Membrane Flow (m}^3\text{)}}$$

Peroxide Concentration: **50.0%**

Runtimes Report

Month: March-17

Date	Daily Gen-Set Runtimes		Daily UV Runtimes		Daily PALL Runtimes				
	LLPS	WTP	UV #1	UV #2	Air Compressor #1	Air Compressor #2	CIP Neutralization	CIP Drain	CIP Recirc
	(Hrs)	(Hrs)	(Hrs)	(Hrs)	(Hrs)	(Hrs)	(Hrs)	(Hrs)	(Hrs)
1	0.0	0.0	0.0	0.0	24.4	0.0	0.0	0.0	0.0
2	0.0	0.0	0.0	0.0	24.4	0.0	0.0	0.0	0.0
3	0.0	0.0	0.0	0.0	24.4	0.0	0.0	0.0	0.0
4	0.0	0.0	0.0	0.0	24.4	0.0	0.0	0.0	0.0
5	0.0	0.0	0.0	0.0	24.4	0.0	0.0	0.0	0.0
6	0.0	0.0	0.0	0.7	24.4	0.0	0.2	0.1	0.5
7	0.0	0.0	0.0	0.0	24.4	0.0	0.0	0.0	0.0
8	5.0	7.2	0.0	0.0	24.2	0.0	0.0	0.0	0.0
9	0.0	0.0	0.0	0.0	24.4	0.0	0.0	0.0	0.0
10	0.0	0.0	0.0	0.0	24.4	0.0	0.0	0.0	0.0
11	0.0	0.0	0.0	0.0	24.4	0.0	0.0	0.0	0.0
12	0.0	0.0	0.0	0.0	24.4	0.0	0.0	0.0	0.0
13	0.0	0.0	0.0	0.0	24.4	0.0	0.0	0.0	0.0
14	0.0	0.0	0.0	0.0	24.4	0.0	0.0	0.0	0.0
15	0.0	0.0	0.0	0.0	24.3	0.0	0.6	0.3	3.8
16	0.0	0.0	0.0	0.0	24.4	0.0	0.2	0.2	3.0
17	0.0	0.0	0.0	0.0	24.4	0.0	0.5	0.2	3.4
18	0.0	0.0	0.0	0.0	24.4	0.0	0.0	0.0	0.0
19	0.0	0.0	0.0	0.0	24.4	0.0	0.0	0.0	0.0
20	0.0	0.0	0.0	0.0	24.4	0.0	0.4	0.2	1.1
21	0.0	0.0	0.0	0.0	24.4	0.0	0.5	0.2	1.1
22	0.0	0.0	0.0	0.0	24.3	0.0	0.2	0.2	0.5
23	0.0	0.0	0.0	0.0	24.4	0.0	0.0	0.0	0.0
24	0.0	0.0	0.0	0.0	24.4	0.0	0.0	0.0	0.0
25	0.0	0.0	0.0	0.0	24.4	0.0	0.0	0.0	0.0
26	0.0	0.0	0.0	0.0	24.4	0.0	0.0	0.0	0.0
27	0.0	0.0	0.0	0.0	24.4	0.0	0.0	0.0	0.0
28	0.0	0.0	0.0	0.0	24.4	0.0	0.0	0.0	0.0
29	0.0	0.0	0.0	0.0	20.1	0.0	0.0	0.0	0.0
30	0.0	0.0	0.0	0.0	24.4	0.0	0.3	0.2	1.0
31	0.0	0.0	0.0	0.0	17.4	0.0	0.3	0.2	0.7
Total	5.0	7.2	0.0	0.7	743.9	0.0	3.2	1.8	15.1

Notes:
8th: Power failures.

Runtimes Report

Month: March-17

Daily

Date	PALL Runtimes						Process Drain	
	RFR Pump #1 (Hrs)	RFR Pump #2 (Hrs)	RF Pump #1 (Hrs)	RF Pump #2 (Hrs)	XR Pump #1 (Hrs)	XR Pump #2 (Hrs)	PDP9010 Pump (Hrs)	PDP9020 Pump (Hrs)
1	0.0	0.0	0.3	0.2	4.0	4.8	1.3	1.7
2	0.0	0.0	0.2	0.3	4.3	4.7	1.4	1.6
3	0.0	0.0	0.4	0.4	5.9	5.5	1.5	1.9
4	0.0	0.0	0.4	0.4	6.5	6.5	1.4	1.8
5	0.0	0.0	0.3	0.3	4.6	4.6	1.3	1.7
6	0.0	0.2	0.3	0.3	5.1	4.6	1.4	2.0
7	0.0	0.0	0.4	0.5	6.9	6.9	1.4	1.8
8	0.0	0.0	0.4	0.4	6.3	6.8	1.5	0.8
9	0.0	0.0	0.5	0.4	7.6	7.0	1.3	1.9
10	0.0	0.0	0.2	0.3	5.0	4.9	1.5	1.9
11	0.0	0.0	0.4	0.4	5.9	6.7	1.3	1.9
12	0.0	0.0	0.4	0.5	6.0	6.1	1.4	1.8
13	0.0	0.0	0.4	0.3	7.5	7.4	1.9	2.5
14	0.0	0.0	0.4	0.4	5.8	5.7	1.6	2.0
15	0.2	0.1	0.2	0.3	4.3	4.4	1.6	2.0
16	0.0	0.0	0.4	0.4	4.5	4.8	1.4	2.0
17	0.0	0.0	0.4	0.4	5.4	5.4	1.4	1.9
18	0.0	0.0	0.6	0.6	0.5	0.3	1.3	1.8
19	0.0	0.0	0.4	0.3	0.7	0.9	1.4	1.9
20	0.0	0.0	0.3	0.4	2.0	2.0	1.9	2.6
21	0.0	0.0	0.4	0.3	1.1	1.1	1.9	2.8
22	0.0	0.0	0.3	0.4	1.7	1.7	2.1	2.8
23	0.0	0.0	0.3	0.4	1.4	1.4	2.1	3.0
24	0.0	0.0	0.4	0.4	1.7	1.7	2.2	2.9
25	0.0	0.0	0.4	0.2	2.1	2.1	2.1	2.9
26	0.0	0.0	0.4	0.4	5.3	4.7	2.0	2.8
27	0.0	0.0	0.3	0.3	4.5	4.6	2.2	3.1
28	0.0	0.0	0.4	0.3	3.8	3.8	2.2	3.2
29	0.0	0.0	0.3	0.3	1.7	2.1	2.1	3.0
30	0.0	0.0	0.4	0.3	4.2	4.4	2.1	3.2
31	0.0	0.0	0.4	0.5	3.1	2.8	2.3	3.0
Total	0.2	0.3	11.3	11.3	128.9	129.9	52.6	70.2

Notes:

Runtimes Report

Month: March-17

Daily

Date	Low Lift Pump Motor Runtimes				High Lift Pump Motor Runtimes			
	LLP1010 (Hrs)	LLP1020 (Hrs)	LLP1030 (Hrs)	LLP1040 (Hrs)	HLP7010 (Hrs)	HLP7020 (Hrs)	HLP7030 (Hrs)	HLP7040 (Hrs)
1	2.2	2.5	2.1	2.8	4.4	0.0	3.3	3.5
2	0.3	3.2	5.3	1.1	3.0	0.0	2.8	3.7
3	2.2	2.8	2.8	4.7	4.9	0.0	3.8	4.1
4	2.8	2.6	4.4	5.0	5.5	0.0	4.1	3.7
5	5.1	2.7	2.6	1.1	3.0	0.0	5.1	3.9
6	1.4	5.5	2.4	2.8	3.9	0.0	3.8	4.1
7	4.0	0.3	6.0	5.5	6.4	0.0	3.8	6.5
8	0.2	4.8	3.1	0.0	2.8	0.0	7.5	4.9
9	2.8	5.6	4.0	2.8	7.0	0.0	4.1	6.1
10	4.9	0.8	2.8	1.8	4.1	0.0	4.4	4.8
11	3.1	5.6	3.0	1.5	3.5	0.0	4.1	3.9
12	5.6	4.0	3.6	2.7	6.6	0.0	8.6	3.2
13	4.4	5.6	1.9	7.3	8.4	0.0	0.0	8.2
14	2.9	4.5	2.9	3.7	6.3	0.0	0.0	6.8
15	1.9	3.4	1.7	2.6	6.5	0.0	0.0	4.7
16	4.8	3.5	4.5	1.7	7.9	0.0	0.0	7.0
17	4.3	5.5	3.4	1.4	7.4	0.0	0.0	8.5
18	5.6	4.0	5.5	3.9	8.2	0.0	0.0	8.9
19	4.6	5.6	2.2	2.6	8.7	0.0	0.0	8.6
20	3.7	6.3	4.4	2.8	7.4	1.6	0.0	7.2
21	5.6	3.3	2.5	5.0	4.7	9.8	0.0	0.0
22	3.0	2.6	5.5	6.0	2.0	4.8	0.0	8.3
23	2.8	5.5	2.6	2.8	4.5	0.9	0.0	8.6
24	4.8	1.9	4.1	3.8	8.8	1.4	0.0	1.5
25	3.5	5.5	5.6	2.9	6.5	2.9	0.0	3.7
26	5.5	5.6	3.8	1.7	5.8	2.5	0.0	8.1
27	2.8	2.8	2.5	5.5	4.8	3.0	0.0	3.5
28	5.5	5.2	4.0	4.5	6.1	0.1	0.0	7.3
29	2.8	4.1	2.5	1.8	3.5	2.1	0.0	6.3
30	4.7	3.8	2.4	3.9	0.1	9.1	0.0	4.2
31	3.5	5.6	3.3	6.8	2.1	13.2	0.0	0.1
Total	111.3	124.7	107.4	102.5	164.8	51.4	55.4	163.9

Notes:

Plant Internal Flow Report

Month: March-17

Date	Settling Tank Level		Process Drain Tank		Settling Tank Flow		Potable Water Flow		Non-Potable Flow	
	T-9003 (m)		T-9001 (m)		FIT_9005 (m ³) (L/s)		FIT_7082 (m ³) (L/s)		FIT_7092 (m ³) (L/s)	
	Maximum	Minimum	Maximum	Minimum	Total	Peak	Total	Peak	Total	Peak
1	2.2	0.1	0.8	0.4	78.1	15.7	0.1	1.4	0.0	0.0
2	2.2	0.1	1.1	0.4	62.9	15.7	0.2	1.3	0.0	0.0
3	2.2	0.1	0.8	0.4	64.5	15.7	0.1	1.3	0.7	1.5
4	2.2	0.1	0.8	0.4	102.0	15.7	0.0	0.0	0.0	0.0
5	2.2	0.1	0.8	0.4	96.2	15.7	0.0	1.1	0.0	0.0
6	2.2	0.1	1.0	0.4	126.0	15.7	0.1	1.4	10.7	16.1
7	2.2	0.1	0.8	0.4	166.5	15.7	0.2	1.4	0.0	0.0
8	2.2	0.1	1.6	0.4	116.0	15.7	0.2	1.5	0.0	0.0
9	2.2	0.1	0.8	0.4	122.7	15.7	0.3	1.4	0.0	0.0
10	2.2	0.1	0.8	0.4	55.8	15.7	0.1	1.4	0.0	0.0
11	2.2	0.1	0.8	0.4	57.8	15.7	0.0	0.0	0.0	0.0
12	2.2	0.1	0.8	0.4	109.9	15.7	0.0	0.0	0.0	0.0
13	2.2	0.1	1.3	0.4	111.7	15.7	0.3	1.4	0.0	0.0
14	2.2	0.1	1.2	0.4	100.3	15.7	0.1	1.4	0.0	0.0
15	2.2	0.3	1.1	0.4	92.4	15.7	0.1	1.4	49.3	22.9
16	2.2	0.1	1.0	0.4	134.3	15.7	0.1	1.4	19.7	14.3
17	2.2	0.1	0.9	0.4	129.8	15.7	0.2	1.4	25.7	23.3
18	2.2	0.1	0.8	0.4	196.4	15.7	0.0	0.0	0.0	0.0
19	2.2	0.1	0.8	0.4	114.8	15.7	0.0	0.0	0.0	0.0
20	2.2	0.1	1.2	0.4	124.8	15.7	0.1	1.4	36.6	23.2
21	2.2	0.1	0.8	0.4	112.5	15.7	0.1	1.4	34.7	22.8
22	2.2	0.1	0.8	0.4	89.5	15.7	0.2	1.4	12.4	15.3
23	2.2	0.2	0.8	0.4	74.5	15.7	0.0	1.3	0.6	0.6
24	2.2	0.1	0.9	0.4	165.5	15.7	0.1	1.4	0.0	0.0
25	2.2	0.1	0.8	0.4	109.5	15.7	0.0	0.0	0.0	0.0
26	2.2	0.1	0.8	0.4	163.4	15.7	0.0	0.0	0.0	0.0
27	2.2	0.1	0.8	0.4	103.5	15.7	0.1	1.4	0.0	0.0
28	2.2	0.1	1.4	0.4	167.6	15.7	0.1	1.4	0.4	1.1
29	2.2	0.1	1.2	0.4	84.5	15.7	0.1	1.4	0.0	0.0
30	2.2	0.1	1.2	0.4	138.3	15.7	0.1	1.4	25.1	16.0
31	2.2	0.1	1.3	0.4	198.5	15.7	0.1	1.3	20.3	23.2
Total					3570.0		2.8		236.2	
Average	2.2	0.1	1.0	0.4	115.2	15.7	0.1	1.1	7.6	5.8
Maximum	2.2		1.6		198.5		0.3		49.3	
Date	8-Mar		8-Mar		31-Mar		13-Mar		15-Mar	
Minimum		0.1		0.4		15.7		0.0		0.0
Date		19-Mar		31-Mar		11-Mar		4-Mar		1-Mar

Notes: