

Municipality of West Elgin - Tri County Water System

Goto:

Month:

Year:

Date is Set to: **September-16**

Limit	Low	High	
Raw Water Chlorine Residual:	0.00	5.00	mg/L
Pre-Strainer Chlorine Residual:	0.00	5.00	mg/L
UV Inlet Chlorine Residual:	0.00	5.00	mg/L
Post Treatment Chlorine Residual:	1.00	5.00	mg/L
Treated Chlorine Residual:	1.00	2.50	mg/L
Distribution Chlorine Residual:	1.00	2.50	mg/L
Limit		High	
WTP C of A		156.0	L/s
WTP Permit to Take Water		13500.0	m <sup>3</sup>
Limit	Low	High	
System Pressure Limits:	50.0	1034.0	Kpa

Compliance Report

Low Lift Monthly Report

>>>

Membranes Monthly Report

>>>

UV System Monthly Report

>>>

Plant Quality Report

>>>

Raw Well/Treated Storage Report

>>>

High Lift Monthly Report

>>>

Operational Report

Low Lift Monthly Report

>>>

High Lift Monthly Report

>>>

Chemical Usage Monthly Report

>>>

Runtimes Report

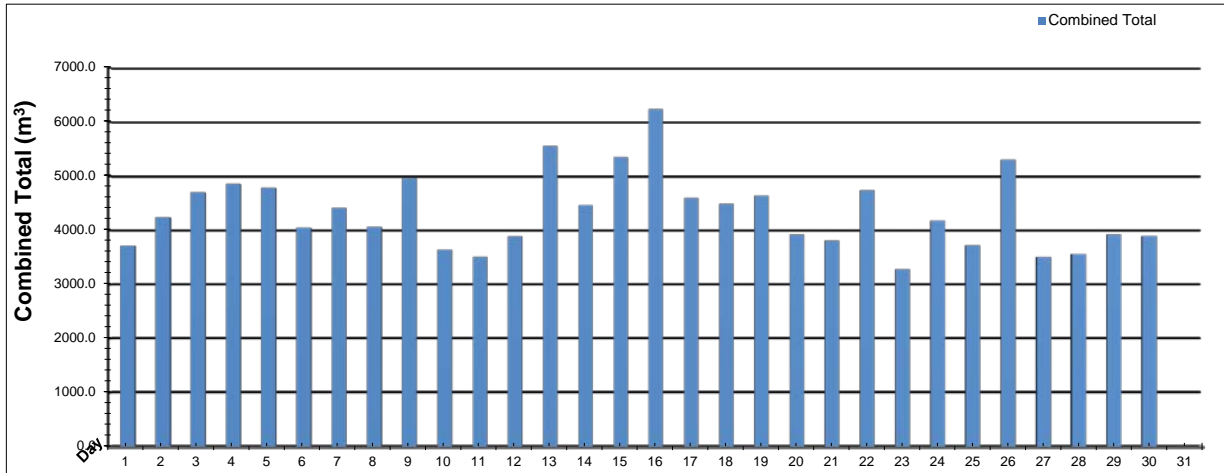
>>>

Plant Internal Flow Report

>>>

# Low Lift Monthly Report

Month: September-16



Date	Combined Total (m³)	West Train FIT-1017 (m³)	West Peak Flow FIT-1017 (L/s)	East Train FIT-1027 (m³)	East Peak Flow FIT-1027 (L/s)	Combined Peak Flow (L/s)
1	✓ 3713.9	0.0	0.0	3713.9	84.8	✓ 84.8
2	✓ 4241.2	0.0	0.0	4241.2	82.7	✓ 82.7
3	✓ 4703.6	0.0	0.0	4703.6	83.7	✓ 83.7
4	✓ 4855.7	0.0	0.0	4855.7	83.5	✓ 83.5
5	✓ 4784.9	0.0	0.0	4784.9	85.1	✓ 85.1
6	✓ 4048.6	0.0	0.0	4048.6	86.1	✓ 86.1
7	✓ 4412.1	0.0	0.0	4412.1	85.8	✓ 85.8
8	✓ 4060.1	0.0	0.0	4060.1	86.1	✓ 86.1
9	✓ 4963.1	0.0	0.0	4963.1	85.7	✓ 85.7
10	✓ 3644.8	0.0	0.0	3644.8	133.4	✓ 133.4
11	✓ 3508.9	0.0	0.0	3508.9	132.4	✓ 132.4
12	✓ 3891.7	0.0	0.0	3891.6	135.6	✓ 135.6
13	✓ 5552.7	0.0	0.0	5552.7	74.0	✓ 74.0
14	✓ 4461.4	0.0	0.0	4461.4	86.5	✓ 86.5
15	✓ 5347.5	0.0	0.0	5347.5	133.9	✓ 133.9
16	✓ 6238.7	0.0	0.0	6238.7	132.9	✓ 132.9
17	✓ 4599.5	0.0	0.0	4599.5	84.3	✓ 84.3
18	✓ 4493.2	0.0	0.0	4493.2	85.7	✓ 85.7
19	✓ 4641.8	0.0	0.0	4641.8	85.3	✓ 85.3
20	✓ 3920.9	0.0	0.0	3920.9	85.9	✓ 85.9
21	✓ 3813.7	0.0	0.0	3813.7	83.8	✓ 83.8
22	✓ 4734.9	0.0	0.0	4734.9	83.4	✓ 83.4
23	✓ 3280.2	0.0	0.0	3280.2	86.2	✓ 86.2
24	✓ 4180.2	0.0	0.0	4180.2	85.4	✓ 85.4
25	✓ 3719.8	0.0	0.0	3719.8	86.0	✓ 86.0
26	✓ 5305.0	0.0	0.0	5305.0	81.4	✓ 81.4
27	✓ 3506.5	0.0	0.0	3506.5	84.9	✓ 84.9
28	✓ 3564.7	0.0	0.0	3564.7	86.7	✓ 86.7
29	✓ 3925.2	0.0	0.0	3925.2	86.4	✓ 86.4
30	✓ 3897.5	0.0	0.0	3897.5	86.5	✓ 86.5
31	✓ 0.0					
<b>Total</b>	130011.9	0.1		130011.8		
<b>Average</b>	4333.7	0.0	0.0	4333.7	92.8	92.8
<b>Maximum</b>	6238.7	0.0	0.00	6238.7	135.60	135.60
<b>Date</b>	16-Sep	10-Sep	1-Sep	16-Sep	12-Sep	12-Sep
<b>Minimum</b>	3280.2	0.0	0.00	3280.2	74.03	74.03
<b>Date</b>	23-Sep	30-Sep	1-Sep	23-Sep	13-Sep	13-Sep

Notes:

---



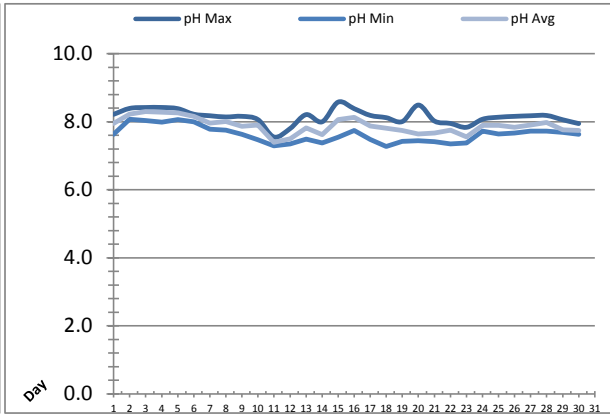
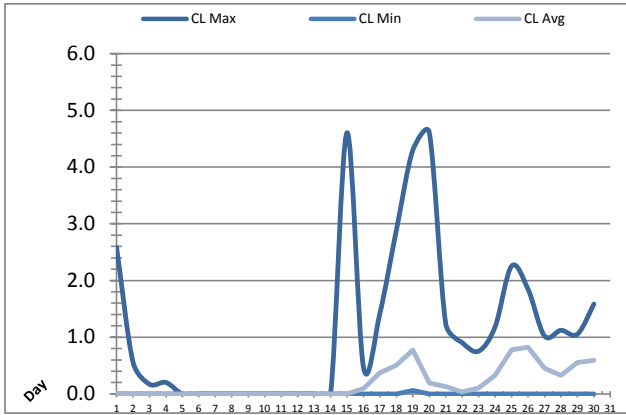
---



---

# Low Lift Monthly Report

Month: **September-16**



Date	Raw Water Chlorine Residual			Raw Water pH		
	AIT_1401_CL (mg/L)			AIT_1401_PH		
	Maximum	Minimum	Average	Maximum	Minimum	Average
1	2.58	0.00	0.01	8.22	7.63	7.95
2	0.56	0.00	0.00	8.39	8.07	8.23
3	0.17	0.00	0.00	8.42	8.03	8.30
4	0.20	0.00	0.00	8.42	7.99	8.28
5	0.00	0.00	0.00	8.38	8.07	8.26
6	0.00	0.00	0.00	8.22	8.00	8.16
7	0.00	0.00	0.00	8.18	7.78	7.96
8	0.00	0.00	0.00	8.14	7.75	8.01
9	0.00	0.00	0.00	8.16	7.63	7.87
10	0.00	0.00	0.00	8.06	7.47	7.90
11	0.00	0.00	0.00	7.55	7.30	7.39
12	0.00	0.00	0.00	7.80	7.35	7.50
13	0.00	0.00	0.00	8.21	7.49	7.82
14	0.00	0.00	0.00	8.00	7.37	7.63
15	4.61	0.00	0.00	8.58	7.54	8.06
16	0.47	0.00	0.09	8.38	7.74	8.13
17	1.42	0.00	0.37	8.19	7.48	7.88
18	2.89	0.00	0.51	8.12	7.27	7.81
19	4.30	0.06	0.77	8.01	7.42	7.74
20	4.61	0.00	0.19	8.49	7.44	7.64
21	1.24	0.00	0.13	8.02	7.42	7.66
22	0.90	0.00	0.03	7.95	7.35	7.76
23	0.75	0.00	0.10	7.84	7.38	7.56
24	1.18	0.00	0.33	8.07	7.73	7.89
25	2.25	0.00	0.78	8.13	7.64	7.89
26	1.84	0.00	0.82	8.16	7.67	7.84
27	1.02	0.00	0.45	8.18	7.73	7.90
28	1.12	0.00	0.33	8.18	7.73	7.98
29	1.05	0.00	0.55	8.06	7.69	7.76
30	1.58	0.00	0.59	7.95	7.63	7.74
Total						
Average	1.16	0.00	0.20	8.15	7.63	7.88
Maximum	4.61		0.82	8.58		8.30
Date	20-Sep		26-Sep	15-Sep		3-Sep
Minimum		0.00	0.00		7.27	7.39
Date		1-Sep	5-Sep		18-Sep	11-Sep

Notes:

---



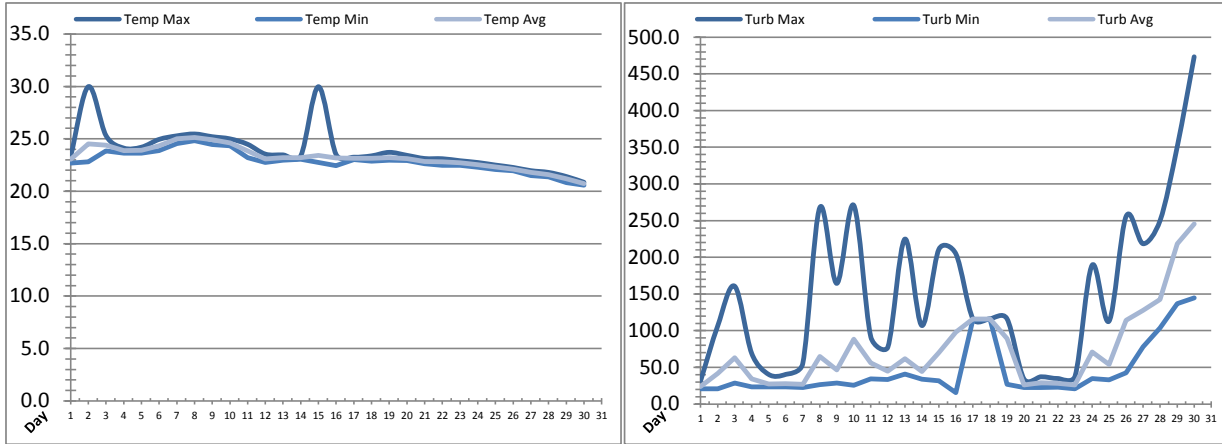
---



---

# Low Lift Monthly Report

Month: September-16

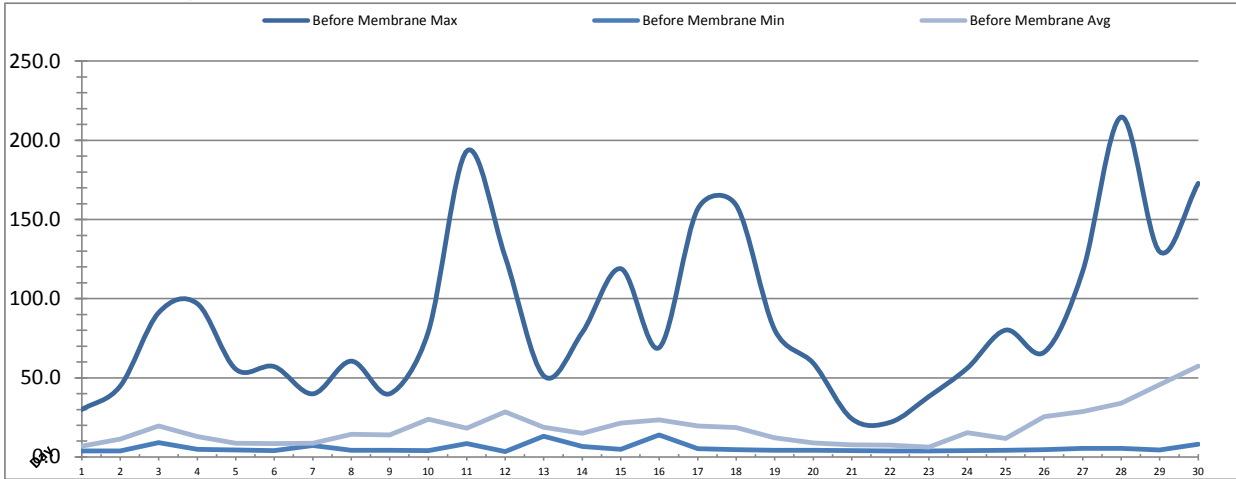


Date	Raw Water Temperature			Raw Water Turbidity		
	TIT_1403 (°C)			AIT_1404 (NTU)		
	Maximum	Minimum	Average	Maximum	Minimum	Average
1	23.3	22.7	23.0	31.81	20.91	23.83
2	30.0	22.8	24.5	106.22	21.00	41.81
3	25.3	23.9	24.4	160.61	28.66	63.04
4	24.1	23.6	23.9	69.02	23.31	34.13
5	24.2	23.6	23.9	40.36	23.28	27.30
6	24.9	23.9	24.3	40.42	23.24	27.68
7	25.3	24.5	25.0	55.07	22.50	26.86
8	25.5	24.8	25.1	267.62	26.36	64.80
9	25.2	24.4	24.9	164.41	28.71	46.72
10	25.0	24.3	24.6	270.75	25.56	88.32
11	24.5	23.2	23.8	91.48	34.13	56.32
12	23.5	22.8	23.1	77.51	33.34	44.63
13	23.5	23.0	23.2	224.85	41.03	61.90
14	23.4	23.1	23.2	106.97	34.07	44.18
15	30.0	22.7	23.4	210.94	31.69	70.25
16	23.5	22.5	23.2	204.66	15.45	97.85
17	23.2	23.0	23.1	116.25	114.64	116.05
18	23.4	22.9	23.1	116.30	115.46	115.93
19	23.7	23.0	23.2	116.33	27.07	89.41
20	23.4	22.9	23.1	34.12	22.41	25.93
21	23.1	22.6	22.9	37.20	22.41	29.21
22	23.1	22.5	22.8	34.83	23.14	28.07
23	22.9	22.5	22.7	37.87	20.82	25.83
24	22.7	22.3	22.5	189.11	34.75	70.83
25	22.5	22.1	22.3	113.07	33.19	54.15
26	22.3	21.9	22.1	255.73	42.44	114.09
27	22.0	21.5	21.8	218.49	78.11	127.68
28	21.8	21.4	21.6	250.28	103.62	142.45
29	21.4	20.8	21.2	350.13	136.99	218.35
30	20.9	20.6	20.7	473.28	144.70	245.30
Total						
Average	23.9	22.9	23.2	148.9	45.1	74.1
Maximum	30.0		25.1	473.3		245.3
Date	2-Sep		8-Sep	30-Sep		30-Sep
Minimum		20.6	20.7		15.4	23.8
Date		30-Sep	30-Sep		16-Sep	1-Sep

Notes:

# Membranes Monthly Report

Month: September-16



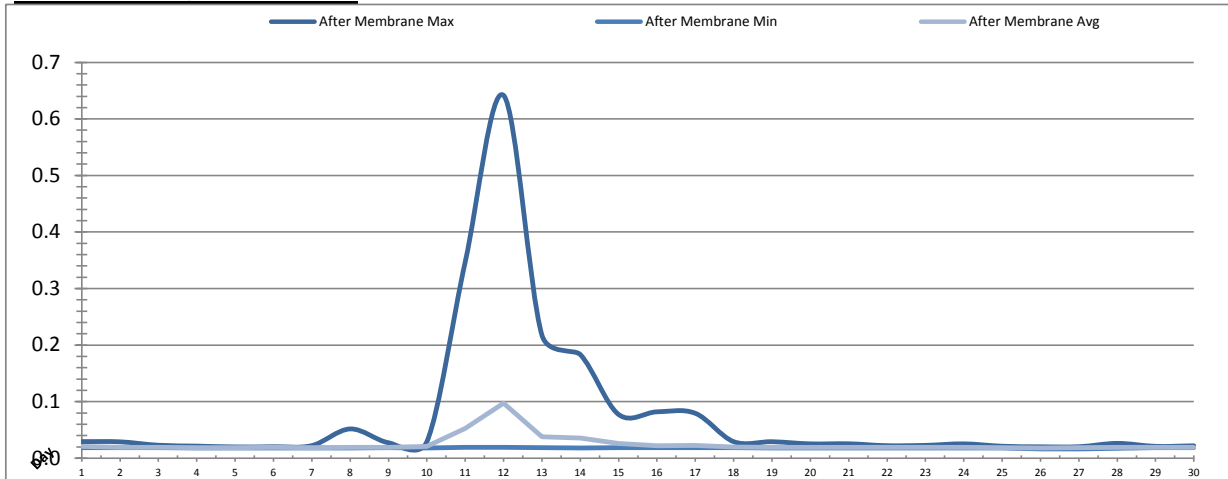
Date	Turbidity Before Membrane			Rack #1 Turbidity			Rack #2 Turbidity		
	PALL_FEED_AIT2006_Value NTU			RACK1_NTU_Value NTU			RACK2_NTU_Value NTU		
	Maximum	Minimum	Average	Maximum	Minimum	Average	Maximum	Minimum	Average
1	29.95	3.80	6.84	0.01	0.01	0.01	0.02	0.01	0.01
2	44.81	3.75	11.21	0.02	0.01	0.01	0.02	0.01	0.01
3	91.23	9.08	19.64	0.01	0.01	0.01	0.01	0.01	0.01
4	96.87	4.77	12.89	0.02	0.01	0.01	0.01	0.01	0.01
5	55.47	4.53	8.75	0.01	0.01	0.01	0.01	0.01	0.01
6	57.08	4.08	8.38	0.01	0.01	0.01	0.01	0.01	0.01
7	39.88	7.20	8.75	0.01	0.01	0.01	0.01	0.01	0.01
8	60.53	4.20	14.25	0.01	0.01	0.01	0.01	0.01	0.01
9	39.94	4.26	13.96	0.01	0.01	0.01	0.01	0.01	0.01
10	79.00	4.12	23.86	0.02	0.01	0.01	0.01	0.01	0.01
11	193.19	8.54	18.25	0.05	0.01	0.01	0.04	0.01	0.01
12	126.25	3.51	28.47	0.21	0.01	0.02	0.19	0.01	0.02
13	51.27	13.05	18.71	0.58	0.01	0.03	0.29	0.01	0.03
14	78.65	6.67	15.01	0.25	0.01	0.02	0.12	0.01	0.02
15	118.93	4.81	21.32	0.23	0.01	0.01	0.37	0.01	0.01
16	69.11	13.91	23.39	0.29	0.01	0.01	0.29	0.01	0.01
17	156.70	5.32	19.51	0.25	0.01	0.01	0.35	0.01	0.01
18	158.93	4.67	18.61	0.16	0.01	0.01	0.20	0.01	0.01
19	80.26	4.28	12.08	0.15	0.01	0.01	0.13	0.01	0.01
20	59.28	4.24	8.91	0.14	0.01	0.01	0.16	0.01	0.01
21	24.18	4.04	7.60	0.15	0.01	0.01	0.12	0.01	0.01
22	21.90	3.84	7.47	0.11	0.01	0.01	0.07	0.01	0.01
23	38.14	3.90	6.26	0.08	0.01	0.01	0.04	0.01	0.01
24	56.08	4.00	15.32	0.21	0.01	0.01	0.05	0.01	0.01
25	80.14	4.24	11.71	0.12	0.01	0.01	0.11	0.01	0.01
26	66.19	4.59	25.53	0.09	0.01	0.01	0.12	0.01	0.01
27	117.36	5.49	28.75	0.29	0.01	0.02	0.19	0.01	0.01
28	214.68	5.36	33.95	0.16	0.01	0.01	0.09	0.01	0.01
29	129.61	4.49	45.77	0.09	0.01	0.01	0.02	0.01	0.01
30	172.83	7.99	57.41	0.08	0.01	0.01	0.01	0.01	0.01
Total									
Average	86.9	5.6	18.4	0.13	0.01	0.01	0.10	0.01	0.01
Maximum	214.7		57.4	0.58		0.03	0.37		0.03
Date	28-Sep		30-Sep	13-Sep		13-Sep	15-Sep		13-Sep
Minimum		3.5	6.3		0.01	0.01		0.01	0.01
Date		12-Sep	23-Sep		1-Sep	23-Sep		11-Sep	30-Sep

**Notes:**

Coloured water caused higher turbidities on racks Sept 11-22

# Membranes Monthly Report

Month: September-16



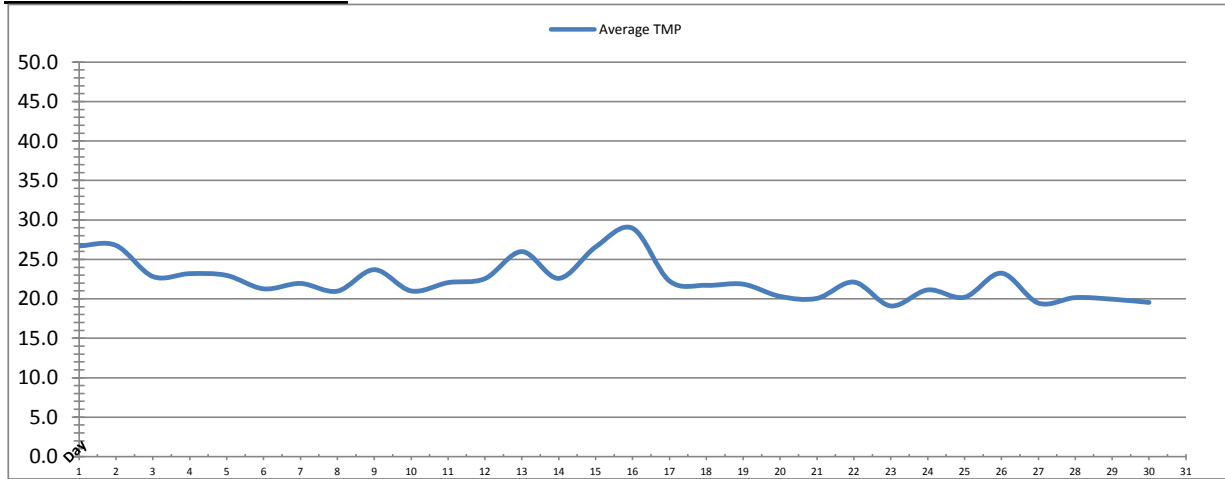
Date	Rack #3 Turbidity			Rack #4 Turbidity			Turbidity After Membranes		
	RACK3_NTU_Value			RACK4_NTU_Value			PALL_FILT_AIT5001_Value		
	Maximum	Minimum	Average	Maximum	Minimum	Average	Maximum	Minimum	Average
1	0.02	0.01	0.01	0.01	0.01	0.01	0.03	0.02	0.02
2	0.02	0.01	0.01	0.18	0.01	0.03	0.03	0.02	0.02
3	0.02	0.01	0.01	0.01	0.01	0.01	0.02	0.02	0.02
4	0.02	0.01	0.01	0.01	0.01	0.01	0.02	0.02	0.02
5	0.02	0.01	0.01	0.01	0.01	0.01	0.02	0.02	0.02
6	0.02	0.01	0.01	0.01	0.01	0.01	0.02	0.02	0.02
7	0.02	0.01	0.01	0.01	0.01	0.01	0.02	0.02	0.02
8	0.02	0.01	0.01	0.50	0.01	0.02	0.05	0.02	0.02
9	0.02	0.01	0.01	0.04	0.01	0.01	0.03	0.02	0.02
10	0.02	0.01	0.01	0.03	0.01	0.01	0.03	0.02	0.02
11	0.06	0.01	0.02	0.20	0.01	0.02	0.35	0.02	0.05
12	0.25	0.01	0.03	0.14	0.01	0.02	0.64	0.02	0.10
13	0.33	0.01	0.03	0.01	0.01	0.01	0.22	0.02	0.04
14	0.13	0.00	0.01	0.01	0.00	0.00	0.18	0.02	0.04
15	0.00	0.00	0.00	0.00	0.00	0.00	0.08	0.02	0.03
16	0.02	0.00	0.00	0.00	0.00	0.00	0.08	0.02	0.02
17	0.03	0.00	0.00	0.00	0.00	0.00	0.08	0.02	0.02
18	0.01	0.00	0.00	0.00	0.00	0.00	0.03	0.02	0.02
19	0.02	0.00	0.00	0.00	0.00	0.00	0.03	0.02	0.02
20	0.01	0.00	0.00	0.02	0.00	0.01	0.03	0.02	0.02
21	0.01	0.00	0.00	0.01	0.00	0.01	0.03	0.02	0.02
22	0.01	0.00	0.00	0.00	0.00	0.00	0.02	0.02	0.02
23	0.01	0.00	0.00	0.00	0.00	0.00	0.02	0.02	0.02
24	0.01	0.00	0.00	0.00	0.00	0.00	0.03	0.02	0.02
25	0.00	0.00	0.00	0.00	0.00	0.00	0.02	0.02	0.02
26	0.00	0.00	0.00	0.00	0.00	0.00	0.02	0.02	0.02
27	0.00	0.00	0.00	0.00	0.00	0.00	0.02	0.02	0.02
28	0.00	0.00	0.00	0.01	0.00	0.00	0.03	0.02	0.02
29	0.02	0.00	0.00	0.01	0.00	0.00	0.02	0.02	0.02
30	0.00	0.00	0.00	0.00	0.00	0.00	0.02	0.02	0.02
Total									
Average	0.04	0.01	0.01	0.04	0.00	0.01	0.07	0.02	0.02
Maximum	0.33		0.03	0.50		0.03	0.64		0.10
Date	13-Sep		13-Sep	8-Sep		2-Sep	12-Sep		12-Sep
Minimum		0.0	0.0		0.0	0.0		0.0	0.0
Date		14-Sep	15-Sep		14-Sep	23-Sep		27-Sep	26-Sep

Notes:

Rack 4 offline

# Membranes Monthly Report

Month: **September-16**

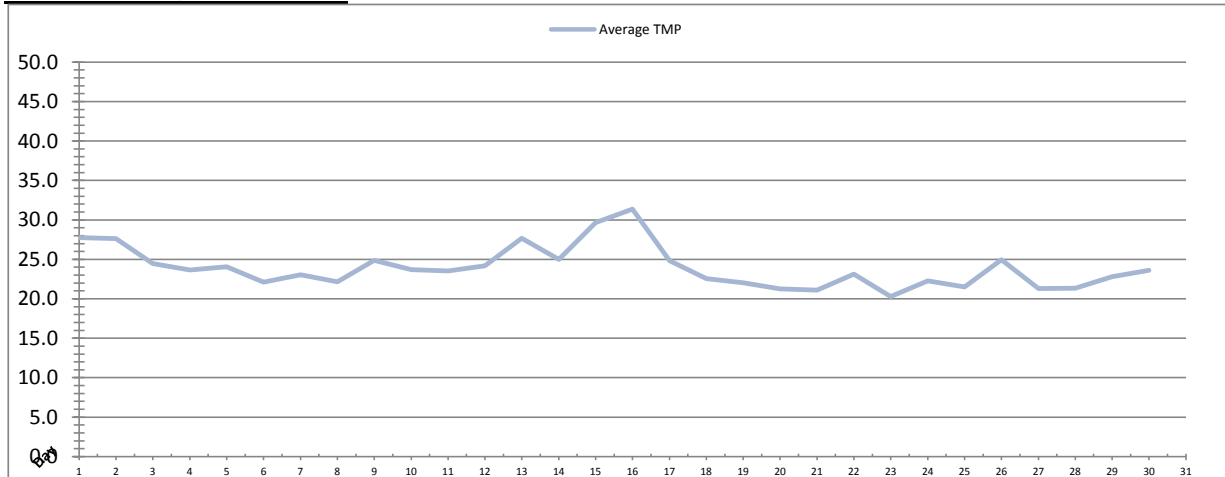


Date	Integrity Test Rack 1							
	Initial Pressure (kPa)	Final Pressure (kPa)	Test Duration (sec)	Change in Pressure (kPa)	UCL	Within UCL	Average TMP (kPa)	Max TMP (kPa)
1	193.4	192.4	300.0	1.0	2.0	✓ 2.0	26.7	72.9
2	193.6	192.6	300.0	1.1	2.0	✓ 2.0	26.8	72.4
3	194.1	193.0	300.0	1.1	2.0	✓ 2.0	22.8	56.0
4	194.4	193.3	300.0	1.0	2.0	✓ 2.0	23.2	38.5
5	194.4	193.2	300.0	1.2	2.0	✓ 2.0	23.0	66.8
6	194.5	193.3	300.0	1.2	2.0	✓ 2.0	21.3	37.7
7	194.0	192.8	300.0	1.2	2.0	✓ 2.0	21.9	37.4
8	194.2	193.0	300.0	1.2	2.0	✓ 2.0	21.0	37.2
9	194.0	193.0	300.0	1.0	2.0	✓ 2.0	23.7	41.2
10	194.0	192.9	300.0	1.1	2.0	✓ 2.0	21.0	69.1
11	194.1	192.9	300.0	1.2	2.0	✓ 2.0	22.1	73.6
12	194.1	193.1	300.0	1.1	2.0	✓ 2.0	22.6	73.2
13	194.4	193.3	300.0	1.1	2.0	✓ 2.0	26.0	43.7
14	193.5	192.3	300.0	1.2	2.0	✓ 2.0	22.6	43.5
15	194.4	193.2	300.0	1.2	2.0	✓ 2.0	26.6	74.8
16	194.2	193.1	300.0	1.1	2.0	✓ 2.0	28.9	73.5
17	194.3	193.0	300.0	1.3	2.0	✓ 2.0	22.3	51.7
18	194.3	193.2	300.0	1.1	2.0	✓ 2.0	21.7	50.5
19	194.1	193.1	300.0	1.0	2.0	✓ 2.0	21.9	37.0
20	194.1	193.0	300.0	1.1	2.0	✓ 2.0	20.3	42.0
21	194.1	193.0	300.0	1.1	2.0	✓ 2.0	20.1	36.9
22	194.4	193.3	300.0	1.1	2.0	✓ 2.0	22.1	38.2
23	194.2	193.1	300.0	1.1	2.0	✓ 2.0	19.1	42.5
24	194.0	192.7	300.0	1.3	2.0	✓ 2.0	21.1	41.2
25	193.6	192.6	300.0	1.1	2.0	✓ 2.0	20.2	39.3
26	193.3	192.1	300.0	1.1	2.0	✓ 2.0	23.2	48.8
27	194.1	193.1	300.0	1.0	2.0	✓ 2.0	19.5	48.0
28	193.9	192.8	300.0	1.1	2.0	✓ 2.0	20.2	40.1
29	194.1	193.0	300.0	1.2	2.0	✓ 2.0	20.0	51.9
30	194.1	193.0	300.0	1.1	2.0	✓ 2.0	19.5	49.4
<b>Total</b>								
Average	194.1	192.9	300.0	1.1	2.0	2.0	22.4	51.0
Maximum	194.5	193.3	300.0	1.3	2.0	2.0	28.9	74.8
Date	6-Sep	4-Sep	1-Sep	17-Sep	1-Sep	1-Sep	16-Sep	15-Sep
Minimum	193.3	192.1	300.0	1.0	2.0	2.0	19.1	36.9
Date	26-Sep	26-Sep	1-Sep	19-Sep	1-Sep	1-Sep	23-Sep	21-Sep

Notes:

# Membranes Monthly Report

Month: **September-16**



Integrity Test Rack 2									
Date	Initial Pressure (kPa)	Final Pressure (kPa)	Test Duration (sec)	Change in Pressure (kPa)	UCL	Within UCL	Average TMP (kPa)	Max TMP (kPa)	
1	200.0	198.9	300.0	1.1	2.0	✓ 2.0	27.7	73.7	
2	199.9	198.8	300.0	1.1	2.0	✓ 2.0	27.6	72.8	
3	200.3	199.1	300.0	1.2	2.0	✓ 2.0	24.4	54.7	
4	200.6	199.9	300.0	0.7	2.0	✓ 2.0	23.7	51.7	
5	200.3	199.2	300.0	1.2	2.0	✓ 2.0	24.0	40.0	
6	200.3	199.2	300.0	1.1	2.0	✓ 2.0	22.1	40.2	
7	200.3	199.2	300.0	1.1	2.0	✓ 2.0	23.1	41.4	
8	200.2	199.1	300.0	1.1	2.0	✓ 2.0	22.1	55.6	
9	200.0	198.9	300.0	1.1	2.0	✓ 2.0	24.9	41.1	
10	199.7	198.5	300.0	1.3	2.0	✓ 2.0	23.7	67.1	
11	200.2	198.7	300.0	1.5	2.0	✓ 2.0	23.5	71.7	
12	199.9	198.7	300.0	1.2	2.0	✓ 2.0	24.2	76.9	
13	200.4	199.2	300.0	1.2	2.0	✓ 2.0	27.7	43.6	
14	200.5	199.2	300.0	1.2	2.0	✓ 2.0	25.0	48.1	
15	200.3	198.9	300.0	1.3	2.0	✓ 2.0	29.7	87.1	
16	200.3	199.0	300.0	1.2	2.0	✓ 2.0	31.4	76.0	
17	200.3	199.0	300.0	1.2	2.0	✓ 2.0	24.8	60.1	
18	200.5	199.6	300.0	0.8	2.0	✓ 2.0	22.6	39.4	
19	200.6	200.0	300.0	0.6	2.0	✓ 2.0	22.0	50.8	
20	200.5	199.2	300.0	1.3	2.0	✓ 2.0	21.3	37.0	
21	200.5	199.1	300.0	1.3	2.0	✓ 2.0	21.1	39.0	
22	200.4	199.3	300.0	1.1	2.0	✓ 2.0	23.1	38.5	
23	200.2	199.1	300.0	1.1	2.0	✓ 2.0	20.3	53.1	
24	200.4	199.1	300.0	1.3	2.0	✓ 2.0	22.3	51.7	
25	200.4	199.3	300.0	1.1	2.0	✓ 2.0	21.5	49.8	
26	200.5	199.2	300.0	1.3	2.0	✓ 2.0	25.0	50.8	
27	200.5	199.3	300.0	1.2	2.0	✓ 2.0	21.3	49.2	
28	200.5	199.5	300.0	1.0	2.0	✓ 2.0	21.3	47.5	
29	200.3	199.6	300.0	0.7	2.0	✓ 2.0	22.8	46.2	
30	200.5	199.8	300.0	0.8	2.0	✓ 2.0	23.6	52.0	
<b>Total</b>									
Average	200.3	199.2	300.0	1.1	2.0	2.0	23.9	53.6	
Maximum	200.6	200.0	300.0	1.5	2.0	2.0	31.4	87.1	
Date	4-Sep	19-Sep	1-Sep	11-Sep	1-Sep	1-Sep	16-Sep	15-Sep	
Minimum	199.7	198.5	300.0	0.6	2.0	2.0	20.3	37.0	
Date	10-Sep	10-Sep	1-Sep	19-Sep	1-Sep	1-Sep	23-Sep	20-Sep	

Notes:

---



---

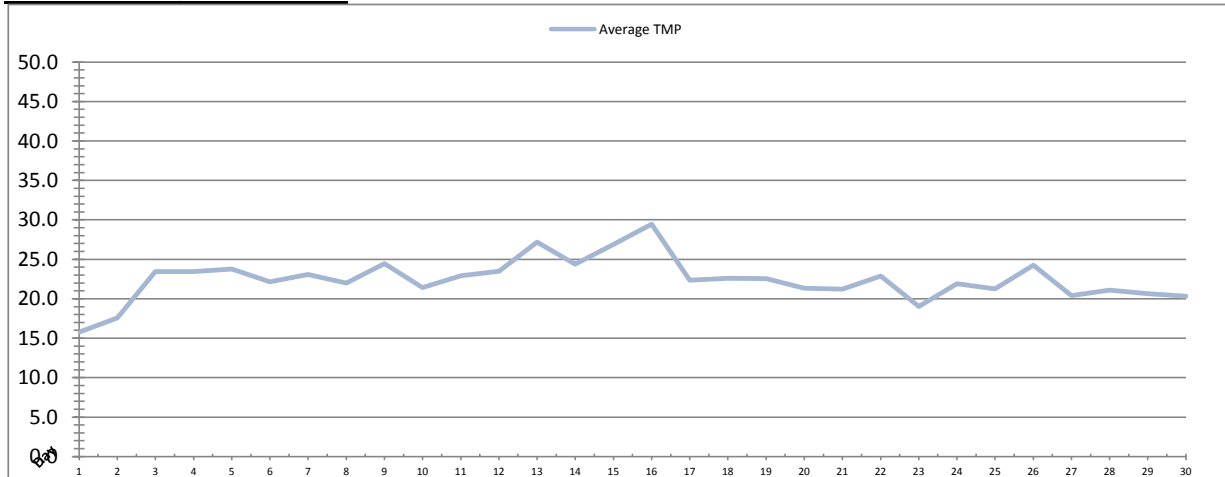


---



# Membranes Monthly Report

Month: **September-16**



Date	Integrity Test Rack 3							
	Initial Pressure (kPa)	Final Pressure (kPa)	Test Duration (sec)	Change in Pressure (kPa)	UCL	Within UCL	Average TMP (kPa)	Max TMP (kPa)
1	190.5	189.3	300.0	1.1	2.0	✓ 2.0	15.8	29.9
2	190.6	189.5	300.0	1.1	2.0	✓ 2.0	17.6	41.6
3	190.4	189.1	300.0	1.3	2.0	✓ 2.0	23.4	43.0
4	190.4	189.3	300.0	1.2	2.0	✓ 2.0	23.4	41.9
5	190.5	189.3	300.0	1.2	2.0	✓ 2.0	23.8	44.9
6	190.1	188.9	300.0	1.2	2.0	✓ 2.0	22.1	42.5
7	189.9	188.7	300.0	1.2	2.0	✓ 2.0	23.1	41.8
8	190.0	188.8	300.0	1.2	2.0	✓ 2.0	22.0	51.3
9	190.6	189.3	300.0	1.3	2.0	✓ 2.0	24.4	41.6
10	190.7	189.5	300.0	1.2	2.0	✓ 2.0	21.4	63.1
11	190.2	188.9	300.0	1.3	2.0	✓ 2.0	22.9	73.9
12	190.2	188.9	300.0	1.3	2.0	✓ 2.0	23.5	106.3
13	190.3	189.0	300.0	1.3	2.0	✓ 2.0	27.2	72.0
14	190.4	189.1	300.0	1.3	2.0	✓ 2.0	24.4	52.0
15	191.0	189.7	300.0	1.3	2.0	✓ 2.0	26.9	73.1
16	190.4	189.1	300.0	1.3	2.0	✓ 2.0	29.5	68.3
17	190.6	189.3	300.0	1.3	2.0	✓ 2.0	22.3	46.9
18	190.7	189.6	300.0	1.1	2.0	✓ 2.0	22.6	47.9
19	190.1	189.0	300.0	1.2	2.0	✓ 2.0	22.6	42.0
20	190.3	189.0	300.0	1.3	2.0	✓ 2.0	21.3	42.1
21	190.4	189.1	300.0	1.3	2.0	✓ 2.0	21.2	44.2
22	190.6	189.3	300.0	1.3	2.0	✓ 2.0	22.9	44.6
23	190.5	189.2	300.0	1.3	2.0	✓ 2.0	19.0	43.0
24	190.6	189.2	300.0	1.4	2.0	✓ 2.0	21.9	42.2
25	190.9	189.5	300.0	1.3	2.0	✓ 2.0	21.3	46.5
26	190.7	189.5	300.0	1.3	2.0	✓ 2.0	24.2	41.7
27	190.4	189.2	300.0	1.2	2.0	✓ 2.0	20.4	48.6
28	191.0	189.7	300.0	1.3	2.0	✓ 2.0	21.1	51.7
29	190.6	189.3	300.0	1.3	2.0	✓ 2.0	20.6	61.6
30	190.9	189.6	300.0	1.3	2.0	✓ 2.0	20.3	50.6
<b>Total</b>								
Average	190.5	189.2	300.0	1.3	2.0	2.0	22.4	51.4
Maximum	191.0	189.7	300.0	1.4	2.0	2.0	29.5	106.3
Date	15-Sep	15-Sep	1-Sep	24-Sep	1-Sep	1-Sep	16-Sep	12-Sep
Minimum	189.9	188.7	300.0	1.1	2.0	2.0	15.8	29.9
Date	7-Sep	7-Sep	1-Sep	2-Sep	1-Sep	1-Sep	1-Sep	1-Sep

Notes:

---



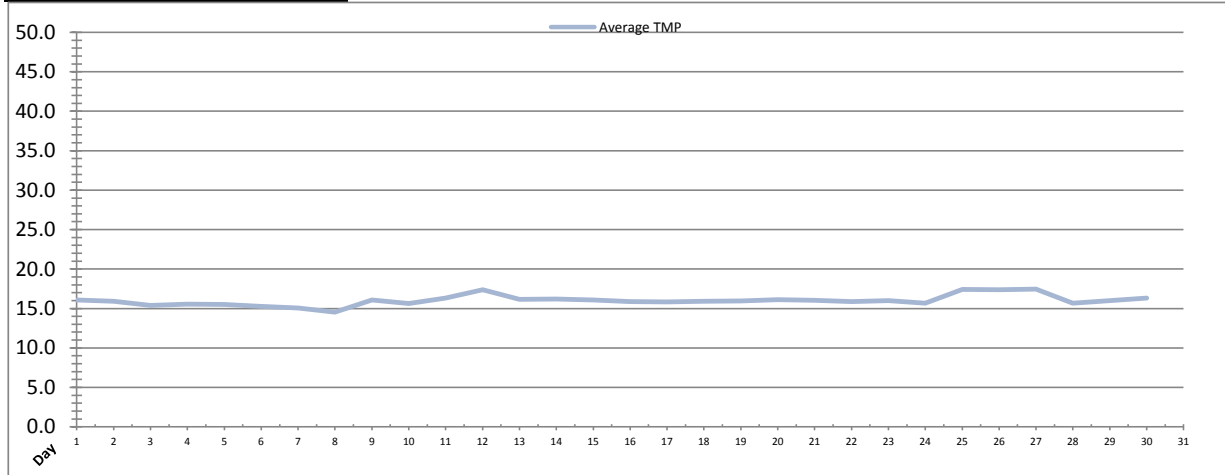
---



---

# Membranes Monthly Report

Month: **September-16**



Integrity Test Rack 4									
Date	Initial Pressure (kPa)	Final Pressure (kPa)	Test Duration (sec)	Change in Pressure (kPa)	UCL	Within UCL	Average TMP (kPa)	Max TMP (kPa)	
1	195.6	194.8	300.0	0.8	2.0	✓ 2.0	16.1	16.8	
2	195.6	194.8	300.0	0.8	2.0	✓ 2.0	15.9	31.0	
3	195.6	194.8	300.0	0.8	2.0	✓ 2.0	15.4	15.8	
4	195.6	194.8	300.0	0.8	2.0	✓ 2.0	15.5	15.8	
5	195.6	194.8	300.0	0.8	2.0	✓ 2.0	15.5	15.9	
6	195.6	194.8	300.0	0.8	2.0	✓ 2.0	15.3	16.4	
7	195.6	194.8	300.0	0.8	2.0	✓ 2.0	15.1	15.3	
8	194.5	193.4	300.0	1.1	2.0	✓ 2.0	14.5	27.4	
9	193.5	192.3	300.0	1.2	2.0	✓ 2.0	16.1	29.6	
10	193.2	192.0	300.0	1.2	2.0	✓ 2.0	15.6	32.4	
11	193.3	192.0	300.0	1.2	2.0	✓ 2.0	16.3	33.5	
12	193.3	192.0	300.0	1.2	2.0	✓ 2.0	17.4	28.7	
13	193.3	192.0	300.0	1.2	2.0	✓ 2.0	16.2	16.6	
14	193.3	192.0	300.0	1.2	2.0	✓ 2.0	16.2	21.7	
15	193.3	192.0	300.0	1.2	2.0	✓ 2.0	16.1	16.6	
16	193.3	192.0	300.0	1.2	2.0	✓ 2.0	15.9	16.6	
17	193.3	192.0	300.0	1.2	2.0	✓ 2.0	15.8	16.5	
18	193.3	192.0	300.0	1.2	2.0	✓ 2.0	15.9	16.2	
19	193.3	192.0	300.0	1.2	2.0	✓ 2.0	16.0	16.3	
20	193.3	192.0	300.0	1.2	2.0	✓ 2.0	16.1	22.4	
21	193.3	192.0	300.0	1.2	2.0	✓ 2.0	16.0	20.9	
22	193.3	192.0	300.0	1.2	2.0	✓ 2.0	15.9	21.8	
23	193.3	192.0	300.0	1.2	2.0	✓ 2.0	16.0	20.8	
24	193.3	192.0	300.0	1.2	2.0	✓ 2.0	15.7	16.7	
25	193.3	192.0	300.0	1.2	2.0	✓ 2.0	17.4	23.0	
26	193.3	192.0	300.0	1.2	2.0	✓ 2.0	17.4	18.1	
27	193.3	192.0	300.0	1.2	2.0	✓ 2.0	17.4	18.1	
28	193.5	192.2	300.0	1.3	2.0	✓ 2.0	15.7	31.2	
29	193.7	192.5	300.0	1.2	2.0	✓ 2.0	16.0	29.0	
30	193.7	192.4	300.0	1.3	2.0	✓ 2.0	16.3	27.1	
<b>Total</b>									
Average	193.9	192.8	300.0	1.1	2.0	2.0	16.0	21.6	
Maximum	195.6	194.8	300.0	1.3	2.0	2.0	17.4	33.5	
Date	1-Sep	1-Sep	1-Sep	30-Sep	1-Sep	1-Sep	27-Sep	11-Sep	
Minimum	193.2	192.0	300.0	0.8	2.0	2.0	14.5	15.3	
Date	10-Sep	10-Sep	1-Sep	1-Sep	1-Sep	1-Sep	8-Sep	7-Sep	

Notes:

---



---



---

# Membranes Monthly Report

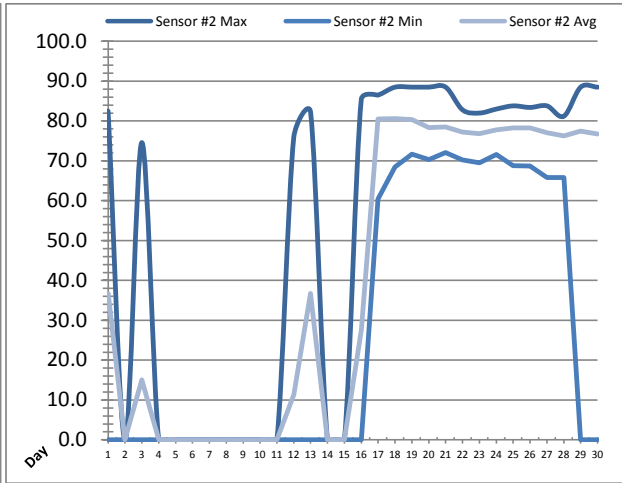
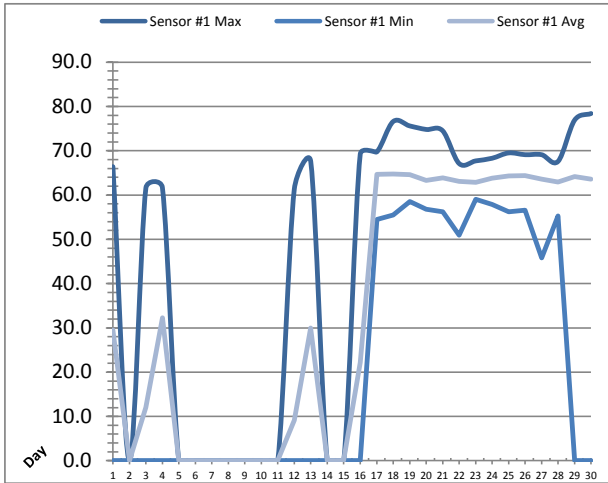
Month: September-16

Date	Membranes Monthly Performance							
	Rack 1 >0.1 NTU (Minutes)	Rack 1 Forward Flow (Minutes)	Rack 2 >0.1 NTU (Minutes)	Rack 2 Forward Flow (Minutes)	Rack 3 >0.1 NTU (Minutes)	Rack 3 Forward Flow (Minutes)	Rack 4 >0.1 NTU (Minutes)	Rack 4 Forward Flow (Minutes)
1	0.0	877.5	0.0	880.2	0.0	732.3	0.0	0.0
2	0.0	1017.2	0.0	1015.4	0.0	834.1	6.3	73.3
3	0.0	1138.5	0.0	1136.3	0.0	1142.1	0.0	0.0
4	0.0	1157.5	0.0	1153.4	0.0	1160.1	0.0	0.0
5	0.0	1127.3	0.0	1123.3	0.0	1122.4	0.0	0.0
6	0.0	951.3	0.0	948.1	0.0	951.2	0.0	0.0
7	0.0	1036.6	0.0	1029.4	0.0	1036.2	0.0	0.0
8	0.0	952.5	0.0	953.4	0.0	954.3	4.0	187.3
9	0.0	1183.5	0.0	1183.1	0.0	1183.5	0.0	483.0
10	0.0	685.3	0.0	679.6	0.0	688.5	0.0	357.3
11	0.0	734.3	0.0	726.6	0.0	736.4	7.2	340.3
12	34.2	868.1	32.4	868.2	44.6	873.0	7.2	148.4
13	99.4	1301.2	68.1	1310.1	77.3	1306.1	0.0	0.0
14	22.5	1065.4	8.1	1060.4	9.5	1066.2	0.0	11.3
15	9.5	1016.4	6.3	1011.4	0.0	1019.6	0.0	0.0
16	4.5	1341.0	7.2	1334.4	0.0	1347.5	0.0	0.0
17	5.4	1172.2	13.0	1170.4	0.0	1170.4	0.0	0.0
18	4.0	1089.6	4.0	1083.2	0.0	1094.5	0.0	0.0
19	4.5	1095.4	0.5	1089.5	0.0	1090.5	0.0	0.0
20	0.5	929.0	2.3	930.4	0.0	932.1	0.0	11.3
21	0.5	899.1	1.4	894.1	0.0	902.0	0.0	11.3
22	0.5	1125.0	0.0	1121.4	0.0	1126.4	0.0	16.2
23	0.0	769.4	0.0	770.2	0.0	774.2	0.0	8.1
24	4.0	992.4	0.0	988.3	0.0	992.3	0.0	0.0
25	0.5	892.2	0.0	892.2	0.0	891.3	0.0	9.5
26	0.0	1281.1	1.4	1276.1	0.0	1285.4	0.0	0.0
27	17.6	873.3	8.1	870.3	0.0	871.3	0.0	0.0
28	6.3	858.2	0.0	855.6	0.0	861.4	0.0	181.1
29	0.0	1059.5	0.0	1058.5	0.0	1060.5	0.0	435.1
30	0.0	1126.5	0.0	1116.0	0.0	1128.2	0.0	477.5
Total	214.1	30616.3	152.9	30529.7	131.4	30333.8	24.7	2750.8
Percent	0.7		0.5		0.4		0.9	
Maximum	99.4	1341.0	68.1	1334.4	77.3	1347.5	7.2	483.0
Date	13-Sep	16-Sep	13-Sep	16-Sep	13-Sep	16-Sep	11-Sep	9-Sep
Minimum	0.0	685.3	0.0	679.6	0.0	688.5	0.0	0.0
Date	1-Sep	10-Sep	1-Sep	10-Sep	1-Sep	10-Sep	1-Sep	1-Sep

Notes:  
 Met filter performance criteria of 99% of the turbidity readings were under 0.1ntu.

# UV System Monthly Report

Month: **September-16**



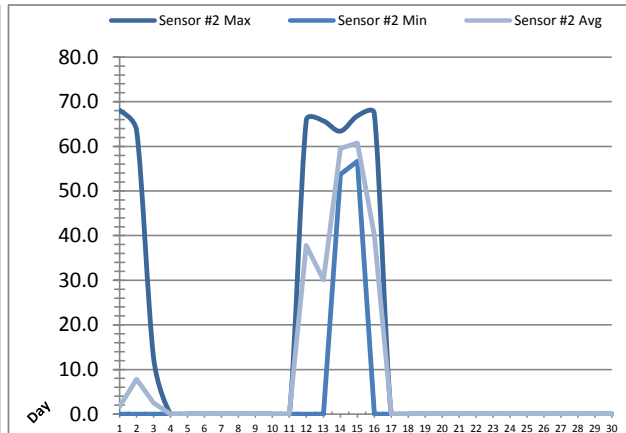
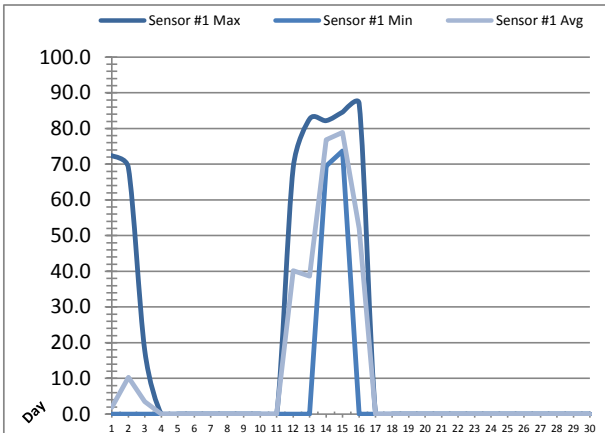
Date	UV Reactor 1					
	Intensity Sensor 1 (mW/cm <sup>2</sup> )			Intensity Sensor 2 (mW/cm <sup>2</sup> )		
	Maximum	Minimum	Average	Maximum	Minimum	Average
1	66.4	0.0	29.5	82.5	0.0	36.6
2	0.0	0.0	0.0	0.0	0.0	0.0
3	61.6	0.0	12.0	74.6	0.0	15.1
4	61.7	0.0	32.3	0.0	0.0	0.0
5	0.0	0.0	0.0	0.0	0.0	0.0
6	0.0	0.0	0.0	0.0	0.0	0.0
7	0.0	0.0	0.0	0.0	0.0	0.0
8	0.0	0.0	0.0	0.0	0.0	0.0
9	0.0	0.0	0.0	0.0	0.0	0.0
10	0.0	0.0	0.0	0.0	0.0	0.0
11	0.0	0.0	0.0	0.0	0.0	0.0
12	61.3	0.0	9.1	75.9	0.0	11.4
13	67.5	0.0	30.0	82.1	0.0	36.8
14	0.0	0.0	0.0	0.0	0.0	0.0
15	0.0	0.0	0.0	0.0	0.0	0.0
16	69.2	0.0	22.2	85.4	0.0	27.6
17	69.7	54.5	64.7	86.5	60.4	80.5
18	76.6	55.5	64.7	88.5	68.5	80.6
19	75.6	58.5	64.6	88.5	71.7	80.3
20	74.8	56.8	63.3	88.5	70.3	78.3
21	74.5	56.2	63.9	88.5	72.1	78.5
22	67.1	50.9	63.1	82.8	70.2	77.2
23	67.7	59.0	62.8	82.0	69.5	76.8
24	68.3	57.9	63.8	83.0	71.6	77.8
25	69.5	56.2	64.3	83.8	68.8	78.3
26	69.1	56.6	64.4	83.4	68.7	78.3
27	69.1	45.8	63.6	83.8	65.8	77.1
28	67.6	55.3	63.0	81.2	65.8	76.3
29	76.9	0.0	64.2	88.5	0.0	77.5
30	78.4	0.0	63.6	88.5	0.0	76.7
Total						
Average	46.4	22.1	34.3	53.3	27.4	40.7
Maximum	78.4		64.7	88.5		80.6
Date	30-Sep		18-Sep	18-Sep		18-Sep
Minimum		0.0	0.0		0.0	0.0
Date		1-Sep	2-Sep		1-Sep	2-Sep

**Notes:**

AOP system in operation due to taste and odour concerns.

# UV System Monthly Report

Month: **September-16**



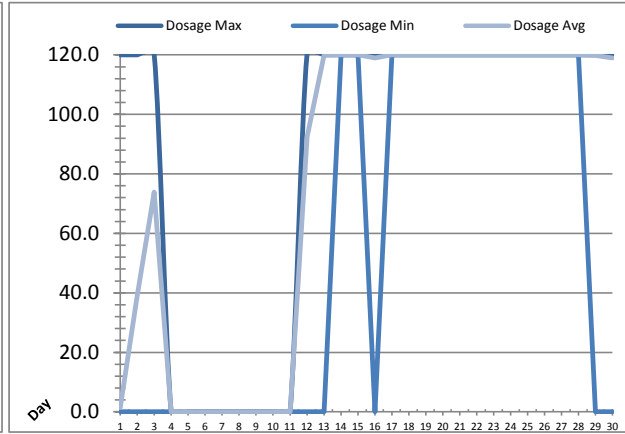
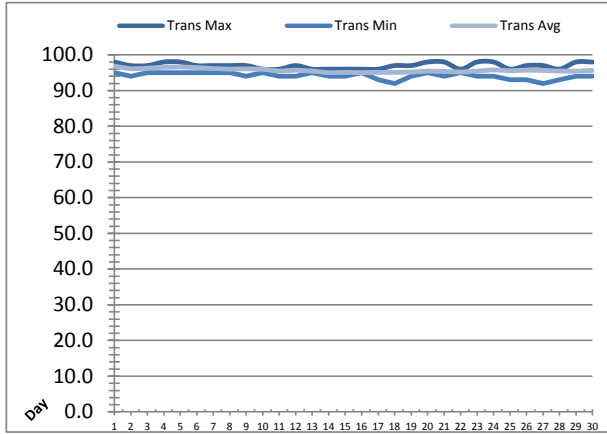
UV Reactor 2						
Date	Intensity Sensor 1 (mW/cm <sup>2</sup> )			Intensity Sensor 2 (mW/cm <sup>2</sup> )		
	Maximum	Minimum	Average	Maximum	Minimum	Average
1	72.4	0.0	1.9	68.1	0.0	1.7
2	69.1	0.0	10.3	63.5	0.0	7.8
3	17.7	0.0	3.5	12.6	0.0	2.5
4	0.0	0.0	0.0	0.0	0.0	0.0
5	0.0	0.0	0.0	0.0	0.0	0.0
6	0.0	0.0	0.0	0.0	0.0	0.0
7	0.0	0.0	0.0	0.0	0.0	0.0
8	0.0	0.0	0.0	0.0	0.0	0.0
9	0.0	0.0	0.0	0.0	0.0	0.0
10	0.0	0.0	0.0	0.0	0.0	0.0
11	0.0	0.0	0.0	0.0	0.0	0.0
12	69.0	0.0	40.2	65.9	0.0	37.8
13	82.7	0.0	38.7	65.7	0.0	30.0
14	82.2	69.5	76.8	63.4	53.7	59.5
15	84.6	73.7	78.9	66.8	56.7	60.8
16	87.0	0.0	52.0	67.4	0.0	40.0
17	0.0	0.0	0.0	0.0	0.0	0.0
18	0.0	0.0	0.0	0.0	0.0	0.0
19	0.0	0.0	0.0	0.0	0.0	0.0
20	0.0	0.0	0.0	0.0	0.0	0.0
21	0.0	0.0	0.0	0.0	0.0	0.0
22	0.0	0.0	0.0	0.0	0.0	0.0
23	0.0	0.0	0.0	0.0	0.0	0.0
24	0.0	0.0	0.0	0.0	0.0	0.0
25	0.0	0.0	0.0	0.0	0.0	0.0
26	0.0	0.0	0.0	0.0	0.0	0.0
27	0.0	0.0	0.0	0.0	0.0	0.0
28	0.0	0.0	0.0	0.0	0.0	0.0
29	0.0	0.0	0.0	0.0	0.0	0.0
30	0.0	0.0	0.0	0.0	0.0	0.0
Total						
Average	18.8	4.8	10.1	15.8	3.7	8.0
Maximum	87.0		78.9	68.1		60.8
Date	16-Sep		15-Sep	1-Sep		15-Sep
Minimum		0.0	0.0		0.0	0.0
Date		1-Sep	4-Sep		1-Sep	4-Sep

Notes:

AOP in operation due to taste and odour concerns.

# UV System Monthly Report

Month: **September-16**



UV System							
Date	Transmittance (%)			Dosage (mJ/cm <sup>2</sup> )			Inlet Flow (L/s)
	Maximum	Minimum	Average	Maximum	Minimum	Average	Maximum
1	98.00	95.00	96.79	120.0	0.0	1.4	89.3
2	97.00	94.00	96.07	120.0	0.0	39.0	96.2
3	97.00	95.00	96.29	120.0	0.0	73.9	75.7
4	98.00	95.00	96.55	0.0	0.0	0.0	76.3
5	98.00	95.00	96.60	0.0	0.0	0.0	77.5
6	97.00	95.00	96.44	0.0	0.0	0.0	75.7
7	97.00	95.00	96.15	0.0	0.0	0.0	75.3
8	97.00	95.00	96.03	0.0	0.0	0.0	86.0
9	97.00	94.00	96.09	0.0	0.0	0.0	90.1
10	96.00	95.00	95.96	0.0	0.0	0.0	149.8
11	96.00	94.00	95.43	0.0	0.0	0.0	147.3
12	97.00	94.00	95.77	120.0	0.0	92.5	143.8
13	96.00	95.00	95.48	120.0	0.0	119.9	77.1
14	96.00	94.00	94.99	120.0	120.0	120.0	84.1
15	96.00	94.00	95.08	120.0	120.0	120.0	133.2
16	96.00	95.00	95.04	120.0	0.0	119.0	131.2
17	96.00	93.00	95.05	120.0	120.0	120.0	75.7
18	97.00	92.00	95.09	120.0	120.0	120.0	77.2
19	97.00	94.00	95.16	120.0	120.0	120.0	75.7
20	98.00	95.00	95.48	120.0	120.0	120.0	82.3
21	98.00	94.00	95.39	120.0	120.0	120.0	82.7
22	96.00	95.00	95.19	120.0	120.0	120.0	81.5
23	98.00	94.00	95.46	120.0	120.0	120.0	80.8
24	98.00	94.00	95.78	120.0	120.0	120.0	75.3
25	96.00	93.00	95.53	120.0	120.0	120.0	82.0
26	97.00	93.00	95.71	120.0	120.0	120.0	78.5
27	97.00	92.00	95.64	120.0	120.0	120.0	79.7
28	96.00	93.00	95.44	120.0	120.0	120.0	86.2
29	98.00	94.00	95.48	120.0	0.0	119.8	89.7
30	98.00	94.00	95.63	120.0	0.0	118.9	88.2
Total							
Average	96.97	94.13	95.69	88.0	56.0	78.8	91.5
Maximum	98.00		96.79	120.0		120.0	149.8
Date	1-Sep		1-Sep	1-Sep		14-Sep	10-Sep
Minimum		92.00	94.99		0.0	0.0	
Date		18-Sep	14-Sep		1-Sep	4-Sep	

Notes:

---



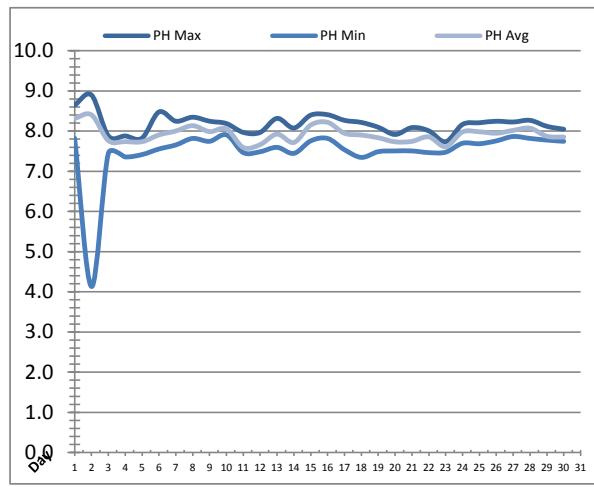
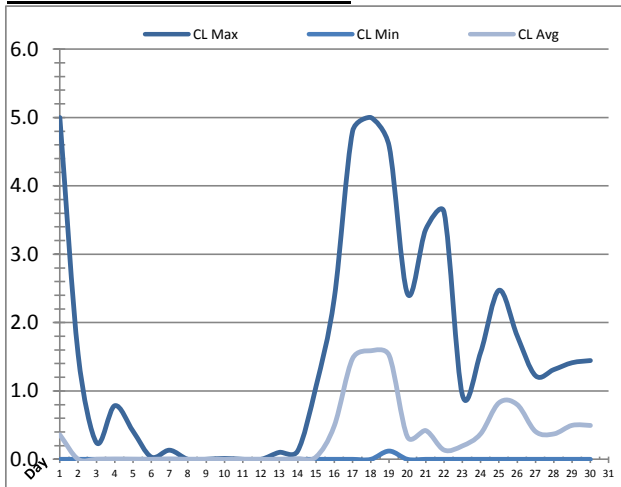
---



---

# Plant Quality Report

Month: **September-16**



Date	Strainer Chlorine Residual			Strainer pH		
	AIT_2003_CL (ppm)			AIT_2003_PH		
	Maximum	Minimum	Average	Maximum	Minimum	Average
1	5.00	0.00	0.36	8.65	7.83	8.32
2	1.53	0.00	0.00	8.90	4.13	8.40
3	0.24	0.00	0.00	7.88	7.45	7.76
4	0.78	0.00	0.00	7.88	7.36	7.74
5	0.41	0.00	0.00	7.83	7.42	7.74
6	0.03	0.00	0.00	8.48	7.56	7.91
7	0.13	0.00	0.01	8.25	7.66	8.00
8	0.00	0.00	0.00	8.35	7.82	8.14
9	0.00	0.00	0.00	8.25	7.75	7.99
10	0.01	0.00	0.00	8.19	7.91	8.06
11	0.00	0.00	0.00	7.97	7.47	7.59
12	0.00	0.00	0.00	7.97	7.49	7.66
13	0.10	0.00	0.00	8.32	7.60	7.93
14	0.12	0.00	0.01	8.08	7.45	7.72
15	1.06	0.00	0.03	8.40	7.76	8.15
16	2.36	0.00	0.49	8.41	7.82	8.22
17	4.80	0.00	1.47	8.27	7.54	7.95
18	5.00	0.00	1.59	8.22	7.35	7.90
19	4.58	0.12	1.52	8.10	7.49	7.84
20	2.42	0.00	0.33	7.92	7.51	7.73
21	3.36	0.00	0.42	8.09	7.51	7.75
22	3.62	0.00	0.14	8.01	7.47	7.86
23	0.94	0.00	0.20	7.74	7.48	7.61
24	1.56	0.00	0.37	8.17	7.70	7.98
25	2.47	0.00	0.83	8.21	7.69	7.98
26	1.80	0.00	0.80	8.25	7.76	7.95
27	1.22	0.00	0.41	8.23	7.87	8.02
28	1.31	0.00	0.37	8.27	7.82	8.07
29	1.41	0.00	0.50	8.12	7.78	7.87
30	1.44	0.00	0.50	8.05	7.75	7.85
Total						
Average	1.59	0.00	0.34	8.18	7.50	7.92
Maximum	5.00		1.59	8.90		8.40
Date	1-Sep		18-Sep	2-Sep		2-Sep
Minimum		0.00			4.13	7.59
Date		1-Sep	8-Sep		2-Sep	11-Sep

Notes:

---



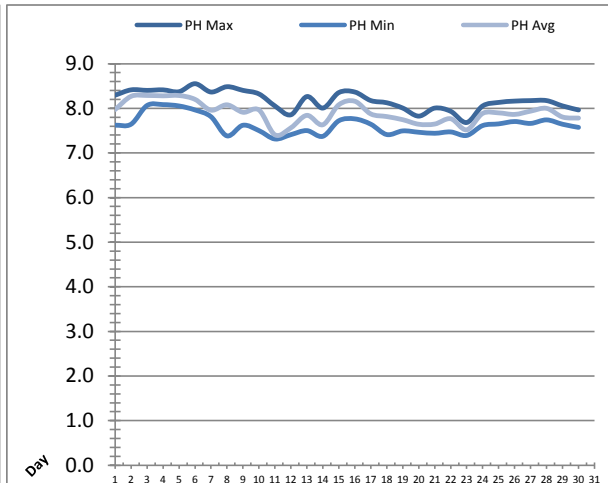
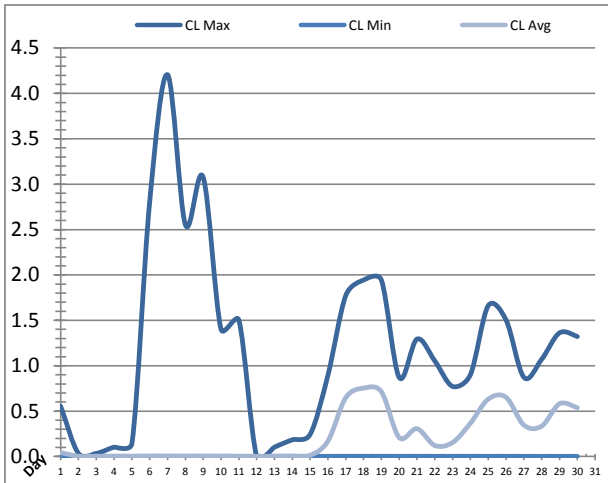
---



---

# Plant Quality Report

Month: **September-16**



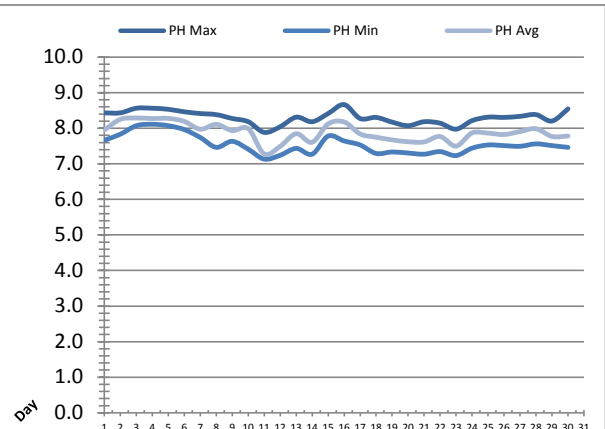
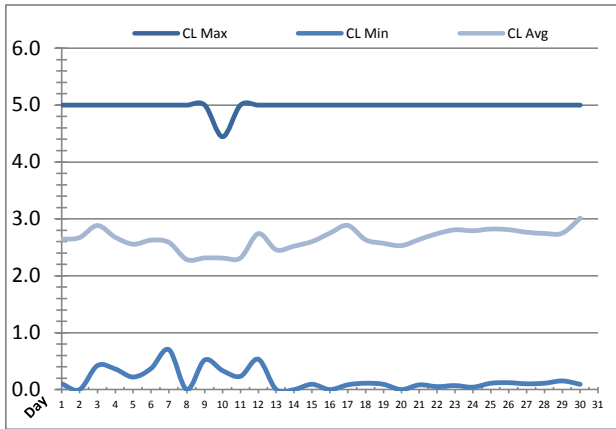
Date	Inlet UV Chlorine Residual			Inlet UV pH		
	AIT_5005_CL (ppm)			AIT_5005_PH		
	Maximum	Minimum	Average	Maximum	Minimum	Average
1	0.55	0.00	0.04	8.29	7.62	7.97
2	0.03	0.00	0.00	8.41	7.64	8.27
3	0.03	0.00	0.00	8.40	8.06	8.29
4	0.10	0.00	0.00	8.41	8.08	8.28
5	0.14	0.00	0.00	8.37	8.05	8.29
6	2.81	0.00	0.00	8.55	7.96	8.20
7	4.21	0.00	0.01	8.37	7.81	7.96
8	2.55	0.00	0.00	8.48	7.38	8.08
9	3.08	0.00	0.00	8.40	7.62	7.91
10	1.40	0.00	0.00	8.32	7.50	7.96
11	1.50	0.00	0.00	8.05	7.31	7.41
12	0.00	0.00	0.00	7.86	7.41	7.56
13	0.10	0.00	0.00	8.26	7.50	7.84
14	0.18	0.00	0.01	8.01	7.37	7.63
15	0.24	0.00	0.01	8.35	7.72	8.08
16	0.89	0.00	0.17	8.37	7.76	8.16
17	1.77	0.00	0.65	8.17	7.64	7.87
18	1.94	0.00	0.75	8.13	7.41	7.82
19	1.94	0.00	0.71	8.01	7.49	7.75
20	0.87	0.00	0.21	7.83	7.46	7.64
21	1.29	0.00	0.31	8.01	7.44	7.65
22	1.05	0.00	0.12	7.93	7.47	7.77
23	0.77	0.00	0.15	7.68	7.39	7.52
24	0.90	0.00	0.37	8.05	7.61	7.89
25	1.66	0.00	0.63	8.13	7.65	7.90
26	1.50	0.00	0.65	8.16	7.70	7.86
27	0.87	0.00	0.35	8.17	7.66	7.94
28	1.07	0.00	0.34	8.17	7.74	8.00
29	1.36	0.00	0.58	8.05	7.64	7.81
30	1.32	0.00	0.54	7.96	7.57	7.78
Total						
Average	1.21	0.00	0.22	8.18	7.62	7.90
Maximum	4.21		0.75	8.55		8.29
Date	7-Sep		18-Sep	6-Sep		3-Sep
Minimum		0.00			7.31	7.41
Date		28-Sep	12-Sep		11-Sep	11-Sep

Notes:



# Plant Quality Report

Month: **September-16**



Date	Discharge UV Chlorine Residual			Discharge UV pH		
	AIT_5006_CL (ppm)			AIT_5006_PH		
	Maximum	Minimum	Average	Maximum	Minimum	Average
1	5.00	0.10	2.64	8.43	7.66	7.95
2	5.00	0.00	2.67	8.43	7.83	8.25
3	5.00	0.42	2.88	8.56	8.07	8.29
4	5.00	0.36	2.68	8.56	8.11	8.27
5	5.00	0.22	2.56	8.53	8.07	8.28
6	5.00	0.37	2.63	8.46	7.96	8.19
7	5.00	0.70	2.59	8.41	7.74	7.97
8	5.00	0.00	2.29	8.38	7.46	8.11
9	5.00	0.52	2.31	8.27	7.63	7.94
10	4.44	0.33	2.31	8.18	7.41	7.99
11	5.00	0.23	2.31	7.88	7.13	7.28
12	5.00	0.53	2.74	8.04	7.24	7.49
13	5.00	0.00	2.46	8.31	7.43	7.85
14	5.00	0.00	2.52	8.18	7.27	7.61
15	5.00	0.09	2.60	8.41	7.78	8.12
16	5.00	0.00	2.75	8.67	7.64	8.18
17	5.00	0.08	2.89	8.27	7.53	7.84
18	5.00	0.11	2.63	8.30	7.29	7.75
19	5.00	0.09	2.57	8.17	7.33	7.67
20	5.00	0.00	2.53	8.07	7.30	7.62
21	5.00	0.08	2.64	8.18	7.27	7.62
22	5.00	0.05	2.74	8.14	7.34	7.77
23	5.00	0.07	2.81	7.97	7.23	7.50
24	5.00	0.04	2.79	8.21	7.44	7.87
25	5.00	0.11	2.82	8.31	7.53	7.86
26	5.00	0.12	2.81	8.30	7.51	7.82
27	5.00	0.10	2.77	8.33	7.49	7.91
28	5.00	0.11	2.74	8.38	7.56	7.99
29	5.00	0.15	2.75	8.20	7.51	7.77
30	5.00	0.09	3.01	8.54	7.46	7.78
Total						
Average	4.98	0.17	2.65	8.31	7.54	7.88
Maximum	5.00		3.01	8.67		8.29
Date	1-Sep		30-Sep	16-Sep		3-Sep
Minimum		0.00	2.29		7.13	7.28
Date		2-Sep	8-Sep		11-Sep	11-Sep

Notes:

---



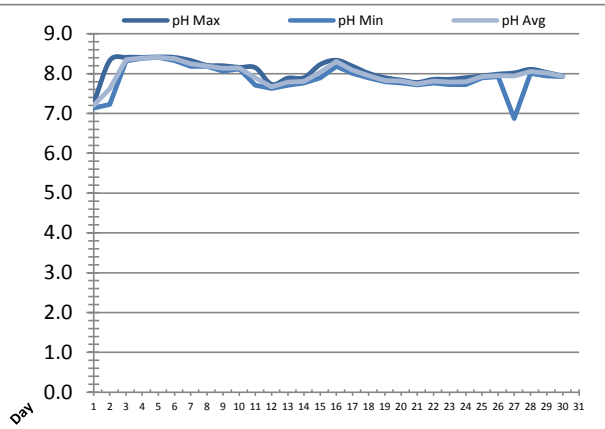
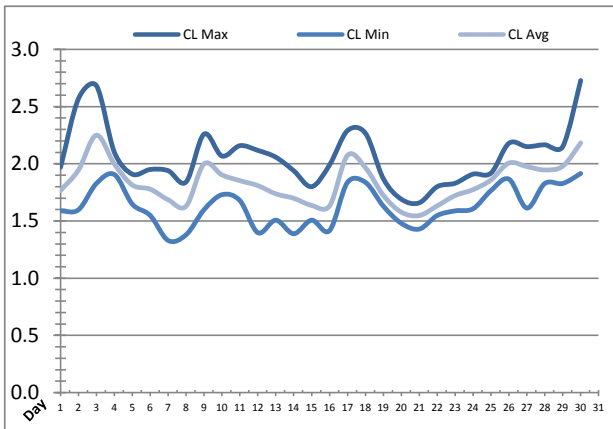
---



---

# Plant Quality Report

Month: **September-16**

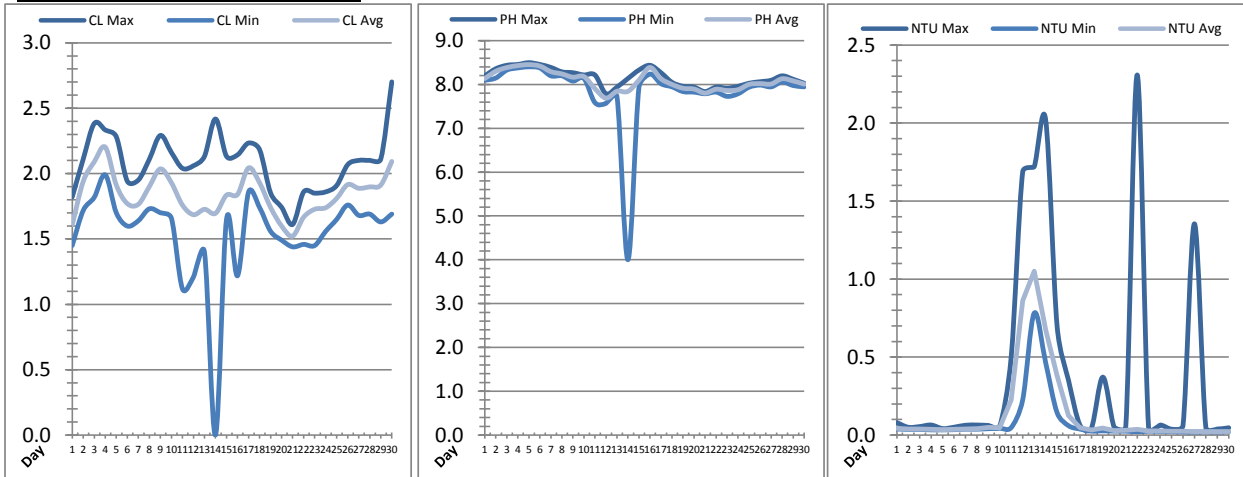


Date	Suction Header Chlorine Res.			Suction Header pH			Distribution CT Calc Total		
	AIT_7001_CL (ppm)			AIT_7001_PH (m)			REAL_CT_CALC_TOTAL (mg*ml/min)		
	Maximum	Minimum	Average	Maximum	Minimum	Average	Maximum	Minimum	Average
1	1.97	1.59	1.77	7.26	7.14	7.20	8300.36	0.00	395.94
2	2.57	1.60	1.95	8.33	7.23	7.62	7034.63	0.00	531.86
3	2.68	1.83	2.25	8.41	8.32	8.35	8619.16	0.00	552.42
4	2.10	1.91	2.00	8.41	8.39	8.39	9173.79	0.00	683.52
5	1.91	1.65	1.82	8.42	8.41	8.41	5189.86	0.00	367.24
6	1.95	1.55	1.78	8.41	8.33	8.38	5979.29	0.00	398.08
7	1.94	1.33	1.69	8.33	8.19	8.24	4210.67	0.00	387.92
8	1.84	1.38	1.63	8.21	8.19	8.19	4877.18	0.00	364.18
9	2.26	1.60	2.00	8.20	8.07	8.13	4929.88	0.00	586.62
10	2.07	1.73	1.90	8.16	8.12	8.14	5439.07	0.00	298.82
11	2.16	1.68	1.85	8.15	7.70	7.89	5234.67	0.00	455.22
12	2.12	1.40	1.81	7.73	7.63	7.67	3530.67	0.00	131.63
13	2.06	1.51	1.74	7.89	7.71	7.79	1645.94	0.00	102.12
14	1.94	1.39	1.70	7.90	7.77	7.81	2378.38	0.00	144.35
15	1.80	1.51	1.64	8.23	7.90	8.04	3859.25	0.00	95.79
16	1.99	1.42	1.63	8.34	8.19	8.30	4421.51	0.00	360.25
17	2.29	1.84	2.07	8.19	8.00	8.08	5863.71	0.00	432.78
18	2.27	1.84	1.97	8.01	7.90	7.95	5396.73	0.00	438.51
19	1.87	1.63	1.72	7.90	7.80	7.83	4634.08	0.00	449.71
20	1.69	1.48	1.58	7.84	7.77	7.81	4158.48	0.00	234.78
21	1.66	1.43	1.55	7.78	7.72	7.74	7679.05	0.00	294.07
22	1.80	1.55	1.63	7.86	7.77	7.81	4477.53	0.00	471.47
23	1.83	1.59	1.72	7.86	7.73	7.79	7970.98	0.00	281.88
24	1.91	1.61	1.77	7.90	7.73	7.80	4656.91	0.00	350.24
25	1.92	1.77	1.86	7.94	7.90	7.92	5644.45	0.00	342.58
26	2.18	1.87	2.01	7.99	7.93	7.95	5037.50	0.00	578.32
27	2.15	1.61	1.98	8.02	6.87	7.94	4691.17	0.00	385.77
28	2.17	1.83	1.95	8.11	8.01	8.05	5871.52	0.00	274.47
29	2.15	1.83	1.98	8.03	7.94	8.01	5360.77	0.00	535.13
30	2.73	1.92	2.18	7.94	7.93	7.93	5948.85	0.00	657.45
Total									
Average	2.07	1.63	1.84	8.06	7.87	7.97	8.06	7.87	7.97
Maximum	2.73		2.25	8.42		8.41	8.42		8.41
Date	30-Sep		3-Sep	5-Sep		5-Sep	5-Sep		5-Sep
Minimum		1.33	1.55		6.87	7.20		6.87	7.20
Date		7-Sep	21-Sep		27-Sep	1-Sep		27-Sep	1-Sep

Notes:

# Plant Quality Report

Month: **September-16**



Date	Distribution Chlorine Header			Distribution pH			Distribution Turbidity		
	AIT_7004_CL (ppm)			AIT_7004_PH (mg/L)			AIT_7003 (mg/L)		
	Maximum	Minimum	Average	Maximum	Minimum	Average	Maximum	Minimum	Average
1	1.82	1.45	1.61	8.20	8.09	8.14	0.08	0.04	0.04
2	2.11	1.72	1.94	8.36	8.15	8.30	0.05	0.04	0.04
3	2.38	1.82	2.09	8.44	8.33	8.39	0.05	0.04	0.04
4	2.33	1.99	2.20	8.46	8.38	8.43	0.06	0.03	0.04
5	2.28	1.70	1.91	8.50	8.40	8.45	0.04	0.03	0.03
6	1.94	1.60	1.77	8.46	8.38	8.42	0.05	0.03	0.04
7	1.95	1.64	1.77	8.39	8.20	8.29	0.06	0.04	0.04
8	2.11	1.73	1.90	8.29	8.20	8.24	0.06	0.04	0.04
9	2.29	1.70	2.04	8.27	8.08	8.17	0.06	0.04	0.05
10	2.16	1.66	1.93	8.22	8.14	8.18	0.06	0.04	0.05
11	2.04	1.12	1.76	8.22	7.59	7.90	0.51	0.05	0.23
12	2.06	1.21	1.69	7.79	7.57	7.69	1.69	0.23	0.86
13	2.13	1.40	1.73	7.94	7.73	7.85	1.72	0.78	1.05
14	2.42	0.00	1.70	8.14	4.00	7.84	2.02	0.47	0.67
15	2.13	1.65	1.84	8.33	7.94	8.10	0.70	0.14	0.38
16	2.14	1.22	1.84	8.44	8.24	8.39	0.35	0.06	0.12
17	2.23	1.86	2.04	8.27	8.02	8.13	0.06	0.04	0.05
18	2.18	1.74	1.93	8.05	7.95	8.00	0.05	0.03	0.03
19	1.85	1.56	1.74	7.96	7.84	7.91	0.37	0.03	0.05
20	1.74	1.49	1.60	7.94	7.83	7.90	0.05	0.03	0.03
21	1.61	1.44	1.52	7.84	7.79	7.80	0.05	0.03	0.03
22	1.86	1.46	1.67	7.94	7.83	7.89	2.31	0.02	0.04
23	1.85	1.45	1.73	7.92	7.73	7.86	0.04	0.02	0.03
24	1.86	1.56	1.74	7.96	7.79	7.88	0.06	0.02	0.03
25	1.91	1.65	1.81	8.03	7.94	8.00	0.04	0.02	0.02
26	2.07	1.76	1.92	8.06	7.99	8.02	0.06	0.02	0.02
27	2.10	1.68	1.89	8.10	7.95	8.01	1.35	0.02	0.02
28	2.10	1.69	1.90	8.20	8.06	8.13	0.05	0.02	0.02
29	2.11	1.63	1.91	8.12	7.98	8.08	0.04	0.02	0.02
30	2.70	1.69	2.09	8.03	7.94	8.01	0.05	0.02	0.02
<b>Total</b>									
<b>Average</b>	2.08	1.54	1.84	8.16	7.87	8.08	0.4	0.1	0.1
<b>Maximum</b>	2.70		2.20	8.50		8.45	2.3		1.1
<b>Date</b>	30-Sep		4-Sep	5-Sep		5-Sep	22-Sep		13-Sep
<b>Minimum</b>		0.00	1.52		4.00	7.69		0.0	0.0
<b>Date</b>		14-Sep	21-Sep		14-Sep	12-Sep		29-Sep	27-Sep

Notes:

---



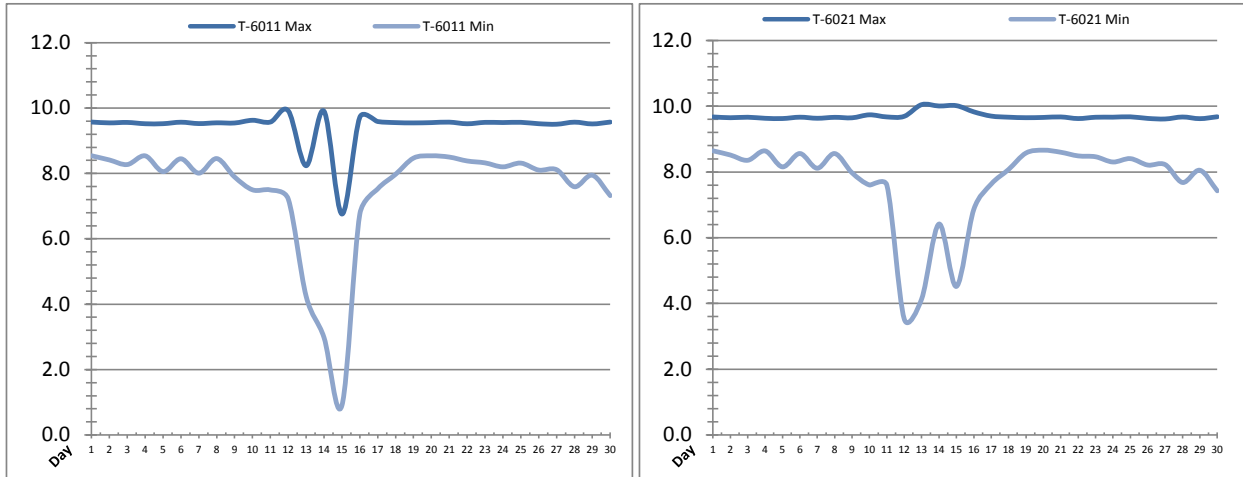
---



---

# Raw Well/Treated Storage Report

Month: September-16



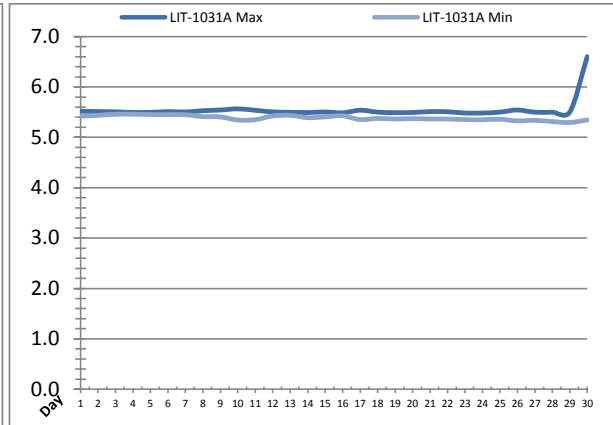
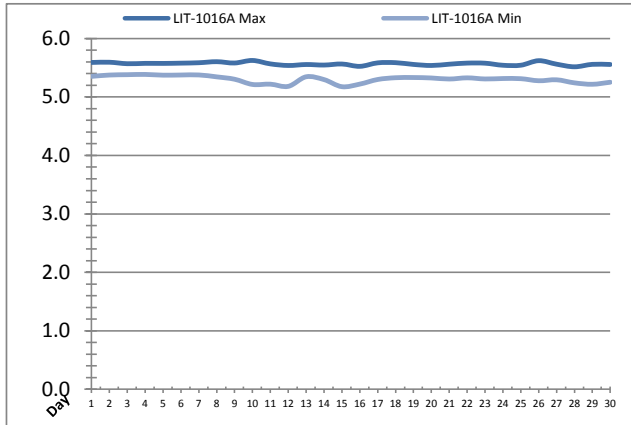
Date	Treated Water Storage Tank					
	T-6011 (m)			T-6021 (m)		
	Maximum	Minimum	Average	Maximum	Minimum	Average
1	9.6	8.5	9.1	9.7	8.6	9.2
2	9.5	8.4	9.1	9.7	8.5	9.2
3	9.6	8.3	9.0	9.7	8.4	9.1
4	9.5	8.5	9.1	9.6	8.6	9.2
5	9.5	8.1	8.8	9.6	8.2	8.9
6	9.6	8.4	9.1	9.7	8.6	9.2
7	9.5	8.0	8.7	9.6	8.1	8.8
8	9.5	8.5	9.0	9.7	8.6	9.1
9	9.5	7.9	8.6	9.6	8.0	8.7
10	9.6	7.5	8.8	9.7	7.6	8.9
11	9.6	7.5	8.5	9.7	7.6	8.6
12	9.9	7.2	9.1	9.7	3.5	7.2
13	8.2	4.2	7.0	10.0	4.1	7.5
14	9.9	3.0	6.7	10.0	6.4	8.3
15	6.8	0.9	3.2	10.0	4.5	7.7
16	9.7	6.8	8.1	9.8	6.9	8.2
17	9.6	7.5	8.7	9.7	7.6	8.9
18	9.6	8.0	8.8	9.7	8.1	8.9
19	9.5	8.5	9.1	9.7	8.6	9.2
20	9.6	8.5	9.1	9.7	8.7	9.2
21	9.6	8.5	9.1	9.7	8.6	9.2
22	9.5	8.4	8.9	9.6	8.5	9.0
23	9.6	8.3	9.1	9.7	8.5	9.2
24	9.6	8.2	8.9	9.7	8.3	9.0
25	9.6	8.3	9.0	9.7	8.4	9.1
26	9.5	8.1	8.9	9.6	8.2	9.0
27	9.5	8.1	8.9	9.6	8.2	9.0
28	9.6	7.6	8.9	9.7	7.7	9.0
29	9.5	7.9	8.7	9.6	8.1	8.8
30	9.6	7.3	8.4	9.7	7.4	8.5
Total						
Average	9.4	7.5	8.6	9.7	7.7	8.8
Maximum	9.9		9.1	10.0		9.2
Date	12-Sep		12-Sep	13-Sep		20-Sep
Minimum		0.9	3.2		3.5	7.2
Date		15-Sep	15-Sep		12-Sep	12-Sep

**Notes:**

Tanks were drained due to coloured water.

# Raw Well/Treated Storage Report

Month: **September-16**



Date	Low Lift Intake Levels					
	Wet Well #1 (LIT-1016A) (m)			Wet Well #2 (LIT-1031A) (m)		
	Maximum	Minimum	Average	Maximum	Minimum	Average
1	5.6	5.4	5.4	5.5	5.4	5.5
2	5.6	5.4	5.4	5.5	5.4	5.5
3	5.6	5.4	5.4	5.5	5.5	5.5
4	5.6	5.4	5.4	5.5	5.5	5.5
5	5.6	5.4	5.4	5.5	5.5	5.5
6	5.6	5.4	5.4	5.5	5.5	5.5
7	5.6	5.4	5.4	5.5	5.4	5.5
8	5.6	5.3	5.4	5.5	5.4	5.5
9	5.6	5.3	5.4	5.5	5.4	5.5
10	5.6	5.2	5.4	5.6	5.3	5.5
11	5.6	5.2	5.4	5.5	5.4	5.5
12	5.5	5.2	5.4	5.5	5.4	5.5
13	5.6	5.3	5.4	5.5	5.4	5.5
14	5.5	5.3	5.4	5.5	5.4	5.4
15	5.6	5.2	5.4	5.5	5.4	5.5
16	5.5	5.2	5.4	5.5	5.4	5.5
17	5.6	5.3	5.4	5.5	5.4	5.4
18	5.6	5.3	5.4	5.5	5.4	5.4
19	5.6	5.3	5.4	5.5	5.4	5.4
20	5.5	5.3	5.4	5.5	5.4	5.4
21	5.6	5.3	5.4	5.5	5.4	5.4
22	5.6	5.3	5.4	5.5	5.4	5.4
23	5.6	5.3	5.4	5.5	5.4	5.4
24	5.5	5.3	5.4	5.5	5.3	5.4
25	5.5	5.3	5.4	5.5	5.4	5.4
26	5.6	5.3	5.4	5.5	5.3	5.4
27	5.6	5.3	5.4	5.5	5.3	5.4
28	5.5	5.2	5.4	5.5	5.3	5.4
29	5.6	5.2	5.4	5.5	5.3	5.4
30	5.6	5.3	5.4	6.6	5.3	5.4
Total						
Average	5.6	5.3	5.4	5.5	5.4	5.4
Maximum	5.6		5.4	6.6		5.5
Date	10-Sep		1-Sep	30-Sep		6-Sep
Minimum		5.2	5.4		5.3	5.4
Date		15-Sep	16-Sep		29-Sep	26-Sep

Notes:

---



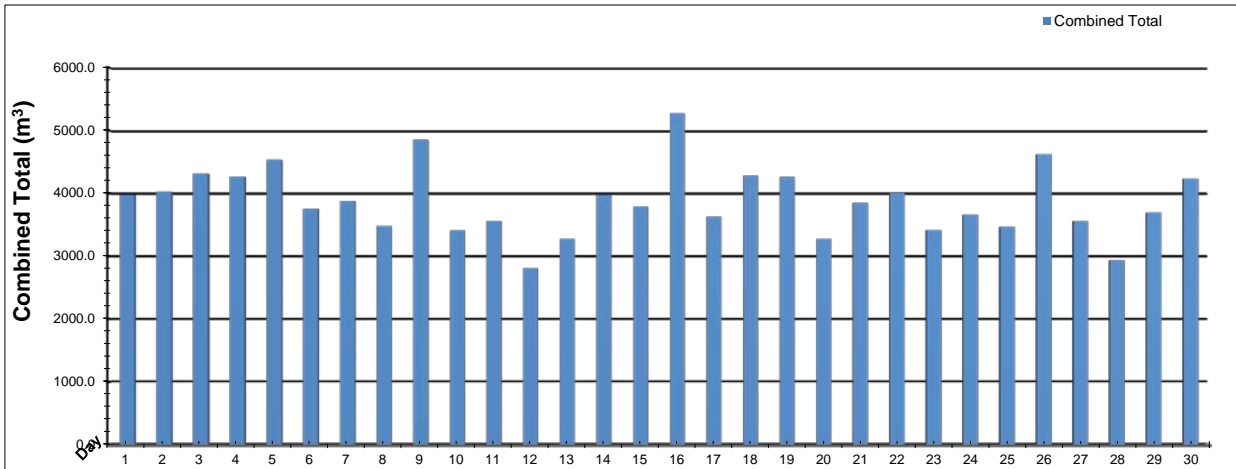
---



---

# High Lift Monthly Report

Month: September-16



Date	Distribution Flow					
	FIT_7052 (East)		FIT_7062 (West)		Combined	
	(m³) Total	(L/s) Peak	(m³) Total	(L/s) Peak	(m³) Total	(L/s) Peak
1	1221.3	47.1	2761.9	85.2	3983.2	91.9
2	964.7	47.0	3064.9	86.2	4029.6	87.0
3	966.0	47.1	3350.1	130.1	4316.1	138.3
4	769.7	33.1	3496.8	84.6	4266.5	89.4
5	945.7	47.1	3586.6	86.0	4532.2	89.2
6	549.6	33.3	3206.2	84.9	3755.8	90.2
7	365.5	33.3	3513.2	108.7	3878.7	108.7
8	862.5	46.9	2618.9	85.9	3481.4	91.9
9	977.6	46.7	3881.0	123.4	4858.5	126.3
10	683.3	46.0	2730.3	83.8	3413.7	86.8
11	650.5	33.1	2913.6	85.0	3564.1	86.6
12	189.2	46.1	2619.5	87.0	2808.7	87.0
13	64.6	33.1	3217.5	88.7	3282.1	88.7
14	4.3	0.0	3972.2	96.1	3976.6	96.1
15	4.4	0.0	3785.8	88.5	3790.2	88.5
16	924.7	42.0	4346.4	124.6	5271.1	161.7
17	460.0	33.8	3174.8	89.6	3634.8	94.6
18	1066.7	46.4	3218.4	88.1	4285.1	92.7
19	1126.8	49.2	3138.5	87.6	4265.4	94.5
20	319.0	31.6	2963.0	91.6	3282.0	91.8
21	997.0	47.3	2856.1	87.0	3853.0	92.0
22	800.3	33.1	3206.1	88.3	4006.4	88.3
23	871.3	47.6	2548.9	87.4	3420.2	95.8
24	899.5	47.0	2760.1	125.0	3659.5	128.1
25	683.3	46.1	2786.7	99.8	3470.0	103.2
26	770.4	48.7	3854.9	127.4	4625.4	130.6
27	53.7	3.3	3511.1	88.4	3564.9	88.4
28	628.3	41.7	2308.7	113.8	2937.0	151.3
29	756.4	46.4	2942.0	81.0	3698.3	89.9
30	648.4	46.8	3585.3	109.7	4233.7	113.5
<b>Total</b>	<b>20224.7</b>		<b>95919.6</b>		<b>116144.3</b>	
<b>Average</b>	<b>674.2</b>	<b>38.4</b>	<b>3197.3</b>	<b>96.4</b>	<b>3871.5</b>	<b>102.1</b>
<b>Maximum</b>	<b>1221.3</b>	<b>49.2</b>	<b>4346.4</b>	<b>130.1</b>	<b>5271.1</b>	<b>161.7</b>
<b>Date</b>	<b>1-Sep</b>	<b>19-Sep</b>	<b>16-Sep</b>	<b>3-Sep</b>	<b>16-Sep</b>	<b>16-Sep</b>
<b>Minimum</b>	<b>4.3</b>		<b>2308.7</b>		<b>2808.7</b>	
<b>Date</b>	<b>14-Sep</b>		<b>28-Sep</b>		<b>12-Sep</b>	

Notes:

---



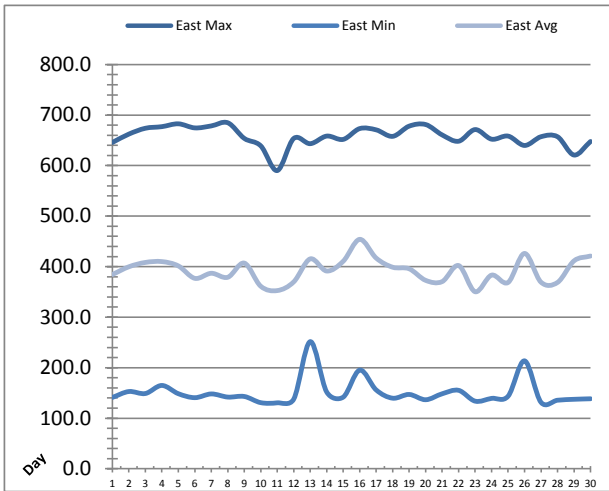
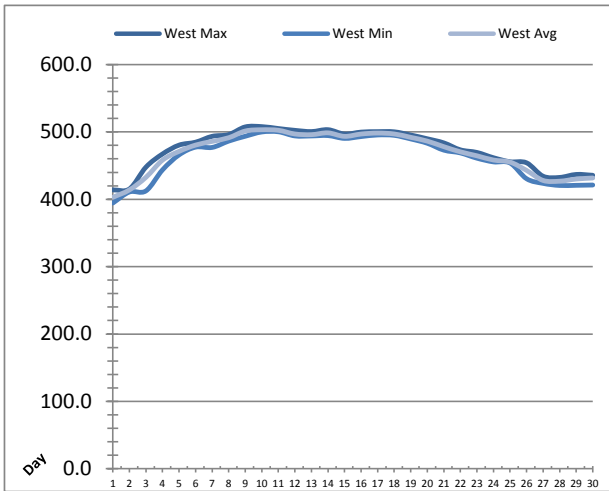
---



---

# Low Lift Monthly Report

Month: **September-16**

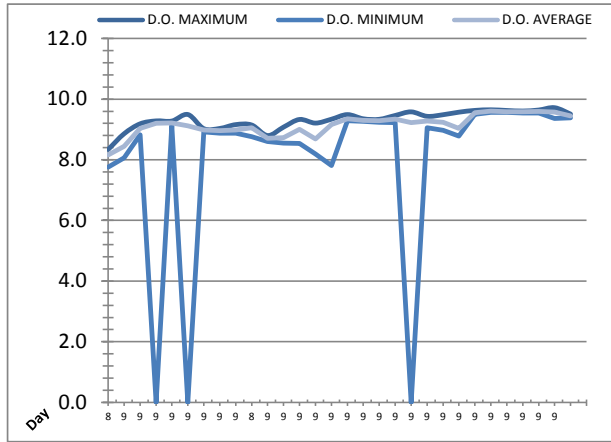
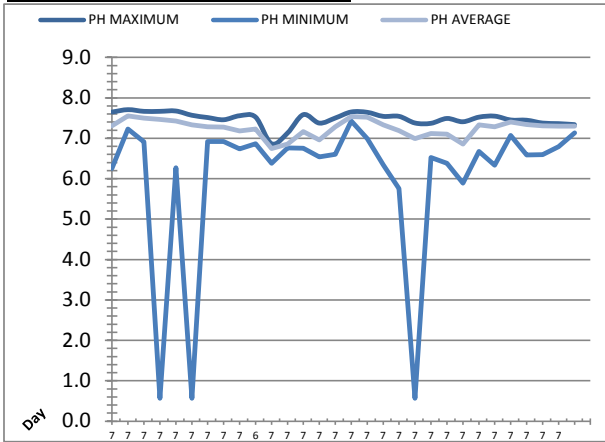


Date	West Train Header Pressure PIT_1018 (kPa)			East Train Header Pressure PIT_1028 (kPa)		
	Maximum	Minimum	Average	Maximum	Minimum	Average
1	413.9	394.4	402.9	645.7	141.2	384.4
2	415.3	410.8	413.9	662.3	152.8	399.8
3	447.8	412.5	432.6	673.9	148.9	408.3
4	467.3	443.6	458.1	677.1	164.9	410.0
5	480.4	465.9	471.1	682.7	148.6	401.5
6	484.8	477.4	480.5	674.6	140.7	376.9
7	493.5	477.0	485.9	678.5	148.1	386.9
8	496.1	486.4	491.4	684.8	141.9	379.0
9	507.4	493.6	501.3	653.8	143.1	407.0
10	507.9	499.9	503.2	639.1	130.8	361.2
11	505.0	500.2	502.4	590.1	130.5	352.6
12	502.3	494.0	496.9	653.8	137.8	369.9
13	500.5	494.0	495.9	643.4	251.6	415.4
14	503.3	494.6	498.6	658.4	151.9	391.3
15	496.8	490.4	493.4	651.9	141.7	410.6
16	499.7	493.1	496.9	673.2	195.3	454.1
17	500.4	495.5	498.3	670.7	156.0	417.0
18	500.2	494.9	497.0	657.9	139.7	398.9
19	495.4	489.6	491.9	678.1	147.1	395.8
20	489.8	483.2	486.4	681.3	136.6	372.9
21	483.7	472.9	478.1	660.7	148.4	370.4
22	473.4	468.8	470.4	648.2	155.2	402.2
23	469.5	461.0	464.6	671.3	133.8	350.3
24	461.7	455.5	458.3	652.3	139.3	383.2
25	455.7	453.8	455.2	658.4	143.5	368.7
26	454.1	430.5	442.9	639.9	213.6	426.2
27	434.2	423.6	427.9	657.2	131.3	369.1
28	432.5	420.5	426.9	657.1	135.6	368.8
29	436.9	420.7	430.1	620.9	137.5	411.5
30	435.6	421.2	431.6	647.7	138.5	421.0
Total						
Average	474.8	464.0	469.5	658.2	150.9	392.2
Maximum	507.9		503.2	684.8		454.1
Date	10-Sep		10-Sep	8-Sep		16-Sep
Minimum		394.4	402.9		130.5	350.3
Date		1-Sep	1-Sep		11-Sep	23-Sep

Notes:

# Low Lift Monthly Report

Month: **September-16**



Date	Raw Water Sample Line					
	AIT_1402_PH (pH)			AIT_1402_DO (mg/L)		
	Maximum	Minimum	Average	Maximum	Minimum	Average
1	7.6	6.3	7.3	8.3	7.8	8.2
2	7.7	7.2	7.6	8.9	8.1	8.4
3	7.7	6.9	7.5	9.2	8.8	9.0
4	7.7	0.6	7.5	9.3	0.0	9.2
5	7.7	6.3	7.4	9.3	9.1	9.2
6	7.6	0.6	7.3	9.5	0.0	9.1
7	7.5	6.9	7.3	9.0	8.9	9.0
8	7.5	6.9	7.3	9.0	8.9	9.0
9	7.6	6.7	7.2	9.2	8.9	9.0
10	7.5	6.9	7.2	9.1	8.8	9.1
11	6.9	6.4	6.7	8.8	8.6	8.7
12	7.1	6.8	6.9	9.1	8.6	8.7
13	7.6	6.8	7.2	9.3	8.5	9.0
14	7.4	6.5	7.0	9.2	8.2	8.7
15	7.5	6.6	7.3	9.3	7.8	9.2
16	7.7	7.4	7.5	9.5	9.3	9.4
17	7.6	7.0	7.5	9.4	9.3	9.3
18	7.5	6.3	7.3	9.3	9.2	9.3
19	7.5	5.8	7.2	9.5	9.2	9.3
20	7.4	0.6	7.0	9.6	0.0	9.2
21	7.4	6.5	7.1	9.4	9.1	9.3
22	7.5	6.4	7.1	9.5	9.0	9.2
23	7.4	5.9	6.9	9.6	8.8	9.0
24	7.5	6.7	7.3	9.6	9.5	9.6
25	7.5	6.3	7.3	9.6	9.6	9.6
26	7.5	7.1	7.4	9.6	9.6	9.6
27	7.4	6.6	7.3	9.6	9.5	9.6
28	7.4	6.6	7.3	9.6	9.5	9.6
29	7.4	6.8	7.3	9.7	9.4	9.6
30	7.3	7.1	7.3	9.5	9.4	9.5
Total						
Average	7.5	6.0	7.2	9.3	8.0	9.1
Maximum	7.7		7.6	9.7		9.6
Date	2-Sep		2-Sep	29-Sep		25-Sep
Minimum		0.6	6.7		0.0	8.2
Date		6-Sep	11-Sep		4-Sep	1-Sep

Notes:

---



---

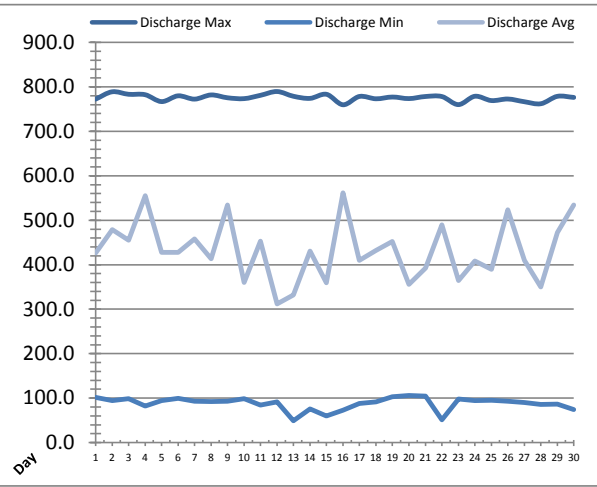


---



# High Lift Monthly Report

Month: September-16

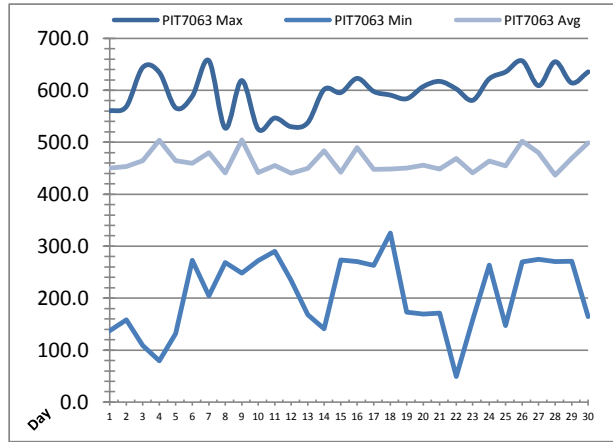
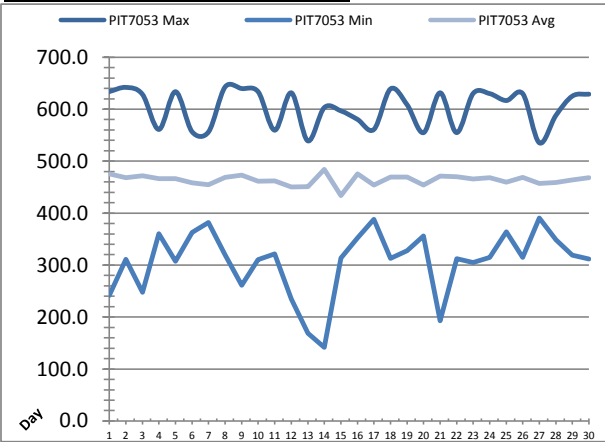


Date	Suction Header Pressure			Discharge Header Pressure		
	PIT_7002 (kPa)			PIT_7005 (kPa)		
	Maximum	Minimum	Average	Maximum	Minimum	Average
1	✓ 111.4	✓ 73.7	85.1	✓ 772.5	✓ 101.3	426.4
2	✓ 107.6	✓ 72.0	84.9	✓ 789.0	✓ 94.3	478.9
3	✓ 108.0	✓ 69.8	84.5	✓ 783.3	✓ 98.9	455.2
4	✓ 114.1	✓ 73.7	85.2	✓ 782.4	✓ 82.2	555.2
5	✓ 99.8	✓ 69.6	82.4	✓ 766.9	✓ 94.4	428.0
6	✓ 97.9	✓ 73.5	85.2	✓ 779.9	✓ 99.6	427.7
7	✓ 110.4	✓ 61.0	81.4	✓ 772.5	✓ 92.9	458.0
8	✓ 100.9	✓ 72.9	84.5	✓ 781.9	✓ 92.1	413.2
9	✓ 100.4	✓ 64.1	80.6	✓ 775.5	✓ 92.9	534.3
10	✓ 100.5	✓ 63.2	82.5	✓ 773.6	✓ 98.4	359.9
11	✓ 99.0	✓ 63.0	79.3	✓ 781.1	✓ 84.7	453.1
12	✓ 157.8	✗ 25.5	80.1	✓ 789.6	✓ 91.2	312.2
13	✓ 104.4	✗ 23.9	68.3	✓ 778.9	✗ 49.2	332.1
14	✓ 103.1	✗ 29.3	72.8	✓ 774.2	✓ 75.7	430.3
15	✓ 109.6	✗ 31.2	70.4	✓ 783.3	✓ 60.1	359.4
16	✓ 99.6	✓ 56.3	75.1	✓ 759.8	✓ 72.7	562.0
17	✓ 97.9	✓ 65.9	81.7	✓ 778.5	✓ 88.0	410.1
18	✓ 99.6	✓ 69.1	81.8	✓ 773.3	✓ 91.7	432.4
19	✓ 97.7	✓ 72.9	84.8	✓ 777.2	✓ 102.8	452.2
20	✓ 108.4	✓ 70.7	85.3	✓ 773.7	✓ 106.0	355.8
21	✓ 108.7	✗ 48.5	85.2	✓ 778.4	✓ 104.6	392.8
22	✓ 109.3	✓ 72.1	83.5	✓ 778.3	✓ 51.0	489.5
23	✓ 111.2	✓ 72.5	84.9	✓ 760.1	✓ 98.1	364.4
24	✓ 100.6	✓ 71.2	83.3	✓ 778.9	✓ 94.7	408.0
25	✓ 116.0	✓ 72.4	84.5	✓ 769.3	✓ 94.8	389.7
26	✓ 111.6	✓ 67.2	82.6	✓ 772.8	✓ 92.7	523.6
27	✓ 110.5	✓ 70.5	83.0	✓ 766.6	✓ 89.8	409.7
28	✓ 103.7	✓ 53.5	82.7	✓ 762.1	✓ 85.8	349.7
29	✓ 100.1	✓ 68.7	81.7	✓ 778.8	✓ 86.3	472.4
30	✓ 109.3	✓ 61.2	78.1	✓ 776.3	✓ 74.4	534.5
Total						
Average	107.0	62.0	81.5	775.6	88.0	432.4
Maximum	157.8		85.3	789.6		562.0
Date	12-Sep		20-Sep	12-Sep		16-Sep
Minimum		23.9	68.3		49.2	312.2
Date		13-Sep	13-Sep		13-Sep	12-Sep

Notes:

# High Lift Monthly Report

Month: **September-16**



Date	Distribution Pressures					
	PIT_7053 (kPa)			PIT_7063 (kPa)		
	Maximum	Minimum	Average	Maximum	Minimum	Average
1	633.9	241.3	475.8	560.3	137.5	450.3
2	641.9	311.1	468.0	568.5	158.3	453.4
3	628.6	247.4	471.6	644.0	108.8	464.5
4	561.0	360.2	466.1	634.4	79.6	504.0
5	633.7	307.5	466.0	566.1	131.7	464.5
6	556.7	363.0	458.3	588.7	272.6	459.4
7	556.4	381.8	454.5	657.3	204.3	480.1
8	642.8	319.7	469.0	527.1	268.6	441.3
9	639.7	261.3	473.3	618.8	248.1	504.4
10	633.4	310.5	461.3	525.1	272.3	441.6
11	559.5	321.4	461.8	546.6	289.9	455.3
12	631.5	234.9	450.4	529.8	234.1	440.5
13	539.0	168.9	450.8	537.7	168.3	449.6
14	603.2	141.8	484.5	601.7	141.3	483.3
15	596.7	313.3	433.8	595.6	273.3	442.0
16	580.4	352.6	475.8	622.9	270.6	489.4
17	561.1	388.3	454.1	597.8	262.8	447.9
18	639.0	312.6	469.1	590.9	325.3	448.6
19	608.6	328.0	469.6	583.8	172.8	450.3
20	554.8	355.9	454.2	607.1	169.2	456.1
21	631.5	192.9	471.3	617.1	171.3	448.5
22	554.9	312.1	469.9	602.7	49.2	468.7
23	630.4	305.1	465.6	580.7	157.4	441.2
24	629.9	315.0	468.3	622.0	263.7	463.8
25	616.6	363.9	459.8	635.5	147.3	454.4
26	629.6	315.0	468.7	656.6	269.7	502.3
27	535.2	390.6	457.4	608.9	274.9	479.8
28	588.0	348.8	458.8	654.9	270.2	436.8
29	625.3	319.1	464.1	614.2	271.0	469.4
30	628.9	311.9	468.1	635.5	164.7	499.1
Total						
Average	602.4	306.5	464.0	597.8	207.6	463.0
Maximum	642.8		484.5	657.3		504.4
Date	8-Sep		14-Sep	7-Sep		9-Sep
Minimum		141.8	433.8		49.2	436.8
Date		14-Sep	15-Sep		22-Sep	28-Sep

Notes:

---



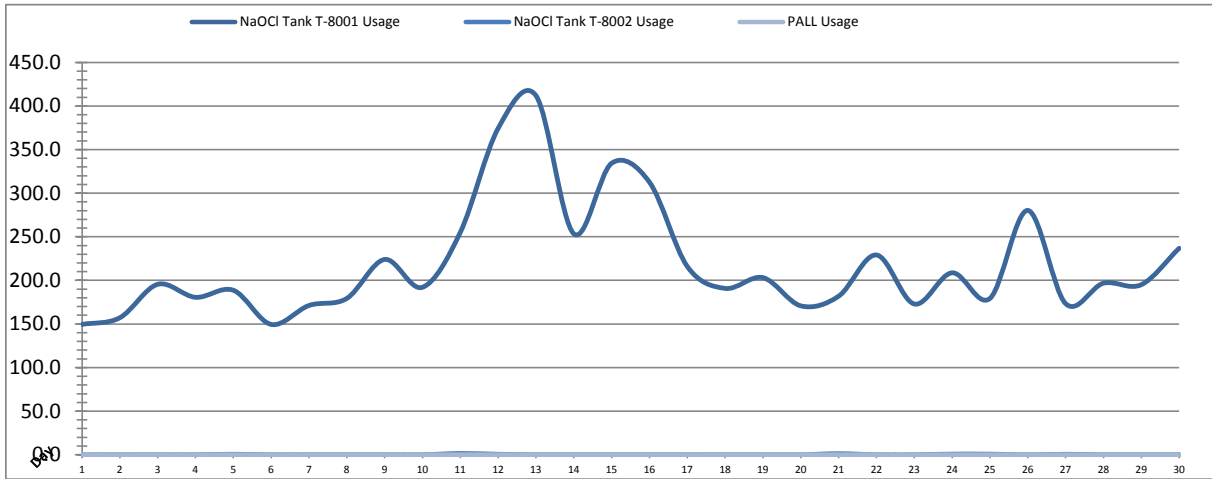
---



---

# Chemical Usage Monthly Report

Month: **September-16**

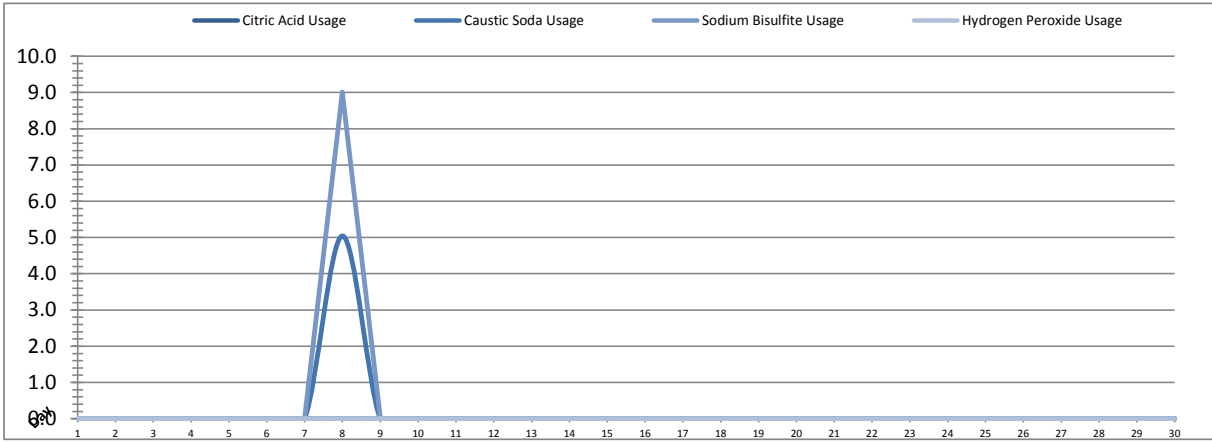


Date	PALL Usage	NaOCl Tank T-8001	NaOCl Tank T-8002
	PALL_HYPO_USAGE (L) Usage	LIT_8002 (Storage) (L) Usage	LIT_8004 (Day) (L) Usage
1	0.0	149.5	0.0
2	0.0	157.1	0.0
3	0.0	195.5	0.1
4	0.0	180.6	0.0
5	0.0	188.7	0.6
6	0.0	149.5	0.0
7	0.0	171.2	0.1
8	0.0	179.3	0.0
9	0.0	224.0	0.0
10	0.0	192.1	0.0
11	0.0	255.1	1.5
12	0.0	374.3	0.6
13	0.0	411.8	0.1
14	0.00	253.40	0.1
15	0.0	334.3	0.1
16	0.0	312.6	0.1
17	0.0	215.9	0.0
18	0.0	190.8	0.0
19	0.0	203.1	0.0
20	0.0	170.8	0.0
21	0.0	181.9	1.2
22	0.0	229.1	0.0
23	0.0	172.9	0.0
24	0.0	208.7	0.7
25	0.0	179.3	0.7
26	0.0	280.2	0.0
27	0.0	173.3	0.5
28	0.0	196.8	0.1
29	0.0	195.1	0.0
30	0.0	236.8	0.0
Total	0.0	6563.6	6.7
Average	0.0	218.8	0.2
Maximum	0.0	411.8	1.5
Date	1-Sep	13-Sep	11-Sep
Minimum	0.0	149.5	0.0
Date	1-Sep	1-Sep	2-Sep

Notes:	
Dosage (mg/L)=	Day Tank (L) x %conc. x 1000
	Membrane Flow (m3)
Chlorine Concentration:	12.0%

# Chemical Usage Monthly Report

Month: **September-16**



Date	Citric Acid	Caustic Soda	CAPTOR	Hydrogen Peroxide		Membrane Flow (m <sup>3</sup> )
	TAGNAME (L) Usage	TAGNAME (L) Usage	TAGNAME (L) Usage	TAGNAME (L) Usage	Dose (mg/L)	
1	0.0	0.0	0.0	0.0	0.0	4152.772
2	0.0	0.0	0.0	0.0	0.0	4500.298
3	0.0	0.0	0.0	0.0	0.0	4566.690
4	0.0	0.0	0.0	0.0	0.0	4715.003
5	0.0	0.0	0.0	0.0	0.0	4660.127
6	0.0	0.0	0.0	0.0	0.0	3928.787
7	0.0	0.0	0.0	0.0	0.0	4299.146
8	0.0	5.0	9.0	0.0	0.0	4001.045
9	0.0	0.0	0.0	0.0	0.0	5155.745
10	0.0	0.0	0.0	0.0	0.0	3687.378
11	0.0	0.0	0.0	0.0	0.0	3610.926
12	0.0	0.0	0.0	0.0	0.0	3860.378
13	0.0	0.0	0.0	0.0	0.0	5407.583
14	0.0	0.0	0.0	0.0	0.0	4306.071
15	0.0	0.0	0.0	0.0	0.0	5149.499
16	0.0	0.0	0.0	0.0	0.0	6026.125
17	0.0	0.0	0.0	0.0	0.0	4405.457
18	0.0	0.0	0.0	0.0	0.0	4350.418
19	0.0	0.0	0.0	0.0	0.0	4515.919
20	0.0	0.0	0.0	0.0	0.0	3820.659
21	0.0	0.0	0.0	0.0	0.0	3706.843
22	0.0	0.0	0.0	0.0	0.0	4623.824
23	0.0	0.0	0.0	0.0	0.0	3178.170
24	0.0	0.0	0.0	0.0	0.0	4065.274
25	0.0	0.0	0.0	0.0	0.0	3602.540
26	0.0	0.0	0.0	0.0	0.0	5124.171
27	0.0	0.0	0.0	0.0	0.0	3327.527
28	0.0	0.0	0.0	0.0	0.0	3586.395
29	0.0	0.0	0.0	0.0	0.0	3970.541
30	0.0	0.0	0.0	0.0	0.0	3944.327
					#DIV/0!	
Total	0.0	5.0	9.0	0.0		128249.6
Average	0.0	0.2	0.3	0.0	0.0	4275.0
Maximum	0.0	5.0	9.0	0.0	0.0	6026.1
Date	1-Sep	8-Sep	8-Sep	1-Sep	1-Sep	16-Sep
Minimum	0.0	0.0	0.0	0.0	0.0	3178.2
Date	1-Sep	1-Sep	1-Sep	1-Sep	1-Sep	23-Sep

Notes:	
Dosage (mg/L)=	Day Tank (L) x %conc. x 1000
	Membrane Flow (m3)
Peroxide Concentration:	50.0%

# Runtimes Report

Month: September-16

Date	Daily Gen-Set Runtimes		Daily UV Runtimes		Daily PALL Runtimes				
	LLPS	WTP	UV #1	UV #2	Air Compressor #1	Air Compressor #2	CIP Neutralization	CIP Drain	CIP Recirc
	(Hrs)	(Hrs)	(Hrs)	(Hrs)	(Hrs)	(Hrs)	(Hrs)	(Hrs)	(Hrs)
1	0.0	0.0	7.0	0.0	24.4	0.0	0.0	0.0	0.0
2	0.0	0.0	0.0	9.1	24.4	0.0	0.4	0.0	0.0
3	0.0	0.0	15.8	4.1	24.4	0.0	0.0	0.0	0.0
4	0.0	0.0	11.2	0.0	24.4	0.0	0.0	0.0	0.0
5	0.0	0.0	0.0	0.0	24.4	0.0	0.0	0.0	0.0
6	0.0	0.0	0.0	0.0	24.4	0.0	0.0	0.0	0.0
7	0.0	0.0	0.0	0.0	24.4	0.0	0.0	0.0	0.0
8	0.0	0.0	0.0	0.0	24.4	0.0	0.5	0.2	3.3
9	0.0	0.0	0.0	0.0	24.4	0.0	0.0	0.0	0.0
10	0.0	0.0	0.0	0.0	24.4	0.0	0.0	0.0	0.0
11	0.0	0.0	0.0	0.0	24.4	0.0	0.0	0.0	0.0
12	0.0	0.0	2.3	9.7	24.4	0.0	0.0	0.0	0.0
13	0.0	0.0	11.8	11.5	24.4	0.0	0.0	0.0	0.0
14	0.0	0.0	0.0	18.9	24.4	0.0	0.0	0.0	0.0
15	0.0	0.0	0.0	18.2	24.4	0.0	0.0	0.0	0.0
16	0.0	0.0	8.1	15.7	24.4	0.0	0.0	0.0	0.0
17	0.0	0.0	20.7	0.0	24.4	0.0	0.0	0.0	0.0
18	0.0	0.0	19.4	0.0	24.4	0.0	0.0	0.0	0.0
19	0.0	0.0	19.5	0.0	24.4	0.0	0.0	0.0	0.0
20	0.0	0.0	16.4	0.0	24.4	0.0	0.0	0.0	0.0
21	0.0	0.0	16.0	0.0	24.4	0.0	0.0	0.0	0.0
22	0.0	0.0	20.0	0.0	24.3	0.0	0.0	0.0	0.0
23	0.0	0.0	13.8	0.0	24.4	0.0	0.0	0.0	0.0
24	0.0	0.0	17.7	0.0	24.4	0.0	0.0	0.0	0.0
25	0.0	0.0	15.9	0.0	24.4	0.0	0.0	0.0	0.0
26	0.0	0.0	22.6	0.0	24.4	0.0	0.0	0.0	0.0
27	0.0	0.0	15.6	0.0	24.4	0.0	0.0	0.0	0.0
28	0.0	0.0	15.3	0.0	24.4	0.0	0.0	0.0	0.0
29	1.0	1.0	18.8	0.0	24.0	0.0	0.0	0.0	0.0
30	0.0	0.0	19.7	0.0	24.4	0.0	0.0	0.0	0.0
Total	1.0	1.0	307.9	87.3	730.7	0.0	0.9	0.2	3.3

Notes:

---



---



---

# Runtimes Report

Month: September-16

## Daily

Date	PALL Runtimes						Process Drain	
	RFR Pump #1 (Hrs)	RFR Pump #2 (Hrs)	RF Pump #1 (Hrs)	RF Pump #2 (Hrs)	XR Pump #1 (Hrs)	XR Pump #2 (Hrs)	PDP9010 Pump (Hrs)	PDP9020 Pump (Hrs)
1	6.5	6.2	0.7	0.8	8.2	6.8	1.7	2.4
2	4.6	4.8	0.7	0.8	8.1	9.2	1.7	2.5
3	0.0	0.0	0.6	0.5	9.1	9.4	1.7	2.3
4	0.0	0.0	0.6	0.6	9.7	9.7	1.6	2.0
5	0.1	0.1	0.6	0.6	9.8	9.5	1.8	2.4
6	0.0	0.0	0.4	0.5	7.4	9.3	1.8	2.5
7	0.0	0.0	0.6	0.5	9.6	8.1	1.9	2.6
8	1.0	1.0	0.5	0.6	8.5	7.8	1.9	2.8
9	4.2	4.2	0.8	0.9	9.5	10.2	1.6	2.1
10	3.1	3.1	0.6	0.6	4.0	3.8	1.8	2.6
11	2.9	3.0	0.4	0.6	6.0	5.8	1.7	2.2
12	1.4	1.2	0.5	0.5	7.2	7.4	2.0	2.8
13	0.0	0.0	0.7	0.7	10.9	10.9	1.8	2.5
14	0.2	0.0	0.5	0.6	8.4	8.9	1.8	2.2
15	0.0	0.0	0.5	0.7	7.3	6.7	1.7	2.4
16	0.0	0.0	0.8	0.8	10.2	10.1	1.5	2.0
17	0.0	0.0	0.5	0.6	8.4	8.5	1.8	2.5
18	0.0	0.0	0.6	0.7	8.6	8.9	1.8	2.4
19	0.1	0.1	0.5	0.5	9.7	9.0	1.8	2.5
20	0.0	0.2	0.5	0.5	7.0	9.2	1.9	2.7
21	0.0	0.2	0.3	0.5	8.8	6.8	1.9	2.6
22	0.3	0.0	0.6	0.4	9.6	9.5	1.7	2.4
23	0.0	0.1	0.3	0.4	5.9	7.3	2.0	2.7
24	0.0	0.0	0.6	0.6	8.8	7.8	1.8	2.6
25	0.2	0.0	0.5	0.4	7.2	7.4	2.0	2.6
26	0.0	0.0	0.5	0.7	10.4	10.4	1.6	2.3
27	0.0	0.0	0.5	0.3	6.7	6.4	1.8	2.5
28	1.5	1.6	0.6	0.6	7.1	6.8	2.1	2.8
29	3.7	3.9	0.7	0.7	6.2	6.7	1.9	2.5
30	4.2	4.2	0.9	0.8	6.1	5.9	1.6	2.1
Total	33.9	33.8	17.1	18.0	243.4	243.2	53.8	73.5

Notes:

# Runtimes Report

Month: September-16

## Daily

Date	Low Lift Pump Motor Runtimes				High Lift Pump Motor Runtimes			
	LLP1010 (Hrs)	LLP1020 (Hrs)	LLP1030 (Hrs)	LLP1040 (Hrs)	HLP7010 (Hrs)	HLP7020 (Hrs)	HLP7030 (Hrs)	HLP7040 (Hrs)
1	5.9	3.3	5.6	1.1	0.1	0.0	9.2	6.4
2	2.9	6.0	5.5	3.9	8.9	0.0	5.6	3.1
3	4.5	6.3	5.6	3.8	8.9	0.0	1.1	7.9
4	5.0	4.3	5.5	5.6	0.1	0.0	2.2	18.0
5	5.2	5.6	3.8	5.5	2.3	0.0	10.1	4.4
6	1.5	5.6	4.3	5.6	7.6	0.0	5.7	2.2
7	6.6	3.1	5.5	3.1	1.3	0.0	11.8	3.7
8	4.5	3.9	5.6	2.9	2.4	0.0	4.8	7.3
9	5.6	5.6	5.5	4.3	16.0	0.0	0.8	4.7
10	5.6	2.8	4.3	5.8	1.4	0.0	9.5	2.0
11	4.3	5.5	2.8	2.8	1.2	0.0	5.7	9.3
12	5.6	5.1	3.9	2.0	2.4	0.0	5.5	2.2
13	5.9	7.1	6.8	3.4	5.5	0.0	4.7	1.9
14	5.2	5.3	2.8	5.6	10.7	0.0	4.1	1.1
15	6.0	6.9	7.4	5.2	0.9	0.0	10.8	2.1
16	7.9	6.6	5.6	8.7	4.4	0.0	19.9	0.6
17	5.5	5.6	4.0	5.7	5.8	0.0	2.5	6.6
18	5.6	5.5	5.3	2.9	2.9	0.0	9.5	4.4
19	5.5	3.5	4.8	5.6	1.2	0.0	7.2	9.0
20	4.6	4.9	2.8	4.1	4.6	0.0	2.3	5.3
21	2.8	5.2	3.2	4.8	2.9	0.0	6.5	5.2
22	5.5	6.1	5.3	3.0	11.6	0.0	5.6	1.0
23	3.6	3.1	2.8	4.2	8.4	0.0	2.2	2.2
24	5.6	5.1	5.6	1.4	4.8	0.0	7.2	3.3
25	2.8	2.0	5.5	5.6	8.7	0.0	0.0	5.3
26	8.3	2.9	5.6	5.9	10.5	0.0	4.1	6.4
27	2.8	3.6	4.0	5.2	8.5	0.0	0.3	5.9
28	4.7	4.7	2.7	3.1	3.2	0.0	2.3	7.9
29	5.5	5.6	3.5	4.2	7.0	0.0	0.8	9.4
30	2.9	3.1	8.4	5.5	5.3	0.0	1.0	14.4
Total	147.9	143.9	144.0	130.5	159.5	0.0	163.0	163.2

Notes:

# Plant Internal Flow Report

Month: September-16

Date	Settling Tank Level		Process Drain Tank		Settling Tank Flow		Potable Water Flow		Non-Potable Flow	
	T-9003 (m)		T-9001 (m)		FIT_9005 (m <sup>3</sup> ) (L/s)		FIT_7082 (m <sup>3</sup> ) (L/s)		FIT_7092 (m <sup>3</sup> ) (L/s)	
	Maximum	Minimum	Maximum	Minimum	Total	Peak	Total	Peak	Total	Peak
1	2.2	0.2	0.9	0.4	204.8	15.7	526.4	7.7	0.1	1.2
2	2.2	0.1	1.3	0.4	264.0	15.7	223.2	7.4	9.8	1.0
3	2.2	0.1	0.8	0.4	396.7	15.7	5.6	5.4	0.6	1.2
4	2.2	0.1	0.8	0.4	392.3	15.7	8.7	5.2	0.0	0.0
5	2.2	0.2	1.0	0.4	420.5	15.7	0.0	1.1	0.0	0.0
6	2.2	0.2	0.8	0.4	426.1	15.7	0.2	1.4	0.0	0.0
7	2.2	0.1	0.8	0.4	445.0	15.7	0.0	1.4	0.0	0.0
8	2.2	0.1	1.1	0.4	398.0	15.7	0.1	1.4	31.2	23.9
9	2.2	0.1	0.8	0.4	213.5	15.7	0.3	1.4	0.0	0.0
10	2.2	0.1	0.8	0.4	223.0	15.7	0.0	0.0	0.0	0.0
11	2.2	0.1	0.8	0.4	119.2	15.7	0.0	0.0	0.0	0.0
12	2.2	0.1	1.0	0.4	242.7	15.7	10.0	5.7	0.0	0.7
13	2.2	0.2	0.8	0.4	437.6	15.7	8.1	7.2	0.0	0.0
14	2.2	0.1	1.3	0.4	406.7	15.7	8.1	5.5	0.0	0.0
15	2.2	0.1	0.8	0.4	411.6	15.7	6.6	5.0	0.0	0.0
16	2.2	0.1	0.8	0.4	510.0	15.7	155.5	7.2	0.0	0.0
17	2.2	0.3	0.8	0.4	503.9	15.7	412.9	7.2	0.0	0.0
18	2.2	0.1	0.8	0.4	423.0	15.7	414.1	7.4	0.0	0.0
19	2.2	0.1	1.0	0.4	372.8	15.7	190.3	6.5	0.0	0.0
20	2.2	0.1	0.8	0.4	351.2	15.7	11.6	5.3	0.0	0.0
21	2.2	0.1	1.0	0.4	316.5	15.7	13.5	5.3	0.0	0.0
22	2.2	0.1	1.0	0.4	409.9	15.7	11.0	5.3	0.0	0.0
23	2.2	0.1	1.0	0.4	307.4	15.7	9.8	5.5	0.0	0.0
24	2.2	0.1	0.8	0.4	297.1	15.7	8.3	5.6	0.0	0.0
25	2.2	0.2	1.0	0.4	243.6	15.7	8.3	5.7	0.0	0.0
26	2.2	0.1	0.8	0.4	411.3	15.7	3.7	5.3	0.0	0.0
27	2.2	0.1	0.8	0.4	273.0	15.7	3.2	5.4	0.0	0.0
28	2.2	0.3	1.0	0.4	219.1	15.7	4.4	5.2	0.0	0.0
29	2.2	0.1	2.0	0.4	221.8	15.7	6.3	5.5	0.0	0.0
30	2.2	0.3	0.8	0.4	217.8	15.7	8.8	5.5	0.0	0.0
Total					10080.2		2059.1		41.7	
Average	2.2	0.1	0.9	0.4	336.0	15.7	68.6	4.8	1.4	0.9
Maximum	2.2		2.0		510.0		526.4		31.2	
Date	18-Sep		29-Sep		16-Sep		1-Sep		8-Sep	
Minimum		0.1		0.4		15.7		0.0		0.0
Date		7-Sep		2-Sep		1-Sep		10-Sep		4-Sep

Notes: