

Municipality of West Elgin - Tri County Water System Remotes

Goto:

Month: February

Year: 2018

Set Date...

Date is Set to: February-18

Remote Sites Report

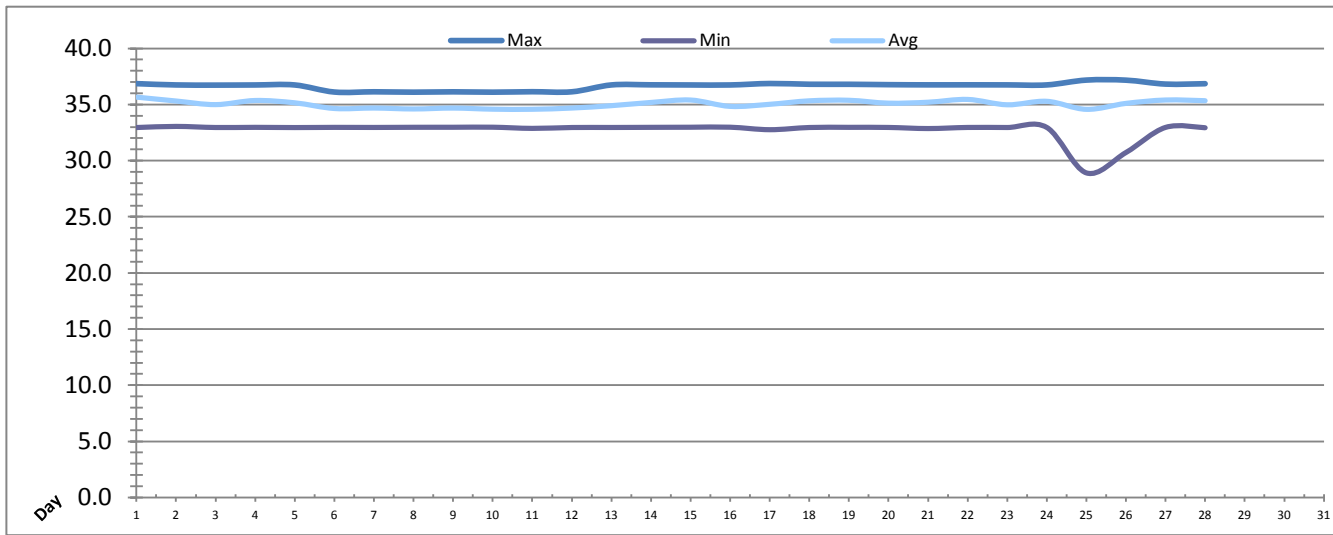
Print

West Lorne Stand Pipe (WLSP)	>>>
Wallacetown Elevated Tank (WAET)	>>>
Southwest Middlesex Meter Chamber (GLNM)	>>>
Rodney Tower (RODT)	>>>
Rodney Meter Chambers	>>>

-
-
-
-
-

West Lorne Stand Pipe (WLSP)

Month: February-18

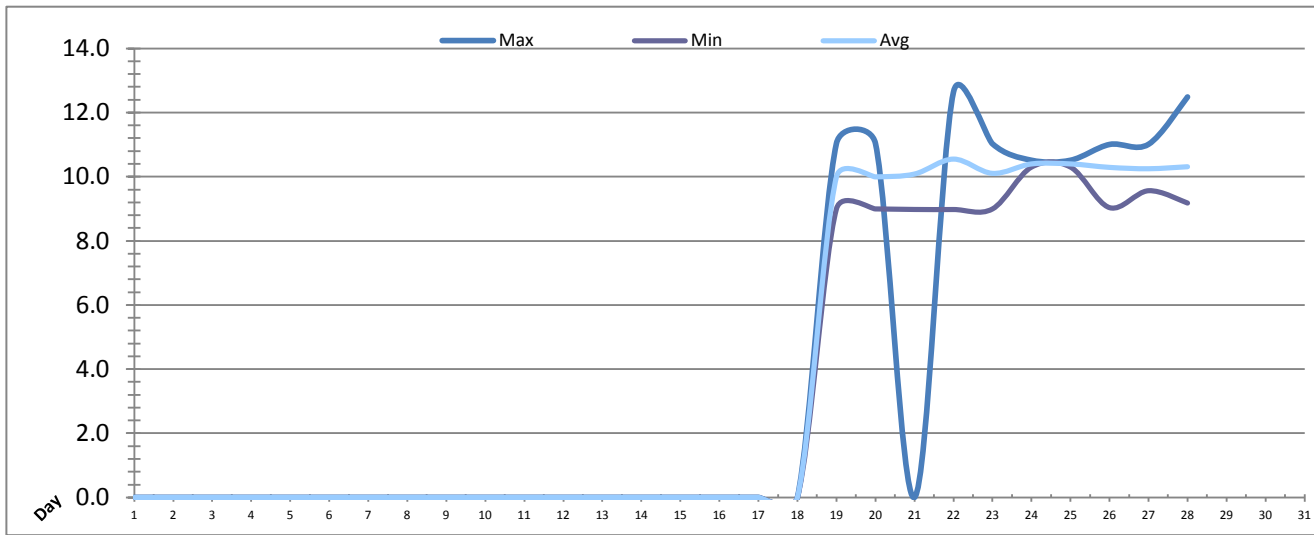


Date	West Lorne Stand Pipe LIT238 (m)		
	Maximum	Minimum	Average
1	36.9	33.0	35.7
2	36.7	33.1	35.3
3	36.7	33.0	35.0
4	36.7	33.0	35.4
5	36.7	32.9	35.2
6	36.1	33.0	34.6
7	36.1	33.0	34.7
8	36.1	33.0	34.6
9	36.1	33.0	34.7
10	36.1	33.0	34.6
11	36.1	32.9	34.6
12	36.1	33.0	34.7
13	36.7	33.0	34.9
14	36.8	33.0	35.2
15	36.7	33.0	35.4
16	36.7	33.0	34.8
17	36.9	32.8	35.0
18	36.8	33.0	35.3
19	36.8	33.0	35.4
20	36.8	33.0	35.1
21	36.8	32.9	35.2
22	36.8	33.0	35.5
23	36.8	33.0	35.0
24	36.7	33.0	35.3
25	37.2	28.9	34.6
26	37.2	30.7	35.1
27	36.8	33.0	35.4
28	36.9	32.9	35.3
Total			
Average	36.6	32.7	35.1
Maximum	37.2		35.7
Date	25-Feb		1-Feb
Minimum		28.9	34.6
Date		25-Feb	25-Feb

Notes:

Wallacetown Elevated Tank (WAET)

Month: February-18

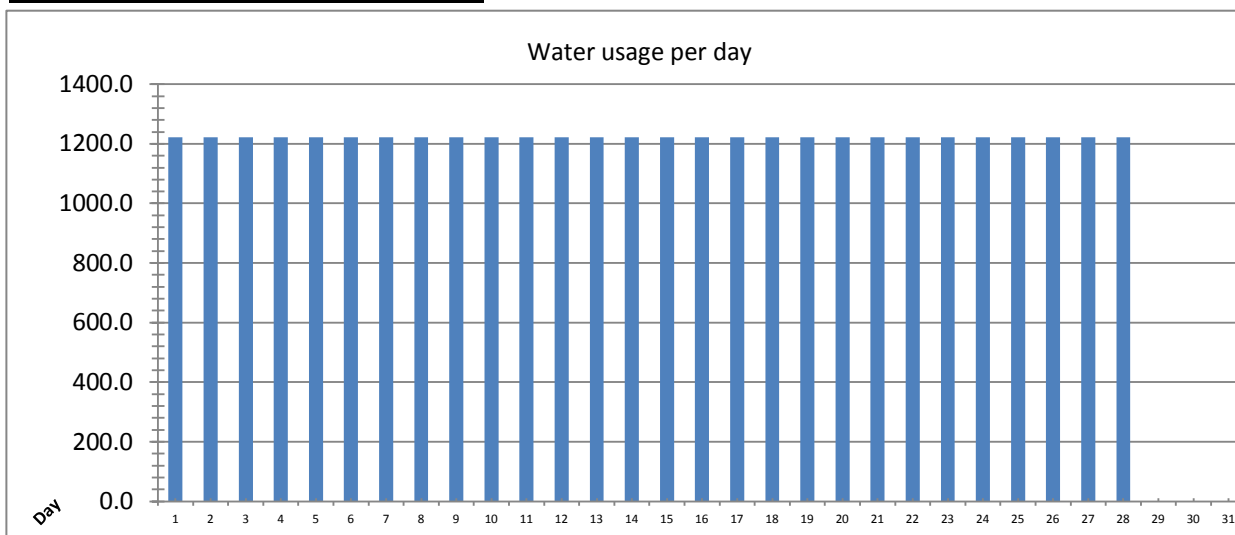


Date	Wallacetown Elevated Tank LIT305 (m)		
	Maximum	Minimum	Average
1	0.0	0.0	0.0
2	0.0	0.0	0.0
3	0.0	0.0	0.0
4	0.0	0.0	0.0
5	0.0	0.0	0.0
6	0.0	0.0	0.0
7	0.0	0.0	0.0
8	0.0	0.0	0.0
9	0.0	0.0	0.0
10	0.0	0.0	0.0
11	0.0	0.0	0.0
12	0.0	0.0	0.0
13	0.0	0.0	0.0
14	0.0	0.0	0.0
15	0.0	0.0	0.0
16	0.0	0.0	0.0
17	0.0	0.0	0.0
18	0.0	0.0	0.0
19	11.0	9.0	10.0
20	11.0	9.0	10.0
21	0.0	9.0	10.1
22	12.6	9.0	10.5
23	11.0	9.0	10.1
24	10.5	10.3	10.4
25	10.5	10.3	10.4
26	11.0	9.0	10.3
27	11.0	9.6	10.2
28	12.5	9.2	10.3
Total			
Average	3.6	3.3	3.7
Maximum	12.6		10.5
Date	22-Feb		22-Feb
Minimum		0.0	0.0
Date		1-Feb	1-Feb

Notes:
Communication issues with Tower.
Tower out of service Feb 14-16 for upgrades.

Southwest Middlesex Meter Chamber (GLNM)

Month: February-18

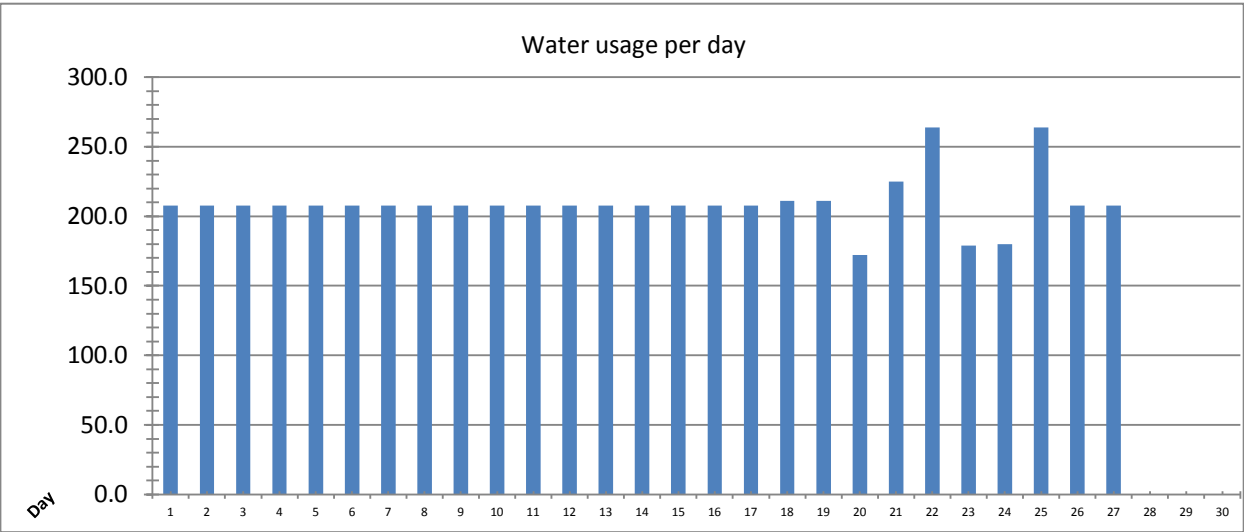


Date	SWM Meter Chamber FIT310	
	Volume (m3)	Peak (l/s)
1	1222.3	0.0
2	1222.3	0.0
3	1222.3	0.0
4	1222.3	0.0
5	1222.3	0.0
6	1222.3	0.0
7	1222.3	0.0
8	1222.3	0.0
9	1222.3	0.0
10	1222.3	0.0
11	1222.3	0.0
12	1222.3	0.0
13	1222.3	0.0
14	1222.3	0.0
15	1222.3	0.0
16	1222.3	0.0
17	1222.3	0.0
18	1222.3	0.0
19	1222.3	0.0
20	1222.3	0.0
21	1222.3	0.0
22	1222.3	0.0
23	1222.3	0.0
24	1222.3	0.0
25	1222.3	0.0
26	1222.3	0.0
27	1222.3	0.0
28	1222.3	0.0
Total	34225.3	
Average	1222.3	0.0
Maximum	1222.3	0.0
Date	1-Feb	1-Feb
Minimum	1222.3	
Date	1-Feb	

Notes:
 Communication issues, used monthly meter reading to obtain average daily flow volumes.

Glencoe Reservoir Meter Chamber

Month: February-18

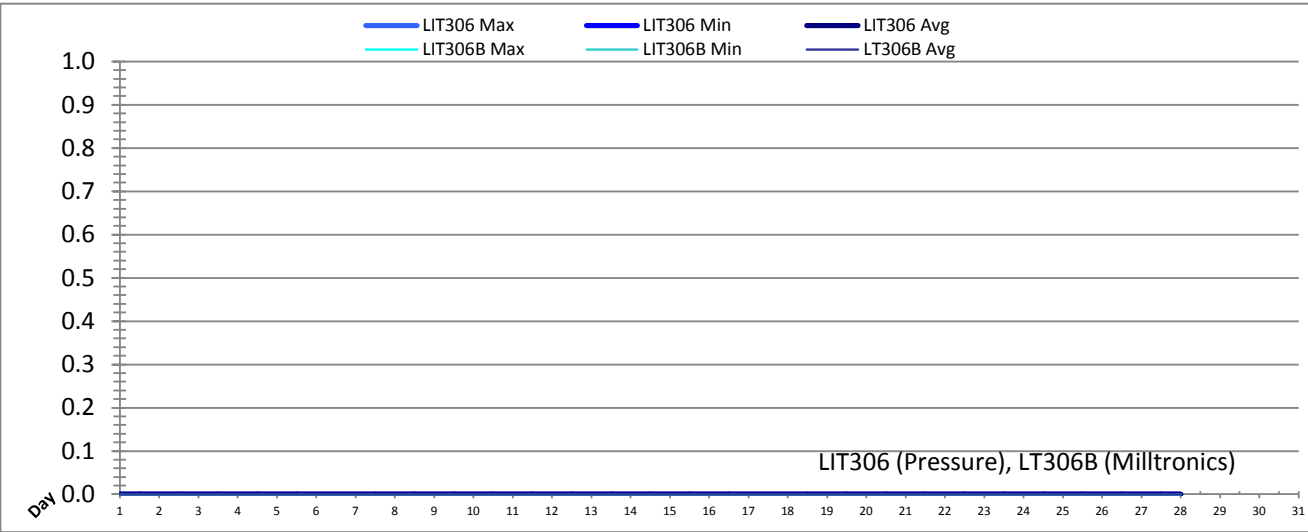


Date	Volume (m3)	Peak (l/s)
1	207.8	0.0
2	207.8	0.0
3	207.8	0.0
4	207.8	0.0
5	207.8	0.0
6	207.8	0.0
7	207.8	0.0
8	207.8	0.0
9	207.8	0.0
10	207.8	0.0
11	207.8	0.0
12	207.8	0.0
13	207.8	0.0
14	207.8	0.0
15	207.8	0.0
16	207.8	0.0
17	207.8	0.0
18	207.8	0.0
19	211.0	0.0
20	211.0	40.0
21	172.0	40.0
22	225.0	40.0
23	264.0	53.3
24	179.0	32.0
25	180.0	26.7
26	264.0	32.0
27	207.8	0.0
28	207.8	40.0
Total	5862.0	
Average	209.4	10.9
Maximum	264.0	53.3
Date	23-Feb	23-Feb
Minimum	172.0	
Date	21-Feb	

Notes:
 Communication issue for most of the month, used monthly meter readings to obtain average daily flow.

RODNEY TOWER (RODT)

Month: February-18

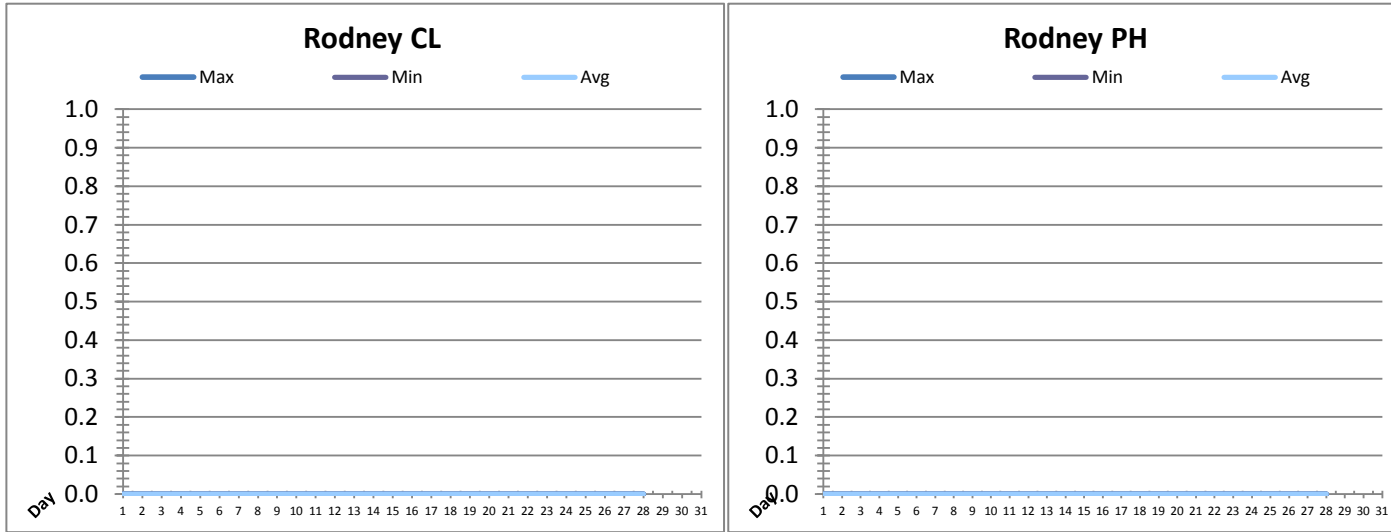


Date	Rodney Elevated Tank LIT306 (Pressure) (m)			Rodney Elevated Tank LIT306B (Millitronics) (m)		
	Maximum	Minimum	Average	Maximum	Minimum	Average
1	0.00	0.00	0.00	0.00	0.00	0.00
2	0.00	0.00	0.00	0.00	0.00	0.00
3	0.00	0.00	0.00	0.00	0.00	0.00
4	0.00	0.00	0.00	0.00	0.00	0.00
5	0.00	0.00	0.00	0.00	0.00	0.00
6	0.00	0.00	0.00	0.00	0.00	0.00
7	0.00	0.00	0.00	0.00	0.00	0.00
8	0.00	0.00	0.00	0.00	0.00	0.00
9	0.00	0.00	0.00	0.00	0.00	0.00
10	0.00	0.00	0.00	0.00	0.00	0.00
11	0.00	0.00	0.00	0.00	0.00	0.00
12	0.00	0.00	0.00	0.00	0.00	0.00
13	0.00	0.00	0.00	0.00	0.00	0.00
14	0.00	0.00	0.00	0.00	0.00	0.00
15	0.00	0.00	0.00	0.00	0.00	0.00
16	0.00	0.00	0.00	0.00	0.00	0.00
17	0.00	0.00	0.00	0.00	0.00	0.00
18	0.00	0.00	0.00	0.00	0.00	0.00
19	0.00	0.00	0.00	0.00	0.00	0.00
20	0.00	0.00	0.00	0.00	0.00	0.00
21	0.00	0.00	0.00	0.00	0.00	0.00
22	0.00	0.00	0.00	0.00	0.00	0.00
23	0.00	0.00	0.00	0.00	0.00	0.00
24	0.00	0.00	0.00	0.00	0.00	0.00
25	0.00	0.00	0.00	0.00	0.00	0.00
26	0.00	0.00	0.00	0.00	0.00	0.00
27	0.00	0.00	0.00	0.00	0.00	0.00
28	0.00	0.00	0.00	0.00	0.00	0.00
Total						
Average	0.00000	0.00000	0.00000	0.00000	0.00000	0.00000
Maximum	0.00000		0.00000	0.00000		0.00000
Date	1-Feb		1-Feb	1-Feb		1-Feb
Minimum		0.00000	0.00000		0.00000	0.00000
Date		1-Feb	1-Feb		1-Feb	1-Feb

Notes:
 Upgrades to tower for re-chlorination system. Data and alarms are being monitored by SCADA, however no trending available.

RODNEY TOWER (RODT)

Month: February-18

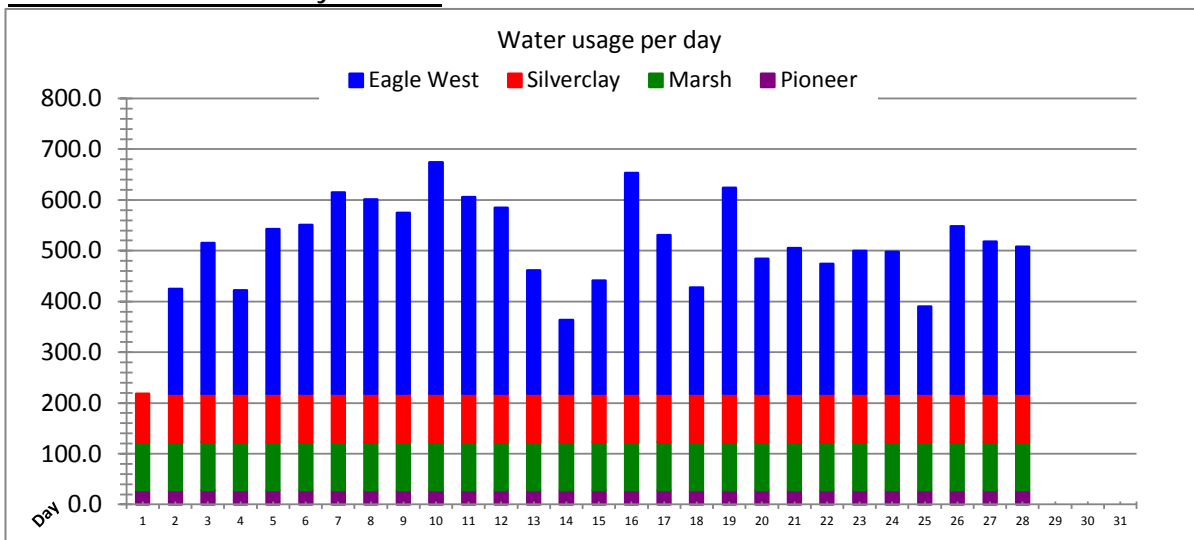


Date	Rodney Elevated Tank AIT306 (Chlorine) (ppm)			Rodney Elevated Tank AIT306P (PH) (pH)		
	Maximum	Minimum	Average	Maximum	Minimum	Average
1	0.00	0.00	0.00	0.00	0.00	0.00
2	0.00	0.00	0.00	0.00	0.00	0.00
3	0.00	0.00	0.00	0.00	0.00	0.00
4	0.00	0.00	0.00	0.00	0.00	0.00
5	0.00	0.00	0.00	0.00	0.00	0.00
6	0.00	0.00	0.00	0.00	0.00	0.00
7	0.00	0.00	0.00	0.00	0.00	0.00
8	0.00	0.00	0.00	0.00	0.00	0.00
9	0.00	0.00	0.00	0.00	0.00	0.00
10	0.00	0.00	0.00	0.00	0.00	0.00
11	0.00	0.00	0.00	0.00	0.00	0.00
12	0.00	0.00	0.00	0.00	0.00	0.00
13	0.00	0.00	0.00	0.00	0.00	0.00
14	0.00	0.00	0.00	0.00	0.00	0.00
15	0.00	0.00	0.00	0.00	0.00	0.00
16	0.00	0.00	0.00	0.00	0.00	0.00
17	0.00	0.00	0.00	0.00	0.00	0.00
18	0.00	0.00	0.00	0.00	0.00	0.00
19	0.00	0.00	0.00	0.00	0.00	0.00
20	0.00	0.00	0.00	0.00	0.00	0.00
21	0.00	0.00	0.00	0.00	0.00	0.00
22	0.00	0.00	0.00	0.00	0.00	0.00
23	0.00	0.00	0.00	0.00	0.00	0.00
24	0.00	0.00	0.00	0.00	0.00	0.00
25	0.00	0.00	0.00	0.00	0.00	0.00
26	0.00	0.00	0.00	0.00	0.00	0.00
27	0.00	0.00	0.00	0.00	0.00	0.00
28	0.00	0.00	0.00	0.00	0.00	0.00
Total						
Average	0.00	0.00	0.00	0.00	0.00	0.00
Maximum	0.00		0.00	0.00		0.00
Date	1-Feb		1-Feb	1-Feb		1-Feb
Minimum		0.00	0.00		0.00	0.00
Date		1-Feb	1-Feb		1-Feb	1-Feb

Notes:
 Upgrades to tower for re-chlorination system. Data and alarms are being monitored by SCADA, however no trending available.

METER CHAMBERS FOR RODNEY TOWER

Month: February-18



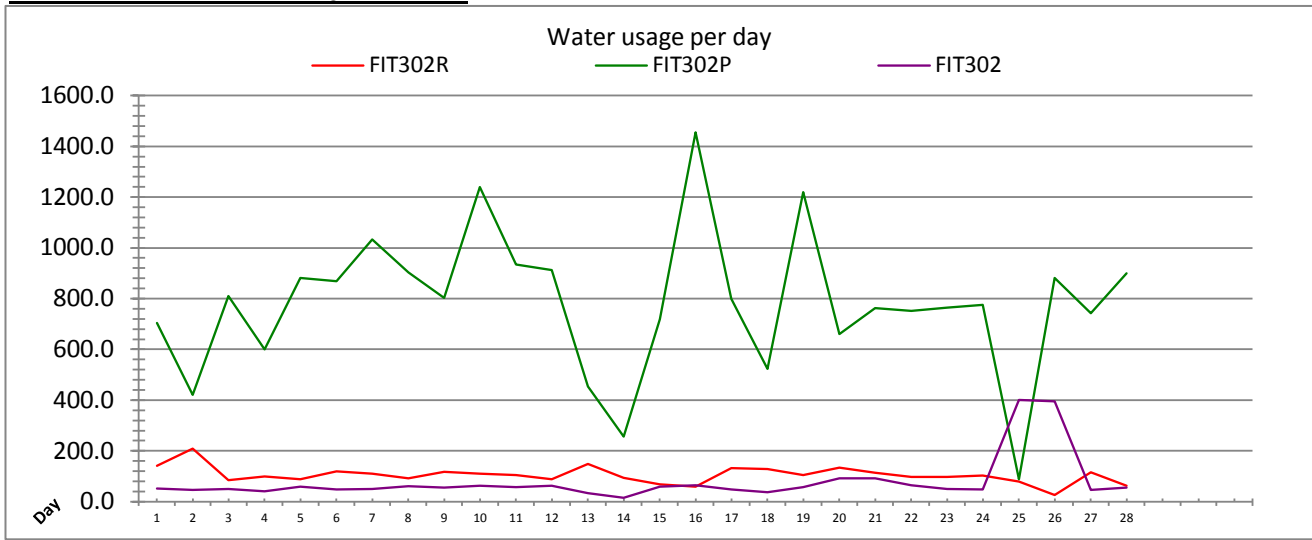
Date	Pioneer Line Chamber FIT304		Marsh Line Chamber FIT301		Silverclay Chamber FIT312		Eagle West Chamber FIT313	
	Volume (m3)	Peak (l/s)	Volume (m3)	Peak (l/s)	Volume (m3)	Peak (l/s)	Volume (m3)	Peak (l/s)
1	28.1	0.0	94.7	0.0	95.8	0.0	0.0	0.0
2	28.1	0.0	94.7	0.0	95.8	0.0	206.0	11.0
3	28.1	0.0	94.7	0.0	95.8	0.0	297.2	9.0
4	28.1	0.0	94.7	0.0	95.8	0.0	203.2	10.0
5	28.1	0.0	94.7	0.0	95.8	0.0	324.2	10.0
6	28.1	0.0	94.7	0.0	95.8	0.0	332.2	11.0
7	28.1	0.0	94.7	0.0	95.8	0.0	396.4	11.0
8	28.1	0.0	94.7	0.0	95.8	0.0	382.7	11.0
9	28.1	0.0	94.7	0.0	95.8	0.0	356.5	11.0
10	28.1	0.0	94.7	0.0	95.8	0.0	456.0	11.0
11	28.1	0.0	94.7	0.0	95.8	0.0	387.4	11.0
12	28.1	0.0	94.7	0.0	95.8	0.0	366.2	11.0
13	28.1	0.0	94.7	0.0	95.8	0.0	243.2	9.0
14	28.1	0.0	94.7	0.0	95.8	0.0	144.8	9.0
15	28.1	0.0	94.7	0.0	95.8	0.0	223.0	9.0
16	28.1	0.0	94.7	0.0	95.8	0.0	434.4	11.0
17	28.1	0.0	94.7	0.0	95.8	0.0	312.0	11.0
18	28.1	0.0	94.7	0.0	95.8	0.0	209.2	8.0
19	28.1	0.0	94.7	0.0	95.8	0.0	405.5	10.0
20	28.1	0.0	94.7	0.0	95.8	0.0	265.8	11.0
21	28.1	0.0	94.7	0.0	95.8	0.0	286.3	11.0
22	28.1	0.0	94.7	0.0	95.8	0.0	255.4	10.0
23	28.1	0.0	94.7	0.0	95.8	0.0	281.2	8.0
24	28.1	0.0	94.7	0.0	95.8	0.0	279.5	11.0
25	28.1	0.0	94.7	0.0	95.8	0.0	171.7	9.0
26	28.1	0.0	94.7	0.0	95.8	0.0	329.8	10.0
27	28.1	0.0	94.7	0.0	95.8	0.0	299.2	9.0
28	28.1	0.0	94.7	0.0	95.8	0.0	289.1	11.0
Total	788.1		2651.7		2681.7		8138.2	
Average	28.1	0.0	94.7	0.0	95.8	0.0	290.7	9.8
Maximum	28.1	0.0	94.7	0.0	95.8	0.0	456.0	11.0
Date	1-Feb	1-Feb	1-Feb	1-Feb	1-Feb	1-Feb	10-Feb	2-Feb
Minimum	28.1		94.7		95.8		0.0	
Date	1-Feb		1-Feb		1-Feb		1-Feb	

Notes:
No Communication

--

EAGLE EAST FLOWMETERS

Month: February-18



Date	Compound meter FIT302		Bypass FWD Pulse FIT302P		Bypass Revers FIT302R		Eagle East Net Flow FIT302+FIT302P-FIT302R	
	Volume (m3)	Peak (l/s)	Volume (m3)	Peak (l/s)	Volume (m3)	Peak (l/s)	Volume (m3)	
1	51.2	12.8	704.8	30.2	141.9	9.2	614.1	
2	45.2	13.0	421.2	30.0	209.0	7.8	257.4	
3	49.0	5.8	809.8	27.4	84.7	5.8	774.1	
4	40.7	12.8	599.7	30.0	99.4	5.4	541.0	
5	58.5	13.7	882.1	30.2	89.0	5.0	851.6	
6	47.4	15.0	868.3	30.6	120.1	5.8	795.6	
7	49.5	13.5	1032.7	30.4	110.4	7.0	971.7	
8	60.5	14.1	904.1	30.2	91.2	6.4	873.4	
9	55.4	13.9	802.4	30.2	116.8	5.6	741.0	
10	63.2	13.7	1239.4	30.2	110.8	5.8	1191.8	
11	56.2	13.8	933.8	30.4	105.0	6.0	884.9	
12	61.9	14.6	911.6	30.2	88.1	6.2	885.4	
13	33.7	3.4	453.3	26.6	148.9	11.2	338.1	
14	15.5	2.5	256.9	26.8	93.3	6.4	179.1	
15	58.5	16.6	719.6	32.2	68.6	5.6	709.5	
16	65.1	14.9	1455.8	30.4	59.2	4.8	1461.7	
17	48.3	12.9	799.5	30.0	131.8	7.0	716.0	
18	37.4	4.0	523.9	27.8	128.4	6.4	432.9	
19	57.0	14.2	1219.9	30.4	105.0	5.2	1171.8	
20	90.9	19.9	659.8	31.2	133.2	6.6	617.5	
21	91.1	20.2	762.0	30.8	112.9	6.6	740.3	
22	63.7	16.1	751.0	30.4	96.9	6.4	717.8	
23	49.7	7.2	764.3	26.4	97.9	6.4	716.1	
24	47.0	13.3	775.2	30.0	102.9	6.6	719.3	
25	401.3	26.9	87.4	18.8	79.6	14.2	409.1	
26	394.9	30.2	881.2	30.6	25.3	7.6	1250.8	
27	45.7	13.6	742.1	30.6	115.2	6.4	672.7	
28	55.5	15.0	898.8	31.0	63.1	5.2	891.2	
Total	2194.1		21860.7		2928.7		21126.1	
Average	78.4	13.8	780.7	29.4	104.6	6.7	754.5	
Maximum	401.3	30.2	1455.8	32.2	209.0	14.2	1461.7	
Date	25-Feb	26-Feb	16-Feb	15-Feb	2-Feb	25-Feb	16-Feb	
Minimum	15.5		87.4		25.3		179.1	
Date	14-Feb		25-Feb		26-Feb		14-Feb	

Notes: