

Municipality of West Elgin - Tri County Water System

Goto:

Month:

Year:

Date is Set to: **January-16**

Limit	Low	High	
Raw Water Chlorine Residual:	0.00	5.00	mg/L
Pre-Strainer Chlorine Residual:	0.00	5.00	mg/L
UV Inlet Chlorine Residual:	0.00	5.00	mg/L
Post Treatment Chlorine Residual:	1.00	5.00	mg/L
Treated Chlorine Residual:	1.00	2.50	mg/L
Distribution Chlorine Residual:	1.00	2.50	mg/L
Limit		High	
WTP C of A		156.0	L/s
WTP Permit to Take Water		13500.0	m ³
Limit	Low	High	
System Pressure Limits:	50.0	1034.0	Kpa

Compliance Report

Low Lift Monthly Report

>>>

Membranes Monthly Report

>>>

UV System Monthly Report

>>>

Plant Quality Report

>>>

Raw Well/Treated Storage Report

>>>

High Lift Monthly Report

>>>

Operational Report

Low Lift Monthly Report

>>>

High Lift Monthly Report

>>>

Chemical Usage Monthly Report

>>>

Runtimes Report

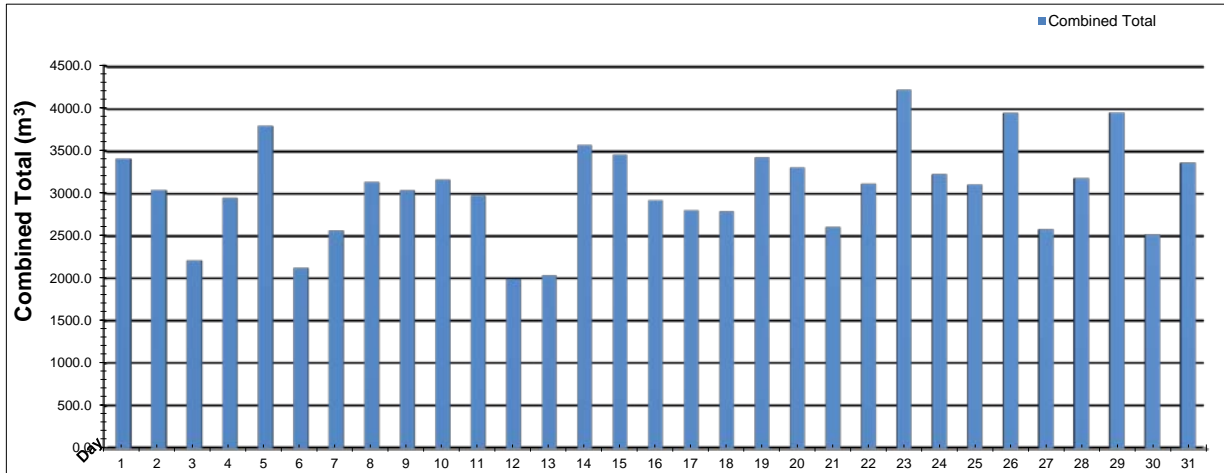
>>>

Plant Internal Flow Report

>>>

Low Lift Monthly Report

Month: January-16

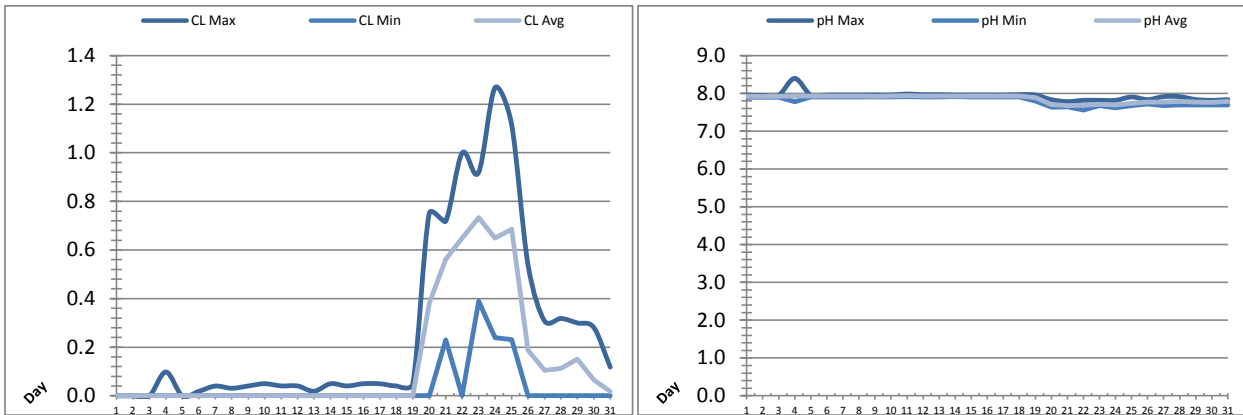


Date	Combined Total (m³)	West Train FIT-1017 (m³)	West Peak Flow FIT-1017 (L/s)	East Train FIT-1027 (m³)	East Peak Flow FIT-1027 (L/s)	Combined Peak Flow (L/s)
1	✓ 3409.2	0.0	0.0	3409.2	80.2	✓ 80.2
2	✓ 3043.7	0.0	0.0	3043.7	82.8	✓ 82.8
3	✓ 2210.9	0.0	0.0	2210.9	82.9	✓ 82.9
4	✓ 2947.2	1063.5	97.1	1883.7	82.8	✓ 97.1
5	✓ 3796.9	3796.9	96.5	0.0	0.0	✓ 96.5
6	✓ 2126.0	2126.0	95.6	0.0	0.0	✓ 95.6
7	✓ 2566.8	2566.8	94.9	0.0	0.0	✓ 94.9
8	✓ 3136.5	3136.5	94.2	0.0	0.0	✓ 94.2
9	✓ 3040.2	3040.2	95.1	0.0	0.0	✓ 95.1
10	✓ 3161.9	3161.9	93.9	0.0	0.0	✓ 93.9
11	✓ 2975.5	2975.5	91.4	0.0	0.0	✓ 91.4
12	✓ 1994.7	1994.7	90.6	0.0	0.0	✓ 90.6
13	✓ 2036.0	2036.0	91.1	0.0	0.0	✓ 91.1
14	✓ 3570.9	3570.9	93.0	0.0	0.0	✓ 93.0
15	✓ 3456.4	3456.4	91.1	0.0	0.0	✓ 91.1
16	✓ 2921.0	2921.0	92.2	0.0	0.0	✓ 92.2
17	✓ 2801.5	2801.5	91.3	0.0	0.0	✓ 91.3
18	✓ 2792.0	2792.0	91.7	0.0	0.0	✓ 91.7
19	✓ 3425.7	3425.7	92.9	0.0	0.0	✓ 92.9
20	✓ 3309.1	3309.1	97.2	0.0	0.0	✓ 97.2
21	✓ 2605.8	2605.8	89.0	0.0	0.0	✓ 89.0
22	✓ 3113.0	2255.5	143.2	857.5	131.3	✓ 143.2
23	✓ 4221.2	0.0	0.0	4221.2	95.3	✓ 95.3
24	✓ 3227.6	0.0	0.0	3227.6	92.6	✓ 92.6
25	✓ 3104.4	0.0	0.0	3104.4	82.8	✓ 82.8
26	✓ 3947.9	0.0	0.0	3947.9	137.5	✓ 137.5
27	✓ 2579.5	0.0	0.0	2579.5	100.0	✓ 100.0
28	✓ 3181.9	0.0	0.0	3181.9	77.5	✓ 77.5
29	✓ 3955.9	0.0	0.0	3955.9	72.0	✓ 72.0
30	✓ 2522.7	0.0	0.0	2522.7	125.2	✓ 125.2
31	✓ 3363.1	0.0	0.0	3363.1	119.6	✓ 119.6
Total	94544.9	53035.8		41509.1		
Average	3049.8	1710.8	58.8	1339.0	44.0	95.8
Maximum	4221.2	3796.9	143.21	4221.2	137.48	143.21
Date	23-Jan	5-Jan	22-Jan	23-Jan	26-Jan	22-Jan
Minimum	1994.7	0.0	0.00	0.0	0.00	72.00
Date	12-Jan	1-Jan	1-Jan	5-Jan	5-Jan	29-Jan

Notes:

Low Lift Monthly Report

Month: January-16



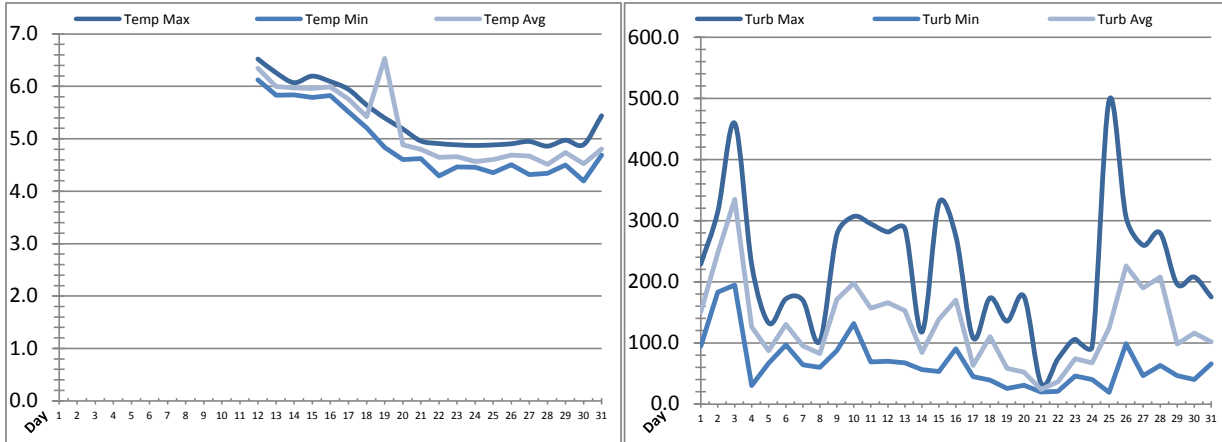
Date	Raw Water Chlorine Residual			Raw Water pH		
	AIT_1401_CL (mg/L)			AIT_1401_PH		
	Maximum	Minimum	Average	Maximum	Minimum	Average
1	0.00	0.00	0.00	7.95	7.90	7.93
2	0.00	0.00	0.00	7.95	7.90	7.92
3	0.00	0.00	0.00	7.95	7.90	7.92
4	0.10	0.00	0.00	8.40	7.78	7.93
5	0.00	0.00	0.00	7.95	7.91	7.93
6	0.02	0.00	0.00	7.95	7.90	7.93
7	0.04	0.00	0.00	7.95	7.91	7.93
8	0.03	0.00	0.00	7.95	7.91	7.93
9	0.04	0.00	0.00	7.95	7.91	7.92
10	0.05	0.00	0.00	7.96	7.91	7.93
11	0.04	0.00	0.00	7.98	7.92	7.94
12	0.04	0.00	0.00	7.96	7.91	7.93
13	0.02	0.00	0.00	7.96	7.91	7.93
14	0.05	0.00	0.00	7.95	7.92	7.93
15	0.04	0.00	0.00	7.96	7.91	7.93
16	0.05	0.00	0.00	7.96	7.91	7.93
17	0.05	0.00	0.00	7.95	7.91	7.93
18	0.04	0.00	0.00	7.96	7.91	7.93
19	0.05	0.00	0.00	7.96	7.79	7.89
20	0.75	0.00	0.38	7.83	7.64	7.71
21	0.72	0.23	0.56	7.78	7.64	7.68
22	1.00	0.00	0.65	7.81	7.56	7.68
23	0.92	0.39	0.73	7.81	7.68	7.71
24	1.27	0.24	0.65	7.81	7.62	7.70
25	1.12	0.23	0.69	7.90	7.68	7.74
26	0.54	0.00	0.19	7.83	7.72	7.77
27	0.31	0.00	0.10	7.91	7.68	7.77
28	0.32	0.00	0.11	7.91	7.70	7.79
29	0.30	0.00	0.15	7.83	7.69	7.77
30	0.28	0.00	0.07	7.81	7.69	7.76
31	0.12	0.00	0.02	7.83	7.69	7.78
Total						
Average	0.27	0.04	0.14	7.93	7.81	7.85
Maximum	1.27		0.73	8.40		7.94
Date	24-Jan		23-Jan	4-Jan		11-Jan
Minimum		0.00	0.00		7.56	7.68
Date		1-Jan	1-Jan		22-Jan	21-Jan

Notes:

Repairs made to pre-chlor system on Jan 19th.

Low Lift Monthly Report

Month: January-16



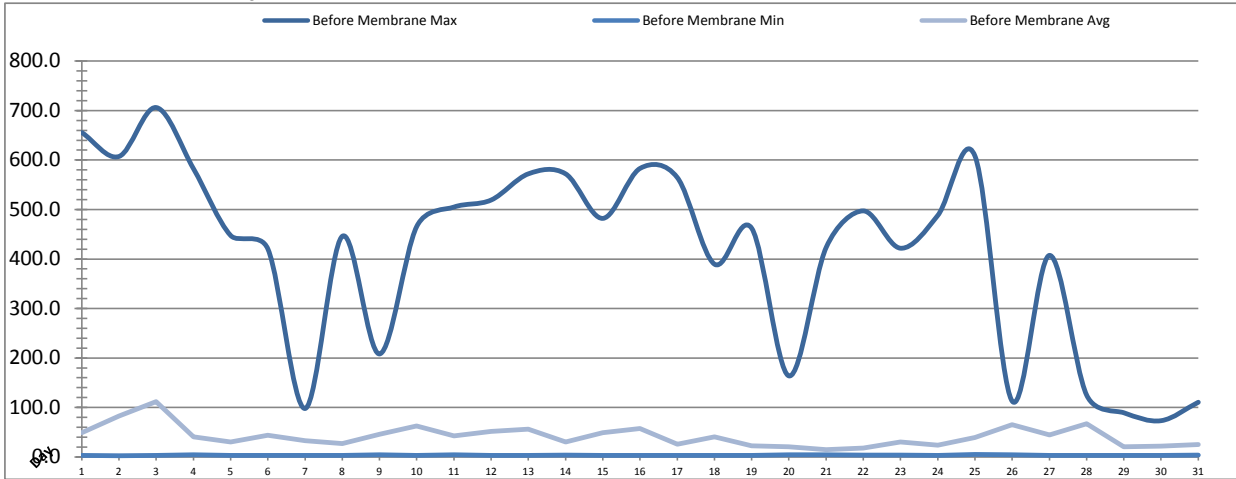
Date	Raw Water Temperature			Raw Water Turbidity		
	TIT_1403 (°C)			AIT_1404 (NTU)		
	Maximum	Minimum	Average	Maximum	Minimum	Average
1				228.80	94.61	150.36
2				314.61	182.96	247.03
3				458.73	194.57	334.88
4				226.41	30.29	126.15
5				132.05	66.68	87.35
6				171.68	96.38	130.16
7				169.38	63.98	95.25
8				102.77	60.11	82.71
9				277.29	87.26	171.10
10				306.66	131.48	197.47
11				294.35	68.67	156.65
12	6.5	6.1	6.3	281.16	70.17	165.68
13	6.3	5.8	6.0	286.53	67.08	152.89
14	6.1	5.8	6.0	117.50	56.25	84.19
15	6.2	5.8	6.0	328.39	53.15	138.54
16	6.1	5.8	6.0	273.43	90.38	170.09
17	5.9	5.5	5.8	108.25	44.58	63.00
18	5.7	5.2	5.4	173.30	39.17	110.41
19	5.4	4.8	6.5	135.31	25.16	58.60
20	5.2	4.6	4.9	175.53	30.60	51.97
21	5.0	4.6	4.8	33.75	19.69	23.66
22	4.9	4.3	4.6	74.03	20.50	36.50
23	4.9	4.5	4.7	105.80	46.10	74.05
24	4.9	4.5	4.6	93.45	39.93	67.52
25	4.9	4.4	4.6	496.26	19.01	124.15
26	4.9	4.5	4.7	305.06	98.84	225.79
27	5.0	4.3	4.7	259.45	46.13	189.68
28	4.9	4.3	4.5	279.53	63.19	207.59
29	5.0	4.5	4.7	195.81	46.14	98.00
30	4.9	4.2	4.5	207.50	39.90	115.92
31	5.4	4.7	4.8	174.86	65.57	102.01
Total						
Average	5.4	4.9	5.2	219.0	66.4	130.3
Maximum	6.5		6.5	496.3		334.9
Date	12-Jan		19-Jan	25-Jan		3-Jan
Minimum		4.2	4.5		19.0	23.7
Date		30-Jan	28-Jan	25-Jan		21-Jan

Notes:

Jan 1-11th: issues with sample pump caused untrue readings.

Membranes Monthly Report

Month: January-16

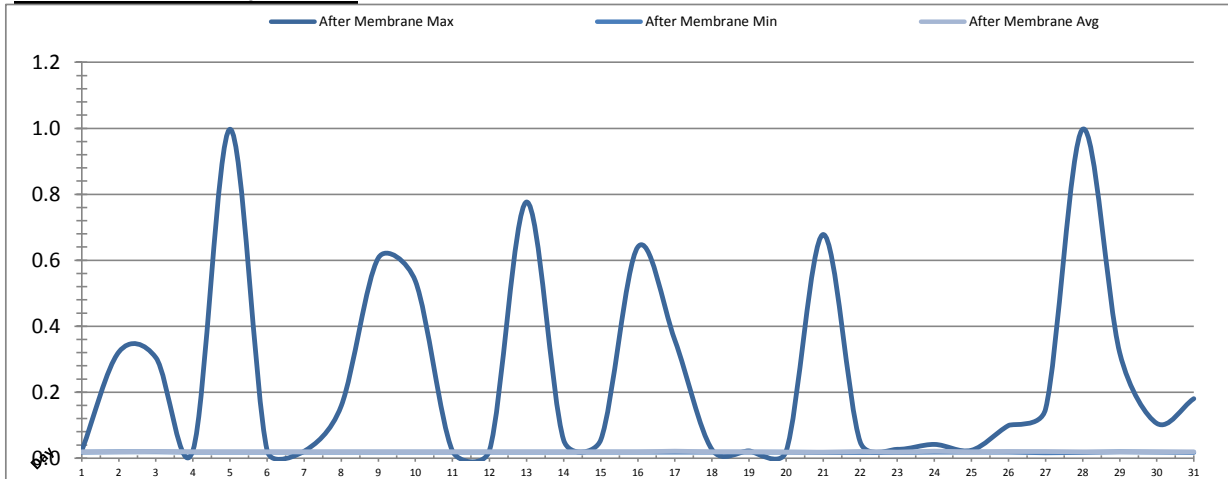


Date	Turbidity Before Membrane			Rack #1 Turbidity			Rack #2 Turbidity		
	PALL_FEED_AIT2006_Value NTU			RACK1_NTU_Value NTU			RACK2_NTU_Value NTU		
	Maximum	Minimum	Average	Maximum	Minimum	Average	Maximum	Minimum	Average
1	655.49	3.22	48.72	0.01	0.01	0.01	0.01	0.01	0.01
2	607.24	2.71	82.53	0.01	0.01	0.01	0.01	0.01	0.01
3	706.08	3.27	112.06	0.01	0.01	0.01	0.01	0.01	0.01
4	582.43	4.06	40.41	0.01	0.01	0.01	0.01	0.01	0.01
5	447.34	3.27	30.38	0.01	0.01	0.01	0.01	0.01	0.01
6	420.06	3.20	43.68	0.01	0.01	0.01	0.01	0.01	0.01
7	97.71	3.08	32.98	0.01	0.01	0.01	0.01	0.01	0.01
8	445.97	2.82	27.03	0.01	0.01	0.01	0.01	0.01	0.01
9	207.99	4.45	45.90	0.01	0.01	0.01	0.01	0.01	0.01
10	465.89	3.14	62.75	0.01	0.01	0.01	0.01	0.01	0.01
11	504.94	4.65	42.66	0.01	0.01	0.01	0.01	0.01	0.01
12	519.19	3.12	51.86	0.01	0.01	0.01	0.01	0.01	0.01
13	572.15	3.06	56.24	0.01	0.01	0.01	0.01	0.01	0.01
14	571.99	3.53	30.26	0.01	0.01	0.01	0.01	0.01	0.01
15	482.03	3.14	49.12	0.01	0.01	0.01	0.01	0.01	0.01
16	583.10	3.14	57.42	0.01	0.01	0.01	0.01	0.01	0.01
17	564.59	3.02	25.76	0.01	0.01	0.01	0.01	0.01	0.01
18	389.42	3.06	40.52	0.01	0.01	0.01	0.01	0.01	0.01
19	461.97	3.06	22.72	0.01	0.01	0.01	0.01	0.01	0.01
20	163.59	4.28	20.47	0.01	0.01	0.01	0.01	0.01	0.01
21	423.22	4.10	14.44	0.01	0.01	0.01	0.01	0.01	0.01
22	497.16	3.61	17.64	0.02	0.01	0.01	0.01	0.01	0.01
23	421.71	3.51	30.44	0.01	0.01	0.01	0.01	0.01	0.01
24	488.06	3.31	23.76	0.02	0.01	0.01	0.01	0.01	0.01
25	607.77	5.06	39.58	0.01	0.01	0.01	0.01	0.01	0.01
26	112.41	4.26	65.41	0.02	0.01	0.01	0.01	0.01	0.01
27	407.28	3.02	44.70	0.01	0.01	0.01	0.01	0.01	0.01
28	124.68	3.24	67.23	0.01	0.01	0.01	0.01	0.01	0.01
29	89.07	3.14	20.52	0.01	0.01	0.01	0.01	0.01	0.01
30	73.10	2.92	22.05	0.01	0.01	0.01	0.01	0.01	0.01
31	110.39	3.43	25.11	0.01	0.01	0.01	0.01	0.01	0.01
Total									
Average	413.0	3.4	41.8	0.0	0.0	0.0	0.0	0.0	0.0
Maximum	706.1		112.1	0.0		0.0	0.0		0.0
Date	3-Jan		3-Jan	26-Jan		30-Jan	17-Jan		31-Jan
Minimum		2.7	14.4		0.0	0.0		0.0	0.0
Date		2-Jan	21-Jan		1-Jan	20-Jan		1-Jan	2-Jan

Notes:

Membranes Monthly Report

Month: **January-16**



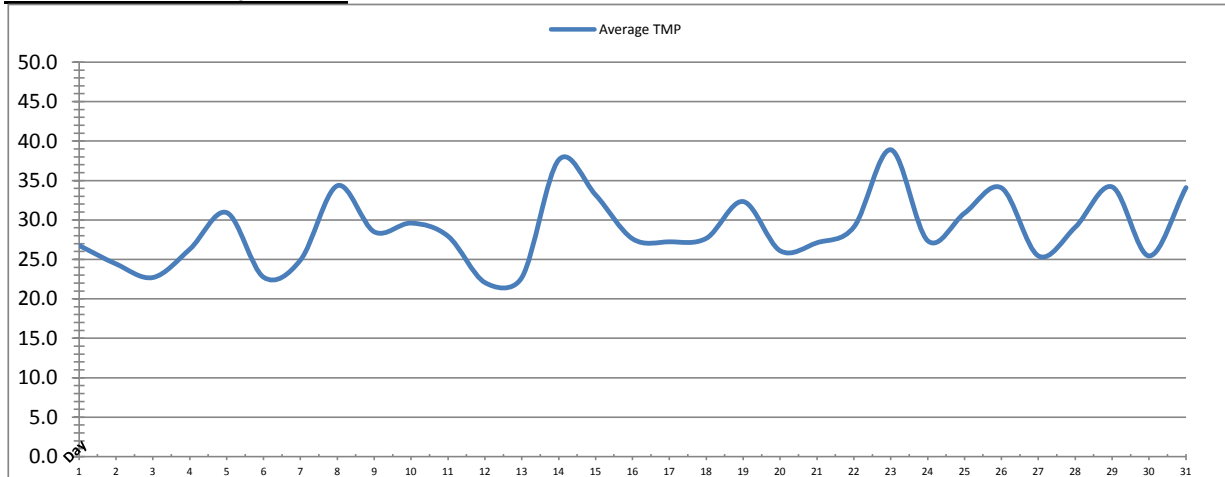
Date	Rack #3 Turbidity			Rack #4 Turbidity			Turbidity After Membranes		
	RACK3_NTU_Value			RACK4_NTU_Value			PALL_FILT_AIT5001_Value		
	Maximum	Minimum	Average	Maximum	Minimum	Average	Maximum	Minimum	Average
1	0.03	0.03	0.03	0.01	0.01	0.01	0.02	0.02	0.02
2	0.03	0.03	0.03	0.01	0.01	0.01	0.32	0.02	0.02
3	0.03	0.03	0.03	0.01	0.01	0.01	0.30	0.02	0.02
4	0.03	0.03	0.03	0.01	0.01	0.01	0.02	0.02	0.02
5	0.03	0.03	0.03	0.01	0.01	0.01	1.00	0.02	0.02
6	0.03	0.03	0.03	0.01	0.01	0.01	0.02	0.02	0.02
7	0.03	0.03	0.03	0.01	0.01	0.01	0.02	0.02	0.02
8	0.24	0.03	0.06	0.01	0.01	0.01	0.16	0.02	0.02
9	0.06	0.06	0.06	0.01	0.01	0.01	0.61	0.02	0.02
10	0.06	0.06	0.06	0.01	0.01	0.01	0.54	0.02	0.02
11	0.39	0.03	0.03	0.01	0.01	0.01	0.02	0.02	0.02
12	0.04	0.03	0.03	0.01	0.01	0.01	0.02	0.02	0.02
13	0.04	0.03	0.03	0.01	0.01	0.01	0.78	0.02	0.02
14	0.05	0.03	0.03	0.01	0.01	0.01	0.05	0.02	0.02
15	0.04	0.03	0.03	0.01	0.01	0.01	0.06	0.02	0.02
16	0.05	0.03	0.03	0.01	0.01	0.01	0.64	0.02	0.02
17	0.04	0.03	0.03	0.01	0.01	0.01	0.36	0.02	0.02
18	0.09	0.03	0.03	0.01	0.01	0.01	0.03	0.02	0.02
19	0.05	0.03	0.03	0.01	0.01	0.01	0.02	0.02	0.02
20	0.04	0.03	0.03	0.01	0.01	0.01	0.02	0.02	0.02
21	0.04	0.03	0.03	0.01	0.01	0.01	0.68	0.02	0.02
22	0.04	0.03	0.03	0.02	0.01	0.01	0.05	0.02	0.02
23	0.03	0.03	0.03	0.01	0.01	0.01	0.03	0.02	0.02
24	0.05	0.03	0.04	0.02	0.01	0.01	0.04	0.02	0.02
25	0.05	0.04	0.05	0.02	0.01	0.01	0.02	0.02	0.02
26	0.04	0.04	0.04	0.01	0.01	0.01	0.10	0.02	0.02
27	0.06	0.03	0.03	0.01	0.01	0.01	0.15	0.02	0.02
28	0.04	0.01	0.03	0.01	0.01	0.01	1.00	0.02	0.02
29	0.02	0.01	0.02	0.01	0.01	0.01	0.32	0.02	0.02
30	0.02	0.01	0.02	0.01	0.01	0.01	0.11	0.02	0.02
31	0.02	0.01	0.02	0.01	0.01	0.01	0.18	0.02	0.02
Total									
Average	0.1	0.0	0.0	0.0	0.0	0.0	0.2	0.0	0.0
Maximum	0.4		0.1	0.0		0.0	1.0		0.0
Date	11-Jan		8-Jan	22-Jan		29-Jan	28-Jan		17-Jan
Minimum		0.0	0.0		0.0	0.0		0.0	0.0
Date		28-Jan	31-Jan		1-Jan	9-Jan		27-Jan	23-Jan

Notes:

Rack 3: Turbidity >0.1ntu for 12min on the 8th and 4min on 11th.

Membranes Monthly Report

Month: **January-16**

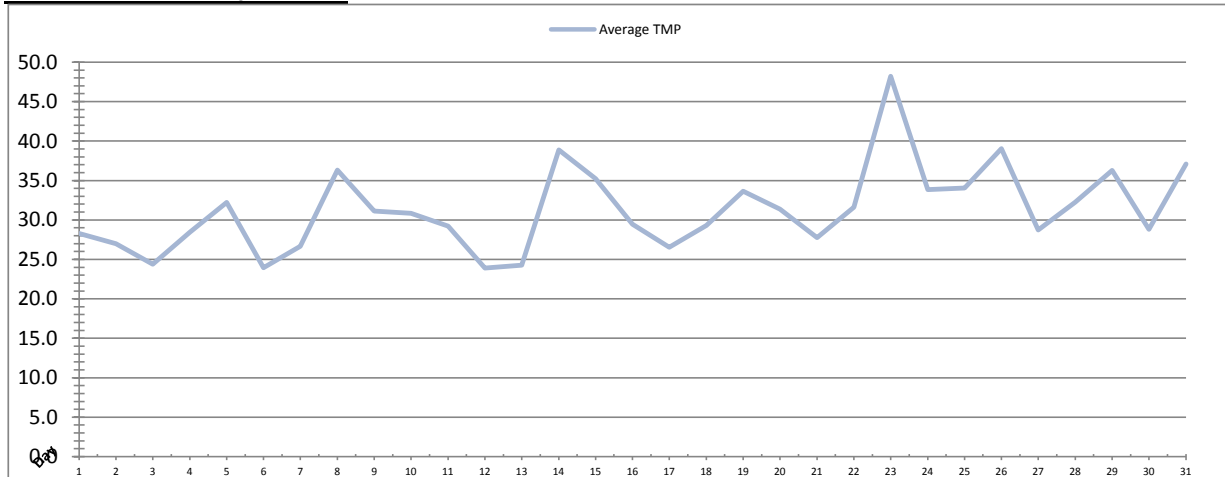


Integrity Test Rack 1									
Date	Initial Pressure (kPa)	Final Pressure (kPa)	Test Duration (sec)	Change in Pressure (kPa)	UCL	Within UCL	Average TMP (kPa)	Max TMP (kPa)	
1	192.1	191.1	300.0	1.0	2.0	✓ 2.0	26.7	114.9	
2	192.5	191.3	300.0	1.2	2.0	✓ 2.0	24.4	77.0	
3	192.8	191.6	300.0	1.2	2.0	✓ 2.0	22.7	137.6	
4	193.2	192.0	300.0	1.2	2.0	✓ 2.0	26.3	105.8	
5	192.9	191.7	300.0	1.2	2.0	✓ 2.0	30.9	67.9	
6	192.9	191.7	300.0	1.2	2.0	✓ 2.0	22.7	68.0	
7	193.5	192.2	300.0	1.3	2.0	✓ 2.0	24.9	80.7	
8	193.1	191.9	300.0	1.3	2.0	✓ 2.0	34.3	141.9	
9	192.9	191.6	300.0	1.3	2.0	✓ 2.0	28.5	76.9	
10	192.1	190.9	300.0	1.2	2.0	✓ 2.0	29.6	100.4	
11	192.8	191.7	300.0	1.2	2.0	✓ 2.0	27.9	118.6	
12	193.2	192.0	300.0	1.2	2.0	✓ 2.0	22.0	90.3	
13	193.0	191.7	300.0	1.3	2.0	✓ 2.0	22.7	82.4	
14	193.3	192.0	300.0	1.3	2.0	✓ 2.0	37.6	143.5	
15	193.4	192.1	300.0	1.3	2.0	✓ 2.0	33.2	128.7	
16	193.2	191.9	300.0	1.3	2.0	✓ 2.0	27.6	72.1	
17	193.1	191.8	300.0	1.3	2.0	✓ 2.0	27.2	82.3	
18	193.5	192.2	300.0	1.3	2.0	✓ 2.0	27.7	77.7	
19	193.1	191.9	300.0	1.3	2.0	✓ 2.0	32.3	112.7	
20	193.3	191.9	300.0	1.3	2.0	✓ 2.0	26.1	71.1	
21	194.0	192.8	300.0	1.2	2.0	✓ 2.0	27.1	77.9	
22	193.0	191.9	300.0	1.1	2.0	✓ 2.0	29.1	131.5	
23	192.5	191.4	300.0	1.2	2.0	✓ 2.0	38.9	134.9	
24	193.5	192.2	300.0	1.3	2.0	✓ 2.0	27.3	81.0	
25	193.3	192.1	300.0	1.2	2.0	✓ 2.0	30.9	154.6	
26	193.0	191.8	300.0	1.2	2.0	✓ 2.0	34.0	219.6	
27	194.1	192.9	300.0	1.2	2.0	✓ 2.0	25.4	97.1	
28	194.3	193.2	300.0	1.1	2.0	✓ 2.0	29.1	106.2	
29	194.3	193.2	300.0	1.1	2.0	✓ 2.0	34.2	97.1	
30	194.3	193.2	300.0	1.1	2.0	✓ 2.0	25.4	115.5	
31	194.3	193.2	300.0	1.1	2.0	✓ 2.0	34.1	133.9	
Total									
Average	193.2	192.0	300.0	1.2	2.0	2.0	28.7	106.4	
Maximum	194.3	193.2	300.0	1.3	2.0	2.0	38.9	219.6	
Date	29-Jan	29-Jan	1-Jan	20-Jan	1-Jan	1-Jan	23-Jan	26-Jan	
Minimum	192.1	190.9	300.0	1.0	2.0	2.0	22.0	67.9	
Date	10-Jan	10-Jan	1-Jan	1-Jan	1-Jan	1-Jan	12-Jan	5-Jan	

Notes:

Membranes Monthly Report

Month: **January-16**

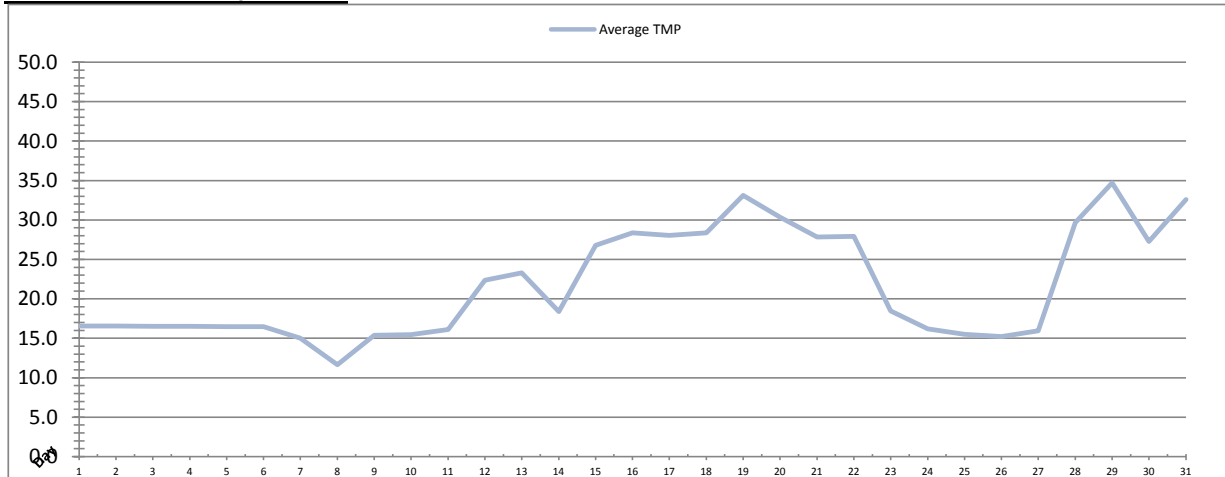


Date	Integrity Test Rack 2							
	Initial Pressure (kPa)	Final Pressure (kPa)	Test Duration (sec)	Change in Pressure (kPa)	UCL	Within UCL	Average TMP (kPa)	Max TMP (kPa)
1	200.8	199.6	300.0	1.2	2.0	✓ 2.0	28.3	100.2
2	200.9	200.1	300.0	0.8	2.0	✓ 2.0	27.0	82.1
3	201.0	200.1	300.0	0.8	2.0	✓ 2.0	24.4	138.3
4	201.0	200.1	300.0	0.8	2.0	✓ 2.0	28.4	82.3
5	200.4	199.2	300.0	1.2	2.0	✓ 2.0	32.2	101.9
6	200.7	199.7	300.0	1.0	2.0	✓ 2.0	23.9	88.4
7	201.1	200.3	300.0	0.8	2.0	✓ 2.0	26.7	67.3
8	201.1	200.1	300.0	1.0	2.0	✓ 2.0	36.3	138.3
9	201.2	200.3	300.0	1.0	2.0	✓ 2.0	31.1	108.3
10	201.1	200.0	300.0	1.1	2.0	✓ 2.0	30.9	105.0
11	200.9	200.1	300.0	0.8	2.0	✓ 2.0	29.2	127.7
12	201.0	199.9	300.0	1.1	2.0	✓ 2.0	23.9	91.1
13	200.9	199.8	300.0	1.1	2.0	✓ 2.0	24.3	95.2
14	200.6	199.8	300.0	0.8	2.0	✓ 2.0	38.9	165.2
15	201.0	200.0	300.0	1.1	2.0	✓ 2.0	35.2	135.4
16	201.0	200.0	300.0	1.0	2.0	✓ 2.0	29.5	78.3
17	200.8	200.1	300.0	0.7	2.0	✓ 2.0	26.6	82.7
18	200.6	199.7	300.0	0.9	2.0	✓ 2.0	29.3	145.1
19	200.8	199.9	300.0	0.9	2.0	✓ 2.0	33.7	81.7
20	201.0	200.0	300.0	1.1	2.0	✓ 2.0	31.4	104.8
21	200.5	199.6	300.0	0.9	2.0	✓ 2.0	27.7	79.6
22	200.8	199.6	300.0	1.2	2.0	✓ 2.0	31.6	126.4
23	200.8	199.8	300.0	1.0	2.0	✓ 2.0	48.2	154.5
24	202.1	201.1	300.0	1.1	2.0	✓ 2.0	33.8	143.6
25	201.4	200.4	300.0	1.1	2.0	✓ 2.0	34.1	165.4
26	200.9	200.0	300.0	0.9	2.0	✓ 2.0	39.0	233.1
27	200.9	200.0	300.0	1.0	2.0	✓ 2.0	28.7	81.9
28	200.9	200.3	300.0	0.7	2.0	✓ 2.0	32.3	107.8
29	200.7	199.6	300.0	1.1	2.0	✓ 2.0	36.3	97.6
30	201.0	200.3	300.0	0.7	2.0	✓ 2.0	28.8	109.3
31	201.1	200.2	300.0	0.9	2.0	✓ 2.0	37.1	134.5
Total								
Average	200.9	200.0	300.0	0.9	2.0	2.0	31.2	114.6
Maximum	202.1	201.1	300.0	1.2	2.0	2.0	48.2	233.1
Date	24-Jan	24-Jan	1-Jan	5-Jan	1-Jan	1-Jan	23-Jan	26-Jan
Minimum	200.4	199.2	300.0	0.7	2.0	2.0	23.9	67.3
Date	5-Jan	5-Jan	1-Jan	28-Jan	1-Jan	1-Jan	12-Jan	7-Jan

Notes:

Membranes Monthly Report

Month: **January-16**

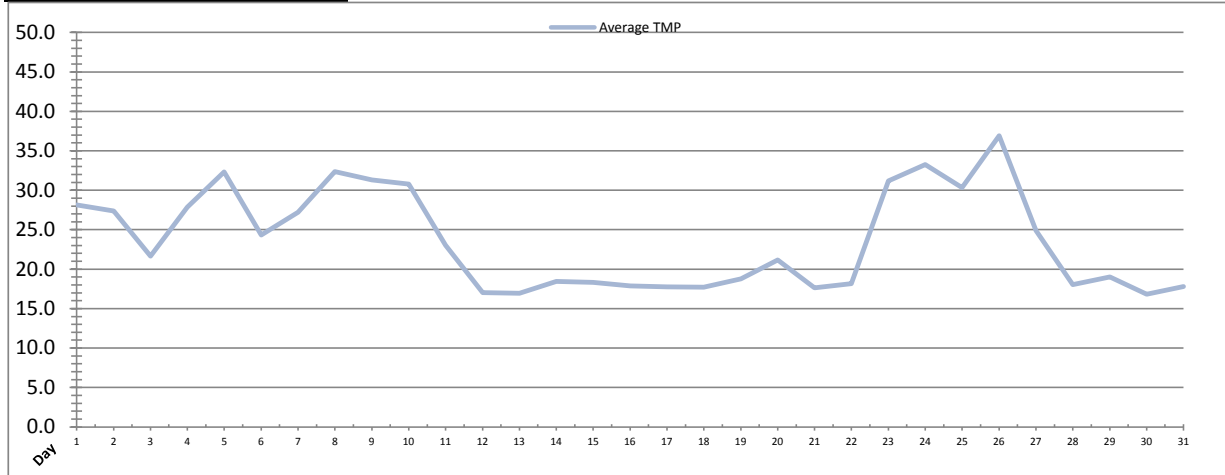


Date	Integrity Test Rack 3							
	Initial Pressure (kPa)	Final Pressure (kPa)	Test Duration (sec)	Change in Pressure (kPa)	UCL	Within UCL	Average TMP (kPa)	Max TMP (kPa)
1	192.0	190.8	300.0	1.2	2.0	✓ 2.0	16.6	16.8
2	192.0	190.8	300.0	1.2	2.0	✓ 2.0	16.5	16.9
3	192.0	190.8	300.0	1.2	2.0	✓ 2.0	16.5	16.9
4	192.0	190.8	300.0	1.2	2.0	✓ 2.0	16.5	16.8
5	192.0	190.8	300.0	1.2	2.0	✓ 2.0	16.5	16.8
6	192.0	190.8	300.0	1.2	2.0	✓ 2.0	16.5	16.6
7	192.0	190.8	300.0	1.2	2.0	✓ 2.0	15.0	17.2
8	189.3	183.9	300.0	5.5	2.0	✓ 2.0	11.7	65.6
9	189.3	183.9	300.0	5.5	2.0	✓ 2.0	15.4	15.7
10	189.3	183.9	300.0	5.5	2.0	✓ 2.0	15.4	15.6
11	192.4	191.9	300.0	0.5	2.0	✓ 2.0	16.1	70.7
12	191.7	190.4	300.0	1.2	2.0	✓ 2.0	22.4	70.8
13	191.2	190.0	300.0	1.3	2.0	✓ 2.0	23.3	81.7
14	190.2	185.2	300.0	5.0	2.0	✓ 2.0	18.4	77.7
15	191.3	189.9	300.0	1.4	2.0	✓ 2.0	26.8	90.0
16	191.3	190.1	300.0	1.2	2.0	✓ 2.0	28.4	94.2
17	192.3	191.1	300.0	1.2	2.0	✓ 2.0	28.1	95.7
18	191.5	189.9	300.0	1.6	2.0	✓ 2.0	28.4	66.1
19	191.3	189.9	300.0	1.4	2.0	✓ 2.0	33.1	113.5
20	191.9	190.5	300.0	1.4	2.0	✓ 2.0	30.4	112.2
21	191.9	190.7	300.0	1.2	2.0	✓ 2.0	27.8	114.1
22	191.9	190.6	300.0	1.3	2.0	✓ 2.0	27.9	101.9
23	191.9	190.6	300.0	1.3	2.0	✓ 2.0	18.4	104.7
24	191.9	190.6	300.0	1.3	2.0	✓ 2.0	16.2	59.1
25	191.9	190.6	300.0	1.3	2.0	✓ 2.0	15.5	48.3
26	191.9	190.6	300.0	1.3	2.0	✓ 2.0	15.2	15.6
27	193.4	192.1	300.0	1.3	2.0	✓ 2.0	16.0	96.3
28	192.0	190.8	300.0	1.1	2.0	✓ 2.0	29.7	103.2
29	191.8	190.7	300.0	1.1	2.0	✓ 2.0	34.7	98.0
30	192.0	190.9	300.0	1.1	2.0	✓ 2.0	27.3	114.8
31	191.6	190.5	300.0	1.1	2.0	✓ 2.0	32.6	123.9
Total								
Average	191.6	189.8	300.0	1.8	2.0	2.0	21.7	66.7
Maximum	193.4	192.1	300.0	5.5	2.0	2.0	34.7	123.9
Date	27-Jan	27-Jan	1-Jan	8-Jan	1-Jan	1-Jan	29-Jan	31-Jan
Minimum	189.3	183.9	300.0	0.5	2.0	2.0	11.7	15.6
Date	8-Jan	8-Jan	1-Jan	11-Jan	1-Jan	1-Jan	8-Jan	26-Jan

Notes:

Membranes Monthly Report

Month: **January-16**



Integrity Test Rack 4									
Date	Initial Pressure (kPa)	Final Pressure (kPa)	Test Duration (sec)	Change in Pressure (kPa)	UCL	Within UCL	Average TMP (kPa)	Max TMP (kPa)	
1	194.0	193.0	300.0	1.0	2.0	✓ 2.0	28.1	123.7	
2	194.1	193.0	300.0	1.1	2.0	✓ 2.0	27.4	66.3	
3	194.1	193.0	300.0	1.1	2.0	✓ 2.0	21.7	113.5	
4	194.4	193.3	300.0	1.1	2.0	✓ 2.0	27.9	103.5	
5	193.9	192.8	300.0	1.1	2.0	✓ 2.0	32.3	67.2	
6	193.8	192.5	300.0	1.3	2.0	✓ 2.0	24.3	96.2	
7	194.4	193.3	300.0	1.2	2.0	✓ 2.0	27.2	103.9	
8	194.4	193.3	300.0	1.2	2.0	✓ 2.0	32.4	105.6	
9	194.5	193.3	300.0	1.3	2.0	✓ 2.0	31.3	84.3	
10	194.3	193.1	300.0	1.2	2.0	✓ 2.0	30.8	81.2	
11	194.3	193.1	300.0	1.2	2.0	✓ 2.0	23.0	128.8	
12	194.4	193.1	300.0	1.2	2.0	✓ 2.0	17.0	48.3	
13	194.4	193.1	300.0	1.3	2.0	✓ 2.0	16.9	41.4	
14	194.4	193.2	300.0	1.2	2.0	✓ 2.0	18.5	48.8	
15	194.2	193.1	300.0	1.2	2.0	✓ 2.0	18.3	46.4	
16	193.6	192.3	300.0	1.3	2.0	✓ 2.0	17.9	41.7	
17	193.4	192.2	300.0	1.2	2.0	✓ 2.0	17.8	45.4	
18	193.9	192.5	300.0	1.3	2.0	✓ 2.0	17.7	45.6	
19	193.9	192.7	300.0	1.2	2.0	✓ 2.0	18.8	50.3	
20	193.7	192.3	300.0	1.3	2.0	✓ 2.0	21.1	75.0	
21	193.7	192.5	300.0	1.2	2.0	✓ 2.0	17.6	43.3	
22	193.6	192.3	300.0	1.3	2.0	✓ 2.0	18.2	46.2	
23	194.0	192.8	300.0	1.2	2.0	✓ 2.0	31.2	137.4	
24	194.1	192.8	300.0	1.3	2.0	✓ 2.0	33.2	125.5	
25	193.6	192.4	300.0	1.2	2.0	✓ 2.0	30.3	118.9	
26	193.5	192.2	300.0	1.3	2.0	✓ 2.0	36.9	182.9	
27	193.6	192.5	300.0	1.2	2.0	✓ 2.0	24.9	110.5	
28	194.1	192.8	300.0	1.3	2.0	✓ 2.0	18.1	43.5	
29	193.6	192.3	300.0	1.3	2.0	✓ 2.0	19.0	49.7	
30	195.9	195.3	300.0	0.6	2.0	✓ 2.0	16.8	59.3	
31	196.2	195.3	300.0	0.9	2.0	✓ 2.0	17.8	44.0	
Total									
Average	194.1	192.9	300.0	1.2	2.0	2.0	23.7	79.9	
Maximum	196.2	195.3	300.0	1.3	2.0	2.0	36.9	182.9	
Date	31-Jan	30-Jan	1-Jan	18-Jan	1-Jan	1-Jan	26-Jan	26-Jan	
Minimum	193.4	192.2	300.0	0.6	2.0	2.0	16.8	41.4	
Date	17-Jan	17-Jan	1-Jan	30-Jan	1-Jan	1-Jan	30-Jan	13-Jan	

Notes:

Membranes Monthly Report

Month: January-16

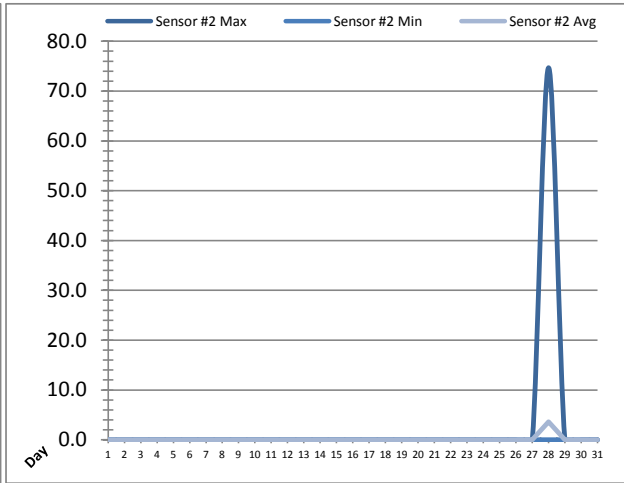
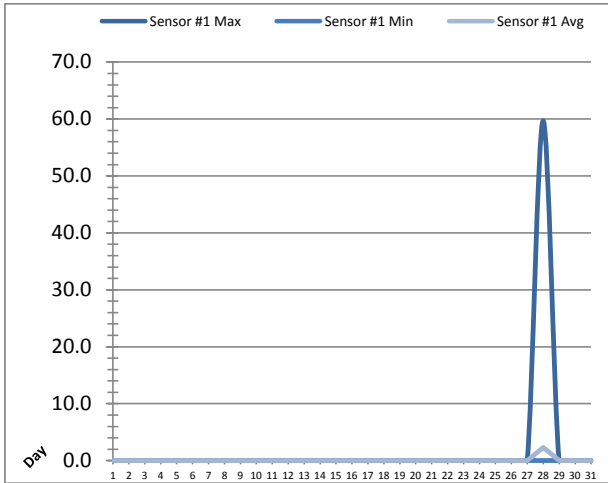
Date	Membranes Monthly Performance							
	Rack 1 >0.1 NTU (Minutes)	Rack 1 Forward Flow (Minutes)	Rack 2 >0.1 NTU (Minutes)	Rack 2 Forward Flow (Minutes)	Rack 3 >0.1 NTU (Minutes)	Rack 3 Forward Flow (Minutes)	Rack 4 >0.1 NTU (Minutes)	Rack 4 Forward Flow (Minutes)
1	0.0	857.1	0.0	852.1	0.0	0.0	0.0	857.1
2	0.0	753.4	0.0	744.6	0.0	0.0	0.0	745.0
3	0.0	545.2	0.0	542.1	0.0	0.0	0.0	545.3
4	0.0	714.5	0.0	666.5	0.0	0.0	0.0	713.5
5	0.0	933.3	0.0	936.0	0.0	0.0	0.0	932.4
6	0.0	536.3	0.0	530.4	0.0	0.0	0.0	535.4
7	0.0	638.2	0.0	640.4	0.0	0.0	0.0	643.5
8	0.0	795.5	0.0	795.5	12.1	100.2	0.0	695.3
9	0.0	750.2	0.0	748.4	0.0	0.0	0.0	748.3
10	0.0	789.5	0.0	787.2	0.0	0.0	0.0	789.6
11	0.0	732.3	0.0	736.4	4.1	391.5	0.0	497.3
12	0.0	487.6	0.0	484.4	0.0	482.1	0.0	256.3
13	0.0	498.5	0.0	498.0	0.0	497.2	0.0	253.4
14	0.0	882.4	0.0	884.1	0.0	486.5	0.0	455.5
15	0.0	859.3	0.0	865.1	0.0	672.3	0.0	435.6
16	0.0	731.2	0.0	732.6	0.0	731.1	0.0	364.0
17	0.0	695.0	0.0	690.0	0.0	690.5	0.0	357.3
18	0.0	692.3	0.0	695.0	0.0	697.5	0.0	337.3
19	0.0	856.0	0.0	860.1	0.0	854.5	0.0	437.2
20	0.0	667.3	0.0	789.1	0.0	776.6	0.0	492.0
21	0.0	635.5	0.0	638.2	0.0	636.4	0.0	331.3
22	0.0	737.4	0.0	750.5	0.0	687.1	0.0	424.1
23	0.0	912.1	0.0	1057.2	0.0	108.0	0.0	843.4
24	0.0	611.5	0.0	774.2	0.0	23.4	0.0	770.6
25	0.0	751.3	0.0	752.3	0.0	7.2	0.0	702.3
26	0.0	818.2	0.0	855.0	0.0	0.0	0.0	838.4
27	0.0	653.4	0.0	652.1	0.0	184.2	0.0	547.5
28	0.0	811.6	0.0	805.2	0.0	811.5	0.0	407.3
29	0.0	1005.5	0.0	1000.1	0.0	1000.2	0.0	477.2
30	0.0	595.5	0.0	591.5	0.0	596.4	0.0	289.0
31	0.0	690.5	0.0	671.6	0.0	673.3	0.0	413.1
Total	0.0	22637.8	0.0	23026.0	16.2	11107.7	0.0	17135.9
Percent	0.0		0.0		0.1		0.0	
Maximum	0.0	1005.5	0.0	1057.2	12.1	1000.2	0.0	932.4
Date	1-Jan	29-Jan	1-Jan	23-Jan	8-Jan	29-Jan	1-Jan	5-Jan
Minimum	0.0	487.6	0.0	484.4	0.0	0.0	0.0	253.4
Date	1-Jan	12-Jan	1-Jan	12-Jan	1-Jan	1-Jan	1-Jan	13-Jan

Notes:

Met filter performance criteria of 99% of the readings were less than 0.1ntu.

UV System Monthly Report

Month: January-16

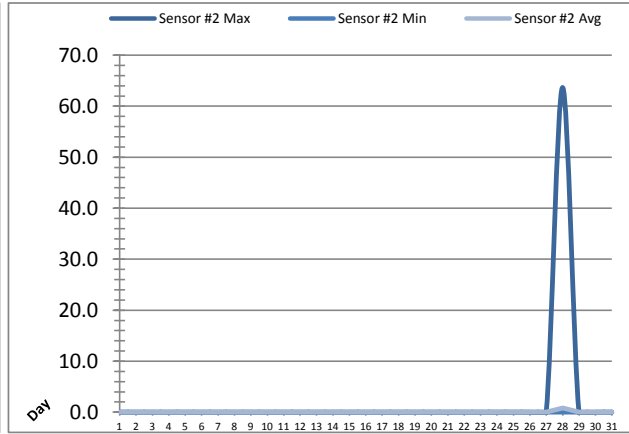
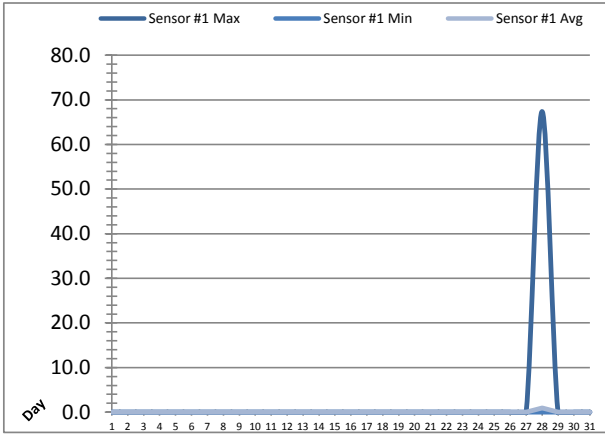


Date	UV Reactor 1					
	Intensity Sensor 1 (mW/cm²)			Intensity Sensor 2 (mW/cm²)		
	Maximum	Minimum	Average	Maximum	Minimum	Average
1	0.0	0.0	0.0	0.0	0.0	0.0
2	0.0	0.0	0.0	0.0	0.0	0.0
3	0.0	0.0	0.0	0.0	0.0	0.0
4	0.0	0.0	0.0	0.0	0.0	0.0
5	0.0	0.0	0.0	0.0	0.0	0.0
6	0.0	0.0	0.0	0.0	0.0	0.0
7	0.0	0.0	0.0	0.0	0.0	0.0
8	0.0	0.0	0.0	0.0	0.0	0.0
9	0.0	0.0	0.0	0.0	0.0	0.0
10	0.0	0.0	0.0	0.0	0.0	0.0
11	0.0	0.0	0.0	0.0	0.0	0.0
12	0.0	0.0	0.0	0.0	0.0	0.0
13	0.0	0.0	0.0	0.0	0.0	0.0
14	0.0	0.0	0.0	0.0	0.0	0.0
15	0.0	0.0	0.0	0.0	0.0	0.0
16	0.0	0.0	0.0	0.0	0.0	0.0
17	0.0	0.0	0.0	0.0	0.0	0.0
18	0.0	0.0	0.0	0.0	0.0	0.0
19	0.0	0.0	0.0	0.0	0.0	0.0
20	0.0	0.0	0.0	0.0	0.0	0.0
21	0.0	0.0	0.0	0.0	0.0	0.0
22	0.0	0.0	0.0	0.0	0.0	0.0
23	0.0	0.0	0.0	0.0	0.0	0.0
24	0.0	0.0	0.0	0.0	0.0	0.0
25	0.0	0.0	0.0	0.0	0.0	0.0
26	0.0	0.0	0.0	0.0	0.0	0.0
27	0.0	0.0	0.0	0.0	0.0	0.0
28	59.7	0.0	2.3	74.7	0.0	3.6
29	0.0	0.0	0.0	0.0	0.0	0.0
30	0.0	0.0	0.0	0.0	0.0	0.0
31	0.0	0.0	0.0	0.0	0.0	0.0
Total						
Average	1.9	0.0	0.1	2.4	0.0	0.1
Maximum	59.7		2.3	74.7		3.6
Date	28-Jan		28-Jan	28-Jan		28-Jan
Minimum		0.0	0.0		0.0	0.0
Date		1-Jan	1-Jan		1-Jan	1-Jan

Notes:

UV System Monthly Report

Month: January-16

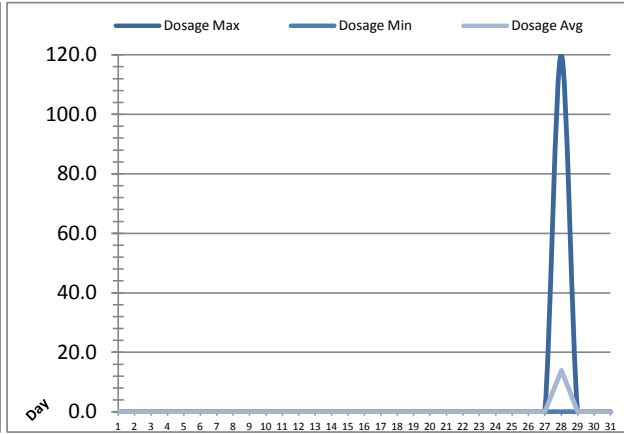


Date	UV Reactor 2					
	Intensity Sensor 1 (mW/cm²)			Intensity Sensor 2 (mW/cm²)		
	Maximum	Minimum	Average	Maximum	Minimum	Average
1	0.0	0.0	0.0	0.0	0.0	0.0
2	0.0	0.0	0.0	0.0	0.0	0.0
3	0.0	0.0	0.0	0.0	0.0	0.0
4	0.0	0.0	0.0	0.0	0.0	0.0
5	0.0	0.0	0.0	0.0	0.0	0.0
6	0.0	0.0	0.0	0.0	0.0	0.0
7	0.0	0.0	0.0	0.0	0.0	0.0
8	0.0	0.0	0.0	0.0	0.0	0.0
9	0.0	0.0	0.0	0.0	0.0	0.0
10	0.0	0.0	0.0	0.0	0.0	0.0
11	0.0	0.0	0.0	0.0	0.0	0.0
12	0.0	0.0	0.0	0.0	0.0	0.0
13	0.0	0.0	0.0	0.0	0.0	0.0
14	0.0	0.0	0.0	0.0	0.0	0.0
15	0.0	0.0	0.0	0.0	0.0	0.0
16	0.0	0.0	0.0	0.0	0.0	0.0
17	0.0	0.0	0.0	0.0	0.0	0.0
18	0.0	0.0	0.0	0.0	0.0	0.0
19	0.0	0.0	0.0	0.0	0.0	0.0
20	0.0	0.0	0.0	0.0	0.0	0.0
21	0.0	0.0	0.0	0.0	0.0	0.0
22	0.0	0.0	0.0	0.0	0.0	0.0
23	0.0	0.0	0.0	0.0	0.0	0.0
24	0.0	0.0	0.0	0.0	0.0	0.0
25	0.0	0.0	0.0	0.0	0.0	0.0
26	0.0	0.0	0.0	0.0	0.0	0.0
27	0.0	0.0	0.0	0.0	0.0	0.0
28	67.4	0.0	0.9	63.7	0.0	0.8
29	0.0	0.0	0.0	0.0	0.0	0.0
30	0.0	0.0	0.0	0.0	0.0	0.0
31	0.0	0.0	0.0	0.0	0.0	0.0
Total						
Average	2.2	0.0	0.0	2.1	0.0	0.0
Maximum	67.4		0.9	63.7		0.8
Date	28-Jan		28-Jan	28-Jan		28-Jan
Minimum		0.0	0.0		0.0	0.0
Date		1-Jan	1-Jan		1-Jan	1-Jan

Notes:

UV System Monthly Report

Month: **January-16**

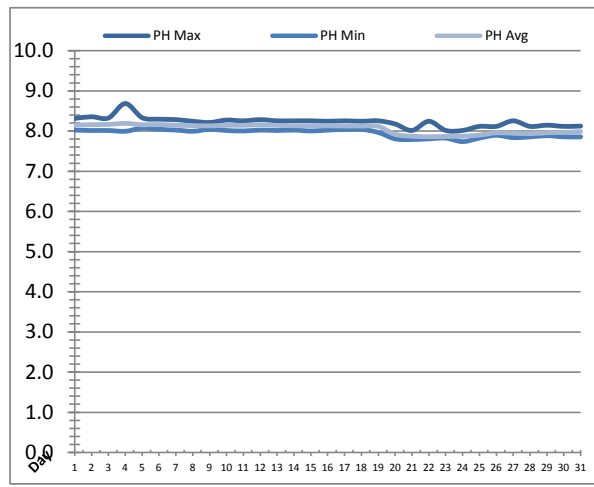
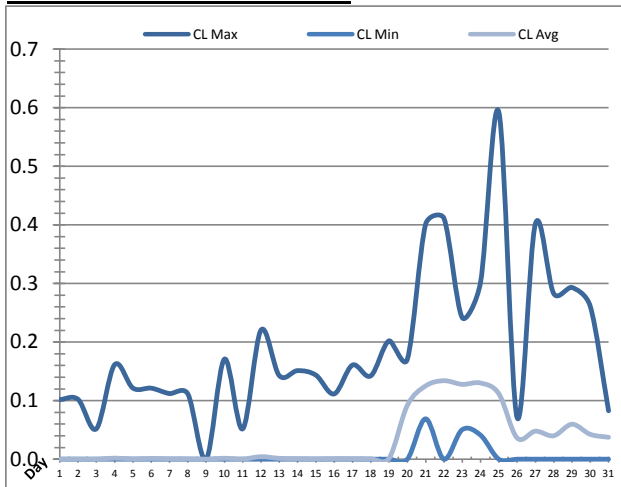


UV System							
Date	Transmittance (%)			Dosage (mJ/cm ²)			Inlet Flow (L/s)
	Maximum	Minimum	Average	Maximum	Minimum	Average	Maximum
1	96.00	92.00	94.99	0.0	0.0	0.0	108.9
2	96.00	93.00	94.39	0.0	0.0	0.0	136.3
3	97.00	92.00	94.34	0.0	0.0	0.0	130.3
4	98.00	92.00	95.09	0.0	0.0	0.0	111.9
5	96.00	93.00	95.00	0.0	0.0	0.0	119.1
6	96.00	90.00	94.98	0.0	0.0	0.0	114.3
7	97.00	92.00	95.09	0.0	0.0	0.0	109.0
8	97.00	92.00	95.18	0.0	0.0	0.0	111.0
9	98.00	92.00	95.20	0.0	0.0	0.0	83.6
10	97.00	92.00	95.11	0.0	0.0	0.0	112.0
11	97.00	92.00	95.04	0.0	0.0	0.0	114.7
12	97.00	92.00	95.09	0.0	0.0	0.0	111.7
13	97.00	92.00	95.04	0.0	0.0	0.0	124.2
14	98.00	92.00	95.16	0.0	0.0	0.0	128.9
15	98.00	91.00	95.19	0.0	0.0	0.0	102.3
16	98.00	93.00	95.34	0.0	0.0	0.0	137.8
17	98.00	86.00	95.45	0.0	0.0	0.0	104.6
18	98.00	92.00	95.12	0.0	0.0	0.0	114.1
19	98.00	92.00	95.32	0.0	0.0	0.0	109.0
20	99.00	94.00	96.05	0.0	0.0	0.0	103.3
21	98.00	92.00	95.96	0.0	0.0	0.0	100.2
22	98.00	92.00	95.91	0.0	0.0	0.0	128.1
23	98.00	93.00	96.02	0.0	0.0	0.0	94.0
24	98.00	92.00	95.96	0.0	0.0	0.0	96.1
25	98.00	93.00	96.02	0.0	0.0	0.0	104.3
26	98.00	94.00	96.01	0.0	0.0	0.0	132.4
27	99.00	92.00	95.98	0.0	0.0	0.0	124.9
28	99.00	92.00	95.99	120.0	0.0	13.9	123.2
29	98.00	92.00	96.00	0.0	0.0	0.0	123.4
30	98.00	92.00	95.97	0.0	0.0	0.0	141.6
31	96.00	92.00	95.97	0.0	0.0	0.0	127.7
Total							
Average	97.55	92.00	95.42	3.9	0.0	0.4	115.6
Maximum	99.00		96.05	120.0		13.9	141.6
Date	20-Jan		20-Jan	28-Jan		28-Jan	30-Jan
Minimum		86.00	94.34		0.0	0.0	
Date		17-Jan	3-Jan		1-Jan	1-Jan	

Notes:

Plant Quality Report

Month: **January-16**

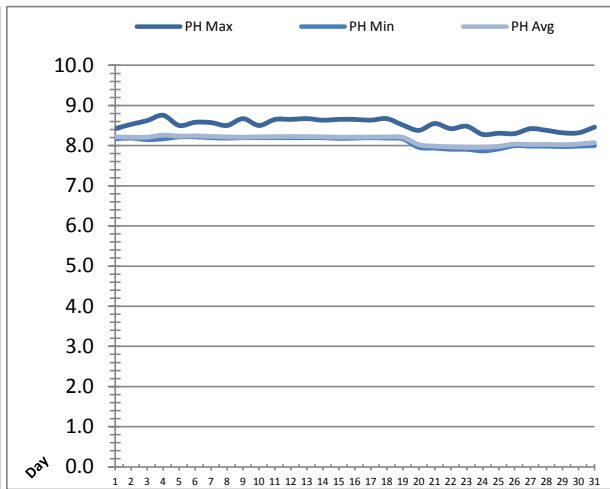
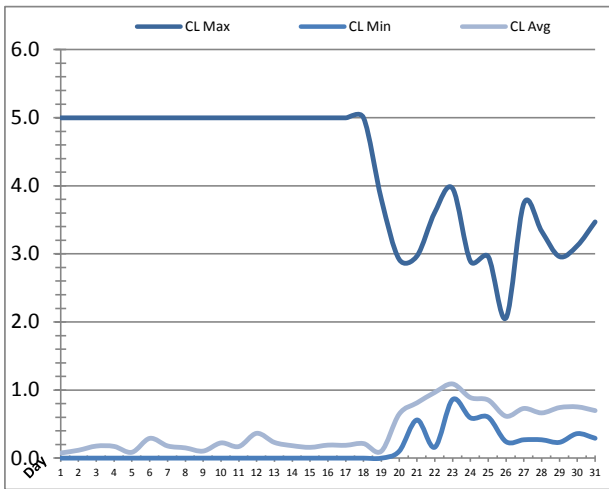


Date	Strainer Chlorine Residual			Strainer pH		
	AIT_2003_CL (ppm)			AIT_2003_PH		
	Maximum	Minimum	Average	Maximum	Minimum	Average
1	0.10	0.00	0.00	8.32	8.03	8.15
2	0.10	0.00	0.00	8.36	8.01	8.16
3	0.05	0.00	0.00	8.33	8.01	8.16
4	0.16	0.00	0.00	8.69	8.00	8.19
5	0.12	0.00	0.00	8.33	8.07	8.16
6	0.12	0.00	0.00	8.30	8.04	8.16
7	0.11	0.00	0.00	8.29	8.03	8.15
8	0.11	0.00	0.00	8.24	8.00	8.13
9	0.00	0.00	0.00	8.21	8.05	8.13
10	0.17	0.00	0.00	8.27	8.01	8.14
11	0.05	0.00	0.00	8.26	8.00	8.14
12	0.22	0.00	0.00	8.29	8.03	8.16
13	0.14	0.00	0.00	8.25	8.02	8.14
14	0.15	0.00	0.00	8.26	8.03	8.13
15	0.14	0.00	0.00	8.26	8.00	8.13
16	0.11	0.00	0.00	8.24	8.03	8.13
17	0.16	0.00	0.00	8.26	8.04	8.13
18	0.14	0.00	0.00	8.24	8.04	8.12
19	0.20	0.00	0.00	8.26	7.97	8.12
20	0.17	0.00	0.09	8.18	7.80	7.92
21	0.40	0.07	0.13	8.02	7.79	7.87
22	0.41	0.00	0.13	8.24	7.80	7.86
23	0.24	0.05	0.13	8.02	7.82	7.87
24	0.30	0.04	0.13	8.02	7.73	7.87
25	0.59	0.00	0.11	8.12	7.82	7.90
26	0.07	0.00	0.04	8.12	7.89	7.96
27	0.40	0.00	0.05	8.26	7.84	7.95
28	0.28	0.00	0.04	8.12	7.85	7.94
29	0.29	0.00	0.06	8.15	7.88	7.96
30	0.26	0.00	0.04	8.12	7.85	7.97
31	0.08	0.00	0.04	8.12	7.85	7.99
Total						
Average	0.19	0.01	0.03	8.23	7.95	8.06
Maximum	0.59		0.13	8.69		8.19
Date	25-Jan		22-Jan	4-Jan		4-Jan
Minimum		0.00	0.00		7.73	7.86
Date		1-Jan	9-Jan		24-Jan	22-Jan

Notes:

Plant Quality Report

Month: January-16

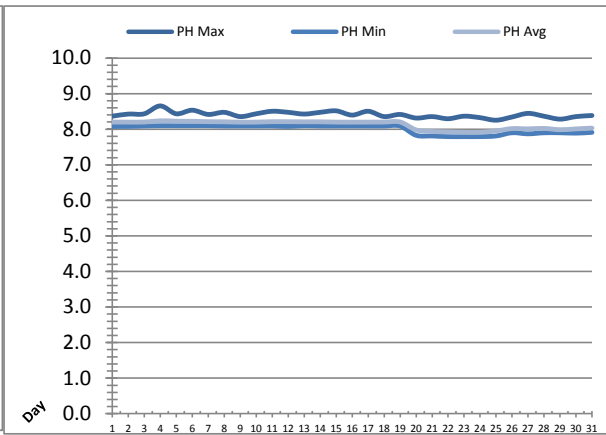
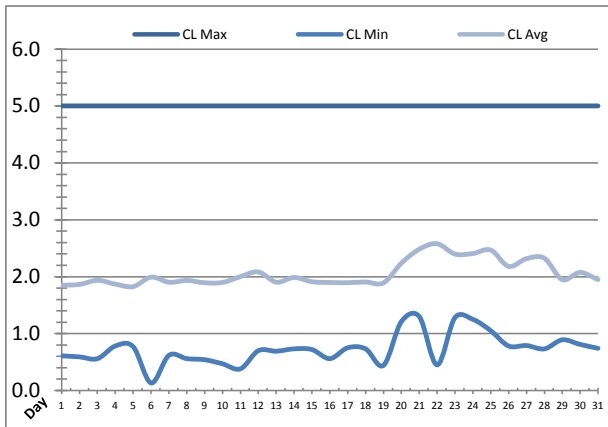


Date	Inlet UV Chlorine Residual			Inlet UV pH		
	AIT_5005_CL (ppm)			AIT_5005_PH		
	Maximum	Minimum	Average	Maximum	Minimum	Average
1	5.00	0.00	0.08	8.42	8.17	8.22
2	5.00	0.00	0.12	8.53	8.19	8.21
3	5.00	0.00	0.18	8.62	8.15	8.21
4	5.00	0.00	0.17	8.75	8.17	8.26
5	5.00	0.00	0.09	8.50	8.22	8.24
6	5.00	0.00	0.29	8.58	8.22	8.24
7	5.00	0.00	0.18	8.57	8.20	8.23
8	5.00	0.00	0.15	8.50	8.19	8.22
9	5.00	0.00	0.10	8.67	8.20	8.21
10	5.00	0.00	0.22	8.50	8.20	8.22
11	5.00	0.00	0.17	8.65	8.20	8.22
12	5.00	0.00	0.36	8.65	8.20	8.23
13	5.00	0.00	0.23	8.67	8.20	8.23
14	5.00	0.00	0.18	8.63	8.20	8.22
15	5.00	0.00	0.16	8.65	8.18	8.21
16	5.00	0.00	0.19	8.65	8.19	8.21
17	5.00	0.00	0.19	8.63	8.20	8.22
18	5.00	0.00	0.21	8.67	8.19	8.22
19	3.80	0.00	0.10	8.51	8.17	8.21
20	2.92	0.10	0.65	8.38	7.96	8.02
21	2.97	0.56	0.81	8.55	7.94	7.98
22	3.61	0.16	0.96	8.42	7.91	7.97
23	3.96	0.86	1.09	8.48	7.91	7.95
24	2.89	0.59	0.89	8.28	7.87	7.96
25	2.96	0.60	0.85	8.31	7.92	7.98
26	2.06	0.24	0.61	8.30	8.00	8.04
27	3.74	0.27	0.73	8.42	7.99	8.02
28	3.33	0.27	0.66	8.38	7.99	8.03
29	2.96	0.23	0.74	8.32	7.98	8.02
30	3.12	0.36	0.75	8.32	7.99	8.04
31	3.47	0.29	0.70	8.46	8.00	8.07
Total						
Average	4.25	0.15	0.41	8.52	8.10	8.14
Maximum	5.00		1.09	8.75		8.26
Date	1-Jan		23-Jan	4-Jan		4-Jan
Minimum		0.00	0.08		7.87	7.95
Date		19-Jan	1-Jan		24-Jan	23-Jan

Notes:

Plant Quality Report

Month: January-16

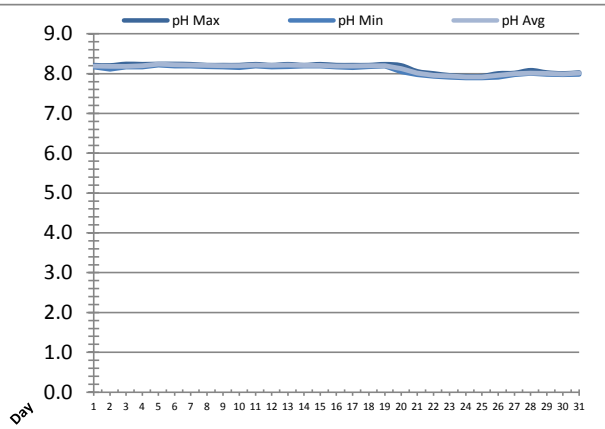
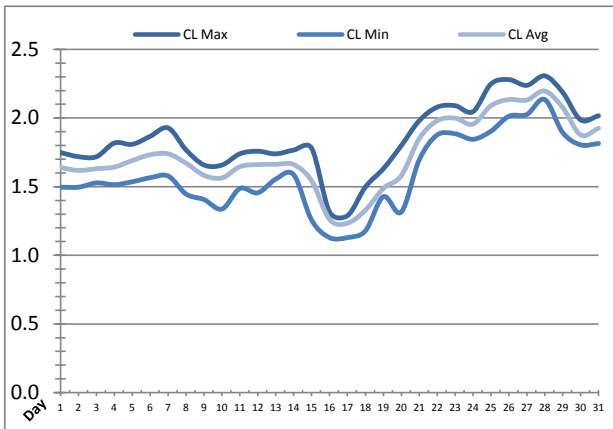


Date	Discharge UV Chlorine Residual			Discharge UV pH		
	AIT_5006_CL (ppm)			AIT_5006_PH		
	Maximum	Minimum	Average	Maximum	Minimum	Average
1	5.00	0.61	1.85	8.36	8.08	8.20
2	5.00	0.59	1.86	8.42	8.08	8.20
3	5.00	0.56	1.94	8.43	8.09	8.20
4	5.00	0.78	1.87	8.65	8.10	8.23
5	5.00	0.77	1.83	8.43	8.10	8.22
6	5.00	0.13	1.99	8.53	8.10	8.22
7	5.00	0.62	1.90	8.41	8.10	8.21
8	5.00	0.56	1.93	8.47	8.09	8.20
9	5.00	0.54	1.89	8.35	8.09	8.19
10	5.00	0.47	1.90	8.43	8.09	8.20
11	5.00	0.38	2.00	8.50	8.09	8.21
12	5.00	0.70	2.08	8.47	8.08	8.21
13	5.00	0.69	1.90	8.42	8.10	8.20
14	5.00	0.73	1.99	8.47	8.09	8.20
15	5.00	0.72	1.91	8.51	8.09	8.20
16	5.00	0.56	1.90	8.39	8.09	8.20
17	5.00	0.75	1.89	8.50	8.09	8.20
18	5.00	0.73	1.91	8.35	8.09	8.20
19	5.00	0.44	1.89	8.41	8.09	8.20
20	5.00	1.21	2.24	8.31	7.83	7.98
21	5.00	1.30	2.48	8.35	7.81	7.94
22	5.00	0.45	2.58	8.29	7.79	7.93
23	5.00	1.28	2.40	8.36	7.79	7.92
24	5.00	1.25	2.41	8.32	7.79	7.92
25	5.00	1.05	2.47	8.25	7.81	7.95
26	5.00	0.78	2.18	8.34	7.90	8.02
27	5.00	0.79	2.32	8.44	7.87	8.01
28	5.00	0.73	2.32	8.36	7.90	8.02
29	5.00	0.89	1.95	8.28	7.90	7.99
30	5.00	0.81	2.07	8.35	7.89	8.01
31	5.00	0.74	1.95	8.38	7.91	8.03
Total						
Average	5.00	0.73	2.06	8.41	8.00	8.12
Maximum	5.00		2.58	8.65		8.23
Date	1-Jan		22-Jan	4-Jan		4-Jan
Minimum		0.13	1.83		7.79	7.92
Date		6-Jan	5-Jan		22-Jan	23-Jan

Notes:

Plant Quality Report

Month: January-16

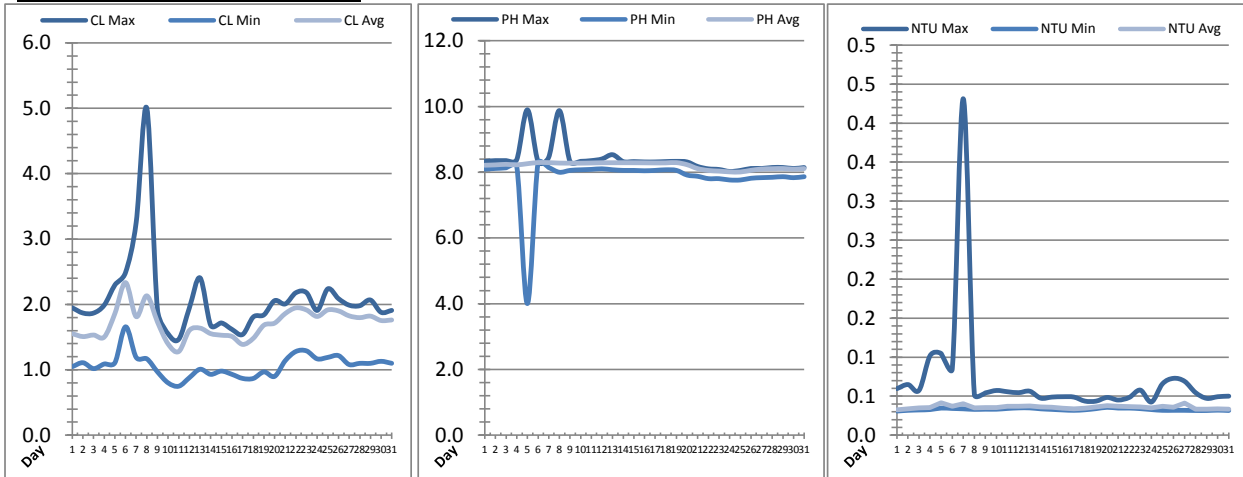


Date	Suction Header Chlorine Res.			Suction Header pH			Distribution CT Calc Total		
	AIT_7001_CL (ppm)			AIT_7001_PH (m)			REAL_CT_CALC_TOTAL (mg*ml/min)		
	Maximum	Minimum	Average	Maximum	Minimum	Average	Maximum	Minimum	Average
1	✓ 1.75	✓ 1.50	1.64	8.21	8.16	8.19	6657.02	0.00	251.05
2	✓ 1.72	✓ 1.50	1.62	8.21	8.11	8.18	6627.53	0.00	372.72
3	✓ 1.72	✓ 1.53	1.63	8.24	8.16	8.18	6315.09	0.00	146.20
4	✓ 1.82	✓ 1.51	1.64	8.24	8.16	8.20	10717.08	0.00	325.73
5	✓ 1.81	✓ 1.54	1.69	8.24	8.21	8.24	5823.18	0.00	260.92
6	✓ 1.87	✓ 1.56	1.73	8.24	8.19	8.22	6868.11	0.00	204.73
7	✓ 1.93	✓ 1.58	1.74	8.24	8.19	8.22	2190.52	0.00	158.80
8	✓ 1.77	✓ 1.45	1.67	8.21	8.18	8.21	4349.03	0.00	270.57
9	✓ 1.66	✓ 1.41	1.58	8.21	8.16	8.19	1907.06	0.00	155.50
10	✓ 1.66	✓ 1.34	1.56	8.21	8.15	8.20	7057.31	0.00	184.79
11	✓ 1.74	✓ 1.49	1.65	8.24	8.19	8.21	6687.23	0.00	239.30
12	✓ 1.76	✓ 1.46	1.66	8.21	8.16	8.21	2432.70	0.00	168.97
13	✓ 1.74	✓ 1.55	1.66	8.24	8.18	8.21	8357.81	0.00	235.10
14	✓ 1.77	✓ 1.59	1.66	8.21	8.19	8.21	5044.27	0.00	297.85
15	✓ 1.78	✓ 1.26	1.54	8.24	8.19	8.21	7932.32	0.00	315.14
16	✓ 1.32	✓ 1.13	1.26	8.21	8.16	8.19	7979.21	0.00	271.37
17	✓ 1.29	✓ 1.13	1.24	8.21	8.15	8.19	4940.61	0.00	141.90
18	✓ 1.50	✓ 1.18	1.33	8.21	8.17	8.19	2465.75	0.00	232.92
19	✓ 1.63	✓ 1.43	1.49	8.24	8.19	8.20	8262.02	0.00	252.31
20	✓ 1.80	✓ 1.31	1.58	8.21	8.04	8.13	9076.75	0.00	265.58
21	✓ 1.98	✓ 1.70	1.85	8.06	7.97	8.01	3315.12	0.00	170.88
22	✓ 2.08	✓ 1.88	1.98	8.00	7.94	7.95	11992.83	0.00	363.70
23	✓ 2.09	✓ 1.89	2.00	7.96	7.91	7.94	6610.55	0.00	393.53
24	✓ 2.05	✓ 1.85	1.95	7.94	7.89	7.91	5984.33	0.00	235.17
25	✓ 2.25	✓ 1.90	2.09	7.94	7.89	7.92	6377.86	0.00	414.64
26	✓ 2.28	✓ 2.01	2.13	8.00	7.91	7.96	3570.82	0.00	322.95
27	✓ 2.24	✓ 2.03	2.13	8.02	7.97	8.00	4785.72	0.00	254.73
28	✓ 2.31	✓ 2.14	2.20	8.08	8.00	8.01	6183.49	0.00	300.08
29	✓ 2.19	✓ 1.89	2.08	8.03	7.98	8.01	3855.29	0.00	287.59
30	✓ 1.99	✓ 1.80	1.88	8.00	7.97	7.99	10592.80	0.00	245.82
31	✓ 2.02	✓ 1.81	1.92	8.03	7.98	8.01	10760.05	0.00	324.91
Total									
Average	1.85	1.59	1.74	8.15	8.09	8.12	8.15	8.09	8.12
Maximum	2.31		2.20	8.24		8.24	8.24		8.24
Date	28-Jan		28-Jan	3-Jan		5-Jan	3-Jan		5-Jan
Minimum		1.13	1.24		7.89	7.91		7.89	7.91
Date		16-Jan	17-Jan		25-Jan	24-Jan		25-Jan	24-Jan

Notes:

Plant Quality Report

Month: **January-16**

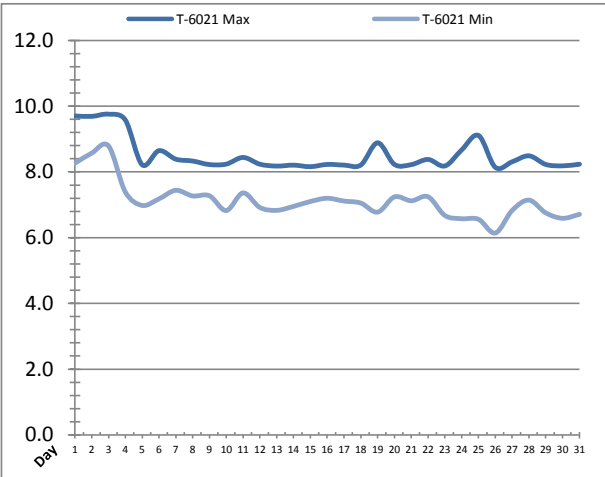
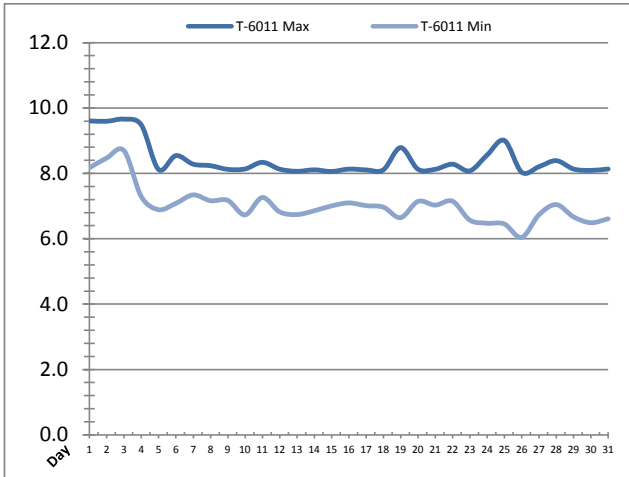


Date	Distribution Chlorine Header			Distribution pH			Distribution Turbidity		
	AIT_7004_CL (ppm)			AIT_7004_PH (mg/L)			AIT_7003 (mg/L)		
	Maximum	Minimum	Average	Maximum	Minimum	Average	Maximum	Minimum	Average
1	1.95	1.05	1.55	8.33	8.09	8.21	0.06	0.03	0.03
2	1.87	1.11	1.51	8.36	8.11	8.22	0.06	0.03	0.03
3	1.87	1.02	1.53	8.36	8.13	8.24	0.06	0.03	0.03
4	1.99	1.09	1.50	8.39	8.18	8.22	0.10	0.03	0.04
5	2.30	1.11	1.86	9.90	4.00	8.26	0.10	0.03	0.04
6	2.49	1.66	2.33	8.33	8.28	8.29	0.09	0.03	0.04
7	3.26	1.19	1.81	8.45	8.15	8.29	0.43	0.03	0.04
8	5.00	1.17	2.13	9.88	8.00	8.28	0.05	0.03	0.03
9	1.92	0.97	1.73	8.33	8.06	8.28	0.05	0.03	0.04
10	1.55	0.80	1.39	8.33	8.07	8.27	0.06	0.03	0.04
11	1.47	0.75	1.28	8.36	8.09	8.28	0.06	0.03	0.04
12	1.95	0.88	1.60	8.40	8.10	8.29	0.05	0.03	0.04
13	2.41	1.01	1.64	8.54	8.07	8.29	0.06	0.03	0.04
14	1.68	0.93	1.55	8.33	8.06	8.29	0.05	0.03	0.04
15	1.72	0.98	1.53	8.33	8.06	8.29	0.05	0.03	0.04
16	1.62	0.93	1.51	8.32	8.04	8.29	0.05	0.03	0.03
17	1.54	0.87	1.39	8.32	8.06	8.28	0.05	0.03	0.03
18	1.81	0.87	1.48	8.33	8.07	8.28	0.04	0.03	0.03
19	1.84	0.97	1.68	8.33	8.06	8.29	0.04	0.03	0.04
20	2.06	0.90	1.71	8.32	7.91	8.23	0.05	0.04	0.04
21	2.01	1.14	1.86	8.18	7.88	8.11	0.04	0.03	0.04
22	2.18	1.28	1.95	8.11	7.80	8.05	0.05	0.03	0.04
23	2.18	1.29	1.91	8.09	7.80	8.03	0.06	0.03	0.04
24	1.91	1.17	1.82	8.03	7.76	8.01	0.04	0.03	0.04
25	2.24	1.19	1.91	8.06	7.76	8.00	0.07	0.03	0.04
26	2.09	1.22	1.90	8.12	7.82	8.05	0.07	0.03	0.04
27	1.99	1.08	1.82	8.12	7.84	8.09	0.07	0.03	0.04
28	1.98	1.10	1.80	8.15	7.85	8.10	0.05	0.03	0.03
29	2.07	1.10	1.82	8.15	7.86	8.11	0.05	0.03	0.03
30	1.88	1.13	1.75	8.12	7.83	8.09	0.05	0.03	0.03
31	1.91	1.10	1.76	8.15	7.86	8.11	0.05	0.03	0.03
Total									
Average	2.09	1.07	1.71	8.37	7.86	8.20	0.1	0.0	0.0
Maximum	5.00		2.33	9.90		8.29	0.4		0.0
Date	8-Jan		6-Jan	5-Jan		6-Jan	7-Jan		5-Jan
Minimum		0.75	1.28		4.00	8.00		0.0	0.0
Date		11-Jan	11-Jan		5-Jan	25-Jan		1-Jan	1-Jan

Notes:

Raw Well/Treated Storage Report

Month: January-16

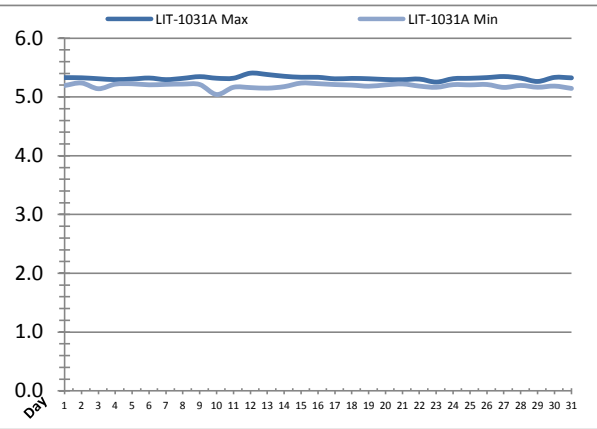
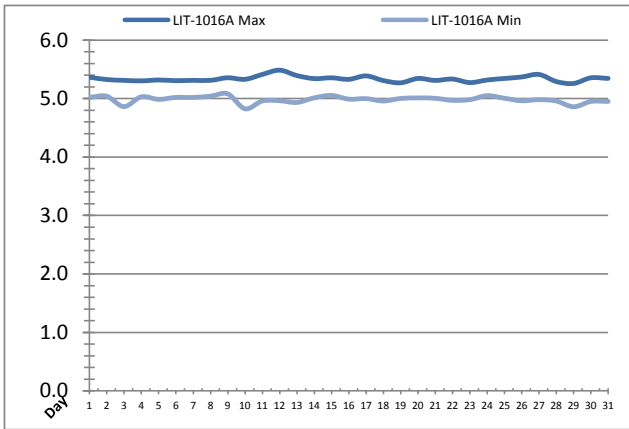


Date	Treated Water Storage Tank					
	T-6011 (m)			T-6021 (m)		
	Maximum	Minimum	Average	Maximum	Minimum	Average
1	9.6	8.2	9.0	9.7	8.3	9.1
2	9.6	8.5	9.2	9.7	8.6	9.3
3	9.7	8.7	9.3	9.8	8.8	9.4
4	9.5	7.3	8.4	9.6	7.4	8.5
5	8.1	6.9	7.6	8.2	7.0	7.7
6	8.5	7.1	7.9	8.6	7.2	8.0
7	8.3	7.3	7.9	8.4	7.4	8.0
8	8.2	7.2	7.7	8.3	7.3	7.8
9	8.1	7.2	7.8	8.2	7.3	7.9
10	8.1	6.7	7.5	8.2	6.8	7.6
11	8.3	7.3	7.8	8.4	7.4	7.9
12	8.1	6.8	7.7	8.2	6.9	7.8
13	8.1	6.7	7.7	8.2	6.8	7.8
14	8.1	6.9	7.6	8.2	7.0	7.7
15	8.1	7.0	7.6	8.2	7.1	7.7
16	8.1	7.1	7.7	8.2	7.2	7.8
17	8.1	7.0	7.7	8.2	7.1	7.8
18	8.1	7.0	7.7	8.2	7.1	7.8
19	8.8	6.6	7.7	8.9	6.8	7.8
20	8.1	7.1	7.7	8.2	7.2	7.8
21	8.1	7.0	7.7	8.2	7.1	7.8
22	8.3	7.2	7.7	8.4	7.2	7.8
23	8.1	6.6	7.4	8.2	6.7	7.5
24	8.6	6.5	7.4	8.7	6.6	7.5
25	9.0	6.5	7.8	9.1	6.6	7.9
26	8.0	6.0	7.1	8.1	6.1	7.2
27	8.2	6.7	7.6	8.3	6.8	7.7
28	8.4	7.0	7.7	8.5	7.1	7.8
29	8.1	6.7	7.4	8.2	6.8	7.5
30	8.1	6.5	7.7	8.2	6.6	7.8
31	8.1	6.6	7.7	8.2	6.7	7.8
Total						
Average	8.4	7.0	7.8	8.5	7.1	7.9
Maximum	9.7		9.3	9.8		9.4
Date	3-Jan		3-Jan	3-Jan		3-Jan
Minimum		6.0	7.1		6.1	7.2
Date		26-Jan	26-Jan		26-Jan	26-Jan

Notes:

Raw Well/Treated Storage Report

Month: January-16

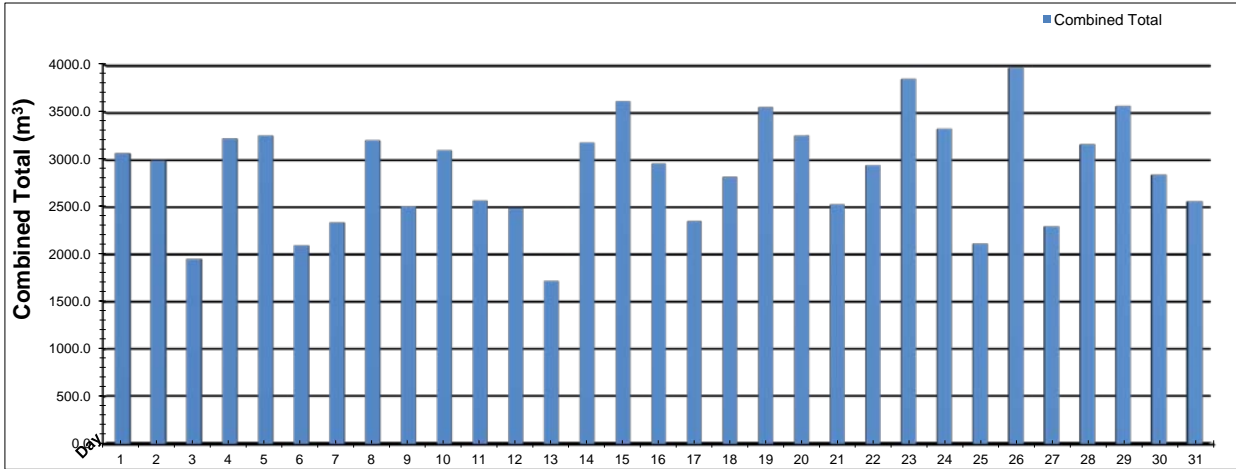


Date	Low Lift Intake Levels					
	Wet Well #1 (LIT-1016A) (m)			Wet Well #2 (LIT-1031A) (m)		
	Maximum	Minimum	Average	Maximum	Minimum	Average
1	5.4	5.0	5.2	5.3	5.2	5.3
2	5.3	5.0	5.2	5.3	5.2	5.3
3	5.3	4.9	5.1	5.3	5.1	5.3
4	5.3	5.0	5.1	5.3	5.2	5.2
5	5.3	5.0	5.2	5.3	5.2	5.3
6	5.3	5.0	5.2	5.3	5.2	5.3
7	5.3	5.0	5.2	5.3	5.2	5.3
8	5.3	5.0	5.2	5.3	5.2	5.3
9	5.4	5.1	5.2	5.3	5.2	5.3
10	5.3	4.8	5.1	5.3	5.0	5.2
11	5.4	5.0	5.2	5.3	5.2	5.3
12	5.5	5.0	5.2	5.4	5.2	5.3
13	5.4	4.9	5.2	5.4	5.2	5.3
14	5.3	5.0	5.2	5.4	5.2	5.3
15	5.4	5.1	5.2	5.3	5.2	5.3
16	5.3	5.0	5.2	5.3	5.2	5.3
17	5.4	5.0	5.2	5.3	5.2	5.3
18	5.3	5.0	5.1	5.3	5.2	5.3
19	5.3	5.0	5.1	5.3	5.2	5.2
20	5.3	5.0	5.2	5.3	5.2	5.3
21	5.3	5.0	5.2	5.3	5.2	5.3
22	5.3	5.0	5.1	5.3	5.2	5.2
23	5.3	5.0	5.1	5.3	5.2	5.2
24	5.3	5.0	5.2	5.3	5.2	5.3
25	5.3	5.0	5.2	5.3	5.2	5.3
26	5.4	5.0	5.2	5.3	5.2	5.3
27	5.4	5.0	5.2	5.3	5.2	5.3
28	5.3	5.0	5.2	5.3	5.2	5.3
29	5.3	4.9	5.1	5.3	5.2	5.2
30	5.4	5.0	5.2	5.3	5.2	5.3
31	5.3	5.0	5.1	5.3	5.1	5.3
Total						
Average	5.3	5.0	5.2	5.3	5.2	5.3
Maximum	5.5		5.2	5.4		5.3
Date	12-Jan		13-Jan	12-Jan		12-Jan
Minimum		4.8	5.1		5.0	5.2
Date		10-Jan	29-Jan		10-Jan	23-Jan

Notes:

High Lift Monthly Report

Month: January-16

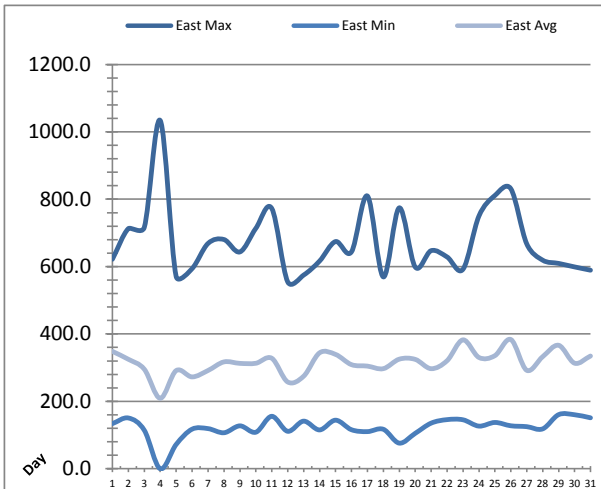
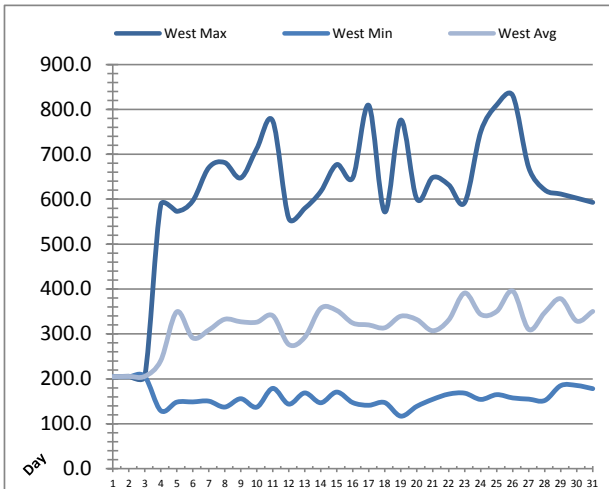


Date	Distribution Flow					
	FIT_7052 (East)		FIT_7062 (West)		Combined	
	(m³) Total	(L/s) Peak	(m³) Total	(L/s) Peak	(m³) Total	(L/s) Peak
1	10.3	18.5	3056.8	85.7	3067.2	86.3
2	3.7	0.0	2985.9	87.2	2989.7	87.2
3	0.8	0.0	1953.8	84.6	1954.6	84.6
4	0.4	0.0	3222.5	80.7	3222.9	80.7
5	0.6	0.0	3253.9	82.9	3254.5	82.9
6	0.4	0.0	2092.0	81.3	2092.4	81.3
7	0.9	0.0	2338.4	84.6	2339.3	84.6
8	132.6	32.8	3073.0	83.1	3205.6	83.1
9	0.8	0.0	2507.9	83.8	2508.7	83.8
10	0.5	0.0	3098.2	85.0	3098.7	85.0
11	0.6	0.0	2570.1	84.9	2570.6	84.9
12	0.6	0.0	2489.3	83.9	2489.8	83.9
13	559.6	33.5	1162.7	80.5	1722.2	80.5
14	0.4	0.0	3178.7	83.5	3179.1	83.5
15	640.5	41.7	2974.6	84.7	3615.1	84.7
16	925.3	35.0	2036.9	80.9	2962.2	89.4
17	662.1	45.9	1690.3	81.3	2352.4	88.4
18	751.6	33.5	2067.9	84.9	2819.6	84.9
19	241.2	33.2	3314.4	82.5	3555.6	91.1
20	387.9	46.0	2866.6	85.1	3254.5	89.2
21	591.6	35.4	1939.6	84.3	2531.2	88.0
22	714.1	36.1	2228.2	80.6	2942.3	89.1
23	809.9	43.7	3041.5	84.3	3851.4	87.9
24	730.2	35.1	2597.4	76.4	3327.6	88.2
25	645.7	34.1	1470.3	84.3	2116.0	84.3
26	601.3	41.0	3368.1	87.3	3969.4	125.6
27	377.2	33.1	1919.8	81.0	2297.1	84.6
28	274.2	34.8	2889.9	84.8	3164.1	84.8
29	424.2	34.1	3142.5	84.6	3566.7	84.6
30	986.1	45.9	1854.8	78.1	2840.9	92.3
31	674.9	34.3	1884.3	81.5	2559.3	85.3
Total	11150.1		78270.4		89420.5	
Average	359.7	23.5	2524.9	83.2	2884.5	86.9
Maximum	986.1	46.0	3368.1	87.3	3969.4	125.6
Date	30-Jan	20-Jan	26-Jan	26-Jan	26-Jan	26-Jan
Minimum	0.4		1162.7		1722.2	
Date	6-Jan		13-Jan		13-Jan	

Notes:

Low Lift Monthly Report

Month: January-16

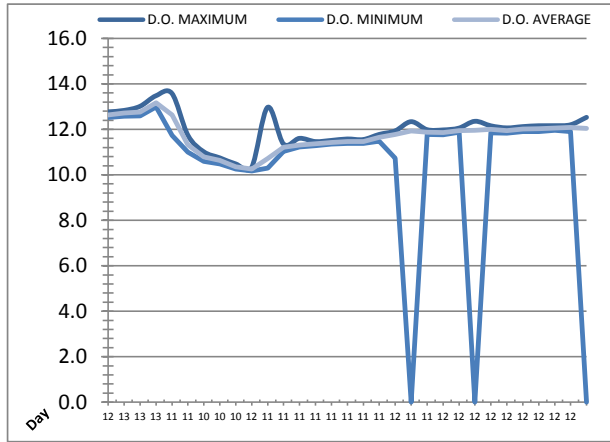
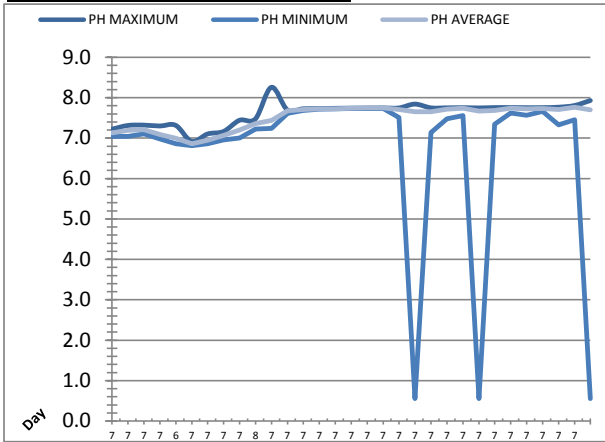


Date	West Train Header Pressure PIT_1018 (kPa)			East Train Header Pressure PIT_1028 (kPa)		
	Maximum	Minimum	Average	Maximum	Minimum	Average
1	204.9	204.3	204.7	621.8	133.6	348.4
2	206.0	204.5	205.1	712.8	150.3	325.0
3	206.0	204.7	205.3	716.2	114.1	295.6
4	587.4	129.0	240.3	1033.9	0.0	209.3
5	573.0	148.0	349.0	570.7	72.0	291.5
6	596.4	148.5	291.0	593.9	117.3	272.7
7	670.3	150.2	308.4	668.7	118.9	291.7
8	681.7	137.0	332.4	680.3	106.6	317.2
9	647.7	155.6	326.8	643.5	127.0	312.9
10	712.7	136.8	325.9	713.6	108.2	313.2
11	774.2	178.6	340.4	772.7	155.3	328.1
12	557.5	143.6	276.3	554.6	110.9	257.7
13	579.9	168.5	292.3	574.8	141.0	274.8
14	617.4	146.6	356.9	616.4	115.0	344.1
15	677.3	170.4	352.0	674.3	143.8	339.5
16	647.8	146.9	324.0	643.6	115.6	309.1
17	809.1	141.0	319.8	809.7	110.0	304.8
18	571.8	147.0	313.4	569.3	116.9	297.1
19	776.4	116.8	339.2	774.5	75.9	325.3
20	601.1	138.6	331.8	598.8	104.8	324.8
21	648.6	154.3	306.8	647.3	135.0	297.1
22	632.0	165.9	331.0	628.6	145.4	320.7
23	592.8	167.9	390.9	592.1	144.9	382.6
24	750.4	154.0	343.2	750.1	126.3	330.4
25	810.2	164.6	350.0	811.1	137.0	335.7
26	830.9	157.3	395.2	831.2	127.2	383.7
27	670.2	154.7	309.7	667.4	124.7	292.2
28	620.8	151.7	347.4	619.0	118.1	332.7
29	611.7	184.7	378.1	609.5	160.2	366.5
30	602.5	185.0	328.3	599.0	159.9	313.4
31	593.0	177.9	349.9	589.2	150.8	334.7
Total						
Average	614.9	159.2	318.2	673.8	121.5	315.2
Maximum	830.9		395.2	1033.9		383.7
Date	26-Jan		26-Jan	4-Jan		26-Jan
Minimum		116.8	204.7		0.0	209.3
Date		19-Jan	1-Jan		4-Jan	4-Jan

Notes:

Low Lift Monthly Report

Month: **January-16**

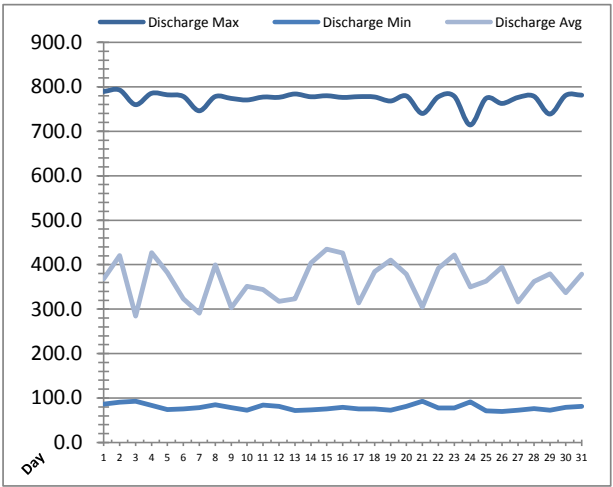
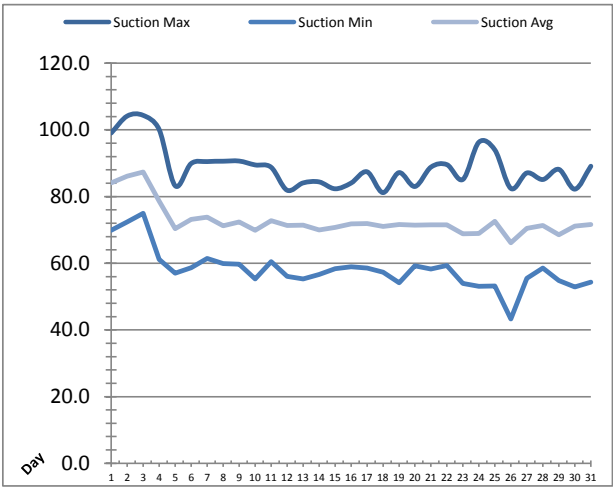


Raw Water Sample Line						
Date	AIT_1402_PH (pH)			AIT_1402_DO (mg/L)		
	Maximum	Minimum	Average	Maximum	Minimum	Average
1	7.2	7.0	7.1	12.8	12.5	12.6
2	7.3	7.0	7.2	12.8	12.6	12.7
3	7.3	7.1	7.2	13.0	12.6	12.8
4	7.3	7.0	7.1	13.5	13.0	13.2
5	7.3	6.9	7.0	13.6	11.7	12.6
6	6.9	6.8	6.9	11.7	11.0	11.3
7	7.1	6.9	7.0	11.0	10.6	10.8
8	7.2	7.0	7.1	10.7	10.5	10.6
9	7.4	7.0	7.2	10.5	10.3	10.3
10	7.5	7.2	7.4	10.3	10.2	10.3
11	8.3	7.2	7.4	13.0	10.3	10.7
12	7.7	7.6	7.7	11.4	11.0	11.2
13	7.7	7.7	7.7	11.6	11.2	11.3
14	7.7	7.7	7.7	11.5	11.3	11.4
15	7.7	7.7	7.7	11.5	11.3	11.4
16	7.7	7.7	7.7	11.6	11.4	11.5
17	7.7	7.7	7.7	11.5	11.4	11.5
18	7.7	7.7	7.7	11.8	11.5	11.6
19	7.7	7.5	7.7	11.9	10.7	11.8
20	7.8	0.6	7.7	12.3	0.0	11.9
21	7.7	7.1	7.7	12.0	11.8	11.9
22	7.7	7.5	7.7	12.0	11.8	11.9
23	7.8	7.6	7.7	12.1	11.9	11.9
24	7.7	0.6	7.7	12.4	0.0	12.0
25	7.8	7.3	7.7	12.2	11.8	12.0
26	7.8	7.6	7.7	12.1	11.8	11.9
27	7.8	7.6	7.7	12.1	11.9	12.0
28	7.8	7.7	7.7	12.2	11.9	12.0
29	7.8	7.3	7.7	12.2	12.0	12.1
30	7.8	7.5	7.8	12.2	11.9	12.1
31	7.9	0.6	7.7	12.5	0.0	12.0
Total						
Average	7.6	6.7	7.5	12.0	10.4	11.7
Maximum	8.3		7.8	13.6		13.2
Date	11-Jan		30-Jan	5-Jan		4-Jan
Minimum		0.6	6.9		0.0	10.3
Date		20-Jan	6-Jan		20-Jan	10-Jan

Notes:

High Lift Monthly Report

Month: **January-16**

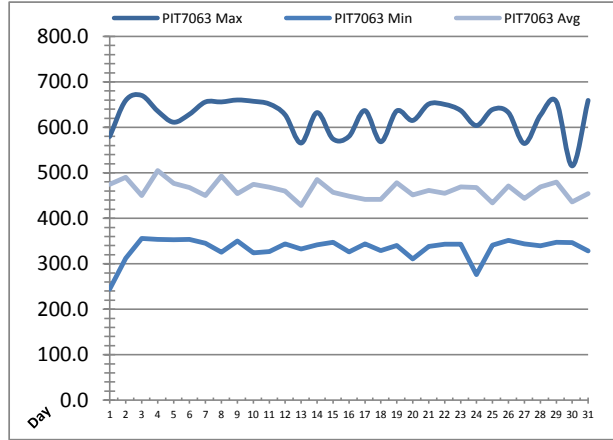
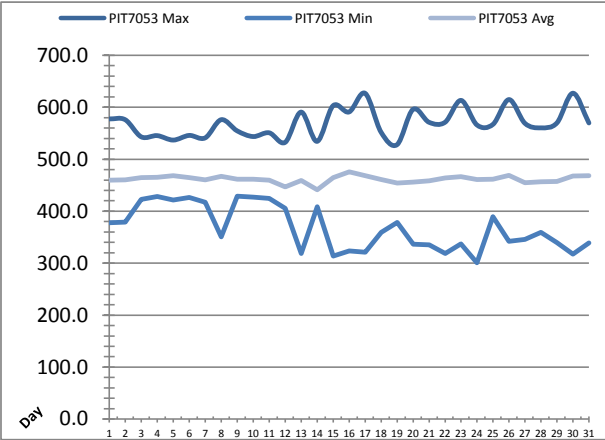


Date	Suction Header Pressure			Discharge Header Pressure		
	PIT_7002 (kPa)			PIT_7005 (kPa)		
	Maximum	Minimum	Average	Maximum	Minimum	Average
1	✓ 99.0	✓ 69.9	84.0	✓ 789.2	✓ 86.1	368.1
2	✓ 104.2	✓ 72.4	86.1	✓ 792.6	✓ 90.4	420.2
3	✓ 104.4	✓ 75.0	87.4	✓ 759.7	✓ 93.0	284.6
4	✓ 100.1	✓ 61.1	78.6	✓ 785.1	✓ 83.1	427.2
5	✓ 83.2	✓ 57.0	70.4	✓ 781.7	✓ 74.1	382.5
6	✓ 89.9	✓ 58.6	73.1	✓ 778.2	✓ 75.8	323.5
7	✓ 90.5	✓ 61.5	73.8	✓ 746.0	✓ 78.2	290.9
8	✓ 90.6	✓ 59.9	71.2	✓ 777.9	✓ 84.6	399.6
9	✓ 90.6	✓ 59.7	72.4	✓ 773.7	✓ 78.3	303.3
10	✓ 89.5	✓ 55.3	69.9	✓ 770.3	✓ 72.4	351.4
11	✓ 88.8	✓ 60.4	72.8	✓ 776.8	✓ 84.3	343.9
12	✓ 81.9	✓ 56.1	71.3	✓ 776.2	✓ 81.3	317.2
13	✓ 84.1	✓ 55.3	71.4	✓ 783.7	✓ 72.0	323.2
14	✓ 84.4	✓ 56.7	70.0	✓ 777.4	✓ 73.4	403.6
15	✓ 82.3	✓ 58.3	70.7	✓ 779.7	✓ 75.5	434.9
16	✓ 84.0	✓ 58.9	71.8	✓ 776.0	✓ 79.1	426.1
17	✓ 87.4	✓ 58.6	71.9	✓ 777.7	✓ 75.7	313.8
18	✓ 81.1	✓ 57.3	71.0	✓ 777.0	✓ 75.2	384.4
19	✓ 87.2	✓ 54.1	71.6	✓ 767.9	✓ 72.8	410.6
20	✓ 83.0	✓ 59.2	71.5	✓ 779.2	✓ 81.2	378.4
21	✓ 88.8	✓ 58.2	71.5	✓ 740.1	✓ 92.7	304.6
22	✓ 89.6	✓ 59.4	71.5	✓ 777.4	✓ 77.7	391.8
23	✓ 85.1	✓ 53.9	68.8	✓ 778.6	✓ 77.7	421.9
24	✓ 96.3	✓ 53.1	68.9	✓ 714.4	✓ 91.6	349.9
25	✓ 94.0	✓ 53.1	72.6	✓ 774.0	✓ 70.9	362.7
26	✓ 82.4	✗ 43.3	66.1	✓ 762.5	✓ 69.8	394.7
27	✓ 87.1	✓ 55.5	70.5	✓ 775.9	✓ 72.9	316.2
28	✓ 85.1	✓ 58.5	71.4	✓ 778.6	✓ 76.6	361.8
29	✓ 88.1	✓ 54.8	68.5	✓ 738.8	✓ 72.6	379.8
30	✓ 82.2	✓ 52.9	71.2	✓ 780.7	✓ 79.4	337.0
31	✓ 89.1	✓ 54.3	71.6	✓ 781.0	✓ 81.3	379.0
Total						
Average	88.8	58.1	72.7	771.9	79.0	364.1
Maximum	104.4		87.4	792.6		434.9
Date	3-Jan		3-Jan	2-Jan		15-Jan
Minimum		43.3	66.1		69.8	284.6
Date		26-Jan	26-Jan		26-Jan	3-Jan

Notes:

High Lift Monthly Report

Month: **January-16**

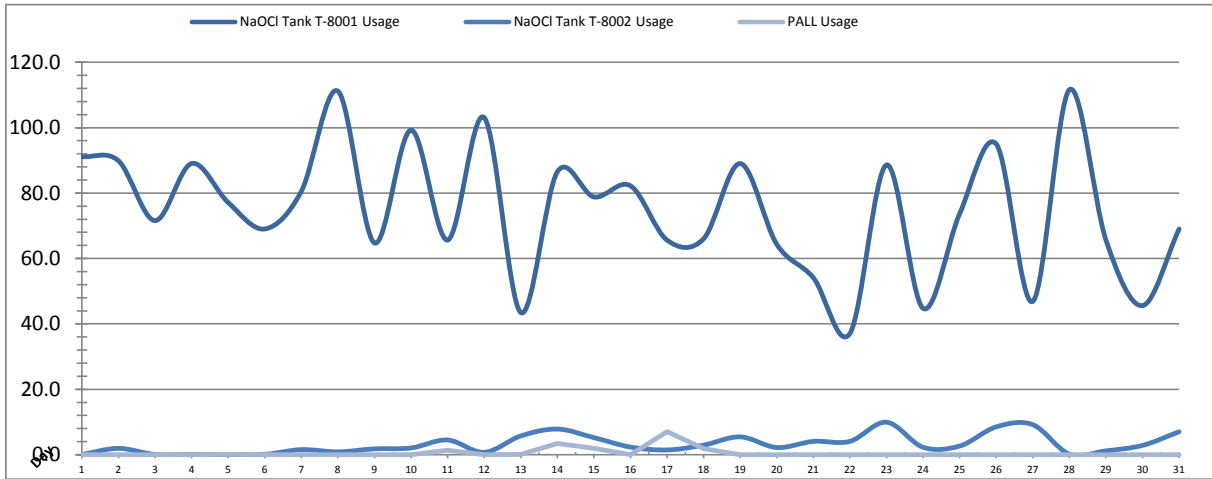


Date	Distribution Pressures					
	PIT_7053 (kPa)			PIT_7063 (kPa)		
	Maximum	Minimum	Average	Maximum	Minimum	Average
1	✓ 577.6	✓ 377.6	459.5	✓ 580.0	✓ 244.8	475.0
2	✓ 576.1	✓ 379.0	460.1	✓ 659.1	✓ 312.1	490.0
3	✓ 543.0	✓ 422.7	464.5	✓ 670.3	✓ 355.7	449.8
4	✓ 545.4	✓ 428.4	465.5	✓ 636.1	✓ 353.8	504.7
5	✓ 536.8	✓ 421.3	468.1	✓ 611.4	✓ 353.0	477.0
6	✓ 545.8	✓ 426.6	464.3	✓ 628.8	✓ 353.8	467.6
7	✓ 541.1	✓ 416.9	460.4	✓ 655.9	✓ 345.3	449.8
8	✓ 576.1	✓ 350.5	467.4	✓ 655.9	✓ 325.6	493.1
9	✓ 554.6	✓ 428.9	461.5	✓ 660.2	✓ 349.9	454.5
10	✓ 543.6	✓ 427.4	461.5	✓ 657.4	✓ 324.3	474.4
11	✓ 550.9	✓ 424.4	459.7	✓ 651.5	✓ 326.9	468.1
12	✓ 532.4	✓ 405.8	446.5	✓ 627.6	✓ 343.9	459.7
13	✓ 590.8	✓ 318.8	459.1	✓ 565.6	✓ 332.2	428.3
14	✓ 534.3	✓ 408.6	441.5	✓ 632.5	✓ 341.6	485.5
15	✓ 603.1	✓ 313.9	464.4	✓ 574.6	✓ 347.1	457.2
16	✓ 591.1	✓ 323.5	476.0	✓ 580.1	✓ 326.2	449.0
17	✓ 627.1	✓ 321.2	468.6	✓ 636.9	✓ 344.0	441.9
18	✓ 552.0	✓ 359.5	461.3	✓ 568.4	✓ 328.9	441.4
19	✓ 527.9	✓ 378.3	454.2	✓ 636.2	✓ 340.1	478.5
20	✓ 596.1	✓ 336.6	456.0	✓ 615.2	✓ 310.4	451.4
21	✓ 571.1	✓ 335.1	458.3	✓ 651.2	✓ 338.3	461.5
22	✓ 571.1	✓ 318.4	463.8	✓ 650.5	✓ 343.2	455.0
23	✓ 613.4	✓ 336.9	466.5	✓ 637.3	✓ 343.2	468.8
24	✓ 565.9	✓ 300.8	460.8	✓ 604.0	✓ 276.3	467.9
25	✓ 567.1	✓ 389.7	461.6	✓ 639.2	✓ 340.9	433.8
26	✓ 615.0	✓ 342.2	469.2	✓ 632.6	✓ 351.6	471.0
27	✓ 569.1	✓ 345.9	455.0	✓ 564.6	✓ 343.9	443.4
28	✓ 560.4	✓ 359.5	456.8	✓ 626.3	✓ 339.5	468.9
29	✓ 570.0	✓ 339.7	457.4	✓ 656.9	✓ 347.2	479.4
30	✓ 627.2	✓ 317.4	467.8	✓ 515.3	✓ 346.5	436.3
31	✓ 569.8	✓ 338.9	468.2	✓ 659.3	✓ 328.1	453.9
Total						
Average	569.2	367.6	461.5	623.9	334.2	462.5
Maximum	627.2		476.0	670.3		504.7
Date	30-Jan		16-Jan	3-Jan		4-Jan
Minimum		300.8	441.5		244.8	428.3
Date		24-Jan	14-Jan		1-Jan	13-Jan

Notes:

Chemical Usage Monthly Report

Month: **January-16**

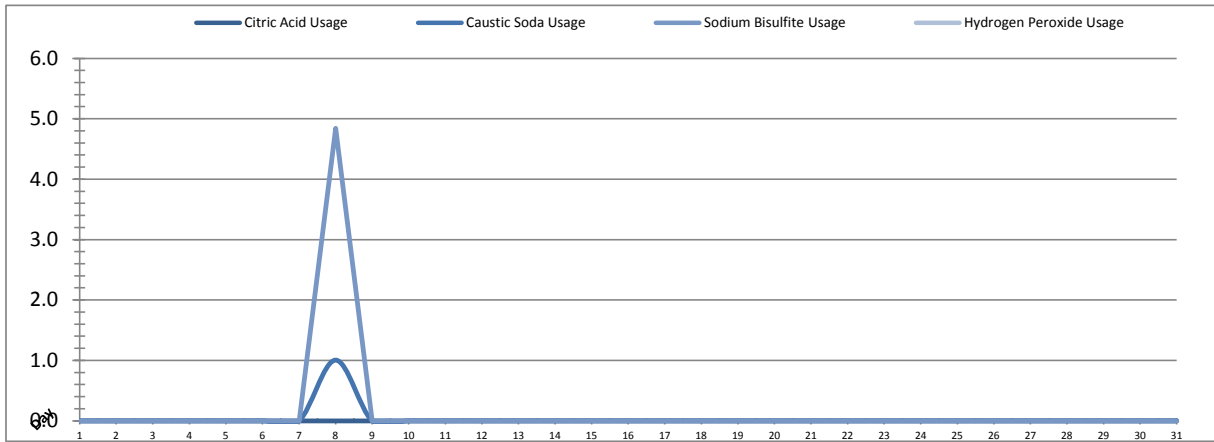


Date	PALL Usage	NaOCI Tank T-8001	NaOCI Tank T-8002
	PALL_HYPO_USAGE (L) Usage	LIT_8002 (Storage) (L) Usage	LIT_8004 (Day) (L) Usage
1	0.0	91.1	0.0
2	0.0	89.9	1.9
3	0.0	71.5	0.0
4	0.0	89.0	0.0
5	0.1	77.1	0.0
6	0.0	69.0	0.1
7	0.0	80.5	1.5
8	0.0	111.2	0.8
9	0.0	64.7	1.7
10	0.0	99.2	2.0
11	1.4	65.6	4.5
12	0.0	103.1	0.7
13	0.1	43.4	5.7
14	3.41	86.45	7.8
15	2.0	78.8	5.2
16	0.0	82.2	2.3
17	7.0	65.6	1.4
18	1.9	66.0	2.9
19	0.0	89.0	5.4
20	0.0	64.3	2.2
21	0.0	54.1	4.0
22	0.0	37.1	4.0
23	0.0	88.6	9.9
24	0.0	44.7	2.2
25	0.0	73.7	2.6
26	0.0	95.0	8.5
27	0.0	46.8	9.1
28	0.0	111.6	0.1
29	0.0	65.6	1.1
30	0.0	45.6	2.8
31	0.0	69.0	7.0
Total	15.9	2319.3	97.6
Average	0.5	74.8	3.1
Maximum	7.0	111.6	9.9
Date	17-Jan	28-Jan	23-Jan
Minimum	0.0	37.1	0.0
Date	1-Jan	22-Jan	1-Jan

Notes:	
Dosage (mg/L)=	Day Tank (L) x %conc. x 1000
	Membrane Flow (m3)
Chlorine Concentration:	12.0%

Chemical Usage Monthly Report

Month: January-16



Date	Citric Acid	Caustic Soda	Sodium Bisulfite	Hydrogen Peroxide		Membrane Flow (m ³)
	TAGNAME (L) Usage	TAGNAME (L) Usage	TAGNAME (L) Usage	TAGNAME (L) Usage	TAGNAME (mg/L) Dose	
1	0.0	0.0	0.0		0.0	3307.876
2	0.0	0.0	0.0		0.0	2969.820
3	0.0	0.0	0.0		0.0	2105.260
4	0.0	0.0	0.0		0.0	2872.228
5	0.0	0.0	0.0		0.0	3825.927
6	0.0	0.0	0.0		0.0	2142.586
7	0.0	0.0	0.0		0.0	2594.930
8	0.0	1.0	4.8		0.0	3151.300
9	0.0	0.0	0.0		0.0	3041.482
10	0.0	0.0	0.0		0.0	3186.729
11	0.0	0.0	0.0		0.0	3019.382
12	0.0	0.0	0.0		0.0	2158.233
13	0.0	0.0	0.0		0.0	2190.212
14	0.0	0.0	0.0		0.0	3821.915
15	0.0	0.0	0.0		0.0	3694.676
16	0.0	0.0	0.0		0.0	3143.946
17	0.0	0.0	0.0		0.0	3024.027
18	0.0	0.0	0.0		0.0	3008.169
19	0.0	0.0	0.0		0.0	3696.477
20	0.0	0.0	0.0		0.0	3356.008
21	0.0	0.0	0.0		0.0	2810.779
22	0.0	0.0	0.0		0.0	3267.760
23	0.0	0.0	0.0		0.0	4281.769
24	0.0	0.0	0.0		0.0	3153.754
25	0.0	0.0	0.0		0.0	3011.889
26	0.0	0.0	0.0		0.0	3830.201
27	0.0	0.0	0.0		0.0	2586.896
28	0.0	0.0	0.0		0.0	3378.900
29	0.0	0.0	0.0		0.0	4172.822
30	0.0	0.0	0.0		0.0	2583.731
31	0.0	0.0	0.0		0.0	3447.959
Total	0.0	1.0	4.8	0.0		96837.6
Average	0.0	0.0	0.2	#DIV/0!	0.0	3123.8
Maximum	0.0	1.0	4.8	0.0	0.0	4281.8
Date	21-Jan	8-Jan	8-Jan	#N/A	1-Jan	23-Jan
Minimum	0.0	0.0	0.0	0.0	0.0	2105.3
Date	1-Jan	1-Jan	1-Jan	#N/A	1-Jan	3-Jan

Notes:	
Dosage (mg/L)=	Day Tank (L) x %conc. x 1000
	Membrane Flow (m3)
Peroxide Concentration:	50.0%

Runtimes Report

Month: January-16

Date	Daily Gen-Set Runtimes		Daily UV Runtimes		Daily PALL Runtimes				
	LLPS	WTP	UV #1	UV #2	Air Compressor #1	Air Compressor #2	CIP Neutralization	CIP Drain	CIP Recirc
	(Hrs)	(Hrs)	(Hrs)	(Hrs)	(Hrs)	(Hrs)	(Hrs)	(Hrs)	(Hrs)
1	0.0	0.0	0.0	0.0	0.0	23.9	0.0	0.0	0.0
2	0.0	0.0	0.0	0.0	0.0	23.9	0.0	0.0	0.0
3	0.0	0.0	0.0	0.0	0.0	23.9	0.0	0.0	0.0
4	0.0	0.0	0.0	0.0	0.0	23.9	0.0	0.0	0.0
5	0.0	0.0	0.0	0.0	0.0	23.9	0.0	0.0	0.0
6	0.0	0.0	0.0	0.0	0.0	23.9	0.0	0.0	0.0
7	0.0	0.0	0.0	0.0	0.0	23.9	0.0	0.0	0.0
8	0.0	0.0	0.0	0.0	0.0	23.9	0.8	0.1	1.1
9	0.0	0.0	0.0	0.0	0.0	23.9	0.0	0.0	0.0
10	0.0	0.0	0.0	0.0	0.0	23.9	0.0	0.0	0.0
11	0.0	0.0	0.0	0.0	0.0	23.9	0.0	0.0	0.4
12	0.0	0.0	0.0	0.0	0.0	23.9	0.0	0.0	0.0
13	0.0	0.0	0.0	0.0	0.0	23.9	0.0	0.0	0.0
14	0.0	0.0	0.0	0.0	0.0	23.9	0.0	0.0	0.0
15	0.0	0.0	0.0	0.0	0.0	23.9	0.0	0.0	0.0
16	0.0	0.0	0.0	0.0	0.0	23.9	0.0	0.0	0.0
17	0.0	0.0	0.0	0.0	0.0	23.9	0.0	0.0	0.0
18	0.0	0.0	0.0	0.0	0.0	23.9	0.0	0.0	0.0
19	0.0	0.0	0.0	0.0	0.0	23.9	0.0	0.0	0.0
20	5.1	5.9	0.0	0.0	0.0	23.6	0.0	0.0	0.0
21	0.0	0.0	0.0	0.0	0.0	23.9	0.0	0.0	0.0
22	0.0	0.0	0.0	0.0	0.0	23.9	0.0	0.0	0.0
23	0.0	0.0	0.0	0.0	0.0	23.9	0.0	0.0	0.0
24	5.2	5.3	0.0	0.0	0.0	23.3	0.0	0.0	0.0
25	0.0	0.0	0.0	0.0	0.0	23.8	0.0	0.0	0.0
26	0.0	0.0	0.0	0.0	0.0	21.0	0.0	0.0	0.0
27	0.0	0.0	0.0	0.0	0.0	23.9	0.0	0.0	0.0
28	0.0	0.0	2.2	0.2	0.0	23.9	0.0	0.0	0.0
29	0.0	0.0	0.0	0.0	0.0	23.9	0.0	0.0	0.0
30	0.0	0.0	0.0	0.0	0.0	23.9	0.0	0.0	0.0
31	5.4	5.9	0.0	0.0	0.0	23.8	0.0	0.0	0.0
Total	15.7	17.1	2.2	0.2	0.0	737.1	0.8	0.1	1.5

Notes:

Runtimes Report

Month: January-16

Daily

Date	PALL Runtimes						Process Drain	
	RFR Pump #1 (Hrs)	RFR Pump #2 (Hrs)	RF Pump #1 (Hrs)	RF Pump #2 (Hrs)	XR Pump #1 (Hrs)	XR Pump #2 (Hrs)	PDP9010 Pump (Hrs)	PDP9020 Pump (Hrs)
1	0.0	0.0	0.6	0.7	8.0	6.3	1.8	2.5
2	0.0	0.0	0.7	0.7	6.3	6.6	1.7	2.3
3	0.0	0.0	0.5	0.4	4.5	4.7	2.1	2.7
4	0.0	0.0	0.6	0.7	6.3	6.2	1.5	2.1
5	0.0	0.0	0.9	0.8	9.2	7.2	1.7	2.3
6	0.0	0.0	0.5	0.5	3.8	5.5	1.9	2.5
7	0.0	0.0	0.5	0.5	4.7	6.5	1.9	2.4
8	0.9	0.6	0.3	0.3	6.7	6.7	3.2	3.9
9	0.0	0.0	0.6	0.7	7.2	5.8	1.7	2.4
10	0.0	0.0	0.8	0.7	6.4	7.1	1.8	2.3
11	1.7	1.8	0.7	0.7	6.6	5.9	1.8	2.1
12	2.2	2.2	0.4	0.5	4.2	4.0	1.7	2.2
13	2.3	2.2	0.6	0.6	4.2	4.2	1.6	2.2
14	3.8	4.1	0.8	1.1	7.5	7.8	1.7	2.2
15	3.7	3.9	1.0	0.8	7.0	8.0	1.6	2.1
16	3.3	3.0	0.8	0.8	7.1	5.5	1.6	2.2
17	3.2	3.0	0.7	0.8	6.0	5.9	1.8	2.4
18	2.9	3.0	0.7	0.6	5.8	6.4	1.5	2.1
19	3.7	3.9	1.0	1.0	7.5	7.5	1.6	2.1
20	2.5	2.2	0.9	0.8	7.0	6.8	1.5	2.8
21	2.8	2.9	0.7	0.6	4.9	6.5	1.7	2.2
22	3.6	3.7	1.0	1.0	7.1	5.9	1.6	2.1
23	1.9	1.5	0.9	0.9	8.8	9.2	1.6	2.0
24	0.0	0.0	0.7	0.6	6.6	6.2	1.6	2.2
25	0.0	0.2	0.6	0.7	6.4	6.2	1.5	2.2
26	0.0	0.0	0.9	0.8	7.2	6.9	1.7	2.1
27	0.7	0.9	0.5	0.6	5.1	5.5	1.6	2.1
28	3.4	3.7	0.9	0.9	6.3	5.9	1.3	1.8
29	4.3	3.9	1.0	1.0	8.4	8.1	1.3	1.5
30	2.5	2.6	0.6	0.6	4.4	4.8	1.3	1.7
31	3.6	3.5	0.9	0.9	5.0	4.9	1.6	1.6
Total	52.8	52.6	22.3	22.3	195.4	193.9	52.6	69.3

Notes:

Runtimes Report

Month: January-16

Daily

Date	Low Lift Pump Motor Runtimes				High Lift Pump Motor Runtimes			
	LLP1010 (Hrs)	LLP1020 (Hrs)	LLP1030 (Hrs)	LLP1040 (Hrs)	HLP7010 (Hrs)	HLP7020 (Hrs)	HLP7030 (Hrs)	HLP7040 (Hrs)
1	0.0	13.8	0.0	1.4	0.0	10.7	0.0	1.6
2	3.6	8.0	1.8	0.0	0.0	9.7	0.0	4.3
3	1.8	4.3	1.8	1.9	0.0	2.2	0.0	5.2
4	1.9	7.9	2.9	0.1	0.0	2.8	0.0	11.6
5	2.8	13.9	0.0	0.0	0.0	9.6	0.0	4.0
6	1.1	4.6	0.2	3.8	0.0	0.0	0.0	9.5
7	0.0	7.8	1.9	1.9	0.0	5.4	0.0	3.6
8	9.7	3.8	0.0	0.3	0.0	0.8	0.0	12.8
9	1.7	0.0	10.1	1.6	0.0	5.2	0.0	4.5
10	0.0	1.9	10.2	2.0	0.0	0.3	0.0	11.7
11	3.6	1.6	2.9	5.2	0.0	9.7	0.0	1.7
12	5.9	0.0	3.0	0.0	0.0	1.0	0.0	8.9
13	3.9	1.5	0.0	3.5	0.0	2.4	0.0	6.6
14	3.9	0.0	11.9	0.0	0.0	13.2	0.0	1.1
15	0.0	2.7	1.6	11.2	0.0	9.0	0.0	6.9
16	1.6	9.0	2.6	0.0	0.0	6.5	0.0	8.1
17	3.4	5.9	2.1	1.0	0.0	4.9	0.0	4.9
18	2.4	7.3	1.5	1.3	0.0	7.2	0.0	5.6
19	0.8	14.0	0.0	0.6	0.0	1.2	0.0	13.6
20	4.2	1.7	5.7	2.9	0.0	6.0	0.0	7.3
21	4.2	3.9	1.5	1.9	0.0	0.0	0.0	9.5
22	1.9	2.5	6.1	2.9	0.0	5.5	0.0	7.8
23	0.0	4.8	4.8	9.3	0.0	10.3	0.0	5.8
24	9.8	1.9	1.0	1.3	0.0	11.0	0.0	1.7
25	12.1	1.2	0.0	0.2	0.0	7.7	0.0	3.4
26	3.8	1.3	0.9	13.4	0.0	12.7	0.0	3.4
27	0.0	1.9	3.2	6.6	0.0	8.8	0.0	1.1
28	2.6	0.0	10.0	1.8	0.0	10.1	0.0	2.7
29	0.0	14.0	0.0	3.8	0.0	10.5	0.0	3.5
30	1.5	1.8	3.1	5.4	0.0	1.2	0.0	10.1
31	1.7	6.9	2.4	6.1	0.0	2.5	0.0	9.6
Total	89.9	149.9	93.2	91.4	0.0	188.1	0.0	192.1

Notes:

Plant Internal Flow Report

Month: January-16

Date	Settling Tank Level		Process Drain Tank		Settling Tank Flow		Potable Water Flow		Non-Potable Flow	
	T-9003 (m)		T-9001 (m)		FIT_9005		FIT_7082		FIT_7092	
	Maximum	Minimum	Maximum	Minimum	(m ³) Total	(L/s) Peak	(m ³) Total	(L/s) Peak	(m ³) Total	(L/s) Peak
1	2.2	1.3	0.8	0.4	123.6	15.7	0.0	1.1	0.0	0.0
2	2.2	1.3	0.8	0.4	123.6	15.7	0.0	0.0	0.0	0.0
3	2.2	1.3	0.8	0.4	97.8	15.7	0.0	0.0	0.0	0.0
4	2.2	1.4	0.9	0.4	95.4	15.7	0.2	1.2	0.4	1.4
5	2.2	1.4	0.8	0.4	145.7	15.7	0.1	1.3	0.0	0.0
6	2.2	1.4	0.8	0.4	92.3	15.7	0.2	1.2	0.0	0.0
7	2.2	1.3	0.8	0.4	121.8	15.7	0.0	1.3	0.0	0.0
8	2.2	1.3	2.2	0.4	81.4	15.7	0.1	1.3	27.0	17.5
9	2.2	1.4	0.8	0.4	204.0	15.7	0.0	0.0	0.0	0.0
10	2.2	1.4	0.8	0.4	70.8	15.7	0.0	0.0	0.0	0.0
11	2.2	1.3	1.6	0.4	90.1	15.7	0.1	1.2	5.3	23.3
12	2.2	1.3	0.8	0.4	50.7	10.3	0.2	1.4	0.0	0.0
13	2.2	1.4	0.8	0.4	9.1	9.2	0.1	1.3	0.0	0.0
14	2.2	1.4	2.1	0.4	51.1	11.9	0.0	1.1	0.0	0.0
15	2.2	1.3	1.2	0.4	33.0	12.6	0.4	1.5	0.1	1.2
16	2.2	1.4	0.8	0.4	19.2	15.7	0.0	0.0	0.0	0.0
17	2.2	1.3	0.8	0.4	13.0	11.5	0.0	0.0	0.0	0.0
18	2.2	1.4	0.9	0.4	12.0	9.1	0.1	1.3	0.2	23.1
19	2.2	1.3	0.9	0.4	94.2	15.7	0.0	1.2	0.2	1.4
20	2.2	1.4	1.5	0.4	237.3	15.7	0.1	1.3	0.0	0.0
21	2.2	1.3	0.8	0.4	29.3	15.7	0.1	1.2	0.3	1.4
22	2.2	1.4	1.0	0.4	58.2	15.7	0.4	1.3	0.0	0.5
23	2.2	1.3	1.0	0.4	126.9	15.7	0.0	0.0	0.0	0.0
24	2.2	1.4	1.6	0.4	144.1	15.7	0.0	1.1	0.0	0.0
25	2.2	1.3	1.0	0.4	159.0	15.7	0.1	1.2	0.0	0.0
26	2.2	1.4	1.1	0.4	206.1	15.7	0.0	1.2	0.0	0.0
27	2.2	1.3	1.1	0.4	90.0	15.7	0.6	1.4	0.0	0.0
28	2.2	1.3	0.8	0.4	24.5	13.9	3.2	5.0	0.0	0.0
29	2.2	1.3	0.8	0.4	23.4	15.7	0.7	2.4	0.0	0.0
30	2.2	1.3	0.8	0.4	25.7	15.7	0.0	0.0	0.0	0.0
31	2.2	1.3	1.3	0.4	55.8	15.7	0.0	1.3	0.0	0.0
Total					2709.0		6.8		33.4	
Average	2.2	1.3	1.0	0.4	87.4	14.7	0.2	1.1	1.1	2.3
Maximum	2.2		2.2		237.3		3.2		27.0	
Date	1-Jan		8-Jan		20-Jan		28-Jan		8-Jan	
Minimum		1.3		0.4		9.1		0.0		0.0
Date		8-Jan		8-Jan		18-Jan		2-Jan		1-Jan

Notes: