

Municipality of West Elgin - Tri County Water System

Goto:

Month:

Year:

Date is Set to: **November-16**

Limit	Low	High	
Raw Water Chlorine Residual:	0.00	5.00	mg/L
Pre-Strainer Chlorine Residual:	0.00	5.00	mg/L
UV Inlet Chlorine Residual:	0.00	5.00	mg/L
Post Treatment Chlorine Residual:	1.00	5.00	mg/L
Treated Chlorine Residual:	1.00	2.50	mg/L
Distribution Chlorine Residual:	1.00	2.50	mg/L
Limit		High	
WTP C of A		156.0	L/s
WTP Permit to Take Water		13500.0	m ³
Limit	Low	High	
System Pressure Limits:	50.0	1034.0	Kpa

Compliance Report

Low Lift Monthly Report

>>>

Membranes Monthly Report

>>>

UV System Monthly Report

>>>

Plant Quality Report

>>>

Raw Well/Treated Storage Report

>>>

High Lift Monthly Report

>>>

Operational Report

Low Lift Monthly Report

>>>

High Lift Monthly Report

>>>

Chemical Usage Monthly Report

>>>

Runtimes Report

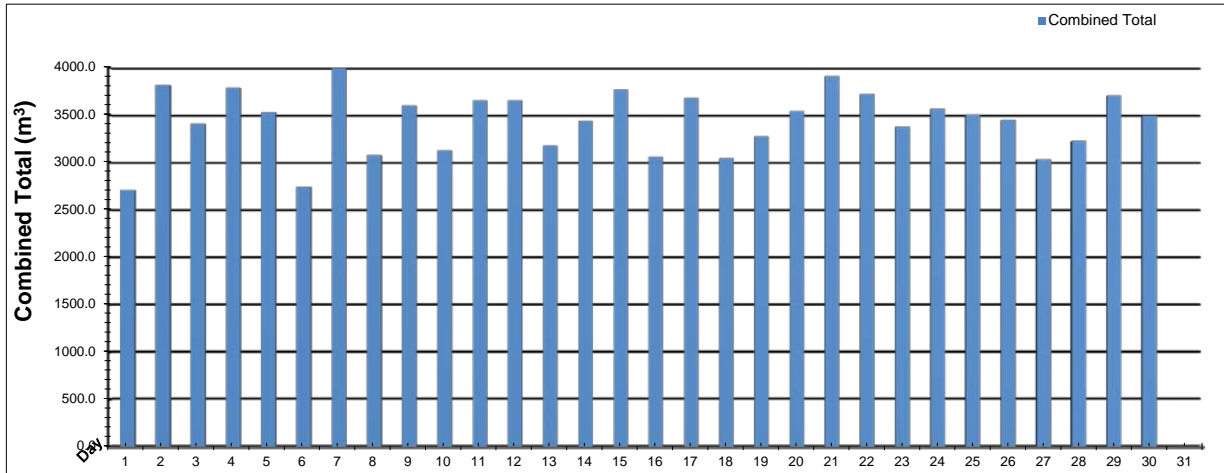
>>>

Plant Internal Flow Report

>>>

Low Lift Monthly Report

Month: **November-16**

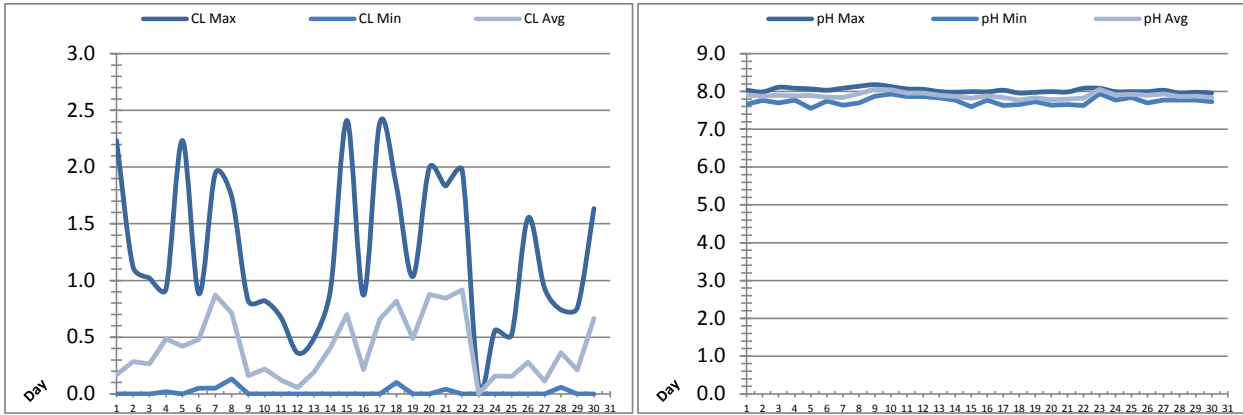


Date	Combined Total (m³)	West Train FIT-1017 (m³)	West Peak Flow FIT-1017 (L/s)	East Train FIT-1027 (m³)	East Peak Flow FIT-1027 (L/s)	Combined Peak Flow (L/s)
1	✓ 2709.8	2709.8	87.7	0.0	0.0	✓ 87.7
2	✓ 3817.5	3817.5	104.6	0.0	0.0	✓ 104.6
3	✓ 3406.5	3406.5	87.4	0.0	0.0	✓ 87.4
4	✓ 3785.7	3785.7	89.1	0.0	0.0	✓ 89.1
5	✓ 3529.6	3529.6	86.5	0.0	0.0	✓ 86.5
6	✓ 2743.2	2743.2	89.2	0.0	0.0	✓ 89.2
7	✓ 3996.7	3996.7	87.6	0.0	0.0	✓ 87.6
8	✓ 3078.9	3078.9	126.8	0.0	0.0	✓ 126.8
9	✓ 3598.1	1834.9	199.9	1763.2	85.7	✓ 89.0
10	✓ 3126.4	0.0	0.0	3126.4	86.5	✓ 86.5
11	✓ 3654.7	0.0	0.0	3654.7	85.0	✓ 85.0
12	✓ 3656.6	0.0	0.0	3656.6	87.1	✓ 87.1
13	✓ 3177.1	0.0	0.0	3177.1	86.7	✓ 86.7
14	✓ 3435.8	0.0	0.0	3435.8	88.9	✓ 88.9
15	✓ 3771.6	0.0	0.0	3771.6	86.7	✓ 86.7
16	✓ 3056.3	0.0	0.0	3056.3	87.4	✓ 87.4
17	✓ 3685.9	0.0	0.0	3685.9	87.7	✓ 87.7
18	✓ 3045.0	0.0	0.0	3045.0	86.5	✓ 86.5
19	✓ 3275.2	0.0	0.0	3275.2	87.1	✓ 87.1
20	✓ 3543.9	0.0	0.0	3543.9	86.3	✓ 86.3
21	✓ 3910.6	0.0	0.0	3910.6	87.1	✓ 87.1
22	✓ 3724.1	0.0	0.0	3724.1	85.3	✓ 85.3
23	✓ 3380.7	0.0	0.0	3380.7	85.7	✓ 85.7
24	✓ 3569.4	0.0	0.0	3569.4	85.2	✓ 85.2
25	✓ 3506.2	0.0	0.0	3506.2	86.8	✓ 86.8
26	✓ 3448.2	0.0	0.0	3448.2	84.9	✓ 84.9
27	✓ 3035.9	0.0	0.0	3035.9	86.4	✓ 86.4
28	✓ 3229.2	0.0	0.0	3229.2	87.2	✓ 87.2
29	✓ 3705.1	0.0	0.0	3705.1	87.8	✓ 87.8
30	✓ 3495.4	0.0	0.0	3495.4	82.2	✓ 82.2
31	✓ 0.0					
Total	103099.2	28902.8		74196.4		
Average	3436.6	963.4	32.0	2473.2	63.3	88.7
Maximum	3996.7	3996.7	199.85	3910.6	88.86	126.76
Date	7-Nov	7-Nov	9-Nov	21-Nov	14-Nov	8-Nov
Minimum	2709.8	0.0	0.00	0.0	0.00	82.18
Date	1-Nov	16-Nov	10-Nov	1-Nov	1-Nov	30-Nov

Notes:

Low Lift Monthly Report

Month: **November-16**

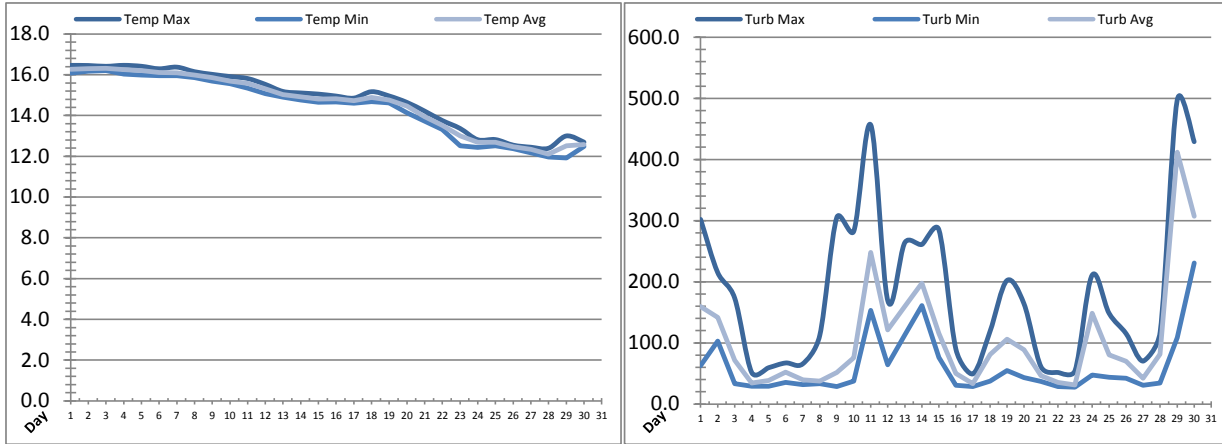


Date	Raw Water Chlorine Residual			Raw Water pH		
	AIT_1401_CL (mg/L)			AIT_1401_PH		
	Maximum	Minimum	Average	Maximum	Minimum	Average
1	2.24	0.00	0.17	8.03	7.66	7.91
2	1.12	0.00	0.28	7.99	7.77	7.87
3	1.02	0.00	0.27	8.11	7.70	7.90
4	0.92	0.02	0.49	8.09	7.78	7.88
5	2.24	0.00	0.42	8.07	7.55	7.89
6	0.88	0.05	0.48	8.03	7.75	7.85
7	1.94	0.05	0.87	8.09	7.64	7.84
8	1.74	0.13	0.71	8.14	7.70	7.94
9	0.82	0.00	0.16	8.18	7.87	8.06
10	0.82	0.00	0.22	8.13	7.93	8.05
11	0.67	0.00	0.12	8.07	7.86	7.96
12	0.36	0.00	0.06	8.06	7.86	7.96
13	0.49	0.00	0.19	8.00	7.83	7.90
14	0.92	0.00	0.41	7.98	7.77	7.86
15	2.41	0.00	0.70	8.00	7.59	7.83
16	0.87	0.00	0.22	7.99	7.77	7.89
17	2.39	0.00	0.66	8.03	7.63	7.84
18	1.84	0.10	0.82	7.96	7.65	7.77
19	1.03	0.00	0.49	7.98	7.73	7.83
20	1.99	0.00	0.88	8.00	7.64	7.78
21	1.83	0.04	0.84	7.99	7.65	7.80
22	1.97	0.00	0.92	8.08	7.63	7.83
23	0.08	0.00	0.00	8.08	7.94	8.05
24	0.56	0.00	0.16	8.00	7.77	7.91
25	0.52	0.00	0.15	8.00	7.84	7.93
26	1.55	0.00	0.28	8.00	7.70	7.90
27	0.93	0.00	0.11	8.03	7.77	7.94
28	0.74	0.06	0.36	7.96	7.77	7.86
29	0.76	0.00	0.21	7.98	7.77	7.88
30	1.63	0.00	0.67	7.96	7.73	7.84
Total						
Average	1.24	0.02	0.41	8.03	7.74	7.89
Maximum	2.41		0.92	8.18		8.06
Date	15-Nov		22-Nov	9-Nov		9-Nov
Minimum		0.00	0.00		7.55	7.77
Date		1-Nov	23-Nov		5-Nov	18-Nov

Notes:

Low Lift Monthly Report

Month: **November-16**

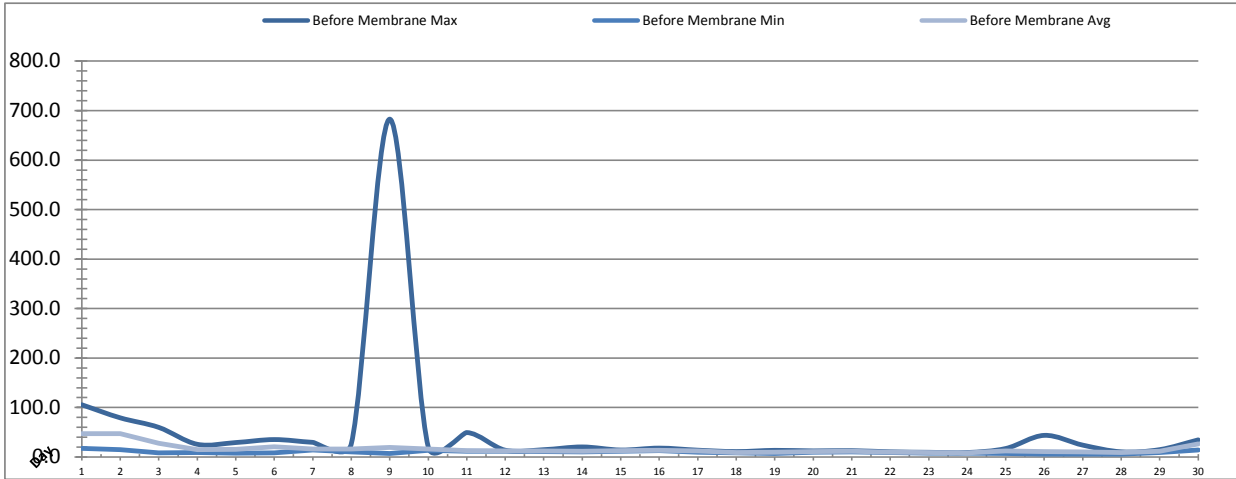


Date	Raw Water Temperature			Raw Water Turbidity		
	TIT_1403 (°C)			AIT_1404 (NTU)		
	Maximum	Minimum	Average	Maximum	Minimum	Average
1	16.5	16.1	16.3	301.97	62.46	159.40
2	16.5	16.2	16.3	215.26	102.79	141.92
3	16.4	16.2	16.3	173.38	33.08	71.52
4	16.5	16.0	16.3	51.70	29.18	34.17
5	16.4	16.0	16.2	59.50	29.16	38.80
6	16.3	16.0	16.1	67.21	35.40	52.17
7	16.4	16.0	16.1	65.72	31.56	39.40
8	16.2	15.9	16.0	112.20	33.08	37.69
9	16.0	15.7	15.9	305.07	28.44	51.74
10	15.9	15.6	15.7	282.75	37.70	75.72
11	15.8	15.3	15.6	456.26	153.16	248.15
12	15.5	15.1	15.3	168.70	64.07	121.06
13	15.2	14.9	15.0	264.11	113.64	160.08
14	15.1	14.8	14.9	261.01	160.95	197.95
15	15.1	14.7	14.8	284.99	76.42	115.68
16	15.0	14.7	14.8	89.65	30.72	50.03
17	14.9	14.6	14.7	49.37	28.39	33.54
18	15.2	14.7	14.9	118.39	37.70	81.06
19	15.0	14.6	14.8	202.07	54.76	106.00
20	14.6	14.1	14.5	164.06	43.08	88.76
21	14.2	13.7	13.9	60.97	36.90	46.51
22	13.8	13.3	13.5	51.62	28.35	35.45
23	13.4	12.5	13.0	54.67	27.50	31.37
24	12.8	12.4	12.7	210.54	47.64	148.58
25	12.8	12.5	12.7	148.48	43.83	80.42
26	12.5	12.4	12.5	115.19	42.27	69.91
27	12.4	12.2	12.3	70.25	30.68	42.36
28	12.4	12.0	12.1	117.48	34.55	81.62
29	13.0	11.9	12.5	496.44	108.93	411.95
30	12.7	12.5	12.6	429.06	230.74	307.09
Total						
Average	14.8	14.4	14.6	181.6	60.6	105.3
Maximum	16.5		16.3	496.4		411.9
Date	4-Nov		3-Nov	29-Nov		29-Nov
Minimum		11.9	12.1		27.5	31.4
Date		29-Nov	28-Nov		23-Nov	23-Nov

Notes:

Membranes Monthly Report

Month: November-16

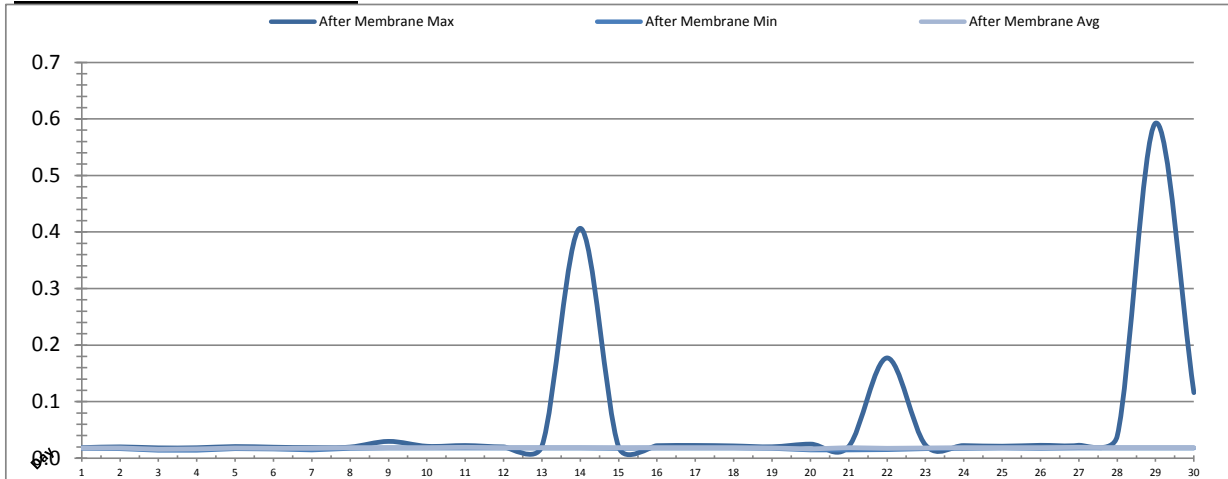


Date	Turbidity Before Membrane			Rack #1 Turbidity			Rack #2 Turbidity		
	PALL_FEED_AIT2006_Value NTU			RACK1_NTU_Value NTU			RACK2_NTU_Value NTU		
	Maximum	Minimum	Average	Maximum	Minimum	Average	Maximum	Minimum	Average
1	105.58	17.43	47.10	0.01	0.01	0.01	0.01	0.01	0.01
2	79.12	14.76	47.50	0.01	0.01	0.01	0.01	0.01	0.01
3	59.83	8.38	27.93	0.01	0.01	0.01	0.01	0.01	0.01
4	25.69	9.12	15.09	0.01	0.01	0.01	0.01	0.01	0.01
5	29.20	7.81	15.54	0.01	0.01	0.01	0.01	0.01	0.01
6	35.23	8.36	20.61	0.01	0.01	0.01	0.01	0.01	0.01
7	29.58	14.09	16.33	0.01	0.01	0.01	0.01	0.01	0.01
8	26.28	10.48	16.13	0.01	0.01	0.01	0.01	0.01	0.01
9	682.80	7.20	19.48	0.01	0.01	0.01	0.01	0.01	0.01
10	20.12	13.44	16.44	0.01	0.01	0.01	0.01	0.01	0.01
11	49.38	11.36	12.58	0.01	0.01	0.01	0.01	0.01	0.01
12	13.70	11.30	12.49	0.01	0.01	0.01	0.01	0.01	0.01
13	14.82	11.13	12.35	0.01	0.01	0.01	0.01	0.01	0.01
14	20.35	10.11	11.78	0.01	0.01	0.01	0.01	0.01	0.01
15	14.11	11.81	12.78	0.01	0.01	0.01	0.01	0.01	0.01
16	18.00	12.58	13.76	0.01	0.01	0.01	0.01	0.01	0.01
17	13.80	9.54	11.98	0.45	0.01	0.01	0.31	0.01	0.01
18	10.95	8.26	9.31	0.01	0.01	0.01	0.01	0.01	0.01
19	13.48	7.30	9.38	0.01	0.01	0.01	0.01	0.01	0.01
20	12.34	9.81	11.10	0.01	0.01	0.01	0.01	0.01	0.01
21	12.87	10.20	11.64	0.01	0.01	0.01	0.01	0.01	0.01
22	10.48	9.08	9.81	0.01	0.01	0.01	0.01	0.01	0.01
23	9.54	7.63	8.73	0.01	0.01	0.01	0.01	0.01	0.01
24	9.05	7.85	8.30	0.01	0.01	0.01	0.20	0.01	0.01
25	17.15	7.18	12.42	0.35	0.01	0.01	0.01	0.01	0.01
26	43.71	5.67	11.03	0.01	0.01	0.01	0.01	0.01	0.01
27	24.00	5.53	9.99	0.01	0.01	0.01	0.01	0.01	0.01
28	10.49	6.08	8.89	0.01	0.01	0.01	0.01	0.01	0.01
29	14.90	9.14	11.55	0.01	0.01	0.01	0.01	0.01	0.01
30	34.64	13.91	26.57	0.01	0.01	0.01	0.01	0.01	0.01
Total									
Average	48.7	9.9	16.0	0.04	0.01	0.01	0.03	0.01	0.01
Maximum	682.8		47.5	0.45		0.01	0.31		0.01
Date	9-Nov		2-Nov	17-Nov		25-Nov	17-Nov		17-Nov
Minimum		5.5	8.3		0.01	0.01		0.01	0.01
Date		27-Nov	24-Nov		1-Nov	7-Nov		7-Nov	21-Nov

Notes:
 17th, 24th, 25th: Turbidity all above 0.1ntu after EFMs.

Membranes Monthly Report

Month: **November-16**



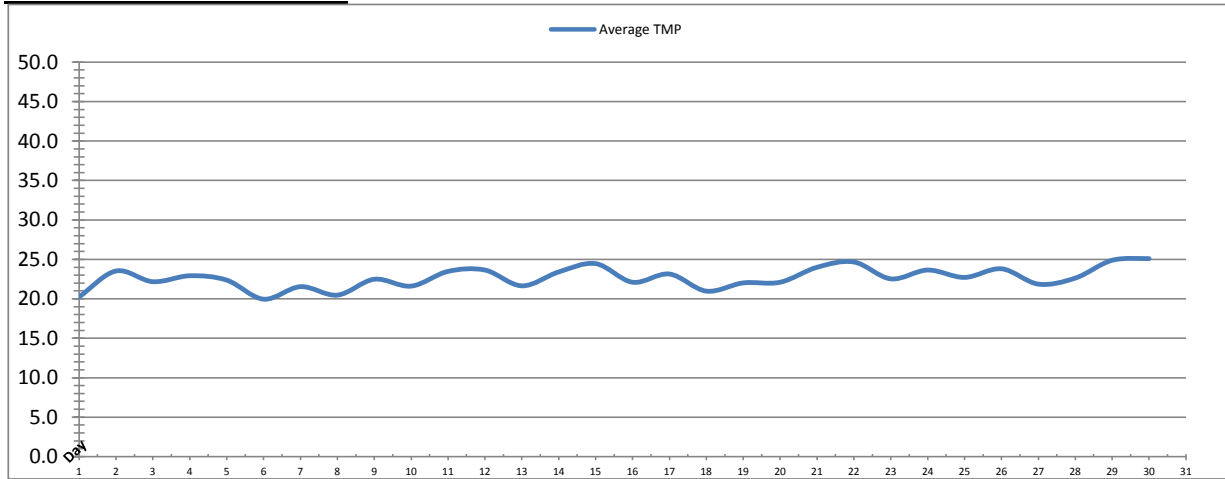
Date	Rack #3 Turbidity			Rack #4 Turbidity			Turbidity After Membranes		
	RACK3_NTU_Value			RACK4_NTU_Value			PALL_FILT_AIT5001_Value		
	Maximum	Minimum	Average	Maximum	Minimum	Average	Maximum	Minimum	Average
1	0.01	0.00	0.00	0.02	0.00	0.00	0.02	0.02	0.02
2	0.00	0.00	0.00	0.02	0.00	0.00	0.02	0.02	0.02
3	0.02	0.00	0.00	0.02	0.00	0.00	0.02	0.01	0.02
4	0.00	0.00	0.00	0.02	0.00	0.00	0.02	0.01	0.02
5	0.01	0.00	0.00	0.02	0.00	0.00	0.02	0.02	0.02
6	0.01	0.00	0.00	0.02	0.00	0.00	0.02	0.02	0.02
7	0.00	0.00	0.00	0.02	0.00	0.00	0.02	0.01	0.02
8	0.01	0.00	0.00	0.00	0.00	0.00	0.02	0.02	0.02
9	0.04	0.00	0.02	0.02	0.00	0.01	0.03	0.02	0.02
10	0.09	0.03	0.03	0.05	0.01	0.02	0.02	0.02	0.02
11	0.03	0.03	0.03	0.02	0.01	0.02	0.02	0.02	0.02
12	0.12	0.03	0.03	0.02	0.01	0.02	0.02	0.02	0.02
13	0.05	0.03	0.03	0.02	0.01	0.02	0.02	0.02	0.02
14	0.05	0.03	0.03	0.02	0.01	0.02	0.41	0.02	0.02
15	0.04	0.03	0.03	0.02	0.01	0.02	0.02	0.02	0.02
16	0.05	0.03	0.03	0.02	0.01	0.02	0.02	0.02	0.02
17	0.99	0.03	0.04	0.02	0.01	0.02	0.02	0.02	0.02
18	0.03	0.03	0.03	0.03	0.01	0.02	0.02	0.02	0.02
19	0.05	0.03	0.03	0.02	0.01	0.02	0.02	0.02	0.02
20	0.07	0.03	0.03	0.02	0.01	0.02	0.02	0.01	0.02
21	0.07	0.03	0.03	0.02	0.01	0.02	0.02	0.01	0.02
22	0.05	0.03	0.03	0.04	0.01	0.02	0.18	0.01	0.02
23	0.05	0.03	0.03	0.02	0.01	0.02	0.02	0.02	0.02
24	0.13	0.03	0.03	0.03	0.01	0.02	0.02	0.02	0.02
25	0.05	0.03	0.03	0.02	0.01	0.02	0.02	0.02	0.02
26	0.08	0.03	0.03	0.02	0.01	0.02	0.02	0.02	0.02
27	0.26	0.03	0.04	0.02	0.01	0.02	0.02	0.02	0.02
28	0.13	0.03	0.03	0.02	0.01	0.02	0.04	0.02	0.02
29	0.05	0.03	0.03	0.02	0.01	0.02	0.59	0.02	0.02
30	0.20	0.03	0.03	0.02	0.01	0.02	0.12	0.02	0.02
Total									
Average	0.1	0.0	0.0	0.0	0.0	0.0	0.1	0.0	0.0
Maximum	1.0		0.0	0.0		0.0	0.6		0.0
Date	17-Nov		27-Nov	10-Nov		11-Nov	29-Nov		11-Nov
Minimum		0.0	0.0		0.0	0.0		0.0	0.0
Date		1-Nov	7-Nov		1-Nov	8-Nov		3-Nov	3-Nov

Notes:

Rack 3: turbidities above 0.1ntu due to air bubbles and flow issues.
 Turbidity after membranes: high pressure issues caused high turbidity readings.

Membranes Monthly Report

Month: **November-16**

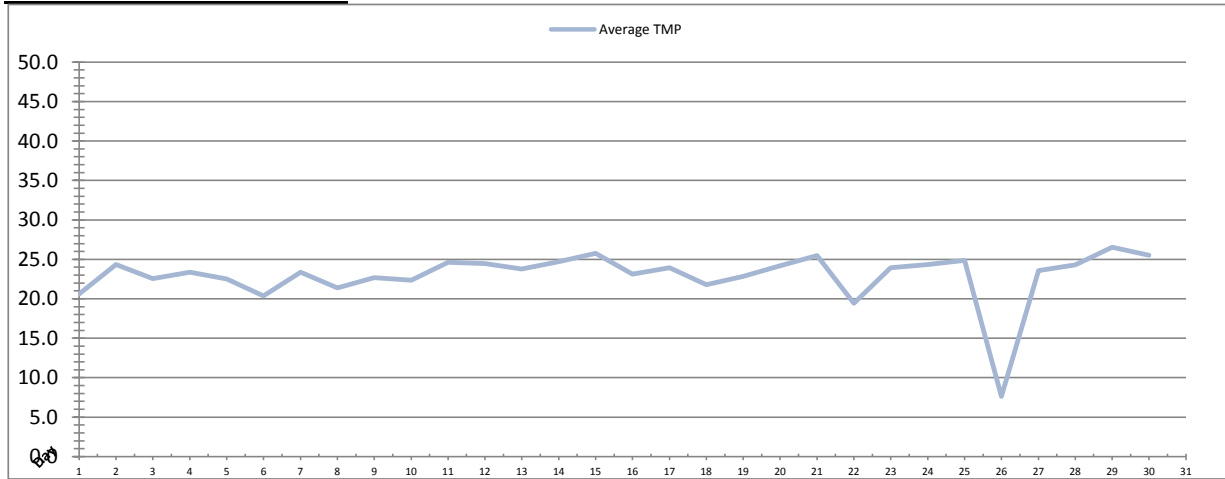


Date	Integrity Test Rack 1							
	Initial Pressure (kPa)	Final Pressure (kPa)	Test Duration (sec)	Change in Pressure (kPa)	UCL	Within UCL	Average TMP (kPa)	Max TMP (kPa)
1	194.2	193.1	300.0	1.2	2.0	✓ 2.0	20.2	43.3
2	194.5	193.2	300.0	1.3	2.0	✓ 2.0	23.5	60.6
3	194.9	193.5	300.0	1.3	2.0	✓ 2.0	22.2	43.4
4	194.6	193.4	300.0	1.1	2.0	✓ 2.0	22.9	64.3
5	194.1	193.0	300.0	1.1	2.0	✓ 2.0	22.4	61.3
6	194.4	193.2	300.0	1.1	2.0	✓ 2.0	20.0	43.2
7	194.3	193.7	300.0	0.5	2.0	✓ 2.0	21.5	42.4
8	194.7	193.4	300.0	1.2	2.0	✓ 2.0	20.5	64.6
9	194.6	193.4	300.0	1.1	2.0	✓ 2.0	22.5	44.4
10	194.5	193.4	300.0	1.1	2.0	✓ 2.0	21.6	74.5
11	194.5	193.3	300.0	1.2	2.0	✓ 2.0	23.5	47.9
12	194.4	193.4	300.0	1.0	2.0	✓ 2.0	23.6	78.0
13	194.5	194.0	300.0	0.5	2.0	✓ 2.0	21.6	63.7
14	194.7	193.4	300.0	1.3	2.0	✓ 2.0	23.4	78.1
15	194.7	193.4	300.0	1.2	2.0	✓ 2.0	24.5	49.7
16	194.7	193.6	300.0	1.2	2.0	✓ 2.0	22.1	65.0
17	194.4	193.2	300.0	1.1	2.0	✓ 2.0	23.1	78.1
18	194.8	193.6	300.0	1.3	2.0	✓ 2.0	21.0	79.6
19	194.9	193.6	300.0	1.3	2.0	✓ 2.0	22.0	75.2
20	194.9	194.2	300.0	0.6	2.0	✓ 2.0	22.1	81.6
21	194.6	193.8	300.0	0.8	2.0	✓ 2.0	24.0	48.4
22	194.9	193.4	300.0	1.5	2.0	✓ 2.0	24.7	76.1
23	195.2	194.4	300.0	0.8	2.0	✓ 2.0	22.5	77.6
24	194.7	193.9	300.0	0.8	2.0	✓ 2.0	23.6	73.1
25	195.3	194.6	300.0	0.8	2.0	✓ 2.0	22.7	60.1
26	194.9	194.1	300.0	0.9	2.0	✓ 2.0	23.8	59.7
27	194.9	194.2	300.0	0.7	2.0	✓ 2.0	21.9	90.6
28	195.2	194.5	300.0	0.6	2.0	✓ 2.0	22.6	78.0
29	194.7	193.4	300.0	1.3	2.0	✓ 2.0	24.9	62.7
30	194.6	193.6	300.0	1.0	2.0	✓ 2.0	25.1	151.2
Total								
Average	194.7	193.6	300.0	1.0	2.0	2.0	22.7	67.2
Maximum	195.3	194.6	300.0	1.5	2.0	2.0	25.1	151.2
Date	25-Nov	25-Nov	1-Nov	22-Nov	1-Nov	1-Nov	30-Nov	30-Nov
Minimum	194.1	193.0	300.0	0.5	2.0	2.0	20.0	42.4
Date	5-Nov	5-Nov	1-Nov	7-Nov	1-Nov	1-Nov	6-Nov	7-Nov

Notes:

Membranes Monthly Report

Month: **November-16**

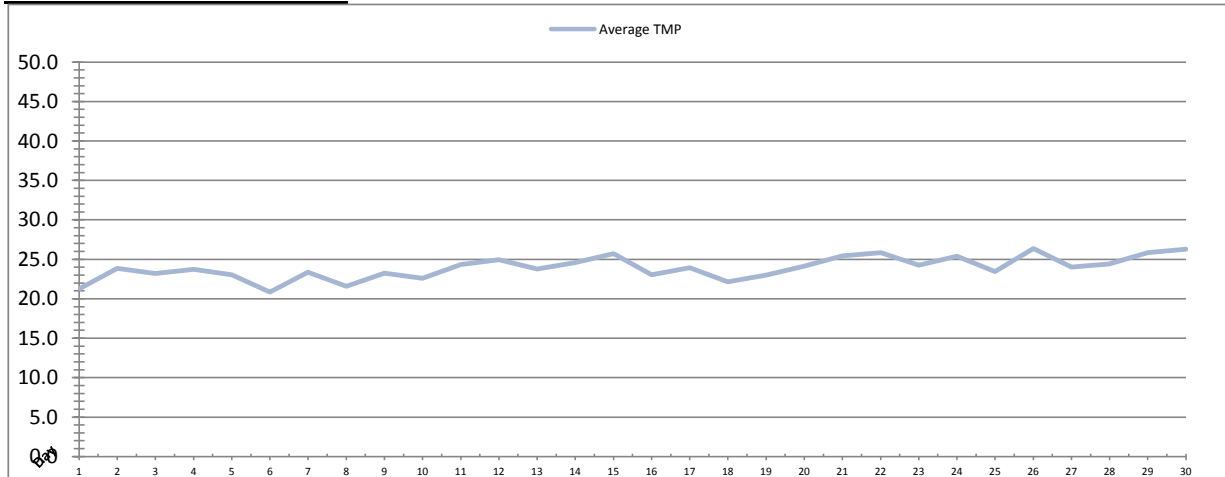


Integrity Test Rack 2									
Date	Initial Pressure (kPa)	Final Pressure (kPa)	Test Duration (sec)	Change in Pressure (kPa)	UCL	Within UCL	Average TMP (kPa)	Max TMP (kPa)	
1	200.6	199.7	300.0	1.0	2.0	✓ 2.0	20.6	43.4	
2	200.6	200.0	300.0	0.6	2.0	✓ 2.0	24.4	62.3	
3	200.9	199.9	300.0	1.0	2.0	✓ 2.0	22.5	61.6	
4	200.8	199.8	300.0	1.0	2.0	✓ 2.0	23.4	43.3	
5	200.7	199.9	300.0	0.8	2.0	✓ 2.0	22.5	44.6	
6	200.9	199.8	300.0	1.1	2.0	✓ 2.0	20.3	45.9	
7	200.7	199.9	300.0	0.8	2.0	✓ 2.0	23.4	44.6	
8	199.8	198.6	300.0	1.2	2.0	✓ 2.0	21.4	49.0	
9	200.9	200.0	300.0	0.9	2.0	✓ 2.0	22.7	64.9	
10	200.8	200.0	300.0	0.8	2.0	✓ 2.0	22.4	57.3	
11	200.2	199.0	300.0	1.2	2.0	✓ 2.0	24.6	72.8	
12	201.0	200.1	300.0	0.9	2.0	✓ 2.0	24.5	59.9	
13	200.8	199.9	300.0	0.9	2.0	✓ 2.0	23.8	80.0	
14	200.3	199.5	300.0	0.8	2.0	✓ 2.0	24.7	72.1	
15	201.0	200.1	300.0	0.9	2.0	✓ 2.0	25.7	50.3	
16	201.0	200.0	300.0	1.0	2.0	✓ 2.0	23.1	61.4	
17	200.9	200.0	300.0	0.9	2.0	✓ 2.0	23.9	68.3	
18	200.7	200.0	300.0	0.7	2.0	✓ 2.0	21.8	73.5	
19	200.5	199.6	300.0	0.8	2.0	✓ 2.0	22.8	53.5	
20	200.9	200.1	300.0	0.8	2.0	✓ 2.0	24.2	71.9	
21	201.0	200.0	300.0	1.0	2.0	✓ 2.0	25.5	58.4	
22	201.3	200.3	300.0	1.0	2.0	✓ 2.0	19.4	74.5	
23	200.8	199.8	300.0	1.1	2.0	✓ 2.0	23.9	76.8	
24	200.6	199.7	300.0	0.9	2.0	✓ 2.0	24.3	56.3	
25	200.7	199.9	300.0	0.8	2.0	✓ 2.0	24.9	67.5	
26	200.4	199.3	300.0	1.1	2.0	✓ 2.0	7.6	50.5	
27	201.0	200.1	300.0	0.9	2.0	✓ 2.0	23.6	77.0	
28	201.1	200.0	300.0	1.1	2.0	✓ 2.0	24.3	68.8	
29	199.9	198.6	300.0	1.3	2.0	✓ 2.0	26.5	62.1	
30	201.0	200.3	300.0	0.8	2.0	✓ 2.0	25.5	152.5	
Total									
Average	200.7	199.8	300.0	0.9	2.0	2.0	22.9	64.2	
Maximum	201.3	200.3	300.0	1.3	2.0	2.0	26.5	152.5	
Date	22-Nov	22-Nov	1-Nov	29-Nov	1-Nov	1-Nov	29-Nov	30-Nov	
Minimum	199.8	198.6	300.0	0.6	2.0	2.0	7.6	43.3	
Date	8-Nov	29-Nov	1-Nov	2-Nov	1-Nov	1-Nov	26-Nov	4-Nov	

Notes:

Membranes Monthly Report

Month: **November-16**

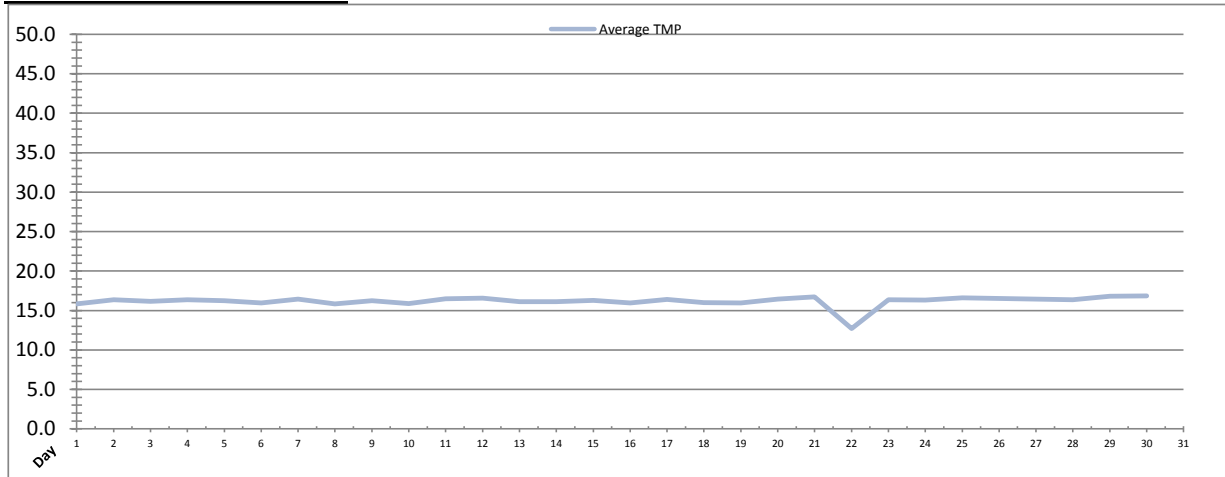


Integrity Test Rack 3									
Date	Initial Pressure (kPa)	Final Pressure (kPa)	Test Duration (sec)	Change in Pressure (kPa)	UCL	Within UCL	Average TMP (kPa)	Max TMP (kPa)	
1	190.2	188.8	300.0	1.4	2.0	✓ 2.0	21.2	44.4	
2	190.6	189.2	300.0	1.4	2.0	✓ 2.0	23.9	61.3	
3	190.2	188.9	300.0	1.3	2.0	✓ 2.0	23.2	46.9	
4	190.4	189.1	300.0	1.3	2.0	✓ 2.0	23.7	46.5	
5	191.1	189.8	300.0	1.3	2.0	✓ 2.0	23.0	44.1	
6	190.6	189.4	300.0	1.2	2.0	✓ 2.0	20.8	43.8	
7	190.9	189.8	300.0	1.2	2.0	✓ 2.0	23.4	47.5	
8	190.7	189.3	300.0	1.3	2.0	✓ 2.0	21.6	48.2	
9	191.1	189.8	300.0	1.3	2.0	✓ 2.0	23.2	67.3	
10	191.3	190.0	300.0	1.3	2.0	✓ 2.0	22.6	84.3	
11	191.1	189.9	300.0	1.2	2.0	✓ 2.0	24.3	63.5	
12	191.9	190.7	300.0	1.1	2.0	✓ 2.0	25.0	78.2	
13	191.4	190.2	300.0	1.2	2.0	✓ 2.0	23.8	86.5	
14	191.0	189.7	300.0	1.3	2.0	✓ 2.0	24.6	77.2	
15	191.1	189.9	300.0	1.2	2.0	✓ 2.0	25.7	64.9	
16	192.2	191.0	300.0	1.2	2.0	✓ 2.0	23.0	64.9	
17	191.1	189.9	300.0	1.3	2.0	✓ 2.0	23.9	80.9	
18	191.4	190.1	300.0	1.3	2.0	✓ 2.0	22.1	77.3	
19	191.8	190.6	300.0	1.2	2.0	✓ 2.0	23.0	74.8	
20	191.1	189.8	300.0	1.3	2.0	✓ 2.0	24.1	76.0	
21	191.7	190.4	300.0	1.2	2.0	✓ 2.0	25.4	58.4	
22	191.9	190.7	300.0	1.1	2.0	✓ 2.0	25.8	85.1	
23	191.8	190.6	300.0	1.2	2.0	✓ 2.0	24.3	66.4	
24	191.7	190.3	300.0	1.3	2.0	✓ 2.0	25.4	78.0	
25	191.5	190.1	300.0	1.4	2.0	✓ 2.0	23.4	80.2	
26	192.0	190.9	300.0	1.1	2.0	✓ 2.0	26.4	116.5	
27	192.2	191.0	300.0	1.1	2.0	✓ 2.0	24.0	105.3	
28	191.2	189.9	300.0	1.3	2.0	✓ 2.0	24.4	65.3	
29	191.5	190.0	300.0	1.4	2.0	✓ 2.0	25.8	62.4	
30	192.1	191.0	300.0	1.1	2.0	✓ 2.0	26.3	163.0	
Total									
Average	191.3	190.0	300.0	1.3	2.0	2.0	23.9	72.0	
Maximum	192.2	191.0	300.0	1.4	2.0	2.0	26.4	163.0	
Date	16-Nov	16-Nov	1-Nov	29-Nov	1-Nov	1-Nov	26-Nov	30-Nov	
Minimum	190.2	188.8	300.0	1.1	2.0	2.0	20.8	43.8	
Date	1-Nov	1-Nov	1-Nov	26-Nov	1-Nov	1-Nov	6-Nov	6-Nov	

Notes:

Membranes Monthly Report

Month: **November-16**



Integrity Test Rack 4									
Date	Initial Pressure (kPa)	Final Pressure (kPa)	Test Duration (sec)	Change in Pressure (kPa)	UCL	Within UCL	Average TMP (kPa)	Max TMP (kPa)	
1	193.9	192.5	300.0	1.3	2.0	✓ 2.0	15.9	30.5	
2	194.3	193.0	300.0	1.3	2.0	✓ 2.0	16.4	35.3	
3	194.7	193.3	300.0	1.3	2.0	✓ 2.0	16.2	31.2	
4	194.1	192.8	300.0	1.3	2.0	✓ 2.0	16.4	29.4	
5	193.7	192.5	300.0	1.2	2.0	✓ 2.0	16.2	31.7	
6	193.9	192.7	300.0	1.2	2.0	✓ 2.0	16.0	30.1	
7	194.4	193.2	300.0	1.2	2.0	✓ 2.0	16.4	33.7	
8	194.0	192.8	300.0	1.2	2.0	✓ 2.0	15.8	29.9	
9	193.8	192.5	300.0	1.2	2.0	✓ 2.0	16.3	30.2	
10	193.8	192.5	300.0	1.3	2.0	✓ 2.0	15.9	31.3	
11	194.1	192.9	300.0	1.2	2.0	✓ 2.0	16.5	29.7	
12	193.8	192.6	300.0	1.1	2.0	✓ 2.0	16.6	29.9	
13	194.5	193.3	300.0	1.2	2.0	✓ 2.0	16.1	31.8	
14	197.9	196.8	300.0	1.1	2.0	✓ 2.0	16.1	32.0	
15	196.4	195.4	300.0	1.0	2.0	✓ 2.0	16.3	33.8	
16	196.6	195.5	300.0	1.1	2.0	✓ 2.0	16.0	37.7	
17	196.5	195.5	300.0	1.0	2.0	✓ 2.0	16.4	33.1	
18	196.3	195.3	300.0	1.0	2.0	✓ 2.0	16.0	34.1	
19	196.3	195.4	300.0	0.9	2.0	✓ 2.0	15.9	34.1	
20	196.7	195.6	300.0	1.1	2.0	✓ 2.0	16.4	52.3	
21	196.1	195.0	300.0	1.1	2.0	✓ 2.0	16.7	33.8	
22	196.7	195.2	300.0	1.5	2.0	✓ 2.0	12.7	34.1	
23	196.4	195.3	300.0	1.1	2.0	✓ 2.0	16.3	36.3	
24	196.5	195.4	300.0	1.1	2.0	✓ 2.0	16.3	35.3	
25	196.5	195.4	300.0	1.1	2.0	✓ 2.0	16.6	31.9	
26	194.7	193.4	300.0	1.3	2.0	✓ 2.0	16.5	42.1	
27	194.7	193.4	300.0	1.3	2.0	✓ 2.0	16.4	55.9	
28	194.7	193.5	300.0	1.2	2.0	✓ 2.0	16.4	35.5	
29	194.8	193.5	300.0	1.3	2.0	✓ 2.0	16.8	36.4	
30	194.9	193.8	300.0	1.2	2.0	✓ 2.0	16.8	58.0	
Total									
Average	195.2	194.0	300.0	1.2	2.0	2.0	16.2	35.4	
Maximum	197.9	196.8	300.0	1.5	2.0	2.0	16.8	58.0	
Date	14-Nov	14-Nov	1-Nov	22-Nov	1-Nov	1-Nov	30-Nov	30-Nov	
Minimum	193.7	192.5	300.0	0.9	2.0	2.0	12.7	29.4	
Date	5-Nov	5-Nov	1-Nov	19-Nov	1-Nov	1-Nov	22-Nov	4-Nov	

Notes:

Membranes Monthly Report

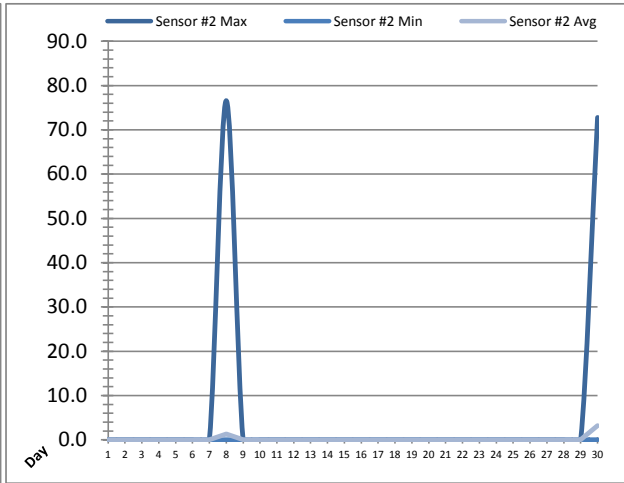
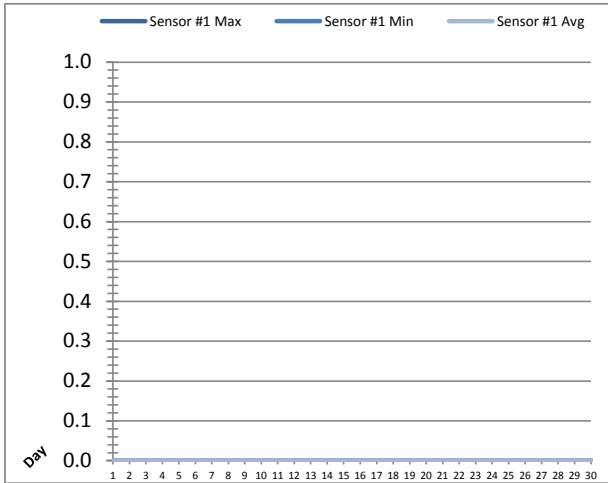
Month: November-16

Date	Membranes Monthly Performance							
	Rack 1 >0.1 NTU (Minutes)	Rack 1 Forward Flow (Minutes)	Rack 2 >0.1 NTU (Minutes)	Rack 2 Forward Flow (Minutes)	Rack 3 >0.1 NTU (Minutes)	Rack 3 Forward Flow (Minutes)	Rack 4 >0.1 NTU (Minutes)	Rack 4 Forward Flow (Minutes)
1	0.0	647.2	0.0	640.4	0.0	648.6	0.0	271.4
2	0.0	951.2	0.0	948.1	0.0	951.3	0.0	368.5
3	0.0	804.3	0.0	801.2	0.0	804.3	0.0	335.3
4	0.0	909.3	0.0	911.5	0.0	912.4	0.0	374.4
5	0.0	850.1	0.0	846.1	0.0	855.1	0.0	347.5
6	0.0	768.5	0.0	766.3	0.0	771.2	0.0	313.3
7	0.0	1135.0	0.0	1135.1	0.0	1136.6	0.0	460.1
8	0.0	715.5	0.0	715.5	0.0	717.3	0.0	310.2
9	0.0	834.2	0.0	831.5	0.0	836.5	0.0	353.3
10	0.0	724.3	0.0	718.5	0.0	725.2	0.0	297.3
11	0.0	849.3	0.0	849.3	0.0	852.4	0.0	337.2
12	0.0	839.3	0.0	833.4	2.3	840.3	0.0	347.5
13	0.0	731.1	0.0	734.1	0.0	740.1	0.0	302.1
14	0.0	837.2	0.0	830.4	0.0	837.1	0.0	350.4
15	0.0	968.0	0.0	969.4	0.0	971.1	0.0	379.3
16	0.0	782.1	0.0	778.5	0.0	780.3	0.0	302.5
17	9.5	868.5	10.4	875.2	8.1	850.3	0.0	384.2
18	0.0	782.4	0.0	783.2	0.0	786.2	0.0	318.3
19	0.0	855.5	0.0	846.5	0.0	850.1	0.0	345.2
20	0.0	947.3	0.0	948.2	0.0	958.1	0.0	380.2
21	0.0	1031.5	0.0	1034.1	0.0	1032.3	0.0	419.3
22	0.0	1001.5	0.0	955.2	0.0	1005.6	0.0	355.2
23	0.0	851.0	0.0	853.3	0.0	859.2	0.0	347.2
24	0.0	994.6	3.2	946.0	2.3	1003.5	0.0	381.5
25	12.1	906.6	0.0	962.2	0.0	932.5	0.0	389.3
26	0.0	915.3	0.0	776.4	0.0	921.1	0.0	328.5
27	0.0	837.5	0.0	838.5	53.0	843.5	0.0	338.1
28	0.0	900.4	0.0	903.2	1.4	908.1	0.0	379.3
29	0.0	1089.0	0.0	1088.2	0.0	1088.2	0.0	432.5
30	0.0	946.3	0.0	940.5	15.3	945.4	0.0	399.1
Total	21.6	26274.2	13.5	26060.1	82.4	26363.7	0.0	10648.3
Percent	0.1		0.1		0.3		0.0	
Maximum	12.1	1135.0	10.4	1135.1	53.0	1136.6	0.0	460.1
Date	25-Nov	7-Nov	17-Nov	7-Nov	27-Nov	7-Nov	1-Nov	7-Nov
Minimum	0.0	647.2	0.0	640.4	0.0	648.6	0.0	271.4
Date	1-Nov	1-Nov	1-Nov	1-Nov	1-Nov	1-Nov	1-Nov	1-Nov

Notes:
 Met filter performance requirement of 99% of the readings were less than 0.1ntu.

UV System Monthly Report

Month: **November-16**

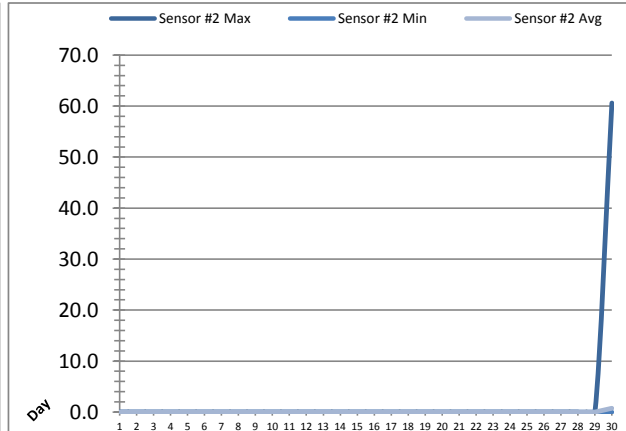
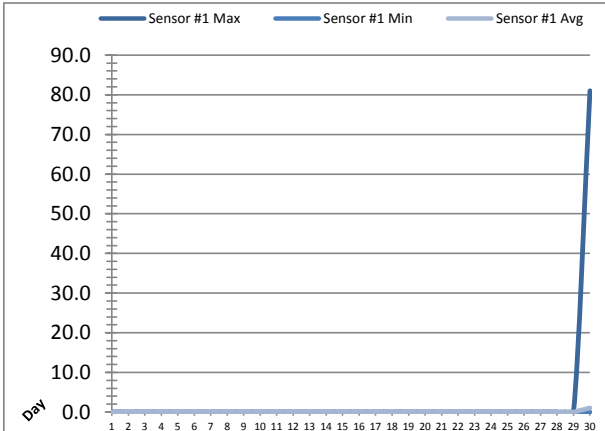


Date	UV Reactor 1					
	Intensity Sensor 1 (mW/cm ²)			Intensity Sensor 2 (mW/cm ²)		
	Maximum	Minimum	Average	Maximum	Minimum	Average
1	0.0	0.0	0.0	0.0	0.0	0.0
2	0.0	0.0	0.0	0.0	0.0	0.0
3	0.0	0.0	0.0	0.0	0.0	0.0
4	0.0	0.0	0.0	0.0	0.0	0.0
5	0.0	0.0	0.0	0.0	0.0	0.0
6	0.0	0.0	0.0	0.0	0.0	0.0
7	0.0	0.0	0.0	0.0	0.0	0.0
8	0.0	0.0	0.0	76.6	0.0	1.4
9	0.0	0.0	0.0	0.0	0.0	0.0
10	0.0	0.0	0.0	0.0	0.0	0.0
11	0.0	0.0	0.0	0.0	0.0	0.0
12	0.0	0.0	0.0	0.0	0.0	0.0
13	0.0	0.0	0.0	0.0	0.0	0.0
14	0.0	0.0	0.0	0.0	0.0	0.0
15	0.0	0.0	0.0	0.0	0.0	0.0
16	0.0	0.0	0.0	0.0	0.0	0.0
17	0.0	0.0	0.0	0.0	0.0	0.0
18	0.0	0.0	0.0	0.0	0.0	0.0
19	0.0	0.0	0.0	0.0	0.0	0.0
20	0.0	0.0	0.0	0.0	0.0	0.0
21	0.0	0.0	0.0	0.0	0.0	0.0
22	0.0	0.0	0.0	0.0	0.0	0.0
23	0.0	0.0	0.0	0.0	0.0	0.0
24	0.0	0.0	0.0	0.0	0.0	0.0
25	0.0	0.0	0.0	0.0	0.0	0.0
26	0.0	0.0	0.0	0.0	0.0	0.0
27	0.0	0.0	0.0	0.0	0.0	0.0
28	0.0	0.0	0.0	0.0	0.0	0.0
29	0.0	0.0	0.0	0.0	0.0	0.0
30	0.0	0.0	0.0	72.8	0.0	3.2
Total						
Average	0.0	0.0	0.0	5.0	0.0	0.2
Maximum	0.0		0.0	76.6		3.2
Date	1-Nov		1-Nov	8-Nov		30-Nov
Minimum		0.0	0.0		0.0	0.0
Date		1-Nov	1-Nov		1-Nov	1-Nov

Notes:

UV System Monthly Report

Month: **November-16**

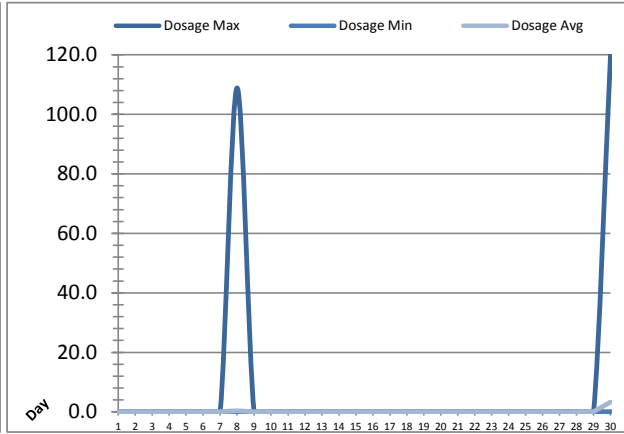
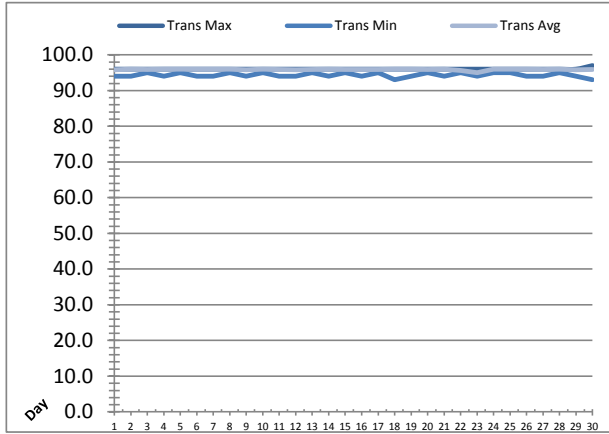


UV Reactor 2						
Date	Intensity Sensor 1 (mW/cm ²)			Intensity Sensor 2 (mW/cm ²)		
	Maximum	Minimum	Average	Maximum	Minimum	Average
1	0.0	0.0	0.0	0.0	0.0	0.0
2	0.0	0.0	0.0	0.0	0.0	0.0
3	0.0	0.0	0.0	0.0	0.0	0.0
4	0.0	0.0	0.0	0.0	0.0	0.0
5	0.0	0.0	0.0	0.0	0.0	0.0
6	0.0	0.0	0.0	0.0	0.0	0.0
7	0.0	0.0	0.0	0.0	0.0	0.0
8	0.0	0.0	0.0	0.0	0.0	0.0
9	0.0	0.0	0.0	0.0	0.0	0.0
10	0.0	0.0	0.0	0.0	0.0	0.0
11	0.0	0.0	0.0	0.0	0.0	0.0
12	0.0	0.0	0.0	0.0	0.0	0.0
13	0.0	0.0	0.0	0.0	0.0	0.0
14	0.0	0.0	0.0	0.0	0.0	0.0
15	0.0	0.0	0.0	0.0	0.0	0.0
16	0.0	0.0	0.0	0.0	0.0	0.0
17	0.0	0.0	0.0	0.0	0.0	0.0
18	0.0	0.0	0.0	0.0	0.0	0.0
19	0.0	0.0	0.0	0.0	0.0	0.0
20	0.0	0.0	0.0	0.0	0.0	0.0
21	0.0	0.0	0.0	0.0	0.0	0.0
22	0.0	0.0	0.0	0.0	0.0	0.0
23	0.0	0.0	0.0	0.0	0.0	0.0
24	0.0	0.0	0.0	0.0	0.0	0.0
25	0.0	0.0	0.0	0.0	0.0	0.0
26	0.0	0.0	0.0	0.0	0.0	0.0
27	0.0	0.0	0.0	0.0	0.0	0.0
28	0.0	0.0	0.0	0.0	0.0	0.0
29	0.0	0.0	0.0	0.0	0.0	0.0
30	81.0	0.0	1.1	60.6	0.0	0.7
Total						
Average	2.7	0.0	0.0	2.0	0.0	0.0
Maximum	81.0		1.1	60.6		0.7
Date	30-Nov		30-Nov	30-Nov		30-Nov
Minimum		0.0	0.0		0.0	0.0
Date		1-Nov	1-Nov		1-Nov	1-Nov

Notes:

UV System Monthly Report

Month: **November-16**

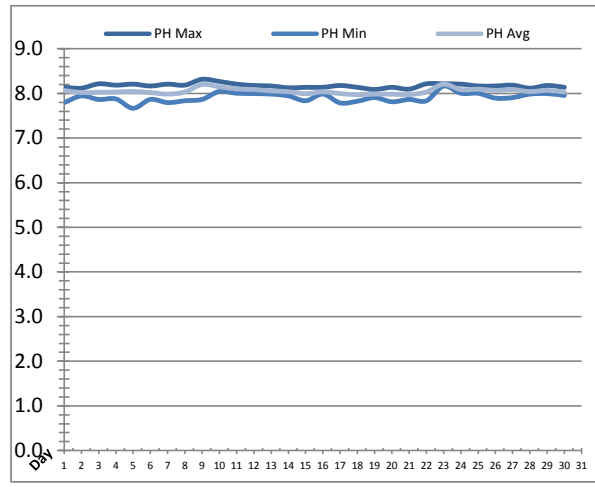
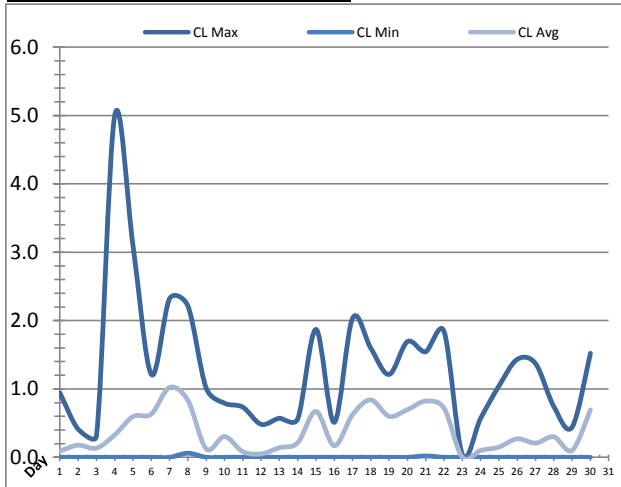


UV System							
Date	Transmittance (%)			Dosage (mJ/cm ²)			Inlet Flow (L/s)
	Maximum	Minimum	Average	Maximum	Minimum	Average	Maximum
1	96.00	94.00	95.79	0.0	0.0	0.0	84.0
2	96.00	94.00	95.95	0.0	0.0	0.0	115.3
3	96.00	95.00	95.92	0.0	0.0	0.0	84.5
4	96.00	94.00	95.99	0.0	0.0	0.0	87.7
5	96.00	95.00	96.00	0.0	0.0	0.0	84.8
6	96.00	94.00	95.99	0.0	0.0	0.0	85.5
7	96.00	94.00	96.00	0.0	0.0	0.0	89.7
8	96.00	95.00	95.99	108.9	0.0	0.3	93.4
9	96.00	94.00	95.81	0.0	0.0	0.0	88.7
10	96.00	95.00	95.96	0.0	0.0	0.0	92.1
11	96.00	94.00	95.89	0.0	0.0	0.0	92.4
12	96.00	94.00	95.85	0.0	0.0	0.0	90.7
13	96.00	95.00	95.94	0.0	0.0	0.0	90.5
14	96.00	94.00	95.97	0.0	0.0	0.0	103.3
15	96.00	95.00	95.92	0.0	0.0	0.0	99.5
16	96.00	94.00	95.90	0.0	0.0	0.0	93.7
17	96.00	95.00	95.90	0.0	0.0	0.0	87.3
18	96.00	93.00	95.98	0.0	0.0	0.0	88.7
19	96.00	94.00	95.97	0.0	0.0	0.0	87.5
20	96.00	95.00	95.93	0.0	0.0	0.0	87.4
21	96.00	94.00	95.99	0.0	0.0	0.0	99.4
22	96.00	95.00	95.65	0.0	0.0	0.0	97.3
23	96.00	94.00	95.02	0.0	0.0	0.0	87.8
24	96.00	95.00	95.96	0.0	0.0	0.0	108.9
25	96.00	95.00	95.99	0.0	0.0	0.0	91.9
26	96.00	94.00	95.99	0.0	0.0	0.0	86.1
27	96.00	94.00	95.91	0.0	0.0	0.0	96.0
28	96.00	95.00	95.99	0.0	0.0	0.0	86.3
29	96.00	94.00	95.84	0.0	0.0	0.0	89.7
30	97.00	93.00	95.95	120.0	0.0	3.3	101.4
Total							
Average	96.03	94.33	95.90	7.6	0.0	0.1	92.4
Maximum	97.00		96.00	120.0		3.3	115.3
Date	30-Nov		7-Nov	30-Nov		30-Nov	2-Nov
Minimum		93.00	95.02		0.0	0.0	
Date		18-Nov	23-Nov		1-Nov	1-Nov	

Notes:

Plant Quality Report

Month: **November-16**

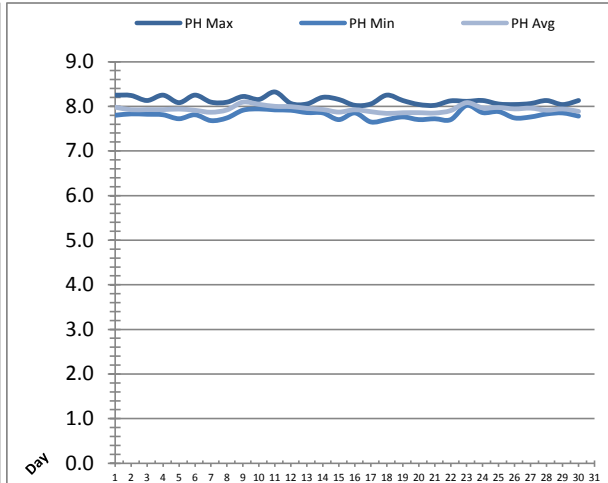
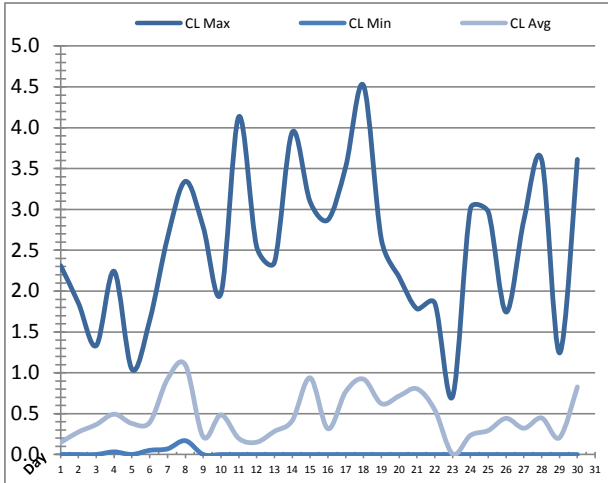


Date	Strainer Chlorine Residual			Strainer pH		
	AIT_2003_CL (ppm)			AIT_2003_PH		
	Maximum	Minimum	Average	Maximum	Minimum	Average
1	0.94	0.00	0.09	8.14	7.79	8.07
2	0.41	0.00	0.18	8.12	7.94	8.02
3	0.31	0.00	0.13	8.21	7.86	8.03
4	5.00	0.00	0.33	8.19	7.88	8.03
5	3.10	0.00	0.60	8.21	7.67	8.04
6	1.21	0.00	0.63	8.17	7.87	8.02
7	2.32	0.00	1.02	8.21	7.79	7.98
8	2.21	0.06	0.83	8.19	7.84	8.03
9	1.01	0.00	0.12	8.32	7.87	8.20
10	0.79	0.00	0.30	8.27	8.05	8.15
11	0.73	0.00	0.08	8.21	8.00	8.10
12	0.48	0.00	0.05	8.18	8.00	8.09
13	0.57	0.00	0.14	8.17	7.99	8.06
14	0.56	0.00	0.21	8.13	7.94	8.04
15	1.87	0.00	0.67	8.14	7.84	7.99
16	0.51	0.00	0.17	8.14	7.99	8.04
17	2.03	0.00	0.62	8.18	7.79	8.00
18	1.59	0.00	0.84	8.14	7.82	7.97
19	1.21	0.00	0.60	8.09	7.91	7.99
20	1.69	0.00	0.70	8.14	7.81	7.98
21	1.54	0.02	0.82	8.10	7.87	7.97
22	1.84	0.00	0.72	8.22	7.83	8.03
23	0.04	0.00	0.00	8.22	8.16	8.21
24	0.57	0.00	0.10	8.21	8.00	8.09
25	1.04	0.00	0.15	8.17	8.00	8.09
26	1.43	0.00	0.27	8.17	7.90	8.07
27	1.37	0.00	0.21	8.18	7.91	8.09
28	0.74	0.00	0.30	8.12	7.98	8.04
29	0.44	0.00	0.10	8.18	8.00	8.07
30	1.52	0.00	0.69	8.14	7.96	8.03
Total						
Average	1.30	0.00	0.39	8.17	7.91	8.05
Maximum	5.00		1.02	8.32		8.21
Date	4-Nov		7-Nov	9-Nov		23-Nov
Minimum		0.00	0.00		7.67	7.97
Date		1-Nov	23-Nov		5-Nov	18-Nov

Notes:

Plant Quality Report

Month: **November-16**

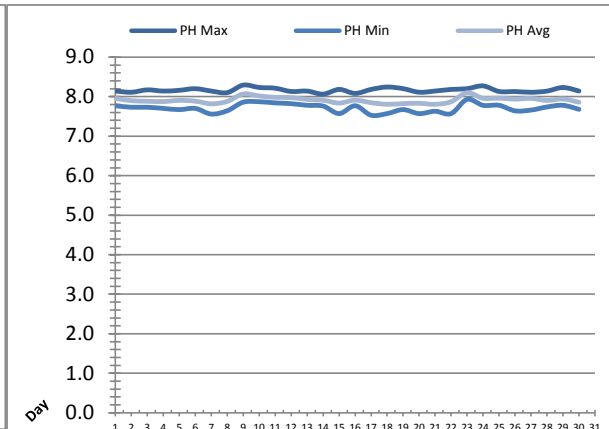
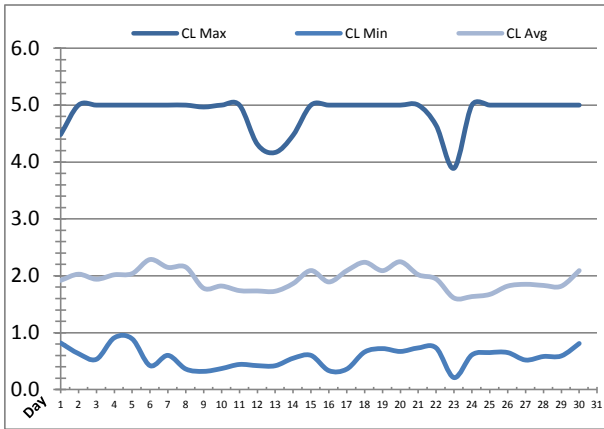


Date	Inlet UV Chlorine Residual			Inlet UV pH		
	AIT_5005_CL (ppm)			AIT_5005_PH		
	Maximum	Minimum	Average	Maximum	Minimum	Average
1	2.31	0.00	0.15	8.25	7.80	7.98
2	1.85	0.00	0.28	8.24	7.83	7.92
3	1.33	0.00	0.37	8.13	7.82	7.93
4	2.24	0.03	0.49	8.25	7.81	7.93
5	1.04	0.00	0.38	8.08	7.72	7.94
6	1.64	0.05	0.39	8.25	7.81	7.91
7	2.65	0.07	0.92	8.09	7.68	7.87
8	3.34	0.17	1.10	8.09	7.74	7.92
9	2.78	0.00	0.22	8.22	7.91	8.09
10	1.97	0.00	0.49	8.15	7.94	8.05
11	4.13	0.00	0.20	8.32	7.92	8.00
12	2.54	0.00	0.15	8.06	7.91	7.99
13	2.35	0.00	0.28	8.05	7.86	7.95
14	3.95	0.00	0.42	8.20	7.85	7.93
15	3.09	0.00	0.94	8.15	7.70	7.87
16	2.87	0.00	0.32	8.02	7.85	7.92
17	3.52	0.00	0.77	8.05	7.65	7.88
18	4.52	0.00	0.92	8.25	7.70	7.84
19	2.63	0.00	0.62	8.13	7.76	7.86
20	2.17	0.00	0.72	8.04	7.70	7.86
21	1.78	0.00	0.80	8.02	7.72	7.85
22	1.85	0.00	0.54	8.12	7.70	7.91
23	0.71	0.00	0.01	8.11	8.02	8.08
24	3.01	0.00	0.23	8.13	7.86	7.96
25	2.97	0.00	0.29	8.05	7.88	7.97
26	1.74	0.00	0.44	8.04	7.74	7.94
27	2.87	0.00	0.32	8.06	7.76	7.96
28	3.60	0.00	0.45	8.13	7.83	7.91
29	1.24	0.00	0.21	8.04	7.85	7.94
30	3.61	0.00	0.83	8.13	7.78	7.89
Total						
Average	2.55	0.01	0.47	8.13	7.80	7.94
Maximum	4.52		1.10	8.32		8.09
Date	18-Nov		8-Nov	11-Nov		9-Nov
Minimum		0.00	0.01		7.65	7.84
Date		9-Nov	23-Nov		17-Nov	18-Nov

Notes:

Plant Quality Report

Month: **November-16**

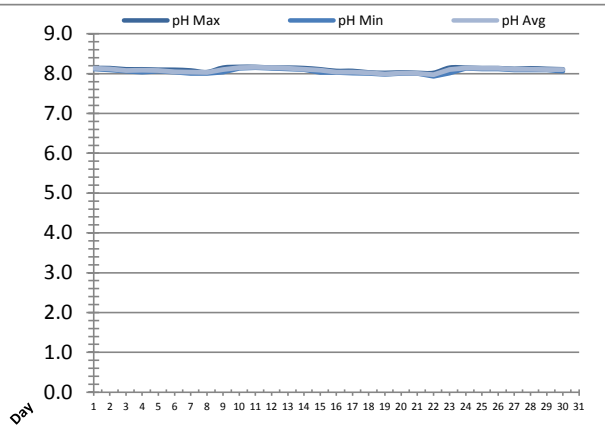
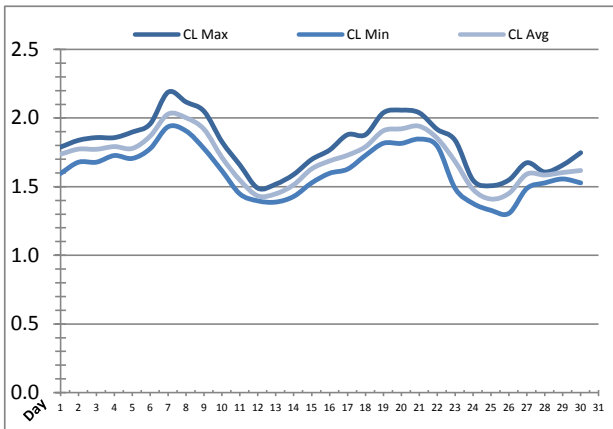


Date	Discharge UV Chlorine Residual			Discharge UV pH		
	AIT_5006_CL (ppm)			AIT_5006_PH		
	Maximum	Minimum	Average	Maximum	Minimum	Average
1	4.48	0.82	1.92	8.14	7.77	7.96
2	5.00	0.63	2.03	8.11	7.73	7.90
3	5.00	0.53	1.94	8.17	7.73	7.88
4	5.00	0.91	2.02	8.14	7.70	7.88
5	5.00	0.89	2.04	8.16	7.67	7.90
6	5.00	0.42	2.29	8.20	7.70	7.89
7	5.00	0.60	2.15	8.14	7.56	7.82
8	5.00	0.36	2.15	8.10	7.64	7.88
9	4.97	0.32	1.78	8.29	7.86	8.07
10	5.00	0.37	1.82	8.23	7.87	8.02
11	5.00	0.44	1.74	8.21	7.84	7.98
12	4.31	0.42	1.73	8.13	7.82	7.98
13	4.17	0.42	1.73	8.14	7.78	7.93
14	4.47	0.55	1.86	8.06	7.76	7.91
15	5.00	0.60	2.09	8.18	7.57	7.84
16	5.00	0.33	1.89	8.08	7.77	7.91
17	5.00	0.36	2.09	8.18	7.53	7.85
18	5.00	0.66	2.24	8.24	7.57	7.81
19	5.00	0.72	2.09	8.20	7.67	7.82
20	5.00	0.67	2.25	8.11	7.57	7.83
21	5.00	0.73	2.02	8.14	7.63	7.81
22	4.64	0.73	1.94	8.18	7.57	7.87
23	3.89	0.21	1.61	8.20	7.93	8.10
24	5.00	0.61	1.64	8.27	7.78	7.96
25	5.00	0.65	1.67	8.13	7.78	7.96
26	5.00	0.65	1.82	8.13	7.64	7.94
27	5.00	0.52	1.85	8.11	7.66	7.96
28	5.00	0.58	1.83	8.14	7.74	7.90
29	5.00	0.59	1.82	8.23	7.78	7.94
30	5.00	0.81	2.09	8.14	7.68	7.86
Total						
Average	4.86	0.57	1.94	8.16	7.71	7.91
Maximum	5.00		2.29	8.29		8.10
Date	2-Nov		6-Nov	9-Nov		23-Nov
Minimum		0.21	1.61		7.53	7.81
Date		23-Nov	23-Nov		17-Nov	18-Nov

Notes:

Plant Quality Report

Month: **November-16**

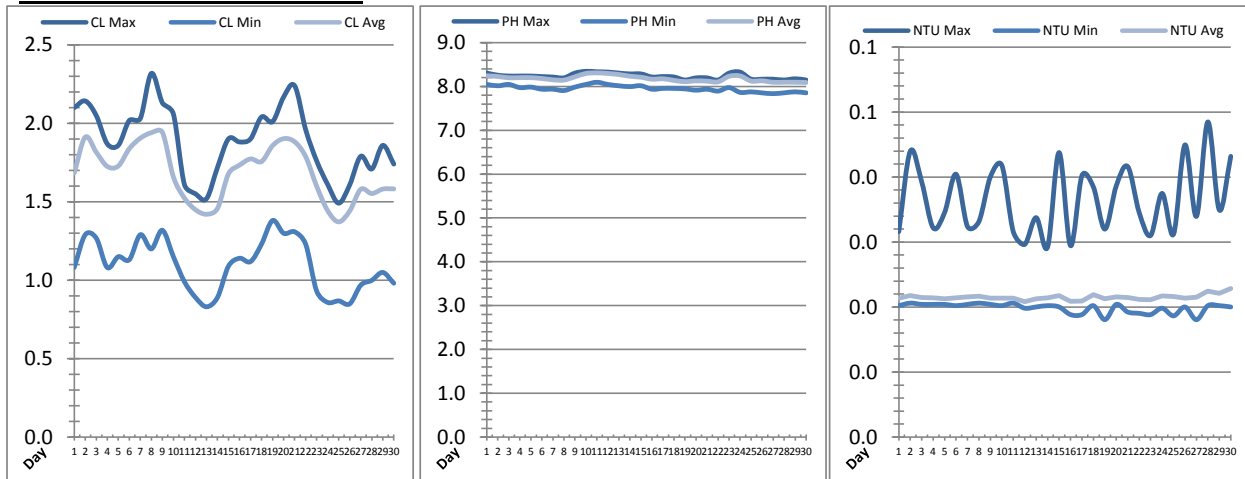


Date	Suction Header Chlorine Res.			Suction Header pH			Distribution CT Calc Total		
	AIT_7001_CL (ppm)			AIT_7001_PH (m)			REAL_CT_CALC_TOTAL (mg*ml/min)		
	Maximum	Minimum	Average	Maximum	Minimum	Average	Maximum	Minimum	Average
1	1.79	1.60	1.74	8.14	8.12	8.14	4220.73	0.00	232.93
2	1.84	1.68	1.77	8.14	8.09	8.12	4637.41	0.00	315.16
3	1.86	1.68	1.77	8.11	8.06	8.08	13160.34	0.00	352.92
4	1.86	1.73	1.79	8.11	8.03	8.09	10494.31	0.00	301.01
5	1.90	1.71	1.78	8.10	8.06	8.08	4831.32	0.00	431.87
6	1.96	1.78	1.87	8.09	8.03	8.04	6800.98	0.00	394.21
7	2.19	1.94	2.03	8.08	8.00	8.04	11819.99	0.00	152.62
8	2.12	1.91	2.00	8.04	8.01	8.03	4668.09	0.00	383.74
9	2.05	1.78	1.92	8.15	8.03	8.10	5376.57	0.00	522.06
10	1.83	1.62	1.71	8.17	8.14	8.15	10864.17	0.00	433.47
11	1.66	1.45	1.55	8.17	8.15	8.16	5487.92	0.00	312.59
12	1.49	1.40	1.43	8.15	8.14	8.15	3472.43	0.00	306.81
13	1.52	1.39	1.45	8.15	8.12	8.13	3612.33	0.00	315.45
14	1.59	1.43	1.51	8.14	8.11	8.11	3640.09	0.00	187.12
15	1.70	1.53	1.63	8.11	8.03	8.09	11290.77	0.00	377.16
16	1.77	1.60	1.69	8.07	8.03	8.04	10791.83	0.00	315.18
17	1.88	1.63	1.73	8.07	8.02	8.04	12688.03	0.00	372.20
18	1.88	1.73	1.79	8.03	8.00	8.02	11040.59	0.00	395.36
19	2.04	1.82	1.91	8.02	7.99	7.99	12766.52	0.00	428.08
20	2.06	1.82	1.92	8.03	8.00	8.01	13285.51	0.00	404.57
21	2.04	1.85	1.94	8.02	8.00	8.00	10746.38	0.00	501.80
22	1.92	1.80	1.85	8.02	7.94	7.97	12999.13	0.00	306.73
23	1.84	1.49	1.68	8.15	8.02	8.10	9032.82	0.00	247.75
24	1.55	1.38	1.48	8.15	8.13	8.14	9676.88	0.00	154.85
25	1.51	1.33	1.41	8.14	8.12	8.13	4988.87	0.00	369.09
26	1.55	1.31	1.45	8.14	8.12	8.13	3192.44	0.00	213.37
27	1.67	1.49	1.59	8.12	8.09	8.11	3875.82	0.00	358.02
28	1.61	1.53	1.59	8.13	8.09	8.11	3305.54	0.00	297.46
29	1.66	1.56	1.60	8.12	8.09	8.10	3897.81	0.00	412.15
30	1.75	1.53	1.62	8.11	8.06	8.10	7543.75	0.00	257.83
Total									
Average	1.80	1.61	1.71	8.10	8.06	8.08	8.10	8.06	8.08
Maximum	2.19		2.03	8.17		8.16	8.17		8.16
Date	7-Nov		7-Nov	10-Nov		11-Nov	10-Nov		11-Nov
Minimum		1.31	1.41		7.94	7.97		7.94	7.97
Date		26-Nov	25-Nov		22-Nov	22-Nov		22-Nov	22-Nov

Notes:

Plant Quality Report

Month: **November-16**

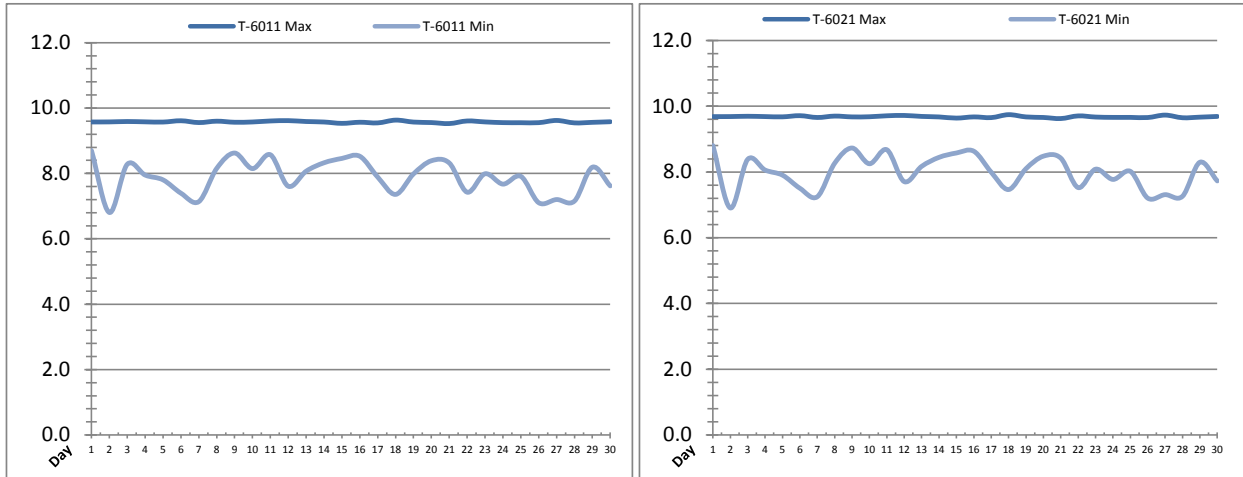


Date	Distribution Chlorine Header			Distribution pH			Distribution Turbidity		
	AIT_7004_CL (ppm)			AIT_7004_PH (mg/L)			AIT_7003 (mg/L)		
	Maximum	Minimum	Average	Maximum	Minimum	Average	Maximum	Minimum	Average
1	2.10	1.08	1.68	8.30	8.05	8.24	0.03	0.02	0.02
2	2.14	1.29	1.91	8.26	8.02	8.23	0.04	0.02	0.02
3	2.05	1.27	1.82	8.24	8.05	8.20	0.04	0.02	0.02
4	1.87	1.08	1.72	8.24	7.97	8.20	0.03	0.02	0.02
5	1.86	1.15	1.73	8.24	7.99	8.20	0.03	0.02	0.02
6	2.02	1.13	1.84	8.23	7.94	8.18	0.04	0.02	0.02
7	2.03	1.29	1.91	8.21	7.94	8.15	0.03	0.02	0.02
8	2.32	1.20	1.94	8.20	7.91	8.14	0.03	0.02	0.02
9	2.13	1.32	1.94	8.30	7.99	8.22	0.04	0.02	0.02
10	2.06	1.15	1.66	8.35	8.05	8.30	0.04	0.02	0.02
11	1.61	0.99	1.52	8.34	8.09	8.31	0.03	0.02	0.02
12	1.55	0.89	1.45	8.33	8.05	8.30	0.03	0.02	0.02
13	1.52	0.83	1.42	8.30	8.02	8.27	0.03	0.02	0.02
14	1.72	0.89	1.46	8.29	8.00	8.23	0.03	0.02	0.02
15	1.90	1.09	1.68	8.29	8.02	8.21	0.04	0.02	0.02
16	1.88	1.14	1.73	8.22	7.94	8.17	0.03	0.02	0.02
17	1.90	1.12	1.77	8.23	7.96	8.18	0.04	0.02	0.02
18	2.04	1.23	1.76	8.22	7.96	8.14	0.04	0.02	0.02
19	2.01	1.38	1.86	8.15	7.94	8.11	0.03	0.02	0.02
20	2.17	1.30	1.90	8.20	7.91	8.13	0.04	0.02	0.02
21	2.24	1.31	1.88	8.20	7.94	8.12	0.04	0.02	0.02
22	1.96	1.23	1.79	8.15	7.89	8.11	0.03	0.02	0.02
23	1.76	0.93	1.60	8.30	7.97	8.23	0.03	0.02	0.02
24	1.61	0.86	1.44	8.33	7.87	8.24	0.04	0.02	0.02
25	1.49	0.87	1.37	8.17	7.88	8.12	0.03	0.02	0.02
26	1.61	0.85	1.44	8.17	7.85	8.13	0.04	0.02	0.02
27	1.79	0.97	1.58	8.17	7.84	8.10	0.03	0.02	0.02
28	1.71	1.00	1.55	8.15	7.85	8.10	0.05	0.02	0.02
29	1.86	1.05	1.58	8.17	7.88	8.10	0.03	0.02	0.02
30	1.74	0.98	1.58	8.15	7.85	8.09	0.04	0.02	0.02
Total									
Average	1.89	1.10	1.68	8.23	7.95	8.18	0.0	0.0	0.0
Maximum	2.32		1.94	8.35		8.31	0.0		0.0
Date	8-Nov		9-Nov	10-Nov		11-Nov	28-Nov		30-Nov
Minimum		0.83	1.37		7.84	8.09		0.0	0.0
Date		13-Nov	25-Nov		27-Nov	30-Nov		19-Nov	12-Nov

Notes:

Raw Well/Treated Storage Report

Month: **November-16**

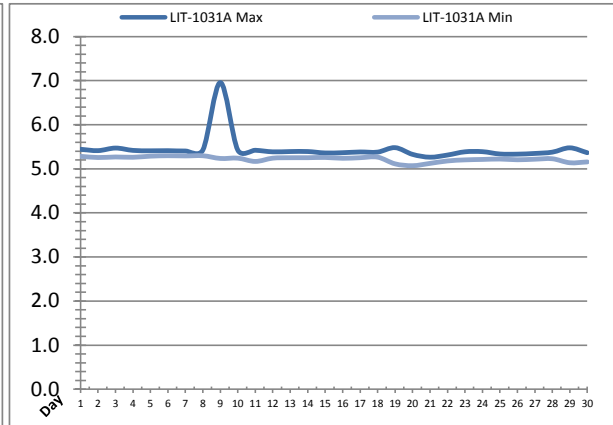
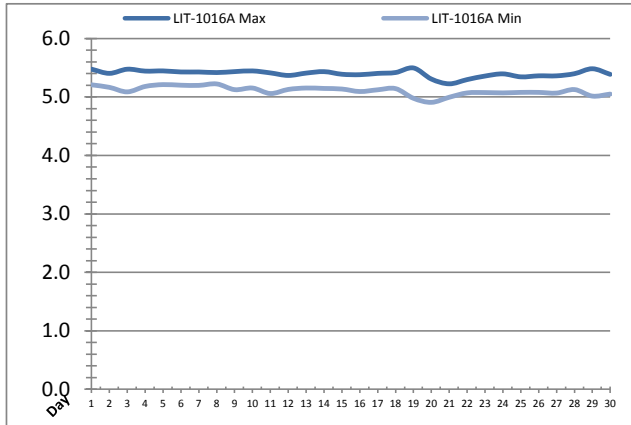


Date	Treated Water Storage Tank					
	T-6011 (m)			T-6021 (m)		
	Maximum	Minimum	Average	Maximum	Minimum	Average
1	9.6	8.7	9.3	9.7	8.8	9.4
2	9.6	6.8	8.7	9.7	6.9	8.8
3	9.6	8.3	9.1	9.7	8.4	9.3
4	9.6	8.0	8.9	9.7	8.1	9.0
5	9.6	7.8	9.0	9.7	7.9	9.1
6	9.6	7.4	9.1	9.7	7.5	9.2
7	9.6	7.1	8.4	9.7	7.2	8.5
8	9.6	8.2	9.1	9.7	8.3	9.2
9	9.6	8.6	9.2	9.7	8.7	9.3
10	9.6	8.1	9.2	9.7	8.2	9.3
11	9.6	8.6	9.2	9.7	8.7	9.3
12	9.6	7.6	9.0	9.7	7.7	9.1
13	9.6	8.1	9.1	9.7	8.2	9.2
14	9.6	8.3	9.1	9.7	8.4	9.2
15	9.5	8.5	9.1	9.6	8.6	9.2
16	9.6	8.5	9.2	9.7	8.6	9.3
17	9.5	7.9	9.1	9.7	8.0	9.2
18	9.6	7.4	9.0	9.7	7.5	9.1
19	9.6	8.0	9.0	9.7	8.1	9.1
20	9.6	8.4	9.1	9.7	8.5	9.2
21	9.5	8.3	9.0	9.6	8.4	9.1
22	9.6	7.4	8.6	9.7	7.5	8.7
23	9.6	8.0	8.9	9.7	8.1	9.0
24	9.6	7.7	8.9	9.7	7.8	9.0
25	9.6	7.9	9.0	9.7	8.0	9.1
26	9.6	7.1	8.6	9.7	7.2	8.7
27	9.6	7.2	9.0	9.7	7.3	9.1
28	9.5	7.2	8.7	9.6	7.3	8.8
29	9.6	8.2	9.0	9.7	8.3	9.1
30	9.6	7.6	8.9	9.7	7.7	9.0
Total						
Average	9.6	7.9	9.0	9.7	8.0	9.1
Maximum	9.6		9.3	9.7		9.4
Date	18-Nov		1-Nov	18-Nov		1-Nov
Minimum		6.8	8.4		6.9	8.5
Date		2-Nov	7-Nov		2-Nov	7-Nov

Notes:

Raw Well/Treated Storage Report

Month: **November-16**

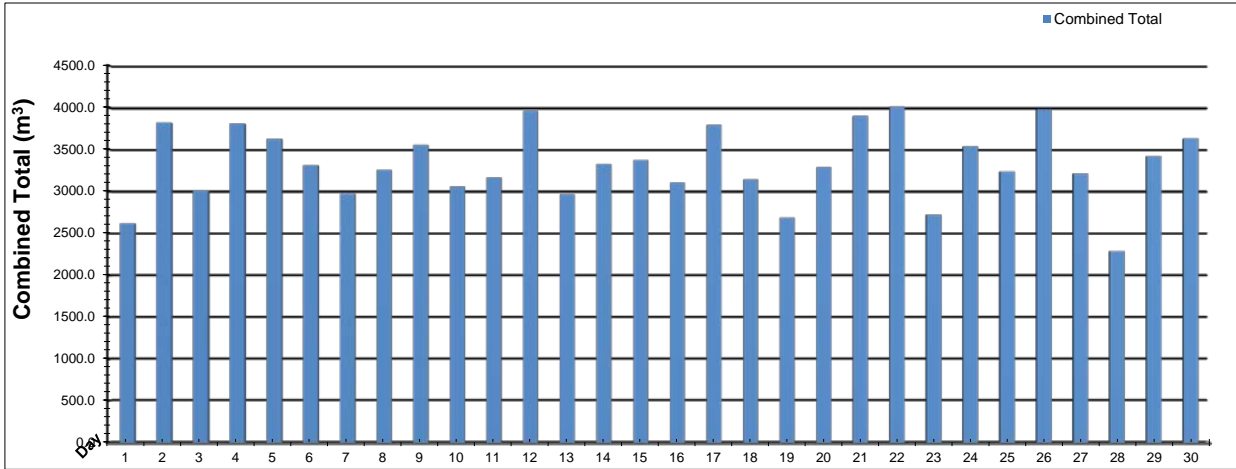


Date	Low Lift Intake Levels					
	Wet Well #1 (LIT-1016A) (m)			Wet Well #2 (LIT-1031A) (m)		
	Maximum	Minimum	Average	Maximum	Minimum	Average
1	5.5	5.2	5.3	5.4	5.3	5.4
2	5.4	5.2	5.3	5.4	5.3	5.3
3	5.5	5.1	5.3	5.5	5.3	5.3
4	5.4	5.2	5.3	5.4	5.3	5.3
5	5.4	5.2	5.3	5.4	5.3	5.3
6	5.4	5.2	5.3	5.4	5.3	5.4
7	5.4	5.2	5.3	5.4	5.3	5.3
8	5.4	5.2	5.3	5.4	5.3	5.3
9	5.4	5.1	5.2	7.0	5.2	5.3
10	5.4	5.2	5.3	5.4	5.2	5.3
11	5.4	5.1	5.2	5.4	5.2	5.3
12	5.4	5.1	5.2	5.4	5.2	5.3
13	5.4	5.2	5.3	5.4	5.3	5.3
14	5.4	5.1	5.2	5.4	5.3	5.3
15	5.4	5.1	5.2	5.4	5.3	5.3
16	5.4	5.1	5.2	5.4	5.2	5.3
17	5.4	5.1	5.2	5.4	5.3	5.3
18	5.4	5.1	5.3	5.4	5.3	5.3
19	5.5	5.0	5.2	5.5	5.1	5.3
20	5.3	4.9	5.1	5.3	5.1	5.2
21	5.2	5.0	5.1	5.3	5.1	5.2
22	5.3	5.1	5.2	5.3	5.2	5.3
23	5.4	5.1	5.2	5.4	5.2	5.3
24	5.4	5.1	5.2	5.4	5.2	5.3
25	5.3	5.1	5.2	5.3	5.2	5.3
26	5.4	5.1	5.2	5.3	5.2	5.3
27	5.4	5.1	5.2	5.3	5.2	5.3
28	5.4	5.1	5.2	5.4	5.2	5.3
29	5.5	5.0	5.2	5.5	5.1	5.3
30	5.4	5.0	5.2	5.4	5.2	5.3
Total						
Average	5.4	5.1	5.2	5.4	5.2	5.3
Maximum	5.5		5.3	7.0		5.4
Date	19-Nov		6-Nov	9-Nov		1-Nov
Minimum		4.9	5.1		5.1	5.2
Date		20-Nov	21-Nov		20-Nov	21-Nov

Notes:

High Lift Monthly Report

Month: November-16

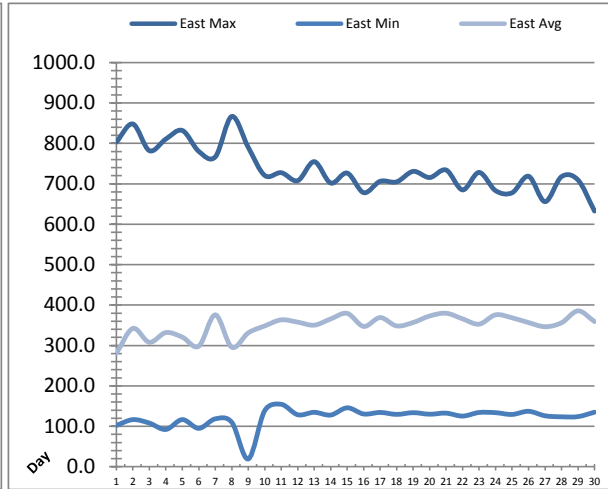
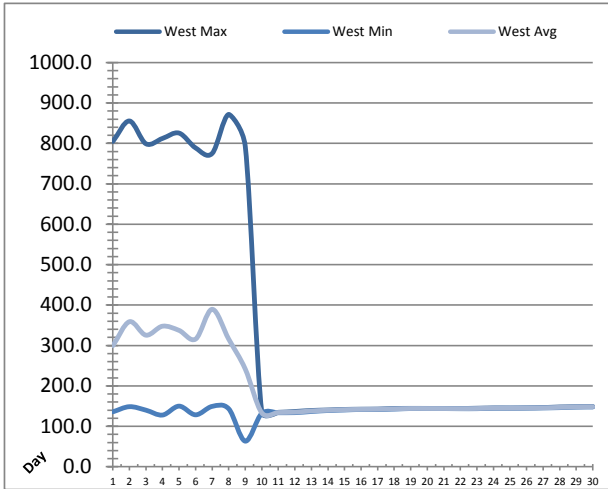


Date	Distribution Flow					
	FIT_7052 (East)		FIT_7062 (West)		Combined	
	(m³) Total	(L/s) Peak	(m³) Total	(L/s) Peak	(m³) Total	(L/s) Peak
1	109.8	42.2	2508.1	121.6	2617.9	159.7
2	1143.9	41.1	2677.0	118.7	3820.9	152.0
3	828.1	42.1	2181.6	111.4	3009.7	147.4
4	671.3	42.3	3138.4	122.1	3809.7	153.1
5	964.4	44.7	2664.6	117.8	3629.0	152.2
6	1077.0	46.6	2233.3	115.0	3310.3	152.0
7	481.3	43.1	2493.2	109.7	2974.5	148.9
8	768.1	43.0	2487.6	120.2	3255.7	154.8
9	871.3	37.4	2683.9	115.2	3555.2	150.7
10	1129.3	41.3	1935.7	110.8	3065.0	143.8
11	414.6	43.0	2753.6	115.4	3168.3	151.6
12	991.8	38.3	2970.3	113.1	3962.2	149.0
13	889.5	41.8	2074.6	104.9	2964.0	143.4
14	710.9	42.8	2617.1	113.9	3328.0	149.0
15	599.3	42.5	2778.9	122.5	3378.2	147.9
16	903.9	42.3	2206.8	113.0	3110.7	151.6
17	1007.6	42.1	2783.5	110.9	3791.1	148.3
18	1041.4	42.5	2099.4	110.5	3140.8	148.3
19	931.3	45.0	1758.1	101.5	2689.5	140.5
20	946.1	42.2	2345.3	113.8	3291.4	148.9
21	801.1	46.6	3101.1	112.0	3902.2	148.1
22	1077.0	54.2	2934.6	119.8	4011.6	148.4
23	685.0	42.7	2040.1	107.5	2725.0	146.1
24	786.6	48.8	2752.2	118.8	3538.8	150.2
25	1030.8	34.6	2211.0	102.6	3241.8	135.6
26	737.0	37.8	3246.5	115.7	3983.5	150.2
27	1042.6	45.1	2172.4	110.0	3215.0	148.5
28	742.3	40.9	1549.8	105.2	2292.1	142.6
29	960.1	40.2	2462.2	112.1	3422.4	147.0
30	706.7	38.4	2926.5	111.5	3633.3	148.0
Total	25050.3		74787.2		99837.5	
Average	835.0	42.5	2492.9	113.2	3327.9	148.6
Maximum	1143.9	54.2	3246.5	122.5	4011.6	159.7
Date	2-Nov	22-Nov	26-Nov	15-Nov	22-Nov	1-Nov
Minimum	109.8		1549.8		2292.1	
Date	1-Nov		28-Nov		28-Nov	

Notes:

Low Lift Monthly Report

Month: **November-16**

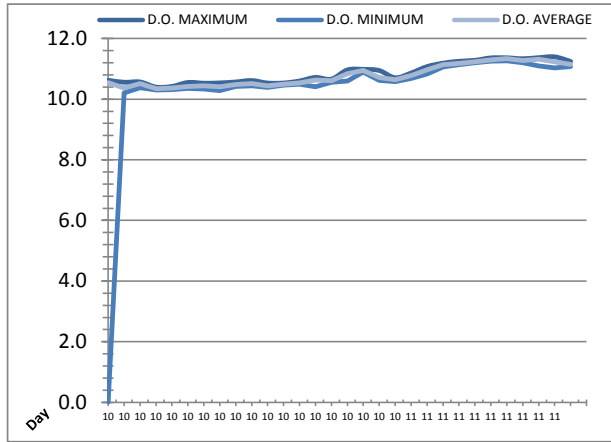
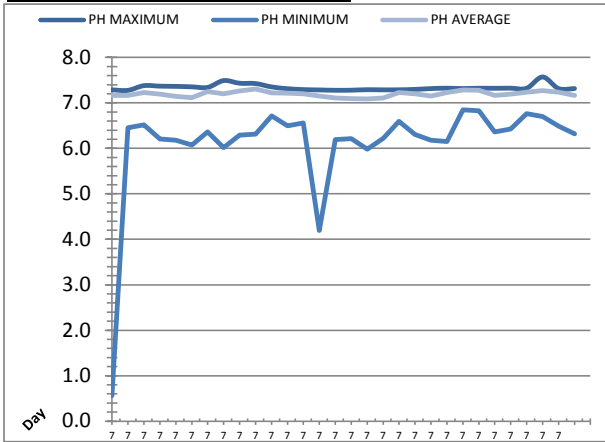


Date	West Train Header Pressure PIT_1018 (kPa)			East Train Header Pressure PIT_1028 (kPa)		
	Maximum	Minimum	Average	Maximum	Minimum	Average
1	804.8	135.9	299.4	803.3	102.3	280.7
2	855.4	148.6	358.9	848.0	116.6	342.3
3	799.0	140.0	325.5	782.0	108.1	307.8
4	812.3	127.9	347.8	810.7	92.3	332.0
5	825.5	150.0	337.3	831.9	116.7	320.6
6	788.8	128.5	315.8	780.1	95.0	298.3
7	775.1	149.3	389.5	766.6	118.6	375.9
8	871.7	143.4	315.7	866.6	109.9	295.7
9	792.9	63.3	241.8	790.1	19.2	331.3
10	134.7	131.9	133.3	720.6	139.1	348.4
11	134.7	133.6	134.3	727.5	154.5	363.4
12	136.7	133.8	135.2	707.8	128.7	357.7
13	139.3	136.7	138.1	754.8	134.7	350.3
14	140.5	139.1	139.8	701.9	128.0	365.7
15	141.8	140.4	141.3	726.6	145.8	379.4
16	142.4	141.8	142.0	678.1	130.5	347.2
17	142.7	141.7	142.3	706.2	134.3	369.1
18	144.1	142.6	143.3	704.9	129.6	348.4
19	144.5	144.0	144.2	730.8	133.8	356.9
20	144.4	143.9	144.1	715.5	130.0	373.0
21	144.3	143.9	144.0	734.2	132.6	379.8
22	144.1	143.6	143.9	684.9	125.4	365.9
23	144.8	143.7	144.2	728.2	134.2	352.7
24	145.5	144.7	145.1	683.0	133.8	375.9
25	145.3	144.9	145.0	677.8	129.4	368.5
26	145.7	145.2	145.5	718.7	137.2	356.6
27	146.4	145.5	145.9	655.8	126.0	346.5
28	147.9	146.2	147.0	717.8	123.6	356.2
29	148.4	147.7	148.1	709.4	124.1	385.6
30	149.0	147.8	148.6	632.6	135.0	359.2
Total						
Average	344.4	139.0	197.6	736.5	122.3	349.7
Maximum	871.7		389.5	866.6		385.6
Date	8-Nov		7-Nov	8-Nov		29-Nov
Minimum		63.3	133.3		19.2	280.7
Date		9-Nov	10-Nov		9-Nov	1-Nov

Notes:

Low Lift Monthly Report

Month: **November-16**

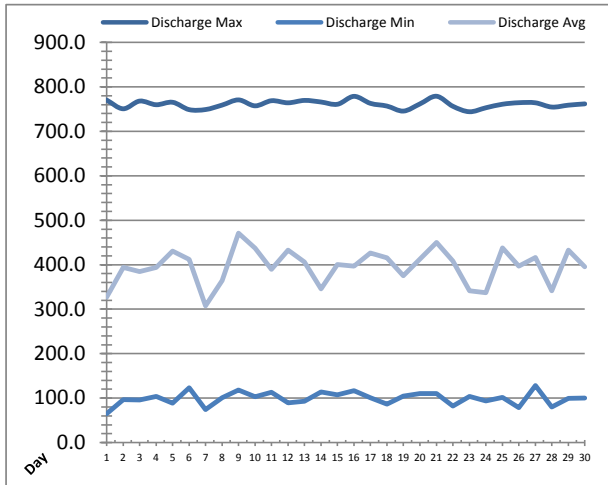
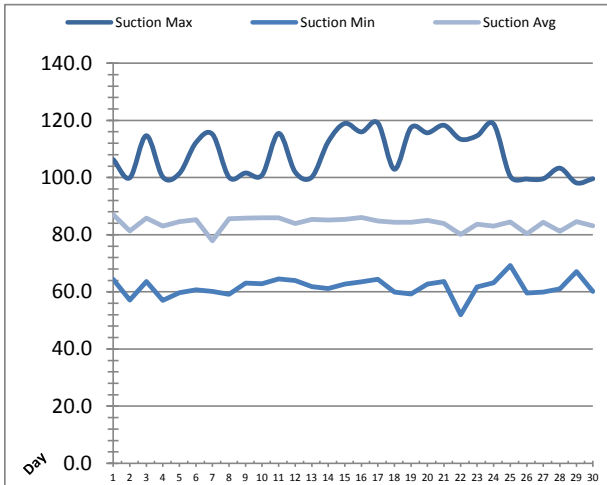


Date	Raw Water Sample Line					
	AIT_1402_PH (pH)			AIT_1402_DO (mg/L)		
	Maximum	Minimum	Average	Maximum	Minimum	Average
1	7.3	0.6	7.2	10.6	0.0	10.5
2	7.3	6.5	7.2	10.6	10.2	10.4
3	7.4	6.5	7.2	10.6	10.4	10.5
4	7.4	6.2	7.2	10.4	10.3	10.3
5	7.4	6.2	7.1	10.4	10.3	10.4
6	7.4	6.1	7.1	10.6	10.4	10.4
7	7.3	6.4	7.2	10.5	10.3	10.4
8	7.5	6.0	7.2	10.5	10.3	10.4
9	7.4	6.3	7.3	10.6	10.4	10.5
10	7.4	6.3	7.3	10.6	10.4	10.5
11	7.4	6.7	7.2	10.5	10.4	10.4
12	7.3	6.5	7.2	10.5	10.5	10.5
13	7.3	6.6	7.2	10.6	10.5	10.5
14	7.3	4.2	7.1	10.7	10.4	10.6
15	7.3	6.2	7.1	10.7	10.6	10.6
16	7.3	6.2	7.1	11.0	10.6	10.8
17	7.3	6.0	7.1	11.0	10.9	10.9
18	7.3	6.2	7.1	10.9	10.6	10.7
19	7.3	6.6	7.2	10.7	10.6	10.6
20	7.3	6.3	7.2	10.9	10.7	10.8
21	7.3	6.2	7.2	11.1	10.8	11.0
22	7.3	6.2	7.2	11.2	11.1	11.1
23	7.3	6.8	7.3	11.2	11.1	11.2
24	7.3	6.8	7.3	11.3	11.2	11.2
25	7.3	6.4	7.2	11.4	11.3	11.3
26	7.3	6.4	7.2	11.4	11.3	11.3
27	7.3	6.8	7.2	11.3	11.2	11.3
28	7.6	6.7	7.3	11.4	11.1	11.3
29	7.3	6.5	7.2	11.4	11.0	11.2
30	7.3	6.3	7.2	11.2	11.1	11.1
Total						
Average	7.3	6.1	7.2	10.9	10.3	10.8
Maximum	7.6		7.3	11.4		11.3
Date	28-Nov		10-Nov	29-Nov		26-Nov
Minimum		0.6	7.1		0.0	10.3
Date		1-Nov	17-Nov		1-Nov	4-Nov

Notes:

High Lift Monthly Report

Month: November-16

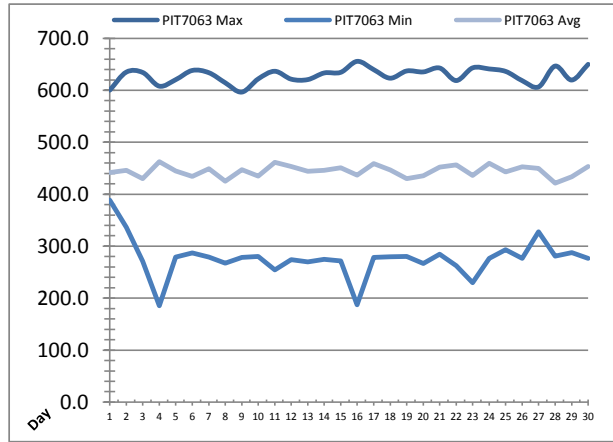
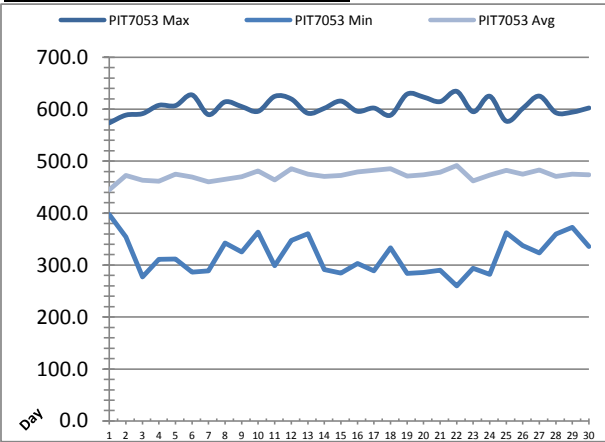


Date	Suction Header Pressure			Discharge Header Pressure		
	PIT_7002 (kPa)			PIT_7005 (kPa)		
	Maximum	Minimum	Average	Maximum	Minimum	Average
1	✓ 106.3	✓ 64.4	87.0	✓ 770.4	✓ 65.2	326.7
2	✓ 99.9	✓ 57.1	81.3	✓ 750.8	✓ 96.9	394.1
3	✓ 114.6	✓ 63.7	85.8	✓ 768.1	✓ 95.8	384.4
4	✓ 100.2	✓ 57.1	83.0	✓ 759.9	✓ 103.5	394.1
5	✓ 101.4	✓ 59.7	84.5	✓ 765.4	✓ 88.7	430.8
6	✓ 112.2	✓ 60.8	85.2	✓ 748.9	✓ 123.4	411.6
7	✓ 115.1	✓ 60.2	77.9	✓ 749.1	✓ 74.0	307.4
8	✓ 100.1	✓ 59.2	85.6	✓ 759.1	✓ 100.5	364.2
9	✓ 101.6	✓ 63.0	85.8	✓ 770.7	✓ 118.1	470.9
10	✓ 100.9	✓ 62.9	85.9	✓ 757.4	✓ 102.9	437.5
11	✓ 115.4	✓ 64.5	85.9	✓ 768.9	✓ 113.1	389.8
12	✓ 101.9	✓ 63.9	83.8	✓ 764.2	✓ 89.4	432.9
13	✓ 100.1	✓ 61.9	85.4	✓ 769.6	✓ 93.3	406.1
14	✓ 112.6	✓ 61.1	85.1	✓ 766.0	✓ 113.9	345.6
15	✓ 118.9	✓ 62.7	85.3	✓ 761.0	✓ 107.6	400.6
16	✓ 116.0	✓ 63.5	86.1	✓ 778.8	✓ 116.9	397.0
17	✓ 119.1	✓ 64.4	84.8	✓ 762.9	✓ 100.8	426.2
18	✓ 102.9	✓ 59.9	84.4	✓ 756.9	✓ 86.5	415.4
19	✓ 117.5	✓ 59.3	84.3	✓ 745.6	✓ 104.7	375.1
20	✓ 115.7	✓ 62.7	85.0	✓ 761.7	✓ 110.2	412.9
21	✓ 118.3	✓ 63.7	83.9	✓ 779.0	✓ 110.4	450.4
22	✓ 113.4	✓ 51.9	80.1	✓ 756.4	✓ 82.1	408.6
23	✓ 114.6	✓ 61.7	83.7	✓ 744.1	✓ 103.7	341.3
24	✓ 118.7	✓ 63.2	83.0	✓ 753.0	✓ 93.6	337.3
25	✓ 100.5	✓ 69.2	84.5	✓ 761.0	✓ 101.6	438.2
26	✓ 99.5	✓ 59.6	80.3	✓ 764.4	✓ 78.8	397.0
27	✓ 99.6	✓ 59.9	84.4	✓ 764.2	✓ 127.9	416.4
28	✓ 103.3	✓ 61.0	81.2	✓ 754.6	✓ 79.7	341.1
29	✓ 98.2	✓ 67.1	84.6	✓ 758.9	✓ 99.6	433.2
30	✓ 99.6	✓ 60.2	83.1	✓ 761.8	✓ 99.9	395.4
Total						
Average	107.9	61.6	84.0	761.1	99.4	396.1
Maximum	119.1		87.0	779.0		470.9
Date	17-Nov		1-Nov	21-Nov		9-Nov
Minimum		51.9	77.9		65.2	307.4
Date		22-Nov	7-Nov		1-Nov	7-Nov

Notes:

High Lift Monthly Report

Month: **November-16**

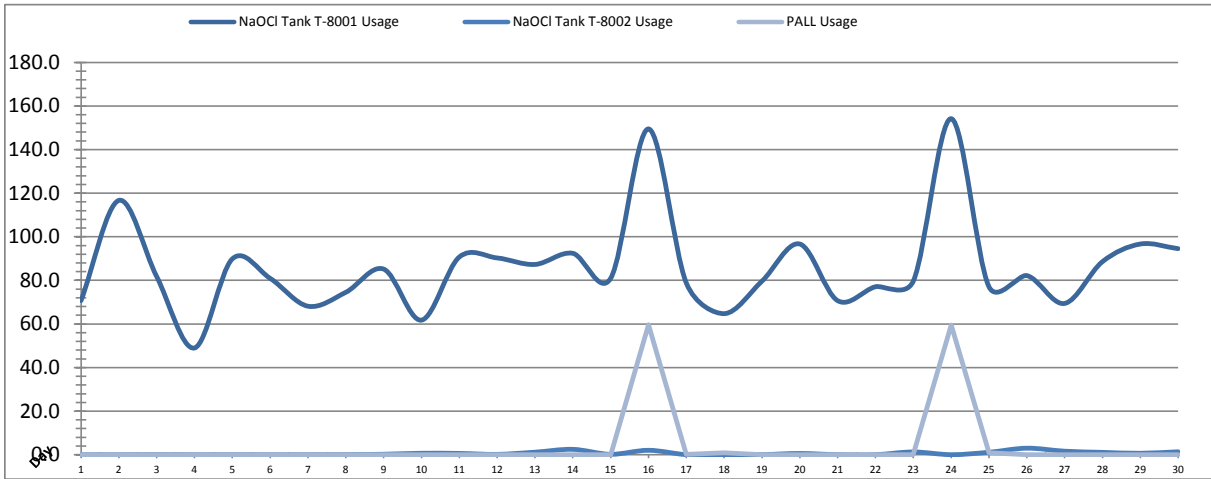


Date	Distribution Pressures					
	PIT_7053 (kPa)			PIT_7063 (kPa)		
	Maximum	Minimum	Average	Maximum	Minimum	Average
1	573.7	397.3	445.0	600.2	388.8	441.9
2	588.6	354.3	472.3	635.0	336.4	445.7
3	591.3	277.3	463.1	634.2	271.0	430.0
4	607.5	311.3	461.5	607.9	185.5	462.3
5	606.8	311.5	475.1	620.5	279.0	444.7
6	627.4	286.7	469.1	638.2	287.3	434.4
7	589.5	288.7	460.2	633.9	278.9	448.8
8	614.1	342.4	464.8	614.4	267.6	424.9
9	605.0	325.1	469.7	596.5	278.4	447.5
10	595.9	363.1	480.8	622.0	280.5	434.8
11	624.7	298.9	464.1	636.6	254.4	461.6
12	619.6	347.4	485.6	621.4	274.2	453.4
13	592.3	360.3	474.9	620.6	269.7	444.4
14	601.8	291.1	470.6	633.4	274.7	446.0
15	615.6	284.7	472.4	634.5	271.8	450.7
16	595.9	303.2	479.2	655.7	187.0	437.0
17	602.1	288.7	482.5	639.7	278.4	458.8
18	588.4	333.3	485.2	623.3	279.9	446.9
19	628.9	283.8	471.2	637.2	280.2	429.7
20	623.3	285.5	473.6	635.3	267.0	435.7
21	614.5	290.0	478.7	642.8	284.3	452.4
22	634.3	260.2	491.3	618.7	262.6	456.2
23	595.1	293.7	462.0	643.2	229.7	436.3
24	624.9	282.2	473.0	641.1	276.9	459.4
25	576.9	362.3	482.6	636.3	293.3	442.6
26	601.5	337.6	474.8	618.6	276.8	452.8
27	625.1	323.5	483.0	606.6	327.6	449.6
28	593.2	359.8	470.6	646.6	281.1	421.5
29	594.3	372.6	475.1	619.7	287.7	433.9
30	602.3	335.8	473.8	649.9	276.4	453.1
Total						
Average	605.1	318.4	472.9	628.8	276.2	444.6
Maximum	634.3		491.3	655.7		462.3
Date	22-Nov		22-Nov	16-Nov		4-Nov
Minimum		260.2	445.0		185.5	421.5
Date		22-Nov	1-Nov		4-Nov	28-Nov

Notes:

Chemical Usage Monthly Report

Month: **November-16**

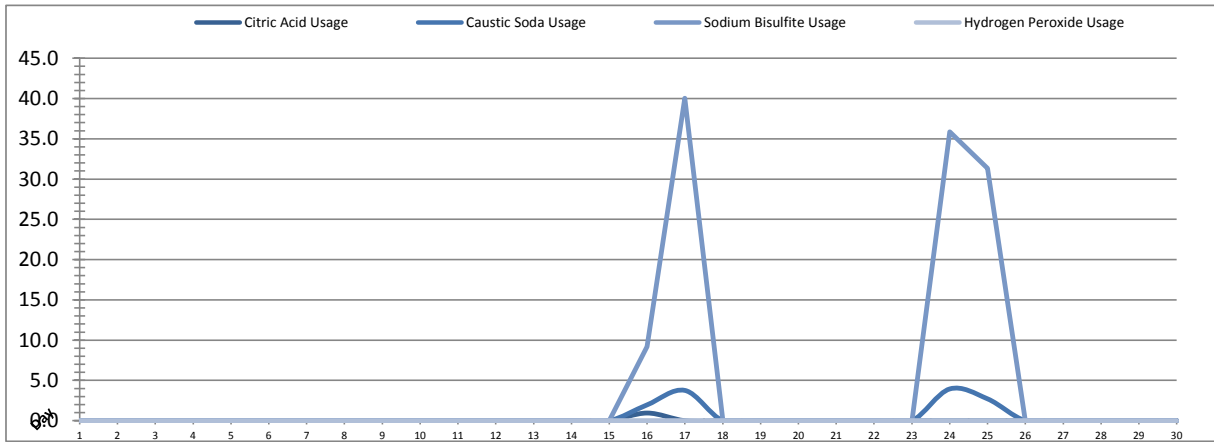


Date	PALL Usage	NaOCI Tank T-8001	NaOCI Tank T-8002
	PALL_HYPO_USAGE (L) Usage	LIT_8002 (Storage) (L) Usage	LIT_8004 (Day) (L) Usage
1	0.0	70.7	0.0
2	0.0	116.7	0.0
3	0.0	81.8	0.1
4	0.0	49.0	0.0
5	0.0	89.9	0.0
6	0.0	80.9	0.0
7	0.0	68.1	0.0
8	0.0	74.5	0.1
9	0.0	85.2	0.2
10	0.0	61.8	0.7
11	0.0	90.7	0.6
12	0.0	90.3	0.2
13	0.0	87.3	1.2
14	0.00	92.41	2.5
15	0.0	80.9	0.2
16	59.6	149.5	2.0
17	0.2	78.8	0.1
18	0.9	64.7	0.0
19	0.0	79.6	0.1
20	0.0	96.7	0.6
21	0.0	70.7	0.0
22	0.0	77.1	0.0
23	0.0	79.6	1.3
24	59.5	154.2	0.0
25	0.9	77.1	1.1
26	0.0	82.2	3.0
27	0.0	69.4	1.6
28	0.0	88.6	1.1
29	0.0	96.7	0.7
30	0.0	94.5	1.4
Total	121.1	2579.5	19.0
Average	4.0	86.0	0.6
Maximum	59.6	154.2	3.0
Date	16-Nov	24-Nov	26-Nov
Minimum	0.0	49.0	0.0
Date	1-Nov	4-Nov	1-Nov

Notes:	
Dosage (mg/L)=	Day Tank (L) x %conc. x 1000
	Membrane Flow (m3)
Chlorine Concentration:	12.0%

Chemical Usage Monthly Report

Month: **November-16**



Date	Citric Acid	Caustic Soda	Captor	Hydrogen Peroxide		Membrane Flow (m ³)
	TAGNAME (L) Usage	TAGNAME (L) Usage	TAGNAME (L) Usage	TAGNAME (L) Usage	(mg/L) Dose	
1	0.0	0.0	0.0	0.0	0.0	2823.044
2	0.0	0.0	0.0	0.0	0.0	3973.689
3	0.0	0.0	0.0	0.0	0.0	3544.346
4	0.0	0.0	0.0	0.0	0.0	3946.406
5	0.0	0.0	0.0	0.0	0.0	3675.892
6	0.0	0.0	0.0	0.0	0.0	2862.618
7	0.0	0.0	0.0	0.0	0.0	4180.626
8	0.0	0.0	0.0	0.0	0.0	3208.533
9	0.0	0.0	0.0	0.0	0.0	3729.706
10	0.0	0.0	0.0	0.0	0.0	3223.652
11	0.0	0.0	0.0	0.0	0.0	3800.423
12	0.0	0.0	0.0	0.0	0.0	3793.336
13	0.0	0.0	0.0	0.0	0.0	3280.555
14	0.0	0.0	0.0	0.0	0.0	3537.894
15	0.0	0.0	0.0	0.0	0.0	3894.470
16	1.0	2.0	9.2	0.0	0.0	3121.116
17	0.0	3.8	40.1	0.0	0.0	3822.030
18	0.0	0.0	0.0	0.0	0.0	3134.318
19	0.0	0.0	0.0	0.0	0.0	3376.683
20	0.0	0.0	0.0	0.0	0.0	3657.938
21	0.0	0.0	0.0	0.0	0.0	4052.422
22	0.0	0.0	0.0	0.0	0.0	3837.225
23	0.0	0.0	0.0	0.0	0.0	3484.898
24	0.0	3.9	35.9	0.0	0.0	3689.149
25	0.0	2.7	31.3	0.0	0.0	3623.843
26	0.0	0.0	0.0	0.0	0.0	3548.692
27	0.0	0.0	0.0	0.0	0.0	3101.128
28	0.0	0.0	0.0	0.0	0.0	3331.757
29	0.0	0.0	0.0	0.0	0.0	3861.772
30	0.0	0.0	0.0	0.0	0.0	3578.991
					#DIV/0!	
Total	1.0	12.4	116.4	0.0		106697.1
Average	0.0	0.4	3.9	0.0	0.0	3556.6
Maximum	1.0	3.9	40.1	0.0	0.0	4180.6
Date	16-Nov	24-Nov	17-Nov	1-Nov	1-Nov	7-Nov
Minimum	0.0	0.0	0.0	0.0	0.0	2823.0
Date	1-Nov	1-Nov	1-Nov	1-Nov	1-Nov	1-Nov

Notes:	
Dosage (mg/L)=	Day Tank (L) x %conc. x 1000
	Membrane Flow (m3)
Peroxide Concentration:	50.0%

Runtimes Report

Month: November-16

Date	Daily Gen-Set Runtimes		Daily UV Runtimes		Daily PALL Runtimes				
	LLPS	WTP	UV #1	UV #2	Air Compressor #1	Air Compressor #2	CIP Neutralization	CIP Drain	CIP Recirc
	(Hrs)	(Hrs)	(Hrs)	(Hrs)	(Hrs)	(Hrs)	(Hrs)	(Hrs)	(Hrs)
1	0.0	0.0	0.0	0.0	24.4	0.0	0.0	0.0	0.0
2	0.0	0.0	0.0	0.0	24.4	0.0	0.0	0.0	0.0
3	0.0	0.0	0.0	0.0	24.4	0.0	0.0	0.0	0.0
4	0.0	0.0	0.0	0.0	24.4	0.0	0.0	0.0	0.0
5	0.0	0.0	0.0	0.0	24.4	0.0	0.0	0.0	0.0
6	0.0	0.0	0.0	0.0	24.4	0.0	0.0	0.0	0.0
7	0.0	0.0	0.0	0.0	24.4	0.0	0.0	0.0	0.0
8	0.0	0.0	0.0	0.0	24.4	0.0	0.0	0.0	0.0
9	0.0	0.0	0.0	0.0	24.4	0.0	0.0	0.0	0.0
10	0.0	0.0	0.0	0.0	24.4	0.0	0.0	0.0	0.0
11	0.0	0.0	0.0	0.0	24.4	0.0	0.0	0.0	0.0
12	0.0	0.0	0.0	0.0	24.4	0.0	0.0	0.0	0.0
13	0.0	0.0	0.0	0.0	24.4	0.0	0.0	0.0	0.0
14	0.0	0.0	0.0	0.0	24.4	0.0	0.0	0.0	0.0
15	0.0	0.0	0.0	0.0	24.4	0.0	0.0	0.0	0.0
16	0.0	0.0	0.0	0.0	24.4	0.0	0.2	0.0	0.1
17	0.0	0.0	0.0	0.0	24.4	0.0	0.6	0.3	1.5
18	0.0	0.0	0.0	0.0	24.4	0.0	0.0	0.0	0.0
19	0.0	0.0	0.0	0.0	24.4	0.0	0.0	0.0	0.0
20	0.0	0.0	0.0	0.0	24.4	0.0	0.0	0.0	0.0
21	0.0	0.0	0.0	0.0	24.4	0.0	0.0	0.0	0.0
22	0.0	0.0	0.0	0.0	24.4	0.0	0.0	0.0	0.0
23	0.0	0.0	0.0	0.0	24.4	0.0	0.0	0.0	0.0
24	0.0	0.0	0.0	0.0	24.4	0.0	0.6	0.3	1.2
25	0.0	0.0	0.0	0.0	24.4	0.0	0.3	0.2	0.9
26	0.0	0.0	0.0	0.0	24.4	0.0	0.0	0.0	0.0
27	0.0	0.0	0.0	0.0	24.4	0.0	0.0	0.0	0.0
28	1.1	1.2	0.0	0.0	24.4	0.0	0.0	0.0	0.0
29	0.0	0.0	0.0	0.0	24.4	0.0	0.0	0.0	0.0
30	0.0	0.0	0.0	0.7	24.4	0.0	0.0	0.0	0.0
Total	1.1	1.2	0.0	0.7	731.3	0.0	1.7	0.8	3.7

Notes:

Runtimes Report

Month: November-16

Daily

Date	PALL Runtimes						Process Drain	
	RFR Pump #1 (Hrs)	RFR Pump #2 (Hrs)	RF Pump #1 (Hrs)	RF Pump #2 (Hrs)	XR Pump #1 (Hrs)	XR Pump #2 (Hrs)	PDP9010 Pump (Hrs)	PDP9020 Pump (Hrs)
1	2.5	2.3	0.4	0.5	5.1	6.3	2.0	2.9
2	3.3	3.4	0.6	0.6	9.2	6.1	1.9	2.6
3	2.9	3.0	0.6	0.5	6.3	7.9	2.0	2.7
4	3.3	3.3	0.5	0.6	8.8	7.1	1.9	2.6
5	3.1	3.1	0.6	0.6	6.7	8.1	1.9	2.5
6	2.8	2.7	0.5	0.6	5.9	7.5	1.9	2.7
7	4.1	4.1	0.8	0.9	10.8	8.5	2.1	2.8
8	2.9	2.6	0.6	0.5	5.7	6.6	2.0	2.7
9	3.0	3.3	0.6	0.5	7.4	7.1	1.8	2.5
10	2.7	2.5	0.5	0.5	5.8	6.5	1.9	2.6
11	2.8	3.1	0.6	0.6	7.8	6.8	1.9	2.6
12	3.3	3.1	0.6	0.7	6.0	8.6	1.8	2.5
13	2.8	2.8	0.6	0.4	7.5	5.3	1.9	2.6
14	3.2	3.1	0.5	0.6	6.9	7.0	2.0	2.7
15	3.5	3.3	0.7	0.5	8.2	8.1	1.9	2.6
16	2.8	2.8	0.5	0.6	6.4	7.0	2.0	2.6
17	3.3	3.5	0.7	0.7	8.2	7.7	1.9	2.5
18	2.9	2.8	0.5	0.5	6.7	6.6	1.8	2.6
19	3.2	3.0	0.7	0.7	7.4	7.1	2.0	2.6
20	3.5	3.4	0.6	0.6	8.0	8.0	1.8	2.7
21	3.7	3.7	0.7	0.7	8.2	9.5	1.9	2.4
22	3.3	3.1	0.6	0.7	9.4	8.1	1.8	2.6
23	3.0	3.1	0.6	0.7	7.5	7.3	2.0	2.8
24	3.4	3.4	0.8	0.6	8.2	8.8	2.1	2.8
25	3.6	3.3	0.7	0.7	9.6	7.2	1.8	2.5
26	3.0	3.0	0.5	0.6	7.2	8.8	1.9	2.6
27	3.0	3.0	0.6	0.6	6.8	7.8	1.9	2.6
28	3.3	3.5	0.6	0.6	8.0	7.5	2.0	2.7
29	4.0	3.9	0.7	0.9	8.9	8.8	1.9	2.5
30	3.5	3.5	0.5	0.6	8.4	8.2	1.9	2.7
Total	95.3	94.3	18.0	18.4	226.1	225.0	57.7	78.8

Notes:

Runtimes Report

Month: November-16

Daily

Date	Low Lift Pump Motor Runtimes				High Lift Pump Motor Runtimes			
	LLP1010 (Hrs)	LLP1020 (Hrs)	LLP1030 (Hrs)	LLP1040 (Hrs)	HLP7010 (Hrs)	HLP7020 (Hrs)	HLP7030 (Hrs)	HLP7040 (Hrs)
1	1.5	5.1	2.1	2.9	1.7	0.0	1.6	7.3
2	5.5	5.1	5.4	3.0	5.3	0.0	7.3	5.5
3	1.7	4.9	2.4	5.3	8.8	0.0	1.5	4.2
4	5.6	3.6	4.4	2.8	5.9	0.0	4.6	6.6
5	0.8	4.2	5.5	4.5	6.2	0.0	8.7	2.9
6	5.6	3.7	0.2	4.4	1.8	0.0	3.0	11.4
7	5.5	5.5	3.9	5.3	1.7	0.0	5.9	5.4
8	3.1	1.7	5.2	2.8	2.0	0.0	5.0	7.1
9	4.0	0.0	4.5	6.5	5.2	0.0	4.9	7.3
10	5.0	0.0	3.8	4.3	2.7	0.0	4.0	9.8
11	5.5	0.0	3.2	6.3	6.3	0.0	4.9	3.1
12	8.3	0.0	5.5	1.1	4.3	0.0	9.4	5.3
13	5.6	0.0	3.2	4.5	7.8	0.0	4.0	3.6
14	1.5	0.0	6.9	6.5	4.0	0.0	4.5	6.1
15	6.9	0.0	5.6	4.8	4.9	0.0	2.9	7.3
16	3.4	0.0	5.0	5.5	5.8	0.0	3.4	6.1
17	5.6	0.0	6.2	4.7	5.1	0.0	8.6	4.9
18	5.6	0.0	2.9	5.6	8.9	0.0	2.7	5.3
19	5.0	0.0	5.5	4.7	2.8	0.0	1.5	8.6
20	5.9	0.0	3.5	7.5	4.5	0.0	3.0	8.3
21	5.2	0.0	7.6	5.6	5.8	0.0	5.0	7.1
22	8.3	0.0	3.7	5.7	4.9	0.0	11.1	2.4
23	5.3	0.0	4.3	5.6	4.0	0.0	2.6	6.2
24	5.7	0.0	5.8	6.4	4.0	0.0	5.4	5.8
25	3.9	0.0	8.3	5.0	4.8	0.0	1.9	10.5
26	5.4	0.0	5.5	5.3	4.7	0.0	6.7	6.3
27	3.7	0.0	4.6	6.8	8.0	0.0	5.6	3.3
28	4.0	0.0	8.3	3.8	3.6	0.0	6.6	1.6
29	5.8	0.0	8.3	5.2	8.3	0.0	5.1	3.2
30	6.6	0.0	2.9	7.3	7.5	0.0	4.8	4.4
Total	145.5	33.8	144.2	149.7	151.3	0.0	146.2	176.9

Notes:

Plant Internal Flow Report

Month: November-16

Date	Settling Tank Level		Process Drain Tank		Settling Tank Flow		Potable Water Flow		Non-Potable Flow	
	T-9003 (m)		T-9001 (m)		FIT_9005 (m ³) (L/s)		FIT_7082 (m ³) (L/s)		FIT_7092 (m ³) (L/s)	
	Maximum	Minimum	Maximum	Minimum	Total	Peak	Total	Peak	Total	Peak
1	2.2	0.1	0.8	0.4	63.4	15.7	0.3	1.4	0.4	1.2
2	2.2	0.2	0.8	0.4	104.0	15.7	0.8	1.4	0.0	0.0
3	2.2	0.1	0.8	0.4	68.3	15.7	0.1	1.4	0.0	0.0
4	2.2	0.2	0.8	0.4	46.5	15.7	0.1	1.4	0.0	0.6
5	2.2	0.1	0.8	0.4	59.4	15.7	0.0	0.0	0.0	0.0
6	2.2	0.1	0.8	0.4	47.8	15.7	0.0	0.0	0.0	0.0
7	2.2	0.3	0.8	0.4	75.0	15.7	0.1	1.4	0.0	0.0
8	2.2	0.1	0.9	0.4	59.5	15.7	0.0	1.4	0.0	0.0
9	2.2	0.2	0.8	0.4	36.9	15.7	0.1	1.4	0.0	0.0
10	2.2	0.1	0.8	0.4	34.9	15.7	0.1	1.4	0.0	0.0
11	2.2	0.1	0.8	0.4	44.6	15.7	0.0	0.5	0.0	0.0
12	2.2	0.2	0.8	0.4	37.3	15.7	0.0	0.0	0.0	0.0
13	2.2	0.2	0.8	0.4	31.0	15.7	0.0	0.0	0.0	0.0
14	2.2	0.1	0.8	0.4	44.1	15.7	0.2	1.3	0.4	1.2
15	2.2	0.3	0.8	0.4	51.1	15.7	0.1	1.3	0.0	0.0
16	2.2	0.2	0.9	0.4	56.4	15.7	0.1	1.4	5.9	22.9
17	2.2	0.1	0.8	0.4	92.5	15.7	0.0	1.4	39.1	17.4
18	2.2	0.1	0.8	0.4	57.7	15.7	0.0	1.4	0.0	0.0
19	2.2	0.1	0.8	0.4	52.5	15.7	0.0	0.0	0.0	0.0
20	2.2	0.1	0.9	0.4	26.6	15.7	0.0	0.0	0.0	0.0
21	2.2	0.1	0.8	0.4	23.3	15.7	0.1	1.4	0.0	0.0
22	2.2	0.1	1.1	0.4	26.0	15.7	0.1	1.6	0.0	0.0
23	2.2	0.2	0.8	0.4	22.7	15.7	0.1	1.4	0.0	0.0
24	2.2	0.1	0.8	0.4	84.6	15.7	0.1	1.4	36.8	25.3
25	2.2	0.2	0.9	0.4	50.2	15.7	0.0	1.4	26.3	16.0
26	2.2	0.1	0.8	0.4	27.6	15.7	0.0	1.1	0.0	0.0
27	2.2	0.1	0.8	0.4	23.5	15.7	0.0	0.0	0.0	0.0
28	2.2	0.2	0.8	0.4	34.6	15.7	0.0	1.4	0.0	0.0
29	2.2	0.2	0.8	0.4	57.6	15.7	0.1	1.5	0.0	0.6
30	2.2	0.1	0.9	0.4	54.6	15.7	15.5	5.4	0.0	0.0
Total					1494.2		18.0		108.8	
Average	2.2	0.1	0.8	0.4	49.8	15.7	0.6	1.2	3.6	2.8
Maximum	2.2		1.1		104.0		15.5		39.1	
Date	7-Nov		22-Nov		2-Nov		30-Nov		17-Nov	
Minimum		0.1		0.4		15.7		0.0		0.0
Date		24-Nov		27-Nov		27-Nov		5-Nov		2-Nov

Notes: