

Municipality of West Elgin - Tri County Water System

Goto:

Month:

Year:

Date is Set to: December-18

Limit	Low	High	
Raw Water Chlorine Residual:	0.00	5.00	mg/L
Pre-Strainer Chlorine Residual:	0.00	5.00	mg/L
UV Inlet Chlorine Residual:	0.00	5.00	mg/L
Post Treatment Chlorine Residual:	1.00	5.00	mg/L
Treated Chlorine Residual:	1.00	2.50	mg/L
Distribution Chlorine Residual:	1.00	2.50	mg/L
Limit		High	
Limit		156.0	L/s
WTP Permit to Take Water		13500.0	m ³
Limit	Low	High	
System Pressure Limits:	50.0	1034.0	Kpa

Compliance Report

Low Lift Monthly Report

>>>

Membranes Monthly Report

>>>

UV System Monthly Report

>>>

Plant Quality Report

>>>

Raw Well/Treated Storage Report

>>>

High Lift Monthly Report

>>>

Operational Report

Low Lift Monthly Report

>>>

High Lift Monthly Report

>>>

Chemical Usage Monthly Report

>>>

Runtimes Report

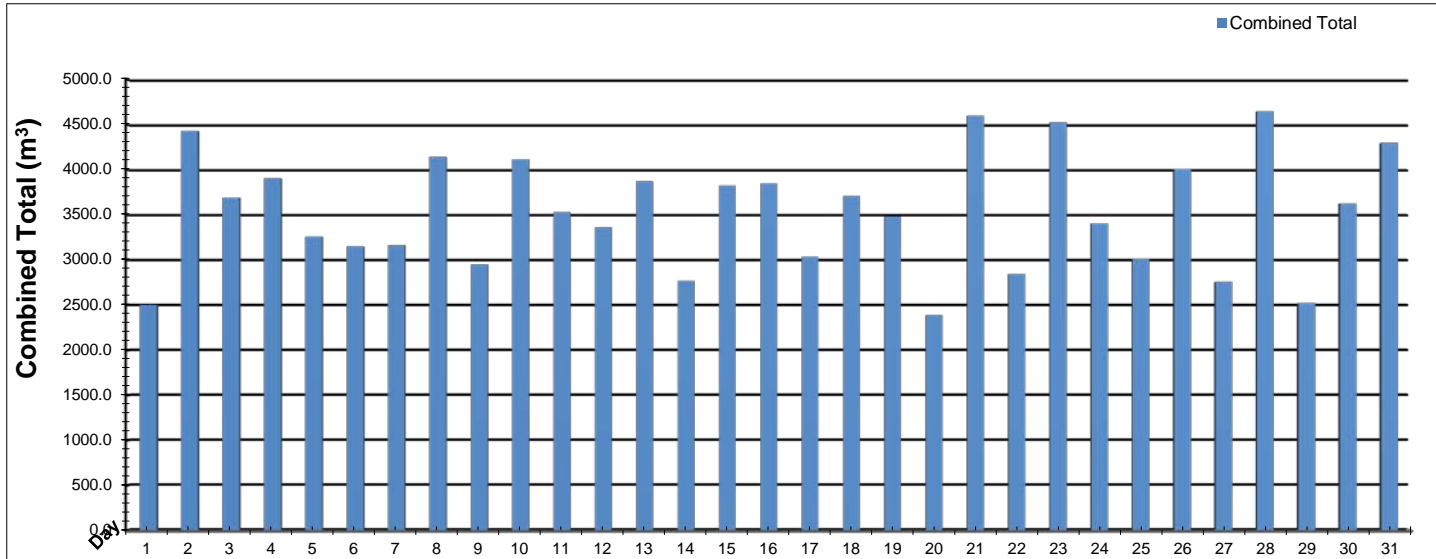
>>>

Plant Internal Flow Report

>>>

Low Lift Monthly Report

Month: December-18

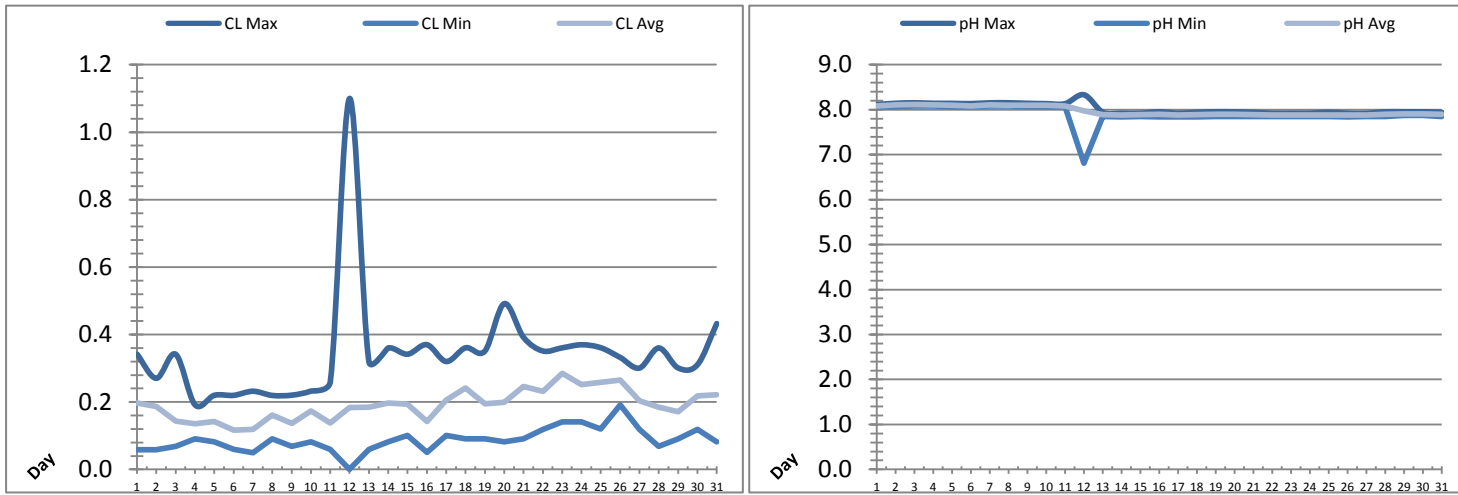


Date	Combined Total (m³)	West Train FIT-1017 (m³)	West Peak Flow FIT-1017 (L/s)	East Train FIT-1027 (m³)	East Peak Flow FIT-1027 (L/s)	Combined Peak Flow (L/s)
1	✓ 2500.6	2500.6	76.0	0.0	0.0	✓ 76.0
2	✓ 4430.3	4430.3	78.2	0.0	0.0	✓ 78.2
3	✓ 3690.8	3690.8	77.3	0.0	0.0	✓ 77.3
4	✓ 3905.6	3905.6	77.8	0.0	0.0	✓ 77.8
5	✓ 3258.5	3258.5	77.5	0.0	0.0	✓ 77.5
6	✓ 3152.0	3152.0	77.0	0.0	0.0	✓ 77.0
7	✓ 3163.5	3163.5	77.7	0.0	0.0	✓ 77.7
8	✓ 4142.9	4142.9	77.2	0.0	0.0	✓ 77.2
9	✓ 2949.9	2949.9	77.2	0.0	0.0	✓ 77.2
10	✓ 4116.6	4116.6	78.4	0.0	0.0	✓ 78.4
11	✓ 3529.0	3529.0	135.3	0.0	0.0	✓ 135.3
12	✓ 3361.9	3361.9	77.6	0.0	0.0	✓ 77.6
13	✓ 3870.9	3870.9	77.4	0.0	0.0	✓ 77.4
14	✓ 2768.4	2768.4	77.6	0.0	0.0	✓ 77.6
15	✓ 3825.2	3825.2	77.3	0.0	0.0	✓ 77.3
16	✓ 3848.2	3848.2	129.8	0.0	0.0	✓ 129.8
17	✓ 3037.5	3037.5	77.3	0.0	0.0	✓ 77.3
18	✓ 3709.7	3709.7	77.7	0.0	0.0	✓ 77.7
19	✓ 3481.6	3481.6	135.7	0.0	0.0	✓ 135.7
20	✓ 2388.1	2388.1	77.0	0.0	0.0	✓ 77.0
21	✓ 4600.0	4600.0	137.1	0.0	0.0	✓ 137.1
22	✓ 2844.7	2844.7	78.1	0.0	0.0	✓ 78.1
23	✓ 4525.8	4525.8	129.8	0.0	0.0	✓ 129.8
24	✓ 3406.7	3406.7	77.5	0.0	0.0	✓ 77.5
25	✓ 3012.7	3012.7	77.3	0.0	0.0	✓ 77.3
26	✓ 4010.0	4010.0	77.5	0.0	0.0	✓ 77.5
27	✓ 2756.3	2756.3	77.5	0.0	0.0	✓ 77.5
28	✓ 4647.6	4647.6	131.1	0.0	0.0	✓ 131.1
29	✓ 2520.7	2520.7	77.2	0.0	0.0	✓ 77.2
30	✓ 3625.8	3625.8	77.5	0.0	0.0	✓ 77.5
31	✓ 4298.2	4298.2	131.5	0.0	0.0	✓ 131.5
Total	109379.3	109379.3		0.0		
Average	3528.4	3528.4	90.0	0.0	0.0	90.0
Maximum	4647.6	4647.6	137.13	0.0	0.00	137.13
Date	28-Dec	28-Dec	21-Dec	2-Dec	1-Dec	21-Dec
Minimum	2388.1	2388.1	75.98	0.0	0.00	75.98
Date	20-Dec	20-Dec	1-Dec	1-Dec	1-Dec	1-Dec

Notes:

Low Lift Monthly Report

Month: December-18

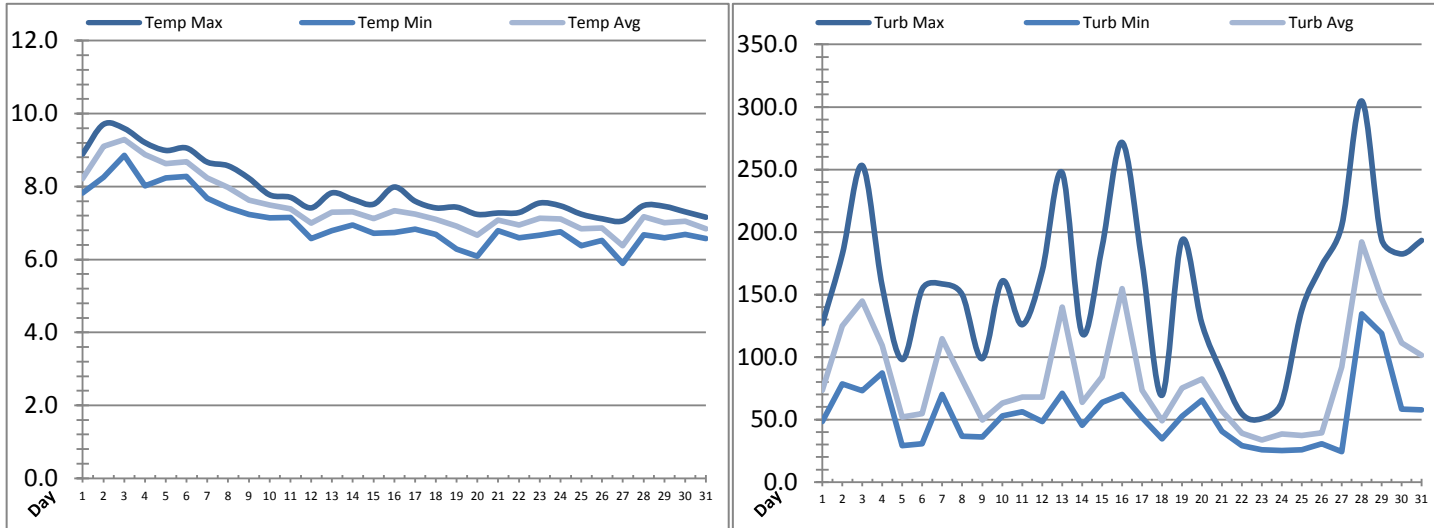


Date	Raw Water Chlorine Residual			Raw Water pH		
	AIT_1401_CL (mg/L)			AIT_1401_PH		
	Maximum	Minimum	Average	Maximum	Minimum	Average
1	0.34	0.06	0.20	8.11	8.06	8.08
2	0.27	0.06	0.19	8.14	8.06	8.11
3	0.34	0.07	0.14	8.15	8.08	8.12
4	0.19	0.09	0.13	8.14	8.08	8.11
5	0.22	0.08	0.14	8.14	8.06	8.10
6	0.22	0.06	0.12	8.13	8.06	8.08
7	0.23	0.05	0.12	8.15	8.08	8.10
8	0.22	0.09	0.16	8.15	8.08	8.10
9	0.22	0.07	0.14	8.14	8.06	8.10
10	0.23	0.08	0.17	8.13	8.06	8.10
11	0.26	0.06	0.14	8.13	8.06	8.08
12	1.10	0.00	0.18	8.33	6.81	7.97
13	0.32	0.06	0.18	7.94	7.85	7.89
14	0.36	0.08	0.20	7.92	7.84	7.88
15	0.34	0.10	0.19	7.92	7.85	7.89
16	0.37	0.05	0.14	7.95	7.84	7.90
17	0.32	0.10	0.21	7.92	7.84	7.88
18	0.36	0.09	0.24	7.94	7.84	7.89
19	0.35	0.09	0.19	7.95	7.85	7.90
20	0.49	0.08	0.20	7.95	7.85	7.90
21	0.39	0.09	0.25	7.94	7.85	7.89
22	0.35	0.12	0.23	7.92	7.85	7.88
23	0.36	0.14	0.28	7.92	7.85	7.88
24	0.37	0.14	0.25	7.92	7.85	7.88
25	0.36	0.12	0.26	7.94	7.85	7.88
26	0.33	0.19	0.26	7.92	7.84	7.88
27	0.30	0.12	0.20	7.92	7.85	7.88
28	0.36	0.07	0.18	7.95	7.85	7.90
29	0.30	0.09	0.17	7.95	7.87	7.91
30	0.31	0.12	0.22	7.95	7.87	7.90
31	0.43	0.08	0.22	7.94	7.85	7.90
Total						
Average	0.34	0.09	0.19	8.02	7.89	7.97
Maximum	1.10		0.28	8.33		8.12
Date	12-Dec		23-Dec	12-Dec		3-Dec
Minimum		0.00	0.12		6.81	7.88
Date		12-Dec	6-Dec		12-Dec	27-Dec

Notes:

Low Lift Monthly Report

Month: December-18

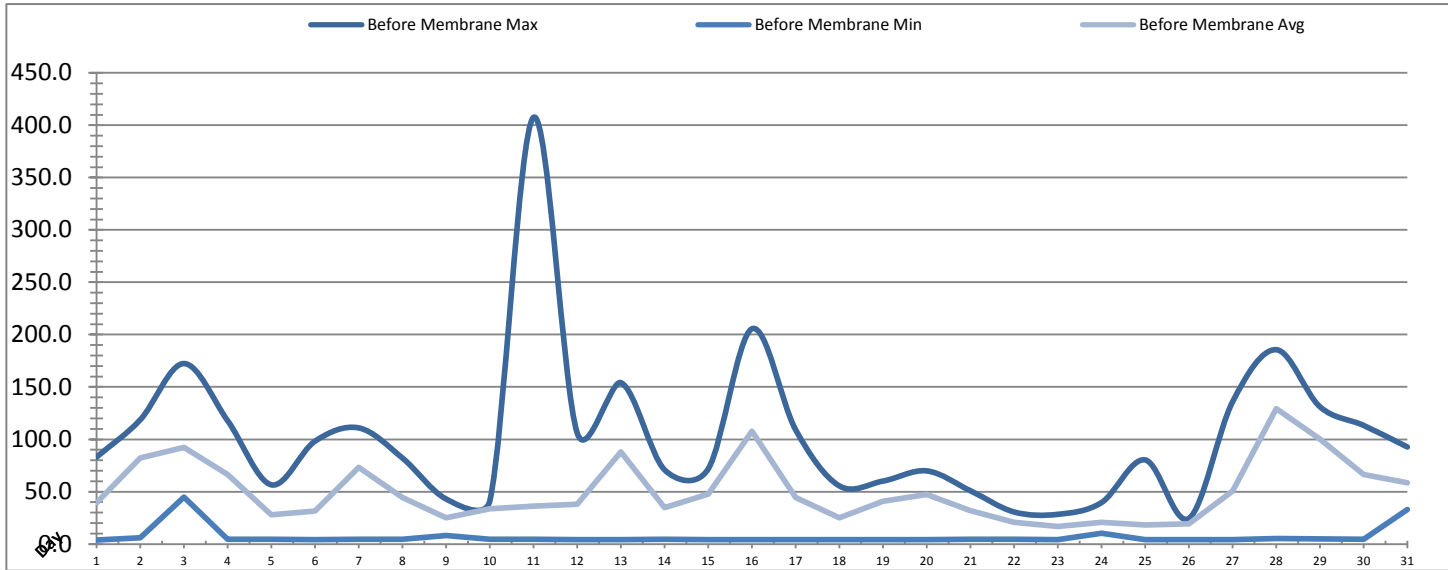


Date	Raw Water Temperature			Raw Water Turbidity		
	TIT_1403 (°C)			AIT_1404 (NTU)		
	Maximum	Minimum	Average	Maximum	Minimum	Average
1	8.9	7.8	8.2	126.57	48.33	73.27
2	9.7	8.3	9.1	182.48	78.50	125.01
3	9.6	8.9	9.3	253.07	73.20	144.66
4	9.2	8.0	8.9	156.12	87.15	109.23
5	9.0	8.2	8.6	98.01	29.03	52.12
6	9.1	8.3	8.7	154.54	30.59	54.57
7	8.7	7.7	8.2	158.47	70.07	114.60
8	8.6	7.4	8.0	149.85	36.76	82.22
9	8.2	7.2	7.6	98.73	36.05	49.69
10	7.8	7.1	7.5	160.74	53.01	63.20
11	7.7	7.2	7.4	125.86	56.11	68.04
12	7.4	6.6	7.0	168.48	48.33	68.03
13	7.8	6.8	7.3	247.55	70.85	140.02
14	7.6	7.0	7.3	118.94	45.29	63.83
15	7.5	6.7	7.1	187.86	63.86	84.30
16	8.0	6.7	7.3	271.67	70.06	154.64
17	7.6	6.8	7.2	176.32	51.47	73.48
18	7.4	6.7	7.1	69.35	34.48	48.89
19	7.4	6.3	6.9	193.29	52.64	75.34
20	7.2	6.1	6.7	126.68	65.45	82.44
21	7.3	6.8	7.1	87.17	40.65	56.79
22	7.3	6.6	6.9	54.62	29.01	39.08
23	7.5	6.7	7.1	50.69	25.89	33.69
24	7.5	6.8	7.1	63.94	25.14	38.58
25	7.2	6.4	6.8	137.45	25.92	37.21
26	7.1	6.5	6.9	173.14	30.56	39.42
27	7.1	5.9	6.4	204.90	24.32	92.10
28	7.5	6.7	7.2	304.82	134.38	192.04
29	7.5	6.6	7.0	194.07	118.85	146.68
30	7.3	6.7	7.1	182.45	58.47	111.29
31	7.2	6.6	6.8	193.26	57.69	101.33
Total						
Average	7.9	7.0	7.5	157.1	53.9	84.4
Maximum	9.7		9.3	304.8		192.0
Date	2-Dec		3-Dec	28-Dec		28-Dec
Minimum		5.9	6.4		24.3	33.7
Date		27-Dec	27-Dec		27-Dec	23-Dec

Notes:

Membranes Monthly Report

Month: December-18

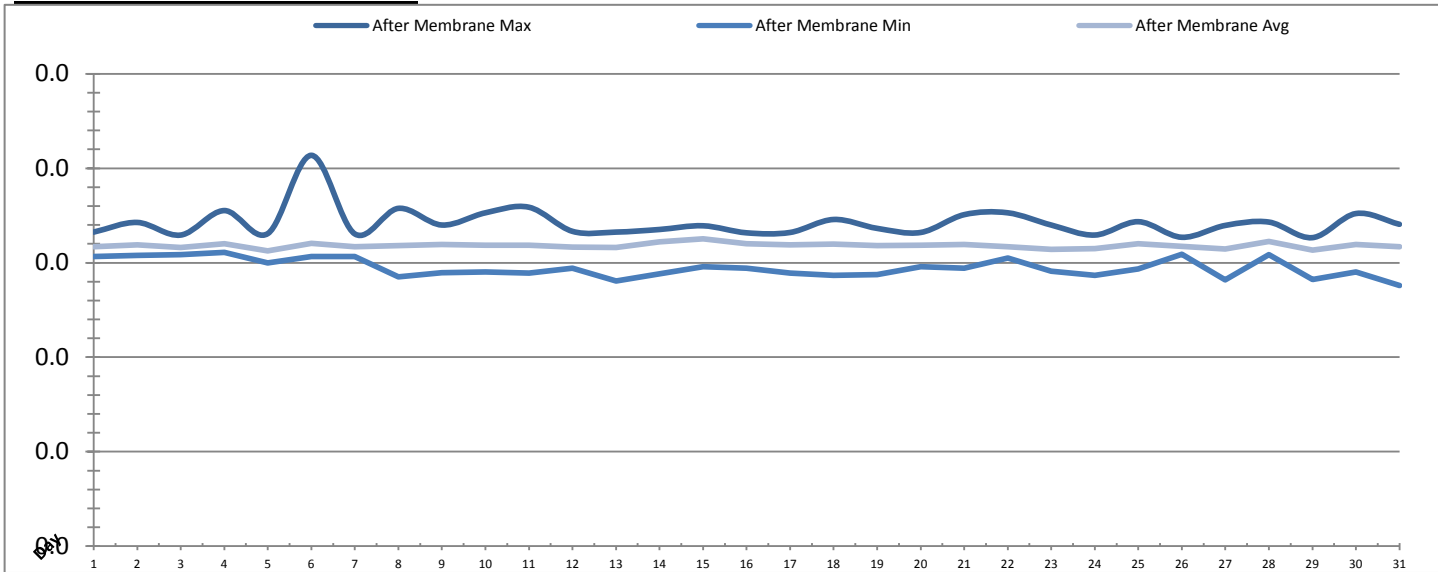


Date	Turbidity Before Membrane			Rack #1 Turbidity			Rack #2 Turbidity		
	PALL_FEED_AIT2006_Value NTU			RACK1_NTU_Value NTU			RACK2_NTU_Value NTU		
	Maximum	Minimum	Average	Maximum	Minimum	Average	Maximum	Minimum	Average
1	83.05	3.88	39.42	0.02	0.02	0.02	0.18	0.02	0.02
2	118.67	6.10	82.20	0.02	0.02	0.02	0.17	0.02	0.02
3	172.36	44.73	92.29	0.02	0.02	0.02	0.03	0.02	0.02
4	117.77	4.59	66.23	0.02	0.02	0.02	0.17	0.02	0.02
5	56.53	4.49	28.06	0.29	0.02	0.02	0.16	0.02	0.02
6	98.24	4.32	31.52	0.02	0.02	0.02	0.09	0.02	0.02
7	110.90	4.43	73.37	0.02	0.02	0.02	0.04	0.02	0.02
8	82.13	4.39	44.50	0.02	0.02	0.02	0.15	0.02	0.02
9	43.02	8.16	25.05	0.02	0.02	0.02	0.16	0.02	0.02
10	41.14	4.49	33.55	0.02	0.02	0.02	0.06	0.02	0.02
11	407.50	4.51	36.06	0.02	0.02	0.02	0.07	0.02	0.02
12	106.03	4.14	38.08	0.02	0.02	0.02	0.19	0.02	0.02
13	154.09	4.20	87.98	0.02	0.02	0.02	0.16	0.02	0.02
14	70.84	4.57	34.58	0.02	0.02	0.02	0.08	0.02	0.02
15	71.84	4.26	47.60	0.02	0.02	0.02	0.14	0.02	0.02
16	205.57	4.12	107.77	0.02	0.02	0.02	0.14	0.02	0.02
17	109.04	4.28	44.55	0.02	0.02	0.02	0.06	0.02	0.02
18	55.49	4.14	25.08	0.03	0.02	0.02	0.12	0.02	0.02
19	60.12	4.18	40.80	0.02	0.02	0.02	0.12	0.02	0.02
20	69.84	4.24	47.19	0.02	0.02	0.02	0.14	0.02	0.02
21	50.86	4.63	31.91	0.02	0.02	0.02	0.04	0.02	0.02
22	30.58	4.57	20.68	0.02	0.02	0.02	0.19	0.02	0.02
23	28.34	4.30	16.76	0.02	0.02	0.02	0.21	0.02	0.02
24	39.57	10.38	20.84	0.02	0.02	0.02	0.05	0.02	0.02
25	80.32	4.32	18.13	0.02	0.02	0.02	0.10	0.02	0.02
26	24.40	4.12	19.42	0.02	0.02	0.02	0.16	0.02	0.02
27	135.87	4.22	50.50	0.02	0.02	0.02	0.14	0.02	0.02
28	185.61	5.20	129.28	0.02	0.02	0.02	0.17	0.02	0.02
29	131.06	4.75	100.19	0.02	0.02	0.02	0.17	0.02	0.02
30	113.26	4.41	66.33	0.02	0.02	0.02	0.18	0.02	0.02
31	92.67	32.78	58.48	0.02	0.02	0.02	0.03	0.02	0.02
Total									
Average	101.5	7.0	50.3	0.0	0.0	0.0	0.1	0.0	0.0
Maximum	407.5		129.3	0.3		0.0	0.2		0.0
Date	11-Dec		28-Dec	5-Dec		5-Dec	23-Dec		27-Dec
Minimum		3.9	16.8		0.0	0.0		0.0	0.0
Date		1-Dec	23-Dec		1-Dec	9-Dec		1-Dec	3-Dec

Notes:

Membranes Monthly Report

Month: December-18

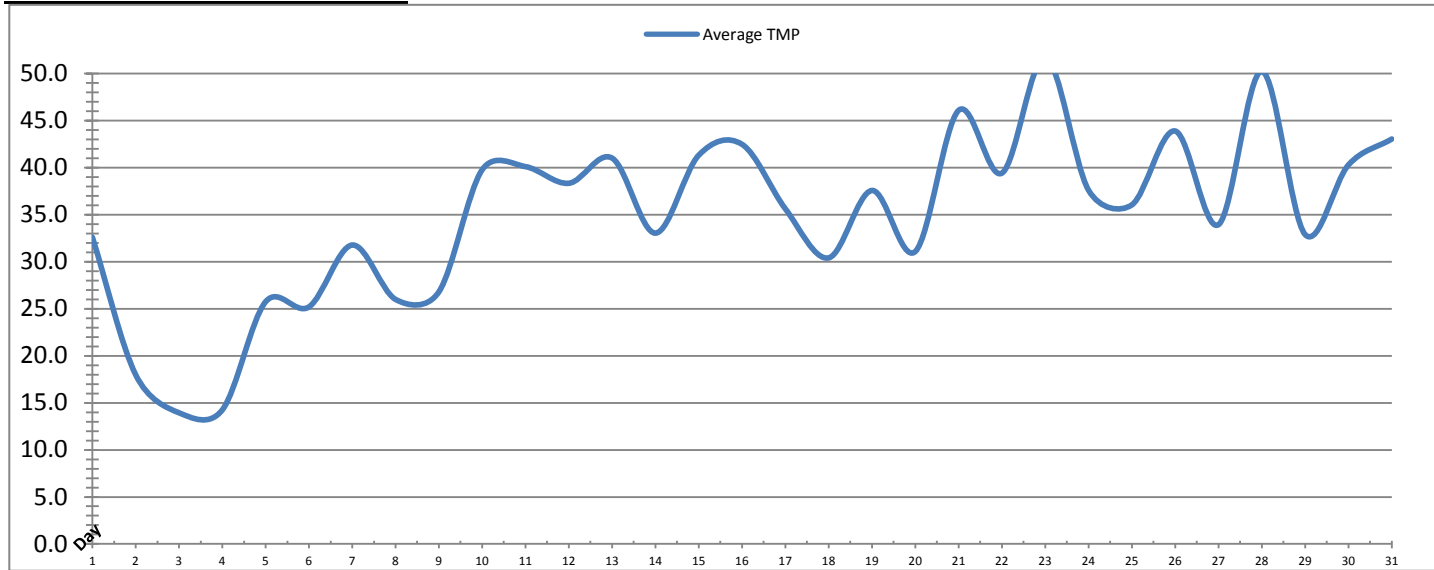


Date	Rack #3 Turbidity			Rack #4 Turbidity			Turbidity After Membranes		
	RACK3_NTU_Value NTU			RACK4_NTU_Value NTU			PALL_FILT_AIT5001_Value NTU		
	Maximum	Minimum	Average	Maximum	Minimum	Average	Maximum	Minimum	Average
1	0.03	0.02	0.02	0.03	0.03	0.03	0.02	0.02	0.02
2	0.02	0.02	0.02	0.03	0.02	0.03	0.02	0.02	0.02
3	0.02	0.02	0.02	0.03	0.03	0.03	0.02	0.02	0.02
4	0.02	0.02	0.02	0.35	0.02	0.03	0.02	0.02	0.02
5	0.20	0.02	0.02	0.03	0.03	0.03	0.02	0.01	0.02
6	0.02	0.02	0.02	0.03	0.02	0.03	0.02	0.02	0.02
7	0.02	0.02	0.02	0.03	0.03	0.03	0.02	0.02	0.02
8	0.02	0.02	0.02	0.03	0.03	0.03	0.02	0.01	0.02
9	0.02	0.02	0.02	0.03	0.02	0.03	0.02	0.01	0.02
10	0.02	0.02	0.02	0.05	0.03	0.03	0.02	0.01	0.02
11	0.02	0.02	0.02	0.03	0.03	0.03	0.02	0.01	0.02
12	0.06	0.02	0.02	0.03	0.03	0.03	0.02	0.01	0.02
13	0.02	0.02	0.02	0.04	0.03	0.03	0.02	0.01	0.02
14	0.02	0.02	0.02	0.03	0.03	0.03	0.02	0.01	0.02
15	0.02	0.02	0.02	0.03	0.03	0.03	0.02	0.01	0.02
16	0.02	0.02	0.02	0.03	0.03	0.03	0.02	0.01	0.02
17	0.02	0.02	0.02	0.03	0.03	0.03	0.02	0.01	0.02
18	0.02	0.02	0.02	0.03	0.03	0.03	0.02	0.01	0.02
19	0.02	0.02	0.02	0.03	0.03	0.03	0.02	0.01	0.02
20	0.02	0.02	0.02	0.03	0.03	0.03	0.02	0.01	0.02
21	0.06	0.02	0.02	0.03	0.03	0.03	0.02	0.01	0.02
22	0.02	0.02	0.02	0.03	0.03	0.03	0.02	0.02	0.02
23	0.02	0.02	0.02	0.03	0.02	0.03	0.02	0.01	0.02
24	0.02	0.02	0.02	0.03	0.02	0.03	0.02	0.01	0.02
25	0.02	0.02	0.02	0.03	0.03	0.03	0.02	0.01	0.02
26	0.02	0.02	0.02	0.03	0.02	0.03	0.02	0.02	0.02
27	0.02	0.02	0.02	0.09	0.02	0.03	0.02	0.01	0.02
28	0.02	0.02	0.02	0.04	0.03	0.03	0.02	0.02	0.02
29	0.02	0.02	0.02	0.03	0.03	0.03	0.02	0.01	0.02
30	0.02	0.02	0.02	0.03	0.03	0.03	0.02	0.01	0.02
31	0.02	0.02	0.02	0.03	0.03	0.03	0.02	0.01	0.02
Total									
Average	0.0	0.0	0.0	0.0	0.0	0.0	0.0	0.0	0.0
Maximum	0.2		0.0	0.3		0.0	0.0		0.0
Date	5-Dec		28-Dec	4-Dec		27-Dec	6-Dec		15-Dec
Minimum		0.0	0.0		0.0	0.0		0.0	0.0
Date		4-Dec	8-Dec		2-Dec	3-Dec		31-Dec	5-Dec

Notes:

Membranes Monthly Report

Month: December-18

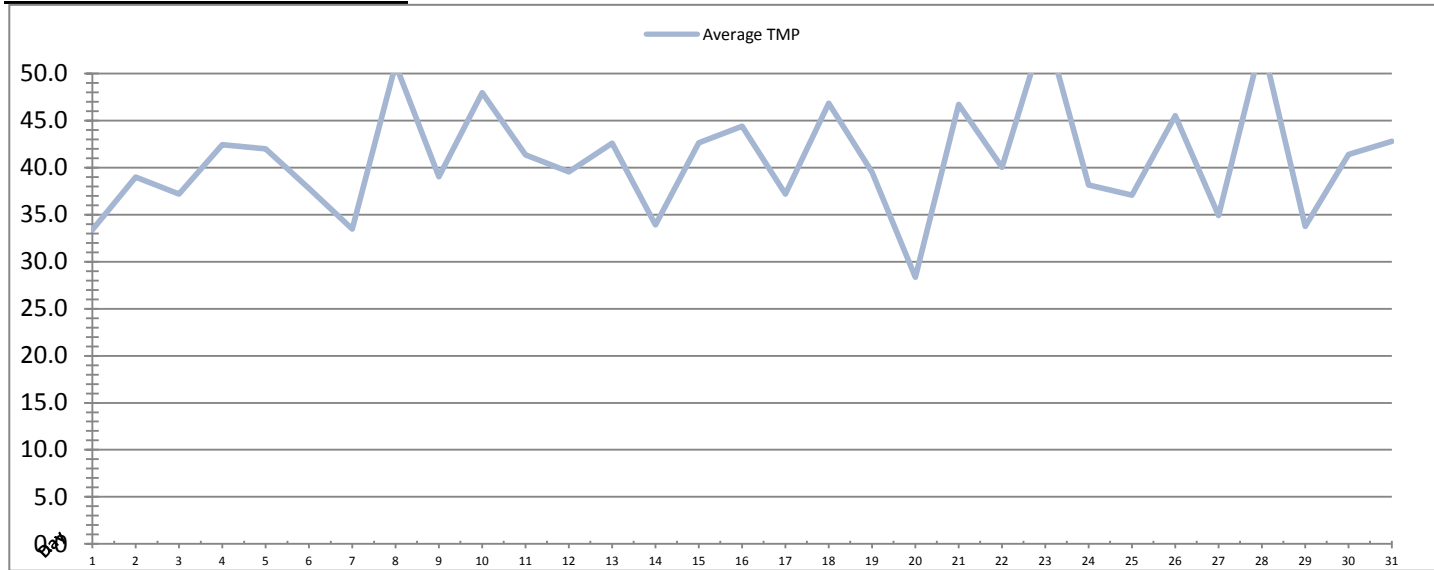


Date	Integrity Test Rack 1							
	Initial Pressure (kPa)	Final Pressure (kPa)	Test Duration (sec)	Change in Pressure (kPa)	UCL	Within UCL	Average TMP (kPa)	Max TMP (kPa)
1	199.2	198.1	300.0	1.1	2.0	✓ 2.0	32.6	166.7
2	199.2	198.1	300.0	1.1	2.0	✓ 2.0	18.0	115.3
3	199.2	198.1	300.0	1.1	2.0	✓ 2.0	13.9	15.5
4	199.5	198.1	300.0	1.3	2.0	✓ 2.0	14.3	80.2
5	199.1	197.7	300.0	1.3	2.0	✓ 2.0	25.7	124.9
6	199.4	198.1	300.0	1.3	2.0	✓ 2.0	25.2	146.0
7	198.8	197.7	300.0	1.1	2.0	✓ 2.0	31.8	82.3
8	199.5	198.1	300.0	1.4	2.0	✓ 2.0	26.0	86.5
9	199.0	197.7	300.0	1.3	2.0	✓ 2.0	26.8	89.5
10	199.5	198.1	300.0	1.4	2.0	✓ 2.0	39.8	101.3
11	199.1	197.7	300.0	1.4	2.0	✓ 2.0	40.1	163.9
12	199.4	198.0	300.0	1.3	2.0	✓ 2.0	38.3	101.7
13	199.2	197.8	300.0	1.3	2.0	✓ 2.0	41.0	100.4
14	199.2	197.9	300.0	1.3	2.0	✓ 2.0	33.0	175.3
15	199.3	197.9	300.0	1.4	2.0	✓ 2.0	41.3	101.0
16	199.2	197.9	300.0	1.3	2.0	✓ 2.0	42.5	164.3
17	199.3	198.0	300.0	1.3	2.0	✓ 2.0	35.6	102.5
18	199.5	198.1	300.0	1.4	2.0	✓ 2.0	30.4	114.1
19	199.2	197.9	300.0	1.3	2.0	✓ 2.0	37.6	158.9
20	199.5	198.1	300.0	1.4	2.0	✓ 2.0	31.1	155.9
21	199.2	197.8	300.0	1.4	2.0	✓ 2.0	46.1	181.1
22	199.3	197.9	300.0	1.4	2.0	✓ 2.0	39.4	200.1
23	199.2	197.9	300.0	1.3	2.0	✓ 2.0	51.7	198.3
24	199.0	197.6	300.0	1.4	2.0	✓ 2.0	37.6	169.4
25	198.9	197.5	300.0	1.3	2.0	✓ 2.0	36.0	103.4
26	199.2	197.7	300.0	1.5	2.0	✓ 2.0	43.9	102.5
27	199.5	198.0	300.0	1.5	2.0	✓ 2.0	33.9	103.4
28	199.3	197.9	300.0	1.4	2.0	✓ 2.0	50.2	153.6
29	199.1	197.8	300.0	1.3	2.0	✓ 2.0	32.9	101.8
30	199.7	198.4	300.0	1.3	2.0	✓ 2.0	40.3	102.0
31	199.7	198.3	300.0	1.4	2.0	✓ 2.0	43.0	160.5
Total								
Average	199.3	197.9	300.0	1.3	2.0	2.0	34.8	126.5
Maximum	199.7	198.4	300.0	1.5	2.0	2.0	51.7	200.1
Date	30-Dec	30-Dec	1-Dec	26-Dec	1-Dec	1-Dec	23-Dec	22-Dec
Minimum	198.8	197.5	300.0	1.1	2.0	2.0	13.9	15.5
Date	7-Dec	25-Dec	1-Dec	7-Dec	1-Dec	1-Dec	3-Dec	3-Dec

Notes:

Membranes Monthly Report

Month: December-18

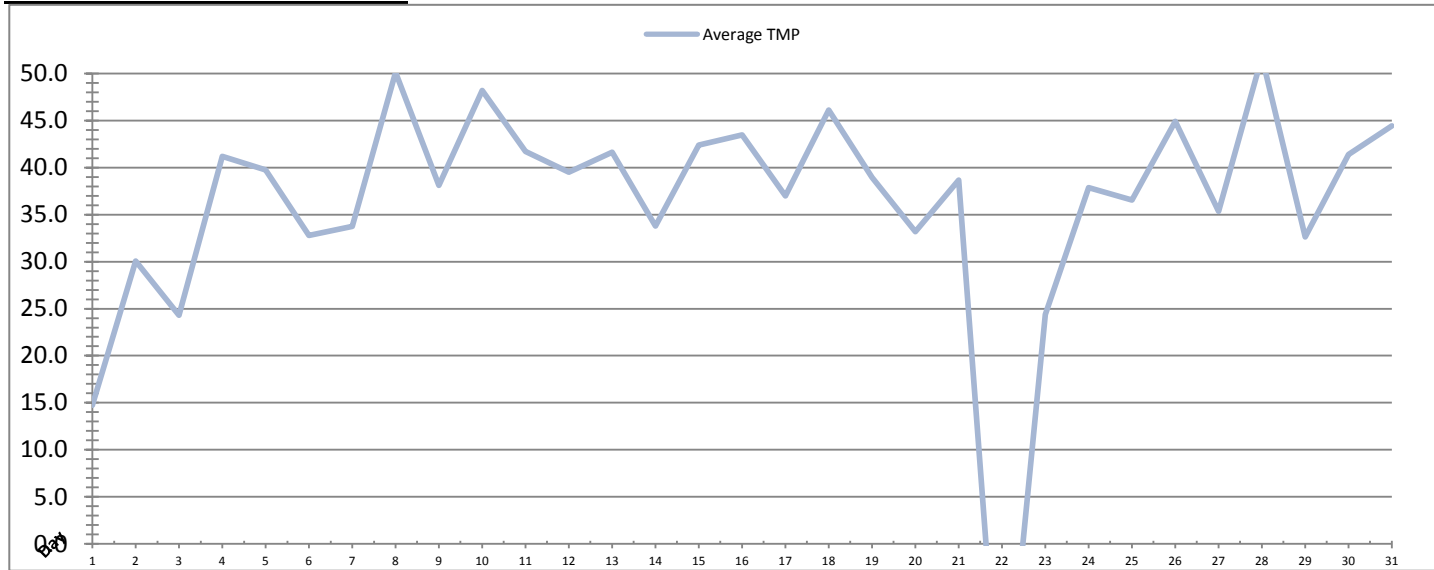


Date	Integrity Test Rack 2							
	Initial Pressure (kPa)	Final Pressure (kPa)	Test Duration (sec)	Change in Pressure (kPa)	UCL	Within UCL	Average TMP (kPa)	Max TMP (kPa)
1	208.0	206.8	300.0	1.2	2.0	✓ 2.0	33.4	181.2
2	208.7	207.4	300.0	1.3	2.0	✓ 2.0	39.0	166.0
3	209.3	208.3	300.0	1.0	2.0	✓ 2.0	37.2	176.2
4	207.7	206.5	300.0	1.2	2.0	✓ 2.0	42.4	193.9
5	208.0	206.9	300.0	1.2	2.0	✓ 2.0	42.0	175.2
6	207.8	206.6	300.0	1.2	2.0	✓ 2.0	37.8	173.3
7	208.0	206.9	300.0	1.2	2.0	✓ 2.0	33.4	84.6
8	207.5	206.2	300.0	1.3	2.0	✓ 2.0	51.0	176.1
9	209.0	207.8	300.0	1.2	2.0	✓ 2.0	39.0	188.3
10	208.1	206.9	300.0	1.2	2.0	✓ 2.0	48.0	170.5
11	208.3	207.0	300.0	1.2	2.0	✓ 2.0	41.3	171.4
12	208.0	206.7	300.0	1.3	2.0	✓ 2.0	39.6	103.9
13	207.3	205.9	300.0	1.4	2.0	✓ 2.0	42.6	102.2
14	208.6	207.5	300.0	1.2	2.0	✓ 2.0	33.9	99.0
15	207.4	206.1	300.0	1.3	2.0	✓ 2.0	42.6	102.9
16	207.6	206.4	300.0	1.2	2.0	✓ 2.0	44.4	168.3
17	208.0	206.7	300.0	1.3	2.0	✓ 2.0	37.2	105.1
18	208.1	206.8	300.0	1.3	2.0	✓ 2.0	46.8	201.9
19	208.0	206.8	300.0	1.2	2.0	✓ 2.0	39.5	175.9
20	207.7	206.5	300.0	1.2	2.0	✓ 2.0	28.3	103.9
21	209.1	207.9	300.0	1.3	2.0	✓ 2.0	46.7	162.9
22	207.5	206.1	300.0	1.3	2.0	✓ 2.0	40.0	187.7
23	208.1	206.8	300.0	1.3	2.0	✓ 2.0	55.0	192.6
24	207.8	206.6	300.0	1.2	2.0	✓ 2.0	38.2	98.6
25	207.9	206.6	300.0	1.3	2.0	✓ 2.0	37.1	122.9
26	207.9	206.6	300.0	1.3	2.0	✓ 2.0	45.5	104.2
27	208.5	207.1	300.0	1.4	2.0	✓ 2.0	34.9	104.8
28	207.7	206.5	300.0	1.3	2.0	✓ 2.0	53.3	154.3
29	209.1	207.7	300.0	1.3	2.0	✓ 2.0	33.8	103.6
30	208.0	206.7	300.0	1.3	2.0	✓ 2.0	41.4	104.2
31	208.1	206.7	300.0	1.4	2.0	✓ 2.0	42.8	163.7
Total								
Average	208.1	206.8	300.0	1.3	2.0	2.0	40.9	145.8
Maximum	209.3	208.3	300.0	1.4	2.0	2.0	55.0	201.9
Date	3-Dec	3-Dec	1-Dec	13-Dec	1-Dec	1-Dec	23-Dec	18-Dec
Minimum	207.3	205.9	300.0	1.0	2.0	2.0	28.3	84.6
Date	13-Dec	13-Dec	1-Dec	3-Dec	1-Dec	1-Dec	20-Dec	7-Dec

Notes:

Membranes Monthly Report

Month: December-18

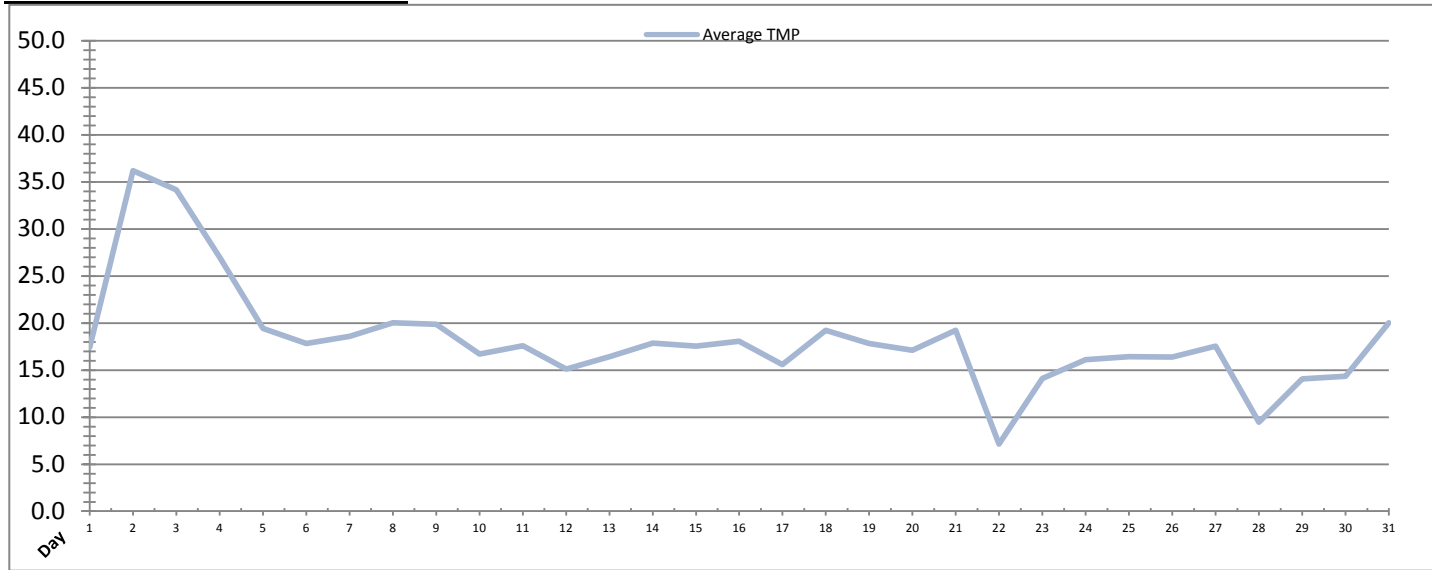


Integrity Test Rack 3									
Date	Initial Pressure (kPa)	Final Pressure (kPa)	Test Duration (sec)	Change in Pressure (kPa)	UCL	Within UCL	Average TMP (kPa)	Max TMP (kPa)	
1	175.3	174.2	300.0	1.1	2.0	✓ 2.0	14.7	84.5	
2	181.7	180.6	300.0	1.1	2.0	✓ 2.0	30.1	80.6	
3	181.0	180.2	300.0	0.8	2.0	✓ 2.0	24.3	120.7	
4	181.4	180.2	300.0	1.3	2.0	✓ 2.0	41.2	119.3	
5	181.4	180.2	300.0	1.2	2.0	✓ 2.0	39.7	182.6	
6	181.5	180.3	300.0	1.2	2.0	✓ 2.0	32.8	142.3	
7	181.5	180.3	300.0	1.1	2.0	✓ 2.0	33.7	83.6	
8	181.0	179.7	300.0	1.3	2.0	✓ 2.0	50.1	171.3	
9	182.4	181.2	300.0	1.2	2.0	✓ 2.0	38.1	168.0	
10	181.6	180.3	300.0	1.3	2.0	✓ 2.0	48.2	189.9	
11	181.9	180.6	300.0	1.3	2.0	✓ 2.0	41.7	193.1	
12	181.0	179.8	300.0	1.3	2.0	✓ 2.0	39.5	103.3	
13	181.6	180.3	300.0	1.3	2.0	✓ 2.0	41.6	91.1	
14	181.3	180.1	300.0	1.3	2.0	✓ 2.0	33.8	94.3	
15	181.3	180.1	300.0	1.2	2.0	✓ 2.0	42.4	96.1	
16	181.4	180.1	300.0	1.3	2.0	✓ 2.0	43.5	157.2	
17	181.4	180.1	300.0	1.3	2.0	✓ 2.0	37.0	98.1	
18	180.2	178.9	300.0	1.3	2.0	✓ 2.0	46.1	180.5	
19	180.8	179.7	300.0	1.2	2.0	✓ 2.0	39.0	171.1	
20	180.7	179.4	300.0	1.2	2.0	✓ 2.0	33.2	173.8	
21	180.6	179.4	300.0	1.3	2.0	✓ 2.0	38.7	174.3	
22	180.6	179.4	300.0	1.3	2.0	✓ 2.0	-22.6	82.3	
23	186.4	184.8	300.0	1.5	2.0	✓ 2.0	24.4	88.6	
24	180.9	179.7	300.0	1.1	2.0	✓ 2.0	37.9	90.7	
25	180.5	179.3	300.0	1.3	2.0	✓ 2.0	36.5	95.8	
26	180.7	179.4	300.0	1.3	2.0	✓ 2.0	44.9	98.0	
27	180.5	179.2	300.0	1.3	2.0	✓ 2.0	35.3	101.7	
28	180.6	179.4	300.0	1.3	2.0	✓ 2.0	51.8	153.4	
29	180.5	179.2	300.0	1.3	2.0	✓ 2.0	32.6	99.6	
30	180.1	178.8	300.0	1.3	2.0	✓ 2.0	41.4	99.3	
31	180.5	179.2	300.0	1.3	2.0	✓ 2.0	44.4	157.1	
Total									
Average	181.0	179.8	300.0	1.2	2.0	2.0	36.0	127.2	
Maximum	186.4	184.8	300.0	1.5	2.0	2.0	51.8	193.1	
Date	23-Dec	23-Dec	1-Dec	23-Dec	1-Dec	1-Dec	28-Dec	11-Dec	
Minimum	175.3	174.2	300.0	0.8	2.0	2.0	-22.6	80.6	
Date	1-Dec	1-Dec	1-Dec	3-Dec	1-Dec	1-Dec	22-Dec	2-Dec	

Notes:

Membranes Monthly Report

Month: December-18



Integrity Test Rack 4								
Date	Initial Pressure (kPa)	Final Pressure (kPa)	Test Duration (sec)	Change in Pressure (kPa)	UCL	Within UCL	Average TMP (kPa)	Max TMP (kPa)
1	200.8	198.9	300.0	1.9	2.0	✓ 2.0	17.4	50.9
2	200.7	198.9	300.0	1.8	2.0	✓ 2.0	36.2	92.6
3	200.5	199.2	300.0	1.3	2.0	✓ 2.0	34.1	109.9
4	200.8	199.2	300.0	1.6	2.0	✓ 2.0	27.0	77.6
5	200.5	199.1	300.0	1.4	2.0	✓ 2.0	19.4	72.7
6	200.4	198.7	300.0	1.7	2.0	✓ 2.0	17.8	51.2
7	200.5	198.9	300.0	1.6	2.0	✓ 2.0	18.6	45.8
8	200.4	198.7	300.0	1.6	2.0	✓ 2.0	20.0	49.3
9	200.4	198.7	300.0	1.6	2.0	✓ 2.0	19.9	49.6
10	201.1	199.6	300.0	1.5	2.0	✓ 2.0	16.7	52.6
11	200.9	199.1	300.0	1.8	2.0	✓ 2.0	17.6	51.5
12	200.5	198.7	300.0	1.7	2.0	✓ 2.0	15.1	48.7
13	201.1	199.5	300.0	1.6	2.0	✓ 2.0	16.4	48.6
14	200.7	199.1	300.0	1.6	2.0	✓ 2.0	17.8	48.1
15	200.5	198.9	300.0	1.6	2.0	✓ 2.0	17.6	49.0
16	200.7	199.0	300.0	1.6	2.0	✓ 2.0	18.1	48.3
17	201.0	199.6	300.0	1.4	2.0	✓ 2.0	15.6	48.7
18	200.9	199.1	300.0	1.8	2.0	✓ 2.0	19.2	55.4
19	200.8	199.4	300.0	1.4	2.0	✓ 2.0	17.8	47.0
20	200.8	198.9	300.0	1.9	2.0	✓ 2.0	17.1	48.4
21	201.1	199.5	300.0	1.7	2.0	✓ 2.0	19.2	54.7
22	200.9	198.9	300.0	2.1	2.0	✓ 2.0	7.2	46.0
23	201.1	199.9	300.0	1.2	2.0	✓ 2.0	14.1	45.5
24	201.2	199.5	300.0	1.6	2.0	✓ 2.0	16.1	50.5
25	201.6	200.0	300.0	1.6	2.0	✓ 2.0	16.4	50.8
26	201.6	199.8	300.0	1.8	2.0	✓ 2.0	16.4	53.4
27	201.6	200.0	300.0	1.6	2.0	✓ 2.0	17.5	44.2
28	199.4	197.5	300.0	1.9	2.0	✓ 2.0	9.4	44.2
29	198.4	196.4	300.0	2.0	2.0	✓ 2.0	14.1	51.8
30	198.0	196.2	300.0	1.8	2.0	✓ 2.0	14.3	22.2
31	198.0	196.4	300.0	1.6	2.0	✓ 2.0	20.0	66.8
Total								
Average	200.5	198.9	300.0	1.7	2.0	2.0	18.2	54.1
Maximum	201.6	200.0	300.0	2.1	2.0	2.0	36.2	109.9
Date	25-Dec	25-Dec	1-Dec	22-Dec	1-Dec	1-Dec	2-Dec	3-Dec
Minimum	198.0	196.2	300.0	1.2	2.0	2.0	7.2	22.2
Date	30-Dec	30-Dec	1-Dec	23-Dec	1-Dec	1-Dec	22-Dec	30-Dec

Notes:

Membranes Monthly Report

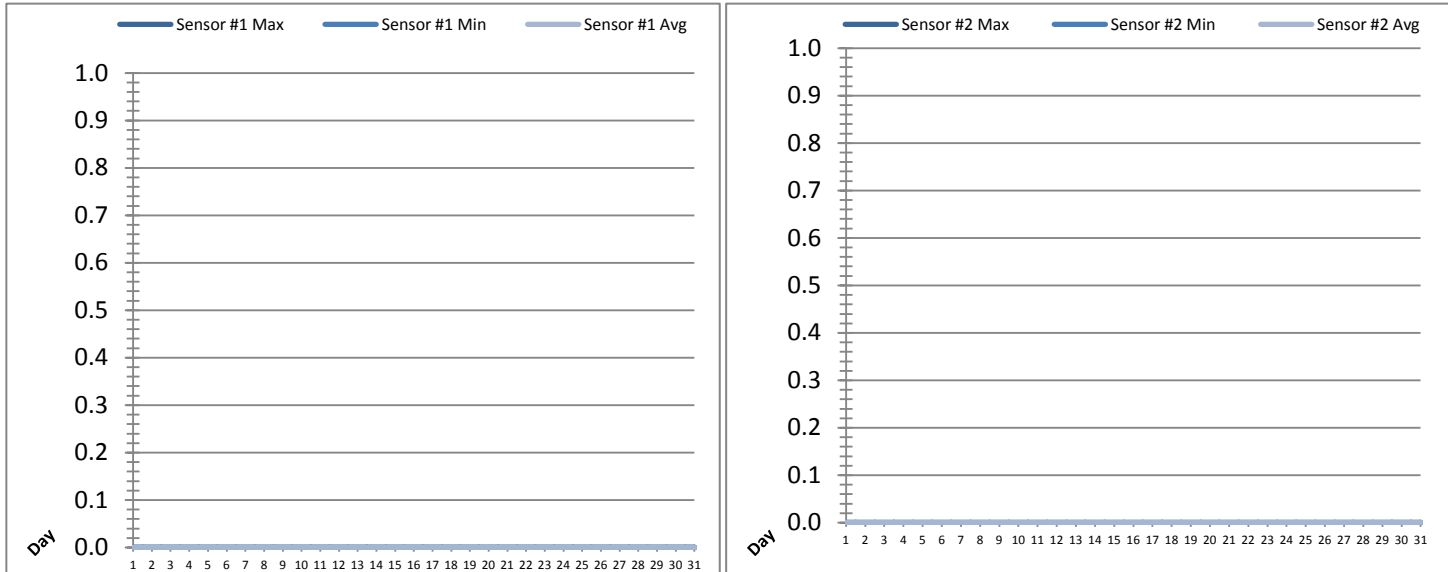
Month: December-18

Date	Membranes Monthly Performance							
	Rack 1 >0.1 NTU (Minutes)	Rack 1 Forward Flow (Minutes)	Rack 2 >0.1 NTU (Minutes)	Rack 2 Forward Flow (Minutes)	Rack 3 >0.1 NTU (Minutes)	Rack 3 Forward Flow (Minutes)	Rack 4 >0.1 NTU (Minutes)	Rack 4 Forward Flow (Minutes)
1	0.0	578.3	1.4	593.2	0.0	455.2	0.0	284.2
2	0.0	118.5	1.4	1040.1	0.0	981.2	0.0	1013.2
3	0.0	0.0	0.0	854.2	0.0	722.0	0.0	836.2
4	0.0	160.0	1.4	918.1	0.0	892.5	1.4	790.5
5	5.4	450.4	1.4	764.5	1.4	667.5	0.0	506.5
6	0.0	431.5	0.0	734.3	0.0	700.2	0.0	336.1
7	0.0	697.2	0.0	733.3	0.0	725.2	0.0	343.6
8	0.0	439.5	0.5	971.1	0.0	944.6	0.0	427.5
9	0.0	459.6	1.4	688.3	0.0	673.0	0.0	305.4
10	0.0	808.4	0.0	940.5	0.0	926.6	0.0	403.5
11	0.0	758.0	0.0	770.2	0.0	760.3	0.0	250.4
12	0.0	790.5	2.2	800.3	0.0	782.3	0.0	266.0
13	0.0	893.2	1.3	905.4	0.0	885.5	0.0	416.4
14	0.0	632.2	0.0	635.5	0.0	628.0	0.0	319.4
15	0.0	877.4	1.4	886.1	0.0	872.2	0.0	425.1
16	0.0	823.1	1.4	836.3	0.0	813.3	0.0	426.3
17	0.0	692.0	0.0	700.6	0.0	687.6	0.0	318.6
18	0.0	584.1	0.5	864.1	0.0	849.3	0.0	410.0
19	0.0	718.1	0.5	736.5	0.0	718.0	0.0	369.3
20	0.0	546.1	0.5	475.6	0.0	553.2	0.0	294.0
21	0.0	999.1	0.0	1007.2	0.0	800.5	0.0	528.5
22	0.0	649.5	1.4	657.6	0.0	324.5	0.0	165.5
23	0.0	1010.4	3.1	1043.1	0.0	750.6	0.0	368.1
24	0.0	787.1	0.0	792.0	0.0	777.2	0.0	365.4
25	0.0	678.1	0.5	688.5	0.0	670.5	0.0	324.4
26	0.0	925.2	1.4	943.1	0.0	920.3	0.0	427.5
27	0.0	640.4	1.3	643.1	0.0	635.5	0.0	284.3
28	0.0	1078.3	1.4	1090.4	0.0	1070.2	0.0	498.0
29	0.0	590.5	2.2	599.1	0.0	587.4	0.0	128.3
30	0.0	830.4	1.4	841.1	0.0	827.2	0.0	0.0
31	0.0	955.0	0.0	912.4	0.0	944.3	0.0	400.3
Total	5.4	20602.0	27.9	25065.9	1.4	23545.9	1.4	12232.7
Percent	0.03		0.11		0.01		0.01	
Maximum	5.4	1078.3	3.1	1090.4	1.4	1070.2	1.4	1013.2
Date	5-Dec	28-Dec	23-Dec	28-Dec	5-Dec	28-Dec	4-Dec	2-Dec
Minimum	0.0	0.0	0.0	475.6	0.0	324.5	0.0	0.0
Date	1-Dec	3-Dec	3-Dec	20-Dec	1-Dec	22-Dec	1-Dec	30-Dec

Notes:

UV System Monthly Report

Month: **December-18**

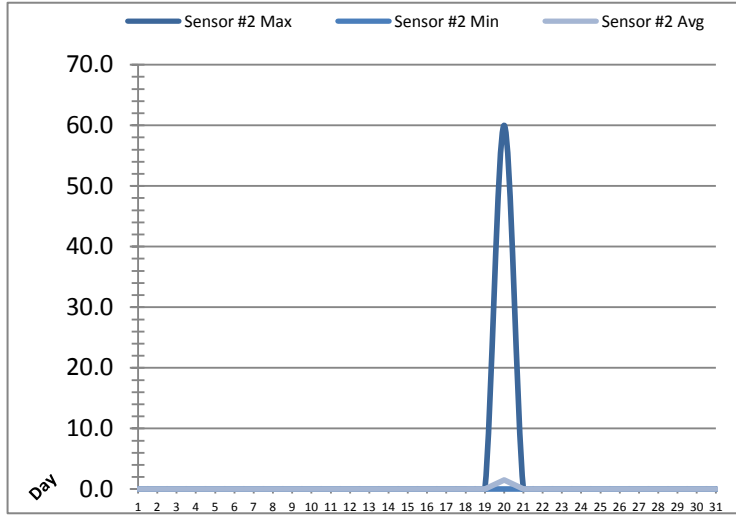
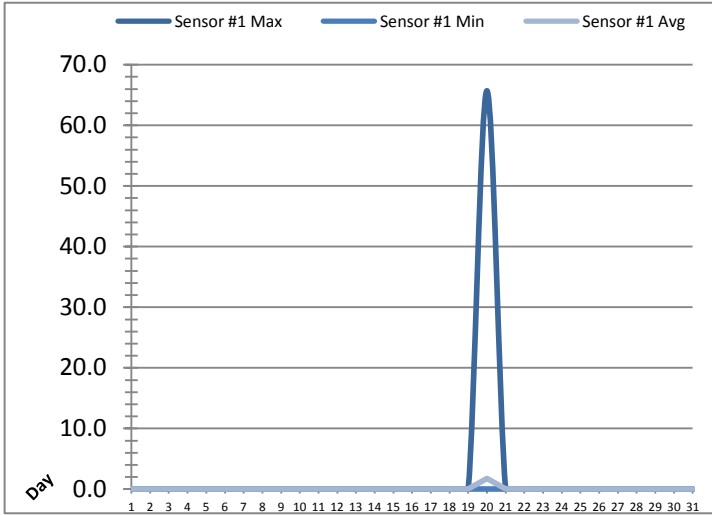


Date	UV Reactor 1					
	Intensity Sensor 1 (mW/cm ²)			Intensity Sensor 2 (mW/cm ²)		
	Maximum	Minimum	Average	Maximum	Minimum	Average
1	0.0	0.0	0.0	0.0	0.0	0.0
2	0.0	0.0	0.0	0.0	0.0	0.0
3	0.0	0.0	0.0	0.0	0.0	0.0
4	0.0	0.0	0.0	0.0	0.0	0.0
5	0.0	0.0	0.0	0.0	0.0	0.0
6	0.0	0.0	0.0	0.0	0.0	0.0
7	0.0	0.0	0.0	0.0	0.0	0.0
8	0.0	0.0	0.0	0.0	0.0	0.0
9	0.0	0.0	0.0	0.0	0.0	0.0
10	0.0	0.0	0.0	0.0	0.0	0.0
11	0.0	0.0	0.0	0.0	0.0	0.0
12	0.0	0.0	0.0	0.0	0.0	0.0
13	0.0	0.0	0.0	0.0	0.0	0.0
14	0.0	0.0	0.0	0.0	0.0	0.0
15	0.0	0.0	0.0	0.0	0.0	0.0
16	0.0	0.0	0.0	0.0	0.0	0.0
17	0.0	0.0	0.0	0.0	0.0	0.0
18	0.0	0.0	0.0	0.0	0.0	0.0
19	0.0	0.0	0.0	0.0	0.0	0.0
20	0.0	0.0	0.0	0.0	0.0	0.0
21	0.0	0.0	0.0	0.0	0.0	0.0
22	0.0	0.0	0.0	0.0	0.0	0.0
23	0.0	0.0	0.0	0.0	0.0	0.0
24	0.0	0.0	0.0	0.0	0.0	0.0
25	0.0	0.0	0.0	0.0	0.0	0.0
26	0.0	0.0	0.0	0.0	0.0	0.0
27	0.0	0.0	0.0	0.0	0.0	0.0
28	0.0	0.0	0.0	0.0	0.0	0.0
29	0.0	0.0	0.0	0.0	0.0	0.0
30	0.0	0.0	0.0	0.0	0.0	0.0
31	0.0	0.0	0.0	0.0	0.0	0.0
Total						
Average	0.0	0.0	0.0	0.0	0.0	0.0
Maximum	0.0		0.0	0.0		0.0
Date	1-Dec		1-Dec	1-Dec		1-Dec
Minimum		0.0	0.0		0.0	0.0
Date		1-Dec	1-Dec		1-Dec	1-Dec

Notes:

UV System Monthly Report

Month: December-18

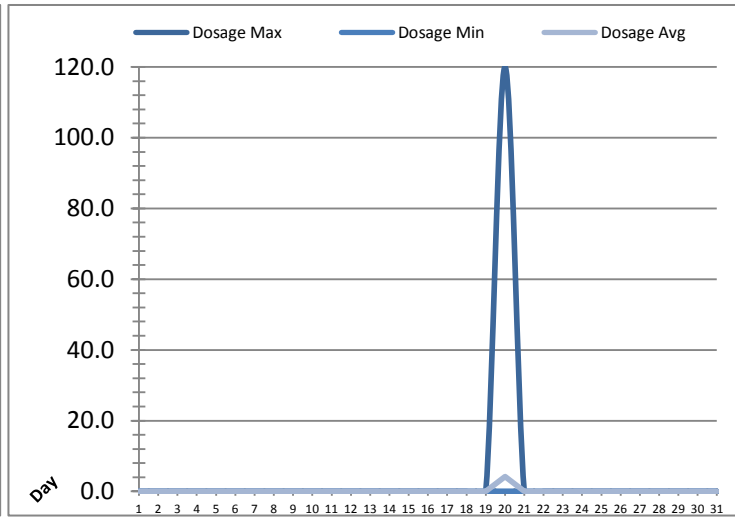
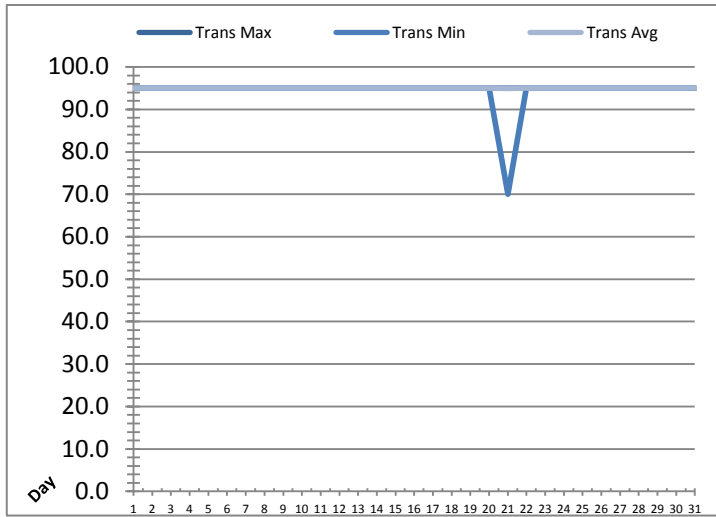


Date	UV Reactor 2					
	Intensity Sensor 1 (mW/cm²)			Intensity Sensor 2 (mW/cm²)		
	Maximum	Minimum	Average	Maximum	Minimum	Average
1	0.0	0.0	0.0	0.0	0.0	0.0
2	0.0	0.0	0.0	0.0	0.0	0.0
3	0.0	0.0	0.0	0.0	0.0	0.0
4	0.0	0.0	0.0	0.0	0.0	0.0
5	0.0	0.0	0.0	0.0	0.0	0.0
6	0.0	0.0	0.0	0.0	0.0	0.0
7	0.0	0.0	0.0	0.0	0.0	0.0
8	0.0	0.0	0.0	0.0	0.0	0.0
9	0.0	0.0	0.0	0.0	0.0	0.0
10	0.0	0.0	0.0	0.0	0.0	0.0
11	0.0	0.0	0.0	0.0	0.0	0.0
12	0.0	0.0	0.0	0.0	0.0	0.0
13	0.0	0.0	0.0	0.0	0.0	0.0
14	0.0	0.0	0.0	0.0	0.0	0.0
15	0.0	0.0	0.0	0.0	0.0	0.0
16	0.0	0.0	0.0	0.0	0.0	0.0
17	0.0	0.0	0.0	0.0	0.0	0.0
18	0.0	0.0	0.0	0.0	0.0	0.0
19	0.0	0.0	0.0	0.0	0.0	0.0
20	65.7	0.0	1.8	60.0	0.0	1.5
21	0.0	0.0	0.0	0.0	0.0	0.0
22	0.0	0.0	0.0	0.0	0.0	0.0
23	0.0	0.0	0.0	0.0	0.0	0.0
24	0.0	0.0	0.0	0.0	0.0	0.0
25	0.0	0.0	0.0	0.0	0.0	0.0
26	0.0	0.0	0.0	0.0	0.0	0.0
27	0.0	0.0	0.0	0.0	0.0	0.0
28	0.0	0.0	0.0	0.0	0.0	0.0
29	0.0	0.0	0.0	0.0	0.0	0.0
30	0.0	0.0	0.0	0.0	0.0	0.0
31	0.0	0.0	0.0	0.0	0.0	0.0
Total						
Average	2.1	0.0	0.1	1.9	0.0	0.0
Maximum	65.7		1.8	60.0		1.5
Date	20-Dec		20-Dec	20-Dec		20-Dec
Minimum		0.0	0.0		0.0	0.0
Date		1-Dec	1-Dec		1-Dec	1-Dec

Notes:

UV System Monthly Report

Month: December-18

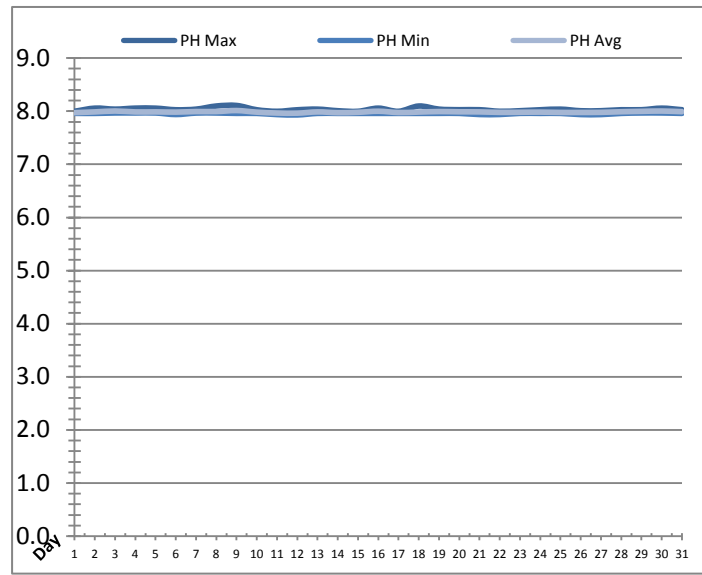
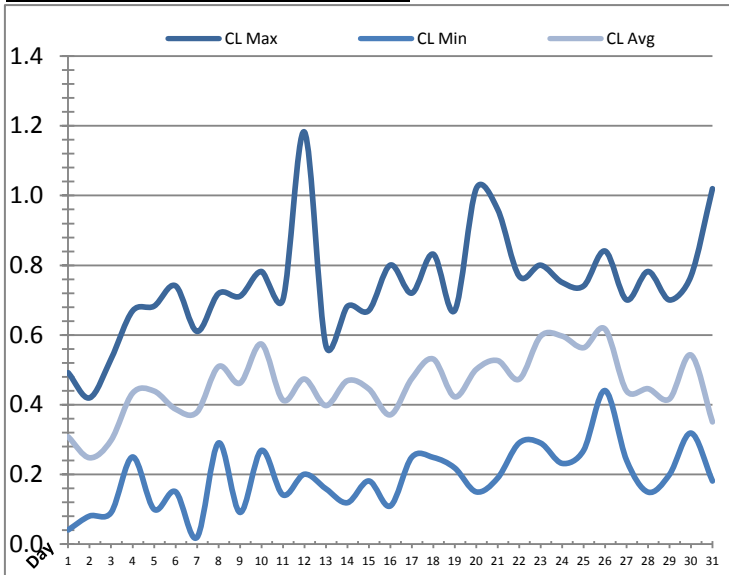


UV System							
Date	Transmittance (%)			Dosage (mJ/cm ²)			Inlet Flow (L/s)
	Maximum	Minimum	Average	Maximum	Minimum	Average	Maximum
1	95.00	95.00	95.00	0.0	0.0	0.0	106.5
2	95.00	95.00	95.00	0.0	0.0	0.0	87.6
3	95.00	95.00	95.00	0.0	0.0	0.0	89.4
4	95.00	95.00	95.00	0.0	0.0	0.0	92.7
5	95.00	95.00	95.00	0.0	0.0	0.0	104.2
6	95.00	95.00	95.00	0.0	0.0	0.0	110.0
7	95.00	95.00	95.00	0.0	0.0	0.0	101.1
8	95.00	95.00	95.00	0.0	0.0	0.0	99.7
9	95.00	95.00	95.00	0.0	0.0	0.0	103.9
10	95.00	95.00	95.00	0.0	0.0	0.0	103.3
11	95.00	95.00	95.00	0.0	0.0	0.0	156.0
12	95.00	95.00	95.00	0.0	0.0	0.0	96.7
13	95.00	95.00	95.00	0.0	0.0	0.0	103.8
14	95.00	95.00	95.00	0.0	0.0	0.0	102.4
15	95.00	95.00	95.00	0.0	0.0	0.0	103.7
16	95.00	95.00	95.00	0.0	0.0	0.0	152.5
17	95.00	95.00	95.00	0.0	0.0	0.0	102.2
18	95.00	95.00	95.00	0.0	0.0	0.0	102.3
19	95.00	95.00	95.00	0.0	0.0	0.0	156.6
20	95.00	95.00	95.00	120.0	0.0	4.2	100.2
21	95.00	70.00	94.98	0.0	0.0	0.0	159.5
22	95.00	95.00	95.00	0.0	0.0	0.0	99.7
23	95.00	95.00	95.00	0.0	0.0	0.0	112.3
24	95.00	95.00	95.00	0.0	0.0	0.0	98.4
25	95.00	95.00	95.00	0.0	0.0	0.0	106.0
26	95.00	95.00	95.00	0.0	0.0	0.0	100.5
27	95.00	95.00	95.00	0.0	0.0	0.0	98.9
28	95.00	95.00	95.00	0.0	0.0	0.0	145.4
29	95.00	95.00	95.00	0.0	0.0	0.0	96.7
30	95.00	95.00	95.00	0.0	0.0	0.0	85.6
31	95.00	95.00	95.00	0.0	0.0	0.0	129.2
Total							
Average	95.00	94.19	95.00	3.9	0.0	0.1	109.9
Maximum	95.00		95.00	120.0		4.2	159.5
Date	1-Dec		1-Dec	20-Dec		20-Dec	21-Dec
Minimum		70.00	94.98		0.0	0.0	
Date		21-Dec	21-Dec		1-Dec	1-Dec	

Notes:

Plant Quality Report

Month: December-18

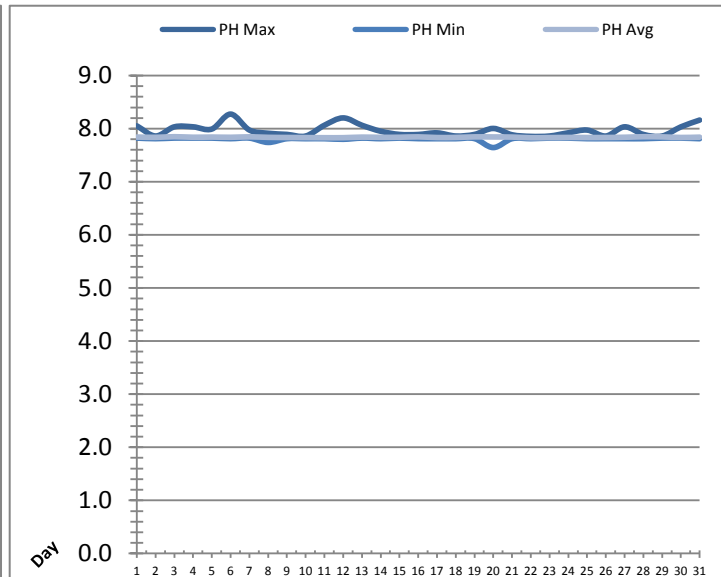
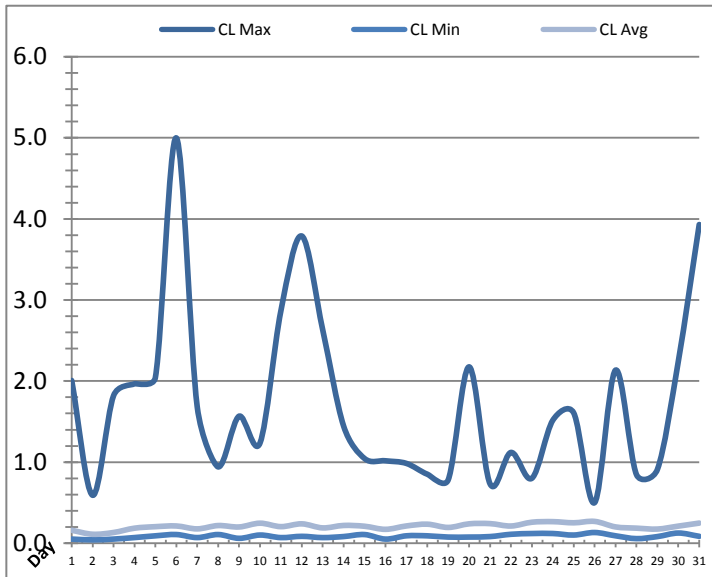


Date	Strainer Chlorine Residual			Strainer pH		
	AIT_2003_CL (ppm)			AIT_2003_PH		
	Maximum	Minimum	Average	Maximum	Minimum	Average
1	0.49	0.04	0.31	8.00	7.96	7.97
2	0.42	0.08	0.25	8.06	7.96	7.99
3	0.53	0.09	0.30	8.04	7.97	8.00
4	0.67	0.25	0.43	8.06	7.97	7.99
5	0.68	0.10	0.44	8.06	7.97	7.99
6	0.74	0.15	0.39	8.03	7.94	7.98
7	0.61	0.02	0.38	8.04	7.97	7.99
8	0.72	0.29	0.51	8.10	7.97	7.99
9	0.71	0.09	0.46	8.11	7.96	8.01
10	0.78	0.27	0.57	8.03	7.96	7.98
11	0.70	0.14	0.41	8.00	7.94	7.97
12	1.18	0.20	0.47	8.03	7.93	7.96
13	0.57	0.16	0.40	8.04	7.96	7.99
14	0.68	0.12	0.47	8.01	7.96	7.97
15	0.67	0.18	0.45	8.00	7.96	7.98
16	0.80	0.11	0.37	8.06	7.96	8.00
17	0.72	0.25	0.47	8.00	7.96	7.97
18	0.83	0.25	0.53	8.10	7.96	7.98
19	0.67	0.22	0.42	8.04	7.96	7.99
20	1.02	0.15	0.50	8.03	7.96	7.99
21	0.96	0.19	0.53	8.03	7.94	7.99
22	0.77	0.29	0.47	8.00	7.94	7.98
23	0.80	0.29	0.60	8.01	7.96	7.98
24	0.75	0.23	0.60	8.03	7.96	7.98
25	0.74	0.27	0.56	8.04	7.96	7.98
26	0.84	0.44	0.62	8.01	7.94	7.98
27	0.70	0.24	0.44	8.01	7.94	7.98
28	0.78	0.15	0.45	8.03	7.96	7.99
29	0.70	0.20	0.42	8.03	7.97	8.00
30	0.77	0.32	0.54	8.06	7.97	8.00
31	1.02	0.18	0.35	8.03	7.96	7.99
Total						
Average	0.74	0.19	0.45	8.03	7.96	7.99
Maximum	1.18		0.62	8.11		8.01
Date	12-Dec		26-Dec	9-Dec		9-Dec
Minimum		0.02	0.25		7.93	7.96
Date		7-Dec	2-Dec		12-Dec	12-Dec

Notes:

Plant Quality Report

Month: December-18

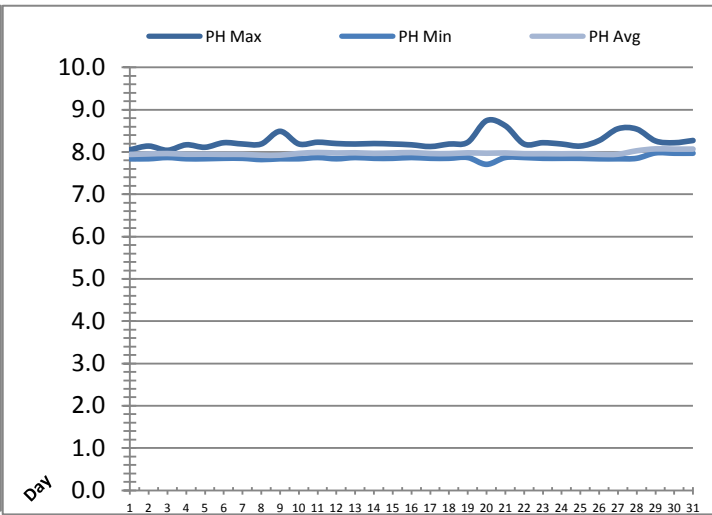
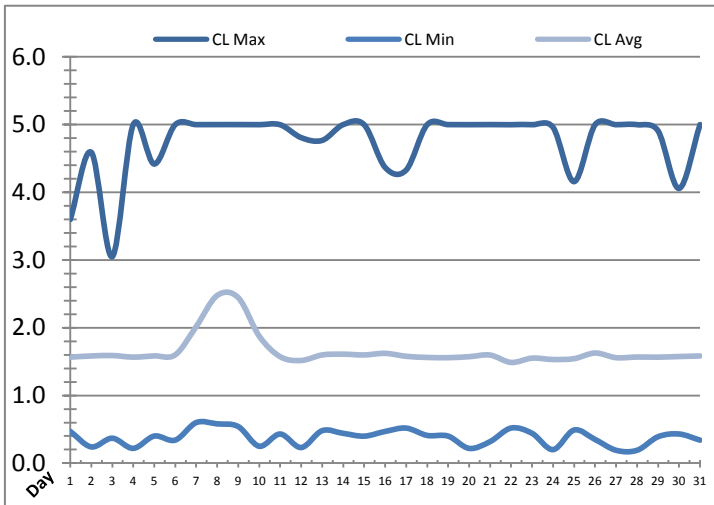


Date	Inlet UV Chlorine Residual			Inlet UV pH		
	AIT_5005_CL (ppm)			AIT_5005_PH		
	Maximum	Minimum	Average	Maximum	Minimum	Average
1	2.01	0.05	0.16	8.05	7.82	7.84
2	0.59	0.04	0.11	7.86	7.81	7.84
3	1.82	0.05	0.13	8.03	7.82	7.85
4	1.97	0.07	0.18	8.03	7.82	7.84
5	2.04	0.09	0.20	7.99	7.82	7.84
6	5.00	0.11	0.21	8.27	7.81	7.84
7	1.68	0.07	0.18	7.97	7.82	7.85
8	0.94	0.11	0.22	7.91	7.74	7.84
9	1.57	0.06	0.20	7.89	7.81	7.83
10	1.23	0.10	0.25	7.86	7.81	7.83
11	2.87	0.07	0.20	8.06	7.81	7.83
12	3.79	0.08	0.24	8.20	7.80	7.83
13	2.63	0.07	0.19	8.06	7.82	7.84
14	1.44	0.08	0.22	7.95	7.81	7.84
15	1.04	0.11	0.21	7.89	7.82	7.84
16	1.02	0.05	0.17	7.89	7.81	7.84
17	0.98	0.09	0.21	7.92	7.81	7.83
18	0.85	0.09	0.23	7.86	7.81	7.83
19	0.78	0.08	0.19	7.89	7.81	7.84
20	2.18	0.08	0.24	8.00	7.64	7.84
21	0.73	0.08	0.24	7.88	7.81	7.84
22	1.12	0.11	0.21	7.85	7.81	7.83
23	0.80	0.12	0.26	7.86	7.82	7.83
24	1.52	0.12	0.27	7.92	7.82	7.83
25	1.61	0.10	0.25	7.97	7.81	7.83
26	0.50	0.13	0.27	7.86	7.81	7.83
27	2.13	0.09	0.20	8.03	7.81	7.84
28	0.85	0.06	0.19	7.89	7.81	7.85
29	0.91	0.08	0.17	7.86	7.82	7.84
30	2.24	0.12	0.21	8.03	7.82	7.83
31	3.93	0.08	0.25	8.16	7.81	7.84
Total						
Average	1.70	0.08	0.21	7.97	7.81	7.84
Maximum	5.00		0.27	8.27		7.85
Date	6-Dec		26-Dec	6-Dec		3-Dec
Minimum		0.04	0.11		7.64	7.83
Date		2-Dec	2-Dec		20-Dec	22-Dec

Notes:

Plant Quality Report

Month: December-18

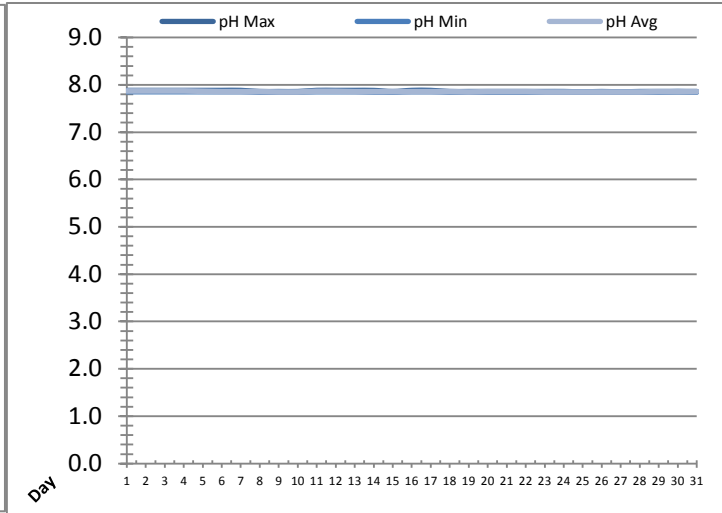
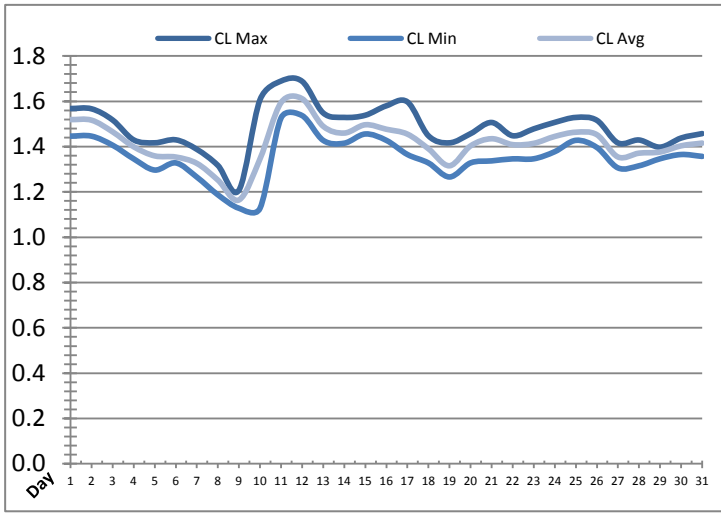


Date	Discharge UV Chlorine Residual			Discharge UV pH		
	AIT_5006_CL (ppm)			AIT_5006_PH		
	Maximum	Minimum	Average	Maximum	Minimum	Average
1	3.60	0.47	1.57	8.05	7.84	7.94
2	4.59	0.24	1.58	8.14	7.84	7.95
3	3.05	0.37	1.59	8.04	7.87	7.96
4	5.00	0.22	1.57	8.17	7.84	7.95
5	4.42	0.40	1.58	8.11	7.84	7.95
6	5.00	0.34	1.60	8.22	7.85	7.94
7	5.00	0.60	2.02	8.19	7.85	7.94
8	5.00	0.58	2.48	8.19	7.82	7.92
9	5.00	0.54	2.44	8.49	7.84	7.93
10	5.00	0.25	1.88	8.19	7.84	7.97
11	5.00	0.43	1.57	8.23	7.87	7.99
12	4.81	0.23	1.52	8.20	7.84	7.98
13	4.77	0.48	1.60	8.19	7.87	7.98
14	5.00	0.44	1.61	8.20	7.85	7.97
15	5.00	0.40	1.60	8.19	7.85	7.98
16	4.37	0.47	1.62	8.17	7.87	7.99
17	4.33	0.52	1.58	8.13	7.85	7.96
18	5.00	0.41	1.56	8.19	7.85	7.96
19	5.00	0.40	1.56	8.23	7.87	7.98
20	5.00	0.22	1.57	8.74	7.71	7.97
21	5.00	0.32	1.60	8.62	7.87	7.98
22	5.00	0.52	1.49	8.19	7.87	7.96
23	5.00	0.44	1.55	8.22	7.85	7.96
24	4.96	0.20	1.53	8.19	7.85	7.96
25	4.16	0.49	1.54	8.14	7.85	7.96
26	5.00	0.35	1.63	8.27	7.84	7.94
27	5.00	0.19	1.56	8.55	7.84	7.95
28	5.00	0.19	1.57	8.54	7.85	8.03
29	4.91	0.39	1.57	8.26	7.98	8.07
30	4.06	0.43	1.57	8.22	7.97	8.07
31	5.00	0.34	1.58	8.27	7.97	8.07
Total						
Average	4.74	0.38	1.65	8.25	7.86	7.97
Maximum	5.00		2.48	8.74		8.07
Date	8-Dec		8-Dec	20-Dec		29-Dec
Minimum		0.19	1.49		7.71	7.92
Date		27-Dec	22-Dec		20-Dec	8-Dec

Notes:

Plant Quality Report

Month: December-18

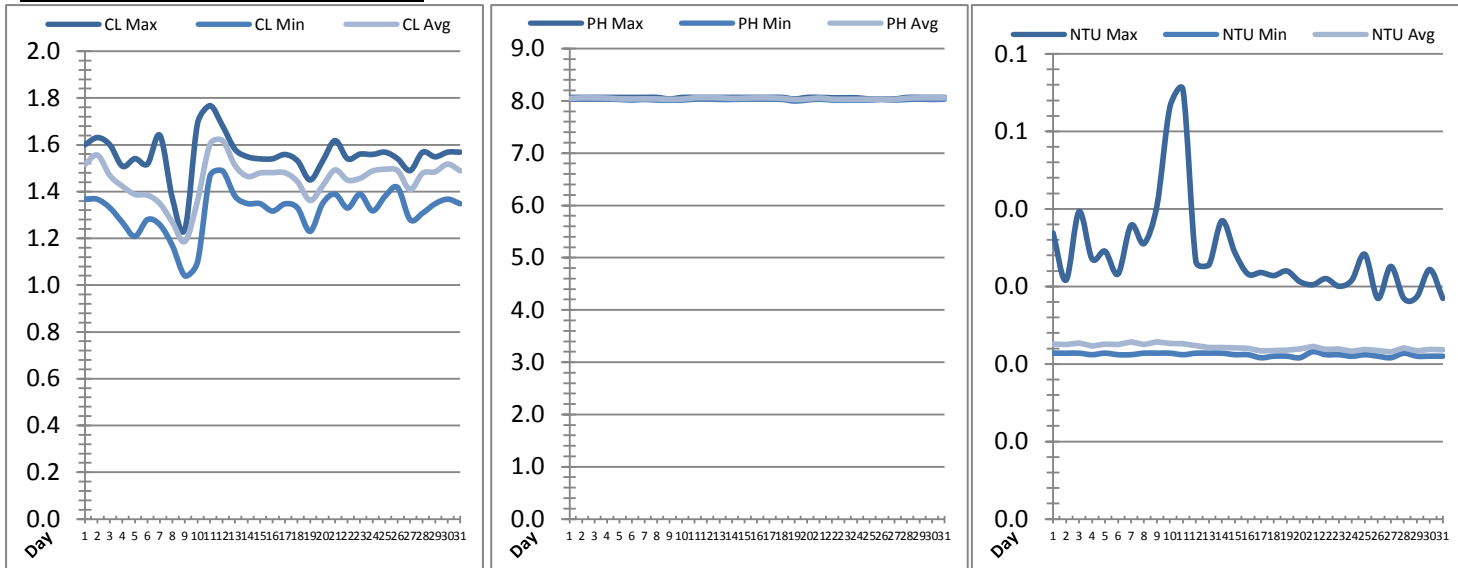


Date	Suction Header Chlorine Res.			Suction Header pH			Distribution CT Calc Total		
	AIT_7001_CL (ppm)			AIT_7001_PH (m)			REAL_CT_CALC_TOTAL (mg*ml/min)		
	Maximum	Minimum	Average	Maximum	Minimum	Average	Maximum	Minimum	Average
1	1.57	1.45	1.52	7.88	7.85	7.87	11221.78	0.00	420.75
2	1.57	1.45	1.52	7.88	7.85	7.88	10692.22	0.00	631.76
3	1.52	1.41	1.47	7.88	7.85	7.88	10923.81	0.00	464.47
4	1.43	1.35	1.40	7.88	7.85	7.87	11027.39	0.00	477.43
5	1.42	1.30	1.36	7.88	7.85	7.86	10929.25	0.00	538.96
6	1.43	1.33	1.35	7.88	7.85	7.86	10358.90	0.00	309.20
7	1.39	1.27	1.33	7.88	7.85	7.86	10300.51	0.00	271.07
8	1.32	1.19	1.25	7.86	7.85	7.85	9634.48	0.00	229.36
9	1.21	1.13	1.16	7.86	7.85	7.85	8802.23	0.00	243.20
10	1.61	1.13	1.35	7.86	7.85	7.85	12384.28	0.00	271.65
11	1.69	1.53	1.59	7.88	7.85	7.86	12303.07	0.00	282.33
12	1.69	1.54	1.61	7.88	7.85	7.86	13089.26	0.00	311.28
13	1.55	1.43	1.49	7.88	7.85	7.86	11572.27	0.00	310.96
14	1.53	1.42	1.46	7.88	7.85	7.86	10891.87	0.00	234.28
15	1.54	1.46	1.50	7.86	7.85	7.85	11213.89	0.00	265.54
16	1.58	1.43	1.48	7.88	7.85	7.86	11270.80	0.00	276.78
17	1.60	1.37	1.46	7.88	7.85	7.86	11600.63	0.00	266.56
18	1.45	1.33	1.39	7.86	7.85	7.86	10475.39	0.00	227.45
19	1.42	1.27	1.32	7.86	7.85	7.85	9576.83	0.00	246.38
20	1.46	1.33	1.40	7.86	7.85	7.86	11053.35	0.00	227.86
21	1.51	1.34	1.43	7.86	7.85	7.85	11506.62	0.00	316.66
22	1.45	1.35	1.41	7.86	7.85	7.86	10658.35	0.00	241.30
23	1.48	1.35	1.41	7.86	7.85	7.85	10351.44	0.00	267.52
24	1.51	1.38	1.44	7.86	7.85	7.85	10483.67	0.00	274.69
25	1.53	1.43	1.46	7.85	7.85	7.85	11160.33	0.00	230.13
26	1.52	1.40	1.45	7.86	7.85	7.85	10815.77	0.00	251.05
27	1.42	1.31	1.35	7.85	7.85	7.85	10490.38	0.00	221.53
28	1.43	1.32	1.37	7.86	7.85	7.85	10588.15	0.00	295.91
29	1.40	1.35	1.38	7.86	7.85	7.86	10710.11	0.00	212.17
30	1.44	1.37	1.40	7.86	7.85	7.86	10121.14	0.00	242.62
31	1.46	1.36	1.42	7.86	7.85	7.85	11606.54	0.00	363.24
Total									
Average	1.49	1.35	1.42	7.87	7.85	7.86			
Maximum	1.69		1.61	7.88		7.88			
Date	11-Dec		12-Dec	1-Dec		3-Dec			
Minimum		1.13	1.16		7.85	7.85			
Date		10-Dec	9-Dec		10-Dec	25-Dec			

Notes:

Plant Quality Report

Month: December-18

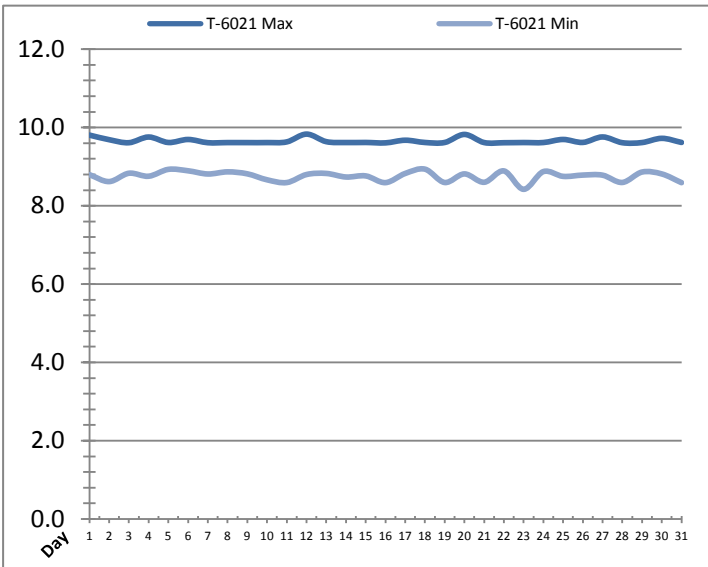
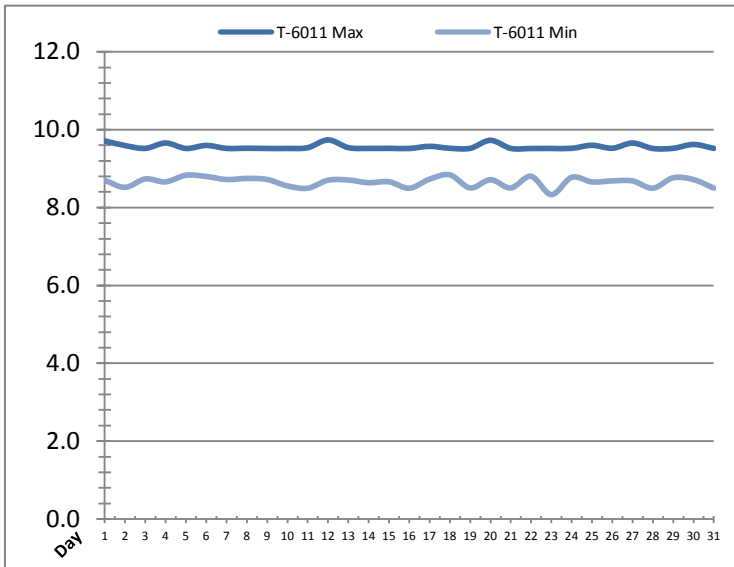


Date	Distribution Chlorine Header			Distribution pH			Distribution Turbidity		
	AIT_7004_CL (ppm)			AIT_7004_PH (mg/L)			AIT_7003 (mg/L)		
	Maximum	Minimum	Average	Maximum	Minimum	Average	Maximum	Minimum	Average
1	1.60	1.37	1.52	8.07	8.03	8.05	0.04	0.02	0.02
2	1.63	1.37	1.56	8.07	8.03	8.06	0.03	0.02	0.02
3	1.60	1.33	1.47	8.07	8.03	8.06	0.04	0.02	0.02
4	1.51	1.27	1.42	8.07	8.03	8.05	0.03	0.02	0.02
5	1.54	1.21	1.39	8.07	8.03	8.04	0.03	0.02	0.02
6	1.52	1.28	1.38	8.07	8.02	8.04	0.03	0.02	0.02
7	1.64	1.26	1.35	8.07	8.03	8.04	0.04	0.02	0.02
8	1.37	1.17	1.27	8.07	8.02	8.04	0.04	0.02	0.02
9	1.24	1.04	1.19	8.04	8.02	8.03	0.04	0.02	0.02
10	1.69	1.10	1.36	8.07	8.02	8.03	0.05	0.02	0.02
11	1.77	1.47	1.60	8.07	8.03	8.06	0.06	0.02	0.02
12	1.68	1.49	1.62	8.07	8.03	8.06	0.03	0.02	0.02
13	1.58	1.38	1.51	8.07	8.03	8.06	0.03	0.02	0.02
14	1.55	1.35	1.46	8.07	8.03	8.05	0.04	0.02	0.02
15	1.54	1.35	1.48	8.07	8.03	8.05	0.03	0.02	0.02
16	1.54	1.32	1.48	8.07	8.03	8.06	0.03	0.02	0.02
17	1.56	1.35	1.48	8.07	8.03	8.06	0.03	0.02	0.02
18	1.53	1.33	1.44	8.07	8.03	8.05	0.03	0.02	0.02
19	1.45	1.23	1.36	8.04	8.00	8.03	0.03	0.02	0.02
20	1.53	1.35	1.42	8.07	8.02	8.04	0.03	0.02	0.02
21	1.62	1.39	1.49	8.07	8.03	8.05	0.03	0.02	0.02
22	1.54	1.33	1.45	8.06	8.02	8.03	0.03	0.02	0.02
23	1.56	1.39	1.46	8.06	8.02	8.03	0.03	0.02	0.02
24	1.56	1.32	1.49	8.06	8.02	8.03	0.03	0.02	0.02
25	1.57	1.38	1.50	8.04	8.02	8.03	0.03	0.02	0.02
26	1.54	1.42	1.49	8.04	8.03	8.03	0.03	0.02	0.02
27	1.49	1.28	1.41	8.04	8.02	8.03	0.03	0.02	0.02
28	1.57	1.31	1.48	8.07	8.03	8.05	0.03	0.02	0.02
29	1.55	1.35	1.48	8.07	8.03	8.06	0.03	0.02	0.02
30	1.57	1.37	1.52	8.07	8.03	8.06	0.03	0.02	0.02
31	1.57	1.35	1.49	8.07	8.03	8.06	0.03	0.02	0.02
Total									
Average	1.55	1.32	1.45	8.06	8.03	8.04	0.0	0.0	0.0
Maximum	1.77		1.62	8.07		8.06	0.1		0.0
Date	11-Dec		12-Dec	3-Dec		12-Dec	11-Dec		7-Dec
Minimum		1.04	1.19		8.00	8.03		0.0	0.0
Date		9-Dec	9-Dec		19-Dec	19-Dec		17-Dec	27-Dec

Notes:

Raw Well/Treated Storage Report

Month: December-18

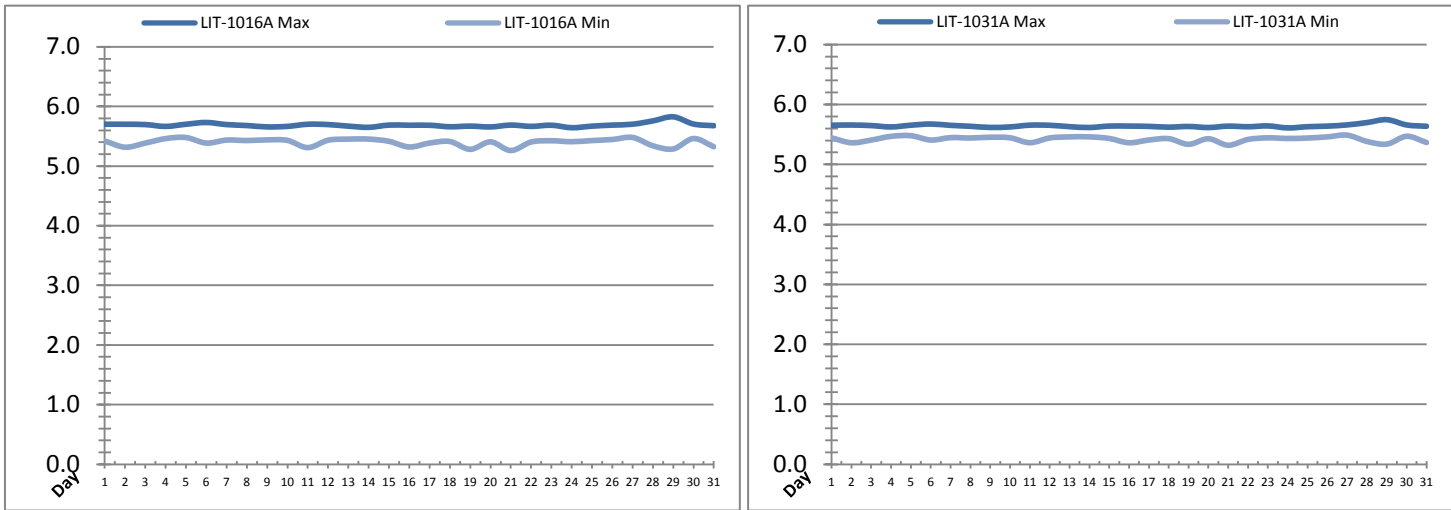


Date	Treated Water Storage Tank					
	T-6011 (m)			T-6021 (m)		
	Maximum	Minimum	Average	Maximum	Minimum	Average
1	9.7	8.7	9.3	9.8	8.8	9.4
2	9.6	8.5	9.1	9.7	8.6	9.2
3	9.5	8.7	9.2	9.6	8.8	9.3
4	9.7	8.7	9.2	9.8	8.8	9.3
5	9.5	8.8	9.2	9.6	8.9	9.3
6	9.6	8.8	9.2	9.7	8.9	9.3
7	9.5	8.7	9.2	9.6	8.8	9.3
8	9.5	8.7	9.2	9.6	8.9	9.3
9	9.5	8.7	9.3	9.6	8.8	9.4
10	9.5	8.6	9.1	9.6	8.7	9.2
11	9.5	8.5	9.2	9.6	8.6	9.3
12	9.7	8.7	9.3	9.8	8.8	9.4
13	9.5	8.7	9.2	9.6	8.8	9.3
14	9.5	8.6	9.3	9.6	8.7	9.4
15	9.5	8.7	9.1	9.6	8.8	9.2
16	9.5	8.5	9.1	9.6	8.6	9.2
17	9.6	8.7	9.3	9.7	8.8	9.4
18	9.5	8.8	9.3	9.6	8.9	9.4
19	9.5	8.5	9.2	9.6	8.6	9.3
20	9.7	8.7	9.3	9.8	8.8	9.4
21	9.5	8.5	9.1	9.6	8.6	9.2
22	9.5	8.8	9.3	9.6	8.9	9.4
23	9.5	8.3	9.0	9.6	8.4	9.1
24	9.5	8.8	9.2	9.6	8.9	9.3
25	9.6	8.7	9.2	9.7	8.8	9.3
26	9.5	8.7	9.1	9.6	8.8	9.2
27	9.7	8.7	9.3	9.8	8.8	9.4
28	9.5	8.5	9.2	9.6	8.6	9.3
29	9.5	8.8	9.4	9.6	8.9	9.5
30	9.6	8.7	9.2	9.7	8.8	9.3
31	9.5	8.5	9.2	9.6	8.6	9.2
Total						
Average	9.6	8.7	9.2	9.7	8.8	9.3
Maximum	9.7		9.4	9.8		9.5
Date	12-Dec		29-Dec	12-Dec		29-Dec
Minimum		8.3	9.0		8.4	9.1
Date		23-Dec	23-Dec		23-Dec	23-Dec

Notes:

Raw Well/Treated Storage Report

Month: December-18

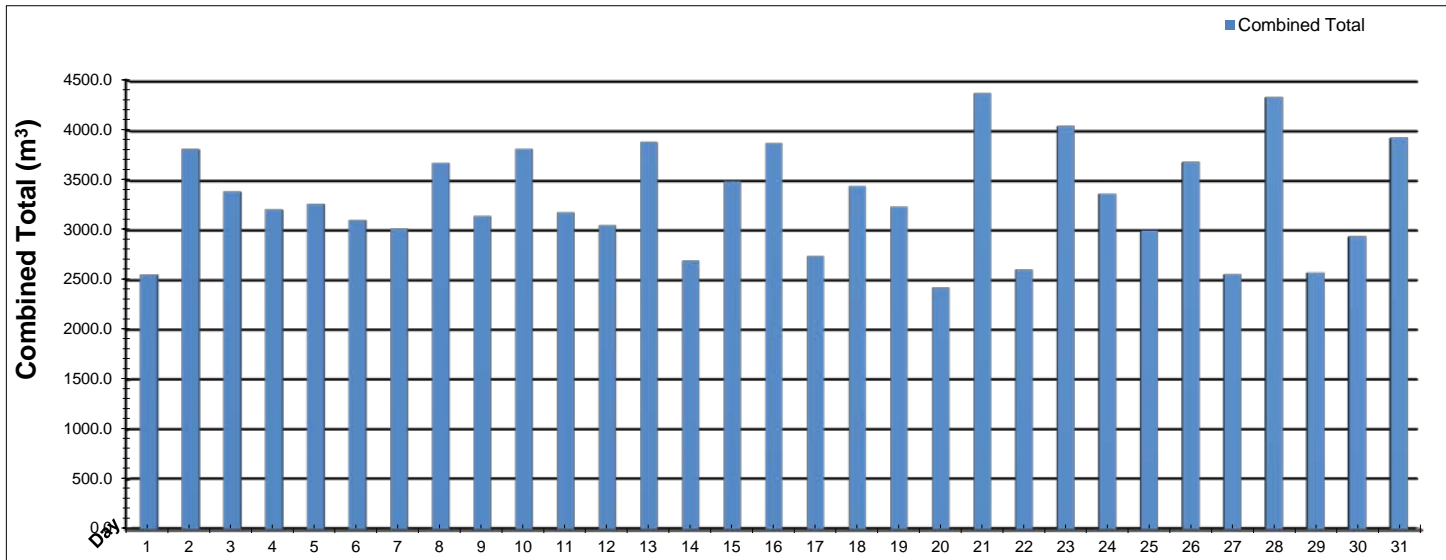


Date	Low Lift Intake Levels					
	Wet Well #1 (LIT-1016A) (m)			Wet Well #2 (LIT-1031A) (m)		
	Maximum	Minimum	Average	Maximum	Minimum	Average
1	5.7	5.4	5.6	5.7	5.4	5.5
2	5.7	5.3	5.5	5.7	5.4	5.5
3	5.7	5.4	5.5	5.6	5.4	5.5
4	5.7	5.5	5.5	5.6	5.5	5.5
5	5.7	5.5	5.6	5.7	5.5	5.5
6	5.7	5.4	5.6	5.7	5.4	5.5
7	5.7	5.4	5.5	5.7	5.4	5.5
8	5.7	5.4	5.5	5.6	5.4	5.5
9	5.7	5.4	5.5	5.6	5.5	5.5
10	5.7	5.4	5.5	5.6	5.4	5.5
11	5.7	5.3	5.5	5.7	5.4	5.5
12	5.7	5.4	5.5	5.7	5.4	5.5
13	5.7	5.5	5.5	5.6	5.5	5.5
14	5.7	5.5	5.5	5.6	5.5	5.5
15	5.7	5.4	5.5	5.6	5.4	5.5
16	5.7	5.3	5.5	5.6	5.4	5.5
17	5.7	5.4	5.5	5.6	5.4	5.5
18	5.7	5.4	5.5	5.6	5.4	5.5
19	5.7	5.3	5.5	5.6	5.3	5.5
20	5.7	5.4	5.5	5.6	5.4	5.5
21	5.7	5.3	5.5	5.6	5.3	5.5
22	5.7	5.4	5.5	5.6	5.4	5.5
23	5.7	5.4	5.5	5.6	5.4	5.5
24	5.6	5.4	5.5	5.6	5.4	5.5
25	5.7	5.4	5.5	5.6	5.4	5.5
26	5.7	5.4	5.5	5.6	5.5	5.5
27	5.7	5.5	5.6	5.7	5.5	5.6
28	5.8	5.3	5.5	5.7	5.4	5.5
29	5.8	5.3	5.6	5.7	5.3	5.5
30	5.7	5.5	5.6	5.7	5.5	5.5
31	5.7	5.3	5.5	5.6	5.4	5.5
Total						
Average	5.7	5.4	5.5	5.6	5.4	5.5
Maximum	5.8		5.6	5.7		5.6
Date	29-Dec		27-Dec	29-Dec		27-Dec
Minimum		5.3	5.5		5.3	5.5
Date		21-Dec	21-Dec		21-Dec	21-Dec

Notes:

High Lift Monthly Report

Month: December-18

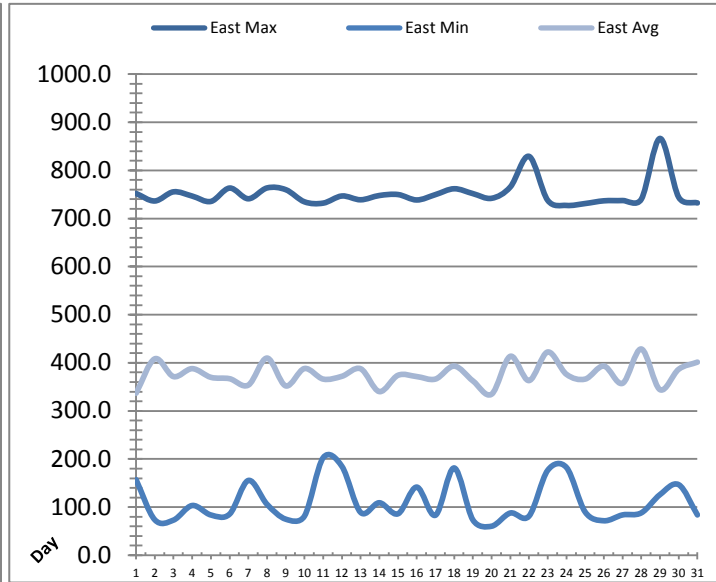
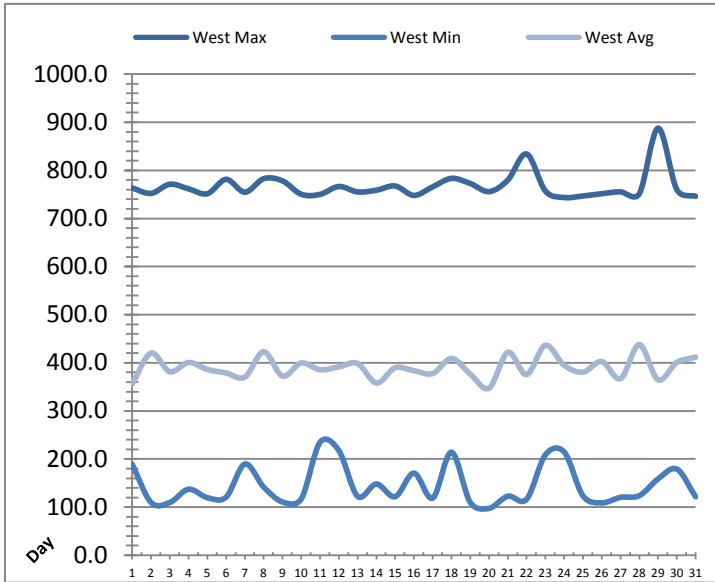


Date	Distribution Flow					
	FIT_7052 (East)		FIT_7062 (West)		Combined	
	(m³)	(L/s)	(m³)	(L/s)	(m³)	(L/s)
	Total	Peak	Total	Peak	Total	Peak
1	911.4	45.2	1643.6	103.3	2555.0	103.3
2	1518.2	46.7	2294.2	101.9	3812.4	101.9
3	750.3	51.0	2637.2	102.8	3387.5	102.8
4	1202.7	48.5	2004.4	109.3	3207.1	109.3
5	868.1	42.9	2394.4	100.3	3262.5	108.6
6	1055.7	59.0	2045.3	100.5	3100.9	104.9
7	1160.7	57.1	1857.1	103.1	3017.7	109.0
8	738.1	51.8	2936.9	103.5	3674.9	103.5
9	1328.8	52.4	1813.5	101.0	3142.3	109.0
10	978.0	53.4	2838.0	100.8	3816.0	107.5
11	1203.4	52.7	1975.2	97.6	3178.6	100.2
12	1139.9	52.3	1908.9	102.7	3048.8	102.7
13	817.6	52.3	3065.5	100.9	3883.1	108.6
14	1179.4	52.8	1517.0	100.3	2696.4	107.5
15	1041.5	53.2	2448.9	101.0	3490.4	109.1
16	1483.0	56.3	2389.4	101.9	3872.4	110.2
17	906.5	51.9	1832.4	101.4	2738.9	101.4
18	715.5	53.0	2727.8	103.2	3443.3	109.1
19	1391.7	53.3	1845.8	100.5	3237.5	108.9
20	878.2	53.2	1549.1	97.5	2427.4	106.3
21	906.3	52.3	3467.9	101.3	4374.1	108.6
22	1115.1	51.8	1490.8	99.4	2605.9	99.4
23	1296.1	56.8	2747.9	102.0	4044.0	109.5
24	1283.2	52.5	2083.1	101.1	3366.3	109.1
25	1086.0	53.6	1912.6	100.1	2998.5	108.5
26	864.5	52.2	2819.2	102.1	3683.7	102.1
27	1001.5	51.9	1556.3	94.5	2557.8	102.0
28	1257.2	51.9	3078.4	102.0	4335.5	109.5
29	791.3	53.1	1784.6	101.3	2576.0	106.3
30	1072.9	51.7	1865.2	101.6	2938.1	106.8
31	998.6	52.8	2929.7	101.1	3928.4	108.5
Total	32941.3		69460.1		102401.4	
Average	1062.6	52.2	2240.6	101.3	3303.3	106.3
Maximum	1518.2	59.0	3467.9	109.3	4374.1	110.2
Date	2-Dec	6-Dec	21-Dec	4-Dec	21-Dec	16-Dec
Minimum	715.5		1490.8		2427.4	
Date	18-Dec		22-Dec		20-Dec	

Notes:

Low Lift Monthly Report

Month: December-18

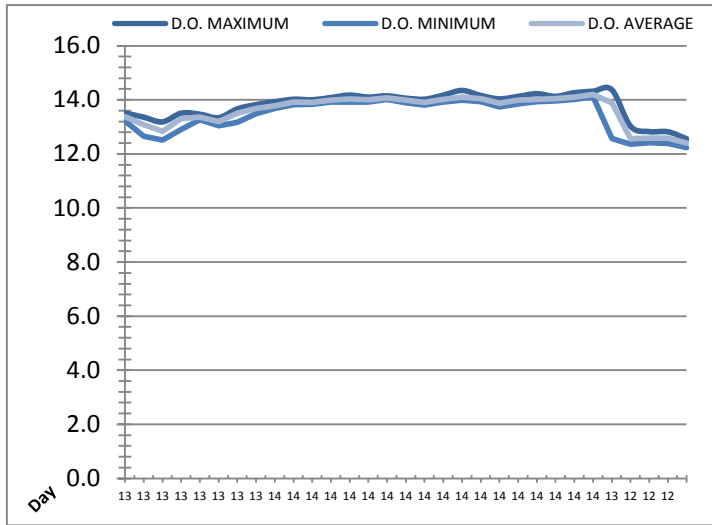
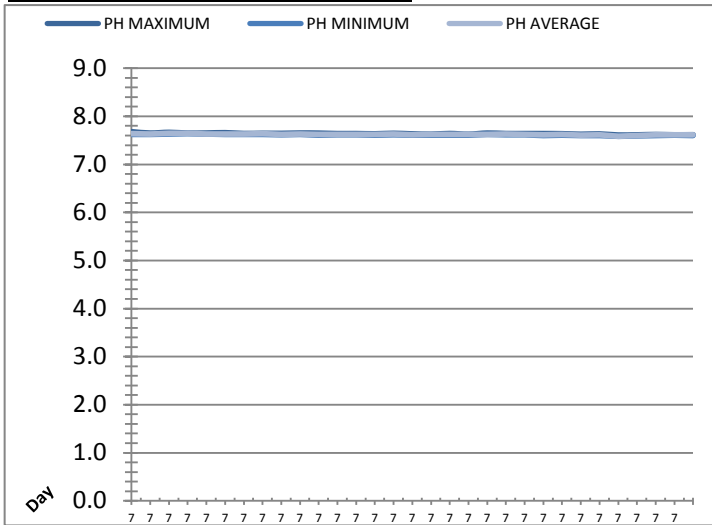


Date	West Train Header Pressure PIT_1018 (kPa)			East Train Header Pressure PIT_1028 (kPa)		
	Maximum	Minimum	Average	Maximum	Minimum	Average
1	763.3	189.3	356.1	752.0	157.1	336.9
2	752.2	109.9	420.1	736.4	73.8	408.3
3	771.2	109.6	381.5	755.4	73.1	371.4
4	761.6	137.3	400.6	746.6	103.4	387.9
5	751.5	119.8	386.2	735.4	83.7	369.8
6	781.4	120.9	378.9	763.3	85.6	367.0
7	754.5	189.6	370.3	741.0	155.5	353.7
8	782.7	141.8	423.1	763.5	105.9	409.9
9	778.2	110.8	372.4	759.9	75.0	352.0
10	750.3	117.1	399.6	734.6	81.4	388.2
11	750.1	234.9	385.7	731.9	202.8	366.2
12	766.5	217.8	391.5	746.8	184.9	372.0
13	755.2	122.6	398.6	738.9	89.1	387.7
14	758.7	148.2	357.9	747.7	109.1	340.2
15	767.5	121.7	389.7	749.8	86.3	374.1
16	748.0	170.7	383.6	738.5	141.7	371.4
17	765.8	118.8	377.8	749.7	83.2	366.3
18	783.4	214.1	409.1	761.8	181.5	393.3
19	772.7	109.8	376.6	751.7	73.5	362.4
20	755.9	97.5	347.2	741.9	60.4	334.7
21	779.9	122.8	421.8	765.5	87.8	413.5
22	834.1	116.3	375.6	829.1	81.3	363.1
23	757.1	208.8	436.5	737.7	176.7	422.5
24	743.6	214.8	394.8	727.1	182.5	376.1
25	746.8	123.5	380.6	731.1	90.0	366.2
26	751.5	108.9	402.7	736.7	71.7	393.3
27	755.4	120.4	367.1	737.3	83.9	357.4
28	751.4	123.9	437.9	740.0	88.1	428.8
29	887.7	158.7	364.6	866.4	126.1	344.2
30	759.9	179.1	400.8	744.1	146.7	386.7
31	746.1	121.4	411.7	732.3	83.9	401.4
Total						
Average	767.2	145.2	390.4	751.4	110.5	376.3
Maximum	887.7		437.9	866.4		428.8
Date	29-Dec		28-Dec	29-Dec		28-Dec
Minimum		97.5	347.2		60.4	334.7
Date		20-Dec	20-Dec		20-Dec	20-Dec

Notes:

Low Lift Monthly Report

Month: December-18

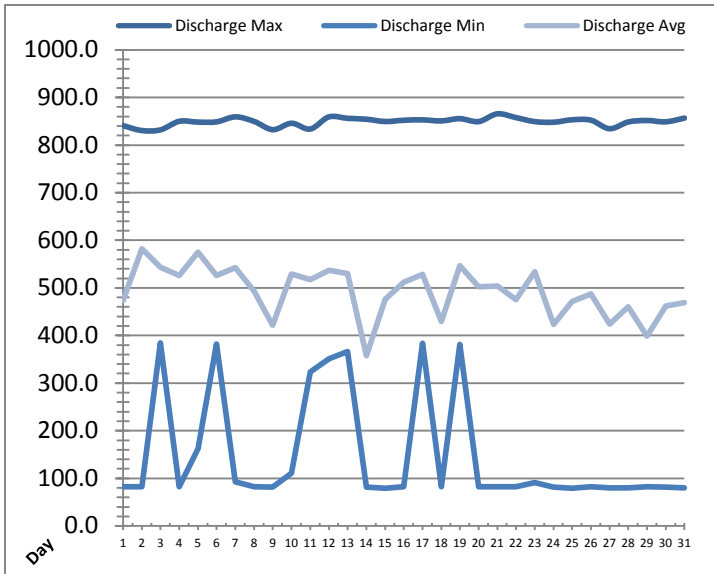
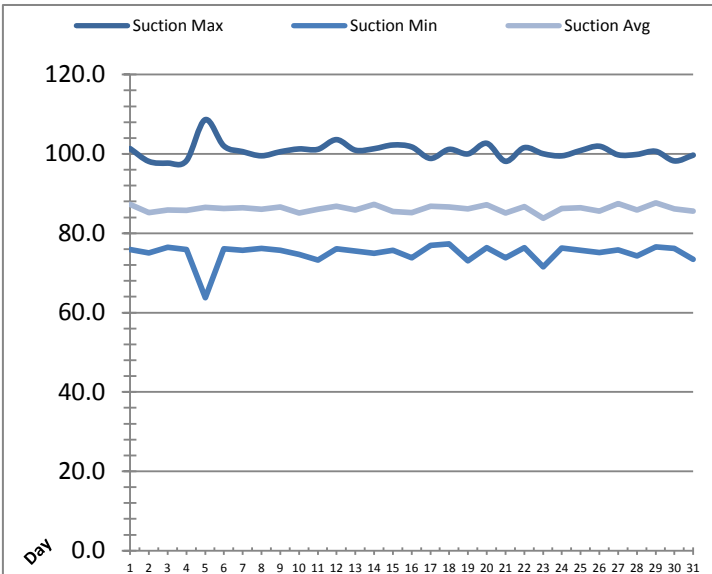


Date	Raw Water Sample Line					
	AIT_1402_PH (pH)			AIT_1402_DO (mg/L)		
	Maximum	Minimum	Average	Maximum	Minimum	Average
1	7.7	7.6	7.6	13.5	13.2	13.4
2	7.7	7.6	7.6	13.4	12.7	13.1
3	7.7	7.6	7.6	13.2	12.5	12.8
4	7.7	7.6	7.6	13.5	12.9	13.3
5	7.7	7.6	7.6	13.5	13.3	13.4
6	7.7	7.6	7.6	13.3	13.0	13.2
7	7.6	7.6	7.6	13.7	13.2	13.5
8	7.6	7.6	7.6	13.8	13.5	13.7
9	7.6	7.6	7.6	13.9	13.7	13.8
10	7.7	7.6	7.6	14.0	13.8	13.9
11	7.6	7.6	7.6	14.0	13.8	13.9
12	7.6	7.6	7.6	14.1	13.9	14.0
13	7.6	7.6	7.6	14.2	13.9	14.0
14	7.6	7.6	7.6	14.1	13.9	14.0
15	7.6	7.6	7.6	14.1	14.0	14.1
16	7.6	7.6	7.6	14.1	13.9	14.0
17	7.6	7.6	7.6	14.0	13.8	13.9
18	7.6	7.6	7.6	14.2	13.9	14.0
19	7.6	7.6	7.6	14.3	14.0	14.1
20	7.7	7.6	7.6	14.2	13.9	14.0
21	7.6	7.6	7.6	14.0	13.7	13.9
22	7.6	7.6	7.6	14.1	13.9	14.0
23	7.6	7.6	7.6	14.2	13.9	14.0
24	7.6	7.6	7.6	14.1	14.0	14.0
25	7.6	7.6	7.6	14.3	14.0	14.1
26	7.6	7.6	7.6	14.3	14.1	14.2
27	7.6	7.6	7.6	14.4	12.6	13.9
28	7.6	7.6	7.6	13.0	12.4	12.6
29	7.6	7.6	7.6	12.8	12.4	12.6
30	7.6	7.6	7.6	12.8	12.4	12.6
31	7.6	7.6	7.6	12.6	12.2	12.4
Total						
Average	7.6	7.6	7.6	13.8	13.4	13.6
Maximum	7.7		7.6	14.4		14.2
Date	1-Dec		3-Dec	27-Dec		26-Dec
Minimum		7.6	7.6		12.2	12.4
Date		27-Dec	27-Dec		31-Dec	31-Dec

Notes:

High Lift Monthly Report

Month: December-18

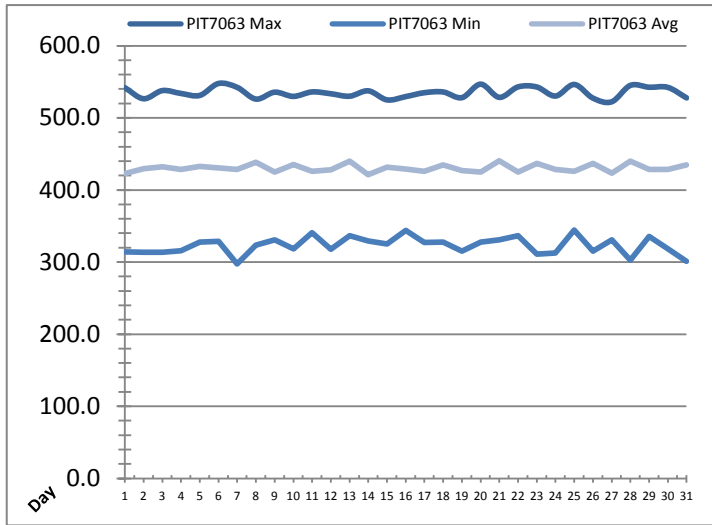
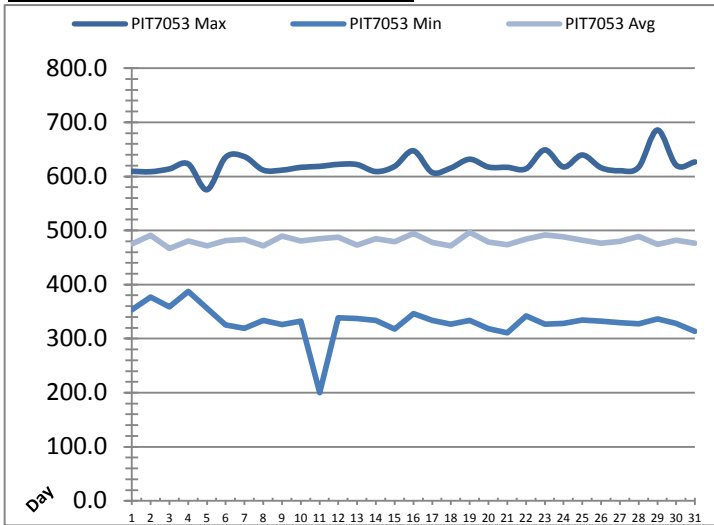


Date	Suction Header Pressure			Discharge Header Pressure		
	PIT_7002 (kPa)			PIT_7005 (kPa)		
	Maximum	Minimum	Average	Maximum	Minimum	Average
1	101.3	75.9	87.3	840.7	82.1	473.6
2	98.1	75.0	85.2	830.5	82.6	581.9
3	97.7	76.5	85.9	831.9	384.4	543.2
4	98.3	75.9	85.7	849.9	82.5	525.8
5	108.6	63.8	86.6	848.2	162.2	575.2
6	102.0	76.1	86.2	848.7	381.8	526.0
7	100.6	75.7	86.4	859.2	92.4	542.6
8	99.5	76.2	86.0	849.7	82.7	492.7
9	100.5	75.7	86.6	832.3	81.7	421.3
10	101.3	74.7	85.1	845.8	111.1	529.1
11	101.1	73.2	86.0	833.6	323.3	517.5
12	103.6	76.1	86.8	859.2	351.0	537.2
13	100.9	75.6	85.9	856.1	366.5	530.1
14	101.3	74.9	87.3	854.3	81.2	357.6
15	102.2	75.7	85.5	849.5	79.5	476.5
16	101.8	73.8	85.2	852.1	82.5	511.9
17	98.9	76.9	86.8	852.9	383.9	528.3
18	101.1	77.3	86.6	850.7	82.5	429.6
19	100.0	73.1	86.1	855.4	381.0	546.9
20	102.7	76.4	87.2	849.3	82.4	502.4
21	98.1	73.8	85.1	865.6	82.5	504.0
22	101.6	76.3	86.7	857.6	82.2	475.7
23	100.0	71.6	83.8	849.2	90.7	534.0
24	99.5	76.3	86.2	847.9	81.3	423.2
25	100.9	75.7	86.4	853.1	79.5	471.3
26	101.9	75.2	85.6	852.2	82.2	487.3
27	99.8	75.8	87.5	834.3	79.9	423.8
28	99.9	74.3	85.9	848.5	80.0	460.1
29	100.7	76.6	87.7	851.6	82.4	398.7
30	98.2	76.2	86.2	848.8	81.3	462.1
31	99.7	73.4	85.6	856.6	80.1	469.3
Total						
Average	100.7	75.0	86.2	848.9	150.3	492.2
Maximum	108.6		87.7	865.6		581.9
Date	5-Dec		29-Dec	21-Dec		2-Dec
Minimum		63.8	83.8		79.5	357.6
Date		5-Dec	23-Dec		15-Dec	14-Dec

Notes:

High Lift Monthly Report

Month: December-18

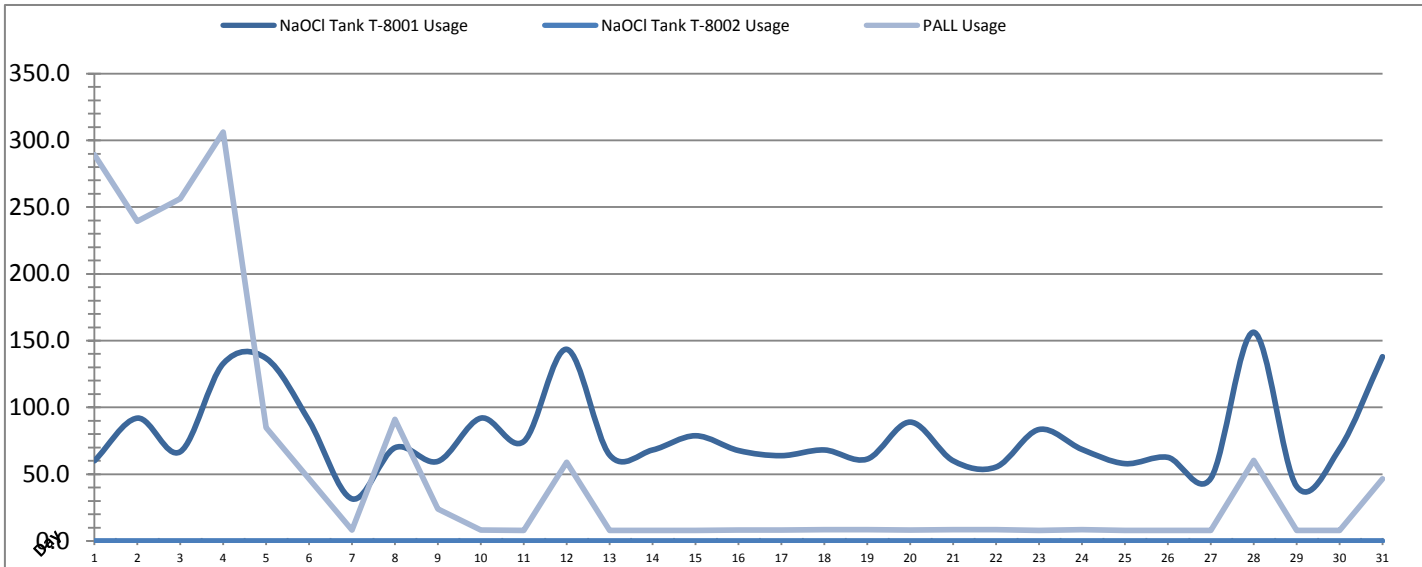


Date	Distribution Pressures					
	PIT_7053 (kPa)			PIT_7063 (kPa)		
	Maximum	Minimum	Average	Maximum	Minimum	Average
1	609.5	353.2	474.8	541.9	313.9	422.7
2	608.7	376.6	491.4	526.6	313.7	429.6
3	613.8	358.9	466.9	537.9	313.5	432.0
4	623.1	387.0	480.5	533.9	315.6	428.6
5	575.4	355.9	471.3	531.2	327.8	432.7
6	635.5	325.5	481.6	547.7	328.6	430.9
7	636.6	318.7	483.7	542.3	297.7	428.6
8	611.6	333.6	471.4	526.1	323.7	438.4
9	611.6	325.9	489.5	535.6	330.6	424.7
10	616.7	332.4	480.8	529.8	318.5	435.3
11	618.5	200.1	484.5	536.0	340.9	425.8
12	622.3	338.4	487.2	533.5	317.9	427.9
13	621.9	337.4	473.2	530.1	336.4	439.7
14	609.0	333.7	485.0	537.5	329.1	421.3
15	618.6	317.6	479.2	525.0	325.2	431.8
16	647.4	345.9	494.3	529.5	343.8	429.1
17	607.3	333.7	477.6	534.9	327.1	426.1
18	615.7	326.6	471.5	535.9	327.5	434.8
19	631.7	333.6	496.6	528.0	315.4	426.7
20	617.3	318.4	478.4	546.8	327.7	424.8
21	616.8	311.0	473.4	528.5	331.1	440.4
22	614.1	342.2	484.4	543.0	336.5	424.8
23	649.0	327.0	491.7	542.8	310.9	436.7
24	617.5	328.3	488.3	530.3	312.6	428.4
25	639.6	334.6	482.0	546.3	344.3	426.0
26	616.0	332.5	476.3	527.4	314.9	436.9
27	610.5	329.8	480.2	522.3	331.1	423.3
28	617.0	327.7	489.1	545.1	302.9	440.1
29	685.7	336.6	474.5	542.5	335.5	428.5
30	620.8	328.3	482.2	542.3	318.4	428.3
31	626.7	313.7	476.5	527.7	300.9	434.8
Total						
Average	621.5	331.1	481.2	535.1	323.0	430.3
Maximum	685.7		496.6	547.7		440.4
Date	29-Dec		19-Dec	6-Dec		21-Dec
Minimum		200.1	466.9		297.7	421.3
Date		11-Dec	3-Dec		7-Dec	14-Dec

Notes:

Chemical Usage Monthly Report

Month: December-18

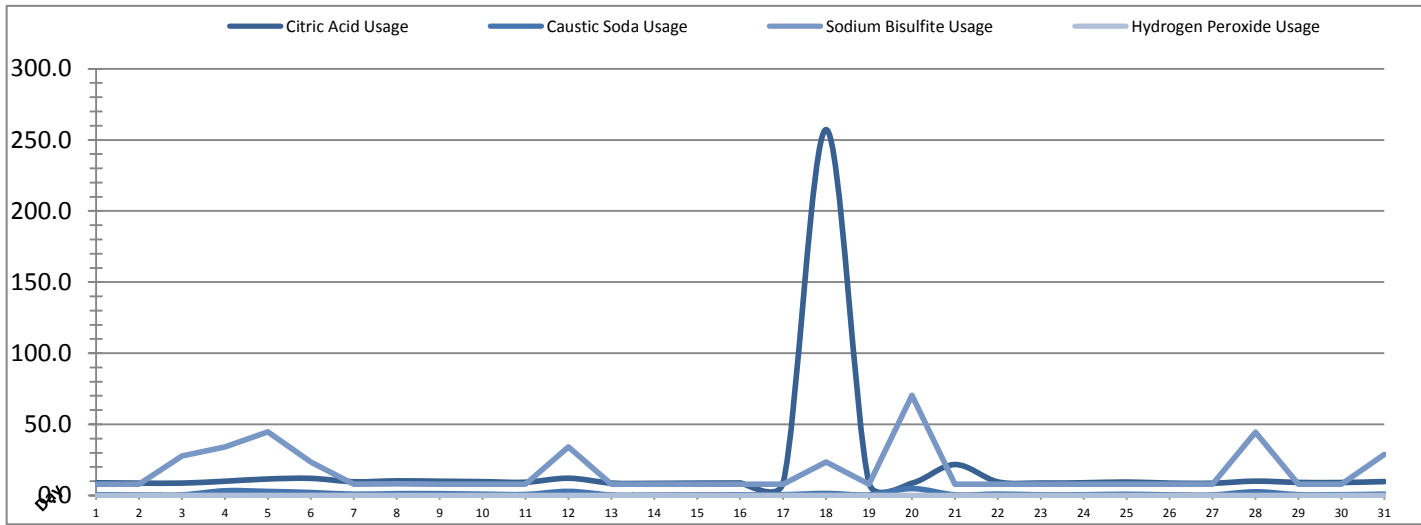


Date	PALL Usage	NaOCl Tank T-8001	NaOCl Tank T-8002
	PALL_HYPO_USAGE (L) Usage	LIT_8002 (Storage) (L) Usage	LIT_8004 (Day) (L) Usage
1	289.2	60.0	0.0
2	239.5	92.0	0.0
3	256.3	66.9	0.0
4	306.2	132.9	0.0
5	84.9	136.7	0.0
6	46.4	89.9	0.0
7	8.1	31.5	0.0
8	91.2	69.8	0.0
9	24.0	59.6	0.0
10	8.1	92.0	0.0
11	7.9	74.5	0.0
12	59.0	143.5	0.0
13	7.9	64.3	0.0
14	7.91	68.14	0.0
15	8.0	78.8	0.0
16	8.3	67.7	0.0
17	8.2	63.9	0.0
18	8.4	68.1	0.0
19	8.4	61.3	0.0
20	8.3	89.0	0.0
21	8.5	60.0	0.0
22	8.5	55.4	0.0
23	8.0	83.5	0.0
24	8.4	68.6	0.0
25	8.0	57.9	0.0
26	8.0	62.6	0.0
27	7.9	46.8	0.0
28	60.2	156.3	0.0
29	7.9	40.9	0.0
30	7.9	69.0	0.0
31	46.6	138.0	0.0
Total	1666.2	2449.7	0.0
Average	53.7	79.0	0.0
Maximum	306.2	156.3	0.0
Date	4-Dec	28-Dec	1-Dec
Minimum	7.9	31.5	0.0
Date	14-Dec	7-Dec	1-Dec

Notes:	
Dosage (mg/L)=	Day Tank (L) x %conc. x 1000
	Membrane Flow (m3)
Chlorine Concentration:	12.0%

Chemical Usage Monthly Report

Month: December-18



Date	Citric Acid	Caustic Soda	Captor	Hydrogen Peroxide		Membrane Flow (m ³)
	TAGNAME (L) Usage	TAGNAME (L) Usage	TAGNAME (L) Usage	TAGNAME (L) Usage	TAGNAME (mg/L) Dose	
1	8.9	0.5	7.9	0.0	0.0	2587.329
2	8.7	0.3	7.9	0.0	0.0	4295.692
3	8.7	0.4	27.7	0.0	0.0	3605.298
4	10.0	3.3	34.0	0.0	0.0	3846.592
5	11.6	2.8	44.6	0.0	0.0	3345.819
6	12.0	2.1	23.6	0.0	0.0	3291.465
7	9.7	0.9	7.9	0.0	0.0	3324.906
8	10.3	1.3	8.1	0.0	0.0	4318.486
9	10.0	1.2	8.0	0.0	0.0	3117.893
10	9.7	0.9	7.9	0.0	0.0	4270.779
11	9.3	0.7	7.9	0.0	0.0	3613.908
12	12.1	2.9	34.1	0.0	0.0	3406.510
13	8.7	0.3	7.9	0.0	0.0	4045.252
14	8.5	0.3	7.9	0.0	0.0	2924.090
15	8.7	0.4	7.9	0.0	0.0	4035.265
16	8.8	0.4	7.9	0.0	0.0	4074.504
17	9.0	0.5	7.9	0.0	0.0	3177.150
18	257.3	1.4	23.6	0.0	0.0	3885.946
19	8.8	0.4	7.9	0.0	0.0	3718.096
20	8.7	4.8	70.5	0.0	0.0	2567.273
21	21.8	0.4	7.9	0.0	0.0	4796.254
22	9.6	1.0	8.0	0.0	0.0	2811.165
23	8.8	0.4	7.9	0.0	0.0	4581.374
24	8.9	0.5	7.9	0.0	0.0	3582.114
25	9.4	0.8	7.9	0.0	0.0	3159.725
26	8.7	0.4	7.9	0.0	0.0	4198.989
27	8.6	0.3	7.9	0.0	0.0	2839.246
28	10.1	2.6	44.4	0.0	0.0	4793.343
29	9.2	0.5	7.9	0.0	0.0	2497.430
30	9.1	0.5	7.9	0.0	0.0	3418.826
31	9.8	0.9	28.7	0.0	0.0	4342.093
Total	553.4	34.2	505.6	0.0		112472.8
Average	17.9	1.1	16.3	0.0	0.0	3628.2
Maximum	257.3	4.8	70.5	0.0	0.0	4796.3
Date	18-Dec	20-Dec	20-Dec	1-Dec	1-Dec	21-Dec
Minimum	8.5	0.3	7.9	0.0	0.0	2497.4
Date	14-Dec	14-Dec	7-Dec	1-Dec	1-Dec	29-Dec

Notes:	
Dosage (mg/L)=	Day Tank (L) x %conc. x 1000
	Membrane Flow (m3)
Peroxide Concentration:	50.0%

Runtimes Report

Month: December-18

Date	Daily Gen-Set Runtimes		Daily UV Runtimes		Daily PALL Runtimes				
	LLPS	WTP	UV #1	UV #2	Air Compressor #1	Air Compressor #2	CIP Neutralization	CIP Drain	CIP Recirc
	(Hrs)	(Hrs)	(Hrs)	(Hrs)	(Hrs)	(Hrs)	(Hrs)	(Hrs)	(Hrs)
1	0.0	0.0	0.0	0.0	0.1	24.3	0.0	0.0	0.0
2	0.0	0.0	0.0	0.0	0.0	24.4	0.0	0.0	0.0
3	0.0	0.0	0.0	0.0	0.9	23.6	0.0	0.0	0.0
4	0.0	0.0	0.0	0.0	7.8	16.5	0.2	0.0	0.3
5	0.0	0.0	0.0	0.0	0.2	24.2	0.3	0.0	0.2
6	0.0	0.0	0.0	0.0	7.9	16.5	0.1	0.1	0.1
7	0.0	0.0	0.0	0.0	17.0	7.4	0.0	0.0	0.0
8	0.0	0.0	0.0	0.0	1.1	23.3	0.0	0.0	0.0
9	0.0	0.0	0.0	0.0	23.3	1.1	0.0	0.0	0.0
10	0.0	0.0	0.0	0.0	1.1	23.3	0.0	0.0	0.0
11	0.0	0.0	0.0	0.0	23.3	1.1	0.0	0.0	0.0
12	0.0	0.0	0.0	0.0	1.1	23.3	0.2	0.0	0.3
13	0.0	0.0	0.0	0.0	23.3	1.1	0.0	0.0	0.0
14	0.0	0.0	0.0	0.0	1.1	23.3	0.0	0.0	0.0
15	0.0	0.0	0.0	0.0	23.3	1.1	0.0	0.0	0.0
16	0.0	0.0	0.0	0.0	1.1	23.3	0.0	0.0	0.0
17	0.0	0.0	0.0	0.0	23.3	1.1	0.0	0.0	0.0
18	0.0	0.0	0.0	0.0	1.1	23.3	0.3	0.0	0.9
19	0.0	0.0	0.0	0.0	23.3	1.1	0.0	0.0	0.0
20	0.0	0.0	0.0	0.5	1.1	23.3	0.4	0.0	0.8
21	0.0	1.1	0.0	0.0	23.3	1.1	0.2	0.0	0.7
22	0.0	0.0	0.0	0.0	1.1	23.3	0.0	0.0	0.0
23	0.0	0.0	0.0	0.0	23.3	1.1	0.0	0.0	0.0
24	0.0	0.0	0.0	0.0	1.1	23.3	0.0	0.0	0.0
25	0.0	0.0	0.0	0.0	23.3	1.0	0.0	0.0	0.0
26	0.0	0.0	0.0	0.0	1.1	23.4	0.0	0.0	0.0
27	1.0	0.0	0.0	0.0	23.3	1.0	0.3	0.0	0.7
28	0.0	0.0	0.0	0.0	1.1	23.3	0.1	0.0	0.3
29	0.0	0.0	0.0	0.0	23.3	1.1	0.0	0.0	0.0
30	0.0	0.0	0.0	0.0	1.1	23.3	0.0	0.0	0.0
31	0.0	0.0	0.0	0.0	23.3	1.1	0.1	0.0	0.2
Total	1.0	1.1	0.0	0.5	326.4	429.1	2.2	0.1	4.5

Notes:

Runtimes Report

Month: December-18

Daily

Date	PALL Runtimes						Process Drain	
	RFR Pump #1	RFR Pump #2	RF Pump #1	RF Pump #2	XR Pump #1	XR Pump #2	PDP9010 Pump	PDP9020 Pump
	(Hrs)	(Hrs)	(Hrs)	(Hrs)	(Hrs)	(Hrs)	(Hrs)	(Hrs)
1	4.6	4.8	0.6	0.5	4.5	5.8	0.0	4.9
2	0.0	0.0	0.7	0.7	8.4	9.1	0.0	4.8
3	0.0	0.0	0.6	0.6	7.5	7.0	0.0	4.9
4	1.1	1.0	0.7	0.6	9.2	6.7	0.0	4.9
5	3.9	3.9	0.5	0.5	4.6	8.6	0.0	5.1
6	5.7	5.6	0.7	0.6	7.3	5.4	0.0	5.0
7	5.8	5.9	0.7	0.6	5.8	7.1	0.0	4.8
8	7.3	7.4	0.9	0.8	9.1	7.5	0.0	4.8
9	5.2	5.3	0.5	0.6	5.6	6.1	0.0	4.9
10	6.6	6.6	1.0	0.8	9.8	6.7	0.0	5.1
11	4.2	4.3	0.6	0.8	6.3	7.3	0.0	4.9
12	4.3	4.2	0.7	0.7	6.3	7.6	0.0	4.8
13	7.0	7.0	0.9	0.8	6.7	8.9	0.0	5.0
14	5.3	5.4	0.6	0.6	6.3	5.0	0.0	4.8
15	7.3	7.3	0.9	0.9	8.6	7.1	0.0	4.8
16	7.1	7.1	0.8	0.9	6.8	7.7	0.0	5.0
17	5.5	5.3	0.6	0.6	6.5	5.9	0.0	5.0
18	6.9	6.8	0.8	0.9	7.0	8.0	0.0	5.2
19	6.3	6.4	0.7	0.8	7.9	5.0	0.0	4.9
20	4.7	4.9	0.6	0.5	3.7	6.3	0.0	5.0
21	8.8	8.1	1.0	1.0	9.3	8.3	0.0	5.2
22	2.8	3.0	0.6	0.5	5.6	5.9	0.0	4.8
23	6.1	6.1	0.9	1.0	7.2	10.6	0.0	5.2
24	6.2	6.2	0.7	0.7	8.4	5.5	0.0	5.1
25	5.4	5.4	0.7	0.7	5.2	7.0	0.0	4.9
26	7.2	7.4	0.9	0.8	9.5	6.9	0.0	4.9
27	4.6	4.6	0.6	0.5	5.0	6.1	0.0	5.1
28	8.1	8.1	1.0	1.0	11.0	7.5	0.0	5.7
29	2.2	2.1	0.3	0.4	3.9	6.7	0.0	4.9
30	0.0	0.0	0.5	0.6	7.4	7.3	0.0	4.7
31	4.1	4.1	0.8	1.0	10.0	6.8	0.0	5.0
Total	153.7	153.7	22.1	22.0	219.5	216.6	0.0	154.3

Notes:

Runtimes Report

Month: December-18

Daily

Date	Low Lift Pump Motor Runtimes				High Lift Pump Motor Runtimes			
	LLP1010 (Hrs)	LLP1020 (Hrs)	LLP1030 (Hrs)	LLP1040 (Hrs)	HLP7010 (Hrs)	HLP7020 (Hrs)	HLP7030 (Hrs)	HLP7040 (Hrs)
1	3.1	3.5	0.0	4.1	5.6	4.4	2.1	0.0
2	7.5	3.7	0.0	7.2	14.1	2.1	2.1	0.0
3	4.4	5.8	0.0	5.1	6.3	4.5	3.2	0.0
4	5.2	5.9	0.0	5.3	1.3	12.1	1.7	0.0
5	5.4	1.8	0.0	6.3	5.3	6.0	3.8	0.0
6	3.2	6.0	0.0	4.3	7.7	1.0	3.6	0.0
7	4.0	4.4	0.0	4.7	4.1	2.5	5.5	0.0
8	5.8	3.8	0.0	7.8	3.5	6.4	3.1	0.0
9	4.7	3.1	0.0	4.4	5.2	3.6	3.7	0.0
10	6.6	6.0	0.0	4.2	4.2	3.4	6.0	0.0
11	4.1	5.3	0.0	5.5	2.9	7.1	2.2	0.0
12	3.6	4.2	0.0	6.5	4.4	5.7	2.3	0.0
13	7.3	2.8	0.0	6.0	4.5	5.9	3.5	0.0
14	3.1	4.0	0.0	4.3	2.1	4.8	3.8	0.0
15	2.5	6.0	0.0	7.4	3.3	4.0	5.4	0.0
16	6.2	7.0	0.0	2.9	1.6	2.7	9.6	0.0
17	5.9	4.0	0.0	2.8	6.5	1.8	2.6	0.0
18	4.0	7.5	0.0	4.0	3.8	2.0	5.7	0.0
19	6.1	2.9	0.0	5.6	1.4	4.1	7.4	0.0
20	3.5	1.5	0.0	5.1	1.8	1.5	6.2	0.0
21	8.5	6.9	0.0	3.6	7.2	3.2	4.7	0.0
22	4.0	2.3	0.0	5.6	5.5	4.2	1.2	0.0
23	5.6	6.3	0.0	8.2	2.5	3.5	8.4	0.0
24	4.0	5.5	0.0	4.5	2.4	7.5	2.9	0.0
25	7.1	2.0	0.0	3.3	1.9	2.3	6.8	0.0
26	4.0	5.2	0.0	7.5	3.2	7.0	2.9	0.0
27	4.2	4.6	0.0	2.7	7.0	3.1	0.0	0.0
28	7.3	7.3	0.0	5.4	1.8	8.4	5.2	0.0
29	3.5	4.1	0.0	3.1	4.5	1.2	4.0	0.0
30	5.7	3.8	0.0	5.6	1.8	6.5	3.2	0.0
31	3.4	7.7	0.0	7.3	7.8	1.7	4.4	0.0
Total	153.5	144.9	0.0	160.3	135.2	134.3	127.2	0.0

Notes:

Plant Internal Flow Report

Month: December-18

Date	Settling Tank Level		Process Drain Tank		Settling Tank Flow		Potable Water Flow		Non-Potable Flow	
	T-9003 (m)		T-9001 (m)		FIT_9005 (m ³) (L/s)		FIT_7082 (m ³) (L/s)		FIT_7092 (m ³) (L/s)	
	Maximum	Minimum	Maximum	Minimum	Total	Peak	Total	Peak	Total	Peak
1	2.2	0.1	1.3	0.4	29.3	15.7	0.0	1.3	0.0	0.0
2	2.2	0.1	1.2	0.4	298.4	15.7	0.0	0.0	0.0	0.0
3	2.2	0.1	1.2	0.4	192.8	15.7	0.1	1.5	0.0	0.0
4	2.2	0.1	1.1	0.4	140.6	15.7	0.5	1.6	17.8	23.5
5	2.2	0.1	1.8	0.4	45.9	15.7	0.1	1.8	24.3	16.9
6	2.2	0.1	1.0	0.4	27.3	15.1	0.1	1.4	11.8	16.6
7	2.2	0.1	0.9	0.4	20.0	15.7	0.1	1.4	0.1	1.0
8	2.2	0.1	1.2	0.4	20.6	15.7	0.0	0.0	0.0	0.0
9	2.2	0.1	1.3	0.4	23.9	15.7	0.0	0.5	0.0	0.0
10	2.2	0.1	1.2	0.4	45.8	15.7	0.1	1.4	0.0	0.0
11	2.2	0.3	1.0	0.4	63.8	15.7	0.1	1.4	0.0	0.0
12	2.2	0.1	1.1	0.4	88.1	15.7	0.1	1.4	18.0	23.3
13	2.2	0.1	0.9	0.4	46.2	15.7	0.2	1.4	0.1	0.7
14	2.2	0.1	1.0	0.4	27.9	15.7	0.1	1.4	0.3	1.2
15	2.2	0.1	1.0	0.4	32.2	15.7	0.0	0.0	0.0	0.0
16	2.2	0.1	1.1	0.4	37.9	15.7	0.0	0.0	0.0	0.0
17	2.2	0.1	1.0	0.4	25.3	15.7	0.3	1.6	0.0	0.0
18	2.2	0.1	1.2	0.4	50.3	15.7	0.1	1.4	26.3	23.6
19	2.2	0.1	1.1	0.4	29.1	15.7	0.3	1.4	0.0	0.0
20	2.2	0.1	1.3	0.4	53.3	15.7	1.5	4.7	29.3	15.8
21	2.2	0.1	1.3	0.4	62.7	15.7	0.1	1.4	19.3	16.4
22	2.2	0.1	1.1	0.4	72.6	15.7	0.0	0.0	0.0	0.0
23	2.2	0.1	2.0	0.4	104.6	15.7	0.0	0.0	0.0	0.0
24	2.2	0.1	1.0	0.4	33.1	15.7	0.1	1.4	0.4	1.3
25	2.2	0.1	1.1	0.4	22.0	15.2	0.0	0.0	0.0	0.0
26	2.2	0.1	1.1	0.4	29.8	13.9	0.5	0.4	0.0	0.0
27	2.2	0.1	1.1	0.4	51.4	15.7	0.1	1.4	30.0	15.5
28	2.2	0.1	1.1	0.4	82.2	15.7	0.1	1.4	5.6	22.5
29	2.2	0.1	1.0	0.4	50.6	15.7	0.0	0.0	0.0	0.0
30	2.2	0.1	0.9	0.4	125.1	15.7	0.0	0.0	0.0	0.0
31	2.2	0.1	1.1	0.4	127.7	15.7	0.1	1.4	11.8	15.2
Total					2060.3		4.6		195.1	
Average	2.2	0.1	1.1	0.4	66.5	15.6	0.1	1.1	6.3	6.2
Maximum	2.2		2.0		298.4		1.5		30.0	
Date	2-Dec		23-Dec		2-Dec		20-Dec		27-Dec	
Minimum		0.1		0.4		13.9		0.0		0.0
Date		24-Dec		7-Dec		26-Dec		2-Dec		1-Dec

Notes: