

Municipality of West Elgin - Tri County Water System

Goto:

Month:

Year:

Date is Set to: **March-16**

Limit	Low	High	
Raw Water Chlorine Residual:	0.00	5.00	mg/L
Pre-Strainer Chlorine Residual:	0.00	5.00	mg/L
UV Inlet Chlorine Residual:	0.00	5.00	mg/L
Post Treatment Chlorine Residual:	1.00	5.00	mg/L
Treated Chlorine Residual:	1.00	2.50	mg/L
Distribution Chlorine Residual:	1.00	2.50	mg/L
Limit		High	
WTP C of A		156.0	L/s
WTP Permit to Take Water		13500.0	m <sup>3</sup>
Limit	Low	High	
System Pressure Limits:	50.0	1034.0	Kpa

Compliance Report

Low Lift Monthly Report

>>>

Membranes Monthly Report

>>>

UV System Monthly Report

>>>

Plant Quality Report

>>>

Raw Well/Treated Storage Report

>>>

High Lift Monthly Report

>>>

Operational Report

Low Lift Monthly Report

>>>

High Lift Monthly Report

>>>

Chemical Usage Monthly Report

>>>

Runtimes Report

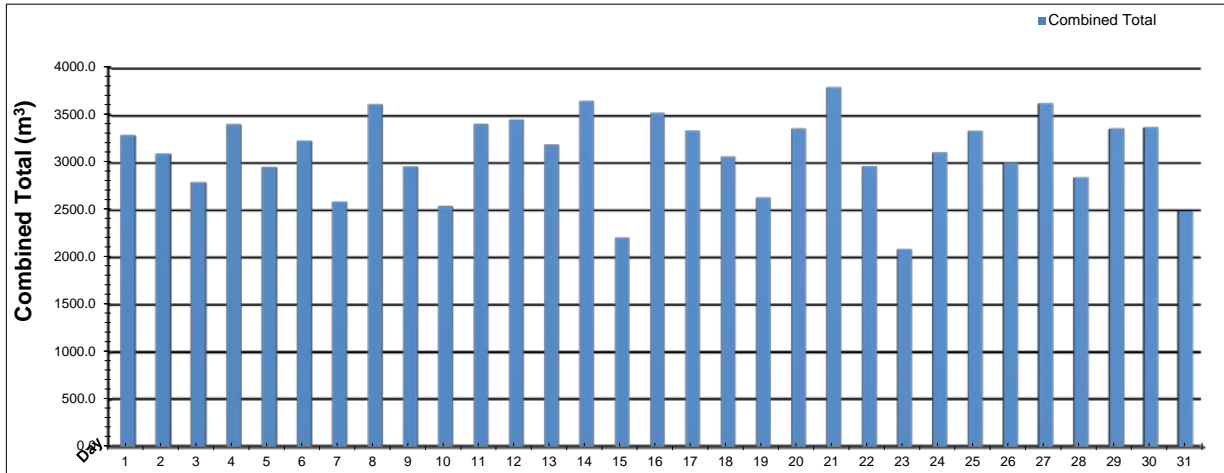
>>>

Plant Internal Flow Report

>>>

# Low Lift Monthly Report

Month: March-16



Date	Combined Total (m³)	West Train FIT-1017 (m³)	West Peak Flow FIT-1017 (L/s)	East Train FIT-1027 (m³)	East Peak Flow FIT-1027 (L/s)	Combined Peak Flow (L/s)
1	✓ 3287.3	0.0	0.0	3287.3	81.4	✓ 81.4
2	✓ 3092.4	0.0	0.0	3092.4	82.2	✓ 82.2
3	✓ 2791.3	0.0	0.0	2791.3	85.0	✓ 85.0
4	✓ 3401.8	0.0	0.0	3401.8	85.4	✓ 85.4
5	✓ 2954.9	0.0	0.0	2954.9	86.8	✓ 86.8
6	✓ 3230.6	0.0	0.0	3230.6	85.6	✓ 85.6
7	✓ 2587.3	0.0	0.0	2587.3	86.4	✓ 86.4
8	✓ 3614.8	0.0	0.0	3614.8	85.6	✓ 85.6
9	✓ 2960.4	2267.7	88.4	692.7	86.8	✓ 88.4
10	✓ 2542.4	2542.4	90.8	0.0	0.0	✓ 90.8
11	✓ 3404.5	3404.5	88.5	0.0	0.0	✓ 88.5
12	✓ 3454.3	3454.3	85.7	0.0	0.0	✓ 85.7
13	✓ 3191.5	3191.5	89.4	0.0	0.0	✓ 89.4
14	✓ 3652.1	3652.1	88.8	0.0	0.0	✓ 88.8
15	✓ 2208.8	2208.8	86.9	0.0	0.0	✓ 86.9
16	✓ 3521.2	3521.2	89.2	0.0	0.0	✓ 89.2
17	✓ 3336.8	3336.8	89.3	0.0	0.0	✓ 89.3
18	✓ 3062.2	3062.2	88.8	0.0	0.0	✓ 88.8
19	✓ 2631.5	2631.5	89.1	0.0	0.0	✓ 89.1
20	✓ 3358.3	3358.3	87.8	0.0	0.0	✓ 87.8
21	✓ 3790.5	3790.5	88.3	0.0	0.0	✓ 88.3
22	✓ 2964.3	2964.3	87.1	0.0	0.0	✓ 87.1
23	✓ 2087.4	2087.4	86.8	0.0	0.0	✓ 86.8
24	✓ 3107.5	3107.5	88.5	0.0	0.0	✓ 88.5
25	✓ 3332.4	3332.4	87.5	0.0	0.0	✓ 87.5
26	✓ 3001.7	3001.7	88.3	0.0	0.0	✓ 88.3
27	✓ 3625.1	3625.1	87.0	0.0	0.0	✓ 87.0
28	✓ 2845.4	2845.4	86.9	0.0	0.0	✓ 86.9
29	✓ 3357.6	3357.6	89.1	0.0	0.0	✓ 89.1
30	✓ 3368.8	3368.8	88.3	0.0	0.0	✓ 88.3
31	✓ 2489.8	1442.1	87.9	1047.7	89.2	✓ 89.2
<b>Total</b>	<b>96254.9</b>	<b>69554.1</b>		<b>26700.8</b>		
<b>Average</b>	<b>3105.0</b>	<b>2243.7</b>	<b>65.4</b>	<b>861.3</b>	<b>27.6</b>	<b>87.4</b>
<b>Maximum</b>	<b>3790.5</b>	<b>3790.5</b>	<b>90.79</b>	<b>3614.8</b>	<b>89.19</b>	<b>90.79</b>
<b>Date</b>	<b>21-Mar</b>	<b>21-Mar</b>	<b>10-Mar</b>	<b>8-Mar</b>	<b>31-Mar</b>	<b>10-Mar</b>
<b>Minimum</b>	<b>2087.4</b>	<b>0.0</b>	<b>0.00</b>	<b>0.0</b>	<b>0.00</b>	<b>81.40</b>
<b>Date</b>	<b>23-Mar</b>	<b>1-Mar</b>	<b>1-Mar</b>	<b>24-Mar</b>	<b>10-Mar</b>	<b>1-Mar</b>

Notes:

---



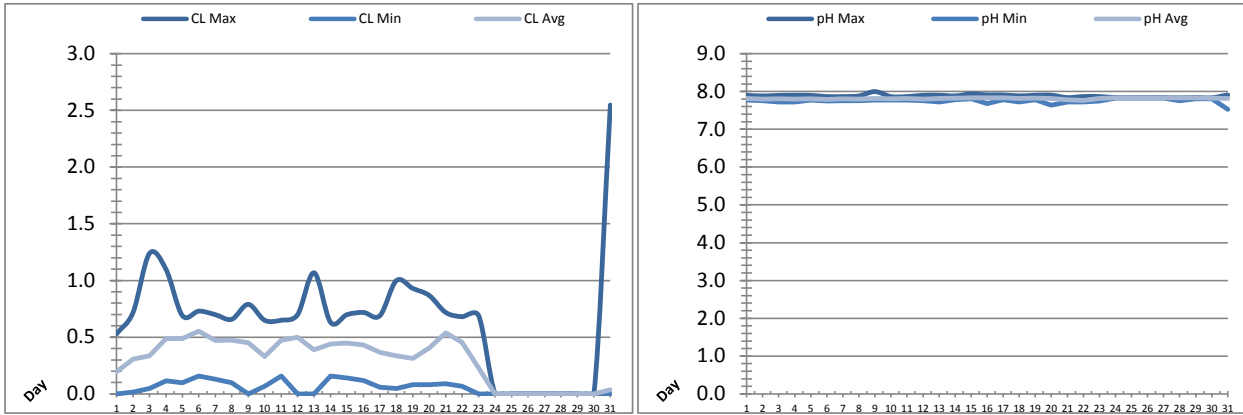
---



---

# Low Lift Monthly Report

Month: **March-16**



Date	Raw Water Chlorine Residual			Raw Water pH		
	AIT_1401_CL (mg/L)			AIT_1401_PH		
	Maximum	Minimum	Average	Maximum	Minimum	Average
1	0.53	0.00	0.19	7.90	7.77	7.82
2	0.72	0.02	0.31	7.88	7.75	7.80
3	1.24	0.05	0.34	7.90	7.72	7.80
4	1.10	0.12	0.49	7.90	7.72	7.80
5	0.69	0.10	0.49	7.90	7.77	7.81
6	0.73	0.16	0.55	7.87	7.75	7.79
7	0.70	0.13	0.47	7.87	7.76	7.81
8	0.66	0.10	0.47	7.88	7.76	7.80
9	0.79	0.00	0.45	8.00	7.77	7.81
10	0.65	0.07	0.33	7.87	7.77	7.81
11	0.65	0.16	0.47	7.87	7.77	7.81
12	0.70	0.00	0.50	7.90	7.76	7.80
13	1.07	0.00	0.39	7.90	7.72	7.81
14	0.63	0.16	0.44	7.88	7.78	7.83
15	0.70	0.14	0.45	7.94	7.81	7.83
16	0.72	0.12	0.43	7.91	7.68	7.83
17	0.69	0.06	0.37	7.91	7.79	7.83
18	1.00	0.05	0.34	7.88	7.73	7.82
19	0.93	0.08	0.31	7.90	7.78	7.83
20	0.87	0.08	0.41	7.90	7.64	7.81
21	0.72	0.09	0.54	7.84	7.72	7.78
22	0.68	0.07	0.45	7.87	7.72	7.77
23	0.69	0.00	0.23	7.87	7.75	7.81
24	0.00	0.00	0.00	7.84	7.83	7.83
25	0.00	0.00	0.00	7.84	7.83	7.83
26	0.00	0.00	0.00	7.84	7.83	7.83
27	0.00	0.00	0.00	7.84	7.83	7.83
28	0.00	0.00	0.00	7.83	7.75	7.83
29	0.00	0.00	0.00	7.84	7.81	7.83
30	0.00	0.00	0.00	7.83	7.81	7.82
31	2.55	0.00	0.04	7.91	7.53	7.82
<b>Total</b>						
<b>Average</b>	0.66	0.06	0.30	7.88	7.76	7.81
<b>Maximum</b>	2.55		0.55	8.00		7.83
<b>Date</b>	31-Mar		6-Mar	9-Mar		15-Mar
<b>Minimum</b>		0.00	0.00		7.53	7.77
<b>Date</b>		1-Mar	24-Mar		31-Mar	22-Mar

Notes:

---



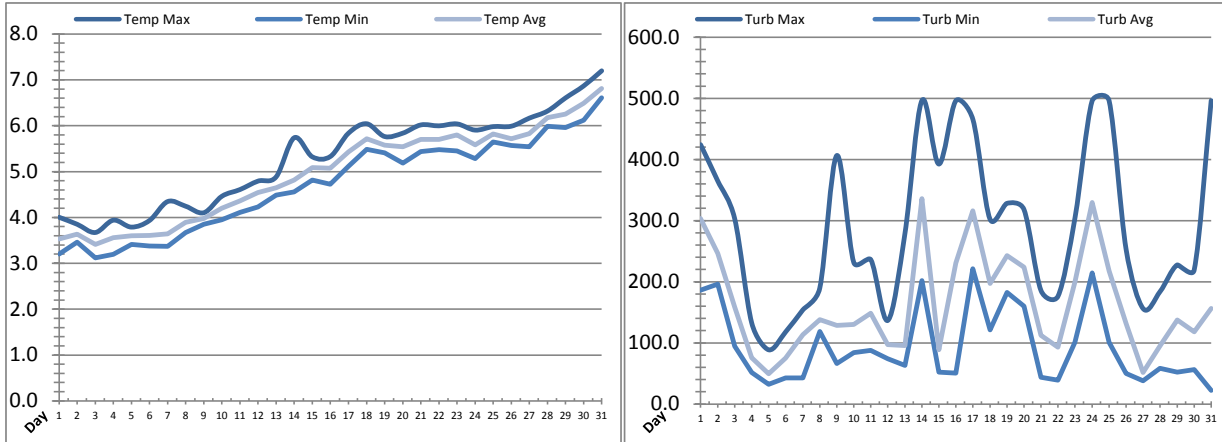
---



---

# Low Lift Monthly Report

Month: **March-16**

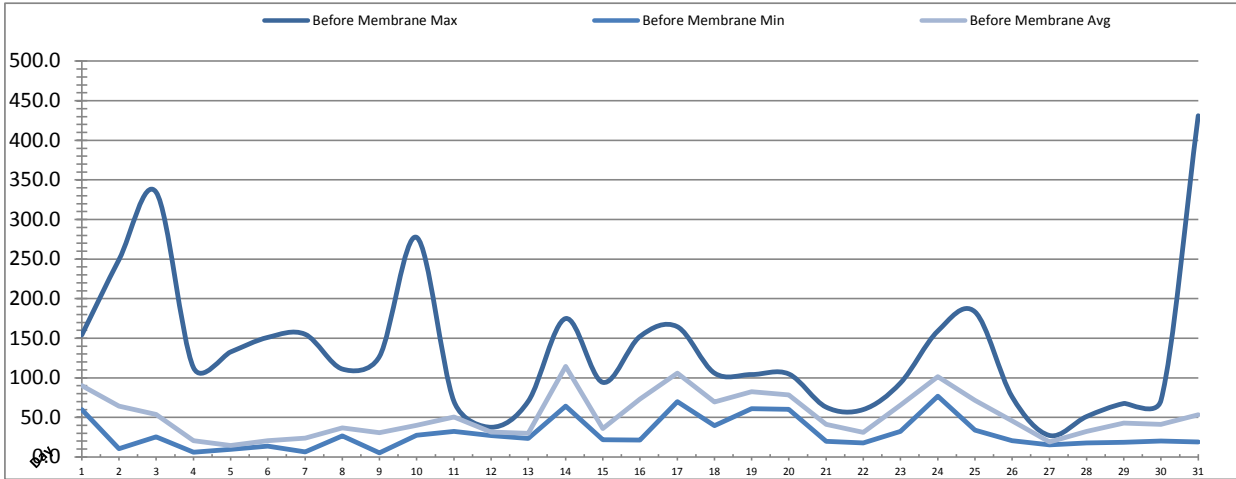


Date	Raw Water Temperature			Raw Water Turbidity		
	TIT_1403 (°C)			AIT_1404 (NTU)		
	Maximum	Minimum	Average	Maximum	Minimum	Average
1	4.0	3.2	3.5	424.17	186.34	303.36
2	3.9	3.5	3.6	365.21	196.42	246.36
3	3.7	3.1	3.4	303.27	94.77	158.59
4	3.9	3.2	3.6	132.78	51.41	75.73
5	3.8	3.4	3.6	88.67	32.06	49.59
6	3.9	3.4	3.6	118.17	42.92	75.45
7	4.3	3.4	3.6	153.79	42.92	113.27
8	4.2	3.7	3.9	189.48	118.93	137.99
9	4.1	3.9	4.0	406.43	66.25	128.46
10	4.5	3.9	4.2	231.44	84.10	130.19
11	4.6	4.1	4.4	236.10	87.91	148.48
12	4.8	4.2	4.5	136.79	73.97	97.34
13	4.9	4.5	4.6	277.89	63.10	95.73
14	5.7	4.6	4.8	496.26	201.92	335.78
15	5.3	4.8	5.1	392.47	52.28	88.72
16	5.3	4.7	5.1	496.29	50.68	230.71
17	5.8	5.1	5.4	465.32	221.40	315.92
18	6.0	5.5	5.7	302.63	121.37	197.33
19	5.8	5.4	5.6	328.23	182.56	243.00
20	5.8	5.2	5.5	318.13	160.07	223.83
21	6.0	5.4	5.7	185.63	43.79	112.38
22	6.0	5.5	5.7	176.38	39.13	93.16
23	6.0	5.5	5.8	304.99	101.11	199.53
24	5.9	5.3	5.6	495.40	214.32	329.92
25	6.0	5.6	5.8	496.27	101.06	217.41
26	6.0	5.6	5.7	253.08	49.93	131.78
27	6.2	5.5	5.8	156.12	38.29	51.77
28	6.3	6.0	6.2	184.10	58.53	95.35
29	6.6	6.0	6.3	227.50	52.36	137.28
30	6.9	6.1	6.5	219.09	56.17	118.12
31	7.2	6.6	6.8	496.26	22.12	156.58
<b>Total</b>						
<b>Average</b>	5.3	4.7	5.0	292.2	93.8	162.6
<b>Maximum</b>	7.2		6.8	496.3		335.8
<b>Date</b>	31-Mar		31-Mar	16-Mar		14-Mar
<b>Minimum</b>		3.1	3.4		22.1	49.6
<b>Date</b>		3-Mar	3-Mar		31-Mar	5-Mar

Notes:

# Membranes Monthly Report

Month: March-16



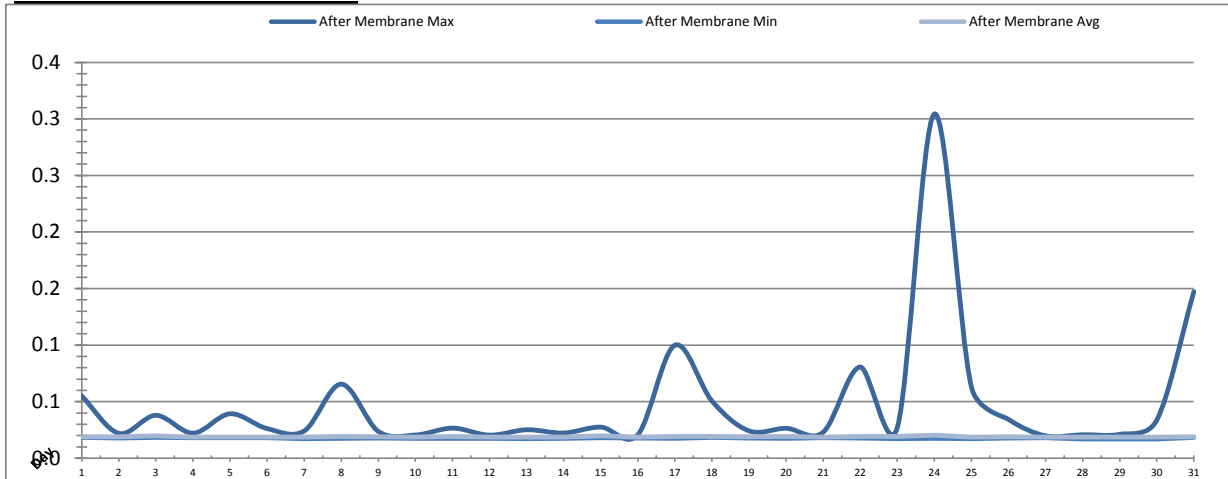
Date	Turbidity Before Membrane			Rack #1 Turbidity			Rack #2 Turbidity		
	PALL_FEED_AIT2006_Value NTU			RACK1_NTU_Value NTU			RACK2_NTU_Value NTU		
	Maximum	Minimum	Average	Maximum	Minimum	Average	Maximum	Minimum	Average
1	154.11	59.71	90.23	0.04	0.01	0.01	0.01	0.01	0.01
2	249.25	10.66	64.07	0.08	0.01	0.01	0.01	0.01	0.01
3	334.28	25.57	53.63	0.02	0.01	0.01	0.01	0.01	0.01
4	113.04	6.20	20.43	0.03	0.01	0.01	0.01	0.01	0.01
5	132.71	9.85	14.69	0.04	0.01	0.01	0.01	0.01	0.01
6	151.10	13.56	20.60	0.01	0.01	0.01	0.01	0.01	0.01
7	155.03	6.51	23.82	0.02	0.01	0.01	0.01	0.01	0.01
8	111.10	26.50	36.64	0.02	0.01	0.01	0.01	0.01	0.01
9	127.04	5.32	30.87	0.04	0.01	0.01	0.01	0.01	0.01
10	277.34	27.60	40.19	0.02	0.01	0.01	0.01	0.01	0.01
11	70.31	32.15	50.69	0.02	0.01	0.01	0.01	0.01	0.01
12	37.57	27.10	31.67	0.02	0.01	0.01	0.01	0.01	0.01
13	70.60	23.43	29.75	0.03	0.01	0.01	0.01	0.01	0.01
14	174.87	64.11	114.39	0.03	0.01	0.01	0.01	0.01	0.01
15	94.28	21.90	36.01	0.04	0.01	0.01	0.02	0.01	0.01
16	152.32	21.35	73.33	0.03	0.01	0.01	0.01	0.01	0.01
17	164.65	69.99	105.98	0.11	0.01	0.01	0.01	0.01	0.01
18	106.01	39.57	69.48	0.02	0.01	0.01	0.05	0.01	0.01
19	104.17	60.89	82.27	0.02	0.01	0.01	0.01	0.01	0.01
20	104.82	60.14	78.33	0.02	0.01	0.01	0.01	0.01	0.01
21	63.01	19.94	41.18	0.02	0.01	0.01	0.01	0.01	0.01
22	59.94	17.88	31.26	0.03	0.01	0.01	0.01	0.01	0.01
23	93.55	32.21	65.64	0.02	0.01	0.01	0.02	0.01	0.01
24	159.03	76.88	101.67	0.04	0.01	0.01	0.01	0.01	0.01
25	183.37	34.07	71.73	0.02	0.01	0.01	0.01	0.01	0.01
26	75.88	20.53	45.52	0.01	0.01	0.01	0.01	0.01	0.01
27	27.24	15.15	19.08	0.01	0.01	0.01	0.01	0.01	0.01
28	51.11	17.78	32.52	0.03	0.01	0.01	0.01	0.01	0.01
29	67.60	18.68	42.70	0.02	0.01	0.01	0.01	0.01	0.01
30	71.74	20.21	41.22	0.01	0.01	0.01	0.01	0.01	0.01
31	431.07	18.78	53.36	0.03	0.01	0.01	0.02	0.01	0.01
Total									
Average	134.5	29.2	52.0	0.03	0.01	0.01	0.01	0.01	0.01
Maximum	431.1		114.4	0.11		0.01	0.05		0.01
Date	31-Mar		14-Mar	17-Mar		9-Mar	18-Mar		15-Mar
Minimum		5.3	14.7		0.01	0.01		0.01	0.01
Date		9-Mar	5-Mar		1-Mar	29-Mar		1-Mar	3-Mar

Notes:

Rack 1: 17th turbidity >0.1ntu for 2 mint following a CIP

# Membranes Monthly Report

Month: **March-16**



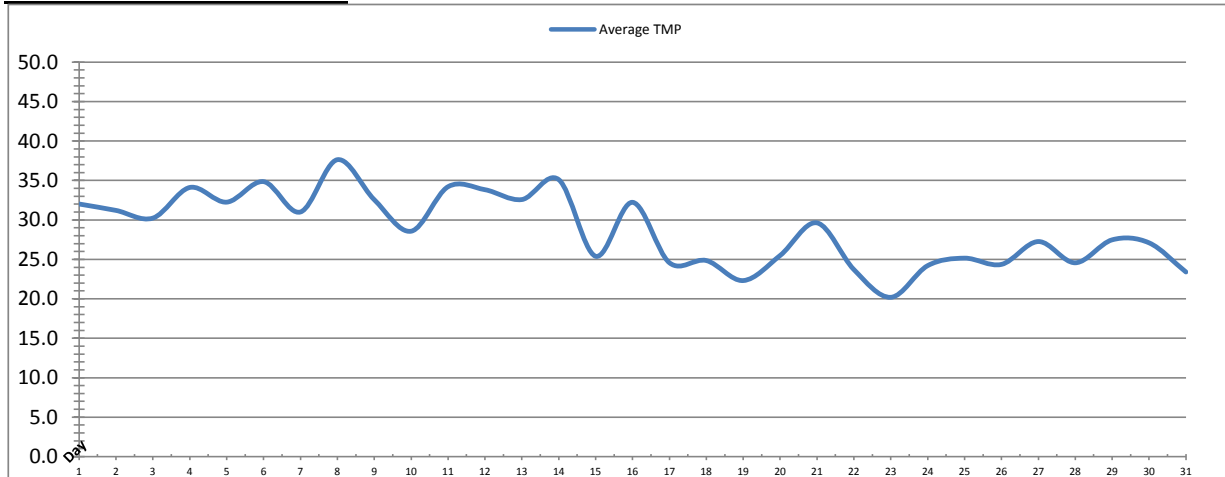
Date	Rack #3 Turbidity			Rack #4 Turbidity			Turbidity After Membranes		
	RACK3_NTU_Value			RACK4_NTU_Value			PALL_FILTER_AIT5001_Value		
	Maximum	Minimum	Average	Maximum	Minimum	Average	Maximum	Minimum	Average
1	0.02	0.02	0.02	0.02	0.01	0.01	0.05	0.02	0.02
2	0.02	0.02	0.02	0.01	0.01	0.01	0.02	0.02	0.02
3	0.02	0.02	0.02	0.01	0.01	0.01	0.04	0.02	0.02
4	0.02	0.02	0.02	0.02	0.01	0.01	0.02	0.02	0.02
5	0.02	0.02	0.02	0.01	0.01	0.01	0.04	0.02	0.02
6	0.02	0.02	0.02	0.01	0.01	0.01	0.03	0.02	0.02
7	0.02	0.02	0.02	0.02	0.01	0.01	0.02	0.02	0.02
8	0.02	0.02	0.02	0.01	0.01	0.01	0.07	0.02	0.02
9	0.02	0.01	0.01	0.01	0.01	0.01	0.02	0.02	0.02
10	0.02	0.01	0.01	0.02	0.01	0.01	0.02	0.02	0.02
11	0.02	0.02	0.02	0.01	0.01	0.01	0.03	0.02	0.02
12	0.02	0.02	0.02	0.01	0.01	0.01	0.02	0.02	0.02
13	0.02	0.02	0.02	0.01	0.01	0.01	0.03	0.02	0.02
14	0.02	0.01	0.01	0.02	0.01	0.01	0.02	0.02	0.02
15	0.02	0.01	0.01	0.01	0.01	0.01	0.03	0.02	0.02
16	0.02	0.01	0.01	0.01	0.01	0.01	0.02	0.02	0.02
17	0.02	0.02	0.02	0.01	0.01	0.01	0.10	0.02	0.02
18	0.02	0.02	0.02	0.01	0.01	0.01	0.05	0.02	0.02
19	0.02	0.02	0.02	0.01	0.01	0.01	0.02	0.02	0.02
20	0.02	0.02	0.02	0.01	0.01	0.01	0.03	0.02	0.02
21	0.42	0.02	0.02	0.01	0.01	0.01	0.02	0.02	0.02
22	0.02	0.02	0.02	0.02	0.01	0.01	0.08	0.02	0.02
23	0.02	0.02	0.02	0.04	0.01	0.01	0.03	0.02	0.02
24	0.02	0.01	0.02	0.02	0.01	0.01	0.30	0.02	0.02
25	0.02	0.01	0.02	0.01	0.01	0.01	0.06	0.02	0.02
26	0.02	0.02	0.02	0.02	0.01	0.01	0.03	0.02	0.02
27	0.02	0.01	0.02	0.01	0.01	0.01	0.02	0.02	0.02
28	0.02	0.01	0.01	0.01	0.01	0.01	0.02	0.02	0.02
29	0.02	0.02	0.02	0.01	0.01	0.01	0.02	0.02	0.02
30	0.02	0.02	0.02	0.01	0.01	0.01	0.03	0.02	0.02
31	0.02	0.01	0.01	0.01	0.01	0.01	0.15	0.02	0.02
<b>Total</b>									
<b>Average</b>	0.03	0.01	0.02	0.01	0.01	0.01	0.05	0.02	0.02
<b>Maximum</b>	0.42		0.02	0.04		0.01	0.30		0.02
<b>Date</b>	21-Mar		21-Mar	23-Mar		23-Mar	24-Mar		24-Mar
<b>Minimum</b>		0.01	0.01		0.01	0.01		0.02	0.02
<b>Date</b>		9-Mar	31-Mar		9-Mar	31-Mar		29-Mar	28-Mar

**Notes:**

Rack 3: Turbidity >0.1ntu on 21st following CIP

# Membranes Monthly Report

Month: **March-16**



Integrity Test Rack 1									
Date	Initial Pressure (kPa)	Final Pressure (kPa)	Test Duration (sec)	Change in Pressure (kPa)	UCL	Within UCL	Average TMP (kPa)	Max TMP (kPa)	
1	195.2	194.3	300.0	0.9	2.0	✓ 2.0	32.0	102.3	
2	194.7	194.0	300.0	0.7	2.0	✓ 2.0	31.2	80.9	
3	195.1	193.9	300.0	1.3	2.0	✓ 2.0	30.2	80.3	
4	194.9	194.3	300.0	0.6	2.0	✓ 2.0	34.1	82.3	
5	194.7	193.5	300.0	1.3	2.0	✓ 2.0	32.3	83.4	
6	194.7	193.8	300.0	0.8	2.0	✓ 2.0	34.9	85.3	
7	195.0	194.1	300.0	0.9	2.0	✓ 2.0	31.0	97.0	
8	195.1	194.2	300.0	0.9	2.0	✓ 2.0	37.6	86.7	
9	195.2	194.1	300.0	1.2	2.0	✓ 2.0	32.6	82.7	
10	194.7	193.9	300.0	0.8	2.0	✓ 2.0	28.6	83.1	
11	195.3	194.5	300.0	0.8	2.0	✓ 2.0	34.2	84.7	
12	195.1	194.3	300.0	0.8	2.0	✓ 2.0	33.8	77.7	
13	194.9	194.1	300.0	0.8	2.0	✓ 2.0	32.6	78.4	
14	194.9	194.1	300.0	0.7	2.0	✓ 2.0	35.1	79.9	
15	195.1	194.1	300.0	1.0	2.0	✓ 2.0	25.4	77.9	
16	195.1	194.5	300.0	0.6	2.0	✓ 2.0	32.2	76.0	
17	194.9	194.1	300.0	0.8	2.0	✓ 2.0	24.6	112.5	
18	194.7	194.2	300.0	0.5	2.0	✓ 2.0	24.9	90.5	
19	194.6	193.7	300.0	0.9	2.0	✓ 2.0	22.3	73.7	
20	194.8	194.0	300.0	0.8	2.0	✓ 2.0	25.5	59.5	
21	194.7	194.0	300.0	0.7	2.0	✓ 2.0	29.6	111.7	
22	194.9	194.1	300.0	0.9	2.0	✓ 2.0	23.7	83.6	
23	195.1	194.3	300.0	0.8	2.0	✓ 2.0	20.2	60.2	
24	194.9	194.3	300.0	0.6	2.0	✓ 2.0	24.2	68.8	
25	194.9	194.0	300.0	0.8	2.0	✓ 2.0	25.2	61.1	
26	195.2	194.6	300.0	0.6	2.0	✓ 2.0	24.4	60.8	
27	195.3	194.7	300.0	0.6	2.0	✓ 2.0	27.3	61.1	
28	195.2	194.3	300.0	0.9	2.0	✓ 2.0	24.6	61.0	
29	194.9	193.6	300.0	1.3	2.0	✓ 2.0	27.5	60.7	
30	195.3	194.6	300.0	0.7	2.0	✓ 2.0	27.1	63.6	
31	194.9	194.1	300.0	0.8	2.0	✓ 2.0	23.4	112.4	
<b>Total</b>									
Average	195.0	194.1	300.0	0.8	2.0	2.0	28.8	80.0	
Maximum	195.3	194.7	300.0	1.3	2.0	2.0	37.6	112.5	
Date	30-Mar	27-Mar	1-Mar	29-Mar	1-Mar	1-Mar	8-Mar	17-Mar	
Minimum	194.6	193.5	300.0	0.5	2.0	2.0	20.2	59.5	
Date	19-Mar	5-Mar	1-Mar	18-Mar	1-Mar	1-Mar	23-Mar	20-Mar	

Notes:

---



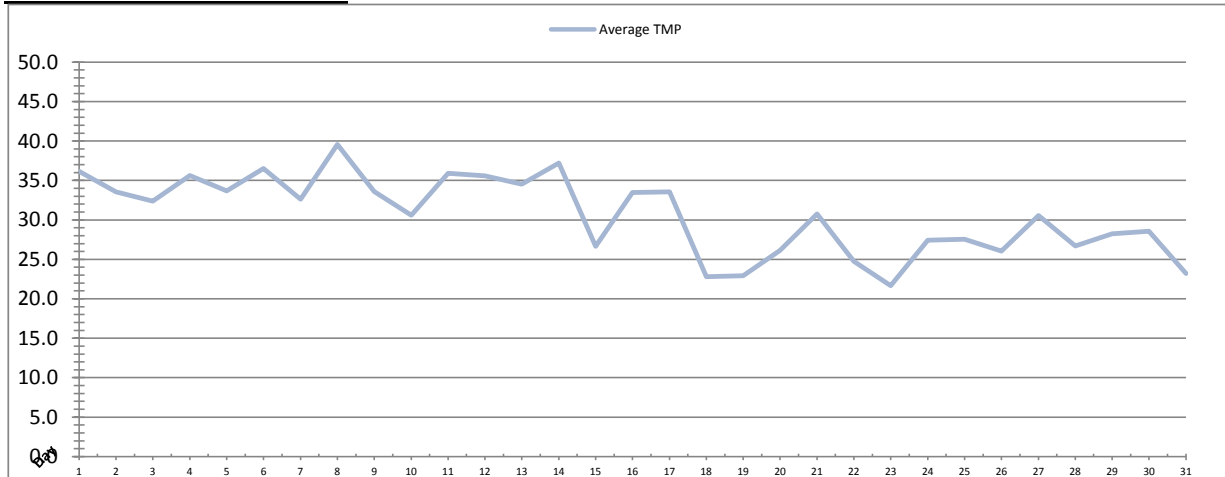
---



---

# Membranes Monthly Report

Month: **March-16**



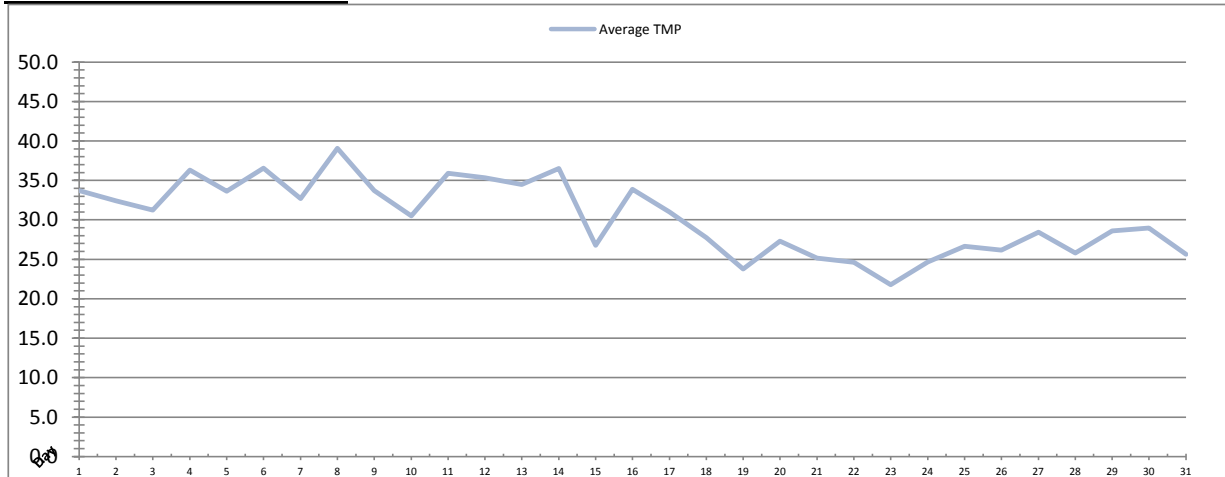
Integrity Test Rack 2									
Date	Initial Pressure (kPa)	Final Pressure (kPa)	Test Duration (sec)	Change in Pressure (kPa)	UCL	Within UCL	Average TMP (kPa)	Max TMP (kPa)	
1	201.4	200.5	300.0	0.9	2.0	✓ 2.0	36.2	103.9	
2	200.7	199.8	300.0	0.8	2.0	✓ 2.0	33.5	89.5	
3	201.3	200.2	300.0	1.1	2.0	✓ 2.0	32.4	105.0	
4	201.1	200.2	300.0	0.9	2.0	✓ 2.0	35.6	83.5	
5	201.2	200.4	300.0	0.8	2.0	✓ 2.0	33.7	84.8	
6	201.0	200.0	300.0	0.9	2.0	✓ 2.0	36.5	126.0	
7	201.0	200.1	300.0	0.9	2.0	✓ 2.0	32.6	119.4	
8	201.0	200.0	300.0	1.0	2.0	✓ 2.0	39.6	118.1	
9	201.0	200.1	300.0	0.9	2.0	✓ 2.0	33.6	83.4	
10	201.0	199.9	300.0	1.1	2.0	✓ 2.0	30.6	84.3	
11	201.0	200.1	300.0	0.9	2.0	✓ 2.0	35.9	99.2	
12	200.9	199.9	300.0	1.0	2.0	✓ 2.0	35.6	95.7	
13	200.6	199.8	300.0	0.8	2.0	✓ 2.0	34.5	91.9	
14	200.2	198.9	300.0	1.2	2.0	✓ 2.0	37.2	80.5	
15	200.7	199.8	300.0	0.8	2.0	✓ 2.0	26.7	120.7	
16	200.5	199.9	300.0	0.6	2.0	✓ 2.0	33.5	87.7	
17	201.0	199.9	300.0	1.1	2.0	✓ 2.0	33.5	139.8	
18	200.6	199.3	300.0	1.3	2.0	✓ 2.0	22.8	74.4	
19	201.0	200.3	300.0	0.8	2.0	✓ 2.0	22.9	55.5	
20	200.6	199.9	300.0	0.7	2.0	✓ 2.0	26.1	59.6	
21	200.4	199.5	300.0	0.9	2.0	✓ 2.0	30.7	108.5	
22	200.7	199.9	300.0	0.8	2.0	✓ 2.0	24.8	61.2	
23	200.8	199.8	300.0	1.0	2.0	✓ 2.0	21.7	92.5	
24	200.6	199.8	300.0	0.8	2.0	✓ 2.0	27.4	70.5	
25	201.0	200.2	300.0	0.8	2.0	✓ 2.0	27.5	62.0	
26	200.8	199.9	300.0	1.0	2.0	✓ 2.0	26.1	78.8	
27	200.0	198.8	300.0	1.3	2.0	✓ 2.0	30.6	66.1	
28	200.3	199.1	300.0	1.3	2.0	✓ 2.0	26.7	90.9	
29	200.7	199.9	300.0	0.8	2.0	✓ 2.0	28.2	61.7	
30	200.2	199.3	300.0	0.9	2.0	✓ 2.0	28.6	65.0	
31	200.5	199.7	300.0	0.8	2.0	✓ 2.0	23.2	108.2	
<b>Total</b>									
Average	200.8	199.8	300.0	0.9	2.0	2.0	30.6	89.3	
Maximum	201.4	200.5	300.0	1.3	2.0	2.0	39.6	139.8	
Date	1-Mar	1-Mar	1-Mar	18-Mar	1-Mar	1-Mar	8-Mar	17-Mar	
Minimum	200.0	198.8	300.0	0.6	2.0	2.0	21.7	55.5	
Date	27-Mar	27-Mar	1-Mar	16-Mar	1-Mar	1-Mar	23-Mar	19-Mar	

Notes:



# Membranes Monthly Report

Month: **March-16**



Integrity Test Rack 3									
Date	Initial Pressure (kPa)	Final Pressure (kPa)	Test Duration (sec)	Change in Pressure (kPa)	UCL	Within UCL	Average TMP (kPa)	Max TMP (kPa)	
1	191.7	190.2	300.0	1.5	2.0	✓ 2.0	33.7	104.0	
2	192.0	190.7	300.0	1.3	2.0	✓ 2.0	32.4	81.3	
3	192.0	190.7	300.0	1.2	2.0	✓ 2.0	31.2	83.2	
4	191.5	190.3	300.0	1.3	2.0	✓ 2.0	36.3	82.1	
5	192.0	190.7	300.0	1.4	2.0	✓ 2.0	33.6	82.1	
6	191.2	190.1	300.0	1.1	2.0	✓ 2.0	36.5	86.0	
7	191.6	190.5	300.0	1.1	2.0	✓ 2.0	32.7	89.0	
8	191.9	190.4	300.0	1.6	2.0	✓ 2.0	39.1	88.5	
9	191.5	190.3	300.0	1.3	2.0	✓ 2.0	33.7	82.7	
10	192.0	190.5	300.0	1.4	2.0	✓ 2.0	30.5	102.8	
11	192.0	190.7	300.0	1.3	2.0	✓ 2.0	35.9	101.2	
12	191.2	189.9	300.0	1.3	2.0	✓ 2.0	35.3	77.5	
13	191.8	190.3	300.0	1.5	2.0	✓ 2.0	34.5	116.7	
14	191.5	190.1	300.0	1.3	2.0	✓ 2.0	36.5	81.8	
15	191.5	190.0	300.0	1.4	2.0	✓ 2.0	26.8	74.4	
16	192.0	190.6	300.0	1.4	2.0	✓ 2.0	33.9	107.2	
17	191.3	190.0	300.0	1.3	2.0	✓ 2.0	31.0	131.4	
18	191.2	190.1	300.0	1.1	2.0	✓ 2.0	27.7	129.2	
19	191.7	190.4	300.0	1.3	2.0	✓ 2.0	23.8	59.4	
20	191.0	189.7	300.0	1.3	2.0	✓ 2.0	27.3	61.9	
21	191.2	190.0	300.0	1.2	2.0	✓ 2.0	25.1	61.8	
22	191.2	190.0	300.0	1.3	2.0	✓ 2.0	24.6	53.3	
23	191.2	189.8	300.0	1.4	2.0	✓ 2.0	21.8	57.1	
24	191.3	190.1	300.0	1.1	2.0	✓ 2.0	24.7	73.7	
25	191.3	189.9	300.0	1.4	2.0	✓ 2.0	26.7	58.2	
26	191.4	189.9	300.0	1.5	2.0	✓ 2.0	26.2	59.5	
27	191.2	189.8	300.0	1.4	2.0	✓ 2.0	28.4	61.8	
28	191.7	190.1	300.0	1.6	2.0	✓ 2.0	25.8	80.9	
29	191.4	190.2	300.0	1.2	2.0	✓ 2.0	28.6	61.5	
30	191.5	190.1	300.0	1.3	2.0	✓ 2.0	28.9	64.8	
31	190.9	189.6	300.0	1.3	2.0	✓ 2.0	25.6	101.5	
<b>Total</b>									
Average	191.5	190.2	300.0	1.3	2.0	2.0	30.3	82.5	
Maximum	192.0	190.7	300.0	1.6	2.0	2.0	39.1	131.4	
Date	2-Mar	2-Mar	1-Mar	28-Mar	1-Mar	1-Mar	8-Mar	17-Mar	
Minimum	190.9	189.6	300.0	1.1	2.0	2.0	21.8	53.3	
Date	31-Mar	31-Mar	1-Mar	6-Mar	1-Mar	1-Mar	23-Mar	22-Mar	

Notes:

---



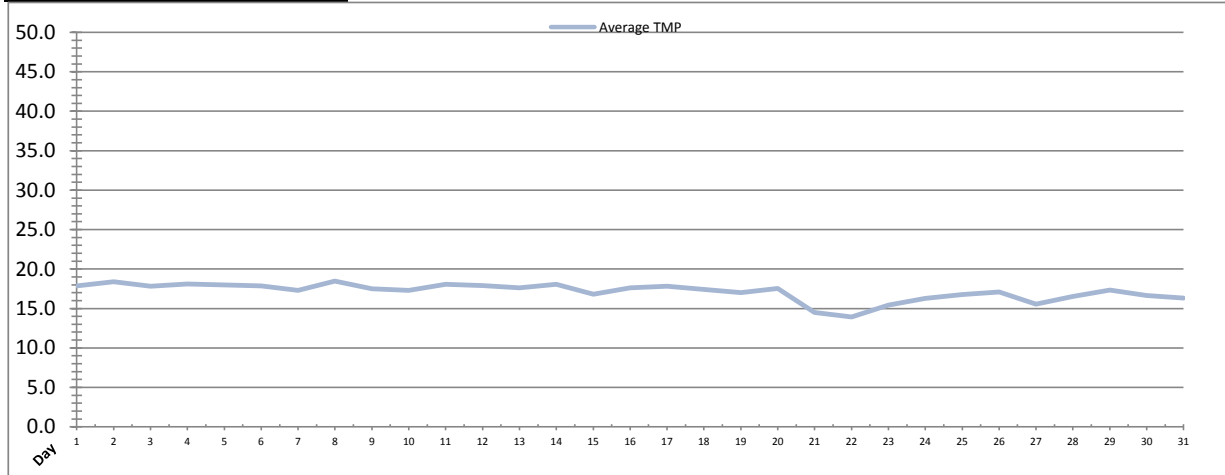
---



---

# Membranes Monthly Report

Month: **March-16**



Integrity Test Rack 4									
Date	Initial Pressure (kPa)	Final Pressure (kPa)	Test Duration (sec)	Change in Pressure (kPa)	UCL	Within UCL	Average TMP (kPa)	Max TMP (kPa)	
1	194.4	193.1	300.0	1.3	2.0	✓ 2.0	17.9	42.7	
2	194.4	193.1	300.0	1.3	2.0	✓ 2.0	18.4	43.9	
3	195.0	193.6	300.0	1.5	2.0	✓ 2.0	17.8	50.8	
4	194.7	193.4	300.0	1.3	2.0	✓ 2.0	18.1	43.8	
5	194.9	193.5	300.0	1.4	2.0	✓ 2.0	18.0	52.4	
6	194.4	193.2	300.0	1.3	2.0	✓ 2.0	17.9	46.6	
7	194.4	193.2	300.0	1.3	2.0	✓ 2.0	17.3	48.8	
8	194.8	193.6	300.0	1.3	2.0	✓ 2.0	18.5	54.1	
9	194.7	193.5	300.0	1.2	2.0	✓ 2.0	17.5	48.0	
10	194.8	193.6	300.0	1.2	2.0	✓ 2.0	17.3	47.3	
11	194.5	193.2	300.0	1.3	2.0	✓ 2.0	18.0	47.8	
12	194.7	193.4	300.0	1.3	2.0	✓ 2.0	17.9	43.6	
13	194.7	193.3	300.0	1.3	2.0	✓ 2.0	17.6	44.6	
14	194.9	193.6	300.0	1.3	2.0	✓ 2.0	18.1	47.5	
15	194.9	193.5	300.0	1.4	2.0	✓ 2.0	16.8	40.5	
16	194.7	193.6	300.0	1.2	2.0	✓ 2.0	17.6	49.0	
17	194.5	193.2	300.0	1.3	2.0	✓ 2.0	17.8	44.8	
18	194.7	193.3	300.0	1.3	2.0	✓ 2.0	17.4	39.9	
19	194.9	193.5	300.0	1.3	2.0	✓ 2.0	17.0	40.2	
20	194.7	193.3	300.0	1.3	2.0	✓ 2.0	17.5	41.0	
21	194.6	193.4	300.0	1.1	2.0	✓ 2.0	14.5	41.3	
22	194.7	193.4	300.0	1.3	2.0	✓ 2.0	13.9	37.2	
23	195.1	193.7	300.0	1.4	2.0	✓ 2.0	15.4	40.9	
24	195.1	194.1	300.0	1.1	2.0	✓ 2.0	16.3	43.8	
25	195.7	194.7	300.0	1.0	2.0	✓ 2.0	16.7	52.9	
26	195.2	193.8	300.0	1.3	2.0	✓ 2.0	17.1	51.9	
27	195.5	194.4	300.0	1.1	2.0	✓ 2.0	15.5	46.0	
28	195.7	194.7	300.0	1.1	2.0	✓ 2.0	16.5	47.5	
29	195.5	194.4	300.0	1.1	2.0	✓ 2.0	17.3	50.1	
30	195.9	195.0	300.0	0.9	2.0	✓ 2.0	16.6	47.8	
31	196.0	194.8	300.0	1.1	2.0	✓ 2.0	16.3	50.9	
<b>Total</b>									
Average	194.9	193.7	300.0	1.2	2.0	2.0	17.1	46.1	
Maximum	196.0	195.0	300.0	1.5	2.0	2.0	18.5	54.1	
Date	31-Mar	30-Mar	1-Mar	3-Mar	1-Mar	1-Mar	8-Mar	8-Mar	
Minimum	194.4	193.1	300.0	0.9	2.0	2.0	13.9	37.2	
Date	2-Mar	2-Mar	1-Mar	30-Mar	1-Mar	1-Mar	22-Mar	22-Mar	

Notes:

# Membranes Monthly Report

Month: March-16

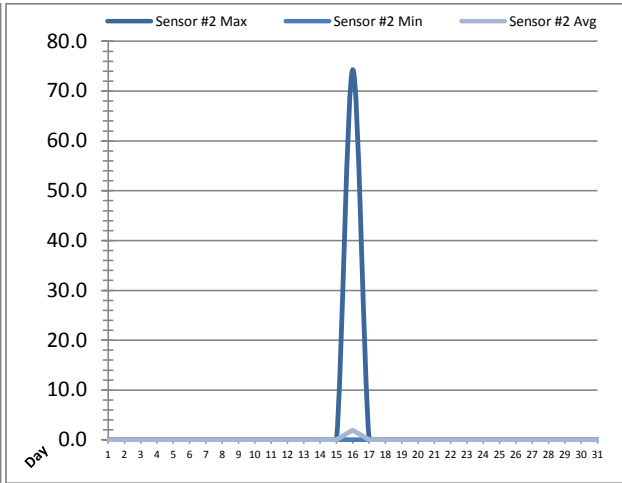
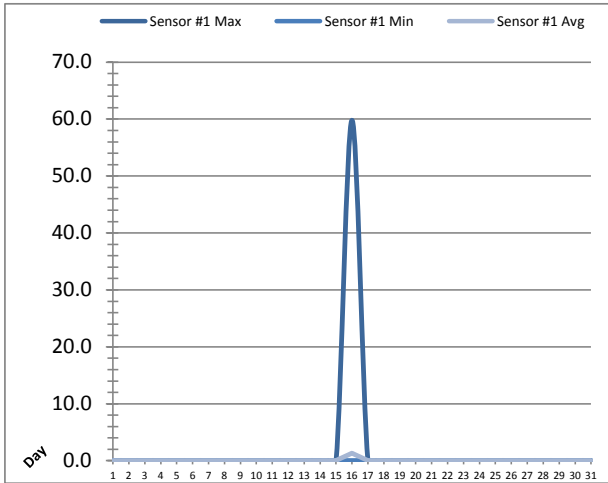
Date	Membranes Monthly Performance							
	Rack 1 >0.1 NTU (Minutes)	Rack 1 Forward Flow (Minutes)	Rack 2 >0.1 NTU (Minutes)	Rack 2 Forward Flow (Minutes)	Rack 3 >0.1 NTU (Minutes)	Rack 3 Forward Flow (Minutes)	Rack 4 >0.1 NTU (Minutes)	Rack 4 Forward Flow (Minutes)
1	0.0	766.1	0.0	769.3	0.0	772.5	0.0	392.3
2	0.0	721.4	0.0	719.1	0.0	720.5	0.0	382.1
3	0.0	639.0	0.0	640.4	0.0	639.0	0.0	344.3
4	0.0	782.4	0.0	782.4	0.0	789.5	0.0	409.3
5	0.0	673.3	0.0	673.3	0.0	674.2	0.0	365.1
6	0.0	735.1	0.0	733.0	0.0	739.1	0.0	381.5
7	0.0	584.5	0.0	585.2	0.0	590.2	0.0	321.4
8	0.0	834.5	0.0	838.5	0.0	840.3	0.0	460.6
9	0.0	688.1	0.0	685.5	0.0	686.4	0.0	359.1
10	0.0	578.0	0.0	582.0	0.0	582.1	0.0	312.4
11	0.0	781.1	0.0	784.2	0.0	784.2	0.0	413.1
12	0.0	799.6	0.0	800.5	0.0	803.2	0.0	419.3
13	0.0	731.2	0.0	735.3	0.0	735.3	0.0	390.3
14	0.0	828.4	0.0	831.5	0.0	835.6	0.0	449.1
15	0.0	501.6	0.0	500.2	0.0	505.2	0.0	278.2
16	0.0	802.2	0.0	798.1	0.0	805.4	0.0	430.6
17	2.3	659.3	0.0	778.5	0.0	777.6	0.0	432.4
18	0.0	678.1	0.0	517.3	0.0	697.1	0.0	384.2
19	0.0	578.4	0.0	576.2	0.0	590.1	0.0	306.1
20	0.0	746.4	0.0	745.0	0.0	761.2	0.0	408.5
21	0.0	849.2	0.0	852.4	13.5	645.2	0.0	447.2
22	0.0	675.0	0.0	648.1	0.0	674.1	0.0	51.2
23	0.0	467.0	0.0	471.1	0.0	471.5	0.0	120.0
24	0.0	716.4	0.0	715.5	0.0	720.4	0.0	471.5
25	0.0	737.3	0.0	753.1	0.0	758.5	0.0	404.5
26	0.0	669.4	0.0	680.1	0.0	676.5	0.0	441.4
27	0.0	813.6	0.0	823.4	0.0	825.1	0.0	461.3
28	0.0	645.3	0.0	650.3	0.0	652.3	0.0	352.2
29	0.0	753.1	0.0	752.3	0.0	756.3	0.0	445.0
30	0.0	736.1	0.0	745.5	0.0	751.4	0.0	481.1
31	0.0	520.0	0.0	459.1	0.0	542.6	0.0	289.2
Total	2.3	21691.2	0.0	21626.2	13.5	21802.6	0.0	11604.1
Percent	0.01		0.00		0.06		0.00	
Maximum	2.3	849.2	0.0	852.4	13.5	840.3	0.0	481.1
Date	17-Mar	21-Mar	1-Mar	21-Mar	21-Mar	8-Mar	1-Mar	30-Mar
Minimum	0.0	467.0	0.0	459.1	0.0	471.5	0.0	51.2
Date	1-Mar	23-Mar	1-Mar	31-Mar	1-Mar	23-Mar	1-Mar	22-Mar

Notes:

Met filter performance criteria of readings <0.1ntu 99% of the time for the month.

# UV System Monthly Report

Month: **March-16**



Date	UV Reactor 1					
	Intensity Sensor 1 (mW/cm²)			Intensity Sensor 2 (mW/cm²)		
	Maximum	Minimum	Average	Maximum	Minimum	Average
1	0.0	0.0	0.0	0.0	0.0	0.0
2	0.0	0.0	0.0	0.0	0.0	0.0
3	0.0	0.0	0.0	0.0	0.0	0.0
4	0.0	0.0	0.0	0.0	0.0	0.0
5	0.0	0.0	0.0	0.0	0.0	0.0
6	0.0	0.0	0.0	0.0	0.0	0.0
7	0.0	0.0	0.0	0.0	0.0	0.0
8	0.0	0.0	0.0	0.0	0.0	0.0
9	0.0	0.0	0.0	0.0	0.0	0.0
10	0.0	0.0	0.0	0.0	0.0	0.0
11	0.0	0.0	0.0	0.0	0.0	0.0
12	0.0	0.0	0.0	0.0	0.0	0.0
13	0.0	0.0	0.0	0.0	0.0	0.0
14	0.0	0.0	0.0	0.0	0.0	0.0
15	0.0	0.0	0.0	0.0	0.0	0.0
16	59.8	0.0	1.3	74.3	0.0	1.9
17	0.0	0.0	0.0	0.0	0.0	0.0
18	0.0	0.0	0.0	0.0	0.0	0.0
19	0.0	0.0	0.0	0.0	0.0	0.0
20	0.0	0.0	0.0	0.0	0.0	0.0
21	0.0	0.0	0.0	0.0	0.0	0.0
22	0.0	0.0	0.0	0.0	0.0	0.0
23	0.0	0.0	0.0	0.0	0.0	0.0
24	0.0	0.0	0.0	0.0	0.0	0.0
25	0.0	0.0	0.0	0.0	0.0	0.0
26	0.0	0.0	0.0	0.0	0.0	0.0
27	0.0	0.0	0.0	0.0	0.0	0.0
28	0.0	0.0	0.0	0.0	0.0	0.0
29	0.0	0.0	0.0	0.0	0.0	0.0
30	0.0	0.0	0.0	0.0	0.0	0.0
31	0.0	0.0	0.0	0.0	0.0	0.0
Total						
Average	1.9	0.0	0.0	2.4	0.0	0.1
Maximum	59.8		1.3	74.3		1.9
Date	16-Mar		16-Mar	16-Mar		16-Mar
Minimum		0.0	0.0		0.0	0.0
Date		1-Mar	1-Mar		1-Mar	1-Mar

Notes:

---



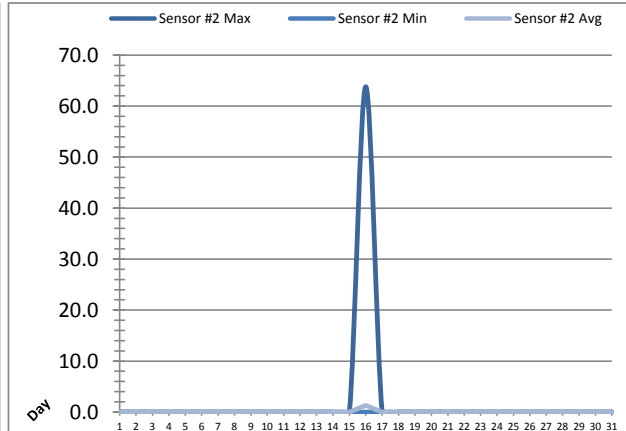
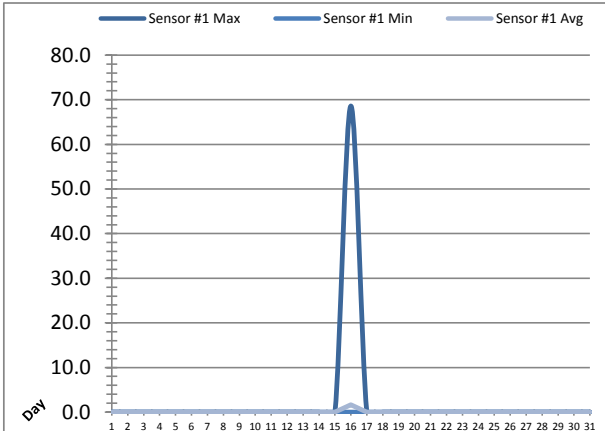
---



---

# UV System Monthly Report

Month: **March-16**



UV Reactor 2						
Date	Intensity Sensor 1 (mW/cm²)			Intensity Sensor 2 (mW/cm²)		
	Maximum	Minimum	Average	Maximum	Minimum	Average
1	0.0	0.0	0.0	0.0	0.0	0.0
2	0.0	0.0	0.0	0.0	0.0	0.0
3	0.0	0.0	0.0	0.0	0.0	0.0
4	0.0	0.0	0.0	0.0	0.0	0.0
5	0.0	0.0	0.0	0.0	0.0	0.0
6	0.0	0.0	0.0	0.0	0.0	0.0
7	0.0	0.0	0.0	0.0	0.0	0.0
8	0.0	0.0	0.0	0.0	0.0	0.0
9	0.0	0.0	0.0	0.0	0.0	0.0
10	0.0	0.0	0.0	0.0	0.0	0.0
11	0.0	0.0	0.0	0.0	0.0	0.0
12	0.0	0.0	0.0	0.0	0.0	0.0
13	0.0	0.0	0.0	0.0	0.0	0.0
14	0.0	0.0	0.0	0.0	0.0	0.0
15	0.0	0.0	0.0	0.0	0.0	0.0
16	68.6	0.0	1.7	63.8	0.0	1.3
17	0.0	0.0	0.0	0.0	0.0	0.0
18	0.0	0.0	0.0	0.0	0.0	0.0
19	0.0	0.0	0.0	0.0	0.0	0.0
20	0.0	0.0	0.0	0.0	0.0	0.0
21	0.0	0.0	0.0	0.0	0.0	0.0
22	0.0	0.0	0.0	0.0	0.0	0.0
23	0.0	0.0	0.0	0.0	0.0	0.0
24	0.0	0.0	0.0	0.0	0.0	0.0
25	0.0	0.0	0.0	0.0	0.0	0.0
26	0.0	0.0	0.0	0.0	0.0	0.0
27	0.0	0.0	0.0	0.0	0.0	0.0
28	0.0	0.0	0.0	0.0	0.0	0.0
29	0.0	0.0	0.0	0.0	0.0	0.0
30	0.0	0.0	0.0	0.0	0.0	0.0
31	0.0	0.0	0.0	0.0	0.0	0.0
Total						
Average	2.2	0.0	0.1	2.1	0.0	0.0
Maximum	68.6		1.7	63.8		1.3
Date	16-Mar		16-Mar	16-Mar		16-Mar
Minimum		0.0	0.0		0.0	0.0
Date		1-Mar	1-Mar		1-Mar	1-Mar

Notes:

---



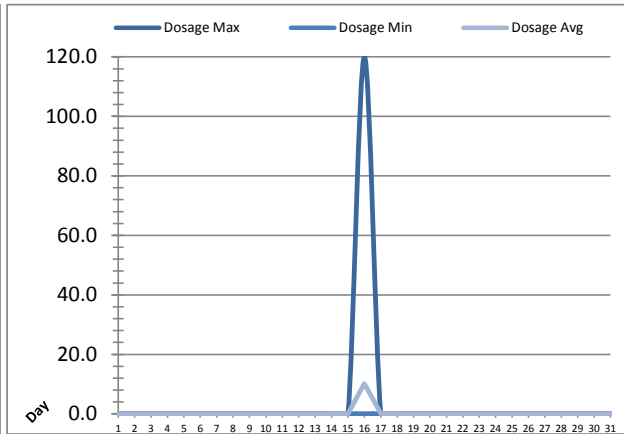
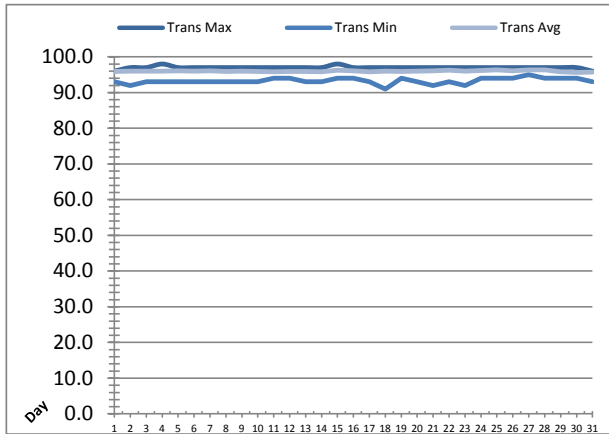
---



---

# UV System Monthly Report

Month: **March-16**



UV System							
Date	Transmittance (%)			Dosage (mJ/cm <sup>2</sup> )			Inlet Flow (L/s)
	Maximum	Minimum	Average	Maximum	Minimum	Average	Maximum
1	96.00	93.00	95.95	0.0	0.0	0.0	85.8
2	97.00	92.00	96.01	0.0	0.0	0.0	89.0
3	97.00	93.00	95.96	0.0	0.0	0.0	88.0
4	98.00	93.00	96.02	0.0	0.0	0.0	85.6
5	97.00	93.00	96.06	0.0	0.0	0.0	88.7
6	97.00	93.00	96.02	0.0	0.0	0.0	87.4
7	97.00	93.00	96.05	0.0	0.0	0.0	84.6
8	97.00	93.00	95.91	0.0	0.0	0.0	87.7
9	97.00	93.00	95.97	0.0	0.0	0.0	89.2
10	97.00	93.00	95.88	0.0	0.0	0.0	85.2
11	97.00	94.00	95.85	0.0	0.0	0.0	85.6
12	97.00	94.00	95.88	0.0	0.0	0.0	84.8
13	97.00	93.00	95.93	0.0	0.0	0.0	86.0
14	97.00	93.00	95.83	0.0	0.0	0.0	86.0
15	98.00	94.00	96.28	0.0	0.0	0.0	83.5
16	97.00	94.00	96.06	120.0	0.0	10.2	87.3
17	97.00	93.00	95.86	0.0	0.0	0.0	83.7
18	97.00	91.00	95.97	0.0	0.0	0.0	88.6
19	97.00	94.00	95.91	0.0	0.0	0.0	86.3
20	97.00	93.00	96.04	0.0	0.0	0.0	89.1
21	97.00	92.00	96.12	0.0	0.0	0.0	90.7
22	97.00	93.00	96.26	0.0	0.0	0.0	86.4
23	97.00	92.00	96.00	0.0	0.0	0.0	97.9
24	97.00	94.00	96.22	0.0	0.0	0.0	99.9
25	97.00	94.00	96.31	0.0	0.0	0.0	102.8
26	97.00	94.00	96.05	0.0	0.0	0.0	101.6
27	97.00	95.00	96.37	0.0	0.0	0.0	101.9
28	97.00	94.00	96.35	0.0	0.0	0.0	99.9
29	97.00	94.00	95.85	0.0	0.0	0.0	99.5
30	97.00	94.00	95.61	0.0	0.0	0.0	100.2
31	96.00	93.00	95.69	0.0	0.0	0.0	101.5
Total							
Average	97.00	93.26	96.01	3.9	0.0	0.3	90.8
Maximum	98.00		96.37	120.0		10.2	102.8
Date	4-Mar		27-Mar	16-Mar		16-Mar	25-Mar
Minimum		91.00	95.61		0.0	0.0	
Date		18-Mar	30-Mar		1-Mar	1-Mar	

Notes:

---



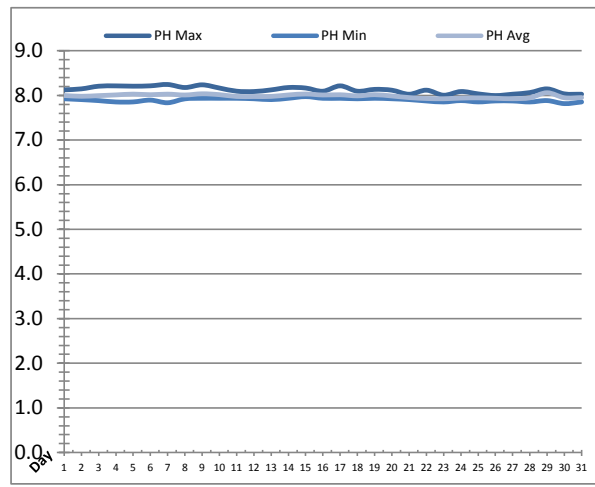
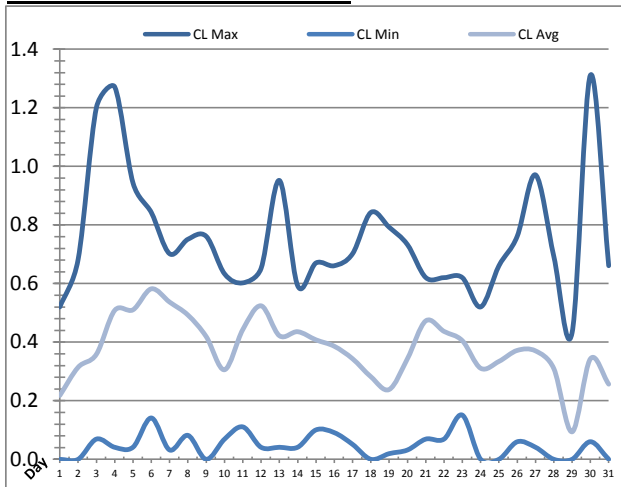
---



---

# Plant Quality Report

Month: **March-16**



Date	Strainer Chlorine Residual			Strainer pH		
	AIT_2003_CL (ppm)			AIT_2003_PH		
	Maximum	Minimum	Average	Maximum	Minimum	Average
1	0.52	0.00	0.22	8.12	7.92	8.00
2	0.68	0.00	0.31	8.15	7.91	7.98
3	1.20	0.07	0.36	8.21	7.88	8.00
4	1.27	0.04	0.51	8.21	7.85	8.01
5	0.94	0.04	0.51	8.21	7.85	8.03
6	0.84	0.14	0.58	8.21	7.90	8.02
7	0.70	0.03	0.54	8.24	7.84	8.03
8	0.75	0.08	0.49	8.18	7.92	8.01
9	0.76	0.00	0.42	8.24	7.94	8.04
10	0.63	0.07	0.31	8.17	7.94	8.02
11	0.60	0.11	0.44	8.09	7.94	7.98
12	0.65	0.04	0.52	8.09	7.93	7.98
13	0.95	0.04	0.42	8.12	7.91	7.98
14	0.59	0.04	0.44	8.18	7.94	8.01
15	0.67	0.10	0.41	8.17	7.97	8.03
16	0.66	0.09	0.39	8.09	7.94	8.01
17	0.70	0.05	0.34	8.21	7.94	8.02
18	0.84	0.00	0.28	8.09	7.92	7.99
19	0.79	0.02	0.24	8.14	7.94	8.02
20	0.73	0.03	0.34	8.12	7.93	7.99
21	0.62	0.07	0.47	8.03	7.91	7.95
22	0.62	0.07	0.44	8.12	7.88	7.93
23	0.62	0.15	0.40	8.00	7.85	7.93
24	0.52	0.00	0.31	8.09	7.88	7.94
25	0.66	0.00	0.33	8.03	7.85	7.95
26	0.76	0.06	0.37	8.00	7.88	7.94
27	0.97	0.04	0.37	8.03	7.88	7.93
28	0.69	0.00	0.31	8.06	7.85	7.95
29	0.43	0.00	0.09	8.15	7.88	8.06
30	1.31	0.06	0.34	8.03	7.82	7.95
31	0.66	0.00	0.26	8.03	7.85	7.95
Total						
Average	0.75	0.05	0.38	8.12	7.90	7.99
Maximum	1.31		0.58	8.24		8.06
Date	30-Mar		6-Mar	7-Mar		29-Mar
Minimum		0.00	0.09		7.82	7.93
Date		1-Mar	29-Mar		30-Mar	23-Mar

Notes:

---



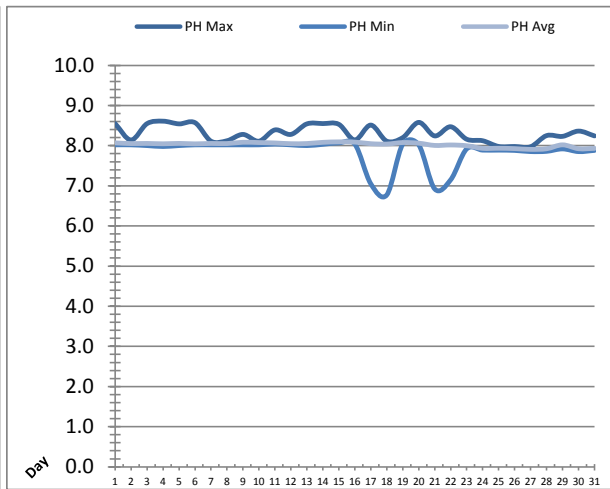
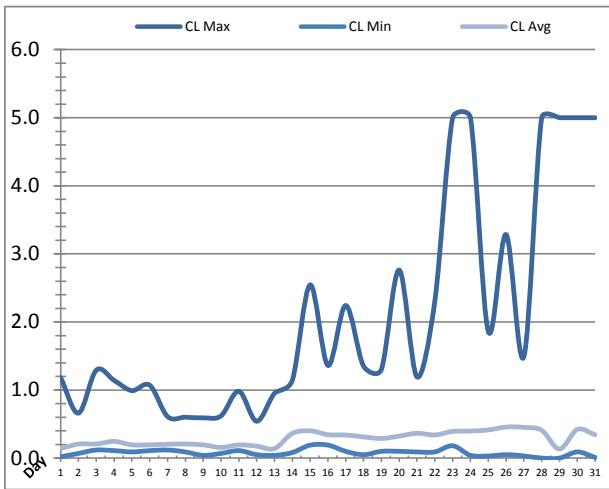
---



---

# Plant Quality Report

Month: March-16



Date	Inlet UV Chlorine Residual			Inlet UV pH		
	AIT_5005_CL (ppm)			AIT_5005_PH		
	Maximum	Minimum	Average	Maximum	Minimum	Average
1	1.18	0.02	0.14	8.55	8.02	8.07
2	0.66	0.07	0.21	8.14	8.02	8.05
3	1.29	0.12	0.21	8.55	8.00	8.06
4	1.14	0.11	0.25	8.61	7.98	8.05
5	0.99	0.09	0.20	8.54	8.00	8.06
6	1.07	0.11	0.20	8.57	8.02	8.04
7	0.61	0.12	0.20	8.11	8.02	8.06
8	0.60	0.09	0.21	8.12	8.02	8.05
9	0.59	0.04	0.19	8.28	8.02	8.08
10	0.62	0.07	0.16	8.11	8.02	8.08
11	0.98	0.11	0.19	8.39	8.04	8.07
12	0.54	0.05	0.18	8.28	8.02	8.05
13	0.95	0.04	0.14	8.54	8.00	8.05
14	1.14	0.08	0.36	8.55	8.03	8.08
15	2.54	0.19	0.40	8.53	8.07	8.09
16	1.36	0.19	0.34	8.14	8.04	8.09
17	2.24	0.10	0.34	8.51	7.05	8.05
18	1.35	0.05	0.31	8.11	6.77	8.04
19	1.30	0.10	0.29	8.20	8.04	8.08
20	2.76	0.10	0.32	8.58	8.02	8.06
21	1.19	0.09	0.37	8.24	6.92	8.01
22	2.30	0.09	0.34	8.47	7.15	8.02
23	5.00	0.18	0.39	8.16	7.92	8.00
24	5.00	0.04	0.40	8.12	7.89	7.93
25	1.86	0.03	0.41	7.98	7.89	7.93
26	3.28	0.05	0.46	7.98	7.88	7.93
27	1.49	0.03	0.45	7.97	7.85	7.91
28	5.00	0.00	0.41	8.25	7.86	7.92
29	5.00	0.00	0.13	8.23	7.92	8.02
30	5.00	0.09	0.42	8.36	7.85	7.92
31	5.00	0.01	0.34	8.24	7.88	7.93
Total						
Average	2.07	0.08	0.29	8.30	7.85	8.02
Maximum	5.00		0.46	8.61		8.09
Date	23-Mar		26-Mar	4-Mar		15-Mar
Minimum		0.00	0.13		6.77	7.91
Date		29-Mar	29-Mar		18-Mar	27-Mar

Notes:

---



---

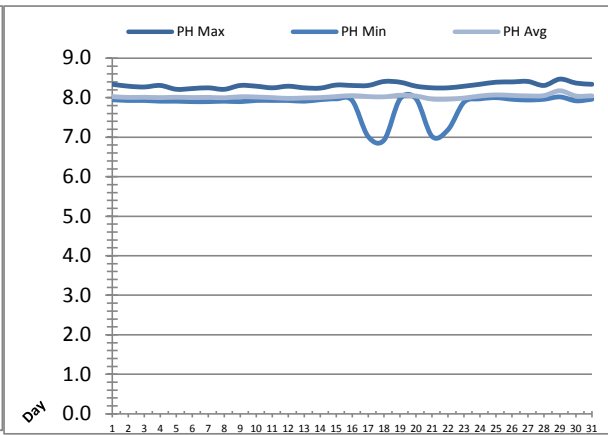
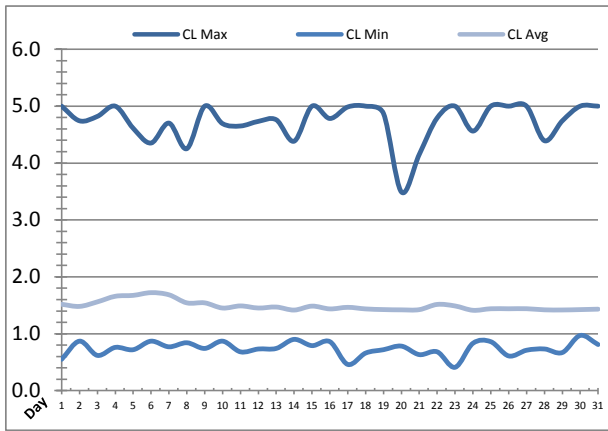


---

**Plant Quality Report**

Month: March-16





Date	Discharge UV Chlorine Residual			Discharge UV pH		
	AIT_5006_CL (ppm)			AIT_5006_PH		
	Maximum	Minimum	Average	Maximum	Minimum	Average
1	5.00	0.55	1.52	8.34	7.95	8.03
2	4.74	0.87	1.48	8.29	7.93	8.01
3	4.82	0.62	1.56	8.27	7.93	8.01
4	5.00	0.76	1.66	8.31	7.91	8.00
5	4.61	0.72	1.67	8.21	7.91	8.01
6	4.35	0.87	1.72	8.23	7.90	8.00
7	4.70	0.77	1.68	8.25	7.90	8.01
8	4.25	0.84	1.54	8.21	7.91	8.00
9	5.00	0.74	1.54	8.31	7.90	8.02
10	4.69	0.87	1.45	8.29	7.93	8.02
11	4.65	0.68	1.49	8.25	7.93	8.00
12	4.73	0.73	1.45	8.29	7.93	7.98
13	4.76	0.74	1.47	8.25	7.91	7.99
14	4.38	0.90	1.42	8.24	7.95	8.00
15	5.00	0.79	1.49	8.32	7.97	8.03
16	4.78	0.86	1.44	8.31	7.93	8.05
17	4.99	0.46	1.46	8.31	7.02	8.03
18	5.00	0.66	1.44	8.41	6.93	8.02
19	4.87	0.72	1.42	8.39	7.97	8.06
20	3.49	0.78	1.42	8.29	7.97	8.04
21	4.15	0.63	1.42	8.25	7.02	7.97
22	4.79	0.68	1.52	8.25	7.19	7.96
23	5.00	0.41	1.49	8.29	7.89	7.99
24	4.56	0.83	1.41	8.34	7.97	8.04
25	5.00	0.86	1.44	8.39	8.00	8.07
26	5.00	0.61	1.44	8.40	7.96	8.06
27	5.00	0.71	1.44	8.41	7.94	8.05
28	4.39	0.73	1.42	8.31	7.96	8.05
29	4.74	0.67	1.42	8.47	8.02	8.17
30	5.00	0.97	1.42	8.37	7.92	8.04
31	5.00	0.81	1.43	8.34	7.96	8.05
Total						
Average	4.73	0.74	1.49	8.31	7.82	8.03
Maximum	5.00		1.72	8.47		8.17
Date	1-Mar		6-Mar	29-Mar		29-Mar
Minimum		0.41	1.41		6.93	7.96
Date		23-Mar	24-Mar		18-Mar	22-Mar

Notes:

---



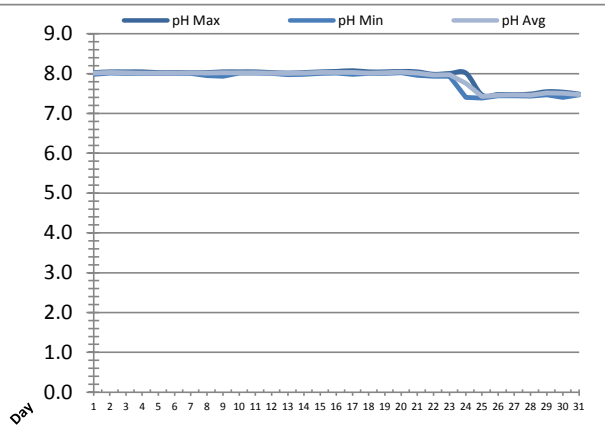
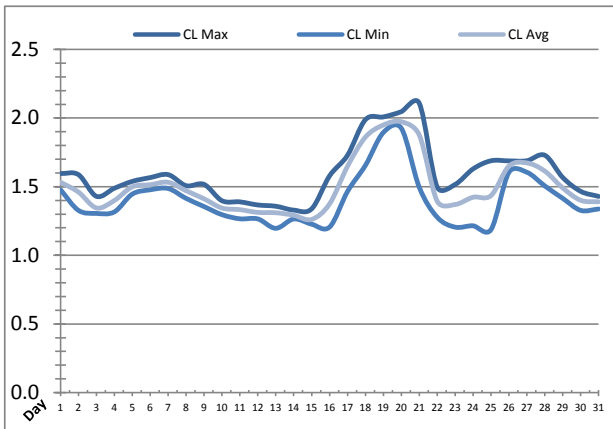
---



---

# Plant Quality Report

Month: **March-16**

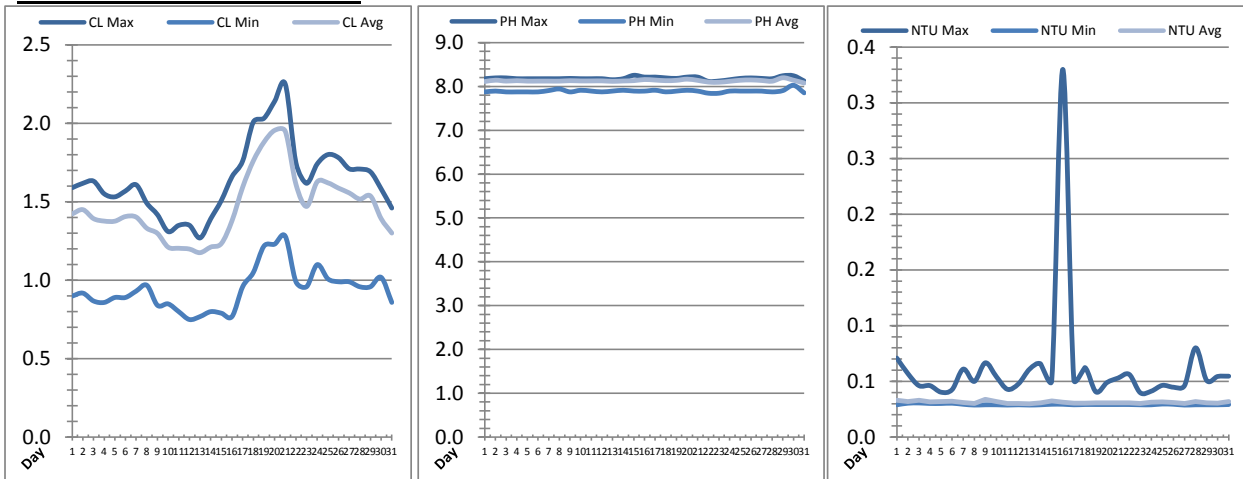


Date	Suction Header Chlorine Res.			Suction Header pH			Distribution CT Calc Total		
	AIT_7001_CL (ppm)			AIT_7001_PH (m)			REAL_CT_CALC_TOTAL (mg*ml/min)		
	Maximum	Minimum	Average	Maximum	Minimum	Average	Maximum	Minimum	Average
1	1.60	1.48	1.53	8.03	7.98	8.01	4415.28	0.00	244.28
2	1.59	1.33	1.46	8.05	8.01	8.03	2389.37	0.00	346.21
3	1.43	1.31	1.35	8.05	8.00	8.02	7851.00	0.00	144.55
4	1.49	1.32	1.40	8.05	8.00	8.02	3665.68	0.00	199.65
5	1.54	1.45	1.50	8.03	8.00	8.01	8278.31	0.00	244.36
6	1.57	1.48	1.51	8.03	8.00	8.01	4912.20	0.00	206.50
7	1.59	1.49	1.53	8.03	8.00	8.02	6498.44	0.00	181.46
8	1.51	1.41	1.47	8.03	7.95	8.01	5360.69	0.00	236.45
9	1.52	1.36	1.41	8.05	7.93	8.02	2325.67	0.00	232.24
10	1.40	1.30	1.34	8.05	8.01	8.02	11639.20	0.00	197.79
11	1.39	1.27	1.33	8.05	8.01	8.02	7948.38	0.00	182.50
12	1.37	1.27	1.31	8.03	8.00	8.02	2129.04	0.00	183.30
13	1.36	1.20	1.31	8.02	7.97	8.01	1985.97	0.00	171.23
14	1.33	1.26	1.29	8.03	7.98	8.01	5874.62	0.00	318.10
15	1.34	1.23	1.26	8.05	8.00	8.03	3591.94	0.00	118.19
16	1.58	1.21	1.37	8.06	8.01	8.03	9655.05	0.00	300.97
17	1.73	1.47	1.65	8.07	7.98	8.03	5462.85	0.00	223.97
18	1.99	1.66	1.86	8.05	8.00	8.01	5966.89	0.00	244.06
19	2.01	1.90	1.95	8.05	8.00	8.02	4665.81	0.00	308.21
20	2.05	1.93	1.97	8.06	8.03	8.04	7812.49	0.00	238.87
21	2.11	1.50	1.88	8.05	7.95	8.01	7901.30	0.00	252.21
22	1.50	1.28	1.39	7.99	7.94	7.97	1882.38	0.00	143.59
23	1.52	1.21	1.37	8.00	7.94	7.97	1865.75	0.00	130.06
24	1.63	1.22	1.42	8.02	7.40	7.76	2744.88	0.00	139.30
25	1.69	1.19	1.44	7.47	7.38	7.43	6933.92	0.00	269.83
26	1.69	1.61	1.65	7.48	7.44	7.46	5438.13	0.00	362.31
27	1.69	1.61	1.67	7.48	7.44	7.47	7076.05	0.00	399.82
28	1.73	1.51	1.61	7.49	7.43	7.46	10137.32	0.00	257.00
29	1.57	1.41	1.49	7.55	7.46	7.52	8883.95	0.00	202.76
30	1.47	1.33	1.40	7.54	7.41	7.51	2092.56	0.00	229.71
31	1.43	1.34	1.39	7.49	7.46	7.48	7871.36	0.00	91.77
Total									
Average	1.59	1.40	1.50	7.91	7.84	7.88	7.91	7.84	7.88
Maximum	2.11		1.97	8.07		8.04	8.07		8.04
Date	21-Mar		20-Mar	17-Mar		20-Mar	17-Mar		20-Mar
Minimum		1.19	1.26		7.38	7.43		7.38	7.43
Date		25-Mar	15-Mar		25-Mar	25-Mar		25-Mar	25-Mar

Notes:

# Plant Quality Report

Month: **March-16**

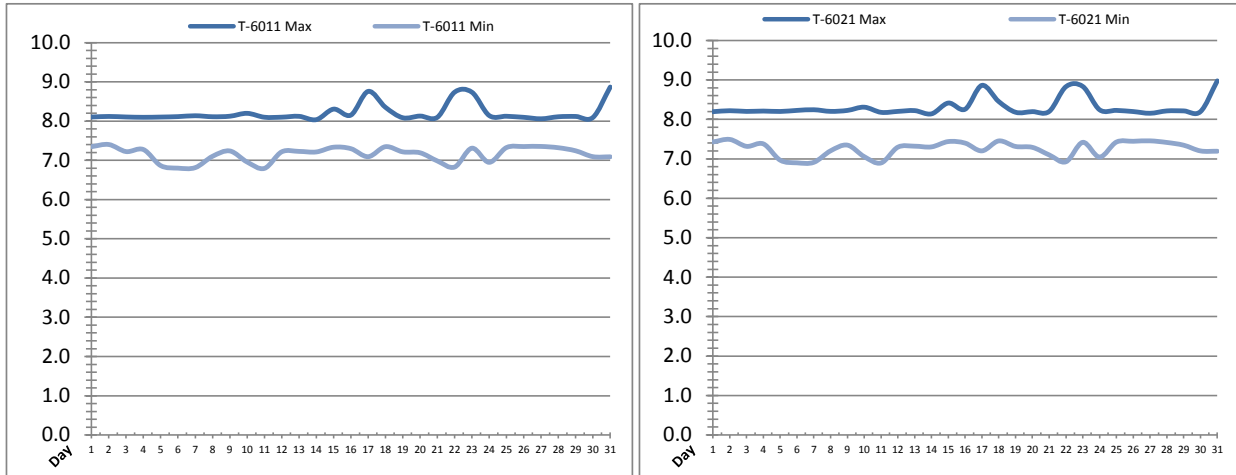


Date	Distribution Chlorine Header			Distribution pH			Distribution Turbidity		
	AIT_7004_CL (ppm)			AIT_7004_PH (mg/L)			AIT_7003 (mg/L)		
	Maximum	Minimum	Average	Maximum	Minimum	Average	Maximum	Minimum	Average
1	1.59	0.90	1.42	8.18	7.88	8.11	0.07	0.03	0.03
2	1.62	0.92	1.45	8.20	7.89	8.14	0.06	0.03	0.03
3	1.63	0.87	1.39	8.19	7.88	8.12	0.05	0.03	0.03
4	1.55	0.86	1.38	8.18	7.88	8.13	0.05	0.03	0.03
5	1.53	0.89	1.38	8.18	7.88	8.12	0.04	0.03	0.03
6	1.57	0.89	1.41	8.18	7.88	8.12	0.04	0.03	0.03
7	1.61	0.93	1.40	8.18	7.91	8.12	0.06	0.03	0.03
8	1.49	0.97	1.33	8.18	7.94	8.12	0.05	0.03	0.03
9	1.42	0.84	1.30	8.18	7.88	8.13	0.07	0.03	0.03
10	1.31	0.85	1.21	8.18	7.91	8.13	0.05	0.03	0.03
11	1.35	0.80	1.20	8.18	7.89	8.13	0.04	0.03	0.03
12	1.35	0.75	1.20	8.18	7.88	8.13	0.05	0.03	0.03
13	1.27	0.77	1.18	8.15	7.89	8.12	0.06	0.03	0.03
14	1.39	0.80	1.21	8.18	7.91	8.13	0.07	0.03	0.03
15	1.51	0.79	1.23	8.25	7.89	8.13	0.05	0.03	0.03
16	1.66	0.77	1.38	8.21	7.89	8.16	0.33	0.03	0.03
17	1.76	0.96	1.59	8.21	7.91	8.15	0.05	0.03	0.03
18	2.01	1.05	1.76	8.20	7.88	8.13	0.06	0.03	0.03
19	2.03	1.22	1.88	8.18	7.89	8.14	0.04	0.03	0.03
20	2.14	1.23	1.95	8.21	7.91	8.17	0.05	0.03	0.03
21	2.25	1.28	1.95	8.21	7.89	8.14	0.05	0.03	0.03
22	1.75	0.99	1.61	8.12	7.85	8.10	0.06	0.03	0.03
23	1.62	0.96	1.47	8.12	7.85	8.10	0.04	0.03	0.03
24	1.74	1.10	1.63	8.15	7.89	8.12	0.04	0.03	0.03
25	1.80	1.01	1.62	8.18	7.89	8.14	0.05	0.03	0.03
26	1.78	0.99	1.59	8.19	7.89	8.15	0.04	0.03	0.03
27	1.71	0.99	1.56	8.18	7.89	8.14	0.05	0.03	0.03
28	1.71	0.96	1.52	8.18	7.88	8.12	0.08	0.03	0.03
29	1.69	0.96	1.54	8.24	7.91	8.20	0.05	0.03	0.03
30	1.58	1.02	1.39	8.24	8.03	8.14	0.05	0.03	0.03
31	1.46	0.86	1.30	8.12	7.85	8.08	0.05	0.03	0.03
Total									
Average	1.64	0.94	1.47	8.18	7.89	8.13	0.1	0.0	0.0
Maximum	2.25		1.95	8.25		8.20	0.3		0.0
Date	21-Mar		20-Mar	15-Mar		29-Mar	16-Mar		9-Mar
Minimum		0.75	1.18		7.85	8.08		0.0	0.0
Date		12-Mar	13-Mar		23-Mar	31-Mar		8-Mar	13-Mar

Notes:

# Raw Well/Treated Storage Report

Month: March-16



Date	Treated Water Storage Tank					
	T-6011 (m)			T-6021 (m)		
	Maximum	Minimum	Average	Maximum	Minimum	Average
1	8.1	7.3	7.8	8.2	7.4	7.9
2	8.1	7.4	7.8	8.2	7.5	7.9
3	8.1	7.2	7.8	8.2	7.3	7.8
4	8.1	7.3	7.7	8.2	7.4	7.8
5	8.1	6.9	7.7	8.2	7.0	7.8
6	8.1	6.8	7.6	8.2	6.9	7.7
7	8.1	6.8	7.8	8.2	6.9	7.9
8	8.1	7.1	7.7	8.2	7.2	7.8
9	8.1	7.2	7.7	8.2	7.3	7.8
10	8.2	7.0	7.8	8.3	7.1	7.9
11	8.1	6.8	7.7	8.2	6.9	7.8
12	8.1	7.2	7.7	8.2	7.3	7.8
13	8.1	7.2	7.7	8.2	7.3	7.8
14	8.0	7.2	7.7	8.1	7.3	7.8
15	8.3	7.3	7.9	8.4	7.4	8.0
16	8.2	7.3	7.7	8.3	7.4	7.8
17	8.8	7.1	7.8	8.9	7.2	7.9
18	8.4	7.3	7.8	8.5	7.5	7.9
19	8.1	7.2	7.8	8.2	7.3	7.9
20	8.1	7.2	7.7	8.2	7.3	7.8
21	8.1	7.0	7.7	8.2	7.1	7.8
22	8.7	6.8	7.8	8.8	6.9	7.9
23	8.7	7.3	8.0	8.8	7.4	8.1
24	8.1	7.0	7.7	8.2	7.0	7.8
25	8.1	7.3	7.8	8.2	7.4	7.9
26	8.1	7.4	7.8	8.2	7.4	7.8
27	8.1	7.4	7.7	8.2	7.5	7.8
28	8.1	7.3	7.8	8.2	7.4	7.9
29	8.1	7.2	7.7	8.2	7.3	7.8
30	8.1	7.1	7.7	8.2	7.2	7.8
31	8.9	7.1	7.9	9.0	7.2	8.0
Total						
Average	8.2	7.2	7.7	8.3	7.3	7.8
Maximum	8.9		8.0	9.0		8.1
Date	31-Mar		23-Mar	31-Mar		23-Mar
Minimum		6.8	7.6		6.9	7.7
Date		11-Mar	6-Mar		11-Mar	6-Mar

Notes:

---



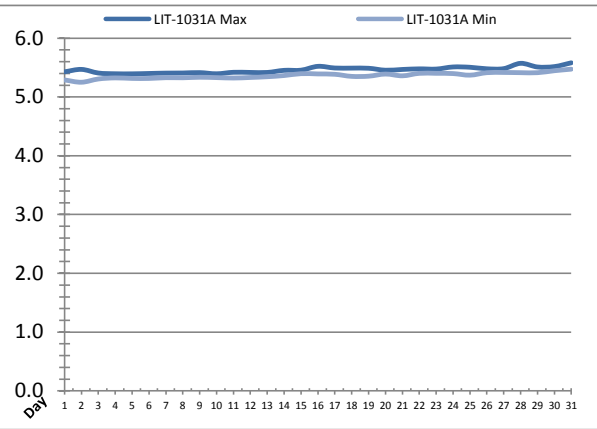
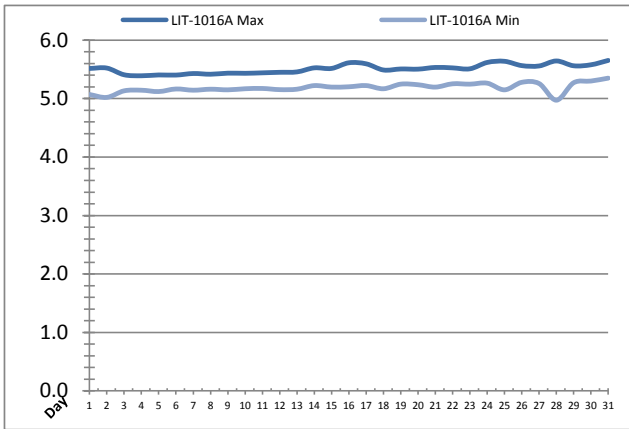
---



---

# Raw Well/Treated Storage Report

Month: March-16



Date	Low Lift Intake Levels					
	Wet Well #1 (LIT-1016A) (m)			Wet Well #2 (LIT-1031A) (m)		
	Maximum	Minimum	Average	Maximum	Minimum	Average
1	5.5	5.1	5.2	5.4	5.3	5.4
2	5.5	5.0	5.2	5.5	5.3	5.3
3	5.4	5.1	5.3	5.4	5.3	5.4
4	5.4	5.1	5.2	5.4	5.3	5.4
5	5.4	5.1	5.3	5.4	5.3	5.4
6	5.4	5.2	5.3	5.4	5.3	5.4
7	5.4	5.1	5.3	5.4	5.3	5.4
8	5.4	5.2	5.3	5.4	5.3	5.4
9	5.4	5.2	5.3	5.4	5.3	5.4
10	5.4	5.2	5.3	5.4	5.3	5.4
11	5.4	5.2	5.3	5.4	5.3	5.4
12	5.5	5.2	5.3	5.4	5.3	5.4
13	5.5	5.2	5.3	5.4	5.3	5.4
14	5.5	5.2	5.3	5.5	5.4	5.4
15	5.5	5.2	5.4	5.5	5.4	5.4
16	5.6	5.2	5.4	5.5	5.4	5.5
17	5.6	5.2	5.4	5.5	5.4	5.4
18	5.5	5.2	5.3	5.5	5.4	5.4
19	5.5	5.2	5.4	5.5	5.4	5.4
20	5.5	5.2	5.4	5.5	5.4	5.4
21	5.5	5.2	5.3	5.5	5.4	5.4
22	5.5	5.3	5.4	5.5	5.4	5.4
23	5.5	5.2	5.4	5.5	5.4	5.4
24	5.6	5.3	5.4	5.5	5.4	5.5
25	5.6	5.1	5.4	5.5	5.4	5.4
26	5.6	5.3	5.4	5.5	5.4	5.4
27	5.6	5.3	5.4	5.5	5.4	5.5
28	5.6	5.0	5.4	5.6	5.4	5.5
29	5.6	5.3	5.4	5.5	5.4	5.5
30	5.6	5.3	5.4	5.5	5.4	5.5
31	5.7	5.4	5.5	5.6	5.5	5.5
Total						
Average	5.5	5.2	5.3	5.5	5.4	5.4
Maximum	5.7		5.5	5.6		5.5
Date	31-Mar		31-Mar	31-Mar		31-Mar
Minimum		5.0	5.2		5.3	5.3
Date		28-Mar	2-Mar		2-Mar	2-Mar

Notes:

---



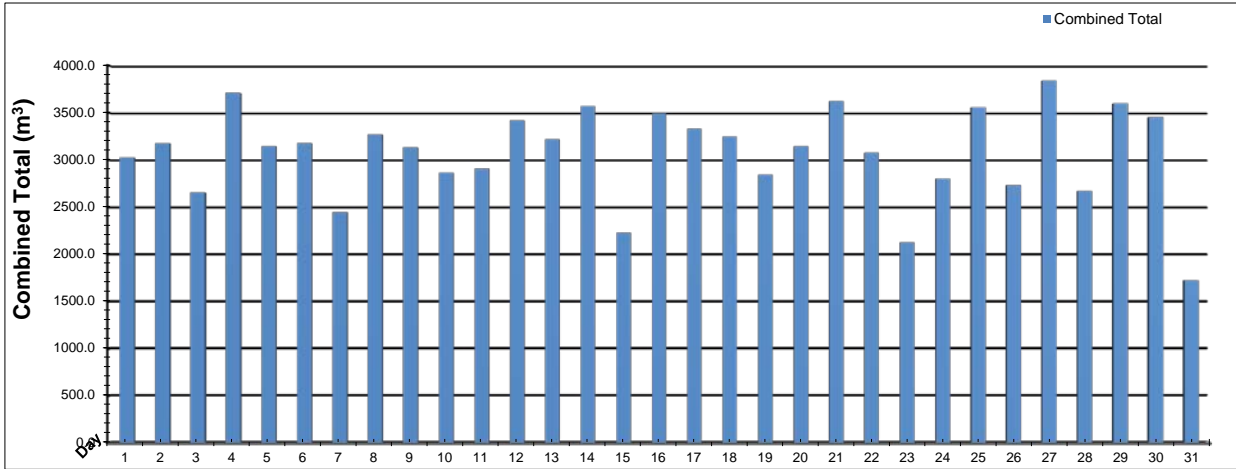
---



---

# High Lift Monthly Report

Month: March-16



Date	Distribution Flow					
	FIT_7052 (East)		FIT_7062 (West)		Combined	
	(m³)	(L/s)	(m³)	(L/s)	(m³)	(L/s)
	Total	Peak	Total	Peak	Total	Peak
1	33.8	33.6	2992.0	84.9	3025.8	84.9
2	811.8	33.5	2365.1	82.3	3176.8	84.8
3	190.6	43.8	2466.6	83.5	2657.2	88.3
4	456.6	35.9	3253.1	84.6	3709.7	90.1
5	717.0	44.0	2430.6	82.2	3147.6	86.9
6	473.5	24.7	2704.4	90.5	3177.9	90.5
7	351.1	33.0	2093.6	82.4	2444.6	87.4
8	149.5	31.9	3123.3	82.4	3272.9	83.2
9	277.8	33.3	2856.6	82.0	3134.4	82.0
10	619.0	33.7	2245.9	82.2	2864.9	87.5
11	671.0	40.5	2237.3	82.9	2908.3	82.9
12	528.5	33.5	2894.9	83.4	3423.4	88.0
13	462.7	34.5	2755.9	82.3	3218.6	85.7
14	1082.4	45.6	2492.3	71.7	3574.7	90.7
15	201.3	33.7	2031.0	92.2	2232.3	92.2
16	614.8	34.7	2882.0	84.2	3496.9	88.5
17	517.2	33.8	2813.5	85.6	3330.7	90.9
18	388.2	42.6	2858.6	90.7	3246.9	90.7
19	1014.6	35.6	1832.5	79.9	2847.1	86.4
20	657.7	35.2	2490.2	86.4	3147.9	91.3
21	636.6	34.9	2988.7	87.9	3625.3	92.5
22	397.8	27.1	2681.4	79.2	3079.2	92.9
23	354.4	32.4	1772.6	78.8	2127.0	91.1
24	667.5	35.6	2138.5	82.7	2806.0	89.1
25	808.3	43.9	2749.4	84.9	3557.7	87.8
26	811.3	34.5	1922.4	85.8	2733.6	85.8
27	667.8	34.7	3174.6	84.1	3842.4	84.1
28	781.2	38.7	1889.0	85.5	2670.2	85.5
29	266.8	33.3	3331.6	84.6	3598.4	86.2
30	928.6	44.0	2527.4	83.7	3456.0	87.3
31	422.4	34.3	1303.1	85.5	1725.5	85.8
Total	16962.3		78297.7		95260.0	
Average	547.2	35.8	2525.7	83.8	3072.9	87.8
Maximum	1082.4	45.6	3331.6	92.2	3842.4	92.9
Date	14-Mar	14-Mar	29-Mar	15-Mar	27-Mar	22-Mar
Minimum	33.8		1303.1		1725.5	
Date	1-Mar		31-Mar		31-Mar	

Notes:

---



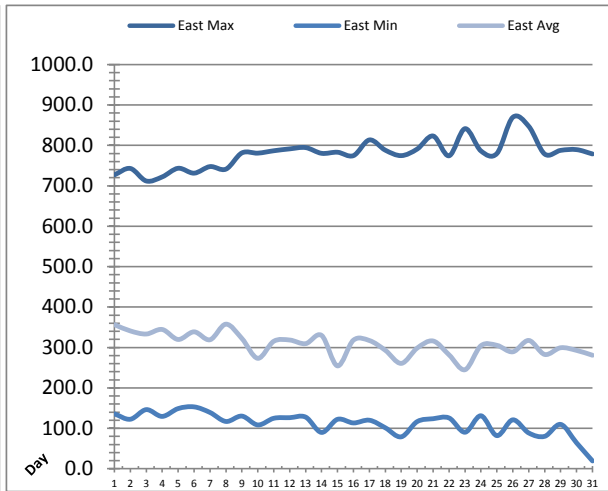
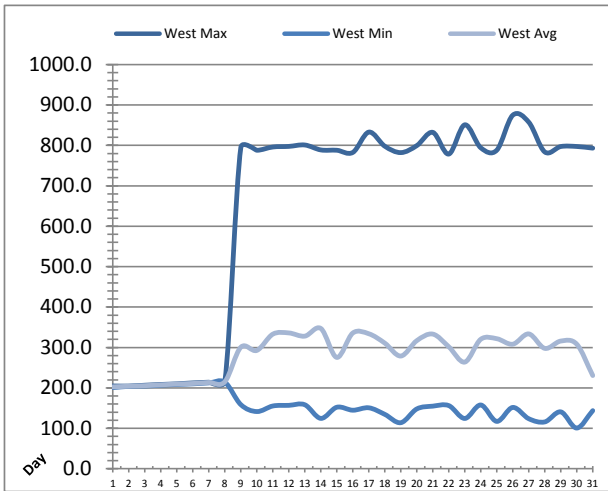
---



---

# Low Lift Monthly Report

Month: **March-16**

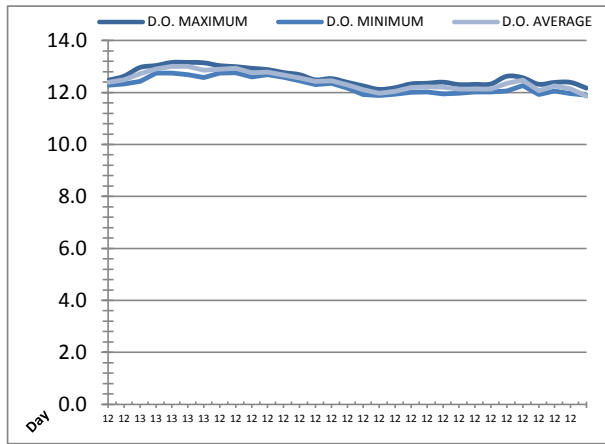
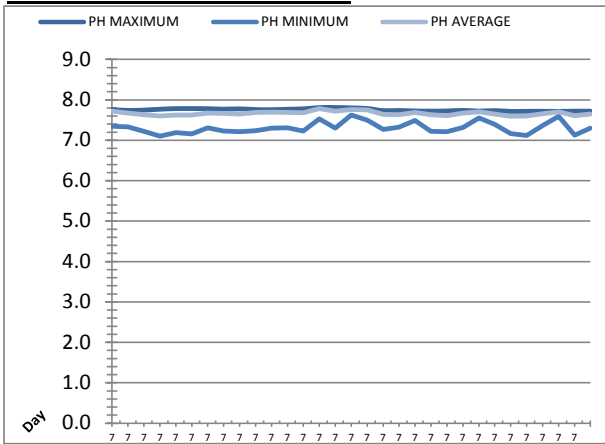


Date	West Train Header Pressure PIT_1018 (kPa)			East Train Header Pressure PIT_1028 (kPa)		
	Maximum	Minimum	Average	Maximum	Minimum	Average
1	204.8	200.7	202.6	727.0	135.9	356.6
2	204.6	203.8	204.1	742.9	122.5	341.0
3	206.7	204.5	205.6	711.9	146.3	333.4
4	208.5	206.6	207.6	722.0	129.5	344.6
5	210.1	208.5	209.5	743.4	148.9	319.9
6	212.5	210.0	211.0	731.3	153.1	338.7
7	214.2	212.4	213.5	747.5	139.3	319.1
8	216.1	214.1	215.2	741.3	117.0	357.7
9	794.9	158.6	300.7	781.4	130.3	322.3
10	787.9	141.5	292.8	780.8	108.4	273.2
11	796.0	155.3	333.0	786.7	124.9	315.4
12	797.5	156.9	336.0	791.4	126.4	318.5
13	801.0	158.3	328.1	794.5	127.8	309.5
14	788.7	124.6	347.1	780.4	89.9	330.0
15	788.0	152.2	275.4	783.1	122.3	254.5
16	782.6	144.8	335.8	774.7	113.3	318.2
17	832.9	150.8	334.0	813.5	120.1	317.2
18	797.9	134.6	310.8	788.1	101.4	293.1
19	782.1	114.0	278.8	774.7	79.0	260.7
20	799.4	148.0	316.9	790.9	116.7	298.6
21	832.2	154.9	333.2	823.2	123.8	316.1
22	778.5	156.2	301.7	774.3	125.6	281.7
23	850.9	124.4	263.9	841.4	90.4	245.0
24	794.0	157.8	320.4	786.3	131.1	304.4
25	788.1	117.2	321.7	779.9	81.9	305.4
26	874.7	151.7	308.1	869.6	121.1	289.3
27	857.4	123.7	333.6	847.1	88.5	317.4
28	783.7	115.9	297.8	778.5	80.2	282.7
29	797.2	140.8	315.9	787.7	109.8	299.4
30	797.3	100.7	308.1	789.5	64.1	292.8
31	793.2	143.8	230.6	778.8	19.3	280.8
<b>Total</b>						
<b>Average</b>	650.8	157.7	283.7	779.5	112.5	307.6
<b>Maximum</b>	874.7		347.1	869.6		357.7
<b>Date</b>	26-Mar		14-Mar	26-Mar		8-Mar
<b>Minimum</b>		100.7	202.6		19.3	245.0
<b>Date</b>		30-Mar	1-Mar		31-Mar	23-Mar

Notes:

# Low Lift Monthly Report

Month: **March-16**



Date	Raw Water Sample Line					
	AIT_1402_PH (pH)			AIT_1402_DO (mg/L)		
	Maximum	Minimum	Average	Maximum	Minimum	Average
1	7.8	7.3	7.7	12.5	12.3	12.4
2	7.7	7.3	7.7	12.6	12.3	12.5
3	7.7	7.2	7.6	13.0	12.4	12.7
4	7.8	7.1	7.6	13.0	12.7	12.9
5	7.8	7.2	7.6	13.2	12.8	13.0
6	7.8	7.2	7.6	13.2	12.7	13.0
7	7.8	7.3	7.7	13.1	12.6	12.9
8	7.8	7.2	7.7	13.0	12.7	12.9
9	7.8	7.2	7.6	13.0	12.8	12.9
10	7.8	7.2	7.7	12.9	12.6	12.8
11	7.8	7.3	7.7	12.9	12.7	12.8
12	7.8	7.3	7.7	12.8	12.6	12.7
13	7.8	7.2	7.7	12.7	12.5	12.6
14	7.8	7.5	7.8	12.5	12.3	12.4
15	7.8	7.3	7.7	12.5	12.4	12.4
16	7.8	7.6	7.8	12.4	12.2	12.3
17	7.8	7.5	7.8	12.3	11.9	12.1
18	7.7	7.3	7.6	12.1	11.9	12.0
19	7.7	7.3	7.6	12.2	11.9	12.0
20	7.7	7.5	7.7	12.3	12.0	12.2
21	7.7	7.2	7.6	12.4	12.0	12.2
22	7.7	7.2	7.6	12.4	11.9	12.2
23	7.7	7.3	7.7	12.3	12.0	12.1
24	7.7	7.6	7.7	12.3	12.0	12.1
25	7.7	7.4	7.7	12.3	12.0	12.1
26	7.7	7.2	7.6	12.6	12.1	12.4
27	7.7	7.1	7.6	12.6	12.3	12.5
28	7.7	7.4	7.7	12.3	11.9	12.1
29	7.7	7.6	7.7	12.4	12.1	12.2
30	7.7	7.1	7.6	12.4	12.0	12.1
31	7.7	7.3	7.7	12.2	11.9	11.9
Total						
Average	7.8	7.3	7.7	12.6	12.3	12.4
Maximum	7.8		7.8	13.2		13.0
Date	15-Mar		14-Mar	6-Mar		5-Mar
Minimum		7.1	7.6		11.9	11.9
Date		4-Mar	26-Mar		18-Mar	31-Mar

Notes:

---



---

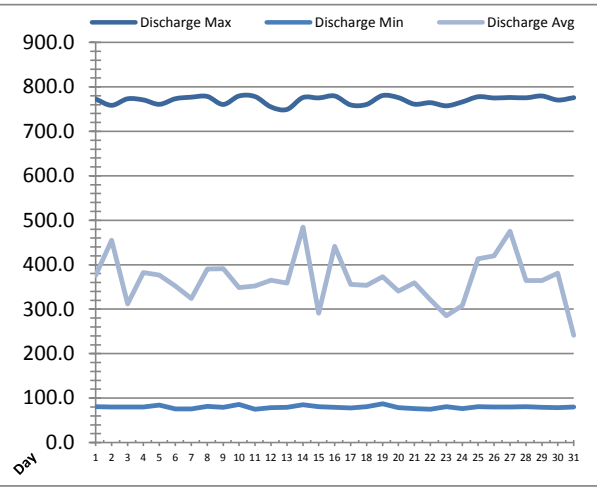
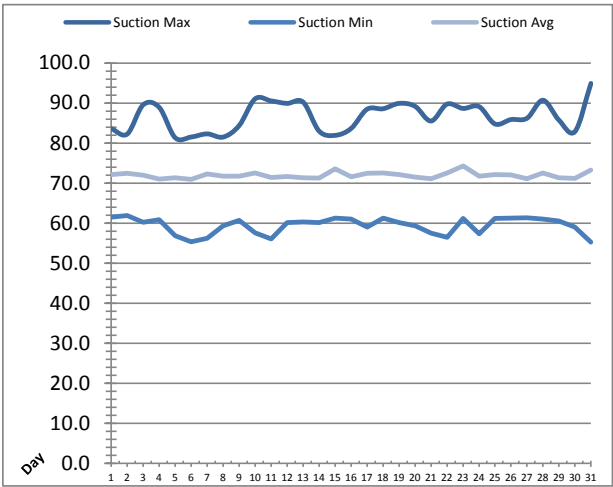


---



# High Lift Monthly Report

Month: **March-16**

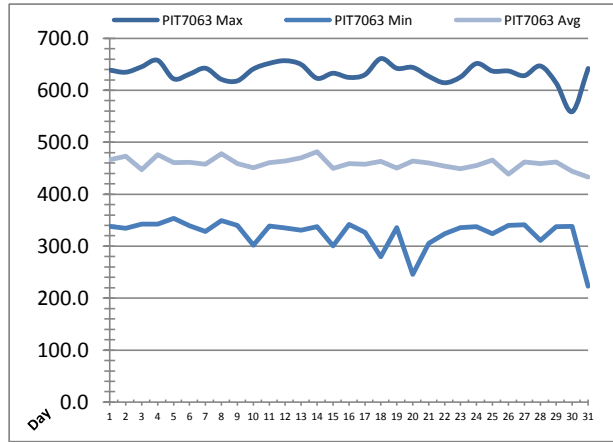
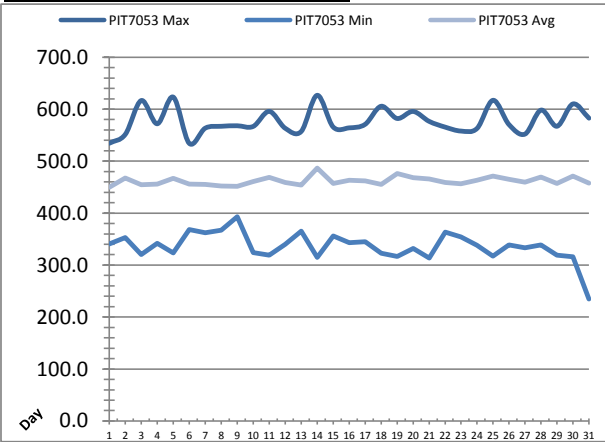


Date	Suction Header Pressure			Discharge Header Pressure		
	PIT_7002 (kPa)			PIT_7005 (kPa)		
	Maximum	Minimum	Average	Maximum	Minimum	Average
1	83.7	61.5	72.2	772.6	80.9	375.6
2	82.3	61.9	72.5	758.6	80.1	455.3
3	89.6	60.2	72.0	773.2	80.3	311.9
4	89.0	60.8	71.1	770.6	79.8	382.4
5	81.4	56.9	71.3	760.8	84.6	376.5
6	81.6	55.3	71.0	773.4	75.5	352.2
7	82.3	56.2	72.3	776.9	75.6	324.1
8	81.5	59.3	71.8	778.6	81.7	390.5
9	84.4	60.7	71.8	760.5	79.6	391.0
10	91.1	57.6	72.6	779.6	85.7	348.7
11	90.6	56.1	71.4	778.2	75.3	352.4
12	90.0	60.2	71.7	754.9	78.6	364.8
13	90.3	60.4	71.4	749.3	79.2	358.5
14	83.0	60.2	71.3	776.0	84.8	484.5
15	82.0	61.3	73.6	775.2	80.8	290.7
16	83.7	61.0	71.6	779.5	79.1	441.6
17	88.5	59.0	72.5	759.4	77.6	355.6
18	88.6	61.3	72.6	760.6	80.8	353.6
19	90.0	60.1	72.2	780.5	86.9	373.0
20	89.2	59.4	71.5	775.8	78.9	340.7
21	85.6	57.5	71.1	761.1	76.7	359.2
22	89.8	56.5	72.5	764.5	74.8	321.0
23	88.7	61.2	74.3	757.4	80.8	285.0
24	89.2	57.4	71.7	766.2	76.4	308.5
25	84.8	61.2	72.2	777.8	80.8	413.4
26	85.9	61.3	72.1	775.0	80.1	419.8
27	86.2	61.3	71.2	776.2	80.2	475.2
28	90.7	61.1	72.6	775.4	81.0	364.8
29	85.8	60.6	71.4	779.5	79.1	364.6
30	82.9	59.0	71.2	770.4	78.7	381.0
31	94.9	55.3	73.3	775.8	80.0	241.0
Total						
Average	86.7	59.4	72.0	770.1	79.8	366.3
Maximum	94.9		74.3	780.5		484.5
Date	31-Mar		23-Mar	19-Mar		14-Mar
Minimum		55.3	71.0		74.8	241.0
Date		31-Mar	6-Mar		22-Mar	31-Mar

Notes:

# High Lift Monthly Report

Month: **March-16**



Date	Distribution Pressures					
	PIT_7053 (kPa)			PIT_7063 (kPa)		
	Maximum	Minimum	Average	Maximum	Minimum	Average
1	✓ 534.4	✓ 340.7	449.9	✓ 638.8	✓ 338.4	466.3
2	✓ 551.6	✓ 352.9	467.8	✓ 634.8	✓ 334.7	472.8
3	✓ 616.7	✓ 320.3	454.5	✓ 645.3	✓ 342.7	447.0
4	✓ 571.9	✓ 341.9	456.0	✓ 657.6	✓ 342.3	475.9
5	✓ 623.2	✓ 323.5	466.8	✓ 622.1	✓ 353.6	461.0
6	✓ 534.2	✓ 368.5	455.7	✓ 631.2	✓ 339.5	461.4
7	✓ 563.5	✓ 362.4	455.0	✓ 642.4	✓ 328.5	457.6
8	✓ 567.1	✓ 366.9	452.3	✓ 621.1	✓ 349.5	478.2
9	✓ 568.1	✓ 393.0	451.2	✓ 618.1	✓ 340.0	459.0
10	✓ 566.8	✓ 323.7	460.6	✓ 641.0	✓ 302.1	450.9
11	✓ 595.8	✓ 319.3	468.5	✓ 651.8	✓ 338.9	460.6
12	✓ 563.3	✓ 339.9	459.0	✓ 656.9	✓ 334.8	463.5
13	✓ 557.0	✓ 365.5	454.3	✓ 649.6	✓ 330.8	469.8
14	✓ 626.7	✓ 315.0	486.5	✓ 623.0	✓ 337.5	481.9
15	✓ 565.7	✓ 355.9	456.9	✓ 632.8	✓ 300.7	449.7
16	✓ 564.1	✓ 342.8	463.1	✓ 624.7	✓ 342.1	459.0
17	✓ 570.8	✓ 344.8	462.2	✓ 630.0	✓ 326.5	457.8
18	✓ 605.6	✓ 322.5	455.5	✓ 661.0	✓ 279.7	463.2
19	✓ 582.1	✓ 316.6	476.2	✓ 642.2	✓ 335.9	450.1
20	✓ 595.6	✓ 332.2	468.1	✓ 644.0	✓ 245.5	464.1
21	✓ 576.6	✓ 313.8	465.8	✓ 626.9	✓ 305.7	460.1
22	✓ 565.5	✓ 363.3	458.7	✓ 614.5	✓ 324.1	453.8
23	✓ 557.9	✓ 354.0	456.2	✓ 625.6	✓ 335.8	449.0
24	✓ 563.0	✓ 338.3	463.3	✓ 651.5	✓ 337.5	455.4
25	✓ 617.1	✓ 317.2	471.5	✓ 636.9	✓ 324.3	465.5
26	✓ 570.3	✓ 338.9	464.8	✓ 637.1	✓ 340.2	438.6
27	✓ 552.1	✓ 333.5	459.8	✓ 628.2	✓ 341.4	462.2
28	✓ 598.2	✓ 339.0	469.2	✓ 646.7	✓ 311.0	458.8
29	✓ 567.1	✓ 319.0	457.1	✓ 613.7	✓ 337.7	461.9
30	✓ 610.1	✓ 316.1	471.2	✓ 558.9	✓ 338.2	443.9
31	✓ 582.7	✓ 234.4	457.8	✓ 642.0	✓ 222.9	433.2
Total						
Average	576.9	336.0	461.8	633.9	324.6	459.1
Maximum	626.7		486.5	661.0		481.9
Date	14-Mar		14-Mar	18-Mar		14-Mar
Minimum		234.4	449.9		222.9	433.2
Date		31-Mar	1-Mar		31-Mar	31-Mar

Notes:

---



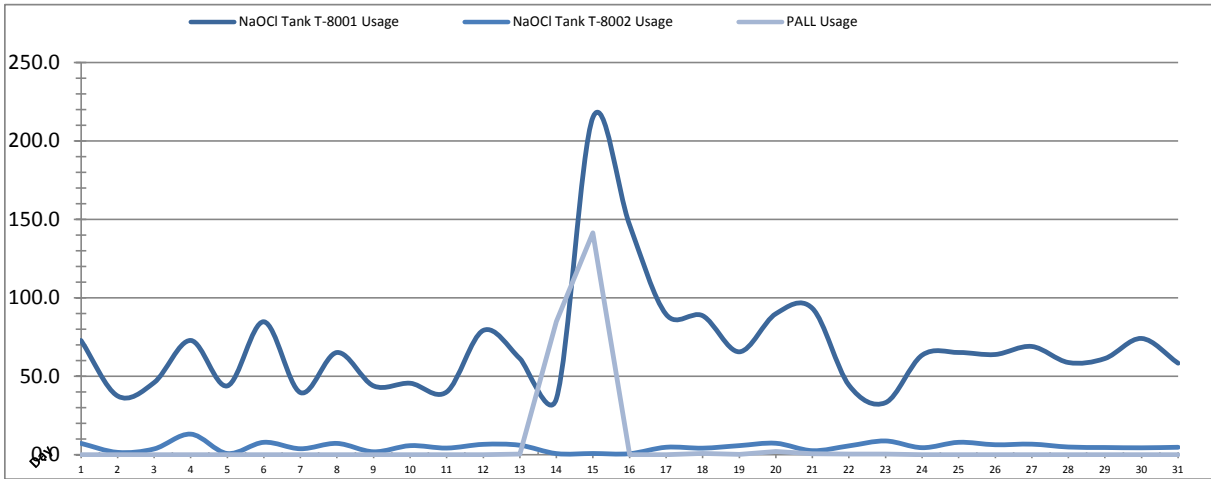
---



---

# Chemical Usage Monthly Report

Month: **March-16**

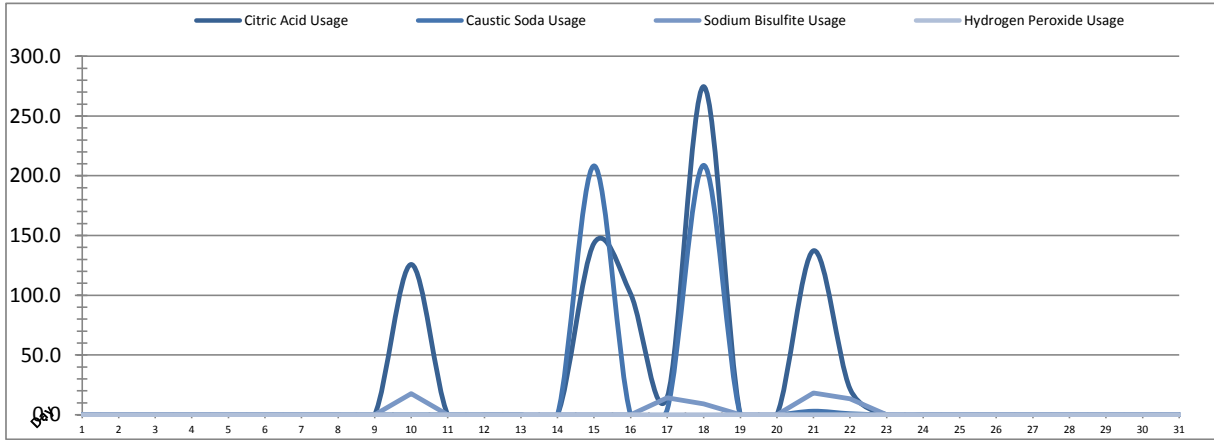


Date	PALL Usage	NaOCl Tank T-8001	NaOCl Tank T-8002
	PALL_HYPO_USAGE (L) Usage	LIT_8002 (Storage) (L) Usage	LIT_8004 (Day) (L) Usage
1	0.0	72.8	7.3
2	0.0	37.5	1.5
3	0.0	46.0	3.7
4	0.0	72.8	13.1
5	0.0	43.9	0.8
6	0.0	84.7	7.9
7	0.0	39.6	3.8
8	0.0	65.2	7.2
9	0.0	43.9	1.9
10	0.0	45.6	5.8
11	0.0	40.0	4.3
12	0.0	79.2	6.6
13	0.4	61.3	6.1
14	84.89	35.77	0.7
15	141.3	215.1	0.8
16	0.0	146.5	0.7
17	0.1	89.4	4.8
18	0.8	88.6	4.2
19	0.3	65.6	5.8
20	2.1	89.9	7.3
21	0.6	93.3	2.6
22	0.5	44.3	5.7
23	0.5	33.2	8.8
24	0.1	63.5	4.5
25	0.0	65.2	7.9
26	0.0	63.9	6.4
27	0.0	69.0	6.7
28	0.0	58.8	4.9
29	0.0	61.3	4.6
30	0.0	74.1	4.4
31	0.0	58.3	4.8
Total	231.6	2148.1	155.7
Average	7.5	69.3	5.0
Maximum	141.3	215.1	13.1
Date	15-Mar	15-Mar	4-Mar
Minimum	0.0	33.2	0.7
Date	1-Mar	23-Mar	16-Mar

Notes:	
$\text{Dosage (mg/L)} = \frac{\text{Day Tank (L)} \times \% \text{conc.} \times 1000}{\text{Membrane Flow (m}^3\text{)}}$	
Chlorine Concentration: <b>12.0%</b>	

# Chemical Usage Monthly Report

Month: **March-16**



Date	Citric Acid	Caustic Soda	Sodium Bisulfite	Hydrogen Peroxide		Membrane Flow (m <sup>3</sup> )
	TAGNAME (L) Usage	TAGNAME (L) Usage	TAGNAME (L) Usage	TAGNAME (L) Usage	(mg/L) Dose	
1	0.0	0.0	0.0	0.0	0.0	3459.846
2	0.0	0.0	0.0	0.0	0.0	3284.481
3	0.0	0.0	0.0	0.0	0.0	2966.932
4	0.0	0.0	0.0	0.0	0.0	3623.224
5	0.0	0.0	0.0	0.0	0.0	3149.583
6	0.0	0.0	0.0	0.0	0.0	3439.308
7	0.0	0.0	0.0	0.0	0.0	2764.257
8	0.0	0.0	0.0	0.0	0.0	3867.724
9	0.0	0.0	0.0	0.0	0.0	3145.650
10	125.8	0.0	17.7	0.0	0.0	2705.636
11	0.0	0.0	0.0	0.0	0.0	3636.089
12	0.0	0.0	0.0	0.0	0.0	3692.388
13	0.0	0.0	0.0	0.0	0.0	3403.571
14	0.0	0.0	0.0	0.0	0.0	3905.376
15	143.6	208.3	0.0	0.0	0.0	2356.554
16	101.2	0.0	0.0	0.0	0.0	3754.340
17	14.7	4.3	14.3	0.0	0.0	3551.468
18	274.6	208.7	9.2	0.0	0.0	3263.382
19	0.0	0.0	0.0	0.0	0.0	2804.684
20	0.0	0.0	0.0	0.0	0.0	3593.418
21	137.3	3.0	18.3	0.0	0.0	4056.855
22	21.6	0.9	13.4	0.0	0.0	2961.666
23	0.0	0.0	0.0	0.0	0.0	2118.210
24	0.0	0.0	0.0	0.0	0.0	3297.996
25	0.0	0.0	0.0	0.0	0.0	3535.797
26	0.0	0.0	0.0	0.0	0.0	3199.911
27	0.0	0.0	0.0	0.0	0.0	3840.977
28	0.0	0.0	0.0	0.0	0.0	3023.196
29	0.0	0.0	0.0	0.0	0.0	3591.910
30	0.0	0.0	0.0	0.0	0.0	3593.754
31	0.0	0.0	0.0	0.0	0.0	2613.158
<b>Total</b>	<b>818.9</b>	<b>425.2</b>	<b>73.0</b>	<b>0.0</b>	<b>0.0</b>	<b>102201.3</b>
<b>Average</b>	<b>26.4</b>	<b>13.7</b>	<b>2.4</b>	<b>0.0</b>	<b>0.0</b>	<b>3296.8</b>
<b>Maximum</b>	<b>274.6</b>	<b>208.7</b>	<b>18.3</b>	<b>0.0</b>	<b>0.0</b>	<b>4056.9</b>
<b>Date</b>	<b>18-Mar</b>	<b>18-Mar</b>	<b>21-Mar</b>	<b>1-Mar</b>	<b>1-Mar</b>	<b>21-Mar</b>
<b>Minimum</b>	<b>0.0</b>	<b>0.0</b>	<b>0.0</b>	<b>0.0</b>	<b>0.0</b>	<b>2118.2</b>
<b>Date</b>	<b>1-Mar</b>	<b>1-Mar</b>	<b>1-Mar</b>	<b>1-Mar</b>	<b>1-Mar</b>	<b>23-Mar</b>

Notes:

$$\text{Dosage (mg/L)} = \frac{\text{Day Tank (L)} \times \% \text{conc.} \times 1000}{\text{Membrane Flow (m}^3\text{)}}$$

Peroxide Concentration: **50.0%**

# Runtimes Report

Month: March-16

Date	Daily Gen-Set Runtimes		Daily UV Runtimes		Daily PALL Runtimes				
	LLPS	WTP	UV #1	UV #2	Air Compressor #1	Air Compressor #2	CIP Neutralization	CIP Drain	CIP Recirc
	(Hrs)	(Hrs)	(Hrs)	(Hrs)	(Hrs)	(Hrs)	(Hrs)	(Hrs)	(Hrs)
1	0.0	0.0	0.0	0.0	0.2	23.8	0.0	0.0	0.0
2	0.0	0.0	0.0	0.0	23.7	0.1	0.0	0.0	0.0
3	0.0	0.0	0.0	0.0	0.2	23.8	0.0	0.0	0.0
4	0.0	0.0	0.0	0.0	23.7	0.1	0.0	0.0	0.0
5	0.0	0.0	0.0	0.0	0.2	23.8	0.0	0.0	0.0
6	0.0	0.0	0.0	0.0	23.7	0.1	0.0	0.0	0.0
7	0.0	0.0	0.0	0.0	0.2	23.8	0.0	0.0	0.0
8	0.0	0.0	0.0	0.0	23.7	0.1	0.0	0.0	0.0
9	0.0	0.0	0.0	0.0	0.2	23.8	0.0	0.0	0.0
10	0.0	0.0	0.0	0.0	23.7	0.1	0.9	0.0	0.1
11	0.0	0.0	0.0	0.0	0.2	23.8	0.0	0.0	0.0
12	0.0	0.0	0.0	0.0	23.7	0.1	0.0	0.0	0.0
13	0.0	0.0	0.0	0.0	0.2	22.8	0.0	0.0	0.0
14	0.0	0.0	0.0	0.0	23.7	0.1	0.0	0.0	0.0
15	0.0	0.0	0.0	0.0	0.2	23.8	0.0	0.0	0.1
16	0.0	0.0	0.9	0.9	23.7	0.1	0.0	0.0	0.0
17	0.0	0.0	0.0	0.0	0.2	23.8	1.5	0.3	3.0
18	0.0	0.0	0.0	0.0	23.7	0.1	0.8	0.2	3.3
19	0.0	0.0	0.0	0.0	0.2	23.7	0.0	0.0	0.0
20	0.0	0.0	0.0	0.0	23.7	0.2	0.0	0.0	0.0
21	0.0	0.0	0.0	0.0	0.2	23.6	1.4	0.2	3.0
22	0.0	0.0	0.0	0.0	23.8	0.2	0.8	0.2	2.9
23	0.0	0.0	0.0	0.0	0.1	23.7	0.0	0.0	0.0
24	0.0	0.0	0.0	0.0	24.1	0.2	0.0	0.0	0.0
25	0.0	0.0	0.0	0.0	0.1	23.7	0.0	0.0	0.0
26	0.0	0.0	0.0	0.0	24.3	0.2	0.0	0.0	0.0
27	0.0	0.0	0.0	0.0	0.1	23.7	0.0	0.0	0.0
28	0.0	0.0	0.0	0.0	24.3	0.2	0.0	0.0	0.0
29	0.0	0.0	0.0	0.0	0.1	23.7	0.0	0.0	0.0
30	0.0	0.0	0.0	0.0	24.3	0.2	0.0	0.0	0.0
31	0.6	1.0	0.0	0.0	0.1	23.4	0.0	0.0	0.0
Total	0.6	1.0	0.9	0.9	360.5	380.9	5.4	0.9	12.4

Notes:

---



---



---

# Runtimes Report

Month: March-16

## Daily

Date	PALL Runtimes						Process Drain	
	RFR Pump #1 (Hrs)	RFR Pump #2 (Hrs)	RF Pump #1 (Hrs)	RF Pump #2 (Hrs)	XR Pump #1 (Hrs)	XR Pump #2 (Hrs)	PDP9010 Pump (Hrs)	PDP9020 Pump (Hrs)
1	3.4	3.3	0.8	0.8	6.0	6.2	1.2	1.8
2	3.3	3.5	0.9	0.8	6.0	6.1	1.1	1.3
3	3.0	2.9	0.8	0.7	5.4	5.6	1.4	1.8
4	3.5	3.6	0.8	0.9	7.6	6.3	1.1	1.5
5	3.1	3.3	0.8	0.8	5.2	6.6	1.4	1.8
6	3.3	3.2	0.9	0.9	8.1	5.0	1.2	1.6
7	2.8	2.8	0.7	0.7	4.5	5.8	1.4	1.7
8	4.1	3.9	1.0	0.9	7.0	7.5	1.2	1.7
9	3.1	3.1	0.7	0.8	6.6	5.6	1.2	1.6
10	2.5	2.9	0.6	0.6	5.5	4.8	1.5	2.0
11	3.6	3.6	0.9	1.0	4.4	9.5	1.4	1.8
12	3.7	3.6	0.9	0.9	8.9	5.3	1.4	1.8
13	3.3	3.4	0.8	0.8	6.3	6.4	1.2	1.6
14	3.8	4.0	0.9	1.0	5.9	8.7	1.2	1.5
15	2.5	2.3	0.6	0.6	5.9	3.1	1.6	2.2
16	3.7	3.7	0.9	0.9	5.6	8.5	1.3	1.6
17	3.8	3.7	0.9	0.9	7.3	5.1	1.4	1.9
18	3.2	3.4	0.9	0.8	6.4	5.8	1.4	1.8
19	2.8	2.5	0.6	0.8	6.4	4.0	1.3	1.8
20	3.5	3.6	0.8	0.9	3.8	9.6	1.3	1.6
21	3.9	3.8	1.0	1.0	10.3	4.8	1.4	1.8
22	0.3	0.6	0.7	0.6	3.6	7.6	1.4	1.9
23	1.3	1.1	0.4	0.4	5.2	3.2	1.4	1.9
24	4.6	4.6	0.9	0.8	4.7	5.7	1.4	1.8
25	4.4	4.1	1.0	0.9	7.1	5.1	1.4	1.9
26	4.3	4.4	0.7	0.9	4.6	7.5	1.4	1.8
27	4.8	4.7	0.8	0.8	7.3	6.1	1.3	1.7
28	3.6	3.7	0.8	0.7	6.0	4.8	1.6	2.2
29	4.7	4.6	0.9	0.9	4.9	8.5	1.3	1.7
30	4.7	4.9	0.8	0.9	8.3	5.0	1.3	1.7
31	2.9	2.8	0.8	0.8	4.6	5.2	1.8	2.7
Total	105.1	105.2	25.0	25.2	188.7	188.3	41.9	55.5

Notes:

# Runtimes Report

Month: March-16

## Daily

Date	Low Lift Pump Motor Runtimes				High Lift Pump Motor Runtimes			
	LLP1010 (Hrs)	LLP1020 (Hrs)	LLP1030 (Hrs)	LLP1040 (Hrs)	HLP7010 (Hrs)	HLP7020 (Hrs)	HLP7030 (Hrs)	HLP7040 (Hrs)
1	3.2	1.9	2.0	6.7	1.7	1.8	2.1	7.3
2	0.0	7.6	2.7	2.6	2.9	12.6	0.5	0.0
3	5.3	3.1	2.0	1.2	2.7	1.1	4.6	1.7
4	0.9	6.2	3.3	3.7	1.8	0.0	9.2	3.3
5	3.5	5.5	3.1	0.0	2.8	4.0	6.5	0.0
6	5.0	5.0	0.0	3.3	4.1	5.8	0.9	1.5
7	5.8	1.2	3.6	0.0	2.4	2.0	1.7	4.2
8	3.7	7.8	0.0	3.6	3.2	2.6	3.4	4.6
9	0.6	4.3	2.9	4.6	3.3	3.7	4.1	2.4
10	1.7	1.7	2.6	4.4	3.0	7.1	0.0	1.7
11	1.7	0.0	4.7	7.7	0.0	2.0	3.4	6.5
12	0.0	1.4	0.0	12.9	7.3	6.0	0.0	0.0
13	1.4	4.9	6.9	0.0	0.0	8.0	4.5	0.0
14	10.6	0.0	0.0	4.3	10.9	0.0	0.0	6.5
15	0.0	3.1	2.5	3.6	0.0	2.2	2.5	4.0
16	4.2	1.9	4.9	3.4	4.0	3.6	4.7	3.7
17	3.7	5.7	0.5	4.0	2.8	6.4	3.6	0.0
18	5.3	1.2	4.2	1.8	3.9	3.8	3.3	1.4
19	1.5	2.1	4.3	2.6	8.7	0.0	0.0	3.8
20	3.4	2.0	6.2	1.9	8.4	1.8	1.6	0.1
21	3.1	10.3	0.6	1.3	3.7	5.8	4.1	0.0
22	0.0	9.2	2.9	0.0	0.0	1.8	1.7	7.5
23	0.4	4.9	0.6	2.8	1.6	4.3	1.3	1.2
24	1.6	0.0	4.5	6.9	5.6	0.0	1.7	2.9
25	7.0	1.3	3.2	2.0	5.9	1.7	4.6	2.9
26	3.2	3.7	3.3	2.1	7.0	1.8	3.7	1.6
27	5.4	2.2	2.2	4.8	5.8	8.2	2.1	1.5
28	1.1	4.8	2.0	3.8	0.1	6.1	0.0	5.9
29	3.0	5.6	3.5	1.6	3.1	5.1	3.1	2.3
30	3.7	3.5	4.6	1.7	4.0	4.3	5.1	0.5
31	2.5	4.1	0.9	2.6	0.0	5.2	0.0	1.1
Total	92.5	116.2	84.7	101.9	110.7	118.8	84.0	80.1

Notes:

# Plant Internal Flow Report

Month: March-16

Date	Settling Tank Level		Process Drain Tank		Settling Tank Flow		Potable Water Flow		Non-Potable Flow	
	T-9003 (m)		T-9001 (m)		FIT_9005 (m <sup>3</sup> ) (L/s)		FIT_7082 (m <sup>3</sup> ) (L/s)		FIT_7092 (m <sup>3</sup> ) (L/s)	
	Maximum	Minimum	Maximum	Minimum	Total	Peak	Total	Peak	Total	Peak
1	2.2	0.1	0.8	0.4	21.6	11.5	0.1	1.3	0.0	0.0
2	2.2	0.1	0.8	0.4	12.3	15.7	0.1	1.2	0.0	1.5
3	2.2	0.1	0.8	0.4	15.0	15.7	0.0	1.2	0.0	0.0
4	2.2	0.1	0.8	0.4	17.0	7.7	0.0	1.3	0.2	0.8
5	2.2	0.1	0.8	0.4	13.1	9.4	0.0	0.0	0.0	0.0
6	2.2	0.1	0.8	0.4	19.4	15.7	0.0	0.0	0.0	0.0
7	2.2	0.2	0.8	0.4	25.2	15.7	0.2	1.4	0.0	0.0
8	2.2	0.1	0.8	0.4	47.1	15.2	0.1	1.4	0.0	0.0
9	2.2	0.1	0.8	0.4	51.4	15.7	0.1	1.3	0.0	0.0
10	2.2	0.1	0.8	0.4	57.0	13.9	0.1	1.5	4.2	23.4
11	2.2	0.1	0.8	0.4	32.2	13.9	0.0	1.2	0.0	0.0
12	2.2	0.3	0.8	0.4	29.6	15.2	0.0	0.0	0.0	0.0
13	2.2	0.2	0.8	0.4	38.3	15.7	0.0	0.0	0.0	0.0
14	2.2	0.1	0.8	0.4	53.5	15.7	0.0	1.3	0.0	0.0
15	2.2	0.1	0.8	0.4	34.9	15.2	0.0	1.4	11.9	24.7
16	2.2	0.2	0.8	0.4	40.6	15.7	3.8	5.1	0.3	2.0
17	2.2	0.1	0.8	0.4	77.3	15.7	0.0	1.3	23.6	15.5
18	2.2	0.3	0.8	0.4	30.0	12.7	0.0	1.3	29.0	23.4
19	2.2	0.2	0.8	0.4	17.7	13.9	0.0	0.0	0.0	0.0
20	2.2	0.1	0.8	0.4	22.3	13.9	0.0	0.0	0.0	0.0
21	2.2	0.1	1.0	0.4	50.9	15.7	0.1	1.4	18.1	16.4
22	2.2	0.3	1.1	0.4	195.6	15.7	0.1	1.4	17.3	16.2
23	2.2	0.1	0.8	0.4	103.3	15.7	0.0	1.3	0.0	1.2
24	2.2	0.1	0.8	0.4	33.4	12.8	0.0	1.4	0.0	0.0
25	2.2	0.1	0.8	0.4	26.4	15.2	0.2	1.1	0.6	1.4
26	2.2	0.3	0.8	0.4	18.4	15.2	0.0	0.0	0.0	0.0
27	2.2	0.2	0.8	0.4	33.7	13.9	0.0	0.0	0.0	0.0
28	2.2	0.3	0.8	0.4	34.9	13.9	0.0	1.3	0.0	0.0
29	2.2	0.2	0.8	0.4	29.4	15.7	0.0	1.3	0.0	0.0
30	2.2	0.2	0.8	0.4	37.6	15.2	0.1	1.4	0.0	0.0
31	2.2	0.3	1.4	0.4	86.1	15.7	1.5	3.6	0.0	0.0
Total					1305.1		6.6		105.2	
Average	2.2	0.1	0.9	0.4	42.1	14.5	0.2	1.2	3.4	4.1
Maximum	2.2		1.4		195.6		3.8		29.0	
Date	7-Mar		31-Mar		22-Mar		16-Mar		18-Mar	
Minimum		0.1		0.4		7.7		0.0		0.0
Date		2-Mar		2-Mar		4-Mar		5-Mar		1-Mar

Notes: