

Municipality of West Elgin - Tri County Water System

Goto:

Month:

Year:

Date is Set to: **April-16**

Limit	Low	High	
Raw Water Chlorine Residual:	0.00	5.00	mg/L
Pre-Strainer Chlorine Residual:	0.00	5.00	mg/L
UV Inlet Chlorine Residual:	0.00	5.00	mg/L
Post Treatment Chlorine Residual:	1.00	5.00	mg/L
Treated Chlorine Residual:	1.00	2.50	mg/L
Distribution Chlorine Residual:	1.00	2.50	mg/L
Limit		High	
WTP C of A		156.0	L/s
WTP Permit to Take Water		13500.0	m <sup>3</sup>
Limit	Low	High	
System Pressure Limits:	50.0	1034.0	Kpa

Compliance Report

Low Lift Monthly Report

>>>

Membranes Monthly Report

>>>

UV System Monthly Report

>>>

Plant Quality Report

>>>

Raw Well/Treated Storage Report

>>>

High Lift Monthly Report

>>>

Operational Report

Low Lift Monthly Report

>>>

High Lift Monthly Report

>>>

Chemical Usage Monthly Report

>>>

Runtimes Report

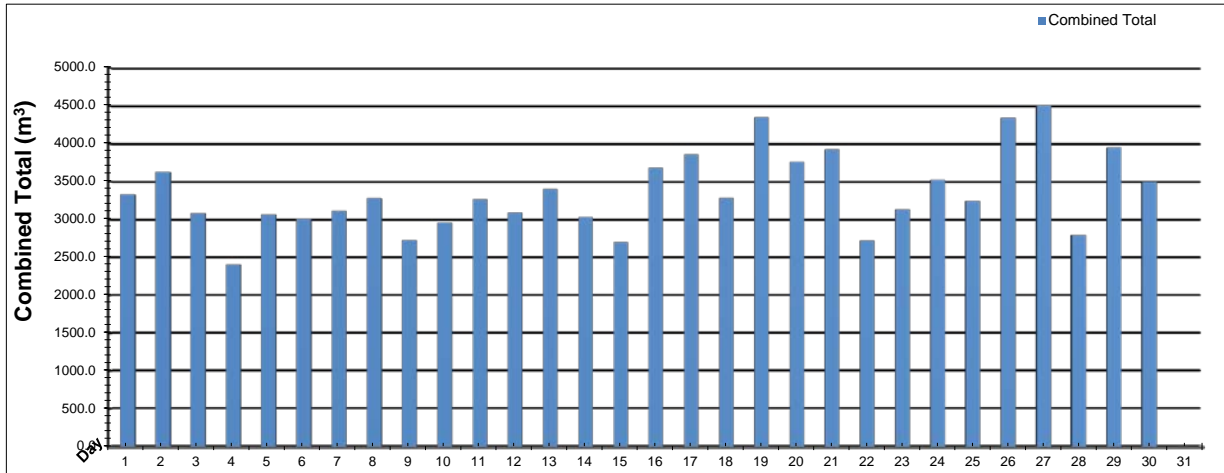
>>>

Plant Internal Flow Report

>>>

# Low Lift Monthly Report

Month: **April-16**



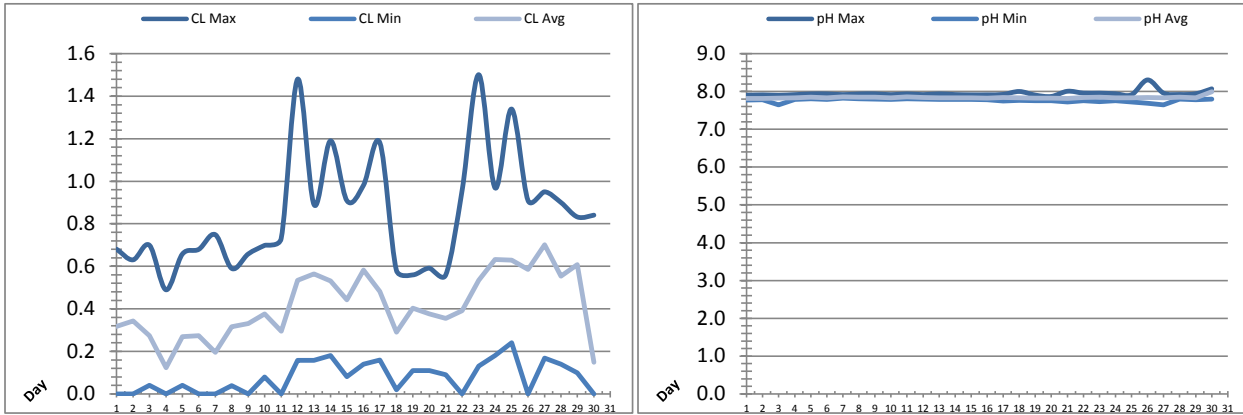
Date	Combined Total (m³)	West Train FIT-1017 (m³)	West Peak Flow FIT-1017 (L/s)	East Train FIT-1027 (m³)	East Peak Flow FIT-1027 (L/s)	Combined Peak Flow (L/s)
1	✓ 3330.5	0.0	0.0	3330.5	85.5	✓ 85.5
2	✓ 3624.5	0.0	0.0	3624.5	86.0	✓ 86.0
3	✓ 3082.6	0.0	0.0	3082.6	85.7	✓ 85.7
4	✓ 2407.8	0.0	0.0	2407.8	86.3	✓ 86.3
5	✓ 3068.0	0.0	0.0	3068.0	86.1	✓ 86.1
6	✓ 3012.6	0.0	0.0	3012.6	84.6	✓ 84.6
7	✓ 3114.9	0.0	0.0	3114.9	86.0	✓ 86.0
8	✓ 3280.5	0.0	0.0	3280.5	86.1	✓ 86.1
9	✓ 2730.9	0.0	0.0	2730.9	86.6	✓ 86.6
10	✓ 2956.6	0.0	0.0	2956.6	86.6	✓ 86.6
11	✓ 3271.0	0.0	0.0	3271.0	85.4	✓ 85.4
12	✓ 3090.3	0.0	0.0	3090.3	86.2	✓ 86.2
13	✓ 3403.7	0.0	0.0	3403.7	84.9	✓ 84.9
14	✓ 3035.0	0.0	0.0	3035.0	86.9	✓ 86.9
15	✓ 2701.9	0.0	0.0	2701.9	138.5	✓ 138.5
16	✓ 3677.4	0.0	0.0	3677.4	87.7	✓ 87.7
17	✓ 3859.5	0.0	0.0	3859.5	83.9	✓ 83.9
18	✓ 3282.9	0.0	0.0	3282.9	85.9	✓ 85.9
19	✓ 4345.9	0.0	0.0	4345.9	86.1	✓ 86.1
20	✓ 3760.5	0.0	0.0	3760.5	86.3	✓ 86.3
21	✓ 3921.7	0.0	0.0	3921.7	86.2	✓ 86.2
22	✓ 2723.8	0.0	0.0	2723.8	84.5	✓ 84.5
23	✓ 3132.2	0.0	0.0	3132.2	83.0	✓ 83.0
24	✓ 3523.5	0.0	0.0	3523.5	85.2	✓ 85.2
25	✓ 3242.7	0.0	0.0	3242.7	83.7	✓ 83.7
26	✓ 4340.8	3149.1	84.1	1191.7	200.0	✓ 89.0
27	✓ 4501.0	4501.0	86.5	0.0	0.0	✓ 86.5
28	✓ 2795.0	2795.0	87.7	0.0	0.0	✓ 87.7
29	✓ 3949.5	3949.5	88.2	0.0	0.0	✓ 88.2
30	✓ 3500.1	3500.1	86.6	0.0	0.0	✓ 86.6
31	✓ 0.0					
<b>Total</b>	<b>100667.5</b>	<b>17894.6</b>		<b>82772.9</b>		
<b>Average</b>	<b>3355.6</b>	<b>596.5</b>	<b>14.4</b>	<b>2759.1</b>	<b>79.8</b>	<b>87.7</b>
<b>Maximum</b>	<b>4501.0</b>	<b>4501.0</b>	<b>88.16</b>	<b>4345.9</b>	<b>200.00</b>	<b>138.50</b>
<b>Date</b>	<b>27-Apr</b>	<b>27-Apr</b>	<b>29-Apr</b>	<b>19-Apr</b>	<b>26-Apr</b>	<b>15-Apr</b>
<b>Minimum</b>	<b>2407.8</b>	<b>0.0</b>	<b>0.00</b>	<b>0.0</b>	<b>0.00</b>	<b>83.01</b>
<b>Date</b>	<b>4-Apr</b>	<b>6-Apr</b>	<b>1-Apr</b>	<b>28-Apr</b>	<b>27-Apr</b>	<b>23-Apr</b>

**Notes:**

Flowmetrix onsite for flow meter verifications on Apr. 26

# Low Lift Monthly Report

Month: **April-16**



Date	Raw Water Chlorine Residual			Raw Water pH		
	AIT_1401_CL (mg/L)			AIT_1401_PH		
	Maximum	Minimum	Average	Maximum	Minimum	Average
1	0.68	0.00	0.32	7.90	7.78	7.81
2	0.63	0.00	0.34	7.91	7.78	7.82
3	0.70	0.04	0.27	7.90	7.64	7.83
4	0.49	0.00	0.12	7.92	7.79	7.83
5	0.66	0.04	0.27	7.94	7.81	7.85
6	0.68	0.00	0.27	7.94	7.79	7.83
7	0.75	0.00	0.20	7.92	7.83	7.86
8	0.59	0.04	0.32	7.93	7.81	7.85
9	0.66	0.00	0.33	7.94	7.79	7.85
10	0.70	0.08	0.38	7.92	7.79	7.83
11	0.73	0.00	0.29	7.94	7.81	7.86
12	1.48	0.16	0.53	7.92	7.79	7.84
13	0.89	0.16	0.57	7.94	7.79	7.83
14	1.19	0.18	0.53	7.92	7.79	7.83
15	0.91	0.08	0.44	7.91	7.79	7.83
16	0.98	0.14	0.58	7.91	7.79	7.83
17	1.18	0.16	0.48	7.92	7.75	7.84
18	0.58	0.02	0.29	8.00	7.76	7.83
19	0.56	0.11	0.40	7.90	7.75	7.83
20	0.59	0.11	0.38	7.87	7.75	7.82
21	0.56	0.09	0.35	8.01	7.73	7.82
22	0.96	0.00	0.39	7.96	7.75	7.84
23	1.50	0.13	0.53	7.96	7.73	7.85
24	0.97	0.18	0.63	7.94	7.75	7.83
25	1.34	0.24	0.63	7.91	7.73	7.83
26	0.91	0.00	0.59	8.31	7.69	7.85
27	0.95	0.17	0.70	7.96	7.64	7.83
28	0.90	0.14	0.55	7.92	7.80	7.85
29	0.83	0.10	0.61	7.94	7.78	7.83
30	0.84	0.00	0.15	8.07	7.80	7.99
Total						
Average	0.85	0.08	0.42	7.95	7.77	7.84
Maximum	1.50		0.70	8.31		7.99
Date	23-Apr		27-Apr	26-Apr		30-Apr
Minimum		0.00	0.12		7.64	7.81
Date		1-Apr	4-Apr		3-Apr	1-Apr

Notes:

---



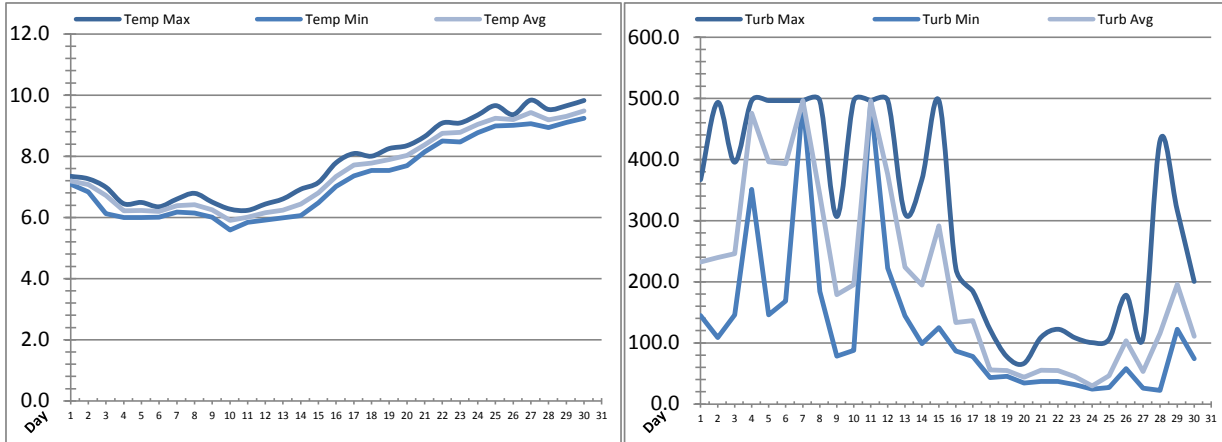
---



---

# Low Lift Monthly Report

Month: April-16



Date	Raw Water Temperature			Raw Water Turbidity		
	TIT_1403 (°C)			AIT_1404 (NTU)		
	Maximum	Minimum	Average	Maximum	Minimum	Average
1	7.3	7.1	7.2	367.00	144.62	232.15
2	7.3	6.8	7.1	493.24	108.93	239.59
3	7.0	6.1	6.7	395.47	146.04	245.89
4	6.4	6.0	6.2	496.25	351.29	475.66
5	6.5	6.0	6.2	496.32	146.05	396.07
6	6.3	6.0	6.2	496.25	168.51	393.26
7	6.6	6.2	6.4	496.31	496.19	496.02
8	6.8	6.1	6.4	496.37	184.09	341.72
9	6.5	6.0	6.2	306.56	78.60	178.84
10	6.3	5.6	5.9	496.19	87.89	195.15
11	6.2	5.8	6.0	496.28	494.62	496.02
12	6.4	5.9	6.2	496.26	222.11	375.82
13	6.6	6.0	6.2	311.91	144.57	224.05
14	6.9	6.1	6.4	367.00	98.89	194.78
15	7.1	6.5	6.8	496.32	125.16	291.70
16	7.8	7.0	7.3	221.40	86.52	133.53
17	8.1	7.4	7.7	184.18	78.05	136.39
18	8.0	7.5	7.8	122.31	43.11	55.88
19	8.3	7.5	7.9	77.28	45.48	54.54
20	8.3	7.7	8.0	66.49	34.63	43.97
21	8.6	8.1	8.4	109.09	36.97	55.06
22	9.1	8.5	8.8	122.29	37.01	54.93
23	9.1	8.5	8.8	108.32	31.50	44.59
24	9.4	8.8	9.0	100.47	24.52	29.52
25	9.7	9.0	9.2	105.97	26.85	46.50
26	9.4	9.0	9.2	177.97	57.84	103.74
27	9.8	9.1	9.4	108.33	26.04	53.38
28	9.5	8.9	9.2	431.41	22.18	115.29
29	9.7	9.1	9.3	317.47	122.15	195.65
30	9.8	9.2	9.5	200.47	74.08	110.89
Total						
Average	7.8	7.3	7.5	305.4	124.8	200.4
Maximum	9.8		9.5	496.4		496.0
Date	27-Apr		30-Apr	8-Apr		7-Apr
Minimum		5.6	5.9		22.2	29.5
Date		10-Apr	10-Apr		28-Apr	24-Apr

Notes:

---



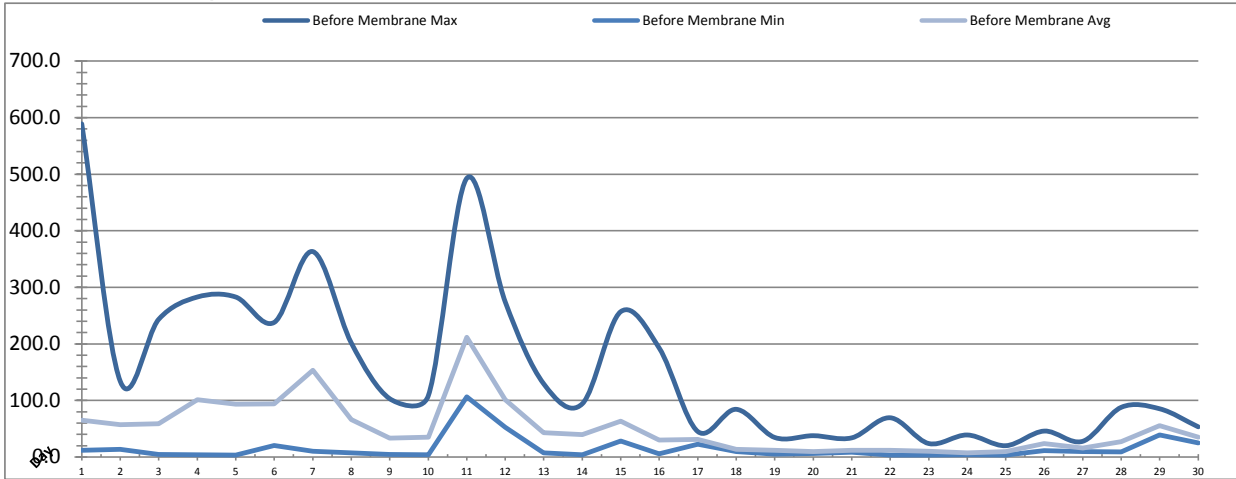
---



---

# Membranes Monthly Report

Month: April-16



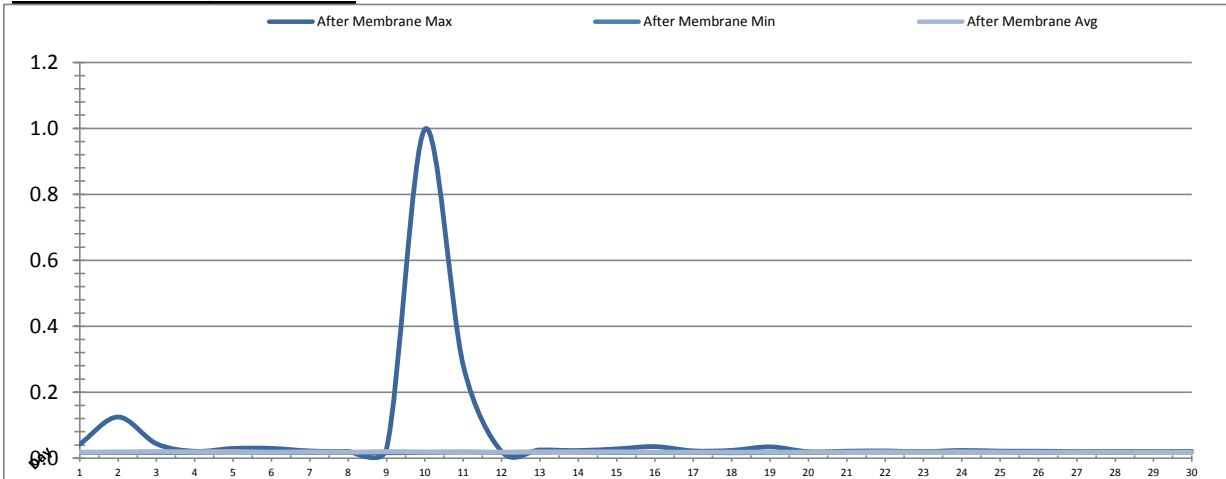
Date	Turbidity Before Membrane			Rack #1 Turbidity			Rack #2 Turbidity		
	PALL_FEED_AIT2006_Value NTU			RACK1_NTU_Value NTU			RACK2_NTU_Value NTU		
	Maximum	Minimum	Average	Maximum	Minimum	Average	Maximum	Minimum	Average
1	589.07	12.11	64.86	0.06	0.01	0.01	0.02	0.01	0.01
2	133.85	13.40	57.09	0.04	0.01	0.01	0.01	0.01	0.01
3	243.65	4.47	58.82	0.03	0.01	0.01	0.01	0.01	0.01
4	282.89	3.90	101.25	0.03	0.01	0.01	0.01	0.01	0.01
5	282.85	3.31	93.12	0.03	0.01	0.01	0.01	0.01	0.01
6	238.10	20.25	94.13	0.02	0.01	0.01	0.01	0.01	0.01
7	363.29	10.26	153.36	0.02	0.01	0.01	0.02	0.01	0.01
8	201.76	7.34	66.47	0.02	0.01	0.01	0.01	0.01	0.01
9	103.03	4.32	33.34	0.05	0.01	0.01	0.01	0.01	0.01
10	108.09	3.84	34.86	0.02	0.01	0.01	0.01	0.01	0.01
11	492.77	106.27	211.79	0.04	0.01	0.01	0.02	0.01	0.01
12	274.16	52.49	101.40	0.02	0.01	0.01	0.01	0.01	0.01
13	129.27	7.12	42.81	0.03	0.01	0.01	0.99	0.01	0.01
14	94.04	3.77	39.48	0.01	0.01	0.01	0.01	0.01	0.01
15	257.04	28.18	63.34	0.02	0.01	0.01	0.01	0.01	0.01
16	192.56	5.79	30.21	0.06	0.01	0.01	0.02	0.01	0.01
17	45.08	22.41	31.15	0.04	0.01	0.01	0.01	0.01	0.01
18	84.32	9.69	13.62	0.02	0.01	0.01	0.02	0.01	0.01
19	34.50	5.08	11.79	0.02	0.01	0.01	0.02	0.01	0.01
20	37.68	5.92	9.63	0.02	0.01	0.01	0.02	0.01	0.01
21	33.86	8.57	11.62	0.03	0.01	0.01	0.02	0.01	0.01
22	69.37	3.61	12.13	0.01	0.01	0.01	0.02	0.01	0.01
23	23.81	3.63	10.15	0.01	0.01	0.01	0.01	0.01	0.01
24	38.92	4.14	7.46	0.02	0.01	0.01	0.01	0.01	0.01
25	19.98	3.47	9.59	0.02	0.01	0.01	0.01	0.01	0.01
26	45.85	11.38	23.90	0.01	0.01	0.01	0.01	0.01	0.01
27	27.79	9.73	15.83	0.01	0.01	0.01	0.01	0.01	0.01
28	87.86	9.26	26.99	0.10	0.01	0.01	0.03	0.01	0.01
29	85.23	38.98	55.35	0.01	0.01	0.01	0.01	0.01	0.01
30	53.33	24.71	34.95	0.02	0.01	0.01	0.01	0.01	0.01
Total									
Average	155.8	14.9	50.7	0.03	0.01	0.01	0.05	0.01	0.01
Maximum	589.1		211.8	0.10		0.01	0.99		0.01
Date	1-Apr		11-Apr	28-Apr		16-Apr	13-Apr		13-Apr
Minimum		3.3	7.5		0.01	0.01		0.01	0.01
Date		5-Apr	24-Apr		14-Apr	26-Apr		3-Apr	5-Apr

Notes:

Rack 2: 13th turbidity spike lasted 4.5min post EFM

# Membranes Monthly Report

Month: April-16



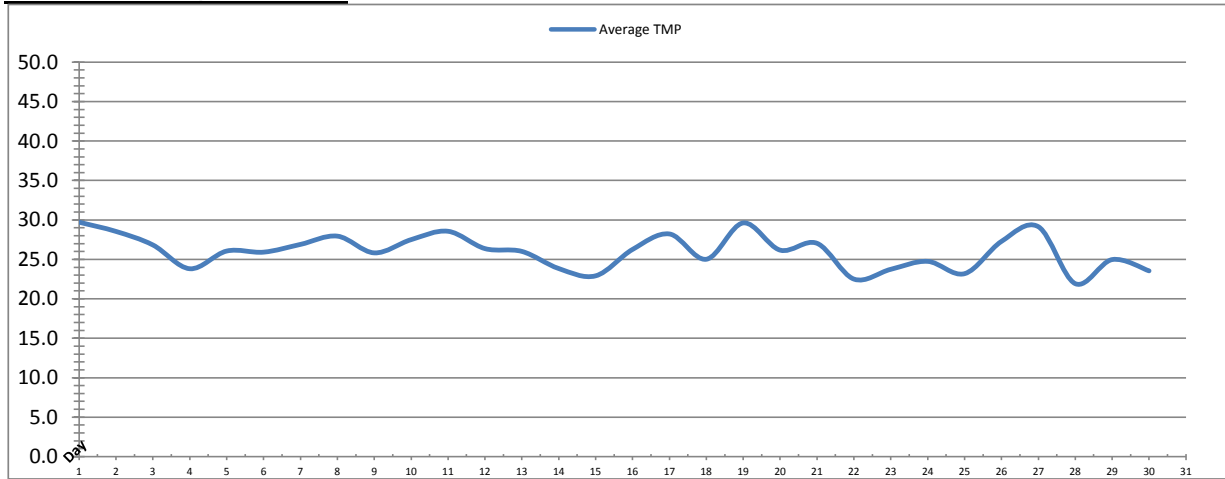
Date	Rack #3 Turbidity			Rack #4 Turbidity			Turbidity After Membranes		
	RACK3_NTU_Value			RACK4_NTU_Value			PALL_FILT_AIT5001_Value		
	Maximum	Minimum	Average	Maximum	Minimum	Average	Maximum	Minimum	Average
1	0.02	0.01	0.01	0.01	0.01	0.01	0.04	0.02	0.02
2	0.02	0.01	0.02	0.01	0.01	0.01	0.12	0.02	0.02
3	0.02	0.02	0.02	0.01	0.01	0.01	0.04	0.02	0.02
4	0.02	0.02	0.02	0.01	0.01	0.01	0.02	0.02	0.02
5	0.02	0.02	0.02	0.01	0.01	0.01	0.03	0.02	0.02
6	0.02	0.01	0.02	0.01	0.01	0.01	0.03	0.02	0.02
7	0.02	0.01	0.01	0.01	0.01	0.01	0.02	0.02	0.02
8	0.02	0.02	0.02	0.01	0.01	0.01	0.02	0.02	0.02
9	0.02	0.02	0.02	0.01	0.01	0.01	0.03	0.02	0.02
10	0.03	0.02	0.02	0.01	0.01	0.01	1.00	0.02	0.02
11	0.03	0.01	0.01	0.01	0.01	0.01	0.28	0.02	0.02
12	0.02	0.01	0.02	0.01	0.01	0.01	0.02	0.02	0.02
13	0.04	0.02	0.02	0.02	0.01	0.01	0.02	0.02	0.02
14	0.04	0.02	0.02	0.15	0.01	0.01	0.02	0.02	0.02
15	0.02	0.02	0.02	0.01	0.01	0.01	0.03	0.02	0.02
16	0.02	0.01	0.01	0.01	0.01	0.01	0.04	0.02	0.02
17	0.02	0.01	0.02	0.01	0.01	0.01	0.02	0.02	0.02
18	0.03	0.01	0.01	0.02	0.01	0.01	0.02	0.02	0.02
19	0.02	0.01	0.01	0.01	0.01	0.01	0.03	0.02	0.02
20	0.02	0.01	0.01	0.01	0.01	0.01	0.02	0.02	0.02
21	0.02	0.01	0.01	0.01	0.01	0.01	0.02	0.02	0.02
22	0.02	0.01	0.01	0.01	0.01	0.01	0.02	0.02	0.02
23	0.02	0.01	0.01	0.01	0.01	0.01	0.02	0.02	0.02
24	0.02	0.01	0.01	0.02	0.01	0.01	0.02	0.02	0.02
25	0.02	0.01	0.01	0.02	0.01	0.01	0.02	0.02	0.02
26	0.02	0.01	0.01	0.01	0.01	0.01	0.02	0.02	0.02
27	0.02	0.01	0.01	0.01	0.01	0.01	0.02	0.02	0.02
28	0.13	0.01	0.02	0.01	0.01	0.01	0.02	0.02	0.02
29	0.02	0.01	0.01	0.01	0.01	0.01	0.02	0.02	0.02
30	0.02	0.01	0.01	0.01	0.01	0.01	0.02	0.02	0.02
Total									
Average	0.0	0.0	0.0	0.0	0.0	0.0	0.1	0.0	0.0
Maximum	0.1		0.0	0.1		0.0	1.0		0.0
Date	28-Apr		28-Apr	14-Apr		14-Apr	10-Apr		9-Apr
Minimum		0.0	0.0		0.0	0.0		0.0	0.0
Date		21-Apr	26-Apr		1-Apr	26-Apr		18-Apr	28-Apr

**Notes:**

Rack 3: 28th turbidity spike 2.3min post EFM  
 Rack 4: 14th turbidity spike 3.2min post EFM

# Membranes Monthly Report

Month: **April-16**



Date	Integrity Test Rack 1							
	Initial Pressure (kPa)	Final Pressure (kPa)	Test Duration (sec)	Change in Pressure (kPa)	UCL	Within UCL	Average TMP (kPa)	Max TMP (kPa)
1	195.3	194.5	300.0	0.8	2.0	✓ 2.0	29.7	123.4
2	194.7	193.9	300.0	0.8	2.0	✓ 2.0	28.5	67.6
3	195.0	193.6	300.0	1.3	2.0	✓ 2.0	26.8	96.8
4	195.0	193.7	300.0	1.3	2.0	✓ 2.0	23.8	69.7
5	195.0	194.4	300.0	0.6	2.0	✓ 2.0	26.1	65.0
6	195.0	194.4	300.0	0.7	2.0	✓ 2.0	25.9	74.0
7	195.2	194.3	300.0	0.9	2.0	✓ 2.0	26.9	65.8
8	194.9	193.6	300.0	1.2	2.0	✓ 2.0	27.9	68.5
9	195.0	193.7	300.0	1.3	2.0	✓ 2.0	25.8	66.3
10	194.9	193.6	300.0	1.3	2.0	✓ 2.0	27.5	77.2
11	194.8	194.1	300.0	0.7	2.0	✓ 2.0	28.6	68.7
12	195.3	194.7	300.0	0.6	2.0	✓ 2.0	26.4	79.9
13	194.9	194.1	300.0	0.8	2.0	✓ 2.0	26.0	82.5
14	195.2	194.5	300.0	0.7	2.0	✓ 2.0	23.8	99.2
15	195.0	194.1	300.0	0.9	2.0	✓ 2.0	22.9	97.9
16	194.5	193.7	300.0	0.8	2.0	✓ 2.0	26.3	55.6
17	194.9	193.8	300.0	1.2	2.0	✓ 2.0	28.2	59.1
18	194.7	193.9	300.0	0.8	2.0	✓ 2.0	25.0	79.8
19	194.9	193.7	300.0	1.2	2.0	✓ 2.0	29.6	60.6
20	195.0	194.3	300.0	0.7	2.0	✓ 2.0	26.2	54.8
21	195.0	193.9	300.0	1.2	2.0	✓ 2.0	27.0	57.8
22	194.1	192.9	300.0	1.1	2.0	✓ 2.0	22.5	75.4
23	194.7	193.5	300.0	1.2	2.0	✓ 2.0	23.7	68.9
24	194.6	193.4	300.0	1.2	2.0	✓ 2.0	24.7	72.0
25	194.7	193.9	300.0	0.8	2.0	✓ 2.0	23.2	175.3
26	194.9	193.6	300.0	1.3	2.0	✓ 2.0	27.3	54.4
27	194.7	193.5	300.0	1.1	2.0	✓ 2.0	29.1	58.1
28	194.7	193.3	300.0	1.3	2.0	✓ 2.0	21.9	97.6
29	194.9	193.6	300.0	1.2	2.0	✓ 2.0	25.0	47.9
30	194.7	193.5	300.0	1.1	2.0	✓ 2.0	23.5	67.2
<b>Total</b>								
Average	194.9	193.9	300.0	1.0	2.0	2.0	26.0	76.2
Maximum	195.3	194.7	300.0	1.3	2.0	2.0	29.7	175.3
Date	1-Apr	12-Apr	1-Apr	3-Apr	1-Apr	1-Apr	1-Apr	25-Apr
Minimum	194.1	192.9	300.0	0.6	2.0	2.0	21.9	47.9
Date	22-Apr	22-Apr	1-Apr	12-Apr	1-Apr	1-Apr	28-Apr	29-Apr

Notes:

---



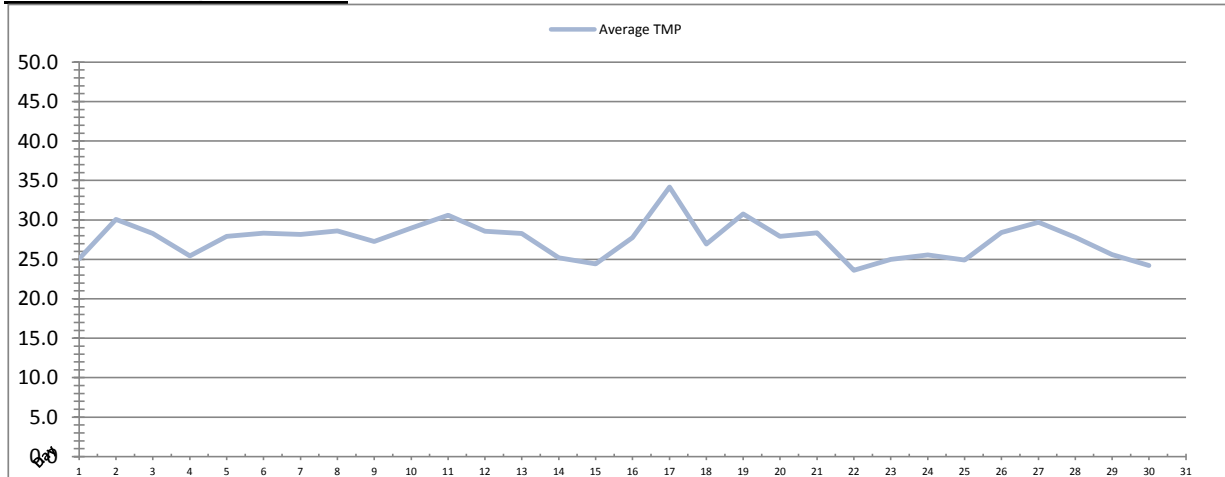
---



---

# Membranes Monthly Report

Month: **April-16**



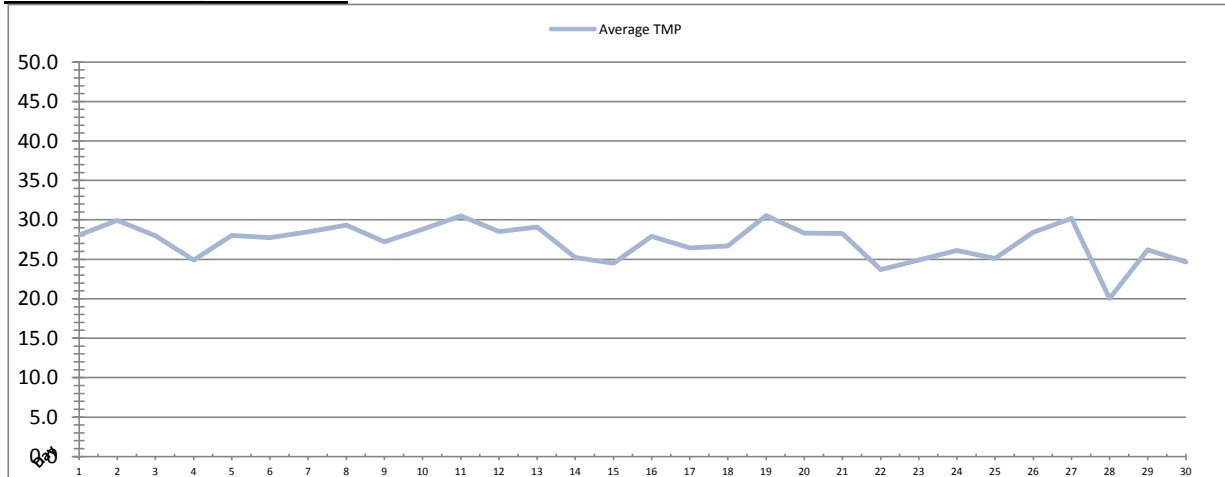
Date	Integrity Test Rack 2							
	Initial Pressure (kPa)	Final Pressure (kPa)	Test Duration (sec)	Change in Pressure (kPa)	UCL	Within UCL	Average TMP (kPa)	Max TMP (kPa)
1	200.5	199.7	300.0	0.8	2.0	✓ 2.0	25.1	62.3
2	200.7	199.8	300.0	0.8	2.0	✓ 2.0	30.1	67.9
3	199.9	198.6	300.0	1.3	2.0	✓ 2.0	28.3	91.8
4	200.5	199.8	300.0	0.8	2.0	✓ 2.0	25.4	74.7
5	200.5	199.5	300.0	1.0	2.0	✓ 2.0	27.9	70.8
6	199.7	198.3	300.0	1.4	2.0	✓ 2.0	28.3	70.1
7	200.7	199.8	300.0	0.8	2.0	✓ 2.0	28.2	66.2
8	200.3	199.6	300.0	0.8	2.0	✓ 2.0	28.6	72.1
9	200.1	198.7	300.0	1.4	2.0	✓ 2.0	27.3	68.6
10	200.1	198.8	300.0	1.3	2.0	✓ 2.0	28.9	77.1
11	200.6	199.7	300.0	0.8	2.0	✓ 2.0	30.6	89.8
12	199.9	198.6	300.0	1.3	2.0	✓ 2.0	28.6	64.8
13	200.2	198.9	300.0	1.3	2.0	✓ 2.0	28.3	103.3
14	200.8	199.9	300.0	0.8	2.0	✓ 2.0	25.2	83.2
15	200.5	199.5	300.0	1.0	2.0	✓ 2.0	24.4	98.3
16	199.6	198.4	300.0	1.2	2.0	✓ 2.0	27.7	56.6
17	200.9	199.9	300.0	1.0	2.0	✓ 2.0	34.2	71.6
18	199.8	198.5	300.0	1.3	2.0	✓ 2.0	26.9	85.2
19	200.3	198.9	300.0	1.3	2.0	✓ 2.0	30.8	57.2
20	200.7	199.4	300.0	1.3	2.0	✓ 2.0	27.9	56.0
21	199.7	198.4	300.0	1.2	2.0	✓ 2.0	28.3	59.3
22	200.0	198.7	300.0	1.3	2.0	✓ 2.0	23.6	58.9
23	199.8	198.6	300.0	1.3	2.0	✓ 2.0	25.0	53.1
24	200.5	199.8	300.0	0.8	2.0	✓ 2.0	25.5	81.2
25	200.5	199.7	300.0	0.8	2.0	✓ 2.0	24.9	202.6
26	200.1	198.7	300.0	1.3	2.0	✓ 2.0	28.4	53.9
27	200.7	199.9	300.0	0.8	2.0	✓ 2.0	29.7	56.9
28	199.6	198.4	300.0	1.3	2.0	✓ 2.0	27.8	101.9
29	200.4	199.6	300.0	0.8	2.0	✓ 2.0	25.6	49.4
30	200.5	199.7	300.0	0.8	2.0	✓ 2.0	24.2	48.5
<b>Total</b>								
Average	200.3	199.2	300.0	1.1	2.0	2.0	27.5	75.1
Maximum	200.9	199.9	300.0	1.4	2.0	2.0	34.2	202.6
Date	17-Apr	14-Apr	1-Apr	6-Apr	1-Apr	1-Apr	17-Apr	25-Apr
Minimum	199.6	198.3	300.0	0.8	2.0	2.0	23.6	48.5
Date	16-Apr	6-Apr	1-Apr	4-Apr	1-Apr	1-Apr	22-Apr	30-Apr

Notes:



# Membranes Monthly Report

Month: **April-16**



Date	Integrity Test Rack 3							
	Initial Pressure (kPa)	Final Pressure (kPa)	Test Duration (sec)	Change in Pressure (kPa)	UCL	Within UCL	Average TMP (kPa)	Max TMP (kPa)
1	191.7	190.4	300.0	1.4	2.0	✓ 2.0	28.1	117.2
2	192.3	190.9	300.0	1.4	2.0	✓ 2.0	29.9	63.7
3	191.1	189.8	300.0	1.3	2.0	✓ 2.0	28.0	82.8
4	191.2	190.1	300.0	1.1	2.0	✓ 2.0	24.9	66.7
5	191.1	189.6	300.0	1.5	2.0	✓ 2.0	28.0	83.3
6	191.2	189.9	300.0	1.3	2.0	✓ 2.0	27.8	64.6
7	191.3	190.1	300.0	1.1	2.0	✓ 2.0	28.5	65.1
8	192.0	190.7	300.0	1.3	2.0	✓ 2.0	29.3	65.7
9	191.9	190.6	300.0	1.3	2.0	✓ 2.0	27.2	107.0
10	192.1	190.7	300.0	1.5	2.0	✓ 2.0	28.8	78.8
11	191.5	189.9	300.0	1.6	2.0	✓ 2.0	30.5	70.4
12	191.3	190.1	300.0	1.2	2.0	✓ 2.0	28.5	64.5
13	191.4	189.9	300.0	1.4	2.0	✓ 2.0	29.1	126.1
14	191.4	190.3	300.0	1.1	2.0	✓ 2.0	25.2	74.2
15	192.5	191.2	300.0	1.3	2.0	✓ 2.0	24.5	97.8
16	191.6	190.3	300.0	1.3	2.0	✓ 2.0	27.9	56.4
17	192.0	190.7	300.0	1.2	2.0	✓ 2.0	26.4	71.3
18	191.2	190.1	300.0	1.1	2.0	✓ 2.0	26.7	63.5
19	191.6	190.4	300.0	1.3	2.0	✓ 2.0	30.6	80.2
20	191.5	190.2	300.0	1.3	2.0	✓ 2.0	28.3	55.5
21	191.5	190.2	300.0	1.3	2.0	✓ 2.0	28.3	55.5
22	191.4	190.2	300.0	1.2	2.0	✓ 2.0	23.7	61.2
23	191.2	189.8	300.0	1.3	2.0	✓ 2.0	24.9	82.3
24	191.2	189.6	300.0	1.6	2.0	✓ 2.0	26.1	55.6
25	191.5	190.0	300.0	1.5	2.0	✓ 2.0	25.1	193.6
26	191.3	189.9	300.0	1.3	2.0	✓ 2.0	28.4	54.9
27	191.1	190.0	300.0	1.1	2.0	✓ 2.0	30.2	59.1
28	191.5	190.0	300.0	1.5	2.0	✓ 2.0	20.0	111.3
29	191.0	189.8	300.0	1.3	2.0	✓ 2.0	26.2	49.1
30	190.9	189.4	300.0	1.5	2.0	✓ 2.0	24.7	49.0
<b>Total</b>								
Average	191.5	190.2	300.0	1.3	2.0	2.0	27.2	77.5
Maximum	192.5	191.2	300.0	1.6	2.0	2.0	30.6	193.6
Date	15-Apr	15-Apr	1-Apr	11-Apr	1-Apr	1-Apr	19-Apr	25-Apr
Minimum	190.9	189.4	300.0	1.1	2.0	2.0	20.0	49.0
Date	30-Apr	30-Apr	1-Apr	4-Apr	1-Apr	1-Apr	28-Apr	30-Apr

Notes:

---



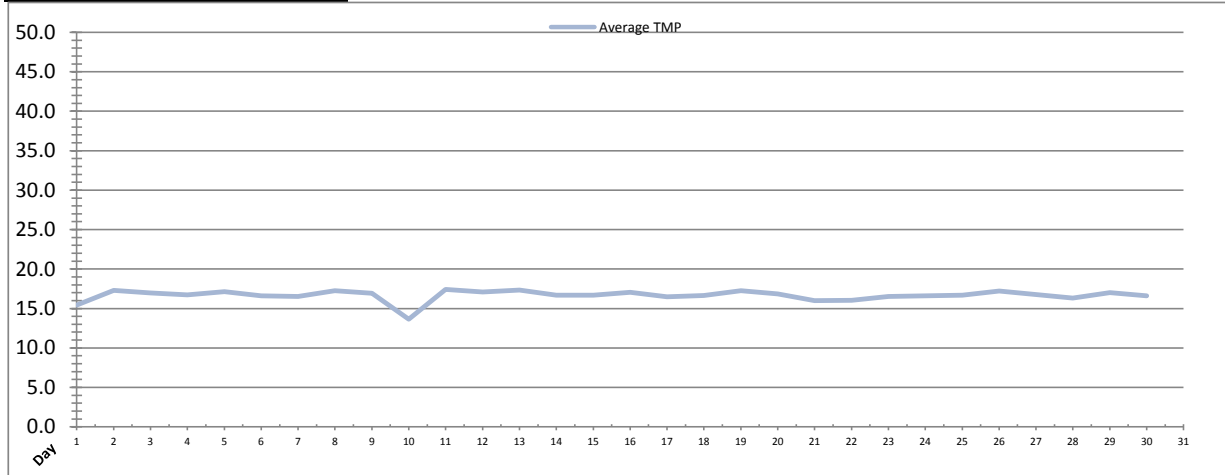
---



---

# Membranes Monthly Report

Month: **April-16**



Integrity Test Rack 4									
Date	Initial Pressure (kPa)	Final Pressure (kPa)	Test Duration (sec)	Change in Pressure (kPa)	UCL	Within UCL	Average TMP (kPa)	Max TMP (kPa)	
1	196.0	194.9	300.0	1.1	2.0	✓ 2.0	15.4	60.8	
2	196.4	195.3	300.0	1.1	2.0	✓ 2.0	17.3	43.7	
3	196.4	195.2	300.0	1.2	2.0	✓ 2.0	17.0	38.4	
4	196.0	194.7	300.0	1.2	2.0	✓ 2.0	16.7	48.4	
5	196.1	194.9	300.0	1.2	2.0	✓ 2.0	17.1	47.7	
6	195.9	194.9	300.0	1.1	2.0	✓ 2.0	16.6	38.9	
7	196.0	194.7	300.0	1.2	2.0	✓ 2.0	16.5	43.8	
8	195.0	193.6	300.0	1.4	2.0	✓ 2.0	17.2	57.4	
9	194.7	193.3	300.0	1.3	2.0	✓ 2.0	16.9	45.9	
10	194.7	193.4	300.0	1.3	2.0	✓ 2.0	13.6	46.1	
11	194.7	193.3	300.0	1.3	2.0	✓ 2.0	17.4	43.2	
12	195.1	194.1	300.0	1.0	2.0	✓ 2.0	17.1	43.1	
13	194.5	193.3	300.0	1.2	2.0	✓ 2.0	17.3	49.6	
14	194.8	193.5	300.0	1.3	2.0	✓ 2.0	16.7	39.8	
15	194.9	193.5	300.0	1.4	2.0	✓ 2.0	16.7	55.5	
16	195.0	193.7	300.0	1.3	2.0	✓ 2.0	17.1	35.7	
17	194.5	193.3	300.0	1.2	2.0	✓ 2.0	16.5	34.9	
18	194.8	193.6	300.0	1.3	2.0	✓ 2.0	16.6	34.9	
19	195.0	193.7	300.0	1.3	2.0	✓ 2.0	17.2	35.5	
20	194.9	193.6	300.0	1.3	2.0	✓ 2.0	16.8	34.8	
21	195.0	193.7	300.0	1.3	2.0	✓ 2.0	16.0	44.6	
22	195.3	194.4	300.0	0.9	2.0	✓ 2.0	16.0	33.7	
23	194.3	193.1	300.0	1.2	2.0	✓ 2.0	16.5	34.7	
24	194.9	193.7	300.0	1.2	2.0	✓ 2.0	16.6	34.4	
25	194.7	193.4	300.0	1.3	2.0	✓ 2.0	16.7	202.3	
26	194.9	193.7	300.0	1.3	2.0	✓ 2.0	17.2	34.7	
27	194.9	193.7	300.0	1.3	2.0	✓ 2.0	16.7	33.8	
28	194.5	193.3	300.0	1.3	2.0	✓ 2.0	16.3	37.4	
29	194.6	193.3	300.0	1.3	2.0	✓ 2.0	17.0	37.3	
30	194.8	193.6	300.0	1.3	2.0	✓ 2.0	16.6	37.2	
Total									
Average	195.1	193.9	300.0	1.2	2.0	2.0	16.7	46.9	
Maximum	196.4	195.3	300.0	1.4	2.0	2.0	17.4	202.3	
Date	2-Apr	2-Apr	1-Apr	8-Apr	1-Apr	1-Apr	11-Apr	25-Apr	
Minimum	194.3	193.1	300.0	0.9	2.0	2.0	13.6	33.7	
Date	23-Apr	23-Apr	1-Apr	22-Apr	1-Apr	1-Apr	10-Apr	22-Apr	

Notes:

---



---



---

# Membranes Monthly Report

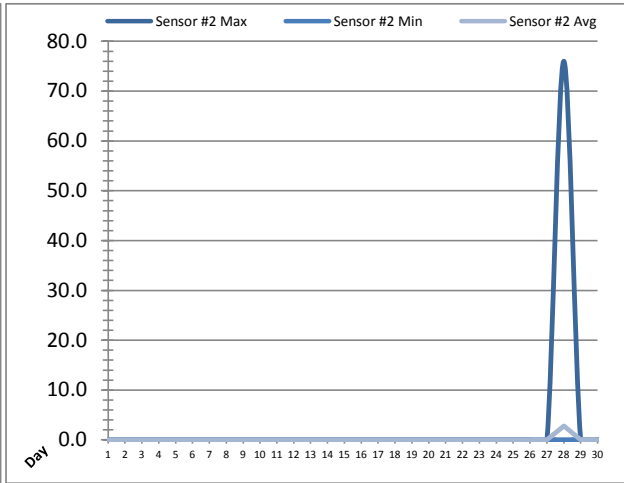
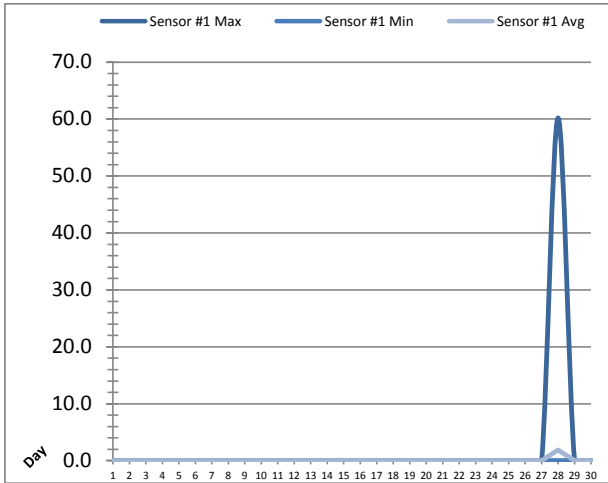
Month: April-16

Date	Membranes Monthly Performance							
	Rack 1 >0.1 NTU (Minutes)	Rack 1 Forward Flow (Minutes)	Rack 2 >0.1 NTU (Minutes)	Rack 2 Forward Flow (Minutes)	Rack 3 >0.1 NTU (Minutes)	Rack 3 Forward Flow (Minutes)	Rack 4 >0.1 NTU (Minutes)	Rack 4 Forward Flow (Minutes)
1	0.0	740.1	0.0	475.1	0.0	727.6	0.0	389.2
2	0.0	807.0	0.0	805.2	0.0	807.6	0.0	390.0
3	0.0	685.3	0.0	683.4	0.0	686.2	0.0	334.3
4	0.0	546.1	0.0	541.4	0.0	551.5	0.0	240.4
5	0.0	689.3	0.0	692.0	0.0	694.3	0.0	323.5
6	0.0	670.4	0.0	678.5	0.0	676.2	0.0	303.5
7	0.0	696.1	0.0	692.1	0.0	697.4	0.0	315.0
8	0.0	728.0	0.0	727.1	0.0	730.2	0.0	336.1
9	0.0	608.6	0.0	606.4	0.0	605.6	0.0	284.1
10	0.0	661.5	0.0	662.4	0.0	661.4	0.0	311.2
11	0.0	742.2	0.0	743.5	0.0	747.2	0.0	350.1
12	0.0	680.1	0.0	686.4	0.0	687.3	0.0	318.2
13	0.0	729.5	4.5	750.0	0.0	765.4	0.0	356.0
14	0.0	666.3	0.0	670.4	0.0	655.1	3.2	313.1
15	0.0	540.2	0.0	538.5	0.0	542.5	0.0	281.5
16	0.0	799.4	0.0	804.3	0.0	806.2	0.0	384.2
17	0.0	1170.5	0.0	1165.5	0.0	1169.0	0.0	293.5
18	0.0	714.1	0.0	718.6	0.0	720.6	0.0	332.1
19	0.0	960.2	0.0	954.5	0.0	956.5	0.0	465.2
20	0.0	823.0	0.0	828.5	0.0	830.2	0.0	383.4
21	0.0	856.0	0.0	857.5	0.0	858.3	0.0	417.1
22	0.0	596.2	0.0	593.6	0.0	598.0	0.0	286.6
23	0.0	692.2	0.0	693.1	0.0	690.4	0.0	334.1
24	0.0	769.6	0.0	767.3	0.0	775.4	0.0	378.1
25	0.0	701.6	0.0	701.1	0.0	704.2	0.0	335.2
26	0.0	933.6	0.0	937.1	0.0	934.5	0.0	457.1
27	0.0	1032.1	0.0	1025.3	0.0	1033.4	0.0	346.3
28	0.0	452.0	0.0	608.5	2.3	391.5	0.0	272.1
29	0.0	869.5	0.0	866.2	0.0	872.0	0.0	422.4
30	0.0	778.3	0.0	780.0	0.0	783.2	0.0	369.2
Total	0.0	22339.1	4.5	22253.6	2.3	22358.9	3.2	10323.1
Percent	0.00		0.02		0.01		0.03	
Maximum	0.0	1170.5	4.5	1165.5	2.3	1169.0	3.2	465.2
Date	1-Apr	17-Apr	13-Apr	17-Apr	28-Apr	17-Apr	14-Apr	19-Apr
Minimum	0.0	452.0	0.0	475.1	0.0	391.5	0.0	240.4
Date	1-Apr	28-Apr	1-Apr	1-Apr	1-Apr	28-Apr	1-Apr	4-Apr

Notes:  
 Met filter performance requirements of 99% of the readings for the turbidity off the racks (filters) were less than 0.1ntu.

# UV System Monthly Report

Month: **April-16**



Date	UV Reactor 1					
	Intensity Sensor 1 (mW/cm²)			Intensity Sensor 2 (mW/cm²)		
	Maximum	Minimum	Average	Maximum	Minimum	Average
1	0.0	0.0	0.0	0.0	0.0	0.0
2	0.0	0.0	0.0	0.0	0.0	0.0
3	0.0	0.0	0.0	0.0	0.0	0.0
4	0.0	0.0	0.0	0.0	0.0	0.0
5	0.0	0.0	0.0	0.0	0.0	0.0
6	0.0	0.0	0.0	0.0	0.0	0.0
7	0.0	0.0	0.0	0.0	0.0	0.0
8	0.0	0.0	0.0	0.0	0.0	0.0
9	0.0	0.0	0.0	0.0	0.0	0.0
10	0.0	0.0	0.0	0.0	0.0	0.0
11	0.0	0.0	0.0	0.0	0.0	0.0
12	0.0	0.0	0.0	0.0	0.0	0.0
13	0.0	0.0	0.0	0.0	0.0	0.0
14	0.0	0.0	0.0	0.0	0.0	0.0
15	0.0	0.0	0.0	0.0	0.0	0.0
16	0.0	0.0	0.0	0.0	0.0	0.0
17	0.0	0.0	0.0	0.0	0.0	0.0
18	0.0	0.0	0.0	0.0	0.0	0.0
19	0.0	0.0	0.0	0.0	0.0	0.0
20	0.0	0.0	0.0	0.0	0.0	0.0
21	0.0	0.0	0.0	0.0	0.0	0.0
22	0.0	0.0	0.0	0.0	0.0	0.0
23	0.0	0.0	0.0	0.0	0.0	0.0
24	0.0	0.0	0.0	0.0	0.0	0.0
25	0.0	0.0	0.0	0.0	0.0	0.0
26	0.0	0.0	0.0	0.0	0.0	0.0
27	0.0	0.0	0.0	0.0	0.0	0.0
28	60.2	0.0	1.9	76.0	0.0	2.8
29	0.0	0.0	0.0	0.0	0.0	0.0
30	0.0	0.0	0.0	0.0	0.0	0.0
Total						
Average	2.0	0.0	0.1	2.5	0.0	0.1
Maximum	60.2		1.9	76.0		2.8
Date	28-Apr		28-Apr	28-Apr		28-Apr
Minimum		0.0	0.0		0.0	0.0
Date		1-Apr	1-Apr		1-Apr	1-Apr

Notes:

---



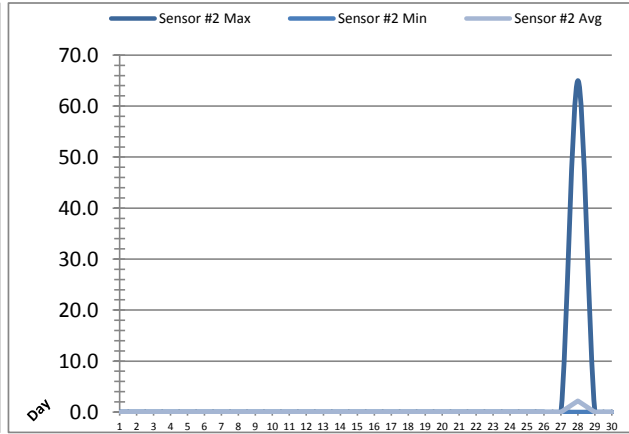
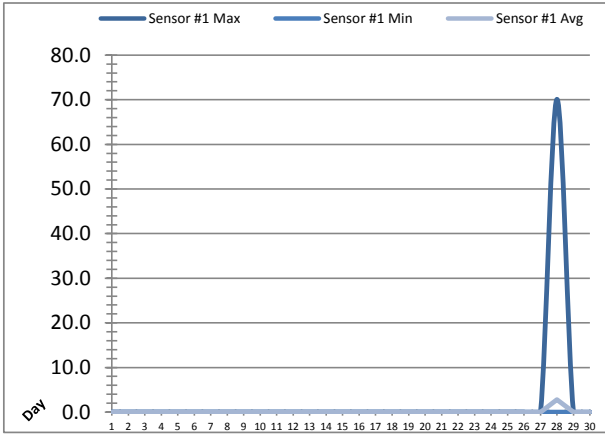
---



---

# UV System Monthly Report

Month: **April-16**



UV Reactor 2						
Date	Intensity Sensor 1 (mW/cm <sup>2</sup> )			Intensity Sensor 2 (mW/cm <sup>2</sup> )		
	Maximum	Minimum	Average	Maximum	Minimum	Average
1	0.0	0.0	0.0	0.0	0.0	0.0
2	0.0	0.0	0.0	0.0	0.0	0.0
3	0.0	0.0	0.0	0.0	0.0	0.0
4	0.0	0.0	0.0	0.0	0.0	0.0
5	0.0	0.0	0.0	0.0	0.0	0.0
6	0.0	0.0	0.0	0.0	0.0	0.0
7	0.0	0.0	0.0	0.0	0.0	0.0
8	0.0	0.0	0.0	0.0	0.0	0.0
9	0.0	0.0	0.0	0.0	0.0	0.0
10	0.0	0.0	0.0	0.0	0.0	0.0
11	0.0	0.0	0.0	0.0	0.0	0.0
12	0.0	0.0	0.0	0.0	0.0	0.0
13	0.0	0.0	0.0	0.0	0.0	0.0
14	0.0	0.0	0.0	0.0	0.0	0.0
15	0.0	0.0	0.0	0.0	0.0	0.0
16	0.0	0.0	0.0	0.0	0.0	0.0
17	0.0	0.0	0.0	0.0	0.0	0.0
18	0.0	0.0	0.0	0.0	0.0	0.0
19	0.0	0.0	0.0	0.0	0.0	0.0
20	0.0	0.0	0.0	0.0	0.0	0.0
21	0.0	0.0	0.0	0.0	0.0	0.0
22	0.0	0.0	0.0	0.0	0.0	0.0
23	0.0	0.0	0.0	0.0	0.0	0.0
24	0.0	0.0	0.0	0.0	0.0	0.0
25	0.0	0.0	0.0	0.0	0.0	0.0
26	0.0	0.0	0.0	0.0	0.0	0.0
27	0.0	0.0	0.0	0.0	0.0	0.0
28	70.1	0.0	2.8	65.0	0.0	2.2
29	0.0	0.0	0.0	0.0	0.0	0.0
30	0.0	0.0	0.0	0.0	0.0	0.0
Total						
Average	2.3	0.0	0.1	2.2	0.0	0.1
Maximum	70.1		2.8	65.0		2.2
Date	28-Apr		28-Apr	28-Apr		28-Apr
Minimum		0.0	0.0		0.0	0.0
Date		1-Apr	1-Apr		1-Apr	1-Apr

Notes:

---



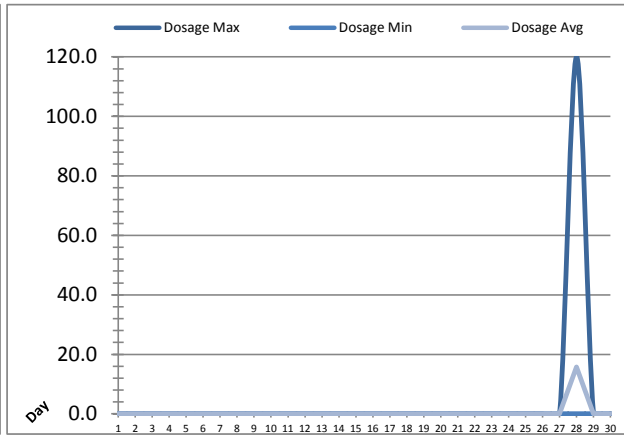
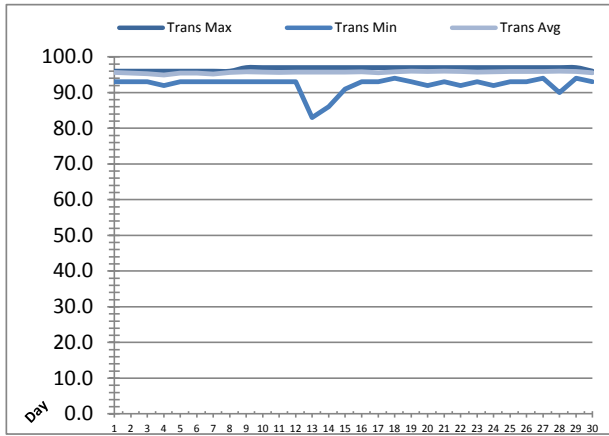
---



---

# UV System Monthly Report

Month: **April-16**



UV System							
Date	Transmittance (%)			Dosage (mJ/cm <sup>2</sup> )			Inlet Flow (L/s)
	Maximum	Minimum	Average	Maximum	Minimum	Average	Maximum
1	96.00	93.00	95.66	0.0	0.0	0.0	96.1
2	96.00	93.00	95.43	0.0	0.0	0.0	90.1
3	96.00	93.00	95.28	0.0	0.0	0.0	89.2
4	96.00	92.00	94.94	0.0	0.0	0.0	89.2
5	96.00	93.00	95.43	0.0	0.0	0.0	90.6
6	96.00	93.00	95.47	0.0	0.0	0.0	89.7
7	96.00	93.00	95.18	0.0	0.0	0.0	90.2
8	96.00	93.00	95.67	0.0	0.0	0.0	93.6
9	97.00	93.00	95.82	0.0	0.0	0.0	87.0
10	97.00	93.00	95.75	0.0	0.0	0.0	86.7
11	97.00	93.00	95.65	0.0	0.0	0.0	87.9
12	97.00	93.00	95.69	0.0	0.0	0.0	90.3
13	97.00	83.00	95.75	0.0	0.0	0.0	88.2
14	97.00	86.00	95.73	0.0	0.0	0.0	89.7
15	97.00	91.00	95.76	0.0	0.0	0.0	145.8
16	97.00	93.00	95.80	0.0	0.0	0.0	98.7
17	97.00	93.00	95.57	0.0	0.0	0.0	87.9
18	97.00	94.00	95.85	0.0	0.0	0.0	93.9
19	97.00	93.00	95.98	0.0	0.0	0.0	89.1
20	97.00	92.00	95.94	0.0	0.0	0.0	89.1
21	97.00	93.00	95.96	0.0	0.0	0.0	91.2
22	97.00	92.00	95.95	0.0	0.0	0.0	91.1
23	97.00	93.00	95.77	0.0	0.0	0.0	91.2
24	97.00	92.00	95.81	0.0	0.0	0.0	88.8
25	97.00	93.00	95.88	0.0	0.0	0.0	93.8
26	97.00	93.00	95.86	0.0	0.0	0.0	89.5
27	97.00	94.00	95.90	0.0	0.0	0.0	92.0
28	97.00	90.00	95.99	120.0	0.0	15.7	88.3
29	97.00	94.00	95.92	0.0	0.0	0.0	89.5
30	96.00	93.00	95.52	0.0	0.0	0.0	89.8
Total							
Average	96.70	92.23	95.70	4.0	0.0	0.5	92.3
Maximum	97.00		95.99	120.0		15.7	145.8
Date	9-Apr		28-Apr	28-Apr		28-Apr	15-Apr
Minimum		83.00	94.94		0.0	0.0	
Date		13-Apr	4-Apr		1-Apr	1-Apr	

Notes:

---



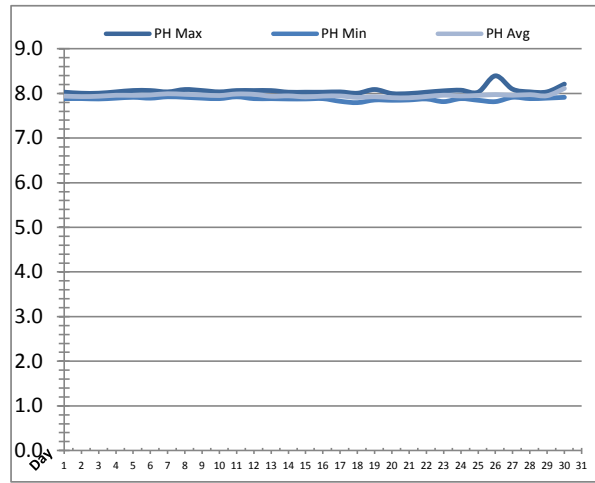
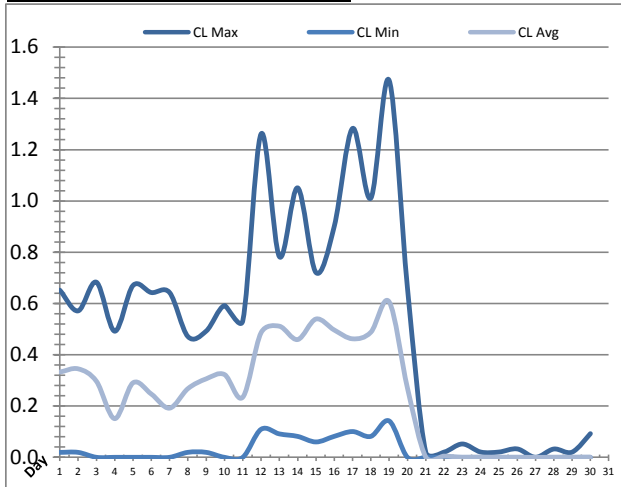
---



---

# Plant Quality Report

Month: **April-16**



Date	Strainer Chlorine Residual			Strainer pH		
	AIT_2003_CL (ppm)			AIT_2003_PH		
	Maximum	Minimum	Average	Maximum	Minimum	Average
1	0.65	0.02	0.33	8.03	7.88	7.94
2	0.57	0.02	0.35	8.00	7.88	7.93
3	0.68	0.00	0.30	8.00	7.88	7.94
4	0.49	0.00	0.15	8.03	7.89	7.96
5	0.67	0.00	0.29	8.07	7.91	7.96
6	0.64	0.00	0.25	8.06	7.89	7.97
7	0.64	0.00	0.19	8.03	7.93	7.99
8	0.47	0.02	0.27	8.09	7.91	7.98
9	0.49	0.02	0.31	8.06	7.89	7.97
10	0.59	0.00	0.32	8.03	7.88	7.95
11	0.53	0.00	0.23	8.06	7.92	7.99
12	1.26	0.11	0.49	8.06	7.88	7.98
13	0.78	0.09	0.51	8.06	7.88	7.94
14	1.05	0.08	0.46	8.03	7.88	7.94
15	0.72	0.06	0.54	8.03	7.88	7.92
16	0.90	0.08	0.50	8.03	7.88	7.94
17	1.28	0.10	0.46	8.03	7.82	7.94
18	1.01	0.08	0.49	8.00	7.79	7.91
19	1.47	0.14	0.61	8.09	7.85	7.93
20	0.66	0.00	0.27	8.00	7.85	7.91
21	0.02	0.00	0.00	8.00	7.85	7.90
22	0.02	0.00	0.00	8.03	7.88	7.93
23	0.05	0.00	0.00	8.06	7.82	7.96
24	0.02	0.00	0.00	8.07	7.88	7.94
25	0.02	0.00	0.00	8.03	7.85	7.96
26	0.03	0.00	0.00	8.39	7.82	7.97
27	0.00	0.00	0.00	8.09	7.91	7.96
28	0.03	0.00	0.00	8.03	7.88	7.97
29	0.02	0.00	0.00	8.04	7.89	7.95
30	0.09	0.00	0.00	8.21	7.91	8.11
Total						
Average	0.53	0.03	0.24	8.06	7.88	7.95
Maximum	1.47		0.61	8.39		8.11
Date	19-Apr		19-Apr	26-Apr		30-Apr
Minimum		0.00	0.00		7.79	7.90
Date		3-Apr	27-Apr		18-Apr	21-Apr

Notes:

---



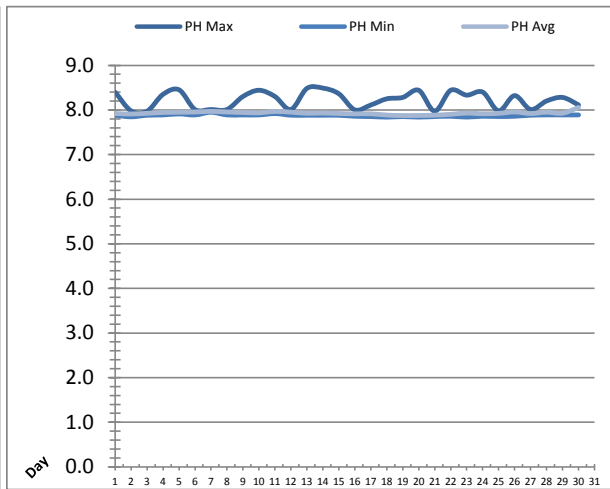
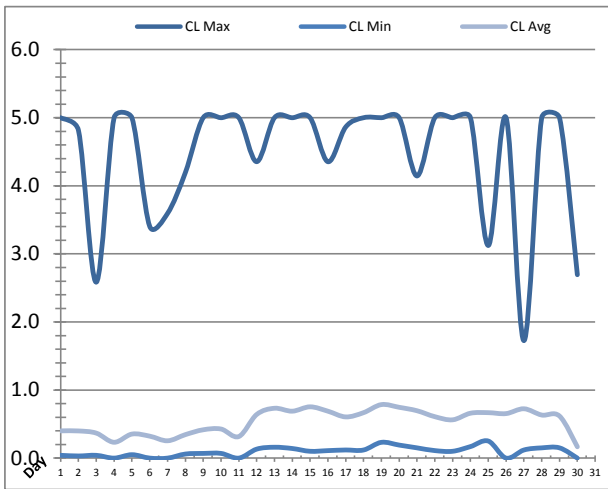
---



---

# Plant Quality Report

Month: April-16



Date	Inlet UV Chlorine Residual			Inlet UV pH		
	AIT_5005_CL (ppm)			AIT_5005_PH		
	Maximum	Minimum	Average	Maximum	Minimum	Average
1	✓ 5.00	✓ 0.04	0.40	8.40	7.88	7.92
2	✓ 4.81	✓ 0.03	0.40	7.98	7.85	7.91
3	✓ 2.58	✓ 0.04	0.37	7.97	7.88	7.92
4	✓ 5.00	✓ 0.00	0.23	8.35	7.89	7.94
5	✓ 5.00	✓ 0.05	0.35	8.45	7.91	7.95
6	✓ 3.40	✓ 0.00	0.32	8.01	7.89	7.95
7	✓ 3.59	✓ 0.00	0.26	8.01	7.95	7.97
8	✓ 4.19	✓ 0.06	0.35	8.01	7.89	7.95
9	✓ 5.00	✓ 0.07	0.42	8.30	7.89	7.94
10	✓ 5.00	✓ 0.07	0.43	8.44	7.89	7.94
11	✓ 5.00	✓ 0.00	0.32	8.30	7.92	7.97
12	✓ 4.35	✓ 0.13	0.64	8.01	7.88	7.95
13	✓ 5.00	✓ 0.16	0.73	8.48	7.88	7.93
14	✓ 5.00	✓ 0.14	0.69	8.49	7.88	7.93
15	✓ 5.00	✓ 0.10	0.75	8.36	7.88	7.92
16	✓ 4.35	✓ 0.11	0.69	8.00	7.86	7.91
17	✓ 4.86	✓ 0.12	0.61	8.11	7.85	7.91
18	✓ 5.00	✓ 0.12	0.67	8.25	7.84	7.89
19	✓ 5.00	✓ 0.23	0.79	8.28	7.85	7.87
20	✓ 5.00	✓ 0.19	0.75	8.44	7.84	7.88
21	✓ 4.14	✓ 0.15	0.70	7.97	7.85	7.88
22	✓ 5.00	✓ 0.11	0.61	8.44	7.86	7.90
23	✓ 5.00	✓ 0.10	0.56	8.33	7.84	7.93
24	✓ 5.00	✓ 0.17	0.66	8.40	7.86	7.92
25	✓ 3.12	✓ 0.25	0.67	7.98	7.85	7.92
26	✓ 5.00	✓ 0.00	0.65	8.32	7.86	7.96
27	✓ 1.73	✓ 0.12	0.73	8.01	7.88	7.92
28	✓ 5.00	✓ 0.15	0.63	8.20	7.89	7.95
29	✓ 5.00	✓ 0.15	0.62	8.28	7.89	7.93
30	✓ 2.69	✓ 0.00	0.17	8.11	7.89	8.06
Total						
Average	4.46	0.10	0.54	8.22	7.88	7.93
Maximum	5.00		0.79	8.49		8.06
Date	1-Apr		19-Apr	14-Apr		30-Apr
Minimum		0.00	0.17		7.84	7.87
Date		7-Apr	30-Apr		18-Apr	19-Apr

Notes:

---



---

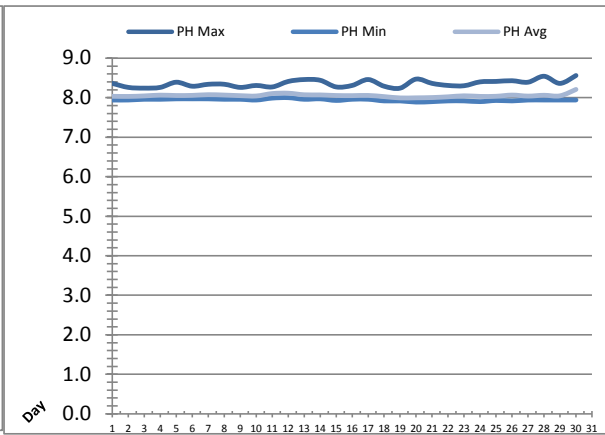
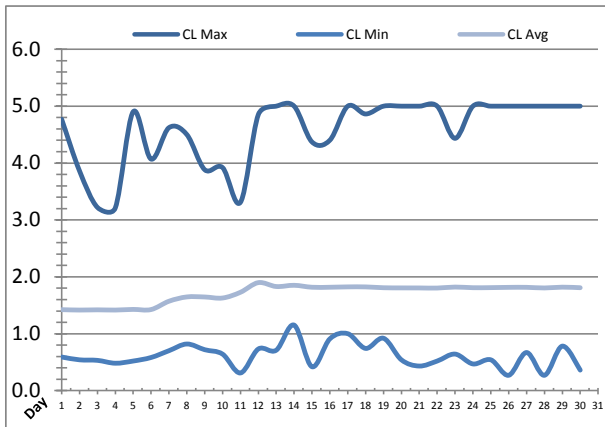


---

**Plant Quality Report**

Month: April-16



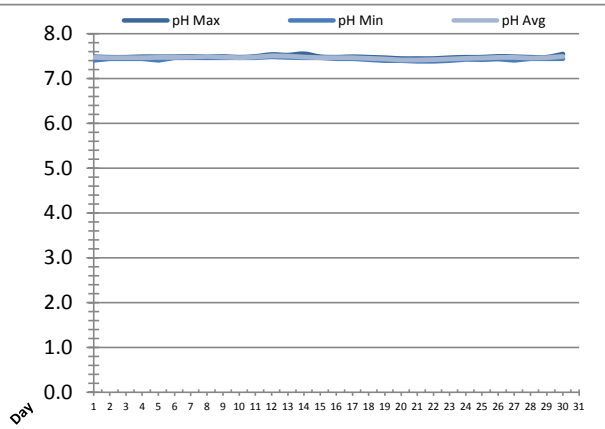
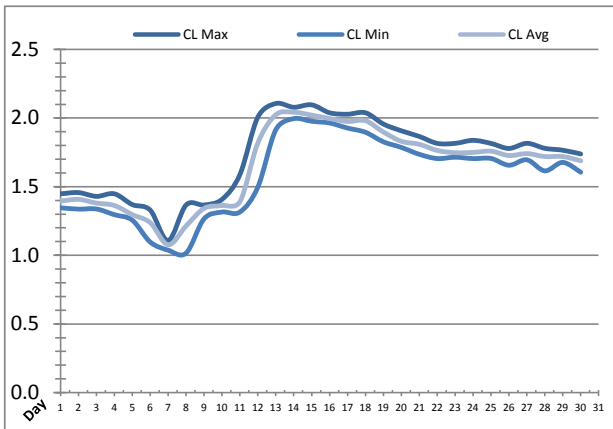


Date	Discharge UV Chlorine Residual			Discharge UV pH		
	AIT_5006_CL (ppm)			AIT_5006_PH		
	Maximum	Minimum	Average	Maximum	Minimum	Average
1	4.77	0.59	1.42	8.36	7.94	8.04
2	3.86	0.54	1.42	8.26	7.94	8.03
3	3.22	0.53	1.42	8.24	7.96	8.04
4	3.21	0.48	1.42	8.26	7.96	8.06
5	4.90	0.52	1.43	8.39	7.97	8.06
6	4.07	0.58	1.43	8.29	7.97	8.06
7	4.62	0.70	1.57	8.34	7.97	8.08
8	4.50	0.82	1.65	8.34	7.96	8.07
9	3.88	0.72	1.65	8.26	7.96	8.05
10	3.92	0.64	1.63	8.31	7.94	8.04
11	3.31	0.31	1.73	8.27	7.99	8.10
12	4.85	0.73	1.90	8.41	8.00	8.11
13	5.00	0.71	1.83	8.46	7.96	8.07
14	5.00	1.15	1.85	8.44	7.97	8.07
15	4.37	0.42	1.82	8.27	7.93	8.06
16	4.40	0.91	1.82	8.31	7.96	8.05
17	5.00	1.00	1.82	8.46	7.96	8.06
18	4.86	0.74	1.82	8.29	7.92	8.03
19	5.00	0.92	1.81	8.24	7.92	7.99
20	5.00	0.54	1.81	8.47	7.89	8.00
21	5.00	0.43	1.81	8.36	7.90	8.00
22	5.00	0.52	1.80	8.31	7.92	8.02
23	4.43	0.64	1.82	8.30	7.92	8.05
24	5.00	0.47	1.81	8.40	7.90	8.03
25	5.00	0.54	1.81	8.41	7.93	8.04
26	5.00	0.27	1.82	8.43	7.92	8.07
27	5.00	0.67	1.82	8.39	7.94	8.04
28	5.00	0.27	1.80	8.54	7.94	8.06
29	5.00	0.78	1.82	8.36	7.94	8.05
30	5.00	0.36	1.81	8.56	7.94	8.21
Total						
Average	4.57	0.62	1.71	8.36	7.94	8.05
Maximum	5.00		1.90	8.56		8.21
Date	13-Apr		12-Apr	30-Apr		30-Apr
Minimum		0.27	1.42		7.89	7.99
Date		28-Apr	2-Apr		20-Apr	19-Apr

Notes:

# Plant Quality Report

Month: **April-16**

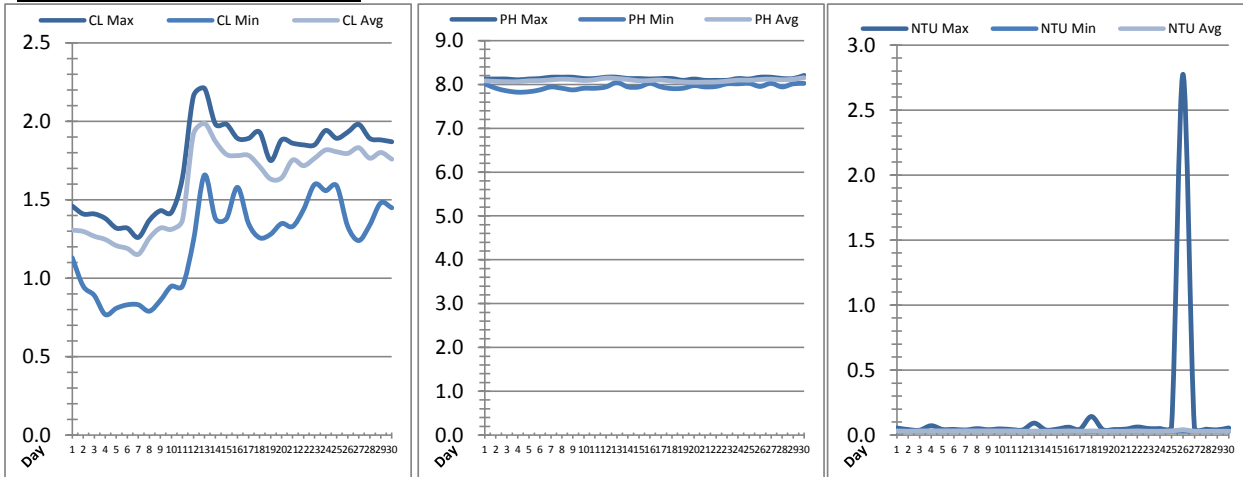


Date	Suction Header Chlorine Res.			Suction Header pH			Distribution CT Calc Total		
	AIT_7001_CL (ppm)			AIT_7001_PH (m)			REAL_CT_CALC_TOTAL (mg*ml/min)		
	Maximum	Minimum	Average	Maximum	Minimum	Average	Maximum	Minimum	Average
1	✓ 1.45	✓ 1.35	1.40	7.49	7.41	7.47	1022.22	0.00	182.52
2	✓ 1.46	✓ 1.34	1.41	7.48	7.44	7.46	3638.02	0.00	229.71
3	✓ 1.43	✓ 1.34	1.38	7.48	7.44	7.47	7855.91	0.00	154.91
4	✓ 1.45	✓ 1.30	1.36	7.49	7.44	7.46	8077.57	0.00	130.38
5	✓ 1.37	✓ 1.26	1.30	7.49	7.41	7.47	7098.85	0.00	321.69
6	✓ 1.33	✓ 1.10	1.24	7.49	7.46	7.47	7729.52	0.00	203.78
7	✓ 1.11	✓ 1.04	1.08	7.49	7.46	7.48	6102.89	0.00	174.12
8	✓ 1.37	✓ 1.02	1.21	7.49	7.46	7.49	5443.44	0.00	216.87
9	✓ 1.37	✓ 1.27	1.34	7.49	7.46	7.48	8359.00	0.00	171.24
10	✓ 1.41	✓ 1.32	1.36	7.48	7.46	7.47	4287.48	0.00	342.98
11	✓ 1.59	✓ 1.32	1.39	7.49	7.46	7.48	8878.72	0.00	211.00
12	✓ 2.01	✓ 1.50	1.82	7.54	7.49	7.51	10837.43	0.00	265.52
13	✓ 2.11	✓ 1.91	2.02	7.52	7.48	7.50	11969.52	0.00	365.11
14	✓ 2.08	✓ 2.00	2.04	7.55	7.46	7.48	12274.72	0.00	335.21
15	✓ 2.10	✓ 1.98	2.02	7.49	7.46	7.47	11145.81	0.00	248.88
16	✓ 2.04	✓ 1.96	2.00	7.48	7.45	7.47	11294.02	0.00	488.96
17	✓ 2.03	✓ 1.93	1.97	7.49	7.44	7.47	11590.29	0.00	508.28
18	✓ 2.04	✓ 1.90	1.98	7.48	7.43	7.45	3964.00	0.00	283.44
19	✓ 1.96	✓ 1.83	1.90	7.47	7.40	7.44	10667.40	0.00	255.04
20	✓ 1.91	✓ 1.79	1.83	7.45	7.40	7.42	8283.88	0.00	286.48
21	✓ 1.87	✓ 1.74	1.81	7.45	7.38	7.42	10356.78	0.00	360.35
22	✓ 1.82	✓ 1.70	1.76	7.45	7.39	7.43	10122.23	0.00	291.89
23	✓ 1.82	✓ 1.71	1.75	7.47	7.40	7.44	9621.38	0.00	336.28
24	✓ 1.84	✓ 1.70	1.75	7.48	7.43	7.45	14945.36	0.00	467.98
25	✓ 1.82	✓ 1.71	1.76	7.48	7.43	7.46	11627.83	0.00	259.80
26	✓ 1.78	✓ 1.66	1.73	7.49	7.43	7.47	3167.58	0.00	288.26
27	✓ 1.82	✓ 1.70	1.74	7.49	7.41	7.47	9857.11	0.00	487.25
28	✓ 1.78	✓ 1.62	1.72	7.48	7.44	7.46	4557.03	0.00	247.66
29	✓ 1.77	✓ 1.68	1.72	7.48	7.44	7.47	3875.31	0.00	273.63
30	✓ 1.74	✓ 1.61	1.69	7.55	7.44	7.50	4580.10	0.00	264.41
Total									
Average	1.72	1.57	1.65	7.49	7.44	7.47	7.49	7.44	7.47
Maximum	2.11		2.04	7.55		7.51	7.55		7.51
Date	13-Apr		14-Apr	14-Apr		12-Apr	14-Apr		12-Apr
Minimum		1.02	1.08		7.38	7.42		7.38	7.42
Date		8-Apr	7-Apr		21-Apr	21-Apr		21-Apr	21-Apr

Notes:  
 Raised chlorine setpoint to achieve an average residual of 1.70mg/L leaving the plant.

# Plant Quality Report

Month: April-16



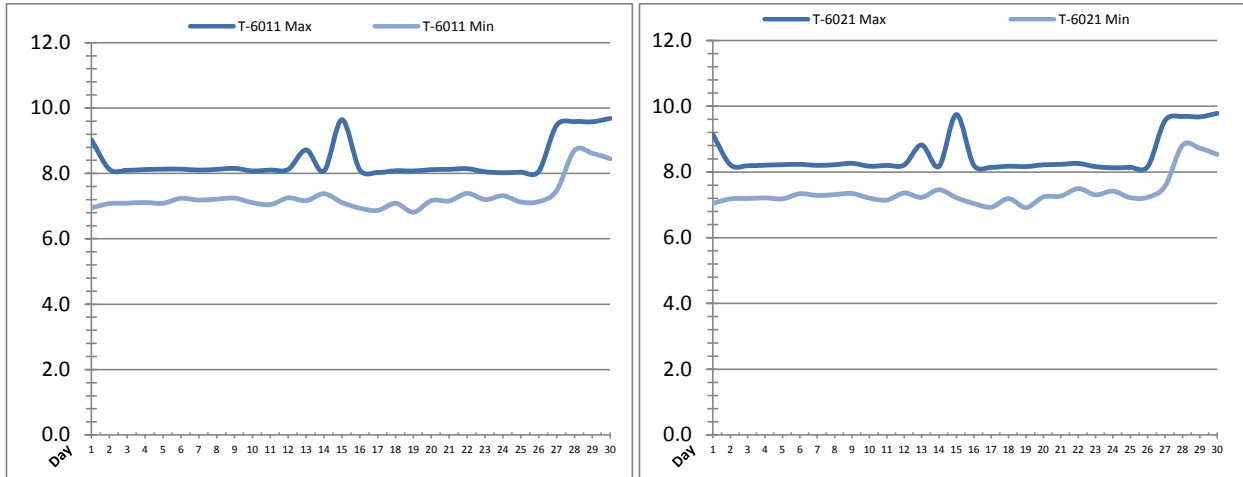
Date	Distribution Chlorine Header			Distribution pH			Distribution Turbidity		
	AIT_7004_CL (ppm)			AIT_7004_PH (mg/L)			AIT_7003 (mg/L)		
	Maximum	Minimum	Average	Maximum	Minimum	Average	Maximum	Minimum	Average
1	1.46	1.13	1.31	8.12	8.01	8.08	0.05	0.03	0.03
2	1.41	0.95	1.30	8.12	7.91	8.07	0.04	0.03	0.03
3	1.41	0.89	1.27	8.12	7.85	8.06	0.04	0.03	0.03
4	1.38	0.77	1.25	8.11	7.82	8.06	0.07	0.03	0.03
5	1.32	0.81	1.21	8.12	7.83	8.08	0.04	0.03	0.03
6	1.32	0.83	1.19	8.13	7.88	8.09	0.04	0.03	0.03
7	1.26	0.83	1.15	8.17	7.94	8.11	0.04	0.03	0.03
8	1.37	0.79	1.26	8.17	7.91	8.12	0.05	0.03	0.03
9	1.43	0.86	1.32	8.17	7.88	8.11	0.04	0.03	0.03
10	1.42	0.95	1.31	8.13	7.91	8.09	0.05	0.03	0.03
11	1.64	0.95	1.37	8.14	7.91	8.11	0.04	0.03	0.03
12	2.16	1.24	1.92	8.17	7.94	8.15	0.04	0.03	0.03
13	2.21	1.66	1.99	8.17	8.04	8.14	0.09	0.03	0.03
14	1.98	1.38	1.87	8.14	7.94	8.11	0.04	0.03	0.03
15	1.98	1.38	1.79	8.14	7.94	8.09	0.05	0.03	0.03
16	1.89	1.58	1.78	8.12	8.03	8.09	0.06	0.03	0.03
17	1.89	1.35	1.78	8.13	7.94	8.10	0.05	0.03	0.03
18	1.93	1.26	1.71	8.14	7.91	8.07	0.14	0.03	0.03
19	1.75	1.28	1.63	8.09	7.91	8.06	0.04	0.03	0.03
20	1.88	1.35	1.64	8.12	7.97	8.05	0.04	0.03	0.03
21	1.86	1.33	1.75	8.09	7.94	8.05	0.05	0.03	0.03
22	1.85	1.44	1.72	8.09	7.95	8.06	0.06	0.03	0.03
23	1.85	1.60	1.76	8.09	8.01	8.08	0.05	0.03	0.03
24	1.94	1.56	1.82	8.14	8.01	8.10	0.05	0.03	0.03
25	1.89	1.59	1.81	8.12	8.03	8.10	0.06	0.03	0.03
26	1.93	1.33	1.80	8.17	7.95	8.11	2.78	0.03	0.04
27	1.98	1.24	1.83	8.17	8.03	8.12	0.06	0.03	0.03
28	1.89	1.34	1.76	8.14	7.94	8.11	0.05	0.03	0.03
29	1.88	1.48	1.80	8.14	8.01	8.12	0.04	0.03	0.03
30	1.87	1.45	1.76	8.21	8.03	8.15	0.06	0.03	0.03
Total									
Average	1.73	1.22	1.59	8.14	7.95	8.09	0.1	0.0	0.0
Maximum	2.21		1.99	8.21		8.15	2.8		0.0
Date	13-Apr		13-Apr	30-Apr		30-Apr	26-Apr		26-Apr
Minimum		0.77	1.15		7.82	8.05		0.0	0.0
Date		4-Apr	7-Apr		4-Apr	20-Apr		18-Apr	29-Apr

Notes:

26: distribution turbidity spike due to maintenance

# Raw Well/Treated Storage Report

Month: **April-16**

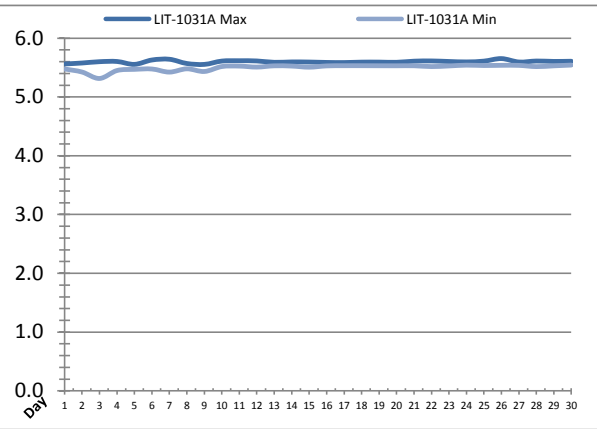
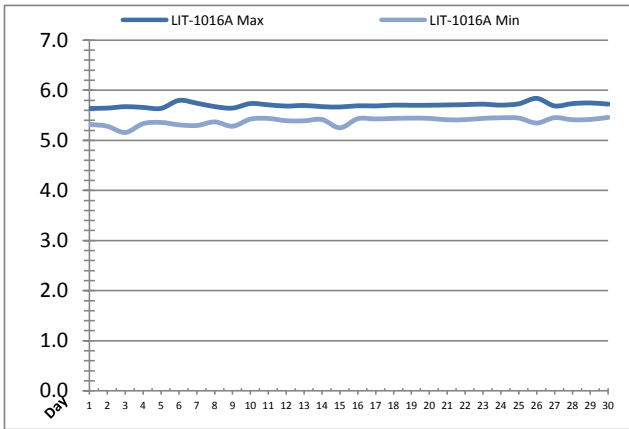


Date	Treated Water Storage Tank					
	T-6011 (m)			T-6021 (m)		
	Maximum	Minimum	Average	Maximum	Minimum	Average
1	9.0	7.0	7.7	9.1	7.0	7.8
2	8.1	7.1	7.7	8.2	7.2	7.8
3	8.1	7.1	7.7	8.2	7.2	7.8
4	8.1	7.1	7.8	8.2	7.2	7.9
5	8.1	7.1	7.7	8.2	7.2	7.8
6	8.1	7.2	7.7	8.2	7.3	7.8
7	8.1	7.2	7.7	8.2	7.3	7.8
8	8.1	7.2	7.7	8.2	7.3	7.8
9	8.2	7.2	7.8	8.3	7.3	7.9
10	8.1	7.1	7.8	8.2	7.2	7.9
11	8.1	7.0	7.7	8.2	7.1	7.8
12	8.1	7.3	7.7	8.2	7.4	7.8
13	8.7	7.2	7.8	8.8	7.2	7.9
14	8.1	7.4	7.8	8.2	7.5	7.9
15	9.6	7.1	8.5	9.7	7.2	8.6
16	8.1	6.9	7.7	8.2	7.0	7.8
17	8.0	6.9	7.4	8.1	6.9	7.5
18	8.1	7.1	7.7	8.2	7.2	7.8
19	8.1	6.8	7.5	8.2	6.9	7.6
20	8.1	7.2	7.7	8.2	7.2	7.8
21	8.1	7.2	7.6	8.2	7.3	7.7
22	8.1	7.4	7.8	8.3	7.5	7.9
23	8.1	7.2	7.7	8.2	7.3	7.8
24	8.0	7.3	7.7	8.1	7.4	7.8
25	8.0	7.1	7.7	8.1	7.2	7.8
26	8.1	7.1	7.6	8.2	7.2	7.7
27	9.5	7.5	8.4	9.6	7.6	8.5
28	9.6	8.7	9.3	9.7	8.8	9.4
29	9.6	8.6	9.1	9.7	8.7	9.2
30	9.7	8.4	9.1	9.8	8.5	9.2
Total						
Average	8.4	7.3	7.9	8.5	7.4	8.0
Maximum	9.7		9.3	9.8		9.4
Date	30-Apr		28-Apr	30-Apr		28-Apr
Minimum		6.8	7.4		6.9	7.5
Date		19-Apr	17-Apr		19-Apr	17-Apr

Notes:  
 27th: operating levels back to summer mode (levels lowered in winter to allow for ice)

# Raw Well/Treated Storage Report

Month: April-16



Date	Low Lift Intake Levels					
	Wet Well #1 (LIT-1016A) (m)			Wet Well #2 (LIT-1031A) (m)		
	Maximum	Minimum	Average	Maximum	Minimum	Average
1	5.6	5.3	5.5	5.6	5.5	5.5
2	5.6	5.3	5.5	5.6	5.4	5.5
3	5.7	5.2	5.4	5.6	5.3	5.5
4	5.7	5.3	5.5	5.6	5.4	5.5
5	5.6	5.4	5.5	5.6	5.5	5.5
6	5.8	5.3	5.5	5.6	5.5	5.6
7	5.7	5.3	5.5	5.6	5.4	5.5
8	5.7	5.4	5.5	5.6	5.5	5.5
9	5.6	5.3	5.5	5.6	5.4	5.5
10	5.7	5.4	5.6	5.6	5.5	5.6
11	5.7	5.4	5.5	5.6	5.5	5.6
12	5.7	5.4	5.5	5.6	5.5	5.6
13	5.7	5.4	5.5	5.6	5.5	5.6
14	5.7	5.4	5.5	5.6	5.5	5.6
15	5.7	5.3	5.5	5.6	5.5	5.6
16	5.7	5.4	5.5	5.6	5.5	5.6
17	5.7	5.4	5.5	5.6	5.5	5.6
18	5.7	5.4	5.5	5.6	5.5	5.6
19	5.7	5.4	5.5	5.6	5.5	5.6
20	5.7	5.4	5.5	5.6	5.5	5.6
21	5.7	5.4	5.5	5.6	5.5	5.6
22	5.7	5.4	5.6	5.6	5.5	5.6
23	5.7	5.4	5.6	5.6	5.5	5.6
24	5.7	5.5	5.6	5.6	5.5	5.6
25	5.7	5.4	5.6	5.6	5.5	5.6
26	5.8	5.3	5.5	5.7	5.5	5.6
27	5.7	5.5	5.5	5.6	5.5	5.6
28	5.7	5.4	5.6	5.6	5.5	5.6
29	5.7	5.4	5.5	5.6	5.5	5.6
30	5.7	5.5	5.6	5.6	5.5	5.6
Total						
Average	5.7	5.4	5.5	5.6	5.5	5.6
Maximum	5.8		5.6	5.7		5.6
Date	26-Apr		25-Apr	26-Apr		26-Apr
Minimum		5.2	5.4		5.3	5.5
Date		3-Apr	3-Apr		3-Apr	3-Apr

Notes:

---



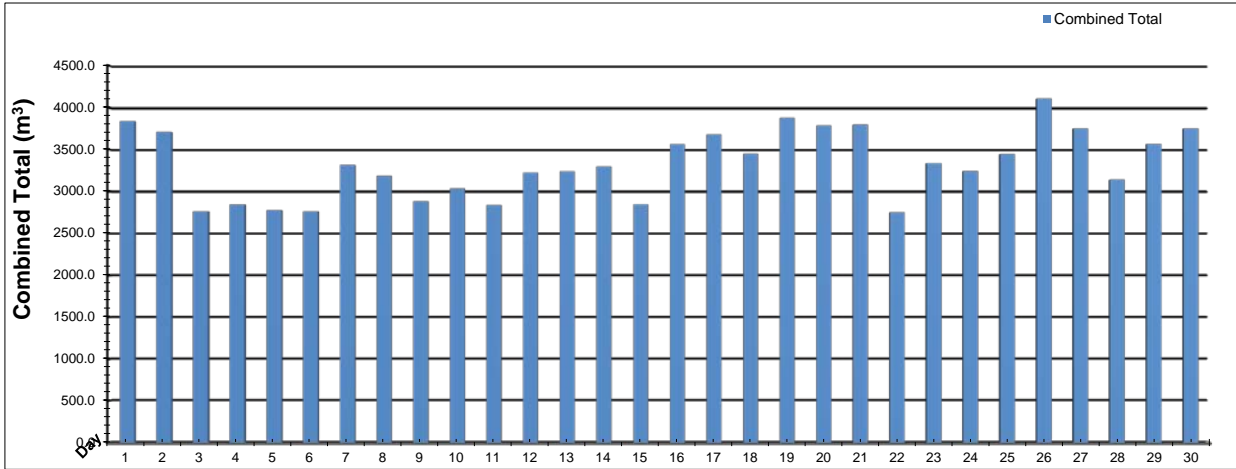
---



---

# High Lift Monthly Report

Month: April-16



Date	Distribution Flow					
	FIT_7052 (East)		FIT_7062 (West)		Combined	
	(m³)	(L/s)	(m³)	(L/s)	(m³)	(L/s)
	Total	Peak	Total	Peak	Total	Peak
1	886.6	43.4	2951.9	82.2	3838.6	90.6
2	906.9	46.5	2805.3	82.2	3712.2	90.1
3	894.5	46.7	1871.1	84.0	2765.7	89.3
4	720.6	44.9	2125.8	84.1	2846.4	90.2
5	937.9	46.1	1838.2	83.4	2776.2	83.4
6	782.1	47.7	1983.0	84.0	2765.2	91.3
7	895.7	45.9	2419.7	82.9	3315.4	94.3
8	829.2	47.4	2359.6	84.5	3188.7	86.1
9	541.3	35.1	2340.7	84.5	2882.0	87.7
10	1326.6	44.9	1711.8	79.0	3038.4	88.7
11	667.1	45.4	2171.3	84.9	2838.4	87.0
12	642.5	47.3	2580.2	89.0	3222.7	91.2
13	1227.4	47.1	2015.0	80.5	3242.5	95.4
14	982.3	47.5	2315.5	87.5	3297.8	87.9
15	654.8	46.9	2196.6	102.8	2851.3	138.7
16	1189.5	47.0	2371.9	83.3	3561.5	89.2
17	1107.2	46.3	2573.4	85.7	3680.6	86.2
18	718.0	33.4	2737.0	105.9	3454.9	105.9
19	950.0	47.0	2926.7	90.3	3876.7	99.4
20	852.4	44.6	2931.7	82.4	3784.2	93.2
21	832.3	48.5	2964.0	87.4	3796.3	88.1
22	810.2	47.5	1938.8	81.4	2748.9	86.5
23	1104.5	45.6	2234.2	83.1	3338.6	89.9
24	1135.2	44.8	2111.4	85.3	3246.6	89.0
25	483.0	33.5	2962.4	85.5	3445.4	89.1
26	342.7	33.6	3768.3	87.4	4111.0	87.4
27	516.8	33.9	3233.1	84.6	3750.0	84.6
28	596.0	35.8	2542.7	84.5	3138.7	92.9
29	515.0	34.8	3050.0	83.6	3565.0	87.6
30	673.4	42.6	3076.5	88.5	3749.9	88.5
<b>Total</b>	<b>24721.8</b>		<b>75108.1</b>		<b>99829.9</b>	
<b>Average</b>	<b>824.1</b>	<b>43.4</b>	<b>2503.6</b>	<b>85.8</b>	<b>3327.7</b>	<b>91.6</b>
<b>Maximum</b>	<b>1326.6</b>	<b>48.5</b>	<b>3768.3</b>	<b>105.9</b>	<b>4111.0</b>	<b>138.7</b>
<b>Date</b>	<b>10-Apr</b>	<b>21-Apr</b>	<b>26-Apr</b>	<b>18-Apr</b>	<b>26-Apr</b>	<b>15-Apr</b>
<b>Minimum</b>	<b>342.7</b>		<b>1711.8</b>		<b>2748.9</b>	
<b>Date</b>	<b>26-Apr</b>		<b>10-Apr</b>		<b>22-Apr</b>	

Notes:

---



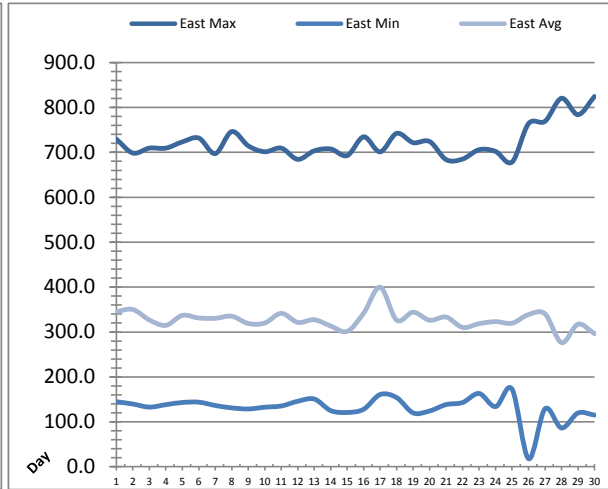
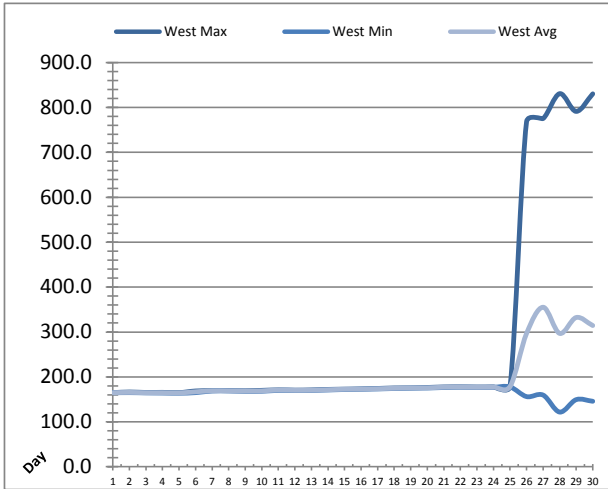
---



---

# Low Lift Monthly Report

Month: **April-16**

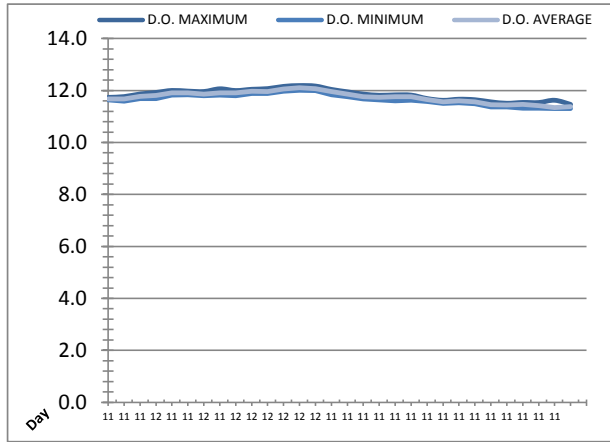
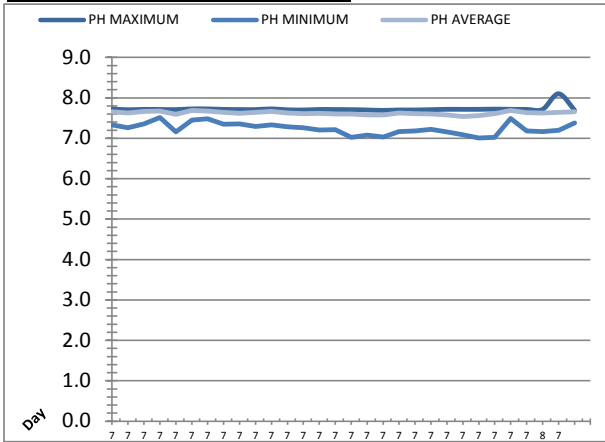


Date	West Train Header Pressure PIT_1018 (kPa)			East Train Header Pressure PIT_1028 (kPa)		
	Maximum	Minimum	Average	Maximum	Minimum	Average
1	165.1	164.7	164.9	729.5	144.9	345.4
2	166.5	165.0	165.6	698.5	139.6	350.2
3	165.4	164.4	164.9	709.5	132.8	326.8
4	165.7	164.1	164.9	709.5	138.2	314.8
5	165.1	163.7	164.5	723.3	143.1	337.0
6	168.7	165.0	166.9	731.8	143.8	331.2
7	169.5	168.7	169.1	697.2	136.4	330.6
8	169.6	168.6	169.0	746.3	131.0	335.1
9	169.3	168.0	168.6	714.6	128.7	319.0
10	170.1	168.1	168.9	701.4	132.6	320.0
11	171.3	170.1	170.9	709.5	135.3	341.6
12	170.6	170.0	170.3	684.5	145.8	321.5
13	171.2	170.0	170.5	703.4	150.8	327.4
14	172.2	170.9	171.6	707.5	125.1	313.4
15	172.8	172.0	172.6	692.9	120.9	301.6
16	173.4	172.6	172.9	734.6	128.0	342.1
17	174.3	173.2	173.7	701.2	160.9	399.7
18	175.5	174.2	174.7	742.3	153.9	326.3
19	175.7	175.0	175.6	721.7	119.9	344.2
20	176.5	175.3	175.8	724.1	124.2	326.2
21	177.7	176.4	177.2	683.8	138.4	333.3
22	177.9	177.1	177.7	685.1	143.0	310.2
23	177.6	176.8	177.1	705.9	163.1	318.6
24	177.9	177.0	177.6	702.0	133.8	323.1
25	179.0	177.8	178.4	678.5	172.6	319.6
26	768.2	156.2	296.9	764.1	17.9	339.0
27	775.2	159.6	355.2	769.2	129.1	340.3
28	830.7	121.7	296.9	820.5	86.3	276.3
29	791.2	149.4	332.3	784.0	119.7	317.5
30	830.3	145.8	314.4	824.5	115.1	296.3
Total						
Average	276.5	166.7	196.0	723.4	131.8	327.6
Maximum	830.7		355.2	824.5		399.7
Date	28-Apr		27-Apr	30-Apr		17-Apr
Minimum		121.7	164.5		17.9	276.3
Date		28-Apr	5-Apr		26-Apr	28-Apr

Notes:

# Low Lift Monthly Report

Month: **April-16**



Date	Raw Water Sample Line					
	AIT_1402_PH (pH)			AIT_1402_DO (mg/L)		
	Maximum	Minimum	Average	Maximum	Minimum	Average
1	7.7	7.3	7.7	11.7	11.6	11.7
2	7.7	7.3	7.6	11.8	11.6	11.7
3	7.7	7.4	7.7	11.9	11.7	11.8
4	7.7	7.5	7.7	11.9	11.7	11.8
5	7.7	7.2	7.6	12.0	11.8	11.9
6	7.7	7.4	7.7	12.0	11.8	11.9
7	7.7	7.5	7.7	12.0	11.8	11.9
8	7.7	7.4	7.6	12.1	11.8	11.9
9	7.7	7.4	7.6	12.0	11.8	11.9
10	7.7	7.3	7.6	12.0	11.9	12.0
11	7.7	7.3	7.7	12.1	11.9	12.0
12	7.7	7.3	7.6	12.2	12.0	12.1
13	7.7	7.3	7.6	12.2	12.0	12.1
14	7.7	7.2	7.6	12.2	12.0	12.1
15	7.7	7.2	7.6	12.0	11.8	12.0
16	7.7	7.0	7.6	12.0	11.8	11.9
17	7.7	7.1	7.6	11.9	11.7	11.8
18	7.7	7.0	7.6	11.8	11.6	11.7
19	7.7	7.2	7.6	11.8	11.6	11.8
20	7.7	7.2	7.6	11.8	11.6	11.8
21	7.7	7.2	7.6	11.7	11.6	11.6
22	7.7	7.2	7.6	11.6	11.5	11.6
23	7.7	7.1	7.5	11.7	11.5	11.6
24	7.7	7.0	7.6	11.6	11.5	11.6
25	7.7	7.0	7.6	11.6	11.4	11.5
26	7.7	7.5	7.7	11.5	11.4	11.4
27	7.7	7.2	7.6	11.5	11.3	11.5
28	7.7	7.2	7.6	11.5	11.3	11.4
29	8.1	7.2	7.6	11.6	11.3	11.3
30	7.7	7.4	7.7	11.5	11.3	11.4
Total						
Average	7.7	7.2	7.6	11.8	11.7	11.7
Maximum	8.1		7.7	12.2		12.1
Date	29-Apr		6-Apr	13-Apr		13-Apr
Minimum		7.0	7.5		11.3	11.3
Date		24-Apr	23-Apr		29-Apr	29-Apr

Notes:

---



---

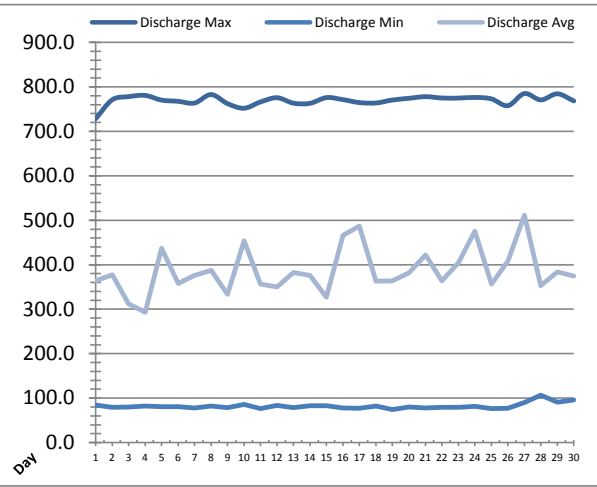
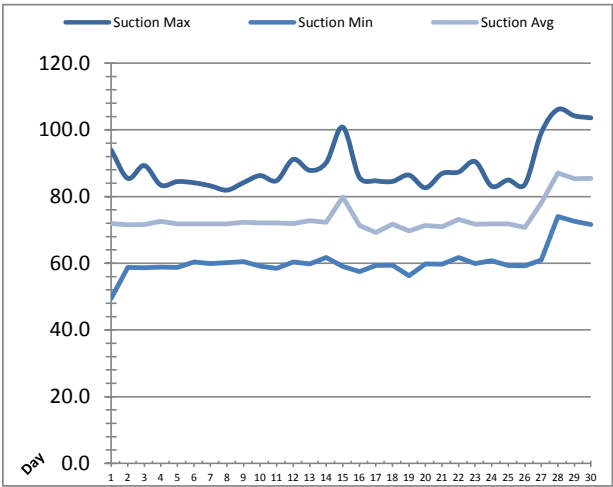


---



# High Lift Monthly Report

Month: April-16

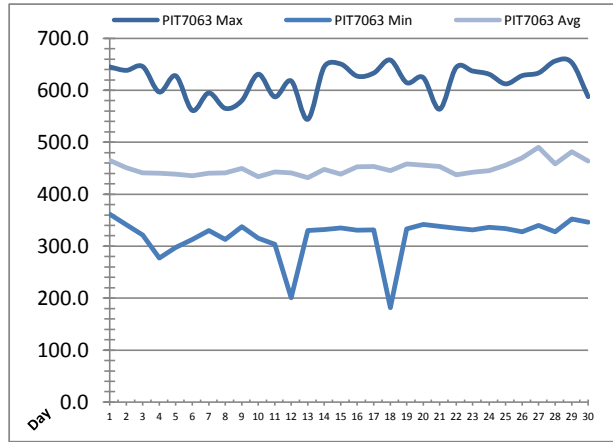
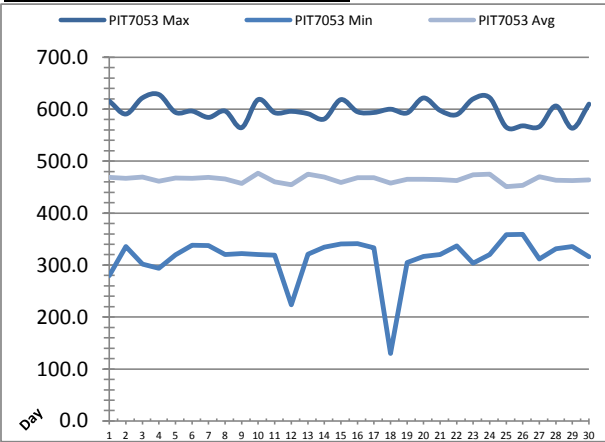


Date	Suction Header Pressure			Discharge Header Pressure		
	PIT_7002 (kPa)			PIT_7005 (kPa)		
	Maximum	Minimum	Average	Maximum	Minimum	Average
1	93.9	49.4	71.9	728.3	84.5	363.6
2	85.5	58.7	71.5	770.9	79.4	377.2
3	89.3	58.6	71.6	778.1	80.0	312.0
4	83.4	58.9	72.6	780.8	82.0	293.0
5	84.5	58.7	71.8	770.3	80.6	437.4
6	84.2	60.4	71.8	767.6	81.0	358.2
7	83.2	59.9	71.8	763.7	77.7	375.6
8	81.9	60.2	71.8	782.8	81.9	387.5
9	84.2	60.5	72.3	762.3	78.8	333.3
10	86.3	59.1	72.1	752.0	85.6	453.4
11	84.8	58.5	72.1	766.2	76.2	356.5
12	91.2	60.4	72.0	775.6	83.6	350.1
13	87.9	59.8	72.8	763.4	78.8	382.7
14	90.2	61.7	72.3	763.1	82.7	375.7
15	100.8	59.1	79.9	775.9	82.9	327.2
16	85.8	57.5	71.4	771.3	77.8	465.9
17	84.7	59.4	69.2	764.7	76.9	486.7
18	84.5	59.4	71.7	763.9	82.0	363.0
19	86.4	56.3	69.7	770.5	74.2	364.0
20	82.6	59.8	71.4	774.3	79.8	381.6
21	86.9	59.7	71.0	778.0	77.8	421.9
22	87.4	61.8	73.1	775.0	79.2	363.6
23	90.5	59.9	71.7	774.8	79.6	404.5
24	83.1	60.8	71.8	776.3	81.5	475.3
25	85.0	59.3	71.8	773.1	76.2	356.3
26	83.6	59.2	70.7	757.7	76.9	407.8
27	99.2	60.9	78.0	785.0	90.3	511.0
28	106.1	74.1	87.1	770.7	106.5	353.0
29	104.2	72.5	85.3	784.5	91.1	383.8
30	103.6	71.6	85.4	768.4	95.8	374.4
Total						
Average	88.8	60.5	73.6	769.6	82.0	386.5
Maximum	106.1		87.1	785.0		511.0
Date	28-Apr		28-Apr	27-Apr		27-Apr
Minimum		49.4	69.2		74.2	293.0
Date		1-Apr	17-Apr		19-Apr	4-Apr

Notes:

# High Lift Monthly Report

Month: **April-16**



Date	Distribution Pressures					
	PIT_7053 (kPa)			PIT_7063 (kPa)		
	Maximum	Minimum	Average	Maximum	Minimum	Average
1	615.6	279.5	468.9	644.9	361.8	465.1
2	590.7	335.7	467.0	638.3	341.1	450.7
3	621.7	301.8	469.7	645.6	321.3	441.0
4	628.1	293.9	461.4	596.6	277.4	440.6
5	593.8	320.0	467.7	627.8	297.3	438.3
6	596.4	338.4	467.0	561.3	312.9	435.2
7	584.2	337.6	468.5	594.9	330.3	440.3
8	596.5	320.0	465.7	565.2	312.7	441.1
9	564.4	322.1	457.0	580.0	337.8	449.9
10	618.5	320.3	477.0	630.9	315.7	433.5
11	593.2	318.9	460.2	587.4	303.4	442.8
12	595.8	223.8	454.6	617.9	200.8	441.1
13	591.3	321.0	474.7	544.2	330.1	431.8
14	581.2	334.7	469.4	645.2	331.9	448.1
15	618.4	340.7	458.7	650.5	335.3	438.6
16	595.0	341.2	468.4	627.2	330.8	452.7
17	593.6	333.0	468.1	633.1	331.2	453.2
18	599.9	130.2	457.4	658.3	181.9	445.5
19	592.8	304.7	465.3	614.6	333.0	458.5
20	621.6	316.4	465.3	624.5	342.1	455.9
21	597.5	320.1	464.4	563.6	337.9	453.6
22	589.6	337.0	462.9	644.0	334.5	437.3
23	619.8	303.8	473.6	637.0	331.5	442.5
24	621.9	320.0	474.8	630.8	336.3	445.3
25	565.3	358.4	450.6	612.3	333.7	456.1
26	567.9	359.3	453.4	628.1	327.8	470.2
27	566.4	311.6	469.8	633.5	340.3	490.5
28	606.1	331.2	463.4	656.3	327.6	458.3
29	563.4	336.0	462.5	653.5	352.2	481.8
30	609.8	316.1	463.7	587.7	346.1	464.1
Total						
Average	596.7	314.3	465.0	617.8	319.9	450.1
Maximum	628.1		477.0	658.3		490.5
Date	4-Apr		10-Apr	18-Apr		27-Apr
Minimum		130.2	450.6		181.9	431.8
Date		18-Apr	25-Apr		18-Apr	13-Apr

Notes:

---



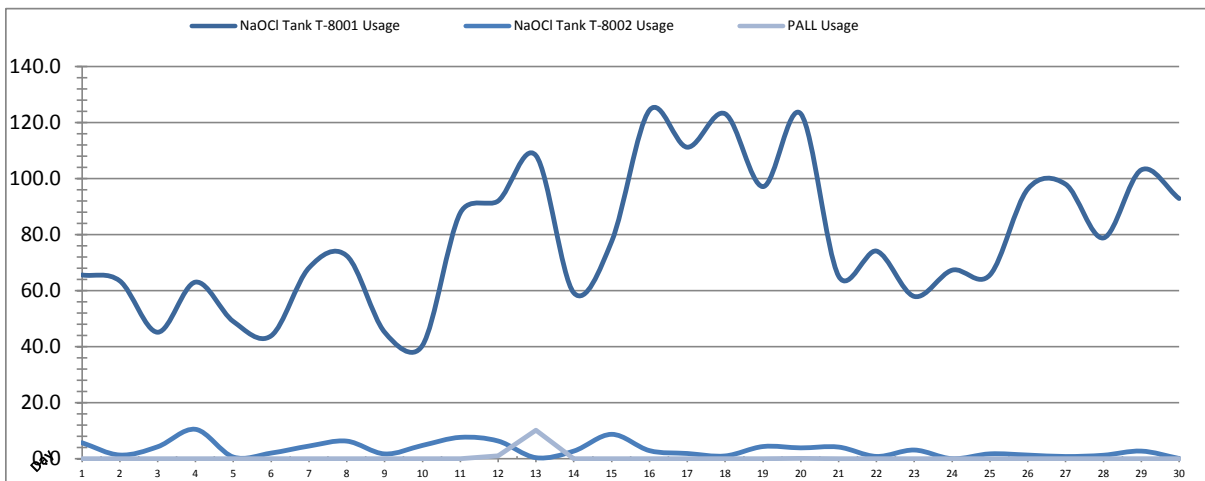
---



---

# Chemical Usage Monthly Report

Month: **April-16**

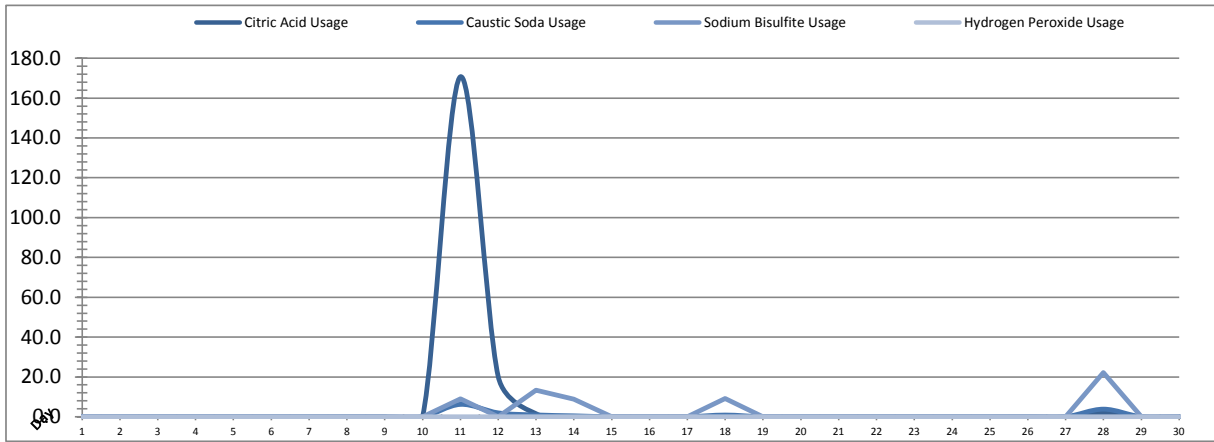


Date	PALL Usage	NaOCI Tank T-8001	NaOCI Tank T-8002
	PALL_HYPO_USAGE (L) Usage	LIT_8002 (Storage) (L) Usage	LIT_8004 (Day) (L) Usage
1	0.0	65.6	5.7
2	0.0	63.5	1.3
3	0.0	45.1	4.3
4	0.0	63.0	10.5
5	0.0	49.0	0.6
6	0.0	43.9	2.0
7	0.0	68.1	4.5
8	0.0	72.4	6.3
9	0.0	45.1	1.7
10	0.0	40.5	4.8
11	0.0	87.7	7.6
12	1.0	92.0	6.3
13	10.2	108.2	0.4
14	0.00	59.20	2.7
15	0.0	77.5	8.7
16	0.0	124.4	2.9
17	0.0	111.2	1.9
18	0.0	123.1	1.0
19	0.0	97.1	4.4
20	0.1	123.1	3.9
21	0.0	65.2	4.2
22	0.0	74.1	0.8
23	0.0	57.9	3.1
24	0.0	67.3	0.0
25	0.0	65.6	1.7
26	0.0	96.2	1.3
27	0.0	98.0	0.8
28	0.0	78.8	1.3
29	0.0	103.1	2.7
30	0.0	92.8	0.1
Total	11.3	2358.5	97.7
Average	0.4	78.6	3.3
Maximum	10.2	124.4	10.5
Date	13-Apr	16-Apr	4-Apr
Minimum	0.0	40.5	0.0
Date	1-Apr	10-Apr	24-Apr

Notes:	
Dosage (mg/L)=	Day Tank (L) x %conc. x 1000
	Membrane Flow (m3)
Chlorine Concentration:	12.0%

# Chemical Usage Monthly Report

Month: **April-16**



Date	Citric Acid	Caustic Soda	Captor	Hydrogen Peroxide		Membrane Flow (m <sup>3</sup> )
	TAGNAME (L) Usage	TAGNAME (L) Usage	TAGNAME (L) Usage	TAGNAME (L) Usage	(mg/L) Dose	
1	0.0	0.0	0.0	0.0	0.0	3445.966
2	0.0	0.0	0.0	0.0	0.0	3881.821
3	0.0	0.0	0.0	0.0	0.0	3294.796
4	0.0	0.0	0.0	0.0	0.0	2536.666
5	0.0	0.0	0.0	0.0	0.0	3272.423
6	0.0	0.0	0.0	0.0	0.0	3206.476
7	0.0	0.0	0.0	0.0	0.0	3303.301
8	0.0	0.0	0.0	0.0	0.0	3493.691
9	0.0	0.0	0.0	0.0	0.0	2899.905
10	0.0	0.0	0.0	0.0	0.0	3154.216
11	170.7	6.2	9.0	0.0	0.0	3491.900
12	20.2	1.9	0.0	0.0	0.0	3282.018
13	1.5	0.9	13.3	0.0	0.0	3640.161
14	0.0	0.5	8.9	0.0	0.0	3242.650
15	0.0	0.0	0.0	0.0	0.0	2883.303
16	0.0	0.0	0.0	0.0	0.0	3946.928
17	0.0	0.0	0.0	0.0	0.0	4032.160
18	0.0	0.9	9.2	0.0	0.0	3497.501
19	0.0	0.0	0.0	0.0	0.0	4680.071
20	0.0	0.0	0.0	0.0	0.0	4011.374
21	0.0	0.0	0.0	0.0	0.0	4193.808
22	0.0	0.0	0.0	0.0	0.0	2897.250
23	0.0	0.0	0.0	0.0	0.0	3350.214
24	0.0	0.0	0.0	0.0	0.0	3769.503
25	0.0	0.0	0.0	0.0	0.0	3459.191
26	0.0	0.0	0.0	0.0	0.0	4566.838
27	0.0	0.0	0.0	0.0	0.0	4726.495
28	1.8	3.8	22.1	0.0	0.0	2963.217
29	0.0	0.0	0.0	0.0	0.0	4233.765
30	0.0	0.0	0.0	0.0	0.0	3738.382
					#DIV/0!	
Total	194.2	14.2	62.5	0.0		107096.0
Average	6.5	0.5	2.1	0.0	0.0	3569.9
Maximum	170.7	6.2	22.1	0.0	0.0	4726.5
Date	11-Apr	11-Apr	28-Apr	1-Apr	1-Apr	27-Apr
Minimum	0.0	0.0	0.0	0.0	0.0	2536.7
Date	1-Apr	1-Apr	1-Apr	1-Apr	1-Apr	4-Apr

Notes:	
Dosage (mg/L)=	Day Tank (L) x %conc. x 1000
	Membrane Flow (m3)
Peroxide Concentration:	50.0%

# Runtimes Report

Month: April-16

Date	Daily Gen-Set Runtimes		Daily UV Runtimes		Daily PALL Runtimes				
	LLPS	WTP	UV #1	UV #2	Air Compressor #1	Air Compressor #2	CIP Neutralization	CIP Drain	CIP Recirc
	(Hrs)	(Hrs)	(Hrs)	(Hrs)	(Hrs)	(Hrs)	(Hrs)	(Hrs)	(Hrs)
1	0.0	0.0	0.0	0.0	0.0	23.9	0.0	0.0	0.0
2	0.0	0.0	0.0	0.0	24.3	0.1	0.0	0.0	0.0
3	0.0	0.0	0.0	0.0	0.1	23.7	0.0	0.0	0.0
4	0.0	0.0	0.0	0.0	24.3	0.2	0.0	0.0	0.0
5	0.0	0.0	0.0	0.0	0.1	23.8	0.0	0.0	0.0
6	0.0	0.0	0.0	0.0	24.2	0.1	0.0	0.0	0.0
7	0.0	0.0	0.0	0.0	0.2	23.8	0.0	0.0	0.0
8	0.0	0.0	0.0	0.0	24.2	0.1	0.0	0.0	0.0
9	0.0	0.0	0.0	0.0	0.2	23.7	0.0	0.0	0.0
10	0.0	0.0	0.0	0.0	24.2	0.2	0.0	0.0	0.0
11	0.0	0.0	0.0	0.0	0.2	23.7	0.9	0.0	0.5
12	0.0	0.0	0.0	0.0	24.2	0.2	0.5	0.0	0.3
13	0.0	0.0	0.0	0.0	0.2	23.7	0.8	0.3	4.0
14	0.0	0.0	0.0	0.0	24.2	0.2	0.9	0.2	4.0
15	0.0	0.0	0.0	0.0	0.2	23.7	0.0	0.0	0.0
16	0.0	0.0	0.0	0.0	24.2	0.2	0.0	0.0	0.0
17	0.0	0.0	0.0	0.0	0.2	23.7	0.0	0.0	0.0
18	0.0	0.0	0.0	0.0	24.2	0.2	0.6	0.0	0.3
19	0.0	0.0	0.0	0.0	0.2	23.7	0.0	0.0	0.0
20	0.0	0.0	0.0	0.0	24.2	0.2	0.0	0.0	0.0
21	0.0	0.0	0.0	0.0	0.2	23.7	0.0	0.0	0.0
22	0.0	0.0	0.0	0.0	24.2	0.2	0.0	0.0	0.0
23	0.0	0.0	0.0	0.0	0.2	23.7	0.0	0.0	0.0
24	0.0	0.0	0.0	0.0	24.2	0.2	0.0	0.0	0.0
25	0.0	0.0	0.0	0.0	0.2	23.7	0.0	0.0	0.0
26	0.0	0.0	0.0	0.0	24.2	0.2	0.0	0.0	0.0
27	0.0	0.0	0.0	0.0	0.2	23.7	0.0	0.0	0.0
28	0.0	0.0	1.1	1.2	24.2	0.2	0.9	0.3	6.0
29	0.7	0.7	0.0	0.0	0.2	23.7	0.0	0.0	0.0
30	0.0	0.0	0.0	0.0	24.2	0.2	0.0	0.0	0.0
Total	0.7	0.7	1.1	1.2	365.4	358.7	4.6	0.8	15.1

Notes:

---



---



---

# Runtimes Report

Month: April-16

## Daily

Date	PALL Runtimes						Process Drain	
	RFR Pump #1 (Hrs)	RFR Pump #2 (Hrs)	RF Pump #1 (Hrs)	RF Pump #2 (Hrs)	XR Pump #1 (Hrs)	XR Pump #2 (Hrs)	PDP9010 Pump (Hrs)	PDP9020 Pump (Hrs)
1	2.0	2.1	0.9	0.9	6.6	6.3	1.4	1.9
2	3.5	3.3	1.0	1.0	6.2	7.9	1.4	1.7
3	2.8	3.2	0.8	0.8	4.1	8.0	1.7	2.4
4	2.2	2.0	0.6	0.6	6.8	1.8	1.7	2.2
5	2.8	2.9	0.8	0.8	6.6	5.5	1.2	1.5
6	2.7	2.7	0.8	0.8	5.0	6.9	1.5	2.1
7	2.8	2.8	0.8	0.7	6.6	5.6	1.3	1.7
8	3.0	2.9	0.9	1.0	4.5	8.4	1.4	1.7
9	2.6	2.6	0.7	0.7	7.0	3.8	1.4	1.9
10	3.0	2.6	0.7	0.8	6.3	5.3	1.2	1.5
11	3.0	3.3	0.9	0.9	6.9	5.9	1.4	1.8
12	2.8	2.8	0.7	0.8	6.0	6.2	1.4	2.1
13	3.2	3.1	0.9	0.9	6.2	7.3	1.4	1.8
14	2.7	2.9	0.8	0.8	4.8	7.2	1.4	1.8
15	2.4	2.7	0.7	0.7	5.8	3.9	0.6	0.7
16	3.6	3.2	1.0	0.9	6.1	8.1	1.0	1.3
17	2.7	2.4	0.7	0.7	5.7	5.0	1.1	1.3
18	2.8	3.1	0.9	0.9	6.7	6.0	1.1	1.5
19	4.1	4.1	1.2	1.1	8.3	8.4	1.4	1.8
20	3.4	3.4	1.0	1.0	9.1	5.6	1.2	1.5
21	3.8	3.7	1.1	1.0	6.2	9.0	1.2	1.6
22	2.6	2.7	0.8	0.6	3.5	7.1	1.6	2.1
23	3.0	2.9	0.8	0.9	7.8	4.5	1.4	2.0
24	3.4	3.4	1.1	0.9	7.8	5.8	1.3	1.7
25	3.0	3.0	0.9	0.8	7.0	5.6	1.8	2.1
26	4.0	4.0	1.1	1.2	5.9	10.5	1.4	1.8
27	3.2	3.2	0.8	0.8	10.8	6.8	1.9	2.6
28	2.5	2.3	0.5	0.6	4.2	7.0	1.7	2.4
29	3.7	3.8	1.1	0.9	10.1	5.3	1.6	2.0
30	3.4	3.3	0.9	1.0	3.6	10.3	1.6	2.1
Total	90.3	90.0	25.9	25.5	191.4	194.2	41.7	54.6

Notes:

# Runtimes Report

Month: April-16

## Daily

Date	Low Lift Pump Motor Runtimes				High Lift Pump Motor Runtimes			
	LLP1010 (Hrs)	LLP1020 (Hrs)	LLP1030 (Hrs)	LLP1040 (Hrs)	HLP7010 (Hrs)	HLP7020 (Hrs)	HLP7030 (Hrs)	HLP7040 (Hrs)
1	10.4	0.3	1.4	1.5	8.0	0.0	5.9	0.0
2	9.9	1.2	2.1	1.3	4.1	5.4	3.6	1.1
3	5.6	3.3	1.9	1.4	8.0	0.1	0.0	2.4
4	2.3	2.8	3.2	1.6	0.1	5.2	2.9	1.8
5	2.0	6.2	2.1	2.3	1.7	8.2	2.5	2.5
6	1.8	5.0	3.0	2.3	8.1	0.0	2.3	1.7
7	3.4	2.6	1.2	5.4	1.1	3.5	1.7	7.1
8	2.3	6.2	2.6	1.9	1.7	5.9	3.0	3.2
9	1.2	2.0	2.8	5.2	4.8	2.8	1.1	2.5
10	2.2	5.0	2.3	2.2	8.4	4.8	2.6	0.0
11	1.8	2.2	4.4	5.0	6.8	1.7	1.9	1.6
12	2.1	6.8	2.0	1.5	0.0	8.9	0.0	3.7
13	0.0	9.2	4.0	0.5	1.4	5.0	5.0	2.3
14	1.9	5.7	2.0	2.5	4.4	0.0	1.7	7.3
15	4.0	7.0	0.0	0.0	1.6	1.2	0.9	7.0
16	6.4	2.9	2.2	2.9	8.8	3.6	1.8	2.7
17	2.4	2.0	1.5	10.2	12.8	2.0	1.6	1.7
18	4.1	2.1	4.6	2.3	1.1	4.0	1.8	6.2
19	3.8	6.4	6.9	0.0	3.9	5.5	1.8	2.9
20	0.0	3.2	4.9	6.7	3.4	4.8	3.0	3.3
21	2.4	0.2	5.7	7.1	0.0	6.1	6.7	3.2
22	1.2	1.8	1.9	6.0	1.1	1.7	6.2	3.2
23	1.1	7.3	1.6	2.3	4.2	5.1	4.2	1.0
24	1.7	2.4	4.9	5.0	4.5	7.4	1.6	3.3
25	2.3	3.1	3.2	4.1	2.7	4.1	4.5	1.7
26	10.3	4.6	0.0	1.8	4.4	2.0	5.0	4.5
27	0.0	15.8	2.3	0.2	4.5	0.0	4.1	9.7
28	3.6	0.8	1.5	5.4	2.3	1.8	0.0	7.7
29	9.6	0.0	1.7	4.2	0.0	0.0	9.8	3.8
30	0.1	4.9	1.5	7.6	7.1	2.4	4.1	0.0
Total	99.9	123.0	79.4	100.4	121.0	103.2	91.3	99.1

Notes:

# Plant Internal Flow Report

Month: April-16

Date	Settling Tank Level		Process Drain Tank		Settling Tank Flow		Potable Water Flow		Non-Potable Flow	
	T-9003 (m)		T-9001 (m)		FIT_9005 (m <sup>3</sup> ) (L/s)		FIT_7082 (m <sup>3</sup> ) (L/s)		FIT_7092 (m <sup>3</sup> ) (L/s)	
	Maximum	Minimum	Maximum	Minimum	Total	Peak	Total	Peak	Total	Peak
1	2.2	0.3	1.0	0.4	159.7	15.7	0.0	1.4	0.0	0.0
2	2.2	0.1	0.9	0.4	34.9	15.2	0.0	0.0	0.0	0.0
3	2.2	0.1	0.8	0.4	21.5	15.2	0.0	0.0	0.0	0.0
4	2.2	0.1	0.9	0.4	17.0	15.7	0.0	1.4	0.0	0.0
5	2.2	0.1	0.8	0.4	16.2	11.5	0.1	1.3	0.0	0.0
6	2.2	0.1	0.8	0.4	28.8	15.7	0.0	1.5	0.0	0.0
7	2.2	0.1	0.8	0.4	11.4	10.3	0.1	1.3	0.0	0.0
8	2.2	0.3	0.9	0.4	4.8	10.5	0.1	1.4	0.0	0.0
9	2.2	0.1	0.8	0.4	16.9	15.7	0.0	0.0	0.0	0.0
10	2.2	0.1	0.8	0.4	14.0	9.2	0.0	0.0	0.0	0.0
11	2.2	0.1	0.9	0.4	58.4	15.7	0.0	1.3	11.6	23.7
12	2.2	0.1	0.8	0.4	53.3	15.7	0.1	1.4	13.8	24.0
13	2.2	0.1	0.9	0.4	52.2	15.7	0.0	1.3	18.3	16.9
14	2.2	0.1	0.8	0.4	53.8	15.7	0.0	1.5	18.8	17.3
15	2.2	0.3	1.8	0.4	14.9	8.6	0.0	1.3	1.9	1.2
16	2.2	0.1	0.9	0.4	0.5	0.0	0.0	0.0	0.0	0.0
17	2.2	0.1	0.8	0.4	0.5	0.0	0.0	1.1	0.0	0.0
18	2.2	0.1	0.9	0.4	0.5	0.0	0.3	1.4	10.5	23.9
19	2.2	0.3	0.8	0.4	0.5	0.0	0.1	1.3	11.3	23.1
20	2.2	0.1	0.8	0.4	10.0	15.7	0.3	1.4	7.8	1.8
21	2.2	0.1	0.8	0.4	41.9	15.7	0.1	1.4	0.0	0.6
22	2.2	0.2	0.8	0.4	48.0	15.7	0.1	1.4	0.3	2.8
23	2.2	0.2	0.8	0.4	30.0	15.2	0.0	0.0	0.0	0.0
24	2.2	0.3	0.8	0.4	34.6	15.7	0.0	0.0	0.0	0.0
25	2.2	0.1	1.8	0.4	60.1	15.7	0.1	1.6	0.0	0.0
26	2.2	0.2	0.8	0.4	42.4	15.7	0.3	1.4	1.8	1.1
27	2.2	0.2	0.8	0.4	35.5	15.7	0.1	1.4	0.0	0.0
28	2.2	0.1	1.2	0.4	37.6	15.2	2.4	5.0	27.8	18.9
29	2.2	0.3	0.8	0.4	42.6	15.7	0.1	1.4	0.0	0.0
30	2.2	0.1	0.8	0.4	42.5	15.7	0.0	0.0	0.0	0.0
Total					985.1		4.4		123.9	
Average	2.2	0.1	0.9	0.4	32.8	12.6	0.1	1.1	4.1	5.2
Maximum	2.2		1.8		159.7		2.4		27.8	
Date	18-Apr		15-Apr		1-Apr		28-Apr		28-Apr	
Minimum		0.1		0.4		0.0		0.0		0.0
Date		13-Apr		16-Apr		17-Apr		2-Apr		1-Apr

Notes: