

Municipality of West Elgin - Tri County Water System

Goto:

Month:

Year:

Date is Set to: **May-16**

Limit	Low	High	
Raw Water Chlorine Residual:	0.00	5.00	mg/L
Pre-Strainer Chlorine Residual:	0.00	5.00	mg/L
UV Inlet Chlorine Residual:	0.00	5.00	mg/L
Post Treatment Chlorine Residual:	1.00	5.00	mg/L
Treated Chlorine Residual:	1.00	2.50	mg/L
Distribution Chlorine Residual:	1.00	2.50	mg/L
Limit		High	
WTP C of A		156.0	L/s
WTP Permit to Take Water		13500.0	m ³
Limit	Low	High	
System Pressure Limits:	50.0	1034.0	Kpa

Compliance Report

Low Lift Monthly Report

>>>

Membranes Monthly Report

>>>

UV System Monthly Report

>>>

Plant Quality Report

>>>

Raw Well/Treated Storage Report

>>>

High Lift Monthly Report

>>>

Operational Report

Low Lift Monthly Report

>>>

High Lift Monthly Report

>>>

Chemical Usage Monthly Report

>>>

Runtimes Report

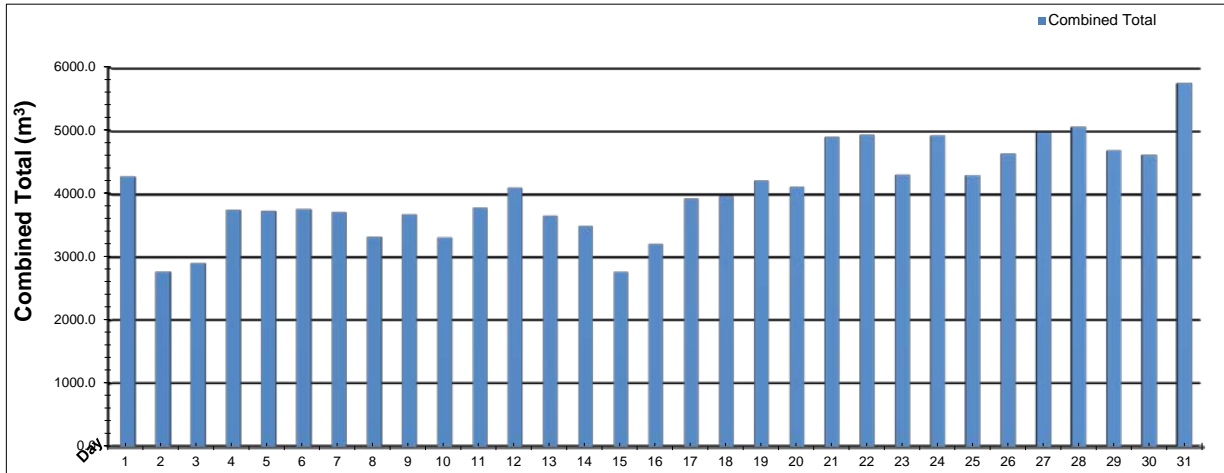
>>>

Plant Internal Flow Report

>>>

Low Lift Monthly Report

Month: May-16

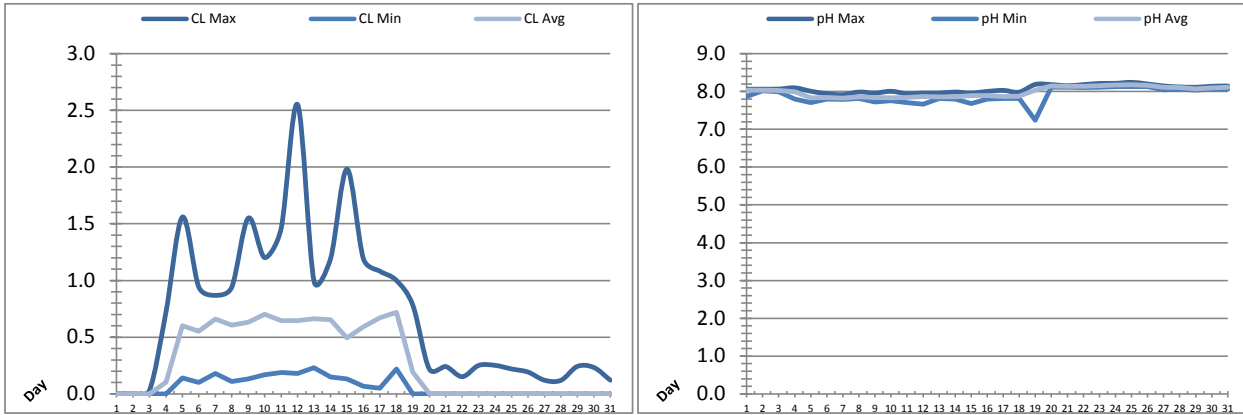


Date	Combined Total (m³)	West Train (FIT-1017 (m³))	West Peak Flow (FIT-1017 (L/s))	East Train (FIT-1027 (m³))	East Peak Flow (FIT-1027 (L/s))	Combined Peak Flow (L/s)
1	✓ 4280.6	4280.6	88.5	0.0	0.0	✓ 88.5
2	✓ 2772.7	2772.7	87.6	0.0	0.0	✓ 87.6
3	✓ 2904.5	2904.5	89.0	0.0	0.0	✓ 89.0
4	✓ 3749.4	3749.4	87.6	0.0	0.0	✓ 87.6
5	✓ 3730.8	3730.8	87.0	0.0	0.0	✓ 87.0
6	✓ 3763.5	3763.5	86.9	0.0	0.0	✓ 86.9
7	✓ 3712.9	3712.9	87.8	0.0	0.0	✓ 87.8
8	✓ 3319.8	3319.7	87.8	0.0	0.0	✓ 87.8
9	✓ 3681.1	3681.1	89.1	0.0	0.0	✓ 89.1
10	✓ 3313.9	3313.9	87.9	0.0	0.0	✓ 87.9
11	✓ 3785.1	3785.1	87.1	0.0	0.0	✓ 87.1
12	✓ 4101.5	4101.5	131.9	0.0	0.0	✓ 131.9
13	✓ 3655.3	3655.3	88.3	0.0	0.0	✓ 88.3
14	✓ 3493.9	3493.9	88.2	0.0	0.0	✓ 88.2
15	✓ 2771.1	2771.1	88.0	0.0	0.0	✓ 88.0
16	✓ 3214.3	3214.3	87.5	0.0	0.0	✓ 87.5
17	✓ 3932.3	3932.3	88.3	0.0	0.0	✓ 88.3
18	✓ 3968.7	3968.7	86.2	0.0	0.0	✓ 86.2
19	✓ 4215.6	1401.1	85.6	2814.4	94.0	✓ 94.0
20	✓ 4111.4	2.8	28.4	4108.6	146.2	✓ 146.2
21	✓ 4906.1	2.1	29.6	4904.0	145.0	✓ 145.0
22	✓ 4939.8	4.5	43.2	4935.3	99.9	✓ 99.9
23	✓ 4303.4	3.5	52.8	4299.9	101.8	✓ 101.8
24	✓ 4927.0	3.2	37.0	4923.8	95.5	✓ 95.5
25	✓ 4297.6	2.2	38.7	4295.4	96.4	✓ 96.4
26	✓ 4638.8	2.3	45.3	4636.5	96.8	✓ 96.8
27	✓ 4977.3	1.2	22.1	4976.1	91.1	✓ 91.1
28	✓ 5066.7	1.4	20.6	5065.3	89.1	✓ 89.1
29	✓ 4689.7	2.2	47.5	4687.5	102.1	✓ 102.1
30	✓ 4623.5	4.1	40.6	4619.4	95.8	✓ 95.8
31	✓ 5759.0	4.1	35.6	5754.9	139.8	✓ 139.8
Total	125607.3	65586.0		60021.2		
Average	4051.8	2115.7	69.4	1936.2	44.9	97.4
Maximum	5759.0	4280.6	131.93	5754.9	146.18	146.18
Date	31-May	1-May	12-May	31-May	20-May	20-May
Minimum	2771.1	1.2	20.59	0.0	0.00	86.24
Date	15-May	27-May	28-May	1-May	1-May	18-May

Notes:

Low Lift Monthly Report

Month: May-16

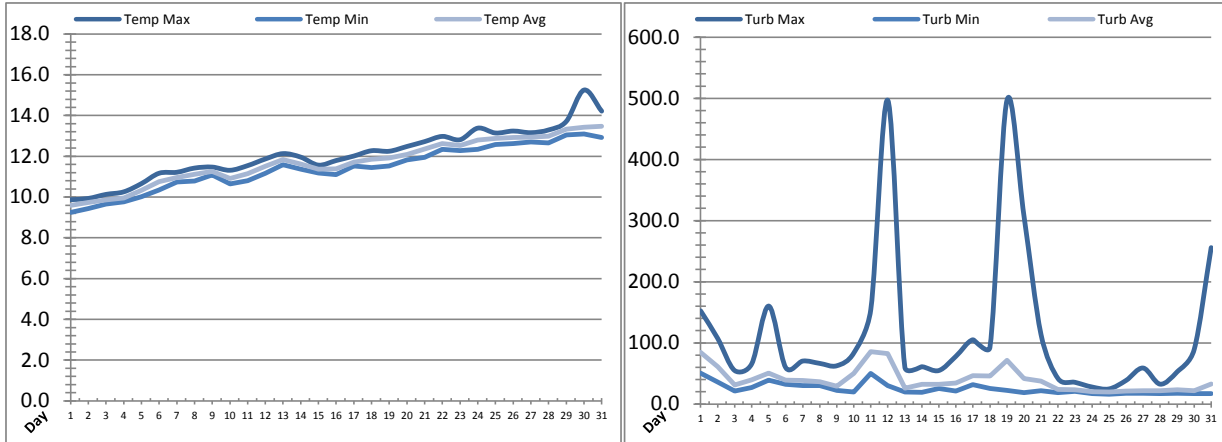


Date	Raw Water Chlorine Residual			Raw Water pH		
	AIT_1401_CL (mg/L)			AIT_1401_PH		
	Maximum	Minimum	Average	Maximum	Minimum	Average
1	0.00	0.00	0.00	8.06	7.87	8.04
2	0.00	0.00	0.00	8.06	8.02	8.03
3	0.03	0.00	0.00	8.06	8.00	8.03
4	0.72	0.00	0.10	8.10	7.80	8.00
5	1.56	0.14	0.60	8.01	7.70	7.83
6	0.94	0.10	0.55	7.94	7.80	7.84
7	0.87	0.18	0.66	7.91	7.79	7.82
8	0.94	0.11	0.61	7.99	7.81	7.86
9	1.55	0.13	0.63	7.96	7.72	7.84
10	1.20	0.17	0.70	8.01	7.76	7.84
11	1.46	0.19	0.65	7.94	7.70	7.84
12	2.55	0.18	0.65	7.96	7.66	7.86
13	0.99	0.23	0.66	7.96	7.82	7.86
14	1.19	0.15	0.66	7.99	7.80	7.86
15	1.98	0.13	0.49	7.96	7.68	7.89
16	1.19	0.07	0.59	8.00	7.80	7.89
17	1.08	0.05	0.67	8.03	7.81	7.86
18	1.00	0.22	0.72	7.98	7.82	7.88
19	0.78	0.00	0.19	8.19	7.24	8.03
20	0.22	0.00	0.00	8.18	8.11	8.14
21	0.24	0.00	0.00	8.15	8.11	8.13
22	0.15	0.00	0.00	8.18	8.11	8.13
23	0.25	0.00	0.00	8.21	8.12	8.15
24	0.25	0.00	0.00	8.22	8.13	8.17
25	0.22	0.00	0.00	8.24	8.13	8.18
26	0.19	0.00	0.00	8.20	8.13	8.17
27	0.12	0.00	0.00	8.15	8.05	8.11
28	0.12	0.00	0.00	8.12	8.06	8.10
29	0.24	0.00	0.00	8.11	8.04	8.07
30	0.23	0.00	0.00	8.14	8.06	8.10
31	0.12	0.00	0.00	8.15	8.06	8.11
Total						
Average	0.72	0.07	0.30	8.07	7.89	7.99
Maximum	2.55		0.72	8.24		8.18
Date	12-May		18-May	25-May		25-May
Minimum		0.00	0.00		7.24	7.82
Date		1-May	1-May		19-May	7-May

Notes:

Low Lift Monthly Report

Month: **May-16**

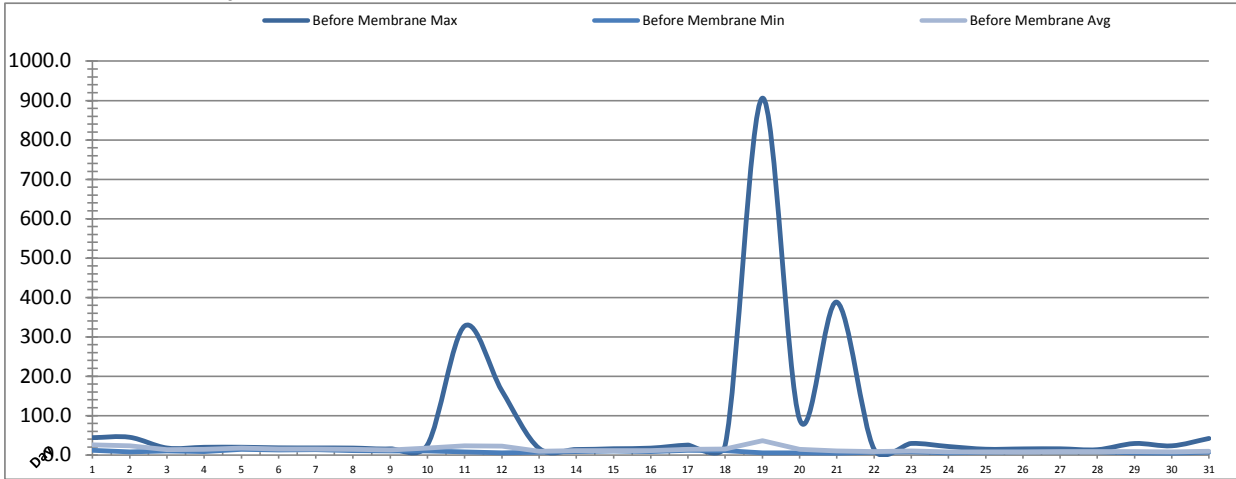


Date	Raw Water Temperature			Raw Water Turbidity		
	TIT_1403 (°C)			AIT_1404 (NTU)		
	Maximum	Minimum	Average	Maximum	Minimum	Average
1	9.9	9.3	9.6	152.44	50.77	84.49
2	9.9	9.4	9.7	107.44	36.16	60.85
3	10.1	9.6	9.9	54.81	21.48	31.16
4	10.3	9.8	10.0	65.66	26.88	39.35
5	10.7	10.0	10.3	160.27	39.28	50.41
6	11.2	10.4	10.8	59.56	32.39	39.01
7	11.2	10.7	11.0	70.36	30.03	38.34
8	11.4	10.8	11.1	66.49	30.11	36.21
9	11.5	11.1	11.3	62.61	22.34	29.31
10	11.3	10.6	10.9	83.52	19.91	50.13
11	11.5	10.8	11.1	154.88	50.12	85.74
12	11.9	11.2	11.5	496.66	30.04	82.34
13	12.1	11.6	11.8	60.28	19.96	25.84
14	12.0	11.4	11.6	61.10	19.14	32.27
15	11.6	11.2	11.4	54.86	25.33	32.32
16	11.8	11.1	11.4	78.12	21.45	34.32
17	12.0	11.5	11.7	105.24	31.57	46.35
18	12.3	11.4	11.8	92.91	25.34	45.75
19	12.2	11.5	11.9	496.67	22.31	71.54
20	12.5	11.8	12.1	307.66	18.50	41.80
21	12.7	11.9	12.4	113.86	21.57	37.61
22	13.0	12.3	12.6	41.71	18.45	23.69
23	12.8	12.3	12.5	35.54	20.77	23.26
24	13.4	12.3	12.8	27.89	16.88	20.23
25	13.1	12.6	12.9	24.76	16.14	19.74
26	13.2	12.6	12.9	38.67	17.69	21.21
27	13.2	12.7	12.9	58.93	17.71	22.00
28	13.3	12.7	13.0	32.55	16.92	21.69
29	13.7	13.0	13.3	52.69	17.72	23.15
30	15.3	13.1	13.4	89.09	17.00	21.80
31	14.2	12.9	13.5	255.85	16.95	32.58
Total						
Average	12.1	11.4	11.7	114.9	24.9	39.5
Maximum	15.3		13.5	496.7		85.7
Date	30-May		31-May	19-May		11-May
Minimum		9.3	9.6		16.1	19.7
Date		1-May	1-May		25-May	25-May

Notes:

Membranes Monthly Report

Month: **May-16**



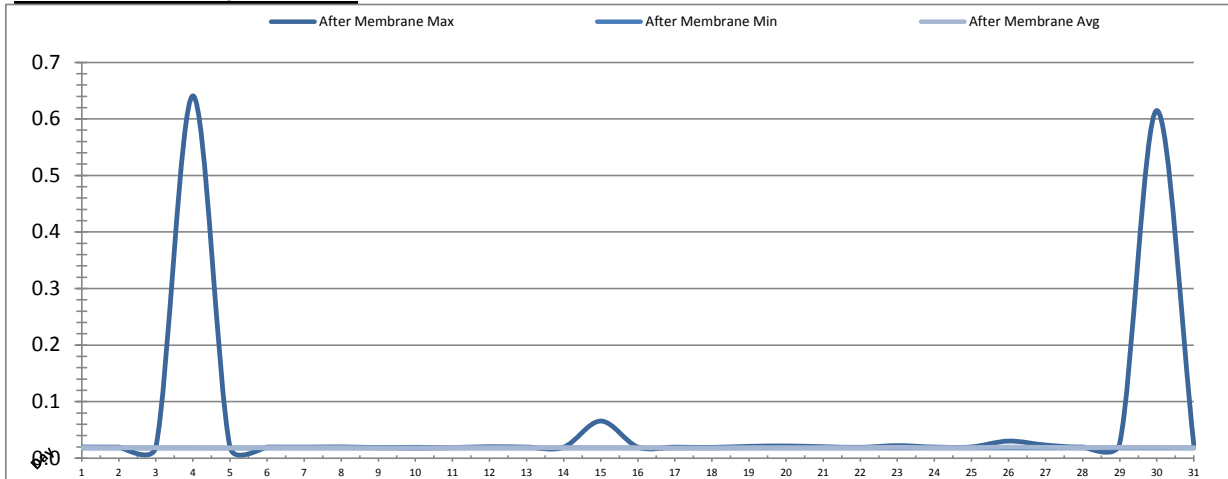
Date	Turbidity Before Membrane			Rack #1 Turbidity			Rack #2 Turbidity		
	PALL_FEED_AIT2006_Value NTU			RACK1_NTU_Value NTU			RACK2_NTU_Value NTU		
	Maximum	Minimum	Average	Maximum	Minimum	Average	Maximum	Minimum	Average
1	43.95	12.15	25.89	0.01	0.01	0.01	0.01	0.01	0.01
2	44.89	8.14	23.16	0.02	0.01	0.01	0.01	0.01	0.01
3	17.68	10.60	13.07	0.01	0.01	0.01	0.01	0.01	0.01
4	19.53	8.77	14.62	0.03	0.01	0.01	0.01	0.01	0.01
5	19.67	13.93	17.86	0.02	0.01	0.01	0.01	0.01	0.01
6	18.11	12.85	15.22	0.02	0.01	0.01	0.01	0.01	0.01
7	17.86	13.36	15.11	0.02	0.01	0.01	0.01	0.01	0.01
8	17.55	10.67	14.43	0.01	0.01	0.01	0.01	0.01	0.01
9	15.54	10.18	12.72	0.01	0.01	0.01	0.01	0.01	0.01
10	25.85	10.03	17.38	0.01	0.01	0.01	0.01	0.01	0.01
11	327.63	7.95	23.53	0.02	0.01	0.01	0.02	0.01	0.01
12	162.88	4.92	22.44	0.22	0.01	0.01	0.12	0.01	0.01
13	16.72	6.83	9.60	0.15	0.01	0.01	0.24	0.01	0.01
14	13.89	8.42	10.63	0.29	0.01	0.01	0.18	0.01	0.01
15	15.84	9.91	10.95	0.02	0.01	0.01	0.01	0.01	0.01
16	17.41	8.87	10.69	0.16	0.01	0.01	0.20	0.01	0.01
17	25.16	11.81	14.46	0.12	0.01	0.01	0.27	0.01	0.01
18	25.16	10.71	14.89	0.11	0.01	0.01	0.14	0.01	0.01
19	906.04	5.39	36.18	0.33	0.01	0.01	0.11	0.01	0.01
20	89.92	5.57	13.98	0.26	0.01	0.02	0.03	0.01	0.01
21	387.97	4.81	10.40	0.01	0.01	0.01	0.10	0.01	0.02
22	14.84	7.24	8.61	0.01	0.01	0.01	0.06	0.01	0.01
23	29.22	7.65	10.08	0.01	0.01	0.01	0.08	0.01	0.02
24	21.43	4.98	8.02	0.01	0.01	0.01	0.06	0.01	0.02
25	14.60	6.69	7.95	0.01	0.01	0.01	0.08	0.01	0.02
26	15.41	7.40	8.08	0.01	0.01	0.01	0.08	0.01	0.02
27	15.66	7.61	8.57	0.01	0.01	0.01	0.18	0.01	0.02
28	13.40	7.38	8.34	0.01	0.01	0.01	0.17	0.01	0.02
29	29.11	5.20	8.88	0.01	0.01	0.01	0.24	0.01	0.02
30	23.22	4.26	7.95	0.01	0.01	0.01	0.13	0.01	0.02
31	41.94	6.65	9.12	0.01	0.01	0.01	0.03	0.01	0.01
Total									
Average	79.0	8.4	14.0	0.06	0.01	0.01	0.09	0.01	0.01
Maximum	906.0		36.2	0.33		0.02	0.27		0.02
Date	19-May		19-May	19-May		20-May	17-May		21-May
Minimum		4.3	7.9		0.01	0.01		0.01	0.01
Date		30-May	25-May		10-May	10-May		15-May	15-May

Notes:

Rack 1 and 2 turbidity above 0.1ntu due to adjustments with flow control vavle to analyzer. Rack 1 required calibration after flow adjustments didn't resolve the issue.

Membranes Monthly Report

Month: **May-16**

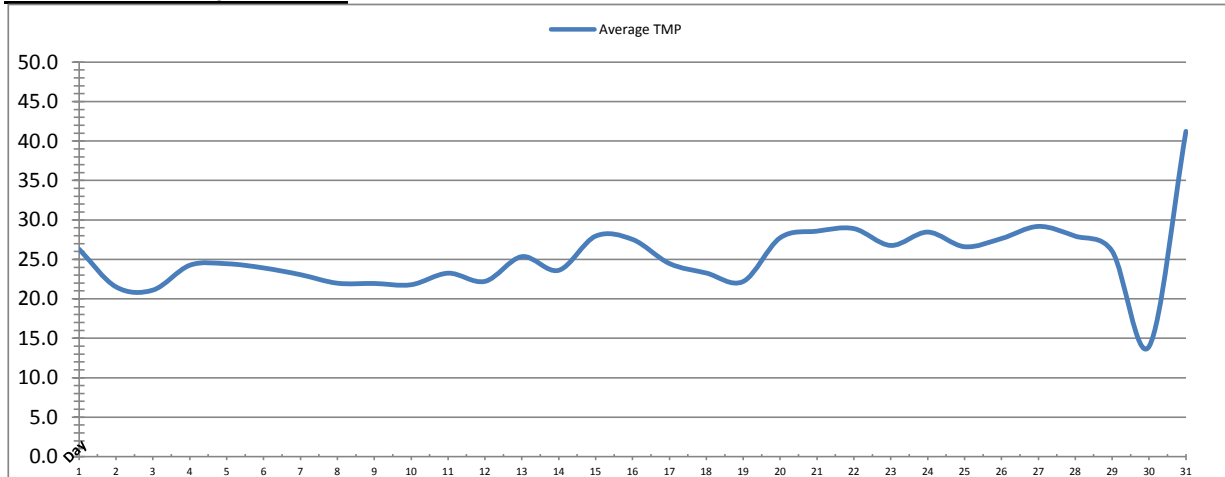


Date	Rack #3 Turbidity			Rack #4 Turbidity			Turbidity After Membranes		
	RACK3_NTU_Value			RACK4_NTU_Value			PALL_FILTER_AIT5001_Value		
	Maximum	Minimum	Average	Maximum	Minimum	Average	Maximum	Minimum	Average
1	0.02	0.01	0.01	0.01	0.01	0.01	0.02	0.02	0.02
2	0.02	0.01	0.01	0.01	0.01	0.01	0.02	0.02	0.02
3	0.02	0.01	0.01	0.01	0.01	0.01	0.02	0.02	0.02
4	0.02	0.01	0.01	0.01	0.01	0.01	0.64	0.02	0.02
5	0.02	0.01	0.01	0.01	0.01	0.01	0.02	0.02	0.02
6	0.02	0.01	0.01	0.01	0.01	0.01	0.02	0.02	0.02
7	0.02	0.01	0.01	0.01	0.01	0.01	0.02	0.02	0.02
8	0.02	0.01	0.01	0.01	0.01	0.01	0.02	0.02	0.02
9	0.02	0.01	0.01	0.01	0.01	0.01	0.02	0.02	0.02
10	0.02	0.01	0.01	0.01	0.01	0.01	0.02	0.02	0.02
11	0.02	0.01	0.01	0.01	0.01	0.01	0.02	0.02	0.02
12	0.02	0.01	0.01	0.02	0.01	0.01	0.02	0.02	0.02
13	0.02	0.01	0.01	0.01	0.01	0.01	0.02	0.02	0.02
14	0.03	0.01	0.01	0.01	0.01	0.01	0.02	0.02	0.02
15	0.02	0.01	0.01	0.02	0.01	0.01	0.07	0.02	0.02
16	0.03	0.01	0.01	0.01	0.01	0.01	0.02	0.02	0.02
17	0.02	0.01	0.01	0.01	0.01	0.01	0.02	0.02	0.02
18	0.02	0.01	0.01	0.01	0.01	0.01	0.02	0.02	0.02
19	0.02	0.01	0.01	0.02	0.01	0.01	0.02	0.02	0.02
20	0.02	0.01	0.01	0.02	0.01	0.01	0.02	0.02	0.02
21	0.02	0.01	0.01	0.01	0.01	0.01	0.02	0.02	0.02
22	0.02	0.01	0.01	0.02	0.01	0.01	0.02	0.02	0.02
23	0.02	0.01	0.01	0.02	0.01	0.01	0.02	0.02	0.02
24	0.02	0.01	0.01	0.02	0.01	0.01	0.02	0.02	0.02
25	0.02	0.01	0.01	0.02	0.01	0.01	0.02	0.02	0.02
26	0.02	0.01	0.01	0.01	0.01	0.01	0.03	0.02	0.02
27	0.02	0.01	0.01	0.02	0.01	0.01	0.02	0.02	0.02
28	0.04	0.01	0.01	0.01	0.01	0.01	0.02	0.02	0.02
29	0.02	0.01	0.01	0.02	0.01	0.01	0.03	0.02	0.02
30	0.02	0.01	0.01	0.01	0.01	0.01	0.61	0.02	0.02
31	0.02	0.01	0.01	0.01	0.01	0.01	0.02	0.02	0.02
Total									
Average	0.02	0.01	0.01	0.01	0.01	0.01	0.06	0.02	0.02
Maximum	0.04		0.01	0.02		0.01	0.64		0.02
Date	28-May		4-May	15-May		15-May	4-May		26-May
Minimum		0.01	0.01		0.01	0.01		0.02	0.02
Date		26-May	28-May		1-May	19-May		10-May	10-May

Notes:

Membranes Monthly Report

Month: **May-16**

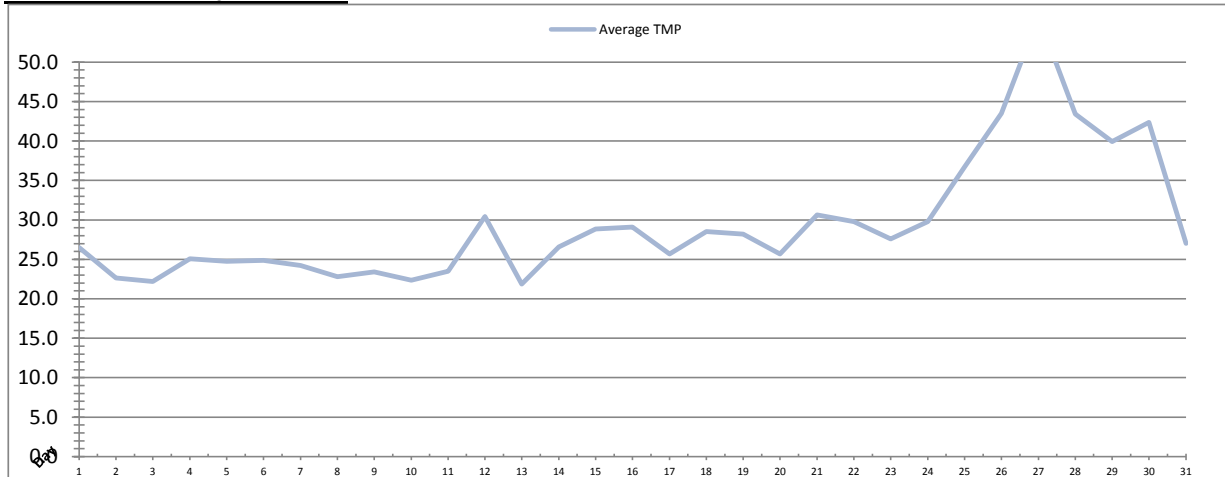


Date	Integrity Test Rack 1							
	Initial Pressure (kPa)	Final Pressure (kPa)	Test Duration (sec)	Change in Pressure (kPa)	UCL	Within UCL	Average TMP (kPa)	Max TMP (kPa)
1	194.9	193.6	300.0	1.3	2.0	✓ 2.0	26.3	49.0
2	194.7	193.5	300.0	1.2	2.0	✓ 2.0	21.5	51.0
3	194.4	193.7	300.0	0.8	2.0	✓ 2.0	21.1	48.6
4	194.7	193.5	300.0	1.2	2.0	✓ 2.0	24.3	49.5
5	194.9	193.7	300.0	1.2	2.0	✓ 2.0	24.4	48.7
6	194.7	193.6	300.0	1.1	2.0	✓ 2.0	23.9	48.7
7	194.4	193.7	300.0	0.7	2.0	✓ 2.0	23.1	46.9
8	194.7	193.5	300.0	1.3	2.0	✓ 2.0	22.0	46.1
9	194.9	194.3	300.0	0.5	2.0	✓ 2.0	21.9	46.6
10	194.6	193.3	300.0	1.3	2.0	✓ 2.0	21.8	46.9
11	194.5	193.3	300.0	1.2	2.0	✓ 2.0	23.3	46.9
12	194.9	194.2	300.0	0.7	2.0	✓ 2.0	22.2	94.0
13	194.9	193.6	300.0	1.3	2.0	✓ 2.0	25.3	51.8
14	194.5	193.9	300.0	0.6	2.0	✓ 2.0	23.6	46.3
15	194.5	193.9	300.0	0.6	2.0	✓ 2.0	28.0	48.4
16	195.1	194.3	300.0	0.8	2.0	✓ 2.0	27.5	66.9
17	195.0	193.7	300.0	1.3	2.0	✓ 2.0	24.5	66.2
18	195.0	194.2	300.0	0.8	2.0	✓ 2.0	23.3	47.5
19	194.9	193.7	300.0	1.2	2.0	✓ 2.0	22.2	56.3
20	194.9	193.6	300.0	1.3	2.0	✓ 2.0	27.7	89.8
21	194.7	194.0	300.0	0.6	2.0	✓ 2.0	28.6	89.0
22	194.8	193.7	300.0	1.1	2.0	✓ 2.0	28.9	50.3
23	194.8	193.5	300.0	1.3	2.0	✓ 2.0	26.8	50.8
24	194.9	194.1	300.0	0.8	2.0	✓ 2.0	28.5	54.1
25	194.6	193.5	300.0	1.1	2.0	✓ 2.0	26.6	50.2
26	194.8	193.5	300.0	1.3	2.0	✓ 2.0	27.6	55.7
27	194.6	193.4	300.0	1.1	2.0	✓ 2.0	29.2	64.2
28	194.4	193.3	300.0	1.1	2.0	✓ 2.0	27.9	60.4
29	194.3	193.2	300.0	1.1	2.0	✓ 2.0	26.0	54.8
30	193.9	192.8	300.0	1.1	2.0	✓ 2.0	14.0	58.5
31	194.6	193.4	300.0	1.2	2.0	✓ 2.0	41.2	162.0
Total								
Average	194.7	193.7	300.0	1.0	2.0	2.0	25.3	59.5
Maximum	195.1	194.3	300.0	1.3	2.0	2.0	41.2	162.0
Date	16-May	9-May	1-May	13-May	1-May	1-May	31-May	31-May
Minimum	193.9	192.8	300.0	0.5	2.0	2.0	14.0	46.1
Date	30-May	30-May	1-May	9-May	1-May	1-May	30-May	8-May

Notes:

Membranes Monthly Report

Month: **May-16**

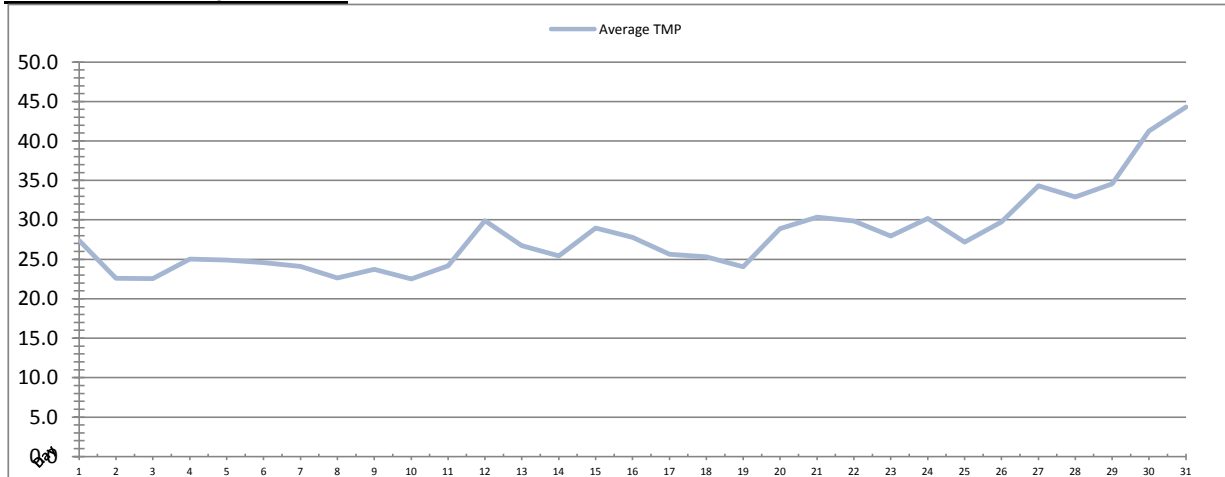


Integrity Test Rack 2									
Date	Initial Pressure (kPa)	Final Pressure (kPa)	Test Duration (sec)	Change in Pressure (kPa)	UCL	Within UCL	Average TMP (kPa)	Max TMP (kPa)	
1	200.0	199.4	300.0	0.7	2.0	✓ 2.0	26.5	52.6	
2	200.7	199.4	300.0	1.3	2.0	✓ 2.0	22.6	73.9	
3	200.5	199.8	300.0	0.7	2.0	✓ 2.0	22.2	49.5	
4	199.7	198.4	300.0	1.3	2.0	✓ 2.0	25.1	65.3	
5	200.5	199.6	300.0	0.9	2.0	✓ 2.0	24.7	49.3	
6	200.5	199.7	300.0	0.8	2.0	✓ 2.0	24.9	48.5	
7	199.8	198.6	300.0	1.2	2.0	✓ 2.0	24.2	72.4	
8	200.0	198.8	300.0	1.3	2.0	✓ 2.0	22.8	46.8	
9	200.7	199.8	300.0	0.8	2.0	✓ 2.0	23.4	47.9	
10	200.5	199.4	300.0	1.1	2.0	✓ 2.0	22.4	47.9	
11	200.5	199.9	300.0	0.6	2.0	✓ 2.0	23.5	71.5	
12	200.1	198.8	300.0	1.3	2.0	✓ 2.0	30.4	143.1	
13	200.8	200.0	300.0	0.8	2.0	✓ 2.0	21.9	50.0	
14	200.4	199.1	300.0	1.3	2.0	✓ 2.0	26.6	46.6	
15	200.4	199.1	300.0	1.3	2.0	✓ 2.0	28.8	49.5	
16	200.7	199.9	300.0	0.8	2.0	✓ 2.0	29.1	79.4	
17	200.7	199.6	300.0	1.1	2.0	✓ 2.0	25.7	49.8	
18	200.6	199.5	300.0	1.1	2.0	✓ 2.0	28.5	81.7	
19	200.5	199.2	300.0	1.3	2.0	✓ 2.0	28.2	68.1	
20	200.3	199.5	300.0	0.8	2.0	✓ 2.0	25.7	100.4	
21	201.0	200.0	300.0	1.0	2.0	✓ 2.0	30.6	90.0	
22	200.9	199.7	300.0	1.1	2.0	✓ 2.0	29.8	51.5	
23	200.7	200.0	300.0	0.8	2.0	✓ 2.0	27.6	52.4	
24	200.8	199.9	300.0	0.9	2.0	✓ 2.0	29.8	55.0	
25	200.4	199.6	300.0	0.8	2.0	✓ 2.0	36.7	63.3	
26	200.7	199.7	300.0	1.0	2.0	✓ 2.0	43.5	81.0	
27	200.7	199.8	300.0	0.8	2.0	✓ 2.0	55.8	94.3	
28	200.7	199.7	300.0	1.0	2.0	✓ 2.0	43.4	77.3	
29	200.2	199.0	300.0	1.2	2.0	✓ 2.0	39.9	111.4	
30	200.7	199.9	300.0	0.8	2.0	✓ 2.0	42.4	115.1	
31	200.8	200.0	300.0	0.8	2.0	✓ 2.0	27.0	116.4	
Total									
Average	200.5	199.5	300.0	1.0	2.0	2.0	29.5	71.0	
Maximum	201.0	200.0	300.0	1.3	2.0	2.0	55.8	143.1	
Date	21-May	21-May	1-May	14-May	1-May	1-May	27-May	12-May	
Minimum	199.7	198.4	300.0	0.6	2.0	2.0	21.9	46.6	
Date	4-May	4-May	1-May	11-May	1-May	1-May	13-May	14-May	

Notes:

Membranes Monthly Report

Month: **May-16**

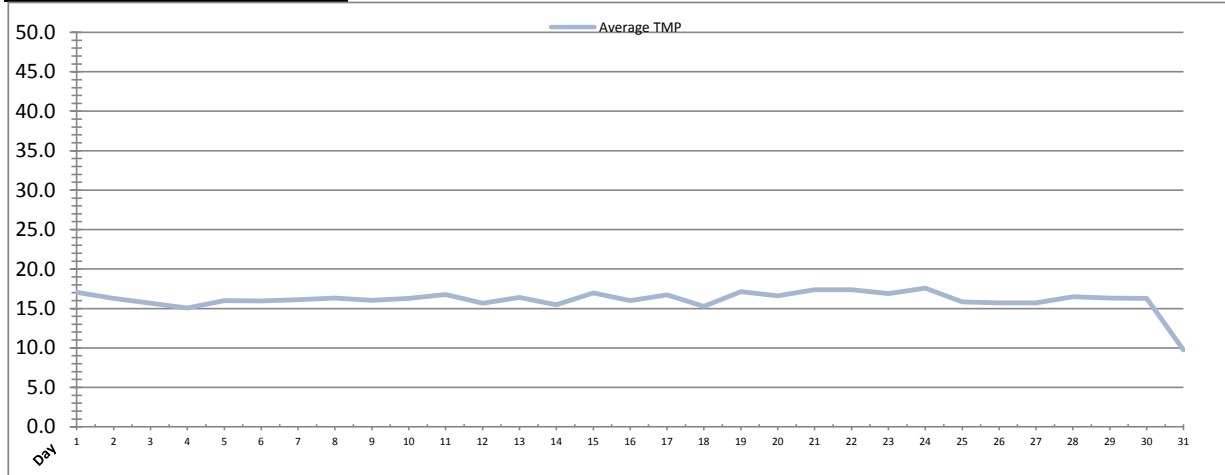


Integrity Test Rack 3									
Date	Initial Pressure (kPa)	Final Pressure (kPa)	Test Duration (sec)	Change in Pressure (kPa)	UCL	Within UCL	Average TMP (kPa)	Max TMP (kPa)	
1	191.7	190.4	300.0	1.3	2.0	✓ 2.0	27.4	50.5	
2	191.2	189.8	300.0	1.3	2.0	✓ 2.0	22.6	49.4	
3	191.7	190.3	300.0	1.3	2.0	✓ 2.0	22.5	48.8	
4	191.4	190.1	300.0	1.3	2.0	✓ 2.0	25.0	49.4	
5	191.1	189.8	300.0	1.3	2.0	✓ 2.0	24.9	68.1	
6	191.4	190.2	300.0	1.2	2.0	✓ 2.0	24.6	49.3	
7	191.5	190.2	300.0	1.3	2.0	✓ 2.0	24.1	48.0	
8	191.5	190.1	300.0	1.3	2.0	✓ 2.0	22.6	46.2	
9	191.0	189.7	300.0	1.3	2.0	✓ 2.0	23.7	47.4	
10	191.1	189.8	300.0	1.3	2.0	✓ 2.0	22.5	47.0	
11	191.4	190.1	300.0	1.3	2.0	✓ 2.0	24.2	47.8	
12	191.4	190.1	300.0	1.3	2.0	✓ 2.0	29.9	162.4	
13	191.5	190.2	300.0	1.3	2.0	✓ 2.0	26.7	97.2	
14	191.5	190.2	300.0	1.3	2.0	✓ 2.0	25.4	47.8	
15	191.5	190.2	300.0	1.3	2.0	✓ 2.0	29.0	49.7	
16	191.2	189.9	300.0	1.3	2.0	✓ 2.0	27.8	79.3	
17	191.5	190.1	300.0	1.3	2.0	✓ 2.0	25.7	49.1	
18	191.5	190.2	300.0	1.3	2.0	✓ 2.0	25.3	58.2	
19	191.0	189.8	300.0	1.2	2.0	✓ 2.0	24.0	47.2	
20	191.0	189.7	300.0	1.3	2.0	✓ 2.0	28.9	111.9	
21	191.0	189.6	300.0	1.4	2.0	✓ 2.0	30.4	88.4	
22	191.4	190.1	300.0	1.3	2.0	✓ 2.0	29.9	50.1	
23	191.2	189.9	300.0	1.3	2.0	✓ 2.0	28.0	52.1	
24	191.1	189.8	300.0	1.3	2.0	✓ 2.0	30.2	51.8	
25	191.5	190.3	300.0	1.2	2.0	✓ 2.0	27.2	52.5	
26	191.2	189.9	300.0	1.3	2.0	✓ 2.0	29.7	70.8	
27	191.5	190.3	300.0	1.2	2.0	✓ 2.0	34.3	93.5	
28	190.9	189.7	300.0	1.3	2.0	✓ 2.0	32.9	106.9	
29	191.3	190.0	300.0	1.3	2.0	✓ 2.0	34.6	103.2	
30	190.8	189.5	300.0	1.3	2.0	✓ 2.0	41.3	111.1	
31	191.2	189.8	300.0	1.3	2.0	✓ 2.0	44.3	177.3	
Total									
Average	191.3	190.0	300.0	1.3	2.0	2.0	28.0	71.4	
Maximum	191.7	190.4	300.0	1.4	2.0	2.0	44.3	177.3	
Date	1-May	1-May	1-May	21-May	1-May	1-May	31-May	31-May	
Minimum	190.8	189.5	300.0	1.2	2.0	2.0	22.5	46.2	
Date	30-May	30-May	1-May	6-May	1-May	1-May	10-May	8-May	

Notes:

Membranes Monthly Report

Month: **May-16**



Integrity Test Rack 4									
Date	Initial Pressure (kPa)	Final Pressure (kPa)	Test Duration (sec)	Change in Pressure (kPa)	UCL	Within UCL	Average TMP (kPa)	Max TMP (kPa)	
1	194.6	193.3	300.0	1.3	2.0	✓ 2.0	17.1	34.8	
2	194.6	193.3	300.0	1.3	2.0	✓ 2.0	16.3	38.2	
3	194.7	193.4	300.0	1.3	2.0	✓ 2.0	15.7	37.2	
4	194.4	193.1	300.0	1.3	2.0	✓ 2.0	15.1	38.5	
5	194.4	193.1	300.0	1.3	2.0	✓ 2.0	16.0	34.3	
6	194.1	193.0	300.0	1.1	2.0	✓ 2.0	16.0	36.7	
7	194.7	193.4	300.0	1.2	2.0	✓ 2.0	16.1	34.4	
8	194.6	193.3	300.0	1.2	2.0	✓ 2.0	16.3	35.5	
9	194.2	193.0	300.0	1.3	2.0	✓ 2.0	16.0	35.4	
10	194.2	193.0	300.0	1.3	2.0	✓ 2.0	16.3	36.2	
11	194.4	193.1	300.0	1.3	2.0	✓ 2.0	16.7	34.1	
12	194.9	193.7	300.0	1.2	2.0	✓ 2.0	15.7	34.7	
13	194.5	193.2	300.0	1.3	2.0	✓ 2.0	16.4	33.6	
14	194.4	193.2	300.0	1.3	2.0	✓ 2.0	15.5	31.6	
15	194.4	193.2	300.0	1.3	2.0	✓ 2.0	17.0	20.0	
16	194.5	193.2	300.0	1.3	2.0	✓ 2.0	16.0	35.8	
17	195.0	193.9	300.0	1.1	2.0	✓ 2.0	16.7	37.2	
18	195.4	194.4	300.0	1.1	2.0	✓ 2.0	15.3	33.7	
19	194.7	193.4	300.0	1.3	2.0	✓ 2.0	17.1	43.6	
20	194.9	193.7	300.0	1.2	2.0	✓ 2.0	16.6	48.8	
21	194.5	193.3	300.0	1.3	2.0	✓ 2.0	17.4	36.6	
22	194.5	193.3	300.0	1.2	2.0	✓ 2.0	17.4	33.5	
23	194.9	193.7	300.0	1.3	2.0	✓ 2.0	16.9	37.2	
24	194.4	193.2	300.0	1.2	2.0	✓ 2.0	17.6	36.6	
25	194.6	193.5	300.0	1.1	2.0	✓ 2.0	15.8	35.2	
26	194.6	193.3	300.0	1.3	2.0	✓ 2.0	15.7	35.4	
27	194.5	193.3	300.0	1.2	2.0	✓ 2.0	15.7	37.3	
28	194.3	193.1	300.0	1.2	2.0	✓ 2.0	16.5	35.0	
29	194.3	193.0	300.0	1.3	2.0	✓ 2.0	16.3	36.9	
30	194.6	193.3	300.0	1.2	2.0	✓ 2.0	16.3	38.6	
31	197.9	196.7	300.0	1.2	2.0	✓ 2.0	9.8	51.1	
Total									
Average	194.7	193.4	300.0	1.2	2.0	2.0	16.1	36.4	
Maximum	197.9	196.7	300.0	1.3	2.0	2.0	17.6	51.1	
Date	31-May	31-May	1-May	3-May	1-May	1-May	24-May	31-May	
Minimum	194.1	193.0	300.0	1.1	2.0	2.0	9.8	20.0	
Date	6-May	6-May	1-May	18-May	1-May	1-May	31-May	15-May	

Notes:

Membranes Monthly Report

Month: May-16

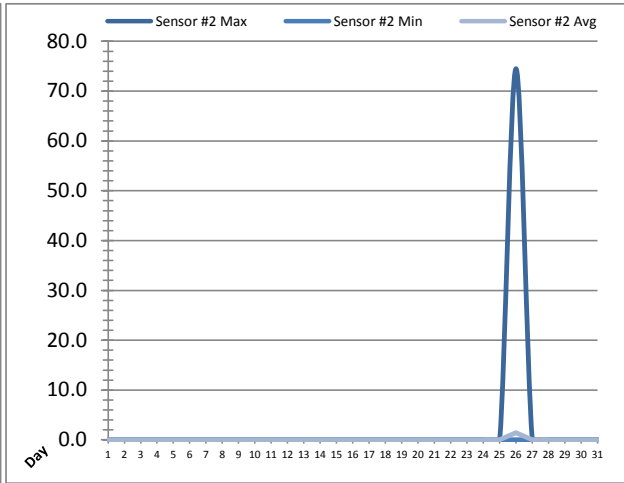
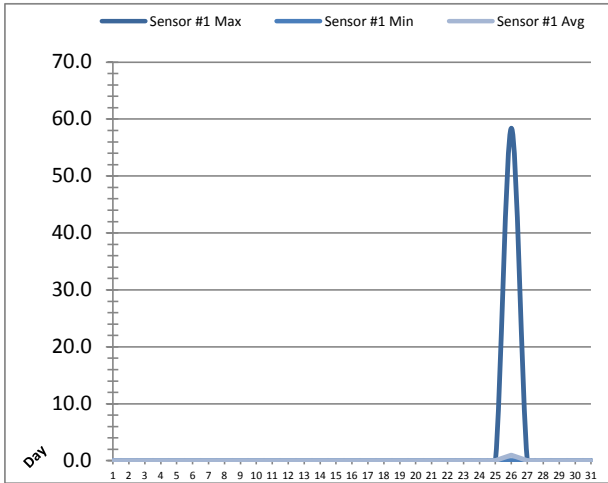
Date	Membranes Monthly Performance							
	Rack 1 >0.1 NTU (Minutes)	Rack 1 Forward Flow (Minutes)	Rack 2 >0.1 NTU (Minutes)	Rack 2 Forward Flow (Minutes)	Rack 3 >0.1 NTU (Minutes)	Rack 3 Forward Flow (Minutes)	Rack 4 >0.1 NTU (Minutes)	Rack 4 Forward Flow (Minutes)
1	0.0	949.0	0.0	939.1	0.0	948.1	0.0	433.1
2	0.0	604.3	0.0	605.3	0.0	605.3	0.0	295.2
3	0.0	635.0	0.0	639.1	0.0	641.3	0.0	306.2
4	0.0	835.3	0.0	835.2	0.0	840.1	0.0	403.3
5	0.0	823.4	0.0	824.2	0.0	824.2	0.0	399.2
6	0.0	837.5	0.0	836.1	0.0	839.4	0.0	381.1
7	0.0	815.1	0.0	818.3	0.0	822.2	0.0	400.5
8	0.0	736.1	0.0	737.1	0.0	736.6	0.0	354.1
9	0.0	811.3	0.0	817.2	0.0	820.1	0.0	387.6
10	0.0	735.3	0.0	731.4	0.0	734.2	0.0	337.1
11	0.0	839.6	0.0	834.1	0.0	840.6	0.0	411.2
12	4.5	673.6	1.4	845.2	0.0	881.1	0.0	262.0
13	1.4	816.4	3.1	642.4	0.0	822.2	0.0	333.0
14	2.3	867.4	2.3	877.2	0.0	875.5	0.0	521.3
15	0.0	660.2	0.0	660.2	0.0	660.2	0.0	660.2
16	1.4	727.6	3.1	732.4	0.0	654.3	0.0	477.4
17	0.5	871.1	3.2	875.2	0.0	876.1	0.0	429.6
18	0.5	935.1	1.4	944.0	0.0	946.6	0.0	259.5
19	5.4	1021.2	0.5	1029.4	0.0	1027.3	0.0	848.3
20	21.2	751.5	0.0	515.5	0.0	755.1	0.0	532.6
21	0.0	944.2	0.5	946.5	0.0	951.4	0.0	520.6
22	0.0	1103.3	0.0	1098.4	0.0	1105.1	0.0	544.5
23	0.0	949.4	0.0	949.4	0.0	952.0	0.0	447.0
24	0.0	1087.3	0.0	1086.1	0.0	1094.1	0.0	533.2
25	0.0	1060.4	0.0	1061.3	0.0	1065.3	0.0	189.1
26	0.0	1178.5	0.0	1178.1	0.0	1181.2	0.0	168.0
27	0.0	1261.2	4.0	1264.3	0.0	1265.3	0.0	163.1
28	0.0	1241.5	2.3	1246.4	0.0	1250.5	0.0	299.3
29	0.0	950.3	4.5	1153.4	0.0	1152.1	0.0	261.1
30	0.0	333.4	3.2	1042.1	0.0	1055.4	0.0	427.4
31	0.0	1151.0	0.0	591.5	0.0	1181.0	0.0	271.5
Total	37.1	27206.2	29.4	27356.3	0.0	28403.8	0.0	12257.1
Percent	0.14		0.11		0.00		0.00	
Maximum	21.2	1261.2	4.5	1264.3	0.0	1265.3	0.0	848.3
Date	20-May	27-May	29-May	27-May	1-May	27-May	1-May	19-May
Minimum	0.0	333.4	0.0	515.5	0.0	605.3	0.0	163.1
Date	1-May	30-May	1-May	20-May	1-May	2-May	1-May	27-May

Notes:

Met filter performance criteria of filter turbidity less than 0.1ntu greater than 99% fo the time.

UV System Monthly Report

Month: **May-16**

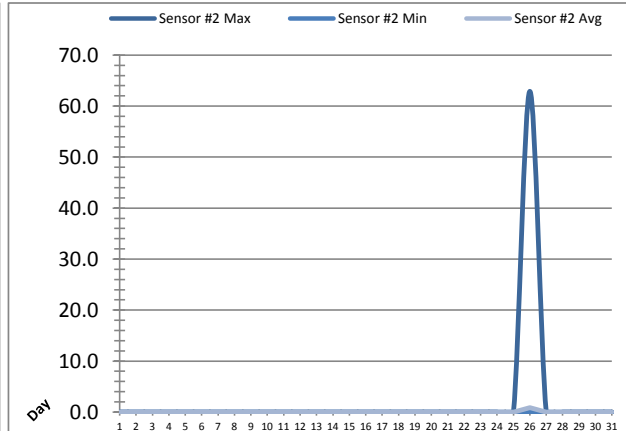
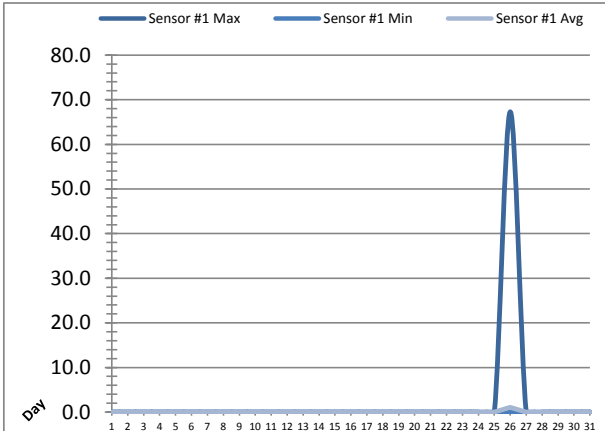


Date	UV Reactor 1					
	Intensity Sensor 1 (mW/cm ²)			Intensity Sensor 2 (mW/cm ²)		
	Maximum	Minimum	Average	Maximum	Minimum	Average
1	0.0	0.0	0.0	0.0	0.0	0.0
2	0.0	0.0	0.0	0.0	0.0	0.0
3	0.0	0.0	0.0	0.0	0.0	0.0
4	0.0	0.0	0.0	0.0	0.0	0.0
5	0.0	0.0	0.0	0.0	0.0	0.0
6	0.0	0.0	0.0	0.0	0.0	0.0
7	0.0	0.0	0.0	0.0	0.0	0.0
8	0.0	0.0	0.0	0.0	0.0	0.0
9	0.0	0.0	0.0	0.0	0.0	0.0
10	0.0	0.0	0.0	0.0	0.0	0.0
11	0.0	0.0	0.0	0.0	0.0	0.0
12	0.0	0.0	0.0	0.0	0.0	0.0
13	0.0	0.0	0.0	0.0	0.0	0.0
14	0.0	0.0	0.0	0.0	0.0	0.0
15	0.0	0.0	0.0	0.0	0.0	0.0
16	0.0	0.0	0.0	0.0	0.0	0.0
17	0.0	0.0	0.0	0.0	0.0	0.0
18	0.0	0.0	0.0	0.0	0.0	0.0
19	0.0	0.0	0.0	0.0	0.0	0.0
20	0.0	0.0	0.0	0.0	0.0	0.0
21	0.0	0.0	0.0	0.0	0.0	0.0
22	0.0	0.0	0.0	0.0	0.0	0.0
23	0.0	0.0	0.0	0.0	0.0	0.0
24	0.0	0.0	0.0	0.0	0.0	0.0
25	0.0	0.0	0.0	0.0	0.0	0.0
26	58.4	0.0	1.0	74.5	0.0	1.4
27	0.0	0.0	0.0	0.0	0.0	0.0
28	0.0	0.0	0.0	0.0	0.0	0.0
29	0.0	0.0	0.0	0.0	0.0	0.0
30	0.0	0.0	0.0	0.0	0.0	0.0
31	0.0	0.0	0.0	0.0	0.0	0.0
Total						
Average	1.9	0.0	0.0	2.4	0.0	0.0
Maximum	58.4		1.0	74.5		1.4
Date	26-May		26-May	26-May		26-May
Minimum		0.0	0.0		0.0	0.0
Date		1-May	1-May		1-May	1-May

Notes:

UV System Monthly Report

Month: May-16

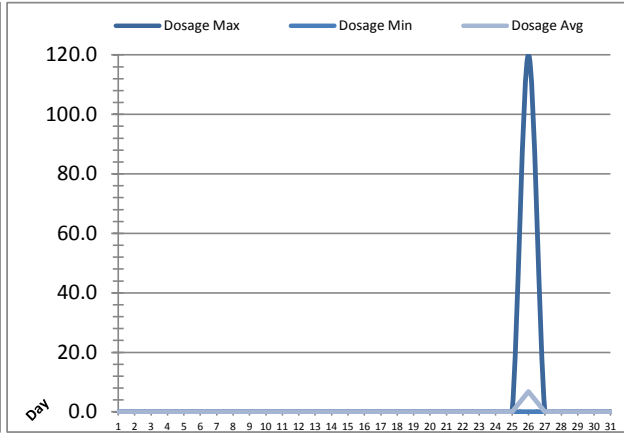
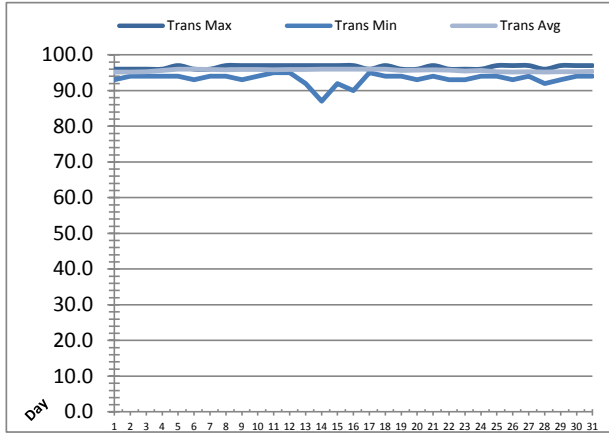


UV Reactor 2						
Date	Intensity Sensor 1 (mW/cm²)			Intensity Sensor 2 (mW/cm²)		
	Maximum	Minimum	Average	Maximum	Minimum	Average
1	0.0	0.0	0.0	0.0	0.0	0.0
2	0.0	0.0	0.0	0.0	0.0	0.0
3	0.0	0.0	0.0	0.0	0.0	0.0
4	0.0	0.0	0.0	0.0	0.0	0.0
5	0.0	0.0	0.0	0.0	0.0	0.0
6	0.0	0.0	0.0	0.0	0.0	0.0
7	0.0	0.0	0.0	0.0	0.0	0.0
8	0.0	0.0	0.0	0.0	0.0	0.0
9	0.0	0.0	0.0	0.0	0.0	0.0
10	0.0	0.0	0.0	0.0	0.0	0.0
11	0.0	0.0	0.0	0.0	0.0	0.0
12	0.0	0.0	0.0	0.0	0.0	0.0
13	0.0	0.0	0.0	0.0	0.0	0.0
14	0.0	0.0	0.0	0.0	0.0	0.0
15	0.0	0.0	0.0	0.0	0.0	0.0
16	0.0	0.0	0.0	0.0	0.0	0.0
17	0.0	0.0	0.0	0.0	0.0	0.0
18	0.0	0.0	0.0	0.0	0.0	0.0
19	0.0	0.0	0.0	0.0	0.0	0.0
20	0.0	0.0	0.0	0.0	0.0	0.0
21	0.0	0.0	0.0	0.0	0.0	0.0
22	0.0	0.0	0.0	0.0	0.0	0.0
23	0.0	0.0	0.0	0.0	0.0	0.0
24	0.0	0.0	0.0	0.0	0.0	0.0
25	0.0	0.0	0.0	0.0	0.0	0.0
26	67.3	0.0	1.1	62.9	0.0	0.9
27	0.0	0.0	0.0	0.0	0.0	0.0
28	0.0	0.0	0.0	0.0	0.0	0.0
29	0.0	0.0	0.0	0.0	0.0	0.0
30	0.0	0.0	0.0	0.0	0.0	0.0
31	0.0	0.0	0.0	0.0	0.0	0.0
Total						
Average	2.2	0.0	0.0	2.0	0.0	0.0
Maximum	67.3		1.1	62.9		0.9
Date	26-May		26-May	26-May		26-May
Minimum		0.0	0.0		0.0	0.0
Date		1-May	1-May		1-May	1-May

Notes:

UV System Monthly Report

Month: **May-16**

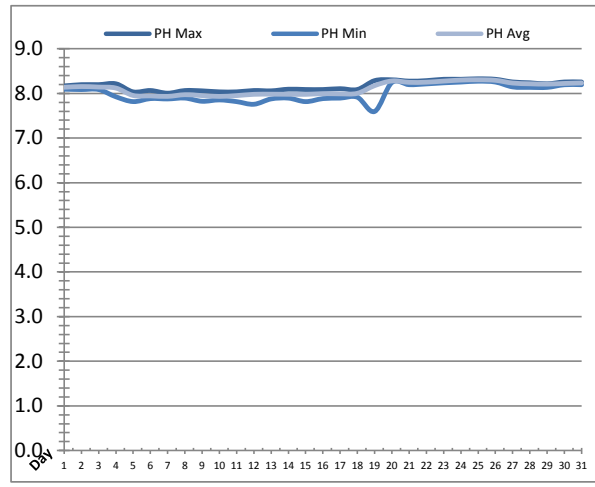
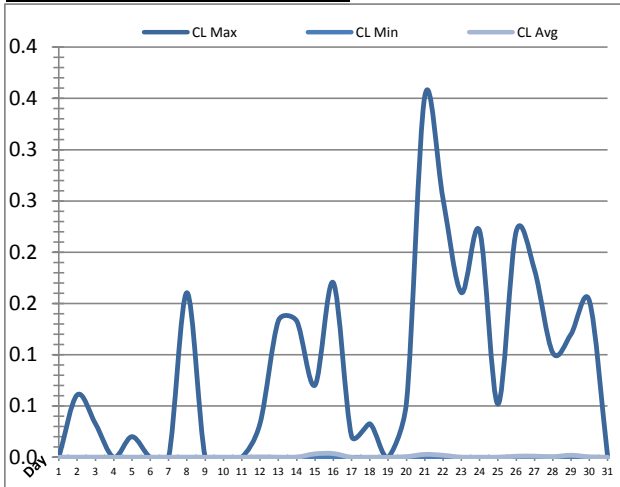


UV System							
Date	Transmittance (%)			Dosage (mJ/cm ²)			Inlet Flow (L/s)
	Maximum	Minimum	Average	Maximum	Minimum	Average	Maximum
1	96.00	93.00	95.16	0.0	0.0	0.0	89.7
2	96.00	94.00	95.14	0.0	0.0	0.0	87.8
3	96.00	94.00	95.32	0.0	0.0	0.0	87.1
4	96.00	94.00	95.68	0.0	0.0	0.0	87.8
5	97.00	94.00	95.97	0.0	0.0	0.0	89.5
6	96.00	93.00	95.96	0.0	0.0	0.0	95.8
7	96.00	94.00	95.93	0.0	0.0	0.0	87.5
8	97.00	94.00	95.83	0.0	0.0	0.0	90.1
9	97.00	93.00	95.93	0.0	0.0	0.0	88.8
10	97.00	94.00	95.91	0.0	0.0	0.0	93.5
11	97.00	95.00	95.84	0.0	0.0	0.0	89.5
12	97.00	95.00	95.87	0.0	0.0	0.0	133.1
13	97.00	92.00	95.91	0.0	0.0	0.0	90.3
14	97.00	87.00	95.98	0.0	0.0	0.0	87.7
15	97.00	92.00	95.98	0.0	0.0	0.0	72.0
16	97.00	90.00	95.96	0.0	0.0	0.0	88.0
17	96.00	95.00	95.97	0.0	0.0	0.0	88.8
18	97.00	94.00	95.96	0.0	0.0	0.0	96.1
19	96.00	94.00	95.63	0.0	0.0	0.0	112.6
20	96.00	93.00	95.69	0.0	0.0	0.0	150.3
21	97.00	94.00	95.84	0.0	0.0	0.0	152.7
22	96.00	93.00	95.69	0.0	0.0	0.0	90.3
23	96.00	93.00	95.48	0.0	0.0	0.0	89.4
24	96.00	94.00	95.59	0.0	0.0	0.0	90.7
25	97.00	94.00	95.26	0.0	0.0	0.0	87.8
26	97.00	93.00	95.21	120.0	0.0	6.8	86.5
27	97.00	94.00	95.31	0.0	0.0	0.0	87.3
28	96.00	92.00	95.17	0.0	0.0	0.0	87.9
29	97.00	93.00	95.25	0.0	0.0	0.0	84.0
30	97.00	94.00	95.29	0.0	0.0	0.0	89.2
31	97.00	94.00	95.36	0.0	0.0	0.0	145.2
Total							
Average	96.58	93.29	95.65	3.9	0.0	0.2	96.7
Maximum	97.00		95.98	120.0		6.8	152.7
Date	5-May		14-May	26-May		26-May	21-May
Minimum		87.00	95.14		0.0	0.0	
Date		14-May	2-May		1-May	1-May	

Notes:

Plant Quality Report

Month: **May-16**

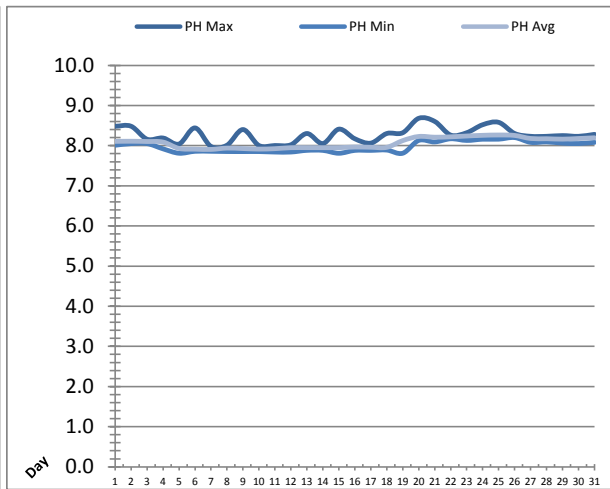
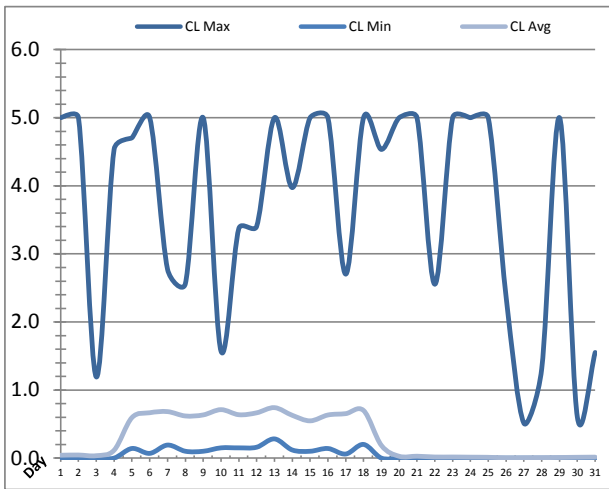


Date	Strainer Chlorine Residual			Strainer pH		
	AIT_2003_CL (ppm)			AIT_2003_PH		
	Maximum	Minimum	Average	Maximum	Minimum	Average
1	0.00	0.00	0.00	8.17	8.09	8.14
2	0.06	0.00	0.00	8.20	8.09	8.15
3	0.03	0.00	0.00	8.20	8.09	8.14
4	0.00	0.00	0.00	8.22	7.92	8.12
5	0.02	0.00	0.00	8.03	7.82	7.95
6	0.00	0.00	0.00	8.07	7.88	7.94
7	0.00	0.00	0.00	8.01	7.88	7.93
8	0.16	0.00	0.00	8.06	7.90	7.97
9	0.00	0.00	0.00	8.06	7.82	7.95
10	0.00	0.00	0.00	8.04	7.85	7.93
11	0.00	0.00	0.00	8.04	7.82	7.95
12	0.03	0.00	0.00	8.07	7.76	7.98
13	0.13	0.00	0.00	8.06	7.88	7.98
14	0.13	0.00	0.00	8.09	7.89	7.98
15	0.07	0.00	0.00	8.09	7.82	7.98
16	0.17	0.00	0.00	8.09	7.88	8.00
17	0.02	0.00	0.00	8.11	7.90	7.99
18	0.03	0.00	0.00	8.09	7.91	8.00
19	0.00	0.00	0.00	8.29	7.60	8.17
20	0.05	0.00	0.00	8.31	8.24	8.28
21	0.35	0.00	0.00	8.28	8.20	8.25
22	0.25	0.00	0.00	8.29	8.21	8.25
23	0.16	0.00	0.00	8.32	8.24	8.28
24	0.22	0.00	0.00	8.32	8.25	8.30
25	0.05	0.00	0.00	8.33	8.27	8.31
26	0.22	0.00	0.00	8.32	8.25	8.29
27	0.18	0.00	0.00	8.26	8.15	8.23
28	0.10	0.00	0.00	8.24	8.14	8.22
29	0.12	0.00	0.00	8.22	8.14	8.21
30	0.15	0.00	0.00	8.26	8.19	8.22
31	0.00	0.00	0.00	8.26	8.20	8.23
Total						
Average	0.09	0.00	0.00	8.17	8.01	8.11
Maximum	0.35		0.00	8.33		8.31
Date	21-May		16-May	25-May		25-May
Minimum		0.00			7.60	7.93
Date		1-May	1-May		19-May	10-May

Notes:

Plant Quality Report

Month: May-16

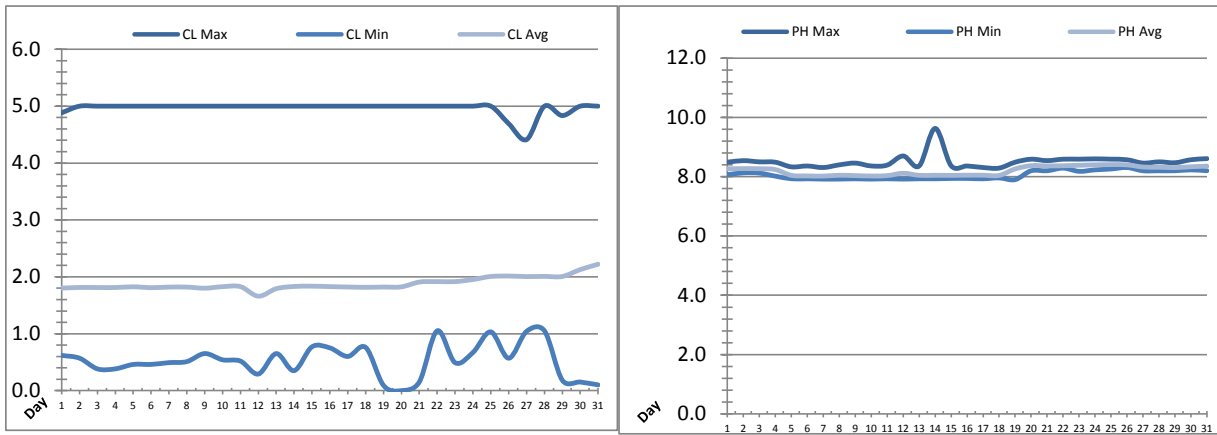


Date	Inlet UV Chlorine Residual			Inlet UV pH		
	AIT_5005_CL (ppm)			AIT_5005_PH		
	Maximum	Minimum	Average	Maximum	Minimum	Average
1	✓ 5.00	✓ 0.00	0.04	8.48	8.01	8.11
2	✓ 5.00	✓ 0.00	0.05	8.48	8.05	8.11
3	✓ 1.19	✓ 0.00	0.04	8.16	8.05	8.10
4	✓ 4.54	✓ 0.00	0.12	8.19	7.92	8.09
5	✓ 4.70	✓ 0.14	0.60	8.04	7.81	7.93
6	✓ 5.00	✓ 0.07	0.67	8.44	7.86	7.91
7	✓ 2.77	✓ 0.19	0.68	7.98	7.86	7.91
8	✓ 2.56	✓ 0.10	0.62	8.01	7.85	7.94
9	✓ 5.00	✓ 0.10	0.63	8.40	7.85	7.93
10	✓ 1.57	✓ 0.15	0.71	8.00	7.85	7.91
11	✓ 3.37	✓ 0.15	0.64	8.00	7.84	7.92
12	✓ 3.40	✓ 0.16	0.67	8.02	7.84	7.95
13	✓ 5.00	✓ 0.28	0.74	8.30	7.88	7.95
14	✓ 3.97	✓ 0.12	0.63	8.05	7.88	7.95
15	✓ 5.00	✓ 0.10	0.55	8.41	7.81	7.95
16	✓ 5.00	✓ 0.14	0.63	8.17	7.88	7.97
17	✓ 2.70	✓ 0.06	0.65	8.06	7.88	7.96
18	✓ 5.00	✓ 0.20	0.70	8.30	7.89	7.96
19	✓ 4.53	✓ 0.00	0.19	8.32	7.81	8.13
20	✓ 5.00	✓ 0.00	0.03	8.68	8.13	8.23
21	✓ 5.00	✓ 0.00	0.03	8.60	8.09	8.21
22	✓ 2.55	✓ 0.00	0.02	8.26	8.17	8.22
23	✓ 5.00	✓ 0.00	0.02	8.32	8.13	8.24
24	✓ 5.00	✓ 0.00	0.01	8.52	8.16	8.26
25	✓ 5.00	✓ 0.00	0.01	8.58	8.16	8.27
26	✓ 2.37	✓ 0.00	0.00	8.30	8.20	8.25
27	✓ 0.51	✓ 0.00	0.01	8.23	8.08	8.18
28	✓ 1.31	✓ 0.00	0.01	8.23	8.09	8.17
29	✓ 5.00	✓ 0.00	0.01	8.25	8.06	8.16
30	✓ 0.60	✓ 0.00	0.01	8.23	8.05	8.18
31	✓ 1.55	✓ 0.00	0.02	8.28	8.08	8.20
Total						
Average	3.68	0.06	0.31	8.27	7.98	8.07
Maximum	5.00		0.74	8.68		8.27
Date	1-May		13-May	20-May		25-May
Minimum		0.00	0.00		7.81	7.91
Date		1-May	26-May		15-May	7-May

Notes:

Plant Quality Report

Month: May-16

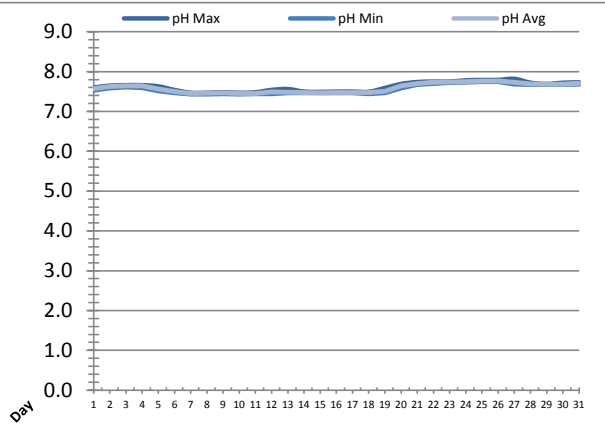
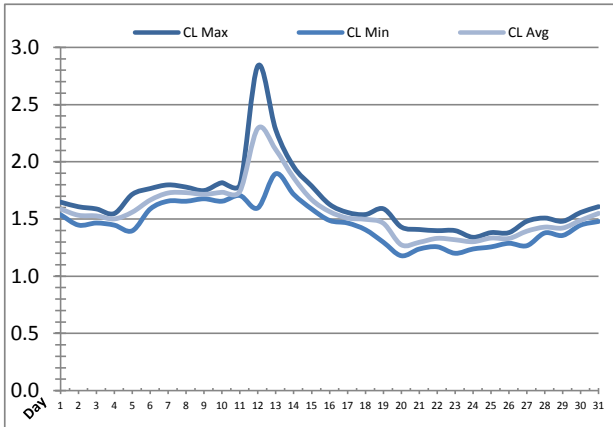


Date	Discharge UV Chlorine Residual			Discharge UV pH		
	AIT_5006_CL (ppm)			AIT_5006_PH		
	Maximum	Minimum	Average	Maximum	Minimum	Average
1	4.88	0.62	1.80	8.49	8.07	8.27
2	5.00	0.57	1.81	8.54	8.13	8.27
3	5.00	0.38	1.81	8.50	8.12	8.27
4	5.00	0.38	1.81	8.49	8.02	8.24
5	5.00	0.46	1.83	8.33	7.93	8.05
6	5.00	0.46	1.81	8.36	7.93	8.03
7	5.00	0.49	1.82	8.31	7.92	8.02
8	5.00	0.51	1.82	8.40	7.92	8.05
9	5.00	0.65	1.80	8.46	7.93	8.04
10	5.00	0.54	1.83	8.36	7.92	8.02
11	5.00	0.52	1.83	8.39	7.93	8.04
12	5.00	0.29	1.66	8.70	7.92	8.12
13	5.00	0.65	1.79	8.36	7.93	8.05
14	5.00	0.35	1.83	9.63	7.93	8.05
15	5.00	0.77	1.84	8.37	7.94	8.05
16	5.00	0.75	1.83	8.36	7.94	8.05
17	5.00	0.60	1.82	8.31	7.93	8.05
18	5.00	0.76	1.82	8.29	7.96	8.04
19	5.00	0.09	1.82	8.49	7.90	8.26
20	5.00	0.00	1.82	8.59	8.20	8.37
21	5.00	0.15	1.91	8.54	8.20	8.36
22	5.00	1.05	1.92	8.59	8.29	8.37
23	5.00	0.49	1.92	8.59	8.18	8.39
24	5.00	0.67	1.95	8.60	8.23	8.40
25	5.00	1.03	2.01	8.59	8.26	8.41
26	4.69	0.57	2.01	8.57	8.31	8.40
27	4.41	1.04	2.00	8.46	8.20	8.33
28	5.00	1.05	2.01	8.50	8.20	8.32
29	4.83	0.18	2.01	8.47	8.20	8.31
30	5.00	0.15	2.13	8.57	8.23	8.34
31	5.00	0.10	2.22	8.61	8.20	8.36
Total						
Average	4.96	0.53	1.88	8.51	8.06	8.20
Maximum	5.00		2.22	9.63		8.41
Date	2-May		31-May	14-May		25-May
Minimum		0.00	1.66		7.90	8.02
Date		20-May	12-May		19-May	7-May

Notes:

Plant Quality Report

Month: **May-16**

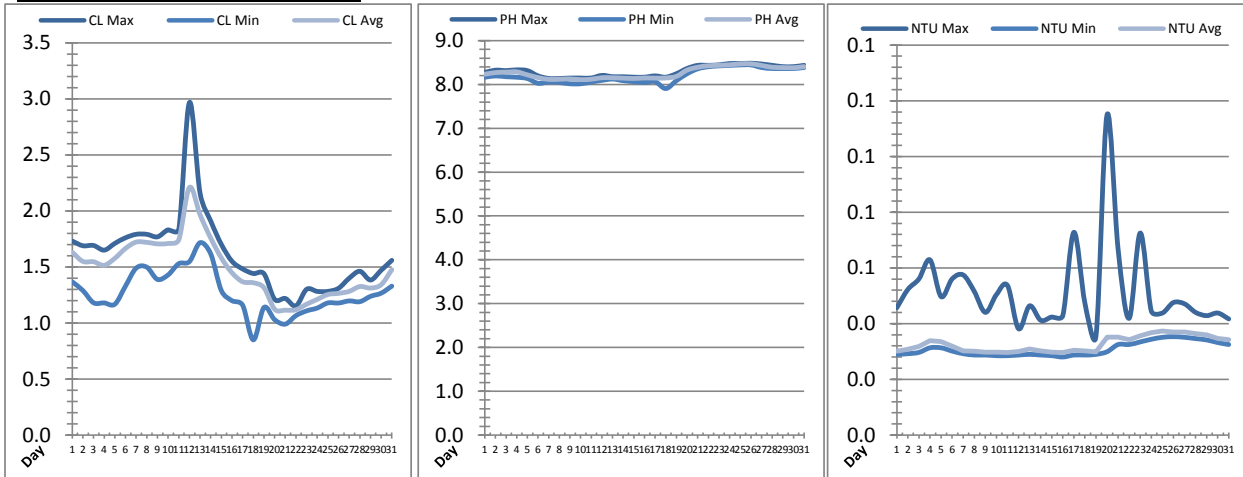


Date	Suction Header Chlorine Res.			Suction Header pH			Distribution CT Calc Total		
	AIT_7001_CL (ppm)			AIT_7001_PH (m)			REAL_CT_CALC_TOTAL (mg*ml/min)		
	Maximum	Minimum	Average	Maximum	Minimum	Average	Maximum	Minimum	Average
1	1.65	1.54	1.59	7.60	7.54	7.57	9862.86	0.00	319.77
2	1.61	1.45	1.53	7.65	7.58	7.62	2614.62	0.00	216.24
3	1.59	1.46	1.53	7.66	7.61	7.64	5904.96	0.00	385.59
4	1.55	1.45	1.50	7.66	7.59	7.64	7092.26	0.00	406.58
5	1.72	1.40	1.56	7.63	7.52	7.56	11279.84	0.00	380.34
6	1.77	1.59	1.67	7.54	7.46	7.50	3323.98	0.00	248.15
7	1.80	1.66	1.73	7.47	7.43	7.45	12583.54	0.00	346.32
8	1.78	1.66	1.73	7.47	7.43	7.46	11662.30	0.00	507.64
9	1.75	1.68	1.72	7.48	7.44	7.47	2228.61	0.00	469.22
10	1.82	1.66	1.73	7.47	7.43	7.45	3113.30	0.00	365.18
11	1.80	1.71	1.74	7.48	7.44	7.45	7630.18	0.00	322.00
12	2.84	1.60	2.29	7.54	7.45	7.49	15667.90	0.00	349.29
13	2.28	1.90	2.11	7.56	7.46	7.48	14576.65	0.00	322.42
14	1.96	1.72	1.86	7.50	7.46	7.48	11633.36	0.00	365.69
15	1.79	1.59	1.67	7.49	7.46	7.47	8620.69	0.00	235.01
16	1.63	1.49	1.56	7.49	7.46	7.47	8025.99	0.00	322.72
17	1.56	1.47	1.51	7.50	7.46	7.48	11011.22	0.00	371.28
18	1.54	1.41	1.50	7.49	7.45	7.47	11122.54	0.00	1448.66
19	1.59	1.30	1.46	7.59	7.46	7.51	10336.00	0.00	203.13
20	1.43	1.18	1.27	7.69	7.58	7.65	7668.94	0.00	110.47
21	1.41	1.24	1.30	7.74	7.67	7.70	8272.28	0.00	163.85
22	1.40	1.26	1.33	7.75	7.70	7.73	908.86	334.26	533.43
23	1.40	1.20	1.32	7.75	7.73	7.74	9372.31	0.00	273.88
24	1.34	1.24	1.30	7.78	7.73	7.75	4922.40	0.00	144.12
25	1.38	1.26	1.33	7.79	7.75	7.76	6285.44	0.00	91.35
26	1.38	1.29	1.33	7.79	7.75	7.76	5714.37	0.00	108.00
27	1.48	1.27	1.39	7.81	7.69	7.73	1484.42	0.00	109.13
28	1.51	1.38	1.43	7.72	7.67	7.69	1551.65	0.00	120.46
29	1.48	1.36	1.42	7.69	7.67	7.68	3475.94	0.00	119.07
30	1.56	1.45	1.49	7.72	7.67	7.68	9605.49	0.00	114.86
31	1.61	1.48	1.55	7.73	7.69	7.71	7565.71	0.00	91.56
Total									
Average	1.66	1.46	1.56	7.62	7.56	7.59	7.62	7.56	7.59
Maximum	2.84		2.29	7.81		7.76	7.81		7.76
Date	12-May		12-May	27-May		25-May	27-May		25-May
Minimum		1.18	1.27		7.43	7.45		7.43	7.45
Date		20-May	20-May		10-May	7-May		10-May	7-May

Notes:

Plant Quality Report

Month: **May-16**

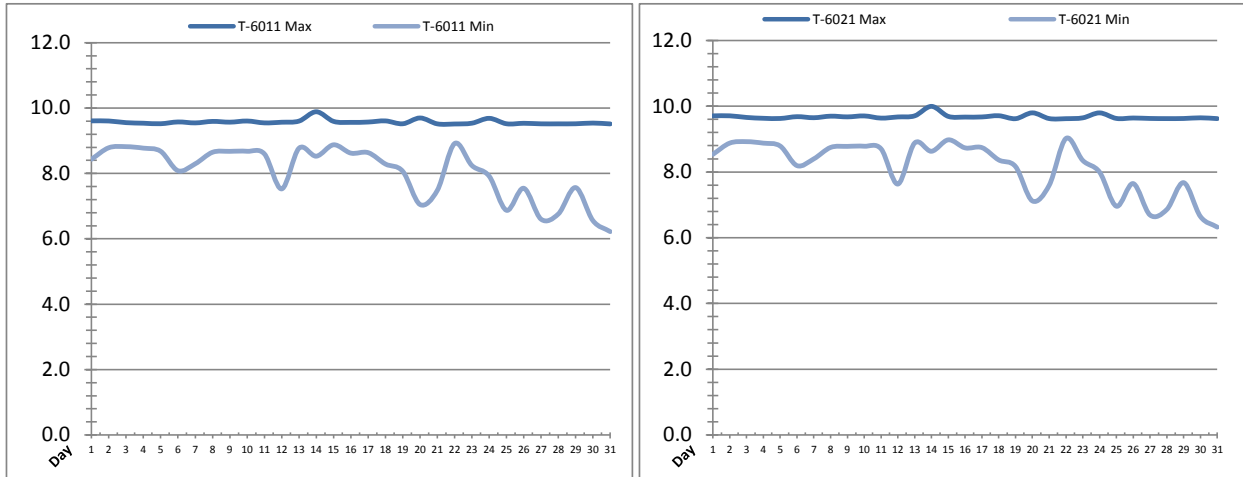


Date	Distribution Chlorine Header			Distribution pH			Distribution Turbidity		
	AIT_7004_CL (ppm)			AIT_7004_PH (mg/L)			AIT_7003 (mg/L)		
	Maximum	Minimum	Average	Maximum	Minimum	Average	Maximum	Minimum	Average
1	1.73	1.37	1.63	8.27	8.16	8.23	0.05	0.03	0.03
2	1.69	1.29	1.55	8.33	8.19	8.27	0.05	0.03	0.03
3	1.69	1.18	1.55	8.32	8.18	8.28	0.06	0.03	0.03
4	1.65	1.18	1.52	8.33	8.16	8.29	0.06	0.03	0.03
5	1.71	1.17	1.58	8.32	8.14	8.22	0.05	0.03	0.03
6	1.76	1.33	1.67	8.20	8.03	8.16	0.06	0.03	0.03
7	1.79	1.49	1.72	8.14	8.06	8.12	0.06	0.03	0.03
8	1.79	1.50	1.72	8.14	8.04	8.12	0.05	0.03	0.03
9	1.77	1.39	1.71	8.15	8.01	8.13	0.04	0.03	0.03
10	1.83	1.43	1.71	8.15	8.02	8.11	0.05	0.03	0.03
11	1.83	1.53	1.74	8.15	8.06	8.12	0.05	0.03	0.03
12	2.97	1.55	2.21	8.21	8.09	8.15	0.04	0.03	0.03
13	2.16	1.72	1.97	8.18	8.12	8.15	0.05	0.03	0.03
14	1.91	1.62	1.76	8.18	8.09	8.14	0.04	0.03	0.03
15	1.70	1.29	1.58	8.17	8.06	8.14	0.04	0.03	0.03
16	1.55	1.20	1.45	8.17	8.04	8.15	0.04	0.03	0.03
17	1.48	1.16	1.37	8.20	8.06	8.15	0.07	0.03	0.03
18	1.44	0.85	1.36	8.17	7.91	8.15	0.05	0.03	0.03
19	1.44	1.14	1.31	8.24	8.09	8.18	0.04	0.03	0.03
20	1.21	1.03	1.12	8.36	8.24	8.33	0.11	0.03	0.04
21	1.22	0.99	1.11	8.44	8.36	8.39	0.07	0.03	0.04
22	1.15	1.07	1.12	8.44	8.40	8.43	0.04	0.03	0.03
23	1.30	1.11	1.17	8.45	8.42	8.44	0.07	0.03	0.04
24	1.28	1.13	1.21	8.48	8.43	8.45	0.04	0.03	0.04
25	1.28	1.18	1.25	8.48	8.45	8.47	0.04	0.04	0.04
26	1.31	1.18	1.26	8.48	8.45	8.47	0.05	0.04	0.04
27	1.40	1.20	1.28	8.47	8.39	8.43	0.05	0.04	0.04
28	1.46	1.19	1.33	8.44	8.36	8.39	0.04	0.03	0.04
29	1.38	1.24	1.31	8.41	8.36	8.39	0.04	0.03	0.04
30	1.47	1.27	1.34	8.41	8.36	8.38	0.04	0.03	0.03
31	1.56	1.33	1.48	8.44	8.39	8.41	0.04	0.03	0.03
Total									
Average	1.61	1.27	1.49	8.30	8.20	8.27	0.1	0.0	0.0
Maximum	2.97		2.21	8.48		8.47	0.1		0.0
Date	12-May		12-May	26-May		26-May	20-May		25-May
Minimum		0.85	1.11		7.91	8.11		0.0	0.0
Date		18-May	21-May		18-May	10-May		16-May	11-May

Notes:

Raw Well/Treated Storage Report

Month: May-16

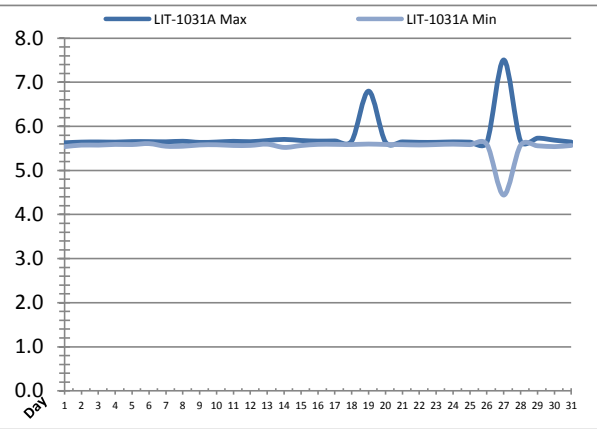
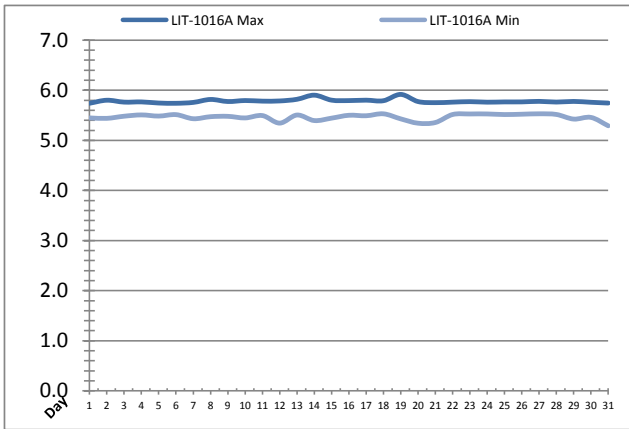


Date	Treated Water Storage Tank					
	T-6011 (m)			T-6021 (m)		
	Maximum	Minimum	Average	Maximum	Minimum	Average
1	9.6	8.4	9.0	9.7	8.5	9.1
2	9.6	8.8	9.2	9.7	8.9	9.4
3	9.6	8.8	9.2	9.7	8.9	9.3
4	9.5	8.8	9.2	9.6	8.9	9.3
5	9.5	8.7	9.1	9.6	8.8	9.2
6	9.6	8.1	8.9	9.7	8.2	9.0
7	9.5	8.3	9.0	9.7	8.4	9.1
8	9.6	8.6	9.3	9.7	8.7	9.4
9	9.6	8.7	9.2	9.7	8.8	9.3
10	9.6	8.7	9.2	9.7	8.8	9.3
11	9.5	8.6	9.2	9.6	8.7	9.3
12	9.6	7.5	8.8	9.7	7.6	8.9
13	9.6	8.8	9.2	9.7	8.9	9.3
14	9.9	8.5	9.2	10.0	8.6	9.3
15	9.6	8.9	9.3	9.7	9.0	9.4
16	9.6	8.6	9.2	9.7	8.7	9.3
17	9.6	8.6	9.2	9.7	8.7	9.3
18	9.6	8.3	9.0	9.7	8.4	9.1
19	9.5	8.1	8.9	9.6	8.2	9.0
20	9.7	7.0	8.9	9.8	7.1	9.0
21	9.5	7.5	8.8	9.6	7.6	8.9
22	9.5	8.9	9.2	9.6	9.0	9.3
23	9.5	8.2	9.0	9.6	8.4	9.1
24	9.7	7.9	8.9	9.8	8.0	9.0
25	9.5	6.9	8.3	9.6	7.0	8.4
26	9.5	7.5	8.7	9.6	7.6	8.8
27	9.5	6.6	8.2	9.6	6.7	8.3
28	9.5	6.8	8.4	9.6	6.9	8.5
29	9.5	7.6	8.6	9.6	7.7	8.7
30	9.5	6.6	8.4	9.6	6.6	8.5
31	9.5	6.2	7.8	9.6	6.3	7.9
Total						
Average	9.6	8.0	8.9	9.7	8.1	9.0
Maximum	9.9		9.3	10.0		9.4
Date	14-May		15-May	14-May		15-May
Minimum		6.2	7.8		6.3	7.9
Date		31-May	31-May		31-May	31-May

Notes:

Raw Well/Treated Storage Report

Month: May-16

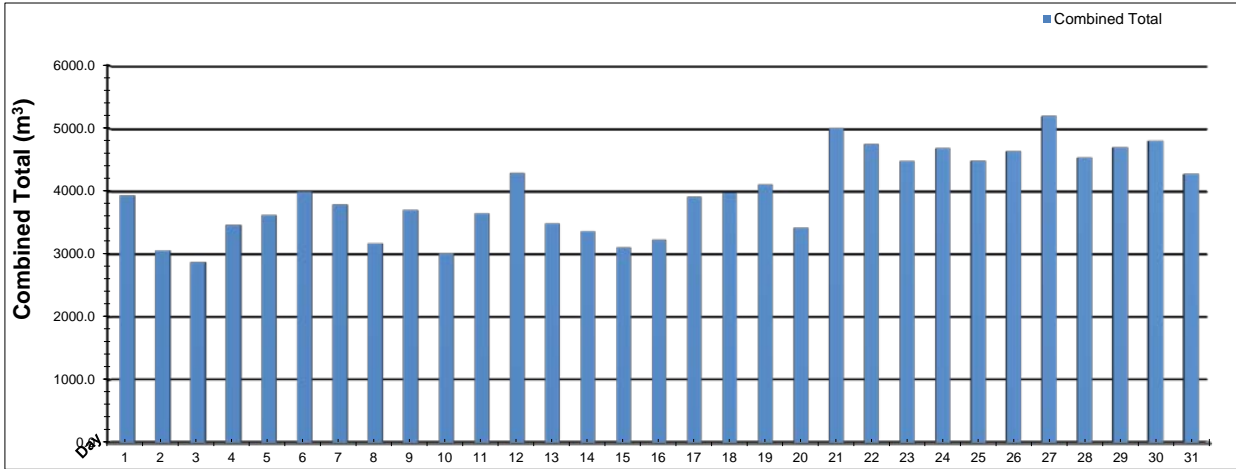


Date	Low Lift Intake Levels					
	Wet Well #1 (LIT-1016A) (m)			Wet Well #2 (LIT-1031A) (m)		
	Maximum	Minimum	Average	Maximum	Minimum	Average
1	5.7	5.4	5.6	5.6	5.5	5.6
2	5.8	5.4	5.6	5.6	5.6	5.6
3	5.8	5.5	5.6	5.6	5.6	5.6
4	5.8	5.5	5.6	5.6	5.6	5.6
5	5.7	5.5	5.6	5.7	5.6	5.6
6	5.7	5.5	5.6	5.7	5.6	5.6
7	5.8	5.4	5.6	5.6	5.5	5.6
8	5.8	5.5	5.6	5.7	5.5	5.6
9	5.8	5.5	5.6	5.6	5.6	5.6
10	5.8	5.4	5.6	5.6	5.6	5.6
11	5.8	5.5	5.6	5.7	5.6	5.6
12	5.8	5.3	5.6	5.7	5.6	5.6
13	5.8	5.5	5.6	5.7	5.6	5.6
14	5.9	5.4	5.6	5.7	5.5	5.6
15	5.8	5.4	5.6	5.7	5.6	5.6
16	5.8	5.5	5.6	5.7	5.6	5.6
17	5.8	5.5	5.6	5.7	5.6	5.6
18	5.8	5.5	5.6	5.7	5.6	5.6
19	5.9	5.4	5.6	6.8	5.6	5.7
20	5.8	5.3	5.6	5.6	5.6	5.6
21	5.8	5.4	5.6	5.6	5.6	5.6
22	5.8	5.5	5.6	5.6	5.6	5.6
23	5.8	5.5	5.6	5.6	5.6	5.6
24	5.8	5.5	5.6	5.6	5.6	5.6
25	5.8	5.5	5.6	5.6	5.6	5.6
26	5.8	5.5	5.6	5.6	5.6	5.6
27	5.8	5.5	5.6	7.5	4.4	5.7
28	5.8	5.5	5.6	5.7	5.6	5.6
29	5.8	5.4	5.6	5.7	5.6	5.6
30	5.8	5.5	5.6	5.7	5.5	5.6
31	5.7	5.3	5.5	5.6	5.6	5.6
Total						
Average	5.8	5.5	5.6	5.8	5.5	5.6
Maximum	5.9		5.6	7.5		5.7
Date	19-May		13-May	27-May		19-May
Minimum		5.3	5.5		4.4	5.6
Date		31-May	31-May		27-May	1-May

Notes:

High Lift Monthly Report

Month: **May-16**



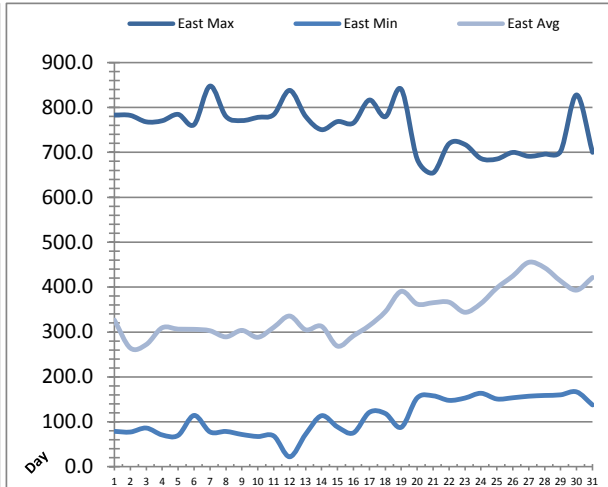
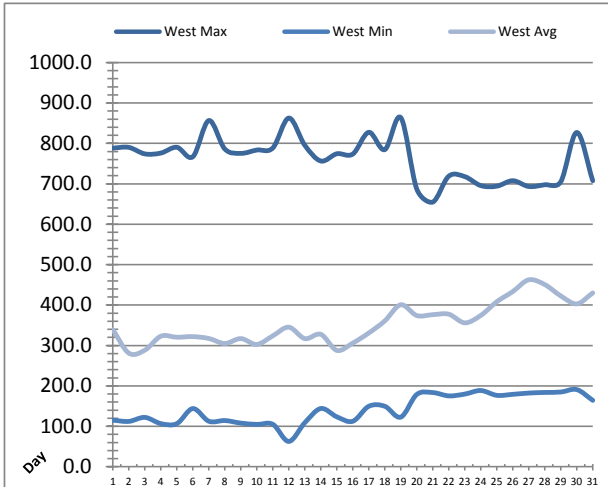
Date	Distribution Flow					
	FIT_7052 (East)		FIT_7062 (West)		Combined	
	(m³)	(L/s)	(m³)	(L/s)	(m³)	(L/s)
	Total	Peak	Total	Peak	Total	Peak
1	767.1	40.2	3170.2	87.4	3937.3	91.6
2	296.3	31.7	2768.0	85.8	3064.3	87.8
3	509.8	33.5	2366.7	84.1	2876.5	84.1
4	470.5	33.6	2998.5	92.0	3469.0	92.0
5	637.3	40.0	2992.5	88.6	3629.8	88.6
6	617.0	27.9	3383.0	83.9	3999.9	91.4
7	1105.1	44.0	2691.5	83.9	3796.7	90.1
8	897.5	34.2	2279.9	87.9	3177.3	87.9
9	1089.7	33.6	2617.1	92.0	3706.8	92.0
10	505.4	35.3	2510.2	91.1	3015.6	91.1
11	658.1	46.4	2995.5	87.3	3653.6	89.8
12	1194.3	44.2	3100.6	127.0	4294.9	149.1
13	414.2	44.6	3076.1	122.7	3490.3	150.1
14	915.3	45.6	2452.8	86.5	3368.2	94.2
15	587.9	43.6	2525.8	123.7	3113.7	155.2
16	1017.8	46.0	2218.0	105.1	3235.9	145.4
17	832.1	47.2	3089.2	98.8	3921.4	138.4
18	859.0	47.3	3119.4	120.6	3978.4	151.9
19	790.1	39.3	3322.3	98.8	4112.3	100.1
20	2997.5	138.0	425.0	117.4	3422.4	155.8
21	5010.6	138.0	0.0	0.0	5010.6	138.0
22	4753.1	79.8	0.0	0.0	4753.1	79.8
23	4487.0	123.4	0.0	0.0	4487.0	123.4
24	4687.6	140.4	0.0	0.0	4687.6	140.4
25	4491.8	141.4	0.0	0.0	4491.8	141.4
26	4640.4	138.1	0.0	0.0	4640.4	138.1
27	5201.4	163.8	0.0	0.0	5201.4	163.8
28	4533.9	139.9	0.0	0.0	4533.9	139.9
29	4702.4	136.6	0.0	0.0	4702.4	136.6
30	4807.1	138.4	0.0	0.0	4807.2	138.4
31	4280.7	138.2	0.0	0.0	4280.7	138.2
Total	68758.0		54102.3		122860.2	
Average	2218.0	76.6	1745.2	63.4	3963.2	119.5
Maximum	5201.4	163.8	3383.0	127.0	5201.4	163.8
Date	27-May	27-May	6-May	12-May	27-May	27-May
Minimum	296.3		0.0		2876.5	
Date	2-May		21-May		3-May	

Notes:

21st: Flow control valve issue with WL train, operating in combined mode until repairs can be made.

Low Lift Monthly Report

Month: **May-16**

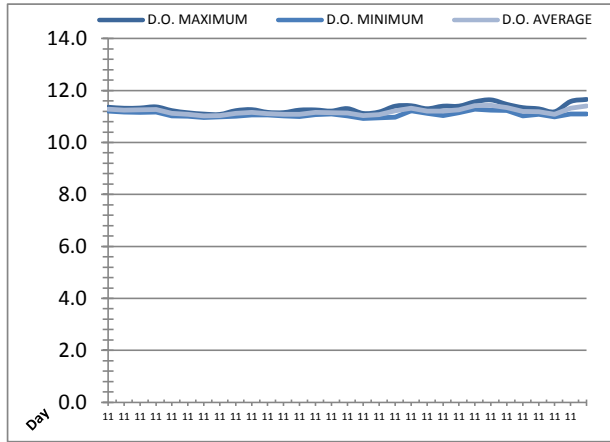
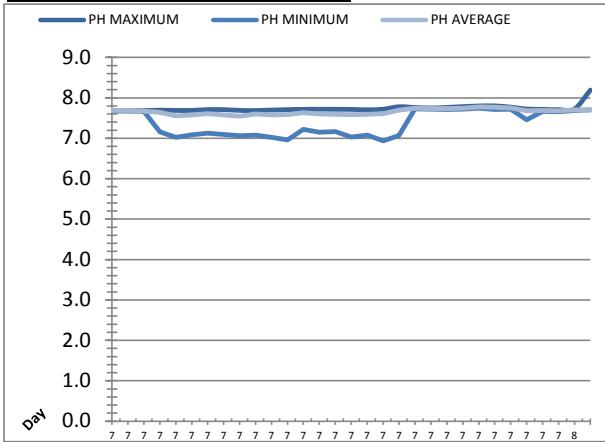


Date	West Train Header Pressure PIT_1018 (kPa)			East Train Header Pressure PIT_1028 (kPa)		
	Maximum	Minimum	Average	Maximum	Minimum	Average
1	788.3	115.2	339.1	783.1	78.8	326.7
2	790.1	112.2	281.1	782.3	77.3	264.4
3	774.0	122.1	288.4	768.0	86.2	272.1
4	776.1	106.7	323.0	770.4	70.8	309.5
5	790.3	106.7	320.4	784.6	69.9	306.4
6	767.0	144.0	322.0	761.8	114.3	306.0
7	856.5	112.6	317.3	847.6	77.5	302.8
8	786.1	114.4	305.0	780.1	78.6	289.2
9	775.3	108.0	317.1	770.8	71.9	303.7
10	783.6	104.8	302.6	778.0	67.3	288.3
11	788.7	105.0	323.9	784.2	68.5	310.5
12	862.7	62.6	345.2	838.1	22.2	335.6
13	795.2	109.1	317.0	780.1	72.3	304.9
14	756.4	144.1	327.6	750.5	113.6	312.7
15	774.3	123.6	287.9	768.6	88.6	268.6
16	773.6	112.6	306.0	765.5	75.5	291.7
17	827.4	149.7	331.0	816.5	121.2	314.5
18	784.6	149.6	360.9	779.4	118.6	345.3
19	863.6	122.8	400.8	840.5	87.9	390.6
20	686.9	178.9	374.1	685.0	153.3	362.2
21	654.8	183.5	376.3	654.3	158.0	365.3
22	718.9	175.3	377.4	719.3	147.8	366.4
23	717.8	179.8	356.0	717.4	153.0	343.9
24	695.5	188.6	374.4	686.3	163.6	363.5
25	694.1	176.7	408.2	685.2	150.9	398.2
26	707.7	179.2	433.4	699.9	153.6	424.7
27	693.3	182.3	462.5	691.3	157.1	455.2
28	697.7	183.8	450.7	696.1	158.7	443.1
29	705.0	184.9	422.6	702.6	160.1	413.6
30	827.0	190.9	403.0	827.9	166.7	393.3
31	707.6	164.3	430.0	700.0	137.6	421.5
Total						
Average	761.9	141.7	354.4	755.3	110.4	341.8
Maximum	863.6		462.5	847.6		455.2
Date	19-May		27-May	7-May		27-May
Minimum		62.6	281.1		22.2	264.4
Date		12-May	2-May		12-May	2-May

Notes:

Low Lift Monthly Report

Month: **May-16**

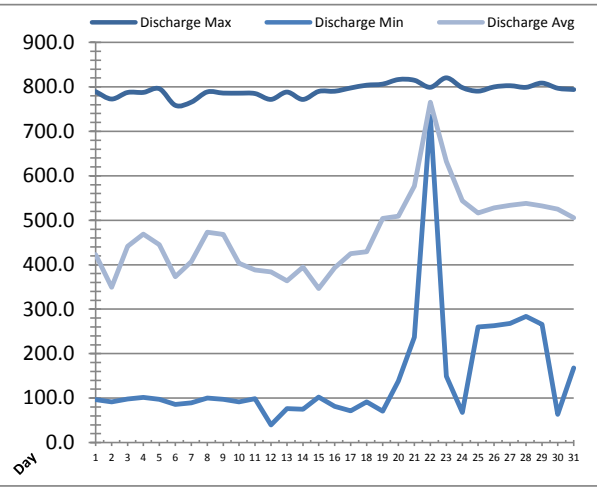
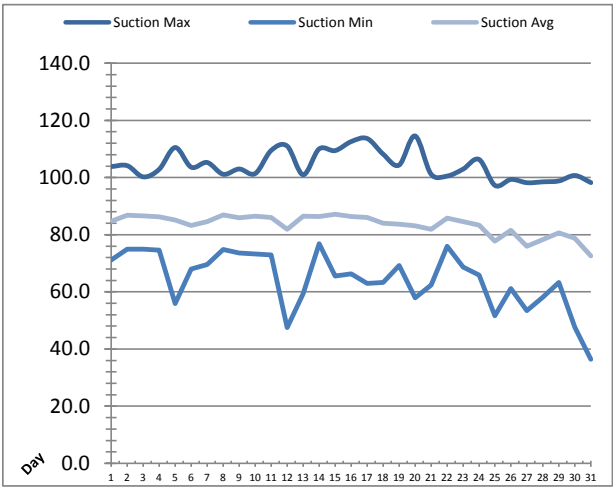


Date	Raw Water Sample Line					
	AIT_1402_PH (pH)			AIT_1402_DO (mg/L)		
	Maximum	Minimum	Average	Maximum	Minimum	Average
1	7.7	7.7	7.7	11.4	11.2	11.3
2	7.7	7.7	7.7	11.3	11.2	11.2
3	7.7	7.7	7.7	11.3	11.2	11.3
4	7.7	7.2	7.6	11.4	11.2	11.3
5	7.7	7.0	7.6	11.2	11.0	11.1
6	7.7	7.1	7.6	11.1	11.0	11.1
7	7.7	7.1	7.6	11.1	11.0	11.0
8	7.7	7.1	7.6	11.1	11.0	11.0
9	7.7	7.1	7.5	11.2	11.0	11.1
10	7.7	7.1	7.6	11.3	11.1	11.2
11	7.7	7.0	7.6	11.2	11.1	11.1
12	7.7	7.0	7.6	11.1	11.0	11.1
13	7.7	7.2	7.6	11.2	11.0	11.1
14	7.7	7.1	7.6	11.3	11.1	11.2
15	7.7	7.2	7.6	11.2	11.1	11.1
16	7.7	7.0	7.6	11.3	11.0	11.1
17	7.7	7.1	7.6	11.1	10.9	11.0
18	7.7	6.9	7.6	11.2	11.0	11.1
19	7.8	7.1	7.7	11.4	11.0	11.2
20	7.8	7.7	7.7	11.4	11.2	11.3
21	7.7	7.7	7.7	11.3	11.1	11.2
22	7.8	7.7	7.7	11.4	11.0	11.2
23	7.8	7.7	7.7	11.4	11.2	11.3
24	7.8	7.7	7.8	11.6	11.3	11.4
25	7.8	7.7	7.8	11.6	11.2	11.4
26	7.8	7.7	7.8	11.5	11.2	11.3
27	7.7	7.5	7.7	11.3	11.0	11.2
28	7.7	7.7	7.7	11.3	11.1	11.2
29	7.7	7.7	7.7	11.2	11.0	11.1
30	7.7	7.7	7.7	11.6	11.1	11.3
31	8.2	7.7	7.7	11.7	11.1	11.4
Total						
Average	7.7	7.4	7.7	11.3	11.1	11.2
Maximum	8.2		7.8	11.7		11.4
Date	31-May		24-May	31-May		25-May
Minimum		6.9	7.5		10.9	11.0
Date		18-May	9-May		17-May	7-May

Notes:

High Lift Monthly Report

Month: **May-16**

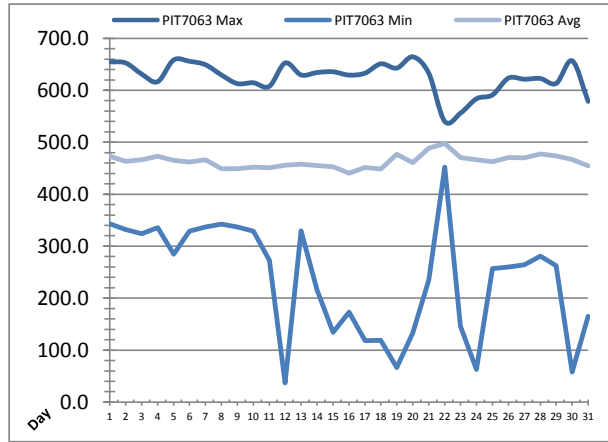
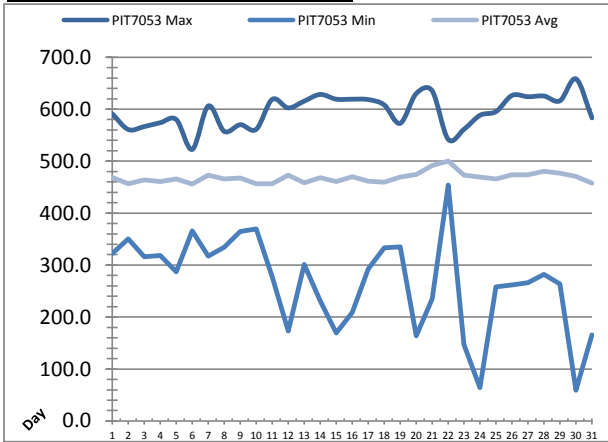


Date	Suction Header Pressure			Discharge Header Pressure		
	PIT_7002 (kPa)			PIT_7005 (kPa)		
	Maximum	Minimum	Average	Maximum	Minimum	Average
1	103.8	71.1	84.7	789.2	96.3	422.9
2	104.2	74.9	86.8	772.7	91.8	349.3
3	100.2	74.9	86.6	787.4	97.8	441.3
4	102.9	74.6	86.3	787.6	101.6	469.1
5	110.5	55.9	85.2	795.8	97.6	445.1
6	103.6	68.0	83.3	758.5	85.7	373.3
7	105.3	69.6	84.6	765.7	89.3	407.1
8	101.1	74.8	86.9	788.7	100.2	473.3
9	103.0	73.6	85.9	786.1	97.0	468.1
10	101.4	73.2	86.5	785.9	91.2	403.6
11	109.5	73.0	86.0	785.0	98.4	388.2
12	111.0	47.5	81.9	771.9	39.6	384.2
13	101.0	59.4	86.5	788.4	76.4	363.6
14	110.0	76.8	86.3	771.8	74.7	394.8
15	109.4	65.6	87.1	789.9	102.2	346.1
16	112.6	66.3	86.3	790.3	81.4	393.0
17	113.7	63.0	86.0	797.6	71.5	425.0
18	108.2	63.3	84.0	803.8	91.3	429.0
19	104.3	69.2	83.7	806.2	70.5	504.0
20	114.6	57.9	83.1	816.6	138.7	509.0
21	101.2	62.4	81.9	814.9	237.3	577.1
22	100.5	75.9	85.8	799.1	734.0	765.8
23	102.9	68.7	84.6	820.4	149.0	632.1
24	106.3	65.9	83.4	798.5	67.4	544.0
25	97.2	51.6	77.8	790.4	260.0	516.3
26	99.3	61.2	81.5	800.0	263.0	528.2
27	98.2	53.5	76.0	802.7	267.8	534.0
28	98.5	58.1	78.3	799.0	283.8	537.8
29	98.8	63.3	80.7	808.6	265.7	532.2
30	100.7	47.6	78.8	796.9	63.1	525.0
31	98.2	36.4	72.6	794.0	167.9	505.6
Total						
Average	104.3	64.4	83.5	792.4	146.8	470.6
Maximum	114.6		87.1	820.4		765.8
Date	20-May		15-May	23-May		22-May
Minimum		36.4	72.6		39.6	346.1
Date		31-May	31-May		12-May	15-May

Notes:

High Lift Monthly Report

Month: **May-16**

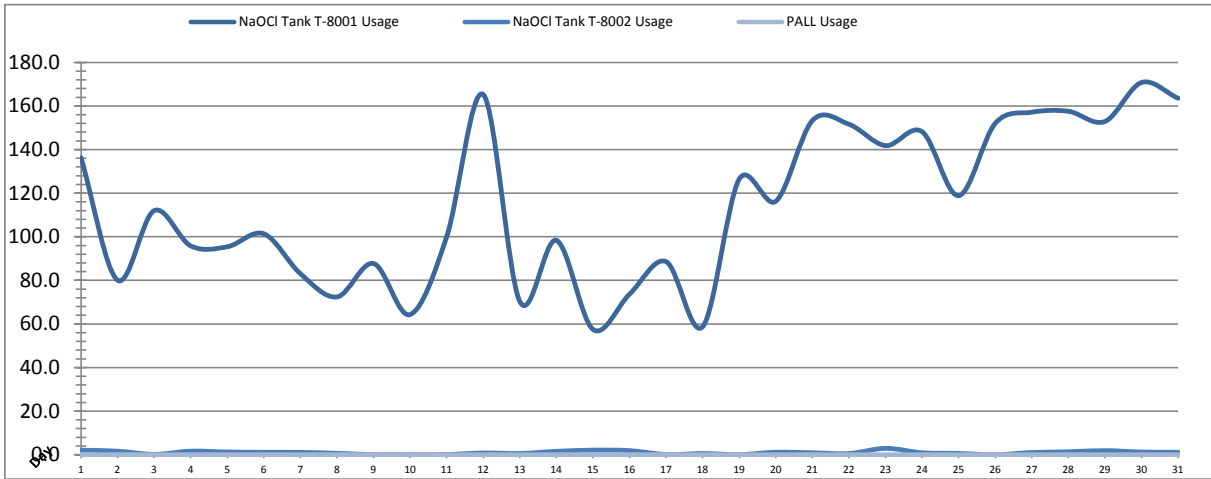


Date	Distribution Pressures					
	PIT_7053 (kPa)			PIT_7063 (kPa)		
	Maximum	Minimum	Average	Maximum	Minimum	Average
1	✓ 591.0	✓ 322.4	468.6	✓ 654.8	✓ 343.2	473.2
2	✓ 560.8	✓ 350.3	456.3	✓ 652.5	✓ 331.9	463.0
3	✓ 566.6	✓ 315.9	463.8	✓ 631.1	✓ 323.7	466.4
4	✓ 574.0	✓ 318.2	460.5	✓ 616.5	✓ 335.7	472.9
5	✓ 580.1	✓ 286.8	465.9	✓ 658.2	✓ 284.5	465.1
6	✓ 522.5	✓ 365.7	456.0	✓ 655.8	✓ 329.0	461.9
7	✓ 606.2	✓ 317.4	473.1	✓ 649.1	✓ 336.9	466.4
8	✓ 557.2	✓ 334.4	466.0	✓ 629.5	✓ 342.5	448.8
9	✓ 570.1	✓ 364.5	467.5	✓ 612.8	✓ 337.0	448.9
10	✓ 561.2	✓ 369.5	456.6	✓ 614.5	✓ 328.7	452.0
11	✓ 619.0	✓ 277.0	456.4	✓ 607.4	✓ 272.8	450.8
12	✓ 602.4	✓ 172.9	473.0	✓ 652.6	✗ 37.0	455.9
13	✓ 615.4	✓ 301.4	458.4	✓ 629.5	✓ 329.5	457.6
14	✓ 628.3	✓ 231.1	468.2	✓ 634.2	✓ 215.6	455.3
15	✓ 619.2	✓ 169.1	460.8	✓ 635.6	✓ 134.3	452.7
16	✓ 619.2	✓ 208.7	470.1	✓ 629.3	✓ 172.9	440.2
17	✓ 618.5	✓ 292.8	461.6	✓ 632.9	✓ 118.1	451.5
18	✓ 608.3	✓ 333.5	459.5	✓ 650.9	✓ 119.0	448.2
19	✓ 572.7	✓ 335.2	469.4	✓ 642.7	✓ 66.2	476.7
20	✓ 629.8	✓ 164.0	474.5	✓ 664.4	✓ 133.1	461.0
21	✓ 635.5	✓ 235.6	491.7	✓ 633.1	✓ 234.5	488.6
22	✓ 542.2	✓ 454.1	500.0	✓ 540.3	✓ 452.3	497.6
23	✓ 561.4	✓ 147.0	472.9	✓ 556.1	✓ 146.0	470.3
24	✓ 588.3	✓ 63.9	469.5	✓ 583.7	✓ 63.0	466.4
25	✓ 595.4	✓ 258.0	465.7	✓ 591.1	✓ 256.7	462.6
26	✓ 626.5	✓ 261.5	473.5	✓ 623.4	✓ 260.2	470.4
27	✓ 624.0	✓ 265.8	473.6	✓ 621.3	✓ 264.5	470.3
28	✓ 625.3	✓ 281.9	480.3	✓ 622.7	✓ 280.6	477.3
29	✓ 616.2	✓ 263.7	476.7	✓ 613.3	✓ 262.4	473.5
30	✓ 658.3	✓ 58.9	470.5	✓ 656.7	✓ 57.9	467.2
31	✓ 583.2	✓ 165.6	457.8	✓ 578.7	✓ 164.9	454.7
Total						
Average	596.1	267.3	468.3	625.0	236.6	463.5
Maximum	658.3		500.0	664.4		497.6
Date	30-May		22-May	20-May		22-May
Minimum		58.9	456.0		37.0	440.2
Date		30-May	6-May		12-May	16-May

Notes:
 HLP shutdowns due to troubleshooting of FCV caused low pressures, very brief (1 second).

Chemical Usage Monthly Report

Month: **May-16**

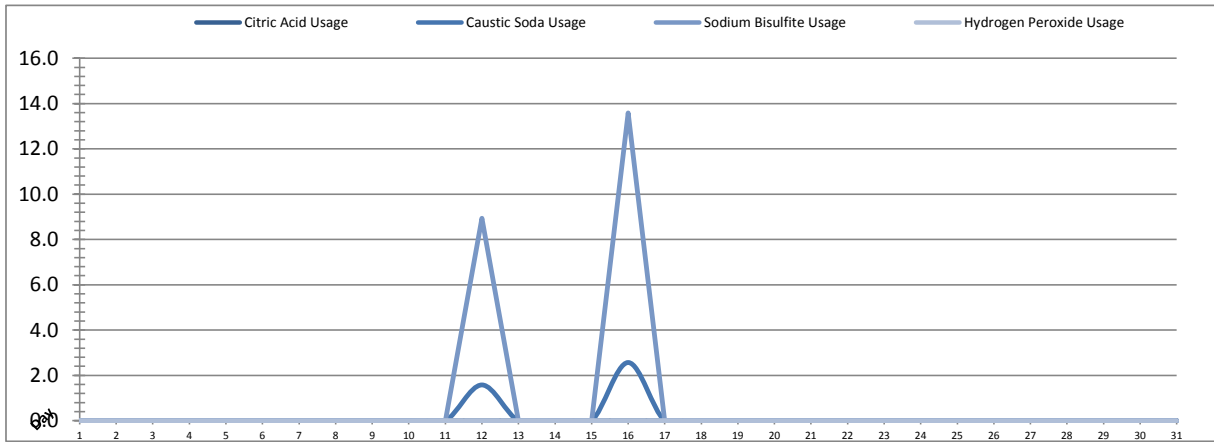


Date	PALL Usage	NaOCI Tank T-8001	NaOCI Tank T-8002
	PALL_HYPO_USAGE (L) Usage	LIT_8002 (Storage) (L) Usage	LIT_8004 (Day) (L) Usage
1	0.0	136.3	2.1
2	0.0	80.1	1.6
3	0.0	112.0	0.2
4	0.0	95.8	1.6
5	0.0	95.4	1.3
6	0.0	101.4	1.1
7	0.0	83.0	1.1
8	0.0	72.4	0.7
9	0.0	87.7	0.0
10	0.0	64.3	0.1
11	0.0	100.1	0.1
12	0.0	165.2	0.8
13	0.0	70.3	0.6
14	0.00	98.38	1.6
15	0.0	57.5	2.1
16	0.0	73.7	1.9
17	0.0	88.6	0.1
18	0.0	58.8	0.6
19	0.0	126.5	0.1
20	0.0	116.3	1.1
21	0.0	153.3	0.9
22	0.0	151.6	0.6
23	0.0	141.8	2.9
24	0.0	148.2	0.9
25	0.0	118.8	0.6
26	0.0	152.0	0.0
27	0.0	157.1	1.0
28	0.0	157.6	1.4
29	0.0	152.9	1.9
30	0.0	170.8	1.2
31	0.0	163.5	1.2
Total	0.0	3551.4	31.4
Average	0.0	114.6	1.0
Maximum	0.0	170.8	2.9
Date	1-May	30-May	23-May
Minimum	0.0	57.5	0.0
Date	1-May	15-May	9-May

Notes:	
$\text{Dosage (mg/L)} = \frac{\text{Day Tank (L)} \times \% \text{conc.} \times 1000}{\text{Membrane Flow (m}^3\text{)}}$	
Chlorine Concentration: 12.0%	

Chemical Usage Monthly Report

Month: **May-16**



Date	Citric Acid	Caustic Soda	Captor	Hydrogen Peroxide		Membrane Flow (m ³)
	TAGNAME (L) Usage	TAGNAME (L) Usage	TAGNAME (L) Usage	TAGNAME (L) Usage	(mg/L) Dose	
1	0.0	0.0	0.0	0.0	0.0	4576.332
2	0.0	0.0	0.0	0.0	0.0	2954.210
3	0.0	0.0	0.0	0.0	0.0	3084.226
4	0.0	0.0	0.0	0.0	0.0	4005.813
5	0.0	0.0	0.0	0.0	0.0	3985.556
6	0.0	0.0	0.0	0.0	0.0	4021.304
7	0.0	0.0	0.0	0.0	0.0	3973.241
8	0.0	0.0	0.0	0.0	0.0	3536.588
9	0.0	0.0	0.0	0.0	0.0	3942.615
10	0.0	0.0	0.0	0.0	0.0	3527.814
11	0.0	0.0	0.0	0.0	0.0	4055.189
12	0.0	1.6	8.9	0.0	0.0	4203.701
13	0.0	0.0	0.0	0.0	0.0	3885.170
14	0.0	0.0	0.0	0.0	0.0	3527.135
15	0.0	0.0	0.0	0.0	0.0	2732.463
16	0.0	2.6	13.6	0.0	0.0	3302.925
17	0.0	0.0	0.0	0.0	0.0	4222.349
18	0.0	0.0	0.0	0.0	0.0	4122.048
19	0.0	0.0	0.0	0.0	0.0	4255.380
20	0.0	0.0	0.0	0.0	0.0	4324.981
21	0.0	0.0	0.0	0.0	0.0	5256.635
22	0.0	0.0	0.0	0.0	0.0	5323.044
23	0.0	0.0	0.0	0.0	0.0	4614.600
24	0.0	0.0	0.0	0.0	0.0	5297.270
25	0.0	0.0	0.0	0.0	0.0	4388.106
26	0.0	0.0	0.0	0.0	0.0	4713.545
27	0.0	0.0	0.0	0.0	0.0	5057.338
28	0.0	0.0	0.0	0.0	0.0	5235.085
29	0.0	0.0	0.0	0.0	0.0	4834.708
30	0.0	0.0	0.0	0.0	0.0	4898.307
31	0.0	0.0	0.0	0.0	0.0	5831.010
Total	0.0	4.1	22.5	0.0	0.0	131688.7
Average	0.0	0.1	0.7	0.0	0.0	4248.0
Maximum	0.0	2.6	13.6	0.0	0.0	5831.0
Date	1-May	16-May	16-May	1-May	1-May	31-May
Minimum	0.0	0.0	0.0	0.0	0.0	2732.5
Date	1-May	1-May	1-May	1-May	1-May	15-May

Notes:	
Dosage (mg/L)=	Day Tank (L) x %conc. x 1000
	Membrane Flow (m3)
Peroxide Concentration:	50.0%

Runtimes Report

Month: May-16

Date	Daily Gen-Set Runtimes		Daily UV Runtimes		Daily PALL Runtimes				
	LLPS	WTP	UV #1	UV #2	Air Compressor #1	Air Compressor #2	CIP Neutralization	CIP Drain	CIP Recirc
	(Hrs)	(Hrs)	(Hrs)	(Hrs)	(Hrs)	(Hrs)	(Hrs)	(Hrs)	(Hrs)
1	0.0	0.0	0.0	0.0	0.2	23.7	0.0	0.0	0.0
2	0.0	0.0	0.0	0.0	24.2	0.1	0.0	0.0	0.0
3	0.0	0.0	0.0	0.0	0.2	23.8	0.0	0.0	0.0
4	0.0	0.0	0.0	0.0	24.2	0.1	0.0	0.0	0.0
5	0.0	0.0	0.0	0.0	0.2	23.8	0.0	0.0	0.0
6	0.0	0.0	0.0	0.0	24.2	0.1	0.0	0.0	0.0
7	0.0	0.0	0.0	0.0	0.2	23.8	0.0	0.0	0.0
8	0.0	0.0	0.0	0.0	24.2	0.1	0.0	0.0	0.0
9	0.0	0.0	0.0	0.0	0.2	23.8	0.0	0.0	0.0
10	0.0	0.0	0.0	0.0	24.2	0.1	0.0	0.0	0.0
11	0.0	0.0	0.0	0.0	0.2	23.8	0.0	0.0	0.0
12	0.0	0.0	0.0	0.0	7.9	15.3	0.8	0.2	2.1
13	0.0	0.0	0.0	0.0	0.0	23.9	0.0	0.1	2.0
14	0.0	0.0	0.0	0.0	3.5	22.2	0.0	0.0	0.0
15	0.0	0.0	0.0	0.0	0.0	23.9	0.0	0.0	0.0
16	0.0	0.0	0.0	0.0	12.4	11.8	0.8	0.1	2.0
17	0.0	0.0	0.0	0.0	0.2	23.7	0.0	0.0	0.0
18	0.0	0.0	0.0	0.0	24.2	0.2	0.0	0.0	0.0
19	0.0	0.0	0.0	0.0	0.2	23.7	0.0	0.0	0.0
20	0.0	0.0	0.0	0.0	24.2	0.2	0.0	0.0	0.0
21	0.0	0.0	0.0	0.0	0.2	23.7	0.0	0.0	0.0
22	0.0	0.0	0.0	0.0	24.2	0.2	0.0	0.0	0.0
23	0.0	0.0	0.0	0.0	16.9	7.4	0.0	0.0	0.0
24	0.0	0.0	0.0	0.0	0.2	23.7	0.0	0.0	0.0
25	0.0	0.0	0.0	0.0	24.2	0.2	0.0	0.0	0.0
26	0.0	0.0	1.0	0.8	0.2	23.7	0.0	0.0	0.0
27	0.0	0.0	0.0	0.0	24.2	0.2	0.0	0.0	0.0
28	0.0	0.0	0.0	0.0	0.2	23.7	0.0	0.0	0.0
29	0.0	0.0	0.0	0.0	24.2	0.2	0.0	0.0	0.0
30	0.0	0.0	0.0	0.0	1.9	20.9	0.0	0.0	0.0
31	4.7	4.3	0.0	0.0	22.6	0.6	0.0	0.0	0.0
Total	4.7	4.3	1.0	0.8	333.5	412.7	1.6	0.4	6.1

Notes:

Runtimes Report

Month: May-16

Daily

Date	PALL Runtimes						Process Drain	
	RFR Pump #1 (Hrs)	RFR Pump #2 (Hrs)	RF Pump #1 (Hrs)	RF Pump #2 (Hrs)	XR Pump #1 (Hrs)	XR Pump #2 (Hrs)	PDP9010 Pump (Hrs)	PDP9020 Pump (Hrs)
1	3.9	4.2	1.2	1.1	6.8	9.9	1.4	1.8
2	2.7	2.6	0.7	0.8	9.8	1.0	1.7	2.3
3	2.7	2.9	0.7	0.8	2.9	8.4	1.6	2.0
4	3.7	3.6	1.0	1.0	9.6	5.3	1.3	1.8
5	3.6	3.7	1.1	1.0	7.0	7.6	1.5	1.9
6	3.5	3.5	0.9	0.9	6.7	7.5	1.6	2.1
7	3.7	3.5	1.0	1.0	5.3	9.2	1.5	2.0
8	3.2	3.3	1.0	0.8	9.0	4.2	1.4	1.8
9	3.6	3.5	0.9	1.1	8.8	5.6	1.4	1.9
10	3.0	3.1	0.9	0.9	4.6	8.4	1.6	2.1
11	3.8	3.8	1.0	1.0	8.0	6.7	1.5	2.1
12	2.4	2.5	0.9	0.8	5.2	8.7	2.6	3.1
13	3.2	2.8	0.8	0.9	8.4	5.8	1.8	2.4
14	0.8	1.0	0.3	0.2	1.7	3.3	1.9	2.7
15	0.0	0.0	0.0	0.0	0.0	0.0	1.8	2.3
16	1.8	1.9	0.3	0.5	4.4	3.4	1.7	2.3
17	3.8	3.9	1.1	1.0	7.7	7.8	1.4	1.9
18	2.4	2.2	0.6	0.6	4.3	7.0	1.3	2.0
19	1.3	1.4	0.7	0.7	5.4	4.4	1.2	1.4
20	3.5	3.3	1.0	1.0	5.5	5.3	1.0	1.2
21	4.8	4.7	1.3	1.3	6.9	9.6	0.8	1.1
22	4.9	5.0	1.4	1.3	9.2	10.2	0.8	1.0
23	4.0	4.0	1.1	1.2	10.6	6.2	0.8	1.0
24	4.8	4.8	1.4	1.2	10.2	8.9	0.8	1.0
25	1.8	1.8	0.4	0.5	2.6	4.4	0.7	1.0
26	1.6	1.6	0.4	0.5	3.3	2.8	0.8	1.0
27	1.4	1.5	0.4	0.4	0.8	5.2	0.7	0.9
28	2.9	2.7	0.7	0.8	6.7	2.7	0.8	1.0
29	2.3	2.3	0.6	0.7	4.9	7.0	1.2	1.6
30	3.9	3.8	1.0	1.3	9.6	7.1	1.0	1.1
31	2.2	2.4	1.6	1.3	9.0	8.6	0.9	1.4
Total	90.8	90.9	26.4	26.6	194.1	191.4	40.5	53.2

Notes:

Runtimes Report

Month: May-16

Daily

Date	Low Lift Pump Motor Runtimes				High Lift Pump Motor Runtimes			
	LLP1010 (Hrs)	LLP1020 (Hrs)	LLP1030 (Hrs)	LLP1040 (Hrs)	HLP7010 (Hrs)	HLP7020 (Hrs)	HLP7030 (Hrs)	HLP7040 (Hrs)
1	7.1	7.6	2.2	0.0	0.0	8.2	0.0	7.4
2	4.3	0.6	4.5	1.5	4.0	1.5	6.1	0.0
3	4.1	3.4	2.3	1.8	5.8	2.6	4.4	1.6
4	2.1	7.9	3.0	2.1	4.1	7.7	2.8	1.8
5	4.4	2.2	3.6	4.5	6.0	1.1	3.3	5.3
6	0.0	0.0	13.5	1.5	0.0	1.4	12.7	0.0
7	2.9	1.9	1.5	8.4	10.2	4.7	0.0	0.0
8	2.1	2.2	2.9	6.0	3.0	7.8	3.5	1.9
9	2.2	2.5	2.1	8.0	1.9	11.1	2.2	1.7
10	2.9	2.7	2.1	5.4	1.9	6.1	2.9	2.6
11	3.3	2.6	6.3	3.0	1.6	7.0	2.5	2.8
12	4.3	4.1	1.8	6.8	12.0	2.9	0.4	1.0
13	4.0	1.0	6.7	2.9	0.3	4.3	2.1	6.4
14	6.9	2.9	2.1	2.2	6.7	0.0	6.9	0.0
15	4.0	1.3	2.0	3.8	1.6	6.4	2.6	1.1
16	3.4	2.8	5.1	1.6	2.4	5.4	3.3	2.6
17	2.1	2.0	5.2	6.3	3.4	8.6	3.0	1.3
18	1.3	12.9	2.5	0.0	0.2	9.3	7.4	0.0
19	2.2	5.8	1.5	8.6	1.4	5.8	3.5	2.6
20	5.0	6.5	2.1	4.2	4.3	3.2	5.8	2.1
21	0.0	5.9	11.1	3.1	7.3	5.9	6.3	6.9
22	4.8	6.8	4.7	3.3	0.0	24.0	0.0	24.0
23	7.7	7.6	0.3	1.5	8.5	12.4	0.1	8.6
24	5.0	3.2	11.3	0.0	7.7	4.7	4.5	4.8
25	0.0	0.0	4.7	13.7	2.9	5.7	6.7	4.0
26	0.0	14.0	1.3	4.9	6.3	6.6	3.8	3.7
27	12.8	8.9	0.0	0.0	4.9	5.7	6.4	5.7
28	9.4	0.0	0.0	12.2	6.8	3.9	3.9	6.7
29	0.0	7.2	4.4	8.5	2.8	7.2	8.0	3.6
30	5.8	13.3	0.3	0.0	6.1	0.0	4.4	5.0
31	3.1	4.7	1.7	0.0	0.0	1.9	4.4	0.0
Total	117.2	144.5	112.8	125.8	124.1	183.1	123.9	115.2

Notes:

Plant Internal Flow Report

Month: May-16

Date	Settling Tank Level		Process Drain Tank		Settling Tank Flow		Potable Water Flow		Non-Potable Flow	
	T-9003 (m)		T-9001 (m)		FIT_9005 (m ³) (L/s)		FIT_7082 (m ³) (L/s)		FIT_7092 (m ³) (L/s)	
	Maximum	Minimum	Maximum	Minimum	Total	Peak	Total	Peak	Total	Peak
1	2.2	0.3	0.8	0.4	66.2	15.7	0.0	0.5	0.0	0.0
2	2.2	0.2	0.9	0.4	40.8	15.7	0.1	1.5	0.0	0.0
3	2.2	0.1	0.9	0.4	31.9	15.7	0.1	1.4	0.0	0.0
4	2.2	0.2	0.8	0.4	54.1	15.7	0.1	1.4	0.0	0.0
5	2.2	0.1	0.9	0.4	70.1	15.7	0.1	1.4	0.0	0.0
6	2.2	0.1	0.8	0.4	82.1	15.7	0.0	1.3	0.0	0.0
7	2.2	0.1	0.8	0.4	54.2	15.7	0.0	0.0	0.0	0.0
8	2.2	0.1	0.8	0.4	45.4	15.7	0.0	0.0	0.0	0.0
9	2.2	0.2	0.9	0.4	48.8	15.7	0.0	1.4	0.0	0.0
10	2.2	0.1	0.8	0.4	45.4	15.7	0.0	1.3	0.0	0.0
11	2.2	0.1	0.8	0.4	73.2	15.7	0.0	1.4	0.0	0.0
12	2.2	0.2	1.8	0.4	143.4	15.7	0.1	1.4	12.9	22.7
13	2.2	0.3	1.0	0.4	83.5	15.7	0.0	1.4	13.7	25.0
14	2.2	0.1	0.8	0.4	20.6	15.2	0.0	1.4	0.0	0.0
15	2.2	0.3	0.8	0.4	0.5	0.2	0.0	1.1	0.0	0.0
16	2.2	0.1	0.8	0.4	41.8	15.7	0.1	1.3	9.4	16.7
17	2.2	0.1	0.8	0.4	60.0	15.7	0.1	1.4	0.0	0.0
18	2.2	0.3	1.0	0.4	40.1	15.7	0.0	1.2	0.0	0.0
19	2.2	0.1	1.9	0.4	129.5	15.7	0.1	1.4	0.4	1.1
20	2.2	0.1	0.8	0.4	95.3	15.7	0.0	1.1	0.0	0.0
21	2.2	0.2	0.8	0.4	105.1	15.7	0.0	0.0	0.0	0.0
22	2.2	0.2	0.9	0.4	96.3	15.7	0.0	0.0	0.0	0.0
23	2.2	0.1	0.9	0.4	86.8	15.7	0.0	1.1	0.0	0.0
24	2.2	0.1	0.9	0.4	114.0	15.7	0.1	1.4	0.0	0.0
25	2.2	0.1	0.8	0.4	48.4	13.9	0.0	1.3	0.1	0.9
26	2.2	0.1	0.8	0.4	47.7	15.7	2.5	5.4	0.3	0.7
27	2.2	0.3	0.9	0.4	59.4	15.7	0.0	1.4	0.0	0.0
28	2.2	0.2	0.9	0.4	92.9	15.7	0.0	0.0	0.0	0.0
29	2.2	0.3	0.9	0.4	78.0	15.7	0.0	0.0	0.0	0.0
30	2.2	0.1	1.3	0.4	131.7	15.7	0.0	1.3	0.0	0.0
31	2.2	0.1	1.3	0.4	338.4	15.7	0.1	1.4	0.2	1.0
Total					2426.2		3.7		37.0	
Average	2.2	0.2	0.9	0.4	78.3	15.1	0.1	1.2	1.2	2.2
Maximum	2.2		1.9		338.4		2.5		13.7	
Date	20-May		19-May		31-May		26-May		13-May	
Minimum		0.1		0.4		0.2		0.0		0.0
Date		8-May		25-May		15-May		7-May		1-May

Notes:
