

Municipality of West Elgin - Tri County Water System

Goto:

Month:

Year:

Date is Set to: **June-16**

Limit	Low	High	
Raw Water Chlorine Residual:	0.00	5.00	mg/L
Pre-Strainer Chlorine Residual:	0.00	5.00	mg/L
UV Inlet Chlorine Residual:	0.00	5.00	mg/L
Post Treatment Chlorine Residual:	1.00	5.00	mg/L
Treated Chlorine Residual:	1.00	2.50	mg/L
Distribution Chlorine Residual:	1.00	2.50	mg/L
Limit		High	
WTP C of A		156.0	L/s
WTP Permit to Take Water		13500.0	m ³
Limit	Low	High	
System Pressure Limits:	50.0	1034.0	Kpa

Compliance Report

Low Lift Monthly Report

>>>

Membranes Monthly Report

>>>

UV System Monthly Report

>>>

Plant Quality Report

>>>

Raw Well/Treated Storage Report

>>>

High Lift Monthly Report

>>>

Operational Report

Low Lift Monthly Report

>>>

High Lift Monthly Report

>>>

Chemical Usage Monthly Report

>>>

Runtimes Report

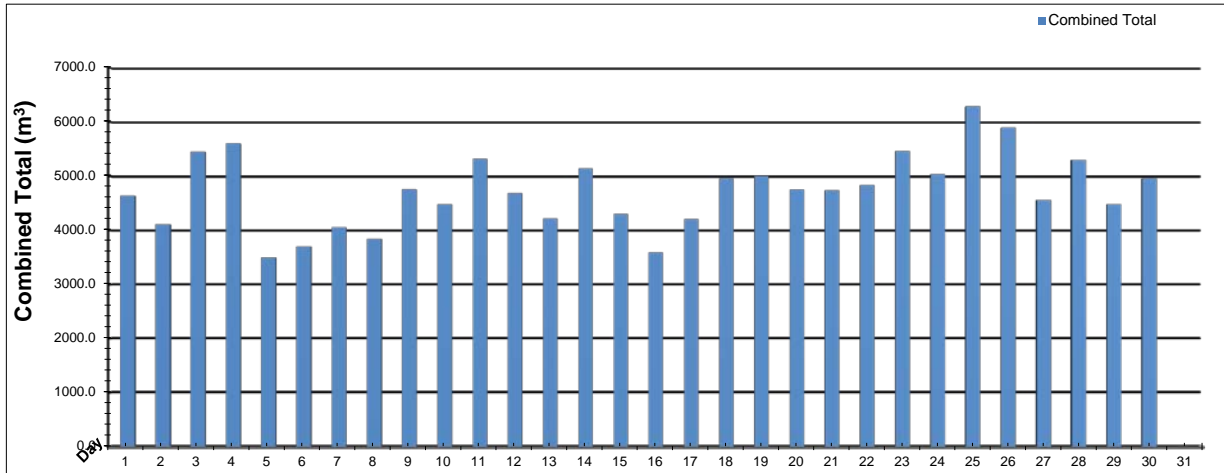
>>>

Plant Internal Flow Report

>>>

Low Lift Monthly Report

Month: June-16

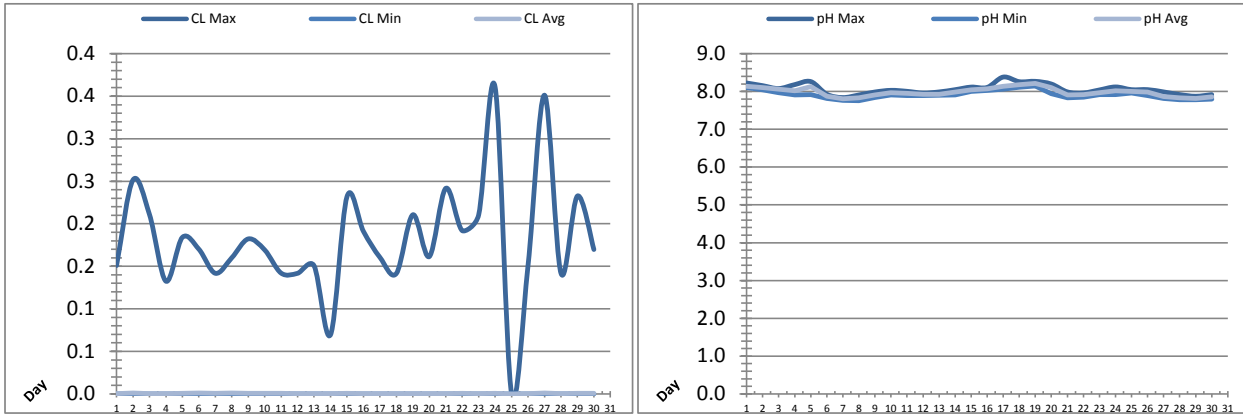


Date	Combined Total (m³)	West Train FIT-1017 (m³)	West Peak Flow FIT-1017 (L/s)	East Train FIT-1027 (m³)	East Peak Flow FIT-1027 (L/s)	Combined Peak Flow (L/s)
1	✓ 4641.9	2.5	25.6	4639.4	92.4	✓ 92.4
2	✓ 4110.1	2.1	25.2	4108.0	95.7	✓ 95.7
3	✓ 5451.8	2.5	16.5	5449.3	90.7	✓ 90.7
4	✓ 5601.1	3.5	31.8	5597.6	83.0	✓ 83.0
5	✓ 3499.5	2.3	37.5	3497.2	94.6	✓ 94.6
6	✓ 3702.6	2.8	46.3	3699.8	97.2	✓ 97.2
7	✓ 4057.2	2.4	35.4	4054.8	88.9	✓ 88.9
8	✓ 3842.0	2.6	25.1	3839.3	96.3	✓ 96.3
9	✓ 4755.6	3.5	26.8	4752.1	93.1	✓ 93.1
10	✓ 4477.1	2.7	38.4	4474.4	142.0	✓ 142.0
11	✓ 5320.7	3.3	31.6	5317.4	144.6	✓ 144.6
12	✓ 4685.4	2.9	24.0	4682.5	92.7	✓ 92.7
13	✓ 4220.7	3.5	40.2	4217.2	96.8	✓ 96.8
14	✓ 5141.2	4.0	22.8	5137.2	125.1	✓ 125.1
15	✓ 4307.1	3.0	40.1	4304.1	95.7	✓ 95.7
16	✓ 3589.4	4.0	35.1	3585.4	134.0	✓ 134.0
17	✓ 4204.0	1.7	17.4	4202.3	95.6	✓ 95.6
18	✓ 4955.8	2.5	24.1	4953.3	143.9	✓ 143.9
19	✓ 5001.6	3.6	25.5	4998.0	91.6	✓ 91.6
20	✓ 4749.6	3.5	21.0	4746.1	90.4	✓ 90.4
21	✓ 4737.3	3.1	25.3	4734.3	96.1	✓ 96.1
22	✓ 4841.0	2.7	36.4	4838.3	92.1	✓ 92.1
23	✓ 5463.8	3.9	21.4	5459.9	138.2	✓ 138.2
24	✓ 5039.2	3.0	41.6	5036.2	95.5	✓ 95.5
25	✓ 6286.3	3.3	13.1	6283.1	145.5	✓ 145.5
26	✓ 5890.8	3.7	35.9	5887.1	143.7	✓ 143.7
27	✓ 4558.0	3.5	34.6	4554.5	143.3	✓ 143.3
28	✓ 5294.3	3.2	33.2	5291.1	84.2	✓ 84.2
29	✓ 4480.6	2.2	26.7	4478.4	97.2	✓ 97.2
30	✓ 4955.4	3.0	24.0	4952.4	88.3	✓ 88.3
31	✓ 0.0					
Total	141861.0	90.3		141770.7		
Average	4728.7	3.0	29.4	4725.7	107.0	107.0
Maximum	6286.3	4.0	46.26	6283.1	145.46	145.46
Date	25-Jun	14-Jun	6-Jun	25-Jun	25-Jun	25-Jun
Minimum	3499.5	1.7	13.11	3497.2	82.97	82.97
Date	5-Jun	17-Jun	25-Jun	5-Jun	4-Jun	4-Jun

Notes:

Low Lift Monthly Report

Month: **June-16**

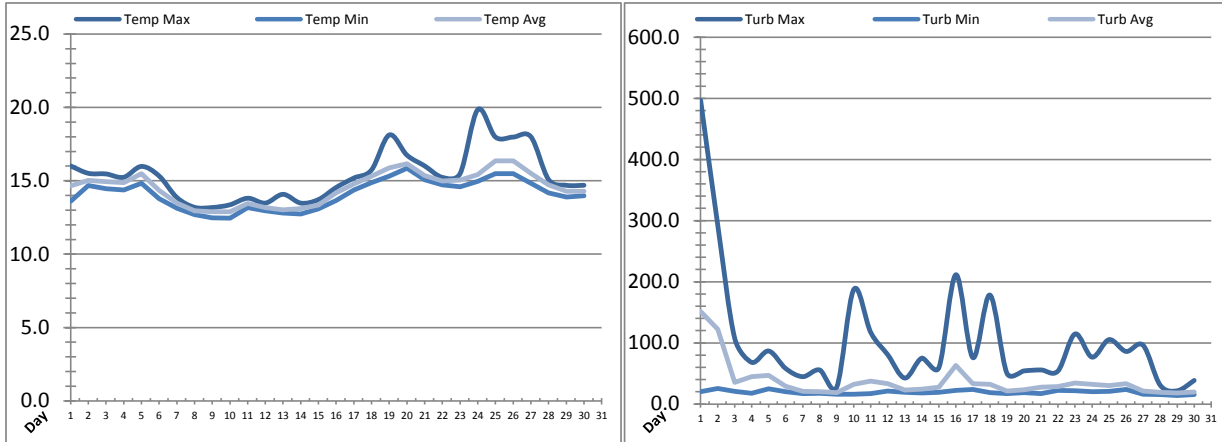


Date	Raw Water Chlorine Residual			Raw Water pH		
	AIT_1401_CL (mg/L)			AIT_1401_PH		
	Maximum	Minimum	Average	Maximum	Minimum	Average
1	0.15	0.00	0.00	8.22	8.11	8.13
2	0.25	0.00	0.00	8.15	8.05	8.10
3	0.21	0.00	0.00	8.08	7.97	8.06
4	0.13	0.00	0.00	8.18	7.91	8.02
5	0.18	0.00	0.00	8.26	7.92	8.13
6	0.17	0.00	0.00	7.93	7.82	7.87
7	0.14	0.00	0.00	7.84	7.76	7.81
8	0.16	0.00	0.00	7.91	7.76	7.83
9	0.18	0.00	0.00	7.99	7.84	7.91
10	0.17	0.00	0.00	8.03	7.91	7.96
11	0.14	0.00	0.00	8.00	7.89	7.95
12	0.14	0.00	0.00	7.96	7.89	7.92
13	0.15	0.00	0.00	7.99	7.90	7.93
14	0.07	0.00	0.00	8.05	7.91	7.98
15	0.23	0.00	0.00	8.12	8.00	8.05
16	0.19	0.00	0.00	8.11	8.03	8.07
17	0.16	0.00	0.00	8.38	8.06	8.14
18	0.14	0.00	0.00	8.26	8.11	8.18
19	0.21	0.00	0.00	8.27	8.14	8.22
20	0.16	0.00	0.00	8.20	7.94	8.11
21	0.24	0.00	0.00	7.99	7.84	7.91
22	0.19	0.00	0.00	7.96	7.85	7.92
23	0.21	0.00	0.00	8.04	7.91	7.97
24	0.36	0.00	0.00	8.12	7.92	8.02
25	0.00	0.00	0.00	8.05	7.96	8.00
26	0.15	0.00	0.00	8.05	7.89	7.98
27	0.35	0.00	0.00	7.99	7.82	7.87
28	0.14	0.00	0.00	7.92	7.78	7.84
29	0.23	0.00	0.00	7.87	7.78	7.82
30	0.17	0.00	0.00	7.92	7.80	7.86
Total						
Average	0.18	0.00	0.00	8.06	7.92	7.99
Maximum	0.36		0.00	8.38		8.22
Date	24-Jun		27-Jun	17-Jun		19-Jun
Minimum		0.00	0.00		7.76	7.81
Date		1-Jun	25-Jun		8-Jun	7-Jun

Notes:

Low Lift Monthly Report

Month: June-16

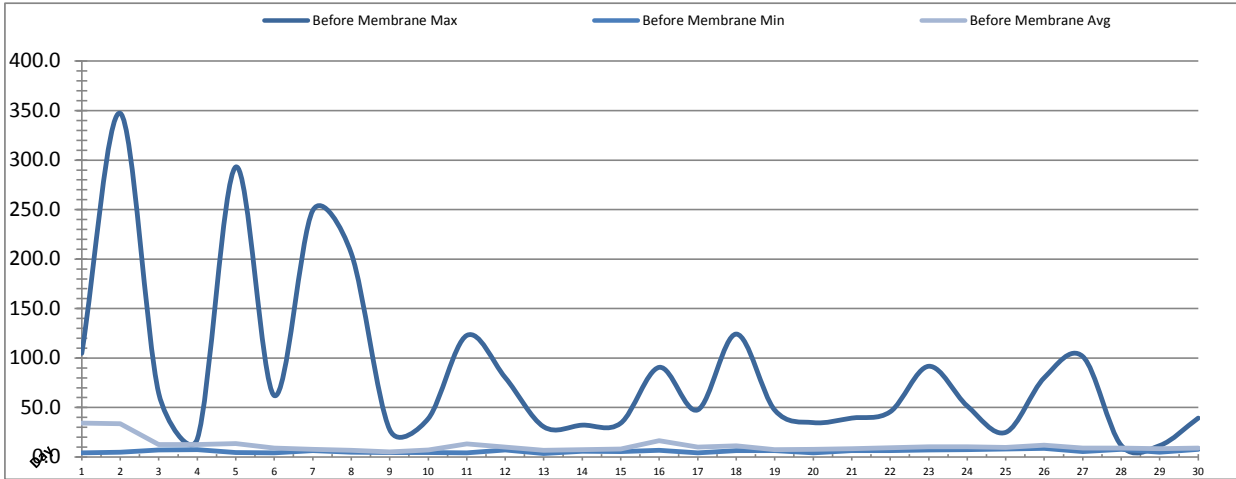


Date	Raw Water Temperature			Raw Water Turbidity		
	TIT_1403 (°C)			AIT_1404 (NTU)		
	Maximum	Minimum	Average	Maximum	Minimum	Average
1	16.0	13.6	14.7	496.86	20.01	151.79
2	15.5	14.7	15.0	293.84	25.49	122.42
3	15.5	14.4	14.9	107.79	20.84	35.42
4	15.2	14.4	14.9	68.20	17.72	44.79
5	16.0	14.8	15.5	86.78	24.74	47.12
6	15.3	13.8	14.4	58.08	20.03	28.98
7	13.9	13.1	13.5	44.80	16.86	20.77
8	13.2	12.7	13.0	55.70	17.61	20.39
9	13.2	12.5	12.9	27.80	16.08	18.57
10	13.4	12.4	12.9	187.44	16.07	32.46
11	13.8	13.2	13.5	116.91	16.92	37.56
12	13.5	13.0	13.2	80.49	21.53	33.34
13	14.1	12.8	13.0	42.52	19.20	22.95
14	13.5	12.7	13.1	75.09	18.40	24.32
15	13.7	13.1	13.4	59.55	19.18	27.59
16	14.5	13.7	14.2	211.52	22.29	63.30
17	15.2	14.4	14.8	75.77	23.95	33.12
18	15.7	14.9	15.3	178.29	18.43	32.52
19	18.1	15.3	15.9	50.27	16.91	21.18
20	16.7	15.9	16.2	54.23	18.47	23.17
21	16.0	15.1	15.4	55.78	16.91	27.53
22	15.2	14.7	15.0	54.19	22.41	28.42
23	15.5	14.6	15.1	114.63	21.62	34.11
24	19.8	15.0	15.4	76.73	20.00	32.25
25	18.0	15.5	16.4	105.38	20.80	30.08
26	18.0	15.5	16.4	86.05	23.97	33.21
27	18.0	14.8	15.5	96.14	16.18	21.27
28	15.1	14.2	14.7	31.00	15.36	19.43
29	14.7	13.9	14.3	21.69	13.77	17.99
30	14.7	14.0	14.3	38.66	15.35	19.56
Total						
Average	15.4	14.1	14.5	101.7	19.2	36.9
Maximum	19.8		16.4	496.9		151.8
Date	24-Jun		25-Jun	1-Jun		1-Jun
Minimum		12.4	12.9		13.8	18.0
Date		10-Jun	9-Jun		29-Jun	29-Jun

Notes:

Membranes Monthly Report

Month: June-16

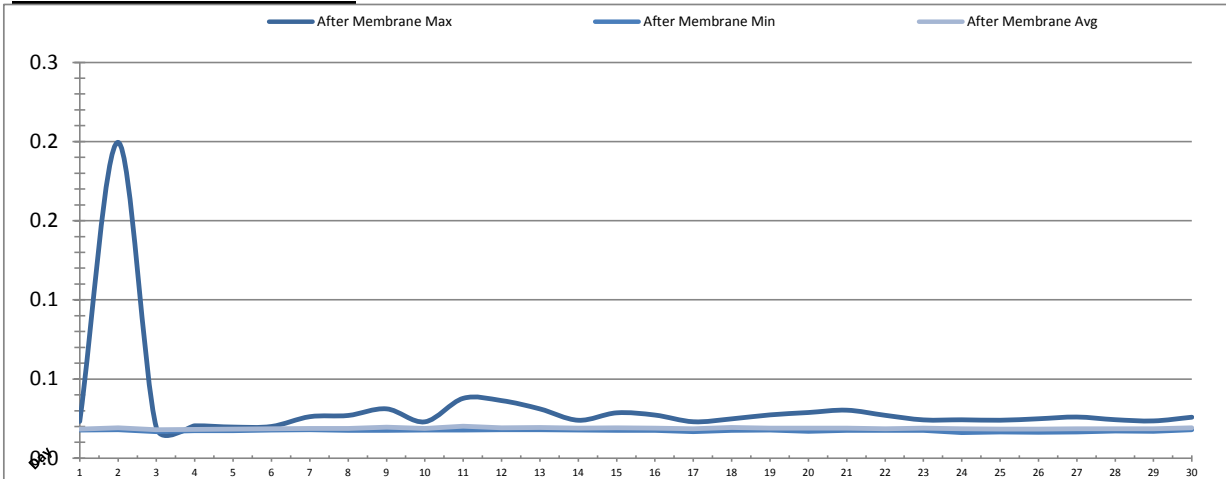


Date	Turbidity Before Membrane			Rack #1 Turbidity			Rack #2 Turbidity		
	PALL_FEED_AIT2006_Value NTU			RACK1_NTU_Value NTU			RACK2_NTU_Value NTU		
	Maximum	Minimum	Average	Maximum	Minimum	Average	Maximum	Minimum	Average
1	104.74	4.20	34.42	0.01	0.01	0.01	0.02	0.01	0.01
2	347.30	4.67	33.51	0.01	0.01	0.01	0.02	0.01	0.01
3	64.11	7.12	12.54	0.02	0.01	0.01	0.02	0.01	0.01
4	18.15	7.51	12.55	0.01	0.01	0.01	0.02	0.01	0.01
5	293.04	4.35	13.69	0.01	0.01	0.01	0.02	0.01	0.01
6	62.04	4.16	8.89	0.01	0.01	0.01	0.02	0.01	0.01
7	249.07	6.40	7.76	0.01	0.01	0.01	0.02	0.01	0.01
8	205.81	4.69	6.61	0.03	0.01	0.01	0.02	0.01	0.01
9	27.46	4.39	5.15	0.04	0.01	0.01	0.02	0.01	0.01
10	38.80	4.47	7.16	0.03	0.01	0.01	0.03	0.01	0.01
11	122.82	4.12	13.17	0.03	0.01	0.01	0.04	0.01	0.01
12	80.18	6.97	10.05	0.03	0.01	0.01	0.02	0.01	0.01
13	30.50	3.37	6.76	0.03	0.01	0.01	0.02	0.01	0.01
14	32.19	5.73	7.43	0.05	0.01	0.01	0.03	0.01	0.01
15	34.21	5.43	8.18	0.05	0.01	0.01	0.02	0.01	0.01
16	90.60	6.77	16.39	0.03	0.01	0.01	0.03	0.01	0.01
17	47.64	4.18	10.13	0.03	0.01	0.01	0.03	0.01	0.01
18	124.23	6.36	11.15	0.04	0.01	0.01	0.04	0.01	0.01
19	47.36	6.53	7.55	0.02	0.01	0.01	0.03	0.01	0.01
20	34.74	4.06	7.60	0.01	0.01	0.01	0.03	0.01	0.01
21	39.31	6.32	8.41	0.02	0.01	0.01	0.05	0.01	0.01
22	45.71	6.44	9.40	0.02	0.01	0.01	0.04	0.01	0.01
23	91.68	7.24	10.29	0.01	0.01	0.01	0.04	0.01	0.01
24	51.52	7.55	10.37	0.01	0.01	0.01	0.04	0.01	0.01
25	24.91	8.06	9.69	0.01	0.01	0.01	0.04	0.01	0.01
26	80.08	8.56	11.98	0.01	0.01	0.01	0.03	0.01	0.01
27	101.56	5.63	9.12	0.01	0.01	0.01	0.04	0.01	0.01
28	11.73	7.61	8.98	0.02	0.01	0.01	0.04	0.01	0.01
29	11.54	4.71	8.30	0.01	0.01	0.01	0.05	0.01	0.01
30	39.31	7.69	8.95	0.01	0.01	0.01	0.05	0.01	0.01
Total									
Average	85.1	5.8	11.2	0.02	0.01	0.01	0.03	0.01	0.01
Maximum	347.3		34.4	0.05		0.01	0.05		0.01
Date	2-Jun		1-Jun	14-Jun		14-Jun	21-Jun		30-Jun
Minimum		3.4	5.2		0.01	0.01		0.01	0.01
Date		13-Jun	9-Jun		1-Jun	20-Jun		9-Jun	9-Jun

Notes:

Membranes Monthly Report

Month: June-16

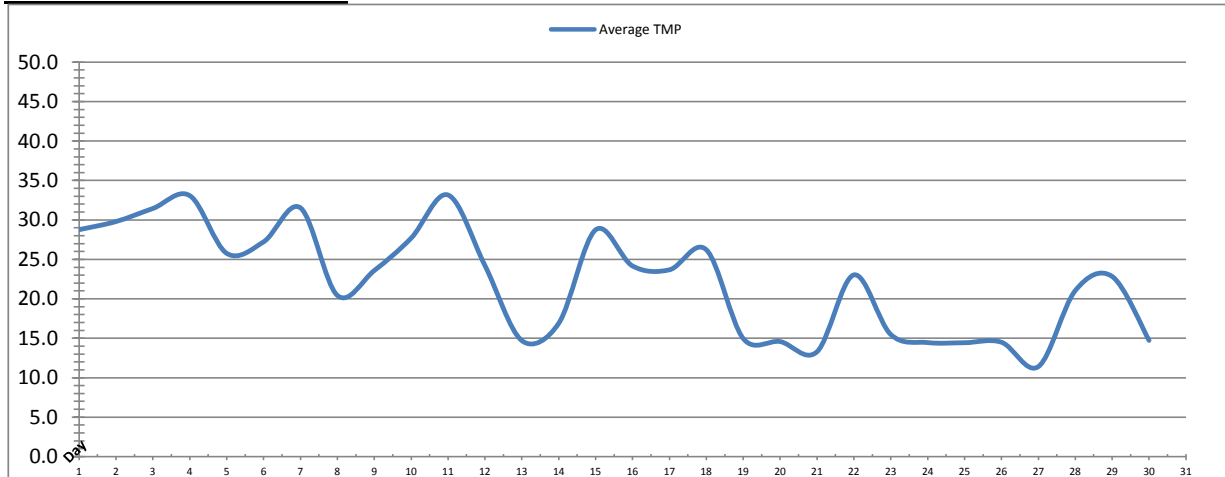


Date	Rack #3 Turbidity			Rack #4 Turbidity			Turbidity After Membranes		
	RACK3_NTU_Value			RACK4_NTU_Value			PALL_FILTER_AIT5001_Value		
	Maximum	Minimum	Average	Maximum	Minimum	Average	Maximum	Minimum	Average
1	0.03	0.01	0.01	0.01	0.01	0.01	0.02	0.02	0.02
2	0.03	0.01	0.01	0.02	0.01	0.01	0.20	0.02	0.02
3	0.03	0.01	0.01	0.01	0.01	0.01	0.02	0.02	0.02
4	0.04	0.01	0.01	0.02	0.01	0.01	0.02	0.02	0.02
5	0.04	0.01	0.01	0.02	0.01	0.01	0.02	0.02	0.02
6	0.04	0.01	0.01	0.02	0.01	0.01	0.02	0.02	0.02
7	0.02	0.01	0.01	0.03	0.01	0.01	0.03	0.02	0.02
8	0.04	0.01	0.01	0.06	0.01	0.01	0.03	0.02	0.02
9	0.04	0.01	0.01	0.03	0.01	0.01	0.03	0.02	0.02
10	0.04	0.01	0.01	0.06	0.01	0.01	0.02	0.02	0.02
11	0.05	0.01	0.01	0.03	0.01	0.01	0.04	0.02	0.02
12	0.04	0.01	0.01	0.02	0.01	0.01	0.04	0.02	0.02
13	0.06	0.01	0.01	0.02	0.01	0.01	0.03	0.02	0.02
14	0.04	0.01	0.01	0.03	0.01	0.01	0.02	0.02	0.02
15	0.04	0.01	0.01	0.04	0.01	0.01	0.03	0.02	0.02
16	0.06	0.01	0.01	0.03	0.01	0.01	0.03	0.02	0.02
17	0.04	0.01	0.01	0.04	0.01	0.01	0.02	0.02	0.02
18	0.05	0.01	0.01	0.04	0.01	0.01	0.02	0.02	0.02
19	0.04	0.01	0.01	0.03	0.01	0.01	0.03	0.02	0.02
20	0.05	0.01	0.01	0.03	0.01	0.01	0.03	0.02	0.02
21	0.05	0.01	0.01	0.03	0.01	0.01	0.03	0.02	0.02
22	0.10	0.01	0.01	0.04	0.01	0.01	0.03	0.02	0.02
23	0.09	0.01	0.01	0.03	0.01	0.01	0.02	0.02	0.02
24	0.06	0.01	0.01	0.03	0.01	0.01	0.02	0.02	0.02
25	0.04	0.01	0.01	0.02	0.01	0.01	0.02	0.02	0.02
26	0.09	0.01	0.01	0.03	0.01	0.01	0.02	0.02	0.02
27	0.04	0.01	0.01	0.03	0.01	0.01	0.03	0.02	0.02
28	0.03	0.01	0.01	0.04	0.01	0.01	0.02	0.02	0.02
29	0.04	0.01	0.01	0.03	0.01	0.01	0.02	0.02	0.02
30	0.03	0.01	0.01	0.03	0.01	0.01	0.03	0.02	0.02
Total									
Average	0.05	0.01	0.01	0.03	0.01	0.01	0.03	0.02	0.02
Maximum	0.10		0.01	0.06		0.01	0.20		0.02
Date	22-Jun		23-Jun	10-Jun		8-Jun	2-Jun		11-Jun
Minimum		0.01	0.01		0.01	0.01		0.02	0.02
Date		1-Jun	1-Jun		1-Jun	27-Jun		24-Jun	3-Jun

Notes:

Membranes Monthly Report

Month: June-16

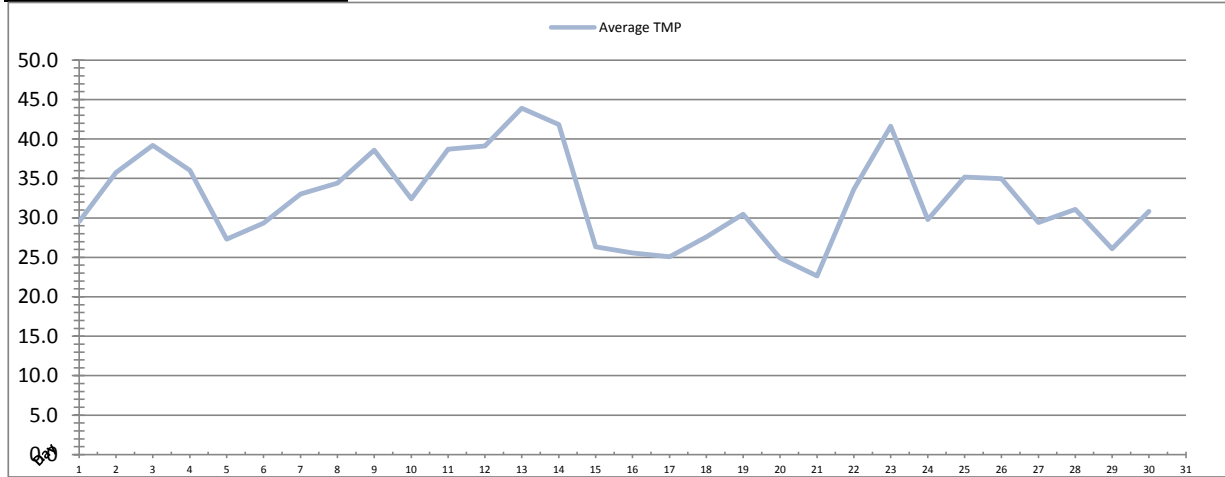


Integrity Test Rack 1									
Date	Initial Pressure (kPa)	Final Pressure (kPa)	Test Duration (sec)	Change in Pressure (kPa)	UCL	Within UCL	Average TMP (kPa)	Max TMP (kPa)	
1	194.9	193.8	300.0	1.1	2.0	✓ 2.0	28.8	109.4	
2	194.9	193.7	300.0	1.2	2.0	✓ 2.0	29.8	105.9	
3	194.2	193.1	300.0	1.1	2.0	✓ 2.0	31.5	89.5	
4	193.9	192.8	300.0	1.2	2.0	✓ 2.0	33.1	55.0	
5	194.4	193.3	300.0	1.0	2.0	✓ 2.0	25.8	57.9	
6	194.4	193.2	300.0	1.2	2.0	✓ 2.0	27.2	55.4	
7	194.5	193.3	300.0	1.3	2.0	✓ 2.0	31.5	95.8	
8	194.9	193.6	300.0	1.3	2.0	✓ 2.0	20.4	57.4	
9	194.4	193.1	300.0	1.3	2.0	✓ 2.0	23.6	60.3	
10	195.0	194.4	300.0	0.6	2.0	✓ 2.0	27.7	97.0	
11	194.9	193.6	300.0	1.3	2.0	✓ 2.0	33.2	104.0	
12	194.7	194.1	300.0	0.7	2.0	✓ 2.0	24.2	73.6	
13	194.7	193.4	300.0	1.3	2.0	✓ 2.0	14.7	58.8	
14	194.7	193.6	300.0	1.1	2.0	✓ 2.0	16.9	54.9	
15	194.6	193.3	300.0	1.3	2.0	✓ 2.0	28.7	61.4	
16	194.7	193.5	300.0	1.2	2.0	✓ 2.0	24.2	53.2	
17	194.6	193.3	300.0	1.2	2.0	✓ 2.0	23.7	57.3	
18	194.1	193.1	300.0	1.1	2.0	✓ 2.0	26.2	76.4	
19	194.1	193.1	300.0	1.1	2.0	✓ 2.0	15.0	41.8	
20	194.1	193.1	300.0	1.1	2.0	✓ 2.0	14.6	14.8	
21	194.9	193.6	300.0	1.3	2.0	✓ 2.0	13.3	54.4	
22	194.7	194.2	300.0	0.5	2.0	✓ 2.0	23.0	53.2	
23	194.7	194.2	300.0	0.5	2.0	✓ 2.0	15.5	86.7	
24	194.7	194.2	300.0	0.5	2.0	✓ 2.0	14.5	14.7	
25	194.7	194.2	300.0	0.5	2.0	✓ 2.0	14.4	14.7	
26	194.7	194.2	300.0	0.5	2.0	✓ 2.0	14.5	14.7	
27	194.7	194.2	300.0	0.5	2.0	✓ 2.0	11.4	17.1	
28	194.7	194.2	300.0	0.5	2.0	✓ 2.0	21.0	52.6	
29	194.9	193.5	300.0	1.4	2.0	✓ 2.0	22.8	50.8	
30	194.9	193.5	300.0	1.4	2.0	✓ 2.0	14.7	15.0	
Total									
Average	194.6	193.6	300.0	1.0	2.0	2.0	22.2	58.5	
Maximum	195.0	194.4	300.0	1.4	2.0	2.0	33.2	109.4	
Date	10-Jun	10-Jun	1-Jun	29-Jun	1-Jun	1-Jun	11-Jun	1-Jun	
Minimum	193.9	192.8	300.0	0.5	2.0	2.0	11.4	14.7	
Date	4-Jun	4-Jun	1-Jun	22-Jun	1-Jun	1-Jun	27-Jun	24-Jun	

Notes:

Membranes Monthly Report

Month: June-16

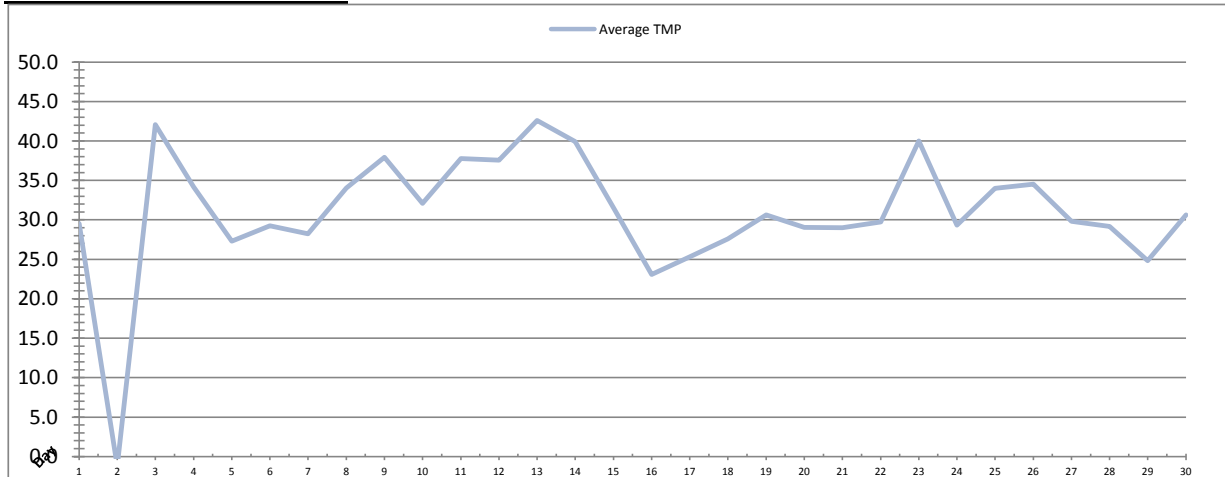


Integrity Test Rack 2									
Date	Initial Pressure (kPa)	Final Pressure (kPa)	Test Duration (sec)	Change in Pressure (kPa)	UCL	Within UCL	Average TMP (kPa)	Max TMP (kPa)	
1	200.7	199.9	300.0	0.8	2.0	✓ 2.0	29.6	92.9	
2	200.8	200.0	300.0	0.9	2.0	✓ 2.0	35.7	117.5	
3	200.7	199.9	300.0	0.8	2.0	✓ 2.0	39.2	79.3	
4	200.5	199.5	300.0	1.0	2.0	✓ 2.0	36.0	119.8	
5	200.5	199.4	300.0	1.1	2.0	✓ 2.0	27.3	60.9	
6	200.5	199.2	300.0	1.3	2.0	✓ 2.0	29.3	65.7	
7	200.8	199.8	300.0	1.0	2.0	✓ 2.0	33.0	119.0	
8	200.5	199.6	300.0	0.9	2.0	✓ 2.0	34.4	116.8	
9	200.7	199.7	300.0	1.1	2.0	✓ 2.0	38.6	111.8	
10	200.5	199.6	300.0	0.9	2.0	✓ 2.0	32.4	105.1	
11	200.3	199.7	300.0	0.5	2.0	✓ 2.0	38.7	111.1	
12	200.3	198.9	300.0	1.3	2.0	✓ 2.0	39.1	111.9	
13	200.6	200.0	300.0	0.7	2.0	✓ 2.0	43.9	119.9	
14	200.3	198.8	300.0	1.5	2.0	✓ 2.0	41.8	122.0	
15	200.7	199.5	300.0	1.2	2.0	✓ 2.0	26.3	59.6	
16	200.3	199.7	300.0	0.7	2.0	✓ 2.0	25.6	85.7	
17	200.5	199.8	300.0	0.7	2.0	✓ 2.0	25.1	49.8	
18	200.5	199.7	300.0	0.8	2.0	✓ 2.0	27.6	78.1	
19	201.1	200.2	300.0	0.9	2.0	✓ 2.0	30.5	86.0	
20	200.6	199.5	300.0	1.1	2.0	✓ 2.0	24.9	81.9	
21	201.1	200.0	300.0	1.1	2.0	✓ 2.0	22.6	87.1	
22	200.6	199.4	300.0	1.3	2.0	✓ 2.0	33.6	96.7	
23	200.5	199.8	300.0	0.7	2.0	✓ 2.0	41.6	163.8	
24	200.7	199.4	300.0	1.3	2.0	✓ 2.0	29.8	69.9	
25	200.8	199.5	300.0	1.3	2.0	✓ 2.0	35.2	111.4	
26	200.8	199.8	300.0	1.0	2.0	✓ 2.0	35.0	96.0	
27	200.7	200.0	300.0	0.7	2.0	✓ 2.0	29.4	94.0	
28	200.6	199.4	300.0	1.3	2.0	✓ 2.0	31.1	55.5	
29	200.9	200.1	300.0	0.8	2.0	✓ 2.0	26.1	71.7	
30	200.7	199.4	300.0	1.3	2.0	✓ 2.0	30.8	61.2	
Total									
Average	200.6	199.6	300.0	1.0	2.0	2.0	32.5	93.4	
Maximum	201.1	200.2	300.0	1.5	2.0	2.0	43.9	163.8	
Date	21-Jun	19-Jun	1-Jun	14-Jun	1-Jun	1-Jun	13-Jun	23-Jun	
Minimum	200.3	198.8	300.0	0.5	2.0	2.0	22.6	49.8	
Date	11-Jun	14-Jun	1-Jun	11-Jun	1-Jun	1-Jun	21-Jun	17-Jun	

Notes:

Membranes Monthly Report

Month: June-16

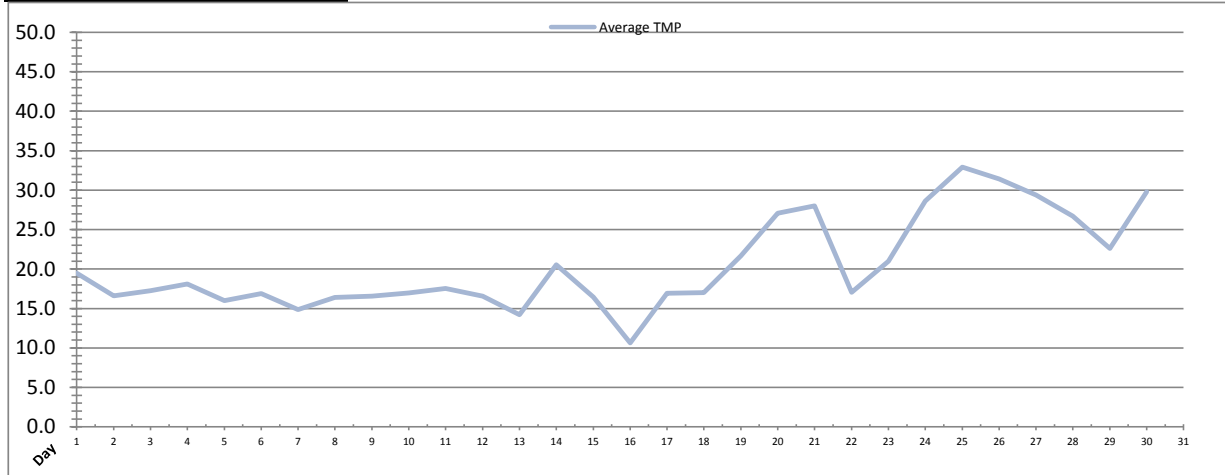


Integrity Test Rack 3									
Date	Initial Pressure (kPa)	Final Pressure (kPa)	Test Duration (sec)	Change in Pressure (kPa)	UCL	Within UCL	Average TMP (kPa)	Max TMP (kPa)	
1	191.3	190.2	300.0	1.1	2.0	✓ 2.0	29.5	74.3	
2	191.1	189.9	300.0	1.2	2.0	✓ 2.0	-1.2	70.0	
3	190.9	189.6	300.0	1.2	2.0	✓ 2.0	42.1	138.6	
4	190.9	189.6	300.0	1.2	2.0	✓ 2.0	34.2	85.2	
5	191.7	190.5	300.0	1.1	2.0	✓ 2.0	27.3	76.4	
6	190.7	189.4	300.0	1.3	2.0	✓ 2.0	29.3	61.7	
7	190.4	189.1	300.0	1.3	2.0	✓ 2.0	28.2	90.7	
8	190.7	189.3	300.0	1.4	2.0	✓ 2.0	34.1	108.6	
9	190.8	189.4	300.0	1.3	2.0	✓ 2.0	38.0	114.9	
10	191.2	189.9	300.0	1.3	2.0	✓ 2.0	32.1	104.4	
11	191.1	189.8	300.0	1.3	2.0	✓ 2.0	37.8	110.1	
12	190.5	189.3	300.0	1.3	2.0	✓ 2.0	37.6	101.7	
13	190.8	189.4	300.0	1.4	2.0	✓ 2.0	42.6	119.1	
14	191.1	189.8	300.0	1.3	2.0	✓ 2.0	39.9	118.3	
15	190.9	189.7	300.0	1.3	2.0	✓ 2.0	31.5	64.3	
16	191.4	190.1	300.0	1.2	2.0	✓ 2.0	23.1	59.5	
17	190.7	189.5	300.0	1.2	2.0	✓ 2.0	25.3	78.9	
18	190.7	189.5	300.0	1.2	2.0	✓ 2.0	27.6	76.0	
19	191.3	190.0	300.0	1.3	2.0	✓ 2.0	30.6	79.8	
20	190.9	189.8	300.0	1.1	2.0	✓ 2.0	29.0	86.8	
21	191.2	189.8	300.0	1.3	2.0	✓ 2.0	29.0	89.6	
22	191.2	189.9	300.0	1.3	2.0	✓ 2.0	29.7	94.0	
23	191.2	190.0	300.0	1.2	2.0	✓ 2.0	40.0	156.8	
24	191.0	189.7	300.0	1.3	2.0	✓ 2.0	29.3	58.3	
25	190.9	189.8	300.0	1.2	2.0	✓ 2.0	34.0	92.1	
26	191.5	190.3	300.0	1.3	2.0	✓ 2.0	34.5	97.1	
27	191.5	190.4	300.0	1.1	2.0	✓ 2.0	29.8	92.1	
28	190.8	189.4	300.0	1.4	2.0	✓ 2.0	29.1	53.2	
29	190.8	189.3	300.0	1.4	2.0	✓ 2.0	24.8	62.5	
30	190.8	189.5	300.0	1.3	2.0	✓ 2.0	30.6	62.3	
Total									
Average	191.0	189.7	300.0	1.3	2.0	2.0	31.0	89.2	
Maximum	191.7	190.5	300.0	1.4	2.0	2.0	42.6	156.8	
Date	5-Jun	5-Jun	1-Jun	29-Jun	1-Jun	1-Jun	13-Jun	23-Jun	
Minimum	190.4	189.1	300.0	1.1	2.0	2.0	-1.2	53.2	
Date	7-Jun	7-Jun	1-Jun	1-Jun	1-Jun	1-Jun	2-Jun	28-Jun	

Notes:

Membranes Monthly Report

Month: June-16



Integrity Test Rack 4									
Date	Initial Pressure (kPa)	Final Pressure (kPa)	Test Duration (sec)	Change in Pressure (kPa)	UCL	Within UCL	Average TMP (kPa)	Max TMP (kPa)	
1	196.1	195.0	300.0	1.1	2.0	✓ 2.0	19.5	52.6	
2	196.7	195.7	300.0	1.1	2.0	✓ 2.0	16.6	43.3	
3	196.0	194.9	300.0	1.1	2.0	✓ 2.0	17.3	37.4	
4	196.3	195.1	300.0	1.2	2.0	✓ 2.0	18.1	42.7	
5	195.9	194.9	300.0	0.9	2.0	✓ 2.0	16.0	36.9	
6	196.4	195.2	300.0	1.2	2.0	✓ 2.0	16.9	36.8	
7	196.4	195.2	300.0	1.2	2.0	✓ 2.0	14.9	34.3	
8	194.6	193.3	300.0	1.3	2.0	✓ 2.0	16.4	39.9	
9	194.6	193.3	300.0	1.3	2.0	✓ 2.0	16.5	32.5	
10	194.0	192.8	300.0	1.2	2.0	✓ 2.0	17.0	37.0	
11	194.2	193.1	300.0	1.1	2.0	✓ 2.0	17.5	36.9	
12	195.3	194.4	300.0	0.9	2.0	✓ 2.0	16.6	34.8	
13	194.3	193.1	300.0	1.2	2.0	✓ 2.0	14.2	34.7	
14	194.3	193.1	300.0	1.2	2.0	✓ 2.0	20.5	60.9	
15	194.2	192.9	300.0	1.3	2.0	✓ 2.0	16.5	34.1	
16	194.4	193.1	300.0	1.2	2.0	✓ 2.0	10.6	33.7	
17	194.2	193.0	300.0	1.3	2.0	✓ 2.0	16.9	31.4	
18	194.2	193.0	300.0	1.2	2.0	✓ 2.0	17.0	33.9	
19	194.5	193.2	300.0	1.3	2.0	✓ 2.0	21.7	48.4	
20	194.1	193.0	300.0	1.1	2.0	✓ 2.0	27.1	81.2	
21	194.4	193.2	300.0	1.2	2.0	✓ 2.0	28.0	86.0	
22	194.3	193.1	300.0	1.2	2.0	✓ 2.0	17.0	34.5	
23	194.8	193.5	300.0	1.3	2.0	✓ 2.0	21.0	54.2	
24	195.1	194.1	300.0	1.0	2.0	✓ 2.0	28.6	48.7	
25	195.4	194.4	300.0	1.1	2.0	✓ 2.0	32.9	86.5	
26	195.2	194.4	300.0	0.9	2.0	✓ 2.0	31.4	90.0	
27	195.3	194.2	300.0	1.1	2.0	✓ 2.0	29.4	89.3	
28	195.7	194.7	300.0	1.1	2.0	✓ 2.0	26.7	54.6	
29	195.2	194.1	300.0	1.1	2.0	✓ 2.0	22.6	54.2	
30	195.6	194.8	300.0	0.8	2.0	✓ 2.0	29.8	68.3	
Total									
Average	195.1	193.9	300.0	1.1	2.0	2.0	20.5	49.7	
Maximum	196.7	195.7	300.0	1.3	2.0	2.0	32.9	90.0	
Date	2-Jun	2-Jun	1-Jun	8-Jun	1-Jun	1-Jun	25-Jun	26-Jun	
Minimum	194.0	192.8	300.0	0.8	2.0	2.0	10.6	31.4	
Date	10-Jun	10-Jun	1-Jun	30-Jun	1-Jun	1-Jun	16-Jun	17-Jun	

Notes:

Membranes Monthly Report

Month: June-16

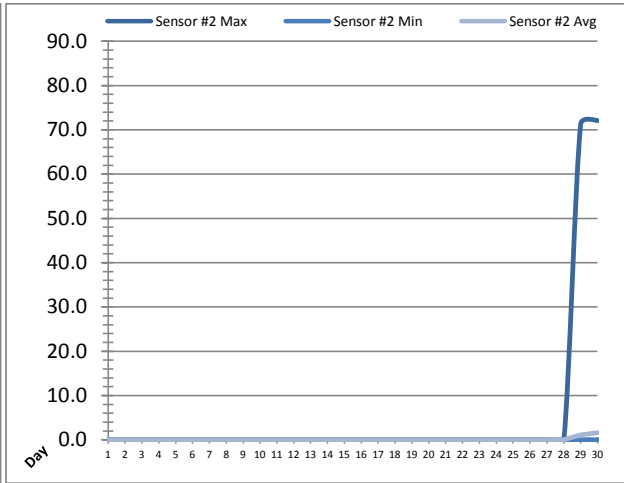
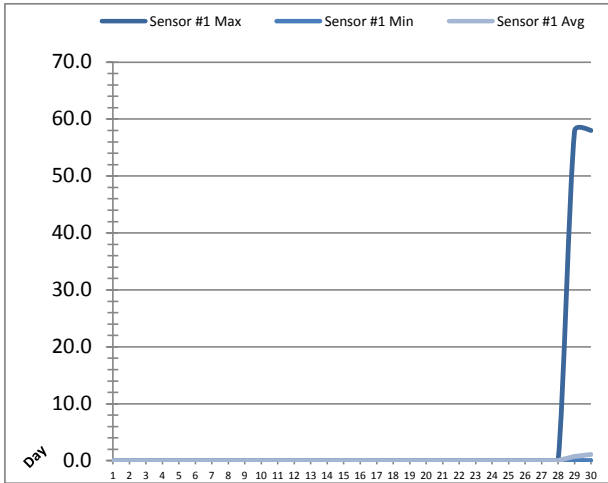
Date	Membranes Monthly Performance							
	Rack 1 >0.1 NTU (Minutes)	Rack 1 Forward Flow (Minutes)	Rack 2 >0.1 NTU (Minutes)	Rack 2 Forward Flow (Minutes)	Rack 3 >0.1 NTU (Minutes)	Rack 3 Forward Flow (Minutes)	Rack 4 >0.1 NTU (Minutes)	Rack 4 Forward Flow (Minutes)
1	0.0	1080.3	0.0	809.4	0.0	1056.0	0.0	521.4
2	0.0	958.4	0.0	957.1	0.0	855.1	0.0	335.5
3	0.0	977.2	0.0	1150.1	0.0	1226.6	0.0	464.4
4	0.0	1258.6	0.0	1271.1	0.0	1262.0	0.0	602.0
5	0.0	795.6	0.0	801.4	0.0	803.2	0.0	265.3
6	0.0	834.4	0.0	845.5	0.0	846.0	0.0	385.4
7	0.0	953.3	0.0	951.1	0.0	768.1	0.0	234.3
8	0.0	434.1	0.0	874.6	0.0	879.0	0.0	685.5
9	0.0	651.1	0.0	1099.5	0.0	1105.3	0.0	748.1
10	0.0	952.1	0.0	969.2	0.0	979.5	0.0	470.4
11	0.0	985.3	0.0	1009.2	0.0	1018.1	0.0	573.3
12	0.0	720.3	0.0	1095.4	0.0	1095.4	0.0	492.1
13	0.0	88.1	0.0	992.0	0.0	996.1	0.0	251.2
14	0.0	304.3	0.0	1188.4	0.0	1195.1	0.0	530.2
15	0.0	1015.5	0.0	781.4	0.0	1025.3	0.0	361.3
16	0.0	897.3	0.0	896.4	0.0	687.0	0.0	326.3
17	0.0	941.5	0.0	933.5	0.0	937.4	0.0	455.6
18	0.0	1044.5	0.0	1039.0	0.0	1042.3	0.0	519.6
19	0.0	59.2	0.0	1141.2	0.0	1147.2	0.0	701.5
20	0.0	0.0	0.0	878.4	0.0	1107.5	0.0	1062.1
21	0.0	354.5	0.0	688.3	0.0	1097.2	0.0	941.3
22	0.0	757.3	0.0	1119.3	0.0	971.4	0.0	455.5
23	0.0	45.4	0.0	1010.1	0.0	1016.4	0.0	772.5
24	0.0	0.0	0.0	1163.3	0.0	1162.4	0.0	1159.2
25	0.0	0.0	0.0	1347.0	0.0	1347.4	0.0	1352.4
26	0.0	0.0	0.0	1206.3	0.0	1070.2	0.0	1209.5
27	0.0	0.0	0.0	985.4	0.0	989.5	0.0	991.2
28	0.0	512.0	0.0	1231.6	0.0	1233.3	0.0	1233.3
29	0.0	797.1	0.0	1042.4	0.0	1050.5	0.0	1054.5
30	0.0	0.0	0.0	1119.2	0.0	1121.5	0.0	1120.1
Total	0.0	17417.2	0.0	30596.5	0.0	31092.0	0.0	20275.0
Percent	0.00		0.00		0.00		0.00	
Maximum	0.0	1258.6	0.0	1347.0	0.0	1347.4	0.0	1352.4
Date	1-Jun	4-Jun	1-Jun	25-Jun	1-Jun	25-Jun	1-Jun	25-Jun
Minimum	0.0	0.0	0.0	688.3	0.0	687.0	0.0	234.3
Date	1-Jun	20-Jun	1-Jun	21-Jun	1-Jun	16-Jun	1-Jun	7-Jun

Notes:

Met filter performance criteria of 99% of the readings were less than 0.1ntu for the month.

UV System Monthly Report

Month: **June-16**

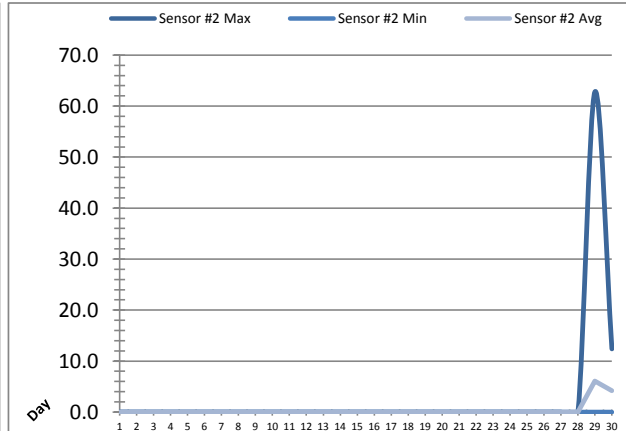
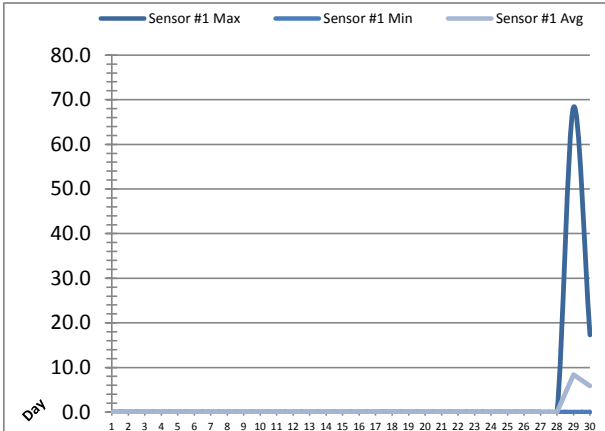


Date	UV Reactor 1					
	Intensity Sensor 1 (mW/cm ²)			Intensity Sensor 2 (mW/cm ²)		
	Maximum	Minimum	Average	Maximum	Minimum	Average
1	0.0	0.0	0.0	0.0	0.0	0.0
2	0.0	0.0	0.0	0.0	0.0	0.0
3	0.0	0.0	0.0	0.0	0.0	0.0
4	0.0	0.0	0.0	0.0	0.0	0.0
5	0.0	0.0	0.0	0.0	0.0	0.0
6	0.0	0.0	0.0	0.0	0.0	0.0
7	0.0	0.0	0.0	0.0	0.0	0.0
8	0.0	0.0	0.0	0.0	0.0	0.0
9	0.0	0.0	0.0	0.0	0.0	0.0
10	0.0	0.0	0.0	0.0	0.0	0.0
11	0.0	0.0	0.0	0.0	0.0	0.0
12	0.0	0.0	0.0	0.0	0.0	0.0
13	0.0	0.0	0.0	0.0	0.0	0.0
14	0.0	0.0	0.0	0.0	0.0	0.0
15	0.0	0.0	0.0	0.0	0.0	0.0
16	0.0	0.0	0.0	0.0	0.0	0.0
17	0.0	0.0	0.0	0.0	0.0	0.0
18	0.0	0.0	0.0	0.0	0.0	0.0
19	0.0	0.0	0.0	0.0	0.0	0.0
20	0.0	0.0	0.0	0.0	0.0	0.0
21	0.0	0.0	0.0	0.0	0.0	0.0
22	0.0	0.0	0.0	0.0	0.0	0.0
23	0.0	0.0	0.0	0.0	0.0	0.0
24	0.0	0.0	0.0	0.0	0.0	0.0
25	0.0	0.0	0.0	0.0	0.0	0.0
26	0.0	0.0	0.0	0.0	0.0	0.0
27	0.0	0.0	0.0	0.0	0.0	0.0
28	0.0	0.0	0.0	0.0	0.0	0.0
29	57.9	0.0	0.8	71.3	0.0	1.1
30	58.0	0.0	1.1	72.1	0.0	1.6
Total						
Average	3.9	0.0	0.1	4.8	0.0	0.1
Maximum	58.0		1.1	72.1		1.6
Date	30-Jun		30-Jun	30-Jun		30-Jun
Minimum		0.0	0.0		0.0	0.0
Date		1-Jun	1-Jun		1-Jun	1-Jun

Notes:

UV System Monthly Report

Month: June-16

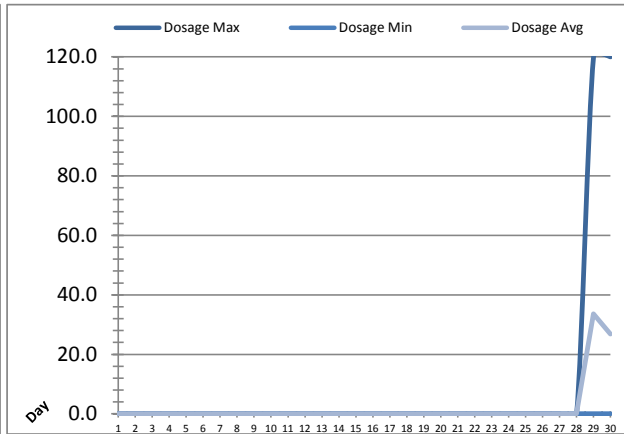


UV Reactor 2						
Date	Intensity Sensor 1 (mW/cm ²)			Intensity Sensor 2 (mW/cm ²)		
	Maximum	Minimum	Average	Maximum	Minimum	Average
1	0.0	0.0	0.0	0.0	0.0	0.0
2	0.0	0.0	0.0	0.0	0.0	0.0
3	0.0	0.0	0.0	0.0	0.0	0.0
4	0.0	0.0	0.0	0.0	0.0	0.0
5	0.0	0.0	0.0	0.0	0.0	0.0
6	0.0	0.0	0.0	0.0	0.0	0.0
7	0.0	0.0	0.0	0.0	0.0	0.0
8	0.0	0.0	0.0	0.0	0.0	0.0
9	0.0	0.0	0.0	0.0	0.0	0.0
10	0.0	0.0	0.0	0.0	0.0	0.0
11	0.0	0.0	0.0	0.0	0.0	0.0
12	0.0	0.0	0.0	0.0	0.0	0.0
13	0.0	0.0	0.0	0.0	0.0	0.0
14	0.0	0.0	0.0	0.0	0.0	0.0
15	0.0	0.0	0.0	0.0	0.0	0.0
16	0.0	0.0	0.0	0.0	0.0	0.0
17	0.0	0.0	0.0	0.0	0.0	0.0
18	0.0	0.0	0.0	0.0	0.0	0.0
19	0.0	0.0	0.0	0.0	0.0	0.0
20	0.0	0.0	0.0	0.0	0.0	0.0
21	0.0	0.0	0.0	0.0	0.0	0.0
22	0.0	0.0	0.0	0.0	0.0	0.0
23	0.0	0.0	0.0	0.0	0.0	0.0
24	0.0	0.0	0.0	0.0	0.0	0.0
25	0.0	0.0	0.0	0.0	0.0	0.0
26	0.0	0.0	0.0	0.0	0.0	0.0
27	0.0	0.0	0.0	0.0	0.0	0.0
28	0.0	0.0	0.0	0.0	0.0	0.0
29	68.3	0.0	8.4	62.8	0.0	6.1
30	17.3	0.0	5.9	12.4	0.0	4.2
Total						
Average	2.9	0.0	0.5	2.5	0.0	0.3
Maximum	68.3		8.4	62.8		6.1
Date	29-Jun		29-Jun	29-Jun		29-Jun
Minimum		0.0	0.0		0.0	0.0
Date		1-Jun	1-Jun		1-Jun	1-Jun

Notes:

UV System Monthly Report

Month: **June-16**

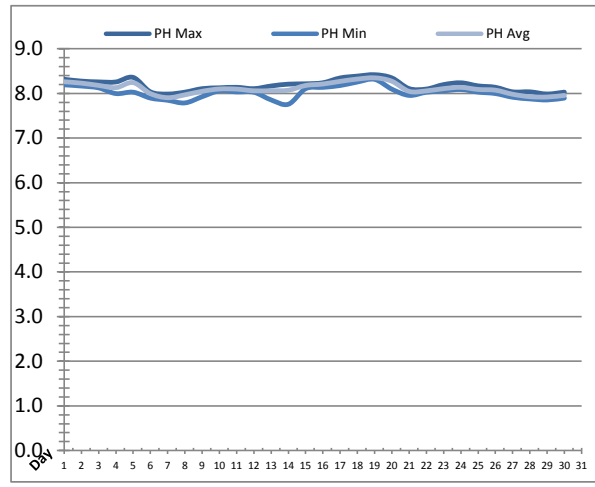
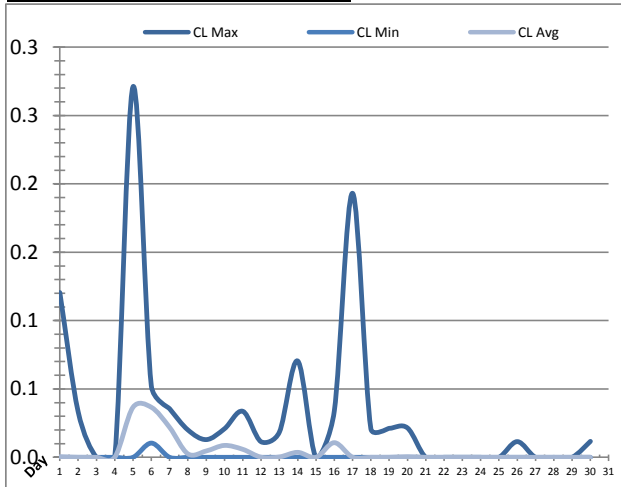


UV System							
Date	Transmittance (%)			Dosage (mJ/cm ²)			Inlet Flow (L/s)
	Maximum	Minimum	Average	Maximum	Minimum	Average	Maximum
1	97.00	94.00	95.47	0.0	0.0	0.0	85.6
2	97.00	94.00	95.41	0.0	0.0	0.0	86.9
3	97.00	93.00	95.38	0.0	0.0	0.0	90.3
4	97.00	94.00	95.63	0.0	0.0	0.0	96.3
5	97.00	94.00	95.48	0.0	0.0	0.0	89.2
6	97.00	92.00	95.58	0.0	0.0	0.0	91.8
7	97.00	94.00	95.43	0.0	0.0	0.0	88.5
8	97.00	90.00	95.39	0.0	0.0	0.0	96.6
9	97.00	94.00	95.37	0.0	0.0	0.0	84.9
10	97.00	94.00	95.37	0.0	0.0	0.0	149.9
11	97.00	93.00	95.27	0.0	0.0	0.0	145.9
12	97.00	94.00	95.28	0.0	0.0	0.0	89.6
13	97.00	92.00	95.19	0.0	0.0	0.0	83.6
14	97.00	91.00	95.27	0.0	0.0	0.0	87.2
15	96.00	90.00	95.26	0.0	0.0	0.0	88.8
16	97.00	70.00	95.58	0.0	0.0	0.0	106.0
17	97.00	94.00	95.78	0.0	0.0	0.0	95.5
18	96.00	92.00	95.62	0.0	0.0	0.0	149.8
19	97.00	93.00	95.95	0.0	0.0	0.0	83.2
20	97.00	93.00	95.64	0.0	0.0	0.0	73.7
21	98.00	94.00	95.44	0.0	0.0	0.0	88.5
22	97.00	92.00	95.70	0.0	0.0	0.0	90.0
23	97.00	92.00	95.79	0.0	0.0	0.0	149.8
24	97.00	92.00	95.71	0.0	0.0	0.0	72.7
25	98.00	94.00	95.99	0.0	0.0	0.0	137.7
26	98.00	92.00	95.90	0.0	0.0	0.0	135.7
27	98.00	93.00	95.87	0.0	0.0	0.0	133.1
28	98.00	93.00	95.90	0.0	0.0	0.0	74.9
29	98.00	93.00	95.84	120.0	0.0	33.6	75.8
30	98.00	93.00	95.97	120.0	0.0	26.9	74.1
Total							
Average	97.17	92.10	95.58	8.0	0.0	2.0	99.9
Maximum	98.00		95.99	120.0		33.6	149.9
Date	21-Jun		25-Jun	29-Jun		29-Jun	10-Jun
Minimum		70.00	95.19		0.0	0.0	
Date		16-Jun	13-Jun		1-Jun	1-Jun	

Notes:

Plant Quality Report

Month: **June-16**

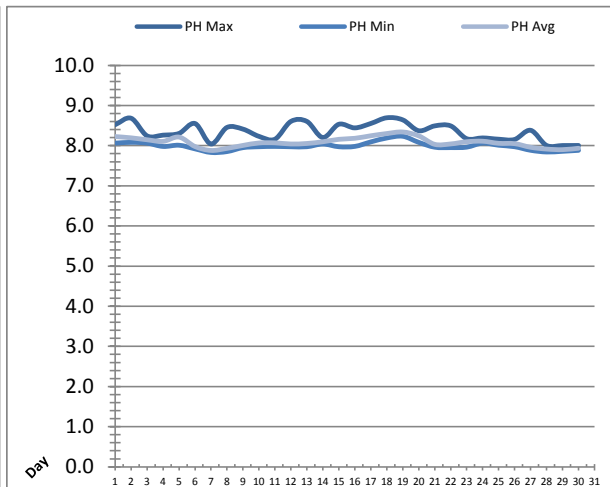
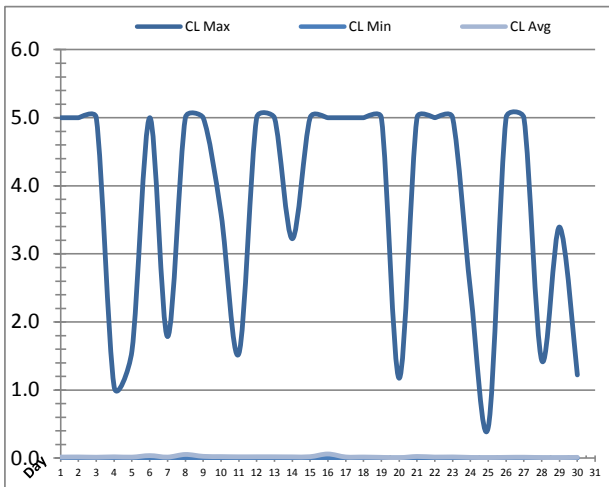


Date	Strainer Chlorine Residual			Strainer pH		
	AIT_2003_CL (ppm)			AIT_2003_PH		
	Maximum	Minimum	Average	Maximum	Minimum	Average
1	0.12	0.00	0.00	8.32	8.19	8.26
2	0.03	0.00	0.00	8.28	8.17	8.23
3	0.00	0.00	0.00	8.26	8.12	8.18
4	0.00	0.00	0.00	8.26	8.00	8.13
5	0.27	0.00	0.04	8.36	8.03	8.24
6	0.05	0.01	0.04	8.04	7.90	8.00
7	0.04	0.00	0.02	7.99	7.85	7.90
8	0.02	0.00	0.00	8.03	7.79	7.97
9	0.01	0.00	0.00	8.11	7.93	8.05
10	0.02	0.00	0.01	8.13	8.06	8.10
11	0.03	0.00	0.01	8.14	8.03	8.10
12	0.01	0.00	0.00	8.11	8.03	8.06
13	0.02	0.00	0.00	8.17	7.85	8.06
14	0.07	0.00	0.00	8.21	7.76	8.07
15	0.00	0.00	0.00	8.22	8.11	8.18
16	0.03	0.00	0.01	8.24	8.14	8.21
17	0.19	0.00	0.00	8.35	8.18	8.27
18	0.02	0.00	0.00	8.39	8.26	8.32
19	0.02	0.00	0.00	8.42	8.32	8.35
20	0.02	0.00	0.00	8.35	8.09	8.27
21	0.00	0.00	0.00	8.11	7.96	8.05
22	0.00	0.00	0.00	8.10	8.03	8.06
23	0.00	0.00	0.00	8.20	8.06	8.11
24	0.00	0.00	0.00	8.24	8.09	8.14
25	0.00	0.00	0.00	8.17	8.03	8.09
26	0.01	0.00	0.00	8.14	8.00	8.07
27	0.00	0.00	0.00	8.04	7.91	7.98
28	0.00	0.00	0.00	8.04	7.88	7.93
29	0.00	0.00	0.00	7.99	7.85	7.92
30	0.01	0.00	0.00	8.03	7.90	7.96
Total						
Average	0.03	0.00	0.00	8.18	8.02	8.11
Maximum	0.27		0.04	8.42		8.35
Date	5-Jun		5-Jun	19-Jun		19-Jun
Minimum		0.00	0.00		7.76	7.90
Date		1-Jun	3-Jun		14-Jun	7-Jun

Notes:

Plant Quality Report

Month: June-16

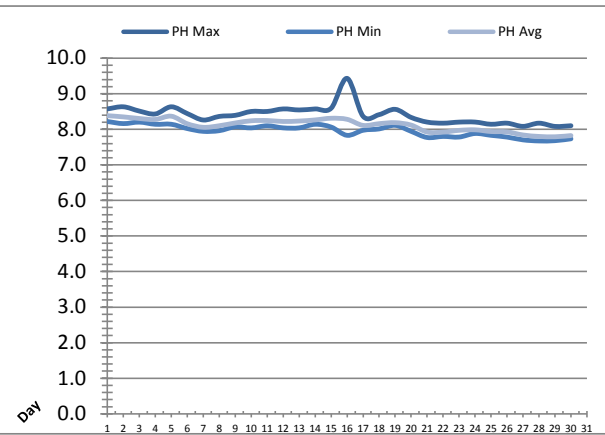
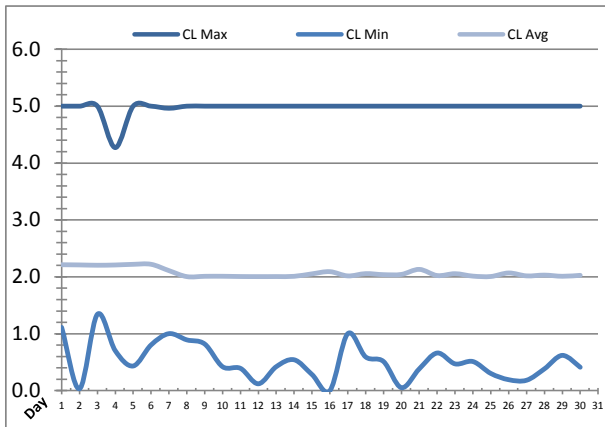


Date	Inlet UV Chlorine Residual			Inlet UV pH		
	AIT_5005_CL (ppm)			AIT_5005_PH		
	Maximum	Minimum	Average	Maximum	Minimum	Average
1	5.00	0.00	0.02	8.52	8.06	8.23
2	5.00	0.00	0.02	8.68	8.08	8.19
3	5.00	0.00	0.01	8.24	8.06	8.15
4	1.05	0.00	0.02	8.26	7.98	8.11
5	1.57	0.00	0.02	8.30	8.01	8.21
6	5.00	0.00	0.04	8.55	7.92	7.98
7	1.78	0.00	0.02	8.04	7.83	7.88
8	5.00	0.00	0.05	8.45	7.85	7.93
9	5.00	0.00	0.03	8.41	7.95	8.01
10	3.59	0.00	0.02	8.23	7.97	8.07
11	1.53	0.00	0.02	8.16	7.98	8.07
12	5.00	0.00	0.02	8.60	7.97	8.04
13	5.00	0.00	0.02	8.60	7.97	8.05
14	3.22	0.00	0.02	8.20	8.04	8.10
15	5.00	0.00	0.02	8.53	7.97	8.16
16	5.00	0.00	0.06	8.44	7.98	8.18
17	5.00	0.00	0.02	8.55	8.09	8.25
18	5.00	0.00	0.02	8.69	8.19	8.30
19	5.00	0.00	0.01	8.64	8.23	8.34
20	1.17	0.00	0.01	8.37	8.08	8.24
21	5.00	0.00	0.02	8.49	7.96	8.03
22	5.00	0.00	0.02	8.49	7.95	8.04
23	5.00	0.00	0.02	8.17	7.96	8.10
24	2.46	0.00	0.01	8.19	8.06	8.11
25	0.45	0.00	0.01	8.16	8.01	8.06
26	5.00	0.00	0.01	8.15	7.97	8.05
27	5.00	0.00	0.01	8.38	7.88	7.96
28	1.44	0.00	0.01	8.00	7.84	7.91
29	3.39	0.00	0.01	8.00	7.86	7.90
30	1.22	0.00	0.01	8.00	7.88	7.94
Total						
Average	3.76	0.00	0.02	8.35	7.99	8.09
Maximum	5.00		0.06	8.69		8.34
Date	1-Jun		16-Jun	18-Jun		19-Jun
Minimum		0.00	0.01		7.83	7.88
Date		5-Jun	20-Jun		7-Jun	7-Jun

Notes:

Plant Quality Report

Month: June-16

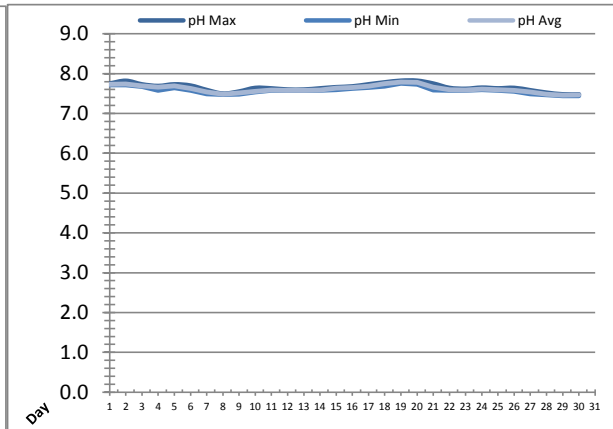
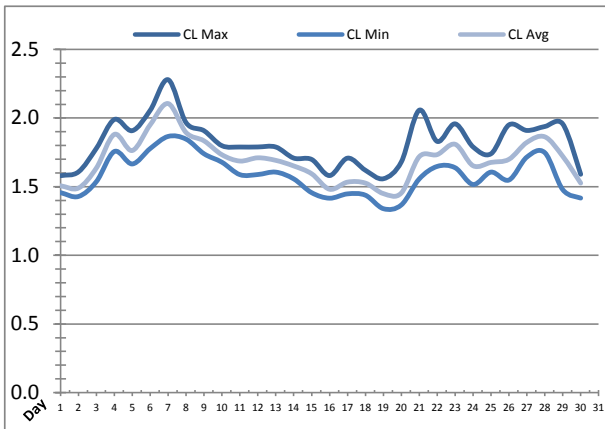


Date	Discharge UV Chlorine Residual			Discharge UV pH		
	AIT_5006_CL (ppm)			AIT_5006_PH		
	Maximum	Minimum	Average	Maximum	Minimum	Average
1	5.00	1.11	2.21	8.57	8.22	8.38
2	5.00	0.03	2.21	8.63	8.16	8.35
3	5.00	1.34	2.20	8.51	8.20	8.30
4	4.27	0.70	2.21	8.43	8.14	8.28
5	5.00	0.43	2.22	8.63	8.14	8.37
6	5.00	0.80	2.22	8.44	8.02	8.16
7	4.96	1.00	2.11	8.26	7.94	8.06
8	5.00	0.89	2.00	8.36	7.96	8.10
9	5.00	0.82	2.01	8.39	8.07	8.18
10	5.00	0.42	2.01	8.50	8.04	8.24
11	5.00	0.39	2.01	8.50	8.10	8.25
12	5.00	0.12	2.00	8.57	8.04	8.22
13	5.00	0.42	2.01	8.54	8.04	8.23
14	5.00	0.54	2.01	8.57	8.14	8.26
15	5.00	0.28	2.05	8.59	8.06	8.31
16	5.00	0.00	2.09	9.43	7.83	8.28
17	5.00	1.00	2.02	8.36	7.97	8.11
18	5.00	0.59	2.06	8.41	8.01	8.16
19	5.00	0.51	2.04	8.56	8.11	8.19
20	5.00	0.05	2.04	8.34	7.94	8.12
21	5.00	0.38	2.13	8.20	7.77	7.92
22	5.00	0.66	2.02	8.17	7.80	7.92
23	5.00	0.47	2.06	8.20	7.78	7.97
24	5.00	0.51	2.01	8.20	7.88	7.99
25	5.00	0.30	2.01	8.14	7.83	7.94
26	5.00	0.19	2.07	8.17	7.78	7.93
27	5.00	0.18	2.02	8.08	7.70	7.84
28	5.00	0.38	2.03	8.17	7.67	7.80
29	5.00	0.62	2.01	8.08	7.68	7.79
30	5.00	0.41	2.03	8.10	7.73	7.82
Total						
Average	4.97	0.52	2.07	8.41	7.96	8.12
Maximum	5.00		2.22	9.43		8.38
Date	1-Jun		6-Jun	16-Jun		1-Jun
Minimum		0.00	2.00		7.67	7.79
Date		16-Jun	8-Jun		28-Jun	29-Jun

Notes:

Plant Quality Report

Month: June-16

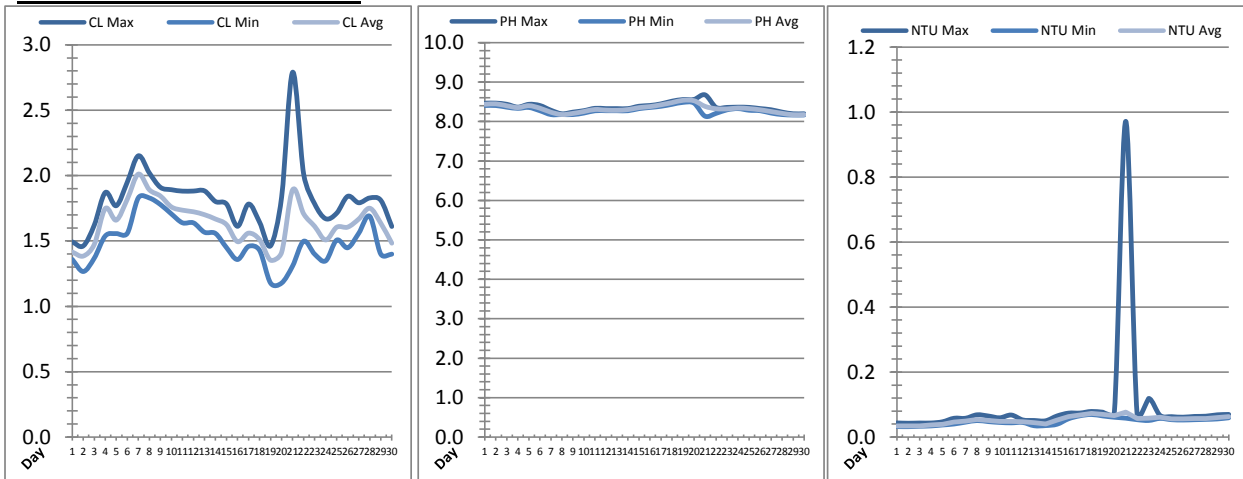


Date	Suction Header Chlorine Res.			Suction Header pH			Distribution CT Calc Total		
	AIT_7001_CL (ppm)			AIT_7001_PH (m)			REAL_CT_CALC_TOTAL (mg*ml/min)		
	Maximum	Minimum	Average	Maximum	Minimum	Average	Maximum	Minimum	Average
1	1.58	1.46	1.51	7.75	7.72	7.73	1713.40	0.00	128.54
2	1.61	1.43	1.49	7.82	7.72	7.74	6335.03	0.00	99.97
3	1.78	1.54	1.64	7.73	7.67	7.69	2004.96	0.00	134.79
4	1.99	1.76	1.88	7.69	7.58	7.66	5659.02	0.00	161.33
5	1.91	1.67	1.76	7.73	7.64	7.69	6776.34	0.00	127.05
6	2.06	1.78	1.95	7.70	7.58	7.63	5170.04	0.00	160.93
7	2.28	1.87	2.11	7.59	7.49	7.54	10187.77	0.00	124.18
8	1.97	1.85	1.89	7.50	7.48	7.49	18185.29	0.00	137.19
9	1.91	1.74	1.83	7.55	7.49	7.51	6750.92	0.00	138.08
10	1.80	1.68	1.73	7.64	7.54	7.56	4688.90	0.00	127.93
11	1.79	1.59	1.69	7.63	7.58	7.59	10469.05	0.00	181.73
12	1.79	1.59	1.71	7.60	7.58	7.58	5944.34	0.00	140.34
13	1.79	1.61	1.69	7.60	7.58	7.58	6226.72	0.00	131.33
14	1.71	1.56	1.65	7.63	7.58	7.59	9807.33	0.00	112.32
15	1.70	1.46	1.59	7.66	7.60	7.64	11281.94	0.00	109.61
16	1.58	1.42	1.48	7.68	7.63	7.65	9220.35	0.00	110.76
17	1.71	1.45	1.53	7.73	7.66	7.69	7772.54	0.00	97.91
18	1.62	1.44	1.53	7.78	7.69	7.75	9358.75	0.00	132.42
19	1.56	1.34	1.45	7.82	7.76	7.79	4962.77	0.00	123.58
20	1.68	1.37	1.45	7.82	7.73	7.78	7176.25	0.00	108.84
21	2.06	1.56	1.72	7.75	7.59	7.66	8148.69	0.00	125.98
22	1.83	1.65	1.73	7.64	7.58	7.59	5817.28	0.00	133.26
23	1.96	1.64	1.81	7.62	7.58	7.59	12164.49	0.00	237.18
24	1.79	1.52	1.65	7.65	7.60	7.61	4290.40	0.00	148.64
25	1.74	1.61	1.68	7.63	7.58	7.60	5285.59	0.00	153.63
26	1.95	1.55	1.70	7.64	7.55	7.58	1965.65	0.00	159.62
27	1.91	1.72	1.82	7.58	7.49	7.54	6002.13	0.00	152.03
28	1.94	1.75	1.86	7.52	7.46	7.48	10308.85	0.00	156.41
29	1.96	1.48	1.72	7.48	7.45	7.46	3755.84	0.00	140.85
30	1.59	1.42	1.53	7.48	7.45	7.47	8193.72	0.00	113.89
Total									
Average	1.82	1.58	1.69	7.65	7.59	7.61	7.65	7.59	7.61
Maximum	2.28		2.11	7.82		7.79	7.82		7.79
Date	7-Jun		7-Jun	19-Jun		19-Jun	19-Jun		19-Jun
Minimum		1.34	1.45		7.45	7.46		7.45	7.46
Date		19-Jun	19-Jun		29-Jun	29-Jun		29-Jun	29-Jun

Notes:

Plant Quality Report

Month: **June-16**

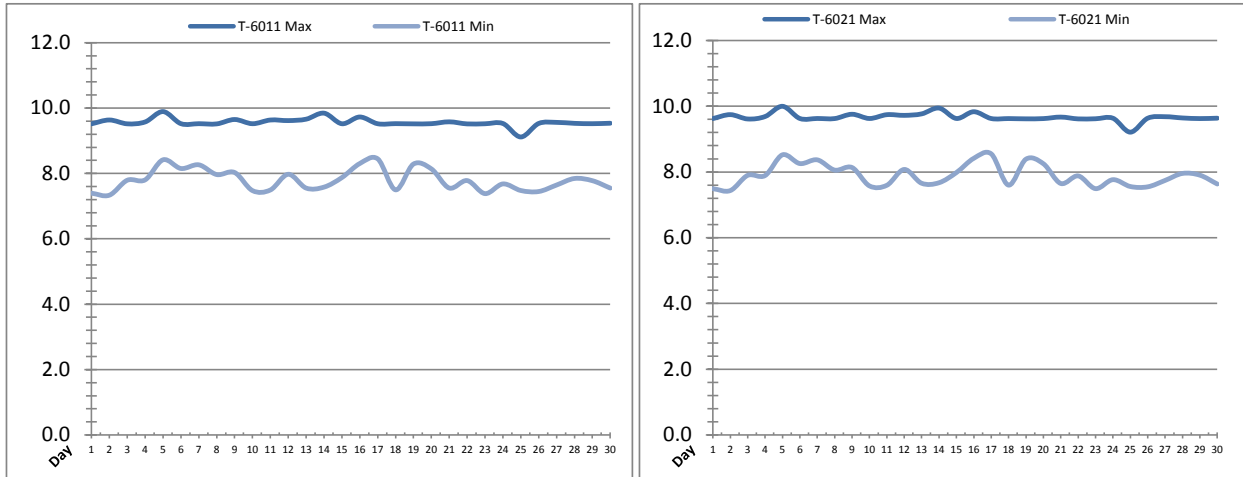


Date	Distribution Chlorine Header			Distribution pH			Distribution Turbidity		
	AIT_7004_CL (ppm)			AIT_7004_PH (mg/L)			AIT_7003 (mg/L)		
	Maximum	Minimum	Average	Maximum	Minimum	Average	Maximum	Minimum	Average
1	1.49	1.36	1.42	8.47	8.40	8.44	0.04	0.03	0.03
2	1.46	1.27	1.38	8.47	8.41	8.45	0.04	0.03	0.03
3	1.62	1.37	1.47	8.44	8.36	8.40	0.04	0.03	0.03
4	1.87	1.54	1.75	8.36	8.33	8.35	0.04	0.03	0.04
5	1.77	1.56	1.66	8.44	8.36	8.40	0.05	0.04	0.04
6	1.95	1.56	1.82	8.41	8.27	8.34	0.06	0.04	0.05
7	2.15	1.83	2.01	8.29	8.18	8.24	0.06	0.05	0.05
8	2.02	1.83	1.89	8.20	8.18	8.18	0.07	0.05	0.05
9	1.91	1.78	1.84	8.24	8.18	8.21	0.06	0.05	0.05
10	1.89	1.71	1.76	8.28	8.21	8.25	0.06	0.04	0.05
11	1.88	1.64	1.74	8.33	8.27	8.31	0.07	0.04	0.05
12	1.88	1.64	1.72	8.33	8.27	8.29	0.05	0.04	0.05
13	1.88	1.57	1.70	8.33	8.27	8.28	0.05	0.03	0.04
14	1.80	1.56	1.67	8.33	8.27	8.30	0.05	0.04	0.04
15	1.78	1.45	1.62	8.39	8.33	8.35	0.07	0.04	0.05
16	1.61	1.36	1.49	8.41	8.36	8.38	0.07	0.06	0.06
17	1.78	1.46	1.56	8.45	8.39	8.42	0.07	0.07	0.07
18	1.64	1.43	1.51	8.52	8.44	8.48	0.08	0.07	0.07
19	1.46	1.18	1.35	8.56	8.49	8.54	0.08	0.07	0.07
20	1.84	1.18	1.41	8.56	8.47	8.53	0.07	0.06	0.07
21	2.79	1.31	1.89	8.68	8.14	8.38	0.97	0.06	0.08
22	2.01	1.50	1.71	8.36	8.21	8.32	0.07	0.05	0.06
23	1.78	1.40	1.61	8.36	8.30	8.32	0.12	0.05	0.06
24	1.67	1.35	1.51	8.36	8.33	8.34	0.07	0.06	0.06
25	1.71	1.51	1.61	8.36	8.29	8.33	0.06	0.05	0.06
26	1.84	1.45	1.61	8.33	8.27	8.30	0.06	0.05	0.06
27	1.79	1.56	1.67	8.30	8.21	8.25	0.06	0.05	0.06
28	1.83	1.69	1.75	8.24	8.18	8.21	0.06	0.05	0.06
29	1.81	1.40	1.64	8.20	8.16	8.17	0.07	0.06	0.06
30	1.61	1.40	1.48	8.20	8.17	8.18	0.07	0.06	0.06
Total									
Average	1.82	1.49	1.64	8.37	8.29	8.33	0.1	0.0	0.1
Maximum	2.79		2.01	8.68		8.54	1.0		0.1
Date	21-Jun		7-Jun	21-Jun		19-Jun	21-Jun		21-Jun
Minimum		1.18	1.35		8.14	8.17		0.0	0.0
Date		19-Jun	19-Jun		21-Jun	29-Jun		2-Jun	1-Jun

Notes:

Raw Well/Treated Storage Report

Month: June-16

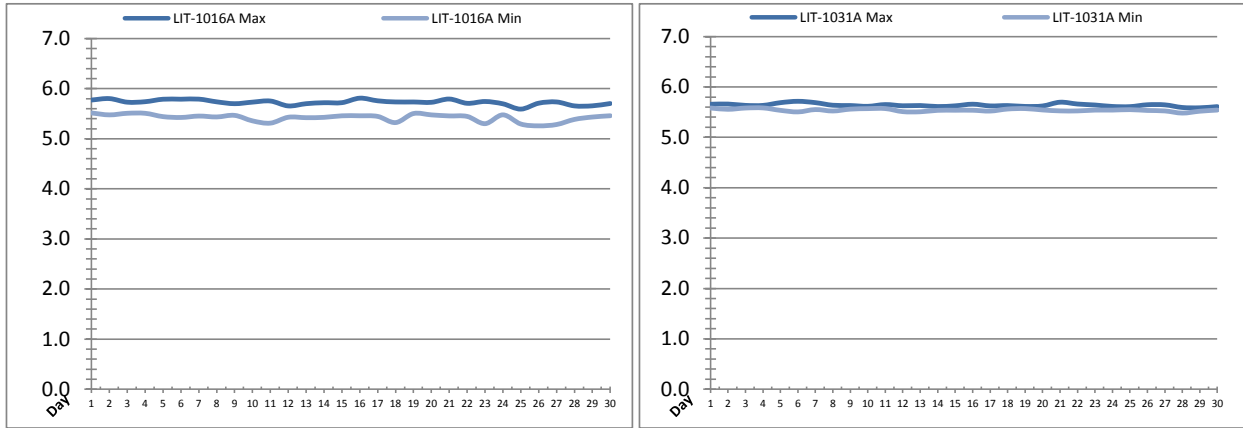


Date	Treated Water Storage Tank					
	T-6011 (m)			T-6021 (m)		
	Maximum	Minimum	Average	Maximum	Minimum	Average
1	9.5	7.4	8.4	9.6	7.5	8.5
2	9.6	7.3	8.7	9.7	7.4	8.8
3	9.5	7.8	8.6	9.6	7.9	8.7
4	9.6	7.8	8.6	9.7	7.9	8.7
5	9.9	8.4	9.2	10.0	8.5	9.3
6	9.5	8.2	9.1	9.6	8.3	9.2
7	9.5	8.3	9.0	9.6	8.4	9.1
8	9.5	8.0	9.0	9.6	8.1	9.1
9	9.7	8.0	8.9	9.8	8.1	9.0
10	9.5	7.5	8.7	9.6	7.6	8.8
11	9.6	7.5	8.9	9.7	7.6	9.0
12	9.6	8.0	8.9	9.7	8.1	9.0
13	9.7	7.6	8.8	9.8	7.7	8.9
14	9.8	7.6	8.4	9.9	7.7	8.5
15	9.5	7.9	8.9	9.6	8.0	9.0
16	9.7	8.3	9.2	9.8	8.4	9.3
17	9.5	8.4	9.1	9.6	8.6	9.2
18	9.5	7.5	8.7	9.6	7.6	8.9
19	9.5	8.3	8.9	9.6	8.4	9.1
20	9.5	8.1	9.0	9.6	8.3	9.1
21	9.6	7.6	8.7	9.7	7.7	8.8
22	9.5	7.8	8.7	9.6	7.9	8.8
23	9.5	7.4	8.6	9.6	7.5	8.7
24	9.5	7.7	8.9	9.6	7.8	9.0
25	9.1	7.5	8.2	9.2	7.6	8.3
26	9.5	7.4	8.6	9.6	7.5	8.7
27	9.6	7.6	8.9	9.7	7.7	9.0
28	9.5	7.8	8.7	9.6	8.0	8.8
29	9.5	7.8	8.8	9.6	7.9	8.9
30	9.5	7.6	8.8	9.6	7.6	8.9
Total						
Average	9.6	7.8	8.8	9.7	7.9	8.9
Maximum	9.9		9.2	10.0		9.3
Date	5-Jun		5-Jun	5-Jun		5-Jun
Minimum		7.3	8.2		7.4	8.3
Date		2-Jun	25-Jun		2-Jun	25-Jun

Notes:

Raw Well/Treated Storage Report

Month: **June-16**

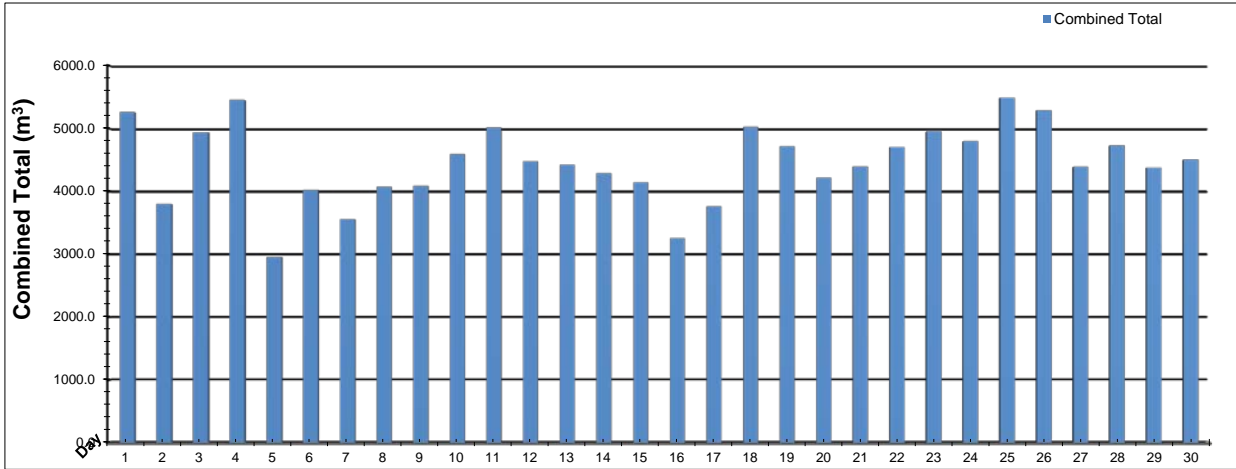


Date	Low Lift Intake Levels					
	Wet Well #1 (LIT-1016A) (m)			Wet Well #2 (LIT-1031A) (m)		
	Maximum	Minimum	Average	Maximum	Minimum	Average
1	5.8	5.5	5.6	5.7	5.6	5.6
2	5.8	5.5	5.6	5.7	5.6	5.6
3	5.7	5.5	5.6	5.6	5.6	5.6
4	5.7	5.5	5.6	5.6	5.6	5.6
5	5.8	5.4	5.6	5.7	5.5	5.6
6	5.8	5.4	5.6	5.7	5.5	5.6
7	5.8	5.5	5.6	5.7	5.6	5.6
8	5.7	5.4	5.6	5.6	5.5	5.6
9	5.7	5.5	5.6	5.6	5.6	5.6
10	5.7	5.4	5.6	5.6	5.6	5.6
11	5.8	5.3	5.5	5.7	5.6	5.6
12	5.7	5.4	5.5	5.6	5.5	5.6
13	5.7	5.4	5.5	5.6	5.5	5.6
14	5.7	5.4	5.5	5.6	5.5	5.6
15	5.7	5.5	5.6	5.6	5.5	5.6
16	5.8	5.5	5.6	5.7	5.5	5.6
17	5.8	5.4	5.6	5.6	5.5	5.6
18	5.7	5.3	5.6	5.6	5.6	5.6
19	5.7	5.5	5.6	5.6	5.6	5.6
20	5.7	5.5	5.6	5.6	5.5	5.6
21	5.8	5.5	5.6	5.7	5.5	5.6
22	5.7	5.4	5.5	5.7	5.5	5.6
23	5.7	5.3	5.5	5.6	5.5	5.6
24	5.7	5.5	5.5	5.6	5.5	5.6
25	5.6	5.3	5.5	5.6	5.5	5.6
26	5.7	5.3	5.5	5.6	5.5	5.6
27	5.7	5.3	5.5	5.6	5.5	5.6
28	5.7	5.4	5.5	5.6	5.5	5.5
29	5.7	5.4	5.5	5.6	5.5	5.6
30	5.7	5.5	5.5	5.6	5.5	5.6
Total						
Average	5.7	5.4	5.6	5.6	5.5	5.6
Maximum	5.8		5.6	5.7		5.6
Date	16-Jun		5-Jun	6-Jun		5-Jun
Minimum		5.3	5.5		5.5	5.5
Date		26-Jun	28-Jun		28-Jun	28-Jun

Notes:

High Lift Monthly Report

Month: June-16

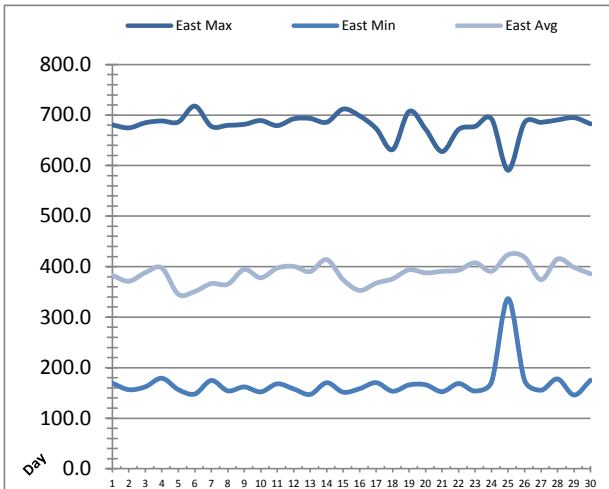
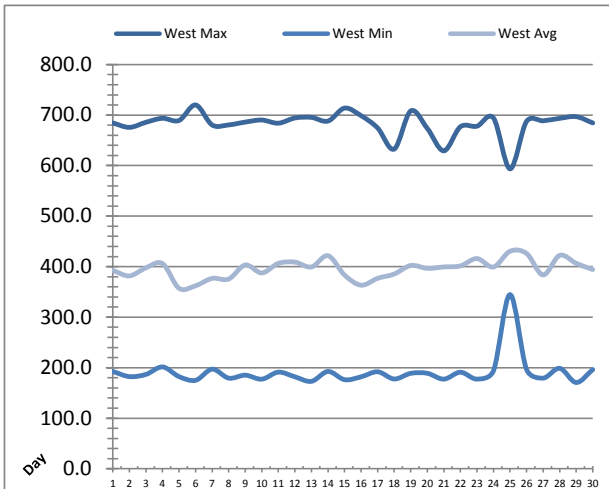


Date	Distribution Flow					
	FIT_7052 (East)		FIT_7062 (West)		Combined	
	(m³)	(L/s)	(m³)	(L/s)	(m³)	(L/s)
	Total	Peak	Total	Peak	Total	Peak
1	5261.4	139.1	0.0	0.0	5261.4	139.1
2	3804.0	139.7	0.0	0.0	3804.0	139.7
3	4938.9	140.0	0.0	0.0	4938.9	140.0
4	5452.2	139.6	0.0	0.0	5452.2	139.6
5	2958.5	139.0	0.0	0.0	2958.5	139.0
6	4025.1	140.3	0.0	0.0	4025.1	140.3
7	3560.5	142.2	0.0	0.0	3560.5	142.2
8	4075.3	140.5	0.0	0.0	4075.3	140.5
9	4095.8	139.4	0.0	0.0	4095.8	139.4
10	4594.0	140.3	0.0	0.0	4594.0	140.3
11	5019.1	138.9	0.0	0.0	5019.1	138.9
12	4478.2	138.6	0.0	0.0	4478.2	138.6
13	4426.9	137.8	0.0	0.0	4426.9	137.8
14	4289.3	141.2	0.0	0.0	4289.3	141.2
15	4149.9	138.6	0.0	0.0	4149.9	138.6
16	3256.6	138.6	0.0	0.0	3256.6	138.6
17	3764.1	141.6	0.0	0.0	3764.1	141.6
18	5031.8	139.5	0.0	0.0	5031.8	139.5
19	4720.9	142.1	0.0	0.0	4720.9	142.1
20	4220.0	139.2	0.0	0.0	4220.0	139.2
21	3939.2	138.6	459.1	157.5	4398.3	157.5
22	4701.4	141.1	1.7	0.0	4703.1	141.1
23	4538.5	137.8	420.7	96.6	4959.2	137.8
24	4731.4	133.7	69.7	83.9	4801.1	133.7
25	5182.4	132.6	309.7	89.8	5492.1	132.6
26	4818.2	136.5	473.1	100.3	5291.4	136.5
27	4009.3	131.9	384.2	95.0	4393.5	131.9
28	4629.9	132.5	105.3	107.0	4735.2	132.5
29	4114.8	134.6	268.0	100.2	4382.8	134.6
30	3780.8	149.5	726.6	125.1	4507.4	149.5
Total	130568.4		3218.3		133786.6	
Average	4352.3	138.8	107.3	31.8	4459.6	139.5
Maximum	5452.2	149.5	726.6	157.5	5492.1	157.5
Date	4-Jun	30-Jun	30-Jun	21-Jun	25-Jun	21-Jun
Minimum	2958.5		0.0		2958.5	
Date	5-Jun		15-Jun		5-Jun	

Notes:

Low Lift Monthly Report

Month: June-16

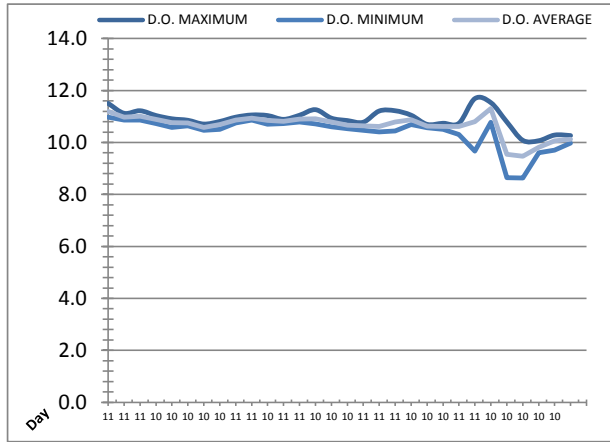
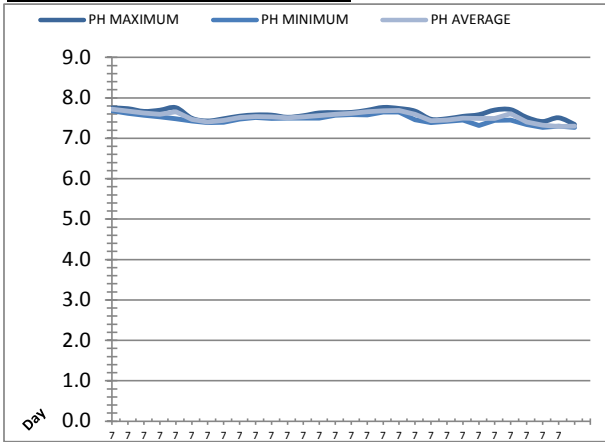


Date	West Train Header Pressure PIT_1018 (kPa)			East Train Header Pressure PIT_1028 (kPa)		
	Maximum	Minimum	Average	Maximum	Minimum	Average
	1	✓ 684.4	✓ 192.5	392.4	✓ 680.6	✓ 169.3
2	✓ 675.7	✓ 182.4	381.8	✓ 674.7	✓ 156.5	371.2
3	✓ 685.8	✓ 186.7	397.7	✓ 684.8	✓ 162.2	388.2
4	✓ 693.6	✓ 201.5	406.1	✓ 688.4	✓ 179.2	397.3
5	✓ 689.4	✓ 182.4	357.2	✓ 686.3	✓ 156.6	345.4
6	✓ 720.0	✓ 175.1	362.3	✓ 717.8	✓ 148.0	350.8
7	✓ 680.3	✓ 197.1	376.8	✓ 677.8	✓ 174.8	366.5
8	✓ 680.6	✓ 179.3	375.5	✓ 679.8	✓ 154.2	365.3
9	✓ 686.1	✓ 185.2	403.3	✓ 681.6	✓ 161.9	394.6
10	✓ 690.2	✓ 177.4	387.6	✓ 689.2	✓ 152.2	378.0
11	✓ 683.9	✓ 191.2	406.5	✓ 679.1	✓ 168.0	397.1
12	✓ 694.3	✓ 182.0	408.9	✓ 692.5	✓ 158.0	400.5
13	✓ 695.4	✓ 173.0	399.3	✓ 693.3	✓ 147.2	390.3
14	✓ 688.1	✓ 192.6	421.7	✓ 685.9	✓ 170.3	414.0
15	✓ 713.8	✓ 176.3	383.4	✓ 711.9	✓ 151.5	374.0
16	✓ 698.8	✓ 181.9	363.3	✓ 698.3	✓ 158.5	352.9
17	✓ 674.4	✓ 191.9	376.9	✓ 673.2	✓ 170.4	367.4
18	✓ 632.7	✓ 177.7	385.3	✓ 631.7	✓ 153.4	376.0
19	✓ 708.2	✓ 188.8	402.4	✓ 707.3	✓ 165.9	393.9
20	✓ 673.7	✓ 188.9	396.6	✓ 671.9	✓ 166.2	387.7
21	✓ 629.2	✓ 177.4	399.4	✓ 627.8	✓ 152.6	390.8
22	✓ 676.8	✓ 191.1	401.5	✓ 671.5	✓ 168.6	393.0
23	✓ 678.0	✓ 177.5	416.0	✓ 677.6	✓ 153.8	407.7
24	✓ 694.1	✓ 194.0	399.3	✓ 692.3	✓ 172.0	390.9
25	✓ 593.6	✓ 344.7	430.5	✓ 590.7	✓ 336.6	423.6
26	✓ 687.6	✓ 196.5	426.0	✓ 685.3	✓ 175.1	418.6
27	✓ 688.6	✓ 179.4	383.6	✓ 685.6	✓ 155.4	374.1
28	✓ 693.5	✓ 198.8	422.3	✓ 690.4	✓ 177.8	415.1
29	✓ 696.8	✓ 170.7	406.5	✓ 694.8	✓ 145.9	398.5
30	✓ 684.4	✓ 196.3	394.3	✓ 682.6	✓ 175.2	385.9
Total						
Average	682.4	191.0	395.5	680.2	167.9	386.4
Maximum	720.0		430.5	717.8		423.6
Date	6-Jun		25-Jun	6-Jun		25-Jun
Minimum		170.7	357.2		145.9	345.4
Date		29-Jun	5-Jun		29-Jun	5-Jun

Notes:

Low Lift Monthly Report

Month: **June-16**

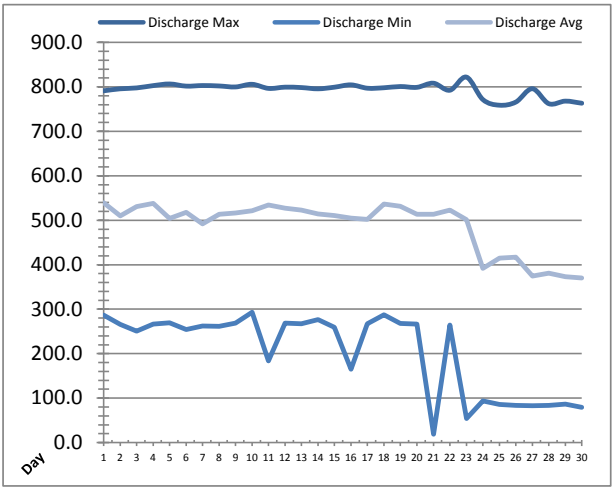
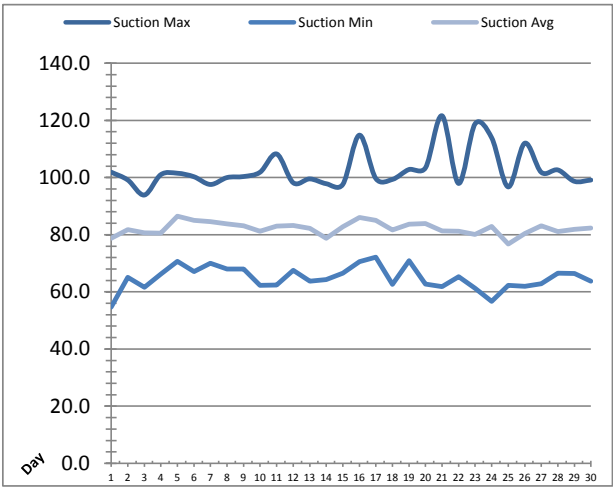


Date	Raw Water Sample Line					
	AIT_1402_PH (pH)			AIT_1402_DO (mg/L)		
	Maximum	Minimum	Average	Maximum	Minimum	Average
1	7.8	7.7	7.7	11.5	11.0	11.2
2	7.7	7.6	7.7	11.1	10.9	11.0
3	7.7	7.6	7.6	11.2	10.9	11.0
4	7.7	7.5	7.6	11.0	10.7	10.9
5	7.8	7.5	7.7	10.9	10.6	10.8
6	7.5	7.4	7.5	10.9	10.6	10.7
7	7.4	7.4	7.4	10.7	10.5	10.6
8	7.5	7.4	7.4	10.8	10.5	10.7
9	7.5	7.5	7.5	11.0	10.8	10.9
10	7.6	7.5	7.5	11.1	10.9	10.9
11	7.6	7.5	7.5	11.0	10.7	10.9
12	7.5	7.5	7.5	10.9	10.7	10.8
13	7.6	7.5	7.5	11.0	10.8	10.9
14	7.6	7.5	7.6	11.3	10.7	10.9
15	7.6	7.6	7.6	10.9	10.6	10.8
16	7.6	7.6	7.6	10.8	10.5	10.7
17	7.7	7.6	7.7	10.8	10.5	10.6
18	7.8	7.6	7.7	11.2	10.4	10.6
19	7.7	7.6	7.7	11.2	10.4	10.8
20	7.7	7.5	7.6	11.0	10.7	10.9
21	7.5	7.4	7.4	10.7	10.6	10.6
22	7.5	7.4	7.4	10.7	10.5	10.6
23	7.5	7.4	7.5	10.7	10.3	10.6
24	7.6	7.3	7.5	11.7	9.7	10.8
25	7.7	7.4	7.5	11.5	10.8	11.3
26	7.7	7.4	7.6	10.8	8.6	9.5
27	7.5	7.3	7.4	10.1	8.6	9.5
28	7.4	7.3	7.3	10.1	9.6	9.8
29	7.5	7.3	7.3	10.3	9.7	10.1
30	7.3	7.3	7.3	10.3	10.0	10.1
Total						
Average	7.6	7.5	7.5	10.9	10.4	10.6
Maximum	7.8		7.7	11.7		11.3
Date	18-Jun		1-Jun	24-Jun		25-Jun
Minimum		7.3	7.3		8.6	9.5
Date		30-Jun	29-Jun		27-Jun	27-Jun

Notes:

High Lift Monthly Report

Month: June-16

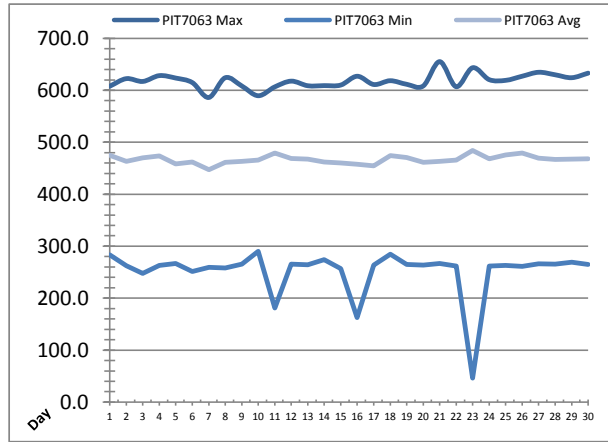
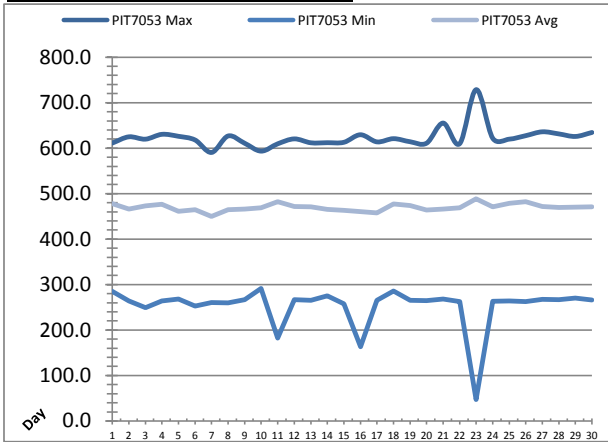


Date	Suction Header Pressure			Discharge Header Pressure		
	PIT_7002 (kPa)			PIT_7005 (kPa)		
	Maximum	Minimum	Average	Maximum	Minimum	Average
1	101.9	54.6	78.7	791.2	286.7	539.1
2	99.1	65.1	81.7	795.7	265.7	510.1
3	93.9	61.6	80.7	797.7	251.0	530.9
4	101.0	66.2	80.5	802.8	266.2	538.0
5	101.5	70.6	86.5	806.6	269.7	504.3
6	100.3	67.1	85.0	801.8	254.6	518.1
7	97.6	70.1	84.5	803.0	262.2	491.6
8	100.0	68.0	83.8	802.1	261.6	513.5
9	100.3	68.0	83.1	799.9	268.8	516.5
10	101.9	62.3	81.2	805.9	293.3	521.5
11	108.2	62.4	83.0	796.6	184.0	534.4
12	98.2	67.5	83.2	799.4	268.6	527.4
13	99.5	63.8	82.2	798.5	267.5	522.7
14	97.8	64.3	78.8	795.7	276.9	514.4
15	97.6	66.6	82.8	799.4	259.6	511.0
16	114.8	70.6	86.0	804.6	165.2	504.9
17	99.6	72.1	85.0	797.0	266.9	502.2
18	99.3	62.6	81.7	798.1	287.5	536.8
19	102.8	70.9	83.7	800.8	267.6	531.6
20	103.4	62.7	83.9	799.0	266.5	513.4
21	121.6	61.9	81.3	808.3	18.8	513.3
22	97.9	65.3	81.2	792.5	264.7	522.8
23	118.8	61.2	80.1	822.1	54.4	501.0
24	113.9	56.7	82.9	771.5	93.5	391.7
25	96.7	62.2	76.7	758.8	85.8	414.9
26	112.0	61.9	80.5	765.9	83.9	416.8
27	101.8	62.8	83.1	796.0	82.7	374.6
28	102.7	66.6	81.1	762.2	83.7	381.2
29	98.7	66.4	81.9	768.0	86.6	373.0
30	99.1	63.7	82.3	763.3	79.0	370.0
Total						
Average	102.7	64.9	82.2	793.5	204.1	488.1
Maximum	121.6		86.5	822.1		539.1
Date	21-Jun		5-Jun	23-Jun		1-Jun
Minimum		54.6	76.7		18.8	370.0
Date		1-Jun	25-Jun		21-Jun	30-Jun

Notes:

High Lift Monthly Report

Month: June-16

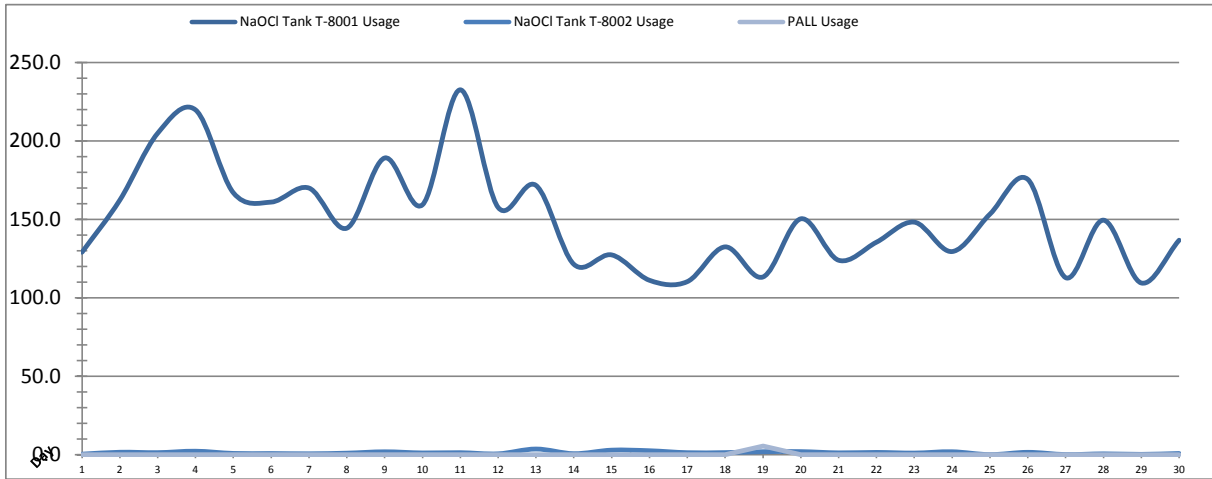


Date	Distribution Pressures					
	PIT_7053 (kPa)			PIT_7063 (kPa)		
	Maximum	Minimum	Average	Maximum	Minimum	Average
1	611.2	284.8	478.1	607.9	283.6	474.7
2	624.9	263.9	465.9	622.4	262.6	463.2
3	619.8	249.0	473.0	617.0	247.7	469.8
4	630.4	264.1	476.9	628.2	262.8	473.4
5	626.0	268.0	460.8	623.5	266.8	458.5
6	618.0	252.7	464.8	614.9	251.5	461.9
7	590.5	260.3	450.0	586.1	259.0	447.2
8	626.8	259.5	464.6	624.2	258.2	461.6
9	610.8	266.9	465.8	608.3	265.5	462.9
10	593.4	291.4	469.2	589.5	290.2	466.0
11	609.6	182.4	482.5	606.5	181.3	479.5
12	620.4	266.8	471.9	617.6	265.6	468.9
13	611.8	265.6	470.7	608.8	264.3	467.7
14	612.0	275.2	465.2	609.0	273.9	462.1
15	612.9	257.9	463.0	610.0	256.6	460.0
16	629.5	163.5	460.3	627.0	162.4	457.8
17	613.8	265.1	457.4	611.1	263.9	454.6
18	620.9	285.7	477.2	618.4	284.5	474.1
19	614.1	265.7	473.5	611.5	264.6	470.6
20	610.9	264.7	463.9	608.3	263.6	461.1
21	655.2	268.0	465.8	655.1	266.9	463.0
22	609.8	262.8	469.0	606.9	261.7	465.9
23	728.7	47.0	488.9	643.5	45.9	484.1
24	621.7	262.9	471.1	620.5	261.8	468.1
25	619.8	264.1	478.9	619.1	262.9	475.7
26	627.5	262.7	482.0	627.1	261.4	479.0
27	635.9	267.5	471.9	634.7	266.4	469.2
28	631.3	266.6	469.9	629.8	265.4	466.8
29	625.7	270.4	470.5	624.2	269.1	467.6
30	634.5	266.0	470.7	633.0	264.8	467.9
Total						
Average	623.3	253.0	469.8	618.1	251.8	466.8
Maximum	728.7		488.9	655.1		484.1
Date	23-Jun		23-Jun	21-Jun		23-Jun
Minimum		47.0	450.0		45.9	447.2
Date		23-Jun	7-Jun		23-Jun	7-Jun

Notes:
 23: low discharge pressure for less than 1 minute due to maintenance on flow control valve.

Chemical Usage Monthly Report

Month: June-16

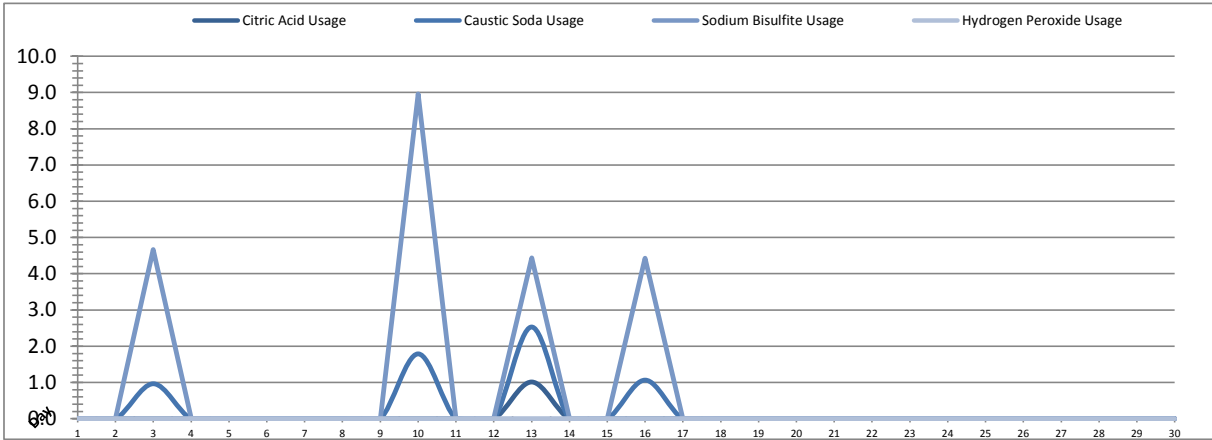


Date	PALL Usage	NaOCl Tank T-8001	NaOCl Tank T-8002
	PALL_HYPO_USAGE (L) Usage	LIT_8002 (Storage) (L) Usage	LIT_8004 (Day) (L) Usage
1	0.0	129.0	0.4
2	0.0	162.3	1.6
3	0.0	204.8	1.3
4	0.0	219.8	2.3
5	0.0	166.9	0.8
6	0.0	161.0	0.8
7	0.0	169.9	0.6
8	0.0	144.4	1.0
9	0.0	189.1	1.9
10	0.0	159.3	1.1
11	0.0	232.5	1.3
12	0.0	157.6	0.6
13	0.0	171.6	3.6
14	0.00	121.37	0.7
15	0.0	127.3	2.9
16	0.0	111.2	2.6
17	0.0	110.3	1.3
18	0.0	132.4	1.4
19	5.5	113.3	1.9
20	0.0	150.3	2.0
21	0.0	123.9	1.2
22	0.0	135.4	1.5
23	0.0	148.2	1.1
24	0.0	129.5	1.9
25	0.0	153.3	0.1
26	0.0	175.5	1.5
27	0.0	112.9	0.1
28	0.0	149.5	0.6
29	0.0	109.5	0.2
30	0.0	136.7	0.8
Total	5.5	4508.8	39.2
Average	0.2	150.3	1.3
Maximum	5.5	232.5	3.6
Date	19-Jun	11-Jun	13-Jun
Minimum	0.0	109.5	0.1
Date	1-Jun	29-Jun	25-Jun

Notes:	
Dosage (mg/L)=	Day Tank (L) x %conc. x 1000
	Membrane Flow (m3)
Chlorine Concentration:	12.0%

Chemical Usage Monthly Report

Month: June-16



Date	Citric Acid	Caustic Soda	Captor	Hydrogen Peroxide		Membrane Flow (m ³)
	TAGNAME (L) Usage	TAGNAME (L) Usage	TAGNAME (L) Usage	TAGNAME (L) Usage	(mg/L) Dose	
1	0.0	0.0	0.0	0.0	0.0	4775.084
2	0.0	0.0	0.0	0.0	0.0	4327.159
3	0.0	1.0	4.7	0.0	0.0	5783.947
4	0.0	0.0	0.0	0.0	0.0	6004.920
5	0.0	0.0	0.0	0.0	0.0	3643.067
6	0.0	0.0	0.0	0.0	0.0	3941.621
7	0.0	0.0	0.0	0.0	0.0	4216.726
8	0.0	0.0	0.0	0.0	0.0	3951.163
9	0.0	0.0	0.0	0.0	0.0	4918.898
10	0.0	1.8	9.0	0.0	0.0	4732.107
11	0.0	0.0	0.0	0.0	0.0	5656.464
12	0.0	0.0	0.0	0.0	0.0	4973.621
13	1.0	2.5	4.4	0.0	0.0	4358.095
14	0.0	0.0	0.0	0.0	0.0	5152.263
15	0.0	0.0	0.0	0.0	0.0	4507.278
16	0.0	1.1	4.4	0.0	0.0	3774.706
17	0.0	0.0	0.0	0.0	0.0	4510.398
18	0.0	0.0	0.0	0.0	0.0	5306.547
19	0.0	0.0	0.0	0.0	0.0	4989.032
20	0.0	0.0	0.0	0.0	0.0	4702.606
21	0.0	0.0	0.0	0.0	0.0	4756.129
22	0.0	0.0	0.0	0.0	0.0	5136.870
23	0.0	0.0	0.0	0.0	0.0	5654.618
24	0.0	0.0	0.0	0.0	0.0	5000.233
25	0.0	0.0	0.0	0.0	0.0	6243.887
26	0.0	0.0	0.0	0.0	0.0	5844.111
27	0.0	0.0	0.0	0.0	0.0	4530.145
28	0.0	0.0	0.0	0.0	0.0	5231.747
29	0.0	0.0	0.0	0.0	0.0	4408.731
30	0.0	0.0	0.0	0.0	0.0	4939.643
					#DIV/0!	
Total	1.0	6.3	22.5	0.0		145971.8
Average	0.0	0.2	0.7	0.0	0.0	4865.7
Maximum	1.0	2.5	9.0	0.0	0.0	6243.9
Date	13-Jun	13-Jun	10-Jun	1-Jun	1-Jun	25-Jun
Minimum	0.0	0.0	0.0	0.0	0.0	3643.1
Date	1-Jun	1-Jun	1-Jun	1-Jun	1-Jun	5-Jun

Notes:

$$\text{Dosage (mg/L)} = \frac{\text{Day Tank (L)} \times \% \text{conc.} \times 1000}{\text{Membrane Flow (m}^3\text{)}}$$

Peroxide Concentration: **50.0%**

Runtimes Report

Month: June-16

Date	Daily Gen-Set Runtimes		Daily UV Runtimes		Daily PALL Runtimes				
	LLPS	WTP	UV #1	UV #2	Air Compressor #1	Air Compressor #2	CIP Neutralization	CIP Drain	CIP Recirc
	(Hrs)	(Hrs)	(Hrs)	(Hrs)	(Hrs)	(Hrs)	(Hrs)	(Hrs)	(Hrs)
1	0.0	0.0	0.0	0.0	15.1	8.6	0.0	0.0	0.0
2	0.0	0.0	0.0	0.0	0.0	23.9	0.0	0.0	0.0
3	0.0	0.0	0.0	0.0	0.0	23.9	0.9	0.1	2.0
4	0.0	0.0	0.0	0.0	0.0	23.9	0.0	0.0	0.0
5	0.0	0.0	0.0	0.0	0.0	23.9	0.0	0.0	0.0
6	0.0	0.0	0.0	0.0	0.0	23.9	0.0	0.0	0.0
7	0.0	0.0	0.0	0.0	0.0	23.9	0.7	0.3	4.2
8	0.0	0.0	0.0	0.0	24.2	0.2	0.0	0.0	0.0
9	0.0	0.0	0.0	0.0	0.2	23.7	0.0	0.0	0.0
10	0.0	0.0	0.0	0.0	24.2	0.2	0.5	0.0	0.1
11	0.0	0.0	0.0	0.0	0.2	23.7	0.0	0.0	0.0
12	0.0	0.0	0.0	0.0	24.2	0.2	0.0	0.0	0.0
13	0.0	0.0	0.0	0.0	0.2	23.7	0.5	0.1	2.0
14	0.0	0.0	0.0	0.0	24.2	0.2	0.0	0.0	0.0
15	0.0	0.0	0.0	0.0	0.2	23.7	0.0	0.1	2.0
16	0.0	0.0	0.0	0.0	24.2	0.2	0.5	0.1	2.0
17	0.0	0.0	0.0	0.0	0.2	23.7	0.0	0.0	0.0
18	0.0	0.0	0.0	0.0	24.2	0.2	0.0	0.0	0.0
19	0.0	0.0	0.0	0.0	0.2	23.7	0.0	0.0	0.0
20	0.0	0.0	0.0	0.0	22.6	0.6	0.0	0.0	0.0
21	0.0	0.0	0.0	0.0	0.2	23.7	0.0	0.0	0.0
22	0.0	0.0	0.0	0.0	24.2	0.2	0.7	0.1	2.2
23	0.0	0.0	0.0	0.0	0.2	23.7	0.0	0.0	0.0
24	0.0	0.0	0.0	0.0	24.2	0.2	0.0	0.0	0.0
25	0.0	0.0	0.0	0.0	0.2	23.7	0.0	0.0	0.0
26	0.0	0.0	0.0	0.0	24.2	0.1	0.0	0.0	0.0
27	0.0	0.0	0.0	0.0	0.2	23.8	0.0	0.0	0.0
28	0.0	0.0	0.0	0.0	24.2	0.1	0.0	0.0	0.0
29	1.2	0.7	0.9	8.7	14.4	9.7	0.0	0.0	0.0
30	0.0	0.0	1.2	7.0	0.2	23.7	0.0	0.0	0.0
Total	1.2	0.7	2.1	15.7	296.2	424.9	3.8	0.8	14.5

Notes:

Runtimes Report

Month: June-16

Daily

Date	PALL Runtimes						Process Drain	
	RFR Pump #1 (Hrs)	RFR Pump #2 (Hrs)	RF Pump #1 (Hrs)	RF Pump #2 (Hrs)	XR Pump #1 (Hrs)	XR Pump #2 (Hrs)	PDP9010 Pump (Hrs)	PDP9020 Pump (Hrs)
1	2.7	2.4	1.1	1.3	4.8	9.9	1.0	1.2
2	3.0	3.2	0.9	0.8	8.5	3.5	0.7	1.0
3	4.0	4.0	1.2	1.1	10.9	10.2	0.9	1.2
4	5.5	5.5	1.4	1.5	10.3	11.9	0.8	1.0
5	2.4	2.3	0.7	0.6	7.3	6.6	1.3	1.6
6	3.5	3.6	1.0	1.0	7.6	7.3	0.7	0.9
7	2.0	2.2	0.6	0.7	8.7	7.6	0.8	1.1
8	2.2	2.0	1.0	0.9	7.0	8.0	0.8	1.0
9	5.5	0.1	1.2	1.2	9.1	9.6	0.9	1.2
10	2.7	6.0	1.1	1.1	7.9	7.6	0.8	1.2
11	4.2	6.1	1.4	1.5	7.9	7.8	0.9	1.1
12	4.2	4.4	1.3	1.1	8.9	8.5	0.8	1.0
13	2.3	2.3	1.0	1.0	7.7	8.5	0.9	1.1
14	2.5	0.0	1.0	1.1	9.3	9.1	0.8	1.3
15	3.6	2.9	1.0	0.9	8.4	7.8	0.8	1.1
16	1.4	4.8	0.9	0.7	7.3	7.6	1.3	1.6
17	4.2	4.2	1.1	1.1	8.4	7.8	0.8	1.1
18	4.9	4.7	1.4	1.4	7.7	10.6	0.9	1.0
19	0.3	0.3	1.1	1.1	11.0	8.9	0.7	1.1
20	0.0	0.0	1.3	1.3	9.7	8.7	0.8	1.2
21	1.2	1.4	1.1	1.1	9.1	9.1	0.9	1.1
22	4.1	4.0	1.1	1.1	9.1	9.3	0.9	1.3
23	3.5	3.7	1.3	1.3	8.2	8.4	1.1	1.4
24	0.0	0.0	1.1	1.0	10.1	9.7	1.3	1.7
25	0.0	0.0	1.2	1.5	10.7	11.2	1.2	1.5
26	0.0	0.0	1.2	1.2	9.2	9.0	1.2	1.6
27	0.0	0.0	1.0	0.9	8.5	8.3	1.3	1.7
28	0.0	0.0	1.0	1.1	8.1	8.1	1.2	2.0
29	0.0	0.0	1.0	0.9	6.0	6.0	1.4	1.9
30	0.0	0.0	1.0	1.1	9.5	9.6	1.3	1.7
Total	69.6	69.8	32.7	32.6	255.9	255.2	29.2	38.9

Notes:

Runtimes Report

Month: June-16

Daily

Date	Low Lift Pump Motor Runtimes				High Lift Pump Motor Runtimes			
	LLP1010 (Hrs)	LLP1020 (Hrs)	LLP1030 (Hrs)	LLP1040 (Hrs)	HLP7010 (Hrs)	HLP7020 (Hrs)	HLP7030 (Hrs)	HLP7040 (Hrs)
1	4.0	8.7	0.0	6.3	5.6	6.1	8.1	3.5
2	5.3	8.5	3.3	0.0	5.7	2.9	6.7	2.1
3	14.1	0.0	0.0	7.3	5.0	5.9	4.3	6.5
4	0.0	2.6	14.8	5.1	5.8	5.8	5.7	6.1
5	2.8	0.0	5.8	5.6	2.5	4.8	6.4	1.1
6	5.5	3.9	2.7	3.1	3.0	6.0	3.4	5.5
7	2.2	8.3	2.3	3.9	3.7	4.9	3.3	3.0
8	2.6	0.0	2.5	10.7	3.1	4.6	4.2	5.9
9	0.0	3.9	7.6	8.3	4.6	3.5	5.7	4.6
10	1.3	1.3	3.5	12.7	4.2	6.2	3.8	5.6
11	6.2	5.4	4.2	7.5	1.9	3.5	10.7	4.9
12	7.8	8.9	0.0	3.0	6.9	5.3	3.4	4.8
13	5.6	8.6	3.6	0.0	3.3	5.8	6.7	4.2
14	14.3	2.1	0.0	4.9	6.0	3.4	3.2	5.8
15	1.0	0.0	3.5	13.5	4.6	5.9	4.5	3.3
16	7.3	6.5	0.7	0.5	5.5	2.0	4.6	3.0
17	12.0	1.3	0.0	3.4	4.9	5.5	2.6	3.4
18	0.0	4.7	15.6	0.0	4.4	6.2	5.1	6.6
19	2.3	8.2	6.0	4.1	5.9	7.0	3.7	4.8
20	3.3	11.5	0.0	5.0	3.6	3.7	5.6	5.5
21	0.0	0.0	4.7	15.1	6.2	2.3	7.3	3.0
22	4.7	3.3	12.0	0.0	4.5	6.9	3.3	5.8
23	12.8	0.0	0.0	11.9	5.3	3.1	6.4	9.0
24	0.0	4.7	3.1	12.9	4.0	9.1	6.9	2.0
25	2.5	24.0	0.0	0.0	5.8	9.4	7.0	3.2
26	7.1	8.7	3.2	6.2	7.9	1.6	4.2	10.6
27	5.0	5.1	6.5	2.2	3.8	6.0	6.5	4.2
28	14.0	0.0	5.3	2.4	6.8	5.7	4.0	5.1
29	9.7	1.9	7.0	0.0	3.2	3.0	7.0	7.2
30	11.8	4.5	3.7	0.0	5.8	5.8	4.8	6.1
Total	165.2	146.6	121.6	155.6	143.5	151.9	159.1	146.4

Notes:

Plant Internal Flow Report

Month: June-16

Date	Settling Tank Level		Process Drain Tank		Settling Tank Flow		Potable Water Flow		Non-Potable Flow	
	T-9003 (m)		T-9001 (m)		FIT_9005 (m ³) (L/s)		FIT_7082 (m ³) (L/s)		FIT_7092 (m ³) (L/s)	
	Maximum	Minimum	Maximum	Minimum	Total	Peak	Total	Peak	Total	Peak
1	2.2	0.1	1.9	0.4	161.1	15.7	0.0	1.3	0.0	0.0
2	2.2	0.1	0.8	0.4	71.6	15.7	0.1	1.7	0.0	0.0
3	2.2	0.3	1.0	0.4	110.7	15.7	0.1	1.3	9.6	18.4
4	2.2	0.1	0.9	0.4	106.2	15.7	0.0	0.0	0.0	0.0
5	2.2	0.2	1.7	0.4	75.6	15.7	0.0	0.0	0.0	0.0
6	2.2	0.3	0.9	0.4	70.3	15.7	0.1	1.3	0.0	0.8
7	2.2	0.1	0.9	0.4	74.2	15.7	0.1	1.4	24.2	25.1
8	2.2	0.1	0.8	0.4	146.2	15.7	0.2	1.4	0.0	0.0
9	2.2	0.3	1.1	0.4	150.9	15.7	0.3	1.3	0.0	0.0
10	2.2	0.1	1.2	0.4	117.4	15.7	0.1	1.4	9.1	25.3
11	2.2	0.1	0.9	0.4	244.2	15.7	0.0	0.0	0.0	0.0
12	2.2	0.1	0.8	0.4	103.9	15.7	0.0	0.0	0.0	0.0
13	2.2	0.3	1.0	0.4	157.9	15.7	0.1	1.4	0.5	1.2
14	2.2	0.1	1.2	0.4	319.7	15.7	0.0	1.3	0.2	1.3
15	2.2	0.2	0.9	0.4	103.5	15.7	0.1	1.4	9.1	18.6
16	2.2	0.1	1.0	0.4	118.8	15.7	0.0	1.4	0.0	0.0
17	2.2	0.1	0.9	0.4	152.0	15.7	0.0	1.4	0.0	0.0
18	2.2	0.1	0.8	0.4	185.9	15.7	0.0	1.1	0.0	0.0
19	2.2	0.1	0.8	0.4	483.0	15.7	0.0	1.1	0.0	0.0
20	2.2	0.3	1.4	0.4	504.3	15.7	0.1	1.4	0.0	0.0
21	2.2	0.2	1.0	0.4	359.1	15.7	0.1	1.4	0.0	0.0
22	2.2	0.2	1.0	0.4	172.3	15.7	0.1	1.4	17.0	24.9
23	2.2	0.3	0.9	0.4	310.7	15.7	0.1	1.3	0.3	1.5
24	2.2	0.3	0.8	0.4	489.5	15.7	0.0	1.4	0.0	0.0
25	2.2	0.2	0.8	0.4	613.5	15.7	0.0	1.4	0.0	0.0
26	2.2	0.1	0.9	0.4	538.4	15.7	0.0	1.3	0.0	0.0
27	2.2	0.1	0.8	0.4	524.6	15.7	0.0	1.4	0.0	0.0
28	2.2	0.2	1.3	0.4	437.7	15.7	0.1	1.4	0.0	0.0
29	2.2	0.1	2.0	0.4	395.9	15.7	2.5	5.4	0.0	0.0
30	2.2	0.1	0.8	0.4	454.8	15.7	1.3	4.8	0.0	0.0
Total					7753.8		5.5		70.1	
Average	2.2	0.2	1.0	0.4	258.5	15.7	0.2	1.4	2.3	3.9
Maximum	2.2		2.0		613.5		2.5		24.2	
Date	11-Jun		29-Jun		25-Jun		29-Jun		7-Jun	
Minimum		0.1		0.4		15.7		0.0		0.0
Date		10-Jun		10-Jun		5-Jun		4-Jun		1-Jun

Notes: