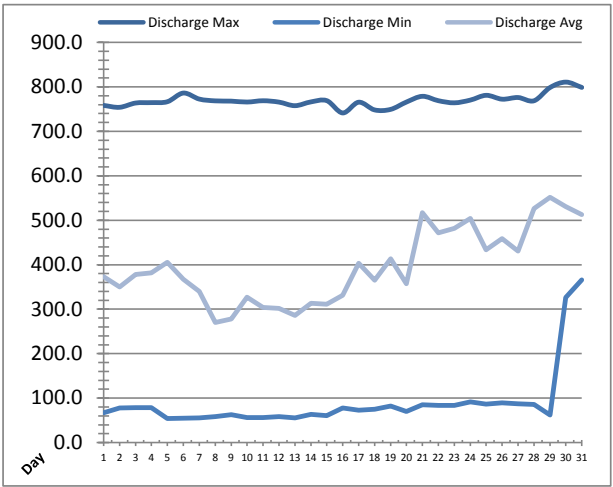
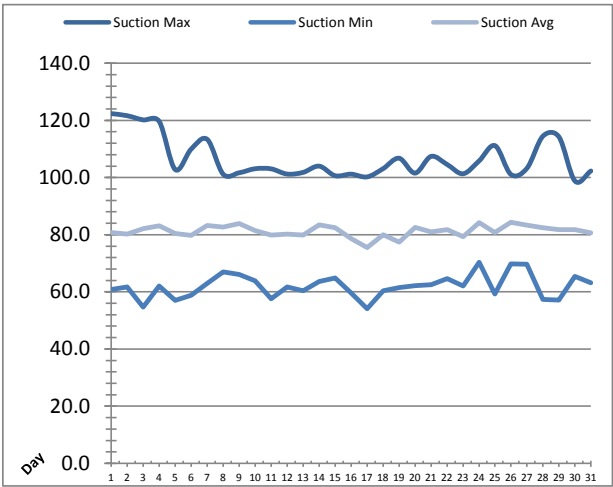


# High Lift Monthly Report

Month: July-16

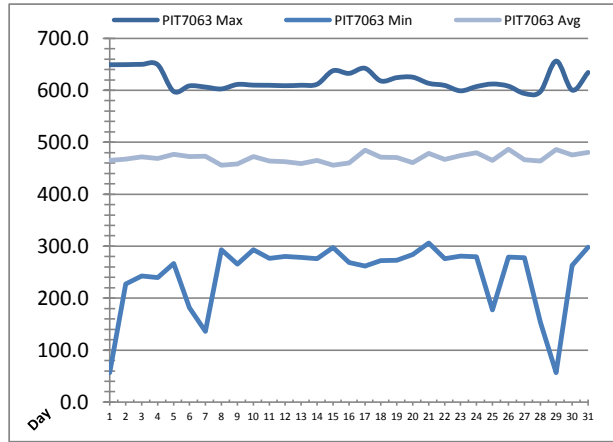
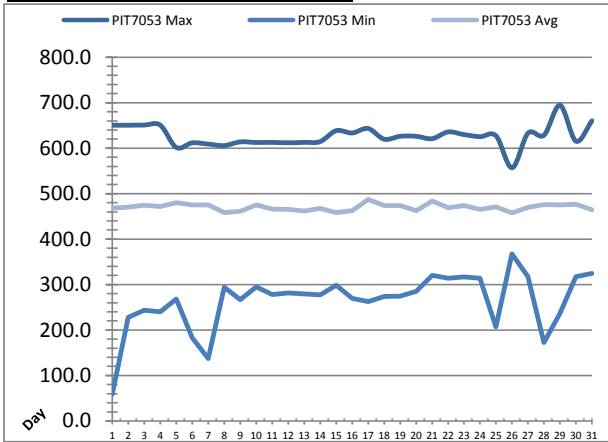


Date	Suction Header Pressure			Discharge Header Pressure		
	PIT_7002 (kPa)			PIT_7005 (kPa)		
	Maximum	Minimum	Average	Maximum	Minimum	Average
1	122.4	60.8	80.8	758.3	66.9	373.4
2	121.6	61.7	80.3	754.1	78.2	350.3
3	120.2	54.6	82.1	763.7	78.9	378.2
4	119.6	62.0	83.1	764.6	78.7	381.8
5	102.8	57.0	80.4	766.7	54.2	405.5
6	110.0	58.8	79.8	786.2	54.6	367.5
7	113.4	63.0	83.2	772.6	55.7	340.0
8	101.2	66.9	82.7	768.6	58.6	270.0
9	101.7	66.1	83.9	768.0	62.6	277.7
10	103.1	63.8	81.5	765.9	56.2	326.7
11	103.0	57.6	79.8	768.9	56.5	303.7
12	101.2	61.7	80.2	765.8	58.4	301.8
13	101.8	60.4	79.8	757.7	55.8	285.9
14	104.0	63.6	83.5	766.2	63.4	313.0
15	100.6	64.9	82.5	769.0	60.5	311.4
16	101.2	59.6	78.6	741.4	78.1	331.1
17	100.2	54.1	75.5	765.6	72.9	403.0
18	103.1	60.4	80.0	748.2	75.1	365.4
19	106.8	61.5	77.4	749.4	82.1	413.4
20	101.5	62.2	82.5	766.0	70.1	357.0
21	107.4	62.5	81.0	778.8	84.9	516.9
22	104.6	64.7	81.7	768.9	83.5	471.7
23	101.3	62.1	79.3	764.2	83.6	481.5
24	105.8	70.3	84.2	770.3	91.6	503.9
25	111.2	59.3	80.7	781.1	86.2	433.3
26	101.1	69.8	84.3	772.4	89.4	458.9
27	103.3	69.7	83.4	776.1	87.1	430.7
28	114.5	57.4	82.4	768.8	86.0	526.4
29	114.2	57.1	81.7	798.4	62.0	552.0
30	98.8	65.4	81.7	810.8	326.6	530.6
31	102.3	63.2	80.6	798.8	366.0	513.1
Total						
Average	106.6	62.0	81.3	769.5	89.2	396.0
Maximum	122.4		84.3	810.8		552.0
Date	1-Jul		26-Jul	30-Jul		29-Jul
Minimum		54.1	75.5		54.2	270.0
Date		17-Jul	17-Jul		5-Jul	8-Jul

Notes:

# High Lift Monthly Report

Month: July-16



Date	Distribution Pressures					
	PIT_7053 (kPa)			PIT_7063 (kPa)		
	Maximum	Minimum	Average	Maximum	Minimum	Average
1	✓ 650.5	✓ 58.5	468.1	✓ 649.2	✓ 56.7	465.2
2	✓ 650.4	✓ 228.1	470.4	✓ 649.3	✓ 227.1	467.8
3	✓ 650.8	✓ 243.5	474.6	✓ 649.9	✓ 242.6	471.8
4	✓ 650.6	✓ 240.3	471.8	✓ 649.3	✓ 239.4	468.6
5	✓ 601.5	✓ 268.2	480.2	✓ 597.9	✓ 266.9	476.7
6	✓ 611.6	✓ 182.7	475.3	✓ 608.5	✓ 181.7	472.2
7	✓ 608.9	✓ 136.9	475.5	✓ 606.2	✓ 136.0	472.8
8	✓ 605.7	✓ 294.2	458.6	✓ 602.6	✓ 293.0	455.8
9	✓ 613.8	✓ 266.7	460.9	✓ 611.3	✓ 265.6	458.4
10	✓ 612.4	✓ 294.8	475.0	✓ 609.9	✓ 293.5	472.2
11	✓ 612.6	✓ 278.0	466.3	✓ 609.6	✓ 276.8	463.6
12	✓ 611.7	✓ 281.4	465.7	✓ 608.9	✓ 280.1	462.8
13	✓ 612.7	✓ 279.4	461.5	✓ 609.7	✓ 278.2	458.7
14	✓ 614.4	✓ 277.2	467.8	✓ 611.7	✓ 276.1	465.0
15	✓ 638.4	✓ 298.6	458.2	✓ 637.6	✓ 297.3	455.8
16	✓ 633.4	✓ 269.9	462.8	✓ 632.5	✓ 268.8	460.2
17	✓ 643.2	✓ 262.6	487.5	✓ 642.4	✓ 261.6	484.7
18	✓ 619.7	✓ 273.5	474.1	✓ 617.9	✓ 272.4	471.1
19	✓ 626.1	✓ 274.3	473.5	✓ 624.3	✓ 273.1	470.6
20	✓ 626.1	✓ 285.4	462.3	✓ 625.2	✓ 284.2	460.5
21	✓ 620.8	✓ 320.6	483.8	✓ 613.4	✓ 306.4	478.4
22	✓ 635.7	✓ 314.3	469.0	✓ 609.4	✓ 276.2	467.1
23	✓ 629.8	✓ 317.1	474.0	✓ 598.9	✓ 280.6	474.2
24	✓ 625.2	✓ 313.9	465.3	✓ 607.2	✓ 279.7	479.7
25	✓ 627.0	✓ 207.2	471.3	✓ 612.1	✓ 177.5	465.1
26	✓ 556.8	✓ 367.4	457.4	✓ 607.9	✓ 279.2	486.5
27	✓ 633.1	✓ 317.3	469.2	✓ 594.0	✓ 277.8	466.1
28	✓ 628.4	✓ 172.7	476.2	✓ 597.3	✓ 153.6	463.6
29	✓ 694.3	✓ 236.8	475.2	✓ 656.2	✓ 56.7	485.9
30	✓ 615.3	✓ 317.5	476.9	✓ 600.3	✓ 263.2	475.8
31	✓ 660.1	✓ 324.7	465.0	✓ 634.3	✓ 297.9	480.8
Total						
Average	626.5	264.6	470.1	618.9	245.8	469.6
Maximum	694.3		487.5	656.2		486.5
Date	29-Jul		17-Jul	29-Jul		26-Jul
Minimum		58.5	457.4		56.7	455.8
Date		1-Jul	26-Jul		29-Jul	15-Jul

Notes:

Municipality of West Elgin - Tri County Water System

Goto:

Month:

Year:

Date is Set to: **July-16**

Limit	Low	High	
Raw Water Chlorine Residual:	0.00	5.00	mg/L
Pre-Strainer Chlorine Residual:	0.00	5.00	mg/L
UV Inlet Chlorine Residual:	0.00	5.00	mg/L
Post Treatment Chlorine Residual:	1.00	5.00	mg/L
Treated Chlorine Residual:	1.00	2.50	mg/L
Distribution Chlorine Residual:	1.00	2.50	mg/L
Limit		High	
WTP C of A		156.0	L/s
WTP Permit to Take Water		13500.0	m <sup>3</sup>
Limit	Low	High	
System Pressure Limits:	50.0	1034.0	Kpa

Compliance Report

Low Lift Monthly Report

>>>

Membranes Monthly Report

>>>

UV System Monthly Report

>>>

Plant Quality Report

>>>

Raw Well/Treated Storage Report

>>>

High Lift Monthly Report

>>>

Operational Report

Low Lift Monthly Report

>>>

High Lift Monthly Report

>>>

Chemical Usage Monthly Report

>>>

Runtimes Report

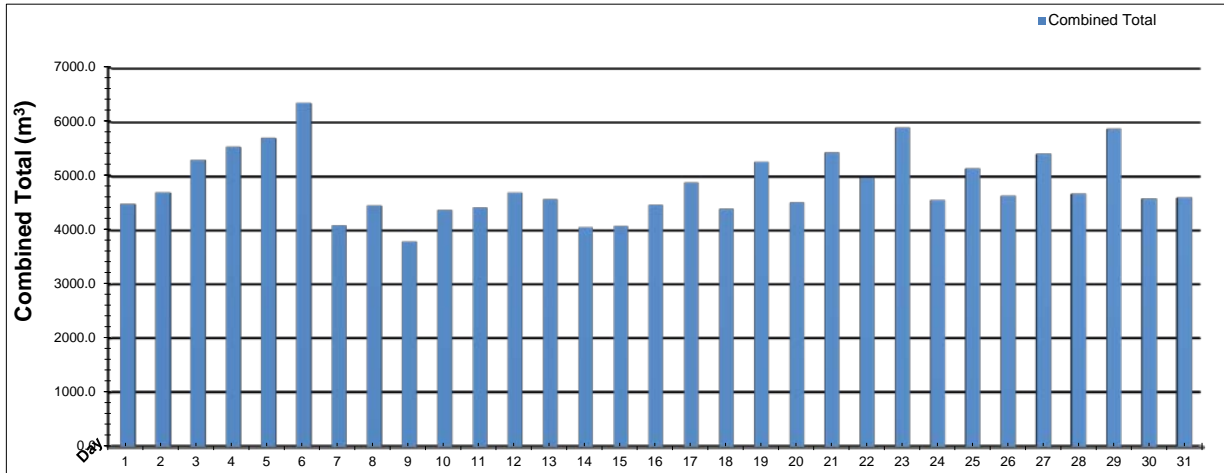
>>>

Plant Internal Flow Report

>>>

# Low Lift Monthly Report

Month: July-16



Date	Combined Total (m³)	West Train FIT-1017 (m³)	West Peak Flow FIT-1017 (L/s)	East Train FIT-1027 (m³)	East Peak Flow FIT-1027 (L/s)	Combined Peak Flow (L/s)
1	✓ 4484.0	3.8	29.5	4480.1	93.8	✓ 93.8
2	✓ 4702.1	3.8	26.5	4698.3	142.4	✓ 142.4
3	✓ 5295.3	3.2	18.3	5292.1	147.5	✓ 147.5
4	✓ 5539.4	3.6	26.9	5535.8	146.0	✓ 146.0
5	✓ 5700.4	4.1	25.9	5696.3	144.4	✓ 144.4
6	✓ 6351.6	31.9	123.8	6319.7	158.3	✓ 129.0
7	✓ 4091.2	1.2	18.1	4090.0	96.1	✓ 96.1
8	✓ 4454.2	1.3	16.2	4452.9	92.8	✓ 92.8
9	✓ 3789.2	2.1	20.8	3787.1	96.9	✓ 96.9
10	✓ 4377.3	2.9	23.4	4374.4	93.6	✓ 93.6
11	✓ 4425.2	2.7	21.4	4422.5	96.1	✓ 96.1
12	✓ 4701.0	2.9	17.1	4698.1	90.0	✓ 90.0
13	✓ 4578.5	2.5	26.3	4576.0	128.2	✓ 128.2
14	✓ 4057.7	2.0	22.7	4055.7	123.2	✓ 123.2
15	✓ 4073.8	2.5	25.0	4071.3	97.4	✓ 97.4
16	✓ 4469.1	2.9	19.1	4466.2	90.5	✓ 90.5
17	✓ 4878.3	1.7	16.4	4876.6	119.9	✓ 119.9
18	✓ 4393.6	1.7	23.0	4391.9	126.7	✓ 126.7
19	✓ 5264.4	2.4	52.7	5262.0	132.3	✓ 132.3
20	✓ 4514.9	1.9	26.1	4513.0	144.3	✓ 144.3
21	✓ 5442.0	3.1	19.0	5438.9	143.6	✓ 143.6
22	✓ 4974.2	3.0	22.4	4971.2	94.8	✓ 94.8
23	✓ 5890.4	2.9	10.4	5887.4	80.1	✓ 80.1
24	✓ 4560.7	3.2	27.3	4557.5	94.0	✓ 94.0
25	✓ 5139.8	2.7	23.7	5137.1	95.7	✓ 95.7
26	✓ 4642.8	2503.4	74.5	2139.4	93.8	✓ 93.8
27	✓ 5409.5	5409.5	88.9	0.0	0.0	✓ 88.9
28	✓ 4674.1	4674.1	86.0	0.0	0.0	✓ 86.0
29	✓ 5873.1	5873.1	139.4	0.0	0.0	✓ 139.4
30	✓ 4586.2	4586.2	87.8	0.0	0.0	✓ 87.8
31	✓ 4603.5	4603.5	85.6	0.0	0.0	✓ 85.6
<b>Total</b>	<b>149937.5</b>	<b>27745.9</b>		<b>122191.7</b>		
<b>Average</b>	<b>4836.7</b>	<b>895.0</b>	<b>40.1</b>	<b>3941.7</b>	<b>95.6</b>	<b>110.3</b>
<b>Maximum</b>	<b>6351.6</b>	<b>5873.1</b>	<b>139.36</b>	<b>6319.7</b>	<b>158.26</b>	<b>147.48</b>
<b>Date</b>	<b>6-Jul</b>	<b>29-Jul</b>	<b>29-Jul</b>	<b>6-Jul</b>	<b>6-Jul</b>	<b>3-Jul</b>
<b>Minimum</b>	<b>3789.2</b>	<b>1.2</b>	<b>10.36</b>	<b>0.0</b>	<b>0.00</b>	<b>80.07</b>
<b>Date</b>	<b>9-Jul</b>	<b>7-Jul</b>	<b>23-Jul</b>	<b>29-Jul</b>	<b>27-Jul</b>	<b>23-Jul</b>

Notes:

---



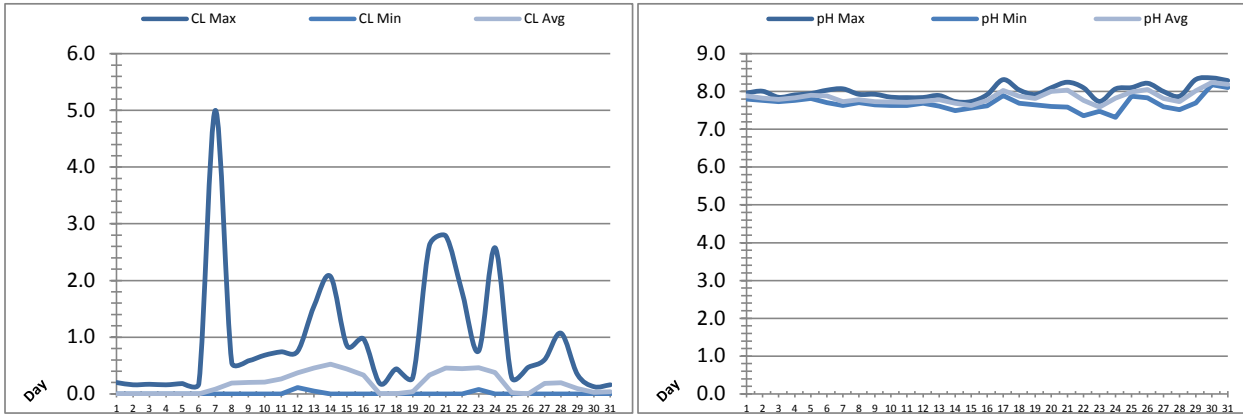
---



---

# Low Lift Monthly Report

Month: July-16



Date	Raw Water Chlorine Residual			Raw Water pH		
	AIT_1401_CL (mg/L)			AIT_1401_PH		
	Maximum	Minimum	Average	Maximum	Minimum	Average
1	0.20	0.00	0.00	7.96	7.80	7.88
2	0.16	0.00	0.00	8.01	7.77	7.82
3	0.17	0.00	0.00	7.85	7.73	7.79
4	0.16	0.00	0.00	7.91	7.76	7.83
5	0.18	0.00	0.00	7.94	7.82	7.90
6	0.18	0.00	0.00	8.03	7.71	7.88
7	5.00	0.00	0.08	8.07	7.63	7.73
8	0.55	0.00	0.19	7.93	7.70	7.78
9	0.58	0.00	0.20	7.93	7.64	7.73
10	0.68	0.00	0.21	7.85	7.63	7.72
11	0.74	0.00	0.26	7.84	7.63	7.72
12	0.75	0.11	0.37	7.84	7.69	7.74
13	1.55	0.05	0.46	7.89	7.61	7.78
14	2.07	0.00	0.52	7.74	7.49	7.69
15	0.85	0.00	0.44	7.73	7.57	7.63
16	0.97	0.00	0.33	7.92	7.62	7.76
17	0.18	0.00	0.00	8.31	7.89	8.03
18	0.44	0.00	0.00	8.04	7.69	7.88
19	0.29	0.00	0.04	7.92	7.64	7.82
20	2.61	0.00	0.33	8.10	7.60	8.00
21	2.79	0.00	0.45	8.25	7.59	8.03
22	1.79	0.00	0.44	8.10	7.36	7.76
23	0.76	0.08	0.46	7.74	7.48	7.59
24	2.58	0.00	0.38	8.07	7.31	7.83
25	0.29	0.00	0.02	8.10	7.87	7.98
26	0.47	0.00	0.00	8.22	7.83	8.06
27	0.60	0.00	0.18	8.00	7.59	7.82
28	1.07	0.00	0.20	7.88	7.52	7.73
29	0.34	0.00	0.10	8.32	7.70	8.02
30	0.13	0.00	0.03	8.36	8.18	8.24
31	0.16	0.00	0.04	8.29	8.10	8.19
Total						
Average	0.95	0.01	0.19	8.00	7.68	7.85
Maximum	5.00		0.52	8.36		8.24
Date	7-Jul		14-Jul	30-Jul		30-Jul
Minimum		0.00	0.00		7.31	7.59
Date		1-Jul	6-Jul		24-Jul	23-Jul

Notes:

---



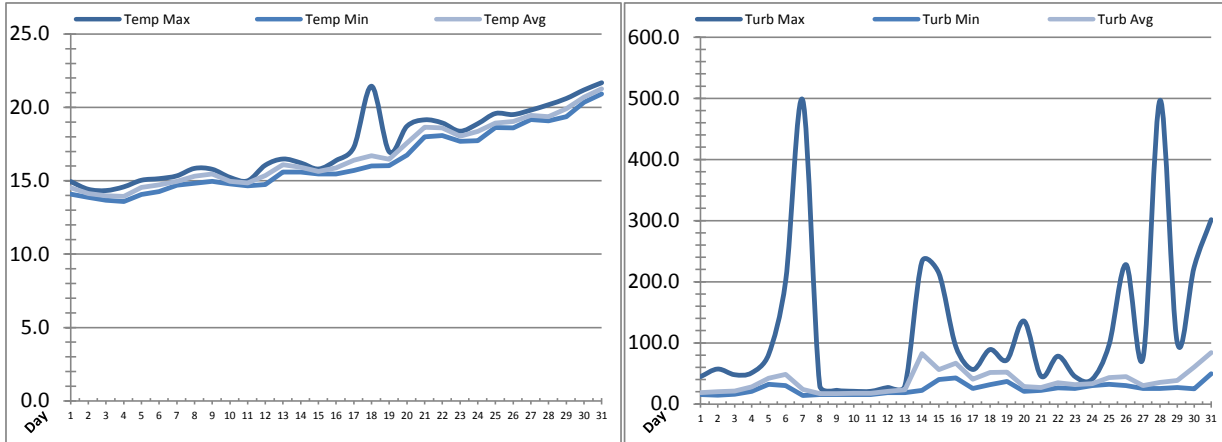
---



---

# Low Lift Monthly Report

Month: July-16



Date	Raw Water Temperature			Raw Water Turbidity		
	TIT_1403 (°C)			AIT_1404 (NTU)		
	Maximum	Minimum	Average	Maximum	Minimum	Average
1	14.9	14.1	14.5	44.88	15.33	18.84
2	14.4	13.9	14.1	57.25	14.53	20.31
3	14.3	13.7	14.0	47.94	16.10	21.09
4	14.6	13.6	13.9	51.04	20.78	28.26
5	15.0	14.1	14.5	81.36	32.43	42.00
6	15.1	14.3	14.7	202.35	30.12	48.58
7	15.3	14.7	15.0	496.80	13.89	23.74
8	15.8	14.8	15.3	30.17	15.37	17.35
9	15.8	15.0	15.5	22.46	15.38	17.10
10	15.2	14.8	15.0	20.90	15.36	17.43
11	15.0	14.7	14.8	20.85	15.37	17.70
12	16.1	14.7	15.4	27.11	18.47	20.86
13	16.5	15.6	16.1	29.44	18.51	23.14
14	16.2	15.6	15.9	232.60	22.43	82.64
15	15.8	15.5	15.6	213.94	40.22	56.61
16	16.4	15.5	15.9	93.73	42.54	66.83
17	17.3	15.7	16.4	56.52	25.54	40.48
18	21.4	16.0	16.7	89.11	31.71	51.43
19	17.0	16.0	16.5	72.09	37.20	51.94
20	18.7	16.8	17.6	135.75	20.97	28.81
21	19.2	18.0	18.6	45.74	22.47	27.06
22	18.9	18.1	18.6	78.32	26.29	34.84
23	18.4	17.7	18.0	44.95	25.53	31.71
24	18.9	17.7	18.4	40.34	30.21	33.29
25	19.6	18.6	18.9	96.91	32.53	43.22
26	19.5	18.6	19.0	228.03	30.23	44.94
27	19.8	19.2	19.5	75.97	25.53	29.93
28	20.2	19.1	19.4	496.86	25.54	35.24
29	20.6	19.4	19.9	101.63	27.10	38.72
30	21.2	20.4	20.7	224.16	24.77	60.44
31	21.7	20.9	21.3	301.53	49.60	83.91
Total						
Average	17.4	16.3	16.8	121.3	25.2	37.4
Maximum	21.7		21.3	496.9		83.9
Date	31-Jul		31-Jul	28-Jul		31-Jul
Minimum		13.6	13.9		13.9	17.1
Date		4-Jul	4-Jul		7-Jul	9-Jul

Notes:

---



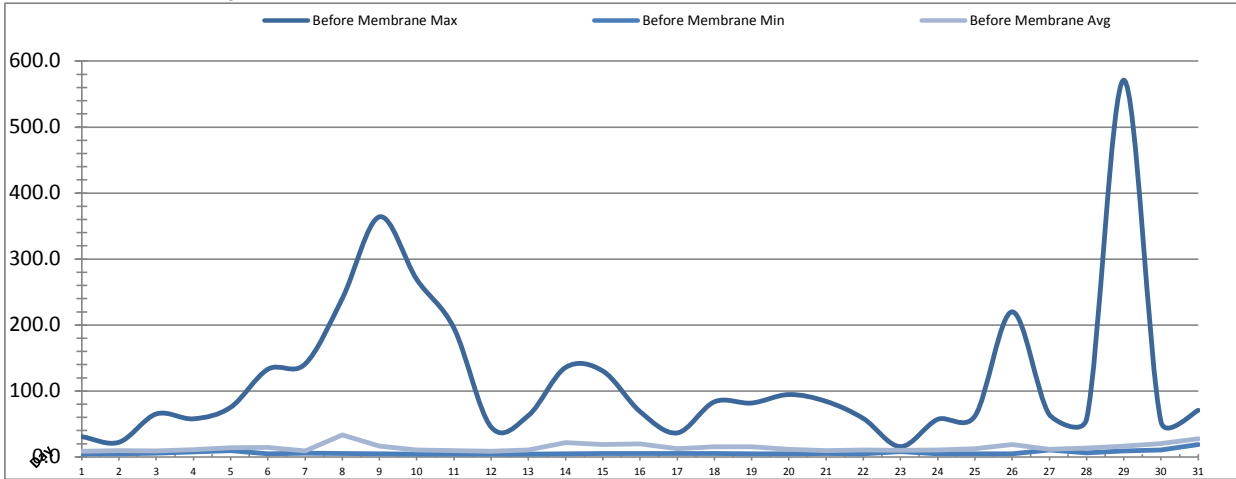
---



---

# Membranes Monthly Report

Month: July-16



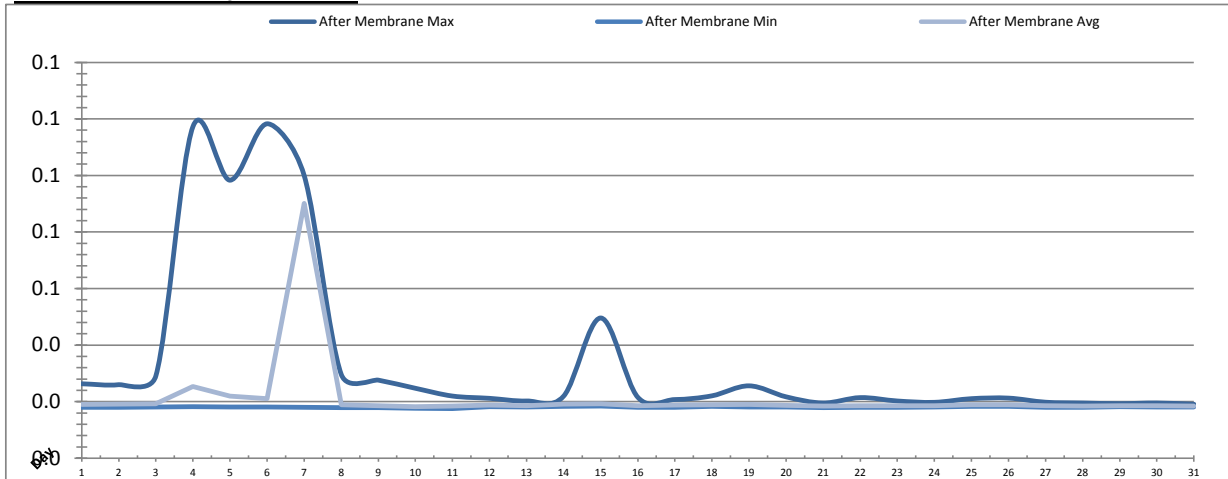
Date	Turbidity Before Membrane			Rack #1 Turbidity			Rack #2 Turbidity		
	PALL_FEED_AIT2006_Value NTU			RACK1_NTU_Value NTU			RACK2_NTU_Value NTU		
	Maximum	Minimum	Average	Maximum	Minimum	Average	Maximum	Minimum	Average
1	30.81	4.71	8.90	0.02	0.01	0.02	0.04	0.01	0.01
2	22.35	4.65	9.72	0.05	0.02	0.04	0.04	0.01	0.01
3	65.24	5.83	9.24	0.05	0.05	0.05	0.04	0.01	0.01
4	57.86	7.79	11.11	0.05	0.05	0.05	0.06	0.01	0.01
5	75.31	9.48	14.18	0.05	0.05	0.05	0.07	0.01	0.01
6	132.98	4.96	14.66	0.05	0.05	0.05	0.07	0.01	0.02
7	140.89	5.89	9.32	0.05	0.05	0.05	0.06	0.01	0.01
8	240.18	5.36	33.33	0.05	0.05	0.05	0.07	0.01	0.01
9	364.06	4.79	16.45	0.05	0.05	0.05	0.05	0.01	0.01
10	269.25	4.49	10.84	0.05	0.05	0.05	0.02	0.01	0.01
11	195.42	4.37	9.50	0.05	0.05	0.05	0.02	0.01	0.01
12	45.42	4.47	8.66	0.05	0.05	0.05	0.02	0.01	0.01
13	62.79	4.47	10.44	0.05	0.05	0.05	0.02	0.01	0.01
14	135.73	4.94	21.79	0.05	0.05	0.05	0.02	0.01	0.01
15	130.37	5.51	18.89	0.54	0.01	0.02	0.02	0.01	0.01
16	68.89	5.53	19.82	0.41	0.01	0.01	0.02	0.01	0.01
17	36.49	5.43	12.69	0.50	0.01	0.01	0.02	0.01	0.01
18	83.68	5.38	15.72	0.25	0.01	0.01	0.03	0.01	0.01
19	81.81	4.77	15.67	0.29	0.01	0.01	0.03	0.01	0.01
20	94.65	4.69	11.81	0.04	0.01	0.01	0.02	0.01	0.01
21	84.30	5.20	9.70	0.01	0.01	0.01	0.02	0.01	0.01
22	58.39	4.88	10.60	0.01	0.01	0.01	0.24	0.01	0.01
23	15.70	8.16	9.91	0.01	0.01	0.01	0.02	0.01	0.01
24	57.12	5.00	10.52	0.01	0.01	0.01	0.02	0.01	0.01
25	62.08	4.85	12.42	0.01	0.01	0.01	0.02	0.01	0.01
26	220.02	4.67	18.86	0.01	0.01	0.01	0.02	0.01	0.01
27	64.14	10.42	11.63	0.01	0.01	0.01	0.01	0.01	0.01
28	57.65	6.40	13.57	0.01	0.01	0.01	0.01	0.01	0.01
29	571.26	9.03	16.65	0.01	0.01	0.01	0.01	0.01	0.01
30	53.49	10.64	20.25	0.01	0.01	0.01	0.01	0.01	0.01
31	70.82	18.66	27.63	0.01	0.01	0.01	0.01	0.01	0.01
Total									
Average	117.7	6.3	14.3	0.1	0.0	0.0	0.0	0.0	0.0
Maximum	571.3		33.3	0.5		0.1	0.2		0.0
Date	29-Jul		8-Jul	15-Jul		3-Jul	22-Jul		6-Jul
Minimum		4.4	8.7		0.0	0.0		0.0	0.0
Date		11-Jul	12-Jul		22-Jul	23-Jul		1-Jul	31-Jul

Notes:

Rack 1: >0.1ntu caused by maintenance on flow control valve  
 Rack 2: >0.1ntu post EFM

# Membranes Monthly Report

Month: July-16



Date	Rack #3 Turbidity			Rack #4 Turbidity			Turbidity After Membranes		
	RACK3_NTU_Value			RACK4_NTU_Value			PALL_FILTER_AIT5001_Value		
	Maximum	Minimum	Average	Maximum	Minimum	Average	Maximum	Minimum	Average
1	0.04	0.01	0.01	0.03	0.01	0.01	0.03	0.02	0.02
2	0.03	0.01	0.01	0.03	0.01	0.01	0.03	0.02	0.02
3	0.04	0.01	0.01	0.03	0.01	0.01	0.03	0.02	0.02
4	0.06	0.01	0.01	0.03	0.01	0.01	0.12	0.02	0.03
5	0.08	0.01	0.01	0.04	0.01	0.01	0.10	0.02	0.02
6	0.05	0.01	0.01	0.04	0.01	0.01	0.12	0.02	0.02
7	0.04	0.01	0.01	0.04	0.01	0.01	0.10	0.02	0.09
8	0.07	0.01	0.01	0.03	0.01	0.01	0.03	0.02	0.02
9	0.05	0.01	0.01	0.02	0.01	0.01	0.03	0.02	0.02
10	0.04	0.01	0.01	0.03	0.01	0.01	0.02	0.02	0.02
11	0.03	0.01	0.01	0.05	0.01	0.01	0.02	0.02	0.02
12	0.02	0.01	0.01	0.05	0.01	0.01	0.02	0.02	0.02
13	0.03	0.01	0.01	0.04	0.01	0.01	0.02	0.02	0.02
14	0.02	0.01	0.01	0.04	0.01	0.01	0.02	0.02	0.02
15	0.03	0.01	0.01	0.01	0.01	0.01	0.05	0.02	0.02
16	0.02	0.01	0.01	0.01	0.01	0.01	0.02	0.02	0.02
17	0.02	0.01	0.01	0.01	0.01	0.01	0.02	0.02	0.02
18	0.02	0.01	0.01	0.01	0.01	0.01	0.02	0.02	0.02
19	0.06	0.01	0.01	0.01	0.01	0.01	0.03	0.02	0.02
20	0.02	0.01	0.01	0.01	0.01	0.01	0.02	0.02	0.02
21	0.02	0.01	0.01	0.01	0.01	0.01	0.02	0.02	0.02
22	0.02	0.01	0.01	0.01	0.01	0.01	0.02	0.02	0.02
23	0.02	0.01	0.01	0.01	0.01	0.01	0.02	0.02	0.02
24	0.02	0.01	0.01	0.01	0.01	0.01	0.02	0.02	0.02
25	0.03	0.01	0.01	0.01	0.01	0.01	0.02	0.02	0.02
26	0.03	0.01	0.01	0.01	0.01	0.01	0.02	0.02	0.02
27	0.02	0.01	0.01	0.01	0.01	0.01	0.02	0.02	0.02
28	0.01	0.01	0.01	0.01	0.01	0.01	0.02	0.02	0.02
29	0.02	0.01	0.01	0.01	0.01	0.01	0.02	0.02	0.02
30	0.02	0.01	0.01	0.01	0.01	0.01	0.02	0.02	0.02
31	0.01	0.01	0.01	0.01	0.01	0.01	0.02	0.02	0.02
Total									
Average	0.03	0.01	0.01	0.02	0.01	0.01	0.03	0.02	0.02
Maximum	0.08		0.01	0.05		0.01	0.12		0.09
Date	5-Jul		8-Jul	11-Jul		6-Jul	6-Jul		7-Jul
Minimum		0.01	0.01		0.01	0.01		0.02	0.02
Date		20-Jul	31-Jul		1-Jul	16-Jul		11-Jul	10-Jul

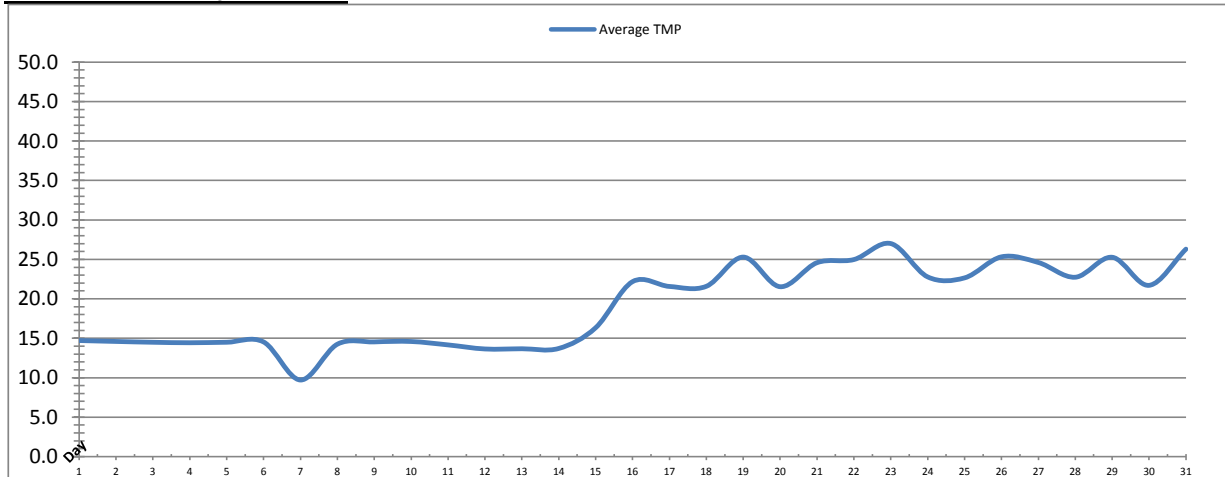
**Notes:**

6: turbidity after membranes 1ntu due to maintenance



# Membranes Monthly Report

Month: July-16



Date	Integrity Test Rack 1							
	Initial Pressure (kPa)	Final Pressure (kPa)	Test Duration (sec)	Change in Pressure (kPa)	UCL	Within UCL	Average TMP (kPa)	Max TMP (kPa)
1	194.9	193.5	300.0	1.4	2.0	✓ 2.0	14.7	31.7
2	194.9	193.5	300.0	1.4	2.0	✓ 2.0	14.6	41.6
3	194.9	193.5	300.0	1.4	2.0	✓ 2.0	14.5	14.7
4	194.9	193.5	300.0	1.4	2.0	✓ 2.0	14.4	14.7
5	194.9	193.5	300.0	1.4	2.0	✓ 2.0	14.5	14.7
6	194.9	193.5	300.0	1.4	2.0	✓ 2.0	14.5	14.7
7	194.9	193.5	300.0	1.4	2.0	✓ 2.0	9.7	14.7
8	194.9	193.5	300.0	1.4	2.0	✓ 2.0	14.3	14.8
9	194.9	193.5	300.0	1.4	2.0	✓ 2.0	14.5	14.7
10	194.9	193.5	300.0	1.4	2.0	✓ 2.0	14.6	14.8
11	194.9	193.5	300.0	1.4	2.0	✓ 2.0	14.2	14.8
12	194.9	193.5	300.0	1.4	2.0	✓ 2.0	13.6	13.8
13	194.9	193.5	300.0	1.4	2.0	✓ 2.0	13.7	13.9
14	194.9	193.5	300.0	1.4	2.0	✓ 2.0	13.7	13.9
15	194.7	193.4	300.0	1.3	2.0	✓ 2.0	16.3	49.2
16	194.1	192.8	300.0	1.3	2.0	✓ 2.0	22.2	57.4
17	194.2	193.0	300.0	1.3	2.0	✓ 2.0	21.6	86.0
18	194.7	193.5	300.0	1.2	2.0	✓ 2.0	21.6	76.9
19	194.2	192.9	300.0	1.3	2.0	✓ 2.0	25.3	84.1
20	194.7	193.5	300.0	1.2	2.0	✓ 2.0	21.5	85.1
21	194.2	193.1	300.0	1.1	2.0	✓ 2.0	24.6	90.6
22	194.4	193.1	300.0	1.3	2.0	✓ 2.0	25.0	69.2
23	193.5	192.3	300.0	1.3	2.0	✓ 2.0	27.0	51.3
24	193.7	192.5	300.0	1.3	2.0	✓ 2.0	22.8	46.7
25	194.2	193.0	300.0	1.2	2.0	✓ 2.0	22.7	60.1
26	193.6	191.9	300.0	1.7	2.0	✓ 2.0	25.3	73.4
27	193.8	192.6	300.0	1.1	2.0	✓ 2.0	24.6	46.8
28	194.2	193.1	300.0	1.2	2.0	✓ 2.0	22.7	38.5
29	194.1	193.0	300.0	1.1	2.0	✓ 2.0	25.3	64.9
30	194.0	192.8	300.0	1.1	2.0	✓ 2.0	21.7	42.0
31	193.7	192.5	300.0	1.2	2.0	✓ 2.0	26.3	82.2
<b>Total</b>								
Average	194.5	193.1	300.0	1.3	2.0	2.0	19.1	43.6
Maximum	194.9	193.5	300.0	1.7	2.0	2.0	27.0	90.6
Date	1-Jul	1-Jul	1-Jul	26-Jul	1-Jul	1-Jul	23-Jul	21-Jul
Minimum	193.5	191.9	300.0	1.1	2.0	2.0	9.7	13.8
Date	23-Jul	26-Jul	1-Jul	21-Jul	1-Jul	1-Jul	7-Jul	12-Jul

Notes:

---



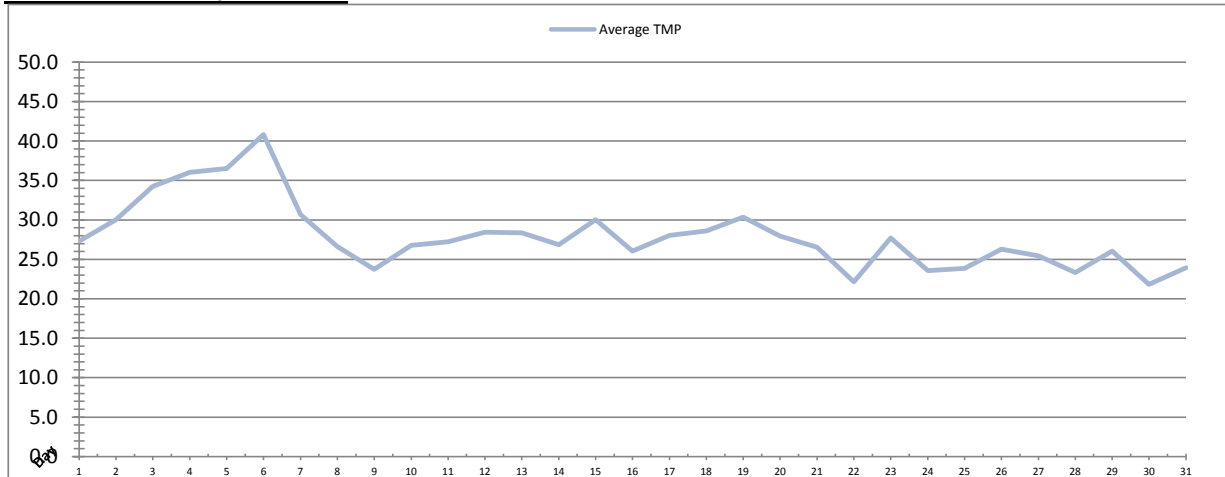
---



---

# Membranes Monthly Report

Month: **July-16**



Integrity Test Rack 2									
Date	Initial Pressure (kPa)	Final Pressure (kPa)	Test Duration (sec)	Change in Pressure (kPa)	UCL	Within UCL	Average TMP (kPa)	Max TMP (kPa)	
1	200.4	199.2	300.0	1.2	2.0	✓ 2.0	27.3	58.4	
2	200.6	199.3	300.0	1.3	2.0	✓ 2.0	30.0	92.9	
3	200.5	198.9	300.0	1.5	2.0	✓ 2.0	34.2	101.2	
4	199.8	198.4	300.0	1.4	2.0	✓ 2.0	36.0	103.1	
5	201.0	199.6	300.0	1.4	2.0	✓ 2.0	36.5	134.6	
6	200.1	198.8	300.0	1.3	2.0	✓ 2.0	40.8	103.8	
7	200.1	198.8	300.0	1.3	2.0	✓ 2.0	30.7	57.9	
8	201.0	200.3	300.0	0.7	2.0	✓ 2.0	26.6	66.3	
9	201.1	200.1	300.0	0.9	2.0	✓ 2.0	23.7	77.0	
10	200.6	199.1	300.0	1.5	2.0	✓ 2.0	26.8	81.8	
11	200.2	198.8	300.0	1.4	2.0	✓ 2.0	27.2	67.4	
12	200.6	199.2	300.0	1.4	2.0	✓ 2.0	28.4	60.9	
13	200.0	198.7	300.0	1.3	2.0	✓ 2.0	28.4	70.8	
14	200.9	200.1	300.0	0.8	2.0	✓ 2.0	26.8	89.5	
15	200.5	199.1	300.0	1.3	2.0	✓ 2.0	30.0	93.4	
16	200.4	199.1	300.0	1.3	2.0	✓ 2.0	26.0	64.1	
17	200.6	199.8	300.0	0.8	2.0	✓ 2.0	28.0	59.9	
18	200.2	198.8	300.0	1.4	2.0	✓ 2.0	28.6	87.4	
19	200.9	200.0	300.0	0.9	2.0	✓ 2.0	30.4	81.5	
20	200.5	199.2	300.0	1.3	2.0	✓ 2.0	27.9	95.5	
21	200.6	199.3	300.0	1.3	2.0	✓ 2.0	26.5	72.6	
22	200.6	199.8	300.0	0.8	2.0	✓ 2.0	22.1	52.5	
23	200.6	199.3	300.0	1.3	2.0	✓ 2.0	27.7	50.9	
24	200.6	199.3	300.0	1.3	2.0	✓ 2.0	23.6	56.6	
25	200.6	199.5	300.0	1.1	2.0	✓ 2.0	23.8	56.6	
26	200.3	199.1	300.0	1.1	2.0	✓ 2.0	26.3	73.5	
27	200.4	199.2	300.0	1.2	2.0	✓ 2.0	25.4	43.3	
28	200.4	199.2	300.0	1.2	2.0	✓ 2.0	23.3	59.0	
29	200.5	199.2	300.0	1.3	2.0	✓ 2.0	26.1	72.6	
30	200.7	199.7	300.0	0.9	2.0	✓ 2.0	21.8	36.9	
31	200.5	199.4	300.0	1.1	2.0	✓ 2.0	23.9	64.3	
<b>Total</b>									
Average	200.5	199.3	300.0	1.2	2.0	2.0	27.9	73.7	
Maximum	201.1	200.3	300.0	1.5	2.0	2.0	40.8	134.6	
Date	9-Jul	8-Jul	1-Jul	3-Jul	1-Jul	1-Jul	6-Jul	5-Jul	
Minimum	199.8	198.4	300.0	0.7	2.0	2.0	21.8	36.9	
Date	4-Jul	4-Jul	1-Jul	8-Jul	1-Jul	1-Jul	30-Jul	30-Jul	

Notes:

---



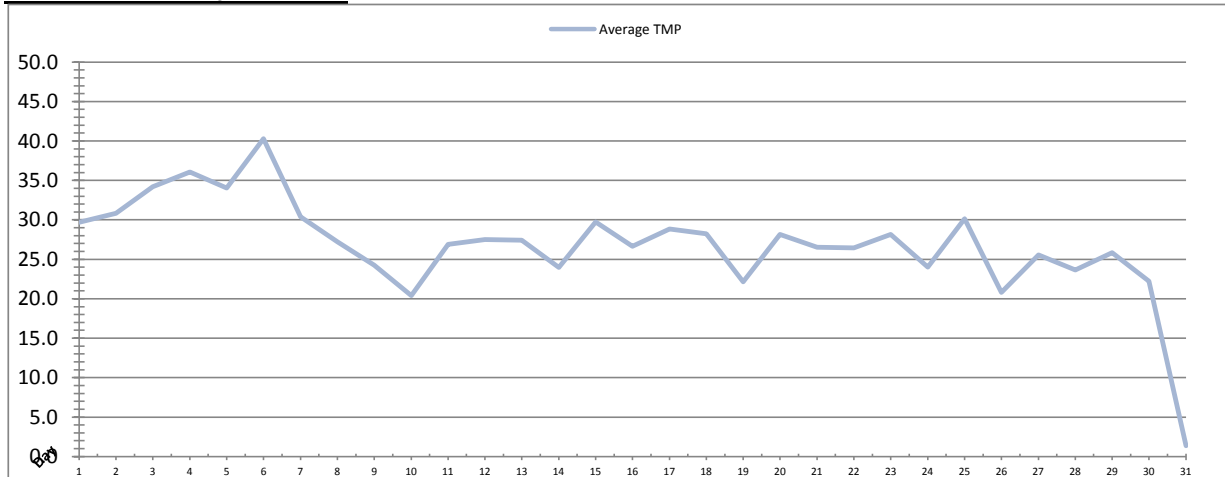
---



---

# Membranes Monthly Report

Month: July-16

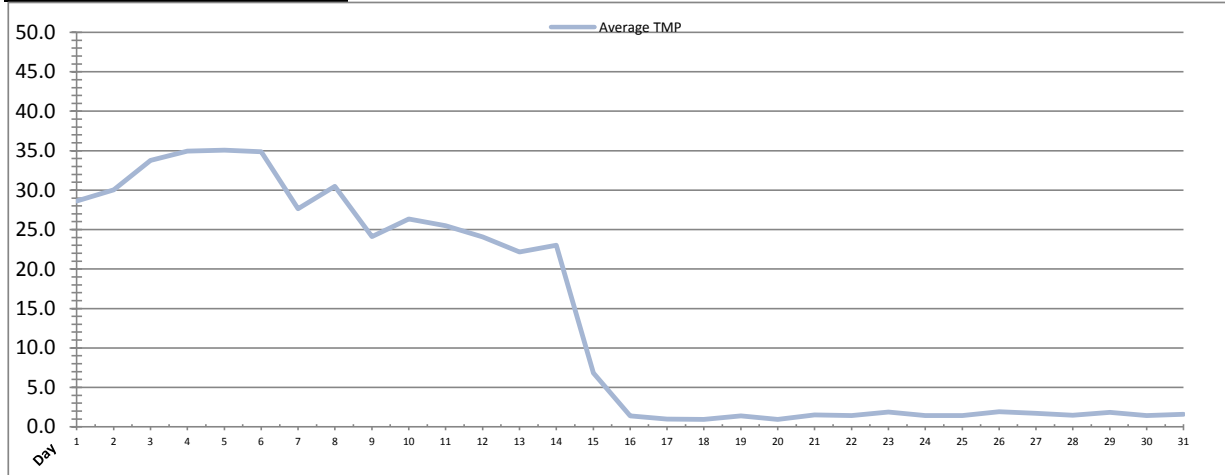


Integrity Test Rack 3									
Date	Initial Pressure (kPa)	Final Pressure (kPa)	Test Duration (sec)	Change in Pressure (kPa)	UCL	Within UCL	Average TMP (kPa)	Max TMP (kPa)	
1	191.2	189.8	300.0	1.4	2.0	✓ 2.0	29.7	94.0	
2	191.3	189.9	300.0	1.4	2.0	✓ 2.0	30.8	91.7	
3	190.8	189.4	300.0	1.4	2.0	✓ 2.0	34.2	100.5	
4	190.7	189.2	300.0	1.4	2.0	✓ 2.0	36.0	101.8	
5	191.2	189.9	300.0	1.3	2.0	✓ 2.0	34.0	127.7	
6	190.7	189.3	300.0	1.3	2.0	✓ 2.0	40.3	126.6	
7	190.7	189.3	300.0	1.3	2.0	✓ 2.0	30.4	60.1	
8	191.2	190.1	300.0	1.1	2.0	✓ 2.0	27.2	59.7	
9	191.2	189.9	300.0	1.3	2.0	✓ 2.0	24.2	56.3	
10	191.0	189.6	300.0	1.3	2.0	✓ 2.0	20.4	58.7	
11	190.6	189.2	300.0	1.4	2.0	✓ 2.0	26.9	53.6	
12	191.1	189.7	300.0	1.4	2.0	✓ 2.0	27.5	48.3	
13	191.1	189.8	300.0	1.3	2.0	✓ 2.0	27.4	80.9	
14	191.2	189.8	300.0	1.4	2.0	✓ 2.0	24.0	77.4	
15	190.9	189.6	300.0	1.3	2.0	✓ 2.0	29.8	90.8	
16	190.9	189.5	300.0	1.4	2.0	✓ 2.0	26.6	65.2	
17	190.6	189.2	300.0	1.4	2.0	✓ 2.0	28.9	74.3	
18	190.4	189.1	300.0	1.3	2.0	✓ 2.0	28.2	81.3	
19	190.8	189.6	300.0	1.3	2.0	✓ 2.0	22.2	94.1	
20	190.9	189.5	300.0	1.4	2.0	✓ 2.0	28.1	94.3	
21	190.8	189.5	300.0	1.3	2.0	✓ 2.0	26.5	71.0	
22	190.5	189.3	300.0	1.2	2.0	✓ 2.0	26.4	56.9	
23	190.1	188.8	300.0	1.3	2.0	✓ 2.0	28.1	46.5	
24	190.9	189.6	300.0	1.3	2.0	✓ 2.0	24.0	52.5	
25	190.7	189.3	300.0	1.4	2.0	✓ 2.0	30.1	78.0	
26	190.5	189.2	300.0	1.3	2.0	✓ 2.0	20.8	56.6	
27	190.7	189.4	300.0	1.3	2.0	✓ 2.0	25.5	43.8	
28	190.4	189.2	300.0	1.1	2.0	✓ 2.0	23.6	49.2	
29	190.9	189.5	300.0	1.3	2.0	✓ 2.0	25.8	76.1	
30	190.4	189.1	300.0	1.3	2.0	✓ 2.0	22.2	42.2	
31	191.3	188.5	300.0	2.8	2.0	✗ 2.0	1.4	36.3	
<b>Total</b>									
Average	190.8	189.4	300.0	1.4	2.0	2.0	26.8	72.5	
Maximum	191.3	190.1	300.0	2.8	2.0	2.0	40.3	127.7	
Date	31-Jul	8-Jul	1-Jul	31-Jul	1-Jul	1-Jul	6-Jul	5-Jul	
Minimum	190.1	188.5	300.0	1.1	2.0	2.0	1.4	36.3	
Date	23-Jul	31-Jul	1-Jul	8-Jul	1-Jul	1-Jul	31-Jul	31-Jul	

Notes:  
 Rack 3: IT failure, troubleshooting issue resolved the following week, rack was left out of service.

# Membranes Monthly Report

Month: July-16



Integrity Test Rack 4									
Date	Initial Pressure (kPa)	Final Pressure (kPa)	Test Duration (sec)	Change in Pressure (kPa)	UCL	Within UCL	Average TMP (kPa)	Max TMP (kPa)	
1	195.0	194.2	300.0	0.8	2.0	✓ 2.0	28.6	94.8	
2	195.9	194.7	300.0	1.3	2.0	✓ 2.0	30.0	95.8	
3	196.1	194.9	300.0	1.2	2.0	✓ 2.0	33.8	98.8	
4	196.0	194.9	300.0	1.1	2.0	✓ 2.0	34.9	99.4	
5	195.7	194.3	300.0	1.3	2.0	✓ 2.0	35.1	96.6	
6	196.1	194.9	300.0	1.2	2.0	✓ 2.0	34.8	101.2	
7	196.0	195.0	300.0	1.0	2.0	✓ 2.0	27.7	68.9	
8	195.9	194.9	300.0	1.0	2.0	✓ 2.0	30.5	94.3	
9	196.5	195.4	300.0	1.1	2.0	✓ 2.0	24.1	47.8	
10	196.0	195.3	300.0	0.7	2.0	✓ 2.0	26.3	92.7	
11	196.1	194.9	300.0	1.1	2.0	✓ 2.0	25.5	50.4	
12	195.9	195.0	300.0	0.8	2.0	✓ 2.0	24.1	62.4	
13	195.6	195.0	300.0	0.6	2.0	✓ 2.0	22.2	69.4	
14	195.6	194.8	300.0	0.8	2.0	✓ 2.0	23.0	68.1	
15	195.6	194.8	300.0	0.8	2.0	✓ 2.0	6.8	46.8	
16	195.6	194.8	300.0	0.8	2.0	✓ 2.0	1.4	17.3	
17	195.6	194.8	300.0	0.8	2.0	✓ 2.0	1.0	17.7	
18	195.6	194.8	300.0	0.8	2.0	✓ 2.0	0.9	17.8	
19	195.6	194.8	300.0	0.8	2.0	✓ 2.0	1.4	18.0	
20	195.6	194.8	300.0	0.8	2.0	✓ 2.0	0.9	17.8	
21	195.6	194.8	300.0	0.8	2.0	✓ 2.0	1.5	17.4	
22	195.6	194.8	300.0	0.8	2.0	✓ 2.0	1.4	17.6	
23	195.6	194.8	300.0	0.8	2.0	✓ 2.0	1.9	17.9	
24	195.6	194.8	300.0	0.8	2.0	✓ 2.0	1.4	17.7	
25	195.6	194.8	300.0	0.8	2.0	✓ 2.0	1.4	17.7	
26	195.6	194.8	300.0	0.8	2.0	✓ 2.0	1.9	18.1	
27	195.6	194.8	300.0	0.8	2.0	✓ 2.0	1.7	18.1	
28	195.6	194.8	300.0	0.8	2.0	✓ 2.0	1.5	18.0	
29	195.6	194.8	300.0	0.8	2.0	✓ 2.0	1.8	17.8	
30	195.6	194.8	300.0	0.8	2.0	✓ 2.0	1.4	17.9	
31	195.6	194.8	300.0	0.8	2.0	✓ 2.0	1.6	18.2	
Total									
Average	195.7	194.8	300.0	0.9	2.0	2.0	13.9	47.5	
Maximum	196.5	195.4	300.0	1.3	2.0	2.0	35.1	101.2	
Date	9-Jul	9-Jul	1-Jul	5-Jul	1-Jul	1-Jul	5-Jul	6-Jul	
Minimum	195.0	194.2	300.0	0.6	2.0	2.0	0.9	17.3	
Date	1-Jul	1-Jul	1-Jul	13-Jul	1-Jul	1-Jul	18-Jul	16-Jul	

Notes:

# Membranes Monthly Report

Month: July-16

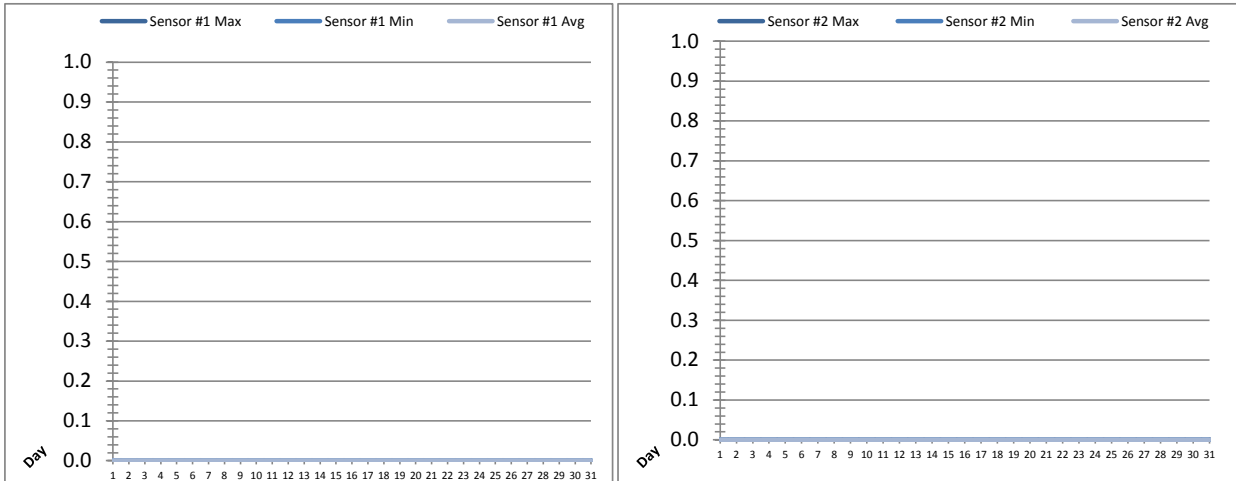
Date	Membranes Monthly Performance							
	Rack 1 >0.1 NTU (Minutes)	Rack 1 Forward Flow (Minutes)	Rack 2 >0.1 NTU (Minutes)	Rack 2 Forward Flow (Minutes)	Rack 3 >0.1 NTU (Minutes)	Rack 3 Forward Flow (Minutes)	Rack 4 >0.1 NTU (Minutes)	Rack 4 Forward Flow (Minutes)
1	0.0	5.4	0.0	925.4	0.0	1034.4	0.0	1033.4
2	0.0	4.0	0.0	974.6	0.0	1041.5	0.0	1037.5
3	0.0	0.0	0.0	1050.6	0.0	1054.1	0.0	1057.2
4	0.0	0.0	0.0	1042.4	0.0	1045.2	0.0	1043.3
5	0.0	0.0	0.0	1090.6	0.0	1080.1	0.0	1096.4
6	0.0	0.0	0.0	1165.6	0.0	1170.4	0.0	1183.0
7	0.0	0.0	0.0	974.1	0.0	974.6	0.0	958.4
8	0.0	0.0	0.0	906.3	0.0	880.2	0.0	1067.2
9	0.0	0.0	0.0	895.1	0.0	898.3	0.0	906.4
10	0.0	0.0	0.0	1037.5	0.0	1002.4	0.0	1046.4
11	0.0	0.0	0.0	1097.3	0.0	1100.4	0.0	1113.4
12	0.0	0.0	0.0	1248.6	0.0	1257.3	0.0	1266.5
13	0.0	0.0	0.0	1099.6	0.0	1104.1	0.0	1119.2
14	0.0	0.0	0.0	962.4	0.0	956.2	0.0	976.5
15	17.6	456.3	0.0	986.3	0.0	989.5	0.0	472.0
16	8.1	1219.4	0.0	1205.5	0.0	1210.4	0.0	0.0
17	3.2	1298.0	0.0	1289.5	0.0	1295.6	0.0	0.0
18	17.6	1032.6	0.0	1025.3	0.0	1027.4	0.0	0.0
19	3.2	1180.3	0.0	1114.3	0.0	1103.5	0.0	0.0
20	0.0	779.1	0.0	895.1	0.0	895.6	0.0	0.0
21	0.0	1107.6	0.0	1107.1	0.0	1111.6	0.0	0.0
22	0.0	1152.5	6.4	1000.6	0.0	1151.6	0.0	0.0
23	0.0	1350.6	0.0	1350.1	0.0	1355.5	0.0	0.0
24	0.0	1056.3	0.0	1058.0	0.0	1058.1	0.0	0.0
25	0.0	1172.2	0.0	1170.5	0.0	1159.3	0.0	0.0
26	0.0	1068.5	0.0	1068.5	0.0	738.5	0.0	0.0
27	0.0	1248.1	0.0	1244.1	0.0	1247.2	0.0	0.0
28	0.0	1087.3	0.0	1088.1	0.0	1092.3	0.0	0.0
29	0.0	1162.3	0.0	1159.1	0.0	1164.1	0.0	0.0
30	0.0	1024.0	0.0	1018.5	0.0	1023.1	0.0	0.0
31	0.0	1039.2	0.0	1033.2	0.0	452.4	0.0	0.0
Total	49.6	18443.8	6.4	33283.8	0.0	32674.8	0.0	15376.8
Percent	0.3		0.0		0.0		0.0	
Maximum	17.6	1350.6	6.4	1350.1	0.0	1355.5	0.0	1266.5
Date	18-Jul	23-Jul	22-Jul	23-Jul	1-Jul	23-Jul	1-Jul	12-Jul
Minimum	0.0	0.0	0.0	895.1	0.0	452.4	0.0	0.0
Date	1-Jul	3-Jul	1-Jul	9-Jul	1-Jul	31-Jul	1-Jul	16-Jul

Notes:

Met filter performance requirements of 99% of readings for the month were below 0.1ntu.

# UV System Monthly Report

Month: July-16



Date	UV Reactor 1					
	Intensity Sensor 1 (mW/cm <sup>2</sup> )			Intensity Sensor 2 (mW/cm <sup>2</sup> )		
	Maximum	Minimum	Average	Maximum	Minimum	Average
1	0.0	0.0	0.0	0.0	0.0	0.0
2	0.0	0.0	0.0	0.0	0.0	0.0
3	0.0	0.0	0.0	0.0	0.0	0.0
4	0.0	0.0	0.0	0.0	0.0	0.0
5	0.0	0.0	0.0	0.0	0.0	0.0
6	0.0	0.0	0.0	0.0	0.0	0.0
7	0.0	0.0	0.0	0.0	0.0	0.0
8	0.0	0.0	0.0	0.0	0.0	0.0
9	0.0	0.0	0.0	0.0	0.0	0.0
10	0.0	0.0	0.0	0.0	0.0	0.0
11	0.0	0.0	0.0	0.0	0.0	0.0
12	0.0	0.0	0.0	0.0	0.0	0.0
13	0.0	0.0	0.0	0.0	0.0	0.0
14	0.0	0.0	0.0	0.0	0.0	0.0
15	0.0	0.0	0.0	0.0	0.0	0.0
16	0.0	0.0	0.0	0.0	0.0	0.0
17	0.0	0.0	0.0	0.0	0.0	0.0
18	0.0	0.0	0.0	0.0	0.0	0.0
19	0.0	0.0	0.0	0.0	0.0	0.0
20	0.0	0.0	0.0	0.0	0.0	0.0
21	0.0	0.0	0.0	0.0	0.0	0.0
22	0.0	0.0	0.0	0.0	0.0	0.0
23	0.0	0.0	0.0	0.0	0.0	0.0
24	0.0	0.0	0.0	0.0	0.0	0.0
25	0.0	0.0	0.0	0.0	0.0	0.0
26	0.0	0.0	0.0	0.0	0.0	0.0
27	0.0	0.0	0.0	0.0	0.0	0.0
28	0.0	0.0	0.0	0.0	0.0	0.0
29	0.0	0.0	0.0	0.0	0.0	0.0
30	0.0	0.0	0.0	0.0	0.0	0.0
31	0.0	0.0	0.0	0.0	0.0	0.0
Total						
Average	0.0	0.0	0.0	0.0	0.0	0.0
Maximum	0.0		0.0	0.0		0.0
Date	1-Jul		1-Jul	1-Jul		1-Jul
Minimum		0.0	0.0		0.0	0.0
Date		1-Jul	1-Jul		1-Jul	1-Jul

Notes:

---



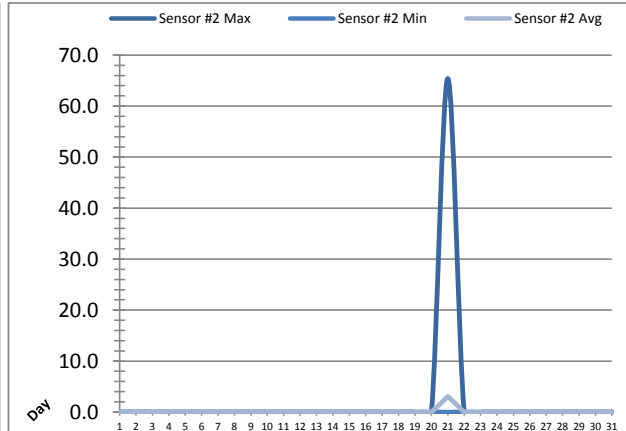
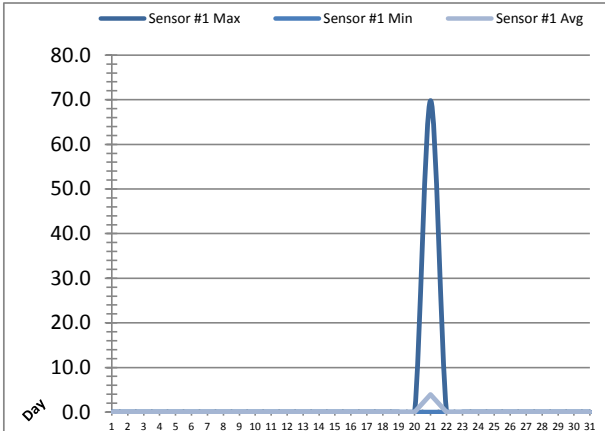
---



---

# UV System Monthly Report

Month: July-16



UV Reactor 2						
Date	Intensity Sensor 1 (mW/cm²)			Intensity Sensor 2 (mW/cm²)		
	Maximum	Minimum	Average	Maximum	Minimum	Average
1	0.0	0.0	0.0	0.0	0.0	0.0
2	0.0	0.0	0.0	0.0	0.0	0.0
3	0.0	0.0	0.0	0.0	0.0	0.0
4	0.0	0.0	0.0	0.0	0.0	0.0
5	0.0	0.0	0.0	0.0	0.0	0.0
6	0.0	0.0	0.0	0.0	0.0	0.0
7	0.0	0.0	0.0	0.0	0.0	0.0
8	0.0	0.0	0.0	0.0	0.0	0.0
9	0.0	0.0	0.0	0.0	0.0	0.0
10	0.0	0.0	0.0	0.0	0.0	0.0
11	0.0	0.0	0.0	0.0	0.0	0.0
12	0.0	0.0	0.0	0.0	0.0	0.0
13	0.0	0.0	0.0	0.0	0.0	0.0
14	0.0	0.0	0.0	0.0	0.0	0.0
15	0.0	0.0	0.0	0.0	0.0	0.0
16	0.0	0.0	0.0	0.0	0.0	0.0
17	0.0	0.0	0.0	0.0	0.0	0.0
18	0.0	0.0	0.0	0.0	0.0	0.0
19	0.0	0.0	0.0	0.0	0.0	0.0
20	0.0	0.0	0.0	0.0	0.0	0.0
21	69.8	0.0	4.0	65.4	0.0	3.1
22	0.0	0.0	0.0	0.0	0.0	0.0
23	0.0	0.0	0.0	0.0	0.0	0.0
24	0.0	0.0	0.0	0.0	0.0	0.0
25	0.0	0.0	0.0	0.0	0.0	0.0
26	0.0	0.0	0.0	0.0	0.0	0.0
27	0.0	0.0	0.0	0.0	0.0	0.0
28	0.0	0.0	0.0	0.0	0.0	0.0
29	0.0	0.0	0.0	0.0	0.0	0.0
30	0.0	0.0	0.0	0.0	0.0	0.0
31	0.0	0.0	0.0	0.0	0.0	0.0
Total						
Average	2.3	0.0	0.1	2.1	0.0	0.1
Maximum	69.8		4.0	65.4		3.1
Date	21-Jul		21-Jul	21-Jul		21-Jul
Minimum		0.0	0.0		0.0	0.0
Date		1-Jul	1-Jul		1-Jul	1-Jul

Notes:

---



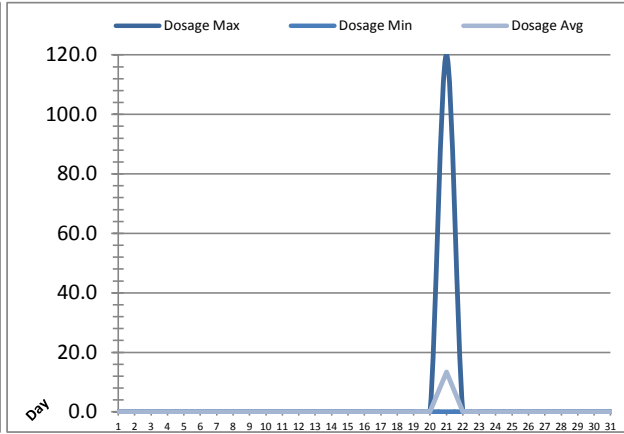
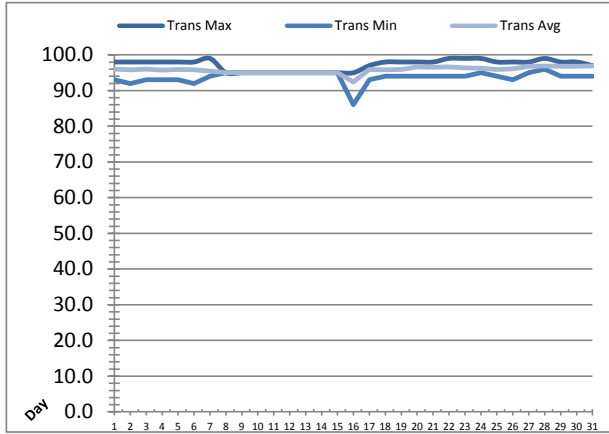
---



---

# UV System Monthly Report

Month: July-16



UV System							
Date	Transmittance (%)			Dosage (mJ/cm <sup>2</sup> )			Inlet Flow (L/s)
	Maximum	Minimum	Average	Maximum	Minimum	Average	Maximum
1	98.00	93.00	95.96	0.0	0.0	0.0	79.4
2	98.00	92.00	95.78	0.0	0.0	0.0	136.1
3	98.00	93.00	95.98	0.0	0.0	0.0	137.9
4	98.00	93.00	95.77	0.0	0.0	0.0	136.0
5	98.00	93.00	95.92	0.0	0.0	0.0	133.8
6	98.00	92.00	95.83	0.0	0.0	0.0	152.0
7	99.00	94.00	95.41	0.0	0.0	0.0	86.8
8	95.00	95.00	95.00	0.0	0.0	0.0	71.8
9	95.00	95.00	95.00	0.0	0.0	0.0	79.9
10	95.00	95.00	95.00	0.0	0.0	0.0	74.4
11	95.00	95.00	95.00	0.0	0.0	0.0	72.8
12	95.00	95.00	95.00	0.0	0.0	0.0	73.6
13	95.00	95.00	95.00	0.0	0.0	0.0	127.8
14	95.00	95.00	95.00	0.0	0.0	0.0	120.8
15	95.00	95.00	95.00	0.0	0.0	0.0	73.2
16	95.00	86.00	92.41	0.0	0.0	0.0	73.6
17	97.00	93.00	95.90	0.0	0.0	0.0	115.0
18	98.00	94.00	95.77	0.0	0.0	0.0	120.3
19	98.00	94.00	95.92	0.0	0.0	0.0	132.3
20	98.00	94.00	96.63	0.0	0.0	0.0	134.1
21	98.00	94.00	96.57	120.0	0.0	13.4	134.0
22	99.00	94.00	96.62	0.0	0.0	0.0	81.5
23	99.00	94.00	96.38	0.0	0.0	0.0	72.3
24	99.00	95.00	96.28	0.0	0.0	0.0	75.6
25	98.00	94.00	95.88	0.0	0.0	0.0	74.4
26	98.00	93.00	96.05	0.0	0.0	0.0	73.5
27	98.00	95.00	96.76	0.0	0.0	0.0	73.9
28	99.00	96.00	96.88	0.0	0.0	0.0	74.1
29	98.00	94.00	96.82	0.0	0.0	0.0	137.5
30	98.00	94.00	96.81	0.0	0.0	0.0	75.4
31	97.00	94.00	96.90	0.0	0.0	0.0	227.4
Total							
Average	97.23	93.81	95.78	3.9	0.0	0.4	104.2
Maximum	99.00		96.90	120.0		13.4	227.4
Date	7-Jul		31-Jul	21-Jul		21-Jul	31-Jul
Minimum		86.00	92.41		0.0	0.0	
Date		16-Jul	16-Jul		1-Jul	1-Jul	

Notes:

---



---

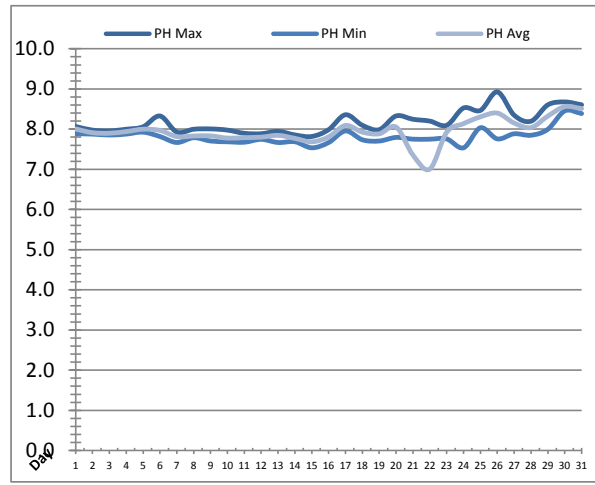
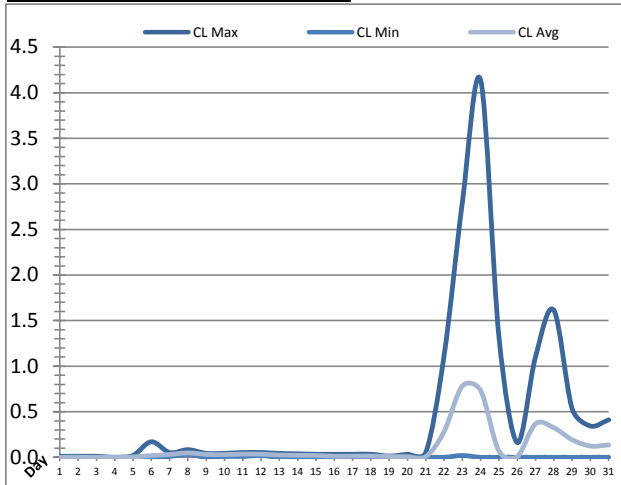


---



# Plant Quality Report

Month: July-16

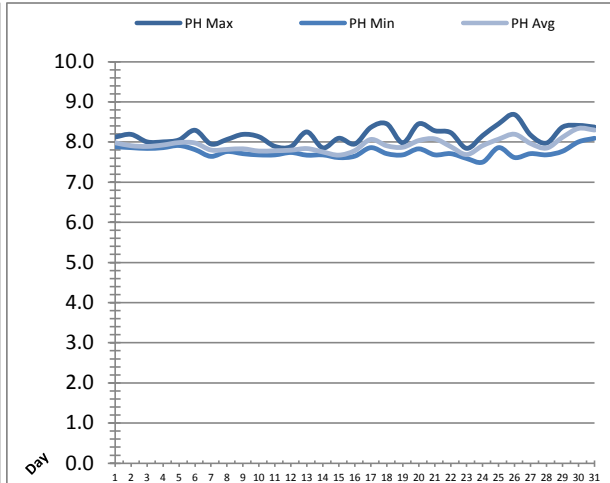
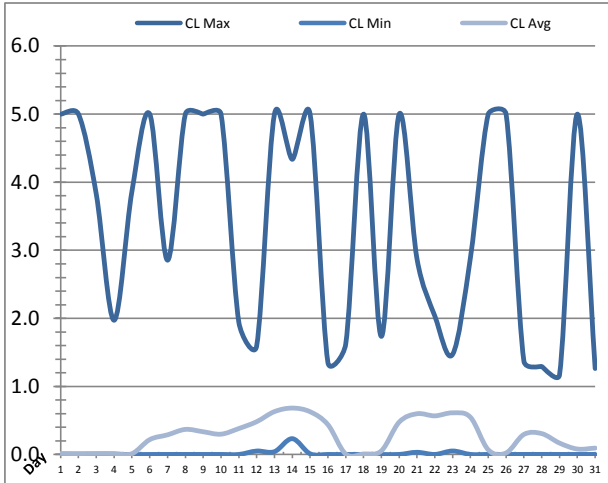


Date	Strainer Chlorine Residual			Strainer pH		
	AIT_2003_CL (ppm)			AIT_2003_PH		
	Maximum	Minimum	Average	Maximum	Minimum	Average
1	0.01	0.00	0.00	8.07	7.88	8.00
2	0.01	0.00	0.00	7.98	7.88	7.91
3	0.01	0.00	0.00	7.96	7.85	7.90
4	0.00	0.00	0.00	8.00	7.88	7.94
5	0.02	0.00	0.00	8.06	7.92	8.00
6	0.17	0.00	0.02	8.33	7.82	7.97
7	0.05	0.01	0.03	7.93	7.67	7.81
8	0.08	0.03	0.05	8.00	7.79	7.83
9	0.04	0.00	0.03	8.01	7.70	7.83
10	0.04	0.01	0.03	7.98	7.69	7.78
11	0.05	0.01	0.04	7.90	7.67	7.79
12	0.05	0.02	0.03	7.89	7.75	7.80
13	0.04	0.00	0.03	7.94	7.67	7.84
14	0.04	0.00	0.02	7.86	7.69	7.77
15	0.03	0.00	0.02	7.82	7.54	7.68
16	0.03	0.00	0.01	7.99	7.67	7.81
17	0.03	0.00	0.01	8.36	7.95	8.09
18	0.03	0.00	0.01	8.10	7.73	7.93
19	0.01	0.00	0.01	7.99	7.70	7.88
20	0.03	0.00	0.01	8.33	7.79	8.05
21	0.05	0.00	0.01	8.25	7.75	7.35
22	1.11	0.00	0.28	8.20	7.75	7.01
23	2.80	0.02	0.78	8.10	7.76	7.92
24	4.14	0.00	0.73	8.53	7.54	8.14
25	1.32	0.00	0.07	8.47	8.03	8.31
26	0.16	0.00	0.01	8.93	7.76	8.40
27	1.10	0.00	0.37	8.35	7.88	8.15
28	1.61	0.00	0.32	8.20	7.85	8.04
29	0.53	0.00	0.19	8.61	8.00	8.33
30	0.34	0.00	0.12	8.68	8.45	8.56
31	0.41	0.00	0.14	8.61	8.39	8.51
Total						
Average	0.46	0.00	0.11	8.17	7.82	7.95
Maximum	4.14		0.78	8.93		8.56
Date	24-Jul		23-Jul	26-Jul		30-Jul
Minimum		0.00	0.00		7.54	7.01
Date		1-Jul	4-Jul		15-Jul	22-Jul

Notes:

# Plant Quality Report

Month: July-16

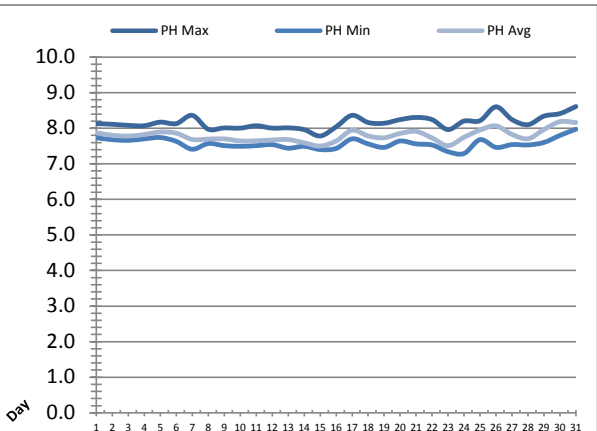
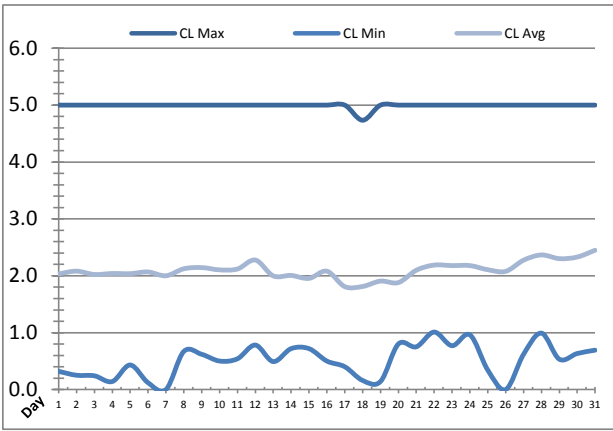


Date	Inlet UV Chlorine Residual			Inlet UV pH		
	AIT_5005_CL (ppm)			AIT_5005_PH		
	Maximum	Minimum	Average	Maximum	Minimum	Average
1	5.00	0.00	0.02	8.12	7.88	7.98
2	5.00	0.00	0.01	8.19	7.86	7.91
3	3.82	0.00	0.02	8.00	7.84	7.89
4	1.97	0.00	0.02	8.00	7.86	7.93
5	3.86	0.00	0.01	8.05	7.91	7.99
6	5.00	0.00	0.22	8.29	7.81	7.98
7	2.85	0.00	0.29	7.95	7.64	7.80
8	5.00	0.00	0.37	8.06	7.76	7.82
9	5.00	0.00	0.33	8.19	7.71	7.83
10	5.00	0.00	0.30	8.13	7.68	7.77
11	1.94	0.00	0.38	7.89	7.68	7.78
12	1.59	0.05	0.48	7.88	7.74	7.80
13	5.00	0.04	0.63	8.25	7.67	7.84
14	4.34	0.23	0.68	7.85	7.68	7.75
15	5.00	0.01	0.63	8.09	7.61	7.67
16	1.35	0.00	0.44	7.95	7.65	7.79
17	1.62	0.00	0.01	8.36	7.86	8.06
18	5.00	0.00	0.01	8.45	7.71	7.91
19	1.73	0.00	0.05	7.98	7.68	7.87
20	5.00	0.00	0.48	8.45	7.83	8.04
21	2.87	0.03	0.60	8.28	7.68	8.08
22	2.03	0.00	0.57	8.23	7.71	7.89
23	1.47	0.05	0.61	7.84	7.59	7.69
24	2.89	0.00	0.55	8.16	7.50	7.91
25	5.00	0.00	0.07	8.45	7.86	8.07
26	5.00	0.00	0.02	8.68	7.61	8.19
27	1.37	0.00	0.30	8.17	7.71	7.96
28	1.29	0.00	0.31	7.97	7.68	7.85
29	1.17	0.00	0.17	8.37	7.77	8.12
30	5.00	0.00	0.08	8.41	8.00	8.34
31	1.26	0.00	0.09	8.37	8.09	8.30
Total						
Average	3.37	0.01	0.28	8.17	7.75	7.93
Maximum	5.00		0.68	8.68		8.34
Date	1-Jul		14-Jul	26-Jul		30-Jul
Minimum		0.00			7.50	7.67
Date		5-Jul	17-Jul		24-Jul	15-Jul

Notes:

# Plant Quality Report

Month: **July-16**



Date	Discharge UV Chlorine Residual			Discharge UV pH		
	AIT_5006_CL (ppm)			AIT_5006_PH		
	Maximum	Minimum	Average	Maximum	Minimum	Average
1	5.00	0.32	2.03	8.13	7.73	7.87
2	5.00	0.25	2.08	8.11	7.68	7.80
3	5.00	0.24	2.02	8.08	7.66	7.78
4	5.00	0.14	2.04	8.07	7.70	7.82
5	5.00	0.43	2.04	8.17	7.74	7.90
6	5.00	0.12	2.07	8.13	7.63	7.86
7	5.00	0.00	2.00	8.36	7.41	7.69
8	5.00	0.67	2.12	7.97	7.57	7.69
9	5.00	0.62	2.14	8.01	7.51	7.70
10	5.00	0.50	2.10	8.00	7.49	7.64
11	5.00	0.54	2.12	8.07	7.51	7.65
12	5.00	0.78	2.28	8.00	7.54	7.67
13	5.00	0.49	2.00	8.01	7.44	7.68
14	5.00	0.72	2.01	7.96	7.49	7.59
15	5.00	0.72	1.95	7.78	7.40	7.50
16	5.00	0.50	2.08	8.04	7.43	7.64
17	5.00	0.40	1.81	8.36	7.70	7.94
18	4.73	0.16	1.81	8.16	7.56	7.79
19	5.00	0.14	1.91	8.14	7.46	7.73
20	5.00	0.80	1.88	8.24	7.64	7.85
21	5.00	0.75	2.10	8.30	7.56	7.91
22	5.00	1.01	2.19	8.24	7.53	7.73
23	5.00	0.77	2.18	7.96	7.34	7.51
24	5.00	0.96	2.18	8.20	7.29	7.75
25	5.00	0.34	2.11	8.21	7.68	7.95
26	5.00	0.00	2.08	8.60	7.46	8.07
27	5.00	0.62	2.27	8.24	7.54	7.83
28	5.00	0.99	2.37	8.10	7.53	7.71
29	5.00	0.53	2.30	8.34	7.60	7.97
30	5.00	0.63	2.33	8.41	7.80	8.19
31	5.00	0.69	2.45	8.61	7.97	8.16
Total						
Average	4.99	0.51	2.10	8.16	7.57	7.79
Maximum	5.00		2.45	8.61		8.19
Date	1-Jul		31-Jul	31-Jul		30-Jul
Minimum		0.00	1.81		7.29	7.50
Date		7-Jul	17-Jul		24-Jul	15-Jul

Notes:

---



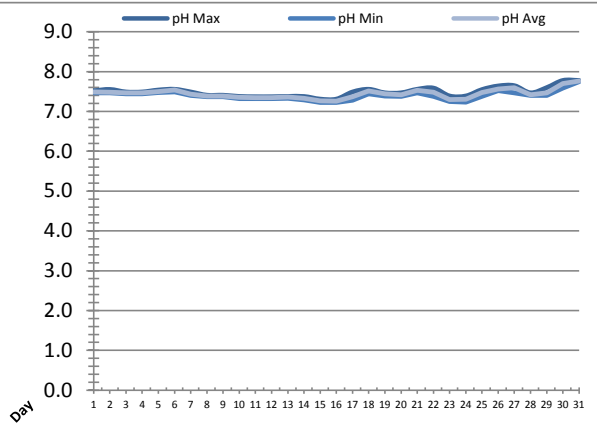
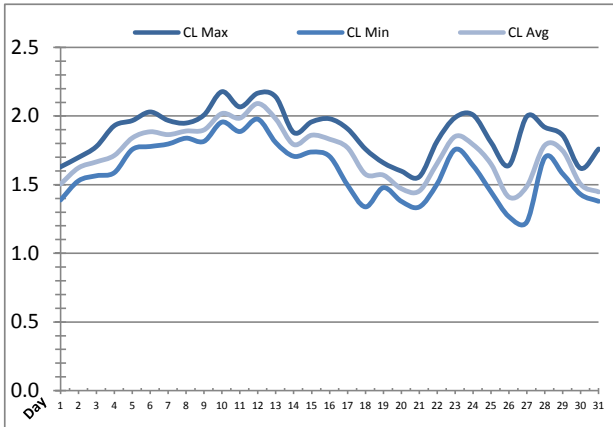
---



---

# Plant Quality Report

Month: **July-16**

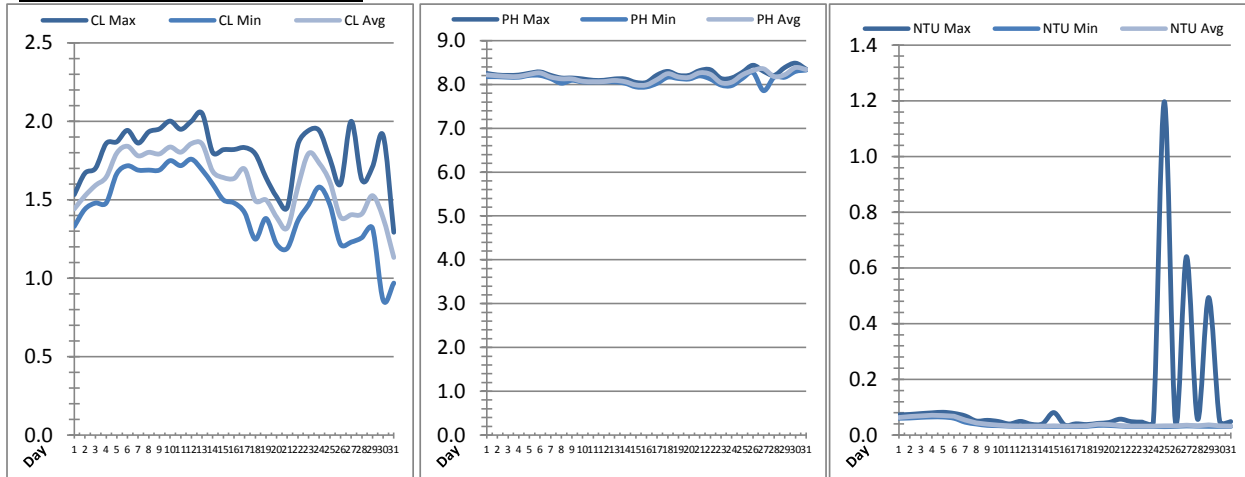


Date	Suction Header Chlorine Res.			Suction Header pH			Distribution CT Calc Total		
	AIT_7001_CL (ppm)			AIT_7001_PH (m)			REAL_CT_CALC_TOTAL (mg*ml/min)		
	Maximum	Minimum	Average	Maximum	Minimum	Average	Maximum	Minimum	Average
1	✓ 1.63	✓ 1.39	1.50	7.52	7.46	7.49	4368.92	0.00	129.26
2	✓ 1.70	✓ 1.53	1.62	7.55	7.46	7.48	2858.05	0.00	103.33
3	✓ 1.78	✓ 1.57	1.67	7.49	7.45	7.47	5530.58	0.00	119.75
4	✓ 1.93	✓ 1.59	1.71	7.49	7.45	7.46	1942.08	0.00	122.30
5	✓ 1.97	✓ 1.76	1.84	7.54	7.48	7.50	12814.34	0.00	176.35
6	✓ 2.03	✓ 1.78	1.89	7.56	7.49	7.54	10393.04	0.00	193.19
7	✓ 1.97	✓ 1.80	1.86	7.49	7.40	7.44	5257.78	0.00	159.63
8	✓ 1.95	✓ 1.84	1.89	7.41	7.37	7.39	1987.00	0.00	114.43
9	✓ 2.01	✓ 1.82	1.90	7.41	7.37	7.38	2031.29	0.00	131.82
10	✓ 2.18	✓ 1.96	2.02	7.38	7.33	7.35	2218.33	0.00	169.02
11	✓ 2.07	✓ 1.89	1.98	7.37	7.33	7.34	10163.83	0.00	173.62
12	✓ 2.17	✓ 1.98	2.09	7.37	7.33	7.34	12689.60	0.00	151.76
13	✓ 2.14	✓ 1.81	1.98	7.38	7.33	7.36	3044.68	0.00	131.43
14	✓ 1.88	✓ 1.71	1.79	7.38	7.29	7.33	7348.86	0.00	163.96
15	✓ 1.96	✓ 1.74	1.86	7.31	7.22	7.27	13151.02	0.00	153.19
16	✓ 1.98	✓ 1.71	1.83	7.31	7.22	7.26	10840.47	0.00	129.96
17	✓ 1.91	✓ 1.50	1.77	7.49	7.28	7.37	1439.76	0.00	200.44
18	✓ 1.76	✓ 1.34	1.58	7.56	7.45	7.51	1267.55	0.00	122.02
19	✓ 1.66	✓ 1.48	1.57	7.47	7.39	7.44	1237.00	0.00	238.20
20	✓ 1.60	✓ 1.38	1.47	7.47	7.37	7.42	1487.57	0.00	184.28
21	✓ 1.56	✓ 1.34	1.45	7.56	7.46	7.53	10120.16	0.00	434.16
22	✓ 1.82	✓ 1.51	1.66	7.59	7.38	7.48	10860.17	0.00	447.33
23	✓ 1.99	✓ 1.76	1.85	7.39	7.25	7.30	11261.98	0.00	467.68
24	✓ 2.01	✓ 1.64	1.79	7.39	7.24	7.30	11687.44	0.00	539.51
25	✓ 1.81	✓ 1.45	1.65	7.55	7.38	7.47	11251.67	0.00	371.98
26	✓ 1.64	✓ 1.27	1.41	7.64	7.52	7.57	9779.13	0.00	335.11
27	✓ 2.00	✓ 1.23	1.49	7.65	7.47	7.59	10432.51	0.00	334.36
28	✓ 1.92	✓ 1.70	1.79	7.47	7.40	7.42	12834.63	0.00	595.42
29	✓ 1.86	✓ 1.58	1.75	7.60	7.40	7.47	11568.47	0.00	343.76
30	✓ 1.62	✓ 1.43	1.50	7.78	7.58	7.70	10035.34	0.00	281.15
31	✓ 1.76	✓ 1.38	1.45	7.78	7.75	7.76	8602.58	0.00	211.91
Total									
Average	1.88	1.61	1.73	7.49	7.40	7.44			
Maximum	2.18		2.09	7.78		7.76			
Date	10-Jul		12-Jul	31-Jul		31-Jul			
Minimum		1.23	1.41		7.22	7.26			
Date		27-Jul	26-Jul		16-Jul	16-Jul			

Notes:

# Plant Quality Report

Month: July-16

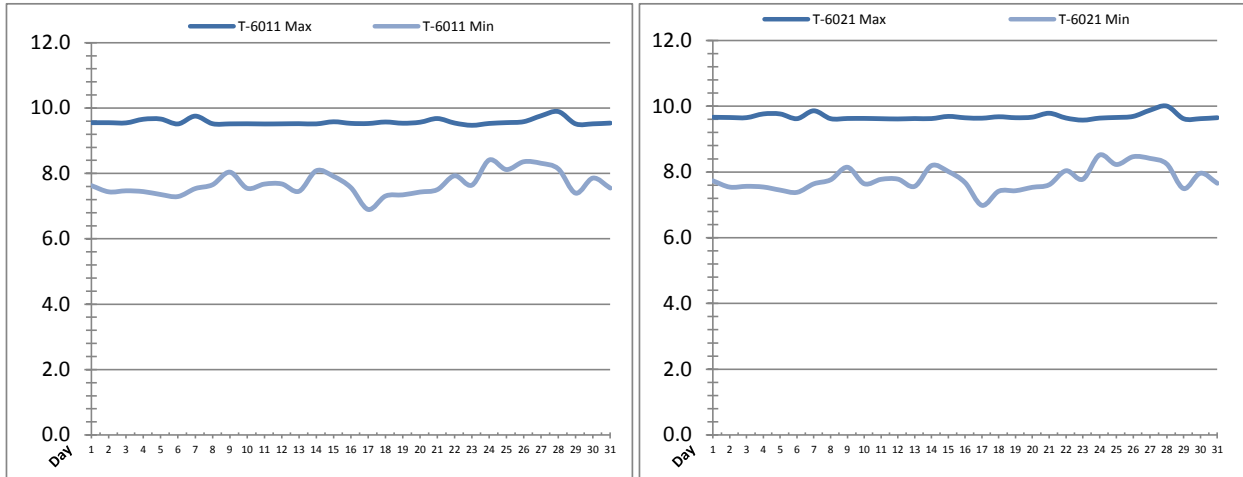


Date	Distribution Chlorine Header			Distribution pH			Distribution Turbidity		
	AIT_7004_CL (ppm)			AIT_7004_PH (mg/L)			AIT_7003 (mg/L)		
	Maximum	Minimum	Average	Maximum	Minimum	Average	Maximum	Minimum	Average
1	1.53	1.33	1.44	8.25	8.18	8.22	0.07	0.06	0.06
2	1.67	1.44	1.52	8.22	8.18	8.20	0.07	0.06	0.07
3	1.70	1.48	1.59	8.21	8.17	8.18	0.08	0.06	0.07
4	1.86	1.48	1.64	8.21	8.16	8.18	0.08	0.07	0.07
5	1.87	1.67	1.80	8.26	8.21	8.23	0.08	0.06	0.07
6	1.94	1.72	1.84	8.29	8.21	8.26	0.08	0.06	0.07
7	1.86	1.69	1.78	8.21	8.14	8.17	0.07	0.05	0.05
8	1.93	1.69	1.80	8.15	8.03	8.13	0.05	0.04	0.04
9	1.95	1.69	1.79	8.15	8.09	8.13	0.05	0.03	0.04
10	2.00	1.75	1.84	8.13	8.06	8.07	0.05	0.03	0.04
11	1.95	1.72	1.80	8.09	8.06	8.06	0.04	0.03	0.03
12	2.00	1.76	1.86	8.10	8.06	8.07	0.05	0.03	0.03
13	2.05	1.69	1.86	8.13	8.06	8.09	0.04	0.03	0.03
14	1.80	1.60	1.68	8.12	8.03	8.06	0.04	0.03	0.03
15	1.82	1.50	1.64	8.05	7.94	7.99	0.08	0.03	0.03
16	1.82	1.48	1.64	8.05	7.94	7.99	0.04	0.03	0.03
17	1.83	1.42	1.70	8.22	8.03	8.11	0.04	0.03	0.03
18	1.79	1.25	1.49	8.30	8.17	8.25	0.04	0.03	0.03
19	1.64	1.38	1.50	8.21	8.14	8.17	0.04	0.03	0.04
20	1.52	1.22	1.39	8.21	8.12	8.16	0.05	0.03	0.04
21	1.45	1.19	1.32	8.32	8.20	8.27	0.06	0.03	0.03
22	1.85	1.37	1.58	8.34	8.12	8.23	0.05	0.03	0.03
23	1.94	1.47	1.79	8.14	7.99	8.04	0.05	0.03	0.03
24	1.94	1.58	1.73	8.15	7.97	8.05	0.05	0.03	0.03
25	1.76	1.47	1.61	8.28	8.14	8.22	1.20	0.03	0.03
26	1.60	1.22	1.39	8.44	8.27	8.32	0.05	0.03	0.03
27	2.00	1.23	1.40	8.30	7.86	8.36	0.64	0.03	0.04
28	1.63	1.26	1.41	8.21	8.17	8.18	0.06	0.03	0.03
29	1.71	1.32	1.53	8.39	8.17	8.22	0.49	0.03	0.04
30	1.91	0.86	1.38	8.49	8.30	8.38	0.05	0.03	0.03
31	1.29	0.97	1.13	8.35	8.33	8.34	0.05	0.03	0.03
Total									
Average	1.79	1.45	1.61	8.22	8.11	8.17	0.1	0.0	0.0
Maximum	2.05		1.86	8.49		8.38	1.2		0.1
Date	13-Jul		12-Jul	30-Jul		30-Jul	25-Jul		4-Jul
Minimum		0.86	1.13		7.86	7.99		0.0	0.0
Date		30-Jul	31-Jul		27-Jul	15-Jul		25-Jul	17-Jul

Notes:

# Raw Well/Treated Storage Report

Month: July-16



Date	Treated Water Storage Tank					
	T-6011 (m)			T-6021 (m)		
	Maximum	Minimum	Average	Maximum	Minimum	Average
1	9.6	7.6	8.6	9.7	7.7	8.8
2	9.6	7.4	8.6	9.7	7.5	8.7
3	9.5	7.5	8.8	9.7	7.6	8.9
4	9.7	7.4	8.9	9.8	7.5	9.0
5	9.7	7.4	8.6	9.8	7.4	8.7
6	9.5	7.3	8.5	9.6	7.4	8.6
7	9.8	7.5	8.9	9.9	7.6	9.0
8	9.5	7.7	8.8	9.6	7.8	8.9
9	9.5	8.0	9.0	9.6	8.1	9.1
10	9.5	7.5	8.7	9.6	7.6	8.8
11	9.5	7.7	8.5	9.6	7.8	8.7
12	9.5	7.7	8.6	9.6	7.8	8.7
13	9.5	7.5	8.5	9.6	7.6	8.7
14	9.5	8.1	8.9	9.6	8.2	9.0
15	9.6	7.9	8.8	9.7	8.0	8.9
16	9.5	7.6	8.4	9.6	7.7	8.5
17	9.5	6.9	8.1	9.6	7.0	8.2
18	9.6	7.3	8.6	9.7	7.4	8.7
19	9.5	7.3	8.3	9.7	7.4	8.4
20	9.6	7.4	8.8	9.7	7.5	8.9
21	9.7	7.5	8.7	9.8	7.6	8.8
22	9.5	7.9	8.7	9.6	8.0	8.9
23	9.5	7.6	8.5	9.6	7.8	8.6
24	9.5	8.4	9.0	9.6	8.5	9.1
25	9.6	8.1	8.6	9.7	8.2	8.8
26	9.6	8.4	9.0	9.7	8.5	9.1
27	9.8	8.3	8.9	9.9	8.4	9.0
28	9.9	8.1	8.8	10.0	8.2	8.9
29	9.5	7.4	8.8	9.6	7.5	8.9
30	9.5	7.9	8.8	9.6	8.0	8.9
31	9.5	7.6	8.6	9.7	7.7	8.7
Total						
Average	9.6	7.7	8.7	9.7	7.8	8.8
Maximum	9.9		9.0	10.0		9.1
Date	28-Jul		26-Jul	28-Jul		26-Jul
Minimum		6.9	8.1		7.0	8.2
Date		17-Jul	17-Jul		17-Jul	17-Jul

Notes:

---



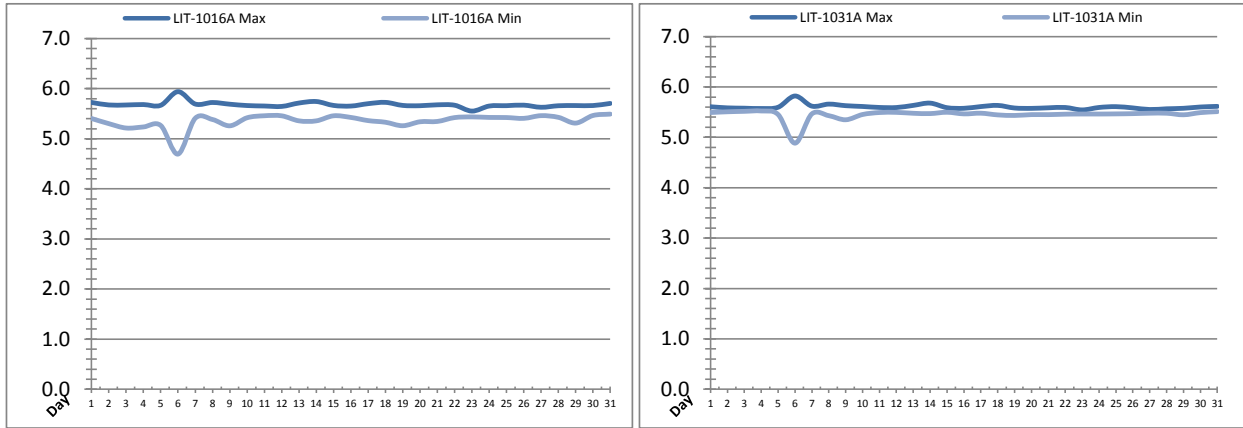
---



---

# Raw Well/Treated Storage Report

Month: July-16



Date	Low Lift Intake Levels					
	Wet Well #1 (LIT-1016A) (m)			Wet Well #2 (LIT-1031A) (m)		
	Maximum	Minimum	Average	Maximum	Minimum	Average
1	5.7	5.4	5.5	5.6	5.5	5.6
2	5.7	5.3	5.5	5.6	5.5	5.5
3	5.7	5.2	5.5	5.6	5.5	5.6
4	5.7	5.2	5.5	5.6	5.5	5.5
5	5.7	5.3	5.5	5.6	5.5	5.5
6	5.9	4.7	5.5	5.8	4.9	5.5
7	5.7	5.4	5.5	5.6	5.5	5.5
8	5.7	5.4	5.5	5.7	5.4	5.5
9	5.7	5.3	5.5	5.6	5.3	5.5
10	5.7	5.4	5.5	5.6	5.5	5.5
11	5.7	5.5	5.5	5.6	5.5	5.5
12	5.6	5.5	5.5	5.6	5.5	5.5
13	5.7	5.4	5.5	5.6	5.5	5.5
14	5.7	5.4	5.6	5.7	5.5	5.6
15	5.7	5.5	5.5	5.6	5.5	5.5
16	5.7	5.4	5.5	5.6	5.5	5.5
17	5.7	5.4	5.5	5.6	5.5	5.5
18	5.7	5.3	5.5	5.6	5.4	5.5
19	5.7	5.3	5.5	5.6	5.4	5.5
20	5.7	5.3	5.5	5.6	5.5	5.5
21	5.7	5.3	5.5	5.6	5.5	5.5
22	5.7	5.4	5.5	5.6	5.5	5.5
23	5.6	5.4	5.5	5.5	5.5	5.5
24	5.7	5.4	5.5	5.6	5.5	5.5
25	5.7	5.4	5.5	5.6	5.5	5.5
26	5.7	5.4	5.5	5.6	5.5	5.5
27	5.6	5.5	5.5	5.6	5.5	5.5
28	5.7	5.4	5.5	5.6	5.5	5.5
29	5.7	5.3	5.5	5.6	5.4	5.5
30	5.7	5.5	5.5	5.6	5.5	5.5
31	5.7	5.5	5.6	5.6	5.5	5.5
Total						
Average	5.7	5.4	5.5	5.6	5.5	5.5
Maximum	5.9		5.6	5.8		5.6
Date	6-Jul		31-Jul	6-Jul		1-Jul
Minimum		4.7	5.5		4.9	5.5
Date		6-Jul	4-Jul		6-Jul	6-Jul

Notes:

---



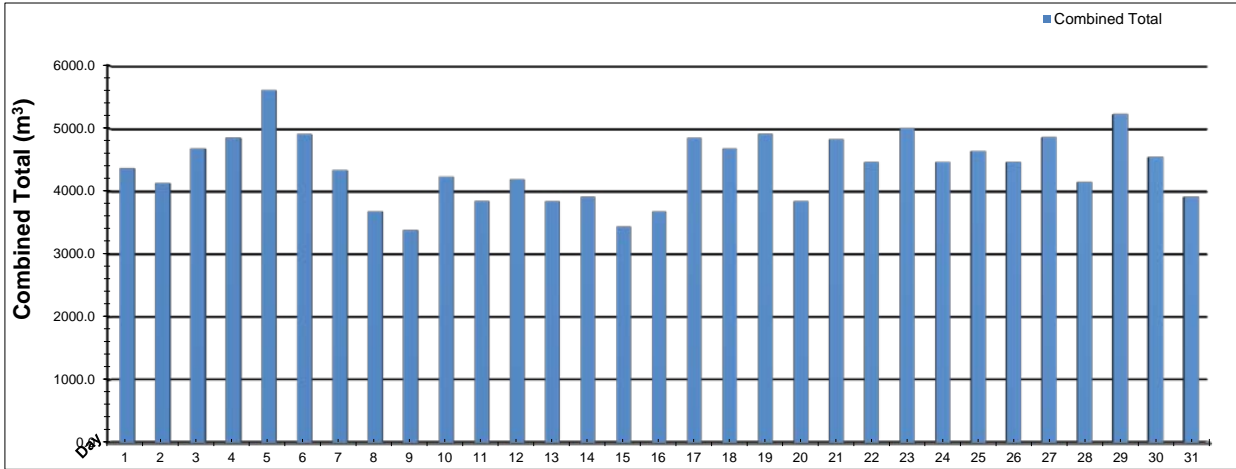
---



---

# High Lift Monthly Report

Month: July-16



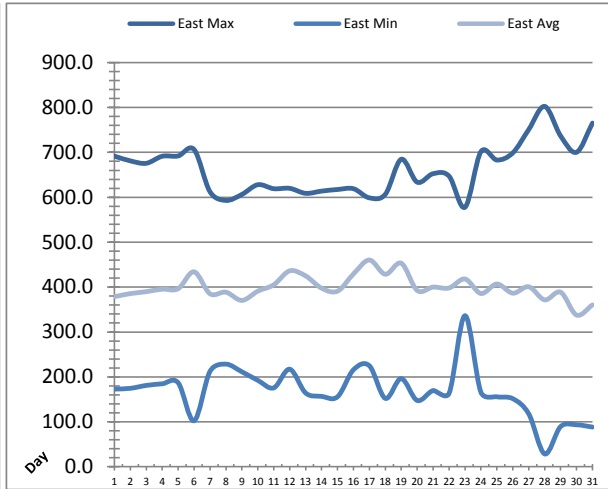
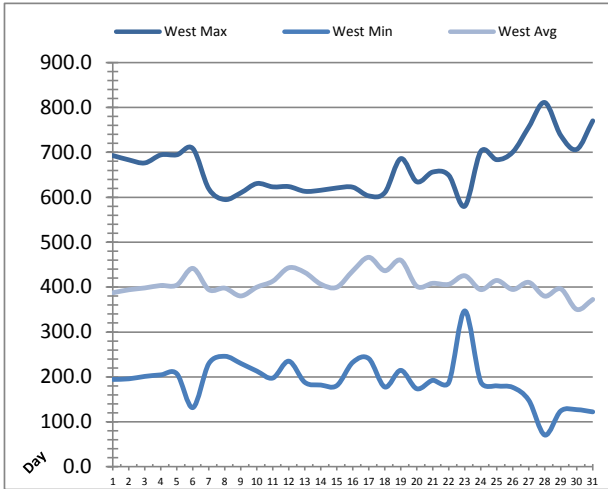
Date	Distribution Flow					
	FIT_7052 (East)		FIT_7062 (West)		Combined	
	(m³)	(L/s)	(m³)	(L/s)	(m³)	(L/s)
	Total	Peak	Total	Peak	Total	Peak
1	4288.8	148.2	81.8	74.9	4370.6	148.2
2	3300.2	149.2	831.5	125.3	4131.8	149.2
3	3901.6	150.4	782.4	125.4	4684.0	150.4
4	4706.1	151.4	150.2	99.0	4856.3	151.4
5	5613.5	149.1	0.6	0.0	5614.1	149.1
6	4649.7	147.7	263.4	140.1	4913.1	147.7
7	4340.6	141.4	0.0	0.0	4340.6	141.4
8	3685.9	141.0	0.0	0.0	3685.9	141.0
9	3389.3	143.8	0.0	0.0	3389.3	143.8
10	4235.0	141.4	0.0	0.0	4235.0	141.4
11	3847.3	139.1	0.0	0.0	3847.3	139.1
12	4191.4	138.2	0.0	0.0	4191.4	138.2
13	3842.7	137.8	0.0	0.0	3842.7	137.8
14	3922.2	144.7	0.0	0.0	3922.2	144.7
15	2776.3	135.5	665.8	84.5	3442.2	135.5
16	3326.2	134.6	360.7	82.6	3686.9	135.7
17	3956.0	134.0	896.6	97.3	4852.6	136.1
18	4633.3	135.8	47.8	47.1	4681.1	138.7
19	4722.0	133.6	194.2	79.3	4916.2	135.7
20	1455.6	132.6	2390.2	105.7	3845.7	135.0
21	705.1	51.1	4123.9	87.1	4829.0	90.5
22	1002.5	46.0	3462.8	81.6	4465.3	90.3
23	1084.6	46.2	3928.0	82.5	5012.6	87.9
24	883.6	45.8	3585.3	84.5	4468.8	90.0
25	941.7	46.0	3700.8	113.1	4642.6	149.7
26	530.1	33.5	3935.6	87.2	4465.7	89.2
27	937.2	46.1	3926.4	87.7	4863.6	101.3
28	1144.2	47.6	3010.0	115.4	4154.2	153.0
29	1011.2	42.9	4218.2	120.5	5229.4	160.1
30	1102.4	42.5	3449.1	97.4	4551.5	104.4
31	678.7	49.6	3239.2	96.3	3917.9	100.7
<b>Total</b>	<b>88805.1</b>		<b>47244.6</b>		<b>136049.7</b>	
<b>Average</b>	<b>2864.7</b>	<b>107.3</b>	<b>1524.0</b>	<b>68.2</b>	<b>4388.7</b>	<b>130.9</b>
<b>Maximum</b>	<b>5613.5</b>	<b>151.4</b>	<b>4218.2</b>	<b>140.1</b>	<b>5614.1</b>	<b>160.1</b>
<b>Date</b>	<b>5-Jul</b>	<b>4-Jul</b>	<b>29-Jul</b>	<b>6-Jul</b>	<b>5-Jul</b>	<b>29-Jul</b>
<b>Minimum</b>	<b>530.1</b>		<b>0.0</b>		<b>3389.3</b>	
<b>Date</b>	<b>26-Jul</b>		<b>13-Jul</b>		<b>9-Jul</b>	

Notes:



# Low Lift Monthly Report

Month: July-16

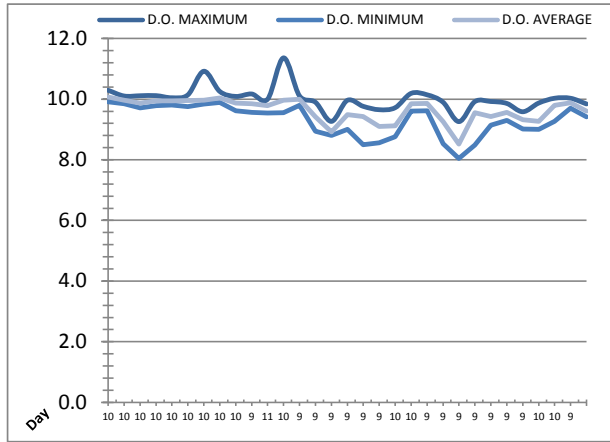
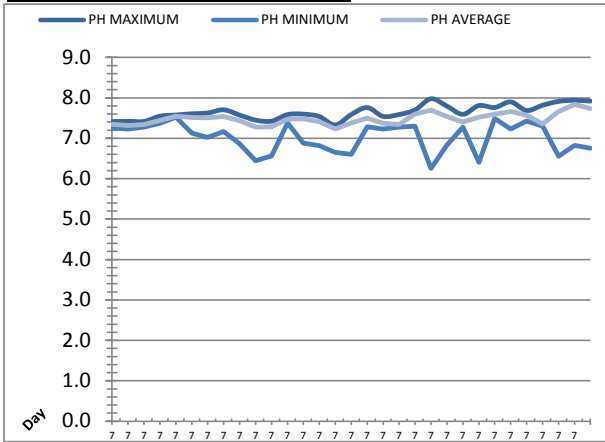


Date	West Train Header Pressure PIT_1018 (kPa)			East Train Header Pressure PIT_1028 (kPa)		
	Maximum	Minimum	Average	Maximum	Minimum	Average
1	692.9	194.4	387.4	691.6	172.9	378.7
2	683.3	195.8	394.1	681.1	174.6	385.5
3	676.5	201.2	398.1	675.7	181.1	389.8
4	694.4	204.6	403.6	691.3	184.7	395.4
5	694.6	207.0	404.6	692.0	187.1	396.4
6	708.5	131.7	441.7	706.4	102.4	434.1
7	618.7	229.8	394.2	612.2	212.4	385.1
8	594.9	245.9	397.7	592.9	228.5	388.7
9	609.9	230.1	380.3	606.3	211.4	370.4
10	630.6	213.0	399.8	628.0	192.4	391.0
11	623.1	197.6	413.2	619.1	175.6	405.2
12	623.8	235.1	443.0	619.9	217.3	436.2
13	613.3	188.0	432.7	608.8	164.3	424.9
14	615.7	182.0	406.5	613.7	156.8	397.6
15	620.7	180.7	399.7	617.3	155.7	390.9
16	622.4	232.6	436.1	619.1	215.9	429.3
17	603.1	240.8	466.3	598.7	224.9	460.3
18	610.4	177.6	436.5	606.6	152.2	428.6
19	686.1	214.7	459.9	684.6	196.3	453.2
20	634.5	173.7	401.9	633.6	147.6	392.5
21	656.3	192.6	408.5	652.6	169.6	400.0
22	648.9	187.6	406.3	647.0	163.5	398.0
23	580.2	347.1	425.2	577.8	336.4	418.0
24	702.1	188.9	394.4	701.7	165.7	385.7
25	683.7	180.1	414.8	682.9	155.8	406.9
26	700.6	176.7	394.7	698.9	151.6	386.5
27	756.5	148.1	410.6	751.0	117.8	400.8
28	811.0	70.6	379.8	802.4	28.5	371.5
29	737.6	124.2	396.1	736.6	89.5	388.7
30	706.7	127.1	350.3	700.3	93.4	337.7
31	770.2	122.2	372.5	765.3	88.4	360.5
Total						
Average	664.9	191.7	408.1	661.8	168.2	399.6
Maximum	811.0		466.3	802.4		460.3
Date	28-Jul		17-Jul	28-Jul		17-Jul
Minimum		70.6	350.3		28.5	337.7
Date		28-Jul	30-Jul		28-Jul	30-Jul

Notes:

# Low Lift Monthly Report

Month: **July-16**



Date	Raw Water Sample Line					
	AIT_1402_PH (pH)			AIT_1402_DO (mg/L)		
	Maximum	Minimum	Average	Maximum	Minimum	Average
1	7.4	7.3	7.3	10.3	9.9	10.1
2	7.4	7.2	7.3	10.1	9.8	10.0
3	7.4	7.3	7.3	10.1	9.7	9.9
4	7.5	7.4	7.4	10.1	9.8	9.9
5	7.6	7.5	7.5	10.0	9.8	9.9
6	7.6	7.1	7.5	10.1	9.8	10.0
7	7.6	7.0	7.5	10.9	9.8	10.0
8	7.7	7.2	7.5	10.3	9.9	10.0
9	7.6	6.9	7.4	10.1	9.6	9.9
10	7.4	6.4	7.3	10.2	9.6	9.9
11	7.4	6.6	7.3	10.0	9.5	9.8
12	7.6	7.4	7.5	11.4	9.6	10.0
13	7.6	6.9	7.5	10.1	9.8	10.0
14	7.5	6.8	7.4	9.9	8.9	9.4
15	7.3	6.6	7.2	9.3	8.8	8.9
16	7.6	6.6	7.4	10.0	9.0	9.5
17	7.8	7.3	7.5	9.8	8.5	9.4
18	7.5	7.2	7.4	9.7	8.6	9.1
19	7.6	7.3	7.3	9.7	8.8	9.1
20	7.7	7.3	7.6	10.2	9.6	9.9
21	8.0	6.3	7.7	10.1	9.6	9.9
22	7.8	6.8	7.5	9.9	8.5	9.3
23	7.6	7.3	7.4	9.3	8.0	8.5
24	7.8	6.4	7.5	9.9	8.5	9.6
25	7.8	7.5	7.6	9.9	9.1	9.4
26	7.9	7.2	7.7	9.9	9.3	9.6
27	7.7	7.4	7.6	9.6	9.0	9.3
28	7.8	7.3	7.4	9.9	9.0	9.3
29	7.9	6.6	7.7	10.0	9.3	9.8
30	7.9	6.8	7.8	10.0	9.7	9.9
31	7.9	6.8	7.7	9.8	9.4	9.6
Total						
Average	7.6	7.0	7.5	10.0	9.3	9.6
Maximum	8.0		7.8	11.4		10.1
Date	21-Jul		30-Jul	12-Jul		1-Jul
Minimum		6.3	7.2		8.0	8.5
Date		21-Jul	15-Jul		23-Jul	23-Jul

Notes:

---



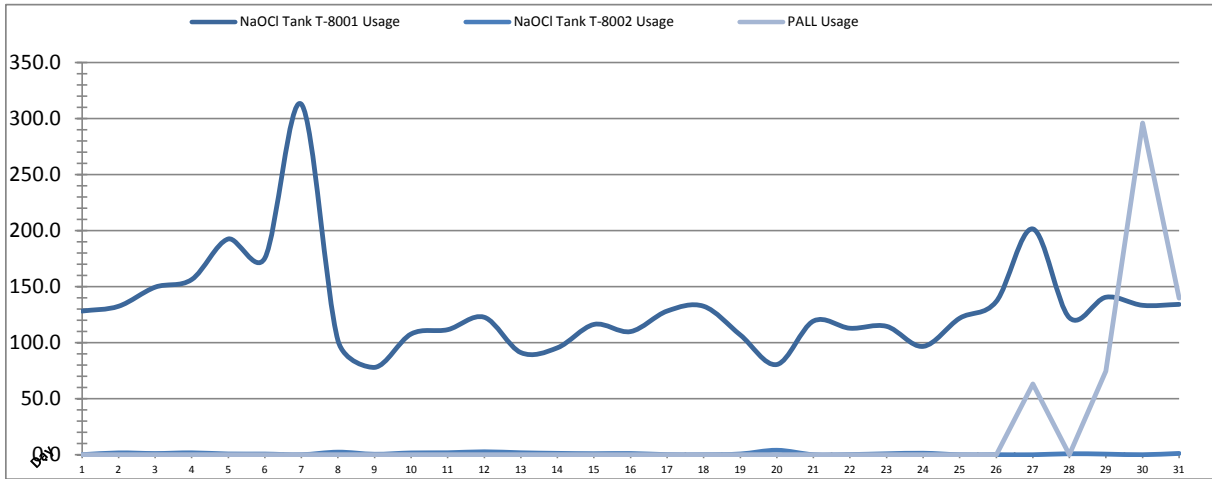
---



---

# Chemical Usage Monthly Report

Month: July-16

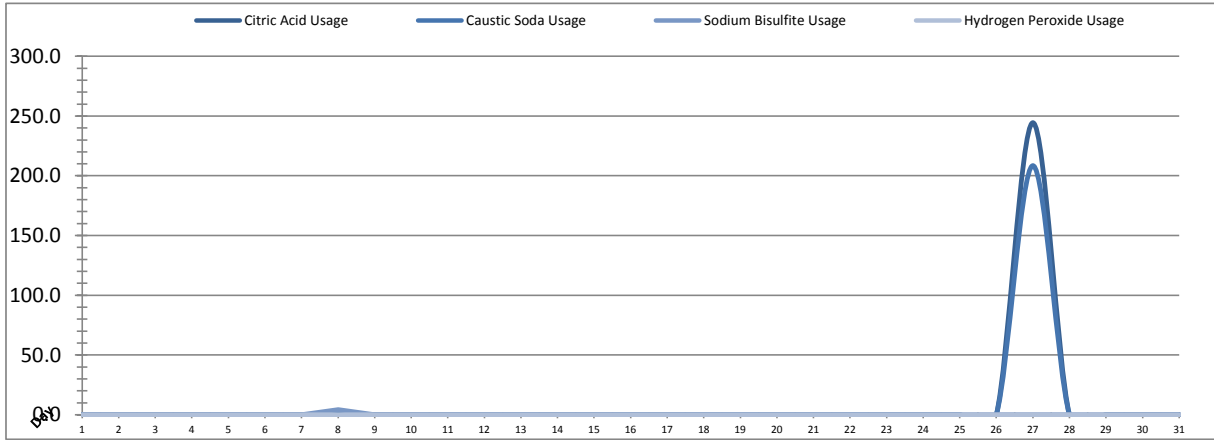


Date	PALL Usage	NaOCl Tank T-8001	NaOCl Tank T-8002
	PALL_HYPO_USAGE (L) Usage	LIT_8002 (Storage) (L) Usage	LIT_8004 (Day) (L) Usage
1	0.0	128.2	0.1
2	0.0	132.4	1.7
3	0.0	149.5	1.1
4	0.0	156.3	1.7
5	0.0	192.5	0.7
6	0.0	175.5	0.6
7	0.0	312.6	0.0
8	0.0	101.8	2.3
9	0.0	77.9	0.4
10	0.0	107.7	1.6
11	0.0	111.6	1.8
12	0.0	122.7	2.6
13	0.0	91.1	1.8
14	0.00	95.40	1.2
15	0.0	116.3	1.0
16	0.0	109.9	1.1
17	0.0	128.2	0.1
18	0.0	132.4	0.0
19	0.0	106.9	0.7
20	0.0	80.5	4.0
21	0.0	119.2	0.1
22	0.0	112.9	0.2
23	0.0	114.6	0.9
24	0.0	96.7	1.4
25	0.0	121.8	0.0
26	0.0	136.7	0.0
27	63.2	201.4	0.0
28	0.1	122.2	0.9
29	74.6	140.5	0.6
30	296.0	133.3	0.0
31	139.6	134.2	1.2
Total	573.6	4062.9	29.8
Average	18.5	131.1	1.0
Maximum	296.0	312.6	4.0
Date	30-Jul	7-Jul	20-Jul
Minimum	0.0	77.9	0.0
Date	1-Jul	9-Jul	25-Jul

Notes:	
Dosage (mg/L)=	Day Tank (L) x %conc. x 1000
	Membrane Flow (m3)
	Chlorine Concentration: 12.0%

# Chemical Usage Monthly Report

Month: July-16



Date	Citric Acid	Caustic Soda	Sodium Bisulfite	Hydrogen Peroxide		Membrane Flow (m <sup>3</sup> )
	TAGNAME (L) Usage	TAGNAME (L) Usage	TAGNAME (L) Usage	TAGNAME (L) Usage	TAGNAME (mg/L) Dose	
1	0.0	0.0	0.0	0.0	0.0	4428.613
2	0.0	0.0	0.0	0.0	0.0	4618.900
3	0.0	0.0	0.0	0.0	0.0	5279.044
4	0.0	0.0	0.0	0.0	0.0	5503.666
5	0.0	0.0	0.0	0.0	0.0	5646.000
6	0.0	0.0	0.0	0.0	0.0	6260.630
7	0.0	0.0	0.0	0.0	0.0	4062.962
8	0.0	1.1	4.4	0.0	0.0	4416.821
9	0.0	0.0	0.0	0.0	0.0	3738.968
10	0.0	0.0	0.0	0.0	0.0	4342.664
11	0.0	0.0	0.0	0.0	0.0	4359.291
12	0.0	0.0	0.0	0.0	0.0	4615.728
13	0.0	0.0	0.0	0.0	0.0	4500.868
14	0.0	0.0	0.0	0.0	0.0	4010.657
15	0.0	0.0	0.0	0.0	0.0	4016.284
16	0.0	0.0	0.0	0.0	0.0	4380.760
17	0.0	0.0	0.0	0.0	0.0	4826.161
18	0.0	0.0	0.0	0.0	0.0	4306.927
19	0.0	0.0	0.0	0.0	0.0	5112.993
20	0.0	0.0	0.0	0.0	0.0	4461.383
21	0.0	0.0	0.0	0.0	0.0	5416.830
22	0.0	0.0	0.0	0.0	0.0	4946.264
23	0.0	0.0	0.0	0.0	0.0	5898.338
24	0.0	0.0	0.0	0.0	0.0	4537.235
25	0.0	0.0	0.0	0.0	0.0	5122.050
26	0.0	0.0	0.0	0.0	0.0	4628.817
27	244.4	208.5	0.0	0.0	0.0	5410.162
28	0.0	0.0	0.0	0.0	0.0	4667.574
29	0.0	0.0	0.0	0.0	0.0	5863.903
30	0.0	0.0	0.0	0.0	0.0	4575.117
31	0.0	0.0	0.0	0.0	0.0	5146.523
Total	244.4	209.6	4.4	0.0	0.0	149102.1
Average	7.9	6.8	0.1	0.0	0.0	4809.7
Maximum	244.4	208.5	4.4	0.0	0.0	6260.6
Date	27-Jul	27-Jul	8-Jul	1-Jul	1-Jul	6-Jul
Minimum	0.0	0.0	0.0	0.0	0.0	3739.0
Date	1-Jul	1-Jul	1-Jul	1-Jul	1-Jul	9-Jul

Notes:	
Dosage (mg/L)=	Day Tank (L) x %conc. x 1000
	Membrane Flow (m3)
Peroxide Concentration:	50.0%

# Runtimes Report

Month: July-16

Date	Daily Gen-Set Runtimes		Daily UV Runtimes		Daily PALL Runtimes				
	LLPS	WTP	UV #1	UV #2	Air Compressor #1	Air Compressor #2	CIP Neutralization	CIP Drain	CIP Recirc
	(Hrs)	(Hrs)	(Hrs)	(Hrs)	(Hrs)	(Hrs)	(Hrs)	(Hrs)	(Hrs)
1	0.0	0.0	0.0	0.0	23.8	0.2	0.0	0.0	0.0
2	0.0	0.0	0.0	0.0	0.3	23.4	0.0	0.0	0.0
3	0.0	0.0	0.0	0.0	0.0	23.9	0.0	0.0	0.0
4	0.0	0.0	0.0	0.0	0.0	23.9	0.0	0.0	0.0
5	0.0	0.0	0.0	0.0	0.0	23.9	0.0	0.0	0.0
6	0.0	0.0	0.0	0.0	0.0	23.9	0.0	0.0	0.0
7	0.0	0.0	0.0	0.0	0.0	23.8	0.0	0.0	0.0
8	0.0	0.0	0.0	0.0	0.0	22.9	0.6	0.2	4.0
9	0.0	0.0	0.0	0.0	0.0	23.9	0.0	0.0	0.0
10	0.0	0.0	0.0	0.0	0.0	23.9	0.0	0.0	0.0
11	0.0	0.0	0.0	0.0	0.0	23.9	0.0	0.0	0.0
12	0.0	0.0	0.0	0.0	0.0	23.9	0.0	0.0	0.0
13	0.0	0.0	0.0	0.0	0.0	23.9	0.0	0.0	0.0
14	0.0	0.0	0.0	0.0	0.0	23.9	0.0	0.0	0.0
15	0.0	0.0	0.0	0.0	0.0	23.9	0.0	0.0	0.0
16	0.1	0.0	0.0	0.0	0.0	23.8	0.0	0.0	0.0
17	0.0	0.0	0.0	0.0	0.0	23.9	0.0	0.0	0.0
18	0.0	0.0	0.0	0.0	0.0	23.9	0.0	0.0	0.0
19	0.0	0.0	0.0	0.0	0.0	22.5	0.0	0.0	0.0
20	0.0	0.0	0.0	0.0	0.0	23.9	0.2	0.2	2.0
21	0.0	0.0	0.0	3.5	0.0	23.9	0.0	0.0	0.0
22	0.0	0.0	0.0	0.0	0.0	23.9	1.3	0.1	2.2
23	0.0	0.0	0.0	0.0	0.0	23.9	0.0	0.0	0.0
24	0.0	0.0	0.0	0.0	0.0	23.9	0.0	0.0	0.0
25	0.0	0.0	0.0	0.0	0.0	23.8	0.0	0.0	0.0
26	0.0	0.0	0.0	0.0	0.0	23.9	0.0	0.0	0.0
27	0.0	0.0	0.0	0.0	0.0	23.9	0.0	0.0	0.1
28	1.6	0.0	0.0	0.0	0.0	23.9	0.0	0.0	0.0
29	0.0	0.0	0.0	0.0	0.0	23.9	0.5	0.0	0.0
30	0.0	0.0	0.0	0.0	0.0	23.9	0.0	0.0	0.0
31	0.0	0.0	0.0	0.0	0.0	23.9	0.0	0.0	0.0
Total	1.7	0.0	0.0	3.5	24.1	714.2	2.6	0.5	8.3

Notes:

# Runtimes Report

Month: July-16

## Daily

Date	PALL Runtimes						Process Drain	
	RFR Pump #1 (Hrs)	RFR Pump #2 (Hrs)	RF Pump #1 (Hrs)	RF Pump #2 (Hrs)	XR Pump #1 (Hrs)	XR Pump #2 (Hrs)	PDP9010 Pump (Hrs)	PDP9020 Pump (Hrs)
1	0.0	0.0	1.1	0.9	8.3	9.0	1.4	1.8
2	0.0	0.0	1.0	1.1	8.6	8.1	1.5	2.0
3	0.0	0.0	1.2	1.2	8.7	9.6	1.3	1.7
4	0.0	0.0	1.1	1.2	9.6	8.5	1.2	1.7
5	0.0	0.0	1.2	1.3	9.1	9.5	1.2	1.6
6	0.0	0.0	1.4	1.3	8.4	8.2	1.2	1.6
7	0.0	0.0	0.9	0.8	8.2	8.0	1.5	3.5
8	0.0	0.0	0.7	0.7	9.0	8.8	2.0	2.7
9	0.0	0.0	0.8	0.8	7.0	7.1	1.8	2.5
10	0.0	0.0	1.0	0.9	7.9	8.2	1.8	2.3
11	0.0	0.0	1.0	0.9	7.8	7.4	1.9	2.5
12	0.0	0.0	1.1	1.1	6.9	7.1	1.8	2.5
13	0.0	0.0	0.8	0.9	5.4	5.4	1.8	2.6
14	0.0	0.0	0.7	0.8	5.7	5.8	1.9	2.5
15	0.0	0.0	1.0	1.0	7.8	7.5	2.1	3.0
16	0.0	0.0	0.9	0.9	6.6	7.0	2.2	3.1
17	0.0	0.0	0.7	0.6	4.1	4.6	2.0	2.7
18	0.0	0.0	0.7	0.7	3.2	2.4	2.0	3.0
19	0.0	0.0	1.3	1.4	4.4	4.2	2.0	2.8
20	0.0	0.0	0.7	0.6	4.5	5.3	2.0	2.9
21	0.1	0.1	1.1	1.1	9.3	8.8	1.6	2.1
22	0.0	0.0	1.0	1.0	9.8	9.8	1.6	2.2
23	0.0	0.0	1.4	1.2	11.8	11.8	1.7	2.3
24	0.0	0.0	0.9	1.0	9.5	8.9	1.7	2.3
25	0.0	0.0	1.0	1.0	8.7	8.5	1.7	2.4
26	0.0	0.0	1.0	1.0	7.4	11.3	1.7	2.3
27	0.0	0.0	1.2	1.2	11.8	10.0	1.7	2.3
28	0.0	0.0	1.0	1.0	10.4	8.6	1.5	2.2
29	0.0	0.0	1.2	1.3	12.4	7.6	1.5	1.8
30	0.0	0.0	1.1	1.0	6.1	11.8	1.4	2.0
31	0.0	0.0	1.1	1.1	9.4	9.3	1.4	1.9
Total	0.1	0.1	31.3	31.0	246.8	247.1	52.2	72.8

Notes:

# Runtimes Report

Month: July-16

## Daily

Date	Low Lift Pump Motor Runtimes				High Lift Pump Motor Runtimes			
	LLP1010 (Hrs)	LLP1020 (Hrs)	LLP1030 (Hrs)	LLP1040 (Hrs)	HLP7010 (Hrs)	HLP7020 (Hrs)	HLP7030 (Hrs)	HLP7040 (Hrs)
1	2.3	13.5	0.0	2.8	5.9	5.2	4.8	6.4
2	2.8	4.5	2.7	9.8	6.2	2.7	7.6	5.6
3	2.2	8.5	7.3	4.4	8.7	6.5	1.2	9.2
4	4.2	2.8	8.1	8.1	8.2	7.8	2.6	8.1
5	3.0	9.5	6.2	5.7	3.7	8.6	8.9	6.8
6	1.4	5.8	10.2	15.3	7.2	4.3	7.0	4.6
7	0.4	10.6	5.1	0.8	5.2	9.2	1.1	5.1
8	0.0	14.1	0.0	4.8	3.2	2.7	5.3	4.7
9	0.8	0.0	4.4	11.0	3.6	2.0	3.9	6.0
10	10.0	5.0	0.0	3.6	6.0	2.5	3.6	7.4
11	3.2	0.0	5.5	10.8	6.9	4.5	2.8	2.7
12	14.7	7.3	0.0	0.0	3.6	5.8	5.7	3.5
13	2.3	9.9	5.0	7.5	3.9	5.6	4.8	2.9
14	7.8	1.5	10.7	0.0	3.9	2.0	4.4	6.9
15	0.6	8.3	3.1	5.8	4.3	4.7	3.8	1.9
16	17.5	0.1	0.0	3.7	0.0	0.0	2.9	2.5
17	0.0	10.7	18.6	0.0	2.0	9.1	3.5	7.2
18	12.7	1.2	4.6	9.8	5.1	5.8	4.8	5.1
19	10.4	2.6	0.0	11.7	3.2	1.8	14.0	0.0
20	11.4	0.0	3.3	8.5	0.2	5.0	2.9	6.3
21	0.0	8.9	12.9	1.7	0.0	0.0	12.1	8.4
22	5.2	0.0	1.0	14.1	1.8	0.1	18.5	0.0
23	0.0	0.0	24.0	0.0	3.8	0.0	19.9	0.0
24	1.6	10.7	0.1	6.5	0.0	0.0	19.6	0.1
25	20.5	0.0	0.2	0.0	4.7	0.1	13.4	0.0
26	2.8	2.3	7.6	6.4	10.6	0.0	7.2	0.0
27	5.6	6.0	5.6	5.0	10.1	0.0	7.4	0.0
28	3.2	1.5	6.3	8.4	12.8	0.0	7.1	0.0
29	5.6	5.7	6.4	7.0	8.4	0.0	0.5	10.5
30	4.6	4.2	5.5	3.8	5.9	0.0	4.1	5.9
31	4.9	5.6	3.6	4.9	1.7	0.0	9.8	2.1
Total	161.7	160.8	168.0	181.9	150.8	96.0	215.2	129.9

Notes:

# Plant Internal Flow Report

Month: July-16

Date	Settling Tank Level		Process Drain Tank		Settling Tank Flow		Potable Water Flow		Non-Potable Flow	
	T-9003 (m)		T-9001 (m)		FIT_9005 (m <sup>3</sup> ) (L/s)		FIT_7082 (m <sup>3</sup> ) (L/s)		FIT_7092 (m <sup>3</sup> ) (L/s)	
	Maximum	Minimum	Maximum	Minimum	Total	Peak	Total	Peak	Total	Peak
1	2.2	0.1	2.0	0.4	443.6	15.7	0.0	1.3	0.0	0.0
2	2.2	0.3	2.0	0.4	424.2	15.7	0.0	0.3	0.4	1.2
3	2.2	0.1	0.8	0.4	464.3	15.7	0.0	0.0	0.0	0.0
4	2.2	0.1	0.8	0.4	433.1	15.7	0.2	1.4	0.0	0.0
5	2.2	0.1	0.8	0.4	526.3	15.7	0.1	1.4	0.0	0.0
6	2.2	0.3	0.8	0.4	569.1	15.7	0.2	1.4	0.0	0.0
7	2.2	0.1	1.6	0.4	418.8	15.7	0.1	1.3	0.0	0.0
8	2.2	0.1	1.4	0.4	350.9	15.7	0.1	1.6	18.3	18.7
9	2.2	0.1	0.8	0.4	363.0	15.7	0.0	0.0	0.0	0.0
10	2.2	0.1	0.8	0.4	427.8	15.7	0.0	0.0	0.0	0.0
11	2.2	0.3	0.8	0.4	420.6	15.7	0.1	1.3	0.0	0.0
12	2.2	0.3	0.8	0.4	493.4	15.7	0.1	1.4	0.0	0.0
13	2.2	0.2	0.8	0.4	441.9	15.7	0.1	1.4	0.0	0.0
14	2.2	0.3	0.8	0.4	353.5	15.7	0.1	1.6	0.0	0.0
15	2.2	0.3	1.0	0.4	430.2	15.7	0.1	1.4	0.0	0.0
16	2.2	0.3	0.8	0.4	395.4	15.7	0.0	1.3	0.0	0.0
17	2.2	0.1	0.8	0.4	274.5	15.7	0.0	0.0	0.0	0.0
18	2.2	0.2	0.8	0.4	356.5	15.7	0.1	1.4	0.0	0.0
19	2.2	0.1	1.8	0.4	359.9	15.7	0.1	1.4	0.0	0.0
20	2.2	0.1	1.0	0.4	253.9	15.7	0.1	1.5	9.4	17.5
21	2.2	0.1	0.8	0.4	436.1	15.7	3.7	4.9	0.2	13.9
22	2.2	0.1	0.9	0.4	485.5	15.7	0.3	1.4	15.0	24.4
23	2.2	0.1	0.8	0.4	570.3	15.7	0.0	0.0	0.0	0.0
24	2.2	0.1	0.8	0.4	422.0	15.7	0.0	0.0	0.0	0.0
25	2.2	0.1	0.8	0.4	487.9	15.7	0.1	1.4	0.3	2.0
26	2.2	0.1	1.0	0.4	431.3	15.7	0.0	1.4	0.0	0.0
27	2.2	0.2	0.8	0.4	479.1	15.7	0.0	1.4	14.4	23.6
28	2.2	0.1	0.8	0.4	420.9	15.7	0.3	1.4	0.0	0.0
29	2.2	0.1	0.8	0.4	533.0	15.7	0.0	1.4	0.0	0.0
30	2.2	0.1	0.8	0.4	413.5	15.7	0.1	0.3	0.5	1.4
31	2.2	0.1	0.8	0.4	483.7	15.7	0.0	0.0	0.0	0.0
Total					13364.1		6.0		58.4	
Average	2.2	0.2	1.0	0.4	431.1	15.7	0.2	1.1	1.9	3.3
Maximum	2.2		2.0		570.3		3.7		18.3	
Date	18-Jul		2-Jul		23-Jul		21-Jul		8-Jul	
Minimum		0.1		0.4		15.7		0.0		0.0
Date		22-Jul		2-Jul		1-Jul		3-Jul		1-Jul

Notes:
