

Municipality of West Elgin - Tri County Water System

Goto:

Month:

Year:

Date is Set to: **July-18**

Limit	Low	High	
Raw Water Chlorine Residual:	0.00	5.00	mg/L
Pre-Strainer Chlorine Residual:	0.00	5.00	mg/L
UV Inlet Chlorine Residual:	0.00	5.00	mg/L
Post Treatment Chlorine Residual:	1.00	5.00	mg/L
Treated Chlorine Residual:	1.00	2.50	mg/L
Distribution Chlorine Residual:	1.00	2.50	mg/L
Limit		High	
Limit		156.0	L/s
WTP Permit to Take Water		13500.0	m <sup>3</sup>
Limit	Low	High	
System Pressure Limits:	50.0	1034.0	Kpa

Compliance Report

Low Lift Monthly Report

>>>

Membranes Monthly Report

>>>

UV System Monthly Report

>>>

Plant Quality Report

>>>

Raw Well/Treated Storage Report

>>>

High Lift Monthly Report

>>>

Operational Report

Low Lift Monthly Report

>>>

High Lift Monthly Report

>>>

Chemical Usage Monthly Report

>>>

Runtimes Report

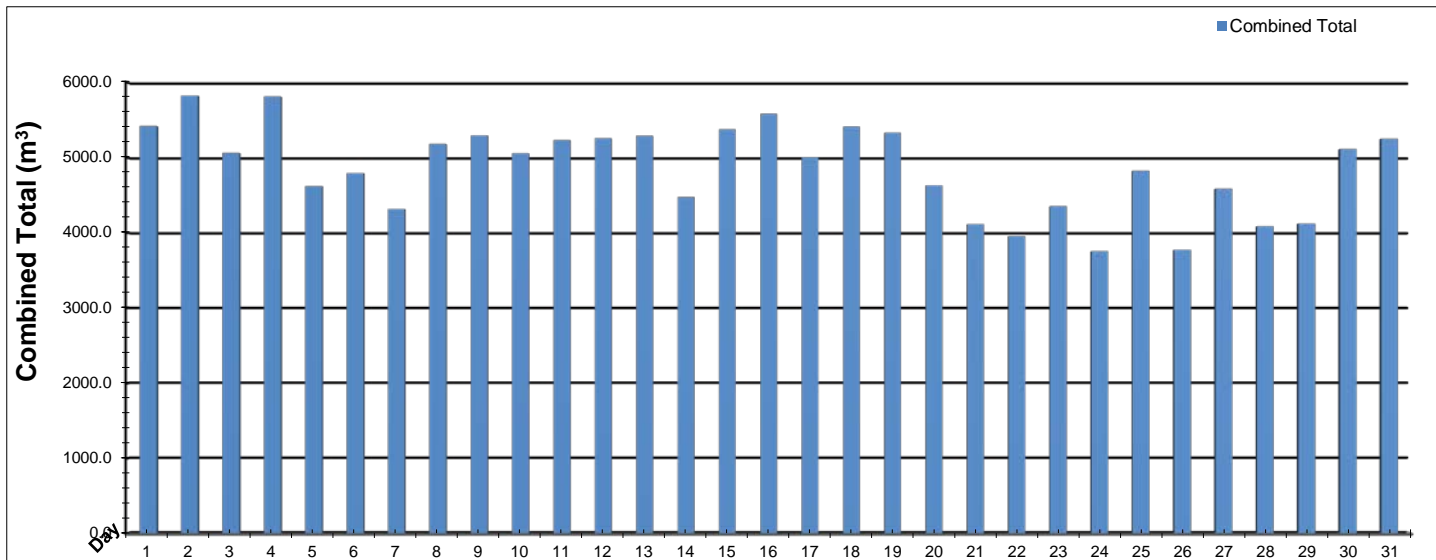
>>>

Plant Internal Flow Report

>>>

# Low Lift Monthly Report

Month: July-18

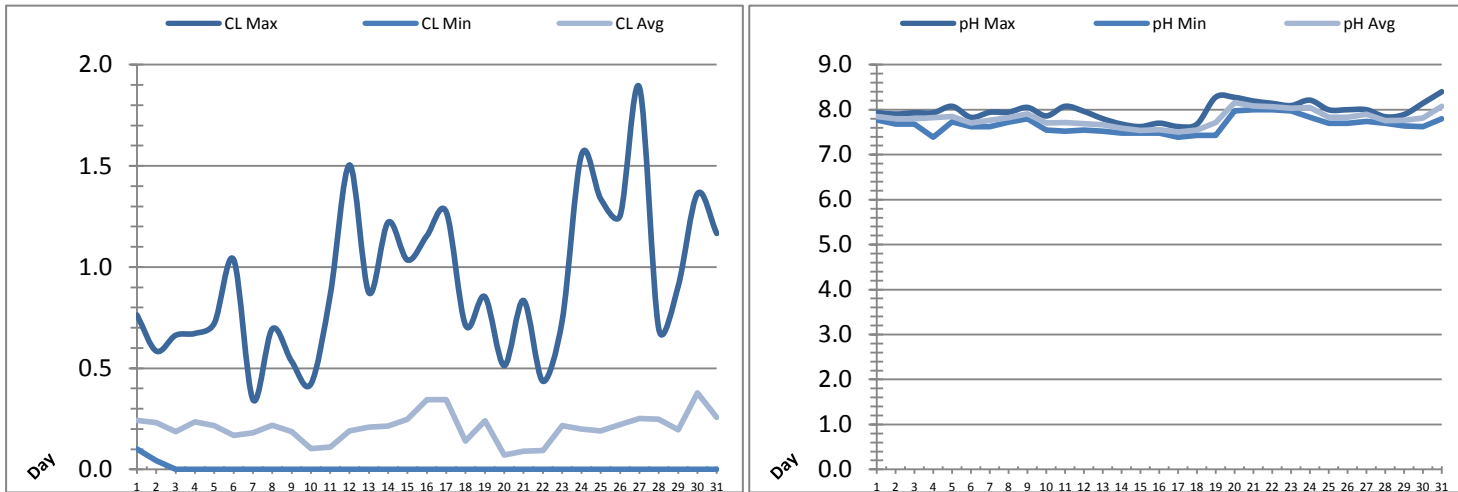


Date	Combined Total (m³)	West Train FIT-1017 (m³)	West Peak Flow FIT-1017 (L/s)	East Train FIT-1027 (m³)	East Peak Flow FIT-1027 (L/s)	Combined Peak Flow (L/s)
1	5423.0	5423.0	74.1	0.0	0.0	74.1
2	5826.6	5826.5	134.6	0.0	0.0	134.6
3	5063.7	5063.7	133.7	0.0	0.0	133.7
4	5813.2	1935.6	73.9	3877.6	138.4	138.4
5	4622.2	0.0	0.0	4622.1	74.5	74.5
6	4795.4	0.0	0.0	4795.4	137.8	137.8
7	4317.6	0.0	0.0	4317.6	71.4	71.4
8	5182.0	0.0	0.0	5182.0	126.4	126.4
9	5297.3	0.0	0.0	5297.3	137.5	137.5
10	5060.1	0.0	0.0	5060.1	137.4	137.4
11	5236.7	0.0	0.0	5236.7	138.0	138.0
12	5257.2	0.0	0.0	5257.2	138.4	138.4
13	5292.3	0.0	0.0	5292.3	137.8	137.8
14	4476.3	0.0	0.0	4476.3	130.2	130.2
15	5376.6	0.0	0.0	5376.6	126.4	126.4
16	5583.5	0.0	0.0	5583.5	137.8	137.8
17	5006.4	0.0	0.0	5006.4	136.4	136.4
18	5415.8	0.0	0.0	5415.8	136.7	136.7
19	5332.6	0.0	0.0	5332.6	135.2	135.2
20	4632.6	0.0	0.0	4632.6	138.0	138.0
21	4114.3	0.0	0.0	4114.3	132.1	132.1
22	3959.1	0.0	0.0	3959.1	74.3	74.3
23	4354.1	0.0	0.0	4354.1	74.2	74.2
24	3756.6	0.0	0.0	3756.6	137.4	137.4
25	4827.0	0.0	0.0	4827.0	137.8	137.8
26	3774.2	0.0	0.0	3774.2	136.8	136.8
27	4587.3	0.0	0.0	4587.3	137.7	137.7
28	4088.9	0.0	0.0	4088.9	74.3	74.3
29	4123.7	0.0	0.0	4123.7	139.6	139.6
30	5115.6	0.0	0.0	5115.6	137.7	137.7
31	5253.6	0.0	0.0	5253.6	137.5	137.5
<b>Total</b>	<b>150965.5</b>	<b>18248.9</b>		<b>132716.6</b>		
<b>Average</b>	<b>4869.9</b>	<b>588.7</b>	<b>13.4</b>	<b>4281.2</b>	<b>112.8</b>	<b>123.9</b>
<b>Maximum</b>	<b>5826.6</b>	<b>5826.5</b>	<b>134.58</b>	<b>5583.5</b>	<b>139.56</b>	<b>139.56</b>
<b>Date</b>	<b>2-Jul</b>	<b>2-Jul</b>	<b>2-Jul</b>	<b>16-Jul</b>	<b>29-Jul</b>	<b>29-Jul</b>
<b>Minimum</b>	<b>3756.6</b>	<b>0.0</b>	<b>0.00</b>	<b>0.0</b>	<b>0.00</b>	<b>71.40</b>
<b>Date</b>	<b>24-Jul</b>	<b>22-Jul</b>	<b>5-Jul</b>	<b>2-Jul</b>	<b>1-Jul</b>	<b>7-Jul</b>

Notes:

# Low Lift Monthly Report

Month: July-18



Date	Raw Water Chlorine Residual			Raw Water pH		
	AIT_1401_CL (mg/L)			AIT_1401_PH		
	Maximum	Minimum	Average	Maximum	Minimum	Average
1	0.76	0.10	0.24	7.93	7.77	7.84
2	0.58	0.04	0.23	7.90	7.68	7.80
3	0.66	0.00	0.19	7.93	7.68	7.79
4	0.67	0.00	0.23	7.93	7.39	7.83
5	0.72	0.00	0.22	8.07	7.73	7.85
6	1.04	0.00	0.17	7.83	7.62	7.71
7	0.34	0.00	0.18	7.94	7.62	7.77
8	0.69	0.00	0.22	7.94	7.73	7.82
9	0.53	0.00	0.19	8.05	7.80	7.91
10	0.42	0.00	0.10	7.86	7.55	7.71
11	0.86	0.00	0.11	8.07	7.52	7.72
12	1.50	0.00	0.19	7.96	7.55	7.69
13	0.87	0.00	0.21	7.80	7.52	7.66
14	1.22	0.00	0.21	7.68	7.48	7.59
15	1.03	0.00	0.25	7.62	7.48	7.54
16	1.15	0.00	0.34	7.70	7.48	7.56
17	1.27	0.00	0.34	7.62	7.39	7.50
18	0.71	0.00	0.14	7.68	7.43	7.55
19	0.85	0.00	0.24	8.28	7.43	7.72
20	0.51	0.00	0.07	8.27	7.98	8.16
21	0.84	0.00	0.09	8.19	7.99	8.08
22	0.44	0.00	0.09	8.14	7.99	8.07
23	0.73	0.00	0.22	8.09	7.98	8.03
24	1.55	0.00	0.20	8.21	7.83	8.05
25	1.34	0.00	0.19	8.00	7.70	7.83
26	1.25	0.00	0.22	8.00	7.70	7.83
27	1.89	0.00	0.25	8.00	7.74	7.89
28	0.69	0.00	0.25	7.84	7.70	7.76
29	0.90	0.00	0.20	7.89	7.64	7.76
30	1.36	0.00	0.38	8.14	7.62	7.81
31	1.17	0.00	0.26	8.40	7.80	8.07
<b>Total</b>						
<b>Average</b>	0.92	0.00	0.21	7.97	7.66	7.80
<b>Maximum</b>	1.89		0.38	8.40		8.16
<b>Date</b>	27-Jul		30-Jul	31-Jul		20-Jul
<b>Minimum</b>		0.00	0.07		7.39	7.50
<b>Date</b>		3-Jul	20-Jul		4-Jul	17-Jul

Notes:

---



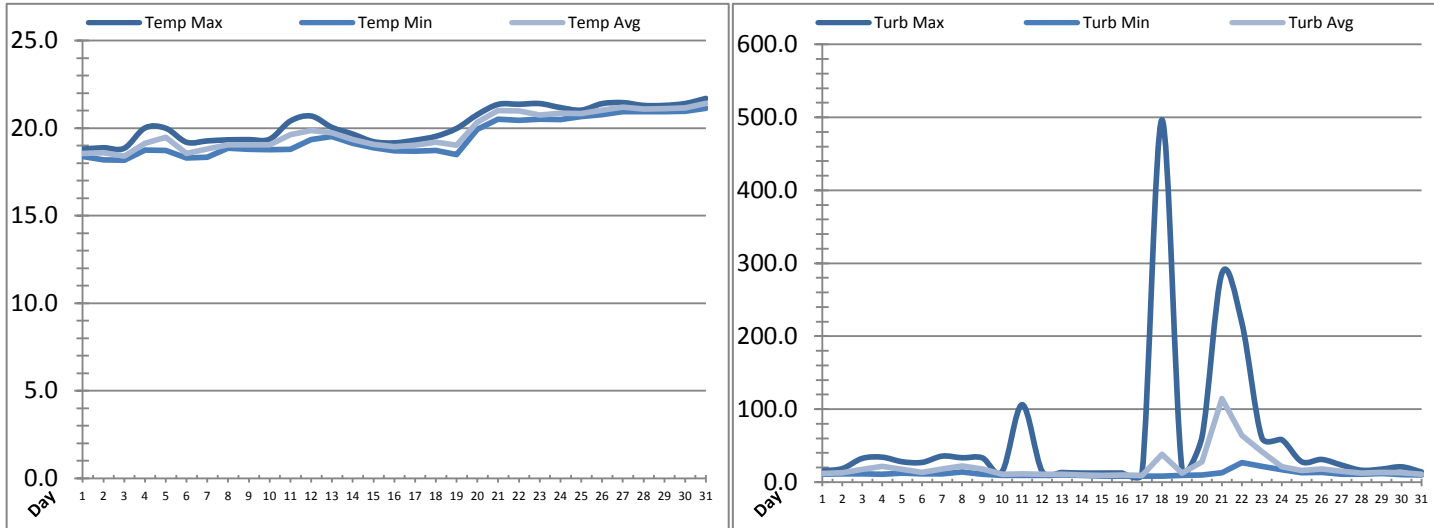
---



---

# Low Lift Monthly Report

Month: July-18

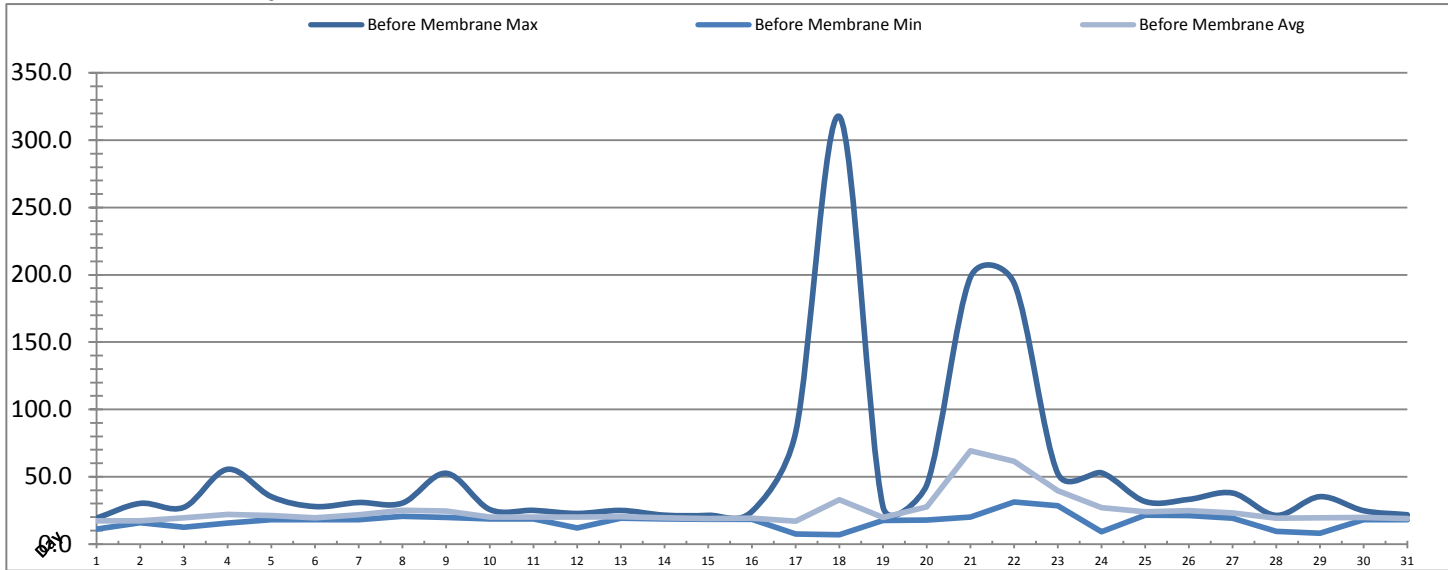


Date	Raw Water Temperature			Raw Water Turbidity		
	TIT_1403 (°C)			AIT_1404 (NTU)		
	Maximum	Minimum	Average	Maximum	Minimum	Average
1	18.8	18.4	18.6	15.42	10.67	11.89
2	18.9	18.2	18.6	18.52	11.47	12.78
3	18.9	18.2	18.4	32.48	11.47	17.42
4	20.0	18.8	19.1	34.08	10.73	21.72
5	20.0	18.7	19.5	27.84	12.28	17.64
6	19.2	18.3	18.5	26.99	11.46	13.45
7	19.3	18.3	18.8	35.60	11.44	17.69
8	19.3	18.9	19.1	33.31	13.74	22.23
9	19.3	18.8	19.0	33.24	10.72	18.18
10	19.4	18.8	19.0	14.59	9.16	10.57
11	20.4	18.8	19.6	106.10	9.16	11.31
12	20.7	19.3	19.9	14.66	9.13	10.87
13	20.0	19.5	19.7	13.10	9.92	10.76
14	19.7	19.1	19.4	12.32	9.17	9.86
15	19.2	18.9	19.1	12.32	8.37	9.26
16	19.2	18.7	19.0	12.35	8.38	9.43
17	19.3	18.7	19.0	11.57	8.34	9.00
18	19.5	18.7	19.2	496.62	8.35	37.87
19	20.0	18.5	19.0	19.24	9.20	12.20
20	20.8	19.9	20.3	61.14	9.92	27.97
21	21.4	20.5	21.0	285.96	13.02	114.70
22	21.4	20.5	21.0	218.49	26.96	63.89
23	21.4	20.5	20.7	61.11	21.56	41.45
24	21.2	20.5	20.9	58.07	16.91	21.01
25	21.0	20.7	20.8	27.83	13.02	15.74
26	21.4	20.8	21.0	30.98	13.07	17.76
27	21.5	21.0	21.2	23.19	10.71	14.77
28	21.3	20.9	21.1	16.15	10.67	12.14
29	21.3	20.9	21.1	17.72	11.51	13.37
30	21.4	21.0	21.2	20.86	9.94	12.84
31	21.7	21.1	21.4	13.83	9.92	10.64
<b>Total</b>						
<b>Average</b>	20.2	19.5	19.8	58.2	11.6	21.0
<b>Maximum</b>	21.7		21.4	496.6		114.7
<b>Date</b>	31-Jul		31-Jul	18-Jul		21-Jul
<b>Minimum</b>		18.2	18.4		8.3	9.0
<b>Date</b>		3-Jul	3-Jul		17-Jul	17-Jul

Notes:

# Membranes Monthly Report

Month: July-18

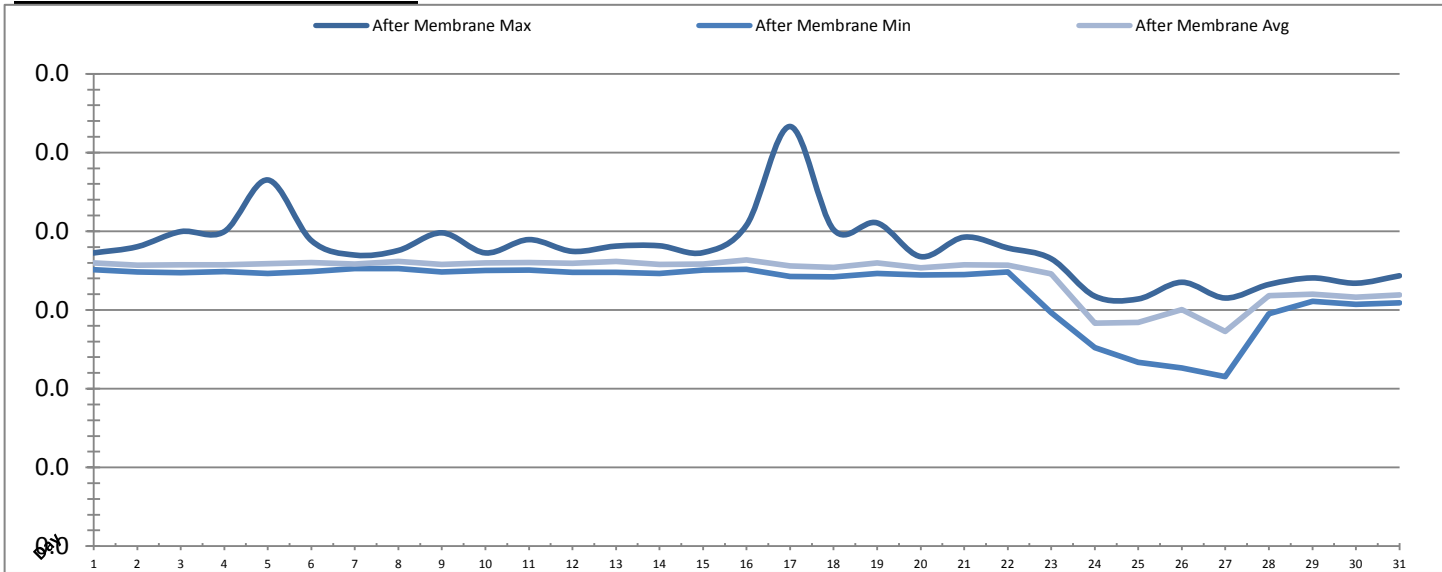


Date	Turbidity Before Membrane			Rack #1 Turbidity			Rack #2 Turbidity		
	PALL_FEED_AIT2006_Value NTU			RACK1_NTU_Value NTU			RACK2_NTU_Value NTU		
	Maximum	Minimum	Average	Maximum	Minimum	Average	Maximum	Minimum	Average
1	19.21	11.11	17.12	0.02	0.02	0.02	0.14	0.02	0.02
2	30.19	15.70	17.31	0.02	0.02	0.02	0.03	0.02	0.02
3	27.26	12.36	19.44	0.02	0.02	0.02	0.19	0.02	0.02
4	55.51	15.54	21.95	0.12	0.02	0.02	0.02	0.02	0.02
5	35.15	18.04	21.16	0.13	0.02	0.02	0.04	0.02	0.02
6	27.81	18.02	19.41	0.02	0.02	0.02	0.02	0.02	0.02
7	30.83	18.19	21.66	0.02	0.02	0.02	0.02	0.02	0.02
8	30.42	20.45	24.94	0.02	0.02	0.02	0.02	0.02	0.02
9	52.54	19.67	24.38	0.02	0.02	0.02	0.17	0.02	0.02
10	25.61	18.64	19.88	0.04	0.02	0.02	0.08	0.02	0.02
11	24.98	18.55	19.90	0.02	0.02	0.02	0.17	0.02	0.02
12	22.69	11.91	19.99	0.02	0.02	0.02	0.02	0.02	0.02
13	24.93	19.29	20.23	0.03	0.02	0.02	0.08	0.02	0.02
14	21.41	18.68	19.45	0.27	0.02	0.02	0.12	0.02	0.02
15	21.29	18.27	18.88	0.02	0.02	0.02	0.02	0.02	0.02
16	24.22	18.35	19.08	0.33	0.02	0.02	0.06	0.02	0.02
17	82.93	7.53	16.80	0.15	0.02	0.02	0.03	0.02	0.02
18	317.58	6.77	33.01	0.04	0.02	0.02	0.05	0.02	0.02
19	27.54	17.55	19.63	0.12	0.02	0.02	0.39	0.02	0.02
20	43.83	17.86	27.66	0.02	0.02	0.02	0.22	0.02	0.02
21	198.17	19.92	69.36	0.02	0.02	0.02	0.21	0.02	0.02
22	193.74	31.15	61.34	0.02	0.02	0.02	0.21	0.02	0.02
23	52.31	28.42	39.61	0.02	0.02	0.02	0.20	0.02	0.02
24	52.86	9.05	26.89	0.02	0.02	0.02	0.03	0.02	0.02
25	31.52	21.49	23.94	0.02	0.02	0.02	0.02	0.02	0.02
26	33.15	21.26	24.76	0.65	0.02	0.02	0.04	0.02	0.02
27	37.86	19.19	23.11	0.02	0.02	0.02	0.05	0.02	0.02
28	21.26	9.44	19.18	0.02	0.02	0.02	0.20	0.02	0.02
29	35.17	8.10	19.55	0.02	0.02	0.02	0.21	0.02	0.02
30	24.75	17.94	19.73	0.02	0.02	0.02	0.03	0.02	0.02
31	21.73	18.00	18.97	0.02	0.02	0.02	0.02	0.02	0.02
Total									
Average	53.2	17.0	24.8	0.1	0.0	0.0	0.1	0.0	0.0
Maximum	317.6		69.4	0.7		0.0	0.4		0.0
Date	18-Jul		21-Jul	26-Jul		26-Jul	19-Jul		22-Jul
Minimum		6.8	16.8		0.0	0.0		0.0	0.0
Date		18-Jul	17-Jul		6-Jul	6-Jul		1-Jul	2-Jul

Notes:

# Membranes Monthly Report

Month: July-18

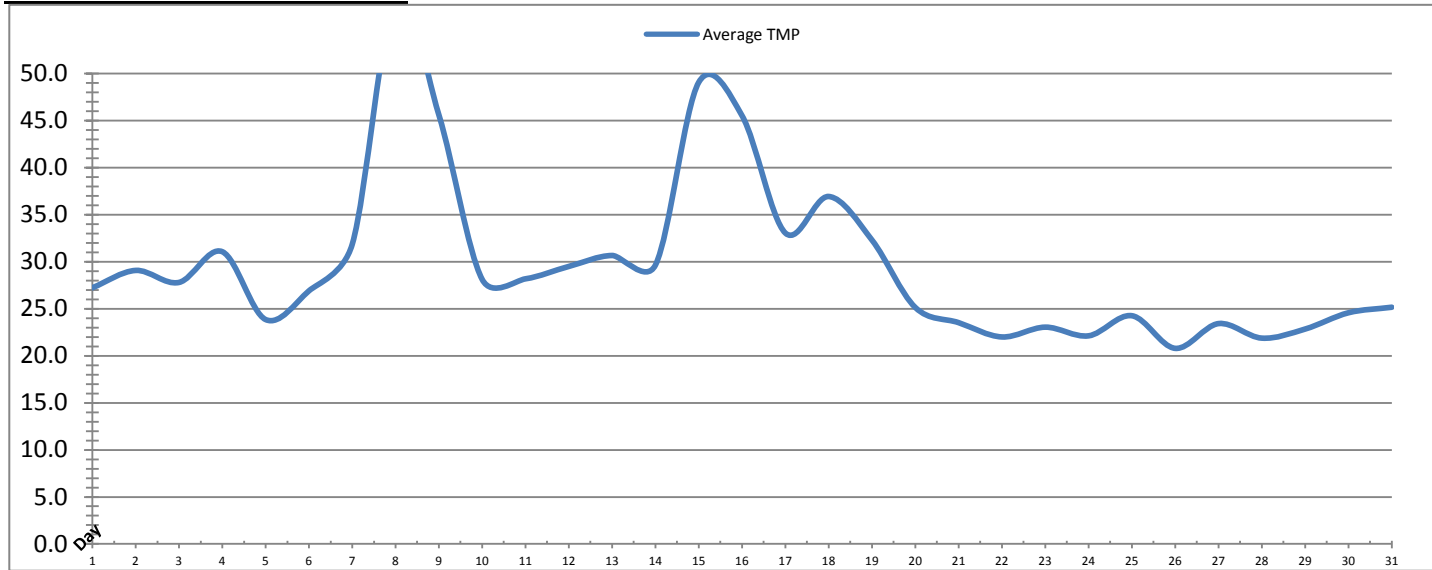


Date	Rack #3 Turbidity			Rack #4 Turbidity			Turbidity After Membranes		
	RACK3_NTU_Value NTU			RACK4_NTU_Value NTU			PALL_FILT_AIT5001_Value NTU		
	Maximum	Minimum	Average	Maximum	Minimum	Average	Maximum	Minimum	Average
1	0.02	0.02	0.02	0.03	0.02	0.03	0.02	0.02	0.02
2	0.02	0.02	0.02	0.03	0.02	0.03	0.02	0.02	0.02
3	0.02	0.02	0.02	0.03	0.02	0.03	0.02	0.02	0.02
4	0.02	0.02	0.02	0.07	0.02	0.03	0.02	0.02	0.02
5	0.03	0.02	0.02	0.03	0.02	0.03	0.02	0.02	0.02
6	0.02	0.02	0.02	0.03	0.02	0.03	0.02	0.02	0.02
7	0.02	0.02	0.02	0.03	0.03	0.03	0.02	0.02	0.02
8	0.02	0.02	0.02	0.03	0.03	0.03	0.02	0.02	0.02
9	0.05	0.02	0.02	0.04	0.02	0.03	0.02	0.02	0.02
10	0.02	0.02	0.02	0.03	0.02	0.03	0.02	0.02	0.02
11	0.02	0.02	0.02	0.03	0.02	0.03	0.02	0.02	0.02
12	0.02	0.02	0.02	0.03	0.02	0.03	0.02	0.02	0.02
13	0.08	0.02	0.02	0.03	0.02	0.03	0.02	0.02	0.02
14	0.02	0.02	0.02	0.03	0.02	0.03	0.02	0.02	0.02
15	0.02	0.02	0.02	0.03	0.03	0.03	0.02	0.02	0.02
16	0.02	0.02	0.02	0.03	0.02	0.03	0.02	0.02	0.02
17	0.02	0.02	0.02	0.04	0.02	0.03	0.03	0.02	0.02
18	0.04	0.02	0.02	0.03	0.02	0.03	0.02	0.02	0.02
19	0.02	0.02	0.02	0.03	0.02	0.03	0.02	0.02	0.02
20	0.02	0.02	0.02	0.03	0.02	0.03	0.02	0.02	0.02
21	0.02	0.02	0.02	0.03	0.02	0.03	0.02	0.02	0.02
22	0.02	0.02	0.02	0.03	0.02	0.03	0.02	0.02	0.02
23	0.02	0.02	0.02	0.03	0.02	0.03	0.02	0.01	0.02
24	0.08	0.02	0.02	0.03	0.02	0.03	0.02	0.01	0.01
25	0.02	0.02	0.02	0.03	0.02	0.03	0.02	0.01	0.01
26	0.02	0.02	0.02	0.03	0.02	0.03	0.02	0.01	0.02
27	0.02	0.02	0.02	0.03	0.02	0.03	0.02	0.01	0.01
28	0.02	0.02	0.02	0.03	0.02	0.03	0.02	0.01	0.02
29	0.02	0.02	0.02	0.03	0.02	0.03	0.02	0.02	0.02
30	0.02	0.02	0.02	0.03	0.02	0.03	0.02	0.02	0.02
31	0.06	0.02	0.02	0.37	0.02	0.03	0.02	0.02	0.02
Total									
Average	0.0	0.0	0.0	0.0	0.0	0.0	0.0	0.0	0.0
Maximum	0.1		0.0	0.4		0.0	0.0		0.0
Date	24-Jul		13-Jul	31-Jul		31-Jul	17-Jul		16-Jul
Minimum		0.0	0.0		0.0	0.0		0.0	0.0
Date		11-Jul	11-Jul		23-Jul	3-Jul		27-Jul	27-Jul

Notes:

# Membranes Monthly Report

Month: **July-18**



Date	Integrity Test Rack 1							
	Initial Pressure (kPa)	Final Pressure (kPa)	Test Duration (sec)	Change in Pressure (kPa)	UCL	Within UCL	Average TMP (kPa)	Max TMP (kPa)
1	198.7	197.6	300.0	1.1	2.0	✓ 2.0	27.2	61.0
2	198.3	197.2	300.0	1.1	2.0	✓ 2.0	29.1	82.4
3	198.6	197.4	300.0	1.2	2.0	✓ 2.0	27.8	114.3
4	198.6	197.4	300.0	1.1	2.0	✓ 2.0	31.1	101.3
5	198.1	197.1	300.0	1.1	2.0	✓ 2.0	23.9	51.9
6	199.2	198.1	300.0	1.1	2.0	✓ 2.0	26.9	102.6
7	199.2	198.1	300.0	1.1	2.0	✓ 2.0	31.9	44.5
8	199.2	198.1	300.0	1.1	2.0	✓ 2.0	58.0	147.1
9	198.9	197.7	300.0	1.2	2.0	✓ 2.0	45.6	139.2
10	198.7	197.5	300.0	1.2	2.0	✓ 2.0	28.1	83.9
11	198.6	197.3	300.0	1.2	2.0	✓ 2.0	28.2	79.3
12	198.7	197.4	300.0	1.3	2.0	✓ 2.0	29.5	82.3
13	198.7	197.4	300.0	1.3	2.0	✓ 2.0	30.7	118.2
14	198.8	197.6	300.0	1.2	2.0	✓ 2.0	29.6	74.6
15	198.8	197.6	300.0	1.2	2.0	✓ 2.0	49.1	118.9
16	198.7	197.6	300.0	1.1	2.0	✓ 2.0	45.5	175.6
17	198.8	197.7	300.0	1.1	2.0	✓ 2.0	33.0	131.7
18	198.3	197.1	300.0	1.2	2.0	✓ 2.0	36.9	183.4
19	198.6	197.4	300.0	1.2	2.0	✓ 2.0	32.3	108.6
20	198.4	197.4	300.0	1.0	2.0	✓ 2.0	25.1	75.5
21	198.0	196.9	300.0	1.1	2.0	✓ 2.0	23.5	70.8
22	198.2	197.2	300.0	1.0	2.0	✓ 2.0	22.0	41.4
23	198.2	197.1	300.0	1.1	2.0	✓ 2.0	23.0	47.5
24	198.1	197.0	300.0	1.1	2.0	✓ 2.0	22.1	130.1
25	198.5	197.3	300.0	1.1	2.0	✓ 2.0	24.3	68.4
26	198.5	197.3	300.0	1.2	2.0	✓ 2.0	20.8	63.9
27	198.5	197.3	300.0	1.1	2.0	✓ 2.0	23.4	93.5
28	198.1	197.1	300.0	1.1	2.0	✓ 2.0	21.9	39.9
29	198.4	197.3	300.0	1.2	2.0	✓ 2.0	22.8	125.0
30	198.4	197.2	300.0	1.1	2.0	✓ 2.0	24.6	67.7
31	198.3	197.1	300.0	1.2	2.0	✓ 2.0	25.2	67.4
<b>Total</b>								
Average	198.6	197.4	300.0	1.1	2.0	2.0	29.8	93.3
Maximum	199.2	198.1	300.0	1.3	2.0	2.0	58.0	183.4
Date	6-Jul	6-Jul	1-Jul	12-Jul	1-Jul	1-Jul	8-Jul	18-Jul
Minimum	198.0	196.9	300.0	1.0	2.0	2.0	20.8	39.9
Date	21-Jul	21-Jul	1-Jul	20-Jul	1-Jul	1-Jul	26-Jul	28-Jul

Notes:

---



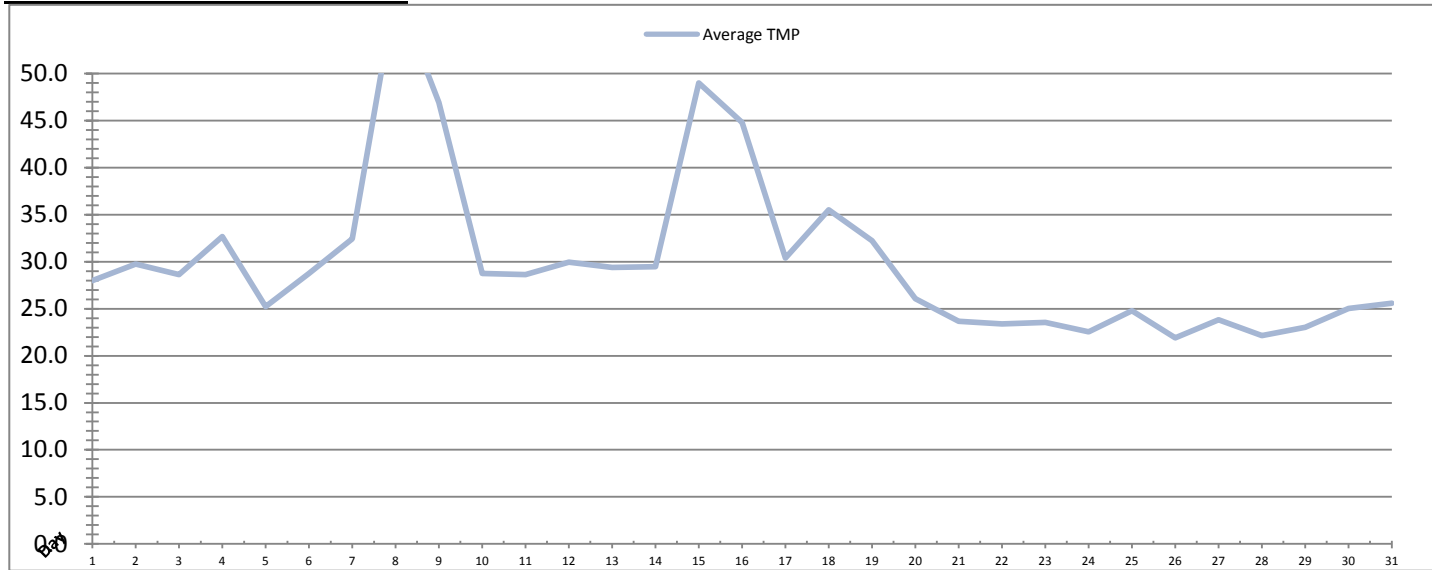
---



---

# Membranes Monthly Report

Month: **July-18**



Date	Integrity Test Rack 2							
	Initial Pressure (kPa)	Final Pressure (kPa)	Test Duration (sec)	Change in Pressure (kPa)	UCL	Within UCL	Average TMP (kPa)	Max TMP (kPa)
1	207.8	206.8	300.0	1.1	2.0	✓ 2.0	28.0	45.6
2	207.7	206.6	300.0	1.1	2.0	✓ 2.0	29.7	79.2
3	208.0	206.8	300.0	1.2	2.0	✓ 2.0	28.6	89.1
4	208.0	206.9	300.0	1.1	2.0	✓ 2.0	32.7	148.7
5	207.7	206.7	300.0	1.1	2.0	✓ 2.0	25.2	47.2
6	208.8	207.7	300.0	1.1	2.0	✓ 2.0	28.8	120.9
7	208.8	207.7	300.0	1.1	2.0	✓ 2.0	32.4	45.0
8	208.8	207.7	300.0	1.1	2.0	✓ 2.0	58.8	149.7
9	208.3	207.2	300.0	1.1	2.0	✓ 2.0	46.9	179.1
10	208.0	206.9	300.0	1.1	2.0	✓ 2.0	28.8	158.4
11	208.0	206.9	300.0	1.1	2.0	✓ 2.0	28.6	82.4
12	208.4	207.2	300.0	1.1	2.0	✓ 2.0	30.0	160.2
13	208.0	206.8	300.0	1.2	2.0	✓ 2.0	29.4	149.9
14	207.7	206.6	300.0	1.1	2.0	✓ 2.0	29.4	74.0
15	207.7	206.6	300.0	1.1	2.0	✓ 2.0	49.0	120.1
16	208.2	207.0	300.0	1.1	2.0	✓ 2.0	44.8	164.8
17	208.6	207.4	300.0	1.2	2.0	✓ 2.0	30.4	102.2
18	208.4	207.3	300.0	1.1	2.0	✓ 2.0	35.5	121.0
19	208.1	207.0	300.0	1.1	2.0	✓ 2.0	32.2	110.0
20	208.1	207.2	300.0	0.9	2.0	✓ 2.0	26.1	94.2
21	208.0	207.0	300.0	1.1	2.0	✓ 2.0	23.7	71.6
22	208.3	207.3	300.0	1.0	2.0	✓ 2.0	23.4	97.4
23	208.0	207.0	300.0	1.0	2.0	✓ 2.0	23.6	41.5
24	208.3	207.2	300.0	1.1	2.0	✓ 2.0	22.5	70.4
25	208.3	207.2	300.0	1.1	2.0	✓ 2.0	24.8	68.9
26	208.3	207.2	300.0	1.1	2.0	✓ 2.0	21.9	123.4
27	208.2	207.1	300.0	1.1	2.0	✓ 2.0	23.8	68.3
28	208.1	207.0	300.0	1.1	2.0	✓ 2.0	22.2	40.8
29	208.3	207.2	300.0	1.1	2.0	✓ 2.0	23.0	68.1
30	208.1	207.1	300.0	1.1	2.0	✓ 2.0	25.0	70.3
31	208.3	207.2	300.0	1.1	2.0	✓ 2.0	25.6	69.3
<b>Total</b>								
Average	208.2	207.1	300.0	1.1	2.0	2.0	30.2	97.8
Maximum	208.8	207.7	300.0	1.2	2.0	2.0	58.8	179.1
Date	6-Jul	6-Jul	1-Jul	17-Jul	1-Jul	1-Jul	8-Jul	9-Jul
Minimum	207.7	206.6	300.0	0.9	2.0	2.0	21.9	40.8
Date	2-Jul	14-Jul	1-Jul	20-Jul	1-Jul	1-Jul	26-Jul	28-Jul

Notes:

---



---

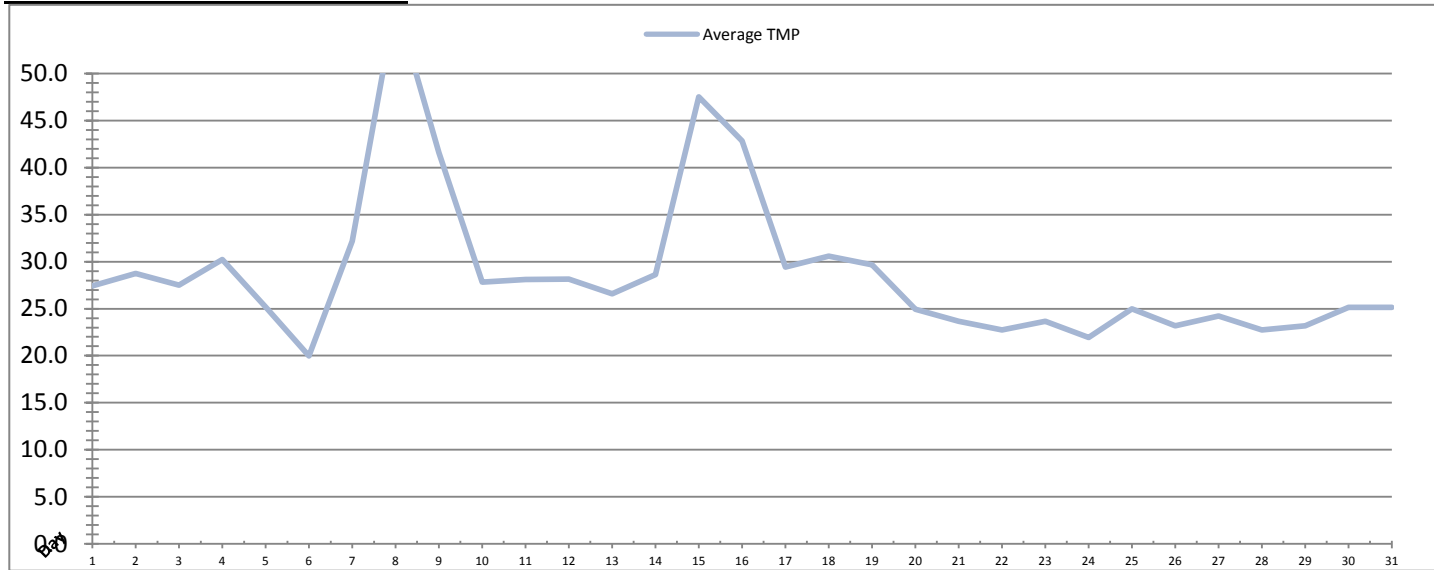


---



# Membranes Monthly Report

Month: **July-18**



Integrity Test Rack 3									
Date	Initial Pressure (kPa)	Final Pressure (kPa)	Test Duration (sec)	Change in Pressure (kPa)	UCL	Within UCL	Average TMP (kPa)	Max TMP (kPa)	
1	188.0	186.9	300.0	1.1	2.0	✓ 2.0	27.4	43.3	
2	186.7	185.5	300.0	1.1	2.0	✓ 2.0	28.8	73.3	
3	188.3	187.1	300.0	1.2	2.0	✓ 2.0	27.5	74.0	
4	186.8	185.7	300.0	1.1	2.0	✓ 2.0	30.2	90.7	
5	187.5	186.4	300.0	1.1	2.0	✓ 2.0	25.2	68.6	
6	187.2	186.1	300.0	1.1	2.0	✓ 2.0	20.0	133.6	
7	187.2	186.1	300.0	1.1	2.0	✓ 2.0	32.2	45.1	
8	187.2	186.1	300.0	1.1	2.0	✓ 2.0	57.5	148.2	
9	186.7	185.6	300.0	1.2	2.0	✓ 2.0	41.6	140.7	
10	186.4	185.1	300.0	1.2	2.0	✓ 2.0	27.8	75.6	
11	186.6	185.3	300.0	1.2	2.0	✓ 2.0	28.1	85.8	
12	186.7	185.5	300.0	1.1	2.0	✓ 2.0	28.1	79.8	
13	186.4	185.0	300.0	1.3	2.0	✓ 2.0	26.6	130.8	
14	186.1	184.9	300.0	1.2	2.0	✓ 2.0	28.6	70.6	
15	186.1	184.9	300.0	1.2	2.0	✓ 2.0	47.5	117.4	
16	185.3	184.2	300.0	1.1	2.0	✓ 2.0	42.8	121.3	
17	186.9	185.7	300.0	1.2	2.0	✓ 2.0	29.4	98.6	
18	186.8	185.7	300.0	1.1	2.0	✓ 2.0	30.6	103.0	
19	185.6	184.5	300.0	1.2	2.0	✓ 2.0	29.7	96.5	
20	186.2	185.2	300.0	1.0	2.0	✓ 2.0	25.0	73.2	
21	186.9	185.9	300.0	1.1	2.0	✓ 2.0	23.7	50.8	
22	186.6	185.5	300.0	1.1	2.0	✓ 2.0	22.7	61.7	
23	184.7	183.7	300.0	1.0	2.0	✓ 2.0	23.7	48.4	
24	185.0	184.0	300.0	1.1	2.0	✓ 2.0	21.9	70.1	
25	185.2	184.0	300.0	1.2	2.0	✓ 2.0	25.0	65.7	
26	184.9	183.7	300.0	1.1	2.0	✓ 2.0	23.2	127.8	
27	185.0	183.9	300.0	1.1	2.0	✓ 2.0	24.2	128.1	
28	184.7	183.5	300.0	1.1	2.0	✓ 2.0	22.7	46.2	
29	184.4	183.2	300.0	1.2	2.0	✓ 2.0	23.2	79.8	
30	184.0	182.8	300.0	1.1	2.0	✓ 2.0	25.2	67.8	
31	184.8	183.8	300.0	1.1	2.0	✓ 2.0	25.1	69.8	
<b>Total</b>									
<b>Average</b>	186.2	185.0	300.0	1.1	2.0	2.0	28.9	86.7	
<b>Maximum</b>	188.3	187.1	300.0	1.3	2.0	2.0	57.5	148.2	
<b>Date</b>	3-Jul	3-Jul	1-Jul	13-Jul	1-Jul	1-Jul	8-Jul	8-Jul	
<b>Minimum</b>	184.0	182.8	300.0	1.0	2.0	2.0	20.0	43.3	
<b>Date</b>	30-Jul	30-Jul	1-Jul	20-Jul	1-Jul	1-Jul	6-Jul	1-Jul	

Notes:

---



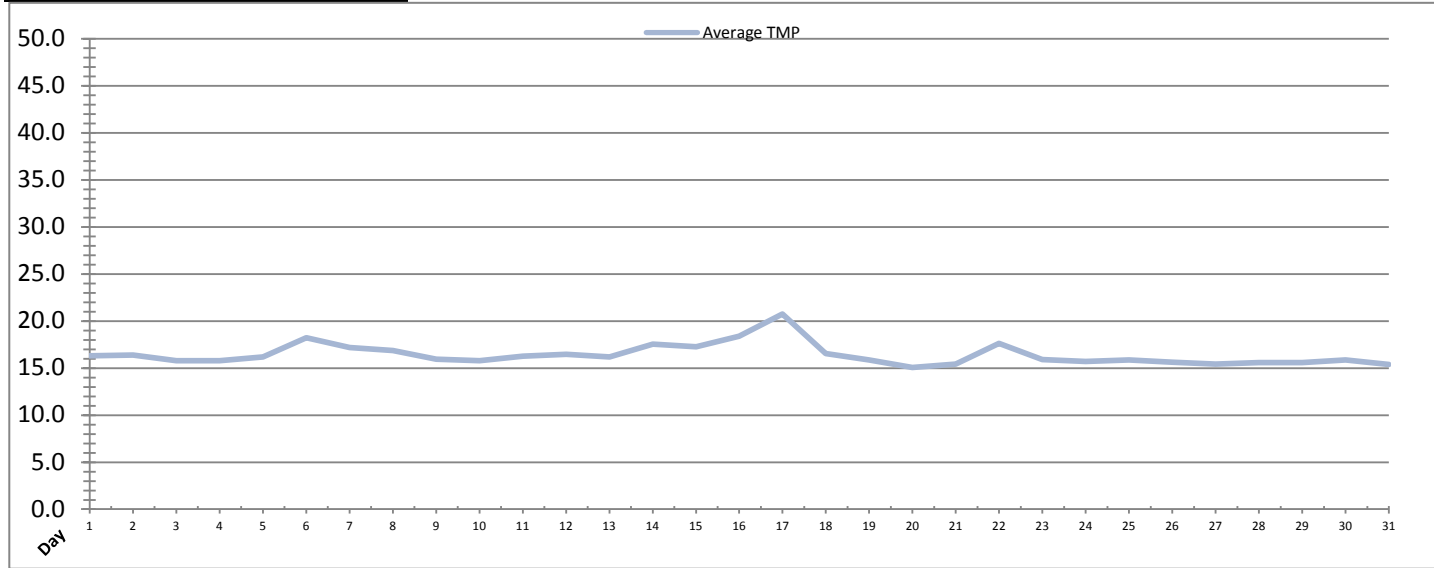
---



---

# Membranes Monthly Report

Month: **July-18**



Integrity Test Rack 4									
Date	Initial Pressure (kPa)	Final Pressure (kPa)	Test Duration (sec)	Change in Pressure (kPa)	UCL	Within UCL	Average TMP (kPa)	Max TMP (kPa)	
1	200.9	199.1	300.0	1.8	2.0	✓ 2.0	16.3	33.8	
2	200.9	199.3	300.0	1.6	2.0	✓ 2.0	16.4	34.6	
3	200.9	199.5	300.0	1.4	2.0	✓ 2.0	15.8	33.8	
4	200.5	199.0	300.0	1.5	2.0	✓ 2.0	15.8	44.6	
5	200.5	199.5	300.0	1.1	2.0	✓ 2.0	16.2	42.7	
6	201.1	199.7	300.0	1.3	2.0	✓ 2.0	18.2	47.5	
7	201.1	199.7	300.0	1.3	2.0	✓ 2.0	17.2	17.6	
8	201.1	199.7	300.0	1.3	2.0	✓ 2.0	16.9	17.2	
9	200.6	199.4	300.0	1.3	2.0	✓ 2.0	15.9	59.9	
10	200.5	199.1	300.0	1.3	2.0	✓ 2.0	15.8	41.6	
11	200.5	199.2	300.0	1.3	2.0	✓ 2.0	16.3	37.3	
12	200.9	199.6	300.0	1.3	2.0	✓ 2.0	16.5	43.9	
13	200.8	199.5	300.0	1.3	2.0	✓ 2.0	16.2	48.4	
14	200.8	199.5	300.0	1.3	2.0	✓ 2.0	17.5	35.1	
15	200.8	199.5	300.0	1.3	2.0	✓ 2.0	17.3	17.4	
16	200.5	199.1	300.0	1.3	2.0	✓ 2.0	18.4	58.4	
17	200.5	199.3	300.0	1.2	2.0	✓ 2.0	20.7	61.9	
18	200.5	199.1	300.0	1.4	2.0	✓ 2.0	16.5	48.4	
19	200.6	199.3	300.0	1.3	2.0	✓ 2.0	15.9	39.3	
20	200.2	199.0	300.0	1.2	2.0	✓ 2.0	15.1	36.7	
21	200.4	199.1	300.0	1.3	2.0	✓ 2.0	15.4	35.8	
22	200.4	199.1	300.0	1.3	2.0	✓ 2.0	17.6	50.3	
23	200.8	199.6	300.0	1.2	2.0	✓ 2.0	15.9	43.4	
24	201.0	199.8	300.0	1.2	2.0	✓ 2.0	15.7	35.9	
25	200.7	199.5	300.0	1.2	2.0	✓ 2.0	15.9	36.5	
26	200.8	199.6	300.0	1.3	2.0	✓ 2.0	15.6	62.8	
27	200.5	199.3	300.0	1.2	2.0	✓ 2.0	15.4	35.5	
28	200.7	199.3	300.0	1.4	2.0	✓ 2.0	15.6	34.2	
29	200.5	199.1	300.0	1.4	2.0	✓ 2.0	15.6	34.1	
30	200.5	199.2	300.0	1.3	2.0	✓ 2.0	15.9	43.5	
31	200.8	199.6	300.0	1.2	2.0	✓ 2.0	15.4	34.6	
<b>Total</b>									
Average	200.7	199.4	300.0	1.3	2.0	2.0	16.4	40.2	
Maximum	201.1	199.8	300.0	1.8	2.0	2.0	20.7	62.8	
Date	6-Jul	24-Jul	1-Jul	1-Jul	1-Jul	1-Jul	17-Jul	26-Jul	
Minimum	200.2	199.0	300.0	1.1	2.0	2.0	15.1	17.2	
Date	20-Jul	4-Jul	1-Jul	5-Jul	1-Jul	1-Jul	20-Jul	8-Jul	

Notes:

# Membranes Monthly Report

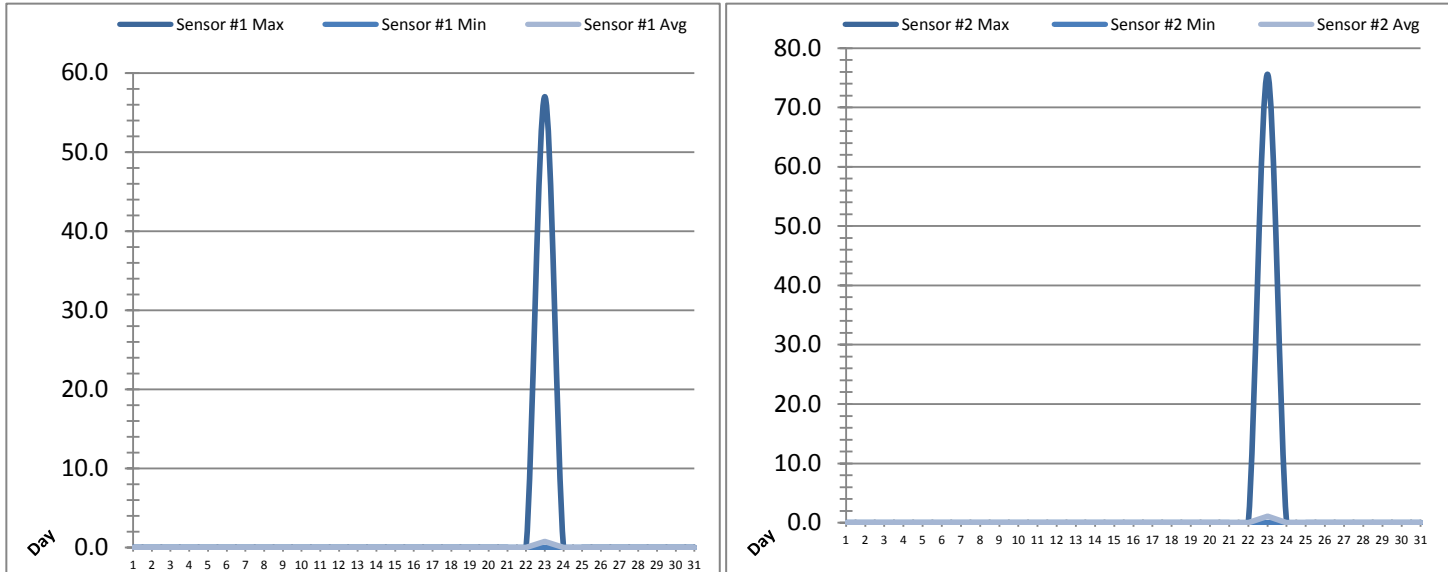
Month: July-18

Date	Membranes Monthly Performance							
	Rack 1 >0.1 NTU (Minutes)	Rack 1 Forward Flow (Minutes)	Rack 2 >0.1 NTU (Minutes)	Rack 2 Forward Flow (Minutes)	Rack 3 >0.1 NTU (Minutes)	Rack 3 Forward Flow (Minutes)	Rack 4 >0.1 NTU (Minutes)	Rack 4 Forward Flow (Minutes)
1	0.0	1239.1	1.4	1262.0	0.0	1233.3	0.0	463.6
2	0.0	1187.0	0.0	1209.0	0.0	1186.5	0.0	523.5
3	0.0	1029.2	1.4	1070.2	0.0	1061.2	0.0	654.5
4	0.5	1209.4	0.0	1276.4	0.0	1194.2	0.0	637.3
5	4.5	989.5	0.0	1077.1	0.0	1047.5	0.0	372.5
6	0.0	918.5	0.0	941.4	0.0	883.5	0.0	245.2
7	0.0	1091.1	0.0	1091.1	0.0	1091.1	0.0	0.0
8	0.0	1207.3	0.0	1207.3	0.0	1207.3	0.0	0.0
9	0.0	1135.0	1.4	1154.4	0.0	1029.3	0.0	225.2
10	0.0	1008.1	0.0	1021.1	0.0	1003.2	0.0	295.5
11	0.0	1082.4	0.5	1085.1	0.0	1082.4	0.0	314.6
12	0.0	912.6	0.0	925.1	0.0	909.4	0.0	317.3
13	0.0	952.1	0.0	910.4	0.0	872.5	0.0	291.5
14	2.3	932.2	1.4	940.3	0.0	930.5	0.0	108.3
15	0.0	1228.4	0.0	1228.4	0.0	1228.4	0.0	0.0
16	2.3	1151.0	0.0	1157.4	0.0	1149.4	0.0	300.1
17	0.5	897.3	0.0	867.1	0.0	967.3	0.0	551.4
18	0.0	1086.4	0.0	1121.4	0.0	1108.4	0.0	244.5
19	0.5	1050.4	3.2	1101.2	0.0	1119.2	0.0	214.5
20	0.0	952.1	2.3	992.6	0.0	983.6	0.0	195.0
21	0.0	942.2	2.3	957.6	0.0	939.6	0.0	256.2
22	0.0	884.2	2.3	926.5	0.0	909.4	0.0	250.2
23	0.0	994.3	1.4	1011.4	0.0	995.2	0.0	380.6
24	0.0	764.4	0.0	771.6	0.0	700.6	0.0	234.6
25	0.0	1020.1	0.0	1029.4	0.0	1017.2	0.0	297.4
26	4.0	713.3	0.0	722.1	0.0	773.3	0.0	236.5
27	0.0	918.5	0.0	932.4	0.0	917.1	0.0	290.2
28	0.0	912.1	1.4	928.4	0.0	914.4	0.0	256.3
29	0.0	816.4	1.4	829.1	0.0	815.6	0.0	245.4
30	0.0	1081.4	0.0	1097.2	0.0	1082.4	0.0	325.4
31	0.0	1035.1	0.0	1041.5	0.0	983.6	1.4	293.6
Total	14.6	31341.4	20.1	31886.1	0.0	31336.5	1.4	9021.0
Percent	0.05		0.06		0.00		0.02	
Maximum	4.5	1239.1	3.2	1276.4	0.0	1233.3	1.4	654.5
Date	5-Jul	1-Jul	19-Jul	4-Jul	1-Jul	1-Jul	31-Jul	3-Jul
Minimum	0.0	713.3	0.0	722.1	0.0	700.6	0.0	0.0
Date	1-Jul	26-Jul	2-Jul	26-Jul	1-Jul	24-Jul	1-Jul	7-Jul

Notes:  
 Met filter performance criteria of 99% of readings below 0.1ntu for the month.

# UV System Monthly Report

Month: July-18



Date	UV Reactor 1					
	Intensity Sensor 1 (mW/cm <sup>2</sup> )			Intensity Sensor 2 (mW/cm <sup>2</sup> )		
	Maximum	Minimum	Average	Maximum	Minimum	Average
1	0.0	0.0	0.0	0.0	0.0	0.0
2	0.0	0.0	0.0	0.0	0.0	0.0
3	0.0	0.0	0.0	0.0	0.0	0.0
4	0.0	0.0	0.0	0.0	0.0	0.0
5	0.0	0.0	0.0	0.0	0.0	0.0
6	0.0	0.0	0.0	0.0	0.0	0.0
7	0.0	0.0	0.0	0.0	0.0	0.0
8	0.0	0.0	0.0	0.0	0.0	0.0
9	0.0	0.0	0.0	0.0	0.0	0.0
10	0.0	0.0	0.0	0.0	0.0	0.0
11	0.0	0.0	0.0	0.0	0.0	0.0
12	0.0	0.0	0.0	0.0	0.0	0.0
13	0.0	0.0	0.0	0.0	0.0	0.0
14	0.0	0.0	0.0	0.0	0.0	0.0
15	0.0	0.0	0.0	0.0	0.0	0.0
16	0.0	0.0	0.0	0.0	0.0	0.0
17	0.0	0.0	0.0	0.0	0.0	0.0
18	0.0	0.0	0.0	0.0	0.0	0.0
19	0.0	0.0	0.0	0.0	0.0	0.0
20	0.0	0.0	0.0	0.0	0.0	0.0
21	0.0	0.0	0.0	0.0	0.0	0.0
22	0.0	0.0	0.0	0.0	0.0	0.0
23	57.0	0.0	0.8	75.6	0.0	1.1
24	0.0	0.0	0.0	0.0	0.0	0.0
25	0.0	0.0	0.0	0.0	0.0	0.0
26	0.0	0.0	0.0	0.0	0.0	0.0
27	0.0	0.0	0.0	0.0	0.0	0.0
28	0.0	0.0	0.0	0.0	0.0	0.0
29	0.0	0.0	0.0	0.0	0.0	0.0
30	0.0	0.0	0.0	0.0	0.0	0.0
31	0.0	0.0	0.0	0.0	0.0	0.0
Total						
Average	1.8	0.0	0.0	2.4	0.0	0.0
Maximum	57.0		0.8	75.6		1.1
Date	23-Jul		23-Jul	23-Jul		23-Jul
Minimum		0.0	0.0		0.0	0.0
Date		1-Jul	1-Jul		1-Jul	1-Jul

Notes:

---



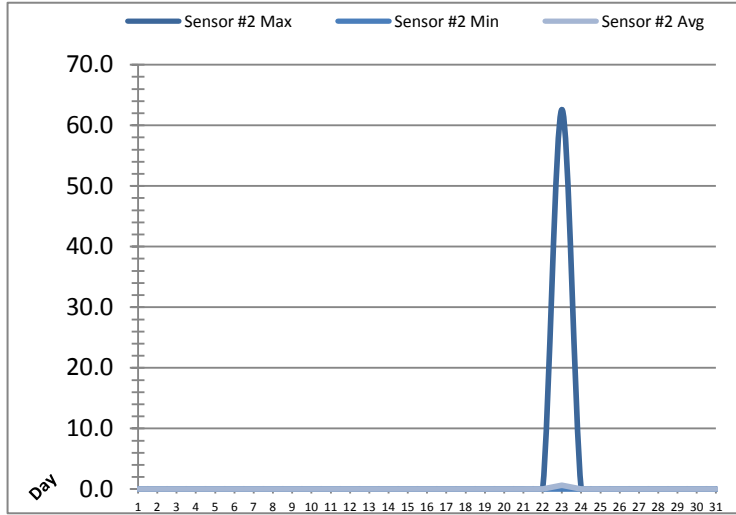
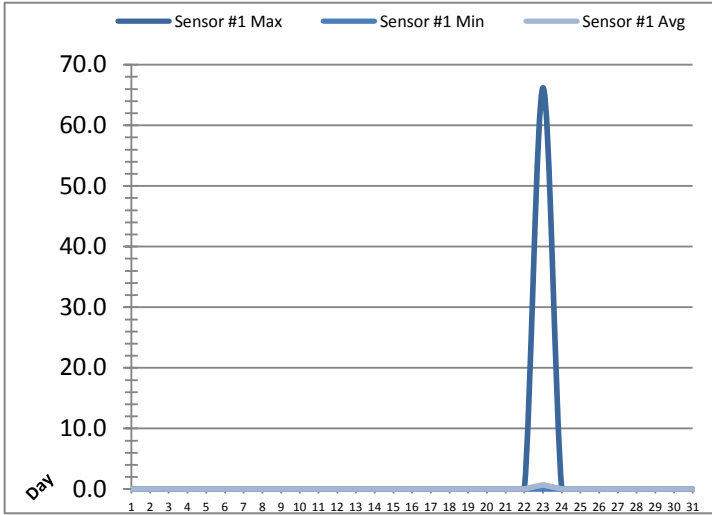
---



---

# UV System Monthly Report

Month: July-18



Date	UV Reactor 2					
	Intensity Sensor 1 (mW/cm²)			Intensity Sensor 2 (mW/cm²)		
	Maximum	Minimum	Average	Maximum	Minimum	Average
1	0.0	0.0	0.0	0.0	0.0	0.0
2	0.0	0.0	0.0	0.0	0.0	0.0
3	0.0	0.0	0.0	0.0	0.0	0.0
4	0.0	0.0	0.0	0.0	0.0	0.0
5	0.0	0.0	0.0	0.0	0.0	0.0
6	0.0	0.0	0.0	0.0	0.0	0.0
7	0.0	0.0	0.0	0.0	0.0	0.0
8	0.0	0.0	0.0	0.0	0.0	0.0
9	0.0	0.0	0.0	0.0	0.0	0.0
10	0.0	0.0	0.0	0.0	0.0	0.0
11	0.0	0.0	0.0	0.0	0.0	0.0
12	0.0	0.0	0.0	0.0	0.0	0.0
13	0.0	0.0	0.0	0.0	0.0	0.0
14	0.0	0.0	0.0	0.0	0.0	0.0
15	0.0	0.0	0.0	0.0	0.0	0.0
16	0.0	0.0	0.0	0.0	0.0	0.0
17	0.0	0.0	0.0	0.0	0.0	0.0
18	0.0	0.0	0.0	0.0	0.0	0.0
19	0.0	0.0	0.0	0.0	0.0	0.0
20	0.0	0.0	0.0	0.0	0.0	0.0
21	0.0	0.0	0.0	0.0	0.0	0.0
22	0.0	0.0	0.0	0.0	0.0	0.0
23	66.2	0.0	0.7	62.6	0.0	0.7
24	0.0	0.0	0.0	0.0	0.0	0.0
25	0.0	0.0	0.0	0.0	0.0	0.0
26	0.0	0.0	0.0	0.0	0.0	0.0
27	0.0	0.0	0.0	0.0	0.0	0.0
28	0.0	0.0	0.0	0.0	0.0	0.0
29	0.0	0.0	0.0	0.0	0.0	0.0
30	0.0	0.0	0.0	0.0	0.0	0.0
31	0.0	0.0	0.0	0.0	0.0	0.0
Total						
Average	2.1	0.0	0.0	2.0	0.0	0.0
Maximum	66.2		0.7	62.6		0.7
Date	23-Jul		23-Jul	23-Jul		23-Jul
Minimum		0.0	0.0		0.0	0.0
Date		1-Jul	1-Jul		1-Jul	1-Jul

Notes:

---



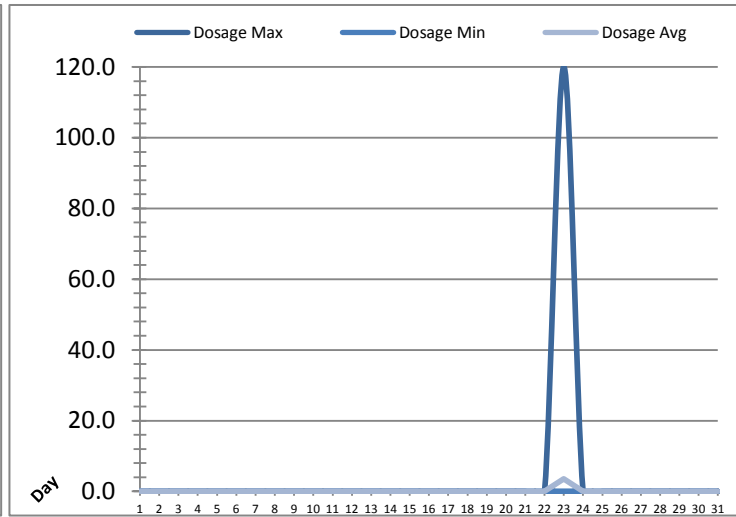
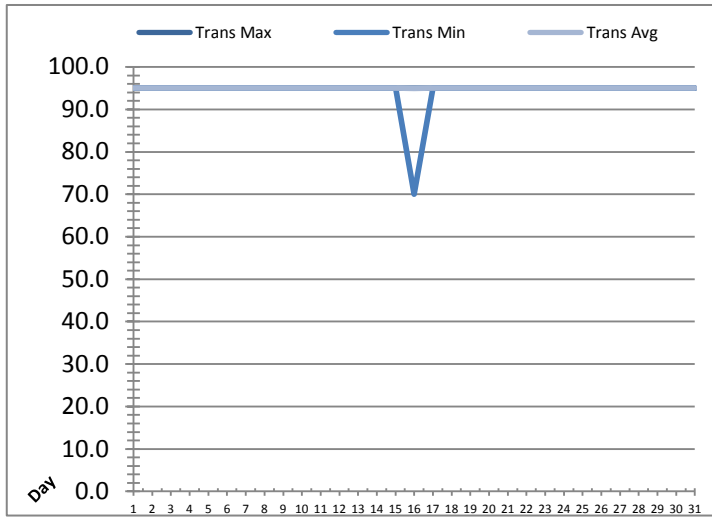
---



---

# UV System Monthly Report

Month: July-18

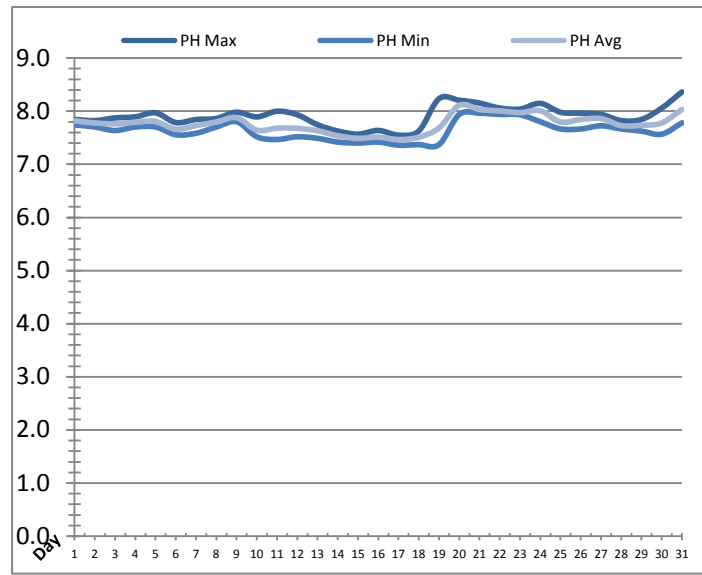
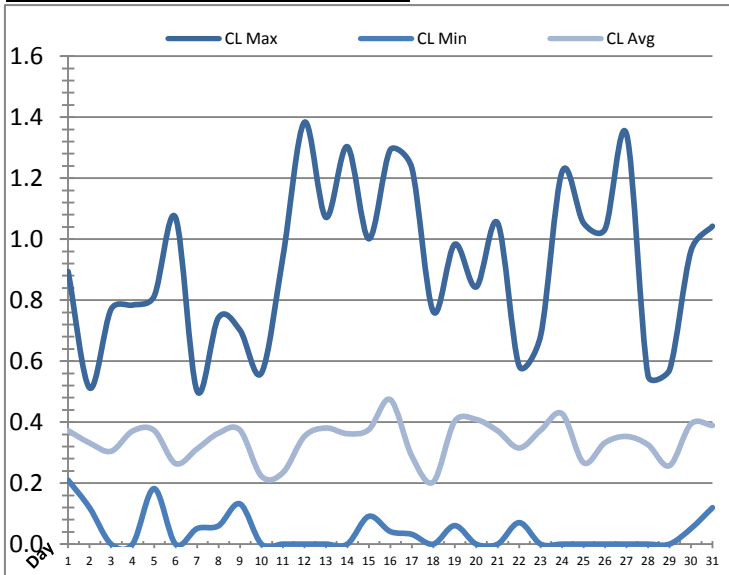


UV System							
Date	Transmittance (%)			Dosage (mJ/cm <sup>2</sup> )			Inlet Flow (L/s)
	Maximum	Minimum	Average	Maximum	Minimum	Average	Maximum
1	95.00	95.00	95.00	0.0	0.0	0.0	106.8
2	95.00	95.00	95.00	0.0	0.0	0.0	167.4
3	95.00	95.00	95.00	0.0	0.0	0.0	149.8
4	95.00	95.00	95.00	0.0	0.0	0.0	175.6
5	95.00	95.00	95.00	0.0	0.0	0.0	136.3
6	95.00	95.00	95.00	0.0	0.0	0.0	177.9
7	95.00	95.00	95.00	0.0	0.0	0.0	74.9
8	95.00	95.00	95.00	0.0	0.0	0.0	131.8
9	95.00	95.00	95.00	0.0	0.0	0.0	617.5
10	95.00	95.00	95.00	0.0	0.0	0.0	171.2
11	95.00	95.00	95.00	0.0	0.0	0.0	622.1
12	95.00	95.00	95.00	0.0	0.0	0.0	177.6
13	95.00	95.00	95.00	0.0	0.0	0.0	174.9
14	95.00	95.00	95.00	0.0	0.0	0.0	160.0
15	95.00	95.00	95.00	0.0	0.0	0.0	141.7
16	95.00	70.00	94.99	0.0	0.0	0.0	170.1
17	95.00	95.00	95.00	0.0	0.0	0.0	169.3
18	95.00	95.00	95.00	0.0	0.0	0.0	613.6
19	95.00	95.00	95.00	0.0	0.0	0.0	173.2
20	95.00	95.00	95.00	0.0	0.0	0.0	177.2
21	95.00	95.00	95.00	0.0	0.0	0.0	159.6
22	95.00	95.00	95.00	0.0	0.0	0.0	554.1
23	95.00	95.00	95.00	120.0	0.0	3.6	121.2
24	95.00	95.00	95.00	0.0	0.0	0.0	177.3
25	95.00	95.00	95.00	0.0	0.0	0.0	179.2
26	95.00	95.00	95.00	0.0	0.0	0.0	624.4
27	95.00	95.00	95.00	0.0	0.0	0.0	177.5
28	95.00	95.00	95.00	0.0	0.0	0.0	111.3
29	95.00	95.00	95.00	0.0	0.0	0.0	647.9
30	95.00	95.00	95.00	0.0	0.0	0.0	174.6
31	95.00	95.00	95.00	0.0	0.0	0.0	177.2
<b>Total</b>							
Average	95.00	94.19	95.00	3.9	0.0	0.1	244.9
Maximum	95.00		95.00	120.0		3.6	647.9
Date	1-Jul		1-Jul	23-Jul		23-Jul	29-Jul
Minimum		70.00	94.99		0.0	0.0	
Date		16-Jul	16-Jul		1-Jul	1-Jul	

Notes:

# Plant Quality Report

Month: July-18



Date	Strainer Chlorine Residual			Strainer pH		
	AIT_2003_CL (ppm)			AIT_2003_PH		
	Maximum	Minimum	Average	Maximum	Minimum	Average
1	0.89	0.21	0.37	7.84	7.74	7.82
2	0.51	0.12	0.33	7.82	7.70	7.78
3	0.77	0.00	0.30	7.87	7.64	7.76
4	0.78	0.00	0.37	7.89	7.70	7.79
5	0.81	0.18	0.37	7.97	7.70	7.80
6	1.07	0.00	0.26	7.79	7.56	7.66
7	0.50	0.05	0.31	7.84	7.58	7.73
8	0.74	0.06	0.36	7.86	7.70	7.80
9	0.70	0.13	0.37	7.98	7.80	7.88
10	0.56	0.00	0.22	7.89	7.52	7.64
11	0.94	0.00	0.23	8.00	7.47	7.68
12	1.38	0.00	0.35	7.93	7.52	7.68
13	1.07	0.00	0.38	7.74	7.49	7.63
14	1.30	0.00	0.36	7.63	7.42	7.54
15	1.00	0.09	0.38	7.57	7.40	7.49
16	1.29	0.04	0.47	7.64	7.42	7.51
17	1.23	0.03	0.29	7.55	7.36	7.47
18	0.76	0.00	0.20	7.63	7.37	7.51
19	0.98	0.06	0.40	8.24	7.37	7.68
20	0.84	0.00	0.41	8.21	7.94	8.11
21	1.05	0.00	0.37	8.15	7.96	8.03
22	0.58	0.07	0.32	8.06	7.94	8.01
23	0.68	0.00	0.37	8.04	7.93	7.97
24	1.22	0.00	0.43	8.15	7.80	8.01
25	1.05	0.00	0.27	7.98	7.67	7.80
26	1.03	0.00	0.33	7.96	7.67	7.84
27	1.34	0.00	0.35	7.94	7.72	7.86
28	0.55	0.00	0.33	7.82	7.67	7.73
29	0.57	0.00	0.26	7.84	7.63	7.73
30	0.96	0.05	0.39	8.06	7.57	7.78
31	1.04	0.12	0.39	8.36	7.78	8.03
Total						
Average	0.91	0.04	0.34	7.91	7.64	7.77
Maximum	1.38		0.47	8.36		8.11
Date	12-Jul		16-Jul	31-Jul		20-Jul
Minimum		0.00	0.20		7.36	7.47
Date		3-Jul	18-Jul		17-Jul	17-Jul

Notes:

---



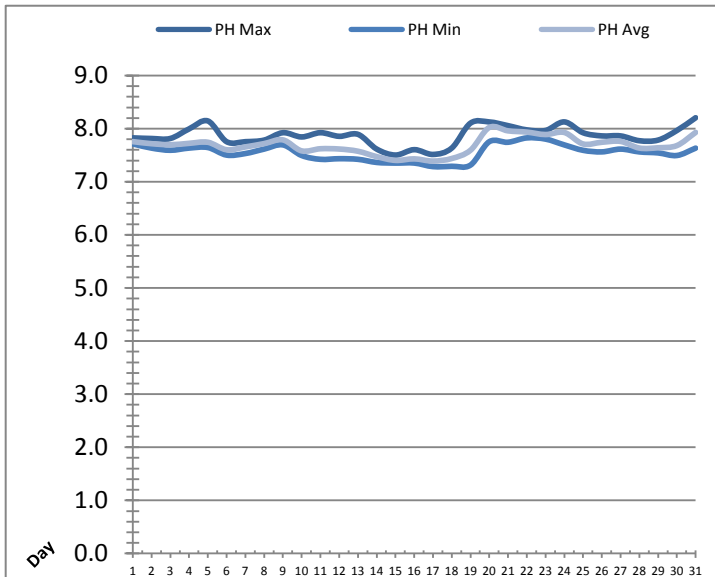
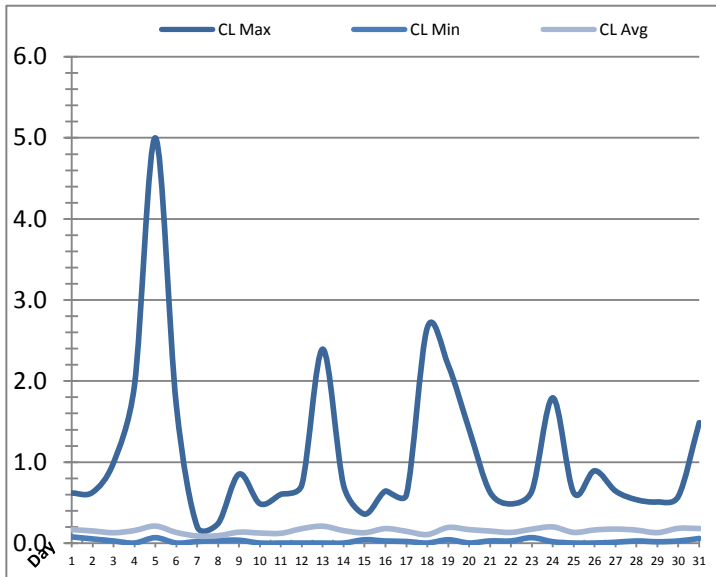
---



---

# Plant Quality Report

Month: July-18



Date	Inlet UV Chlorine Residual			Inlet UV pH		
	AIT_5005_CL (ppm)			AIT_5005_PH		
	Maximum	Minimum	Average	Maximum	Minimum	Average
1	0.62	0.08	0.17	7.83	7.71	7.76
2	0.63	0.05	0.15	7.81	7.63	7.72
3	0.99	0.03	0.13	7.81	7.59	7.70
4	1.95	0.00	0.16	7.99	7.63	7.72
5	5.00	0.07	0.21	8.14	7.64	7.74
6	1.70	0.00	0.13	7.75	7.50	7.60
7	0.20	0.02	0.09	7.75	7.53	7.66
8	0.24	0.03	0.09	7.78	7.62	7.72
9	0.85	0.04	0.14	7.92	7.69	7.79
10	0.49	0.00	0.13	7.84	7.49	7.58
11	0.60	0.00	0.12	7.92	7.42	7.62
12	0.72	0.00	0.18	7.86	7.43	7.62
13	2.39	0.00	0.21	7.89	7.42	7.57
14	0.71	0.00	0.15	7.62	7.36	7.47
15	0.36	0.04	0.13	7.50	7.35	7.40
16	0.64	0.03	0.18	7.60	7.35	7.43
17	0.60	0.02	0.15	7.51	7.29	7.39
18	2.66	0.00	0.11	7.63	7.29	7.44
19	2.20	0.04	0.19	8.10	7.31	7.59
20	1.40	0.00	0.17	8.13	7.75	8.02
21	0.63	0.03	0.15	8.06	7.74	7.96
22	0.48	0.03	0.13	7.98	7.83	7.94
23	0.64	0.07	0.17	7.97	7.80	7.89
24	1.79	0.02	0.20	8.13	7.69	7.93
25	0.62	0.00	0.13	7.92	7.59	7.71
26	0.89	0.00	0.16	7.86	7.56	7.74
27	0.64	0.01	0.17	7.86	7.61	7.76
28	0.54	0.03	0.16	7.77	7.56	7.63
29	0.51	0.02	0.13	7.78	7.54	7.64
30	0.58	0.03	0.18	7.96	7.49	7.68
31	1.49	0.06	0.18	8.21	7.63	7.93
Total						
Average	1.09	0.02	0.15	7.87	7.55	7.69
Maximum	5.00		0.21	8.21		8.02
Date	5-Jul		5-Jul	31-Jul		20-Jul
Minimum		0.00	0.09		7.29	7.39
Date		10-Jul	7-Jul		17-Jul	17-Jul

Notes:

---



---

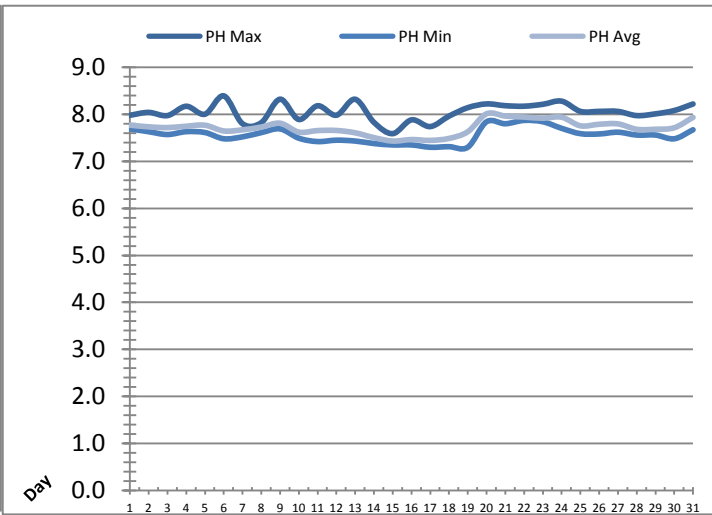
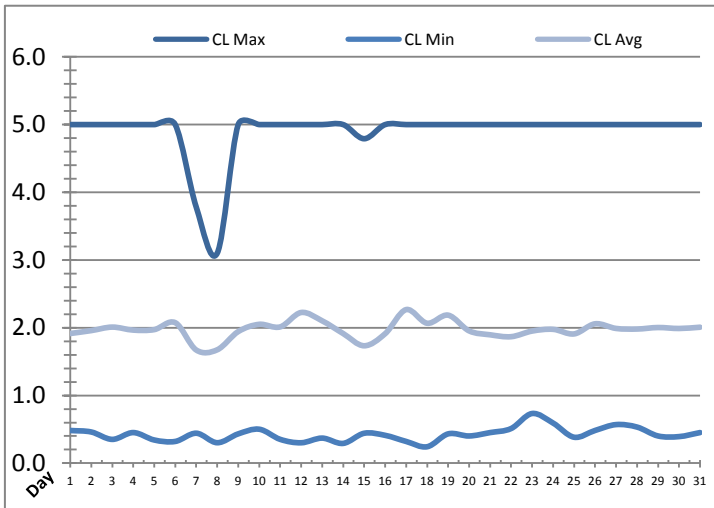


---



# Plant Quality Report

Month: **July-18**



Date	Discharge UV Chlorine Residual			Discharge UV pH		
	AIT_5006_CL (ppm)			AIT_5006_PH		
	Maximum	Minimum	Average	Maximum	Minimum	Average
1	5.00	0.48	1.91	7.98	7.69	7.77
2	5.00	0.46	1.96	8.04	7.63	7.74
3	5.00	0.35	2.01	7.98	7.57	7.72
4	5.00	0.45	1.97	8.17	7.63	7.75
5	5.00	0.34	1.97	8.00	7.61	7.77
6	5.00	0.32	2.07	8.39	7.48	7.65
7	3.78	0.44	1.67	7.80	7.52	7.67
8	3.10	0.30	1.67	7.82	7.61	7.73
9	5.00	0.43	1.94	8.32	7.69	7.81
10	5.00	0.50	2.05	7.89	7.49	7.62
11	5.00	0.35	2.01	8.18	7.42	7.66
12	5.00	0.30	2.23	7.98	7.45	7.66
13	5.00	0.37	2.10	8.32	7.43	7.61
14	5.00	0.29	1.91	7.83	7.38	7.51
15	4.79	0.44	1.73	7.59	7.35	7.43
16	5.00	0.41	1.91	7.88	7.35	7.47
17	5.00	0.32	2.27	7.74	7.30	7.45
18	5.00	0.24	2.07	7.96	7.31	7.49
19	5.00	0.43	2.19	8.14	7.30	7.63
20	5.00	0.40	1.95	8.22	7.84	8.01
21	5.00	0.45	1.90	8.19	7.80	7.97
22	5.00	0.51	1.87	8.17	7.87	7.94
23	5.00	0.73	1.95	8.22	7.84	7.92
24	5.00	0.59	1.98	8.28	7.70	7.94
25	5.00	0.38	1.91	8.06	7.59	7.76
26	5.00	0.48	2.06	8.07	7.58	7.79
27	5.00	0.57	1.99	8.06	7.62	7.80
28	5.00	0.53	1.98	7.97	7.56	7.68
29	5.00	0.40	2.00	8.01	7.56	7.68
30	5.00	0.39	1.99	8.08	7.48	7.72
31	5.00	0.45	2.01	8.22	7.67	7.94
Total						
Average	4.89	0.42	1.98	8.05	7.56	7.72
Maximum	5.00		2.27	8.39		8.01
Date	1-Jul		17-Jul	6-Jul		20-Jul
Minimum		0.24	1.67		7.30	7.43
Date		18-Jul	7-Jul		17-Jul	15-Jul

Notes:

---



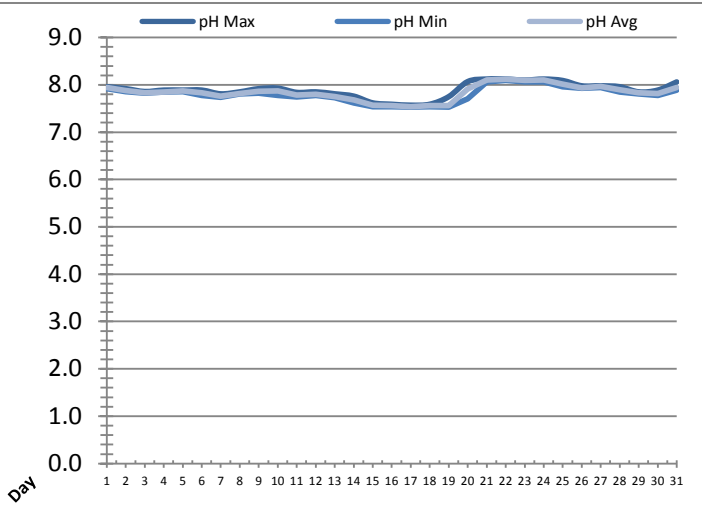
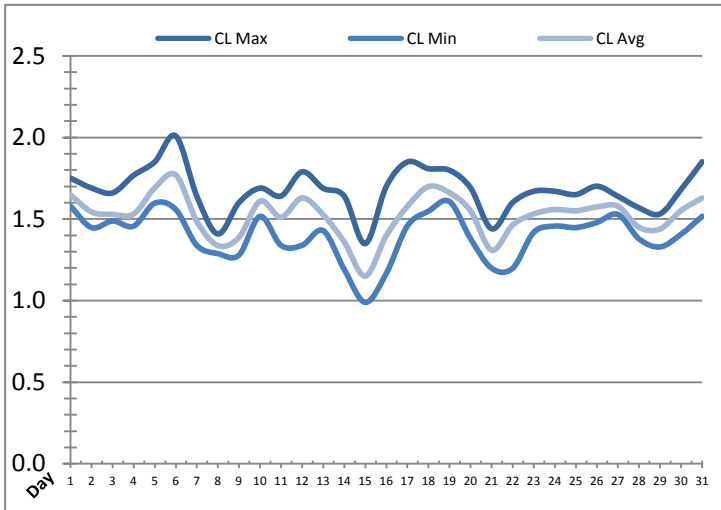
---



---

# Plant Quality Report

Month: **July-18**

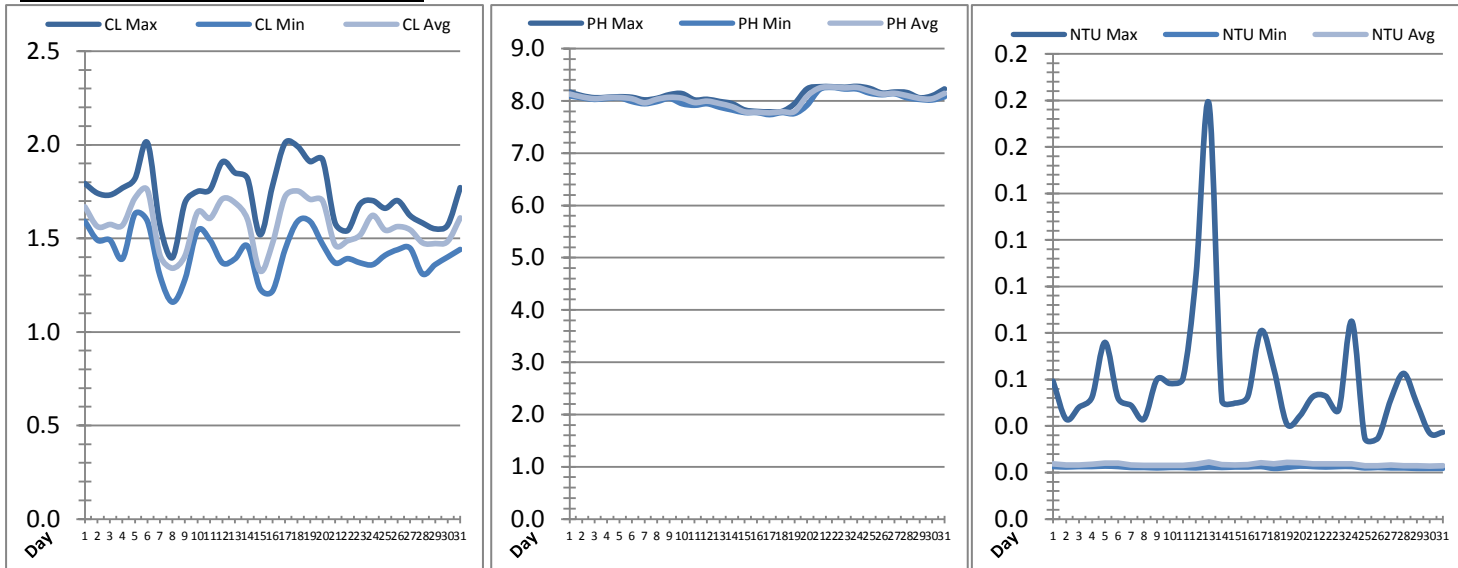


Date	Suction Header Chlorine Res.			Suction Header pH			Distribution CT Calc Total		
	AIT_7001_CL (ppm)			AIT_7001_PH (m)			REAL_CT_CALC_TOTAL (mg*ml/min)		
	Maximum	Minimum	Average	Maximum	Minimum	Average	Maximum	Minimum	Average
1	1.75	1.58	1.65	7.96	7.92	7.94	7963.77	0.00	441.51
2	1.69	1.45	1.54	7.92	7.86	7.88	9517.85	0.00	340.78
3	1.66	1.49	1.53	7.86	7.83	7.83	9649.36	0.00	293.71
4	1.77	1.46	1.53	7.89	7.85	7.85	9651.82	0.00	382.12
5	1.85	1.60	1.69	7.89	7.86	7.87	11975.28	0.00	326.45
6	2.01	1.56	1.77	7.89	7.78	7.83	10894.48	0.00	389.68
7	1.64	1.34	1.49	7.81	7.74	7.76	8286.92	0.00	328.94
8	1.41	1.29	1.34	7.85	7.81	7.81	9853.94	0.00	402.06
9	1.60	1.28	1.39	7.92	7.83	7.86	7822.52	0.00	257.24
10	1.69	1.52	1.61	7.93	7.78	7.87	8886.46	0.00	312.22
11	1.64	1.34	1.51	7.84	7.75	7.78	9581.83	0.00	302.58
12	1.79	1.34	1.63	7.85	7.78	7.80	921.07	0.00	286.30
13	1.69	1.43	1.53	7.81	7.73	7.76	2471.81	0.00	239.84
14	1.64	1.19	1.36	7.76	7.62	7.68	9823.88	0.00	263.03
15	1.35	0.99	1.15	7.62	7.54	7.57	7160.24	0.00	282.53
16	1.70	1.17	1.40	7.59	7.54	7.56	9948.96	0.00	309.07
17	1.85	1.46	1.58	7.57	7.53	7.54	7898.98	0.00	248.87
18	1.81	1.55	1.70	7.59	7.54	7.56	11839.21	0.00	312.76
19	1.80	1.61	1.66	7.75	7.53	7.56	10770.98	0.00	414.68
20	1.69	1.38	1.55	8.07	7.71	7.91	11171.52	0.00	261.20
21	1.44	1.20	1.31	8.12	8.06	8.10	8205.73	0.00	243.84
22	1.60	1.20	1.46	8.12	8.10	8.12	9123.07	0.00	280.98
23	1.67	1.42	1.53	8.10	8.07	8.09	11331.73	0.00	318.09
24	1.67	1.46	1.56	8.12	8.07	8.10	9692.32	0.00	254.99
25	1.65	1.45	1.55	8.09	7.96	8.02	10826.71	0.00	347.32
26	1.70	1.48	1.57	7.98	7.93	7.94	10269.69	0.00	298.81
27	1.64	1.53	1.58	7.98	7.95	7.96	4570.27	0.00	295.83
28	1.57	1.38	1.45	7.96	7.85	7.90	9607.98	0.00	279.16
29	1.53	1.33	1.44	7.85	7.81	7.83	8141.99	0.00	238.24
30	1.68	1.41	1.55	7.89	7.78	7.82	10157.13	0.00	324.19
31	1.85	1.52	1.63	8.06	7.89	7.94	9684.99	0.00	375.23
Total									
Average	1.68	1.40	1.52	7.89	7.80	7.84			
Maximum	2.01		1.77	8.12		8.12			
Date	6-Jul		6-Jul	22-Jul		22-Jul			
Minimum		0.99	1.15		7.53	7.54			
Date		15-Jul	15-Jul		19-Jul	17-Jul			

Notes:  
 15th: <1ppm for 30secs

# Plant Quality Report

Month: July-18

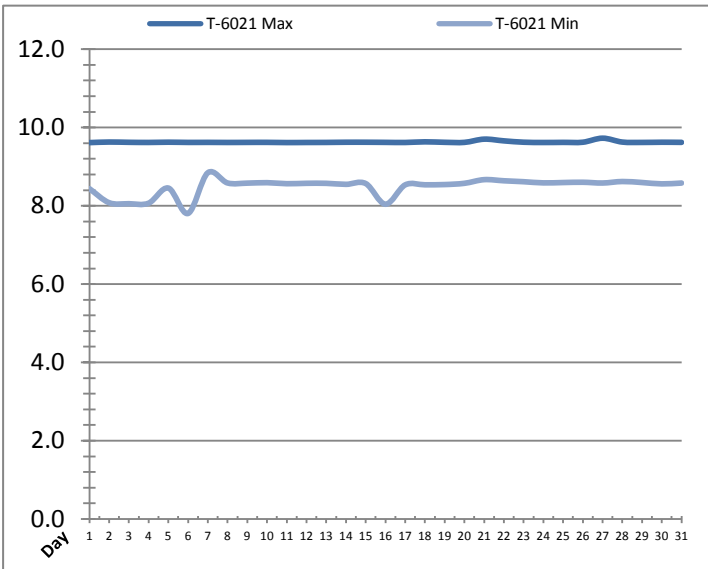
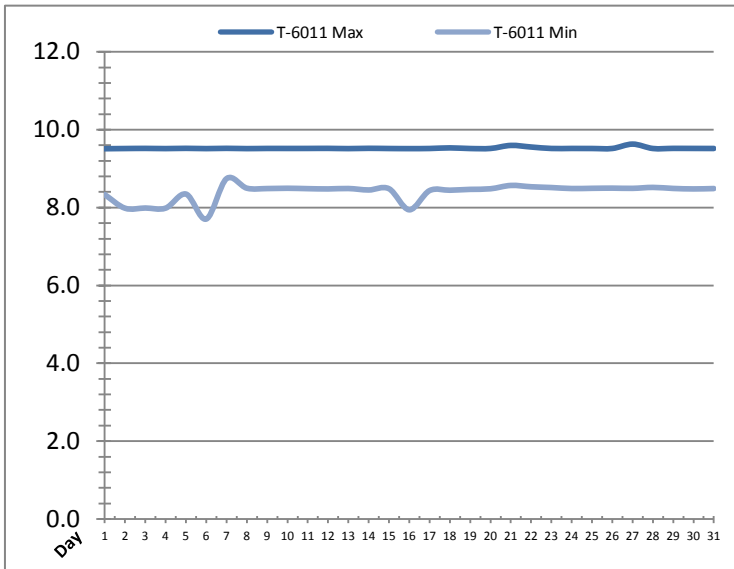


Date	Distribution Chlorine Header			Distribution pH			Distribution Turbidity		
	AIT_7004_CL (ppm)			AIT_7004_PH (mg/L)			AIT_7003 (mg/L)		
	Maximum	Minimum	Average	Maximum	Minimum	Average	Maximum	Minimum	Average
1	1.79	1.59	1.67	8.17	8.10	8.13	0.06	0.02	0.02
2	1.74	1.49	1.56	8.10	8.06	8.07	0.04	0.02	0.02
3	1.73	1.49	1.57	8.06	8.03	8.04	0.05	0.02	0.02
4	1.77	1.39	1.57	8.07	8.05	8.06	0.05	0.02	0.02
5	1.82	1.63	1.72	8.08	8.06	8.06	0.08	0.02	0.02
6	2.01	1.59	1.76	8.07	7.99	8.04	0.05	0.02	0.02
7	1.57	1.30	1.41	8.02	7.95	7.96	0.05	0.02	0.02
8	1.40	1.16	1.34	8.05	7.99	8.03	0.04	0.02	0.02
9	1.69	1.28	1.41	8.12	8.05	8.07	0.06	0.02	0.02
10	1.75	1.54	1.64	8.14	7.95	8.05	0.06	0.02	0.02
11	1.76	1.49	1.61	8.02	7.92	7.97	0.06	0.02	0.02
12	1.91	1.37	1.71	8.03	7.95	7.99	0.10	0.02	0.02
13	1.85	1.39	1.69	7.99	7.88	7.95	0.18	0.02	0.02
14	1.82	1.46	1.60	7.95	7.83	7.89	0.05	0.02	0.02
15	1.52	1.23	1.33	7.83	7.78	7.79	0.05	0.02	0.02
16	1.78	1.22	1.47	7.80	7.78	7.79	0.05	0.02	0.02
17	2.01	1.44	1.72	7.79	7.74	7.77	0.08	0.02	0.02
18	1.99	1.59	1.75	7.80	7.78	7.79	0.06	0.02	0.02
19	1.91	1.59	1.71	7.95	7.76	7.80	0.04	0.02	0.02
20	1.92	1.47	1.70	8.23	7.92	8.09	0.04	0.02	0.02
21	1.58	1.37	1.46	8.27	8.22	8.25	0.05	0.02	0.02
22	1.54	1.39	1.49	8.27	8.26	8.26	0.05	0.02	0.02
23	1.68	1.37	1.52	8.26	8.23	8.25	0.05	0.02	0.02
24	1.70	1.36	1.62	8.28	8.23	8.26	0.08	0.02	0.02
25	1.66	1.41	1.54	8.24	8.15	8.19	0.03	0.02	0.02
26	1.70	1.44	1.56	8.15	8.12	8.13	0.03	0.02	0.02
27	1.62	1.45	1.55	8.17	8.14	8.14	0.05	0.02	0.02
28	1.58	1.31	1.48	8.16	8.06	8.10	0.06	0.02	0.02
29	1.55	1.36	1.47	8.06	8.03	8.05	0.05	0.02	0.02
30	1.57	1.40	1.48	8.10	8.02	8.04	0.04	0.02	0.02
31	1.77	1.44	1.61	8.23	8.08	8.14	0.04	0.02	0.02
Total									
Average	1.73	1.42	1.57	8.08	8.00	8.04	0.1	0.0	0.0
Maximum	2.01		1.76	8.28		8.26	0.2		0.0
Date	6-Jul		6-Jul	24-Jul		22-Jul	13-Jul		13-Jul
Minimum		1.16	1.33		7.74	7.77		0.0	0.0
Date		8-Jul	15-Jul		17-Jul	17-Jul		18-Jul	30-Jul

Notes:

# Raw Well/Treated Storage Report

Month: July-18



Date	Treated Water Storage Tank					
	T-6011 (m)			T-6021 (m)		
	Maximum	Minimum	Average	Maximum	Minimum	Average
1	9.5	8.3	8.9	9.6	8.4	9.0
2	9.5	8.0	8.7	9.6	8.1	8.8
3	9.5	8.0	8.8	9.6	8.1	8.9
4	9.5	8.0	8.8	9.6	8.1	8.9
5	9.5	8.3	9.0	9.6	8.5	9.1
6	9.5	7.7	8.9	9.6	7.8	9.0
7	9.5	8.7	9.1	9.6	8.8	9.2
8	9.5	8.5	9.0	9.6	8.6	9.1
9	9.5	8.5	9.1	9.6	8.6	9.2
10	9.5	8.5	9.0	9.6	8.6	9.1
11	9.5	8.5	9.0	9.6	8.6	9.1
12	9.5	8.5	9.0	9.6	8.6	9.1
13	9.5	8.5	9.0	9.6	8.6	9.1
14	9.5	8.5	9.1	9.6	8.5	9.2
15	9.5	8.5	9.0	9.6	8.6	9.1
16	9.5	7.9	8.9	9.6	8.0	9.0
17	9.5	8.4	9.0	9.6	8.5	9.1
18	9.5	8.4	9.0	9.6	8.5	9.1
19	9.5	8.5	9.0	9.6	8.5	9.1
20	9.5	8.5	9.1	9.6	8.6	9.2
21	9.6	8.6	9.1	9.7	8.7	9.2
22	9.6	8.5	9.2	9.7	8.6	9.3
23	9.5	8.5	9.1	9.6	8.6	9.2
24	9.5	8.5	9.1	9.6	8.6	9.2
25	9.5	8.5	9.1	9.6	8.6	9.2
26	9.5	8.5	9.1	9.6	8.6	9.2
27	9.6	8.5	9.1	9.7	8.6	9.2
28	9.5	8.5	9.1	9.6	8.6	9.2
29	9.5	8.5	9.1	9.6	8.6	9.2
30	9.5	8.5	9.1	9.6	8.6	9.2
31	9.5	8.5	9.1	9.6	8.6	9.2
Total						
Average	9.5	8.4	9.0	9.6	8.5	9.1
Maximum	9.6		9.2	9.7		9.3
Date	27-Jul		22-Jul	27-Jul		22-Jul
Minimum		7.7	8.7		7.8	8.8
Date		6-Jul	2-Jul		6-Jul	2-Jul

Notes:

---



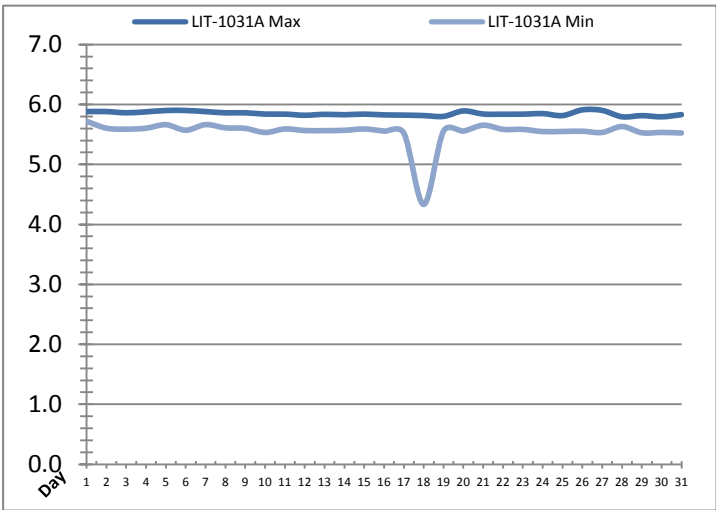
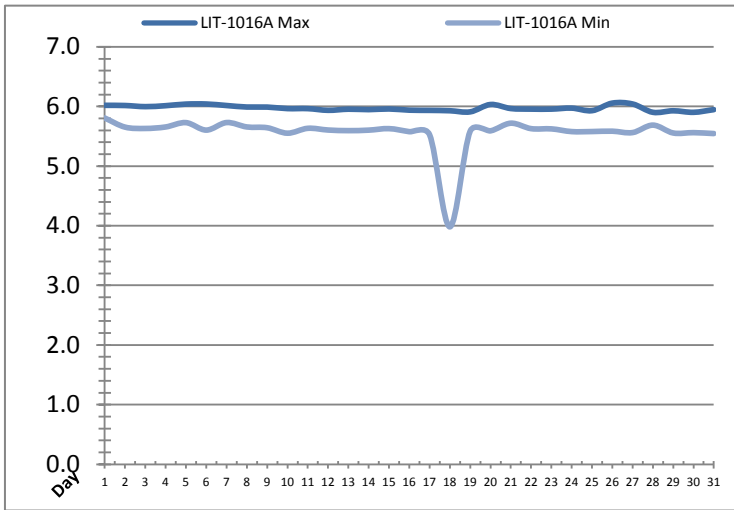
---



---

# Raw Well/Treated Storage Report

Month: July-18



Date	Low Lift Intake Levels					
	Wet Well #1 (LIT-1016A) (m)			Wet Well #2 (LIT-1031A) (m)		
	Maximum	Minimum	Average	Maximum	Minimum	Average
1	6.0	5.8	5.9	5.9	5.7	5.8
2	6.0	5.7	5.8	5.9	5.6	5.7
3	6.0	5.6	5.8	5.9	5.6	5.7
4	6.0	5.7	5.8	5.9	5.6	5.7
5	6.0	5.7	5.9	5.9	5.7	5.8
6	6.0	5.6	5.8	5.9	5.6	5.7
7	6.0	5.7	5.8	5.9	5.7	5.8
8	6.0	5.7	5.8	5.9	5.6	5.7
9	6.0	5.6	5.8	5.9	5.6	5.7
10	6.0	5.6	5.8	5.8	5.5	5.7
11	6.0	5.6	5.8	5.8	5.6	5.7
12	5.9	5.6	5.8	5.8	5.6	5.7
13	6.0	5.6	5.8	5.8	5.6	5.7
14	5.9	5.6	5.8	5.8	5.6	5.7
15	6.0	5.6	5.8	5.8	5.6	5.7
16	5.9	5.6	5.8	5.8	5.6	5.7
17	5.9	5.5	5.7	5.8	5.5	5.7
18	5.9	4.0	5.7	5.8	4.3	5.6
19	5.9	5.6	5.8	5.8	5.6	5.7
20	6.0	5.6	5.8	5.9	5.6	5.7
21	6.0	5.7	5.8	5.8	5.7	5.7
22	6.0	5.6	5.8	5.8	5.6	5.7
23	6.0	5.6	5.8	5.8	5.6	5.7
24	6.0	5.6	5.8	5.8	5.5	5.7
25	5.9	5.6	5.8	5.8	5.6	5.7
26	6.1	5.6	5.8	5.9	5.6	5.7
27	6.0	5.6	5.8	5.9	5.5	5.7
28	5.9	5.7	5.8	5.8	5.6	5.7
29	5.9	5.6	5.8	5.8	5.5	5.7
30	5.9	5.6	5.8	5.8	5.5	5.7
31	5.9	5.5	5.7	5.8	5.5	5.7
Total						
Average	6.0	5.6	5.8	5.8	5.5	5.7
Maximum	6.1		5.9	5.9		5.8
Date	26-Jul		5-Jul	26-Jul		5-Jul
Minimum		4.0	5.7		4.3	5.6
Date		18-Jul	18-Jul		18-Jul	18-Jul

Notes:

---



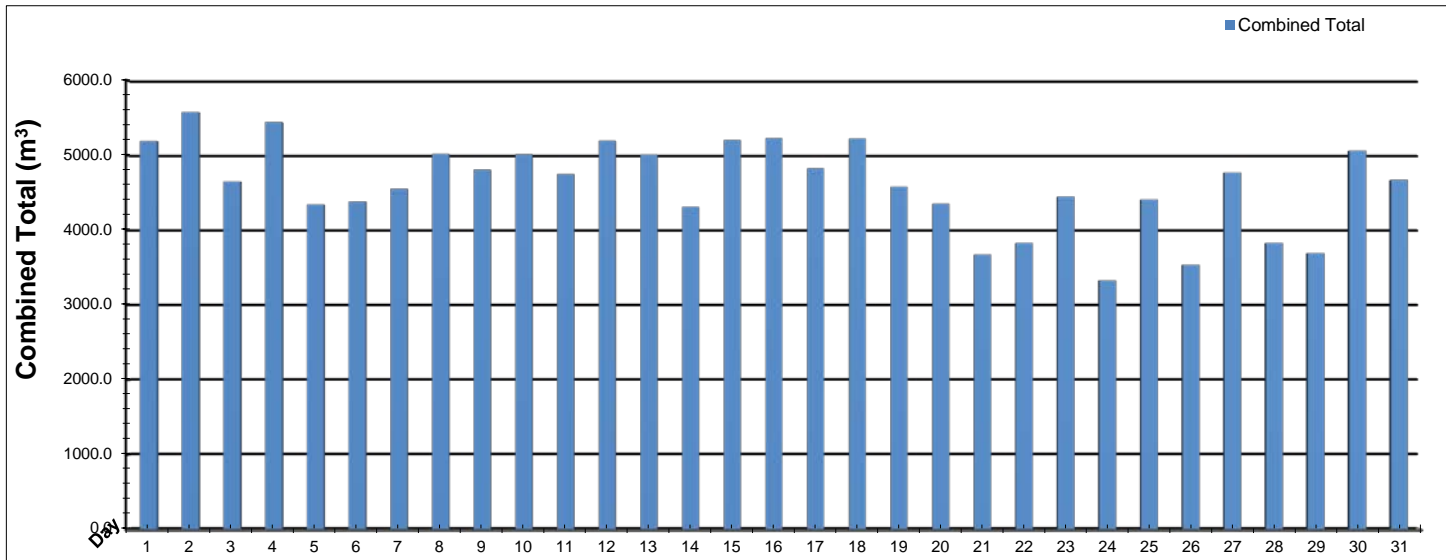
---



---

# High Lift Monthly Report

Month: July-18



Date	Distribution Flow					
	FIT_7052 (East)		FIT_7062 (West)		Combined	
	(m³)	(L/s)	(m³)	(L/s)	(m³)	(L/s)
	Total	Peak	Total	Peak	Total	Peak
1	2203.9	59.7	2987.5	94.8	5191.5	104.0
2	2003.7	58.6	3573.6	90.0	5577.3	103.8
3	1732.6	59.2	2917.6	93.2	4650.3	104.1
4	2093.0	59.4	3351.7	94.4	5444.8	107.4
5	1568.4	64.8	2775.7	95.7	4344.1	109.3
6	1473.6	64.9	2910.5	105.0	4384.1	148.9
7	1341.8	58.9	3212.3	106.2	4554.1	106.2
8	1976.3	59.6	3044.6	99.0	5020.9	103.2
9	1451.0	64.3	3358.2	109.6	4809.1	113.2
10	1596.2	58.6	3419.8	96.9	5016.0	111.5
11	1780.1	59.5	2971.0	108.0	4751.0	108.7
12	1565.5	64.7	3630.3	94.7	5195.8	112.4
13	1269.4	59.4	3742.5	102.5	5011.9	111.0
14	1688.5	59.1	2622.3	111.9	4310.7	156.8
15	2141.3	58.9	3064.9	102.9	5206.2	106.0
16	1793.0	63.7	3436.5	103.5	5229.6	113.5
17	1416.5	66.1	3410.2	117.6	4826.7	166.0
18	1467.0	65.6	3759.5	106.6	5226.5	110.4
19	1882.9	60.3	2699.8	95.8	4582.7	102.4
20	1249.4	66.1	3104.1	109.1	4353.4	114.0
21	1358.3	63.9	2317.2	98.9	3675.5	111.8
22	1409.4	62.5	2420.5	102.5	3829.9	113.0
23	1696.9	70.6	2751.2	103.5	4448.1	105.7
24	1368.6	59.3	1959.9	94.7	3328.5	105.3
25	1576.0	60.0	2834.5	106.8	4410.5	108.2
26	1488.1	59.7	2050.7	95.5	3538.8	106.9
27	1386.5	59.9	3384.3	100.3	4770.8	102.4
28	1268.0	58.6	2561.5	101.9	3829.5	103.3
29	1394.9	59.7	2298.2	100.0	3693.1	103.9
30	1360.1	59.6	3703.8	104.8	5063.9	107.0
31	1837.1	59.5	2834.8	104.2	4671.9	108.0
<b>Total</b>	<b>49838.0</b>		<b>93109.2</b>		<b>142947.2</b>	
<b>Average</b>	<b>1607.7</b>	<b>61.4</b>	<b>3003.5</b>	<b>101.6</b>	<b>4611.2</b>	<b>112.5</b>
<b>Maximum</b>	<b>2203.9</b>	<b>70.6</b>	<b>3759.5</b>	<b>117.6</b>	<b>5577.3</b>	<b>166.0</b>
<b>Date</b>	<b>1-Jul</b>	<b>23-Jul</b>	<b>18-Jul</b>	<b>17-Jul</b>	<b>2-Jul</b>	<b>17-Jul</b>
<b>Minimum</b>	<b>1249.4</b>		<b>1959.9</b>		<b>3328.5</b>	
<b>Date</b>	<b>20-Jul</b>		<b>24-Jul</b>		<b>24-Jul</b>	

Notes:

---



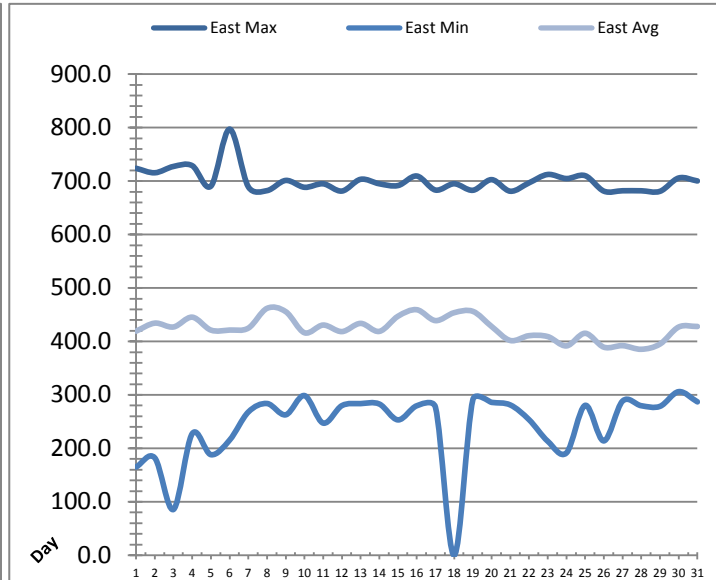
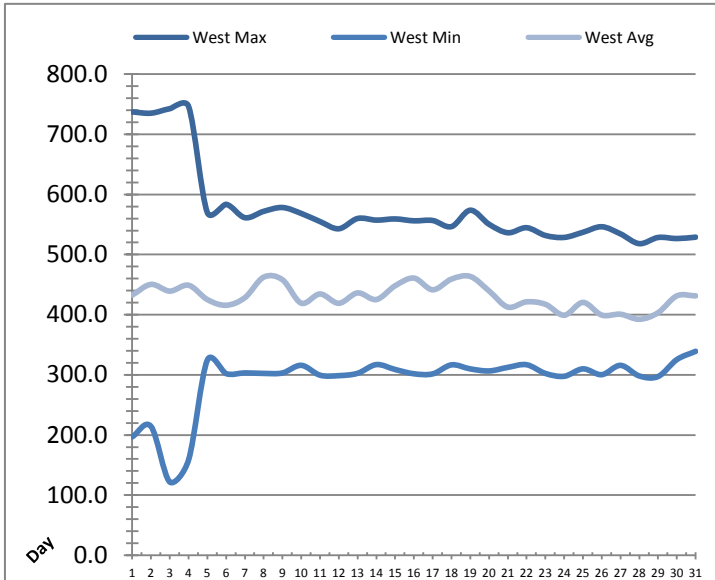
---



---

# Low Lift Monthly Report

Month: July-18

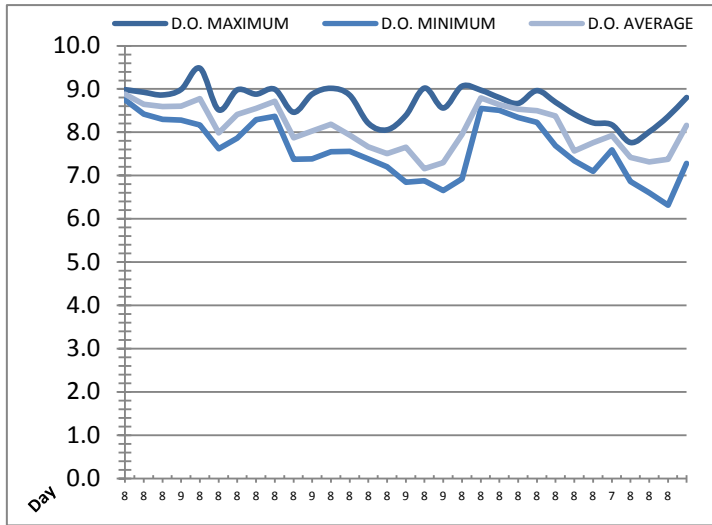
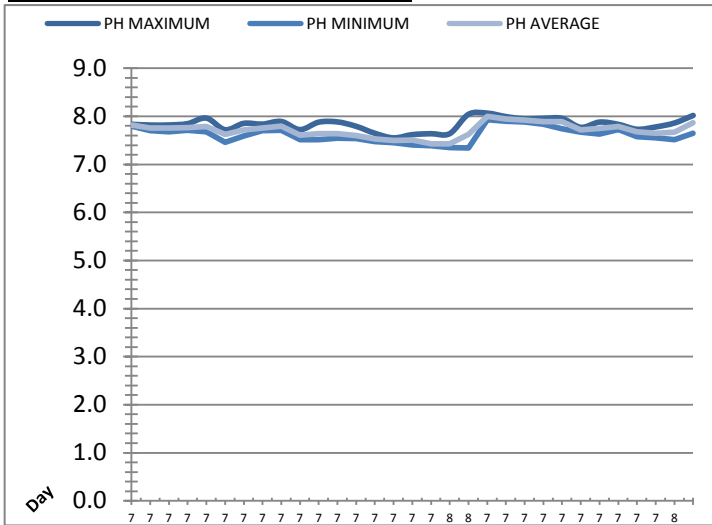


Date	West Train Header Pressure PIT_1018 (kPa)			East Train Header Pressure PIT_1028 (kPa)		
	Maximum	Minimum	Average	Maximum	Minimum	Average
1	737.2	196.9	432.6	723.9	165.2	419.2
2	735.1	214.3	450.4	715.5	182.2	434.2
3	742.5	121.8	439.2	727.4	85.7	427.1
4	746.4	158.5	449.0	728.8	227.4	445.4
5	569.9	324.5	425.2	690.5	188.1	421.2
6	583.5	302.0	415.7	797.2	215.5	421.3
7	561.3	303.2	428.4	689.2	268.0	424.9
8	571.9	302.4	462.4	682.1	283.9	461.9
9	578.2	303.2	458.1	701.2	262.8	455.7
10	568.4	315.8	419.2	688.3	298.7	416.2
11	554.9	299.4	434.5	694.9	247.2	430.6
12	542.9	298.7	419.0	681.3	279.9	418.4
13	560.0	302.5	436.2	703.3	283.7	433.8
14	557.3	317.0	425.2	694.9	282.9	418.8
15	559.2	308.9	448.1	691.6	253.2	447.2
16	556.1	301.8	460.9	709.5	279.6	459.3
17	556.6	301.6	441.4	683.2	277.0	439.0
18	546.5	316.6	459.2	695.0	0.0	453.8
19	573.7	309.9	463.7	682.8	291.1	456.3
20	550.4	306.5	439.5	702.6	286.0	428.0
21	536.3	312.4	412.7	681.0	281.2	401.8
22	544.7	316.8	421.4	696.6	253.7	410.8
23	531.8	302.3	417.3	712.3	213.3	409.1
24	528.5	297.6	399.1	704.7	191.4	391.7
25	537.1	310.0	420.4	710.1	280.4	415.3
26	546.3	300.3	399.4	681.1	213.9	389.2
27	534.4	315.8	400.8	681.9	288.5	392.1
28	518.1	298.1	392.4	681.8	279.7	385.3
29	528.4	297.2	403.3	680.8	278.6	395.1
30	526.6	325.4	431.3	705.8	306.1	427.0
31	528.9	339.1	431.3	700.2	287.0	428.0
Total						
Average	574.6	291.0	430.2	700.6	243.0	424.4
Maximum	746.4		463.7	797.2		461.9
Date	4-Jul		19-Jul	6-Jul		8-Jul
Minimum		121.8	392.4		0.0	385.3
Date		3-Jul	28-Jul		18-Jul	28-Jul

Notes:

# Low Lift Monthly Report

Month: **July-18**



Date	Raw Water Sample Line					
	AIT_1402_PH (pH)			AIT_1402_DO (mg/L)		
	Maximum	Minimum	Average	Maximum	Minimum	Average
1	7.8	7.8	7.8	9.0	8.7	8.9
2	7.8	7.7	7.8	8.9	8.4	8.6
3	7.8	7.7	7.8	8.9	8.3	8.6
4	7.8	7.7	7.8	9.0	8.3	8.6
5	8.0	7.7	7.8	9.5	8.2	8.8
6	7.7	7.5	7.6	8.5	7.6	8.0
7	7.9	7.6	7.7	9.0	7.9	8.4
8	7.8	7.7	7.8	8.9	8.3	8.6
9	7.9	7.7	7.8	9.0	8.4	8.7
10	7.7	7.5	7.6	8.5	7.4	7.9
11	7.9	7.5	7.6	8.9	7.4	8.0
12	7.9	7.5	7.6	9.0	7.6	8.2
13	7.8	7.5	7.6	8.9	7.6	7.9
14	7.6	7.5	7.5	8.2	7.4	7.7
15	7.6	7.4	7.5	8.1	7.2	7.5
16	7.6	7.4	7.5	8.4	6.8	7.7
17	7.6	7.4	7.4	9.0	6.9	7.2
18	7.6	7.4	7.4	8.6	6.7	7.3
19	8.0	7.3	7.6	9.1	6.9	8.0
20	8.1	7.9	8.0	9.0	8.6	8.8
21	8.0	7.9	7.9	8.8	8.5	8.6
22	7.9	7.9	7.9	8.7	8.3	8.5
23	8.0	7.8	7.9	9.0	8.2	8.5
24	8.0	7.7	7.9	8.7	7.7	8.4
25	7.8	7.7	7.7	8.4	7.3	7.6
26	7.9	7.6	7.8	8.2	7.1	7.8
27	7.8	7.7	7.8	8.2	7.6	7.9
28	7.7	7.6	7.7	7.8	6.9	7.4
29	7.8	7.6	7.6	8.0	6.6	7.3
30	7.9	7.5	7.7	8.4	6.3	7.4
31	8.0	7.6	7.9	8.8	7.3	8.2
Total						
Average	7.8	7.6	7.7	8.7	7.6	8.1
Maximum	8.1		8.0	9.5		8.9
Date	20-Jul		20-Jul	5-Jul		1-Jul
Minimum		7.3	7.4		6.3	7.2
Date		19-Jul	17-Jul		30-Jul	17-Jul

Notes:

---



---

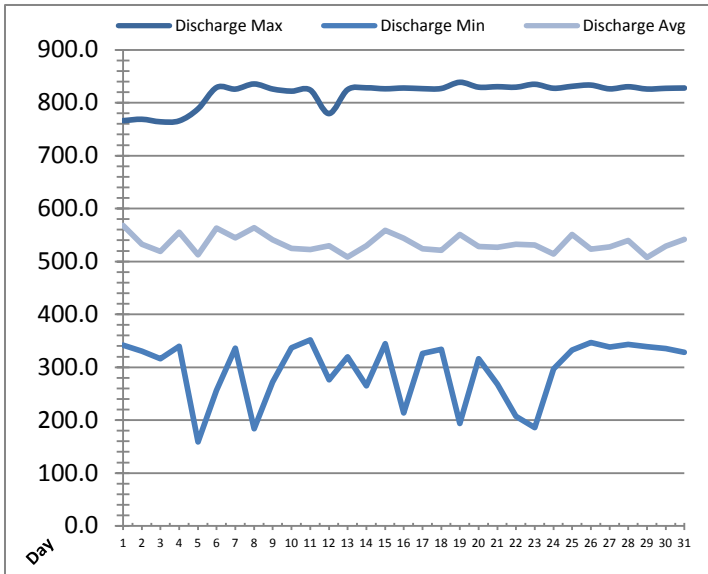
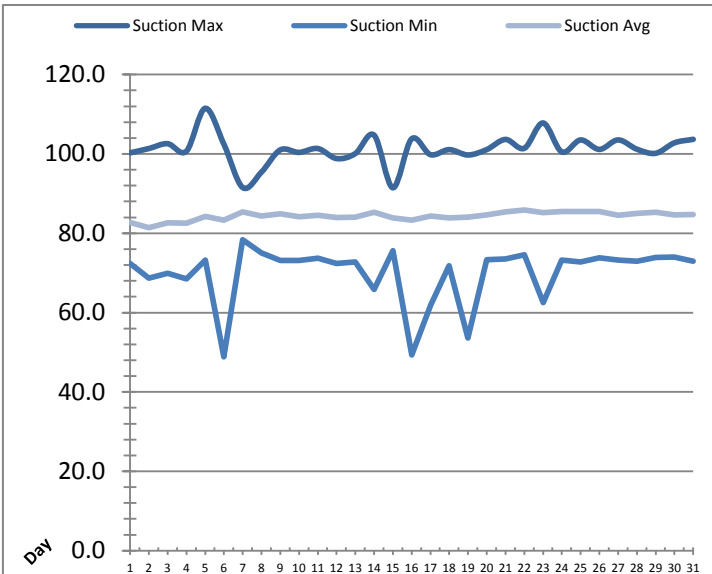


---



# High Lift Monthly Report

Month: July-18



Date	Suction Header Pressure			Discharge Header Pressure		
	PIT_7002 (kPa)			PIT_7005 (kPa)		
	Maximum	Minimum	Average	Maximum	Minimum	Average
1	100.3	72.3	82.7	766.1	341.4	568.0
2	101.4	68.7	81.4	768.7	330.6	532.7
3	102.6	69.9	82.6	764.0	316.2	519.0
4	100.7	68.5	82.5	765.7	339.5	555.3
5	111.5	73.3	84.2	788.2	158.8	512.4
6	102.4	48.8	83.3	828.9	256.4	562.9
7	91.5	78.3	85.4	825.8	336.1	544.5
8	95.4	75.1	84.4	835.5	183.7	563.5
9	101.0	73.1	84.9	825.8	272.1	541.3
10	100.4	73.1	84.1	821.9	337.1	524.7
11	101.4	73.7	84.5	824.1	351.7	522.5
12	98.8	72.4	83.9	779.5	276.1	529.6
13	100.1	72.7	84.1	824.8	319.5	508.3
14	104.7	65.9	85.3	828.2	264.6	529.7
15	91.5	75.6	83.9	826.3	344.9	558.5
16	103.8	49.3	83.3	827.8	213.5	543.9
17	99.8	61.8	84.4	826.6	325.9	524.0
18	101.1	71.8	83.9	826.9	333.6	520.7
19	99.7	53.6	84.1	838.7	193.6	551.0
20	101.1	73.3	84.6	829.4	316.0	527.9
21	103.6	73.6	85.4	830.3	268.0	526.7
22	101.4	74.6	85.9	829.4	207.0	532.2
23	107.8	62.5	85.2	834.9	186.2	531.4
24	100.5	73.2	85.5	827.4	297.0	513.6
25	103.5	72.7	85.4	831.1	332.2	550.8
26	101.1	73.8	85.4	833.3	347.0	522.9
27	103.5	73.3	84.6	826.2	338.2	527.8
28	101.2	73.0	85.0	830.2	342.8	539.5
29	100.2	73.9	85.3	825.9	339.0	507.3
30	102.8	74.0	84.7	827.3	335.4	528.9
31	103.7	73.0	84.7	827.8	328.4	541.6
Total						
Average	101.2	70.0	84.3	817.6	294.6	534.3
Maximum	111.5		85.9	838.7		568.0
Date	5-Jul		22-Jul	19-Jul		1-Jul
Minimum		48.8	81.4		158.8	507.3
Date		6-Jul	2-Jul		5-Jul	29-Jul

Notes:

---



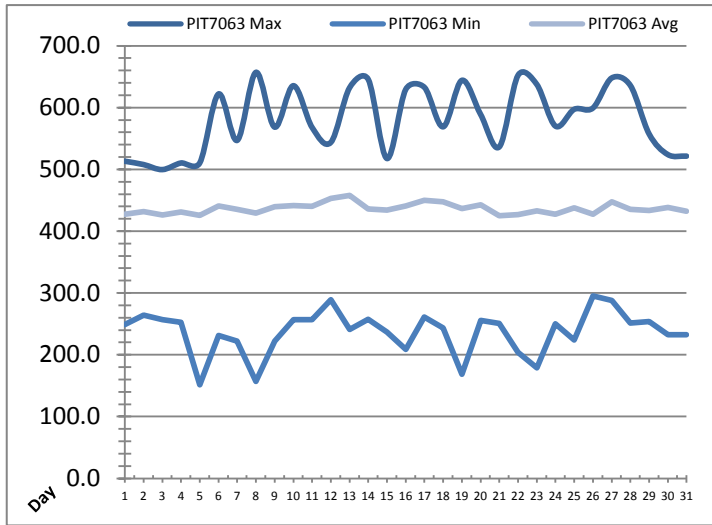
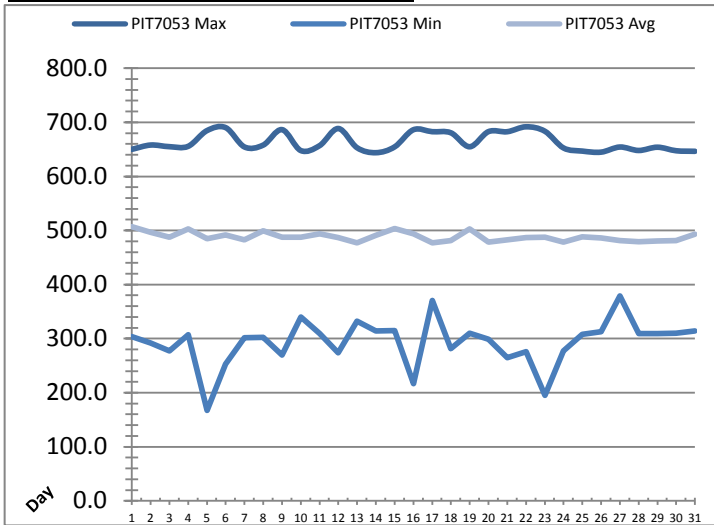
---



---

# High Lift Monthly Report

Month: July-18

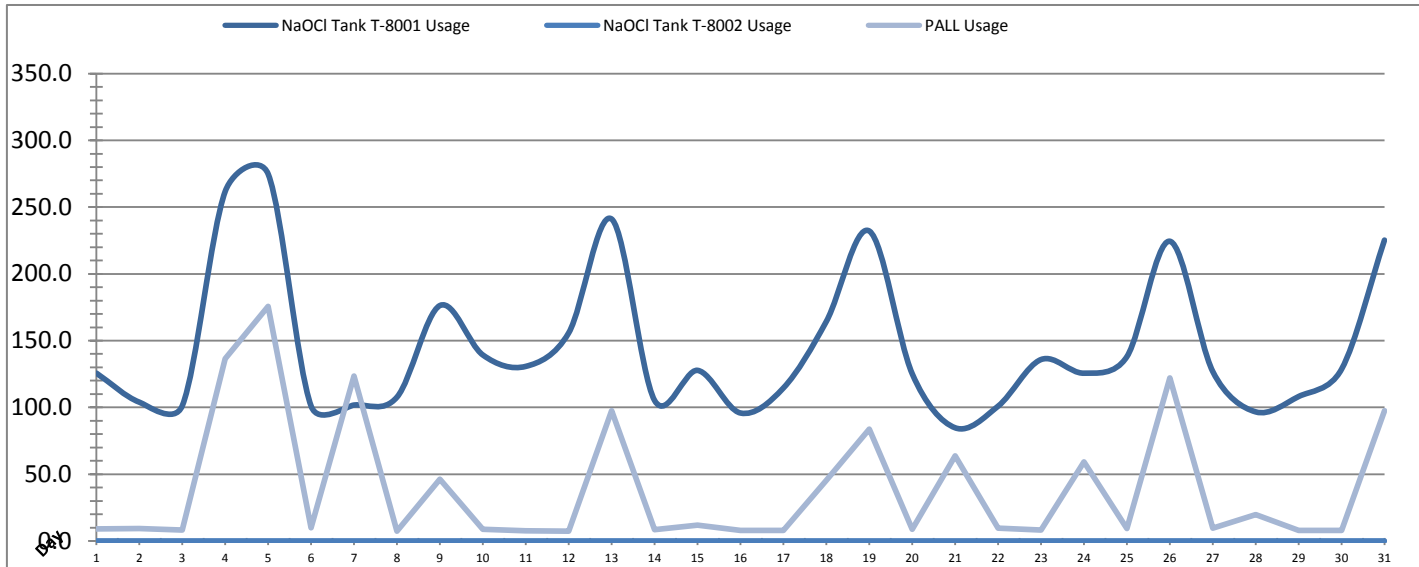


Date	Distribution Pressures					
	PIT_7053 (kPa)			PIT_7063 (kPa)		
	Maximum	Minimum	Average	Maximum	Minimum	Average
1	650.1	303.8	507.0	513.2	249.0	427.3
2	658.0	291.7	496.6	507.8	264.3	431.6
3	655.0	277.1	487.3	499.7	256.8	426.3
4	655.6	307.3	503.2	510.4	252.8	431.3
5	684.6	167.0	485.0	510.5	151.3	425.6
6	690.2	253.2	491.8	622.0	231.2	441.0
7	654.5	301.7	482.7	547.0	222.0	435.3
8	657.9	302.7	499.1	657.0	156.7	429.2
9	686.5	269.6	487.3	568.4	222.4	439.4
10	647.8	340.1	487.3	635.4	257.1	441.4
11	656.8	309.1	493.8	567.8	256.8	439.9
12	688.5	274.0	486.9	543.7	289.2	452.7
13	653.0	332.4	477.3	632.1	241.2	458.0
14	643.8	314.1	491.0	645.5	257.7	435.7
15	654.6	314.8	503.8	517.5	236.9	434.1
16	686.3	217.0	493.9	629.3	208.4	440.5
17	682.7	370.3	477.2	632.7	260.9	450.1
18	680.6	281.2	481.4	568.9	243.6	447.5
19	654.8	309.9	502.9	644.1	168.6	436.5
20	682.8	299.0	478.4	588.9	255.7	442.8
21	682.6	264.8	482.9	536.5	250.7	424.8
22	691.7	276.0	486.5	652.3	203.9	427.0
23	683.6	195.4	487.2	637.6	178.6	433.1
24	652.5	277.1	478.2	569.9	250.0	427.2
25	646.8	307.7	488.5	597.2	224.2	437.8
26	644.9	312.7	486.3	599.3	295.4	427.7
27	654.3	378.9	481.5	647.8	287.7	447.5
28	647.9	309.7	479.5	635.7	251.2	435.3
29	654.0	309.1	480.6	557.3	253.6	433.3
30	647.4	309.7	481.4	524.0	232.4	438.5
31	646.4	313.9	493.0	521.4	232.5	432.6
Total						
Average	663.7	293.3	488.4	581.3	236.9	436.5
Maximum	691.7		507.0	657.0		458.0
Date	22-Jul		1-Jul	8-Jul		13-Jul
Minimum		167.0	477.2		151.3	424.8
Date		5-Jul	17-Jul		5-Jul	21-Jul

Notes:

# Chemical Usage Monthly Report

Month: July-18

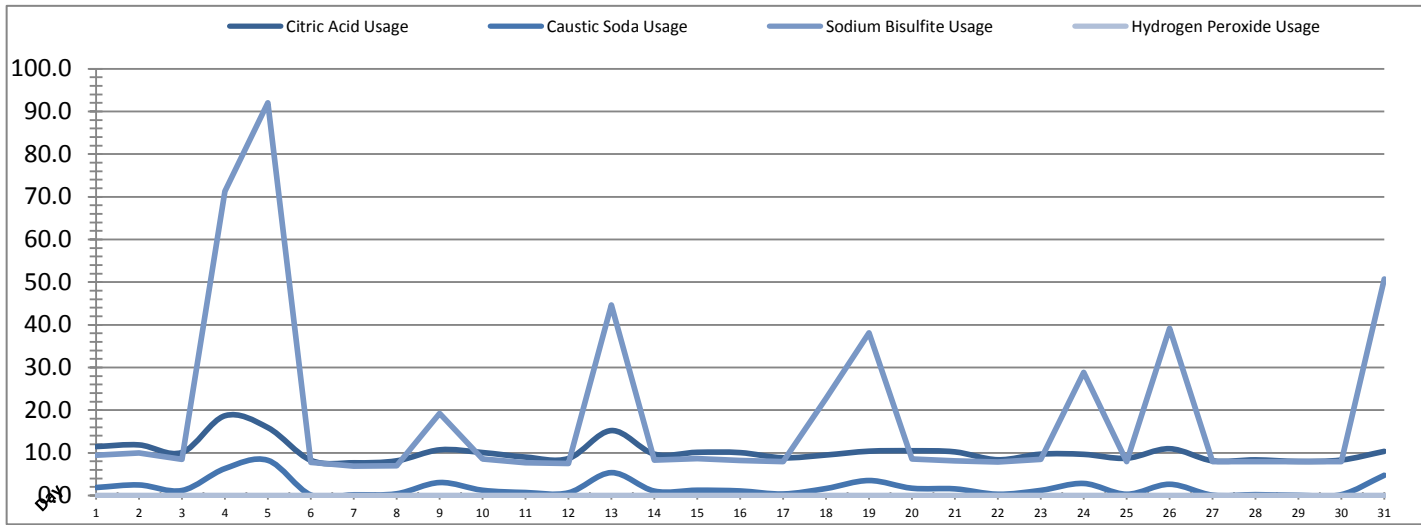


Date	PALL Usage	NaOCl Tank T-8001	NaOCl Tank T-8002
	PALL_HYPO_USAGE (L) Usage	LIT_8002 (Storage) (L) Usage	LIT_8004 (Day) (L) Usage
1	9.1	125.6	0.0
2	9.4	103.9	0.0
3	8.2	101.4	0.0
4	136.5	261.9	0.0
5	175.7	274.7	0.0
6	9.9	100.9	0.0
7	123.6	101.8	0.0
8	7.2	107.7	0.0
9	46.4	176.3	0.0
10	8.7	139.3	0.0
11	7.5	130.7	0.0
12	7.4	155.9	0.0
13	97.6	241.0	0.0
14	8.49	105.19	0.0
15	11.8	127.8	0.0
16	8.0	95.8	0.0
17	7.9	114.6	0.0
18	45.5	164.4	0.0
19	83.9	232.1	0.0
20	8.7	125.2	0.0
21	63.6	84.8	0.0
22	9.7	100.9	0.0
23	8.2	135.9	0.0
24	59.1	125.6	0.0
25	9.3	138.0	0.0
26	122.1	224.4	0.0
27	9.7	126.9	0.0
28	19.9	96.7	0.0
29	8.0	108.2	0.0
30	8.0	128.6	0.0
31	97.6	225.3	0.0
Total	1236.5	4481.5	0.0
Average	39.9	144.6	0.0
Maximum	175.7	274.7	0.0
Date	5-Jul	5-Jul	1-Jul
Minimum	7.2	84.8	0.0
Date	8-Jul	21-Jul	1-Jul

Notes:	
Dosage (mg/L)=	Day Tank (L) x %conc. x 1000
	Membrane Flow (m3)
Chlorine Concentration:	12.0%

# Chemical Usage Monthly Report

Month: July-18



Date	Citric Acid	Caustic Soda	Captor	Hydrogen Peroxide		Membrane Flow (m <sup>3</sup> )
	TAGNAME (L) Usage	TAGNAME (L) Usage	TAGNAME (L) Usage	TAGNAME (L) Usage	(mg/L) Dose	
1	11.5	1.9	9.5	0.0	0.0	5673.129
2	11.8	2.5	9.9	0.0	0.0	6108.763
3	10.1	1.2	8.4	0.0	0.0	5148.720
4	18.7	6.3	71.3	0.0	0.0	6033.514
5	15.9	8.2	92.1	0.0	0.0	4748.641
6	8.2	0.1	7.8	0.0	0.0	4943.462
7	7.7	0.2	6.8	0.0	0.0	4249.202
8	8.1	0.4	7.0	0.0	0.0	5142.240
9	10.7	3.0	19.2	0.0	0.0	5393.789
10	10.1	1.2	8.5	0.0	0.0	5263.812
11	9.0	0.7	7.7	0.0	0.0	5460.428
12	8.7	0.6	7.5	0.0	0.0	5528.259
13	15.2	5.3	44.7	0.0	0.0	5485.300
14	9.7	1.0	8.3	0.0	0.0	4521.754
15	10.1	1.2	8.7	0.0	0.0	5328.600
16	10.0	1.1	8.2	0.0	0.0	5549.899
17	8.8	0.4	7.9	0.0	0.0	5098.319
18	9.5	1.6	22.7	0.0	0.0	5351.562
19	10.4	3.5	38.1	0.0	0.0	5200.740
20	10.5	1.7	8.6	0.0	0.0	4629.926
21	10.2	1.5	8.2	0.0	0.0	4241.609
22	8.4	0.3	7.9	0.0	0.0	4060.776
23	9.7	1.2	8.4	0.0	0.0	4632.678
24	9.6	2.8	28.8	0.0	0.0	3947.605
25	8.7	0.3	7.9	0.0	0.0	5062.523
26	11.0	2.6	39.1	0.0	0.0	4089.513
27	8.1	0.1	7.9	0.0	0.0	4848.838
28	8.3	0.2	7.9	0.0	0.0	4250.980
29	8.0	0.0	7.9	0.0	0.0	4355.086
30	8.3	0.2	7.9	0.0	0.0	5339.120
31	10.3	4.7	50.7	0.0	0.0	5461.497
Total	315.3	56.1	585.6	0.0		155150.3
Average	10.2	1.8	18.9	0.0	0.0	5004.8
Maximum	18.7	8.2	92.1	0.0	0.0	6108.8
Date	4-Jul	5-Jul	5-Jul	1-Jul	1-Jul	2-Jul
Minimum	7.7	0.0	6.8	0.0	0.0	3947.6
Date	7-Jul	29-Jul	7-Jul	1-Jul	1-Jul	24-Jul

Notes:
Dosage (mg/L)= Day Tank (L) x %conc. x 1000
Membrane Flow (m3)
Peroxide Concentration: 50.0%

# Runtimes Report

Month: July-18

Date	Daily Gen-Set Runtimes		Daily UV Runtimes		Daily PALL Runtimes				
	LLPS	WTP	UV #1	UV #2	Air Compressor #1	Air Compressor #2	CIP Neutralization	CIP Drain	CIP Recirc
	(Hrs)	(Hrs)	(Hrs)	(Hrs)	(Hrs)	(Hrs)	(Hrs)	(Hrs)	(Hrs)
1	0.0	0.0	0.0	0.0	4.2	20.3	0.0	0.0	0.0
2	0.0	0.0	0.0	0.0	0.0	24.3	0.0	0.0	0.0
3	0.0	0.0	0.0	0.0	24.4	0.1	0.0	0.0	0.0
4	0.0	0.0	0.0	0.0	0.0	24.3	0.5	0.0	0.5
5	3.3	3.3	0.0	0.0	23.7	0.1	0.6	0.0	0.6
6	4.2	0.0	0.0	0.0	4.6	15.4	0.0	0.0	0.0
7	0.0	0.0	0.0	0.0	24.3	0.0	0.0	0.0	0.0
8	0.0	0.0	0.0	0.0	0.0	24.4	0.0	0.0	0.0
9	0.0	0.0	0.0	0.0	8.8	15.5	0.2	0.0	0.2
10	0.0	0.0	0.0	0.0	24.4	0.0	0.0	0.0	0.0
11	0.2	0.2	0.0	0.0	0.0	24.4	0.0	0.0	0.0
12	0.0	0.0	0.0	0.0	24.4	0.0	0.0	0.0	0.0
13	0.0	0.0	0.0	0.0	0.0	24.4	0.3	0.0	0.4
14	0.0	0.0	0.0	0.0	24.4	0.0	0.0	0.0	0.0
15	0.0	0.0	0.0	0.0	0.0	24.4	0.0	0.0	0.0
16	0.0	0.0	0.0	0.0	23.1	0.0	0.0	0.0	0.0
17	0.0	0.0	0.0	0.0	7.4	17.1	0.0	0.0	0.0
18	0.0	0.0	0.0	0.0	24.3	0.0	0.2	0.0	0.1
19	0.0	0.0	0.0	0.0	0.1	24.4	0.2	0.0	0.2
20	0.0	0.0	0.0	0.0	24.3	0.0	0.0	0.0	0.0
21	0.0	0.0	0.0	0.0	0.0	24.4	0.0	0.0	0.0
22	0.0	0.0	0.0	0.0	23.2	0.0	0.0	0.0	0.0
23	1.4	1.5	0.4	0.2	7.3	17.1	0.0	0.0	0.0
24	1.3	1.2	0.0	0.0	24.3	0.0	0.2	0.0	0.3
25	0.0	0.0	0.0	0.0	0.1	24.4	0.0	0.0	0.0
26	0.0	0.0	0.0	0.0	24.3	0.0	0.3	0.1	0.3
27	0.0	0.0	0.0	0.0	0.0	24.4	0.0	0.0	0.0
28	0.0	0.0	0.0	0.0	24.4	0.0	0.0	0.0	0.0
29	0.0	0.0	0.0	0.0	0.0	24.4	0.0	0.0	0.0
30	0.0	0.0	0.0	0.0	24.4	0.0	0.0	0.0	0.0
31	0.0	0.0	0.0	0.0	0.0	24.4	0.4	0.0	0.4
<b>Total</b>	10.4	6.2	0.4	0.2	370.0	377.9	2.9	0.1	3.0

Notes:

# Runtimes Report

Month: July-18

## Daily

Date	PALL Runtimes						Process Drain	
	RFR Pump #1	RFR Pump #2	RF Pump #1	RF Pump #2	XR Pump #1	XR Pump #2	PDP9010 Pump	PDP9020 Pump
	(Hrs)	(Hrs)	(Hrs)	(Hrs)	(Hrs)	(Hrs)	(Hrs)	(Hrs)
1	7.6	7.6	1.2	1.2	10.6	11.2	2.2	2.9
2	8.0	8.1	1.3	1.3	10.4	10.1	2.4	3.1
3	5.3	5.0	0.8	0.8	8.5	8.9	2.2	3.2
4	4.4	4.8	0.9	0.9	10.9	10.2	2.5	3.1
5	4.9	4.8	0.8	1.0	8.4	10.0	2.5	3.5
6	4.1	4.1	0.8	0.8	7.7	7.8	2.9	3.1
7	0.0	0.0	0.0	0.0	9.4	8.4	2.0	2.6
8	0.0	0.0	0.0	0.0	10.1	9.3	2.1	2.6
9	4.0	4.1	0.8	0.7	9.5	9.0	2.4	2.9
10	5.3	5.2	1.1	1.1	9.8	7.6	2.3	3.0
11	5.6	5.6	1.1	1.0	8.1	9.7	2.3	2.9
12	5.5	5.4	1.0	1.1	7.1	7.8	2.3	3.0
13	5.1	5.2	1.0	1.0	7.3	7.2	2.4	3.0
14	2.0	2.0	0.4	0.4	7.1	7.8	2.3	2.8
15	0.0	0.0	0.0	0.0	9.6	9.8	2.1	2.7
16	2.3	2.3	0.6	0.6	9.8	8.4	2.7	3.2
17	4.6	4.7	0.9	1.0	6.6	7.1	2.3	3.0
18	4.1	4.0	1.1	1.0	7.5	7.6	2.5	3.2
19	3.6	3.7	1.0	0.9	7.8	7.9	2.6	3.2
20	3.5	3.5	0.9	0.8	7.9	8.0	2.4	2.9
21	4.5	4.5	0.9	0.8	8.3	8.0	2.4	2.9
22	4.4	4.3	0.7	0.7	6.9	8.9	2.7	3.1
23	6.5	6.5	1.0	1.1	10.0	7.5	2.4	3.1
24	4.0	4.0	0.8	0.8	6.0	7.6	2.3	2.9
25	5.1	5.3	0.8	0.9	8.8	9.2	2.4	3.0
26	3.6	3.4	0.7	0.6	6.7	7.0	2.5	3.0
27	5.0	5.1	1.0	0.9	10.9	5.5	2.5	3.1
28	4.6	4.6	0.8	0.9	6.1	10.2	2.3	2.9
29	4.2	4.4	0.8	0.8	6.6	8.0	2.6	2.8
30	5.7	5.6	1.0	1.0	10.6	8.6	2.4	3.1
31	4.9	4.8	0.9	1.0	7.9	10.5	2.5	3.2
<b>Total</b>	<b>131.9</b>	<b>132.1</b>	<b>25.1</b>	<b>25.1</b>	<b>261.9</b>	<b>263.8</b>	<b>74.4</b>	<b>93.0</b>

Notes:

# Runtimes Report

Month: July-18

## Daily

Date	Low Lift Pump Motor Runtimes				High Lift Pump Motor Runtimes			
	LLP1010 (Hrs)	LLP1020 (Hrs)	LLP1030 (Hrs)	LLP1040 (Hrs)	HLP7010 (Hrs)	HLP7020 (Hrs)	HLP7030 (Hrs)	HLP7040 (Hrs)
1	0.0	7.8	8.3	6.1	20.2	0.0	0.0	0.0
2	0.0	8.5	10.6	5.8	19.1	0.0	0.0	0.0
3	0.0	8.4	7.3	6.5	16.3	0.0	0.0	0.0
4	0.0	8.3	9.4	7.1	20.0	0.0	0.0	0.0
5	0.0	4.1	8.4	6.7	12.8	1.1	1.0	0.0
6	0.0	8.0	10.8	2.0	3.9	1.6	6.5	0.0
7	0.0	6.0	6.3	5.9	3.0	10.8	3.0	0.0
8	0.0	8.6	7.1	7.6	3.6	15.6	0.4	0.0
9	0.0	8.4	7.1	8.1	1.8	1.5	12.6	0.0
10	0.0	5.3	9.6	6.6	2.9	11.2	2.9	0.0
11	0.0	8.4	8.4	5.9	12.3	2.5	1.7	0.0
12	0.0	8.4	7.3	7.8	0.0	5.8	10.8	0.0
13	0.0	8.8	6.9	8.7	12.6	0.0	3.2	0.0
14	0.0	9.4	4.8	5.5	12.4	2.8	1.1	0.0
15	0.0	7.6	9.0	6.9	16.3	1.5	1.5	0.0
16	0.0	9.9	8.6	6.5	4.7	5.4	7.8	0.0
17	0.0	8.0	7.2	8.5	1.1	2.8	11.5	0.0
18	0.0	8.4	10.0	7.8	11.0	1.0	4.8	0.0
19	0.0	5.7	10.2	9.2	3.3	14.2	0.2	0.0
20	0.0	6.4	4.4	9.3	5.2	1.8	7.8	0.0
21	0.0	8.5	4.0	4.7	5.0	4.9	3.7	0.0
22	0.0	7.2	7.1	2.1	6.6	1.2	6.2	0.0
23	0.0	4.6	6.0	7.4	1.3	13.2	1.6	0.0
24	0.0	7.1	3.3	5.4	8.6	1.5	2.5	0.0
25	0.0	9.3	7.8	3.1	8.7	4.0	3.9	0.0
26	0.0	5.6	5.7	4.5	11.5	1.6	0.6	0.0
27	0.0	5.3	8.2	5.6	0.0	13.9	2.6	0.0
28	0.0	6.9	6.4	3.1	7.3	2.2	5.1	0.0
29	0.0	5.2	2.9	9.2	7.8	4.4	1.0	0.0
30	0.0	7.8	6.6	6.9	11.7	2.7	2.9	0.0
31	0.0	6.5	6.4	9.0	1.5	14.5	1.4	0.0
<b>Total</b>	0.0	228.4	226.0	199.5	252.5	143.7	108.3	0.0

Notes:

LLP1 out of service  
HLP4 out of service

# Plant Internal Flow Report

Month: July-18

Date	Settling Tank Level		Process Drain Tank		Settling Tank Flow		Potable Water Flow		Non-Potable Flow	
	T-9003 (m)		T-9001 (m)		FIT_9005 (m <sup>3</sup> ) (L/s)		FIT_7082 (m <sup>3</sup> ) (L/s)		FIT_7092 (m <sup>3</sup> ) (L/s)	
	Maximum	Minimum	Maximum	Minimum	Total	Peak	Total	Peak	Total	Peak
1	2.2	0.3	1.1	0.4	395.4	15.7	0.0	0.5	0.0	0.0
2	2.2	0.3	1.1	0.4	436.0	15.7	0.2	1.1	0.6	0.7
3	2.2	0.1	1.6	0.4	341.9	15.7	0.1	1.4	0.0	0.0
4	2.2	0.1	1.3	0.4	409.8	15.7	0.6	1.4	42.8	22.9
5	2.2	0.3	2.2	0.4	450.5	15.7	0.3	1.5	54.0	22.3
6	2.2	0.1	2.2	0.4	251.3	15.7	0.8	1.4	0.2	1.0
7	2.2	0.1	0.8	0.4	100.9	4.3	0.0	0.0	0.0	0.0
8	2.2	0.3	0.8	0.4	133.1	5.0	0.0	0.0	0.0	0.0
9	2.2	0.3	1.3	0.4	321.3	15.7	0.1	1.4	12.1	15.7
10	2.2	0.2	1.0	0.4	348.5	15.7	0.6	1.4	0.5	1.0
11	2.2	0.3	1.2	0.4	335.2	15.7	0.1	1.4	0.0	0.0
12	2.2	0.1	1.0	0.4	332.2	15.7	0.1	1.4	0.0	0.0
13	2.2	0.1	1.0	0.4	401.3	15.7	0.4	1.4	29.7	23.2
14	2.2	0.1	0.9	0.4	251.0	15.7	0.0	0.0	0.0	0.0
15	2.2	0.2	0.8	0.4	217.3	5.9	0.0	0.0	0.0	0.0
16	2.2	0.2	2.2	0.4	375.3	15.7	0.6	1.4	0.1	1.4
17	2.2	0.1	1.3	0.4	382.2	15.7	0.1	1.4	0.0	0.0
18	2.2	0.3	1.1	0.4	427.0	15.7	0.0	1.5	12.2	15.9
19	2.2	0.1	1.2	0.4	474.8	15.7	0.2	1.2	24.1	18.1
20	2.2	0.1	0.9	0.4	425.7	15.7	0.1	1.4	0.0	0.0
21	2.2	0.1	0.9	0.4	283.6	15.7	0.0	1.3	0.0	0.0
22	2.2	0.1	2.1	0.4	223.6	15.7	0.0	0.0	0.0	0.0
23	2.2	0.1	1.0	0.4	349.1	15.7	3.8	5.0	0.0	0.0
24	2.2	0.1	1.3	0.4	297.8	15.7	0.1	1.4	18.0	23.5
25	2.2	0.3	1.1	0.4	339.3	15.7	0.1	1.4	0.3	1.9
26	2.2	0.1	1.2	0.4	269.9	15.7	0.0	1.4	24.0	17.8
27	2.2	0.3	1.0	0.4	268.4	15.7	0.1	1.4	1.3	1.3
28	2.2	0.1	0.9	0.4	250.2	15.7	0.0	0.0	0.0	0.0
29	2.2	0.3	1.2	0.4	225.8	15.7	0.0	0.0	0.0	0.0
30	2.2	0.3	1.0	0.4	299.0	15.7	0.0	1.4	0.0	0.0
31	2.2	0.1	1.2	0.4	330.7	15.7	0.8	1.4	30.3	22.6
<b>Total</b>					<b>9948.3</b>		<b>9.4</b>		<b>250.3</b>	
<b>Average</b>	2.2	0.2	1.2	0.4	320.9	14.7	0.3	1.2	8.1	6.1
<b>Maximum</b>	2.2		2.2		474.8		3.8		54.0	
<b>Date</b>	16-Jul		6-Jul		19-Jul		23-Jul		5-Jul	
<b>Minimum</b>		0.1		0.4		4.3		0.0		0.0
<b>Date</b>		14-Jul		6-Jul		7-Jul		7-Jul		1-Jul

Notes: