

Municipality of West Elgin - Tri County Water System

Goto:

Month:

Year:

Date is Set to: **August-16**

Limit	Low	High	
Raw Water Chlorine Residual:	0.00	5.00	mg/L
Pre-Strainer Chlorine Residual:	0.00	5.00	mg/L
UV Inlet Chlorine Residual:	0.00	5.00	mg/L
Post Treatment Chlorine Residual:	1.00	5.00	mg/L
Treated Chlorine Residual:	1.00	2.50	mg/L
Distribution Chlorine Residual:	1.00	2.50	mg/L
Limit		High	
WTP C of A		156.0	L/s
WTP Permit to Take Water		13500.0	m <sup>3</sup>
Limit	Low	High	
System Pressure Limits:	50.0	1034.0	Kpa

Compliance Report

Low Lift Monthly Report

>>>

Membranes Monthly Report

>>>

UV System Monthly Report

>>>

Plant Quality Report

>>>

Raw Well/Treated Storage Report

>>>

High Lift Monthly Report

>>>

Operational Report

Low Lift Monthly Report

>>>

High Lift Monthly Report

>>>

Chemical Usage Monthly Report

>>>

Runtimes Report

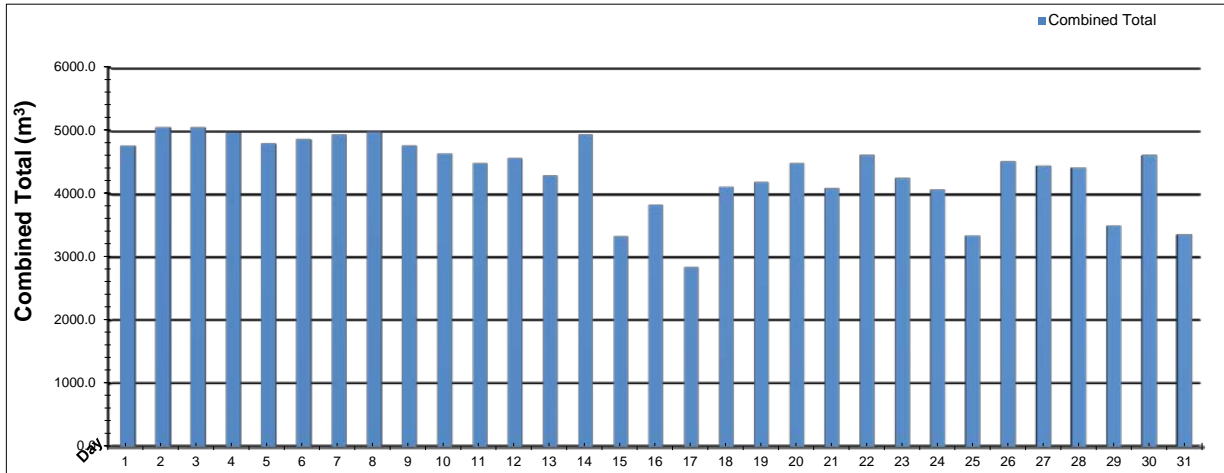
>>>

Plant Internal Flow Report

>>>

# Low Lift Monthly Report

Month: August-16

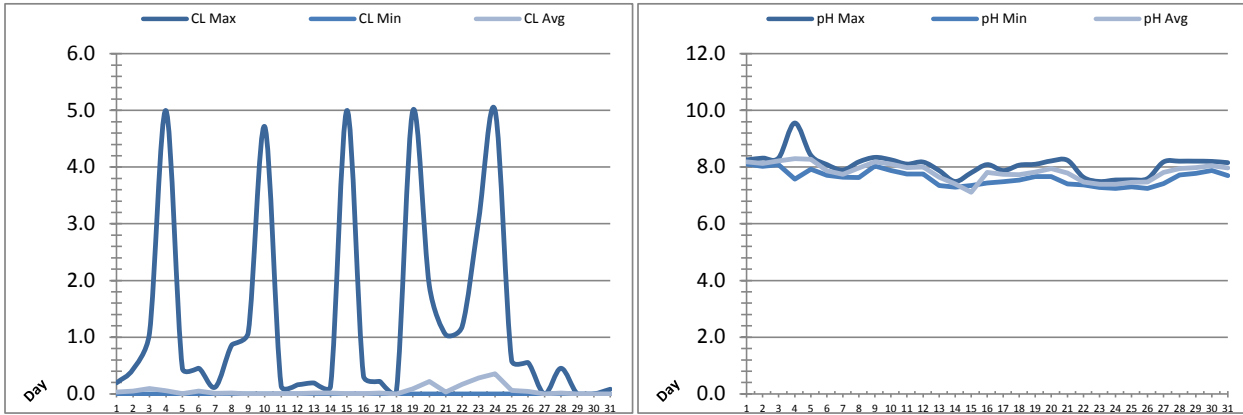


Date	Combined Total (m³)	West Train (FIT-1017 (m³))	West Peak Flow (FIT-1017 (L/s))	East Train (FIT-1027 (m³))	East Peak Flow (FIT-1027 (L/s))	Combined Peak Flow (L/s)
1	✓ 4763.4	4763.4	134.2	0.0	0.0	✓ 134.2
2	✓ 5055.6	5055.6	85.1	0.0	0.0	✓ 85.1
3	✓ 5053.5	5053.5	87.5	0.0	0.0	✓ 87.5
4	✓ 4977.7	4977.6	85.7	0.0	0.0	✓ 85.7
5	✓ 4800.8	4800.8	87.4	0.0	0.0	✓ 87.4
6	✓ 4868.1	4868.1	88.0	0.0	0.0	✓ 88.0
7	✓ 4947.0	4947.0	85.3	0.0	0.0	✓ 85.3
8	✓ 4985.0	4985.0	87.6	0.0	0.0	✓ 87.6
9	✓ 4767.9	4767.9	85.4	0.0	0.0	✓ 85.4
10	✓ 4641.4	4641.4	87.0	0.0	0.0	✓ 87.0
11	✓ 4494.1	4494.1	86.5	0.0	0.0	✓ 86.5
12	✓ 4567.6	4567.6	87.0	0.0	0.0	✓ 87.0
13	✓ 4293.8	4293.8	87.5	0.0	0.0	✓ 87.5
14	✓ 4947.3	4947.3	134.8	0.0	0.0	✓ 134.8
15	✓ 3335.9	3335.9	86.9	0.0	0.0	✓ 86.9
16	✓ 3828.7	3828.7	86.2	0.0	0.0	✓ 86.2
17	✓ 2845.4	2845.4	88.7	0.0	0.0	✓ 88.7
18	✓ 4115.8	4115.8	85.8	0.0	0.0	✓ 85.8
19	✓ 4189.9	4189.9	92.6	0.0	0.0	✓ 92.6
20	✓ 4493.8	4493.8	86.0	0.0	0.0	✓ 86.0
21	✓ 4096.1	4096.1	84.8	0.0	0.0	✓ 84.8
22	✓ 4622.3	4622.3	88.4	0.0	0.0	✓ 88.4
23	✓ 4258.2	4258.2	88.1	0.0	0.0	✓ 88.1
24	✓ 4068.7	4068.7	87.0	0.0	0.0	✓ 87.0
25	✓ 3348.9	3348.9	87.6	0.0	0.0	✓ 87.6
26	✓ 4518.5	4518.5	121.9	0.0	0.0	✓ 121.9
27	✓ 4450.8	4450.8	124.4	0.0	0.0	✓ 124.4
28	✓ 4418.2	4418.2	86.7	0.0	0.0	✓ 86.7
29	✓ 3503.3	2775.7	86.4	727.6	84.1	✓ 86.4
30	✓ 4620.5	0.0	0.0	4620.5	83.0	✓ 83.0
31	✓ 3360.9	0.0	0.0	3360.9	85.8	✓ 85.8
<b>Total</b>	<b>135239.4</b>	<b>126530.1</b>		<b>8709.2</b>		
<b>Average</b>	<b>4362.6</b>	<b>4081.6</b>	<b>86.8</b>	<b>280.9</b>	<b>8.2</b>	<b>92.2</b>
<b>Maximum</b>	<b>5055.6</b>	<b>5055.6</b>	<b>134.85</b>	<b>4620.5</b>	<b>85.85</b>	<b>134.85</b>
<b>Date</b>	<b>2-Aug</b>	<b>2-Aug</b>	<b>14-Aug</b>	<b>30-Aug</b>	<b>31-Aug</b>	<b>14-Aug</b>
<b>Minimum</b>	<b>2845.4</b>	<b>0.0</b>	<b>0.00</b>	<b>0.0</b>	<b>0.00</b>	<b>83.01</b>
<b>Date</b>	<b>17-Aug</b>	<b>30-Aug</b>	<b>30-Aug</b>	<b>25-Aug</b>	<b>1-Aug</b>	<b>30-Aug</b>

Notes:

# Low Lift Monthly Report

Month: **August-16**



Date	Raw Water Chlorine Residual			Raw Water pH		
	AIT_1401_CL (mg/L)			AIT_1401_PH		
	Maximum	Minimum	Average	Maximum	Minimum	Average
1	✓ 0.20	✗ 0.00	0.03	8.25	8.10	8.18
2	✓ 0.43	✗ 0.00	0.05	8.32	8.03	8.13
3	✓ 1.07	✗ 0.00	0.10	8.33	8.09	8.22
4	✓ 5.00	✗ 0.00	0.05	9.55	7.58	8.30
5	✓ 0.45	✗ 0.00	0.01	8.42	7.92	8.27
6	✓ 0.45	✗ 0.00	0.05	8.09	7.71	7.87
7	✓ 0.12	✗ 0.00	0.01	7.90	7.64	7.74
8	✓ 0.86	✗ 0.00	0.01	8.19	7.63	7.97
9	✓ 1.08	✗ 0.00	0.00	8.34	8.04	8.18
10	✓ 4.71	✗ 0.00	0.00	8.26	7.88	8.10
11	✓ 0.14	✗ 0.00	0.00	8.11	7.75	7.98
12	✓ 0.16	✗ 0.00	0.00	8.18	7.75	8.00
13	✓ 0.19	✗ 0.00	0.02	7.88	7.35	7.65
14	✓ 0.13	✗ 0.00	0.02	7.49	7.30	7.40
15	✓ 5.00	✗ 0.00	0.01	7.80	7.35	7.11
16	✓ 0.32	✗ 0.00	0.01	8.09	7.44	7.81
17	✓ 0.22	✗ 0.00	0.02	7.88	7.49	7.75
18	✓ 0.04	✗ 0.00	0.00	8.07	7.54	7.74
19	✓ 5.00	✗ 0.00	0.09	8.10	7.67	7.82
20	✓ 1.91	✗ 0.00	0.22	8.22	7.67	7.95
21	✓ 1.04	✗ 0.00	0.03	8.24	7.40	7.79
22	✓ 1.19	✗ 0.00	0.17	7.64	7.37	7.48
23	✓ 3.07	✗ 0.00	0.28	7.49	7.29	7.39
24	✓ 4.99	✗ 0.00	0.35	7.54	7.24	7.39
25	✓ 0.59	✗ 0.00	0.06	7.55	7.30	7.46
26	✓ 0.55	✗ 0.00	0.05	7.60	7.25	7.48
27	✓ 0.00	✗ 0.00	0.00	8.18	7.42	7.81
28	✓ 0.45	✗ 0.00	0.02	8.21	7.73	7.95
29	✓ 0.00	✗ 0.00	0.00	8.21	7.78	7.99
30	✓ 0.00	✗ 0.00	0.00	8.20	7.88	8.05
31	✓ 0.08	✗ 0.00	0.00	8.16	7.70	7.97
Total						
Average	1.27	0.00	0.05	8.08	7.62	7.84
Maximum	5.00		0.35	9.55		8.30
Date	15-Aug		24-Aug	4-Aug		4-Aug
Minimum		0.00	0.00		7.24	7.11
Date		1-Aug	27-Aug		24-Aug	15-Aug

Notes:

---



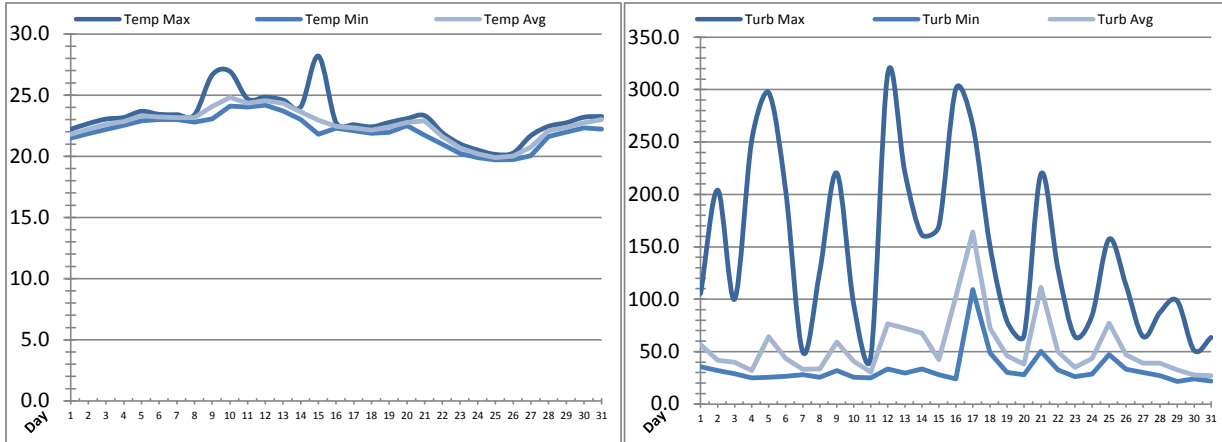
---



---

# Low Lift Monthly Report

Month: **August-16**



Date	Raw Water Temperature			Raw Water Turbidity		
	TIT_1403 (°C)			AIT_1404 (NTU)		
	Maximum	Minimum	Average	Maximum	Minimum	Average
1	22.2	21.5	21.8	105.47	35.77	56.67
2	22.7	21.8	22.2	204.07	31.83	41.58
3	23.0	22.2	22.6	100.05	28.81	39.83
4	23.2	22.5	22.9	251.38	24.86	31.82
5	23.7	22.9	23.3	297.12	25.63	64.46
6	23.4	23.0	23.2	203.25	26.41	43.53
7	23.4	23.0	23.2	49.75	27.95	33.11
8	23.4	22.8	23.1	126.46	25.60	33.36
9	26.7	23.1	24.1	220.39	31.82	59.08
10	26.9	24.1	24.8	94.66	25.64	40.83
11	24.7	24.0	24.3	45.04	24.86	30.33
12	24.8	24.2	24.5	315.59	33.42	76.65
13	24.6	23.7	24.3	221.12	29.51	72.34
14	24.0	23.0	23.6	161.34	33.36	67.69
15	28.2	21.8	23.0	169.84	27.90	42.39
16	22.7	22.3	22.5	300.77	24.00	102.43
17	22.6	22.1	22.3	265.19	109.30	164.11
18	22.4	21.9	22.1	151.15	48.82	72.26
19	22.8	22.0	22.4	79.08	30.19	46.16
20	23.1	22.5	22.8	65.16	27.96	38.07
21	23.3	21.7	22.9	219.57	50.38	111.52
22	21.9	21.0	21.6	128.69	32.53	50.05
23	21.0	20.2	20.7	64.35	26.27	34.96
24	20.5	19.9	20.2	84.55	28.73	43.66
25	20.2	19.7	19.9	157.37	47.24	77.08
26	20.3	19.7	20.0	113.14	33.32	46.87
27	21.7	20.1	20.7	64.33	30.17	39.13
28	22.5	21.6	22.1	87.62	27.14	38.97
29	22.7	22.0	22.4	98.49	21.72	32.52
30	23.2	22.3	22.7	51.14	24.00	27.62
31	23.3	22.2	23.0	63.63	21.75	27.05
<b>Total</b>						
<b>Average</b>	23.2	22.1	22.6	147.1	32.8	54.4
<b>Maximum</b>	28.2		24.8	315.6		164.1
<b>Date</b>	15-Aug		10-Aug	12-Aug		17-Aug
<b>Minimum</b>		19.7	19.9		21.7	27.1
<b>Date</b>		25-Aug	25-Aug		29-Aug	31-Aug

Notes:

---



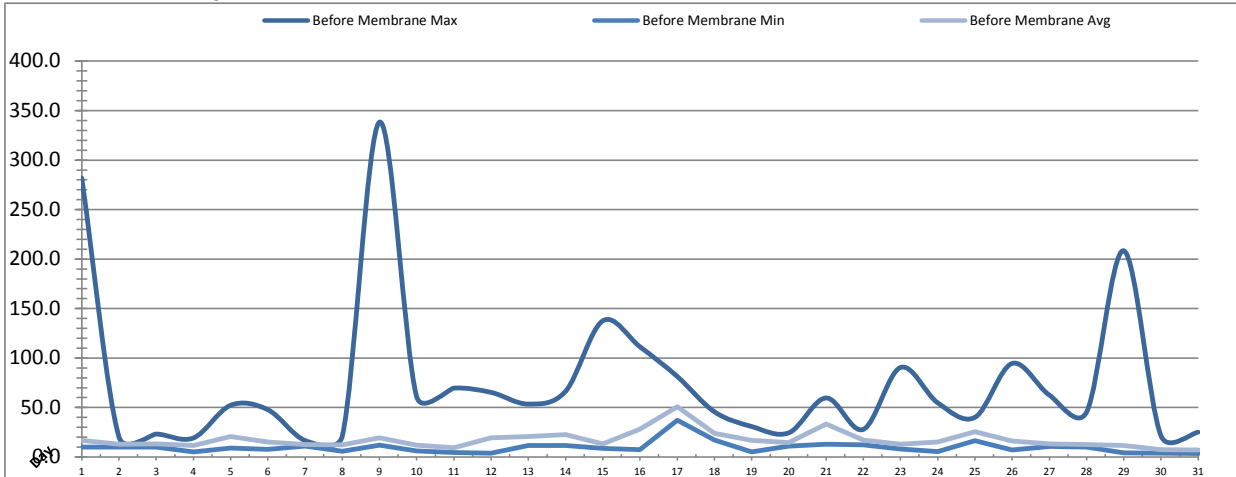
---



---

# Membranes Monthly Report

Month: August-16



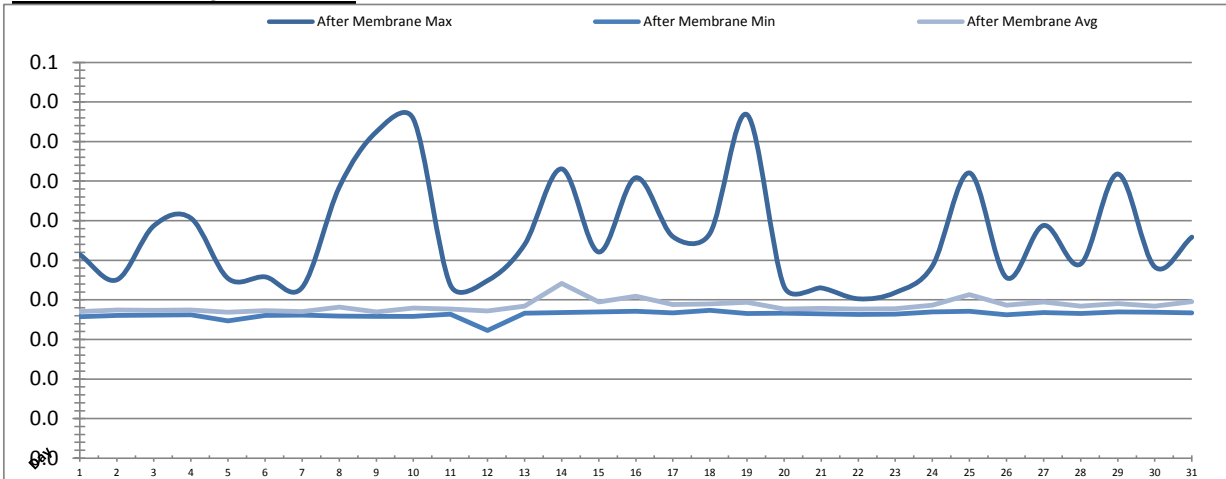
Date	Turbidity Before Membrane			Rack #1 Turbidity			Rack #2 Turbidity		
	PALL_FEED_AIT2006_Value NTU			RACK1_NTU_Value NTU			RACK2_NTU_Value NTU		
	Maximum	Minimum	Average	Maximum	Minimum	Average	Maximum	Minimum	Average
1	281.79	10.03	16.83	0.01	0.01	0.01	0.02	0.01	0.01
2	20.21	10.11	12.98	0.01	0.01	0.01	0.02	0.01	0.01
3	23.18	10.03	13.19	0.16	0.01	0.01	0.01	0.01	0.01
4	19.21	5.16	11.49	0.02	0.01	0.01	0.05	0.01	0.01
5	52.29	8.95	20.75	0.02	0.00	0.01	0.11	0.01	0.01
6	47.79	7.77	15.10	0.02	0.01	0.01	0.02	0.01	0.01
7	16.66	11.03	12.60	0.01	0.01	0.01	0.01	0.01	0.01
8	21.12	5.83	12.39	0.03	0.01	0.01	0.01	0.01	0.01
9	338.42	11.79	19.42	0.01	0.01	0.01	0.01	0.01	0.01
10	60.77	6.08	12.09	0.01	0.01	0.01	0.01	0.01	0.01
11	69.60	4.45	9.21	0.01	0.01	0.01	0.01	0.01	0.01
12	65.26	3.82	19.23	0.03	0.01	0.01	0.18	0.01	0.01
13	53.47	11.68	20.79	0.01	0.01	0.01	0.12	0.01	0.01
14	66.38	11.46	22.77	0.02	0.01	0.01	0.06	0.01	0.01
15	137.62	8.79	13.10	0.02	0.01	0.01	0.07	0.01	0.01
16	111.33	7.48	28.23	0.07	0.01	0.01	0.12	0.01	0.02
17	81.42	37.02	50.67	0.03	0.01	0.01	0.07	0.01	0.01
18	45.67	17.15	24.03	0.03	0.01	0.01	0.19	0.01	0.01
19	30.81	5.24	16.67	0.02	0.01	0.01	0.09	0.01	0.01
20	24.45	11.11	14.41	0.02	0.01	0.01	0.02	0.01	0.01
21	59.67	12.93	33.37	0.01	0.01	0.01	0.20	0.01	0.01
22	27.89	12.19	16.96	0.01	0.01	0.01	0.01	0.01	0.01
23	90.47	8.12	12.83	0.02	0.01	0.01	0.01	0.01	0.01
24	54.72	5.49	15.28	0.02	0.01	0.01	0.02	0.01	0.01
25	40.08	16.35	25.63	0.02	0.01	0.01	0.02	0.01	0.01
26	94.55	7.20	16.10	0.02	0.01	0.01	0.02	0.01	0.01
27	62.55	10.60	13.19	0.03	0.01	0.01	0.02	0.01	0.01
28	45.36	10.03	12.48	0.03	0.01	0.01	0.04	0.01	0.01
29	208.44	4.06	11.63	0.02	0.01	0.01	0.03	0.01	0.01
30	21.35	3.80	7.37	0.02	0.01	0.01	0.02	0.01	0.01
31	25.10	3.55	7.22	0.04	0.01	0.01	0.02	0.01	0.01
Total									
Average	74.1	9.7	17.4	0.0	0.0	0.0	0.1	0.0	0.0
Maximum	338.4		50.7	0.2		0.0	0.2		0.0
Date	9-Aug		17-Aug	3-Aug		6-Aug	21-Aug		16-Aug
Minimum		3.5	7.2		0.0	0.0		0.0	0.0
Date		31-Aug	31-Aug		5-Aug	5-Aug		23-Aug	23-Aug

Notes:

Rack 1: Aug 3 spike after CIP  
 Rack 2: Aug 5 spike after CIP; 12th, 13th, 16th, 18th, 21st spike due to air bubbles;

# Membranes Monthly Report

Month: August-16



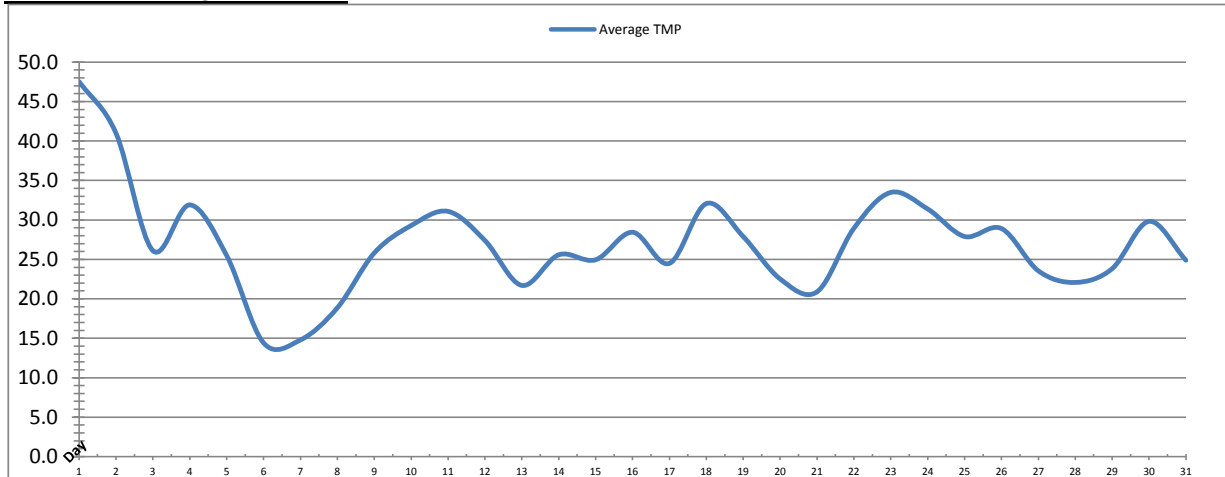
Date	Rack #3 Turbidity			Rack #4 Turbidity			Turbidity After Membranes		
	Maximum	Minimum	Average	Maximum	Minimum	Average	Maximum	Minimum	Average
1	0.03	0.01	0.02	0.01	0.01	0.01	0.03	0.02	0.02
2	0.02	0.01	0.02	0.01	0.01	0.01	0.02	0.02	0.02
3	0.19	0.01	0.01	0.01	0.01	0.01	0.03	0.02	0.02
4	0.01	0.01	0.01	0.04	0.01	0.02	0.03	0.02	0.02
5	0.02	0.01	0.01	0.01	0.01	0.01	0.02	0.02	0.02
6	0.01	0.01	0.01	0.01	0.01	0.01	0.02	0.02	0.02
7	0.01	0.01	0.01	0.01	0.01	0.01	0.02	0.02	0.02
8	0.17	0.01	0.01	0.01	0.01	0.01	0.03	0.02	0.02
9	0.04	0.01	0.01	0.01	0.01	0.01	0.04	0.02	0.02
10	0.04	0.01	0.01	0.01	0.01	0.01	0.04	0.02	0.02
11	0.03	0.01	0.01	0.01	0.01	0.01	0.02	0.02	0.02
12	0.04	0.01	0.01	0.01	0.01	0.01	0.02	0.02	0.02
13	0.02	0.01	0.01	0.01	0.01	0.01	0.03	0.02	0.02
14	0.02	0.01	0.01	0.01	0.01	0.01	0.04	0.02	0.02
15	0.06	0.01	0.01	0.01	0.01	0.01	0.03	0.02	0.02
16	0.03	0.01	0.01	0.01	0.01	0.01	0.04	0.02	0.02
17	0.03	0.01	0.01	0.01	0.01	0.01	0.03	0.02	0.02
18	0.04	0.01	0.01	0.01	0.01	0.01	0.03	0.02	0.02
19	0.02	0.01	0.01	0.01	0.01	0.01	0.04	0.02	0.02
20	0.03	0.01	0.01	0.01	0.01	0.01	0.02	0.02	0.02
21	0.02	0.01	0.01	0.01	0.01	0.01	0.02	0.02	0.02
22	0.02	0.01	0.01	0.01	0.01	0.01	0.02	0.02	0.02
23	0.03	0.01	0.01	0.01	0.01	0.01	0.02	0.02	0.02
24	0.02	0.01	0.01	0.01	0.01	0.01	0.02	0.02	0.02
25	0.03	0.01	0.01	0.01	0.01	0.01	0.04	0.02	0.02
26	0.04	0.01	0.01	0.01	0.01	0.01	0.02	0.02	0.02
27	0.03	0.01	0.01	0.01	0.01	0.01	0.03	0.02	0.02
28	0.03	0.01	0.01	0.01	0.01	0.01	0.02	0.02	0.02
29	0.03	0.01	0.01	0.01	0.01	0.01	0.04	0.02	0.02
30	0.02	0.01	0.01	0.01	0.01	0.01	0.02	0.02	0.02
31	0.02	0.01	0.01	0.01	0.01	0.01	0.03	0.02	0.02
Total									
Average	0.0	0.0	0.0	0.0	0.0	0.0	0.0	0.0	0.0
Maximum	0.2		0.0	0.0		0.0	0.0		0.0
Date	3-Aug		1-Aug	4-Aug		4-Aug	19-Aug		14-Aug
Minimum		0.0	0.0		0.0	0.0		0.0	0.0
Date		5-Aug	7-Aug		1-Aug	1-Aug		12-Aug	5-Aug

**Notes:**

Rack 3: Aug 3 spike due to air bubble; 8th spike after CIP

# Membranes Monthly Report

Month: August-16

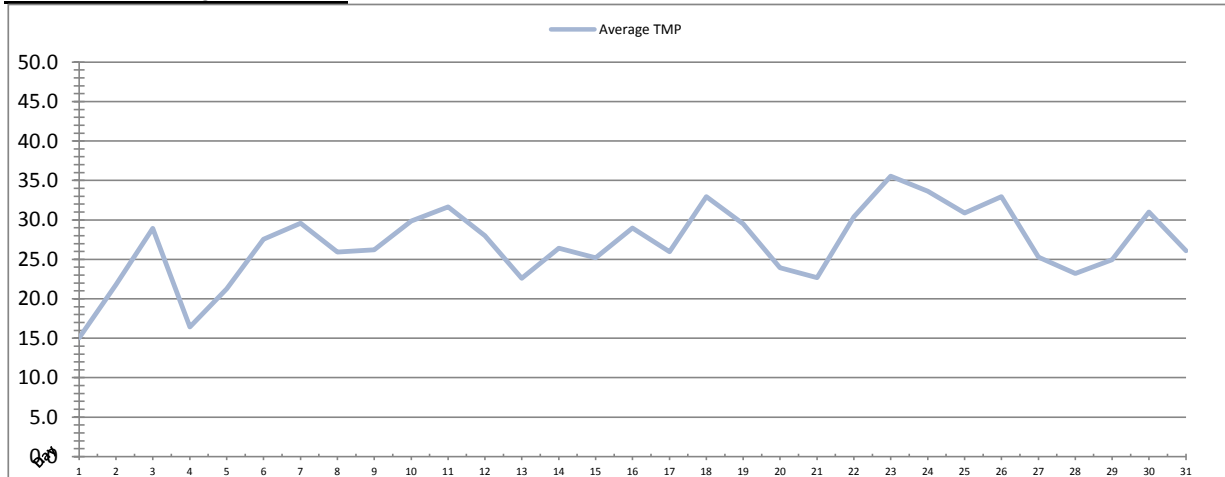


Integrity Test Rack 1								
Date	Initial Pressure (kPa)	Final Pressure (kPa)	Test Duration (sec)	Change in Pressure (kPa)	UCL	Within UCL	Average TMP (kPa)	Max TMP (kPa)
1	193.6	192.6	300.0	1.0	2.0	✓ 2.0	47.5	125.3
2	193.5	192.5	300.0	1.0	2.0	✓ 2.0	41.0	89.2
3	193.6	192.6	300.0	1.1	2.0	✓ 2.0	26.1	68.5
4	193.3	192.3	300.0	1.1	2.0	✓ 2.0	31.9	67.6
5	193.4	192.4	300.0	1.1	2.0	✓ 2.0	25.5	64.6
6	193.4	192.4	300.0	1.1	2.0	✓ 2.0	14.4	35.5
7	193.4	192.4	300.0	1.1	2.0	✓ 2.0	14.8	15.0
8	193.5	192.5	300.0	1.0	2.0	✓ 2.0	18.9	62.6
9	193.7	192.7	300.0	1.0	2.0	✓ 2.0	25.8	67.8
10	193.1	192.1	300.0	1.1	2.0	✓ 2.0	29.3	74.0
11	193.0	192.0	300.0	1.0	2.0	✓ 2.0	31.1	79.6
12	193.1	192.1	300.0	1.0	2.0	✓ 2.0	27.4	70.6
13	193.2	192.2	300.0	1.0	2.0	✓ 2.0	21.7	49.2
14	193.5	192.3	300.0	1.2	2.0	✓ 2.0	25.6	74.3
15	193.7	192.7	300.0	1.1	2.0	✓ 2.0	25.0	76.8
16	193.2	192.3	300.0	0.9	2.0	✓ 2.0	28.4	78.8
17	193.2	192.1	300.0	1.1	2.0	✓ 2.0	24.5	78.4
18	193.5	192.3	300.0	1.2	2.0	✓ 2.0	32.1	99.7
19	193.9	192.6	300.0	1.2	2.0	✓ 2.0	27.9	77.0
20	193.8	192.8	300.0	1.1	2.0	✓ 2.0	22.5	47.2
21	194.0	192.8	300.0	1.2	2.0	✓ 2.0	20.9	73.7
22	194.0	192.9	300.0	1.1	2.0	✓ 2.0	28.9	81.2
23	193.9	192.8	300.0	1.1	2.0	✓ 2.0	33.5	86.3
24	194.4	193.1	300.0	1.2	2.0	✓ 2.0	31.4	86.6
25	194.5	193.3	300.0	1.2	2.0	✓ 2.0	27.9	88.2
26	194.2	193.1	300.0	1.1	2.0	✓ 2.0	28.9	90.3
27	194.5	193.3	300.0	1.2	2.0	✓ 2.0	23.5	82.5
28	194.1	193.0	300.0	1.1	2.0	✓ 2.0	22.1	55.9
29	193.9	192.8	300.0	1.1	2.0	✓ 2.0	23.8	69.9
30	194.0	192.9	300.0	1.1	2.0	✓ 2.0	29.8	73.2
31	194.0	193.0	300.0	1.1	2.0	✓ 2.0	24.9	72.2
<b>Total</b>								
Average	193.7	192.6	300.0	1.1	2.0	2.0	27.0	73.0
Maximum	194.5	193.3	300.0	1.2	2.0	2.0	47.5	125.3
Date	27-Aug	27-Aug	1-Aug	18-Aug	1-Aug	1-Aug	1-Aug	1-Aug
Minimum	193.0	192.0	300.0	0.9	2.0	2.0	14.4	15.0
Date	11-Aug	11-Aug	1-Aug	16-Aug	1-Aug	1-Aug	6-Aug	7-Aug

Notes:

# Membranes Monthly Report

Month: August-16



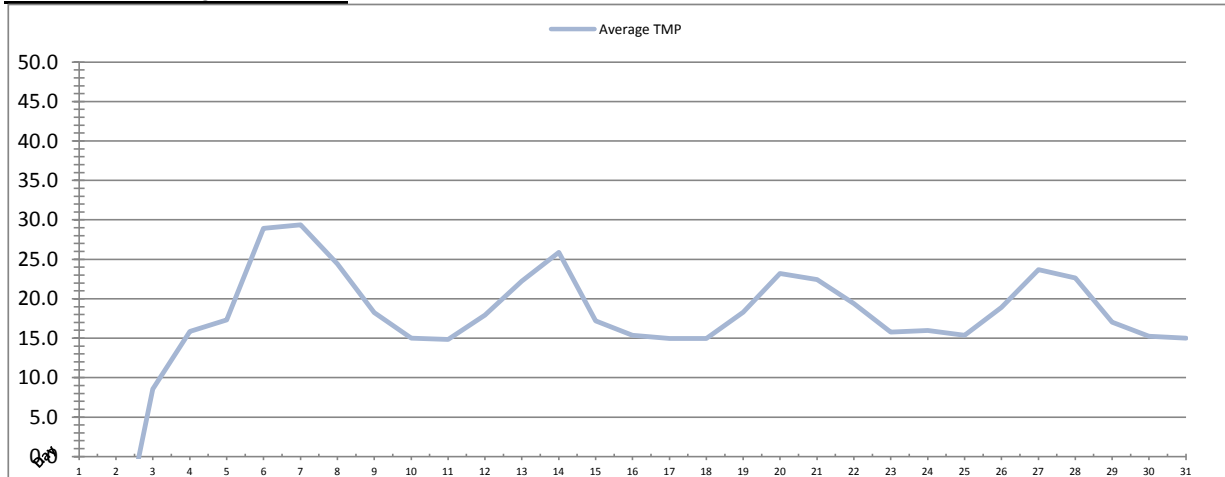
Date	Integrity Test Rack 2							
	Initial Pressure (kPa)	Final Pressure (kPa)	Test Duration (sec)	Change in Pressure (kPa)	UCL	Within UCL	Average TMP (kPa)	Max TMP (kPa)
1	200.6	199.9	300.0	0.7	2.0	✓ 2.0	15.0	63.3
2	200.7	200.1	300.0	0.6	2.0	✓ 2.0	21.8	64.1
3	200.5	199.4	300.0	1.1	2.0	✓ 2.0	28.9	66.6
4	200.1	199.1	300.0	1.0	2.0	✓ 2.0	16.4	91.3
5	200.3	199.2	300.0	1.1	2.0	✓ 2.0	21.3	64.1
6	200.6	199.9	300.0	0.7	2.0	✓ 2.0	27.6	65.7
7	200.6	199.5	300.0	1.1	2.0	✓ 2.0	29.6	67.1
8	200.4	199.3	300.0	1.1	2.0	✓ 2.0	25.9	66.9
9	200.7	199.6	300.0	1.1	2.0	✓ 2.0	26.2	67.6
10	200.1	199.1	300.0	1.1	2.0	✓ 2.0	29.9	69.9
11	200.0	199.1	300.0	1.0	2.0	✓ 2.0	31.6	82.1
12	200.3	199.2	300.0	1.1	2.0	✓ 2.0	28.0	71.2
13	200.4	199.5	300.0	0.9	2.0	✓ 2.0	22.6	38.9
14	200.3	199.2	300.0	1.1	2.0	✓ 2.0	26.4	73.9
15	200.5	199.7	300.0	0.8	2.0	✓ 2.0	25.2	74.7
16	200.1	199.0	300.0	1.1	2.0	✓ 2.0	29.0	78.3
17	200.0	198.9	300.0	1.1	2.0	✓ 2.0	25.9	80.4
18	200.2	198.9	300.0	1.3	2.0	✓ 2.0	32.9	89.4
19	200.2	199.2	300.0	1.0	2.0	✓ 2.0	29.5	99.8
20	200.2	199.0	300.0	1.2	2.0	✓ 2.0	23.9	60.2
21	200.3	199.2	300.0	1.1	2.0	✓ 2.0	22.7	50.4
22	200.4	199.1	300.0	1.3	2.0	✓ 2.0	30.4	80.1
23	200.3	199.0	300.0	1.3	2.0	✓ 2.0	35.5	93.4
24	199.8	198.5	300.0	1.3	2.0	✓ 2.0	33.6	85.1
25	199.9	198.1	300.0	1.7	2.0	✓ 2.0	30.9	84.3
26	200.2	199.4	300.0	0.8	2.0	✓ 2.0	33.0	83.6
27	200.5	199.8	300.0	0.6	2.0	✓ 2.0	25.3	85.4
28	200.5	199.7	300.0	0.8	2.0	✓ 2.0	23.2	40.2
29	199.9	198.8	300.0	1.1	2.0	✓ 2.0	25.0	71.3
30	199.9	198.7	300.0	1.2	2.0	✓ 2.0	31.0	73.3
31	199.7	198.6	300.0	1.1	2.0	✓ 2.0	26.1	84.6
<b>Total</b>								
Average	200.3	199.2	300.0	1.0	2.0	2.0	26.9	73.1
Maximum	200.7	200.1	300.0	1.7	2.0	2.0	35.5	99.8
Date	2-Aug	2-Aug	1-Aug	25-Aug	1-Aug	1-Aug	23-Aug	19-Aug
Minimum	199.7	198.1	300.0	0.6	2.0	2.0	15.0	38.9
Date	31-Aug	25-Aug	1-Aug	2-Aug	1-Aug	1-Aug	1-Aug	13-Aug

Notes:



# Membranes Monthly Report

Month: August-16

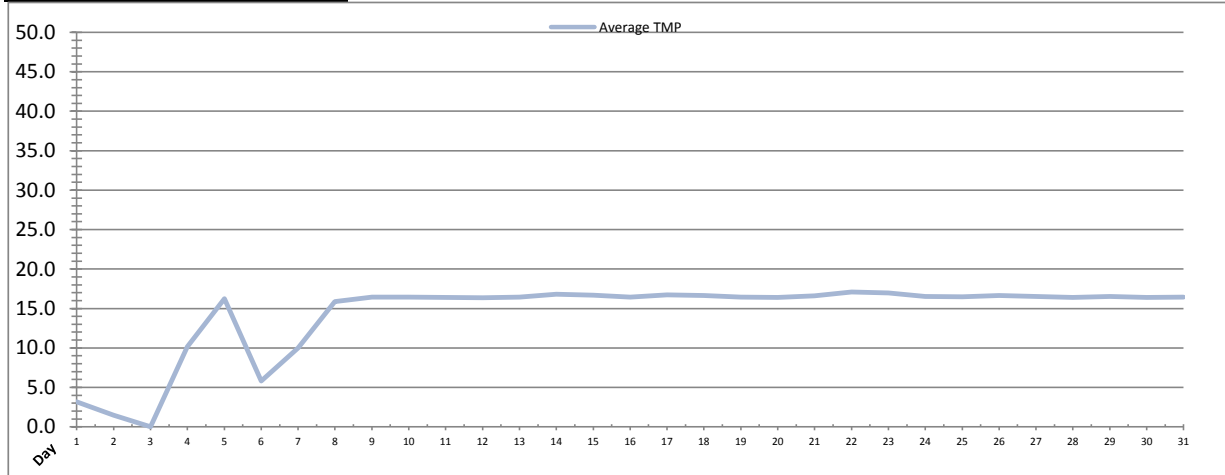


Date	Integrity Test Rack 3							
	Initial Pressure (kPa)	Final Pressure (kPa)	Test Duration (sec)	Change in Pressure (kPa)	UCL	Within UCL	Average TMP (kPa)	Max TMP (kPa)
1	190.9	185.8	300.0	5.2	2.0	✓ 2.0	-10.9	102.6
2	189.8	184.1	300.0	5.7	2.0	✓ 2.0	-14.2	29.9
3	190.4	184.5	300.0	5.9	2.0	✓ 2.0	8.5	127.3
4	190.4	184.5	300.0	5.9	2.0	✓ 2.0	15.9	16.0
5	190.1	188.9	300.0	1.2	2.0	✓ 2.0	17.3	61.3
6	189.6	188.5	300.0	1.1	2.0	✓ 2.0	28.9	65.5
7	190.1	188.8	300.0	1.3	2.0	✓ 2.0	29.4	66.8
8	190.5	189.2	300.0	1.3	2.0	✓ 2.0	24.4	66.2
9	190.3	189.2	300.0	1.1	2.0	✓ 2.0	18.2	48.6
10	190.3	189.3	300.0	1.1	2.0	✓ 2.0	15.0	61.7
11	190.0	188.9	300.0	1.1	2.0	✓ 2.0	14.8	32.8
12	190.2	189.1	300.0	1.1	2.0	✓ 2.0	17.9	36.7
13	190.3	189.2	300.0	1.1	2.0	✓ 2.0	22.2	49.2
14	189.6	188.4	300.0	1.2	2.0	✓ 2.0	25.9	102.8
15	189.6	188.4	300.0	1.2	2.0	✓ 2.0	17.2	41.1
16	190.4	189.2	300.0	1.1	2.0	✓ 2.0	15.4	45.0
17	190.1	188.9	300.0	1.2	2.0	✓ 2.0	15.0	38.8
18	190.4	189.2	300.0	1.2	2.0	✓ 2.0	14.9	36.4
19	190.3	189.0	300.0	1.3	2.0	✓ 2.0	18.3	52.1
20	190.3	189.1	300.0	1.3	2.0	✓ 2.0	23.2	43.0
21	190.3	189.1	300.0	1.2	2.0	✓ 2.0	22.4	56.0
22	189.6	188.4	300.0	1.2	2.0	✓ 2.0	19.4	41.0
23	190.3	188.9	300.0	1.3	2.0	✓ 2.0	15.8	39.9
24	190.4	189.1	300.0	1.3	2.0	✓ 2.0	16.0	34.2
25	190.7	189.5	300.0	1.2	2.0	✓ 2.0	15.4	44.0
26	190.6	189.2	300.0	1.4	2.0	✓ 2.0	18.9	71.1
27	190.3	188.9	300.0	1.3	2.0	✓ 2.0	23.7	67.0
28	191.0	189.8	300.0	1.2	2.0	✓ 2.0	22.6	48.0
29	190.2	189.1	300.0	1.2	2.0	✓ 2.0	17.1	37.1
30	190.4	189.1	300.0	1.2	2.0	✓ 2.0	15.3	30.2
31	190.4	189.1	300.0	1.3	2.0	✓ 2.0	15.0	32.0
<b>Total</b>								
Average	190.2	188.5	300.0	1.8	2.0	2.0	16.7	52.4
Maximum	191.0	189.8	300.0	5.9	2.0	2.0	29.4	127.3
Date	28-Aug	28-Aug	1-Aug	3-Aug	1-Aug	1-Aug	7-Aug	3-Aug
Minimum	189.6	184.1	300.0	1.1	2.0	2.0	-14.2	16.0
Date	6-Aug	2-Aug	1-Aug	10-Aug	1-Aug	1-Aug	2-Aug	4-Aug

Notes:  
 Rack 3 offline, troubleshooting failure.

# Membranes Monthly Report

Month: **August-16**



Integrity Test Rack 4									
Date	Initial Pressure (kPa)	Final Pressure (kPa)	Test Duration (sec)	Change in Pressure (kPa)	UCL	Within UCL	Average TMP (kPa)	Max TMP (kPa)	
1	195.6	194.8	300.0	0.8	2.0	✓ 2.0	3.2	18.8	
2	195.6	194.8	300.0	0.8	2.0	✓ 2.0	1.5	17.4	
3	195.6	194.8	300.0	0.8	2.0	✓ 2.0	0.0	0.0	
4	195.6	194.8	300.0	0.8	2.0	✓ 2.0	10.1	35.3	
5	195.6	194.8	300.0	0.8	2.0	✓ 2.0	16.2	16.5	
6	195.6	194.8	300.0	0.8	2.0	✓ 2.0	5.8	17.7	
7	195.6	194.8	300.0	0.8	2.0	✓ 2.0	10.0	14.3	
8	195.6	194.8	300.0	0.8	2.0	✓ 2.0	15.9	16.7	
9	195.6	194.8	300.0	0.8	2.0	✓ 2.0	16.4	16.7	
10	195.6	194.8	300.0	0.8	2.0	✓ 2.0	16.5	16.7	
11	195.6	194.8	300.0	0.8	2.0	✓ 2.0	16.4	16.6	
12	195.6	194.8	300.0	0.8	2.0	✓ 2.0	16.4	16.5	
13	195.6	194.8	300.0	0.8	2.0	✓ 2.0	16.4	16.9	
14	195.6	194.8	300.0	0.8	2.0	✓ 2.0	16.8	17.1	
15	195.6	194.8	300.0	0.8	2.0	✓ 2.0	16.7	17.1	
16	195.6	194.8	300.0	0.8	2.0	✓ 2.0	16.4	16.9	
17	195.6	194.8	300.0	0.8	2.0	✓ 2.0	16.7	17.0	
18	195.6	194.8	300.0	0.8	2.0	✓ 2.0	16.6	16.9	
19	195.6	194.8	300.0	0.8	2.0	✓ 2.0	16.5	16.8	
20	195.6	194.8	300.0	0.8	2.0	✓ 2.0	16.4	16.6	
21	195.6	194.8	300.0	0.8	2.0	✓ 2.0	16.6	17.5	
22	195.6	194.8	300.0	0.8	2.0	✓ 2.0	17.1	17.7	
23	195.6	194.8	300.0	0.8	2.0	✓ 2.0	17.0	17.4	
24	195.6	194.8	300.0	0.8	2.0	✓ 2.0	16.5	16.9	
25	195.6	194.8	300.0	0.8	2.0	✓ 2.0	16.5	16.7	
26	195.6	194.8	300.0	0.8	2.0	✓ 2.0	16.6	16.9	
27	195.6	194.8	300.0	0.8	2.0	✓ 2.0	16.5	16.9	
28	195.6	194.8	300.0	0.8	2.0	✓ 2.0	16.4	16.9	
29	195.6	194.8	300.0	0.8	2.0	✓ 2.0	16.5	16.9	
30	195.6	194.8	300.0	0.8	2.0	✓ 2.0	16.4	16.7	
31	195.6	194.8	300.0	0.8	2.0	✓ 2.0	16.4	16.7	
<b>Total</b>									
Average	195.6	194.8	300.0	0.8	2.0	2.0	14.3	17.0	
Maximum	195.6	194.8	300.0	0.8	2.0	2.0	17.1	35.3	
Date	1-Aug	1-Aug	1-Aug	1-Aug	1-Aug	1-Aug	22-Aug	4-Aug	
Minimum	195.6	194.8	300.0	0.8	2.0	2.0	0.0	0.0	
Date	1-Aug	1-Aug	1-Aug	1-Aug	1-Aug	1-Aug	3-Aug	3-Aug	

Notes:  
 Offline due to waiting on parts for flow control valve.

# Membranes Monthly Report

Month: August-16

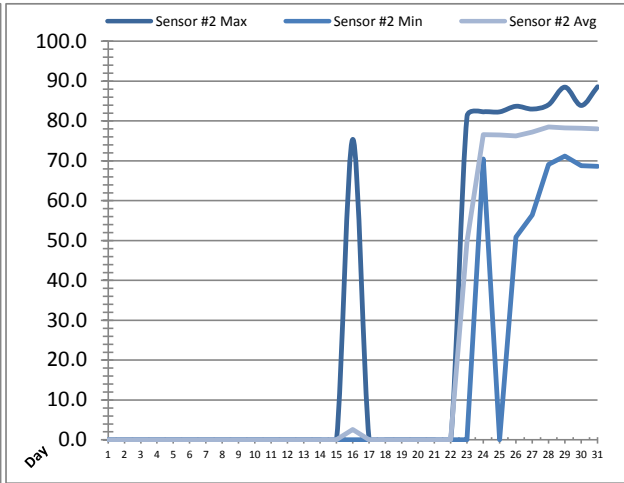
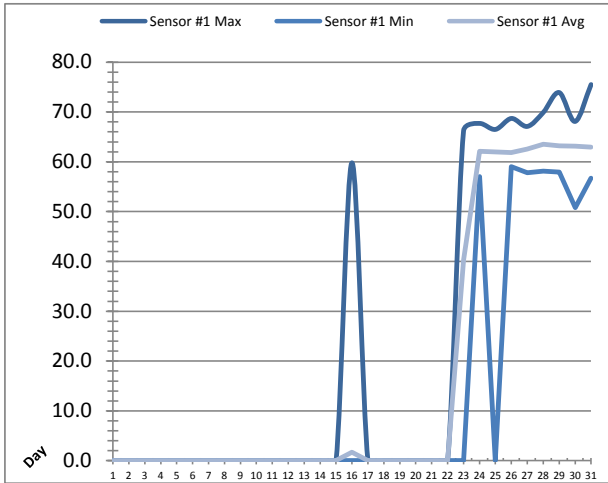
Date	Membranes Monthly Performance							
	Rack 1 >0.1 NTU (Minutes)	Rack 1 Forward Flow (Minutes)	Rack 2 >0.1 NTU (Minutes)	Rack 2 Forward Flow (Minutes)	Rack 3 >0.1 NTU (Minutes)	Rack 3 Forward Flow (Minutes)	Rack 4 >0.1 NTU (Minutes)	Rack 4 Forward Flow (Minutes)
1	0.0	1110.2	0.0	1017.5	0.0	35.1	0.0	0.0
2	0.0	1166.4	0.0	1110.1	0.0	14.4	0.0	0.0
3	11.3	957.1	0.0	1111.0	1.4	156.5	0.0	0.0
4	0.0	1136.4	0.0	910.3	0.0	0.0	0.0	13.5
5	0.0	1063.5	4.1	841.0	0.0	561.0	0.0	0.0
6	0.0	13.5	0.0	1062.2	0.0	1090.3	0.0	0.0
7	0.0	0.0	0.0	1110.1	0.0	1110.2	0.0	0.0
8	0.0	698.1	0.0	1113.3	5.4	1012.3	0.0	0.0
9	0.0	1069.4	0.0	1071.5	0.0	689.2	0.0	0.0
10	0.0	1048.2	0.0	1045.5	0.0	636.4	0.0	0.0
11	0.0	1030.3	0.0	1030.2	0.0	695.5	0.0	0.0
12	0.0	1036.2	8.1	1037.5	0.0	804.2	0.0	0.0
13	0.0	1009.1	0.5	1008.1	0.0	1007.3	0.0	0.0
14	0.0	996.3	0.0	993.6	0.0	994.0	0.0	0.0
15	0.0	769.3	0.0	767.0	0.0	478.5	0.0	0.0
16	0.0	884.3	6.3	891.0	0.0	355.5	0.0	0.0
17	0.0	701.5	0.0	701.5	0.0	296.0	0.0	0.0
18	0.0	1015.1	2.3	1008.3	0.0	672.5	0.0	0.0
19	0.0	1013.1	0.0	1018.4	0.0	832.5	0.0	0.0
20	0.0	1106.2	0.0	1103.1	0.0	1105.3	0.0	0.0
21	0.0	1026.2	5.4	987.1	0.0	1026.3	0.0	0.0
22	0.0	1121.5	0.0	1120.1	0.0	679.2	0.0	0.0
23	0.0	1080.1	0.0	1077.5	0.0	845.1	0.0	0.0
24	0.0	1052.3	0.0	1044.6	0.0	549.2	0.0	0.0
25	0.0	969.2	0.0	955.2	0.0	334.4	0.0	0.0
26	0.0	1178.5	0.0	1156.4	0.0	726.3	0.0	0.0
27	0.0	1045.6	0.0	1036.1	0.0	1047.3	0.0	0.0
28	0.0	1114.2	0.0	1106.1	0.0	1112.4	0.0	0.0
29	0.0	867.1	0.0	862.2	0.0	548.0	0.0	0.0
30	0.0	1120.5	0.0	1126.4	0.0	545.1	0.0	0.0
31	0.0	820.5	0.0	815.2	0.0	325.4	0.0	0.0
Total	11.3	29219.9	26.7	31238.4	6.8	20285.3	0.0	13.5
Percent	0.0		0.1		0.0		0.0	
Maximum	11.3	1178.5	8.1	1156.4	5.4	1112.4	0.0	13.5
Date	3-Aug	26-Aug	12-Aug	26-Aug	8-Aug	28-Aug	1-Aug	4-Aug
Minimum	0.0	0.0	0.0	701.5	0.0	0.0	0.0	0.0
Date	1-Aug	7-Aug	1-Aug	17-Aug	1-Aug	4-Aug	1-Aug	1-Aug

Notes:

Met filter performance requirement of 99% of readings were less than 0.1ntu for the month.

# UV System Monthly Report

Month: **August-16**



Date	UV Reactor 1					
	Intensity Sensor 1 (mW/cm <sup>2</sup> )			Intensity Sensor 2 (mW/cm <sup>2</sup> )		
	Maximum	Minimum	Average	Maximum	Minimum	Average
1	0.0	0.0	0.0	0.0	0.0	0.0
2	0.0	0.0	0.0	0.0	0.0	0.0
3	0.0	0.0	0.0	0.0	0.0	0.0
4	0.0	0.0	0.0	0.0	0.0	0.0
5	0.0	0.0	0.0	0.0	0.0	0.0
6	0.0	0.0	0.0	0.0	0.0	0.0
7	0.0	0.0	0.0	0.0	0.0	0.0
8	0.0	0.0	0.0	0.0	0.0	0.0
9	0.0	0.0	0.0	0.0	0.0	0.0
10	0.0	0.0	0.0	0.0	0.0	0.0
11	0.0	0.0	0.0	0.0	0.0	0.0
12	0.0	0.0	0.0	0.0	0.0	0.0
13	0.0	0.0	0.0	0.0	0.0	0.0
14	0.0	0.0	0.0	0.0	0.0	0.0
15	0.0	0.0	0.0	0.0	0.0	0.0
16	59.8	0.0	1.7	75.4	0.0	2.6
17	0.0	0.0	0.0	0.0	0.0	0.0
18	0.0	0.0	0.0	0.0	0.0	0.0
19	0.0	0.0	0.0	0.0	0.0	0.0
20	0.0	0.0	0.0	0.0	0.0	0.0
21	0.0	0.0	0.0	0.0	0.0	0.0
22	0.0	0.0	0.0	0.0	0.0	0.0
23	66.2	0.0	40.3	81.2	0.0	49.6
24	67.7	57.0	62.1	82.3	70.5	76.6
25	66.5	0.0	62.0	82.3	0.0	76.5
26	68.7	59.0	61.8	83.7	50.9	76.3
27	67.1	57.8	62.6	83.0	56.4	77.2
28	69.9	58.1	63.5	84.1	69.1	78.5
29	73.9	57.9	63.2	88.5	71.2	78.3
30	68.1	50.8	63.1	83.9	68.8	78.2
31	75.5	56.7	62.9	88.6	68.6	78.0
Total						
Average	22.0	12.8	17.5	26.9	14.7	21.7
Maximum	75.5		63.5	88.6		78.5
Date	31-Aug		28-Aug	31-Aug		28-Aug
Minimum		0.0			0.0	
Date		1-Aug	1-Aug		1-Aug	1-Aug

Notes:

---



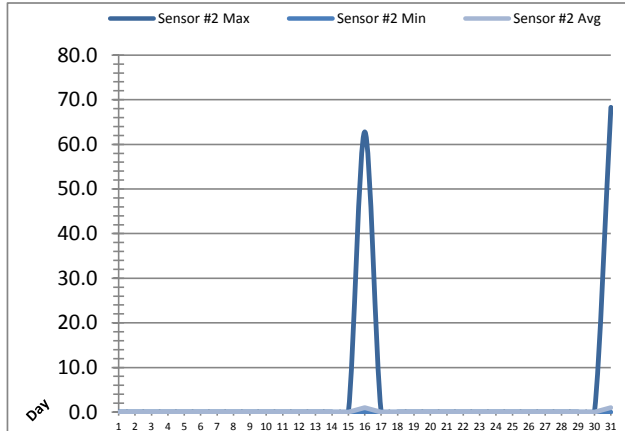
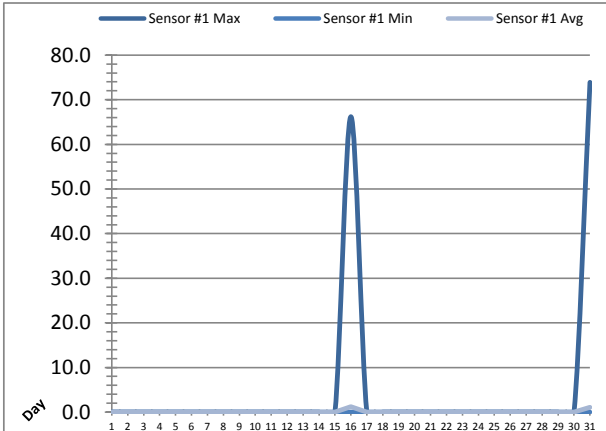
---



---

# UV System Monthly Report

Month: **August-16**



UV Reactor 2						
Date	Intensity Sensor 1 (mW/cm <sup>2</sup> )			Intensity Sensor 2 (mW/cm <sup>2</sup> )		
	Maximum	Minimum	Average	Maximum	Minimum	Average
1	0.0	0.0	0.0	0.0	0.0	0.0
2	0.0	0.0	0.0	0.0	0.0	0.0
3	0.0	0.0	0.0	0.0	0.0	0.0
4	0.0	0.0	0.0	0.0	0.0	0.0
5	0.0	0.0	0.0	0.0	0.0	0.0
6	0.0	0.0	0.0	0.0	0.0	0.0
7	0.0	0.0	0.0	0.0	0.0	0.0
8	0.0	0.0	0.0	0.0	0.0	0.0
9	0.0	0.0	0.0	0.0	0.0	0.0
10	0.0	0.0	0.0	0.0	0.0	0.0
11	0.0	0.0	0.0	0.0	0.0	0.0
12	0.0	0.0	0.0	0.0	0.0	0.0
13	0.0	0.0	0.0	0.0	0.0	0.0
14	0.0	0.0	0.0	0.0	0.0	0.0
15	0.0	0.0	0.0	0.0	0.0	0.0
16	66.2	0.0	1.2	62.8	0.0	1.0
17	0.0	0.0	0.0	0.0	0.0	0.0
18	0.0	0.0	0.0	0.0	0.0	0.0
19	0.0	0.0	0.0	0.0	0.0	0.0
20	0.0	0.0	0.0	0.0	0.0	0.0
21	0.0	0.0	0.0	0.0	0.0	0.0
22	0.0	0.0	0.0	0.0	0.0	0.0
23	0.0	0.0	0.0	0.0	0.0	0.0
24	0.0	0.0	0.0	0.0	0.0	0.0
25	0.0	0.0	0.0	0.0	0.0	0.0
26	0.0	0.0	0.0	0.0	0.0	0.0
27	0.0	0.0	0.0	0.0	0.0	0.0
28	0.0	0.0	0.0	0.0	0.0	0.0
29	0.0	0.0	0.0	0.0	0.0	0.0
30	0.0	0.0	0.0	0.0	0.0	0.0
31	73.9	0.0	1.1	68.3	0.0	1.0
Total						
Average	4.5	0.0	0.1	4.2	0.0	0.1
Maximum	73.9		1.2	68.3		1.0
Date	31-Aug		16-Aug	31-Aug		16-Aug
Minimum		0.0	0.0		0.0	0.0
Date		1-Aug	1-Aug		1-Aug	1-Aug

Notes:

---



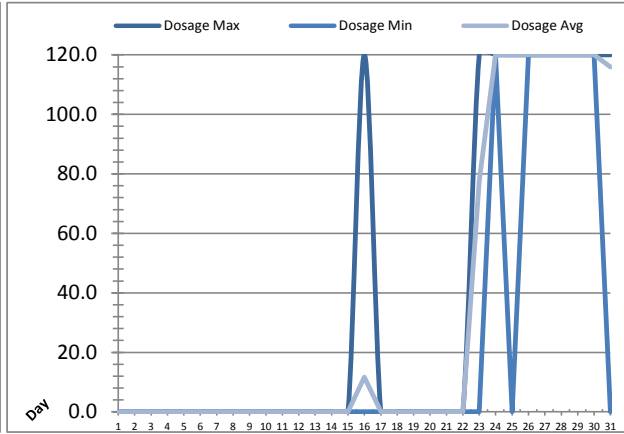
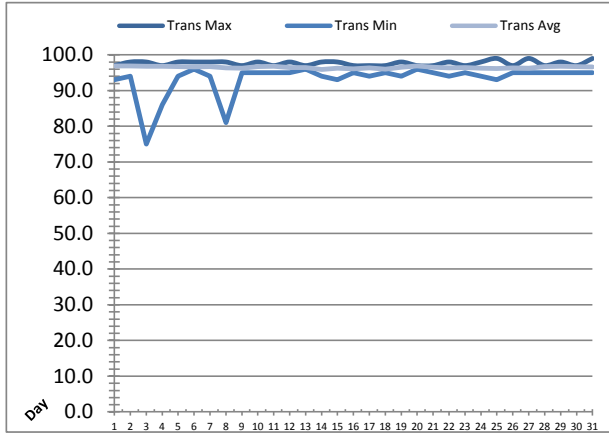
---



---

# UV System Monthly Report

Month: **August-16**



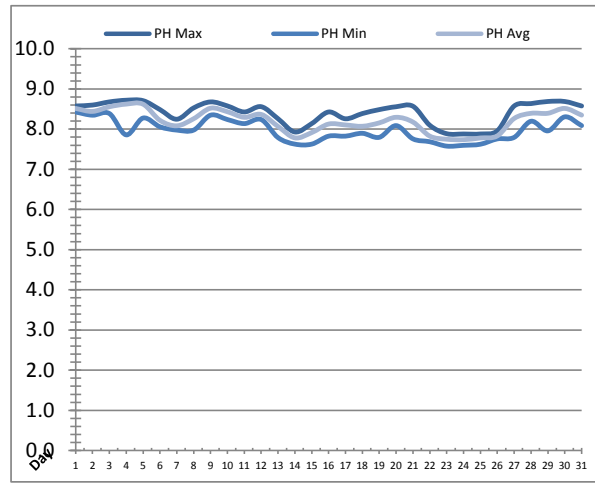
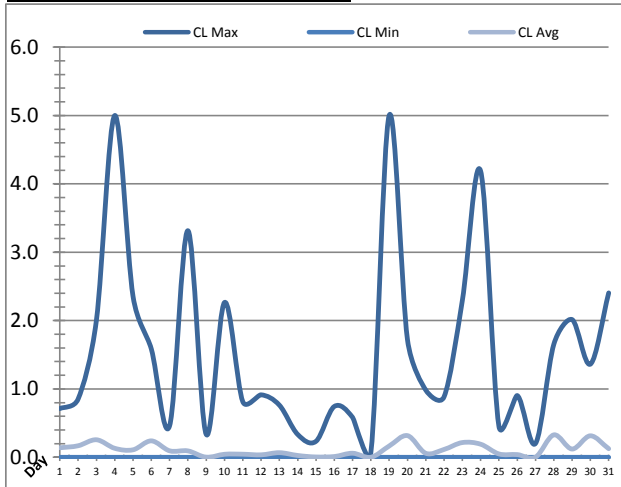
UV System							
Date	Transmittance (%)			Dosage (mJ/cm <sup>2</sup> )			Inlet Flow (L/s)
	Maximum	Minimum	Average	Maximum	Minimum	Average	Maximum
1	97.00	93.00	96.88	0.0	0.0	0.0	290.2
2	98.00	94.00	96.86	0.0	0.0	0.0	229.6
3	98.00	75.00	96.77	0.0	0.0	0.0	82.7
4	97.00	86.00	96.84	0.0	0.0	0.0	199.9
5	98.00	94.00	96.75	0.0	0.0	0.0	84.7
6	98.00	96.00	96.66	0.0	0.0	0.0	75.5
7	98.00	94.00	96.72	0.0	0.0	0.0	75.2
8	98.00	81.00	96.35	0.0	0.0	0.0	78.0
9	97.00	95.00	96.29	0.0	0.0	0.0	105.6
10	98.00	95.00	96.67	0.0	0.0	0.0	102.9
11	97.00	95.00	96.81	0.0	0.0	0.0	101.8
12	98.00	95.00	96.46	0.0	0.0	0.0	102.8
13	97.00	96.00	96.47	0.0	0.0	0.0	78.5
14	98.00	94.00	95.92	0.0	0.0	0.0	135.3
15	98.00	93.00	96.25	0.0	0.0	0.0	103.3
16	97.00	95.00	96.10	120.0	0.0	11.6	105.2
17	97.00	94.00	96.35	0.0	0.0	0.0	99.1
18	97.00	95.00	95.97	0.0	0.0	0.0	88.0
19	98.00	94.00	96.52	0.0	0.0	0.0	99.8
20	97.00	96.00	96.85	0.0	0.0	0.0	77.1
21	97.00	95.00	96.55	0.0	0.0	0.0	79.9
22	98.00	94.00	96.38	0.0	0.0	0.0	89.4
23	97.00	95.00	96.47	120.0	0.0	77.6	101.8
24	98.00	94.00	96.28	120.0	120.0	120.0	90.1
25	99.00	93.00	96.18	120.0	0.0	119.9	91.1
26	97.00	95.00	96.35	120.0	120.0	120.0	129.8
27	99.00	95.00	96.27	120.0	120.0	120.0	124.2
28	97.00	95.00	96.73	120.0	120.0	120.0	79.1
29	98.00	95.00	96.81	120.0	120.0	120.0	85.0
30	97.00	95.00	96.72	120.0	120.0	120.0	85.0
31	99.00	95.00	96.62	120.0	0.0	115.9	90.4
<b>Total</b>							
<b>Average</b>	97.65	93.26	96.51	38.7	23.2	33.7	108.4
<b>Maximum</b>	99.00		96.88	120.0		120.0	290.2
<b>Date</b>	25-Aug		1-Aug	16-Aug		24-Aug	1-Aug
<b>Minimum</b>		75.00	95.92		0.0	0.0	
<b>Date</b>		3-Aug	14-Aug		1-Aug	1-Aug	

**Notes:**

AOP system in operation on Aug 23rd.

# Plant Quality Report

Month: August-16



Date	Strainer Chlorine Residual			Strainer pH		
	AIT_2003_CL (ppm)			AIT_2003_PH		
	Maximum	Minimum	Average	Maximum	Minimum	Average
1	0.71	0.00	0.14	8.58	8.43	8.52
2	0.85	0.00	0.17	8.60	8.35	8.44
3	2.01	0.00	0.26	8.68	8.39	8.56
4	5.00	0.00	0.13	8.72	7.86	8.62
5	2.36	0.00	0.11	8.71	8.28	8.62
6	1.58	0.00	0.24	8.49	8.06	8.22
7	0.46	0.00	0.10	8.25	7.98	8.08
8	3.32	0.00	0.09	8.53	7.98	8.26
9	0.34	0.00	0.00	8.68	8.35	8.52
10	2.27	0.00	0.04	8.58	8.24	8.43
11	0.81	0.00	0.05	8.43	8.14	8.29
12	0.91	0.00	0.04	8.56	8.24	8.37
13	0.76	0.00	0.07	8.26	7.79	8.07
14	0.33	0.00	0.03	7.93	7.63	7.78
15	0.23	0.00	0.00	8.14	7.63	7.91
16	0.74	0.00	0.01	8.43	7.83	8.13
17	0.58	0.00	0.06	8.26	7.83	8.10
18	0.07	0.00	0.00	8.39	7.90	8.07
19	5.00	0.00	0.17	8.49	7.80	8.16
20	1.72	0.00	0.32	8.56	8.09	8.29
21	0.98	0.00	0.06	8.57	7.76	8.18
22	0.88	0.00	0.12	8.10	7.69	7.83
23	2.29	0.00	0.22	7.89	7.58	7.75
24	4.19	0.00	0.19	7.88	7.60	7.74
25	0.45	0.00	0.05	7.88	7.62	7.78
26	0.90	0.00	0.04	7.96	7.76	7.83
27	0.20	0.00	0.00	8.58	7.79	8.27
28	1.65	0.00	0.33	8.64	8.20	8.39
29	2.01	0.00	0.12	8.69	7.96	8.39
30	1.36	0.00	0.31	8.69	8.31	8.52
31	2.41	0.00	0.13	8.58	8.09	8.35
Total						
Average	1.53	0.00	0.12	8.41	7.97	8.21
Maximum	5.00		0.33	8.72		8.62
Date	4-Aug		28-Aug	4-Aug		4-Aug
Minimum		0.00	0.00		7.58	7.74
Date		1-Aug	18-Aug		23-Aug	24-Aug

Notes:

---



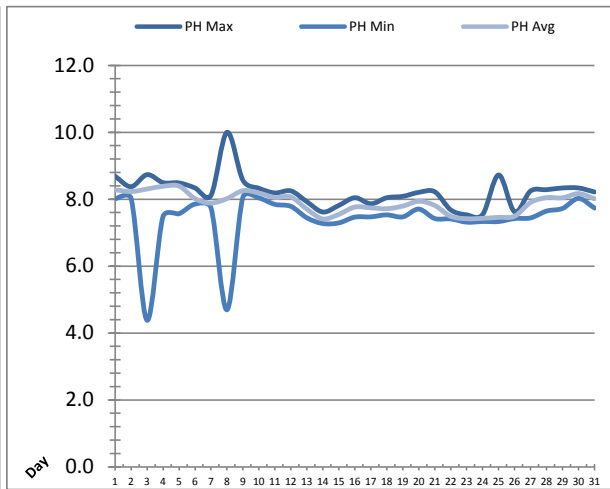
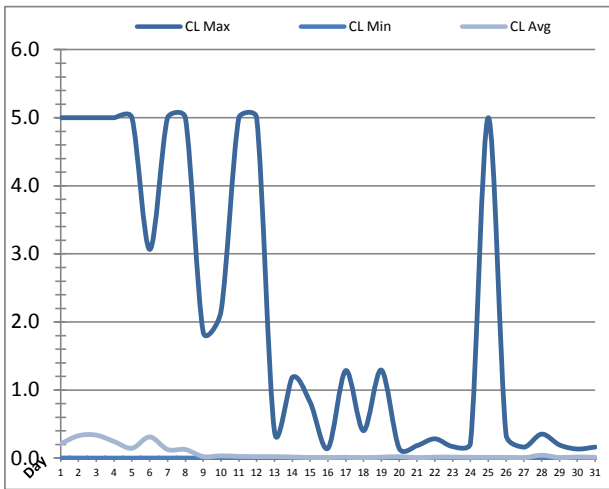
---



---

# Plant Quality Report

Month: August-16



Date	Inlet UV Chlorine Residual			Inlet UV pH		
	AIT_5005_CL (ppm)			AIT_5005_PH		
	Maximum	Minimum	Average	Maximum	Minimum	Average
1	5.00	0.00	0.21	8.68	8.01	8.28
2	5.00	0.00	0.33	8.37	8.02	8.23
3	5.00	0.00	0.34	8.73	4.38	8.30
4	5.00	0.00	0.24	8.49	7.48	8.39
5	5.00	0.00	0.15	8.49	7.56	8.39
6	3.07	0.00	0.31	8.34	7.85	8.02
7	5.00	0.00	0.13	8.11	7.74	7.89
8	5.00	0.00	0.13	10.00	4.69	8.02
9	1.85	0.00	0.02	8.56	8.07	8.25
10	2.16	0.00	0.03	8.33	8.04	8.18
11	5.00	0.00	0.03	8.19	7.84	8.05
12	5.00	0.00	0.02	8.25	7.79	8.07
13	0.39	0.00	0.02	7.92	7.44	7.70
14	1.19	0.00	0.02	7.62	7.27	7.41
15	0.82	0.00	0.01	7.81	7.29	7.55
16	0.14	0.00	0.01	8.04	7.46	7.77
17	1.29	0.00	0.01	7.86	7.47	7.74
18	0.40	0.00	0.00	8.04	7.53	7.72
19	1.29	0.00	0.01	8.08	7.47	7.79
20	0.14	0.00	0.02	8.20	7.70	7.94
21	0.18	0.00	0.01	8.22	7.42	7.81
22	0.28	0.00	0.01	7.68	7.41	7.49
23	0.17	0.00	0.02	7.53	7.31	7.42
24	0.22	0.00	0.01	7.54	7.33	7.43
25	5.00	0.00	0.01	8.72	7.33	7.46
26	0.34	0.00	0.01	7.62	7.42	7.49
27	0.16	0.00	0.01	8.25	7.44	7.90
28	0.35	0.00	0.04	8.28	7.64	8.05
29	0.19	0.00	0.01	8.34	7.72	8.04
30	0.13	0.00	0.02	8.34	8.02	8.17
31	0.16	0.00	0.01	8.22	7.73	8.02
Total						
Average	2.10	0.00	0.07	8.22	7.42	7.90
Maximum	5.00		0.34	10.00		8.39
Date	1-Aug		3-Aug	8-Aug		5-Aug
Minimum		0.00	0.00		4.38	7.41
Date		11-Aug	18-Aug		3-Aug	14-Aug

Notes:

---



---

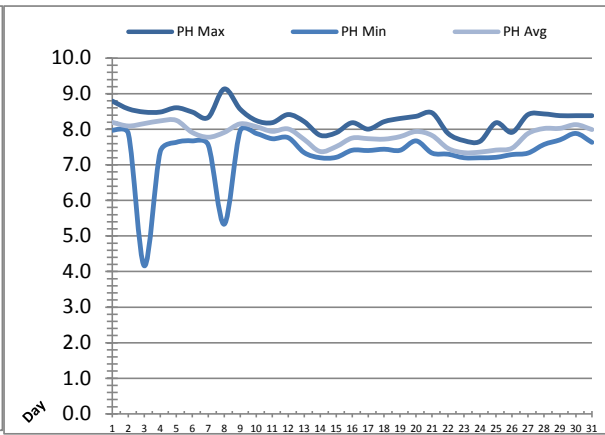
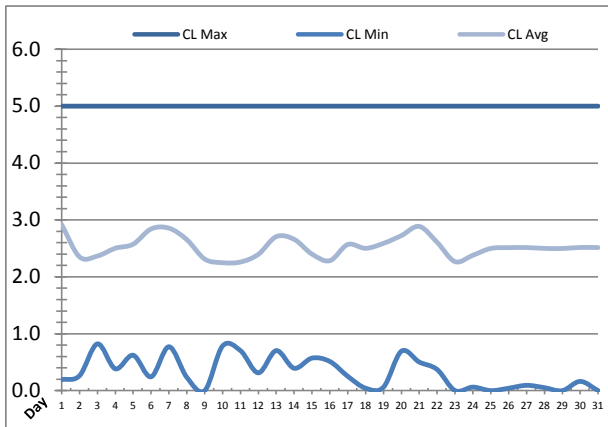


---

**Plant Quality Report**

Month: August-16





Date	Discharge UV Chlorine Residual			Discharge UV pH		
	AIT_5006_CL (ppm)			AIT_5006_PH		
	Maximum	Minimum	Average	Maximum	Minimum	Average
1	5.00	0.19	2.92	8.79	7.97	8.19
2	5.00	0.26	2.35	8.58	7.88	8.09
3	5.00	0.82	2.37	8.48	4.16	8.16
4	5.00	0.38	2.50	8.49	7.37	8.24
5	5.00	0.62	2.57	8.61	7.63	8.25
6	5.00	0.24	2.84	8.49	7.67	7.91
7	5.00	0.77	2.86	8.34	7.56	7.78
8	5.00	0.23	2.65	9.14	5.33	7.91
9	5.00	0.00	2.31	8.56	7.96	8.15
10	5.00	0.79	2.25	8.25	7.88	8.07
11	5.00	0.70	2.26	8.19	7.74	7.94
12	5.00	0.31	2.40	8.42	7.76	8.01
13	5.00	0.70	2.71	8.22	7.34	7.71
14	5.00	0.39	2.66	7.83	7.20	7.38
15	5.00	0.57	2.40	7.90	7.21	7.51
16	5.00	0.51	2.28	8.18	7.41	7.75
17	5.00	0.25	2.57	8.00	7.40	7.74
18	5.00	0.04	2.50	8.21	7.44	7.72
19	5.00	0.06	2.59	8.31	7.41	7.79
20	5.00	0.69	2.73	8.36	7.67	7.94
21	5.00	0.50	2.89	8.46	7.33	7.83
22	5.00	0.37	2.61	7.88	7.30	7.46
23	5.00	0.00	2.27	7.68	7.20	7.34
24	5.00	0.06	2.38	7.66	7.20	7.36
25	5.00	0.00	2.50	8.18	7.21	7.42
26	5.00	0.04	2.51	7.91	7.29	7.47
27	5.00	0.09	2.51	8.41	7.33	7.88
28	5.00	0.05	2.50	8.43	7.57	8.02
29	5.00	0.00	2.50	8.38	7.70	8.03
30	5.00	0.16	2.52	8.38	7.88	8.13
31	5.00	0.00	2.51	8.38	7.63	7.99
Total						
Average	5.00	0.32	2.53	8.29	7.35	7.85
Maximum	5.00		2.92	9.14		8.25
Date	1-Aug		1-Aug	8-Aug		5-Aug
Minimum		0.00	2.25		4.16	7.34
Date		9-Aug	10-Aug		3-Aug	23-Aug

Notes:

---



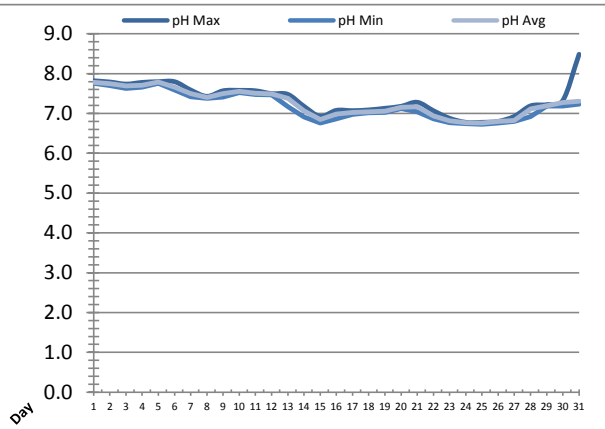
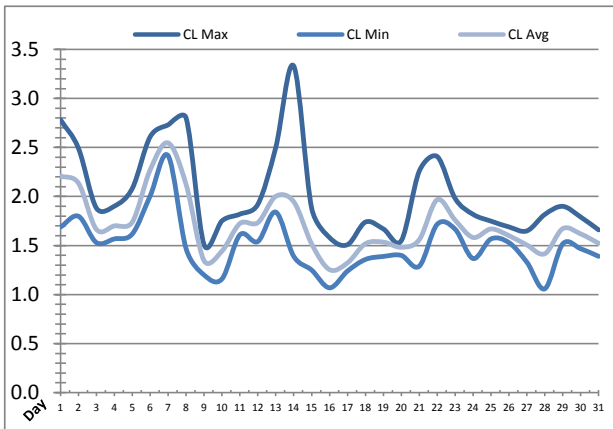
---



---

# Plant Quality Report

Month: **August-16**



Date	Suction Header Chlorine Res.			Suction Header pH			Distribution CT Calc Total		
	AIT_7001_CL (ppm)			AIT_7001_PH (m)			REAL_CT_CALC_TOTAL (mg*ml/min)		
	Maximum	Minimum	Average	Maximum	Minimum	Average	Maximum	Minimum	Average
1	2.78	1.69	2.21	7.82	7.76	7.78	15554.65	0.00	356.99
2	2.49	1.80	2.14	7.79	7.70	7.75	10863.85	0.00	417.95
3	1.88	1.53	1.66	7.74	7.63	7.69	10496.62	0.00	301.42
4	1.90	1.57	1.70	7.78	7.66	7.71	8935.88	0.00	333.96
5	2.08	1.62	1.74	7.80	7.76	7.79	10820.62	0.00	347.12
6	2.61	2.01	2.27	7.80	7.59	7.66	13328.90	0.00	536.58
7	2.73	2.42	2.55	7.59	7.42	7.50	6867.95	0.00	647.74
8	2.80	1.47	2.12	7.43	7.38	7.40	14236.52	0.00	373.78
9	1.51	1.20	1.35	7.57	7.41	7.50	6364.98	0.00	264.62
10	1.75	1.16	1.44	7.58	7.53	7.56	6557.09	0.00	234.59
11	1.82	1.61	1.72	7.57	7.48	7.51	11600.03	0.00	256.72
12	1.92	1.54	1.73	7.50	7.46	7.49	7331.99	0.00	289.84
13	2.50	1.84	2.00	7.48	7.17	7.38	14394.44	0.00	270.85
14	3.33	1.39	1.95	7.18	6.91	7.07	12512.17	0.00	526.26
15	1.88	1.25	1.52	6.93	6.76	6.84	4709.99	0.00	370.61
16	1.58	1.07	1.25	7.08	6.87	6.98	3628.74	0.00	273.58
17	1.51	1.24	1.32	7.07	6.98	7.02	4764.37	0.00	179.07
18	1.74	1.36	1.52	7.09	7.02	7.04	4779.41	0.00	226.91
19	1.67	1.39	1.53	7.13	7.03	7.06	11983.82	0.00	403.85
20	1.55	1.40	1.48	7.18	7.12	7.15	7256.20	0.00	370.58
21	2.26	1.29	1.56	7.28	7.04	7.17	8086.87	0.00	235.73
22	2.41	1.72	1.97	7.07	6.87	6.94	6128.31	0.00	399.39
23	1.98	1.67	1.76	6.88	6.77	6.81	4864.82	0.00	434.90
24	1.82	1.37	1.58	6.78	6.75	6.77	5181.20	0.00	284.99
25	1.75	1.57	1.67	6.78	6.73	6.76	11012.94	0.00	252.08
26	1.69	1.53	1.60	6.80	6.76	6.80	4386.96	0.00	291.44
27	1.65	1.33	1.51	6.93	6.80	6.82	4548.15	0.00	331.46
28	1.82	1.06	1.42	7.19	6.92	7.11	8247.51	0.00	346.08
29	1.90	1.52	1.67	7.22	7.19	7.20	11009.59	0.00	397.23
30	1.79	1.47	1.62	7.33	7.19	7.27	9733.94	0.00	372.55
31	1.66	1.39	1.52	8.49	7.24	7.31	8565.17	0.00	378.41
Total									
Average	2.02	1.50	1.71	7.35	7.19	7.25	7.35	7.19	7.25
Maximum	3.33		2.55	8.49		7.79	8.49		7.79
Date	14-Aug		7-Aug	31-Aug		5-Aug	31-Aug		5-Aug
Minimum		1.06	1.25		6.73	6.76		6.73	6.76
Date		28-Aug	16-Aug		25-Aug	25-Aug		25-Aug	25-Aug

Notes:

---



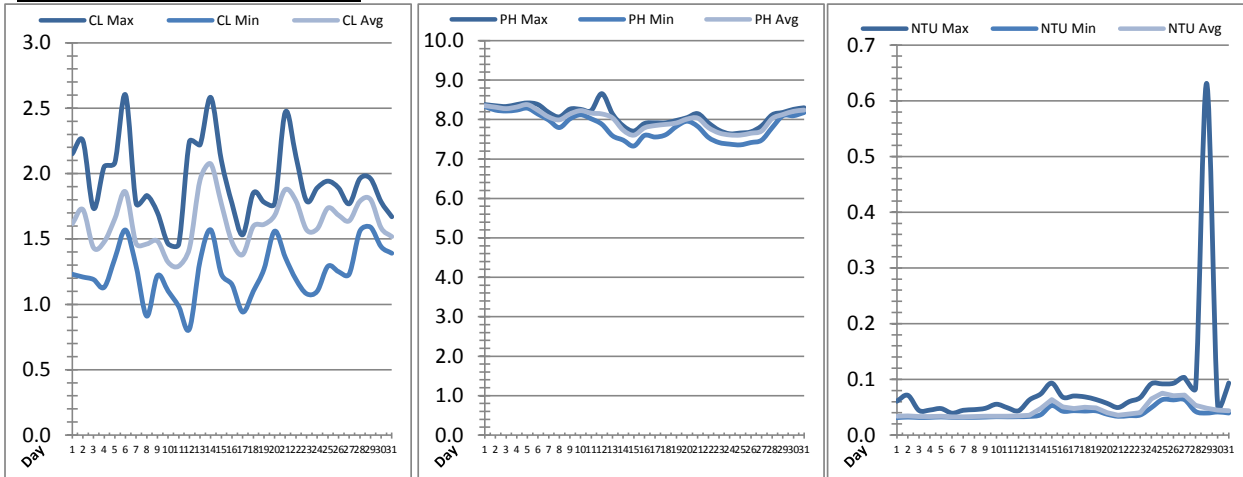
---



---

# Plant Quality Report

Month: **August-16**

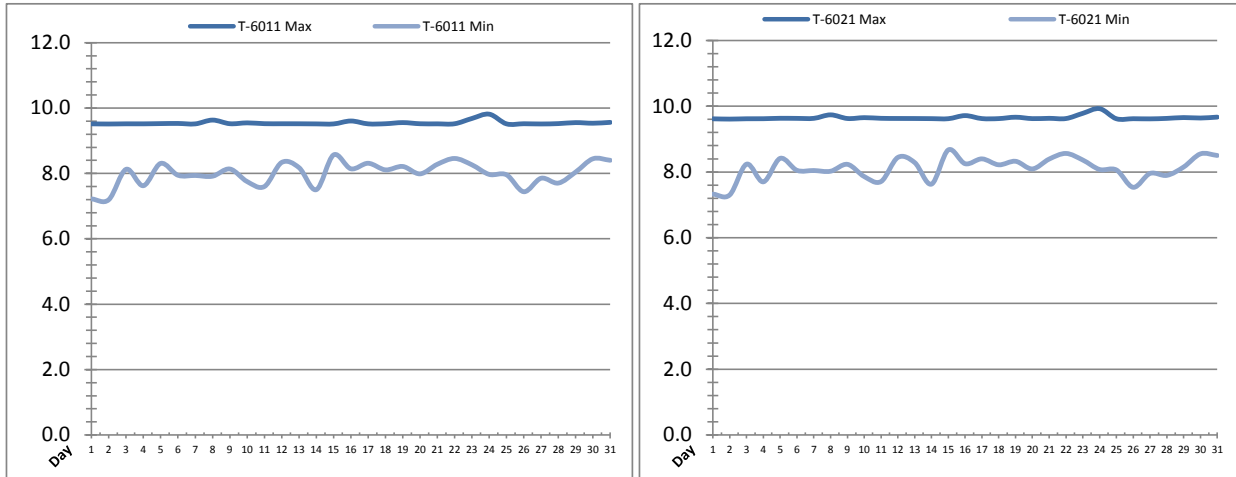


Date	Distribution Chlorine Header			Distribution pH			Distribution Turbidity		
	AIT_7004_CL (ppm)			AIT_7004_PH (mg/L)			AIT_7003 (mg/L)		
	Maximum	Minimum	Average	Maximum	Minimum	Average	Maximum	Minimum	Average
1	2.15	1.23	1.61	8.38	8.33	8.35	0.06	0.03	0.03
2	2.25	1.21	1.72	8.35	8.24	8.31	0.07	0.03	0.03
3	1.73	1.19	1.43	8.33	8.22	8.28	0.04	0.03	0.03
4	2.05	1.13	1.48	8.38	8.24	8.32	0.04	0.03	0.03
5	2.08	1.35	1.65	8.42	8.29	8.38	0.05	0.03	0.03
6	2.60	1.57	1.86	8.38	8.14	8.23	0.04	0.03	0.03
7	1.77	1.29	1.46	8.18	7.99	8.06	0.04	0.03	0.03
8	1.83	0.91	1.46	8.07	7.80	7.99	0.05	0.03	0.03
9	1.70	1.22	1.48	8.26	8.02	8.14	0.05	0.03	0.03
10	1.46	1.10	1.32	8.26	8.12	8.23	0.06	0.03	0.03
11	1.46	0.98	1.29	8.23	8.02	8.16	0.05	0.03	0.03
12	2.24	0.81	1.43	8.66	7.88	8.14	0.04	0.03	0.03
13	2.22	1.33	1.95	8.14	7.59	8.04	0.06	0.03	0.04
14	2.58	1.57	2.07	7.84	7.48	7.73	0.07	0.04	0.05
15	2.10	1.23	1.77	7.71	7.33	7.60	0.09	0.05	0.06
16	1.77	1.15	1.48	7.90	7.60	7.79	0.07	0.04	0.05
17	1.53	0.94	1.38	7.92	7.56	7.85	0.07	0.04	0.05
18	1.85	1.10	1.60	7.92	7.62	7.88	0.07	0.04	0.05
19	1.78	1.27	1.61	7.98	7.83	7.91	0.06	0.04	0.05
20	1.77	1.56	1.68	8.05	7.96	8.01	0.06	0.04	0.04
21	2.47	1.36	1.88	8.15	7.83	8.04	0.05	0.03	0.04
22	2.13	1.19	1.79	7.92	7.55	7.80	0.06	0.03	0.04
23	1.79	1.08	1.57	7.73	7.42	7.66	0.07	0.04	0.04
24	1.89	1.10	1.58	7.64	7.38	7.61	0.09	0.05	0.07
25	1.94	1.29	1.74	7.66	7.36	7.60	0.09	0.06	0.08
26	1.89	1.25	1.68	7.69	7.42	7.65	0.09	0.06	0.07
27	1.77	1.23	1.64	7.84	7.48	7.71	0.10	0.06	0.07
28	1.96	1.56	1.79	8.12	7.80	8.02	0.08	0.04	0.05
29	1.96	1.59	1.80	8.18	8.10	8.13	0.63	0.04	0.05
30	1.78	1.44	1.58	8.26	8.10	8.21	0.05	0.04	0.04
31	1.67	1.39	1.52	8.30	8.18	8.24	0.09	0.04	0.04
Total									
Average	1.94	1.25	1.62	8.09	7.83	8.00	0.1	0.0	0.0
Maximum	2.60		2.07	8.66		8.38	0.6		0.1
Date	6-Aug		14-Aug	12-Aug		5-Aug	29-Aug		25-Aug
Minimum		0.81	1.29		7.33	7.60		0.0	0.0
Date		12-Aug	11-Aug		15-Aug	15-Aug		1-Aug	7-Aug

Notes:

# Raw Well/Treated Storage Report

Month: August-16



Date	Treated Water Storage Tank					
	T-6011 (m)			T-6021 (m)		
	Maximum	Minimum	Average	Maximum	Minimum	Average
1	9.5	7.2	8.5	9.6	7.3	8.6
2	9.5	7.2	8.2	9.6	7.3	8.3
3	9.5	8.1	8.8	9.6	8.2	9.0
4	9.5	7.6	8.7	9.6	7.7	8.8
5	9.5	8.3	9.0	9.6	8.4	9.1
6	9.5	7.9	8.9	9.6	8.0	9.0
7	9.5	7.9	8.6	9.6	8.0	8.7
8	9.6	7.9	8.9	9.7	8.0	9.0
9	9.5	8.1	8.9	9.6	8.2	9.0
10	9.5	7.8	8.8	9.7	7.9	8.9
11	9.5	7.6	8.9	9.6	7.7	9.0
12	9.5	8.3	8.9	9.6	8.4	9.0
13	9.5	8.2	8.9	9.6	8.3	9.0
14	9.5	7.5	8.8	9.6	7.6	8.9
15	9.5	8.6	9.1	9.6	8.7	9.2
16	9.6	8.1	9.1	9.7	8.3	9.2
17	9.5	8.3	9.1	9.6	8.4	9.2
18	9.5	8.1	9.1	9.6	8.2	9.2
19	9.6	8.2	9.2	9.7	8.3	9.3
20	9.5	8.0	9.0	9.6	8.1	9.1
21	9.5	8.3	9.1	9.6	8.4	9.2
22	9.5	8.5	9.1	9.6	8.6	9.2
23	9.7	8.3	9.1	9.8	8.4	9.2
24	9.8	8.0	8.9	9.9	8.1	9.0
25	9.5	8.0	9.1	9.6	8.1	9.2
26	9.5	7.4	8.6	9.6	7.5	8.7
27	9.5	7.9	9.0	9.6	8.0	9.1
28	9.5	7.7	8.7	9.6	7.9	8.8
29	9.6	8.0	9.1	9.7	8.2	9.2
30	9.5	8.4	9.0	9.6	8.6	9.1
31	9.6	8.4	9.1	9.7	8.5	9.2
Total						
Average	9.5	8.0	8.9	9.7	8.1	9.0
Maximum	9.8		9.2	9.9		9.3
Date	24-Aug		19-Aug	24-Aug		19-Aug
Minimum		7.2	8.2		7.3	8.3
Date		2-Aug	2-Aug		2-Aug	2-Aug

Notes:

---



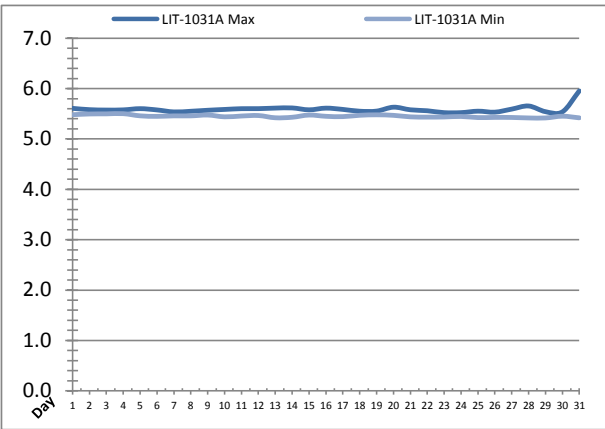
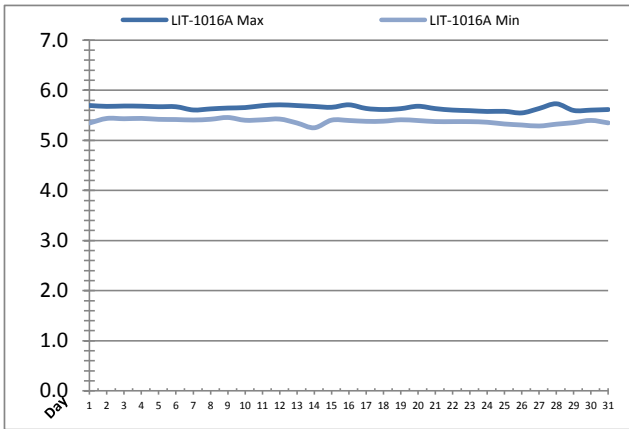
---



---

# Raw Well/Treated Storage Report

Month: August-16



Date	Low Lift Intake Levels					
	Wet Well #1 (LIT-1016A) (m)			Wet Well #2 (LIT-1031A) (m)		
	Maximum	Minimum	Average	Maximum	Minimum	Average
1	5.7	5.3	5.6	5.6	5.5	5.5
2	5.7	5.4	5.5	5.6	5.5	5.5
3	5.7	5.4	5.5	5.6	5.5	5.5
4	5.7	5.4	5.5	5.6	5.5	5.5
5	5.7	5.4	5.5	5.6	5.5	5.5
6	5.7	5.4	5.5	5.6	5.4	5.5
7	5.6	5.4	5.5	5.5	5.5	5.5
8	5.6	5.4	5.5	5.5	5.5	5.5
9	5.6	5.5	5.5	5.6	5.5	5.5
10	5.7	5.4	5.5	5.6	5.4	5.5
11	5.7	5.4	5.5	5.6	5.5	5.5
12	5.7	5.4	5.5	5.6	5.5	5.5
13	5.7	5.3	5.5	5.6	5.4	5.5
14	5.7	5.3	5.5	5.6	5.4	5.5
15	5.7	5.4	5.5	5.6	5.5	5.5
16	5.7	5.4	5.5	5.6	5.4	5.5
17	5.6	5.4	5.5	5.6	5.4	5.5
18	5.6	5.4	5.5	5.6	5.5	5.5
19	5.6	5.4	5.5	5.6	5.5	5.5
20	5.7	5.4	5.5	5.6	5.5	5.5
21	5.6	5.4	5.5	5.6	5.4	5.5
22	5.6	5.4	5.5	5.6	5.4	5.5
23	5.6	5.4	5.4	5.5	5.4	5.5
24	5.6	5.4	5.4	5.5	5.4	5.5
25	5.6	5.3	5.5	5.6	5.4	5.5
26	5.5	5.3	5.4	5.5	5.4	5.5
27	5.6	5.3	5.4	5.6	5.4	5.5
28	5.7	5.3	5.5	5.7	5.4	5.5
29	5.6	5.4	5.5	5.5	5.4	5.5
30	5.6	5.4	5.5	5.5	5.5	5.5
31	5.6	5.3	5.5	6.0	5.4	5.5
Total						
Average	5.6	5.4	5.5	5.6	5.5	5.5
Maximum	5.7		5.6	6.0		5.5
Date	28-Aug		1-Aug	31-Aug		1-Aug
Minimum		5.3	5.4		5.4	5.5
Date		14-Aug	26-Aug		28-Aug	26-Aug

Notes:

---



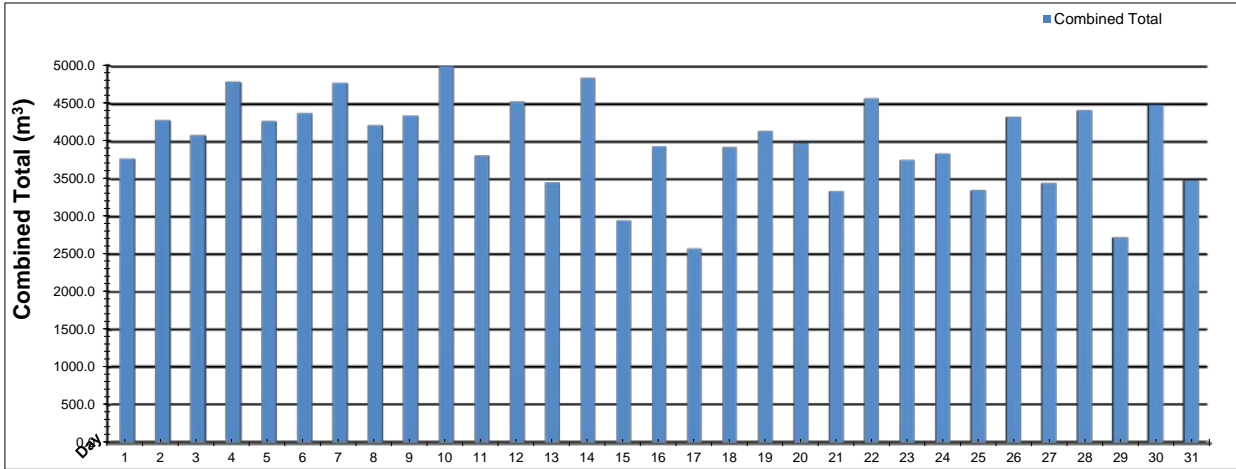
---



---

# High Lift Monthly Report

Month: August-16



Date	Distribution Flow					
	FIT_7052 (East)		FIT_7062 (West)		Combined	
	(m³)	(L/s)	(m³)	(L/s)	(m³)	(L/s)
	Total	Peak	Total	Peak	Total	Peak
1	1048.9	50.1	2718.3	97.4	3767.2	103.9
2	633.5	49.7	3644.0	93.1	4277.5	102.9
3	836.5	50.6	3239.2	98.9	4075.8	104.5
4	1218.9	51.3	3563.7	97.8	4782.6	103.7
5	1017.1	44.9	3244.2	100.4	4261.3	104.9
6	893.8	48.6	3480.5	98.4	4374.3	102.6
7	1408.5	51.1	3363.7	90.9	4772.3	102.6
8	475.0	50.2	3732.7	98.4	4207.8	103.1
9	614.5	50.5	3724.0	96.3	4338.5	100.4
10	1012.7	49.6	3978.9	98.3	4991.5	102.2
11	652.5	38.8	3156.8	97.7	3809.4	98.2
12	1051.9	42.2	3473.5	121.5	4525.4	161.8
13	533.4	37.7	2921.3	98.6	3454.7	101.0
14	1213.8	33.4	3621.8	96.9	4835.6	107.4
15	636.5	33.8	2309.3	94.0	2945.8	94.0
16	521.6	33.3	3405.6	97.2	3927.2	97.2
17	739.1	33.8	1836.6	94.7	2575.7	101.1
18	557.7	40.8	3357.1	94.5	3914.8	96.5
19	1269.6	33.7	2865.2	96.7	4134.9	103.3
20	783.9	33.1	3183.8	94.3	3967.7	102.5
21	427.3	40.6	2907.3	94.4	3334.7	99.0
22	908.6	49.6	3657.7	101.6	4566.2	101.6
23	747.0	49.4	3006.3	121.0	3753.3	153.9
24	396.7	37.0	3437.8	95.8	3834.5	126.2
25	606.4	54.5	2737.8	119.0	3344.2	152.4
26	938.0	44.3	3385.4	98.1	4323.4	98.9
27	703.8	44.1	2737.6	94.3	3441.5	127.6
28	1291.6	51.0	3116.8	94.3	4408.4	104.3
29	984.7	46.2	1737.6	119.6	2722.3	153.0
30	654.6	33.1	3826.2	87.3	4480.8	92.0
31	667.7	33.8	2811.3	86.8	3479.0	86.8
Total	25446.0		98182.1		123628.1	
Average	820.8	43.2	3167.2	99.0	3988.0	109.3
Maximum	1408.5	54.5	3978.9	121.5	4991.5	161.8
Date	7-Aug	25-Aug	10-Aug	12-Aug	10-Aug	12-Aug
Minimum	396.7		1737.6		2575.7	
Date	24-Aug		29-Aug		17-Aug	

Notes:

---



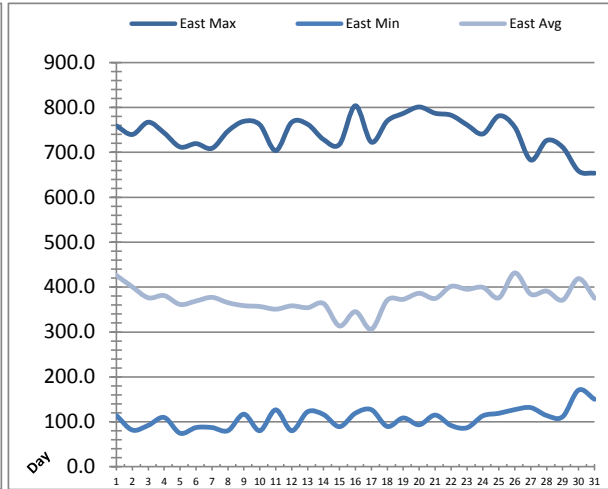
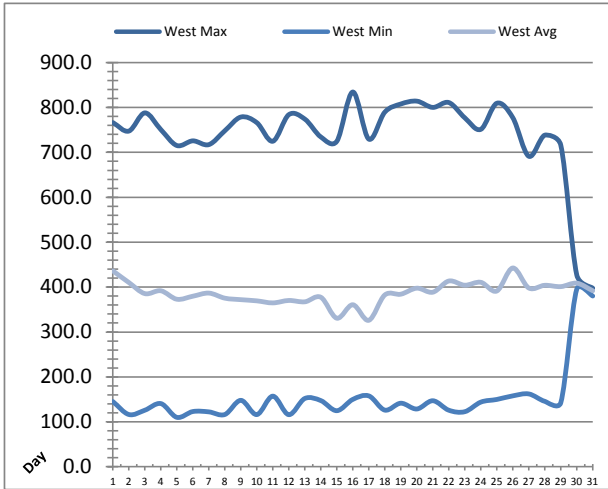
---



---

# Low Lift Monthly Report

Month: August-16

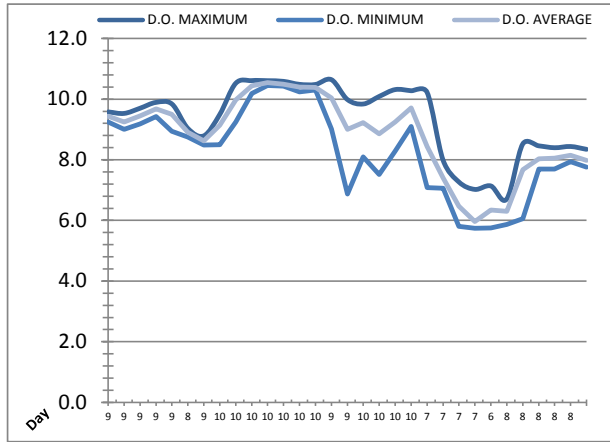
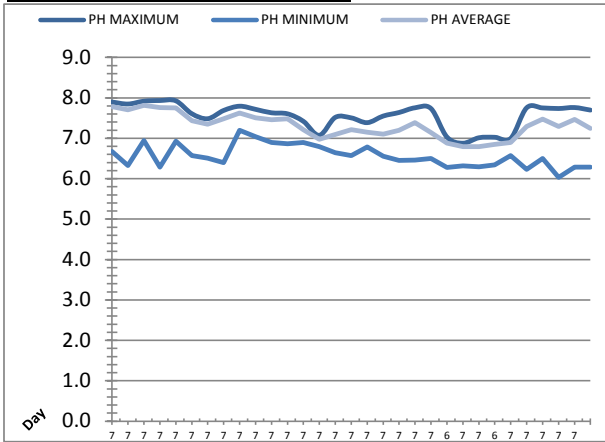


Date	West Train Header Pressure PIT_1018 (kPa)			East Train Header Pressure PIT_1028 (kPa)		
	Maximum	Minimum	Average	Maximum	Minimum	Average
	1	✓ 766.4	✓ 145.2	436.1	✓ 759.0	✓ 114.3
2	✓ 747.4	✓ 116.3	410.2	✓ 739.8	✓ 81.7	400.5
3	✓ 787.9	✓ 125.9	385.5	✓ 767.2	✓ 92.2	376.3
4	✓ 750.6	✓ 140.6	391.8	✓ 743.3	✓ 109.7	381.1
5	✓ 715.3	✓ 110.0	373.0	✓ 712.0	✓ 74.6	361.4
6	✓ 725.6	✓ 122.9	379.7	✓ 719.5	✓ 87.3	369.1
7	✓ 717.3	✓ 122.2	386.6	✓ 709.1	✓ 87.2	377.1
8	✓ 748.2	✓ 116.3	375.4	✓ 747.3	✓ 80.4	365.3
9	✓ 778.7	✓ 147.9	372.0	✓ 769.2	✓ 117.0	358.7
10	✓ 766.1	✓ 116.1	369.4	✓ 761.6	✓ 80.2	356.8
11	✓ 724.8	✓ 157.2	364.8	✓ 704.0	✓ 126.6	350.8
12	✓ 784.0	✓ 115.9	370.2	✓ 766.9	✓ 80.2	358.2
13	✓ 774.1	✓ 152.0	367.3	✓ 762.6	✓ 122.5	354.2
14	✓ 734.3	✓ 147.3	377.4	✓ 728.5	✓ 116.2	363.5
15	✓ 724.7	✓ 124.8	330.7	✓ 717.9	✓ 89.3	313.4
16	✓ 834.4	✓ 150.0	360.7	✓ 803.8	✓ 119.3	345.3
17	✓ 729.4	✓ 157.7	326.1	✓ 722.8	✓ 127.0	306.2
18	✓ 789.6	✓ 126.1	382.5	✓ 770.1	✓ 89.7	371.1
19	✓ 807.7	✓ 141.5	384.2	✓ 786.8	✓ 108.7	372.8
20	✓ 814.1	✓ 128.6	397.6	✓ 801.1	✓ 93.5	386.2
21	✓ 800.1	✓ 147.0	388.7	✓ 787.1	✓ 115.0	374.7
22	✓ 810.9	✓ 125.9	413.5	✓ 782.7	✓ 91.9	401.6
23	✓ 777.0	✓ 122.6	404.3	✓ 761.3	✓ 86.9	395.2
24	✓ 751.2	✓ 143.9	410.7	✓ 741.1	✓ 113.4	399.4
25	✓ 809.3	✓ 149.8	391.3	✓ 781.3	✓ 119.0	376.2
26	✓ 777.3	✓ 157.8	442.6	✓ 756.2	✓ 127.2	431.6
27	✓ 691.3	✓ 162.2	398.0	✓ 683.0	✓ 131.6	384.2
28	✓ 738.4	✓ 145.7	404.0	✓ 726.5	✓ 114.1	391.1
29	✓ 716.2	✓ 142.5	401.1	✓ 711.5	✓ 111.4	371.1
30	✓ 427.1	✓ 395.4	408.7	✓ 658.5	✓ 170.7	418.9
31	✓ 397.6	✓ 380.1	391.9	✓ 653.6	✓ 150.2	375.3
Total						
Average	739.3	152.8	387.0	743.1	107.4	374.6
Maximum	834.4		442.6	803.8		431.6
Date	16-Aug		26-Aug	16-Aug		26-Aug
Minimum		110.0	326.1		74.6	306.2
Date		5-Aug	17-Aug		5-Aug	17-Aug

Notes:

# Low Lift Monthly Report

Month: **August-16**



Date	Raw Water Sample Line					
	AIT_1402_PH (pH)			AIT_1402_DO (mg/L)		
	Maximum	Minimum	Average	Maximum	Minimum	Average
1	7.9	6.7	7.8	9.6	9.2	9.4
2	7.8	6.3	7.7	9.5	9.0	9.2
3	7.9	6.9	7.8	9.7	9.2	9.5
4	7.9	6.3	7.8	9.9	9.4	9.7
5	7.9	6.9	7.8	9.8	8.9	9.5
6	7.6	6.6	7.4	9.0	8.7	8.9
7	7.5	6.5	7.3	8.8	8.5	8.6
8	7.7	6.4	7.5	9.5	8.5	9.1
9	7.8	7.2	7.6	10.5	9.3	10.0
10	7.7	7.0	7.5	10.6	10.2	10.4
11	7.6	6.9	7.5	10.6	10.5	10.5
12	7.6	6.9	7.5	10.6	10.4	10.5
13	7.4	6.9	7.2	10.5	10.2	10.4
14	7.1	6.8	7.0	10.5	10.3	10.4
15	7.5	6.6	7.1	10.6	9.0	10.0
16	7.5	6.6	7.2	10.0	6.9	9.0
17	7.4	6.8	7.1	9.8	8.1	9.2
18	7.5	6.6	7.1	10.1	7.5	8.9
19	7.6	6.5	7.2	10.3	8.3	9.2
20	7.8	6.5	7.4	10.3	9.1	9.7
21	7.7	6.5	7.1	10.2	7.1	8.4
22	7.0	6.3	6.9	8.0	7.1	7.4
23	6.9	6.3	6.8	7.3	5.8	6.5
24	7.0	6.3	6.8	7.0	5.7	6.0
25	7.0	6.3	6.8	7.1	5.8	6.3
26	7.0	6.6	6.9	6.7	5.9	6.3
27	7.8	6.2	7.3	8.5	6.1	7.7
28	7.8	6.5	7.5	8.5	7.7	8.0
29	7.7	6.0	7.3	8.4	7.7	8.1
30	7.8	6.3	7.5	8.4	7.9	8.2
31	7.7	6.3	7.2	8.3	7.8	8.0
Total						
Average	7.6	6.6	7.3	9.3	8.2	8.8
Maximum	7.9		7.8	10.6		10.5
Date	4-Aug		3-Aug	15-Aug		11-Aug
Minimum		6.0	6.8		5.7	6.0
Date		29-Aug	24-Aug		24-Aug	24-Aug

Notes:

---



---

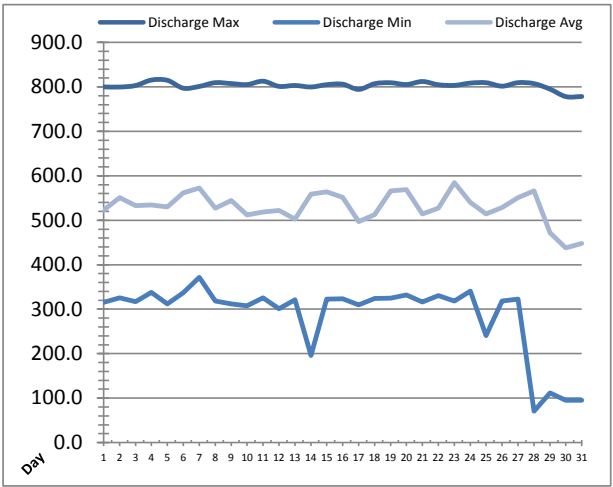
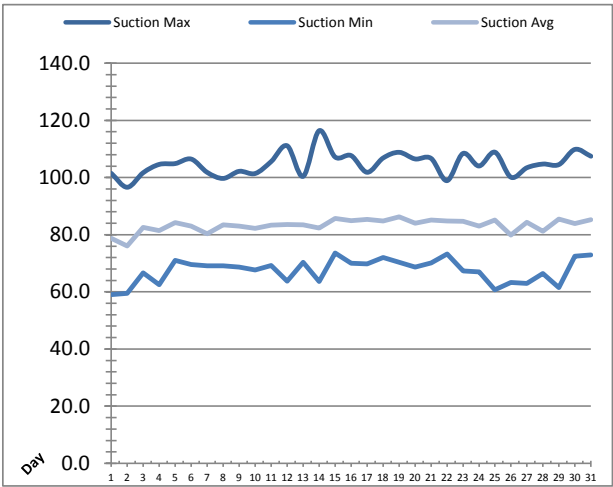


---



# High Lift Monthly Report

Month: **August-16**

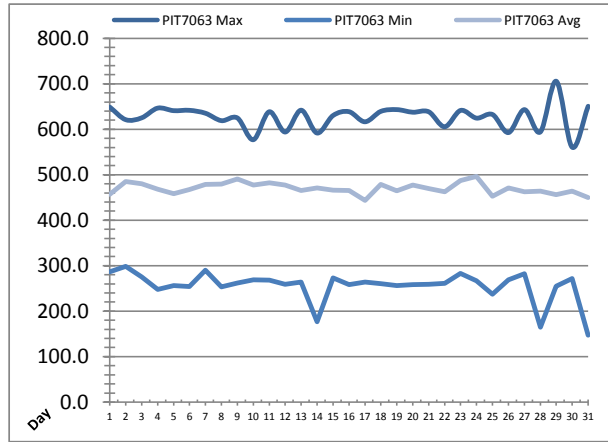
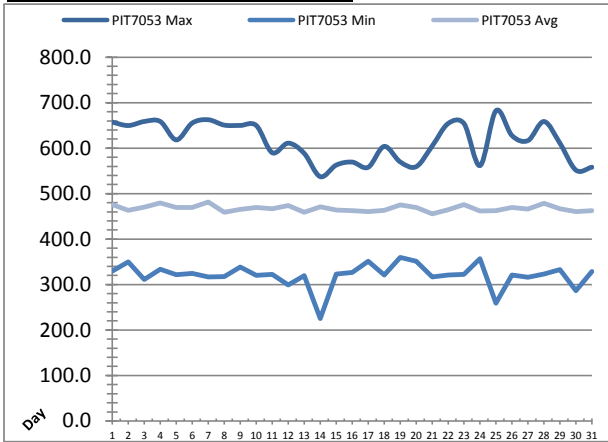


Date	Suction Header Pressure			Discharge Header Pressure		
	PIT_7002 (kPa)			PIT_7005 (kPa)		
	Maximum	Minimum	Average	Maximum	Minimum	Average
1	✓ 101.5	✓ 59.1	78.8	✓ 800.0	✓ 315.3	522.7
2	✓ 96.6	✓ 59.4	76.0	✓ 799.7	✓ 325.7	550.7
3	✓ 101.7	✓ 66.7	82.6	✓ 803.1	✓ 316.9	533.1
4	✓ 104.6	✓ 62.5	81.5	✓ 815.4	✓ 337.8	534.2
5	✓ 104.9	✓ 71.0	84.3	✓ 814.8	✓ 312.0	529.9
6	✓ 106.5	✓ 69.5	83.0	✓ 797.0	✓ 337.2	561.9
7	✓ 101.8	✓ 69.1	80.3	✓ 801.1	✓ 371.5	572.4
8	✓ 99.7	✓ 69.1	83.5	✓ 809.5	✓ 318.5	526.9
9	✓ 102.2	✓ 68.7	83.0	✓ 807.5	✓ 312.1	544.7
10	✓ 101.4	✓ 67.6	82.3	✓ 805.2	✓ 307.9	512.4
11	✓ 105.6	✓ 69.2	83.3	✓ 812.8	✓ 325.4	518.5
12	✓ 111.1	✓ 63.7	83.5	✓ 801.2	✓ 300.9	522.1
13	✓ 100.4	✓ 70.3	83.4	✓ 803.2	✓ 321.3	503.0
14	✓ 116.4	✓ 63.7	82.3	✓ 799.8	✓ 196.0	558.6
15	✓ 107.2	✓ 73.6	85.7	✓ 805.0	✓ 322.9	563.6
16	✓ 107.7	✓ 70.0	84.9	✓ 806.1	✓ 323.4	551.5
17	✓ 101.8	✓ 69.8	85.3	✓ 794.4	✓ 309.9	496.9
18	✓ 106.8	✓ 72.0	84.8	✓ 807.2	✓ 324.3	513.1
19	✓ 108.8	✓ 70.3	86.2	✓ 809.4	✓ 324.7	565.7
20	✓ 106.5	✓ 68.7	84.0	✓ 805.3	✓ 332.4	569.1
21	✓ 106.7	✓ 70.2	85.1	✓ 812.1	✓ 316.0	514.5
22	✓ 98.9	✓ 73.3	84.8	✓ 804.8	✓ 330.7	527.5
23	✓ 108.4	✓ 67.3	84.7	✓ 803.4	✓ 318.7	585.1
24	✓ 104.0	✓ 66.9	83.0	✓ 808.5	✓ 340.9	540.5
25	✓ 108.9	✓ 60.8	85.1	✓ 809.4	✓ 240.8	514.2
26	✓ 100.1	✓ 63.3	79.9	✓ 801.6	✓ 318.5	528.9
27	✓ 103.4	✓ 63.0	84.3	✓ 809.5	✓ 322.9	550.8
28	✓ 104.7	✓ 66.4	81.2	✓ 807.3	✓ 70.6	566.2
29	✓ 104.5	✓ 61.5	85.5	✓ 795.0	✓ 112.0	471.4
30	✓ 109.8	✓ 72.5	83.9	✓ 778.1	✓ 95.2	437.6
31	✓ 107.5	✓ 72.9	85.2	✓ 778.4	✓ 95.4	447.8
Total						
Average	104.8	67.5	83.3	803.4	287.0	530.2
Maximum	116.4		86.2	815.4		585.1
Date	14-Aug		19-Aug	4-Aug		23-Aug
Minimum		59.1	76.0		70.6	437.6
Date		1-Aug	2-Aug		28-Aug	30-Aug

Notes:

# High Lift Monthly Report

Month: **August-16**



Date	Distribution Pressures					
	PIT_7053 (kPa)			PIT_7063 (kPa)		
	Maximum	Minimum	Average	Maximum	Minimum	Average
1	✓ 657.2	✓ 329.4	475.9	✓ 648.7	✓ 286.6	456.7
2	✓ 649.7	✓ 349.9	463.4	✓ 621.0	✓ 298.5	484.8
3	✓ 658.7	✓ 311.1	469.9	✓ 625.1	✓ 275.2	479.8
4	✓ 658.6	✓ 333.7	479.4	✓ 646.5	✓ 248.1	468.5
5	✓ 618.1	✓ 321.7	469.8	✓ 640.9	✓ 256.5	458.2
6	✓ 655.3	✓ 324.6	469.7	✓ 641.6	✓ 254.1	467.4
7	✓ 662.5	✓ 316.8	481.7	✓ 635.2	✓ 290.1	479.0
8	✓ 650.7	✓ 317.3	458.7	✓ 618.9	✓ 253.4	479.1
9	✓ 649.9	✓ 338.7	465.3	✓ 624.9	✓ 262.2	490.8
10	✓ 649.9	✓ 320.0	469.4	✓ 577.0	✓ 268.9	477.0
11	✓ 590.0	✓ 322.5	466.5	✓ 638.5	✓ 268.4	482.1
12	✓ 611.0	✓ 298.9	473.9	✓ 593.9	✓ 259.1	477.2
13	✓ 588.6	✓ 319.3	458.7	✓ 641.9	✓ 263.9	465.6
14	✓ 537.3	✓ 225.0	471.1	✓ 591.7	✓ 177.0	471.2
15	✓ 562.7	✓ 323.3	463.7	✓ 630.2	✓ 273.2	465.9
16	✓ 569.4	✓ 326.9	462.4	✓ 638.6	✓ 258.6	465.6
17	✓ 557.9	✓ 351.3	460.4	✓ 616.4	✓ 263.7	443.4
18	✓ 603.8	✓ 321.0	463.3	✓ 639.4	✓ 260.8	478.7
19	✓ 569.9	✓ 359.7	474.9	✓ 643.2	✓ 256.2	464.5
20	✓ 559.2	✓ 351.5	469.3	✓ 637.4	✓ 258.0	477.1
21	✓ 604.4	✓ 316.9	455.5	✓ 638.4	✓ 259.3	469.8
22	✓ 654.1	✓ 321.2	464.9	✓ 605.5	✓ 261.4	462.3
23	✓ 653.8	✓ 322.2	475.6	✓ 641.4	✓ 283.1	487.0
24	✓ 561.6	✓ 357.0	461.7	✓ 624.5	✓ 266.8	496.1
25	✓ 682.6	✓ 258.9	462.8	✓ 632.4	✓ 236.9	452.5
26	✓ 627.5	✓ 320.9	469.3	✓ 592.6	✓ 268.9	471.3
27	✓ 616.7	✓ 315.7	466.3	✓ 643.2	✓ 282.3	462.5
28	✓ 658.6	✓ 323.2	479.0	✓ 594.1	✓ 164.4	463.8
29	✓ 610.5	✓ 332.7	466.7	✓ 705.6	✓ 255.0	456.2
30	✓ 551.5	✓ 286.4	460.5	✓ 560.4	✓ 271.4	463.7
31	✓ 558.1	✓ 329.0	462.4	✓ 650.6	✓ 147.1	450.0
Total						
Average	614.2	320.9	467.5	627.1	255.8	469.9
Maximum	682.6		481.7	705.6		496.1
Date	25-Aug		7-Aug	29-Aug		24-Aug
Minimum		225.0	455.5		147.1	443.4
Date		14-Aug	21-Aug		31-Aug	17-Aug

Notes:

---



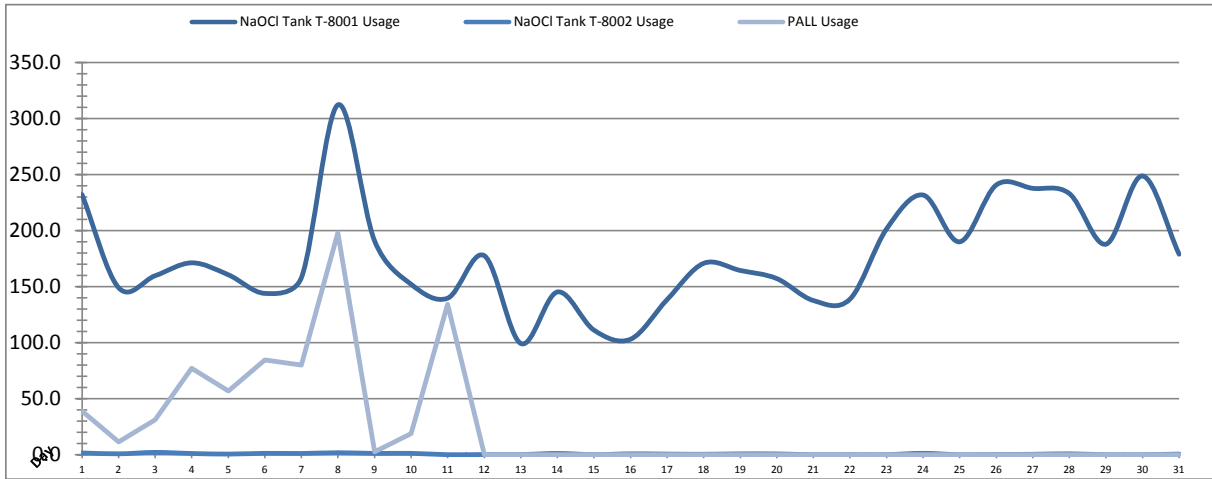
---



---

# Chemical Usage Monthly Report

Month: **August-16**

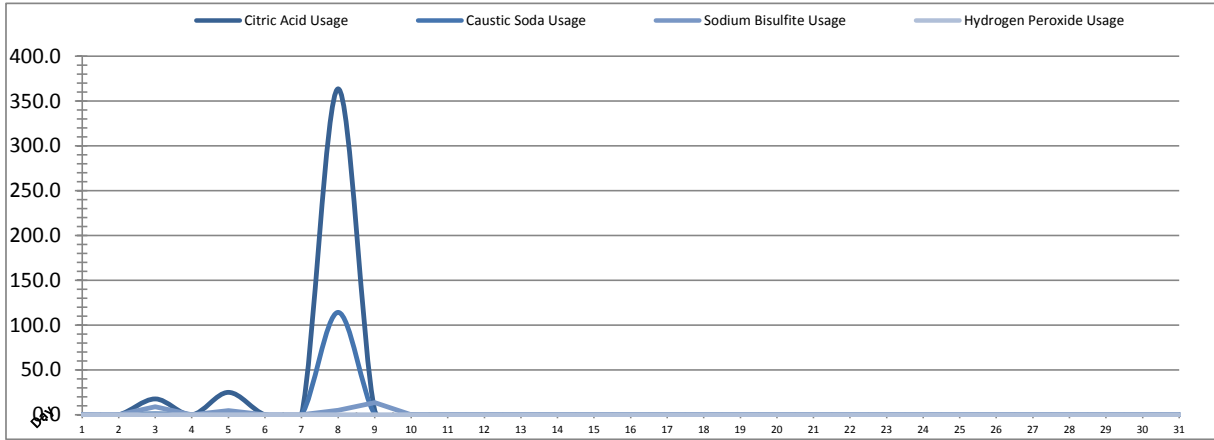


Date	PALL Usage	NaOCl Tank T-8001	NaOCl Tank T-8002
	PALL_HYPO_USAGE (L) Usage	LIT_8002 (Storage) (L) Usage	LIT_8004 (Day) (L) Usage
1	39.0	232.1	1.6
2	11.5	149.1	0.8
3	31.1	159.7	2.1
4	77.1	171.2	1.1
5	57.0	160.6	0.6
6	84.6	143.9	1.3
7	79.9	158.0	1.1
8	197.8	312.2	1.8
9	2.7	190.8	1.2
10	19.0	152.0	1.3
11	134.2	139.7	0.1
12	0.0	177.6	0.2
13	0.0	99.2	0.2
14	0.00	145.22	1.2
15	0.0	111.2	0.1
16	0.0	103.1	0.8
17	0.0	138.4	0.6
18	0.0	170.8	0.4
19	0.0	164.4	0.8
20	0.0	157.1	0.7
21	0.0	137.6	0.0
22	0.0	138.8	0.1
23	0.0	201.4	0.1
24	0.0	231.7	1.3
25	0.0	189.9	0.0
26	0.0	240.6	0.2
27	0.0	237.6	0.4
28	0.0	233.0	0.8
29	0.0	187.8	0.0
30	0.0	248.7	0.0
31	0.0	178.9	0.6
Total	733.9	5462.3	21.7
Average	23.7	176.2	0.7
Maximum	197.8	312.2	2.1
Date	8-Aug	8-Aug	3-Aug
Minimum	0.0	99.2	0.0
Date	12-Aug	13-Aug	21-Aug

Notes:	
$\text{Dosage (mg/L)} = \frac{\text{Day Tank (L)} \times \% \text{conc.} \times 1000}{\text{Membrane Flow (m}^3\text{)}}$	
Chlorine Concentration: 12.0%	

# Chemical Usage Monthly Report

Month: **August-16**



Date	Citric Acid	Caustic Soda	Captor	Hydrogen Peroxide		Membrane Flow (m <sup>3</sup> )
	TAGNAME (L) Usage	TAGNAME (L) Usage	TAGNAME (L) Usage	TAGNAME (L) Usage	TAGNAME (mg/L) Dose	
1	0.0	0.0	0.0	0.0	0.0	10384.857
2	0.0	0.0	0.0	0.0	0.0	8157.676
3	17.7	1.1	8.8	0.0	0.0	4995.721
4	0.0	0.0	0.0	0.0	0.0	4968.718
5	25.0	0.0	4.6	0.0	0.0	4730.869
6	0.0	0.0	0.0	0.0	0.0	4745.233
7	0.0	0.0	0.0	0.0	0.0	4836.072
8	363.7	114.2	5.0	0.0	0.0	4872.753
9	5.2	1.0	13.6	0.0	0.0	4866.782
10	0.0	0.0	0.0	0.0	0.0	4775.451
11	0.0	0.0	0.0	0.0	0.0	4633.788
12	0.0	0.0	0.0	0.0	0.0	4642.879
13	0.0	0.0	0.0	0.0	0.0	4184.649
14	0.0	0.0	0.0	0.0	0.0	4803.565
15	0.0	0.0	0.0	0.0	0.0	3430.334
16	0.0	0.0	0.0	0.0	0.0	3995.592
17	0.0	0.0	0.0	0.0	0.0	2916.595
18	0.0	0.0	0.0	0.0	0.0	4196.903
19	0.0	0.0	0.0	0.0	0.0	4206.547
20	0.0	0.0	0.0	0.0	0.0	4334.491
21	0.0	0.0	0.0	0.0	0.0	3935.166
22	0.0	0.0	0.0	0.0	0.0	4642.253
23	0.0	0.0	0.0	0.0	0.0	4526.146
24	0.0	0.0	0.0	0.0	0.0	4264.875
25	0.0	0.0	0.0	0.0	0.0	3408.096
26	0.0	0.0	0.0	0.0	0.0	4425.285
27	0.0	0.0	0.0	0.0	0.0	4272.790
28	0.0	0.0	0.0	0.0	0.0	4232.472
29	0.0	0.0	0.0	0.0	0.0	3531.143
30	0.0	0.0	0.0	0.0	0.0	4794.251
31	0.0	0.0	0.0	0.0	0.0	3481.894
<b>Total</b>	<b>411.5</b>	<b>116.3</b>	<b>32.1</b>	<b>0.0</b>	<b>0.0</b>	<b>144193.8</b>
<b>Average</b>	<b>13.3</b>	<b>3.8</b>	<b>1.0</b>	<b>0.0</b>	<b>0.0</b>	<b>4651.4</b>
<b>Maximum</b>	<b>363.7</b>	<b>114.2</b>	<b>13.6</b>	<b>0.0</b>	<b>0.0</b>	<b>10384.9</b>
<b>Date</b>	<b>8-Aug</b>	<b>8-Aug</b>	<b>9-Aug</b>	<b>1-Aug</b>	<b>1-Aug</b>	<b>1-Aug</b>
<b>Minimum</b>	<b>0.0</b>	<b>0.0</b>	<b>0.0</b>	<b>0.0</b>	<b>0.0</b>	<b>2916.6</b>
<b>Date</b>	<b>1-Aug</b>	<b>1-Aug</b>	<b>1-Aug</b>	<b>1-Aug</b>	<b>1-Aug</b>	<b>17-Aug</b>

<b>Notes:</b>	
Dosage (mg/L)=	Day Tank (L) x %conc. x 1000
	Membrane Flow (m3)
Peroxide Concentration:	<b>50.0%</b>

# Runtimes Report

Month: August-16

Date	Daily Gen-Set Runtimes		Daily UV Runtimes		Daily PALL Runtimes				
	LLPS	WTP	UV #1	UV #2	Air Compressor #1	Air Compressor #2	CIP Neutralization	CIP Drain	CIP Recirc
	(Hrs)	(Hrs)	(Hrs)	(Hrs)	(Hrs)	(Hrs)	(Hrs)	(Hrs)	(Hrs)
1	0.0	0.0	0.0	0.0	0.0	23.9	0.0	0.0	0.0
2	0.0	0.0	0.0	0.0	0.0	23.8	0.0	0.0	0.0
3	0.2	0.3	0.0	0.0	0.0	23.9	1.0	0.2	3.1
4	0.0	0.0	0.0	0.0	0.0	23.9	0.0	0.0	0.0
5	0.0	0.0	0.0	0.0	0.0	23.9	1.0	0.2	3.2
6	0.0	0.0	0.0	0.0	0.0	23.9	0.0	0.0	0.0
7	0.0	0.0	0.0	0.0	0.0	23.9	0.0	0.0	0.0
8	0.0	0.0	0.0	0.0	0.0	23.9	1.1	0.2	3.3
9	0.0	0.0	0.0	0.0	0.0	23.9	0.4	0.0	0.0
10	0.0	0.0	0.0	0.0	0.0	23.9	0.0	0.0	0.0
11	0.0	0.0	0.0	0.0	0.0	23.9	0.0	0.0	0.0
12	0.0	0.0	0.0	0.0	0.0	23.9	0.0	0.0	0.0
13	0.0	0.0	0.0	0.0	0.0	23.9	0.0	0.0	0.0
14	0.0	0.0	0.0	0.0	0.0	23.9	0.0	0.0	0.0
15	0.0	0.0	0.0	0.0	0.0	23.9	0.0	0.0	0.0
16	0.0	0.0	1.7	0.7	0.0	23.9	0.0	0.0	0.0
17	0.0	0.0	0.0	0.0	0.0	23.9	0.0	0.0	0.0
18	0.0	0.0	0.0	0.0	0.0	23.9	0.0	0.0	0.0
19	0.0	0.0	0.0	0.0	0.0	23.9	0.0	0.0	0.0
20	0.0	0.0	0.0	0.0	0.0	23.9	0.0	0.0	0.0
21	0.0	0.0	0.0	0.0	0.0	23.9	0.0	0.0	0.0
22	0.0	0.0	0.0	0.0	12.7	10.9	0.0	0.0	0.0
23	0.0	0.0	12.4	0.0	24.4	0.0	0.0	0.0	0.0
24	0.0	0.0	19.0	0.0	24.4	0.0	0.0	0.0	0.0
25	0.0	0.0	16.8	0.0	24.4	0.0	0.0	0.0	0.0
26	0.0	0.0	21.0	0.0	24.4	0.0	0.0	0.0	0.0
27	0.0	0.0	18.5	0.0	24.4	0.0	0.0	0.0	0.0
28	0.0	0.0	19.7	0.0	24.4	0.0	0.0	0.0	0.0
29	0.0	0.0	15.8	0.0	24.4	0.0	0.0	0.0	0.0
30	0.0	0.0	20.2	0.0	24.4	0.0	0.0	0.0	0.0
31	0.0	0.0	14.9	0.0	24.4	0.0	0.0	0.0	0.0
<b>Total</b>	0.2	0.3	160.2	0.7	232.1	512.8	3.5	0.6	9.6

Notes:

# Runtimes Report

Month: August-16

## Daily

Date	PALL Runtimes						Process Drain	
	RFR Pump #1 (Hrs)	RFR Pump #2 (Hrs)	RF Pump #1 (Hrs)	RF Pump #2 (Hrs)	XR Pump #1 (Hrs)	XR Pump #2 (Hrs)	PDP9010 Pump (Hrs)	PDP9020 Pump (Hrs)
1	0.0	0.0	2.1	2.2	9.8	10.9	1.4	2.0
2	0.0	0.0	1.7	1.8	11.3	10.0	1.3	1.8
3	0.1	0.0	1.3	1.2	11.7	8.6	1.8	2.1
4	0.0	0.0	1.0	1.0	9.8	10.5	1.7	2.7
5	0.2	0.0	0.9	0.9	7.7	11.4	1.6	2.0
6	0.0	0.0	0.6	0.6	9.4	10.2	1.4	1.8
7	0.0	0.0	0.6	0.7	8.7	11.2	1.3	1.8
8	0.0	0.0	0.8	0.5	11.7	8.2	1.5	2.0
9	2.1	2.4	0.7	0.6	10.9	8.2	1.3	1.9
10	2.6	2.6	0.6	0.6	9.4	9.2	1.5	2.2
11	2.2	2.1	0.6	0.5	6.4	11.7	1.4	1.9
12	2.1	2.2	0.6	0.6	11.6	6.9	1.6	2.2
13	0.0	0.0	0.4	0.5	7.7	9.2	1.4	1.9
14	0.0	0.0	0.6	0.6	8.5	8.1	1.5	2.1
15	2.0	1.9	0.5	0.4	5.9	7.7	1.4	1.9
16	3.1	3.2	0.7	0.5	9.5	6.3	1.5	2.0
17	2.0	2.0	0.4	0.5	4.6	6.4	1.5	1.9
18	2.0	2.0	0.4	0.5	8.1	8.2	1.5	2.1
19	1.3	1.2	0.5	0.4	8.4	8.4	1.6	2.3
20	0.0	0.0	0.5	0.5	8.8	8.7	1.5	2.0
21	0.0	0.0	0.5	0.6	7.8	7.8	1.5	2.0
22	2.1	2.2	0.7	0.7	9.2	9.2	1.5	2.0
23	4.1	4.2	0.5	0.6	8.4	8.4	1.5	2.0
24	5.0	4.8	0.7	0.8	7.6	7.6	1.6	2.2
25	2.9	3.1	0.6	0.5	6.0	6.0	1.4	1.8
26	2.3	2.1	0.6	0.7	6.9	6.9	1.5	2.1
27	0.0	0.0	0.5	0.6	7.4	7.3	1.4	1.8
28	0.0	0.0	0.6	0.6	8.3	8.2	1.3	1.9
29	2.0	2.3	0.4	0.6	6.7	7.0	1.8	2.1
30	3.5	3.7	0.7	0.7	9.4	9.1	1.7	2.4
31	2.9	2.9	0.6	0.6	6.7	6.8	1.7	2.3
Total	44.3	44.7	21.9	22.1	263.3	263.3	46.6	63.2

Notes:

# Runtimes Report

Month: August-16

## Daily

Date	Low Lift Pump Motor Runtimes				High Lift Pump Motor Runtimes			
	LLP1010 (Hrs)	LLP1020 (Hrs)	LLP1030 (Hrs)	LLP1040 (Hrs)	HLP7010 (Hrs)	HLP7020 (Hrs)	HLP7030 (Hrs)	HLP7040 (Hrs)
1	6.4	5.5	5.7	6.1	0.0	0.0	0.1	13.4
2	5.6	4.6	4.7	6.7	9.0	0.0	4.8	2.5
3	6.4	6.8	1.6	5.9	6.7	0.0	0.7	7.4
4	5.0	5.4	4.4	5.8	7.4	0.0	1.0	8.0
5	7.2	2.8	5.5	3.8	1.7	0.0	6.9	6.6
6	5.8	5.2	3.2	5.5	1.4	0.0	2.6	12.7
7	5.6	5.6	5.3	3.9	0.0	0.0	12.1	6.6
8	5.0	4.3	5.1	5.6	5.5	0.0	5.0	4.3
9	6.1	5.6	4.6	3.1	0.9	0.0	9.5	5.7
10	3.6	3.5	3.5	8.2	8.0	0.0	2.6	5.2
11	4.0	5.0	5.6	3.7	5.6	0.0	2.5	5.2
12	4.3	4.2	5.5	4.6	4.5	0.0	4.0	6.9
13	5.6	2.9	3.7	5.7	3.9	0.0	4.3	3.7
14	6.9	5.9	5.8	2.8	8.4	0.0	0.9	8.5
15	3.1	5.5	3.0	2.3	5.0	0.0	8.3	0.5
16	3.5	2.3	5.4	5.1	1.7	0.0	4.5	9.2
17	2.8	4.1	2.8	3.1	3.6	0.0	6.1	0.0
18	4.9	3.4	5.5	3.9	6.7	0.0	5.0	1.6
19	5.8	3.7	5.6	3.2	0.4	0.0	14.9	1.6
20	3.6	6.3	4.4	5.3	13.5	0.0	1.4	1.5
21	3.3	5.5	5.5	3.8	4.9	0.0	1.6	5.6
22	5.8	3.0	5.8	5.6	3.1	0.0	9.0	3.8
23	4.0	5.3	5.1	4.7	0.8	0.0	2.5	13.5
24	4.4	3.9	5.6	5.2	2.0	0.0	11.3	1.6
25	3.5	2.1	5.5	5.5	6.2	0.0	3.6	3.4
26	5.9	4.3	7.4	5.6	3.0	0.0	9.2	3.1
27	3.7	5.6	5.6	6.3	1.6	0.0	6.3	6.6
28	4.8	5.6	3.7	5.6	0.4	0.0	3.7	13.2
29	3.4	4.4	4.8	3.0	2.5	0.0	4.5	6.2
30	5.3	5.5	5.6	3.8	4.1	0.0	9.3	3.6
31	1.5	5.0	5.6	2.9	11.5	0.0	0.0	4.0
Total	146.8	142.8	151.1	146.3	134.0	0.0	158.2	175.7

Notes:

# Plant Internal Flow Report

Month: August-16

Date	Settling Tank Level		Process Drain Tank		Settling Tank Flow		Potable Water Flow		Non-Potable Flow	
	T-9003 (m)		T-9001 (m)		FIT_9005 (m <sup>3</sup> ) (L/s)		FIT_7082 (m <sup>3</sup> ) (L/s)		FIT_7092 (m <sup>3</sup> ) (L/s)	
	Maximum	Minimum	Maximum	Minimum	Total	Peak	Total	Peak	Total	Peak
1	2.2	0.1	1.3	0.4	622.2	15.7	0.0	1.1	0.0	0.0
2	2.2	0.1	0.8	0.4	614.8	15.7	0.1	1.4	0.0	0.0
3	2.2	0.1	1.7	0.4	515.5	15.7	0.1	1.4	18.2	16.0
4	2.2	0.1	2.1	0.4	548.9	15.7	0.1	1.4	0.0	0.0
5	2.2	0.1	1.2	0.4	516.5	15.7	0.0	1.2	29.6	24.8
6	2.2	0.1	0.8	0.4	440.5	15.7	0.0	0.0	0.0	0.0
7	2.2	0.1	0.8	0.4	405.3	15.7	0.0	0.0	0.0	0.0
8	2.2	0.1	1.1	0.4	448.1	15.7	0.1	1.1	38.8	25.3
9	2.2	0.1	1.1	0.4	302.7	15.7	0.0	1.4	0.0	0.0
10	2.2	0.1	1.0	0.4	219.3	15.7	0.0	1.3	0.0	0.0
11	2.2	0.2	1.0	0.4	178.0	15.7	0.1	1.4	0.0	0.0
12	2.2	0.1	1.1	0.4	304.3	15.7	0.0	1.3	0.0	0.0
13	2.2	0.1	0.8	0.4	414.6	15.7	0.0	0.0	0.0	0.0
14	2.2	0.1	0.8	0.4	433.5	15.7	0.0	0.0	0.0	0.0
15	2.2	0.2	0.9	0.4	162.7	15.7	0.1	1.6	0.0	0.8
16	2.2	0.1	0.8	0.4	136.8	15.7	4.1	4.9	0.0	0.0
17	2.2	0.1	0.8	0.4	138.8	15.7	0.2	1.5	0.0	0.0
18	2.2	0.1	0.8	0.4	161.4	15.7	0.1	1.4	0.0	0.0
19	2.2	0.1	1.4	0.4	243.2	15.7	0.1	1.4	0.6	1.0
20	2.2	0.3	0.8	0.4	417.9	15.7	0.0	1.1	0.0	0.0
21	2.2	0.1	0.9	0.4	374.8	15.7	0.3	1.1	0.5	1.4
22	2.2	0.1	1.0	0.4	242.1	15.7	0.1	1.4	0.0	0.0
23	2.2	0.1	0.8	0.4	174.4	15.7	0.1	1.3	0.0	0.0
24	2.2	0.3	1.1	0.4	281.7	15.7	0.0	1.4	0.0	0.0
25	2.2	0.2	0.8	0.4	242.6	15.7	6.3	5.3	0.0	0.0
26	2.2	0.1	0.9	0.4	391.0	15.7	7.6	5.4	0.0	0.0
27	2.2	0.1	0.8	0.4	446.2	15.7	5.0	5.5	0.0	0.0
28	2.2	0.1	0.8	0.4	477.4	15.7	7.3	5.3	0.0	0.0
29	2.2	0.1	1.0	0.4	256.9	15.7	13.4	5.4	0.0	0.0
30	2.2	0.1	0.8	0.4	197.4	15.7	7.3	6.0	0.0	0.0
31	2.2	0.1	0.8	0.4	176.7	15.7	14.9	5.3	0.0	0.0
Total					10486.3		67.4		87.7	
Average	2.2	0.1	1.0	0.4	338.3	15.7	2.2	2.2	2.8	2.2
Maximum	2.2		2.1		622.2		14.9		38.8	
Date	6-Aug		4-Aug		1-Aug		31-Aug		8-Aug	
Minimum		0.1		0.4		15.7		0.0		0.0
Date		19-Aug		4-Aug		1-Aug		6-Aug		1-Aug

Notes:
