

Municipality of West Elgin - Tri County Water System

Goto:

Month:

Year:

Date is Set to: **August-17**

Limit	Low	High	
Raw Water Chlorine Residual:	0.00	5.00	mg/L
Pre-Strainer Chlorine Residual:	0.00	5.00	mg/L
UV Inlet Chlorine Residual:	0.00	5.00	mg/L
Post Treatment Chlorine Residual:	1.00	5.00	mg/L
Treated Chlorine Residual:	1.00	2.50	mg/L
Distribution Chlorine Residual:	1.00	2.50	mg/L
Limit		High	
WTP C of A		156.0	L/s
WTP Permit to Take Water		13500.0	m ³
Limit	Low	High	
System Pressure Limits:	50.0	1034.0	Kpa

Compliance Report

Low Lift Monthly Report

>>>

Membranes Monthly Report

>>>

UV System Monthly Report

>>>

Plant Quality Report

>>>

Raw Well/Treated Storage Report

>>>

High Lift Monthly Report

>>>

Operational Report

Low Lift Monthly Report

>>>

High Lift Monthly Report

>>>

Chemical Usage Monthly Report

>>>

Runtimes Report

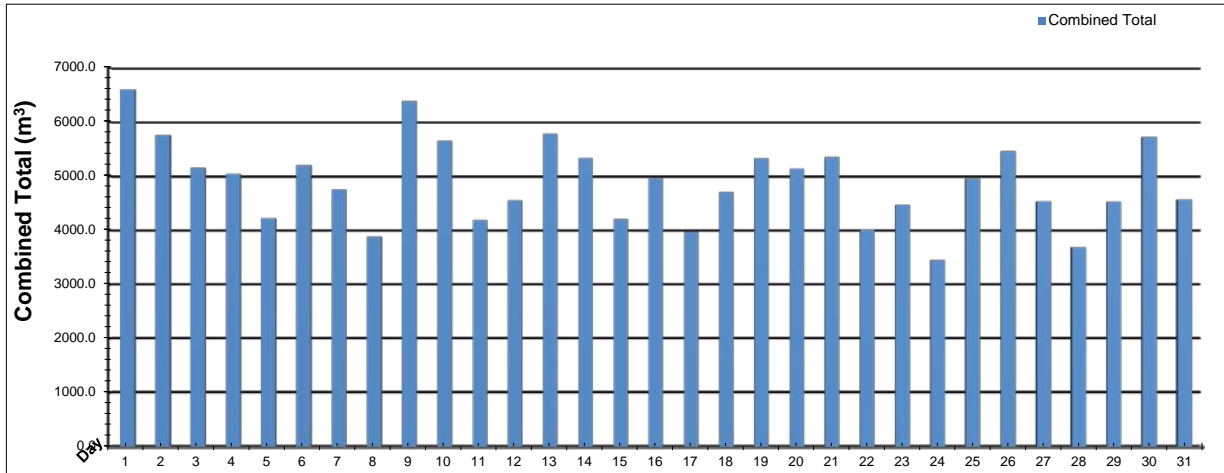
>>>

Plant Internal Flow Report

>>>

Low Lift Monthly Report

Month: August-17

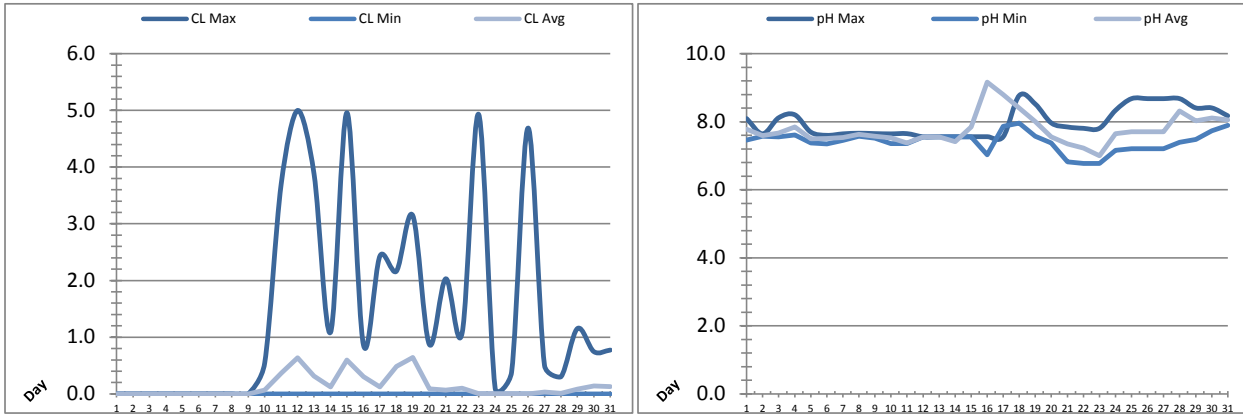


Date	Combined Total (m³)	West Train FIT-1017 (m³)	West Peak Flow FIT-1017 (L/s)	East Train FIT-1027 (m³)	East Peak Flow FIT-1027 (L/s)	Combined Peak Flow (L/s)
1	✓ 6602.4	4929.5	136.1	1672.9	82.7	136.1
2	✓ 5755.8	0.0	0.0	5755.8	121.2	121.2
3	✓ 5147.5	0.0	0.0	5147.5	84.7	84.7
4	✓ 5044.4	0.0	0.0	5044.4	83.8	83.8
5	✓ 4228.5	0.0	0.0	4228.5	130.2	130.2
6	✓ 5202.6	0.0	0.0	5202.6	195.7	121.0
7	✓ 4752.7	0.0	0.0	4752.7	135.0	135.0
8	✓ 3883.1	0.0	0.0	3883.1	162.0	162.0
9	✓ 6388.0	0.0	0.0	6388.0	160.3	160.3
10	✓ 5651.4	0.0	0.0	5651.4	136.6	136.6
11	✓ 4189.2	0.0	0.0	4189.2	136.3	136.3
12	✓ 4544.4	0.0	0.0	4544.4	139.4	139.4
13	✓ 5784.2	0.0	0.0	5784.2	135.5	135.5
14	✓ 5335.7	0.0	0.0	5335.7	135.7	135.7
15	✓ 4207.4	0.0	0.0	4207.4	178.4	134.0
16	✓ 4953.8	0.0	0.0	4953.8	138.5	138.5
17	✓ 3973.7	0.0	0.0	3973.7	133.2	133.2
18	✓ 4710.7	0.0	0.0	4710.7	133.9	133.9
19	✓ 5327.4	0.0	0.0	5327.4	199.6	199.6
20	✓ 5135.8	0.0	0.0	5135.8	139.0	139.0
21	✓ 5350.7	2997.5	192.2	2353.2	137.9	131.0
22	✓ 4014.9	4014.9	132.7	0.0	0.0	132.7
23	✓ 4466.2	4466.2	132.4	0.0	0.0	132.4
24	✓ 3450.1	3450.1	196.6	0.0	0.0	196.6
25	✓ 4950.7	4950.7	132.4	0.0	0.0	132.4
26	✓ 5462.7	5462.7	155.9	0.0	0.0	155.9
27	✓ 4532.0	4532.0	198.9	0.0	0.0	198.9
28	✓ 3688.4	3688.4	132.5	0.0	0.0	132.5
29	✓ 4527.2	4527.1	136.4	0.0	0.0	136.4
30	✓ 5723.7	5723.7	135.2	0.0	0.0	135.2
31	✓ 4571.9	4571.9	134.5	0.0	0.0	134.5
Total	151557.0	53314.6		98242.4		
Average	4888.9	1719.8	58.6	3169.1	93.5	139.2
Maximum	6602.4	5723.7	198.92	6388.0	199.56	199.56
Date	1-Aug	30-Aug	27-Aug	9-Aug	19-Aug	19-Aug
Minimum	3450.1	0.0	0.00	0.0	0.00	83.81
Date	24-Aug	11-Aug	2-Aug	28-Aug	22-Aug	4-Aug

Notes:

Low Lift Monthly Report

Month: **August-17**

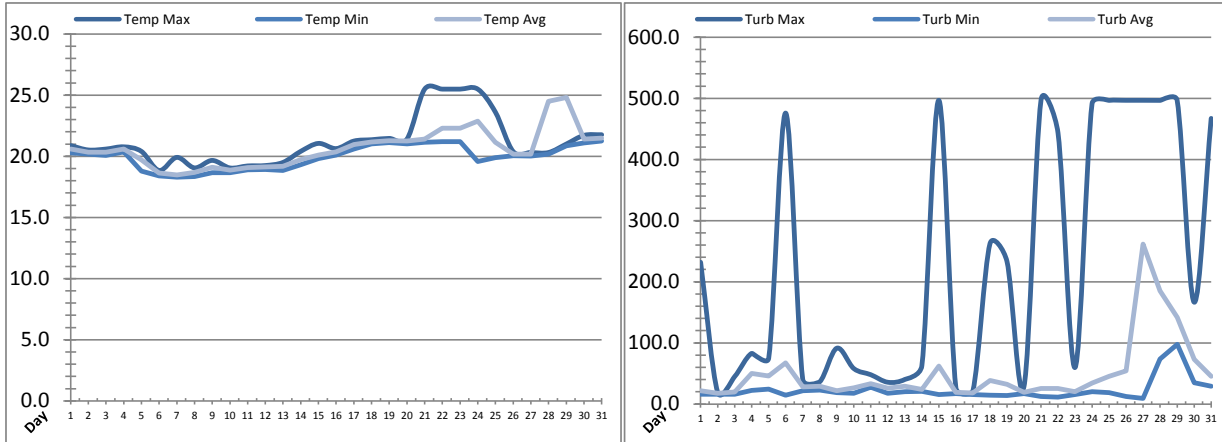


Date	Raw Water Chlorine Residual			Raw Water pH		
	AIT_1401_CL (mg/L)			AIT_1401_PH		
	Maximum	Minimum	Average	Maximum	Minimum	Average
1	0.00	0.00	0.00	8.09	7.46	7.78
2	0.00	0.00	0.00	7.64	7.57	7.60
3	0.00	0.00	0.00	8.12	7.55	7.66
4	0.00	0.00	0.00	8.20	7.61	7.84
5	0.00	0.00	0.00	7.70	7.38	7.50
6	0.00	0.00	0.00	7.60	7.35	7.51
7	0.00	0.00	0.00	7.64	7.46	7.54
8	0.00	0.00	0.00	7.66	7.57	7.63
9	0.00	0.00	0.00	7.65	7.52	7.58
10	0.54	0.00	0.07	7.64	7.36	7.53
11	3.70	0.00	0.37	7.65	7.36	7.38
12	5.00	0.00	0.64	7.56	7.55	7.56
13	3.88	0.00	0.32	7.56	7.55	7.56
14	1.09	0.00	0.12	7.56	7.55	7.41
15	4.96	0.00	0.60	7.56	7.55	7.85
16	0.86	0.00	0.31	7.56	7.03	9.17
17	2.43	0.00	0.12	7.56	7.86	8.80
18	2.16	0.00	0.49	8.77	7.96	8.40
19	3.14	0.00	0.64	8.52	7.57	8.01
20	0.87	0.00	0.09	7.96	7.38	7.56
21	2.03	0.00	0.07	7.85	6.82	7.35
22	1.08	0.00	0.10	7.81	6.77	7.23
23	4.93	0.00	0.01	7.81	6.77	7.00
24	0.10	0.00	0.00	8.33	7.16	7.65
25	0.38	0.00	0.01	8.68	7.20	7.70
26	4.69	0.00	0.00	8.68	7.20	7.70
27	0.50	0.00	0.03	8.68	7.20	7.70
28	0.30	0.00	0.01	8.68	7.39	8.32
29	1.15	0.00	0.09	8.41	7.48	8.02
30	0.75	0.00	0.14	8.41	7.74	8.11
31	0.77	0.00	0.13	8.17	7.89	8.06
Total						
Average	1.46	0.00	0.14	7.99	7.41	7.76
Maximum	5.00		0.64	8.77		9.17
Date	12-Aug		19-Aug	18-Aug		16-Aug
Minimum		0.00	0.00		6.77	7.00
Date		1-Aug	1-Aug		22-Aug	23-Aug

Notes:

Low Lift Monthly Report

Month: August-17

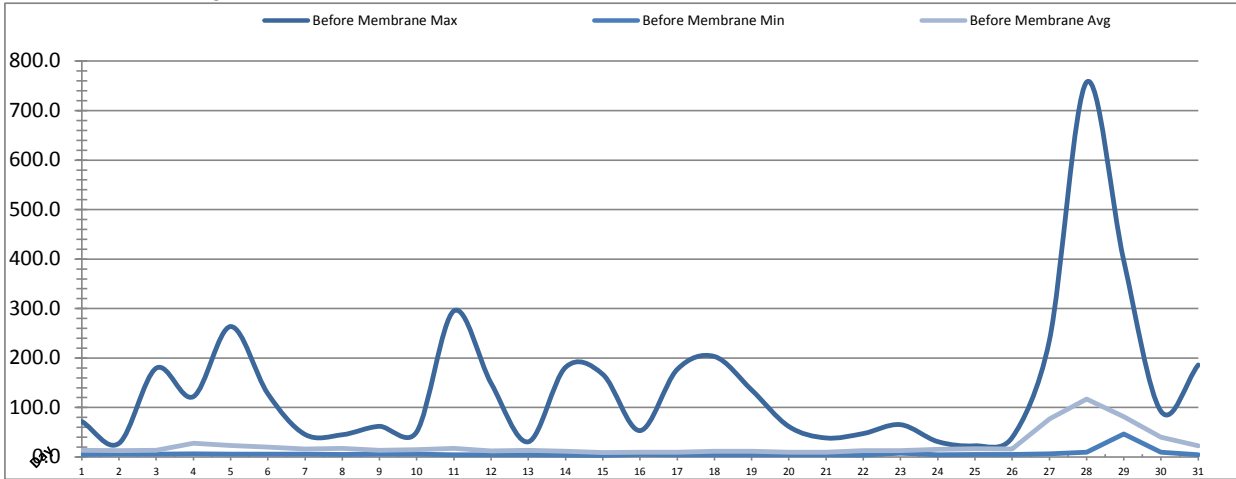


Date	Raw Water Temperature			Raw Water Turbidity		
	TIT_1403 (°C)			AIT_1404 (NTU)		
	Maximum	Minimum	Average	Maximum	Minimum	Average
1	20.9	20.3	20.6	231.85	16.24	22.04
2	20.5	20.2	20.3	19.36	16.19	17.82
3	20.6	20.1	20.3	44.95	16.18	19.66
4	20.8	20.4	20.6	82.90	22.41	49.85
5	20.4	18.8	19.7	75.12	24.67	45.79
6	18.8	18.4	18.6	475.83	14.63	67.23
7	19.9	18.3	18.5	40.18	21.60	27.91
8	19.1	18.4	18.7	36.41	23.08	29.05
9	19.7	18.6	19.1	91.36	18.48	21.79
10	19.0	18.7	18.9	58.08	17.66	26.58
11	19.2	18.9	19.1	47.97	27.78	33.55
12	19.2	18.9	19.1	35.64	17.69	25.83
13	19.5	18.8	19.2	40.26	20.00	29.22
14	20.4	19.3	19.7	62.81	20.86	23.84
15	21.1	19.8	20.1	496.71	15.39	62.10
16	20.6	20.1	20.4	26.32	16.93	19.06
17	21.2	20.6	21.0	21.67	15.39	18.09
18	21.4	21.0	21.2	262.04	14.66	38.63
19	21.5	21.1	21.3	233.36	13.84	32.28
20	21.4	21.0	21.2	28.72	16.98	19.42
21	25.5	21.1	21.4	496.77	12.36	25.21
22	25.5	21.2	22.3	443.27	11.55	25.45
23	25.5	21.2	22.3	59.70	15.40	20.43
24	25.5	19.6	22.9	491.25	20.03	34.12
25	23.6	19.9	21.1	496.65	18.52	45.41
26	20.4	20.0	20.2	496.75	12.33	54.30
27	20.3	20.0	20.2	496.75	9.15	261.77
28	20.3	20.2	24.5	496.64	73.50	184.91
29	21.0	20.9	24.8	496.62	97.51	141.56
30	21.7	21.1	21.4	166.56	34.80	73.08
31	21.8	21.2	21.5	467.16	29.38	45.42
Total						
Average	21.2	19.9	20.7	226.4	22.7	49.7
Maximum	25.5		24.8	496.8		261.8
Date	21-Aug		29-Aug	21-Aug		27-Aug
Minimum		18.3	18.5		9.1	17.8
Date		7-Aug	7-Aug		27-Aug	2-Aug

Notes:

Membranes Monthly Report

Month: August-17



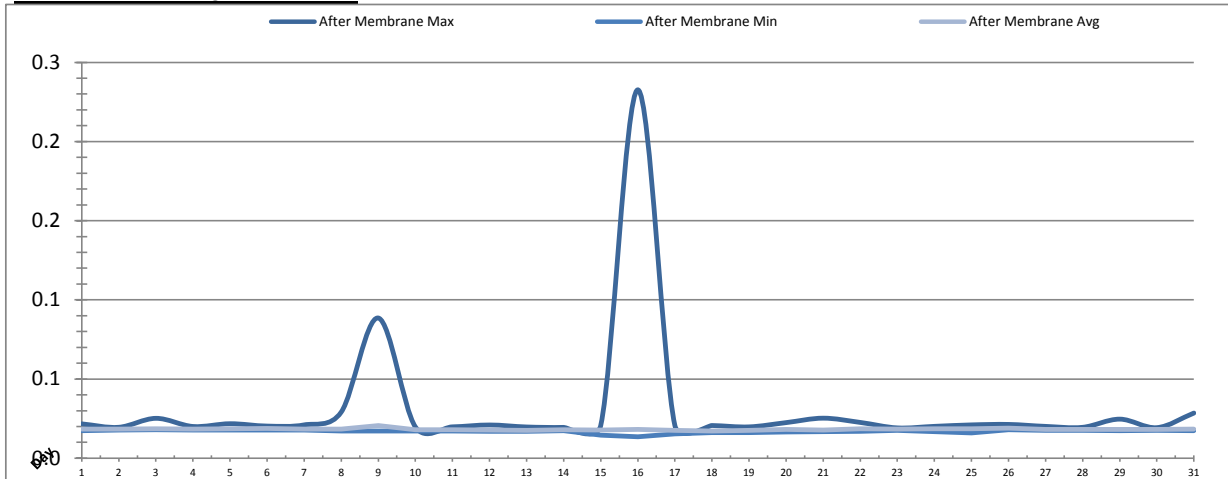
Date	Turbidity Before Membrane			Rack #1 Turbidity			Rack #2 Turbidity		
	PALL_FEED_AIT2006_Value NTU			RACK1_NTU_Value NTU			RACK2_NTU_Value NTU		
	Maximum	Minimum	Average	Maximum	Minimum	Average	Maximum	Minimum	Average
1	71.88	5.10	13.85	0.01	0.01	0.01			
2	27.65	5.69	12.60	0.01	0.01	0.01			
3	179.52	5.77	13.29	0.02	0.01	0.01			
4	122.05	6.12	27.68	0.02	0.01	0.01			
5	263.66	5.71	23.06	0.02	0.01	0.01			
6	127.78	5.73	20.19	0.02	0.01	0.01			
7	45.50	5.89	15.81	0.01	0.01	0.01			
8	44.97	5.22	17.55	0.02	0.01	0.01			
9	61.97	5.47	13.45	0.02	0.01	0.01			
10	50.84	5.45	14.65	0.02	0.01	0.01			
11	295.40	4.59	17.55	0.02	0.01	0.01			
12	148.88	4.73	12.10	0.01	0.01	0.01			
13	30.70	4.77	13.48	0.01	0.01	0.01			
14	181.31	4.12	11.71	0.01	0.01	0.01			
15	167.06	3.45	9.14	0.01	0.01	0.01			
16	53.31	5.20	9.72	0.04	0.01	0.01			
17	176.99	4.18	9.42	0.01	0.01	0.01			
18	203.10	4.28	11.92	0.02	0.01	0.01			
19	135.44	4.35	11.60	0.02	0.01	0.01			
20	61.61	4.55	9.85	0.01	0.01	0.01			
21	38.47	4.39	9.90	0.02	0.01	0.01			
22	47.38	3.75	13.03	0.01	0.01	0.01			
23	65.34	7.50	12.94	0.01	0.01	0.01			
24	31.05	4.71	15.66	0.02	0.01	0.01			
25	22.63	5.38	16.68	0.02	0.01	0.01			
26	39.35	5.06	16.32	0.02	0.01	0.01			
27	235.43	6.14	77.26	0.02	0.01	0.01			
28	757.49	9.34	116.92	0.02	0.01	0.01			
29	396.43	46.77	81.17	0.01	0.01	0.01			
30	92.21	9.36	39.89	0.01	0.01	0.01			
31	186.02	4.75	22.35	0.02	0.01	0.01	0.12	0.01	0.03
Total									
Average	140.7	6.7	22.9	0.02	0.01	0.01	0.12	0.01	0.03
Maximum	757.5		116.9	0.04		0.01	0.12		0.03
Date	28-Aug		28-Aug	16-Aug		31-Aug	31-Aug		31-Aug
Minimum		3.5	9.1		0.01	0.01		0.01	0.03
Date		15-Aug	15-Aug		4-Aug	30-Aug		31-Aug	31-Aug

Notes:

Rack 2 offline for maintenance, put back online on the 31st. Spike in turbidity after EFM performed.

Membranes Monthly Report

Month: August-17



Date	Rack #3 Turbidity			Rack #4 Turbidity			Turbidity After Membranes		
	RACK3_NTU_Value			RACK4_NTU_Value			PALL_FILTER_AIT5001_Value		
	Maximum	Minimum	Average	Maximum	Minimum	Average	Maximum	Minimum	Average
1	0.04	0.01	0.01	0.02	0.02	0.02	0.02	0.02	0.02
2	0.02	0.01	0.01	0.03	0.02	0.02	0.02	0.02	0.02
3	0.03	0.01	0.01	0.03	0.02	0.02	0.03	0.02	0.02
4	0.05	0.01	0.01	0.03	0.02	0.02	0.02	0.02	0.02
5	0.06	0.01	0.01	0.03	0.02	0.02	0.02	0.02	0.02
6	0.02	0.01	0.01	0.04	0.02	0.02	0.02	0.02	0.02
7	0.07	0.01	0.02	0.03	0.02	0.02	0.02	0.02	0.02
8	0.33	0.01	0.02	0.08	0.02	0.02	0.03	0.02	0.02
9	0.03	0.01	0.01	0.17	0.02	0.02	0.09	0.02	0.02
10	0.03	0.01	0.01	0.04	0.02	0.02	0.02	0.02	0.02
11	0.06	0.01	0.01	0.03	0.02	0.02	0.02	0.02	0.02
12	0.08	0.01	0.02	0.05	0.02	0.02	0.02	0.02	0.02
13	0.11	0.01	0.02	0.03	0.02	0.02	0.02	0.02	0.02
14	0.02	0.01	0.01	0.05	0.02	0.02	0.02	0.02	0.02
15	0.02	0.01	0.01	0.03	0.02	0.02	0.02	0.01	0.02
16	0.10	0.01	0.01	0.31	0.02	0.02	0.23	0.01	0.02
17	0.02	0.01	0.02	0.11	0.02	0.02	0.02	0.02	0.02
18	0.06	0.01	0.02	0.11	0.02	0.03	0.02	0.02	0.02
19	0.04	0.01	0.02	0.16	0.02	0.03	0.02	0.02	0.02
20	0.03	0.01	0.02	0.06	0.02	0.02	0.02	0.02	0.02
21	0.03	0.01	0.01	0.04	0.02	0.02	0.03	0.02	0.02
22	0.06	0.01	0.02	0.05	0.02	0.02	0.02	0.02	0.02
23	0.02	0.01	0.01	0.03	0.02	0.02	0.02	0.02	0.02
24	0.04	0.01	0.01	0.03	0.02	0.02	0.02	0.02	0.02
25	0.03	0.01	0.01	0.03	0.02	0.02	0.02	0.02	0.02
26	0.03	0.01	0.01	0.07	0.02	0.02	0.02	0.02	0.02
27	0.04	0.01	0.01	0.03	0.02	0.02	0.02	0.02	0.02
28	0.03	0.01	0.01	0.03	0.02	0.02	0.02	0.02	0.02
29	0.02	0.01	0.01	0.03	0.02	0.02	0.02	0.02	0.02
30	0.02	0.01	0.01	0.04	0.02	0.02	0.02	0.02	0.02
31	0.05	0.01	0.01	0.04	0.02	0.02	0.03	0.02	0.02
Total									
Average	0.05	0.01	0.02	0.06	0.02	0.02	0.03	0.02	0.02
Maximum	0.33		0.02	0.31		0.03	0.23		0.02
Date	8-Aug		7-Aug	16-Aug		18-Aug	16-Aug		9-Aug
Minimum		0.01	0.01		0.02	0.02		0.01	0.02
Date		1-Aug	23-Aug		1-Aug	30-Aug		16-Aug	18-Aug

Notes:

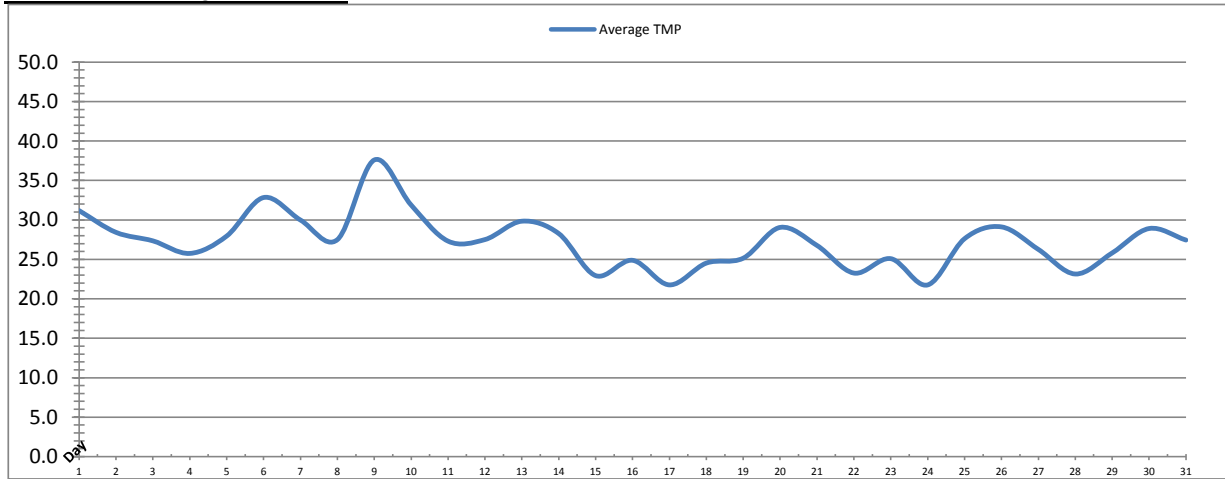
Rack 3: turbidity spikes >0.1ntu on 8th, 13th, 16th

Rack 4: turbidity spikes >0.1ntu on 9, 16, 17, 18, 19

Met filter performance despite spike in turbidities.

Membranes Monthly Report

Month: August-17

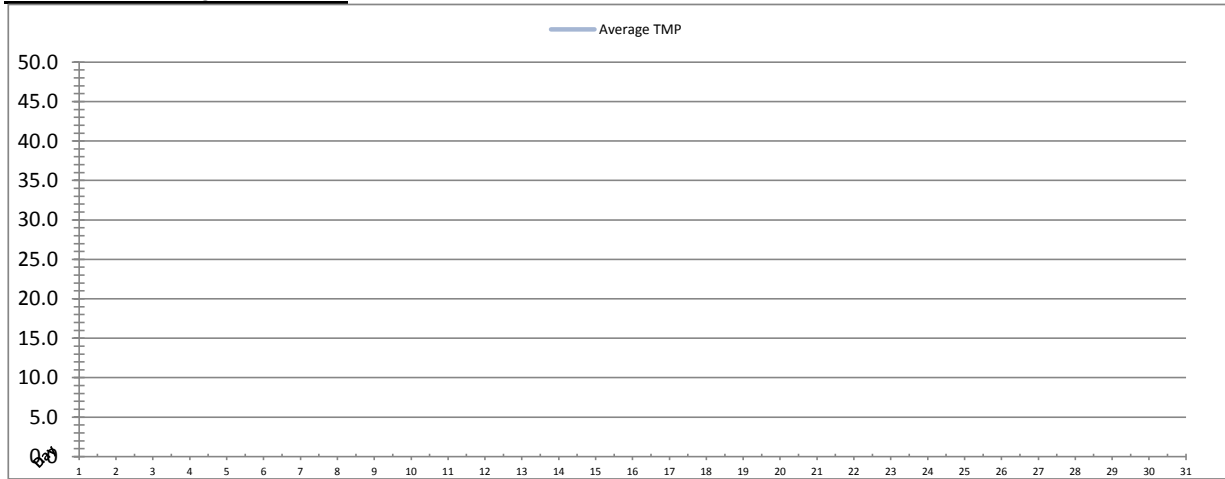


Integrity Test Rack 1								
Date	Initial Pressure (kPa)	Final Pressure (kPa)	Test Duration (sec)	Change in Pressure (kPa)	UCL	Within UCL	Average TMP (kPa)	Max TMP (kPa)
1	195.7	194.7	300.0	1.0	2.0	✓ 2.0	31.2	73.1
2	196.1	195.2	300.0	0.9	2.0	✓ 2.0	28.4	45.2
3	195.6	194.7	300.0	0.9	2.0	✓ 2.0	27.3	161.7
4	195.6	194.7	300.0	0.8	2.0	✓ 2.0	25.8	47.3
5	195.6	194.6	300.0	1.0	2.0	✓ 2.0	28.0	131.8
6	195.7	194.7	300.0	1.0	2.0	✓ 2.0	32.8	149.9
7	195.7	195.0	300.0	0.7	2.0	✓ 2.0	30.0	98.0
8	195.5	194.7	300.0	0.9	2.0	✓ 2.0	27.5	136.4
9	195.9	194.9	300.0	1.0	2.0	✓ 2.0	37.6	148.9
10	195.6	194.4	300.0	1.2	2.0	✓ 2.0	31.9	94.4
11	195.5	194.6	300.0	0.9	2.0	✓ 2.0	27.3	163.1
12	195.4	194.6	300.0	0.8	2.0	✓ 2.0	27.5	146.0
13	195.5	194.6	300.0	0.9	2.0	✓ 2.0	29.8	80.2
14	195.7	194.2	300.0	1.5	2.0	✓ 2.0	28.3	130.0
15	195.7	194.7	300.0	1.0	2.0	✓ 2.0	22.9	69.5
16	195.7	194.9	300.0	0.8	2.0	✓ 2.0	24.9	70.3
17	195.6	194.6	300.0	1.0	2.0	✓ 2.0	21.8	121.2
18	195.8	194.8	300.0	1.0	2.0	✓ 2.0	24.5	126.6
19	196.1	195.2	300.0	0.9	2.0	✓ 2.0	25.1	66.5
20	196.1	195.2	300.0	0.9	2.0	✓ 2.0	29.1	77.2
21	195.7	194.7	300.0	0.9	2.0	✓ 2.0	26.8	73.0
22	195.7	194.4	300.0	1.3	2.0	✓ 2.0	23.3	72.6
23	195.9	194.7	300.0	1.2	2.0	✓ 2.0	25.1	73.5
24	195.8	194.7	300.0	1.1	2.0	✓ 2.0	21.8	83.4
25	195.7	194.7	300.0	1.1	2.0	✓ 2.0	27.6	83.1
26	196.0	194.9	300.0	1.2	2.0	✓ 2.0	29.1	79.7
27	195.5	194.6	300.0	0.9	2.0	✓ 2.0	26.3	78.7
28	195.6	194.8	300.0	0.8	2.0	✓ 2.0	23.1	77.8
29	195.4	194.5	300.0	0.9	2.0	✓ 2.0	25.8	78.8
30	195.6	194.5	300.0	1.1	2.0	✓ 2.0	28.9	75.8
31	195.5	194.6	300.0	0.9	2.0	✓ 2.0	27.4	127.9
Total								
Average	195.7	194.7	300.0	1.0	2.0	2.0	27.3	98.1
Maximum	196.1	195.2	300.0	1.5	2.0	2.0	37.6	163.1
Date	2-Aug	2-Aug	1-Aug	14-Aug	1-Aug	1-Aug	9-Aug	11-Aug
Minimum	195.4	194.2	300.0	0.7	2.0	2.0	21.8	45.2
Date	12-Aug	14-Aug	1-Aug	7-Aug	1-Aug	1-Aug	24-Aug	2-Aug

Notes:

Membranes Monthly Report

Month: August-17

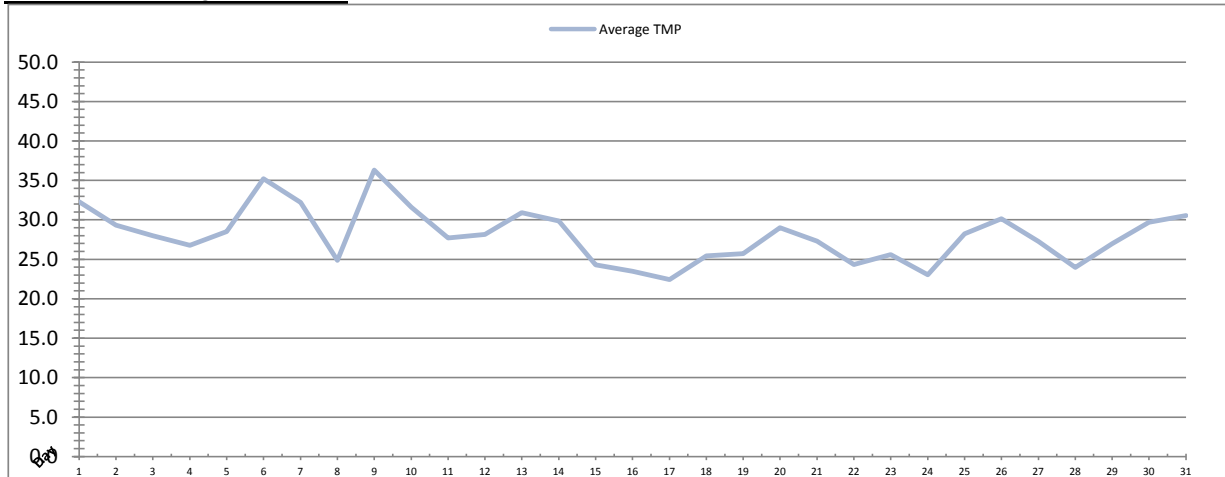


Date	Integrity Test Rack 2							
	Initial Pressure (kPa)	Final Pressure (kPa)	Test Duration (sec)	Change in Pressure (kPa)	UCL	Within UCL	Average TMP (kPa)	Max TMP (kPa)
1								
2								
3								
4								
5								
6								
7								
8								
9								
10								
11								
12								
13								
14								
15								
16								
17								
18								
19								
20								
21								
22								
23								
24								
25								
26								
27								
28								
29								
30								
31	209.9	208.8	300.0	1.1	2.0	✓ 2.0	70.5	324.4
Total								
Average	209.9	208.8	300.0	1.1	2.0	2.0	70.5	324.4
Maximum	209.9	208.8	300.0	1.1	2.0	2.0	70.5	324.4
Date	31-Aug	31-Aug	31-Aug	31-Aug	31-Aug	31-Aug	31-Aug	31-Aug
Minimum	209.9	208.8	300.0	1.1	2.0	2.0	70.5	324.4
Date	31-Aug	31-Aug	31-Aug	31-Aug	31-Aug	31-Aug	31-Aug	31-Aug

Notes:
 Rack 2 offline until August 30th.

Membranes Monthly Report

Month: **August-17**

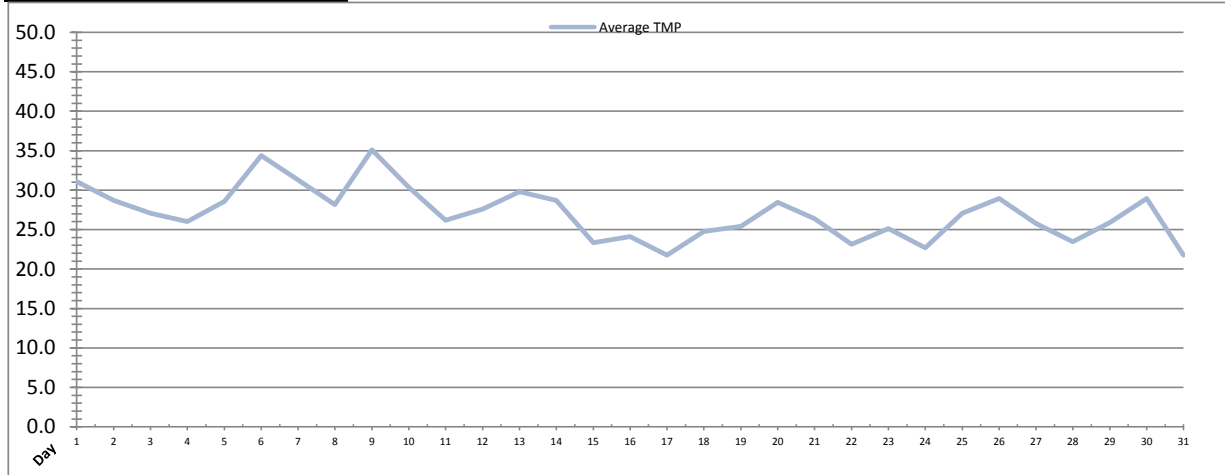


Integrity Test Rack 3									
Date	Initial Pressure (kPa)	Final Pressure (kPa)	Test Duration (sec)	Change in Pressure (kPa)	UCL	Within UCL	Average TMP (kPa)	Max TMP (kPa)	
1	190.7	189.3	300.0	1.3	2.0	✓ 2.0	32.3	74.2	
2	190.7	189.5	300.0	1.2	2.0	✓ 2.0	29.3	58.2	
3	190.6	189.4	300.0	1.1	2.0	✓ 2.0	28.0	115.1	
4	190.6	189.5	300.0	1.1	2.0	✓ 2.0	26.8	52.4	
5	190.9	189.7	300.0	1.3	2.0	✓ 2.0	28.5	132.2	
6	190.9	189.8	300.0	1.1	2.0	✓ 2.0	35.2	148.2	
7	191.8	190.8	300.0	1.0	2.0	✓ 2.0	32.2	105.0	
8	190.3	189.0	300.0	1.3	2.0	✓ 2.0	24.9	95.1	
9	190.6	189.3	300.0	1.3	2.0	✓ 2.0	36.3	150.9	
10	190.1	188.8	300.0	1.3	2.0	✓ 2.0	31.6	90.6	
11	190.9	189.7	300.0	1.2	2.0	✓ 2.0	27.7	178.4	
12	191.3	190.0	300.0	1.3	2.0	✓ 2.0	28.2	155.8	
13	190.5	189.3	300.0	1.2	2.0	✓ 2.0	30.9	79.1	
14	191.8	190.7	300.0	1.1	2.0	✓ 2.0	29.9	135.8	
15	191.8	190.7	300.0	1.1	2.0	✓ 2.0	24.3	73.9	
16	191.3	190.2	300.0	1.1	2.0	✓ 2.0	23.5	68.7	
17	190.7	189.6	300.0	1.1	2.0	✓ 2.0	22.4	53.5	
18	191.1	189.9	300.0	1.2	2.0	✓ 2.0	25.4	137.1	
19	191.7	190.7	300.0	1.1	2.0	✓ 2.0	25.7	81.4	
20	191.7	190.7	300.0	1.1	2.0	✓ 2.0	29.0	70.6	
21	191.0	189.8	300.0	1.2	2.0	✓ 2.0	27.3	72.5	
22	190.5	189.2	300.0	1.3	2.0	✓ 2.0	24.3	81.1	
23	190.2	189.0	300.0	1.3	2.0	✓ 2.0	25.6	74.7	
24	189.5	188.3	300.0	1.3	2.0	✓ 2.0	23.0	76.1	
25	190.4	189.0	300.0	1.4	2.0	✓ 2.0	28.2	80.2	
26	190.9	189.6	300.0	1.3	2.0	✓ 2.0	30.1	84.2	
27	190.3	189.1	300.0	1.2	2.0	✓ 2.0	27.3	79.2	
28	191.2	190.1	300.0	1.1	2.0	✓ 2.0	24.0	78.8	
29	190.4	189.2	300.0	1.2	2.0	✓ 2.0	27.0	79.8	
30	190.4	189.1	300.0	1.3	2.0	✓ 2.0	29.7	75.9	
31	190.9	189.8	300.0	1.1	2.0	✓ 2.0	30.6	129.8	
Total									
Average	190.8	189.6	300.0	1.2	2.0	2.0	28.0	95.8	
Maximum	191.8	190.8	300.0	1.4	2.0	2.0	36.3	178.4	
Date	7-Aug	7-Aug	1-Aug	25-Aug	1-Aug	1-Aug	9-Aug	11-Aug	
Minimum	189.5	188.3	300.0	1.0	2.0	2.0	22.4	52.4	
Date	24-Aug	24-Aug	1-Aug	7-Aug	1-Aug	1-Aug	17-Aug	4-Aug	

Notes:

Membranes Monthly Report

Month: **August-17**



Integrity Test Rack 4									
Date	Initial Pressure (kPa)	Final Pressure (kPa)	Test Duration (sec)	Change in Pressure (kPa)	UCL	Within UCL	Average TMP (kPa)	Max TMP (kPa)	
1	198.4	197.2	300.0	1.3	2.0	✓ 2.0	31.1	71.6	
2	198.1	196.9	300.0	1.3	2.0	✓ 2.0	28.7	49.2	
3	197.8	196.6	300.0	1.2	2.0	✓ 2.0	27.1	118.1	
4	197.6	196.5	300.0	1.1	2.0	✓ 2.0	26.0	54.7	
5	197.5	196.3	300.0	1.2	2.0	✓ 2.0	28.6	140.8	
6	197.7	196.7	300.0	1.0	2.0	✓ 2.0	34.4	167.1	
7	197.2	196.3	300.0	1.0	2.0	✓ 2.0	31.3	94.3	
8	197.2	196.0	300.0	1.2	2.0	✓ 2.0	28.2	152.1	
9	197.6	196.3	300.0	1.3	2.0	✓ 2.0	35.1	155.4	
10	197.6	196.4	300.0	1.2	2.0	✓ 2.0	30.4	87.7	
11	197.0	195.9	300.0	1.1	2.0	✓ 2.0	26.2	156.7	
12	197.3	196.1	300.0	1.2	2.0	✓ 2.0	27.6	162.0	
13	197.6	196.4	300.0	1.1	2.0	✓ 2.0	29.8	76.1	
14	197.6	196.5	300.0	1.1	2.0	✓ 2.0	28.7	140.7	
15	197.2	196.1	300.0	1.1	2.0	✓ 2.0	23.4	70.3	
16	197.1	196.0	300.0	1.1	2.0	✓ 2.0	24.1	67.8	
17	196.9	195.2	300.0	1.7	2.0	✓ 2.0	21.7	134.5	
18	197.1	196.0	300.0	1.1	2.0	✓ 2.0	24.8	144.9	
19	197.2	196.1	300.0	1.1	2.0	✓ 2.0	25.4	64.6	
20	197.2	196.1	300.0	1.1	2.0	✓ 2.0	28.5	74.8	
21	196.7	195.6	300.0	1.1	2.0	✓ 2.0	26.4	70.0	
22	197.8	196.3	300.0	1.4	2.0	✓ 2.0	23.1	73.0	
23	197.1	195.8	300.0	1.2	2.0	✓ 2.0	25.1	79.0	
24	196.7	195.4	300.0	1.3	2.0	✓ 2.0	22.7	74.4	
25	196.9	195.6	300.0	1.3	2.0	✓ 2.0	27.1	76.3	
26	196.8	195.6	300.0	1.2	2.0	✓ 2.0	28.9	84.1	
27	197.3	196.3	300.0	1.1	2.0	✓ 2.0	25.8	77.6	
28	196.9	196.0	300.0	1.0	2.0	✓ 2.0	23.5	74.2	
29	197.6	196.4	300.0	1.2	2.0	✓ 2.0	25.9	76.2	
30	197.1	196.0	300.0	1.2	2.0	✓ 2.0	28.9	74.2	
31	197.6	196.5	300.0	1.1	2.0	✓ 2.0	21.8	84.6	
Total									
Average	197.3	196.2	300.0	1.2	2.0	2.0	27.1	97.6	
Maximum	198.4	197.2	300.0	1.7	2.0	2.0	35.1	167.1	
Date	1-Aug	1-Aug	1-Aug	17-Aug	1-Aug	1-Aug	9-Aug	6-Aug	
Minimum	196.7	195.2	300.0	1.0	2.0	2.0	21.7	49.2	
Date	21-Aug	17-Aug	1-Aug	7-Aug	1-Aug	1-Aug	17-Aug	2-Aug	

Notes:

Membranes Monthly Report

Month: August-17

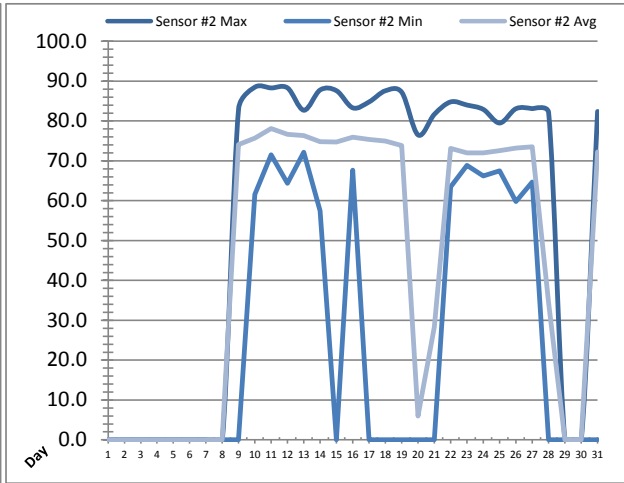
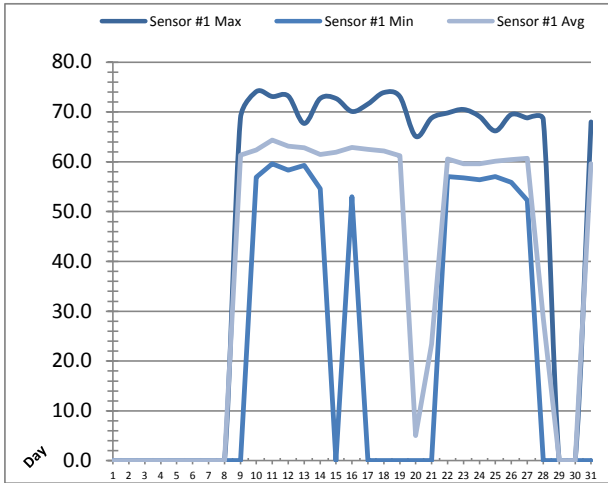
Date	Membranes Monthly Performance							
	Rack 1 >0.1 NTU (Minutes)	Rack 1 Forward Flow (Minutes)	Rack 2 >0.1 NTU (Minutes)	Rack 2 Forward Flow (Minutes)	Rack 3 >0.1 NTU (Minutes)	Rack 3 Forward Flow (Minutes)	Rack 4 >0.1 NTU (Minutes)	Rack 4 Forward Flow (Minutes)
1	0.0	1107.6	0.0	0.0	0.0	1109.3	0.0	1113.2
2	0.0	1330.5	0.0	0.0	0.0	1329.4	0.0	1338.4
3	0.0	1201.3	0.0	0.0	0.0	1201.4	0.0	1203.2
4	0.0	1157.2	0.0	0.0	0.0	1160.4	0.0	1160.3
5	0.0	894.4	0.0	0.0	0.0	895.3	0.0	895.3
6	0.0	833.0	0.0	0.0	0.0	833.5	0.0	833.1
7	0.0	837.1	0.0	0.0	0.0	841.2	0.0	840.3
8	0.0	797.3	0.0	0.0	4.5	673.2	0.0	808.5
9	0.0	1092.1	0.0	0.0	0.0	1074.6	4.5	1027.2
10	0.0	1105.2	0.0	0.0	0.0	1097.1	0.0	1094.5
11	0.0	783.5	0.0	0.0	0.0	780.2	0.0	779.3
12	0.0	814.2	0.0	0.0	0.0	810.1	0.0	815.5
13	0.0	1073.3	0.0	0.0	0.5	1078.3	0.0	1078.2
14	0.0	864.4	0.0	0.0	0.0	869.4	0.0	867.6
15	0.0	868.1	0.0	0.0	0.0	885.6	0.0	889.2
16	0.0	1069.2	0.0	0.0	0.5	1015.4	8.1	1007.4
17	0.0	919.4	0.0	0.0	0.0	922.1	0.5	923.5
18	0.0	883.5	0.0	0.0	0.0	881.2	2.3	884.4
19	0.0	1078.2	0.0	0.0	0.0	1076.4	11.3	1077.3
20	0.0	1210.0	0.0	0.0	0.0	1209.6	0.0	1209.5
21	0.0	1007.2	0.0	0.0	0.0	1006.4	0.0	1009.1
22	0.0	757.2	0.0	0.0	0.0	757.5	0.0	758.4
23	0.0	899.5	0.0	0.0	0.0	901.4	0.0	902.1
24	0.0	708.1	0.0	0.0	0.0	708.5	0.0	708.2
25	0.0	918.3	0.0	0.0	0.0	923.3	0.0	922.5
26	0.0	924.5	0.0	0.0	0.0	924.1	0.0	924.5
27	0.0	892.0	0.0	0.0	0.0	892.5	0.0	894.3
28	0.0	751.3	0.0	0.0	0.0	748.2	0.0	752.2
29	0.0	844.3	0.0	0.0	0.0	847.4	0.0	847.0
30	0.0	1110.5	0.0	0.0	0.0	1110.5	0.0	1111.4
31	0.0	807.5	2.2	487.5	0.0	891.6	0.0	838.6
Total	0.0	29540.1	2.2	487.5	5.5	29455.0	26.7	29514.4
Percent	0.00		0.46		0.02		0.09	
Maximum	0.0	1330.5	2.2	487.5	4.5	1329.4	11.3	1338.4
Date	1-Aug	2-Aug	31-Aug	31-Aug	8-Aug	2-Aug	19-Aug	2-Aug
Minimum	0.0	708.1	0.0	0.0	0.0	673.2	0.0	708.2
Date	1-Aug	24-Aug	1-Aug	1-Aug	1-Aug	8-Aug	1-Aug	24-Aug

Notes:

Met filter performance requirement of 99% of readings below 0.1ntu for the month.

UV System Monthly Report

Month: **August-17**

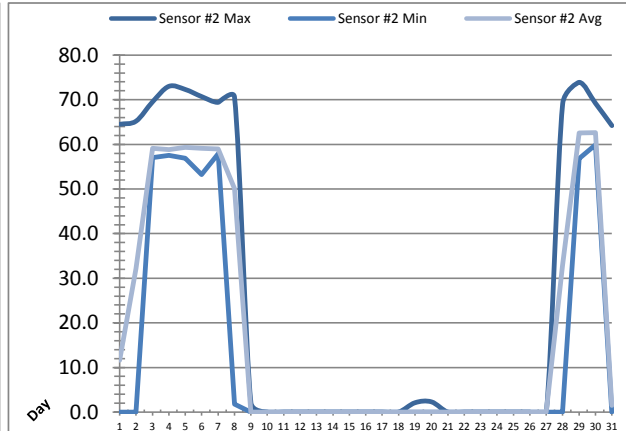
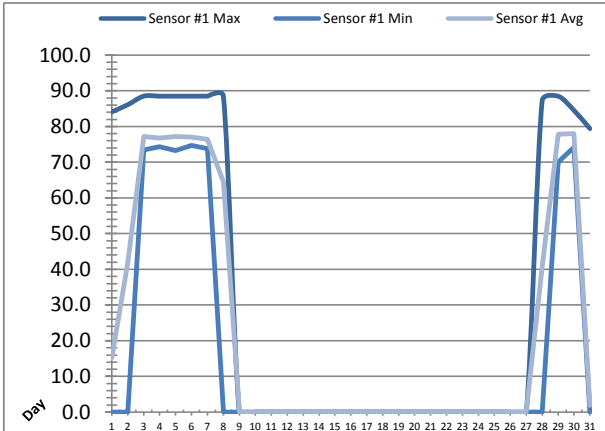


Date	UV Reactor 1					
	Intensity Sensor 1 (mW/cm ²)			Intensity Sensor 2 (mW/cm ²)		
	Maximum	Minimum	Average	Maximum	Minimum	Average
1	0.0	0.0	0.0	0.0	0.0	0.0
2	0.0	0.0	0.0	0.0	0.0	0.0
3	0.0	0.0	0.0	0.0	0.0	0.0
4	0.0	0.0	0.0	0.0	0.0	0.0
5	0.0	0.0	0.0	0.0	0.0	0.0
6	0.0	0.0	0.0	0.0	0.0	0.0
7	0.0	0.0	0.0	0.0	0.0	0.0
8	0.0	0.0	0.0	0.0	0.0	0.0
9	68.7	0.0	61.3	83.1	0.0	74.1
10	74.1	56.9	62.4	88.5	61.6	75.7
11	73.1	59.6	64.3	88.3	71.5	78.1
12	73.2	58.3	63.1	88.3	64.4	76.6
13	67.7	59.3	62.8	82.7	72.2	76.3
14	72.7	54.6	61.5	87.8	57.5	74.8
15	72.7	0.0	61.9	87.6	0.0	74.7
16	70.1	53.0	62.9	83.3	67.7	76.0
17	71.6	0.0	62.5	84.8	0.0	75.4
18	73.9	0.0	62.2	87.6	0.0	75.0
19	73.1	0.0	61.2	87.2	0.0	73.8
20	65.1	0.0	5.0	76.5	0.0	6.0
21	68.8	0.0	23.4	81.7	0.0	28.3
22	69.8	57.0	60.5	84.8	63.5	73.1
23	70.5	56.8	59.6	84.0	68.9	72.0
24	69.1	56.4	59.6	82.9	66.2	72.0
25	66.2	57.0	60.1	79.5	67.5	72.6
26	69.5	55.9	60.4	83.1	59.8	73.2
27	68.8	52.3	60.7	83.1	64.7	73.5
28	68.5	0.0	28.6	82.1	0.0	34.5
29	0.0	0.0	0.0	0.0	0.0	0.0
30	0.0	0.0	0.0	0.0	0.0	0.0
31	68.0	0.0	59.6	82.4	0.0	72.2
Total						
Average	47.6	21.8	37.5	57.1	25.3	45.4
Maximum	74.1		64.3	88.5		78.1
Date	10-Aug		11-Aug	10-Aug		11-Aug
Minimum		0.0			0.0	
Date		1-Aug	1-Aug		1-Aug	1-Aug

Notes:
 AOP system in operation.

UV System Monthly Report

Month: **August-17**

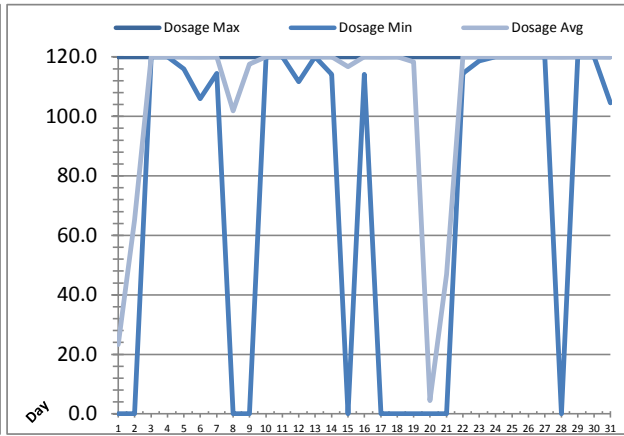
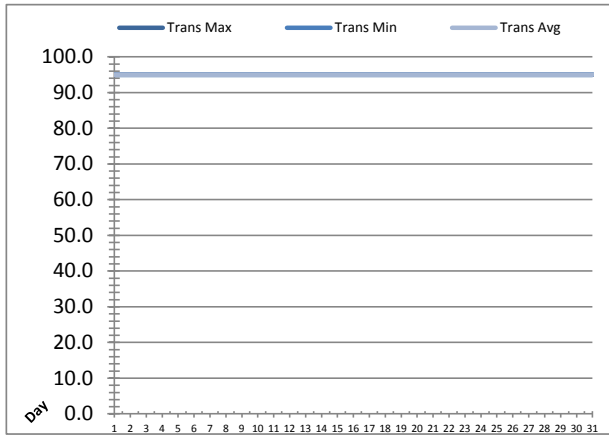


UV Reactor 2						
Date	Intensity Sensor 1 (mW/cm ²)			Intensity Sensor 2 (mW/cm ²)		
	Maximum	Minimum	Average	Maximum	Minimum	Average
1	84.1	0.0	15.1	64.5	0.0	11.6
2	86.1	0.0	41.9	65.2	0.0	32.1
3	88.5	73.4	77.2	69.5	57.0	59.1
4	88.5	74.3	76.8	73.0	57.5	58.8
5	88.5	73.3	77.2	72.3	56.9	59.3
6	88.5	74.7	77.0	70.7	53.2	59.1
7	88.5	73.8	76.4	69.4	57.9	59.0
8	88.5	0.0	64.5	70.6	1.8	50.1
9	0.0	0.0	0.0	2.1	0.0	0.0
10	0.0	0.0	0.0	0.0	0.0	0.0
11	0.0	0.0	0.0	0.0	0.0	0.0
12	0.0	0.0	0.0	0.0	0.0	0.0
13	0.0	0.0	0.0	0.0	0.0	0.0
14	0.0	0.0	0.0	0.0	0.0	0.0
15	0.0	0.0	0.0	0.0	0.0	0.0
16	0.0	0.0	0.0	0.0	0.0	0.0
17	0.0	0.0	0.0	0.0	0.0	0.0
18	0.0	0.0	0.0	0.0	0.0	0.0
19	0.0	0.0	0.0	2.1	0.0	0.0
20	0.0	0.0	0.0	2.3	0.0	0.0
21	0.0	0.0	0.0	0.0	0.0	0.0
22	0.0	0.0	0.0	0.0	0.0	0.0
23	0.0	0.0	0.0	0.0	0.0	0.0
24	0.0	0.0	0.0	0.0	0.0	0.0
25	0.0	0.0	0.0	0.0	0.0	0.0
26	0.0	0.0	0.0	0.0	0.0	0.0
27	0.0	0.0	0.0	0.0	0.0	0.0
28	87.2	0.0	40.8	69.1	0.0	32.8
29	88.5	70.0	77.8	73.9	56.8	62.5
30	84.5	74.2	78.0	69.2	59.9	62.6
31	79.4	0.0	1.9	64.2	0.0	1.5
Total						
Average	33.6	16.6	22.7	27.0	12.9	17.7
Maximum	88.5		78.0	73.9		62.6
Date	3-Aug		30-Aug	29-Aug		30-Aug
Minimum		0.0	0.0		0.0	0.0
Date		1-Aug	9-Aug		1-Aug	10-Aug

Notes:
 AOP is in operation

UV System Monthly Report

Month: **August-17**

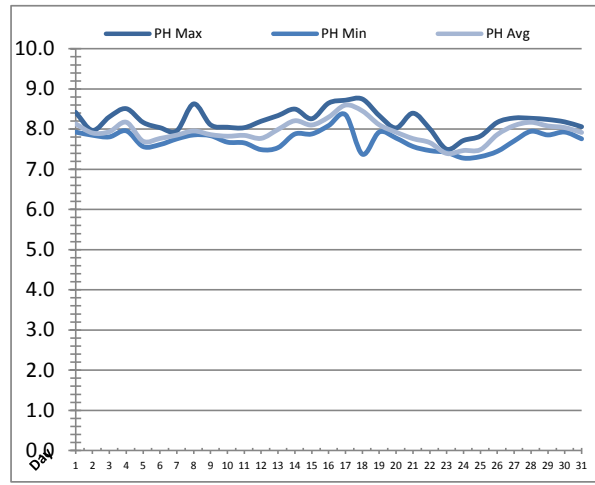
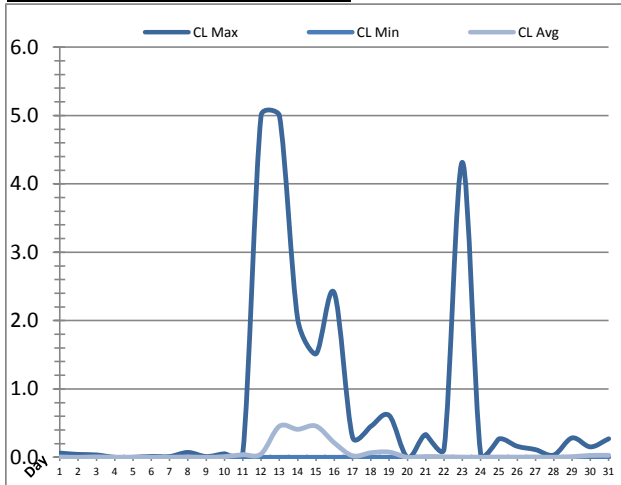


UV System							
Date	Transmittance (%)			Dosage (mJ/cm ²)			Inlet Flow (L/s)
	Maximum	Minimum	Average	Maximum	Minimum	Average	Maximum
1	95.00	95.00	95.00	120.0	0.0	23.3	131.7
2	95.00	95.00	95.00	120.0	0.0	65.2	78.6
3	95.00	95.00	95.00	120.0	120.0	120.0	72.4
4	95.00	95.00	95.00	120.0	120.0	120.0	98.9
5	95.00	95.00	95.00	120.0	116.0	120.0	134.4
6	95.00	95.00	95.00	120.0	105.9	120.0	155.9
7	95.00	95.00	95.00	120.0	114.4	120.0	132.4
8	95.00	95.00	95.00	120.0	0.0	101.9	131.7
9	95.00	95.00	95.00	120.0	0.0	117.6	134.2
10	95.00	95.00	95.00	120.0	120.0	120.0	131.9
11	95.00	95.00	95.00	120.0	120.0	120.0	135.5
12	95.00	95.00	95.00	120.0	111.6	120.0	155.2
13	95.00	95.00	95.00	120.0	120.0	120.0	129.2
14	95.00	95.00	95.00	120.0	114.1	120.0	132.7
15	95.00	95.00	95.00	120.0	0.0	116.7	134.5
16	95.00	95.00	95.00	120.0	114.1	120.0	142.8
17	95.00	95.00	95.00	120.0	0.0	119.9	99.9
18	95.00	95.00	95.00	120.0	0.0	120.0	129.3
19	95.00	95.00	95.00	120.0	0.0	118.3	153.9
20	95.00	95.00	95.00	120.0	0.0	4.5	135.7
21	95.00	95.00	95.00	120.0	0.0	46.8	133.2
22	95.00	95.00	95.00	120.0	114.4	120.0	136.9
23	95.00	95.00	95.00	120.0	118.6	120.0	130.9
24	95.00	95.00	95.00	120.0	120.0	120.0	129.1
25	95.00	95.00	95.00	120.0	120.0	120.0	129.2
26	95.00	95.00	95.00	120.0	120.0	120.0	132.7
27	95.00	95.00	95.00	120.0	120.0	120.0	130.2
28	95.00	95.00	95.00	120.0	0.0	119.9	127.2
29	95.00	95.00	95.00	120.0	120.0	120.0	131.8
30	95.00	95.00	95.00	120.0	120.0	120.0	130.8
31	95.00	95.00	95.00	120.0	104.5	119.9	146.7
Total							
Average	95.00	95.00	95.00	120.0	75.3	108.2	129.3
Maximum	95.00		95.00	120.0		120.0	155.9
Date	1-Aug		1-Aug	1-Aug		3-Aug	6-Aug
Minimum		95.00	95.00		0.0	4.5	
Date		1-Aug	1-Aug		1-Aug	20-Aug	

Notes:

Plant Quality Report

Month: **August-17**

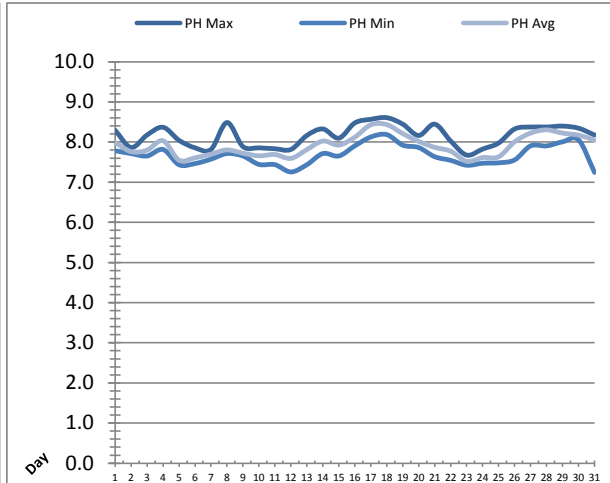
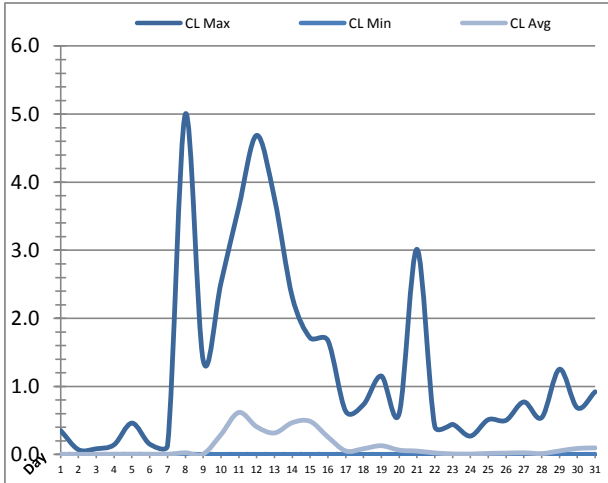


Date	Strainer Chlorine Residual			Strainer pH		
	AIT_2003_CL (ppm)			AIT_2003_PH		
	Maximum	Minimum	Average	Maximum	Minimum	Average
1	0.06	0.00	0.00	8.42	7.93	8.13
2	0.04	0.00	0.00	7.97	7.85	7.90
3	0.04	0.00	0.01	8.31	7.81	7.94
4	0.00	0.00	0.00	8.51	7.96	8.17
5	0.00	0.00	0.00	8.17	7.57	7.70
6	0.01	0.00	0.00	8.04	7.62	7.77
7	0.01	0.00	0.00	7.96	7.76	7.85
8	0.07	0.00	0.01	8.63	7.86	7.95
9	0.01	0.00	0.00	8.11	7.84	7.86
10	0.05	0.00	0.01	8.05	7.68	7.82
11	0.06	0.01	0.04	8.04	7.66	7.84
12	5.00	0.00	0.05	8.20	7.49	7.77
13	5.00	0.00	0.45	8.34	7.54	7.99
14	2.02	0.00	0.41	8.50	7.88	8.21
15	1.51	0.00	0.46	8.26	7.88	8.10
16	2.41	0.00	0.21	8.65	8.09	8.30
17	0.29	0.00	0.02	8.72	8.36	8.60
18	0.45	0.00	0.07	8.75	7.38	8.45
19	0.61	0.00	0.08	8.34	7.93	8.11
20	0.00	0.00	0.00	8.03	7.78	7.92
21	0.33	0.00	0.01	8.40	7.57	7.76
22	0.12	0.00	0.01	8.01	7.47	7.66
23	4.32	0.00	0.00	7.50	7.42	7.39
24	0.05	0.00	0.00	7.72	7.28	7.47
25	0.27	0.00	0.00	7.83	7.32	7.49
26	0.16	0.00	0.00	8.17	7.45	7.86
27	0.11	0.00	0.00	8.28	7.71	8.09
28	0.03	0.00	0.00	8.27	7.95	8.17
29	0.28	0.00	0.01	8.24	7.86	8.08
30	0.15	0.00	0.03	8.18	7.93	8.04
31	0.27	0.00	0.03	8.06	7.76	7.92
Total						
Average	0.77	0.00	0.06	8.21	7.73	7.95
Maximum	5.00		0.46	8.75		8.60
Date	12-Aug		15-Aug	18-Aug		17-Aug
Minimum		0.00	0.00		7.28	7.39
Date		1-Aug	4-Aug		24-Aug	23-Aug

Notes:

Plant Quality Report

Month: August-17

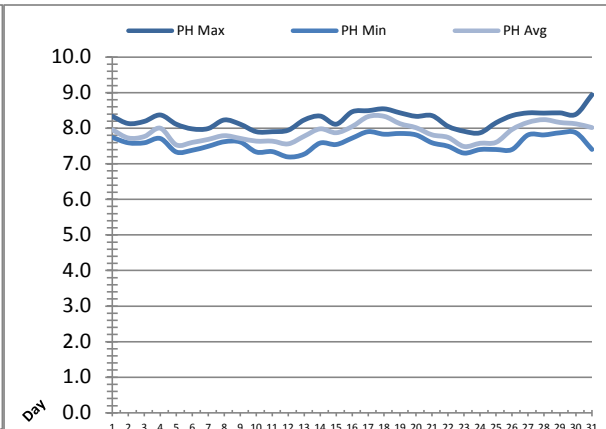
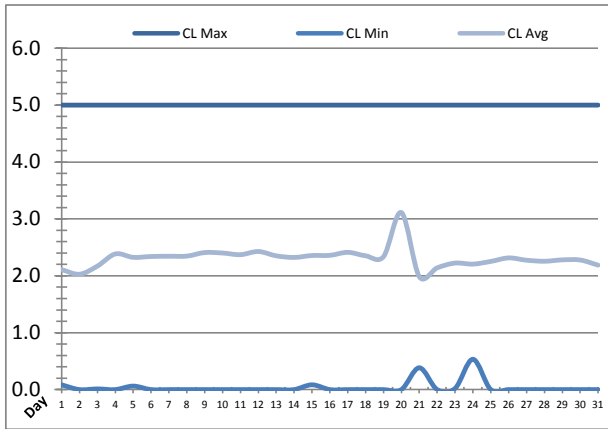


Date	Inlet UV Chlorine Residual			Inlet UV pH		
	AIT_5005_CL (ppm)			AIT_5005_PH		
	Maximum	Minimum	Average	Maximum	Minimum	Average
1	0.35	0.00	0.00	8.29	7.78	7.99
2	0.07	0.00	0.00	7.86	7.71	7.76
3	0.08	0.00	0.00	8.18	7.65	7.80
4	0.14	0.00	0.00	8.37	7.81	8.03
5	0.46	0.00	0.01	8.04	7.43	7.55
6	0.15	0.00	0.01	7.86	7.46	7.61
7	0.13	0.00	0.00	7.81	7.57	7.70
8	5.00	0.00	0.03	8.49	7.71	7.80
9	1.38	0.00	0.01	7.89	7.65	7.72
10	2.52	0.00	0.29	7.86	7.44	7.66
11	3.64	0.00	0.62	7.83	7.44	7.69
12	4.69	0.00	0.41	7.81	7.26	7.59
13	3.76	0.00	0.32	8.16	7.43	7.81
14	2.31	0.00	0.47	8.33	7.71	8.03
15	1.71	0.00	0.49	8.10	7.65	7.92
16	1.67	0.00	0.26	8.48	7.90	8.12
17	0.63	0.00	0.05	8.57	8.13	8.43
18	0.73	0.00	0.09	8.61	8.18	8.43
19	1.15	0.00	0.13	8.44	7.92	8.21
20	0.60	0.00	0.06	8.16	7.86	8.02
21	3.01	0.00	0.05	8.45	7.63	7.87
22	0.41	0.00	0.02	8.02	7.54	7.77
23	0.44	0.00	0.01	7.67	7.42	7.52
24	0.27	0.00	0.01	7.83	7.47	7.61
25	0.51	0.00	0.02	7.98	7.48	7.63
26	0.50	0.00	0.02	8.32	7.55	8.01
27	0.77	0.00	0.03	8.37	7.90	8.22
28	0.54	0.00	0.01	8.37	7.90	8.30
29	1.25	0.00	0.05	8.40	8.01	8.22
30	0.69	0.00	0.09	8.34	8.05	8.17
31	0.92	0.00	0.10	8.18	7.24	8.05
Total						
Average	1.31	0.00	0.12	8.16	7.68	7.91
Maximum	5.00		0.62	8.61		8.43
Date	8-Aug		11-Aug	18-Aug		18-Aug
Minimum		0.00			7.24	7.52
Date		18-Aug	2-Aug		31-Aug	23-Aug

Notes:

Plant Quality Report

Month: **August-17**

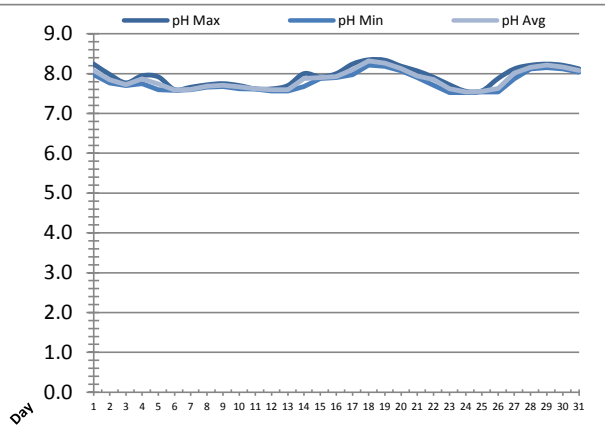
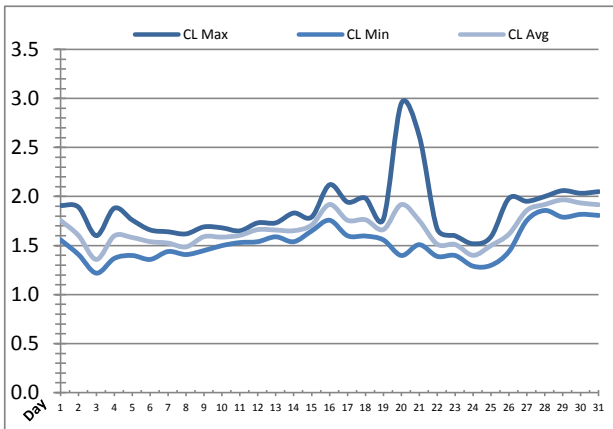


Date	Discharge UV Chlorine Residual			Discharge UV pH		
	AIT_5006_CL (ppm)			AIT_5006_PH		
	Maximum	Minimum	Average	Maximum	Minimum	Average
1	5.00	0.08	2.11	8.34	7.74	7.96
2	5.00	0.00	2.03	8.13	7.59	7.73
3	5.00	0.01	2.17	8.19	7.59	7.77
4	5.00	0.00	2.38	8.37	7.71	8.00
5	5.00	0.06	2.32	8.11	7.33	7.53
6	5.00	0.00	2.34	7.98	7.38	7.60
7	5.00	0.00	2.34	7.99	7.49	7.69
8	5.00	0.00	2.35	8.23	7.62	7.79
9	5.00	0.00	2.41	8.11	7.61	7.72
10	5.00	0.00	2.40	7.90	7.33	7.64
11	5.00	0.00	2.37	7.90	7.34	7.64
12	5.00	0.00	2.43	7.95	7.19	7.56
13	5.00	0.00	2.35	8.23	7.27	7.78
14	5.00	0.00	2.32	8.34	7.58	7.98
15	5.00	0.08	2.36	8.11	7.54	7.87
16	5.00	0.00	2.36	8.46	7.72	8.05
17	5.00	0.00	2.41	8.49	7.90	8.33
18	5.00	0.00	2.35	8.55	7.83	8.34
19	5.00	0.00	2.34	8.43	7.85	8.13
20	5.00	0.00	3.11	8.34	7.81	8.02
21	5.00	0.38	1.99	8.35	7.59	7.81
22	5.00	0.00	2.14	8.05	7.49	7.74
23	5.00	0.02	2.22	7.91	7.30	7.49
24	5.00	0.53	2.21	7.87	7.40	7.58
25	5.00	0.00	2.25	8.15	7.40	7.60
26	5.00	0.00	2.31	8.35	7.40	7.97
27	5.00	0.00	2.27	8.43	7.81	8.17
28	5.00	0.00	2.26	8.43	7.81	8.24
29	5.00	0.00	2.28	8.43	7.87	8.16
30	5.00	0.00	2.28	8.40	7.87	8.12
31	5.00	0.00	2.19	8.94	7.40	8.02
Total						
Average	5.00	0.04	2.31	8.24	7.58	7.87
Maximum	5.00		3.11	8.94		8.34
Date	1-Aug		20-Aug	31-Aug		18-Aug
Minimum		0.00	1.99		7.19	7.49
Date		2-Aug	21-Aug		12-Aug	23-Aug

Notes:

Plant Quality Report

Month: **August-17**

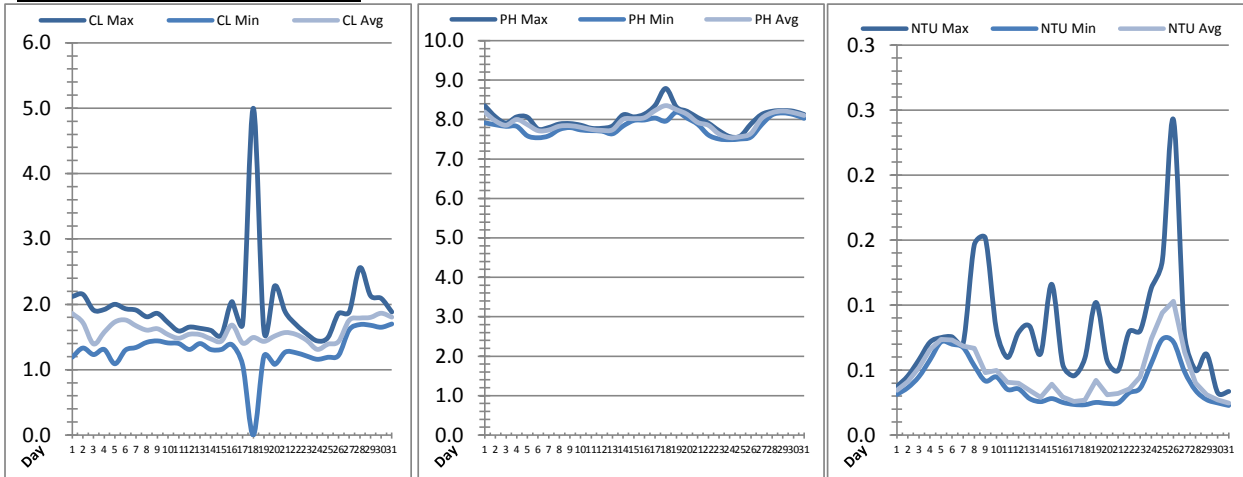


Date	Suction Header Chlorine Res.			Suction Header pH			Distribution CT Calc Total		
	AIT_7001_CL (ppm)			AIT_7001_PH (m)			REAL_CT_CALC_TOTAL (mg*ml/min)		
	Maximum	Minimum	Average	Maximum	Minimum	Average	Maximum	Minimum	Average
1	1.91	1.56	1.76	8.24	7.98	8.07	5174.56	0.00	176.67
2	1.89	1.41	1.60	7.98	7.77	7.84	3974.15	0.00	133.79
3	1.60	1.22	1.36	7.77	7.70	7.72	5298.79	0.00	157.26
4	1.88	1.37	1.60	7.95	7.75	7.87	5002.35	0.00	124.64
5	1.76	1.40	1.58	7.92	7.60	7.74	5261.94	0.00	129.92
6	1.66	1.36	1.54	7.60	7.58	7.59	5297.55	0.00	149.68
7	1.64	1.44	1.52	7.66	7.60	7.61	4387.05	0.00	125.32
8	1.62	1.41	1.49	7.72	7.66	7.69	5238.26	0.00	105.26
9	1.69	1.45	1.59	7.75	7.68	7.71	2908.81	0.00	111.69
10	1.68	1.50	1.59	7.70	7.62	7.67	4673.69	0.00	188.58
11	1.65	1.53	1.60	7.62	7.61	7.62	5251.46	0.00	116.43
12	1.73	1.54	1.66	7.62	7.57	7.59	3927.43	0.00	250.18
13	1.73	1.59	1.66	7.70	7.57	7.60	5928.90	0.00	204.60
14	1.83	1.54	1.65	8.00	7.68	7.87	2949.95	0.00	126.63
15	1.79	1.65	1.71	7.92	7.88	7.90	4775.33	0.00	105.62
16	2.12	1.76	1.92	8.00	7.90	7.92	2891.88	0.00	180.05
17	1.94	1.60	1.76	8.24	7.98	8.10	3681.70	0.00	150.70
18	1.98	1.60	1.76	8.35	8.22	8.32	5481.00	0.00	168.50
19	1.77	1.56	1.66	8.34	8.19	8.27	5250.71	0.00	164.77
20	2.95	1.40	1.92	8.19	8.07	8.13	5258.52	0.00	118.11
21	2.62	1.51	1.75	8.07	7.90	7.94	8601.37	0.00	117.68
22	1.67	1.39	1.51	7.91	7.71	7.85	1497.20	0.00	105.54
23	1.60	1.40	1.51	7.72	7.53	7.62	5288.16	0.00	122.55
24	1.52	1.29	1.40	7.56	7.53	7.54	4609.17	0.00	90.99
25	1.59	1.30	1.50	7.57	7.54	7.55	3401.39	0.00	105.21
26	1.98	1.44	1.62	7.88	7.54	7.63	617.60	0.00	267.92
27	1.95	1.76	1.86	8.12	7.87	8.02	1843.49	0.00	75.10
28	2.00	1.86	1.92	8.21	8.12	8.16	5001.49	0.00	69.53
29	2.06	1.79	1.97	8.24	8.15	8.21	4238.93	0.00	95.22
30	2.03	1.82	1.93	8.21	8.12	8.16	6411.84	0.00	87.44
31	2.05	1.81	1.92	8.12	8.04	8.08	6315.24	0.00	86.61
Total									
Average	1.87	1.52	1.67	7.93	7.79	7.86			
Maximum	2.95		1.97	8.35		8.32			
Date	20-Aug		29-Aug	18-Aug		18-Aug			
Minimum		1.22	1.36		7.53	7.54			
Date		3-Aug	3-Aug		24-Aug	24-Aug			

Notes:

Plant Quality Report

Month: **August-17**

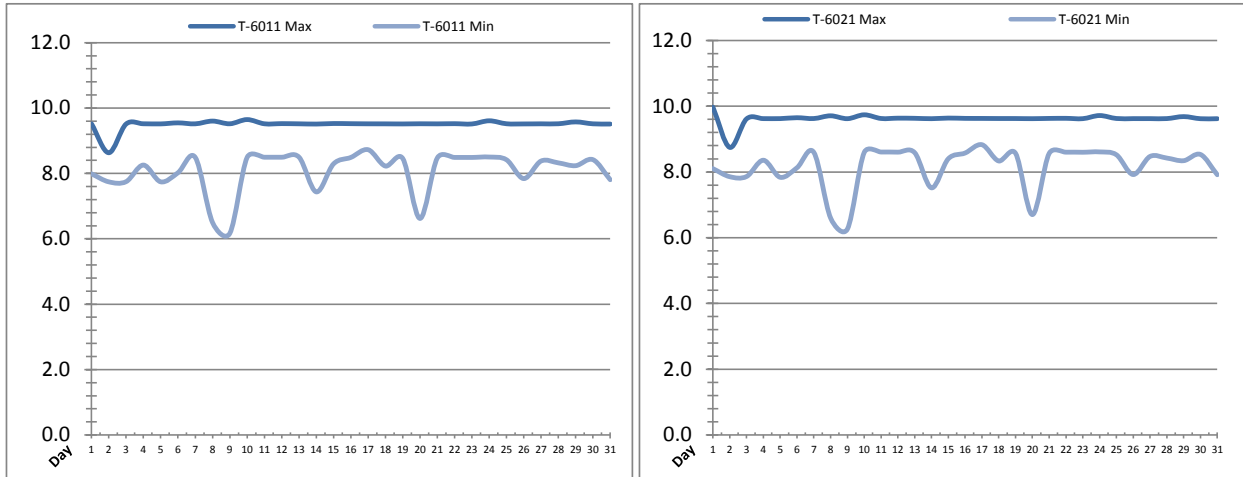


Date	Distribution Chlorine Header			Distribution pH			Distribution Turbidity		
	AIT_7004_CL (ppm)			AIT_7004_PH (mg/L)			AIT_7003 (mg/L)		
	Maximum	Minimum	Average	Maximum	Minimum	Average	Maximum	Minimum	Average
1	2.12	1.19	1.86	8.35	7.92	8.19	0.04	0.03	0.03
2	2.15	1.33	1.72	8.07	7.87	7.96	0.05	0.04	0.04
3	1.91	1.23	1.39	7.91	7.83	7.85	0.06	0.04	0.05
4	1.92	1.31	1.57	8.07	7.83	8.00	0.07	0.06	0.07
5	2.00	1.09	1.73	8.06	7.59	7.87	0.07	0.07	0.07
6	1.93	1.30	1.76	7.76	7.54	7.72	0.08	0.07	0.07
7	1.91	1.34	1.67	7.80	7.59	7.73	0.07	0.07	0.07
8	1.81	1.42	1.61	7.89	7.75	7.83	0.15	0.05	0.07
9	1.86	1.44	1.63	7.90	7.80	7.84	0.15	0.04	0.05
10	1.72	1.41	1.54	7.86	7.74	7.80	0.08	0.04	0.05
11	1.59	1.40	1.48	7.78	7.72	7.75	0.06	0.04	0.04
12	1.65	1.31	1.54	7.78	7.71	7.72	0.08	0.04	0.04
13	1.63	1.40	1.54	7.84	7.64	7.74	0.08	0.03	0.03
14	1.60	1.31	1.47	8.12	7.84	8.01	0.06	0.03	0.03
15	1.53	1.31	1.44	8.07	7.98	8.02	0.12	0.03	0.04
16	2.04	1.38	1.68	8.14	7.99	8.05	0.05	0.03	0.03
17	1.70	1.07	1.41	8.36	8.04	8.23	0.05	0.02	0.03
18	5.00	0.00	1.49	8.79	7.96	8.35	0.06	0.02	0.03
19	1.59	1.21	1.43	8.32	8.19	8.25	0.10	0.03	0.04
20	2.28	1.08	1.51	8.21	8.04	8.13	0.06	0.02	0.03
21	1.88	1.27	1.57	8.05	7.88	7.93	0.05	0.02	0.03
22	1.69	1.26	1.54	7.91	7.61	7.85	0.08	0.03	0.04
23	1.55	1.21	1.45	7.72	7.51	7.63	0.08	0.04	0.04
24	1.44	1.16	1.31	7.57	7.49	7.54	0.11	0.06	0.07
25	1.49	1.19	1.39	7.58	7.51	7.56	0.13	0.07	0.09
26	1.86	1.22	1.43	7.89	7.56	7.65	0.24	0.07	0.10
27	1.88	1.61	1.76	8.13	7.87	8.03	0.08	0.05	0.06
28	2.56	1.69	1.79	8.21	8.12	8.17	0.05	0.03	0.04
29	2.13	1.68	1.80	8.23	8.17	8.22	0.06	0.03	0.03
30	2.09	1.65	1.86	8.21	8.13	8.18	0.03	0.02	0.03
31	1.88	1.70	1.80	8.13	8.03	8.10	0.03	0.02	0.02
Total									
Average	1.95	1.30	1.59	8.02	7.82	7.93	0.1	0.0	0.0
Maximum	5.00		1.86	8.79		8.35	0.2		0.1
Date	18-Aug		30-Aug	18-Aug		18-Aug	26-Aug		26-Aug
Minimum		0.00	1.31		7.49	7.54		0.0	0.0
Date		18-Aug	24-Aug		24-Aug	24-Aug		31-Aug	31-Aug

Notes:

Raw Well/Treated Storage Report

Month: August-17

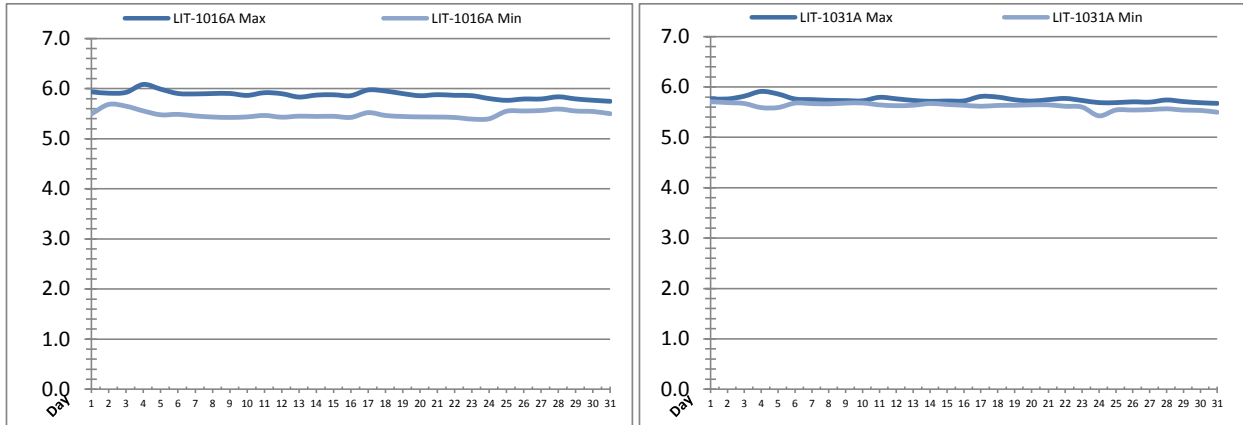


Date	Treated Water Storage Tank					
	T-6011 (m)			T-6021 (m)		
	Maximum	Minimum	Average	Maximum	Minimum	Average
1	9.5	8.0	8.8	10.0	8.1	9.4
2	8.6	7.7	8.1	8.7	7.9	8.3
3	9.5	7.7	8.7	9.6	7.9	8.8
4	9.5	8.3	8.9	9.6	8.4	9.0
5	9.5	7.7	8.6	9.6	7.8	8.7
6	9.5	8.0	9.0	9.7	8.1	9.1
7	9.5	8.5	9.0	9.6	8.6	9.2
8	9.6	6.5	8.8	9.7	6.6	8.9
9	9.5	6.2	8.4	9.6	6.3	8.5
10	9.6	8.5	9.1	9.7	8.6	9.2
11	9.5	8.5	9.1	9.6	8.6	9.2
12	9.5	8.5	9.1	9.6	8.6	9.2
13	9.5	8.5	9.0	9.6	8.6	9.1
14	9.5	7.4	8.7	9.6	7.5	8.8
15	9.5	8.3	9.1	9.6	8.4	9.2
16	9.5	8.5	9.0	9.6	8.6	9.1
17	9.5	8.7	9.1	9.6	8.8	9.3
18	9.5	8.2	9.1	9.6	8.3	9.2
19	9.5	8.5	9.0	9.6	8.6	9.1
20	9.5	6.6	7.9	9.6	6.7	8.0
21	9.5	8.5	9.0	9.6	8.6	9.1
22	9.5	8.5	9.1	9.6	8.6	9.2
23	9.5	8.5	9.0	9.6	8.6	9.1
24	9.6	8.5	9.2	9.7	8.6	9.3
25	9.5	8.4	9.0	9.6	8.5	9.1
26	9.5	7.8	8.8	9.6	7.9	8.9
27	9.5	8.4	9.0	9.6	8.5	9.2
28	9.5	8.3	9.1	9.6	8.4	9.3
29	9.6	8.2	9.1	9.7	8.3	9.2
30	9.5	8.4	9.0	9.6	8.5	9.1
31	9.5	7.8	9.0	9.6	7.9	9.1
Total						
Average	9.5	8.1	8.9	9.6	8.2	9.0
Maximum	9.6		9.2	10.0		9.4
Date	10-Aug		24-Aug	1-Aug		1-Aug
Minimum		6.2	7.9		6.3	8.0
Date		9-Aug	20-Aug		9-Aug	20-Aug

Notes:

Raw Well/Treated Storage Report

Month: **August-17**

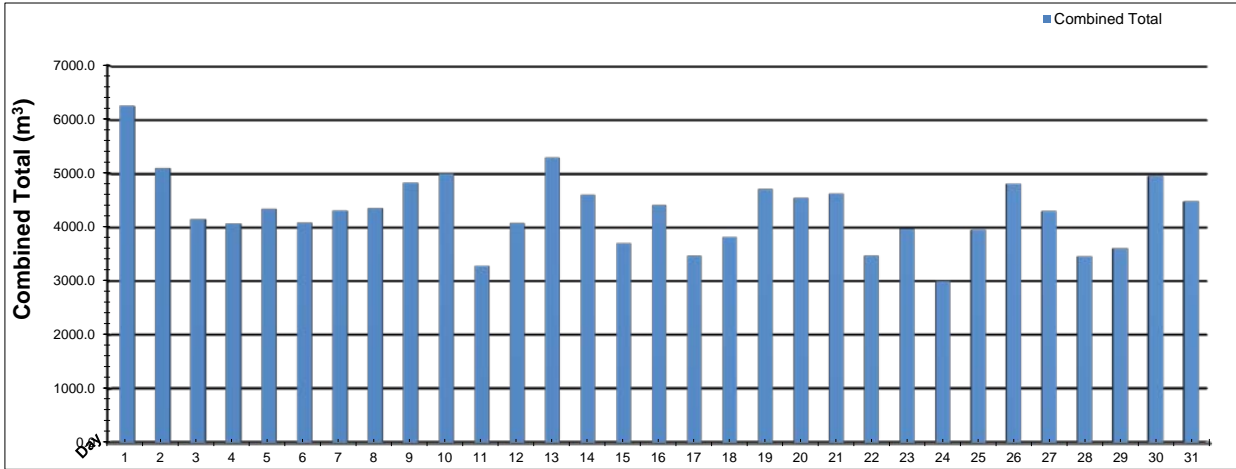


Date	Low Lift Intake Levels					
	Wet Well #1 (LIT-1016A) (m)			Wet Well #2 (LIT-1031A) (m)		
	Maximum	Minimum	Average	Maximum	Minimum	Average
1	5.9	5.5	5.7	5.8	5.7	5.7
2	5.9	5.7	5.7	5.8	5.7	5.7
3	5.9	5.6	5.7	5.8	5.7	5.7
4	6.1	5.6	5.8	5.9	5.6	5.7
5	6.0	5.5	5.7	5.9	5.6	5.7
6	5.9	5.5	5.7	5.8	5.7	5.7
7	5.9	5.5	5.7	5.7	5.7	5.7
8	5.9	5.4	5.7	5.7	5.7	5.7
9	5.9	5.4	5.6	5.7	5.7	5.7
10	5.9	5.4	5.7	5.7	5.7	5.7
11	5.9	5.5	5.7	5.8	5.6	5.7
12	5.9	5.4	5.7	5.8	5.6	5.7
13	5.8	5.5	5.6	5.7	5.6	5.7
14	5.9	5.4	5.6	5.7	5.7	5.7
15	5.9	5.4	5.7	5.7	5.7	5.7
16	5.9	5.4	5.7	5.7	5.6	5.7
17	6.0	5.5	5.7	5.8	5.6	5.7
18	6.0	5.5	5.7	5.8	5.6	5.7
19	5.9	5.4	5.7	5.7	5.6	5.7
20	5.9	5.4	5.6	5.7	5.6	5.7
21	5.9	5.4	5.7	5.7	5.6	5.7
22	5.9	5.4	5.7	5.8	5.6	5.7
23	5.9	5.4	5.6	5.7	5.6	5.7
24	5.8	5.4	5.7	5.7	5.4	5.6
25	5.8	5.5	5.7	5.7	5.5	5.6
26	5.8	5.6	5.7	5.7	5.5	5.6
27	5.8	5.6	5.7	5.7	5.5	5.6
28	5.8	5.6	5.7	5.7	5.6	5.7
29	5.8	5.6	5.7	5.7	5.5	5.6
30	5.8	5.5	5.7	5.7	5.5	5.6
31	5.7	5.5	5.6	5.7	5.5	5.6
Total						
Average	5.9	5.5	5.7	5.7	5.6	5.7
Maximum	6.1		5.8	5.9		5.7
Date	4-Aug		4-Aug	4-Aug		4-Aug
Minimum		5.4	5.6		5.4	5.6
Date		23-Aug	9-Aug		24-Aug	31-Aug

Notes:

High Lift Monthly Report

Month: August-17



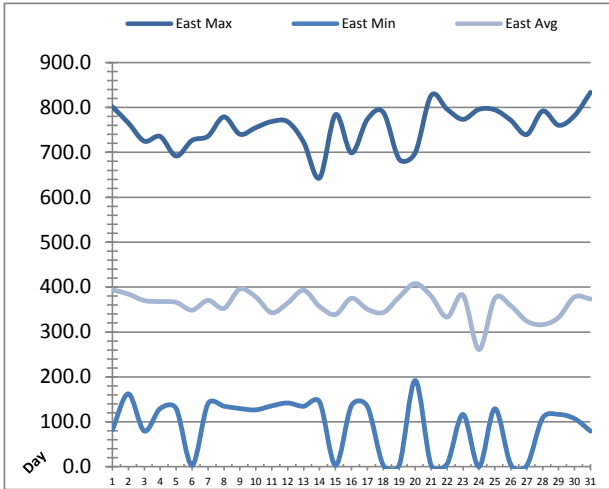
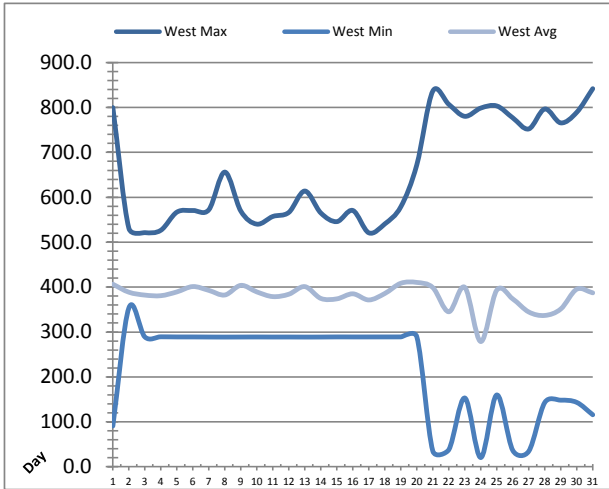
Date	Distribution Flow					
	FIT_7052 (East)		FIT_7062 (West)		Combined	
	(m³)	(L/s)	(m³)	(L/s)	(m³)	(L/s)
	Total	Peak	Total	Peak	Total	Peak
1	1634.5	35.0	4624.4	87.7	6258.9	110.4
2	1478.0	47.1	3622.8	123.1	5100.7	157.8
3	1337.7	51.2	2821.4	95.9	4159.2	104.3
4	888.9	41.0	3178.6	95.2	4067.6	102.4
5	1255.2	39.5	3087.0	87.0	4342.1	105.0
6	1268.1	50.7	2820.9	91.4	4089.0	104.5
7	1071.6	37.3	3243.3	96.5	4314.9	103.7
8	835.0	49.9	3526.5	96.0	4361.5	105.1
9	982.8	51.2	3847.5	100.6	4830.3	106.5
10	1542.1	51.4	3453.7	92.1	4995.8	105.4
11	859.8	40.3	2431.5	94.9	3291.4	102.3
12	1351.9	34.2	2723.3	94.6	4075.2	102.2
13	1456.2	52.3	3831.9	93.1	5288.1	104.3
14	1353.8	51.1	3247.9	87.5	4601.7	105.3
15	494.6	19.6	3212.9	91.1	3707.5	99.6
16	784.3	34.2	3624.8	92.5	4409.0	100.9
17	822.6	39.8	2648.2	91.8	3470.7	102.3
18	1050.1	40.3	2778.7	93.6	3828.8	102.8
19	1110.1	39.6	3605.1	92.2	4715.2	105.9
20	1146.8	45.5	3400.9	112.6	4547.7	156.1
21	1148.8	41.2	3479.7	125.2	4628.4	157.5
22	902.8	39.0	2573.1	93.5	3475.8	101.9
23	879.8	51.7	3095.4	92.1	3975.3	101.6
24	597.6	33.5	2405.2	95.9	3002.8	105.6
25	872.3	51.1	3089.4	92.2	3961.8	102.8
26	4809.0	156.6	0.0	0.0	4809.0	156.6
27	4306.3	153.7	0.0	0.0	4306.3	153.7
28	3459.6	159.1	0.0	0.0	3459.6	159.1
29	3612.6	154.4	0.0	0.0	3612.6	154.4
30	4955.0	154.8	0.5	101.6	4955.5	249.0
31	4479.4	151.2	0.0	0.0	4479.4	151.2
Total	52747.1		80374.8		133121.9	
Average	1701.5	64.4	2592.7	81.0	4294.3	121.9
Maximum	4955.0	159.1	4624.4	125.2	6258.9	249.0
Date	30-Aug	28-Aug	1-Aug	21-Aug	1-Aug	30-Aug
Minimum	494.6		0.0		3002.8	
Date	15-Aug		26-Aug		24-Aug	

Notes:

Issues with flow control valve, plant is operating in combined mode as of Aug 26th.

Low Lift Monthly Report

Month: **August-17**

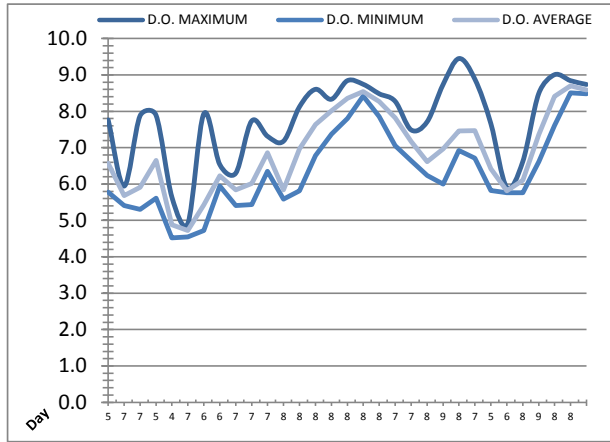
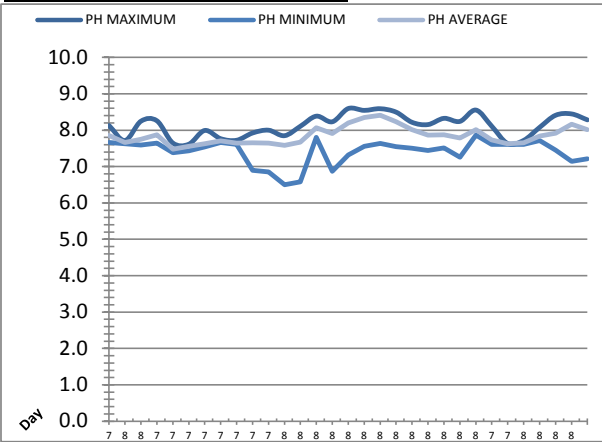


Date	West Train Header Pressure PIT_1018 (kPa)			East Train Header Pressure PIT_1028 (kPa)		
	Maximum	Minimum	Average	Maximum	Minimum	Average
	1	799.7	90.8	406.4	801.3	82.1
2	531.0	353.5	388.7	765.6	162.4	384.5
3	521.3	289.0	382.2	725.0	79.6	370.0
4	526.6	289.4	380.9	735.5	129.7	367.8
5	566.9	289.1	389.3	691.8	129.7	366.1
6	570.5	289.0	401.2	726.7	3.3	348.8
7	572.2	288.9	392.7	735.9	140.5	370.4
8	656.1	288.7	382.4	779.1	134.8	352.7
9	569.2	288.9	403.9	740.4	129.6	395.7
10	540.2	289.0	389.3	755.2	126.7	378.0
11	557.3	288.8	378.8	768.7	135.6	343.1
12	566.3	288.9	384.2	768.3	142.0	364.7
13	613.9	288.7	401.1	722.7	134.5	392.9
14	565.1	288.8	374.8	643.0	144.5	356.9
15	545.8	289.1	373.8	784.0	3.3	339.1
16	570.7	289.0	385.1	698.9	136.0	375.1
17	520.8	289.0	371.4	773.8	134.2	350.9
18	540.7	289.1	385.8	789.0	3.2	343.6
19	578.8	289.1	408.5	684.6	3.7	377.9
20	672.2	289.5	410.4	698.9	192.1	407.9
21	836.4	35.1	399.0	826.5	3.3	380.0
22	806.9	37.9	345.1	796.1	6.3	333.2
23	780.3	153.2	399.5	773.5	116.6	381.9
24	798.7	20.4	278.7	795.8	0.0	260.9
25	803.3	159.9	393.2	794.7	129.1	375.0
26	776.9	36.3	373.6	771.4	4.7	358.4
27	752.2	34.6	344.6	739.7	2.6	324.2
28	796.7	143.1	336.9	792.1	108.8	316.4
29	765.6	148.2	351.3	760.3	116.5	332.5
30	789.2	143.3	395.3	781.9	107.1	378.1
31	841.8	115.7	387.2	833.6	79.3	373.5
Total						
Average	655.9	215.3	380.5	756.6	91.0	361.1
Maximum	841.8		410.4	833.6		407.9
Date	31-Aug		20-Aug	31-Aug		20-Aug
Minimum		20.4	278.7		0.0	260.9
Date		24-Aug	24-Aug		24-Aug	24-Aug

Notes:

Low Lift Monthly Report

Month: **August-17**

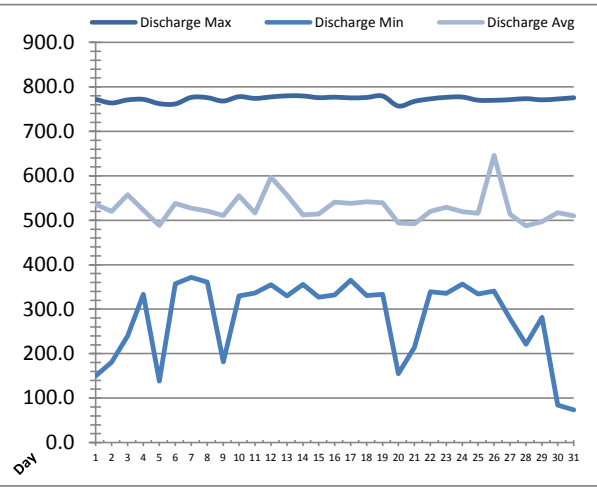
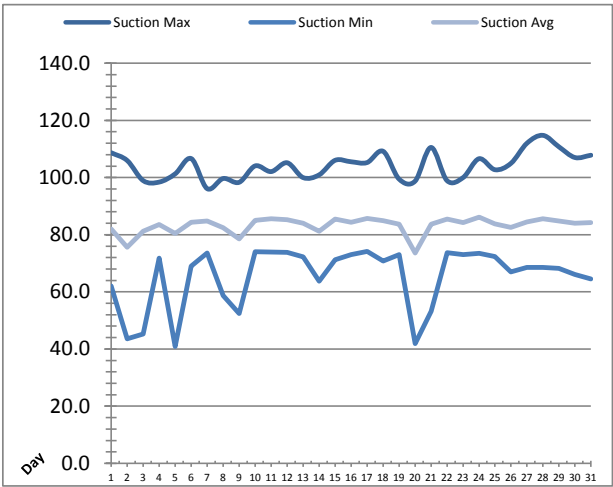


Raw Water Sample Line						
Date	AIT_1402_PH (pH)			AIT_1402_DO (mg/L)		
	Maximum	Minimum	Average	Maximum	Minimum	Average
1	8.1	7.7	7.9	7.8	5.8	6.6
2	7.7	7.6	7.7	5.9	5.4	5.7
3	8.2	7.6	7.7	7.9	5.3	5.9
4	8.3	7.6	7.9	7.9	5.6	6.7
5	7.6	7.4	7.5	5.6	4.5	4.9
6	7.6	7.4	7.6	4.9	4.5	4.7
7	8.0	7.5	7.6	7.9	4.7	5.4
8	7.8	7.7	7.7	6.5	6.0	6.2
9	7.7	7.6	7.6	6.3	5.4	5.8
10	7.9	6.9	7.7	7.7	5.4	6.0
11	8.0	6.8	7.6	7.3	6.4	6.9
12	7.8	6.5	7.6	7.2	5.6	5.8
13	8.1	6.6	7.7	8.1	5.8	7.0
14	8.4	7.8	8.1	8.6	6.8	7.6
15	8.2	6.9	7.9	8.3	7.4	8.0
16	8.6	7.3	8.2	8.8	7.8	8.4
17	8.5	7.6	8.4	8.7	8.4	8.5
18	8.6	7.6	8.4	8.5	7.9	8.3
19	8.5	7.5	8.2	8.3	7.1	7.8
20	8.2	7.5	8.0	7.5	6.6	7.2
21	8.2	7.4	7.9	7.7	6.2	6.6
22	8.3	7.5	7.9	8.7	6.0	7.0
23	8.2	7.3	7.8	9.5	6.9	7.5
24	8.6	7.9	8.0	8.9	6.7	7.5
25	8.1	7.6	7.7	7.7	5.8	6.4
26	7.6	7.6	7.6	5.9	5.8	5.8
27	7.7	7.6	7.7	6.6	5.8	6.1
28	8.1	7.7	7.8	8.5	6.6	7.4
29	8.4	7.4	7.9	9.0	7.6	8.4
30	8.4	7.1	8.2	8.8	8.5	8.7
31	8.3	7.2	8.0	8.7	8.5	8.6
Total						
Average	8.1	7.4	7.9	7.7	6.3	6.9
Maximum	8.6		8.4	9.5		8.7
Date	16-Aug		18-Aug	23-Aug		30-Aug
Minimum		6.5	7.5		4.5	4.7
Date		12-Aug	5-Aug		5-Aug	6-Aug

Notes:
 Experienced low dissolved oxygen but was manageable at the plant.

High Lift Monthly Report

Month: **August-17**

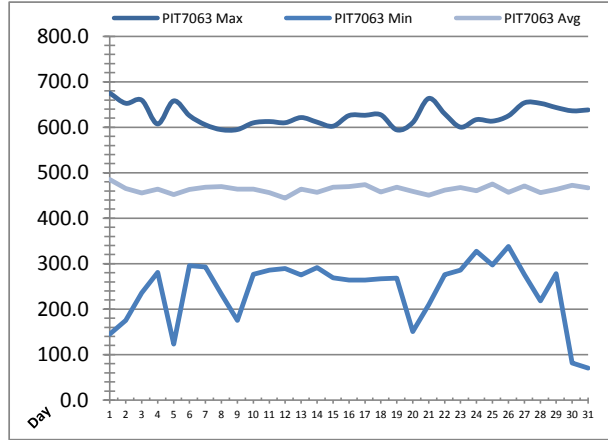
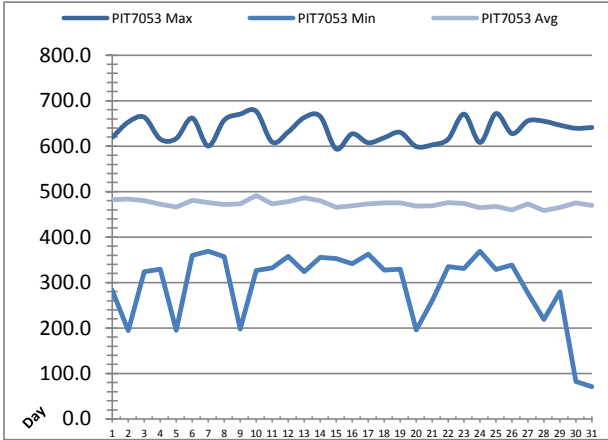


Date	Suction Header Pressure			Discharge Header Pressure		
	PIT_7002 (kPa)			PIT_7005 (kPa)		
	Maximum	Minimum	Average	Maximum	Minimum	Average
1	108.7	62.0	82.0	772.1	149.7	535.7
2	105.9	43.6	75.6	763.9	180.9	520.2
3	98.9	45.2	81.2	770.7	239.6	557.6
4	98.4	71.8	83.5	771.9	333.3	522.8
5	101.3	40.9	80.4	762.3	138.0	488.6
6	106.6	69.0	84.4	761.7	357.0	538.2
7	96.1	73.6	84.7	776.5	371.8	527.0
8	99.7	58.7	82.5	775.9	360.9	520.5
9	98.3	52.5	78.5	768.2	181.8	510.4
10	104.1	74.1	85.0	778.0	329.5	555.1
11	102.1	73.9	85.6	774.2	336.6	516.5
12	105.2	73.8	85.3	777.4	354.9	597.1
13	100.0	72.2	84.0	779.9	330.2	556.5
14	100.9	63.7	81.2	779.7	355.8	511.8
15	106.0	71.3	85.5	775.8	327.3	514.1
16	105.5	73.1	84.3	776.9	332.0	540.8
17	105.2	74.1	85.7	775.3	365.2	538.0
18	109.2	70.8	84.9	776.2	330.9	541.5
19	99.5	73.0	83.7	779.5	333.5	539.6
20	98.7	41.9	73.5	757.0	154.8	493.8
21	110.5	53.2	83.7	767.5	214.0	491.8
22	98.9	73.7	85.5	773.1	339.1	519.7
23	100.0	73.1	84.3	776.6	335.8	529.0
24	106.6	73.5	86.2	777.2	356.8	519.3
25	102.7	72.4	83.8	770.1	334.4	515.6
26	105.0	67.0	82.5	769.8	341.0	646.1
27	112.0	68.6	84.5	771.3	279.1	513.6
28	114.8	68.5	85.6	773.5	221.0	487.3
29	110.7	68.3	84.8	770.9	281.3	496.8
30	107.0	66.1	84.0	772.9	84.4	517.2
31	107.8	64.6	84.2	775.6	73.7	510.2
Total						
Average	104.1	65.4	83.2	772.6	281.4	528.1
Maximum	114.8		86.2	779.9		646.1
Date	28-Aug		24-Aug	13-Aug		26-Aug
Minimum		40.9	73.5		73.7	487.3
Date		5-Aug	20-Aug		31-Aug	28-Aug

Notes:

High Lift Monthly Report

Month: **August-17**

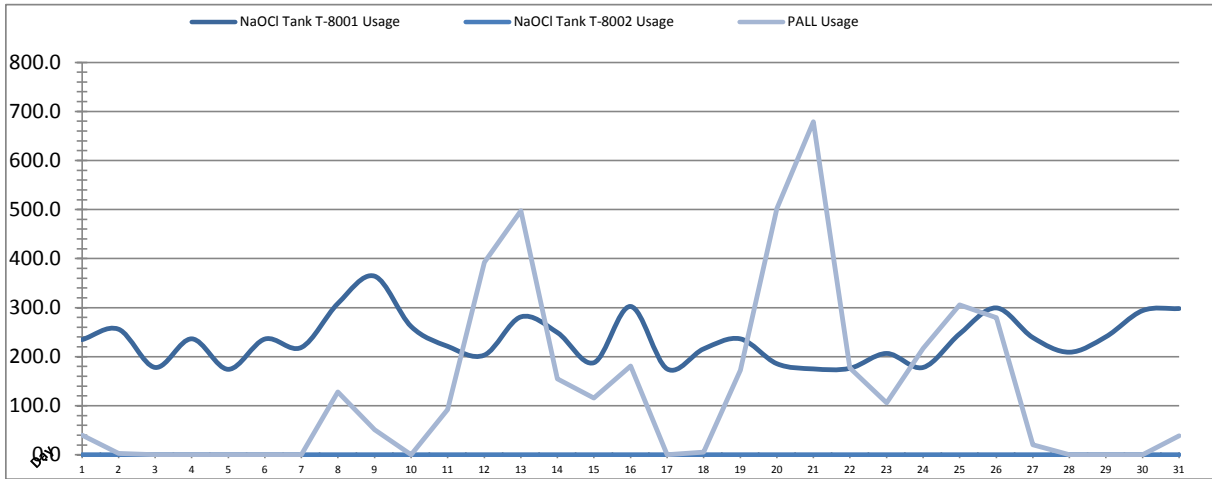


Date	Distribution Pressures					
	PIT_7053 (kPa)			PIT_7063 (kPa)		
	Maximum	Minimum	Average	Maximum	Minimum	Average
1	619.4	283.1	482.2	675.1	145.3	485.0
2	653.0	194.4	483.9	652.7	174.9	465.3
3	663.5	323.9	480.4	659.6	235.5	455.5
4	615.4	329.8	472.5	607.4	281.0	463.8
5	616.8	194.9	465.9	657.9	123.0	451.6
6	661.8	360.0	480.7	625.4	295.7	463.0
7	600.1	368.8	475.9	605.3	292.7	468.3
8	657.3	357.1	471.8	594.6	233.0	469.5
9	670.4	197.7	473.3	595.0	175.3	464.1
10	676.7	326.8	491.6	609.7	276.7	464.2
11	608.8	332.2	472.9	612.6	285.5	456.0
12	631.1	357.7	477.9	610.0	289.5	444.5
13	662.9	324.0	486.4	621.4	275.1	463.9
14	665.5	355.7	480.4	611.2	291.4	456.9
15	593.9	352.8	465.1	602.4	268.6	468.1
16	627.0	341.6	468.7	625.8	263.9	469.8
17	607.6	362.3	473.0	626.3	263.7	473.8
18	618.4	327.4	475.0	627.3	267.1	457.3
19	630.3	329.3	475.5	594.2	267.8	468.5
20	599.3	195.7	468.4	610.3	150.5	459.2
21	602.8	260.4	469.2	663.4	209.9	450.4
22	615.2	334.8	475.8	629.7	276.0	461.7
23	670.4	331.0	474.1	600.3	286.0	467.4
24	608.2	368.9	464.9	616.8	327.3	460.4
25	671.7	328.9	467.2	613.5	296.7	475.5
26	627.6	338.9	459.7	625.1	337.7	457.1
27	655.8	276.9	473.4	653.7	276.0	470.7
28	654.7	218.9	458.4	652.6	217.9	456.1
29	646.1	279.2	465.3	643.3	278.2	463.0
30	639.3	82.1	475.4	636.1	81.5	472.4
31	641.0	71.0	469.8	638.1	70.3	467.1
Total						
Average	635.9	293.8	473.4	625.7	242.4	463.6
Maximum	676.7		491.6	675.1		485.0
Date	10-Aug		10-Aug	1-Aug		1-Aug
Minimum		71.0	458.4		70.3	444.5
Date		31-Aug	28-Aug		31-Aug	12-Aug

Notes:
 30, 31: maintenance on flow control caused low pressure for <1min.

Chemical Usage Monthly Report

Month: **August-17**

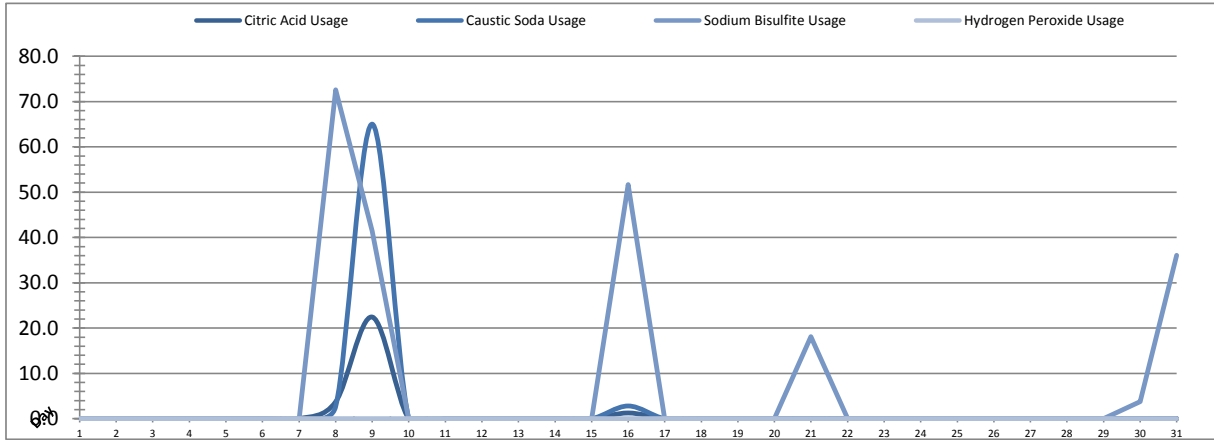


Date	PALL Usage	NaOCl Tank T-8001	NaOCl Tank T-8002
	PALL_HYPO_USAGE (L) Usage	LIT_8002 (Storage) (L) Usage	LIT_8004 (Day) (L) Usage
1	39.6	234.7	0.0
2	2.9	256.0	0.0
3	0.3	178.0	0.0
4	0.0	236.4	0.0
5	0.0	174.2	0.0
6	0.0	235.9	0.0
7	0.0	218.9	0.0
8	128.3	308.8	0.0
9	51.2	364.1	0.0
10	0.3	261.5	0.0
11	92.2	221.0	0.0
12	392.7	203.1	0.0
13	497.8	281.1	0.0
14	154.70	249.13	0.0
15	115.6	187.8	0.0
16	180.8	302.4	0.0
17	0.0	175.0	0.0
18	5.0	215.9	0.0
19	172.5	236.4	0.0
20	502.1	185.7	0.0
21	679.0	175.0	0.0
22	177.2	176.3	0.0
23	106.2	206.6	0.0
24	216.6	178.0	0.0
25	305.3	246.6	0.0
26	279.2	299.4	0.0
27	20.3	238.9	0.0
28	0.0	209.1	0.0
29	0.0	240.6	0.0
30	0.0	293.9	0.0
31	38.5	298.1	0.0
Total	4158.3	7288.5	1.1
Average	134.1	235.1	0.0
Maximum	679.0	364.1	0.0
Date	21-Aug	9-Aug	1-Aug
Minimum	0.0	174.2	0.0
Date	4-Aug	5-Aug	1-Aug

Notes:	
Dosage (mg/L)=	Day Tank (L) x %conc. x 1000
	Membrane Flow (m3)
Chlorine Concentration:	12.0%

Chemical Usage Monthly Report

Month: **August-17**



Date	Citric Acid	Caustic Soda	Captor	Hydrogen Peroxide		Membrane Flow (m ³)
	TAGNAME (L) Usage	TAGNAME (L) Usage	TAGNAME (L) Usage	TAGNAME (L) Usage	TAGNAME (mg/L) Dose	
1	0.0	0.0	0.0	0.0	0.0	6299.681
2	0.0	0.0	0.0	0.0	0.0	5493.056
3	0.0	0.0	0.0	0.0	0.0	4891.492
4	0.0	0.0	0.0	0.0	0.0	4789.359
5	0.0	0.0	0.0	0.0	0.0	3959.602
6	0.0	0.0	0.0	0.0	0.0	4865.485
7	0.0	0.0	0.0	0.0	0.0	4468.518
8	3.7	2.7	72.6	0.0	0.0	3644.504
9	22.4	65.0	41.4	0.0	0.0	6069.552
10	0.0	0.0	0.0	0.0	0.0	5364.646
11	0.0	0.0	0.0	0.0	0.0	3918.885
12	0.0	0.0	0.0	0.0	0.0	4235.758
13	0.0	0.0	0.0	0.0	0.0	5471.765
14	0.0	0.0	0.0	0.0	0.0	5023.533
15	0.0	0.0	0.0	0.0	0.0	3927.721
16	1.3	2.8	51.6	0.0	0.0	4718.762
17	0.0	0.0	0.0	0.0	0.0	3719.429
18	0.0	0.0	0.0	0.0	0.0	4374.550
19	0.0	0.0	0.0	0.0	0.0	4923.942
20	0.0	0.0	0.0	0.0	0.0	4833.734
21	0.0	0.0	18.1	0.0	0.0	5071.307
22	0.0	0.0	0.0	0.0	0.0	3727.200
23	0.0	0.0	0.0	0.0	0.0	4117.016
24	0.0	0.0	0.0	0.0	0.0	3199.995
25	0.0	0.0	0.0	0.0	0.0	4594.494
26	0.0	0.0	0.0	0.0	0.0	5098.194
27	0.0	0.0	0.0	0.0	0.0	4260.510
28	0.0	0.0	0.0	0.0	0.0	3448.707
29	0.0	0.0	0.0	0.0	0.0	4232.321
30	0.0	0.0	3.7	0.0	0.0	5401.100
31	0.0	0.0	36.1	0.0	0.0	4511.286
Total	27.4	70.5	223.6	0.0	0.0	142656.1
Average	0.9	2.3	7.2	0.0	0.0	4601.8
Maximum	22.4	65.0	72.6	0.0	0.0	6299.7
Date	9-Aug	9-Aug	8-Aug	1-Aug	1-Aug	1-Aug
Minimum	0.0	0.0	0.0	0.0	0.0	3200.0
Date	1-Aug	1-Aug	1-Aug	1-Aug	1-Aug	24-Aug

Notes:	
Dosage (mg/L)=	Day Tank (L) x %conc. x 1000
	Membrane Flow (m3)
Peroxide Concentration:	50.0%

Runtimes Report

Month: August-17

Date	Daily Gen-Set Runtimes		Daily UV Runtimes		Daily PALL Runtimes				
	LLPS	WTP	UV #1	UV #2	Air Compressor #1	Air Compressor #2	CIP Neutralization	CIP Drain	CIP Recirc
	(Hrs)	(Hrs)	(Hrs)	(Hrs)	(Hrs)	(Hrs)	(Hrs)	(Hrs)	(Hrs)
1	0.0	0.0	0.0	4.0	23.9	0.0	0.0	0.0	0.1
2	0.0	1.9	0.0	12.9	24.3	0.0	0.0	0.0	0.0
3	0.0	0.0	0.0	21.4	24.4	0.0	0.0	0.0	0.0
4	0.0	0.0	0.0	20.7	24.4	0.0	0.0	0.0	0.0
5	0.0	0.0	0.0	16.1	24.4	0.0	0.0	0.0	0.0
6	0.0	0.0	0.0	15.2	24.4	0.0	0.0	0.0	0.0
7	0.0	0.0	0.0	15.3	24.4	0.0	0.0	0.0	0.0
8	0.0	0.0	0.0	14.7	10.4	13.7	0.7	0.5	1.1
9	0.0	0.0	18.9	0.0	24.4	0.0	0.3	0.1	1.7
10	0.0	0.0	19.7	0.0	0.0	23.9	0.0	0.0	0.0
11	0.0	0.0	14.2	0.0	24.4	0.0	0.0	0.0	0.0
12	0.0	0.0	14.8	0.0	0.0	23.9	0.0	0.0	0.0
13	0.0	0.0	19.5	0.0	24.4	0.0	0.0	0.0	0.0
14	0.0	0.0	15.9	0.0	0.0	23.9	0.0	0.0	0.0
15	0.0	0.0	14.9	0.0	24.4	0.0	0.0	0.0	0.0
16	0.0	0.0	19.1	0.0	0.0	23.9	0.4	0.2	1.0
17	0.0	0.0	16.3	0.0	24.2	0.0	0.0	0.0	0.0
18	0.0	0.0	16.1	0.0	14.6	8.9	0.0	0.0	0.0
19	0.0	0.0	19.3	0.0	23.1	0.0	0.0	0.0	0.0
20	0.0	0.0	0.6	0.0	0.0	23.9	0.0	0.0	0.0
21	1.5	0.1	6.9	0.0	24.2	0.1	0.0	0.0	0.0
22	0.0	0.0	13.7	0.0	24.3	0.1	0.0	0.0	0.0
23	0.0	0.0	16.3	0.0	24.3	0.2	0.0	0.0	0.0
24	0.0	0.0	12.8	0.0	14.3	9.9	0.0	0.0	0.0
25	0.0	0.0	16.7	0.0	24.4	0.0	0.0	0.0	0.0
26	0.0	0.0	16.8	0.0	0.0	23.9	0.0	0.0	0.0
27	0.0	0.0	16.2	0.0	24.4	0.0	0.0	0.0	0.0
28	0.0	0.0	6.4	7.1	0.0	23.9	0.0	0.0	0.0
29	0.0	0.0	0.0	15.4	24.4	0.0	0.0	0.0	0.0
30	0.0	0.0	0.0	20.0	0.0	23.9	0.0	0.0	0.0
31	0.0	0.0	15.9	0.6	24.0	0.3	0.2	0.1	0.5
Total	1.5	2.0	311.3	163.6	523.9	224.4	1.6	0.9	4.4

Notes:

Runtimes Report

Month: August-17

Daily

Date	PALL Runtimes						Process Drain	
	RFR Pump #1 (Hrs)	RFR Pump #2 (Hrs)	RF Pump #1 (Hrs)	RF Pump #2 (Hrs)	XR Pump #1 (Hrs)	XR Pump #2 (Hrs)	PDP9010 Pump (Hrs)	PDP9020 Pump (Hrs)
1	0.0	0.0	0.9	1.0	19.7	0.0	2.0	2.3
2	0.0	0.0	0.9	0.8	23.4	0.0	2.1	3.9
3	0.0	0.0	0.7	0.8	20.9	0.0	1.9	2.3
4	0.0	0.0	0.8	0.7	20.3	0.0	1.8	2.4
5	0.0	0.0	0.6	0.6	14.5	0.0	1.9	2.5
6	0.0	0.0	0.8	0.8	14.2	0.0	2.0	2.4
7	0.0	0.0	0.7	0.7	14.8	0.0	2.1	2.6
8	0.0	0.0	0.5	0.6	14.2	0.0	2.7	3.5
9	0.0	0.0	0.9	0.8	19.1	0.0	7.8	13.2
10	0.0	0.0	0.9	0.7	19.4	0.0	2.3	9.8
11	0.0	0.0	0.5	0.7	13.8	0.0	2.1	2.6
12	0.0	0.0	0.7	0.7	14.5	0.0	2.1	2.7
13	0.0	0.0	0.8	0.8	19.1	0.0	2.0	2.6
14	0.0	0.0	0.8	0.8	15.4	0.0	7.0	6.3
15	0.0	0.0	0.6	0.7	15.7	0.0	8.5	3.2
16	0.0	0.0	0.7	0.7	18.7	0.0	2.0	2.4
17	0.0	0.0	0.5	0.6	16.1	0.0	2.1	2.6
18	0.0	0.0	0.7	0.7	15.6	0.0	5.3	6.2
19	0.0	0.0	0.9	0.8	18.1	0.0	2.3	3.4
20	0.0	0.0	0.7	0.7	11.4	0.0	22.3	23.7
21	0.0	0.0	0.8	0.7	17.5	0.1	4.0	4.6
22	0.0	0.0	0.5	0.6	3.5	0.0	2.0	2.6
23	0.0	0.0	0.7	0.7	0.0	0.0	2.1	2.6
24	0.0	0.0	0.5	0.6	0.0	0.0	2.0	2.6
25	0.0	0.0	0.7	0.6	0.0	0.0	2.0	2.5
26	0.0	0.0	0.8	0.9	0.0	0.0	1.9	2.3
27	0.0	0.0	0.6	0.7	0.0	0.0	1.9	2.4
28	0.0	0.0	0.5	0.5	0.0	0.0	2.0	2.5
29	0.0	0.0	0.6	0.7	0.0	0.0	2.0	2.5
30	0.0	0.0	0.9	0.8	0.0	0.0	1.9	2.3
31	3.5	3.5	0.8	0.9	15.5	0.0	2.2	3.2
Total	3.5	3.5	22.0	22.4	376.0	0.1	106.4	130.7

Notes:

Runtimes Report

Month: August-17

Daily

Date	Low Lift Pump Motor Runtimes				High Lift Pump Motor Runtimes			
	LLP1010 (Hrs)	LLP1020 (Hrs)	LLP1030 (Hrs)	LLP1040 (Hrs)	HLP7010 (Hrs)	HLP7020 (Hrs)	HLP7030 (Hrs)	HLP7040 (Hrs)
1	7.0	0.0	12.2	9.6	2.3	16.9	0.0	0.4
2	7.3	0.0	8.2	8.1	4.3	12.7	0.0	0.0
3	8.3	0.0	7.4	5.6	12.6	3.5	0.0	0.1
4	8.4	0.0	8.4	4.0	0.0	9.9	0.0	3.8
5	7.7	0.0	5.5	5.9	9.7	0.8	0.0	2.8
6	8.0	0.0	10.1	6.6	15.0	0.0	0.0	0.0
7	6.6	0.0	8.8	5.8	3.4	7.7	0.0	3.3
8	6.7	0.0	8.0	3.1	4.2	4.5	0.0	5.6
9	9.3	0.0	8.8	9.4	2.8	4.0	0.0	8.1
10	7.7	0.0	7.0	9.0	3.8	11.2	0.0	2.9
11	9.8	0.0	6.1	2.3	7.4	0.9	0.0	3.2
12	4.1	0.0	8.1	7.5	0.0	4.6	0.0	13.3
13	8.0	0.0	8.3	8.6	6.4	10.9	0.0	1.5
14	8.6	0.0	8.7	5.7	0.0	0.0	0.0	14.6
15	6.6	1.6	3.4	5.9	7.1	2.2	0.0	2.9
16	5.8	3.2	6.0	5.6	4.2	7.9	0.0	3.4
17	2.2	4.6	4.0	5.6	0.7	7.4	0.0	4.7
18	1.8	5.5	4.0	10.0	2.6	1.2	0.0	10.4
19	8.1	4.8	3.8	11.7	4.3	4.9	0.0	7.0
20	5.6	5.6	6.6	5.5	6.0	7.9	0.0	0.1
21	6.6	3.4	9.3	4.5	0.0	3.5	0.0	6.3
22	7.4	2.9	3.1	5.6	3.5	5.3	0.0	3.2
23	6.4	5.7	5.2	3.3	3.4	4.3	0.0	6.2
24	5.6	5.1	1.9	4.0	4.1	4.7	0.0	2.0
25	6.7	8.3	5.6	3.0	4.6	4.2	0.0	4.5
26	8.2	5.8	6.5	4.4	7.8	18.8	0.0	0.0
27	4.7	6.2	5.4	5.5	6.7	5.2	0.0	6.9
28	4.5	2.5	2.9	6.9	4.0	6.4	0.0	3.7
29	6.2	6.2	4.8	3.0	3.8	6.0	0.0	4.9
30	8.3	5.7	4.4	5.6	5.3	9.8	0.0	5.2
31	5.9	6.9	2.0	5.8	6.1	7.6	0.0	5.1
Total	208.0	84.0	194.5	187.1	146.1	194.9	0.0	136.1

Notes:
HLP #3 out of service.

Plant Internal Flow Report

Month: August-17

Date	Settling Tank Level		Process Drain Tank		Settling Tank Flow		Potable Water Flow		Non-Potable Flow	
	T-9003 (m)		T-9001 (m)		FIT_9005 (m ³) (L/s)		FIT_7082 (m ³) (L/s)		FIT_7092 (m ³) (L/s)	
	Maximum	Minimum	Maximum	Minimum	Total	Peak	Total	Peak	Total	Peak
1	2.2	0.1	1.8	0.4	579.6	15.7	3.1	4.9	4.4	23.6
2	2.2	0.3	1.9	0.4	616.8	15.7	6.3	4.7	1.2	1.1
3	2.2	0.1	0.8	0.4	552.0	15.7	3.6	4.7	0.4	0.9
4	2.2	0.2	0.8	0.4	466.7	15.7	5.1	5.0	0.0	0.0
5	2.2	0.1	0.8	0.4	387.0	15.7	5.9	4.9	0.0	0.0
6	2.2	0.1	1.3	0.4	402.0	15.7	7.2	4.8	0.0	0.0
7	2.2	0.1	0.8	0.4	432.2	15.7	10.1	4.9	0.0	0.0
8	2.2	0.1	1.7	0.4	408.6	15.7	98.5	5.1	33.2	25.3
9	2.2	0.1	2.1	0.4	684.3	15.7	296.2	7.2	20.6	22.5
10	2.2	0.1	2.0	0.4	564.0	15.7	127.5	5.3	0.0	0.0
11	2.2	0.1	0.8	0.4	393.1	15.7	12.3	5.7	0.0	0.0
12	2.2	0.1	0.8	0.4	402.4	15.7	12.6	5.2	0.0	0.0
13	2.2	0.1	0.8	0.4	494.6	15.7	10.6	5.3	0.0	0.0
14	2.2	0.1	1.9	0.4	443.2	15.7	170.7	7.2	0.0	0.0
15	2.2	0.1	2.0	0.4	539.9	15.7	119.9	7.2	0.0	0.0
16	2.2	0.1	1.1	0.4	419.3	15.7	6.6	6.0	26.0	17.0
17	2.2	0.1	0.8	0.4	389.1	15.7	9.9	5.7	0.0	0.0
18	2.2	0.3	2.0	0.4	516.5	15.7	114.6	7.1	0.0	0.0
19	2.2	0.3	1.8	0.4	523.2	15.7	30.6	7.0	0.0	0.0
20	2.2	0.1	2.2	0.4	528.0	15.7	289.8	7.6	0.5	1.2
21	2.2	0.1	2.2	0.4	320.9	15.7	12.8	5.1	0.0	0.0
22	2.2	0.2	0.8	0.4	421.2	15.7	11.0	5.2	0.0	0.0
23	2.2	0.2	0.8	0.4	473.3	15.7	6.8	5.3	0.4	0.9
24	2.2	0.1	0.8	0.4	347.8	15.7	10.6	5.2	0.0	0.0
25	2.2	0.1	0.8	0.4	441.2	15.7	8.4	5.2	0.3	0.8
26	2.2	0.1	0.8	0.4	474.7	15.7	6.6	4.9	0.0	0.0
27	2.2	0.1	0.8	0.4	411.5	15.7	9.2	5.4	0.0	0.0
28	2.2	0.3	0.8	0.4	403.4	15.7	12.8	7.3	0.0	0.0
29	2.2	0.1	0.8	0.4	503.6	15.7	10.5	5.7	0.0	0.0
30	2.2	0.2	0.8	0.4	619.3	15.7	4.5	5.0	0.0	0.0
31	2.2	0.1	2.0	0.4	298.7	15.7	18.4	7.4	11.8	16.8
Total					14458.2		1452.7		98.7	
Average	2.2	0.1	1.3	0.4	466.4	15.7	46.9	5.7	3.2	3.6
Maximum	2.2		2.2		684.3		296.2		33.2	
Date	21-Aug		20-Aug		9-Aug		9-Aug		8-Aug	
Minimum		0.1		0.4		15.7		4.7		0.0
Date		8-Aug		21-Aug		1-Aug		3-Aug		4-Aug

Notes:
