

Municipality of West Elgin - Tri County Water System

Goto:

Month:

Year:

Date is Set to: August-18

Limit	Low	High	
Raw Water Chlorine Residual:	0.00	5.00	mg/L
Pre-Strainer Chlorine Residual:	0.00	5.00	mg/L
UV Inlet Chlorine Residual:	0.00	5.00	mg/L
Post Treatment Chlorine Residual:	1.00	5.00	mg/L
Treated Chlorine Residual:	1.00	2.50	mg/L
Distribution Chlorine Residual:	1.00	2.50	mg/L

Limit	High	
Limit	156.0	L/s
WTP Permit to Take Water	13500.0	m ³

Limit	Low	High	
System Pressure Limits:	50.0	1034.0	Kpa

Compliance Report

Low Lift Monthly Report

>>>

Membranes Monthly Report

>>>

UV System Monthly Report

>>>

Plant Quality Report

>>>

Raw Well/Treated Storage Report

>>>

High Lift Monthly Report

>>>

Operational Report

Low Lift Monthly Report

>>>

High Lift Monthly Report

>>>

Chemical Usage Monthly Report

>>>

Runtimes Report

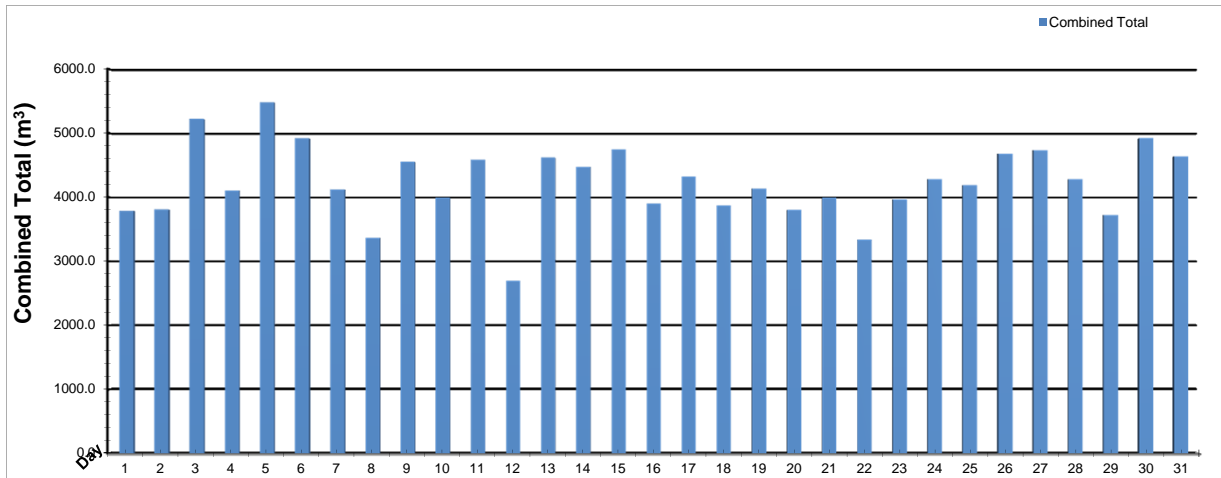
>>>

Plant Internal Flow Report

>>>

Low Lift Monthly Report

Month: August-18

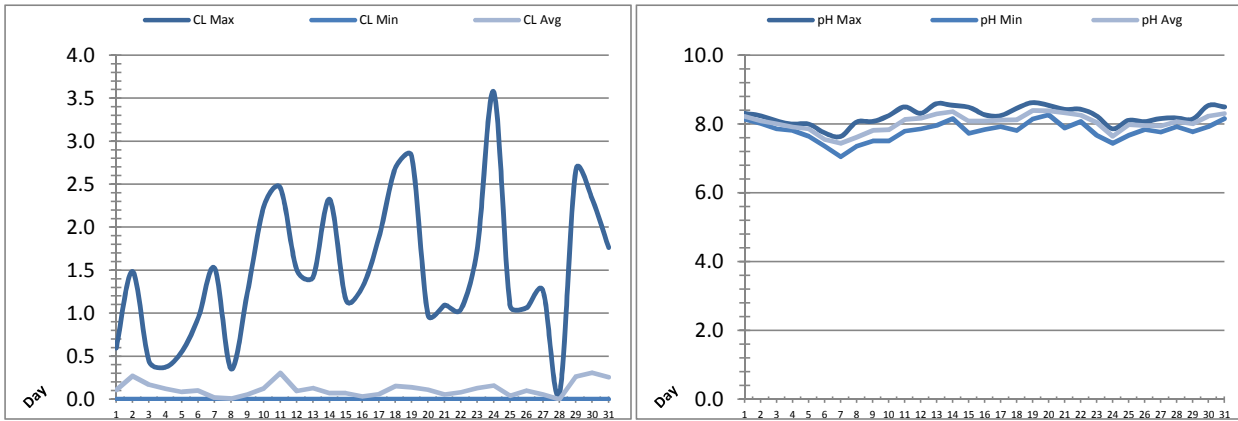


Date	Combined Total (m³)	West Train FIT-1017 (m³)	West Peak Flow FIT-1017 (L/s)	East Train FIT-1027 (m³)	East Peak Flow FIT-1027 (L/s)	Combined Peak Flow (L/s)
1	3785.4	0.0	0.0	3785.4	132.1	132.1
2	3810.2	0.0	0.0	3810.2	137.4	137.4
3	5219.6	0.0	0.0	5219.6	74.1	74.1
4	4102.8	0.0	0.0	4102.8	74.3	74.3
5	5478.4	0.0	0.0	5478.4	138.6	138.6
6	4918.0	0.0	0.0	4918.0	131.8	131.8
7	4123.6	0.0	0.0	4123.6	133.5	133.5
8	3370.2	0.0	0.0	3370.2	137.1	137.1
9	4551.7	3764.0	135.4	787.7	138.0	138.0
10	3993.7	3993.7	135.9	0.0	0.0	135.9
11	4588.5	4588.5	135.6	0.0	0.0	135.6
12	2695.0	2695.0	73.7	0.0	0.0	73.7
13	4618.2	4618.2	135.7	0.0	0.0	135.7
14	4475.7	4475.7	136.0	0.0	0.0	136.0
15	4743.8	4743.8	135.7	0.0	0.0	135.7
16	3904.8	3904.8	135.2	0.0	0.0	135.2
17	4326.0	4326.0	135.7	0.0	0.0	135.7
18	3869.5	3869.5	131.4	0.0	0.0	131.4
19	4137.9	4137.9	135.9	0.0	0.0	135.9
20	3801.3	3801.3	133.6	0.0	0.0	133.6
21	3996.3	3996.3	133.5	0.0	0.0	133.5
22	3343.8	3343.8	74.1	0.0	0.0	74.1
23	3968.5	3968.5	134.2	0.0	0.0	134.2
24	4280.0	4280.0	134.3	0.0	0.0	134.3
25	4192.2	4192.2	73.2	0.0	0.0	73.2
26	4678.7	4678.7	128.2	0.0	0.0	128.2
27	4733.4	4733.4	121.0	0.0	0.0	121.0
28	4277.6	4277.6	134.1	0.0	0.0	134.1
29	3720.0	3720.0	134.3	0.0	0.0	134.3
30	4918.8	4918.8	134.6	0.0	0.0	134.6
31	4634.5	4634.5	134.1	0.0	0.0	134.1
Total	131257.9	95662.1		35595.8		
Average	4234.1	3085.9	93.4	1148.3	35.4	124.4
Maximum	5478.4	4918.8	135.96	5478.4	138.57	138.57
Date	5-Aug	30-Aug	14-Aug	5-Aug	5-Aug	5-Aug
Minimum	2695.0	0.0	0.00	0.0	0.00	73.23
Date	12-Aug	1-Aug	1-Aug	25-Aug	10-Aug	25-Aug

Notes:

Low Lift Monthly Report

Month: **August-18**

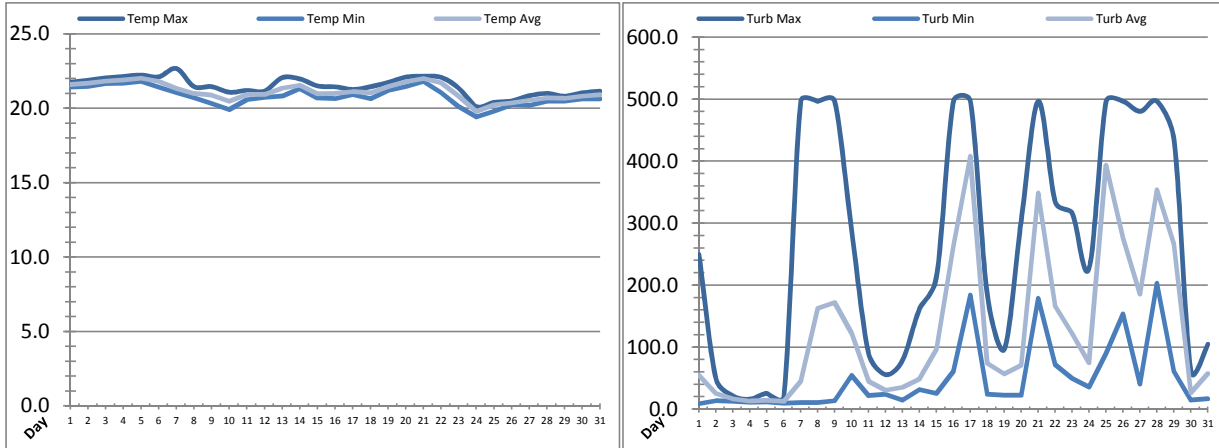


Date	Raw Water Chlorine Residual			Raw Water pH		
	AIT_1401_CL (mg/L)			AIT_1401_PH		
	Maximum	Minimum	Average	Maximum	Minimum	Average
1	0.59	0.00	0.11	8.31	8.14	8.22
2	1.48	0.00	0.27	8.24	8.02	8.10
3	0.44	0.00	0.17	8.09	7.86	8.00
4	0.37	0.00	0.12	8.00	7.81	7.92
5	0.55	0.00	0.09	8.00	7.65	7.86
6	0.94	0.00	0.10	7.74	7.36	7.55
7	1.52	0.00	0.02	7.64	7.05	7.44
8	0.35	0.00	0.01	8.06	7.36	7.62
9	1.25	0.00	0.06	8.07	7.51	7.81
10	2.25	0.00	0.13	8.24	7.51	7.84
11	2.46	0.00	0.31	8.50	7.80	8.13
12	1.50	0.00	0.10	8.31	7.86	8.17
13	1.42	0.00	0.13	8.59	7.96	8.30
14	2.32	0.00	0.07	8.54	8.16	8.36
15	1.15	0.00	0.07	8.49	7.73	8.08
16	1.30	0.00	0.03	8.27	7.84	8.09
17	1.87	0.00	0.06	8.24	7.93	8.11
18	2.69	0.00	0.15	8.46	7.81	8.12
19	2.83	0.00	0.14	8.62	8.15	8.39
20	0.98	0.00	0.11	8.54	8.27	8.38
21	1.09	0.00	0.06	8.43	7.89	8.33
22	1.05	0.00	0.08	8.43	8.07	8.26
23	1.75	0.00	0.13	8.24	7.68	8.04
24	3.57	0.00	0.16	7.86	7.45	7.65
25	1.09	0.00	0.04	8.11	7.67	7.98
26	1.06	0.00	0.10	8.07	7.84	7.96
27	1.26	0.00	0.06	8.16	7.77	7.95
28	0.06	0.00	0.00	8.18	7.92	8.07
29	2.67	0.00	0.26	8.14	7.77	8.01
30	2.32	0.00	0.31	8.54	7.92	8.23
31	1.76	0.00	0.26	8.50	8.16	8.30
Total						
Average	1.48	0.00	0.12	8.25	7.80	8.04
Maximum	3.57		0.31	8.62		8.39
Date	24-Aug		30-Aug	19-Aug		19-Aug
Minimum		0.00			7.05	7.44
Date		1-Aug	28-Aug		7-Aug	7-Aug

Notes:

Low Lift Monthly Report

Month: August-18

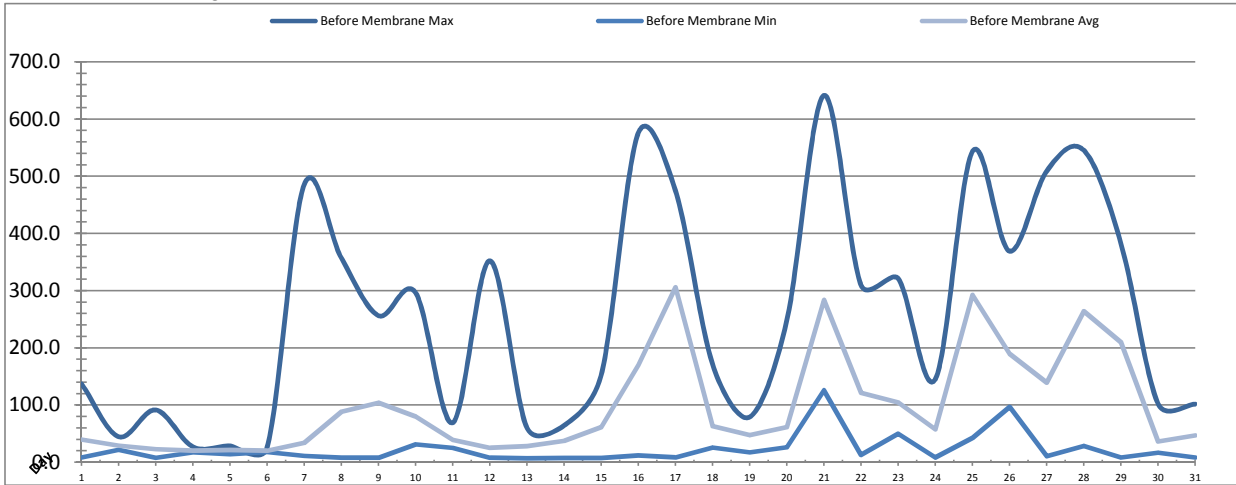


Date	Raw Water Temperature			Raw Water Turbidity		
	TIT_1403 (°C)			AIT_1404 (NTU)		
	Maximum	Minimum	Average	Maximum	Minimum	Average
1	21.8	21.4	21.6	249.51	9.15	54.67
2	21.9	21.5	21.7	49.50	13.78	25.27
3	22.1	21.7	21.8	21.65	12.25	16.65
4	22.1	21.7	21.9	16.18	10.79	12.85
5	22.2	21.8	22.0	25.56	11.50	13.97
6	22.1	21.4	21.8	19.37	9.20	12.70
7	22.7	21.1	21.3	496.67	10.69	45.23
8	21.5	20.7	21.0	496.63	10.69	162.48
9	21.5	20.3	20.9	496.73	13.78	172.17
10	21.1	19.9	20.5	288.35	54.16	122.24
11	21.2	20.6	20.9	89.81	21.65	45.05
12	21.2	20.7	20.9	55.76	23.92	30.55
13	22.1	20.8	21.4	79.02	14.68	35.10
14	22.0	21.4	21.6	161.98	31.75	48.59
15	21.5	20.7	21.0	213.19	25.50	96.10
16	21.5	20.6	21.0	496.70	61.17	262.93
17	21.3	20.9	21.1	496.73	183.66	407.71
18	21.5	20.6	21.0	183.68	24.00	73.89
19	21.7	21.2	21.5	96.84	22.40	56.66
20	22.1	21.5	21.8	305.27	22.40	70.88
21	22.2	21.8	22.0	496.66	178.92	348.39
22	22.1	21.1	21.7	334.72	71.92	166.25
23	21.4	20.1	20.8	316.13	49.52	122.06
24	20.1	19.4	19.8	227.79	35.49	75.16
25	20.4	19.8	20.2	496.63	89.74	393.74
26	20.5	20.2	20.4	496.58	153.35	276.30
27	20.9	20.2	20.6	480.41	40.18	185.50
28	21.0	20.5	20.7	496.73	202.96	353.85
29	20.8	20.5	20.7	434.75	61.10	266.45
30	21.0	20.6	20.8	61.15	14.59	26.52
31	21.2	20.6	20.9	104.60	16.89	57.31
Total						
Average	21.5	20.8	21.1	267.3	48.4	130.2
Maximum	22.7		22.0	496.7		407.7
Date	7-Aug		5-Aug	9-Aug		17-Aug
Minimum		19.4	19.8		9.1	12.7
Date		24-Aug	24-Aug		1-Aug	6-Aug

Notes:

Membranes Monthly Report

Month: August-18

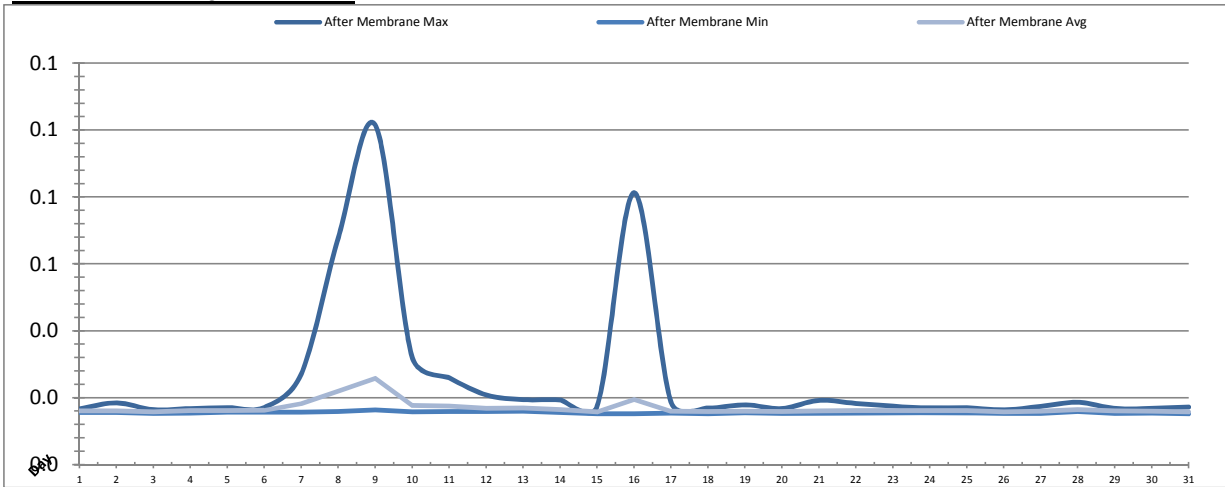


Date	Turbidity Before Membrane			Rack #1 Turbidity			Rack #2 Turbidity		
	PALL_FEED_AIT2006_Value NTU			RACK1_NTU_Value NTU			RACK2_NTU_Value NTU		
	Maximum	Minimum	Average	Maximum	Minimum	Average	Maximum	Minimum	Average
1	137.11	8.30	39.85	0.02	0.02	0.02	0.04	0.02	0.02
2	44.79	21.94	29.25	0.02	0.02	0.02	0.02	0.02	0.02
3	91.61	8.04	23.22	0.02	0.02	0.02	0.02	0.02	0.02
4	27.10	17.49	20.42	0.02	0.02	0.02	0.21	0.02	0.02
5	28.89	13.99	21.03	0.02	0.02	0.02	0.22	0.02	0.02
6	25.81	18.09	20.39	0.02	0.02	0.02	0.21	0.02	0.02
7	485.35	11.19	34.08	0.20	0.02	0.02	0.24	0.02	0.02
8	357.70	8.10	88.47	0.06	0.02	0.02	0.25	0.02	0.02
9	256.43	8.08	104.26	0.11	0.02	0.02	0.06	0.02	0.02
10	296.55	31.34	79.99	0.03	0.02	0.02	0.10	0.02	0.02
11	69.15	25.40	39.00	0.03	0.02	0.02	0.25	0.02	0.02
12	352.26	7.95	25.29	0.02	0.02	0.02	0.25	0.02	0.02
13	60.59	6.77	27.81	0.02	0.02	0.02	0.03	0.02	0.02
14	64.38	7.14	37.54	0.02	0.02	0.02	0.03	0.02	0.02
15	151.81	7.18	61.45	0.02	0.02	0.02	0.03	0.02	0.02
16	575.35	11.58	170.11	0.04	0.02	0.02	0.02	0.02	0.02
17	475.43	8.30	305.90	0.02	0.02	0.02	0.23	0.02	0.02
18	171.58	25.51	63.11	0.02	0.02	0.02	0.18	0.02	0.02
19	79.14	17.53	47.77	0.02	0.02	0.02	0.18	0.02	0.02
20	247.34	26.22	61.70	0.02	0.02	0.02	0.22	0.02	0.02
21	641.28	126.07	283.57	0.52	0.02	0.02	0.38	0.02	0.02
22	310.16	12.72	121.48	0.02	0.02	0.02	0.17	0.02	0.02
23	321.54	49.99	104.40	0.02	0.02	0.02	0.05	0.02	0.02
24	145.17	8.65	57.71	0.02	0.02	0.02	0.02	0.02	0.02
25	542.98	42.49	292.76	0.02	0.02	0.02	0.19	0.02	0.02
26	369.20	96.93	189.46	0.02	0.02	0.02	0.17	0.02	0.02
27	508.78	10.48	139.44	0.16	0.02	0.02	0.15	0.02	0.02
28	545.63	28.40	264.03	0.02	0.02	0.02	0.03	0.02	0.02
29	383.55	8.16	209.58	0.02	0.02	0.02	0.06	0.02	0.02
30	102.76	16.76	36.25	0.02	0.02	0.02	0.03	0.02	0.02
31	101.79	8.22	47.12	0.02	0.02	0.02	0.25	0.02	0.02
Total									
Average	257.1	22.5	98.3	0.1	0.0	0.0	0.1	0.0	0.0
Maximum	641.3		305.9	0.5		0.0	0.4		0.0
Date	21-Aug		17-Aug	21-Aug		9-Aug	21-Aug		12-Aug
Minimum		6.8	20.4		0.0	0.0		0.0	0.0
Date		13-Aug	6-Aug		6-Aug	24-Aug		15-Aug	30-Aug

Notes:

Membranes Monthly Report

Month: **August-18**

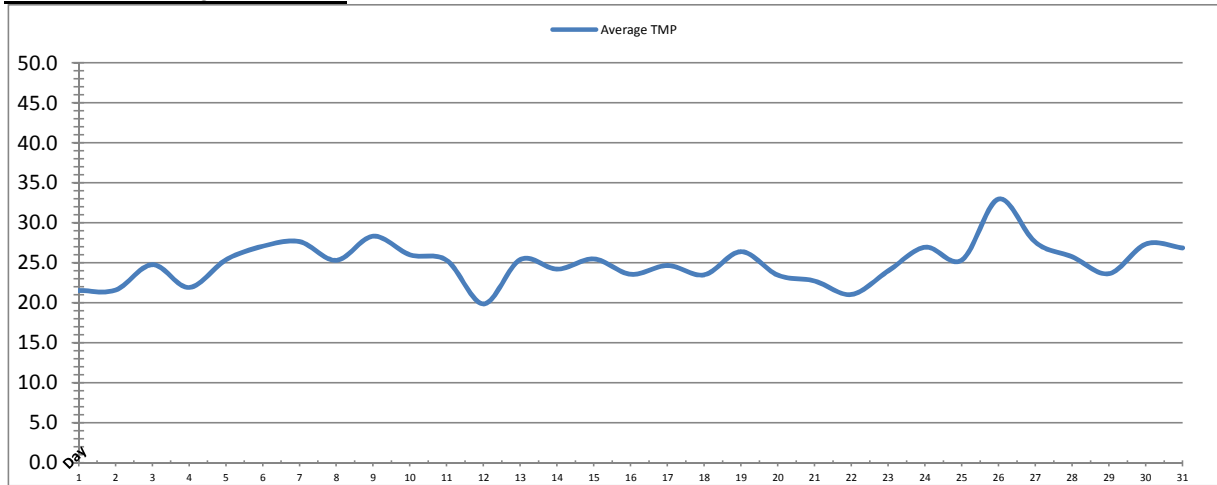


Date	Rack #3 Turbidity			Rack #4 Turbidity			Turbidity After Membranes		
	RACK3_NTU_Value			RACK4_NTU_Value			PALL_FILT_AIT5001_Value		
	Maximum	Minimum	Average	Maximum	Minimum	Average	Maximum	Minimum	Average
1	0.02	0.02	0.02	0.03	0.02	0.03	0.02	0.02	0.02
2	0.02	0.02	0.02	0.04	0.02	0.03	0.02	0.02	0.02
3	0.02	0.02	0.02	0.03	0.02	0.03	0.02	0.02	0.02
4	0.02	0.02	0.02	0.03	0.02	0.03	0.02	0.02	0.02
5	0.02	0.02	0.02	0.03	0.02	0.03	0.02	0.02	0.02
6	0.02	0.02	0.02	0.09	0.02	0.03	0.02	0.02	0.02
7	0.14	0.02	0.02	0.04	0.02	0.03	0.03	0.02	0.02
8	0.04	0.02	0.02	0.07	0.02	0.03	0.07	0.02	0.02
9	0.07	0.02	0.02	0.10	0.02	0.04	0.10	0.02	0.03
10	0.03	0.02	0.02	0.05	0.02	0.03	0.03	0.02	0.02
11	0.03	0.02	0.02	0.08	0.02	0.03	0.03	0.02	0.02
12	0.02	0.02	0.02	0.07	0.02	0.03	0.02	0.02	0.02
13	0.18	0.02	0.02	0.05	0.02	0.03	0.02	0.02	0.02
14	0.02	0.02	0.02	0.04	0.02	0.03	0.02	0.02	0.02
15	0.02	0.02	0.02	0.05	0.02	0.03	0.02	0.02	0.02
16	0.03	0.02	0.02	0.04	0.02	0.03	0.08	0.02	0.02
17	0.02	0.02	0.02	0.03	0.02	0.03	0.02	0.02	0.02
18	0.02	0.02	0.02	0.03	0.02	0.03	0.02	0.02	0.02
19	0.02	0.02	0.02	0.03	0.02	0.03	0.02	0.02	0.02
20	0.02	0.02	0.02	0.03	0.02	0.03	0.02	0.02	0.02
21	0.39	0.02	0.02	0.16	0.02	0.03	0.02	0.02	0.02
22	0.02	0.02	0.02	0.03	0.02	0.03	0.02	0.02	0.02
23	0.02	0.02	0.02	0.03	0.02	0.03	0.02	0.02	0.02
24	0.02	0.02	0.02	0.03	0.02	0.03	0.02	0.02	0.02
25	0.02	0.02	0.02	0.03	0.02	0.03	0.02	0.02	0.02
26	0.02	0.02	0.02	0.03	0.02	0.02	0.02	0.02	0.02
27	0.08	0.02	0.02	0.03	0.02	0.02	0.02	0.02	0.02
28	0.02	0.02	0.02	0.03	0.02	0.03	0.02	0.02	0.02
29	0.02	0.02	0.02	0.03	0.02	0.03	0.02	0.02	0.02
30	0.02	0.02	0.02	0.03	0.02	0.03	0.02	0.02	0.02
31	0.02	0.02	0.02	0.03	0.02	0.03	0.02	0.02	0.02
Total									
Average	0.0	0.0	0.0	0.0	0.0	0.0	0.0	0.0	0.0
Maximum	0.4		0.0	0.2		0.0	0.1		0.0
Date	21-Aug		21-Aug	21-Aug		9-Aug	9-Aug		9-Aug
Minimum		0.0	0.0		0.0	0.0		0.0	0.0
Date		24-Aug	5-Aug		27-Aug	26-Aug		15-Aug	26-Aug

Notes:

Membranes Monthly Report

Month: **August-18**

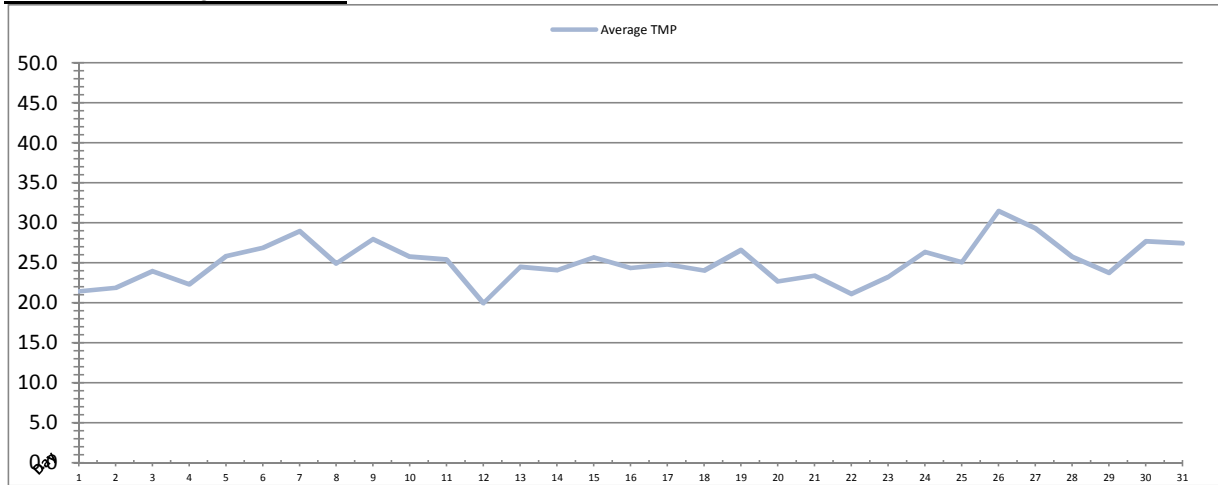


Date	Integrity Test Rack 1							
	Initial Pressure (kPa)	Final Pressure (kPa)	Test Duration (sec)	Change in Pressure (kPa)	UCL	Within UCL	Average TMP (kPa)	Max TMP (kPa)
1	198.5	197.3	300.0	1.1	2.0	✓ 2.0	21.5	70.6
2	198.5	197.3	300.0	1.1	2.0	✓ 2.0	21.6	67.6
3	198.4	197.3	300.0	1.1	2.0	✓ 2.0	24.8	74.8
4	198.2	197.0	300.0	1.2	2.0	✓ 2.0	21.9	41.5
5	198.3	197.1	300.0	1.2	2.0	✓ 2.0	25.4	68.5
6	198.3	197.1	300.0	1.2	2.0	✓ 2.0	27.1	61.4
7	199.1	197.8	300.0	1.3	2.0	✓ 2.0	27.7	76.0
8	198.7	197.4	300.0	1.2	2.0	✓ 2.0	25.3	98.6
9	198.5	197.3	300.0	1.2	2.0	✓ 2.0	28.3	148.3
10	198.8	197.5	300.0	1.3	2.0	✓ 2.0	26.0	102.9
11	198.5	197.3	300.0	1.2	2.0	✓ 2.0	25.3	76.2
12	199.0	197.9	300.0	1.1	2.0	✓ 2.0	19.9	43.4
13	198.6	197.5	300.0	1.1	2.0	✓ 2.0	25.4	72.6
14	198.4	197.2	300.0	1.1	2.0	✓ 2.0	24.2	145.5
15	198.7	197.6	300.0	1.2	2.0	✓ 2.0	25.5	95.0
16	198.7	197.4	300.0	1.2	2.0	✓ 2.0	23.6	78.1
17	198.8	197.6	300.0	1.2	2.0	✓ 2.0	24.7	77.4
18	198.3	197.1	300.0	1.2	2.0	✓ 2.0	23.5	59.3
19	198.4	197.3	300.0	1.1	2.0	✓ 2.0	26.4	78.0
20	198.4	197.3	300.0	1.1	2.0	✓ 2.0	23.5	91.3
21	198.2	197.3	300.0	0.9	2.0	✓ 2.0	22.7	77.2
22	197.6	196.5	300.0	1.0	2.0	✓ 2.0	21.1	42.9
23	198.1	197.0	300.0	1.1	2.0	✓ 2.0	24.0	76.6
24	199.0	197.8	300.0	1.3	2.0	✓ 2.0	27.0	99.1
25	198.7	197.6	300.0	1.1	2.0	✓ 2.0	25.4	46.7
26	198.1	197.1	300.0	1.0	2.0	✓ 2.0	33.0	93.3
27	198.1	197.1	300.0	1.0	2.0	✓ 2.0	27.6	81.3
28	197.9	196.9	300.0	1.0	2.0	✓ 2.0	25.8	123.1
29	198.2	197.1	300.0	1.1	2.0	✓ 2.0	23.7	76.3
30	198.2	197.1	300.0	1.1	2.0	✓ 2.0	27.4	78.0
31	198.4	197.3	300.0	1.1	2.0	✓ 2.0	26.9	82.7
Total								
Average	198.4	197.3	300.0	1.1	2.0	2.0	25.0	80.8
Maximum	199.1	197.9	300.0	1.3	2.0	2.0	33.0	148.3
Date	7-Aug	12-Aug	1-Aug	7-Aug	1-Aug	1-Aug	26-Aug	9-Aug
Minimum	197.6	196.5	300.0	0.9	2.0	2.0	19.9	41.5
Date	22-Aug	22-Aug	1-Aug	21-Aug	1-Aug	1-Aug	12-Aug	4-Aug

Notes:

Membranes Monthly Report

Month: **August-18**

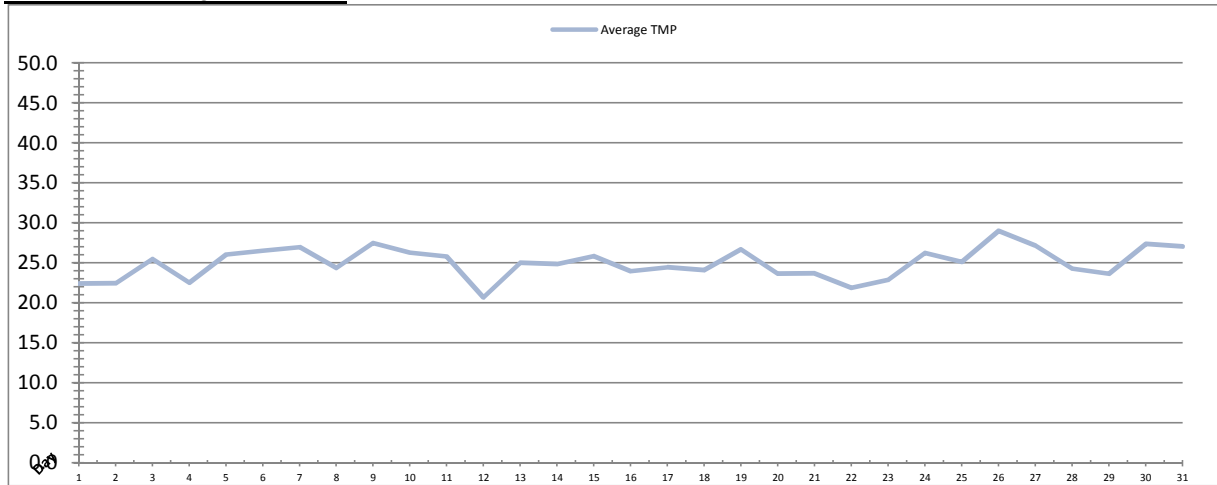


Date	Integrity Test Rack 2							
	Initial Pressure (kPa)	Final Pressure (kPa)	Test Duration (sec)	Change in Pressure (kPa)	UCL	Within UCL	Average TMP (kPa)	Max TMP (kPa)
1	208.3	207.2	300.0	1.1	2.0	✓ 2.0	21.4	48.5
2	208.4	207.3	300.0	1.1	2.0	✓ 2.0	21.9	69.5
3	208.3	207.2	300.0	1.1	2.0	✓ 2.0	24.0	41.4
4	208.0	207.0	300.0	1.0	2.0	✓ 2.0	22.3	41.3
5	208.3	207.2	300.0	1.1	2.0	✓ 2.0	25.8	69.4
6	208.1	206.9	300.0	1.1	2.0	✓ 2.0	26.9	62.4
7	208.2	207.0	300.0	1.2	2.0	✓ 2.0	29.0	154.4
8	208.0	206.8	300.0	1.1	2.0	✓ 2.0	24.9	96.4
9	208.0	206.8	300.0	1.2	2.0	✓ 2.0	27.9	78.3
10	207.9	206.8	300.0	1.1	2.0	✓ 2.0	25.8	82.1
11	207.8	206.7	300.0	1.1	2.0	✓ 2.0	25.4	75.2
12	208.2	207.2	300.0	1.1	2.0	✓ 2.0	20.0	44.4
13	208.4	207.3	300.0	1.1	2.0	✓ 2.0	24.5	72.2
14	208.1	207.0	300.0	1.1	2.0	✓ 2.0	24.1	69.0
15	208.4	207.3	300.0	1.1	2.0	✓ 2.0	25.7	91.4
16	208.0	207.0	300.0	1.1	2.0	✓ 2.0	24.4	108.9
17	208.4	207.3	300.0	1.1	2.0	✓ 2.0	24.8	77.7
18	208.2	207.1	300.0	1.1	2.0	✓ 2.0	24.0	89.5
19	208.2	207.1	300.0	1.1	2.0	✓ 2.0	26.6	75.9
20	207.9	206.9	300.0	1.0	2.0	✓ 2.0	22.7	79.6
21	207.6	206.7	300.0	1.0	2.0	✓ 2.0	23.4	68.6
22	207.8	206.8	300.0	1.0	2.0	✓ 2.0	21.1	41.9
23	208.2	207.1	300.0	1.1	2.0	✓ 2.0	23.2	71.8
24	208.0	206.9	300.0	1.1	2.0	✓ 2.0	26.4	80.9
25	207.8	206.8	300.0	1.0	2.0	✓ 2.0	25.1	53.4
26	207.7	206.7	300.0	0.9	2.0	✓ 2.0	31.5	83.1
27	207.5	206.5	300.0	0.9	2.0	✓ 2.0	29.3	97.5
28	207.6	206.6	300.0	1.1	2.0	✓ 2.0	25.8	124.7
29	207.8	206.7	300.0	1.1	2.0	✓ 2.0	23.8	78.1
30	207.8	206.6	300.0	1.2	2.0	✓ 2.0	27.7	79.5
31	207.8	206.7	300.0	1.1	2.0	✓ 2.0	27.5	91.3
Total								
Average	208.0	206.9	300.0	1.1	2.0	2.0	25.1	77.4
Maximum	208.4	207.3	300.0	1.2	2.0	2.0	31.5	154.4
Date	15-Aug	2-Aug	1-Aug	7-Aug	1-Aug	1-Aug	26-Aug	7-Aug
Minimum	207.5	206.5	300.0	0.9	2.0	2.0	20.0	41.3
Date	27-Aug	27-Aug	1-Aug	26-Aug	1-Aug	1-Aug	12-Aug	4-Aug

Notes:

Membranes Monthly Report

Month: **August-18**

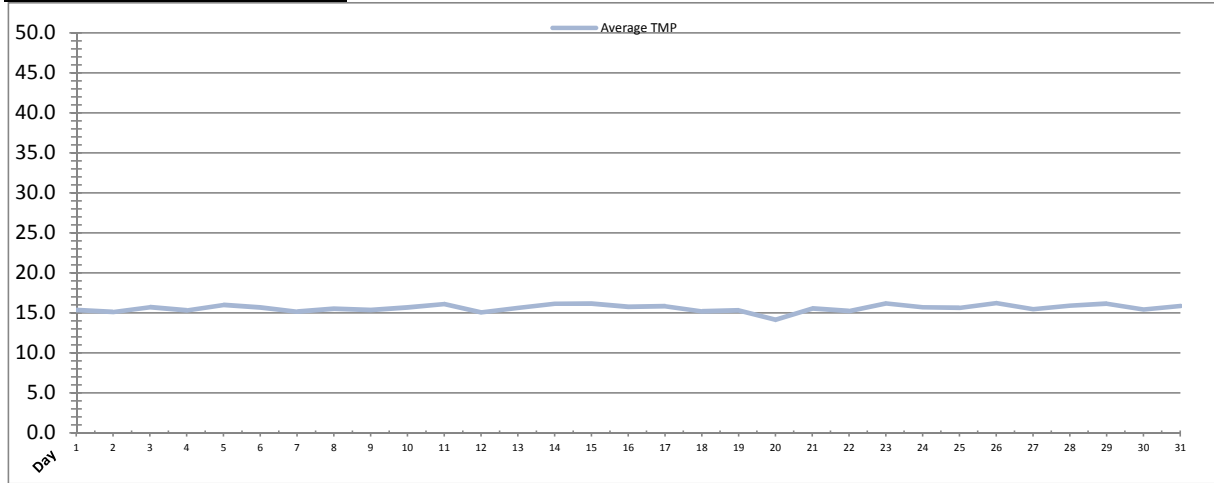


Date	Integrity Test Rack 3							
	Initial Pressure (kPa)	Final Pressure (kPa)	Test Duration (sec)	Change in Pressure (kPa)	UCL	Within UCL	Average TMP (kPa)	Max TMP (kPa)
1	184.2	183.0	300.0	1.1	2.0	✓ 2.0	22.4	47.2
2	184.1	183.0	300.0	1.1	2.0	✓ 2.0	22.5	73.8
3	184.0	182.9	300.0	1.1	2.0	✓ 2.0	25.5	69.7
4	184.0	182.9	300.0	1.1	2.0	✓ 2.0	22.5	40.3
5	183.6	182.4	300.0	1.1	2.0	✓ 2.0	26.0	67.4
6	182.6	181.5	300.0	1.1	2.0	✓ 2.0	26.5	59.8
7	183.7	182.6	300.0	1.1	2.0	✓ 2.0	27.0	96.7
8	182.9	181.7	300.0	1.1	2.0	✓ 2.0	24.4	119.2
9	183.0	181.9	300.0	1.1	2.0	✓ 2.0	27.5	75.5
10	182.7	181.6	300.0	1.1	2.0	✓ 2.0	26.3	92.7
11	182.6	181.5	300.0	1.1	2.0	✓ 2.0	25.8	74.9
12	183.4	182.4	300.0	1.0	2.0	✓ 2.0	20.7	43.3
13	183.2	182.1	300.0	1.1	2.0	✓ 2.0	25.0	76.9
14	182.6	181.6	300.0	1.1	2.0	✓ 2.0	24.8	92.8
15	183.0	181.8	300.0	1.1	2.0	✓ 2.0	25.8	73.3
16	183.1	181.9	300.0	1.1	2.0	✓ 2.0	24.0	78.5
17	182.7	181.6	300.0	1.1	2.0	✓ 2.0	24.5	82.8
18	183.1	181.9	300.0	1.2	2.0	✓ 2.0	24.1	57.8
19	182.8	181.8	300.0	1.0	2.0	✓ 2.0	26.7	74.9
20	182.2	181.3	300.0	0.9	2.0	✓ 2.0	23.7	83.3
21	181.7	180.7	300.0	1.0	2.0	✓ 2.0	23.7	77.2
22	181.7	180.7	300.0	1.0	2.0	✓ 2.0	21.9	42.5
23	182.0	180.9	300.0	1.1	2.0	✓ 2.0	22.9	73.1
24	181.5	180.3	300.0	1.2	2.0	✓ 2.0	26.2	113.8
25	182.3	181.3	300.0	1.0	2.0	✓ 2.0	25.1	53.3
26	181.7	180.6	300.0	1.1	2.0	✓ 2.0	29.0	79.9
27	181.0	179.9	300.0	1.1	2.0	✓ 2.0	27.2	110.2
28	182.4	181.4	300.0	1.0	2.0	✓ 2.0	24.3	86.4
29	181.0	179.9	300.0	1.1	2.0	✓ 2.0	23.6	74.0
30	181.1	180.0	300.0	1.1	2.0	✓ 2.0	27.4	75.3
31	181.4	180.3	300.0	1.1	2.0	✓ 2.0	27.0	81.1
Total								
Average	182.6	181.5	300.0	1.1	2.0	2.0	25.0	75.7
Maximum	184.2	183.0	300.0	1.2	2.0	2.0	29.0	119.2
Date	1-Aug	1-Aug	1-Aug	24-Aug	1-Aug	1-Aug	26-Aug	8-Aug
Minimum	181.0	179.9	300.0	0.9	2.0	2.0	20.7	40.3
Date	29-Aug	27-Aug	1-Aug	20-Aug	1-Aug	1-Aug	12-Aug	4-Aug

Notes:

Membranes Monthly Report

Month: **August-18**



Date	Integrity Test Rack 4							
	Initial Pressure (kPa)	Final Pressure (kPa)	Test Duration (sec)	Change in Pressure (kPa)	UCL	Within UCL	Average TMP (kPa)	Max TMP (kPa)
1	200.6	199.3	300.0	1.3	2.0	✓ 2.0	15.4	34.5
2	200.5	199.5	300.0	1.1	2.0	✓ 2.0	15.1	34.7
3	200.7	199.5	300.0	1.3	2.0	✓ 2.0	15.7	40.9
4	201.3	200.1	300.0	1.3	2.0	✓ 2.0	15.3	39.3
5	200.5	199.2	300.0	1.3	2.0	✓ 2.0	16.0	35.3
6	201.2	200.0	300.0	1.3	2.0	✓ 2.0	15.7	37.6
7	200.7	199.4	300.0	1.3	2.0	✓ 2.0	15.2	38.6
8	201.2	199.9	300.0	1.3	2.0	✓ 2.0	15.5	50.7
9	200.7	199.5	300.0	1.2	2.0	✓ 2.0	15.4	37.3
10	200.5	198.9	300.0	1.6	2.0	✓ 2.0	15.7	49.4
11	200.4	199.1	300.0	1.3	2.0	✓ 2.0	16.1	40.8
12	201.3	200.1	300.0	1.2	2.0	✓ 2.0	15.1	43.0
13	200.8	199.6	300.0	1.2	2.0	✓ 2.0	15.6	40.6
14	200.7	199.5	300.0	1.1	2.0	✓ 2.0	16.1	35.3
15	200.9	199.6	300.0	1.3	2.0	✓ 2.0	16.2	41.6
16	200.3	198.9	300.0	1.3	2.0	✓ 2.0	15.8	42.2
17	200.4	199.1	300.0	1.3	2.0	✓ 2.0	15.8	41.9
18	200.3	199.1	300.0	1.3	2.0	✓ 2.0	15.2	35.7
19	200.3	199.1	300.0	1.3	2.0	✓ 2.0	15.3	43.3
20	200.1	198.9	300.0	1.3	2.0	✓ 2.0	14.1	35.3
21	200.0	198.8	300.0	1.2	2.0	✓ 2.0	15.6	42.8
22	200.5	199.4	300.0	1.1	2.0	✓ 2.0	15.3	33.5
23	200.7	199.5	300.0	1.2	2.0	✓ 2.0	16.2	52.1
24	201.0	199.9	300.0	1.1	2.0	✓ 2.0	15.7	36.6
25	200.5	199.4	300.0	1.1	2.0	✓ 2.0	15.7	40.0
26	200.5	199.4	300.0	1.1	2.0	✓ 2.0	16.3	20.8
27	200.4	199.2	300.0	1.2	2.0	✓ 2.0	15.5	35.6
28	200.0	198.7	300.0	1.3	2.0	✓ 2.0	15.9	36.8
29	201.2	200.1	300.0	1.1	2.0	✓ 2.0	16.2	42.3
30	200.4	199.4	300.0	1.0	2.0	✓ 2.0	15.4	41.2
31	200.6	199.5	300.0	1.1	2.0	✓ 2.0	15.9	64.0
Total								
Average	200.6	199.4	300.0	1.2	2.0	2.0	15.6	40.1
Maximum	201.3	200.1	300.0	1.6	2.0	2.0	16.3	64.0
Date	4-Aug	4-Aug	1-Aug	10-Aug	1-Aug	1-Aug	26-Aug	31-Aug
Minimum	200.0	198.7	300.0	1.0	2.0	2.0	14.1	20.8
Date	21-Aug	28-Aug	1-Aug	30-Aug	1-Aug	1-Aug	20-Aug	26-Aug

Notes:

Membranes Monthly Report

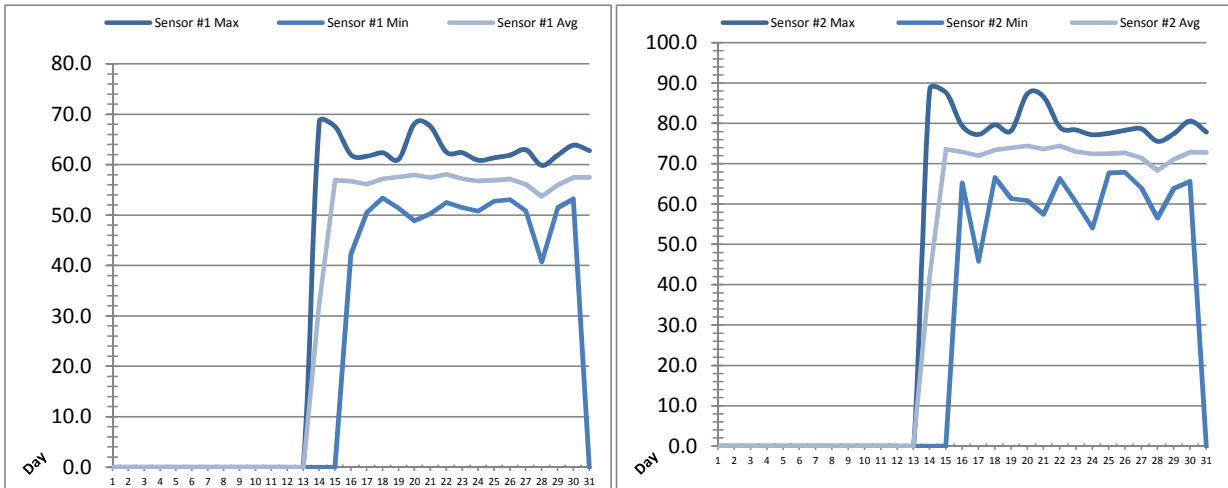
Month: August-18

Date	Membranes Monthly Performance							
	Rack 1 >0.1 NTU (Minutes)	Rack 1 Forward Flow (Minutes)	Rack 2 >0.1 NTU (Minutes)	Rack 2 Forward Flow (Minutes)	Rack 3 >0.1 NTU (Minutes)	Rack 3 Forward Flow (Minutes)	Rack 4 >0.1 NTU (Minutes)	Rack 4 Forward Flow (Minutes)
1	0.0	840.3	0.0	846.1	0.0	842.0	0.0	245.3
2	0.0	799.4	0.0	812.4	0.0	799.3	0.0	241.3
3	0.0	1174.1	0.0	1115.1	0.0	1173.6	0.0	341.1
4	0.0	925.1	1.4	939.1	0.0	924.3	0.0	253.4
5	0.0	1113.1	2.2	1136.0	0.0	1113.1	0.0	349.2
6	0.0	1078.3	1.4	1084.6	0.0	1072.4	0.0	240.1
7	7.2	807.3	2.3	869.3	2.3	804.0	0.0	164.5
8	0.0	680.5	1.4	687.2	0.0	679.1	0.0	190.1
9	7.2	851.3	0.0	853.5	0.0	857.1	0.0	177.1
10	0.0	804.1	0.0	809.0	0.0	803.2	0.0	211.3
11	0.0	994.2	2.3	1013.1	0.0	995.1	0.0	286.4
12	0.0	595.5	2.3	607.2	0.0	591.5	0.0	168.1
13	0.0	985.2	0.0	925.5	8.1	912.4	0.0	258.3
14	0.0	941.2	0.0	942.6	0.0	940.3	0.0	364.1
15	0.0	925.1	0.0	935.4	0.0	928.1	0.0	408.6
16	0.0	846.1	0.0	869.0	0.0	858.3	0.0	276.3
17	0.0	843.3	2.3	876.6	0.0	863.1	0.0	194.6
18	0.0	878.0	1.4	908.1	0.0	896.5	0.0	605.2
19	0.0	888.3	2.3	903.2	0.0	893.3	0.0	601.1
20	0.0	851.5	2.3	815.5	0.0	855.1	0.0	352.4
21	8.6	854.1	2.3	919.3	7.2	899.0	8.6	342.4
22	0.0	751.4	1.4	763.5	0.0	750.0	0.0	388.4
23	0.0	912.2	0.0	916.2	0.0	921.1	0.0	259.5
24	0.0	997.5	0.0	998.4	0.0	1002.5	0.0	478.3
25	0.0	988.5	1.4	1004.3	0.0	992.5	0.0	403.2
26	0.0	1093.2	1.4	1094.6	0.0	1093.2	0.0	1123.2
27	0.5	1040.1	1.4	1146.2	0.0	1045.0	0.0	607.5
28	0.0	763.1	0.0	771.2	0.0	769.3	0.0	288.5
29	0.0	786.2	0.0	794.3	0.0	785.4	0.0	262.2
30	0.0	1032.3	0.0	1043.5	0.0	1034.4	0.0	302.0
31	0.0	954.0	2.3	971.6	0.0	959.4	0.0	252.2
Total	23.5	27994.4	31.5	28371.4	17.6	28053.7	8.6	10635.9
Percent	0.08		0.11		0.06		0.08	
Maximum	8.6	1174.1	2.3	1146.2	8.1	1173.6	8.6	1123.2
Date	21-Aug	3-Aug	20-Aug	27-Aug	13-Aug	3-Aug	21-Aug	26-Aug
Minimum	0.0	595.5	0.0	607.2	0.0	591.5	0.0	164.5
Date	1-Aug	12-Aug	1-Aug	12-Aug	1-Aug	12-Aug	1-Aug	7-Aug

Notes:
 Met monthly turbidity requirement of 99% readings were below 0.1ntu.

UV System Monthly Report

Month: August-18



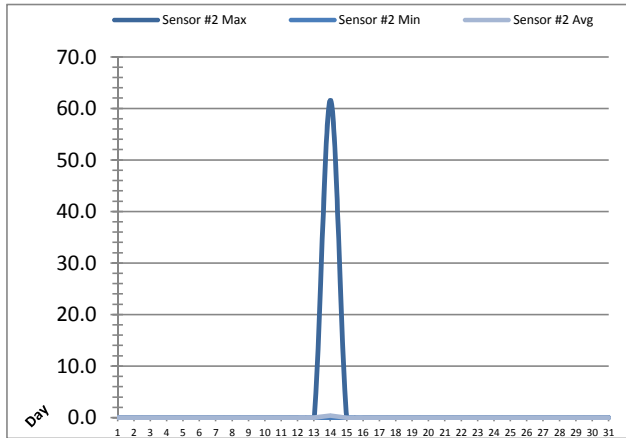
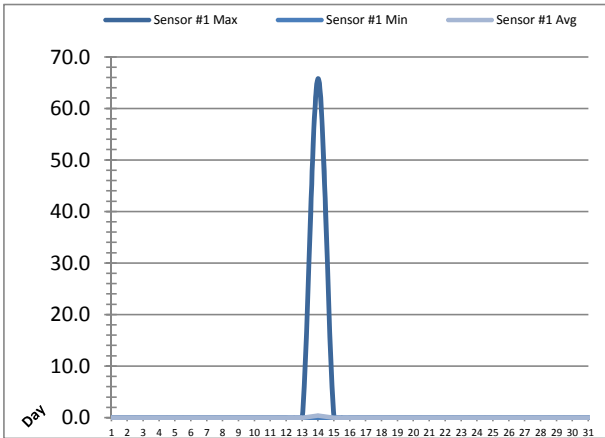
Date	UV Reactor 1					
	Intensity Sensor 1 (mW/cm ²)			Intensity Sensor 2 (mW/cm ²)		
	Maximum	Minimum	Average	Maximum	Minimum	Average
1	0.0	0.0	0.0	0.0	0.0	0.0
2	0.0	0.0	0.0	0.0	0.0	0.0
3	0.0	0.0	0.0	0.0	0.0	0.0
4	0.0	0.0	0.0	0.0	0.0	0.0
5	0.0	0.0	0.0	0.0	0.0	0.0
6	0.0	0.0	0.0	0.0	0.0	0.0
7	0.0	0.0	0.0	0.0	0.0	0.0
8	0.0	0.0	0.0	0.0	0.0	0.0
9	0.0	0.0	0.0	0.0	0.0	0.0
10	0.0	0.0	0.0	0.0	0.0	0.0
11	0.0	0.0	0.0	0.0	0.0	0.0
12	0.0	0.0	0.0	0.0	0.0	0.0
13	0.0	0.0	0.0	0.0	0.0	0.0
14	68.5	0.0	32.2	88.5	0.0	42.0
15	67.6	0.0	56.9	87.7	0.0	73.6
16	62.0	42.4	56.7	79.4	65.3	73.0
17	61.7	50.5	56.1	77.3	45.8	72.0
18	62.4	53.4	57.2	79.7	66.6	73.4
19	61.1	51.4	57.6	78.2	61.4	74.0
20	68.2	48.9	58.0	87.4	60.9	74.5
21	67.6	50.3	57.5	86.6	57.5	73.7
22	62.5	52.5	58.1	79.1	66.4	74.5
23	62.4	51.5	57.2	78.4	60.4	73.1
24	60.9	50.8	56.8	77.2	54.1	72.5
25	61.4	52.8	56.9	77.6	67.7	72.5
26	61.9	53.1	57.2	78.3	67.9	72.7
27	63.0	50.9	56.2	78.7	64.0	71.4
28	59.9	40.7	53.7	75.6	56.5	68.3
29	61.9	51.5	56.0	77.5	63.9	71.2
30	63.9	53.2	57.5	80.6	65.7	72.9
31	62.8	0.0	57.5	77.9	0.0	72.8
Total						
Average	36.8	24.3	32.2	46.6	29.8	41.2
Maximum	68.5		58.1	88.5		74.5
Date	14-Aug		22-Aug	14-Aug		22-Aug
Minimum		0.0	0.0		0.0	0.0
Date		1-Aug	1-Aug		1-Aug	1-Aug

Notes:

AOP System in operation

UV System Monthly Report

Month: **August-18**

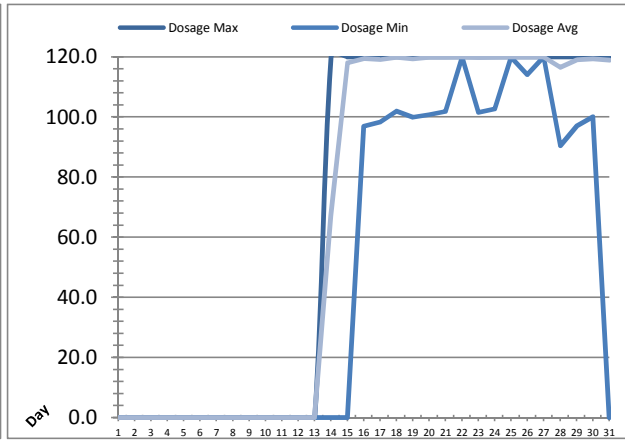
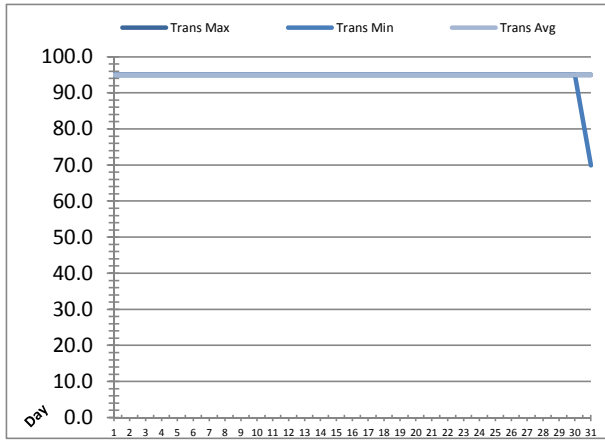


Date	UV Reactor 2					
	Intensity Sensor 1 (mW/cm ²)			Intensity Sensor 2 (mW/cm ²)		
	Maximum	Minimum	Average	Maximum	Minimum	Average
1	0.0	0.0	0.0	0.0	0.0	0.0
2	0.0	0.0	0.0	0.0	0.0	0.0
3	0.0	0.0	0.0	0.0	0.0	0.0
4	0.0	0.0	0.0	0.0	0.0	0.0
5	0.0	0.0	0.0	0.0	0.0	0.0
6	0.0	0.0	0.0	0.0	0.0	0.0
7	0.0	0.0	0.0	0.0	0.0	0.0
8	0.0	0.0	0.0	0.0	0.0	0.0
9	0.0	0.0	0.0	0.0	0.0	0.0
10	0.0	0.0	0.0	0.0	0.0	0.0
11	0.0	0.0	0.0	0.0	0.0	0.0
12	0.0	0.0	0.0	0.0	0.0	0.0
13	0.0	0.0	0.0	0.0	0.0	0.0
14	65.8	0.0	0.4	61.6	0.0	0.4
15	0.0	0.0	0.0	0.0	0.0	0.0
16	0.0	0.0	0.0	0.0	0.0	0.0
17	0.0	0.0	0.0	0.0	0.0	0.0
18	0.0	0.0	0.0	0.0	0.0	0.0
19	0.0	0.0	0.0	0.0	0.0	0.0
20	0.0	0.0	0.0	0.0	0.0	0.0
21	0.0	0.0	0.0	0.0	0.0	0.0
22	0.0	0.0	0.0	0.0	0.0	0.0
23	0.0	0.0	0.0	0.0	0.0	0.0
24	0.0	0.0	0.0	0.0	0.0	0.0
25	0.0	0.0	0.0	0.0	0.0	0.0
26	0.0	0.0	0.0	0.0	0.0	0.0
27	0.0	0.0	0.0	0.0	0.0	0.0
28	0.0	0.0	0.0	0.0	0.0	0.0
29	0.0	0.0	0.0	0.0	0.0	0.0
30	0.0	0.0	0.0	0.0	0.0	0.0
31	0.0	0.0	0.0	0.0	0.0	0.0
Total						
Average	2.1	0.0	0.0	2.0	0.0	0.0
Maximum	65.8		0.4	61.6		0.4
Date	14-Aug		14-Aug	14-Aug		14-Aug
Minimum		0.0	0.0		0.0	0.0
Date		1-Aug	1-Aug		1-Aug	1-Aug

Notes:

UV System Monthly Report

Month: **August-18**

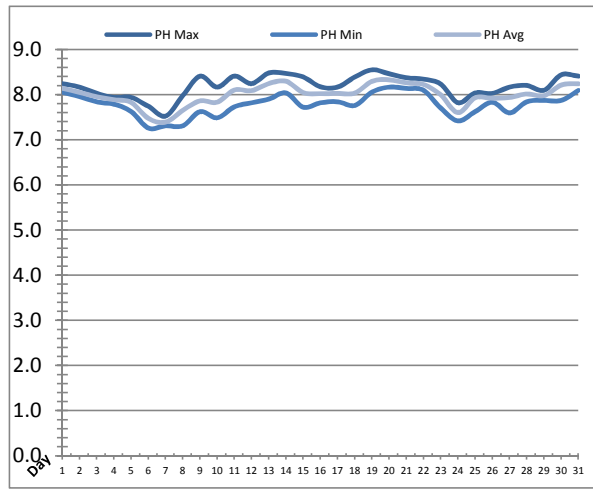
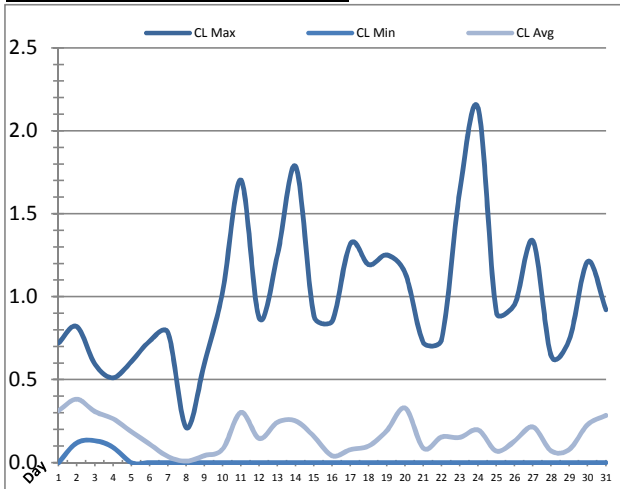


UV System							
Date	Transmittance (%)			Dosage (mJ/cm ²)			Inlet Flow (L/s)
	Maximum	Minimum	Average	Maximum	Minimum	Average	Maximum
1	95.00	95.00	95.00	0.0	0.0	0.0	120.4
2	95.00	95.00	95.00	0.0	0.0	0.0	168.3
3	95.00	95.00	95.00	0.0	0.0	0.0	116.7
4	95.00	95.00	95.00	0.0	0.0	0.0	117.6
5	95.00	95.00	95.00	0.0	0.0	0.0	175.8
6	95.00	95.00	95.00	0.0	0.0	0.0	140.2
7	95.00	95.00	95.00	0.0	0.0	0.0	564.7
8	95.00	95.00	95.00	0.0	0.0	0.0	171.3
9	95.00	95.00	95.00	0.0	0.0	0.0	179.3
10	95.00	95.00	95.00	0.0	0.0	0.0	174.8
11	95.00	95.00	95.00	0.0	0.0	0.0	175.1
12	95.00	95.00	95.00	0.0	0.0	0.0	113.0
13	95.00	95.00	95.00	0.0	0.0	0.0	176.2
14	95.00	95.00	95.00	120.0	0.0	67.1	172.4
15	95.00	95.00	95.00	120.0	0.0	118.0	170.5
16	95.00	95.00	95.00	120.0	97.0	119.4	167.5
17	95.00	95.00	95.00	120.0	98.3	119.1	179.2
18	95.00	95.00	95.00	120.0	102.0	119.9	551.9
19	95.00	95.00	95.00	120.0	99.9	119.4	174.9
20	95.00	95.00	95.00	120.0	100.8	119.8	165.8
21	95.00	95.00	95.00	120.0	101.9	119.9	162.0
22	95.00	95.00	95.00	120.0	120.0	120.0	116.2
23	95.00	95.00	95.00	120.0	101.5	119.7	165.3
24	95.00	95.00	95.00	120.0	102.7	119.9	152.2
25	95.00	95.00	95.00	120.0	120.0	120.0	109.1
26	95.00	95.00	95.00	120.0	114.1	119.9	139.3
27	95.00	95.00	95.00	120.0	120.0	120.0	107.2
28	95.00	95.00	95.00	120.0	90.5	116.5	640.4
29	95.00	95.00	95.00	120.0	97.0	119.0	173.2
30	95.00	95.00	95.00	120.0	100.1	119.3	178.3
31	95.00	70.00	94.98	120.0	0.0	118.9	167.5
Total							
Average	95.00	94.19	95.00	69.7	50.5	67.6	196.3
Maximum	95.00		95.00	120.0		120.0	640.4
Date	1-Aug		1-Aug	14-Aug		22-Aug	28-Aug
Minimum		70.00	94.98		0.0	0.0	
Date		31-Aug	31-Aug		1-Aug	1-Aug	

Notes:

Plant Quality Report

Month: **August-18**

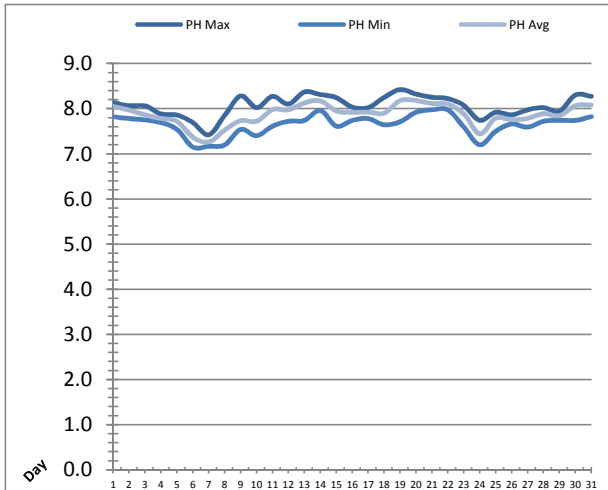
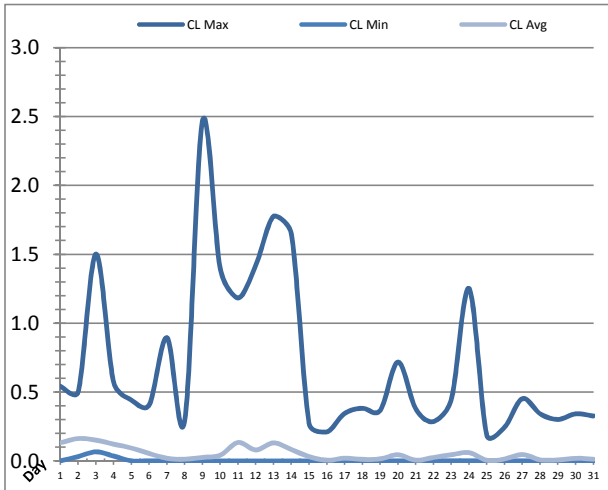


Date	Strainer Chlorine Residual			Strainer pH		
	AIT_2003_CL (ppm)			AIT_2003_PH		
	Maximum	Minimum	Average	Maximum	Minimum	Average
1	0.72	0.00	0.31	8.25	8.06	8.14
2	0.82	0.12	0.38	8.17	7.96	8.05
3	0.59	0.13	0.31	8.03	7.84	7.96
4	0.51	0.09	0.26	7.94	7.79	7.89
5	0.61	0.00	0.19	7.94	7.63	7.83
6	0.73	0.00	0.11	7.74	7.26	7.48
7	0.78	0.00	0.04	7.53	7.31	7.39
8	0.21	0.00	0.01	7.98	7.31	7.65
9	0.60	0.00	0.04	8.41	7.63	7.86
10	1.03	0.00	0.08	8.17	7.49	7.84
11	1.70	0.00	0.30	8.41	7.73	8.10
12	0.87	0.00	0.15	8.25	7.82	8.09
13	1.25	0.00	0.24	8.48	7.90	8.25
14	1.78	0.00	0.25	8.47	8.04	8.30
15	0.88	0.00	0.16	8.39	7.73	8.05
16	0.85	0.00	0.04	8.18	7.82	8.02
17	1.32	0.00	0.08	8.17	7.84	8.03
18	1.19	0.00	0.10	8.39	7.76	8.04
19	1.25	0.00	0.19	8.55	8.06	8.30
20	1.14	0.00	0.33	8.46	8.17	8.33
21	0.72	0.00	0.09	8.38	8.14	8.26
22	0.74	0.00	0.15	8.35	8.10	8.23
23	1.64	0.00	0.15	8.24	7.70	8.00
24	2.13	0.00	0.20	7.82	7.42	7.60
25	0.90	0.00	0.07	8.04	7.63	7.93
26	0.95	0.00	0.13	8.03	7.83	7.92
27	1.34	0.00	0.22	8.17	7.60	7.94
28	0.64	0.00	0.07	8.21	7.84	8.02
29	0.74	0.00	0.08	8.10	7.87	7.98
30	1.21	0.00	0.23	8.44	7.87	8.21
31	0.92	0.00	0.28	8.41	8.10	8.24
Total						
Average	0.99	0.01	0.17	8.20	7.78	8.00
Maximum	2.13		0.38	8.55		8.33
Date	24-Aug		2-Aug	19-Aug		20-Aug
Minimum		0.00	0.01		7.26	7.39
Date		1-Aug	8-Aug		6-Aug	7-Aug

Notes:

Plant Quality Report

Month: **August-18**

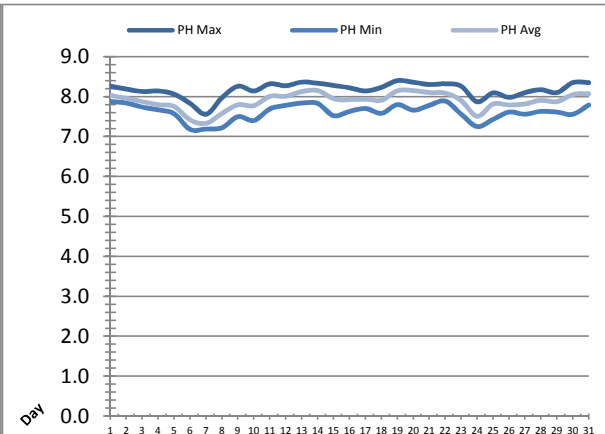
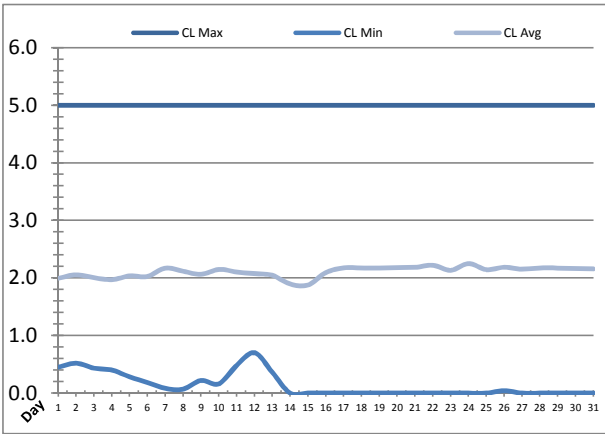


Date	Inlet UV Chlorine Residual			Inlet UV pH		
	AIT_5005_CL (ppm)			AIT_5005_PH		
	Maximum	Minimum	Average	Maximum	Minimum	Average
1	0.54	0.00	0.13	8.14	7.83	8.05
2	0.50	0.03	0.16	8.07	7.78	7.97
3	1.50	0.07	0.15	8.07	7.75	7.87
4	0.57	0.04	0.12	7.89	7.69	7.79
5	0.44	0.00	0.10	7.86	7.54	7.72
6	0.41	0.00	0.06	7.69	7.15	7.37
7	0.90	0.00	0.02	7.42	7.17	7.27
8	0.30	0.00	0.01	7.86	7.20	7.53
9	2.47	0.00	0.03	8.28	7.54	7.74
10	1.39	0.00	0.04	8.02	7.40	7.72
11	1.18	0.00	0.14	8.28	7.62	7.98
12	1.42	0.00	0.08	8.10	7.72	7.98
13	1.78	0.00	0.13	8.37	7.74	8.13
14	1.65	0.00	0.08	8.31	7.96	8.18
15	0.27	0.00	0.03	8.25	7.62	7.95
16	0.21	0.00	0.01	8.04	7.74	7.92
17	0.35	0.00	0.02	8.03	7.78	7.93
18	0.38	0.00	0.01	8.25	7.64	7.90
19	0.37	0.00	0.02	8.43	7.71	8.18
20	0.72	0.00	0.05	8.33	7.92	8.18
21	0.38	0.00	0.01	8.26	7.98	8.12
22	0.29	0.00	0.03	8.22	7.98	8.11
23	0.45	0.00	0.05	8.07	7.59	7.89
24	1.25	0.00	0.06	7.74	7.20	7.45
25	0.19	0.00	0.01	7.92	7.50	7.79
26	0.25	0.00	0.02	7.86	7.66	7.76
27	0.45	0.00	0.05	7.98	7.59	7.79
28	0.34	0.00	0.01	8.03	7.72	7.89
29	0.30	0.00	0.01	7.95	7.74	7.85
30	0.34	0.00	0.02	8.31	7.74	8.07
31	0.33	0.00	0.01	8.28	7.83	8.09
Total						
Average	0.71	0.01	0.05	8.07	7.65	7.88
Maximum	2.47		0.16	8.43		8.18
Date	9-Aug		2-Aug	19-Aug		20-Aug
Minimum		0.00	0.01		7.15	7.27
Date		12-Aug	25-Aug		6-Aug	7-Aug

Notes:

Plant Quality Report

Month: **August-18**

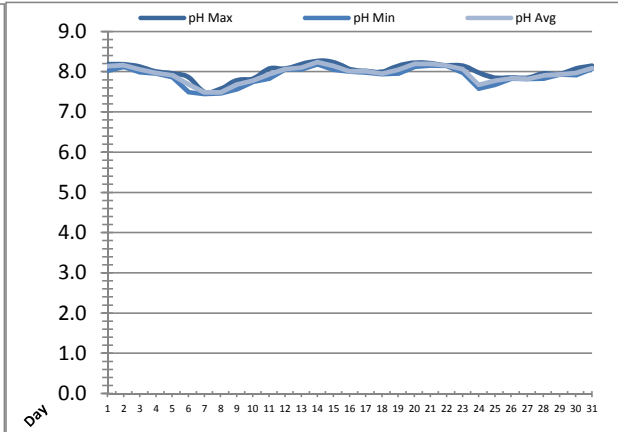
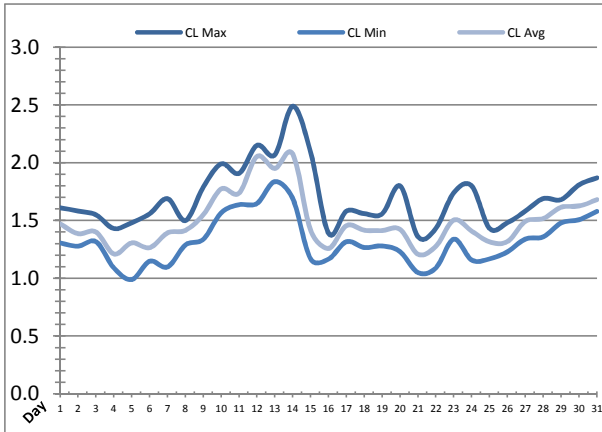


Date	Discharge UV Chlorine Residual			Discharge UV pH		
	AIT_5006_CL (ppm)			AIT_5006_PH		
	Maximum	Minimum	Average	Maximum	Minimum	Average
1	5.00	0.45	2.00	8.26	7.88	8.03
2	5.00	0.52	2.06	8.19	7.84	7.96
3	5.00	0.43	2.01	8.13	7.74	7.88
4	5.00	0.40	1.97	8.14	7.67	7.80
5	5.00	0.28	2.04	8.06	7.57	7.75
6	5.00	0.18	2.03	7.83	7.18	7.42
7	5.00	0.08	2.17	7.56	7.19	7.33
8	5.00	0.07	2.12	7.97	7.22	7.58
9	5.00	0.22	2.06	8.26	7.50	7.80
10	5.00	0.16	2.15	8.14	7.40	7.78
11	5.00	0.48	2.11	8.32	7.69	8.01
12	5.00	0.70	2.08	8.28	7.78	8.01
13	5.00	0.36	2.05	8.37	7.84	8.13
14	5.00	0.00	1.90	8.34	7.83	8.15
15	5.00	0.00	1.88	8.28	7.52	7.95
16	5.00	0.00	2.09	8.22	7.63	7.93
17	5.00	0.00	2.18	8.14	7.70	7.94
18	5.00	0.00	2.17	8.23	7.58	7.91
19	5.00	0.00	2.17	8.40	7.80	8.15
20	5.00	0.00	2.18	8.36	7.66	8.16
21	5.00	0.00	2.19	8.31	7.78	8.10
22	5.00	0.00	2.22	8.33	7.89	8.09
23	5.00	0.00	2.13	8.26	7.56	7.90
24	5.00	0.00	2.25	7.87	7.25	7.51
25	5.00	0.00	2.15	8.10	7.43	7.82
26	5.00	0.04	2.19	7.98	7.61	7.79
27	5.00	0.00	2.15	8.10	7.56	7.82
28	5.00	0.00	2.18	8.18	7.63	7.91
29	5.00	0.00	2.17	8.10	7.61	7.88
30	5.00	0.00	2.17	8.35	7.56	8.05
31	5.00	0.00	2.16	8.35	7.79	8.08
Total						
Average	5.00	0.14	2.11	8.18	7.61	7.89
Maximum	5.00		2.25	8.40		8.16
Date	1-Aug		24-Aug	19-Aug		20-Aug
Minimum		0.00	1.88		7.18	7.33
Date		14-Aug	15-Aug		6-Aug	7-Aug

Notes:

Plant Quality Report

Month: **August-18**

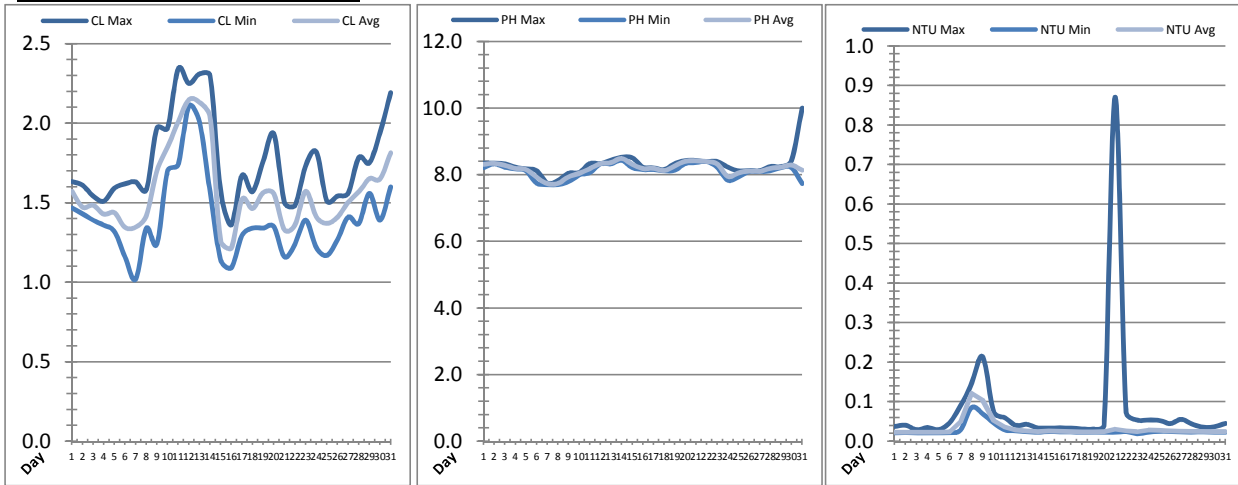


Date	Suction Header Chlorine Res.			Suction Header pH			Distribution CT Calc Total		
	AIT_7001_CL (ppm)			AIT_7001_PH (m)			REAL_CT_CALC_TOTAL (mg·ml/min)		
	Maximum	Minimum	Average	Maximum	Minimum	Average	Maximum	Minimum	Average
1	1.61	1.31	1.47	8.19	8.03	8.14	3830.66	0.00	263.84
2	1.58	1.28	1.39	8.19	8.13	8.16	10516.71	0.00	275.41
3	1.55	1.32	1.40	8.13	7.99	8.06	8957.24	0.00	384.80
4	1.43	1.09	1.21	8.01	7.96	7.97	8683.07	0.00	256.60
5	1.48	0.99	1.31	7.96	7.87	7.92	9417.93	0.00	321.75
6	1.56	1.15	1.27	7.87	7.50	7.68	9188.70	0.00	259.65
7	1.69	1.10	1.39	7.50	7.45	7.48	2656.79	0.00	195.40
8	1.50	1.29	1.42	7.58	7.46	7.49	9597.15	0.00	221.44
9	1.79	1.34	1.55	7.79	7.57	7.68	9963.78	0.00	227.61
10	1.99	1.57	1.77	7.83	7.75	7.78	10673.76	0.00	313.75
11	1.91	1.64	1.74	8.08	7.83	7.94	11607.82	0.00	410.80
12	2.15	1.65	2.06	8.08	8.06	8.07	13530.01	0.00	352.85
13	2.07	1.84	1.95	8.19	8.06	8.11	14295.31	0.00	467.36
14	2.49	1.69	2.08	8.27	8.19	8.24	9176.54	0.00	440.22
15	2.09	1.17	1.42	8.24	8.05	8.14	9692.00	0.00	302.67
16	1.39	1.17	1.26	8.07	8.00	8.01	7768.49	0.00	232.93
17	1.58	1.32	1.46	8.02	7.98	8.01	10099.65	0.00	246.93
18	1.56	1.27	1.42	8.00	7.94	7.95	8455.20	0.00	315.37
19	1.56	1.28	1.41	8.15	7.96	8.05	8989.43	0.00	302.91
20	1.80	1.23	1.42	8.23	8.13	8.20	8318.16	0.00	297.29
21	1.36	1.05	1.21	8.21	8.16	8.19	8366.09	0.00	271.25
22	1.43	1.09	1.28	8.16	8.15	8.16	9305.24	0.00	255.73
23	1.74	1.34	1.51	8.15	7.98	8.07	9706.08	0.00	290.06
24	1.80	1.16	1.41	7.98	7.58	7.68	8892.03	0.00	290.11
25	1.43	1.17	1.32	7.85	7.68	7.78	9012.42	0.00	271.76
26	1.48	1.23	1.32	7.86	7.83	7.84	2221.04	0.00	249.12
27	1.58	1.34	1.49	7.85	7.82	7.82	8473.38	0.00	363.59
28	1.69	1.36	1.52	7.96	7.83	7.91	7243.47	0.00	266.24
29	1.68	1.48	1.62	7.94	7.93	7.94	11782.22	0.00	288.21
30	1.81	1.51	1.63	8.08	7.92	7.97	8498.38	0.00	266.59
31	1.87	1.58	1.68	8.15	8.08	8.09	11122.75	0.00	296.92
Total									
Average	1.70	1.32	1.50	8.02	7.90	7.95	8.02	7.90	7.95
Maximum	2.49		2.08	8.27		8.24	8.27		8.24
Date	14-Aug		14-Aug	14-Aug		14-Aug	14-Aug		14-Aug
Minimum		0.99	1.21		7.45	7.48		7.45	7.48
Date		5-Aug	21-Aug		7-Aug	7-Aug		7-Aug	7-Aug

Notes:

Plant Quality Report

Month: **August-18**

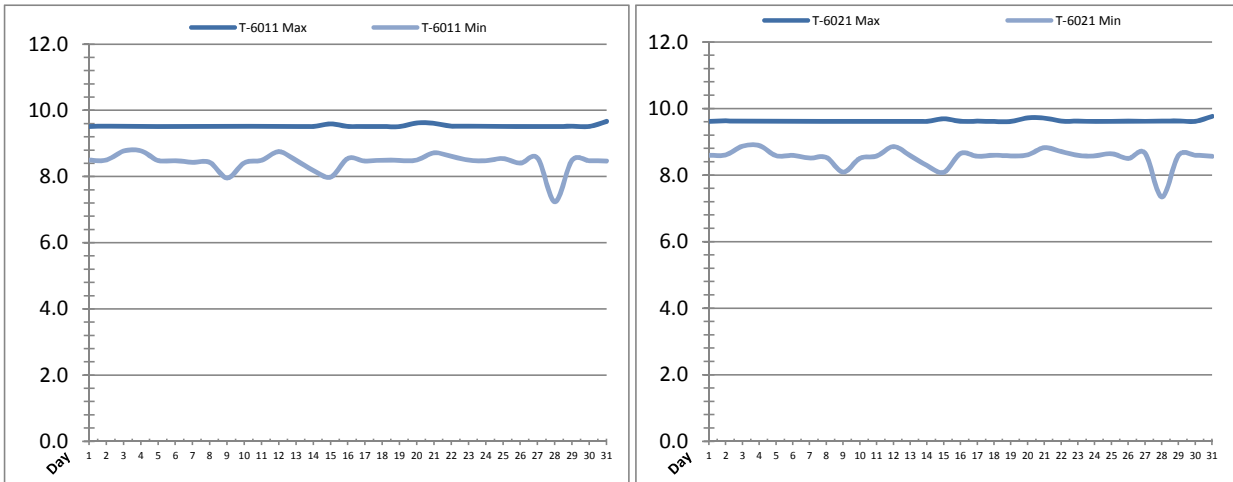


Date	Distribution Chlorine Header			Distribution pH			Distribution Turbidity		
	AIT_7004_CL (ppm)			AIT_7004_PH (mg/L)			AIT_7003 (mg/L)		
	Maximum	Minimum	Average	Maximum	Minimum	Average	Maximum	Minimum	Average
1	1.63	1.47	1.57	8.35	8.22	8.32	0.04	0.02	0.02
2	1.61	1.43	1.47	8.35	8.33	8.35	0.04	0.02	0.02
3	1.54	1.39	1.48	8.33	8.23	8.28	0.03	0.02	0.02
4	1.51	1.36	1.43	8.23	8.18	8.19	0.03	0.02	0.02
5	1.59	1.32	1.44	8.18	8.12	8.16	0.03	0.02	0.02
6	1.62	1.16	1.35	8.12	7.75	7.92	0.05	0.02	0.02
7	1.63	1.02	1.35	7.75	7.71	7.74	0.09	0.03	0.05
8	1.58	1.34	1.42	7.83	7.71	7.74	0.15	0.09	0.12
9	1.97	1.24	1.70	8.05	7.80	7.94	0.21	0.07	0.10
10	1.97	1.70	1.85	8.07	8.00	8.04	0.07	0.05	0.05
11	2.34	1.74	2.01	8.34	8.07	8.18	0.06	0.03	0.04
12	2.25	2.11	2.15	8.34	8.33	8.33	0.04	0.03	0.03
13	2.31	2.01	2.13	8.44	8.33	8.37	0.04	0.02	0.03
14	2.30	1.57	2.04	8.53	8.44	8.49	0.03	0.02	0.02
15	1.57	1.14	1.26	8.51	8.22	8.31	0.03	0.03	0.03
16	1.36	1.09	1.21	8.23	8.16	8.19	0.03	0.02	0.03
17	1.67	1.29	1.52	8.21	8.16	8.20	0.03	0.02	0.02
18	1.57	1.34	1.46	8.16	8.12	8.13	0.03	0.02	0.02
19	1.76	1.34	1.56	8.34	8.14	8.26	0.03	0.02	0.02
20	1.93	1.35	1.56	8.43	8.34	8.41	0.04	0.02	0.02
21	1.50	1.16	1.33	8.43	8.37	8.42	0.87	0.02	0.03
22	1.48	1.24	1.36	8.40	8.40	8.40	0.07	0.02	0.03
23	1.73	1.39	1.57	8.40	8.23	8.32	0.05	0.02	0.02
24	1.82	1.22	1.41	8.23	7.84	7.95	0.05	0.02	0.03
25	1.51	1.17	1.37	8.12	7.94	8.05	0.05	0.03	0.03
26	1.54	1.27	1.41	8.13	8.10	8.11	0.04	0.02	0.03
27	1.56	1.41	1.50	8.12	8.10	8.10	0.06	0.02	0.03
28	1.78	1.37	1.57	8.25	8.12	8.19	0.04	0.02	0.03
29	1.75	1.56	1.65	8.25	8.22	8.23	0.04	0.02	0.02
30	1.94	1.39	1.65	8.43	8.22	8.29	0.04	0.02	0.02
31	2.19	1.60	1.81	10.00	7.74	8.14	0.05	0.02	0.02
Total									
Average	1.76	1.39	1.57	8.31	8.11	8.19	0.1	0.0	0.0
Maximum	2.34		2.15	10.00		8.49	0.9		0.1
Date	11-Aug		12-Aug	31-Aug		14-Aug	21-Aug		8-Aug
Minimum		1.02	1.21		7.71	7.74		0.0	0.0
Date		7-Aug	16-Aug		8-Aug	7-Aug		23-Aug	3-Aug

Notes:

Raw Well/Treated Storage Report

Month: **August-18**

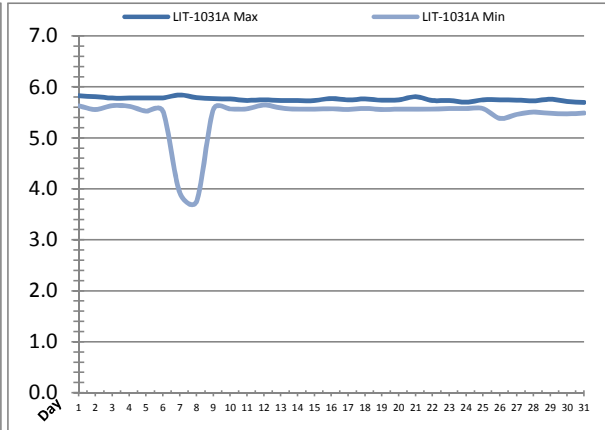
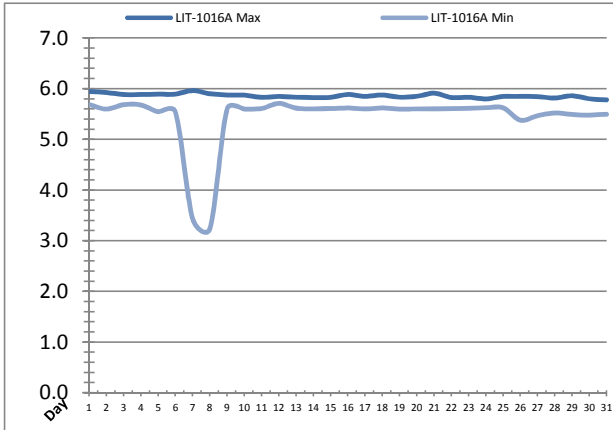


Date	Treated Water Storage Tank					
	T-6011 (m)			T-6021 (m)		
	Maximum	Minimum	Average	Maximum	Minimum	Average
1	9.5	8.5	9.1	9.6	8.6	9.2
2	9.5	8.5	9.3	9.6	8.6	9.4
3	9.5	8.8	9.2	9.6	8.9	9.3
4	9.5	8.8	9.2	9.6	8.9	9.3
5	9.5	8.5	9.0	9.6	8.6	9.1
6	9.5	8.5	9.0	9.6	8.6	9.1
7	9.5	8.4	9.1	9.6	8.5	9.2
8	9.5	8.4	9.1	9.6	8.5	9.2
9	9.5	8.0	9.0	9.6	8.1	9.1
10	9.5	8.4	9.1	9.6	8.5	9.2
11	9.5	8.5	9.1	9.6	8.6	9.2
12	9.5	8.8	9.3	9.6	8.9	9.4
13	9.5	8.5	9.1	9.6	8.6	9.2
14	9.5	8.2	9.0	9.6	8.3	9.1
15	9.6	8.0	9.0	9.7	8.1	9.1
16	9.5	8.6	9.0	9.6	8.7	9.1
17	9.5	8.5	9.1	9.6	8.6	9.2
18	9.5	8.5	9.1	9.6	8.6	9.2
19	9.5	8.5	9.1	9.6	8.6	9.2
20	9.6	8.5	9.1	9.7	8.6	9.2
21	9.6	8.7	9.2	9.7	8.8	9.3
22	9.5	8.6	9.2	9.6	8.7	9.3
23	9.5	8.5	9.1	9.6	8.6	9.2
24	9.5	8.5	9.1	9.6	8.6	9.2
25	9.5	8.5	9.1	9.6	8.6	9.2
26	9.5	8.4	9.0	9.6	8.5	9.1
27	9.5	8.6	9.0	9.6	8.7	9.1
28	9.5	7.2	8.8	9.6	7.3	8.9
29	9.5	8.5	9.2	9.6	8.6	9.3
30	9.5	8.5	9.0	9.6	8.6	9.1
31	9.7	8.5	9.1	9.8	8.6	9.2
Total						
Average	9.5	8.4	9.1	9.6	8.5	9.2
Maximum	9.7		9.3	9.8		9.4
Date	31-Aug		12-Aug	31-Aug		12-Aug
Minimum		7.2	8.8		7.3	8.9
Date		28-Aug	28-Aug		28-Aug	28-Aug

Notes:

Raw Well/Treated Storage Report

Month: **August-18**



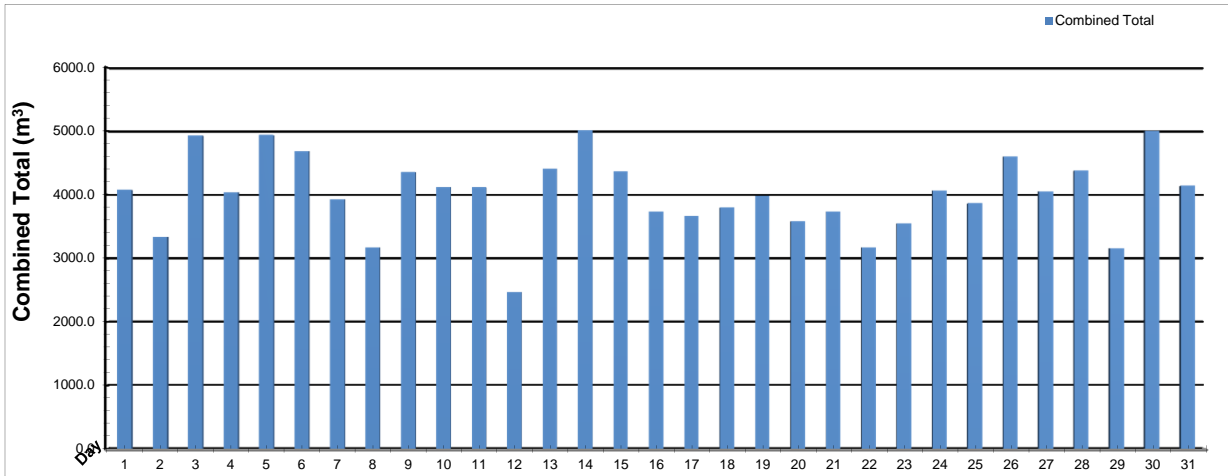
Date	Low Lift Intake Levels					
	Wet Well #1 (LIT-1016A) (m)			Wet Well #2 (LIT-1031A) (m)		
	Maximum	Minimum	Average	Maximum	Minimum	Average
1	5.9	5.7	5.8	5.8	5.6	5.7
2	5.9	5.6	5.8	5.8	5.6	5.7
3	5.9	5.7	5.8	5.8	5.6	5.7
4	5.9	5.7	5.8	5.8	5.6	5.7
5	5.9	5.5	5.7	5.8	5.5	5.7
6	5.9	5.5	5.7	5.8	5.5	5.7
7	6.0	3.4	5.7	5.8	3.9	5.6
8	5.9	3.2	5.7	5.8	3.8	5.6
9	5.9	5.6	5.8	5.8	5.6	5.7
10	5.9	5.6	5.8	5.8	5.6	5.7
11	5.8	5.6	5.8	5.7	5.6	5.7
12	5.8	5.7	5.8	5.7	5.6	5.7
13	5.8	5.6	5.8	5.7	5.6	5.7
14	5.8	5.6	5.8	5.7	5.6	5.7
15	5.8	5.6	5.7	5.7	5.6	5.7
16	5.9	5.6	5.8	5.8	5.6	5.7
17	5.9	5.6	5.7	5.7	5.6	5.7
18	5.9	5.6	5.8	5.8	5.6	5.7
19	5.8	5.6	5.8	5.7	5.6	5.7
20	5.9	5.6	5.8	5.8	5.6	5.7
21	5.9	5.6	5.8	5.8	5.6	5.7
22	5.8	5.6	5.7	5.7	5.6	5.7
23	5.8	5.6	5.7	5.7	5.6	5.7
24	5.8	5.6	5.7	5.7	5.6	5.7
25	5.8	5.6	5.7	5.8	5.6	5.7
26	5.9	5.4	5.6	5.8	5.4	5.6
27	5.8	5.5	5.7	5.7	5.5	5.6
28	5.8	5.5	5.7	5.7	5.5	5.6
29	5.9	5.5	5.7	5.8	5.5	5.6
30	5.8	5.5	5.7	5.7	5.5	5.6
31	5.8	5.5	5.7	5.7	5.5	5.6
Total						
Average	5.9	5.4	5.7	5.8	5.4	5.7
Maximum	6.0		5.8	5.8		5.7
Date	7-Aug		1-Aug	7-Aug		1-Aug
Minimum		3.2	5.6		3.8	5.6
Date		8-Aug	26-Aug		8-Aug	26-Aug

Notes:

8th: Switched to shoreline intake due to low dissolved oxygen on main intake.

High Lift Monthly Report

Month: August-18

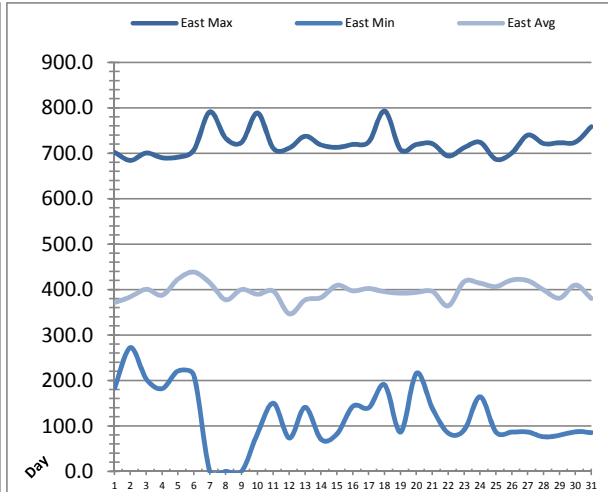
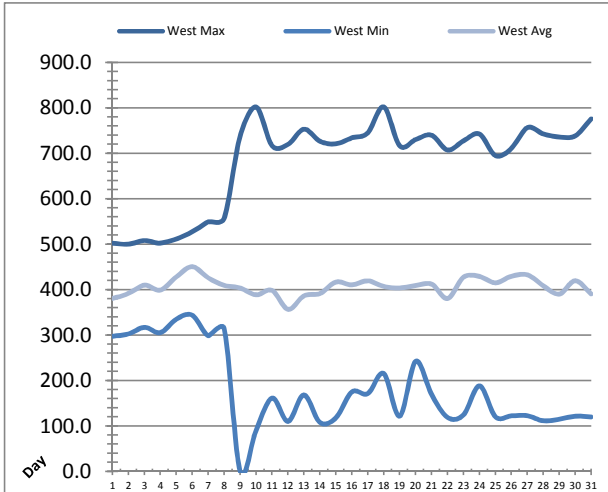


Date	Distribution Flow					
	FIT_7052 (East)		FIT_7062 (West)		Combined	
	(m³) Total	(L/s) Peak	(m³) Total	(L/s) Peak	(m³) Total	(L/s) Peak
1	1654.1	66.3	2418.9	104.8	4073.0	112.4
2	1495.8	62.3	1837.0	103.5	3332.8	108.1
3	2022.5	59.9	2905.0	103.7	4927.5	105.5
4	1506.4	65.8	2529.8	103.6	4036.2	110.6
5	1841.9	60.4	3096.1	103.6	4938.0	105.8
6	1548.1	66.7	3137.1	105.4	4685.2	112.3
7	1298.8	65.7	2629.5	103.0	3928.3	115.5
8	1544.0	64.8	1624.6	94.6	3168.6	112.2
9	1439.4	64.3	2918.7	90.2	4358.1	113.5
10	1538.9	65.7	2575.8	95.5	4114.7	112.5
11	1957.2	60.1	2156.7	102.6	4113.9	105.3
12	1360.1	58.7	1109.5	103.2	2469.6	105.7
13	1872.9	65.4	2539.2	95.9	4412.1	115.5
14	1869.0	62.9	3141.3	103.7	5010.3	108.4
15	1625.2	59.4	2738.8	105.1	4364.0	111.9
16	1248.6	65.2	2482.0	103.4	3730.6	108.9
17	1241.3	58.7	2418.8	102.7	3660.1	105.8
18	1591.2	58.1	2205.7	102.2	3796.9	105.1
19	1729.6	59.4	2255.0	102.6	3984.5	104.8
20	1705.4	58.1	1872.5	103.1	3577.9	105.5
21	1430.5	47.1	2306.1	102.3	3736.7	104.5
22	1569.3	59.7	1599.7	101.8	3169.1	104.5
23	1453.5	59.2	2094.9	103.8	3548.4	105.4
24	1459.1	58.5	2601.6	102.6	4060.8	105.5
25	1597.3	58.9	2267.8	103.5	3865.1	106.3
26	1644.4	59.5	2952.4	103.0	4596.8	105.5
27	1920.6	66.0	2130.6	97.8	4051.2	109.4
28	1718.9	64.5	2657.5	100.8	4376.4	111.9
29	1519.3	65.2	1637.1	91.9	3156.4	112.7
30	1340.9	65.5	3662.9	104.2	5003.8	113.7
31	1890.2	66.5	2250.0	101.3	4140.1	113.2
Total	49634.6		74752.4		124387.1	
Average	1601.1	61.9	2411.4	101.5	4012.5	109.0
Maximum	2022.5	66.7	3662.9	105.4	5010.3	115.5
Date	3-Aug	6-Aug	30-Aug	6-Aug	14-Aug	13-Aug
Minimum	1241.3		1109.5		2469.6	
Date	17-Aug		12-Aug		12-Aug	

Notes:

Low Lift Monthly Report

Month: **August-18**

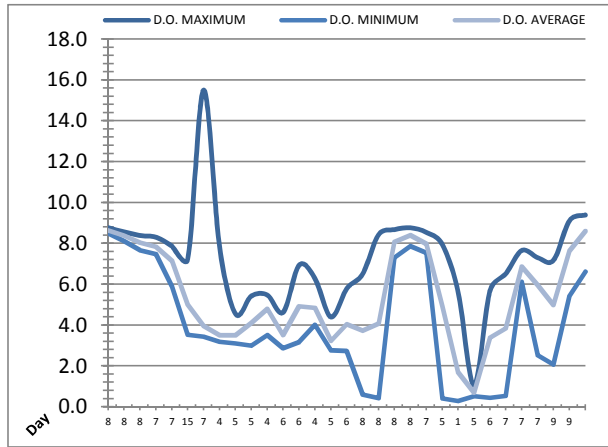
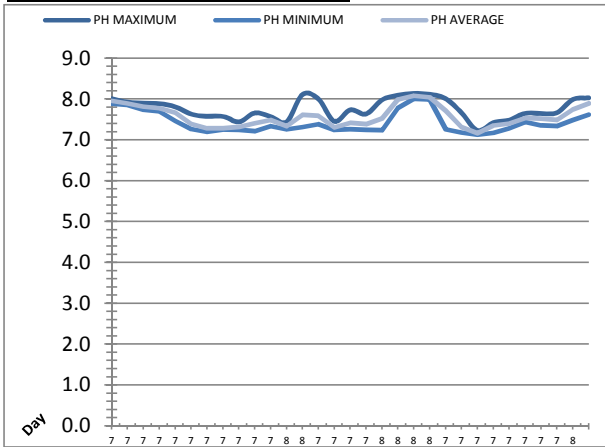


Date	West Train Header Pressure PIT_1018 (kPa)			East Train Header Pressure PIT_1028 (kPa)		
	Maximum	Minimum	Average	Maximum	Minimum	Average
1	502.2	297.3	380.6	702.4	183.3	371.8
2	500.0	302.5	391.6	684.5	272.5	383.9
3	508.2	317.0	410.1	700.9	203.4	401.0
4	502.2	305.6	399.1	690.3	182.3	387.8
5	512.0	335.0	428.3	691.7	221.1	423.4
6	527.2	343.8	450.5	707.7	210.8	438.7
7	549.3	298.6	426.0	791.3	0.0	415.1
8	557.7	313.9	409.4	733.3	0.0	377.7
9	738.4	0.1	403.7	724.4	0.2	400.4
10	802.1	90.7	388.7	788.9	83.9	389.8
11	717.0	161.4	398.3	710.8	150.2	396.6
12	719.9	110.1	356.7	711.7	73.5	346.7
13	753.2	168.2	386.4	737.7	141.1	377.5
14	726.6	107.8	391.5	718.4	70.4	382.6
15	721.0	118.0	416.8	713.1	82.4	409.6
16	734.0	174.9	410.6	719.8	143.5	397.2
17	745.1	171.4	419.4	725.4	140.2	402.7
18	802.2	215.3	407.0	793.2	190.6	395.2
19	716.6	121.6	403.7	707.9	86.5	392.5
20	730.4	242.3	409.0	719.6	216.2	393.8
21	740.0	169.3	412.1	721.2	138.9	396.2
22	707.3	118.8	380.5	694.2	84.0	364.3
23	727.5	124.6	427.5	712.7	91.1	417.8
24	742.4	188.3	429.1	724.4	164.3	414.1
25	695.1	120.3	415.2	686.8	86.4	406.8
26	711.0	122.3	429.4	700.8	86.4	421.4
27	756.7	122.4	432.5	740.2	86.7	419.9
28	742.8	111.3	408.7	721.6	76.0	399.1
29	736.1	115.0	390.2	723.5	79.5	381.4
30	738.6	121.4	419.7	724.8	87.3	410.2
31	775.8	120.0	390.5	759.0	85.6	380.6
Total						
Average	681.9	181.6	407.2	722.0	119.9	396.6
Maximum	802.2		450.5	793.2		438.7
Date	18-Aug		6-Aug	18-Aug		6-Aug
Minimum		0.1	356.7		0.0	346.7
Date		9-Aug	12-Aug		7-Aug	12-Aug

Notes:
7, 8, 9 backwash intake.

Low Lift Monthly Report

Month: **August-18**

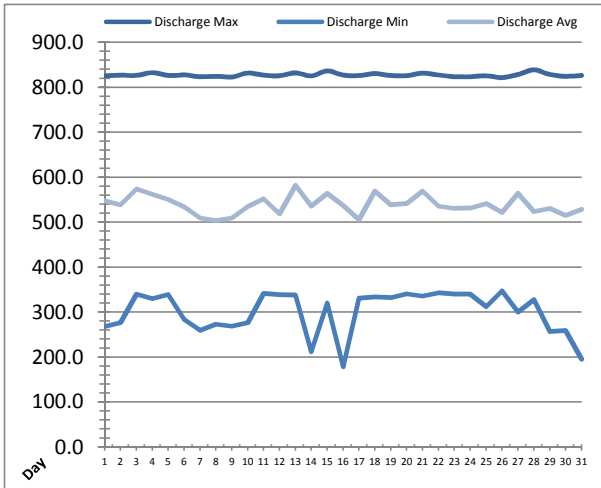
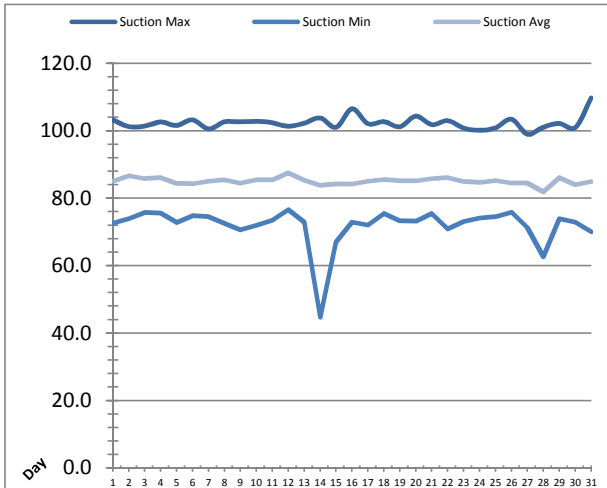


Date	Raw Water Sample Line					
	AIT_1402_PH (pH)			AIT_1402_DO (mg/L)		
	Maximum	Minimum	Average	Maximum	Minimum	Average
1	8.0	7.9	8.0	8.8	8.5	8.6
2	7.9	7.9	7.9	8.6	8.1	8.4
3	7.9	7.7	7.8	8.4	7.7	8.0
4	7.9	7.7	7.8	8.3	7.5	7.8
5	7.8	7.5	7.7	7.9	5.9	7.1
6	7.6	7.3	7.4	7.2	3.5	5.0
7	7.6	7.2	7.3	15.5	3.4	4.0
8	7.6	7.3	7.3	7.8	3.2	3.5
9	7.4	7.2	7.3	4.6	3.1	3.5
10	7.7	7.2	7.4	5.4	3.0	4.1
11	7.6	7.3	7.5	5.5	3.5	4.8
12	7.4	7.3	7.3	4.6	2.9	3.5
13	8.1	7.3	7.6	6.9	3.2	4.9
14	8.0	7.4	7.6	6.3	4.0	4.8
15	7.5	7.2	7.3	4.4	2.8	3.2
16	7.7	7.3	7.4	5.8	2.7	4.0
17	7.6	7.2	7.4	6.5	0.6	3.7
18	8.0	7.2	7.5	8.4	0.4	4.1
19	8.1	7.8	8.0	8.7	7.3	8.1
20	8.1	8.0	8.1	8.8	7.9	8.4
21	8.1	8.0	8.0	8.5	7.5	8.0
22	8.0	7.3	7.7	8.0	0.4	4.9
23	7.7	7.2	7.3	5.6	0.3	1.7
24	7.2	7.1	7.2	1.0	0.5	0.7
25	7.4	7.2	7.4	5.7	0.4	3.4
26	7.5	7.3	7.4	6.5	0.5	3.8
27	7.7	7.4	7.5	7.7	6.1	6.9
28	7.6	7.4	7.5	7.3	2.5	6.0
29	7.7	7.3	7.5	7.2	2.1	5.0
30	8.0	7.5	7.7	9.1	5.4	7.6
31	8.0	7.6	7.9	9.4	6.6	8.6
Total						
Average	7.8	7.4	7.6	7.2	3.9	5.4
Maximum	8.1		8.1	15.5		8.6
Date	20-Aug		20-Aug	7-Aug		1-Aug
Minimum		7.1	7.2		0.3	0.7
Date		24-Aug	24-Aug		23-Aug	24-Aug

Notes:
 Low dissolved oxygen, switched to shoreline intake on the 8th.

High Lift Monthly Report

Month: August-18

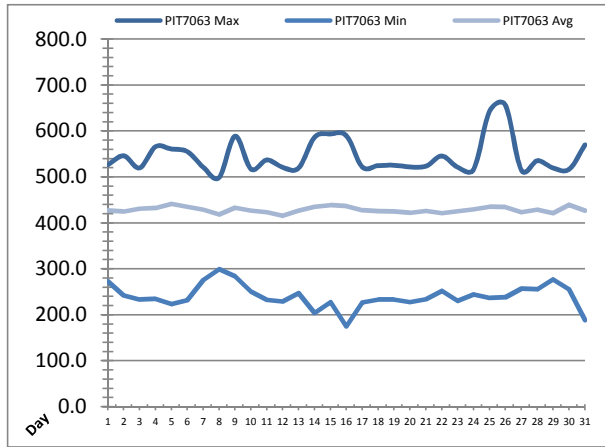
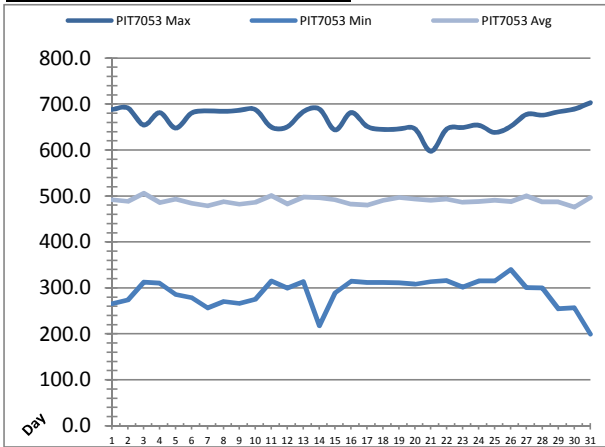


Date	Suction Header Pressure			Discharge Header Pressure		
	PIT_7002 (kPa)			PIT_7005 (kPa)		
	Maximum	Minimum	Average	Maximum	Minimum	Average
1	103.3	72.6	85.1	825.5	268.3	547.9
2	101.2	74.0	86.6	827.1	276.6	538.7
3	101.4	75.8	85.8	826.6	339.9	574.0
4	102.6	75.6	86.1	832.7	329.7	562.2
5	101.6	72.8	84.4	826.3	339.0	550.8
6	103.3	74.8	84.3	827.5	283.7	534.5
7	100.6	74.5	85.0	823.7	259.6	509.4
8	102.7	72.5	85.4	824.5	273.3	503.6
9	102.6	70.6	84.4	823.0	268.5	509.5
10	102.9	71.9	85.4	831.7	276.9	534.9
11	102.3	73.5	85.4	827.1	341.3	552.0
12	101.4	76.6	87.5	825.9	338.2	518.4
13	102.3	72.9	85.3	832.1	337.7	581.9
14	103.8	44.7	83.8	825.4	211.7	535.7
15	101.1	67.1	84.2	836.7	320.3	564.2
16	106.5	72.9	84.2	827.1	178.3	536.8
17	102.1	72.0	85.0	826.2	331.0	506.0
18	102.7	75.5	85.5	830.7	333.5	569.2
19	101.2	73.3	85.2	826.2	331.9	538.8
20	104.3	73.2	85.2	825.9	340.5	541.0
21	101.8	75.5	85.8	831.7	335.5	568.9
22	103.0	70.9	86.1	827.5	342.5	535.5
23	100.8	73.1	85.0	823.8	340.0	530.9
24	100.2	74.1	84.6	823.9	339.8	531.2
25	100.9	74.5	85.2	825.5	312.4	541.4
26	103.4	75.9	84.5	821.8	347.4	521.6
27	99.0	71.3	84.5	828.5	300.3	564.0
28	101.1	62.6	82.0	839.0	327.7	523.6
29	102.2	73.9	86.1	828.7	257.0	530.7
30	101.0	72.9	84.0	824.6	258.7	515.0
31	109.7	70.1	85.0	826.7	195.2	528.6
Total						
Average	102.4	72.0	85.1	827.5	301.2	538.7
Maximum	109.7		87.5	839.0		581.9
Date	31-Aug		12-Aug	28-Aug		13-Aug
Minimum		44.7	82.0		178.3	503.6
Date		14-Aug	28-Aug		16-Aug	8-Aug

Notes:

High Lift Monthly Report

Month: **August-18**

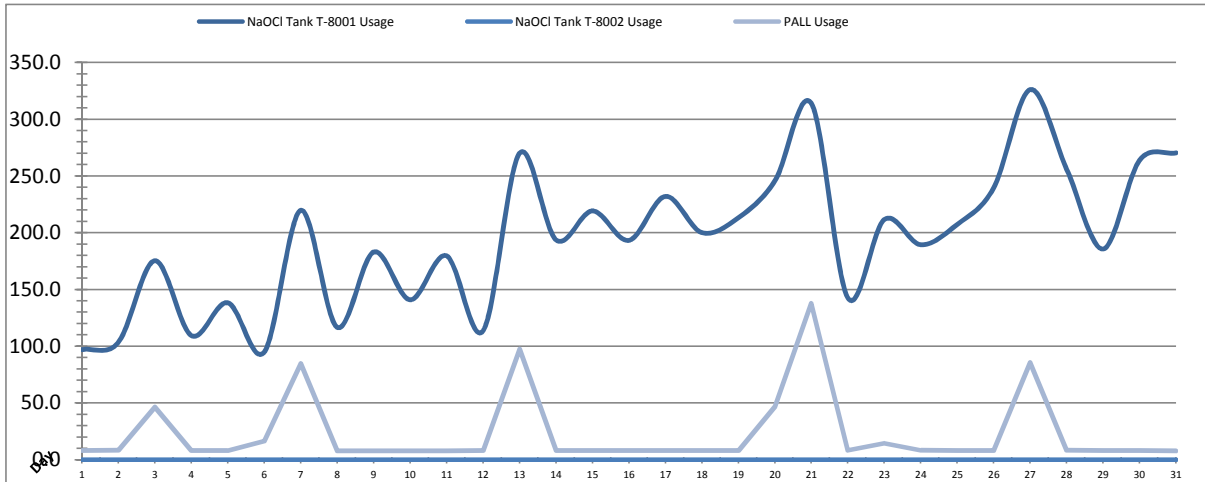


Date	Distribution Pressures					
	PIT_7053 (kPa)			PIT_7063 (kPa)		
	Maximum	Minimum	Average	Maximum	Minimum	Average
1	688.4	265.5	492.0	526.5	273.2	427.0
2	691.6	274.3	488.6	546.2	242.0	424.8
3	654.8	312.6	505.8	519.7	233.6	431.1
4	681.6	310.5	485.5	565.9	234.4	432.7
5	648.0	286.0	493.6	560.8	223.7	441.4
6	680.7	278.7	484.3	555.4	231.7	434.9
7	685.4	257.0	478.7	521.3	275.8	428.9
8	684.3	270.7	487.6	499.1	299.2	418.8
9	686.9	266.2	482.7	588.8	284.2	433.3
10	688.2	275.2	486.5	517.2	250.9	427.0
11	650.0	315.3	501.0	537.2	232.7	423.4
12	650.9	299.7	483.2	520.9	229.3	415.9
13	683.8	314.0	498.0	519.7	247.0	426.7
14	689.7	217.7	496.4	586.5	204.3	435.4
15	644.0	289.6	492.1	593.8	228.0	438.6
16	681.9	314.7	482.6	590.1	175.1	436.5
17	651.7	311.8	480.1	521.8	226.9	427.4
18	645.0	312.1	490.5	524.9	233.1	425.7
19	646.0	311.1	496.8	525.7	233.0	424.7
20	646.4	308.3	493.7	522.0	227.9	422.1
21	597.7	313.6	491.0	523.6	233.9	426.2
22	646.0	315.8	493.4	545.6	252.3	421.4
23	649.1	301.9	486.5	521.2	230.8	425.6
24	654.3	315.5	487.9	516.6	244.3	429.5
25	638.4	315.2	490.6	643.0	237.1	435.4
26	651.5	340.3	488.2	656.2	238.2	434.3
27	677.8	300.4	500.2	514.7	257.1	423.6
28	676.1	300.2	486.9	535.5	255.6	428.8
29	683.6	254.8	487.2	519.7	277.0	421.3
30	689.5	256.5	476.2	516.7	255.9	439.3
31	703.1	200.0	497.1	569.7	188.7	427.1
Total						
Average	666.0	290.5	489.8	545.4	240.5	428.7
Maximum	703.1		505.8	656.2		441.4
Date	31-Aug		3-Aug	26-Aug		5-Aug
Minimum		200.0	476.2		175.1	415.9
Date		31-Aug	30-Aug		16-Aug	12-Aug

Notes:

Chemical Usage Monthly Report

Month: **August-18**

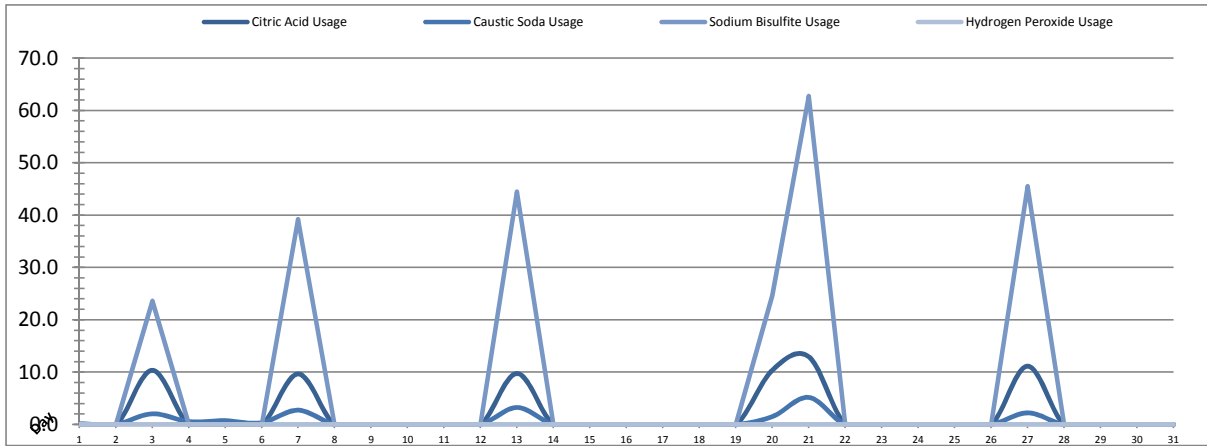


Date	PALL Usage	NaOCI Tank T-8001	NaOCI Tank T-8002
	PALL_HYPO_USAGE (L) Usage	LIT_8002 (Storage) (L) Usage	LIT_8004 (Day) (L) Usage
1	8.0	97.1	0.0
2	8.4	103.5	0.0
3	46.4	175.5	0.0
4	8.1	109.5	0.0
5	7.9	138.4	0.0
6	16.4	95.0	0.0
7	84.8	219.8	0.0
8	7.8	116.7	0.0
9	7.7	183.1	0.0
10	7.8	141.0	0.0
11	7.8	179.7	0.0
12	7.9	113.7	0.0
13	97.5	270.0	0.0
14	7.93	193.77	0.0
15	8.0	219.3	0.0
16	7.9	193.4	0.0
17	7.9	232.1	0.0
18	7.9	200.2	0.0
19	7.9	213.4	0.0
20	46.9	245.7	0.0
21	137.6	313.9	0.0
22	8.2	142.7	0.0
23	14.6	211.7	0.0
24	8.4	189.5	0.0
25	7.9	207.4	0.0
26	8.2	239.8	0.0
27	85.6	326.2	0.0
28	8.3	256.0	0.0
29	7.9	185.7	0.0
30	8.0	264.0	0.0
31	7.9	270.4	0.0
Total	713.7	6047.9	0.0
Average	23.0	195.1	0.0
Maximum	137.6	326.2	0.0
Date	21-Aug	27-Aug	1-Aug
Minimum	7.7	95.0	0.0
Date	9-Aug	6-Aug	1-Aug

Notes:	
Dosage (mg/L)=	Day Tank (L) x %conc. x 1000
	Membrane Flow (m3)
Chlorine Concentration:	12.0%

Chemical Usage Monthly Report

Month: **August-18**



Date	Citric Acid	Caustic Soda	Captor	Hydrogen Peroxide		Membrane Flow (m ³)
	TAGNAME (L) Usage	TAGNAME (L) Usage	TAGNAME (L) Usage	TAGNAME (L) Usage	TAGNAME (mg/L) Dose	
1	0.0	0.2	0.0	0.0	0.0	3969.207
2	0.0	0.1	0.0	0.0	0.0	3985.420
3	10.4	2.1	23.6	0.0	0.0	5478.689
4	0.0	0.6	0.0	0.0	0.0	4265.642
5	0.0	0.7	0.0	0.0	0.0	5757.998
6	0.0	0.3	0.0	0.0	0.0	4961.106
7	9.7	2.8	39.2	0.0	0.0	4186.853
8	0.0	0.0	0.0	0.0	0.0	3382.463
9	0.0	0.0	0.0	0.0	0.0	4724.423
10	0.0	0.0	0.0	0.0	0.0	4150.679
11	0.0	0.0	0.0	0.0	0.0	4799.781
12	0.0	0.0	0.0	0.0	0.0	2781.666
13	9.8	3.3	44.5	0.0	0.0	4857.244
14	0.0	0.0	0.0	0.0	0.0	4873.801
15	0.0	0.0	0.0	0.0	0.0	5107.398
16	0.0	0.0	0.0	0.0	0.0	3982.217
17	0.0	0.0	0.0	0.0	0.0	4242.335
18	0.0	0.0	0.0	0.0	0.0	3904.522
19	0.0	0.0	0.0	0.0	0.0	4212.390
20	10.4	1.5	24.7	0.0	0.0	3958.812
21	13.0	5.2	62.7	0.0	0.0	4122.803
22	0.0	0.0	0.0	0.0	0.0	3408.756
23	0.0	0.0	0.0	0.0	0.0	3946.663
24	0.0	0.0	0.0	0.0	0.0	4137.793
25	0.0	0.0	0.0	0.0	0.0	4203.203
26	0.0	0.0	0.0	0.0	0.0	4415.120
27	11.2	2.2	45.5	0.0	0.0	4732.608
28	0.0	0.0	0.0	0.0	0.0	4458.347
29	0.0	0.0	0.0	0.0	0.0	3848.622
30	0.0	0.0	0.0	0.0	0.0	5122.917
31	0.0	0.0	0.0	0.0	0.0	4825.185
Total	64.3	18.9	240.1	0.0	0.0	134804.7
Average	2.1	0.6	7.7	0.0	0.0	4348.5
Maximum	13.0	5.2	62.7	0.0	0.0	5758.0
Date	21-Aug	21-Aug	21-Aug	1-Aug	1-Aug	5-Aug
Minimum	0.0	0.0	0.0	0.0	0.0	2781.7
Date	1-Aug	8-Aug	1-Aug	1-Aug	1-Aug	12-Aug

Notes:

$$\text{Dosage (mg/L)} = \frac{\text{Day Tank (L)} \times \% \text{conc.} \times 1000}{\text{Membrane Flow (m}^3\text{)}}$$

Peroxide Concentration: **50.0%**

Runtimes Report

Month: August-18

Date	Daily Gen-Set Runtimes		Daily UV Runtimes		Daily PALL Runtimes				
	LLPS	WTP	UV #1	UV #2	Air Compressor #1	Air Compressor #2	CIP Neutralization	CIP Drain	CIP Recirc
	(Hrs)	(Hrs)	(Hrs)	(Hrs)	(Hrs)	(Hrs)	(Hrs)	(Hrs)	(Hrs)
1	0.0	0.0	0.0	0.0	24.4	0.0	0.0	0.0	0.0
2	0.0	0.0	0.0	0.0	0.0	24.4	0.0	0.0	0.0
3	0.0	0.0	0.0	0.0	24.4	0.0	0.1	0.0	0.1
4	0.0	0.0	0.0	0.0	0.0	24.4	0.0	0.0	0.0
5	0.0	0.0	0.0	0.0	24.4	0.0	0.0	0.0	0.0
6	0.0	0.0	0.0	0.0	0.0	24.1	0.0	0.0	0.0
7	0.0	0.0	0.0	0.0	24.4	0.1	0.3	0.0	0.2
8	0.0	0.0	0.0	0.0	0.0	24.3	0.0	0.0	0.0
9	0.0	0.0	0.0	0.0	24.4	0.1	0.0	0.0	0.0
10	0.0	0.0	0.0	0.0	0.0	24.3	0.0	0.0	0.0
11	0.0	0.0	0.0	0.0	23.9	0.1	0.0	0.0	0.0
12	0.0	0.0	0.0	0.0	23.6	0.0	0.0	0.0	0.0
13	0.0	0.0	0.0	0.0	24.4	0.0	0.3	0.0	0.4
14	0.0	0.0	9.1	0.2	0.1	23.3	0.0	0.0	0.0
15	0.0	0.0	16.9	0.0	24.4	0.0	0.0	0.0	0.0
16	0.0	0.0	15.6	0.0	0.1	24.3	0.0	0.0	0.0
17	0.0	0.0	15.7	0.0	24.3	0.1	0.0	0.0	0.0
18	0.0	0.0	16.1	0.0	0.1	24.3	0.0	0.0	0.0
19	0.0	0.0	15.8	0.0	24.3	0.1	0.0	0.0	0.0
20	0.0	0.0	15.4	0.0	0.1	24.3	0.2	0.0	0.1
21	0.0	0.0	16.4	0.0	24.3	0.1	0.5	0.0	0.5
22	0.0	0.0	13.6	0.0	0.1	24.3	0.0	0.0	0.0
23	0.0	0.0	16.5	0.0	24.3	0.1	0.0	0.0	0.0
24	0.0	0.0	17.7	0.0	0.1	24.3	0.0	0.0	0.0
25	0.0	0.0	17.8	0.0	24.3	0.1	0.0	0.0	0.0
26	0.0	0.0	18.8	0.0	0.1	24.3	0.0	0.0	0.0
27	0.0	0.0	20.0	0.0	24.3	0.1	0.2	0.1	0.2
28	0.0	1.1	14.0	0.0	0.1	24.3	0.0	0.0	0.0
29	0.0	0.0	14.4	0.0	24.3	0.0	0.0	0.0	0.0
30	0.0	0.0	18.7	0.0	0.1	24.3	0.0	0.0	0.0
31	0.0	0.2	16.4	0.0	24.3	0.1	0.0	0.0	0.0
Total	0.0	1.3	289.2	0.2	413.2	339.8	1.6	0.1	1.5

Notes:

Runtimes Report

Month: August-18

Daily

Date	PALL Runtimes						Process Drain	
	RFR Pump #1 (Hrs)	RFR Pump #2 (Hrs)	RF Pump #1 (Hrs)	RF Pump #2 (Hrs)	XR Pump #1 (Hrs)	XR Pump #2 (Hrs)	PDP9010 Pump (Hrs)	PDP9020 Pump (Hrs)
1	4.2	4.3	0.7	0.8	9.3	5.7	2.5	3.2
2	4.2	4.1	0.8	0.7	5.4	9.0	2.7	3.3
3	5.8	5.8	1.1	1.1	11.4	9.4	2.7	3.6
4	4.4	4.3	0.7	0.9	8.6	7.8	2.7	3.2
5	6.0	6.0	1.1	1.0	10.0	9.8	2.7	3.4
6	3.8	4.0	0.6	0.7	8.6	8.9	3.0	3.7
7	2.1	2.1	0.5	0.4	7.0	6.8	2.9	3.5
8	3.0	2.9	0.4	0.5	5.0	5.6	3.0	3.7
9	3.1	3.0	0.6	0.6	7.3	6.6	2.8	3.6
10	3.6	3.7	0.7	0.7	6.3	7.5	2.9	3.7
11	5.1	5.0	0.9	0.9	9.2	8.5	3.0	3.6
12	2.9	3.0	0.5	0.7	6.1	4.7	2.8	3.8
13	4.7	4.6	0.9	0.8	7.4	9.9	2.9	3.7
14	6.3	6.3	0.9	0.9	6.4	10.4	3.0	3.8
15	6.5	6.7	1.1	0.9	10.0	6.2	3.8	5.0
16	4.0	4.0	0.7	0.8	7.8	6.9	3.1	4.3
17	2.8	3.0	0.9	0.7	6.7	6.9	3.4	3.9
18	2.6	2.6	0.5	0.6	7.5	7.5	3.2	3.9
19	3.2	3.2	0.5	0.6	6.2	8.7	3.4	4.4
20	4.8	4.6	0.8	0.7	8.7	5.8	3.7	4.3
21	4.9	5.0	0.8	0.8	7.4	7.8	3.6	4.8
22	3.1	3.0	0.6	0.6	5.3	8.1	3.3	4.2
23	4.5	4.4	0.8	0.8	8.0	4.9	3.4	4.5
24	2.1	2.1	0.6	0.4	7.4	7.8	4.1	4.8
25	4.5	4.3	0.7	0.9	8.4	7.8	3.7	4.7
26	0.0	0.0	0.1	0.2	7.2	8.0	3.5	4.5
27	4.2	4.3	0.8	0.6	9.4	8.6	3.8	5.7
28	4.7	4.5	0.8	0.8	5.5	6.0	3.7	5.3
29	4.3	4.4	0.7	0.7	6.3	6.9	3.4	4.6
30	5.1	5.2	1.0	1.0	10.3	7.6	3.1	5.0
31	4.5	4.5	0.9	0.9	7.4	9.1	2.4	6.2
Total	124.5	124.4	22.7	22.7	236.6	234.3	98.2	129.9

Notes:

Runtimes Report

Month: August-18

Daily

Date	Low Lift Pump Motor Runtimes				High Lift Pump Motor Runtimes			
	LLP1010 (Hrs)	LLP1020 (Hrs)	LLP1030 (Hrs)	LLP1040 (Hrs)	HLP7010 (Hrs)	HLP7020 (Hrs)	HLP7030 (Hrs)	HLP7040 (Hrs)
1	0.0	5.5	3.8	5.9	1.2	0.0	13.3	0.0
2	0.0	5.3	7.0	3.1	7.5	2.8	3.2	0.0
3	0.0	7.4	5.3	8.4	3.1	15.0	1.4	0.0
4	0.0	5.2	6.4	5.0	1.8	2.6	11.0	0.0
5	0.0	8.1	3.0	11.7	14.6	2.3	1.5	0.0
6	0.0	7.4	8.1	5.7	9.4	1.8	5.3	0.0
7	0.0	4.8	4.4	9.2	0.0	1.3	11.4	0.0
8	0.0	8.2	4.6	4.8	8.7	0.0	3.2	0.0
9	0.0	5.0	7.3	6.1	0.0	1.6	12.0	0.0
10	0.0	7.0	6.5	3.8	1.6	1.5	11.3	0.0
11	0.0	6.4	4.9	7.7	11.5	3.5	1.4	0.0
12	0.0	3.7	3.1	4.1	8.9	0.7	1.5	0.0
13	0.0	6.3	6.1	6.6	2.6	1.6	12.8	0.0
14	0.0	7.3	6.2	4.8	5.9	10.1	2.0	0.0
15	0.0	8.2	6.2	6.0	1.7	4.2	10.4	0.0
16	0.0	5.3	3.6	7.8	8.1	0.8	5.3	0.0
17	0.0	7.4	7.2	4.9	3.2	7.9	2.0	0.0
18	0.0	6.8	2.4	7.1	4.4	2.9	8.4	0.0
19	0.0	1.9	10.0	5.6	9.0	5.2	1.3	0.0
20	0.0	7.7	2.2	6.4	7.0	6.4	1.4	0.0
21	0.0	5.5	4.2	7.3	3.9	3.1	8.2	0.0
22	0.0	6.2	2.5	4.8	6.0	6.5	1.0	0.0
23	0.0	5.4	3.3	9.1	8.5	2.6	3.0	0.0
24	0.0	7.4	7.2	4.1	3.2	10.7	1.4	0.0
25	0.0	4.6	4.8	8.3	9.3	1.6	4.2	0.0
26	0.0	7.7	8.2	5.6	0.0	13.7	2.3	0.0
27	1.0	7.6	1.8	9.6	9.3	3.4	4.1	0.0
28	0.0	11.2	0.0	9.3	0.0	9.3	6.0	0.0
29	0.0	6.1	0.0	10.0	1.2	2.6	8.5	0.0
30	0.0	10.5	0.0	10.7	1.5	1.2	12.7	0.0
31	0.0	11.3	0.0	8.7	2.9	3.6	8.0	0.0
Total	1.0	208.4	140.3	212.1	156.0	130.5	179.5	0.0

Notes:

Plant Internal Flow Report

Month: August-18

Date	Settling Tank Level		Process Drain Tank		Settling Tank Flow		Potable Water Flow		Non-Potable Flow	
	T-9003 (m)		T-9001 (m)		FIT_9005 (m ³ (L/s))		FIT_7082 (m ³ (L/s))		FIT_7092 (m ³ (L/s))	
	Maximum	Minimum	Maximum	Minimum	Total	Peak	Total	Peak	Total	Peak
1	2.2	0.3	1.1	0.4	256.2	15.7	0.1	1.4	0.0	0.0
2	2.2	0.1	1.0	0.4	276.3	15.7	0.1	1.4	0.0	0.0
3	2.2	0.1	1.2	0.4	353.4	15.7	0.1	1.4	11.9	16.7
4	2.2	0.2	0.9	0.4	311.3	15.7	0.0	0.0	0.0	0.0
5	2.2	0.1	0.9	0.4	368.4	15.7	0.0	0.3	0.3	1.2
6	2.2	0.2	2.1	0.4	354.8	15.7	0.0	1.1	0.0	0.0
7	2.2	0.1	1.2	0.4	293.6	15.7	0.3	1.4	24.6	20.6
8	2.2	0.3	1.4	0.4	313.9	15.7	0.1	1.4	0.0	0.0
9	2.2	0.1	1.1	0.4	297.7	15.7	0.1	1.4	0.4	1.0
10	2.2	0.3	1.1	0.4	294.6	15.7	0.1	1.4	0.5	2.7
11	2.2	0.3	0.9	0.4	294.6	15.7	0.0	0.0	0.0	0.0
12	2.2	0.1	2.1	0.4	266.2	15.7	0.0	0.0	0.0	0.0
13	2.2	0.1	1.3	0.4	349.1	15.7	0.1	1.4	29.6	22.5
14	2.2	0.3	1.1	0.4	386.2	15.7	192.6	6.9	0.0	0.7
15	2.2	0.2	2.1	0.4	419.3	15.7	152.3	7.1	0.0	0.6
16	2.2	0.3	1.2	0.4	343.3	15.7	10.5	5.2	0.0	0.0
17	2.2	0.1	1.8	0.4	446.9	15.7	8.4	5.2	0.0	0.0
18	2.2	0.2	1.1	0.4	270.0	15.7	19.5	5.2	0.0	0.0
19	2.2	0.1	1.0	0.4	271.2	15.7	10.3	5.3	0.0	0.0
20	2.2	0.1	1.2	0.4	300.2	15.7	6.8	5.2	11.9	17.9
21	2.2	0.3	1.2	0.4	357.0	15.7	16.7	5.3	42.2	22.6
22	2.2	0.2	0.9	0.4	211.9	15.7	7.0	5.2	0.6	1.0
23	2.2	0.1	1.1	0.4	312.7	15.7	10.5	5.2	0.0	0.0
24	2.2	0.2	2.1	0.4	272.7	15.7	10.5	5.4	0.0	0.0
25	2.2	0.1	1.0	0.4	313.3	15.7	10.0	5.3	0.0	0.0
26	2.2	0.3	1.0	0.4	307.2	15.7	3.5	5.2	0.0	0.0
27	2.2	0.1	1.6	0.4	412.8	15.7	3.6	5.2	25.4	17.3
28	2.2	0.3	1.5	0.4	310.0	15.7	7.6	5.4	0.1	1.0
29	2.2	0.1	1.0	0.4	249.2	15.7	15.4	5.2	0.1	2.8
30	2.2	0.1	1.1	0.4	245.2	15.7	12.5	5.3	0.0	0.0
31	2.2	0.1	1.0	0.4	256.9	15.7	10.1	5.2	0.0	0.0
Total					9716.0		508.8		147.6	
Average	2.2	0.2	1.3	0.4	313.4	15.7	16.4	3.6	4.8	4.2
Maximum	2.2		2.1		446.9		192.6		42.2	
Date	13-Aug		12-Aug		17-Aug		14-Aug		21-Aug	
Minimum		0.1		0.4		15.7		0.0		0.0
Date		3-Aug		5-Aug		1-Aug		4-Aug		1-Aug

Notes:
