

Municipality of West Elgin - Tri County Water System

Goto:

Month:

Year:

Date is Set to: **September-17**

Limit	Low	High	
Raw Water Chlorine Residual:	0.00	5.00	mg/L
Pre-Strainer Chlorine Residual:	0.00	5.00	mg/L
UV Inlet Chlorine Residual:	0.00	5.00	mg/L
Post Treatment Chlorine Residual:	1.00	5.00	mg/L
Treated Chlorine Residual:	1.00	2.50	mg/L
Distribution Chlorine Residual:	1.00	2.50	mg/L
Limit		High	
WTP C of A		156.0	L/s
WTP Permit to Take Water		13500.0	m ³
Limit	Low	High	
System Pressure Limits:	50.0	1034.0	Kpa

Compliance Report

Low Lift Monthly Report

>>>

Membranes Monthly Report

>>>

UV System Monthly Report

>>>

Plant Quality Report

>>>

Raw Well/Treated Storage Report

>>>

High Lift Monthly Report

>>>

Operational Report

Low Lift Monthly Report

>>>

High Lift Monthly Report

>>>

Chemical Usage Monthly Report

>>>

Runtimes Report

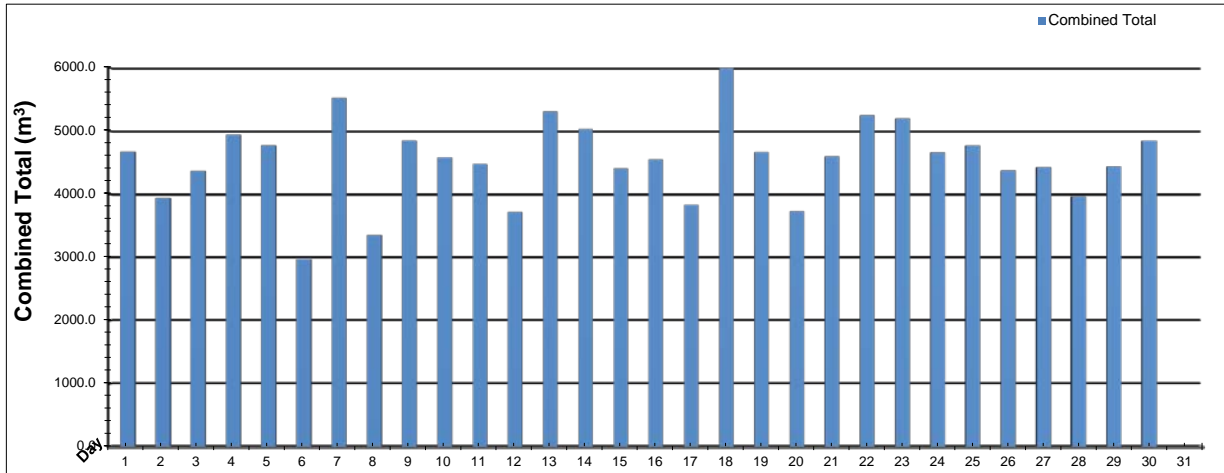
>>>

Plant Internal Flow Report

>>>

Low Lift Monthly Report

Month: **September-17**



Date	Combined Total (m³)	West Train FIT-1017 (m³)	West Peak Flow FIT-1017 (L/s)	East Train FIT-1027 (m³)	East Peak Flow FIT-1027 (L/s)	Combined Peak Flow (L/s)
1	✓ 4675.3	4675.3	132.2	0.0	0.0	132.2
2	✓ 3939.5	3939.5	135.3	0.0	0.0	135.3
3	✓ 4372.7	4372.7	123.7	0.0	0.0	123.7
4	✓ 4945.1	4945.1	130.8	0.0	0.0	130.8
5	✓ 4774.8	4774.8	135.9	0.0	0.0	135.9
6	✓ 2968.9	2968.8	134.5	0.0	0.0	134.5
7	✓ 5529.0	5529.0	196.7	0.0	0.0	196.7
8	✓ 3356.7	3356.7	134.1	0.0	0.0	134.1
9	✓ 4849.5	4849.5	136.3	0.0	0.0	136.3
10	✓ 4581.8	4581.8	135.7	0.0	0.0	135.7
11	✓ 4472.1	4472.1	136.4	0.0	0.0	136.4
12	✓ 3715.2	3715.2	137.3	0.0	0.0	137.3
13	✓ 5313.4	5313.4	136.6	0.0	0.0	136.6
14	✓ 5031.3	5031.3	135.8	0.0	0.0	135.8
15	✓ 4406.7	4406.7	136.6	0.0	0.0	136.6
16	✓ 4552.6	4552.6	135.9	0.0	0.0	135.9
17	✓ 3831.9	3831.9	194.8	0.0	0.0	194.8
18	✓ 5997.7	5997.7	199.3	0.0	0.0	199.3
19	✓ 4669.4	4669.4	131.5	0.0	0.0	131.5
20	✓ 3729.1	1299.5	81.2	2429.5	168.3	168.3
21	✓ 4601.2	0.0	0.0	4601.2	155.8	155.8
22	✓ 5248.7	0.0	0.0	5248.7	126.8	126.8
23	✓ 5197.5	0.0	0.0	5197.5	122.6	122.6
24	✓ 4664.7	0.0	0.0	4664.7	156.2	156.2
25	✓ 4771.8	0.0	0.0	4771.8	126.1	126.1
26	✓ 4378.2	0.0	0.0	4378.2	117.0	117.0
27	✓ 4429.0	0.0	0.0	4429.0	195.2	195.2
28	✓ 3960.0	0.0	0.0	3960.0	192.4	192.4
29	✓ 4440.5	1165.8	197.4	3274.7	172.6	197.4
30	✓ 4849.3	4849.3	152.4	0.0	0.0	152.4
Total	136253.6	93298.2		42955.4		
Average	4541.8	3109.9	105.7	1431.8	51.1	148.3
Maximum	5997.7	5997.7	199.29	5248.7	195.19	199.29
Date	18-Sep	18-Sep	18-Sep	22-Sep	27-Sep	18-Sep
Minimum	2968.9	0.0	0.00	0.0	0.00	116.96
Date	6-Sep	28-Sep	21-Sep	3-Sep	1-Sep	26-Sep

Notes:

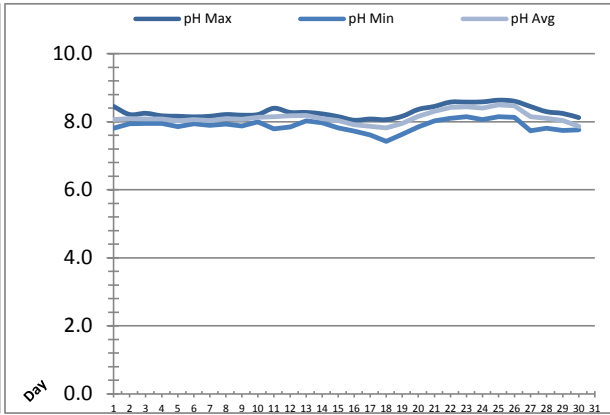
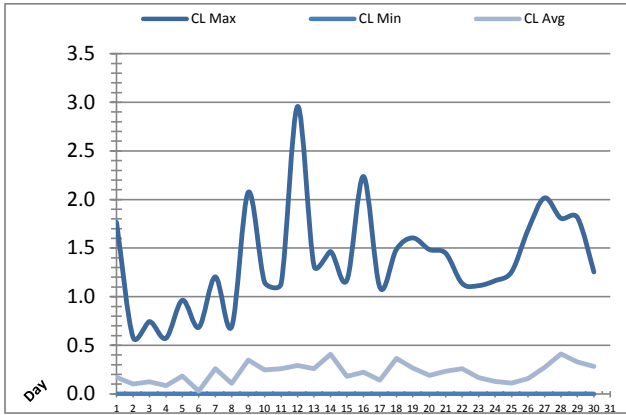
7th: PTTW exceedance of flow due to above 156L/s for more than 1min (1min32sec)

17th, 18th, 20th, 27-19th: all flows were less than one minute.

Flow volumes above due to serge valve issues.

Low Lift Monthly Report

Month: **September-17**

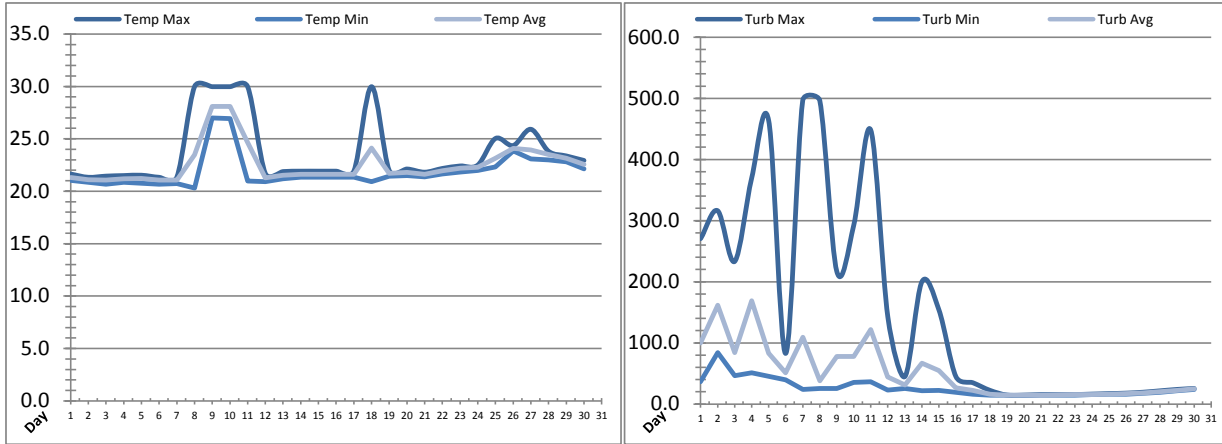


Date	Raw Water Chlorine Residual			Raw Water pH		
	AIT_1401_CL (mg/L)			AIT_1401_PH		
	Maximum	Minimum	Average	Maximum	Minimum	Average
1	1.76	0.00	0.17	8.45	7.81	8.06
2	0.58	0.00	0.10	8.21	7.94	8.09
3	0.74	0.00	0.12	8.25	7.95	8.09
4	0.57	0.00	0.08	8.17	7.95	8.08
5	0.96	0.00	0.19	8.16	7.86	8.02
6	0.69	0.00	0.03	8.14	7.94	8.06
7	1.20	0.00	0.26	8.16	7.89	8.04
8	0.69	0.00	0.11	8.21	7.93	8.09
9	2.07	0.00	0.35	8.19	7.87	8.07
10	1.15	0.00	0.24	8.21	8.00	8.13
11	1.14	0.00	0.26	8.40	7.79	8.15
12	2.96	0.00	0.29	8.27	7.84	8.18
13	1.32	0.00	0.26	8.27	8.02	8.18
14	1.46	0.00	0.41	8.23	7.97	8.09
15	1.17	0.00	0.18	8.15	7.82	8.03
16	2.24	0.00	0.22	8.04	7.72	7.92
17	1.09	0.00	0.14	8.08	7.61	7.86
18	1.49	0.00	0.37	8.06	7.42	7.82
19	1.60	0.00	0.27	8.16	7.63	7.95
20	1.49	0.00	0.19	8.36	7.84	8.16
21	1.45	0.00	0.23	8.45	8.03	8.30
22	1.14	0.00	0.26	8.58	8.10	8.42
23	1.11	0.00	0.17	8.58	8.15	8.44
24	1.16	0.00	0.13	8.58	8.06	8.40
25	1.26	0.00	0.11	8.63	8.15	8.49
26	1.69	0.00	0.16	8.60	8.13	8.47
27	2.02	0.00	0.27	8.45	7.73	8.15
28	1.81	0.00	0.41	8.29	7.81	8.10
29	1.81	0.00	0.33	8.24	7.74	8.03
30	1.25	0.00	0.28	8.12	7.76	7.86
Total						
Average	1.37	0.00	0.22	8.29	7.88	8.13
Maximum	2.96		0.41	8.63		8.49
Date	12-Sep		28-Sep	25-Sep		25-Sep
Minimum		0.00	0.03		7.42	7.82
Date		1-Sep	6-Sep		18-Sep	18-Sep

Notes:

Low Lift Monthly Report

Month: **September-17**

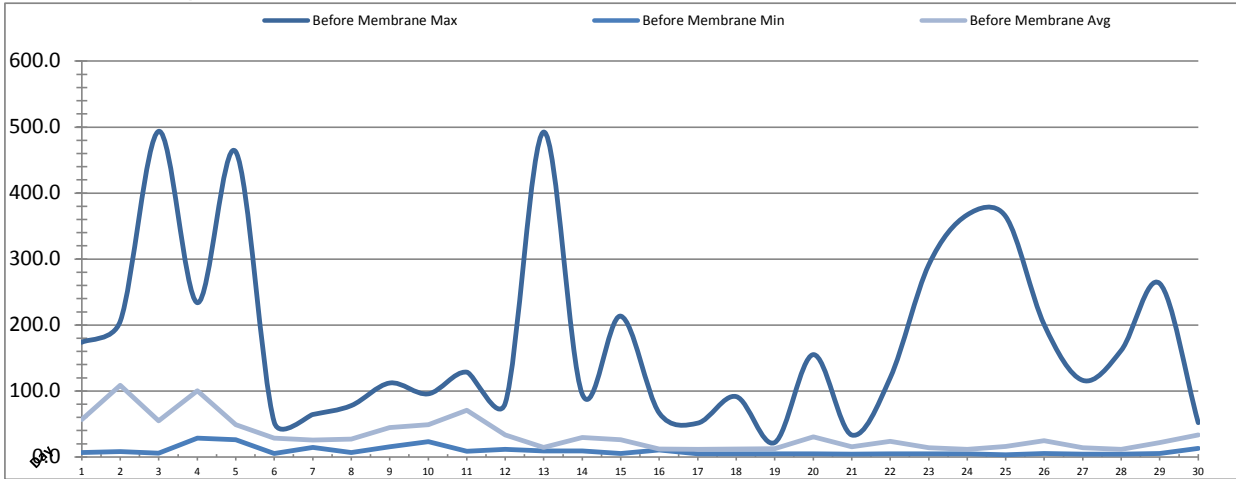


Date	Raw Water Temperature			Raw Water Turbidity		
	TIT_1403 (°C)			AIT_1404 (NTU)		
	Maximum	Minimum	Average	Maximum	Minimum	Average
1	21.6	21.0	21.3	270.55	36.28	99.93
2	21.3	20.9	21.1	316.15	84.36	161.65
3	21.4	20.7	21.1	233.24	46.39	84.08
4	21.5	20.9	21.2	369.68	50.97	169.12
5	21.5	20.8	21.2	463.38	45.61	82.89
6	21.3	20.7	21.1	82.85	39.44	51.37
7	21.3	20.7	21.1	496.61	23.95	109.37
8	30.0	20.3	23.5	496.56	25.40	38.27
9	30.0	27.0	28.1	217.01	25.38	78.08
10	30.0	26.9	28.1	292.85	35.47	77.97
11	30.0	21.0	24.6	447.76	36.29	121.65
12	21.7	20.9	21.3	142.51	23.07	44.21
13	21.9	21.2	21.5	44.83	25.51	31.01
14	21.9	21.4	21.6	199.93	21.56	66.74
15	21.9	21.4	21.6	154.18	22.37	54.79
16	21.9	21.4	21.6	44.93	19.31	26.47
17	21.9	21.4	21.6	34.83	16.15	22.07
18	30.0	20.9	24.1	22.42	14.60	16.25
19	22.0	21.4	21.7	14.65	14.57	14.62
20	22.1	21.5	21.8	14.71	13.79	14.63
21	21.8	21.4	21.6	15.49	14.60	14.69
22	22.2	21.7	21.9	15.50	14.61	14.78
23	22.4	21.8	22.2	15.54	14.62	15.33
24	22.5	22.0	22.3	16.33	15.42	15.65
25	25.0	22.3	23.1	17.08	16.22	16.29
26	24.4	23.8	24.1	17.90	16.24	17.12
27	25.9	23.1	23.9	19.38	17.75	18.30
28	23.8	23.0	23.5	21.67	19.31	20.32
29	23.4	22.8	23.2	23.95	21.61	22.55
30	22.9	22.1	22.6	25.55	23.89	24.98
Total						
Average	23.7	21.9	22.6	151.6	26.5	51.5
Maximum	30.0		28.1	496.6		169.1
Date	18-Sep		10-Sep	7-Sep		4-Sep
Minimum		20.3	21.1		13.8	14.6
Date		8-Sep	7-Sep		20-Sep	19-Sep

Notes:
 8-11th, 18th: higher temperatures due to clogging of filter of raw sample line.

Membranes Monthly Report

Month: September-17



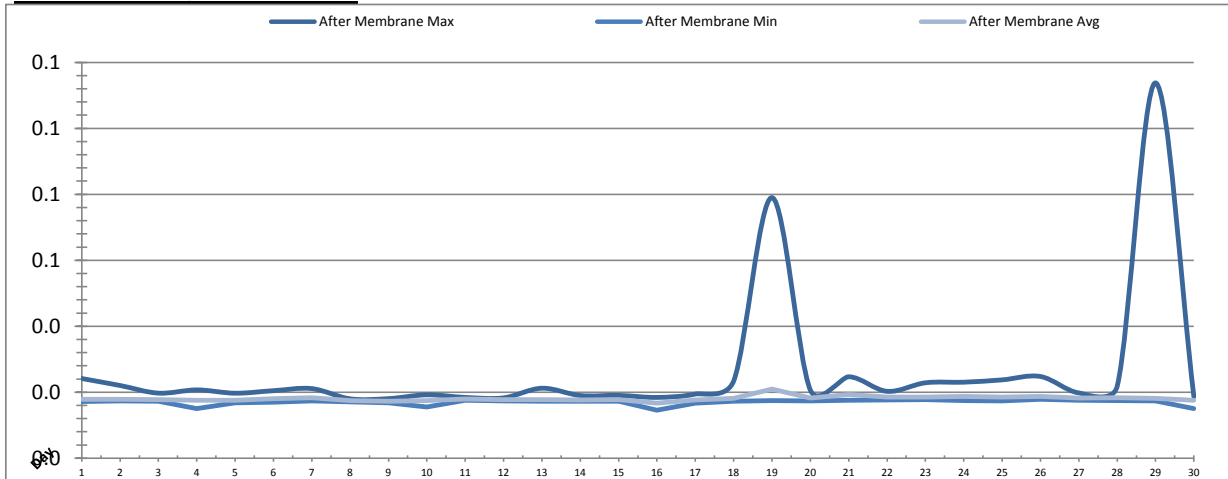
Date	Turbidity Before Membrane			Rack #1 Turbidity			Rack #2 Turbidity		
	PALL_FEED_AIT2006_Value NTU			RACK1_NTU_Value NTU			RACK2_NTU_Value NTU		
	Maximum	Minimum	Average	Maximum	Minimum	Average	Maximum	Minimum	Average
1	173.85	6.55	56.81	0.53	0.01	0.02	0.04	0.02	0.03
2	205.85	8.30	108.61	0.02	0.02	0.02	0.14	0.02	0.03
3	493.71	5.67	55.00	0.03	0.02	0.02	0.03	0.03	0.03
4	233.90	28.52	100.38	0.03	0.01	0.02	0.03	0.02	0.02
5	462.60	26.26	48.74	0.50	0.01	0.14	0.03	0.02	0.02
6	52.58	5.20	28.53	0.02	0.02	0.02	0.05	0.02	0.02
7	64.40	14.29	25.83	0.03	0.02	0.03	0.03	0.02	0.02
8	77.90	6.97	27.16	0.03	0.03	0.03	0.03	0.02	0.02
9	112.16	15.39	44.60	0.03	0.03	0.03	0.03	0.02	0.02
10	95.73	23.36	49.03	0.03	0.03	0.03	0.03	0.02	0.02
11	128.61	8.69	71.02	0.03	0.03	0.03	0.03	0.02	0.02
12	81.60	11.48	33.57	0.03	0.03	0.03	0.02	0.02	0.02
13	492.57	9.07	14.34	0.03	0.03	0.03	0.02	0.02	0.02
14	95.24	9.14	29.74	0.03	0.03	0.03	0.02	0.02	0.02
15	213.52	5.16	26.27	0.03	0.03	0.03	0.02	0.02	0.02
16	66.58	10.62	12.15	0.03	0.03	0.03	0.03	0.02	0.02
17	51.35	5.00	11.64	0.03	0.03	0.03	0.03	0.02	0.02
18	91.55	4.59	12.25	0.03	0.03	0.03	0.04	0.02	0.02
19	21.94	4.61	12.56	0.05	0.02	0.02	0.04	0.02	0.02
20	155.17	4.81	30.68	0.02	0.02	0.02	0.12	0.02	0.02
21	33.35	4.49	15.64	0.68	0.02	0.02	0.11	0.02	0.02
22	120.09	4.65	23.70	0.03	0.02	0.02	0.06	0.03	0.03
23	291.31	5.04	14.18	0.02	0.02	0.02	0.05	0.03	0.03
24	367.08	4.90	11.41	0.03	0.02	0.02	0.04	0.03	0.03
25	364.41	3.59	16.01	0.02	0.02	0.02	0.05	0.03	0.03
26	200.33	5.24	24.75	0.02	0.02	0.02	0.04	0.03	0.03
27	116.18	4.41	13.84	0.02	0.02	0.02	0.03	0.02	0.02
28	161.60	4.22	11.41	0.09	0.02	0.02	0.03	0.02	0.02
29	262.97	5.34	21.74	0.02	0.02	0.02	0.03	0.02	0.02
30	52.01	13.07	33.38	0.02	0.02	0.02	0.03	0.02	0.02
Total									
Average	178.00	8.95	32.83	0.08	0.02	0.03	0.04	0.02	0.02
Maximum	493.7		108.6	0.7		0.1	0.1		0.0
Date	3-Sep		2-Sep	21-Sep		5-Sep	2-Sep		2-Sep
Minimum		3.6	11.4		0.0	0.0		0.0	0.0
Date		25-Sep	24-Sep		1-Sep	20-Sep		9-Sep	28-Sep

Notes:

Rack 1: turbidity >0.1ntu on 1st due to EFM for 6min; turbidity >0.1ntu on 5th due to testing of rack fro 1.4min; 21st >0.1ntu due to CIP.
 Rack 2: turbidity >0.1ntu on 2nd fro 0.5min; 20th for 2.3min due to CIP; 21st for 0.5min

Membranes Monthly Report

Month: September-17



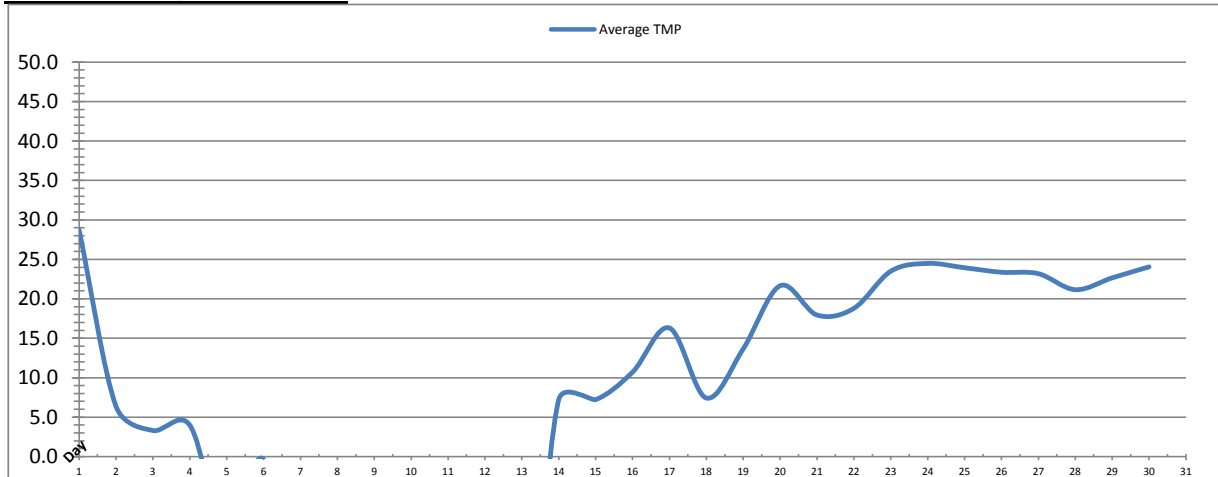
Date	Rack #3 Turbidity			Rack #4 Turbidity			Turbidity After Membranes		
	RACK3_NTU_Value NTU			RACK4_NTU_Value NTU			PALL_FILT_AIT5001_Value NTU		
	Maximum	Minimum	Average	Maximum	Minimum	Average	Maximum	Minimum	Average
1	0.02	0.01	0.01	0.06	0.02	0.02	0.02	0.02	0.02
2	0.02	0.01	0.01	0.06	0.02	0.02	0.02	0.02	0.02
3	0.02	0.01	0.01	0.05	0.02	0.02	0.02	0.02	0.02
4	0.03	0.01	0.01	0.03	0.02	0.02	0.02	0.02	0.02
5	0.02	0.01	0.01	0.07	0.02	0.02	0.02	0.02	0.02
6	0.53	0.01	0.02	0.03	0.02	0.02	0.02	0.02	0.02
7	0.02	0.01	0.01	0.38	0.02	0.02	0.02	0.02	0.02
8	0.02	0.01	0.01	0.02	0.02	0.02	0.02	0.02	0.02
9	0.02	0.01	0.01	0.03	0.02	0.02	0.02	0.02	0.02
10	0.02	0.01	0.01	0.02	0.02	0.02	0.02	0.02	0.02
11	0.02	0.01	0.01	0.02	0.02	0.02	0.02	0.02	0.02
12	0.01	0.01	0.01	0.02	0.02	0.02	0.02	0.02	0.02
13	0.01	0.01	0.01	0.03	0.02	0.02	0.02	0.02	0.02
14	0.01	0.01	0.01	0.03	0.02	0.02	0.02	0.02	0.02
15	0.01	0.01	0.01	0.02	0.02	0.02	0.02	0.02	0.02
16	0.01	0.01	0.01	0.02	0.02	0.02	0.02	0.01	0.02
17	0.02	0.01	0.01	0.02	0.02	0.02	0.02	0.02	0.02
18	0.05	0.01	0.01	0.06	0.02	0.02	0.02	0.02	0.02
19	0.09	0.01	0.02	0.04	0.02	0.02	0.08	0.02	0.02
20	0.03	0.01	0.01	0.06	0.02	0.02	0.02	0.02	0.02
21	0.02	0.01	0.01	0.06	0.02	0.02	0.02	0.02	0.02
22	0.03	0.01	0.01	0.07	0.02	0.02	0.02	0.02	0.02
23	0.02	0.01	0.01	0.04	0.02	0.02	0.02	0.02	0.02
24	0.02	0.01	0.01	0.03	0.02	0.02	0.02	0.02	0.02
25	0.02	0.01	0.01	0.03	0.02	0.02	0.02	0.02	0.02
26	0.02	0.01	0.01	0.03	0.02	0.02	0.02	0.02	0.02
27	0.14	0.01	0.02	0.03	0.02	0.02	0.02	0.02	0.02
28	0.02	0.01	0.01	0.05	0.02	0.02	0.02	0.02	0.02
29	0.03	0.01	0.01	0.03	0.02	0.02	0.11	0.02	0.02
30	0.02	0.01	0.01	0.03	0.02	0.02	0.02	0.02	0.02
Total									
Average	0.04	0.01	0.01	0.05	0.02	0.02	0.03	0.02	0.02
Maximum	0.5		0.0	0.4		0.0	0.1		0.0
Date	6-Sep		6-Sep	7-Sep		21-Sep	29-Sep		19-Sep
Minimum		0.0	0.0		0.0	0.0		0.0	0.0
Date		5-Sep	5-Sep		1-Sep	16-Sep		16-Sep	16-Sep

Notes:

Rack 3: turbidity >0.1ntu for 6.3 min post EFM on the 6th; 27th for 1.4min post EFM
 Rack 4: turbidity >0.1ntu for 2.3min post EFM on the 7th.

Membranes Monthly Report

Month: **September-17**



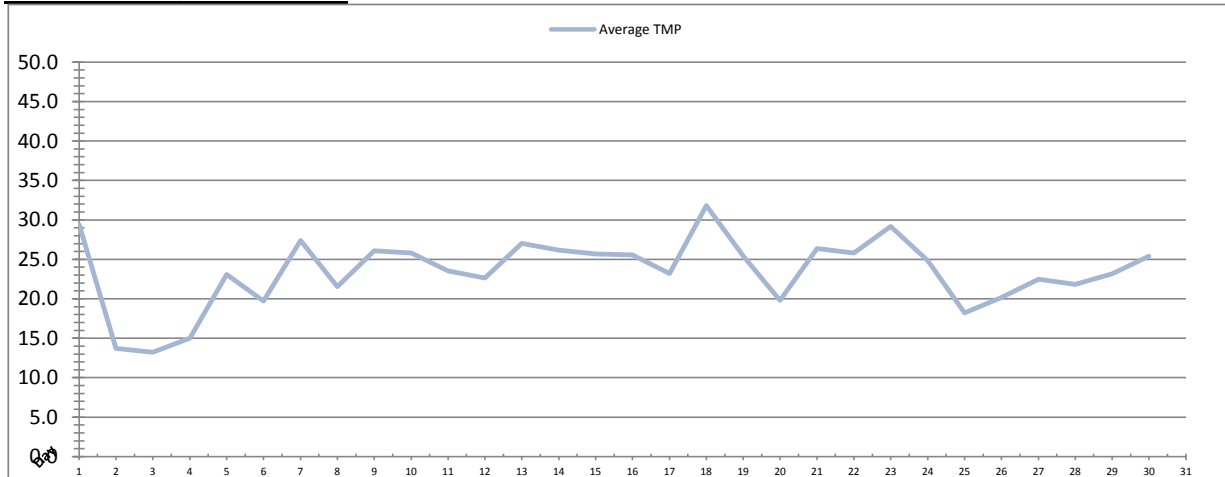
Integrity Test Rack 1									
Date	Initial Pressure (kPa)	Final Pressure (kPa)	Test Duration (sec)	Change in Pressure (kPa)	UCL	Within UCL	Average TMP (kPa)	Max TMP (kPa)	
1	198.6	197.6	300.0	1.1	2.0	✓ 2.0	28.7	130.9	
2	198.1	192.7	300.0	5.3	2.0	5.3	6.4	53.3	
3	197.9	192.4	300.0		2.0	0.0	3.3	47.5	
4	197.8	192.5	300.0		2.0	0.0	4.0	40.6	
5	197.9	192.4	300.0		2.0	0.0	-9.9	38.9	
6	197.7		300.0		2.0	0.0	-0.4	30.1	
7	198.1		300.0		2.0	0.0	-21.0	114.5	
8	198.1		300.0		2.0	0.0	-6.0	-5.1	
9	198.1		300.0		2.0	0.0	-4.8	-4.5	
10	198.1		300.0		2.0	0.0	-4.2	-3.8	
11	198.1		300.0		2.0	0.0	-3.6	-3.3	
12	198.1		300.0		2.0	0.0	-3.1	-2.7	
13	199.2		300.0		2.0	0.0	-29.1	6.8	
14	199.2		300.0		2.0	0.0	7.2	30.9	
15	199.2		300.0		2.0	0.0	7.2	16.1	
16	199.2		300.0		2.0	0.0	10.7	15.4	
17	199.2		300.0		2.0	0.0	16.3	16.5	
18	199.2		300.0		2.0	0.0	7.4	23.3	
19	199.0	197.9	300.0	1.2	2.0	✓ 2.0	13.7	61.4	
20	198.9	198.2	300.0	0.6	2.0	✓ 2.0	21.7	153.8	
21	198.6	197.6	300.0	1.0	2.0	✓ 2.0	17.9	115.7	
22	198.7	197.7	300.0	1.0	2.0	✓ 2.0	18.8	136.5	
23	198.4	197.4	300.0	1.0	2.0	✓ 2.0	23.5	115.4	
24	198.7	197.7	300.0	1.0	2.0	✓ 2.0	24.5	86.7	
25	198.4	197.4	300.0	1.0	2.0	✓ 2.0	23.9	65.3	
26	198.1	197.3	300.0	0.9	2.0	✓ 2.0	23.4	104.0	
27	197.9	197.1	300.0	0.8	2.0	✓ 2.0	23.2	65.3	
28	198.5	197.6	300.0	1.0	2.0	✓ 2.0	21.2	149.1	
29	198.6	197.7	300.0	0.9	2.0	✓ 2.0	22.7	156.8	
30	198.9	197.9	300.0	1.1	2.0	✓ 2.0	24.1	64.3	
Total									
Average	198.5	196.4	300.0	1.3	2.0	1.0	8.9	60.7	
Maximum	199.2	198.2	300.0	5.3	2.0	5.3	28.7	156.8	
Date	13-Sep	20-Sep	1-Sep	2-Sep	1-Sep	2-Sep	1-Sep	29-Sep	
Minimum	197.7	192.4	300.0	0.6	2.0	0.0	-29.1	-5.1	
Date	6-Sep	3-Sep	1-Sep	20-Sep	1-Sep	3-Sep	13-Sep	8-Sep	

Notes:

Rack 1 flow control valve issue caused time out on IT testing. Rack was taken offline until repairs made on the 18th.

Membranes Monthly Report

Month: **September-17**

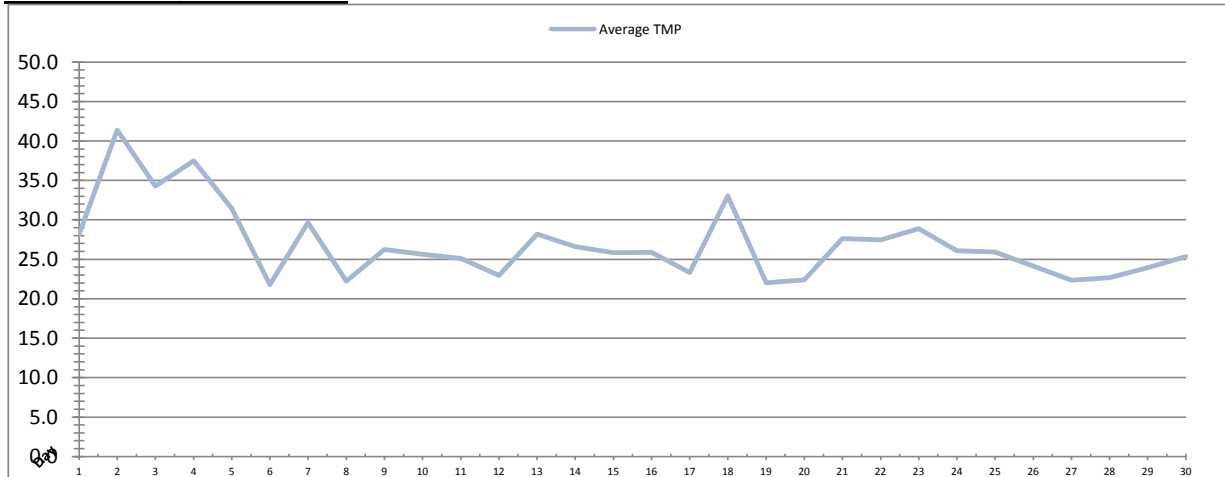


Integrity Test Rack 2									
Date	Initial Pressure (kPa)	Final Pressure (kPa)	Test Duration (sec)	Change in Pressure (kPa)	UCL	Within UCL	Average TMP (kPa)	Max TMP (kPa)	
1	209.9	208.8	300.0	1.1	2.0	✓ 2.0	29.4	115.8	
2	209.9	208.8	300.0	1.1	2.0	✓ 2.0	13.7	115.7	
3	209.9	208.8	300.0	1.1	2.0	✓ 2.0	13.2	13.4	
4	209.9	208.8	300.0	1.1	2.0	✓ 2.0	15.0	115.8	
5	209.9	208.8	300.0	1.1	2.0	✓ 2.0	23.1	83.2	
6	209.0	207.8	300.0	1.1	2.0	✓ 2.0	19.7	80.2	
7	209.3	208.1	300.0	1.1	2.0	✓ 2.0	27.4	78.0	
8	208.8	207.7	300.0	1.2	2.0	✓ 2.0	21.5	77.5	
9	208.9	207.8	300.0	1.1	2.0	✓ 2.0	26.1	75.6	
10	208.8	207.7	300.0	1.2	2.0	✓ 2.0	25.8	78.1	
11	208.4	207.3	300.0	1.1	2.0	✓ 2.0	23.5	75.5	
12	208.6	207.4	300.0	1.2	2.0	✓ 2.0	22.7	76.9	
13	208.6	207.5	300.0	1.1	2.0	✓ 2.0	27.0	75.8	
14	208.7	207.5	300.0	1.2	2.0	✓ 2.0	26.2	76.8	
15	208.4	207.3	300.0	1.1	2.0	✓ 2.0	25.7	76.2	
16	208.3	207.2	300.0	1.1	2.0	✓ 2.0	25.6	75.4	
17	208.4	207.3	300.0	1.1	2.0	✓ 2.0	23.2	74.3	
18	208.3	207.2	300.0	1.2	2.0	✓ 2.0	31.8	167.0	
19	208.5	207.4	300.0	1.1	2.0	✓ 2.0	25.4	75.7	
20	208.1	206.6	300.0	1.5	2.0	✓ 2.0	19.8	172.1	
21	208.0	207.1	300.0	0.9	2.0	✓ 2.0	26.4	153.8	
22	208.7	207.7	300.0	1.1	2.0	✓ 2.0	25.8	146.0	
23	208.0	207.0	300.0	1.1	2.0	✓ 2.0	29.2	151.0	
24	208.1	206.4	300.0	1.8	2.0	✓ 2.0	24.8	77.2	
25	208.0	206.7	300.0	1.3	2.0	✓ 2.0	18.2	135.2	
26	208.2	207.2	300.0	1.0	2.0	✓ 2.0	20.2	140.3	
27	208.0	207.2	300.0	0.8	2.0	✓ 2.0	22.5	66.6	
28	209.0	207.9	300.0	1.1	2.0	✓ 2.0	21.8	151.4	
29	208.8	207.9	300.0	0.9	2.0	✓ 2.0	23.2	174.3	
30	208.8	207.7	300.0	1.1	2.0	✓ 2.0	25.4	66.5	
Total									
Average	208.7	207.6	300.0	1.1	2.0	2.0	23.4	101.4	
Maximum	209.9	208.8	300.0	1.8	2.0	2.0	31.8	174.3	
Date	1-Sep	1-Sep	1-Sep	24-Sep	1-Sep	1-Sep	18-Sep	29-Sep	
Minimum	208.0	206.4	300.0	0.8	2.0	2.0	13.2	13.4	
Date	21-Sep	24-Sep	1-Sep	27-Sep	1-Sep	1-Sep	3-Sep	3-Sep	

Notes:

Membranes Monthly Report

Month: **September-17**

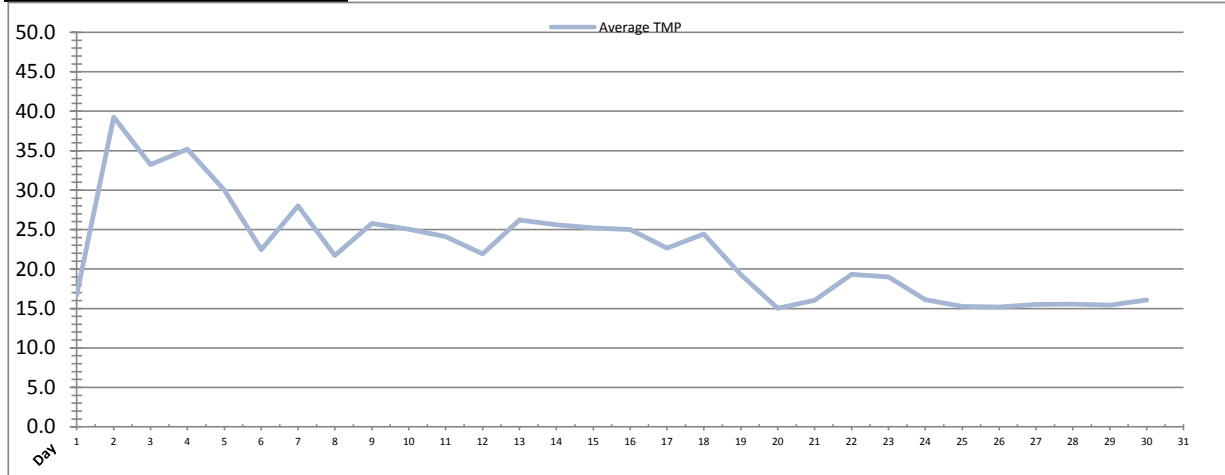


Date	Integrity Test Rack 3							
	Initial Pressure (kPa)	Final Pressure (kPa)	Test Duration (sec)	Change in Pressure (kPa)	UCL	Within UCL	Average TMP (kPa)	Max TMP (kPa)
1	189.6	188.5	300.0	1.1	2.0	✓ 2.0	28.2	148.8
2	190.4	189.2	300.0	1.2	2.0	✓ 2.0	41.4	137.2
3	190.7	189.5	300.0	1.2	2.0	✓ 2.0	34.3	137.4
4	190.7	189.7	300.0	1.1	2.0	✓ 2.0	37.5	131.9
5	190.4	189.3	300.0	1.2	2.0	✓ 2.0	31.4	108.3
6	190.0	188.8	300.0	1.2	2.0	✓ 2.0	21.8	79.3
7	190.6	189.2	300.0	1.3	2.0	✓ 2.0	29.7	105.2
8	190.4	189.1	300.0	1.3	2.0	✓ 2.0	22.2	73.6
9	189.9	188.6	300.0	1.3	2.0	✓ 2.0	26.2	73.1
10	190.9	189.6	300.0	1.3	2.0	✓ 2.0	25.6	72.8
11	190.7	189.6	300.0	1.1	2.0	✓ 2.0	25.1	72.8
12	190.4	189.2	300.0	1.2	2.0	✓ 2.0	22.9	72.8
13	190.5	189.3	300.0	1.2	2.0	✓ 2.0	28.2	82.9
14	191.2	190.0	300.0	1.1	2.0	✓ 2.0	26.6	74.5
15	190.7	189.3	300.0	1.3	2.0	✓ 2.0	25.8	74.3
16	191.1	189.9	300.0	1.2	2.0	✓ 2.0	25.9	74.5
17	190.3	189.1	300.0	1.2	2.0	✓ 2.0	23.3	71.6
18	190.5	189.2	300.0	1.3	2.0	✓ 2.0	33.0	113.3
19	190.7	189.4	300.0	1.3	2.0	✓ 2.0	22.0	67.0
20	191.0	190.0	300.0	1.1	2.0	✓ 2.0	22.4	168.7
21	191.3	190.4	300.0	0.9	2.0	✓ 2.0	27.6	93.9
22	190.6	189.6	300.0	1.1	2.0	✓ 2.0	27.5	159.1
23	191.5	190.6	300.0	1.0	2.0	✓ 2.0	28.9	138.2
24	190.2	189.3	300.0	0.9	2.0	✓ 2.0	26.1	135.6
25	190.4	189.4	300.0	1.1	2.0	✓ 2.0	25.9	138.1
26	191.2	190.3	300.0	0.9	2.0	✓ 2.0	24.2	98.3
27	190.7	189.8	300.0	0.9	2.0	✓ 2.0	22.3	62.3
28	190.2	189.3	300.0	0.9	2.0	✓ 2.0	22.7	132.5
29	190.9	189.9	300.0	1.0	2.0	✓ 2.0	23.9	164.8
30	190.1	189.1	300.0	1.1	2.0	✓ 2.0	25.3	67.0
Total								
Average	190.6	189.5	300.0	1.1	2.0	2.0	26.9	104.3
Maximum	191.5	190.6	300.0	1.3	2.0	2.0	41.4	168.7
Date	23-Sep	23-Sep	1-Sep	7-Sep	1-Sep	1-Sep	2-Sep	20-Sep
Minimum	189.6	188.5	300.0	0.9	2.0	2.0	21.8	62.3
Date	1-Sep	1-Sep	1-Sep	27-Sep	1-Sep	1-Sep	6-Sep	27-Sep

Notes:

Membranes Monthly Report

Month: **September-17**



Integrity Test Rack 4									
Date	Initial Pressure (kPa)	Final Pressure (kPa)	Test Duration (sec)	Change in Pressure (kPa)	UCL	Within UCL	Average TMP (kPa)	Max TMP (kPa)	
1	197.6	196.4	300.0	1.1	2.0	✓ 2.0	16.6	47.8	
2	197.5	196.3	300.0	1.2	2.0	✓ 2.0	39.3	109.2	
3	197.6	196.4	300.0	1.2	2.0	✓ 2.0	33.2	139.8	
4	197.4	196.3	300.0	1.1	2.0	✓ 2.0	35.2	130.1	
5	198.0	196.8	300.0	1.2	2.0	✓ 2.0	30.0	93.1	
6	197.5	196.3	300.0	1.2	2.0	✓ 2.0	22.4	81.1	
7	197.6	196.5	300.0	1.1	2.0	✓ 2.0	28.0	121.1	
8	197.3	196.2	300.0	1.2	2.0	✓ 2.0	21.7	70.3	
9	197.7	196.4	300.0	1.3	2.0	✓ 2.0	25.8	70.4	
10	197.9	196.6	300.0	1.2	2.0	✓ 2.0	25.0	71.0	
11	197.7	196.5	300.0	1.2	2.0	✓ 2.0	24.1	69.3	
12	197.8	196.5	300.0	1.2	2.0	✓ 2.0	21.9	72.2	
13	197.2	196.0	300.0	1.2	2.0	✓ 2.0	26.2	69.3	
14	197.6	196.4	300.0	1.2	2.0	✓ 2.0	25.6	70.3	
15	197.7	196.5	300.0	1.2	2.0	✓ 2.0	25.2	70.8	
16	197.6	196.4	300.0	1.1	2.0	✓ 2.0	25.0	70.9	
17	197.8	196.5	300.0	1.3	2.0	✓ 2.0	22.7	68.7	
18	197.6	196.4	300.0	1.2	2.0	✓ 2.0	24.4	65.4	
19	197.5	196.4	300.0	1.1	2.0	✓ 2.0	19.3	62.0	
20	198.0	197.0	300.0	1.0	2.0	✓ 2.0	15.0	52.5	
21	197.4	196.3	300.0	1.1	2.0	✓ 2.0	16.0	66.4	
22	197.6	196.4	300.0	1.1	2.0	✓ 2.0	19.3	73.3	
23	197.1	196.0	300.0	1.1	2.0	✓ 2.0	19.0	77.6	
24	197.6	196.5	300.0	1.1	2.0	✓ 2.0	16.1	66.8	
25	197.1	196.2	300.0	0.9	2.0	✓ 2.0	15.2	33.5	
26	197.2	196.3	300.0	0.9	2.0	✓ 2.0	15.2	28.2	
27	196.6	195.3	300.0	1.3	2.0	✓ 2.0	15.5	38.2	
28	197.2	196.3	300.0	1.0	2.0	✓ 2.0	15.5	65.1	
29	197.1	196.1	300.0	1.0	2.0	✓ 2.0	15.4	31.6	
30	197.5	196.5	300.0	1.0	2.0	✓ 2.0	16.1	25.8	
Total									
Average	197.5	196.4	300.0	1.1	2.0	2.0	22.3	70.4	
Maximum	198.0	197.0	300.0	1.3	2.0	2.0	39.3	139.8	
Date	5-Sep	20-Sep	1-Sep	9-Sep	1-Sep	1-Sep	2-Sep	3-Sep	
Minimum	196.6	195.3	300.0	0.9	2.0	2.0	15.0	25.8	
Date	27-Sep	27-Sep	1-Sep	26-Sep	1-Sep	1-Sep	20-Sep	30-Sep	

Notes:

Membranes Monthly Report

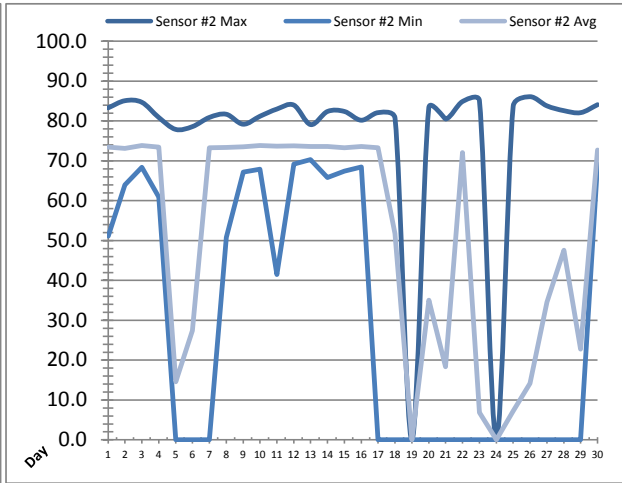
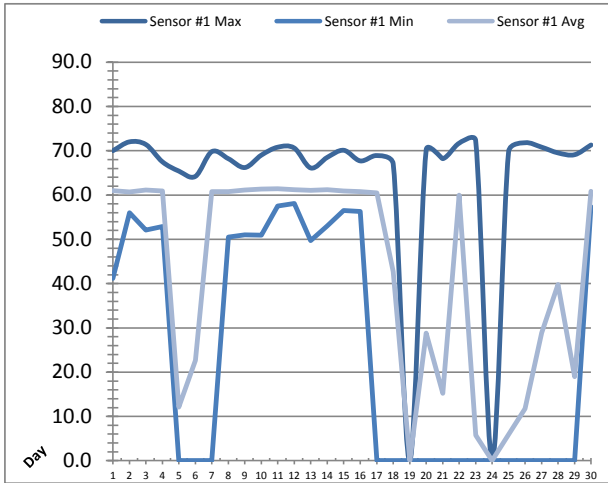
Month: September-17

Date	Membranes Monthly Performance							
	Rack 1 >0.1 NTU (Minutes)	Rack 1 Forward Flow (Minutes)	Rack 2 >0.1 NTU (Minutes)	Rack 2 Forward Flow (Minutes)	Rack 3 >0.1 NTU (Minutes)	Rack 3 Forward Flow (Minutes)	Rack 4 >0.1 NTU (Minutes)	Rack 4 Forward Flow (Minutes)
1	6.3	948.5	0.0	667.5	0.0	989.4	0.0	790.6
2	0.0	4.5	0.5	39.6	0.0	822.1	0.0	822.5
3	0.0	33.3	0.0	0.0	0.0	848.2	0.0	850.5
4	0.0	68.3	0.0	88.1	0.0	950.4	0.0	948.1
5	1.4	4.5	0.0	525.1	0.0	985.2	0.0	982.2
6	0.0	0.0	0.0	925.1	6.3	896.3	0.0	947.1
7	0.0	0.5	0.0	1269.1	0.0	1341.6	2.3	1288.1
8	0.0	0.0	0.0	739.5	0.0	731.4	0.0	731.4
9	0.0	0.0	0.0	1014.1	0.0	1002.5	0.0	1002.5
10	0.0	0.0	0.0	906.1	0.0	895.3	0.0	895.3
11	0.0	0.0	0.0	907.1	0.0	895.4	0.0	897.1
12	0.0	0.0	0.0	791.5	0.0	782.4	0.0	784.3
13	0.0	0.0	0.0	1074.0	0.0	1093.0	0.0	1068.2
14	0.0	0.0	0.0	1071.1	0.0	1063.5	0.0	1058.5
15	0.0	0.0	0.0	815.0	0.0	805.1	0.0	809.1
16	0.0	0.0	0.0	888.3	0.0	882.4	0.0	882.4
17	0.0	0.0	0.0	826.2	0.0	827.1	0.0	827.1
18	0.0	0.0	0.0	1059.4	0.0	1078.2	0.0	783.0
19	0.0	671.2	0.0	1027.6	0.0	816.3	0.0	803.1
20	0.0	819.1	2.3	666.2	0.0	843.3	0.0	522.4
21	7.2	688.5	0.5	1061.2	0.0	1054.1	0.0	814.2
22	0.0	538.1	0.0	1048.2	0.0	1039.3	0.0	845.4
23	0.0	633.1	0.0	893.3	0.0	889.3	0.0	851.2
24	0.0	907.3	0.0	927.4	0.0	921.1	0.0	806.1
25	0.0	998.4	0.0	919.3	0.0	1022.2	0.0	652.3
26	0.0	998.1	0.0	966.5	0.0	1003.3	0.0	611.0
27	0.0	858.3	0.0	824.4	1.4	839.4	0.0	610.1
28	0.0	894.1	0.0	957.5	0.0	974.6	0.0	591.2
29	0.0	984.0	0.0	1010.1	0.0	1009.1	0.0	610.5
30	0.0	912.0	0.0	961.5	0.0	949.5	0.0	679.4
Total	14.9	10962.0	3.2	24869.8	7.7	28250.9	2.3	24764.9
Percent	0.14		0.01		0.03		0.01	
Maximum	7.2	998.4	2.3	1269.1	6.3	1341.6	2.3	1288.1
Date	21-Sep	25-Sep	20-Sep	7-Sep	6-Sep	7-Sep	7-Sep	7-Sep
Minimum	0.00	0.00	0.00	0.00	0.00	731.44	0.00	522.4
Date	2-Sep	6-Sep	1-Sep	3-Sep	1-Sep	8-Sep	1-Sep	20-Sep

Notes:
 Met filter performance criteria of 99% of the readings less than 0.1ntu for the month.

UV System Monthly Report

Month: **September-17**

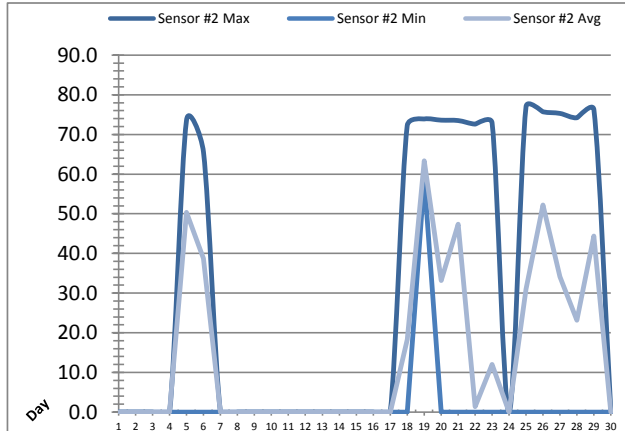
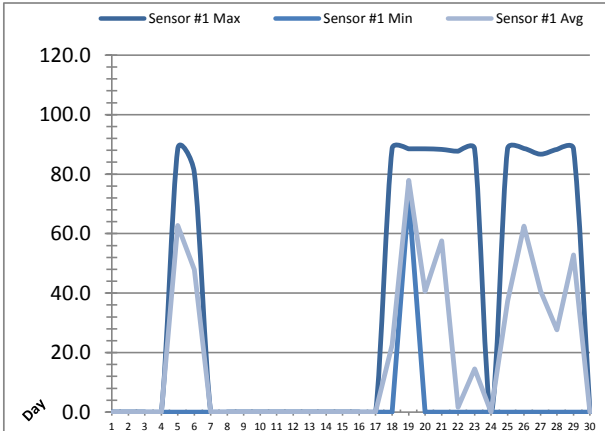


Date	UV Reactor 1					
	Intensity Sensor 1 (mW/cm ²)			Intensity Sensor 2 (mW/cm ²)		
	Maximum	Minimum	Average	Maximum	Minimum	Average
1	70.0	41.2	61.0	83.3	51.1	73.5
2	72.0	56.0	60.7	85.1	64.0	73.2
3	71.4	52.1	61.1	84.7	68.4	73.8
4	67.5	52.9	60.9	80.9	60.9	73.5
5	65.4	0.0	12.1	77.9	0.0	14.6
6	64.2	0.0	22.7	78.6	0.0	27.4
7	69.8	0.0	60.8	80.9	0.0	73.3
8	68.2	50.5	60.8	81.7	50.8	73.4
9	66.2	51.0	61.1	79.2	67.2	73.5
10	69.0	50.9	61.3	81.2	67.9	73.8
11	70.8	57.5	61.4	83.0	41.5	73.7
12	70.6	58.1	61.2	84.0	69.2	73.8
13	66.1	49.7	61.0	79.1	70.3	73.6
14	68.5	53.0	61.2	82.4	65.8	73.6
15	70.1	56.5	60.9	82.4	67.4	73.3
16	67.7	56.3	60.8	80.2	68.5	73.6
17	68.9	0.0	60.4	82.1	0.0	73.3
18	67.0	0.0	42.7	80.7	0.0	51.7
19	0.0	0.0	0.0	0.0	0.0	0.0
20	70.2	0.0	28.8	83.3	0.0	35.1
21	68.2	0.0	15.2	80.5	0.0	18.4
22	71.7	0.0	59.9	84.9	0.0	72.1
23	72.3	0.0	5.8	85.1	0.0	6.8
24	0.0	0.0	0.0	0.0	0.0	0.0
25	69.8	0.0	6.0	83.7	0.0	7.2
26	71.8	0.0	11.8	86.1	0.0	14.1
27	70.8	0.0	28.8	83.8	0.0	34.6
28	69.5	0.0	39.8	82.6	0.0	47.6
29	69.1	0.0	19.0	82.1	0.0	22.7
30	71.3	57.4	60.9	84.1	69.2	72.7
Total						
Average	64.6	24.8	42.3	76.8	29.4	50.9
Maximum	72.3		61.4	86.1		73.8
Date	23-Sep		11-Sep	26-Sep		3-Sep
Minimum		0.0			0.0	
Date		5-Sep	19-Sep		5-Sep	19-Sep

Notes:

UV System Monthly Report

Month: **September-17**

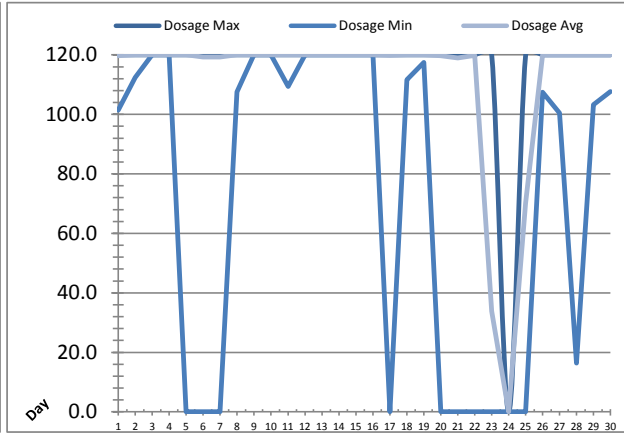
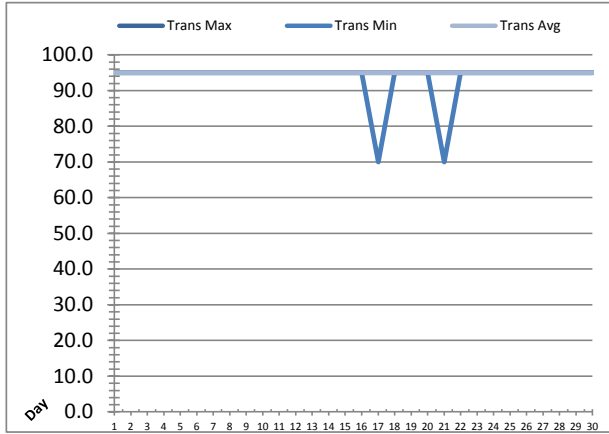


UV Reactor 2						
Date	Intensity Sensor 1 (mW/cm ²)			Intensity Sensor 2 (mW/cm ²)		
	Maximum	Minimum	Average	Maximum	Minimum	Average
1	0.0	0.0	0.0	0.0	0.0	0.0
2	0.0	0.0	0.0	0.0	0.0	0.0
3	0.0	0.0	0.0	0.0	0.0	0.0
4	0.0	0.0	0.0	0.0	0.0	0.0
5	88.5	0.0	62.7	73.6	0.0	50.4
6	80.6	0.0	47.9	65.5	0.0	38.7
7	0.0	0.0	0.0	0.0	0.0	0.0
8	0.0	0.0	0.0	0.0	0.0	0.0
9	0.0	0.0	0.0	0.0	0.0	0.0
10	0.0	0.0	0.0	0.0	0.0	0.0
11	0.0	0.0	0.0	0.0	0.0	0.0
12	0.0	0.0	0.0	0.0	0.0	0.0
13	0.0	0.0	0.0	0.0	0.0	0.0
14	0.0	0.0	0.0	0.0	0.0	0.0
15	0.0	0.0	0.0	0.0	0.0	0.0
16	0.0	0.0	0.0	0.0	0.0	0.0
17	0.0	0.0	0.0	0.0	0.0	0.0
18	88.6	0.0	22.6	72.2	0.0	18.3
19	88.5	72.4	77.9	73.9	58.9	63.3
20	88.5	0.0	40.6	73.6	0.0	33.2
21	88.3	0.0	57.5	73.5	0.0	47.4
22	87.7	0.0	1.7	72.6	0.0	1.4
23	88.5	0.0	14.5	72.9	0.0	12.0
24	0.0	0.0	0.0	0.0	0.0	0.0
25	88.5	0.0	37.3	77.0	0.0	31.0
26	88.6	0.0	62.5	75.7	0.0	52.2
27	86.7	0.0	40.7	75.3	0.0	34.1
28	88.3	0.0	27.6	74.2	0.0	23.1
29	88.5	0.0	52.9	76.2	0.0	44.4
30	0.0	0.0	0.0	0.0	0.0	0.0
Total						
Average	38.0	2.4	18.2	31.9	2.0	15.0
Maximum	88.6		77.9	77.0		63.3
Date	18-Sep		19-Sep	25-Sep		19-Sep
Minimum		0.0	0.0		0.0	0.0
Date		1-Sep	1-Sep		1-Sep	1-Sep

Notes:

UV System Monthly Report

Month: **September-17**

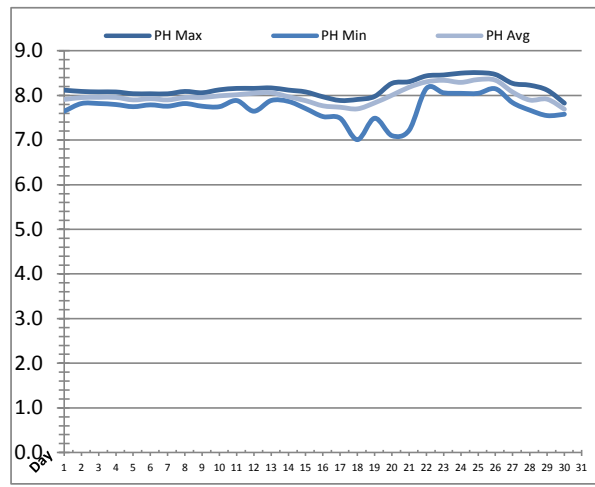
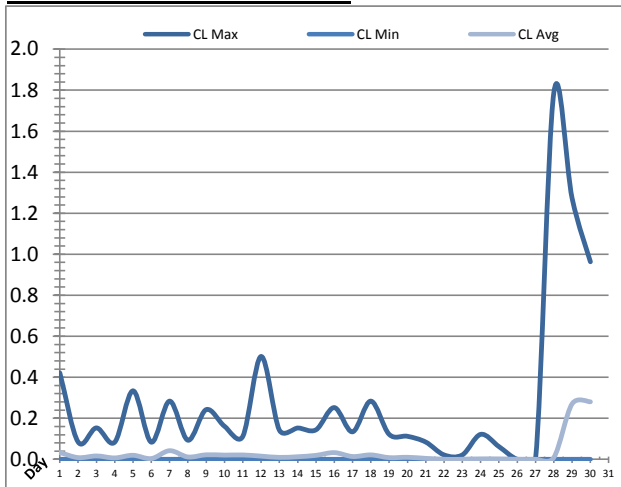


UV System							
Date	Transmittance (%)			Dosage (mJ/cm ²)			Inlet Flow (L/s)
	Maximum	Minimum	Average	Maximum	Minimum	Average	Maximum
1	95.00	95.00	95.00	120.0	101.4	119.8	586.3
2	95.00	95.00	95.00	120.0	112.4	120.0	140.0
3	95.00	95.00	95.00	120.0	120.0	120.0	123.3
4	95.00	95.00	95.00	120.0	120.0	120.0	121.8
5	95.00	95.00	95.00	120.0	0.0	120.0	128.4
6	95.00	95.00	95.00	120.0	0.0	119.3	131.7
7	95.00	95.00	95.00	120.0	0.0	119.3	130.2
8	95.00	95.00	95.00	120.0	107.6	120.0	126.2
9	95.00	95.00	95.00	120.0	120.0	120.0	128.3
10	95.00	95.00	95.00	120.0	120.0	120.0	125.8
11	95.00	95.00	95.00	120.0	109.4	120.0	127.3
12	95.00	95.00	95.00	120.0	120.0	120.0	125.5
13	95.00	95.00	95.00	120.0	120.0	120.0	125.4
14	95.00	95.00	95.00	120.0	120.0	120.0	126.2
15	95.00	95.00	95.00	120.0	120.0	120.0	128.0
16	95.00	95.00	95.00	120.0	120.0	120.0	127.7
17	95.00	70.00	94.98	120.0	0.0	119.8	125.8
18	95.00	95.00	95.00	120.0	111.6	120.0	556.5
19	95.00	95.00	95.00	120.0	117.5	120.0	136.1
20	95.00	95.00	95.00	120.0	0.0	119.7	577.0
21	95.00	70.00	94.98	120.0	0.0	119.0	552.1
22	95.00	95.00	95.00	120.0	0.0	119.8	133.7
23	95.00	95.00	95.00	120.0	0.0	33.9	159.7
24	95.00	95.00	95.00	0.0	0.0	0.0	631.7
25	95.00	95.00	95.00	120.0	0.0	70.2	161.6
26	95.00	95.00	95.00	120.0	107.5	120.0	179.5
27	95.00	95.00	95.00	120.0	100.5	119.9	164.3
28	95.00	95.00	95.00	120.0	16.4	119.9	152.5
29	95.00	95.00	95.00	120.0	103.2	119.9	157.9
30	95.00	95.00	95.00	120.0	107.7	120.0	143.1
Total							
Average	95.00	93.33	95.00	116.0	72.5	111.3	211.1
Maximum	95.00		95.00	120.0		120.0	631.7
Date	1-Sep		1-Sep	1-Sep		3-Sep	24-Sep
Minimum		70.00	94.98		0.0	0.0	
Date		17-Sep	17-Sep		5-Sep	24-Sep	

Notes:

Plant Quality Report

Month: September-17

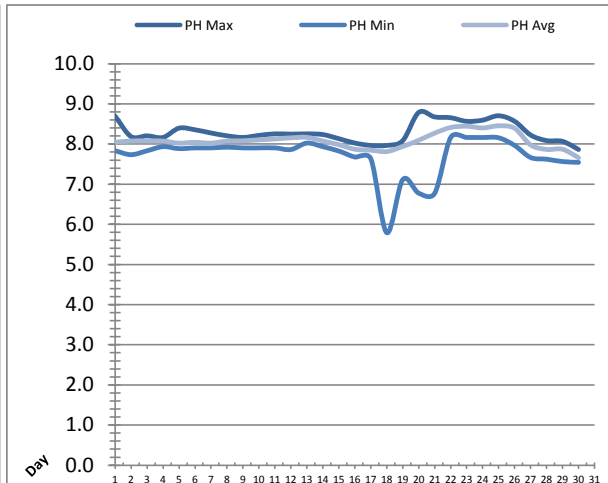
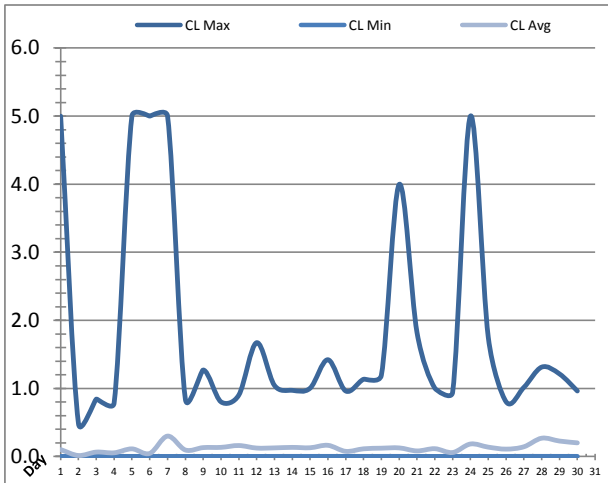


Date	Strainer Chlorine Residual			Strainer pH		
	AIT_2003_CL (ppm)			AIT_2003_PH		
	Maximum	Minimum	Average	Maximum	Minimum	Average
1	0.42	0.00	0.03	8.12	7.65	7.91
2	0.08	0.00	0.01	8.09	7.82	7.95
3	0.15	0.00	0.02	8.08	7.82	7.96
4	0.08	0.00	0.01	8.08	7.80	7.96
5	0.33	0.00	0.02	8.04	7.75	7.90
6	0.08	0.00	0.00	8.04	7.79	7.93
7	0.28	0.00	0.04	8.04	7.76	7.90
8	0.09	0.00	0.01	8.09	7.82	7.95
9	0.24	0.00	0.02	8.06	7.76	7.95
10	0.16	0.00	0.02	8.13	7.75	7.99
11	0.11	0.00	0.02	8.16	7.89	8.01
12	0.50	0.00	0.02	8.16	7.65	8.05
13	0.14	0.00	0.01	8.17	7.89	8.06
14	0.15	0.00	0.01	8.12	7.87	7.97
15	0.14	0.00	0.02	8.08	7.71	7.88
16	0.25	0.00	0.03	7.97	7.53	7.77
17	0.13	0.00	0.01	7.89	7.49	7.74
18	0.28	0.00	0.02	7.91	7.01	7.70
19	0.12	0.00	0.01	7.98	7.49	7.83
20	0.11	0.00	0.01	8.27	7.10	8.00
21	0.08	0.00	0.00	8.31	7.22	8.18
22	0.02	0.00	0.00	8.44	8.16	8.30
23	0.02	0.00	0.00	8.46	8.06	8.34
24	0.12	0.00	0.00	8.50	8.05	8.29
25	0.06	0.00	0.00	8.51	8.05	8.36
26	0.00	0.00	0.00	8.47	8.15	8.34
27	0.00	0.00	0.00	8.27	7.84	8.07
28	1.79	0.00	0.01	8.23	7.67	7.90
29	1.27	0.00	0.27	8.12	7.55	7.92
30	0.96	0.00	0.28	7.83	7.58	7.69
Total						
Average	0.27	0.00	0.03	8.15	7.72	7.99
Maximum	1.79		0.28	8.51		8.36
Date	28-Sep		30-Sep	25-Sep		25-Sep
Minimum		0.00			7.01	7.69
Date		1-Sep	26-Sep		18-Sep	30-Sep

Notes:

Plant Quality Report

Month: September-17

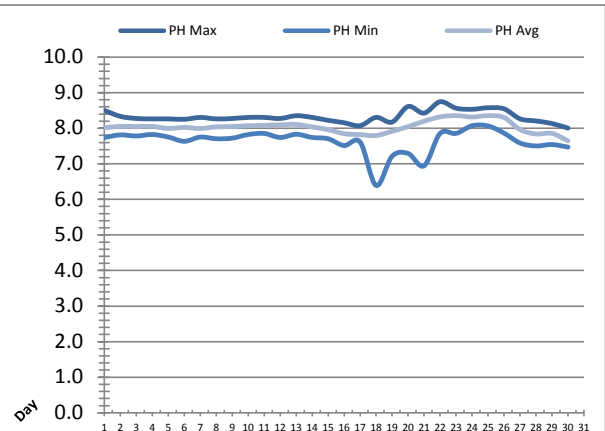
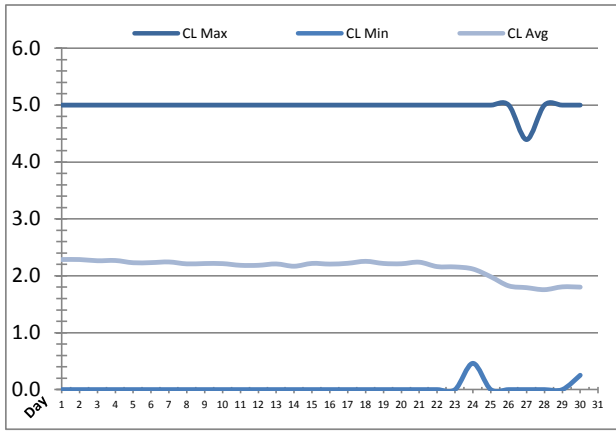


Date	Inlet UV Chlorine Residual			Inlet UV pH		
	AIT_5005_CL (ppm)			AIT_5005_PH		
	Maximum	Minimum	Average	Maximum	Minimum	Average
1	5.00	0.00	0.10	8.70	7.83	8.04
2	0.48	0.00	0.01	8.19	7.73	8.08
3	0.84	0.00	0.07	8.20	7.83	8.08
4	0.78	0.00	0.05	8.16	7.93	8.07
5	5.00	0.00	0.11	8.40	7.89	8.02
6	5.00	0.00	0.05	8.35	7.90	8.04
7	5.00	0.00	0.30	8.27	7.90	8.02
8	0.84	0.00	0.10	8.20	7.92	8.07
9	1.27	0.00	0.13	8.16	7.90	8.08
10	0.80	0.00	0.13	8.22	7.90	8.10
11	0.90	0.00	0.16	8.25	7.90	8.13
12	1.67	0.00	0.12	8.25	7.86	8.15
13	1.04	0.00	0.13	8.25	8.02	8.17
14	0.97	0.00	0.13	8.24	7.93	8.08
15	1.00	0.00	0.13	8.13	7.83	7.98
16	1.42	0.00	0.16	8.02	7.68	7.87
17	0.96	0.00	0.08	7.96	7.63	7.85
18	1.14	0.00	0.11	7.97	5.79	7.81
19	1.19	0.00	0.12	8.09	7.11	7.94
20	4.00	0.00	0.13	8.79	6.78	8.09
21	1.82	0.00	0.08	8.67	6.77	8.27
22	1.00	0.00	0.12	8.66	8.16	8.41
23	0.94	0.00	0.06	8.57	8.16	8.44
24	5.00	0.00	0.18	8.59	8.16	8.40
25	1.75	0.00	0.14	8.70	8.16	8.45
26	0.80	0.00	0.11	8.57	7.96	8.39
27	1.02	0.00	0.14	8.22	7.66	7.98
28	1.31	0.00	0.27	8.09	7.62	7.87
29	1.21	0.00	0.23	8.07	7.56	7.87
30	0.96	0.00	0.20	7.86	7.54	7.66
Total						
Average	1.84	0.00	0.13	8.29	7.70	8.08
Maximum	5.00		0.30	8.79		8.45
Date	1-Sep		7-Sep	20-Sep		25-Sep
Minimum		0.00	0.01		5.79	7.66
Date		7-Sep	2-Sep		18-Sep	30-Sep

Notes:

Plant Quality Report

Month: **September-17**

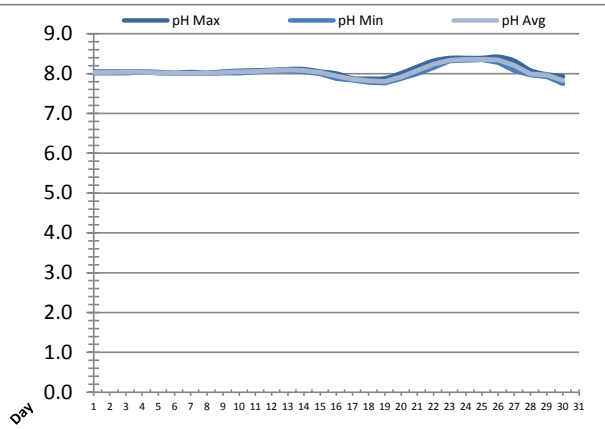
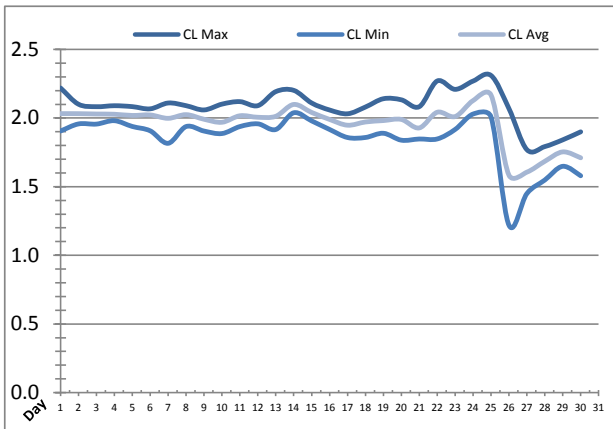


Date	Discharge UV Chlorine Residual			Discharge UV pH		
	AIT_5006_CL (ppm)			AIT_5006_PH		
	Maximum	Minimum	Average	Maximum	Minimum	Average
1	5.00	0.00	2.29	8.50	7.74	8.01
2	5.00	0.00	2.29	8.33	7.81	8.05
3	5.00	0.00	2.26	8.27	7.78	8.05
4	5.00	0.00	2.27	8.26	7.82	8.05
5	5.00	0.00	2.23	8.26	7.75	7.99
6	5.00	0.00	2.23	8.25	7.63	8.02
7	5.00	0.00	2.24	8.30	7.75	7.99
8	5.00	0.00	2.21	8.26	7.70	8.04
9	5.00	0.00	2.22	8.27	7.72	8.05
10	5.00	0.00	2.21	8.31	7.82	8.07
11	5.00	0.00	2.18	8.31	7.85	8.08
12	5.00	0.00	2.18	8.28	7.74	8.10
13	5.00	0.00	2.21	8.35	7.83	8.11
14	5.00	0.00	2.17	8.30	7.74	8.04
15	5.00	0.00	2.22	8.22	7.71	7.96
16	5.00	0.00	2.21	8.16	7.51	7.85
17	5.00	0.00	2.22	8.07	7.61	7.82
18	5.00	0.00	2.25	8.31	6.39	7.80
19	5.00	0.00	2.22	8.17	7.21	7.92
20	5.00	0.00	2.21	8.61	7.29	8.05
21	5.00	0.00	2.24	8.43	6.94	8.20
22	5.00	0.00	2.16	8.74	7.85	8.32
23	5.00	0.00	2.16	8.56	7.85	8.36
24	5.00	0.46	2.12	8.53	8.07	8.32
25	5.00	0.00	1.98	8.58	8.06	8.35
26	5.00	0.00	1.82	8.55	7.86	8.30
27	4.39	0.00	1.79	8.27	7.59	7.96
28	5.00	0.00	1.76	8.20	7.50	7.84
29	5.00	0.00	1.81	8.13	7.54	7.85
30	5.00	0.25	1.80	8.00	7.47	7.64
Total						
Average	4.98	0.02	2.14	8.33	7.64	8.04
Maximum	5.00		2.29	8.74		8.36
Date	1-Sep		2-Sep	22-Sep		23-Sep
Minimum		0.00	1.76		6.39	7.64
Date		1-Sep	28-Sep		18-Sep	30-Sep

Notes:

Plant Quality Report

Month: **September-17**

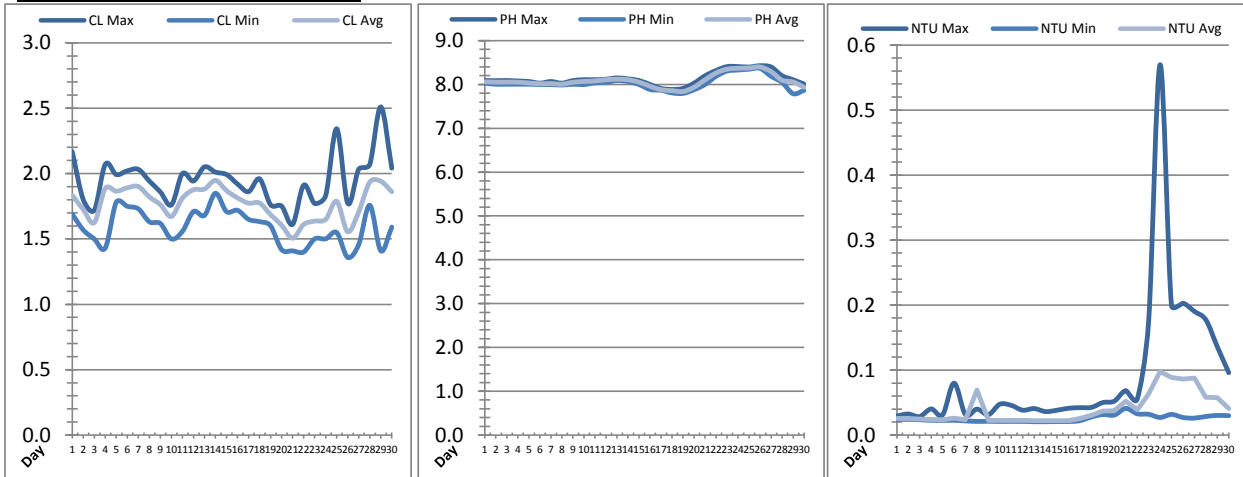


Date	Suction Header Chlorine Res.			Suction Header pH			Distribution CT Calc Total		
	AIT_7001_CL (ppm)			AIT_7001_PH (m)			REAL_CT_CALC_TOTAL (mg*ml/min)		
	Maximum	Minimum	Average	Maximum	Minimum	Average	Maximum	Minimum	Average
1	2.22	1.91	2.03	8.05	8.02	8.03	6697.93	0.00	94.55
2	2.10	1.96	2.03	8.05	8.02	8.03	4086.35	0.00	66.93
3	2.08	1.96	2.03	8.05	8.02	8.03	1837.58	0.00	87.94
4	2.09	1.98	2.03	8.05	8.04	8.04	4664.89	0.00	99.44
5	2.08	1.94	2.02	8.04	8.02	8.02	4651.01	0.00	98.37
6	2.07	1.91	2.02	8.02	8.00	8.01	1783.35	0.00	78.13
7	2.11	1.82	2.00	8.04	8.01	8.01	3294.97	0.00	124.78
8	2.09	1.94	2.02	8.02	8.00	8.01	1427.55	0.00	80.33
9	2.06	1.91	1.99	8.05	8.02	8.03	835.57	0.00	94.76
10	2.10	1.89	1.97	8.07	8.02	8.05	2855.18	0.00	93.13
11	2.12	1.94	2.02	8.08	8.04	8.05	5398.99	0.00	78.18
12	2.09	1.96	2.01	8.09	8.08	8.08	4462.79	0.00	73.63
13	2.19	1.92	2.01	8.11	8.08	8.09	4564.14	0.00	97.34
14	2.20	2.04	2.10	8.11	8.05	8.08	4003.72	0.00	102.91
15	2.11	1.98	2.04	8.05	8.00	8.03	7063.90	0.00	85.75
16	2.06	1.92	1.99	8.00	7.88	7.94	7225.31	0.00	115.21
17	2.03	1.86	1.95	7.88	7.84	7.86	3104.21	0.00	76.75
18	2.08	1.86	1.97	7.87	7.78	7.82	6007.25	0.00	90.99
19	2.14	1.89	1.98	7.88	7.77	7.80	933.68	0.00	86.36
20	2.13	1.84	1.99	8.01	7.88	7.92	3246.20	0.00	63.03
21	2.08	1.85	1.93	8.17	8.00	8.08	1362.95	0.00	83.49
22	2.27	1.85	2.04	8.32	8.15	8.24	6313.33	0.00	84.10
23	2.21	1.92	2.01	8.39	8.32	8.34	3089.77	0.00	115.92
24	2.27	2.03	2.13	8.39	8.34	8.36	6424.27	0.00	115.75
25	2.31	2.01	2.17	8.39	8.35	8.36	2210.82	0.00	110.77
26	2.07	1.22	1.58	8.42	8.28	8.34	777.15	0.00	83.72
27	1.77	1.45	1.61	8.32	8.08	8.20	4086.04	0.00	90.28
28	1.79	1.55	1.68	8.08	7.97	7.99	5895.03	0.00	86.26
29	1.84	1.65	1.75	7.98	7.93	7.97	3183.41	0.00	103.64
30	1.90	1.58	1.71	7.93	7.75	7.83	6221.83	0.00	111.97
Total									
Average	2.09	1.85	1.96	8.10	8.02	8.05	8.10	8.02	8.05
Maximum	2.31		2.17	8.42		8.36	8.42		8.36
Date	25-Sep		25-Sep	26-Sep		25-Sep	26-Sep		25-Sep
Minimum		1.22	1.58		7.75	7.80		7.75	7.80
Date		26-Sep	26-Sep		30-Sep	19-Sep		30-Sep	19-Sep

Notes:

Plant Quality Report

Month: **September-17**

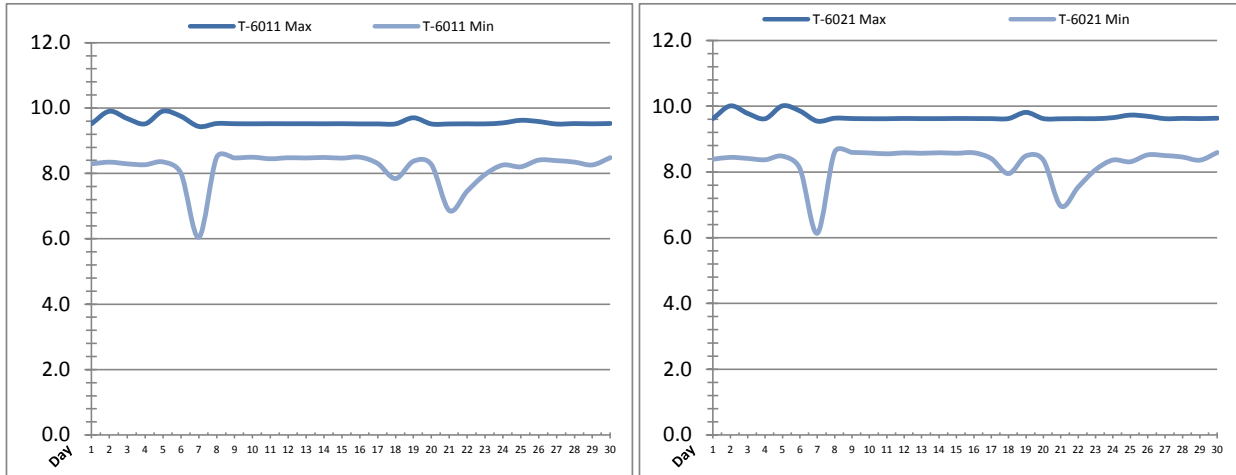


Date	Distribution Chlorine Header			Distribution pH			Distribution Turbidity		
	AIT_7004_CL (ppm)			AIT_7004_PH (mg/L)			AIT_7003 (mg/L)		
	Maximum	Minimum	Average	Maximum	Minimum	Average	Maximum	Minimum	Average
1	2.17	1.69	1.83	8.09	8.03	8.06	0.03	0.02	0.03
2	1.80	1.57	1.73	8.09	8.00	8.05	0.03	0.02	0.03
3	1.72	1.50	1.62	8.09	8.01	8.05	0.03	0.02	0.02
4	2.07	1.43	1.89	8.08	8.01	8.05	0.04	0.02	0.02
5	1.99	1.78	1.86	8.07	8.01	8.03	0.03	0.02	0.02
6	2.02	1.75	1.89	8.03	8.00	8.02	0.08	0.02	0.03
7	2.03	1.73	1.90	8.07	8.00	8.02	0.03	0.02	0.02
8	1.94	1.63	1.82	8.03	7.99	8.01	0.04	0.02	0.07
9	1.86	1.62	1.76	8.09	8.00	8.05	0.03	0.02	0.02
10	1.76	1.50	1.67	8.11	8.00	8.07	0.05	0.02	0.02
11	2.00	1.56	1.81	8.11	8.04	8.08	0.05	0.02	0.02
12	1.94	1.71	1.88	8.12	8.05	8.11	0.04	0.02	0.02
13	2.05	1.68	1.88	8.15	8.09	8.12	0.04	0.02	0.02
14	2.01	1.85	1.95	8.13	8.07	8.11	0.04	0.02	0.02
15	1.99	1.71	1.87	8.09	8.00	8.05	0.04	0.02	0.02
16	1.92	1.72	1.81	8.00	7.89	7.96	0.04	0.02	0.02
17	1.86	1.65	1.77	7.91	7.87	7.88	0.04	0.02	0.03
18	1.96	1.63	1.77	7.89	7.81	7.86	0.04	0.03	0.03
19	1.76	1.60	1.69	7.91	7.80	7.84	0.05	0.03	0.04
20	1.75	1.42	1.61	8.03	7.88	7.94	0.05	0.03	0.04
21	1.61	1.41	1.51	8.20	8.00	8.11	0.07	0.04	0.05
22	1.91	1.40	1.61	8.32	8.19	8.26	0.06	0.03	0.04
23	1.77	1.50	1.64	8.41	8.31	8.35	0.18	0.03	0.06
24	1.83	1.50	1.65	8.41	8.33	8.37	0.57	0.03	0.10
25	2.34	1.55	1.79	8.40	8.35	8.38	0.20	0.03	0.09
26	1.77	1.36	1.55	8.43	8.37	8.40	0.20	0.03	0.09
27	2.03	1.46	1.71	8.40	8.19	8.29	0.19	0.03	0.09
28	2.07	1.76	1.93	8.20	8.05	8.10	0.18	0.03	0.06
29	2.51	1.41	1.94	8.11	7.79	8.06	0.14	0.03	0.06
30	2.04	1.59	1.86	8.01	7.87	7.93	0.10	0.03	0.04
Total									
Average	1.95	1.59	1.77	8.13	8.03	8.09	0.1	0.0	0.0
Maximum	2.51		1.95	8.43		8.40	0.6		0.1
Date	29-Sep		14-Sep	26-Sep		26-Sep	24-Sep		24-Sep
Minimum		1.36	1.51		7.79	7.84		0.0	0.0
Date		26-Sep	21-Sep		29-Sep	19-Sep		13-Sep	14-Sep

Notes:

Raw Well/Treated Storage Report

Month: September-17

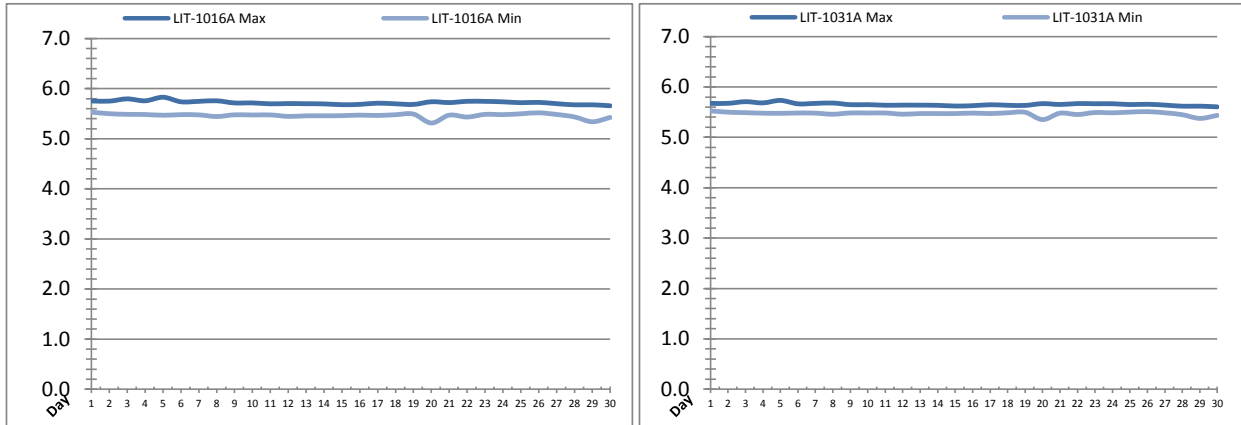


Date	Treated Water Storage Tank					
	T-6011 (m)			T-6021 (m)		
	Maximum	Minimum	Average	Maximum	Minimum	Average
1	9.5	8.3	9.0	9.6	8.4	9.1
2	9.9	8.3	9.2	10.0	8.4	9.3
3	9.7	8.3	9.0	9.8	8.4	9.2
4	9.5	8.3	8.9	9.6	8.4	9.0
5	9.9	8.4	9.1	10.0	8.5	9.2
6	9.7	8.0	8.9	9.9	8.1	9.0
7	9.4	6.0	8.2	9.5	6.1	8.3
8	9.5	8.5	9.2	9.6	8.6	9.3
9	9.5	8.5	9.1	9.6	8.6	9.2
10	9.5	8.5	9.1	9.6	8.6	9.2
11	9.5	8.4	9.1	9.6	8.6	9.2
12	9.5	8.5	9.2	9.6	8.6	9.3
13	9.5	8.5	9.1	9.6	8.6	9.2
14	9.5	8.5	9.1	9.6	8.6	9.2
15	9.5	8.5	9.1	9.6	8.6	9.2
16	9.5	8.5	9.1	9.6	8.6	9.2
17	9.5	8.3	9.1	9.6	8.4	9.2
18	9.5	7.8	8.7	9.6	7.9	8.8
19	9.7	8.4	9.1	9.8	8.5	9.2
20	9.5	8.3	9.0	9.6	8.4	9.1
21	9.5	6.9	8.7	9.6	7.0	8.8
22	9.5	7.5	8.6	9.6	7.5	8.7
23	9.5	8.0	8.9	9.6	8.1	9.0
24	9.5	8.3	9.0	9.7	8.4	9.1
25	9.6	8.2	9.0	9.7	8.3	9.1
26	9.6	8.4	9.0	9.7	8.5	9.1
27	9.5	8.4	9.1	9.6	8.5	9.2
28	9.5	8.3	9.1	9.6	8.5	9.2
29	9.5	8.3	9.0	9.6	8.4	9.1
30	9.5	8.5	9.0	9.6	8.6	9.1
Total						
Average	9.6	8.2	9.0	9.7	8.3	9.1
Maximum	9.9		9.2	10.0		9.3
Date	5-Sep		8-Sep	5-Sep		8-Sep
Minimum		6.0	8.2		6.1	8.3
Date		7-Sep	7-Sep		7-Sep	7-Sep

Notes:

Raw Well/Treated Storage Report

Month: **September-17**

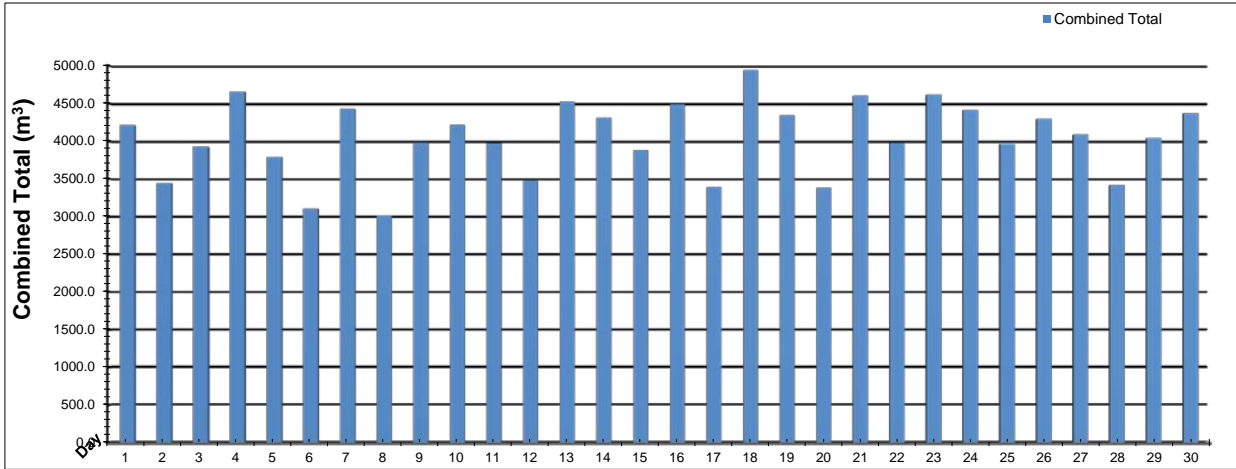


Date	Low Lift Intake Levels					
	Wet Well #1 (LIT-1016A) (m)			Wet Well #2 (LIT-1031A) (m)		
	Maximum	Minimum	Average	Maximum	Minimum	Average
1	5.8	5.5	5.6	5.7	5.5	5.6
2	5.8	5.5	5.7	5.7	5.5	5.6
3	5.8	5.5	5.6	5.7	5.5	5.6
4	5.8	5.5	5.6	5.7	5.5	5.6
5	5.8	5.5	5.6	5.7	5.5	5.6
6	5.7	5.5	5.6	5.7	5.5	5.6
7	5.7	5.5	5.6	5.7	5.5	5.6
8	5.8	5.4	5.6	5.7	5.5	5.6
9	5.7	5.5	5.6	5.6	5.5	5.6
10	5.7	5.5	5.6	5.6	5.5	5.6
11	5.7	5.5	5.6	5.6	5.5	5.6
12	5.7	5.4	5.6	5.6	5.5	5.6
13	5.7	5.5	5.6	5.6	5.5	5.6
14	5.7	5.5	5.6	5.6	5.5	5.6
15	5.7	5.5	5.6	5.6	5.5	5.6
16	5.7	5.5	5.6	5.6	5.5	5.6
17	5.7	5.5	5.6	5.6	5.5	5.6
18	5.7	5.5	5.6	5.6	5.5	5.6
19	5.7	5.5	5.6	5.6	5.5	5.6
20	5.7	5.3	5.6	5.7	5.4	5.6
21	5.7	5.5	5.6	5.7	5.5	5.6
22	5.7	5.4	5.6	5.7	5.5	5.6
23	5.7	5.5	5.6	5.7	5.5	5.6
24	5.7	5.5	5.6	5.7	5.5	5.6
25	5.7	5.5	5.6	5.7	5.5	5.6
26	5.7	5.5	5.6	5.7	5.5	5.6
27	5.7	5.5	5.6	5.6	5.5	5.6
28	5.7	5.4	5.6	5.6	5.4	5.5
29	5.7	5.3	5.5	5.6	5.4	5.5
30	5.7	5.4	5.5	5.6	5.4	5.5
Total						
Average	5.7	5.5	5.6	5.7	5.5	5.6
Maximum	5.8		5.7	5.7		5.6
Date	5-Sep		2-Sep	5-Sep		2-Sep
Minimum		5.3	5.5		5.4	5.5
Date		20-Sep	30-Sep		20-Sep	30-Sep

Notes:

High Lift Monthly Report

Month: September-17

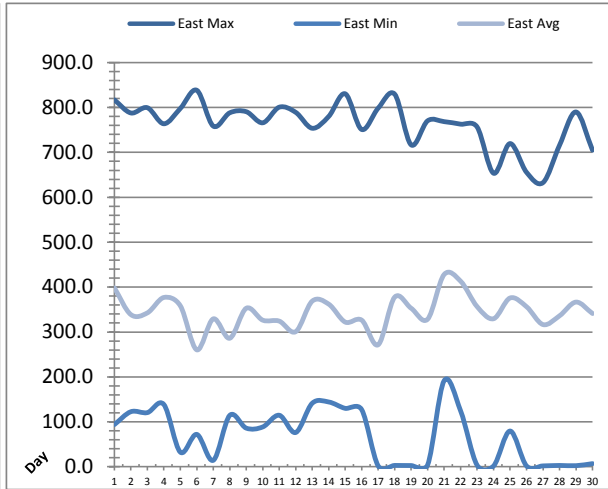
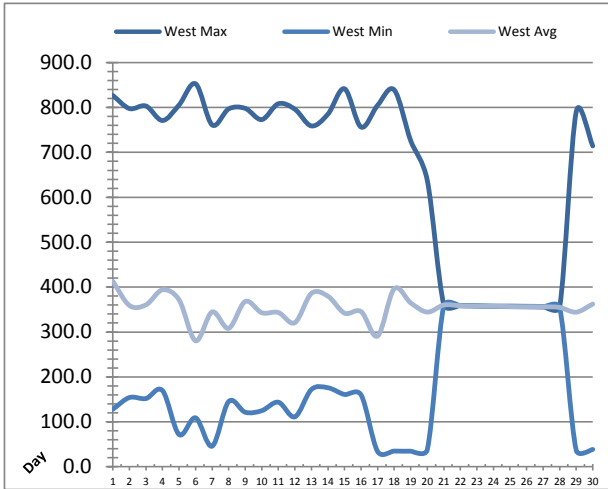


Date	Distribution Flow					
	FIT_7052 (East)		FIT_7062 (West)		Combined	
	(m³)	(L/s)	(m³)	(L/s)	(m³)	(L/s)
	Total	Peak	Total	Peak	Total	Peak
1	4210.6	150.2	0.0	0.0	4210.6	150.2
2	3440.0	148.6	0.0	0.0	3440.0	148.6
3	3923.9	151.5	0.0	0.0	3923.9	151.5
4	4656.5	150.8	0.0	0.0	4656.5	150.8
5	3789.9	146.1	0.0	0.0	3789.9	146.1
6	3104.7	152.9	0.0	0.0	3104.7	152.9
7	4430.6	148.2	0.0	0.0	4430.6	148.2
8	3015.0	147.8	0.0	0.0	3015.0	147.8
9	3985.3	150.3	0.0	0.0	3985.3	150.3
10	4213.4	148.8	0.0	0.0	4213.4	148.8
11	3975.9	149.4	0.0	0.0	3975.9	149.4
12	3475.4	155.3	0.0	0.0	3475.4	155.3
13	4523.3	149.2	0.0	0.0	4523.3	149.2
14	4305.3	149.3	0.0	0.0	4305.3	149.3
15	3881.1	152.0	0.0	0.0	3881.1	152.0
16	4488.8	146.8	0.0	0.0	4488.8	146.8
17	3391.6	157.2	0.0	0.0	3391.6	157.2
18	4939.6	150.6	0.0	0.0	4939.6	150.6
19	4342.0	148.1	0.0	0.0	4342.0	148.1
20	3380.8	153.8	0.0	0.0	3380.8	153.8
21	4602.0	159.5	0.0	0.0	4602.0	159.5
22	3978.8	149.5	0.0	0.0	3978.8	149.5
23	4619.5	149.2	0.0	0.0	4619.5	149.2
24	4415.6	148.3	0.0	0.0	4415.6	148.3
25	3962.9	150.2	0.0	0.0	3962.9	150.2
26	4295.7	147.7	0.0	0.0	4295.7	147.7
27	4089.4	131.4	0.0	0.0	4089.4	131.4
28	3417.2	128.5	0.0	0.0	3417.2	128.5
29	4043.5	146.8	0.0	0.0	4043.5	146.8
30	4370.7	98.5	0.0	0.0	4370.7	98.5
Total	121269.0		0.1		121269.1	
Average	4042.3	147.2	0.0	0.0	4042.3	147.2
Maximum	4939.6	159.5	0.0	0.0	4939.6	159.5
Date	18-Sep	21-Sep	20-Sep	1-Sep	18-Sep	21-Sep
Minimum	3015.0		0.0		3015.0	
Date	8-Sep		10-Sep		8-Sep	

Notes:

Low Lift Monthly Report

Month: September-17

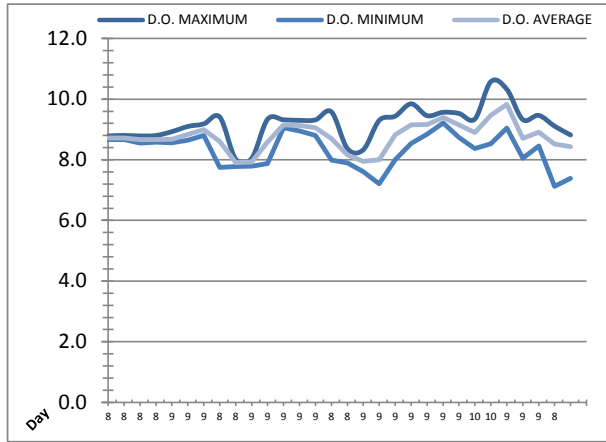
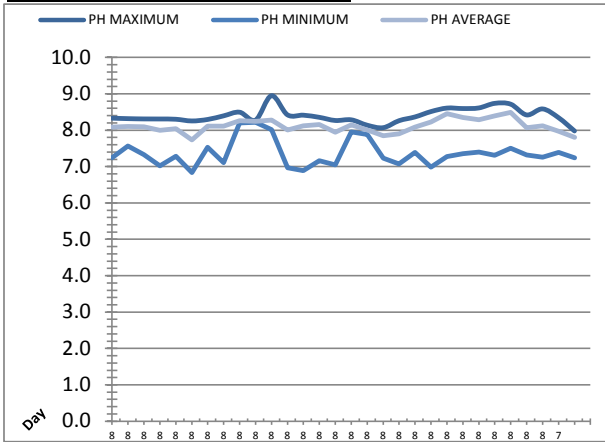


Date	West Train Header Pressure PIT_1018 (kPa)			East Train Header Pressure PIT_1028 (kPa)		
	Maximum	Minimum	Average	Maximum	Minimum	Average
1	826.6	128.1	412.8	817.0	93.9	398.4
2	797.6	154.1	359.1	787.7	122.6	338.8
3	803.1	151.9	360.5	799.4	120.5	342.6
4	770.9	169.5	394.0	763.7	138.7	376.9
5	805.5	71.7	371.8	797.8	32.5	358.4
6	852.6	108.9	280.4	838.3	72.1	260.3
7	761.1	45.8	344.7	758.4	14.4	329.3
8	796.9	145.3	308.3	788.1	114.5	286.1
9	797.9	121.4	368.1	790.5	86.0	353.0
10	773.0	124.9	342.9	765.8	88.7	326.4
11	808.2	143.7	343.5	800.6	114.7	324.3
12	796.0	111.2	320.8	789.1	76.3	300.8
13	758.8	172.1	386.1	753.7	141.4	368.8
14	785.4	175.9	379.7	780.0	144.2	362.1
15	841.6	160.9	342.0	830.4	130.0	322.1
16	756.4	159.9	345.5	750.9	127.2	326.5
17	804.9	33.9	291.1	798.5	1.9	271.6
18	839.1	34.9	396.2	829.7	3.0	377.6
19	725.7	34.7	364.9	716.7	2.7	352.9
20	637.7	38.0	344.4	770.3	4.0	328.6
21	361.0	359.0	360.1	768.4	191.6	428.1
22	359.4	358.2	358.6	762.8	124.4	413.2
23	358.6	357.5	358.0	756.6	3.5	356.6
24	357.8	356.9	357.4	653.5	1.8	329.6
25	357.7	356.4	356.7	719.6	79.6	375.8
26	357.3	356.0	356.4	655.5	1.7	356.3
27	356.9	355.4	356.2	632.7	1.9	316.5
28	355.7	354.0	354.7	715.9	2.9	336.1
29	790.1	36.9	344.2	789.9	2.4	366.6
30	714.3	38.6	362.3	704.8	7.0	341.2
Total						
Average	670.3	173.9	354.0	762.9	68.2	344.2
Maximum	852.6		412.8	838.3		428.1
Date	6-Sep		1-Sep	6-Sep		21-Sep
Minimum		33.9	280.4		1.7	260.3
Date		17-Sep	6-Sep		26-Sep	6-Sep

Notes:

Low Lift Monthly Report

Month: **September-17**

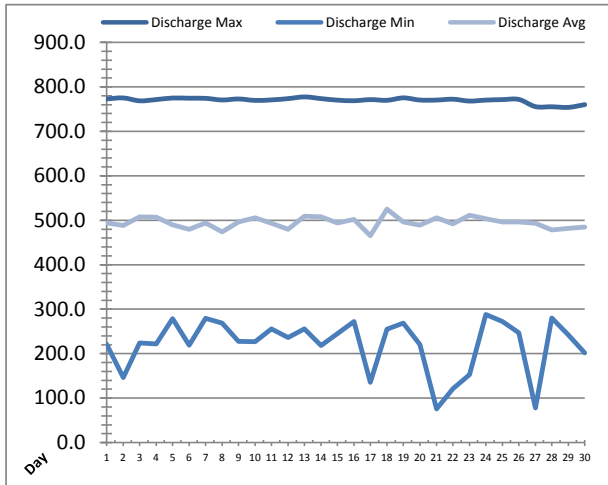
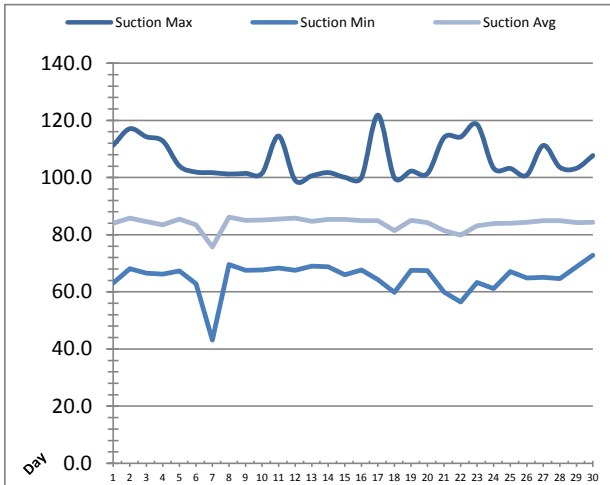


Date	Raw Water Sample Line					
	AIT_1402_PH (pH)			AIT_1402_DO (mg/L)		
	Maximum	Minimum	Average	Maximum	Minimum	Average
1	8.3	7.2	8.1	8.8	8.7	8.7
2	8.3	7.6	8.1	8.8	8.7	8.7
3	8.3	7.3	8.1	8.8	8.5	8.7
4	8.3	7.0	8.0	8.8	8.6	8.7
5	8.3	7.3	8.0	8.9	8.6	8.7
6	8.3	6.8	7.7	9.1	8.6	8.8
7	8.3	7.5	8.1	9.2	8.8	9.0
8	8.4	7.1	8.1	9.4	7.8	8.6
9	8.5	8.2	8.3	8.0	7.8	7.9
10	8.3	8.2	8.2	8.0	7.8	7.9
11	8.9	8.0	8.3	9.3	7.9	8.6
12	8.4	7.0	8.0	9.3	9.1	9.2
13	8.4	6.9	8.1	9.3	9.0	9.1
14	8.4	7.2	8.2	9.3	8.8	9.1
15	8.3	7.0	7.9	9.6	8.0	8.7
16	8.3	8.0	8.1	8.4	7.9	8.2
17	8.1	7.9	8.0	8.3	7.6	7.9
18	8.1	7.2	7.8	9.3	7.2	8.0
19	8.3	7.1	7.9	9.4	8.0	8.8
20	8.4	7.4	8.1	9.8	8.5	9.2
21	8.5	7.0	8.2	9.5	8.8	9.2
22	8.6	7.3	8.5	9.6	9.2	9.4
23	8.6	7.3	8.3	9.5	8.7	9.2
24	8.6	7.4	8.3	9.3	8.4	8.9
25	8.7	7.3	8.4	10.6	8.5	9.5
26	8.7	7.5	8.5	10.3	9.0	9.8
27	8.4	7.3	8.1	9.3	8.1	8.7
28	8.6	7.3	8.1	9.5	8.5	8.9
29	8.3	7.4	8.0	9.1	7.1	8.5
30	8.0	7.2	7.8	8.8	7.4	8.4
Total						
Average	8.4	7.4	8.1	9.2	8.3	8.8
Maximum	8.9		8.5	10.6		9.8
Date	11-Sep		26-Sep	25-Sep		26-Sep
Minimum		6.8	7.7		7.1	7.9
Date		6-Sep	6-Sep		29-Sep	9-Sep

Notes:

High Lift Monthly Report

Month: September-17

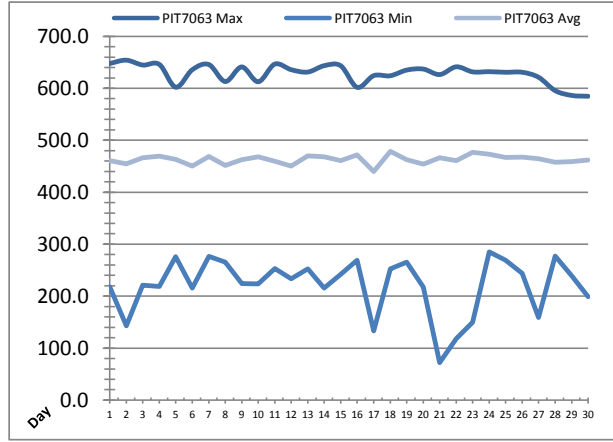
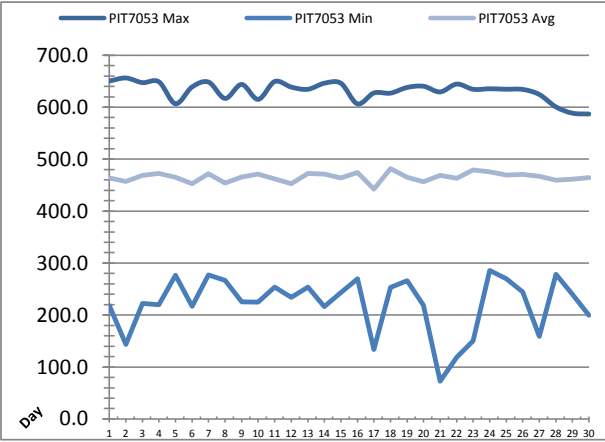


Date	Suction Header Pressure			Discharge Header Pressure		
	PIT_7002 (kPa)			PIT_7005 (kPa)		
	Maximum	Minimum	Average	Maximum	Minimum	Average
1	111.3	63.1	84.0	773.0	221.0	493.7
2	117.1	68.1	85.8	775.2	146.1	488.1
3	114.3	66.6	84.6	768.7	224.3	507.9
4	112.8	66.2	83.4	771.5	221.9	506.8
5	104.0	67.3	85.5	775.0	278.9	489.6
6	101.9	62.8	83.5	774.5	218.7	479.8
7	101.7	43.1	75.8	774.3	279.4	493.8
8	101.2	69.6	86.1	770.6	268.5	473.8
9	101.4	67.5	85.1	772.8	227.5	496.3
10	101.5	67.7	85.2	769.6	226.8	505.4
11	114.5	68.3	85.5	770.7	255.9	493.5
12	99.0	67.5	85.8	773.6	236.4	479.7
13	100.6	69.0	84.7	777.5	255.6	509.1
14	101.7	68.8	85.4	773.7	218.5	507.5
15	100.1	66.0	85.3	770.2	245.1	494.2
16	99.9	67.7	84.9	768.9	271.9	501.9
17	121.8	64.3	84.9	771.4	135.8	465.6
18	99.9	59.9	81.5	769.8	255.3	524.9
19	102.2	67.6	85.0	775.3	268.4	496.4
20	101.4	67.4	84.2	770.4	220.7	488.7
21	114.0	59.9	81.5	770.4	75.7	505.6
22	114.2	56.4	79.8	772.3	121.0	492.1
23	118.5	63.3	83.1	768.1	152.6	511.0
24	103.2	61.1	83.9	770.3	288.1	503.6
25	103.2	67.1	84.0	771.4	272.0	496.0
26	100.8	64.9	84.3	771.8	246.9	496.5
27	111.2	65.1	84.9	755.6	78.2	493.2
28	103.6	64.7	84.9	755.3	280.1	478.0
29	103.2	68.7	84.3	753.9	242.2	481.6
30	107.7	72.8	84.4	760.1	201.8	484.7
Total						
Average	106.3	65.1	84.0	769.9	221.2	494.6
Maximum	121.8		86.1	777.5		524.9
Date	17-Sep		8-Sep	13-Sep		18-Sep
Minimum		43.1	75.8		75.7	
Date		7-Sep	7-Sep		21-Sep	17-Sep

Notes:

High Lift Monthly Report

Month: **September-17**

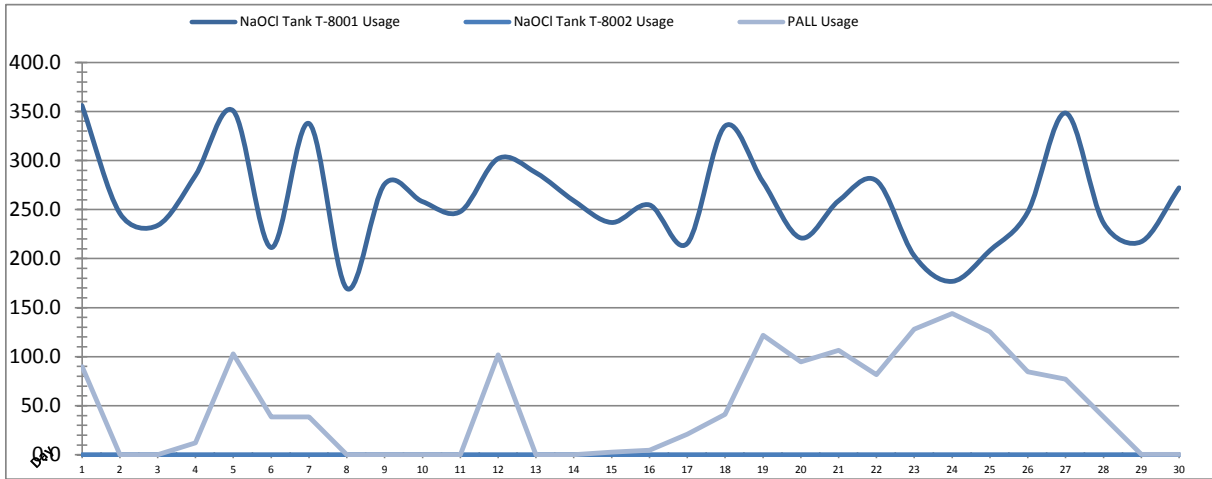


Date	Distribution Pressures					
	PIT_7053 (kPa)			PIT_7063 (kPa)		
	Maximum	Minimum	Average	Maximum	Minimum	Average
1	✓ 650.3	✓ 218.8	463.7	✓ 647.8	✓ 217.9	461.0
2	✓ 656.2	✓ 143.8	457.2	✓ 654.1	✓ 143.0	454.8
3	✓ 647.2	✓ 222.2	468.8	✓ 644.7	✓ 221.2	466.3
4	✓ 648.8	✓ 219.8	472.3	✓ 646.0	✓ 218.9	469.5
5	✓ 606.6	✓ 276.8	465.4	✓ 602.0	✓ 275.8	462.9
6	✓ 638.8	✓ 216.6	452.6	✓ 635.7	✓ 215.6	450.4
7	✓ 648.3	✓ 277.3	471.6	✓ 645.8	✓ 276.3	469.0
8	✓ 616.8	✓ 266.4	453.7	✓ 613.0	✓ 265.5	451.5
9	✓ 643.8	✓ 225.4	465.5	✓ 641.1	✓ 224.4	462.9
10	✓ 615.0	✓ 224.8	471.0	✓ 612.6	✓ 223.8	468.3
11	✓ 649.4	✓ 253.8	462.1	✓ 646.5	✓ 252.8	459.3
12	✓ 638.6	✓ 234.3	452.7	✓ 635.7	✓ 233.3	450.2
13	✓ 634.4	✓ 253.5	472.6	✓ 631.2	✓ 252.5	469.8
14	✓ 646.1	✓ 216.4	471.0	✓ 643.5	✓ 215.4	468.2
15	✓ 646.0	✓ 243.1	463.6	✓ 643.3	✓ 242.2	461.0
16	✓ 606.4	✓ 269.8	474.4	✓ 601.8	✓ 268.9	471.8
17	✓ 627.3	✓ 133.5	442.6	✓ 624.4	✓ 132.9	440.1
18	✓ 627.0	✓ 253.3	481.7	✓ 624.1	✓ 252.3	478.9
19	✓ 637.9	✓ 266.3	465.3	✓ 635.0	✓ 265.4	462.5
20	✓ 640.2	✓ 218.5	456.2	✓ 637.0	✓ 217.6	453.9
21	✓ 629.4	✓ 72.9	468.9	✓ 626.4	✓ 72.2	466.1
22	✓ 644.4	✓ 118.8	463.1	✓ 641.3	✓ 118.1	460.6
23	✓ 634.4	✓ 150.6	479.2	✓ 631.6	✓ 149.9	476.6
24	✓ 635.4	✓ 286.0	475.7	✓ 632.0	✓ 285.0	473.1
25	✓ 634.5	✓ 270.0	469.2	✓ 630.8	✓ 269.0	466.7
26	✓ 634.1	✓ 244.8	470.3	✓ 630.8	✓ 243.8	467.7
27	✓ 624.4	✓ 158.9	467.2	✓ 621.1	✓ 158.9	464.7
28	✓ 600.5	✓ 278.2	459.7	✓ 595.5	✓ 277.1	457.5
29	✓ 588.5	✓ 240.0	461.4	✓ 586.3	✓ 239.0	458.9
30	✓ 586.8	✓ 199.7	464.6	✓ 584.6	✓ 198.9	462.0
Total						
Average	631.3	221.8	465.4	628.2	220.9	462.9
Maximum	656.2		481.7	654.1		478.9
Date	2-Sep		18-Sep	2-Sep		18-Sep
Minimum		72.9	442.6		72.2	440.1
Date		21-Sep	17-Sep		21-Sep	17-Sep

Notes:

Chemical Usage Monthly Report

Month: September-17

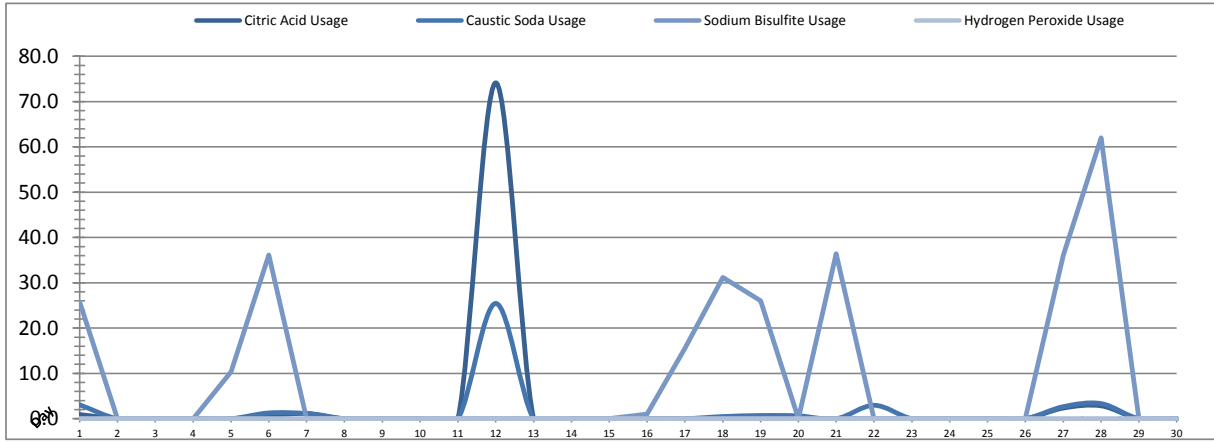


Date	PALL Usage	NaOCI Tank T-8001	NaOCI Tank T-8002
	PALL_HYPO_USAGE (L) Usage	LIT_8002 (Storage) (L) Usage	LIT_8004 (Day) (L) Usage
1	89.8	356.0	0.0
2	0.1	246.2	0.0
3	0.0	233.8	0.0
4	12.0	284.9	0.0
5	102.7	350.5	0.0
6	38.6	211.2	0.0
7	38.5	337.7	0.0
8	0.1	169.5	0.0
9	0.0	276.0	0.0
10	0.0	258.1	0.0
11	0.2	247.9	0.0
12	101.9	301.9	0.0
13	0.1	287.5	0.0
14	0.08	258.94	0.0
15	2.5	236.8	0.0
16	4.5	254.7	0.0
17	21.1	215.5	0.0
18	41.3	335.2	0.0
19	121.9	278.1	0.0
20	94.7	221.0	0.0
21	106.4	258.9	0.0
22	81.7	279.4	0.0
23	128.1	202.7	0.0
24	144.1	176.7	0.0
25	125.4	208.3	0.0
26	84.6	247.4	0.0
27	77.1	348.4	0.0
28	38.6	236.4	0.0
29	0.2	217.2	0.0
30	0.3	272.1	0.0
Total	1456.5	7808.9	1.0
Average	48.5	260.3	0.0
Maximum	144.1	356.0	0.0
Date	24-Sep	1-Sep	1-Sep
Minimum	0.0	169.5	0.0
Date	9-Sep	8-Sep	1-Sep

Notes:	
Dosage (mg/L)=	Day Tank (L) x %conc. x 1000
	Membrane Flow (m3)
	Chlorine Concentration: 12.0%

Chemical Usage Monthly Report

Month: **September-17**



Date	Citric Acid	Caustic Soda	Captor	Hydrogen Peroxide		Membrane Flow (m ³)
	TAGNAME (L) Usage	TAGNAME (L) Usage	TAGNAME (L) Usage	TAGNAME (L) Usage	TAGNAME (mg/L) Dose	
1	0.9	3.1	25.7	0.0	0.0	4722.468
2	0.0	0.0	0.0	0.0	0.0	3845.058
3	0.0	0.0	0.0	0.0	0.0	4138.220
4	0.0	0.0	0.0	0.0	0.0	4647.898
5	0.0	0.0	10.3	0.0	0.0	4180.056
6	0.6	1.3	36.1	0.0	0.0	2590.460
7	1.2	1.1	0.0	0.0	0.0	4890.827
8	0.0	0.0	0.0	0.0	0.0	2852.957
9	0.0	0.0	0.0	0.0	0.0	4178.062
10	0.0	0.0	0.0	0.0	0.0	3973.567
11	0.0	0.0	0.0	0.0	0.0	3854.573
12	74.1	25.4	0.0	0.0	0.0	3146.669
13	0.0	0.0	0.0	0.0	0.0	4537.040
14	0.0	0.0	0.0	0.0	0.0	4216.643
15	0.0	0.0	0.0	0.0	0.0	3836.015
16	0.0	0.0	1.0	0.0	0.0	3942.756
17	0.0	0.0	15.5	0.0	0.0	3302.351
18	0.0	0.5	31.2	0.0	0.0	5247.355
19	0.0	0.7	26.0	0.0	0.0	4324.157
20	0.0	0.6	0.0	0.0	0.0	3549.269
21	0.0	0.0	36.4	0.0	0.0	4232.105
22	0.0	3.0	0.0	0.0	0.0	4720.943
23	0.0	0.0	0.0	0.0	0.0	4922.572
24	0.0	0.0	0.0	0.0	0.0	4627.952
25	0.0	0.0	0.0	0.0	0.0	4606.245
26	0.0	0.0	0.0	0.0	0.0	4164.594
27	2.4	2.7	36.1	0.0	0.0	4239.879
28	2.8	3.3	62.0	0.0	0.0	3629.347
29	0.0	0.0	0.0	0.0	0.0	4209.237
30	0.0	0.0	0.0	0.0	0.0	4777.377
Total	82.0	41.7	280.5	0.0	0.0	124106.6
Average	2.7	1.4	9.4	0.0	0.0	4136.9
Maximum	74.1	25.4	62.0	0.0	0.0	5247.4
Date	12-Sep	12-Sep	28-Sep	1-Sep	1-Sep	18-Sep
Minimum	0.0	0.0	0.0	0.0	0.0	2590.5
Date	2-Sep	2-Sep	2-Sep	1-Sep	1-Sep	6-Sep

Notes:

$$\text{Dosage (mg/L)} = \frac{\text{Day Tank (L)} \times \% \text{conc.} \times 1000}{\text{Membrane Flow (m}^3\text{)}}$$

Peroxide Concentration: **50.0%**

Runtimes Report

Month: September-17

Date	Daily Gen-Set Runtimes		Daily UV Runtimes		Daily PALL Runtimes				
	LLPS	WTP	UV #1	UV #2	Air Compressor #1	Air Compressor #2	CIP Neutralization	CIP Drain	CIP Recirc
	(Hrs)	(Hrs)	(Hrs)	(Hrs)	(Hrs)	(Hrs)	(Hrs)	(Hrs)	(Hrs)
1	0.0	0.0	17.5	0.0	0.0	23.9	0.2	0.2	0.4
2	0.0	0.0	14.5	0.0	24.4	0.0	0.0	0.0	0.0
3	0.0	0.0	15.8	0.0	0.0	23.9	0.0	0.0	0.0
4	0.0	0.0	17.6	0.0	24.4	0.0	0.0	0.0	0.0
5	0.0	0.0	3.4	13.7	16.6	7.8	0.1	0.0	0.2
6	0.0	0.0	3.8	6.4	24.1	0.2	0.2	0.1	0.1
7	0.0	0.0	17.4	0.0	15.0	9.3	0.2	0.1	0.1
8	0.0	0.0	13.3	0.0	11.8	12.3	0.0	0.0	0.0
9	0.0	0.0	18.0	0.0	24.4	0.0	0.0	0.0	0.0
10	0.0	0.0	16.2	0.0	0.0	23.9	0.0	0.0	0.0
11	0.0	0.0	16.2	0.0	15.2	9.0	0.0	0.0	0.0
12	0.0	0.0	14.2	0.0	15.2	9.0	0.0	0.0	0.1
13	0.0	0.0	19.6	0.0	8.8	15.3	0.0	0.0	0.0
14	0.0	0.0	19.1	0.0	15.8	8.3	0.0	0.0	0.0
15	0.0	0.0	14.6	0.0	8.4	15.6	0.0	0.0	0.0
16	0.0	0.0	16.0	0.0	24.4	0.0	0.0	0.0	0.0
17	0.0	0.1	14.2	0.0	6.5	17.5	0.0	0.0	0.0
18	0.0	0.0	13.8	6.0	24.1	0.2	0.3	0.2	0.8
19	0.0	0.0	0.0	18.3	15.0	9.2	0.2	0.2	0.8
20	0.0	0.0	7.7	7.8	17.4	7.0	0.2	0.1	0.7
21	0.0	0.3	4.6	13.5	13.2	10.9	0.3	0.3	0.8
22	0.0	6.4	18.5	0.6	17.0	7.1	0.1	0.0	0.2
23	0.0	0.2	1.6	2.9	0.0	23.8	0.0	0.0	0.0
24	0.0	0.0	0.0	0.0	0.0	23.9	0.0	0.0	0.0
25	0.0	0.0	1.9	9.1	8.5	15.5	0.0	0.0	0.0
26	0.1	0.0	3.4	14.7	15.7	8.4	0.0	0.0	0.0
27	1.3	0.0	7.5	8.1	15.6	8.7	0.4	0.2	0.3
28	0.0	0.0	11.0	6.3	16.9	7.4	0.4	0.2	0.4
29	0.0	0.0	5.7	12.2	15.2	8.9	0.0	0.0	0.0
30	0.0	0.0	17.2	0.0	0.0	23.9	0.0	0.0	0.0
Total	1.4	7.0	344.6	119.7	393.7	330.6	2.6	1.6	4.9

Notes:
22nd: generator operated due to numerous power flickers due to high demand (warm weather)

Runtimes Report

Month: September-17

Daily

Date	PALL Runtimes						Process Drain	
	RFR Pump #1 (Hrs)	RFR Pump #2 (Hrs)	RF Pump #1 (Hrs)	RF Pump #2 (Hrs)	XR Pump #1 (Hrs)	XR Pump #2 (Hrs)	PDP9010 Pump (Hrs)	PDP9020 Pump (Hrs)
1	2.3	2.6	0.4	0.5	7.9	0.0	2.9	3.6
2	0.0	0.0	0.2	0.2	13.9	0.0	2.1	2.5
3	0.0	0.0	0.7	0.7	15.5	0.0	2.1	2.7
4	0.0	0.0	0.7	0.7	17.2	0.0	2.0	2.5
5	0.0	0.0	0.6	0.6	17.4	0.0	4.4	4.8
6	0.0	0.0	0.6	0.6	16.8	0.0	2.2	2.7
7	0.0	0.0	0.9	0.9	23.6	0.0	2.4	2.6
8	0.0	0.0	0.4	0.5	12.9	0.0	2.0	2.7
9	0.0	0.0	0.7	0.6	17.7	0.0	2.0	2.4
10	0.0	0.0	0.7	0.6	15.9	0.0	1.8	2.4
11	0.0	0.0	0.7	0.7	7.6	0.0	1.9	2.4
12	0.0	0.0	0.5	0.5	0.0	0.0	1.9	2.5
13	0.0	0.0	0.6	0.7	15.9	0.0	2.0	2.5
14	0.0	0.0	0.7	0.7	18.8	0.0	2.0	2.5
15	0.0	0.0	0.5	0.5	14.4	0.0	1.9	2.4
16	0.0	0.0	0.7	0.6	15.6	0.0	1.8	2.4
17	0.0	0.0	0.5	0.6	14.5	0.0	2.1	2.4
18	0.0	0.0	0.9	1.0	19.0	0.0	2.2	3.2
19	3.5	3.4	0.8	0.8	17.6	0.0	2.0	2.7
20	4.5	4.5	0.7	0.7	14.1	0.0	2.0	2.4
21	3.8	3.8	0.6	0.6	11.6	0.0	1.9	2.5
22	3.6	3.7	0.9	0.8	15.0	0.0	2.8	2.8
23	3.8	4.9	0.6	0.5	14.8	0.0	5.6	5.6
24	7.3	6.3	0.9	0.9	15.7	0.0	1.8	2.2
25	5.6	5.5	0.9	0.9	17.6	0.0	1.8	2.3
26	5.0	5.5	0.9	0.8	17.3	0.0	1.8	2.3
27	5.4	5.1	0.9	0.7	14.9	0.0	1.9	2.1
28	5.0	4.6	0.8	1.0	16.8	0.0	1.8	2.3
29	5.1	5.3	0.9	0.9	17.0	0.0	1.8	2.3
30	5.7	5.9	1.0	1.0	16.2	0.0	1.9	2.4
Total	60.4	60.9	20.9	20.8	454.0	0.0	66.9	81.1

Notes:

Runtimes Report

Month: September-17

Daily

Date	Low Lift Pump Motor Runtimes				High Lift Pump Motor Runtimes			
	LLP1010 (Hrs)	LLP1020 (Hrs)	LLP1030 (Hrs)	LLP1040 (Hrs)	HLP7010 (Hrs)	HLP7020 (Hrs)	HLP7030 (Hrs)	HLP7040 (Hrs)
1	6.4	7.6	3.9	4.6	5.3	5.7	0.0	4.8
2	4.3	5.2	5.1	4.3	5.0	4.7	0.0	4.8
3	7.9	2.8	5.6	3.8	8.2	3.5	0.0	5.8
4	4.9	7.0	4.8	6.8	5.4	4.1	0.0	8.2
5	5.0	7.6	4.1	3.8	5.8	5.1	0.0	2.6
6	0.9	1.5	4.7	5.5	2.5	5.9	0.0	4.1
7	2.7	8.7	7.4	5.1	3.5	7.5	0.0	3.3
8	2.9	2.6	3.6	4.7	3.8	4.3	0.0	2.7
9	4.9	4.2	4.4	7.0	5.7	3.8	0.0	5.9
10	3.7	4.3	6.0	5.3	2.2	5.8	0.0	8.9
11	5.5	6.6	4.9	1.7	4.8	6.5	0.0	4.4
12	2.9	2.8	4.2	5.4	5.3	4.2	0.0	3.9
13	6.1	6.3	5.4	4.1	4.7	6.2	0.0	7.3
14	6.5	4.4	3.5	6.2	5.1	5.9	0.0	6.3
15	3.4	5.6	4.8	4.8	6.7	4.5	0.0	4.4
16	7.4	4.3	3.2	3.9	3.8	7.0	0.0	5.1
17	4.8	3.8	4.3	5.1	5.2	5.1	0.0	0.0
18	6.8	9.6	3.8	11.6	7.6	4.4	0.0	9.3
19	6.2	4.6	7.0	5.2	5.7	6.2	0.0	4.8
20	2.9	5.3	3.8	9.6	4.6	4.8	0.0	5.2
21	6.9	5.7	6.4	5.9	2.3	8.5	0.0	7.8
22	7.8	6.1	9.2	6.2	3.7	0.0	0.0	6.0
23	7.2	6.1	4.8	8.5	5.1	3.1	0.0	9.4
24	6.7	7.2	5.8	5.1	3.4	6.0	0.0	6.9
25	5.7	8.5	2.8	7.7	5.2	2.8	0.0	6.7
26	5.9	7.3	6.6	4.4	7.4	4.6	0.0	4.2
27	4.6	4.1	8.3	6.5	7.4	7.0	0.0	0.0
28	6.0	7.9	3.9	3.9	10.7	0.8	0.0	0.0
29	5.5	7.5	6.2	5.6	12.4	0.8	0.0	0.0
30	5.0	6.8	5.1	6.8	8.4	5.1	0.0	0.0
Total	157.4	172.0	153.6	169.1	166.9	143.9	0.0	142.8

Notes:

HLP3 out of service
HLP 4 out of service Sept 27th

Plant Internal Flow Report

Month: September-17

Date	Settling Tank Level		Process Drain Tank		Settling Tank Flow		Potable Water Flow		Non-Potable Flow	
	T-9003 (m)		T-9001 (m)		FIT_9005 (m ³) (L/s)		FIT_7082 (m ³) (L/s)		FIT_7092 (m ³) (L/s)	
	Maximum	Minimum	Maximum	Minimum	Total	Peak	Total	Peak	Total	Peak
1	2.2	0.1	2.2	0.4	180.1	15.7	11.7	5.4	18.3	23.3
2	2.2	0.1	1.9	0.4	176.0	15.7	7.1	5.4	0.0	0.0
3	2.2	0.1	2.0	0.4	441.7	15.7	10.7	5.4	0.0	0.0
4	2.2	0.3	2.0	0.4	478.0	15.7	5.1	5.4	0.0	0.0
5	2.2	0.3	2.1	0.4	524.6	15.7	11.6	5.3	12.9	25.4
6	2.2	0.1	1.3	0.4	390.7	15.7	12.9	6.4	12.7	17.7
7	2.2	0.1	2.0	0.4	526.7	15.7	1.5	5.7	12.6	18.0
8	2.2	0.1	0.8	0.4	272.6	15.7	14.4	5.5	0.0	0.0
9	2.2	0.1	0.8	0.4	421.2	15.7	8.2	5.2	0.0	0.0
10	2.2	0.1	0.8	0.4	409.1	15.7	5.6	5.4	0.0	0.0
11	2.2	0.1	0.8	0.4	397.5	15.7	6.9	5.4	0.1	1.0
12	2.2	0.1	0.8	0.4	388.9	15.7	9.9	5.5	8.0	25.8
13	2.2	0.2	1.1	0.4	528.6	15.7	3.6	5.5	0.0	0.0
14	2.2	0.1	0.8	0.4	492.2	15.7	6.4	5.4	0.0	0.0
15	2.2	0.1	0.9	0.4	397.0	15.7	9.3	5.5	0.0	0.0
16	2.2	0.3	0.8	0.4	426.8	15.7	5.8	5.3	0.0	0.0
17	2.2	0.1	1.8	0.4	420.5	15.7	13.8	5.3	0.8	1.3
18	2.2	0.1	1.8	0.4	623.5	15.7	13.8	6.5	19.6	19.3
19	2.2	0.1	1.0	0.4	359.3	15.7	9.8	5.1	19.9	17.9
20	2.2	0.3	1.6	0.4	285.1	15.7	23.7	5.8	19.5	18.7
21	2.2	0.1	1.9	0.4	281.3	15.7	19.3	6.6	19.3	19.5
22	2.2	0.1	2.0	0.4	492.9	15.7	20.7	6.5	3.6	2.7
23	2.2	0.3	2.2	0.4	300.6	15.7	9.6	5.4	0.0	0.0
24	2.2	0.1	0.8	0.4	279.2	15.7	0.0	0.0	0.0	0.0
25	2.2	0.1	0.9	0.4	312.9	15.7	14.1	6.6	0.0	0.6
26	2.2	0.1	1.1	0.4	293.9	15.7	14.0	6.2	5.5	23.9
27	2.2	0.3	1.7	0.4	293.4	15.7	15.6	6.5	24.5	17.2
28	2.2	0.2	1.1	0.4	192.8	15.7	16.0	5.4	26.1	22.1
29	2.2	0.1	0.8	0.4	153.4	15.7	11.0	5.5	0.0	0.0
30	2.2	0.1	0.8	0.4	163.6	15.7	6.6	5.1	0.0	0.0
Total					10904.2		318.6		203.5	
Average	2.2	0.2	1.4	0.4	363.5	15.7	10.6	5.5	6.8	8.5
Maximum	2.2		2.2		623.5		23.7		26.1	
Date	21-Sep		1-Sep		18-Sep		20-Sep		28-Sep	
Minimum		0.1		0.4		15.7		0.0		0.0
Date		2-Sep		22-Sep		1-Sep		24-Sep		2-Sep

Notes:
