

Municipality of West Elgin - Tri County Water System

Goto:

Month:

Year:

Date is Set to: **January-17**

Limit	Low	High	
Raw Water Chlorine Residual:	0.00	5.00	mg/L
Pre-Strainer Chlorine Residual:	0.00	5.00	mg/L
UV Inlet Chlorine Residual:	0.00	5.00	mg/L
Post Treatment Chlorine Residual:	1.00	5.00	mg/L
Treated Chlorine Residual:	1.00	2.50	mg/L
Distribution Chlorine Residual:	1.00	2.50	mg/L
Limit		High	
Limit		156.0	L/s
WTP Permit to Take Water		13500.0	m <sup>3</sup>
Limit	Low	High	
System Pressure Limits:	50.0	1034.0	Kpa

Compliance Report

Low Lift Monthly Report

>>>

Membranes Monthly Report

>>>

UV System Monthly Report

>>>

Plant Quality Report

>>>

Raw Well/Treated Storage Report

>>>

High Lift Monthly Report

>>>

Operational Report

Low Lift Monthly Report

>>>

High Lift Monthly Report

>>>

Chemical Usage Monthly Report

>>>

Runtimes Report

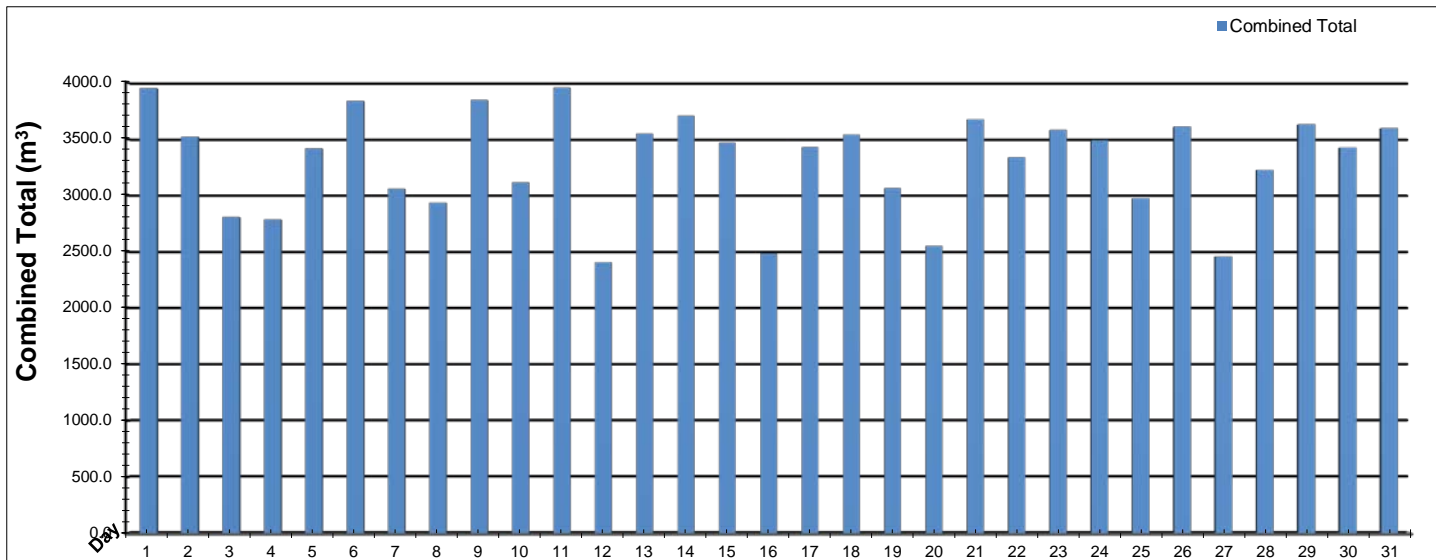
>>>

Plant Internal Flow Report

>>>

# Low Lift Monthly Report

Month: January-17



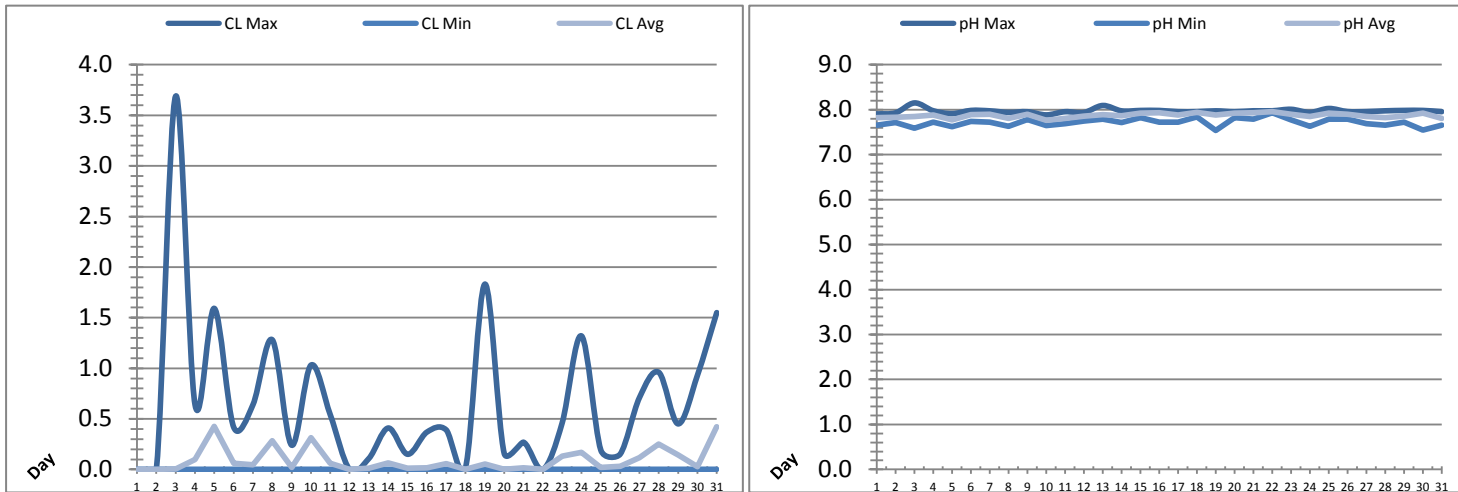
Date	Combined Total (m³)	West Train FIT-1017 (m³)	West Peak Flow FIT-1017 (L/s)	East Train FIT-1027 (m³)	East Peak Flow FIT-1027 (L/s)	Combined Peak Flow (L/s)
1	✓ 3951.3	3951.3	87.4	0.0	0.0	✓ 87.4
2	✓ 3519.9	3519.9	131.0	0.0	0.0	✓ 131.0
3	✓ 2807.5	2807.5	131.3	0.0	0.0	✓ 131.3
4	✓ 2785.1	2785.1	118.8	0.0	0.0	✓ 118.8
5	✓ 3415.4	3415.4	88.3	0.0	0.0	✓ 88.3
6	✓ 3838.0	3838.0	131.7	0.0	0.0	✓ 131.7
7	✓ 3058.4	3058.4	87.0	0.0	0.0	✓ 87.0
8	✓ 2935.3	2935.3	87.0	0.0	0.0	✓ 87.0
9	✓ 3845.6	3845.6	131.3	0.0	0.0	✓ 131.3
10	✓ 3115.3	3115.3	87.9	0.0	0.0	✓ 87.9
11	✓ 3955.9	3955.9	128.7	0.0	0.0	✓ 128.7
12	✓ 2407.5	2407.5	118.4	0.0	0.0	✓ 118.4
13	✓ 3547.6	3547.6	83.6	0.0	0.0	✓ 83.6
14	✓ 3704.6	3704.6	88.4	0.0	0.0	✓ 88.4
15	✓ 3465.8	3465.8	131.9	0.0	0.0	✓ 131.9
16	✓ 2484.7	2484.7	86.8	0.0	0.0	✓ 86.8
17	✓ 3427.4	3427.4	84.9	0.0	0.0	✓ 84.9
18	✓ 3538.3	3538.3	87.9	0.0	0.0	✓ 87.9
19	✓ 3063.4	3063.4	86.6	0.0	0.0	✓ 86.6
20	✓ 2551.2	2551.2	123.0	0.0	0.0	✓ 123.0
21	✓ 3673.4	3673.4	131.5	0.0	0.0	✓ 131.5
22	✓ 3337.7	3337.7	85.5	0.0	0.0	✓ 85.5
23	✓ 3580.0	3580.0	88.8	0.0	0.0	✓ 88.8
24	✓ 3487.7	3487.7	86.4	0.0	0.0	✓ 86.4
25	✓ 2975.6	2975.6	87.3	0.0	0.0	✓ 87.3
26	✓ 3609.7	3609.7	87.0	0.0	0.0	✓ 87.0
27	✓ 2456.3	2456.3	88.4	0.0	0.0	✓ 88.4
28	✓ 3224.9	3224.9	86.6	0.0	0.0	✓ 86.6
29	✓ 3629.9	3629.9	88.4	0.0	0.0	✓ 88.4
30	✓ 3423.6	2956.7	86.2	466.9	176.4	✗ 176.4
31	✓ 3596.1	0.0	0.0	3596.1	81.1	✓ 81.1
<b>Total</b>	<b>102413.1</b>	<b>98350.1</b>		<b>4063.0</b>		
<b>Average</b>	<b>3303.6</b>	<b>3172.6</b>	<b>97.4</b>	<b>131.1</b>	<b>8.3</b>	<b>102.9</b>
<b>Maximum</b>	<b>3955.9</b>	<b>3955.9</b>	<b>131.88</b>	<b>3596.1</b>	<b>176.41</b>	<b>176.41</b>
<b>Date</b>	<b>11-Jan</b>	<b>11-Jan</b>	<b>15-Jan</b>	<b>31-Jan</b>	<b>30-Jan</b>	<b>30-Jan</b>
<b>Minimum</b>	<b>2407.5</b>	<b>0.0</b>	<b>0.00</b>	<b>0.0</b>	<b>0.00</b>	<b>81.08</b>
<b>Date</b>	<b>12-Jan</b>	<b>31-Jan</b>	<b>31-Jan</b>	<b>2-Jan</b>	<b>1-Jan</b>	<b>31-Jan</b>

Notes:

30th: Low lift flow above 156L/s for less than minute while flushing main intake, therefore no PTTW exceedance.

# Low Lift Monthly Report

Month: January-17



Date	Raw Water Chlorine Residual			Raw Water pH		
	AIT_1401_CL (mg/L)			AIT_1401_PH		
	Maximum	Minimum	Average	Maximum	Minimum	Average
1	0.00	0.00	0.00	7.91	7.66	7.82
2	0.00	0.00	0.00	7.93	7.72	7.83
3	3.69	0.00	0.01	8.15	7.59	7.85
4	0.64	0.00	0.10	7.98	7.73	7.88
5	1.59	0.00	0.43	7.91	7.62	7.78
6	0.42	0.00	0.06	7.98	7.74	7.89
7	0.64	0.00	0.05	7.97	7.73	7.90
8	1.28	0.00	0.28	7.94	7.63	7.80
9	0.24	0.00	0.02	7.95	7.78	7.90
10	1.03	0.00	0.31	7.88	7.64	7.76
11	0.54	0.00	0.06	7.96	7.69	7.81
12	0.00	0.00	0.00	7.94	7.74	7.86
13	0.11	0.00	0.01	8.09	7.79	7.89
14	0.41	0.00	0.07	7.97	7.72	7.87
15	0.15	0.00	0.01	7.98	7.82	7.92
16	0.37	0.00	0.02	7.98	7.73	7.93
17	0.39	0.00	0.06	7.96	7.72	7.88
18	0.02	0.00	0.00	7.96	7.84	7.94
19	1.83	0.00	0.05	7.97	7.54	7.88
20	0.16	0.00	0.00	7.96	7.82	7.93
21	0.27	0.00	0.02	7.98	7.79	7.93
22	0.00	0.00	0.00	7.98	7.93	7.96
23	0.46	0.00	0.13	8.01	7.77	7.90
24	1.32	0.00	0.17	7.94	7.63	7.85
25	0.19	0.00	0.02	8.03	7.79	7.93
26	0.15	0.00	0.03	7.96	7.79	7.90
27	0.71	0.00	0.11	7.96	7.69	7.85
28	0.96	0.00	0.25	7.97	7.66	7.82
29	0.45	0.00	0.14	7.98	7.73	7.86
30	0.93	0.00	0.03	7.98	7.55	7.92
31	1.55	0.00	0.42	7.96	7.66	7.81
Total						
Average	0.66	0.00	0.09	7.97	7.72	7.87
Maximum	3.69		0.43	8.15		7.96
Date	3-Jan		5-Jan	3-Jan		22-Jan
Minimum		0.00	0.00		7.54	7.76
Date		1-Jan	1-Jan		19-Jan	10-Jan

Notes:

---



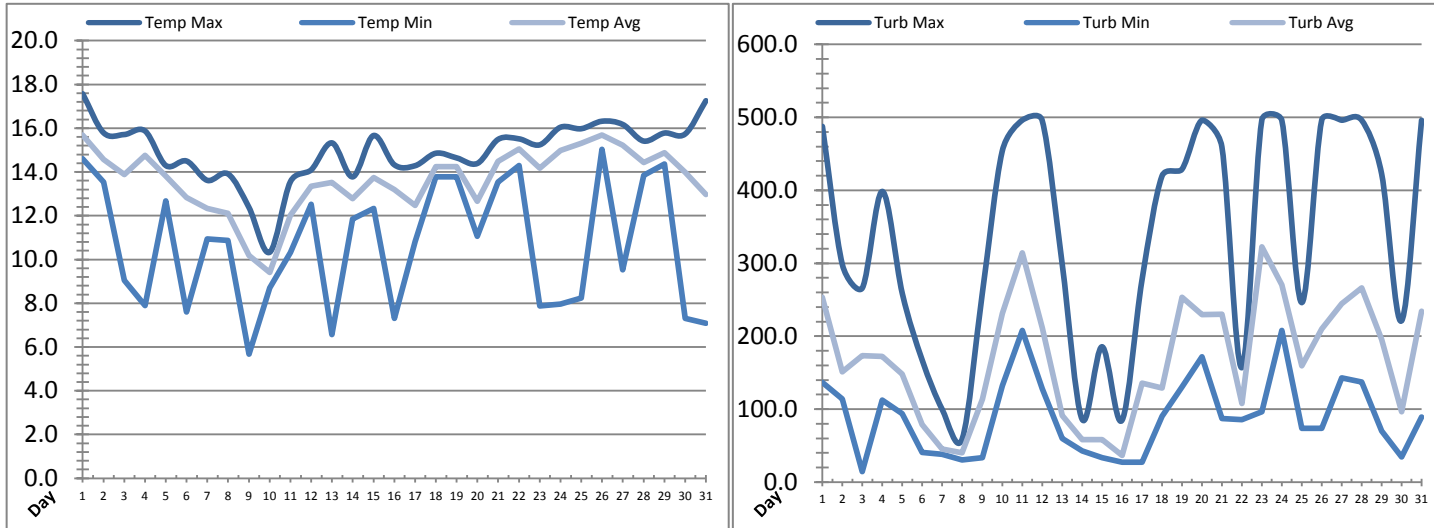
---



---

# Low Lift Monthly Report

Month: January-17



Date	Raw Water Temperature			Raw Water Turbidity		
	TIT_1403 (°C)			AIT_1404 (NTU)		
	Maximum	Minimum	Average	Maximum	Minimum	Average
1	17.6	14.6	15.7	487.60	136.71	253.13
2	15.8	13.5	14.6	297.93	114.18	150.90
3	15.7	9.0	13.9	266.19	14.20	173.37
4	15.9	7.9	14.8	398.47	112.63	172.49
5	14.3	12.7	13.8	258.41	94.03	147.82
6	14.5	7.6	12.8	166.87	40.54	78.86
7	13.6	10.9	12.3	99.42	38.16	45.54
8	13.9	10.9	12.1	59.22	30.43	39.91
9	12.4	5.7	10.2	257.57	33.56	113.48
10	10.3	8.7	9.4	453.37	131.91	231.28
11	13.6	10.3	12.0	496.05	207.98	314.18
12	14.1	12.5	13.4	496.03	128.10	211.70
13	15.3	6.6	13.5	300.00	59.92	91.05
14	13.8	11.8	12.8	86.28	42.86	58.36
15	15.7	12.3	13.7	185.51	33.66	57.99
16	14.3	7.3	13.2	84.76	27.35	36.54
17	14.3	10.8	12.5	276.92	27.35	135.68
18	14.9	13.8	14.3	419.41	90.17	128.81
19	14.6	13.8	14.2	428.76	130.47	253.13
20	14.4	11.1	12.7	496.06	171.52	229.40
21	15.5	13.5	14.5	459.72	87.09	230.12
22	15.5	14.3	15.0	156.88	85.54	107.99
23	15.2	7.9	14.2	496.15	96.38	322.31
24	16.0	8.0	15.0	496.10	208.08	270.61
25	16.0	8.2	15.3	246.04	73.91	159.43
26	16.3	15.0	15.7	496.12	73.91	210.09
27	16.2	9.5	15.2	496.14	142.91	244.35
28	15.4	13.8	14.4	496.14	137.42	266.45
29	15.8	14.4	14.9	422.56	70.02	195.39
30	15.7	7.3	14.0	221.16	34.40	96.28
31	17.3	7.1	13.0	496.07	89.35	234.18
Total						
Average	15.0	10.7	13.6	338.6	89.2	169.7
Maximum	17.6		15.7	496.1		322.3
Date	1-Jan		26-Jan	23-Jan		23-Jan
Minimum		5.7	9.4		14.2	36.5
Date		9-Jan	10-Jan		3-Jan	16-Jan

Notes:

---



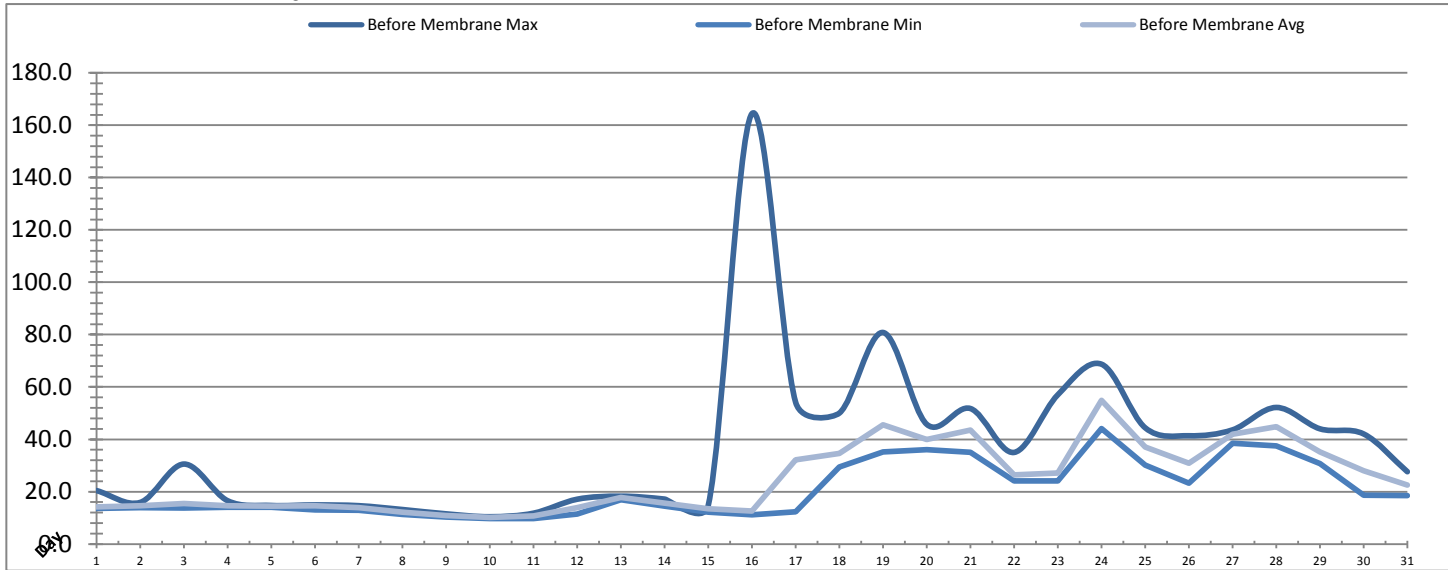
---



---

# Membranes Monthly Report

Month: January-17



Date	Turbidity Before Membrane			Rack #1 Turbidity			Rack #2 Turbidity		
	PALL_FEED_AIT2006_Value NTU			RACK1_NTU_Value NTU			RACK2_NTU_Value NTU		
	Maximum	Minimum	Average	Maximum	Minimum	Average	Maximum	Minimum	Average
1	20.41	13.58	14.19	0.01	0.01	0.01	0.01	0.01	0.01
2	15.90	13.91	14.67	0.01	0.01	0.01	0.01	0.01	0.01
3	30.54	13.82	15.52	0.01	0.00	0.01	0.01	0.01	0.01
4	16.52	14.05	14.55	0.04	0.01	0.01	0.02	0.00	0.01
5	14.72	14.07	14.51	0.01	0.01	0.01	0.19	0.00	0.01
6	14.93	13.07	14.65	0.01	0.01	0.01	0.01	0.01	0.01
7	14.64	12.87	13.82	0.02	0.01	0.01	0.01	0.00	0.01
8	13.17	11.26	12.18	0.02	0.01	0.01	0.01	0.00	0.01
9	11.52	10.22	10.87	0.01	0.01	0.01	0.01	0.00	0.01
10	10.42	9.77	10.13	0.37	0.01	0.01	0.01	0.01	0.01
11	11.77	9.77	10.72	0.02	0.01	0.01	0.01	0.01	0.01
12	17.11	11.48	13.85	0.01	0.01	0.01	0.02	0.01	0.01
13	18.27	16.94	17.74	0.02	0.01	0.01	0.03	0.01	0.01
14	17.15	14.46	15.67	0.01	0.01	0.01	0.01	0.01	0.01
15	14.80	12.15	13.49	0.02	0.01	0.01	0.01	0.01	0.01
16	164.43	11.20	12.61	0.01	0.01	0.01	0.01	0.01	0.01
17	54.11	12.34	32.19	0.01	0.01	0.01	0.01	0.01	0.01
18	50.01	29.36	34.55	0.01	0.01	0.01	0.01	0.01	0.01
19	80.81	35.25	45.50	0.01	0.01	0.01	0.02	0.01	0.01
20	45.73	36.08	39.97	0.01	0.01	0.01	0.01	0.01	0.01
21	51.76	34.98	43.51	0.01	0.01	0.01	0.01	0.01	0.01
22	35.00	24.04	26.43	0.01	0.01	0.01	0.02	0.01	0.01
23	57.02	24.14	27.17	0.01	0.01	0.01	0.02	0.01	0.01
24	68.70	44.08	54.86	0.01	0.01	0.01	0.01	0.01	0.01
25	44.40	30.11	37.04	0.01	0.01	0.01	0.02	0.01	0.01
26	41.36	23.24	30.87	0.02	0.01	0.01	0.02	0.01	0.01
27	43.61	38.51	41.91	0.01	0.01	0.01	0.02	0.01	0.01
28	52.17	37.51	44.85	0.01	0.01	0.01	0.02	0.01	0.01
29	44.01	30.78	35.19	0.01	0.01	0.01	0.01	0.01	0.01
30	42.04	18.68	28.04	0.01	0.01	0.01	0.01	0.00	0.01
31	27.61	18.55	22.53	0.01	0.01	0.01	0.01	0.00	0.01
Total									
Average	36.9	20.7	24.6	0.0	0.0	0.0	0.0	0.0	0.0
Maximum	164.4		54.9	0.4		0.0	0.2		0.0
Date	16-Jan		24-Jan	10-Jan		10-Jan	5-Jan		22-Jan
Minimum		9.8	10.1		0.0	0.0		0.0	0.0
Date		10-Jan	10-Jan		3-Jan	31-Jan		4-Jan	8-Jan

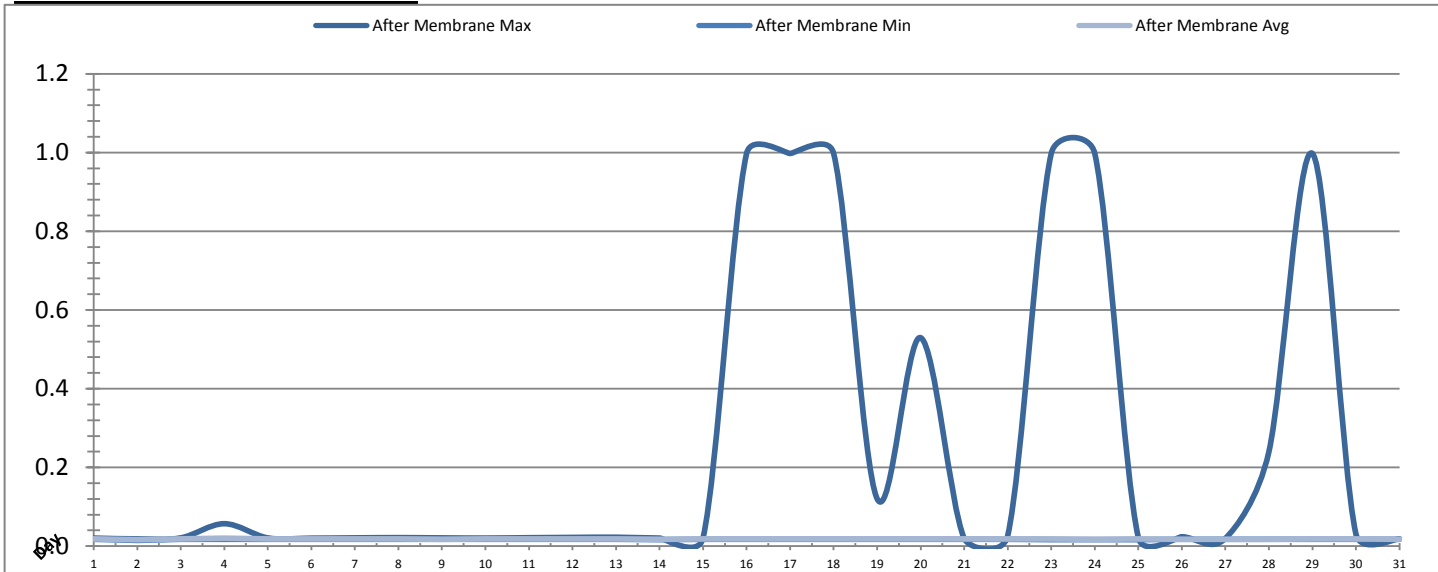
Notes:

Rack 1: Turbidity spike above 0.1ntu for 8.6min post EFM.

Rack 2: turbidity spike above 0.1ntu for 8.6min post EFM.

# Membranes Monthly Report

Month: **January-17**



Date	Rack #3 Turbidity			Rack #4 Turbidity			Turbidity After Membranes		
	RACK3_NTU_Value NTU			RACK4_NTU_Value NTU			PALL_FILT_AIT5001_Value NTU		
	Maximum	Minimum	Average	Maximum	Minimum	Average	Maximum	Minimum	Average
1	0.06	0.03	0.03	0.03	0.02	0.02	0.02	0.02	0.02
2	0.06	0.03	0.03	0.03	0.02	0.02	0.02	0.01	0.02
3	0.08	0.03	0.03	0.03	0.02	0.02	0.02	0.02	0.02
4	0.07	0.03	0.03	0.04	0.02	0.02	0.06	0.02	0.02
5	0.06	0.03	0.03	0.10	0.02	0.02	0.02	0.02	0.02
6	0.05	0.03	0.03	0.03	0.02	0.02	0.02	0.02	0.02
7	0.04	0.03	0.03	0.03	0.02	0.02	0.02	0.02	0.02
8	0.05	0.03	0.03	0.03	0.01	0.02	0.02	0.02	0.02
9	0.05	0.03	0.03	0.03	0.01	0.02	0.02	0.02	0.02
10	0.05	0.03	0.03	0.03	0.02	0.02	0.02	0.02	0.02
11	0.06	0.03	0.03	0.03	0.02	0.02	0.02	0.02	0.02
12	0.04	0.03	0.03	0.02	0.02	0.02	0.02	0.02	0.02
13	0.14	0.03	0.03	0.04	0.02	0.02	0.02	0.02	0.02
14	0.04	0.03	0.03	0.07	0.01	0.02	0.02	0.02	0.02
15	0.04	0.03	0.03	0.31	0.02	0.02	0.02	0.02	0.02
16	0.05	0.03	0.03	0.29	0.02	0.02	1.00	0.02	0.02
17	0.05	0.03	0.03	0.04	0.02	0.02	1.00	0.02	0.02
18	0.03	0.03	0.03	0.04	0.02	0.02	1.00	0.02	0.02
19	0.03	0.03	0.03	0.03	0.02	0.02	0.12	0.02	0.02
20	0.03	0.03	0.03	0.02	0.02	0.02	0.53	0.02	0.02
21	0.03	0.03	0.03	0.02	0.02	0.02	0.02	0.02	0.02
22	0.03	0.03	0.03	0.03	0.02	0.02	0.03	0.02	0.02
23	0.03	0.03	0.03	0.02	0.02	0.02	1.00	0.02	0.02
24	0.03	0.03	0.03	0.02	0.02	0.02	1.00	0.02	0.02
25	0.03	0.03	0.03	0.02	0.02	0.02	0.02	0.02	0.02
26	0.03	0.03	0.03	0.02	0.02	0.02	0.02	0.02	0.02
27	0.03	0.03	0.03	0.02	0.02	0.02	0.02	0.02	0.02
28	0.03	0.03	0.03	0.02	0.02	0.02	0.24	0.02	0.02
29	0.03	0.03	0.03	0.03	0.02	0.02	1.00	0.02	0.02
30	0.03	0.03	0.03	0.03	0.02	0.02	0.03	0.02	0.02
31	0.03	0.03	0.03	0.02	0.02	0.02	0.02	0.02	0.02
Total									
Average	0.0	0.0	0.0	0.0	0.0	0.0	0.2	0.0	0.0
Maximum	0.1		0.0	0.3		0.0	1.0		0.0
Date	13-Jan		13-Jan	15-Jan		16-Jan	17-Jan		4-Jan
Minimum		0.0	0.0		0.0	0.0		0.0	0.0
Date		4-Jan	8-Jan		8-Jan	12-Jan		2-Jan	2-Jan

**Notes:**

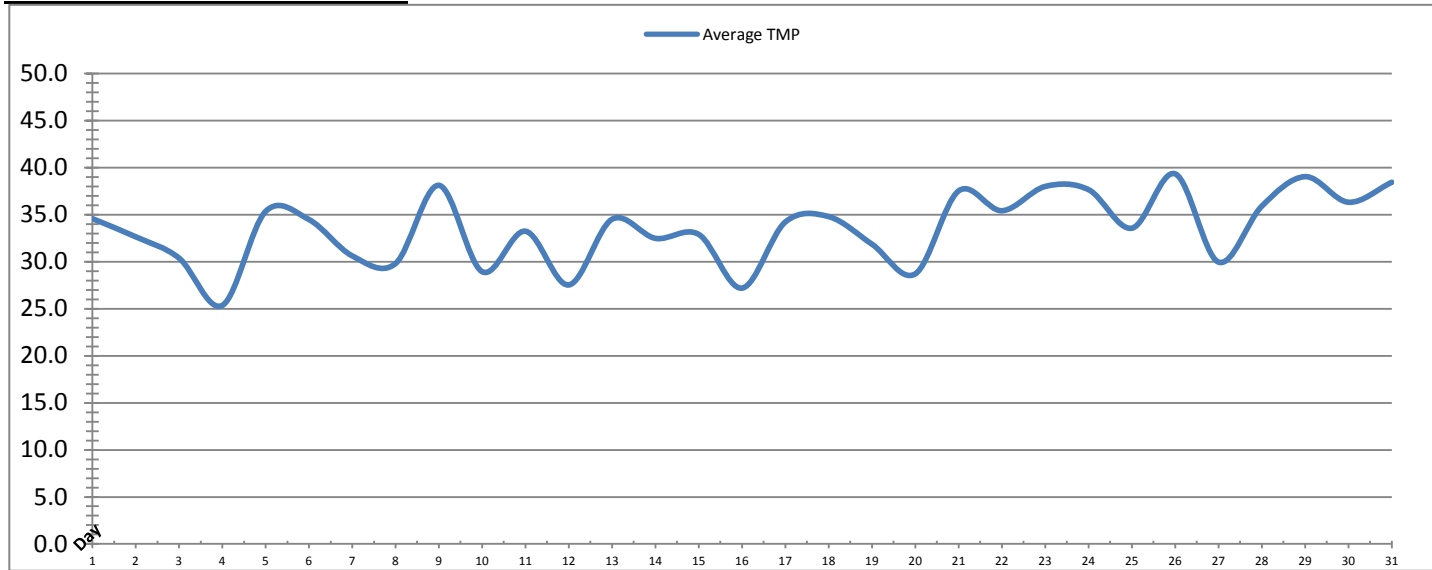
Rack 3: Turbidity spike above 0.1ntu for 3.1min

Rack 4: Turbidity spike above 0.1ntu for 0.5min on 5th, 9.5min on 15th and 9.5min on 16th.

Turbidity after membranes spikes due to adjustments to flow control, spike lasted less than 1min.

# Membranes Monthly Report

Month: **January-17**



Date	Integrity Test Rack 1							
	Initial Pressure (kPa)	Final Pressure (kPa)	Test Duration (sec)	Change in Pressure (kPa)	UCL	Within UCL	Average TMP (kPa)	Max TMP (kPa)
1	194.9	194.1	300.0	0.8	2.0	✓ 2.0	34.6	78.8
2	195.1	194.5	300.0	0.6	2.0	✓ 2.0	32.6	143.0
3	194.9	193.7	300.0	1.2	2.0	✓ 2.0	30.4	138.1
4	194.9	194.3	300.0	0.6	2.0	✓ 2.0	25.4	114.6
5	195.1	193.9	300.0	1.2	2.0	✓ 2.0	35.3	130.6
6	194.8	193.7	300.0	1.1	2.0	✓ 2.0	34.5	134.3
7	194.9	194.2	300.0	0.7	2.0	✓ 2.0	30.6	81.0
8	194.9	194.4	300.0	0.5	2.0	✓ 2.0	29.8	77.6
9	195.1	194.4	300.0	0.7	2.0	✓ 2.0	38.1	152.2
10	195.4	194.7	300.0	0.7	2.0	✓ 2.0	28.9	85.7
11	195.6	195.2	300.0	0.4	2.0	✓ 2.0	33.2	145.3
12	195.6	195.2	300.0	0.4	2.0	✓ 2.0	27.5	96.7
13	195.1	194.3	300.0	0.8	2.0	✓ 2.0	34.5	134.2
14	195.2	194.7	300.0	0.5	2.0	✓ 2.0	32.5	72.8
15	195.4	194.7	300.0	0.7	2.0	✓ 2.0	32.9	140.0
16	195.2	194.6	300.0	0.7	2.0	✓ 2.0	27.2	81.1
17	195.2	194.4	300.0	0.9	2.0	✓ 2.0	34.2	90.6
18	195.2	194.0	300.0	1.2	2.0	✓ 2.0	34.8	138.0
19	195.1	193.9	300.0	1.2	2.0	✓ 2.0	31.9	141.3
20	194.9	194.0	300.0	0.9	2.0	✓ 2.0	28.7	140.9
21	195.1	193.8	300.0	1.3	2.0	✓ 2.0	37.5	168.3
22	195.1	193.9	300.0	1.2	2.0	✓ 2.0	35.4	89.6
23	195.1	193.9	300.0	1.1	2.0	✓ 2.0	38.0	89.9
24	194.7	193.9	300.0	0.8	2.0	✓ 2.0	37.7	154.9
25	194.9	194.0	300.0	0.9	2.0	✓ 2.0	33.6	90.9
26	195.2	194.0	300.0	1.2	2.0	✓ 2.0	39.3	92.7
27	194.8	193.6	300.0	1.2	2.0	✓ 2.0	30.0	87.7
28	195.4	194.7	300.0	0.7	2.0	✓ 2.0	35.9	133.1
29	194.9	194.4	300.0	0.5	2.0	✓ 2.0	39.0	94.5
30	195.2	194.5	300.0	0.8	2.0	✓ 2.0	36.3	133.5
31	194.9	194.2	300.0	0.7	2.0	✓ 2.0	38.4	128.3
<b>Total</b>								
Average	195.1	194.3	300.0	0.8	2.0	2.0	33.5	115.5
Maximum	195.6	195.2	300.0	1.3	2.0	2.0	39.3	168.3
Date	11-Jan	11-Jan	1-Jan	21-Jan	1-Jan	1-Jan	26-Jan	21-Jan
Minimum	194.7	193.6	300.0	0.4	2.0	2.0	25.4	72.8
Date	24-Jan	27-Jan	1-Jan	11-Jan	1-Jan	1-Jan	4-Jan	14-Jan

Notes:

---



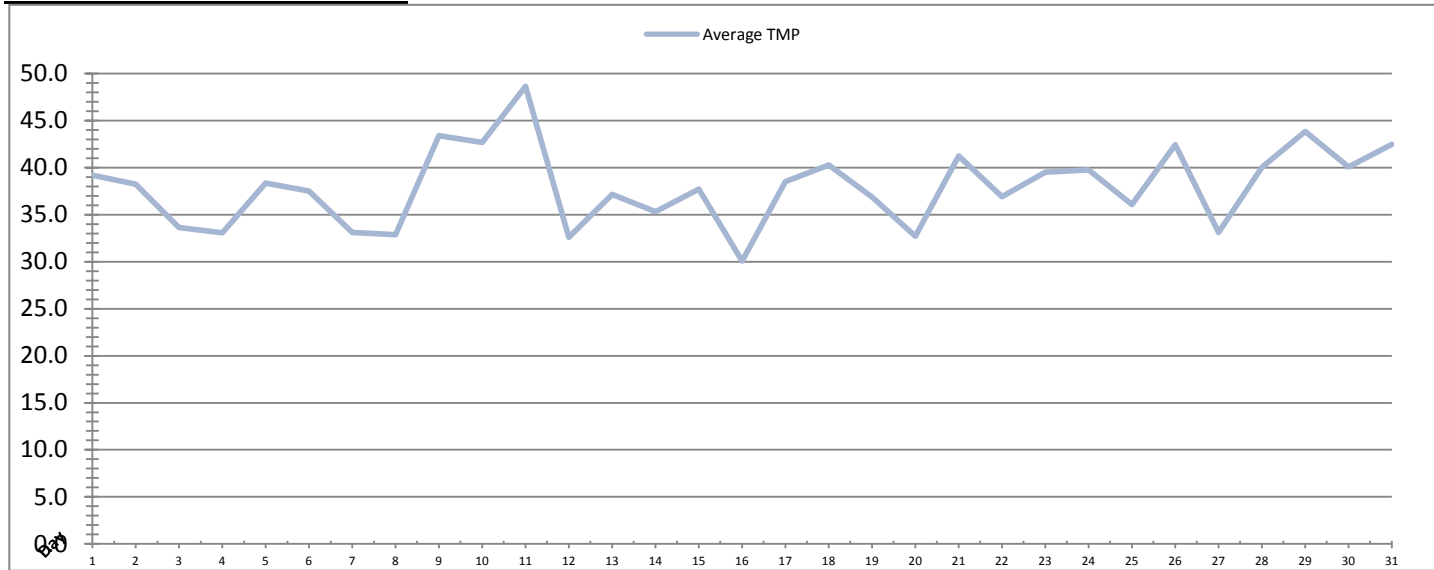
---



---

# Membranes Monthly Report

Month: **January-17**



Date	Integrity Test Rack 2							
	Initial Pressure (kPa)	Final Pressure (kPa)	Test Duration (sec)	Change in Pressure (kPa)	UCL	Within UCL	Average TMP (kPa)	Max TMP (kPa)
1	201.2	200.4	300.0	0.8	2.0	✓ 2.0	39.2	92.2
2	201.3	200.3	300.0	1.1	2.0	✓ 2.0	38.2	150.1
3	201.3	200.4	300.0	0.9	2.0	✓ 2.0	33.6	140.8
4	201.3	200.3	300.0	1.0	2.0	✓ 2.0	33.0	140.3
5	201.3	200.4	300.0	0.9	2.0	✓ 2.0	38.4	161.3
6	201.2	200.3	300.0	0.8	2.0	✓ 2.0	37.5	136.3
7	201.1	200.1	300.0	1.0	2.0	✓ 2.0	33.1	125.6
8	201.5	200.4	300.0	1.1	2.0	✓ 2.0	32.9	89.9
9	201.3	200.3	300.0	1.1	2.0	✓ 2.0	43.4	152.3
10	201.3	200.3	300.0	1.0	2.0	✓ 2.0	42.7	151.1
11	201.9	200.8	300.0	1.1	2.0	✓ 2.0	48.6	163.0
12	201.6	200.5	300.0	1.1	2.0	✓ 2.0	32.6	159.1
13	201.6	200.5	300.0	1.1	2.0	✓ 2.0	37.1	180.3
14	201.5	200.5	300.0	1.1	2.0	✓ 2.0	35.3	79.9
15	201.4	200.6	300.0	0.8	2.0	✓ 2.0	37.7	140.8
16	201.6	200.6	300.0	0.9	2.0	✓ 2.0	30.1	92.3
17	201.4	200.6	300.0	0.8	2.0	✓ 2.0	38.5	169.2
18	201.6	200.8	300.0	0.8	2.0	✓ 2.0	40.3	104.1
19	201.2	200.2	300.0	1.0	2.0	✓ 2.0	36.9	158.3
20	201.7	200.6	300.0	1.1	2.0	✓ 2.0	32.7	140.2
21	201.7	200.8	300.0	0.9	2.0	✓ 2.0	41.2	168.9
22	201.7	200.5	300.0	1.2	2.0	✓ 2.0	36.9	149.0
23	201.6	200.6	300.0	1.0	2.0	✓ 2.0	39.5	145.2
24	201.6	200.5	300.0	1.1	2.0	✓ 2.0	39.7	158.0
25	201.4	200.5	300.0	0.9	2.0	✓ 2.0	36.1	148.2
26	201.7	200.6	300.0	1.1	2.0	✓ 2.0	42.4	153.0
27	201.5	200.5	300.0	1.0	2.0	✓ 2.0	33.1	116.0
28	201.6	200.5	300.0	1.1	2.0	✓ 2.0	40.0	165.3
29	200.1	198.8	300.0	1.3	2.0	✓ 2.0	43.8	136.9
30	201.6	200.5	300.0	1.1	2.0	✓ 2.0	40.1	120.6
31	201.6	200.6	300.0	1.0	2.0	✓ 2.0	42.5	130.5
<b>Total</b>								
Average	201.4	200.4	300.0	1.0	2.0	2.0	38.0	139.3
Maximum	201.9	200.8	300.0	1.3	2.0	2.0	48.6	180.3
Date	11-Jan	11-Jan	1-Jan	29-Jan	1-Jan	1-Jan	11-Jan	13-Jan
Minimum	200.1	198.8	300.0	0.8	2.0	2.0	30.1	79.9
Date	29-Jan	29-Jan	1-Jan	17-Jan	1-Jan	1-Jan	16-Jan	14-Jan

Notes:

---



---

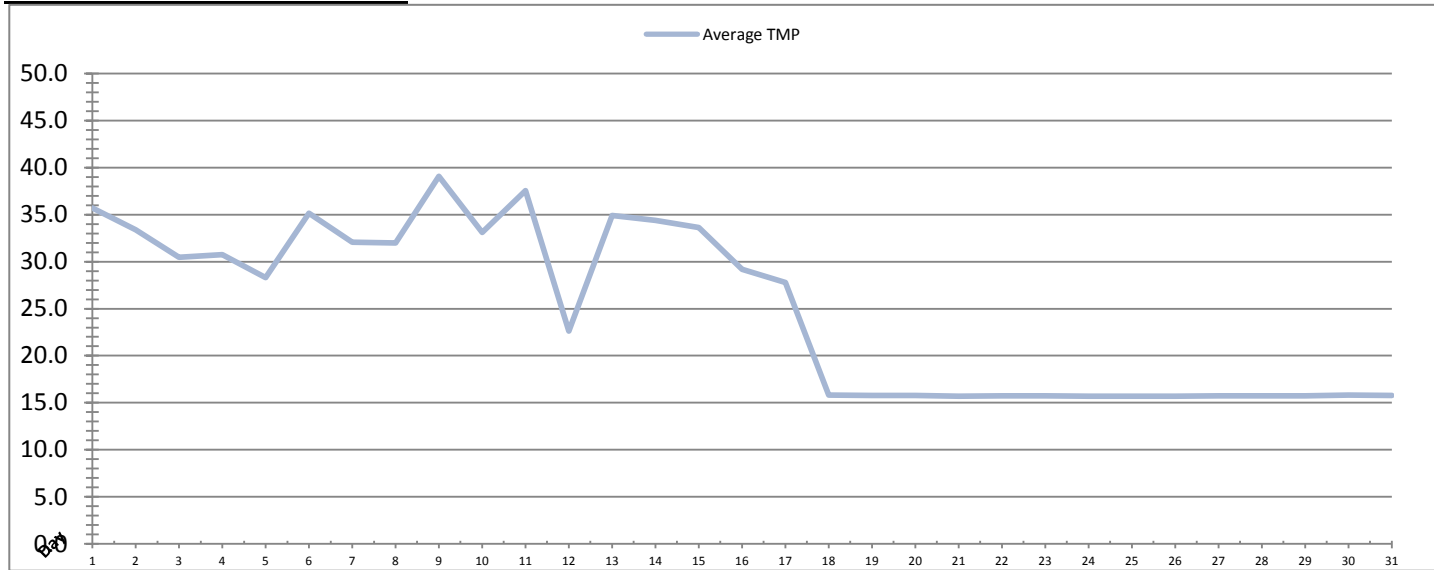


---



# Membranes Monthly Report

Month: **January-17**



Date	Integrity Test Rack 3							
	Initial Pressure (kPa)	Final Pressure (kPa)	Test Duration (sec)	Change in Pressure (kPa)	UCL	Within UCL	Average TMP (kPa)	Max TMP (kPa)
1	191.6	190.4	300.0	1.2	2.0	✓ 2.0	35.7	125.6
2	191.7	190.5	300.0	1.2	2.0	✓ 2.0	33.4	135.9
3	191.9	190.7	300.0	1.2	2.0	✓ 2.0	30.5	137.2
4	191.8	190.4	300.0	1.3	2.0	✓ 2.0	30.7	96.8
5	191.4	190.2	300.0	1.2	2.0	✓ 2.0	28.3	129.7
6	191.3	190.0	300.0	1.3	2.0	✓ 2.0	35.1	133.9
7	192.0	190.8	300.0	1.2	2.0	✓ 2.0	32.1	79.0
8	191.7	190.4	300.0	1.3	2.0	✓ 2.0	32.0	129.8
9	191.5	190.3	300.0	1.2	2.0	✓ 2.0	39.1	143.1
10	191.5	190.2	300.0	1.2	2.0	✓ 2.0	33.1	166.6
11	191.4	190.1	300.0	1.3	2.0	✓ 2.0	37.5	157.1
12	191.4	190.1	300.0	1.3	2.0	✓ 2.0	22.6	155.4
13	192.0	190.6	300.0	1.4	2.0	✓ 2.0	34.9	117.0
14	192.0	190.7	300.0	1.2	2.0	✓ 2.0	34.4	113.9
15	191.8	190.7	300.0	1.2	2.0	✓ 2.0	33.6	139.0
16	192.6	191.2	300.0	1.5	2.0	✓ 2.0	29.2	127.2
17	191.8	190.7	300.0	1.2	2.0	✓ 2.0	27.8	108.4
18	191.8	190.7	300.0	1.2	2.0	✓ 2.0	15.8	16.0
19	191.8	190.7	300.0	1.2	2.0	✓ 2.0	15.8	16.0
20	191.8	190.7	300.0	1.2	2.0	✓ 2.0	15.8	16.0
21	191.8	190.7	300.0	1.2	2.0	✓ 2.0	15.7	15.9
22	191.8	190.7	300.0	1.2	2.0	✓ 2.0	15.7	15.9
23	191.8	190.7	300.0	1.2	2.0	✓ 2.0	15.7	15.9
24	191.8	190.7	300.0	1.2	2.0	✓ 2.0	15.7	15.9
25	191.8	190.7	300.0	1.2	2.0	✓ 2.0	15.7	15.9
26	191.8	190.7	300.0	1.2	2.0	✓ 2.0	15.7	15.8
27	191.8	190.7	300.0	1.2	2.0	✓ 2.0	15.7	15.9
28	191.8	190.7	300.0	1.2	2.0	✓ 2.0	15.7	15.9
29	191.8	190.7	300.0	1.2	2.0	✓ 2.0	15.7	16.0
30	191.8	190.7	300.0	1.2	2.0	✓ 2.0	15.8	15.9
31	191.8	190.7	300.0	1.2	2.0	✓ 2.0	15.8	16.0
<b>Total</b>								
Average	191.8	190.6	300.0	1.2	2.0	2.0	24.9	78.0
Maximum	192.6	191.2	300.0	1.5	2.0	2.0	39.1	166.6
Date	16-Jan	16-Jan	1-Jan	16-Jan	1-Jan	1-Jan	9-Jan	10-Jan
Minimum	191.3	190.0	300.0	1.2	2.0	2.0	15.7	15.8
Date	6-Jan	6-Jan	1-Jan	5-Jan	1-Jan	1-Jan	24-Jan	26-Jan

Notes:

---



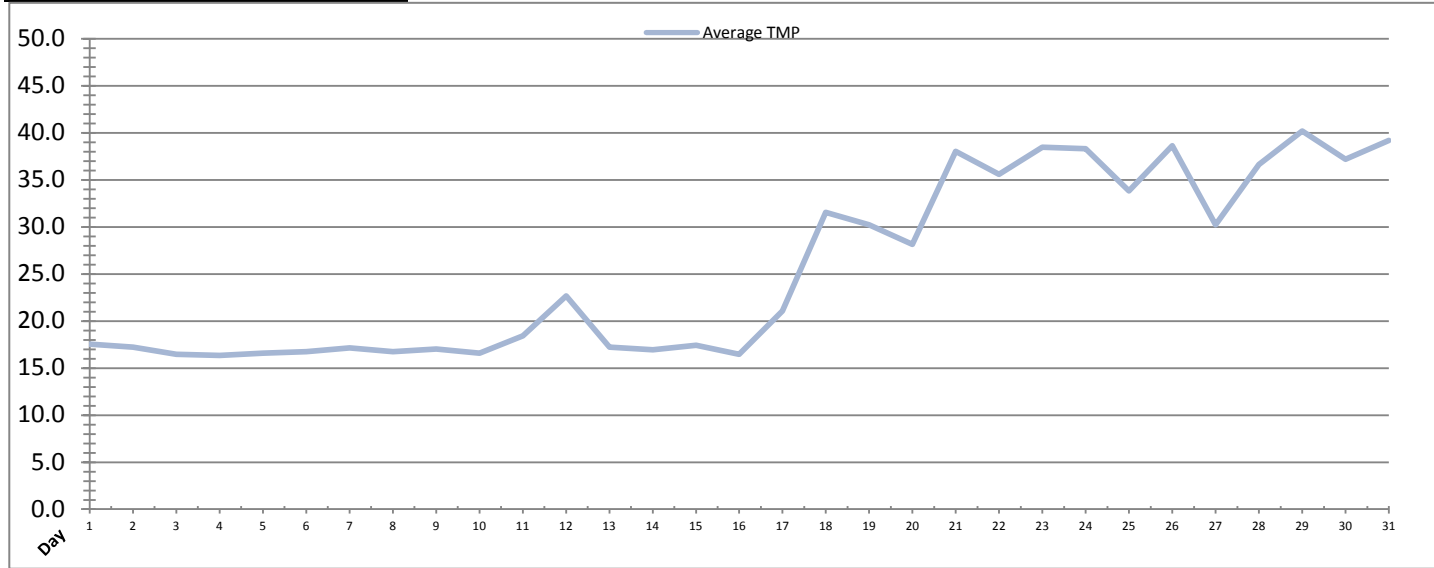
---



---

# Membranes Monthly Report

Month: January-17



Integrity Test Rack 4									
Date	Initial Pressure (kPa)	Final Pressure (kPa)	Test Duration (sec)	Change in Pressure (kPa)	UCL	Within UCL	Average TMP (kPa)	Max TMP (kPa)	
1	195.3	194.3	300.0	1.0	2.0	✓ 2.0	17.5	33.3	
2	195.5	194.2	300.0	1.2	2.0	✓ 2.0	17.2	35.8	
3	195.2	194.0	300.0	1.2	2.0	✓ 2.0	16.5	34.2	
4	195.3	194.2	300.0	1.1	2.0	✓ 2.0	16.3	35.1	
5	194.9	193.6	300.0	1.3	2.0	✓ 2.0	16.6	39.5	
6	195.2	194.0	300.0	1.2	2.0	✓ 2.0	16.7	34.2	
7	195.2	194.0	300.0	1.3	2.0	✓ 2.0	17.1	34.9	
8	195.5	194.5	300.0	1.0	2.0	✓ 2.0	16.8	33.9	
9	195.2	194.1	300.0	1.1	2.0	✓ 2.0	17.0	35.2	
10	195.5	194.4	300.0	1.1	2.0	✓ 2.0	16.6	37.7	
11	195.7	194.4	300.0	1.2	2.0	✓ 2.0	18.4	51.7	
12	195.7	194.4	300.0	1.2	2.0	✓ 2.0	22.7	71.6	
13	195.7	194.5	300.0	1.2	2.0	✓ 2.0	17.2	37.3	
14	195.5	194.5	300.0	1.0	2.0	✓ 2.0	17.0	36.0	
15	195.8	194.6	300.0	1.2	2.0	✓ 2.0	17.4	38.5	
16	195.7	194.5	300.0	1.1	2.0	✓ 2.0	16.5	39.2	
17	195.6	194.5	300.0	1.1	2.0	✓ 2.0	21.1	81.4	
18	195.7	194.6	300.0	1.1	2.0	✓ 2.0	31.6	84.7	
19	195.7	194.5	300.0	1.2	2.0	✓ 2.0	30.2	78.8	
20	195.6	194.1	300.0	1.5	2.0	✓ 2.0	28.2	92.9	
21	195.4	193.9	300.0	1.4	2.0	✓ 2.0	38.0	134.8	
22	195.5	194.2	300.0	1.2	2.0	✓ 2.0	35.6	114.3	
23	195.0	193.6	300.0	1.4	2.0	✓ 2.0	38.5	129.0	
24	195.4	194.1	300.0	1.3	2.0	✓ 2.0	38.3	85.1	
25	195.4	194.1	300.0	1.3	2.0	✓ 2.0	33.8	85.7	
26	195.2	193.8	300.0	1.4	2.0	✓ 2.0	38.6	129.3	
27	195.3	193.9	300.0	1.3	2.0	✓ 2.0	30.2	144.0	
28	195.3	193.9	300.0	1.4	2.0	✓ 2.0	36.6	126.6	
29	195.0	193.6	300.0	1.4	2.0	✓ 2.0	40.2	138.9	
30	195.4	194.0	300.0	1.4	2.0	✓ 2.0	37.2	137.5	
31	194.9	193.4	300.0	1.5	2.0	✓ 2.0	39.2	125.6	
<b>Total</b>									
Average	195.4	194.2	300.0	1.2	2.0	2.0	25.6	74.7	
Maximum	195.8	194.6	300.0	1.5	2.0	2.0	40.2	144.0	
Date	15-Jan	15-Jan	1-Jan	20-Jan	1-Jan	1-Jan	29-Jan	27-Jan	
Minimum	194.9	193.4	300.0	1.0	2.0	2.0	16.3	33.3	
Date	5-Jan	31-Jan	1-Jan	1-Jan	1-Jan	1-Jan	4-Jan	1-Jan	

Notes:

# Membranes Monthly Report

Month: January-17

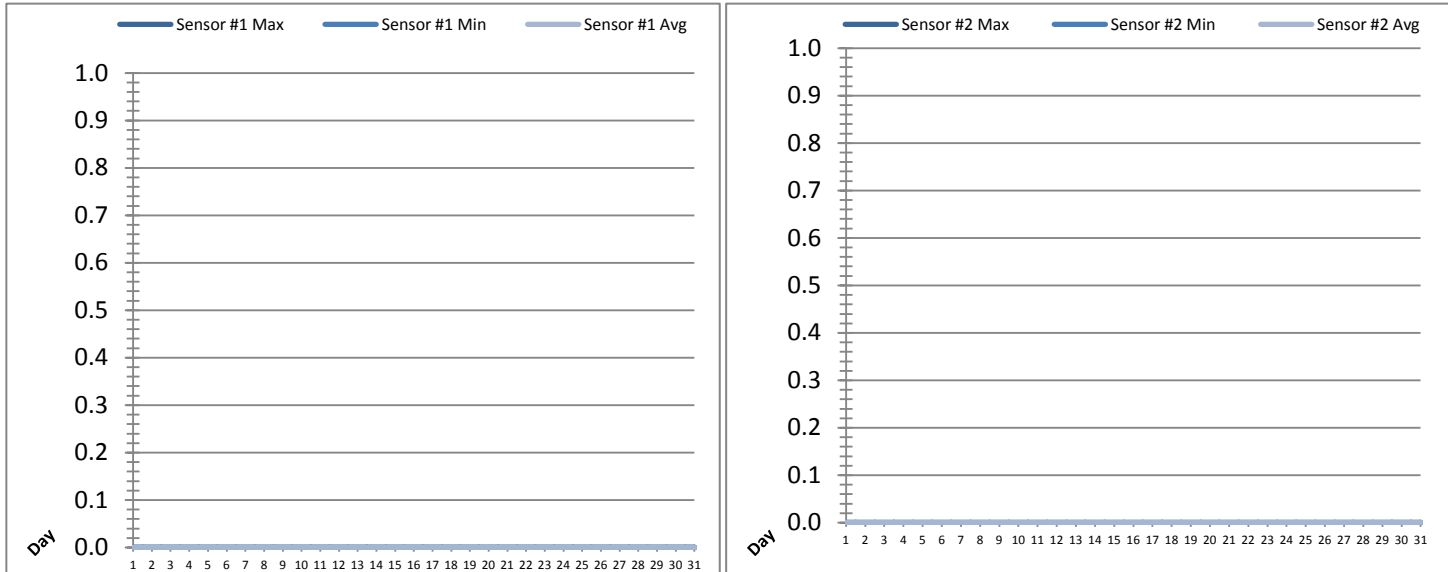
Date	Membranes Monthly Performance							
	Rack 1 >0.1 NTU (Minutes)	Rack 1 Forward Flow (Minutes)	Rack 2 >0.1 NTU (Minutes)	Rack 2 Forward Flow (Minutes)	Rack 3 >0.1 NTU (Minutes)	Rack 3 Forward Flow (Minutes)	Rack 4 >0.1 NTU (Minutes)	Rack 4 Forward Flow (Minutes)
1	0.0	939.2	0.0	942.3	0.0	947.3	0.0	436.3
2	0.0	759.3	0.0	765.2	0.0	766.5	0.0	414.6
3	0.0	594.4	0.0	593.0	0.0	596.1	0.0	313.6
4	0.0	648.4	0.0	659.1	0.0	662.2	0.0	312.0
5	0.0	808.3	8.6	801.6	0.0	646.5	0.5	357.3
6	0.0	830.5	0.0	831.3	0.0	835.4	0.0	315.4
7	0.0	710.1	0.0	715.5	0.0	721.3	0.0	334.5
8	0.0	683.2	0.0	693.6	0.0	693.1	0.0	325.5
9	0.0	826.3	0.0	832.1	0.0	836.2	0.0	432.4
10	8.6	693.1	0.0	775.4	0.0	779.4	0.0	359.0
11	0.0	841.1	0.0	879.3	0.0	872.6	0.0	531.0
12	0.0	534.5	0.0	561.6	0.0	245.6	0.0	414.1
13	0.0	833.5	0.0	742.3	3.1	758.4	0.0	352.3
14	0.0	865.1	0.0	869.6	0.0	874.5	0.0	398.3
15	0.0	693.5	0.0	696.5	0.0	702.5	9.5	404.4
16	0.0	578.2	0.0	589.5	0.0	569.3	9.5	330.0
17	0.0	828.4	0.0	829.4	0.0	504.5	0.0	683.3
18	0.0	856.3	0.0	860.3	0.0	0.0	0.0	858.1
19	0.0	739.5	0.0	740.3	0.0	0.0	0.0	735.5
20	0.0	605.5	0.0	607.3	0.0	0.0	0.0	609.5
21	0.0	776.1	0.0	776.5	0.0	0.0	0.0	774.3
22	0.0	794.2	0.0	795.4	0.0	0.0	0.0	788.2
23	0.0	846.5	0.0	847.5	0.0	0.0	0.0	849.3
24	0.0	819.2	0.0	826.4	0.0	0.0	0.0	822.4
25	0.0	705.2	0.0	706.5	0.0	0.0	0.0	705.2
26	0.0	865.6	0.0	866.5	0.0	0.0	0.0	862.5
27	0.0	588.1	0.0	587.0	0.0	0.0	0.0	587.0
28	0.0	764.3	0.0	769.4	0.0	0.0	0.0	769.4
29	0.0	863.2	0.0	873.6	0.0	0.0	0.0	871.4
30	0.0	808.0	0.0	817.3	0.0	0.0	0.0	805.3
31	0.0	856.4	0.0	860.5	0.0	0.0	0.0	862.2
Total	8.6	23555.0	8.6	23711.9	3.1	12011.3	19.5	17614.4
Percent	0.04		0.04		0.03		0.11	
Maximum	8.6	939.2	8.6	942.3	3.1	947.3	9.5	871.4
Date	10-Jan	1-Jan	5-Jan	1-Jan	13-Jan	1-Jan	16-Jan	29-Jan
Minimum	0.0	534.5	0.0	561.6	0.0	0.0	0.0	312.0
Date	1-Jan	12-Jan	1-Jan	12-Jan	1-Jan	18-Jan	1-Jan	4-Jan

**Notes:**

Met filter turbidity requirement of measurements below 0.1ntu more than 99% of the time.  
 Rack 3: taken out of service on 18 due to inability to calibrate turbidity meter. Meter on order.

# UV System Monthly Report

Month: January-17



Date	UV Reactor 1					
	Intensity Sensor 1 (mW/cm <sup>2</sup> )			Intensity Sensor 2 (mW/cm <sup>2</sup> )		
	Maximum	Minimum	Average	Maximum	Minimum	Average
1	0.0	0.0	0.0	0.0	0.0	0.0
2	0.0	0.0	0.0	0.0	0.0	0.0
3	0.0	0.0	0.0	0.0	0.0	0.0
4	0.0	0.0	0.0	0.0	0.0	0.0
5	0.0	0.0	0.0	0.0	0.0	0.0
6	0.0	0.0	0.0	0.0	0.0	0.0
7	0.0	0.0	0.0	0.0	0.0	0.0
8	0.0	0.0	0.0	0.0	0.0	0.0
9	0.0	0.0	0.0	0.0	0.0	0.0
10	0.0	0.0	0.0	0.0	0.0	0.0
11	0.0	0.0	0.0	0.0	0.0	0.0
12	0.0	0.0	0.0	0.0	0.0	0.0
13	0.0	0.0	0.0	0.0	0.0	0.0
14	0.0	0.0	0.0	0.0	0.0	0.0
15	0.0	0.0	0.0	0.0	0.0	0.0
16	0.0	0.0	0.0	0.0	0.0	0.0
17	0.0	0.0	0.0	0.0	0.0	0.0
18	0.0	0.0	0.0	0.0	0.0	0.0
19	0.0	0.0	0.0	0.0	0.0	0.0
20	0.0	0.0	0.0	0.0	0.0	0.0
21	0.0	0.0	0.0	0.0	0.0	0.0
22	0.0	0.0	0.0	0.0	0.0	0.0
23	0.0	0.0	0.0	0.0	0.0	0.0
24	0.0	0.0	0.0	0.0	0.0	0.0
25	0.0	0.0	0.0	0.0	0.0	0.0
26	0.0	0.0	0.0	0.0	0.0	0.0
27	0.0	0.0	0.0	0.0	0.0	0.0
28	0.0	0.0	0.0	0.0	0.0	0.0
29	0.0	0.0	0.0	0.0	0.0	0.0
30	0.0	0.0	0.0	0.0	0.0	0.0
31	0.0	0.0	0.0	0.0	0.0	0.0
Total						
Average	0.0	0.0	0.0	0.0	0.0	0.0
Maximum	0.0		0.0	0.0		0.0
Date	1-Jan		1-Jan	1-Jan		1-Jan
Minimum		0.0	0.0		0.0	0.0
Date		1-Jan	1-Jan		1-Jan	1-Jan

Notes:

---



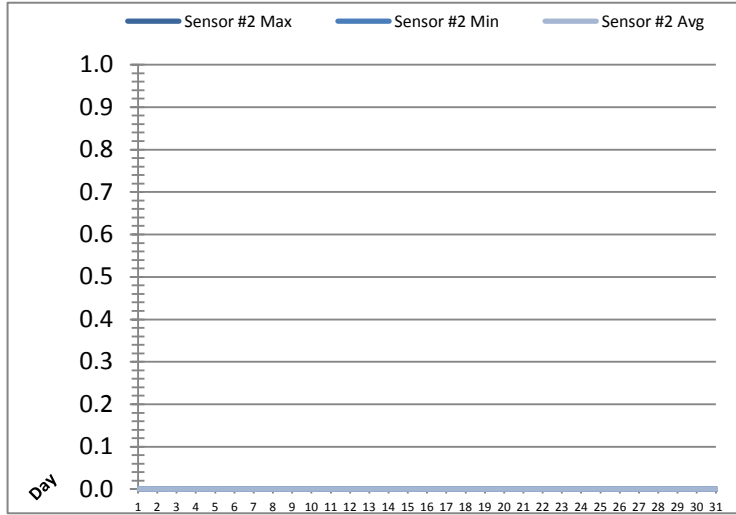
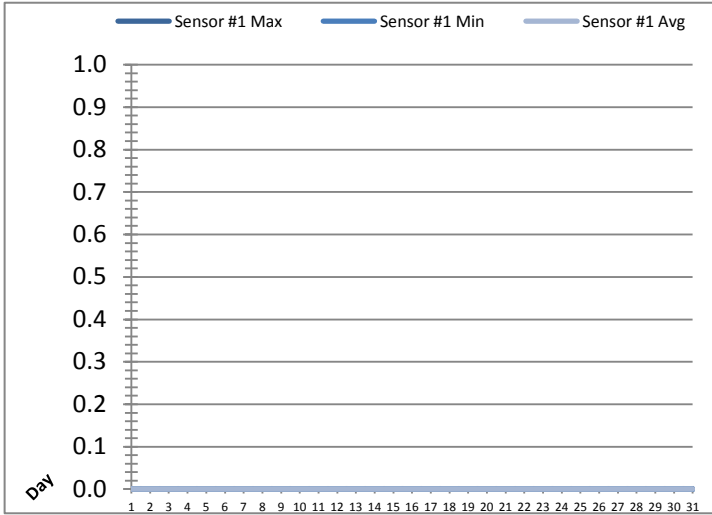
---



---

# UV System Monthly Report

Month: January-17



Date	UV Reactor 2					
	Intensity Sensor 1 (mW/cm <sup>2</sup> )			Intensity Sensor 2 (mW/cm <sup>2</sup> )		
	Maximum	Minimum	Average	Maximum	Minimum	Average
1	0.0	0.0	0.0	0.0	0.0	0.0
2	0.0	0.0	0.0	0.0	0.0	0.0
3	0.0	0.0	0.0	0.0	0.0	0.0
4	0.0	0.0	0.0	0.0	0.0	0.0
5	0.0	0.0	0.0	0.0	0.0	0.0
6	0.0	0.0	0.0	0.0	0.0	0.0
7	0.0	0.0	0.0	0.0	0.0	0.0
8	0.0	0.0	0.0	0.0	0.0	0.0
9	0.0	0.0	0.0	0.0	0.0	0.0
10	0.0	0.0	0.0	0.0	0.0	0.0
11	0.0	0.0	0.0	0.0	0.0	0.0
12	0.0	0.0	0.0	0.0	0.0	0.0
13	0.0	0.0	0.0	0.0	0.0	0.0
14	0.0	0.0	0.0	0.0	0.0	0.0
15	0.0	0.0	0.0	0.0	0.0	0.0
16	0.0	0.0	0.0	0.0	0.0	0.0
17	0.0	0.0	0.0	0.0	0.0	0.0
18	0.0	0.0	0.0	0.0	0.0	0.0
19	0.0	0.0	0.0	0.0	0.0	0.0
20	0.0	0.0	0.0	0.0	0.0	0.0
21	0.0	0.0	0.0	0.0	0.0	0.0
22	0.0	0.0	0.0	0.0	0.0	0.0
23	0.0	0.0	0.0	0.0	0.0	0.0
24	0.0	0.0	0.0	0.0	0.0	0.0
25	0.0	0.0	0.0	0.0	0.0	0.0
26	0.0	0.0	0.0	0.0	0.0	0.0
27	0.0	0.0	0.0	0.0	0.0	0.0
28	0.0	0.0	0.0	0.0	0.0	0.0
29	0.0	0.0	0.0	0.0	0.0	0.0
30	0.0	0.0	0.0	0.0	0.0	0.0
31	0.0	0.0	0.0	0.0	0.0	0.0
Total						
Average	0.0	0.0	0.0	0.0	0.0	0.0
Maximum	0.0		0.0	0.0		0.0
Date	1-Jan		1-Jan	1-Jan		1-Jan
Minimum		0.0	0.0		0.0	0.0
Date		1-Jan	1-Jan		1-Jan	1-Jan

Notes:

---



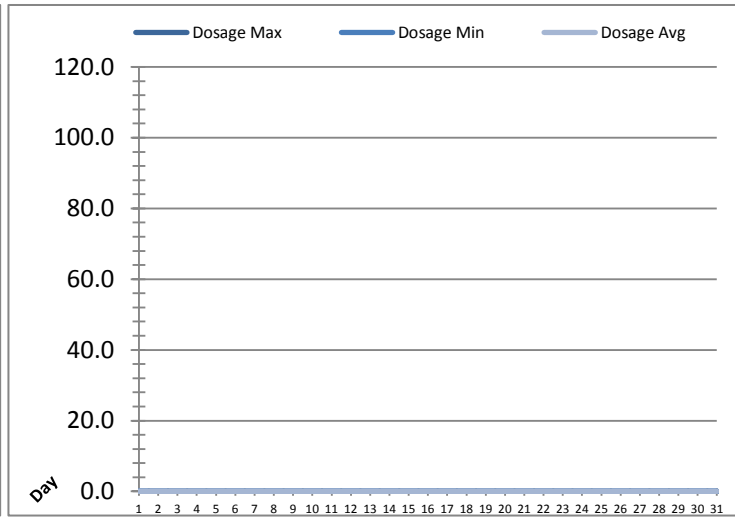
---



---

# UV System Monthly Report

Month: January-17



UV System							
Date	Transmittance (%)			Dosage (mJ/cm <sup>2</sup> )			Inlet Flow (L/s)
	Maximum	Minimum	Average	Maximum	Minimum	Average	Maximum
1	96.00	94.00	95.08	0.0	0.0	0.0	85.2
2	96.00	93.00	95.39	0.0	0.0	0.0	140.8
3	96.00	93.00	95.14	0.0	0.0	0.0	135.8
4	96.00	93.00	94.99	0.0	0.0	0.0	87.6
5	96.00	85.00	95.87	0.0	0.0	0.0	103.5
6	96.00	94.00	95.65	0.0	0.0	0.0	139.0
7	96.00	94.00	95.44	0.0	0.0	0.0	85.3
8	96.00	94.00	95.88	0.0	0.0	0.0	142.7
9	97.00	94.00	95.56	0.0	0.0	0.0	135.8
10	97.00	87.00	95.89	0.0	0.0	0.0	85.4
11	97.00	93.00	95.93	0.0	0.0	0.0	132.4
12	97.00	93.00	95.73	0.0	0.0	0.0	122.5
13	97.00	80.00	95.77	0.0	0.0	0.0	83.0
14	97.00	92.00	95.91	0.0	0.0	0.0	85.9
15	96.00	94.00	95.85	0.0	0.0	0.0	139.0
16	96.00	94.00	95.70	0.0	0.0	0.0	99.2
17	96.00	93.00	95.43	0.0	0.0	0.0	83.4
18	96.00	93.00	94.88	0.0	0.0	0.0	73.0
19	96.00	93.00	94.82	0.0	0.0	0.0	74.0
20	97.00	92.00	94.97	0.0	0.0	0.0	126.2
21	97.00	92.00	94.67	0.0	0.0	0.0	124.7
22	97.00	93.00	94.82	0.0	0.0	0.0	72.3
23	97.00	91.00	94.07	0.0	0.0	0.0	76.1
24	97.00	92.00	94.89	0.0	0.0	0.0	73.7
25	97.00	93.00	95.04	0.0	0.0	0.0	73.0
26	98.00	93.00	95.20	0.0	0.0	0.0	74.0
27	97.00	93.00	95.72	0.0	0.0	0.0	96.7
28	97.00	93.00	95.82	0.0	0.0	0.0	77.9
29	97.00	93.00	95.68	0.0	0.0	0.0	75.0
30	97.00	93.00	95.43	0.0	0.0	0.0	99.5
31	98.00	94.00	96.00	0.0	0.0	0.0	104.4
Total							
Average	96.65	92.19	95.39	0.0	0.0	0.0	100.2
Maximum	98.00		96.00	0.0		0.0	142.7
Date	26-Jan		31-Jan	1-Jan		1-Jan	8-Jan
Minimum		80.00	94.07		0.0	0.0	
Date		13-Jan	23-Jan		1-Jan	1-Jan	

Notes:

---



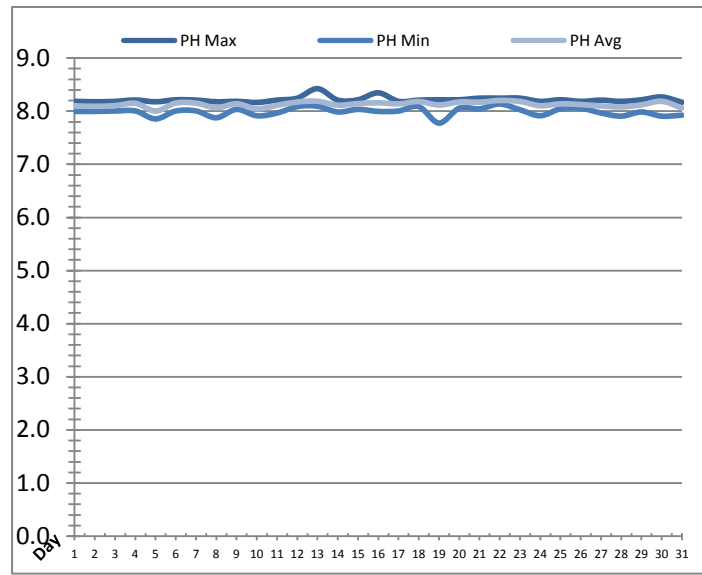
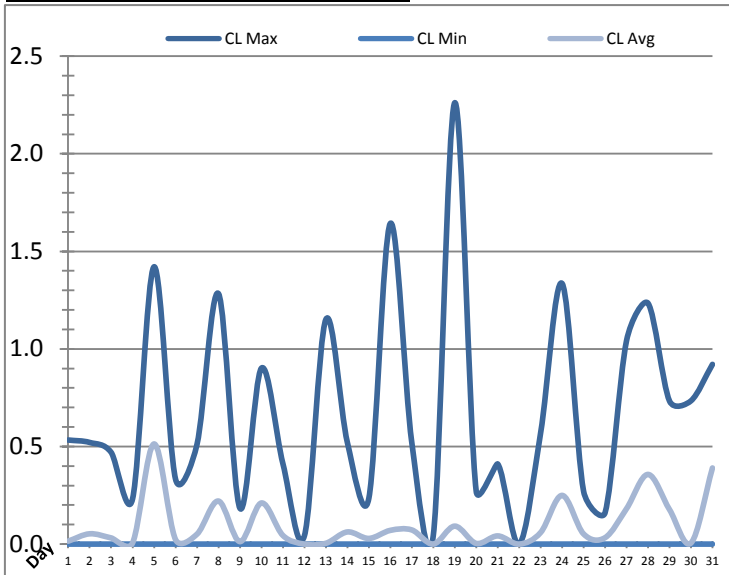
---



---

# Plant Quality Report

Month: **January-17**



Date	Strainer Chlorine Residual			Strainer pH		
	AIT_2003_CL (ppm)			AIT_2003_PH		
	Maximum	Minimum	Average	Maximum	Minimum	Average
1	0.53	0.00	0.01	8.19	8.00	8.10
2	0.52	0.00	0.05	8.18	8.00	8.09
3	0.47	0.00	0.03	8.19	8.00	8.10
4	0.23	0.00	0.01	8.21	8.00	8.15
5	1.42	0.00	0.51	8.18	7.85	8.00
6	0.33	0.00	0.02	8.21	8.00	8.15
7	0.51	0.00	0.05	8.21	8.00	8.15
8	1.28	0.00	0.22	8.18	7.88	8.07
9	0.18	0.00	0.01	8.19	8.03	8.14
10	0.90	0.00	0.21	8.17	7.91	8.05
11	0.41	0.00	0.04	8.21	7.97	8.11
12	0.04	0.00	0.00	8.24	8.09	8.17
13	1.15	0.00	0.00	8.42	8.09	8.19
14	0.52	0.00	0.06	8.21	7.99	8.11
15	0.23	0.00	0.03	8.21	8.03	8.14
16	1.64	0.00	0.07	8.35	8.00	8.16
17	0.52	0.00	0.07	8.19	8.00	8.14
18	0.04	0.00	0.00	8.21	8.09	8.18
19	2.26	0.00	0.09	8.21	7.78	8.12
20	0.27	0.00	0.00	8.22	8.06	8.17
21	0.41	0.00	0.04	8.25	8.04	8.17
22	0.00	0.00	0.00	8.25	8.14	8.20
23	0.57	0.00	0.06	8.25	8.03	8.18
24	1.34	0.00	0.25	8.19	7.91	8.10
25	0.27	0.00	0.05	8.22	8.05	8.14
26	0.16	0.00	0.03	8.19	8.06	8.13
27	1.04	0.00	0.18	8.21	7.97	8.10
28	1.23	0.00	0.36	8.19	7.91	8.08
29	0.73	0.00	0.18	8.22	7.98	8.12
30	0.73	0.00	0.01	8.27	7.91	8.19
31	0.92	0.00	0.39	8.17	7.93	8.06
<b>Total</b>						
<b>Average</b>	0.67	0.00	0.10	8.22	7.99	8.13
<b>Maximum</b>	2.26		0.51	8.42		8.20
<b>Date</b>	19-Jan		5-Jan	13-Jan		22-Jan
<b>Minimum</b>		0.00	0.00		7.78	8.00
<b>Date</b>		1-Jan	22-Jan		19-Jan	5-Jan

Notes:

---



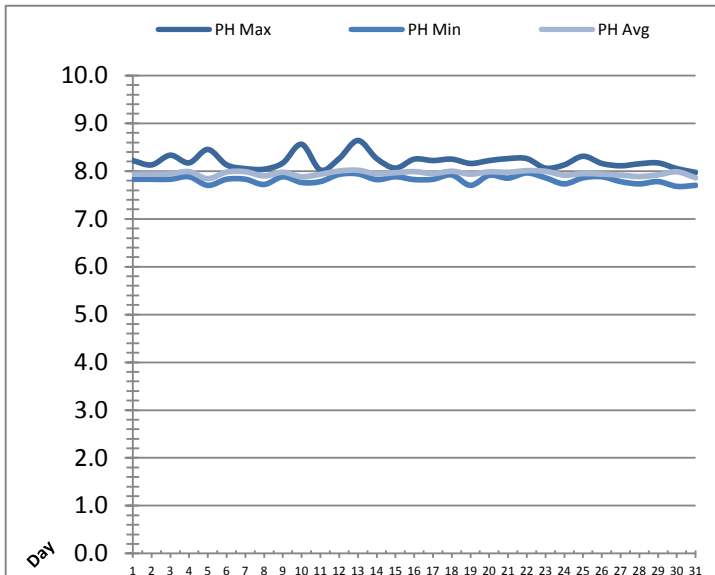
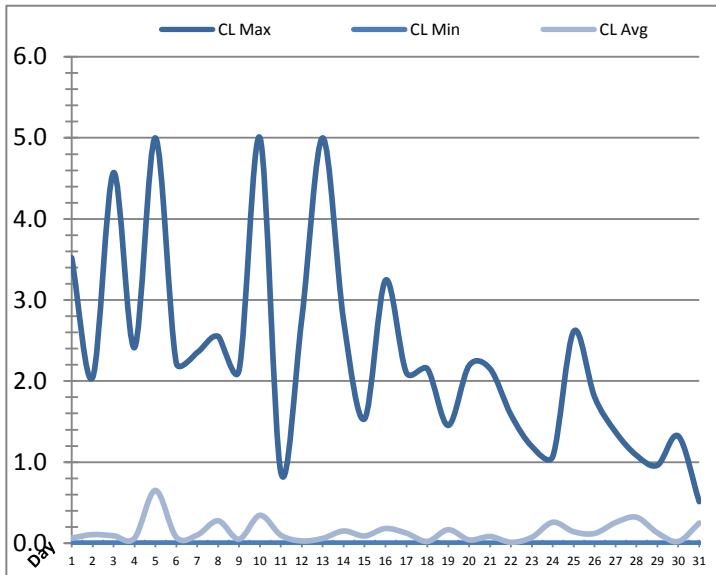
---



---

# Plant Quality Report

Month: **January-17**



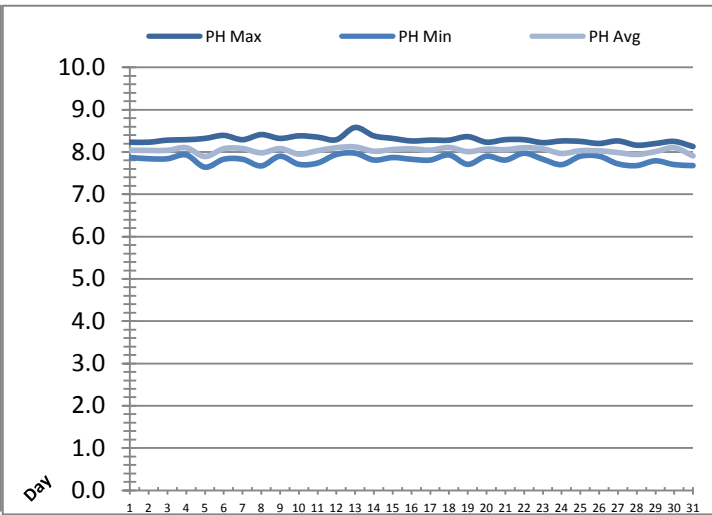
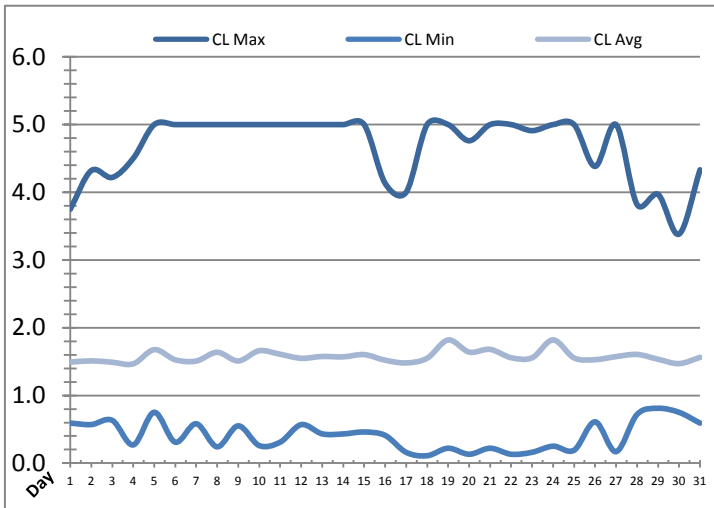
Date	Inlet UV Chlorine Residual			Inlet UV pH		
	AIT_5005_CL (ppm)			AIT_5005_PH		
	Maximum	Minimum	Average	Maximum	Minimum	Average
1	3.52	0.00	0.06	8.22	7.83	7.94
2	2.04	0.00	0.11	8.13	7.83	7.94
3	4.57	0.00	0.09	8.33	7.83	7.94
4	2.41	0.00	0.06	8.17	7.88	7.99
5	5.00	0.00	0.65	8.45	7.70	7.84
6	2.22	0.00	0.07	8.13	7.83	7.98
7	2.35	0.00	0.10	8.05	7.83	7.99
8	2.55	0.00	0.28	8.04	7.72	7.90
9	2.13	0.00	0.05	8.17	7.88	7.98
10	5.00	0.00	0.34	8.56	7.76	7.88
11	0.87	0.00	0.10	8.02	7.78	7.94
12	2.77	0.00	0.03	8.26	7.93	8.00
13	5.00	0.00	0.06	8.64	7.94	8.02
14	2.74	0.00	0.15	8.26	7.82	7.94
15	1.53	0.00	0.09	8.06	7.88	7.97
16	3.24	0.00	0.18	8.25	7.82	7.99
17	2.10	0.00	0.12	8.22	7.83	7.95
18	2.15	0.00	0.02	8.25	7.92	8.00
19	1.45	0.00	0.17	8.16	7.70	7.94
20	2.19	0.00	0.04	8.22	7.91	7.99
21	2.15	0.00	0.08	8.26	7.85	7.98
22	1.58	0.00	0.01	8.26	7.96	8.01
23	1.19	0.00	0.07	8.06	7.86	8.00
24	1.07	0.00	0.26	8.13	7.73	7.92
25	2.61	0.00	0.14	8.31	7.86	7.95
26	1.80	0.00	0.12	8.16	7.88	7.94
27	1.37	0.00	0.25	8.11	7.78	7.92
28	1.08	0.00	0.32	8.15	7.73	7.89
29	0.96	0.00	0.13	8.17	7.78	7.92
30	1.32	0.00	0.02	8.05	7.68	7.99
31	0.51	0.00	0.25	7.97	7.70	7.86
Total						
Average	2.31	0.00	0.14	8.20	7.82	7.95
Maximum	5.00		0.65	8.64		8.02
Date	5-Jan		5-Jan	13-Jan		13-Jan
Minimum		0.00	0.01		7.68	7.84
Date		21-Jan	22-Jan		30-Jan	5-Jan

Notes:



# Plant Quality Report

Month: January-17



Date	Discharge UV Chlorine Residual			Discharge UV pH		
	AIT_5006_CL (ppm)			AIT_5006_PH		
	Maximum	Minimum	Average	Maximum	Minimum	Average
1	3.75	0.59	1.49	8.23	7.87	8.04
2	4.32	0.57	1.51	8.23	7.84	8.04
3	4.22	0.63	1.49	8.28	7.84	8.04
4	4.50	0.27	1.47	8.29	7.93	8.10
5	5.00	0.75	1.68	8.32	7.64	7.89
6	5.00	0.31	1.53	8.39	7.83	8.08
7	5.00	0.58	1.51	8.29	7.83	8.08
8	5.00	0.24	1.64	8.41	7.67	7.98
9	5.00	0.55	1.51	8.32	7.90	8.08
10	5.00	0.26	1.66	8.38	7.71	7.95
11	5.00	0.31	1.61	8.35	7.74	8.03
12	5.00	0.57	1.55	8.29	7.94	8.10
13	5.00	0.43	1.58	8.58	7.97	8.12
14	5.00	0.43	1.57	8.38	7.81	8.02
15	5.00	0.46	1.60	8.32	7.87	8.06
16	4.13	0.41	1.52	8.26	7.83	8.07
17	4.00	0.16	1.48	8.28	7.81	8.04
18	5.00	0.11	1.55	8.28	7.93	8.11
19	5.00	0.22	1.82	8.36	7.71	8.01
20	4.76	0.13	1.64	8.23	7.90	8.07
21	5.00	0.22	1.68	8.29	7.81	8.05
22	5.00	0.13	1.56	8.29	7.97	8.10
23	4.91	0.16	1.56	8.22	7.83	8.07
24	5.00	0.25	1.82	8.26	7.70	7.97
25	5.00	0.19	1.55	8.25	7.90	8.03
26	4.38	0.61	1.53	8.20	7.90	8.03
27	5.00	0.17	1.57	8.26	7.72	7.99
28	3.82	0.72	1.61	8.16	7.68	7.94
29	3.97	0.81	1.53	8.20	7.79	8.01
30	3.38	0.75	1.47	8.25	7.70	8.10
31	4.33	0.59	1.56	8.13	7.68	7.91
Total						
Average	4.66	0.41	1.58	8.29	7.81	8.04
Maximum	5.00		1.82	8.58		8.12
Date	5-Jan		24-Jan	13-Jan		13-Jan
Minimum		0.11	1.47		7.64	7.89
Date		18-Jan	4-Jan		5-Jan	5-Jan

Notes:

---



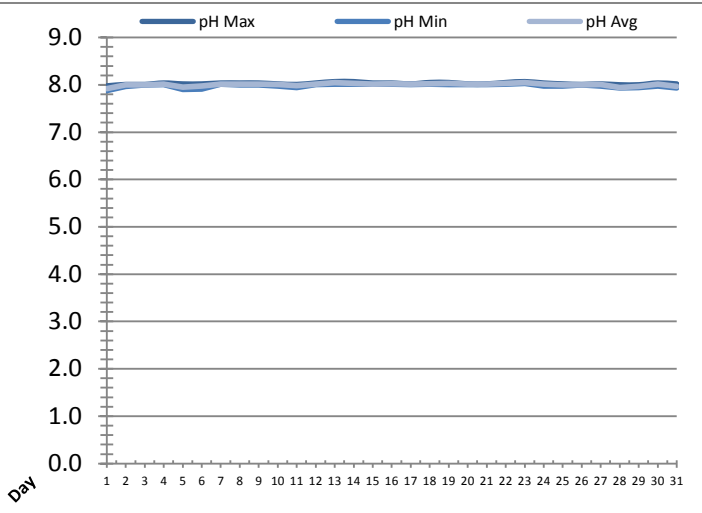
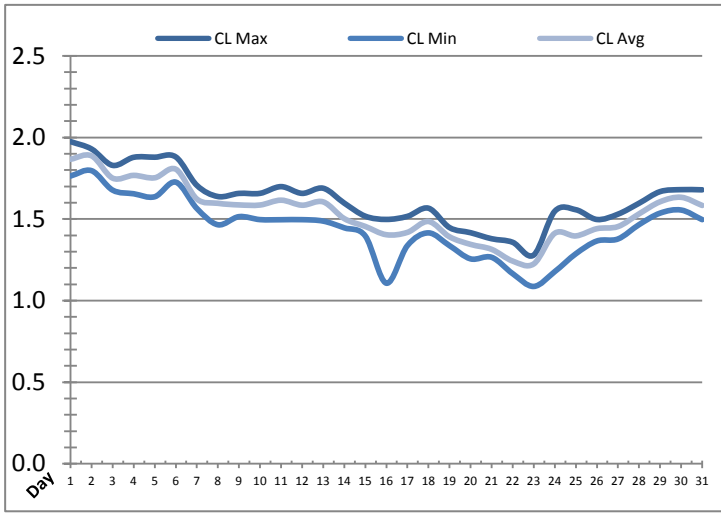
---



---

# Plant Quality Report

Month: January-17

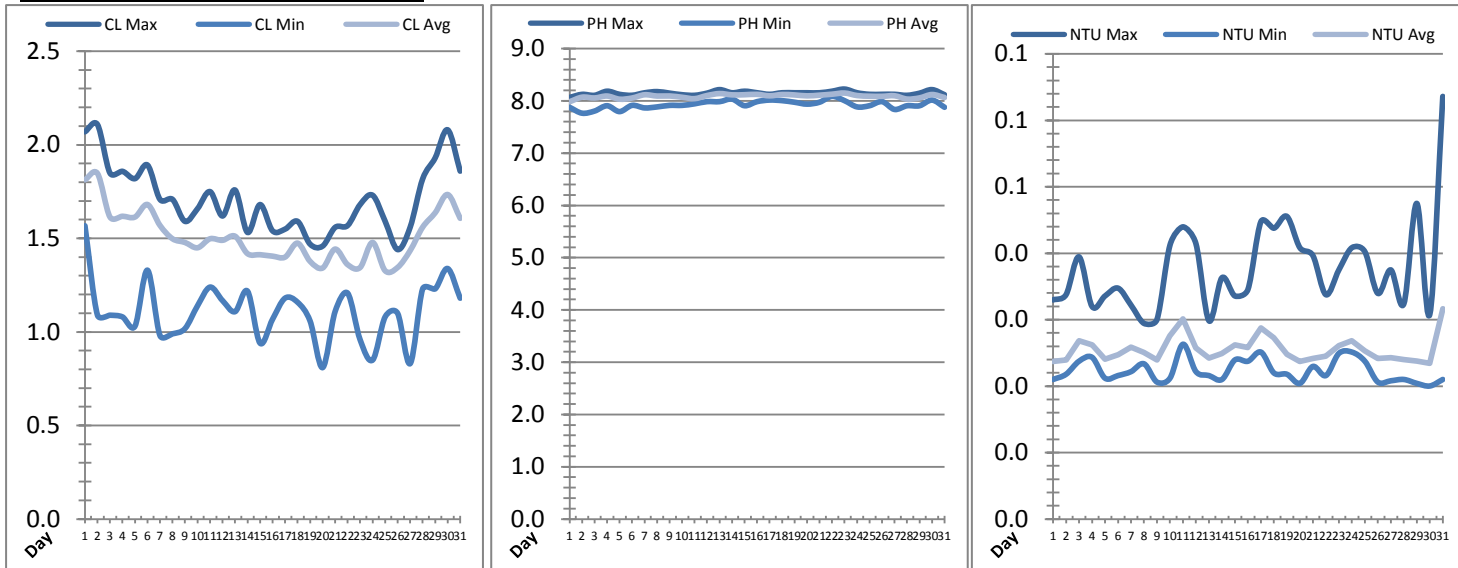


Date	Suction Header Chlorine Res.			Suction Header pH			Distribution CT Calc Total		
	AIT_7001_CL (ppm)			AIT_7001_PH (m)			REAL_CT_CALC_TOTAL (mg*ml/min)		
	Maximum	Minimum	Average	Maximum	Minimum	Average	Maximum	Minimum	Average
1	1.98	1.76	1.87	7.98	7.88	7.92	11723.50	0.00	302.65
2	1.93	1.80	1.89	8.01	7.97	8.00	3598.33	0.00	279.26
3	1.83	1.68	1.75	8.01	8.00	8.00	7024.17	0.00	153.05
4	1.88	1.66	1.77	8.04	8.00	8.02	5159.85	0.00	154.31
5	1.88	1.64	1.75	8.02	7.91	7.95	9101.05	0.00	413.45
6	1.88	1.73	1.81	8.02	7.91	7.97	3330.44	0.00	297.56
7	1.71	1.57	1.62	8.04	8.01	8.02	3459.61	0.00	307.41
8	1.64	1.47	1.60	8.04	8.00	8.01	8822.17	0.00	194.96
9	1.66	1.52	1.59	8.04	8.00	8.02	3129.62	0.00	257.03
10	1.66	1.50	1.59	8.02	7.97	8.00	9005.98	0.00	321.14
11	1.70	1.50	1.62	8.01	7.94	7.98	4980.08	0.00	343.68
12	1.66	1.50	1.59	8.04	8.00	8.02	3743.90	0.00	243.81
13	1.69	1.49	1.61	8.07	8.01	8.05	9165.91	0.00	327.82
14	1.60	1.45	1.50	8.07	8.01	8.03	2813.70	0.00	354.52
15	1.52	1.40	1.46	8.04	8.01	8.02	2669.76	0.00	157.45
16	1.50	1.11	1.40	8.04	8.01	8.03	2883.09	0.00	277.42
17	1.52	1.34	1.42	8.02	8.00	8.02	2653.01	0.00	353.22
18	1.57	1.42	1.49	8.05	8.01	8.03	2819.65	0.00	177.62
19	1.45	1.34	1.39	8.05	8.00	8.03	8428.07	0.00	308.51
20	1.42	1.26	1.35	8.02	8.00	8.02	9341.51	0.00	234.07
21	1.38	1.27	1.31	8.02	8.00	8.02	7855.08	0.00	305.39
22	1.36	1.17	1.24	8.05	8.01	8.03	7214.91	0.00	274.18
23	1.28	1.09	1.23	8.07	8.03	8.05	3158.96	0.00	130.02
24	1.55	1.18	1.41	8.04	7.97	8.01	8544.86	0.00	201.07
25	1.56	1.29	1.40	8.02	7.97	8.00	4062.81	0.00	148.64
26	1.50	1.37	1.44	8.01	8.00	8.00	7241.37	0.00	207.03
27	1.53	1.38	1.45	8.02	7.97	8.00	9039.56	0.00	165.84
28	1.60	1.47	1.53	8.00	7.94	7.95	8224.10	0.00	315.87
29	1.67	1.54	1.61	8.00	7.94	7.97	6170.38	0.00	297.63
30	1.68	1.56	1.63	8.04	7.97	8.01	9832.58	0.00	257.73
31	1.68	1.50	1.58	8.02	7.94	7.97	8071.06	0.00	311.41
Total									
Average	1.63	1.45	1.54	8.03	7.98	8.00	8.03	7.98	8.00
Maximum	1.98		1.89	8.07		8.05	8.07		8.05
Date	1-Jan		2-Jan	23-Jan		13-Jan	23-Jan		13-Jan
Minimum		1.09	1.23		7.88	7.92		7.88	7.92
Date		23-Jan	23-Jan		1-Jan	1-Jan		1-Jan	1-Jan

Notes:

# Plant Quality Report

Month: **January-17**

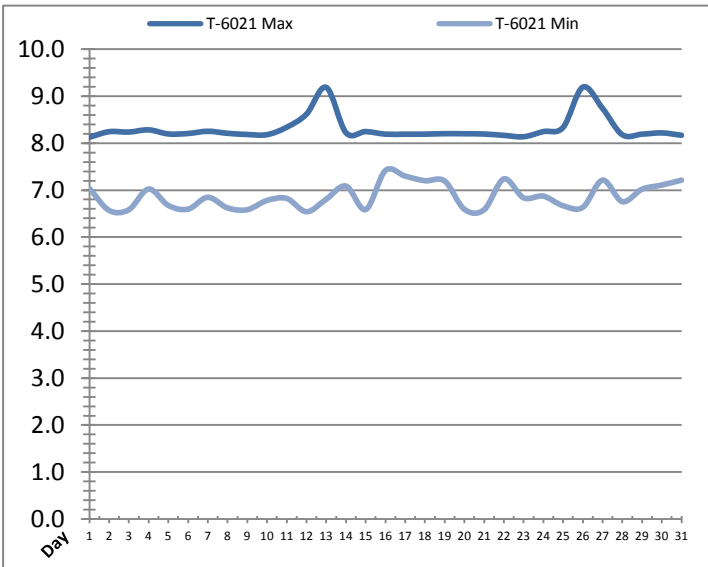
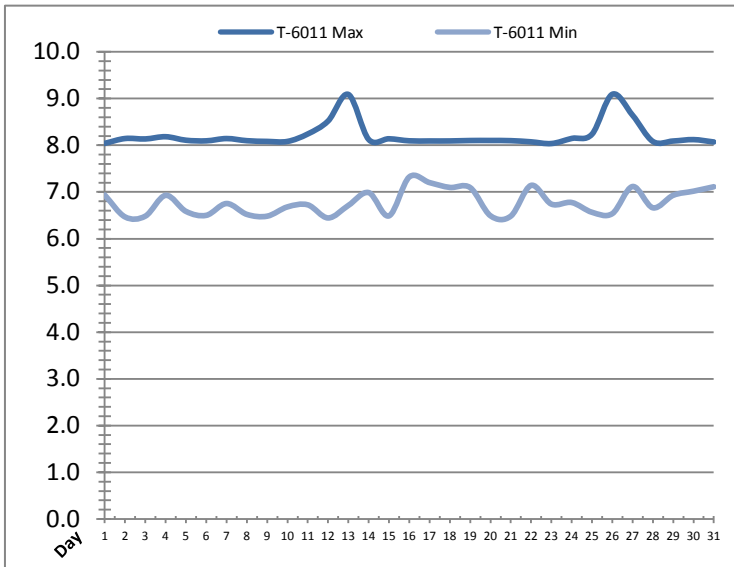


Date	Distribution Chlorine Header			Distribution pH			Distribution Turbidity		
	AIT_7004_CL (ppm)			AIT_7004_PH (mg/L)			AIT_7003 (mg/L)		
	Maximum	Minimum	Average	Maximum	Minimum	Average	Maximum	Minimum	Average
1	2.07	1.57	1.81	8.07	7.88	7.98	0.03	0.02	0.02
2	2.11	1.09	1.85	8.12	7.76	8.07	0.03	0.02	0.02
3	1.85	1.09	1.61	8.11	7.81	8.06	0.04	0.02	0.03
4	1.86	1.08	1.62	8.18	7.91	8.09	0.03	0.02	0.03
5	1.82	1.03	1.61	8.12	7.79	8.03	0.03	0.02	0.02
6	1.89	1.33	1.68	8.11	7.91	8.05	0.03	0.02	0.02
7	1.71	0.98	1.57	8.15	7.86	8.12	0.03	0.02	0.03
8	1.71	0.99	1.50	8.18	7.88	8.09	0.03	0.02	0.03
9	1.59	1.02	1.48	8.15	7.91	8.09	0.03	0.02	0.02
10	1.66	1.14	1.45	8.12	7.91	8.07	0.04	0.02	0.03
11	1.75	1.24	1.50	8.11	7.94	8.04	0.04	0.03	0.03
12	1.62	1.17	1.49	8.15	7.99	8.10	0.04	0.02	0.03
13	1.76	1.11	1.51	8.21	7.98	8.14	0.03	0.02	0.02
14	1.53	1.22	1.42	8.15	8.03	8.11	0.04	0.02	0.02
15	1.68	0.94	1.41	8.18	7.91	8.12	0.03	0.02	0.03
16	1.54	1.07	1.40	8.15	7.98	8.12	0.03	0.02	0.03
17	1.55	1.18	1.40	8.12	8.02	8.10	0.04	0.03	0.03
18	1.59	1.16	1.47	8.15	8.00	8.12	0.04	0.02	0.03
19	1.47	1.06	1.38	8.15	7.97	8.11	0.05	0.02	0.02
20	1.46	0.81	1.34	8.15	7.94	8.10	0.04	0.02	0.02
21	1.56	1.11	1.44	8.15	7.97	8.11	0.04	0.02	0.02
22	1.57	1.21	1.36	8.18	8.09	8.13	0.03	0.02	0.02
23	1.68	0.96	1.34	8.23	8.00	8.15	0.04	0.02	0.03
24	1.73	0.85	1.48	8.15	7.88	8.10	0.04	0.03	0.03
25	1.59	1.08	1.33	8.12	7.91	8.09	0.04	0.02	0.03
26	1.44	1.10	1.34	8.12	7.99	8.09	0.03	0.02	0.02
27	1.56	0.83	1.43	8.13	7.84	8.10	0.04	0.02	0.02
28	1.82	1.23	1.56	8.11	7.91	8.03	0.03	0.02	0.02
29	1.93	1.23	1.64	8.15	7.91	8.06	0.05	0.02	0.02
30	2.08	1.34	1.73	8.21	8.02	8.12	0.03	0.02	0.02
31	1.86	1.18	1.61	8.12	7.88	8.06	0.06	0.02	0.03
Total									
Average	1.71	1.11	1.51	8.15	7.93	8.09	0.0	0.0	0.0
Maximum	2.11		1.85	8.23		8.15	0.1		0.0
Date	2-Jan		2-Jan	23-Jan		23-Jan	31-Jan		31-Jan
Minimum		0.81	1.33		7.76	7.98		0.0	0.0
Date		20-Jan	25-Jan		2-Jan	1-Jan		30-Jan	30-Jan

Notes:

# Raw Well/Treated Storage Report

Month: January-17



Date	Treated Water Storage Tank					
	T-6011 (m)			T-6021 (m)		
	Maximum	Minimum	Average	Maximum	Minimum	Average
1	8.0	6.9	7.6	8.1	7.0	7.7
2	8.1	6.5	7.6	8.2	6.6	7.7
3	8.1	6.5	7.6	8.2	6.6	7.7
4	8.2	6.9	7.8	8.3	7.0	7.9
5	8.1	6.6	7.6	8.2	6.7	7.7
6	8.1	6.5	7.6	8.2	6.6	7.7
7	8.1	6.8	7.7	8.3	6.8	7.8
8	8.1	6.5	7.7	8.2	6.6	7.8
9	8.1	6.5	7.7	8.2	6.6	7.8
10	8.1	6.7	7.6	8.2	6.8	7.7
11	8.2	6.7	7.6	8.3	6.8	7.7
12	8.5	6.4	7.7	8.6	6.5	7.8
13	9.1	6.7	8.2	9.2	6.8	8.3
14	8.1	7.0	7.6	8.2	7.1	7.7
15	8.1	6.5	7.6	8.2	6.6	7.7
16	8.1	7.3	7.8	8.2	7.4	7.9
17	8.1	7.2	7.7	8.2	7.3	7.8
18	8.1	7.1	7.6	8.2	7.2	7.7
19	8.1	7.1	7.7	8.2	7.2	7.8
20	8.1	6.5	7.7	8.2	6.6	7.8
21	8.1	6.5	7.7	8.2	6.6	7.8
22	8.1	7.1	7.7	8.2	7.2	7.8
23	8.0	6.7	7.5	8.1	6.8	7.6
24	8.1	6.8	7.6	8.2	6.9	7.7
25	8.2	6.6	7.7	8.3	6.7	7.8
26	9.1	6.5	8.1	9.2	6.6	8.2
27	8.6	7.1	8.0	8.7	7.2	8.1
28	8.1	6.7	7.6	8.2	6.8	7.7
29	8.1	6.9	7.7	8.2	7.0	7.8
30	8.1	7.0	7.7	8.2	7.1	7.8
31	8.1	7.1	7.6	8.2	7.2	7.7
Total						
Average	8.2	6.8	7.7	8.3	6.9	7.8
Maximum	9.1		8.2	9.2		8.3
Date	26-Jan		13-Jan	26-Jan		13-Jan
Minimum		6.4	7.5		6.5	7.6
Date		12-Jan	23-Jan		12-Jan	23-Jan

Notes:

---



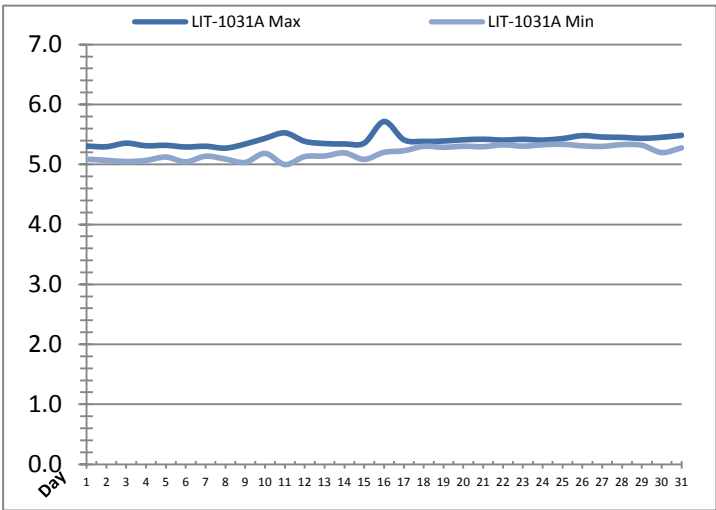
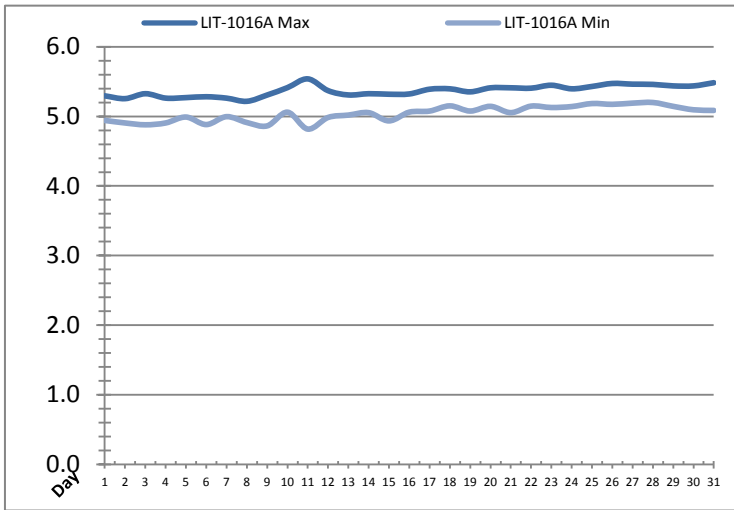
---



---

# Raw Well/Treated Storage Report

Month: January-17



Date	Low Lift Intake Levels					
	Wet Well #1 (LIT-1016A) (m)			Wet Well #2 (LIT-1031A) (m)		
	Maximum	Minimum	Average	Maximum	Minimum	Average
1	5.3	4.9	5.1	5.3	5.1	5.2
2	5.3	4.9	5.1	5.3	5.1	5.2
3	5.3	4.9	5.1	5.4	5.0	5.2
4	5.3	4.9	5.1	5.3	5.1	5.2
5	5.3	5.0	5.1	5.3	5.1	5.2
6	5.3	4.9	5.1	5.3	5.0	5.2
7	5.3	5.0	5.1	5.3	5.1	5.2
8	5.2	4.9	5.1	5.3	5.1	5.2
9	5.3	4.9	5.1	5.3	5.0	5.2
10	5.4	5.1	5.2	5.4	5.2	5.3
11	5.5	4.8	5.1	5.5	5.0	5.2
12	5.4	5.0	5.2	5.4	5.1	5.2
13	5.3	5.0	5.1	5.3	5.1	5.2
14	5.3	5.1	5.2	5.3	5.2	5.3
15	5.3	4.9	5.2	5.4	5.1	5.3
16	5.3	5.1	5.2	5.7	5.2	5.3
17	5.4	5.1	5.2	5.4	5.2	5.3
18	5.4	5.2	5.2	5.4	5.3	5.3
19	5.4	5.1	5.2	5.4	5.3	5.3
20	5.4	5.1	5.3	5.4	5.3	5.4
21	5.4	5.1	5.2	5.4	5.3	5.4
22	5.4	5.1	5.3	5.4	5.3	5.4
23	5.4	5.1	5.3	5.4	5.3	5.4
24	5.4	5.1	5.3	5.4	5.3	5.4
25	5.4	5.2	5.3	5.4	5.3	5.4
26	5.5	5.2	5.3	5.5	5.3	5.4
27	5.5	5.2	5.3	5.5	5.3	5.4
28	5.5	5.2	5.3	5.5	5.3	5.4
29	5.4	5.1	5.3	5.4	5.3	5.4
30	5.4	5.1	5.3	5.5	5.2	5.4
31	5.5	5.1	5.3	5.5	5.3	5.4
Total						
Average	5.4	5.0	5.2	5.4	5.2	5.3
Maximum	5.5		5.3	5.7		5.4
Date	11-Jan		27-Jan	16-Jan		31-Jan
Minimum		4.8	5.1		5.0	5.2
Date		11-Jan	8-Jan		11-Jan	8-Jan

Notes:

---



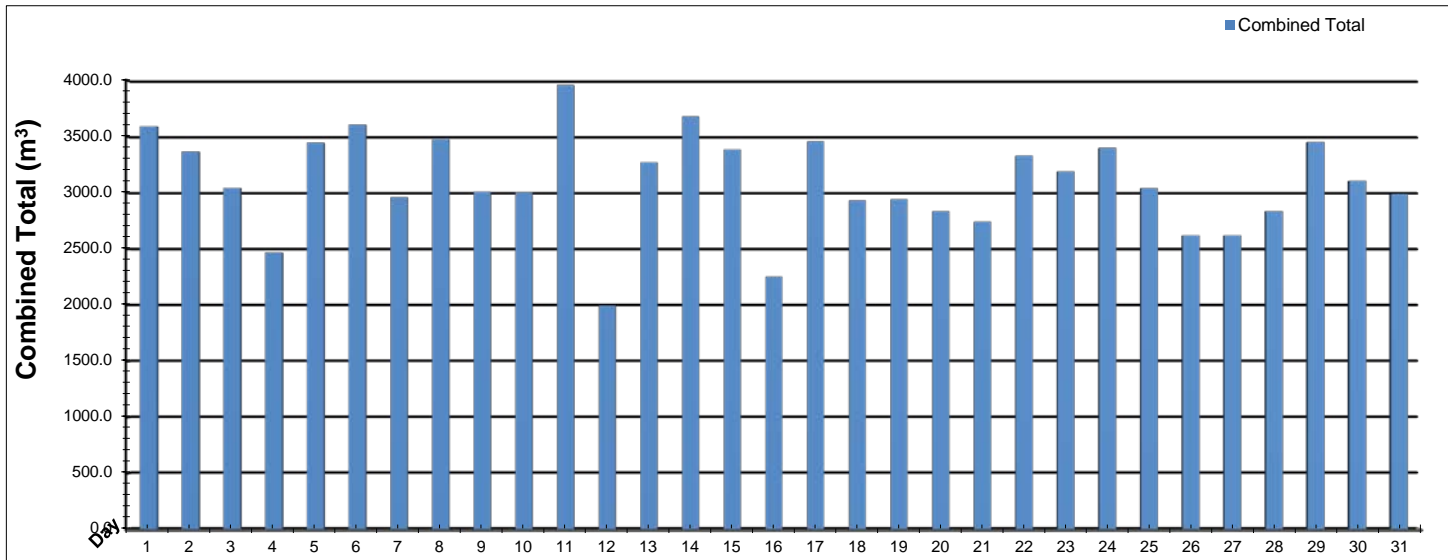
---



---

# High Lift Monthly Report

Month: January-17



Date	Distribution Flow					
	FIT_7052 (East)		FIT_7062 (West)		Combined	
	(m³)	(L/s)	(m³)	(L/s)	(m³)	(L/s)
	Total	Peak	Total	Peak	Total	Peak
1	758.1	40.5	2833.6	108.6	3591.7	138.2
2	656.5	41.4	2711.6	113.3	3368.1	144.9
3	801.7	40.3	2241.9	109.3	3043.6	146.3
4	397.9	40.3	2070.0	102.5	2467.9	140.1
5	915.2	39.7	2531.8	111.2	3447.1	147.4
6	884.3	36.9	2724.1	110.5	3608.4	144.8
7	843.7	38.3	2118.7	110.9	2962.4	147.1
8	867.8	40.9	2609.5	110.4	3477.3	147.3
9	830.4	40.2	2179.8	103.9	3010.2	141.3
10	825.8	39.3	2179.2	110.9	3005.0	146.4
11	775.7	40.6	3184.0	108.4	3959.7	144.0
12	747.4	44.1	1247.5	106.0	1994.9	140.0
13	707.2	39.2	2564.5	108.3	3271.7	144.8
14	935.2	40.1	2745.5	102.6	3680.7	137.1
15	627.0	40.1	2759.5	109.3	3386.5	146.0
16	699.6	33.6	1552.8	81.0	2252.4	81.0
17	947.9	39.3	2509.1	102.6	3456.9	139.2
18	72.3	4.8	2859.4	80.8	2931.8	80.8
19	622.6	33.4	2319.7	81.2	2942.4	81.2
20	928.2	39.2	1906.9	106.6	2835.1	143.7
21	828.2	33.9	1913.9	80.6	2742.1	100.8
22	888.8	39.7	2441.6	102.1	3330.5	138.3
23	442.2	39.4	2748.8	116.7	3190.9	146.9
24	599.6	39.1	2802.0	111.0	3401.7	144.0
25	466.4	36.5	2575.5	112.8	3041.9	146.2
26	586.2	40.9	2034.1	100.6	2620.4	138.3
27	428.9	42.4	2191.6	103.3	2620.5	140.2
28	953.0	39.8	1883.7	86.1	2836.7	121.0
29	811.7	41.4	2642.1	83.5	3453.8	121.5
30	597.8	42.0	2509.3	83.3	3107.1	121.6
31	669.9	44.0	2318.7	82.4	2988.7	100.2
<b>Total</b>	<b>22117.2</b>		<b>73910.9</b>		<b>96028.1</b>	
<b>Average</b>	<b>713.5</b>	<b>38.4</b>	<b>2384.2</b>	<b>101.3</b>	<b>3097.7</b>	<b>132.3</b>
<b>Maximum</b>	<b>953.0</b>	<b>44.1</b>	<b>3184.0</b>	<b>116.7</b>	<b>3959.7</b>	<b>147.4</b>
<b>Date</b>	<b>28-Jan</b>	<b>12-Jan</b>	<b>11-Jan</b>	<b>23-Jan</b>	<b>11-Jan</b>	<b>5-Jan</b>
<b>Minimum</b>	<b>72.3</b>		<b>1247.5</b>		<b>1994.9</b>	
<b>Date</b>	<b>18-Jan</b>		<b>12-Jan</b>		<b>12-Jan</b>	

Notes:

---



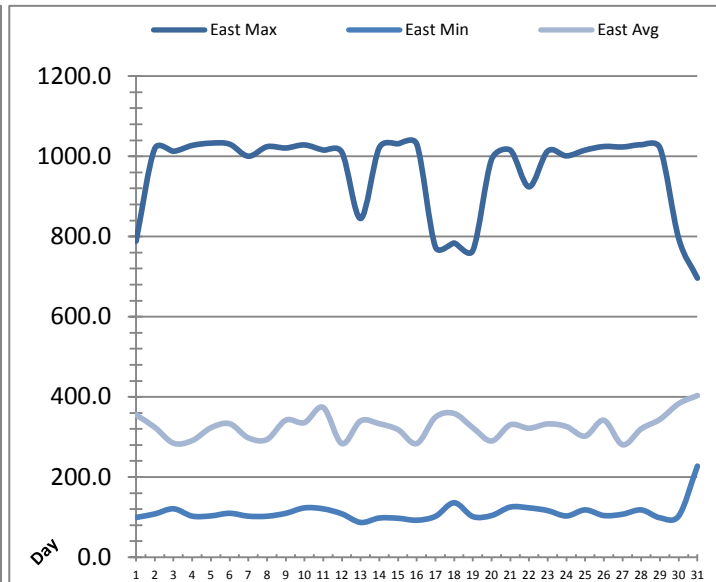
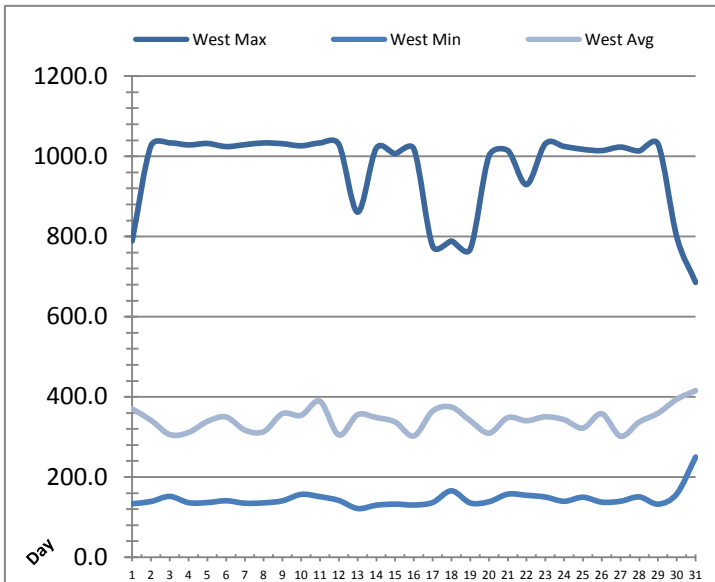
---



---

# Low Lift Monthly Report

Month: **January-17**



Date	West Train Header Pressure PIT_1018 (kPa)			East Train Header Pressure PIT_1028 (kPa)		
	Maximum	Minimum	Average	Maximum	Minimum	Average
1	✓ 789.4	✓ 133.6	370.1	✓ 788.5	✓ 99.3	355.2
2	✓ 1026.4	✓ 139.1	341.7	✓ 1019.4	✓ 108.0	324.2
3	✓ 1033.5	✓ 151.8	306.0	✓ 1012.6	✓ 120.9	284.5
4	✓ 1028.5	✓ 136.2	311.2	✓ 1027.2	✓ 102.6	291.0
5	✓ 1032.1	✓ 136.4	338.8	✓ 1032.9	✓ 103.2	323.0
6	✓ 1024.3	✓ 141.0	349.8	✓ 1030.3	✓ 109.7	333.1
7	✓ 1029.1	✓ 134.8	317.1	✓ 1000.3	✓ 102.5	297.9
8	✓ 1033.5	✓ 135.7	313.3	✓ 1024.1	✓ 102.4	293.8
9	✓ 1031.5	✓ 140.8	358.2	✓ 1020.8	✓ 109.6	342.0
10	✓ 1026.3	✓ 156.8	354.2	✓ 1028.4	✓ 123.2	335.8
11	✓ 1033.4	✓ 151.1	389.0	✓ 1015.7	✓ 120.8	373.7
12	✓ 1030.1	✓ 141.7	305.1	✓ 1010.1	✓ 108.3	283.5
13	✓ 860.7	✓ 121.6	355.5	✓ 844.9	✓ 86.8	340.1
14	✓ 1020.6	✓ 129.9	348.4	✓ 1021.8	✓ 97.9	333.1
15	✓ 1006.6	✓ 132.6	337.4	✓ 1031.4	✓ 97.3	318.4
16	✓ 1018.1	✓ 130.4	302.6	✓ 1030.5	✓ 92.4	283.6
17	✓ 775.5	✓ 136.6	364.8	✓ 773.8	✓ 102.1	349.3
18	✓ 788.6	✓ 165.7	374.4	✓ 783.7	✓ 136.0	358.6
19	✓ 768.7	✓ 135.4	340.6	✓ 765.3	✓ 101.5	323.0
20	✓ 1001.2	✓ 138.5	309.7	✓ 992.3	✓ 104.1	290.0
21	✓ 1014.5	✓ 157.5	348.2	✓ 1015.5	✓ 125.3	330.4
22	✓ 929.7	✓ 154.6	340.5	✓ 923.9	✓ 123.2	321.8
23	✓ 1031.5	✓ 150.2	350.4	✓ 1013.1	✓ 116.4	332.6
24	✓ 1024.6	✓ 139.6	343.0	✓ 1001.2	✓ 103.0	326.0
25	✓ 1017.4	✓ 149.8	322.2	✓ 1015.6	✓ 118.2	302.1
26	✓ 1014.4	✓ 137.6	357.9	✓ 1024.5	✓ 104.1	341.7
27	✓ 1023.0	✓ 139.7	301.8	✓ 1023.3	✓ 107.4	280.6
28	✓ 1013.5	✓ 150.5	337.5	✓ 1028.9	✓ 118.1	320.4
29	✓ 1030.5	✓ 132.6	359.4	✓ 1020.9	✓ 98.4	344.1
30	✓ 798.3	✓ 158.4	394.2	✓ 795.0	✓ 103.0	383.2
31	✓ 685.6	✓ 249.9	415.7	✓ 696.2	✓ 227.3	403.3
Total						
Average	965.8	145.5	343.8	961.7	112.0	326.5
Maximum	1033.5		415.7	1032.9		403.3
Date	3-Jan		31-Jan	5-Jan		31-Jan
Minimum		121.6	301.8		86.8	280.6
Date		13-Jan	27-Jan		13-Jan	27-Jan

Notes:

---



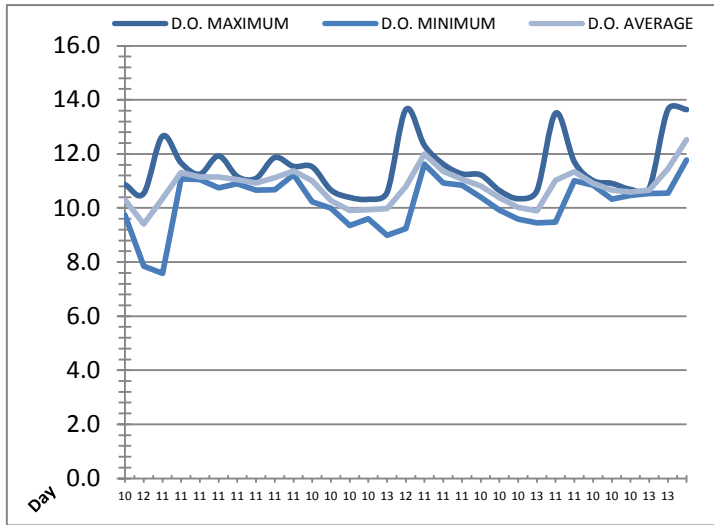
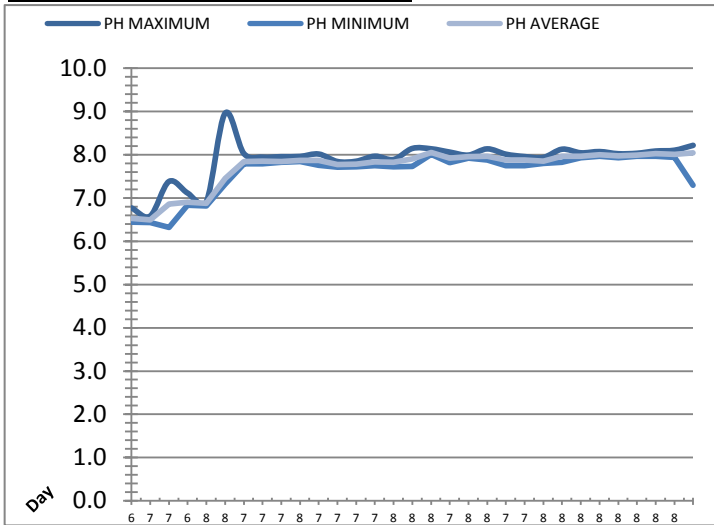
---



---

# Low Lift Monthly Report

Month: **January-17**



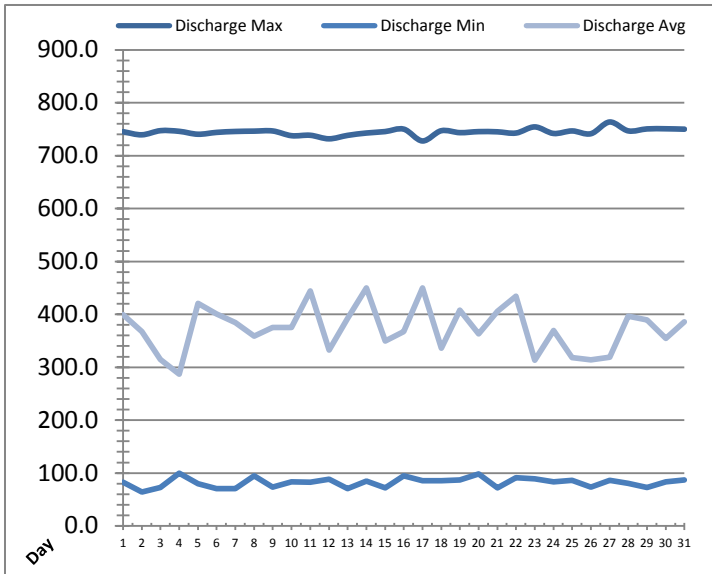
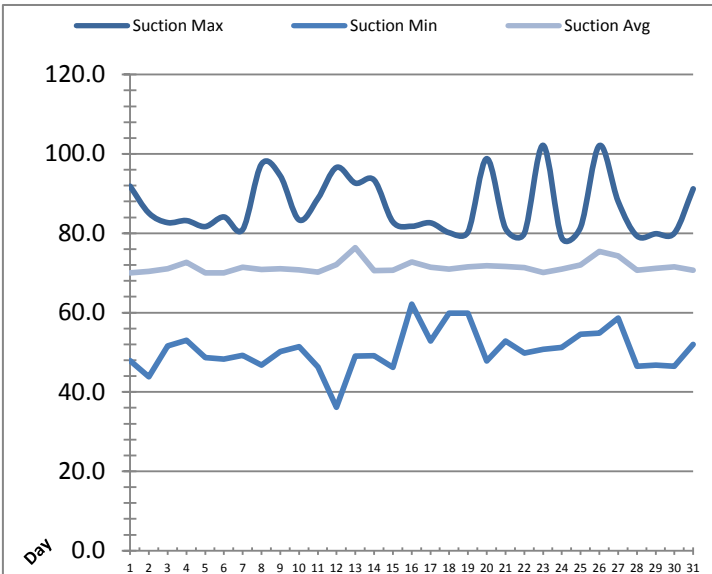
Date	Raw Water Sample Line					
	AIT_1402_PH (pH)			AIT_1402_DO (mg/L)		
	Maximum	Minimum	Average	Maximum	Minimum	Average
1	6.8	6.4	6.5	10.9	9.7	10.3
2	6.6	6.4	6.5	10.5	7.8	9.4
3	7.4	6.3	6.9	12.7	7.6	10.4
4	7.1	6.8	6.9	11.7	11.1	11.3
5	6.9	6.8	6.9	11.3	11.0	11.1
6	9.0	7.3	7.4	11.9	10.7	11.1
7	8.0	7.8	7.8	11.2	10.9	11.0
8	7.9	7.8	7.9	11.1	10.7	10.9
9	8.0	7.8	7.8	11.9	10.7	11.1
10	8.0	7.8	7.9	11.5	11.2	11.4
11	8.0	7.8	7.9	11.5	10.2	11.0
12	7.8	7.7	7.8	10.7	10.0	10.3
13	7.9	7.7	7.8	10.4	9.3	9.9
14	8.0	7.8	7.8	10.3	9.6	9.9
15	7.9	7.7	7.8	10.6	9.0	10.0
16	8.1	7.7	7.9	13.6	9.2	10.8
17	8.1	8.0	8.1	12.3	11.6	12.0
18	8.1	7.8	7.9	11.6	10.9	11.4
19	8.0	7.9	8.0	11.3	10.8	11.1
20	8.1	7.9	8.0	11.2	10.4	10.8
21	8.0	7.8	7.9	10.6	9.9	10.4
22	8.0	7.7	7.9	10.3	9.6	10.0
23	7.9	7.8	7.9	10.6	9.4	9.9
24	8.1	7.8	8.0	13.5	9.5	11.0
25	8.0	7.9	8.0	11.7	11.0	11.3
26	8.1	8.0	8.0	11.0	10.8	10.9
27	8.0	7.9	8.0	10.9	10.3	10.7
28	8.0	8.0	8.0	10.7	10.5	10.6
29	8.1	8.0	8.0	10.7	10.5	10.7
30	8.1	7.9	8.0	13.6	10.5	11.5
31	8.2	7.3	8.0	13.6	11.8	12.5
Total						
Average	7.9	7.6	7.7	11.5	10.2	10.8
Maximum	9.0		8.1	13.6		12.5
Date	6-Jan		17-Jan	16-Jan		31-Jan
Minimum		6.3	6.5		7.6	9.4
Date		3-Jan	2-Jan		3-Jan	2-Jan

Notes:



# High Lift Monthly Report

Month: **January-17**



Date	Suction Header Pressure			Discharge Header Pressure		
	PIT_7002 (kPa)			PIT_7005 (kPa)		
	Maximum	Minimum	Average	Maximum	Minimum	Average
1	91.9	47.9	70.0	745.2	82.8	399.6
2	85.1	43.9	70.3	739.4	64.5	367.0
3	82.7	51.6	71.0	747.2	73.0	314.8
4	83.2	53.1	72.6	745.9	99.4	286.8
5	81.7	48.7	70.0	740.5	79.9	420.9
6	84.1	48.3	70.0	744.0	70.7	400.8
7	80.9	49.2	71.4	745.7	70.4	384.4
8	97.4	46.8	70.8	746.3	94.7	358.6
9	94.5	50.2	71.0	746.6	73.1	375.1
10	83.4	51.4	70.8	737.7	83.1	375.4
11	88.7	46.3	70.2	738.5	82.7	444.4
12	96.6	36.1	72.1	731.8	88.4	332.4
13	92.6	49.0	76.4	738.3	70.4	392.1
14	93.4	49.1	70.6	742.7	85.1	449.6
15	82.9	46.2	70.7	745.5	72.3	349.8
16	81.8	62.1	72.8	750.1	95.0	367.4
17	82.6	52.8	71.5	727.8	85.3	449.9
18	80.1	59.8	71.0	747.1	85.8	336.2
19	80.3	59.9	71.6	743.4	86.8	407.9
20	98.8	47.8	71.8	745.4	98.1	362.9
21	81.2	52.9	71.6	745.0	72.3	406.0
22	80.0	49.8	71.3	742.7	91.1	434.4
23	102.2	50.8	70.1	754.3	89.3	313.1
24	78.8	51.2	71.0	741.9	83.3	369.3
25	81.5	54.5	72.0	746.7	85.9	318.1
26	102.1	54.8	75.4	741.4	73.1	314.2
27	88.0	58.6	74.3	763.6	86.2	319.2
28	79.3	46.5	70.7	746.8	80.2	396.2
29	79.9	46.8	71.1	750.5	72.5	389.2
30	80.1	46.5	71.6	750.8	83.4	354.4
31	91.2	52.0	70.6	750.0	87.0	385.7
Total						
Average	86.7	50.5	71.5	744.6	82.1	373.4
Maximum	102.2		76.4	763.6		449.9
Date	23-Jan		13-Jan	27-Jan		17-Jan
Minimum		36.1	70.0		64.5	286.8
Date		12-Jan	6-Jan		2-Jan	4-Jan

Notes:

---



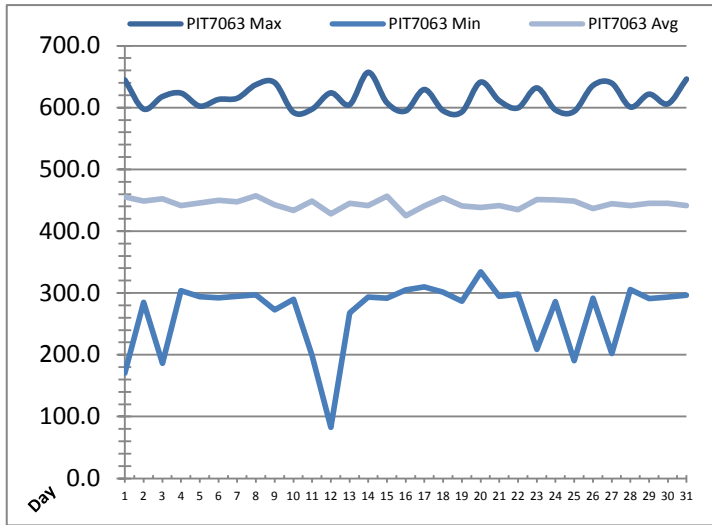
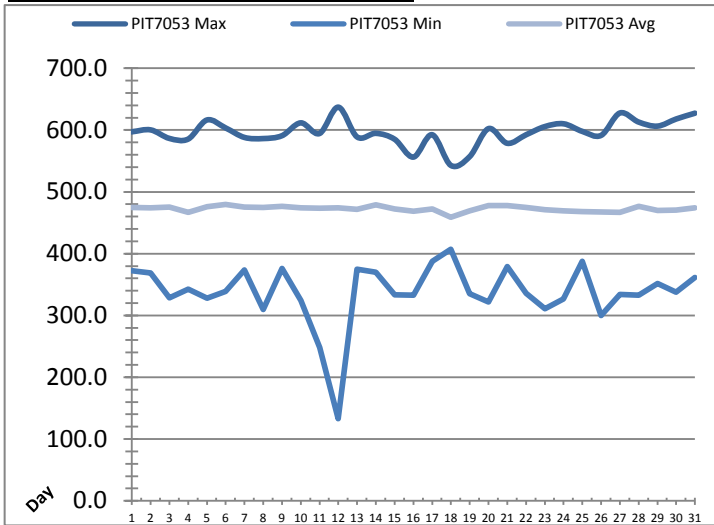
---



---

# High Lift Monthly Report

Month: **January-17**



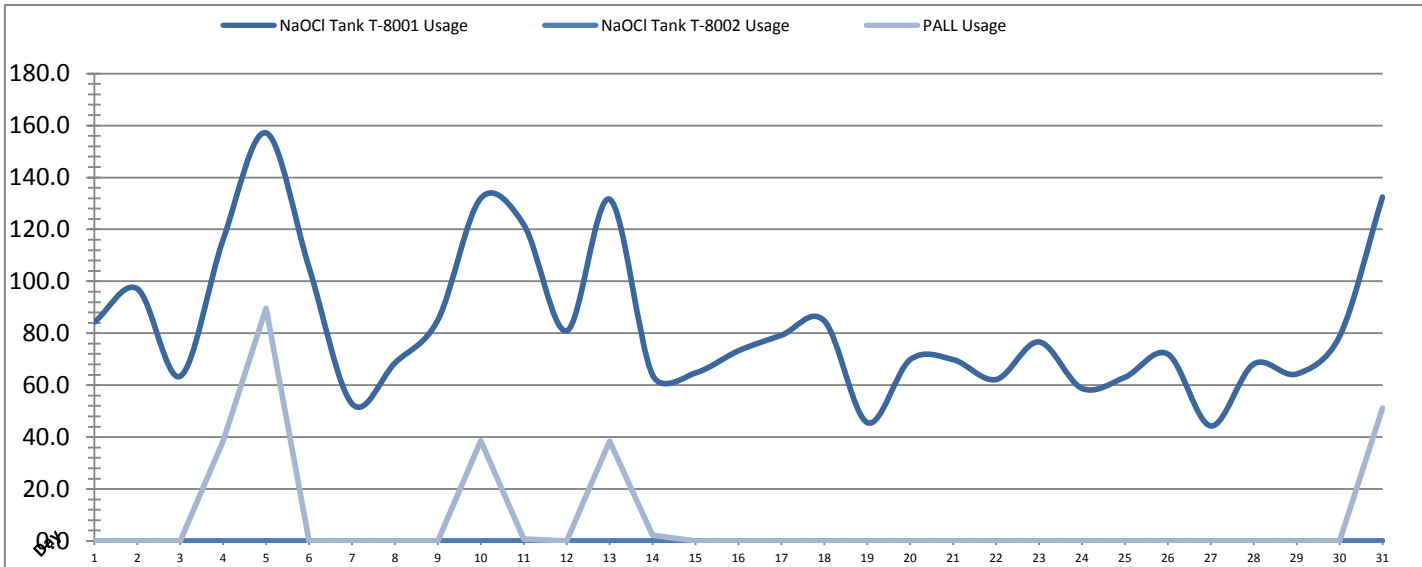
Date	Distribution Pressures					
	PIT_7053 (kPa)			PIT_7063 (kPa)		
	Maximum	Minimum	Average	Maximum	Minimum	Average
1	597.1	372.2	475.0	644.6	170.5	455.3
2	600.3	369.0	474.1	597.7	284.7	448.6
3	586.5	328.2	475.5	617.7	186.0	452.6
4	585.4	342.7	466.6	623.4	303.7	441.1
5	616.3	327.9	475.9	602.4	293.7	445.5
6	603.4	339.0	479.5	613.2	292.2	450.1
7	588.0	373.6	475.3	615.1	294.4	447.5
8	586.2	309.5	475.0	637.1	296.9	457.2
9	590.9	375.9	476.7	640.4	272.8	442.5
10	611.6	324.1	474.1	592.4	289.7	433.3
11	594.4	248.0	473.5	597.5	198.8	448.8
12	637.0	133.1	474.4	623.8	82.3	428.1
13	588.8	374.8	471.6	604.6	267.6	444.8
14	594.7	370.2	479.3	657.0	293.1	441.5
15	585.1	333.3	472.4	607.7	291.5	456.4
16	556.2	332.9	468.6	594.6	305.0	425.2
17	592.4	387.8	472.1	629.2	309.9	440.7
18	542.7	407.4	458.8	594.9	301.1	454.5
19	557.0	335.3	469.3	593.0	286.5	441.1
20	602.3	321.9	478.0	641.2	334.5	438.7
21	578.6	379.2	477.5	611.0	294.4	441.7
22	592.3	335.9	475.0	599.6	298.0	434.6
23	605.6	310.7	471.1	631.8	208.9	451.0
24	610.1	326.9	469.0	596.2	286.3	450.8
25	597.8	387.9	468.3	593.9	190.2	448.8
26	591.4	299.8	467.6	635.7	291.6	436.3
27	627.6	334.1	467.1	639.6	202.2	444.8
28	612.9	332.6	476.5	600.9	305.5	441.3
29	606.3	351.4	470.1	621.7	290.9	445.1
30	617.9	337.6	470.2	606.1	293.1	445.3
31	627.3	361.3	474.1	646.2	296.6	441.2
Total						
Average	596.3	337.6	472.6	616.5	268.1	444.3
Maximum	637.0		479.5	657.0		457.2
Date	12-Jan		6-Jan	14-Jan		8-Jan
Minimum		133.1	458.8		82.3	425.2
Date		12-Jan	18-Jan		12-Jan	16-Jan

Notes:

12: High pressure shutdown of highlift pumps dropped pressure for <1min.

# Chemical Usage Monthly Report

Month: January-17

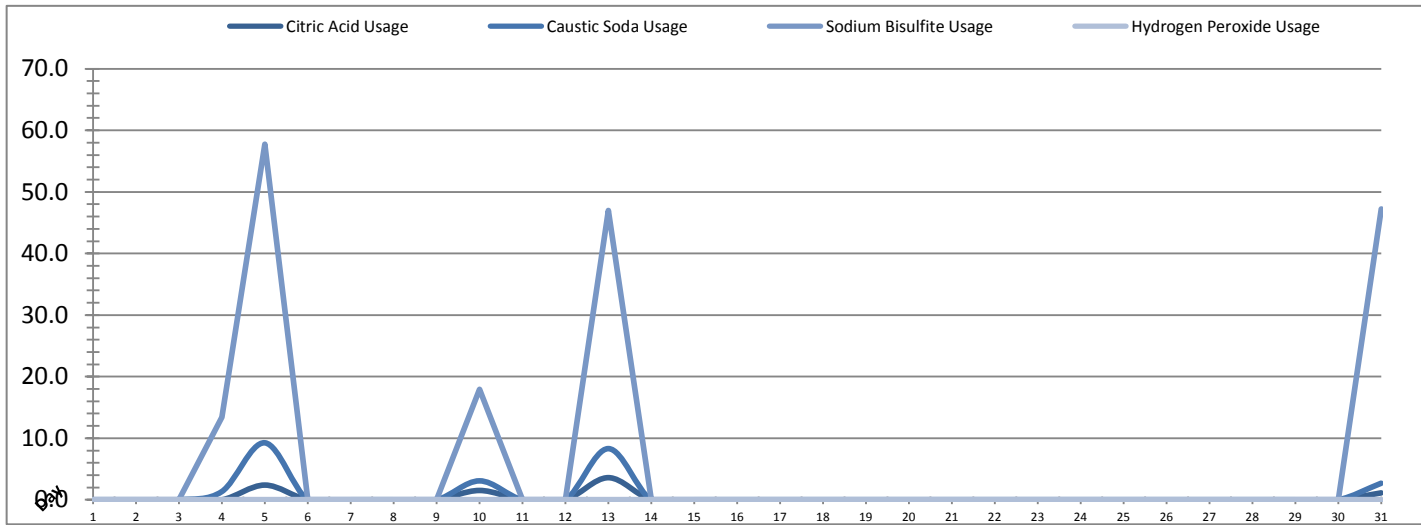


Date	PALL Usage	NaOCl Tank T-8001	NaOCl Tank T-8002
	PALL_HYPO_USAGE (L) Usage	LIT_8002 (Storage) (L) Usage	LIT_8004 (Day) (L) Usage
1	0.0	84.3	0.0
2	0.0	97.1	0.0
3	0.0	63.5	0.0
4	38.6	116.3	0.0
5	89.6	157.1	0.0
6	0.0	105.2	0.0
7	0.0	52.8	0.0
8	0.0	68.6	0.0
9	0.0	85.2	0.0
10	38.5	132.0	0.0
11	0.8	121.8	0.0
12	0.0	80.9	0.0
13	38.5	131.6	0.0
14	2.14	63.88	0.0
15	0.0	64.7	0.0
16	0.0	73.2	0.0
17	0.0	79.2	0.0
18	0.0	84.8	0.0
19	0.0	45.6	0.0
20	0.0	69.8	0.0
21	0.0	69.8	0.0
22	0.0	62.2	0.0
23	0.0	76.7	0.0
24	0.0	58.8	0.0
25	0.0	63.0	0.0
26	0.0	72.0	0.0
27	0.0	44.3	0.0
28	0.0	68.1	0.0
29	0.0	64.3	0.0
30	0.0	78.8	0.0
31	51.2	132.4	0.0
Total	259.3	2568.0	1.1
Average	8.4	82.8	0.0
Maximum	89.6	157.1	0.0
Date	5-Jan	5-Jan	1-Jan
Minimum	0.0	44.3	0.0
Date	1-Jan	27-Jan	1-Jan

Notes:	
Dosage (mg/L)=	Day Tank (L) x %conc. x 1000
	Membrane Flow (m3)
Chlorine Concentration:	12.0%

# Chemical Usage Monthly Report

Month: January-17



Date	Citric Acid	Caustic Soda	Captor	Hydrogen Peroxide		Membrane Flow (m <sup>3</sup> )
	TAGNAME (L) Usage	TAGNAME (L) Usage	TAGNAME (L) Usage	TAGNAME (L) Usage	TAGNAME (mg/L) Dose	
1	0.0	0.0	0.0	0.0	0.0	4055.402
2	0.0	0.0	0.0	0.0	0.0	3596.375
3	0.0	0.0	0.0	0.0	0.0	2869.417
4	0.0	1.3	13.4	0.0	0.0	2868.841
5	2.4	9.3	57.8	0.0	0.0	3487.638
6	0.0	0.0	0.0	0.0	0.0	3881.830
7	0.0	0.0	0.0	0.0	0.0	3167.483
8	0.0	0.0	0.0	0.0	0.0	3033.922
9	0.0	0.0	0.0	0.0	0.0	3944.825
10	1.5	3.1	17.9	0.0	0.0	3130.876
11	0.0	0.0	0.0	0.0	0.0	3864.627
12	0.0	0.0	0.0	0.0	0.0	2287.289
13	3.6	8.3	47.0	0.0	0.0	3629.120
14	0.0	0.0	0.0	0.0	0.0	3837.224
15	0.0	0.0	0.0	0.0	0.0	3544.728
16	0.0	0.0	0.0	0.0	0.0	2594.766
17	0.0	0.0	0.0	0.0	0.0	3373.581
18	0.0	0.0	0.0	0.0	0.0	3331.755
19	0.0	0.0	0.0	0.0	0.0	2893.108
20	0.0	0.0	0.0	0.0	0.0	2407.998
21	0.0	0.0	0.0	0.0	0.0	3523.236
22	0.0	0.0	0.0	0.0	0.0	3214.712
23	0.0	0.0	0.0	0.0	0.0	3450.642
24	0.0	0.0	0.0	0.0	0.0	3367.925
25	0.0	0.0	0.0	0.0	0.0	2871.155
26	0.0	0.0	0.0	0.0	0.0	3459.759
27	0.0	0.0	0.0	0.0	0.0	2333.862
28	0.0	0.0	0.0	0.0	0.0	3089.724
29	0.0	0.0	0.0	0.0	0.0	3491.220
30	0.0	0.0	0.0	0.0	0.0	3201.587
31	1.1	2.7	47.3	0.0	0.0	3438.985
<b>Total</b>	8.6	24.7	183.3	0.0		101243.6
<b>Average</b>	0.3	0.8	5.9	0.0	0.0	3265.9
<b>Maximum</b>	3.6	9.3	57.8	0.0	0.0	4055.4
<b>Date</b>	13-Jan	5-Jan	5-Jan	1-Jan	1-Jan	1-Jan
<b>Minimum</b>	0.0	0.0	0.0	0.0	0.0	2287.3
<b>Date</b>	1-Jan	1-Jan	1-Jan	1-Jan	1-Jan	12-Jan

Notes:	
Dosage (mg/L)=	Day Tank (L) x %conc. x 1000
	Membrane Flow (m3)
Peroxide Concentration:	50.0%

# Runtimes Report

Month: January-17

Date	Daily Gen-Set Runtimes		Daily UV Runtimes		Daily PALL Runtimes				
	LLPS	WTP	UV #1	UV #2	Air Compressor #1	Air Compressor #2	CIP Neutralization	CIP Drain	CIP Recirc
	(Hrs)	(Hrs)	(Hrs)	(Hrs)	(Hrs)	(Hrs)	(Hrs)	(Hrs)	(Hrs)
1	0.0	0.0	0.0	0.0	24.4	0.0	0.0	0.0	0.0
2	0.0	0.0	0.0	0.0	24.4	0.0	0.0	0.0	0.0
3	0.0	0.0	0.0	0.0	24.4	0.0	0.0	0.0	0.0
4	0.0	0.0	0.0	0.0	24.4	0.0	0.1	0.1	0.5
5	0.0	0.0	0.0	0.0	24.4	0.0	0.4	0.2	1.1
6	0.0	0.0	0.0	0.0	24.4	0.0	0.0	0.0	0.0
7	0.0	0.0	0.0	0.0	24.4	0.0	0.0	0.0	0.0
8	0.0	0.0	0.0	0.0	24.4	0.0	0.0	0.0	0.0
9	0.0	0.0	0.0	0.0	24.4	0.0	0.0	0.0	0.0
10	0.0	0.0	0.0	0.0	24.4	0.0	0.2	0.2	0.5
11	0.0	0.0	0.0	0.0	21.3	0.0	0.0	0.0	0.0
12	0.0	0.0	0.0	0.0	17.8	0.0	0.0	0.0	0.0
13	0.0	0.0	0.0	0.0	24.4	0.0	0.2	0.2	1.0
14	0.0	0.0	0.0	0.0	24.4	0.0	0.0	0.0	0.0
15	0.0	0.0	0.0	0.0	24.4	0.0	0.0	0.0	0.0
16	0.0	0.0	0.0	0.0	24.4	0.0	0.0	0.0	0.0
17	0.0	0.0	0.0	0.0	24.4	0.0	0.0	0.0	0.0
18	0.0	0.0	0.0	0.0	24.4	0.0	0.0	0.0	0.0
19	0.0	0.0	0.0	0.0	24.4	0.0	0.0	0.0	0.0
20	0.0	0.0	0.0	0.0	24.4	0.0	0.0	0.0	0.0
21	0.0	0.0	0.0	0.0	24.4	0.0	0.0	0.0	0.0
22	0.0	0.0	0.0	0.0	24.4	0.0	0.0	0.0	0.0
23	0.0	0.0	0.0	0.0	24.4	0.0	0.0	0.0	0.0
24	0.9	0.9	0.0	0.0	24.4	0.0	0.0	0.0	0.0
25	0.0	0.0	0.0	0.0	24.4	0.0	0.2	0.0	0.0
26	0.0	0.0	0.0	0.0	24.4	0.0	0.0	0.0	0.0
27	0.0	0.0	0.0	0.0	24.4	0.0	0.0	0.0	0.0
28	0.0	0.0	0.0	0.0	24.4	0.0	0.0	0.0	0.0
29	0.0	0.0	0.0	0.0	24.4	0.0	0.0	0.0	0.0
30	0.0	0.0	0.0	0.0	24.4	0.0	0.0	0.0	0.0
31	0.0	0.0	0.0	0.0	24.4	0.0	0.0	0.0	0.1
<b>Total</b>	<b>0.9</b>	<b>0.9</b>	<b>0.0</b>	<b>0.0</b>	<b>746.0</b>	<b>0.0</b>	<b>1.1</b>	<b>0.7</b>	<b>3.2</b>

Notes:

# Runtimes Report

Month: January-17

## Daily

Date	PALL Runtimes						Process Drain	
	RFR Pump #1	RFR Pump #2	RF Pump #1	RF Pump #2	XR Pump #1	XR Pump #2	PDP9010 Pump	PDP9020 Pump
	(Hrs)	(Hrs)	(Hrs)	(Hrs)	(Hrs)	(Hrs)	(Hrs)	(Hrs)
1	3.8	3.8	0.6	0.7	7.2	7.0	1.8	2.5
2	3.6	3.5	0.6	0.6	5.3	5.5	1.9	2.6
3	2.7	2.8	0.5	0.3	4.4	4.3	2.0	2.8
4	2.7	2.6	0.5	0.5	5.2	5.2	2.1	2.8
5	2.5	2.6	0.4	0.6	6.6	6.4	1.9	2.5
6	2.9	2.6	0.6	0.5	6.3	6.7	1.8	2.7
7	2.9	3.0	0.5	0.5	5.8	6.0	1.9	2.5
8	2.8	2.9	0.5	0.4	6.0	5.5	2.0	2.7
9	3.6	3.7	0.7	0.6	6.2	6.2	1.9	2.6
10	3.1	3.1	0.6	0.5	4.5	4.5	1.9	2.7
11	2.9	2.9	0.5	0.6	5.1	5.1	2.1	2.6
12	0.9	1.3	0.3	0.3	4.2	4.4	2.1	3.3
13	3.3	2.7	0.6	0.5	7.0	7.1	2.1	2.9
14	3.6	3.4	0.6	0.5	7.3	7.3	1.8	2.4
15	3.3	3.6	0.6	0.7	5.0	5.0	2.0	2.7
16	2.5	2.6	0.4	0.3	4.9	4.7	1.9	2.6
17	1.5	1.6	0.4	0.5	6.2	6.3	1.8	2.4
18	0.0	0.0	0.4	0.4	6.1	6.0	2.0	2.7
19	0.0	0.0	0.4	0.4	5.4	5.5	1.7	2.4
20	0.0	0.0	0.3	0.3	4.7	4.6	1.9	2.6
21	0.0	0.0	0.5	0.4	6.7	6.4	1.9	2.5
22	0.0	0.0	0.4	0.4	6.7	7.2	1.7	2.4
23	0.0	0.0	0.4	0.5	7.3	7.5	2.0	2.8
24	0.0	0.0	0.5	0.4	8.3	6.0	1.9	2.5
25	0.0	0.0	0.3	0.4	4.5	7.8	2.0	2.8
26	0.0	0.0	0.4	0.4	7.7	6.5	2.2	2.9
27	0.0	0.0	0.4	0.2	4.6	4.6	2.1	2.8
28	0.0	0.0	0.4	0.4	6.2	6.2	1.8	2.6
29	0.0	0.0	0.4	0.5	7.0	7.2	1.9	2.6
30	0.0	0.0	0.3	0.4	6.6	6.7	2.2	2.7
31	0.0	0.0	0.4	0.4	6.9	7.0	1.8	2.5
<b>Total</b>	<b>48.4</b>	<b>48.5</b>	<b>14.4</b>	<b>14.1</b>	<b>185.2</b>	<b>185.7</b>	<b>60.2</b>	<b>82.1</b>

Notes:

# Runtimes Report

Month: January-17

## Daily

Date	Low Lift Pump Motor Runtimes				High Lift Pump Motor Runtimes			
	LLP1010 (Hrs)	LLP1020 (Hrs)	LLP1030 (Hrs)	LLP1040 (Hrs)	HLP7010 (Hrs)	HLP7020 (Hrs)	HLP7030 (Hrs)	HLP7040 (Hrs)
1	5.5	5.6	2.6	3.0	5.7	0.0	7.7	4.1
2	5.0	2.8	5.0	2.8	10.1	0.0	2.6	3.0
3	1.6	4.0	2.8	4.0	6.1	0.0	6.7	2.2
4	0.6	4.3	2.4	4.6	3.4	0.0	6.1	2.0
5	5.6	4.0	4.0	0.9	4.1	0.0	7.6	5.8
6	5.0	2.0	4.1	5.5	5.0	0.0	7.5	5.0
7	3.2	3.6	4.8	1.2	3.9	0.0	7.0	4.6
8	1.5	3.9	2.8	4.2	1.3	0.0	7.5	8.3
9	6.0	2.9	6.1	1.9	3.7	0.0	7.2	4.6
10	3.5	2.8	2.7	4.7	4.4	0.0	7.9	2.6
11	3.2	3.6	7.6	4.1	11.7	0.0	1.6	5.0
12	3.1	2.2	3.1	2.2	2.7	0.0	5.0	3.7
13	2.8	4.6	3.6	4.3	4.8	0.0	4.9	5.9
14	5.6	2.9	3.8	3.2	5.8	0.0	5.1	7.2
15	4.6	5.6	3.5	2.1	3.3	0.0	6.1	6.6
16	4.7	0.3	3.1	2.5	2.9	0.0	5.8	3.4
17	0.9	3.0	5.6	5.2	4.5	0.0	4.4	8.7
18	5.5	3.5	2.5	3.8	3.8	0.0	4.1	4.2
19	4.7	2.9	0.5	5.1	3.6	0.0	9.4	1.8
20	1.0	2.8	4.7	2.5	8.0	0.0	3.2	3.6
21	1.8	7.1	3.4	4.1	8.7	0.0	5.1	1.3
22	1.1	5.5	6.2	1.3	4.0	0.0	3.9	8.8
23	2.2	5.0	4.9	3.0	2.1	0.0	3.5	8.2
24	4.5	1.8	2.8	5.6	5.9	0.0	5.5	3.9
25	2.6	4.5	2.8	2.8	4.5	0.0	5.3	3.5
26	3.0	3.0	5.2	4.3	3.0	0.0	2.6	5.6
27	3.0	3.0	0.5	4.0	6.0	0.0	3.4	2.5
28	3.5	2.7	5.2	2.3	4.6	0.0	5.2	5.2
29	5.6	3.0	1.3	5.5	9.1	0.0	2.9	3.4
30	1.2	4.3	6.0	4.7	3.5	0.0	3.2	6.7
31	3.5	4.3	4.6	2.8	4.3	0.0	5.5	5.0
<b>Total</b>	<b>105.6</b>	<b>111.5</b>	<b>118.2</b>	<b>108.2</b>	<b>154.5</b>	<b>0.0</b>	<b>163.5</b>	<b>146.4</b>

Notes:

# Plant Internal Flow Report

Month: January-17

Date	Settling Tank Level		Process Drain Tank		Settling Tank Flow		Potable Water Flow		Non-Potable Flow	
	T-9003 (m)		T-9001 (m)		FIT_9005 (m <sup>3</sup> ) (L/s)		FIT_7082 (m <sup>3</sup> ) (L/s)		FIT_7092 (m <sup>3</sup> ) (L/s)	
	Maximum	Minimum	Maximum	Minimum	Total	Peak	Total	Peak	Total	Peak
1	2.2	0.1	0.8	0.4	28.3	15.7	0.0	0.0	0.0	0.0
2	2.2	0.1	0.8	0.4	38.1	15.7	0.0	1.3	0.0	0.0
3	2.2	0.2	0.8	0.1	37.2	15.7	0.0	1.4	0.0	0.0
4	2.2	0.1	0.8	0.4	25.5	15.7	0.1	1.4	11.2	15.9
5	2.2	0.1	1.0	0.4	34.3	15.7	0.0	1.4	27.1	22.7
6	2.2	0.1	1.2	0.4	49.5	15.7	0.1	1.4	0.7	1.3
7	2.2	0.1	0.9	0.4	12.4	8.9	0.0	0.0	0.0	0.0
8	2.2	0.1	0.8	0.4	33.3	13.3	0.0	0.0	0.0	0.0
9	2.2	0.1	0.8	0.4	413.4	15.7	0.0	1.3	0.0	0.0
10	2.2	0.2	1.2	0.4	208.2	15.7	0.1	1.4	11.2	16.0
11	2.2	0.1	1.7	0.4	122.7	15.7	0.0	1.4	0.0	0.5
12	2.2	0.1	1.7	0.4	106.0	15.7	0.1	1.6	0.0	0.0
13	2.2	0.1	1.3	0.4	34.4	15.7	0.1	1.4	21.6	17.9
14	2.2	0.1	0.8	0.4	21.3	10.9	0.0	0.0	0.0	0.0
15	2.2	0.1	0.8	0.4	30.2	13.9	0.0	0.0	0.0	0.0
16	2.2	0.2	1.0	0.4	14.6	10.1	0.1	1.4	0.0	0.0
17	2.2	0.3	1.0	0.4	85.8	15.7	0.6	1.6	0.0	0.0
18	2.2	0.1	0.8	0.4	170.8	15.7	0.2	2.1	0.0	0.0
19	2.2	0.3	0.8	0.4	98.0	15.7	0.1	1.4	0.0	0.0
20	2.2	0.1	0.8	0.4	80.5	15.7	0.1	1.4	0.0	0.0
21	2.2	0.1	0.8	0.4	138.8	15.7	0.0	0.0	0.0	0.0
22	2.2	0.2	0.8	0.4	139.7	15.7	0.0	0.0	0.0	0.0
23	2.2	0.3	0.8	0.4	155.3	15.7	0.0	1.3	0.4	1.1
24	2.2	0.1	0.8	0.4	107.3	15.7	0.1	1.3	0.0	0.0
25	2.2	0.1	0.8	0.4	118.0	15.7	0.1	1.3	0.0	0.0
26	2.2	0.1	0.8	0.4	118.7	15.7	0.1	1.2	0.0	0.0
27	2.2	0.1	0.8	0.4	74.2	15.7	0.0	1.4	0.7	1.1
28	2.2	0.1	0.8	0.4	96.8	15.7	0.0	0.0	0.0	0.0
29	2.2	0.1	0.8	0.4	95.3	15.7	0.0	0.0	0.0	0.0
30	2.2	0.1	1.4	0.4	103.8	15.7	0.1	1.4	0.0	0.0
31	2.2	0.3	0.8	0.4	116.6	15.7	0.1	1.4	9.0	23.8
<b>Total</b>					2909.3		2.1		81.9	
<b>Average</b>	2.2	0.1	1.0	0.4	93.8	15.0	0.1	1.0	2.6	3.2
<b>Maximum</b>	2.2		1.7		413.4		0.6		27.1	
<b>Date</b>	21-Jan		11-Jan		9-Jan		17-Jan		5-Jan	
<b>Minimum</b>		0.1		0.1		8.9		0.0		0.0
<b>Date</b>		11-Jan		3-Jan		7-Jan		1-Jan		1-Jan

Notes: