

Municipality of West Elgin - Tri County Water System

Goto:

Month:

Year:

Date is Set to:

Limit	Low	High	
Raw Water Chlorine Residual:	0.00	5.00	mg/L
Pre-Strainer Chlorine Residual:	0.00	5.00	mg/L
UV Inlet Chlorine Residual:	0.00	5.00	mg/L
Post Treatment Chlorine Residual:	1.00	5.00	mg/L
Treated Chlorine Residual:	1.00	2.50	mg/L
Distribution Chlorine Residual:	1.00	2.50	mg/L
Limit		High	
WTP C of A		156.0	L/s
WTP Permit to Take Water		13500.0	m <sup>3</sup>
Limit	Low	High	
System Pressure Limits:	50.0	1034.0	Kpa

Compliance Report

Low Lift Monthly Report

>>>

Membranes Monthly Report

>>>

UV System Monthly Report

>>>

Plant Quality Report

>>>

Raw Well/Treated Storage Report

>>>

High Lift Monthly Report

>>>

Operational Report

Low Lift Monthly Report

>>>

High Lift Monthly Report

>>>

Chemical Usage Monthly Report

>>>

Runtimes Report

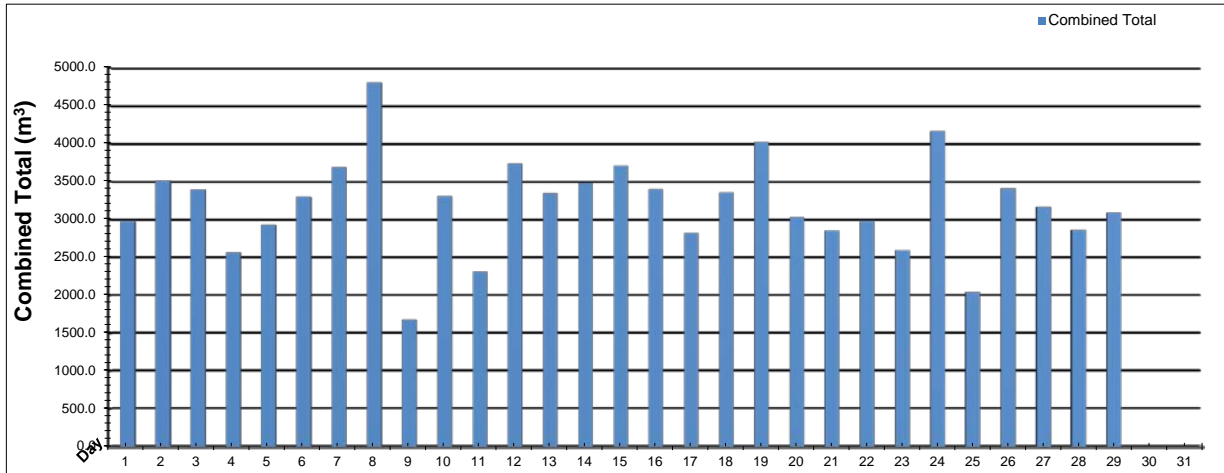
>>>

Plant Internal Flow Report

>>>

# Low Lift Monthly Report

Month: February-16

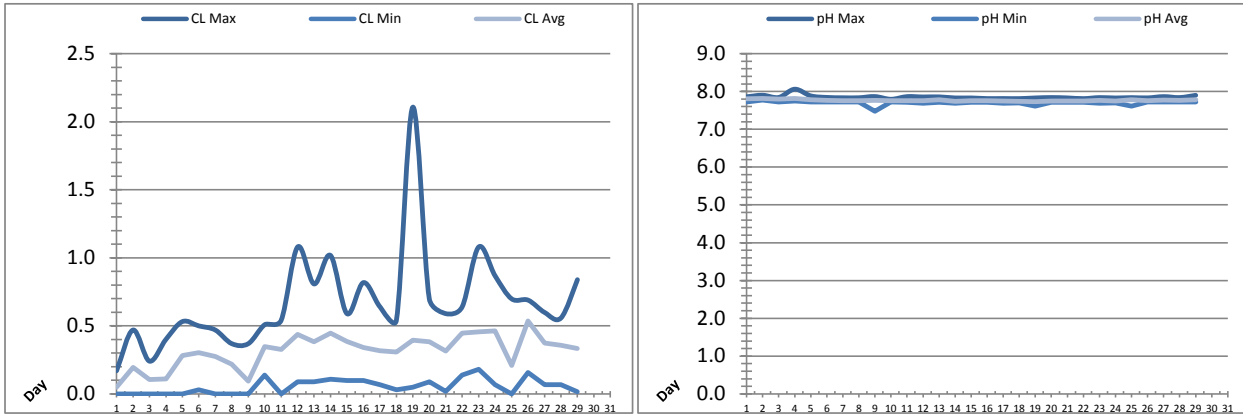


Date	Combined Total (m³)	West Train FIT-1017 (m³)	West Peak Flow FIT-1017 (L/s)	East Train FIT-1027 (m³)	East Peak Flow FIT-1027 (L/s)	Combined Peak Flow (L/s)
1	✓ 2978.7	36.4	74.9	2942.3	79.7	✓ 82.5
2	✓ 3515.5	20.6	57.5	3494.9	80.1	✓ 80.9
3	✓ 3394.2	23.7	54.7	3370.6	77.6	✓ 83.2
4	✓ 2563.4	48.4	96.5	2514.9	76.7	✓ 96.5
5	✓ 2929.8	47.8	106.8	2882.1	79.2	✓ 106.8
6	✓ 3295.4	20.7	40.9	3274.7	78.3	✓ 81.4
7	✓ 3695.4	19.3	41.9	3676.0	75.6	✓ 81.6
8	✓ 4808.3	19.1	50.7	4789.1	121.6	✓ 121.6
9	✓ 1679.6	1087.6	103.8	592.1	155.2	✓ 155.2
10	✓ 3309.0	3003.0	101.3	305.9	92.4	✓ 101.3
11	✓ 2312.7	2285.9	96.2	26.8	62.1	✓ 96.2
12	✓ 3735.9	3735.9	82.5	0.0	0.0	✓ 82.5
13	✓ 3350.2	3350.2	83.2	0.0	0.0	✓ 83.2
14	✓ 3481.6	3481.6	86.9	0.0	0.0	✓ 86.9
15	✓ 3710.4	3710.4	86.1	0.0	0.0	✓ 86.1
16	✓ 3402.4	3402.4	83.9	0.0	0.0	✓ 83.9
17	✓ 2820.1	2820.1	90.0	0.0	0.0	✓ 90.0
18	✓ 3359.4	3359.4	88.4	0.0	0.0	✓ 88.4
19	✓ 4020.3	4020.3	85.8	0.0	0.0	✓ 85.8
20	✓ 3034.0	3034.0	88.3	0.0	0.0	✓ 88.3
21	✓ 2855.7	2855.7	88.1	0.0	0.0	✓ 88.1
22	✓ 2978.7	2978.7	86.7	0.0	0.0	✓ 86.7
23	✓ 2596.7	2596.7	88.1	0.0	0.0	✓ 88.1
24	✓ 4163.9	4163.9	89.7	0.0	0.0	✓ 89.7
25	✓ 2037.5	615.0	89.0	1422.5	89.0	✓ 89.0
26	✓ 3413.8	0.0	0.0	3413.8	78.8	✓ 78.8
27	✓ 3168.1	0.0	0.0	3168.1	82.3	✓ 82.3
28	✓ 2859.4	0.0	0.0	2859.4	82.1	✓ 82.1
29	✓ 3088.9	0.0	0.0	3088.9	81.9	✓ 81.9
Total	92558.8	50736.6		41822.1		
Average	3191.7	1749.5	70.4	1442.1	48.0	90.6
Maximum	4808.3	4163.9	106.82	4789.1	155.15	155.15
Date	8-Feb	24-Feb	5-Feb	8-Feb	9-Feb	9-Feb
Minimum	1679.6	0.0	0.00	0.0	0.00	78.79
Date	9-Feb	29-Feb	26-Feb	15-Feb	12-Feb	26-Feb

Notes:

# Low Lift Monthly Report

Month: February-16



Date	Raw Water Chlorine Residual			Raw Water pH		
	AIT_1401_CL (mg/L)			AIT_1401_PH		
	Maximum	Minimum	Average	Maximum	Minimum	Average
1	0.17	0.00	0.05	7.86	7.72	7.81
2	0.47	0.00	0.20	7.90	7.78	7.82
3	0.24	0.00	0.11	7.84	7.72	7.80
4	0.40	0.00	0.11	8.06	7.75	7.82
5	0.53	0.00	0.28	7.88	7.72	7.78
6	0.50	0.03	0.30	7.84	7.72	7.76
7	0.47	0.00	0.27	7.83	7.72	7.76
8	0.37	0.00	0.22	7.83	7.72	7.76
9	0.37	0.00	0.09	7.87	7.47	7.76
10	0.51	0.14	0.35	7.79	7.72	7.76
11	0.54	0.00	0.33	7.86	7.71	7.75
12	1.08	0.09	0.44	7.86	7.69	7.75
13	0.81	0.09	0.38	7.86	7.71	7.78
14	1.02	0.11	0.45	7.83	7.69	7.74
15	0.59	0.10	0.38	7.83	7.71	7.76
16	0.82	0.10	0.34	7.81	7.71	7.75
17	0.64	0.07	0.32	7.81	7.69	7.75
18	0.54	0.03	0.31	7.81	7.69	7.74
19	2.11	0.05	0.40	7.83	7.62	7.73
20	0.70	0.09	0.38	7.84	7.71	7.75
21	0.59	0.02	0.31	7.83	7.71	7.75
22	0.64	0.14	0.45	7.81	7.71	7.75
23	1.08	0.18	0.46	7.84	7.69	7.77
24	0.87	0.07	0.46	7.83	7.69	7.75
25	0.70	0.00	0.21	7.84	7.61	7.78
26	0.69	0.16	0.54	7.83	7.72	7.76
27	0.60	0.07	0.37	7.86	7.72	7.77
28	0.56	0.07	0.36	7.84	7.72	7.77
29	0.84	0.02	0.33	7.90	7.72	7.78
Total						
Average	0.67	0.06	0.32	7.85	7.70	7.76
Maximum	2.11		0.54	8.06		7.82
Date	19-Feb		26-Feb	4-Feb		4-Feb
Minimum		0.00	0.05		7.47	7.73
Date		1-Feb	1-Feb		9-Feb	19-Feb

Notes:

---



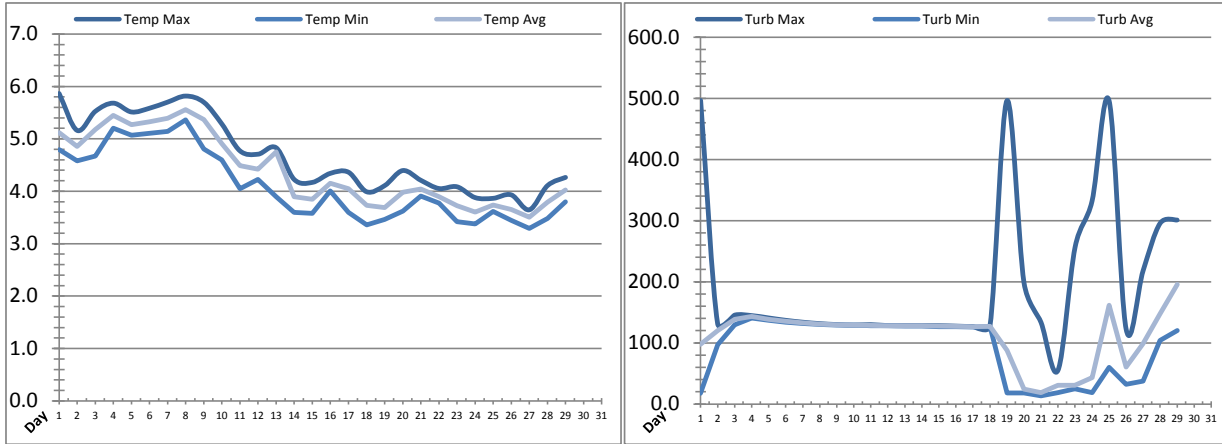
---



---

# Low Lift Monthly Report

Month: February-16



Date	Raw Water Temperature			Raw Water Turbidity		
	TIT_1403 (°C)			AIT_1404 (NTU)		
	Maximum	Minimum	Average	Maximum	Minimum	Average
1	5.9	4.8	5.1	496.46	17.57	97.75
2	5.2	4.6	4.9	131.42	97.35	120.40
3	5.5	4.7	5.2	145.47	129.85	138.32
4	5.7	5.2	5.4	144.70	140.78	143.06
5	5.5	5.1	5.3	140.80	136.90	138.67
6	5.6	5.1	5.3	136.94	133.84	135.32
7	5.7	5.1	5.4	133.88	131.51	132.84
8	5.8	5.4	5.6	131.55	129.97	130.86
9	5.7	4.8	5.4	130.01	129.06	129.45
10	5.3	4.6	4.9	129.15	129.01	129.02
11	4.8	4.0	4.5	129.88	128.24	128.80
12	4.7	4.2	4.4	128.33	128.26	128.29
13	4.8	3.9	4.8	128.37	127.54	128.18
14	4.2	3.6	3.9	128.30	127.49	128.21
15	4.2	3.6	3.8	128.23	126.69	127.75
16	4.3	4.0	4.2	127.51	126.68	126.80
17	4.4	3.6	4.0	126.83	125.96	126.76
18	4.0	3.4	3.7	127.56	126.62	126.90
19	4.1	3.5	3.7	496.18	18.08	87.72
20	4.4	3.6	4.0	198.67	18.10	24.31
21	4.2	3.9	4.0	133.66	13.46	18.67
22	4.1	3.8	3.9	55.39	18.92	30.87
23	4.1	3.4	3.7	256.14	25.06	30.54
24	3.9	3.4	3.6	331.94	18.83	43.48
25	3.9	3.6	3.7	496.07	59.99	161.80
26	3.9	3.4	3.7	122.81	32.14	60.60
27	3.6	3.3	3.5	218.14	37.54	98.90
28	4.1	3.5	3.8	295.67	104.16	147.34
29	4.3	3.8	4.0	301.01	120.44	195.50
Total						
Average	4.7	4.1	4.4	194.9	91.7	110.9
Maximum	5.9		5.6	496.5		195.5
Date	1-Feb		8-Feb	1-Feb		29-Feb
Minimum		3.3	3.5		13.5	18.7
Date		27-Feb	27-Feb		21-Feb	21-Feb

Notes:

---



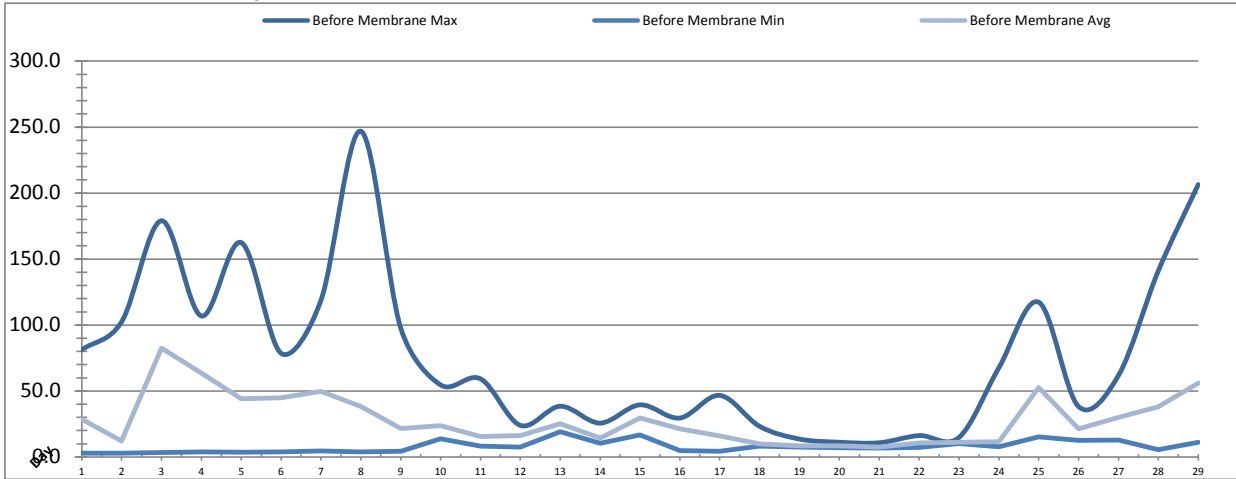
---



---

# Membranes Monthly Report

Month: February-16



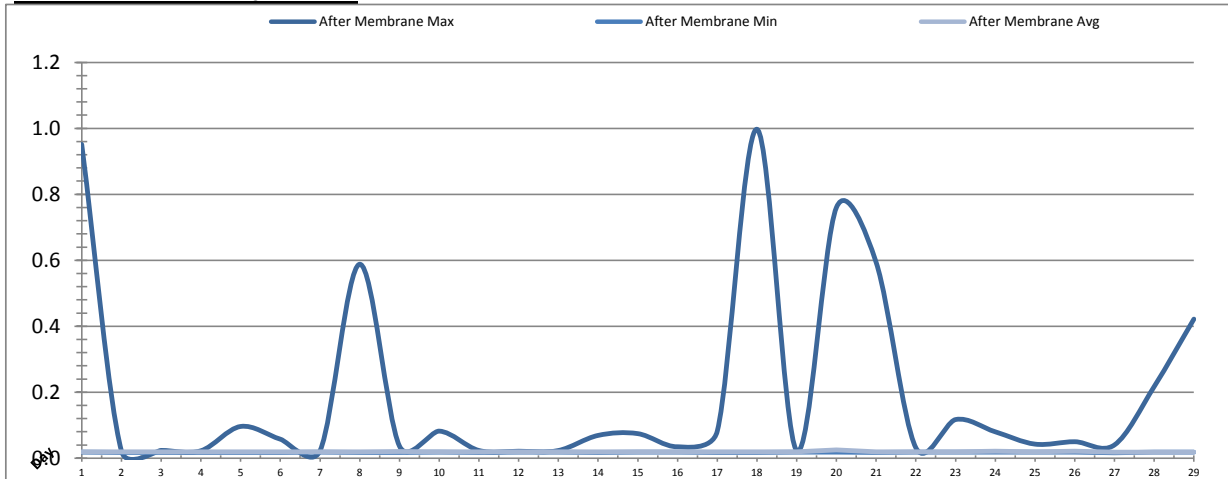
Date	Turbidity Before Membrane			Rack #1 Turbidity			Rack #2 Turbidity		
	PALL_FEED_AIT2006_Value NTU			RACK1_NTU_Value NTU			RACK2_NTU_Value NTU		
	Maximum	Minimum	Average	Maximum	Minimum	Average	Maximum	Minimum	Average
1	81.28	3.00	28.64	0.01	0.01	0.01	0.01	0.01	0.01
2	102.50	2.94	12.22	0.01	0.01	0.01	0.01	0.01	0.01
3	179.05	3.47	82.59	0.01	0.01	0.01	0.02	0.01	0.01
4	106.86	3.79	63.48	0.01	0.01	0.01	0.02	0.01	0.01
5	162.51	3.51	44.24	0.01	0.01	0.01	0.01	0.01	0.01
6	78.59	3.77	44.87	0.01	0.01	0.01	0.01	0.01	0.01
7	118.87	4.67	49.83	0.01	0.01	0.01	0.01	0.01	0.01
8	246.91	3.84	38.37	0.01	0.01	0.01	0.01	0.01	0.01
9	97.63	4.32	21.54	0.01	0.01	0.01	0.02	0.01	0.01
10	54.60	13.70	23.71	0.01	0.01	0.01	0.01	0.01	0.01
11	59.24	8.30	15.47	0.01	0.01	0.01	0.01	0.01	0.01
12	23.98	7.44	16.25	0.01	0.01	0.01	0.01	0.01	0.01
13	38.47	19.15	25.21	0.01	0.01	0.01	0.01	0.01	0.01
14	25.69	10.32	14.27	0.02	0.01	0.01	0.01	0.01	0.01
15	39.51	16.64	29.69	0.02	0.01	0.01	0.01	0.01	0.01
16	29.54	4.86	21.25	0.01	0.01	0.01	0.01	0.01	0.01
17	46.69	4.39	15.96	0.01	0.01	0.01	0.01	0.01	0.01
18	23.24	8.20	9.86	0.05	0.01	0.01	0.01	0.01	0.01
19	13.60	7.51	8.55	0.05	0.01	0.01	0.02	0.01	0.01
20	11.19	7.00	8.51	0.04	0.01	0.01	0.02	0.01	0.01
21	10.79	6.75	7.50	0.01	0.01	0.01	0.01	0.01	0.01
22	16.25	7.30	10.59	0.01	0.01	0.01	0.01	0.01	0.01
23	14.82	10.16	11.23	0.01	0.01	0.01	0.01	0.01	0.01
24	67.64	7.73	11.72	0.05	0.01	0.01	0.01	0.01	0.01
25	117.30	15.31	52.65	0.23	0.01	0.01	0.01	0.01	0.01
26	38.21	12.60	21.21	0.20	0.01	0.03	0.01	0.01	0.01
27	61.83	12.93	30.05	0.07	0.01	0.02	0.01	0.01	0.01
28	141.17	5.47	38.06	0.04	0.01	0.02	0.01	0.01	0.01
29	206.50	11.03	56.04	0.05	0.01	0.01	0.01	0.01	0.01
Total									
Average	76.4	7.9	28.1	0.04	0.01	0.01	0.01	0.01	0.01
Maximum	246.9		82.6	0.23		0.03	0.02		0.01
Date	8-Feb		3-Feb	25-Feb		26-Feb	9-Feb		1-Feb
Minimum		2.9	7.5		0.01	0.01		0.01	0.01
Date		2-Feb	21-Feb		1-Feb	12-Feb		5-Feb	12-Feb

**Notes:**

Rack 1: 24 and 25th flow issues on analyzer caused higher turbidity readings.

# Membranes Monthly Report

Month: February-16



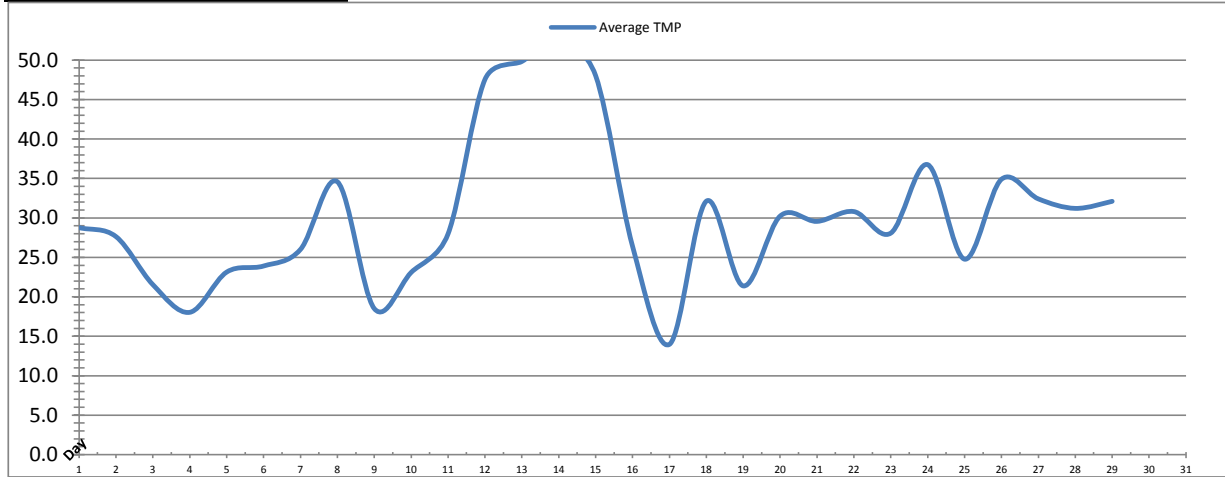
Date	Rack #3 Turbidity			Rack #4 Turbidity			Turbidity After Membranes		
	RACK3_NTU_Value			RACK4_NTU_Value			PALL_FILT_AIT5001_Value		
	Maximum	Minimum	Average	Maximum	Minimum	Average	Maximum	Minimum	Average
1	0.02	0.02	0.02	0.01	0.01	0.01	0.95	0.02	0.02
2	0.02	0.02	0.02	0.01	0.01	0.01	0.02	0.02	0.02
3	0.02	0.02	0.02	0.01	0.01	0.01	0.02	0.02	0.02
4	0.02	0.02	0.02	0.01	0.01	0.01	0.02	0.02	0.02
5	0.02	0.02	0.02	0.01	0.01	0.01	0.10	0.02	0.02
6	0.02	0.02	0.02	0.01	0.01	0.01	0.06	0.02	0.02
7	0.02	0.02	0.02	0.01	0.01	0.01	0.02	0.02	0.02
8	0.02	0.02	0.02	0.01	0.01	0.01	0.59	0.02	0.02
9	0.05	0.01	0.02	0.01	0.01	0.01	0.04	0.02	0.02
10	0.02	0.02	0.02	0.04	0.01	0.01	0.08	0.02	0.02
11	0.02	0.02	0.02	0.01	0.01	0.01	0.02	0.02	0.02
12	0.02	0.02	0.02	0.01	0.01	0.01	0.02	0.02	0.02
13	0.02	0.02	0.02	0.01	0.01	0.01	0.02	0.02	0.02
14	0.02	0.02	0.02	0.01	0.01	0.01	0.07	0.02	0.02
15	0.02	0.02	0.02	0.02	0.01	0.01	0.07	0.02	0.02
16	0.02	0.02	0.02	0.01	0.01	0.01	0.03	0.02	0.02
17	0.02	0.02	0.02	0.02	0.01	0.01	0.08	0.02	0.02
18	0.02	0.02	0.02	0.03	0.01	0.01	1.00	0.02	0.02
19	0.02	0.02	0.02	0.02	0.01	0.01	0.02	0.02	0.02
20	0.02	0.02	0.02	0.02	0.01	0.01	0.76	0.02	0.02
21	0.02	0.02	0.02	0.03	0.01	0.01	0.59	0.02	0.02
22	0.02	0.02	0.02	0.02	0.01	0.01	0.03	0.02	0.02
23	0.02	0.01	0.02	0.02	0.01	0.01	0.12	0.02	0.02
24	0.02	0.01	0.02	0.01	0.01	0.01	0.08	0.02	0.02
25	0.02	0.02	0.02	0.02	0.01	0.01	0.04	0.02	0.02
26	0.02	0.02	0.02	0.02	0.01	0.01	0.05	0.02	0.02
27	0.02	0.02	0.02	0.01	0.01	0.01	0.04	0.02	0.02
28	0.02	0.02	0.02	0.01	0.01	0.01	0.22	0.02	0.02
29	0.02	0.01	0.02	0.01	0.01	0.01	0.42	0.02	0.02
Total									
Average	0.02	0.02	0.02	0.02	0.01	0.01	0.19	0.02	0.02
Maximum	0.05		0.02	0.04		0.01	1.00		0.02
Date	9-Feb		17-Feb	10-Feb		10-Feb	18-Feb		20-Feb
Minimum		0.01	0.02		0.01	0.01		0.02	0.02
Date		9-Feb	28-Feb		1-Feb	16-Feb		27-Feb	27-Feb

Notes:

24: turbidity after membranes spike from maintenance on analyzer.

# Membranes Monthly Report

Month: February-16

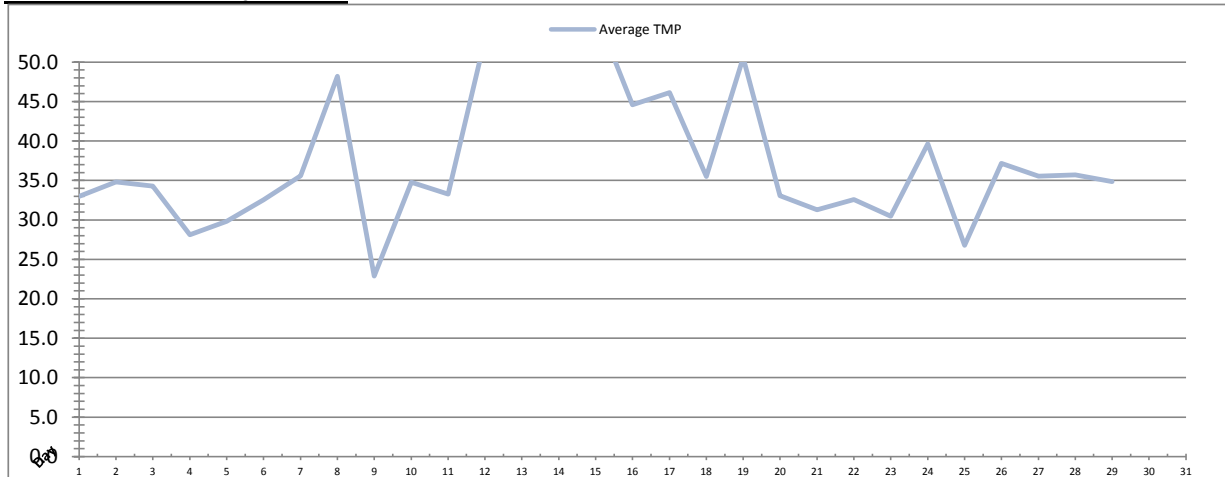


Integrity Test Rack 1									
Date	Initial Pressure (kPa)	Final Pressure (kPa)	Test Duration (sec)	Change in Pressure (kPa)	UCL	Within UCL	Average TMP (kPa)	Max TMP (kPa)	
1	194.2	193.1	300.0	1.1	2.0	✓ 2.0	28.8	94.3	
2	194.1	193.1	300.0	1.1	2.0	✓ 2.0	27.6	157.6	
3	194.1	193.0	300.0	1.1	2.0	✓ 2.0	21.5	107.9	
4	194.4	193.2	300.0	1.1	2.0	✓ 2.0	18.0	103.1	
5	193.5	192.5	300.0	1.0	2.0	✓ 2.0	23.1	104.0	
6	194.2	193.2	300.0	1.0	2.0	✓ 2.0	23.9	100.5	
7	194.2	193.2	300.0	1.0	2.0	✓ 2.0	26.0	88.1	
8	193.9	192.8	300.0	1.1	2.0	✓ 2.0	34.6	166.0	
9	193.7	192.5	300.0	1.2	2.0	✓ 2.0	18.5	127.7	
10	193.9	192.7	300.0	1.1	2.0	✓ 2.0	23.1	117.7	
11	193.4	192.3	300.0	1.1	2.0	✓ 2.0	28.0	139.1	
12	194.0	192.8	300.0	1.2	2.0	✓ 2.0	47.6	158.0	
13	193.9	192.6	300.0	1.3	2.0	✓ 2.0	49.8	168.6	
14	194.4	193.1	300.0	1.3	2.0	✓ 2.0	52.8	173.9	
15	194.7	193.3	300.0	1.3	2.0	✓ 2.0	48.0	186.1	
16	194.7	193.5	300.0	1.2	2.0	✓ 2.0	26.4	164.1	
17	195.0	193.6	300.0	1.4	2.0	✓ 2.0	14.0	86.8	
18	194.8	193.5	300.0	1.3	2.0	✓ 2.0	32.1	79.8	
19	194.3	193.1	300.0	1.2	2.0	✓ 2.0	21.4	76.7	
20	194.8	194.1	300.0	0.7	2.0	✓ 2.0	30.2	79.8	
21	194.9	193.7	300.0	1.2	2.0	✓ 2.0	29.6	79.3	
22	194.9	193.6	300.0	1.3	2.0	✓ 2.0	30.8	112.8	
23	194.9	193.9	300.0	1.1	2.0	✓ 2.0	28.1	80.7	
24	195.6	194.5	300.0	1.1	2.0	✓ 2.0	36.8	113.6	
25	195.5	194.4	300.0	1.0	2.0	✓ 2.0	24.8	83.4	
26	195.0	194.3	300.0	0.7	2.0	✓ 2.0	34.9	103.6	
27	195.1	194.2	300.0	0.8	2.0	✓ 2.0	32.4	95.8	
28	195.1	194.0	300.0	1.1	2.0	✓ 2.0	31.2	95.3	
29	194.9	193.8	300.0	1.2	2.0	✓ 2.0	32.1	117.5	
<b>Total</b>									
Average	194.5	193.4	300.0	1.1	2.0	2.0	30.2	115.9	
Maximum	195.6	194.5	300.0	1.4	2.0	2.0	52.8	186.1	
Date	24-Feb	24-Feb	1-Feb	17-Feb	1-Feb	1-Feb	14-Feb	15-Feb	
Minimum	193.4	192.3	300.0	0.7	2.0	2.0	14.0	76.7	
Date	11-Feb	11-Feb	1-Feb	20-Feb	1-Feb	1-Feb	17-Feb	19-Feb	

Notes:

# Membranes Monthly Report

Month: February-16



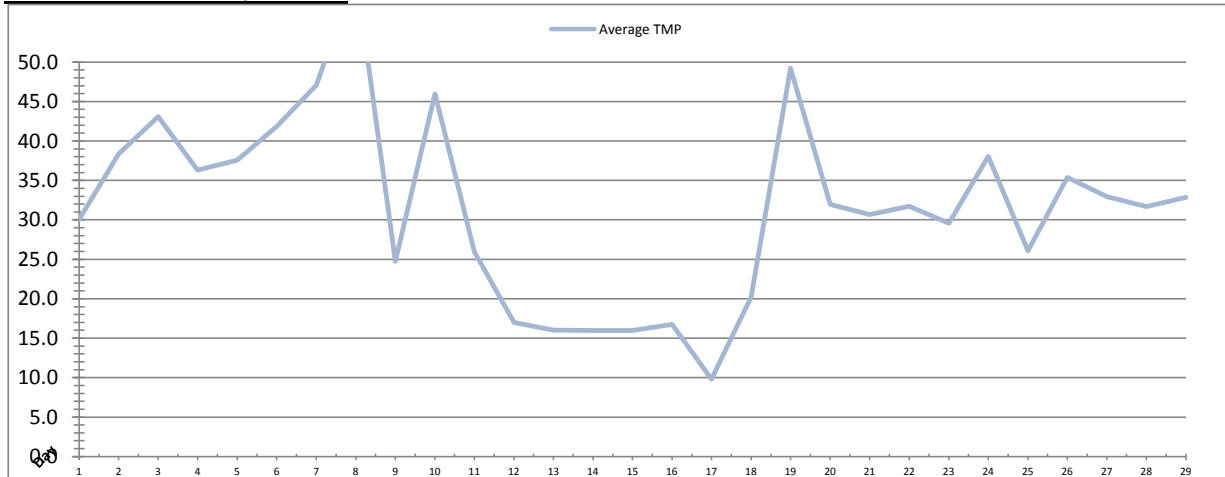
Date	Integrity Test Rack 2							
	Initial Pressure (kPa)	Final Pressure (kPa)	Test Duration (sec)	Change in Pressure (kPa)	UCL	Within UCL	Average TMP (kPa)	Max TMP (kPa)
1	201.1	200.3	300.0	0.9	2.0	✓ 2.0	33.0	111.0
2	201.1	200.2	300.0	1.0	2.0	✓ 2.0	34.8	158.9
3	201.1	200.1	300.0	1.0	2.0	✓ 2.0	34.3	121.1
4	201.1	200.1	300.0	0.9	2.0	✓ 2.0	28.1	113.9
5	200.2	199.6	300.0	0.6	2.0	✓ 2.0	29.8	93.0
6	201.2	200.3	300.0	0.9	2.0	✓ 2.0	32.5	107.1
7	201.2	200.3	300.0	0.9	2.0	✓ 2.0	35.6	88.4
8	200.9	199.8	300.0	1.1	2.0	✓ 2.0	48.2	176.0
9	201.1	200.2	300.0	0.9	2.0	✓ 2.0	22.9	128.5
10	200.9	200.0	300.0	0.8	2.0	✓ 2.0	34.8	118.4
11	201.2	200.2	300.0	1.0	2.0	✓ 2.0	33.3	148.7
12	199.7	198.4	300.0	1.2	2.0	✓ 2.0	52.9	171.1
13	201.6	200.5	300.0	1.1	2.0	✓ 2.0	56.4	196.6
14	201.4	200.4	300.0	1.0	2.0	✓ 2.0	59.1	187.0
15	200.0	198.4	300.0	1.6	2.0	✓ 2.0	56.3	197.6
16	201.4	200.4	300.0	1.0	2.0	✓ 2.0	44.6	190.8
17	201.1	199.9	300.0	1.2	2.0	✓ 2.0	46.1	197.1
18	201.3	200.3	300.0	1.1	2.0	✓ 2.0	35.5	106.8
19	201.4	200.4	300.0	1.0	2.0	✓ 2.0	50.5	169.4
20	201.5	200.4	300.0	1.1	2.0	✓ 2.0	33.1	93.4
21	201.4	200.5	300.0	1.0	2.0	✓ 2.0	31.3	81.0
22	201.2	200.2	300.0	1.1	2.0	✓ 2.0	32.6	97.1
23	201.1	199.8	300.0	1.3	2.0	✓ 2.0	30.5	123.2
24	200.5	199.3	300.0	1.1	2.0	✓ 2.0	39.6	93.0
25	201.3	200.3	300.0	1.1	2.0	✓ 2.0	26.8	91.4
26	201.4	200.6	300.0	0.8	2.0	✓ 2.0	37.2	105.6
27	201.2	200.5	300.0	0.8	2.0	✓ 2.0	35.5	97.1
28	201.3	200.3	300.0	1.0	2.0	✓ 2.0	35.7	97.1
29	200.9	200.1	300.0	0.8	2.0	✓ 2.0	34.8	93.1
Total								
Average	201.1	200.1	300.0	1.0	2.0	2.0	38.1	129.4
Maximum	201.6	200.6	300.0	1.6	2.0	2.0	59.1	197.6
Date	13-Feb	26-Feb	1-Feb	15-Feb	1-Feb	1-Feb	14-Feb	15-Feb
Minimum	199.7	198.4	300.0	0.6	2.0	2.0	22.9	81.0
Date	12-Feb	15-Feb	1-Feb	5-Feb	1-Feb	1-Feb	9-Feb	21-Feb

Notes:



# Membranes Monthly Report

Month: February-16

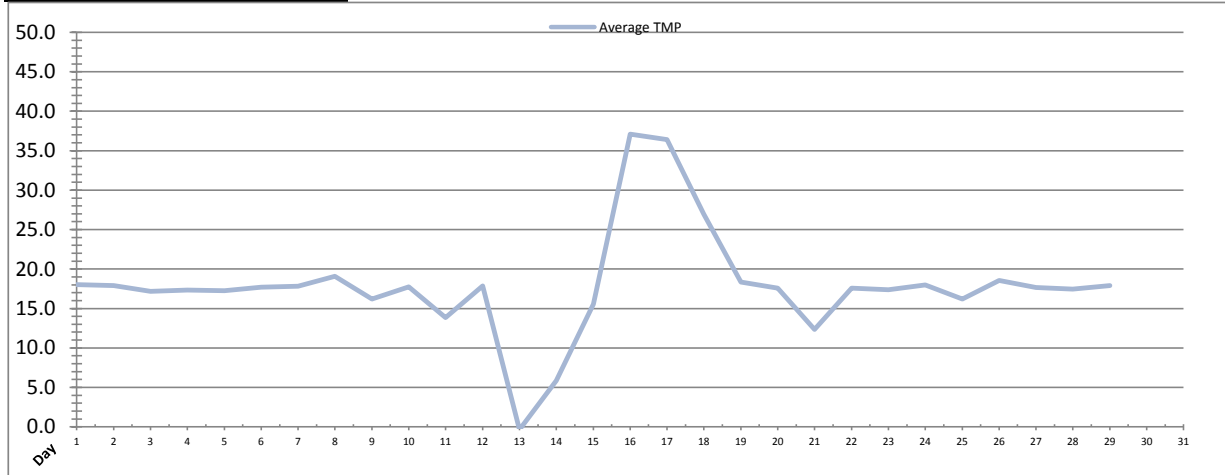


Date	Integrity Test Rack 3							
	Initial Pressure (kPa)	Final Pressure (kPa)	Test Duration (sec)	Change in Pressure (kPa)	UCL	Within UCL	Average TMP (kPa)	Max TMP (kPa)
1	191.1	189.8	300.0	1.3	2.0	✓ 2.0	30.1	109.5
2	191.7	190.5	300.0	1.2	2.0	✓ 2.0	38.3	124.8
3	192.6	191.3	300.0	1.3	2.0	✓ 2.0	43.1	103.4
4	192.3	190.9	300.0	1.3	2.0	✓ 2.0	36.3	125.9
5	191.4	190.3	300.0	1.1	2.0	✓ 2.0	37.6	114.1
6	191.5	190.6	300.0	0.9	2.0	✓ 2.0	41.8	112.9
7	191.7	190.4	300.0	1.3	2.0	✓ 2.0	47.1	134.4
8	192.4	191.0	300.0	1.4	2.0	✓ 2.0	61.2	133.3
9	192.8	191.6	300.0	1.2	2.0	✓ 2.0	24.7	129.0
10	192.0	191.1	300.0	1.0	2.0	✓ 2.0	46.0	163.4
11	191.6	190.4	300.0	1.2	2.0	✓ 2.0	26.0	149.6
12	191.6	190.4	300.0	1.2	2.0	✓ 2.0	17.0	76.4
13	191.6	190.4	300.0	1.2	2.0	✓ 2.0	16.0	62.3
14	191.6	190.4	300.0	1.2	2.0	✓ 2.0	16.0	16.5
15	191.6	190.4	300.0	1.2	2.0	✓ 2.0	16.0	16.3
16	191.6	190.4	300.0	1.2	2.0	✓ 2.0	16.8	82.3
17	180.7	177.3	300.0	3.4	2.0	2.0	9.8	43.8
18	192.1	190.7	300.0	1.4	2.0	✓ 2.0	20.2	90.4
19	192.0	190.5	300.0	1.6	2.0	✓ 2.0	49.2	147.3
20	192.7	191.1	300.0	1.6	2.0	✓ 2.0	32.0	79.8
21	191.4	190.1	300.0	1.3	2.0	✓ 2.0	30.7	77.7
22	191.7	190.3	300.0	1.4	2.0	✓ 2.0	31.7	105.1
23	191.0	189.5	300.0	1.5	2.0	✓ 2.0	29.6	114.1
24	191.8	190.3	300.0	1.5	2.0	✓ 2.0	38.1	76.9
25	192.3	191.1	300.0	1.2	2.0	✓ 2.0	26.1	107.9
26	192.6	191.5	300.0	1.1	2.0	✓ 2.0	35.4	97.3
27	192.9	191.6	300.0	1.3	2.0	✓ 2.0	32.9	94.5
28	192.0	190.7	300.0	1.3	2.0	✓ 2.0	31.7	96.6
29	191.7	190.3	300.0	1.4	2.0	✓ 2.0	32.9	82.1
Total								
Average	191.5	190.2	300.0	1.4	2.0	2.0	31.5	98.9
Maximum	192.9	191.6	300.0	3.4	2.0	2.0	61.2	163.4
Date	27-Feb	27-Feb	1-Feb	17-Feb	1-Feb	1-Feb	8-Feb	10-Feb
Minimum	180.7	177.3	300.0	0.9	2.0	2.0	9.8	16.3
Date	17-Feb	17-Feb	1-Feb	6-Feb	1-Feb	1-Feb	17-Feb	15-Feb

Notes:  
 17th: Rack 3 failed integrity test due to flow control valve issues, not membrane integrity. Repairs made and passed IT next day.

# Membranes Monthly Report

Month: February-16



Integrity Test Rack 4									
Date	Initial Pressure (kPa)	Final Pressure (kPa)	Test Duration (sec)	Change in Pressure (kPa)	UCL	Within UCL	Average TMP (kPa)	Max TMP (kPa)	
1	196.0	195.0	300.0	1.0	2.0	✓ 2.0	18.0	75.6	
2	196.0	195.2	300.0	0.9	2.0	✓ 2.0	17.9	94.1	
3	196.0	195.5	300.0	0.5	2.0	✓ 2.0	17.2	63.5	
4	196.5	195.5	300.0	1.0	2.0	✓ 2.0	17.3	52.8	
5	196.1	195.3	300.0	0.8	2.0	✓ 2.0	17.2	51.4	
6	196.1	195.2	300.0	0.9	2.0	✓ 2.0	17.7	42.4	
7	195.9	195.1	300.0	0.8	2.0	✓ 2.0	17.8	39.7	
8	195.8	194.4	300.0	1.3	2.0	✓ 2.0	19.1	51.6	
9	196.0	194.9	300.0	1.1	2.0	✓ 2.0	16.2	56.9	
10	196.1	195.1	300.0	1.1	2.0	✓ 2.0	17.8	47.9	
11	195.7	194.7	300.0	0.9	2.0	✓ 2.0	13.8	46.4	
12	194.4	193.1	300.0	1.3	2.0	✓ 2.0	17.9	113.2	
13	190.7	186.1	300.0	4.6	2.0	2.0	-0.4	107.4	
14	194.2	193.9	300.0	0.3	2.0	✓ 2.0	5.8	107.9	
15	192.3	191.1	300.0	1.2	2.0	✓ 2.0	15.6	79.6	
16	194.2	192.9	300.0	1.3	2.0	✓ 2.0	37.1	141.2	
17	194.2	192.9	300.0	1.3	2.0	✓ 2.0	36.4	160.2	
18	194.7	193.7	300.0	1.0	2.0	✓ 2.0	26.9	80.0	
19	194.6	193.5	300.0	1.1	2.0	✓ 2.0	18.4	52.0	
20	194.7	193.5	300.0	1.3	2.0	✓ 2.0	17.6	49.4	
21	194.9	193.6	300.0	1.3	2.0	✓ 2.0	12.3	48.3	
22	194.7	193.3	300.0	1.4	2.0	✓ 2.0	17.6	45.4	
23	194.9	193.5	300.0	1.4	2.0	✓ 2.0	17.4	45.4	
24	195.1	193.9	300.0	1.2	2.0	✓ 2.0	18.0	54.7	
25	194.8	194.0	300.0	0.8	2.0	✓ 2.0	16.2	41.2	
26	194.5	193.4	300.0	1.1	2.0	✓ 2.0	18.6	50.5	
27	194.5	193.3	300.0	1.2	2.0	✓ 2.0	17.7	48.0	
28	194.8	193.6	300.0	1.2	2.0	✓ 2.0	17.4	43.4	
29	194.7	193.6	300.0	1.2	2.0	✓ 2.0	17.9	44.8	
Total									
Average	194.9	193.8	300.0	1.2	2.0	2.0	17.9	66.7	
Maximum	196.5	195.5	300.0	4.6	2.0	2.0	37.1	160.2	
Date	4-Feb	3-Feb	1-Feb	13-Feb	1-Feb	1-Feb	16-Feb	17-Feb	
Minimum	190.7	186.1	300.0	0.3	2.0	2.0	-0.4	39.7	
Date	13-Feb	13-Feb	1-Feb	14-Feb	1-Feb	1-Feb	13-Feb	7-Feb	

Notes:  
 13th: Rack 4 failed IT due to flow control valve issue, not actual integrity of membrane. Repairs made and passed IT next day.

# Membranes Monthly Report

Month: February-16

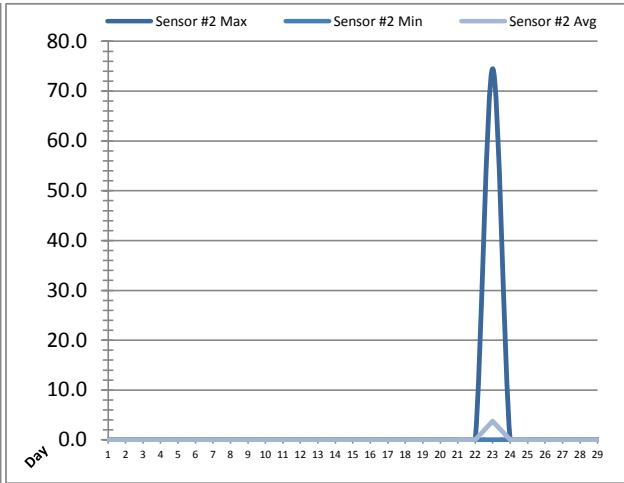
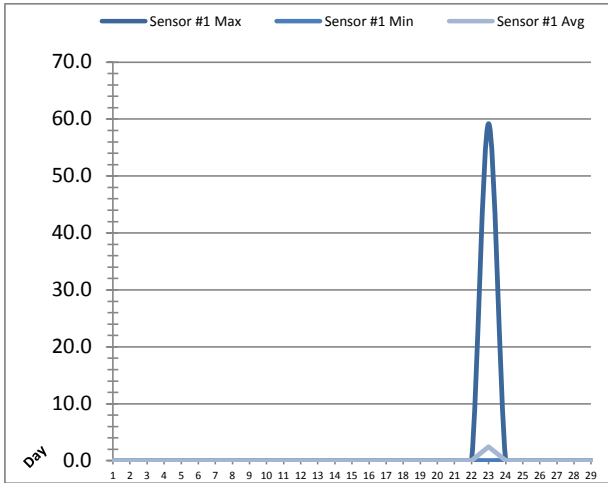
Date	Membranes Monthly Performance							
	Rack 1 >0.1 NTU (Minutes)	Rack 1 Forward Flow (Minutes)	Rack 2 >0.1 NTU (Minutes)	Rack 2 Forward Flow (Minutes)	Rack 3 >0.1 NTU (Minutes)	Rack 3 Forward Flow (Minutes)	Rack 4 >0.1 NTU (Minutes)	Rack 4 Forward Flow (Minutes)
1	0.0	755.3	0.0	750.3	0.0	752.6	0.0	357.0
2	0.0	917.5	0.0	911.3	0.0	902.3	0.0	389.4
3	0.0	872.2	0.0	904.6	0.0	890.1	0.0	386.3
4	0.0	621.5	0.0	683.1	0.0	660.2	0.0	306.3
5	0.0	756.3	0.0	754.5	0.0	754.5	0.0	312.3
6	0.0	866.5	0.0	858.4	0.0	854.3	0.0	392.3
7	0.0	984.3	0.0	970.4	0.0	964.6	0.0	408.5
8	0.0	921.5	0.0	908.1	0.0	896.5	0.0	575.1
9	0.0	367.4	0.0	414.1	0.0	427.1	0.0	189.4
10	0.0	766.2	0.0	794.0	0.0	780.5	0.0	352.0
11	0.0	541.2	0.0	542.1	0.0	290.1	0.0	258.0
12	0.0	877.4	0.0	880.1	0.0	43.2	0.0	520.1
13	0.0	800.4	0.0	803.1	0.0	3.2	0.0	223.4
14	0.0	811.6	0.0	829.5	0.0	0.0	0.0	39.1
15	0.0	906.3	0.0	882.5	0.0	0.0	0.0	414.5
16	0.0	479.4	0.0	801.3	0.0	20.2	0.0	762.6
17	0.0	77.4	0.0	635.5	0.0	0.5	0.0	630.2
18	0.0	768.1	0.0	776.2	0.0	369.5	0.0	620.2
19	0.0	345.2	0.0	939.4	0.0	932.5	0.0	494.3
20	0.0	687.1	0.0	693.0	0.0	690.3	0.0	356.2
21	0.0	646.3	0.0	647.0	0.0	648.5	0.0	354.0
22	0.0	675.5	0.0	679.5	0.0	679.3	0.0	339.3
23	0.0	591.3	0.0	595.3	0.0	599.1	0.0	328.4
24	0.0	953.2	0.0	967.1	0.0	964.0	0.0	506.1
25	6.3	460.3	0.0	460.4	0.0	466.1	0.0	237.4
26	75.1	782.5	0.0	785.1	0.0	782.5	0.0	431.5
27	0.0	732.0	0.0	731.6	0.0	731.6	0.0	377.5
28	0.0	670.5	0.0	668.2	0.0	672.3	0.0	344.5
29	0.0	721.2	0.0	718.1	0.0	723.5	0.0	372.0
Total	81.4	20355.6	0.0	21983.7	0.0	16498.9	0.0	11278.2
Percent	0.40		0.00		0.00		0.00	
Maximum	75.1	984.3	0.0	970.4	0.0	964.6	0.0	762.6
Date	26-Feb	7-Feb	1-Feb	7-Feb	1-Feb	7-Feb	1-Feb	16-Feb
Minimum	0.0	77.4	0.0	414.1	0.0	0.0	0.0	39.1
Date	1-Feb	17-Feb	1-Feb	9-Feb	1-Feb	14-Feb	1-Feb	14-Feb

Notes:

Met filter performance criteria of turbidity <0.1ntu for at least 99% of the readings for the month.

# UV System Monthly Report

Month: February-16

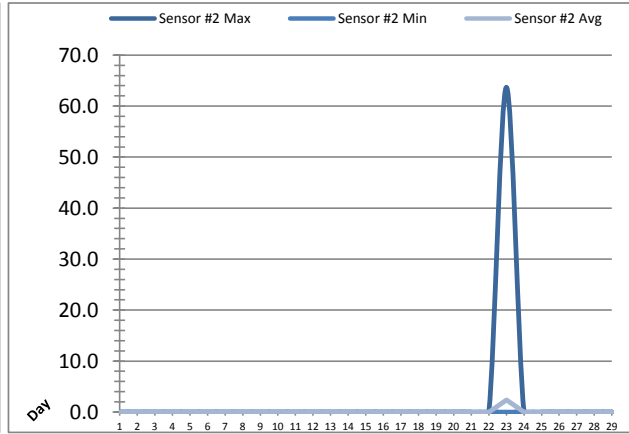
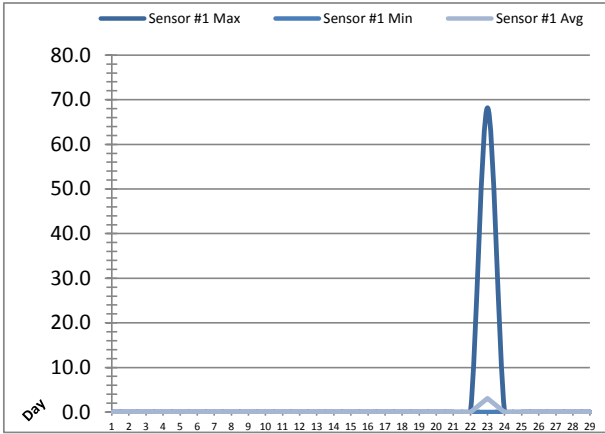


Date	UV Reactor 1					
	Intensity Sensor 1 (mW/cm²)			Intensity Sensor 2 (mW/cm²)		
	Maximum	Minimum	Average	Maximum	Minimum	Average
1	0.0	0.0	0.0	0.0	0.0	0.0
2	0.0	0.0	0.0	0.0	0.0	0.0
3	0.0	0.0	0.0	0.0	0.0	0.0
4	0.0	0.0	0.0	0.0	0.0	0.0
5	0.0	0.0	0.0	0.0	0.0	0.0
6	0.0	0.0	0.0	0.0	0.0	0.0
7	0.0	0.0	0.0	0.0	0.0	0.0
8	0.0	0.0	0.0	0.0	0.0	0.0
9	0.0	0.0	0.0	0.0	0.0	0.0
10	0.0	0.0	0.0	0.0	0.0	0.0
11	0.0	0.0	0.0	0.0	0.0	0.0
12	0.0	0.0	0.0	0.0	0.0	0.0
13	0.0	0.0	0.0	0.0	0.0	0.0
14	0.0	0.0	0.0	0.0	0.0	0.0
15	0.0	0.0	0.0	0.0	0.0	0.0
16	0.0	0.0	0.0	0.0	0.0	0.0
17	0.0	0.0	0.0	0.0	0.0	0.0
18	0.0	0.0	0.0	0.0	0.0	0.0
19	0.0	0.0	0.0	0.0	0.0	0.0
20	0.0	0.0	0.0	0.0	0.0	0.0
21	0.0	0.0	0.0	0.0	0.0	0.0
22	0.0	0.0	0.0	0.0	0.0	0.0
23	59.2	0.0	2.5	74.5	0.0	3.7
24	0.0	0.0	0.0	0.0	0.0	0.0
25	0.0	0.0	0.0	0.0	0.0	0.0
26	0.0	0.0	0.0	0.0	0.0	0.0
27	0.0	0.0	0.0	0.0	0.0	0.0
28	0.0	0.0	0.0	0.0	0.0	0.0
29	0.0	0.0	0.0	0.0	0.0	0.0
Total						
Average	2.0	0.0	0.1	2.6	0.0	0.1
Maximum	59.2		2.5	74.5		3.7
Date	23-Feb		23-Feb	23-Feb		23-Feb
Minimum		0.0	0.0		0.0	0.0
Date		1-Feb	1-Feb		1-Feb	1-Feb

Notes:

# UV System Monthly Report

Month: February-16



UV Reactor 2						
Date	Intensity Sensor 1 (mW/cm²)			Intensity Sensor 2 (mW/cm²)		
	Maximum	Minimum	Average	Maximum	Minimum	Average
1	0.0	0.0	0.0	0.0	0.0	0.0
2	0.0	0.0	0.0	0.0	0.0	0.0
3	0.0	0.0	0.0	0.0	0.0	0.0
4	0.0	0.0	0.0	0.0	0.0	0.0
5	0.0	0.0	0.0	0.0	0.0	0.0
6	0.0	0.0	0.0	0.0	0.0	0.0
7	0.0	0.0	0.0	0.0	0.0	0.0
8	0.0	0.0	0.0	0.0	0.0	0.0
9	0.0	0.0	0.0	0.0	0.0	0.0
10	0.0	0.0	0.0	0.0	0.0	0.0
11	0.0	0.0	0.0	0.0	0.0	0.0
12	0.0	0.0	0.0	0.0	0.0	0.0
13	0.0	0.0	0.0	0.0	0.0	0.0
14	0.0	0.0	0.0	0.0	0.0	0.0
15	0.0	0.0	0.0	0.0	0.0	0.0
16	0.0	0.0	0.0	0.0	0.0	0.0
17	0.0	0.0	0.0	0.0	0.0	0.0
18	0.0	0.0	0.0	0.0	0.0	0.0
19	0.0	0.0	0.0	0.0	0.0	0.0
20	0.0	0.0	0.0	0.0	0.0	0.0
21	0.0	0.0	0.0	0.0	0.0	0.0
22	0.0	0.0	0.0	0.0	0.0	0.0
23	68.2	0.0	3.1	63.7	0.0	2.4
24	0.0	0.0	0.0	0.0	0.0	0.0
25	0.0	0.0	0.0	0.0	0.0	0.0
26	0.0	0.0	0.0	0.0	0.0	0.0
27	0.0	0.0	0.0	0.0	0.0	0.0
28	0.0	0.0	0.0	0.0	0.0	0.0
29	0.0	0.0	0.0	0.0	0.0	0.0
Total						
Average	2.4	0.0	0.1	2.2	0.0	0.1
Maximum	68.2		3.1	63.7		2.4
Date	23-Feb		23-Feb	23-Feb		23-Feb
Minimum		0.0	0.0		0.0	0.0
Date		1-Feb	1-Feb		1-Feb	1-Feb

Notes:

---



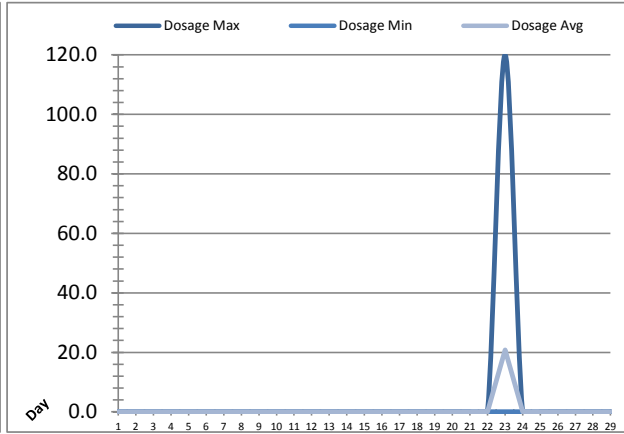
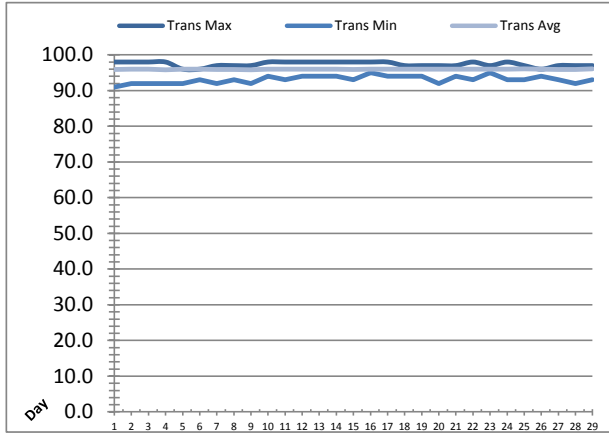
---



---

# UV System Monthly Report

Month: February-16



UV System							
Date	Transmittance (%)			Dosage (mJ/cm <sup>2</sup> )			Inlet Flow (L/s)
	Maximum	Minimum	Average	Maximum	Minimum	Average	Maximum
1	98.00	91.00	95.93	0.0	0.0	0.0	123.3
2	98.00	92.00	95.98	0.0	0.0	0.0	102.5
3	98.00	92.00	95.99	0.0	0.0	0.0	109.2
4	98.00	92.00	95.85	0.0	0.0	0.0	101.3
5	96.00	92.00	95.97	0.0	0.0	0.0	101.3
6	96.00	93.00	95.96	0.0	0.0	0.0	103.0
7	97.00	92.00	95.92	0.0	0.0	0.0	90.9
8	97.00	93.00	95.93	0.0	0.0	0.0	130.5
9	97.00	92.00	95.83	0.0	0.0	0.0	113.3
10	98.00	94.00	95.99	0.0	0.0	0.0	101.5
11	98.00	93.00	95.99	0.0	0.0	0.0	102.5
12	98.00	94.00	96.00	0.0	0.0	0.0	92.2
13	98.00	94.00	95.98	0.0	0.0	0.0	81.4
14	98.00	94.00	95.98	0.0	0.0	0.0	70.2
15	98.00	93.00	95.91	0.0	0.0	0.0	71.3
16	98.00	95.00	96.02	0.0	0.0	0.0	71.4
17	98.00	94.00	96.00	0.0	0.0	0.0	72.4
18	97.00	94.00	95.95	0.0	0.0	0.0	85.9
19	97.00	94.00	95.97	0.0	0.0	0.0	84.5
20	97.00	92.00	95.97	0.0	0.0	0.0	85.5
21	97.00	94.00	95.98	0.0	0.0	0.0	86.5
22	98.00	93.00	95.98	0.0	0.0	0.0	84.6
23	97.00	95.00	96.00	120.0	0.0	20.8	85.4
24	98.00	93.00	96.02	0.0	0.0	0.0	86.2
25	97.00	93.00	96.05	0.0	0.0	0.0	103.9
26	96.00	94.00	95.99	0.0	0.0	0.0	100.9
27	97.00	93.00	95.94	0.0	0.0	0.0	101.5
28	97.00	92.00	95.95	0.0	0.0	0.0	96.5
29	97.00	93.00	96.05	0.0	0.0	0.0	87.5
Total							
Average	97.38	93.10	95.97	4.1	0.0	0.7	94.0
Maximum	98.00		96.05	120.0		20.8	130.5
Date	1-Feb		29-Feb	23-Feb		23-Feb	8-Feb
Minimum		91.00	95.83		0.0	0.0	
Date		1-Feb	9-Feb		1-Feb	1-Feb	

Notes:

---



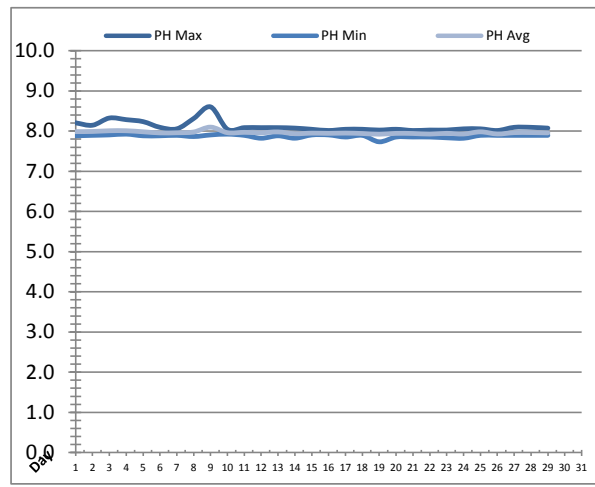
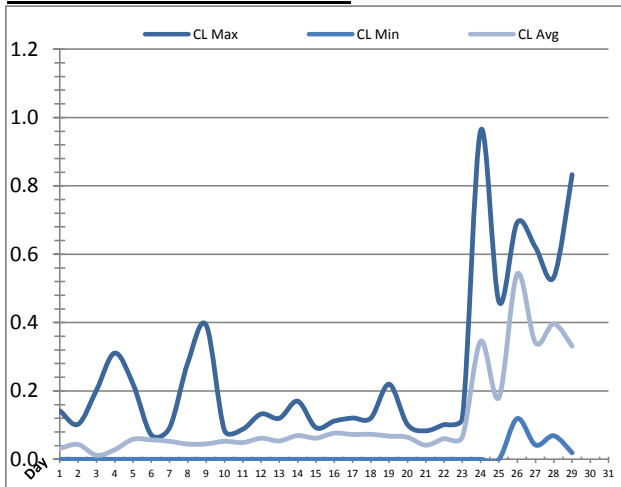
---



---

# Plant Quality Report

Month: February-16



Date	Strainer Chlorine Residual			Strainer pH		
	AIT_2003_CL (ppm)			AIT_2003_PH		
	Maximum	Minimum	Average	Maximum	Minimum	Average
1	0.14	0.00	0.03	8.21	7.88	7.99
2	0.10	0.00	0.04	8.15	7.89	7.99
3	0.20	0.00	0.01	8.33	7.91	8.01
4	0.31	0.00	0.03	8.29	7.93	8.01
5	0.22	0.00	0.06	8.24	7.88	7.98
6	0.07	0.00	0.06	8.09	7.88	7.96
7	0.09	0.00	0.05	8.06	7.90	7.96
8	0.28	0.00	0.04	8.32	7.87	7.98
9	0.39	0.00	0.04	8.60	7.91	8.10
10	0.08	0.00	0.05	8.05	7.93	7.96
11	0.09	0.00	0.05	8.09	7.89	7.97
12	0.13	0.00	0.06	8.09	7.82	7.96
13	0.12	0.00	0.05	8.09	7.88	7.98
14	0.17	0.00	0.07	8.08	7.82	7.94
15	0.09	0.00	0.06	8.05	7.91	7.95
16	0.11	0.00	0.08	8.02	7.91	7.94
17	0.12	0.00	0.07	8.05	7.85	7.95
18	0.12	0.00	0.07	8.05	7.89	7.94
19	0.22	0.00	0.07	8.03	7.73	7.92
20	0.10	0.00	0.06	8.05	7.85	7.94
21	0.08	0.00	0.04	8.02	7.85	7.94
22	0.10	0.00	0.06	8.03	7.85	7.93
23	0.12	0.00	0.07	8.03	7.83	7.95
24	0.96	0.00	0.35	8.06	7.82	7.93
25	0.46	0.00	0.18	8.06	7.90	7.98
26	0.69	0.12	0.54	8.02	7.89	7.93
27	0.62	0.04	0.34	8.09	7.89	7.96
28	0.53	0.07	0.40	8.09	7.89	7.96
29	0.83	0.02	0.33	8.07	7.90	7.96
Total						
Average	0.26	0.01	0.12	8.12	7.88	7.96
Maximum	0.96		0.54	8.60		8.10
Date	24-Feb		26-Feb	9-Feb		9-Feb
Minimum		0.00	0.01		7.73	7.92
Date		1-Feb	3-Feb		19-Feb	19-Feb

Notes:

---



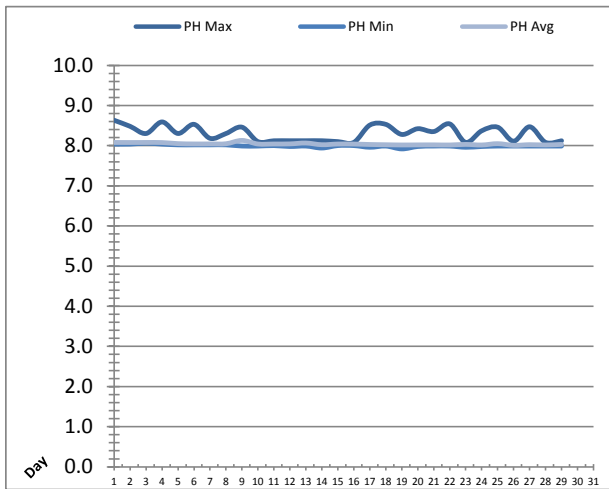
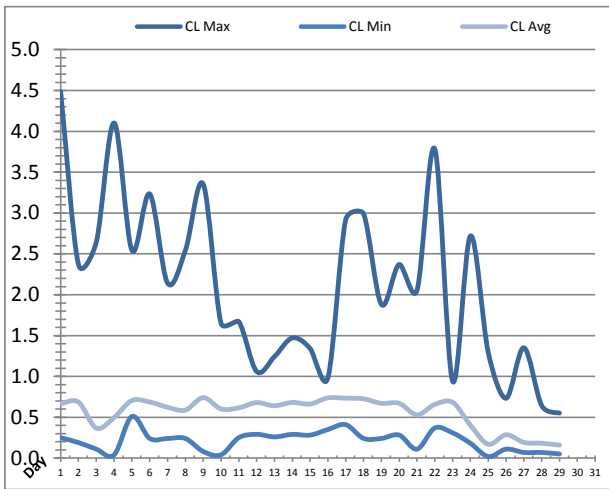
---



---

# Plant Quality Report

Month: February-16



Date	Inlet UV Chlorine Residual			Inlet UV pH		
	AIT_5005_CL (ppm)			AIT_5005_PH		
	Maximum	Minimum	Average	Maximum	Minimum	Average
1	✓ 4.48	✓ 0.25	0.67	8.63	8.04	8.08
2	✓ 2.37	✓ 0.19	0.69	8.48	8.04	8.08
3	✓ 2.64	✓ 0.11	0.37	8.30	8.06	8.08
4	✓ 4.10	✓ 0.04	0.50	8.59	8.04	8.08
5	✓ 2.54	✓ 0.51	0.71	8.30	8.02	8.05
6	✓ 3.23	✓ 0.24	0.69	8.53	8.02	8.04
7	✓ 2.14	✓ 0.24	0.62	8.18	8.02	8.04
8	✓ 2.54	✓ 0.24	0.59	8.30	8.02	8.05
9	✓ 3.35	✓ 0.08	0.74	8.46	7.99	8.13
10	✓ 1.65	✓ 0.04	0.60	8.10	7.99	8.04
11	✓ 1.67	✓ 0.25	0.62	8.12	8.00	8.04
12	✓ 1.06	✓ 0.29	0.68	8.12	7.98	8.04
13	✓ 1.24	✓ 0.26	0.64	8.12	7.99	8.07
14	✓ 1.47	✓ 0.29	0.68	8.12	7.94	8.02
15	✓ 1.34	✓ 0.28	0.66	8.10	8.00	8.04
16	✓ 0.98	✓ 0.35	0.74	8.08	8.00	8.04
17	✓ 2.92	✓ 0.41	0.73	8.51	7.96	8.03
18	✓ 2.99	✓ 0.24	0.73	8.53	7.99	8.02
19	✓ 1.88	✓ 0.24	0.67	8.28	7.92	8.02
20	✓ 2.37	✓ 0.28	0.67	8.42	7.98	8.02
21	✓ 2.05	✓ 0.11	0.53	8.35	7.99	8.02
22	✓ 3.78	✓ 0.37	0.66	8.54	7.99	8.02
23	✓ 0.94	✓ 0.31	0.68	8.08	7.96	8.03
24	✓ 2.72	✓ 0.18	0.40	8.37	7.98	8.02
25	✓ 1.29	✓ 0.02	0.17	8.46	7.99	8.05
26	✓ 0.73	✓ 0.11	0.29	8.11	7.99	8.01
27	✓ 1.35	✓ 0.07	0.19	8.47	7.99	8.02
28	✓ 0.64	✓ 0.07	0.18	8.08	7.99	8.02
29	✓ 0.55	✓ 0.05	0.16	8.12	7.99	8.03
Total						
Average	2.11	0.21	0.56	8.31	8.00	8.04
Maximum	4.48		0.74	8.63		8.13
Date	1-Feb		9-Feb	1-Feb		9-Feb
Minimum		0.02	0.16		7.92	8.01
Date		25-Feb	29-Feb		19-Feb	26-Feb

Notes:

---



---

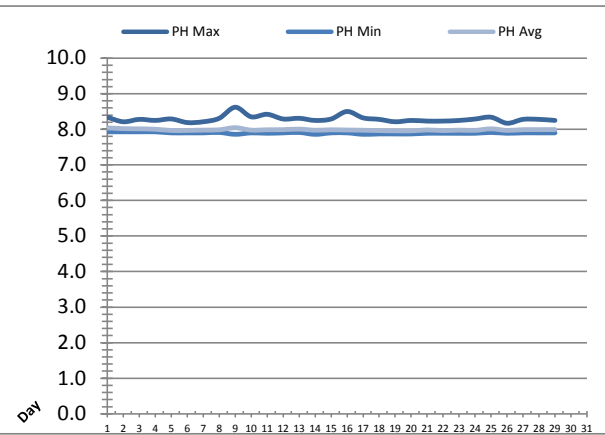
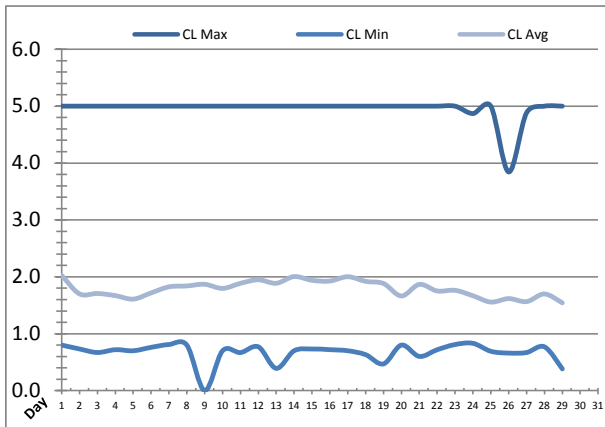


---

**Plant Quality Report**

Month: February-16





Date	Discharge UV Chlorine Residual			Discharge UV pH		
	AIT_5006_CL (ppm)			AIT_5006_PH		
	Maximum	Minimum	Average	Maximum	Minimum	Average
1	5.00	0.80	2.03	8.34	7.93	8.04
2	5.00	0.73	1.70	8.21	7.93	8.02
3	5.00	0.67	1.71	8.28	7.93	8.01
4	5.00	0.72	1.67	8.25	7.93	8.00
5	5.00	0.70	1.61	8.29	7.90	7.97
6	5.00	0.76	1.72	8.19	7.90	7.97
7	5.00	0.81	1.82	8.21	7.90	7.98
8	5.00	0.80	1.84	8.31	7.91	7.99
9	5.00	0.00	1.87	8.62	7.86	8.05
10	5.00	0.70	1.80	8.35	7.90	7.98
11	5.00	0.67	1.89	8.42	7.89	7.99
12	5.00	0.77	1.95	8.29	7.90	7.99
13	5.00	0.39	1.89	8.31	7.91	8.00
14	5.00	0.70	2.01	8.25	7.86	7.97
15	5.00	0.73	1.94	8.29	7.90	7.99
16	5.00	0.72	1.93	8.50	7.90	7.98
17	5.00	0.70	2.00	8.32	7.86	7.97
18	5.00	0.63	1.92	8.28	7.87	7.96
19	5.00	0.47	1.88	8.21	7.87	7.96
20	5.00	0.80	1.66	8.25	7.87	7.96
21	5.00	0.60	1.87	8.23	7.89	7.98
22	5.00	0.72	1.75	8.23	7.89	7.96
23	5.00	0.81	1.76	8.25	7.89	7.98
24	4.87	0.83	1.67	8.29	7.89	7.97
25	5.00	0.69	1.56	8.34	7.91	8.01
26	3.84	0.66	1.62	8.17	7.89	7.97
27	4.88	0.67	1.57	8.28	7.90	7.99
28	5.00	0.77	1.70	8.28	7.90	7.99
29	5.00	0.38	1.54	8.25	7.90	7.99
Total						
Average	4.95	0.67	1.79	8.29	7.90	7.99
Maximum	5.00		2.03	8.62		8.05
Date	1-Feb		1-Feb	9-Feb		9-Feb
Minimum		0.00	1.54		7.86	7.96
Date		9-Feb	29-Feb		14-Feb	20-Feb

Notes:

---



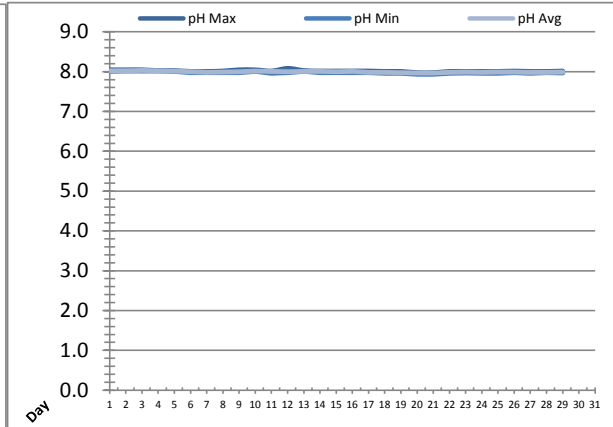
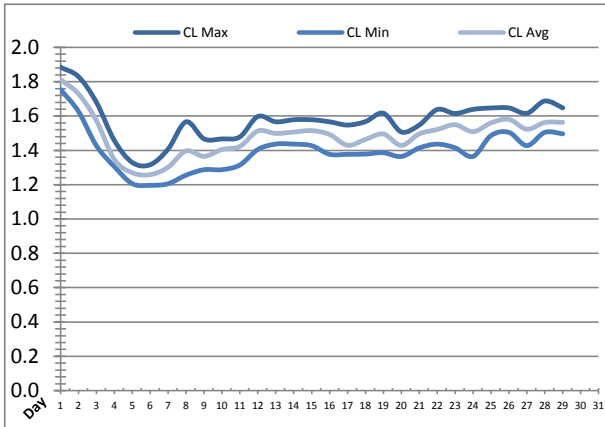
---



---

# Plant Quality Report

Month: February-16

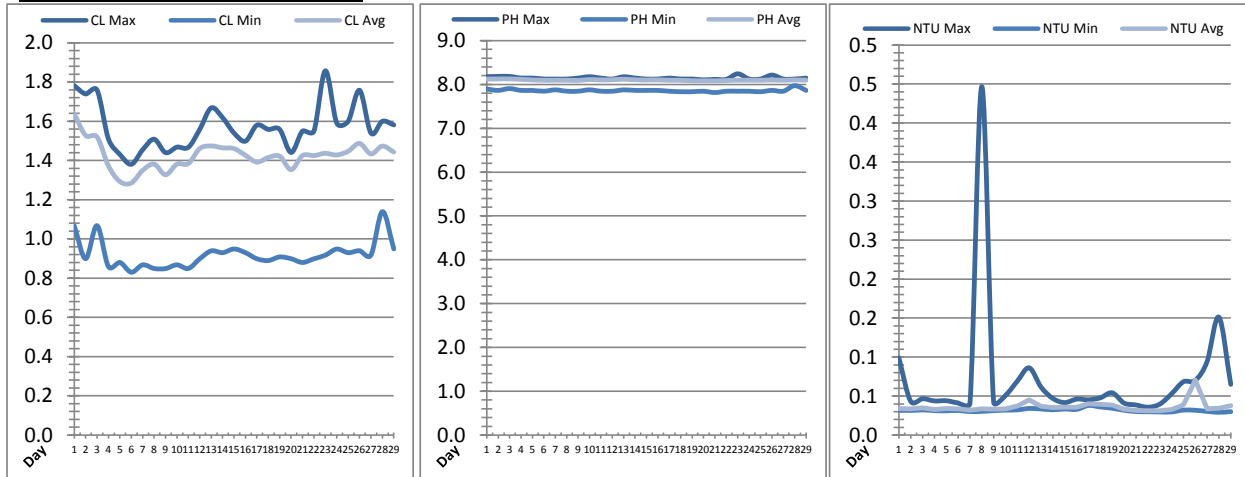


Date	Suction Header Chlorine Res.			Suction Header pH			Distribution CT Calc Total		
	AIT_7001_CL (ppm)			AIT_7001_PH (m)			REAL_CT_CALC_TOTAL (mg*ml/min)		
	Maximum	Minimum	Average	Maximum	Minimum	Average	Maximum	Minimum	Average
1	✓ 1.88	✓ 1.75	1.81	8.05	8.00	8.02	2137.42	0.00	358.78
2	✓ 1.83	✓ 1.63	1.73	8.05	8.01	8.02	10804.63	0.00	299.20
3	✓ 1.68	✓ 1.43	1.57	8.05	8.01	8.03	3307.84	0.00	261.73
4	✓ 1.46	✓ 1.31	1.35	8.03	8.01	8.02	3855.84	0.00	159.29
5	✓ 1.33	✓ 1.21	1.27	8.03	8.00	8.01	7197.61	0.00	184.37
6	✓ 1.32	✓ 1.20	1.26	8.00	7.97	7.99	7451.31	0.00	230.54
7	✓ 1.41	✓ 1.21	1.30	8.00	7.97	7.98	1610.32	0.00	204.94
8	✓ 1.57	✓ 1.26	1.40	8.02	7.97	7.99	2294.25	0.00	234.78
9	✓ 1.47	✓ 1.29	1.37	8.05	7.97	8.00	4733.59	0.00	103.48
10	✓ 1.47	✓ 1.29	1.41	8.04	8.00	8.01	1514.31	0.00	195.45
11	✓ 1.48	✓ 1.31	1.42	8.02	7.96	8.00	8767.83	0.00	166.26
12	✓ 1.60	✓ 1.41	1.51	8.08	7.97	8.00	7733.02	0.00	412.01
13	✓ 1.57	✓ 1.44	1.50	8.03	8.00	8.01	8979.20	0.00	320.59
14	✓ 1.58	✓ 1.44	1.51	8.02	7.97	8.00	5664.91	0.00	294.78
15	✓ 1.58	✓ 1.43	1.52	8.02	7.97	8.00	7168.41	0.00	315.65
16	✓ 1.57	✓ 1.38	1.49	8.02	7.97	8.00	10383.71	0.00	250.26
17	✓ 1.55	✓ 1.38	1.43	8.02	7.97	7.98	4873.51	0.00	163.40
18	✓ 1.57	✓ 1.38	1.46	8.00	7.95	7.98	3322.23	0.00	163.25
19	✓ 1.62	✓ 1.39	1.50	8.00	7.95	7.97	2285.75	0.00	297.44
20	✓ 1.51	✓ 1.36	1.43	7.97	7.94	7.96	5044.34	0.00	157.81
21	✓ 1.55	✓ 1.41	1.50	7.97	7.94	7.96	5784.47	0.00	256.89
22	✓ 1.64	✓ 1.44	1.52	8.00	7.95	7.98	5658.89	0.00	300.22
23	✓ 1.62	✓ 1.41	1.55	8.00	7.97	7.99	2959.62	0.00	211.59
24	✓ 1.64	✓ 1.36	1.51	8.00	7.95	7.98	6431.06	0.00	315.61
25	✓ 1.65	✓ 1.49	1.56	8.00	7.95	7.99	1927.08	0.00	172.29
26	✓ 1.65	✓ 1.50	1.58	8.01	7.97	7.99	3750.17	0.00	153.05
27	✓ 1.62	✓ 1.43	1.52	8.00	7.95	7.98	3372.90	0.00	332.51
28	✓ 1.69	✓ 1.51	1.56	8.00	7.97	7.98	7526.57	0.00	149.36
29	✓ 1.65	✓ 1.50	1.56	8.02	7.97	7.99	2080.21	0.00	339.44
Total									
Average	1.58	1.40	1.49	8.02	7.97	7.99	8.02	7.97	7.99
Maximum	1.88		1.81	8.08		8.03	8.08		8.03
Date	1-Feb		1-Feb	12-Feb		3-Feb	12-Feb		3-Feb
Minimum		1.20	1.26		7.94	7.96		7.94	7.96
Date		6-Feb	6-Feb		20-Feb	20-Feb		20-Feb	20-Feb

Notes:

# Plant Quality Report

Month: February-16

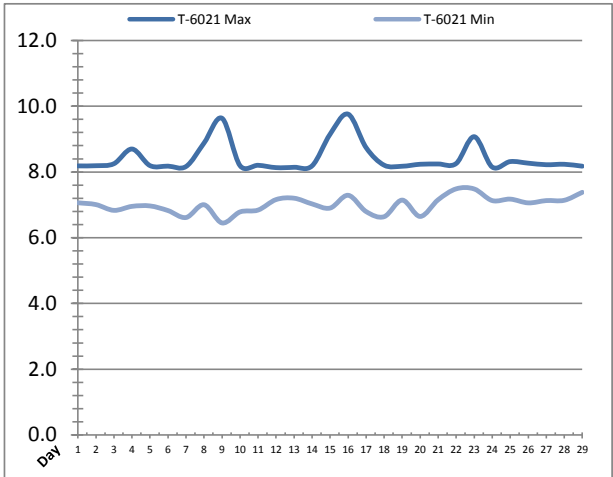
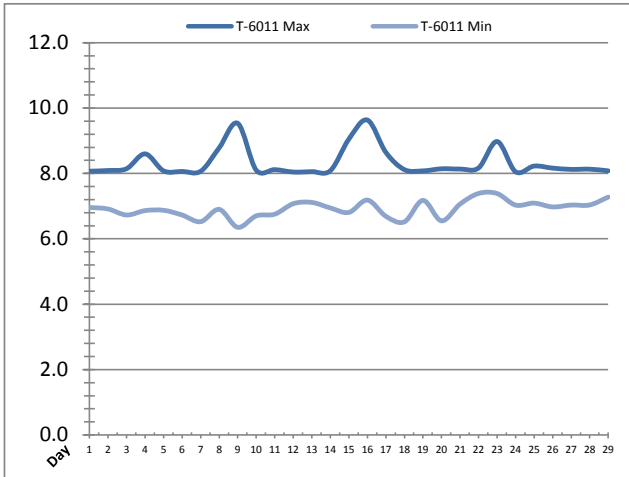


Date	Distribution Chlorine Header			Distribution pH			Distribution Turbidity		
	AIT_7004_CL (ppm)			AIT_7004_PH (mg/L)			AIT_7003 (mg/L)		
	Maximum	Minimum	Average	Maximum	Minimum	Average	Maximum	Minimum	Average
1	1.78	1.07	1.64	8.18	7.89	8.12	0.10	0.03	0.03
2	1.74	0.90	1.53	8.18	7.86	8.13	0.04	0.03	0.03
3	1.76	1.07	1.52	8.18	7.91	8.13	0.05	0.03	0.03
4	1.51	0.86	1.37	8.15	7.86	8.12	0.04	0.03	0.03
5	1.43	0.88	1.29	8.15	7.86	8.10	0.04	0.03	0.03
6	1.38	0.83	1.29	8.12	7.85	8.10	0.04	0.03	0.03
7	1.46	0.87	1.35	8.12	7.88	8.10	0.04	0.03	0.03
8	1.51	0.85	1.38	8.12	7.85	8.10	0.45	0.03	0.03
9	1.44	0.85	1.33	8.15	7.85	8.09	0.04	0.03	0.03
10	1.47	0.87	1.38	8.18	7.88	8.11	0.05	0.03	0.03
11	1.47	0.85	1.38	8.15	7.85	8.10	0.07	0.03	0.04
12	1.56	0.90	1.46	8.12	7.85	8.11	0.09	0.03	0.05
13	1.67	0.94	1.47	8.18	7.88	8.12	0.06	0.03	0.04
14	1.62	0.93	1.46	8.15	7.86	8.11	0.05	0.03	0.04
15	1.54	0.95	1.46	8.12	7.86	8.10	0.04	0.03	0.04
16	1.50	0.93	1.43	8.12	7.86	8.10	0.05	0.03	0.04
17	1.58	0.90	1.39	8.15	7.85	8.10	0.05	0.04	0.04
18	1.56	0.89	1.42	8.12	7.83	8.09	0.05	0.04	0.04
19	1.56	0.91	1.42	8.12	7.83	8.08	0.05	0.03	0.04
20	1.44	0.90	1.35	8.11	7.85	8.08	0.04	0.03	0.03
21	1.55	0.88	1.43	8.12	7.82	8.08	0.04	0.03	0.03
22	1.55	0.90	1.43	8.12	7.85	8.09	0.04	0.03	0.03
23	1.86	0.92	1.44	8.24	7.85	8.10	0.04	0.03	0.03
24	1.59	0.95	1.43	8.12	7.85	8.10	0.05	0.03	0.03
25	1.60	0.93	1.45	8.12	7.83	8.10	0.07	0.03	0.04
26	1.76	0.94	1.49	8.21	7.86	8.10	0.07	0.03	0.07
27	1.54	0.92	1.43	8.12	7.85	8.10	0.09	0.03	0.03
28	1.60	1.14	1.47	8.12	7.97	8.10	0.15	0.03	0.03
29	1.58	0.95	1.44	8.15	7.86	8.10	0.07	0.03	0.04
Total									
Average	1.57	0.92	1.43	8.14	7.86	8.10	0.1	0.0	0.0
Maximum	1.86		1.64	8.24		8.13	0.4		0.1
Date	23-Feb		1-Feb	23-Feb		3-Feb	8-Feb		26-Feb
Minimum		0.83	1.29		7.82	8.08		0.0	0.0
Date		6-Feb	6-Feb		21-Feb	21-Feb		28-Feb	23-Feb

Notes:

# Raw Well/Treated Storage Report

Month: February-16

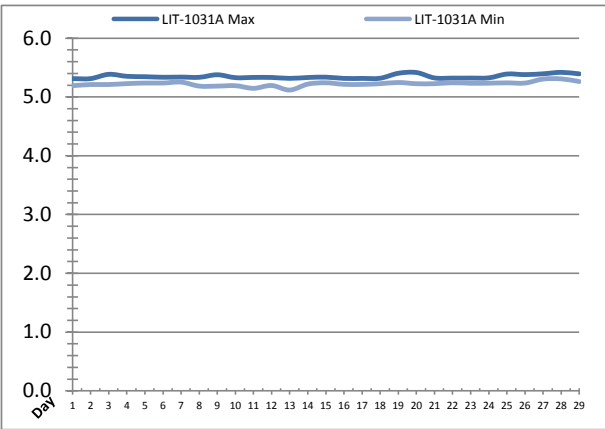
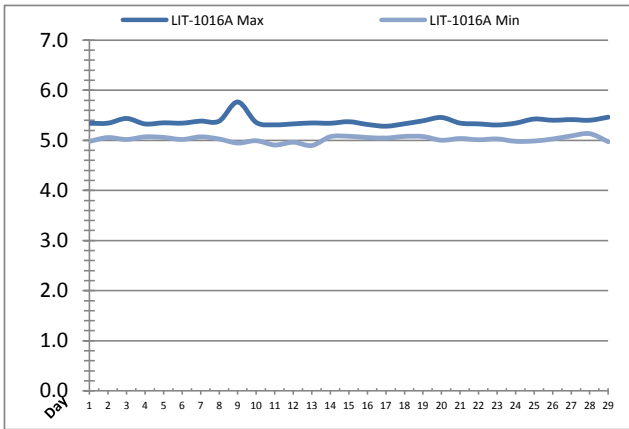


Date	Treated Water Storage Tank					
	T-6011 (m)			T-6021 (m)		
	Maximum	Minimum	Average	Maximum	Minimum	Average
1	8.1	7.0	7.6	8.2	7.1	7.7
2	8.1	6.9	7.6	8.2	7.0	7.7
3	8.1	6.7	7.6	8.3	6.8	7.7
4	8.6	6.9	7.8	8.7	7.0	7.9
5	8.1	6.9	7.6	8.2	7.0	7.7
6	8.1	6.7	7.5	8.2	6.8	7.6
7	8.1	6.5	7.3	8.2	6.6	7.4
8	8.8	6.9	7.9	8.9	7.0	8.0
9	9.5	6.4	8.2	9.6	6.4	8.3
10	8.1	6.7	7.4	8.2	6.8	7.5
11	8.1	6.8	7.8	8.2	6.8	7.9
12	8.0	7.1	7.6	8.1	7.2	7.7
13	8.1	7.1	7.6	8.1	7.2	7.7
14	8.1	6.9	7.6	8.2	7.0	7.7
15	9.1	6.8	7.8	9.1	6.9	7.9
16	9.6	7.2	8.5	9.8	7.3	8.6
17	8.6	6.7	7.7	8.7	6.8	7.8
18	8.1	6.5	7.4	8.2	6.6	7.5
19	8.1	7.2	7.6	8.2	7.1	7.7
20	8.1	6.5	7.4	8.2	6.6	7.6
21	8.1	7.1	7.8	8.2	7.2	7.9
22	8.2	7.4	7.8	8.3	7.5	7.9
23	9.0	7.4	8.1	9.1	7.5	8.2
24	8.0	7.0	7.6	8.1	7.1	7.7
25	8.2	7.1	7.9	8.3	7.2	8.0
26	8.2	7.0	7.7	8.3	7.1	7.8
27	8.1	7.0	7.7	8.2	7.1	7.8
28	8.1	7.0	7.7	8.2	7.1	7.8
29	8.1	7.3	7.7	8.2	7.4	7.8
Total						
Average	8.3	6.9	7.7	8.4	7.0	7.8
Maximum	9.6		8.5	9.8		8.6
Date	16-Feb		16-Feb	16-Feb		16-Feb
Minimum		6.4	7.3		6.4	7.4
Date		9-Feb	7-Feb		9-Feb	7-Feb

Notes:

# Raw Well/Treated Storage Report

Month: February-16

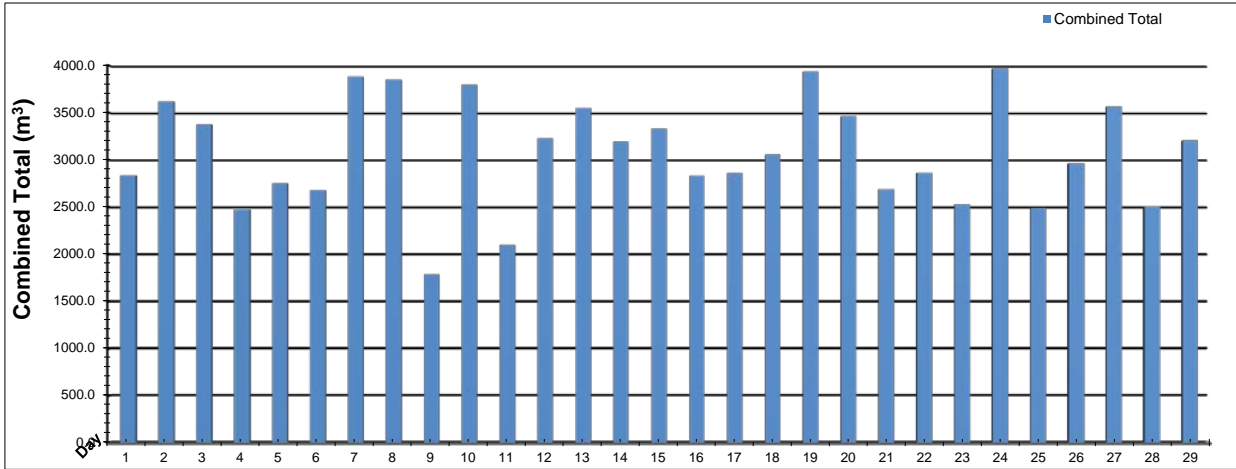


Date	Low Lift Intake Levels					
	Wet Well #1 (LIT-1016A) (m)			Wet Well #2 (LIT-1031A) (m)		
	Maximum	Minimum	Average	Maximum	Minimum	Average
1	5.3	5.0	5.2	5.3	5.2	5.3
2	5.3	5.1	5.2	5.3	5.2	5.3
3	5.4	5.0	5.2	5.4	5.2	5.3
4	5.3	5.1	5.2	5.4	5.2	5.3
5	5.4	5.1	5.2	5.3	5.2	5.3
6	5.3	5.0	5.2	5.3	5.2	5.3
7	5.4	5.1	5.2	5.3	5.3	5.3
8	5.4	5.0	5.2	5.3	5.2	5.3
9	5.8	4.9	5.2	5.4	5.2	5.3
10	5.4	5.0	5.2	5.3	5.2	5.3
11	5.3	4.9	5.2	5.3	5.1	5.3
12	5.3	5.0	5.2	5.3	5.2	5.3
13	5.3	4.9	5.1	5.3	5.1	5.2
14	5.3	5.1	5.2	5.3	5.2	5.3
15	5.4	5.1	5.2	5.3	5.2	5.3
16	5.3	5.1	5.2	5.3	5.2	5.3
17	5.3	5.0	5.2	5.3	5.2	5.3
18	5.3	5.1	5.2	5.3	5.2	5.3
19	5.4	5.1	5.2	5.4	5.2	5.3
20	5.5	5.0	5.2	5.4	5.2	5.3
21	5.3	5.0	5.2	5.3	5.2	5.3
22	5.3	5.0	5.2	5.3	5.2	5.3
23	5.3	5.0	5.2	5.3	5.2	5.3
24	5.3	5.0	5.1	5.3	5.2	5.3
25	5.4	5.0	5.2	5.4	5.2	5.3
26	5.4	5.0	5.2	5.4	5.2	5.3
27	5.4	5.1	5.2	5.4	5.3	5.4
28	5.4	5.1	5.3	5.4	5.3	5.4
29	5.5	5.0	5.2	5.4	5.3	5.3
Total						
Average	5.4	5.0	5.2	5.3	5.2	5.3
Maximum	5.8		5.3	5.4		5.4
Date	9-Feb		28-Feb	28-Feb		28-Feb
Minimum		4.9	5.1		5.1	5.2
Date		13-Feb	13-Feb		13-Feb	13-Feb

Notes:

# High Lift Monthly Report

Month: February-16

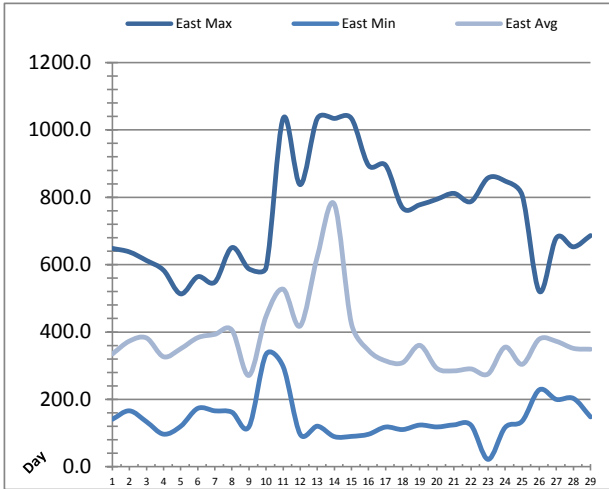
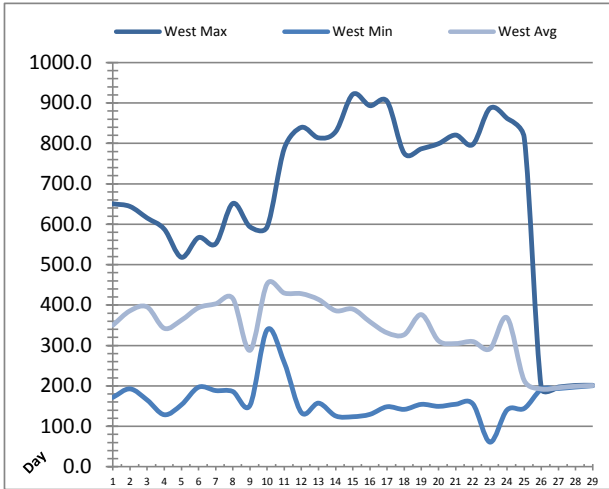


Date	Distribution Flow					
	FIT_7052 (East)		FIT_7062 (West)		Combined	
	(m³)	(L/s)	(m³)	(L/s)	(m³)	(L/s)
	Total	Peak	Total	Peak	Total	Peak
1	518.7	34.6	2321.0	82.2	2839.8	82.2
2	487.6	33.0	3134.3	84.3	3621.9	86.3
3	277.3	27.3	3099.4	84.8	3376.7	85.3
4	250.0	42.8	2226.7	78.4	2476.8	79.1
5	723.1	39.7	2028.6	83.4	2751.7	89.4
6	520.6	34.2	2158.1	83.6	2678.7	90.0
7	633.5	35.3	3254.0	82.2	3887.5	88.0
8	378.5	27.3	3474.5	83.9	3853.1	84.7
9	152.1	29.7	1634.8	88.0	1786.9	88.0
10	415.8	33.9	3382.8	81.9	3798.6	88.6
11	274.6	44.2	1824.0	85.0	2098.6	85.0
12	1245.8	45.2	1984.8	80.0	3230.6	85.5
13	593.6	34.2	2958.0	85.3	3551.7	85.3
14	513.5	34.3	2683.5	84.3	3197.1	84.3
15	505.4	34.7	2827.6	83.6	3333.0	83.6
16	569.8	46.4	2265.6	85.9	2835.4	90.3
17	547.1	38.0	2316.0	82.8	2863.0	89.7
18	428.4	33.2	2628.9	80.3	3057.3	88.8
19	714.5	35.4	3221.5	81.6	3936.0	90.8
20	617.2	28.3	2849.2	85.7	3466.4	91.3
21	490.5	33.6	2201.0	82.2	2691.6	82.2
22	430.7	33.9	2433.0	83.0	2863.7	83.0
23	415.5	45.6	2118.1	81.2	2533.6	88.7
24	402.7	33.9	3569.9	84.8	3972.7	84.8
25	572.4	33.6	1922.9	81.9	2495.3	86.8
26	441.7	41.9	2523.8	100.7	2965.5	140.0
27	859.4	33.8	2706.1	82.8	3565.4	86.9
28	675.3	35.0	1832.8	84.7	2508.1	89.1
29	739.2	34.7	2468.3	85.1	3207.5	85.1
Total	15394.4		74049.6		89444.0	
Average	530.8	35.8	2553.4	83.9	3084.3	88.4
Maximum	1245.8	46.4	3569.9	100.7	3972.7	140.0
Date	12-Feb	16-Feb	24-Feb	26-Feb	24-Feb	26-Feb
Minimum	152.1		1634.8		1786.9	
Date	9-Feb		9-Feb		9-Feb	

Notes:

# Low Lift Monthly Report

Month: February-16

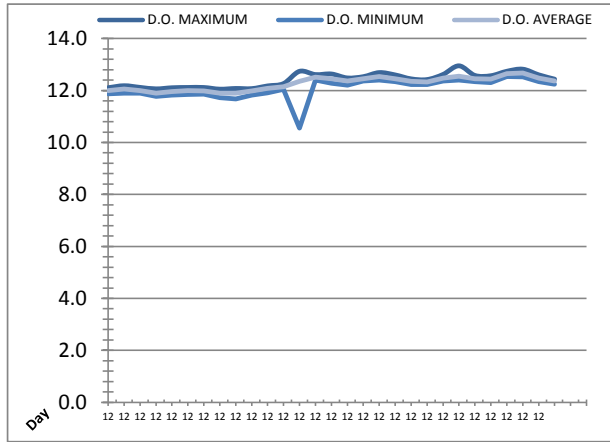
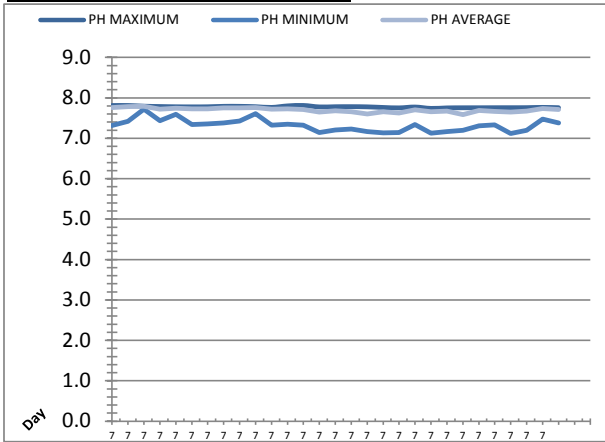


Date	West Train Header Pressure PIT_1018 (kPa)			East Train Header Pressure PIT_1028 (kPa)		
	Maximum	Minimum	Average	Maximum	Minimum	Average
	1	650.5	171.7	350.2	648.2	141.0
2	643.9	192.6	385.9	637.7	166.0	373.2
3	615.4	165.1	395.3	612.2	133.5	382.2
4	587.8	128.7	342.4	583.2	96.8	326.5
5	518.1	153.3	362.7	513.2	120.0	350.4
6	567.1	196.9	393.5	564.2	173.3	383.3
7	551.7	188.4	403.1	548.0	165.9	393.1
8	651.3	186.1	416.3	650.6	161.9	405.7
9	593.5	151.9	288.0	587.3	119.0	271.1
10	593.5	338.9	452.5	591.0	333.9	446.8
11	787.3	257.9	429.7	1034.0	297.5	527.3
12	839.6	134.0	428.2	837.3	96.2	418.0
13	813.7	157.4	413.8	1034.0	120.5	623.8
14	829.1	125.7	386.0	1034.0	89.4	779.2
15	921.4	123.8	390.1	1034.0	90.1	424.4
16	893.3	129.6	358.7	894.6	96.5	345.4
17	904.1	148.4	331.3	895.1	117.9	314.3
18	775.3	142.0	326.8	768.3	110.5	309.1
19	786.6	154.4	376.3	777.7	123.8	360.5
20	799.3	149.4	311.7	794.2	118.2	292.4
21	820.6	154.6	304.8	811.6	124.3	284.7
22	797.2	155.7	309.8	787.3	123.5	290.4
23	886.8	60.9	291.7	857.5	21.9	275.4
24	861.9	140.5	368.6	848.2	116.7	355.2
25	814.4	144.3	213.5	805.7	135.5	304.1
26	193.6	191.3	192.4	520.9	228.4	379.0
27	197.3	193.6	195.6	679.6	199.9	372.3
28	201.2	197.2	199.2	652.8	202.8	351.5
29	201.6	200.5	200.9	686.3	147.9	348.9
Total						
Average	665.4	166.7	338.6	747.9	143.9	380.1
Maximum	921.4		452.5	1034.0		779.2
Date	15-Feb		10-Feb	11-Feb		14-Feb
Minimum		60.9	192.4		21.9	271.1
Date		23-Feb	26-Feb		23-Feb	9-Feb

Notes:

# Low Lift Monthly Report

Month: February-16



Date	Raw Water Sample Line					
	AIT_1402_PH (pH)			AIT_1402_DO (mg/L)		
	Maximum	Minimum	Average	Maximum	Minimum	Average
1	7.8	7.3	7.8	12.1	11.9	12.0
2	7.8	7.4	7.8	12.2	11.9	12.1
3	7.8	7.7	7.8	12.1	11.9	12.0
4	7.8	7.4	7.7	12.1	11.8	11.9
5	7.8	7.6	7.7	12.1	11.8	12.0
6	7.8	7.3	7.7	12.1	11.8	12.0
7	7.8	7.4	7.7	12.1	11.9	12.0
8	7.8	7.4	7.7	12.1	11.7	11.9
9	7.8	7.4	7.7	12.1	11.7	11.9
10	7.8	7.6	7.8	12.1	11.8	12.0
11	7.8	7.3	7.7	12.2	11.9	12.1
12	7.8	7.3	7.7	12.3	12.0	12.1
13	7.8	7.3	7.7	12.7	10.6	12.4
14	7.8	7.1	7.6	12.6	12.4	12.5
15	7.8	7.2	7.7	12.6	12.3	12.5
16	7.8	7.2	7.7	12.5	12.2	12.4
17	7.8	7.2	7.6	12.5	12.4	12.5
18	7.8	7.1	7.7	12.7	12.4	12.5
19	7.8	7.1	7.6	12.6	12.3	12.4
20	7.8	7.3	7.7	12.4	12.2	12.4
21	7.7	7.1	7.7	12.4	12.2	12.3
22	7.8	7.2	7.7	12.6	12.4	12.5
23	7.8	7.2	7.6	12.9	12.4	12.5
24	7.8	7.3	7.7	12.6	12.3	12.4
25	7.8	7.3	7.7	12.6	12.3	12.4
26	7.8	7.1	7.7	12.7	12.5	12.6
27	7.8	7.2	7.7	12.8	12.5	12.7
28	7.8	7.5	7.7	12.6	12.3	12.5
29	7.8	7.4	7.7	12.4	12.2	12.4
Total						
Average	7.8	7.3	7.7	12.4	12.1	12.3
Maximum	7.8		7.8	12.9		12.7
Date	13-Feb		3-Feb	23-Feb		27-Feb
Minimum		7.1	7.6		10.6	11.9
Date		26-Feb	23-Feb		13-Feb	4-Feb

Notes:

---



---

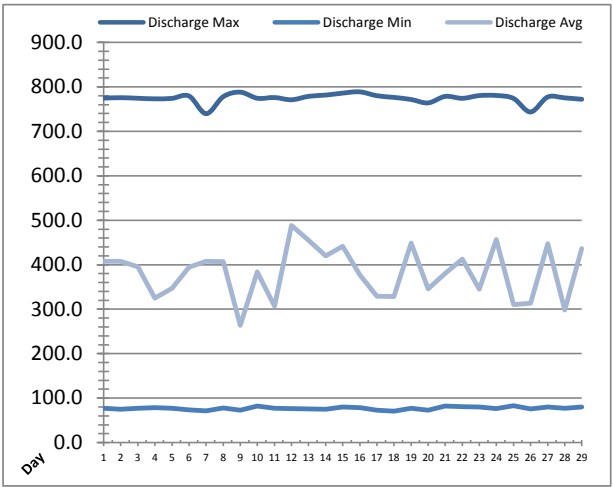
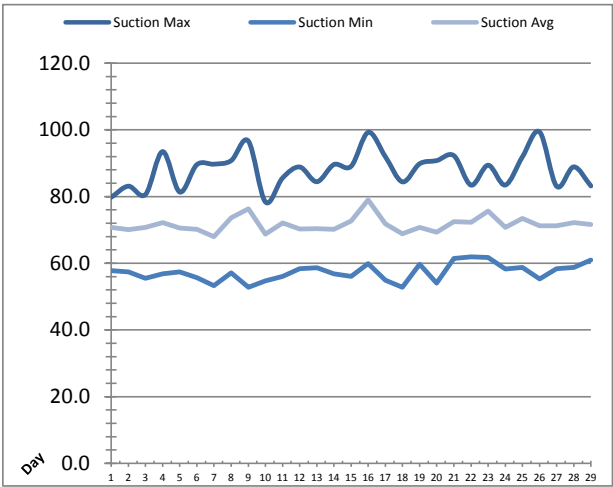


---



# High Lift Monthly Report

Month: February-16

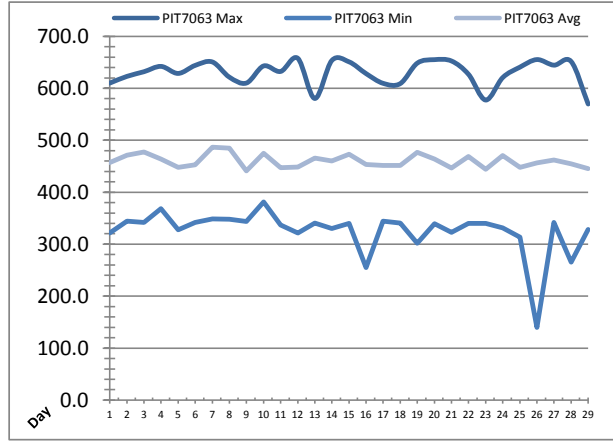
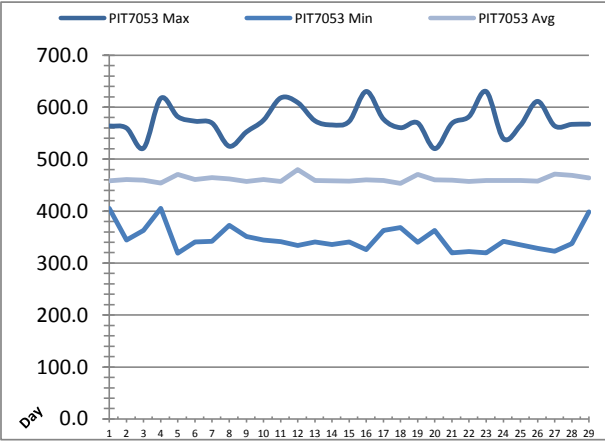


Date	Suction Header Pressure			Discharge Header Pressure		
	PIT_7002 (kPa)			PIT_7005 (kPa)		
	Maximum	Minimum	Average	Maximum	Minimum	Average
1	✓ 79.8	✓ 57.8	70.8	✓ 774.8	✓ 77.1	407.8
2	✓ 83.1	✓ 57.4	70.1	✓ 775.7	✓ 75.2	407.4
3	✓ 80.6	✓ 55.5	70.7	✓ 774.4	✓ 77.4	395.7
4	✓ 93.5	✓ 56.9	72.2	✓ 773.2	✓ 78.5	325.0
5	✓ 81.4	✓ 57.4	70.6	✓ 774.2	✓ 76.8	347.3
6	✓ 89.6	✓ 55.7	70.2	✓ 779.5	✓ 73.6	394.3
7	✓ 89.7	✓ 53.3	68.0	✓ 739.7	✓ 71.2	407.3
8	✓ 90.8	✓ 57.2	73.6	✓ 777.9	✓ 77.6	406.6
9	✓ 96.7	✓ 52.8	76.3	✓ 788.2	✓ 72.5	263.7
10	✓ 78.4	✓ 54.7	68.8	✓ 774.4	✓ 82.5	384.1
11	✓ 85.6	✓ 56.1	72.1	✓ 776.1	✓ 77.1	306.9
12	✓ 88.9	✓ 58.3	70.3	✓ 771.0	✓ 76.2	488.4
13	✓ 84.5	✓ 58.7	70.4	✓ 778.8	✓ 76.0	455.0
14	✓ 89.6	✓ 56.8	70.2	✓ 781.5	✓ 74.8	419.6
15	✓ 89.1	✓ 56.0	72.7	✓ 786.0	✓ 80.1	441.5
16	✓ 99.3	✓ 59.9	79.0	✓ 788.9	✓ 78.4	376.4
17	✓ 92.0	✓ 54.9	71.8	✓ 780.1	✓ 73.1	328.9
18	✓ 84.4	✓ 52.9	68.8	✓ 776.4	✓ 70.8	328.6
19	✓ 89.8	✓ 59.8	70.8	✓ 771.7	✓ 76.9	449.0
20	✓ 90.8	✓ 54.0	69.3	✓ 764.0	✓ 72.6	345.7
21	✓ 92.3	✓ 61.5	72.5	✓ 778.6	✓ 81.9	380.6
22	✓ 83.4	✓ 61.9	72.3	✓ 774.3	✓ 81.0	412.6
23	✓ 89.4	✓ 61.7	75.6	✓ 780.4	✓ 79.8	344.9
24	✓ 83.5	✓ 58.3	70.7	✓ 780.7	✓ 76.5	456.8
25	✓ 91.9	✓ 58.8	73.4	✓ 774.1	✓ 83.2	310.6
26	✓ 99.4	✓ 55.3	71.2	✓ 743.6	✓ 75.7	313.5
27	✓ 83.1	✓ 58.4	71.3	✓ 777.2	✓ 80.0	447.1
28	✓ 88.9	✓ 58.7	72.2	✓ 775.3	✓ 77.5	298.1
29	✓ 83.2	✓ 61.0	71.6	✓ 772.1	✓ 80.0	436.8
Total						
Average	88.0	57.3	71.6	774.6	77.0	382.1
Maximum	99.4		79.0	788.9		488.4
Date	26-Feb		16-Feb	16-Feb		12-Feb
Minimum		52.8	68.0		70.8	263.7
Date		9-Feb	7-Feb		18-Feb	9-Feb

Notes:

# High Lift Monthly Report

Month: February-16

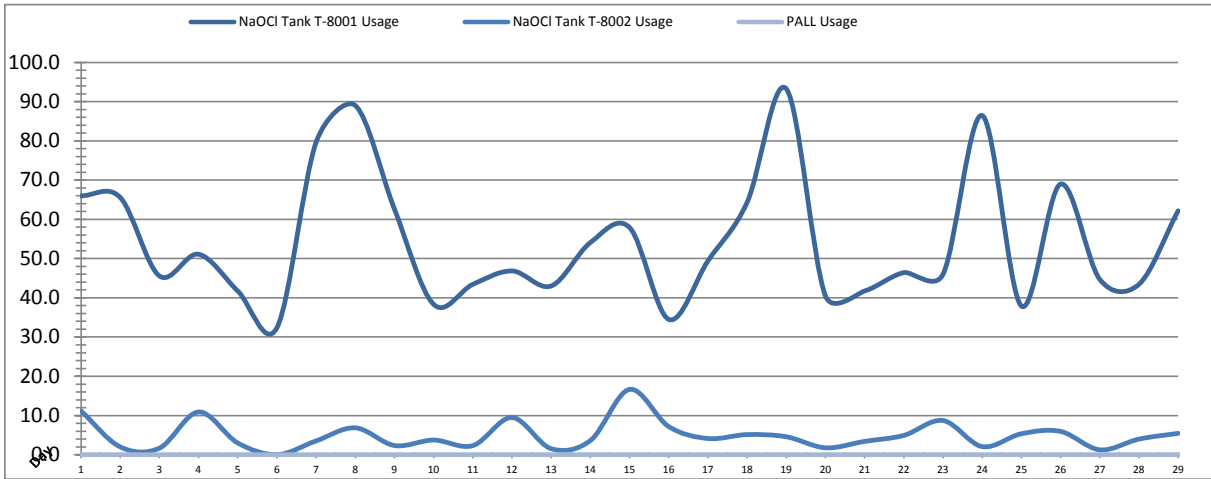


Date	Distribution Pressures					
	PIT_7053 (kPa)			PIT_7063 (kPa)		
	Maximum	Minimum	Average	Maximum	Minimum	Average
1	✓ 563.8	✓ 405.5	458.5	✓ 610.0	✓ 321.3	456.8
2	✓ 559.9	✓ 344.4	461.0	✓ 622.9	✓ 344.4	471.3
3	✓ 521.3	✓ 362.9	459.2	✓ 631.9	✓ 341.8	477.6
4	✓ 616.9	✓ 405.6	453.7	✓ 642.1	✓ 368.2	464.0
5	✓ 581.7	✓ 319.3	470.6	✓ 628.6	✓ 327.6	447.6
6	✓ 573.0	✓ 340.4	460.9	✓ 644.1	✓ 341.7	452.5
7	✓ 569.3	✓ 342.0	464.5	✓ 650.7	✓ 348.5	486.3
8	✓ 524.8	✓ 372.5	462.0	✓ 621.4	✓ 347.8	484.6
9	✓ 552.3	✓ 351.3	456.9	✓ 610.1	✓ 343.9	441.3
10	✓ 575.0	✓ 344.3	460.7	✓ 642.9	✓ 381.5	475.1
11	✓ 617.8	✓ 341.3	457.2	✓ 632.4	✓ 337.2	447.4
12	✓ 608.8	✓ 334.1	479.9	✓ 657.8	✓ 321.4	448.5
13	✓ 573.8	✓ 340.8	459.2	✓ 580.4	✓ 340.5	465.6
14	✓ 565.8	✓ 335.6	458.2	✓ 653.6	✓ 329.9	460.2
15	✓ 572.6	✓ 340.9	457.5	✓ 650.9	✓ 339.7	473.0
16	✓ 630.2	✓ 325.9	460.4	✓ 628.3	✓ 254.9	453.2
17	✓ 577.1	✓ 362.9	458.7	✓ 609.5	✓ 344.2	451.8
18	✓ 560.5	✓ 368.1	453.3	✓ 609.0	✓ 340.6	451.7
19	✓ 569.7	✓ 339.7	470.4	✓ 648.4	✓ 302.0	476.7
20	✓ 520.2	✓ 362.8	460.2	✓ 655.1	✓ 339.6	463.9
21	✓ 568.7	✓ 319.4	459.6	✓ 652.5	✓ 322.7	446.5
22	✓ 582.0	✓ 322.2	457.1	✓ 626.7	✓ 340.3	468.9
23	✓ 630.1	✓ 319.6	458.8	✓ 577.4	✓ 339.9	444.4
24	✓ 539.6	✓ 342.1	459.0	✓ 620.7	✓ 331.7	470.9
25	✓ 565.0	✓ 335.3	459.0	✓ 640.6	✓ 313.2	447.6
26	✓ 611.2	✓ 328.6	458.0	✓ 655.2	✓ 139.7	456.5
27	✓ 563.9	✓ 322.8	471.4	✓ 644.5	✓ 342.1	462.0
28	✓ 566.9	✓ 337.6	468.5	✓ 651.7	✓ 265.3	454.5
29	✓ 567.4	✓ 398.5	463.9	✓ 569.7	✓ 328.5	445.6
Total						
Average	573.4	347.1	461.3	630.0	325.5	460.2
Maximum	630.2		479.9	657.8		486.3
Date	16-Feb		12-Feb	12-Feb		7-Feb
Minimum		319.3	453.3		139.7	441.3
Date		5-Feb	18-Feb		26-Feb	9-Feb

Notes:

# Chemical Usage Monthly Report

Month: February-16

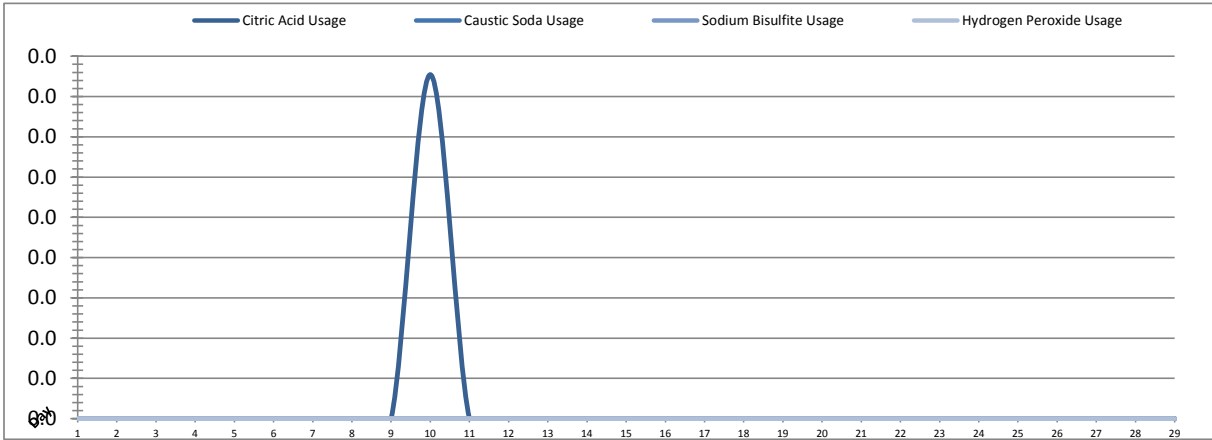


Date	PALL Usage	NaOCI Tank T-8001	NaOCI Tank T-8002
	PALL_HYPO_USAGE (L) Usage	LIT_8002 (Storage) (L) Usage	LIT_8004 (Day) (L) Usage
1	0.0	66.0	11.2
2	0.0	65.6	2.0
3	0.0	45.6	1.7
4	0.0	51.1	10.9
5	0.0	41.7	3.0
6	0.0	32.4	0.0
7	0.0	79.6	3.5
8	0.0	89.0	6.9
9	0.0	62.6	2.4
10	0.0	38.3	3.7
11	0.0	43.4	2.3
12	0.0	46.8	9.5
13	0.0	43.0	1.5
14	0.00	54.09	3.6
15	0.0	57.9	16.7
16	0.0	34.5	7.2
17	0.0	49.4	4.1
18	0.0	64.3	5.1
19	0.0	93.3	4.6
20	0.0	40.5	1.8
21	0.0	41.7	3.4
22	0.0	46.4	4.9
23	0.0	46.0	8.7
24	0.0	86.5	2.1
25	0.0	37.9	5.3
26	0.0	69.0	6.0
27	0.0	44.7	1.3
28	0.0	43.4	4.0
29	0.0	62.2	5.5
Total	0.0	1577.0	142.9
Average	0.0	54.4	4.9
Maximum	0.0	93.3	16.7
Date	1-Feb	19-Feb	15-Feb
Minimum	0.0	32.4	0.0
Date	1-Feb	6-Feb	6-Feb

Notes:	
Dosage (mg/L)=	Day Tank (L) x %conc. x 1000
	Membrane Flow (m3)
Chlorine Concentration:	12.0%

# Chemical Usage Monthly Report

Month: February-16



Date	Citric Acid	Caustic Soda	Sodium Bisulfite	Hydrogen Peroxide		Membrane Flow (m <sup>3</sup> )
	TAGNAME (L) Usage	TAGNAME (L) Usage	TAGNAME (L) Usage	TAGNAME (L) Usage	(mg/L) Dose	
1	0.0	0.0	0.0	0.0	0.0	3048.017
2	0.0	0.0	0.0	0.0	0.0	3628.249
3	0.0	0.0	0.0	0.0	0.0	3439.365
4	0.0	0.0	0.0	0.0	0.0	2622.714
5	0.0	0.0	0.0	0.0	0.0	3007.851
6	0.0	0.0	0.0	0.0	0.0	3396.905
7	0.0	0.0	0.0	0.0	0.0	3826.217
8	0.0	0.0	0.0	0.0	0.0	4904.489
9	0.0	0.0	0.0	0.0	0.0	1581.709
10	0.0	0.0	0.0	0.0	0.0	3366.135
11	0.0	0.0	0.0	0.0	0.0	2415.883
12	0.0	0.0	0.0	0.0	0.0	3883.069
13	0.0	0.0	0.0	0.0	0.0	3420.731
14	0.0	0.0	0.0	0.0	0.0	3456.825
15	0.0	0.0	0.0	0.0	0.0	3645.842
16	0.0	0.0	0.0	0.0	0.0	3347.529
17	0.0	0.0	0.0	0.0	0.0	2735.344
18	0.0	0.0	0.0	0.0	0.0	3448.371
19	0.0	0.0	0.0	0.0	0.0	4299.018
20	0.0	0.0	0.0	0.0	0.0	3232.370
21	0.0	0.0	0.0	0.0	0.0	3044.454
22	0.0	0.0	0.0	0.0	0.0	3168.658
23	0.0	0.0	0.0	0.0	0.0	2777.612
24	0.0	0.0	0.0	0.0	0.0	4410.831
25	0.0	0.0	0.0	0.0	0.0	2132.104
26	0.0	0.0	0.0	0.0	0.0	3643.833
27	0.0	0.0	0.0	0.0	0.0	3331.766
28	0.0	0.0	0.0	0.0	0.0	3012.023
29	0.0	0.0	0.0	0.0	0.0	3257.020
					#DIV/0!	
					#DIV/0!	
Total	0.0	0.0	0.0	0.0		95484.9
Average	0.0	0.0	0.0	0.0	0.0	3292.6
Maximum	0.0	0.0	0.0	0.0	0.0	4904.5
Date	10-Feb	1-Feb	1-Feb	1-Feb	1-Feb	8-Feb
Minimum	0.0	0.0	0.0	0.0	0.0	1581.7
Date	1-Feb	1-Feb	1-Feb	1-Feb	1-Feb	9-Feb

Notes:	
Dosage (mg/L)=	Day Tank (L) x %conc. x 1000
	Membrane Flow (m3)
Peroxide Concentration:	50.0%

# Runtimes Report

Month: February-16

Date	Daily Gen-Set Runtimes		Daily UV Runtimes		Daily PALL Runtimes				
	LLPS	WTP	UV #1	UV #2	Air Compressor #1	Air Compressor #2	CIP Neutralization	CIP Drain	CIP Recirc
	(Hrs)	(Hrs)	(Hrs)	(Hrs)	(Hrs)	(Hrs)	(Hrs)	(Hrs)	(Hrs)
1	0.0	0.0	0.0	0.0	0.0	23.9	0.0	0.0	0.0
2	0.0	0.0	0.0	0.0	0.0	23.9	0.0	0.0	0.0
3	0.0	0.0	0.0	0.0	0.0	23.6	0.0	0.0	0.0
4	0.0	0.0	0.0	0.0	0.0	23.9	0.0	0.0	0.0
5	0.0	0.0	0.0	0.0	10.7	13.1	0.0	0.0	0.0
6	0.0	0.0	0.0	0.0	0.2	23.7	0.0	0.0	0.0
7	0.0	0.0	0.0	0.0	23.7	0.2	0.0	0.0	0.0
8	0.0	0.0	0.0	0.0	5.0	18.9	0.0	0.0	0.0
9	0.0	0.0	0.0	0.0	23.8	0.1	0.0	0.0	0.0
10	0.0	0.0	0.0	0.0	0.1	23.8	0.0	0.0	0.0
11	0.0	0.0	0.0	0.0	23.8	0.1	0.0	0.0	0.0
12	0.0	0.0	0.0	0.0	0.1	23.8	0.0	0.0	0.0
13	0.0	0.0	0.0	0.0	23.8	0.1	0.0	0.0	0.0
14	0.0	0.0	0.0	0.0	0.1	23.8	0.0	0.0	0.0
15	0.0	0.0	0.0	0.0	23.8	0.1	0.0	0.0	0.0
16	0.0	0.0	0.0	0.0	0.1	23.8	0.0	0.0	0.0
17	0.0	0.0	0.0	0.0	23.5	0.2	0.0	0.0	0.0
18	0.0	0.0	0.0	0.0	0.1	23.7	0.0	0.0	0.0
19	0.0	0.0	0.0	0.0	23.8	0.2	0.0	0.0	0.1
20	0.0	0.0	0.0	0.0	0.1	23.7	0.0	0.0	0.0
21	0.0	0.0	0.0	0.0	23.8	0.2	0.0	0.0	0.0
22	0.0	0.0	0.0	0.0	0.1	23.7	0.0	0.0	0.0
23	1.5	1.3	1.6	1.5	23.7	0.2	0.0	0.0	0.0
24	0.0	0.0	0.0	0.0	0.2	23.7	0.0	0.0	0.0
25	0.0	0.0	0.0	0.0	23.7	0.2	0.0	0.0	0.0
26	0.0	0.0	0.0	0.0	0.2	23.7	0.0	0.0	0.0
27	0.0	0.0	0.0	0.0	23.7	0.1	0.0	0.0	0.0
28	0.0	0.0	0.0	0.0	0.2	23.8	0.0	0.0	0.0
29	0.0	0.0	0.0	0.0	23.7	0.1	0.0	0.0	0.0
Total	1.5	1.3	1.6	1.5	302.0	390.5	0.0	0.0	0.1

Notes:

---



---



---

# Runtimes Report

Month: February-16

## Daily

Date	PALL Runtimes						Process Drain	
	RFR Pump #1 (Hrs)	RFR Pump #2 (Hrs)	RF Pump #1 (Hrs)	RF Pump #2 (Hrs)	XR Pump #1 (Hrs)	XR Pump #2 (Hrs)	PDP9010 Pump (Hrs)	PDP9020 Pump (Hrs)
1	3.0	3.2	0.7	0.8	5.8	5.7	1.0	1.6
2	3.5	3.2	0.9	0.9	5.3	5.4	1.2	1.5
3	3.4	3.3	0.8	0.8	2.9	2.9	1.4	1.6
4	2.8	2.6	0.6	0.7	2.3	2.3	1.4	1.9
5	2.5	2.9	0.7	0.6	3.7	3.6	1.2	1.6
6	3.3	3.5	0.9	0.8	3.8	4.0	1.2	1.7
7	3.6	3.5	0.8	0.9	4.3	4.1	1.2	1.4
8	4.9	4.9	1.3	1.1	3.8	3.7	1.1	1.5
9	1.8	1.5	0.3	0.4	2.3	2.4	1.6	2.0
10	3.1	3.0	0.8	0.7	3.1	2.9	1.4	2.0
11	1.9	2.5	0.5	0.6	3.7	3.5	1.8	2.3
12	3.2	2.9	0.9	0.9	7.3	7.5	1.4	2.1
13	1.5	1.7	0.8	0.7	6.5	7.2	1.4	1.7
14	0.0	0.0	0.8	0.7	7.5	6.9	1.4	1.8
15	0.0	0.0	0.9	0.8	7.0	7.2	1.4	1.9
16	0.0	0.0	0.6	0.7	7.0	6.7	1.8	2.4
17	0.0	0.0	0.6	0.7	5.8	5.4	1.7	2.4
18	1.6	1.6	0.9	0.8	7.0	6.4	1.4	2.0
19	4.2	4.2	1.1	1.0	7.3	9.3	1.2	1.4
20	3.2	3.0	0.9	0.7	6.8	5.1	1.4	1.8
21	3.0	3.0	0.7	0.8	5.6	5.7	1.3	1.7
22	2.9	3.0	0.8	0.7	4.9	6.8	1.5	1.8
23	3.0	2.8	0.5	0.8	5.7	4.7	1.4	2.0
24	4.3	4.2	1.3	1.0	9.0	7.4	1.4	1.9
25	2.0	2.2	0.5	0.6	2.8	5.1	1.6	2.0
26	3.8	3.5	1.0	0.8	6.9	6.4	1.9	2.2
27	3.2	3.4	0.8	0.9	6.3	5.5	1.2	1.5
28	2.9	3.0	0.7	0.7	4.8	5.0	1.6	2.1
29	3.3	3.2	0.8	0.9	5.8	5.6	1.1	1.4
Total	75.6	75.5	22.9	22.5	154.4	153.8	40.6	53.2

Notes:

# Runtimes Report

Month: February-16

## Daily

Date	Low Lift Pump Motor Runtimes				High Lift Pump Motor Runtimes			
	LLP1010 (Hrs)	LLP1020 (Hrs)	LLP1030 (Hrs)	LLP1040 (Hrs)	HLP7010 (Hrs)	HLP7020 (Hrs)	HLP7030 (Hrs)	HLP7040 (Hrs)
1	1.5	0.0	2.4	9.5	0.0	12.9	0.0	1.1
2	3.5	9.9	0.9	1.9	0.0	7.6	0.0	7.3
3	3.8	7.5	4.7	0.0	0.0	4.9	0.0	9.3
4	0.0	4.5	0.0	7.6	0.0	9.2	0.0	1.3
5	4.0	0.0	2.9	6.6	0.0	6.9	0.0	4.7
6	1.8	1.7	9.1	2.7	0.0	7.4	0.0	5.6
7	0.0	3.4	13.7	0.0	0.0	9.7	0.0	5.8
8	10.3	2.6	0.0	13.8	0.0	5.9	0.0	9.3
9	0.8	3.7	0.8	2.6	0.0	4.6	0.0	2.3
10	11.4	0.0	0.0	2.6	0.0	12.4	0.0	2.3
11	3.1	2.1	1.2	3.4	0.0	3.7	0.0	5.5
12	4.2	2.7	2.8	6.4	0.0	11.2	0.0	6.0
13	2.6	2.0	2.1	7.9	0.0	4.2	0.0	12.1
14	1.1	9.8	2.8	1.8	0.0	10.3	0.0	4.5
15	0.0	6.1	0.9	9.4	0.0	5.5	0.0	10.1
16	5.3	0.0	1.2	8.0	0.0	6.5	0.0	5.8
17	9.3	0.1	2.6	0.1	0.0	2.4	0.0	8.5
18	0.9	11.8	0.0	1.1	0.0	10.5	0.0	1.3
19	0.0	2.1	12.2	2.7	0.0	4.4	0.0	12.3
20	1.3	0.0	11.2	0.0	0.0	0.0	0.0	12.5
21	4.7	2.1	3.3	1.6	0.0	8.3	0.0	4.3
22	5.5	0.1	2.8	3.7	0.0	8.4	0.0	5.4
23	2.1	0.0	0.0	8.7	0.0	3.0	0.0	7.9
24	2.3	8.3	4.4	2.3	0.0	10.1	0.0	7.1
25	2.5	2.7	3.2	0.0	0.0	7.3	0.0	2.6
26	4.7	7.6	0.0	1.8	5.1	3.6	0.9	1.6
27	4.6	2.8	2.3	3.4	0.0	5.5	4.9	6.0
28	4.9	3.4	3.7	0.0	0.0	1.3	4.8	3.2
29	2.4	3.0	1.7	6.0	0.0	1.4	12.0	2.0
Total	98.6	100.0	92.9	115.6	5.1	189.1	22.6	167.7

Notes:

Plant Internal Flow Report

Month: February-16

Date	Settling Tank Level		Process Drain Tank		Settling Tank Flow		Potable Water Flow		Non-Potable Flow	
	T-9003 (m)		T-9001 (m)		FIT_9005 (m³) (L/s)		FIT_7082 (m³) (L/s)		FIT_7092 (m³) (L/s)	
	Maximum	Minimum	Maximum	Minimum	Total	Peak	Total	Peak	Total	Peak
1	2.2	1.3	0.8	0.4	24.4	15.7	0.1	1.3	0.1	0.9
2	2.2	1.4	0.8	0.4	20.4	10.3	0.0	1.2	0.0	0.0
3	2.2	1.4	1.3	0.4	43.2	15.7	0.0	1.2	0.0	0.0
4	2.2	1.4	1.0	0.4	21.2	13.9	0.0	1.3	0.0	0.0
5	2.2	1.4	0.8	0.4	11.7	9.2	0.2	1.4	0.2	1.3
6	2.2	1.3	0.8	0.4	20.3	15.7	0.0	0.0	0.0	0.0
7	2.2	1.3	0.8	0.4	28.4	13.9	0.0	0.0	0.0	0.0
8	2.2	1.4	0.9	0.4	12.5	13.9	0.0	1.4	0.0	0.0
9	2.2	1.4	0.8	0.4	19.1	15.7	0.1	1.3	0.0	0.0
10	2.2	1.3	0.8	0.4	6.8	6.3	0.0	1.3	0.0	0.0
11	2.2	1.4	0.8	0.4	16.7	15.2	0.1	1.4	0.0	0.0
12	2.2	1.3	1.1	0.4	152.1	15.7	0.0	1.2	0.0	0.0
13	2.2	1.4	1.1	0.4	295.3	15.7	0.0	0.0	0.0	0.0
14	2.2	0.0	1.0	0.4	524.8	15.7	0.0	0.0	0.0	0.0
15	2.2	0.3	0.9	0.4	20.8	15.7	0.3	1.1	0.2	1.3
16	2.2	0.1	1.2	0.4	0.4	0.0	0.2	1.3	0.3	1.4
17	2.2	0.1	1.2	0.4	58.0	15.7	0.1	1.3	0.0	0.0
18	2.2	0.1	1.0	0.4	0.4	0.0	0.1	1.3	0.0	0.0
19	2.2	0.1	1.1	0.4	0.5	0.0	0.1	1.2	3.7	23.4
20	2.2	0.1	0.8	0.4	0.5	0.0	0.0	0.0	0.0	0.0
21	2.2	0.1	0.8	0.4	0.4	0.0	0.0	0.0	0.0	0.0
22	2.2	0.3	0.8	0.4	0.4	0.0	0.1	1.1	0.5	1.4
23	2.2	0.1	0.9	0.4	0.4	0.0	2.5	5.3	0.1	0.7
24	2.2	0.2	1.9	0.4	33.7	15.7	0.1	1.4	0.0	0.0
25	2.2	0.1	0.8	0.4	10.5	6.9	0.1	1.6	0.0	0.0
26	2.2	0.3	2.1	0.4	22.7	9.5	0.6	1.5	0.0	3.5
27	2.2	0.1	0.8	0.4	25.4	15.7	0.0	0.0	0.0	0.0
28	2.2	0.1	0.8	0.4	37.2	15.7	0.0	0.0	0.0	0.0
29	2.2	0.1	0.8	0.4	22.1	15.2	0.0	1.1	0.0	0.0
Total					1430.3		4.8		5.2	
Average	2.2	0.7	1.0	0.4	49.3	10.4	0.2	1.1	0.2	1.2
Maximum	2.2		2.1		524.8		2.5		3.7	
Date	1-Feb		26-Feb		14-Feb		23-Feb		19-Feb	
Minimum		0.0		0.4		0.0		0.0		0.0
Date		14-Feb		21-Feb		16-Feb		6-Feb		2-Feb

Notes:
