

Municipality of West Elgin - Tri County Water System

Goto:

Month:

Year:

Date is Set to: **December-16**

Limit	Low	High	
Raw Water Chlorine Residual:	0.00	5.00	mg/L
Pre-Strainer Chlorine Residual:	0.00	5.00	mg/L
UV Inlet Chlorine Residual:	0.00	5.00	mg/L
Post Treatment Chlorine Residual:	1.00	5.00	mg/L
Treated Chlorine Residual:	1.00	2.50	mg/L
Distribution Chlorine Residual:	1.00	2.50	mg/L
Limit		High	
WTP C of A		156.0	L/s
WTP Permit to Take Water		13500.0	m ³
Limit	Low	High	
System Pressure Limits:	50.0	1034.0	Kpa

Compliance Report

Low Lift Monthly Report

>>>

Membranes Monthly Report

>>>

UV System Monthly Report

>>>

Plant Quality Report

>>>

Raw Well/Treated Storage Report

>>>

High Lift Monthly Report

>>>

Operational Report

Low Lift Monthly Report

>>>

High Lift Monthly Report

>>>

Chemical Usage Monthly Report

>>>

Runtimes Report

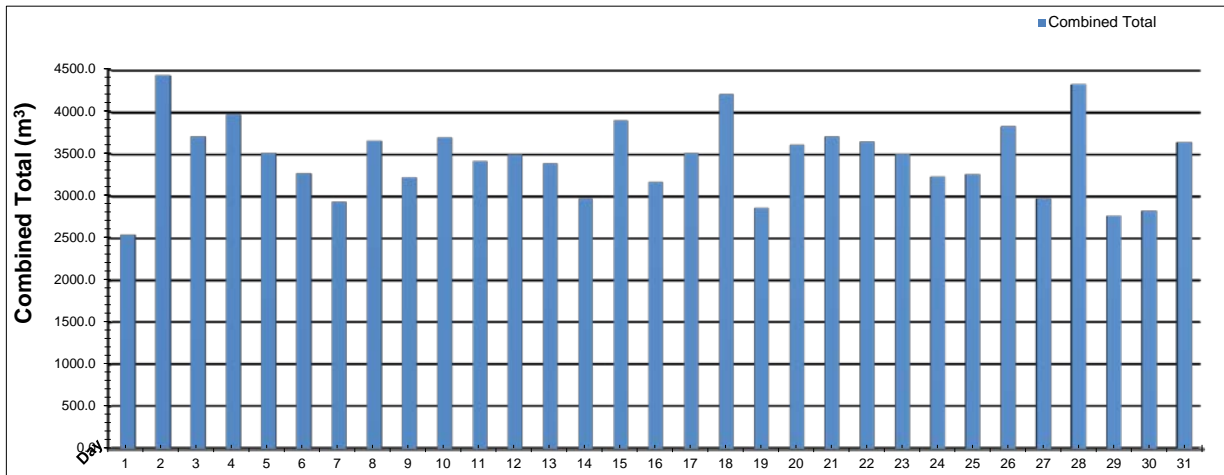
>>>

Plant Internal Flow Report

>>>

Low Lift Monthly Report

Month: December-16



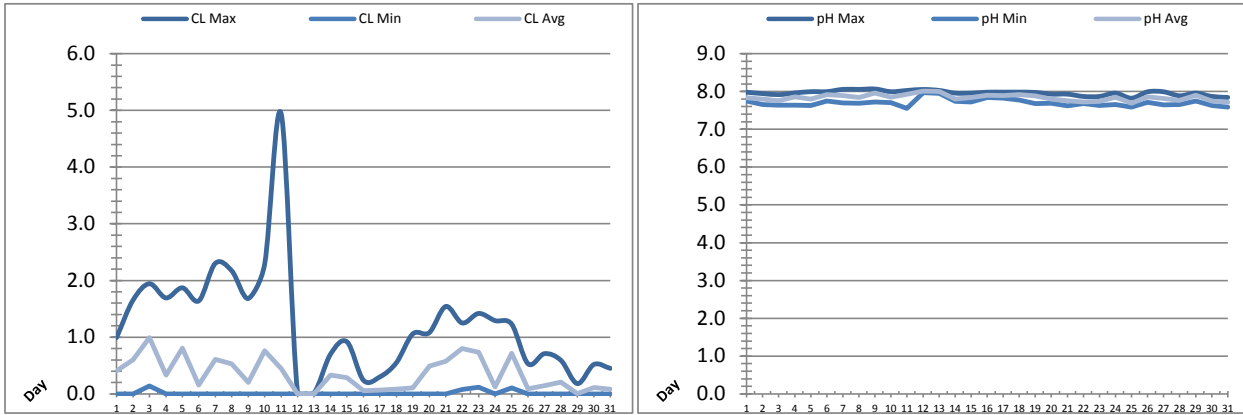
Date	Combined Total (m³)	West Train (FIT-1017 (m³))	West Peak Flow (FIT-1017 (L/s))	East Train (FIT-1027 (m³))	East Peak Flow (FIT-1027 (L/s))	Combined Peak Flow (L/s)
1	✓ 2540.6	0.0	0.0	2540.6	83.2	✓ 83.2
2	✓ 4432.7	0.0	0.0	4432.7	82.5	✓ 82.5
3	✓ 3712.9	0.0	0.0	3712.9	82.1	✓ 82.1
4	✓ 3968.1	0.0	0.0	3968.1	81.3	✓ 81.3
5	✓ 3512.6	0.0	0.0	3512.6	83.5	✓ 83.5
6	✓ 3272.4	0.0	0.0	3272.4	84.3	✓ 84.3
7	✓ 2935.3	0.0	0.0	2935.3	136.0	✓ 136.0
8	✓ 3656.1	0.0	0.0	3656.1	82.3	✓ 82.3
9	✓ 3223.0	0.0	0.0	3223.0	83.3	✓ 83.3
10	✓ 3695.7	0.0	0.0	3695.7	81.2	✓ 81.2
11	✓ 3417.3	0.0	0.0	3417.3	81.1	✓ 81.1
12	✓ 3498.8	0.0	0.0	3498.8	116.1	✓ 116.1
13	✓ 3389.4	0.0	0.0	3389.4	80.9	✓ 80.9
14	✓ 2969.9	0.0	0.0	2969.9	83.4	✓ 83.4
15	✓ 3899.7	0.0	0.0	3899.7	83.6	✓ 83.6
16	✓ 3167.6	0.0	0.0	3167.6	85.8	✓ 85.8
17	✓ 3512.9	0.0	0.0	3512.9	85.1	✓ 85.1
18	✓ 4207.9	0.0	0.0	4207.9	85.7	✓ 85.7
19	✓ 2861.8	0.0	0.0	2861.8	85.6	✓ 85.6
20	✓ 3608.5	0.0	0.0	3608.5	86.5	✓ 86.5
21	✓ 3712.8	1344.1	199.4	2368.7	85.5	✓ 85.5
22	✓ 3647.3	3647.3	86.2	0.0	0.0	✓ 86.2
23	✓ 3502.5	3502.5	124.3	0.0	0.0	✓ 124.3
24	✓ 3230.4	3230.4	126.3	0.0	0.0	✓ 126.3
25	✓ 3261.2	3261.2	128.5	0.0	0.0	✓ 128.5
26	✓ 3826.3	3826.3	87.1	0.0	0.0	✓ 87.1
27	✓ 2968.8	2968.8	105.3	0.0	0.0	✓ 105.3
28	✓ 4329.5	4329.5	130.5	0.0	0.0	✓ 130.5
29	✓ 2770.4	2770.4	87.1	0.0	0.0	✓ 87.1
30	✓ 2826.4	2826.4	88.2	0.0	0.0	✓ 88.2
31	✓ 3641.6	3641.6	130.7	0.0	0.0	✓ 130.7
Total	107200.3	35348.4		71851.9		
Average	3458.1	1140.3	41.7	2317.8	59.3	94.6
Maximum	4432.7	4329.5	199.42	4432.7	136.02	136.02
Date	2-Dec	28-Dec	21-Dec	2-Dec	7-Dec	7-Dec
Minimum	2540.6	0.0	0.00	0.0	0.00	80.87
Date	1-Dec	1-Dec	1-Dec	22-Dec	22-Dec	13-Dec

Notes:

21: Switch raw water mains

Low Lift Monthly Report

Month: December-16

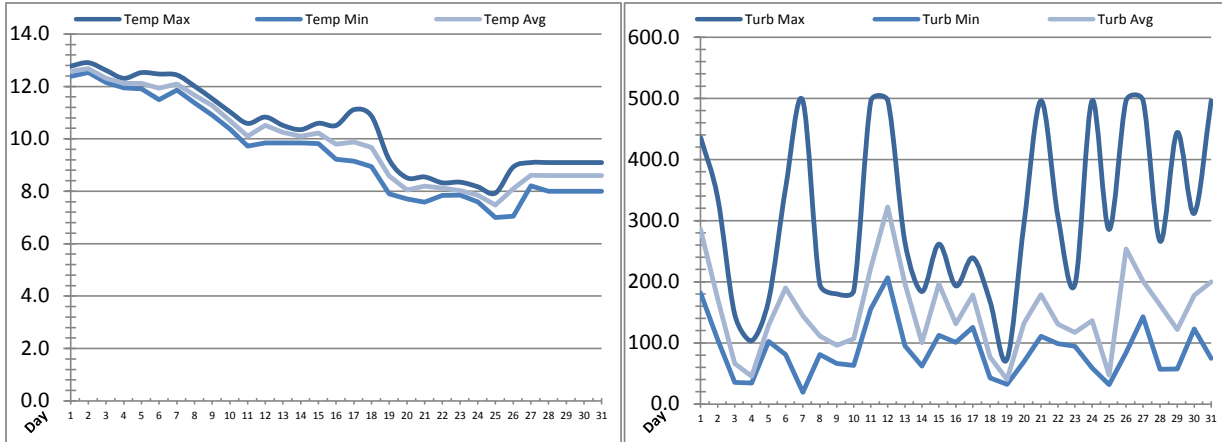


Date	Raw Water Chlorine Residual			Raw Water pH		
	AIT_1401_CL (mg/L)			AIT_1401_PH		
	Maximum	Minimum	Average	Maximum	Minimum	Average
1	0.99	0.00	0.40	7.98	7.75	7.83
2	1.65	0.00	0.60	7.94	7.65	7.80
3	1.94	0.14	0.99	7.92	7.64	7.75
4	1.69	0.00	0.33	7.96	7.64	7.85
5	1.87	0.00	0.81	8.00	7.63	7.80
6	1.64	0.00	0.16	8.00	7.75	7.92
7	2.30	0.00	0.61	8.06	7.70	7.89
8	2.17	0.00	0.53	8.06	7.69	7.84
9	1.68	0.00	0.20	8.07	7.72	7.96
10	2.29	0.00	0.76	7.99	7.70	7.85
11	4.94	0.00	0.45	8.03	7.55	7.93
12	0.02	0.00	0.00	8.05	7.97	8.01
13	0.02	0.00	0.00	8.03	7.95	8.00
14	0.70	0.00	0.33	7.96	7.74	7.80
15	0.92	0.00	0.29	7.96	7.73	7.84
16	0.24	0.00	0.05	7.98	7.84	7.90
17	0.30	0.00	0.07	7.98	7.82	7.89
18	0.55	0.00	0.08	7.98	7.77	7.91
19	1.06	0.00	0.11	7.98	7.68	7.88
20	1.08	0.00	0.49	7.93	7.69	7.79
21	1.54	0.00	0.57	7.93	7.62	7.76
22	1.25	0.08	0.80	7.87	7.68	7.72
23	1.42	0.12	0.73	7.87	7.63	7.74
24	1.29	0.00	0.12	7.96	7.66	7.85
25	1.23	0.11	0.71	7.82	7.59	7.69
26	0.53	0.00	0.09	7.99	7.71	7.86
27	0.71	0.00	0.15	7.99	7.65	7.82
28	0.59	0.00	0.21	7.89	7.66	7.77
29	0.18	0.00	0.00	7.96	7.74	7.90
30	0.52	0.00	0.11	7.87	7.63	7.75
31	0.45	0.00	0.08	7.84	7.59	7.71
Total						
Average	1.22	0.01	0.35	7.96	7.70	7.84
Maximum	4.94		0.99	8.07		8.01
Date	11-Dec		3-Dec	9-Dec		12-Dec
Minimum		0.00	0.00		7.55	7.69
Date		1-Dec	12-Dec		11-Dec	25-Dec

Notes:

Low Lift Monthly Report

Month: December-16

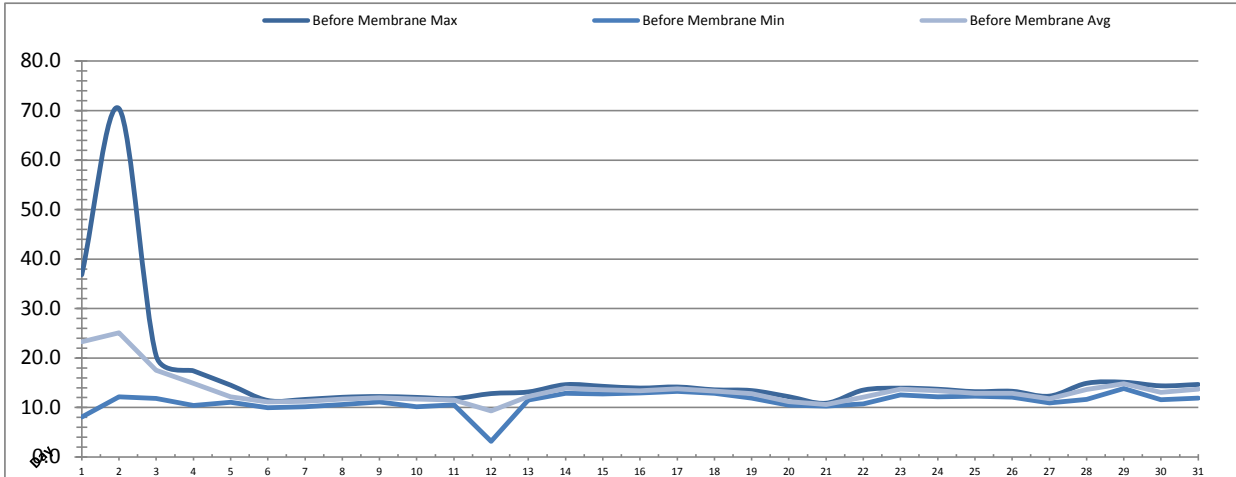


Date	Raw Water Temperature			Raw Water Turbidity		
	TIT_1403 (°C)			AIT_1404 (NTU)		
	Maximum	Minimum	Average	Maximum	Minimum	Average
1	12.8	12.4	12.6	435.99	181.85	286.11
2	12.9	12.5	12.7	337.62	105.08	171.42
3	12.6	12.2	12.3	146.94	35.34	66.25
4	12.3	11.9	12.1	103.49	34.58	45.47
5	12.5	11.9	12.1	170.22	102.70	129.06
6	12.5	11.5	11.9	354.53	81.00	189.92
7	12.4	11.9	12.1	496.25	19.01	144.33
8	12.0	11.4	11.7	196.46	81.01	111.23
9	11.5	10.9	11.3	180.20	66.25	96.18
10	11.0	10.4	10.7	185.65	63.13	106.61
11	10.6	9.7	10.1	495.33	155.38	222.19
12	10.8	9.8	10.5	496.19	206.57	322.12
13	10.5	9.8	10.2	265.50	94.87	196.49
14	10.4	9.8	10.1	184.00	62.31	100.34
15	10.6	9.8	10.2	261.51	112.59	196.44
16	10.5	9.2	9.8	193.24	100.96	131.17
17	11.1	9.1	9.9	239.05	125.73	178.10
18	10.9	8.9	9.7	168.45	42.88	76.57
19	9.2	7.9	8.6	73.13	32.10	40.35
20	8.5	7.7	8.0	294.81	69.20	132.07
21	8.5	7.6	8.2	496.03	111.05	178.91
22	8.3	7.8	8.1	305.57	98.64	130.79
23	8.3	7.9	8.0	196.35	94.82	117.19
24	8.2	7.6	7.9	496.05	59.23	136.54
25	7.9	7.0	7.5	285.51	32.01	47.60
26	8.9	7.0	8.1	496.09	83.91	254.00
27	9.1	8.2	8.6	496.08	142.89	200.66
28	9.1	8.0	8.6	266.20	56.85	162.00
29	9.1	8.0	8.6	444.11	57.64	121.75
30	9.1	8.0	8.6	311.78	122.73	177.64
31	9.1	8.0	8.6	496.05	74.63	199.83
Total						
Average	10.4	9.5	9.9	308.7	87.3	150.6
Maximum	12.9		12.7	496.2		322.1
Date	2-Dec		2-Dec	7-Dec		12-Dec
Minimum		7.0	7.5		19.0	40.4
Date		25-Dec	25-Dec		7-Dec	19-Dec

Notes:

Membranes Monthly Report

Month: December-16



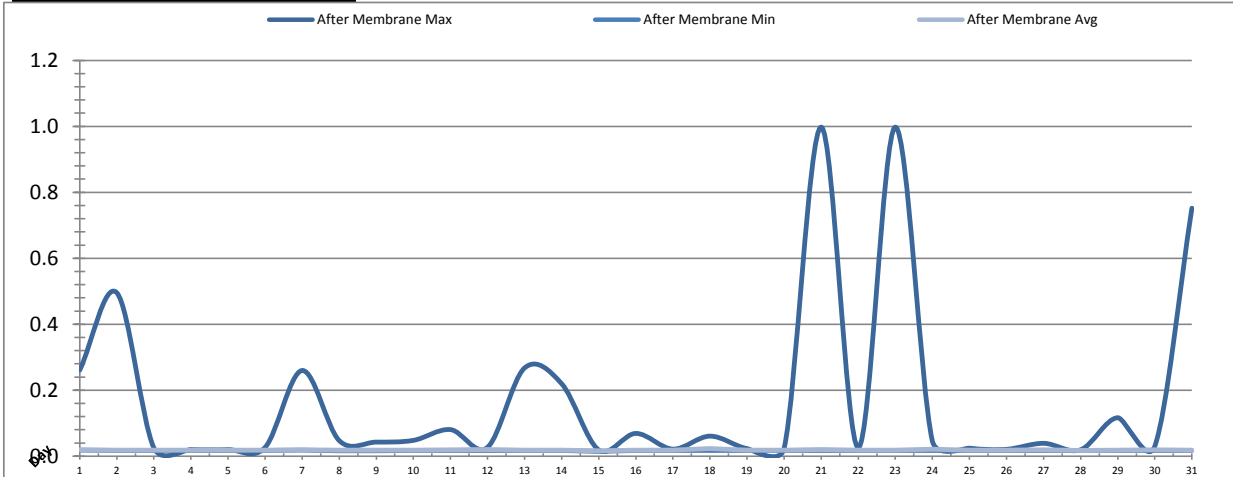
Date	Turbidity Before Membrane			Rack #1 Turbidity			Rack #2 Turbidity		
	PALL_FEED_AIT2006_Value NTU			RACK1_NTU_Value NTU			RACK2_NTU_Value NTU		
	Maximum	Minimum	Average	Maximum	Minimum	Average	Maximum	Minimum	Average
1	36.84	8.06	23.28	0.01	0.01	0.01	0.18	0.01	0.01
2	70.41	12.13	25.10	0.51	0.01	0.01	0.01	0.01	0.01
3	20.43	11.85	17.52	0.01	0.01	0.01	0.01	0.01	0.01
4	17.41	10.44	14.88	0.01	0.01	0.01	0.01	0.01	0.01
5	14.52	11.09	12.16	0.01	0.01	0.01	0.01	0.01	0.01
6	11.42	9.93	11.11	0.01	0.01	0.01	0.79	0.01	0.01
7	11.64	10.18	11.24	0.02	0.01	0.01	0.03	0.01	0.01
8	12.07	10.60	11.73	0.01	0.01	0.01	0.02	0.01	0.01
9	12.23	11.11	11.96	0.26	0.01	0.01	0.01	0.01	0.01
10	12.05	10.14	11.73	0.03	0.01	0.01	0.02	0.01	0.01
11	11.81	10.54	11.52	0.04	0.01	0.01	0.01	0.01	0.01
12	12.81	3.18	9.33	0.02	0.01	0.01	0.01	0.00	0.00
13	13.15	11.48	12.20	0.02	0.01	0.01	0.00	0.00	0.00
14	14.62	12.87	13.92	0.02	0.01	0.01	0.01	0.00	0.00
15	14.29	12.76	13.57	0.02	0.01	0.01	0.01	0.01	0.01
16	13.93	12.93	13.42	0.01	0.01	0.01	0.01	0.01	0.01
17	14.15	13.27	13.78	0.02	0.01	0.01	0.01	0.01	0.01
18	13.58	12.87	13.29	0.02	0.01	0.01	0.01	0.01	0.01
19	13.42	11.91	12.79	0.02	0.01	0.01	0.01	0.01	0.01
20	12.19	10.46	11.22	0.51	0.01	0.02	0.01	0.01	0.01
21	10.87	10.30	10.63	0.03	0.01	0.01	0.01	0.01	0.01
22	13.52	10.71	12.10	0.01	0.01	0.01	0.01	0.01	0.01
23	13.91	12.58	13.71	0.02	0.01	0.01	0.01	0.00	0.01
24	13.70	12.19	13.40	0.03	0.01	0.01	0.01	0.01	0.01
25	13.21	12.26	12.87	0.05	0.01	0.01	0.02	0.01	0.01
26	13.29	12.11	12.90	0.01	0.01	0.01	0.01	0.01	0.01
27	12.30	10.93	11.78	0.01	0.01	0.01	0.27	0.01	0.01
28	14.90	11.64	13.66	0.01	0.01	0.01	0.01	0.01	0.01
29	15.11	13.82	14.83	0.01	0.01	0.01	0.01	0.01	0.01
30	14.38	11.58	13.07	0.01	0.01	0.01	0.01	0.01	0.01
31	14.66	11.89	13.68	0.01	0.01	0.01	0.01	0.01	0.01
Total									
Average	16.2	11.2	13.5	0.1	0.0	0.0	0.0	0.0	0.0
Maximum	70.4		25.1	0.5		0.0	0.8		0.0
Date	2-Dec		2-Dec	2-Dec		20-Dec	6-Dec		6-Dec
Minimum		3.2	9.3		0.0	0.0		0.0	0.0
Date		12-Dec	12-Dec		1-Dec	6-Dec		12-Dec	13-Dec

Notes:

Rack 1: turbidity spike post EFM on 2nd and 20th; turbidity spike post CIP on 9th
 Rack 2: turbidity spike post EFM on 1st and 27th; turbidity spike post CIP on 6th; Turbidity analyzer failure on 12th to 14th reported to MOECC on Jan 3rd, 2017.

Membranes Monthly Report

Month: December-16

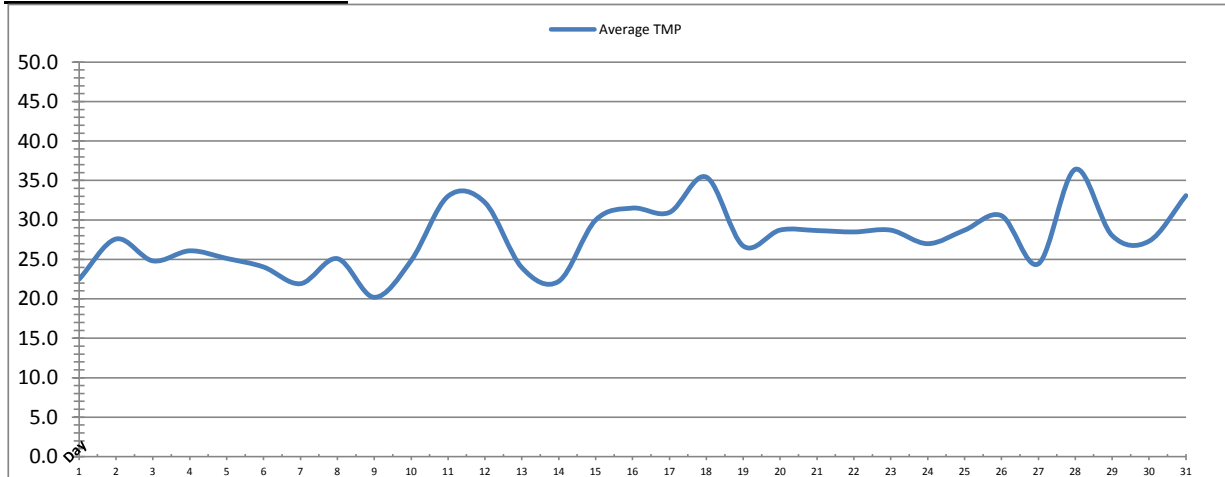


Date	Rack #3 Turbidity			Rack #4 Turbidity			Turbidity After Membranes		
	RACK3_NTU_Value			RACK4_NTU_Value			PALL_FILT_AIT5001_Value		
	Maximum	Minimum	Average	Maximum	Minimum	Average	Maximum	Minimum	Average
1	0.05	0.03	0.03	0.02	0.01	0.02	0.26	0.02	0.02
2	0.99	0.03	0.03	0.02	0.01	0.02	0.50	0.02	0.02
3	0.05	0.03	0.03	0.02	0.01	0.02	0.03	0.02	0.02
4	0.03	0.03	0.03	0.02	0.01	0.02	0.02	0.02	0.02
5	0.03	0.03	0.03	0.02	0.01	0.02	0.02	0.02	0.02
6	0.06	0.03	0.03	0.02	0.01	0.02	0.03	0.02	0.02
7	0.51	0.03	0.03	0.03	0.02	0.02	0.26	0.02	0.02
8	0.13	0.03	0.03	0.03	0.02	0.02	0.05	0.02	0.02
9	0.06	0.03	0.03	0.03	0.01	0.02	0.04	0.02	0.02
10	0.37	0.03	0.03	0.03	0.02	0.02	0.05	0.02	0.02
11	0.04	0.03	0.03	0.04	0.02	0.02	0.08	0.02	0.02
12	0.17	0.03	0.03	0.04	0.02	0.02	0.03	0.02	0.02
13	0.06	0.03	0.03	0.02	0.02	0.02	0.27	0.02	0.02
14	0.05	0.03	0.03	0.02	0.02	0.02	0.22	0.02	0.02
15	0.06	0.03	0.03	0.03	0.02	0.02	0.02	0.01	0.02
16	0.05	0.03	0.03	0.05	0.02	0.02	0.07	0.02	0.02
17	0.05	0.03	0.03	0.04	0.02	0.02	0.02	0.02	0.02
18	0.07	0.03	0.03	0.04	0.02	0.02	0.06	0.02	0.02
19	0.06	0.03	0.03	0.05	0.02	0.02	0.02	0.02	0.02
20	0.99	0.03	0.03	0.06	0.02	0.02	0.02	0.02	0.02
21	0.06	0.03	0.03	0.14	0.02	0.02	1.00	0.02	0.02
22	0.05	0.03	0.03	0.07	0.02	0.02	0.03	0.02	0.02
23	0.11	0.03	0.03	0.03	0.02	0.02	1.00	0.02	0.02
24	0.11	0.03	0.03	0.04	0.02	0.02	0.05	0.02	0.02
25	0.08	0.03	0.03	0.03	0.02	0.02	0.02	0.02	0.02
26	0.06	0.03	0.03	0.04	0.02	0.02	0.02	0.02	0.02
27	0.05	0.03	0.03	0.03	0.02	0.02	0.04	0.02	0.02
28	0.05	0.03	0.03	0.02	0.02	0.02	0.02	0.02	0.02
29	0.61	0.03	0.03	0.03	0.02	0.02	0.12	0.02	0.02
30	0.05	0.03	0.03	0.03	0.02	0.02	0.03	0.02	0.02
31	0.05	0.03	0.03	0.03	0.02	0.02	0.75	0.02	0.02
Total									
Average	0.2	0.0	0.0	0.0	0.0	0.0	0.2	0.0	0.0
Maximum	1.0		0.0	0.1		0.0	1.0		0.0
Date	2-Dec		29-Dec	21-Dec		21-Dec	23-Dec		18-Dec
Minimum		0.0	0.0		0.0	0.0		0.0	0.0
Date		10-Dec	15-Dec		1-Dec	14-Dec		15-Dec	15-Dec

Notes:
 Rack 3: turbidity spike post EFM on 2nd; turbidity spike post CIP on 7th; Air bubbles on 8th, 12th, 23rd, 24th adjusting flow to analyzer to rectify.
 Rack 4: turbidity spike on 21st post EFM

Membranes Monthly Report

Month: December-16

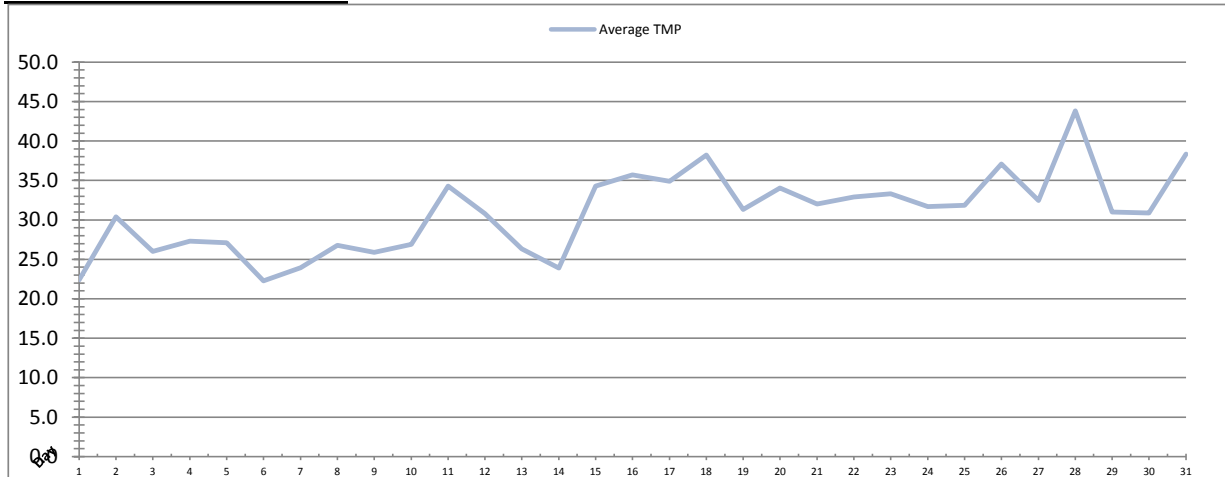


Integrity Test Rack 1									
Date	Initial Pressure (kPa)	Final Pressure (kPa)	Test Duration (sec)	Change in Pressure (kPa)	UCL	Within UCL	Average TMP (kPa)	Max TMP (kPa)	
1	194.6	193.3	300.0	1.3	2.0	✓ 2.0	22.5	144.7	
2	194.7	193.6	300.0	1.1	2.0	✓ 2.0	27.6	73.4	
3	194.5	193.3	300.0	1.2	2.0	✓ 2.0	24.8	67.3	
4	194.7	193.9	300.0	0.8	2.0	✓ 2.0	26.1	79.2	
5	194.9	194.0	300.0	0.8	2.0	✓ 2.0	25.1	66.1	
6	194.7	194.1	300.0	0.5	2.0	✓ 2.0	24.0	96.3	
7	194.9	193.9	300.0	1.1	2.0	✓ 2.0	21.9	159.4	
8	194.9	193.8	300.0	1.1	2.0	✓ 2.0	25.1	79.6	
9	195.2	194.6	300.0	0.7	2.0	✓ 2.0	20.2	99.3	
10	195.0	193.9	300.0	1.1	2.0	✓ 2.0	24.9	82.3	
11	183.6	182.1	300.0	1.5	2.0	✓ 2.0	33.0	153.7	
12	195.7	195.1	300.0	0.6	2.0	✓ 2.0	32.2	160.9	
13	194.7	194.1	300.0	0.6	2.0	✓ 2.0	24.0	57.4	
14	194.9	194.2	300.0	0.7	2.0	✓ 2.0	22.2	106.0	
15	194.9	194.1	300.0	0.8	2.0	✓ 2.0	30.0	79.6	
16	195.0	194.3	300.0	0.8	2.0	✓ 2.0	31.5	101.0	
17	195.0	194.1	300.0	0.8	2.0	✓ 2.0	31.0	100.2	
18	194.8	193.9	300.0	0.9	2.0	✓ 2.0	35.4	95.8	
19	194.5	193.6	300.0	1.0	2.0	✓ 2.0	26.7	89.4	
20	195.3	194.7	300.0	0.6	2.0	✓ 2.0	28.7	105.8	
21	194.9	194.3	300.0	0.6	2.0	✓ 2.0	28.7	168.0	
22	194.9	194.4	300.0	0.5	2.0	✓ 2.0	28.5	67.8	
23	194.9	194.2	300.0	0.7	2.0	✓ 2.0	28.7	113.3	
24	194.7	194.1	300.0	0.5	2.0	✓ 2.0	27.0	113.3	
25	195.1	194.3	300.0	0.8	2.0	✓ 2.0	28.7	116.4	
26	194.7	193.5	300.0	1.2	2.0	✓ 2.0	30.5	90.1	
27	195.1	194.4	300.0	0.7	2.0	✓ 2.0	24.4	86.5	
28	194.5	193.9	300.0	0.6	2.0	✓ 2.0	36.4	122.1	
29	195.1	193.9	300.0	1.2	2.0	✓ 2.0	28.0	74.9	
30	195.2	194.4	300.0	0.8	2.0	✓ 2.0	27.3	77.2	
31	194.6	193.5	300.0	1.1	2.0	✓ 2.0	33.1	137.7	
Total									
Average	194.5	193.7	300.0	0.9	2.0	2.0	27.7	102.1	
Maximum	195.7	195.1	300.0	1.5	2.0	2.0	36.4	168.0	
Date	12-Dec	12-Dec	1-Dec	11-Dec	1-Dec	1-Dec	28-Dec	21-Dec	
Minimum	183.6	182.1	300.0	0.5	2.0	2.0	20.2	57.4	
Date	11-Dec	11-Dec	1-Dec	22-Dec	1-Dec	1-Dec	9-Dec	13-Dec	

Notes:

Membranes Monthly Report

Month: December-16

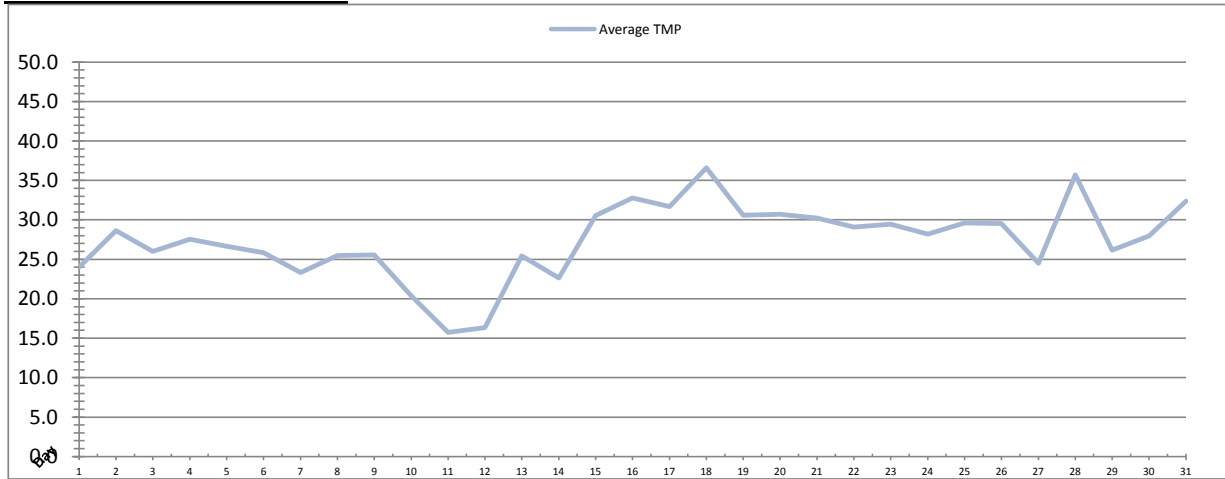


Integrity Test Rack 2									
Date	Initial Pressure (kPa)	Final Pressure (kPa)	Test Duration (sec)	Change in Pressure (kPa)	UCL	Within UCL	Average TMP (kPa)	Max TMP (kPa)	
1	201.1	200.0	300.0	1.1	2.0	✓ 2.0	22.4	157.2	
2	200.9	199.9	300.0	1.0	2.0	✓ 2.0	30.4	93.4	
3	201.1	200.0	300.0	1.1	2.0	✓ 2.0	26.0	71.9	
4	200.4	199.6	300.0	0.8	2.0	✓ 2.0	27.3	61.7	
5	200.9	200.1	300.0	0.8	2.0	✓ 2.0	27.1	79.3	
6	201.1	200.2	300.0	0.8	2.0	✓ 2.0	22.3	89.0	
7	201.1	200.1	300.0	0.9	2.0	✓ 2.0	23.9	170.8	
8	201.1	200.1	300.0	0.9	2.0	✓ 2.0	26.8	94.9	
9	200.2	199.3	300.0	0.8	2.0	✓ 2.0	25.9	77.7	
10	201.0	200.2	300.0	0.8	2.0	✓ 2.0	26.9	85.1	
11	178.8	177.6	300.0	1.2	2.0	✓ 2.0	34.3	144.7	
12	201.4	200.6	300.0	0.8	2.0	✓ 2.0	30.8	176.6	
13	201.4	200.5	300.0	0.8	2.0	✓ 2.0	26.3	69.4	
14	201.3	200.3	300.0	1.0	2.0	✓ 2.0	23.9	120.5	
15	201.2	200.2	300.0	1.1	2.0	✓ 2.0	34.3	67.7	
16	201.4	200.5	300.0	1.0	2.0	✓ 2.0	35.7	119.0	
17	200.5	199.8	300.0	0.7	2.0	✓ 2.0	34.9	85.5	
18	201.6	200.4	300.0	1.2	2.0	✓ 2.0	38.2	104.7	
19	201.4	200.5	300.0	1.0	2.0	✓ 2.0	31.3	82.3	
20	201.4	200.4	300.0	1.0	2.0	✓ 2.0	34.0	175.2	
21	201.5	200.6	300.0	0.8	2.0	✓ 2.0	32.0	163.1	
22	201.2	200.3	300.0	0.9	2.0	✓ 2.0	32.9	70.6	
23	201.3	200.4	300.0	0.8	2.0	✓ 2.0	33.3	126.3	
24	201.4	200.5	300.0	0.9	2.0	✓ 2.0	31.7	123.3	
25	201.4	200.5	300.0	0.9	2.0	✓ 2.0	31.8	121.2	
26	201.4	200.5	300.0	0.9	2.0	✓ 2.0	37.1	73.6	
27	201.5	200.5	300.0	1.0	2.0	✓ 2.0	32.5	91.6	
28	201.6	200.6	300.0	1.0	2.0	✓ 2.0	43.8	132.2	
29	201.3	200.5	300.0	0.9	2.0	✓ 2.0	31.0	111.6	
30	201.4	200.5	300.0	0.9	2.0	✓ 2.0	30.9	85.6	
31	201.2	200.3	300.0	0.9	2.0	✓ 2.0	38.3	138.0	
Total									
Average	200.5	199.5	300.0	0.9	2.0	2.0	30.9	108.5	
Maximum	201.6	200.6	300.0	1.2	2.0	2.0	43.8	176.6	
Date	18-Dec	21-Dec	1-Dec	11-Dec	1-Dec	1-Dec	28-Dec	12-Dec	
Minimum	178.8	177.6	300.0	0.7	2.0	2.0	22.3	61.7	
Date	11-Dec	11-Dec	1-Dec	17-Dec	1-Dec	1-Dec	6-Dec	4-Dec	

Notes:

Membranes Monthly Report

Month: December-16

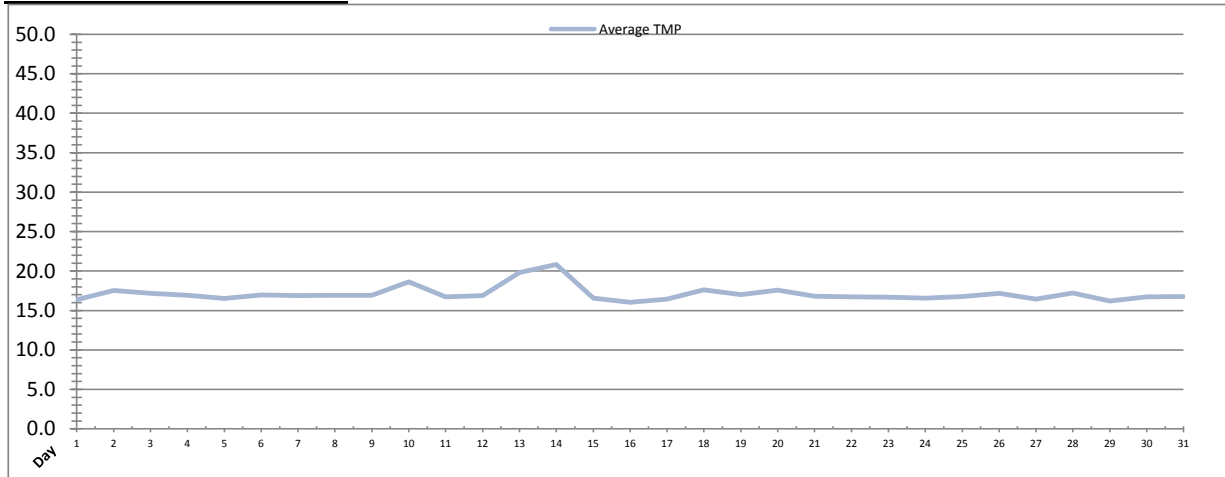


Integrity Test Rack 3									
Date	Initial Pressure (kPa)	Final Pressure (kPa)	Test Duration (sec)	Change in Pressure (kPa)	UCL	Within UCL	Average TMP (kPa)	Max TMP (kPa)	
1	192.5	191.3	300.0	1.2	2.0	✓ 2.0	24.0	169.3	
2	191.7	190.5	300.0	1.3	2.0	✓ 2.0	28.7	99.3	
3	192.2	191.1	300.0	1.1	2.0	✓ 2.0	26.0	83.0	
4	191.5	190.2	300.0	1.3	2.0	✓ 2.0	27.6	81.3	
5	191.9	190.7	300.0	1.3	2.0	✓ 2.0	26.7	71.3	
6	192.3	191.2	300.0	1.1	2.0	✓ 2.0	25.8	90.9	
7	191.9	190.7	300.0	1.2	2.0	✓ 2.0	23.3	177.3	
8	192.5	191.5	300.0	1.1	2.0	✓ 2.0	25.5	89.3	
9	191.7	190.0	300.0	1.6	2.0	✓ 2.0	25.6	135.9	
10	192.5	191.2	300.0	1.4	2.0	✓ 2.0	20.3	92.8	
11	177.2	175.8	300.0	1.4	2.0	✓ 2.0	15.7	77.4	
12	191.8	190.4	300.0	1.4	2.0	✓ 2.0	16.4	108.6	
13	191.3	189.9	300.0	1.4	2.0	✓ 2.0	25.4	64.8	
14	191.5	190.2	300.0	1.3	2.0	✓ 2.0	22.6	61.7	
15	191.8	190.6	300.0	1.3	2.0	✓ 2.0	30.6	80.7	
16	191.2	189.8	300.0	1.4	2.0	✓ 2.0	32.8	106.3	
17	192.0	190.7	300.0	1.3	2.0	✓ 2.0	31.7	101.2	
18	191.5	190.1	300.0	1.3	2.0	✓ 2.0	36.6	95.6	
19	191.2	190.0	300.0	1.2	2.0	✓ 2.0	30.6	92.0	
20	191.4	190.2	300.0	1.1	2.0	✓ 2.0	30.7	143.9	
21	192.4	191.3	300.0	1.1	2.0	✓ 2.0	30.2	174.1	
22	192.2	191.0	300.0	1.1	2.0	✓ 2.0	29.1	66.3	
23	191.5	190.4	300.0	1.1	2.0	✓ 2.0	29.5	107.4	
24	192.5	191.3	300.0	1.3	2.0	✓ 2.0	28.2	106.5	
25	191.6	190.4	300.0	1.2	2.0	✓ 2.0	29.6	115.0	
26	191.5	190.3	300.0	1.2	2.0	✓ 2.0	29.5	70.9	
27	191.3	190.0	300.0	1.3	2.0	✓ 2.0	24.5	103.6	
28	192.3	191.1	300.0	1.2	2.0	✓ 2.0	35.7	118.5	
29	191.6	190.4	300.0	1.2	2.0	✓ 2.0	26.2	74.0	
30	191.2	189.9	300.0	1.3	2.0	✓ 2.0	27.9	103.3	
31	191.5	190.2	300.0	1.2	2.0	✓ 2.0	32.4	122.4	
Total									
Average	191.3	190.1	300.0	1.3	2.0	2.0	27.4	102.7	
Maximum	192.5	191.5	300.0	1.6	2.0	2.0	36.6	177.3	
Date	8-Dec	8-Dec	1-Dec	9-Dec	1-Dec	1-Dec	18-Dec	7-Dec	
Minimum	177.2	175.8	300.0	1.1	2.0	2.0	15.7	61.7	
Date	11-Dec	11-Dec	1-Dec	21-Dec	1-Dec	1-Dec	11-Dec	14-Dec	

Notes:

Membranes Monthly Report

Month: December-16



Integrity Test Rack 4									
Date	Initial Pressure (kPa)	Final Pressure (kPa)	Test Duration (sec)	Change in Pressure (kPa)	UCL	Within UCL	Average TMP (kPa)	Max TMP (kPa)	
1	194.9	193.7	300.0	1.2	2.0	✓ 2.0	16.4	50.4	
2	194.7	193.6	300.0	1.1	2.0	✓ 2.0	17.6	33.3	
3	194.4	193.2	300.0	1.2	2.0	✓ 2.0	17.2	45.4	
4	194.3	193.1	300.0	1.3	2.0	✓ 2.0	16.9	34.5	
5	194.4	193.1	300.0	1.3	2.0	✓ 2.0	16.5	35.1	
6	194.6	193.3	300.0	1.3	2.0	✓ 2.0	17.0	49.8	
7	194.7	193.3	300.0	1.4	2.0	✓ 2.0	16.9	83.3	
8	195.0	193.8	300.0	1.2	2.0	✓ 2.0	16.9	37.9	
9	194.5	193.2	300.0	1.3	2.0	✓ 2.0	16.9	36.5	
10	194.3	193.2	300.0	1.1	2.0	✓ 2.0	18.6	81.3	
11	192.0	190.9	300.0	1.1	2.0	✓ 2.0	16.7	60.6	
12	195.8	194.5	300.0	1.3	2.0	✓ 2.0	16.9	61.5	
13	195.1	193.9	300.0	1.2	2.0	✓ 2.0	19.8	56.0	
14	195.5	194.5	300.0	1.1	2.0	✓ 2.0	20.8	53.7	
15	195.4	194.2	300.0	1.2	2.0	✓ 2.0	16.5	34.5	
16	195.5	194.1	300.0	1.3	2.0	✓ 2.0	16.0	40.3	
17	195.5	194.5	300.0	1.1	2.0	✓ 2.0	16.5	40.9	
18	195.1	193.8	300.0	1.3	2.0	✓ 2.0	17.6	36.4	
19	195.1	193.8	300.0	1.3	2.0	✓ 2.0	17.0	36.2	
20	195.2	194.2	300.0	1.1	2.0	✓ 2.0	17.6	64.1	
21	195.5	194.2	300.0	1.3	2.0	✓ 2.0	16.8	59.1	
22	195.4	194.2	300.0	1.1	2.0	✓ 2.0	16.7	30.8	
23	195.1	193.9	300.0	1.3	2.0	✓ 2.0	16.7	31.5	
24	195.2	194.1	300.0	1.1	2.0	✓ 2.0	16.6	37.0	
25	195.0	193.8	300.0	1.3	2.0	✓ 2.0	16.8	31.8	
26	195.1	193.9	300.0	1.2	2.0	✓ 2.0	17.2	33.0	
27	195.1	193.9	300.0	1.2	2.0	✓ 2.0	16.4	32.1	
28	195.1	193.9	300.0	1.2	2.0	✓ 2.0	17.2	34.5	
29	195.2	194.0	300.0	1.2	2.0	✓ 2.0	16.2	32.4	
30	195.0	193.7	300.0	1.3	2.0	✓ 2.0	16.7	34.5	
31	195.4	194.2	300.0	1.1	2.0	✓ 2.0	16.8	31.9	
Total									
Average	194.9	193.7	300.0	1.2	2.0	2.0	17.1	43.9	
Maximum	195.8	194.5	300.0	1.4	2.0	2.0	20.8	83.3	
Date	12-Dec	12-Dec	1-Dec	7-Dec	1-Dec	1-Dec	14-Dec	7-Dec	
Minimum	192.0	190.9	300.0	1.1	2.0	2.0	16.0	30.8	
Date	11-Dec	11-Dec	1-Dec	14-Dec	1-Dec	1-Dec	16-Dec	22-Dec	

Notes:

Membranes Monthly Report

Month: December-16

Date	Membranes Monthly Performance							
	Rack 1 >0.1 NTU (Minutes)	Rack 1 Forward Flow (Minutes)	Rack 2 >0.1 NTU (Minutes)	Rack 2 Forward Flow (Minutes)	Rack 3 >0.1 NTU (Minutes)	Rack 3 Forward Flow (Minutes)	Rack 4 >0.1 NTU (Minutes)	Rack 4 Forward Flow (Minutes)
1	0.0	675.5	3.2	621.5	0.0	679.4	0.0	271.3
2	7.2	1165.0	0.0	1220.3	4.5	1167.2	0.0	488.2
3	0.0	1009.2	0.0	1009.2	0.0	1012.2	0.0	402.2
4	0.0	1013.1	0.0	1008.3	0.0	1015.4	0.0	401.3
5	0.0	989.4	0.0	992.6	0.0	996.0	0.0	514.6
6	0.0	1019.5	8.6	805.5	0.0	1026.3	0.0	394.1
7	0.0	748.2	0.0	748.2	9.5	723.5	0.0	309.0
8	0.0	923.3	0.0	919.3	3.2	917.1	0.0	474.6
9	1.4	647.5	0.0	847.5	0.0	861.4	0.0	344.1
10	0.0	969.1	0.0	966.5	6.3	814.1	0.0	463.1
11	0.0	926.3	0.0	929.3	0.0	322.3	0.0	342.5
12	0.0	807.3	0.0	782.5	4.5	647.4	0.0	408.2
13	0.0	825.5	0.0	827.3	0.0	828.2	0.0	590.0
14	0.0	718.1	0.0	642.2	0.0	657.5	0.0	577.0
15	0.0	1007.1	0.0	1010.2	0.0	1014.2	0.0	422.5
16	0.0	794.2	0.0	796.5	0.0	800.5	0.0	643.2
17	0.0	870.0	0.0	868.2	0.0	872.3	0.0	431.1
18	0.0	1018.6	0.0	1021.3	0.0	1026.2	0.0	470.5
19	0.0	621.2	0.0	701.1	0.0	694.3	0.0	316.3
20	12.1	818.5	0.0	866.6	3.2	808.6	0.0	422.6
21	0.0	889.5	0.0	889.5	0.0	896.1	4.0	422.4
22	0.0	907.3	0.0	906.4	0.0	911.3	0.0	418.5
23	0.0	806.1	0.0	801.3	0.5	809.4	0.0	393.3
24	0.0	809.4	0.0	814.3	0.5	815.2	0.0	390.2
25	0.0	775.2	0.0	774.2	0.0	780.1	0.0	384.1
26	0.0	1054.5	0.0	1053.1	0.0	1054.4	0.0	499.4
27	0.0	925.4	7.2	876.4	0.0	958.1	0.0	349.2
28	0.0	839.0	0.0	839.4	0.0	844.4	0.0	538.2
29	0.0	662.0	0.0	658.5	7.2	609.0	0.0	313.4
30	0.0	660.5	0.0	662.3	0.0	665.5	0.0	352.0
31	0.0	800.0	0.0	798.3	0.0	799.2	0.0	422.5
Total	20.8	26695.5	18.9	26657.9	39.4	26027.0	4.0	13169.8
Percent	0.1		0.1		0.2		0.0	
Maximum	12.1	1165.0	8.6	1220.3	9.5	1167.2	4.0	643.2
Date	20-Dec	2-Dec	6-Dec	2-Dec	7-Dec	2-Dec	21-Dec	16-Dec
Minimum	0.0	621.2	0.0	621.5	0.0	322.3	0.0	271.3
Date	1-Dec	19-Dec	2-Dec	1-Dec	1-Dec	11-Dec	1-Dec	1-Dec

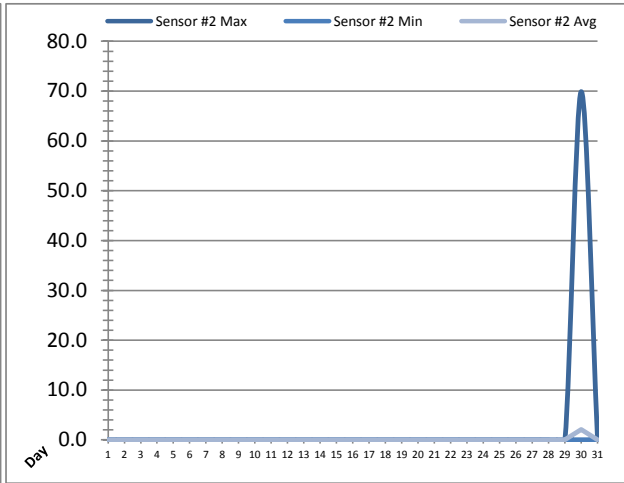
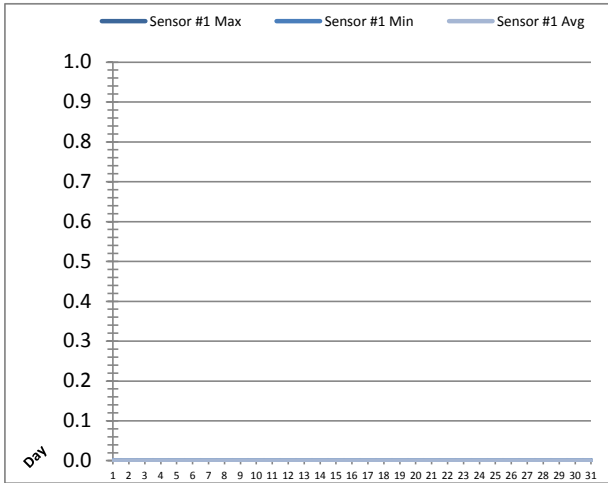
Notes:

Met filter performance criteria of 99% of readings less than 0.1ntu for the month.

Non-compliance reported for Rack 2 filter turbidity failure to continuous monitor. Unit was replaced on December 14th.

UV System Monthly Report

Month: December-16

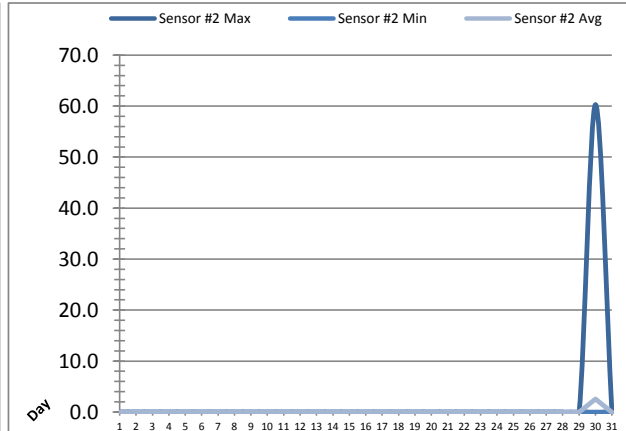
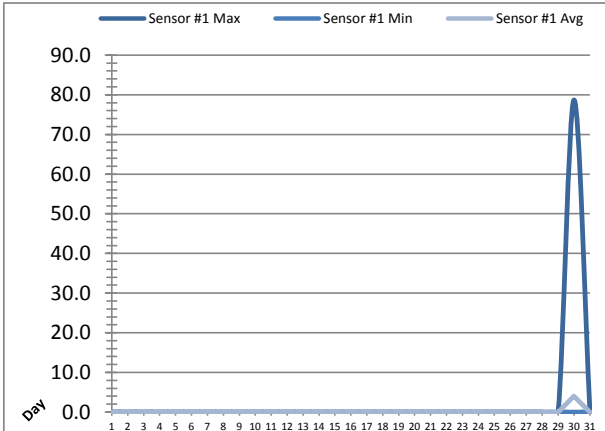


Date	UV Reactor 1					
	Intensity Sensor 1 (mW/cm ²)			Intensity Sensor 2 (mW/cm ²)		
	Maximum	Minimum	Average	Maximum	Minimum	Average
1	0.0	0.0	0.0	0.0	0.0	0.0
2	0.0	0.0	0.0	0.0	0.0	0.0
3	0.0	0.0	0.0	0.0	0.0	0.0
4	0.0	0.0	0.0	0.0	0.0	0.0
5	0.0	0.0	0.0	0.0	0.0	0.0
6	0.0	0.0	0.0	0.0	0.0	0.0
7	0.0	0.0	0.0	0.0	0.0	0.0
8	0.0	0.0	0.0	0.0	0.0	0.0
9	0.0	0.0	0.0	0.0	0.0	0.0
10	0.0	0.0	0.0	0.0	0.0	0.0
11	0.0	0.0	0.0	0.0	0.0	0.0
12	0.0	0.0	0.0	0.0	0.0	0.0
13	0.0	0.0	0.0	0.0	0.0	0.0
14	0.0	0.0	0.0	0.0	0.0	0.0
15	0.0	0.0	0.0	0.0	0.0	0.0
16	0.0	0.0	0.0	0.0	0.0	0.0
17	0.0	0.0	0.0	0.0	0.0	0.0
18	0.0	0.0	0.0	0.0	0.0	0.0
19	0.0	0.0	0.0	0.0	0.0	0.0
20	0.0	0.0	0.0	0.0	0.0	0.0
21	0.0	0.0	0.0	0.0	0.0	0.0
22	0.0	0.0	0.0	0.0	0.0	0.0
23	0.0	0.0	0.0	0.0	0.0	0.0
24	0.0	0.0	0.0	0.0	0.0	0.0
25	0.0	0.0	0.0	0.0	0.0	0.0
26	0.0	0.0	0.0	0.0	0.0	0.0
27	0.0	0.0	0.0	0.0	0.0	0.0
28	0.0	0.0	0.0	0.0	0.0	0.0
29	0.0	0.0	0.0	0.0	0.0	0.0
30	0.0	0.0	0.0	69.9	0.0	2.1
31	0.0	0.0	0.0	0.0	0.0	0.0
Total						
Average	0.0	0.0	0.0	2.3	0.0	0.1
Maximum	0.0		0.0	69.9		2.1
Date	1-Dec		1-Dec	30-Dec		30-Dec
Minimum		0.0	0.0		0.0	0.0
Date		1-Dec	1-Dec		1-Dec	1-Dec

Notes:

UV System Monthly Report

Month: December-16

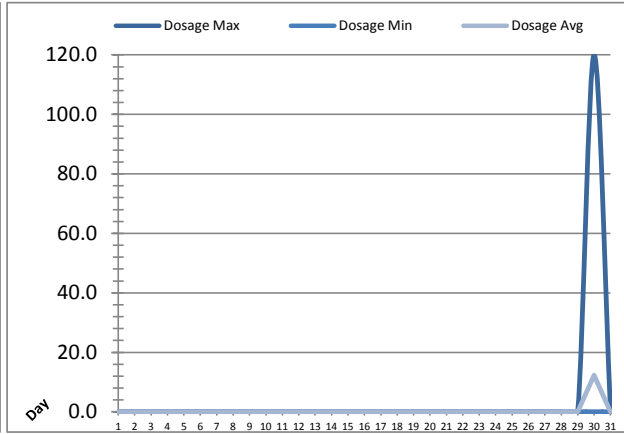
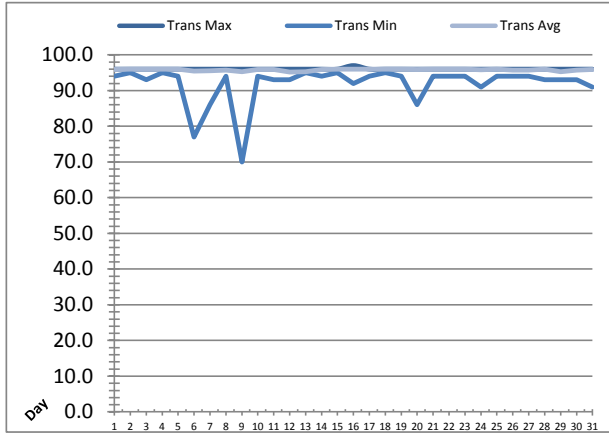


UV Reactor 2						
Date	Intensity Sensor 1 (mW/cm ²)			Intensity Sensor 2 (mW/cm ²)		
	Maximum	Minimum	Average	Maximum	Minimum	Average
1	0.0	0.0	0.0	0.0	0.0	0.0
2	0.0	0.0	0.0	0.0	0.0	0.0
3	0.0	0.0	0.0	0.0	0.0	0.0
4	0.0	0.0	0.0	0.0	0.0	0.0
5	0.0	0.0	0.0	0.0	0.0	0.0
6	0.0	0.0	0.0	0.0	0.0	0.0
7	0.0	0.0	0.0	0.0	0.0	0.0
8	0.0	0.0	0.0	0.0	0.0	0.0
9	0.0	0.0	0.0	0.0	0.0	0.0
10	0.0	0.0	0.0	0.0	0.0	0.0
11	0.0	0.0	0.0	0.0	0.0	0.0
12	0.0	0.0	0.0	0.0	0.0	0.0
13	0.0	0.0	0.0	0.0	0.0	0.0
14	0.0	0.0	0.0	0.0	0.0	0.0
15	0.0	0.0	0.0	0.0	0.0	0.0
16	0.0	0.0	0.0	0.0	0.0	0.0
17	0.0	0.0	0.0	0.0	0.0	0.0
18	0.0	0.0	0.0	0.0	0.0	0.0
19	0.0	0.0	0.0	0.0	0.0	0.0
20	0.0	0.0	0.0	0.0	0.0	0.0
21	0.0	0.0	0.0	0.0	0.0	0.0
22	0.0	0.0	0.0	0.0	0.0	0.0
23	0.0	0.0	0.0	0.0	0.0	0.0
24	0.0	0.0	0.0	0.0	0.0	0.0
25	0.0	0.0	0.0	0.0	0.0	0.0
26	0.0	0.0	0.0	0.0	0.0	0.0
27	0.0	0.0	0.0	0.0	0.0	0.0
28	0.0	0.0	0.0	0.0	0.0	0.0
29	0.0	0.0	0.0	0.0	0.0	0.0
30	78.7	0.0	4.0	60.3	0.0	2.6
31	0.0	0.0	0.0	0.0	0.0	0.0
Total						
Average	2.5	0.0	0.1	1.9	0.0	0.1
Maximum	78.7		4.0	60.3		2.6
Date	30-Dec		30-Dec	30-Dec		30-Dec
Minimum		0.0	0.0		0.0	0.0
Date		1-Dec	1-Dec		1-Dec	1-Dec

Notes:

UV System Monthly Report

Month: **December-16**

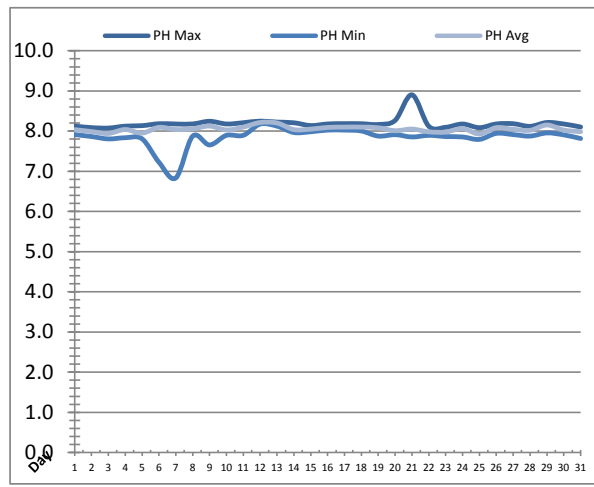
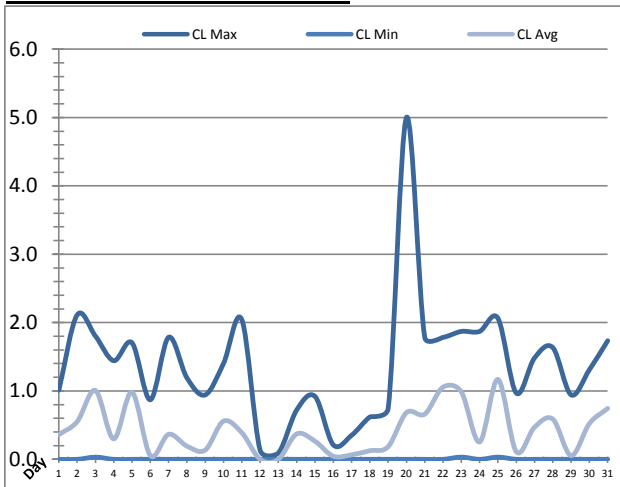


UV System							
Date	Transmittance (%)			Dosage (mJ/cm ²)			Inlet Flow (L/s)
	Maximum	Minimum	Average	Maximum	Minimum	Average	Maximum
1	96.00	94.00	95.86	0.0	0.0	0.0	116.2
2	96.00	95.00	95.96	0.0	0.0	0.0	117.2
3	96.00	93.00	95.99	0.0	0.0	0.0	104.3
4	96.00	95.00	96.00	0.0	0.0	0.0	100.5
5	96.00	94.00	95.98	0.0	0.0	0.0	83.1
6	96.00	77.00	95.49	0.0	0.0	0.0	87.0
7	96.00	86.00	95.59	0.0	0.0	0.0	132.3
8	96.00	94.00	95.74	0.0	0.0	0.0	134.8
9	96.00	70.00	95.26	0.0	0.0	0.0	124.4
10	96.00	94.00	95.90	0.0	0.0	0.0	105.1
11	96.00	93.00	95.87	0.0	0.0	0.0	97.0
12	96.00	93.00	95.21	0.0	0.0	0.0	128.7
13	96.00	95.00	95.27	0.0	0.0	0.0	101.7
14	96.00	94.00	95.94	0.0	0.0	0.0	84.9
15	96.00	95.00	96.00	0.0	0.0	0.0	94.8
16	97.00	92.00	95.99	0.0	0.0	0.0	84.9
17	96.00	94.00	95.98	0.0	0.0	0.0	93.6
18	96.00	95.00	95.97	0.0	0.0	0.0	89.5
19	96.00	94.00	95.98	0.0	0.0	0.0	90.8
20	96.00	86.00	95.95	0.0	0.0	0.0	94.0
21	96.00	94.00	95.98	0.0	0.0	0.0	110.7
22	96.00	94.00	95.98	0.0	0.0	0.0	87.5
23	96.00	94.00	95.98	0.0	0.0	0.0	133.3
24	96.00	91.00	95.84	0.0	0.0	0.0	137.0
25	96.00	94.00	95.98	0.0	0.0	0.0	133.3
26	96.00	94.00	95.71	0.0	0.0	0.0	83.2
27	96.00	94.00	95.75	0.0	0.0	0.0	115.7
28	96.00	93.00	95.98	0.0	0.0	0.0	134.8
29	96.00	93.00	95.29	0.0	0.0	0.0	85.2
30	96.00	93.00	95.69	120.0	0.0	12.3	86.2
31	96.00	91.00	95.93	0.0	0.0	0.0	139.2
Total							
Average	96.03	91.87	95.81	3.9	0.0	0.4	106.8
Maximum	97.00		96.00	120.0		12.3	139.2
Date	16-Dec		15-Dec	30-Dec		30-Dec	31-Dec
Minimum		70.00	95.21		0.0	0.0	
Date		9-Dec	12-Dec		1-Dec	1-Dec	

Notes:

Plant Quality Report

Month: December-16

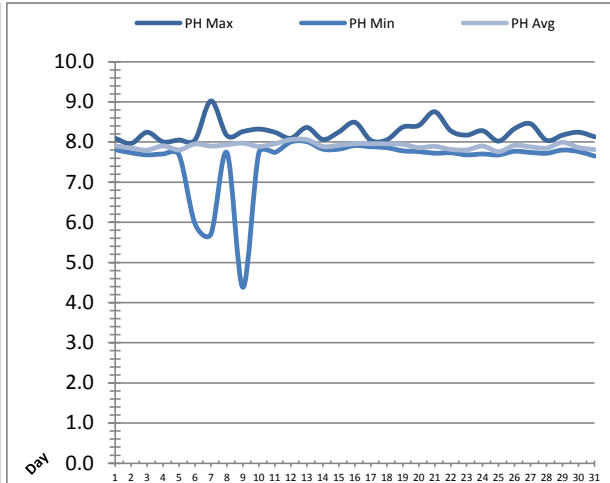
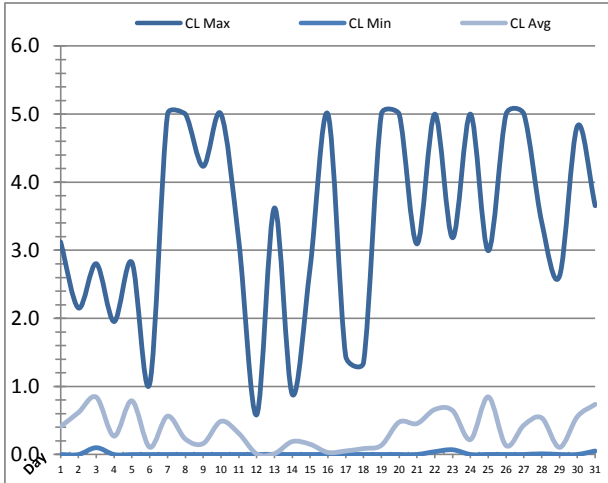


Date	Strainer Chlorine Residual			Strainer pH		
	AIT_2003_CL (ppm)			AIT_2003_PH		
	Maximum	Minimum	Average	Maximum	Minimum	Average
1	1.01	0.00	0.36	8.12	7.91	8.04
2	2.11	0.00	0.55	8.09	7.87	7.99
3	1.80	0.03	1.01	8.08	7.81	7.94
4	1.44	0.00	0.30	8.12	7.84	8.04
5	1.70	0.00	0.98	8.14	7.81	7.95
6	0.87	0.00	0.05	8.18	7.23	8.09
7	1.79	0.00	0.37	8.18	6.83	8.04
8	1.19	0.00	0.19	8.18	7.88	8.06
9	0.94	0.00	0.14	8.25	7.66	8.13
10	1.40	0.00	0.56	8.18	7.90	8.03
11	2.04	0.00	0.39	8.21	7.90	8.10
12	0.13	0.00	0.00	8.25	8.18	8.21
13	0.09	0.00	0.00	8.23	8.12	8.20
14	0.72	0.00	0.37	8.21	7.97	8.04
15	0.92	0.00	0.27	8.14	7.98	8.05
16	0.21	0.00	0.04	8.18	8.03	8.09
17	0.35	0.00	0.07	8.19	8.03	8.10
18	0.62	0.00	0.13	8.18	8.00	8.10
19	0.74	0.00	0.19	8.17	7.88	8.08
20	5.00	0.00	0.68	8.27	7.91	8.01
21	1.78	0.00	0.66	8.90	7.85	8.05
22	1.78	0.00	1.06	8.12	7.89	7.98
23	1.87	0.03	0.99	8.10	7.87	7.98
24	1.87	0.00	0.25	8.18	7.86	8.06
25	2.06	0.03	1.17	8.09	7.79	7.93
26	0.97	0.00	0.11	8.18	7.94	8.09
27	1.48	0.00	0.47	8.18	7.91	8.05
28	1.63	0.00	0.59	8.12	7.88	8.02
29	0.94	0.00	0.05	8.22	7.96	8.15
30	1.31	0.00	0.52	8.18	7.91	8.03
31	1.73	0.00	0.74	8.10	7.82	7.99
Total						
Average	1.37	0.00	0.43	8.19	7.85	8.05
Maximum	5.00		1.17	8.90		8.21
Date	20-Dec		25-Dec	21-Dec		12-Dec
Minimum		0.00	0.00		6.83	7.93
Date		1-Dec	13-Dec		7-Dec	25-Dec

Notes:

Plant Quality Report

Month: December-16

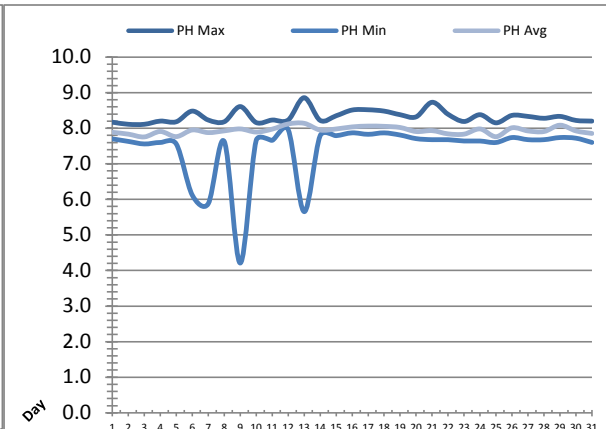
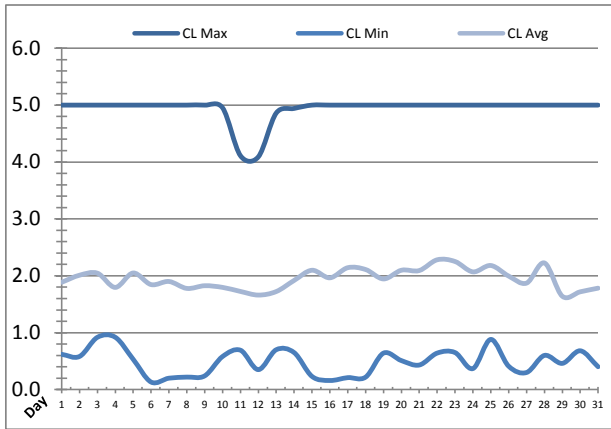


Date	Inlet UV Chlorine Residual			Inlet UV pH		
	AIT_5005_CL (ppm)			AIT_5005_PH		
	Maximum	Minimum	Average	Maximum	Minimum	Average
1	3.12	0.00	0.41	8.09	7.81	7.90
2	2.15	0.00	0.62	7.96	7.73	7.85
3	2.80	0.10	0.84	8.24	7.68	7.80
4	1.95	0.00	0.27	8.00	7.70	7.90
5	2.82	0.00	0.79	8.05	7.68	7.80
6	1.04	0.00	0.11	8.05	5.96	7.95
7	5.00	0.00	0.56	9.02	5.71	7.90
8	5.00	0.00	0.23	8.16	7.73	7.93
9	4.23	0.00	0.16	8.26	4.38	7.97
10	5.00	0.00	0.49	8.32	7.74	7.89
11	3.13	0.00	0.31	8.24	7.74	7.96
12	0.58	0.00	0.01	8.09	8.00	8.06
13	3.62	0.00	0.01	8.36	8.01	8.06
14	0.88	0.00	0.19	8.06	7.82	7.89
15	2.74	0.00	0.15	8.25	7.82	7.92
16	5.00	0.00	0.03	8.49	7.91	7.96
17	1.44	0.00	0.05	8.04	7.88	7.96
18	1.35	0.00	0.09	8.05	7.86	7.96
19	5.00	0.00	0.14	8.37	7.78	7.94
20	5.00	0.00	0.48	8.41	7.76	7.86
21	3.09	0.00	0.46	8.75	7.72	7.89
22	5.00	0.04	0.66	8.28	7.73	7.82
23	3.18	0.07	0.64	8.17	7.68	7.80
24	5.00	0.00	0.22	8.28	7.70	7.90
25	2.99	0.00	0.85	8.02	7.68	7.76
26	5.00	0.00	0.13	8.33	7.77	7.92
27	5.00	0.00	0.43	8.45	7.74	7.88
28	3.41	0.01	0.54	8.04	7.72	7.85
29	2.62	0.00	0.11	8.17	7.80	7.99
30	4.82	0.00	0.56	8.24	7.76	7.86
31	3.65	0.05	0.74	8.13	7.65	7.81
Total						
Average	3.41	0.01	0.36	8.24	7.54	7.90
Maximum	5.00		0.85	9.02		8.06
Date	7-Dec		25-Dec	7-Dec		12-Dec
Minimum		0.00			4.38	
Date		1-Dec	12-Dec		9-Dec	25-Dec

Notes:

Plant Quality Report

Month: December-16

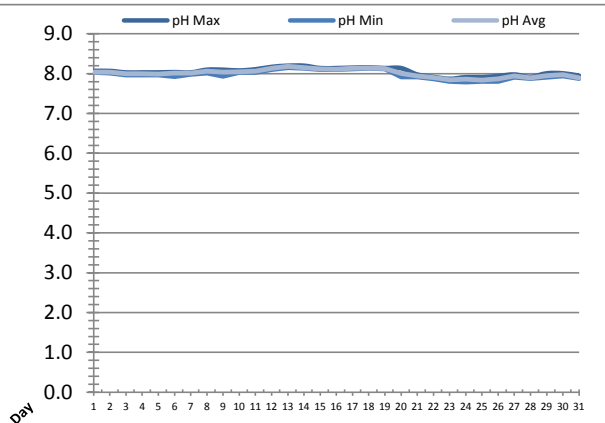
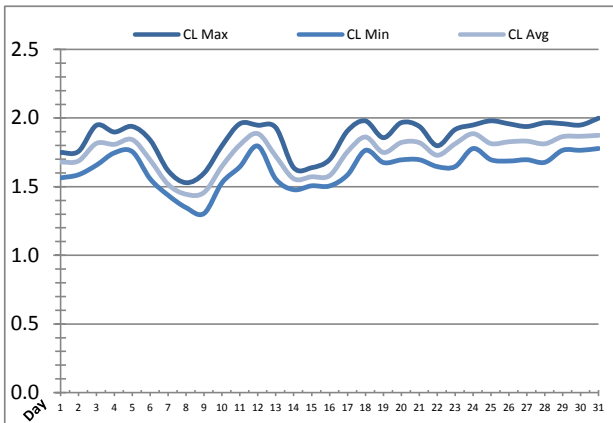


Date	Discharge UV Chlorine Residual			Discharge UV pH		
	AIT_5006_CL (ppm)			AIT_5006_PH		
	Maximum	Minimum	Average	Maximum	Minimum	Average
1	5.00	0.62	1.89	8.17	7.70	7.89
2	5.00	0.58	2.01	8.11	7.63	7.83
3	5.00	0.92	2.05	8.11	7.56	7.76
4	5.00	0.92	1.80	8.20	7.60	7.91
5	5.00	0.53	2.05	8.18	7.56	7.77
6	5.00	0.13	1.85	8.48	6.12	7.95
7	5.00	0.20	1.90	8.23	5.88	7.88
8	5.00	0.22	1.78	8.18	7.63	7.93
9	5.00	0.24	1.83	8.61	4.21	7.98
10	4.95	0.58	1.80	8.16	7.66	7.89
11	4.11	0.69	1.72	8.23	7.66	7.98
12	4.09	0.35	1.66	8.23	7.96	8.12
13	4.86	0.70	1.72	8.86	5.65	8.14
14	4.94	0.65	1.92	8.22	7.79	7.95
15	5.00	0.23	2.10	8.35	7.79	7.98
16	5.00	0.16	1.96	8.51	7.87	8.04
17	5.00	0.21	2.14	8.52	7.83	8.06
18	5.00	0.22	2.11	8.48	7.87	8.05
19	5.00	0.64	1.94	8.38	7.81	8.02
20	5.00	0.51	2.10	8.32	7.71	7.91
21	5.00	0.43	2.09	8.73	7.68	7.93
22	5.00	0.64	2.28	8.39	7.68	7.84
23	5.00	0.65	2.25	8.19	7.64	7.83
24	5.00	0.37	2.07	8.38	7.64	7.98
25	5.00	0.88	2.18	8.15	7.60	7.76
26	5.00	0.41	2.00	8.36	7.74	8.01
27	5.00	0.30	1.87	8.33	7.68	7.92
28	5.00	0.60	2.23	8.28	7.68	7.91
29	5.00	0.46	1.64	8.33	7.74	8.09
30	5.00	0.68	1.72	8.22	7.72	7.93
31	5.00	0.40	1.78	8.20	7.60	7.85
Total						
Average	4.93	0.49	1.95	8.33	7.42	7.94
Maximum	5.00		2.28	8.86		8.14
Date	1-Dec		22-Dec	13-Dec		13-Dec
Minimum		0.13	1.64		4.21	7.76
Date		6-Dec	29-Dec		9-Dec	3-Dec

Notes:

Plant Quality Report

Month: **December-16**

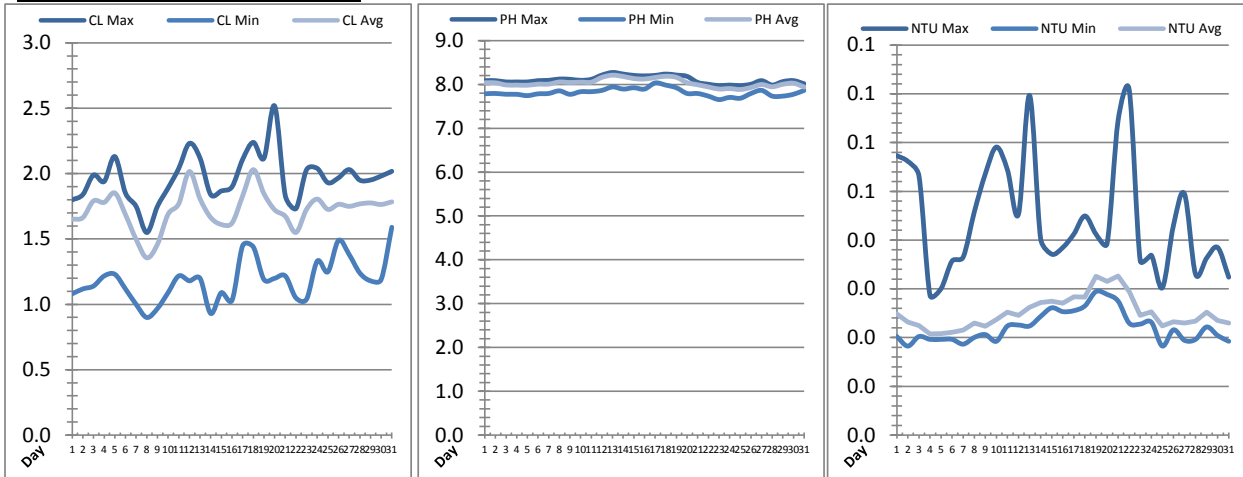


Date	Suction Header Chlorine Res.			Suction Header pH			Distribution CT Calc Total		
	AIT_7001_CL (ppm)			AIT_7001_PH (m)			REAL_CT_CALC_TOTAL (mg*ml/min)		
	Maximum	Minimum	Average	Maximum	Minimum	Average	Maximum	Minimum	Average
1	1.75	1.56	1.68	8.07	8.03	8.04	9523.77	0.00	194.37
2	1.76	1.59	1.69	8.07	8.01	8.03	9168.99	0.00	218.09
3	1.95	1.66	1.82	8.03	7.97	8.00	13569.43	0.00	309.84
4	1.90	1.75	1.81	8.03	7.97	8.00	11117.72	0.00	304.52
5	1.94	1.76	1.84	8.03	7.97	7.99	4372.19	0.00	420.46
6	1.84	1.56	1.69	8.04	7.93	8.01	6429.25	0.00	372.11
7	1.62	1.44	1.52	8.03	7.98	8.01	3599.23	0.00	215.78
8	1.53	1.35	1.44	8.10	8.01	8.07	8339.82	0.00	254.92
9	1.60	1.31	1.46	8.10	7.94	8.04	3427.68	0.00	381.38
10	1.80	1.53	1.65	8.08	8.03	8.05	3779.89	0.00	550.34
11	1.96	1.65	1.80	8.11	8.03	8.06	13286.20	0.00	253.06
12	1.95	1.80	1.89	8.17	8.10	8.13	3915.59	0.00	278.17
13	1.93	1.56	1.72	8.20	8.15	8.18	10679.35	0.00	378.80
14	1.64	1.48	1.56	8.20	8.13	8.15	4822.61	0.00	329.85
15	1.64	1.51	1.57	8.14	8.10	8.11	3242.59	0.00	488.65
16	1.70	1.51	1.58	8.14	8.10	8.11	3658.08	0.00	321.87
17	1.91	1.59	1.75	8.15	8.12	8.13	4788.58	0.00	530.46
18	1.98	1.76	1.86	8.16	8.13	8.14	6080.24	0.00	395.23
19	1.86	1.68	1.75	8.14	8.12	8.12	3360.48	0.00	419.86
20	1.97	1.70	1.82	8.14	7.91	8.01	7892.61	0.00	423.10
21	1.94	1.70	1.82	7.98	7.91	7.94	6138.50	0.00	229.55
22	1.80	1.65	1.73	7.92	7.87	7.90	3213.60	0.00	407.51
23	1.92	1.65	1.81	7.87	7.81	7.85	3769.25	0.00	278.40
24	1.95	1.78	1.89	7.91	7.79	7.86	5159.30	0.00	361.37
25	1.98	1.70	1.81	7.91	7.81	7.84	10453.49	0.00	331.47
26	1.96	1.69	1.83	7.94	7.81	7.87	3584.55	0.00	498.82
27	1.94	1.70	1.83	7.98	7.91	7.94	5585.66	0.00	298.57
28	1.97	1.68	1.81	7.92	7.88	7.89	3425.20	0.00	291.97
29	1.96	1.77	1.86	8.01	7.91	7.95	3222.03	0.00	321.23
30	1.95	1.77	1.87	8.01	7.94	7.98	4986.00	0.00	223.34
31	2.00	1.78	1.87	7.95	7.88	7.89	3790.87	0.00	454.81
Total									
Average	1.86	1.63	1.74	8.05	7.98	8.01			
Maximum	2.00		1.89	8.20		8.18			
Date	31-Dec		12-Dec	13-Dec		13-Dec			
Minimum		1.31	1.44		7.79	7.84			
Date		9-Dec	8-Dec		24-Dec	25-Dec			

Notes:

Plant Quality Report

Month: December-16

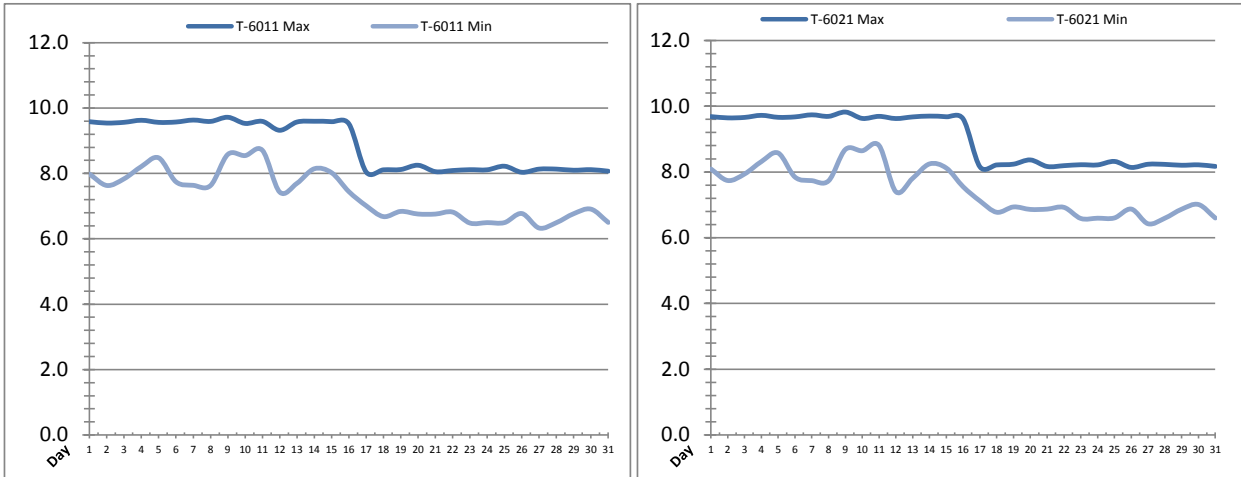


Date	Distribution Chlorine Header			Distribution pH			Distribution Turbidity		
	AIT_7004_CL (ppm)			AIT_7004_PH (mg/L)			AIT_7003 (mg/L)		
	Maximum	Minimum	Average	Maximum	Minimum	Average	Maximum	Minimum	Average
1	1.80	1.08	1.65	8.09	7.79	8.04	0.06	0.02	0.02
2	1.84	1.12	1.66	8.09	7.79	8.04	0.06	0.02	0.02
3	1.99	1.14	1.79	8.06	7.78	7.99	0.05	0.02	0.02
4	1.94	1.22	1.78	8.06	7.78	7.99	0.03	0.02	0.02
5	2.13	1.23	1.85	8.06	7.75	7.98	0.03	0.02	0.02
6	1.85	1.12	1.69	8.09	7.79	8.01	0.04	0.02	0.02
7	1.75	1.00	1.50	8.09	7.79	8.01	0.04	0.02	0.02
8	1.55	0.90	1.36	8.12	7.85	8.06	0.05	0.02	0.02
9	1.75	0.97	1.46	8.12	7.78	8.04	0.05	0.02	0.02
10	1.89	1.09	1.69	8.09	7.83	8.05	0.06	0.02	0.02
11	2.04	1.22	1.77	8.12	7.84	8.05	0.05	0.02	0.03
12	2.23	1.18	2.02	8.21	7.86	8.16	0.05	0.02	0.02
13	2.12	1.20	1.81	8.27	7.94	8.21	0.07	0.02	0.03
14	1.84	0.93	1.66	8.24	7.89	8.18	0.04	0.02	0.03
15	1.87	1.09	1.61	8.21	7.92	8.14	0.04	0.03	0.03
16	1.90	1.03	1.62	8.20	7.89	8.12	0.04	0.03	0.03
17	2.11	1.45	1.83	8.21	8.03	8.16	0.04	0.03	0.03
18	2.24	1.44	2.03	8.24	7.98	8.19	0.04	0.03	0.03
19	2.12	1.19	1.85	8.21	7.92	8.16	0.04	0.03	0.03
20	2.52	1.20	1.72	8.18	7.79	8.04	0.04	0.03	0.03
21	1.83	1.22	1.67	8.05	7.79	7.99	0.06	0.03	0.03
22	1.73	1.05	1.55	8.01	7.73	7.94	0.07	0.02	0.03
23	2.03	1.04	1.73	7.97	7.66	7.90	0.04	0.02	0.02
24	2.04	1.33	1.80	7.99	7.70	7.91	0.04	0.02	0.03
25	1.93	1.25	1.73	7.97	7.69	7.88	0.03	0.02	0.02
26	1.97	1.49	1.76	8.00	7.79	7.93	0.04	0.02	0.02
27	2.03	1.38	1.75	8.09	7.87	8.00	0.05	0.02	0.02
28	1.95	1.24	1.77	7.99	7.73	7.95	0.03	0.02	0.02
29	1.95	1.18	1.78	8.07	7.73	8.00	0.04	0.02	0.03
30	1.98	1.19	1.76	8.09	7.78	8.03	0.04	0.02	0.02
31	2.02	1.59	1.78	8.02	7.87	7.94	0.03	0.02	0.02
Total									
Average	1.97	1.18	1.72	8.10	7.82	8.04	0.0	0.0	0.0
Maximum	2.52		2.03	8.27		8.21	0.1		0.0
Date	20-Dec		18-Dec	13-Dec		13-Dec	22-Dec		21-Dec
Minimum		0.90	1.36		7.66	7.88		0.0	0.0
Date		8-Dec	8-Dec		23-Dec	25-Dec		2-Dec	4-Dec

Notes:

Raw Well/Treated Storage Report

Month: December-16

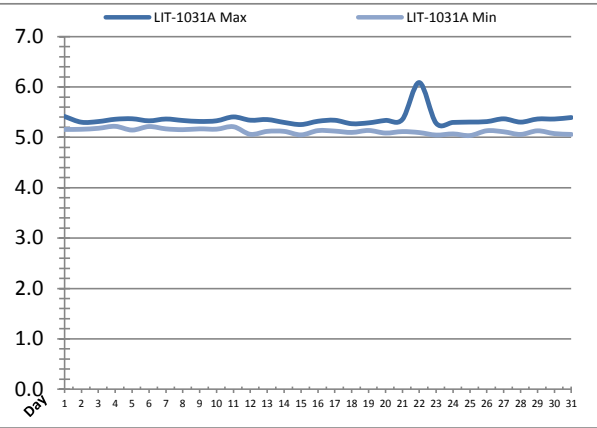
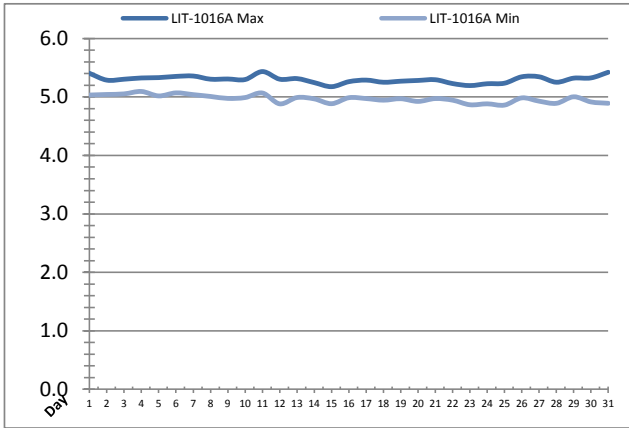


Date	Treated Water Storage Tank					
	T-6011 (m)			T-6021 (m)		
	Maximum	Minimum	Average	Maximum	Minimum	Average
1	9.6	8.0	9.1	9.7	8.1	9.2
2	9.5	7.6	8.7	9.6	7.7	8.8
3	9.6	7.8	8.9	9.7	7.9	9.0
4	9.6	8.2	9.0	9.7	8.3	9.1
5	9.6	8.5	9.1	9.7	8.6	9.2
6	9.6	7.7	8.8	9.7	7.8	8.9
7	9.6	7.6	9.0	9.7	7.7	9.1
8	9.6	7.6	9.0	9.7	7.7	9.1
9	9.7	8.6	9.1	9.8	8.7	9.2
10	9.5	8.5	9.1	9.6	8.6	9.2
11	9.6	8.7	9.2	9.7	8.8	9.3
12	9.3	7.4	6.5	9.6	7.4	6.6
13	9.6	7.7	9.0	9.7	7.8	9.1
14	9.6	8.1	9.2	9.7	8.2	9.3
15	9.6	8.0	8.9	9.7	8.1	9.0
16	9.5	7.4	8.3	9.6	7.6	8.4
17	8.0	7.0	7.6	8.2	7.1	7.7
18	8.1	6.7	7.5	8.2	6.8	7.6
19	8.1	6.8	7.7	8.2	6.9	7.8
20	8.3	6.8	7.7	8.4	6.9	7.8
21	8.1	6.8	7.5	8.2	6.9	7.6
22	8.1	6.8	7.5	8.2	6.9	7.6
23	8.1	6.5	7.6	8.2	6.6	7.7
24	8.1	6.5	7.6	8.2	6.6	7.7
25	8.2	6.5	7.7	8.3	6.6	7.8
26	8.0	6.8	7.5	8.1	6.9	7.6
27	8.1	6.3	7.3	8.2	6.4	7.4
28	8.1	6.5	7.5	8.2	6.6	7.6
29	8.1	6.8	7.7	8.2	6.9	7.8
30	8.1	6.9	7.7	8.2	7.0	7.8
31	8.1	6.5	7.6	8.2	6.6	7.7
Total						
Average	8.9	7.3	8.2	9.0	7.4	8.3
Maximum	9.7		9.2	9.8		9.3
Date	9-Dec		11-Dec	9-Dec		11-Dec
Minimum		6.3	6.5		6.4	6.6
Date		27-Dec	12-Dec		27-Dec	12-Dec

Notes:

Raw Well/Treated Storage Report

Month: December-16

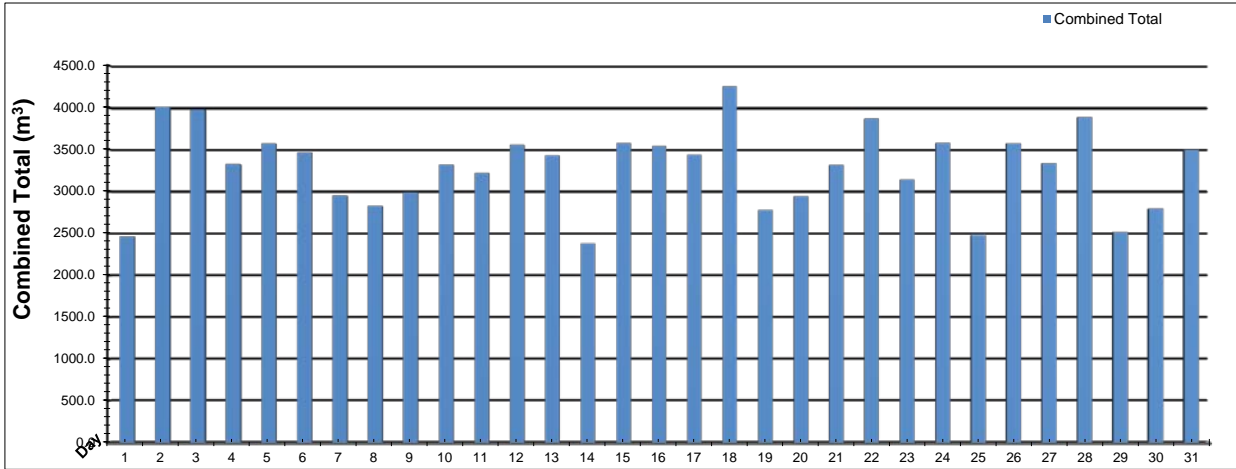


Date	Low Lift Intake Levels					
	Wet Well #1 (LIT-1016A) (m)			Wet Well #2 (LIT-1031A) (m)		
	Maximum	Minimum	Average	Maximum	Minimum	Average
1	5.4	5.0	5.2	5.4	5.2	5.3
2	5.3	5.0	5.1	5.3	5.2	5.2
3	5.3	5.1	5.2	5.3	5.2	5.2
4	5.3	5.1	5.2	5.4	5.2	5.3
5	5.3	5.0	5.2	5.4	5.1	5.3
6	5.4	5.1	5.2	5.3	5.2	5.3
7	5.4	5.0	5.2	5.4	5.2	5.3
8	5.3	5.0	5.2	5.3	5.2	5.2
9	5.3	5.0	5.1	5.3	5.2	5.2
10	5.3	5.0	5.1	5.3	5.2	5.2
11	5.4	5.1	5.2	5.4	5.2	5.3
12	5.3	4.9	5.1	5.3	5.1	5.2
13	5.3	5.0	5.1	5.4	5.1	5.2
14	5.2	5.0	5.1	5.3	5.1	5.2
15	5.2	4.9	5.0	5.3	5.0	5.1
16	5.3	5.0	5.1	5.3	5.1	5.2
17	5.3	5.0	5.1	5.3	5.1	5.2
18	5.3	4.9	5.1	5.3	5.1	5.2
19	5.3	5.0	5.1	5.3	5.1	5.2
20	5.3	4.9	5.1	5.3	5.1	5.2
21	5.3	5.0	5.1	5.4	5.1	5.2
22	5.2	4.9	5.1	6.1	5.1	5.2
23	5.2	4.9	5.1	5.3	5.0	5.2
24	5.2	4.9	5.1	5.3	5.1	5.2
25	5.2	4.9	5.1	5.3	5.0	5.2
26	5.3	5.0	5.1	5.3	5.1	5.2
27	5.3	4.9	5.1	5.4	5.1	5.2
28	5.3	4.9	5.1	5.3	5.1	5.2
29	5.3	5.0	5.1	5.4	5.1	5.2
30	5.3	4.9	5.1	5.4	5.1	5.2
31	5.4	4.9	5.1	5.4	5.1	5.2
Total						
Average	5.3	5.0	5.1	5.4	5.1	5.2
Maximum	5.4		5.2	6.1		5.3
Date	11-Dec		1-Dec	22-Dec		6-Dec
Minimum		4.9	5.0		5.0	5.1
Date		25-Dec	15-Dec		25-Dec	15-Dec

Notes:

High Lift Monthly Report

Month: December-16

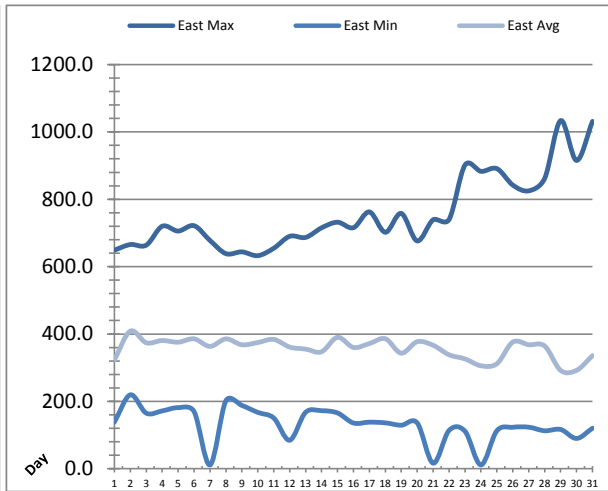
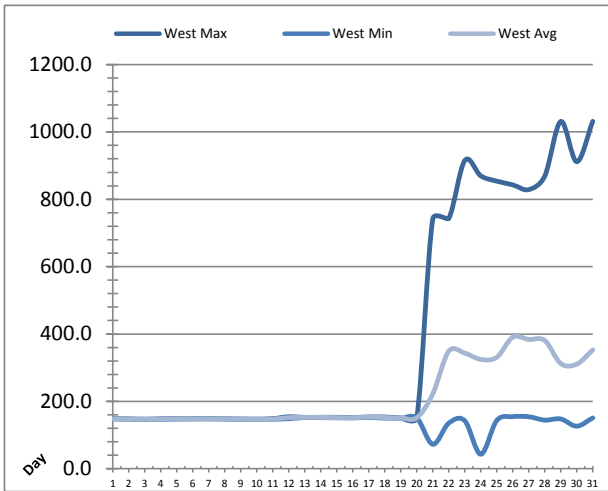


Date	Distribution Flow					
	FIT_7052 (East)		FIT_7062 (West)		Combined	
	(m³)	(L/s)	(m³)	(L/s)	(m³)	(L/s)
	Total	Peak	Total	Peak	Total	Peak
1	857.7	41.4	1607.0	113.0	2464.8	151.1
2	706.5	47.5	3302.0	108.8	4008.6	143.6
3	781.9	44.2	3197.8	108.5	3979.7	142.9
4	724.6	42.8	2604.1	106.5	3328.8	146.2
5	707.6	44.1	2862.6	91.5	3570.2	132.3
6	538.9	38.7	2929.2	103.5	3468.1	139.5
7	782.5	40.2	2168.5	112.8	2951.0	150.2
8	881.6	43.5	1945.3	104.3	2827.0	142.7
9	492.1	33.1	2501.2	83.2	2993.3	83.2
10	969.7	34.5	2351.4	83.0	3321.1	83.0
11	473.4	45.8	2746.2	104.7	3219.6	141.9
12	812.4	44.9	2744.4	112.8	3556.7	148.0
13	1182.9	40.8	2247.8	111.6	3430.8	149.7
14	717.3	40.5	1665.8	112.8	2383.0	151.3
15	1415.5	42.5	2163.1	110.2	3578.5	142.1
16	660.9	38.3	2884.8	127.9	3545.7	157.2
17	1269.9	35.2	2167.1	118.4	3437.1	143.3
18	1122.7	43.0	3130.0	117.2	4252.6	143.8
19	1061.5	38.1	1719.3	110.5	2780.8	145.6
20	674.3	34.5	2269.8	103.7	2944.2	135.6
21	610.0	36.3	2705.4	111.1	3315.4	145.8
22	1241.6	44.6	2626.7	111.9	3868.3	144.7
23	908.1	39.8	2230.6	109.6	3138.7	146.0
24	1004.6	43.5	2576.2	113.5	3580.8	145.7
25	834.1	49.1	1646.4	114.0	2480.5	143.1
26	1010.6	38.8	2561.6	119.0	3572.2	140.2
27	615.0	39.4	2722.8	106.5	3337.8	143.9
28	1023.1	47.0	2864.1	109.3	3887.2	144.7
29	862.9	40.1	1654.2	100.8	2517.1	138.8
30	589.7	40.4	2205.4	104.5	2795.1	141.7
31	1176.3	38.9	2321.3	106.4	3497.6	142.7
Total	26710.0		75322.3		102032.3	
Average	861.6	41.0	2429.8	108.1	3291.4	140.3
Maximum	1415.5	49.1	3302.0	127.9	4252.6	157.2
Date	15-Dec	25-Dec	2-Dec	16-Dec	18-Dec	16-Dec
Minimum	473.4		1607.0		2383.0	
Date	11-Dec		1-Dec		14-Dec	

Notes:

Low Lift Monthly Report

Month: December-16

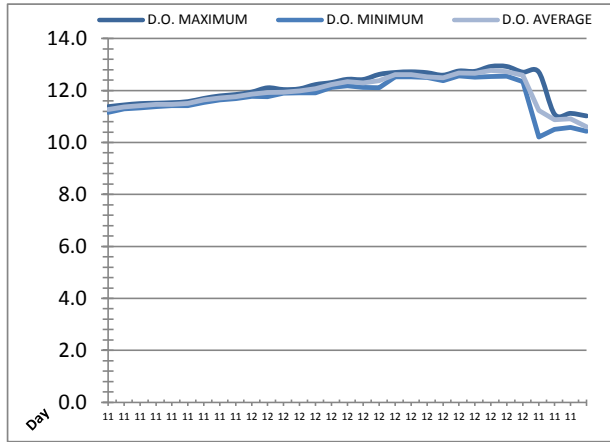
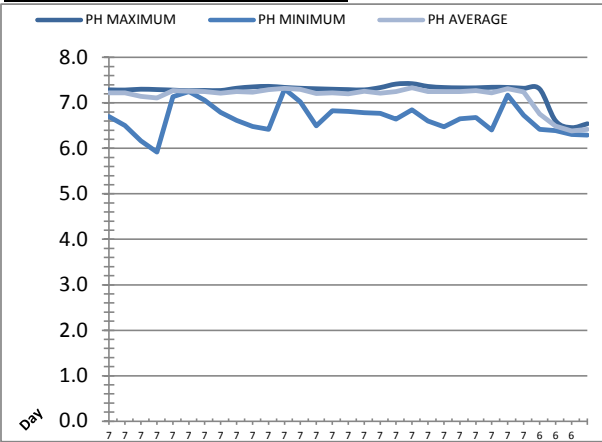


Date	West Train Header Pressure PIT_1018 (kPa)			East Train Header Pressure PIT_1028 (kPa)		
	Maximum	Minimum	Average	Maximum	Minimum	Average
1	148.8	147.9	148.3	649.0	138.4	323.3
2	148.0	147.1	147.5	665.6	219.5	408.6
3	147.1	146.6	146.9	663.9	165.1	374.0
4	148.3	146.8	147.4	720.0	171.8	380.7
5	148.6	147.5	148.1	705.7	181.5	375.8
6	148.9	147.6	148.3	721.5	169.8	385.6
7	148.9	147.9	148.2	677.7	11.1	363.4
8	148.3	147.5	148.1	638.5	202.1	385.5
9	147.7	146.8	147.2	643.9	188.0	368.1
10	147.4	146.7	147.0	632.6	167.3	374.8
11	148.8	146.7	147.5	654.6	150.6	384.0
12	154.3	148.7	151.9	690.1	84.6	361.2
13	152.6	152.1	152.3	686.8	167.6	355.2
14	152.8	151.8	152.4	715.3	172.3	347.3
15	152.6	151.2	151.8	731.9	165.7	390.3
16	152.2	151.0	151.5	715.6	135.8	360.2
17	153.7	152.1	153.4	762.5	138.3	371.7
18	153.6	150.5	152.2	702.0	136.3	386.0
19	150.8	149.9	150.4	758.1	129.2	343.2
20	152.5	150.5	151.5	676.3	136.2	377.2
21	742.0	72.6	222.5	739.1	16.5	366.6
22	743.2	135.6	349.2	740.0	113.9	338.3
23	915.2	142.4	343.3	901.8	111.3	326.1
24	869.5	43.1	324.5	882.9	11.3	305.8
25	853.8	143.4	330.8	890.9	112.9	311.8
26	842.7	154.6	390.6	842.1	123.2	376.2
27	828.7	154.3	383.8	825.0	123.4	368.1
28	868.9	144.5	380.7	862.2	112.8	364.4
29	1031.1	147.8	312.3	1033.6	116.7	292.0
30	911.6	126.4	310.5	915.3	90.0	292.2
31	1031.4	150.9	352.7	1031.3	120.4	336.0
Total						
Average	407.9	141.7	215.9	757.3	131.7	357.9
Maximum	1031.4		390.6	1033.6		408.6
Date	31-Dec		26-Dec	29-Dec		2-Dec
Minimum		43.1	146.9		11.1	292.0
Date		24-Dec	3-Dec		7-Dec	29-Dec

Notes:

Low Lift Monthly Report

Month: December-16

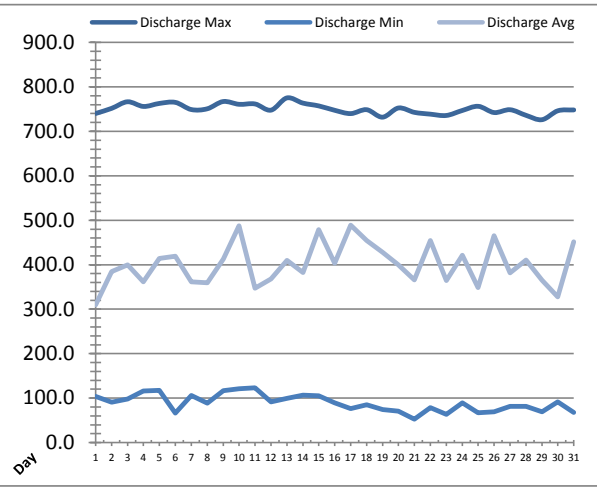
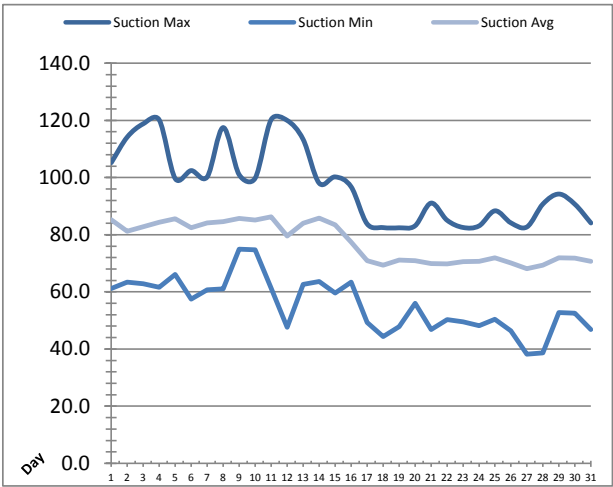


Date	Raw Water Sample Line					
	AIT_1402_PH (pH)			AIT_1402_DO (mg/L)		
	Maximum	Minimum	Average	Maximum	Minimum	Average
1	7.3	6.7	7.2	11.4	11.2	11.3
2	7.3	6.5	7.2	11.4	11.3	11.4
3	7.3	6.2	7.1	11.5	11.3	11.4
4	7.3	5.9	7.1	11.5	11.4	11.5
5	7.3	7.1	7.3	11.5	11.4	11.5
6	7.3	7.2	7.3	11.6	11.4	11.5
7	7.3	7.1	7.3	11.7	11.5	11.6
8	7.3	6.8	7.2	11.8	11.6	11.7
9	7.3	6.6	7.2	11.8	11.7	11.8
10	7.4	6.5	7.2	11.9	11.8	11.9
11	7.4	6.4	7.3	12.1	11.8	11.9
12	7.3	7.3	7.3	12.0	11.9	11.9
13	7.3	7.0	7.3	12.1	11.9	12.0
14	7.3	6.5	7.2	12.2	11.9	12.1
15	7.3	6.8	7.2	12.3	12.1	12.2
16	7.3	6.8	7.2	12.4	12.2	12.3
17	7.3	6.8	7.3	12.4	12.1	12.3
18	7.3	6.8	7.2	12.6	12.1	12.4
19	7.4	6.6	7.3	12.7	12.5	12.6
20	7.4	6.8	7.3	12.7	12.5	12.6
21	7.4	6.6	7.3	12.7	12.5	12.5
22	7.3	6.5	7.2	12.6	12.4	12.5
23	7.3	6.7	7.2	12.8	12.6	12.7
24	7.3	6.7	7.3	12.7	12.5	12.7
25	7.3	6.4	7.2	12.9	12.5	12.8
26	7.3	7.2	7.3	12.9	12.5	12.7
27	7.3	6.7	7.2	12.7	12.3	12.6
28	7.3	6.4	6.8	12.7	10.2	11.2
29	6.6	6.4	6.5	11.1	10.5	10.9
30	6.5	6.3	6.4	11.1	10.6	10.9
31	6.5	6.3	6.4	11.0	10.4	10.6
Total						
Average	7.2	6.7	7.1	12.1	11.8	11.9
Maximum	7.4		7.3	12.9		12.8
Date	20-Dec		20-Dec	25-Dec		25-Dec
Minimum		5.9	6.4		10.2	10.6
Date		4-Dec	30-Dec		28-Dec	31-Dec

Notes:

High Lift Monthly Report

Month: December-16

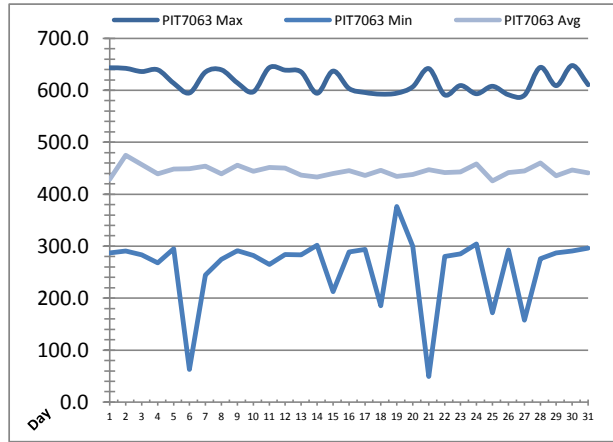
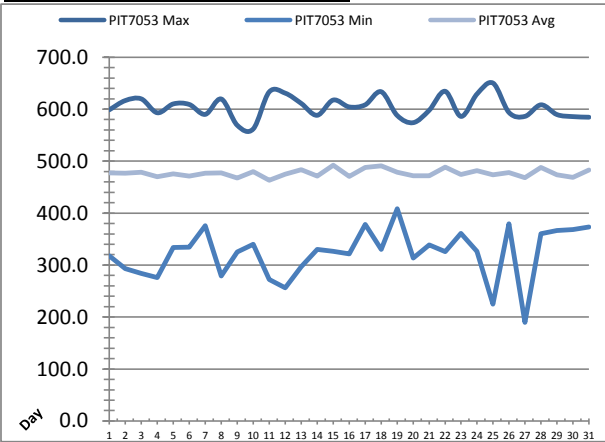


Date	Suction Header Pressure			Discharge Header Pressure		
	PIT_7002 (kPa)			PIT_7005 (kPa)		
	Maximum	Minimum	Average	Maximum	Minimum	Average
1	105.2	61.2	85.2	740.2	104.1	309.9
2	114.2	63.4	81.3	751.7	90.5	384.8
3	118.8	62.8	82.8	766.5	97.9	400.0
4	120.2	61.6	84.3	756.0	115.7	361.9
5	99.6	66.1	85.5	762.8	117.5	414.2
6	102.4	57.5	82.5	765.2	66.6	419.3
7	100.2	60.7	84.1	749.0	106.1	361.8
8	117.5	61.1	84.6	750.7	88.6	359.5
9	101.0	74.9	85.6	767.1	116.5	412.8
10	99.8	74.8	85.1	760.8	120.7	487.4
11	120.3	61.3	86.3	761.6	123.5	346.9
12	120.0	47.6	79.6	747.7	91.4	368.3
13	113.4	62.6	84.0	775.2	99.7	409.7
14	98.1	63.6	85.8	763.6	106.4	382.2
15	100.2	59.6	83.4	757.2	105.2	479.0
16	96.8	63.4	77.4	747.3	89.1	403.6
17	83.8	49.3	70.9	739.9	76.3	488.7
18	82.5	44.4	69.4	748.7	84.7	454.2
19	82.4	47.8	71.2	731.9	74.5	427.9
20	83.1	56.0	71.0	752.6	70.6	399.8
21	91.1	46.8	69.9	742.7	52.8	366.0
22	85.1	50.3	69.7	738.7	78.4	454.4
23	82.5	49.5	70.6	735.7	63.4	364.3
24	83.1	48.1	70.7	746.9	89.5	421.1
25	88.4	50.4	71.9	756.3	67.2	348.8
26	84.1	46.4	70.1	742.3	69.0	465.2
27	82.7	38.2	68.1	748.6	81.7	382.0
28	90.8	38.7	69.3	736.1	81.4	410.2
29	94.2	52.8	71.9	726.2	69.4	365.1
30	90.6	52.5	71.8	746.3	91.4	327.7
31	84.1	46.8	70.7	748.2	67.5	451.9
Total						
Average	97.3	55.5	77.2	750.4	88.9	400.9
Maximum	120.3		86.3	775.2		488.7
Date	11-Dec		11-Dec	13-Dec		17-Dec
Minimum		38.2	68.1		52.8	309.9
Date		27-Dec	27-Dec		21-Dec	1-Dec

Notes:

High Lift Monthly Report

Month: December-16

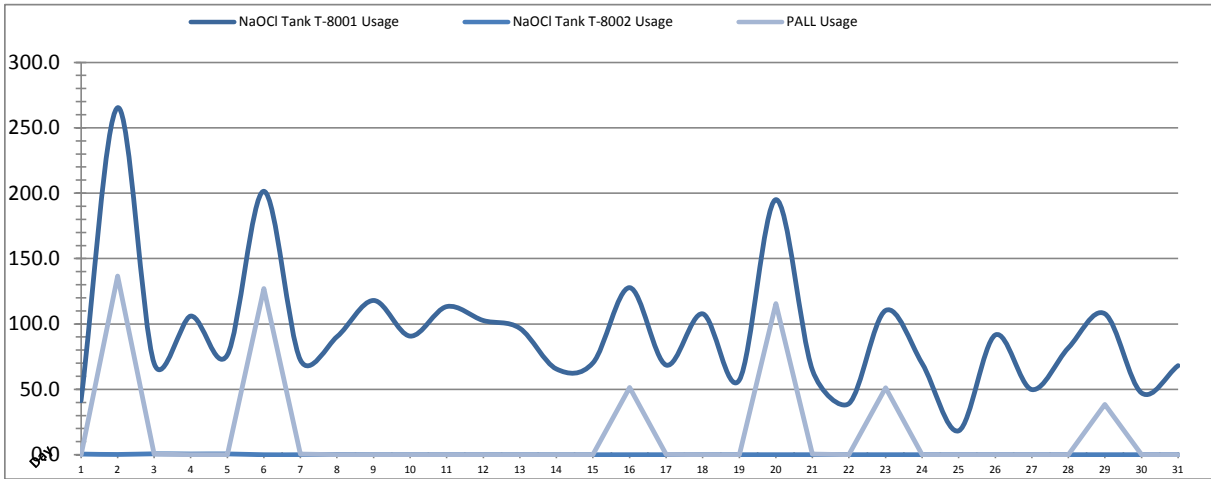


Date	Distribution Pressures					
	PIT_7053 (kPa)			PIT_7063 (kPa)		
	Maximum	Minimum	Average	Maximum	Minimum	Average
1	598.8	318.0	477.2	643.3	286.7	428.6
2	616.6	293.5	477.0	642.2	290.6	475.2
3	619.8	284.1	478.8	636.1	283.3	457.1
4	593.1	276.1	469.9	639.4	268.2	439.4
5	610.1	333.7	475.4	613.8	294.9	448.5
6	609.1	334.3	471.5	595.0	62.6	448.8
7	590.0	376.0	476.9	635.2	244.7	454.1
8	619.6	279.1	477.3	639.4	274.5	439.4
9	569.0	325.4	467.5	614.3	291.4	455.8
10	562.0	339.9	479.6	597.0	281.8	444.4
11	633.2	272.1	463.4	643.5	264.8	451.6
12	630.8	256.4	475.2	638.7	283.9	450.3
13	611.1	296.9	483.6	635.3	283.6	436.5
14	588.2	330.2	471.5	594.3	301.5	433.1
15	617.6	326.7	492.2	637.0	212.8	439.5
16	604.3	321.5	470.4	603.5	289.1	445.4
17	608.3	378.5	487.6	595.8	293.8	436.3
18	633.6	330.2	490.9	592.6	185.6	445.8
19	588.0	408.3	478.5	594.4	376.1	434.2
20	574.0	313.8	471.7	606.7	300.1	437.8
21	597.6	338.9	471.9	641.8	49.5	446.9
22	634.4	325.6	488.4	591.2	280.5	441.6
23	586.1	361.1	474.3	609.1	285.3	443.2
24	629.3	326.4	481.7	593.3	304.1	458.4
25	650.1	224.7	473.9	607.7	172.1	425.4
26	593.5	379.6	478.1	591.4	292.9	441.7
27	586.2	190.0	468.4	590.4	157.9	444.7
28	608.4	360.4	487.6	644.1	276.2	460.2
29	589.6	366.6	473.9	609.0	287.3	435.2
30	585.7	368.1	468.8	647.6	290.5	446.5
31	584.5	373.6	483.1	610.6	296.0	441.2
Total						
Average	604.0	322.9	477.0	617.2	260.1	444.7
Maximum	650.1		492.2	647.6		475.2
Date	25-Dec		15-Dec	30-Dec		2-Dec
Minimum		190.0	463.4		49.5	425.4
Date		27-Dec	11-Dec		21-Dec	25-Dec

Notes:

Chemical Usage Monthly Report

Month: December-16

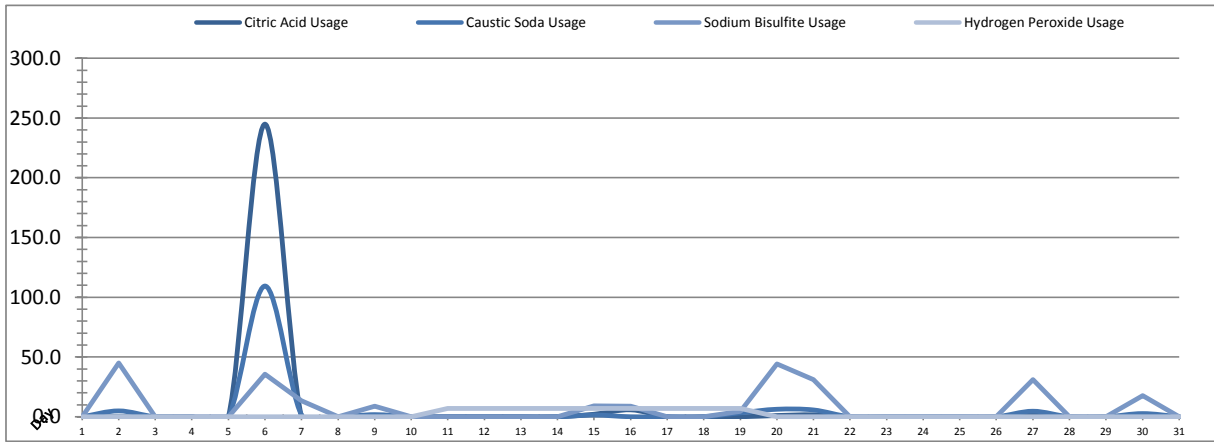


Date	PALL Usage	NaOCI Tank T-8001	NaOCI Tank T-8002
	PALL_HYPO_USAGE (L) Usage	LIT_8002 (Storage) (L) Usage	LIT_8004 (Day) (L) Usage
1	0.0	41.3	0.5
2	136.6	265.3	0.2
3	0.6	69.8	0.7
4	0.0	106.0	0.6
5	0.0	76.2	0.6
6	127.2	201.4	0.0
7	0.5	72.4	0.0
8	0.0	90.3	0.2
9	0.0	118.0	0.0
10	0.0	90.7	0.0
11	0.0	113.3	0.0
12	0.0	102.6	0.0
13	0.0	96.7	0.0
14	0.00	65.58	0.0
15	0.0	70.3	0.0
16	51.3	127.8	0.0
17	0.3	68.6	0.0
18	0.0	107.7	0.0
19	0.0	57.1	0.0
20	115.5	195.1	0.0
21	0.5	64.7	0.0
22	0.0	39.2	0.0
23	51.1	110.3	0.0
24	0.1	69.8	0.0
25	0.0	18.3	0.0
26	0.0	91.6	0.0
27	0.0	49.8	0.0
28	0.0	81.8	0.0
29	38.4	107.7	0.0
30	0.0	47.3	0.0
31	0.0	68.1	0.0
Total	522.1	2884.9	3.6
Average	16.8	93.1	0.1
Maximum	136.6	265.3	0.7
Date	2-Dec	2-Dec	3-Dec
Minimum	0.0	18.3	0.0
Date	1-Dec	25-Dec	14-Dec

Notes:	
Dosage (mg/L)=	Day Tank (L) x %conc. x 1000
	Membrane Flow (m3)
Chlorine Concentration:	12.0%

Chemical Usage Monthly Report

Month: December-16



Date	Citric Acid	Caustic Soda	Captor	Hydrogen Peroxide		Membrane Flow (m ³)
	TAGNAME (L) Usage	TAGNAME (L) Usage	TAGNAME (L) Usage	TAGNAME (L) Usage	(mg/L) Dose	
1	0.0	0.0	0.0	0.0	0.0	2519.328
2	0.0	4.9	44.9	0.0	0.0	4592.532
3	0.0	0.0	0.0	0.0	0.0	3824.568
4	0.0	0.0	0.0	0.0	0.0	4118.654
5	0.0	0.0	0.0	0.0	0.0	3610.004
6	244.9	109.4	35.7	0.0	0.0	3365.878
7	0.0	1.7	13.4	0.0	0.0	2916.556
8	0.0	0.0	0.0	0.0	0.0	3748.410
9	0.7	1.8	8.9	0.0	0.0	3264.065
10	0.0	0.0	0.0	0.0	0.0	3689.882
11	0.0	0.0	0.0	6.9	1.0	3468.867
12	0.0	0.0	0.0	6.9	1.0	3427.350
13	0.0	0.0	0.0	6.9	1.1	3277.447
14	0.0	0.0	0.0	6.9	1.2	2792.864
15	2.1	1.4	9.0	6.9	0.9	3910.039
16	5.8	0.0	8.8	6.9	1.1	3172.879
17	0.0	0.0	0.0	6.9	1.0	3560.336
18	0.0	0.0	0.0	6.9	0.8	4344.106
19	0.0	3.3	4.7	6.9	1.2	2918.258
20	1.0	6.3	44.3	0.0	0.0	3623.578
21	1.7	5.7	31.2	0.0	0.0	3697.943
22	0.0	0.0	0.0	0.0	0.0	3750.178
23	0.0	0.0	0.0	0.0	0.0	3567.371
24	0.0	0.0	0.0	0.0	0.0	3296.379
25	0.0	0.0	0.0	0.0	0.0	3351.487
26	0.0	0.0	0.0	0.0	0.0	3873.061
27	1.8	4.6	31.0	0.0	0.0	2885.684
28	0.0	0.0	0.0	0.0	0.0	4391.938
29	0.0	0.0	0.0	0.0	0.0	2847.935
30	0.5	2.7	17.7	0.0	0.0	2917.099
31	0.0	0.0	0.0	0.0	0.0	3710.618
Total	258.4	141.7	249.4	62.0		108435.3
Average	8.3	4.6	8.0	2.0	0.3	3497.9
Maximum	244.9	109.4	44.9	6.9	1.2	4592.5
Date	6-Dec	6-Dec	2-Dec	11-Dec	14-Dec	2-Dec
Minimum	0.0	0.0	0.0	0.0	0.0	2519.3
Date	1-Dec	1-Dec	1-Dec	1-Dec	1-Dec	1-Dec

Notes:	
Dosage (mg/L)=	Day Tank (L) x %conc. x 1000
	Membrane Flow (m3)
Peroxide Concentration:	50.0%

Runtimes Report

Month: December-16

Date	Daily Gen-Set Runtimes		Daily UV Runtimes		Daily PALL Runtimes				
	LLPS	WTP	UV #1	UV #2	Air Compressor #1	Air Compressor #2	CIP Neutralization	CIP Drain	CIP Recirc
	(Hrs)	(Hrs)	(Hrs)	(Hrs)	(Hrs)	(Hrs)	(Hrs)	(Hrs)	(Hrs)
1	0.0	0.0	0.0	0.0	24.4	0.0	0.2	0.2	0.5
2	0.0	0.0	0.0	0.0	24.3	0.0	0.5	0.2	1.2
3	0.0	0.0	0.0	0.0	24.4	0.0	0.0	0.0	0.0
4	0.0	0.0	0.0	0.0	24.4	0.0	0.0	0.0	0.0
5	0.0	0.0	0.0	0.0	24.4	0.0	0.0	0.0	0.0
6	0.0	0.0	0.0	0.0	24.4	0.0	0.4	0.2	3.2
7	0.0	0.0	0.0	0.0	24.4	0.0	0.2	0.2	3.0
8	0.0	0.0	0.0	0.0	24.4	0.0	0.0	0.0	0.0
9	0.0	0.0	0.0	0.0	24.4	0.0	0.3	0.2	3.0
10	0.0	0.0	0.0	0.0	24.4	0.0	0.0	0.0	0.0
11	0.0	0.0	0.0	0.0	24.4	0.0	0.0	0.0	0.0
12	0.0	0.0	0.0	0.0	7.9	15.2	0.0	0.0	0.0
13	0.0	0.0	0.0	0.0	0.0	23.9	0.0	0.0	0.0
14	0.0	0.0	0.0	0.0	1.0	22.0	0.0	0.0	0.0
15	0.0	0.0	0.0	0.0	24.4	0.0	0.1	0.2	2.9
16	0.0	0.0	0.0	0.0	24.4	0.0	0.3	0.0	0.5
17	0.0	0.0	0.0	0.0	24.4	0.0	0.0	0.0	0.0
18	0.0	0.0	0.0	0.0	24.4	0.0	0.0	0.0	0.0
19	0.0	0.0	0.0	0.0	24.4	0.0	0.1	0.0	0.0
20	0.0	0.0	0.0	0.0	24.4	0.0	0.5	0.4	1.4
21	0.8	1.7	0.0	0.0	24.4	0.0	0.3	0.1	0.6
22	0.0	0.0	0.0	0.0	24.4	0.0	0.0	0.0	0.1
23	0.0	0.0	0.0	0.0	24.4	0.0	0.0	0.0	0.1
24	0.0	0.0	0.0	0.0	24.4	0.0	0.0	0.0	0.0
25	0.0	0.0	0.0	0.0	24.4	0.0	0.0	0.0	0.0
26	0.0	0.0	0.0	0.0	24.3	0.0	0.0	0.0	0.0
27	0.0	0.0	0.0	0.0	24.4	0.0	0.2	0.1	0.5
28	0.0	0.0	0.0	0.0	24.4	0.0	0.0	0.0	0.0
29	0.0	0.0	0.0	0.0	24.4	0.0	0.0	0.1	0.5
30	0.0	0.0	0.0	1.9	24.4	0.0	0.2	0.0	0.0
31	0.0	0.0	0.0	0.0	24.4	0.0	0.0	0.0	0.0
Total	0.8	1.7	0.0	1.9	691.2	61.2	3.3	1.9	17.5

Notes:
Air compressor #2 out of service, requires motor rebuild.

Runtimes Report

Month: December-16

Daily

Date	PALL Runtimes						Process Drain	
	RFR Pump #1 (Hrs)	RFR Pump #2 (Hrs)	RF Pump #1 (Hrs)	RF Pump #2 (Hrs)	XR Pump #1 (Hrs)	XR Pump #2 (Hrs)	PDP9010 Pump (Hrs)	PDP9020 Pump (Hrs)
1	2.5	2.5	0.6	0.6	5.5	5.8	2.2	2.9
2	4.4	4.4	0.8	0.8	10.2	9.8	2.0	2.7
3	3.5	3.7	0.7	0.6	8.0	9.1	1.9	2.5
4	3.7	3.6	0.7	0.8	9.1	8.4	1.9	2.7
5	3.2	3.1	0.6	0.6	8.5	8.0	1.9	2.6
6	3.5	3.4	0.6	0.7	7.4	7.9	2.4	1.7
7	2.7	2.9	0.6	0.5	6.0	5.9	2.8	1.6
8	2.9	3.1	0.5	0.6	7.2	7.3	2.1	2.8
9	3.2	3.0	0.6	0.4	6.9	7.1	1.8	2.6
10	3.1	3.1	0.7	0.6	8.2	8.0	1.9	2.4
11	3.0	3.0	0.6	0.6	7.7	7.7	2.0	2.8
12	3.0	2.8	0.7	0.8	5.9	5.8	2.2	3.4
13	1.5	1.6	0.6	0.5	6.8	6.6	2.0	2.7
14	0.8	0.8	0.5	0.5	5.9	5.9	2.3	3.3
15	3.2	3.1	0.6	0.7	7.2	7.4	1.8	2.4
16	1.7	1.6	0.2	0.3	6.2	6.1	1.8	2.5
17	3.6	4.0	0.6	0.6	6.4	6.3	1.6	2.2
18	4.2	4.0	0.8	0.6	8.2	8.4	1.7	2.3
19	2.8	2.7	0.3	0.5	5.9	5.8	2.0	2.5
20	2.7	3.0	0.5	0.6	6.5	6.6	2.0	2.7
21	3.6	3.7	0.7	0.6	6.5	6.6	1.9	2.5
22	3.8	3.6	0.6	0.7	6.3	6.4	1.7	2.3
23	3.3	3.5	0.7	0.5	5.6	5.6	1.9	2.6
24	3.5	3.2	0.5	0.6	5.7	5.8	1.8	2.4
25	3.2	3.5	0.6	0.6	6.1	5.9	1.9	2.7
26	4.6	4.1	0.7	0.7	6.2	6.4	1.7	2.3
27	2.2	2.7	0.4	0.4	3.3	3.5	2.0	2.4
28	4.0	3.7	0.6	0.7	5.4	5.4	1.8	2.5
29	2.8	2.7	0.5	0.4	4.9	4.8	1.9	2.6
30	2.9	3.1	0.5	0.6	4.9	5.1	2.0	2.6
31	3.8	3.6	0.7	0.6	5.3	5.3	1.8	2.4
Total	96.5	96.4	18.3	18.3	203.1	203.9	60.8	78.6

Notes:

Runtimes Report

Month: December-16

Daily

Date	Low Lift Pump Motor Runtimes				High Lift Pump Motor Runtimes			
	LLP1010 (Hrs)	LLP1020 (Hrs)	LLP1030 (Hrs)	LLP1040 (Hrs)	HLP7010 (Hrs)	HLP7020 (Hrs)	HLP7030 (Hrs)	HLP7040 (Hrs)
1	4.9	0.0	3.8	3.5	5.7	0.0	0.8	5.6
2	5.5	0.0	8.3	7.7	4.1	0.0	7.3	7.1
3	6.4	0.0	3.3	8.4	5.0	0.0	6.5	6.5
4	6.9	0.0	4.4	6.6	1.3	0.0	4.5	8.7
5	3.7	0.0	7.5	6.4	4.9	0.0	7.7	4.0
6	7.2	0.0	6.4	4.5	0.5	0.0	5.0	7.6
7	3.4	0.0	3.8	6.4	3.9	0.0	6.1	4.8
8	5.6	2.4	2.8	5.5	1.7	0.0	3.5	8.0
9	5.4	5.1	2.9	1.9	4.1	0.0	6.7	3.4
10	2.8	5.6	3.4	5.4	7.5	0.0	7.4	2.7
11	1.6	5.6	5.6	4.0	3.8	0.0	3.6	6.0
12	4.0	3.6	5.5	5.6	9.5	0.0	3.9	2.5
13	4.0	2.5	2.8	5.3	0.0	0.0	6.8	10.7
14	0.6	3.3	5.5	3.8	2.8	0.0	4.6	5.0
15	1.7	5.7	2.9	7.5	5.9	0.0	8.2	6.1
16	5.6	2.2	3.0	3.2	5.0	0.0	6.6	4.5
17	2.4	5.5	4.5	3.0	12.0	0.0	2.9	4.2
18	3.2	5.0	5.3	4.8	6.2	0.0	6.5	7.7
19	3.8	3.7	0.2	4.7	2.9	0.0	3.7	9.0
20	4.1	4.3	4.8	2.8	8.5	0.0	4.6	1.6
21	1.4	3.7	3.4	7.3	4.8	0.0	4.6	6.4
22	2.8	5.6	4.4	3.4	5.0	0.0	8.0	6.6
23	3.4	6.1	1.8	4.9	5.1	0.0	3.2	7.5
24	5.5	1.9	5.4	1.9	6.9	0.0	5.8	5.5
25	0.5	5.5	4.1	5.3	6.2	0.0	6.7	0.0
26	5.5	3.9	5.5	3.7	4.8	0.0	10.3	3.1
27	5.2	5.6	0.9	5.7	4.8	0.0	6.2	4.5
28	4.0	4.1	5.6	9.1	6.2	0.0	10.0	3.5
29	3.0	2.6	2.4	3.8	2.7	0.0	8.5	2.5
30	4.1	2.8	4.8	0.1	6.3	0.0	5.2	2.4
31	2.9	4.4	2.8	6.2	4.4	0.0	10.1	4.3
Total	121.1	100.7	127.8	152.4	152.5	0.0	185.5	162.0

Notes:
HLP 2 out of service.

Plant Internal Flow Report

Month: December-16

Date	Settling Tank Level		Process Drain Tank		Settling Tank Flow		Potable Water Flow		Non-Potable Flow	
	T-9003 (m)		T-9001 (m)		FIT_9005 (m ³) (L/s)		FIT_7082 (m ³) (L/s)		FIT_7092 (m ³) (L/s)	
	Maximum	Minimum	Maximum	Minimum	Total	Peak	Total	Peak	Total	Peak
1	2.2	0.1	0.8	0.4	28.9	15.7	0.1	1.4	12.7	16.0
2	2.2	0.1	0.8	0.4	72.7	15.7	0.1	1.4	39.1	22.9
3	2.2	0.2	0.8	0.4	31.7	15.7	0.0	1.3	0.0	0.0
4	2.2	0.1	0.8	0.4	30.8	15.7	0.0	0.0	0.0	0.0
5	2.2	0.1	0.8	0.4	30.7	15.7	0.1	1.3	0.0	0.0
6	2.2	0.1	0.8	0.4	52.8	15.7	0.3	1.4	30.6	22.9
7	2.2	0.1	0.8	0.4	28.5	15.7	0.2	1.3	18.0	16.7
8	2.2	0.1	0.8	0.4	15.6	15.7	0.2	1.4	0.0	0.0
9	2.2	0.1	0.8	0.4	34.5	15.7	0.1	1.4	18.0	17.0
10	2.2	0.3	1.2	0.4	29.9	15.7	0.0	0.0	0.0	0.0
11	2.2	0.1	0.9	0.4	23.5	15.7	0.0	1.3	0.0	0.0
12	2.2	0.1	1.6	0.4	51.4	15.7	0.1	1.4	0.0	0.0
13	2.2	0.3	1.1	0.4	92.4	15.7	0.2	1.4	0.0	0.0
14	2.2	0.1	1.9	0.4	69.3	15.7	0.2	1.5	0.0	0.0
15	2.2	0.3	0.8	0.4	43.5	15.7	0.1	1.4	14.4	17.0
16	2.2	0.2	0.8	0.4	18.3	15.7	0.1	1.4	20.1	26.4
17	2.2	0.1	0.8	0.4	32.9	13.7	0.0	0.0	0.0	0.0
18	2.2	0.3	0.8	0.4	18.5	10.1	0.0	0.5	0.0	0.0
19	2.2	0.2	0.9	0.4	10.0	9.2	0.2	1.4	1.0	1.4
20	2.2	0.1	1.2	0.4	62.0	15.7	0.1	1.4	38.9	16.2
21	2.2	0.3	0.8	0.4	47.1	15.7	0.4	1.4	13.2	16.2
22	2.2	0.3	0.8	0.4	25.1	8.2	0.1	1.4	3.6	22.5
23	2.2	0.1	0.8	0.4	37.3	15.2	0.0	1.3	9.6	23.2
24	2.2	0.1	0.8	0.4	32.1	15.7	0.0	0.0	0.0	0.0
25	2.2	0.2	0.8	0.4	31.0	15.7	0.0	0.0	0.0	0.0
26	2.2	0.1	0.8	0.4	43.4	15.7	0.0	0.0	0.0	0.0
27	2.2	0.1	1.2	0.4	43.1	15.7	0.0	1.3	10.8	16.9
28	2.2	0.1	1.2	0.4	32.6	15.7	0.0	1.3	0.0	0.0
29	2.2	0.1	0.8	0.4	18.5	15.7	0.0	1.3	11.0	15.6
30	2.2	0.1	0.8	0.4	32.6	15.7	9.2	5.6	0.0	0.0
31	2.2	0.1	0.8	0.4	38.0	15.7	0.0	0.0	0.0	0.0
Total					1158.5		11.5		240.8	
Average	2.2	0.1	0.9	0.4	37.4	15.0	0.4	1.2	7.8	8.1
Maximum	2.2		1.9		92.4		9.2		39.1	
Date	26-Dec		14-Dec		13-Dec		30-Dec		2-Dec	
Minimum		0.1		0.4		8.2		0.0		0.0
Date		12-Dec		10-Dec		22-Dec		4-Dec		3-Dec

Notes: