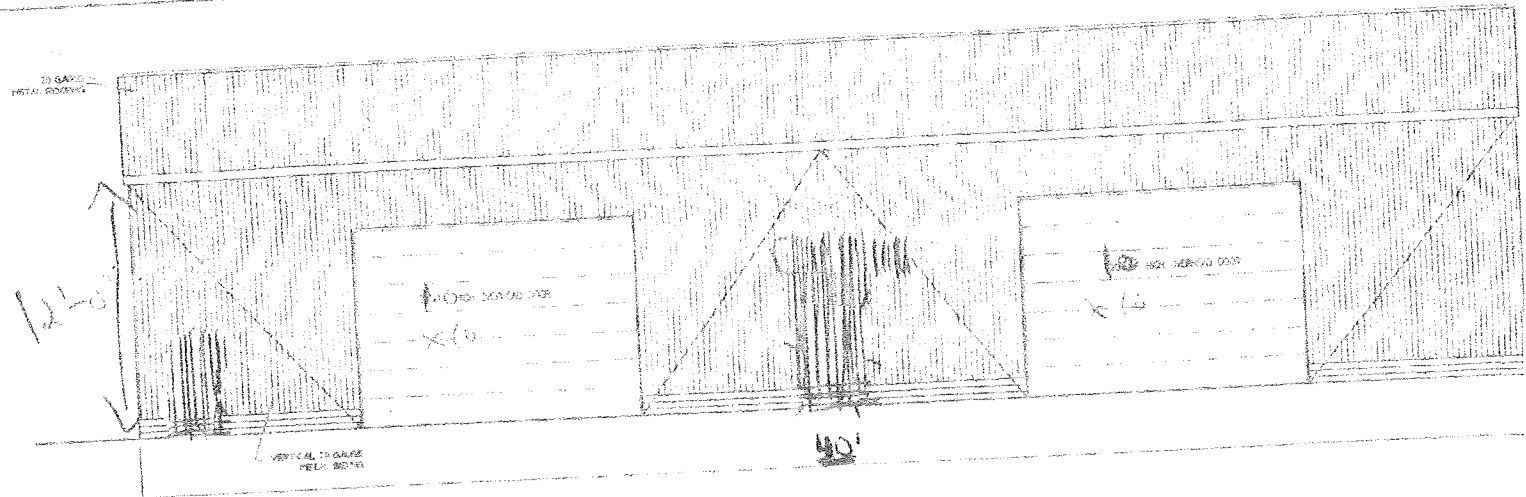


EXT. WALL CONSTRUCTION 1 HOUR RATED INSUL. ON EX.
 1/2" G.G. FIBRE REINFORCED STEEL SIDING
 1/4" EXTERIOR GYPSUM VAPOR BARRIER IN INSUL. INSTALLATION
 2x4 @ 16" OC. INTERIOR BRACING
 2 LAYERS 5/8" TYPE X DRYWALL

VERTICAL TO GAGE
 METAL ROOFING

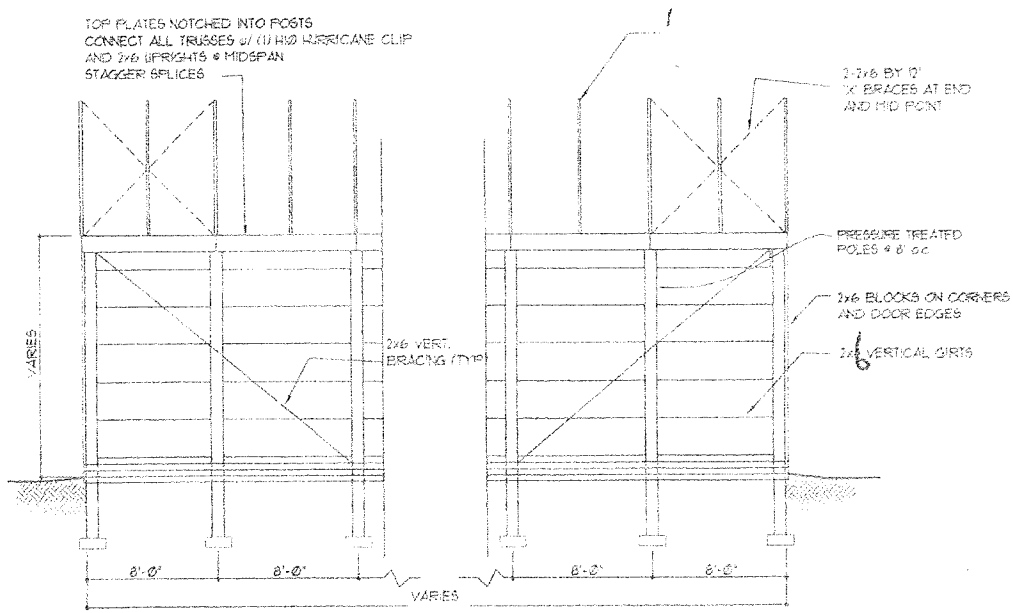
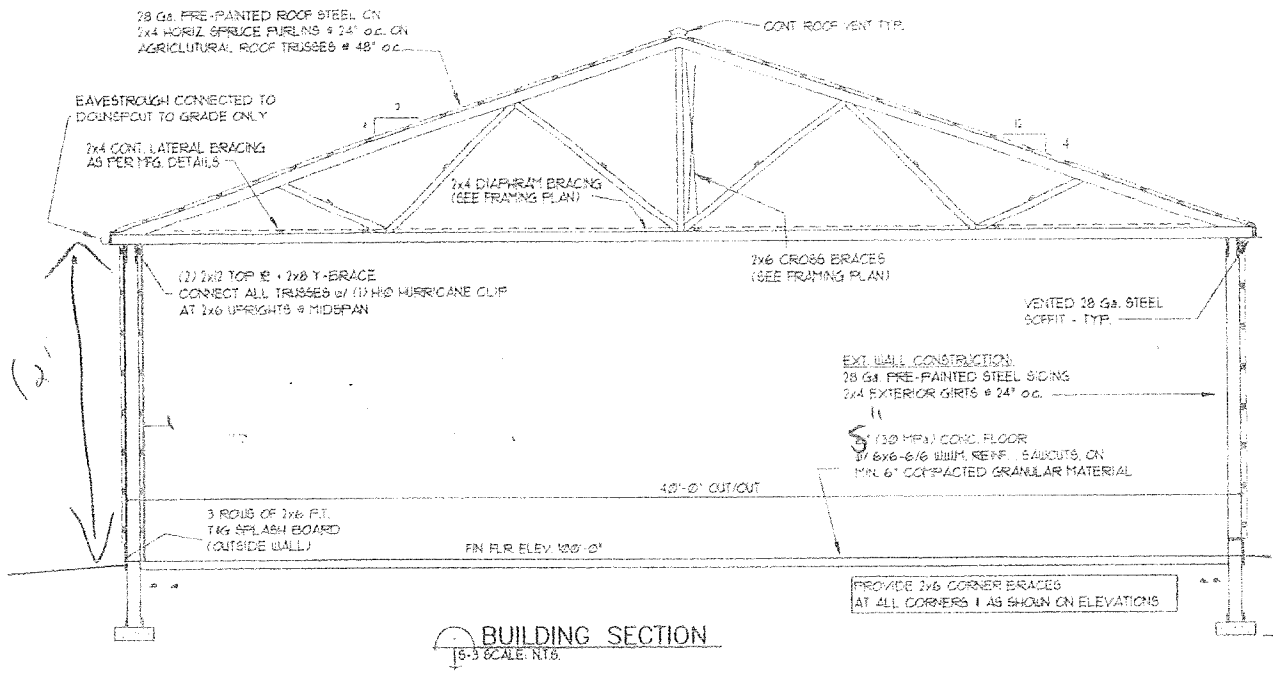
WEST
 EAST ELEVATION
 SCALE 1/4" = 1'-0"



TO GAGE
 METAL ROOFING

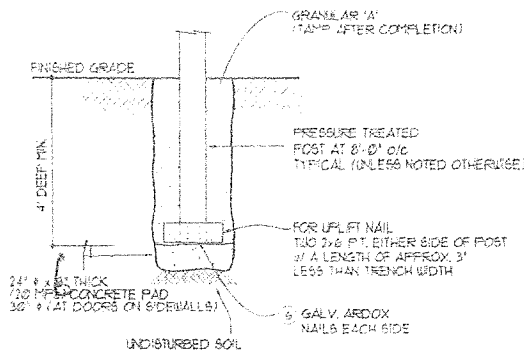
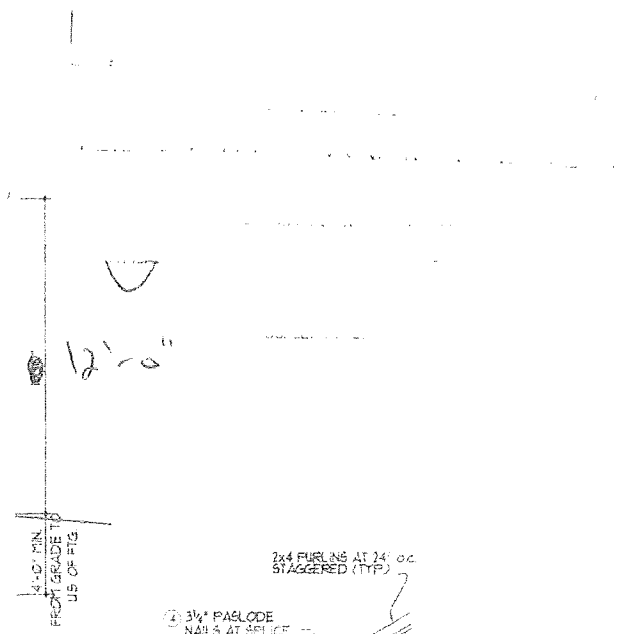
VERTICAL TO GAGE
 METAL ROOFING

EAST
 WEST ELEVATION
 SCALE 1/4" = 1'-0"

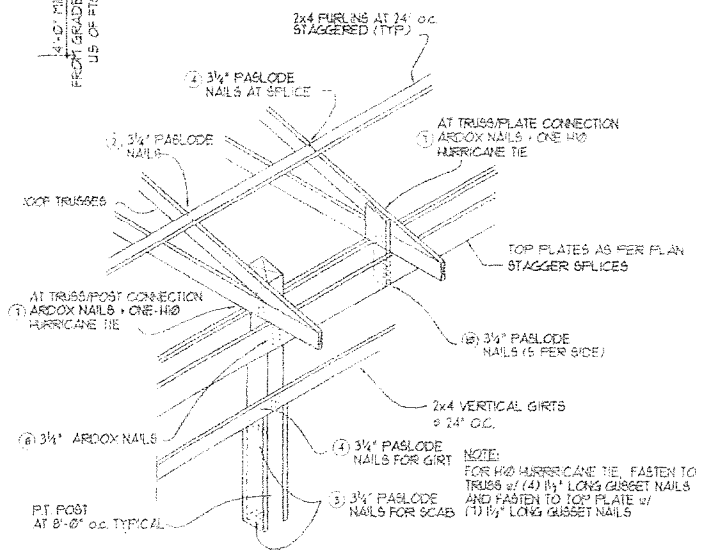


GENERAL NOTES

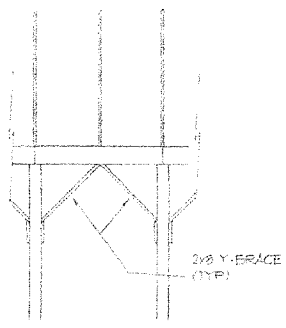
- 10 GENERAL
- 11 PRIOR TO THE COMMENCEMENT OF CONSTRUCTION OR FABRICATION, THE CONTRACTOR SHALL VERIFY ALL DIMENSIONS AND FIELD CONDITIONS. SHOULD FIELD CONDITIONS OR DIMENSIONS VARY FROM DESIGN DRAWINGS, THE CONSULTANT SHALL BE NOTIFIED.
- 12 THE LOCATION OF UTILITIES IS NOT SHOWN ON THESE DRAWINGS. THE ONUS LIES UPON THE CONTRACTOR TO ASCERTAIN, AT HIS OWN EXPENSE, THE EXACT LOCATION OF EACH UTILITY.
- 13 CODES
- 21 THE NATIONAL BUILDING CODE OF CANADA 1985 EDITION, LATEST REVISIONS, AND THE BUILDING CODE OF ONTARIO 1991, ONT. REG. 403/91, LATEST REVISIONS, SHALL BE THE BASIS FOR DESIGN AND CONSTRUCTION OF ALL WORK.
- 22 HEALTH AND SAFETY ACT ONT. REG. 203/91, LATEST REVISIONS.
- 5.0 CARPENTRY WORK
- 5.1 CARPENTRY WORK SHALL INCLUDE ALL LAMB BLOCKING, INSTALLATION OF DOORS, FRAMES, ALL NAILERS, FASTENERS, BOLTS, WASHERS, NL
- 5.2 ALL FRAMING LUMBER TO BE S-P-F No. 1 OR 1 PRESSURE TREATED LUMBER TO BE IN ACCOR Q15, GRADE B FIR PLYWOOD IN ACCORDANCE
- 5.3 SUPPLY ALL ROUGH HARDWARE WHERE REQUIRED EXPANSION BOLTS, ETC., TO BE OF SUFFICIENT
- 5.4 INSTALL HOLLOW METAL DOOR FRAMES PLUMB ON DRAWINGS COMPLETE WITH HARDWARE.



FOOTING DETAIL
SCALE: N.T.S.



ROOF TRUSS CONNECTION DETAIL
SCALE: N.T.S.



TYPICAL Y-BRACING DETAIL
SCALE: N.T.S.