



MUNICIPALITY OF  
**West Elgin**

## Construction Notice: Village of Rodney Reconstruction

March 10, 2021

Dear Property Owner/Resident/Merchant,

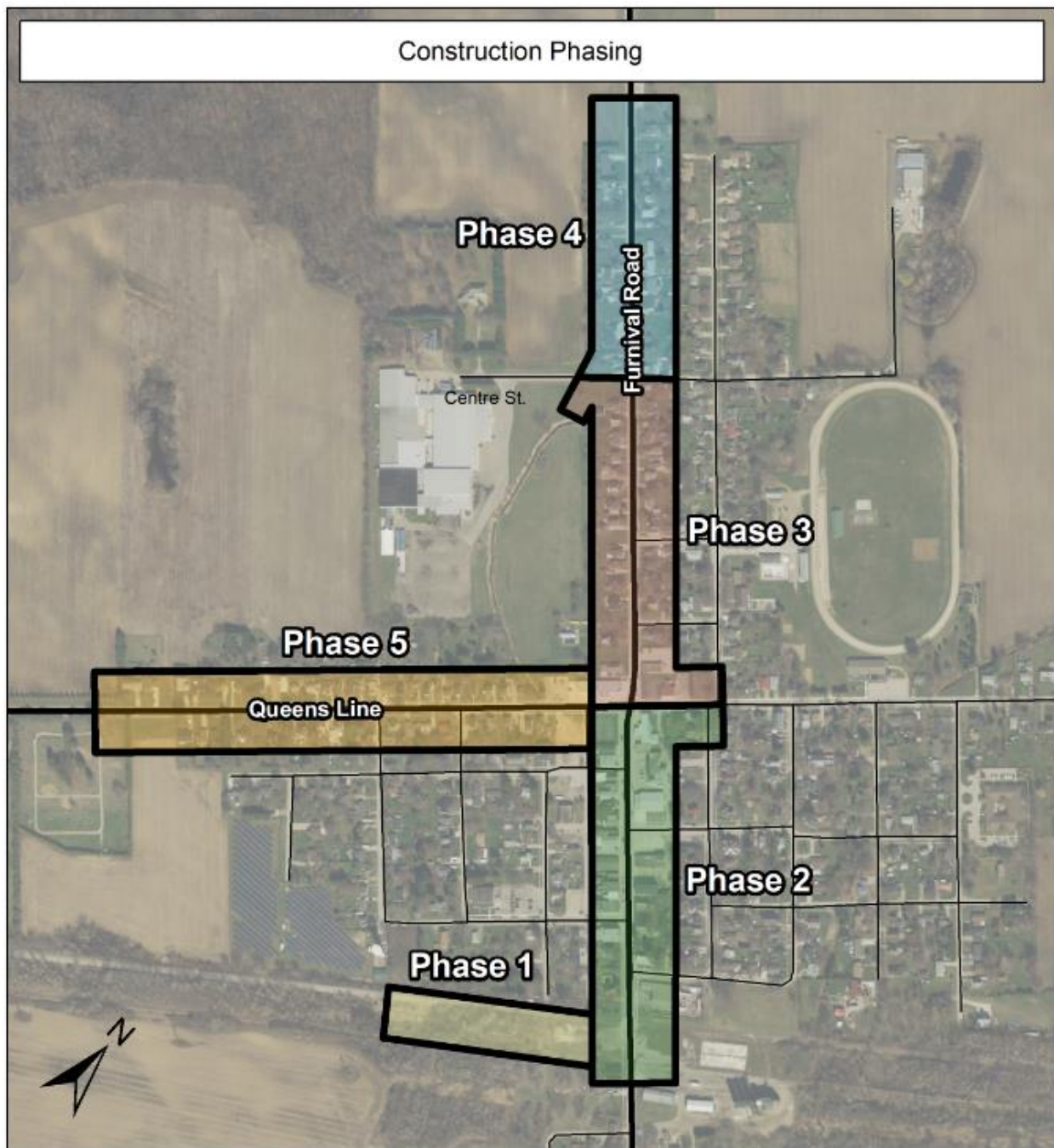
The County of Elgin in partnership with the Municipality of West Elgin, will soon be starting a construction project in your area. This letter provides details about the project and information on how construction may impact you.

### Project Location

<b>Location</b>	<p><b>Phase 1:</b> Storm Sewer Outlet – (from the Wismer municipal drain along the former railway corridor to Furnival Road);</p> <p><b>Phase 2:</b> Furnival Road (CR103) - (from approximately 180m south of Victoria Street to Queens Line);</p> <p><b>Phase 3:</b> Furnival Road (CR103) – (from approximately Centre Street to Queens Line);</p> <p><b>Phase 4:</b> Furnival Road (CR103) - (from approximately 335m north of Centre Street to Centre Street); and,</p> <p><b>Phase 5:</b> Queens Line (CR104) – (from approximately 300m west of Flora Street to Furnival Road)</p>
<b>Schedule</b>	<p><b>Phase 1:</b> Tentative Start – March 25, 2021* Estimated Completion – April 16, 2021* Top Coat Asphalt – Spring 2022*</p> <p><b>Phase 2:</b> Tentative Start – April 12, 2021* Estimated Completion – May 28, 2021* Top Coat Asphalt – Spring 2022*</p> <p><b>Phase 3:</b> Tentative Start – May 31, 2021* Estimated Completion – July 16, 2020* Top Coat Asphalt – Spring 2022*</p> <p><b>Phase 4:</b> Tentative Start – July 19, 2021* Estimated Completion – September 3, 2021* Top Coat Asphalt – Spring 2022*</p> <p><b>Phase 5:</b> Tentative Start – September 6, 2021* Estimated Completion – October 29, 2020* Top Coat Asphalt – Spring 2022*</p>
<b>Scope</b>	<ul style="list-style-type: none"> <li>• Road reconstruction including curb, gutter, sidewalks, and asphalt</li> <li>• Storm sewer replacement and private drain connection installation (where requested)</li> <li>• New storm sewer outlets</li> <li>• Streetscape improvements including decorative pedestal street lighting solely within Phase 2</li> </ul>
<b>Traffic Impacts</b>	Furnival Road will both be closed from Pioneer Line (CR2) to McDougall Line (CR9), and Queens Line will be closed from Furnival Road (CR103) to Blacks Road during their respective phases to “through traffic”. Access for local, business, and emergency vehicles will be maintained at all times to the extent possible.
<b>Contractor</b>	Van Bree Drainage and Bulldozing Limited

\* Please note that the timelines are approximate and will vary depending on weather and other factors.

## Project Map



## How Will Construction Impact You?

**Working Hours:** Work will typically take place from 7:00 a.m. to 7:00 p.m., Monday to Friday. In some extenuating circumstances work may need to occur outside of these typical hours to accommodate the completion of the project within the established schedule and to minimize the social impacts of the work.

**Storm Sewer Private Drain Connection (PDC):** As mentioned previously the Municipality of West Elgin is offering to install a storm sewer private drain connection to your property line. Please contact Lee Gosnell at the Municipality (519) 785-0560, ext. 232 if you would like a PDC installed during construction.

**Street Access and Parking:** Furnival Road (CR103) will both be closed from Pioneer Line (CR2) to McDougall Line (CR9), and Queens Line (CR104) will be closed from Furnival Road (CR103) to Blacks Road during their respective phases to “through traffic”. Access for local, business and emergency vehicles will be maintained to the extent possible. Every effort will be made to minimize any impacts during construction.

**Building Condition Assessment:** In advance of underground work, Wristen’s Home Specialties Inc. (WHS), will be contacting each property owner directly to schedule a brief pre-condition survey of your residence / building as a precautionary measure to record preconstruction conditions. Your participation in this survey is optional and at your discretion.



MUNICIPALITY OF  
**West Elgin**

**Vibration – Protect Valuables:** Construction equipment can cause vibrations. Please ensure you protect valuables susceptible to damage.

**Privately Owned Sprinkler Systems, Landscaping or Fencing:** If you have a sprinkler system, landscaping, or fence on the County Boulevard that conflicts with the construction project you will need to remove and re-install it, at your expense, onto your own property. The County will not accept liability for damage to items on the County Boulevard. Please contact us to determine if this applies to you.

**Garbage and Recycling Collection:** If your pick-up point is temporarily blocked by construction the contractor will assist in collecting and transporting your garbage and recycling. Please clearly label your containers with your address.

**Tree Removal:** A couple of trees have been identified for removal due to construction conflicts. These trees will be marked on-site in advance. After construction, the County's consultant tree forester will review the tree inventory on your street and determine the number and species of trees to replant.

**Nursery Sod:** The contractor will water and maintain all new sod for 30 days following placement. During this maintenance period we encourage you to participate in the watering process as well. After the 30 days, all sod maintenance and watering become your responsibility as it was prior to construction. Watering restrictions do not apply to newly seeded or sodded areas.

### Contact Information

If you have any questions about this project please contact one of the Project Team members listed below. During construction you can also speak with the inspector on-site. If there is a construction related emergency and there are no staff on-site to report it to then please contact the County afterhours at (519) 631-1460, ext. 333.

<b>24hr Contractor Contact</b>	Victor Lopes (519) 520-0796, <a href="mailto:victorl@vanbree.ca">victorl@vanbree.ca</a>
<b>Consultant Site Inspector</b>	Elias Hajjar (519) 319-8143
<b>Consultant Project Manager</b>	Brad Walt, (519) 672-9403 Ext. 5224, <a href="mailto:Brad.Walt@gmblueplan.ca">Brad.Walt@gmblueplan.ca</a>
<b>Municipality Project Manager</b>	Lee Gosnell, (519) 785-0560, Ext. 232, <a href="mailto:lgosnell@westelgin.net">lgosnell@westelgin.net</a>
<b>County Project Manager</b>	Brian Lima, (519) 631-1460, ext. 117, <a href="mailto:blima@elgin.ca">blima@elgin.ca</a>
<b>General Inquiries</b>	519-631-1460
<b>Website</b>	<a href="https://www.elgincounty.ca/engineering-services-rodney-reconstruction/">https://www.elgincounty.ca/engineering-services-rodney-reconstruction/</a>

Thank you in advance for your cooperation.

Sincerely,

Brian Lima, P.Eng.  
Director of Engineering Services

Cc: Tom Marks – Warden, County of Elgin  
Duncan McPhail – Mayor, Municipality of West Elgin  
Richard Leatham – Deputy Mayor, Municipality of West Elgin  
Taraesa Tellier – Ward 1 Councillor, Municipality of West Elgin  
Julie Gonyou – CAO/Clerk, County of Elgin  
Magda Badura – CAO/Treasurer, Municipality of West Elgin  
Lee Gosnell - Manager of Operations & Community Services, Municipality of West Elgin  
GM BluePlan Engineering Limited  
Van Bree Drainage and Bulldozing Limited  
MTO West Region